

Digitized by the Internet Archive  
in 2010 with funding from  
Allen County Public Library Genealogy Center

GEN



Gc 975.601 B56s

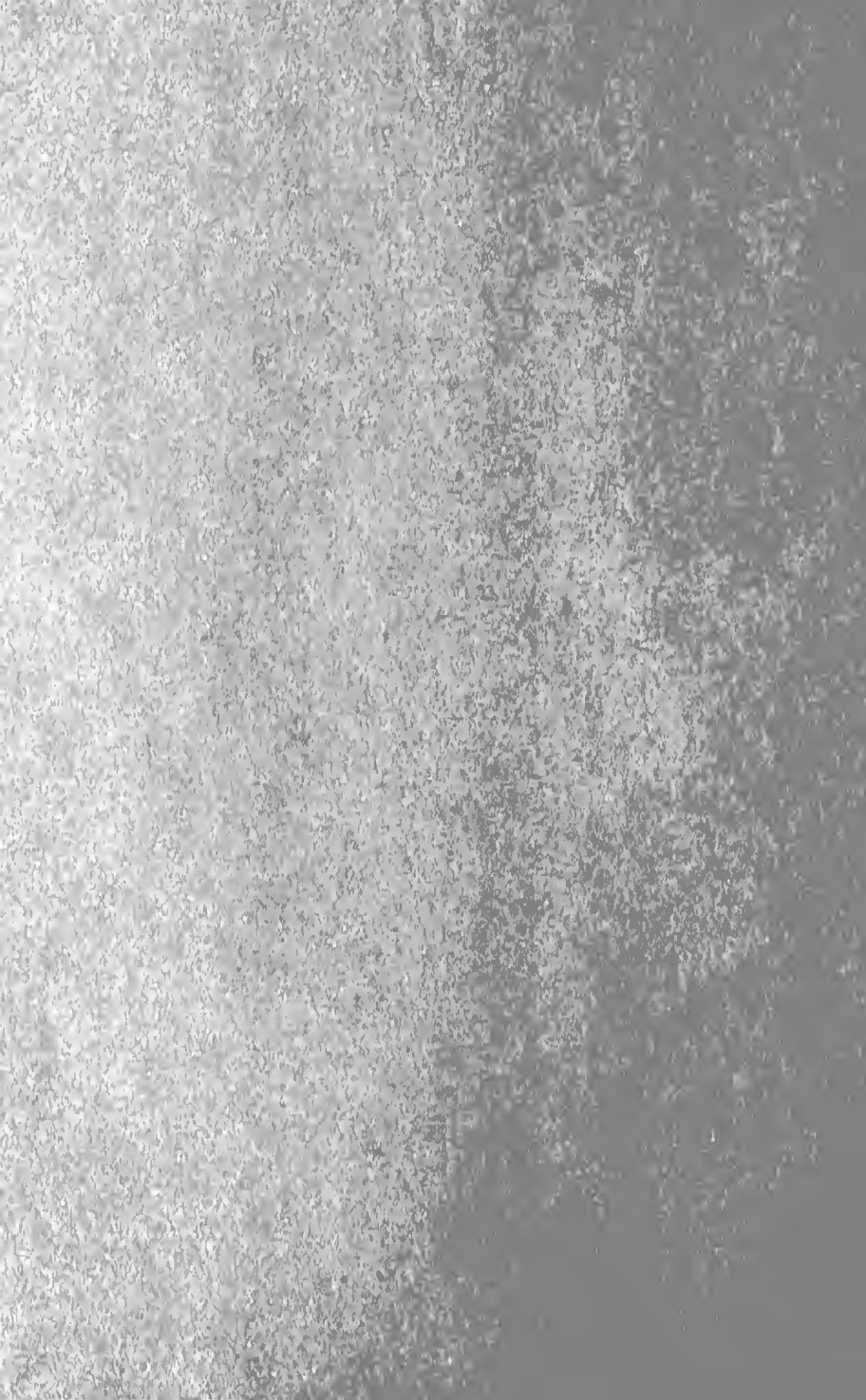
1763 Bladen County, North  
Carolina tax list



# BLADEN COUNTY 1763 TAX LIST



## NORTH CAROLINA TAX SERIES



EN

**1763**  
**BLADEN COUNTY,**  
**NORTH CAROLINA**  
**TAX LIST**

Allen County Public Library  
900 Webster Street  
PO Box 2270  
Fort Wayne, IN 46801-2270

MOUNTAIN PRESS  
P. O. BOX 400  
Signal Mountain, Tennessee  
37577-0400



## 1763 BLADEN COUNTY, NORTH CAROLINA TAX LIST

In 1734 Bladen County was created from New Hanover County. It is located in the southeastern portion of the state and was named for Martin Bladen, the English soldier and politician who was Commissioner of Trade and Plantations, 1717-1746. The county seat is Elizabethtown.

This 1763 tax listing is the earliest one preserved and covers all of the present day Bladen County, all of Robeson and the southwestern half of Hoke County. It also covers a part of Brunswick County and Columbus County. In some cases, the occupation of the person is given. When the "con. or cons." is used, this means a Constable. An accounting of the white males, negro males and negro females are represented by the three different numbers following each entry. The fourth number is the total of the above.



1763 BLADEN CO., NC TAX LIST  
 # WHITE POLLS - # BLACK MALE POLLS  
 # BLACK FEMALE POLLS - # TOTAL

\*\*\*\*\*

Atkinson, Charleton 1-0-0-1	Baxley, Thos. & son Jno. 2-0-0-2
Anderson, John 1-0-2-3	Braveboy, David 3-0-0-3
Anderson, Jos. & Jno. Sykes 2-0-0-2	Bullard, John 1-0-0-1
Anderson, Stephen 1-1-0-2	Beard, Niel & two sons 3-0-0-3
Anderson, William 1-0-0-1	Brumble, William 1-0-0-1
Anderson, John 1-0-0-1	Barns, Abram 1-0-0-1
Anderson, Samuel 1-0-0-1	Barefield, David 1-0-0-1
Atkinson, Henry & two sons 3-0-0-3	Brantley, Thos. 1-0-0-1
Ard, James & son 2-1-1-4	Barefield, Richd. Joshua Nathan Barefield & Josia 4-2-0-6
Allen, William 1-0-0-1	Barefield, Roger 1-0-0-1
	Bagget, Joseph 1-0-0-1
Bartram, William, Esq. 3-6-4-13	Bailey, Jas. Colvill & Stewart 3-3-2-8
Benbow, Charles 2-2-1-5	Brown, Geo. & Benj. Gallaway 2-1-2-5
Blenning, Elizth. 0-3-4-7	Baker, Robert 1-1-0-2
Boyd, Jno. & son 2-0-1-3	Bryan, Thos., Sen 1-1-3-5
Bailey(?), John 1-0-0-1	Brady, Owen 1-1-0-2
Blocker, Mary Huffman & Johns(?) 2-1-2-5	Byrne, Mathew 1-2-1-4
Blocker, Elizth. 0-0-1-1	Bryan, Edward & son 2-1-0-3
Brown, John 1-0-0-1	Blunt, Jas. & Braveboy 2-0-0-2
Bright, Simon 1-0-0-1	Blunt, Jno. two sons & Miller 4-0-0-4
Boon, Thos. 1-0-0-1	Britt, Jos. & Drinkwater 2-0-1-2
Beezeley, Benj. 1-0-0-1	Barefield, Roger 1-0-0-1
Baldwin, John 2-3-2-7	Branton, John 1-0-0-1
Bryam, William 2-0-0-2	Bryan, Pheloman 1-0-0-1
Biven, Morris 1-0-0-1	Bryan, Stephen 1-0-0-1
Bigford, Jeremiah & son 2-1-0-3	Bryan, John & Shelley 2-0-0-2
Baldwin, Jos. 1-3-1-5	
Byrney, William 3-1-1-5	
Bosswill, Henry & Jno. Browder 2-0-0-2	Colebreath, Peter & McCallam 2-0-0-2
Boulton, John 1-0-0-1	Chambers, William 1-0-0-1
Byrne, Laurence 1-0-0-1	Cain, William & son Sara 2-2-2-6

1763 BLADEN CO., NC TAX LIST  
 # WHITE POLLS - # BLACK MALE POLLS  
 # BLACK FEMALE POLLS - # TOTAL

\*\*\*\*\*

Cain, William, Jun. 1-0-0-1	Davis, Edward & Burnett 2-0-1-3
Cain, Joseph 1-1-0-2	Dunn, John & Geo. Rabon 2-0-0-2
Cheshire, Richd. 1-0-0-1	Davis, Benj. Con & Tho. Davis 1-1-0-2
Carter, Jas. 1-0-0-1	Dupre, Jams. 1-1-1-3
Cooper, Isaac & Jas. Brown 2-0-0-2	Dunn, Jos. 1-1-1-3
Carver, Wm. Baldwin & Richardson 3-6-4-13	Dunn, John 1-0-0-1
Cruse, John 1-0-0-1	Dunn, William 1-0-0-1
Cox, Gilbert & Simon 2-0-0-2	Donohoe, Summers H.(?) 1-0-0-1
Chandler, John 1-0-0-1	Doan, Sarah & Thos. Bland 1-1-0-2
Clark, Benj. & Brayford 2-0-0-2	Dulaney, Patrick 1-0-0-1
Colbert, Jos. & two sons 3-0-0-3	Dubusk, John 1-0-0-1
Cooper, Joseph & Benj. 2-0-0-2	Davis, Thomas 1-3-2-6
Cooper, Geo. & Handepoor 2-0-0-2	Davis, Thos. Tanner 1-0-0-1
Cromartee, Wm. 1-0-0-1	Davis, William, Esq. 1-5-6-12
Crutchfield, Edmon & Kirkpatrick 2-0-0-2	Ducamp, John 1-0-0-1
Cullam, Dennis 1-0-0-1	Edwards, Wm. Newet two sons & Ward 4-0-0-4
Crawford, Niel 1-0-0-1	Ellis, John, Sen. 1-1-3-5
Cannon, Jos. 1-1-1-3	Edwards, Rob. & Sam Hollingswo. 2-0-0-2
Clark, David 1-0-0-1	Ellwill, Benj. & son 2-0-0-2
Chancey, John 2-0-0-2	Ellis, Jas. & Thos. Jones 2-0-0-2
Cunning, Cloud 1-0-0-1	Evans, Josiah Cons & Maulsbey 1-1-0-2
Curry, Daniel 1-0-0-1	Edge, John 1-0-0-1
Clark, Jos. 1-4-4-9	Ellis, Evan & Wm. 2-2-1-5
Clayton, Benone 1-0-0-1	Evans, Thomas 1-0-0-1
Councill, Hardee & 2 sons 3-2-2-7	Ethridge, Sam & two sons 3-0-0-3
Colebreath, Neven & Daniel 2-0-0-2	Ellis, John, Junier 1-0-0-1
Caven, Robert & Jas. Edmons 2-4-7-13	Epsley, Brozey & Jacob 2-0-0-2
Darrah, Archabald 1-0-0-1	Evans, George 1-0-0-1
Duke, Men & Jno. Isaac(?) 2-0-0-2	Flowers, Edward 1-0-0-1
Dowlass, John 1-0-0-1	

1763 BLADEN CO., NC TAX LIST  
 # WHITE POLLS - # BLACK MALE POLLS  
 # BLACK FEMALE POLLS - # TOTAL

\*\*\*\*\*

Forrester, William 1-0-0-1	Handin, Josiah 1-0-0-1
Fitzrandolph, Benj. Chancey & Gayton 3-0-0-3	Handin, Isum & Jos. Bossworth 2-0-0-2
Farris, John 1-0-0-1	Hamilton, Jno. Cook & Byrne 3-0-0-3
Fling, Danniell 1-0-0-1	Howell, Alex. & son 2-0-0-2
Finney, Thos. 1-2-0-3	Ha . Josua 1-1-1-3
Freeman, Stephen 1-0-0-1	Hays, Suthew 1-0-0-1
Freeman, Thos. 1-0-0-1	Hollingsworth, Stephen 1-0-0-1
Fogatee, Edmond 1-2-0-3	Hollingsworth, John 1-0-0-1
Farmer, Wm. Geo. Smith & 2 sons 4-0-0-4	Hughes, Edward 1-0-0-1
Grange, Jno., Esq. 1-24-25-50	Hather, Rob. Lashwell & Stepheus 3-0-0-3
Grage, John, Jun. 3-16-32-51	Howard, Jos. Hezekiah & Benj. 3-0-0-3
Garvin, Mathew 1-0-0-1	Howard, William 1-0-0-1
Gates, Peter 1-0-0-1	Howard, Jno. & Ashburne 2-0-2-4
Goodman, Samuel 1-0-0-1	Haws(?), Edmund 1-0-0-1
Gallaway, Caleb 1-0-0-1	Harrison, Edward, Sen. 1-2-1-4
Graham, Andrew 1-0-0-1	Harrison, Richard 1-1-0-2
Glass, Levey 1-0-0-1	Higgins, Jephath 1-0-0-1
Gibbs, George 1-6-6-13	Harrison, John 1-0-0-1
Green, John 1-3-0-4	Hughes, Samuel & son 2-0-0-2
Greer, John Hunter 1-0-0-1	Houstin, Samuel 1-0-0-1
Greer, Thos., Jun. 1-0-0-1	
Hale (Hall?), Thos., Esq. 2-14-10-26	Ivey, Thos. & two sons 3-0-0-3
How, Robert. Esq. 1-7-6-14	Inman, Jas. 1-0-0-1
How, William 1-0-0-1	
Hesters, Thos. & two sons 3-0-0-3	Johnston, Robt., Esq. & Allen 2-6-5-13
Hill(?), William 7 Hen. Sutton 2-0-0-2	Jackson, Thos. 1-0-0-1
Harrison, Edward, Jun. 1-1-1-3	Jarvis, John 1-0-0-1
Handin, Wm. son Isaac Cross 3-0-0- 3	Johnston, Jno. wife 2-0-0-2
	Johnston, Lazerus 1-0-0-1
	Jones, Jno. & Nehemiah Stephens

1763 BLADEN CO., NC TAX LIST  
 # WHITE POLLS - # BLACK MALE POLLS  
 # BLACK FEMALE POLLS - # TOTAL

\*\*\*\*\*

2-0-0-2

Jones, Isaac, Esqre. & Jos.

Humphreys 2-4-1-7

Jourdin, John 1-4-7-12

Johnston, Thos. 2-1-0-3

Jones, Marmaduke, Esq. 1-14-5-20

Jones, Samuel 2-0-0-2

Jones, Jos. & Mat. Black 2-0-0-2

Jones, John 1-0-0-1

King, Abrm. 1-0-0-1

Kenlow, Thos. 1-0-0-1

Kerr, Jas. 1-2-1-4

Kersey, John 1-1-0-2

Kersey, Peter 1-0-0-1

Kelley, Mathew 1-2-0-3

King, Danil 1-0-0-1

Kemp, Jos. Spaight, McCoulskey

& Porter 4-0-0-4

Lyon, Esq. Rowan & Yopp 3-5-2-10

Lock, John Ferryman 1-1-2-4

Lewis, William 1-0-0-1

Lee, John 1-0-0-1

Lackelur, Jno. wife son &

daughter 4-0-0-4

Lamb, Thos. 1-0-0-1

Ler, Burrell 1-0-0-1

Lennon, Ephrem 1-0-0-1

Lampert, Jno. & Jno. Harper

2-0-0-2

Lewis, Josiah 1-0-0-1

Lamb, Abraham 1-0-0-1

Lamb, Isaac 1-0-0-1

Lord, Peter, Esq. & Jno. Stone

2-4-2-8

Lock, David Brazewell & Isaac Hill

3-1-0-4

Lock, Jos. 1-0-0-1

Low, Eenezer [sic] 1-0-0-1

Lewis, Jas. 1-0-0-1

Lambert, Benj. 1-1-3-5

Lewis, Hanson 2-2-1-5

Lucas, John 2-6-4-12

Lock, Leonerd 1-1-0-2

Loyd & son 2-1-0-3

Millar, Ralph, Esq. & son 2-2-1-5

Muns, Jacob & son 2-0-0-2

McMaster, William & son 2-0-0-2

McConkey, Alex. 1-2-0-3

McKissack, Archabald & Jos. Clark

2-1-1-4

Messer, Jos. 1-0-0-1

Mailer(?), David 1-0-0-1

Moore, Benjamin & son 2-0-0-2

Marlin (Martin?), Jos. & two

Pitmans 3-0-0-3

McDaniel, Jas. 1-2-0-3

Meces(?), Soloman 1-0-0-1

Mustlewhite, Thos. 1-0-0-1

Mustlewhite, Jessue 1-0-0-1

Moore, William 1-1-0-2

Moore, John & Daniel Beard

2-0-0-2

Moore, Alex. Ferryman 1-1-3-5

McClendel, Jno. & three(?)

Thems(?) 4-0-0-4

McRee, Wm. & Samuel 2-7-0-9

McDowgal, Aler. & Jacob Webb

1763 BLADEN CO., NC TAX LIST  
 # WHITE POLLS - # BLACK MALE POLLS  
 # BLACK FEMALE POLLS - # TOTAL

\*\*\*\*\*

1-1-0-2  
 Mulphord, Ephem & Richd.  
 Mullingt. 2-0-2-4  
 Melvin, Daniel 1-0-0-1  
 McIntoy, Thos. 1-0-0-1  
 McKeithen, Duncan & son 2-1-0-3  
 Maredeth, Nathan 1-0-0-1  
 McConkey, Patrick 1-1-1-3  
 McNeil, William 1-1-0-2  
 McCleland, Andrew 2-0-1-3  
 Murphey, Jas. 1-0-0-1  
 Murphey, Darbey 2-0-0-2  
 McEun, John 1-0-0-1  
 Mims, George 2-0-0-2  
 Mims, Thos. 1-1-1-3  
 McCoulskey, Arc. 1-0-1-2  
 McCoulskey, Neil 2-0-0-2  
 Moore, Berr, Esq. 3-9-13-25  
 Moore, Rogers estate 1-21-12-33  
 McCoy, Iver 1-2-1-4  
 Maultsby, William 1-3-1-5  
 McKeithen, Daniel 2-2-1-5  
 McFatter, Arch. 1-0-0-1  
 McDuffee, John 1-0-0-1  
 McCoy, Neil 1-0-0-1  
 McNorton, Neil 1-0-0-1  
 Mercer, Hen. & John Ellwill  
 2-0-0-2  
  
 Newton, Thos. & son 2-4-1-7  
 Nesfield, Jno. & Enox 2-6-3-11  
 Norton, Jacob 1-0-0-1  
 Nortin, Daniel 1-0-0-1  
 Newberry, Jno. & son 2-2-2-6

Owens, Thos. 1-2-0-3  
 Odam, Aron Thos. Pecocton(?) &  
 Colley 3-0-0-3  
 Odam, Thos. & Arthur Lamb  
 2-0-1-3  
 Overton, Titus & wife 2-0-0-2  
 Odam 1-0-0-1  
 Obodysford, Green 1-0-0-1  
 Owens, Ephrem Cons. Jno. &  
 David Poor 2-0-0-2  
 Odam, Benj. 1-0-0-1  
  
 Purdie, Hugh, Esq. 2-7-11-20  
 Pointer, John 1-1-0-2  
 Pitts, John 1-0-0-1  
 Patience, Geo. 1-0-0-1  
 Patrick, Samuel 1-0-2-3  
 Patrick, Daniel 1-0-1-2  
 Puckett, Gideon 1-0-0-1  
 Price, William & Jas. Dowe  
 2-0-0-2  
 Plumber, Jos. Jeremiah Cons. &  
 William 2-0-0-2  
 Parrish, Gideon & Lennon 2-0-0-2  
 Powers, Jas. 1-0-0-1  
 Pemberton, Margaret 0-1-1-2  
 Phillips, Jas. 1-0-0-1  
 Pearce, Jessue 1-0-0-1  
 Perry, Jessue 1-0-0-1  
  
 Russ, David 1-0-0-1  
 Russ, Jno. Jun. Hill & Deeden(?)  
 3-0-0-3  
 Russ, Thos. Jun. Wm. & (?) Edmon  
 3-0-0-3

1763 BLADEN CO., NC TAX LIST  
 # WHITE POLLS - # BLACK MALE POLLS  
 # BLACK FEMALE POLLS - # TOTAL

\*\*\*\*\*

Robbison, Thos., Sen. 1-4-5-10	Saunders, Thos. 2-0-0-2
Rocke, Edmund & son 2-3-0-5	Stubbs, John 2-0-0-2
Robison, Thos., Jun. 1-2-1-4	Stewart, Patrick 2-2-1-5
Russell, Majer & son 2-0-0-2	Stewart, Hugh 1-0-0-1
Ridghill, Richd. 1-0-0-1	Shaw, Daniel 1-1-0-2
Ridghill, John 1-0-0-1	Smithart, John 1-0-0-1
Reeves, Jessue 1-0-0-1	Shipman, Daniel 2-2-0-4
Richardson, Robt. 1-0-0-1	Singletarry, Benjn. Richard & Jno. Peacock 3-2-2-7
Roseur(?), David 1-0-0-1	Storm, Windol 1-0-0-1
Regan, Joseph & son 2-2-0-4	Singletarry, Richd. 2-1-1-4
Russ, John, Sen. 1-0-0-1	Shepherd, Stephen 2-0-0-2
Russ, Mary 0-2-0-2	Smith, David 1-0-0-1
Russ, Jonodabb Oliphant & Dick Small 3-0-0-3	Shaver, Dorathey & Peter Shaver 1-0-0-1
Russ, Thos. 1-0-0-1	Stewart, William 1-3-2-6
Rabon, John 1-0-0-1	Sykes, Joshua 1-0-0-1
Russ, Jos. 1-0-0-1	Straun, Othniel 1-2-0-3
Ray, Isaac 1-3-2-6	Singletarry, John & Jno. Small 2-0-0-2
Ray, Jos. 1-0-0-1	Salter, William & tu(?) brothers 3-3-2-8
Reeves, Edward 1-0-0-1	Salter, Richard 1-0-0-1
Smith, John, Esq. Wm. Davis & Jno. Russ Sh. 3-1-1-5	Struan [sic], David 1-0-0-1
Singletarry, Wm. & Russ School 2-1-0-3	Stewart, Jas. 1-0-0-1
Singletarry, Ithamore 1-0-0-1	Sims, Jas., Sen. & three sons 4-0-0-4
Shirley, Philip 1-0-0-1	Sims, Jas., Jun. & Thos. Platt 2-0-0-2
Smith, William 1-0-0-1	Smith, John 1-0-0-1
Stephens, Barnabass 1-1-0-2	Stephens, Josiah & Lott Borden 2-0-0-2
Simson, Thos. 1-0-2-3	Stephens, Charles 1-1-0-2
Sapp, Henry 1-0-0-1	Shaw, Neil & Archabald 2-1-1-4
Sapp, Jno. Elijah & Jessee 3-0-0-3	Shaw, John 1-0-0-1
Smith, Edward 1-0-0-1	
Skipper, Jos. Fred. & Hardy 3-0-0-3	
Smith, Zacharia 1-1-0-2	



1763 BLADEN CO., NC TAX LIST  
 # WHITE POLLS - # BLACK MALE POLLS  
 # BLACK FEMALE POLLS - # TOTAL

\*\*\*\*\*

Turner, John, Esq. 1-4-2-7	Williams, Thomas 1-2-0-3
Turner, Jno., Esq. for Abrm. Sue Rachal free Negroes 0-2-2-4	Williams, Thomas 1-0-0-1
Thos., Evan & two sons 3-0-0-3	Williams, McKeney 1-0-0-1
Townsend, Thos. 1-0-0-1	Wayman, Thomas 1-1-0-2
Turner, Daniel 1-0-0-1	Walker, Joseph 1-0-0-1
Tomce(?), Henry 1-1-0-2	Wilson, Josiah Cons. 0-1-0-1
Tomee, Jos. 1-0-0-1	West, Jas. 1-0-0-1
Thos., John 1-0-0-1	Welles, Benj. 1-7-1-9
Tedrick, John & Thos. Cochran 2-0-0-2	Whitely, Soloman 1-0-0-1
Terril, Robert 1-1-1-3	Wilson, Selvanus 1-2-1-4
Thomas, Geo. 1-0-0-1	Willis (Welles?), Daniel & Corbett 2-0-0-2
Tyler, Sarah 0-1-1-1	
	Young, George 1-0-0-1
Vernon, Thos. & Jno. Griffin 2-1-0-3	Young, David & son 2-0-0-2
Vince, Thos. & two sons 3-0-0-3	
	Total Given in: 1244
Waddell, Hu.(?), Esq. Bader & Thrawl 1-19-16-38	NOTE: The abbreviations Jas. & Jos. above, were often indistinguishable. Editor.
White, Thos. 1-0-0-1	
Weir(?), Robert 1-0-1-2	*****
Wilkinson, John 1-1-1-3	
Wool, Sampson & two sons 3-1-1-5	
White, David & Stephen 2-0-0-2	
Williamson, William 1-0-0-1	
Williamson, John 1-0-0-1	
White, William Trader 1-2-1-4	
White, John & three sons 4-3-2-9	
Wilkinson, William 1-0-0-1	
White, William 1-0-0-1	
Watts, Berremman 1-0-0-1	
Williams, Benedictus 1-0-0-1	
Wall, Edward 1-0-0-1	

3 1833 03585 2638



A stylized graphic of a mountain peak, composed of a series of small, dark, textured dots forming the outline of a triangle. The peak is positioned behind the word "Mountain" in the logo.

Mountain  
P R E S S





**HECKMAN**

B I N D E R Y , I N C .

Bound-To-Please®

**JAN 00**

N. MANCHESTER, INDIANA 46962

