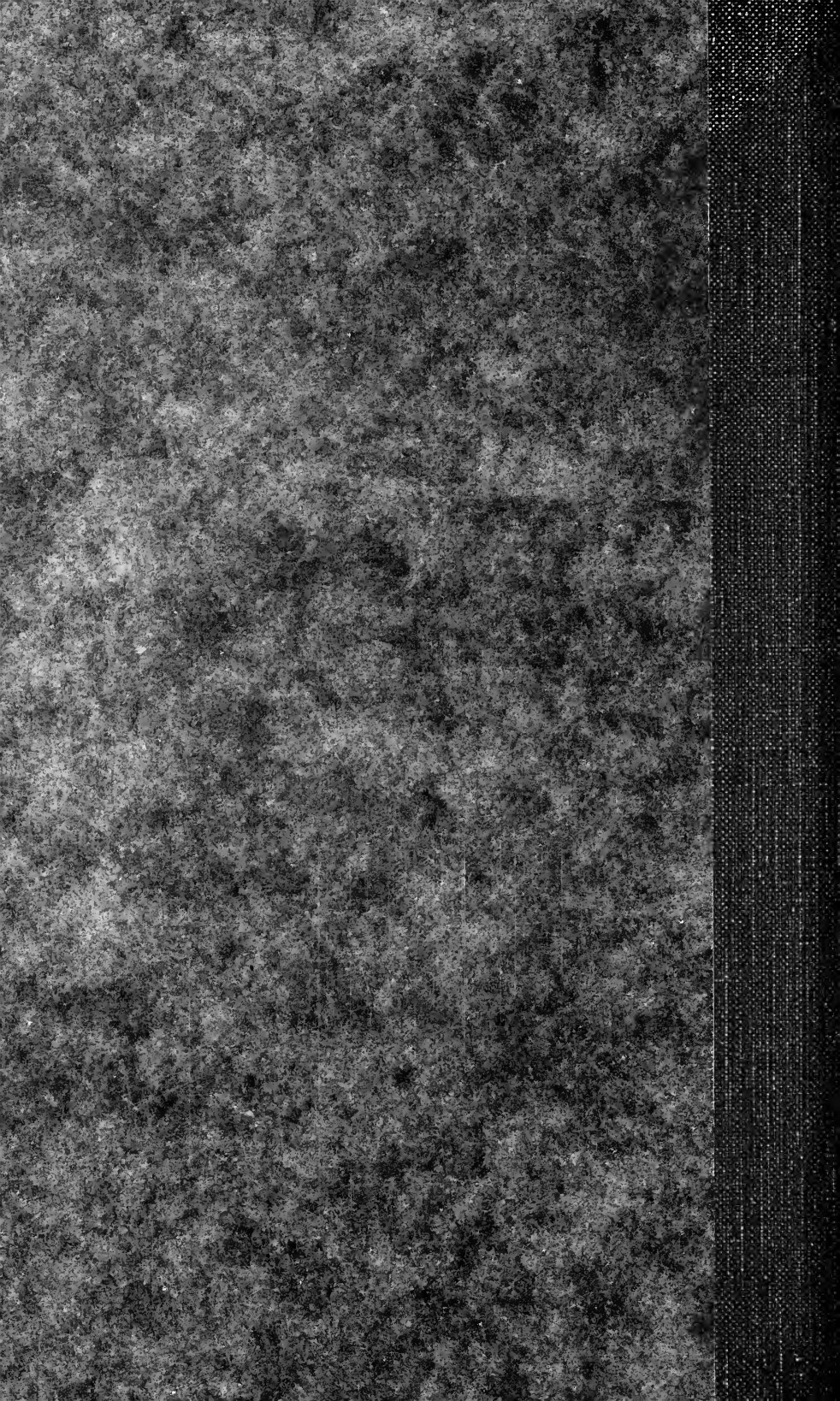


UCB



AUG 6 1920

DEPARTMENT OF THE INTERIOR  
U.S. OFFICE OF INDIAN AFFAIRS



# ROUTES TO INDIAN AGENCIES AND SCHOOLS

WITH

THEIR POST OFFICE AND TELEGRAPHIC ADDRESSES  
AND NEAREST RAILROAD STATIONS

*pb*  
*Dois*

—————  
CORRECTED TO JUNE 1, 1920  
—————



WASHINGTON  
GOVERNMENT PRINTING OFFICE

1920

72378153

Doc

E93

U641

1920

DOCS

## ROUTES TO INDIAN AGENCIES AND SCHOOLS.

---

### **ALBUQUERQUE SCHOOL, NEW MEXICO.**

Post office: Albuquerque, N. Mex.

Telegraph address: Albuquerque, N. Mex. (Postal and Western Union); thence telephone.

Railroad station: Albuquerque, N. Mex., on Atchison, Topeka & Santa Fe Ry.; thence hired automobile,  $2\frac{1}{2}$  miles.

### **BISHOP AGENCY AND SCHOOLS, CALIFORNIA.**

Post office: Bishop, Calif.

Telegraph address: Bishop, Calif. (Western Union),  $\frac{1}{4}$  mile from agency; thence telephone or messenger.

Railroad station: Laws, Calif., on Nevada & California division of Southern Pacific Ry.; thence daily stage, 5 miles.

#### *Bishop day school.*

Post office: Bishop, Calif.

Telegraph address: Same as agency; thence 1 mile.

Railroad station: Same as agency; thence  $5\frac{3}{4}$  miles.

#### *Bigpine day school.*

Post office: Bigpine, Calif.

Telegraph address: Zurich, Calif. (Western Union).

Railroad station: Zurich, Calif., on Nevada & California division of Southern Pacific Ry.; thence daily stage, 3 miles.

#### *Independence day school.*

Post office: Independence, Calif.

Telegraph address: Independence, Calif. (Western Union), 2 miles from school; thence telephone, mail, or messenger.

Railroad station: Kearsarge, Calif., on Nevada & California division of Southern Pacific Ry.; thence stage to Independence, 6 miles; thence hired team, 2 miles.

#### *Pine Creek day school.*

Post office: Bishop, Calif.

Telegraph address: Bishop, Calif. (Western Union); thence telephone.

Railroad station: Laws, Calif., on Nevada & California division of Southern Pacific Ry.; thence daily stage to Bishop, 5 miles; thence stage, daily except Sundays, to school, 15 miles.

### **BISMARCK SCHOOL, NORTH DAKOTA.**

Post office: Bismarck, N. Dak.

Telegraph address: Bismarck, N. Dak. (Western Union); thence telephone.

Railroad station: Bismarck, N. Dak., on "Soo Line" and Northern Pacific Ry.; thence hired team,  $1\frac{1}{2}$  miles.

### **BLACKFEET AGENCY AND SCHOOLS, MONTANA.**

Post office: Browning, Mont.

Telegraph address: Browning, Mont. (Western Union); thence telephone.

Railroad station: Browning, Mont., on Great Northern Ry.; thence stage, 2 miles.

#### *Blackfeet boarding school.*

Same as agency; thence 7 miles north.

#### *Heart Butte day school.*

Same as agency; thence auto in summer and team in winter, 25 miles.

#### *Old agency day school.*

Located at Piegan subagency.

**BLACKFEET AGENCY AND SCHOOLS, MONTANA—Continued.***Piegan subagency.*

Post office: Family, Mont.

Telegraph address: Browning, Mont.; thence telephone.

Railroad station: Browning, Mont., on Great Northern Ry.; thence daily stage to Family, Mont., 18 miles; from Family to subagency, 4 miles.

*Holy Family mission school.*

Post office: Family, Mont.

Telegraph address: Browning, Mont.; thence telephone.

Railroad station: Browning, Mont., on Great Northern Ry.; thence daily stage, 14 miles.

*Browning district school.*

Located at Browning, Mont.

**BLOOMFIELD SEMINARY, OKLAHOMA.**

Post office: Ardmore, Okla.

Telegraph address: Ardmore, Okla. (Western Union).

Railroad station: Ardmore, Okla., on Chicago, Rock Island & Pacific Ry.; St. Louis-San Francisco Ry., and Atchison, Topeka & Santa Fe Ry.

**CAMPO AGENCY AND SCHOOL, CALIFORNIA.**

Post office: Campo, Calif.

Telegraph address: Campo, Calif. (Western Union); thence telephone, 10 miles.

Railroad station: San Diego, Calif., on Atchison, Topeka & Santa Fe Ry.; thence daily stage, 61 miles; or San Diego & Arizona Ry., from San Diego to Campo; thence auto to agency, 10 miles. (The latter railroad passes into Mexico for a considerable distance, and passengers are subject to the customs regulations of the Mexican Government.)

*Campo day school.*

At agency.

**CAMP VERDE AGENCY AND SCHOOLS, ARIZONA.**

Post office: Camp Verde, Ariz.

Telegraph address: Cherry Creek, Ariz. (Western Union); thence mail.

Railroad station: Prescott, Ariz., on Santa Fe, Prescott & Phoenix Ry., to Cherry Creek, Ariz., 20 miles; thence stage to Camp Verde, Ariz., 32 miles; thence private conveyance to school, 6 miles.

*Camp Verde day school.*

At agency.

*Clarkdale day school.*

Post office: Clarkdale, Ariz.

Telegraph address: Clarkdale, Ariz. (Western Union).

Railroad station: Clarkdale, Ariz., terminus of branch of Santa Fe, Prescott & Phoenix Ry.;  $\frac{3}{4}$  mile from school. (School 22 miles from agency.)

**CANTON INSANE ASYLUM, SOUTH DAKOTA.**

Post office: Canton, S. Dak.

Telegraph address: Canton, S. Dak. (Western Union); thence telephone.

Railroad station: Canton, S. Dak., on Chicago, Milwaukee & St. Paul Ry.; distance, 2 miles.

**CANTONMENT AGENCY AND SCHOOL, OKLAHOMA.**

Post office: Canton, Okla.

Telegraph address: Canton, Okla. (Western Union); thence telephone.

Railroad station: Canton, Okla., on Kansas City, Mexico & Orient Ry.; thence hired team,  $4\frac{1}{2}$  miles.

**CARSON SCHOOL, NEVADA.**

Post office: Stewart, Nev.

Telegraph address: Carson City, Nev. (Western Union),  $3\frac{1}{2}$  miles from school; thence telephone.

Railroad station: Stewart, Nev., on Virginia & Truckee Ry., via Reno, on Southern Pacific Ry.,  $\frac{1}{4}$  mile from school.

*Carson sanatorium.*

Same as school.

**CHEROKEE AGENCY AND SCHOOLS, NORTH CAROLINA.**

Post office: Cherokee, N. C.

Telegraph address: Ela, N. C. (Western Union); thence telephone.

Railroad station: Ela, N. C., on Murphy division of Southern Ry.; thence via Appalachian Ry., distance 6 miles.

*Birdtown day school.*

Post office: Cherokee, N. C.

Telegraph address: Whittier, N. C. (Western Union), 3 miles from school.

Railroad station: Ela, N. C.; on Murphy division of Southern Ry.; thence Appalachian Ry. to Birdtown, 3½ miles.

*Snowbird Gap day school.*

Post office: Robbinsville, N. C.

Telegraph address: Topton, N. C. (Western Union), 8 miles from school.

Railroad station: Topton, N. C., on Southern Ry.; thence private conveyance, via Robbinsville, 13 miles. (School 40 miles from agency.)

*Little Snowbird day school.*

Post office: Robbinsville, N. C.

Telegraph address: Topton, N. C. (Western Union); thence mail.

Railroad station: Topton, N. C.; thence private conveyance, 12 miles. (School 65 miles from agency.)

*Big Cove day school.*

Post office: Ravensford, N. C.

Telegraph address: Ela, N. C. (Western Union); thence telephone, via Cherokee; thence messenger.

Railroad station: Cherokee, N. C.; thence private conveyance, 9 miles.

**CHEROKEE ORPHAN TRAINING SCHOOL, OKLAHOMA.**

Post office: Tahlequah, Okla.

Telegraph address: Tahlequah, Okla. (Western Union); thence telephone.

Railroad station: Park Hill, Okla., on San Francisco & St. Louis Ry.; thence livery, 3 miles. Or Tahlequah, Okla., on San Francisco & St. Louis Ry.; thence livery, 6 miles.

**CHEYENNE AND ARAPAHOE AGENCY AND SCHOOL, OKLAHOMA.**

Post office: Concho, Okla.

Telegraph address: El Reno, Okla. (Western Union), 8 miles from school; thence telephone.

Railroad station: Concho, Okla., on Chicago, Rock Island & Pacific Ry., at school.

**CHEYENNE RIVER AGENCY AND SCHOOLS, SOUTH DAKOTA.**

Post office: Cheyenne Agency, S. Dak.

Telegraph address: Gettysburg, S. Dak. (Western Union); thence telephone.

Railroad station: Gettysburg, S. Dak., on Chicago & North Western Ry.; thence stage, daily except Sundays, 20 miles. Or, La Plant, S. Dak., on Chicago, Milwaukee & St. Paul Ry.; thence hired conveyance, 22 miles.

*Boarding school.*

At agency.

*White Horse substation and No. 7 day school.*

Post office: White Horse, S. Dak.

Telegraph address: Timber Lake, S. Dak. (Western Union); thence mail.

Railroad station: Timber Lake, S. Dak., on Chicago, Milwaukee & St. Paul Ry.; thence hired conveyance, 18 miles. Or, La Plant, S. Dak., on same road; thence hired conveyance, 20 miles.

*Thunder Butte substation and No. 2 day school.*

Post office: Dupree, S. Dak.

Telegraph address: Dupree, S. Dak. (Western Union); thence telephone.

Railroad station: Dupree, S. Dak., on Chicago, Milwaukee & St. Paul Ry.; thence hired conveyance, 15 miles. Or, Isabel, S. Dak., same line and about same distance.

*Cherry Creek substation.*

Post office: Cherry Creek, S. Dak.

Telegraph address: Midland, S. Dak.; thence mail.

Railroad station: Dupree, S. Dak., on Chicago, Milwaukee & St. Paul Ry.; thence hired conveyance, 35 miles.

**CHILOCCO SCHOOL, OKLAHOMA.**

Post office: Chilocco, Okla.

Telegraph address: Arkansas City, Kans. (Western Union), 7 miles from school; thence telephone.

Railroad station: Chilocco, Okla.; flag station on Atchison, Topeka & Santa Fe Ry.;  $1\frac{1}{2}$  miles from school. Or Erie flag station on St. Louis & San Francisco Ry., 1 mile from school. Conveyance from school will meet visitors on request.

**CHOCTAW-CHICKASAW SANATORIUM, OKLAHOMA.**

Post office: Talihina, Okla.

Telegraph address: Talihina, Okla. (Western Union); thence telephone.

Railroad station: Talihina, Okla., on St. Louis & San Francisco Ry. (Frisco); thence  $3\frac{1}{4}$  miles, by local jitney or Government car.

**CHOCTAW INDIANS, MISSISSIPPI.**

Post office: Philadelphia, Miss.

Telegraph address: Philadelphia, Miss. (Western Union).

Railroad station: Philadelphia, Miss., on Gulf, Mobile & Northern Ry.

*Union day school.*

Post office: Union, Miss.

Telegraph address: Union, Miss. (Western Union).

Railroad station: Union, Miss. Same road; 15 miles from Philadelphia, Miss.

*Standing Pine day school.*

Twelve miles from Philadelphia, Miss.

**CEUR D'ALENE AGENCY AND SCHOOLS, IDAHO AND WASHINGTON.**

Post office: Sorrento, Idaho.

Telegraph address: Tekoa, Wash. (Western Union); thence telephone.

Railroad station: Lovell, Idaho, on Wallace branch of Oregon-Washington Ry. & Navigation Co.; thence 2 miles by Government team (if notified). Or, Sorrento, Idaho, on Chicago, Milwaukee & St. Paul Ry.; thence  $1\frac{1}{2}$  miles.

*Kootenai day school.*

Post office: Bonners Ferry, Idaho.

Telegraph address: Bonners Ferry, Idaho (Western Union).

Railroad station: Bonners Ferry, Idaho, on Great Northern Ry. and Spokane & International Ry.; thence hired team,  $3\frac{1}{2}$  miles. (School 168 miles from agency.)

*Kalispel day school.*

Post office: Cusick, Wash.

Telegraph address: Cusick, Wash. (Western Union).

Railroad station: Cusick, Wash.; on Chicago, Milwaukee & St. Paul Ry.; thence rowboat across Pend Oreille River. (School 145 miles from agency.)

*Desmet mission school.*

Post office: Desmet, Idaho.

Telegraph address: Tekoa, Wash. (Western Union); thence telephone.

Railroad station: Tekoa, Wash.; thence stage, daily except Sundays, 12 miles.

**COLORADO RIVER AGENCY AND SCHOOL, ARIZONA.**

Post office: Parker, Ariz.

Telegraph address: Parker, Ariz. (Western Union); thence telephone.

Railroad station: Parker, Ariz., on Santa Fe, Prescott & Phoenix Ry. (Santa Fe Coast Lines); thence Government team (if notified), 2 miles to agency;  $\frac{3}{4}$  mile to school.

**COLVILLE AGENCY AND SCHOOLS, WASHINGTON.**

Post office: Nespelem, Wash.

Telegraph address: Wilbur, Wash. (Western Union), 35 miles from school; thence telephone.

Railroad station: Almira, Wash., on Washington Central branch of Northern Pacific Ry.; thence mail stage, daily except Sundays, 35 miles. Or, Wilbur, Wash., same road; thence stage to agency (35 miles) three times a week, December 1 to April 1, leaving Wilbur Mondays, Wednesdays, and Fridays, and daily, except Sundays, April 1 to December 1. Auto stages on both routes April 1 to December 1. Better road via Wilbur.



**COLVILLE AGENCY AND SCHOOLS, WASHINGTON—Continued.**

*Day school No. 1.*

Post office: Covada, Wash.

Telegraph address: Davenport, Wash. (Western Union); thence telephone via Hunters to Covada; thence messenger, 5 miles.

Railroad station: Davenport, Wash., on Washington Central branch of Northern Pacific Ry.; thence stage, daily except Sundays, to Hunters, 45 miles; thence hired team, 6 miles, ferrying across Columbia River.

*Day school No. 3.*

Post office: Nespelem, Wash.

Telegraph address: Same as agency.

Railroad station: Same as agency. (School  $2\frac{1}{2}$  miles from agency.)

*Day school No. 4.*

Post office: Daisy, Wash.

Telegraph address: Meyers Falls, Wash. (Western Union); thence telephone to Inchelium subagency, via Daisy, 29 miles; thence messenger. Or, same as agency; thence telephone to subagency by Government line, 55 miles; thence messenger.

Railroad station: Meyers Falls, Wash., on Spokane Falls & Northern Ry.; thence stage, daily except Sundays, to Daisy, Wash., 24 miles; thence hired team, 4 miles, crossing Columbia River by ferry. Or, Addy, Wash., on Spokane Falls & Northern Ry.; thence hired team, ferrying across Columbia River at Gifford, 21 miles. (School 55 miles from agency.)

*Day school No. 9.*

Post office: Keller, Wash.

Telegraph address: Same as agency; thence telephone via Government line, 25 miles.

Railroad station: Wilbur, Wash., on Washington Central Ry.; thence Keller stage, daily except Sundays, or hired team, 23 miles. (School 28 miles from agency.)

*Inchelium subagency.*

Post office: Gifford, Wash.

Telegraph address: Meyers Falls, Wash. (Western Union); thence telephone to subagency via Daisy, 29 miles. Or, same as agency; thence telephone to subagency by Government line, 55 miles.

Railroad station: Meyers Falls, Wash., on Spokane Falls & Northern Ry.; thence daily stage, 24 miles, to Daisy; thence hired team, 5 miles, to Inchelium, ferrying Columbia River at Daisy or Gifford. Or, Addy, Wash., on Spokane Falls & Northern Ry.; thence stage or hired team, 18 miles, ferrying Columbia River at Gifford.

*Okanogan subagency.*

Post office: Omak, Wash.

Telegraph address: Omak, Wash. (Western Union); thence telephone,  $\frac{1}{2}$  mile. Or, same as agency; thence telephone by Government line.

Railroad station: Omak, Wash., on Great Northern Ry.

*Republic subagency.*

Post office: Republic, Wash.

Telegraph address: Republic, Wash. (Western Union). Or, same as agency; thence telephone by Government line, 52 miles.

Railroad station: Republic, Wash., on Spokane Falls & Northern Ry.

*Colville mission school.*

Post office: Ward, Wash.

Telegraph address: Meyers Falls, Wash., thence telephone 2 miles to Ward, Wash.

Railroad station: Ward, Wash., on Spokane Falls & Northern Ry.; trains daily from Spokane.

*St. Mary's mission school.*

Post office: Omak, Wash.

Telegraph station: Omak, Wash. (Western Union); thence telephone.

Railroad station: Omak, Wash., on Great Northern Ry.; thence private conveyance, 4 miles.

**CROW AGENCY AND SCHOOLS, MONTANA.**

Post office: Crow Agency, Mont.

Telegraph station: Crow Agency, Mont. (Western Union); telephone.

Railroad station: Crow Agency, Mont., on Chicago, Burlington & Quincy Ry.

**CROW AGENCY AND SCHOOLS, MONTANA**—Continued.*Crow boarding school.*

At agency.

*Pryor Creek boarding school.*

Post office: Pryor, Mont.

Telegraph address: Edgar, Mont. (Western Union); thence telephone, or mail 3 times a week.

Railroad station: Edgar, Mont., on Billings-Thermopolis branch of Chicago, Burlington &amp; Quincy Ry.; thence stage, Tuesdays, Thursdays, and Saturdays, 18 miles.

*Pryor substation.*

Same as Pryor Creek boarding school.

*Lodgegrass substation.*

Post office: Lodgegrass, Mont.

Telegraph address: Lodgegrass, Mont. (Western Union),  $\frac{1}{2}$  mile from agency; thence messenger.

Railroad station: Lodgegrass, Mont., on Chicago, Burlington &amp; Quincy Ry.

*St. Xavier substation.*

Post office: St. Xavier, Mont.

Telegraph address: Crow Agency, Mont. (Western Union); thence telephone from agency office, 21 miles.

Railroad station: Hardin, or Crow Agency, Mont., on Chicago, Burlington &amp; Quincy Ry.; thence private conveyance.

*Crow Hospital.*

Same as agency.

**CROW CREEK AGENCY AND SCHOOLS, SOUTH DAKOTA.**

Post office: Fort Thompson, S. Dak.

Telegraph address: Fort Thompson, via Chamberlain, S. Dak. (Western Union); thence telephone.

Railroad station: Chamberlain, S. Dak., on Chicago, Milwaukee &amp; St. Paul Ry.; thence auto stage, daily except Sundays, 25 miles. Or Highmore, on Chicago &amp; North Western Ry.; thence hired team, 38 miles. River route from Chamberlain in summer for freight only.

*Immaculate Conception mission school.*

Post office: Stephan, S. Dak.

Telegraph address: Highmore, S. Dak. (Western Union); thence mail.

Railroad station: Highmore, S. Dak., on Chicago &amp; North Western Ry.; thence stage Mondays, Wednesdays, and Fridays, 22 miles; from agency, 16 miles.

**CUSHMAN AGENCY AND SCHOOLS, WASHINGTON.**

Post office: Tacoma, Wash.

Telegraph address: Tacoma, Wash. (Postal and Western Union); thence telephone.

Railroad station: Tacoma, Wash., on Northern Pacific Ry., 2 miles from school. (Freight should be billed to Reservation, Wash., on Northern Pacific Ry.)

*Jamestown day school.*

Post office: Sequim, Wash.

Telegraph address: Sequim, Wash. (Western Union); thence mail or private messenger, 4 miles.

Railroad station: Seattle, Wash.; thence daily steamer to Port Williams, Wash.; 70 miles; thence hired conveyance, 4 miles. (School 104 miles from agency.)

*Port Gamble day school.*

Post office: Port Gamble, Wash.

Telegraph address: Port Gamble, Wash. (Postal and Western Union); thence private boat,  $\frac{1}{2}$  mile.

Railroad station: On Hood Canal, 35 miles from Seattle; daily steamer. (School 63 miles from agency.)

*Chehalis day school and reservation.*

Post office: Oakville, Wash.

Telegraph address: Oakville, Wash. (Western Union); thence mounted messenger.

Railroad station: Oakville, Wash., on Northern Pacific Ry. (Grays Harbor branch); thence hired team, 4 miles. (56 miles from agency.)

**CUSHMAN AGENCY AND SCHOOLS, WASHINGTON**—Continued.

*Skokomish Reservation.*

Post office: Potlatch, Wash.

Telegraph address: Olympia, Wash. (Postal and Western Union); thence telephone.

Railroad station: Olympia, Wash, on Northern Pacific Ry.; thence daily stage to Potlatch, 35 miles. Or Tacoma, Wash.; thence boat to Shelton, 50 miles; thence daily stage, 14 miles. (Reservation 64 miles from agency.)

*Squamish Island Reservation.*

Post office: Shelton, Wash.

Telegraph address: Shelton, Wash. (Western Union); thence private boat, or mail, R. F. D.

Railroad station: Olympia, Wash., on Northern Pacific Ry.; thence hired launch, 12 miles. (Reservation 44 miles from agency.)

*Muckleshoot Reservation.*

Post office: Auburn, Wash.

Telegraph address: Auburn, Wash. (Western Union); thence telephone.

Railroad station: Auburn, Wash., on Interurban Electric Ry. and Northern Pacific Ry.; thence auto stage, 10 miles. (Reservation 28 miles from agency.)

**DIGGER RESERVATION, CALIFORNIA.**

Post office: Jackson, Calif.

Telegraph address: Jackson, Calif. (Western Union), 4 miles from reservation; thence mounted messenger.

Railroad station: Martell, Calif., on Amador Central Ry.; thence stage to Jackson, 2 miles; thence hired team, 4 miles.

**EUCHEE BOARDING SCHOOL, OKLAHOMA.**

Post office: Sapulpa, Okla.

Telegraph address: Sapulpa, Okla. (Western Union), 1 mile from school; thence telephone or messenger.

Railroad station: Sapulpa, Okla., on San Francisco & St. Louis Ry. (Frisco); thence street car, 5 minutes (75 miles from Muskogee).

**EUFULA BOARDING SCHOOL, OKLAHOMA.**

Post office: Eufaula, Okla.

Telegraph address: Eufaula, Okla. (Western Union); thence telephone.

Railroad station: Eufaula, Okla., on Missouri, Kansas & Texas Ry.,  $\frac{1}{2}$  mile.

**FALLON SCHOOL, NEVADA.**

Post office: Fallon, Nev.

Telegraph address: Fallon, Nev. (Western Union); thence telephone.

Railroad station: Fallon, Nev., on branch of Southern Pacific Ry.; via Hazen, Nev., on main line of Southern Pacific Ry.; thence stage, daily except Sundays, 10 miles.

*Lovelocks day school.*

Post office: Lovelocks, Nev.

Telegraph address: Lovelocks, Nev. (Postal and Western Union); thence mail or messenger.

Railroad station: Lovelocks, Nev., on Southern Pacific Ry.;  $\frac{1}{2}$  mile.

**FIVE CIVILIZED TRIBES, OKLAHOMA.**

Post office: Muskogee, Okla.

Telegraph address: Muskogee, Okla. (Postal, Western Union, and Mackay); messages delivered by messenger.

Railroad station: Muskogee, Okla., on Missouri, Kansas & Texas Ry., St. Louis & San Francisco Ry., Missouri, Oklahoma & Gulf Ry., and Midland Valley Ry.

**FLANDREAU SCHOOL, SOUTH DAKOTA.**

Post office: Flandreau, S. Dak.

Telegraph address: Flandreau, S. Dak. (Western Union); thence telephone.

Railroad station: Flandreau, S. Dak., on Chicago, Milwaukee & St. Paul Ry.; school 1 mile from station.

**FLATHEAD AGENCY AND SCHOOLS, MONTANA.**

Post office: Dixon, Mont.

Telegraph address: Arlee, Mont. (Western Union), 17 miles from agency, thence telephone.

Railroad station: Dixon, Mont., on Northern Pacific Ry.; thence hired conveyance, or agency conveyance if notified of time of arrival; 2 miles. (Telephone in depot.)

*St. Ignatius mission school.*

Post office: St. Ignatius, Mont.

Telegraph address: Ravalli, Mont. (Western Union); thence telephone.

Railroad station: Ravalli, Mont., on Northern Pacific Ry.; thence auto stage, 5 miles.

**FOND DU LAC AGENCY AND SCHOOLS, MINNESOTA.**

Post office: Federal Building, Superior, Wis.

Telegraph address: Superior, Wis. (Western Union).

Railroad station: Superior, Wis., on Chicago, St. Paul, Minneapolis & Omaha Ry.; Duluth, South Shore & Atlantic Ry.; Great Northern Ry.; Northern Pacific Ry.; Lake Superior Terminal & Transfer Ry.; and Minneapolis, St. Paul & Sault Ste. Marie (Soo Line) Ry.

*Fond du Lac Hospital.*

Post office: Cloquet, Minn.

Telegraph address: Cloquet, Minn. (Western Union).

Railroad station: Cloquet, Minn., on Great Northern Ry., and Northern Pacific Ry. (Hospital 30 miles from agency office.)

*Nett Lake day school and subagency.*

Post office: Nett Lake, Minn.

Telegraph address: Orr, Minn. (Postal and Western Union, connecting at Duluth, Minn., and at Virginia, Minn., respectively, with Duluth, Winnipeg & Pacific telegraph office), 16 miles; thence telephone.

Railroad station: Orr, Minn., on Duluth, Winnipeg & Pacific Ry.; thence in summer, across Pelican Lake by launch, 9 miles, and team to agency, 7 miles; or by hired automobile around lake, 27 miles. In winter, across lake on ice by hired team or stage. Tuesdays, Thursdays, and Saturdays, 16 miles. (Notify superintendent 3 days before arrival at Orr.) (140 miles from agency office.)

*Grand Portage day school and subagency.*

Post office: Grand Portage, Minn.

Telegraph address: Duluth, Minn. (Postal and Western Union); thence telephone to agency. Or by wireless from Duluth to Grand Marais, Minn.; thence telephone. Distance from Duluth to subagency, 168 miles.

Railroad station: Duluth, Minn., on Northern Pacific Ry.; Great Northern Ry., etc. From May to December 1: Steamer *America* (U. S. & D. T. Co.) on Sundays and Wednesdays, 10 a. m., landing at Grand Portage Island; thence hired gasoline boat, or by hired automobile from Duluth to Grand Marais; thence hired team. From December 1 to May 1: Duluth to Knife River, Minn., on Duluth & Iron Range Ry.; thence to Cramer, Minn., on Duluth & Northern Minnesota Ry.; thence stage to Grand Portage; 80 miles by rail and 80 miles by stage. (173 miles from agency office.)

*Vermillion Lake subagency.*

Post office: Tower, Minn.

Telegraph address: Tower, Minn. (Postal and Western Union).

Railroad station: Tower, Minn., on Duluth & Iron Range Ry., 3 miles from subagency; thence by launch from May to November, and by team across lake on ice during other months.

**FORT APACHE AGENCY AND SCHOOLS, ARIZONA.**

Post office: Whiteriver, Ariz.

Telegraph address: Fort Apache, Ariz., via Holbrook (Postal and Western Union); military telegraph line to Fort Apache, 4 miles from school and agency; thence telephone.

Railroad station: Cooley, via Holbrook, Ariz., on Apache Ry.; thence stage or private conveyance, 22 miles.

*Fort Apache boarding school.*

At agency.

**FORT APACHE AGENCY AND SCHOOLS, ARIZONA—Continued.**

*Canyon day school.*

Post office: Fort Apache, Ariz.

Telegraph address: Same as agency; thence telephone.

Railroad station: Same as agency. (School 7 miles southwest of agency.)

*Cibecue day school.*

Post office: Cibecue, Ariz.

Telegraph address: Same as agency; thence telephone.

Railroad station: Same as agency. (School 50 miles west of agency.)

*East Fork day school.*

Post office: Whiteriver, Ariz.

Telegraph address: Same as agency; thence telephone.

Railroad station: Same as agency. (School 4 miles southeast of agency.)

**FORT BELKNAP AGENCY AND SCHOOLS, MONTANA.**

Post office: Harlem, Mont.

Telegraph address: Harlem, Mont. (Western Union); thence telephone.

Railroad station: Harlem, Mont., on Great Northern Ry.; thence school or private team (automobile in summer), 4 miles.

*Fort Belknap boarding school.*

At agency.

*Lodge Pole day school and subagency.*

Post office: Lodge Pole, Mont.

Telegraph address: Same as Hays subagency.

Railroad station: Harlem, Mont., on Great Northern Ry.; thence private team. Or, Dodson, Mont., on Great Northern Ry.; thence stage, daily except Sundays; 40 miles.

*Hays subagency.*

Post office: Hays, Mont.

Telegraph address: Harlem station, Mont. (Western Union), 44 miles from subagency; telephone to Fort Belknap school, 4 miles; thence mounted messenger, 40 miles.

Railroad station: Harlem, Mont., on Great Northern Ry.; thence private team. Or, Dodson to Lodge Pole; stage daily except Sundays; thence stage to Hays on Tuesdays, Thursdays, and Saturdays; distance, 52 miles.

*St. Pauls mission school.*

Post office: St. Pauls, Mont.

Telegraph address: Dodson, Mont. (Western Union), 60 miles from school; thence mail.

Railroad station: Dodson, Mont., on Great Northern Ry.; daily stage, except Sundays, to Lodge Pole; thence stage on Tuesdays, Thursdays, and Saturdays. Or, Harlem, Mont., on Great Northern Ry.; thence private team; distance, 50 miles.

**FORT BERTHOLD AGENCY AND SCHOOLS, NORTH DAKOTA.**

Post office: Elbowoods, N. Dak.

Telegraph address: Garrison, N. Dak. (Western Union, connecting at Bismarck, N. Dak., with Soo Line Telegraph Co.), 40 miles from school; thence mail.

Railroad station: Garrison, N. Dak., on Soo Line Ry. (Bismarck Division); thence stage, daily except Sundays, 40 miles.

*Agency boarding school.*

Same as agency.

*Day schools Nos. 2 and 3.*

Post office: Elbowoods, N. Dak.

Telegraph address: Garrison, N. Dak.

Railroad station: Same agency; thence by jitney stage. (Schools 17 and 22 miles, respectively, from agency.)

**FORT BIDWELL AGENCY AND SCHOOL, CALIFORNIA.**

Post office: Fort Bidwell, Calif.

Telegraph address: Fort Bidwell, Calif. (Western Union, connecting at Reno, Nev., with California & Oregon Telegraph Co.);  $\frac{3}{4}$  mile from school; thence telephone.

Railroad station: Willow Ranch, Calif., on Nevada, California & Oregon Ry.; thence stage, daily except Sundays, to Fort Bidwell, Calif., 20 miles. Or, Alturas, Calif., on Nevada, California & Oregon Ry.; thence auto stage, via Cedarville, Calif., 50 miles.

**FORT BIDWELL AGENCY AND SCHOOL, CALIFORNIA—Continued.**

*Pit River subagency.* (Headquarters of farmer and field matron.)

Post office: Likely, Calif.

Telegraph address: Likely, Calif. (Western Union, connecting at Reno, Nev., with California & Oregon Telegraph Co.); thence telephone.

Railroad station: Likely, Calif., on Nevada, California & Oregon Ry.; thence private conveyance, 3 miles. Or, at Water Tank  $\frac{1}{2}$  mile from subagency. (Subagency 75 miles from agency.)

**FORT HALL AGENCY AND SCHOOL, IDAHO.**

Post office: Fort Hall, Idaho.

Telegraph address: Fort Hall, Idaho (Western Union); delivered by operator to agency and by messenger to school.

Railroad station: Fort Hall, Idaho, on Oregon Short Line Ry.; agency office 260 yards from station and school 1 mile south of station.

*Skull Valley day school.*

Post office: Iosepa, Utah.

Telegraph address: Delle, Utah (Western Union); thence telephone to Iosepa; thence messenger to school, 12 miles.

Railroad station: Timple, Utah, on Western Pacific Ry. Stage leaves Timple for Iosepa on Mondays and Thursdays, connecting with west-bound afternoon trains; thence hired team to Indian Camp, 10 miles. In case trains are late, telephone from box-car waiting room to Delle that Iosepa be notified.

**FORT LAPWAI AGENCY AND SCHOOL, IDAHO. (NEZ PERCE AGENCY.)**

Post office: Lapwai, Idaho.

Telegraph address: Fort Lapwai, Idaho (Western Union); thence telephone.

Railroad station: Fort Lapwai, Idaho, on Camas Prairie Ry.; school  $\frac{1}{2}$  mile from station. Or, North Lapwai, Idaho; thence hired team, 4 miles.

*St. Joseph's mission school.*

Post office: Slickpoo, Idaho.

Telegraph address: Culdeseac, Idaho (Western Union); mail to Slickpoo.

Railroad station: Jacques Spur, Idaho, on Camas Prairie Ry.; thence team, 4 miles.

*Fort Lapwai Sanatorium.*

Same as agency.

**FORT McDERMITT SCHOOL, NEVADA.**

Post office: McDermitt, Nev.

Telegraph address: Winnemucca, Nev. (Postal and Western Union), 90 miles from school; thence telephone.

Railroad station; Winnemucca, Nev., on Southern Pacific Ry. or Western Pacific Ry.; thence automobile stage, daily except Sundays, to McDermitt, Nev., 85 miles; thence hired rig to school, 5 miles.

**FORT MOJAVE AGENCY AND SCHOOL, ARIZONA.**

Post office: Mohave City, Ariz.

Telegraph address: Kingman, Ariz. (Postal and Western Union), 36 miles from school; thence telephone.

Railroad station: Kingman, Ariz., on Santa Fe Ry.; thence auto stage daily to Oatman, Ariz., 26 miles; thence Government auto to school, 10 miles. Or Needles, Calif., on same road; thence stage Tuesdays, Thursdays, and Saturdays, 14 miles. Latter route for passengers from the west.

**FORT PECK AGENCY AND SCHOOLS, MONTANA.**

Post office: Poplar, Mont.

Telegraph address: Popular, Mont. (Western Union), delivered by operator.

Railroad station: Poplar, Mont., on Great Northern Ry.; thence  $\frac{1}{2}$  mile.

*Fort Peck boarding school.* At agency.

*Fort Peck day school No. 1.*

Post office: Culbertson, Mont.

Telegraph address: Culbertson, Mont. (Western Union), 8 miles from school; thence mail, irregular.

**FORT PECK AGENCY AND SCHOOLS, MONTANA**—Continued.

Railroad station: Drew, Mont., on Great Northern Ry.; local trains stop on signal to conductor;  $\frac{1}{4}$  mile from school, 25 miles west to boarding school.

*Fort Peck day school No. 2.*

Post office: Brockton, Mont.

Telegraph address: Brockton, Mont. (Western Union); thence mail, irregular.

Railroad station: Brockton, Mont., on Great Northern Ry.; trains stop on signal to conductor; 2 miles southwest to day school by team; 12 miles west to boarding school.

*Fort Peck day school No. 3.*

Post office: Oswego, Mont.

Telegraph address: Oswego, Mont. (Western Union); thence mail, irregular.

Railroad station: Oswego, Mont., on Great Northern Ry.; trains stop on signal to conductor; 1 mile south to school by team; 32 miles east to boarding school.

*Box Elder substation.*

Post office: Brockton, Mont.

Telegraph address: Brockton, Mont. (Western Union); thence mail, irregular.

Railroad station: Brockton, Mont., on Great Northern Ry., trains stop on signal to conductor; 4 miles east to substation; 18 miles west to school.

*Wolf Point mission school.*

Post office: Wolf Point, Mont.

Telegraph address: Wolf Point, Mont. (Western Union); thence telephone to subagency.

Railroad station: Wolf Point, Mont., on Great Northern Ry.; thence 1 mile south by team; 21 miles east to Fort Peck boarding school.

*Wolf Point subagency.*

Post office: Wolf Point, Mont.

Telegraph address: Wolf Point, Mont. (Western Union); thence telephone to subagency.

Railroad station: Wolf Point, Mont., on Great Northern Ry.; then 1 mile south by team; 21 miles east to Fort Peck boarding school.

**FORT TOTTEN AGENCY AND SCHOOL, NORTH DAKOTA. (DEVILS LAKE AGENCY.)**

Post office: Fort Totten, N. Dak.

Telegraph address: Devils Lake, N. Dak. (Western Union); thence telephone.

Railroad station: Devils Lake, N. Dak., on Great Northern Ry. and Soo Line Ry.; thence hired team, 16 miles. Or Oberon, N. Dak., on Northern Pacific Ry.; thence hired team, 12 miles. Or Narrows, N. Dak., on Great Northern Ry.; thence stage, daily except Sundays, 8 miles.

*Grey Nuns' department.*

Located  $\frac{1}{2}$  mile north of school.

**FORT YUMA AGENCY AND SCHOOLS, CALIFORNIA.**

Post office: Yuma, Ariz.

Telegraph address: Yuma, Ariz. (Western Union); thence telephone.

Railroad station: Yuma, Ariz., on Southern Pacific Ry.,  $\frac{1}{2}$  mile from school.

*Cocopah day school.*

Post office: Somerton, Ariz.

Telegraph address: Yuma, Ariz. (Western Union); thence telephone or mail to Somerton. School 3 miles from latter place.

Railroad station: Same as agency. (School 19 miles from agency.)

*Yuma Valley day school.*

Same as agency. (School 7 miles from Yuma, Ariz.)

**GENOA SCHOOL, NEBRASKA.**

Post office: Genoa, Nebr.

Telegraph address: Genoa, Nebr. (Western Union); messages telephoned from office.

Railroad station: Genoa, Nebr., on Union Pacific Ry., via Columbus, Nebr. School in city.

**GOSHUTE AGENCY AND SCHOOL, UTAH.**

Post office: Ibapah, Utah.

Telegraph address: Gold Hill, Utah (Western Union); thence mail to Ibapah, 15 miles; thence to Indian Camp; time, 1½ days.

Railroad station: Gold Hill, Utah, on Deep Creek Ry.; thence stage Tuesdays, Thursdays, and Saturdays; thence private team to Indian Camp; 30 miles.

**GRAND RAPIDS AGENCY, WISCONSIN.**

Post office: Grand Rapids, Wis.

Telegraph address: Grand Rapids, Wis. (Western Union).

Railroad station: Grand Rapids, Wis., on Chicago & Northwestern Ry., Chicago & St. Paul Ry., Minneapolis, St. Paul & Sault Ste. Marie Ry., and Green Bay & Western Ry. Office located in suite 1, McKinnon Building.

**GREENVILLE SCHOOL, CALIFORNIA.**

Post office: Greenville, Calif.

Telegraph address: Greenville, Plumas County, Calif. (Western Union, connecting at Reno, Nev., with California & Oregon Telegraph Co.); 4 miles from school; thence telephone.

Railroad station: Crescent Mills, Calif., on Indian Valley Ry.; thence daily stage to Greenville, 8 miles; thence hired or school auto, 4 miles.

*Susanville station (field matron's headquarters).*

Post office: Susanville, Calif.

Telegraph address: Susanville, Calif. (California & Oregon Telegraph Co.).

Railroad station: Susanville, Calif., on Southern Pacific Ry.; thence private team, ¼ mile.

*Redding subagency.*

Post office: Redding, Calif.

Telegraph address: Redding, Calif. (Western Union).

Railroad station: Redding, Calif., on Southern Pacific Ry. office located in town.

**HASKELL INSTITUTE, KANSAS.**

Post office: Lawrence, Kans.

Telegraph address: Lawrence, Kans. (Postal and Western Union); thence telephone.

Railroad station: Lawrence, Kans., on Atchison, Topeka & Santa Fe Ry., and Union Pacific Ry.; thence hired team or street car, 2½ miles.

**HAVASUPAI AGENCY AND SCHOOL, ARIZONA.**

Post office: Supai, via Grand Canyon, Ariz.

Telegraph address: Grand Canyon, Ariz. (Postal), 47 miles from school; thence mail, Thursdays, or messenger.

Railroad station: Grand Canyon, Ariz., via Williams, Ariz., on Santa Fe Ry.; thence hired team or auto 35 miles, and saddle 12 miles over trail; time, one day; or Seligman, Ariz., on Santa Fe Ry.; thence saddle, auto, or wagon 70 miles, and saddle 8 miles over trail; time, two days. Latter route best for freight. (Appointees should communicate with superintendent and await his reply before starting.)

*Day school.*

About 200 yards from agency.

**HAYWARD SCHOOL, WISCONSIN.**

Post office: Hayward, Wis.

Telegraph address: Hayward, Wis. (Western Union); thence telephone.

Railroad station: Hayward, Wis., on Chicago, St. Paul, Minneapolis & Omaha Ry., running between St. Paul, Minn., and Ashland, Wis. Route via Chicago over Chicago & Northwestern Ry. to Spooner, Wis.; thence over Ashland branch to Hayward. School 1½ miles north of city station. Telephone for conveyance.

*Lac Courte Oreille day school and reservation.*

Post office: Reserve, Wis.

Telegraph address: Hayward, Wis. (Western Union), 16 miles from farmer's office; thence telephone.



**HAYWARD SCHOOL, WISCONSIN—Continued.**

*Lac Courte Oreille day school and reservation—Continued.*

Railroad station: Reserve, Wis., on branch of Minneapolis, St. Paul & Sault Ste. Marie Ry., daily, except Sundays, which connects with its main line and with Chicago, St. Paul, Minneapolis & Omaha Ry. at Cameron Junction, Wis.; or Hayward, Wis., on Chicago, St. Paul, Minneapolis & Omaha Ry.; thence hired team, 16 miles. (No stage.) School  $\frac{1}{2}$  mile from farmer's office.

**HOOPA VALLEY AGENCY AND SCHOOL, CALIFORNIA.**

Post office: Hoopa, Calif.

Telegraph address: Eureka, Calif. (Western Union), 55 miles from Hoopa; thence telephone.

Railroad station: San Francisco, Calif.; thence Northwestern Pacific Ry. or steamship to Eureka, Calif., 230 miles. In summer months, from Eureka to Arcata, by rail, 10 miles; thence auto stage, Mondays, Wednesdays, and Fridays, to Hoopa, 46 miles. In winter months from Eureka to Korbhel, by rail, 20 miles; thence horse stage, Mondays, Wednesdays and Fridays to Hoopa, 35 miles. (Persons coming from northern points may leave Southern Pacific Ry. at Grants Pass; thence auto stage to Crescent City, 100 miles; thence auto stage to Arcata and Eureka; time from Grants Pass, 2 days, stopping overnight in Crescent City.)

**HOPE SCHOOL, SOUTH DAKOTA.**

Post office: Springfield, S. Dak.

Telegraph address: Springfield, S. Dak. (Western Union); thence telephone.

Railroad station: Springfield, S. Dak., on Chicago, Milwaukee & St. Paul Ry.; thence bus, 2 miles.

**JICARILLA AGENCY AND SCHOOL, NEW MEXICO.**

Post office: Dulce, N. Mex.

Telegraph address: Dulce, N. Mex. (Western Union).

- Railroad station: Dulce, N. Mex., on Denver & Rio Grande Ry.; school 1 mile distant; agency at station.

*Jicarilla sanatorium.*

At agency.

**JONES MALE ACADEMY, OKLAHOMA.**

Post office: Hartshorne, Okla.

Telegraph address: Hartshorne, Okla. (Western Union); thence telephone.

Railroad station: Hartshorne, Okla., on Chicago, Rock Island & Pacific Ry.; thence livery, 4 miles (75 miles from Muskogee).

**KAIBAB AGENCY AND SCHOOL, ARIZONA.**

Post office: Moccasin, Ariz.

Telegraph address: Moccasin, Ariz., via Marysvale, Utah (Western Union), 150 miles from school; thence telephone.

Railroad station: Marysvale, Utah, on Denver & Rio Grande Ry.; thence stage to Kanab, Utah, 150 miles; thence hired team, 18 miles; time, 45 hours. Or, Marysvale, Utah; thence daily stage 105 miles to Orderville, Utah; time, 34 hours; thence hired team 1 day. Or, Lund, Utah, on Los Angeles & Salt Lake Ry. (Salt Lake Route); thence stage to Hurricane, Utah, 68 miles; thence hired conveyance to school, 48 miles. Regular daily auto stage between Lund and Cedar City.

*Kaibab day school.*

At agency.

**KESHENA AGENCY AND SCHOOLS, WISCONSIN.**

Post office: Keshena, Wis.

Telegraph address: Shawano, Wis. (Western Union); thence telephone.

Railroad station: Shawano, Wis., on Chicago & North Western Ry.; thence daily stage, 8 miles.

*Neopit day school.*

Post office: Neopit, Wis.

Telegraph address: Shawano, Wis. (Western Union); thence telephone.

Railroad station: Neopit, Wis., on Wisconsin & Northern Ry. (School 13 miles from agency.)

**KESHENA AGENCY AND SCHOOLS, WISCONSIN—Continued.***St. Joseph's industrial school.*

Post office: Keshena, Wis.

Telegraph address: Shawano, Wis. (Western Union).

Railroad station: Shawano, Wis., on Chicago & North Western Ry.; thence daily stage, 8 miles.

*Menominee Indian Mills.*

Post office: Neopit, Wis.

Telegraph address: Shawano, Wis. (Western Union); thence telephone.

Railroad station: Neopit, Wis., on Wisconsin & Northern Ry.

*Oneida subagency.*

Post office: Oneida, Wis.

Telegraph address: Green Bay, Wis. (Postal and Western Union), 10 miles from school; thence telephone.

Railroad station: Oneida, Wis., on Green Bay & Western Ry.

**KICKAPOO AGENCY AND SCHOOL, KANSAS.**

Post office: Horton, Kans.

Telegraph address: Horton, Kans. (Western Union), 7 miles from school; thence telephone.

Railroad station: Germantown, Kans., on Chicago, Rock Island & Pacific Ry.; thence school team, 2 miles.

*Potawatomi subagency.*

Post office: Mayetta, Kans.

Telegraph address: Mayetta, Kans. (Western Union); thence telephone.

Railroad station: Mayetta, Kans., on Chicago, Rock Island & Pacific Ry.; thence  $\frac{1}{2}$  mile west (30 miles from Kickapoo agency).

**KIOWA AGENCY AND SCHOOLS, OKLAHOMA.**

Post office: Anadarko, Okla.

Telegraph address: Anadarko, Okla. (Western Union); thence telephone.

Railroad station: Anadarko, Okla., on Chicago, Rock Island & Pacific Ry.; thence hired team,  $\frac{1}{2}$  mile.

*Anadarko boarding school.*

Post office: Anadarko, Okla.

Telegraph address: Anadarko, Okla. (Western Union); thence telephone.

Railroad station: Anadarko, Okla., on Chicago, Rock Island & Pacific Ry.; school  $2\frac{1}{2}$  miles from agency and 2 miles from freight station.

*Fort Sill boarding school.*

Post office: Lawton, Okla.

Telegraph address: Lawton, Okla. (Western Union); thence telephone.

Railroad station: Lawton, Okla., on Chicago, Rock Island & Pacific Ry.; thence hired team, 1 mile; also on St. Louis & San Francisco Ry.; thence hired team,  $1\frac{1}{2}$  miles.

*Fort Sill subagency.*

Post office: Lawton, Okla.

Telegraph address: Lawton, Okla. (Western Union); thence telephone.

Railroad station: Lawton, Okla., on Chicago, Rock Island & Pacific Ry.; thence hired team,  $1\frac{1}{2}$  miles; also on St. Louis & San Francisco Ry.; thence hired team, 2 miles.

*Rainy Mountain boarding school.*

Post office: Gotebo, Okla. (R. F. D. No. 2).

Telegraph address: Gotebo, Okla. (Western Union); thence telephone.

Railroad station: Gotebo, Okla., on Chicago, Rock Island & Pacific Ry.; thence hired team, 6 miles.

*Rainy Mountain farmer's station.*

Post office: Gotebo, Okla.

Telegraph address: Gotebo, Okla. (Western Union); thence telephone to school and messenger from school.

Railroad station: Gotebo, Okla., on Chicago, Rock Island & Pacific Ry.; thence hired team, 6 miles.

*Riverside boarding school.*

Post office: Same as agency.

Telegraph address: Same as agency.

Railroad station: Anadarko, Okla., on Chicago, Rock Island & Pacific Ry.; thence hired team,  $1\frac{1}{2}$  miles.

**KIOWA AGENCY AND SCHOOLS, OKLAHOMA**—Continued.

*Cache Creek mission school.*

Post office: Apache, Okla.

Telegraph address: Apache, Okla. (Western Union); thence telephone.

Railroad station: Apache, Okla., on Chicago, Rock Island & Pacific Ry.; thence hired team,  $4\frac{1}{2}$  miles.

*Fort Cobb farmer's station.*

Post office: Fort Cobb, Okla.

Telegraph address: Fort Cobb, Okla. (Western Union); thence telephone.

Railroad station: Fort Cobb, Okla., on Chicago, Rock Island & Pacific Ry.; thence hired team, 1 mile.

*Mount Scott farmer's station.*

Post office: Lawton, Okla. "Star Route."

Telegraph address: Fort Sill, Okla. (Western Union); 10 miles from station; thence telephone to Indian trader's store;  $\frac{1}{4}$  mile from trader's store.

Railroad station: Lawton, Okla., on Chicago, Rock Island & Pacific Ry., and St. Louis & San Francisco Ry., 18 miles from station.

*Mount Scott mission school.*

Same as farmer's station.

*Red Rock field matron's station.*

Post office: Anadarko, Okla. (R. F. D. No. 5).

Telegraph address: Anadarko, Okla. (Western Union), 6 miles from station; thence telephone.

Railroad station: Washita, Okla., on Chicago, Rock Island & Pacific Ry.; thence hired team, 3 miles.

*West Cache farmer's station.*

Post office: Cache, Okla.

Telegraph address: Cache, Okla. (Western Union); thence telephone.

Railroad station: Cache, Okla., on St. Louis & San Francisco Ry.; thence hired team, 1 mile.

*Walter farmer's station.*

Post office: Walter, Okla.

Telegraph address: Walter, Okla. (Western Union).

Railroad station: Walter, Okla., on Chicago, Rock Island & Pacific Ry.

*Walter field matron's station.*

Same as farmer's station.

*Apache farmer's station.*

Post office: Apache, Okla.

Telegraph address: Apache, Okla. (Western Union).

Railroad station: Apache, Okla., on Chicago, Rock Island & Pacific Ry.

*Apache field matron's station.*

Same as farmer's station.

*Mountain View field matron's station.*

Post office: Mountain View, Okla.

Telegraph address: Mountain View, Okla. (Western Union); thence mounted messenger.

Railroad station: Mountain View, Okla., on Chicago, Rock Island & Pacific Ry.; thence hired team,  $5\frac{1}{2}$  miles.

*Wichita field matron's station.*

Post office: Anadarko, Okla.

Telegraph address: Anadarko, Okla. (Western Union); thence telephone.

Railroad station: Anadarko, Okla., on Chicago, Rock Island & Pacific Ry.; thence team, 3 miles.

*Indiahoma field matron's station.*

Post office: Indiahoma, Okla.

Telegraph address: Indiahoma, Okla. (Western Union); thence telephone.

Railroad station: Indiahoma, Okla., on St. Louis & San Francisco Ry.; thence hired team,  $7\frac{1}{2}$  miles.

*Carnegie farmer's station.*

Post office: Carnegie, Okla.

Telegraph address: Carnegie, Okla. (Western Union).

Railroad station: Carnegie, Okla., on Chicago, Rock Island & Pacific Ry.

*Binger farmer's station.*

Post office: Binger, Okla.

Telegraph address: Binger, Okla. (Western Union).

Railroad station: Binger, Okla., on Chicago, Rock Island & Pacific Ry.

**KIOWA AGENCY AND SCHOOLS, OKLAHOMA—Continued.***Kiowa hospital.*

Post office: Lawton, Okla.

Telegraph address: Lawton, Okla. (Western Union); thence telephone.

Railroad station: Lawton, Okla., on Chicago, Rock Island & Pacific Ry.; thence hired team, 1½ miles; also on St. Louis & San Francisco Ry.; thence hired team, 2 miles.

**KLAMATH AGENCY AND SCHOOLS, OREGON.**

Post office: Klamath Agency, Ore.

Telegraph address: Klamath Agency, Ore. (Western Union).

Railroad station: Chiloquin, Ore., on Oregon Eastern Ry.; thence stage, daily except Sundays, 5 miles.

*Klamath boarding school.*

At agency.

*Modoc Point day school.*

Post office: Klamath Agency, Ore.

Telegraph address: Via agency; thence telephone.

Railroad station: Chiloquin, Ore., on Oregon Eastern Ry.; thence hired team, 6 miles.

*Klamath day school No. 3.*

Post office: Beatty, Ore.

Telegraph address: Via agency; thence telephone.

Railroad station: Chiloquin, Ore., on Oregon Eastern Ry.; thence hired team, 50 miles.

**LAC DU FLAMBEAU AGENCY AND SCHOOL, WISCONSIN.**

Post office: Lac du Flambeau, Wis.

Telegraph address: Lac du Flambeau, Wis. (Western Union); thence telephone.

Railroad station: Lac du Flambeau, Wis., on Chicago & North Western Ry. (Ashland Division); thence stage, 3 miles. Stage does not meet night trains during winter season.

**LAONA AGENCY, WISCONSIN.**

Post office: Laona, Wis.

Telegraph address: Laona, Wis. (Western Union).

Railroad station: Laona, Wis., on Chicago & North Western Ry.

**LA POINTE AGENCY AND SCHOOLS, WISCONSIN.**

Post office: Ashland, Wis.

Telegraph address: Ashland, Wis. (Western Union).

Railroad station: Ashland, Wis.; on Chicago & North Western Ry.; Soo Line Ry.; Chicago, St. Paul, Minneapolis & Omaha Ry.; and Northern Pacific Ry.

*St. Mary's mission school. (On Bad River Reservation.)*

Post office: Odanah, Wis.

Telegraph address: Odanah, Wis. (Western Union).

Railroad station: Odanah, Wis., on Chicago & North Western Ry., running between Chicago and Ashland. (School 10 miles from agency.)

**LEECH LAKE AGENCY AND SCHOOLS, MINNESOTA.**

Post office: Onigum, Minn.

Telegraph address: Walker, Minn. (Western Union), 3 miles from agency; thence telephone.

Railroad station: Walker, Minn., on Minnesota & International Ry.; thence boat in summer and across ice in winter, 2 miles. Or Walker, Minn., on Great Northern Ry.; thence bus or dray, 1 mile, to city dock; thence boat in summer and across ice in winter, 2 miles.

*Leech Lake boarding school.*

At agency.

*Cass Lake boarding school and subagency.*

Post office: Cass Lake, Minn.

Telegraph address: Cass Lake, Minn. (Western Union); thence telephone.

Railroad station: Cass Lake, Minn., on Great Northern Ry. and Minneapolis, St. Paul & Sault Ste. Marie Ry.; thence 6 miles by road. (School 30 miles from agency and subagency 24 miles from agency.)

**LEECH LAKE AGENCY AND SCHOOLS, MINNESOTA—Continued.**

*Bena subagency.*

Post office: Bena, Minn.

Telegraph address: Bena, Minn. (Western Union).

Railroad station: Bena, Minn., on Great Northern Ry.; near office. (Fifty miles from agency.)

**LEUPP AGENCY AND SCHOOLS, ARIZONA.**

Post office: Leupp, Ariz.

Telegraph address: Canyon Diablo, Ariz. (Western Union); thence auto mail stage, Mondays, Wednesdays, and Fridays.

Railroad station: Canyon Diablo, Ariz., on Atchison, Topeka & Santa Fe Ry.; thence team, 13 miles.

*Leupp boarding school.*

At Agency.

*Tolchaco mission school.*

Post office: Tolchaco, Ariz.

Telegraph address: Canyon Diablo, Ariz. (Western Union); thence tri-weekly mail, via Leupp, Ariz.

Railroad station: Canyon Diablo, Ariz., on Atchison, Topeka & Santa Fe Ry.; school 10 miles from Leupp.

**LOWER BRULE AGENCY, SOUTH DAKOTA.**

Post office: Lower Brule, S. Dak.

Telegraph address: Lower Brule, via Reliance, S. Dak. (Western Union); thence telephone.

Railroad station: Reliance, S. Dak., on Chicago, Milwaukee & St. Paul Ry.; thence stage, daily except Sundays, 16 miles.

**MACKINAC AGENCY, MICHIGAN.**

Post office: Baraga, Mich.

Telegraph station: Baraga, Mich. (Western Union), at agency.

Railroad station: Baraga, Mich., on Duluth, South Shore & Atlantic Ry.

**MEKUSUKEY ACADEMY, OKLAHOMA.**

Post office: Seminole, Okla.

Telegraph address: Seminole, Okla. (Western Union); thence telephone.

Railroad station: Seminole, Okla., on Chicago, Rock Island & Pacific Ry.; thence livery or school team,  $4\frac{3}{4}$  miles.

**MESCALERO AGENCY AND SCHOOL, NEW MEXICO.**

Post office: Mescalero, N. Mex.

Telegraph address: Tularosa, N. Mex. (Western Union); thence telephone.

Railroad station: Tularosa, N. Mex.; reached from the south by El Paso & Southwestern Ry., via El Paso, Tex.; from the north by Chicago, Rock Island & Pacific Ry.; thence daily stage, 18 miles.

**MOAPA RIVER AGENCY AND SCHOOL, NEVADA.**

Post office: Moapa, Nev.

Telegraph address: Moapa, Nev. (Western Union); thence telephone.

Railroad station: Moapa, Nev. on Los Angeles & Salt Lake Ry., distance 2 miles.

**MOQUI AGENCY AND SCHOOLS, ARIZONA.**

Post office: Keams Canon, Ariz.

Telegraph address: Holbrook, Ariz. (Postal and Western Union); thence mail to Keams Canon, Ariz., 3 times a week, 12 hours.

Railroad station: Holbrook, Ariz., on Santa Fe Pacific Ry.; thence mail automobile stage to Keams Canon, Mondays, Wednesdays, and Fridays, 85 miles. In good weather trip consumes 1 day. Cost of passenger transportation from Holbrook, Ariz., \$12.

*Chimopovy day school.*

Post office: Toreva, Ariz.

Telegraph address: Holbrook, Ariz. (Postal and Western Union), 110 miles from school; thence mail 3 times a week.

Railroad station: Holbrook, Ariz., on Santa Fe Pacific Ry.; thence stage to Keams Canon; thence Government auto to Chimopovy. (School 25 miles from agency.)

**MOQUI AGENCY AND SCHOOLS, ARIZONA**—Continued.*Oraibi day school.*

Post office: Oraibi, Ariz.

Telegraph address: Holbrook, Ariz. (Postal and Western Union), 120 miles from school; thence mail, 3 times a week.

Railroad station: Holbrook, Ariz., on Santa Fe Pacific Ry.; thence stage to Keams Canon; thence Government auto to Oraibi. (School 35 miles from agency.)

*Polacca day school.*

Post office: Polacca, Ariz.

Telegraph address: Holbrook, Ariz. (Postal and Western Union), 98 miles from school; thence mail, 3 times a week.

Railroad station: Holbrook, Ariz., on Santa Fe Pacific Ry.; thence stage to Keams Canon; thence Government auto to Polacca. (School 13 miles from agency.)

*Second Mesa day school.*

Post office: Toreva, Ariz.

Telegraph address: Holbrook, Ariz. (Postal and Western Union), 110 miles from school; thence mail, 3 times a week.

Railroad station: Holbrook, Ariz., on Santa Fe Pacific Ry.; thence stage to Keams Canon; thence Government auto to Toreva.

*Hotevilla-Bacabi day school.*

Post office: Hotevilla, Ariz.

Telegraph address: Holbrook, Ariz. (Postal and Western Union), 125 miles from school; thence mail, 3 times a week.

Railroad station: Holbrook, Ariz., on Santa Fe Pacific Ry.; thence stage to Keams Canon; thence Government auto to Hotevilla. (School 40 miles from agency.) (For Government freight: Winslow, Ariz., on same road.)

**MOUNT PLEASANT SCHOOL, MICHIGAN.**

Post office: Mount Pleasant, Mich.

Telegraph address: Mount Pleasant, Mich. (Western Union); thence telephone.

Railroad station: Mount Pleasant, Mich., on Ann Arbor Ry., and Pere Marquette Ry.; via Toledo or Detroit from the east, and via Durand, Alma, or Owosso from Chicago; distance,  $\frac{3}{4}$  mile.

**NAVAJO AGENCY AND SCHOOLS, ARIZONA AND NEW MEXICO.**

Post office: Fort Defiance, Ariz.

Telegraph address: Fort Defiance, Ariz., via Gallup, N. Mex. (Postal and Western Union); thence telephone.

Railroad station: Gallup, N. Mex., on Atchison, Topeka & Santa Fe Ry.; thence stage, daily except Sundays, 30 miles.

*Navajo boarding school.*

At agency.

*Chin Lee boarding school.*

Post office: Chin Lee, Ariz.

Telegraph address: Gallup, N. Mex., via Fort Defiance, Ariz. (Postal and Western Union), 80 miles from school; thence telephone to Fort Defiance, Ariz.; thence telephone, 50 miles.

Railroad station: Gallup, N. Mex., on Atchison, Topeka & Santa Fe Ry.; thence stage, daily except Sundays, to Fort Defiance; thence to Chin Lee by Government or hired team, 50 miles.

*Tohatchi boarding school (Little Water).*

Post office: Tohatchi, N. Mex.

Telegraph address: Gallup, N. Mex. (Postal and Western Union); thence telephone to Fort Defiance; thence telephone to Tohatchi, or mail from Gallup to Tohatchi.

Railroad station: Gallup, N. Mex., on Atchison, Topeka & Santa Fe Ry.; thence triweekly auto stage 25 miles.

*Cornfields day school.*

Post office: Cornfields, Ariz.

Telegraph address: Gallup, N. Mex. (Postal and Western Union), 60 miles from school; thence telephone to Fort Defiance, Ariz.; thence telephone, 44 miles.

**NAVAJO AGENCY AND SCHOOLS, ARIZONA AND NEW MEXICO—Continued.**

*Cornfields day school*—Continued.

Railroad station: Gallup, N. Mex., on Atchison, Topeka & Santa Fe Ry.; thence daily stage to St. Michaels; thence triweekly stage to Cornfields, 55 miles.

*Luki Chuki day school.*

Located 92 miles from Gallup, N. Mex., on Atchison, Topeka & Santa Fe Ry.; thence stage, daily except Sundays, to Fort Defiance, Ariz.; thence Government team, 60 miles.

Telegraph address: Fort Defiance, Ariz. (Postal and Western Union); thence telephone.

*Rehoboth mission school.*

Post office: Gallup, N. Mex.

Telegraph address: Gallup, N. Mex. (Postal and Western Union); thence telephone.

Railroad station: Gallup, N. Mex., on Atchison, Topeka & Santa Fe Ry.; thence hired team, 6 miles.

*St. Michaels mission school.*

Post office: St. Michaels, Ariz.

Telegraph address: Gallup, N. Mex. (Postal and Western Union); thence telephone to St. Michaels, Ariz.

Railroad station: Gallup, N. Mex., on Atchison, Topeka & Santa Fe Ry.; thence daily buckboard, 27 miles.

*Ganado mission school.*

Post office: Ganado, Ariz.

Telegraph address: St. Michaels, Ariz.; thence telephone, 26 miles.

Railroad station: Gallup, N. Mex., on Atchison, Topeka & Santa Fe Ry.; thence triweekly mail stage, 50 miles.

**NEAH BAY AGENCY AND SCHOOLS, WASHINGTON.**

Post office: Neah Bay, Wash.

Telegraph address: Neah Bay, Wash. (Postal and Western Union, connecting at Port Angeles, Wash., with United States Sea Coast Telegraph Co.), 2 miles from school; thence telephone.

Railroad station: Seattle, Wash., on Chicago, Milwaukee & St. Paul Ry., Great Northern Ry., Northern Pacific Ry., and Oregon-Washington Ry. & Navigation Co.; thence triweekly steamer in summer and weekly steamer from October 1 to May 1; 147 miles.

*Neah Bay day school*, 2 miles from agency.

*Quilteute day school.*

Post office: Mora, Wash.

Telegraph address: Clallam Bay, Wash. (Postal and Western Union, connecting at Port Angeles, Wash., with United States Sea Coast Telegraph Co.), 50 miles from school; thence telephone.

Railroad station: Seattle, Wash.; thence steamer, daily except Sundays, to Clallam Bay, Wash.; thence 48 miles by triweekly stage and 2 miles by canoe. Or daily steamer from Seattle to Port Angeles, Wash., 84 miles; thence private automobile 81 miles and canoe 2 miles; 178 miles from Seattle via Clallam Bay, or 167 miles via Port Angeles. (School 45 miles from agency.)

**NEVADA AGENCY AND SCHOOLS, NEVADA.**

Post office: Nixon, Nev.

Telegraph address: Wadsworth, Nev. (Western Union), 16 miles from agency and school; thence private Government telephone.

Railroad station: Numana, Nev., on Southern Pacific Ry.; thence school team, 4 miles.

*Agency day school. At agency.*

*Wadsworth day school.*

Post office: Wadsworth, Nev.

Telegraph address: Wadsworth, Nev. (Western Union).

Railroad station: Wadsworth, Nev., on Southern Pacific Ry. School in town of Wadsworth.

**NEW YORK AGENCY, NEW YORK.**

Post office: Salamanca, N. Y.

Telegraph address: Salamanca, N. Y. (Postal and Western Union); delivered by messenger.

**NEW YORK AGENCY, NEW YORK**—Continued.

Railroad station: Salamanca, N. Y., on main line Erie Ry.; main line Buffalo, Rochester & Pittsburgh Ry., and Allegheny Valley Division of Pennsylvania Ry.

**NORTHERN PUEBLO AGENCY AND DAY SCHOOLS, NEW MEXICO.**

Post office: Espanola, N. Mex.

Telegraph address: Espanola, N. Mex. (Western Union).

Railroad station: Espanola, N. Mex., on Denver & Rio Grande Ry. Agency office in town.

*Picuris day school.*

Post office: Penasco, N. Mex.

Telegraph address: Taos, N. Mex. (Western Union); thence telephone.

Railroad station: Embudo, N. Mex., on Denver & Rio Grande Ry.; thence stage, daily except Sundays; 20 miles. (School 40 miles from agency.)

*San Idefonso day school.*

Post office: Santa Fe, N. Mex.

Telegraph address: Espanola, N. Mex. (Western Union); thence messenger.

Railroad station: Espanola, N. Mex., on Denver & Rio Grande Ry.; thence hired team, 10 miles.

*San Juan day school.*

Post office: Chamita, N. Mex.

Telegraph address: Espanola, N. Mex. (Western Union), 6 miles from school; thence telephone.

Railroad station: Chamita, N. Mex., on Denver & Rio Grande Ry.; thence hired team, 1 mile. (School 6 miles from agency.)

*Santa Clara day school.*

Post office: Espanola, N. Mex.

Telegraph address: Espanola, N. Mex. (Western Union); thence messenger.

Railroad station: Espanola, N. Mex., on Denver & Rio Grande Ry.; thence  $1\frac{1}{2}$  miles. (Trains stop at Santa Clara upon notice to conductor.)

*Santa Clara Reservation.*

Same as day school.

*Taos day school.*

Post office: Taos, N. Mex.

Telegraph address: Taos, N. Mex. (Western Union); thence telephone; 3 miles.

Railroad station: Taos Junction, N. Mex., or Embuda, N. Mex., on Denver & Rio Grande Ry.; thence stage, daily except Sundays; 27 miles. (School 54 miles from agency.)

**NUYAKA BOARDING SCHOOL, OKLAHOMA.**

Post office: Nuyaka, Okla.

Telegraph address: Okmulgee, Okla. (Western Union); thence telephone or mail.

Railroad station: Beggs, Okla., on St. Louis & San Francisco Ry.; thence hired team, 12 miles.

**OMAHA AGENCY, NEBRASKA.**

Post office: Macy, Nebr.

Telegraph address: Walthill, Nebr. (Western Union); thence telephone.

Railroad station: Walthill, Nebr., on Chicago, Burlington & Quincy Ry.; thence stage, daily except Sundays, 8 miles.

**OSAGE AGENCY AND SCHOOL, OKLAHOMA.**

Post office: Pawhuska, Okla.

Telegraph address: Pawhuska, Okla. (Western Union).

Railroad station: Pawhuska, Okla., on Midland Valley Ry., via Arkansas City, Kans., or Tulsa, Okla.,  $\frac{1}{4}$  mile from agency and school. Or Nelagoney, Okla., on Missouri, Kansas & Texas Ry., 6 miles. Automobile meets all trains of Missouri, Kansas & Texas Ry., at Nelagoney.

**PALA AGENCY AND SCHOOLS, CALIFORNIA.**

Post office: Pala, Calif.

Telegraph address: Pala, via San Diego, Calif. (Postal and Western Union), 60 miles from school; thence telephone.



**PALA AGENCY AND SCHOOLS, CALIFORNIA—Continued.**

Railroad station: Temecula, Calif., on Atchison, Topeka & Santa Fe Ry.; thence hired team, 12 miles. Or, Oceanside, Calif., on same road; thence auto stage daily except Sundays, 24 miles. (Oceanside best route from north or east, except Sundays. Murietta, Calif., via Temecula, Sunday station.)

*Capitan Grande day school.*

Post office: Lakeside, Calif.

Telegraph address: Lakeside, Calif. (Western Union); thence special messenger.

Railroad station: Lakeside, Calif., on San Diego & South Eastern Ry. (via San Diego); thence hired team, 12 miles. (School, 70 miles from agency.)

*La Jolla day school.*

Post office: Valley Center, Calif.

Telegraph address: San Diego, Calif. (Postal and Western Union), 60 miles from school; thence telephone to Valley Center; thence mail to school.

Railroad station: Escondido, Calif., on Santa Fe Ry.; thence hired team, 25 miles. No stage. Or via Pala Agency; 18 miles by team.

*Rincon day school and reservation.*

Post office: Valley Center, Calif.

Telegraph address: San Diego, Calif. (Postal and Western Union), 53 miles; thence telephone to Valley Center; thence mounted messenger.

Railroad station: Escondido, Calif., on Santa Fe Ry.; thence hired team, 18 miles. Or via Pala Agency; 12 miles.

*Volcan day school.*

Post office: Santa Ysabel, Calif.

Telegraph address: San Diego, Calif. (Postal and Western Union), 55 miles from school; thence telephone.

Railroad station: Lakeside, Calif., on San Diego & Southeastern Ry.; thence stage to Santa Ysabel, 30 miles; thence hired team, 4 miles.

*Mesa Grande day school and Reservation.*

Post office: Mesa Grande, Calif.

Telegraph address: San Diego, Calif. (Postal and Western Union), 55 miles from Mesa Grande; thence telephone.

Railroad station: Lakeside, Calif., on San Diego & Arizona Ry. (via San Diego); thence stage, daily except Sundays, 30 miles.

*Inaja or Cosmit Reservation.*

Post office: Julian, Calif.

Telegraph address: San Diego, Calif. (Postal and Western Union); thence telephone to Julian; thence private messenger, 15 miles.

Railroad station: Lakeside, Calif., on San Diego & Arizona Ry. (via San Diego); thence auto stage, daily except Sundays, to Julian, 60 miles; thence hired team, 15 miles.

*Los Coyotes Reservation.*

Post office: Warner Springs, Calif.

Telegraph address: San Diego, Calif. (Postal and Western Union); thence telephone to Warner Springs; thence private messenger over mountain grades, 6 miles.

Railroad station: Lakeside, Calif., on San Diego & Arizona Ry. (via San Diego); thence auto stage, daily except Sundays, to Warner Springs, 60 miles; thence hired team, 6 miles.

**PAWNEE AGENCY AND SCHOOL, OKLAHOMA.\***

Post office: Pawnee, Okla.

Telegraph address: Pawnee, Okla. (Western Union); thence telephone.

Railroad station: Pawnee, Okla., on Atchison, Topeka & Santa Fe Ry. and St. Louis & San Francisco Ry.; thence hired auto, 1 mile.

*Ponca subagency.*

Post office: Whiteagle, Okla.

Telegraph address: Ponca City, Okla. (Western Union), 7½ miles from school; thence telephone.

Railroad station: Whiteagle, Okla., on Atchison, Topeka & Santa Fe Ry.; thence hired or agency team, 3 miles.

**PAWNEE AGENCY AND SCHOOL, OKLAHOMA—Continued.***Kaw subagency.*

Post office: Kaw, Okla., R. F. D. No. 2.

Telegraph address: Kaw, Okla. (Western Union); thence telephone.

Railroad station: Kaw, Okla., on Atchison, Topeka & Santa Fe Ry.

*Otoc subagency.*

Post office: Red Rock, Okla.

Telegraph address: Red Rock, Okla. (Western Union); thence telephone.

Railroad station: Red Rock, Okla., on Atchison, Topeka & Santa Fe Ry.; thence  $7\frac{1}{2}$  miles to school. Or Bliss, Okla., on same railroad; thence 7 miles to school.

*Tonkawa subagency.*

Post office: Tonkawa, Okla.

Telegraph address: Tonkawa, Okla. (Western Union); thence telephone.

Railroad station: Tonkawa, Okla., on Atchison, Topeka & Santa Fe Ry.; thence team, 2 miles.

**PHOENIX SCHOOL, ARIZONA.**

Post office: Phoenix, Ariz.

Telegraph address: Phoenix, Ariz. (Western Union); thence telephone.

Railroad station: Phoenix, Ariz., 3 miles from school on Arizona Eastern Ry. and Santa Fe, Prescott & Phoenix Ry. Change from Southern Pacific Ry. at Maricopa. Change from Atchison, Topeka & Santa Fe Coast Lines at Ash Fork.

*East Farm Sanatorium.*

Post office: Phoenix, Ariz.

Telegraph address: Phoenix, Ariz. (Western Union),  $4\frac{1}{4}$  miles from sanatorium; thence telephone.

Railroad station: Same as school.

**PIERRE SCHOOL, SOUTH DAKOTA.**

Post office: Pierre, S. Dak.

Telegraph address: Pierre, S. Dak. (Western Union); thence telephone.

Railroad station: Pierre, S. Dak., on Chicago & North Western Ry.; thence hired team, 2 miles.

**PIMA AGENCY AND SCHOOLS, ARIZONA.**

Post office: Sacaton, Ariz.

Telegraph address: Casa Grande, Ariz. (Western Union); thence telephone.

Railroad station: Casa Grande, Ariz., on Southern Pacific Ry.; thence stage, daily except Sundays, 14 miles.

*Pima boarding school.*

At agency.

*Blackwater day school.*

Post office: Blackwater, Ariz.

Telegraph address: Same as agency; thence mail or messenger.

Railroad station: Same as agency; thence 11 miles east by agency team.

*Casa Blanca day school.*

Post office: Vah Ki, Ariz., 1 mile from school.

Telegraph address: Same as agency; thence mail twice a week.

Railroad station: Same as agency; thence 12 miles west by team.

*Gila Crossing day school.*

Post office: Komatke, Ariz., 1 mile from school.

Telegraph address: Phoenix, Ariz. (Western Union); thence mail.

Railroad station: Phoenix, Ariz., on Atchison, Topeka & Santa Fe Ry., Southern Pacific Ry., and Arizona Eastern Ry.; thence stage and hired team, 15 miles south.

*Maricopa day school.*

Post office: Laveen, Ariz., 3 miles from school.

Telegraph address: Phoenix, Ariz. (Western Union); thence messenger.

Railroad station: Phoenix, Ariz., on Arizona Eastern Ry., Southern Pacific Ry., and Atchison, Topeka & Santa Fe Ry.; thence stage and hired team, 15 miles.

*Pima day school.*

Same as agency.

**PIMA AGENCY AND SCHOOLS, ARIZONA—Continued.**

*Santan day school.*

Post office: Sacaton, Ariz.

Telegraph address: Same as agency.

Railroad station: Same as agency; thence 19 miles north by agency team.

*Chiu Chuishu day school.*

Post office: Casa Grande, Ariz.

Telegraph address: Casa Grande, Ariz. (Western Union); thence messenger.

Railroad station: Casa Grande, Ariz., on Southern Pacific Ry.; thence private conveyance, 11 miles.

*Cocklebur day school.*

Post office: Casa Grande, Ariz.

Telegraph address: Casa Grande, Ariz. (Western Union); thence messenger.

Railroad station: Casa Grande, Ariz., on Southern Pacific Ry.; thence private conveyance, 22 miles.

*Quajote day school.*

Post office: Casa Grande, Ariz.

Telegraph address: Casa Grande, Ariz. (Western Union); thence messenger.

Railroad station: Casa Grande, Ariz., on Southern Pacific Ry.; thence private conveyance, 25 miles.

*Gila Bend day school.*

Post office: Gila, Ariz.

Telegraph address: Gila, Ariz. (Western Union); thence messenger.

Railroad station: Gila, Ariz., on Southern Pacific Ry.; thence 4 miles.

*St. Johns Catholic mission school.*

Post office: Komatke, Ariz.

Telegraph address: Phoenix, Ariz. (Western Union); thence telephone or messenger.

Railroad station: Phoenix, Ariz., on Arizona Eastern Ry., Southern Pacific Ry., and Atchison, Topeka & Santa Fe Ry.; thence stage and hired team, 16 miles.

**PINE RIDGE AGENCY AND SCHOOLS, SOUTH DAKOTA.**

Post office: Pine Ridge, S. Dak.

Telegraph address: Pine Ridge, S. Dak., via Rushville, Nebr. (Western Union); thence telephone.

Railroad station: Rushville, Nebr., on Chicago & North Western Ry.; thence daily stage, 25 miles. Or Chadron, Nebr., on same road; thence hired team, 32 miles.

*Pine Ridge boarding school.*

At agency.

*Day schools Nos. 1, 4, 27, 28.*

Post office: Pine Ridge, S. Dak.

Telegraph address: Pine Ridge, S. Dak.; thence messenger.

Railroad station: Same as agency; thence hired team, 0, 9, 6, and 6 miles respectively.

*Day schools Nos. 7, 9, 10, 12.*

Post office: Manderson, S. Dak.

Telegraph address: Pine Ridge, S. Dak.; telephone to Manderson; thence messenger.

Railroad station: Same as agency; thence hired team, 15, 18, 21, and 32 miles, respectively.

*Day schools Nos. 5, 6, 25, 26.*

Post office: Oglala, S. Dak.

Telegraph address: Pine Ridge, S. Dak.; telephone to White Clay; thence messenger.

Railroad station: Same as agency; thence hired team, 5 to 30 miles.

*Day schools Nos. 13, 15, 16, 30.*

Post office: Porcupine, S. Dak.

Telegraph address: Pine Ridge, S. Dak.; telephone to Porcupine; thence messenger.

Railroad station: Same as agency; thence stage, Mondays, Wednesdays, and Fridays, to Porcupine, 25 miles; thence hired team, 11, 5, 4, and 7 miles, respectively.

**PINE RIDGE AGENCY AND SCHOOLS, SOUTH DAKOTA**—Continued.*Day schools Nos. 17, 18, 19, 29.*

Post office: Kyle, S. Dak.

Telegraph address: Pine Ridge, S. Dak.; telephone to Kyle; thence messenger.

Railroad station: Same as agency; thence stage, Mondays, Wednesdays, and Fridays, to Porcupine, 25 miles; thence hired team, 12,  $\frac{1}{4}$ , 6, and 5 miles, respectively. Or Merriman, Nebr.; thence stage to Kyle, 45 miles; thence hired team. Or Interior, S. Dak., on Chicago, Milwaukee & St. Paul Ry.; thence stage to Kyle, 30 miles; thence hired team.

*Day schools Nos. 20, 21.*

Post office: Allen, S. Dak.

Telegraph address: Pine Ridge, S. Dak.; telephone to Allen; thence messenger.

Railroad station: Merriman, Nebr.; thence stage to Allen, 30 miles; thence hired team, 7 and 3 miles, respectively. Or agency; thence stage and team, 40 and 45 miles, respectively.

*Day school No. 23.*

Post office: Interior, S. Dak.

Telegraph address: Pine Ridge, S. Dak.; telephone to Kyle; thence messenger.

Railroad station: Merriman, Nebr.; thence hired team to Kyle, 45 miles; thence hired team, 15 miles. Or agency to Kyle by stage, 40 miles; thence hired team. Or Interior, S. Dak., on Chicago, Milwaukee & St. Paul Ry.; thence stage, 15 miles.

*Day schools Nos. 22, 24.*

Post office: Porch, S. Dak.

Telegraph address: Pine Ridge, S. Dak.; telephone to Eagle Nest sub-agency; thence messenger.

Railroad station: Kadoka, S. Dak., on Chicago, Milwaukee & St. Paul Ry.; thence hired team, 37 and 22 miles, respectively. Or Merriman, Nebr., to Allen, S. Dak., by stage, 30 miles; thence hired team, 15 and 30 miles, respectively. Or agency to Allen.

*Holy Rosary Mission School.*

Post office: Pine Ridge, S. Dak.

Telegraph address: Pine Ridge, S. Dak.; telephone to school.

Railroad station: Same as agency; thence hired team, 4 miles.

*Medicine Root subagency.*

Post office: Kyle, S. Dak.

Telegraph address: Pine Ridge, S. Dak.; telephone to Kyle.

Railroad station: Merriman, Nebr., on Northwestern Ry.; thence stage, Mondays, Wednesdays, and Fridays, 45 miles. Or Gordon, Nebr., same road; thence hired team, 50 miles. Or agency; thence stage to Porcupine, 28 miles; thence hired team to Kyle, 17 miles.

*Pass Creek subagency.*

Post office: Allen, S. Dak.

Telegraph address: Pine Ridge, S. Dak.; telephone to Allen.

Railroad station: Merriman, Nebr.; thence stage, Mondays, Wednesdays, and Fridays, 30 miles. Or agency; thence hired team, 50 miles.

*Porcupine subagency.*

Post office: Porcupine, S. Dak.

Telegraph address: Pine Ridge, S. Dak.; telephone to Porcupine.

Railroad station: Same as agency; thence stage, Tuesdays, Thursdays, and Saturdays, 28 miles. Or Gordon, Nebr.; thence hired team, 40 miles.

*Wakpamni subagency.*

Post office: Pine Ridge, S. Dak.

Telegraph address: Pine Ridge, S. Dak.

Railroad station: Same as agency.

*White Clay subagency.*

Post office: Pine Ridge, S. Dak.

Telegraph address: Pine Ridge, S. Dak.; thence telephone.

Railroad station: Same as agency; thence hired team, 18 miles.

*Wounded Knee subagency.*

Post office: Manderson, S. Dak.

Telegraph address: Pine Ridge, S. Dak.; telephone to Manderson.

Railroad station: Same as agency; thence stage, 18 miles. Or Gordon, Nebr.; thence hired team, 40 miles.

**PINE RIDGE AGENCY AND SCHOOLS, SOUTH DAKOTA—Continued.**

*Eagle Nest subagency.*

Post office: Porch, S. Dak.

Telegraph address: Pine Ridge, S. Dak.; telephone to Eagle Nest.

Railroad station: Interior, S. Dak., or Kadoka, S. Dak., on Chicago, Milwaukee & St. Paul Ry.; thence hired team, 25 miles.

**PIPESTONE SCHOOL, MINNESOTA.**

Post office: Pipestone, Minn.

Telegraph address: Pipestone, Minn. (Western Union); thence telephone.

Railroad station: Pipestone, Minn., on Chicago, Milwaukee & St. Paul Ry., Great Northern Ry., Chicago, St. Paul, Minneapolis & Omaha Ry., and Chicago, Rock Island & Pacific Ry. (Last-named railroad is best route from eastern points.) Thence school team, 1½ miles.

*Birch Cooley day school.*

Post office: Morton, Minn.

Telegraph address: Morton, Minn. (Western Union); thence telephone.

Railroad station: Morton, Minn., on Minneapolis & St. Louis Ry.; thence hired team, 1½ miles. (School 95 miles from Pipestone School.)

**PUEBLO BONITO AGENCY AND SCHOOL, NEW MEXICO.**

Post office: Crownpoint, N. Mex.

Telegraph address: Thoreau, N. Mex. (Western Union); thence mail stage.

Railroad station: Thoreau, N. Mex., on Atchison, Topeka & Santa Fe Ry.; thence stage, Mondays, Wednesdays, and Fridays, 28 miles.

*Pinedale day school.*

Located 3 miles from agency.

**RAPID CITY SCHOOL, SOUTH DAKOTA.**

Post office: Rapid City, S. Dak.

Telegraph address: Rapid City, S. Dak. (Western Union); thence telephone.

Railroad station: Rapid City, S. Dak., on Chicago & North Western lines from east, north, and south; on Chicago, Milwaukee & St. Paul Ry. from east; from west by Rapid City, Black Hills & Western Ry., which connects with Burlington lines at Mystic, S. Dak. School team or automobile daily from Rapid City; distance, 2 miles.

**RED CLIFF AGENCY AND SCHOOL, WISCONSIN.**

Post office: Bayfield, Wis.

Telegraph address: Bayfield, Wis. (Western Union); thence messenger.

Railroad station: Bayfield, Wis., on branch St. Paul, Minneapolis & Omaha Ry., running between Ashland and Bayfield; distance, 3 miles.

**RED LAKE AGENCY AND SCHOOLS, MINNESOTA.**

Post office: Red Lake, Minn.

Telegraph address: Bemidji, Minn. (Western Union), 40 miles from school; thence telephone.

Railroad station: Redby, Minn., terminus of Minneapolis, Red Lake & Manitoba Ry.; thence stage, daily except Sundays, 5 miles.

*Red Lake boarding school.*

At agency.

*Cross Lake school.*

Post office: Ponemah, Minn.

Telegraph address: Bemidji, Minn. (Western Union), 45 miles from school; thence telephone to Red Lake school; thence agency telephone line.

Railroad station: Redby, Minn., terminus of Minneapolis, Red Lake & Manitoba, Ry.; thence hired team across ice in winter and steamboat in summer, 10 miles.

*St. Mary's Mission School.*

Post office: Red Lake, Minn.

Telegraph address: Bemidji, Minn. (Western Union), 40 miles from school; thence telephone.

Railroad station: Redby, Minn., terminus of Minneapolis, Red Lake & Manitoba Ry.; thence stage to Red Lake, 5 miles; thence hired team, 1 mile.

**RENO AGENCY, NEVADA.**

Post office address: Reno, Nev.

Telegraph address: Reno, Nev. (Postal and Western Union).

Railroad station: Reno, Nev., on Southern Pacific Ry.; Virginia & Truckee Ry., and Western Pacific Ry.

**ROCKY BOY'S AGENCY, MONTANA.**

Post office: Box Elder, Mont.

Telegraph address: Box Elder, Mont. (Western Union).

Railroad station: Box Elder, Mont., on Great Northern Ry.; thence 14 miles.

Day school at agency.

**ROSEBUD AGENCY AND SCHOOLS, SOUTH DAKOTA.**

Post office: Rosebud, S. Dak.

Telegraph address: Rosebud, S. Dak., via Valentine, Nebr. (Western Union); thence telephone.

Railroad station: Valentine, Nebr., on Chicago & North Western Ry.; thence stage, daily except Sundays, 35 miles. Or Crookston, Nebr., on same railroad; thence hired team, 25 miles.

*Agency boarding school.*

Post office: Mission, S. Dak.

Telegraph address: Same as agency; thence telephone.

Railroad station: Valentine, Nebr.; thence hired team, 30 miles. Or same as agency; thence 15 miles.

*Agency day school.*

Post office: Rosebud, S. Dak.

Telegraph address: Via agency.

Railroad station: Via agency.

*Black Pipe and Corn Creek day schools.*

Post office: Norris, S. Dak.

Telegraph address: Via agency.

Railroad station: Via agency, or Belvidere, S. Dak., on Chicago, Milwaukee & St. Paul Ry.; thence hired team, 30 and 35 miles, respectively.

*Cut Meat, Upper Cut Meat, He Dog's Camp and Ironwood day schools.*

Post office: Wososo, S. Dak.

Telegraph address: Via agency.

Railroad station: Via agency; thence 15 miles.

*Little Crow's day school.*

Post office: Carter, S. Dak.

Telegraph address: Via agency and Oak Creek by messenger.

Railroad station: Via agency; thence 35 miles. Or Valentine, Nebr.; thence hired team, 41 miles. Or Winner, S. Dak., on Chicago & North Western Ry.; thence hired team, 30 miles.

*Pine Creek day school.*

Post office: White River, S. Dak.

Telegraph address: Via agency.

Railroad station: Via agency, or Murdo, S. Dak., on Chicago, Milwaukee & St. Paul Ry.; thence hired team, 30 and 25 miles, respectively.

*Milk's Camp day school.*

Post office: Herrick, S. Dak.

Telegraph address: St. Charles or Herrick, S. Dak.; thence telephone.

Railroad station: St. Charles, S. Dak., on Bonesteel extension of Chicago & North Western Ry.; thence hired team, 5 miles.

*Oak Creek day school.*

Post office: Okreek, S. Dak.

Telegraph address: Valentine, Nebr.

Railroad station: Via agency; thence 28 miles.

*Spring Creek day school.*

Post office: St. Francis, S. Dak.

Telegraph address: Via agency.

Railroad station: Kilgore, Nebr., on Chicago & North Western Ry.; thence hired team, 12 miles. Or via agency; thence 15 miles.

**ROSEBUD AGENCY AND SCHOOLS, SOUTH DAKOTA—Continued.**

*Whirlwind Soldier day school.*

Post office: Rummingsville, S. Dak.

Telegraph address: Via agency by Butte Creek issue station; thence messenger.

Railroad station: Vivian, S. Dak.; thence hired team, 15 miles. Or same as agency; thence 50 miles.

*White Lake day school.*

Post office: Lake View, S. Dak.

Telegraph address: Valentine, Nebr.

Railroad station: Valentine, Nebr., on Chicago & North Western Ry.; thence stage daily, except Sundays, to Lake View, S. Dak., or school; 18 miles.

*Wood day school.*

Same as Butte Creek issue station.

*Big White River issue station.*

Post office: Hamill, S. Dak.

Telegraph address: Winner, S. Dak.; thence telephone.

Railroad station: Same as above, 24 miles. Distance from agency, 80 miles.

*Black Pipe issue station.*

Post office: Norris, S. Dak.

Telegraph address: Via agency, thence telephone.

Railroad station: Same as agency, thence 28 miles. Or Belvidere, S. Dak., on Chicago, Milwaukee & St. Paul Ry.; thence hired team, 30 miles. Or Cody, Nebr., on Chicago and North Western Ry.; thence hired team, 35 miles.

*Butte Creek issue station.*

Post office: Wood, S. Dak.

Telegraph address: Valentine, Nebr., thence telephone.

Railroad station: Via agency; thence 32 miles.

*Cut Meat Creek issue station.*

Post office: Cut Meat, S. Dak.

Telegraph address: Same as agency; thence telephone.

Railroad station: Same as agency; thence stage daily, except Sundays, 12 miles.

*Little White River issue station.*

Post office: White River, S. Dak.

Telegraph address: Same as agency; thence telephone.

Railroad station: Same as agency; thence 28 miles. Or Murdo, S. Dak., on Chicago, Milwaukee & St. Paul Ry.; thence hired team, 25 miles.

*Ponca Creek issue station.*

Post office: Herrick, S. Dak.

Telegraph address: St. Charles or Herrick, S. Dak.; thence telephone.

Railroad station: Herrick, S. Dak., on Bonesteel extension of Chicago & North Western Ry.; thence hired team, 7 miles.

*St. Francis mission school.*

Post office: St. Francis, S. Dak.

Telegraph address: Same as agency; thence telephone.

Railroad station: Crookston, Nebr., on Chicago & North Western Ry.; thence hired team, 18 miles. Or same as agency; thence 8 miles.

*St. Mary's mission school.*

Post office: Mission, S. Dak.

Telegraph address: Same as agency; thence telephone.

Railroad station: Valentine, Nebr.; thence hired team, 30 miles. Or same as agency; thence 12 miles.

**ROUND VALLEY AGENCY AND SCHOOLS, CALIFORNIA.**

Post office: Covelo, Calif.

Telegraph address: Covelo, via Willits, Calif. (Western Union); thence telephone.

Railroad station: Dos Rios, Calif., on Northwestern Pacific Ry.; thence daily stage or auto to Covelo, 18 miles; thence 3 miles to school.

*Upper Lake day school.*

Post office: Upper Lake, Calif.

Telegraph address: Ukiah, Calif. (Western Union); thence telephone to Upper Lake.

Railroad station: Ukiah, Calif.; thence stage, daily except Sundays, 30 miles.

**ROUND VALLEY AGENCY AND SCHOOLS, CALIFORNIA**—Continued.*Pinolville day school.*

Post office: Ukiah, Calif.

Telegraph address: Ukiah, Calif. (Western Union); thence mail or messenger.

Railroad station: Ukiah, Calif., on Northwestern Pacific Ry.; school 3 miles from station.

*Yokaia day school.*

Post office: Ukiah, Calif., R. F. D. No. 1.

Telegraph address: Ukiah, Calif. (Western Union); thence mail or messenger.

Railroad station: Ukiah, Calif., on Northwestern Pacific Ry.; thence private conveyance, 6 miles.

**SAC AND FOX SANATORIUM, AGENCY, AND SCHOOLS, IOWA.**

Post office: Toledo, Iowa.

Telegraph address: Tama, Iowa (Western Union); thence telephone.

Railroad station: Toledo, Iowa, on Chicago & North Western Ry. and Tama & Toledo Electric Ry., latter having traffic arrangements with Chicago, Milwaukee & St. Paul Ry., via Tama. Sanatorium 1 mile west by public highway. (Passengers via Tama on Chicago, North Western Ry. can usually save time by taking electric car to Toledo. Baggage should go direct to Toledo.)

*Sac and Fox agency.*

Five miles west of sanatorium.

*Mesquakie day school.*

Post office: Tama, Iowa, R. F. D. No. 4.

Telegraph address: Toledo, Iowa (Western Union), 4 miles from school; thence telephone.

Railroad station: Tama, Iowa, on Chicago & North Western Ry. and Chicago, Milwaukee & St. Paul Ry.; thence  $2\frac{1}{2}$  miles west by public highway. (School  $4\frac{1}{2}$  miles from agency.)

*Fox day school.*

Same as Mesquakie day school, but 1 mile farther west. (School  $5\frac{1}{2}$  miles from agency.)

**SALEM SCHOOL, OREGON.**

Post office: Chemawa, Oreg.

Telegraph address: Salem, Oreg. (Postal and Western Union), 5 miles from school; thence telephone.

Railroad station: Chemawa, Oreg., on Southern Pacific Ry., also on Oregon Electric Ry., 5 miles north of Salem and 47 miles south of Portland.

**SALT RIVER AGENCY AND SCHOOLS, ARIZONA.**

Post office: Scottsdale, Ariz.

Telegraph address: Scottsdale, via Phoenix, Ariz. (Western Union); thence telephone from Phoenix to agency, 14 miles.

Railroad station: Phoenix, Ariz., on Arizona Eastern Ry. and Santa Fe, Prescott & Phoenix Ry. Change from Southern Pacific Ry. at Maricopa, Ariz., and from Santa Fe Coast Lines at Ashfork, Ariz.; thence private conveyance.

*Lehi day school.*

Post office: Mesa, Ariz., R. F. D. No. 1.

Telegraph address: Mesa, Ariz. (Western Union); thence mail or mounted messenger.

Railroad station: Mesa, Ariz., on Arizona Eastern Ry.; thence hired team, 5 miles.

*Salt River day school.*

Same as agency.

*Camp McDowell subagency.*

Post office: Scottsdale, Ariz.

Telegraph address: Via agency; thence messenger.

Railroad station: Same as agency; thence agency team, 22 miles.

**SAN CARLOS AGENCY AND SCHOOLS, ARIZONA.**

Post office: San Carlos, Ariz.

Telegraph address: San Carlos, Ariz. (Western Union); thence telephone or mounted messenger.



**SAN CARLOS AGENCY AND SCHOOLS, ARIZONA—Continued**

Railroad station: San Carlos, Ariz., on Arizona Eastern Ry., a branch of the Southern Pacific Ry., with which it connects at Bowie, Ariz.; distance, 1 mile.

*San Carlos day school.*

Same as agency.

*Bylas day school.*

Post office: Rice, Ariz.

Telegraph address: San Carlos, Ariz. (Western Union); thence telephone.

Railroad station: Bylas, Ariz., flag station on Arizona Eastern Ry.

*Rice station boarding school.*

Post office: Rice, Ariz.

Telegraph address: San Carlos, Ariz. (Western Union), 12 miles from school; thence telephone.

Railroad station: Rice, Ariz., on Arizona Eastern Ry.; school  $\frac{1}{2}$  mile from station. This railroad connects with the Southern Pacific at Bowie, Ariz. (School 12 miles from San Carlos Agency.)

**SAN JUAN AGENCY AND SCHOOLS, NEW MEXICO.**

Post office: Shiprock, N. Mex.

Telegraph address: Farmington, N. Mex. (Western Union); thence telephone.

Railroad station: Farmington, N. Mex., on Denver & Rio Grande Ry. (Farmington Branch); thence stage, daily except Sundays, 35 miles.

*Toadlena boarding school.*

Post office: Toadlena, N. Mex.

Telegraph address: Shiprock, N. Mex., via Farmington, N. Mex. (Western Union); telephone to Shiprock; thence special messenger to Toadlena.

Railroad station: Farmington, N. Mex., on Denver & Rio Grande Ry. (Farmington Branch); thence stage, daily except Sundays, to Shiprock, 35 miles; thence Government conveyance to Toadlena, 42 miles. Or Gallup, N. Mex., on Atchison, Topeka & Santa Fe Ry.; thence stage, Tuesdays, Thursdays, and Saturdays, leaving at 7 a. m., to Newcomb's store, 62 miles; thence school team, on notice, 10 miles. Employees from California and Arizona should go by way of Gallup.

*Methodist mission school.*

Post office: Farmington, N. Mex.

Telegraph address: Farmington, N. Mex. (Western Union).

Railroad station: Farmington, N. Mex., on Denver & Rio Grande Ry. (Farmington Branch).

**SANTA FE SCHOOL, NEW MEXICO.**

Post office: Santa Fe, N. Mex.

Telegraph address: Santa Fe, N. Mex. (Postal and Western Union); thence telephone.

Railroad station: Santa Fe, N. Mex., on Atchison, Topeka & Santa Fe Ry., Denver & Rio Grande Ry., and New Mexico Central Ry.; thence taxi,  $1\frac{1}{2}$  miles.

**SEGER AGENCY AND SCHOOL, OKLAHOMA.**

Post office: Colony, Okla.

Telegraph address: Weatherford, Okla. (Western Union); thence telephone to Colony, Okla. (Colony  $\frac{3}{4}$  mile from agency.)

Railroad station: Weatherford, Okla., on Chicago, Rock Island & Pacific Ry. (Checotaw, Oklahoma & Gulf Division); thence auto stage or private conveyance, daily except Sundays,  $14\frac{1}{2}$  miles.

*Red Moon day school and subagency.*

Post office: Hammon, Okla.

Telegraph address: Hammon, Okla. (Western Union); thence telephone.

Railroad station: Hammon, Okla., on Wichita Falls & North Western Ry. and Clinton & Oklahoma Western Ry.; thence private conveyance, 2 miles. (School 65 miles from Seger Agency.)

**SELLS AGENCY AND SCHOOLS, ARIZONA.**

Post office: Sells, Ariz.

Telegraph address: Tucson, Ariz. (Western Union); thence messenger.

Railroad station: Tucson, Ariz., on Southern Pacific Ry.; thence private conveyance, or auto stage, Tuesdays, Thursdays, and Saturdays, 65 miles.

**SELLS AGENCY AND SCHOOLS, ARIZONA—Continued.***Sells day school.*

At agency.

*San Xavier day school.*

Post office: Tucson, Ariz.

Telegraph address: Tucson, Ariz. (Western Union); thence messenger.

Railroad station: Tucson, Ariz., on Southern Pacific Ry.; thence private conveyance or auto stage, 9 miles.

*Tucson day school.*

Post office: Tucson, Ariz.

Telegraph address: Tucson, Ariz. (Western Union); thence messenger.

Railroad station: Tucson, Ariz., on Southern Pacific Ry.; school in city limits.

*Santa Rosa day school.*

Post office: Santa Rosa, via Casa Grande, Ariz.

Telegraph address: Casa Grande, Ariz. (Western Union); thence messenger, 40 miles, or Tucson, Ariz.; thence mail to agency; thence messenger.

Railroad station: Tucson, Ariz., on Southern Pacific Ry.; thence private conveyance or agency team, 105 miles. (School 40 miles from agency.)

*Vamori day school.*

Post office: Sells, Ariz.

Telegraph address: Same as agency.

Railroad station: Tucson, Ariz., on Southern Pacific Ry.; thence private conveyance or agency team, 83 miles. (School 18 miles from agency.)

*Mission school (Presbyterian).*

Post office: Escuela, Ariz.

Telegraph address: Tucson, Ariz. (Western Union); thence telephone or messenger.

Railroad station: Tucson, Ariz., on Southern Pacific Ry.; thence hired team, 3 miles.

**SEMINOLE INDIANS, FLORIDA.**

Fort Myers, Fla.

Telegraph address: Fort Myers, Fla. (Western Union).

Railroad station: Fort Myers, Fla., on Atlantic Coast Line.

**SENECA AGENCY AND SCHOOLS, OKLAHOMA (QUAPAW AGENCY).**

Post office: Wyandotte, Okla.

Telegraph address: Seneca, Mo. (Western Union), 9 miles from school; thence telephone.

Railroad station: Wyandotte, Okla., on St. Louis &amp; San Francisco Ry.; school 1 mile from station.

*St. Mary's mission school.*

Post office: Baxter Springs, Kans. (R. F. D. No. 2).

Telegraph address: Baxter, Kans. (Western Union); thence telephone.

Railroad station: Baxter, Kans., on St. Louis &amp; San Francisco Ry. and Missouri, Oklahoma &amp; Gulf Ry., 7 miles. Or Quapaw, Okla., on St. Louis &amp; San Francisco Ry., 3 miles; no regular conveyance. Or Lincolnville, Okla., on Missouri, Oklahoma &amp; Gulf Ry., 2 miles.

**SHAWNEE AGENCY AND SCHOOLS, OKLAHOMA.**

Post office: Shawnee, Okla.

Telegraph address: Shawnee, Okla. (Western Union); thence telephone.

Railroad station: Shawnee, Okla., on Chicago, Rock Island &amp; Pacific Ry., Atchison, Topeka &amp; Santa Fe Ry., and Missouri, Kansas &amp; Texas Ry.

Trains of the Atchison, Topeka &amp; Santa Fe Ry. stop at Thackery on signal, station being in the rear of the school grounds. Trains on the Chicago, Rock Island &amp; Pacific Ry. and the Missouri, Kansas &amp; Texas Ry. met upon request by Government team; distance, 2 miles.

*Shawnee day school.*

At agency.

*Sac and Fox subagency.*

Post office: Stroud, Okla. (R. F. D. No. 2).

Telegraph address: Stroud, Okla. (Western Union); thence telephone.

Railroad station: Stroud, Okla., on St. Louis &amp; San Francisco Ry.; thence hired team, 6 miles. Or Davenport, Okla., on Santa Fe Ry. and St. Louis &amp; San Francisco Ry.; thence hired team, 9 miles. (Subagency 35 miles from Shawnee.)

**SHERMAN INSTITUTE, CALIFORNIA.**

Post office: Riverside, Calif.

Telegraph address: Riverside, Calif. (Postal and Western Union); thence telephone.

Railroad station: Riverside, Calif., on Atchison, Topeka & Santa Fe Ry., Southern Pacific Ry., and San Pedro, Los Angeles & Salt Lake Ry.; electric cars direct to school on Magnolia Avenue, 6 miles.

**SHIVWITS AGENCY AND SCHOOL, UTAH.**

Post office: Santa Clara, Utah.

Telegraph address: St. George, Utah (Western Union); thence telephone.

Railroad station: Modena, Utah., on San Pedro, Los Angeles & Salt Lake Ry.; thence stage or hired team, 60 miles. (Ship freight to Modena, Utah.)

**SHOSHONE AGENCY AND SCHOOLS, WYOMING.**

Post office: Fort Washakie, Wyo.

Telegraph address: Lander, Wyo. (Western Union); thence telephone.

Railroad station: Lander, Wyo., on Chicago & North Western Ry.; thence stage, daily except Sundays; 18 miles.

*Arapahoe subissue station.*

Post office: Arapahoe, Wyo.

Telegraph address: Arapahoe, Wyo. (Western Union).

Railroad station: Arapahoe, Wyo., on Chicago & North Western Ry. (Located 25 miles from agency.)

*Farmer's station.*

Post office: Lenore, Wyo.

Telegraph address: Lander, Wyo. (Western Union); thence Government telephone line to Crow Heart, Wyo.

Railroad station: Lander, Wyo., on Chicago & North Western Ry.; thence daily stage to Fort Washakie, Wyo., 12 miles; thence hired auto, 42 miles.

Or Riverton, Wyo., on same road; thence stage, daily except Sundays, to Crow Heart school; 56 miles. (Located 42 miles from agency.)

*Episcopal mission school.*

Post office: Wind River, Wyo.

Telegraph address: Lander, Wyo. (Western Union); thence telephone.

Railroad station: Same as Shoshone school; thence hired team, 2 miles. (School 2½ miles from agency.)

*St. Stephens mission school.*

Post office: St. Stephens, Wyo.

Telegraph address: St. Stephens, Wyo., via Arapahoe, Wyo.

Railroad station: Arapahoe, Wyo., on Chicago & North Western Ry.; thence hired team, 5 miles. (School 28 miles from agency.)

*St. Michael's mission school.*

Post office: Ethete, Wyo.

Telegraph address: Lander, Wyo. (Western Union); thence telephone.

Railroad station: Lander, Wyo., on Chicago & North Western Ry.; thence stage to Fort Washakie, Wyo.; thence hired auto to Ethete. (School 6 miles from agency.)

**SILETZ AGENCY AND SCHOOL, OREGON.**

Post office: Siletz, Oreg.

Telegraph address: Toledo, Oreg. (Western Union); thence telephone.

Railroad station: Toledo, Oreg., on Southern Pacific Ry.; thence stage, 10 miles.

*Grande Ronde Subagency.*

Railroad station: Willamina, Oreg., on Southern Pacific Ry.; thence stage, 10 miles.

**SISETON AGENCY AND SCHOOL, SOUTH DAKOTA.**

Post office: Sisseton, S. Dak. (R. F. D. No. 4.)

Telegraph address: Sisseton, S. Dak. (Western Union); thence telephone.

Railroad station: Peever, S. Dak., on Chicago, Milwaukee & St. Paul Ry.; thence hired team, 5 miles. Or Sisseton, S. Dak.; thence hired team, 10 miles.

*Sisseton day school.*

Located at agency.

**SOBOBA AGENCY AND SCHOOLS, CALIFORNIA.**

Post office: San Jacinto, Calif.

Telegraph address: San Jacinto, Calif. (Western Union); thence telephone.

Railroad station: San Jacinto, Calif., on Atchison, Topeka & Santa Fe Ry.; thence Government team (if notified by telephone), or hired team, 4½ miles.

*Cahuilla Reservation.*

Post office: Cahuilla, Calif.

Telegraph address: Hemet, Calif. (Western Union), 37 miles from reservation; thence telephone to Aguanga, Calif., 14 miles; thence special messenger.

Railroad station: Hemet, Calif., on Atchison, Topeka & Santa Fe Ry.; thence hired team 37 miles up mountainous roads. Or, Temecula, Calif., on same road; thence stage to Aguanga; thence hired team, 11 miles.

*Santa Rosa Reservation.*

Post office: Keen Camp, Calif.

Telegraph address: Hemet, Calif. (Western Union), 40 miles; thence telephone to Keen Camp; thence special messenger, 18 miles.

Railroad station: Hemet, Calif., on Atchison, Topeka & Santa Fe Ry.; thence hired team, 40 miles, over heavy mountain grade.

*Santa Ynez Reservation.*

Post office: Santa Ynez, Calif.

Telegraph address: Gaviota, Calif. (Western Union); thence telephone to Santa Ynez.

Railroad station: Gaviota, Calif., on Southern Pacific Ry.; thence auto stage or hired team, 18 miles.

*Malki subagency.*

Post office: Banning, Calif.

Telegraph address: Banning, Calif. (Western Union); thence telephone.

Railroad station: Banning, Calif., on Southern Pacific Ry.; thence hired team, 4 miles.

*Martinez subagency.*

Post office: Thermal, Calif., R. F. D. No. 1.

Telegraph address: Thermal, Calif. (Western Union); thence telephone.

Railroad station: Thermal, Calif., on Southern Pacific Ry.; thence hired team, or agency team if notified by telephone; 6 miles.

**SOUTHERN PUEBLO AGENCY AND DAY SCHOOLS, NEW MEXICO.**

Post office: Albuquerque, N. Mex.

Telegraph address: Albuquerque, N. Mex. (Postal and Western Union).

Railroad station: Albuquerque, N. Mex., on Atchison, Topeka & Santa Fe Ry.; office 8 blocks from station, at 723 North Second Street.

*Acomita day school.*

Post office: Acomita, N. Mex.

Telegraph address: Laguna, N. Mex.; (Western Union); thence telephone, 14 miles.

Railroad station: Acomita, N. Mex., flag station on Atchison, Topeka & Santa Fe Ry.; thence Government team, 1 mile.

*Encinal day school.*

• Post office: Cubero, N. Mex.

Telegraph address: Laguna, N. Mex. (Western Union); thence telephone, 7 miles.

Railroad station: Cubero, N. Mex., flag station on Atchison, Topeka & Santa Fe Ry., 4 miles from school. No conveyance.

*Isleta day school.*

Post office: Isleta, N. Mex.

Telegraph address: Isleta, N. Mex. (Western Union).

Railroad station: Isleta, N. Mex., on Atchison, Topeka & Santa Fe Ry.; school near station.

*Laguna day school.*

Post office: Laguna, N. Mex.

Telegraph address: Laguna, N. Mex. (Western Union).

Railroad station: Laguna, N. Mex., on Atchison, Topeka & Santa Fe Ry.; thence Government team, 2½ miles.

**SOUTHERN PUEBLO AGENCY AND DAY SCHOOLS, NEW MEXICO**—Continued.

*McCartys day school.*

Post office: Acomita, N. Mex.

Telegraph address: Laguna, N. Mex. (Western Union); thence telephone, 21 miles.

Railroad station: McCartys, N. Mex., on Atchison, Topeka & Santa Fe Ry., 2 miles from school. No conveyance.

*Mesita day school.*

Post office: Laguna, N. Mex.

Telegraph address: Laguna, N. Mex. (Western Union); thence telephone, 10 miles.

Railroad station: Rita, N. Mex., flag station on Atchison, Topeka & Santa Fe Ry., 2 miles from school. No conveyance.

*Paguete day school.*

Post office: Laguna, N. Mex.

Telegraph address: Laguna, N. Mex. (Western Union).

Railroad station: Laguna, N. Mex., on Atchison, Topeka & Santa Fe Ry.; thence Government team, 16 miles.

*Paraje day school.*

Post office: Casa Blanca, N. Mex.

Telegraph address: Laguna, N. Mex. (Western Union); thence telephone, 3½ miles.

Railroad station: Cubero, N. Mex., flag station on Atchison, Topeka & Santa Fe Ry., 3 miles from school. No conveyance.

*San Felipe day school.*

Post office: Algodones, N. Mex.

Telegraph address: Bernalillo, N. Mex. (Western Union), 11 miles from school; thence special messenger or daily mail.

Railroad station: Algodones, N. Mex., on Atchison, Topeka & Santa Fe Ry.; thence hired team, 5 miles.

*Seama day school.*

Post office: Cubero, N. Mex.

Telegraph address: Laguna, N. Mex. (Western Union); thence telephone.

Railroad station: Laguna, N. Mex., on Atchison, Topeka & Santa Fe Ry.; thence Government team, 9 miles. (Cubero flag station, 1 mile from school. No conveyance.)

*Cochiti day school.*

Post office: Pena Blanca, N. Mex.

Telegraph address: Domingo, N. Mex. (Western Union); thence daily mail.

Railroad station: Domingo, N. Mex., on Atchison, Topeka & Santa Fe Ry.; thence Government team, 10 miles.

*Jemez day school.*

Post office: Jemez, N. Mex.

Telegraph address: Albuquerque, N. Mex. (Postal and Western Union); thence daily mail. Or Bernalillo, N. Mex. (Western Union); thence messenger.

Railroad station: Albuquerque, N. Mex., on Atchison, Topeka & Santa Fe Ry.; thence hired team during winter and daily stage in summer, 44 miles. Or Bernalillo, N. Mex., on Atchison, Topeka & Santa Fe Ry.; thence hired team, 32 miles.

*Sia day school.*

Post office: Sandoval, N. Mex.

Telegraph address: Albuquerque, N. Mex. (Postal and Western Union); thence mail or messenger. Or Bernalillo, N. Mex. (Western Union); thence messenger.

Railroad station: Albuquerque, N. Mex., on Atchison, Topeka & Santa Fe Ry.; thence stage in summer and hired team in winter, 44 miles. Or Bernalillo, N. Mex., on Atchison, Topeka & Santa Fe Ry.; thence hired team, 22 miles.

*Santo Domingo day school.*

Post office: Domingo, N. Mex.

Telegraph address: Domingo, N. Mex. (Western Union); thence messenger.

Railroad station: Domingo, N. Mex., on Atchison, Topeka & Santa Fe Ry.; thence hired team, 2½ miles.

**SOUTHERN UTE AGENCY AND SCHOOLS, COLORADO.**

Post office: Ignacio, Colo.

Telegraph address: Ignacio, Colo. (Western Union); thence telephone.

Railroad station: Ignacio, Colo., on Denver & Rio Grande Ry.; thence daily stage,  $1\frac{3}{4}$  miles.

*Allen day school.*

Post office: Bayfield, Colo.

Telegraph address: Ignacio, Colo. (Western Union); via agency.

Railroad station: Ignacio, Colo., on Denver & Rio Grande Ry.; thence stage daily to agency,  $1\frac{3}{4}$  miles; thence Government team, 6 miles.

**SPOKANE AGENCY AND SCHOOLS, WASHINGTON.**

Post office: Wellpinit, Wash.

Telegraph address: Reardan, Wash. (Western Union).

Railroad station: Reardan, Wash., on Washington Central branch of Northern Pacific Ry.; thence private conveyance, or stage, Mondays, Wednesdays, and Fridays, 22 miles. Or Springdale, Wash., on Great Northern Ry.; thence livery, 22 miles.

*Day school No. 1, Three Mountain district.*

Post office: Miles, Wash.

Telegraph address: Davenport, Wash. (Western Union); thence telephone to school via Miles.

Railroad station: Davenport, Wash., on Washington Central branch of Northern Pacific Ry.; thence stage to Miles, 24 miles; thence stage to school, 8 miles; daily except Sundays. (School 15 miles from agency.)

*Day school No. 2, Lott's district.*

Post office: Wellpinit, Wash.

Telegraph address: Reardan, Wash. (Western Union); thence telephone to school.

Railroad station: Springdale, Wash., on Great Northern Ry.; thence hired team, 21 miles. Or Reardan, Wash., on Northern Pacific Ry.; thence private conveyance, or stage, Mondays, Wednesdays, and Fridays, 21 miles. (School 1 block from agency.)

*Day school No. 8, Walker's Prairie district.*

Post office: Ford, Wash.

Telegraph address: Reardan, Wash. (Western Union); thence telephone via Wellpinit.

Railroad station: Springdale, Wash., on Great Northern Ry.; thence hired team, 12 miles. (School 8 miles from agency.)

**STANDING ROCK AGENCY AND SCHOOLS, NORTH DAKOTA.**

Post office: Fort Yates, N. Dak.

Telegraph address: Cannon Ball, N. Dak. (Western Union); thence telephone.

Railroad station: McLaughlin, S. Dak., on Chicago, Milwaukee & St. Paul Ry.; thence hired team or stage, 25 miles. Or Cannon Ball, N. Dak., on Northern Pacific Ry.; thence hired team, 25 miles.

*Agency boarding school.*

Same as agency.

*Grand River day school and substation.*

Post office: Little Eagle, S. Dak.

Telegraph address: McLaughlin, S. Dak. (Western Union); thence telephone.

Railroad station: McLaughlin, S. Dak., on Chicago, Milwaukee & St. Paul Ry.; thence hired team, 12 miles. (School 37 miles from agency.)

*Bullhead day school and substation.*

Post office: Bullhead, S. Dak.

Telegraph address: Via agency; thence telephone.

Railroad station: McLaughlin, S. Dak., on Chicago, Milwaukee & St. Paul Ry.; thence hired team, 15 miles. (School 40 miles from agency.)

*Cannon Ball day school and substation.*

Post office: Cannon Ball, N. Dak.

Telegraph address: Cannon Ball, N. Dak. (Western Union); thence telephone.

Railroad station: Cannon Ball, N. Dak., on Northern Pacific Ry.,  $\frac{1}{2}$  mile. (School 25 miles from agency.)

**STANDING ROCK AGENCY AND SCHOOLS, NORTH DAKOTA—Continued.**

*Porcupine substation.*

Post office: Shields, N. Dak.

Telegraph address: Shields, N. Dak. (Western Union).

Railroad station: Shields, N. Dak., on Chicago, Milwaukee & St. Paul Ry., 1 mile from substation. (Substation 27 miles from agency.)

*Oak Creek substation.*

Post office: Wakpala, S. Dak.

Telegraph address: Wakpala, S. Dak. (Western Union).

Railroad station: Wakpala, S. Dak., on Chicago, Milwaukee & St. Paul Ry.;  $\frac{1}{4}$  mile from substation. (Substation 42 miles from agency.)

*St. Elizabeth's mission school.*

Post office: Wakpala, S. Dak.

Telegraph address: Wakpala, S. Dak. (Western Union).

Railroad station: Wakpala, S. Dak., on Chicago, Milwaukee & St. Paul Ry.; thence hired team, 3 miles. (School 44 miles from agency.)

*Kenel substation.*

Post office: Kenel, S. Dak.

Telegraph address: Same as agency; thence telephone.

Railroad station: McLaughlin, S. Dak., on Chicago, Milwaukee & St. Paul Ry.; thence tri-weekly stage or hired team, 19 miles.

**TAHOLAH AGENCY AND SCHOOLS, WASHINGTON.**

Post office: Taholah, Wash.

Telegraph address: Moclips, Wash. (Western Union); thence Government telephone.

Railroad station: Moclips, Wash., on Northern Pacific Ry.; thence stage, daily except Sundays, or hired team, 9 miles.

*Taholah day school.*

Same as agency.

*Queets River day school.*

Same as agency; thence trail along beach, 15 miles.

*Quinalt Reservation.*

Same as agency.

**TOMAH SCHOOL, WISCONSIN.**

Post office: Tomah, Wis.

Telegraph address: Tomah, Wis. (Western Union); thence telephone.

Railroad station: Tomah, Wis., on Chicago, Milwaukee & St. Paul Ry.; thence hired team, 1 mile.

**TONGUE RIVER AGENCY AND SCHOOLS, MONTANA.**

Post office: Lame Deer, Mont.

Telegraph address: Lame Deer, via Forsyth, Mont. (Western Union); thence telephone.

Railroad station: Crow Agency, Mont., on Chicago, Burlington & Quincy Ry.; thence stage, Tuesdays and Fridays, or hired team, 55 miles. Or Forsyth, Mont., on Northern Pacific Ry.; thence daily auto stage, 64 miles. (Latter most convenient route.)

*Tongue River boarding school.*

Post office: Busby, Mont.

Telegraph address: Crow Agency, Mont. (Western Union); thence mail.

Railroad station: Crow Agency, Mont., on Chicago, Burlington & Quincy Ry.; thence stage, Tuesdays and Fridays, or hired team 32 miles. Or Forsyth, Mont., on Northern Pacific Ry.; thence stage, daily except Sundays, to agency, 65 miles; thence hired team, 18 miles. (Former most convenient route.)

*Birney day school.*

Post office: Birney, Mont.

Telegraph address: Birney, via Forsyth, Mont. (Western Union); thence telephone.

Railroad station: Sheridan, Wyo., on Chicago, Burlington & Quincy Ry.; thence stage, Mondays, Wednesdays, and Fridays, to Birney, Mont., 60 miles; thence private team to school, 5 miles. Or same as agency; thence hired team, 22 miles.

**TONGUE RIVER AGENCY AND SCHOOLS, MONTANA—Continued.***Lame Deer day school.*

Same as agency.

*St. Labre's mission school.*

Post office: Ashland, Mont.

Telegraph address: Same as agency.

Railroad station: Forsyth, Mont., on Northern Pacific Ry.; thence stage, daily except Sundays, to mission school, 63 miles.

**TRUXTON CANYON AGENCY AND SCHOOL, ARIZONA.**

Post office: Valentine, Ariz.

Telegraph address: Hackberry, Ariz. (Western Union), 5 miles from school; thence telephone.

Railroad station: Valentine, Ariz., on Atchison, Topeka &amp; Santa Fe Ry.; school 200 yards from station.

*Headquarters of superintendent of live stock.*

Peach Springs, Ariz., on Atchison, Topeka &amp; Santa Fe Ry.; 100 yards from headquarters, and 18 miles from school.

**TULALIP AGENCY AND SCHOOLS, WASHINGTON.**

Post office: Tulalip, Wash. (At agency.)

Telegraph address: Marysville, Wash. (Western Union), 8 miles from school; thence telephone.

Railroad station: Everett, Wash., on Great Northern Ry. (coast line), 35 miles north of Seattle; thence to Tulalip by daily mail boat, leaving city dock 10.30 a. m.; 8 miles. Everett reached from Seattle by steamboat, railway train, and electric interurban railway.

*Tulalip boarding school.*

At agency.

*Lummi day school and reservation.*

Post office: Marietta, Wash.

Telegraph address: Bellingham, Wash. (Postal and Western Union); thence telephone.

Railroad station: Bellingham, Wash., on Great Northern Ry. (coast line); thence hired team, 7 miles. Or auto stage to Marietta. Day school  $1\frac{1}{2}$  miles from Marietta. Bellingham also reached by boat or train from Seattle and Everett, or by electric interurban line from Mount Vernon, Wash. (School 80 miles from agency.)*Swinomish day school and reservation.*

Post office: La Conner, Wash.

Telegraph address: La Conner, Wash. (Postal and Western Union),  $\frac{1}{4}$  mile from school; thence telephone.Railroad station: Mount Vernon, Wash., on Great Northern Ry. (coast line), 69 miles north of Seattle and 28 miles south of Bellingham, Wash.; thence auto stage to La Conner, Wash., 10 miles; thence across Swinomish Slough bridge,  $\frac{1}{4}$  mile. Reservation on Fidalgo Island.*Port Madison Reservation.*

Post office: Suquamish, Wash.

Telegraph address: Seattle, Wash. (Postal and Western Union), 18 miles from reservation; thence daily steamer.

Railroad station: Seattle, Wash.; thence daily steamer to Suquamish, Wash., on reservation, 18 miles.

**TULE RIVER AGENCY AND SCHOOLS, CALIFORNIA.**

Post office: Porterville, Calif.

Telegraph address: Porterville, Calif. (Western Union); thence telephone or mail.

Railroad station: Porterville, Calif., on Southern Pacific Ry.; thence Government or hired team, 17 miles. (Notify superintendent in advance.)

*Auberry day school.*

Post office: Auberry, Calif.

Telegraph address: Auberry, Calif. (Western Union), 3 miles from school.

Railroad station: Indian Mission, Calif., on San Joaquin & Eastern Ry.,  $\frac{1}{2}$  mile from school. (School 140 miles from agency.)



**TULE RIVER AGENCY AND SCHOOLS, CALIFORNIA—Continued.**

*Tule River day school.*

At agency.

*Burrough day school.*

Post office: Toll House, Calif., 6 miles from school.

Telegraph address: Fresno, Calif. (Western Union); thence telephone to Toll House; thence mail or private carrier; 45 miles.

Railroad station: Clovis, Calif., on Southern Pacific Ry.; thence hired jitney, 35 miles. (School 140 miles from agency.)

**TURTLE MOUNTAIN AGENCY AND SCHOOLS, NORTH DAKOTA.**

Post office: Belcourt, N. Dak.

Telegraph address: Rolla, N. Dak. (Western Union); thence telephone.

Railroad station: Rolla, N. Dak., on Great Northern Ry.; thence hired team, 7 miles.

*Day school No. 5.*

Post office: Dunseith, N. Dak.

Telegraph address: Dunseith, N. Dak. (Western Union); thence messenger.

Railroad station: Dunseith, N. Dak., on Great Northern Ry.; thence hired team, 2 miles, or Rolla, N. Dak., on same road; thence hired team to agency, 7 miles; thence 18 miles to day school.

**TUSKAHOMA FEMALE ACADEMY, OKLAHOMA.**

Post office: Tuskahoma, Okla.

Telegraph address: Tuskahoma, Okla. (Western Union); thence telephone or messenger.

Railroad station: Tuskahoma, Okla., on St. Louis & San Francisco Ry.; thence team, 4 miles.

**UINTAH AND OURAY AGENCY AND SCHOOL, UTAH.**

Post office: Fort Duchesne, Utah.

Telegraph address: Fort Duchesne, Utah (Western Union, connecting at Mack, Colo., with Uintah Ry. telegraph office).

Railroad station: Watson, Utah, terminal Uintah Ry. (Uintah Ry. connects with Denver & Rio Grande Ry. at Mack, Colo., 18 miles west of Grand Junction, Colo.); thence daily stage to Vernal, Utah, 54 miles, arriving in evening; thence daily stage in early morning to Fort Duchesne, 26 miles, or, Price, Utah, on main line of Denver & Rio Grande Ry.; thence daily stage to Roosevelt, Utah, 88½ miles; thence private conveyance to Fort Duchesne, 8 miles, or Helper, Utah, on same road as Price; thence daily stage to Fort Duchesne, 98 miles.

*Uintah boarding school.*

Post office: Whiterocks, Utah.

Telegraph address: Same as agency; thence telephone to school.

Railroad station: Same as agency; thence Government or private conveyance, 16 miles.

*Ouray subagency.*

Post office: Ouray, Utah.

Telegraph address: Same as agency; thence telephone.

Railroad station: Same as agency; thence stage, daily except Sundays, 19 miles.

**UMATILLA AGENCY AND SCHOOLS, OREGON.**

Post office: Pendleton, Oreg.

Telegraph address: Pendleton, Oreg. (Western Union); thence telephone.

Railroad station: Pendleton, Oreg., on Oregon-Washington Railroad & Navigation Co.'s Ry., and Northern Pacific Ry.; thence 5½ miles.

*Umatilla day school.*

At agency.

*Tutuilla day school.*

Located 5 miles from agency.

*St. Andrew's mission school.*

Post office: Pendleton, Oreg.

Telegraph address: Pendleton, Oreg. (Western Union); thence telephone.

Railroad station: Same as Umatilla School; distance, 10 miles.

**UTE MOUNTAIN AGENCY AND SCHOOL, COLORADO.**

Post office: Towaoc, Colo.

Telegraph address: Cortez, Colo. (Western Union); thence telephone.

Railroad station: Dolores, Colo., on Rio Grande Southern Ry.; thence daily stage to Cortez, Colo., 15 miles; thence private team, or stage Tuesdays, Thursdays, and Saturdays, 19 miles.

**WAHPETON SCHOOL, NORTH DAKOTA.**

Post office: Wahpeton, N. Dak.

Telegraph address: Wahpeton, N. Dak. (Western Union); thence telephone.

Railroad station: Wahpeton, N. Dak., on Great Northern, Northern Pacific, and Chicago, Milwaukee & St. Paul Rys. School  $\frac{3}{4}$  mile from station.

**WALKER RIVER AGENCY AND DAY SCHOOL, NEVADA.**

Post office: Schurz, Nev.

Telegraph address: Schurz, Nev. (Western Union).

Railroad station: Schurz, Nev., on Southern Pacific Lines between Reno, Nev., and Mojave, Calif. Connections via Las Vegas, Nev., on Salt Lake Route at Goldfield, Nev., and Mina, Nev. School  $\frac{1}{4}$  mile from Schurz. Best route via Reno.

**WARM SPRINGS AGENCY AND SCHOOLS, OREGON.**

Post office: Warmspring, Oreg.

Telegraph address: Mecca, Oreg. (Western Union); thence telephone.

Railroad station: Mecca, Oreg., on Oregon Trunk Ry.; thence stage, daily except Sundays, 3 miles. (Oregon Trunk Ry. connects with Spokane, Portland & Seattle Ry. at Fallbridge, Wash., and with Oregon-Washington Ry. & Navigation Co. at Metolius, Oreg.) Notify superintendent in advance of time of arrival.

*Sinnasho day school.*

Post office: Sinnasho, Oreg.

Telegraph address: Mecca, Oreg. (Western Union); thence telephone.

Railroad station: Mecca, Oreg., on Oregon Trunk Ry.; thence hired team, 25 miles. (School 22 miles from agency.)

**WESTERN NAVAJO AGENCY AND SCHOOLS, ARIZONA.**

Post office: Tuba City, Ariz.

Telegraph address: Flagstaff, Ariz. (Postal and Western Union); thence telephone.

Railroad station: Flagstaff, Ariz., on Atchison, Topeka & Santa Fe Ry.; thence hired team to Tuba City (cost about \$30), or auto stage Monday and Friday mornings (fare, \$10); 80 miles. Government house halfway for night stop-over. (Correspond with superintendent in advance.)

*Marsh Pass boarding school.*

Post office: Kayenta, Ariz.

Telegraph address: Flagstaff, Ariz. (Postal and Western Union); thence mail to Tuba City, Ariz.; thence special messenger.

Railroad station: Same as agency; thence school team, 160 miles.

*Moencopi day school.*

Same as agency.

**WESTERN SHOSHONE AGENCY AND SCHOOLS, NEVADA.**

Post office: Owyhee, Nev.

Telegraph address: Elko, Nev. (Western Union), 120 miles from agency; thence telephone (3 days if sent by mail).

Railroad station: Elko, Nev., on Southern Pacific Ry. and Western Pacific Ry.; thence daily stage to Tuscarora, Nev., 55 miles; thence stage, daily except Sundays, to Whiterock, Nev., 40 miles; thence stage, daily except Sundays, to agency, 25 miles. Or, Mountain Home, Idaho, on Oregon Short Line; thence daily stage to Bruneau, Idaho, 22 $\frac{1}{2}$  miles; thence stage, Wednesdays and Saturdays, to Riddle, Idaho, 63 miles; thence private or agency conveyance (when notified), 20 miles. (Mountain Home route better for winter months.)

*Day school No. 1.*

Four miles north of agency.

**WESTERN SHOSHONE AGENCY AND SCHOOLS, NEVADA—Continued.**

*Day school No. 2.*

Two miles west of agency.

*Day school No. 3.*

Nine miles north of agency.

**WHEELOCK FEMALE ORPHAN ACADEMY, OKLAHOMA.**

Post office: Millerton, Okla.

Telegraph address: Millerton, Okla. (Western Union).

Railroad station: Millerton, Okla., on St. Louis & San Francisco Ry.; thence team, 1½ miles.

**WHITE EARTH AGENCY AND SCHOOLS, MINNESOTA.**

Post office: White Earth, Minn.

Telegraph address: Ogema, Minn. (Postal and Western Union, connecting at Minneapolis, Minn., with Minneapolis, St. Paul & Sault Ste. Marie Ry. telegraph office); thence telephone.

Railroad station: Ogema, Minn., on Minneapolis, St. Paul & Sault Ste. Marie Ry.; thence stage, 4 miles. Or Detroit, Minn., on Northern Pacific Ry.; thence hired team, 22 miles.

*Pine Point day school.*

Post office: Ponsford, Minn.

Telegraph address: Park Rapids, Minn. (Western Union); thence telephone.

Railroad station: Park Rapids, Minn., on Great Northern Ry.; thence daily stage or hired team, 22 miles.

*Round Lake day school.*

Post office: White Earth, Minn.

Telegraph address: Same as agency; thence messenger, 30 miles.

Railroad station: Callaway, Minn., on Minneapolis, St. Paul & Sault Ste. Marie Ry.; thence hired team, 22 miles.

*Twin Lake day school.*

Same as agency.

*St. Benedict's mission school.*

Same as agency.

**WINNEBAGO AGENCY AND SCHOOL, NEBRASKA.**

Post office: Winnebago, Nebr.

Telegraph address: Winnebago, Nebr. (Western Union); thence telephone.

Railroad station: Winnebago, Nebr., on Chicago, Burlington & Quincy Ry.; thence Government team, 1¼ miles.

**YAKIMA AGENCY AND SCHOOL, WASHINGTON.**

Post office: Fort Simcoe, Wash.

Telegraph address: Wapato, Wash. (Western Union); thence telephone.

Railroad station: Toppenish, Wash., on Northern Pacific Ry.; thence daily train to White Swan, Wash.; thence auto, 7 miles. Or Wapato, Wash., on same road; thence mail stage, daily except Sundays, 26 miles.

**YANKTON AGENCY AND SCHOOL, SOUTH DAKOTA.**

Post office: Wagner, S. Dak., R. R. No. 3.

Telegraph address: Wagner, S. Dak. (Western Union); thence telephone.

Railroad station: Wagner, S. Dak., on Chicago, Milwaukee & St. Paul Ry.; thence private conveyance, 16 miles.

*Santee subagency.*

Post office: Santee, Nebr.

Telegraph address: Santee, Nebr., via Springfield, S. Dak. (Western Union); thence telephone.

Railroad station: Springfield, S. Dak., on Chicago, Milwaukee & St. Paul Ry.; thence hired team, 5 miles. Or Niobrara, Nebr., on Fremont, Elkhorn & Missouri Valley Ry.; thence stage, 18 miles.

*Farmer's station.*

Post office: Lake Andes, S. Dak.

Telegraph address: Lake Andes, S. Dak. (Western Union).

Railroad station: Lake Andes, S. Dak., on Chicago, Milwaukee & St. Paul Ry.; thence private conveyance, 1 mile.

**ZUNI AGENCY AND SCHOOLS, NEW MEXICO.**

Post office: Blackrock, N. Mex.

Telegraph address: Blackrock, via Gallup, N. Mex. (Postal and Western Union); thence telephone.

Railroad station: Gallup, N. Mex., on Atchison, Topeka & Santa Fe Ry.; thence hired team, 45 miles.

*Zuni day school.*

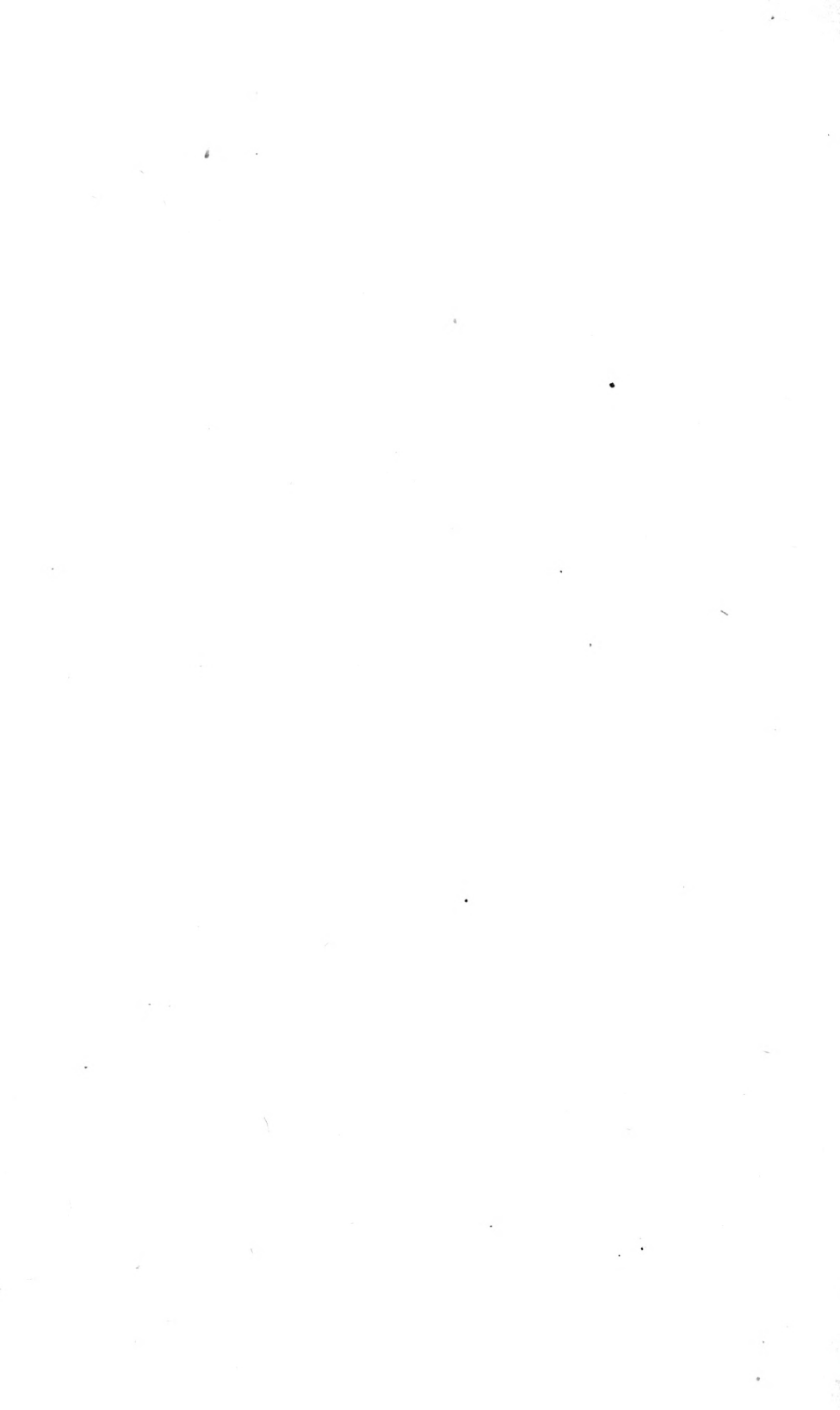
Post office: Zuni, N. Mex.

Telegraph address: Same as agency.

Railroad station: Same as agency; thence hired team, 40 miles.







GENERAL LIBRARY - U.C. BERKELEY



8000977274

