

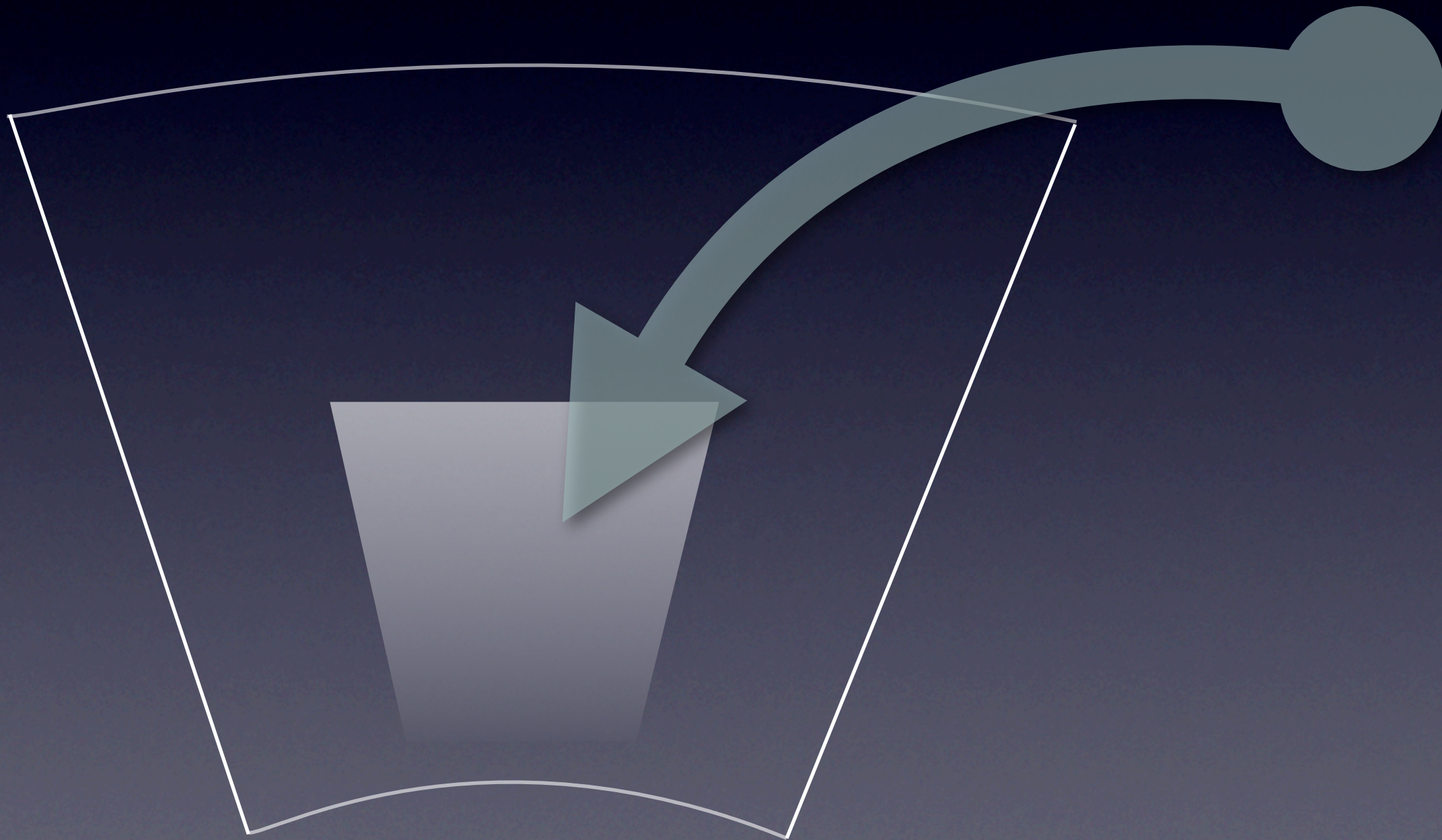
A thick, curved brown swoosh graphic that starts from the left and curves upwards and to the right, partially overlapping the word "LAFAYETTE".

LAFAYETTE

COMMUNITY CHURCH

www.lafayettecommunitychurch.com

We like you. Please
sit toward the front!



WHERE SHOULD I PARK?

no

YES



(response card)

7, 2008. thank you for joining us!

information so we can keep our records up to date.

today, I made the decision to...

- ☐ join a LIFE group
- ☐ give my life to Christ
- ☐ get baptized
- ☐ volunteer to help with _____

how did you hear about us?

we are so encouraged by your feedback! please use the back of this card to write your response to the service and to mention prayer needs.

19 • 20s • 30s • 40s • 50s • 60+
married • single again

Please fill out your communication card.

A brown swoosh graphic that curves under the word "LAFAYETTE".

LAFAYETTE

COMMUNITY CHURCH

www.lafayettecommunitychurch.com

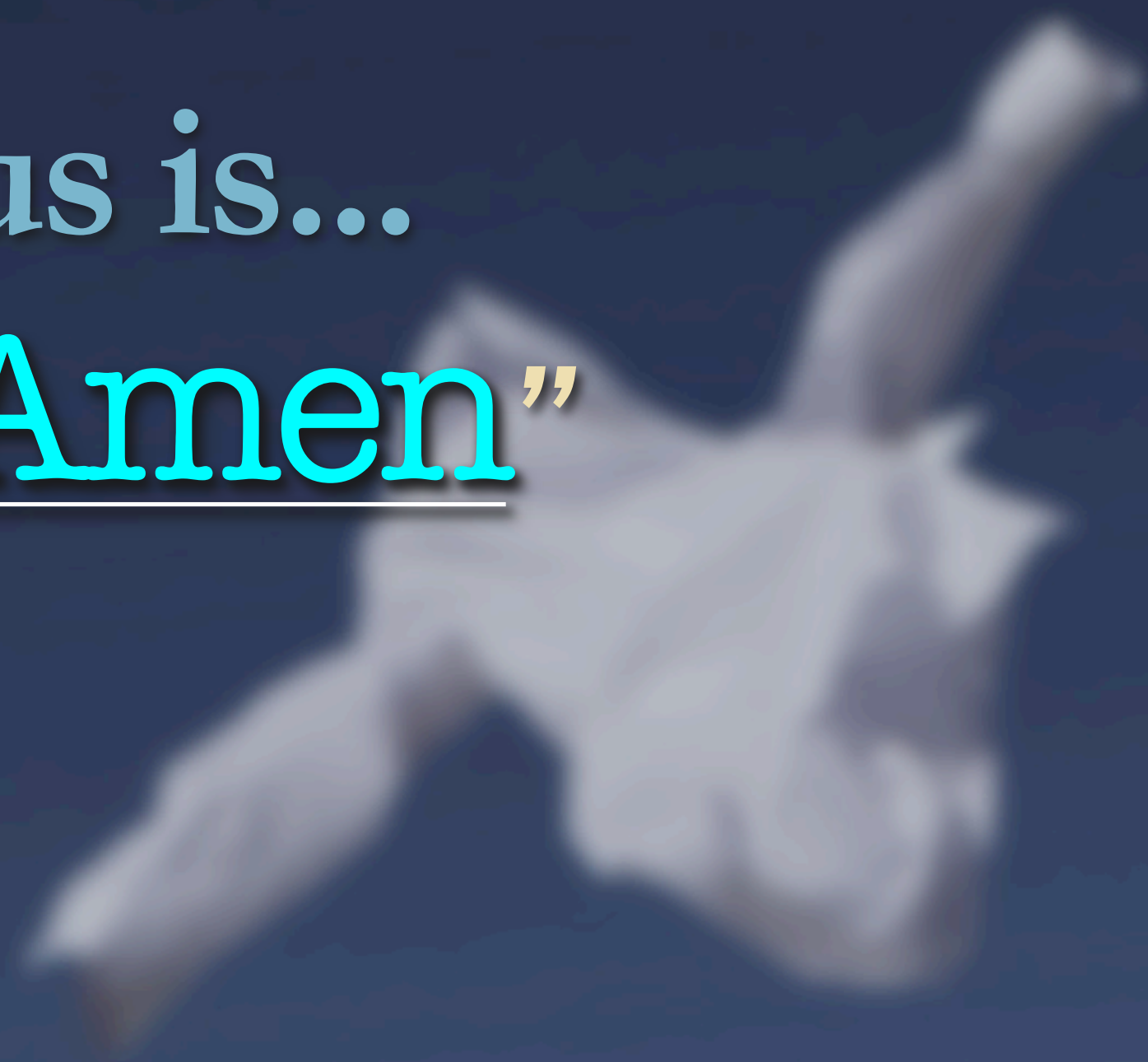
Losing *my* Religion



Religion makes Jesus sick
because Jesus, only
Jesus can solve our
deepest need!

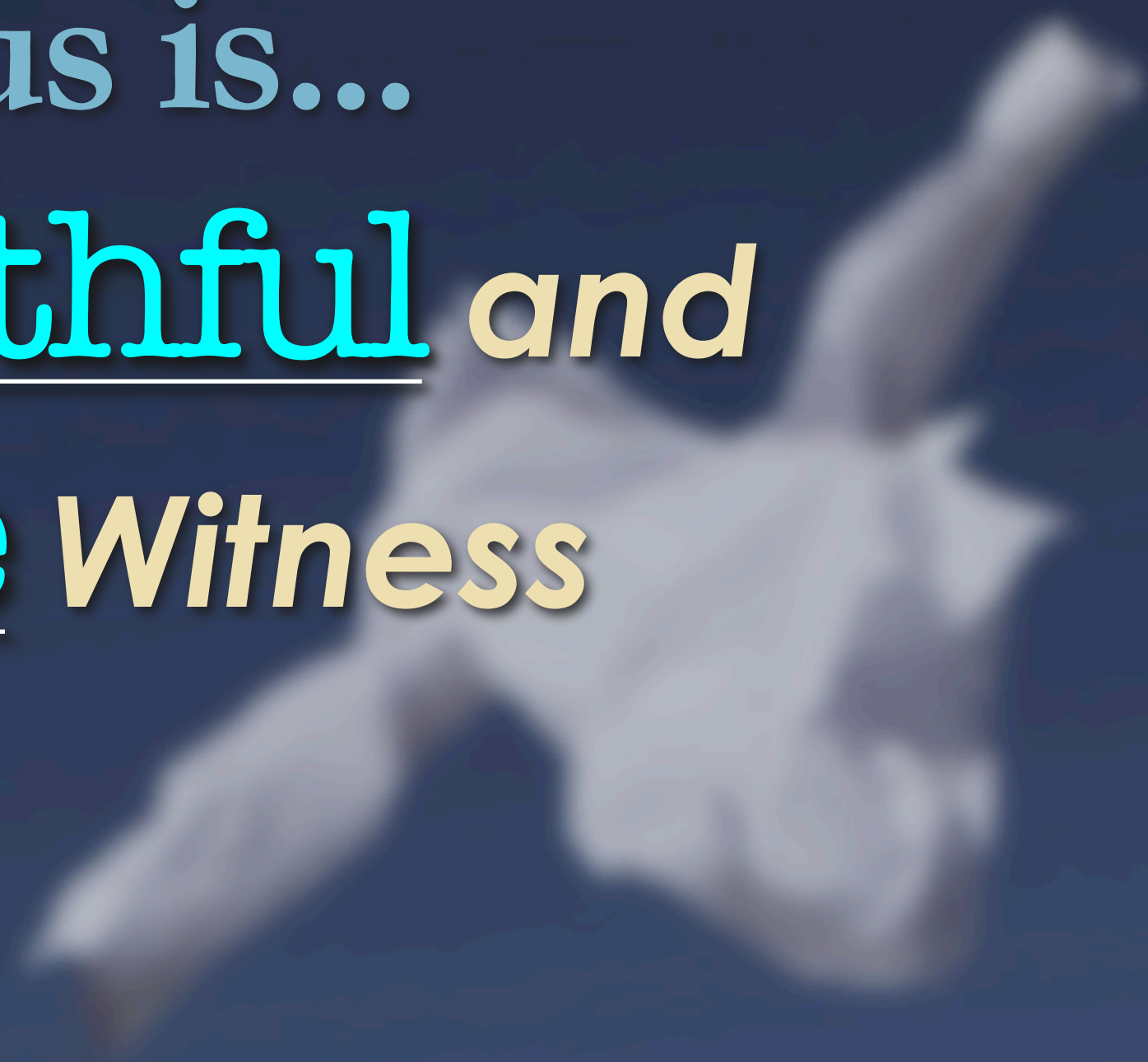
Jesus is...

The “Amen”



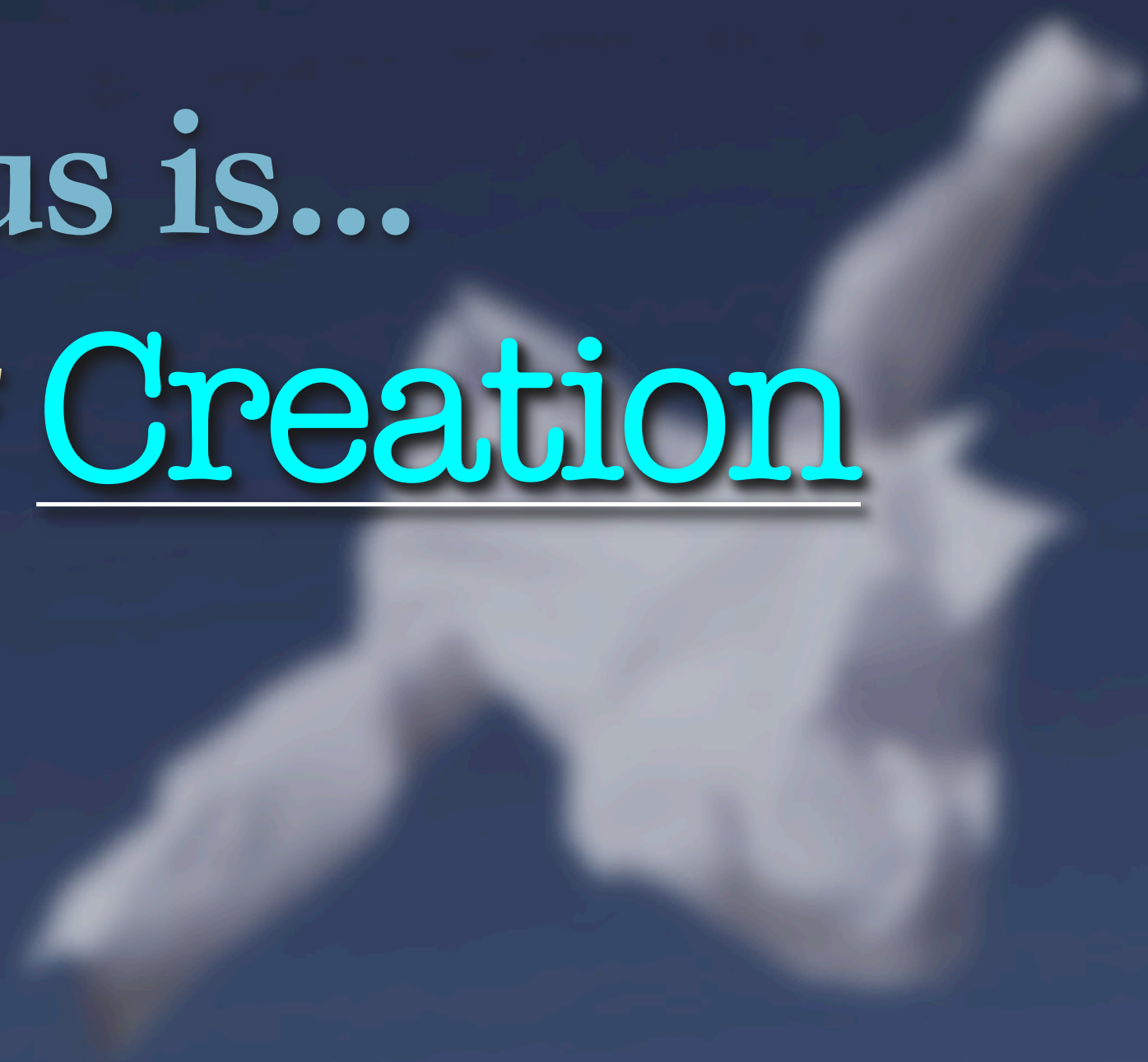
Jesus is...

The Faithful and
True Witness



Jesus is...

Ruler *of* Creation



The Church is
Lukewarm!



Option 1:

They were neither
passionate nor
resistant, but just over
the line—a “C+” mentality.

Facts about Laodicea:

1. They had bred sheep to produce a glossy black wool.

Facts about Laodicea:

2. They were so rich, they
cashed government
checks.

Facts about Laodicea:

3. They had a medical school with a miracle cure for eye conditions.

Facts about Laodicea:

4. They had
terrible water.

MEANDER
RIVER

Hot Springs

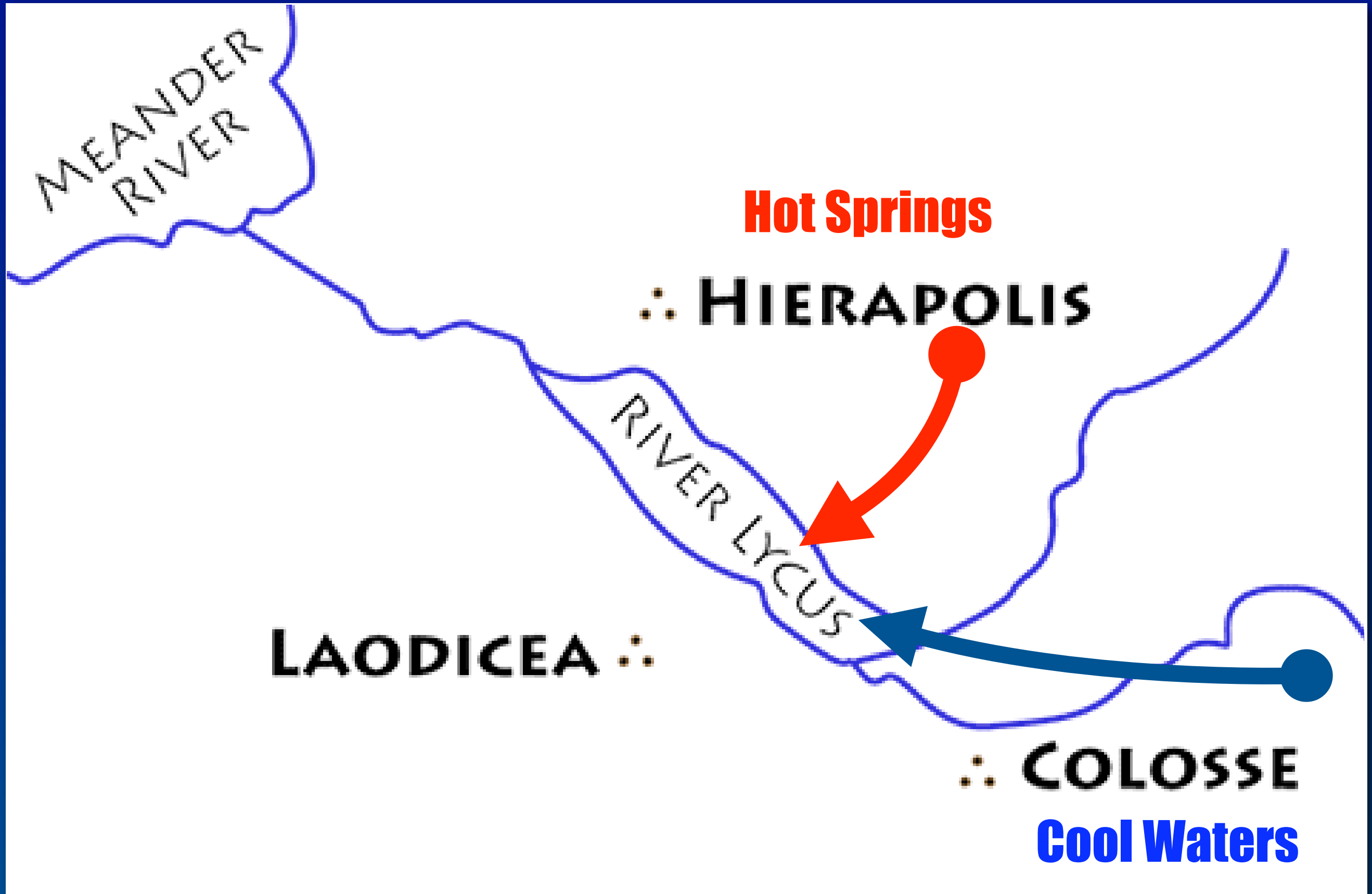
∴ **HIERAPOLIS**

RIVER LYCUS

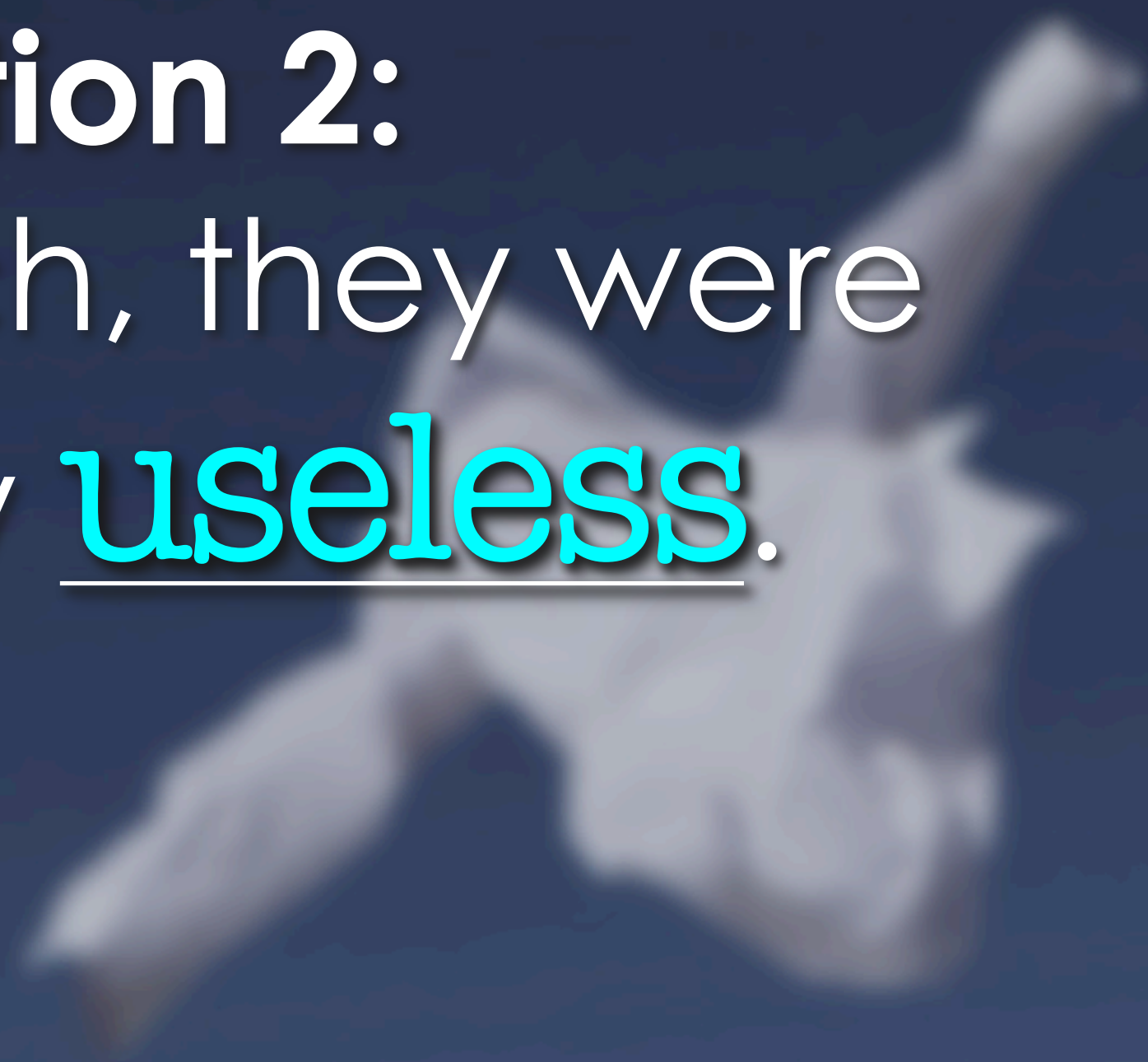
LAODICEA ∴

∴ **COLOSSE**

Cool Waters



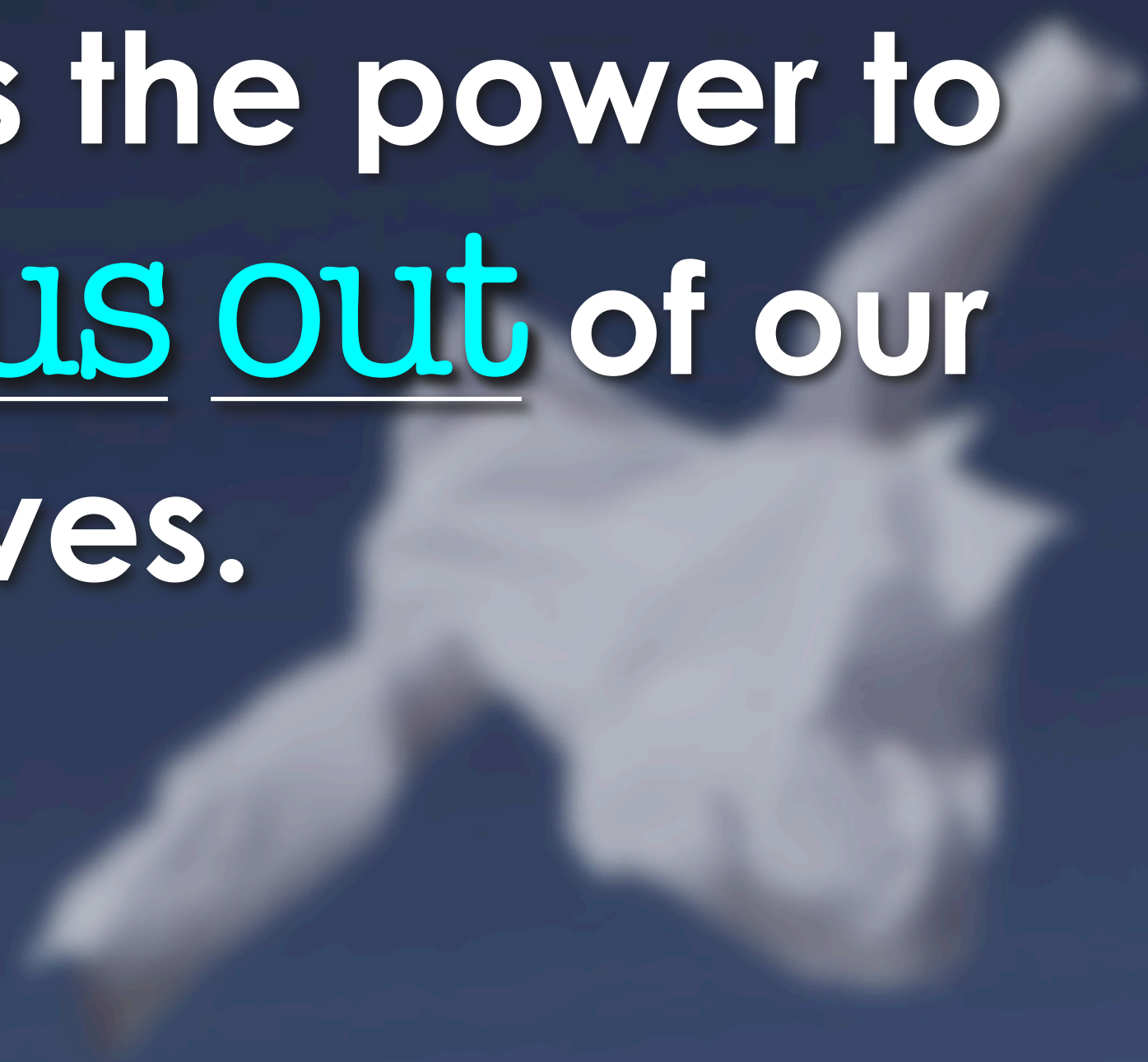
Option 2:
As a church, they were
spiritually useless.





Religion has the power to
hide our deepest need.

Religion has the power to
shut Jesus out of our
lives.



Following Jesus means
following Jesus!

