

ROBERT W. WOODRUFF
LIBRARY



EMORY UNIVERSITY
Special Collections & Archives

 SOUVENIR 




Children's * Day * 1894.



TO THE GRAND ARMY OF YOUNG AFRICAN METHODISTS, WHO HAVE SO VALIANTLY STOOD
BY THE INTERESTS OF THEIR PUBLISHING HOUSE,
THIS SOUVENIR IS MOST AFFECTIONATELY DEDICATE.

Bishop A. W. WAYMAN, D. D., President.

C. S. SMITH, Chief Scribe.


Nashville, Tenn., January 31, 1894.



REV. C. S. SMITH, D. D., M. D.,
THE CHIEF FOUNDER OF THE A. M. E. CHURCH SUNDAY SCHOOL UNION AND ITS FIRST SECRETARY AND TREASURER.

FOUNDERS OF THE A. M. E. CHURCH SUNDAY SCHOOL UNION.



RT. REV DANIEL A. PAYNE, D. D., LL. D.,



RT. REV A. W. WAYMAN, D. D.,

FOUNDERS OF THE A. M. E. CHURCH SUNDAY SCHOOL UNION.



RT. REV. JABEZ PITT CAMPBELL, D. D., LL. D.



RT. REV. THOMAS M. D. WARD, D. D.

FOUNDERS OF THE A. M. E. CHURCH SUNDAY SCHOOL UNION.



RT. REV. JOHN MIFFLIN BROWN, D. D., D. C. L.



RT. REV. H. M. TURNER, D. D., LL. D.

HISTORICAL.

The Connectional Sunday School Union of the African Methodist Episcopal Church was formed in answer to a demand, which for years had steadily grown, that something ought to be done in a systematic way to develop and strengthen its Sunday-school work.

The Union was organized at Cape May, N. J., August 11, 1882. The place of its organization is thus referred to, because it was there that the Bishops of the A. M. E. Church, in their annual council, deliberated on the plan proposed for its organization, sanctioned the same, and provided for its execution. Of the nine Bishops, the following seven were present and agreed to the plan: D. A. Payne, A. W. Wayman, J. P. Campbell, T. M. H. Ward, J. M. Brown, W. F. Pickerson, R. H. Cain. A constitution was adopted, and the Rev. C. S. Smith was elected Corresponding Secretary, with full power to do whatever was necessary to secure its acceptance by the Church.

GENERAL CONFERENCE ACTION.

At the session of the General Conference of the A. M. E. Church, which met in Baltimore, Md., May, 1884, the action of the Bishops in projecting a plan for the organization of a Sunday School Union was unanimously ratified, and the Union was adopted as one of the permanent institutions of the Church.

OBJECTS.

1. Its objects shall be to unite, strengthen, and extend the Sunday-school work of the A. M. E. Church in the United States and elsewhere; to provide an ample and suitable literature for the same; to aid the needy Sunday-schools thereof; to encourage the holding of Sunday-school normal institutes and conventions for the training of teachers, and to impart information concerning the best methods of governing, conducting, and equipping Sunday-schools; to secure the proper grading of our Sunday-schools, and to gather whatever statistics and other data that may be necessary to keep the Church continually informed of the true condition of her Sunday-school work.
2. That all who are interested in our work make the several sections of the Constitution of the Union the subject of earnest and careful study. The more fully and thoroughly the aims and methods of the Union are understood, the more liberally will they be appreciated and sustained.
3. That the pastors spare no pains to fully inform the schools under their charge of the work we have to accomplish, and how we propose to do it.
4. That diligent efforts be made to secure for our Sunday-school literature as large a circulation as possible.
5. That the presiding elders insist on the pastors attending the Sunday-school conventions, and to inform us of the time and place of the meeting thereof.
6. That the presiding elders and pastors immediately let us know whenever a new school is organized, giving the name and post-office address of the superintendent.
7. That the District Superintendents keep us regularly informed of the condition and wants of the schools under their charge.
8. That the Secretary of every Annual Conference, and of every Sunday-school convention, send us a printed copy of the minutes of each session.
9. That every one interested should know that in helping us they help themselves, and that every dollar we receive will be judiciously expended in the interest of the work.

FOUNDERS OF THE A. M. E. CHURCH SUNDAY SCHOOL UNION.



RT. REV. WILLIAM FISHER DICKERSON, D. D.

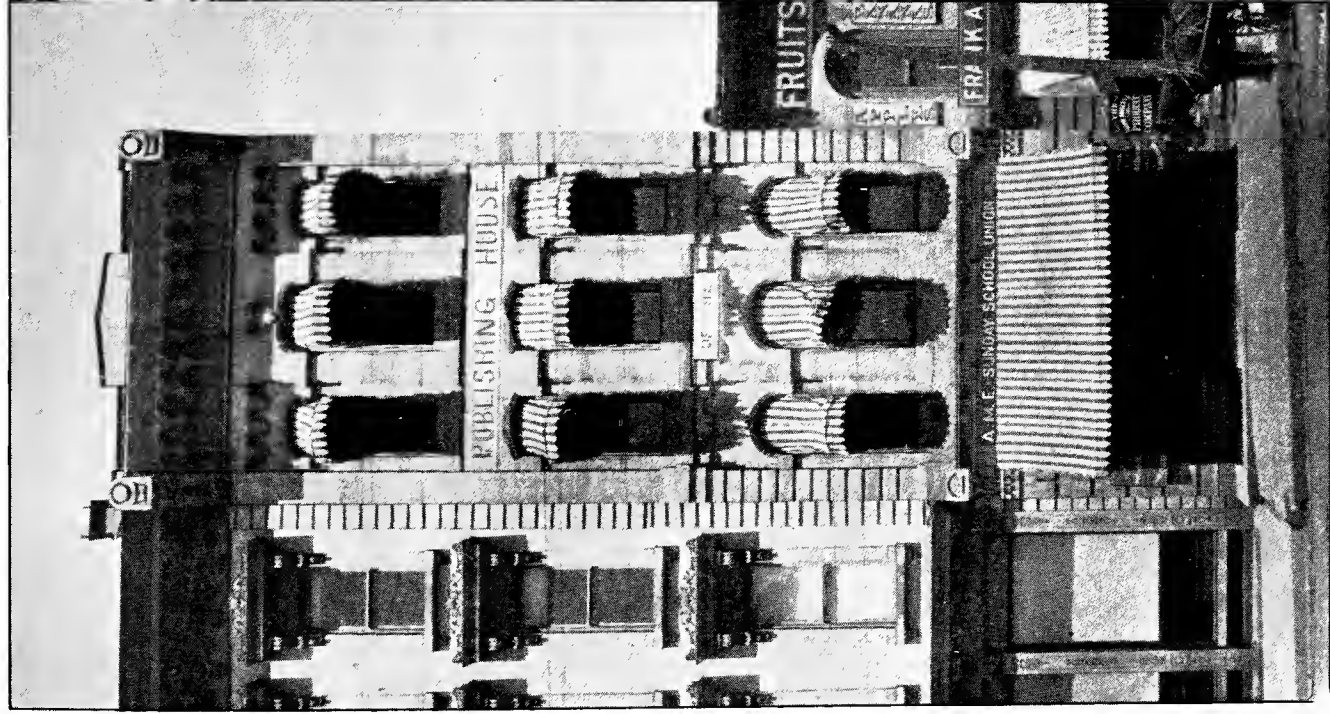


RT. REV. RICHARD HARVEY CAIN, D. D.

The building of the Sunday School Union of the African Methodist Episcopal Church was purchased by Rev. Charles S. Smith, D. D., of Mrs. Maria Louisa Yandell, (a widow) of Louisville, Kentucky, February 28, 1888, for the sum of nine thousand dollars (\$9,000), of which five thousand dollars (\$5,000) of the purchase money was paid at the time the property was secured, and the remainder four thousand dollars (\$4,000) in equal payments of two thousand dollars (\$2,000) per annum, with interest.

The entire amount of purchase money was paid July 13, 1891. The property is situated upon the north side of the Public Square, in the city of Nashville, Tenn., with a frontage of 20 feet 4 inches, and runs back northwardly about 128½ feet. There is an alley in the rear of about 15 feet in width for ingress and egress from Market Street.

The building is about 90 feet in height and has an imposing stone front. Including the basement it has five stories, and is covered with a substantial concrete roof. Four skylights in the centre afford ample light to the several floors. The building is constructed of the very best material, and is one of the most attractive and substantial business houses in the city. It was dedicated Sunday and Monday, Jan. 20-21, 1889.

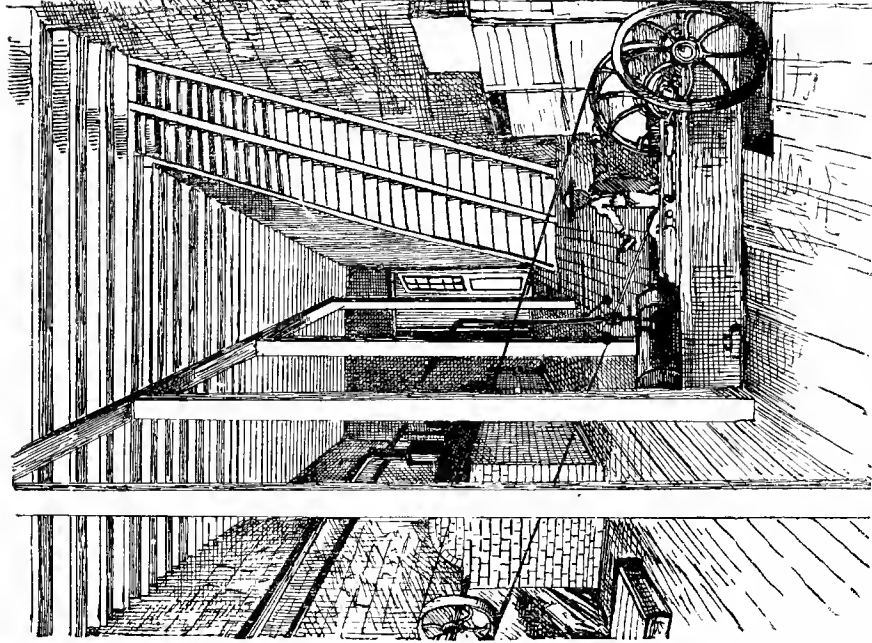


PUBLISHING HOUSE A. M. E. CHURCH SUNDAY SCHOOL UNION,
NASHVILLE, TENN.

The first or, basement floor is used as an engine and stock room—here may be seen one of the finest and best engines of its size and kind used in any publishing house in this city. Upon the day of dedication Bishop B. W. Arnett, of Ohio, christened this all-important piece of machinery, and named it "*You Must*."

This engine, *You Must*, is the great motor power, driving before it the machinery of the entire building.

An insurance of \$17,500 is carried, also an additional insurance of \$10,000 is carried upon the boiler, to cover any damage that might occur from explosion. The premiums paid upon insurance are \$375.50 per year.

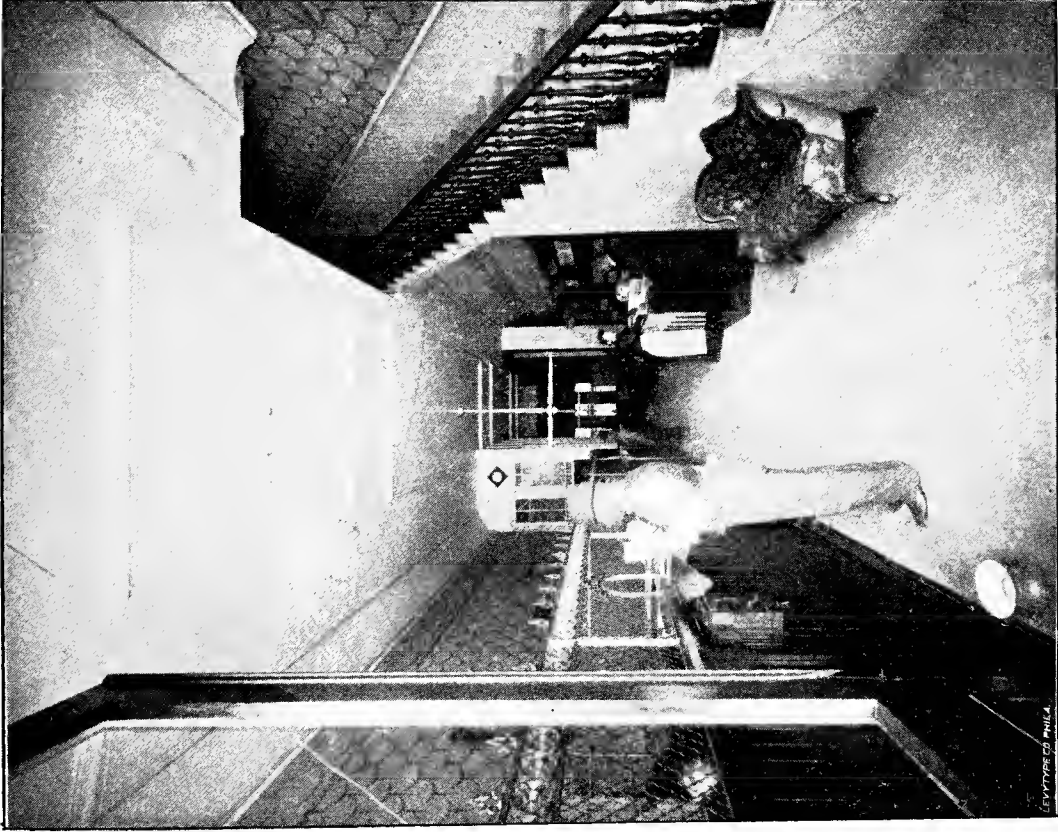


“ YOU MUST.”

FIRST FLOOR OR BASEMENT.—ENGINE AND STOCK ROOM.

Upon approaching the building from the street—we enter at once upon the second floor—used as office, sales and shipping room. The office situated in the front part of this compartment is neatly fitted up and presents a beautiful appearance, as this picture shows. Upon the left as you enter, can be seen the clerical force—composed of males and females. Just upon the right or opposite side—looking east, are the books, periodicals and other salable goods. The books etc., are systematically arranged upon well finished cased shelves, while a variety of other goods in stock is neatly arranged in show cases. The central portion of the room on either side is used as a sales and shipping department. Here is also small compartment used as a stock room.

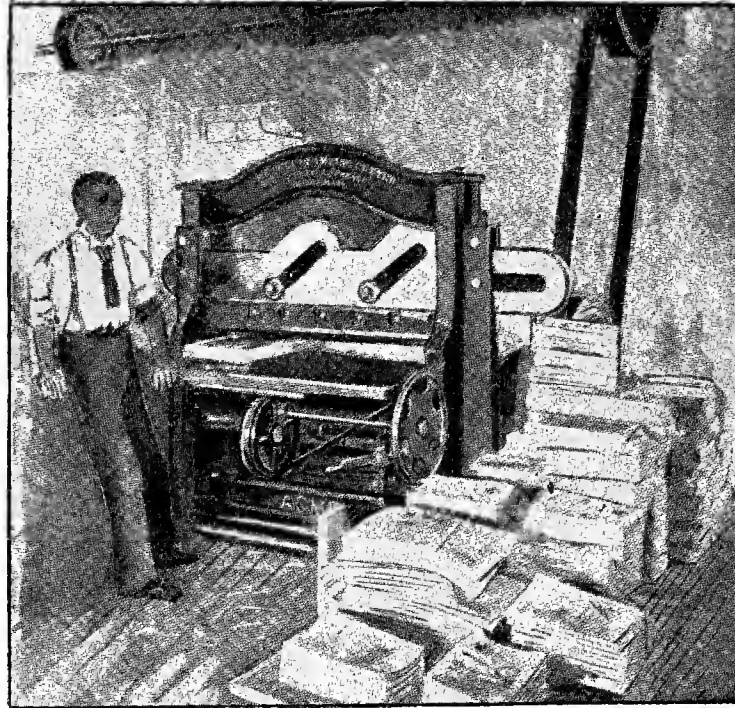
The walls of the main office are decorated with large pictures of each of the Bishops of the A. M. E. Church. There is also a rear exit from this floor to the basement and alley.



LEVITT & CO. PHILA.

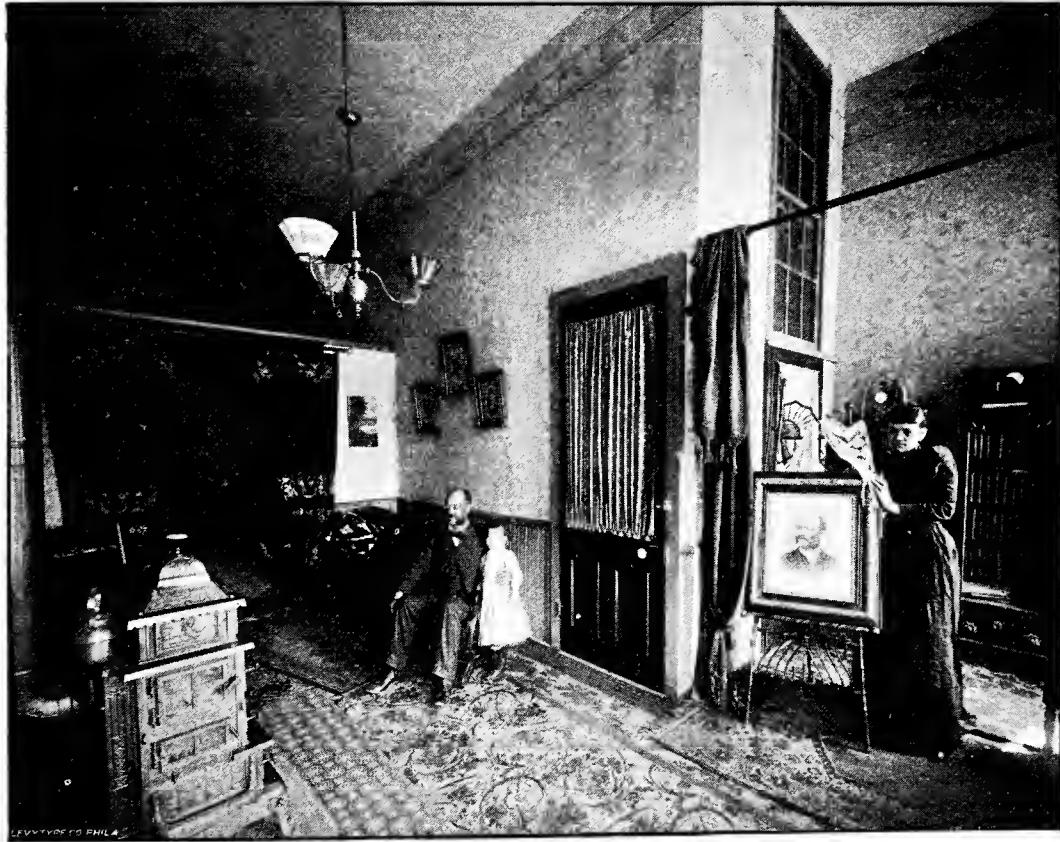
SECOND FLOOR FRONT.—OFFICE AND SALESROOM.

At the rear part of the room may be seen a most substantial paper cutter, upon which, all the stock for manufacturing purposes is cut, and all pamphlets, etc., are trimmed. The length of the blade is thirty-two inches—it is a very powerful machine.



SECOND FLOOR REAR.--TRIMMING AND STOCK ROOM.

The reader is now upon the third floor. This division of the house is used by the Secretary as a dwelling. There are seven rooms in all—front looking southward in the direction of the Square is a well furnished parlor with a beautiful alcove—the alcove is used as a private office, library and studio. Adjacent to the parlor is the sitting room. The next is used as a bed-room, all handsomely furnished, presenting a very neat interior. The rear apartment, including bed-room, dining-room, pantry, kitchen and bath-room are separated from the front division by the skylight.



THIRD FLOOR FRONT.—PARLOR.

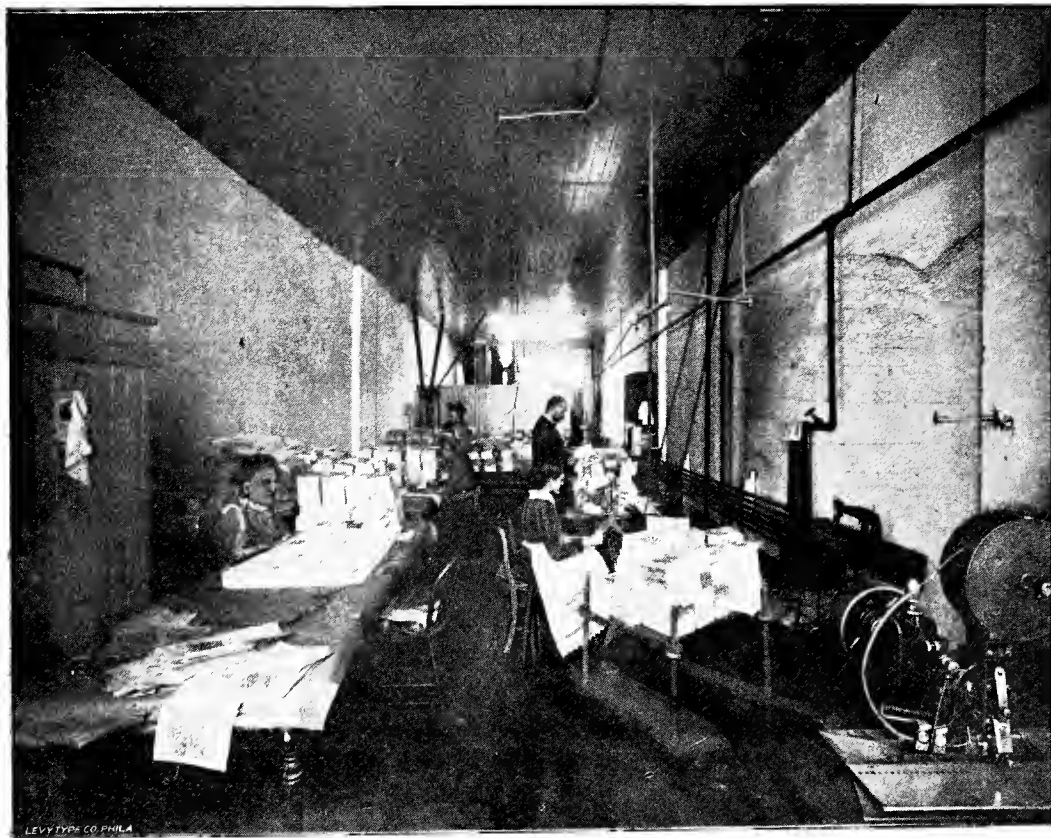
Ascending a flight of stairs to the fourth floor. We are inducted at once into the Secretary's office. It is a double office, with a beautiful alcove, separated from the main office by *Chenille* Portiers, Curtains. Hanging upon the wall in the alcove, is a large size crayon photograph of the late Bishop Payne—in this division of the office is also the Secretary's private desk and chairs and other furniture.

In the main office room looking west, upon the wall is another large size crayon picture. It is the likeness of Secretary Smith, and it appears to be almost natural. In the rear part of the office may be seen three large size glass cases, with drawers and pigeon-holes. There are encased here, books, periodicals, conference minutes and important documents.



FOURTH FLOOR FRONT.—SECRETARY'S PRIVATE OFFICE AND LIBRARY.

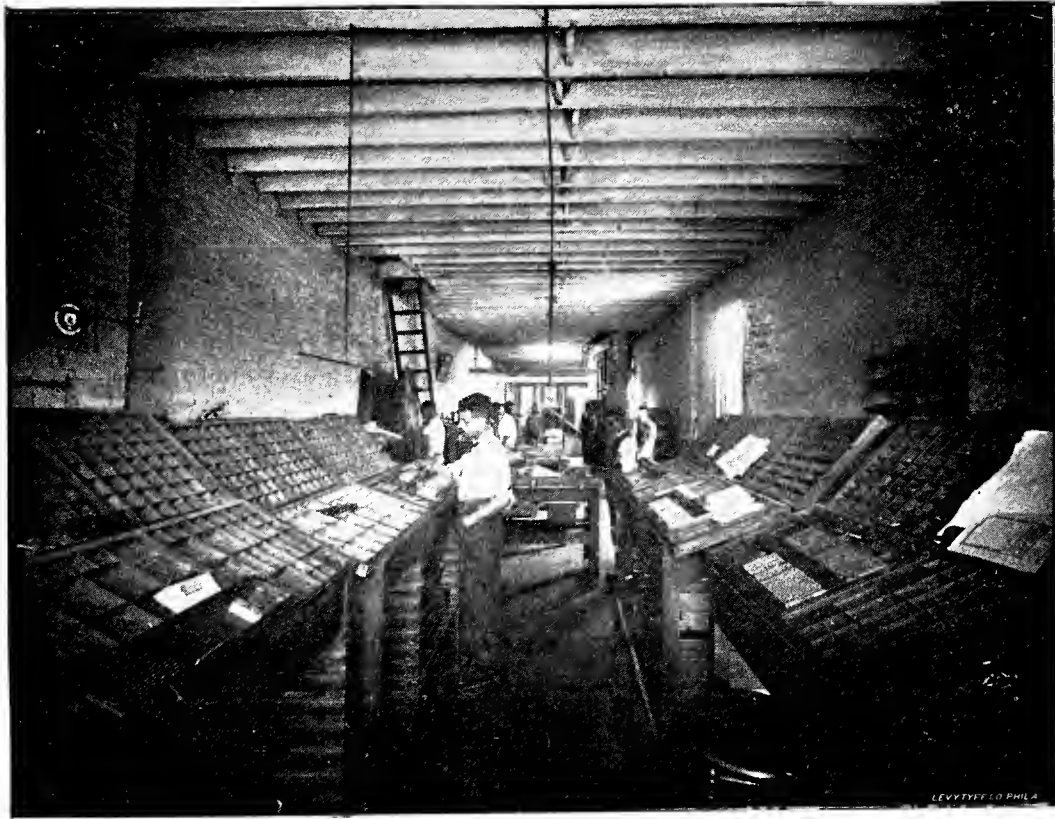
The third division upon this floor is used as a stock room, where the supplies for printing purposes, etc., are neatly kept. Passing the sky-light, moving toward the rear, we enter the bindery department, which is under the entire supervision of females. The special line of work here is that which is brought down from the press-room—when once here, it is folded, stitched, covered and transferred to the cutting-room upon the second floor.



LEVY TYPE CO. PHILA.

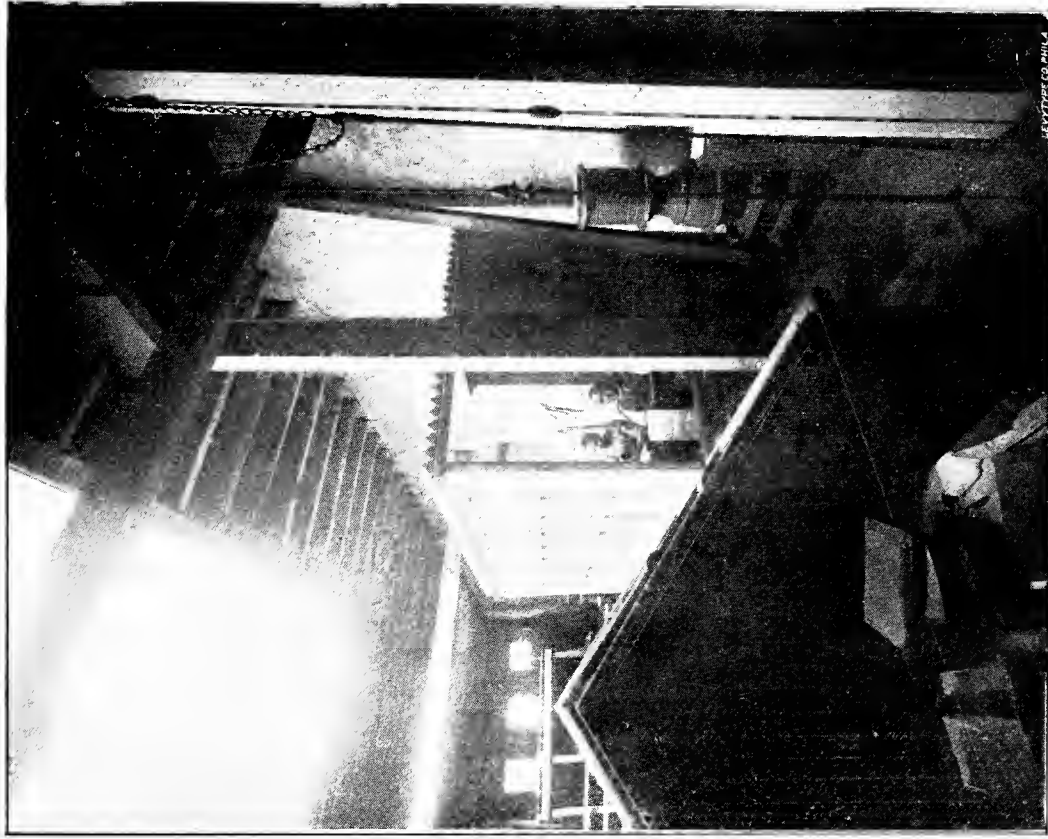
FOURTH FLOOR REAR.—BINDERY.

We are now upon the fifth and last floor. At the front is situated the composing room, where the literature produced by the Sunday School Union is "set up," or in other words, where the thoughts of those who labor for the advancement of the Grand Army of Young African Methodists are put into type. In this division there are hundreds of pounds of type of the most improved styles, and the paraphernalia usually found in well appointed printing offices. It is here that the mechanical work is performed. This division is well lighted by means of windows looking towards the south and east. The beautiful illustration as exhibited upon the opposite page speaks for itself.



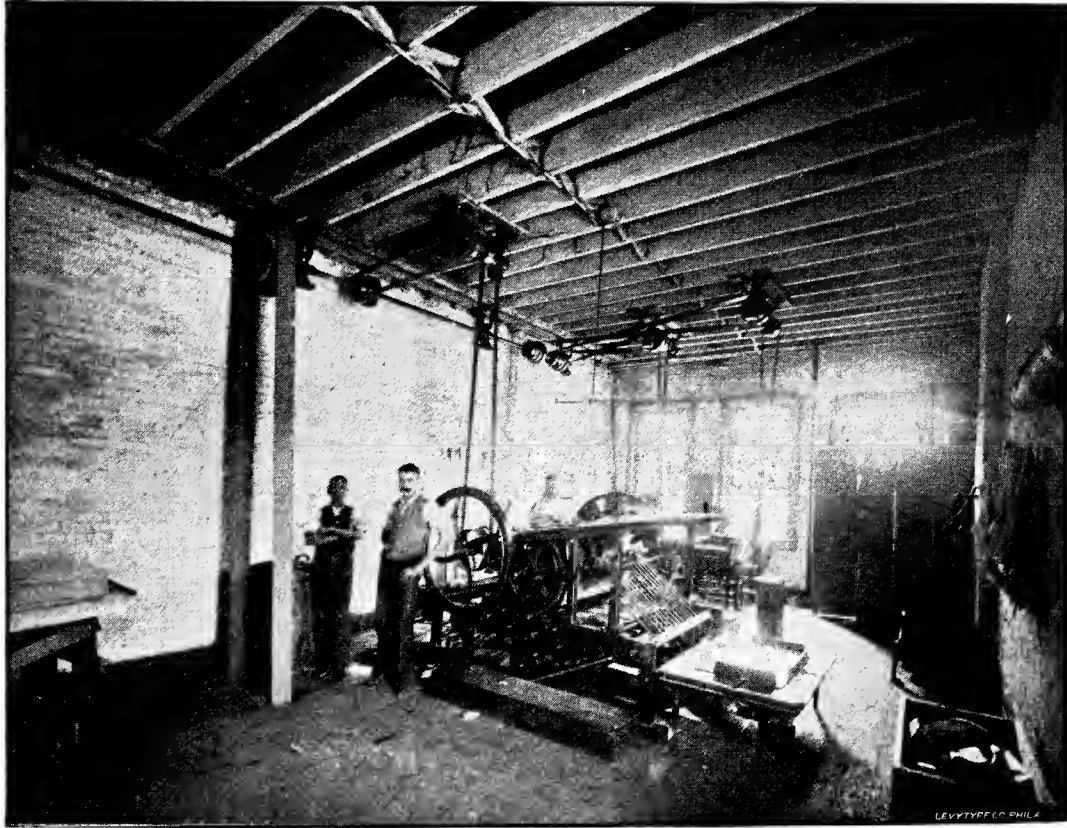
FIFTH FLOOR FRONT.—TYPE SETTING ROOM.

Our next stop upon this floor is the central division, known as the proof reader's office. This compartment is well lighted and easy of access. It joins the eastern wall of the main building, looking toward the alley from the elevator. Its dimensions are $5\frac{1}{2}$ by 12 feet.



FIFTH FLOOR CENTER.—PROOF READER'S OFFICE.

Moving on further toward the rear wall is the third and last apartment—the press-room. The machinery here consists of one Cylinder and two Gordon presses, which is not sufficient for our increasing demands. We shall, however, in the near future enlarge our facilities in this department.



FIFTH FLOOR REAR.—PRESS ROOM.

Our system of communication to all parts of the building is perfect and complete. Midway the building can be seen our steam elevator, moving from one floor to another, performing its arduous task, like an automatic machine. It serves well all purposes for which it is intended—moving at the order of the conductor.

In close proximity to the elevator, and upon the side looking north, can be seen our “*Ducany*.” We use this little system to transfer small packages to and fro from all parts of the building. It is quite a convenient arrangement, and saves much time, labor and expense. Upon the south side of the elevator, looking toward the Square is attached three speaking tubes, through which perfect communication, in a conversational tone, is carried on between the second, third, fourth and fifth floors, every word conducted through these tubes reaching the ear clear and distinct.

The Secretary's office and Clerical Department are connected by means of electric bells, which make no uncertain sound. The Clerical Department has a direct communication with the general office of the Western Union Telegraph Company by means of an electric bell—through which method a messenger answers a call within four minutes from the time the alarm is given.

Each floor from the first to the fifth is connected by a most substantial stairway, affording us the pleasure of riding up in our flying elevator, or walking up each flight of stairs.

Every department of the edifice is well heated by steam.

The front of the building, as the picture shows, is of solid stone finish, making quite a beautiful frontage, while on either side of the main entrance may be seen hanging upon the outer wall our sign boards, thus : "Publishing House of the African Methodist Episcopal Church Sunday School Union." Deeply carved in stone upon the exterior, midway between the first and second floors, the pedestrian may run and read the following :

"FOUNDED A. D., 1882;

BY

REV. C. S. SMITH,

A. M. E. SUNDAY SCHOOL UNION."

During the warm season attractive awnings (in colors) add to the beauty of the imposing front.

Here, we end the description of our Sunday School Union Publishing House—the pride of the African Methodist Episcopal Church, an honor to the race, and a credit to the nation.

Permit us however, to name the principal of each department : Mrs. Christine Shoecraft Smith, the Secretary's wife, has charge of the clerical force; the Bindery is under the supervision of Miss Julia A. McKinney; the Pressroom is conducted by Mr. Edward L. Carter; the Composing Department is managed by Mr. C. H. Burrill; while our great engine, "You Must," is manned by Squire Thompson.

FIGURES AND MARKS IN THE FOOTSTEPS
OF THE
A. M. E. CHURCH SUNDAY SCHOOL UNION.

FINANCIAL EXHIBIT.

YEAR.	CHILDREN'S DAY MONEY.	BUSINESS.
1882	\$ 737 37
1883.....	1515 76
1884 ..	2278 69	\$ 629 73
1885.....	4464 48	2851 50
1886.....	4515 08	8147 19
1887	4362 98	10897 00
1888..	4000 00	12269 50
1889.....	6043 77	11240 01
1890.. ..	7523 68	14987 91
1891.....	6500 00	17000 00
1892.....	2111 11	17752 30
1893.	2478 94 .. .	17250 12

Behind these results there has been a personal life, force, energy, faith, intelligence and determination.

We present these facts and figures not by way of boasting, but in support of the principle that to whom honor is due honor should be given.



