

# GARAGES

*and their*

# STANLEY

GARAGE  
HARDWARE



REK

NA 8348

S 98

TC



exc-6/87 25-

***I**N the following pages are illustrated and described eight private garages, of interest to the owner and to the prospective owner of one or more automobiles.*

*The appearance, the plan, and the hardware equipment of these buildings are shown.*



All the pictures of garages to be found within were reproduced from photographs of garages actually built and equipped with Stanley Garage Hardware.

# 8 GARAGES *and their* STANLEY GARAGE HARDWARE

If this booklet aids the garage builder  
or owner in securing a structure  
more practical, convenient,  
appropriate or satisfac-  
tory, it will have  
achieved its  
purpose.



**THE STANLEY WORKS**  
New Britain, Conn.,                      U. S. A.

NEW YORK: 100 Lafayette Street      CHICAGO: 73 E. Lake Street  
*Pacific States Representative: J. T. Rowntree, Inc., Los Angeles*  
*Canadian Representative: A. MacFarlane & Company, Montreal*

# *Contents*

	<i>Page</i>
Announcement . . . . .	5
Stucco Garage for two cars . . . . .	8
for three cars . . . . .	10
Clapboard Garage for two cars . . . . .	12
for one car . . . . .	14
Stucco Garage with extra heavy doors . . . . .	16
with curved-top doors . . . . .	18
built into residence . . . . .	20
Garage with chauffeur's quarters . . . . .	22
Stanley Garage Hardware . . . . .	24
Hinges and Butts . . . . .	26
Latches and Handles . . . . .	27
Bolts . . . . .	28
Door Holder . . . . .	29
Facts about The Stanley Works . . . . .	30

## *Announcement*

**T**HE kind of garage you build will depend much on local conditions. If the size of your property permits, it is advisable to have the garage at a fair distance from your house, and of such an architectural character as to blend harmoniously with it.

A fireproof garage is preferable, but not always necessary.

The building and its equipment should be of good *quality*, and it is well to remember that a good architect and contractor are usually an economy.

Although you may not now have any expectations of possessing more than one car, it is advisable to look into the future, and to provide space for a second or even a third. This extra space adds comparatively little to the cost and is frequently desirable for the housing of a visitor's car, and for other purposes. In many instances the additional space may be rented out to a neighbor.

Your garage should be as independent of the weather as possible. With fuel at a high figure,

it should be constructed to stay warm in winter and to protect the car from freezing and dampness.

Important items of garage comfort are:

A work bench.

A pit, to enable you to get under the car for cleaning and repairs.

A gasoline tank outside the garage, with pipe and pump inside.

Running water and a conveniently placed sink.

A drain in concrete floor.

Good natural and artificial lighting.

Heating apparatus.

Plenty of shelving, cupboards, and bins or racks for supplies.

Proper ventilating facilities.

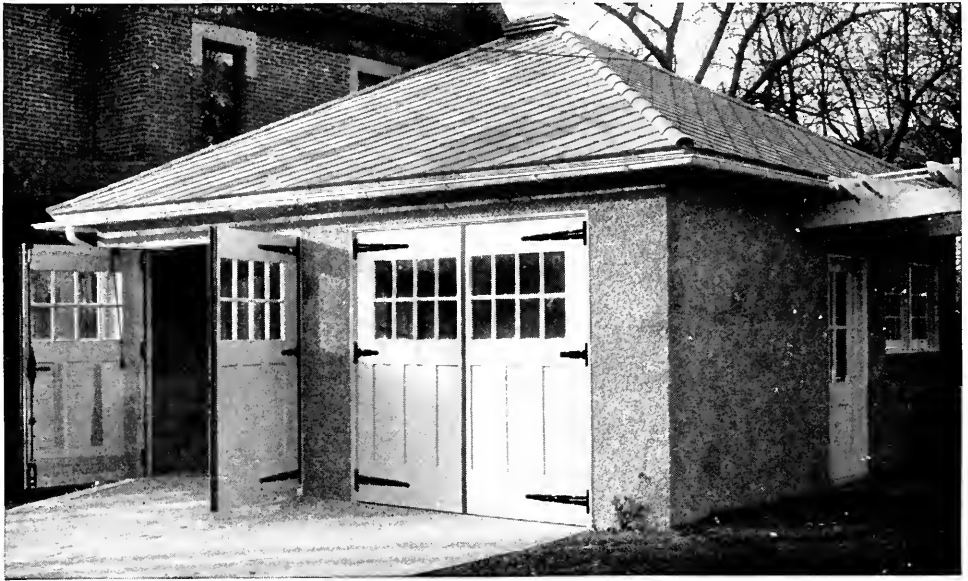
To these should be added an entrance arrangement permitting all cars to enter or leave at the same time; doors that are so equipped as to swing open and shut easily, doors that close snugly and weather-tight, and that can be locked *open* so as to prevent a gust of wind slamming them against your car.

The many advantages in swinging the doors out on hinges should not be overlooked. Garage doors swung on hinges close snugly—as weather-tight as the front doors of your home. Hinges cost less to buy and less to apply than



any other device and when the doors are up, you have a better looking, smoother acting piece of workmanship. No space is wasted operating doors on hinges. There is nothing to adjust or to get out of order. It is easier to swing heavy doors out than to push them back.

Whether you plan to build an elaborate garage or just a modest one provision for the above features will add materially to the service and satisfaction you will get from it during the years to come.



## *A Stucco Garage for Two Cars*

**T**HIS fireproof garage is in the heart of a residential section, with houses on either side. Its stucco walls and slate roof prevent its catching fire from outside, or the spreading of any flames that might start within the garage.

The owner enters through a side door, which is connected with the house by a pergola-covered walk. When vines have had time to grow over both pergola and garage, the latter will “fit into the landscape” attractively and unobtrusively.

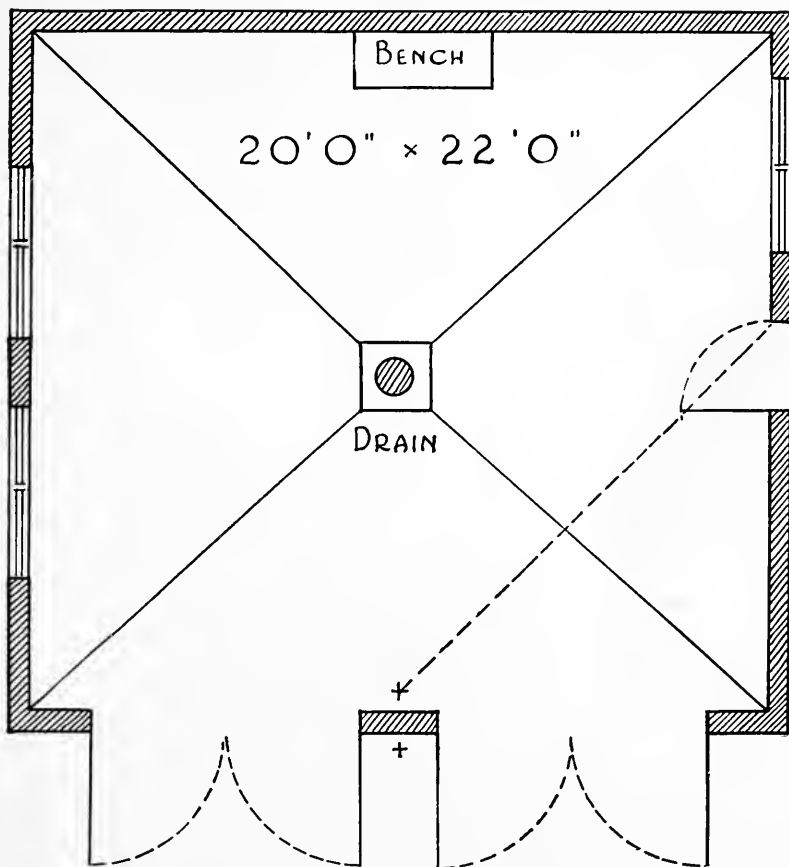
Five pairs of double windows, in addition to those in the doors, insure a well-lighted interior.

The driveway is made to slope away from the garage to prevent rain from entering.

## GARAGE HARDWARE

*The following Stanley Garage Hardware  
was used on this garage:*

- Hinges:* 4 pairs No. 1457 24-inch and 2 pairs 10-inch—equipped with ball bearings. . . . . Page 26  
*Bolts:* 2 No. 1052 top and bottom locking Cremone Bolts with staples. . . . . Page 28  
*Door Holders:* 2 pairs No. 1774. . . . . Page 29  
If desired, Duplex Latch No. 1264 may be added. . . . . Page 27





*Architect:* C. E. Townsend, New Haven

## *A Stucco Garage for Three Cars*

**T**HIS garage illustrates well the advantage of swinging garage doors out on hinges, so all three entrances may be open at the same time (see page 2). The doors are equipped with Stanley Garage Door Holders 1774, which hold them open at a little more than right angles and prevent them from interfering with each other or slamming against the cars when passing in or out.

The ground plan consists of the garage proper, with the heater room, toilet and staircase in an extension at the rear. Upstairs is a storeroom.

The lower floor is concreted, including a pit centered inside one pair of the entrance doors. In the

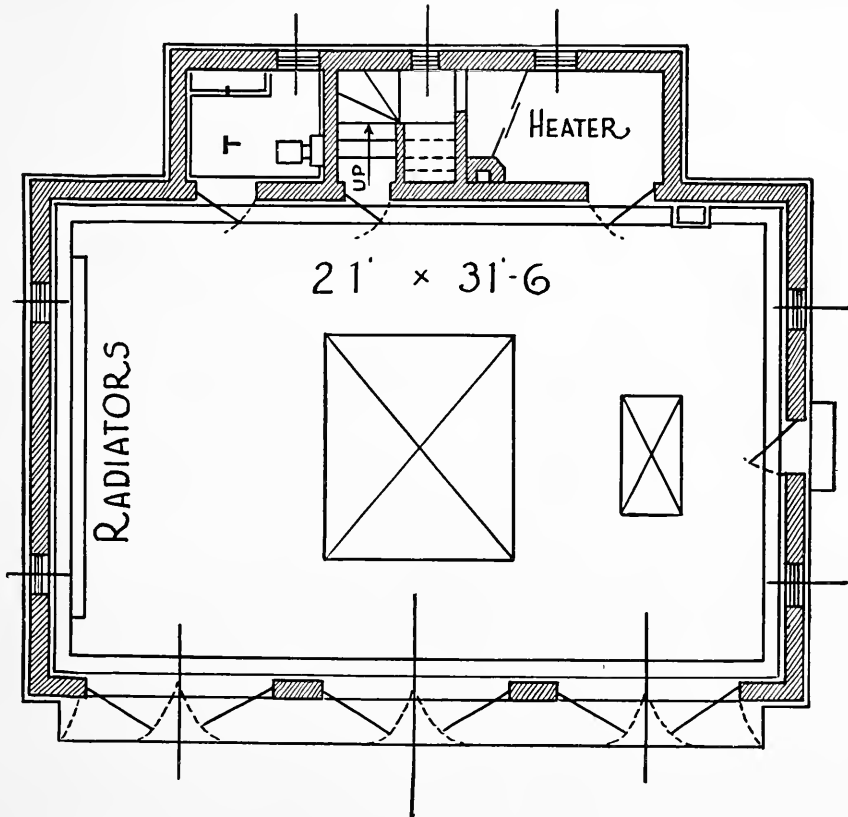
doorways the floor is raised slightly, to insure a weather-tight construction.

A hot water system supplies heat. Plumbing and electric connections with the house are made underground. A two-barrel underground gasoline tank is buried just outside the garage, the pump being indoors.

### GARAGE HARDWARE

*The following Stanley Garage Hardware was used on this garage:*

- Hinges: 9 pairs No. 1457 24-inch—equipped with ball bearings. . . . . Page 26*
- Latches: 3 No. 1264 extra heavy Duplex Latches. . . . . Page 27*
- Bolts: 3 No. 1052 top and bottom locking Cremone Bolts. . . . . Page 28*
- Door Holders: 3 pairs No. 1774. . . . . Page 29*





## *A Clapboard Garage for Two Cars*

**S**IMPLE, but attractive, this garage, closely surrounded by trees, harmonizes well with its residence.

A broad driveway permits cars to be readily turned around.

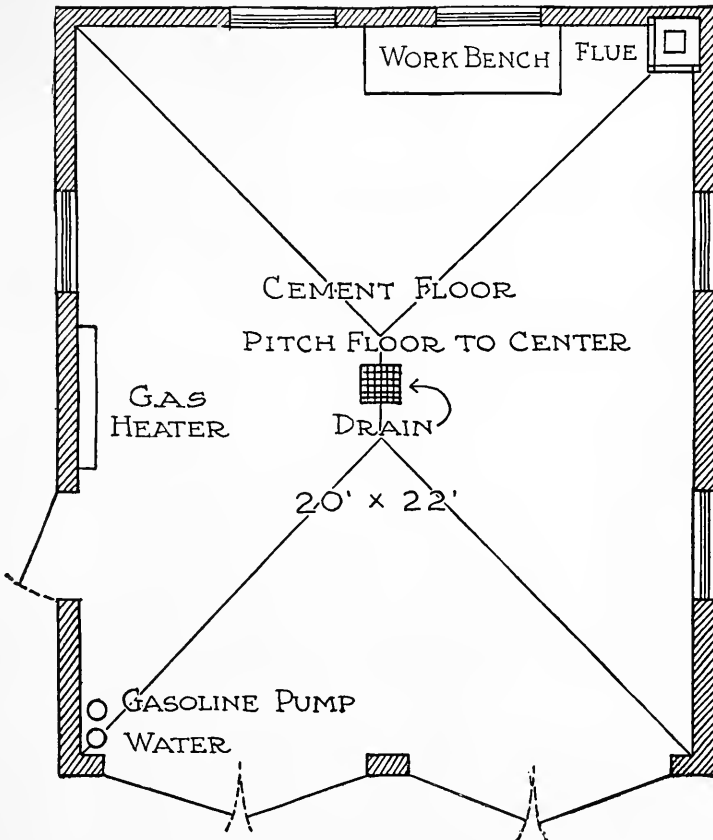
The gas heater may be seen at the left through the open door. At the rear is a work-bench. The floor is of cement pitched to the center, where a drain is located.

This construction is one that will appeal to many as being substantial and comparatively inexpensive.

# GARAGE HARDWARE

*The following Stanley Garage Hardware  
was used on this garage:*

- Hinges:* 4 pairs No. 1457 24-inch and 2 pairs 10-inch—equipped  
with ball bearings.....Page 26
- Latches:* 2 No. 1263 extra heavy Single Latches.....Page 27
- Bolts:* 2 No. 1055 10-inch extra heavy Chain Bolts with staples  
and 2 No. 1056 10-inch Foot Bolts with floor plates.....Page 28
- Door Holders:* 2 pairs No. 1774.....Page 29





## *A Clapboard Garage for One Car*

**T**HE garage here illustrated could be set down almost anywhere and be quite suitable for the man who owns and wishes sightly and roomy accommodation for one car.

The dark doors (which are swung on Stanley Hinges and close snugly and weather-tight) contrast well with the lighter clapboard sides.

At the center of the floor is a drain, and close to the side wall is a sink. A shelf for tools, repair parts, etc., comes in handy.

A private telephone has been installed from the garage to the house which is some little distance away.

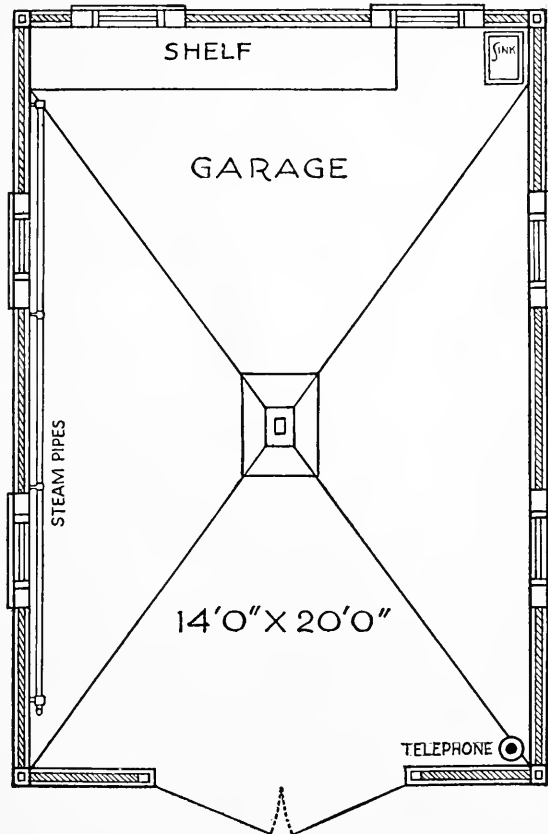


This is a great convenience, especially to the man who enjoys tinkering with his machine. The garage is lighted by electricity and heated by steam from the house.

## GARAGE HARDWARE

*The following Stanley Garage Hardware  
was used on this garage:*

- Hinges:* 2 pairs No. 1457 24-inch and 1 pair 10-inch—equipped with ball bearings . . . . . Page 26
- Latch:* 1 No. 1264 extra heavy Duplex Latch . . . . . Page 27
- Bolts:* 1 No. 1055 10-inch Chain Bolt and 1 No. 1056 10-inch Foot Bolt . . . . . Page 28
- Door Holder:* 1 pair No. 1774 . . . . . Page 29





## *A Stucco Garage*

*for Two Cars  
with extra heavy doors*

**I**T IS always desirable to build the garage in a style to harmonize with the residence near which it is located.

In the stucco garage here illustrated, the lines are good, the general impression given being that of strength, permanence and quality.

The doors are heavier than those ordinarily used, and are swung on long, strong Stanley ball-bearing Hinges No. 1458. These prevent sagging and make certain that the doors always swing smoothly and close snugly.

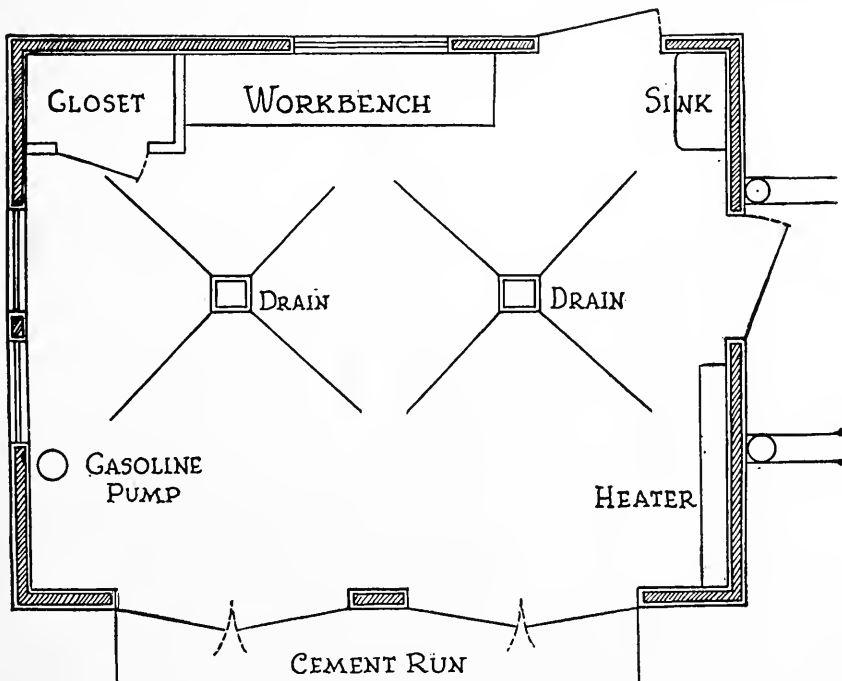
The roof is of a graceful slope, with liberal overhang at the eaves.

This type of garage is excellent for handsome homes with broad grounds surrounding them. A covered way, lighted by electricity, connects the garage with the residence.

## GARAGE HARDWARE

*The following Stanley Garage Hardware  
was used on this garage:*

- Hinges:* 3 pairs No. 1458 extra heavy hinges equipped with ball bearings.....Page 26
- Latches:* 2 No. 1264 extra heavy Duplex Latch.....Page 27
- Pull:* 2 No. 1266 extra heavy Pull.....Page 27
- Bolts:* 2 No. 1052 top and bottom locking Cremone Bolts with staples.....Page 28
- Door Holder:* 2 pairs No. 1774.....Page 29





## *A Stucco Garage*

*for Two Cars  
with curved-top doors*

**W**HEN you look at this picture you immediately notice that here is something different, and the difference, it is quickly seen, is due to the curved-top doors, and to the Colonial windows.

For those who are a bit tired of severe straight lines, this style will prove a pleasing change. There is an air of the broad open countryside about this garage.

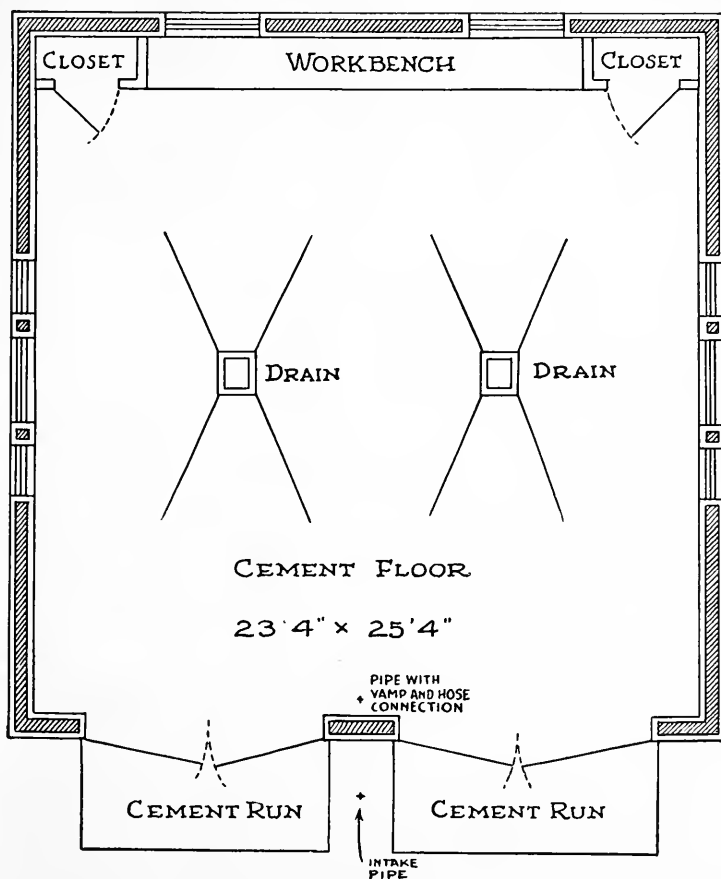
At the front is a cement run, and inside the building is the pipe with vamp and hose connection. Two drains are in the cement floor. At the rear are closets and a long work-bench.

The doors are each swung on three Stanley ball-bearing butts, the construction of their tops and size of the windows making them unsuitable for the usual broad Stanley strap hinges.

## GARAGE HARDWARE

*The following Stanley Garage Hardware was used on this garage:*

<i>Hinges:</i> 6 pairs No. 252 butts 6 x 8" .....	Page 26
<i>Latches:</i> No. 1264 extra heavy Duplex Latch .....	Page 27
<i>Bolts:</i> No. 1052 top and bottom locking Cremone Bolts with staples .....	Page 28
<i>Door Holders:</i> 2 pairs No. 1774 .....	Page 29





## *A Stucco Garage*

*for One Car  
built into residence*

**N**ow and then it is desirable to make the garage a part of the house itself.

This is particularly true where space is limited, or conditions of grade are unusual, or where the car may be wanted quickly for emergency use—the latter having special reference to men in such occupations as physicians, fire, police, or other public officials.

In a building of this kind it is easy to have radiators and sink connected to the house system. The doors here shown swing on 3 Stanley ball-bearing butts, the

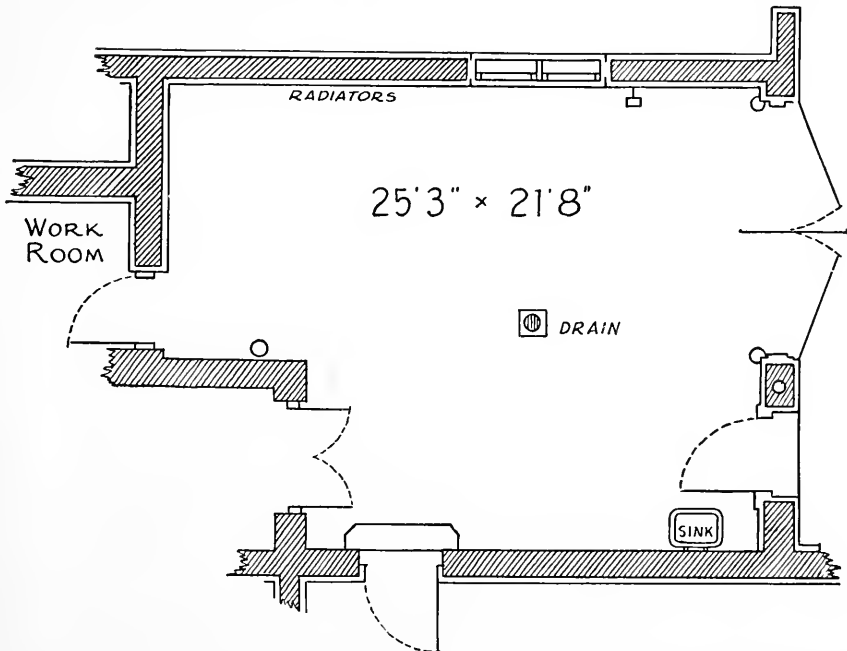
curved construction (as in the case of the garage on page 18) not permitting the use of the stronger and more substantial Stanley strap hinges. They are locked open for the safe exit and entry of the car by Stanley Door Holders, these being adapted to the curved door frame by a simple block.

A drain is provided in the floor. A convenient workroom makes the care of the car a pleasure.

## GARAGE HARDWARE

*The following Stanley Garage Hardware was used on this garage:*

- Hinges:* 3 pairs No. 252 butts 6 x 8" ..... Page 26  
*Latches:* 1 No. 1264 extra heavy Duplex Latch and 1266 Pull . . Page 27  
*Bolts:* 1 No. 1055 10-inch extra heavy Chain Bolt with staple  
 and 1 No. 1056 10-inch Foot Bolt with floor plate ..... Page 28  
*Door Holders:* 1 pair No. 1774 ..... Page 29





## *A Shingled Garage*

*for Two Cars  
with chauffeur's quarters*

**Q**UITE imposing is this garage which roams over a large area and provides a home for the chauffeur and his family.

On the first floor are the garage, tool room and coal room. Four bedrooms and a bathroom occupy the second floor.

The garage has a concrete floor with two drains, one for each car. A sink, which is a great convenience in a garage, is provided, and a work-bench is built beneath a window.

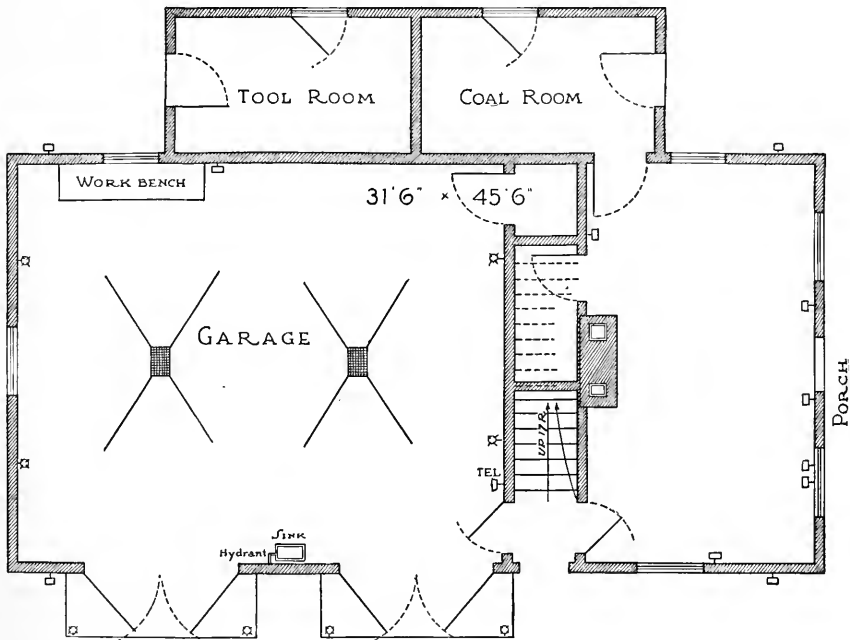


The building is heated by steam from a furnace in the basement of the owner's residence. Electric lights, telephone and a gasoline tank are included in the up-to-date equipment.

## GARAGE HARDWARE

*The following Stanley Garage Hardware  
was used on this garage:*

- Hinges:* 4 pairs No. 1457 24-inch and 2 pairs 10-inch—equipped with ball bearings.....Page 26
- Latches:* 2 No. 1263 Latches.....Page 27
- Pulls:* 2 No. 1266 Pulls.....Page 27
- Bolts:* 2 No. 1055 10-inch Chain Bolts and 2 No. 1056 10-inch Foot Bolts.....Page 28
- Door Holders:* 2 pairs No. 1774.....Page 29





**H**ERE is a pair of model doors equipped with Stanley Garage Hardware, there being here shown Ball Bearing Door Hinges with long and short straps (see Page 26), a thumb latch set with a comfortable grip (Page 27). On the inside are Stanley top and bottom locking Bolts (Page 28) and Stanley Door Holders (Page 29).

# *Stanley Garage Hardware*

**C**OVERING the equipment of garages of all sizes and kinds, from the simplest to the most elaborate, Stanley Garage Hardware is a *complete* line of hardware especially designed for garage use.

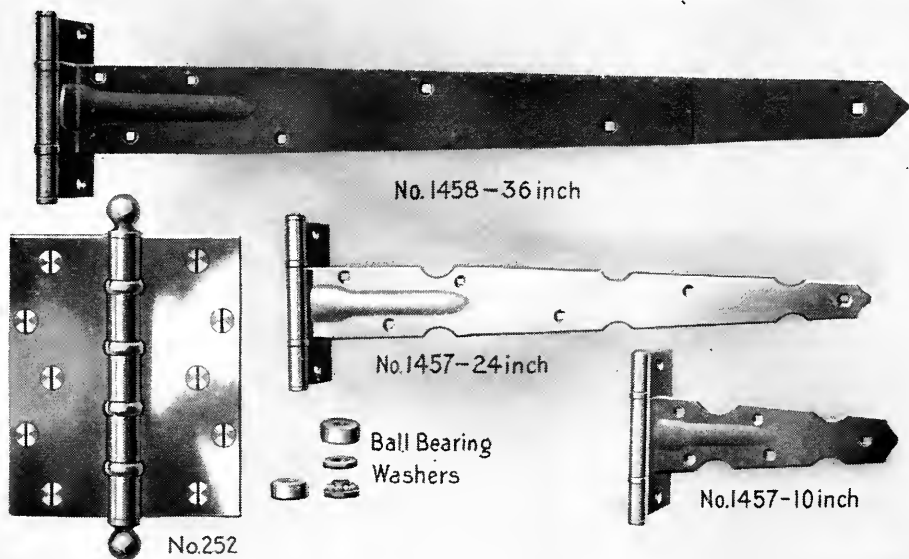
Whether the building you contemplate erecting is to be of brick, cement, concrete or wood, there is Stanley Hardware suitable for it. And also for special conditions, such as when doors cannot be swung out, when doors have curved tops, etc., there are Stanley products ready for use.

*Stanley Hinges* close the garage door so that it is as tight as the front door of your residence. A Stanley hinged door means a smooth-acting door—the Stanley ball-bearings see to that.

*Stanley Bolts, Latches and Handles* are strong, well made, and of proper design.

*Stanley Door Holder* is simple, strong, and always works. It is a form of accident prevention for every modern garage door.

When you build, specify Stanley Garage Hardware by name and number and you will be entirely satisfied with its appearance and operation. The more important items are illustrated and described on the following pages.



## *Hinges and Butts*

**T**HE following are the more important hinges and butts made especially for garage hardware and specified on garages in the preceding pages.

No. 1458 36 inches long. The strongest garage door hinge made. Equipped with ball bearings.

No. 1457 24 inches long. Designed for average weight doors.

These are usually placed at top and bottom of doors.

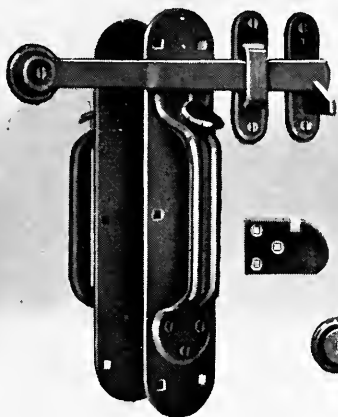
No. 1457 10 inches long. These are usually placed in the centre of average weight doors with the 24-inch size at top and bottom.

No. 252 These butts should be used when conditions require that a garage door be swung in, or when the construction of a curved top door with upper glass panels does not permit the use of garage door hinges. Equipped with four ball bearing washers. They are made in the following sizes: 6 x 4, 6 x 6, 6 x 7, 6 x 8, 7 x 6.

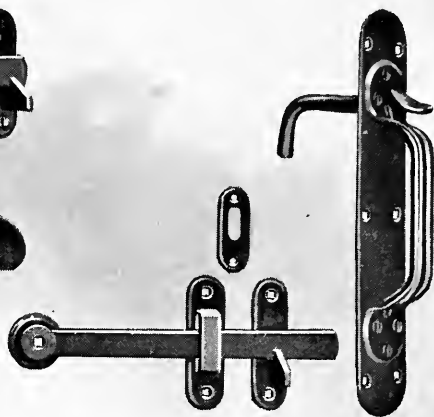
For more complete details see large catalog on Stanley Garage Hardware, which will be mailed free on request.



No. 1266



No. 1264



No. 1263

## *Latches and Handles*

**T**HESE extra heavy steel latches are practically breakage-proof, being designed for the most severe working conditions.

- No. 1264 Duplex Latch. The two handles and thumb pieces provide a comfortable grip in handling a heavy garage door from either side.
- No. 1263 Single Thumb Latch. This is provided with a plate  $14\frac{1}{2}$  inches long, which not only improves the appearance of the latch, but increases the holding power of the screws by distributing them over a comparatively wide space.
- No. 1266 Pull Mounted on Plate. This matches No. 1263 and No. 1264 latches, and is for use on the inside of the opposite door. The plate is  $14\frac{1}{2}$  inches long.
- No. 1252 Thumb Latch. This is similar to No. 1264 illustrated above, but is without plates. The handle is  $10\frac{1}{2}$  inches long.

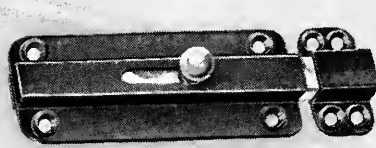
For more complete details see large catalog on Stanley Garage Hardware, which will be mailed free on request.



No. 1052



No. 1055-10 inch



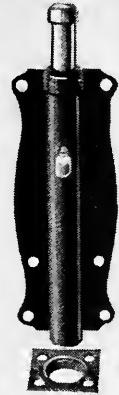
No. 1096



No. 1138



Strike for  
No. 1096



No. 1056-10 inch

## Bolts

**S**TANLEY Bolts are not only strong and safe fastenings for the door, but are easily operated. They may be had in a variety of finishes.

- No. 1052 Cremone Bolt. Locks doors at top and bottom with one movement of the lever handle. May be furnished in practically any length desired.
- No. 1096 Cased Bolt. For use when doors are to be locked on the inside.
- No. 1055 Chain Bolt. Goes on the top of the door. Ten inches long and provided with 24 inches of chain.
- No. 1056 Foot Bolt. Ten inches long. Same size and design as No. 1055, and when used together make a neat appearance.

For more complete details see large catalog on Stanley Garage Hardware, which will be mailed free on request.



## *No. 1774 Door Holder*

**T**HIS is an arm of steel which holds garage doors open, preventing them from slamming against the car, smashing an expensive lamp or the door itself.

There are three parts to the holder: the first is a U-shaped bar of heavy steel, the second a pivot plate with  $\frac{7}{16}$  inch rivet, coupling the bar to the door, the third, the bumper plate which locks the bar to the frame of the garage at two points.

When the door opens to a little more than to a right angle, the notches in the end of the bar drop over the bottom of the slotted plate, locking the door open. A pull on the chain releases the bar and the door is free to swing shut.

This Stanley Holder can control a door of any weight and is easily applied. It is reversible for right or left hand doors of any shape.

For more complete details see large catalog on Stanley Garage Hardware, which will be mailed free on request.



The Main Offices of the Stanley Works, at New Britain, Conn.

## *A Few Facts About The Stanley Works*

**F**ROM a small factory started 76 years ago, The Stanley Works has grown to three great plants, situated at New Britain, Conn. (where the main offices and warehouse are located), at Bridgewater, Mass., and at Niles, Ohio, with branch houses established in New York and Chicago.

The products from the very start have been concentrated in one line—wrought steel hardware. Today The Stanley Works is not only the oldest but also the largest organization in the world manufacturing wrought steel hardware.



Go into any hardware store, anywhere, and you can find Stanley products for sale.

This booklet has described Stanley Garage Hardware comprising Door Hinges and Butts, Door Holders, Bolts, Latches and Handles, all designed particularly for Garage use.

Other very important divisions comprise goods covering the general hardware field, such as:

**Butts and Hinges:** Wrought steel and wrought bronze covering practically every known hinge requirement.

**Bolts:** This line includes wrought steel foot and chain bolts, barrel bolts of wrought steel and wrought brass, cremone bolts, square and flush bolts, etc.

Shelf brackets, thumb latches, chest handles, door holders, corner irons and washers.

Screen Door Trim and hardware for storm sash and screens, cellar windows and outside blinds.

Garage Hardware, Cabinet Hardware and Box Strapping, all of which are described and illustrated in separate catalogs.

Cold Rolled Steel and wrought steel specialties.

New products are being added from time to time.

The Stanley Works is always pleased to be of all possible assistance to prospective users of its products.

**A**NY information which you may desire will be promptly and gladly furnished. Your letters will have thoughtful and careful consideration and correspondence regarding *anything* in wrought steel hardware is solicited. Please address the home office, or New York or Chicago branches.

*The items illustrated on pages 24 to 29 are carried by the leading builders' hardware stores throughout the country. You can examine samples of our products and obtain prices from your hardware dealer. If he does not happen to have on hand what you want he can get it quickly from us.*

