

The Book ^{no} of Lawn Furniture

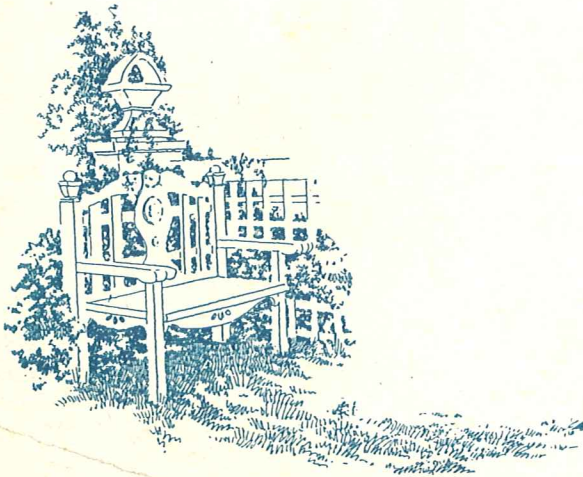


The Home That Invites You

*I*T is not a pretentious home. Neither are its lawn and garden large, nor do they bespeak extravagance. What, then, makes it so alluring?

In front of the home there is a white latticed fence with vines entwining it. The gate is trellised and roses climb over it. At the front door there is a lattice and pergola top entrance which makes one desire to enter. At the side of the house you see an ornamental garden seat, shaded by a trellised arbor; and peeping from the rear yard is a vine-covered pergola which very likely harbors some happy children. And all the woodwork is snow-white.

The Book of Lawn Furniture, published by Long-Bell Lumber Sales Corporation, makes it easy to beautify the home grounds with attractive outdoor woodwork. Most of the pieces shown are comparatively inexpensive, especially when you consider the added charm and service they give. Show the illustrations you like to your lumberman and he will be glad to recommend the proper lumber to use and a carpenter to build the furniture. Thus you will be able to duplicate any of the furniture shown in the following pages, and to make your lawn and garden seem to say, "Come in and rest, or come and play. You're always welcome!"



\$28.00

The Book of Lawn Furniture

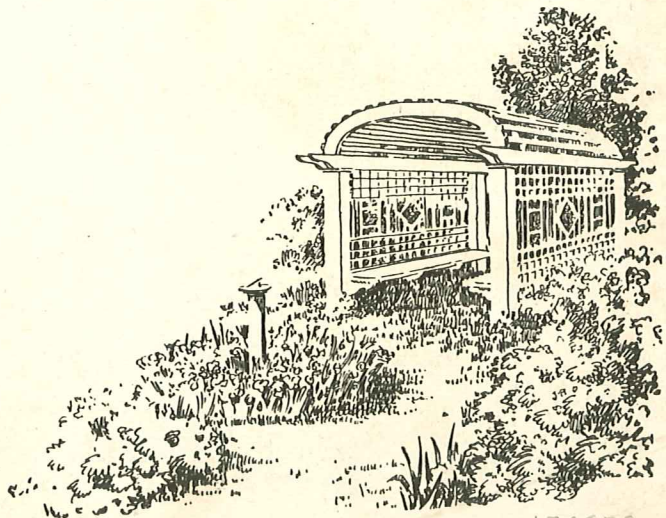
*Dedicated to those
who wish to make
their lawns—whether
large or small—just
a little more alluring*

Contents Copyright 1934

The Long-Bell Lumber Company
Kansas City, Mo.

9th Edition (G), July, 1934

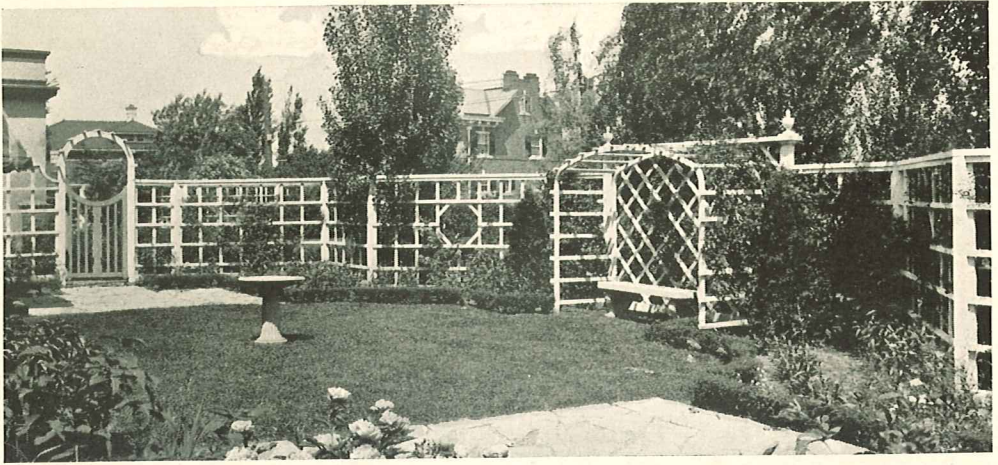
Form No. 1201 Printed in U. S. A.



180028328

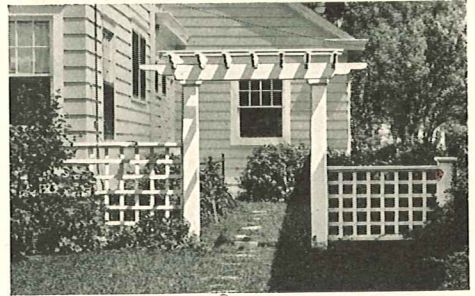
Tech D 2

A Piece For Every Home

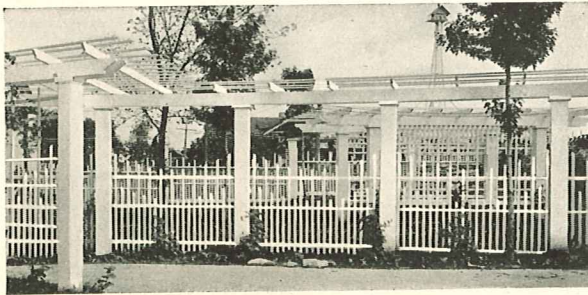


A rear lawn made attractive by an ornamental fence and garden seat, and shrubbery

ASMALL lawn? A rented home? That does not matter—there's a piece of lawn furniture for every home, large or small, rented or owned. There's a certain pergola, lawn seat, trellis, fence or arbor which will lend added attractiveness to the home, and at a cost well within the limits of the average family. You will find many suggestions for such furniture in this book.

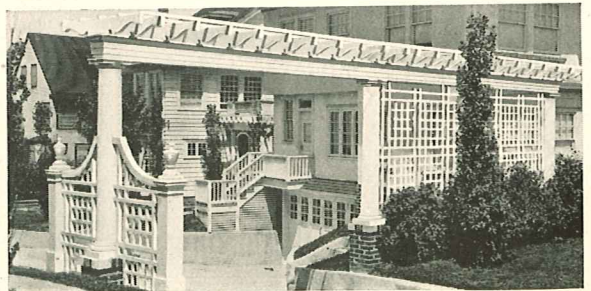


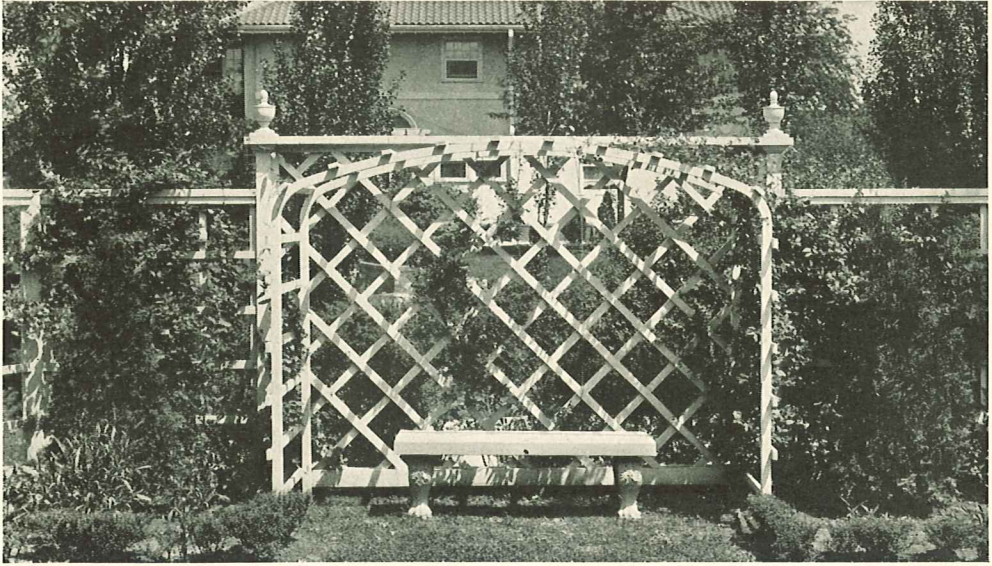
A garden gate with pergola top, appropriate for many homes



Ornamental fences and pergolas ready for the vines to begin climbing

Elaborate pergola and ornamental screen surrounding driveway to a basement garage



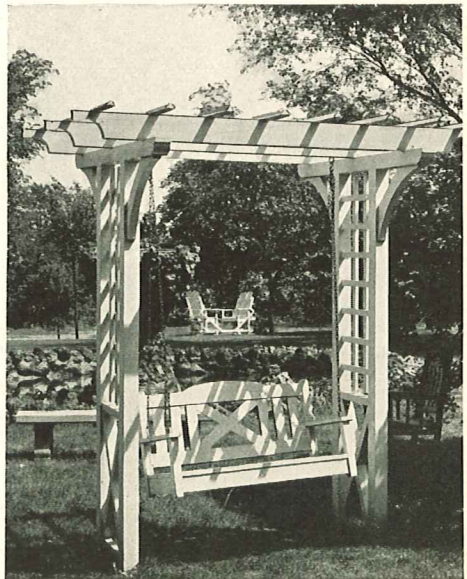


An Ornate Garden Seat

THIS trellised seat is in the garden pictured on the opposite page, and displaces a section of the fence. It is nine feet wide and six feet high. It is built over a frame of one by two inch pieces. The lattice openings are eight and three-quarters inches. The rear corner posts are "four by fours," seven feet high and capped with turned wood ornaments. Adjoining fence is five feet, six inches high, capped with a "two by four" piece. The openings in the fence lattice are ten and one-fourth inches.

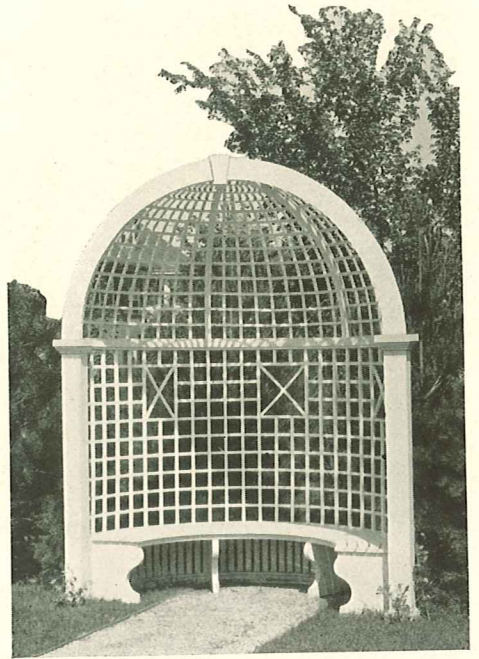
Pergola Swing

THE pergola swing is a much used lawn ornament. The one shown is twelve feet high and five feet wide. Lumber of standard sizes is used. The illustration furnishes all the information needed by a carpenter to build it.

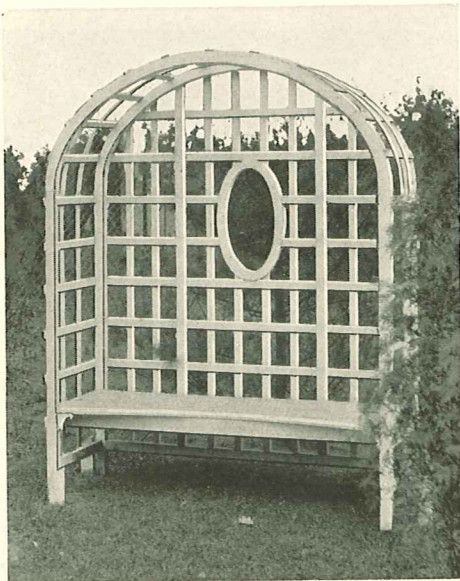


Crescent Garden Seat

HERE is a garden seat which you will find appropriate for placing in corners formed by shrubbery or at the end of a garden walk. Its crescent shape makes it particularly pleasing; it is well designed and ornamental as well as useful. The lumber required for its construction is of standard size and pattern and your carpenter will have no difficulty building it if he follows the illustration. Height to the square is six feet; over all height, ten feet; width, seven feet; posts, four by fours; seat, eighteen inches high and eighteen inches deep; strips, one inch by one and one-half inches, dressed, spaced four and one-half inches; arch facing is five inches wide.

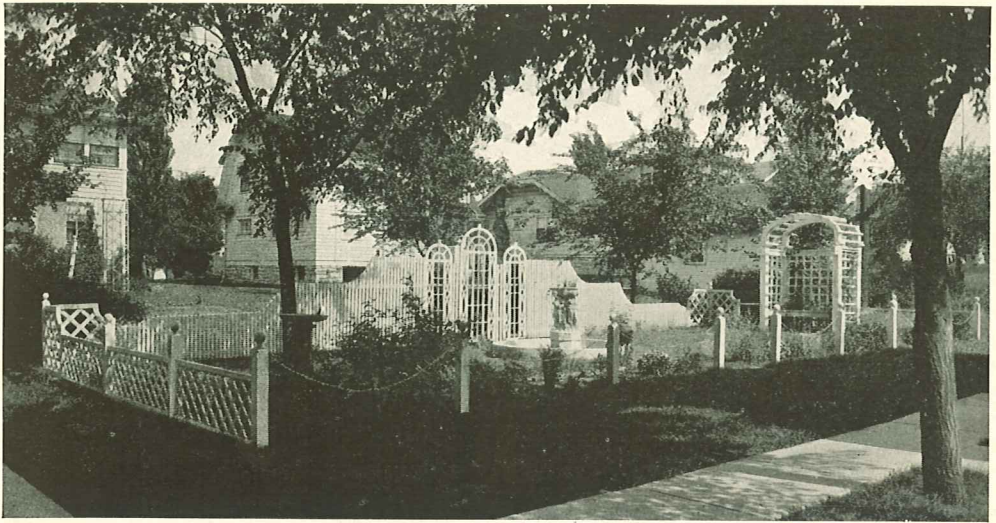


For the garden corner



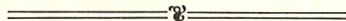
A Pleasing Design

THE rounded corners and elliptical opening in the lattice work give the piece shown at the right a unique appearance that is sometimes lacking in more costly designs. This is one of the less expensive pieces, though very charming, especially so when flanked by shrubbery of the darker shades of green, or when used as a trellis for flowering vines. This piece is 5 feet wide, 7 feet high and 22 inches deep. Seat height 16 inches. Grill work is of 1x2's dressed.

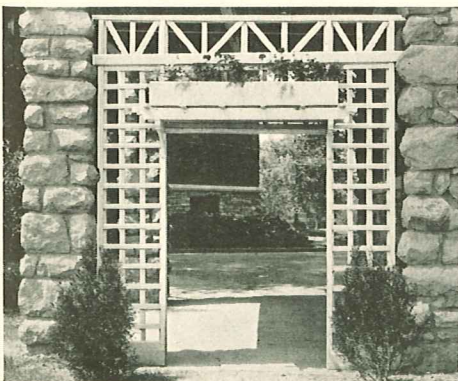


The Bungalow Garden

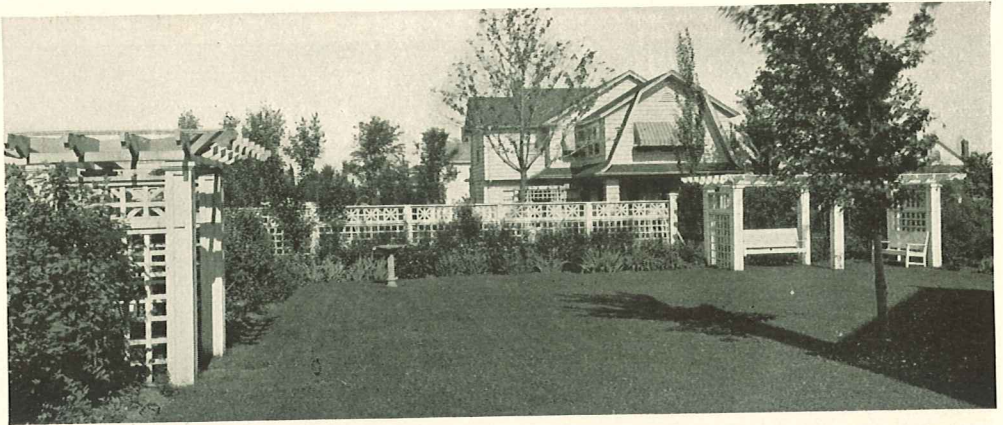
THIS garden, photographed twelve months after planting, marks the rear boundary of a bungalow homestead at street intersections. The garden has a breadth of fifty feet and depth of twenty-two feet. The enclosing lattice is well designed and executed. The panels next to the street have a height of twenty-four inches, increasing to forty inches at a point six feet from each corner. The rear paneling near the corners is twenty-four inches high and is increased gracefully to the central arch which is seven feet, ten inches in height. A rose-embowered garden seat and a lily pond with ornate fountain are special features of this highly satisfactory garden that was designed and built by the owner.



For Stone Columned Porches



MORE and more home owners are realizing that stone columned porches can be made more attractive—that the harshness of the stone can be softened—by the employment of lattice work such as the accompanying illustration shows. The lattice is built principally with strips one and one-half inches wide and one inch thick, dressed. A flower box is an added touch in the example shown.

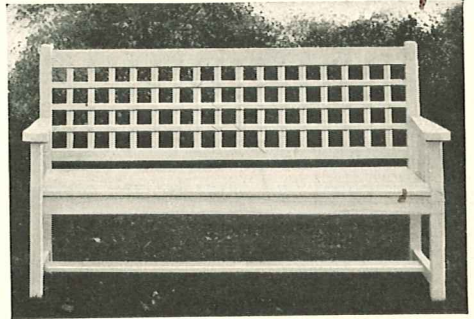


A Well Arranged Lawn

MUCH of the beauty of the large lawn shown above must be credited to the handsome lattice woodwork that borders it on three sides. The contrast of the green shrubbery banked against the white woodwork is pleasing.

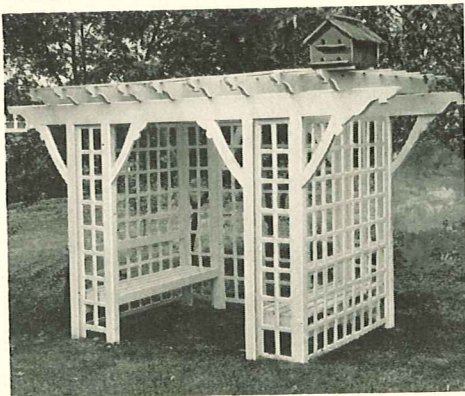
A Dignified Lawn Settee

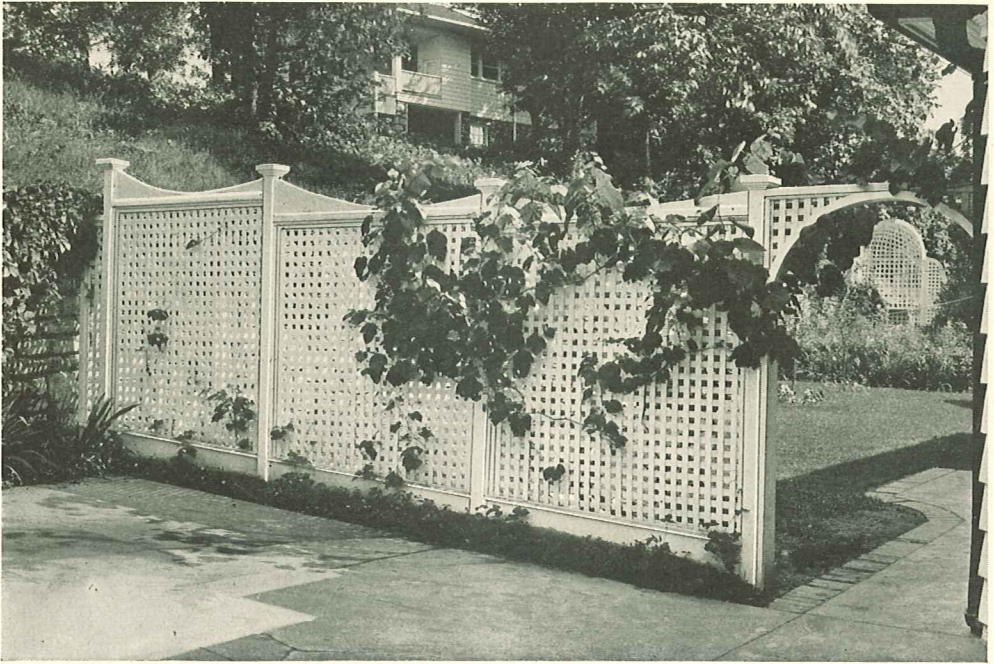
This easily constructed piece is of excellent design. It is five feet long; seat depth is eighteen inches; seat height, eighteen inches. The back panel is twenty inches high. The seat is made of six strips with small spaces between. For end construction see the lawn chair on page eight.



A Good Lawn Ornament

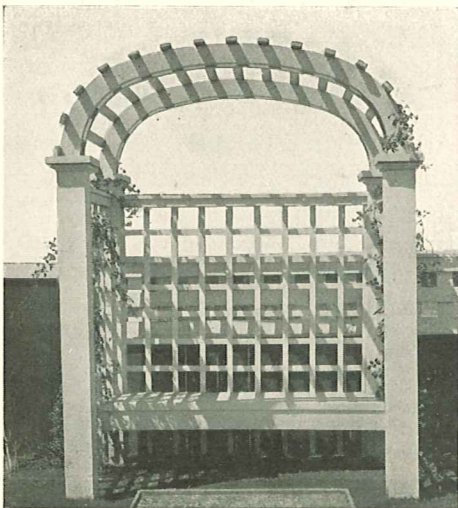
A lattice-enclosed lawn seat with a pergola top is a very appropriate lawn ornament. The illustration on the left shows a pleasing type. Build 7 feet wide, 6 feet deep, 7 feet 6 inches high. Entrance 3 feet wide. Seat height 16 inches, depth 18 inches. Grill work of 1x2's, dressed. End beam facing 2x8's projecting 30 inches, crossed by 2x6's.





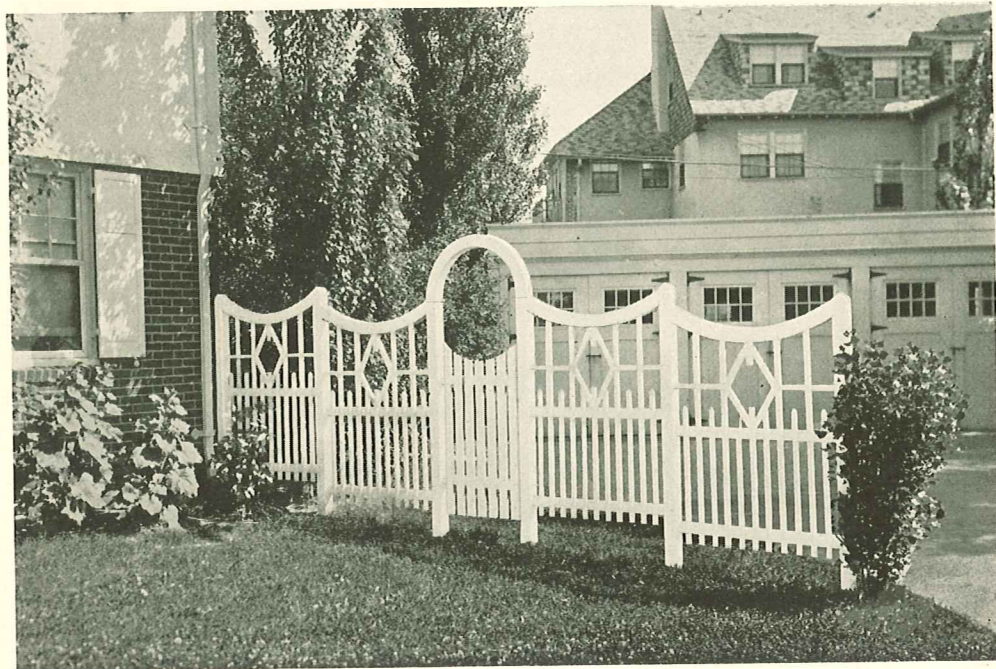
Shields from the Public View

TO derive maximum enjoyment from lawn and garden—the “outdoor home”—there must be privacy—the grounds must be shielded from the public view. Where the lawn or garden touches the highway, a decorative fence, such as the one of close-set lattice shown above, will give the desired privacy. Boxed post 6 feet 6 inches above ground level. Base board 1x10, capped by 1x2 pieces. Lattice of $\frac{1}{2}$ x1 $\frac{1}{4}$ inches spaced to form square openings 1 $\frac{1}{4}$ inches square. Lattice work capped by 2x4 dressed, and held between cove mould. Top trim of one-inch lumber.



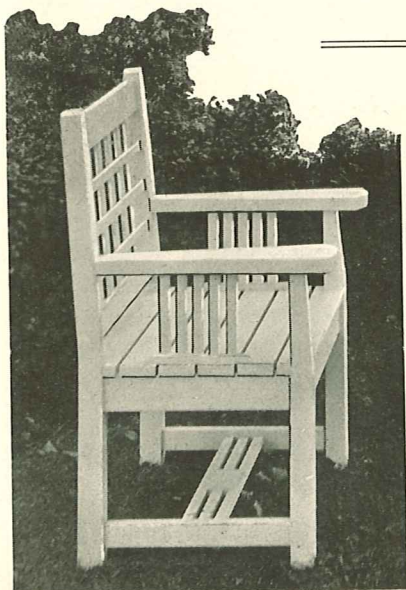
A Simple Garden Seat

Here is a simple garden seat suitable for almost any lawn. It is inexpensive, easily constructed and is a feature you will be glad to have. You can well imagine the beauty of this piece when it is covered with flowering vines. Build 5 feet wide, 26 inches deep. Over all height 8 feet. Seat height 16 inches, depth 18 inches. Grill work of 1x2's dressed, openings 5 inches square.



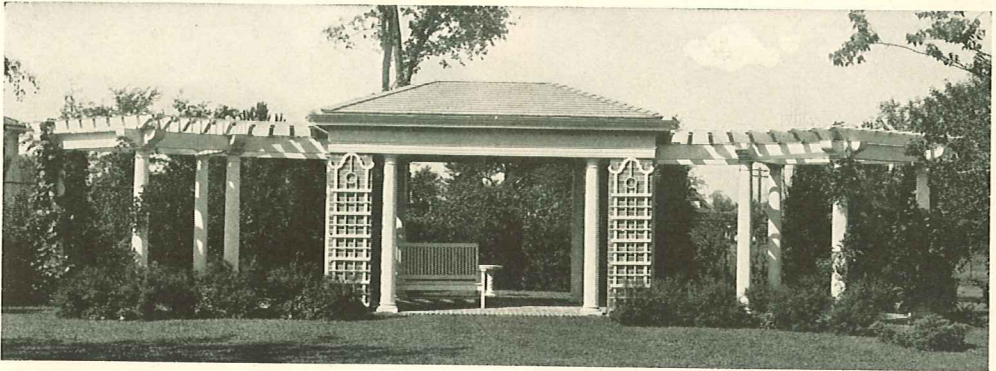
Hiding Unsightly Backgrounds

THE lawn and garden, of which a part is shown in the above illustration, are highly developed, but without the ornamental fence to partly hide the row of garages they would be incomplete and lose some of their loveliness. The fence pattern shown is highly ornamental. The panels vary in length with distance to be covered. Those shown are approximately 6 feet in length, posts five feet 8 inches above ground. Gate opening width 2 feet 10 inches, height 7 feet.



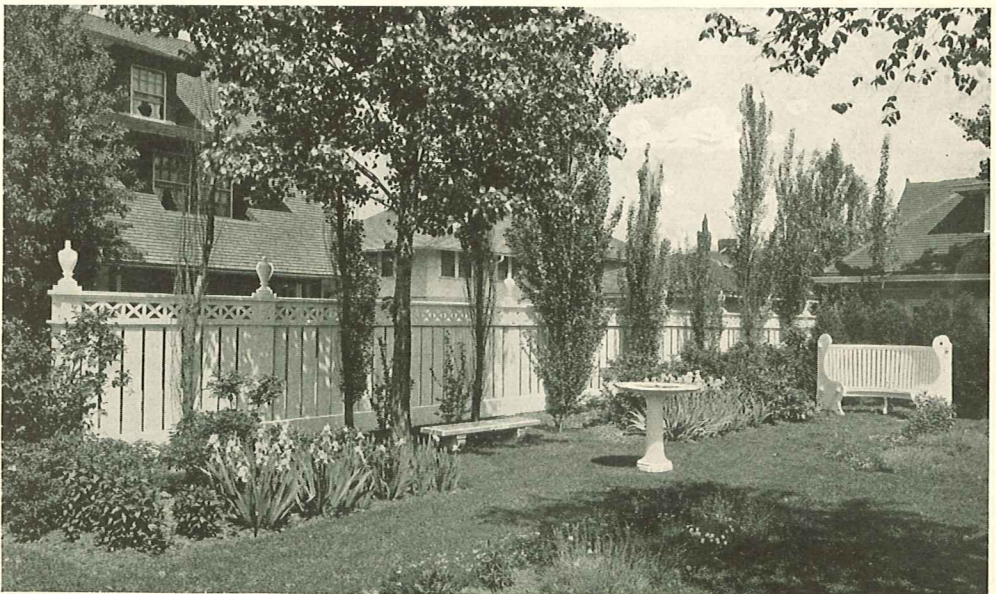
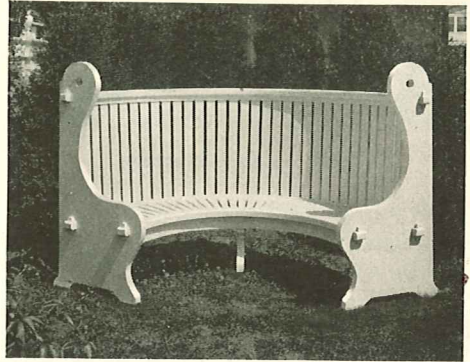
A Sturdy Lawn Chair

At the left is a well designed and sturdy lawn chair, of exactly the same pattern as the settee on page six. Two chairs and the settee are usually placed in a group. You will find such pieces not only an added attraction to your lawn but useful on many occasions. Depth of seat 18 inches, height above lawn 18 inches, width 22 inches. Sticking in back and under arms 1x2's dressed.

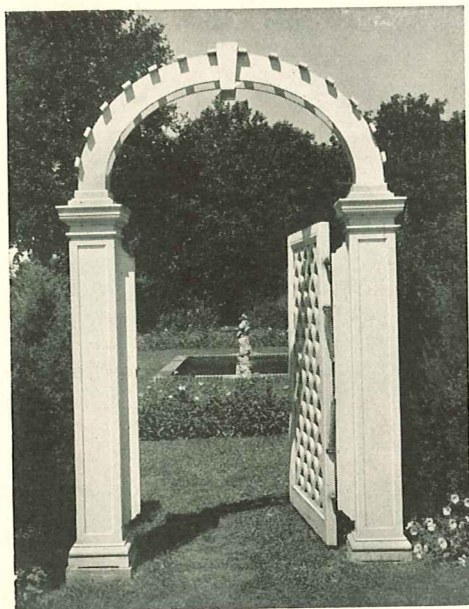


More Formal Designs

THE upper illustration shows a well-designed summer house and pergola, most appropriate for a large lawn. The lower picture shows how a board fence with lattice fresco can be employed to assure privacy where the garden is close to other residences or the highway. The crescent shaped garden seat seen in the lower illustration is the same as shown on the right.



This interesting garden is greatly improved by the well-designed fence and privacy is assured



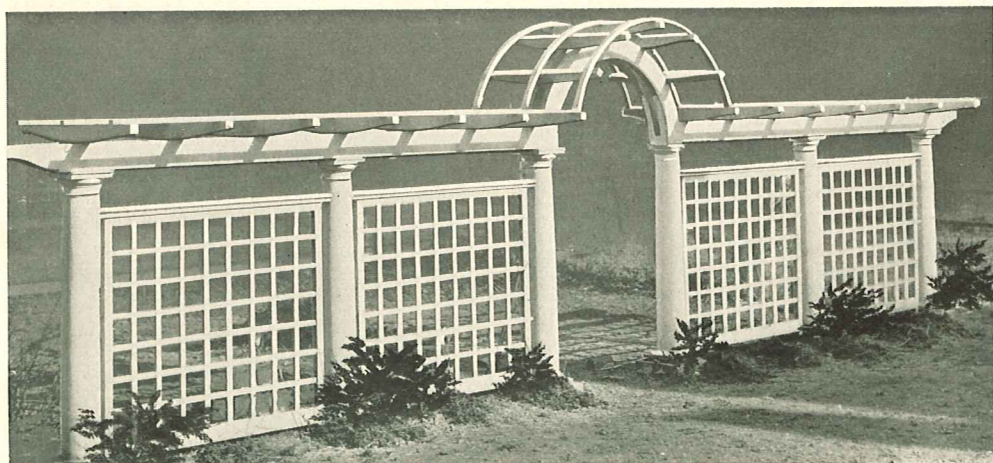
For the flower garden



An attractive entrance gateway

A Place in Every Garden

SOMEWHERE about each lawn or garden there is a place for one of the arched gateways shown on this page. The illustrations demonstrate the decorative value of a gateway of graceful pattern, and offer a selection ranging from the simplest to those of much artistry and perfection. These gateways are usually given a width of 3 feet 6 inches to 4 feet; and height to base of arch of from 60 to 72 inches. The upper illustration at the left is 8 feet high over all.



This fence and gateway could be used nicely on the back end of many city lots

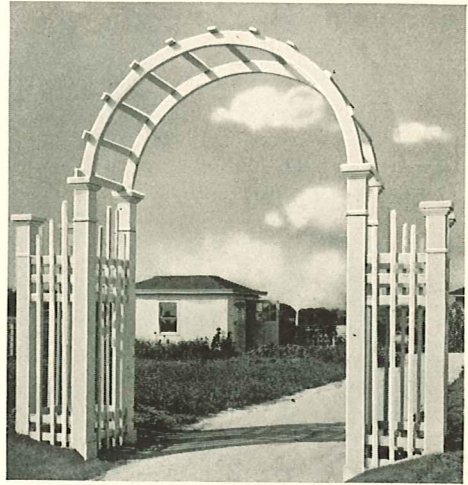
Attractive Entrances

A FREQUENTLY overlooked opportunity to improve the residence property lies in the entrance from the street—the driveway or walk. These can be made very attractive by arches or pergola tops and which will greatly add to the appearance of the entire property.

The illustrations on this page show two practical suggestions for ornamental driveway entrances; and these same ideas can be applied to the walks. You will find many other ideas elsewhere in *The Book of Lawn Furniture* which can be applied, with some alterations, perhaps, to various drives and walks.

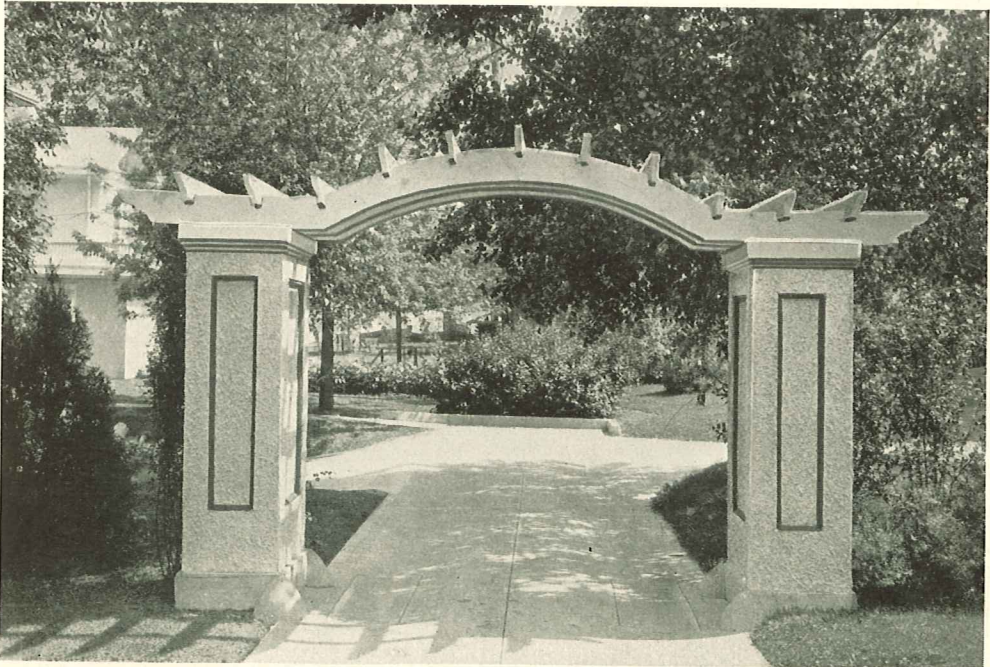
The upper illustration shows an arch made entirely of wood—it can be easily constructed by your carpenter, and with vines entwined will add beauty to walk or drive.

The lower illustration will afford a suggestion to many home owners who

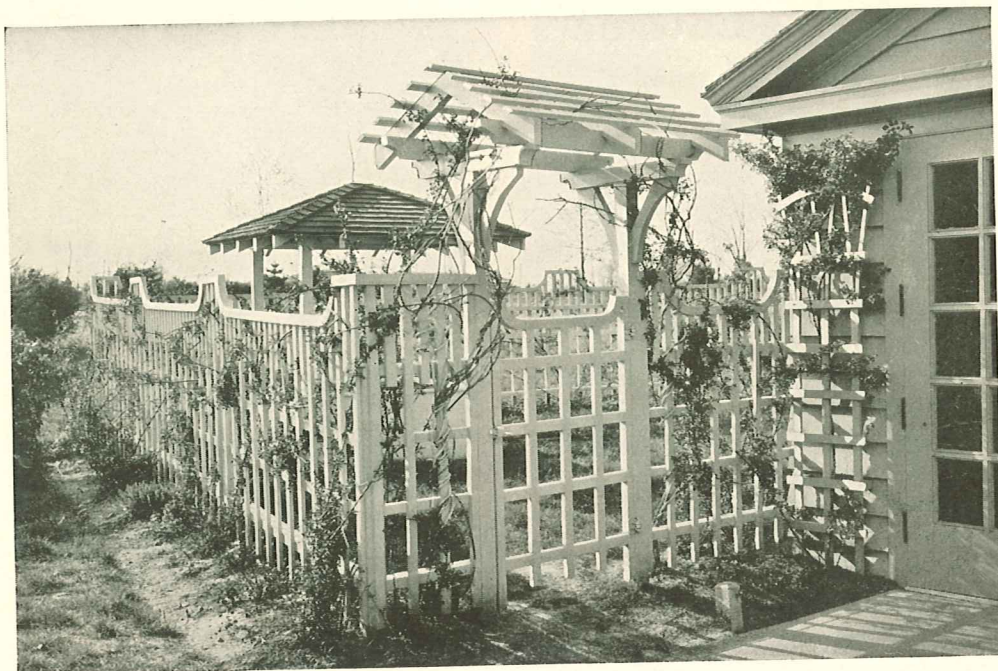


An arched entrance that is flanked by picket paneling is shown above. This decoration is placed at the entrance to a restricted building tract

have two stone posts guarding the drive entrance. Just a simple, inexpensive touch results in an entrance which will be much admired.



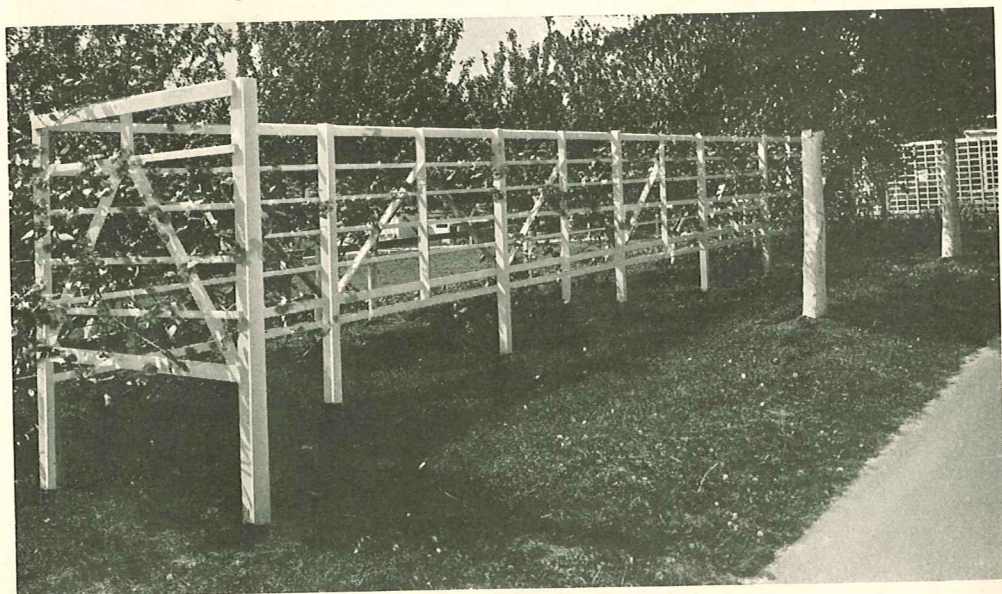
Driveway entrance to residence, showing how a pergola-top arch can be used effectively

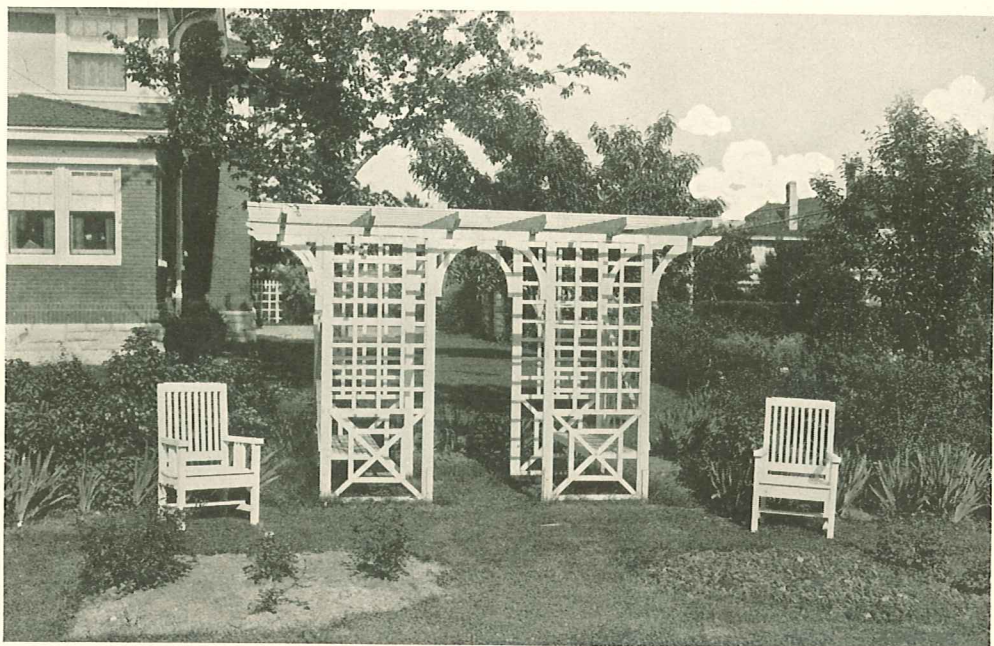


A Lattice-Enclosed Garden

THE upper illustration shows a most pleasing lattice design, enclosing a flower and vegetable garden. While highly decorative, it is not prohibitive in cost or difficult to construct. Height at center of panels 54 inches. Vertical 1x2½ inch sticking spaced 5 inches. Gate width 30 inches. Over all height of gate frame 8 feet 6 inches.

The grape trellis shown below is usually built 6 feet high, lower horizontal rail 24 inches above ground. Posts 4x4's surfaced four sides. Top rail 1x3. Intermediate horizontal strips 1x2's dressed.





For The Garden Corner

FOR a garden corner, the three-piece set shown above is most appropriate and decorative. The central piece is seven feet wide at the base, six feet deep and nine feet high. Corner posts are "four by four" timber, and grill work is "one by two inch" strips dressed. If there are children, the seats should be about fifteen inches above the ground.

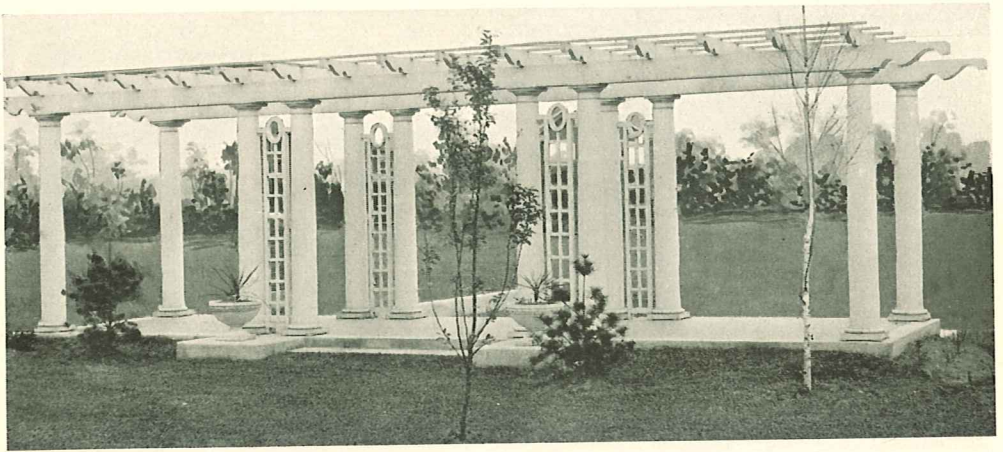


For The Pathway

BUILT over a garden path this graceful arbor affords a shady retreat and a trellis for vines. It is simply designed and easy to build.

This is an excellent example of what a few pieces of lumber and moulding will do in the way of making the home grounds more beautiful and inviting.

Outside dimensions: width 6 feet, height 8 feet, length 6 to 8 feet. End frames and arch of 2x8 lumber. Covering strips 1x2's dressed. Seat height 16 inches.

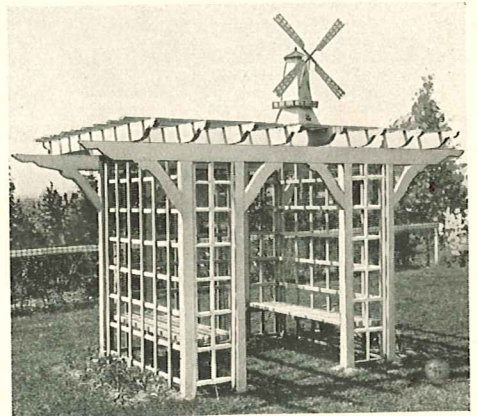


A decorative piece for use on a large lawn, country place or club grounds

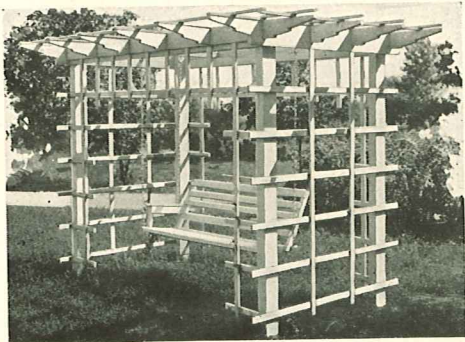
Arbor Selections

THE arbor designs shown on this and the adjoining page were selected for their artistic merit and moderate cost. All lawns are improved in appearance by the use of graceful, ivory-white wood-work.

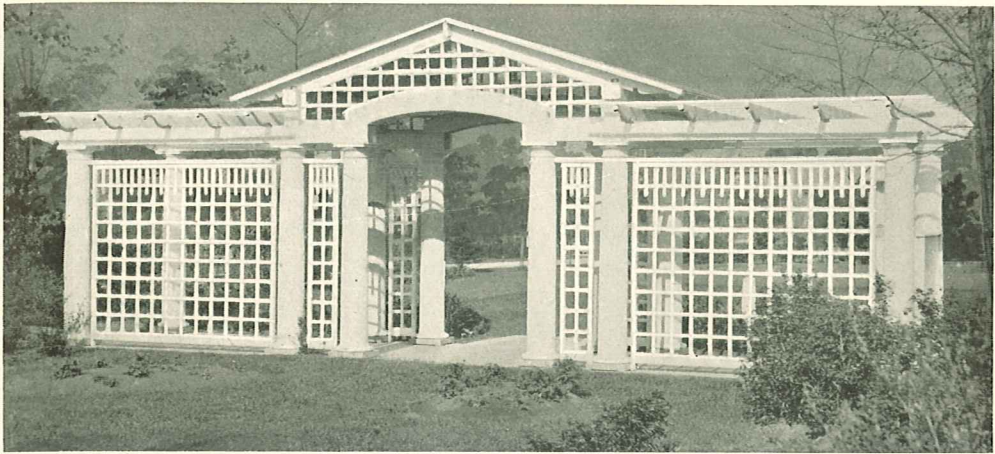
With the assistance of these illustrations and the dimensions given, the pieces may be reproduced with every assurance that they will be like those in the pictures. The material and labor needed to build such pieces is minimized by the openings and light weight of the material used. It is economical to give lawn furniture three coats of paint.



Arbor seat, six feet, eight inches wide; five and one-half feet deep; seven feet, six inches high; seat depth and height, seventeen inches; side panels, twenty-two inches wide; pergola projection, thirty inches; lattice strips are one by two inches dressed



This arbor is 7 feet wide, 4 feet deep and 8 feet 8 inches high. Corner posts 4x4's surfaced four sides. Pergola top pieces 2x8's, projecting 24 inches. Striping is 1x2's uniformly spaced.

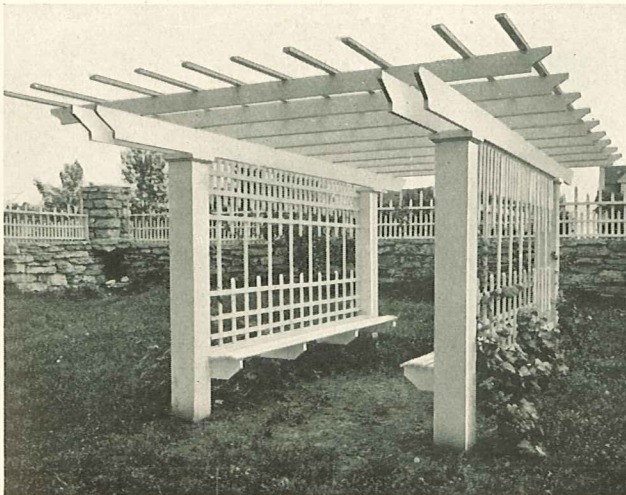
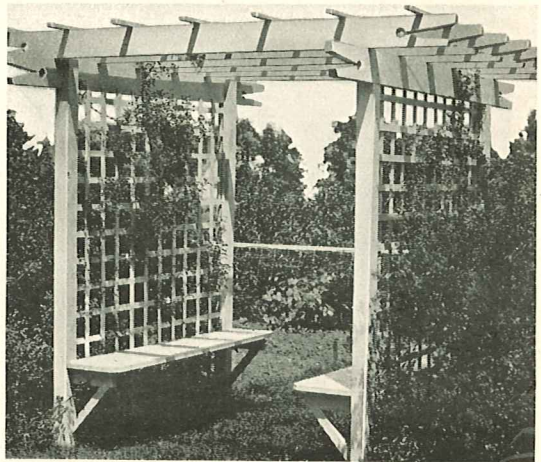


A handsome ornament for the large lawn

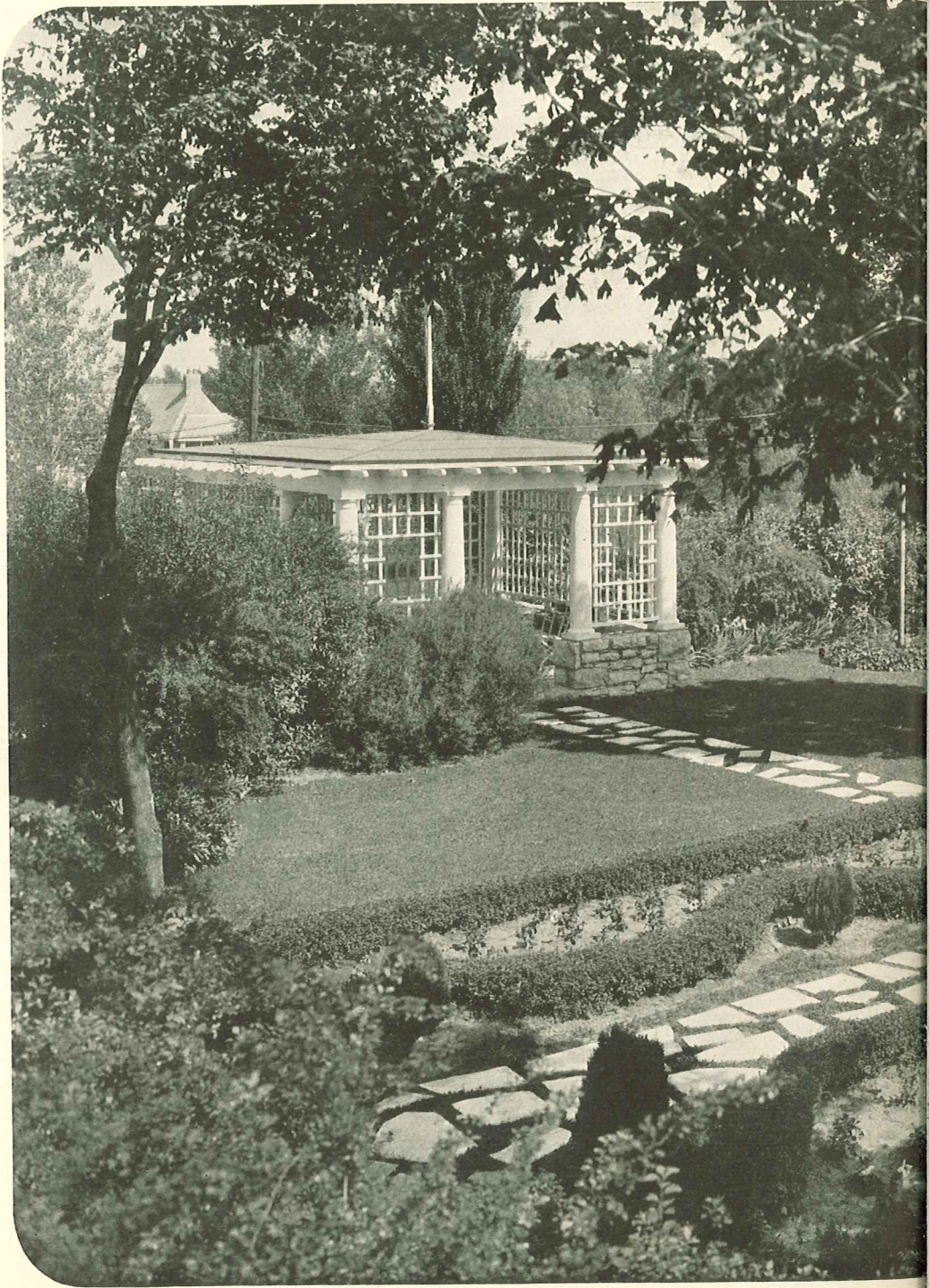
More Arbors

WHEN the home grounds are extensive, the larger pieces shown on this page are appropriate. Quite frequently a plot of ground adjoining the building site is unimproved and detracts from the appearance of the neighborhood. A good treatment for such idle ground is to relieve its barrenness with ornamental woodwork as shown here.

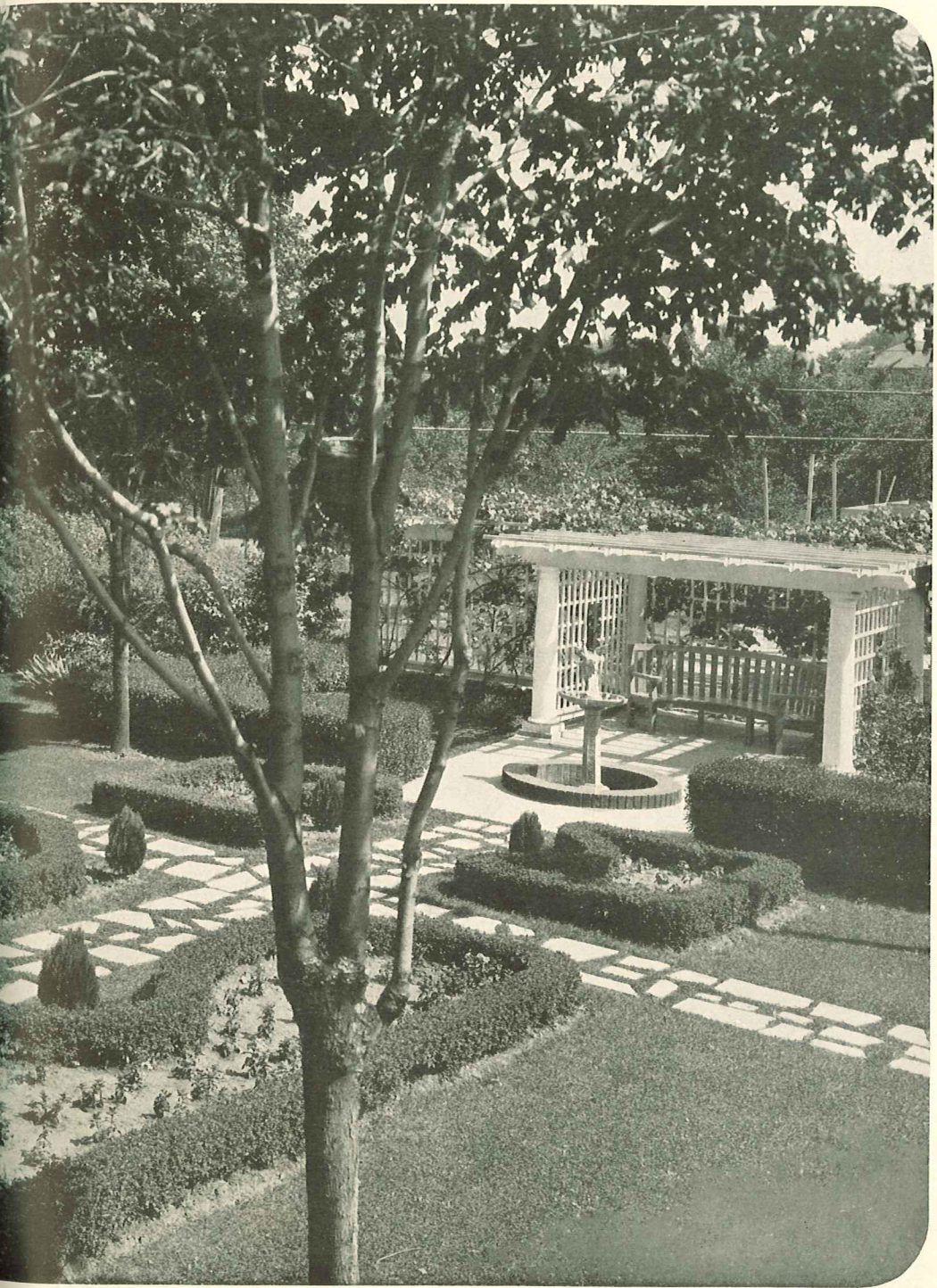
The piece at the right is 6 feet wide, 8 feet 8 inches high over all and 8 feet long. Corner posts are 4x4's dressed. Covering of 2x8's. Lattice of 1x2's dressed.



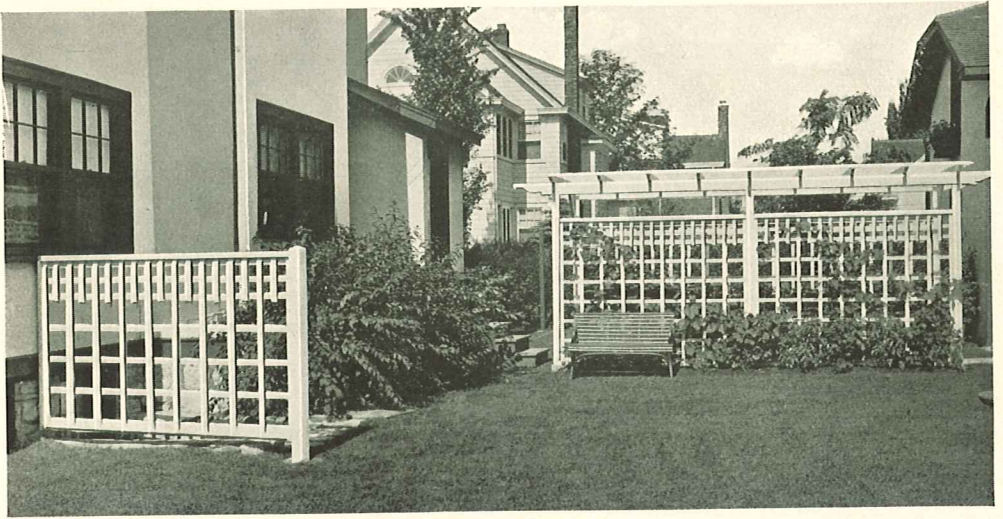
The handsome arbor shown at the left is 7 feet wide, 10 feet deep and 7 feet high to top of corner posts which have an 8 inch face. Beams are of 2x8's. Top cross pieces 2x6's. Beams and top project 30 inches. Grill work of 1½ inch square strips. Seat depth 18 inches, raise 16 inches.



This unusually pleasing garden affords an excellent example of what may be accomplished on a level lawn by the use of flagged walks, hedge bordered flower beds, banked shrubbery and super-white griled woodwork

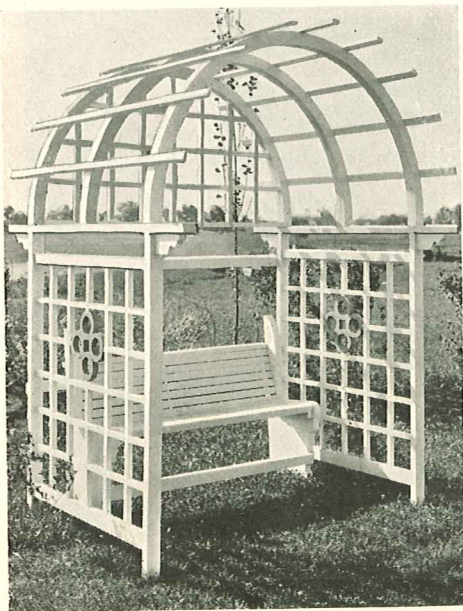


This plot of ground has no natural advantages. The garden is entirely the creation of landscape artist and gardener, and so is a striking example of what may be done with any piece of level lawn



A Well Arranged Rear Lawn

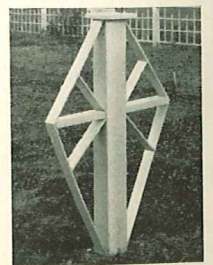
THE above view shows the rear portion of a lawn at a street intersection. The lattice fence section screens from view the grade cellar entrance. The larger piece is a rose arbor into which one steps from the kitchen door. Entrance to the garage is through the arbor. The cellar entrance screen is 54 inches high. Post 4x4 surfaced four sides. The grill work is secured by moulding between 2x4 rails at top and bottom. For dimensions of arbor see description of similar pieces.



Another Garden Seat

The garden seat enclosure at the left is built 5 feet wide, 4 feet deep and 60 inches high to base of arch. Frame is of one inch lumber, the arch of two ply one inch lumber. Grill work pieces are 1 $\frac{1}{4}$ inches square. The seat is portable and built of 2 $\frac{1}{2}$ inch strips to prevent warping.

*Attractive support
for a young
rose-bush*



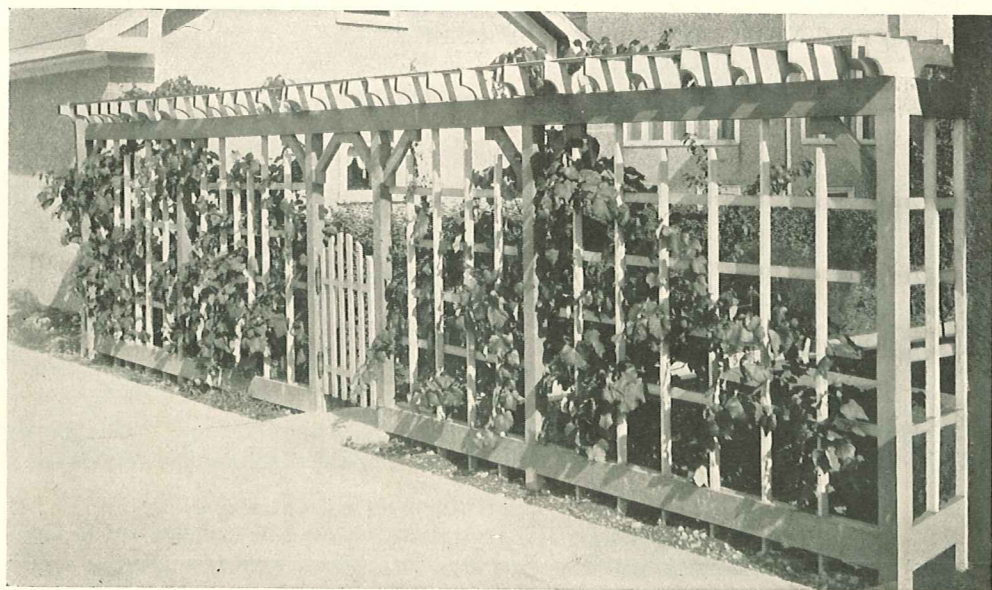
The Value of This Book

NEARLY every one enjoys owning or viewing a lawn embellished with super-white latticed woodwork but very few persons are qualified to plan such pieces. Lawn furniture, though simple enough from a construction standpoint, is rather difficult to design.

The service we hope to perform in presenting these pictures is to enable you to attain the graceful and artistic. The designs shown, with very few exceptions, may be classed properly as works of art—they are outstanding examples of the best in outdoor ornamentation—difficult to originate, perhaps, though any good carpenter can look at the pictures and reproduce them.

A Lattice Fence

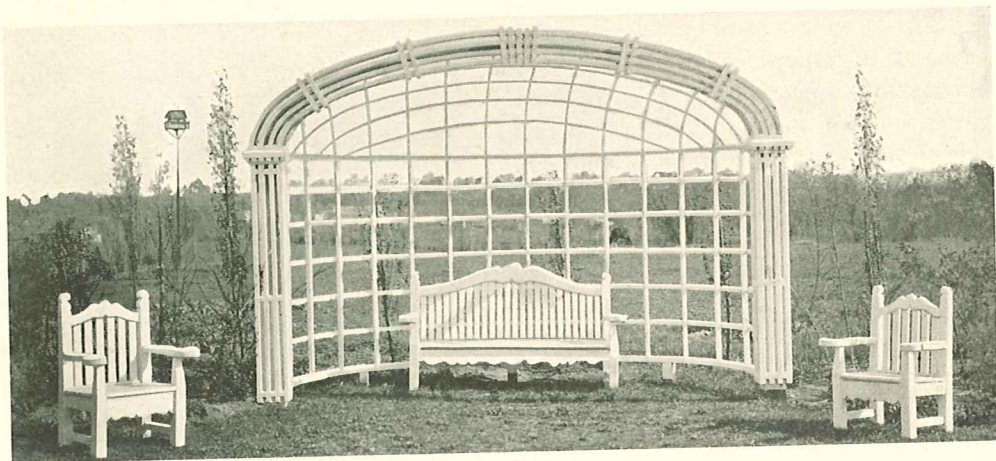
The lattice fence shown below is used between the house and garage. The height over all is 85 inches. Rail at top and bottom 2x6. Ornamental caps 2x8 projecting 10 inches. Grill work of 1½ inch square pieces secured to inside of frame work. Gate width 30 inches.



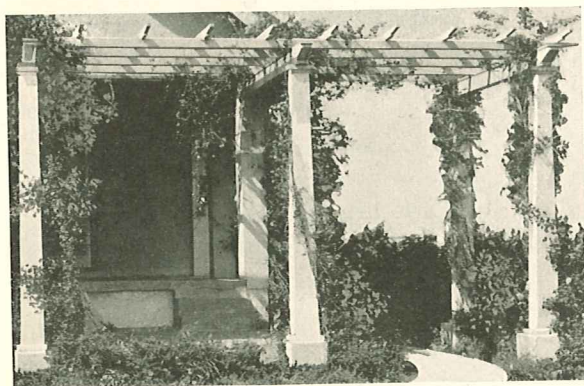
Tree Seat

The octagonal seat is a rather involved piece of carpentry but so very desirable that we urge its adoption. Its building will not prove difficult to a good carpenter.

A Page of Suggestions

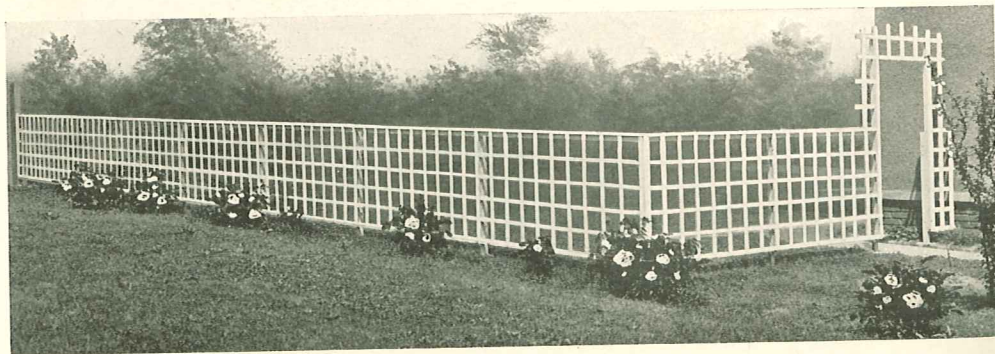


This large set is used to distract attention from undeveloped adjoining property



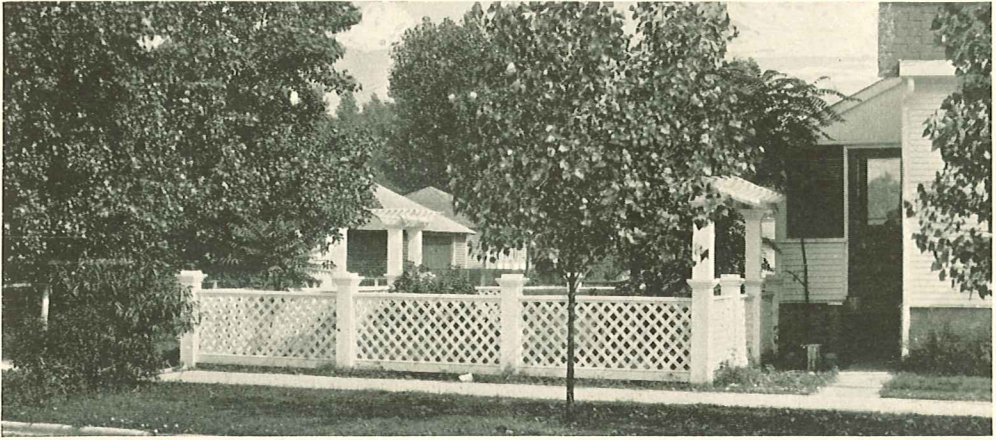
At the left is shown a simple pergola arrangement at a rear entrance-way. A second section of this piece spans the path.

Size and height of columns and weight of upper covering will vary with location and other influencing factors.

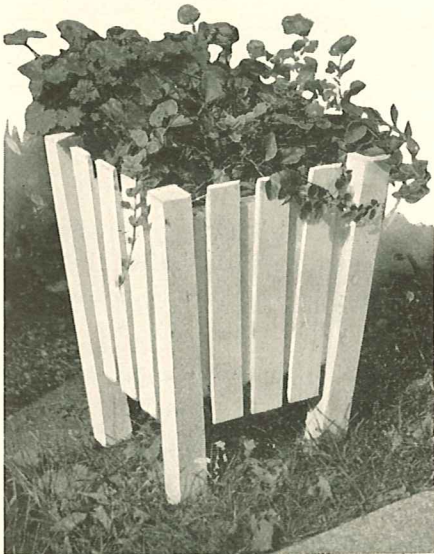


This lattice fence has a panel height of forty-four inches, an over all height of fifty inches. Strips are one and one-half inches square. Gate width, thirty-six inches; height, seventy-eight inches. The posts are spaced nine feet apart

Contributions to the Lawn



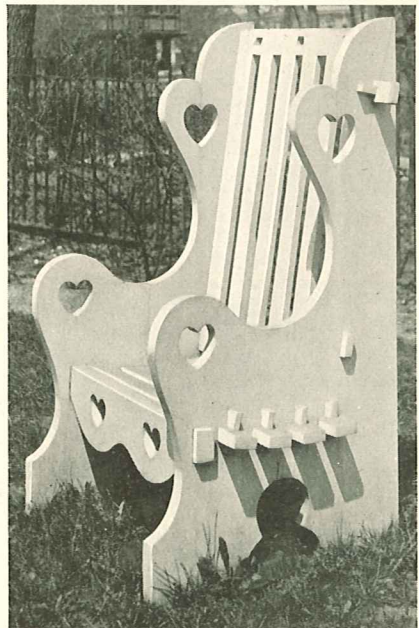
This quaint garden enclosure is appropriate for a corner building site. The lattice fence panels are supported on a "one by eight" inch board and capped by a "two by four" piece. The posts are built up to twelve inches square

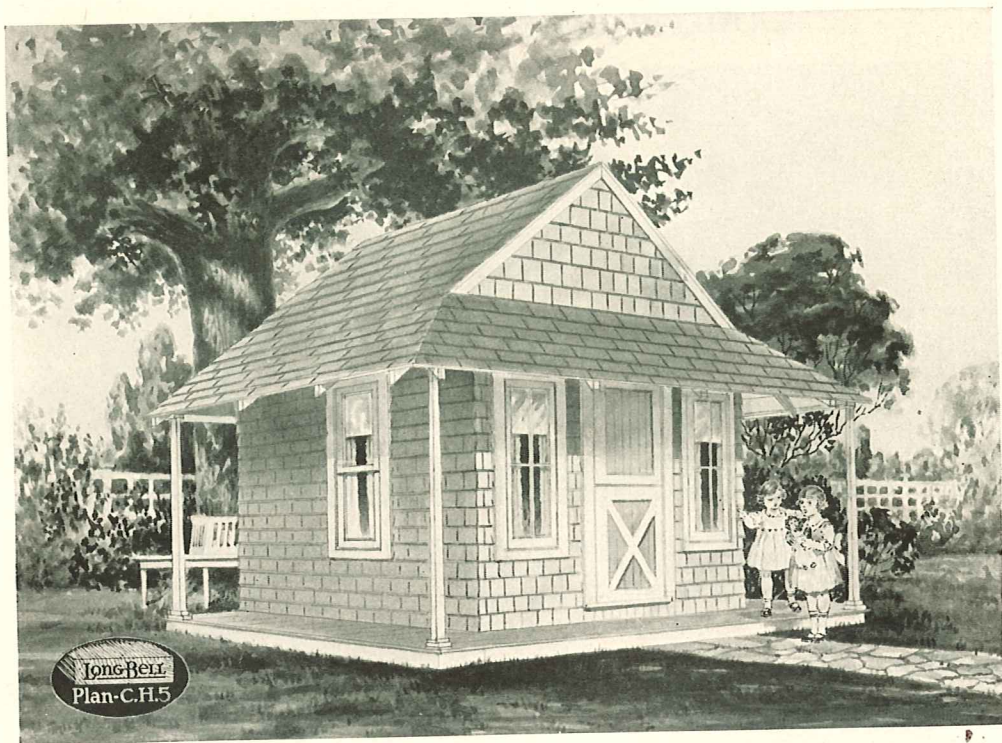


The portable lawn vase shown on the left is 24 inches high, 18 inches square at the top, tapering to 14 inches. Corner posts are 3x3 inches, other pieces of inch lumber. Bottom is raised 10 inches, below which the side panels project 3 inches

A Sturdy Chair

THE arm chair shown on the right is a rather distinguished piece of lawn furniture. It is built of two inch lumber throughout. The design is most artistic and will reward those who undertake its building. The dimensions are made sufficiently clear by the picture so that a skillful carpenter can reproduce it.

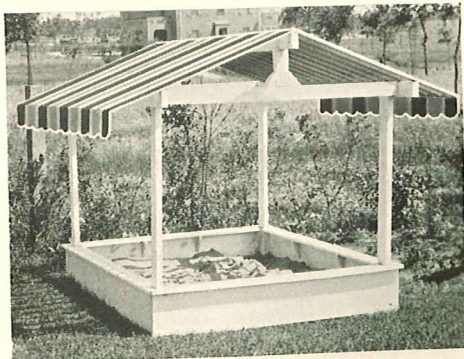
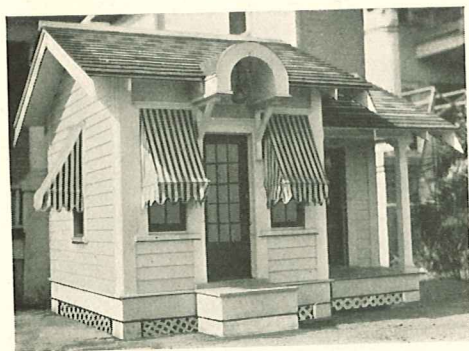


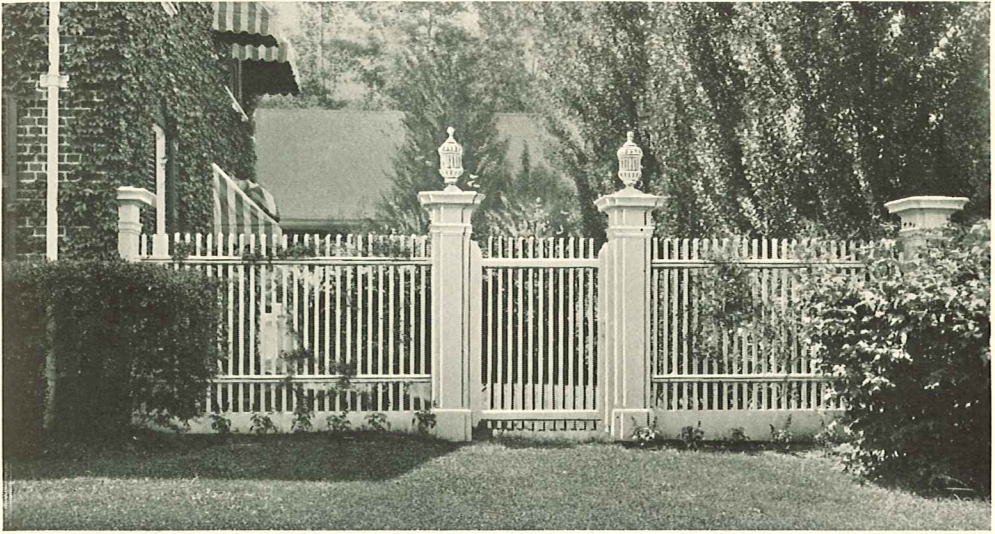


Make The Children Happy

EITHER of the two play houses shown on this page will make your children happy. We can obtain plans for these miniatures from Long-Bell Lumber Sales Corporation at small cost. They contain all the necessary details and include material lists.

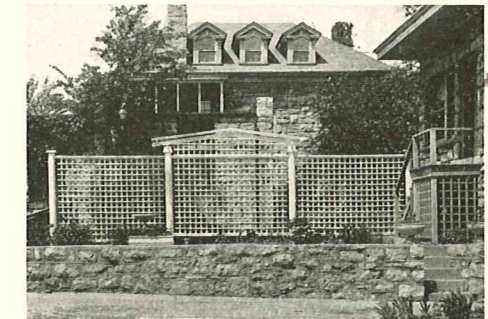
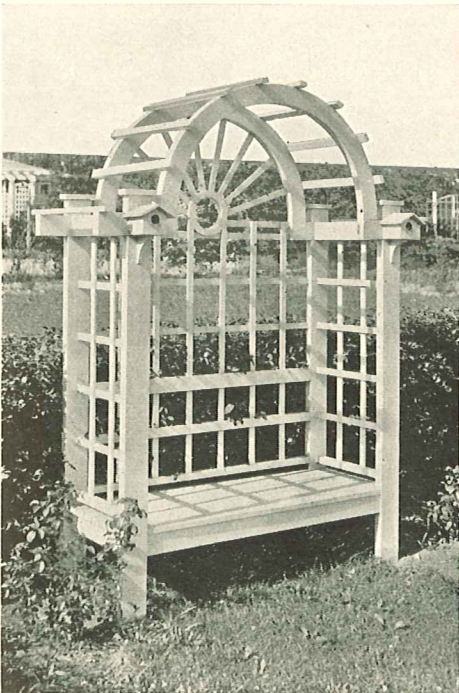
The illustration in the lower right hand corner shows a canopied sand box, seven feet square, built of "two by ten" inch planks. Trim with "one by six" boards. Posts are "two by fours." Lay canvas or muslin over a light roof frame.





Lends Dignity and Charm

THIS fence preserves the dignity of a formal lawn, shutting off from view the flower garden and rear premises. One and one-half inch square pickets spaced two and one-fourth inches, are used. The fence is five feet, four inches high. Gate opening is four feet. Gate posts have a twelve-inch face and depth of fourteen inches.

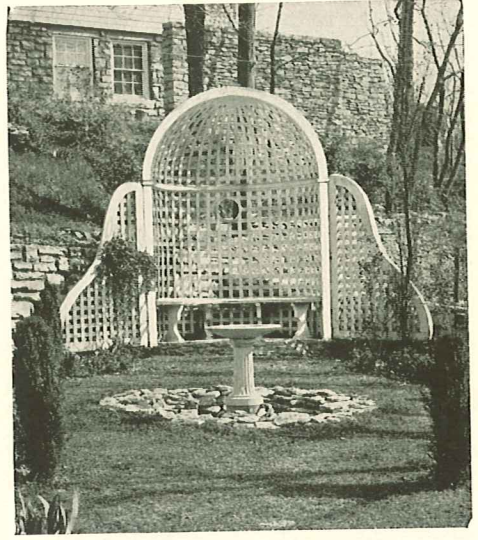


Above is an ornamental fence which separates two rear lawns. The lattice is of $\frac{3}{8}$ x2 $\frac{1}{2}$ strips framed in between round column but not in contact with them. Lattice perforations are 4 inches square. Center panel height 9 $\frac{1}{2}$ feet—wings 7 feet.

The seat at the left is five feet wide, 8 feet high, 24 inches deep. Grill is of 1 $\frac{1}{16}$ inch square pieces. Seat of 2 $\frac{1}{2}$ inch strips spaced $\frac{3}{8}$ inches. Seat height from lawn 16 inches.

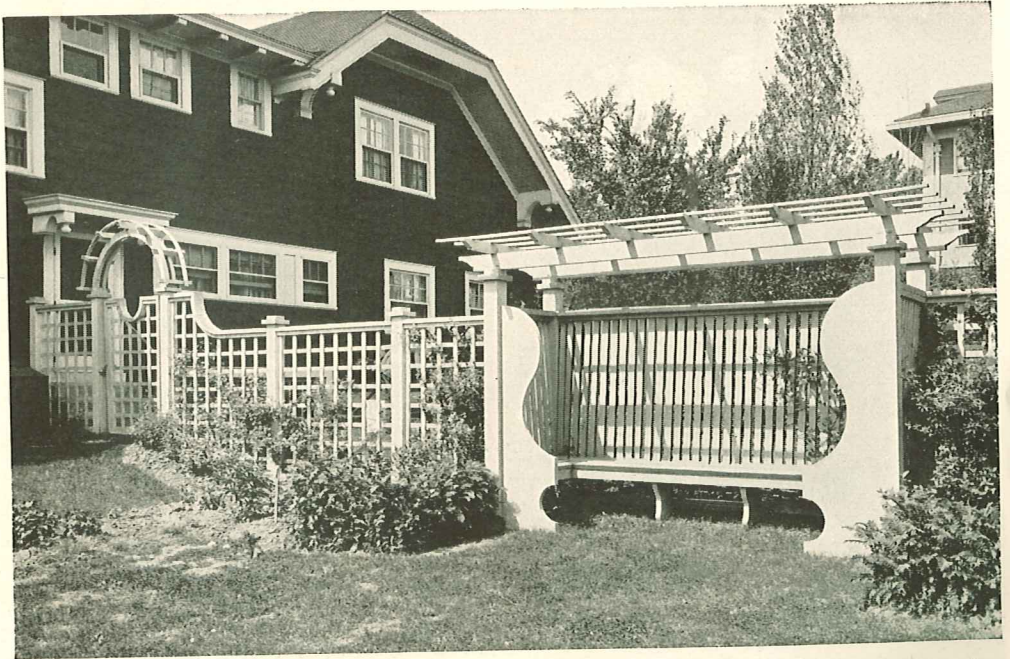
For the Stony Corner

THE illustration on the right suggests a way to improve a stony corner where there is little soil to support sod. The lattice work in the corner, and the bird bath and pool, with their background of stone and trees, make an unusually pleasing scene. The approximate dimensions of this piece are: width 7 feet; post height 6 feet; over all $10\frac{1}{2}$ feet; depth at center 30 inches. Wings $4\frac{1}{2}$ feet wide at base. The lattice work is of $\frac{3}{8} \times 2\frac{1}{4}$ inch strips, the horizontal pieces bent over the perpendicular in the center panel.



A Unique Combination

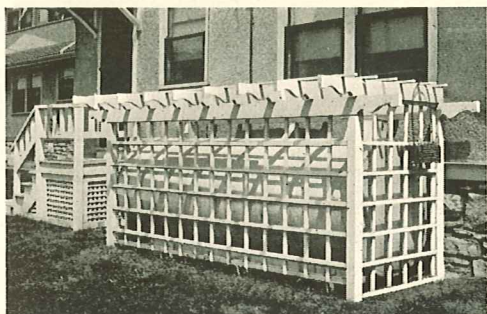
THE ornamental fence, unique garden seat and shrubbery in the lower illustration are used to maintain the formal appearance of the lawn as viewed from the street by concealing a corner of the lawn devoted to children's playground, clothes line and vegetable garden.



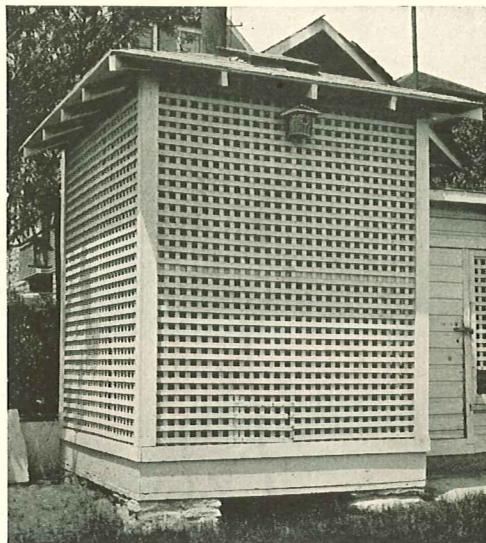
This handsome fence and lawn seat conceals a part of the lawn used for children's playground

Hide the Fuel Tank

AN uncovered oil tank can utterly ruin the appearance of a lawn. The older method of concealing an upright tank is shown on the right. Such latticed coverings effectively conceal tanks as soon as they are built. However, we believe the more open covering shown in



Open lattice employed to hide a horizontal tank

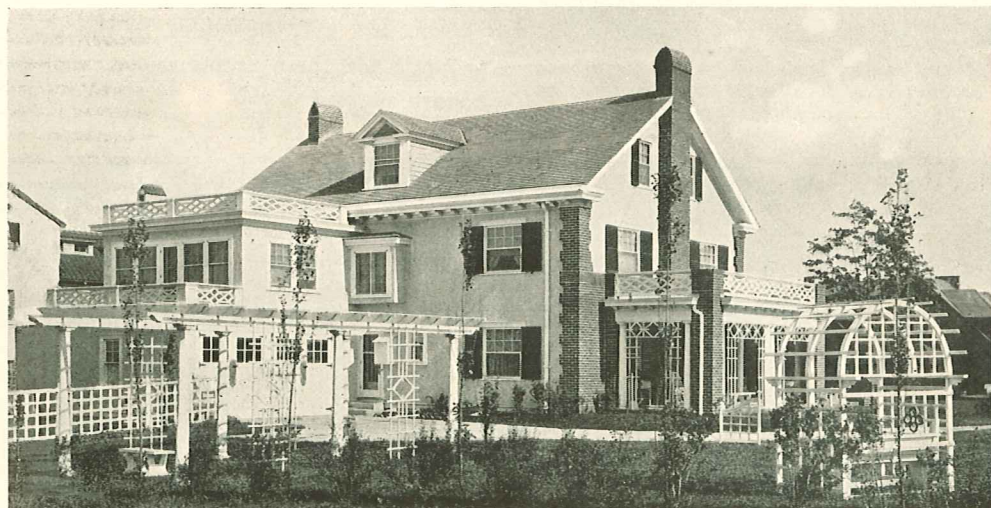


A common method of concealing a vertical tank

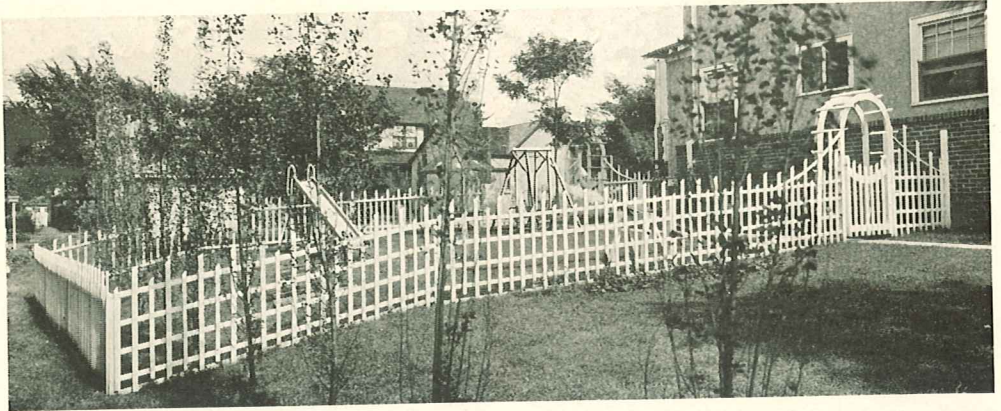
the illustration on the left is preferable for both horizontal and upright tanks. The open work with pergola roof is in itself highly ornamental and when vine covered its utility feature is not notice-

able. For the horizontal tank the corner posts are 4x4's. Pergola top cross pieces and supports 2x6's. 1x2 inch strips form the grill work with openings $8\frac{1}{4}$ inches square.

A Picture Which Pleases the Eye



This home owes much of its charm to the beautiful woodwork on porch and lawn



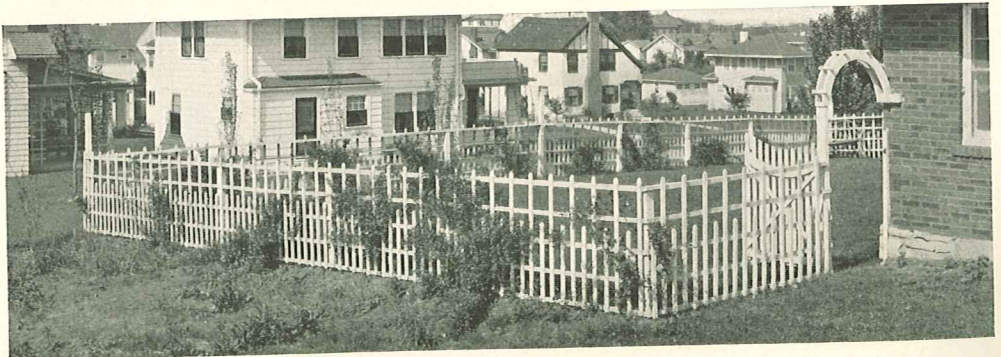
Enclosed Playgrounds

THE four fence illustrations on this and the following page suggest conservative patterns for enclosing the children's playgrounds. Where the grounds are exposed to public scrutiny, and privacy is wanted, the pattern shown in the upper illustration on the next page is recommended. The two illustrations on page 27 give views of corner lots and the lower illustration suggests a way of fencing sloping ground.

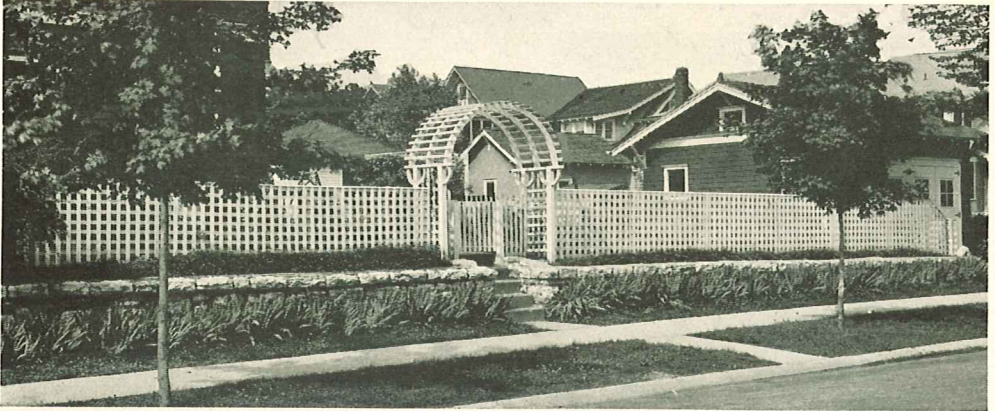
The garden or lawn seats shown on this and the following page will harmonize with any of the four fence patterns shown, and may be added to the playgrounds for their usefulness as well as beauty.



A conservative lawn seat for the playground or elsewhere, constructed to carry vines of climbing roses

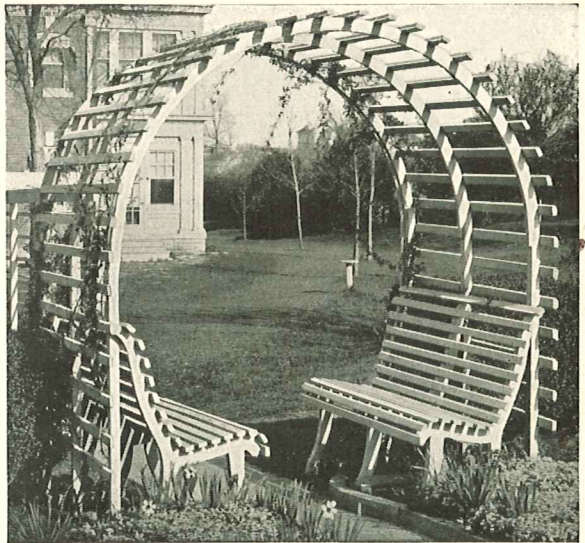


The enclosed rear lawn is a safe playground for small children. The woodwork over which roses climb is decorative

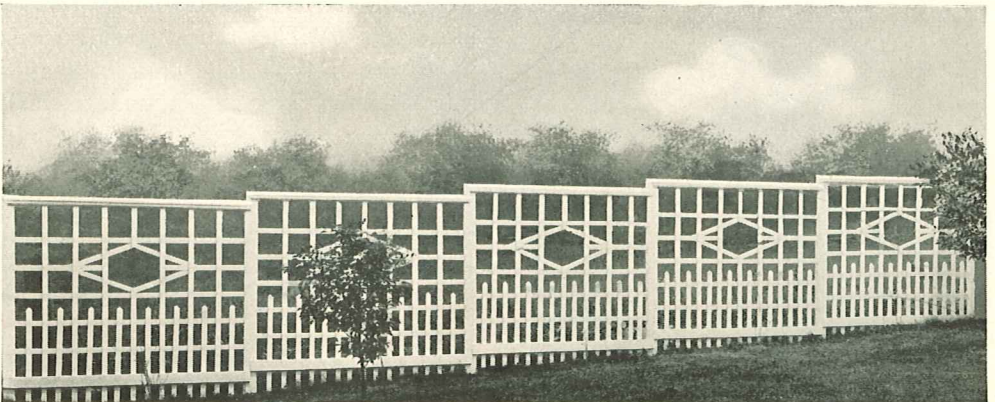


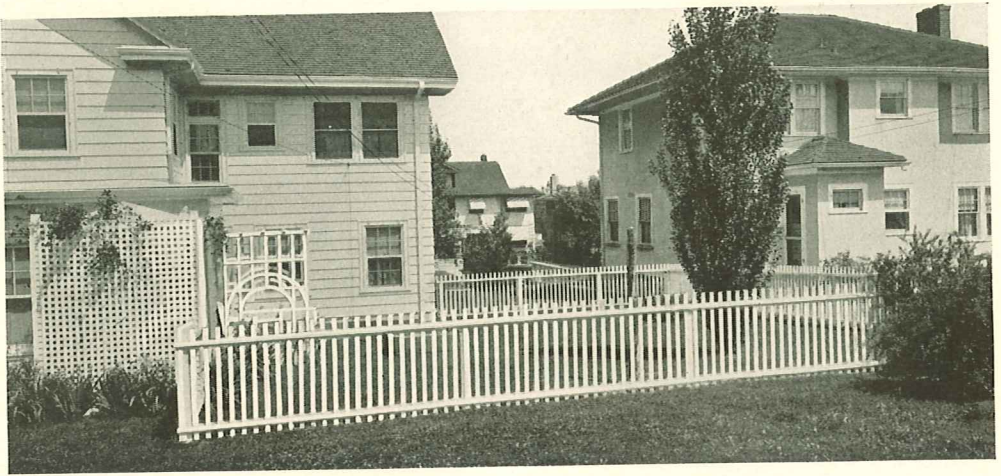
The upper illustration shows a playground enclosed with a close-latticed ornamental fence. Shrubbery may be planted along the fence line, thus assuring privacy as well as good appearance

This circular trellis arbor is 7 feet wide, 7 feet high and 3 feet deep. The posts and arch are formed of one inch lumber, batteded inside at joints. The trellis pieces are 1x2's dressed



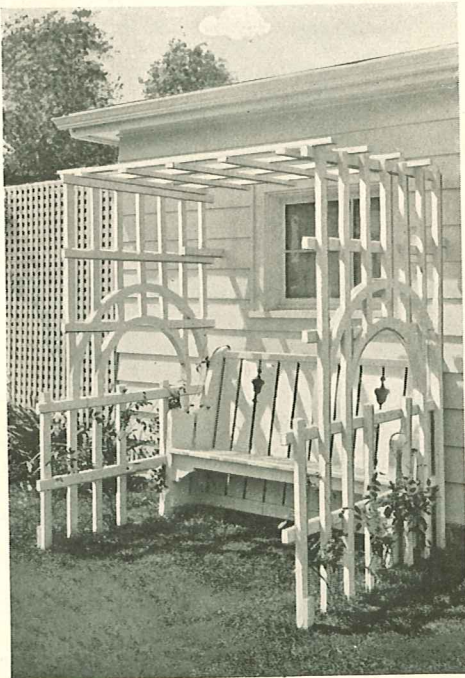
The lower illustration shows how an ornamental fence may be constructed to follow sloping ground. It is a very distinctive type of picket fence





The Outdoor Nursery

THE above scene is of a rear lawn enclosed to provide a safe outdoor nursery or playground. The fence is three feet, six inches high; pickets are one by two inch strips, dressed; and three feet, four inches long. Lateral timbers are "two by fours" and posts "four by fours." A lattice enclosed oil tank is seen at the extreme left.

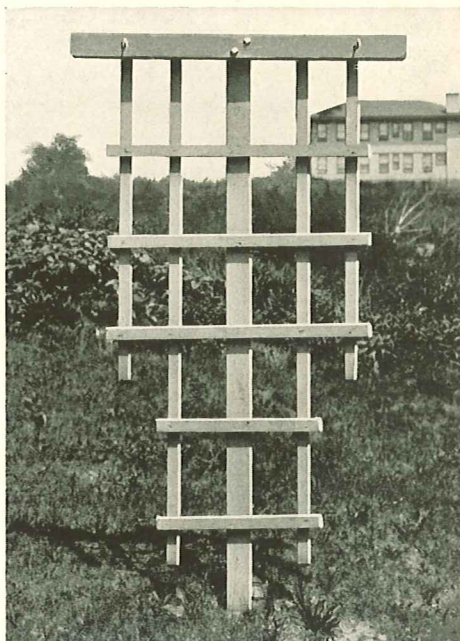


A Garden Seat

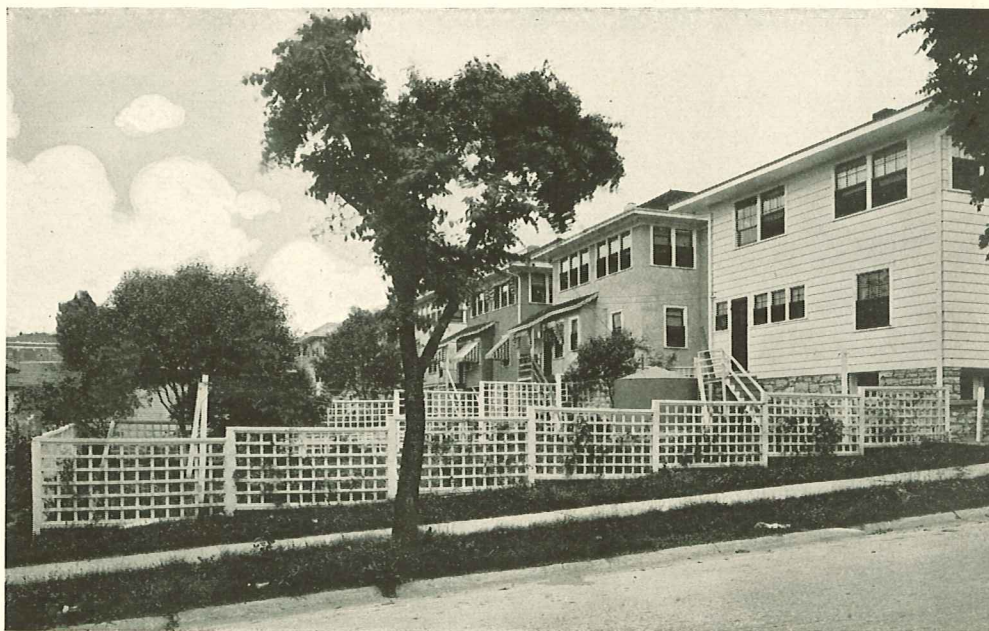
THE seat shown at the left is a part of the lawn ornamentation of the outdoor nursery shown above. It is seven feet high, six feet wide and five feet, six inches deep. The lattice spacing is six by fifteen inches. The crescent shaped side openings are sixteen and one-half inches high. Lattice strips are one and one-half inches by three inches, dressed. Seat depth is seventeen inches; seat height, eighteen inches; seat back, twenty-seven inches high.

Ornamental Clothes Pole

WHY disfigure the lawn with a crude unadorned clothes pole when an ornamental one may be had at small cost? A flowering vine may be planted at the base of the pole as shown, which, in another season, will cover it with verdure. It is six feet high above ground. The top cross piece is three and one-half inches square and forty-eight inches long. Lattice is of one inch by two inch strips, dressed. As many of these poles as needed may be placed in the yard without disfiguring the premises; in fact they will make attractive rose trellises whether or not they are to be used as clothes poles. They will accommodate a double line.



For A Sloping Lot



To secure privacy to the rear premises of a sloping lot, the fence shown above is suggested. It will be found to be satisfactory and of inexpensive design

Lattice Adorned Porches Add Charm

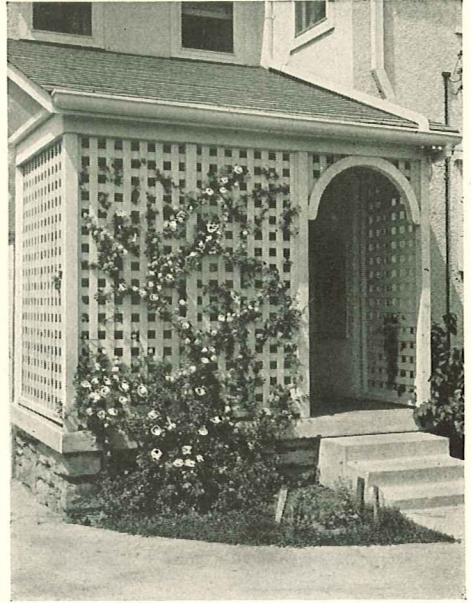
THE improvement wrought in porches by lace-like lattice work is little short of miraculous. All open porches afford a splendid opportunity for the exercise of the finishing touch in grilled woodwork. The views on this and the following page demonstrate the striking benefit of the use of grilled woodwork on side and rear porches. Imagine these porches without the lattice work



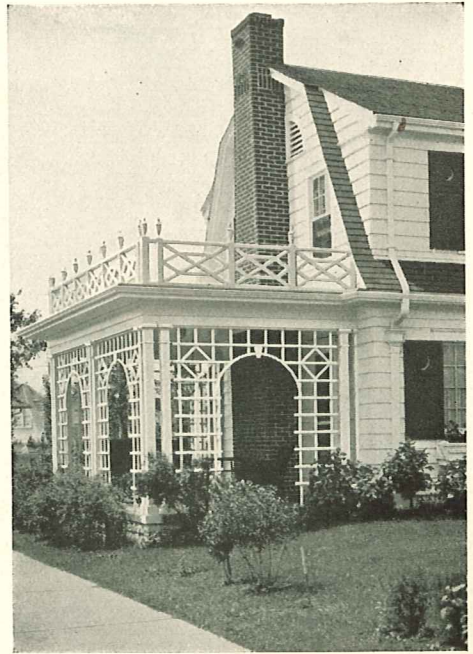
This simple rose arbor above the walk is very pleasing

and you may be able to better realize how much the added feature improves the general appearance of the homes.

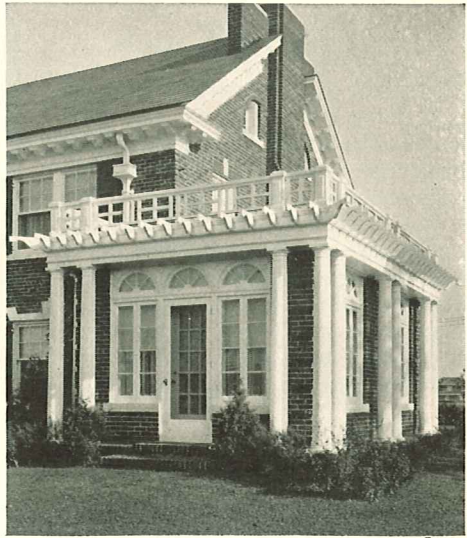
In considering the improvement of porches wrought by grill or lattice work, it is important to know that such improvement does not call for extravagance. Look closely at the illustrations and notice how little extra material was used in addition to the porch floors, columns and roof.



This combination of snowy white lattice and blooming roses is delightful. The lattice strips used here are 2½ inches wide, spaced to leave square openings of like dimensions

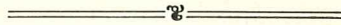


Grill work such as shown above, lends charm and dignity to the home

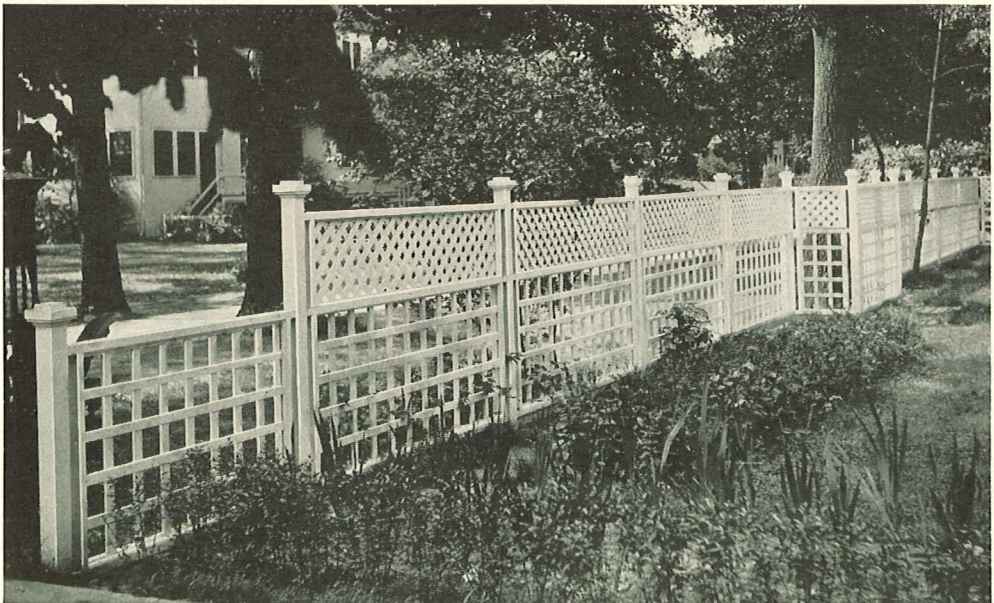


Suggestions for Side and Rear Entrances

ABOVE is suggested a treatment for side or rear entrance. For the cottage type of home the trellis is appropriate for the front entrance. At the right is shown an example of ornamenting in a dignified way, a sunroom or study.



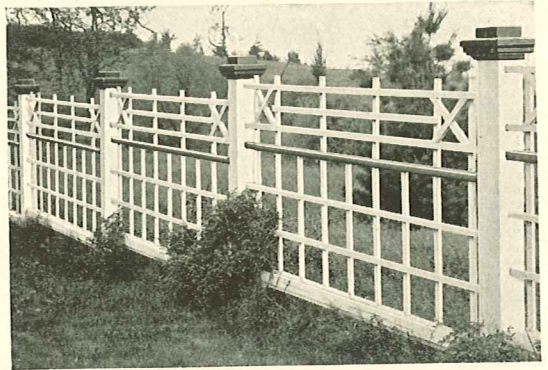
An Excellent Example of Grillwork Fencing



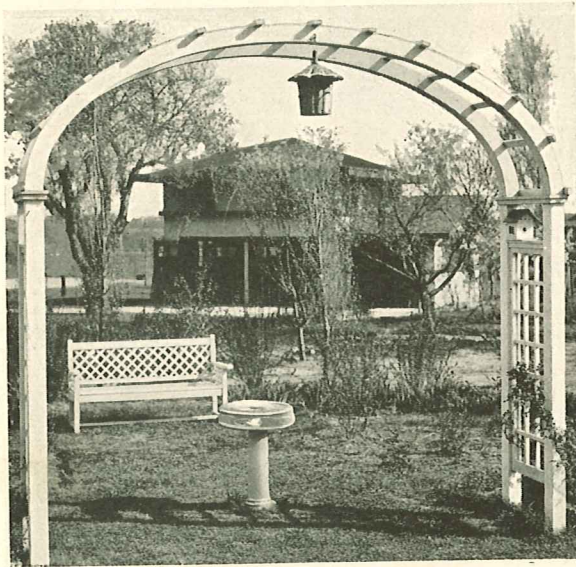
Fences like this add charm to any garden

That Extra Touch

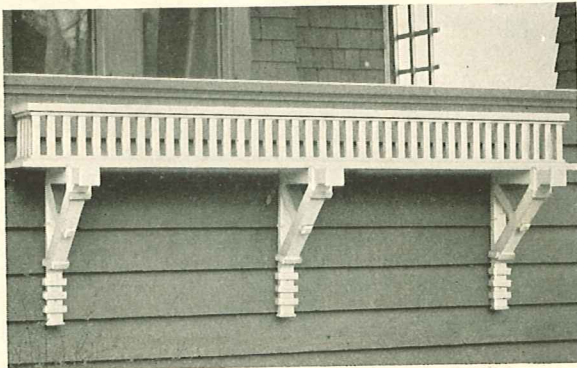
EVEN after the home grounds have been laid out and garden furniture may have been in use for several years, there are frequent occasions when an additional fence, pergola, trellis or arbor will add that something which the owner may have thought lacking for some time. Herewith are a few more practical suggestions as to the use to which wood may be put in making the lawn and garden more attractive.



A fence with an individual touch



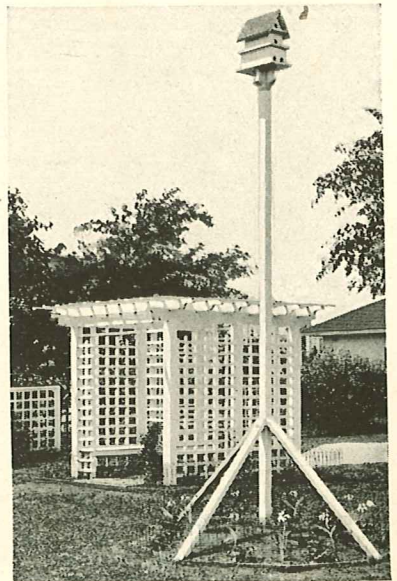
An arched trellis, easily constructed. Note the bird houses with the bird bath conveniently near. This piece is 8 feet wide, 8 feet high and 24 inches deep. Posts are 4x4's dressed—arch built two ply of one inch lumber. Side panel grill of 1 1/16 square strips



An attractive, easily built flower box

Use Good Lumber

THE quantity of lumber required for most lawn furniture is so small that any difference in price between good and cheap lumber will not be noticeable; yet, like in the building of homes, dependable lumber is the only kind which will assure full value for your investment. Usually, the pieces should be constructed of Douglas fir, yellow pine or white pine. Your lumberman will be glad to recommend the right lumber to use.



Don't overlook the birds

The Outdoor Home

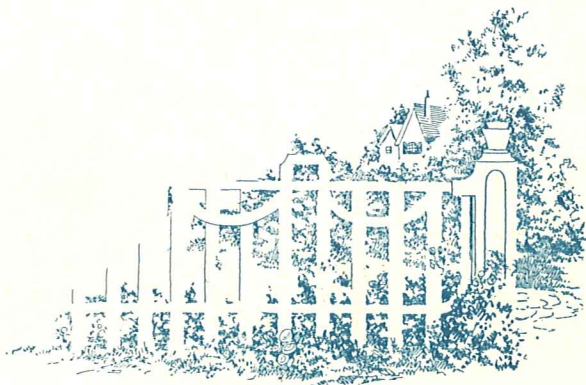
SO much thought has been given to the home from the standpoint of a dwelling and its interior that this space is given to emphasize the importance and value of the outdoor home—the lawn and garden.

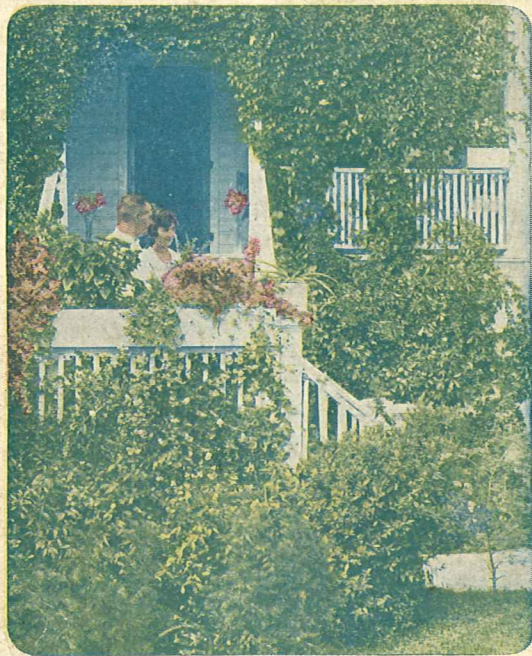
To have a home in every sense of the word, one must possess not only a substantial dwelling and a cozy, comfortable, well-arranged interior, but also a setting which harmonizes with the dwelling, which sets it off to its best advantage, and which affords its owner outdoor comfort and contentment.

The home grounds need not be large. Many a dwelling, built on a narrow lot, has a charming lawn and garden which afford much enjoyment to the owner month after month. Neither need the outdoor home be one of expensiveness; but it must be a place where you will find relaxation in addition to its good appearance.

Suppose you are searching for a home of your own. You want to have beautiful settings. Attractive lawns and gardens always add to the resale value of a home.

For several years Long-Bell Lumber Sales Corporation has been gathering the information which you will find in this book and has selected the best that was available to present to you. We hope that *The Book of Lawn Furniture* will be a means of enabling you to make your outdoor home more enjoyable.





The Book and of Lawn Furniture

