

Historic, Archive Document

Do not assume content reflects current scientific knowledge, policies, or practices.



Courtesy of Home Designer.

The Vallance Nursery

81 Glen Avenue

At 40th St. and Piedmont Ave. Key Route Station

Oakland, California

Phone Piedmont 30



Supplying C. C. MORSE & CO., 648 Market St., San Francisco,
with Trees and Plants

NEWEST AND BEST ROSES

The plants we offer are two year old, field grown, and will bloom first spring after planting.

ASPIRANT MARCEL ROUYER

Deep reddish apricot, tinted salmon; long pointed buds. **\$1.50 each.**

BETTY UPRICHARD

Outer face of petals carmine suffused with coppery orange; inner face soft salmon pink, faintly suffused orange. **\$1.75 each.**

COMPTESSA DE CASSAGNE

Rich coppery pink-shaded clear rose; color variable, sometimes coming clear yellow; flowers large and globular. **\$1.50 each.**

CLIMBING H. V. MACHIN

Vivid crimson scarlet. **\$1.00 each.**

CLIMBING MRS. ARON WARD

A vigorous and very free flowering climber; color Indian-yellow, shading lighter towards the edges. **\$1.00 each.**

CLIMBING LADY HILLINGTON

Similar in color to the bush variety, which is deep apricot yellow; beautiful in bud. **\$1.25 each.**

CHATILLON ROSE

A delightful "baby" rose, with silvery carmine semi-double flowers, borne in large clusters; very free in bloom and flowers last well after cut. **\$1.00 each.**

DAINTY

Rosy apricot, heavily tinted cherry pink; bud pointed and sweetly scented. **\$1.50 each.**

EARL HAIG

Dark crimson, flowers large and well formed; sweetly perfumed; growth strong and upright; continuous bloomer. **\$1.00 each.**

E. P. H. KINGMA

Deep apricot orange, very free in bloom; a very bright rose; **\$1.50 each.**

ETHEL SOMERSET

Shrimp pink, edges of petals deep coral pink; flower very large, perfect in shape, borne on very good stems. It is free in bloom and of delightful fragrance. **\$1.50 each.**

EVENING STAR

Golden yellow, suffused apricot orange; buds long and pointed, producing its attractive flowers for many months in the year; fragrance very sweet. A "sport" from Madam Herriot. **\$1.50 each.**

FRANCES GAUNT

Deep fawny apricot, toning to silvery flesh. Its shell-shaped petals form a beautiful globular cup-shaped bloom, borne on stiff stems; very good bloomer. **\$1.25 each.**

GEISHA

Pure deep orange yellow, gradually changing to golden yellow; buds long and pointed. Another "sport" from Madam Herriot. **\$1.50 each.**

GOLDEN EMBLEM

Color rich deep golden yellow, tinged with coppery orange; is a free and continuous bloomer and very sweetly scented; of free and branching habit, with lovely, glossy foliage. **\$1.50 each.**

HENRIETTA

Soft coral salmon, beautifully shaded at base, glowing orange; buds are long and pointed. **\$1.00 each.**

INDEPENDENCE DAY

Flame tints overlying a bright apricot color; blooms carried on good stems; foliage also very good. **\$1.50 each.**

JOHN DAVISON

Deep rich crimson, shaded velvety crimson. **\$1.50 each.**

LESLIE PIDGEON

Orange buff, heavily flushed and suffused with terra cotta; flowers produced in great profusion; good strong grower; a very fine rose. **\$2.50 each.**

LADY ANDERSON

Deep coral pink suffused flesh with slight yellow shadings; very large and full; sweetly "tea" scented. A fine rose. **\$1.50 each.**

LORD CHARLEMONT

Free growing perfectly shaped long pointed flowers of clear crimson deepening to carmine-crimson; a beautiful variety worthy of cultivating. **\$2.50 each.**

MISS WILLMOTT

Soft sulphur-cream, with faint blush at edge of petals; of good shape and sweetly scented. **\$1.00 each.**

MRS. E. C. VAN ROSSEM

Velvety crimson heavily veined dark maroon; flowers produced during many months in the year in great profusion. A most satisfactory variety and one that will be a "standby". **\$1.50 each.**

MRS. CHAS. LAMPLOUGH

Soft creamy yellow, a most pleasing shade. The flowers are large and borne on fine stems, very free flowering; sweetly scented; foliage ideal. **\$1.50 each.**

MRS. CURNOCK SAWDAY

Rich satiny pink, edges of petals shaded deep salmon pink; flowers are large and borne on good stiff stems, sweetly scented. **\$1.50 each.**

MRS. H. D. GREENE

Reddish bronze, opening to flame and copper; a fine combination of colors. **\$1.50 each.**

MRS. REDFORD

Bright apricot orange, lovely shadings; flowers are freely produced on stiff stems; fragrance is sweet. Price **\$1.50 each.**

PADRE

A most novel and attractive coloring, with fine long petals of coppery scarlet flushed with yellow at base; free flowering and good grower. **\$1.50 each.**

PRESIDENT WILSON

A lovely shade of pleasing pink; buds long and pointed; a free bloomer. Price **\$1.00 each.**

RED CROSS

Orange crimson-scarlet; flowers very profusely and for a long period. In this variety we have a shade of scarlet which does not fade. A fine acquisition. **\$1.00 each.**

SOUVENIR DE CLAUDIUS DENOYEL

Brilliant velvety red tinted vermilion; flowers of enormous size, petals large and massive; of strong vigorous growth, almost a climber. **\$1.50 each.**

SHOT SILK

The coloring of this rose is hard to describe; orange-cerise suffused old gold, petals of lovely texture; of medium size, but flowers are produced freely and for a long period. **\$2.50 each.**

VIOLONDELLISTE ALBERT FOURES

Orange yellow tinted chamois; very free and good. **\$1.50 each.**

ROSES OF GREAT MERIT

75c each, \$7.50 per dozen.

AUTUMN TINTS

Coppery red, shaded orange and salmon, of very great excellence.

BELLE OF PORTUGAL

A vigorous climber, flowers lovely silvery pink, of large size. Very desirable.

BILLARD ET BARRE

Clear canary yellow; buds and flowers large cupped shaped. This is an unique shade, and is of great merit.

CHARLES K. DOUGLAS

Intense flaming scarlet, flushed bright velvety crimson; a flower of great brilliance and charm; very free bloomer.

CHEERFUL

Pure orange-flame, with distinct orange-yellow base; lovely in every way.

CLIMBING GENERAL McARTHUR

A strong growing variety of the old favorite; dazzling crimson-scarlet.

CLIMBING HOOSIER BEAUTY

Rich velvety crimson, which does not fade; buds are long and pointed.

CLIMBING RICHMOND

Rich velvety scarlet, buds long and pointed; a very strong grower.

CLIMBING SUNBURST

Rich yellow, shaded with orange and copper; a strong vigorous grower.

CLIMBING PAUL'S SCARLET

Clear bright scarlet; very free blooming; of strong habit.

COLUMBIA

A very pleasing shade of pink; sweetly scented, and free flowering; habit of plant strong and vigorous.

CONSTANCE

Orange-yellow buds, sometimes streaked crimson; changing to golden yellow as the flowers open. Very beautiful.

CRIMSON QUEEN

A wonderfully glowing crimson, which does not fade; flowers produced very freely, and for a long period.

DUCHESS OF WELLINGTON

Intense saffron yellow; a very beautiful color; buds long and pointed; exceedingly free in bloom.

DUCHESS OF WESTMINSTER

Clear, rose-pink, very large and full, sweetly perfumed, highly commendable.

GEORGE DICKSON

The color is velvety black scarlet-crimson, with a brilliant scarlet reflexed tips, with heavy and uniquely pure crimson-maroon veining on the reverse.

GEORGEOUS

Deep orange yellow, heavily veined with reddish copper; color unique and very beautiful. Gold Medal Rose.

GRACE MOLYNEUX

A beautiful shade of creamy apricot; very charming.

HADLEY

Dark velvety crimson; very fragrant.

HOOSIER BEAUTY

Glowing crimson scarlet with darker shadings; texture like velvet; deliciously fragrant. The buds are long and pointed, borne on long stiff stems.

IONA HERDMAN

It is clear orange-flame, the flowers are carried on good long stems, and is beautiful in bud, and when full bloom it is a continuous bloomer; the growth of plant is also ideal; the foliage is bright glossy green.

IRISH ELEGANCE

Apricot shaded coppery bronze. Single.

IRISH FIREFLAME

Old gold; flushed crimson; buds long and pointed; foliage rich and glossy; plant strong grower. A very charming single rose.

ISOBEL

This lovely acquisition to the single roses will surely be welcomed by all rose lovers. It is an exquisite shade of pink flushed orange scarlet; center of flower pure rich yellow; the combination of colors cannot be adequately described, it must be seen to be fully appreciated; fragrance is charming.

JULIET

Outside of petals old gold, center rich, rosy red, changing to deep rose as the flowers expand.

JOSEPH HILL

Pink, shaded salmon, outside petals coppery pink; a most superb shade; flowers large and double. One of the best recent introductions.

K. OF K.

Semi-double with large petals, intense scarlet; free bloomer, sweetly scented.

LADY HILLINGDON

Blooms continuously, buds very long with a most pleasing shade of orange yellow. Particularly fine in the bud state.

LIEUTENANT CHAURE

Velvety crimson-red, large; a grand bloomer, and very fragrant.

LOS ANGELES

The originator (Fred S. Howard) describes Los Angeles as "a flame pink, toned with coral and shaded with translucent gold at the base of the petals."

LYON ROSE

One of the judges who awarded the gold medal to this rose says: "I have no hesitation in recommending it as the most wonderful color yet obtained among roses. This may be best compared to the intense flame color seen in a glowing coke furnace."

MADAME BUTTERFLY

Brilliant pink suffused apricot and gold; flowers carried on long stems. A very fine acquisition to our newer roses.

MADAME CHARLES LUTAUD

Large, full and globular flower, fine long bud of a nice ochre yellow, carmine tinted; carried on long flower stalks. The progeny of an unnamed variety crossed with Marquise de Sinety.

MADAME MELANIE SOUPERT

Salmon yellow, suffused carmine; buds long and pointed; when open the flowers resemble a semi-double paeony.

MADAME HERRIOT

"Daily Mail Rose"

Coral red, shaded yellow at base, passing to shrimp red; a very beautiful combination of colors.

MADAME SEGOND-WEBER

A highly satisfactory rose, ever-blooming and hardy. Flowers are very large, full and fragrant; a warm, deep pink—although a lighter shade of salmon-flesh in the bud form.

MARQUIS DE SINETY

Yellow flushed orange, buds pointed; open flowers cupped; fragrance rich and pronounced, a very beautiful sort.

MISS LOLITA ARMOUR

Color of this new rose is distinct from all others. The flowers are large and full, with petals of great substance and sweetly scented; as the flowers expand they develop to a deep coral red with a golden red suffusion; a vigorous grower and free bloomer.

MME. COLETTE MARTINET

A vigorous growing variety; long golden-yellow bud opening to a beautiful old-gold, shaded with orange-yellow; attractive bronzy-green foliage.

MRS. WEMYSS QUINN

Intense lemon-crome, suffused orange, which gives it a rare depth of color, which never fades out; flowers and buds ideal; long bloomer; habit of growth perfect.

MRS. AMBROSE RICCARDO

Varying in color from a deep honey-yellow with soft but glowing rosy suffusion to a soft saffron-yellow; of great size, the largest of its type. A magnificent, delightfully fragrant rose, and remarkably free-flowering.

MRS. BULLEN

Cochineal yellow, tinted rosy carmine; large, well formed flowers, freely and continuously produced. A most wonderful color.



General MacArthur

MRS. WALTER EASLEA

Glowing crimson-carmine, back of petals satiny crimson; blooms large, full; imbricated form and freely produced; deliciously perfumed.

MRS. H. STEVENS

A grand pure white; buds and flowers exquisite, which are produced for a long period in great profusion. Highly commended.

MRS. MONA HUNTING

Deep chamois yellow, opening to pure fawn. A most charming rose.

MARECHAL NIEL

Deep yellow, large globular form; a good pillar rose.

NATIONAL EMBLEM

Very dark crimson; rich velvety shadings; full moderate sized flowers; a very valuable bedding variety.

OLD GOLD

Coppery orange; tips of petals tinted red and apricot; buds pointed.

OPHELIA

Salmon flesh, shaded rose, center of flower showing pronounced coloring of chamois; buds long and pointed; very free in bloom.

PREMIER

Pure rose-pink, borne on stiff thornless stems; deliciously fragrant; very free in bloom.

QUEEN MARY

Creamy ground, pencilled and flushed carmine, with an underlying shade of yellow; a wonderful combination of colors; it is extremely free in bloom; of dwarfish habit, thus making it a fine sort for bedding purposes.

RED LETTER DAY

A strong vigorous grower and free bloomer; flowers semi-double, of most vivid crimson scarlet. Very attractive and good for cutting.

ROSES, FINE ASSORTMENT

65c each; \$6.50 per dozen.

Please state if we can substitute if sold out of any varieties ordered.

AMERICAN BEAUTY—Large, globular, deep pink, shaded carmine, delicious odor.

ARTHUR R. GOODWIN—Apricot flushed salmon, fading to shrimp pink; a very lovely sort.

BEAUTY OF GLAZENWOOD—A combination of copper, carmine and salmon-yellow; a strong, fast climber.

BELLE SIEBRECHT—Superb pink; buds are long and pointed.

BETTY—Coppery rose overlaid with ruddy gold; buds long and pointed.

BRIDE—An everblooming pure white; bulbs pointed and the ends of the petals slightly recurved.

BRIDESMAID—Pink; buds and flowers very double.

CAPTAIN HAYWARD—Very fine dark red; extremely free in bloom.

CAROLINE TESTOUT—Bright, clear, delicate pink.

CECILE BRUNER—A charming "Baby" variety; color salmon-pink, with deep salmon center.

CHATEAU de CLOS VOGUET—Velvety scarlet, shading to bright red; sweetly perfumed.

CHEROKEE—Pink.

CHEROKEE (Single)—Clear, white, single flowers.

CLIMBING BRIDESMAID—A rich shade of velvety pink; buds exquisite; stems long and stiff.

CLIMBING BELLE SIEBRECHT—A climbing sort of the old favorite bush variety; buds long and pointed; beautiful shade of pink.

CLIMBING CAROLINE TESTOUT—An exact counterpart in color and shape of that old favorite, Caroline Testout.

CLIMBING CECILE BRUNER—Same as that of the bush form in all respects.

CLIMBING LA FRANCE—Deep pink.

CLIMBING LADY ASHTON—Glistening pink; buds and full blown flower excellent.

CLIMBING LAMARQUE—Pure white; strong and free bloomer.

CLIMBING PINK COCHET.

CLIMBING REVE D'OR—Deep yellow; foliage ideal; strong and vigorous.

CLIMBING VICTORIA—Buds long and pointed; pure white.

CLIMBING W. A. RICHARDSON—Deep orange-yellow.

CLIMBING WHITE COCHET—The "Cochets" are famous for their wonderful wealth of bloom; we are pleased to have a climbing variety to offer.

EXCELSA—A fine red cluster sort; excellent for arches or pillars.

F. K. DRUSCHKI (White American Beauty)—Pure snow-white; very long buds; shell-shaped petals.

GENERAL McARTHUR—Dazzling crimson scarlet; buds of ideal shape and exquisite perfume; foliage beautiful; a strong, thrifty grower.

GLOIRE DE CHEDANE GUINOISSEAU—Bright vermillion red; shaded velvety crimson.

GLOIRE DE DIJON—A combination of rose, salmon and yellow; flowers very large and full; a good climber.

GOLD OF OPHIR—Reddish copper, tinted fawn and salmon; blooms very freely and for a long period; a fine climber.

HIAWATHA—Brilliant scarlet, single flowering in large clusters; climber.

HONORABLE INA BINGHAM—A matchless pink of most charming tone, beautifully veined; the flowers are semi-double; petals very large.

HUGH DICKSON—A brilliant velvety crimson shaded scarlet; bud long and pointed.

K. A. VICTORIA—Full flowers; magnificent in bud; stems long; pure white.

KATE MOULTON—It is a beautiful clear pink; the edges (which are prettily recurved) are tipped white.

KING CHARLES—Satin rose, reverse of petals silvery pink; very large and fine.

THE VALLANCE NURSERY, OAKLAND, CALIF.

LA FRANCE—Delicate silvery rose, shaded with cerise pink, often silvery pink, with peach shading.

LADY ASHTON—Beautiful shade of glistening pink; flowers ideal and produced for a long period.

LADY BATTERSEA (Red Niphotos)—Beautiful cherry-crimson; buds long and pointed.

LADY GREENALL—Intense saffron orange, heavily zoned and overspread on deep creamy-white.

LADY PIRRIE—Deep coppery-reddish salmon, inside of petals apricot-yellow, flushed fawn and copper.

MADAME A. CHATENAY—Rosy carmine, tinted salmon; an exquisite sort.

MELODY—Buds are of beautiful formation, long pointed; color, pure deep canary yellow.

MOSS ROSE—Red.

MOSS ROSE—White.

MRS. A. R. WADDELL—Color reddish salmon, outer petals flesh; buds and petals long; flowers of medium size and semi-double. A fine flowering sort, of good upright growth.

MRS. AARON WARD—Distinct shade of apricot-yellow shading lighter toward the edges. Very free flowering.

MRS. CHARLES RUSSELL—Brilliant rosy carmine with scarlet center; flowers beautifully formed and borne on strong stems.

MRS. MYLES KENNEDY—Delicate silvery white shaded buff, while the center is pink.

MRS. W. CHRISTIE MILLER—Rosy carmine; outer petals pearly blush; buds and flowers very large.

MAMAN COCHET PINK—Deep pink; buds long and pointed, of great substance; a continuous bloomer.

MAMAN COCHET WHITE—Buds faintly suffused with pink on outside petals; foliage glossy.

MAMAN COCHET YELLOW—Like the other "Cochets," very large and continuously in blossom.

PAPA GONTIER—Dark cherry-red; buds long and pointed; very free grower and good bloomer.

PAUL NEYRON—Clear pink; one of the largest roses grown.

PERLE D'OR—Salmon pink shaded rose; flowers in clusters; a very pretty "Baby" rose.

PERLE DES JARDINS—Fine straw yellow; sometimes deep canary yellow; very large and full.

PERSIAN YELLOW—Very deep orange-yellow.

PHARISAER—Rosy white suffused salmon; buds long and pointed; a beautiful sort.

RADIANCE—Brilliant rosy carmine; large and full flowers of beautiful shape.

RAINBOW—Deep coral pink, beautifully striped and mottled with intense glowing crimson.

RAYON D'OR—Flowers large of globular form; color golden yellow tinged coppery orange; foliage beautiful; a grand sort.

RICHMOND—Vivid scarlet; free bloomer; fine.

SILVER MOON—A strong rapid grower; foliage dark and glossy; flowers in clusters in spring and early summer; creamy white; semi-double.

SUNBURST—A magnificent yellow, shaded orange copper; long buds on strong stems; flowers are large. A vigorous and healthy grower.

THOUSAND FLOWERS—This cluster rose is a most charming variety, its delicately colored pink flowers are most attractive; makes a grand porch or pillar plant.

ULRICH BRUNER—Bright, clear red; a profuse bloomer and hardy grower.

STANDARD ROSES

We can supply roses in standard or tree form; that is, they are budded on single stems, four to four and one-half feet from the ground. \$2.00 each.

HARDY EVERGREEN TREES

Potted plants are taken from pots when shipped.

"Balled" means the plants are taken from the ground with a ball of soil around the roots.

ACACIA

For quick growth and shade-affording purposes we know of no better tree. We offer the following varieties, all pot-grown.

ARMATA—1½ to 2 feet, 50c each; \$4.00 per 10.

BAILEYANA—Beautiful silvery foliage, producing long grape-like clusters of sweetly scented flowers. 24 to 30 inches, \$1.00 each.

CULTRIFORMIS. Foliage of this variety is triangular in form; color beautiful sea-green; profuse in bloom; of medium sized spreading growth. 3 to 3½ feet, 75c each; \$6.00 per 10.

CYANOPHYLLA (Blue-Leaved Wattle). Flowers yellow, leaves very large; glaucous green. 3 to 4 feet, 60c each; \$5.00 per 10.

DEALBATA (Mollissima). One of the finest of the feathery foliaged, yellow flowering sorts. 12 to 15 inches, 30c each; \$2.50 per 10; 18 to 24 inches, 50c each; 4 to 5 feet, \$1.00 each.

LATIFOLIA. This variety is much used for windbreaks; it is excellent for sidewalk planting, as it can be trimmed to any desired shape. 3 to 4 feet, 60c each; \$5.00 per 10;

MELANOXYLON (Blackwood Tree). A splendid sort for sidewalk planting; of very quick growth. 3½ feet, 40c each; 4 to 4½, 60c each; 5 to 6 feet, \$1.00 each.

PYCNANTHA. Medium in growth; leaves very large; flowers beautiful yellow. 4 to 5 feet, \$1.25 each.

RETINOIDES FLORABUNDA. Pendulous habit; sea-green foliage; very floriferous and sweet perfumed. 3 to 4 feet, 60c each; \$5.00 per 10; 5 to 6 feet, \$1.00 each.

VERTICILATA. 2 to 3 feet, 75c each.

CALIFORNIA BIG TREE (Sequoia Gigantea). 1½ feet, \$1.50 each.

CALIFORNIA PRIVET. See Ligustrum Ovalifolium.

CALIFORNIA REDWOOD. See Redwood.

CAMPHOR TREE. A fast-growing, very symmetrical, ornamental tree, thriving in the very poorest soil. Well adapted for lawn purposes. Pot grown, 1½ feet, \$1.00 each.

CALIFORNIA WILD CHERRY. Beautiful glossy foliage; berries black. 5-inch pots, \$1.00 each.

CARBON TREE (St. John's Bread). 4-inch pots, 40c each.

CASUARINA STRICTA. 3-inch pots, 20c each; \$1.50 per 10. Balled, 3 to 4 feet, \$1.50 each.

CEDRUS DEODARA, Indian or Himalayan Cedar. One of the handsomest of coniferous trees. From \$5.00 to \$6.00 each.

CYPRESS

ARIZONA. Foliage sea-green, pyramidal in shape; beautiful. Balled, 2½ to 3 feet, \$2.50 each; 3 to 4 feet, \$3.50 each.

LAWSON SILVER. It is of rather upright growth; the branches droop gracefully, and the foliage is of a lovely sea-green color. 18 inches, \$1.50 each.

MONTEREY. A native of California, and one of the most desirable of evergreens; stands pruning well; very extensively planted for hedges. Transplanted in flats, \$3.50 per flat (of about 100). Pot grown, 10 to 15 inches, 25c each; \$2.00 per 10; 20 to 24 inches, 40c each; \$3.00 per 10. Balled, 15 to 18 inches, 75c each; \$6.50 per 10; 2 to 2½ feet, \$1.00 each; \$9.00 per 10; 5 to 6 feet, \$2.00 each.

ITALIAN. Of upright, pyramidal growth; very much used in landscaping, being particularly adapted for such work. Balled, 18 to 24 inches, \$1.25 each; 2 to 2½ feet, \$2.00 each; 3 to 3½ feet, \$3.00 each; 4 to 4½ feet, \$4.00 each.

EDWARDSIA. Foliage delicate, flowers yellow. 5-inch pots, 3 to 4 feet, 75c each.

HARDY EVERGREEN TREES—Continued.

EUCALYPTUS

- CORYNOCALX SUGAR GUM.** Pot grown, 15 to 18 inches, 25c each; \$2.00 per 10.
- FICIFOLIA, Scarlet-flowering Gum.** A beautiful sort; bearing lovely scarlet flowers, thick leathery leaves; hardy only in warmer sections. 10 to 12 inches, 50c each; 2½ to 3 feet, \$1.25 each.
- GLOBULUS, Tasmanian Blue Gum.** Transplanted in flats, \$3.50 per 100; 2 to 2½ feet, 30c each; \$2.50 per 10; 3 to 3½ feet, 40c each; \$3.50 per 10; 4 to 5 feet, 60c each; \$5.00 per 10.
- POLYANTHEMA.** Pot grown, 15 to 18 inches, 25c each; \$2.00 per 10.
- ROSTRATA, Red Gum.** In flats, \$3.50 per 100; 4-inch pots, 30c each; \$2.50 per 10.
- GREVILLEA ROBUSTA, Australian Silk Oak.** A most beautiful Australian tree; leathery foliage; orange-yellow blossoms. 4-inch pots, 40c each; \$3.50 per 10.
- GREVILLEA THELMAIANA.** Flowers pink; pretty shrub. \$1.00 each.
- JUNIPER BERMUDA.** Upright habit; foliage bright green. Balled, 1 foot, \$1.00 each.
- JUNIPER CREEPING.** Dwarf spreading habit. \$1.50 and \$2.50 each.
- JUNIPER, Irish.** Of upright pyramidal growth; glaucous foliage. 2 feet, \$1.50.
- LAUREL, PORTUGAL.** A handsome shrub; foliage dark-green; long paniced pure white flowers. Balled, 15 to 18 inches, \$1.00 each; \$9.00 per 10; very bushy, \$3.00 each.
- LIGISTRUM.** See Privet.

- LOQUAT.** 4-inch pots, 40c each; \$3.50 per 10. Balled, \$1.00 and \$1.50.
- PEPPER TREE.** 10 to 12 inches, 25c each; \$2.00 per 10; 15 inches, 40c each; \$3.50 per 10; 3 to 4 feet, \$1.00 each.
- PINE, MONTEREY.** Balled, 15 to 18 inches, 75c each; \$6.50 per 10; 2 to 2½ feet, \$1.00 each; \$9.00 per 10.
- PITTOSPORUM, CRASSIFOLIA.** 5-inch pots, 75c each; \$6.50 per 10; larger, \$1.00 each.
- PITTOSPORUM EUGENOIDES.** A large, upright-growing shrub, with glossy, yellowish green leaves; a very effective shrub and excellent for hedges. Pot grown, 2 to 2½ feet, 75c each; \$6.00 per 10.
- PITTOSPORUM, NIGRICANS.** A very handsome, upright-growing shrub, with silvery light green leaves and black stems. 3-inch pots, 35c each; \$2.50 per 10; 3 to 3½ feet, \$1.50 each; 4 to 4½ feet, \$2.50 each.
- PITTOSPORUM, TOBIRA.** White fragrant flowers; leaves very glossy. 4-inch pots, 40c each. Balled, 1½ to 2 feet, \$1.50.
- PITTOSPORUM, UNDALATUM.** Flowers white, sweetly scented. 5-inch pots, 60c each.
- PRIVET ELEGANTISSIMA AUREA.** A variety with beautiful golden foliage. Balled, 60c, 80c, \$1.00 each, according to size.
- PRIVET JAPONICUM, Japanese Privet.** Leaves glossy, leathery, dark green. A large-growing shrub (or small tree). Good hedges are obtained from this variety. In flats, \$8.00 per 100; 4-inch pots, 40c each; \$3.50 per 10.
- PRIVET OVALIOLIUM (California Privet).** A valuable hedge plant. Naked roots, 2 feet, 20c each; \$1.75 per 10; \$12.50 per 100.
- REDWOOD, CALIFORNIA.** 6-inch pots, \$1.00 each. Balled, \$1.50 and \$2.00 each.

HARDY EVERGREEN AND DECIDUOUS SHRUBS

Those Plants with a Star before the names are deciduous.

- ABELIA GRANDIFLORA.** A very showy evergreen shrub, producing its white flowers in great profusion for a long period. 6-inch pots, \$1.00 each.
- ARBOR VITAE, PYRAMID.** Balled, 2 feet, \$2.00; 2½ feet, \$2.50 each.
- ARBUTUS UNEDO, "Strawberry Tree."** 1½ to 2 feet, \$1.00 each; smaller, 35c each.
- AUCUBA JAPONICA.** "Gold-dust tree." Very fine for shady places. 6-inch pots, \$1.25 each.
- AUCUBA VIRDIS.** Dark green foliage; produces very showy red berries. 5-inch pots, 60c each.
- AZARA MICROPHYLLA.** Foliage "fern-like"; flowers yellow. 50c and 75c each.
- BERBERIS STENOPHYLLA.** Extremely handsome and showy. 6-inch pots, 1½ to 2 feet, \$1.50 each.
- BERBERIS DARWINII.** A very handsome evergreen shrub, with small glossy foliage; flowers in clusters of a deep yellow. \$1.00 and \$1.50 each.
- BOX, DWARF, Suffruticosa.** A fine small bush, with glossy, roundish leaves. The variety so extensively used for edging. Strong, well rooted. \$6.00 per 100; extra select, \$8.00 per 100.
- BOX, JAPANESE.** Good for trimming. 12 to 18 inches, \$1.00 each.
- BROOM, GORSE.** Splendid for dry or exposed places; flowers yellow; long bloomer. 50c and 75c each.
- BROOM, SCOTCH.** 18 to 24 inches, 80c each.
- BROOM, SPANISH.** 12 to 15 inches, 40c each; \$3.50 per 10; 2 to 2½ feet, 80c each.
- BROOM, WHITE.** 4-inch pots, 35c each.
- CASSIA TOMENTOSA.** 5-inch pots, 2½ feet, 50c each.
- CHOISYA TERNATA.** "Mexican Orange." A medium-sized growing shrub with glossy foliage; flowers pure white; delightfully fragrant. Balled, 1½ feet, \$1.50 each.
- COPROSMA BAUERIANA.** Foliage of this lovely shrub as though varnished, succeeds well in windy, exposed situations. 5-inch pots, 80c each; balled, \$1.00 and \$1.25 each, according to size.
- COTONEASTER ANGUSTIFOLIA.** A fast-growing sort of upright and spreading habit; berries very freely; orange colored. 4-inch pots, 40c each; 5-inch pots, 65c and 80c each. Balled, \$1.00, \$1.50 and \$2.50 each.

- COTONEASTER HORIZONTALIS.** A beautiful variety, of low-spreading growth; berries very profuse. Balled, strong, \$1.25 and \$3.00 each.
- COTONEASTER NEPAULENSIS.** This shrub is much esteemed; of fairly rapid, upright growth; foliage medium; berries bright red; very pleasing. 2½ feet, \$1.50 each.
- COTONEASTER MICROPHYLLA.** A small-leaved variety of low, spreading habit; much used in making up shrubbery; berries red. Pot grown, 75c to \$1.00 each. Balled, \$2.00 and \$2.50 each.
- COTONEASTER FRANCHETTI.** Orange-colored berries. Balled, 2 to 2½ feet, \$1.50 each.
- COTONEASTER PANOSA.** Upright growth; branches long and slender; foliage green on upper side, silvery under side; rapid grower; berries borne in great profusion. Vermillion red. 4-inch pots, 40c each; 5-inch pots, 80c each. Balled, \$2.00, \$2.50 and \$3.00, according to size.
- COTONEASTER YUNANANSIS.** Of spreading habit; orange berries. 4-inch pots, 40c each; \$3.50 per 10; 24 to 30 inches, \$1.25 each.
- CRATAEGUS CRENULATA.** An evergreen species of the Hawthorn family. Is of dwarfish habit, with glossy foliage, and has berries of a bright scarlet color about the size of a pea. 5-inch pots, 80c each. Balled, 1½ feet, \$1.00; 2 to 2½ feet, \$2.00.
- CRATAEGUS LELANDII (Burning Bush).** Berries orange colored. Pot grown or balled, \$1.00 and \$1.50 each.
- N. B.—The Cotoneasters and Crataegus all produce beautifully colored berries in fall and winter months. All very hardy and of easy growth.
- DIOSMA, ALBA (Breath of Heaven).** This shrub never attains large proportions. It produces small, white star-shaped flowers in great numbers. The foliage, when bruised, emits a sweet fragrance. 5-inch pots, 80c each.
- *DEUTZIA GRACILIS.** Flowers white, very beautiful shrub. 1½ to 2 feet, 75c each.
- ERICA, MEDITERRANEAN.** This variety is most desirable; it produces its small wax-like flowers in wonderful profusion. 5-inch pots, 50c each. Balled, \$1.00 each.
- ERICA MELANTHERA.** Splendid winter blooming variety; flowers rose colored. \$1.00, \$1.25 and \$1.50 each.
- ERICA PERSOLUTA ALBA.** Flowers white. 5-inch pots, 80c and \$1.00 each.

HARDY EVERGREEN AND DECIDUOUS SHRUBS—Continued.

ESCALLONIA, RED. 75c and \$1.00 each.

ESCALLONIA, PINK. Hardy, quick-growing evergreen shrub; blooms continuously. 5-inch pots, \$1.00 each.

ESCALLONIA, WHITE. 5-inch pots, 15 to 18 inches, 80c each. Balled, 2 to 2½ feet, \$2.00 each.

EUGENIA MYRTIFOLIA. Blooms profusely; flowers creamy white; berries purple; foliage ruddy in new growth. 5-inch pots, 75c, \$1.00 and \$1.25 each.

EUONYMUS AUREA. Beautiful golden foliage. Balled 15 to 18 inches, \$1.00 each; \$9.00 per 10.

EUONYMUS DUC d'ANJOU. Foliage prettily marked, golden yellow in center of leaf. Balled, 18 to 24 inches, \$1.00 each; \$9.00 per 10.

EUONYMUS, JAPONICA. Dwarf habit; fine for hedges or as single specimens. Balled, 15 to 18 inches, 80c each; \$7.00 per 10.

EUONYMUS, SILVER EDGED. 15 to 18 inches, \$1.00 each; \$9.00 per 10.

EUONYMUS, SILVER. Balled, 1½ to 2 feet, \$1.50 each.

GENISTA RACEMOSUS. This variety produces very lovely yellow blossoms in great profusion; foliage lace-like; of dwarf habit. 5-inch pots, 75c and \$1.00 each.

GENISTA CANARIENSIS. Flowers yellow, of rapid growth. 4-inch pots, 3 feet, 60c each; 4 feet, 75c each.

HAKEA SALIGNA. Medium-sized shrub; long slender foliage, with small clusters white flowers. 5-inch pots, 2 to 2½ feet, 75c each.

HAKEA SUAVEOLENS. A compact tall growing shrub; leaves sharply pointed; flowers white; 2½ feet, \$1.25 each.

HEATHERS. See Erica.

HYDRANGEA HORTENSIS. This plant is a most satisfactory one, blooming as it does for such a long period; they succeed admirably when planted in a shady place in the garden. 35c, 60c, 75c each, according to size.

HYPERICUM FLORABUNDA. A taller growing variety; flowers yellow, smaller than those of the two following sorts; very floriferous. 5-inch pots, 2½ feet, 75c each.

HYPERICUM MOSERIANUM. Of more shrubby growth than the preceding; flowers single yellow. 70c each.

HYPERICUM CALYGINUM. Of low spreading habit, producing large single, deep yellow flowers in great profusion and for a long period; fine for covering banks or planting below trees. 30c each; \$2.50 per 10.

***KERRIA JAPONICA.** Bears ball-shaped double yellow flowers in great profusion during a long period. 2 to 2½ feet, 75c each.

LAURUSTINUS. A well-known winter flowering shrub of great beauty, producing an abundance of white flowers; well adapted for hedges. 5-inch pots, 60c each; \$5.00 per 10. Balled, \$1.00, \$1.50 and \$2.00 each.

***LEMON VERBENA.** The fragrance from the foliage of this old favorite is delightfully refreshing. 5-inch pots, 75c each.

LEPTOSPERNUM LAEVIGATUM. An evergreen shrub much used in Golden Gate Park, where it succeeds to perfection. Especially adapted for windy places. 5-inch pots, 3 to 3½ feet, 75c each; \$6.50 per 10. Balled, 2 to 2½ feet, \$1.50 each.

LEPTOSPERNUM NICHOLSII. Of smaller habit than preceding; foliage feathery; flowers lovely pastel shades. Pot grown, \$1.00 each.

***LILAC, PURPLE.** White, 2 to 3 feet, \$1.00 each. **LILAC BUDDED SORTS,** \$1.25 each.

LONICERA NITIDA. A handsome evergreen plant of very compact growth; leaves small, closely set on branches, glistening green in summer, bronzy during winter. 4-inch pots, 35c each; \$3.00 per 10. 5-inch pots, 60c each. Balled, 24 to 30 inches, \$1.25 each.

***MOCK ORANGE.** 3 to 4 feet, 80c each.

MYRTLE, ENGLISH. Single white. Balled, 15 to 18 inches, \$1.00 each.

OLEANDER, SINGLE WHITE. 5-inch pots, 50c each.

OLEANDER, SINGLE SALMON. 1½ feet, \$1.25 each.

PIMELEA DECUSATA. Flowers beautiful rosy pink, borne very profusely at end of stems; a charming small growing shrub. Pot grown, 80c each.

POLYGALA DALMATIANA. A profuse flowering shrub, with purple pea-blossom-shaped flowers, and pretty light green foliage. 5-inch pots, 60c each.

***POMEGRANATE, DOUBLE SCARLET.** 3 to 4 feet, 80c each.

***QUINCE (Japanese Scarlet-Flowering).** 1½ to 2 feet, \$1.00 each.

RAPHIOLEPIS OVATA. A low-spreading shrub, dark green leaves; good for landscaping. 4-inch pots, 40c each. Balled, 12 to 15 inches, \$1.00 each.

***SNOWBALL.** This well-known shrub is known to nearly everyone; white flowers in greatest profusion in May and June. 2 to 3 feet, \$1.00 each.

***SPIRAEA PRUNIFOLIA.** "Bridal Wreath." 2 to 3 feet, 75c each.

***SPIRAEA A. WATERER.** Crimson flowers. 1 to 1½ feet, 60c each.

TOJON BERRY (California Christmas Berry). 25c, 75c and \$1.00 each.

VERONICA CUPRESSIODES. Balled, bushy, 75c, \$1.00 and \$1.50 each.

VERONICA TRAVERSII. Of dwarf bushy habit. Balled, \$1.00 each.

VERONICA DECUSATA. Of dwarf habit; leaves closely set together; flowers large violet blue. 6-inch pots, 15 to 18 inches, 75c each; \$6.50 per 10. Balled, 60c, 80c and \$1.00 each.

VERONICA IMPERIALIS. The finest of the species. Flowers amaranth. 5-inch pots, 15 inches, 75c each; \$6.50 per 10.

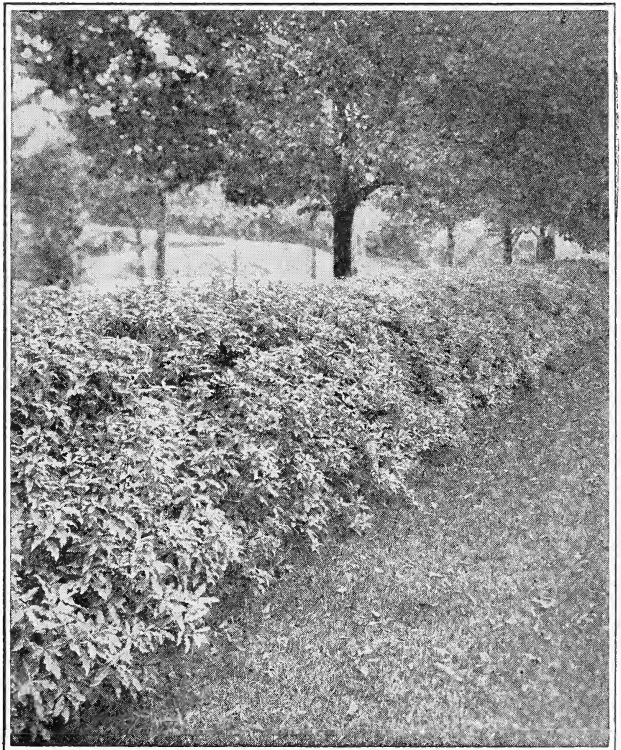
VERONICA, LIGHT BLUE. 5-inch pots, 15 to 18 inches, 75c each.

VERONICA BUXIFOLIA. Balled, bushy, \$1.00, \$1.25 and \$1.50 each.

VERONICA GLAUCOPHYLLA. Glaucous foliage; of spreading habit. \$1.00 each.

VERONICA HULKIANA. Pink flowers. 4-inch pots, 35c each; \$3.00 per 10.

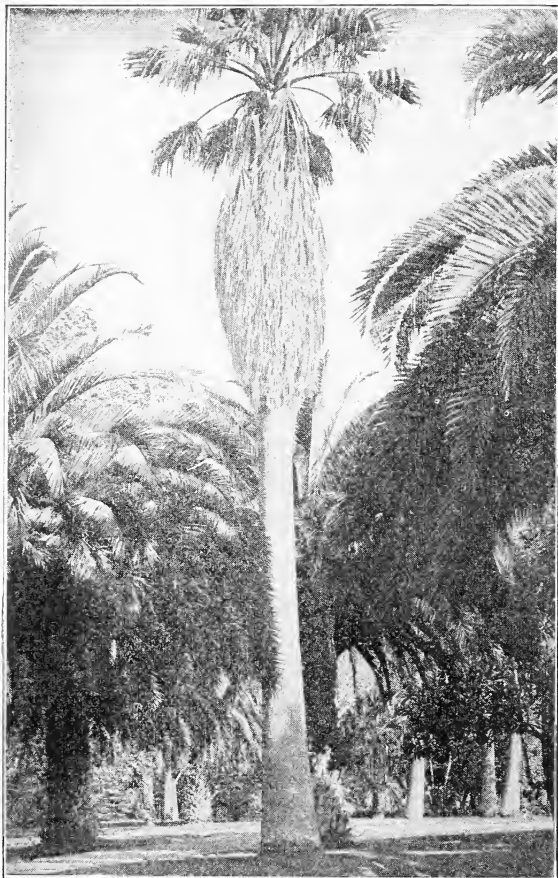
***WEIGILEA ROSEA.** Much esteemed shrubs; producing lovely trumpet-shaped pink flowers. 2 to 3 feet, 75c each.



Fittosporum Hedge

PALMS, DRACAENAS

* Marked thus are for indoor, conservatory decoration, or warmer sections only



California Fan Palm and Phoenix Canariensis

- AGAVE, AMERICAN.** 6-inch pots, 75c each.
- AGAVE, AMERICAN VARIEGATED.** 5-inch pots, 75c each. Larger, \$1.00 and \$1.50 each.
- BAMBOO FALCATA.** Of medium sized growth; foliage bright green. \$2.50 per clump.
- BRAHEA EDULIS.** It has very large fan-shaped leaves of bright green color; is never affected by heat or cold.
- CALIFORNIA FAN PALM.** See Washingtonia.

- CHAMAEROPSIS EXCELSA (Japanese Fan Palm).** One of the hardiest of the Fan Palms. \$3.00 and \$3.50 each.
- CHAMAEROPS HUMILIS, Dwarf Fan Palm.** Dwarf, hardy Palm. Leaves very small with spiny stalks, segments rigid and double-pointed. A very useful Palm for a small lawn. Fine for tub culture. Handsome and requires but little space. 7-inch pots, \$1.50 each.
- DRACAENA INDIVISA.** A fine plant for outdoor planting in California, and much in use for lawns, avenues and parks. Balled, 1½ to 2 feet, 75c each; 2½ feet, \$1.50 each; 3 feet, \$2.00 each.
- ***KENTIA BELMOREANA.** This fine palm is a valuable addition to our collection. Its leaves are pinnate, dark green and so beautifully crisp as to gain for it the name of 'Curly Palm.' 5-inch pots, \$2.50.
- ***KENTIA FOSTERIANA.** One of the finest of the Kentias, with graceful, light green foliage. 5-inch pots, \$2.50.
- FAMPAS GRASS.** 75c and \$1.00 each.
- PHOENIX CANARIENSIS (The Canary Island Date).** Balled, 1½ feet, \$2.00 each; 2½ feet, \$3.00 each.
- PHOENIX RECLINATA.** A fine variety; good for house decoration. 6-inch pots, \$1.00 each.
- WASHINGTONIA ROBUSTA.** One of the most beautiful of our native palms; leaves fan-shaped. Balled, 2½ feet, \$1.50 each; 3½ feet, \$2.00.

Fukien, China.

I wish to send thanks for the careful packing which brought the trees here in fine condition. There were delays at Shanghai and Foochow, so that the box did not arrive here until nearly two months after the date shipped from Oakland. However, when the trees were unpacked everything was found to be in good condition.

P. H. P.

Cebu, Philippine Island.

I am pleased to state that the roses reached me in perfect condition.

A. P. T.

Chekiang, China.

The fruit trees and grape vines were safely received; the trees were very good and plump.

M. L. C.

San Angel, Mexico.

I am very well satisfied with your roses which arrived in fine condition. Your plants are the best I have ever received from the United States. I congratulate you on your packing.

A. M. C.

Moji, Japan.

I received this morning the parcel of roses. They were 50 days in transit, and out of the 54 sent, only one was dead.

Our method of packing for foreign shipments, as is evidenced by the above letters, is of the very best, and we solicit orders from Mexico, Central America, China and Japan.

DECIDUOUS ORNAMENTAL AND AVENUE TREES

- ALMOND, Double Pink Flowering.** 3 to 5 feet, \$1.00 each.
- APRICOT, Double Flowering.** 3 to 5 feet, \$1.00 each.
- APPLE FLOWERING. BETCHELLS, DOUBLE LIGHT PINK.** 3 feet, \$1.50 each.
- APPLE FLOWERING. PARKMANS.** Single deep flowers along the stems. 4 to 5 feet, \$2.50 each.
- BIRCH, EUROPEAN WHITE.** A very graceful tree, with silvery bark, as it attains age. 6 to 8 feet, \$1.75 each.
- HAWTHORNE, DOUBLE WHITE.** 5 to 6 feet, \$1.25 each.
- HAWTHORNE, Paul's Double Scarlet.** 5 to 6 feet, \$1.75 each.
- LABURNUM.** A beautiful medium sized growing tree, producing long, drooping racemes of fragrant yellow flowers. 6 to 8 feet, \$1.50 each.
- MAPLE, SILVER, OR SOFT.** A rapid-growing tree; foliage bright green above, silvery beneath. 6 to 8 feet, \$1.50 each.
- PLUM, PURPLE-LEAVED.** 5 to 6 feet, \$1.25 each.
- POPLAR, LOMBARDY.** A very rapid, erect growing tree, with a tall, spiry form and particularly striking and picturesque. 6 to 8 feet, \$1.00 each.
- PEACH, DOUBLE FLOWERING.** Red, White and "Early" Red. Separate colors. 4 to 5 feet, \$1.25 each.
- SYCAMORE, EUROPEAN.** This variety is much in demand for sidewalk planting. 6 to 8 feet, \$1.50 each.
- ***TAMARIX AFRICANA.** 3 to 4 feet, 80c each.
- TAMARIX AESTIVALIS.** 3 to 4 feet, \$1.00 each.
- TEXAS UMBRELLA TREE.** 5 to 6 feet, \$1.25 each.
- WALNUT, CALIFORNIA BLACK.** One of the best shade trees for California; of rapid growth. 4 to 5 feet, 75c each.
- WILLOW, FRENCH PUSSY.** 2 to 3 feet. 75c each.
- WILLOW, WEeping.** A rapid growing tree with drooping branches, leaves long and narrow. 6 to 8 feet, \$1.25 each.

CLIMBING AND TRAILING PLANTS

AMPELOPSIS EVERGREEN. This variety clings like the Boston Ivy, but is an evergreen. **60c each.**

AMPELOPSIS QUINQUEFOLIA (Virginia Creeper). The leaves are palmate, handsome and luxuriant, assuming in autumn a gorgeous bronzy hue. **60c each; \$5.00 per 10.**

AMPELOPSIS VEITCHII (Boston or Japan Ivy). This variety clings closely without any assistance to a stone wall or brick flue, or a wooden surface. **50c and 75c.**

AUSTRALIAN PEA VINE. This lovely fast-growing climber we can recommend to those desiring a rapid grower. The flowers are pea-shaped, pink and produced in great luxuriance. **35c each.**

BOSTON IVY. See *Ampelopsis Veitchii*.

BOUGAINVILLEA BRAZILIENSIS. Have peculiarly shaped flowers, somewhat resembling the leaves in shape, the color being of a rosy lake, and produced along the branches in wonderful profusion. **\$1.00 and \$1.50 each.**

BIGNONIA CHERERE. Large, showy trumpet-shaped flowers, deep crushed strawberry red; **\$1.00 each.**

BIGNONIA GRANDIFLORA (Trumpet Vine). Rapid-growing climber, bearing large orange-yellow trumpet-shaped flowers in great profusion. **75c each.**

CHORIZEMA ILLICIFOLIA. A very attractive "climbing" shrub; produces pea-shaped flowers, color orange-red, beautiful shade, in great profusion; leaves "holly" like. **75c and \$1.00 each.**

CLEMATIS MONTANA. Medium sized white flowers; very floriferous. **5-inch pots, 80c each.**

EUONYMUS RADICANS, VARIEGATA. Extremely handsome plant for parkings. **4-inch pots, 50c each.**

FICUS REPENS. A very pretty, useful climber; clings to stone, brick or wood; like the Boston ivy. Evergreen. **50c, 75c and \$1.00 each.**

FICUS NITIDA. Leaves much smaller than preceding. **80c each.**

HOP ROOTS. **10c each; 50c per 10.**

HONEYSUCKLE, CHINESE. Rosy white; very sweetly scented. **35c and 50c each.**

HONEYSUCKLE, HALLEANA. A strong, vigorous, almost evergreen sort, with pure white flowers, changing to yellow; very fragrant; a long and continuous bloomer. **35c and 50c each.**

HONEYSUCKLE. Gold netted. **35c and 50c each.**

HOYA CARNOSA. "Wax Plant" flowers; come in terminal clusters, in great profusion; color creamy white; of very rapid growth. **75c each.**

IVY, ENGLISH, LARGE-LEAVED. Leaves thick, shining, leathery. In flats of **50, \$3.00; from pots, 25c and 35c each.**

JASMINE NUDIFLORUM. Fragrant yellow flowers in very early spring in great profusion. **75c each.**

JASMINE OFFICINALIS. Single white flowers. **90c each.**

JASMINE PRIMULINUM. Golden yellow; the blossoms are fully two inches in diameter, and in early spring-time the plant is one mass of blooms. **40c and 75c each.**

LOTUS PELIORHYNCUS. A dainty plant of creeping habit; foliage glaucous, lace-like; flowers scarlet. **35c each.**

MUEHLENBRECKIA COMPLEXA (New Zealand Mattress Vine). This pretty, strong-growing climber and trailer is very desirable for covering old stumps of trees, rockwork, etc. **35c and 50c each.**

PEA VINE, EVERLASTING. This variety dies down in winter, but makes a wonderful growth during summer.

PASSION VINE. Scarlet. Of rapid growth, and very attractive when covered with the large handsome flowers. **4-inch pots, 40c each.**

PLUMBAGO CAPENSIS. Flowers light sky-blue, verbena-shaped, **60c each; Plumbago White, 40c each.**

SOLLYA (Australian Bluehill), 60c each.

THE WISTERIA

Very hardy, growing in cold countries to perfection. We offer the following varieties. Strong plants. **\$1.50 each.**

CHINENSIS. Clusters about a foot long; flowers single, pale blue.

MULTIJUGA ALBA. Bears long racemes of pure white flowers.

VINCA, VARIEGATED (Perewinkle). Flowers blue, fine for covering banks. **4-inch pots, 35c each.**

HARDY FERNS

The following varieties are all hardy, especially around the Bay District; for shady and partially shady places ferns are very effective and add wonderfully to the beauty of the garden. We offer the following varieties.

ADIANTUM PEDATUM. "Five-Fingered Fern". This native variety is well known; very dainty and graceful. **50c each.**

ASPLENIUM FELIX-FOEMINA. "Lace Fern". Very lacy in appearance; color of fronds very pleasing green; grows to a height of 1½ feet. **60c each.**

ASPLENIUM FELIX-FOEMINA. "Slender Lace Fern." Similar to preceding, but of drooping habit. **40c each.**

PTERIS TREMULA. Attains a height of two feet; fronds green on upper side and silvery green on under side. **75c each.**

POLYSTICHUM SETOSUM. Fronds very glossy dark green, a handsome variety. **75c each.**

POLYSTICHUM CAPENSE. "Leather Leaved Fern." Fronds very shiny; of erect, rapid growth. **75c each.**

POLYSTICHUM TSUSSINENSE. Native of Japan, of dwarf habit; fronds very dark green. **60c each.**

POLYSTICHUM MUNITUM. A native Sword fern, growing to a height of 1½ feet high; one of the best ferns. **75c each.**

SUNBREAK FERN. Elegant large growing fern; attains a height of 4 feet; fronds of soft downy appearance. **75c each.**

WOODWARDIA FERN. This native variety grows rapidly and produces long elegant fronds. **35c, 50c and 75c each,** according to size.



Clematis Montana

CARNATIONS

3-inch pot plants, 20c each; \$2.00 doz. except where noted otherwise. Ready February.

- BELLE WASHBURN.** Deep red.
BENORA. White streaked and splashed pink.
DONALD. Crimson; large and fragrant.
LADDIE. Warm rose-salmon; silvery in appearance; fine. 30c each; \$3.00 per 12.
MAINE SUNSHINE. Very fine, new yellow sort. 30c each; \$3.00 per 12.
MATCHLESS. Pure white, of excellent form; long stemmed and free flowering; petals fringed.
MORNING GLOW. Silvery pink.
MRS. C. W. WARD. Deep pink.

VIOLETS

- MARIE LOUISE.** The well-known double light purple variety. 75c per dozen.
PRINCESS OF WALES. Very large flowers, violet blue; single, sweetly scented; stems long; very free in bloom. 60c per dozen.

FUCHSIAS

4-inch pots, 35c each; \$3.00 per dozen.

- ABBE FARGES.** Extremely double. Sepals very much reflexed. Corolla reddish violet. Giant in size.
"BABY" FUCHSIA. Very small, graceful flowers.
BLACK PRINCE. Purple; double.
EMILE LAURENT. A very free blooming variety. Sepals clear rose; corolla rose and white; double.
GEROLSTEIN. Sepals white; corolla bluish pink; single; tall grower.
PHENOMENAL. Large double purple.
PROCUMBENS. Small foliage; of creeping habit.
RICORTIANA. Very small flowers; a miniature variety.
STORM KING. Double white.
TORPILLEUR. Sepals intense red; giant double corolla. Color white, shaded rose. Extra fine; double.

Large Flowered Chrysanthemums

Ready about May 1st. 20c each, \$2.00 dozen.

- CHIEFTAIN.** A beautiful, incurving pink of perfect shape.
DR. ENQUEHARD. Grand variety; color, pink.
GLENVIEW. Dark bronze and clear red.
HARVARD. Reflex from dark crimson; excellent.
ODESSA. Splendid incurved form, bright yellow.
PACIFIC SUPREME. Brilliant pink. Midseason.
ROSE PERFECTION. Fine shade of rose. Midseason.
RICHMOND. Bright golden yellow, of perfect form.
SMITH'S SUBLIME. A fine lavender pink. Early.
SMITH'S SENSATION. A grand early white; very free.
TEKONSHA. A splendid large bronze. Midseason.
TINTS OF GOLD. A valuable early bright bronze.
WHITE CHIEFTAIN. A grand white sport from Chieftain.
WILLIAM TURNER. Purest possible white.
YELLOW TURNER. Pale yellow.

THREE NEW ANEMONE FLOWERING

CHRYSANTHEMUMS

25c each; \$2.50 per 12

- FLORERA**—Color, light yellow with an exceptionally large cushion which nearly extends to the ends of the ray florets. Very distinct and striking. A grand new sort.
PRIMROSE—Clear light yellow, dwarf; fine pot plant.
PURITAN—A fine pure white; excellent for pot culture.

POMPONS—VARIETIES

15c each; \$1.50 per 12.

- BALDWIN'S SCARLET.** Golden scarlet; splendid form.
GOLDEN CLIMAX. Standard deep yellow.
ILLONA. Rosy lavender; strong grower.
LEILAH. A rose pink, of exceptional merit.
OURAY. Dark mahogany brown, best in its color.
WOLVERINE. A bright yellow; very hardy.

BUTTON TYPE POMPONS

15c each; \$1.50 per 12.

- BABY DOLL.** Light yellow tinted bronze.
FRANK WILCOX, JR. An orange bronze; excellent sort.
HILDA CANNING. A very attractive rosy bronze.
WHITE MIDGET. A fine pure white.

SINGLE CHRYSANTHEMUMS

15c each; \$1.50 per 12.

- BRONZE BUCKINGHAM.** Wonderful coppery rose color.
DAZZLER. The brightest possible shade of crimson.
GARZA. The purest white, yellow center.
OLD GOLD. Orange yellow and bronze.
RICHARD DELAFIELD. Terracotta scarlet shadings.
W. BUCKINGHAM. A grand, vigorous pink.

GERANIUMS

Price of plants from 3-inch pots, 15c each; \$1.50 per dozen.

- BELLE POITEVINE.** Large handsome trusses of salmon-colored flowers.
JEAN VIAUD. Soft, pure pink, with two white blotches; dwarf-stocky grower, rigid stems, large trusses, perfect florets; semi-double.
GENERAL GRANT. A splendid double salmon red; trusses very large and showy.
GERTRUDE PEARSON. Rosy pink, white eye; one of the best; single.
MRS. GLADSTONE. Very pale pink; single.
NEWSOM. A beautiful single scarlet, shading to red; immense trusses and very free flowering.
SINGLE WHITE.
S. A. NUTT. The very best of the double dark crimson scarlets.
THE CLYDE. An immense single scarlet; trusses very fine. Extra strong grower.
THE SWAN. A grand double white variety, constantly in bloom.



Diosma in Foreground.

HERBACEOUS, BEDDING AND MISCELLANEOUS PLANTS

- AGAPANTHUS UMBELLATUS.** (Blue African Lily.) Flowers borne in clusters, for a long period; color lovely shade of blue; strong roots. **60c each.**
- ALSTROMERIA.** (Peruvian Golden Lily.) This is the beautiful golden-spotted Peruvian Lily you see often in the florists' windows. Very free in bloom. **25c each; \$2.50 per 12.**
- ANCHUSA ITALICA.** Flowers intense blue. Very fine perennial. **60c per dozen.**
- ANEMONE JAPONICA.** (Japanese Wind-Flower.) White and Pink. **40c each.**
- ANTHERICUM VARIEGATUM.** ("Spider Plant.") Foliage prettily tipped yellowish white; a nice basket or window plant. **35c each.**
- ARALIA SIEBOLDII.** A remarkably pretty shrub; leaves are somewhat like the fig leaf; it makes a nice house plant and when planted out of doors, makes a handsome specimen. **60c each.**
- ASPARAGUS PLUMOSUS.** A very nice house plant, or it can be planted in protected place in the garden; it climbs very nicely. **75c and \$1.00 each.**
- ASPARAGUS SPRENGERII.** Fine house plant, and much used for hanging baskets or window boxes. **75c, \$1.00 and \$1.50 each.**
- ASTER, SEMPLE'S NEW BRANCHING.** Crimson, lavender, pink and white. Ready about April 15th. **50c per 12.**
- AQUILEGIA.** Columbine. These well-known perennials should be in every collection; the great profusion of bloom and their exquisite blossoms are certainly very beautiful. We have a strain of the very best colors to offer. **60c per dozen.**
- BEGONIA VERNON.** Dark pink, foliage bronzy in sun. **60c per 12; \$6.00 per 100.**
- BOSTON FERNS.** **\$1.50 and \$2.50 each.**
- BUDDLEA VARIABILIS.** "Butterfly Plant." Flowers lilac, borne profusely in long spikes; very fragrant; continuous bloomer. **5-inch pots, 60c each.**
- CAMPANULA.** Medium. Very pretty and showy; blue and white. **15c each; \$1.25 per 12.**
- CAMPANULA.** (Cup and Saucer.) Pink white and blue. **10c each; \$1.00 per 12.**
- CESTRUM AURANTICA.** Flowers yellow; dies down every winter and starts away in spring. Very showy. **50c each.**
- CHEIRANTHUS ALLIONII.** This plant produces "Wallflower like" in great profusion; brilliant orange-red flowers. **65c per 12.**
- CINERARIA.** As a winter blooming plant for house culture, or for use for bedding under the shade of large trees, these are invaluable. We offer a fine strain. **80c per 12.**
- CALCEOLARIA YELLOW.** A splendid bedding or border plant; produces its showy yellow flowers for a very long period. **50c each; \$1.50 per dozen.**
- CALCEOLARIA RUGOSA.** This sort produces flowers of a brownish-red color; grows taller than the preceding. **15c each; \$1.50 per 12.**
- COREOPSIS LANGEOLATA.** The flowers, which are yellow, are of graceful form, are invaluable for cutting for decorative purposes. **75c per 12; stronger, \$1.00 per 12.**
- COCOLOBA PLATYPHILA.** An odd-looking plant, with jointed stems; bright green foliage; of quick growth. **5-inch pots, 75c each.**
- COSMOS.** Crimson pink, white and yellow. Ready about April 15th. **50c per dozen.**
- DAISIES.** Double, all colors. **50c per 12.**
- DELPHINIUM HYBRIDUM.** All shades of dark and light blue **15c each; \$1.50 per 12. Stronger, 25c each; \$2.50 per 12.**
- DIGITALIS.** Fox Glove. Tall growing plants, throwing up very long spikes of lovely bell-shaped flowers, in great profusion; all colors. **10c each; \$1.00 per 12.**
- DORONICUM FLAVA.** Flowers buttercup-yellow, produced in spring and early summer; very pretty, indeed. **50c per 12.**
- ECHVEVERIA** (Hen and Chickens). **75c per 12.**
- FORGET-ME-NOT.** (Myosotis.) Small blue star-like flowers borne in clusters on long stems. **50c per 12.**
- GAILLARDIA GRANDIFLORA.** Flowers bronze scarlet, bordered with golden yellow, three inches in diameter, produced on long stems. **60c per 12.**
- GAZANIA SPLENDENS.** Produces masses of orange-yellow flowers in spring; beautiful for banks and borders. **50c per 12; \$3.00 per 100.**
- GEUM. MRS. BRADSHAW.** Large scarlet flowers; a very showy perennial. **75c per 12.**
- GOLDEN FEATHER.** (Feverfew). This plant is much used for making borders and beds; foliage yellow. **35c per 12; \$2.50 per 100.**
- HABROTHAMNUS ELEGANS.** Strong plants. **80c each.**
- HELIOTROPE QUEEN.** Very dark. **35c each.**
- HELIOTROPE SAPPHIRE.** Purple, white center. **35c each.**
- HOLLYHOCK.** Double fine selection. **60c per 12.**
- HEUCHERA SANGUINEA.** Coral Gem. Produces dainty, beautiful pink flowers, on a stem of about 1½ feet high; always in bloom; fine for borders or massing in beds. **75c per 12.**
- INDIAN CURRANT.** Very showy; in the fall it produces berries of a darkish red color all along the branches. **50c each.**
- IRIS FOETIDISSIMA.** This variety is beautiful when it produces its lovely red seeds, that come in a pod, which bursts open at a certain period; after cutting they keep for a long time, and are very ornamental. Strong clumps. **50c each; \$4.00 per 10.**
- ISOLEPIS GRACILIS.** A pretty "grass like" plant, with drooping foliage; very nice for hanging baskets, or edges of pools. **50c each.**
- LYNCHUS VISCARIA.** Grows about 2 feet high, and bears brilliant flowers in orange and pink shades. **\$1.25 per 12.**
- LANTANA.** Extremely pretty plants, producing their odd colored brownish-yellow flowers in great profusion for a long period. **4-inch pots, 40c each.**
- LANTANA.** Lavender colored flowers; a very pretty variety of creeping habit. **4-inch pots, 40c each.**
- LAVENDAR, ENGLISH.** 4-inch pots, **30c each; \$2.50 per 10.**
- LEONOTIS.** "Lon's Tail." Flowers ruddy orange, borne on whorls around the branches; very showy. **4-inch pots, 35c each; \$3.50 per 10.**
- LIPPIA REPENS.** Used to make lawns; requires very little water. **\$2.50 per 100.**
- LOBELIA.** Dwarf blue. **35c per 12; \$2.50 per 100.**
- LYTHRUM ROSEUM.** Produces large spiked-shaped flowers, bright rose color; blooms very freely. **40c each.**
- MARGUERITE BLUE.** (Agatheae coelestis.) Sky-blue flowers, yellow center. **30c each.**
- MARGUERITE, WHITE.** **15c and 25c each.**
- MARGUERITE, YELLOW.** **15c and 25c each.**
- MARIGOLD.** **35c per 12.**
- MESEMBRYANTHEMUM.** Lavender flowers. **50c per 12; \$2.50 per 100.**
- MESEMBRYANTHEMUM PINK.** These are much used for bedding purposes and planting on banks and hillsides. **60c per 12; \$3.00 per 100.**
- MINT PLANTS.** Strong roots. **35c each.**
- MOSS, SCOTCH.** (Inopsidum.) Makes a pretty green carpet, frequently used between the stepping stones (**\$2.50 per flat**), which can be divided into many plants.
- NEW MARGUERITE, MRS. SAUNDERS.** The flowers are snow-white and double. **15c and 25c each.**
- PANSIES.** **50c per 12.**
- PENTSTEMON.** Very ornamental plants, producing long spikes of showy colors in great abundance. **Assorted colors, 10c each; \$1.00 per 12.**
- PENSTEMON ("South Gate Gem").** Beautiful scarlet flowers. **15c each; \$1.25 per 12.**
- PETUNIAS, GIANTS OF CALIFORNIA.** Mixed colors. **From flats, 75c per 12. Ready in March.**
- PHLOX, PERENNIAL.** Produces beautiful colored flowers, in clusters. **Mixed kinds, 40c each.**
- PLUMBAGO LARPENTAE.** Of creeping habit; produces dark blue flowers in great profusion. **35c each; \$3.50 per 12.**
- POPPY, ICELAND.** Produces very graceful flowers, resembling crumpled tissue paper; mixed colors. **60c per 12.**
- POPPY ORIENTAL.** **\$1.00 per dozen.**

PERENNIAL AND BEDDING PLANTS—Continued

- PRIMROSE, BABY.** (*P. Malacoides.*) Produces flowers in great profusion, borne on long stems; very showy. 60c per 12.
- PRIMROSE, COMMON.** Mixed colors. 60c per 12.
- PYRETHRUM, HYBRIDS.** Flowers "Cosmos like" in appearance, borne on stout stems, and in great profusion; mixed colors. 35c each; \$3.00 per 12.
- RUEBECKIA LACINEATA.** Golden-yellow flowers, double, borne very freely; quite showy. 20c each; \$1.75 per 12.
- SANTOLINA.** A beautiful border plant; foliage silvery gray; stands trimming well. \$2.50 per 100.
- SALVIA LEUCANTHA.** Violet-purple flowers, tipped white, and borne in whorls which are 6 to 10 inches long; very free in bloom. Large plants, 60c each.
- SALVIA SPLENDENS.** Scarlet flowers; continuous bloomers. Ready March. 10c each; 60c per 12.
- SAXIFRAGA UMBROSA.** A dainty plant with erect flowering stems, about 10 to 12 inches; flowers white. 35c each.
- SCABIOSA CAUCASICA.** (*Blue Bonnet.*) Large pale blue flowers, borne on long stems and for a long period; fine for cutting. 15c each; \$1.50 per 12.
- SEA PINK** (*Armeria*). Very dwarf, requiring no trimming. Flowers rose-pink. 50c per 12; \$2.50 per 100.
- SHASTA DAISY** (*Alaska*). The flowers are very large, borne on long stems and very free in bloom. Single white, with yellow center. 60c per 12.
- SNAPDRAGON.** Fine varieties, in separate colors. 50c per 12.
- STRAWBERRY.** "Evergreen or Wild." Fine for covering embankments. 50c per 12; \$2.50 per 100.
- STOCKS.** In fine assortment. 35c per 12.
- STREPTOSOLON JAMESONII** (*The "Yellow Heliotrope"*). A very useful garden plant, producing masses of showy yellow flowers. 4-inch pots, 40c each.

- THALICTRUM.** (*Meadow Rue.*) Flowers very dainty; produced on long stems very freely; color rosy purple. 30c each.
- TRITOMA UVARIA.** (*Red Hot Poker Plant.*) Foliage "grassy-like"; flowers deep orange, borne for a long period on stout stems; very showy. 35c and 50c each.
- UMBRELLA PLANTS.** A nice house plant, or very suitable for planting on edges of pools. 80c each.
- VALERIAN** (*Centranthus ruber.*) Showy hardy bedding plants producing large corymbs of red or white flowers. 60c per 12.
- VERBENA, MAMMOTH.** All colors. Ready March. 10c each; 75c per 12.
- VIOLAS.** ("Tufted Pansies.") Yellow and blue, 40c per 12.
- WALLFLOWER.** 50c per 12.
- WOODWARDIA FERN.** 60c each.

CANNAS

25c each; \$2.50 per dozen (except where noted).

- AUSTRIA.** Deep yellow; flowers very large.
- FIREBIRD.** Intense scarlet. 30c each; \$3.00 per 12.
- KING HUMBERT.** Deep scarlet, bronze foliage. 30c each; \$3.00 per 12.
- INDIANA.** Deep orange-red, flecked old gold; green foliage.
- SHENODOAH.** Deep rose-pink; bronze foliage.
- WYOMING.** Beautiful orange; bronze foliage.

IVY LEAF GERANIUMS

- Are indispensable for covering banks, fences, etc. They are almost continuously in bloom, and require very little water.
- CHARLES TURNER.** The color is a bright pink, quite double. Very useful for window boxes and rockeries.
- CARLOS UHDE.** A magnificent new variety, quite double; color rosy scarlet; grand for window boxes and banks, always in bloom.



The Perennial Plant Garden.

FRUIT TREES AND SMALL FRUITS

The California Cultivator (a paper devoted to horticulture in this state) submitted to us the following questions and asked us to give them an answer thereto. As they bear very greatly on fruit tree planting in California, and we receive such questions daily from intending planters, we thought we would help planters by giving the questions and our reply. We know it will be of great assistance to the novice in fruit tree planting:

1. How many months are included in the best planting period, i. e., how early may fruit trees be taken from nursery in fall and how late may they be planted?
 1. Late December, January, February, and early March.
 2. Where is it best to plant them, i. e., can you give a general idea as to planting figs, apples, pears, cherries, walnuts, peaches, and such other fruits? Of course, if you covered all the fruits, this would take too much time, but whatever information you can give is greatly needed by tree planters. Orchard after orchard has been set out, only to prove a failure because owners did not understand this question.
 2. Figs should be set out in the warmer sections, principally the San Joaquin and Sacramento Valleys, and the other fruits mentioned can be planted from Mendocino to San Diego. The intending planter, however, must use his own judgment about the best locations for each of these fruits.
 3. What age and size of tree is best?
 3. The best tree to plant out is what nurserymen call "one-year-old" trees; the root is a year older, so this practically makes the trees two years old, but nurserymen style them "one-year-old;" either three to four feet high or four to six feet high.
 4. How large and how deep should holes be?
 4. In sedimentary land, the hole does not require to be so very large, 1½ feet square will cover it. In heavier soil two feet will be necessary.
 5. Is it best to plant any deeper in well-prepared soil than tree was set in nursery?
 5. Plant a little deeper than what they were in the nursery—not more than one inch.
 6. Would you recommend close pruning of roots before planting or simply trimming mutilated ends? If you favor close trimming of roots, would you go to the extremes recommended in the Stringfellow method?
 6. We recommend medium cutting back of the roots. We would not go to the extreme as Mr. Stringfellow does, although we practice it a great deal in our nurseries when we are lining out young stock, and have good success with it.
 7. Would you top trees, i. e., take off greater portion of top grown in nursery, and if so, before or after setting? Would you do it by exact measurement the orchard over, or according to vigor of trees?
 7. Trees should be pruned after planting, not before. They should be cut back about to 2½ to 3½ feet; peaches and almonds should have some of the laterals left; prune these to two or three inches from the stem; the main stem has often blind eyes; apricots, prunes, pears, apples and plums can be trimmed to single stem.
 8. If irrigation water is available, would you settle dirt about the trees with water or by tamping?
 8. In the drier sections it is a good idea to use irrigation to settle the soil around the roots after planting, but in the northern parts and in the Santa Clara Valley, where the rainfall is good during the months of January and February, this is not necessary. Work the soil carefully around the roots; in light soil heavier tamping can be done than in heavy, wet land.
 9. Would you advise use of fertilizer or manure, either in hole or on surface, at time of planting?
 9. In planting large orchards no fertilizing is done.
 10. Is any advantage gained by protecting trunks of newly planted trees from rays of sun? If so, what method is best?
 10. It is very necessary to protect the trunks of young trees during the first summer months, either by tulle tree protectors, shakes set on the sunny side, or by wrapping newspaper and tying with a cord. This keeps the tree from getting sunburnt and is certainly of great benefit to the young tree.

APPLES

Price, 4 to 5 feet, 70c each; \$6.00 per 10.

- ALEXANDER.** Greenish white, streaked red; a fine early variety.
- DELICIOUS.** A very fine eating apple, tender and of fine flavor; ripens late.
- ESOPUS SPITZENBERG.** Large, light red, rich. Sprightly; vinous flavor. November to January.
- GRAVENSTEIN.** A large striped, beautiful, roundish apple; of excellent quality, juicy, high flavored. Ripe in August.
- JONATHAN.** Light yellow, with red stripes; tender and juicy. Ripens October and November.
- RED ASTRACHAN.** Large; skin deep red, flesh white; juicy and crisp; ripens June and July.
- WHITE WINTER PEARMIN.** Large, roundish, oblong and pale yellow; dotted with brown. Ripe December to February.
- WINTER BANANA.** A very fine late variety, of excellent quality.
- YELLOW NEWTON PIPPIN.** Large; flesh yellow, firm, crisp, juicy, of exceedingly rich flavor. Ripe January to March.
- YELLOW BELLEFLOWER.** Very large, oblong, irregular and tapering toward the eye. Ripens November.

CRAB APPLES

Hyslop and Yellow Siberian.

CHERRIES

Price, 4 to 6 feet, 75c each; \$7.00 per 10.

- BING.** Fruit large, dark brown or black; very fine; late. A good shipping variety.
- BLACK TARTARIAN.** Very large, bright black. The favorite.
- ENGLISH MORRILLO.** Large dark red; a sour sort.

NAPOLEON BIGARREAU (Royal Ann). Very large; amber in color. The favorite white cherry.

PEARS

Price, 4 to 5 feet, 70c each; \$6.00 per 10.

- BARTLETT.** Bears heavily; good for shipping and canning. Ripe in August.
- BEURRE HARDY.** Large, russety, juicy and melting; very fine. Ripens in August.
- DOYENNE DE COMICE.** Fruit large, of roundish shape, tapering towards stem; very sweet and delicious. Ripens October.
- WINTER NELLIS.** Medium size, roundish, yellowish green, dotted with russet. November to January.

PLUMS

4 to 6 feet, 70c each; \$6.00 per 10.

- BEAUTY.** Crimson, sprinkled whitish dots; flesh, amber in color; very sweet, early.
- BURBANK.** Yellowish ground, red cheek; firm.
- CLYMAN.** Mottled, reddish purple; early.
- DAMSON.** A fine blue plum, good for preserves.
- FORMOSA.** Very large, heart-shaped; skin cherry-red; flesh pale yellow, sweet and delicious.
- GREEN GAGE.** Round, greenish yellow, with brown dots; very juicy and sweet. August.
- JEFFERSON.** Skin golden yellow; red cheek; of luscious flavor.
- SANTA ROSA.** Very large; skin deep purplish crimson with pale blue bloom; flesh purple-shaped rosy scarlet.
- SATSUMA.** Japanese "Blood Plum." Flesh red.
- WICKSON.** Fruit heart shaped; skin deep cherry red; meat amber colored; very juicy; pit small.

FRUIT TREES AND SMALL FRUITS—Continued

PEACHES

Price, 4 to 5 feet, 70c each; \$6.00 per 10.

- ***ALEXANDER.** Flesh firm and juicy, sweet. Ripens early in June.
- ***BRIGGS RED MAY.** Medium to large; skin greenish white; flesh melting and juicy. Ripens middle of June.
- EARLY CRAWFORD.** Very large; bright yellow, with a beautifully mottled red cheek; flesh yellow, juicy, sweet. Ripens last of July. Freestone.
- ELBERTA.** Very large; skin yellow-red cheek; flesh yellow, juicy, rich, sweet and of fine flavor; freestone. Ripens about middle of August.
- J. H. HALE.** A valuable new variety; yellow freestone; flesh tender, excellent quality; very large and heavy producer. Ripens middle of August.
- LATE CRAWFORD.** Large, freestone; flesh deep yellow, excellent flavor. Ripens early September.
- MAYFLOWER.** "The earliest of all Peaches;" skin red; flesh white, excellent flavor; very heavy bearer; freestone.
- MUIR.** Has a delicious rich, buttery, sweet flavor. Freestone. Ripens end of August.
- PHILLIPS CLING.** The best late clingstone.
- ***STRAWBERRY.** Medium size; flesh white; mid-season.
- TUSCAN CLING.** A very fine early clingstone; a good shipping and canning sort.
Those varieties "starred" are good only for eating fresh.

PRUNES

4 to 6 feet, 70c each; \$6.00 per 10.

- FRENCH (Petite d'Agen).** This is the prune now grown so extensively and successively in California for drying purposes; medium-sized; egg-shaped, violet purple; very rich and sugary.
- HUNGARIAN.** Fruit very large, with tendency to come double; reddish violet, covered with a handsome bloom.
- IMPERIAL EPINEUSE.** Large and uniform in size. Very sweet, and of high flavor.
- SUGAR.** Skin very tender; at first of a light purple, tinted with green, changing at maturity to dark purple, covered with a thick, white bloom.
- TRAGEDY.** This is the earliest of all prunes, and earlier than any plum. Good size, dark purple skin, yellowish green flesh. Sweet and very rich.

NECTARINES

4 to 6 feet, 70c each.

- BOSTON.** Rich flavor; excellent. July.
- STANWICK.** Very large, pale green skin shaded violet; flesh white; very tender, juicy and separates freely from the pit.

APRICOTS

Price, 4 to 5 feet, 70c each; \$6.00 per 10.

- BLenheim.** The trees are early and regular bearers and have an abundance of foliage thoroughly protecting the fruit. Fruit above medium, oval; orange color; with deep yellow, juicy and rich flesh. July.
- HEMSKIRKE.** Large, roundish; flesh bright orange; tender and juicy, with a rich plum-like flavor; fruit not quite as large as the Moorpark, but ripens more evenly. August.
- ROYAL.** Of medium size, yellow with red cheek; immensely productive; an early ripening variety.

ALMONDS

Price, 4 to 5 feet, 70c each; \$6.00 per 10.

- I. X. L.** Nuts large; shells easily, no machine being needed, nor is any bleaching necessary; shell soft but perfect.
- NE PLUS ULTRA.** Tree a rapid grower, of bushy habit; a heavy and regular bearer.
- NONPAREIL.** Of a weeping style of growth; an extraordinary heavy and regular bearer, with very thin shell.
- DRAKE'S SEEDLING.** Very heavy and regular bearer; good to plant as a pollinizer; medium hard shell.

QUINCES

Price, 4 to 5 feet, 70c each.

- APPLE, or Orange.** Large, bright yellow.
- CHAMPION.** Very large; flesh tender, delicate flavor.
- PINE APPLE.** Very tender; makes a high flavored jelly; pineapple flavor.

FIGS

3 to 4 feet, 70c each; \$6.00 per 10.

- CALIFORNIA BLACK.** Large, dark purple, almost black when fully ripe. (This variety does not require the Wild Fig for pollinization.)
- WHITE ADRIATIC.** One of the very best sorts.
- KADOTA.** One of the best for canning, preserving and pickling.

ORANGES

Price, lifted with balls of soil, \$3.00 each.

- RIVERSIDE WASHINGTON NAVEL.** Fruit first-class in every respect; symmetrical, seedless; pulp fine-grained.
- VALENCIA LATE.** An orange of remarkably strong-growing habit, and claimed by those fruiting it to be a good bearer; a little later than Mediterranean Sweet.

LEMONS

Price, lifted with balls of soil, \$3.00 each.

- EUREKA.** Tree nearly thornless, of rapid growth and prolific bearer; fruit of the best quality. A general favorite.
- LISBON.** Medium size; sweet rind; very strong in acid; very few seeds; tree a rapid grower and very productive.

POMELOS (Grape Fruit)

Price, lifted with balls of soil, \$3.00 each.

- MARSH'S SEEDLESS.** Medium, practically seedless; skin thin and smooth; pulp juicy; of superior flavor. Keeps late.

OLIVES

Mission. 1/2 to 5/8 inch caliper, \$1.00 each.

GRAPES

25c each; \$2.00 per 10.

- FLAME TOKAY.** A very fine large red grape.
- MUSCAT OF ALEXANDRIA.** Bunches and berries large, pale amber.
- THOMPSON'S SEEDLESS.** The well-known raisin grape; a fine eating variety.
- ZINFANDEL.** Another well-known sort.

GRAPES (American Sorts)

35c each; \$3.00 per 10.

- CONCORD.** Berries large; color red; very sweet.
- PIERCE.** Berries black; heavy producer.
- NIAGARA.** Bunches large, very compact; greenish white in color.

CURRANTS

30c each; \$2.50 per 10.

- CHERRY CURRANT.** Very large, deep red. One of the best.

GOOSEBERRIES

OREGON CHAMPION. 30c each; \$2.50 per 10.

RASPBERRIES

- OUTHBERT.** The largest, handsomest and best red Raspberry cultivated. Bears transportation well. 15c each; \$1.00 per 10; \$6.00 per 100.
- GOLDEN QUEEN.** Large clear yellow-amber berries. 20c each; \$1.50 per 10.
- ST. REGIS.** Of excellent quality; bears for a long period; berries large, bright crimson. 20c each; \$1.50 per 10.

FRUIT TREES AND SMALL FRUITS—Continued

BLACKBERRY HIMALAYA

Bears immense crops of fruit, commencing to ripen about the middle of July and it will keep bearing until frost. The fruit is very large and the flavor is delicious, having a wonderfully fine aroma which commends itself to everyone.
1-year plants, 25c each; \$2.00 per 10.

BLACKBERRY MAMMOTH

Named by some "The Black Loganberry."

Flavor is a decided improvement on any known variety of blackberry. Set out nine feet apart, and six feet in the rows.
1-year plants, 25c each; \$2.00 per 10.

THE LOGANBERRY

(Raspberry-Blackberry)

It partakes of both flavors of the raspberry and the blackberry, being a combination of the two mixed; a very pleasant, mild, vinous flavor. 1-year plants, 25c each; \$2.00 per 10.

CORY THORNLESS BLACKBERRY

The berries often measure 2½ inches in length, have a small core and are almost seedless. The flavor is like the wild berry, but they are richer and sweeter than other blackberries, yet are acid enough to make the finest of jelly.

They are very early and bear enormously through a long season. 30c each; \$2.50 per 10.

PHENOMENAL BERRY

30c each; \$2.50 per 10.

STRAWBERRIES

Price, 35c per 12; \$2.50 per 100.

BRANDYWINE. (Per.) Very productive; blossoms perfect; fruit very large, of good form, bright red all over, and of good quality. Season, medium to very late.

Kindly let us know if we can substitute, should we be sold out of any of the varieties ordered.

Special prices on fruit trees, in larger quantities than we have specified, will be given on application.

KLONDYKE. Rich red; of mild flavor; quite juicy; very productive.

MAGOON. Large berry, dark red in color, and of very fine aroma.

MARSHALL. (Per.) Of enormous size, blood red color, rich aromatic flavor. One of the good old "standbys."

OREGON EVERBEARING. A very fine variety; a heavy and regular bearer.

BANNER STRAWBERRY

This well-known variety is now so well known that it needs no description; excellent in every way. 35c per 12; \$2.50 per 100.

WALNUTS

FRANQUETTE. Grafted on California Black. 4 to 5 feet, \$1.50 each; \$1.35 per 10.

MAYETTE. Grafted on California Black root. 4 to 5 feet, \$1.50 each; \$1.35 per 10.

LAWTON BLACKBERRY

This variety produces large, luscious berries; this variety does not vine, but is of bush habit. 15c each; \$1.25 per 12.

ASPARAGUS ROOTS

\$2.50 per 100.

HORSE RADISH ROOTS

50c per 12; \$2.50 per 100.

RHUBARB ROOTS

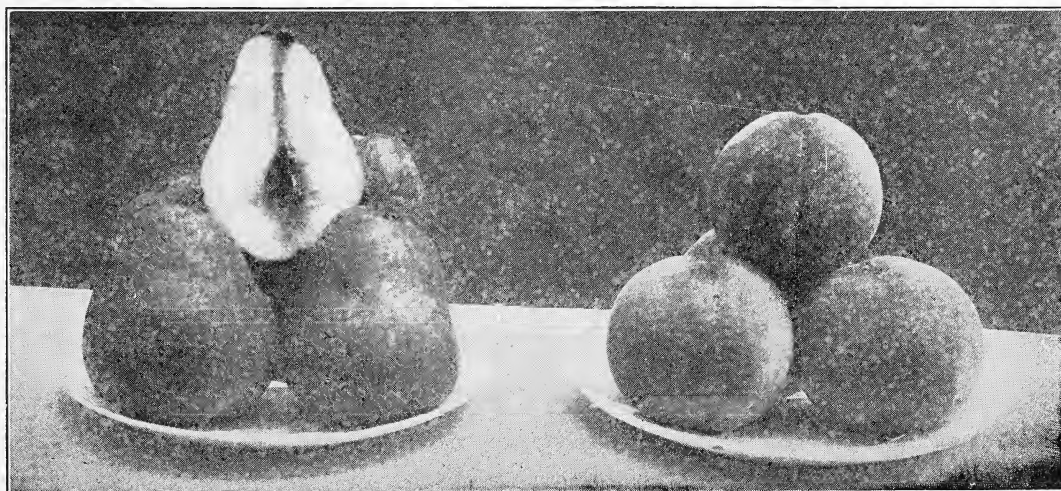
25c each; \$2.00 per 12.

DISTANCES FOR PLANTING FRUIT TREES

Standard Apples.....25 to 30 feet apart each way
Standard Pears.....24 to 30 feet apart each way
Cherries24 to 30 feet apart each way
Standard Plums and Prunes.....24 to 30 feet apart each way
Apricots, Peaches, Nectarines.....24 to 30 feet apart each way
Grapes 7 to 10 feet apart each way
Walnuts40 to 50 feet apart each way
Currants and Gooseberries.....4 by 6
Blackberries and Loganberries.....3 to 4 by 5 to 7

Strawberries for Field Culture.....1 to 1½ by 4 to 5
Strawberries for Garden Culture.....1 to 2 feet apart

To find out how many trees it takes to plant one acre—Multiply the distance in feet between the rows by the distance the plants are apart in the rows, and the product will be the number of square feet for each plant or hill, which, divided into the number of feet in an acre (43,560), will give the number of plants or trees to the acre.



Bartlett Pear

Crawford Peach

KINDLY READ THE FOLLOWING

LITTLE ARTICLE

The months of November to April are ideal for the setting out of evergreen trees and shrubs; many homes are now made beautiful by the intelligent planting of these; they add so much to the home, and the cost is so reasonable that not a house should be without this adornment. In order to further this laudable work, we take pleasure in offering a few suggestions. The larger percentage of homes now being built are medium in size and therefore it does not require a large expenditure of money.

For the average requirements we think the following list will be found about right: The Italian Cypress or the Arizona Blue Cypress will be what you will require for pyramid shaped plants; the Abelia, a very fine variety having pinkish-white flowers in clusters; Berberis Darwini, foliage small, glossy green, flowers yellow; Coprosma, sometimes called "Mirror Plant" on account of its very glossy leaves which shine as though varnished; the Cotoneasters and Crataegus are those shrubs which bear such lovely red and orange colored berries in the fall and winter months; Diosma ("Breath of Heaven") is a lovely low growing shrub bearing small white flowers, the foliage when pressed in the fingers emits a sweet odor; the Heathers produce small bell-shaped flowers in great profusion and are much admired; Genista Racemosus belongs to the Broom family, is of rather dwarf habit, flowers in long racemes of striking yellow; the Spanish Broom is another favorite, this variety is larger growing than the preceding and has canary yellow flowers borne in great profusion during summer and fall months; Lonicera Nitida is another shrub we can recommend, it is of quick growth, and has small glossy leaves, can be trimmed like a boxwood if so desired; Pittosporum Crassifolia you will fall in love with, the underside of the leaves are sea-green in color, it bears seed pods which when ripe burst open and show the red seeds, perhaps you have noticed this shrub and wondered what it was, you should have one of these by all means; Oregon

Grape (Mahonia), lovely glossy holly-like foliage; the Pink Crepe Myrtle you very likely are acquainted with, one does not see many in this vicinity, but in valleys they are wonderful. Why not plant some Fuchsias? Your garden would not be complete without them; take the Baby Fuchsia, for instance; don't you think they are charming? The Laurustinus is also good, flowers very showy; the English Myrtle must also be remembered, leaves dart shaped, small and shiny, and when bruised emit a pleasant aromatic odor, flowers white in clusters. The different species of Veronicas are much used in beautifying of homes; the flowers are of various shades of blue, and one variety has ruby colored flowers; there are also three low growing kinds that are of dwarf habit, Cupressoides, Buxifolia and Traversii; they grow like Boxwoods, but more satisfactory, we think; if you have any little spaces on the walks to your house, use either of these.

How about a nice border? Would you care to have one? then use the Dwarf Boxwood; this never grows very high, foliage nice pleasing green. If you don't care for this then try the Santolina, foliage sage green; requires trimming about twice a year. The Sea Pink (Armeria) is good for edging and has pretty pink flowers. Feverfew (Golden Feather) of course you know, as it is much used for borders.

Would you care to have some trees on your sidewalk? If so, get neighbors together and agree upon one variety; a conglomeration of varieties on the sidewalk is heart-breaking and should not be allowed. The Black Acacia and Acacia Latifolia are ideal for this purpose; these two varieties can be trimmed to suit. Some people like the Purple Leaved Plum, very nice, and some use the Hawthorn for sidewalk, but to our way of thinking, the sidewalk is no place for it; it is all right in some place in the back garden where you can go and visit it on a nice dewy morning, when in bloom, and the sweet fragrance will carry you back to the days of your youth. Oh! don't forget the Silver Birch and Mountain Ash; they are very dear to us all.

Fuller descriptions and prices will be found on pages 5, 6 and 7 of this booklet.



Field of Roses. Note wealth of bloom and size of plants.

The Vallance Nursery

81 Glen Avenue (one block from 40th St. and Piedmont Avenue), Oakland, California

We are succeeding the Nursery department of C. C. Morse & Co., and are continuing the business at the old location, 81 Glen Avenue, just one block from 40th Street and Piedmont Avenue. Prospective customers and those interested in plants are invited to call and inspect our stock and consult us about planting at all times.

Our experience in planting Ornamental Grounds and Orchards, extends actively over 25 years in California. We are glad to consult with you about your planting problems.

THE VALLANCE NURSERY give no warranty, express or implied, as to description, purity, productiveness, or any other matter of any plants or trees they send out, and will be in no way responsible for the crop. If the purchaser does not accept the goods on these terms they are at once to be returned.