

MISCELLANEOUS PAPERS

Centre for Entomological Studies Ankara

No 167

04 February 2018

ISSN 1015-8235

<http://zoobank.org/References/2AC824F4-99DA-4A4C-8E22-100B69EDDD5>

Annotated list of the moth fauna of Anamur district (İçel Prov., South Turkey), with descriptions of new species (Lepidoptera)

Muhabbet Kemal¹ Ahmet Ömer Koçak

Abstract: Annotated list of the moth fauna of Anamur district (İçel Prov., South Turkey), with descriptions of new species (Lepidoptera). *Misc. Pap.* 167: 1-45, 73 figs., 1 map
In this paper, 167 species of 21 families are evaluated faunistically. Totally 94 species are reported here as new to the fauna of İçel Province. Taxonomically, two new species in the families *Gelechiidae* and *Psychidae* are described. Several taxa are discussed from various standpoints.
Keywords: *Lepidoptera*, fauna, Anamur, İçel, Turkey.



Fig. 1 – Upper heights of Anamur Oro-Mediterranean coniferous forest belt, composed of *Cedrus libani*, *Abies cilicica* and *Juniperus*, 10 9 2017, M.Kemal (Cesa)

In this paper, prepared under unfavourable conditions,² a large number of moth species are evaluated faunistically. Taxonomically, two new species, *Altenia anamuria* sp.n. (*Gelechiidae*), and *Kalliesia ruya* sp. n. (*Psychidae*) are described. Separately, some topics are highlighted here. The authors would like to draw attention to such issues that need to be seriously discussed.

As complementary works to this paper, 20 males and 6 females genitalia are illustrated here. Some of them are published for the first time. Besides, tympanal organs of 9 species (5 *Geometridae*, 4 *Pyraloidea*) are also illustrated for the first time.

Localities and their codes, where the species were observed and collected: Alaköprü 105m (33Ak), Çiçekyurdu 1620m (33Ae), Kaşyaylası 3km SW 1180m (33Aj), Pınarlar 475m (33Ad), Suolmaz Pass 1650m (33Af), Taşocağı 210m (33Ac) (see also Koçak & Kemal, 2017). On the left, the upper heights of Anamur is illustrated (**Fig.1**).

Collecting information and remarks are added to some species under discussion. Unless otherwise stated, all the species have been identified by the authors.

¹ Asst. Prof. Dr. Muhabbet Kemal, Van Yüzcüncü Yıl University, Faculty of Science, Dept. of Biology, Campus, Van / Turkey. e-mail: muhabbet_kemal@yahoo.com.tr - co-author: Prof. em. Dr. Ahmet Ömer Koçak, c/o Van Yüzcüncü Yıl University, Faculty of Science, Dept. of Biology, Campus, Van / Turkey. e-mail: cesa_tr@yahoo.com.tr

² To the increasingly worsening working conditions in the remote area of our region (SE and E Turkey), serious military operations in our border regions were also added. All resulting new conditions negatively affects our research program, and forces us to think new strategies for working in a very limited time. Therefore, the results and the evaluations of the present work, and the oncoming papers may far from our expectations in some respects.

New records are based upon Cesa –Infosystem.³ All the materials studied are preserved in coll. Cesa-33.⁴

List of the species

Totally 167 species of 21 moth families are listed below in alphabetical order, together with their synonymous names and original references. Faunistically 94 species are reported here as new to the fauna of İçel Province. Number of the new records are given below according to their families: *Arctiidae* (2), *Autostichidae* (1), *Gelechiidae* (1), *Geometridae* (34), *Hepialidae* (1), *Lecithoceridae* (1), *Noctuidae* (17), *Oecophoridae* (1), *Pterophoridae* (1), *Pyralidae* (31), *Sphingidae* (1), *Thaumetopoeidae* (1), *Tortricidae* (1), *Yponomeutidae* (1). Status of several species, or populations of the species are discussed from taxonomical or faunistical standpoints. For example, *Paidia* (*Arctiidae*), *Aristotelia* (*Gelechiidae*), *Cnestrognophos* (*Geometridae*), *Charissa variegata/subtaurica* (*Geometridae*), *Eupithecia* sp. (*Geometridae*), *Selidosema brunnearium* (*Geometridae*), and *Penestoglossa* sp. (*Psychidae*). Some microlepidopteran species are not included to this list, as the works on the identification are still ongoing. The symbol #, mentioned below, denotes nomenclaturally unavailable name (cf. ICZN).

Arctiidae

1. *Arctia (Epicallia) villica* (Linnaeus, 1758)

Synonym(s): *villica* Linnaeus, 1758; *corsica* Oberthür, 1911; *niceensis* Oberthür, 1911; *britannica* Oberthür, 1911; *meridionalis* Heinrich, 1923.

Original Reference: *Phalaena villica* Linnaeus, 1758, Syst. Nat. (Edn.10) 1: 501. Syntypes: [Europa].

2. *Eilema (Muscula) muscula* (Staudinger, 1899) (Figs. 2-4)

Synonym(s): *muscula* Staudinger, 1899

Original Reference: *Lithosia muscula* Staudinger, 1899, Dt. ent. Z., Iris 12: 156. Type(s): [Türkei]: Gjaur Dagħ [Amanos Mts.].

Recently the authors reported *Eilema (Muscula) brevifurca* Wilts. from Mutki (Bitlis Prov., East Turkey) (Kemal & Koçak, 2017c). It is interesting that in both species, i.e., *brevifurca* and *muscula*, the furca of the male genitalia is developed asymmetrically. Prep. no: GP988♂ GP2202♀ GP2834♂. Material studied: 3♂2♀. Anamur Alaköprü 105m (33Ak) 19 8 2015. 3♂♀. Anamur Taşocağı 210m (33Ac) 19 8 2015, M. Kemal & A. Koçak leg. (Cesa).

3. *Euplagia quadripunctaria* (Poda, 1761)

Synonym(s): *quadripunctaria* Poda, 1761; *hera* Linnaeus, 1767; *magna* Spuler, 1910 nec Hol., 1897; *latefasciata* Bubacek, 1915.

Original Reference: *Phalaena quadripunctaria* Poda, 1761, Insecta Mus. Graecensis: 89. Type(s): [Austria]: Graz.

New to the fauna of İçel Province.

Material studied: 1♂ Anamur Kaşyaylası 3km SW 1180m (33Aj) 10 9 2017, M. Kemal & A. Koçak leg. (Cesa).

4. *Manulea (s.str.) complana* (Linnaeus, 1758) (Fig. 5)

Synonym(s): *complana* Linnaeus, 1758; *ochrocephala* Fourcroy, 1785; *sericea* Gregson, 1860; *molybdeola* Guenée, 1861; *balcanica* Daniel, 1939.

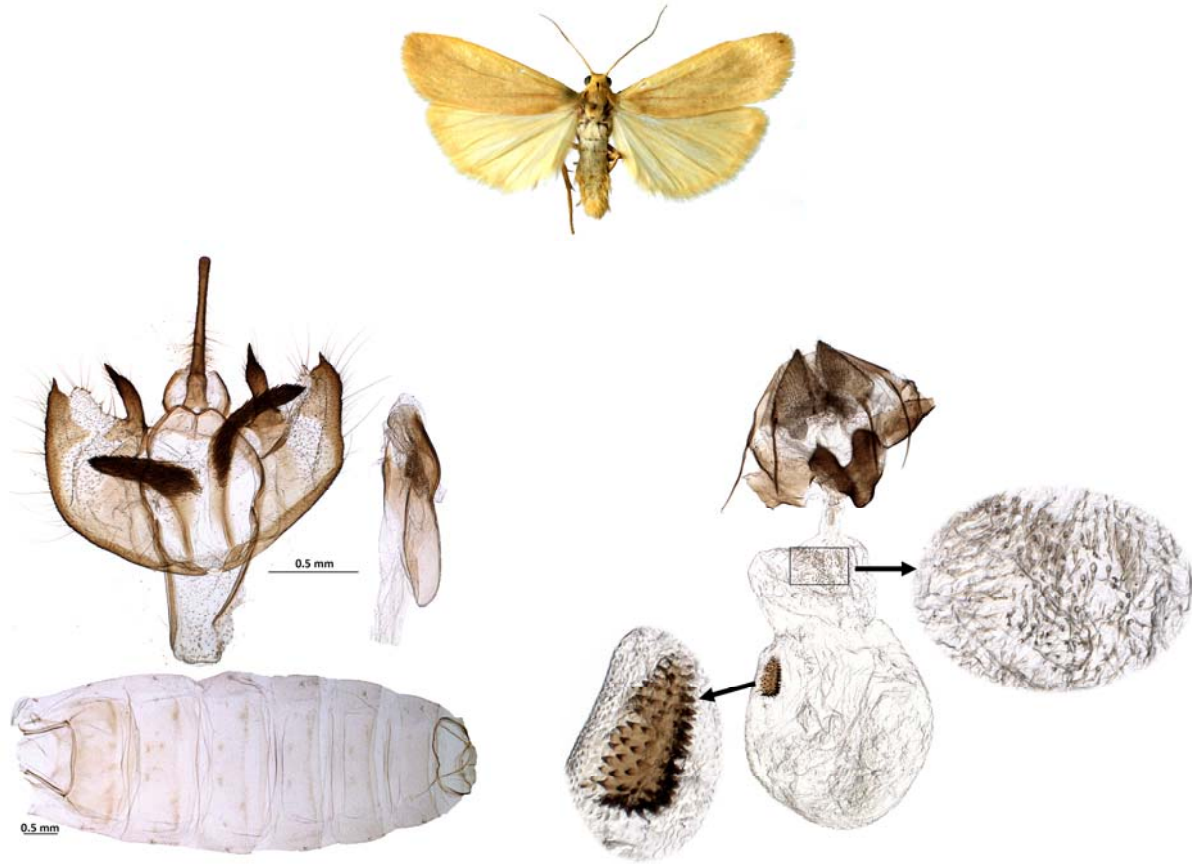
Original Reference: *Phalaena complana* Linnaeus, 1758, Syst. Nat. (Edn.10) 1: 512. Type(s): [Europa].

New to the fauna of İçel Province.

³ <http://www.cesa-tr.org/Infos.htm>

⁴ Cesa Collection: <http://grbio.org/cool/eaaz-xyfc>

Material studied: 8♂♀. Anamur Taşocağı 210m (33Ac) 19 8 2015. 1♂3♀. Anamur Kaşyaylası 3km SW 1180m (33Aj) 10 9 2017. 14♂♀ Anamur Çiçekyurdu 1620m (33Ae) 10 9 2017, M.Kemal & A.Koçak leg. (Cesa).



Figs. 2-4 - *Eilema (Muscula) muscula*. Upperside of male (top), male genitalia and abdominal skin GP2834♂ (left), female genitalia, GP2202♀ (right). Anamur, Taşocağı 210m, 19 8 2015, M. Kemal (Cesa)

5. *Paidia* sp.

The nominate subgenus of *Paidia* Hbn is currently represented by the following species in Turkey: *albescens* Stgr., 1892, *brunneagriscens* Daniel, 1932, *cinerascens* H.-S., [1847], and *rica* Fr., [1855] (= *murina* Hbn, 1790, preocc.). The homonymy in the last species has been demonstrated for the first time by Koçak (1980: 10). The members of this genus is widely distributed in Turkey. Around Anamur, this genus is represented by an almost blackish populations of an unidentified species. Its identity will be studied separately.

Material studied: 5♂. Anamur Pınarlar 475m (33Ad) 19 8 2015. 1♂ (GP2208). Anamur Taşocağı 210m (33Ac) 19 8 2015. 13♂♀. Anamur Alaköprü 105m (33Ak), 8 9 2017, M.Kemal & A.Koçak leg. (Cesa).

Autostichidae

6. *Aprominta bifasciata* (Staudinger, 1870)

Synonym(s): *bifasciata* Staudinger, 1870; *virginella* Rebel, 1902.

New to the fauna of İçel Province.

Material studied: 3♂ Anamur Pınarlar 475m (33Ad) 19 8 2015; 5♂ Anamur Alaköprü 105m (33Ak), 8 9 2017, M.Kemal & A.Koçak leg. (Cesa).

7. *Symmoca* sp.

Material studied: 7♂ Anamur Alaköprü 105m (33Ak), 8 9 2017, M. Kemal & A.Koçak leg. (Cesa). A very small species (wingspan about 10-11mm). Its identity will be separately studied.



Fig. 5 - *Manulea (s.str.) complana*. Male genitalia, GP2257♂. Anamur, Taşocağı 210m, M.Kemal (Cesa)

Ctenuchidae

8. *Amata rossica* (Turati, 1917)

Synonym(s): *#nigricornis* Alpheraky, 1883; *nigricornis* Kirby, 1892 (praeocc.); *rossica* Turati, 1917; *tanaica* Obraztsov, 1941

Original Reference: *Syntomis rossica* Turati, 1917, Atti Soc. ital. Sci. Nat. 56: 219, 228, t.4 fig. 4.
Type ♂: Russia: Saratow (coll. Turati).

9. *Dysauxes (s.str.) famula* (Freyer, 1836)

Synonym(s): *famula* Freyer, 1836; *hyalina* Freyer, 1845; *ragusaria* Zickert, 1904; *herthina* Stauder, 1921; *burgeffi* Draudt, 1931; *taurica* Draudt, 1931; *pseudoservula* Naufock, 1933; *pontica* Friese, 1959; *sofiata* De Laever, 1983; *lucana* De Laever, 1983.

Original Reference: *Lithosia famula* Freyer, 1836, Neuere Beitr. 2: 143. Type(s): [Slovenien]: Fiume [Rijeka].

Material studied: 1♂ Anamur, Alaköprü 105m (33Ak) 8 9 2017; 4♂ Kaşyaylası 3km SW 1180m (33Aj), 10 9 2017; 2♂ Çiçekyurdu 1620m (33Ae), 10 9 2017, M.Kemal & A.Koçak leg. (Cesa)

Gelechiidae

Totally 5 taxa of this family from Anamur district have been mentioned by the authors so far.

In the last year, the authors reported this species as *Altenia* aff. *modesta* Danil. from Anamur (İçel Prov.), together with Şirvan (Siirt Pr.), and Beydağı (Malatya Pr.) records for the first time in Turkey (Kemal & Koçak, 2017b). In the same paper, the authors illustrated a male genitalia, and its 8th abdominal tergite & sternite. The affinities to *Altenia modesta* Danil. were also discussed there. Despite all these, no comment has been received so far about this interesting record from Turkey.

After preparing a new male genitalia with the same perspective (cf. Huemer & Karsholt, 1999: 259, fig. 59), the important differences in the male genitalia became visible. After re-evaluation of all the genitalic characters in the male and the female, the authors came to the conclusion that this *Altenia*

species is new to the science. Taking the material collected from Anamur into consideration, this new species is described as follows:

10. *Altenia anamuria* sp.n.

(Figs. 6-11)

<http://zoobank.org/urn:lsid:zoobank.org:act:BCFF53A9-0340-480C-905F-433FC56623AE>

Holotype ♂. Forewing: 10mm, wingspan: 23mm.

Larger than *Altenia modesta* Danilevsky. Wing shapes and dark markings of upperside of forewing similar to *modesta*, but pinkish markings greatly reduced to a dirty yellowish subcostal line. Paler areas are creamy. Discal and postdiscal twin black spots developed. Ciliae almost three-coloured. Hindwing semitransparent. Ciliae slightly darker than the ground colour and long.

Male genitalia (Fig.2): Uncus bifid, broader at base. Anterior emargination of tegumen remarkably different from *modesta*. Apical tooth of aedeagus absent.

Female genitalia (Figs.3, 4): Shape of signum on bursa copulatrix, quadrate and short-toothed serrate margin instead of cross-shaped and large toothed serrate margin as in *modesta*.

Paratypes 6♂♂ forewing 8-11mm, wingspan 20-24mm; 10♀♀ forewing 9-11mm, 19-24mm.

General markings and colouration are similar to those of holotype. Subcostal line on upperside of forewing yellowish in males, reddish in females. Wing size variable.

Habitat: Mediterranean lowland vegetation between 100-200m above sea level (Fig.).

Material examined: Holotype (♂) South Turkey, İçel Province, Anamur, Alaköprü 105m (33Ak), 31 3 2017; 4♂♂ Anamur, Taşocağı 210m (33Ac), 29 3 2017, 2♂♂ 10♀♀ (paratypes) Anamur, Alaköprü 105m (33Ak), 31 3 2017, M. Kemal & A.Koçak leg.

Holotype and paratypes are preserved in the biorepository Centre for Entomological Studies Ankara (Cesa).⁵

1♀ (image of the genitalia of *Altenia modesta* from Kyrgyzstan, prep. by Bidzilya) (Oleksiy Bidzilya, pers. comm., on 23 April 2017).

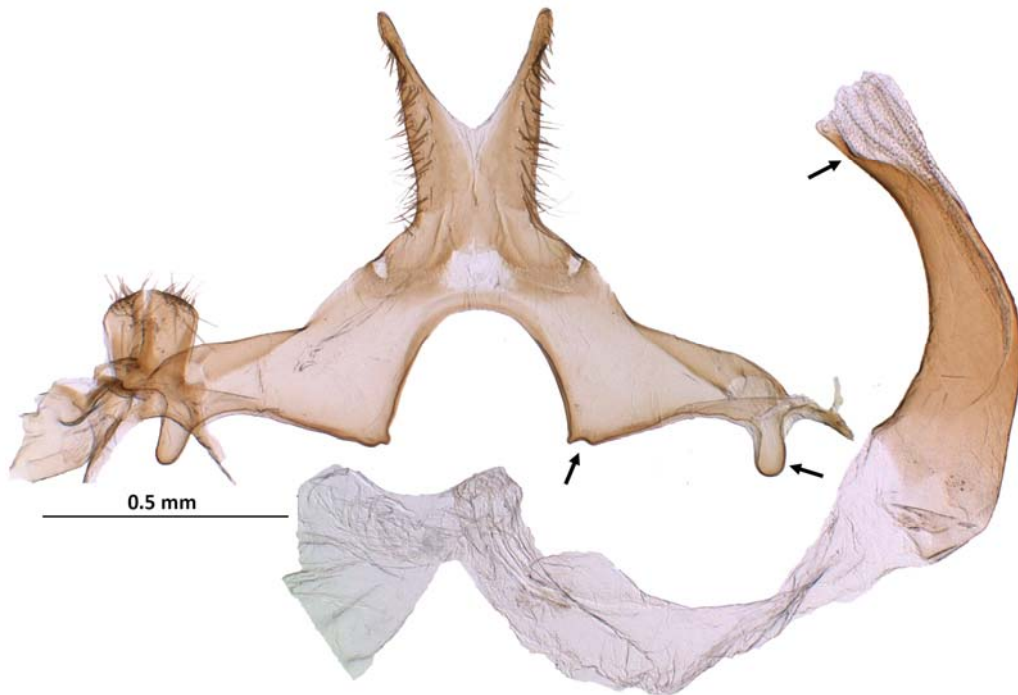
Etymology: The new species is named after the collecting place, Anamur, an historical, currently capital city of a district in İçel Province (South Turkey).

A molecular analysis of this species will be made by the authors, when appropriate conditions occur (cf. Announcement, Cesa News 150: 1).



Figs. 6, 7 - *Altenia anamuria* sp.n. Upperside of male (Holotype) (left), and female (paratype) (right) (before preparations). South Turkey, İçel Pr., Anamur, Alaköprü (33Ak), M. Kemal (Cesa)

⁵ Cool URI: <http://grbio.org/cool/eaaz-xyfc>



Figs. 8 - *Altenia anamuria* sp.n. male genitalia (holotype). GP2817. Diagnostic characters are marked with arrows. South Turkey, İçel Pr., Anamur, Alaköprü (33Ak), M. Kemal (Cesa)



Figs. 9, 10 - Female genitalia of *Altenia anamuria* sp.n. (paratypes). GP2645♀ (above), GP2646♀ (below). Signum separately enlarged, and its shape is diagnostic for the new species. Both from İçel Pr., Anamur, Alaköprü, M. Kemal (Cesa)



Fig. 11 - Habitat and type-locality of *Altenia anamuria* sp.n., İel Pr., Anamur, Alaköprü (33Ak), on 31 3 2017, M. Kemal (Cesa)

11. *Aristotelia* sp. (Fig.12)

Its external ornamentation reminds us of an *Aristotelia* species (resembling to *decoratella* Stgr in some respects), at first sight. Due to the lack of a published revisional work on this genus, and absence of the collected material enough prevent us from doing further research. Therefore, we placed this species in the faunal list as unidentified temporarily.

Material: 1 ex. Anamur Taşocağı 210m (33Ac) 19 8 2015, M. Kemal & A.Koak leg. (Cesa).



Fig. 12 - *Aristotelia* sp. Upperside of the moth. Anamur, M. Kemal (Cesa)

12. *Caryocolum* sp. (Fig.13)

Material studied: 1♀. İel Pr., Anamur, N of Suolmaz Pass 1660m (33Af), 20 8 2015, diurnal, M. Kemal & A.Koak leg. (Cesa)

A temporary determination. For the precise identification, more material is needed.



Fig. 13 – Female genitalia of a *Caryocolum* species (GP2250♀), with enlarged signum. Anamur, Suolmaz Pass 1660m, 20 8 2015, M. Kemal (Cesa)

13. *Metzneria aprilella* (Herrich-Schäffer, [1854])

Synonym(s): *aprilella* Herrich-Schäffer, [1854]; *igneella* Tengström, 1859; *sanguinolentella* De Joannis, 1910

Original Reference: *Parasia aprilella* Herrich-Schäffer, [1854], Schmett. Eur. 5: 207. Type: [Türkei]: "Brussa" (lost).

Recorded by the authors (Kemal & Koçak, 2017b).

Material studied: 1ex. Anamur, Alaköprü 105m (33Ak) 31 3 2017; 2ex Anamur Taşocağı 210m (33Ac) 29 3 2017, M. Kemal & A. Koçak leg. (Cesa)

14. *Nothris gregersenii* Karsholt & Sumpich, 2015

Synonym(s): *gregersenii* Karsholt & Sumpich, 2015

Original Reference: *Nothris gregersenii* Karsholt & Sumpich, 2015, Zootaxa 4059 (3): 481. Holotype ♂: Suecia, Öl Tocknekärr, leg. O. Karsholt (ZMUC).

New to the fauna of İçel Province.

Material studied: 9♂♀. Anamur, Çiçekyurdu 1620m (33Ae) 10 9 2017. 4♂♀ Anamur Kaşyaylası 3km SW 1180m (33Aj) 10 9 2017, M. Kemal & A. Koçak leg. (Cesa)

Geometridae

15. *Acanthovalva inconspicuaris* (Hübner, [1819])

Synonym(s): *inconspicuaris* Hübner, [1819]; *pumicaria* Lederer, 1855; *osyraria* Guenée, [1858]; *cinerascens* Butler, 1875; *perturbata* Bastelberger, 1908; *cinnamomaria* Rothschild, 1914

Original Reference: *Geometra inconspicuaris* Hübner, [1819], Samml. eur. Schmett. 5: pl. 97, fig. 500. Type (s): Europa.

New to the fauna of İçel Province.

16. *Aplasta ononaria* (Fuessly, 1783)

Synonym(s): *ononaria* Fuessly, 1783; *rubellata* De Villers, 1789; *rubicapraria* Hübner, 1793; *sudataria* Hübner, [1817]; *faecataria* Hübner, [1819]; *ononata* Bellier, 1861

Original Reference: *Phalaena ononaria* Fuessly, 1783, Arch. Insektengesch. 3: 1-2, pl. 17 6 figs. 1-5. Syntypes: Schweiz.

Material studied: 1♂. Anamur, Alaköprü 105m (33Ak) 8 9 2017, M. Kemal & A. Koçak leg. (Cesa)

17. *Charissa (Cnestrognophos) sp.* (Figs. 14-16)

Last year, the authors collected some *Charissa* species from the upper heights of Anamur. Among them, four specimens were found to be closer to *mutilata/peloponnesiaria* externally (Erlacher & Erlacher, 2017). However, the male genitalia proved that this species is more similar to *mutilata*

than *peloponnesiaria*, although the wing colouration is more like to *peloponnesiaria*. For this reason, we only report the species from Anamur, for the time being. The necessary molecular analyses on this species will be made by us in the near future (*vide*, Announcement: *Cesa News* 150: 1).

Material studied: 4♂ Anamur Çiçekyurdu 1620m (33Ae) 10 9 2017, M.Kemal & A.Koçak leg. (Cesa).



Figs. 14, 15 – *Charissa (Cnestrognophos)* sp. Upperside of male (left). Tympanal organ (before & after preparation) (right), (GP2843♂), Anamur Çiçekyurdu 1620m (33Ae) 10 9 2017, M. Kemal (Cesa)

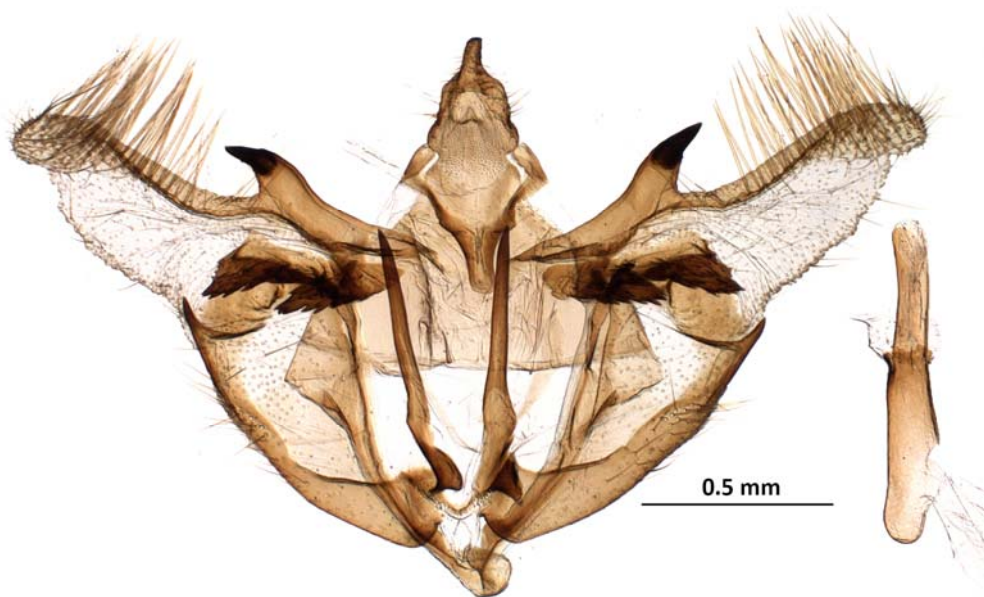


Fig. 16 – *Charissa (Cnestrognophos)* sp. Male genitalia (GP2843♂), Anamur Çiçekyurdu 1620m (33Ae) 10 9 2017, M. Kemal (Cesa)

18. *Charissa (Euchrognophos) variegata* (Duponchel, 1830) / *subtaurica* (Wehrli, 1934)

Synonym(s): *variegatus* Duponchel, 1830; *rothschildi* L.B. Prout, 1929; *#subtaurica* Wehrli, 1932; *subtaurica* Wehrli, 1934

Original References: [1] *Gnophos variegata* Duponchel, 1830, Hist. nat. lépid. pap. Fr. 8 (1): 216-217, pl.18 fig.4, pl.185 fig.8. Syntypes: France, env. Paris. [2] *Gnophos variegata* ssp. *subtaurica* Wehrli, 1934, Mitt. münch. ent. Ges. 34: 54, Taf. I fig. 25, 26 (attributed to the author's previous paper, *ibidem* 22: 9).

The screenshot shows the Lepiforum website interface. On the left, the search results for *Charissa subtaurica* (Wehrli, 1932) are displayed, including four photographs of the moth. On the right, the 'Weitere Informationen' section shows the etymology and other combinations. The etymology states: '„variegatus bunt, schreckig, nach der Färbung des Falters.“ SPULER 2 (1910: 109L.)'. Under 'Andere Kombinationen', it lists *Gnophos variegata* Duponchel, 1830 and *Euchrognophos variegata* (Duponchel, 1830). Under 'Unterarten', it lists *Charissa variegata subtaurica* Wehrli, 1932. The 'Literatur' section includes the first description by Duponchel, P.-A.-J. (1830).

Figs. 17, 18 - Two images from Lepiforum. On the left, *Charissa subtaurica* is considered as a distinct species. On the right, “*subtaurica*” is considered as a subspecies “Unterart” of *Charissa variegata* Dup. Both images have been taken on the same day (10 1 2018).

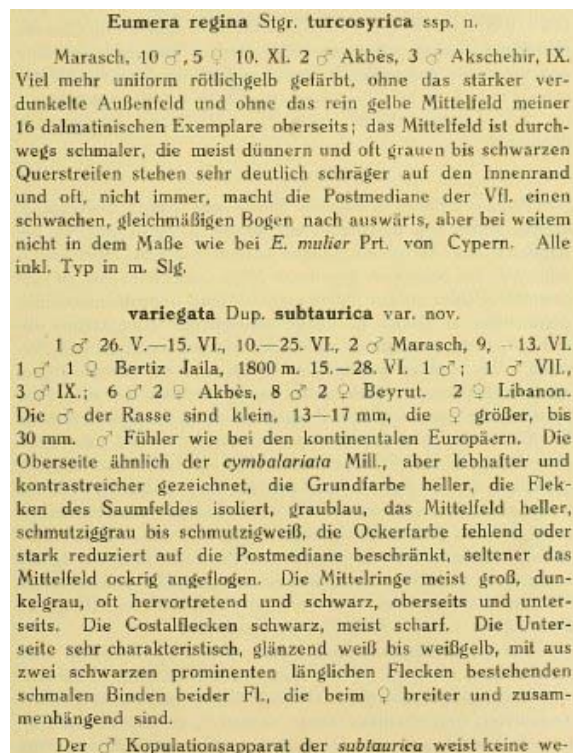


Fig. 19 - The original name combination of the description of “*subtaurica*” by Wehrli (1932, Mitt. Münch. ent. Ges. 22: 9). As it is seen from the figure, “*subtaurica*” was proposed as a variation of the species *variegata* Dup. but without genus name. The earlier name, described on the same page was *Eumera regina turcosyrica* ssp. n. The name “*subtaurica*” is nomenclaturally unavailable, due to two reasons: [1] Non-binominal, as being described without generic name. [2] Described at as a quadriminomial name. Namely, Wehrli described two taxa on the same page. He placed *turcosyrica* to the “subspecies” category, later he also placed “*subtaurica*” as “variation” category. It is well known that if two categories such “subspecies” and “variation” are at issue in the same time, “subspecies” is used for the trinomial, while “variation” for the quadriminomial name. We are of the opinion that the correct authorship and the date of publication should be as “Wehrli, 1934”.

It is still unclear, whether *variegata* Duponchel occurs in Turkey, or represented by its subspecies *subtaurica* Whli, or *subtaurica* occurs in Turkey alone (cf. **Figs. 17,18,20,21**). The authorship and date of publication of *subtaurica* are also discussed in the explanation of the **fig. 19** above.



Figs. 20, 21 – *Charissa variegata/subtaurica*. GP2760♂. Upperside (left), and underside of the male (right). İçel Pr., Anamur, Çiçekyurdu 1620m (33Ae). For the genitalia and tympanal organs, see below. M. Kemal (Cesa)



Figs. 22, 23 – *Charissa variegata/subtaurica*. GP2760♂. Tympanal organs (before & after preparation) (left). Male genitalia (right), İçel Pr., Anamur, Çiçekyurdu 1620m (33Ae), M. Kemal (Cesa)

19. *Charissa (Kemtroglyphos) zeitunaria* (Staudinger, 1901)

(Fig. 24-27)

Synonym(s): *zeitunaria* Staudinger, 1901

Original Reference: *Gnophos obscuraria* var. *zeitunaria* Staudinger, 1901, Cat. Lep. palaearkt. Faunengeb. 3(1):344, nr. 3931c. Type(s): [Türkei]: "Taur.m.or." [=Zeitun].

New to the fauna of İçel Province.

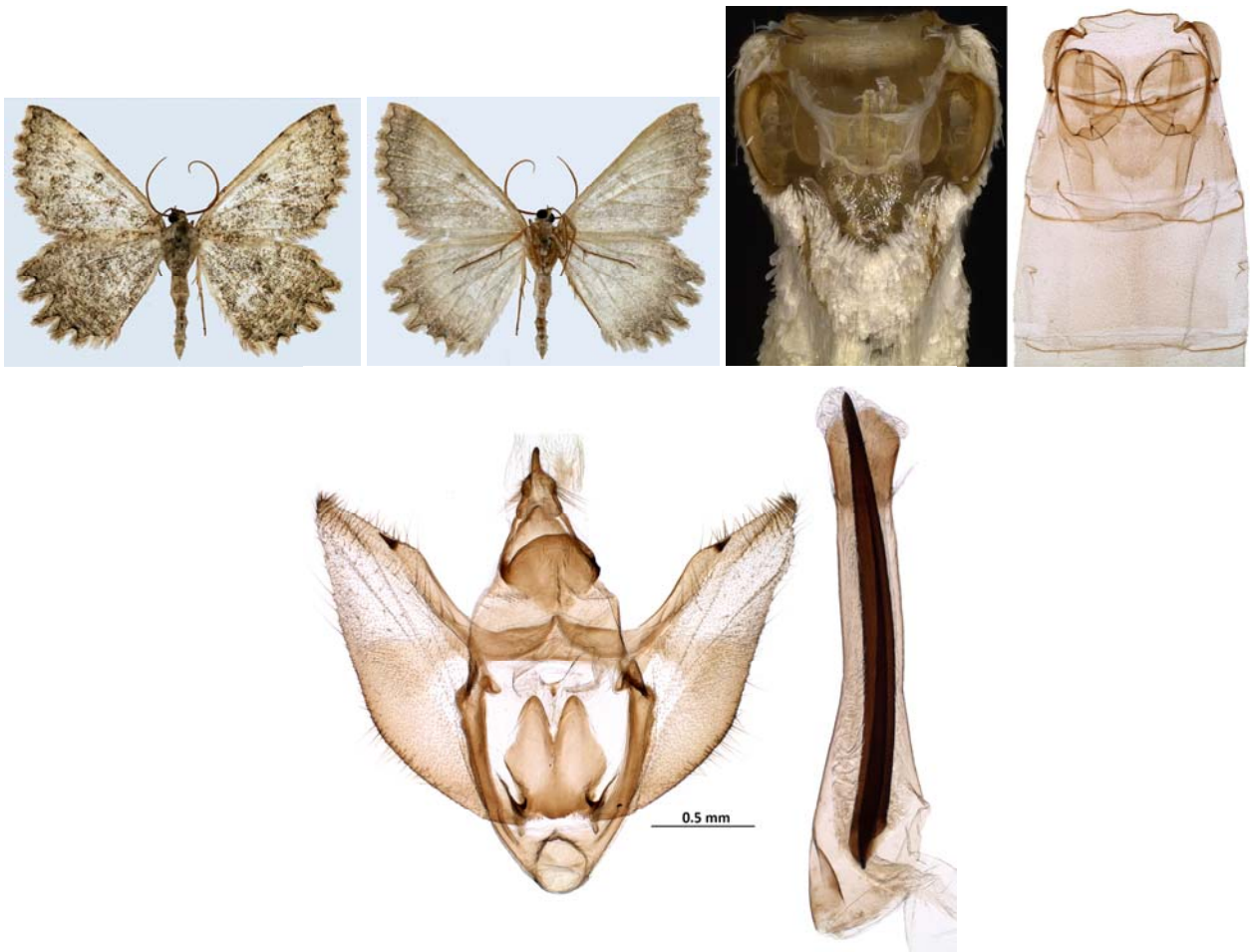
Material studied: 1♂ (GP2761♂). Anamur, Çiçekyurdu 1620m (33Ae) 10 9 2017, M. Kemal & A. Koçak leg. (Cesa)

20. *Coenotephria ablutaria* (Boisduval, 1840)

Synonym(s): *#ablutaria* Boisduval, 1840; *probaria* Herrich-Schäffer, 1852; *ruficinctaria* Guenée, [1858]; *ochrearia* Staudinger, 1901

Original Reference: *Eubolia ablutaria* Boisduval, 1840, Genera index meth. eur.: 203, Type: "Gall. mer." [without description; simply nomen nudum!]

Previously recorded from Anamur, and illustrated by the authors (Kemal & Koçak, 2017b).



Figs. 24-27 – *Charissa zeitunaria*. Upper- and underside of the male (top left), tympanal organ (before and after preparation) (top right). Male genitalia (GP2761♂) (bottom). Anamur, Çiçekyurdu 1620m (33Ae), 10 9 2017, M. Kemal (Cesa)

21. *Cyclophora puppillaria* (Hübner, [1799])

Synonym(s): *puppillaria* Hübner, [1799]; *nolaria* Hübner, 1809; *gyrata* Hübner, [1813]; *gyraria* Treitschke, 1827; *mirtalis* Costa, 1834; *calaritana* Turati, 1911; *asiaeminoris* Amsel, 1935; *granti* L.B. Prout, 1935.

Original Reference: *Geometra puppillaria* Hübner, [1799], Samml. eur. Schmett. 5: pl.13, fig.69.

Type: Europa.

New to the fauna of İçel Province.

Material studied: 3♂♀. Anamur Taşocağı 210m (33Ac) 19 8 2015. 1♂ Anamur Pınarlar 475m (33Ad) 19 8 2015, M. Kemal & A. Koçak leg. (Cesa).

22. *Cyclophora suppunctaria* (Zeller, 1847)

Synonym(s): *suppunctaria* Zeller, 1847; *amabilis* Schawerda, 1922; *grisea* Schawerda, 1938.

Original Reference: *Cabera suppunctaria* Zeller, 1847, Isis v. Oken 1847: 496-497. Syntypes: "Sicilia".

Previously recorded from Anamur, and also illustrated by the authors (Kemal & Koçak, 2017b).

23. *Dasycorsa modesta* (Staudinger, 1879)

Synonym(s): *modesta* Staudinger, 1879

Original Reference: *Dasycephala modesta* Staudinger, 1879, Horae Soc. ent. ross. 14: 445. Type ♀: [Türkei]: Taurus (Haberhauer leg.).

Common in the spring, nocturnal.

Previously recorded from Anamur by the authors (Kemal & Koçak, 2017b).

24. *Eumera turcosyrica* Wehrli, 1932

Synonyms: *turcosyrica* Wehrli, 1932; *#turcosyriaca* Wehrli, 1934

Original Reference: *Eumera regina* ssp. *turcosyrica* Wehrli, 1932, Mitt. münch. ent. Ges. 22: 9. Syntypes 15♂ 5♀: [Türkei]: Marasch, Akbes, Akschehir (ZFMK).

New to the fauna of İçel Province.

Material studied: 1♂. Anamur Çiçekyurdu 1620m (33Ae), 10 9 2017, M.Kemal & A.Koçak leg. (Cesa)

Uncommon in the autumn, nocturnal.

The male genitalia of this species was illustrated by Wehrli (1934: Taf.v fig.13), with a misspelled name as "*turcosyriaca*".

25. *Eupithecia* sp. (Figs.28-30)

The species "externally very similar to *Eupithecia quercetica* Prout, 1938 (= *buxata* Pinker, 1958). However, its genitalia unknown for me, especially the eighth sternite, which similar to those of species from *egenaria* species-group" (Mironov, pers. comm. on 16 January 2018).

Previously recorded from Anamur by the authors (Kemal & Koçak, 2017b).

Material examined: 1♂ (GP2824) S. Turkey, İçel Pr., Anamur, Alaköprü 105m (33Ak) 31 3 2017, M. Kemal & A.Koçak leg. (Cesa)



Figs. 28-30 - *Eupithecia* sp. Upperside of male (top left), tympanal organs (before and after preparation) (top right), male genitalia and 8th sternite, GP2824♂ (below), South Turkey, İçel Pr. Anamur, M.Kemal (Cesa)

26. *Gnopharmia rubraria* Staudinger, 1892

Synonym(s): *rubraria* Staudinger, 1892

Original Reference: *Gnopharmia rubraria* Staudinger, 1892, Dt. ent. Z., Iris 5: 184-185, Taf.2 f.12.

Syntypes: [Türkei]: Maraş, Aintab; [Israel]: Jerusalem.

New to the fauna of İçel Province.

27. *Gymnoscelis rufifasciata* (Haworth, [1809])

Synonym(s): *rufifasciata* Haworth, [1809]; *pumilata* Hübner, [1813].

Original Reference: *Phalaena rufifasciata* Haworth,[1809], Lepid. Br. (2): 361. Syntypes: Britain (BMNH).

Previously recorded from Anamur by the authors (Kemal & Koçak,2017b).

28. *Hylaea fasciaria* (Linnaeus,1758)

Synonym(s): *fasciaria* Linnaeus,1758; *prosapiaria* Linnaeus,1758; *neustriaria* Hufnagel,1767; *prasinaria* [Denis & Schiffermüller],1775; *bilosata* De Villers,1789; *viridifasciosa* Esper,1794; *cleui* Leraut,1993 **Original Reference:** *Phalaena fasciaria* Linnaeus,1758, Syst. Nat. (Edn.10)1: 521. Type(s): [Europa].

Sihvonen et al. (2014) revised *Hylaea fasciaria* group of the West Palaearctic. The species occurs in Turkey, and represented in the Taurus Mountains by the subspecies *cedricola* Wehrli,1929 (see also Skou & Sihvonen,2015).

Material studied: 4♂ 1♀ Anamur, 3km SW Kaşyaylası, 1180m (33Aj), 10 9 2017; 1♂ Anamur Çiçekyurdu 1620m (33Ae), 10 9 2017, M.Kemal & A.Koçak leg. (Cesa)

29. *Hypomecis punctinalis* (Scopoli,1763) (Figs.31,32)

Synonym(s): *punctinalis* Scopoli,1763; *urticaria* Hufnagel,1767; *turcaria* Fabricius,1775; *griseonigra* Goeze,1781; *bandedvillaea* Fourcroy,1785; *consortaria* Fabricius,1787; *convexata* De Villers,1789; *leucopheataria* De Villers,1789

Original Reference: *Phalaena punctinalis* Scopoli,1763, Entomologia Carniolica: 217. Type(s): [Slovenien]: Carniolia [Krain].

Fischer & Lewandowski (2004) described a subspecies of *Hypomecis punctinalis* from Cyprus as *kerstinae*, distinguished from the nominate subspecies by the absence of discal oval marking on the hindwing. Anamur population of *punctinalis* is represented by rather darkbrown ground colouration of the upperside of wings, with well developed discal oval marking on the hindwing.

New to the fauna of İçel Province.

Material studied: 5♂ Anamur, Taşocağı 210m (33Ac), 19 8 2015, GP2217♂ M.Kemal & A.Koçak leg. (Cesa)



Figs. 31, 32 – *Hypomecis punctinalis*. Upperside of male (left). Male genitalia GP2217♂ (right). İçel Pr., Anamur, Taşocağı 210m, 19 8 2015, M. Kemal (Cesa)

30. *Idaea degeneraria* (Hübner,[1799])

Synonym(s): *degeneraria* Hübner,[1799]; *degenerata* Treitschke,1828; *floridaria* Turati,1913

Original Reference: *Geometra degeneraria* Hübner,[1799], Samml. eur. Schmett. 5: pl.11, fig.57. Type: Europa.

New to the fauna of İçel Province.

Material studied: 1♂ Anamur, Alaköprü 105m (33Ak), 8 9 2017 M.Kemal & A.Koçak leg. (Cesa)

31. *Idaea dimidiata* (Hufnagel,1767)

Synonym(s): *dimidiata* Hufnagel,1767; *scutulata* [Denis & Schiffermüller],1775; *antitaurica* Wehrli,1931 nec Wehrli,1931; *tauricola* Wehrli,1934.

Original Reference: *Phalaena dimidiata* Hufnagel,1767, Berl. Mag. 4: 602. Type(s): Deutschland: Berlin.

New to the fauna of İçel Province.

Material studied: 3♂ Anamur Taşocağı 210m (33Ac) 19 8 2015; 4♂ Anamur Pınarlar 475m (33Ad) 19 8 2015, M.Kemal & A.Koçak leg. (Cesa).

32. *Idaea distinctaria* (Boisduval,1840)

Synonym(s): *distinctaria* Boisduval,1840; *ruficostata* Zeller,1849; *incarnaria* Herrich-Schäffer,1852

Original Reference: *Acidalia distinctaria* Boisduval,1840, Genera Index meth. eur. Lepid.: 224.

Syntypes: France, Provence (ZFMK).

Previously recorded from Anamur by the authors (Kemal & Koçak,2017b).

33. *Idaea filicata* (Hübner,[1799])

Synonym(s): *filicata* Hübner,[1799]; *filicaria* Duponchel,1830; *levequei* Leraut,2005

Original Reference: *Geometra filicata* Hübner,[1799], Samml. eur. Schmett. 5: pl.46, fig.238. Type: Europa.

Material studied: 1♂ Anamur Pınarlar 475m (33Ad) 19 8 2015; 1♂ Alaköprü 105m (33Ak) 8 9 2017; 1♀ Çiçekyurdu 1620m (33Ae), 10 9 2017, M. Kemal & A.Koçak leg. (Cesa).

34. *Myinodes shohami* Hausmann,1994

Synonym(s): *shohami* Hausmann,1994

Original Reference: *Myinodes shohami* Hausmann,1994, Nota lepid. 17 (1/2): 38, figs. Holotype ♂: Jordan (north-east): Quasr el Hallabad, 500m (ZSBS).

A rare species in the early spring. Previously recorded from Anamur by the authors (Kemal & Koçak,2017b).

35. *Oulobophora externaria* (Herrich-Schäffer,[1848])

Synonym(s): *externata* Herrich-Schäffer,1843; *externaria* Herrich-Schäffer,[1848]

Original Reference: *Lobophora externaria* Herrich-Schäffer,[1848], Syst. Bearb. Eur. Schmett. 3: 180. Type ♀: [Turkey: Istanbul Prov.]: "Constantinopel".

A very common species in the spring. Previously recorded from Anamur by the authors (Kemal & Koçak,2017b).

36. *Peribatodes correptarius* (Zeller,1847)

Synonym(s): *correptaria* Zeller,1847

Original Reference: *Boarmia correptaria* Zeller,1847, Isis 1847: 18-19. Syntypes: [Turkey]: Pera [Istanbul], Smyrna [=Izmir] (BMNH).

A very common species at the upper heights.

New to the fauna of İçel Province.

Material studied: 1♂ Anamur Pınarlar 475m (33Ad) 19 8 2015; 4♂4♀ Anamur Kaşyaylası 3km SW 1180m (33Aj) 10 9 2017; 8♂22♀ Anamur Çiçekyurdu 1620m (33Ae) 10 9 2017, M.Kemal & A.Koçak leg. (Cesa)

37. *Peribatodes rhomboidarius* [Denis & Schiffermüller],1775)

Synonym(s): *rhomboidaria* [Denis & Schiffermüller],1775; *inaequalis* Goeze,1781; *gemmaria* Brahm,1791; *ichnusaria* Ghiliani,1852; *corsicaria* Schawerda,1931; *saerdabensis* Wehrli,1943

Material studied: 2♂1♀ Anamur Taşocağı 210m (33Ac) 19 8 2015, M.Kemal & A.Koçak leg. (Cesa).

New to the fauna of İçel Province.

38. *Peribatodes secundarius* ([Denis & Schiffermüller],1775)

Synonym(s): *secundaria* [Denis & Schiffermüller],1775; *fallentaria* Staudinger,1879; *druentiararia* Cleu,1928; *syrisca* Wehrli,1933; *francosuevica* Schneider,1942; *rometschi* Schneider,1942; *occidentaria* Lempke,1953

Original Reference: *Geometra secundaria* [Denis & Schiffermüller], 1775, Ankündigung syst. Werkes Schmett. Wienergegend: 101. Type(s): [Austria]: Vienna district.

New to the fauna of İçel Province.

39. *Problepsis ocellata* (Frivaldszky,1845)

Synonym(s): *ocellata* Frivaldszky,1845; *ommatophoraria* Guenée,[1858]

Original Reference: *Caloptera ocellata* Frivaldszky,1845, Evr. Kiral. Magy. Term. Tars. 1: 185, pl.3 fig.1. Syntypes: Greece: Crete, [Turkey]: Smyrna [Izmir].

Common in the coastal region.

Material studied: 8♂ Anamur Pınarlar 475m (33Ad) 19 8 2015; 3♂2♀ Anamur, Kaşyaylası 3km SW, 1180m (33Aj), 10 9 2017, M. Kemal & A.Koçak leg. (Cesa).

40. *Pseudopanthera syriacata* (Guenée, 1858)

Synonym(s): *syriacata* Guenée, 1858; *#syriacaria* Wiltshire, 1958

Original Reference: *Venilia syriacata* Guenée, 1858, [in] Boisduval & Guenée, Hist. nat. Insectes (Spec. gén. Lépid.) 9: 113, pl. 21 fig. 2. Type ♂: [Lebanon]: "Beyrouth" (coll. Lederer).

Common in the spring, diurnal-nocturnal. Previously recorded from Anamur by the authors (Kemal & Koçak, 2017b).

41. *Pseudoterpnia coronillaria* (Hübner, [1817])

Synonym(s): *coronillaria* Hübner, [1817]; *cinerascens* Koch, 1854 nec Z., 1847; *#coronillaria* Rebel, 1939

Original Reference: *Geometra coronillaria* Hübner, [1817], Samml. eur. Schmett. 5: pl. 93, figs. 479-482. Syntypes: Europa.

New to the fauna of İçel Province.

Material studied: 1♂. Anamur Taşocağı 210m (33Ac) 19 8 2015, M. Kemal & A. Koçak leg. (Cesa).

42. *Rhodometra sacraria* (Linnaeus, 1767)

Synonym(s): *sacraria* Linnaeus, 1767; *labda* Cramer, 1777; *sacralis* Thunberg, 1784; *fulvaria* Fabricius, 1794; *sanguinaria* Esper, 1801; *minervae* Gistel, 1856; *labdaria* Guenée, [1858]

Original Reference: *Phalaena sacraria* Linnaeus, 1767, Syst. Nat. (Edn. 12) 1(2): 863. Syntypes: [Algeria]: Barbaria (LSL).

Common in all seasons, diurnal-nocturnal.

Material studied: 1♂ Anamur Alaköprü 105m (33Ak) 8 9 2017; 1♂ Anamur Suolmaz Pass 1660m (33Af), diurnal, 10 9 2017, M. Kemal & A. Koçak leg. (Cesa)

43. *Scopula marginepunctata* (Goeze, 1781)

Synonym(s): *marginepunctata* Goeze, 1781; *conjugata* Borkhausen, 1794; *aniculosata* Rambur, 1829; *puellaria* Boisduval, 1840; *mutaria* Heydenreich, 1851; *promutata* Guenée, [1858]; *promutaria* Morris, 1861; *apertaria* Walker, [1863]; *madoniata* Fuchs, 1901; *pastoraria* Joannis, 1891; *#marginipunctata* Rothschild, 1914; *britonaria* Oberthür, 1917; *subatrata* Wagner, 1919; *#insubrica* Vorbrodt, 1930

Original Reference: *Phalaena marginepunctata* Goeze, 1781, Ent. Beytr. 3(3): 385.

New to the fauna of İçel Province.

Material studied: 1♂ Anamur Kaşyaylası 3km SW 1180m (33Aj) 10 9 2017; 1♂ Anamur Çiçekyurdu 1620m (33Ae) 10 9 2017, M. Kemal & A. Koçak leg. (Cesa).

44. *Selidosema brunnearium* (De Villiers, 1789)

(Figs. 33-36)

Synonym(s): *brunnearia* De Villiers, 1789; *ericetaria* Villiers, 1789; *subfimbriata* Haworth, 1812; *oelandica* Wahlgren, 1913.

Original Reference: *Phalaena brunnearia* De Villiers, 1789, Caroli Linnaei Entomologia...: 325-326.

In the most recent publication on this genus (Redondo & Gaston, 2012), the species can be easily separated by means of their genitalia and external morphology.

Two species of the genus *Selidosema*, *brunnearium*, and *plumarium* occurring in Turkey can be confused each other, if their genitalic preparations are not examined. As an unpublished faunistic information, the second author collected and prepared male genitalia of *Selidosema plumarium* from Niğde Prov. Çamardı, Demirkazık (GP729♂). *Selidosema brunnearium* is widely distributed in Turkey. Two populations of this species from Anamur (İçel), and Kale (Malatya) are given here for comparison purposes. The male genitalia shows great similarity to each other. However, the external morphology and colouration from Anamur seems rather unusual. Therefore, more material is needed for further taxonomical evaluation.

New to the fauna of İçel Province.

Material studied: 1♂. Anamur, Taşocağı 210m (33Ac), 19 8 2015, GP2216♂ M. Kemal & A. Koçak leg. (Cesa)



Figs. 33-36 – *Selidosema brunnearium*. Upperside of males: top left: from Anamur, top right from Malatya (Kale). Male genitalia: Bottom left from Anamur, GP2216♂, bottom right from Malatya (Kale), GP2146♂, M.Kemal (Cesa)

45. *Wehrlia revocaria* (Staudinger, 1892)

(Figs. 37-39)

Synonym(s): *revocaria* Staudinger, 1892; *#fasciata* Wagner, 1931.

Original Reference: *Aspilates revocaria* Staudinger, 1892, Dt. ent. Z., Iris 5: 203-204, Taf. 2 f. 16.

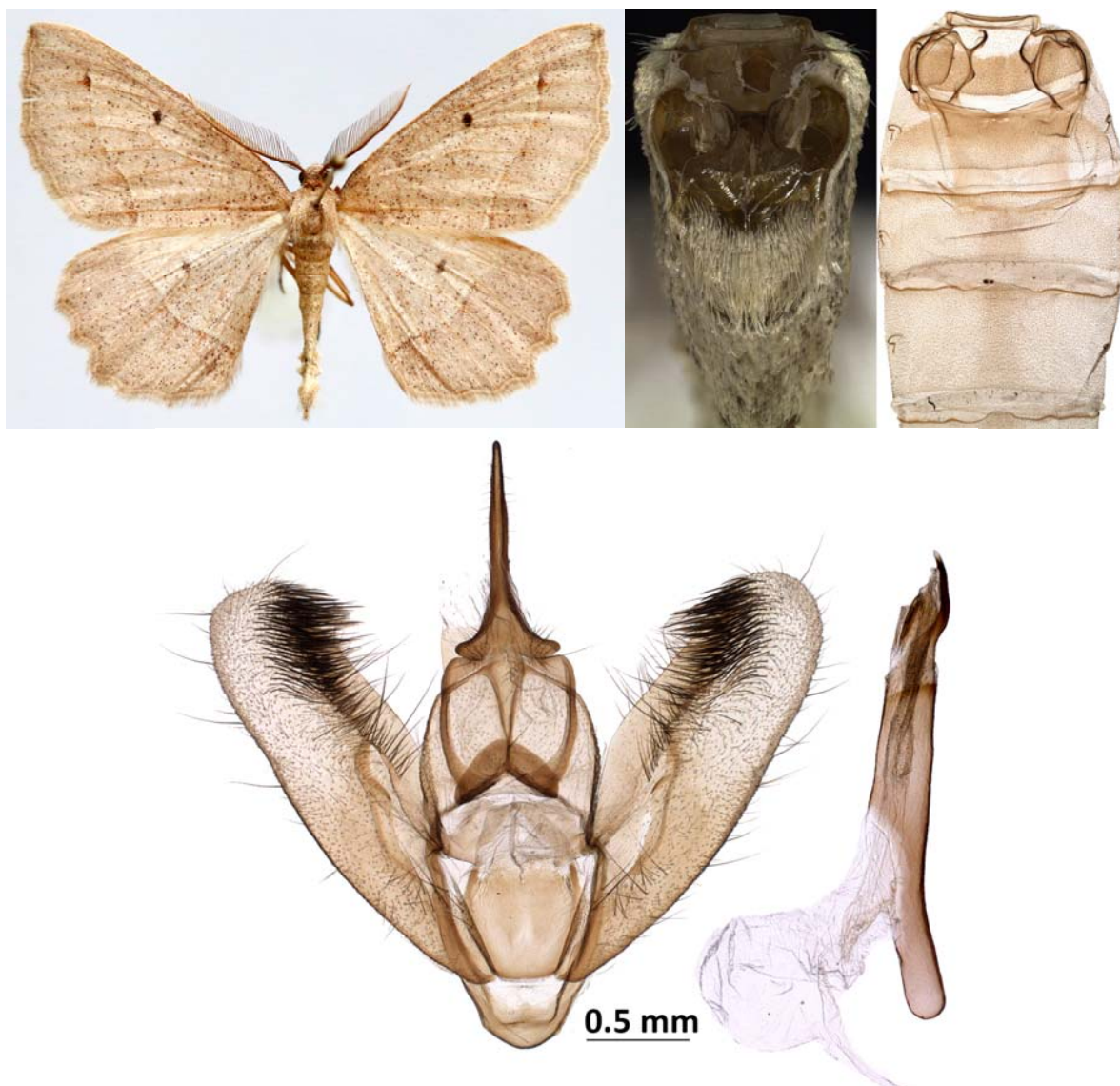
Type: [Lebanon]: Beirut.

Apparently very rare, confined to the upper heights. Nocturnal.

In the updated list, Koçak & Kemal (2015) mentioned *Wehrlia* as valid generic name of Turkey. The genus is currently monotypic, represented by the species *revocaria* Stgr. This species is hitherto known from Lebanon and Turkey (Akşehir) (Wagner, 1931), and Maraş (Wehrli, 1934). After 84 years, the present record is new for the fauna of İçel Province.

The genitalia and the tympanal organ of this species are illustrated here for the first time.

Material studied: 1♂ (GP2846) Anamur, Kaşyaylası 3km SW, 1180m (33Aj), 10 9 2017; 1♂ Anamur, Çiçekyurdu 1620m 10 9 2017, M.Kemal & A.Koçak leg. (Cesa).



Figs. 37-39 – *Wehrliola revocaria*. Upperside of male (top left). Tympanal organ (top right), male genitalia, GP2846, Anamur Kaşyaylası 3km SW 1180, M. Kemal (Cesa)

46. *Xanthorhoe fluctuata* (Linnaeus, 1758)

Synonym(s): *fluctuata* Linnaeus, 1758; *fibulata* Hufnagel, 1767; *cinerata* Fourcroy, 1785 nec Fabr., 1781; *costovata* Haworth, 1809; *fluctuaria* Boisduval, 1840; *multistriga* Oberthür, 1910

Original Reference: *Phalaena fluctuata* Linnaeus, 1758, Syst. Nat. (Edn.10)1: 527. Type(s): [Europa].

Previously recorded from Anamur by the authors (Kemal & Koçak, 2017b).

Gracillariidae

47. *Caloptilia alchimiella* (Scopoli, 1763)

Synonym(s): *alchimiella* Scopoli, 1763; *crucifera* Fourcroy, 1785; *swederella* Thunberg, 1788; *thunbergella* Fabricius, 1794; *franckella* Hübner, 1796; *thunbergii* Haworth, 1828; *hilaripennella* Treitschke, 1833; *sardiniella* Amsel, 1936

Original Reference: *Phalaena alchimiella* Scopoli, 1763, Entomologia Carniolica: 254. Type(s): "Carniolia".

Previously recorded from Anamur by the authors (Kemal & Koçak, 2017b).

48. *Phyllonorycter abrasella* (Duponchel, 1843)

Synonym(s): *abrasella* Duponchel, 1843; *abrasella* Zeller, 1846

Previously recorded from Anamur by the authors (Kemal & Koçak, 2017b).

Hepialidae

49. *Triodia amasina* (Herrich-Schäffer, [1851])

Synonym(s): *amasina* Herrich-Schäffer, [1851]

Original Reference: *Hepialus amasina* Herrich-Schäffer, [1851], Syst. Bearb. Schmett. Eur. Taf. Hepial. fig. 7; ibid. 6: 30. Type(s): [Türkei]: Amasia.

Apparently rare in autumn, crepuscular to nocturnal.

New to the fauna of İçel Province.

Material studied: 1♂. Anamur, Çiçekyurdu 1620m (33Ae) 10 9 2017, M.Kemal & A.Koçak leg. (Cesa)

Lasiocampidae

50. *Lasiocampa grandis* (Rogenhofer, 1891)

Synonym(s): *grandis* Rogenhofer, 1891; *salomonis* Staudinger, [1892]

Original Reference: *Gastropacha trifolii* var. *grandis* Rogenhofer, 1891, Verh. zool.- bot. Ges. Wien 41: 86. Syntypes ♂♀: "Syrien".

New to the fauna of İçel Province.

Common in *Quercus* woodlands, nocturnal.

Material studied: 1♂. Anamur Kaşyaylası 3km SW 1180m (33Aj) 10 9 2017, M.Kemal & A.Koçak leg. (Cesa)

51. *Pachypasa otus* (Drury, [1773])

Synonym(s): *#otus* Drury, [1770]; *otus* Drury, [1773]

Original Reference: *Sphinx otus* Drury, [1773], Illustr. Nat. Hist. Exot. Ins. 2: index to 1. Type: [Turkey]: "Smyrna" [Izmir Prov.].

Uncommon in *Quercus* woodlands, nocturnal.

Material studied: 1♂. Anamur Taşocağı 210m (33Ac) 19 8 2015, M.Kemal & A.Koçak leg. (Cesa).

52. *Phyllodesma (s.str.) tremulifolium* (Hübner, [1810])

Synonym(s): *betulifolium* Ochsenheimer, 1810 nec Esp., 1782; *tremulifolium* Hübner, [1810]; *danieli* De Lajonquière, 1963; *#tremulifolium* De Freina, 1999

Original Reference: *Bombyx tremulifolia* Hübner, [1810], Samml. eur. Schmett., Bombyces 148, pl. 44 figs. 191, 192. Syntypes ♂♀: Deutschland.

Material studied: 3♂. Anamur Taşocağı 210m (33Ac) 19 8 2015, M.Kemal & A.Koçak leg. (Cesa).

Lecithoceridae

53. *Homaloxestis hades* Gozmany, 1978 (Figs. 40, 41)

Synonym(s): *hades* Gozmany, 1978

Original Reference: *Homaloxestis hades* Gozmany, 1978, Microlepid. Palaeart. 5: 66, pls. Holotype ♂: [Türkei]: Kleinasien: Taurus: Marasch, 6-900m, 29.8.1929 (ZSM).

Gozmany (1978) described this species from Turkey (Maras). Recently, Barton (2015) reported this species from Cyprus. *Homaloxestis hades* was hitherto known in Turkey from its type-locality only. New to the fauna of İçel Province.

Material studied: 5♂ (GP2852). Anamur, Çiçekyurdu 1620m (33Ae) 10 9 2017; 1♂ Anamur Alaköprü 105m (33Ak), 8 9 2017, M.Kemal & A.Koçak leg. (Cesa)



Figs. 40, 41 - *Homaloxestis hades*. Upperside of male (left). Male genitalia, removed aedeagus and abdominal skin, GP2852, Anamur Çiçekyurdu, M. Kemal (Cesa)

Noctuidae

54. *Acronicta* sp.

Material studied: 1♂. Anamur Taşocağı 210m (33Ac) 19 8 2015, M.Kemal & A.Koçak leg. (Cesa).

55. *Agrotis (Crassagrotis) bigramma* (Esper, [1790])

Synonym(s): *bigramma* Esper, [1790]; *crassa* Hübner, [1803]; *lata* Treitschke, 1835; *golickei* Erschoff, 1872; *huguenini* Rühl, 1891.

Original Reference: *Phalaena bigramma* Esper, [1790], Schmett. Abb. 4 (2/1): 490, Taf. Noct. 71 Taf. 150, 2. Type: Erlangen (Germany) (ZSM).

56. *Agrotis (Putagrotis) puta* (Hübner, [1803])

Synonym(s): *puta* Hübner, [1803]; *radius* Haworth, 1803; *renitens* Hübner, [1824]; *lignosa* Godart, 1825; *erythroxylea* Treitschke, 1826; *radiola* Stephens, 1829; *meridionalis* Spuler, 1905; *minima* Turati, 1924; *silvestrii* Turati, 1924; *insula* Richardson, 1958.

Original Reference: *Noctua puta* Hübner, [1803], Samml. eur. Schmett., Noct. 2: Taf. 52, fig. 255. Type: [Europa].

Previously recorded from Anamur by the authors (Kemal & Koçak, 2017b).

57. *Agrotis (s.str.) ipsilon* (Hufnagel, 1766)

Synonym(s): *ipsilon* Hufnagel, 1766; *suffusa* [Denis & Schiffermüller], 1775; *idonea* Cramer, [1780]; *spinula* Esper, [1786]; *spinifera* De Villers, 1789.

Original Reference: *Phalaena ipsilon* Hufnagel, 1766, Berl. Mag. 4 (2): 416. Type(s): [Germany]: Berlin.

Material studied: 2♂. Anamur Çiçekyurdu 1620m (33Ae) 10 9 2017. 1♂ Anamur Kaşyaylası 3km SW 1180m (33Aj) 10 9 2017, M.Kemal & A.Koçak leg. (Cesa).

58. *Agrotis (s.str.) segetum* ([Denis & Schiffermüller], 1775)

Synonym(s): *segetum* [Denis & Schiffermüller], 1775; *sordida* [Denis & Schiffermüller], 1775; *undulatus* Goeze, 1781 (praeocc.); *nigricornis* De Villers, 1789; *segetis* Fabricius, 1794; *catenatus* Haworth, 1803; *monileus* Haworth, 1803; *pectinatus* Haworth, 1803; *connexus* Haworth, 1803; *subatratus* Haworth, 1803; *nigricornutus* Haworth, 1803; *praecox* Hübner, [1808]; *fervida* Hübner, [1824]; *affinis* Stephens, 1829; *sicula* Boisduval, 1840; *dimidia* Zeller, 1847; *sicania* Guenée, 1852; *marginalis* Walker, 1857; *aversa* Walker, 1857; *correctus* Walker, 1857; *obliviosus* Walker, 1857; *denticulosus* Wallengren, 1860; *certificata* Walker, 1865; *conspurcatus* Walker, 1865; *repulsus* Walker, 1865; *ingratus* Butler, 1878; *pallidus* Staudinger, 1881; *lassa* Swinhoe, 1886.

Original Reference: *Noctua segetum* [Denis & Schiffermüller], 1775, Ankündigung syst. Werkes Schmett. Wienergegend: 81, t. 1, f. 3. Type(s): [Austria]: Vienna district.

Material studied: 2♂. Anamur Çiçekyurdu 1620m (33Ae) 10 9 2017, M.Kemal & A.Koçak leg. (Cesa)

59. *Antarchaea conicephala* (Staudinger, 1870)

Synonym(s): *conicephala* Staudinger, 1870 [April]; *conicephala* Staudinger, 1870 [Oct.]; *barcinonensis* Milli re, 1872; *fumicollis* Rogenhofer, 1873.

Original Reference: *Thalpochares conicephala* Staudinger, 1870, Berl. ent. Z. 14: 121. Syntypes: [Spanien]: Catalonia, Malaga; Macedonia; [Iran]: Persia.

Material studied: 1♂. Anamur Taşocağı 210m (33Ac) 19 8 2015, M. Kemal & A. Koçak leg. (Cesa).

60. *Anthracia eriopoda* (Herrich-Sch ffer, [1851])

Synonym(s): *eriopoda* Herrich-Sch ffer, [1851]; *sareptae* Guen e, 1852; *eriopodoides* Strand, 1916

Original Reference: *Ophiusa eriopoda* Herrich-Sch ffer, [1851], Syst. Bearb. Schmett. Eur. 2: 403.

Type (s): [T rkei]: Brussa [Bursa].

Material studied: 2♂. Anamur  eçkyurdu 1620m (33Ae) 10 9 2017, M. Kemal & A. Koçak leg. (Cesa).

61. *Autographa gamma* (Linnaeus, 1758)

Synonym(s): *gamma* Linnaeus, 1758; *messmeri* Schadewald, 1992; *voelkeri* Schadewald, 1992.

Original Reference: *Phalaena gamma* Linnaeus, 1758, Syst. Nat. (Edn.10) 1: 513. Lectotype ♀: [Europa], designated by Mikkola & Honey, 1993.

Material studied: 1♂. Anamur Taşocağı 210m (33Ac) 19 8 2015. 1♂ Anamur Kaşyaylası 3km SW 1180m (33Aj) 10 9 2017, M. Kemal & A. Koçak leg. (Cesa).

62. *Calloplistria juvenina* (Stoll, [1782])

Synonym(s): *juvenina* Stoll, [1782]; *purpureofasciata* Piller & Mitterpacher, 1783; *lagopus* Esper, [1788]; *pteridis* Thunberg, 1788; *manicata* De Villers, 1789; *formissimalis* H bner, 1796; *obscura* Butler, 1878

63. *Calloplistria latreillei* (Duponchel, 1827)

Synonym(s): *latreillei* Duponchel, 1827; *quieta* Treitschke, 1826; *roseitelum* Walker, [1858]; *rakoto* Viette, 1865; *rechingeri* Koutsaftikis, 1973.

Original Reference: *Noctua latreillei* Duponchel, 1827, [in] Godart & Duponchel, Hist. nat. L pid. Pap. Fr. 7: 327.

New to the fauna of  cel Province.

Material studied: 2♂. Anamur, Pınarlar 475m (33Ad) 19 8 2015; 1♂ Anamur Taşocağı 210m (33Ac), 19 8 2015, M. Kemal & A. Koçak leg. (Cesa)

64. *Calophasia platyptera* (Esper, [1788])

Synonym(s): *platyptera* Esper, [1788]; *canterius* De Villers, 1789; *tenera* H bner, [1803]; *olbiena* Duponchel, 1842; *subalbida* Staudinger, 1901; *signata* Constantini, 1916

Original Reference: *Phalaena platyptera* Esper, [1788], Die Schmett. 4(2): 396, Taf. 130, fig.5.

Type(s): [Germany]: Frankfurt.

Previously recorded from Anamur by the authors (Kemal & Koçak, 2017b).

65. *Chersotis (s.str.) margaritacea* (De Villers, 1789)

Synonym(s): *margaritacea* De Villers, 1789; *i-intactum* H bner, [1803]; *#abruzzensis* Corti & Draudt, 1933; *espuensis* Calle, 1982

Original Reference: *Phalaena margaritacea* De Villers, 1789, Linn. Ent. 2: 272, Taf. 5, fig. 16.

Type(s): Europa.

Uncommon in the autumn, nocturnal.

New to the fauna of  cel Province.

Material studied: 1♂. Anamur,  eçkyurdu 1620m (33Ae) 10 9 2017, M. Kemal & A. Koçak leg. (Cesa)

66. *Clytie (s.str.) syriaca* (Bugnion, 1837)

Synonym(s): *syriaca* Bugnion, 1837; *gentilitia* Freyer, 1848.

Original Reference: *Ophiusa syriaca* Bugnion, 1837, Anns Soc. ent. Fr. 1837: 442. Neotype: Turkey: Adana: Feke 6km N, 100m, leg. Hacker (ZSM).

67. *Cryphia (Bryoleuca) raptricula* ([Denis & Schiffermüller],1775)

Synonym(s): *raptricula* [Denis & Schiffermüller],1775; *divisa* Esper,[1791]; *divisa* Esper,1791; *palliola* Borkhausen,1792; *pomula* Borkhausen,1792; *deceptricula* Hübner,[1803]; *carbonis* Freyer,1849; *felina* Eversmann,1852; *oxybiensis* Millière,1875; *#striata* Staudinger,1879; *eretina* Calberla,1888; *raptriculoidea* Turati,1912; *bryophiloides* Rothschild,1914; *#persica* Strand,1915; *cretica* Reisser,1962

Original Reference: *Noctua raptricula* [Denis & Schiffermüller],1775, Ankündigung syst. Werkes Schmett. Wienergegend: 89. Type(s): [Austria]: Vienna district.

68. *Cryphia (Bryopsis) amasina* (Draudt,1931)

Synonym(s): *amasina* Draudt,1931.

Original Reference: *Bryophila muralis amasina* Draudt,1931, [in] Seitz,A., Grossschmett. Erde Suppl. 3: 19, pl.2 row g. Type: [Turkey]: "Amasia".

New to the fauna of İçel Province.

Material studied: 1♂. Anamur, 3km SW Kaşaylası, 1180m (33Aj), 10 9 2017, M.Kemal & A.Koçak leg. (Cesa)

69. *Cryphia (Euthales) ochsi* (Boursin,1941)

Synonym(s): *ochsi* Boursin,1941; *#badiofasciata* Boursin,1952.

Original Reference: *Bryophila ochsi* Boursin,1941, Mitt. münch. ent. Ges. 31: 316-318. Holotype ♂. Südfrankreich, St. Barnabé (Alpes Mmes).

70. *Dichagyris (Yigoga) signifera* ([Denis & Schiffermüller],1775)

Synonym(s): *#signifera* [Denis & Schiffermüller],1775

Original Reference: *Noctua signifera* [Denis & Schiffermüller], 1775, Ankündigung syst. Werkes Schmett. Wienergegend: 80. Type(s): [Austria]: Vienna district.

Common in the summer, nocturnal.

71. *Dysgonia algira* (Linnaeus,1767)

Synonym(s): *algira* Linnaeus,1767; *achatina* Sulzer,1776; *alterna* De Villers,1789; *triangularis* Hübner,[1803] nec Thunb.,1784; *albivitta* Guenée,1852; *festina* Walker,1858; *olympia* Swinhoe,1885; *europaea* Schawerda,1912

Original Reference: *Phalaena algira* Linnaeus,1767, Syst. Nat. (Edn.12) 1: 836. Type(s): Algeria.

New to the fauna of İçel Province.

Material studied: 2♂. Anamur Taşocağı 210m (33Ac) 19 8 2015, M.Kemal & A.Koçak leg. (Cesa).

72. *Egira tabori* Hreblay,1994

Synonym(s): *tabori* Hreblay,1994

Original Reference: *Egira tabori* Hreblay,1994, Acta zool. hung. 40: 247, figs. Holotype ♂: Turkey: Prov. Maraş, 1km N of Kahramanmaraş 900m 5.iv.1994 leg. Csovári & Hreblay (coll.M.Hreblay).

Common in the spring, nocturnal. Previously recorded from Anamur by the authors (Kemal & Koçak,2017b).

Previously recorded and illustrated from Anamur by the authors (Kemal & Koçak,2017b).

73. *Epilecta linogrisea* ([Denis & Schiffermüller],1775)

Synonym(s): *linogrisea* [Denis & Schiffermüller],1775; *lutosa* Staudinger,1901.

Original Reference: *Noctua linogrisea* [Denis & Schiffermüller],1775, Ankündigung syst. Werkes Schmett. Wienergegend: 79. Type(s): [Austria]: Vienna district.

New to the fauna of İçel Province.

Material studied: 1♂. Anamur, 3km SW Kaşaylası, 1180m (33Aj), 10 9 2017, M.Kemal & A.Koçak leg. (Cesa)

74. *Episema korsakovi* (Christoph,1885)

Synonym(s): *korsakovi* Christoph,1885; *paenulata* Christoph,1885.

Original Reference: *Agrotis korsakovi* Christoph,1885, [in] Romanoff, Mem. Lep. 2: 44, fig. Syntypes: [Azerbaijan]: Helenendorf [=Kirovabad].

Uncommon in the autumn.

New to the fauna of İçel Province.

Material studied: 1♂. Anamur Çiçekyurdu 1620m (33Ae) 10 9 2017, M.Kemal & A.Koçak leg. (Cesa)

75. *Eublemma (candidana-gr.) pulchralis* (De Villers, 1789)

Synonym(s): *pulchralis* De Villers, 1789; *candidana* Fabricius, 1794; *minuta* Hübner, [1809]; *perlana* Geyer, [1830]; *skafiota* Freyer, 1845; *impura* Staudinger, 1871

Original Reference: *Pyralis pulchralis* De Villers, 1789, Linn. Ent. 2: 452.

New to the fauna of İçel Province.

Material studied: 2♂. Anamur Taşocağı 210m (33Ac) 19 8 2015, M. Kemal & A. Koçak leg. (Cesa).

76. *Eublemma (rosina-gr.) amoenum* (Hübner, [1803])

Synonym(s): *respersa* Hübner, 1790 (praeocc.); *amoena* Hübner, [1803]; *bithynica* Bethune-Baker, 1888.

Original Reference: *Noctua amoena* Hübner, [1803], Samml. eur. Schmett. 4: pl. 61 fig. 300. Type: Europa.

77. *Euxoa (s.str.) cos* (Hübner, [1824])

Synonym(s): *cos* Hübner, [1824]; *tephra* Boisduval, 1840; *nagyagensis* Freyer, 1845; *vacillans* Herrich-Schäffer, [1850]; *millierei* Staudinger, 1870; *cycladum* Staudinger, 1871; *aphe* Mabille, 1885; *crimaea* A. Bang-Haas, 1906; *mesopotamica* O. Bang-Haas, 1922; *rubra* Corti, 1933.

Original Reference: *Noctua cos* Hübner, [1824], Samml. eur. Schmett., Noct. 2: Taf. 154, fig. 720.

Type: [France]: Wallis.

New to the fauna of İçel Province.

Material studied: 1♂. Anamur Çiçekyurdu 1620m (33Ae), 10 9 2017, M. Kemal & A. Koçak leg. (Cesa)

78. *Haemerosia renalis* (Hübner, [1813])

Synonym(s): *renalis* Hübner, [1813]

Original Reference: *Pyralis renalis* Hübner, [1813], Samml. eur. Schmett. Pyral. 2: Taf. 24 fig. 157.

Type(s): Europa.

79. *Hecatera spinaciae* (Vieweg, 1790)

Synonym(s): *#dysodea* [Denis & Schiffermüller], 1775; *spinaciae* Vieweg, 1790; *ornata* De Villers, 1789; *chrysozona* Borkhausen, 1792; *ranunculina* Haworth, 1809; *caduca* Herrich-Schäffer, [1851]; *innocens* Staudinger, 1871; *subflava* W. Warren, 1910; *faroulti* Rothschild, 1914; *antitypina* Rothschild, 1914; *africana* Oberthür, 1918; *khala* Rungs, 1972

Original Reference: *Noctua spinaciae* Vieweg, 1790, Tab. Verz. Brand. Schmett. 2: 70. Type(s): [Germany]: Berlin.

New to the fauna of İçel Province.

Material studied: 1♂. Anamur Taşocağı 210m (33Ac) 19 8 2015, M. Kemal & A. Koçak leg. (Cesa).

80. *Helicoverpa armigera* (Hübner, [1808])

Synonym(s): *obsoleta* auct. nec Fabr., 1775; *barbara* Fabricius, 1794 [rejected]; *armigera* Hübner, [1808]; *pulverosa* Walker, [1857]; *uniformis* Wallengren, 1860; *rama* Bhattacharjee & Gupta, 1972.

Original Reference: *Noctua armigera* Hübner, [1808], Samml. eur. Schmett., Noct. 2: Taf. 79, fig. 370. Type: [Europa].

New to the fauna of İçel Province.

Material studied: 7♂♀. Anamur, 3km SW Kaşyaylası, 1180m (33Aj), 10 9 2017; 3♂♀ Anamur Alaköprü 105m (33Ak) 8 9 2017, M. Kemal & A. Koçak leg. (Cesa)

81. *Heliothis peltigera* ([Denis & Schiffermüller], 1775)

Synonym(s): *peltigera* [Denis & Schiffermüller], 1775; *alpea* Cramer, 1780; *florentina* Esper, [1788]; *charmione* Stoll, 1790; *straminea* Donovan, 1793; *insulata* Navas, 1924.

Original Reference: *Noctua peltigera* [Denis & Schiffermüller], 1775, Ankündigung syst. Werkes Schmett. Wienergegend: 89. Type(s): [Austria]: Vienna district.

Material studied: 1♀ Anamur Taşocağı 210m (33Ac) 19 8 2015; 1♀ Anamur Pınarlar 475m (33Ad), 19 8 2015, M. Kemal & A. Koçak leg. (Cesa).

82. *Idia calvaria* ([Denis & Schiffermüller], 1775)

Synonym(s): *calvaria* [Denis & Schiffermüller], 1775; *calvarialis* Hübner, 1818

- Original Reference: *Noctua calvaria* [Denis & Schiffermüller], 1775, Ankündigung syst. Werkes Schmett. Wienergegend: 71. Type(s): [Austria]: Vienna district.
New to the fauna of İçel Province.
Material studied: 1♂. Anamur, 3km SW Kaşyaylası, 1180m (33Aj), 10 9 2017, M.Kemal & A.Koçak leg. (Cesa)
- 83. *Lithophane ledereri* (Staudinger, 1892)**
Synonym(s): *ledereri* Staudinger, 1892; *discors* Staudinger, 1892
Original Reference: *Xylina ledereri* Staudinger, 1892, Dt. ent. Z., Iris 4: 304-305. Syntypes: [Türkei]: Amasia (Kindermann leg.).
Previously recorded from Anamur by the authors (Kemal & Koçak, 2017b).
- 84. *Lygephila (s.str.) amasina* (Staudinger, 1879)**
Synonym(s): *amasina* Staudinger, 1879; *sublutea* W. Warren, 1913.
Original Reference: *Toxocampa lusoria* var. *amasina* Staudinger, 1879, Horae Soc. ent. ross. 14: 428. Syntypes: [Türkei]: Amasia (Kerasdere).
Material studied: 1♂. Anamur, 3km SW Kaşyaylası, 1180m (33Aj), 10 9 2017, M.Kemal & A.Koçak leg. (Cesa)
- 85. *Metachrostis velox* (Hübner, [1813])**
Synonym(s): *velox* Hübner, [1813]; *griseimargo* W. Warren, 1912; *mendacularis* Treitschke, 1829; *tarda* Turati, 1926; *velocissima* Turati, 1926; *rubescens* Schwingenschuss, 1930
Original Reference: *Noctua velox* Hübner, [1813], Samml. eur. Schmett. 4, Noctuae: Tab. 108 fig. 507. Type(s): Europa.
New to the fauna of İçel Province.
Material studied: 1♂. Anamur Alaköprü 105m (33Ak) 8 9 2017, M.Kemal & A.Koçak leg. (Cesa)
- 86. *Minucia bimaculata* Osthelder, 1933**
Synonym(s): *bimaculata* Osthelder, 1933
Original Reference: *Minucia bimaculata* Osthelder, 1933, Mitt. münch. ent. Ges. 23: 95-96. Syntypes: [Türkei]: Kahramanmaraş, Yeşildere (ZSM).
Previously recorded from Anamur by the authors (Kemal & Koçak, 2017b).
- 87. *Mythimna (Aletia) vitellina* (Hübner, [1808])**
Synonym(s): *vitellina* Hübner, [1808]; *#vitellena* Lederer, 1870; *decolorata* Dannehl, 1929; *saturationior* Dannehl, 1929; *grisescens* Dannehl, 1929.
Original Reference: *Noctua vitellina* Hübner, [1808], Samml. eur. Schmett., Noct. 2: Taf. 81, fig. 379. Type: [Europa].
Material studied: 1♂. Anamur Çiçekyurdu 1620m (33Ae), 10 9 2017, M.Kemal & A.Koçak leg. (Cesa)
- 88. *Noctua (Divaena) haywardi* (Tams, 1926)**
Synonym(s): *haywardi* Tams, 1926; *balcanica* Slivov, 1985
Original Reference: *Lycophotia haywardi* Tams, 1926, Entomologist's Rec. J. Var. 38: 129-130, pl. Holotype ♂: Cyprus: Platres, June 1921 (Captain K.J. Hayward) (BMNH).
Uncommon in the conifer forests.
- 89. *Noctua (Latanoctua) orbona* (Hufnagel, 1766)**
Synonym(s): *orbona* Hufnagel, 1766; *subsequa* [Denis & Schiffermüller], 1775; *caroni* Lempke, 1964.
Original Reference: *Phalaena orbona* Hufnagel, 1766, Berl. Mag. 3(3): 304. Type(s): [Germany]: Berlin.
- 90. *Noctua (Paranoctua) comes* (Hübner, [1813])**
Synonym(s): *orbona* Fabricius, 1787 nec Hufn., 1767; *comes* Hübner, [1813]; *adsequa* Treitschke, 1825; *prosequa* Treitschke, 1825; *bergensis* Sp.-Schn., 1901.
Original Reference: *Noctua comes* Hübner, [1813], Samml. eur. Schmett., Noct. 2: Taf. 111, fig. 521 Type: [Europa].

91. *Nola (s.str.) cicatricalis* (Treitschke, 1835)

Synonym(s): *cicatricalis* Treitschke, 1835; *tubercularis* Mann, 1857

Original Reference: *Hercyna cicatricalis* Treitschke, 1835, Schmett. Eur. 10 (3): 39. Type: "Ungarn".

Previously recorded from Anamur by the authors (Kemal & Koçak, 2017b).

92. *Nola (s.str.) cucullatella* (Linnaeus, 1758)

Synonym(s): *cucullatella* Linnaeus, 1758; *ludvigella* Müller, 1764; *palliola* [Denis & Schiffermüller], 1775; *pygmaria* Fabricius, 1794; *palliotalis* Hübner, 1796; *cucullatalis* Haworth, 1811; *cucullatana* Hübner, [1825]; *fuliginalis* Stephens, 1834

Original Reference: *Phalaena cucullatella* Linnaeus, 1758, Syst. Nat. (Edn.10)1: 537. Type(s): [Europa].

93. *Nola (s.str.) ronkayorum* Beshkov, 2006

Synonym(s): *ronkayorum* Beshkov, 2006

Original Reference: *Nola ronkayorum* Beshkov, 2006, Phegea 34 (1): 18-31, figs. Holotype ♀: Bulgaria: Eastern Rhodopi Mts. leg. Beshkov et al. (NMNHS).

Common in the spring, nocturnal. Previously recorded from Anamur by the authors (Kemal & Koçak, 2017b).

94. *Nola subchlamydula* Staudinger, 1870

Synonym(s): *subchlamydula* Staudinger, 1870; *lathonialis* Millière, 1872; *kruegeri* Turati, 1911; *praetextula* Chrétien, 1923; *infantula* Kitt, 1926; *derasa* Zerny, 1933; *albidula* Zerny, 1934

Original Reference: *Nola subchlamydula* Staudinger, 1870, Horae Soc. ent. ross. 7: 107-109, Tab.1 figs.6,7. Syntypes ♂♀: Griechenland: Attica.

New to the fauna of İçel Province.

Material studied: 4♂. Anamur Taşocağı 210m (33Ac) 19 8 2015, M. Kemal & A.Koçak leg. (Cesa).

95. *Ophiusa tirhaca* (Cramer, [1777])

Synonym(s): *tirhaca* Cramer, [1777]; *#tirrhaea* Fabricius, 1781; *vesta* Esper, 1789; *olivacea* De Villers, 1789; *auricularis* Hübner, [1803]; *separans* Walker, 1858; *hottentota* Guenée, 1852; *clementi* Swinhoe, 1918; *#demarginata* Heydemann et al., 1963; *obscura* Pinker & Bacallado, 1978

Original Reference: *Phalaena tirhaca* Cramer, [1777], Uitl. Kapellen 2:116. Type(s): [South Africa]: Kap Horn.

96. *Orthosia (Monima) cerasi* (Fabricius, 1775)

Synonym(s): *cerasi* Fabricius, 1775; *stabilis* [Denis & Schiffermüller], 1775; *obliqua* De Villers, 1789; *junctus* Haworth, 1803; *pallida* Haworth, 1809; *rufannulata* Haworth, 1809.

Original Reference: *Noctua cerasi* Fabricius, 1775, Syst. Ent.: 600. Syntypes: [England]: Angliae; [Germany]: Germaniae.

Vernal and nocturnal species. Previously recorded from Anamur by the authors (Kemal & Koçak, 2017b).

97. *Orthosia (s.str.) incerta* (Hufnagel, 1766)

Synonym(s): *incerta* Hufnagel, 1766; *instabilis* [Denis & Schiffermüller], 1775; *collinita* Esper, [1790]; *contracta* Esper, [1790]; *trigutta* Esper, [1790]; *nebulosus* Haworth, 1803; *subsetaceus* Haworth, 1803; *angustus* Haworth, 1803; *fuscatus* Haworth, 1803; *pallida* Lampa, 1885 nec Hw., 1809; *pallidior* Staudinger, 1901 nec Stgr., 1888

Original Reference: *Phalaena incerta* Hufnagel, 1766, Berl. Mag. 3 (3): 298. Type(s): [Germany]: Berlin.

Vernal and nocturnal species. Previously recorded from Anamur by the authors (Kemal & Koçak, 2017b).

98. *Parascotia robiginosa* (Staudinger, 1892)

Synonym(s): *robiginosa* Staudinger, 1892

Original Reference: *Boletobia robiginosa* Staudinger, 1892, Dt. ent. Z., Iris 4: 332. Syntypes: [Türkei]: Amasia, Hadjin [=Saimbeyli], Maraş.

Material studied: 3♂. Anamur Pınarlar 475m (33Ad) 19 8 2015, M.Kemal & A.Koçak leg. (Cesa)

99. *Perigrapha (Opacographa) rorida* (Frivaldsky,1835)

Synonym(s): *rorida* Frivaldsky,1835; *sieversi* Romanoff,1885; *ganimetae* Kornosor & Lödl,1990

Original Reference: *Orthosia rorida* Frivaldsky,1835, Tarsas. Tud. Akad. Evkönyv. 2: 272, fig.7.
Type: Balkans.

Vernal and nocturnal species. Previously recorded from Anamur by the authors (Kemal & Koçak,2017b).

100. *Plecoptera inquinata* (Lederer,1857)

Synonym(s): *inquinata* Lederer,1857; *pyrami* Rogenhofer,1873; *amanica* Osthelder,1933

Original Reference: *Madopa inquinata* Lederer,1857, Wien. ent. Monatschr.1:98. Type(s): [Lebanon]: Beirut.

New to the fauna of İçel Province.

Material studied: 6♂♀. Anamur Taşocağı 210m (33Ac) 19 8 2015. 12♂♀. Anamur Pınarlar 475m (33Ad) 19 8 2015, M.Kemal & A.Koçak leg. (Cesa).

101. *Spodoptera cilium* Guenée,1852

Synonym(s): *cilium* Guenée,1852; *cycloides* Guenée,1852; *capicola* Herrich-Schäffer,[1854]; *latebrosa* Lederer,1855; *insignata* Walker,1857; *orbicularis* Walker,1857; *praeterita* Walker,1857; *procedens* Walker,1857; *obliterans* Walker,1862; *infixa* Walker,1862; *insulsa* Walker,1865; *imperviata* Walker,1865; *retrahens* Walker,1870.

Original Reference: *Spodoptera cilium* Guenée,1852, [in] Boisduval & Guenée, Hist. nat. Ins. Noct. 1: 156. Type(s): Indie (MNHNP).

New to the fauna of İçel Province.

Material studied: 1♂. Anamur Taşocağı 210m (33Ac) 19 8 2015, M.Kemal & A.Koçak leg. (Cesa).

102. *Victrix (Rasihia) tabora* (Staudinger,1892)

Synonym(s): *tabora* Staudinger,1892

Original Reference: *Bryophila tabora* Staudinger,1892, Dt. ent. Z., Iris 4: 264-265. Type ♀: [Türkei]: Aintab [= Gaziantep], 5 September (Manissadjian leg.).

New to the fauna of İçel Province.

Material studied: 2♂. Anamur, Pınarlar 475m (33Ad) 19 8 2015, M. Kemal & A.Koçak leg. (Cesa)

103. *Zebeeba falsalis* (Herrich-Schäffer,[1839])

Synonym(s): *falsalis* Herrich-Schäffer,[1839]; *?dardounula* Millière,1871

Original Reference: *Hypena falsalis* Herrich-Schäffer,[1839], [in] Panzer, Faunae Ins. Germ. (166): fig.1. Type: Sicily.

New to the fauna of İçel Province.

Notodontidae**104. *Harpyia milhauseri* (Fabricius,1775)**

Synonym(s): *milhauseri* Fabricius,1775; *terrifica* [Denis & Schiffermüller],1775; *vidua* Knoch,1781; *albida* Daniel,1932

Original Reference: *Bombyx milhauseri* Fabricius,1775; Syst. Ent.: 577. Type(s): [Germania]: Dresden.

Previously recorded from Anamur by the authors (Kemal & Koçak,2017b).

Oecophoridae**105. *Agonopterix purpurea* (Haworth,[1811])**

Synonym(s): *purpurea* Haworth,[1811]; *vaccinella* Hübner,[1813]

Original Reference: *Depressaria purpurea* Haworth,[1811], Lepid. Br.: 511. Type: Britain.

106. *Agonopterix scopariella* (Heinemann,1870)**(Figs. 42,43)**

Synonym(s): *scopariella* Heinemann,1870; *rubescens* Heinemann,1870; *rubropunctella* Lhomme,1929; *calycotomella* Amsel,1958 [ssp.]

Original Reference: *Depressaria scopariella* Heinemann,1870, Schmett. Dtl. Schw. (2) 2: 149.

New to the fauna of İçel Province.

Material studied: 1♀ (GP2762). Anamur, Çiçekyurdu 1620m (33Ae) 10 9 2017, M.Kemal & A.Koçak leg. (Cesa).



Figs. 42, 43 - *Agonopterix scopariella*. Upperside of female, and the genitalia GP2762♀. İçel Pr., Anamur, M. Kemal (Cesa)

107. *Diurnea fagella* ([Denis & Schiffermüller], 1775)

Synonym(s): *#fagella* [Denis & Schiffermüller], 1775; *pilosella* Thunberg, 1788; *atomana* Brahm, 1791; *fagi* Fabricius, 1798; *disparella* Schrank, 1802; *dormoyella* Duponchel, 1838; *nolckenella* Millière, 1880

Original Reference: *Tinea fagella* [Denis & Schiffermüller], 1775, *Ankündigung syst. Werkes Schmett. Wienergegend*: 135. Type(s): [Austria]: Vienna district [without description; nomen nudum!]

Previously recorded from Anamur by the authors (Kemal & Koçak, 2017b).

108. *Depressaria* sp. (Figs. 44-46)

Material studied: 1♀ (GP2765). İçel Pr., Anamur, Kaşyaylası 3km SW 1180m (33Aj), 10 9 2017, M.Kemal & A.Koçak leg. (Cesa).

The female from Anamur is illustrated below, together with lateral view of head and the genitalia. Studies on the identity of this specimen together with P. Buchner are ongoing.



Figs. 44-46 – *Depressaria* sp. Upperside of female and lateral view of head (left), female genitalia with enlarged signum (GP2765), Anamur, Kaşyaylası 3km SW, M.Kemal (Cesa)

Psychidae *Typhoniinae*

- 109.** This beautiful, very small species is currently represented by a single male in our collection, observed and captured by the first author by day at the upper heights of Anamur, on 20 August 2015. Externally, similar to *Kalliesia* (Sobczyk, 2004). Presence of epiphysis on fore-tibia, and number of antennal segments, as well as well covered fore-, and hind wings by scales, having contrast colourations of both wings support this identification. Currently, the genus is represented by *irana* Sobczyk in Iran only (Sobczyk, 2011). The present specimen belongs to a different species, which is described and named below as new to the science.

Kalliesia ruya sp. n.

(Figs.47-51, 1 map)

<http://zoobank.org/urn:lsid:zoobank.org:act:DE8B7A82-4464-459F-9141-3B82F53B5A1C>

Holotype (male).

Description:

Wingspan: 12mm.

Body: General colouration dark brown. Head covered by hairs irregularly. Palpus labialis reduced. Frons creamy, hairy. Antenna brown, basal part large, scaled and hairy; bipectinate, lamellae with long setae; number of pectinated segments 23. Thorax dark brown, with yellowish hairs dorsally. Fore-tibia with well developed, long epiphysis. All legs more or less covered by creamy-yellow scales.

Forewing covered by scales completely. Upperside general colouration creamy-light yellow, with dark yellow ornamentations especially at outer part. Ciliae dark yellow. Underside brown, pale brown-yellowish marginal and costal area.

Hindwing covered by scales completely. Upperside general colouration blackish-brown, with no remarkable marking. Costal area from base to middle creamy coloured. Dark brown marginal line indistinct. Apex with a few yellowish scales. Ciliae dark brown. Underside colouration dark brown completely.

Male genitalia (GP2848): At first glance it reminds *irana*. However, it is easily distinguishable by the following points: From ventral side, tegumen round, slightly indented. Sacculus well chitinized, more slender with 4 apical spines, and curved inward terminally. Anellus partly with strong teeth. Saccus more slender than that of *irana*. Aedeagus large, cylindrical and strongly curved, but without cornutus (**Fig.50**).

Female: Unknown.

Habitat: Mountain steppe in the Oro-Mediterranean coniferous forest belt, composed of *Cedrus libani*, *Abies cilicica* and *Juniperus*, with humid-semihumid mountain climate (Atalay et al., 2014) (**Fig.1**).

Distinguishing characters: The new species is distinguishable from *irana* Sobc by colouration and ornamentations on upperside of forewing, by number of antennal segments, longer epiphysis, the shapes of tegumen, sacculus, anellus, and saccus.

Range: The genus *Kalliesia* Sobczyk is now represented by two species in West Asia: In Turkey, *ruya* sp.n., and in Iran, *irana* Sobczyk.

Material studied: 1♂ (holotype). South Turkey, İçel Province, Anamur, Suolmaz Pass 1660m, 20 8 2015, M. Kemal leg.

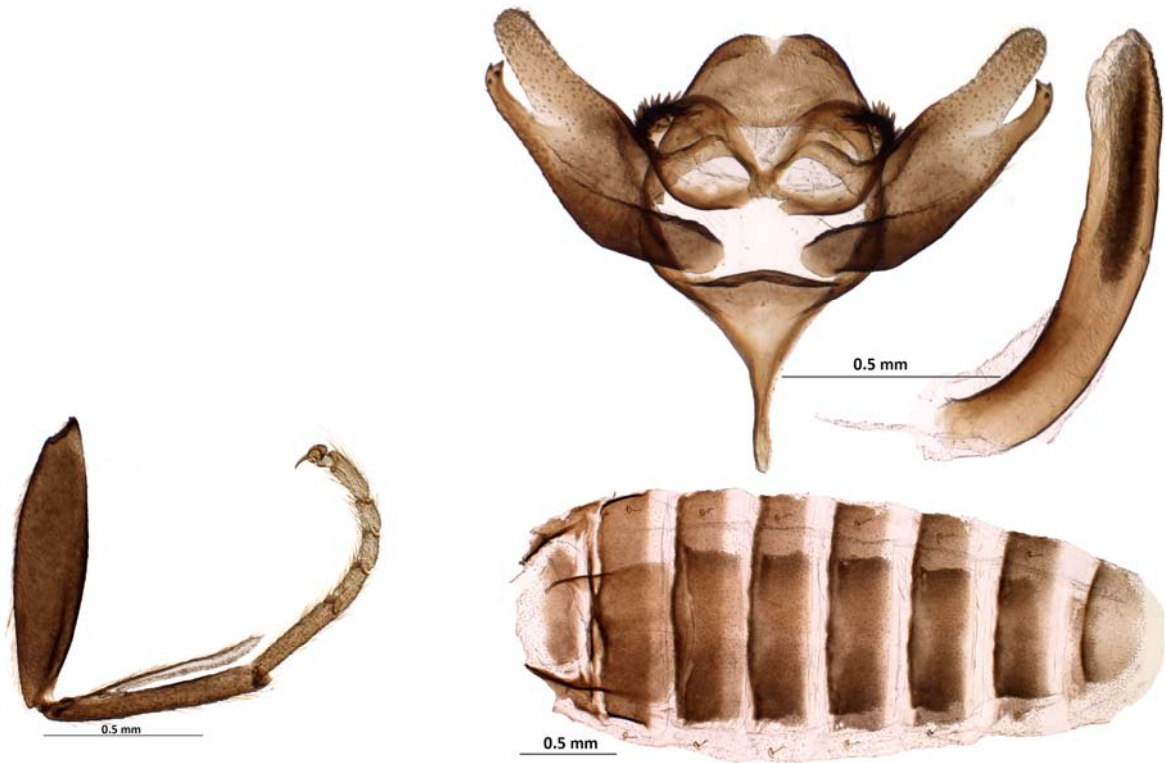
Holotype is preserved in the biorepository Centre for Entomological Studies Ankara (Cesa).⁶

Etymology: The new species is named after Ms Rüya Ünal, living in Anamur. As a Turkish word “rüya” means “dream, ideal, aim, beautiful thing, etc”.

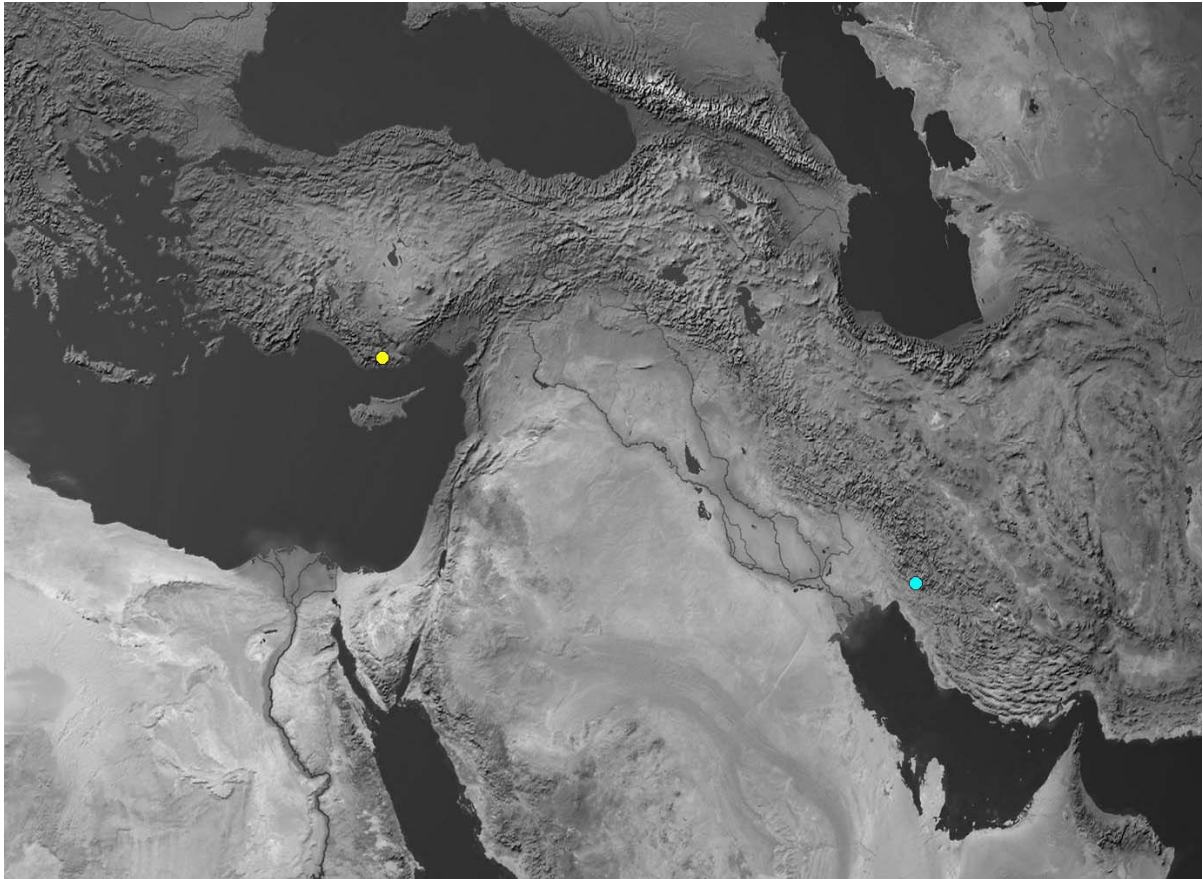


Figs. 47, 48 – *Kalliesia ruya* sp. n. – Resting position of the male (holotype) on the rock by day (left). Upperside of the same male (right). Anamur Suolmaz Pass 1650m, 20 8 2015, M. Kemal leg. (Cesa)

⁶ Cool URI: <http://grbio.org/cool/eaaz-xyfc>



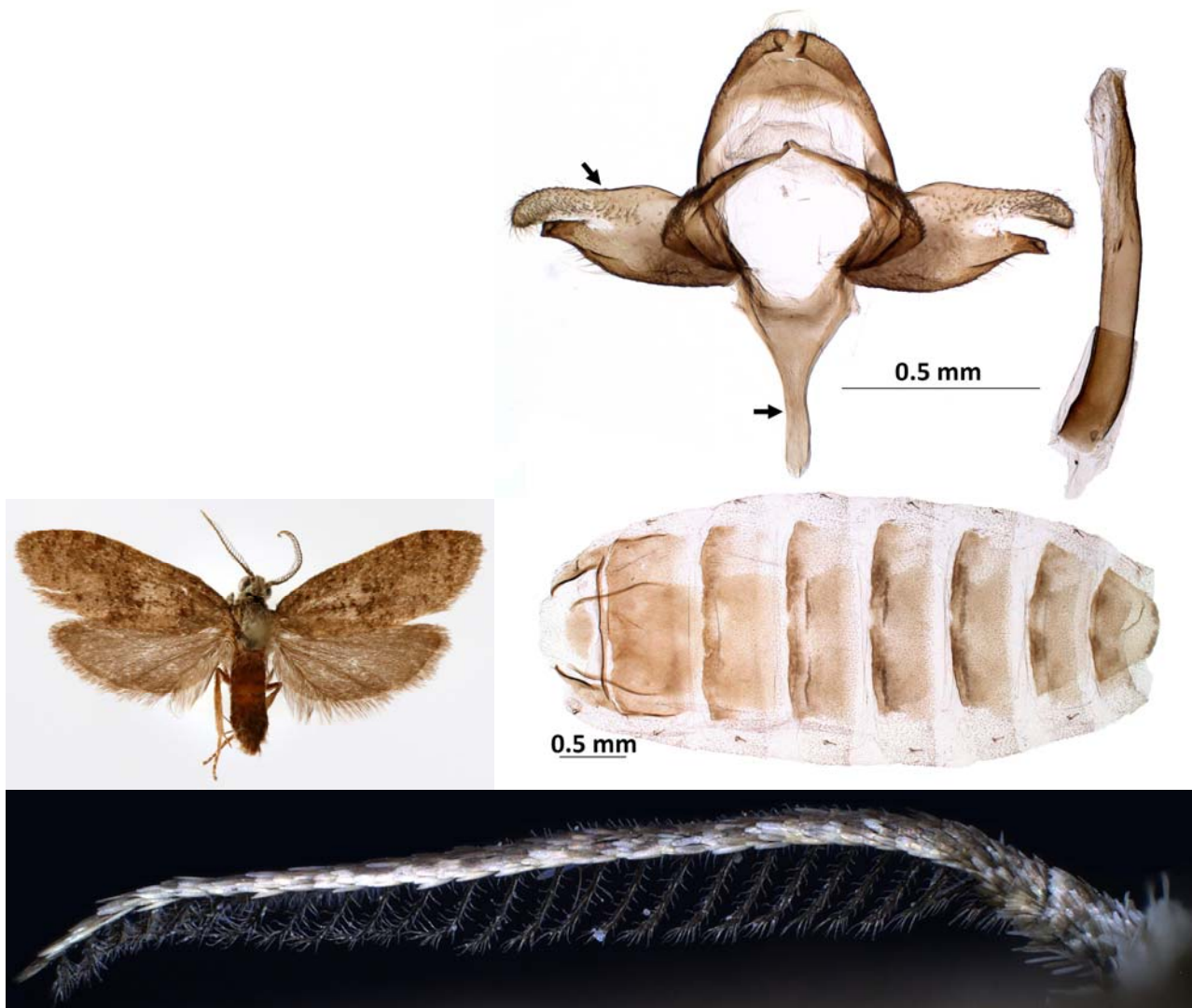
Figs. 49-51 - *Kalliesia ruya* sp.n. (holotype). Foreleg: Epiphysis slightly shorter than tibia (left). Male genitalia with removed aedeagus (GP2848), and abdominal skin (right), M. Kemal (Cesa)



Map 1 – Locations of two species of the genus *Kalliesia* Sobc. *Kalliesia ruya* sp.n. (yellow), *Kalliesia irana* Sobc. (blue), A.Koçak (Cesa)

110. *Penestoglossa* sp. (Figs. 52-55)

Material studied: 9♂ Anamur Alaköprü 105m. (33Ak), 8 9 2017, M. Kemal & A.Koçak leg. (Cesa)
 The genus is currently presented in Turkey by two species, *tauricella* Rebel and *dardoinella* Mill. The first one was described from Maraş, and distinguished at first glance by its large size (wingspan 24mm) (Rebel,1935, 1940: taf.xi fig.6). The species *dardoinella* was mentioned by Sobczyk et al. (2016) from Turkey (Bilecik, Konya). The wingspan of the species from Anamur is 14.5-16mm. According to Rebel (1940: key), the wingspan of *dardoinella* up to 17mm; Arnscheid & Weidlich (2017) mentioned the wingspan of *dardoinella* as 16-25mm in both sexes. Antennal segments of Anamur specimen are more than 27 (Fig.55). Arnscheid & Weidlich mentioned antenna with 21-25 segments. Proportion of length/width of aedeagus of *dardoinella* is 5.38 (see: Sobczyk et al., 2016: fig.13). Proportion of length/width of aedeagus of Anamur specimen is 8.55 (Fig.53). Margin of the valva remarkably emarginated in the middle (Fig.53). Under these circumstances, Anamur specimens may be considered as a different species rather than *dardoinella*, until its precise identification is fulfilled. A molecular analysis of this population will also be made by the authors, when appropriate conditions occur (cf. Announcement, Cesa News 150: 1).



Figs. 52-55 – *Penestoglossa* sp. – Upperside of male (left). Male genitalia, and abdominal skin (right), GP2858. Emargination of valva and slender saccus marked with arrows. Aedeagus slender, more than 8 times longer than its width. Male antenna (below). Anamur Alaköprü 105m (33Ak), M. Kemal (Cesa)

Pterophoridae

111. *Stenoptilodes taprobanes* (R.Felder & Rogenhofer, 1875)

Synonym(s): *taprobanes* R.Felder & Rogenhofer, 1875; *brachymorpha* Meyrick, 1888; *seeboldi* Hofmann, 1898; *crenulata* Barnes & McDunnough, 1913; *phaenicodactyla* Chrétien, 1915; *terlizzii* Turati, 1926; *zavattarii* Hartig, 1953; *legrandi* Bigot, 1962.

Original Reference: *Amblyptilia taprobanes* R.Felder & Rogenhofer, 1875, Reise österr. Fregatte Novara, Lep. Het.: pl.140 fig.54. Type: India (BMNH).

New to the fauna of İçel Province.

Pyralidae

112. *Acrobasis* sp.

Material studied: 1ex Anamur Kaşyaylası 3km SW 1180m (33Aj) 10 9 2017; 1ex Anamur Çiçekyurdu 1620m (33Ae), 10 9 2017, M. Kemal & A.Koçak leg. (Cesa)

113. *Aglossa arcuatalis* Zerny, 1914

Synonym(s): *arcuatalis* Zerny, 1914

Original Reference: *Aglossa arcuatalis* Zerny, 1914, Annln. naturh. Mus. Wien 28 (3/4): 320, pl. xxv fig.21. Type ♂: [Israel]: "Haifa, Syrien".

New to the fauna of İçel Province.

Material studied: 6♂ Anamur Pınarlar 475m (33Ad) 19 8 2015, M.Kemal & A.Koçak leg. (Cesa).

114. *Agriphila inquinatella* ([Denis & Schiffermüller], 1775) (Figs.56-60)

Synonym(s): *inquinatella* [Denis & Schiffermüller], 1775; ? *arbustella* Schrank, 1802; *nevadensis* Caradja, 1910.

Original Reference: *Tinea inquinatella* [Denis & Schiffermüller], 1775, Ankündigung syst. Werkes Schmett. Wienergegend: 134. Type(s): [Austria]: Vienna district [Types presumably destroyed by fire in 1848].

Tympanal organ of this species is illustrated here for the first time.

New to the fauna of İçel Province.

Material studied: 3♂ Anamur Kaşyaylası 3km SW (33Aj), 10 9 2017; 2♂ (GP2854), 1♀ (GP2856) Anamur Çiçekyurdu 1620m (33Ae) 10 9 2017, M.Kemal & A.Koçak leg. (Cesa).

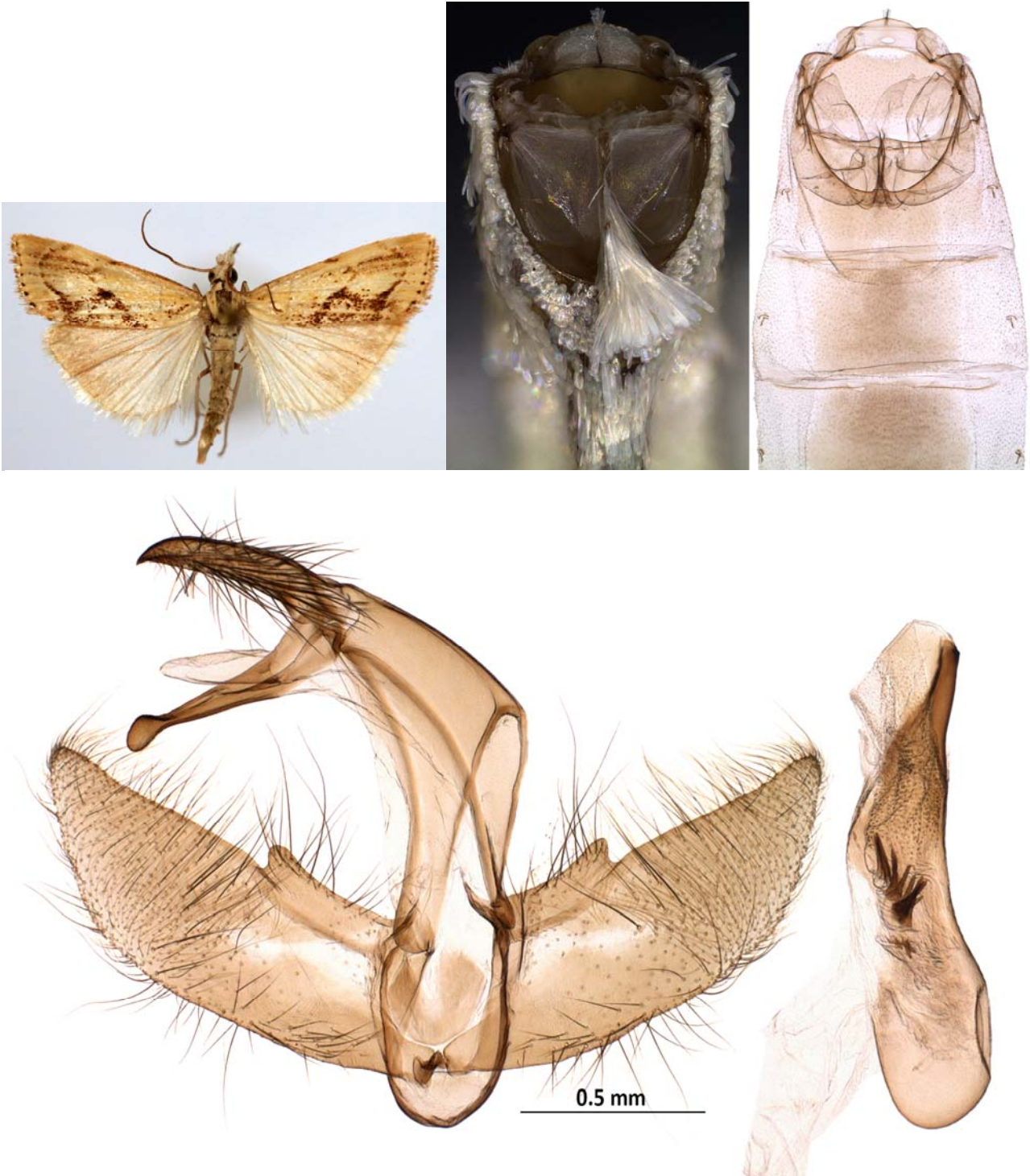
115. *Ancylolomia palpella* ([Denis & Schiffermüller], 1775) (Figs.61-63)

Synonym(s): *palpella* [Denis & Schiffermüller], 1775; *sovinskyi* Krulikovsky, 1909

Original Reference: *Tinea palpella* [Denis & Schiffermüller], 1775, Ankündigung syst. Werkes Schmett. Wienergegend: 134. Type(s): [Austria]: Vienna district [Types presumably destroyed by fire in 1848].

Tympanal organ of this species is illustrated here for the first time.

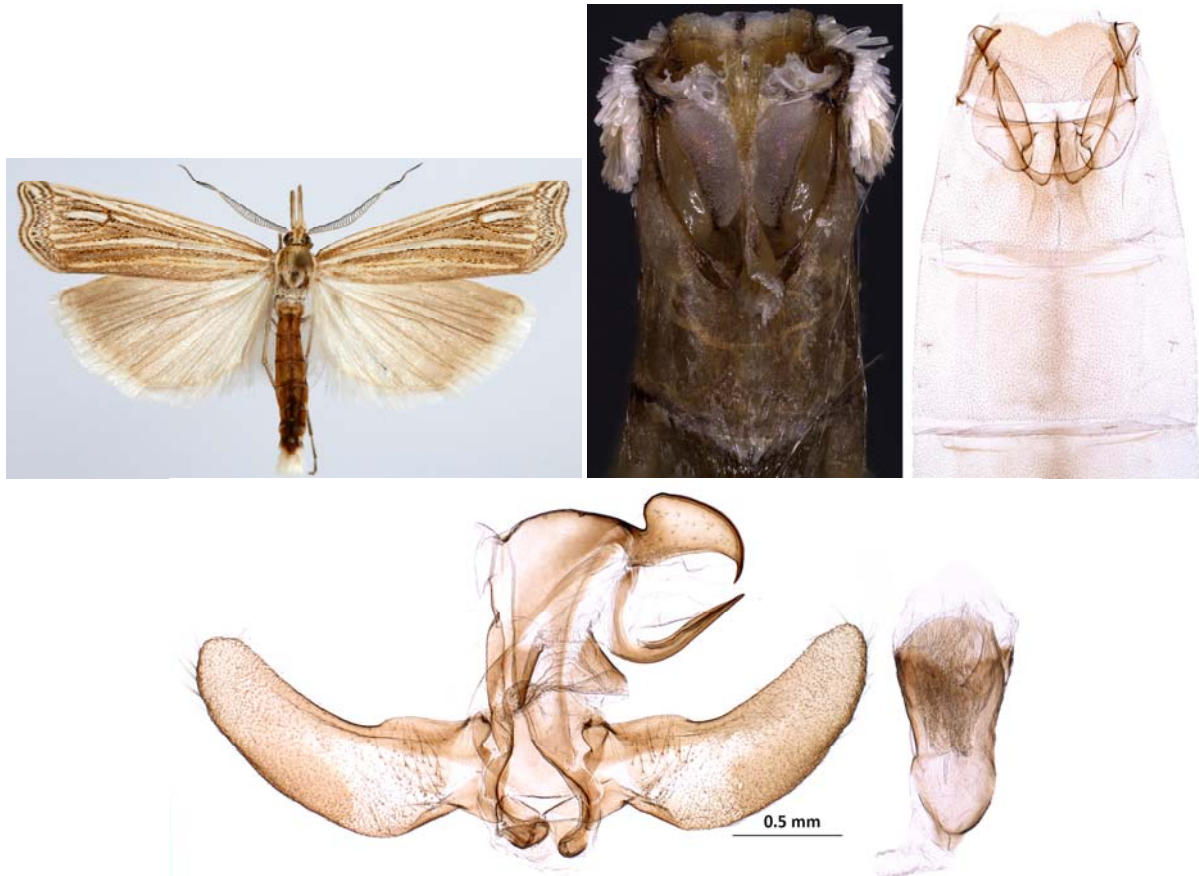
Material studied: 1♂(GP2857) 2♀. Anamur Çiçekyurdu 1620m (33Ae) 10 9 2017, M.Kemal & A.Koçak leg. (Cesa).



Figs. 56-58 - *Agriphila inquinatella*. Upperside of male (left). Tympanal organ (before and after preparation) (top right). Male genitalia, GP2854 (below), Anamur Çiçekyurdu, M. Kemal (Cesa)



Figs. 59-60 - *Agriphila inquinatella*. Lateral view of female head (above). Female genitalia, GP2856. Anamur Çiçekyurdu, M. Kemal (Cesa)



Figs. 61-63 – *Ancylolema palpella*. Upperside male (top left), Tympanal organ (before & after preparation) (top right). Male genitalia, GP2857 (below), Anamur Çiçekyurdu, M. Kemal (Cesa)

116. *Catoptria dimorphella* (Staudinger, 1881)

(Figs. 64-65)

Synonym(s): *dimorphellus* Staudinger, 1881; *haywardi* Rebel, 1939; *aetnella* Zerny, 1943; *wolffi* Ganey & Hacker, 1984

Original Reference: *Crambus dimorphellus* Staudinger, 1881, Horae Soc. ent. ross. 16: 81. Lectotype ♀: [Türkei]: Amasia (Bleszynski, 1965: 282).

New to the fauna of İçel Province.

Material studied: 3♂ Anamur Kaşaylası 3km SW 1180m (33Aj) 10 9 2017; 11♂ Anamur Çiçekyurdu 1620m (33Ae) 10 9 2017, M. Kemal & A. Koçak leg. (Cesa).



Figs. 64, 65 - *Catoptria dimorphella*. Upperside of male (left). Male genitalia, with removed aedeagus, GP2853 (right), Anamur, M. Kemal (Cesa)

117. *Cybalomia pentadalis* (Lederer, 1855)

Synonym(s): *pentadalis* Lederer, 1855

Original Reference: *Botys pentadalis* Lederer, 1855, Verh. zool.- bot. Ges. Wien 5: 217-218, Taf. 3 fig. 13. Syntypes 20♂♀: Libanon: Beirut.

New to the fauna of İçel Province.

Material studied: 8♂ Anamur Taşocağı 210m (33Ac) 19 8 2015; 3♂ Alaköprü 105m (33Ak) 8 9 2017, M. Kemal & A. Koçak leg. (Cesa).

118. *Cynaeda (s.str.) gigantea* (Staudinger, 1879)

Synonym(s): #*gigantea* Wocke, 1871; *gigantea* Staudinger, 1879

Original Reference: *Odontia dentalis* v. *gigantea* Staudinger, 1879, Horae Soc. ent. ross. 15: 165-166. Syntypes: [Türkei]: Amasia.

New to the fauna of İçel Province.

Material studied: 1♂. Anamur Çiçekyurdu 1620m (33Ae) 10 9 2017, M. Kemal & A. Koçak leg. (Cesa).

119. *Denticera divisella* (Duponchel, 1842)

Synonym(s): *divisella* Duponchel, 1842; *euphorbiella* Zeller, 1846; *albiricella* Herrich-Schäffer, 1849; *sardzeella* Amsel, 1961.

Original Reference: *Phycis divisella* Duponchel, 1842, Hist. nat. Lépid. Pap. Fr. Suppl. 4: 126-127, pl. 60 fig. 9.

New to the fauna of İçel Province.

Material studied: 1♂. Anamur Kaşyaylası 3km SW 1180m (33Aj) 10 9 2017, M. Kemal & A. Koçak leg. (Cesa).

120. *Dioryctria mendacella* (Staudinger, 1859)

Synonym(s): *mendacella* Staudinger, 1859; #*mendecella* Rebel, 1939

Original Reference: *Nephopteryx mendacella* Staudinger, 1859, Stettin ent. Ztg. 20 (7/9): 222-223. Syntypes ♂♀: Spanien: Granada.

Previously recorded from Anamur by the authors (Kemal & Koçak, 2017b).

121. *Dolicharthria bruguieralis* (Duponchel, 1833)

Synonym(s): *bruguieralis* Duponchel, 1833; *coniotalis* Hampson, 1903; *pseudobotys* Rothschild, 1913; *similalis* Rothschild, 1915; *bahrlutalis* Amsel, 1935; *mauretanicus* D. Lucas, 1949

Original Reference: *Botys bruguieralis* Duponchel, 1833, [in] Godart, Hist. Nat. Lépid. Pap. Fr. 15: 320, Tab. 232 fig. 3. Syntypes: Nismes [sic!], Corsica.

New to the fauna of İçel Province.

Material studied: 5♂ Anamur Kaşyaylası 3km SW 1180m (33Aj) 10 9 2017; 9♂ Anamur Çiçekyurdu 1620m (33Ae) 10 9 2017, M. Kemal & A. Koçak leg. (Cesa).

122. *Dolicharthria punctalis* ([Denis & Schiffermüller], 1775)

Synonym(s): *punctalis* [Denis & Schiffermüller], 1775; *longipedalis* Curtis, 1830

Original Reference: *Pyralis punctalis* [Denis & Schiffermüller], 1775, Ankündigung syst. Werkes Schmett. Wienergegend: 123. Type(s): [Austria]: Vienna district [Types presumably destroyed by fire in 1848].

New to the fauna of İçel Province.

123. *Elegia fallax* (Staudinger, 1881)

Synonym(s): *fallax* Staudinger, 1881; *atrifasciella* Ragonot, 1887; *nigribasella* Ragonot, 1895; *iozona* Meyrick, 1937; *elegiella* Amsel, 1953

Original Reference: *Nephopteryx fallax* Staudinger, 1881, Horae Soc. ent. ross. 16: 83. Syntypes: [Türkei]: Kleinasien, Amasia.

Previously recorded from Anamur by the authors (Kemal & Koçak, 2017b).

124. *Epischnia* sp.

Material: 3♂ Anamur Alaköprü 105m (33Ak) 31 3 2017, M. Kemal & A. Koçak leg. (Cesa).

125. *Etiella zinckenella* (Treitschke, 1832)

Synonym(s): *marginella* Fabricius, 1781 nec Den. & Schiff., 1775; *zinckenella* Treitschke, 1832; *etiella* Treitschke, 1835; *majorellus* Costa, 1836; *colonnellus* Costa, 1836; *dymnusalis* Walker, 1859; *heraldella* Guenée, 1862; *anticalis* Walker, 1863; *indicatalis* Walker, 1863; *hastiferella* Walker, 1866; *decipiens* Staudinger, 1870; *spartiella* Rondani, 1876; *sabulinus* Butler, 1879; *madagascariensis* Saalmüller, 1880; *schisticolor* Zeller, 1881; *villosella* Hulst, 1887; *rubribasella* Hulst, 1890; *#tiella* Pinhey, 1975.

Original Reference: *Phycis zinckenella* Treitschke, 1832, [in] Ochseneheimer, Schmett. Eur. 9 (1): 201. Lectotype ♀: "Sizilien" (TMB).

New to the fauna of İçel Province.

Material studied: 2♂ Anamur Taşocağı 210m (33Ac) 31 3 2017; 1♂ Anamur Çiçekyurdu 1620m (33Ae) 10 9 2017, M.Kemal & A.Koçak leg. (Cesa).

126. *Euzopherodes lutisignella* (Mann, 1869)

Synonym(s): *lutisignella* Mann, 1869; *leonhardi* Rebel, 1910; *scipionella* Turati, 1924; *battella* Turati, 1924.

Original Reference: Myeloides lutisignella Mann, 1869, Verh. zool.- bot. Ges. 19: 381. Type ♂: Dalmatien: Ragusa.

New to the fauna of İçel Province.

Material studied: 4♂1♀ Anamur Alaköprü 105m (33Ak) 31 3 2017; 2♂ from same place, 8 9 2017; 1♀ Anamur Pınarlar 475m (33Ad) 19 8 2015, 1♀ Anamur Çiçekyurdu 1620m (33Ae) 10 9 2017, M.Kemal & A.Koçak leg. (Cesa).

127. *Evergestis serratalis* (Staudinger, 1870)

Synonym(s): *serratalis* Staudinger, 1870.

Original Reference: *Botys (Orobena) serratalis* Staudinger, 1870, Horae Soc. ent. ross. 7: 193, Tab. 2 fig. 11. Type ♂: Griechenland: Parnass oder Acarnanien.

New to the fauna of İçel Province.

Material studied: 11♂. Anamur Çiçekyurdu 1620m (33Ae) 10 9 2017, M.Kemal & A.Koçak leg. (Cesa).

128. *Glaucocharis euchromiella* (Ragonot, 1895)

Synonym(s): *euchromiella* Ragonot, 1895; *sinualis* Hampson, 1900; *rebeli* Osthelder, 1941.

Original Reference: *Diptychophora euchromiella* Ragonot, 1895, Bull. Soc. ent. Fr. 1895: xcix. Holotype ♂: [Turquie]: Akbes (MNHNP).

New to the fauna of İçel Province.

Material studied: 2♂. Anamur Pınarlar 475m (33Ad) 19 8 2015, M.Kemal & A.Koçak leg. (Cesa).

129. *Herpetogramma licarsisalis* (Walker, 1859)

Synonym(s): *licarsisalis* Walker, 1859; *pharaxalis* Walker, 1859; *immundalis* Walker, [1866]; *fumidalis* Walker, [1866]; *serotinalis* De Joannis, 1888; *#licarsialis* Rebel, 1939

Original Reference: *Botys licarsisalis* Walker, 1859, List Specimens lepid Insects Colln Br. Mus. 18: 686. Type: Borneo, Sarawak (BMNH).

It flies nocturnally on the coastal area in late summer.

New to the fauna of İçel Province.

130. *Hyperlais argillacealis* (Zeller, 1847)

Synonym(s): *argillacealis* Zeller, 1847.

Original Reference: *Scopula argillacealis* Zeller, 1847, Isis von Oken 1847: 579-580. Syntypes: Italia, Sicilia.

131. *Hypsoptygia costalis* (Fabricius, 1775)

Synonym(s): *costalis* Fabricius, 1775; *fimbrialis* [Denis & Schiffermüller], 1775; *purpurana* Thunberg, 1784; *hyllalis* Walker, 1859; *rubrociliaris* Staudinger, 1870; *#lugens* Rebel, 1903; *syriaca* Zerny, 1914; *lugens* Caradja, 1917.

Original Reference: *Phalaena costalis* Fabricius, 1775, Syst. Ent.: 644, nr. 132. Type(s): Anglia.

New to the fauna of İçel Province.

Material studied: 1♂. Anamur Taşocağı 210m (33Ac) 19 8 2015, M.Kemal & A.Koçak leg. (Cesa).

132. *Metaeuchromius latoides* Schouten, 1997

Synonym(s): *latoides* Schouten,1997

Original Reference: *Metaeuchromius latoides* Schouten,1997, Tijdschr. Ent. 140: 119, figs.8, 25. Holotype ♀: Turquie, [Nevşehir Prov.]: "Acıgol".

Remarks: This species was reported by the authors from Anamur, as a second locality in Turkey and the genitalia of both sexes were illustrated (Kemal & Koçak, 2017a).

133. *Metasia supbandalis* (Hübner,[1823])

Synonym(s): *supbandalis* Hübner,[1823]

Original Reference: *Pyralis supbandalis* Hübner,[1823], Samml. eur. Schmett. 6, Pyralides: Tab.30 figs.187-190. Syntypes: Europa.

New to the fauna of İçel Province.

Material studied: 4♂♀. Anamur Çiçekyurdu 1620m (33Ae) 10 9 2017, M.Kemal & A.Koçak leg. (Cesa).

134. *Myelois (Gnathogutta) ossicolor* Ragonot,1893

Synonym(s): *ossicolor* Ragonot,1893

Original Reference: *Myelois ossicolor* Ragonot,1893, [in] Romanoff, Mém. lépid. 7: 44, pl.xxvi fig.1 [Hampson,1901]. Type ♂: "Mardin (Turquie d'Asie)". (coll. Staudinger).

New to the fauna of İçel Province.

135. *Nomophila noctuella* ([Denis & Schiffermüller],1775)

Synonym(s): *noctuella* [Denis & Schiffermüller],1775; *hybridalis* Hübner,1796; *indistinctalis* Walker,1859

Original Reference: *Tinea noctuella* [Denis & Schiffermüller],1775, Ankündigung syst. Werkes Schmett. Wienergegend: 136. Type(s): [Austria]: Vienna district [Types presumably destroyed by fire in 1848].

New to the fauna of İçel Province.

Material studied: 1♂. Anamur Pınarlar 475m (33Ad) 19 8 2015, M.Kemal & A.Koçak leg. (Cesa).

136. *Palpita vitrealis* (Rossi,1794)

Synonym(s): *vitrealis* Rossi,1794; *unionalis* Hübner,1796; *quinquepunctalis* Boisduval,1833; *transvisalis* Guenée,1854; *suralis* Lederer,1863; *septempunctalis* Mabilie,1880

Original Reference: *Phalaena vitrealis* Rossi,1794, Mantissa Insectorum... 2: 42. Type(s): Etruria.

New to the fauna of İçel Province.

Material studied: 1♂. Anamur Taşocağı 210m (33Ac) 19 8 2015, M.Kemal & A.Koçak leg. (Cesa).

137. *Patania balteata* (Fabricius,1798) (Figs. 66-68)

Synonym(s): *balteata* Fabricius,1798; *crocealis* Duponchel,1834; *mysolalis* Walker,[1866]; *accipitralis* Walker,[1866]; *aurea* Butler,1879; *fraterna* Moore,1886; *evergestialis* Strand,1918; *africalis* Leraut,2005

Original Reference: *Phalaena balteata* Fabricius,1798, Suppl. Ent. Syst.: 457. Type(s): India.

Slamka (2013) illustrated this species very well. Therefore, our identification is based upon his work.

Tympanal organ of this species is illustrated here for the first time.

New to the fauna of İçel Province.

Material studied: 14♂♀ (GP2845♂). Anamur Taşocağı 210m (33Ac) 19 8 2015, M.Kemal & A.Koçak leg. (Cesa).

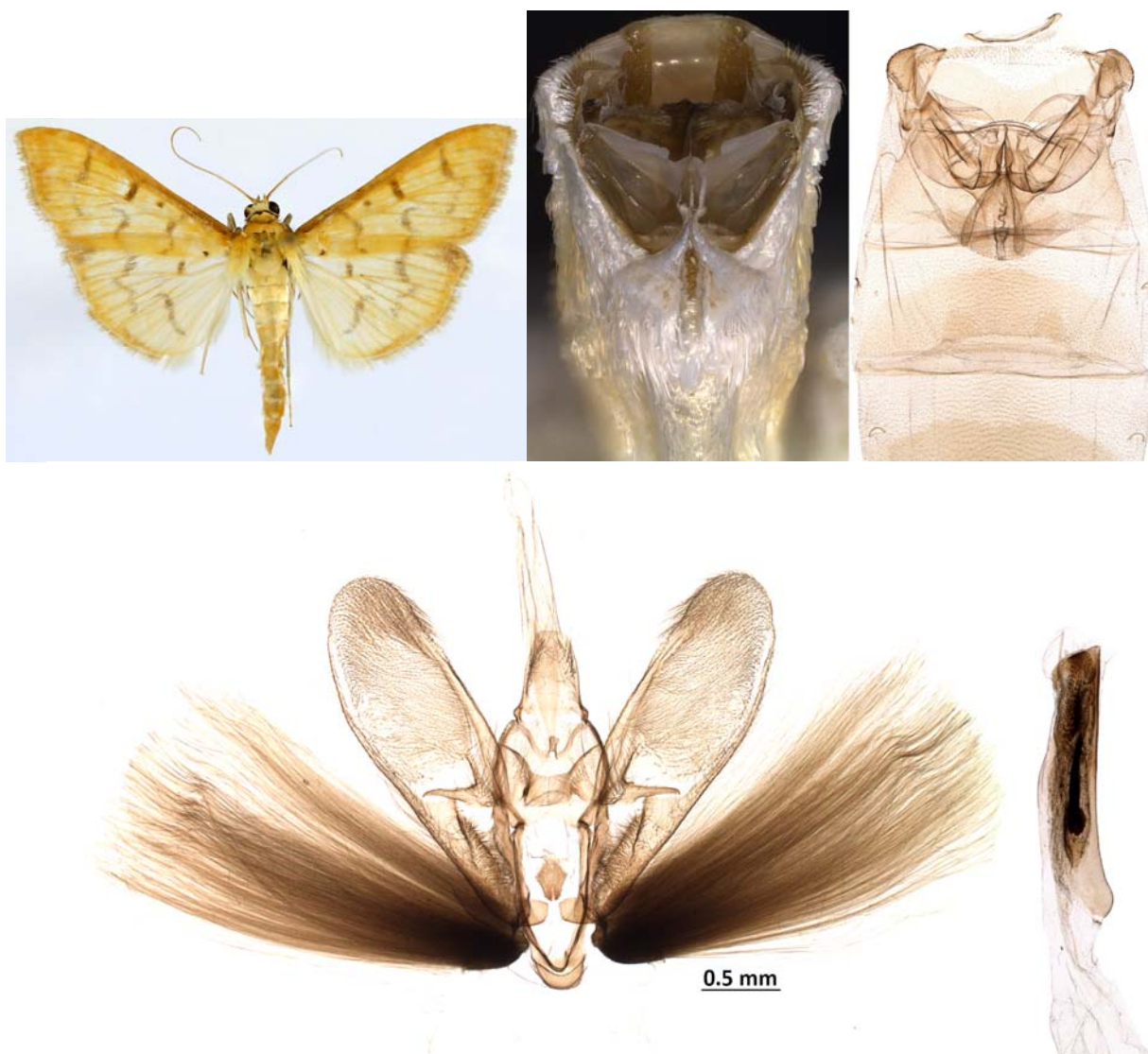
138. *Pediasia matricella* (Treitschke,1832)

Synonym(s): *matricella* Treitschke,1832; *obscura* Caradja,1931; *stenopterella* Amsel,1949

Original Reference: *Phycis matricella* Treitschke,1832, Schmett. Eur. 9 (1): 171. Type ♂: Ungarn.

New to the fauna of İçel Province.

Material studied: 1♂ Anamur Suolmaz Pass 1660m (33Af), diurnal, 10 9 2017, M.Kemal & A.Koçak leg. (Cesa).



Figs. 66-68 - *Patania balteata*. Upperside of male (top left). Tympanal organ (before after & preparation) (top right). Male genitalia with a pair of scent organ, GP2845, Anamur Taşocağı, M. Kemal (Cesa)

139. *Pempelia alpigenella* (Duponchel, 1836)

Synonym(s): *alpigenella* Duponchel, 1836; *wagnerella* Freyer, 1845

Original Reference: *Phycis alpigenella* Duponchel, 1836, Hist. nat. Lépid. Papillons Fr. 10: 208, pl. 280, fig. 7. Syntypes: "Alpe".

140. *Phlyctaenomorpha sinuosalis* (Le Cerf, [1910])

Synonym(s): *sinuosalis* Le Cerf, [1910]; *platyphaea* Meyrick, 1937.

Original Reference: *Phlyctoenodes* [sic!] *sinuosalis* Le Cerf, [1910], Bull. Mus. natn. Hist. nat. Paris 3 (8) (1909): 536. Type ♂: [Iran]: Perse: Ab-e-bid.

New to the fauna of İçel Province.

Material studied: 9♂. Anamur Kaşaylası 3km SW 1180m (33Aj) 10 9 2017; 1♂ Anamur Alaköprü 105m (33Ak) 8 9 2017, M. Kemal & A. Koçak leg. (Cesa).

141. *Pyralis kacheticalis* (Christoph, 1893)

Synonym(s): *kacheticalis* Christoph, 1893; *imperialis* Caradja, 1916

Original Reference: *Asopia kacheticalis* Christoph, 1893, Dt. ent. Z., Iris 6: 96. Syntypes: "Eldar, Muganlı, Transcaucas.".

New to the fauna of İçel Province.

142. *Pyrausta pavidalis* Zerny, 1935

Synonym(s): *pavidalis* Zerny, 1935; *krimensis* Budashkin & Martin, 1993.

Original Reference: *Pyrausta pavidalis* Zerny, 1935, [in] Osthelder, L. & E. Pfeiffer, Mitt. münch. ent. Ges. 24 (3): 101-102. Syntypes 4♂ 2♀: [Türkei]: Marasch.

New to the fauna of İçel Province.

Material studied: 16♂ Anamur Çiçekyurdu 1620m (33Ae), 10 9 2017, M. Kemal & A. Koçak leg. (Cesa).

143. *Pyrausta sanguinalis* (Linnaeus, 1767)

Synonym(s): *sanguinalis* Linnaeus, 1767; *crentalis* Scriba, 1770; *haematalis* Hübner, [1819]

Original Reference: *Phalaena sanguinalis* Linnaeus, 1767, Syst. Nat. (Edn. 12) 1(2): 882, no. 339. Lectotype 1 ex: [Lusitania] (Robinson & Nielsen, 1983: 229).

New to the fauna of İçel Province.

Material studied: 1♂. Anamur Taşocağı 210m (33Ac) 19 8 2015, M. Kemal & A. Koçak leg. (Cesa).

144. *Spoladea recurvalis* (Fabricius, 1775)

Synonym(s): *recurvalis* Fabricius, 1775; *fascialis* Cramer, [1782]; *recurvella* Zincken, 1818; *diffascialis* Hübner, [1825]; *albifacialis* Boisduval, 1833; *animalis* Guenée, 1854; *exodias* Meyrick, 1904; *formosana* Shiraki, 1910.

Original Reference: *Phalaena recurvalis* Fabricius, 1775, Syst. Ent.: 407. Type(s): Lost (Clarke, 1986: 51).

New to the fauna of İçel Province.

Material studied: 1♂ Anamur Taşocağı 210m (33Ac) 19 8 2015, M. Kemal & A. Koçak leg. (Cesa).

145. *Stemmatophora honestalis* (Treitschke, 1829)

Synonym(s): *honestalis* Treitschke, 1829; *marrakechensis* Leraut, 2000.

Original Reference: *Pyrallis honestalis* Treitschke, 1829, Schmett. Eur. 7: 49-50. Type: Ungarn.

New to the fauna of İçel Province.

146. *Stemmatophora syriacalis* (Ragonot, 1895)

Synonym(s): *syriacalis* Ragonot, 1895

Original Reference: *Scotomerodes syriacalis* Ragonot, 1895, Bull. Soc. ent. Fr. 1895: xcvi. Type ♂: [Turquie]: Akbes.

New to the fauna of İçel Province.

Material studied: 6♂ Anamur Pınarlar 475m (33Ad) 19 8 2015, M. Kemal & A. Koçak leg. (Cesa)

147. *Synaphe berytalis* (Ragonot, 1888) (Figs. 69-71)

Synonym(s): *berytalis* Ragonot, 1888

Original Reference: *Cledeobia berytalis* Ragonot, 1888, Anns Soc. ent. Fr. (6) 8: 276-277, pl. 6 fig. 1 (♀). Syntypes ♂♂♀♀: [Lebanon]: "Beyrouth (Syrie)".

Leraut (2014: pl. 8 figs. 13, 14) illustrated both sexes from Beirut, type-locality of this species.

Tympanal organ and male genitalia are illustrated here for the first time.

New to the fauna of İçel Province.

Material studied: 1♂ Anamur Taşocağı 210m (33Ac) 19 8 2015. 2♂ Anamur Alaköprü 105m (33Ak) 8 9 2017. 10♂ 1♀ (GP2855♂). Anamur, Çiçekyurdu 1620m (33Ae) 10 9 2017, M. Kemal & A. Koçak leg. (Cesa)

148. *Teliphasa (Sultania) lophotalis* (Hampson, 1900)

Synonym(s): *lophotalis* Hampson, 1900

New to the fauna of İçel Province.

Original Reference: *Macalla lophotalis* Hampson, 1900, Trans. ent. Soc. Lond. 1900 (2): 375. Syntypes ♂♀: [Turkey]: "Armenia, Zeitun [=Süleymanli]; Mardin" (coll. Staudinger).

149. *Thyridiphora furia* (Swinhoe, 1884)

Synonym(s): *furia* Swinhoe, 1884; *fenestrata* W. Warren, 1888; *grisea* Amsel, 1968.

Original Reference: *Micra furia* Swinhoe, 1884, Proc. zool. Soc. Lond. 1884: 519, Pl.47 fig.13.
Lectotype ♂: Pakistan: "Kurrachee" [Karachi] (BMNH).
New to the fauna of İçel Province.
Material studied: 3♂ Anamur Alaköprü 105m (33Ak) 8 9 2017. 1♂ Anamur Kaşaylası 3km SW 1180m (33Aj) 10 9 2017, M. Kemal & A.Koçak leg. (Cesa).



Figs. 69-71 – *Synaphe berytalis*. Upperside of male (top left). Tympanal organ (before & after preparation) (top right). Male genitalia, GP2855, Anamur Çiçekyurdu, M. Kemal (Cesa)

150. *Udea ferrugalis* (Hübner, 1796)

Synonym(s): *ferruginalis* Rossi, 1794 nec Fabr., 1781; *ferrugalis* Hübner, 1796; *#ferugalis* Hübner, 1796; *martialis* Guenée, 1854; *hypatialis* Walker, 1859; *testacea* Butler, 1879

Original Reference: *Pyralis ferrugalis* Hübner, 1796, Samml. eur. Schmett. 6, Pyralides: Tab. 9 fig. 54. Type(s): Europa.

New to the fauna of İçel Province.

Material studied: 1♂. Anamur Taşocağı 210m (33Ac) 19 8 2015; 1♂ Anamur Çiçekyurdu 1620m (33Ae), 10 9 2017, M. Kemal & A.Koçak leg. (Cesa).

151. *Udea languidalis* (Eversmann, 1842)

Synonym(s): *languidalis* Eversmann, 1842; *arabescalis* Herrich-Schäffer, 1860; *veneralis* Staudinger, 1871

Original Reference: *Botys languidalis* Eversmann, 1842, Bull. Soc. Imp. Nat. Moscou 15 (3): 559. Type: Russia, Kasan.

New to the fauna of İçel Province.

Material studied: 2♂. Anamur Çiçekyurdu 1620m (33Ae), 10 9 2017, M. Kemal & A.Koçak leg. (Cesa).

Scythridae

152. *Scythris (elegantella-gr.) limbella* (Fabricius,1775)

Synonym(s): *limbella* Fabricius,1775; *variella* [Denis & Schiffermüller],1775; *quadriguttella* Thunberg,1794; *chenopodiella* Hübner,[1813]; *obscura* Staudinger,1880.

Original Reference: *Tinea limbella* Fabricius,1775; Syst. Ent.: 660. Type(s): Germania.

Previously recorded, and the male genitalia from Anamur illustrated by the authors (Kemal & Koçak,2017b).

Material studied: 1♂ (GP2651) Anamur Alaköprü 105m (33Ak), 31 3 2017; 5♂ from same locality, 8 9 2017, M. Kemal & A.Koçak leg. (Cesa).

Sphingidae

153. *Hyles livornica* (Esper,[1780])

Synonym(s): *livornica* Esper,[1780]; *koechlini* Fuessly,1781; *tatsienhuica* Oberthür,1916; *saharae* Gehlen,1932; *malgassica* Denso,1944; *tatsienhuica* Oberthür,1944; *renneri* Eitschberger, Danner & Surholt,1998.

Original Reference: *Sphinx livornica* Esper,[1780], Die Schmett. 2 (13): 88. Type: Germany.

Material studied: 1♀. Anamur Pınarlar 475m (33Ad) 19 8 2015, M.Kemal & A.Koçak leg. (Cesa).

154. *Macroglossum stellatarum* (Linnaeus,1758)

Synonym(s): *stellatarum* Linnaeus,1758; *nigra* Cosmovici,1892.

Original Reference: *Sphinx stellatarum* Linnaeus,1758, Syst. Nat. (Edn.10) 1: 493.

155. *Marumba quercus* ([Denis & Schiffermüller],1775)

Synonym(s): *quercus* [Denis & Schiffermüller],1775; *denisii* Fuessly,1779; *#brunnescens* Rebel,1910; *#canescens*, *palescens* Closs,1922; *mesopotamica* O.Bang-Haas,1938; *schirasi* O.Bang-Haas,1938; *#pallida* Vilarrubia,1973.

Original Reference: *Sphinx quercus* [Denis & Schiffermüller],1775, Ankündigung syst. Werkes Schmett. Wienergegend: 41, Tab 1 fig.1. Type(s): Vienna district.

New to the fauna of İçel Province.

Material studied: 1♂. Anamur Taşocağı 210m (33Ac) 19 8 2015, M.Kemal & A.Koçak leg. (Cesa).

156. *Sphinx pinastri* Linnaeus,1758

Synonym(s): *pinastri* Linnaeus,1758; *piceae* Gleditsch,1775; *asiaticus* Butler,1875; *saniptri* Strecker,1876; *cenisius* Jordan,1931; *medialis* Jordan,1931; *euxinus* Derzhavets,1979; *selon* De Freina & Witt,1987.

Original Reference: *Sphinx pinastri* Linnaeus,1758, Syst. Nat. (Edn.10) 1: 492. Type(s): Europe.

Material studied: 1♂. Anamur Pınarlar 475m (33Ad) 19 8 2015, M.Kemal & A.Koçak leg. (Cesa).

Thaumetopoeidae

157. *Thaumetopoea (s.str.) solitaria* (Freyer,[1838])

Synonym(s): *solitaria* Freyer,[1838]

Original Reference: *Gastropacha solitaria* Freyer,[1838], Neuere Beitr. Schmettk. Abb. Natur 3: 102-103, pl.266. Type(s): "europäische Türkei".

New to the fauna of İçel Province.

Material studied: 1♂ Anamur Alaköprü 105m (33Ak) 8 9 2017; 17♂6♀ Anamur Kaşaylası 3km SW 1180m (33Aj) 10 9 2017, M. Kemal & A.Koçak leg. (Cesa).

Thyatiridae

158. *Asphalia ruficollis* (Fabricius,1787)

Synonym(s): *#ruficollis* [Denis & Schiffermüller],1775; *ruficollis* Fabricius,1787

Previously recorded from Anamur by the authors (Kemal & Koçak,2017b).

159. *Polyploca korbi* Rebel,1901

Synonym(s): *korbi* Rebel,1901

Original Reference: *Polyploca korbi* Rebel,1901, Annln naturh. Mus. Wien 16: 167. Type ♂: Türkei, Akşehir (ZMHU) [see: Int. ent. Z. 24 (45): Tafel, fig.2].

Previously recorded from Anamur by the authors (Kemal & Koçak,2017b).

Tortricidae

160. *Aethes margarotana* (Duponchel,1836) (Figs.72, 73)

Synonym(s): *margarotana* Duponchel,1836; *maritimana* Guenée,1845; *parallelana* Kennel,1913; *edrisitana* Chrétien,1922; *paronyma* Meyrick,1932.

Original Reference: *Argyrolepis margarotana* Duponchel,1836, Hist. nat. Lépid. Papillons Fr. 9: 429, pl.258 figs. 7a-b. Type: France, Nimes.

Colouration of upperside of male from Anamur are remarkably reddish-brown.

Material studied: 6♂ (GP2174♂, GP2175♂) Anamur Taşocağı 210m (33Ac), 19 8 2015, M. Kemal & A.Koçak leg. (Cesa)



Figs. 72, 73 – *Aethes margarotana*. Upperside of male (left). Male genitalia, GP2175♂ (right). Anamur, Taşocağı, M. Kemal (Cesa)

161. *Bactra* sp.

Material studied: 1♀. Anamur Taşocağı 210m (33Ac) 19 8 2015, M.Kemal & A.Koçak leg. (Cesa).

162. *Cochylidia heydeniana* (Herrich-Schäffer,[1851])

Synonym(s): *heydeniana* Herrich-Schäffer,[1851]; *pudorana* Staudinger,1859; *erigenana* Walsingham,1891; *sabulicola* Walsingham,1900; *almana* Kennel,1919; *obraztsovi* Amsel,1951; *amseli* Obratzsov,1956.

Original Reference: *Cochylis heydeniana* Herrich-Schäffer,[1851], Syst. Bearb. Schmett. Eur. 4: 187. Type: Germany.

Previously recorded and the male genitalia illustrated from Anamur by the authors (Kemal & Koçak,2017b).

163. *Endothenia sororiana* (Herrich-Schäffer,[1851])

Synonym(s): *#sororiana* Herrich-Schäffer,[1850]; *sororiana* Herrich-Schäffer,[1851]; *phlomidana* Staudinger,1871

Original Reference: *Penthina sororiana* Herrich-Schäffer,[1851], Syst. Bearb. Schmett. Eur. 4: 230. Type: Sicilia.

164. *Kenneliola fagiglandana* (Zeller, 1841)

This species was recently reported by the authors from Bitlis (Mutki) (Kemal Koçak, 2017c).

New to the fauna of İçel Province.

Material: 1ex. Anamur Alaköprü 105m (33Ak) 8 9 2017, M. Kemal & A. Koçak leg. (Cesa).

165. *Pammene querceti* (Gozmany, 1957)

Synonym(s): *querceti* Gozmany, 1957

Original Reference: *Hemimene querceti* Gozmany, 1957, Acta zool. Acad. Sci. Hung. 3 (1/2): 133-134, fig. 8. Holotype ♂: Hungary, Budakeszi, Harsbókorhegy".

Previously recorded from Anamur by the authors (Kemal & Koçak, 2017b).

166. *Pseudeulia asinana* (Hübner, [1799])

Synonym(s): *asinana* Hübner, [1799]; *vermicularis* Meyrick, 1935

Original Reference: [*Tortrix*] *asinana* Hübner, [1799], Samml. eur. Schmett. Tortrices: pl. 16 fig. 101.

Type: Europe.

Previously recorded from Anamur by the authors (Kemal & Koçak, 2017b).

Yponomeutidae**167. *Plutella* (s.str.) *xylostella* (Linnaeus, 1758)**

Synonym(s): *xylostella* Linnaeus, 1758; *cinerea* Fourcroy, 1785 nec Hufn., 1766; *xylostei* Fabricius, 1798; *maculipennis* Curtis, 1832; *niveella* Zeller, 1839; *cruciferarum* Zeller, 1843; *brassicella* Fitch, 1856; *limbipennella* Clemens, 1860; *mollipedella* Clemens, 1860; *cicerella* Rondani, 1876; *dubiosella* Beutenmüller, 1889; *albovenosa* Walsingham, 1897; *megapterella* Benthinck, 1943; *karsholtella* Baraniak, 2003

Original Reference: *Phalaena Tinea xylostella* Linnaeus, 1758, Syst. Nat. (Edn. 10) 1: 538.

Previously recorded from Anamur by the authors (Kemal & Koçak, 2017b).

New to the fauna of İçel Province.

Material: 1♂. Anamur Çiçekyurdu 1620m (33Ae), 10 9 2017, M. Kemal & A. Koçak leg. (Cesa).

Acknowledgements

We thank to P. Buchner (Austria) for his valuable taxonomical comments and collaboration on the *Depressariinae* species, to O. Bidzilya (Ukraine) for sending the image of the female genitalia of *Altenia modesta* Danil. for our comparison of the new species. Finally we thank also to Mironov for his valuable comment to an *Eupithecia* sp. from Anamur.

References

- Arnscheid, W.R. & M. Weidlich**, 2017, *Psychidae Microlepidoptera of Europe*, vol. 8. Brill.
- Atalay, I., Efe, R. & M. Öztürk**, 2014, Effects of topography and climate on the ecology of Taurus Mountains in the Mediterranean region of Turkey. *Procedia* 120: 142-156, figs.
- Barton, I.**, 2015, A contribution to the microlepidopteran fauna of Cyprus. *Entomologist's Rec. J. Var.* 127 (4): 157-167.
- Erlacher, S. & J. Erlacher**, 2017, A new species of *Charissa* Curtis, 1826 from Europe (Lepidoptera: Geometridae). *Zootaxa* 4341 (1): 89-96.
- Fischer, H. & S. Lewandowski**, 2004, Neue taxonomische Erkenntnisse der zyprischen Geometridae (Lepidoptera, Geometridae, Ennominae). *Atalanta* 35 (1/2): 127-132, figs.
- Gozmany, L.**, 1978, *Lecithoceridae*, [in] Amsel, H.G., Gregor, F. & H. Reisser, *Microlepidoptera Palaearctica* vol. 5 (text & plates), xxviii + 1-306 pp. Verlag Georg Fromme & Co. Wien.
- Huemer, P. & O. Karsholt**, 1999, *Gelechiidae I (Gelechiinae: Teleiodini, Gelechiini)*, [in] Huemer, P., Karsholt, O. & L. Lyneborg, *Microlepidoptera of Europe* vol. 3., 356 pp., Pls., Stenstrup.
- Kemal, M. & A. Ö. Koçak**, 2017a, New and little known Pyraloidea of Turkey, with some faunistic notes (Lepidoptera). *Cesa News* 130: 1-43, 103 figs.
<https://www.researchgate.net/publication/314116662> New and little known Pyraloidea of Turkey with some faunistic notes Lepidoptera
- Kemal, M. & A. Ö. Koçak**, 2017b, Some vernal Lepidoptera of SE Turkey, faunistic results of a short trip made in 2017 with some taxonomic and bionomic notes. *Cesa News* 133: 1-16, 26 figs.

- <https://www.researchgate.net/publication/316166551> Some vernal Lepidoptera of SE Turkey faunistical results of a short trip made in 2017 with some taxonomic and bionomic notes
- Kemal, M. & A.Ö.Koçak**, 2017c, On the moths of Mutki district (Bitlis Province, East Turkey (Lepidoptera). *Cesa News* 150: 2-46, 93 figs.
<https://www.researchgate.net/publication/322008558> On the moths of Mutki district Bitlis Province East Turkey Lepidoptera
- Koçak, A.Ö.**, 1980, Some notes on the nomenclature of Lepidoptera. *Communs Fac. Sci. Univ. Ankara*, (Ser C3, Zool.) 24: 7-25. <https://www.researchgate.net/publication/272956395> Some Notes on the Nomenclature of Lepidoptera
- Koçak, A.Ö. & M.Kemal**, 2015, List of the genus group names of Lepidoptera of Turkey. *Priamus* 13 (2): 75-159. <https://www.researchgate.net/publication/307940860> List of the genus group names of Lepidoptera of Turkey
- Koçak, A.Ö. & M.Kemal**, 2017, Geographical codes used in the publications of the Cesa. *Cesa News* 135: 1-40. <https://www.researchgate.net/publication/316740240> Geographical codes used in the publications of the Cesa
- Lepiforum e.V.** 2018, Bestimmungshilfe für die in Europa nachgewiesenen Schmetterlingsarten. http://www.lepiforum.de/lepiwiki.pl?Lepiforum_E_V [latest access: 18 1 2018]
- Leraut, P.**, 2014, *Moths of Europe*, vol. 4 Pyralids 2, 441 pp. Verrieres-le-Buisson (N.A.P. Editions).
- Mironov, V.**, 2003, *The Geometrid Moths of Europe* vol. 4 *Larentiinae* II (*Perizomini* and *Eupitheciini*). Apollo Books.
- Rebel, H.**, 1935, *Penestoglossa taurica* nova sp. [in] Osthelder, L., *Mitt. münch. ent. Ges.* 29: 88.
- Rebel, H.**, 1940, Zur Kenntnis einiger Subfamilien der Psychiden (Schluss). *Z. Wien EntVer.* 25: 73-76, Taf. xi.
- Redondo, V. & J.Gaston**, 2012, *Selidosema pyrenaearia* (Boisduval, 1840) bona species de la Península Ibérica y actualización de las especies ibéricas de *Selidosema* Hübner, [1823] del grupo *plumaria-brunnearia* (Lepidoptera: Geometridae, Ennominae). *SHILAP Revta. lepid.*, 40 (157): 61-71, figs.
- Sihvonen, P., Skou, P., Flamigni, C., Fiumi, G. & A.Hausmann**, 2014, Revision of the *Hylaea fasciaria* (Linnaeus, 1758) species group in the West Palaearctic (Lepidoptera: Geometridae, Ennominae). *Zootaxa* 3768 (4): 469-486, figs.
- Skou, P. & P.Sihvonen**, 2015, *Subfamily Ennominae* I, [in] Hausmann, A. (ed.), *The geometrid moths of Europe* 5: 1-657. Brill & Leiden.
- Slamka, F.**, 2013, *Pyraloidea of Europe (Lepidoptera)*, vol. 3. *Pyraustinae & Spilomelinae*. 357 S., 133 Taf. Bratislava.
- Sobczyk, T.**, 2004, Beitrag zur Kenntnis der Typhoniini mit der Beschreibung von *Kalliesia irana* gen. et sp. n. aus dem Iran (Psychidae). *Nota lepid.* 27 (1): 19-31, figs.
- Sobczyk, T.**, 2011, Psychidae (Lepidoptera), [in] M. Nuss (ed.), *World Catalogue of Insects* 10: 1-467. Apollo Books.
- Sobczyk, T., Bläsius, R. & M. Nuss**, 2016, Revision der nordafrikanischen Arten der Gattungen *Penestoglossa* Rogenhofer, 1875, *Dissoctenioides* Rebel, 1935 und *Pseudofumea* Rebel, 1935 (Lepidoptera, Psychidae). *Entomofauna* 37 (41): 629-684, figs.
- Wagner, F.**, 1931, Neue Heteroceren aus Kleinasien. *Int. ent. Z.* 25: 367-371, 388.
- Wehrli, E.** 1929, Ueber die paläarktischen Arten der Gattung *Ellopiia* Tr. (Lepidopt. Geometr.). *Mitt. münch. ent. Ges.* 19: 311-323.
- Wehrli, E.**, 1932, Neue Geometriden-Arten und -Rassen (Lepid. Het.) von der Maras-Expedition L. Osthelder u. E. Pfeiffer, München. *Mitt. münch. ent. Ges.* 22: 3-11.
- Wehrli, E.**, 1934, Die Geometriden der Ausbeute des Herrn Ernst Pfeiffer und Herrn L. Osthelder München aus Marasch und Bertiz Jaila, Achyr Dagh, Südost Taurus. [in] Osthelder, L. & E. Pfeiffer, Lepidopteren-Fauna von Marasch in türkisch Nordsyrien. *Mitt. münch. ent. Ges.* 24 (1): 1-18, 2 Pls.

C o n t e n t s : Kemal, M. & A.ÖKoçak, Annotated list of the moth fauna of Anamur district (İçel Prov., South Turkey), with descriptions of new species (Lepidoptera), p.1 - **editorial**, p.46.

MISCELLANEOUS PAPERS

ISSN 1015-8235

Miscellaneous Papers is a peer reviewed online serial of the Centre for Entomological Studies Ankara, established in 1989. It appears at irregular interval in a year, as PDF format and includes original articles of the research workers of the Centre, regarding on various subjects on Entomology (taxonomy, nomenclature, checklist, fauna, biodiversity, distribution, biogeography, ecology, insect-plant interactions, bionomy, and behaviour).

The CESA is a non-profit group, no royalties will be paid to authors of contributions. Papers accepted become the copyright of the related serial.

Miscellaneous Papers is currently archived online at "Internet Archive", in accordance with the publication rules of the ICZN. It is an open-access serial, distributed under the terms of the "Creative Commons Attribution License", which permits free use, and distribution in any medium, provided the original author(s) and source are credited.

Centre for Entomological Studies Ankara



(A scientific Consortium)

(co-operation of research workers for pure-scientific, not commercial purpose)

Web Page of the Cesa: <http://www.cesa-tr.org/>

Scientific Serials: Priamus & Priamus Supplement (print and online versions) (ISSN 1015-8243)⁷, Miscellaneous Papers (print and online versions) (ISSN 1015-8235)⁸, Memoirs (print and online versions) (ISSN-8227)⁹ DVD Films¹⁰, Iconographia Insectorum¹¹ (online), Cesa Publications on African Lepidoptera (online)¹², Cesa News (online)¹³, Cesa Books (online)¹⁴

Owners / Sahipleri - Editors / Yayıncılar: Prof. em. Dr. Ahmet Ömer Koçak (c/o Van Yüzüncü Yıl University, Van, Turkey), Asst. Prof. Dr. Muhabbet Kemal Koçak (c/o Van Yüzüncü Yıl University, Van, Turkey).

Editorial Board of all Scientific Serials of the CESA / Bütün Bilimsel Yayınların Yayın Kurulu: Insecta, taxonomy, nomenclature, ecology, faunistics: Prof. Dr. Ahmet Ömer Koçak (c/o Van Yüzüncü Yıl Üniversitesi, Turkey), Asst. Prof. Dr. Muhabbet Kemal Koçak (Van Yüzüncü Yıl University, Turkey).

Chief referees of all Scientific Serials of the CESA: Prof. em. Dr. Ahmet Ömer Koçak & Asst. Prof. Dr. Muhabbet Kemal Koçak: Insecta, taxonomy, nomenclature, fauna, ecology, catalogues, checklists of the Old World.

Expert referees according to the subject areas: Dr. Peter Huemer (Austria): Gelechiidae, and some Microlepidoptera groups in Palaearctic (Lepidoptera). Dr. J. B. Heppner (U.S.A.): Microlepidoptera of Nearctic and Neotropical. Dr. G. Baldizzone (Italy): Coleophoridae (Lepidoptera). Dr. V. Korneyev (Ukraine): Tephritidae, Pyrgotidae, Ulidiidae (Diptera). Prof. Dr. Y.G.Verves (Ukraine): Sarcophagidae (Diptera). Dr. Daniel Burckhardt (Switzerland): Psyllidae (Homoptera). Prof. Dr. E. Heiss (Austria): Hemiptera. Dr. R. Ehrmann (Germany): Mantodea. Prof. Dr. Mustafa Ünal (Bolu, Turkey): Orthoptera. Prof. Dr. Hüseyin Özdikmen (Turkey): Coleoptera. Prof. Dr. Suat Kiyak (Turkey): Hemiptera.

Plant taxonomy, flora and vegetation: Assoc. Prof. Dr. Murat Ünal, Asst. Prof. Dr. Mesut Pınar, (Yüzüncü Yıl University, Van, Turkey).

Molecular studies: Asst. Prof. Dr. İsmail Yıldız, Dr. Sibel Kızıldağ (Van Yüzüncü Yıl University, Van, Turkey).

Editorial policy: The submitted manuscript is evaluated by the Chief Editor and Referee. In case of need, the manuscript is sent to expert referees according to the subject areas.

ALL RIGHTS RESERVED

Correspondences should be addressed to: Prof. em. Dr. Ahmet Ömer Koçak, c/o Yüzüncü Yıl University, Fen Fakültesi, Biyoloji Bölümü, Kampus, Van / Turkey. - e-mail: cesa_tr@yahoo.com.tr

All the serials of the Cesa are archived regularly by the Internet Archive (300 Funston Ave., San Francisco, CA 94118, U.S.A.), in accordance with the rules of the International Codes of Zoological Nomenclature (ICZN)

<https://archive.org/>

also recorded regularly by the Zoological Record, Thomson Reuters, Enterprise House, Innovation Way, Heslington, York, YO10 5NQ, United Kingdom, <https://clarivate.com/>

⁷ <http://www.cesa-tr.org/Pri.htm>

⁸ <http://www.cesa-tr.org/Miscell.htm>

⁹ <http://www.cesa-tr.org/Memoirs.htm>

¹⁰ <http://www.cesa-tr.org/CDF.htm>

¹¹ <http://www.cesa-tr.org/Icon.htm>

¹² <http://www.cesa-tr.org/CPAL.htm>

¹³ <http://www.cesa-tr.org/Cesanews.htm>

¹⁴ <http://www.cesa-tr.org/Cesabooks.htm>