

COMMERCIAL  
BODIES

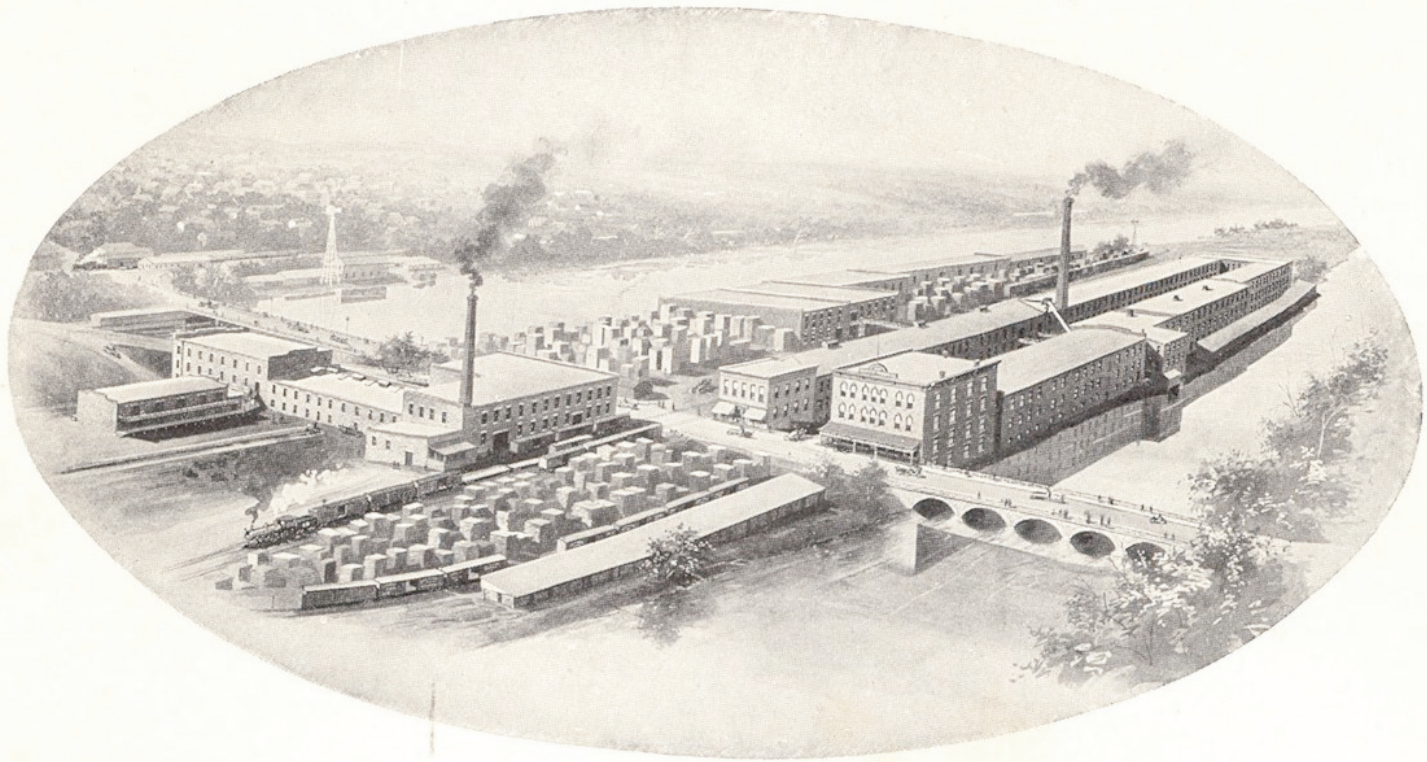
EMERSON-BRANTINGHAM CORPORATION, Rockford, Illinois, U. S. A.

# E-B COMMERCIAL BODIES

FOR CHEVROLET LIGHT DELIVERY AND  
1½-TON UTILITY TRUCK CHASSIS



EMERSON - BRANTINGHAM CORPORATION  
ROCKFORD, ILLINOIS, U. S. A. CABLE ADDRESS: EMERSON



EMERSON-BRANTINGHAM NEWTON WORKS—BATAVIA, ILL.



## FOREWORD

**D**URING a continuous manufacturing experience of more than seventy-five years, we have endeavored to build a line of products that would create a feeling of confidence and esteem for the E-B Line.

Our products have been marketed and are favorably known in almost every corner of the world. It is our intention to add to any prestige we now enjoy by furnishing the trade a line of commercial bodies unsurpassed in design, quality and price.

The Newton Works at Batavia, Illinois, in which E-B commercial bodies are built, has been producing high grade

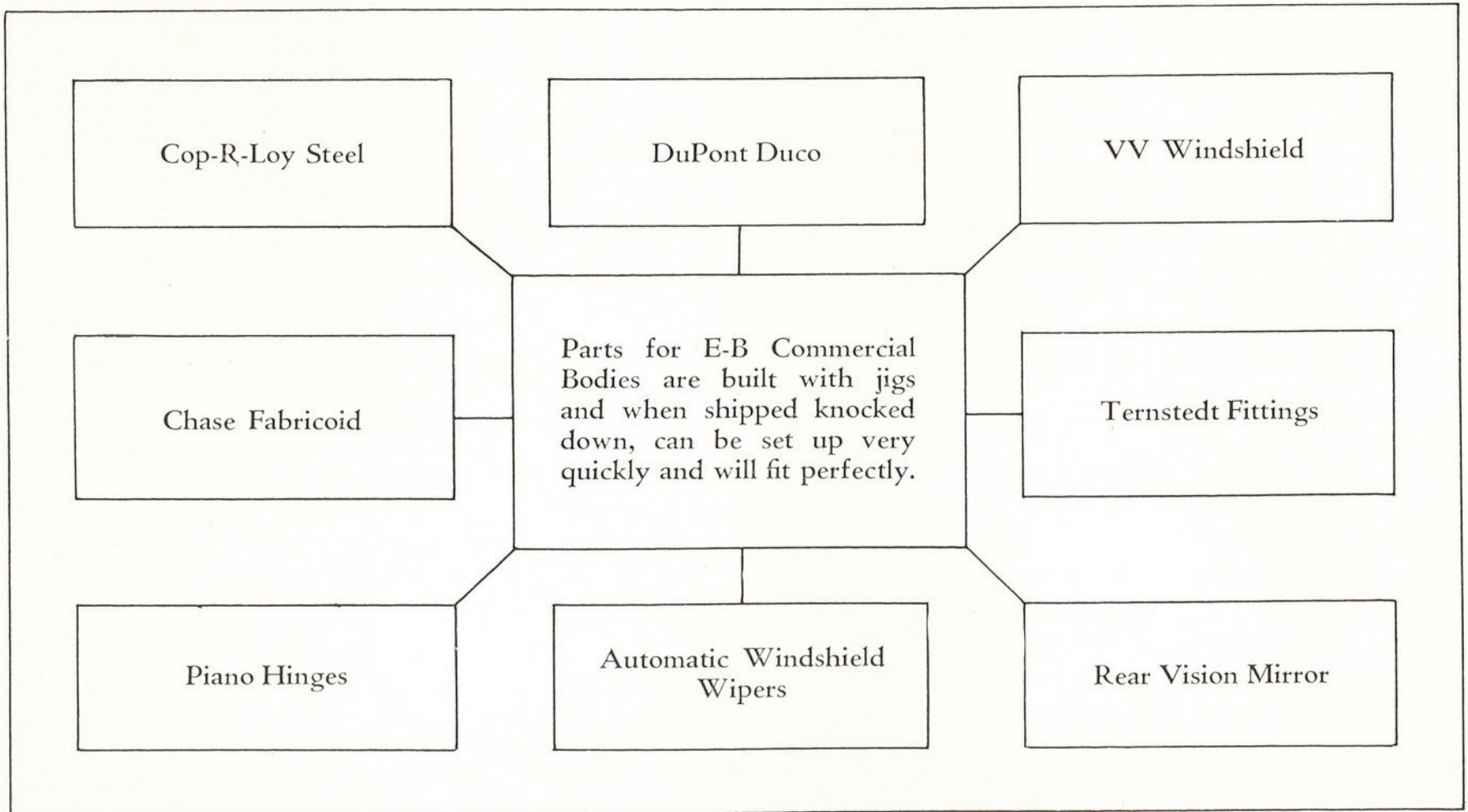
farm wagons for over three-quarters of a century. At no time in our history have we produced a cheap, shoddy product, nor will we do so in the future under the present management.

The E-B Line of commercial bodies offered to the trade is pleasing to the eye, the design is attractive and the wear-resisting quality so necessary for complete satisfaction is the basis of their construction. You can safely buy and use E-B commercial bodies—they will stand the test—built for those who want quality.

We reserve right to change body specifications without notice.



EQUIPMENT OF NATIONAL REPUTATION USED ON E-B COMMERCIAL BODIES





## COP-R-LOY

COPPER Alloyed steel, is used in the manufacture of Emerson-Brantingham commercial bodies. This is a modern product of one of America's leading steel producers and has a number of important characteristics which make it most desirable from the view point of the truck purchaser.

In recent years, through research sponsored by producers and consumers of steel it has been determined that the use of copper as an alloy increases the durability of steel under atmospheric conditions from two to five times. The American Society for Testing Materials extending over a period of years at Fort Sheridan, Ill., Pittsburgh, Pa., and Annapolis, Md., reported on April 25, 1929 as follows:

"At the close of twelve years' observations of the Annapolis atmospheric tests the sub-committee would direct attention to the fact that failures at this location confirm the findings at the Pittsburgh and Fort Sheridan locations that copper-bearing metal shows superiority in rust resisting properties as compared to non-copper-bearing metal of substantially the same general composition under atmospheric exposure."

This is in substantiation of other findings by eminent metallurgists, research engineers of steel manufacturers,

railroads and of similar findings in Europe, after prolonged study of the problems of corrosion.

While in the unprotected or uncoated state COP-R-LOY is not immune to rust, the resistance it possesses can be observed in the thin tightly adhering film of oxide which will be uniform on the surface. This is quite in contrast with the varying thickness of oxide gathering on non-copper ferrous metals, flaky in spots with accompanying pitting.

In the choice of material for commercial bodies we considered not only corrosion resistance but also the factor of mechanical abrasion upon which the life of commercial bodies depend. In conjunction with rapid corrosion the damage to steel from mechanical abrasion is greatest. Therefore, COP-R-LOY, which we consider the foremost Copper Alloy Steel of the day, has been selected to insure the minimum tendency to rust under atmospheric conditions.

COP-R-LOY has the qualities which permit extraordinarily fine workmanship in fashioning it to commercial body specifications, which furnishes a firm unity of paint and metal and also enables the purchaser to obtain long and continued service.



# WARRANTY

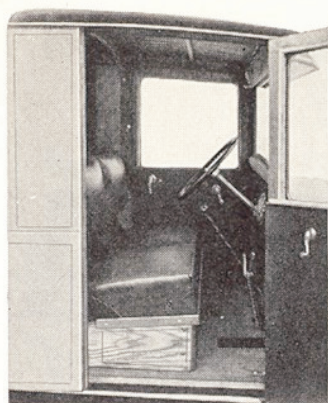
---

*E-B Commercial Bodies are constructed of first-class materials by experienced workmen. Should any defects develop in either materials or workmanship, we will cheerfully replace same without charge. « » « »*

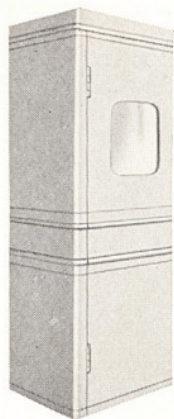
*Our seventy-five years of manufacturing experience stands squarely back of E-B Products. « » « » « »*

EMERSON-BRANTINGHAM CORPORATION

ROCKFORD, ILLINOIS, U. S. A.



Roomy doors—indestructible soft cushions—comfortable lazy back—Ternstedt fittings.

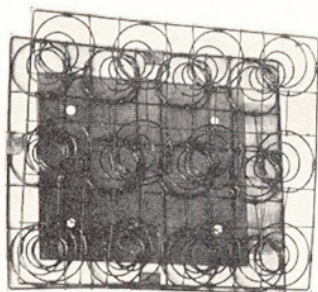


Rear corners are rounded, adding beauty to the design.

THESE FEATURES ADD DURABILITY, COMFORT AND ATTRACTIVENESS To E-B COMMERCIAL Bodies



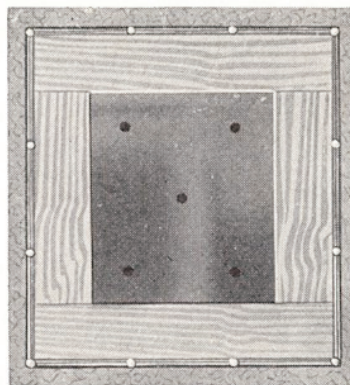
Cop-R-Loy steel stretcher leveled steel, then ample felt to eliminate rumbles over waterproof three-ply veneer are the basic elements in E-B Panel Bodies.



Specially constructed, easy-riding cushion, springs, will retain elasticity and not sag with use.

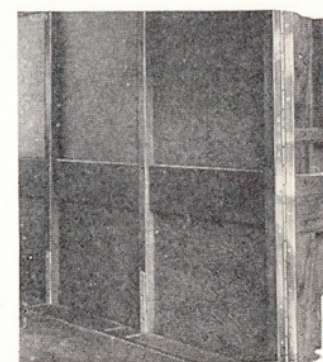


Top view of cushion furnished on E-B Commercial Bodies.

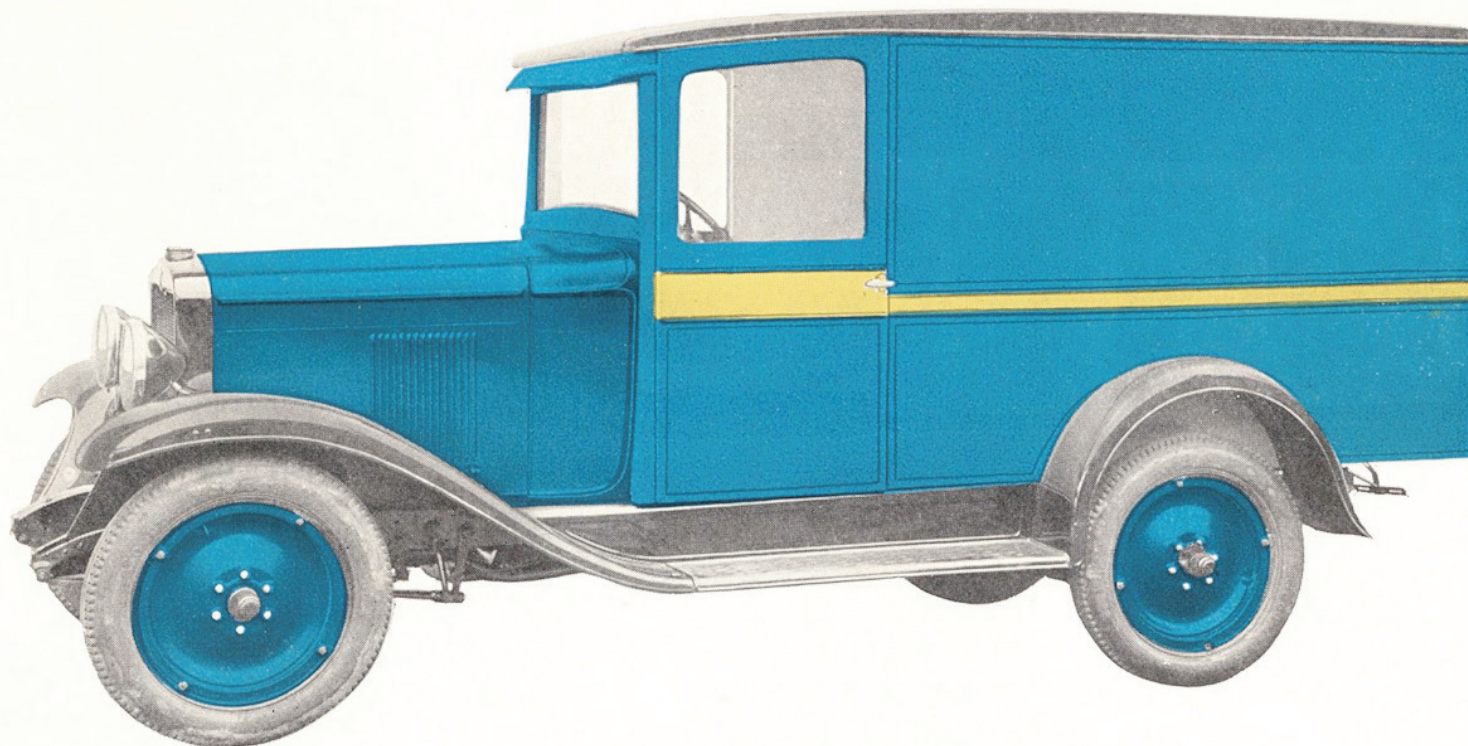


Steel spring bottom air cushion built for service and comfort. An important feature we have not overlooked.

Superiority of inside panel construction on E-B Panel Bodies is clearly shown. Corner posts heavily reinforced to bottom sill.







## E-B No. 450 DeLuxe Panel Body

For Light Delivery Chassis

### Specifications

Length 72" inside

Width 44" inside

Height 50" inside

### Approximate Weights

Net, 800 lbs.

Crated, 1050 lbs.

### Painting

Lower Panel in Bluebelle Blue, Belt in light colors, Upper Panel in Fox Valley Blue, Belt in harmonizing light colors, body appropriately striped.

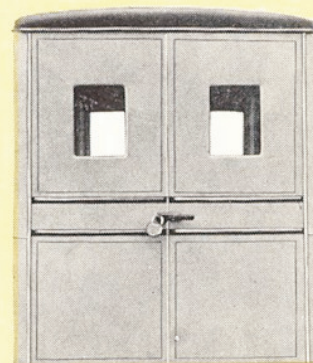
Code Word—DADO



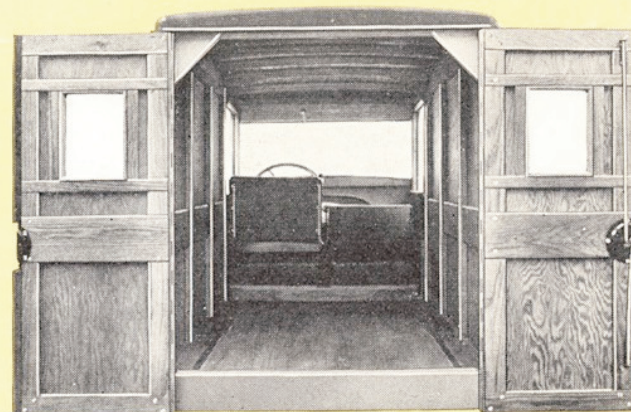
## DESIRABLE FEATURES ON E-B DELUXE PANEL BODIES

Individuality in design, graceful lines, superior workmanship and attractive finish give E-B Bodies an ultra-smart appearance.

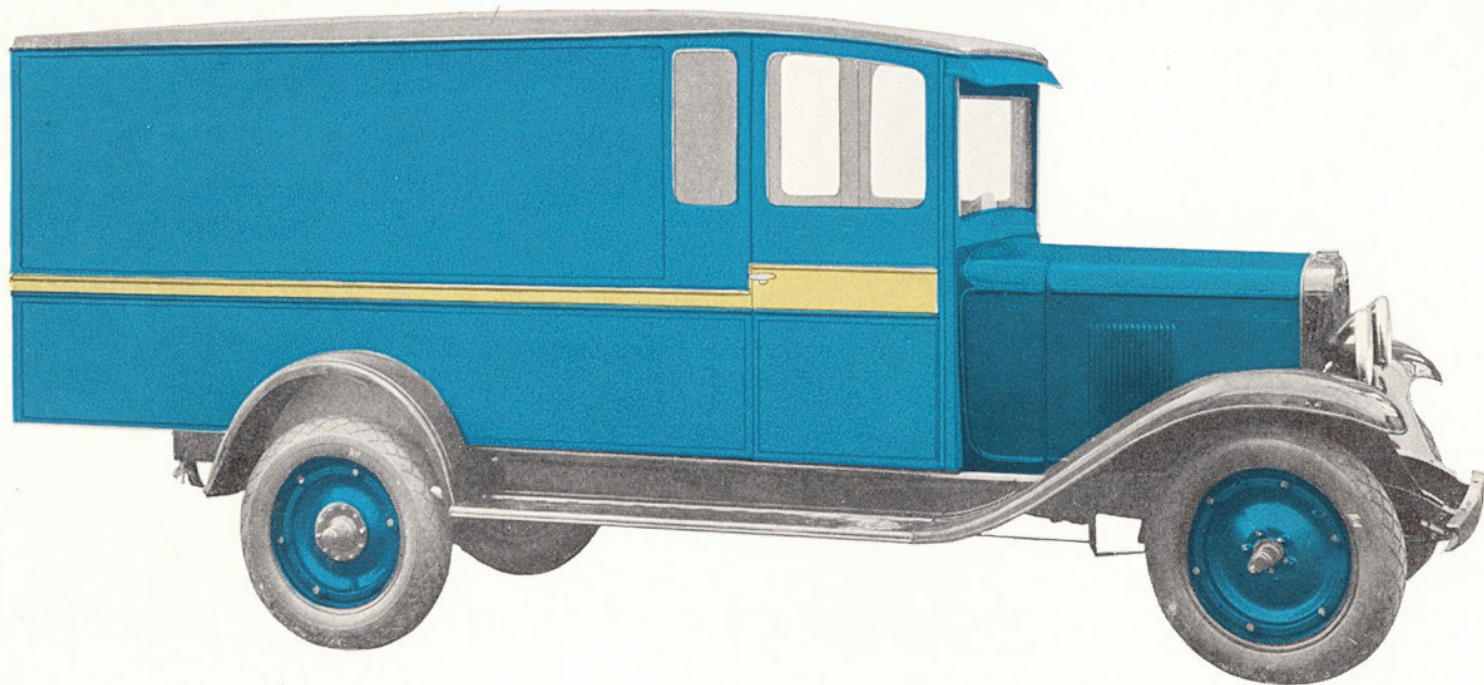
1. Sedan type, flush fitting door with remote control.
2. Continuous door panels obviate use of weather strips.
3. Nickel plated key-locked door handles, side and rear.
4. Glass in doors slide in felt covered rubber.
5. Clear vision one piece plate glass windshield.
6. Automatic windshield wiper and rear vision mirror.
7. Option of blue or red colored upholstery material by Chase.
8. Body appearance beautified by round corners.
9. Interior side panels are of water-proof, three-ply veneer in natural wood.
10. Moulding on all bodies rolled in by special machines.
11. "T" iron floor strips covering contraction and expansion joints.
12. Piano hinges—each one thoroughly fastened with 40 screws—Doors will never sag nor bind.
13. Graceful and pleasing lines in roof with built in sun visor.
14. Cop-R-Loy stretcher leveled sheet steel properly insulated, eliminating rumble, also assuring an even temperature.
15. DuPont Duco colors used, thereby insuring exceptional finish and beauty.



Unobstructed view through rear door, assuring greater safety to the driver.



The utmost care and attention to inside panels of E-B Bodies, both as to finish and construction. Doors hung on piano hinges and each hinge has forty (40) screws—



## E-B No. 451 DeLuxe Panel Body

For Utility Chassis

### Specifications

Length 112" inside

Width 50" inside

Height 55" inside

### Approximate Weights

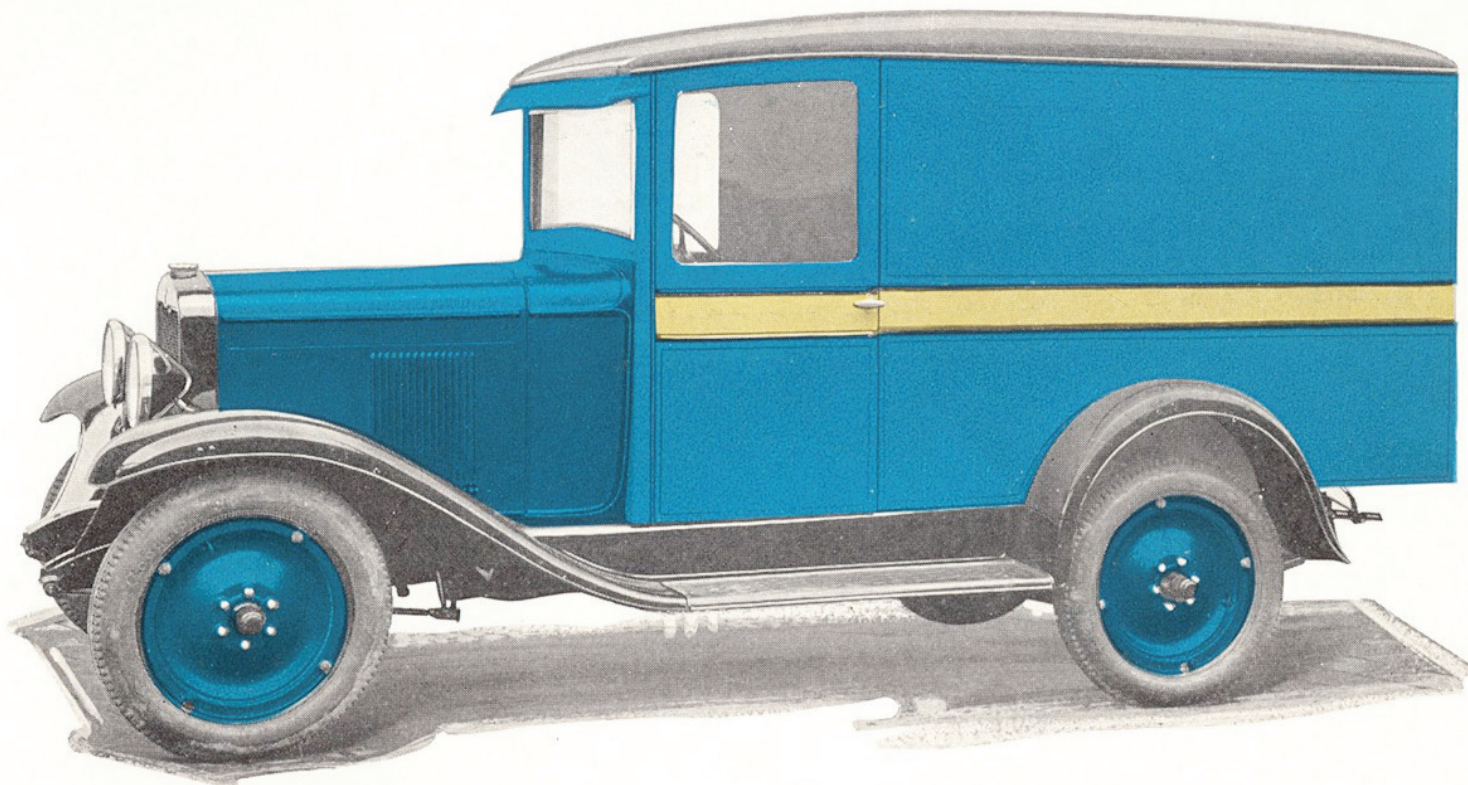
Net, 1000 lbs.

Crated, 1300 lbs.

### Painting

Lower Panel in Bluebelle Blue, Belt in light colors, Upper Panel in Fox Valley Blue, Belt in harmonizing light colors, body appropriately striped.

Code Word—DAHLIA



## E-B No. 452 Standard Panel Body

For Light Delivery Chassis

### Specifications

Length 72" inside  
Width 44" inside  
Height 50" inside

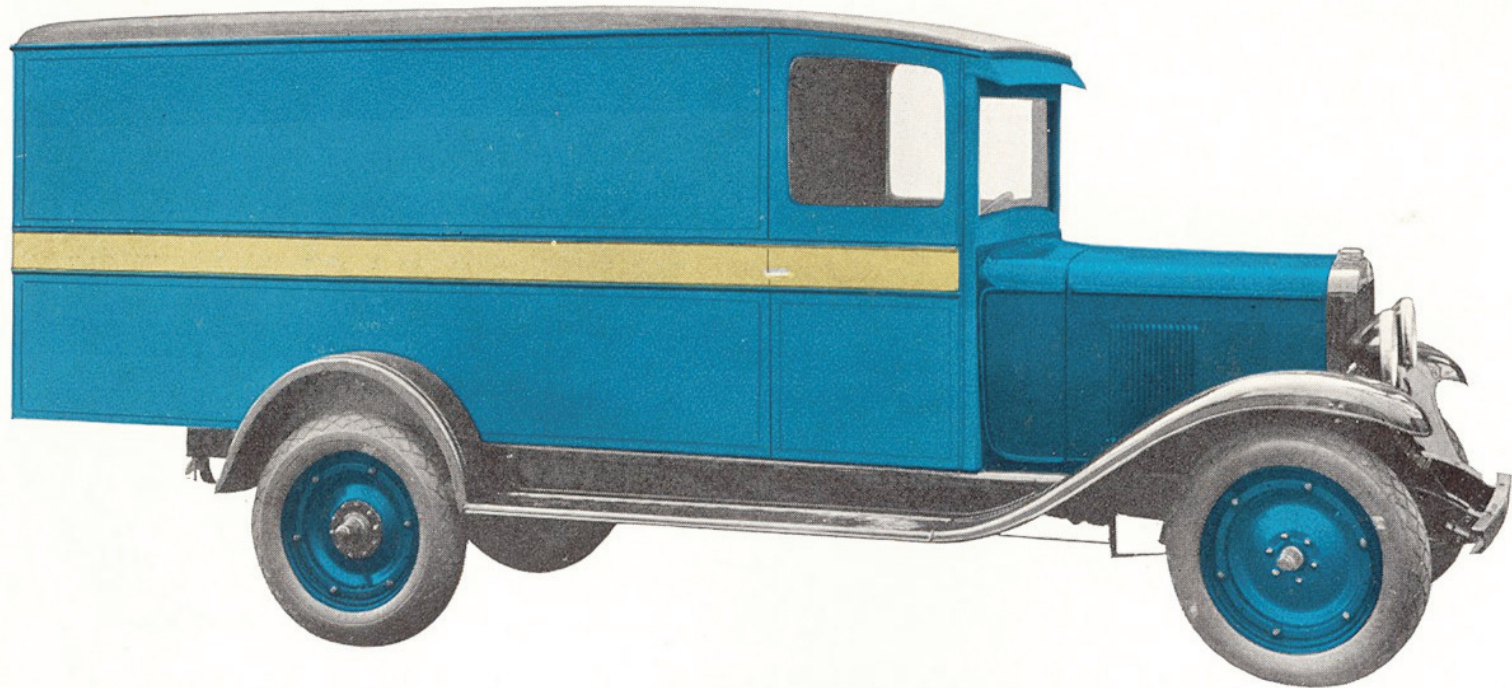
### Approximate Weights

Net, 800 lbs.  
Crated, 1050 lbs.

Code Word—DAINTY

### Painting

Lower Panel in Bluebelle Blue with a harmonizing lighter shade of blue in upper panel. Belt in light colors, body appropriately striped.



## E-B No. 453 Standard Panel Body

For Utility Chassis

### Specifications

Length 102" inside  
Width 44" inside  
Height 55" inside

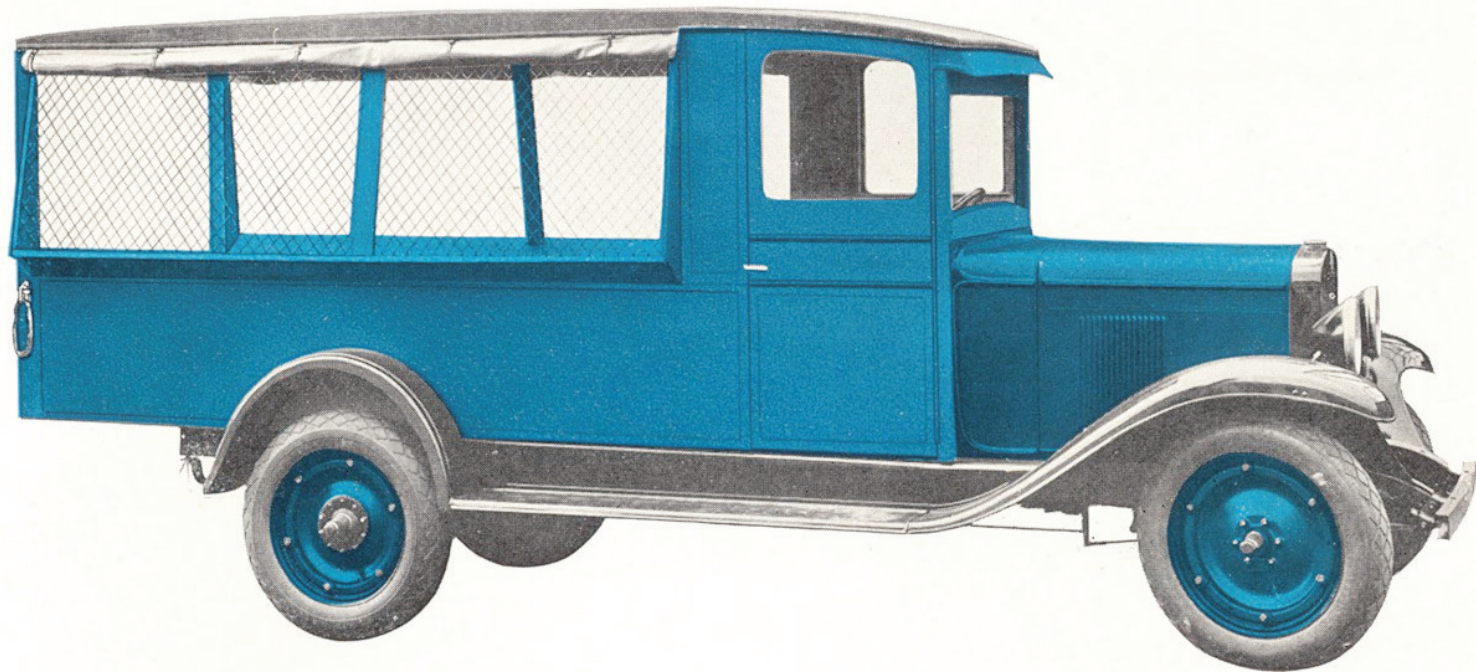
### Approximate Weights

Net, 900 lbs.  
Crated, 1250 lbs.

Code Word—DAISY

### Painting

Lower Panel in Bluebelle Blue with a harmonizing lighter shade of blue in upper panel. Belt in light colors, body appropriately striped.



E-B No. 430 Screened Side Canopy Top Express Body  
For Utility Chassis

Specifications

Length 102" inside  
Width 44" inside  
Height 55" inside  
Side Panels 17"  
Flare Boards 6½"

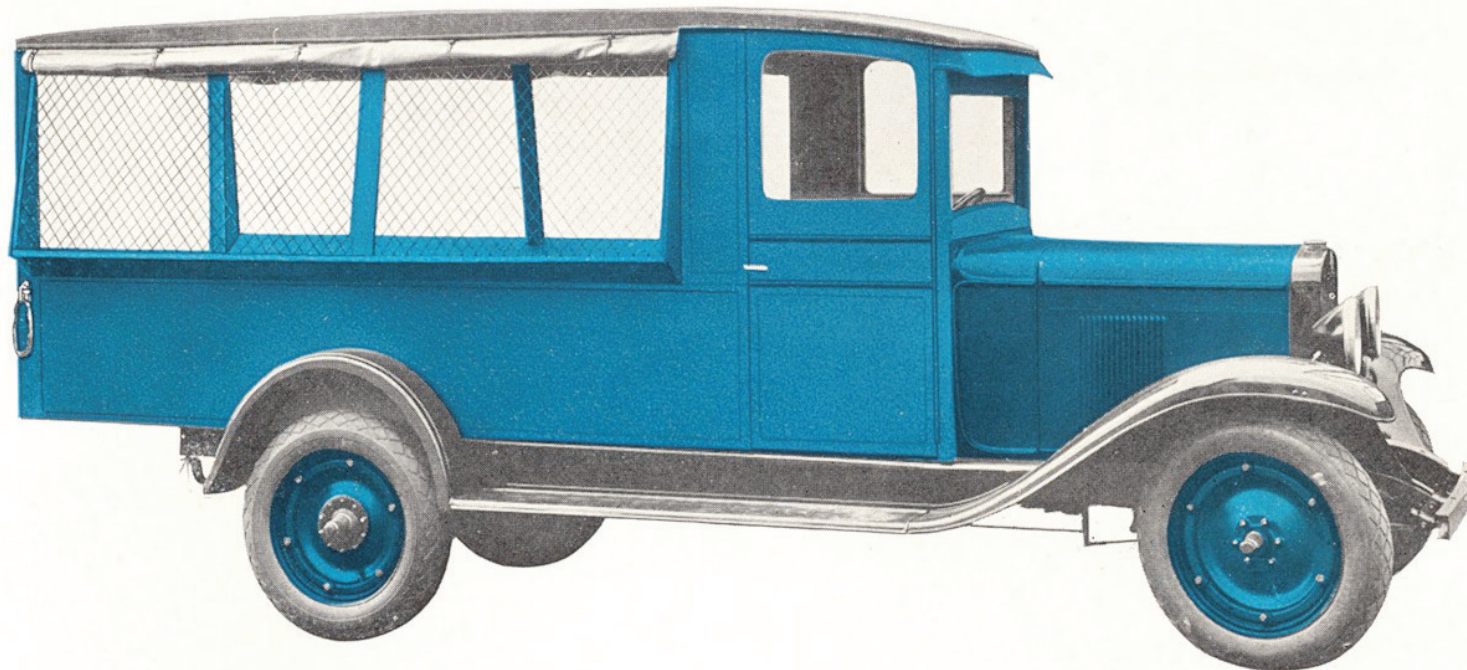
Approximate Weights

Net, 950 lbs.  
Crated, 1175 lbs.

Painting

Finished in Bluebelle Blue, Belt Panel in  
light colors, body appropriately striped.

Code Word—DALE



**E-B No. 430 Screened Side Canopy Top Express Body**  
For Utility Chassis

**Specifications**

Length 102" inside  
Width 44" inside  
Height 55" inside  
Side Panels 17"  
Flare Boards 6½"

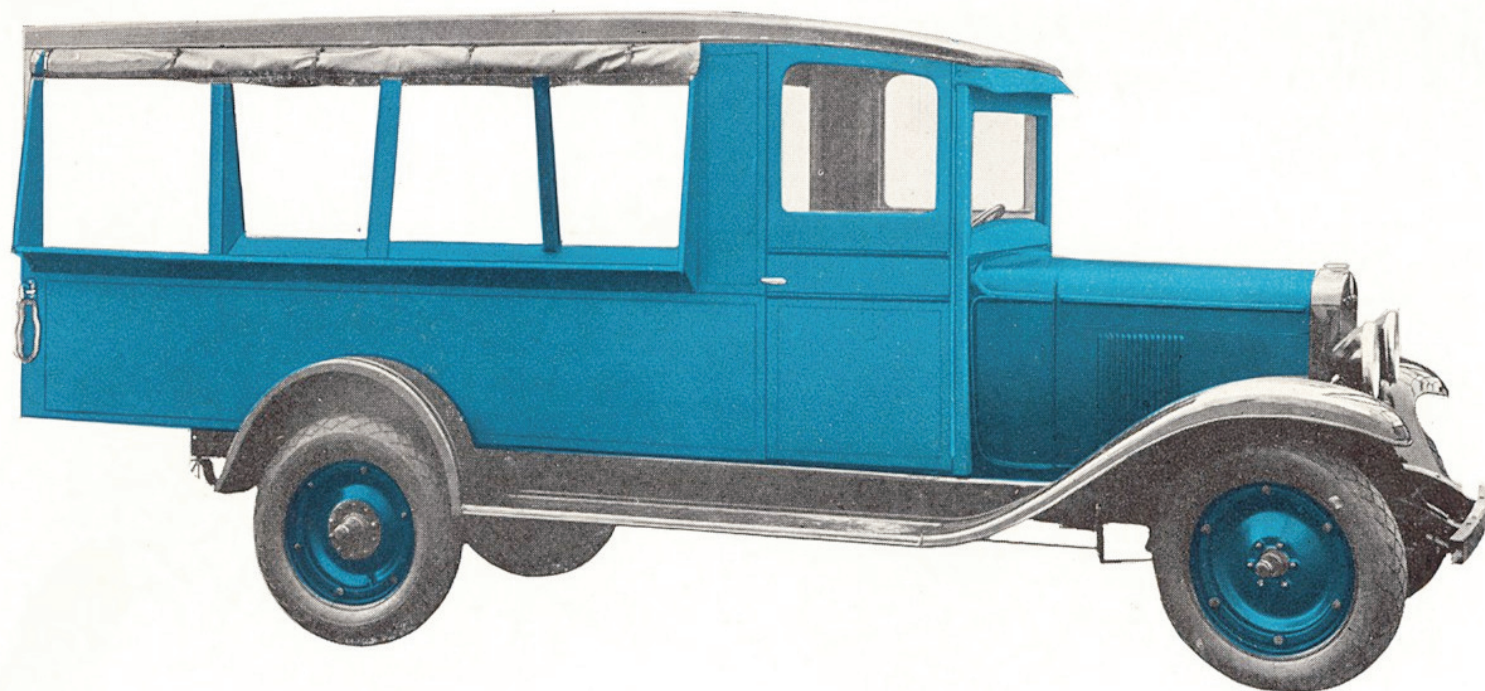
**Approximate Weights**

Net, 950 lbs.  
Crated, 1175 lbs.

**Painting**

Finished in Bluebelle Blue, Belt Panel in light colors, body appropriately striped.

Code Word—DALE



## E-B No. 429 Canopy Top Express Body For Utility Chassis

### Specifications

Length 102" inside  
Width 44" inside  
Height 55" inside  
Side Panels 17"  
Flare Boards 6½"

### Approximate Weights

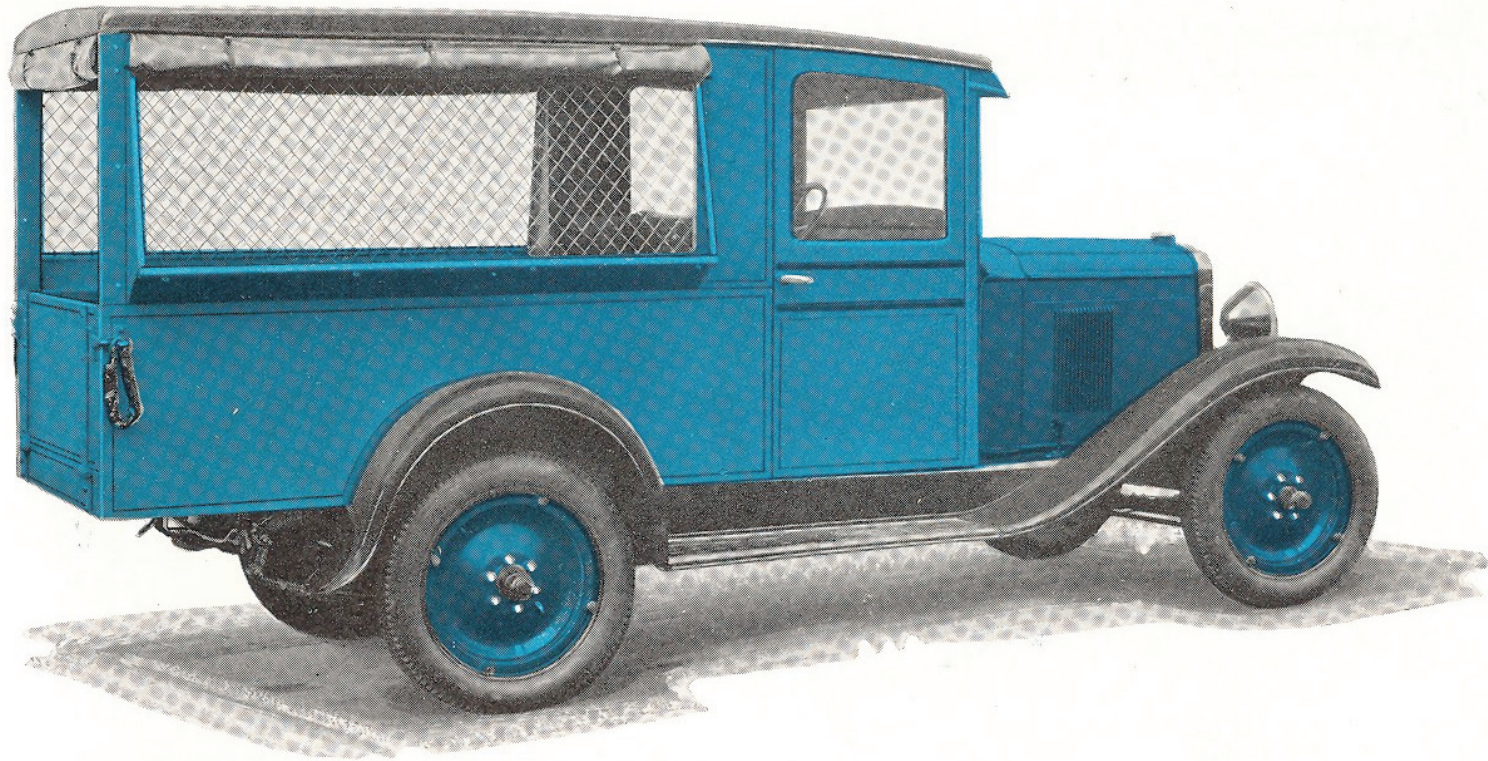
Net, 900 lbs.  
Crated, 1125 lbs.

### Painting

Finished in Bluebelle Blue, Belt Panel in light colors, body appropriately striped.

Code Word—DALTON





## E-B No. 428 Screened Side Canopy Top Express Body

### Specifications

Length 72" inside  
Width 44" inside  
Height 55" inside  
Side Panels 17"  
Flare Boards 6½"

### For Utility Chassis

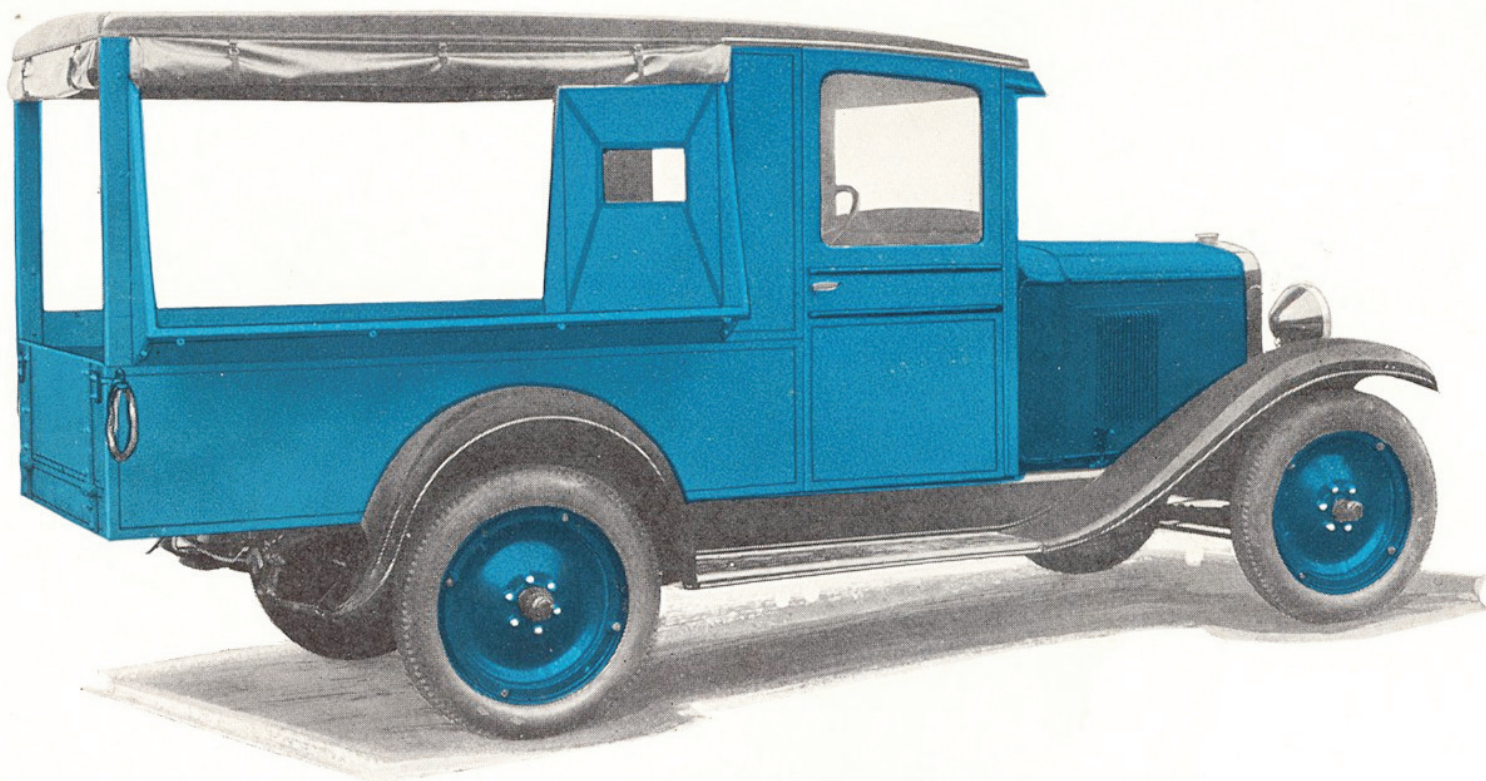
### Approximate Weights

Net, 850 lbs.  
Crated 1065 lbs.

### Painting

Finished in Bluebelle Blue, Belt Panel in light colors, body appropriately striped.

Code Word—DAMASK



## E-B No. 427 Canopy Top Express Body

With Roll-up Curtains — For Light Delivery Chassis

### Specifications

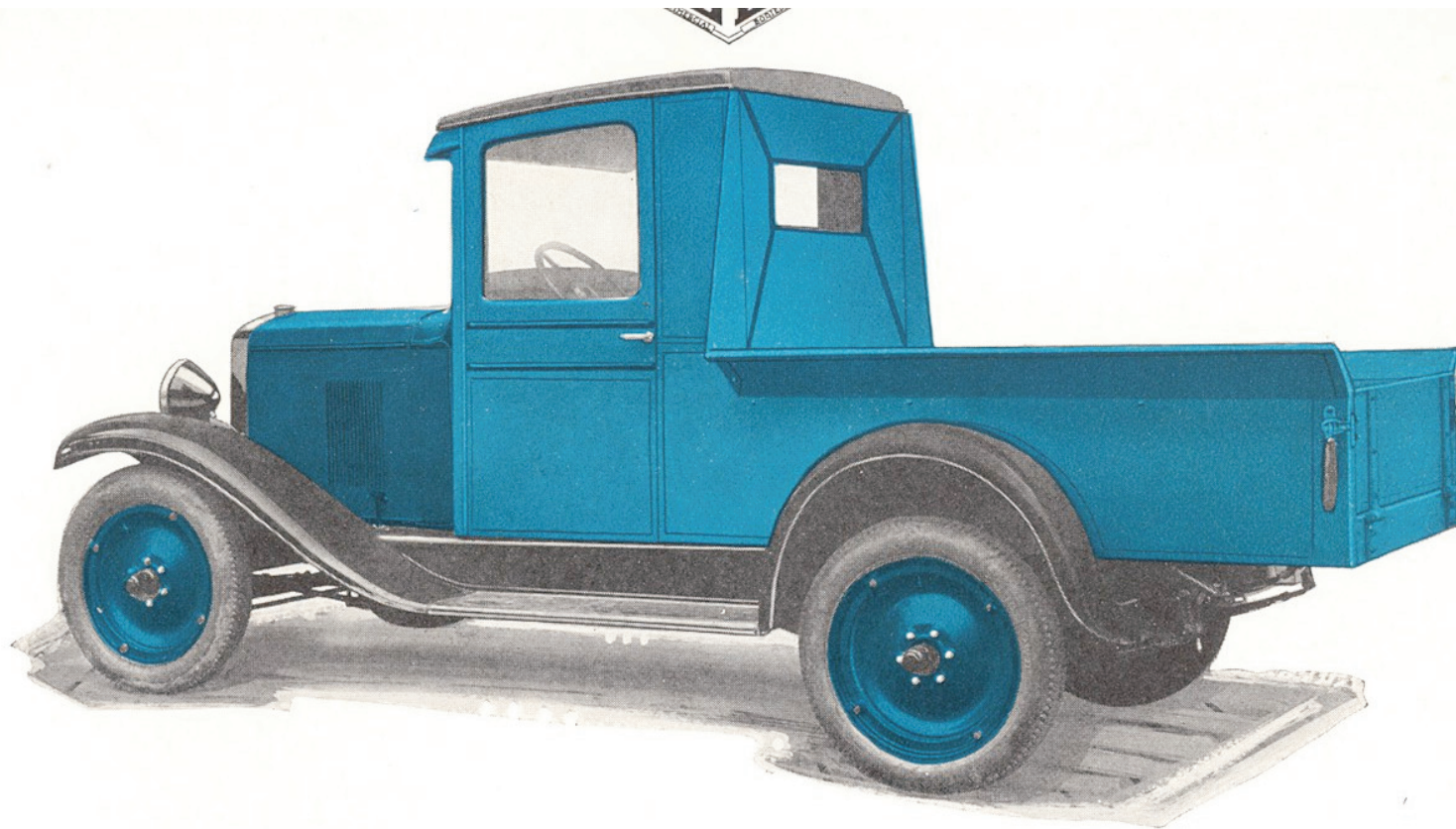
Length 72" inside  
Width 44" inside  
Height 55" inside  
Side Panels 14"  
Flare Boards 6½"

### Approximate Weights

Net, 750 lbs.  
Crated, 950 lbs.  
Code Word—DAME

### Painting

Finished in Bluebelle Blue, Belt Panel in light colors, body appropriately striped.



## E-B No. 426 Cab Top Express Body

For Light Delivery Chassis

### Specifications

Length 72" inside  
Width 44" inside  
Side Panels 14"  
Flare Boards 6½"

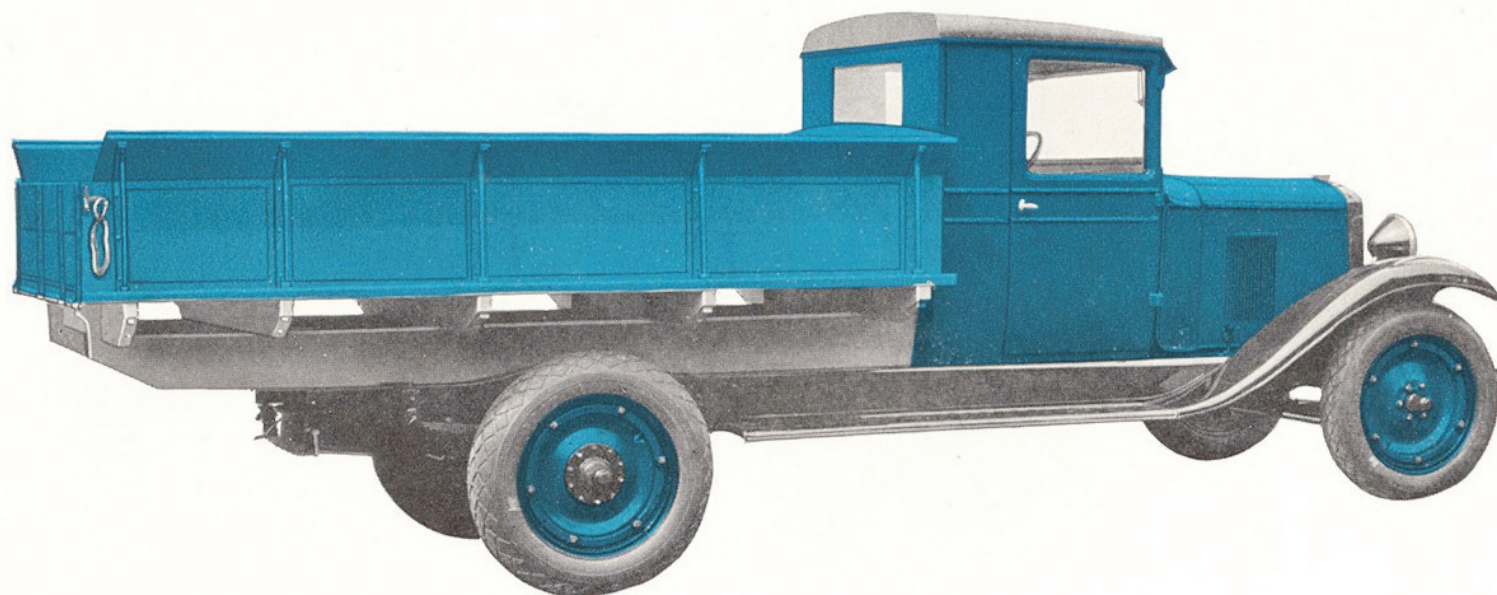
### Approximate Weights

Net, 600 lbs.  
Crated, 900 lbs.

### Painting

Finished in Bluebelle Blue, Belt Panel in light colors, body appropriately striped.

Code Word—DAMON



## E-B No. 425 Open Express Body

For Utility Chassis

### Specifications

Length 108" inside  
Width 72" inside  
Side Panels 16"  
Flare Boards 6½"

### Approximate Weights

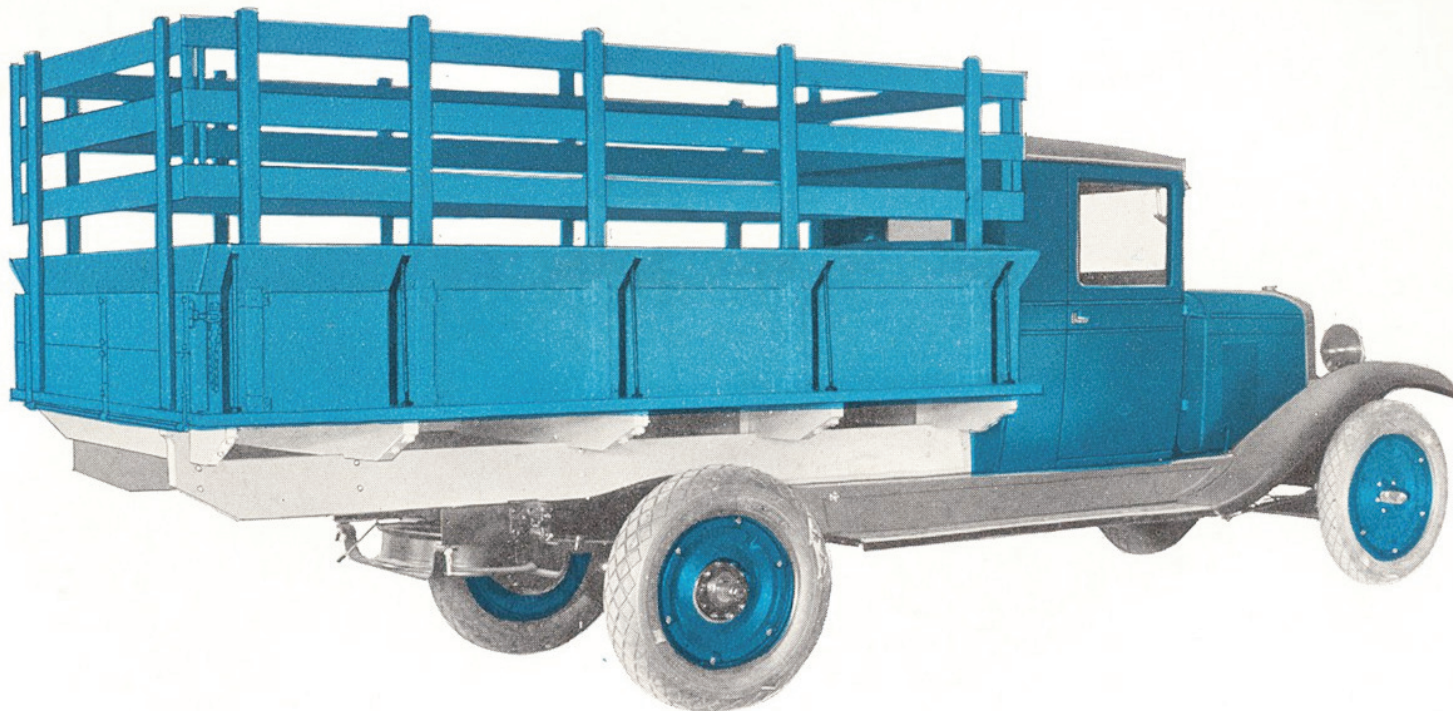
Net, 750 lbs.  
Crated, 825 lbs.

Code Word—DANA

### Painting

Finished in Bluebelle Blue, with appropriate striping.

Note:—Full length chain across tail gate.



## E-B No. 424 Open Express Body with Stock Rack

For Utility Chassis

### Specifications

Length 108"  
Width 72" inside  
Side Panels 16"  
Flare Boards 6½"  
Height over all 46"

### Approximate Weights

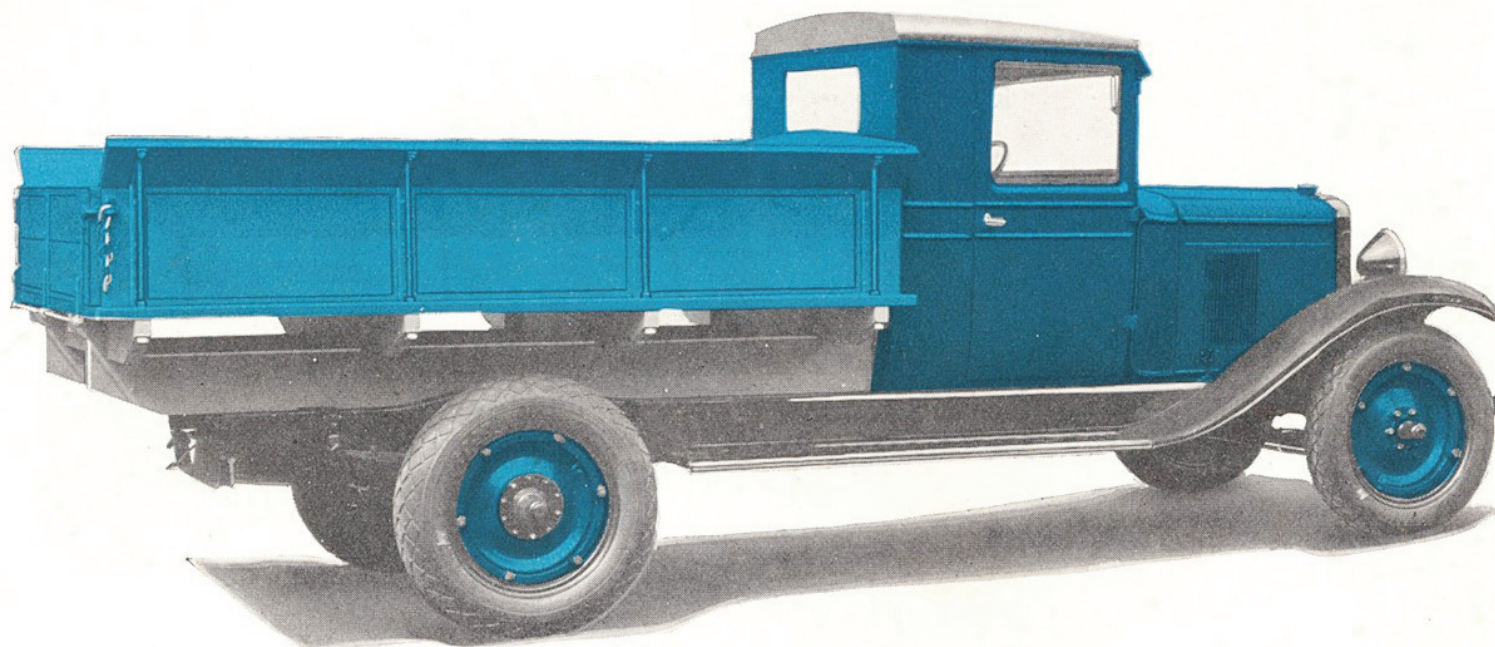
Net, 850 lbs.  
Crated, 950 lbs.

### Painting

Finished in Bluebelle Blue with appropriate striping.

Code Word—DANDER

Note:—Full length chain across tail gate.



## E-B No. 423 Open Express Body

For Utility Chassis

### Specifications

Length 96" inside  
Width 68" inside  
Side Panels 16"  
Flare Boards 6½"

### Approximate Weights

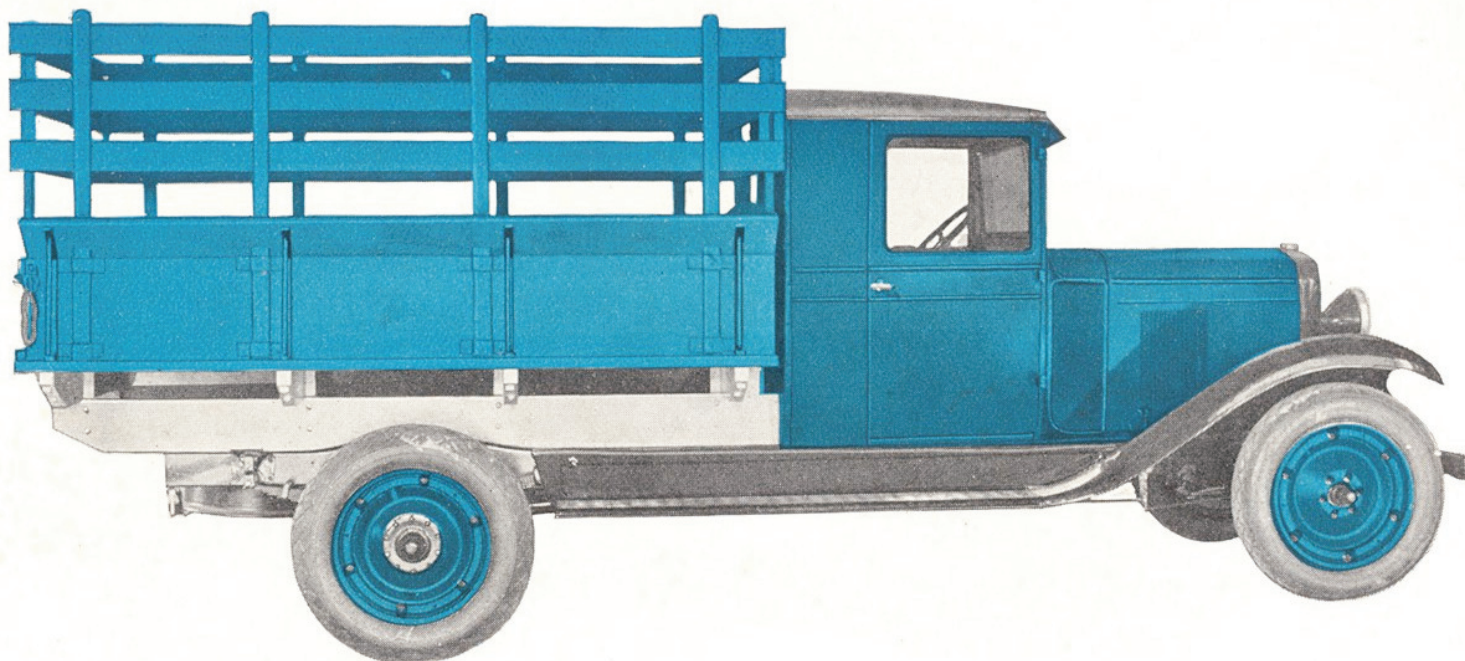
Net, 550 lbs.  
Crated, 600 lbs.

### Painting

Finished in Bluebelle Blue with appropriate striping.

Code Word—DANGLE

Note:—Full length chain across tail gate.



## E-B No. 422 Open Express Body with Stock Rack For Utility Chassis

### Specifications

Length 96" inside  
Width 68" inside  
Side Panels 16"  
Flare Boards 6½"  
Height over all 46"

### Approximate Weights

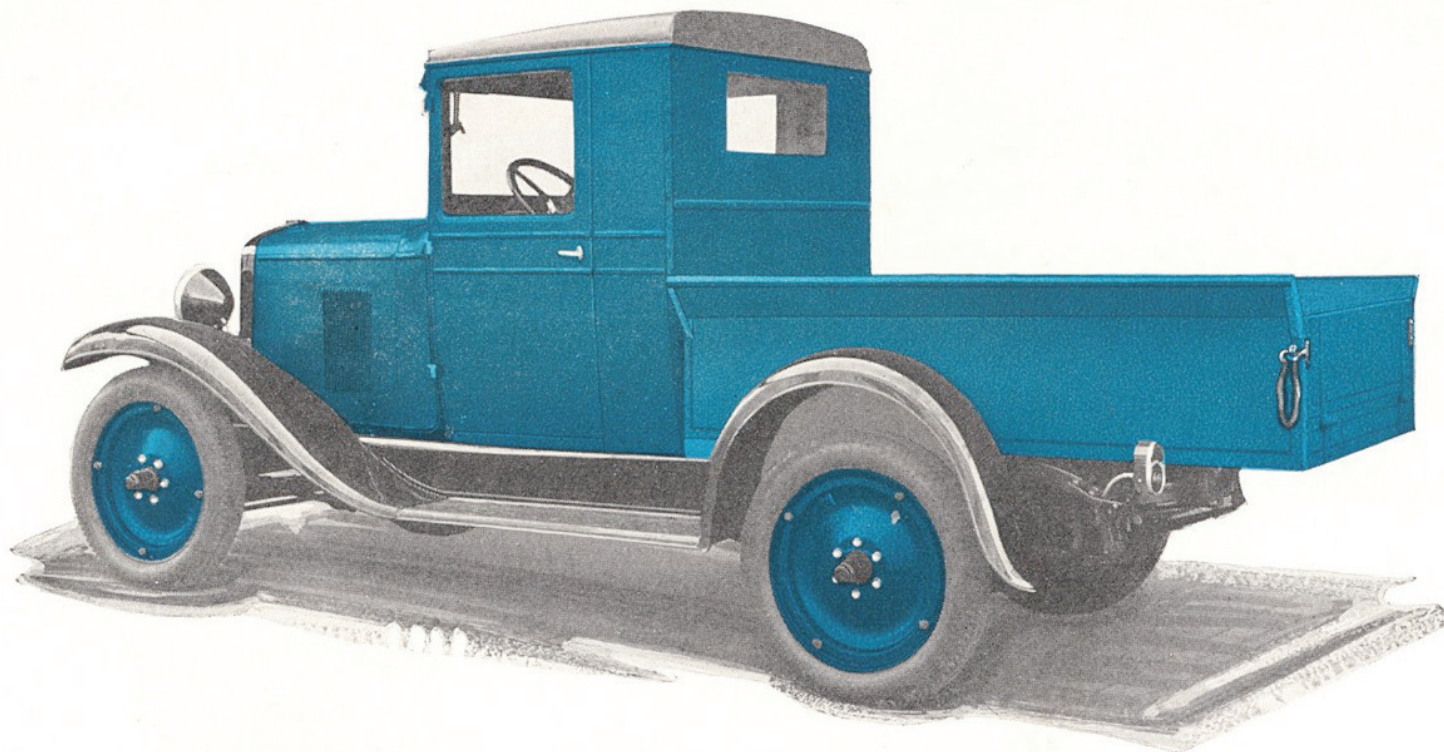
Net, 700 lbs.  
Crated, 800 lbs.

### Painting

Finished in Bluebelle Blue with appropriate striping.

Code Word—DANTON

Note:—Full length chain across tail gate.



## E-B No. 421 Open Express Body

For Light Delivery Chassis

### Specifications

Length 72" inside  
Width 44" inside  
Side Panels 14"  
Flare Boards 6½"

### Approximate Weights

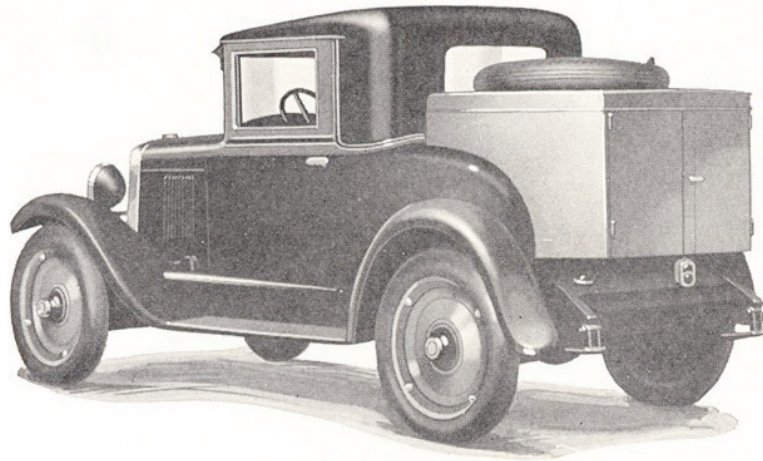
Net, 200 lbs.  
Crated, 275 lbs.

### Painting

Finished in Bluebelle Blue with appropriate striping.

Code Word—DAPPER





## E-B No. 471 Open Slip-On Body

For Roadster

### Specifications

Length 58" inside  
Width 37" inside  
Flare Boards 6"  
Side Panels 12"

### Approximate Weights

Net, 175 lbs.  
Crated, 200 lbs.

### Painting

Finished to match Chevrolet Roadster colors.

Code Word—DAFFODIL

## E-B No. 470 Panel Slip-On Body

For Coupe

### Specifications

Length 48" inside  
Width 37" inside  
Height 24 $\frac{3}{4}$ " inside

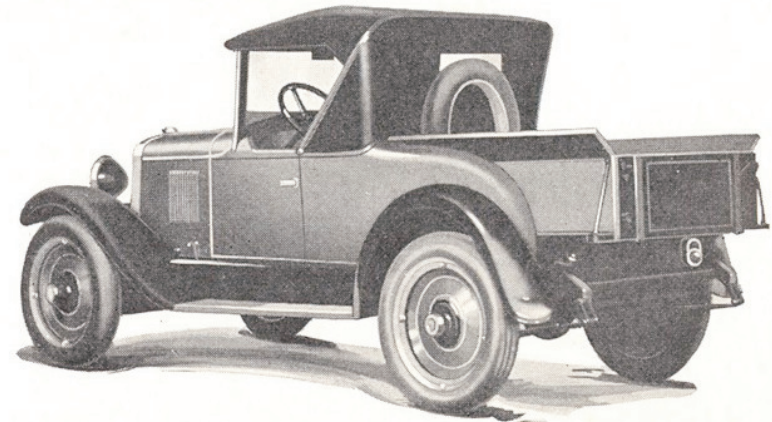
### Approximate Weights

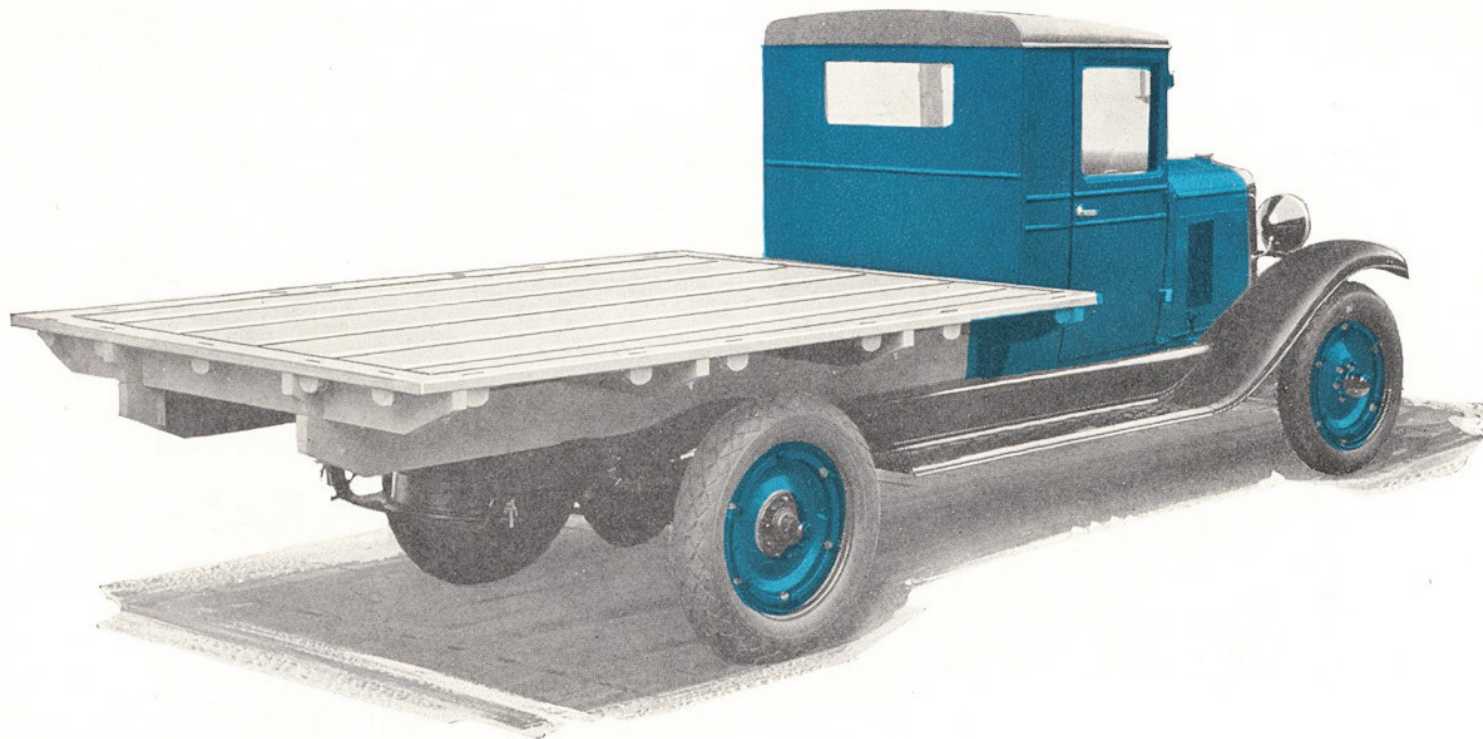
Net, 250 lbs.  
Crated, 275 lbs.

### Painting

Finished to match Chevrolet Coupe colors.

Code Word—DAZZLE





## E-B No. 465 Platform Body

For Utility Chassis

Length 112", width 79". Approximate weight 475 lbs. Finished in Black. Code Word—DARE

### E-B No. 466 PLATFORM BODY

For Utility Chassis

Length 108", width 72". Approximate weight 425 lbs. Finished in Black. Code Word—DASH

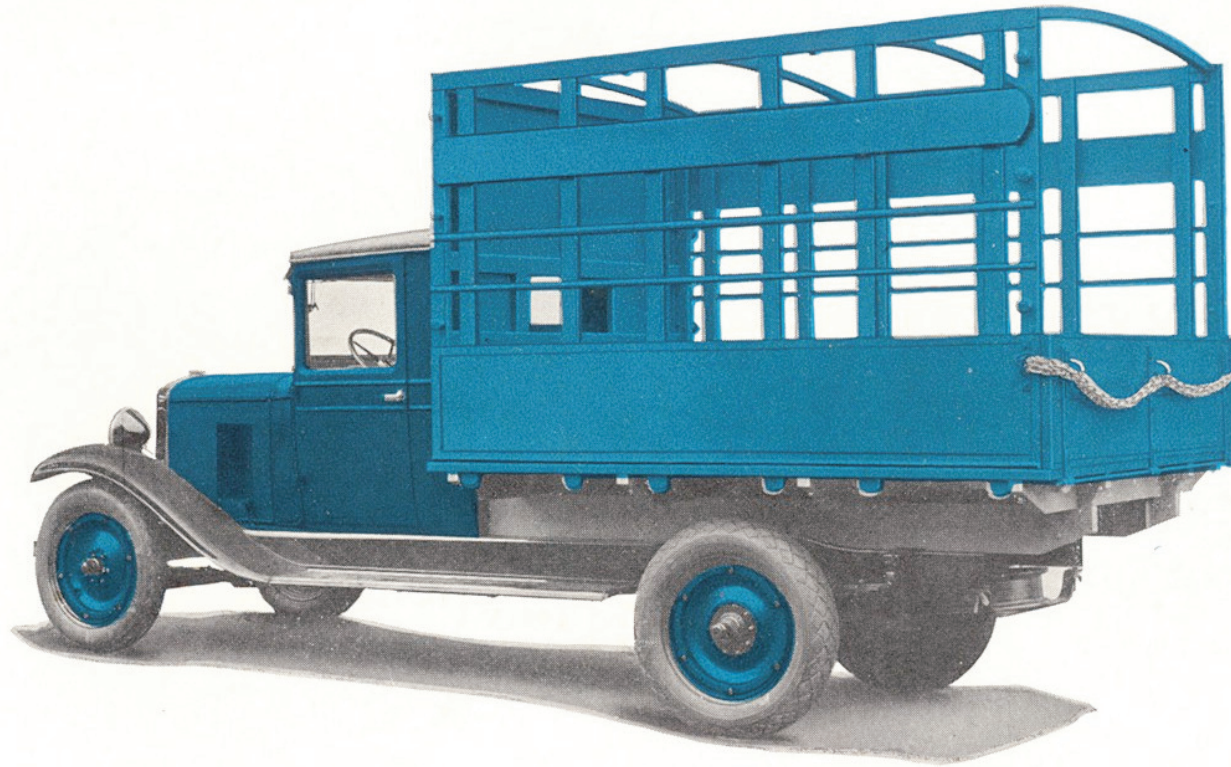
### E-B No. 467 PLATFORM BODY

Length 96", width 68". Approximate weight 375 lbs. Finished in Black. Code Word—DANUBE  
Preceding platforms have five iron strips on floor.

### E-B No. 468 PLATFORM BODY

Length 96", width 68". Approximate weight 350 lbs. Finished in Black. Code Word—DALZIEL

This platform does not have iron strips on floor.  
Above are inside measurements—crating not required.



## E-B No. 460 Wide Chicago Stake Body

For Utility Chassis

### Specifications

Length 108" inside  
Width 72" inside  
Height 62" inside

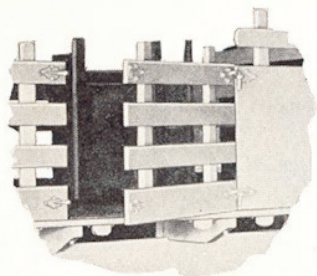
### Approximate Weights

Net, 775 lbs.  
Crated, 1000 lbs.

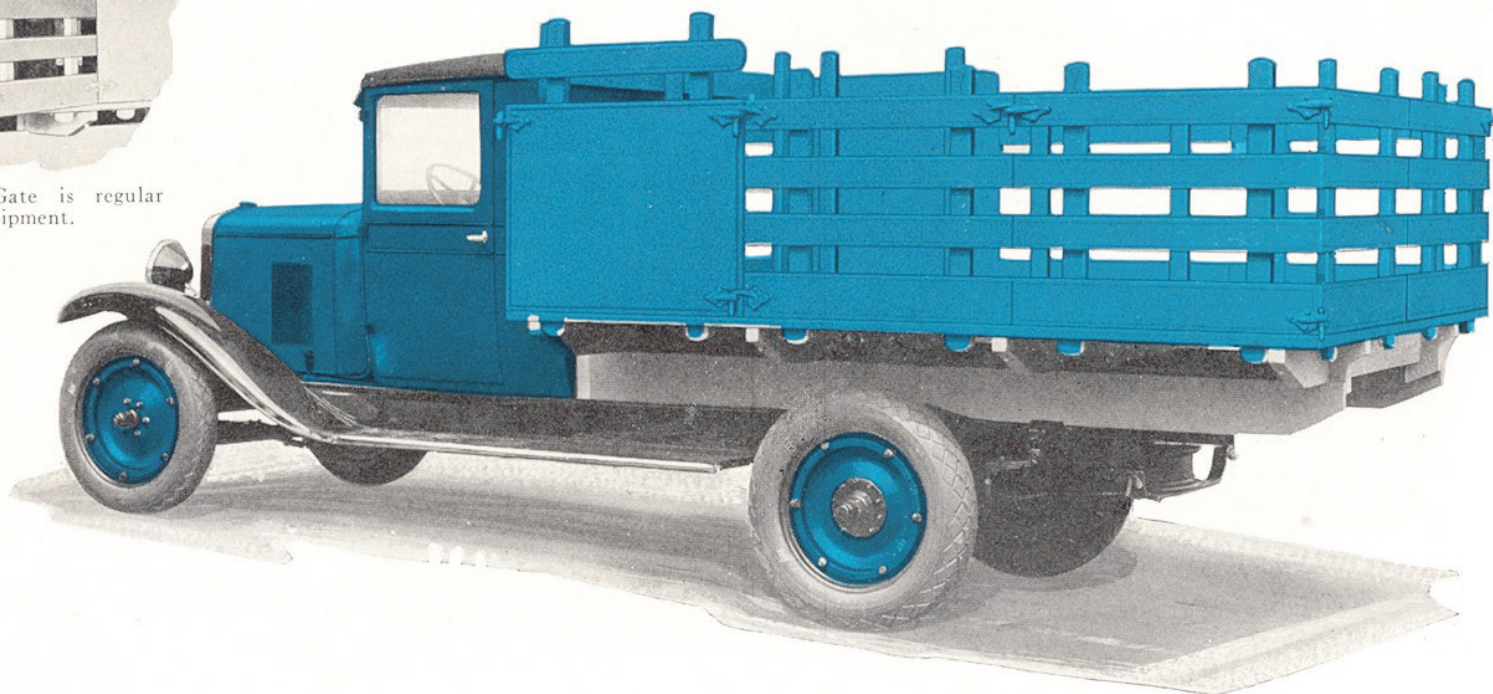
Code Word—DARBY

### Painting

Finished in Bluebelle Blue, appropriately striped.



Swinging Gate is regular equipment.



## E-B No. 461 Platform Stake and Panel Body

For Utility Chassis

### Specifications

Length ~~112~~" inside 108  
Width 79" inside 81  
Height 40" inside

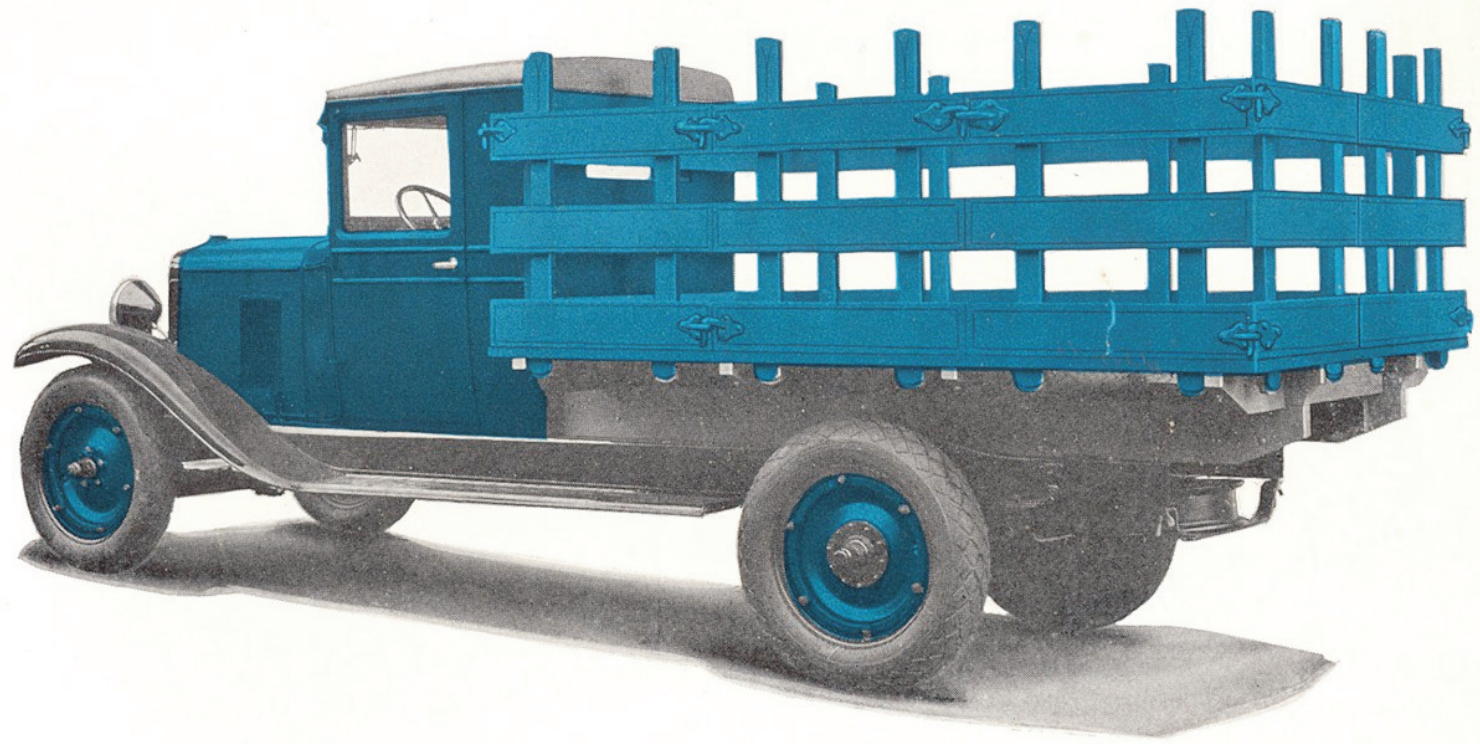
### Approximate Weights

Net 875 lbs.  
Crated 1075 lbs.

Code Word—DAPPLE

### Painting

Finished in Bluebelle Blue, appropriately striped.



**E-B No. 462 Platform and Stake Body**  
For Utility Chassis

**Specifications**

Length 96" inside  
Width 68" inside  
Height 36" inside

96  
60

**Approximate Weights**

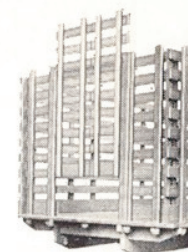
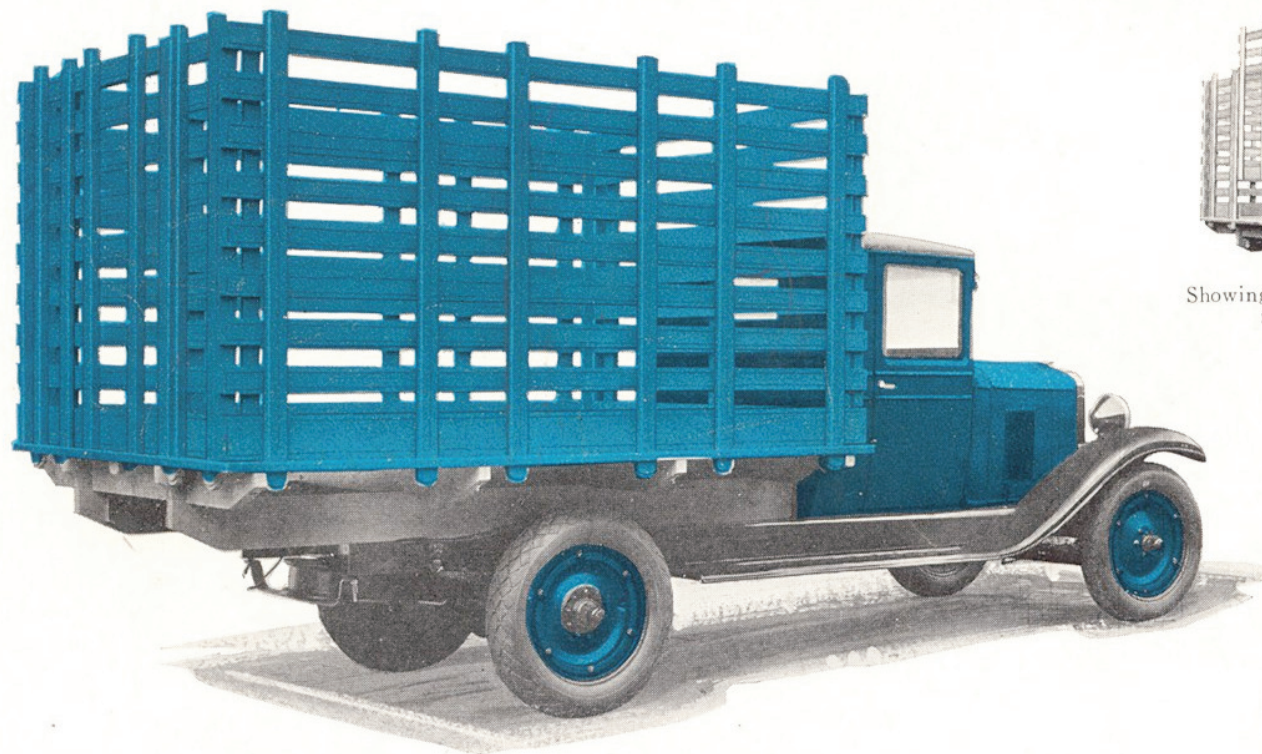
Net, 650 lbs.  
Crated, 750 lbs.

Code Word—DAMSEL

**Painting**

Finished in Bluebelle Blue, appropriately striped.

Note:—Swinging gate is regular equipment.



Showing End Gate raised.

## E-B No. 445 Platform and Stock Rack Body

For Utility Chassis

### Specifications

Length 112" inside  
Width 79" inside  
Height 60" inside

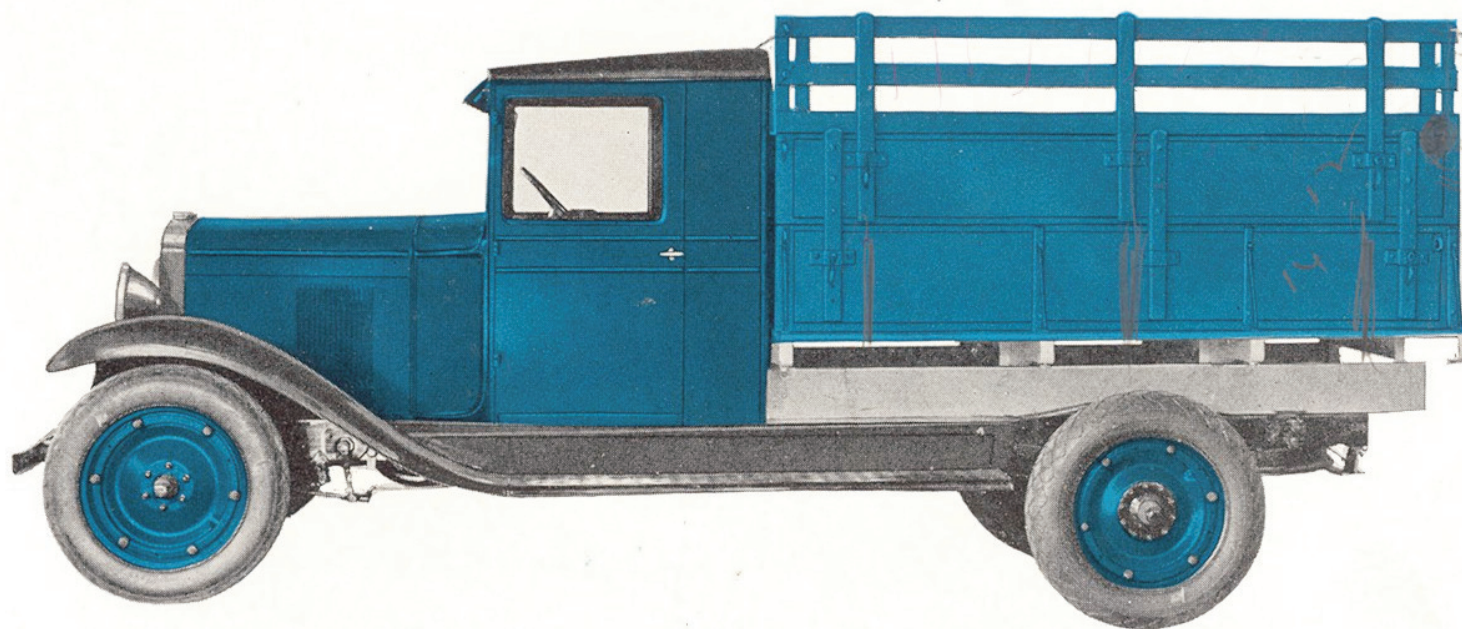
### Approximate Weights

Net, 700 lbs.  
Crated, 775 lbs.

Code Word—DARK

### Painting

Finished in Bluebelle Blue, with appropriate striping.



## E-B No. 446 Combination Grain and Stock Rack Body

For Utility Chassis

### Specifications

Length 96" inside

Width 68" inside

Side Panels 26"

Stock Rack over all 48" when  
sides are raised.

### Approximate Weights

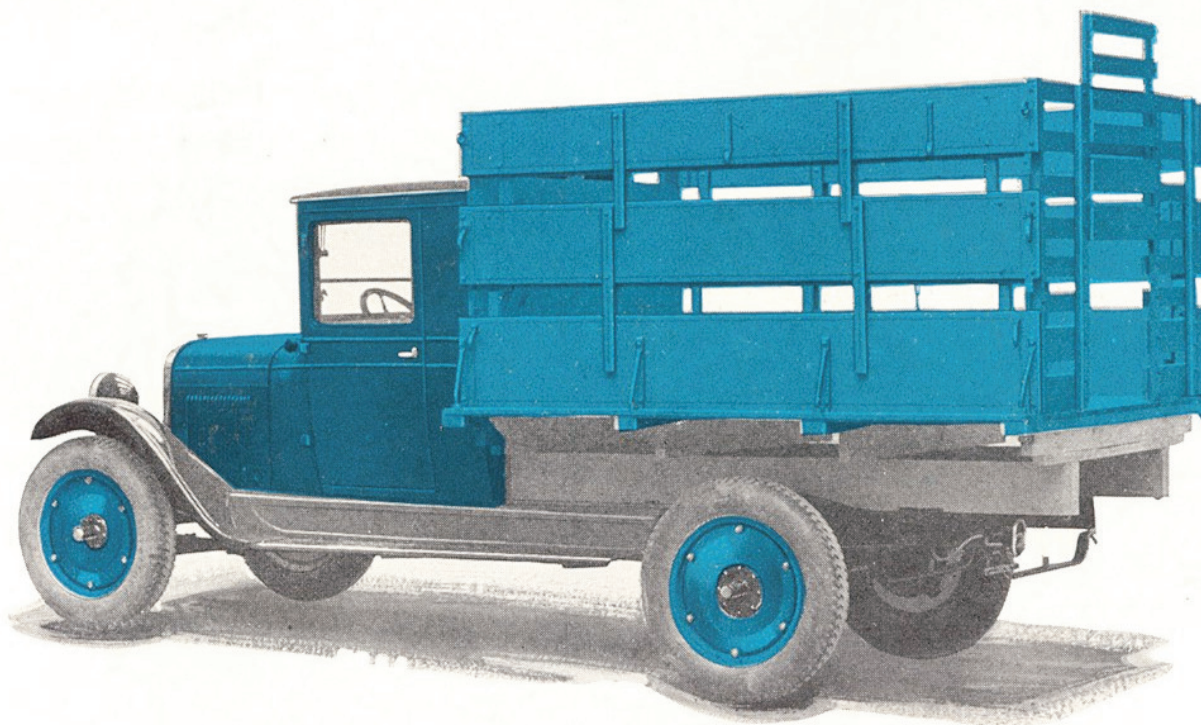
Net, 500 lbs.

Crated, 550 lbs.

### Painting

Finished in Bluebelle Blue with appropriate  
striping.

Code Word—DAWN



## E-B No. 447 Combination Grain and Stock Rack Body

### Specifications

Length 96" inside  
Width 68" inside  
Side Panels 14-12-10"  
Stock Rack over all 48"  
when sides are raised.

### For Utility Chassis

#### Approximate Weights

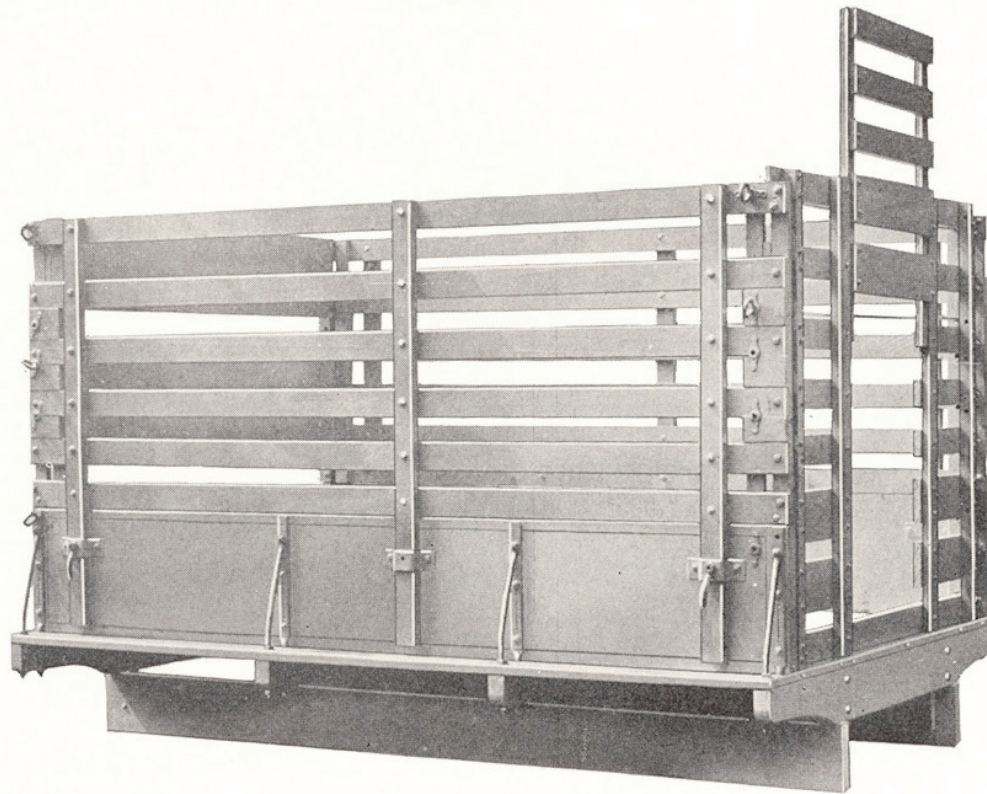
Net, 500 lbs.  
Crated, 550 lbs.

### Painting

Finished in Bluebelle Blue with appropriate striping.

Code Word—DAZE





## E-B No. 448 Grain Body with Hog End Gate

### Specifications

Length 96" inside  
Width 68"  
Lower Side Panel 14"  
Height over all 48"

### For Utility Chassis

#### Approximate Weights

Net, 500 lbs.  
Crated, 550 lbs.

Code Word—DAYTON

### Painting

Finished in Bluebelle Blue with appropriate striping.



## E-B "EXTRA-QUALITY" GRAIN BODIES

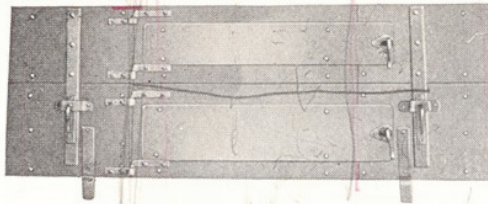
FOR more than a half century Newton Wagon Boxes have enjoyed the reputation of being the best constructed and best finished boxes on the market, and we propose that E-B "Extra Quality" Grain Bodies shall enjoy a similar reputation. The finish, workmanship and general construction will please the most exacting.

We use either select cotton wood or gum for panels, tip tops and ends. Side cleats are extra heavy and firmly riveted to tip top panels.

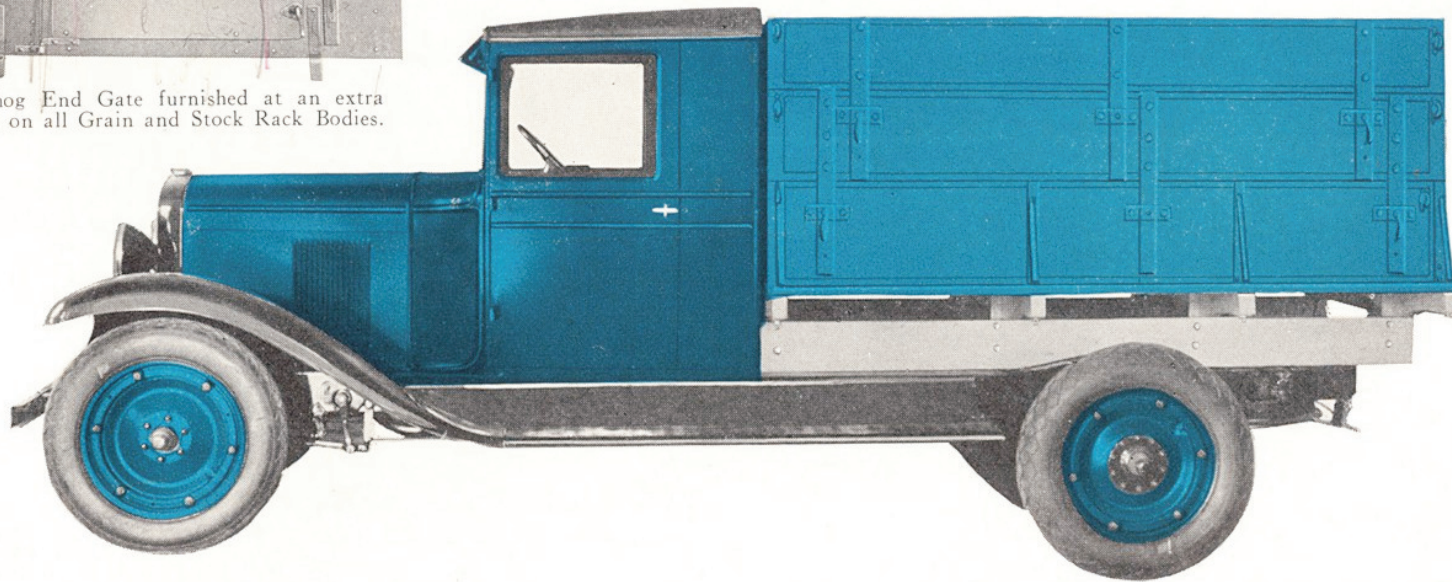
Oversize side irons and braces on lower panels.

All "Extra Quality" Grain Bodies with or without platforms are equipped with anti-spread chain to prevent bodies spreading when loaded to capacity with grain. The adjustable or ventilating sides for hauling stock can be raised quickly and when adjusted, will remain in that position.

E-B "Extra Quality" Grain Bodies are furnished regularly with end gate as shown, or can be equipped with E-B Hog End Gate at an extra charge.



E-B hog End Gate furnished at an extra charge on all Grain and Stock Rack Bodies.



## E-B No. 443 Combination Grain and Stock Rack Body

### Specifications

Length 96" inside  
Width 68" inside  
Adjustable Sides  
Side Panels 14-12-10"  
Approximate capacity 95 bu.

### For Utility Chassis

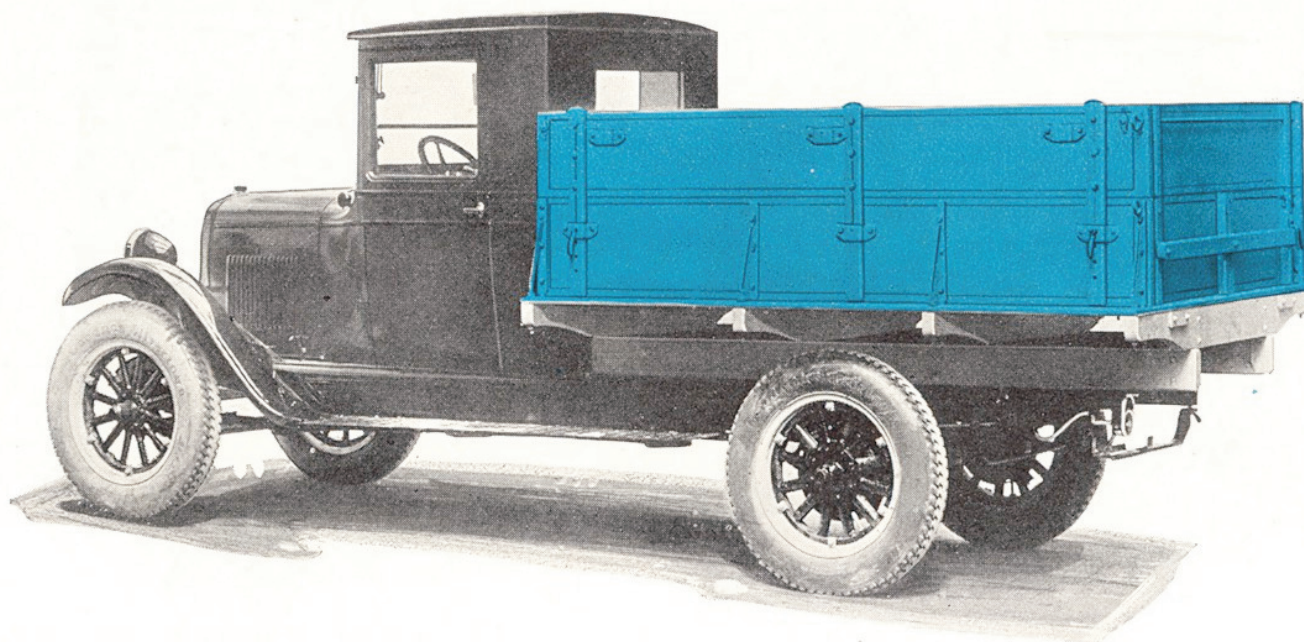
#### Approximate Weights

Net, 525 lbs.  
Crated, 550 lbs.

### Painting

Finished in Bluebelle Blue with appropriate striping.

Code Word—DAUPHIN



## E-B No. 444 Combination Grain and Stock Rack

For Utility Chassis

### Specifications

Length 96" inside  
Width 68" inside  
Adjustable Sides  
Side Panels 14-12"  
Capacity 68 bu.

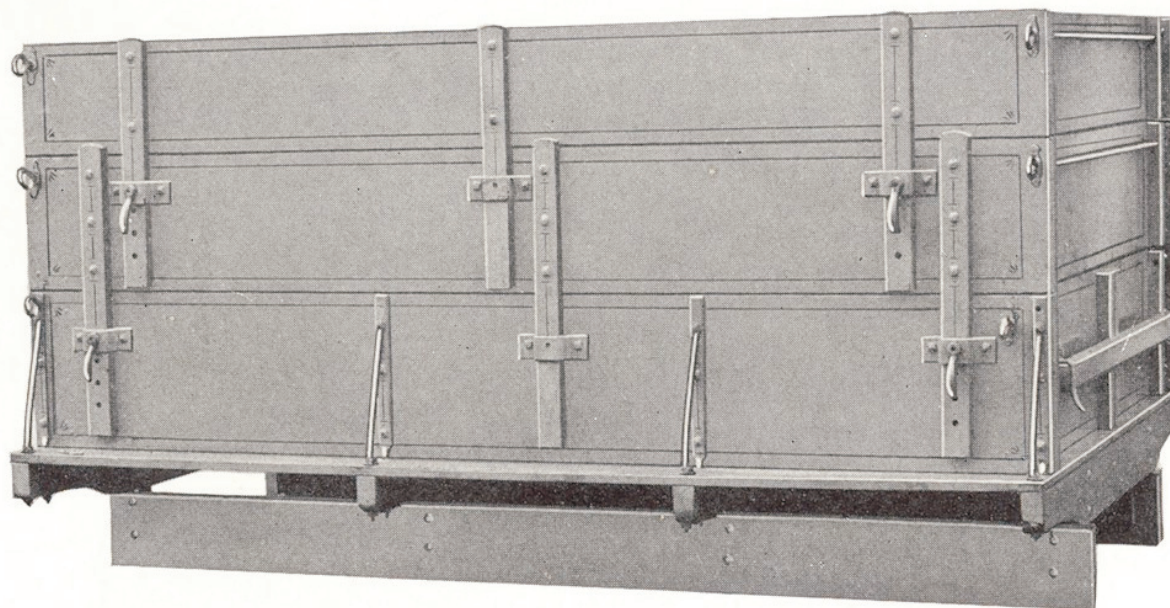
### Approximate Weights

Net, 475 lbs.  
Crated, 500 lbs.

### Painting

Finished in Bluebelle Blue with appropriate striping.

Code Word—DATURN



## E-B No. 439 "Extra Quality" Grain and Stock Rack Sides Only

For Utility Chassis

### Specifications

Length 96" inside

Width 68" inside

Adjustable Sides

Side Panels 14-12-10"

Approximate capacity 95 bu.

### Approximate Weights

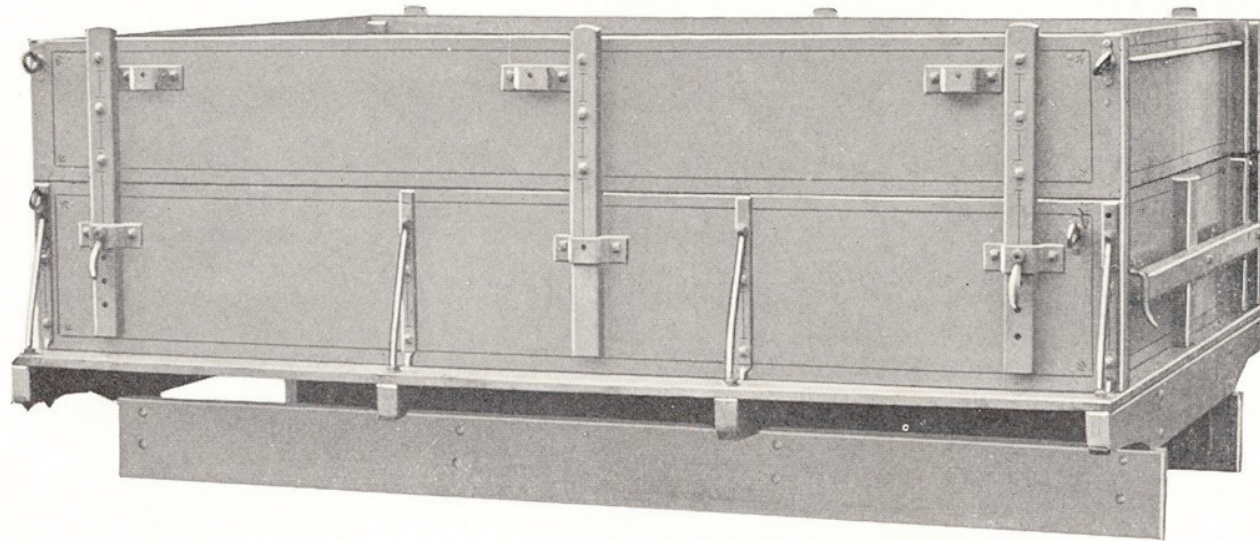
Net, 325 lbs.

Crated, 350 lbs.

### Painting

Finished in Bluebelle Blue with appropriate striping.

Code Word—DARWIN



## E-B No. 438 "Extra Quality" Grain and Stock Rack Sides Only

For Utility Chassis

### Specifications

Length 96" inside

Width 68" inside

Adjustable Sides

Side Panels 14-12"

Approximate capacity 68 bu.

### Approximate Weights

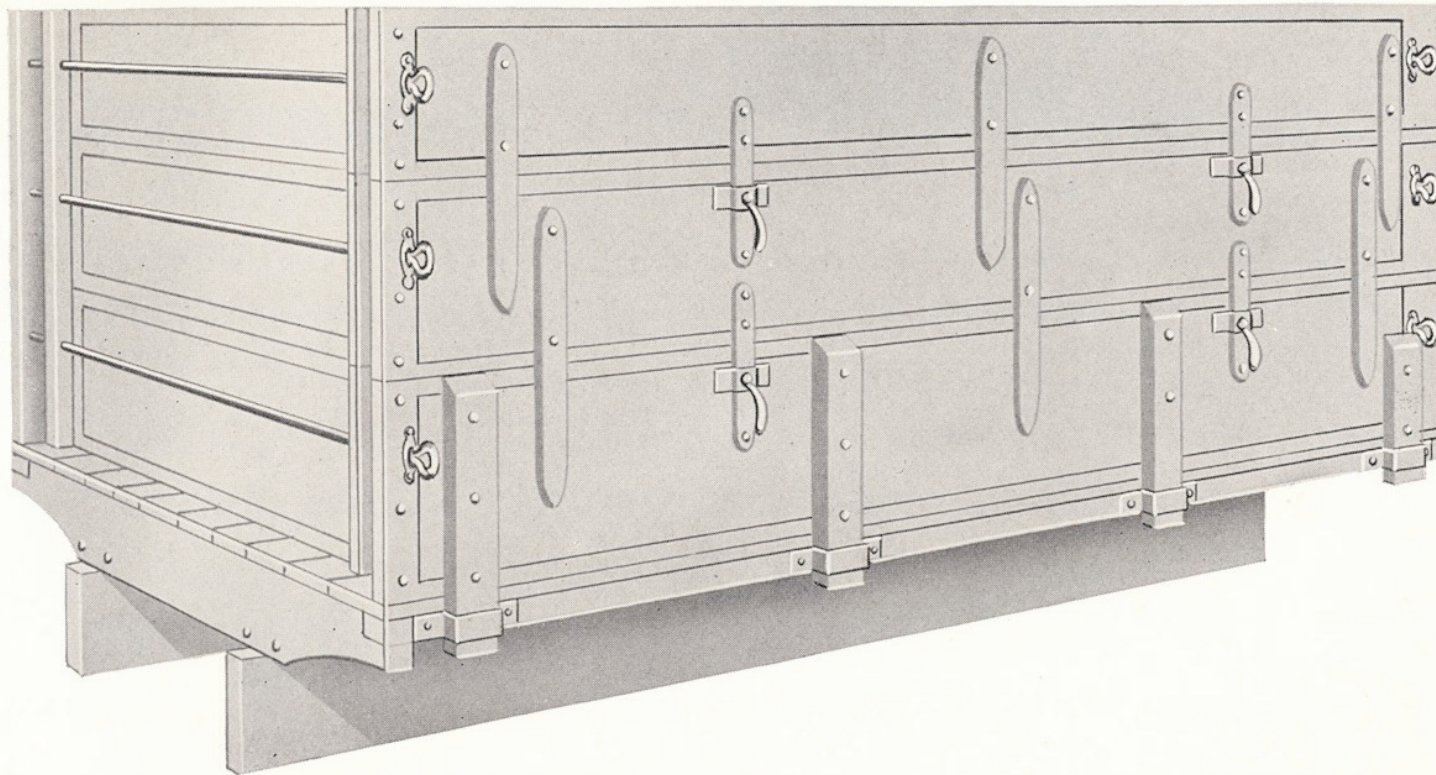
Net, 275 lbs.

Crated, 300 lbs.

### Painting

Finished in Bluebelle Blue with appropriate striping.

Code Word—DAVIS



## E-B No. 437 Standard Grain and Stock Rack Sides Only (For Utility Chassis)

### Specifications

Length 96" inside  
 Width 68" inside  
 Adjustable Sides  
 Side Panels 14-12-10"

Approximate capacity 95 bu.

### Approximate Weights

Net, 325 lbs.  
 Crated, 350 lbs.

Code Word—DANIEL

Painting—Finished in Bluebelle Blue with appropriate striping.

E-B No. 436 Standard Grain and Stock Rack Sides only. 26" over all. Side Sections 14-12".

Code Word—DACLON



## E-B COMMERCIAL BODY DISTRIBUTORS

☞ We have already established connections with leading distributors in many of the larger trade centers throughout the country, who have recognized the superiority and valuable features of the E-B Line of Commercial Bodies.

*An E-B Commercial Body Franchise in Any Section  
is a Real Asset to Your Business*

NO BETTER BUILT BODIES—NO BETTER MATERIAL USED—NONE  
BETTER FINISHED—PROFITABLE TO YOU—  
SATISFACTORY TO THE USER.

---

Price list, discounts and full information upon request.





## OVERSEAS TRADE

During the past half century we have enjoyed a very large business from the principal countries throughout the world. We are, therefore, familiar with all phases of export trade.

We can assure our customers abroad that our products will not only be properly and securely packed, but of proper dimensions to secure the most favorable ocean freight rates.

Our New York forwarders, W. P. Neth Company, 44 Whitehall Street, New York City, are responsible and experienced and any matters entrusted to them will be taken care of satisfactorily.

### CABLE ADDRESS

EMERBRAN . . . New York City  
EMERSON . . . Rockford, Illinois



## Table Showing Carload Rate of Freight from Batavia, Ill. to Points Named In Effect September 15, 1929

No responsibility for any changes of rates that may go into effect after this date.

	Column No. 1	Column No. 2		Column No. 1	Column No. 2		Column No. 1	Column No. 2
Amarillo, Texas .....	2.18	1.41	Detroit, Mich. ....	.74	.43 <sup>1</sup> / <sub>2</sub>	New Orleans, La.....	1.83	1.18
Baltimore, Md. ....	126 <sup>1</sup> / <sub>2</sub>	.65 <sup>1</sup> / <sub>2</sub>	El Paso, Texas .....	2.85	1.84	Oklahoma City, Okla.	1.83	1.18
Buffalo, N. Y. ....	.91	.53 <sup>1</sup> / <sub>2</sub>	Flint, Mich. ....	.77	.45 <sup>1</sup> / <sub>2</sub>	Omaha, Nebr. ....	1.02	.60
Boston, Mass .....	1.35 <sup>1</sup> / <sub>2</sub>	.72 <sup>1</sup> / <sub>2</sub>	Fargo, N. Dak. ....	1.40	.91	Pittsburgh, Pa. ....	.91	.53 <sup>1</sup> / <sub>2</sub>
Birmingham, Ala. ....	1.53	.99	Fort Smith, Ark. ....	1.72	1.11	Philadelphia, Pa. ....	1.27 <sup>1</sup> / <sub>2</sub>	.66 <sup>1</sup> / <sub>2</sub>
Billings, Mont. ....	3.13 <sup>1</sup> / <sub>2</sub>	†2.30	Indianapolis, Ind. ....	.64 <sup>1</sup> / <sub>2</sub>	.38	Peoria, Ill. ....	.55 <sup>1</sup> / <sub>2</sub>	.33
Baton Rouge, La. ....	1.80	1.17	Jacksonville, Fla. ....	2.11	1.36	Phoenix, Arizona ....	*3.80	†2.40
Bristol, Va. ....	1.50	.97	Kansas City, Mo. ....	1.02	.60	Portland, Oregon ....	*3.80	†2.40
Bristol, Tenn. ....	1.50	.97	Knoxville, Tenn. ....	1.40	.91	Richmond, Va. ....	1.26 <sup>1</sup> / <sub>2</sub>	.65 <sup>1</sup> / <sub>2</sub>
Chicago, Ill. ....	.35 <sup>1</sup> / <sub>2</sub>	.21	Louisville, Ky. ....	.74	.44 <sup>1</sup> / <sub>2</sub>	St. Louis, Mo. ....	.67	.39 <sup>1</sup> / <sub>2</sub>
Columbus, Ohio.....	.75	.44	Little Rock, Ark. ....	1.57	1.02	San Francisco, Calif. *	3.80	†2.40
Charleston, W. Va....	.86 <sup>1</sup> / <sub>2</sub>	.51	Lansing, Mich. ....	.73 <sup>1</sup> / <sub>2</sub>	.43 <sup>1</sup> / <sub>2</sub>	Sioux Falls, S. Dak. 1.16 <sup>1</sup> / <sub>2</sub>	.64 <sup>1</sup> / <sub>2</sub>	
Charlotte, N. C. ....	1.75	1.13	Los Angeles, Calif....	*3.80	†2.40	Salt Lake City, Utah **	2.65	2.23
Cleveland, Ohio ....	.78	.46	Minneapolis, Minn....	.83 <sup>1</sup> / <sub>2</sub>	.49	Spokane, Wash. ....	*3.80	†2.30
Des Moines, Iowa.....	.73	.41 <sup>1</sup> / <sub>2</sub>	Milwaukee, Wis. ....	.49 <sup>1</sup> / <sub>2</sub>	.29 <sup>1</sup> / <sub>2</sub>	San Antonio, Texas..	2.32	1.50
Dallas, Texas .....	2.09	1.35	Memphis, Tenn. ....	1.27	.82	Toledo, Ohio .....	.70	.41 <sup>1</sup> / <sub>2</sub>
Denver, Colo. ....	2.20 <sup>1</sup> / <sub>2</sub>	1.29 <sup>1</sup> / <sub>2</sub>	New York City, N.Y.	1.29 <sup>1</sup> / <sub>2</sub>	.68 <sup>1</sup> / <sub>2</sub>	Washington, D.C. ....	1.26 <sup>1</sup> / <sub>2</sub>	.65 <sup>1</sup> / <sub>2</sub>
Duluth, Minn. ....	.89 <sup>1</sup> / <sub>2</sub>	.53	Nashville, Tenn. ....	1.17	.76	Wichita, Kans. ....	1.75	1.13

Column No. 1—The rate named in this column is based on shipments being made loose or in packages with a minimum rate of 10,000 lbs. in a 36 ft. car.

Column No. 2—The rates named in this column are based on bodies being folded completely flat, or knocked down flat with a minimum weight of 20,000 lbs. in a 36 ft. car.

\*\* Exception is made to this particular point as the minimum is 12,000 lbs. with the special commodity rates as shown in the above table.

† Minimum weight 20,000 lbs., any size car.

\* { Minimum weight of 10,000 lbs. for cars under 42 ft. in length.  
 { Minimum weight of 12,000 lbs. for cars over 42 ft. in length.

