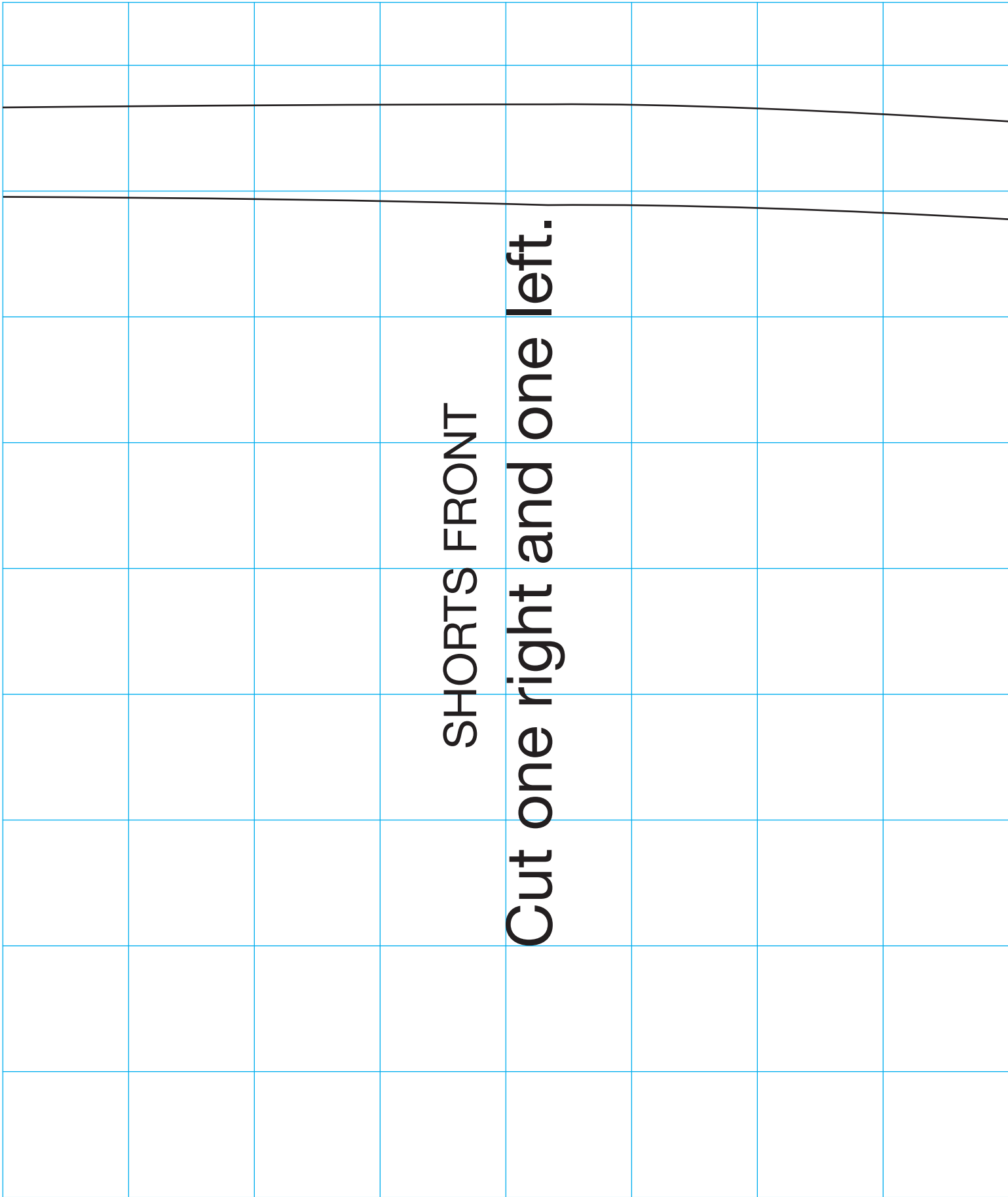


Shorts Front Pattern Piece 1

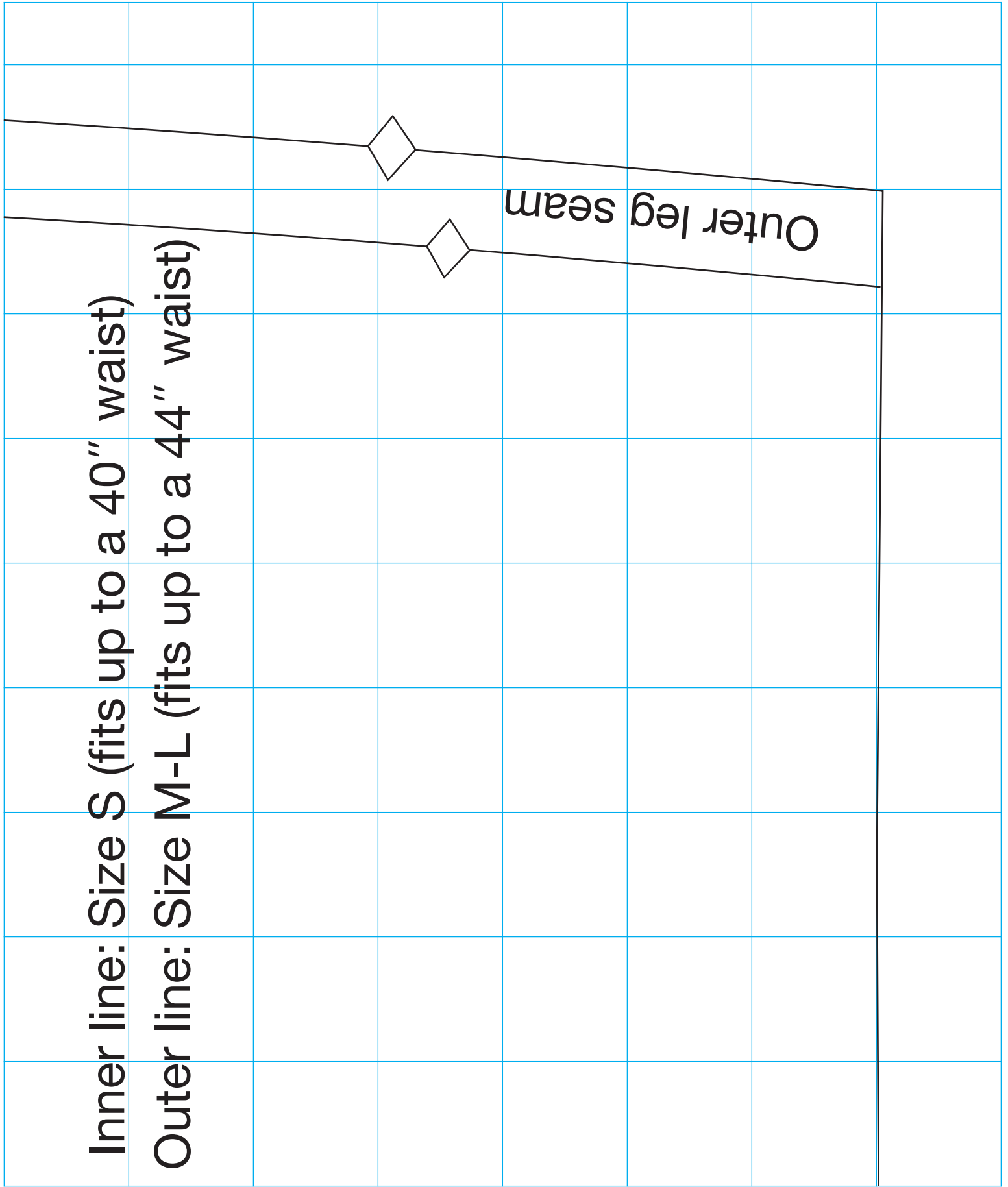


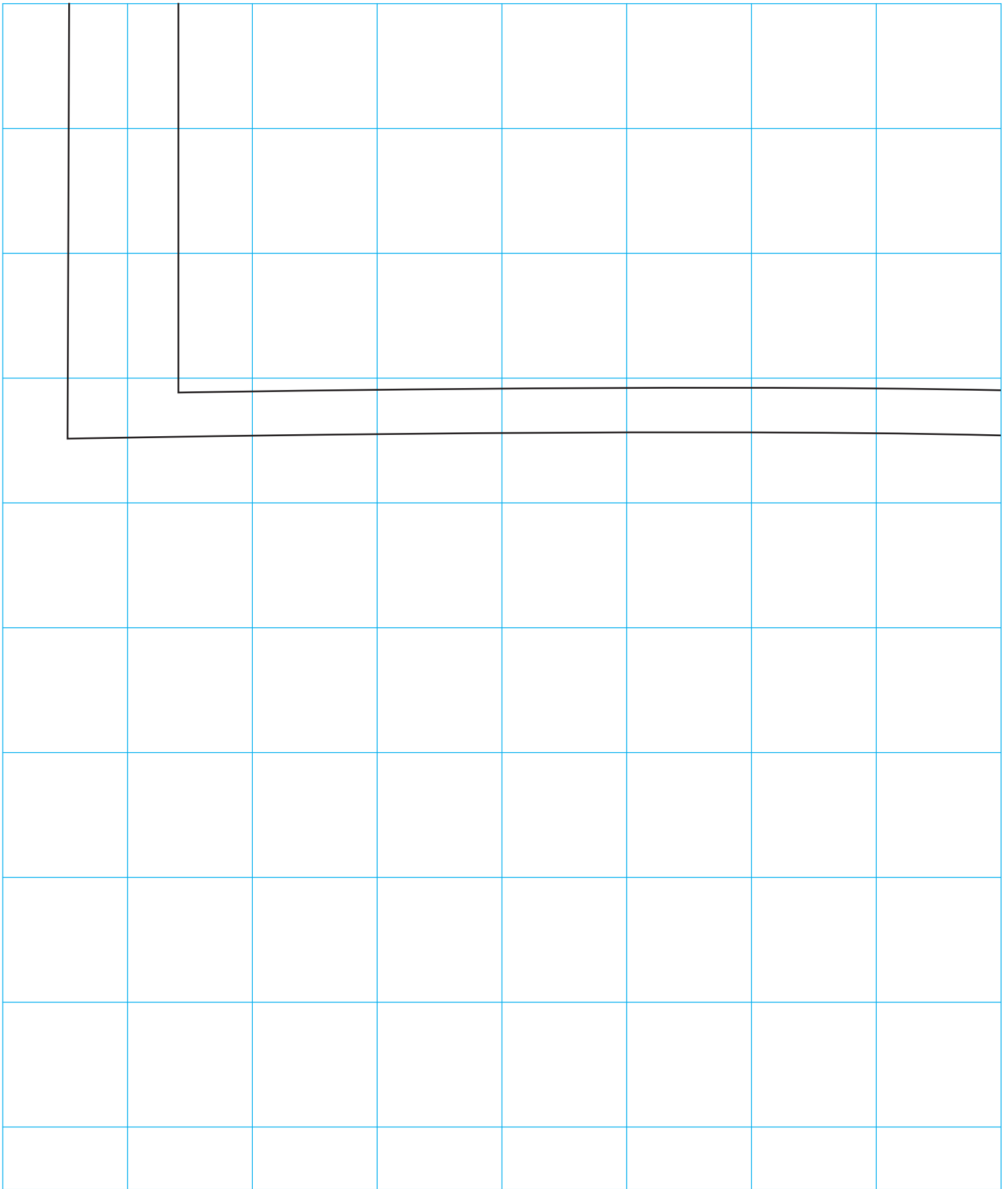
SHORTS FRONT

Cut one right and one left.

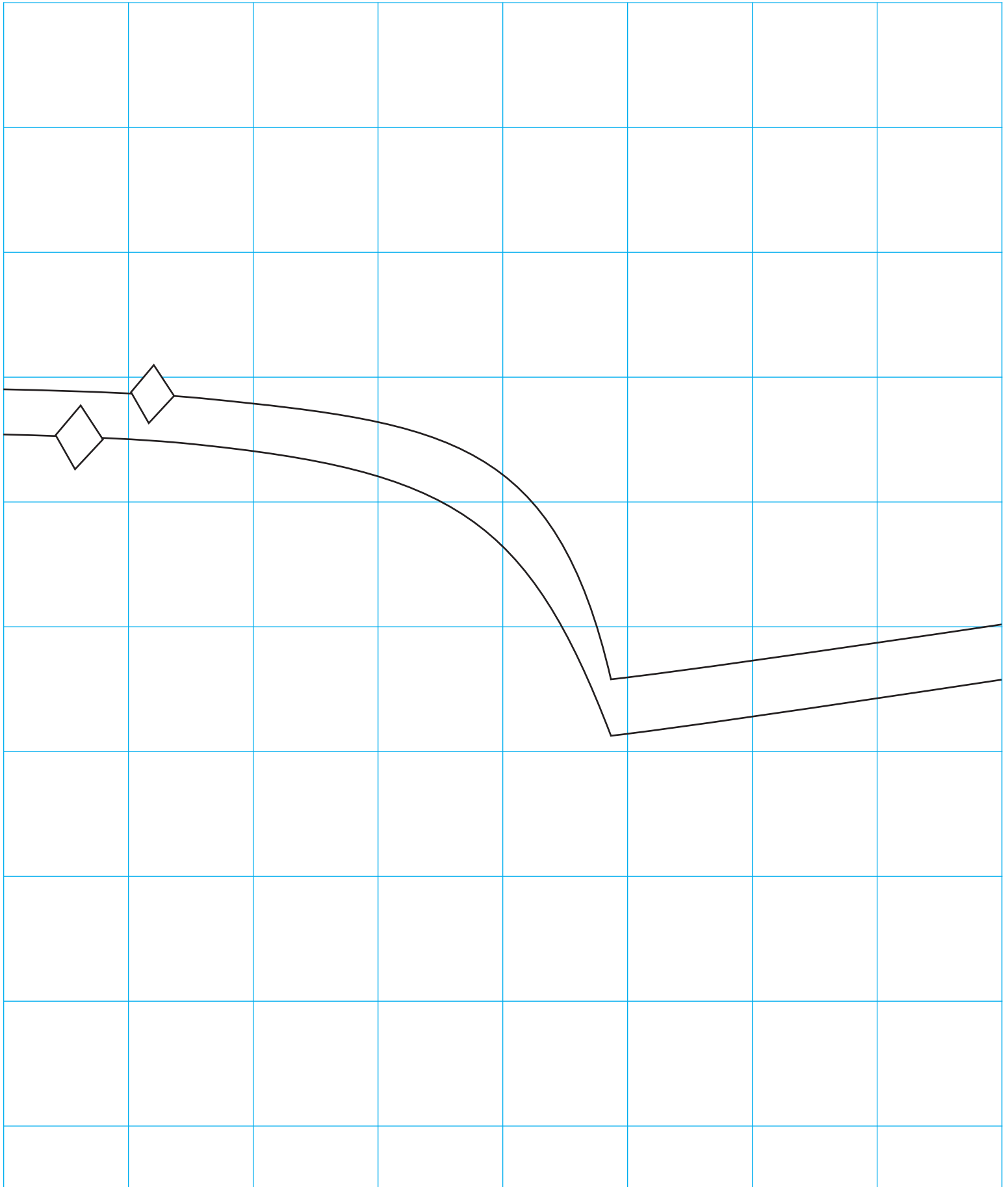
Inner line: Size S (fits up to a 40" waist)

Outer line: Size M-L (fits up to a 44" waist)

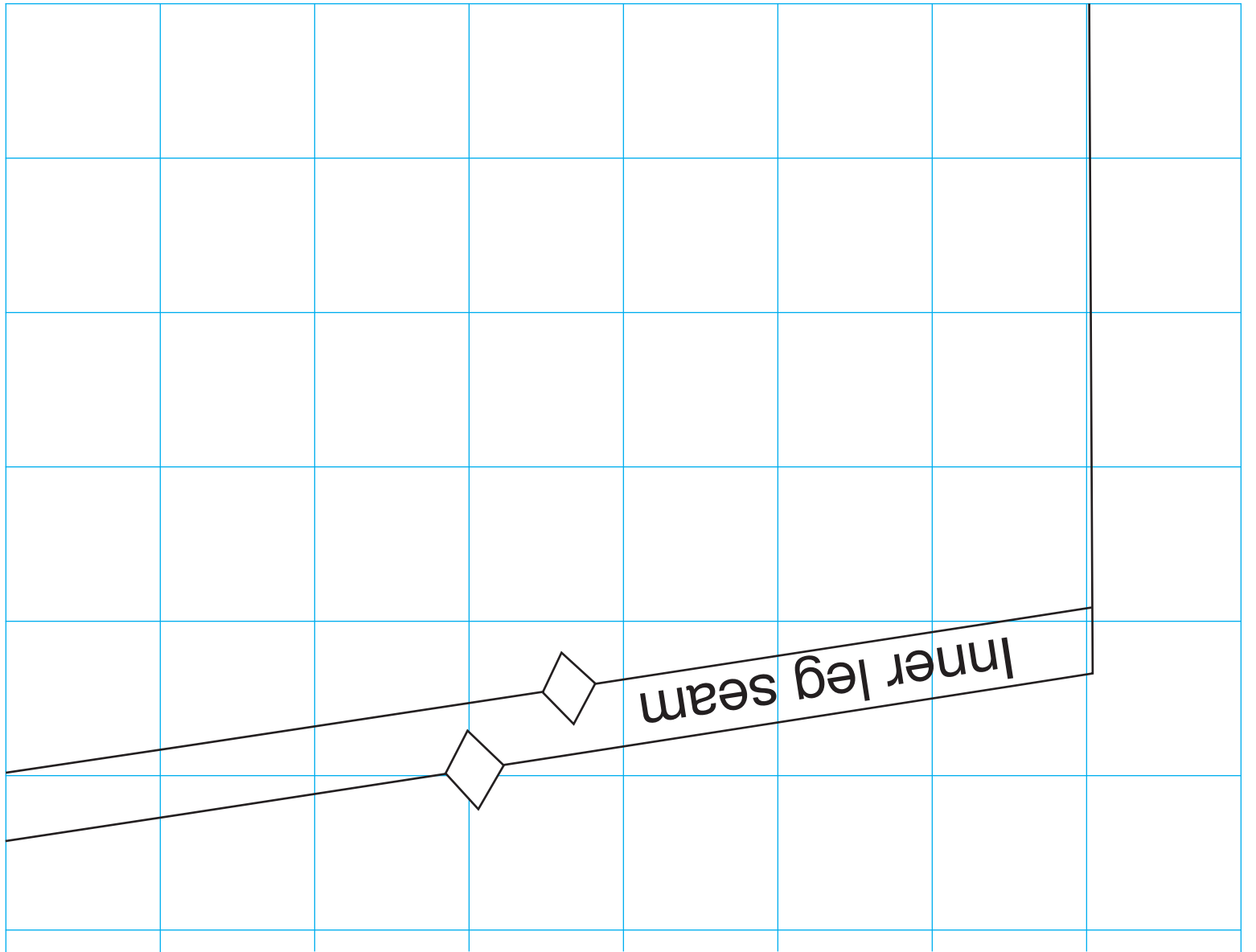




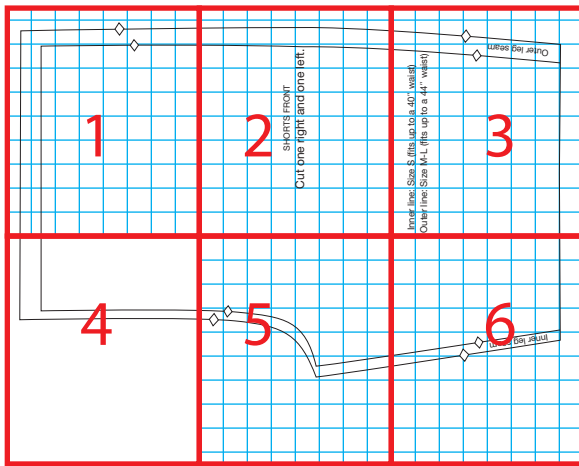
Shorts Front Pattern Piece 4



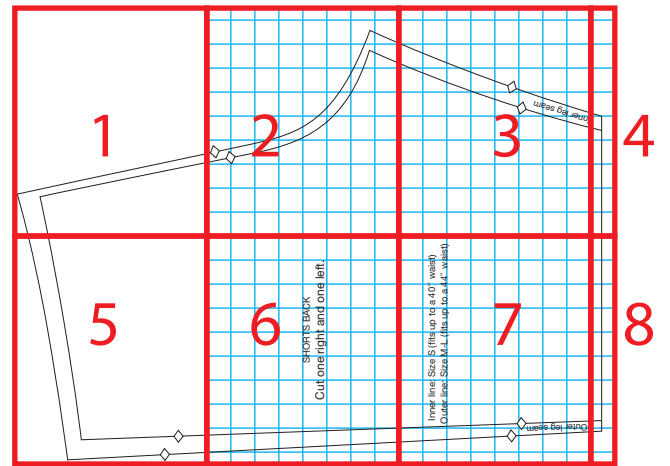
Shorts Front Pattern Piece 5



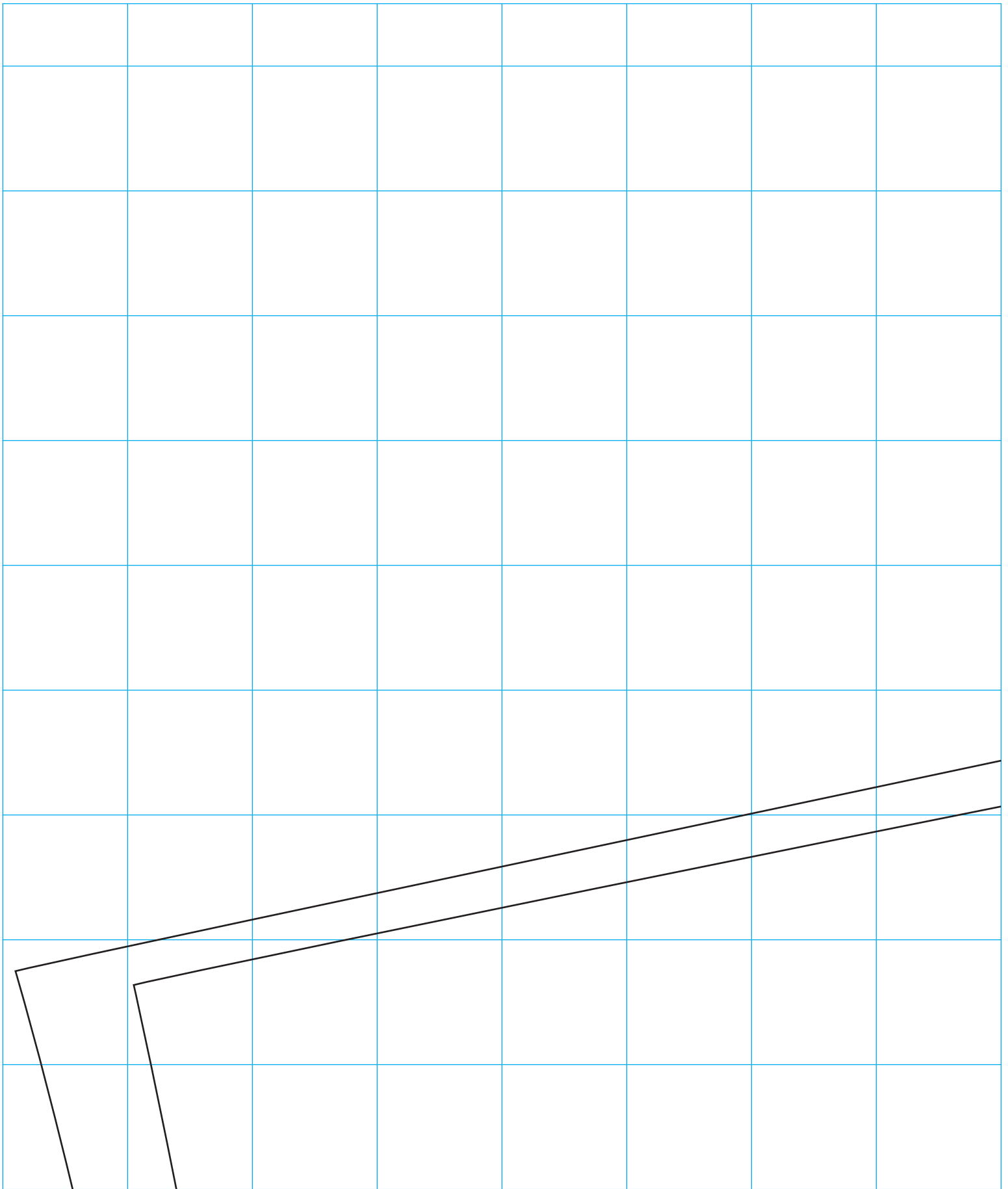
Pattern Layout



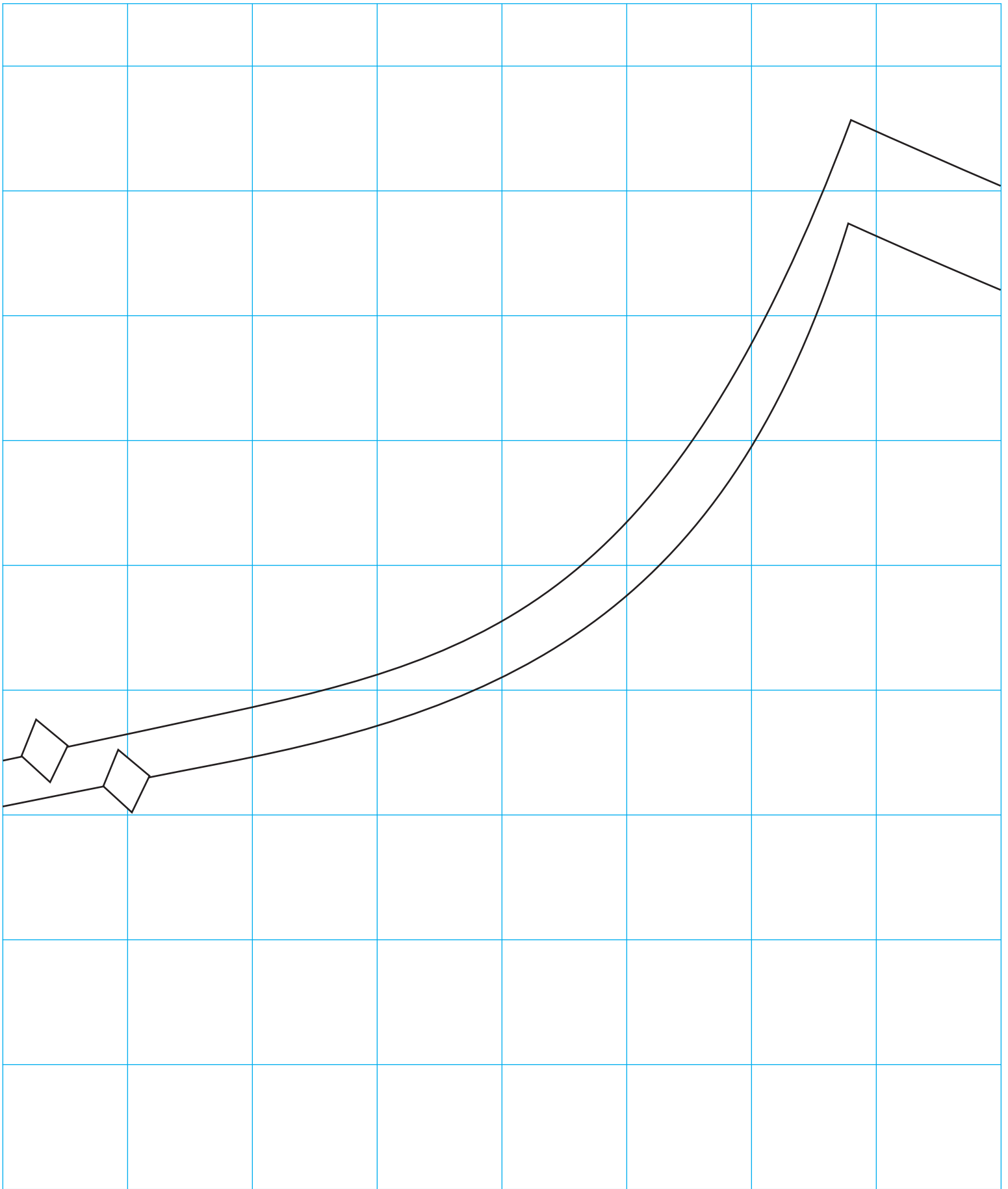
Shorts Front



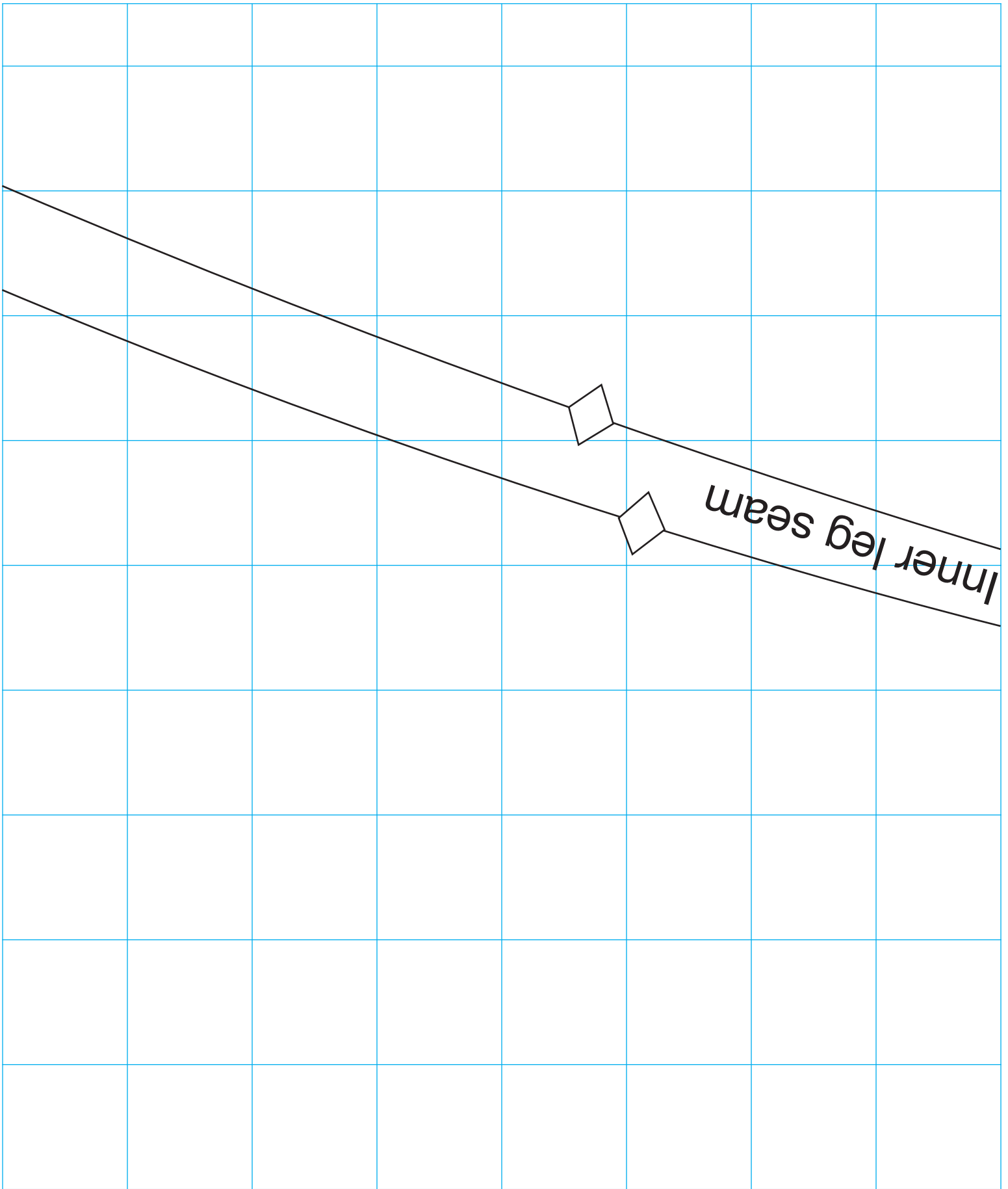
Shorts Back



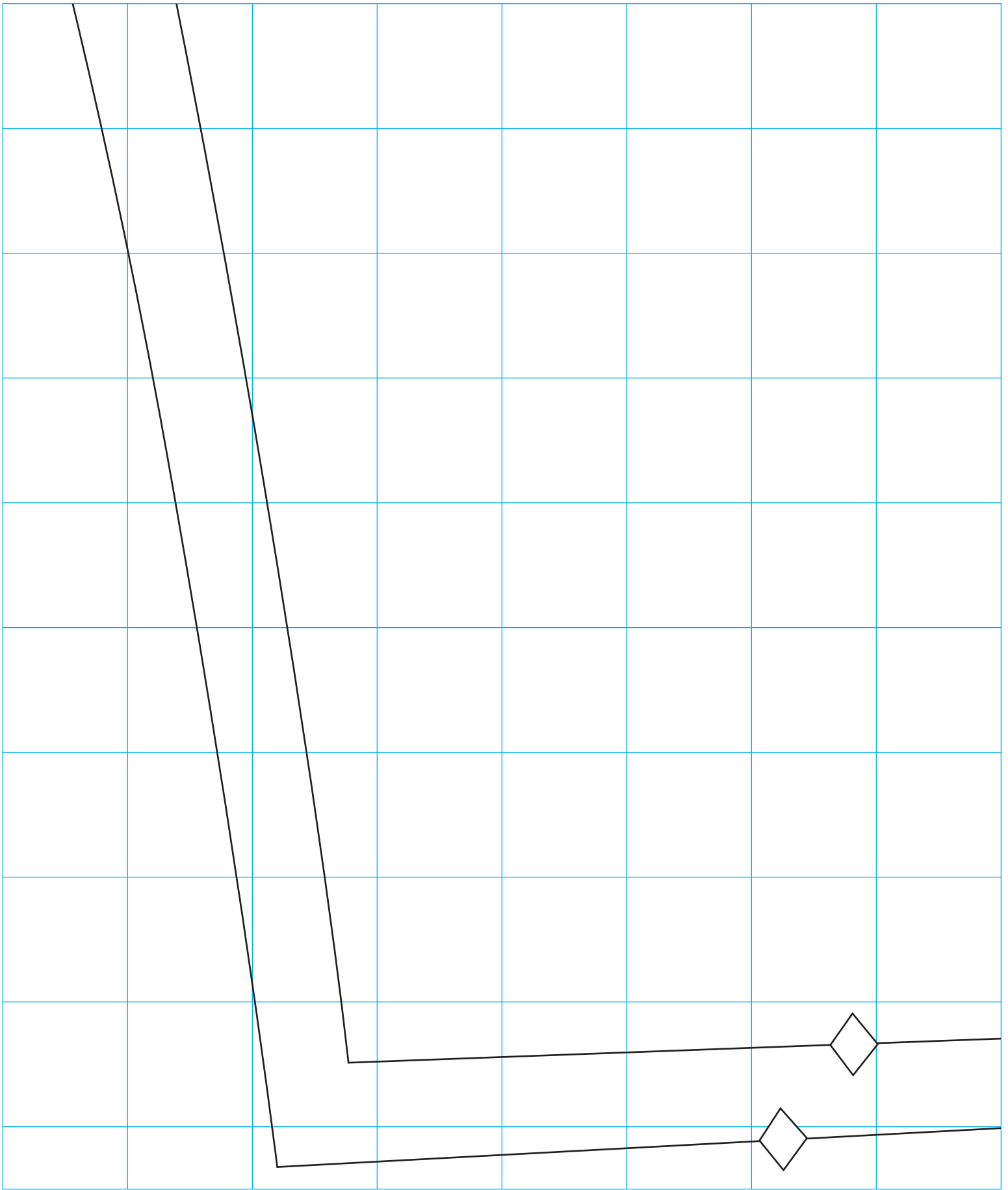
Shorts Back Pattern Piece 1



Shorts Back Pattern Piece 2



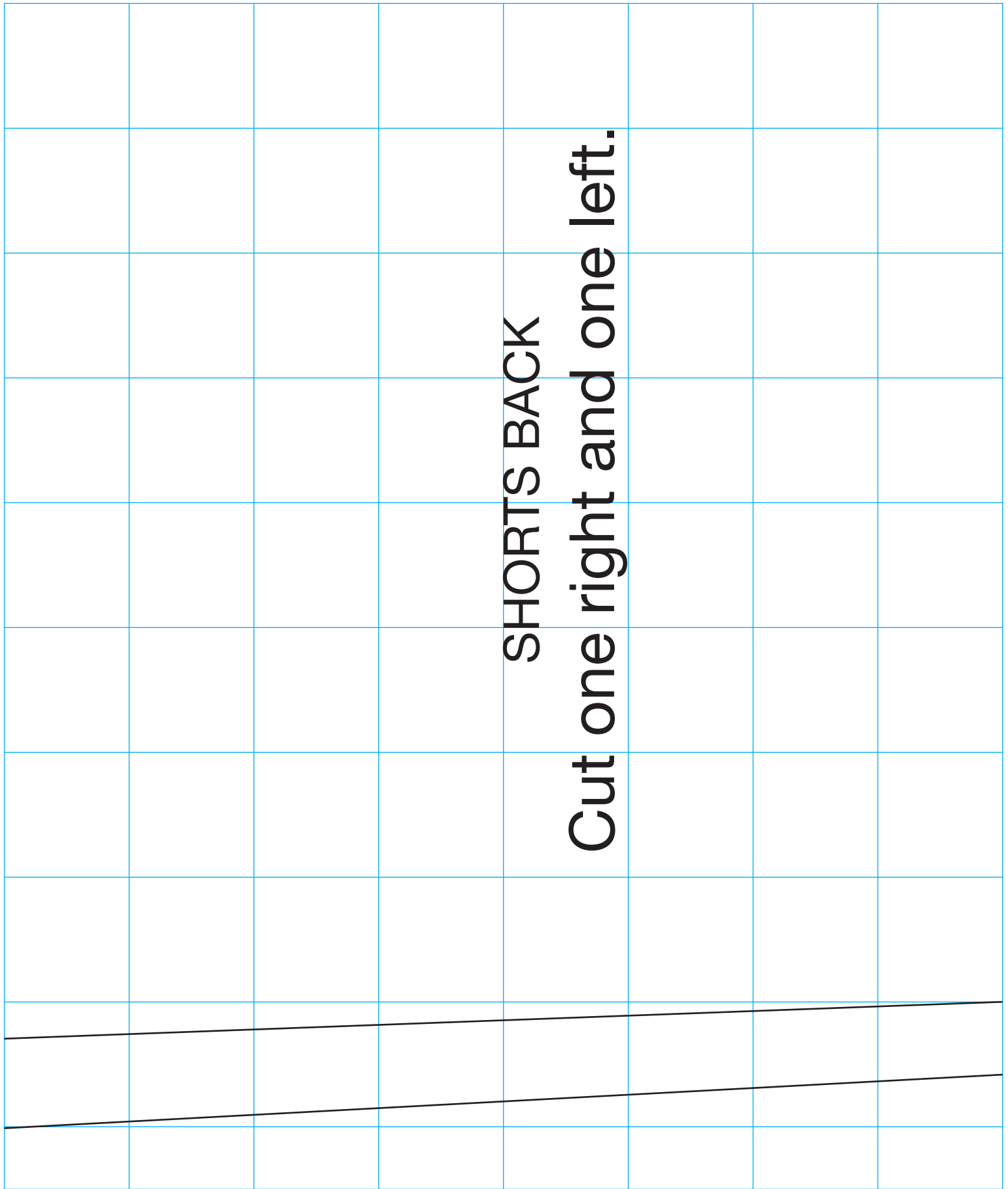
Shorts Back Pattern Piece 3



Shorts Back Pattern Piece 5

SHORTS BACK

Cut one right and one left.



Inner line: Size S (fits up to a 40" waist)

Outer line: Size M-L (fits up to a 44" waist)

