

Television and FM-broadcast Band DX into the Owens Valley, California

2008 - 2012 [Television DX](#) into the Owens Valley, California

Television DX photos: With the coming of late-spring and the summertime comes with it Sporadic-E skip. I am fascinated by the phenomenon of Sporadic-E skip as much as I am with natural VLF radio, so I undertake a project of capturing long-distance TV reception. Since the analogue shutdown in the USA in June 2009, I can now only receive E-skip TV from Canada and Mexico, but the Owens Valley is well-situated to be within 1-hop distance to several TV stations in Mexico and Canada, and if I am fortunate I can see even two-hop signals from southern Mexico and eastern Canada. Below is just a taste of this reception I have snapped photos of, or made screen captures from, either a VCR or quicktime movie captures. This page will grow with photos as I add them.

Time is running short for NTSC TV DXing - in August 2011 Canada will shutdown analogue TV stations, and in Mexico, they will do the same in 2022. If you click on the link underscoring "Television DX" above [or here](#) will bring you to a great Wikipedia article about TV DXing and its fascinating history. Also, search Wikipedia for "sporadic-e" skip. There are many clubs and groups devoted in-depth to this fascinating pursuit.

[This DX page has a link \(here\) to FM sporadic-E skip DX at www.archive.org, and some TV -audio DX and meterscatter DX. Images of Television DX are further below.](#)

FM and TV DX (long-distance reception) (via sporadic-E skip and meteor- Stephen P. McGreevy scatter)

Few people, aside from radio "DXers" (people whom enjoy a pastime/hobby of pursuing long-distance radio reception by various signal-propagation means) know that FM broadcast radio stations, and also television broadcast stations, can "propagate" for extraordinary long-distances at certain times of the year and are not simply limited to "line-of-sight" reception.

This is particularly true during the DXer's local summertime period, when the ionosphere can become like a "mirror" to radio signals and reflect/refract FM broadcast stations, as well as VHF ham-radio and other VHF radio signals, quite long distances.

I have been an enthusiast of long-distance reception of broadcast radio of all types for over three decades.

These recordings are also quite wonderful "air-checks" of a multitude of FM radio stations across western and central Canada, the USA, and northern Mexico.

Even more amazing (to me) is file #33 - a recording by Dave Headland (of Victoria, Australia) whom traveled to the Cook Islands in July 1989 where he recorded astounding reception of 95.1 KAOI Maui, Hawaii (100 kw ERP). We believe this is not sporadic e-skip (Es), but a form of TE (trans-equatorial) skip, as the signal is very multi-pathy sounding, but clear enough to enjoy and understand!

As soon as I can locate Dave's FM DX tapes of FM Es DX from New Zealand to eastern Australia, I will convert them to MP3 files and upload those MP3 files here.

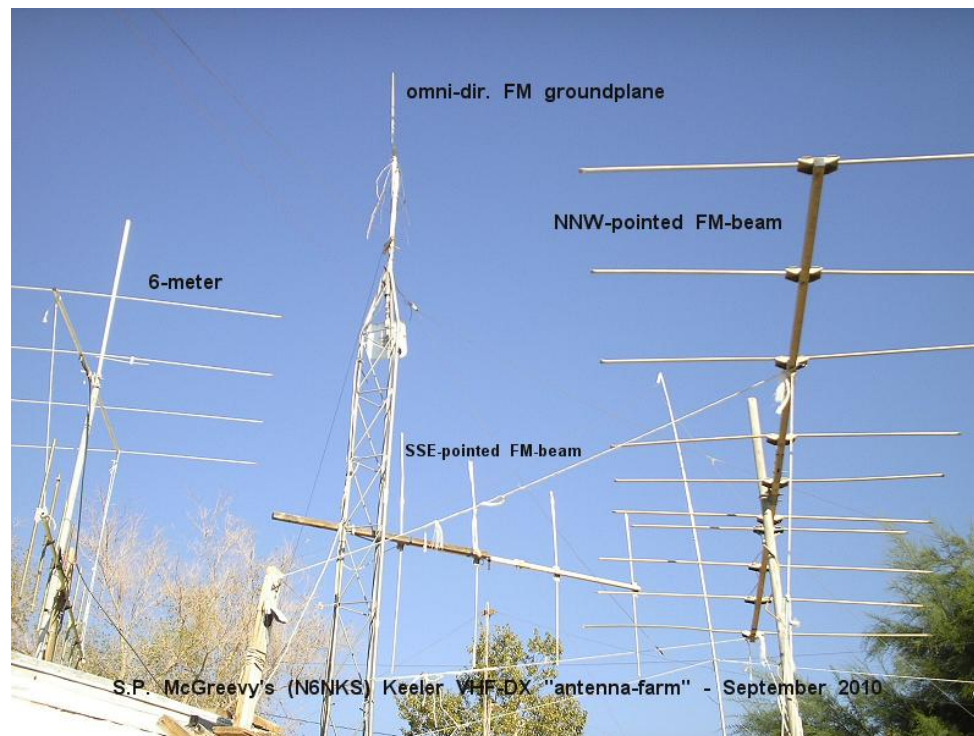
Enjoy the huge variety of DX and the variety of FM radio formats portrayed here.

Stephen P. McGreevy - N6NKS - September 2010

[Screenshot of Internet Archives FM-DX page](#)



[embed this](#)
Your browser supports the new <audio> tag!
Would you like to [try the new <audio> tag?](#)



[HUGE AMOUNT OF MY FM-DX MP3 ARCHIVES AT ARCHIVE.ORG](#)

In the late summer of 2009, I also engaged in a project of [capturing METEOR-SCATTER reception of TV Channel Two signals](#) using a small, sensitive black and white TV set hooked to a log-periodic antenna (no pre-amp. employed). See below.

Most of the Black and White TV receptions were made via a simple 300-ohm folded-dipole cut for channel A2, prior to about 25 July 2009, when I employed the log-periodic antenna. (The Log-periodic antenna, pictured at bottom of this page, is the antenna of choice for the 2010 season). And so in essence, you don't need a fancy gain-antenna to capture NTSC-TV Es DX!

I use CB channel 19 (27.185 MHz) to advance-warn of Es openings: (much more dense signals on CB Ch. 19 than 10 meters, hence a better Es propagation-indicator channel, and also, I use CB channel 5 (27.015 MHz) for indications of Mexican Es openings. Then, when CB is hopping, I scan the 10-meter beacon band for signals to get the idea of the direction/region of the opening(s). Then I await the MUF to climb into 6-meters and low-band TV, if it does so.

Stephen P. McGreevy, N6NKS, June 2011

Spring-Summer 2012 season:



A very early-season Es opening to Sinaloa, Mexico - XHQ Channel 3 (NTSC) from Culiacan, Sinaloa, Mexico (Grupo Pacifico) re-appeared for 1/2 hour this day! Reception via B&W Panasonic 515 and 1/4 wave wire clipped to its whip-antenna - SP McGreevy - N6NKS

Summer 2011 season:



At the time of this reception (1944z - 28 June 2011 - I was receiving video-carriers on my Kenwood TS-480 on 55.240 and 55.260 MHz - with 55.260 (plus-offset) being the most strongest signal - SP McGreevy - N6NKS



TV-2 XEPM - Cd. Juarez - 29 June 11 (z) - 0157z - McGreevy - N6NKS

Channel 2 XEPM Cd. Juarez, Chihuahua (55.250 MHz - zero-offset) came in again 29 June 2011 (UT) for 15 minutes, peaking in strength during a newscast - this image is during a weather segment at 0157 UT.



TV ch. 2 - Calgary with ad for "peteThePlumber.com" 21 Jul 11 - 0206z - N6NKS



TV ch. 2 - Calgary with "analogue-shutdown" notice 22 Jul 11 - 0121z - N6NKS

Two receptions of Global TV Calgary Channel 2 on the evenings of 20-21 July, 2011 (PDT dates) into Keeler, CA.

Spring/Summer 2010 season:

Early E-skip opening to northern Mexico, 04 May 2010 about 0030 UT (1730 PDT):

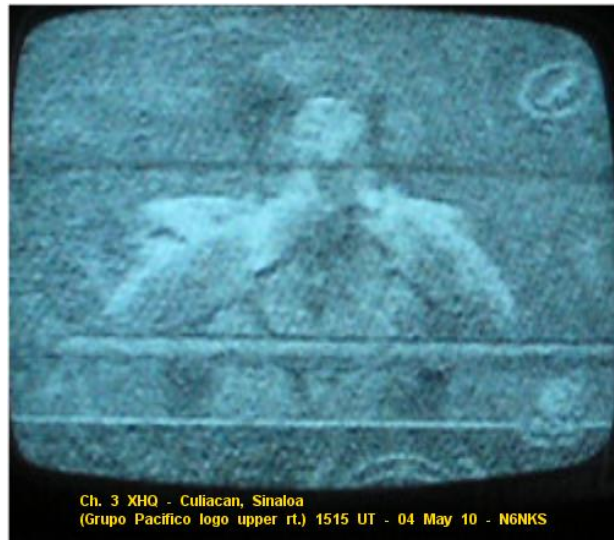


unid_ch 4 mexican - 03 May 2010 - 0030 ut - N6NKS



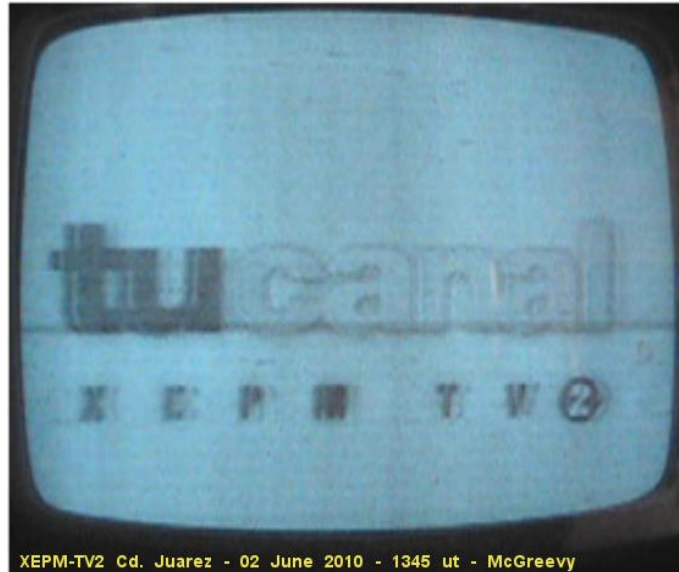
UnID TV-4 Mexican with cartoon @ 1642UT 04 May 2010 - McGreevy

The e-skip to same area returned the next morning (0942 PDT) locally here...



Ch. 3 XHQ - Culiacan, Sinaloa
(Grupo Pacifico logo upper rt.) 1515 UT - 04 May '10 - N6NKS

There they are again - good 'ole XHQ Culiacan, Sinaloa ('Grupo Pacifico' Seagull logo) back in again, though they were weak this day...



XEPM-TV2 Cd. Juarez - 02 June 2010 - 1345 ut - McGreevy

Good ole XEPM channel 2 - Ciudad Juarez, Chihuahua, Mexico - a regular, strong on 02 June 2010.



Ch. 2 - XHI - Cd. Obregon (relays XHQ Sinaloa) - 27 July 09 at 1945 ut into Keeler, Calif.

Ch. 2 - XHI Cd. Obregon, Sonora (relays XHQ Culiacan, Sinaloa - Grupo Pacifico) on VCR, large TV and groundplane antenna. 27 July 09.



One of my many channel 2 TV sporadic-E skip (12 June 2009) catches (above); Channel 3 XHW (s.b. XHQ) Culiacan, Sinaloa, Mexico on 21 June 2008 (below)

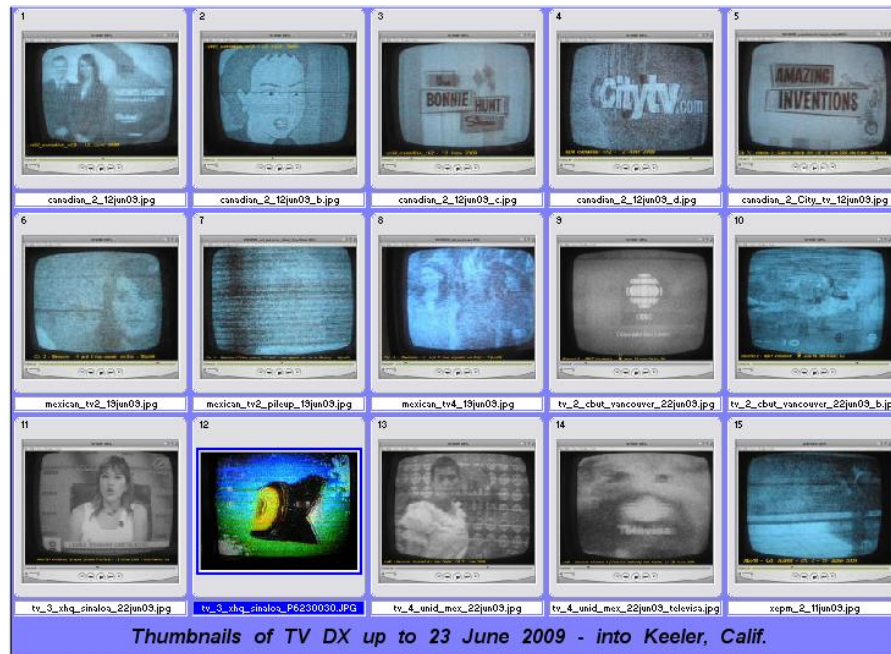




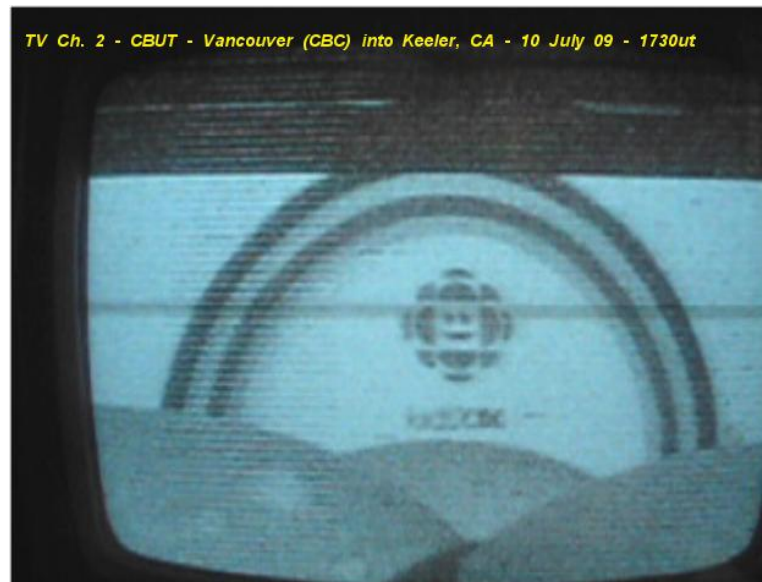
KOTA Rapid City, SD, USA, Channel 3, 15 June 2008 sporadic_E skip.



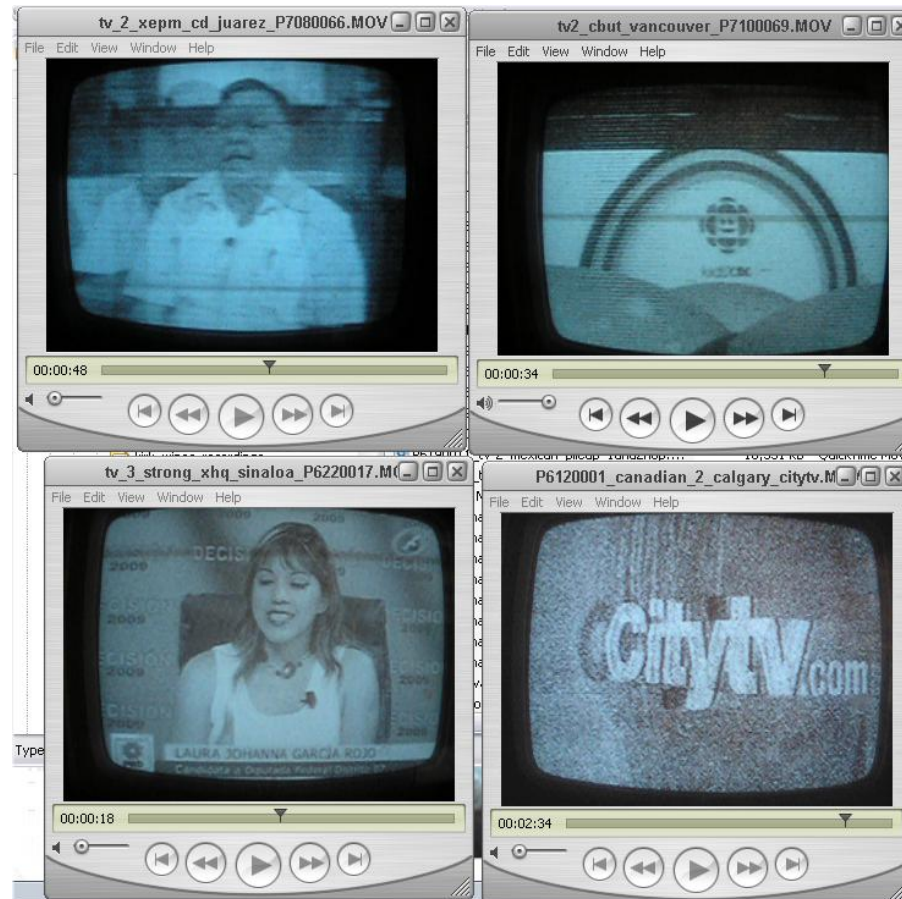
KTVQ Billings, Montana, USA, June 2008, Channel 2 sporadic_E skip.



Montage of thumbnails of June 2009 Sporadic-E skip DX.



TV Ch. 2 - CBUT Vancouver - 10 July 09 - 1730ut.



Montage of movie-captures of TV DX (via Sporadic-e skip) in summer 2009.



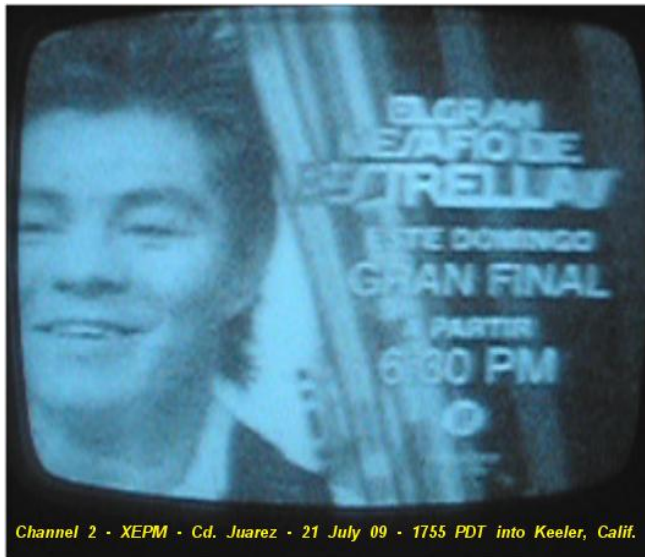
TV Channel 2 - City TV - Calgary, Alberta, Canada - 13 July 2009 into Keeler, Calif.

Ch. 2 - City TV Calgary, Alberta 13 July 2009 - 1830 UTC via sporadic-E skip.



Ch. 2 - XEPM Cd. Juarez, Chihuahua, Mexico - 17 July 09 into Keeler, CA

CH. 2 - XEPM CD. Juarez, Mexico 17 July 09 via sporadic-E skip. I get XEPM frequently.



Channel 2 - XEPM - Cd. Juarez - 21 July 09 - 1755 PDT into Keeler, Calif.
XEPM Channel 2 TV, Cd. Juarez, Mexico 22 July 09 - 0055 UTC via sporadic-E skip.

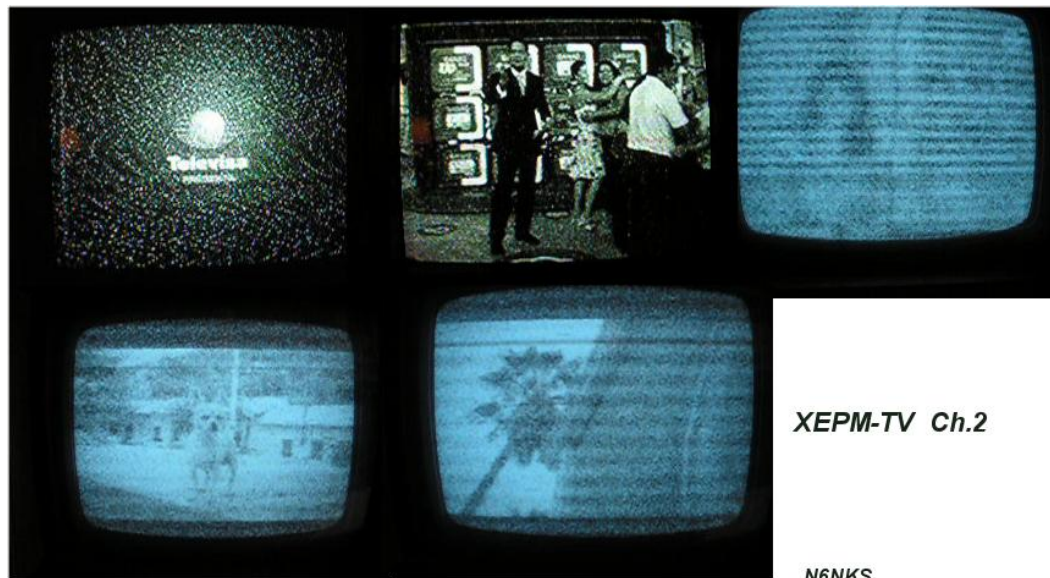


Channel 2 - CBUT - Vancouver, BC, Canada - 23 July 09 - 2015 ut - into Keeler, Calif.

Channel 2 - CBUT - Vancouver, BC, Canada - 23 July 09 - 2010 ut - into Keeler, Calif.

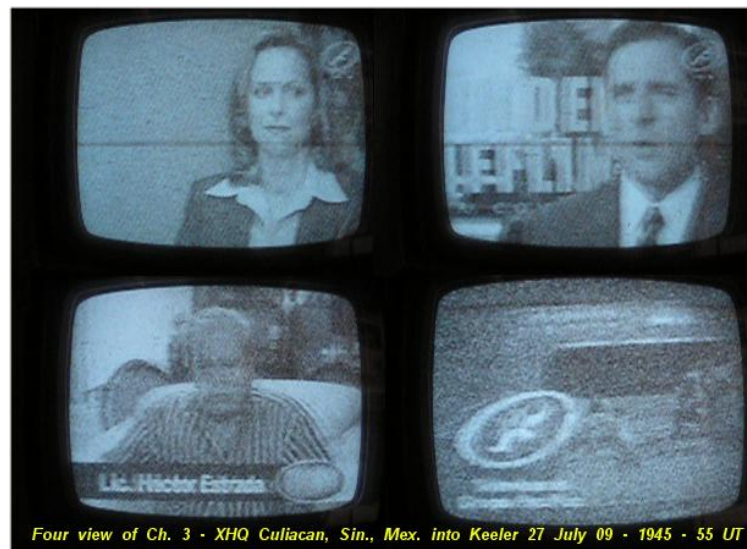


CBUT Vancouver, BC, Canada 23 July 09 at 2010 UTC via sporadic-E skip.



Various views of Ch. 2 - XEPM Cd. Juarez - 25 July 09 - into Keeler, Calif. via sporadic-E skip.

XEPM Cd. Juarez, Chihuahua, Mexico - 25 July 09 at about 1900 to 2000 UT via sporadic-E skip. Views from two different TV sets/antennas. A regular station into here.

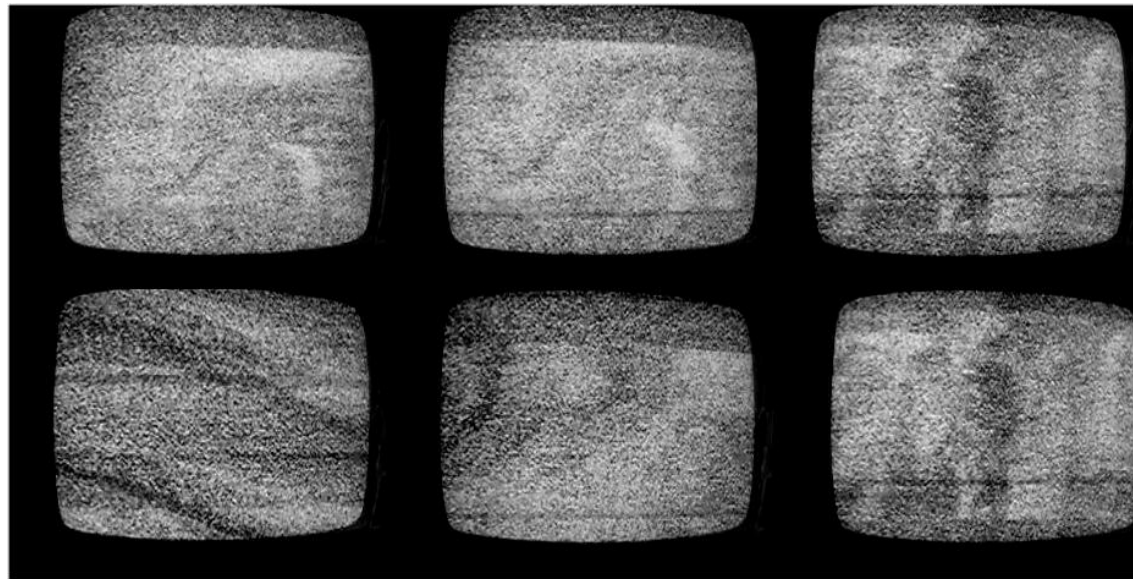


Ch. 3 XHQ, Culiacan, Sinaloa, Mexico - 27 July 09 via sporadic-E skip, on the black and white set. Another regular station into here.



Ch. 2 - CBUT Vancouver, BC at 1947 UT - 27 July 2009 into Keeler, Calif.

Ch. 2 CBUT, Vancouver, BC, Canada - 27 July 09 via sporadic-E skip, on the black and white set. Yet another regular station into here - see color shot of this station further above.

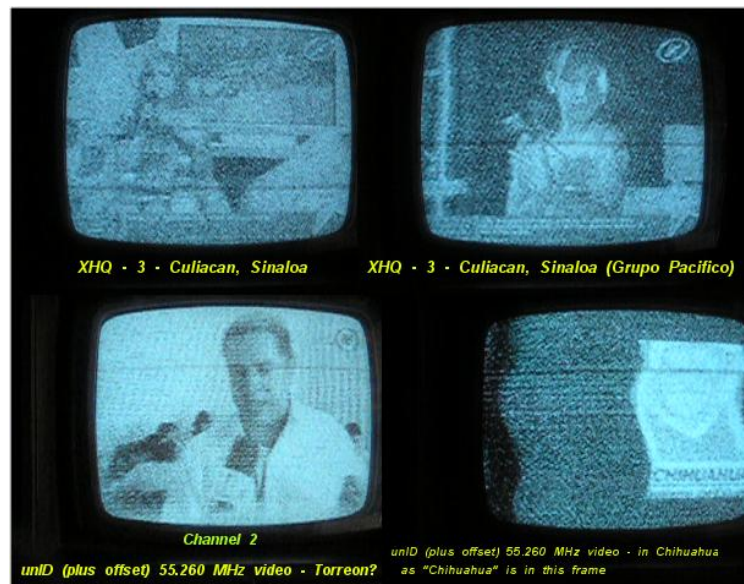


ch2. - weaker mix of 2 neg.-offset (55.240 MHz) Ontario stations - 28 July 2009 - about 2015 UT into Keeler, CA, N6NKS
Ch. 2 - Two weaker Canadian TV stations mixing together from Ontario, negative-offset - 28 July 09 via sporadic-E skip, on the black and white set.



Various mexican stations during 29 July 09 (1645 to 1745 UT) opening into Keeler, CA

Ch. 2 - 4 Various Mexican TV stations came into Keeler the morning of 29 July 2009 via sporadic-E skip, on the black and white set.



Another Sporadic-E skip opening to Mexico 01 August 2009 - about 1600 - 1700 UT

Ch. 2 - 3 Two Mexican TV stations came into Keeler the morning of 01 August 2009 via sporadic-E skip, on the black and white set - always happy to get E-skip in August!



XEPM - 2- Cd. Juarez "tu canal" logo, etc. 55.250 MHz 06 Aug 09 - 1942 UT



strong XEPM - 2- Cd. Juarez 55.250 MHz 06 Aug 09 - 1830 UT

Ch. 2 XEPM Cd. Juarez (55.250.0 MHz) on two different TV's. A strong late-season E-skip opening.

Friend Kirk W. whom lives north of Tucson, Arizona captured Channel 2 - KTVU Oakland/San Francisco using a color TV and log-periodic antenna pointed n.w. He snapped this photo the evening of the same day KTVU's (plus-offset) analogue signal left the air for good on 11 June 2009.

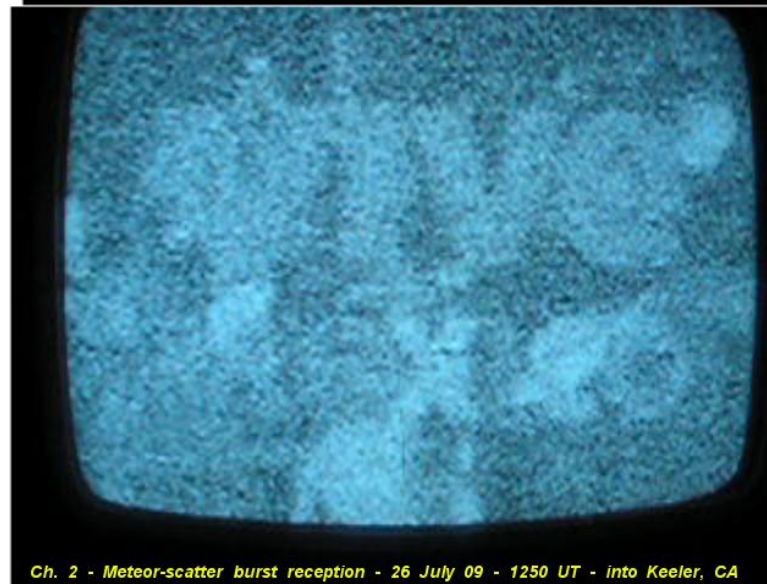


Meteor-scatter NTSC Television DX - Channel Two

The following images are of meteor-scatter reception of NTSC video signals on TV Channel 2. I use a very sensitive Panasonic Ranger-505 B&W TV set hooked to a 15 ft. (2.9m) long log-periodic antenna up 7 feet (2.1m) pointed eastward.



Ch. 2 - Meteor-scatter burst reception - 26 July 09 - 1245 UT - into Keeler, CA



Ch. 2 - Meteor-scatter burst reception - 26 July 09 - 1250 UT - into Keeler, CA

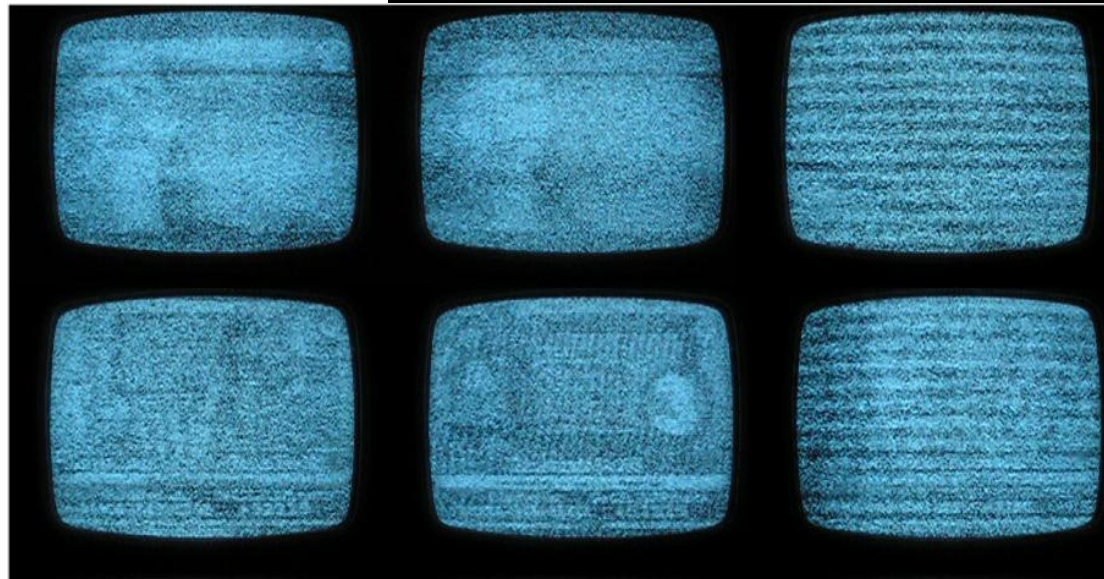
Two images of short-burst (< 1 sec.) Ms reception on channel two from random meteors about 1240-50 UT, 26 July 2009. The first I IDed as XEPM Cd. Juarez, and the other unID says "Viva Mexico."



A short-burst (< 1 sec.) Ms reception on channel 2 from a random meteor about 1235 UT, 27 July 2009. Most short-burst meteors exhibit weak, snowy pictures on my system. It is possible with better antenna feedline and a pre-amp that I could get clearer pictures.



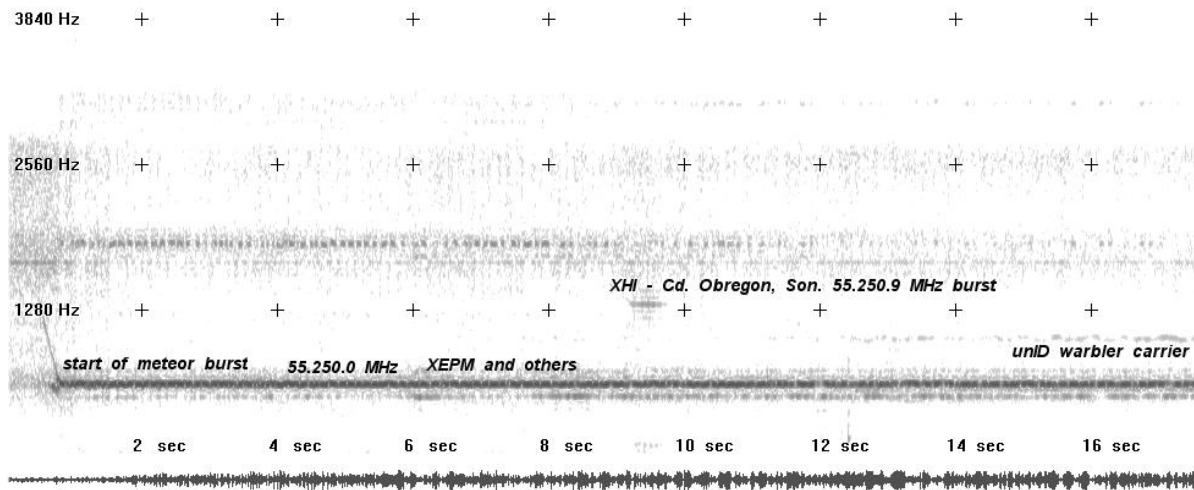
tail-end of Perseid burst - Ch. 2 - 11 Aug. 09 - 1655 ut



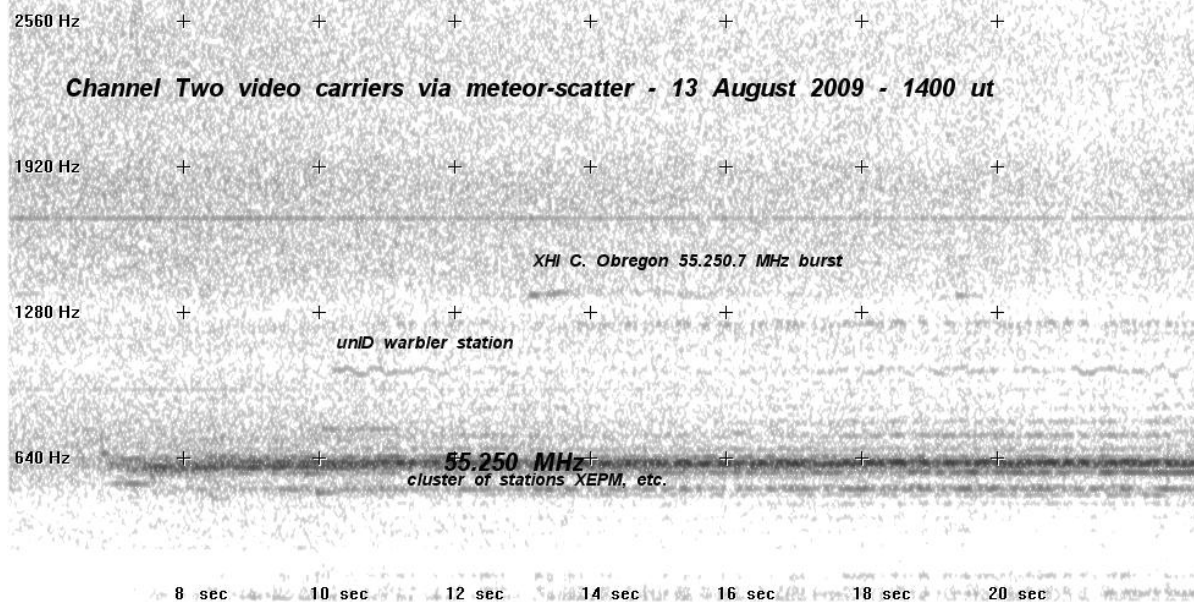
Channel 2 - sequence of large Perseid meteor burst - 13 Aug. 09 - 0650 ut into Keeler, Calif.

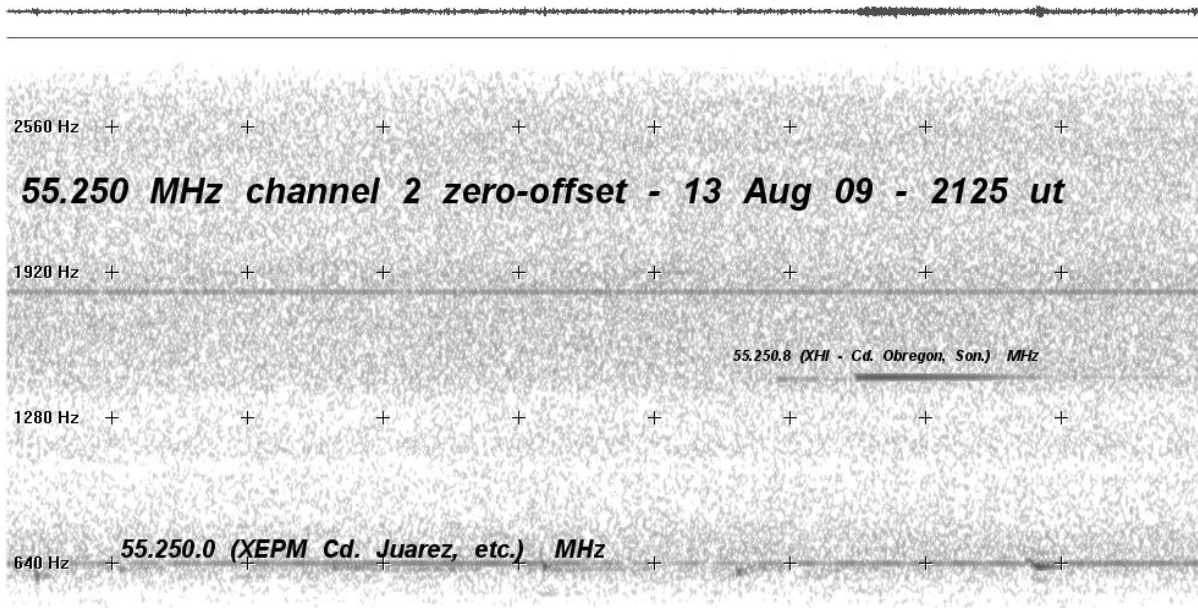
Longer-duration Perseid bursts 12, 13 August 2009!

Channel Two video carriers via meteor-scatter - 13 August 2009 - 1430 ut



Channel Two video carriers via meteor-scatter - 13 August 2009 - 1400 ut





12 sec 14 sec 16 sec 18 sec 20 sec 22 sec 24 sec 26 sec

Amazing spectrograms of meteors on Channel 2 video carriers (Kenwood TS480SAT USB mode).



More Great TV DX Photo/INformation pages Pages:

[Mexican Channel 2 ID-help page](#)

[Todd Emslie's TV DX Photos](#)


[WA5IYX TV-DX Photos](#)

[F2 DX Television Transmitters - amazing F2 TV DX photos page](#)

[The Television DX Photo Page by N0UIH](#)

[George Palmer - Australian TV DX Pioneer](#)

[Christopher Dunne's TV DX photo pages \(excellent!\)](#)

Visits since 25 July 2009: 

This page is written in simple HTML for all to be able to view with ease.

 [Wikipedia Affiliate Button](#)