



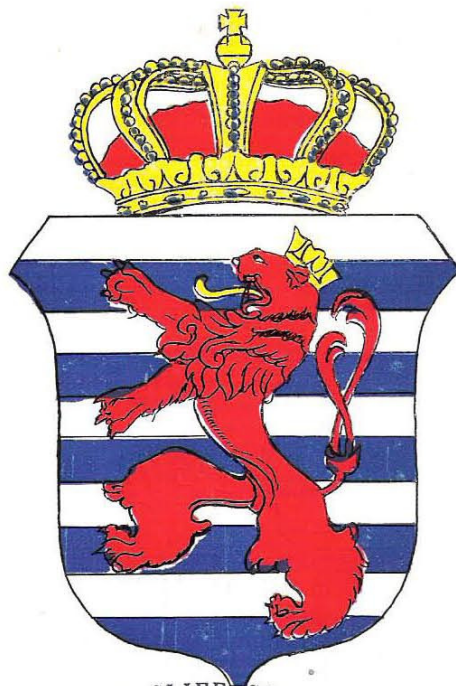
DH  
908  
.A4x

7.3  
11

Aleoch, Gustave, chair

Grand Duchy of  
**LUXEMBOURG**

*Memorial*



BRIAR CLIFF COLLEGE  
LIBRARY

Remsen, Iowa, U.S.A

*Souvenir*

1946

## DEDICATION

To Her Royal Highness Charlotte, Grand Duchess of Luxembourg and to her royal family; to her people who were so sorely wounded by the oppressor; to those who bore arms and otherwise sacrificed so that the cherished Four Freedoms might live, and to those who are carrying on to restore the stricken country and the principles for which she stands, this book is respectfully dedicated.

23412

## *Foreword*

This souvenir book indirectly had its beginning with the visit to Remsen, in September, 1940, by His Royal Highness Prince John of Luxembourg and Pierre Dupong, Luxembourg prime minister and his staff.

The distinguished visitors, on tour of such localities in which dwell Luxembourgers and their descendents in appreciable number, plead for material support of their countrymen who were sorely stricken by the German invader and were left in dire distress.

Immediately after this memorable visit, officers and members of Section 14, Luxembourg Brotherhood of America of Remsen, assembled and organized a local Luxembourg Relief committee.

The committee started immediately the collection of funds which were placed on bank deposit, but because of the fact that the Grand Duchy was temporarily under German occupation and it was clear that funds or material sent abroad at the time were sure to fall into enemy hands, further soliciting was postponed to an expected more opportune time.

That time arrived with the end of the war and the restoration of the Grand Duchy to its rightful rulers.

The Remsen Luxembourg Relief committee then renewed its efforts and immediately gained the almost unanimous support of the people of the Remsen community.

Additional volunteer committee help was obtained for the asking and a house-to-house canvass for funds was made. Some of the solicitors ventured into neighboring towns and cities and everywhere were met with encouragement and substantial support which far exceeded expectations.

The results were of such magnitude that the committee members, feeling that a word of mere thanks was insufficient, decided to issue this souvenir book, which includes advertising on behalf of all patrons who contributed a certain fixed minimum, or more.

All contributed funds, together with profits derived through the sale of the souvenir book will, upon completion of the sale of books and the payment of expenses incident to its publication, be sent by the local committee directly to the government of the Grand Duchy of Luxembourg.

GUSTAVE ALESCH,  
Chairman.

*Members of the Remsen  
Luxembourg Relief Committee*

Gustave Alesch, Chairman

John Keffeler, Treasurer

E. F. Kieffer, Secretary

J. P. Beck

Fred G. Eichhorn

Geo. D. Hagar

Michael Klein

J. P. Ludwig

Martin Ludwig

Jim Mathey

Al. Roder

Wm. Roder

Peter Thill

Nick Treinen

Jos. C. Wilberding

# The Luxembourgers in America

Natives of the grand duchy of Luxembourg residing in this country, as well as their descendants, have demonstrated conclusively their deep sense of patriotism and allegiance to the land of their adoption. Down through the years they have given a shining example of patriotism and loyalty and sacrifice, at the same time retaining their love and esteem for the land of their birth where the first principles of liberty, freedom and independence were implanted in their minds and hearts.

Luxembourgers fully realize that the new land of their choice has been very good to them, and they ascribe fully to the American concept of liberty as proclaimed in this country's Declaration of Independence. They have shown that in their loyalty they are ready to fight, and if need be, die for their adopted land. At the same time their undaunted spirit, enslaved by a savage oppressor but unconquerable and courageous in the face of death itself displayed by their kin in the tiny homeland, fills our hearts with pride. It is therefore but natural that those in this country who call it the land of their birth are greatly interested and concerned in the future welfare of their mother country.

## LUXEMBOURG IMMIGRANTS

It is approximately 100 years since the first Luxembourg immigrants settled in the various parts of the United States and here transplanted their inherited traditions, traits and characteristics. They very readily adjusted themselves to the American way of life and it is today estimated that there are some 300,000 Americanized Luxembourgers and descendants, residing in the United States of America.

It is a proven fact that the Luxembourgers have contributed their share in the building and development of America—of its government, its institutions; its cultural, educational and economic structure. Whenever Uncle Sam called on his citizens for a service, the Luxembourg people responded readily, always eager to do something for the land which gave them the opportunity of rearing their families as free and independent American citizens.

But four score years ago the Indian, the buffalo and the elk roamed the prairie where Remsen stands today. The nearest railway station was Fort Dodge. About that time a caravan of

Luxembourgers started from Dubuque and Jackson county with ox teams for western Iowa. They homesteaded between Remsen and Alton and were the pioneers who laid the groundwork in developing Northwestern Iowa into what it is today.

## EARLY SETTLERS

The period between 1880 and 1900 brought a large number of Luxembourgers directly from the grand duchy to settle around Remsen. These early settlers with their German neighbors and a sprinkling of Irish and Scandnavians ultimately developed this territory into one of the most beautiful and prosperous in the state of Iowa. The mode of living, the promises for the future and the cosmopolitan spirit that prevailed gave to these early Luxembourgers a fraternal inspiration and a feeling of neighborly and brotherly love for the country and for their new neighbors.

In their new field of activity with its problem of establishing and developing homes for their families among a varied people in a strange but promising land made their social contacts events of real happiness and joy. Naturally, those of a common homeland found great pleasure in mingling frequently with their friends from that country, and in time the idea of forming a society of Luxembourgers found a ready acceptance.

## LIKE ATTRACTS LIKE

The many Luxembourgers in Chicago led the way and organized the National Brotherhood of America, which spread throughout the country.

Section No. 14 of the Remsen Brotherhood of America was organized on May 14, 1905, through the energetic efforts of John P. Kieffer and Michael Treinen. It soon won a substantial membership and has flourished ever since. Imbued with a true spirit of Luxembourg fraternalism the members have always been enthusiastic in upholding Luxembourg traditions; they have been loyal citizens, steadfast in their religious duties and substantial members of the community. The outstanding social events promoted by Section 14 are their annual Maifest (May Feast) on the first Sunday in that month, and their annual picnic in August, both of which attract hundreds of people from over the surrounding countryside, and beyond.

## VISIT FROM H. R. H. JEAN CROWN PRINCE

In September 1940 the Luxembourgers of Remsen were host to His Royal Highness, John, Crown Prince of the Grand Duchy of Luxembourg. The royal visitor was accompanied by Prime Minister Pierre DuPong and members of his staff. They were on a tour of Midwestern localities in which dwelt numerous people of Luxembourg nativity and descent.

The visiting group were given a fitting welcome in which the Luxembourgers were joined by their friends and in which the town officials cooperated wholeheartedly. A public reception in the municipal auditorium was attended by hundreds in the immediate territory and many from surrounding communities. Crown Prince Jean and Prime Minister DuPong told their friends of the plight of the little grand duchy which they were obliged to flee when the Germans entered and took over the government and the country as a whole. They related about the crimes committed by the oppressor; the starving condition of the people and the wrecking of the country's governmental, social and economic structure, and pleaded for help to the Luxembourg people, who were sorely in distress.

## BROTHERS IN NEED

Responding to the requests of Prince Jean and Mr. DuPong a local committee was appointed with the aim of collecting funds with which to

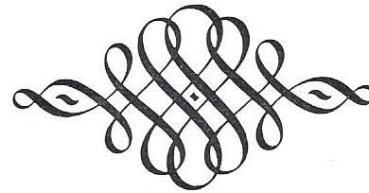
afford the people of Luxembourg as much economic relief as possible in this manner. At that time no one dreamed that the atrocities committed by Hitler's henchmen would reach the proportions that were later reported; that half the territory would be destroyed.

The Remsen committee set to work immediately, gathering funds by degrees until the German surrender in August, 1945, after which the work was pressed forward vigorously. Subcommittees were appointed and a house-to-house canvas was made both in Remsen and in its surrounding territory as well as in nearby towns and Sioux City. The result was astounding: a few declined to give while 99 percent responded with amounts never anticipated.

## THE HELPING HAND

This souvenir book is a result of the campaign for funds for Luxembourg Relief. Through this medium a major portion of the relief money was collected and the work has not been completed. It is now estimated that when the promised money is turned in the total will be surprising and will be a help to many a suffering family in the grand duchy during the approaching winter and which is but another testimony of the spirit of patriotism and generosity that prevails among the Luxembourgers and their friends in the United States of America.

Speaking for those who will thus be benefited, we say, to the supporters of this project, our endless thanks, and may God bless you all!



*"Better to me the poor man's crust,  
Better the blessing of the poor,  
Though I turn me empty from his door;  
That is no true alms which the hand can hold:  
He gives nothing but worthless gold  
    Who gives from a sense of duty;  
But he who gives but a slender mite,  
And gives to that which is out of sight,  
    That thread of all-sustaining Beauty  
Which runs through all and doth all unite---  
The hand cannot clasp the whole of his alms,  
The heart outstretches its eager palms,  
For a god goes with it and makes it store  
To the soul that was starving in darkness before."*

JAMES RUSSELL LOWELL,

*The Vision of Sir Launfal.*





Her Royal Highness, Grand-Duchess Charlotte of Luxembourg

Charlotte, Grand-Duchess of Luxembourg, January 23, 1896, daughter of William, Grand-Duchess of Luxembourg and Marie Anne, Princess of Monaco, of Portugal. On January 9, 1919, she succeeded her sister, Marie Adelaide, to the throne of Luxembourg, taking the oath on January 15, 1919, in the City of Luxembourg, to H. R. H. Prince Vincent, prince of Bourbon de Parme, who was born on September 28, 1893, at Schwarzau. To this union she has borne the following children: H. R. H. Prince Felix, Prince John and Princess Alix, by Colonel Biddle representing General Eisenhower, Mr. Joseph Bech, Minister of Foreign Affairs, Mr. Guill Konsbruck, Minister of Economic Affairs and Mr. Andrew Clasen, Minister of Luxembourg to the United Kingdom.

After a triumphal welcome by the people, the Grand-Duchess returned to the country after her first official visit to the Consultative Assembly on Monday, April 16, 1945.

Eisenhower's personal plane at Sandweiler Airport, the Grand-Duchess was welcomed by Prince Minister Pierre Dupong and other members of the Luxembourg Government accompanied by Mr. George Platt Waller, Charge d' Affaires of the United States of America, Brigadier General Lewis, representing General Bradley, Brigadier General Gower representing General Lee, Colonel Fraser, Chief of the Military Mission and Lt. Colonel Lambert, Deputy Chief of the Military Mission.

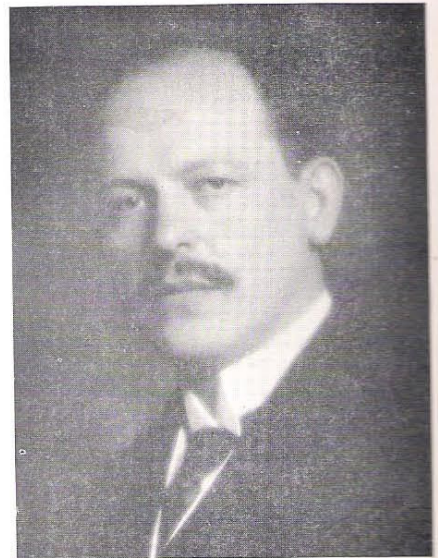
After a triumphal welcome by the people, the Grand-Duchess returned to the country after her first official visit to the Consultative Assembly on Monday, April 16, 1945.



PRINCE JOHN

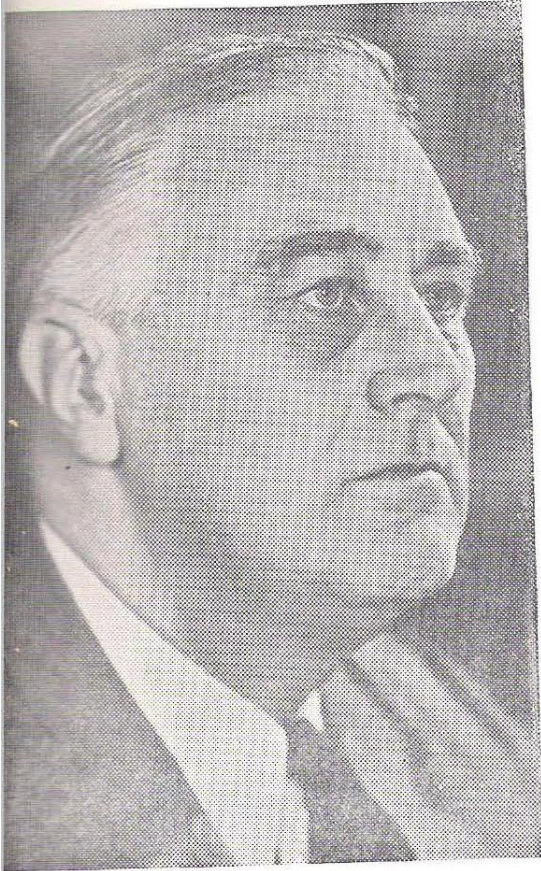


PRINCE FELIX



PIERRE DUPONG

## *Our War Presidents*



FRANKLIN DELANO ROOSEVELT



PRESIDENT HARRY S. TRUMAN

*Your Business*

*Is Appreciated by the*

# FARMERS SAVINGS BANK

REMSEN, IOWA



# Luxembourg In Peace and War

As Germany sank into the night of Fascism, as the talons of murderous reaction stretched out from Berlin into every corner of the world, every fragment of liberty became valuable and significant. Luxembourg constituted such a fragment of liberty.

Thus Luxembourg, the smallest of the European democracies, became the fountain-head of the greatest of constructive ideas—the international solidarity of all working men and women.

Passionately independent, the Luxembourger sits tight to his rights. The land is like the people. The Grand-Duchy has an area of 999 square miles, slightly larger than Plymouth county, and a population which is a little under 300,000.

The Grand-Duchy is an independent and sovereign state with a constitutional monarchy which is hereditary in the House of Nassau and can be handed down to the female line.

## PRESENT RULER

The present ruler is the Grand-Duchess Charlotte, born January 23rd, 1896, the daughter of the Grand-Duke William IV of the elder branch of the Nassau family. She married Prince Felix de Bourbon-Parme. The royal couple have six children—two boys and four girls.

The heir to the throne is Prince Jean who was born in the chateau of Colmar-Berg on the 5th of January, 1921.

No capital in the world is quite like Luxembourg City. It has the pose and poise of Gibraltar; it has a historic charm surpassed by no other city in Europe. After centuries of careful and patient building, its beauty emerges triumphant.

Luxembourg's fighting days are but a memory. What is left of the fortress only remains as a monumental tribute to the military genius of Luxembourg.

The fortress of Luxembourg for centuries was recognized as the most strategic military point in northern Europe. The fortress was built on a solid rock, called the Bock. There exist inside this rock on which Luxembourg is built approximately 18 miles of galleries, tunnels and twisting passages named with the Spanish word, casements. It was impossible to dislodge even a small army of trained soldiers from these casements except by

starvation. During the air raids this stronghold proved a safe shelter even against modern bombs.

## BLESSED LAND

Luxembourg is blessed by nature with much beauty. When the country was under the French rule, it was called the Department of Forests. Even today the mountain chain of the Ardennes is covered with many miles of dense forests. The banks of the Moselle are rich with vineyards which have brought fame to their cultivators. Neat white-washed cottages brighten the long valleys with their lovely variegated gardens, known especially for the beauty and color of their roses. It seems as though the Creator had decided to produce a pocket edition of all the earth can yield, for nearby lie the iron ore mines which are

Luxembourg's main sources of employment and income. Hundreds of acres are covered with orchards; every square inch of soil is cultivated; every kind of agriculture thrives.

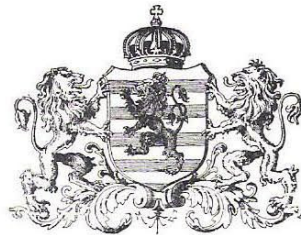
It is, indeed, a blessed land. The mountains of Luxembourg, too, with their deep valleys and rushing torrents, their picturesque scenery, are second to no place in Europe. During the second half of the last century Luxembourg changed from a sleepy provincial country to a modernized state.

The people of Luxembourg are a peace-loving people. They're broad-minded, good natured, deliberate, thorough and frank, almost curt in their manner. They enjoy heaped platters and full glasses. Luxembourgers could even teach a Hitler how much richer, more attractive and constructive are men who embrace the cultural and material achievements of their neighbors, instead of withdrawing into the seclusion of racial purity.

In the course of history Luxembourg has been ruled by Burgundy, Austria, France, Spain and Holland. All these have left traces on the face of the country and on the culture of its people.

## LUXEMBOURG, SELF-SUFFICIENT AND INDEPENDENT

But one thing above all—the people of Luxembourg have learned through all of their history and that is; never to bow their heads. They stubbornly love their democracy, their



BEST WISHES TO THE GRAND DUCHY OF LUXEMBOURG

AND FRIENDS EVERYWHERE

from

## AHMANN LUMBER COMPANY

Lumber, Coal, Building Material

Cement, Fencing, Paints

PETER J. HOMAN, MGR.

REMSEN, IOWA

GREETINGS FROM

## BILL'S GARAGE

Motor Car Overhauling

Repairing

Wrecker Service

WM. REINERS, PROP.

Remsen, Iowa

try and their freedom. Yet these people of the best European democracy love their democracy no less than their native soil and its beauty. Luxembourg's particularly close relationship with the surrounding countries is due to three factors: its geographical position, the smallness of the country and its wealth.

With industrial technique and organization at its present stage, no state of its size could exist a day if it tried to be self-sufficient. This is particularly true of Luxembourg which lies between its age-old enemies, France and Germany, who have so often turned Europe into a battle-

If the world were ruled by reason instead of conflicting interests of large powers, if the will of the many, instead of the wealth of a few, were decisive, this corner of Europe would long have enjoyed peace under a non-profit-making international administration.

If there is one song in the world that has become the symbol of a nation, representing all that is meant by Freedom and progress it is "Feirwon" or "The Chariot of Fire", the national song of Luxembourg. It is better known by its refrain, the country's slogan—"Mir welle bleiwen wat mir sin"—"We want to remain what we are, free and independent, but a member of an ever widening brotherhood of nations."

So Luxembourg is stolidly conservative. How could those words be interpreted?

Next to agriculture, the greatest industry is the extraction and smelting of iron ore. In spite of the small extent of its iron ore territory Luxembourg ranked 7th in 1937 in the steel producing countries of the world. In that year it produced 1.5 million tons of steel.

Radio Luxembourg is one of the most international stations in the world for it broadcasts regularly in nine different languages. It is the second most powerful station in Europe, with only Moscow exceeding it in power. Inside the studios as well as the transmitting station, everything is of the most modern style for the station came into being in 1934. All of the equipment was drawn from the best that is produced in England, America, Germany and France.

## THE FIRST WORLD CONFLAGRATION

Luxembourg, although it has had to acknowledge foreign overlordship many times in its history, had never been under German rule. After

the Prussian War of 1870, Berlin specifically pledged itself not to make use of the Luxembourg railway system for war purposes. In those days

the diplomatic treaties had not lost all value. By a Hague Convention, neutral territory was declared invulnerable.

Then came the summer of 1914. On June 29th, the Austrian heir and his wife were murdered in Sarajevo. Prussian high officials appeared in Luxembourg, steadily growing troop concentrations assembled on the right bank of the Moselle.

The people of tiny Luxembourg looked across their frontiers with increasing anxiety. They knew that they were powerless. They only had a few police officers and about 150 policemen to defend their country against the strongest armed power of the continent.

### "DEUTCHLAND UBER ALLES"

During the night of July 31st, German troops occupied the railway station of Ulflingen in the north of Luxembourg. Just 24 hours later German troop trains stood in the main station of Luxembourg. On August 2nd, Luxembourg was completely occupied by the German Army and their Commander-in-Chief published the following proclamation:

"France has infringed Luxembourg's neutrality and has begun hostilities against Germany on Luxembourg soil. This has been proven conclusively. In view of this emergency, His Majesty, the Kaiser, has ordered German front-line troops, the Ninth Army Corps, to march into Luxembourg."

The last sentence, only, accorded with the facts.

The dream of peaceful progress had been rudely shattered. Europe was in flames. The people of Luxembourg were at a fever's pitch. The General Staff with the Kaiser, in person, and the highest dignitaries of the Reich established themselves in Luxembourg. The thunder of guns roared continuously across the frontier. All of the large factories came under the German War Service Act. All kinds of goods were commandeered and draught animals were requisitioned. The people of Luxembourg clenched their fists in their pockets.

On August 27th, the main German Army headquarters was moved to Luxembourg. No one in Europe, not even the highest staff officers or army commanders, had any idea that the outcome of the war was decided in the week including September 5th to 9th, 1914. Those days saw the battle of the Marne. It was directed from the city of Luxembourg and it was lost.

Greetings and Best Wishes from  
**THE DeKALB ORGANIZATION**

High Test, High Yielding Hybrid Seed Corn



**CLARENCE KEFFELER**

Dealer, Remsen, Iowa

COMPLIMENTS OF

**O. H. HUEWE**

Insurance  
and  
Farm Loans



REMSSEN, IOWA

GREETINGS FROM

**A. J. ERNSTER**

Automobile, Truck  
and Tractor  
Mechanics



REMSSEN, IOWA



When just a few weeks earlier the Kaiser ordered his troops to cross the Moselle, he committed a crime far exceeding in importance the tiny country of Luxembourg, whose neutrality he had violated. The German Kaiser left the domain of Right and had stacked his tiny on Might. Sooner than anyone could have dreamed, Right had avenged itself on Might. The man sword failed on the Marne.

In those days the conflict seemed endless and fortunes of war favored Germany. The economic condition of Luxembourg could not keep pace with the ever growing demands of the High Command. Shortages of raw materials and of essential food products and the rising prices made themselves more increasingly noticeable.

### THE WORKERS REBEL

In Luxembourg the agitation grew. The Luxembourg rebelled. Opposition became more common. Here and there small strikes took place. In November, 1916, 600 metal workers went on strike; in December, 1916, locomotive workshop workers went on a strike; on June 5th the foundry workers went on a strike. Soon ten thousand workers were striking. The storm was brewing. The peasants everywhere rallied to help the workers by furnishing food products for them. The strike spread rapidly and became general.

The workers of Luxembourg, citizens of the best democracy, defied the bristling German Army and the foreign oppressor recognized the importance of this rebellion.

The strike was mercilessly crushed, and the ringleaders were deported to Germany. Many workers were given heavy prison terms. The rulers managed to save face. But Germany could no longer afford to incur the resentment of the Luxembourgers, so Germany changed her ruthless tactics and became far more lenient with Luxembourg.

Now Luxembourg has the honor of being the first country to have a successful general strike in the middle of a World War. From then on the German Army deteriorated rapidly. The Big Four, the Allies, got stronger day by day, and finally Germany had to withdraw her mighty armies, to admit defeat and to sue for peace.

### WELCOME THE STARS AND STRIPES

After the Armistice in 1918, the American Expeditionary Forces were moved forward from the Meuse towards the Rhine. They entered the Grand-Duchy on the heels of the retreating

German Armies. On the 20th of November, General Dickson arrived, followed on the 21st by General Pershing and the 18th Infantry of the First Division of the American Third Army. Before crossing the frontier the Commander-in-Chief sent to the people the following proclamation:

"After four years of violation, the territory of the Grand-Duchy of Luxembourg is now happily liberated. The termination of the German occupation has been effected by the American and Allied Armies as one of the conditions of the present Armistice. It is now necessary for American troops to pass through the Grand-Duchy and according to the stage of advance for their columns to be quartered in the country for a certain period of time.

"The American troops have come into Grand-Duchy of Luxembourg as friends and will act strictly in accordance with international law. Their presence will not be prolonged for longer than is absolutely necessary, and will not be a burden to you. The functions of your government and of your institutions will be in no way encumbered. Your daily life and business will not suffer interference and your personal welfare will be respected.

"It will be necessary for the American Army to have at its disposal certain services such as railroads, telegraphs and telephones as well as perhaps public services to meet the needs of accommodations and transports. In addition, the supplies of materials used will be paid for after a fair assessment has been made. It is understood that you will not commit any act of aggression against the American Army nor give information or assistance to its enemies. You will act always in accordance with the instructions given by the American Commander for the security of his troops and for your own protection.

John J. Pershing  
General Commander-in-Chief  
American Expeditionary Force"

The Commander and his suite were received in the grand ducal palace. It was a picturesque meeting of the new and the old order when the tall American general and the young Grand-Duchess stood on the palace balcony watching the

# F. J. GROFF

HEATING - PLUMBING - TINWORK

NORGE APPLIANCES



Shop Phone 94

Residence Phone 207

Remsen, Iowa

*Greetings*

from the Physicians of the

LE MARS CLINIC



LeMars, Iowa

men step to the tune of their Yankee airs. Luxembourg had turned for a time into a fairyland for the Yankee troops.

### MESSAGE OF GRATITUDE

The following telegram was sent to President Wilson in Washington, D. C., "Citizens of Luxembourg desire to express to you the gratitude of Luxembourg for having given us Liberty. We wish to further express our admiration for the American soldiers who have come to our relief."

Meanwhile Americans of the 2nd army were tramping over the Grand-Duchy on their way to the Rhine without touching the Capital and were everywhere cordially and enthusiastically received.

The European situation was very unstable for the peace treaties had not yet been signed. The Big Four, Lloyd George, Wilson, Clemenceau and Orlando held the future of Luxembourg in their hands.

### "MIR WELLE BLEIVE VAT MIR SIN"

A Luxembourg delegation met with the Council of Four, and by an impressive demonstration conveyed the desire of the Luxembourgers to definitely remain an independent state. Luxembourg for the Luxembourgers was their slogan. They meant by this, not isolation, but that they did not wish to be incorporated into any foreign state.

On September 28th, in a referendum the Big Four decided that Luxembourg should remain an independent state with an economic union with France and Belgium. Many details had to be settled between these countries.

The treaty was finally concluded for fifty years. Relations between Luxembourg, France and Belgium could not have been better. During these critical times, Luxembourg had put forward its right of self-determination and had won. Lasting peace, contentment, and prosperity were in sight for Luxembourg.

### THE WOLF PROWLs

Things were not going so well in the rest of the world, however. Right was losing ground day by day. Leaders of nations failed to realize what was brewing in central Europe. Hitler ruled Germany and with his blustering talk intimidated England and France. Those who held peace and freedom dear were almost in despair. The Treaty of Versailles was ignored. Fascism gained ground by leaps and bounds. Hitler took back the Saar district. Austria was next taken over; then

Czechoslovakia. The ruler of Germany became crazy with power. Other nations objected and warned Hitler, but with him Might was Right, so his armies marched into Poland. Poland defended itself and began begging for help from other nations. At last, England took heart and France soon followed.

For the second time in a quarter of a century a world war had broken out. In the west for almost a year both sides waited. Then in May, 1940, all hell was let loose. On one side by criminals and on the other side by the short-sighted.

### IN SHEEP'S CLOTHING

The people of Luxembourg, like the Belgians, the Hollanders, the Danes and the Norwegians, did not realize the seriousness of their danger. But on May 9th, the blow fell. The Germans invaded Luxembourg for the second time in twenty-five years. The same excuse was used by Hitler that was used by the Kaiser in 1914, that British and French troops were ready to invade Luxembourg and that the Germans had to march in to protect the country.

But this invasion was considerably more terrible than the first one. Parachutists fell from the sky, motor troops clattered madly through villages and towns, bombing planes spread fire from above, dead and wounded lay on the stones beneath smoking ruins in many villages. It was the day of doom and not only in Luxembourg.

### DEATH, DESTRUCTION, MISERY

In no time Hitler's troops had occupied all important points. Enormous masses of troops swarmed across the country. Almost a third of the people had left house and home and had fled. Many succeeded in reaching French soil. Every car and motorcycle was snatched by the Germans. Everything that was not riveted or chained was taken. The soldiers cleaned out everything of value to them in return for which they gave worthless German paper money.

Behind them came the civil authorities, the SS, the Gestapo, corruption and the Gauleiter Simon. The picture changed. Parliament was dissolved, the Constitution was declared null and void, use of the French language was forbidden, the Gestapo was in control. The groans and shrieks of the tortured could be heard everywhere. The horrible details of oppression, the stubborn resistance of the Luxembourger is history. The most determined resistance came from the workers. Their humor and ready wit never left them. They were controlled, impoverished,



There's nothing so satisfying

as a

**Well Tailored Suit  
or Overcoat**

Made to Your Own Measure

Keith Hats

E & W Shirts

Star Brand Shoes

Servus Rubber Footwear

Hanes Underwear

Golden Fleece Leather Coats

North Country Wool Jackets and Mackinaws

Baker's Work Clothing

Holeproof or Cannon Hosiery

Gloves by Sendra

Western Maid Undergarments

Purrey Blankets

Gilbrae Fabrics

Quadruga Prints

Butterick Patterns



**FRANK'S**

"THE STORE THAT APPRECIATES YOUR BUSINESS"

led by spies and agents. Their struggle hopeless but Hitler and all of his agents were able to kill the spirit of the Luxembourg.

## LUXEMBOURG IS TRIED

It was proven beyond any doubt when forced a census in October of 1941. Every man had to give his or her nationality but the blanks of the questionnaire only Luxembourg was excluded as an answer.

The Germans were blind enough to imagine the majority of the people would put their nationality down as German. But 96 per cent in the cities and 99 per cent in the villages put in Luxembourg in spite of intimidation and prohibi-

tion. The small country valued freedom more than all the advantages which might have been gained by belonging to the German Reich. But the Germans did not give up.

The Gauleiter Simon declared clumsily in a speech, "From this day the Grand-Duchy of Luxembourg is a Province of the German Reich. Everyone of its inhabitants is a German citizen subject to military service. The youths between the ages of 18 and 22 will be called immediately".

## THE MASSES RESIST

On the next day the world learned of a general strike in Luxembourg.

Remember, the German Armies were not on the defensive on the East and South. The German dictator had not yet fallen and the German flag was not yet trembling. The workers of Luxembourg dared to take up the fight against Germany's military and economic might. They did this, not merely for bread, but for Freedom. It was their mass protest against compulsory conscription.

The efforts of the Nazis to belittle these acts and to ascribe them to foreign agents were vain. It was useless to hush the matter. Factories were at a stand-still. Peasants refused to make deliveries. The students joined in and so did the workers. A whole nation, led by its workers, stood up against domination by a foreign power. The movement spread into the mining district of Esch-Schifflingen and in a few hours over the whole country.

The Nazis declared a state of siege throughout the country. They began military courts, carried out 20 executions, confiscated property,

deprived many men of their citizenship and organized mass deportation to Germany. The terror machine was in full swing.

On September 8th, the state of siege was ended. The court martials ceased their activities. The strike had been trampled down, crushed even more brutally than it had been twenty-five years earlier. But crushed also was the Gauleiter's lie that the people of Luxembourg wanted to belong to the German Reich or to be part of the New Order.

## HORROR UPON HORROR

Up to now the occupying authorities had tried outwardly, at least, to keep up some pretense of decency. They now vented their wrath and their vengeance on the rebellious people. With every refinement of terrorization they started a transfer of population. About fifty families were visited by the Gestapo each week. The head of the household was given three hours to bring his household into order and to say farewell to his family, his house and his home. All behaved like heroes. No tears betrayed their despair.

Families which were spared deportation were overwhelmed with other calamities. Children were torn from their parents. According to the Gauleiter they had failed to bring their children up in the spirit of National Socialism. The secondary schools were sifted out and the young boys were sent to German training camps. There they were drilled into obedient German subjects.

Perhaps even worse was the fate of the young girls. They were forcibly taken from the shelter of their families and driven beyond the confines, not only of their country, but of their womanly dignity. The mothers in Luxembourg read with horror in the official newspaper that it was an honor for their daughters to share in German national service and to return to their homes as German mothers.

In such a country it is comparatively easy to organize united acts of resistance but regular underground was more difficult because of its size. The young women and the young men of Luxembourg dared everything to escape German rules and the German uniform. They found it extremely difficult to hide. Many of them were captured sooner or later. And yet they kept alive the spirit of resistance.

## THE RED LION

Anyone who helped patriots to escape or provided civil clothes or food for prisoners of war,

*Greetings and Good Wishes*

from

**THE JOHNSON CAFE**

ALT JOHNSON

and

**LUXEMBOURGER CAFE**

MRS. CLARA JOHNSON



Remsen, Iowa

*Compliments of*

**FRANK'S SERVICE STATION**

The Motorist's Friend

**D-X GAS, GREASES, OILS**



CLARENCE FRANK

Remsen, Iowa

wed refugees the secret frontier paths, or led to the new organization called the Red of Luxembourg, did it with the full knowledge of the fact that if he were caught he would go to Hintzert, a concentration camp twenty miles north-east of Trier and that frightful fate awaited him there.

The proudest men of Luxembourg met in the barracks of Hintzert. There were workers, professors, intellectuals and industrialists, priests, students and officers. Their head jailer, Pop Leader George Schaaf, who had been named Ivan, the Terrible, and their senior guard the Wippe, henchman of Barbarism, would be a nightmare memory to his victims, long after Hitler's Reich had crumbled into dirt and long after he and his likes have received their "reward" for their crimes.

Thousands have passed through the hell of war. One of the fortunate ones who was able to escape sent a report to the world. He finished these lines, "My words are written in blood. God strengthen our arms and our hearts for the day of judgement. It will come, the day when He will call them to account. Till then, Brothers of R.L.L., strike and strike hard."

#### THEN CAME THE DAWN

And the day did come. The Americans and British landed in Northern France and in a remarkably short time had chased the Nazis back through France, Holland, Belgium and through Luxembourg. They made a stand on the Moselle at the border of Luxembourg and their territory.

General von Runstedt with his crack troops made a desperate counter-attack and for a little while succeeded in driving the American troops through Luxembourg and back into Belgium. Ev-

ery inch of ground was bitterly contested, but Germany was doomed. With heavy reinforcements and unlimited supplies the American Army defeated the Germans. They retreated through Luxembourg once more, destroying everything by fire and bombs. Fully one-half of Luxembourg was destroyed, but Luxembourg was free and the people thanked God and the Americans for their freedom.

The Nazis fighting spirit was broken. They finally had to surrender to the Allies, unconditionally. Now the Nazi ringleaders who caused such tremendous destruction and such terrible suffering have to stand trial in a world court, and will be punished for their crimes.

Thousands of Luxembourgers had volunteered for the French and Belgium Armies and had fought on the side of the Allies in both World Wars. Many of them made the Supreme Sacrifice. The people of Luxembourg had to submit to mighty Germany, but never did any one of them line up with Germany to win the war for them.

#### THAT IS LUXEMBOURG

That is Luxembourg, only a dot on the World Atlas. Its inhabitants are only a drop in the sea of humanity that is Europe. Its workers are a mere battalion in the million strong army of their class. These people are Europeans in the best sense of the word, as they have shown in this testing time. This country, so tiny in size, is great in the power of dignity of its conviction.

Luxembourg emerges from this war as a small country which the Nazis could not break. Will it receive the reward to which it is entitled?

Humbly they ask Almighty God to permit their homeland to live in a state of peace and harmony as Christian Civilization provides.



Our Best Wishes to the People  
of the Grand Duchy of Luxembourg  
and Friends Everywhere

## OLE'S MARKET

Groceries, Meats, Bakery Goods, Fruits, Vegetables

FEATURING

Del Monte, Richeliue and Monarch Canned Foods; Swift & Co.,  
Armour & Co. and Cudahy Meats; Bunte Bros. Candies



ELMER C. OHLENDORF, ROBERT H. SCHNIEDERS

Greetings and Good Wishes

from

Dr. Frank J. Hussey

D. V. M.



Remsen, Iowa



# Grand Duchy Has Impressive Religious Customs

ously, Luxembourg is definitely Catholic. 300,000 inhabitants there are about Catholics, the remaining 5,000 being Protestants and Jews. Nevertheless the minority has freedom of worship without the least restriction in any form.

Records show that the first Catholic church in the grand duchy was established at Weimer in the year 384, A. D.

Two most important religious celebrations are the Octave during the first week in May, and the Dancing Procession at Echternach on the eighth day after Pentecost. The Dancing Procession has its origin 700 years ago when the grand duchy experienced a serious epidemic of epilepsy, called the St. Vitus dance. All known medical resources were useless to check the disease and as a last resort the people implored the intercession of St. Vitus. The appeal was not in vain; the disease miraculously stayed.

Willibrord was a bishop of the diocese of Utrecht in Germany, to which Luxembourg belonged at that time. St. Willibrord rebuilt the church at Echternach after its destruction during the Saracen wars, and his remains rest under the high altar of this cathedral.

## ECHTERNACH DANCE PROCESSION

The dance is an act of atonement and penance on the part of those afflicted with epilepsy, St. Vitus convulsions, the Luxembourgish in the city of Echternach, what is known as the Echternach Dance Procession. Contrary to the popular opinion that might be gained from the title, the Dance procession is a dignified, solemn religious procedure, the true nature of which is hard to describe because of its religious significance. Religious functions begin at nine o'clock in the morning with High Mass and sermons by the Bishop of Luxembourg, the Abbot of Echternach and other prelates always attend this ceremony.

The dance itself is used as the means of atonement in the procession to the religious ceremony. It consists of three steps forward and two backward, so that five steps are required to cover the distance of one step, and the entire distance of pilgrimage in this manner is slightly more than one mile. It usually requires about

three hours to complete the distance. During this time several bands play continuously, all using the same music. Faithful as the people have been in clinging to this unique custom for 700 years, it is interesting to know that for the Dance Procession the musical score used today is the same that was used in the original celebration, and more remarkable still is the fact that in the grand duchy this music, apparently held sacred to this ceremony, has never been used on any other public occasion.

The major portion, by far, of all pilgrims in the Dance Procession, are Luxembourgers. However, many persons come from across the borders to take part, bringing the total number of pilgrims to as high as 18,000, with as high as 40,000 spectators lining the path of those taking an active part. Only once in these many years, and admittedly for no justifiable reason, has the Dance Procession not been held, and history records that immediately after this failure there was a noticeable increase in the number of cases of epilepsy and St. Vitus dance.

So much for the dance here described. The spirit in which it is performed is for the visitor an abiding memory; it expresses a sincere Catholic faith, an inalienable reflection of gratitude and simplicity of truth.

## EARLY TRIALS

Luxembourg the unknown, the tiny grand duchy hedged in by France, Belgium and Germany, with an almost impregnable rock as its capital, has been attacked again and again, has known all the horrors of successive sieges which have been bravely resisted and has time and again been the victim of marauders as its cities and hamlets were captured and sacked.

In 1666 at the end of 30 years of war in which England, Spain, France, Holland and Germany were the principals and during which the grand duchy was time and again used as a battleground, the misery of its people was intensified by starvation and pestilence which threatened to depopulate the country. In their agony and distress the people, led by the civil and clerical authorities turned to the Blessed Virgin Mary, the Comforter of the Afflicted as their patron saint and in an elaborate ceremony a statue of the

*Greetings, Kind Wishes*



**Dr. J. E. McGOVERN, M. D.**

Remsen, Iowa

*With Hopes for a Bright Future  
Greetings*

from

**The HATZ MARKET**

Meats, Groceries, Vegetables, Fruits

Bakery and Dairy Products

**N. H. HATZ**

**MATHEW HATZ**

Remsen, Iowa

ed Mother was enthroned in the principal church of Luxembourg City. Here the populace continuously offered special prayers of petition for relief. Pestilence and its consequent deaths came to a sudden halt and enormous harvests were reaped soon thereafter, convincing the faithful that their prayers had been heard.

The gratitude of the people intensified their devotion to the Mother of God and ever since, almost 300 years, they have continued their devotion to her at the shrine of the church of Notre Dame in the city of Luxembourg. Each year on the first Sunday of May the solemn octave of the Blessed Virgin is begun in the Cathedral of Luxembourg where the statue of the Miraculous Madonna is exposed on the beautiful votive altar erected three centuries ago.

During the first week in May pilgrims from the grand duchy, Alsace, Belgium and the Rhine province come into the city singly, in pairs, in groups and in processions, continuing throughout the week to worship at the shrine of Mary. As they wend their ways from their outlying parishes the pilgrims lift their voices in song and prayer to the Blessed Mother, invoking her aid and intercession for physical ailments or other forms of distress or for some worthy benefit desired,

and many are the cases on record, supported by sworn statements, that the desired aid was granted.

On the second Sunday the city pays its tribute to the Miraculous Patroness. Solemn High Mass is celebrated by the Bishop of Luxembourg in the forenoon. In the afternoon there is a solemn procession through the streets of the city. In this procession the Catholic grand duchess and her family, the principal officials of the duchy and of the capital city, all societies, schools and churches are represented, as are the mechanics' and artists' guilds, the clergy and the public, forming a magnificent procession through the principal thoroughfares, ending at an improvised altar in the public marketplace. Here the bishop, on behalf of the city and the country, renews the people's dedication to the heavenly Mother and implores her continued protection, after which the procession returns to the cathedral, the Madonna's statue is replaced on the votive altar and the solemn Te Deum ends the festival octave.



**Comforter of the Afflicted . . . .**

Statue in St. Mary's church, Remsen, imported from the Grand Duchy and donated by Mrs. Catherine Scharff, Miss Anna Kieffer and Mrs. Cornelius Wollwert.

The celebration, carried on with profound solemnity and dignity, is beautiful to behold as is its purpose, and those who have been privileged to take part in this religious festivity declare that its full significance cannot be otherwise realized.





Symbol of Service to the American Farmers  
We have a Complete Line of Machinery and Parts

## Peters Implement Co.

PHONE 91

REMSEN, IOWA

# The Progressive Farmers Cooperative Commission

is happy to contribute to the

**LUXEMBOURG RELIEF**

We are happy also to receive shipments of  
livestock consigned to

**THE SIOUX CITY MARKET**

# The Real Luxembourg

BY GEORGE D. HAGAR

THE REAL LUXEMBOURG had its beginning in the 10th century under the Luxembourg Counts of the Ardennes, and remained free and independent as a country until 1443 when it was united with Burgundy. In 1482 it was regained by the Hapsburgs, but passed to the Spaniards in 1555.

In 1684 the French conquered Luxembourg fortress, but were forced to return it to Spain in 1698. It came under Austrian sovereignty in 1714 and remained so until 1795 when it was annexed by France for the second time.

In 1815 at the Vienna Congress Luxembourg was created a Grand Duchy and was united with the Netherlands through the bonds of the same dynasty, in what was termed a personal union. In the year of 1839 its independence was again restored, so from 1890 until 1940 the 300,000 people who comprised the Grand Duchy lived peaceable and Christian lives. It was in 1939 they celebrated their 100 years of independence, only to be driven to strife and desperation when Germany invaded their country in 1940 and with utter disregard for all treaties or rights of justice, and against a nation that was unable to defend itself against aggression, and Germany's second offence in 25 years.

Many lives were lost and homes destroyed in an underground warfare for the freedom in which they believed. Their land was pillaged and citizens were taken as hostages to serve the interests of Germany in any way she chose. Luxembourg never faltered in her efforts of underground resistance, and this God-fearing people had their prayer of deliverance answered on the 10th day of September, 1944 when American troops finally drove the beast from its prey. This reborn freedom has again welded Luxembourg even more closely than ever before, and the love of freedom is personified in the character of their people who have ever been known as peaceful, prosperous and ambit-

ious, and a visit to the flowering vineyards in the Sauer and Moselle valley is convincing evidence that this sturdy race of people once called merry folk have toiled to make their nation fertile. Long hours of toil in the iron ore district in the south and intensive farming in the fertile fields of the Gutland have built character and their belief in God has built the formation of their morale.

Let us hope that the historic flag, The Red Lion, will waft in the breeze henceforth from the historic walls of the old fortress to the width and breadth of the nation. So be.

## THE REAL REMSEN

Written for the Luxembourg May Feast  
by Geo. D. Hagar

We've gathered here to celebrate,  
you're all on friendly ground;  
Cause everybody's luxembourg,  
when picnic day rolls around.

It does not matter who is king,  
or queen or prince that day;  
Cause everybody's luxembourg,  
and all are out to play.

The feast is on, the beer is cool,  
and everyone is gay;  
They're out to greet their neighbors,  
cause we're luxembourg that day.

We'll welcome guests from far and wide,  
we'll kneel with you to pray;  
Come, be a Luxembourger, with us  
just for a day.

And when the boys return from war  
and battles all have ceased,  
We will all, be Luxembourgers for a day of  
prayer and feast.

So be.

*Best Wishes and  
Our Continued Good Will*

**WICTOR HARDWARE STORE**

SINCE 1886

Jos. T. Wictor – Frank R. Wictor – Gilbert Wictor

REMSEN, IOWA

*Compliments of*

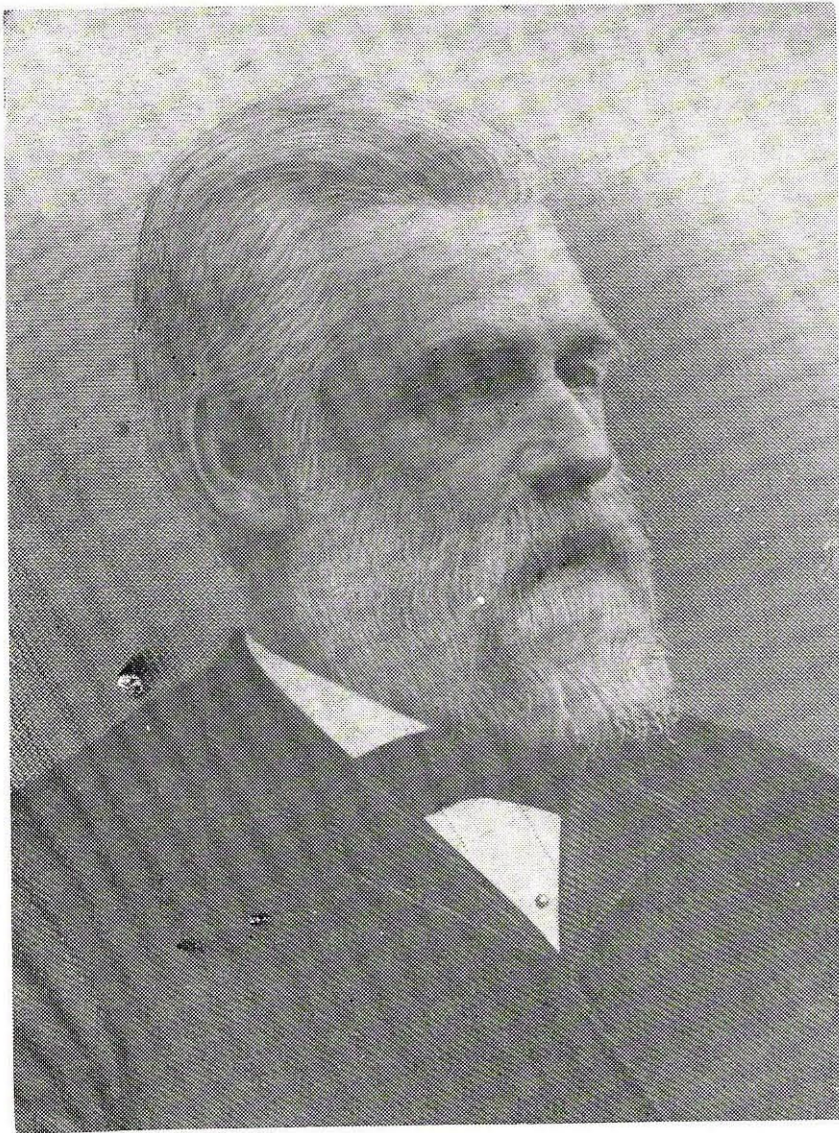
**THE VOGUE THEATRE**

Mr. and Mrs. Allan Banks



The All-year Parade of the Best in Motion Pictures

## *He Gave Remsen Its Name*



**Dr. William Remsen Smith**

Remsen was named for Dr. William Remsen Smith, a pioneer Sioux City physician who became an extensive landowner in this territory. Dr. Smith was a close friend of John I. Blair, the man who had charge of construction here for the Dubuque & Sioux City railway company. Mr. Blair first suggested the name Smithville but Dr. Smith, thinking there were so many Smiths in the world, chose to name the town after his own middle name—hence Remsen.

Dr. Smith came to Iowa from Red Bank, N. J., in 1856. He walked from Council Bluffs to Sioux City since there were no railroads. He became receiver in the U. S. Land Office at Sioux City and became well acquainted with the people settling around the Remsen site where he owned 640 acres of land. In later years he was wont to tell his children of the beauty of the virgin prairie in this area. Dr. Smith left \$300 to the town for the establishment of a library.

BRIAR CLIFF COLLEGE  
LIBRARY

SIoux CITY, IOWA

*The Pioneer General Store*  
**J. P. BECK COMPANY**  
Established in 1882

By Michael Beck, Native of the Grand Duchy of Luxembourg

**In Continuous Operation by Four Family Generations**

**- Present Firm Members -**

J. P. Beck, entered business with his father, Michael Beck, in 1882  
A. M. Beck, Since 1920      H. J. Beck, Since 1939

**Incorporated in 1922**

Member of the Grocers' Wholesale Co. (Briardale Foods) Des Moines  
J. P. Beck, senior member of the J. P. Beck Co., is a charter member  
and member of board of directors.

Member of the Northern Jobbing Co. of St. Paul, of which the  
senior Mr. Beck was an original organizer in 1914.

**Nationally Advertised Brand for More Than 50 Years**

BRIARDALE, G. W. C., TALL CORN FOODS  
MARX-HAAS CLOTHING FOR MEN  
HART SCHAFFNER & MARX CLOTHING FOR MEN  
SHIRTCRAFT SHIRTS  
BOTANY TIES  
MUNSINGWEAR FOR MEN, WOMEN and CHILDREN  
GEORGIANA DRESSES  
ARMOUR & CO. MEATS  
THE BEST IN DRESS SHOES  
WOLVERINE WORK SHOES  
ROSWELLE HATS

**The J. P. Beck Company**  
IN  
**REMSEN - GRANVILLE - POCAHONTAS**



# REMSEN

## PLATTED IN 1876—INCORPORATED IN 1889

Remsen was platted by the Iowa Falls & City Railroad and Town Lot and Land Co., August 28, 1876, but little was accomplished in the way of business until 1881, when Frank Miller put in a general store. The same season C. R. Blake, who erected the Blake House, known as the Monhoven House.

Miller was first to deal in farm implements at Remsen, and the firm of Rathmann & Miller was organized.

The first hardware was sold by John H. Rathmann. The first grocery was started by Samuel Miller. In 1882 a furniture store was opened by Hubert Nothem. Theodore Wrede opened the first drug store: "Doctor" Baker sold a few patent medicines one by one.

Ernest Monner, who is said to have built the first residence, now owned by Charles Peters and occupied by C. M. Myers, also gave the town its first saloon which he kept until the thirsty in 1881.

Wey & Company were the first real grain dealers at Remsen. Townsend Brothers, of Leavenworth, started the first lumber business in the place. Martin Seba kindled the first fire in a smith's forge at Remsen and wielded the hammer at his glowing forge many years. John Scher started the first wagon-repair shop in Remsen. The Bank of Remsen was started in 1885. Two local newspapers were published there—Die Remsen Glocke and The Remsen

### INCORPORATED

In the spring of 1889, Remsen was incorporated. The "History of Plymouth County" records that, "The place was incorporated in order to stop to numerous riots and rough houses which had been uncontrollable without a municipal government. It reached the case, but hastily adds, "A good school was built in 1889 and the beginning of good government and all that makes a town desirable soon followed."

With incorporation necessarily went the first election which resulted as follows: Mayor, Nick Lang; recorder, Edward S. Lloyd; treasurer,

Z. Gilman and councilmen, Michael Scheel, Ham Atkinson, John Fisch, Hubert Nothem, Peter Brucher and George Ebrecht. The postmaster at the time was A. C. Morgan.

### BUSINESS HOUSES

The first general merchandise store in Remsen was opened by Frank Miller in 1882, who later disposed of his holdings to Michael Beck, and moved to California. The extensive store of the John P. Beck Co. is the offspring of Remsen's original store. A little later, stores were opened by Nicholas Kass and Sam Wentz. Stephen Ellsworth was the first grain buyer.

Remsen's first amusement place was known as the Remsen opera house, built in 1885 by Carson Witt and liberally patronized for a number of years.

### JUSTICE OF PEACE

The first justice of the peace was C. R. Baker, and among his successors may be named L. B. Page, Asmus Erickson, H. Jost, J. P. Kieffer, Ed S. Lloyd, Frank Wengler and B. Bunkers. Crime and misdemeanors are and always have been at a very low mark in Remsen and nowhere in the state is there to be found a more law-abiding community.

The first bank in Remsen was opened in 1885 by W. D. Creglow, and two years later the Farmers Loan & Trust Co. was organized. It later became known as the German Savings Bank. In 1902, M. R. Faber founded the Farmers & Merchants bank, which was merged with the First National bank in 1904.

Present banks are the Farmers Savings bank and the First Trust & Savings bank.

Remsen today, in 1945, has 75 substantial business enterprises and professional people, and with its population of 1,200 has nearly 300 fine homes. The business and residential property are well-kept and for its neat and substantial appearance the town has a widespread reputation.

Besides its neat and substantial homes and business places, its well-kept lawns and the cleanliness of its streets which have made Remsen "talked about", the general appearance of the



**NICK LANG**  
First Mayor

Compliments of

**G. G. HUEWE**

JEWELRY  
OUTOMETRIST



Remsen, Iowa

GREETINGS FROM

**DUNN'S  
CAFE**



MR. AND MRS. F. T. DUNN



Remsen, Iowa

GOOD CHEER

from

THE  
**REMSEN  
DRY  
CLEANERS**



Mr. and Mrs. J. E. Elving  
Joseph G. Elving

Here's to a  
Happy Future



**John M. Kennebec**

Breeder of  
SHETLAND PONIES  
and  
PALOMINA HORSES



REMSEN, IOWA



**JOHN KEFFELER**  
Present Mayor

### THE MAYORS OF REMSEN

- 1889-1891—Nick Lang
- 1891-1892—F. J. Jost
- 1892-1893—Sam Wentz
- 1893-1896—M. Scheel
- 1896-1898—Frank Reichmann
- 1898-1899—Nick Miller
- 1899-1903—E. Jorgensen
- 1903-1907—John Fisch
- 1907-1909—Fred Rubie
- 1909-1920—J. H. Ahmann
- 1920-1930—Barney Bunkers
- 1930-1934—J. F. Gamerdinger
- 1934-1937—C. M. Myers
- 1937-????—John Keffeler

wn is enhanced by its paved streets. With the ception of a few blocks in the outskirts, all eets in Remsen are concrete paved, with asalt covering in the business district. There are e miles of paving.

The modern water system extends throught the town as does its sewage system, with the ception of a few outlying blocks which will be us improved in 1946.

Remsen is one of the few Iowa small towns ving its own electric plant. The magnificent ant, built in 1933 and enlarged later for a total st of \$125,000, serves the entire town. In spite low electric rates the plant paid for itself in 11 ars. Its operation is supervised by a board of ists appointed by the mayor and approved by e council, whose direct management is under H. Holtgrewe and a crew of assistants—all me town men.

The \$50,000 municipal building which inades a gymnasium-auditorium used by the pub and the two schools, kitchen, council chamb, clerk's office and public library, was built in 1939.

The Remsen postoffice, with Elmer T. Treir n as postmaster, went into second class two ars ago and according to stamp sales, on the bas of which postoffices are classified, it will reain there for years to come. Clerk in the post- fice is Marcel W. Matgen; sub-clerk is Miss

LaVonne Beelner and the four rural mail carriers are Harm Dirks, Albert J. Haverkamp, S. M. Fidler and John G. Schnieders.

Remsen has a businessmen's organization known as the Commercial Club, active in civic work.

### TOWN OFFICERS

Present officials for the town of Remsen are:

John Keffeler, Mayor  
Councilmen—Clifford A. Dorr, Frank R. Wictor, N. H. Hatz, C. M. Myers and A. D. Ohlendorf.

Clerk—George Wess.  
Treasurer—S. R. Nothem.  
Assessor—N. B. Homan.

Jos. C. Wilberding is the duly elected constable; justice of the peace is Barney Bunkers, former councilman and mayor.

### POLICE

The history of Remsen discloses a long list of faithful police officers, notably the late Henry Niggeling who served for many years, and J. P. Muller, still residing here, but retired.

The present force consists of three trust-worthy men: Leonard Wevik, who came to Remsen in 1929, has been on the force for 10 years and is on duty during the day. Ross Harnack, member of a well-known local family, returned to

*Our Heartiest Good Wishes to*

THE ROYAL FAMILY

AND

THE BRAVE AND VICTORIOUS  
GRAND DUCHY OF LUXEMBOURG



*Our Compliments to*

THE LUXEMBOURG RELIEF COMMITTEE



*Our Pledge of Continued Loyalty*

TO

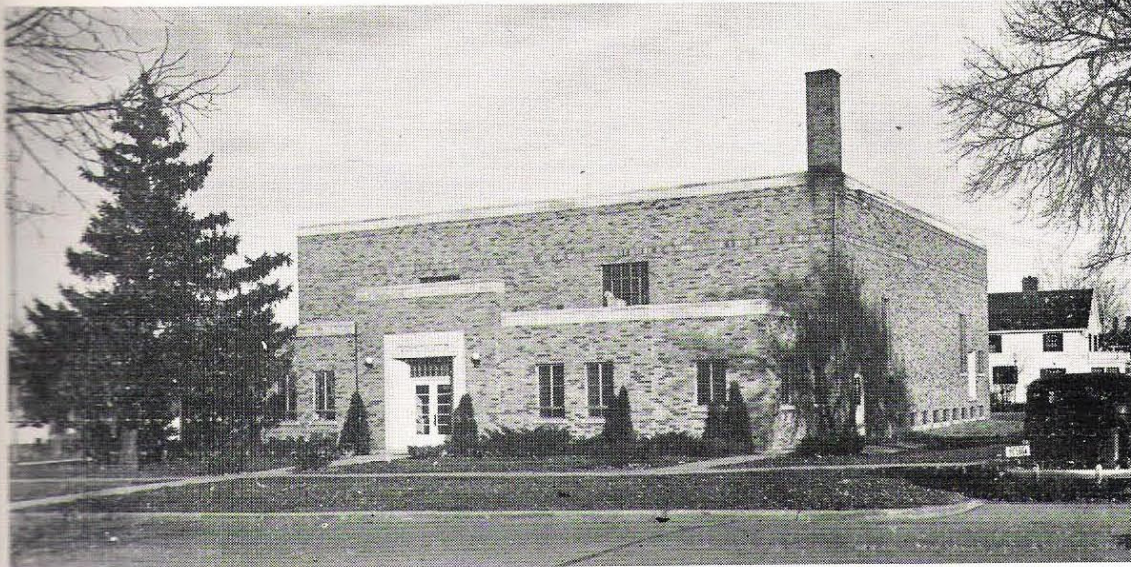
OUR COUNTRY, OUR TOWN, OUR FRIENDS



**McGREGOR BROS. & COMPANY**

Edw. L. Lloyd, Manager

Building Material and Coal



MUNICIPAL AUDITORIUM, GYMNASIUM, OFFICIAL OFFICES

in 1940 after having been on the police in Santa Cruz, Calif., for eight years. He served since 1940 with the exception of from 1942, until October, 1943, when he was on leave of absence to do his bit for Uncle Sam in the army and saw much active service in the African campaign. He is on night duty. Second on night duty is Peter Schuver, who has been in the force since 1942 but who during the war was off duty for several months because of illness and who is now back on duty. The police force serves also in a custodial capacity for the municipal building.

### FIRE PROTECTION

Adequate fire protection is provided by the town of Remsen. Atop the town's foremost elevation is a 75,000-gallon steel reservoir which stores ample water for all homes and which releases water in case of fire and which is supplied by two deep wells with three electric pumps, located on town-owned land north of the town limits.

The fire department, a well-organized and enthusiastic group of volunteers, is equipped with modern motor fire trucks with all accessories including a chemical fire-fighting unit.

Both trucks are used for fire calls within the town. One is used in answering country calls with a radius of six miles. This truck was purchased by popular subscription, with nearly 100 per cent of the farmers subscribing.

The department has been able to cope with emergencies with one exception, the catastrophe of the fire of 1936, which will be retained in the memory of everyone living here at the time. The fire

broke out in mid-afternoon of the nation's birthday, with a brisk wind fanning the flames and in the midst of a drouth period. The fire, starting in the business section, wiped out more than a half million dollars in property within five hours. The fire departments from Alton and Remsen came to the town's assistance but the combined forces of the three departments were of little avail until the blaze met with brick and concrete and steel-sided walls. Simultaneously, a fire disaster was under way in the town of Oyens, four miles to the west, and the Remsen firemen were unable to be of assistance there.

The fire department is the proud possessor of some of the antiquated fire-fighting equipment used a half century ago, most cherished of which is a hook-and-ladder vehicle, fully equipped, hand made many years ago by Theodore Fideler, local blacksmith. This vehicle at the time equalled many a factory-made product in every way.

Present officers of the fire department are:

Chief—Peter Treinen.

Rural Service Chief—Jack Zimmerman.

Assistant Chief—Leslie Peters.

Secretary—James P. Muller.

Treasurer—O. N. Frank.

Other members — Roman Groff, Andy Schmitz, Robert Schnieders, O. H. Nitzschke, Frank Schefstad, Harry Tritz, Jos. V. Fisch, E. H. Holtgrewe, John H. Wiebersch and Elmer Nitzschke.

All members are faithful in attendance of meetings, held once each month in winter and twice monthly in summer when one practice meeting is held each month.

*Compliments of*

F. B. WILBERDING



**DEKALB**

SEED CORN

—and—

**GRASS SEEDS**



Marcus, Iowa

**Burton Parriot**

Attorney



Remsen, Iowa

**N. B. HOMAN**

REALTOR

At Your Service



**REMSEN**

320 East 4th St.

Phone 95

Look to the Future  
and Trade with

**JACK THIEL**

Welding and Car Servi  
New and Used Parts  
Wrecker Service



PHONE 180

REMSEN, IOWA

# The Illinois Central Railroad Guided the March of Progress

is the story of a railroad—the Illinois  
—and its coming to a virgin land—north-

in the time of the first settlement in the  
50's until the arrival of the first Illinois  
train in 1870, there was little development  
valley of the Big Sioux, although there  
attered settlements. This in spite of the  
beauty and the richness of its soil. Beauty  
ness, however, did not make up for the  
n outlet to market, and there was nothing  
come the natural aversion to the fierce  
of the prairie country.

hen the first train chugged and snorted  
into Sioux City from the east in July,  
that was changed. Now there was a  
for the abundant crops of the valleys of  
Sioux, the Floyd and the Little Sioux.  
y lay open to the markets of the east, and  
h county, which had attracted only  
ersons in the fourteen years since 1856,  
an quadrupled its population in the ten  
etween 1870 and 1880 and doubled it  
om 1880 to 1890.

## DUBUQUE & PACIFIC RAILROAD CO.

get back to the coming of the railroad,  
land grant made to the state of Iowa to  
he construction of railroads was approved  
hington on May 15, 1856, and one of the  
d lines was designated to run from  
e across the state to Sioux City. This  
as made to a company called the Dubuque  
fic Railroad Co., most railroads at that  
d for many years thereafter including the  
"Pacific" in their name to indicate their  
n to reach the Pacific coast. The line was  
constructed by the Iowa Falls & Sioux  
ompany, later becoming a part of the  
e & Sioux City Railroad and eventually  
great Illinois Central System, stretching  
e Missouri river to the Gulf of Mexico.

llowing railroad custom, the line from  
alls to Sioux City was begun at both ends  
same time, although it was necessary to  
ails from St. Louis up the Missouri river  
mer to Sioux City. Rails for the eastern  
the work could, of course, be brought out  
hicago on trains to the end of track at  
alls. By October, 1869, the line from Sioux

City had reached Meriden, while the line from  
the east had arrived at Webster City—just over  
a hundred miles apart. When work began again  
in the spring of 1870, stimulated by the flood of  
immigration stirred up by news of the line's  
progress, construction went forward rapidly, and  
on July 27th of that year the eastern and western  
sections of the line met at a point near Storm  
Lake.

As soon as it could be accomplished, stations  
were established all along the line. LeMars, Rem-  
sen, Oyens, Merrill, Hinton and James were  
established in Plymouth county, Remsen itself  
being platted in 1876 by the railroad company  
and named after Dr. William Remsen Smith, a  
prominent physician of Sioux City.

With an outlet for their crops assured, set-  
tlers flocked into northwest Iowa, and the popula-  
tion of Remsen township alone grew from 645  
to 1,271 in five years.

## LIFE-SAVER IN GRASSHOPPER YEARS

The railroad soon showed that it was not  
alone a mover of goods, but that it had other func-  
tions almost equally important. The years between  
1873 and 1879 are still known in Plymouth coun-  
ty as the "grasshopper years", and it was during  
those years that the Illinois Central played its  
new role—that of the life-saver. Driven to des-  
peration by the annual stripping of their crops by  
hordes of grasshoppers, many of the farmers of  
Plymouth county and northwestern Iowa literally  
lost everything and made plans to leave in search  
of a new home in a location not plagued by the  
winged destroyers. Realizing what this would  
mean, the Illinois Central shipped feed, grain and  
supplies into the afflicted section and in addition  
inaugurated land excursions to Iowa from the east.  
These measures, taken in combination, infused  
new life into western Iowa and carried the settlers  
through the hard times.

In those days it was grasshoppers in summer  
and blizzards in winter. Here again the railroad  
shone—this time as the life-line for fuel and food  
for communities isolated by snow-drifted roads.  
It might be pointed out in passing that the Illinois  
Central had still not given up this role entirely,  
as in the terrible winter of 1935-36 when for many  
days during January and February, 1936, Ply-  
mouth county depended entirely upon the "iron  
horse" for its food and fuel.

Compliments of  
**ALLIS CHALMERS**  
**Manufacturing Co.**

TRACTOR DIVISION BRANCH  
Sioux City, Iowa

Manufacturers of  
**Modern Farm Equipment**

—sold by—  
**FALKE MOTOR CO.**

Compliments of  
**BELLMYER**

Chrysler and Plymouth  
Used Car Exchange

SEE US FOR A SQUARE DEAL

Office Phone 57  
Residence Phone 93

**C. J. BELLMYER**  
REMSEN, IOWA

Compliments of  
**Empire Memorials**

MELROSE, MINN.

**JOS. C. WILBERDING**

Local Representative

Telephone 249  
REMSEN, IOWA

**OFFERMAN'S**

REMSEN, IOWA

—for—

**DRUGS, TOILETRIES**  
**GIFTS**

**TOBACCOS, SODA**

**Livestock and Poultry**  
**Remedies**

**Hog Cholera Serum and**



me mention has been made of the land  
ns of the Illinois Central. These excu-  
eveloped originally to stimulate growth in  
thern states, were extended to the western  
the railroad with such successful results  
quote from a book published in Dubuque  
,"The people of the Northwest, and of  
particular, owe the Illinois Central a last-  
of gratitude."

is book, entitled "Through Iowa via  
Central Railroad from Dubuque to Sioux  
a veritable treasure house of information  
thern Iowa of sixty years ago, written in  
very style of Victorian days. There follows  
tion from the introduction to the work:

#### OLDEST—RELIABLE AND SAFE

The Illinois Central Railroad, with its 2874  
track, is not only the oldest, but one of  
t thoroughly reliable and safe lines in the  
A striking characteristic of this company is  
rong determination to develop the towns  
ntry adjacent to their lines, and the efforts  
ward by them to accomplish this result.  
xample, a few years ago when grasshoppers  
astated the country tributary to the west  
the Central's system, and the farmers, dis-  
d and disheartened, were beginning to  
emigrating to some more favored locality,  
nois Central promptly came to their aid,  
nished fuel and feed at low prices, and the  
ng year inaugurated a system of land seek-  
ursions that advertised far and wide the  
er of the soil and the future possibilities of  
at Northwest. People began to visit the  
and in less than two years the price of  
vanced from 300 to 500 per cent."

#### FAMILIAR TO NORTHWEST

he writer of the book enthusiastically pro-  
the names of General Manager E. T.  
General Passenger Agent A. H. Hanson  
sistant General Passenger Agent J. F. Mer-  
ing as familiar to the Northwest as Wash-  
Lincoln and Grant to the world at large.  
ith the completion of the line from Iowa  
Sioux City, and later from Cherokee to  
alls, division headquarters were established  
okee and remained there until shortly after  
hen the Cherokee division ceased to exist  
e lines included became a part of the Iowa  
n embracing all Illinois Central lines west  
terloo. Division headquarters were again  
in 1931, this time to Waterloo, and the

present division includes all of the 1,000 miles of  
railroad stretching west of Chicago—a territory  
larger in itself than the total mileage of many  
good-sized railroads.

#### REACH HIGH PLACES

The names of the men who have served as  
superintendents, chief dispatchers or train masters  
on the west end of the Illinois Central include  
many who reached a high place in the service  
of the railroad. They include such men as W.  
Atwill, formerly chief train dispatcher at Chero-  
road; L. A. Downs, once superintendent at Fort  
kee, who later became vice president of the rail-  
Dodge and in after years president of the Illinois  
Central, and C. F. Duggan, whose rise to the vice-  
presidency included five years as superintendent  
at Waterloo. They know western Iowa from per-  
sonal experience.

Lying like an arm and hand across northern  
Illinois and Iowa, with fingers reaching into Min-  
nesota, South Dakota and Nebraska, the Iowa  
Division of the Illinois Central taps the richest  
food-producing area of the world. No railroad in  
the United States passes through a territory pro-  
ducing a greater variety of the necessities of life  
than does the Illinois Central System. Beginning  
with the fisheries and rice fields of southern  
Louisiana, traversing the great cotton-growing  
area of the Mississippi Delta, through the coal  
fields of western Kentucky and southern Illinois,  
to the great steel mills of Chicago and west  
through the "bread-basket of the nation" with its  
corn, hogs and dairy products to terminate at the  
great meat packing cities along the Missouri river,  
the Illinois Central truly "has everything."

#### SERVES FINE COMMUNITIES

There are no cleaner, more prosperous com-  
munities on the lines of the Illinois Central than  
the towns of western Iowa. Sioux City, gateway  
to the grain fields of the Dakotas; Remsen, live-  
stock selling and feeding center, with its fine  
municipal auditorium; Cherokee, retail hub of a  
rich farming district; Storm Lake, beautiful city  
on one of Iowa's finest lakes—these and many  
more create a steady flow of rail traffic that places  
Iowa high as a revenue producing state.

The Illinois Central is proud to serve west-  
ern Iowa, proud of its record of 75 years as the  
route to market to the "cattle and hog belt" and  
proud of the thrifty, progressive Americans who  
have provided the traffic that has made the service  
possible.

*Our Best Wishes*

KRAMER'S

COMPLETE

FOOD STORE



Meats, Groceries,

Bakery and Dairy Products



GEORGE W. KRAMER

CYRIL KRAMER

Remsen, Iowa

*Oldest Luxembourger Resident  
of Remsen*



**PETER THILL**

Having settled on a farm in the Remsen vicinity 65 years ago, Mr. Thill is the oldest Luxembourger, in point of residence, in the community. A charter member of Section 14, Luxembourger Brotherhood of America, he has always been faithful in attendance of meetings, is an office holder and one of the section's loyal members.

OUR CONTINUED GOOD WILL  
AND COMPLIMENTS TO

THE GRAND DUCHY  
OF LUXEMBOURG

and

the Luxembourgers of Remsen



We thank the many who showed their  
good will toward us while operating the  
Myers Cafe, before and since.



Mr. and Mrs. C. M. Myers

*Greetings*

from

THE

LANG  
SERVICE STATION

STANDARD OIL  
PRODUCTS



Joe Lang, Prop.  
Remsen

GOOD WISHES

from

RAY BAACK

Painting

Decorating

Paper Hanging



LeMars, Iowa

OUR COMPLIMENTS

to

LUXEMBOURG

and

REMSEN



Clara Owen's

Style Shop

and

Tots & Teens Shop  
LeMars, Iowa

# The Remsen Public School

Some of the early records of the Remsen independent school district apparently were lost. Continuous records on hand at present in the office of Secretary O. H. Huewe date back only to 1900. However, there is a record of the first students to graduate. This was in 1897 when four students received diplomas—Henry Lindemann, Fritz B. Noethe, Edward Hoeck and Lucy E. Gering. Since then many have received their honors and gone forth into the worlds of commerce, agriculture and the professions.

The first school building was a small frame structure which was wrecked by the tornado of 1894. Another frame building took its place, but in 1911 the present brick structure, modern in every respect, was erected.

In 1900 the officers were: Theodore P. Scott, president; Nicholas Kass, secretary, and Frank Spiecker, treasurer. Teachers that year included: John Vanderwicken as principal, and Fritz Koenig, Dell Conner, Anna Donahoe and A. Johnning.

In 1902, Hubert Huewe was the new treasurer of the school district, and R. T. Scott joined the teaching staff as principal. The next school year brought in Katie Neumann and Rosa Peters as teachers and three school directors: P. Scott, John Groth and Charles Rosburg.

## DISTRICT OFFICERS

In 1904, John Groth became president of the district, and new teachers added to the staff were William Hays, principal, Emma Cook, Anna Kieffer. A record was kept of 1905, but in 1906 the new teachers were William H. Branch, Marie Bergsma and Dot Earnest.

Directors of the school district in 1907 were John Groth, Henry Ahmann, Theo. P. Scott, Charles Rosburg and Peter Lauters. The teaching staff was comprised of J. H. Wescoat, principal, Mary Harnack, Anna Kieffer, Annie Donahoe and Dot L. Earnest.

## PRESIDENT SCOTT

Theodore P. Scott was president of the school district in 1908, and the rest of the staff remained the same. In 1909, Theodore Moeller and Dr. Jastram joined the force of directors and Elizabeth Schneider, Emma Lang, Elizabeth Kass and Mary Cocklin became the new teachers. Emma Atkinson was added to the teaching

staff in 1910, and 1911 brought several changes. Peter Arens and Frank Wengler were elected directors and Prof. F. E. Stamper, Maria Wiese, Emma Harms, Regina Wenner and Janet Grieve replaced the old teaching staff. New teachers in 1911 were: Eva Wagner, Elizabeth Kass, Clara Homan, Mae Cocklin, Margueritte Ulrich and Alice Minten.

## NEW TEACHERS

In the school year of 1912, Elsie Williges, Mayme McCoy, Lily Stortz and Alice Minten were new teachers. In 1913, C. J. Ahmann was elected new secretary of the district, and M. A. Mieras elected treasurer. Directors that year were L. H. Harnack, Frank Wengler, Charles Rosburg and Peter Lauters. New teachers were Justice Georges and Flora Hewicker.

George Kramer and Henry Feller began services as directors of the school board in 1914, and the next year Lillian C. Kramer was added to the teaching staff. In 1916, M. H. Niggeling was appointed treasurer of the school district to fill the resignation of M. A. Mieras. New teachers that year were Eleanor Niggeling, Marion Cooley and T. B. Ryan.

## 1917 STAFF

President of the school district in 1917 was F. A. Sievers, while Henry Feller became one of the directors. The teaching staff that year included: Gregory Edres, T. B. Ryan, Lillian C. Kramer, Marian C. Cooley, I. K. Sweeney, Justine Georges, Mayme McCoy, Frances Hoffman.

George W. Schroeder was elected president in 1918, and John A. Johnson was added to the staff of directors. The next year M. H. Niggeling resigned as treasurer and Frank Spiecker was appointed to the position. U. J. Barbel served as superintendent that year, and Elsie Williges as principal. New teachers were Mattie Kollmansperger, Mae E. Monnett, Catherine Whalen, Sylvia Lukenbille, Edna Sorenson and Frances Hoffman.

## NEWCOMERS TO STAFF

M. H. Niggeling continued to serve as treasurer in 1920, and new teachers were Belle B. Andrews, Charline Shelp, Henriette C. Steiner, Mabel Schroder and Elta Santner. In 1921, B. R. Haroff, Irene Mathis, Delia Mulder, Ethel Schro-

# FIRST TRUST & SAVINGS BANK

Established 1887

REMSEN, IOWA



Member Federal Deposit Insurance  
Corporation

Mrs. Florence Keeton and Marcelinda Alesch were newcomers to the teaching staff.

Directors in 1922 were: G. W. Schroder, L. Homan, Henry Feller, Peter Lauters and Chas. Finen. Teachers included: E. W. Reading, superintendent; James W. Burns, Elizabeth Speidel, Abel Schroder, Nelle Cullen, Marcelinda Alesch, Abel Schroder and Ruth Reily, teachers.

#### PRESIDENT IN 1923

President of the school district in 1923 was H. Jastram. New director was Frank Wengler, while Anne Kramer, Adelaide Lloyd and Olivia Lauters were among the new teachers. In 1924 James W. Burns became superintendent of the Remsen school, and Frank Whaley, Lillian McEdden and Edna Martini were newcomers to the teaching staff.

Three new teachers—Elsie Knapp, Olivia Lauters and Helen Ocker—came to the Remsen school in 1925, and were followed the next year by Nelson Arnold and Grace Williams. A new director in 1927 was M. M. Gripenburg, while Edith Anderson, Ella Moeller and Wilma Gunsell were newcomers to sign teaching contracts.

#### STAFF OF 1928

Dr. A. H. Jastram continued as president of the district school board in 1928, and C. J. Ahlmann and M. H. Niggeling continued to perform their duties as secretary and treasurer, respectively.

Directors that year were Dr. A. H. Jastram, Peter Lauters, L. S. Homan, Henry Feller and M. M. Gripenburg. The teaching staff was comprised of: J. W. Burns, superintendent; Lena Gemmiller, Edith Anderson, Nelson Arnold, Ella Moeller, Olivia Lauters, Adelaide Lloyd and Wilma Gunsell, teachers.

The staff remained the same in 1929, but in 1930 two new directors—F. C. Stearns and Edward Lloyd came in, as did four new teachers: Margaret Goodwin, Elizabeth Amlie, Inez Hauff and Ruth Eichhorn. O. H. Huewe was elected secretary of the board in 1931, and George C. Schultz was appointed new principal.

#### FURTHER CHANGES

In 1932, Genevieve Ferris, Helen Hunter and Gladys Willenburg were added to the teaching staff. No other changes were made until 1934 when Dr. J. E. McGovern became a new director and Melva Zeller and Elizabeth Melson began teaching. The next change came in 1936, when Rosalia Mansheim and Theda Jane Childs signed their teaching contracts.

In the school year of 1936-37, Principal Paul Grier was added to the staff, as were Irene M. Blount and Dorothy Lenore Carritt, teachers.

Last school year Anne Bechtelheimer began teaching here and the rest of the staff remained the same.

Dr. Jastram remained as president in 1938-39, O. H. Huewe as secretary and M. H. Niggeling, treasurer. The teaching staff was: Superintendent J. W. Burns, Principal Paul Grier and teachers Rosalia Mansheim, Dora Nykvist, Robert Mecklenburg, Irene Blount, Gladys Willenburg, Adelaide Lloyd and Anne Bechtelheimer.

#### PRESENT STAFF

After 23 consecutive years Dr. Jastram remains president of the board of education; Mr. Huewe still is secretary and Mr. Niggling is the treasurer. All have given long and faithful service. With Dr. Jastram as chairman are the following board members: Edw. L. Lloyd, L. S. Homan, Harry Duggan and Elmer H. Holtgrewe.

Present instructors are: Supt. Earl R. Stephenson, Mrs. Thelma Walker, Paul Deist and Miss Marjorie Lang in the high school, and Mrs. Stephenson, Miss Eva Myers, Miss Dorothea Becker and Miss Mary Frances Murphy in the grades.

Dora Boers, Mary Rose McCartan and Edna Landseidel joined the staff in 1940. The following year Mrs. Clifford Dorr taught to fill a vacancy as she has done several times, always dependable and willing to help in an emergency. That year also brought Mr. and Mrs. Earl R. Stephenson to the school, the former as superintendent. Others to join the staff in 1941 were Norma Jean Fuesler and M. A. Sargent.

In 1942 the new teachers were Genevra Mathey, Martha Seymour, Eva Myers, Dorothea Becker and Mrs. Stephenson, and in 1943 five new names appeared in the list as successors to as many who resigned—Pearl Simms, Lester Jenkins, Mrs. Joe Hey, Jr., Ira F. Vail and Mrs. Omar Schmidt.

In 1944 Miss Marge Lang accepted a high school position, as did Mrs. Thelma Walker, who formerly resided here and who returned to fill a vacancy while her husband served overseas in the army medical corps. This year, 1945, as successors to two of the 1944 staff, Miss Mary Frances Murphy and Paul Deist are included in the corps of instructors.

The district has a modern brick school building, is well equipped with up-to-date Home Economics and Science departments and a valuable library. The athletic department uses the municipal gymnasium and boasts strong boys' and girls' basketball teams coached by Mr. Deist and Miss Myers, respectively.

Greetings, Best Wishes from  
The Man Who Can Sell Real Estate



## FRED G. EICHHORN

He has been successful in business ever since he started.

His Business Platform Is **Straightforwardness** That's Why He Has Been Successful

He SELLS farm and city property. The scores of farms which he has for sale are located in Iowa, Minnesota and South Dakota.

IN BUSINESS 40 YEARS  
SPECIALIZING IN REAL ESTATE 34 YEARS  
IN  
Remsen, Iowa

Greetings From

## DORR'S PRODUCE & FEEDS

LIVESTOCK FEEDS AND REMEDIES

Poultry, Cream, Eggs

ESTABLISHED IN 1934



Clifford A. Dorr, Proprietor



# Saint Mary's School

In 1887, even before the town of Remsen was incorporated, St. Mary's was established. The parish had been organized six years earlier under the leadership of Rev. J. Gilchrist, who lived at Marcus and came to Remsen to take care of the spiritual needs of the people. Despite the fact that these pioneer Catholics met with frequent reverses, they tenaciously clung to their faith. Their first church, three years after it was built, was destroyed by a tornado.

Undaunted, the parishioners immediately built a new church under the direction of Rev. Father F. X. Schulte, who had succeeded Father Gilchrist and who became the first resident pastor. In 1887, one year after the dedication of this second church, which was somewhat larger than the first, the first parochial school was opened.

This school consisted of one room directly under the choir loft in the newly dedicated church. Drop doors, so devised that they might be hooked up on Sunday, separated the body of the church from the improvised school. Ingenuous carpenters contrived to turn church pews into desks by attaching drop leaves to the backs of pews. A table served as a teacher's desk. Herman Anthe was engaged as teacher, and St. Mary's, Remsen's Catholic school, had begun. The interest and enthusiasm of the Catholics in the religious education of their children is evident from the fact that the enrollment for the first year was forty.

## FIRST SCHOOL BUILDING

One year later, in 1888, a \$4,000 school was erected. This building, which was 36x62x20 feet, stood north of the site of the present school. It consisted of two stories, four rooms on first floor, and four rooms on the second floor.

The education of the children was then entrusted to the Sisters of Saint Francis, Dubuque, Iowa. In September of that year three Sisters, Sister Mary Colette, later the Mother General of the Order, Sister Mary Angelina, and

Sister Mary Humiliana took up their residence in the unoccupied rooms of the new school. Of these, the first two were the teachers, and the latter did the domestic work. Because of the large enrollment a third teacher, Sister Mary Blondina, was added to the staff after the Christmas holidays. The course of study at this time included Religion, English, German, reading, arithmetic, civil government and drawing. Geography and United States history were soon added.

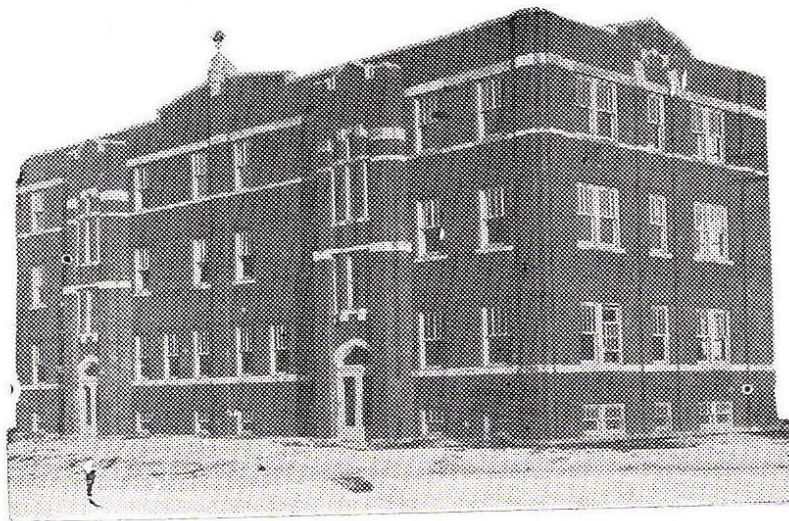
The school was not graded. According to the prevailing organization, a pupil remained in the first room until he had arrived at a certain age. He then automatically was promoted to the next room, where again he spent a specified time. When the pupil had attained the age of twelve or thirteen, the age at which he also received his first Holy Communion, he was graduated.

## CONVENT HOME

The enrollment of the school steadily increased and it soon became necessary to open more school rooms and to add to the faculty. This condition necessitated the building of a home for the Sisters. Accordingly a nine-room convent was built south of the school. This was connected to the school by a small passage way so that the Sisters could go to and from school without going out of doors. On the second floor a small chapel was provided for the Sisters.

Then all the rooms in the school building were used for classes except two rooms on the second floor which were retained as dormitories for boarders. In September of the year 1902, Sister Mary Petronella (Wienieke) introduced the ninth grade with a view of having pupils qualify for a teacher's certificate. The next year another grade was added. In the spring of 1904, three pupils, Elizabeth Kass, Laura Bruecher, and Clem Ahmann, were graduated from the two-year high school course.

In the fall of 1905 another year was ad-



ST. MARY'S CONVENT HOME

Greetings and Compliments

- of -

THE  
MOELLER  
FURNITURE CO.

*Furnishers for the Complete Home*

REMSEN, IOWA

the school course and consequently in 1906 there were no graduates. The first class to be graduated from the three-year course were Regina Herber, Dorothy Meinert, and Albert Kass. Sister Mary De Chantal took charge of the school in September of 1907. Though there were still only twelve pupils and but one room and one teacher for the high school, she, nevertheless, introduced second year algebra and geometry. It was not until 1910 that another teacher, and then only a part-time teacher, was added for high school.

### NEW BUILDING

After the original school had served the town for twenty years, it was condemned as a trap. And again the people gave generously and made possible the erection of the present school building, which occupies the south-west corner of the St. Mary's Church block. This building is a two-story brick structure with, originally, six classrooms and a large hall on the second floor; six rooms and connecting wardrobes on the first floor; and two class rooms, a large dining room, kitchen, boys' and girls' toilet rooms, and a boiler room in the basement. Not all the rooms in the building were at once used for school purposes, but additional space was provided for the probable growth of the enrollment. Two of the rooms on the second floor were used as dormitories for boarders.

September of 1910 marked the opening of school in the new building. This was a definite step forward in the history of St. Mary's school. The new building provided book-cases for increasing library and a science room was constructed for the newly purchased \$200 worth of science equipment. Previous to this, science equipment existed practically only in name for the sum of such apparatus was a tall jar and an ext- pump—and these were the property of the school.

Interest was immediately aroused in the extension of the library. The pupils took an active part in the campaign for more books. Programs were sponsored to raise funds, and one year the school alone succeeded in collecting more than \$300 for book purchases.

The course of study was again enlarged during this memorable year. Physiology, botany, and home economics were included. Since the fourth teacher was added at this time, the class which would have been graduated in 1910 was retained and the class of 1911 was the first to be graduated in the new school. There were seven members in this class: Mae Kelley, Elizabeth Nothem,

Blanche Sudtelgte, Ida Sudtelgte, Justine Georges, Edward Brucher, and Henry Kass.

Four years later, in 1915, home economics was introduced. The following year bookkeeping and solid geometry were added. In 1918, through the influence of L. S. Homan, one of the first parochial school graduates, arrangements were made with the Remsen public school for the junior boys of St. Mary's to enroll in manual training class at the public school, thus saving the expense of duplication of equipment and of teachers.

A third teacher was added to the regular staff in 1920. The next year, Mr. Stephen Foster, State Superintendent and Inspector of Schools, visited the school with a view to accrediting. Equipment and classes were found satisfactory. The accrediting was delayed until the fourth year was added the following year. Mr. Foster urged parents as well as pupils who were finally convinced that all pupils must attend four years in order successfully to complete the high school course.

### AN ACCREDITED HIGH SCHOOL

The class of 1922 was the first, then, to be graduated by receiving credits which entitled them to enter any state institution of higher learning. Members of this privileged class were: Margaret Wictor, Callista Ahmann, Monica Dalhoff, Cecelia Dickmann, Florence Greenen, Sybella Wellendorf, George Foxen, Clarence Groff, Clarence Offermann, and Edmund Treinen.

By 1924 the enrollment had increased to such an extent that all the rooms in the building had been converted into school rooms. Each grade was taught in a separate room. Even the basement class room and the large hall had to be turned into school rooms.

As the enrollment increased, and as the teaching load was also proportionally increased, an arrangement was made for the junior girls to enroll for home economics at the Remsen public school.

### STUDENT ACTIVITIES

In 1934 the first glee club was organized; the following year uniforms for the high school girls were introduced.

The fourth high school teacher was employed in 1933. Each year more equipment in the various departments and more books were added. In 1936 the library was reorganized. The same year the senior class of the high school published the first volume of St. Mary's Hi-Lite, the school

*Greetings from*

**WARFIELD  
DISTRIBUTING COMPANY**

Distributors of

**OLD STYLE LAGER BEER**

**Sioux City, Iowa**

*Best Wishes from*

**DON DISTRIBUTING CO.**

**BUDWEISER BEER**



218 Douglas St.

**Sioux City, Iowa**

al. It was also during this year that the high school for the first time entered the diocesan contests in the declamatory and extemporaneous divisions.

In 1939 the high school was received into the dignity and became a member of the DUCAM, a national union of all Catholic Action groups under St. Mary. The first president of the High School Dignity was Ethel Kestel '39. In 1941 the Sodality was host to the DUCAM in the annual spring convention which brought about 2000 sodalists from Remsen for a gathering in honor of the Blessed Virgin.

In 1940 crowded conditions made it necessary to convert the school auditorium into classrooms. Rt. Rev. Msgr. M. A. Schemel planned and directed the partitioning of the auditorium into five rooms, two on the west and three on the east, with a corridor between. The north rooms provided a science laboratory, a classroom, and a commercial room furnished with fifteen typewriters, Remington and Royal; the west room, senior homeroom and a library.

With the introduction of commercial courses in 1940, a fifth teacher was added to the faculty.

### ATHLETICS

The athletic program of St. Mary's had always been limited by lack of gym facilities. In 1940 the new Remsen Municipal Hall was made available for St. Mary's pupils on alternate days of the week, and from then on basketball teams had definite practice schedules. Rev. Father Friedman, present coach, Clarence Bunkers '26, Elmer

Treinen '26, and Harold Weis are to be commended for their efforts to build character through sports.

The launching of a new project, the S.M.H. Reporter, the school paper, was a marked achievement of the year 1944-45. The girls enthusiastically approved the change from the one-piece blue uniform to white blouses and jumpers.

### WHEN WAR CAME

St. Mary's School took an active part in the war effort. The pupils sold bonds and stamps in school, the total sales purchasing a jeep and an ambulance. Eighty-seven of her graduates are enrolled in the armed forces. Richard Treinen '40, the first St. Mary's alumnus to lose his life for his country, was killed in an air plane crash. The only St. Mary's boy to die on a foreign battle front was Roman Kosse '42, who was killed in action February 1, 1945. The third casualty was Walter Ruden '39, who was killed in an air plane crash before an assignment overseas.

### THE RECORD

The record of the achievement of the people of St. Mary's parish in providing a Catholic education for their children from the humble beginning in 1887 to the present day notes the graduation of forty classes, the first being the class of 1904. There have been 564 graduates, 359 girls and 205 boys, among whom are priests, sisters, and men and women in the various professions, each working in his own field for the greater honor and glory of God.



Greetings and Good Wishes from

**HENRY FALKE**

**POWER FARM IMPLEMENTS**  
THE ALLIS-CHALMERS LINE  
**FORD MOTOR CAR AGENCY**  
REPAIRING AND OVERHAULING

**Member Town Council 22 Years**  
During these years the town built its  
—Municipal Electric System, Paved All  
Streets, Installed Water System and  
Sewage Disposal System

**Director Farmers Savings Bank**  
32 Years

**Manager Remsen Tank Line**  
**Company 32 Years**  
Present Office Headquarters

**Member Christ Lutheran Church**  
41 Years  
Present Chairman of Board



IN BUSINESS HERE 41 YEARS AND STILL OPERATING, AT  
**Remsen, Iowa**

**BEST WISHES**  
**FROM YOUR CO-OP**





## Remsen and Oyens

### *Military Honor Roll*

Ahmann, Casmir  
 Ahmann, Donald  
 Ahmann, LeRoy  
 Arens, Melvin  
 Arens, Oswald

Baack, Ray  
 Baker, Clarence  
 Baker, Roscoe  
 Baker, Victor  
 Barthole, Jack  
 Barthole, Ray  
 Baune, Joe  
 Beck, James  
 Beck, Harry  
 Beck, Herbert  
 Beckman, Wm.  
 Beelner, Roman  
 Bellmyer, Milo  
 Bentz, Darrel  
 Bentz, Floyd  
 Bentz, Kenneth  
 Bentz, Lester  
 Bentz, Wm.  
 Bloom, Gilbert  
 Bock, Harold E.  
 Bode, Carl  
 Boever, Donald  
 Boever, Maurice  
 Bogh, Elmer  
 Bohlke, Milo  
 Bohnenkamp, Francis  
 Bornhorst, Clarence  
 Bornhorst, Sylvester  
 Bottjen, Carl  
 Brandes, Henry  
 Bunkers, Cletus

Bunkers, Roman  
 Bunkers, U. H.  
 Burns, James  
 Busch, John

Chancellor, Earl  
 Christoffel, Henry  
 Christoffel, Ray  
 Christophersen,  
 Henry  
 Christophersen, D.  
 Clark, Mike  
 Colling, Carl  
 Collins, Glen  
 Cook, Clark  
 Cronin, Lloyd

De Lay, J. J.  
 Delperdang, Al.  
 Delperdang, Cletus  
 Delperdang, Kenneth  
 Delperdang, Marion  
 Delperdang, Merland  
 Delperdang, Milton  
 Delperdang, Wm.  
 Diederich, Francis  
 Diederich, Joe  
 Diederich, Norman  
 Diekman, Ralph  
 Dominick, Joe  
 Dorr, Eugene  
 Dorr, Lewis  
 Dorr, Martin

Eisenbraun, Arnold  
 Elving, J. G.

Faber, Bob  
 Faber, Lester  
 Faber, Matthew  
 Feller, Arnold  
 Feller, Ray  
 Foss, Dr. Robert  
 Frank, E. H.  
 Frank, Leander  
 Frank, Valerius  
 Frasch, Filmore  
 Frederes, George

Galigan, Wm.  
 Galles, Louis  
 Gapp, Robert  
 Gengler, Al.  
 Gengler, Chas.  
 Gengler, Joe  
 Gordon, John J.  
 Graff, Kenneth  
 Grage, Raymond  
 Gramke, Melvin  
 Groepper, Harry  
 Groff, Frank  
 Guttner, Ray

Haack, Chas.  
 Haack, Donald  
 Haack, Earl  
 Haack, Ray  
 Hagar, George Jr.  
 Hames, LuVern  
 Hanno, Loren  
 Hansen, Leonard  
 Hansen, Ray  
 Hanson, Ambrose  
 Hanson, Roy

Harnack, Bob  
 Harnack, Kenneth  
 Harnack, Ross  
 Harvey, Floyd  
 Hatz, Paul  
 Hatz, Vernon  
 Haverkamp, Albert  
 Hazen, Robert  
 Hazen, Vernon  
 Hermes, Lester  
 Holton, Emmet  
 Homan, Bob  
 Homan, Gordon  
 Horkey, Joe  
 Hughes, Richard  
 Hussey, Frank Jr.

Jasper, Ray  
 Jastram, Cecil  
 Johnson, Harold  
 Johnson, Robert  
 Johnson, Walter  
 Johnston, Roy  
 Juhl, Glen  
 Juhl, Irvin  
 Juhl, Lyle  
 Junkers, Joe

Kass, Joe  
 Kahl, Edward  
 Kahl, Henry  
 Keene, Robert  
 Kellen, Raymond  
 Kellen, Robert  
 Kellen, Victor  
 Kelly, Eldon  
 Kemp, Harold





## Remsen and Oyens *Military Honor Roll*

- |  |  |  |  |
|--|--|--|--|
| Kennedy, Wayne<br>Kestel, Herald<br>Kichoff, Levurne<br>Kiefer, Eugene Jr.<br>Kipp, Melvin<br>Klein, Melvin<br>Klein, Ray<br>Kloster, Jack<br>Kloster, Norman<br>Kluvar, Marvin<br>Koob, Fidelis<br>Kramer, Wm. Jr.<br>Kroeger, Elmer<br>Krogmann, Ambrose<br>Krogmann, Joe<br>Kunkel, Richard<br><br>Lang, Edward<br>Lang, Paul<br>Lang, Robert<br>Lang, Wayne<br>Langel, Clarence<br>Lamberto, Donald<br>Lamberto, Roman<br>Larson, Nelson<br>Lehnertz, Wally<br>Letsche, Lee<br>Letsche, LeRoy<br>Loutsch, Elmer<br>Loutsch, Vernon<br>Ludwig, Alphonse<br>Ludwig, Francis<br>Ludwig, Gordon<br>Ludwig, Roland<br>Lund, Donald<br><br>Mai, Donald | Mai, Marvin<br>Marquis, Vance<br>Matgen, Richard<br>McGovern, John<br>McKay, Melvin<br>Meyer, Milton<br>Milfs, Merle<br>Milfs, Richard<br>Miller, Leander<br>Mitchell, Howard E.<br>Moeller, Alfred Jr.<br>Mortensen, Melvin<br>Muller, Bud<br><br>Niehoff, Phillip<br>Niehus, Ed.<br>Neihus, E.<br>Neuenschwander,<br>Bob<br>Neuenschwander,<br>Elmer<br>Niggeling, Jim<br>Niggeling, Tom<br>Nitzschke, Donald<br>Nitzschke, Elmer<br>Nitzschke, Lloyd<br>Nitzschke, Lester<br>Nitzschke, Lyle<br>Nitzschke, Richard<br>Nitzschke, Warren<br>Nothem, Hubert<br><br>Oberman, Lawrence<br>Offerman, Donald<br>Offerman, Francis<br>Ohlendorf,<br>Glenwood | Ohlendorf, Don<br>Opbroek, Arnold<br>Ortman, Joe<br>Ortman, Roman<br>Ott, Donald<br><br>Parriott, Burton<br>Parry, Marvin<br>Paulson, Alfred<br>Paulson, Paul<br>Peters, Ralph<br>Petersen, Alvin<br>Peterson, Burwin<br>Peterson, Farley<br>Peterson, Woodrow<br>Pfeifer, Oliver<br>Phillips, Wallace<br>Phillips, Wendell<br>Phillips, F. H.<br>Pick, James<br>Plathe, Jos.<br>Porter, Dan<br>Porter, Dwight<br>Presuhn, Chas.<br>Petersen, Paul<br><br>Raker, Paschel<br>Raveling, Orville<br>Recknagel, Orville<br>Reichling, Leonard<br>Richter, Elmer<br>Ricke, Robert<br>Roder, Jerome<br>Rodesch, George<br>Rosburg, Lyle<br>Ruba, Mathias<br>Roden, Sylvester | Ruba, Norbert<br>Reinholdt, Clarence<br><br>Sanow, Harlan<br>Sanow, Wayne<br>Schefstad, Frank<br>Schiltz, Elmer<br>Schiltz, Richard<br>Schmidt, Omar<br>Schmidt, Robert<br>Schmidt, Richard<br>Schmidt, Peter<br>Schmitz, Earl<br>Schnepf, Ralph<br>Schnieders, Bob<br>Scholer, Anslem<br>Schorg, Kenneth<br>Schorg, Weldon<br>Schorg, Lyle<br>Schultz, Leander<br>Schultz, Robert<br>Schumacher, Don<br>Schut, John<br>Schut, Ray<br>Schuver, John<br>Schroeder, Irvin<br>Schwartz, Chas.<br>Shea, Gerald<br>Schields, Ray<br>Sievers, Linden<br>Sievers, Ray<br>Sitzmann, Kenneth<br>Smith, James<br>Staab, Andrew<br>Staab, Irvin<br>Staab, Richard<br>Staab, Ralph |
|--|--|--|--|







## Remsen and Oyens *Military Honor Roll*

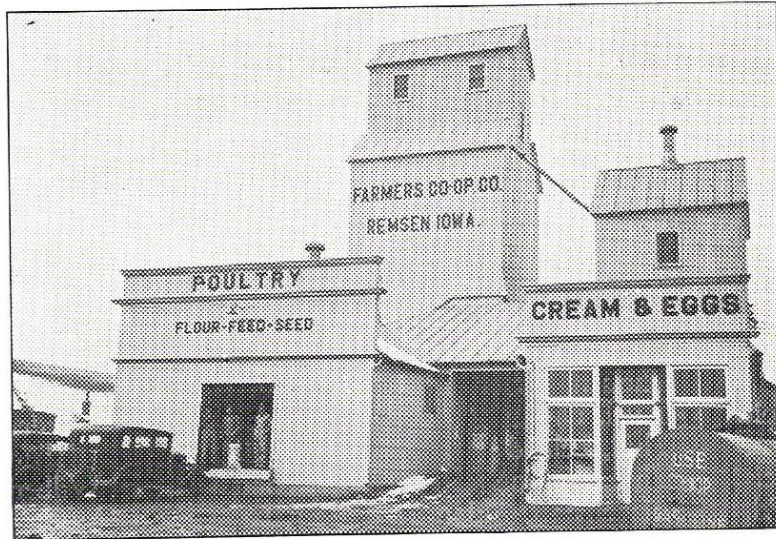
Steffen, C. C.	Theisen, Elmer	Vaske, Al.	Wiederholdt, Ray
Steichen, Arnold	Thiel, Urban		Wiederholdt, Vitus
Steichen, Arthur	Thill, Leland	Waldschmitt,	Wilberding, Emil
Steichen, Francis	Thill, Vernon	Raymond	Wilberding, Joe
Stellingwerf, Ed.	Tiedemann, Eldon	Walker, Dr. L. W.	Wilberding, Julian
Stoffel, Florian	Treinen, Charles N.	Weber, Leonard	Wilberding, Vincent
Stoffel, John	Treinen, Claude	Weichbrodt, Ray	Willenburg, Arnold
Stoffel, Wm.	Treinen, Elmer	Weiler, Duane	Witt, Leonard
Stoos, Jack	Treinen, Francis	Weiler, Gilbert	Witt, Ray
Stoos, Jerome	Treinen, Henry	Weiler, Stanley	Wolf, James
Stoos, Nick	Treinen, LeRoy	Weiler, Walter	Wurth, C.
Sudtelgte, Earl	Treinen, Louis	Wersinger, Art.	Wurth, Wm.
	Tritz, Francis	Wersinger, Jos.	
Taylor, Clarence	Tritz, Joe	Wess, Vernon	Zimmer, Louis
Theisen, Raphael	Twenstrup, Dr.	Wictor, Gilbert	

## Oyens Military Honor Roll

Bortscheller, Edward	Hames, Orville	Ludwig, Clarence	Petersen, Alvin
Bouma, Roy	Hames, Raphael	Ludwig, Herbert	Reistroffer, Donald
Brandenburg, C.	Hansen, Alfred	Lutton, Dean	Rollins, Virgil
Brandenburg, Lawrence	Hansen, Lawrence	Mohning, Arnold	Ruden, Silvius
	Heuertz, Wilbur	Mohning, Merland	Scheitler, Ray
Delperdang, Ralph	Kelly, Eldon	Mulder, Magnus	Seglem, Robert
Doud, Vernon	Kelly, Ronald	Niehus, Doyle	Sheehan, Leo
Gengler, John	Lanzendorf, John	Peppersack, Henry	Wagner, Donald
Goetzinger, Ray	Larson, Niels	Perry, Clifford	Wurth, Louis

NOTE: The foregoing list of World War II service men furnished through the cooperation of Pieper Post No. 220, American Legion and Diekmann Post, Veterans of Foreign Wars, of Remsen, Iowa





*Greetings and Best Wishes*

- from -

**THE FARMERS  
CO-OPERATIVE COMPANY**



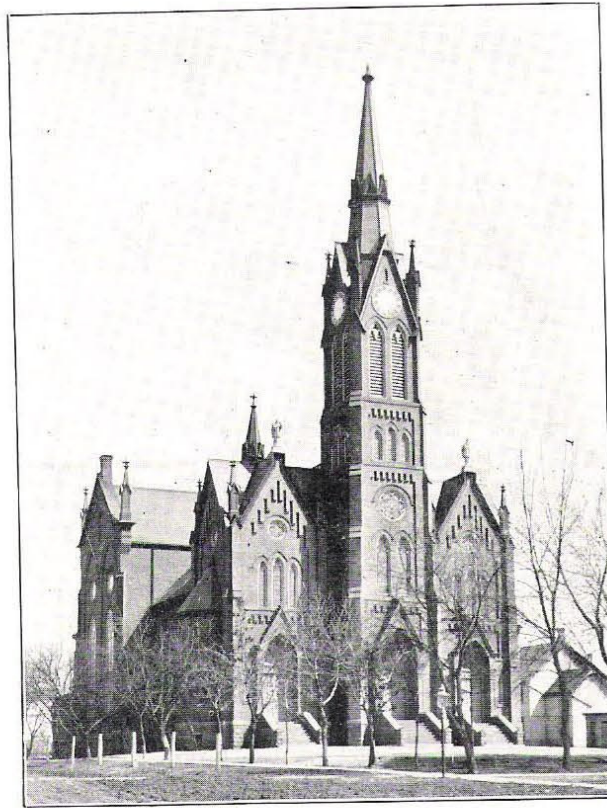
GRAIN, FEEDS, COAL

CUSTOM GRINDING

BUYERS OF CREAM



Remsen, Iowa



**ST. MARY'S CATHOLIC CHURCH**  
Built in 1902-1903



**ST. MARY'S PAROCHIAL SCHOOL**  
Built in 1910

*Best Wishes from*

**C. J. MILLIGAN & SON, Inc.**

Sioux City's Leading

Distributors of

**HAY AND FEEDS**



Dairy Feeds, Sugared Cattle Feeds

Hog Feeds, Poultry Mash



**SIoux CITY, IOWA**

## St. Mary's Church

About one hundred years after the close of the Revolutionary war, St. Mary's church, Remsen, whose present pastor is Rt. Rev. Msgr. M. A. Schemel with Rev. Leander Friedman as assistant, had its beginnings under the leadership of the Rev. J. Gilchrist of Marcus, Iowa. The land, comprising a block, was purchased from the Iowa Railroad Company for \$700, and the first church, of the same building, was built in the spring of 1882. The church was destroyed by a cyclone on June 1, 1885. After its destruction work was almost immediately begun on a new church.

Rev. F. X. Schulte, assistant at St. Mary's church, Dubuque, Iowa, was appointed the first resident pastor of the struggling St. Mary's parish in the fall of 1885. Services on Christmas of that year were the first to be held in the newly-constructed but unfinished church. When the church was finally completed the next spring, it was dedicated. By that time the parish had increased to about one hundred families.

An addition to the church, consisting of transepts and sacristy, was built in 1891. In 1895, a pneumatic pipe organ, having fourteen stops and 40 pipes, was purchased from and installed by William Schuelke and Company, Milwaukee, Wisconsin. This year, 1946, the organ will have served the parish fifty years.

Since the parish grew rapidly, the families numbering about 200 at the turn of the century, plans were considered for the building of a new church, the present one. The following men were appointed members of the building committee: Rev. F. X. Schulte, chairman; F. G. Meinert, treasurer; J. F. Kass, secretary; W. J. Kass, assistant secretary and Anton Wintz, G. H. Bunkers, Joseph Reker, Peter Arens, Albert Mensen and Carl Staab.

The architect, Guido Beck of Dubuque, submitted the plans, which were approved by the congregation. Work of the construction was begun in the summer of 1902 under the contractor, J. Tappendorf of Rock Island, Illinois. Rt. Rev. Philip J. Garrigan, bishop of Sioux City, assisted by many priests of the diocese, laid the cornerstone on April 21, 1903.

The dedication ceremony was held September 9, 1904. A Pontifical High Mass opened the ceremonies; Rev. Hoppmann of Ottumwa, Iowa, gave the sermon. In the afternoon, Rt. Rev. J. Schweback, bishop of LaCrosse, Wisconsin, performed the dedication ceremony; Rev. W. Halpin of Algona, Iowa, delivered the sermon.

The total cost of the church approached \$56,000. The church, of brick construction, is 152 feet long; 62 feet wide; 50 feet high with a tower 156 feet high. The transepts are 79 feet wide; the winter chapel is 60 by 70 by 12.

Rev. F. X. Schulte, the first resident pastor, resigned in 1923; Rev. A. A. Bausch, during whose pastorate St. Mary's convent was built, was administrator until 1925, when Rev. H. J. Schleier was appointed pastor. He served until his death on December 18, 1936. During his ministry, the present rectory was built, and the church was redecorated at a cost of \$6,000. Rev. J. A. Roder was the next pastor, residing until November 17, 1938. Rev. M. A. Schemel succeeded Father Roder.

On September 17, 1940, St. Mary's parish was honored by having its pastor raised to the rank of domestic prelate with the title of monsignor. Rt. Rev. Msgr. M. A. Schemel was one of the nine priests invested on the occasion. Monsignor Schemel continued the program of parish improvement begun by his predecessors. The outstanding improvement was made in the school, which was remodeled to accommodate the introduction of commercial courses in the curriculum. The High School Sodality was established under the direction of Monsignor Schemel.

The assistants to the pastor who have served here include: Father John Heinzlmeier, 1898-1903; Father Herman J. Dries, 1903-1904; Father Christopher Huelshorst, 1904-1907; Father Joseph D. Fisch, 1907-1913; Father John Thoenissen, 1913-1916; Father B. Loeffelholz, 1916; Father George Theobald, 1916-1919; Father Joseph Underberg, 1919-1920; Father James B. Greteman, 1920-1925; Father John Hausmann, 1925-1928; Father P. J. Mattes, 1928-1931; Father William Bucholtz, 1931-1934; Father Edward Fandel, 1934-1940; and the present assistant, Father Leander Friedman, 1940.

The present congregation, consisting of about 400 families, includes approximately 2000 souls.

The achievements of the Catholic people of Remsen can be expressed adequately in the words of Rev. Edward L. Curran, author of "Great Moments in Catholic History." He says, in part, that the wealth of the Catholic church consists of items we should never forget—buildings erected for the honor and glory of God; Catholic schools erected for the service of humanity; the voluntary donations and sacrifices of all individual Catholics.

Compliments of

**JOHN DEERE**

**PLOW CO.**

**INSULATION**

Eagle Mineral Wool



**WEATHER STRIPPING**



**The Gerkin Co.**

2100 - 4th Street

Sioux City, Iowa

Compliments of

**SHERMAN BROS.**

**SIoux CITY  
IOWA**

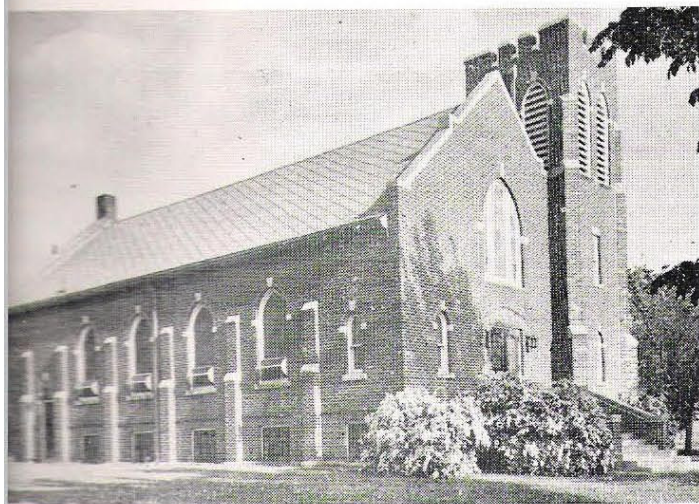
**THE  
SANITARY  
BAKERIES**

Furnish You the Finest  
Bakery Products  
Obtainable

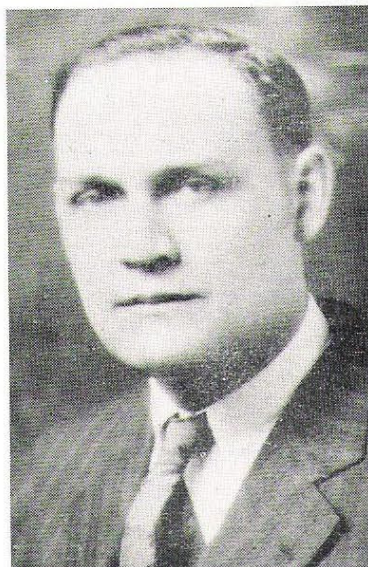


**REMSEN  
ALTON, ORANGE CIT**

# History of St. Paul's Evangelical Lutheran Church



**ST. PAUL'S EVANGELICAL LUTHERAN CHURCH  
REMSSEN, IOWA**



**REV. PAUL WUEBBEN**

Paul's Evangelical Lutheran congregation organized October 19, 1884, and was given the name Die Deutsche Evangelische Lutherische Gemeinde zu Remsen, Iowa.

It was the first Protestant organization in

Remsen. Meetings for the organization had been held in private homes and in the old public school as early as June 8, 1881.

Original members of St. Paul's congregation were: John Herbst, George Beck, John Stobelski, John Helms, Frank Rave, Karl Schumacher, Fred Metz, H. Moritz, Fred Schmidt, Fred Stobelski, Henry Thompson, Robert Jolefs, Harm Jurgens Bock, Claus Sievers, Michael Schumacher, William Beck, William Thiesen, John Thies, George Roepke, George Tangeman, Ernest Earnest, Jacob Wullstein, G. D. Moritz, Carl Mulhaber, Henry Gaden, Peter Geiser, Carl Metz, Robert Bornstein, Claus Ruehnen, H. H. Harms, M. Tozynka, and Carl Mel.

The following pastors have served the congregation: Rev. Heinrich Bender, Rev. Drechsler,

Rev. George Kreth, Rev. Hoepner, Rev. Dettmann, Rev. Vehe, Rev. Dallmann, Rev. Ernst Birkner, Rev. E. H. Eilers, Rev. H. Jurgens, Rev. H. Reifschneider, Rev. Weichelt and the present pastor, Rev. Paul Wuebben.

The first church building was erected in 1888 and the present one in 1930.

At the present time the congregation has a membership of 140 families, and for a number of years has been free of debt.

St. Paul's congregation has four organizations active in church affairs. The oldest is the Ladies Aid, organized in 1890. Then there are the Young People's League, the Senior choir and the Junior choir.

St. Paul's celebrated its sixtieth anniversary on October 22, 1944.

The present pastor, Rev. Wuebben, has been a minister of the church for the past 13 years.

After 50 years of its existence the congregation was reincorporated under the name of St. Paul's Evangelical Lutheran Church of Remsen.

Hearty Greetings and  
Best Wishes  
from

**REMSEN RECREATION CENTER**

—AND—

**THE AERO CLUB**



**BOWLING - BAR SERVICE - GOOD FOOD**

Ray M. Tritz, Prop.

Compliments of

**DR. W. P. KELSEY**

**OSTEOPATHIC PHYSICIAN AND SURGEON**

GENERAL PRACTICE

X-RAY — SURGERY



**REMSEN, IOWA**

Telephone—Office, 32-R2 — Residence, 32-R3



# History of Christ Lutheran Church

Lutheran church services were conducted in Remsen before the town was incorporated. Fifty-six years ago Trinity Lutheran Church, Amherst township, Cherokee county, was organized and a few years later its pastor, Rev. J. D. Hesse, began to preach in Remsen. In 1886, services were held in the old Remsen public school house. Although the old records now on hand are incomplete, one of the earliest documents of the church is preserved which shows that on March 27, 1887 the congregation was organized. For several years Pastor Hesse continued to minister unto the people here, being assisted at times by the Lutheran pastor at LeMars. In 1895, the congregation decided to erect a church and to call a pastor of their own. The cornerstone was laid in the fall of that year. On the last Sunday in April, 1896, the church was dedicated. The pastors conducting the dedication services were Rev. J. D. Hesse, of Cherokee county, and Rev. J. Horn of Germantown.

## INCORPORATED

Incorporation papers were recorded by the congregation on May 1, 1896. The signers of the incorporation were Messrs. John Harnack, Sr., Hans Detlefs, George Ebrecht and Henry Sievers.

## PASTORS

On the same day the first church building was dedicated, the first resident pastor, Rev. Martin Brueggemann was installed. He continued his pastorate here for two and one-half years. After Rev. Brueggemann moved to Alma, Iowa, the congregation was without a pastor for a period of four years, but were again provided when, on August 10, 1902, Rev. Paul Brammer was installed. Pastor Brammer remained here for four years. He then accepted a call to St. Ansgar, Iowa, which congregation he has been serving the last thirty-nine years. His successor here was Rev. L. A. Brauer who served the congregation 1906-1910. Other pastors were Rev. E. Kallsen, 1910-1911; Rev. E. Starck, 1911-1913; Rev. J. P. Guenther, 1913-1919; Rev. F. Wahlers, 1919-1922. The present pastor is Rev. A. Noack, who has now been serving the congregation since October, 1922.

## A NEW CHURCH

In 1927 the interior of the congregation's first church building was greatly improved with a new altar, pulpit and pipe organ, but as time

went on the members of the congregation realized that it would need to be replaced with a new building. In July, 1941, the congregation decided to build a new church. The building committee consisted of Rev. A. Noack and Messrs. Henry Falke, Fred Seel, Wm. G. Sievers, August Erichsen, A. D. Ohlendorf. Mr. Thorwald Thorson of Forest City was the architect. The last service held in the old church was on March 13, 1942. Three days later the building had been dismantled.

The new church is of brick, the roof is covered with asbestos shingles of a combination of red colors. The seating capacity is 250. The church is 94 feet long, the nave is 29 feet and the rear 40 feet wide. The social room, kitchen, class room, and restrooms are all finished with glazed tile. The church has a loud-speaker system, with microphones at the altar, pulpit, and lectern; two loud-speakers are in the nave and four in the basement. The cost of the building with furnishings is \$25,000, which sum was paid in full shortly after the church was dedicated. The general contractor for the building was Mr. John Nemmers of LeMars, whose excellent workmanship is greatly appreciated by the whole congregation.

## PARISH EDUCATION

Since the very beginning the congregation has had a flourishing Sunday school, taught by teachers of many years of experience. The teachers meet bi-monthly for lesson preparation and teacher training. All the children receive weekly or monthly magazines which give them Christian reading in the homes. The Sunday school also has its own library with books for the various ages. The pastor gives a two-year course in Catechism and Bible study for the children, preparing them for communicant membership in the church. A junior and senior Bible class meets each Sunday morning making a more thorough study of the sacred Scriptures. Bible quizzes and Bible topic study are conducted in each meeting. Every home in the congregation receives the official paper of the Lutheran Church, the Lutheran Witness.

## SOCIETIES

Sixty-five women of the congregation are the active membership of the Ladies' Aid. This organization has doubled in size since the meetings are being held in the social room of the new church. The Ladies Aid, is true to its name, aiding not only its own members and the congregation, but also the work of the church at large by supporting

Greetings from

IOWA  
BAKING  
COMPANY



SIOUX CITY  
IOWA

Compliments of

Allis-Chalmers  
Manufacturing  
Company



SIOUX CITY  
IOWA



FALKE MOTOR CO., DEALER  
Remsen, Iowa

Compliments of

MEINERT PHARMACY

1889 - 1945

*Third Generation in the Family*



*Prescriptions*

*Fountain . . . Sundries*



ANNA MEINERT, PROPRIETOR

Registered Pharmacist

missions and institutions of charity and contributing to the Red Cross and other national welfare organizations.

Thirty young people are members of the Youth League. They meet monthly for their topics, business, and recreation.

A group of the young folks sing as a choir every service. The robed choir members sing a seasonal hymn and a selection at every worship thus do their part to beautify the church services.

### SYNODICAL MEMBERSHIP

The congregation has always been affiliated with the Lutheran Synod of Missouri, Ohio, and the West. During its first years it received aid from the mission treasury of the Iowa District. The congregation supports very liberally the work of the Church at large. During the first year of this year it has remitted over \$3,300 for various Missions of the Lutheran Church.

### SPECIAL ACTIVITIES DURING THE WAR

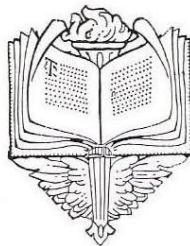
Many homes were directly affected by the war. Thirty-eight members of the congregation rendered the service of the nation. A military

funeral and a memorial service were held for the two members who made the supreme sacrifice. At different times the congregation remembered their beloved absent ones with gift boxes. Each month the soldiers are receiving some message from the pastor's study. All changed addresses are reported weekly in the Sunday Bulletin. The soldiers' birthdays are made known in advance so that the membership may send greetings. Our Church's motto is, "They shall not march alone!"

Many articles have been sent to veterans' hospitals. Baked goods were sent to service centers. Boxes of books were sent to prisoners of war camps. Hundreds of dollars were contributed to the Army and Navy Commission of the Lutheran Church for its work among the armed forces. Truck loads of salvaged paper have been gathered. These and many other special efforts were gladly rendered by the membership out of thankfulness for the priceless blessing of religious freedom in our beloved country.

### STATISTICS

The present membership is 325 baptized persons, 200 of these are communicant members. The church record shows that 668 were baptized, 458 confirmed, 134 marriages were performed and 216 persons buried.



*Our Hearty Good Wishes to  
The Grand Duchy of Luxembourg  
and Friends Everywhere*



DEALERS IN

**NUTRENA FEEDS**

—FOR—

**LIVESTOCK**

—ALSO—

**BABY CHICKS, POULTRY SUPPLIES  
FEEDS, MASHES, REMEDIES  
ARTIFICIAL ICE**



BUYERS OF

**POULTRY, EGGS AND CREAM**



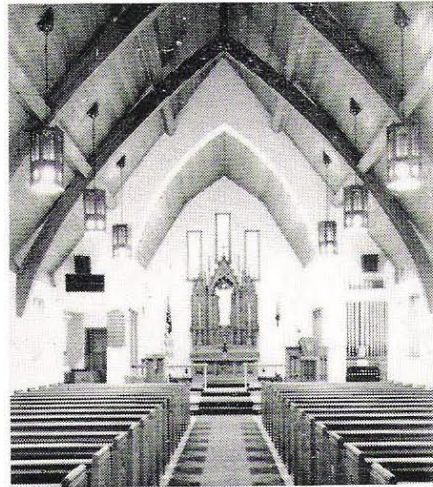
**KELLEN PRODUCE**

Remsen

# *Christ Lutheran Church*



**REV. A. NOACK**  
Pastor Since 1922



**THE INTERIOR**



**BUILT IN 1941—42 AT A COST OF \$25,000.00**

Compliments of  
**DEDE BEVERAGE COMPANY**

■  
BLUE RIBBON BEER

AND

GRAIN BELT BEER

■  
Sioux City, Iowa  
313 Jennings St.

GREETINGS FROM  
**RAY MITCHELL**

Distributor of Beer

HAMM'S - SCHLITZ - FALSTAFF

■  
300 Court St.  
**SIoux CITY, IOWA**

# Court Joan of Arc - Catholic Daughters of America



The national order of the Catholic Daughters of America was founded in 1903 by the Knights of Columbus, at Utica, N.Y. with a membership of 60.

From this nucleus we have grown to a membership of more than 200,000, established in 45 states, Panama, Puerto Rico, Canada and Alaska.

Our aim is the propagation and preservation of our Holy Faith; the intensification of patriotism; the material, moral and intellectual development of Catholic womanhood, and the protection and well-being of our Catholic girls. We are also pledged to the dispensation of charity and the furtherance of Catholic charitable projects.

Each unit maps out its own work, commensurate with the needs of the community in accordance with the scope outlined and the wishes of the Reverend clergy.

Court Joan of Arc, No. 335, of Remsen, Iowa, was organized in May, 1918, by a group of 26 members of the order. The first reception was held on June 2 of that year, at which the 26 new members were admitted. The exemplification of the ritual was carried out by the degree team of Court Santa Maria, 179, of LeMars, Iowa, in which court the organizers of the new court originally were members.

Charter members are: Mrs. C. J. Ahmann, Elvira Alesch, Marcelinda Alesch, Matilda Alesch, Margaret Arens, Celia Ahmann, Mrs. A. M. Beck, Olga Brucher, Mrs. Wm. Determan, Mrs. J. J. Determan, Mrs. F. B. Duster, Mrs. J. C. Esser, Lauretta Foxen, Justine Georges, Mrs. M. Goebel, Margaret Galles, Mrs. F. Lorge, Mrs. W. H. Hombach, Mrs. Frank J. Homan, Mrs. P. J. Homan, Mae Kelly, Mrs. M. Kennedy, Mrs. Orrin M. Kelly, Mrs. E. F. Kieffer, Mrs. John Keffeler, Elizabeth Lotz, Lillian Levins, Edith Lloyd, Mrs. J. Lotz, Mrs. T. S. List, Anna Meinert, Hildegard Meinert, Hedwig Meinert, Mrs. John McCoy, Mayme McCoy, Regina Nothem, Katherine Nothem, Mrs. J. Nothem, Katherine Niggeling, Bertha Singer, Carrie Schnepf, Josephine Staab, Blanche Sudtelgte, Mrs. Nic Treinen, Mrs. C. Treinen, Marie Wagner, Gertrude Wagner, Susan Weiler, Leonora Wagner, Isabel Wendt, Lillian Wendt.

Of these charter members the following still retain their membership: Margaret Arens, Mrs. J. Flynn, Mrs. A. M. Beck, Mrs. F. Duster, Mrs. J. C. Esser, Lauretta Foxen, Mrs. M. Goebel, Mrs. Gordon Garvin, Mrs. F. Lorge, Mrs. P. J. Homan, Mrs. M. Kennedy, Mrs. E. F. Kieffer, Mrs. John Keffeler, Edith Lloyd, Anna Meinert, Mrs. May-

me Polar, Mrs. M. Peters, Katherine Nothem, Mrs. J. Nothem, Carrie Schnepf, Mrs. L. Ahlers, Mrs. N. Treinen, Marie Wagner, Mrs. O. H. Huewe and Mrs. E. Lloyd.

Since organization approximately \$10,000 has been contributed to charity and benevolences. Of this amount \$3,000 was contributed to St. Mary's parish of Remsen. Our project was the complete furnishing of the convent chapel. The sum of \$5,176 was paid in aid to young men studying for the priesthood. Other recipients include local needy families, victims of national disasters, home and foreign missions, the American Red Cross, cancer and tuberculosis institutions, the March of Dimes, war funds, chaplain funds, orphanages, schools and colleges.

Breakfast is served to approximately 250 children of St. Mary's parochial school on the first Friday of each month.

Members have been active in national defense and other war activities, namely: Home nursing and first aid courses, assisting in Red Cross and U. S. O. drives, serving on the Emergency Food and Housing committee, Emergency Drivers committee, ration boards, and Red Cross sewing and knitting.

Cord rosaries were made for men in the service, and prayer books, medals and cash for chaplains' aid were contributed.

The members, now numbering 278, may be counted on as leaders in community affairs whether merely local or in cooperation with national projects.

Two members of Court Joan of Arc, Mrs. A. M. Beck and Mrs. Orrin M. Kelly, have represented the court in national conventions of the order, the former at Atlantic City, N. J., the latter at Washington, D. C., and Marie Dalhoff represented the court at the Eucharistic Congress in New Orleans.

Although primarily a charitable organization, the order pays a mortuary benefit of \$25 to \$100, according to the length of membership.

Present officers of Court Joan of Arc are: Grand regent, Mrs. A. M. Beck; vice grand regent, Mrs. S. M. Fideler; prophetess, Mrs. Ben Sudtelgte; lecturer, Joan Ludwig; financial secretary, Mrs. John Ritz, Sr.; treasurer, Lauretta Foxen; historian, Mrs. Louis Zimmer; monitor, Caroline Zigrang; organist, Mrs. Edw. L. Lloyd; sentinel, Mrs. J. Schiltz; trustees, Mrs. Anna Faber, Mrs. J. T. Schultz, Mrs. J. Watgen, Marie Wagner, Mrs. O. H. Huewe, Mrs. E. F. Kieffer; chaplain, the Rt. Rev. Msgr. M. A. Schemel.

# PERKINS SEED STORE SEEDS

■  
GARDEN SEED AND NURSERY STOCK  
BABY CHICKS

■  
314 Fourth Street  
SIOUX CITY, IOWA

## Pilley's Prices Please Producers

■  
*Sell Your  
Cream, Eggs and Poultry*

—TO—

Verne Kellen, Remsen, Iowa  
Farmers Elevator, Remsen, Iowa



# Pieper Post No. 220---The American Legion

Pieper Post, No. 220, of Remsen was formally organized Oct. 4, 1919.

The leadership of Capt. Edward J. Brucher was largely responsible for the organization of the local post at that time, and in recognition of his valued services, the members unanimously chose Capt. Brucher as their first commander.

Pieper Post was named after William Pieper, member of a pioneer Remsen family and one of the first lads to enlist after America's entrance in the World War. He was a member of the 168th Infantry, 42nd (Rainbow) Division, and fell in action before the terrible barrage at Chateau-Thierry, on July 19, 1918.

One of the outstanding achievements was the building of their Legion Home in 1932 at a cost of \$5000. The building is a handsome, one-story structure with full basement.

Among the public enterprises that the post has taken part in, was the organization and main-



**WILLIAM PIEPER**  
For whom Pieper Post was named

tenance of Junior Baseball clubs up to World War II, a juvenile drill corps under the captaincy of Dave Cook, an Americanism school for aliens, actively supporting Boys' State by sending boys to camp annually and various community service activities.

In 1935, 1938 and in 1941, the post was host to the Ninth District Convention here.

The present membership of Pieper Post is 98, and it is one of the most active posts in the state for its size. Officers elected in June were: Aloy Pick, commander; Joe Bohnenkamp, vice commander; Joe N. Beck, adjutant.

John Harnack, finance officer; John Theisen, chaplain; Anthony Strehl, historian; Nick Mai, sergeant-at-arms. Members of the executive committee are: V. N. Delperdang, Nick Hatz, S. M. Fidler, Ted Kobberman and Richard Staab. Charles Wilberding is chairman of the graves registration committee and O. H. Huewe is the service officer.

## MEMBERS



## Pieper Post No. 220

### World War I

Lawrence Ahlers  
Fred Arens  
John T. Arens  
Joe N. Beck  
Wm. Benjegerdes  
Joe Bohnenkamp  
Herman Boever  
Wm. Dawson  
Math Diederich  
Gene Diers  
V. N. Delperdang  
Harm Dirks  
John Engelbrecht  
A. J. Ernster  
Gus Feller  
S. M. Fidler  
Nick Frank  
John P. Gengler  
Adolph Haack

Claus Haack  
John Harnack  
Jim Harman  
Nick Hatz  
Claire Haye  
Frank Hewicker  
O. H. Huewe  
F. J. Hussey  
F. W. Horkey  
Enoch Johnson  
Herman Johnson  
Walter Lang  
Frank Lenertz  
E. L. Lloyd  
John Long  
John Maass  
Nick Mai  
Carl Marquard  
Marcel Matgen  
M. M. Milfs  
Ferd Moeller  
Niels Mortensen

F. A. Mylan  
C. M. Myers  
M. H. Niggeling  
Otto Nitzschke  
Elmer Ohlendorf  
Walter Ortman  
Aloy Pick  
Albert Reiners  
John Rodenbour  
Henry Rolfes  
Anthony Strehl  
John Sanny  
Frank Scholer  
Lawrence Shea  
Charles Siefke  
John L. Scharff  
Emil Staab  
Fred A. Steffen  
John Schuchard  
E. R. Stephenson  
Emil Schermer  
John Theisen

Oscar Tregoning  
Frank Thiel  
Ben Veldhuis  
Charles Wilberding  
Charles Wulf  
Victor Wolff  
E. E. Wilson  
John Wenthold

### World War I & II

Dave Cook  
Wm. F. Pratt

### World War II

Friedland Bohlke  
Roy L. Bentz  
Ray P. Baack

Thomas E. Dawson  
Frank Greten  
Cletus Hansen  
Henry H. A. Hansen  
Roy H. G. Hansen  
Ross Harnack  
Ted Kobberman  
Al Kenkel  
Joe J. Kelly  
Roland Letsche  
Chas. E. Manning  
Aloysius Masuen  
Wm. H. Milfs  
Elmer T. Nitzschke  
Burton Parriott  
Wallace H. Phillips  
Wendell F. Phillips  
Earl G. Peters  
John Rodesch  
Richard Staab  
Henry A. Treinen  
John Waldschmitt

## Why You Should Be a Member of



The American Legion can and will do many things for you. You will be represented by the Legion's National Rehabilitation, Employment, Legislative and Veterans' Preference committee at Washington, D. C. You will be kept informed of your rights and privileges under all federal legislation of benefit to the veteran. You will be able to turn to your local post for help at any time.

All through the years the Legion has battled for proper legislation to take care of veterans and their dependents.

**The American Legion is the largest Veterans' Organization in the history of the world.**

In connection with World War II veterans' legislation, the Legislative committee has worked on almost every congressional bill affecting them. We have seen our efforts rewarded with the enactment of the following laws providing benefits for them:

The National Service Life Insurance Act of 1940 and beneficial amendments thereto.  
The Soldiers and Sailors Civil Relief Act of 1940.  
Six Months' Gratuity benefits for dependents of all officers and enlisted men.  
The payment of compensation at various wartime rates for the disabled in line of duty.  
Free postage to members in the armed forces while on active duty.  
The pay readjustment act of 1942.  
The family allowance act for dependents of enlisted men of the armed forces.  
Hospitalization, domiciliary care and burial benefits for World War II veterans.  
Vocational rehabilitation for veterans of World War II who incur permanent disabilities.

AND MANY OTHERS

**The legislative program of the American Legion will continue to be geared to the needs of the Veterans of World War II.**

**CHILD WELFARE.** The American Legion has had a program of Child Welfare since 1925. Since its establishment, 5,900,00 children have been rendered aid and service at a cost of \$50,000,000.00. Ninety per cent of the children were with their own mothers in their own family homes. The Legion also has a \$5,000,000.00 endowment fund, interest of which is used to pay a portion of the cost of the Child and Rehabilitation work.

Throughout the nation the physical properties and investments, such as buildings, furnishings, equipment, investments in government War Bonds represent more than \$65,000,000.00.

**PIEPER POST** owns its own well equipped home. Plans for enlarging the present facilities will wait until returning World War II veterans can present their ideas for a larger and better Legion home.

## Pieper Post No. 220 The American Legion

# American Legion Auxiliary



Pieper Post No. 220, American Legion Auxiliary, was organized May 9, 1921, with Mrs. Lucie A. Lloyd as the first president. When the charter was granted May 8, 1922, there were 49 charter members.

Present membership is 108. Of these, twenty-two are Twenty-Five Year members, eligible for the Twenty-Five Year service pin.

The unit conducts an annual health program in the community. In addition, members engage in Red Cross work and in the sale of Christmas seals and bonds and stamps.

Present officers are:

President, Mrs. Enoch Johnson

First Vice President, Mrs. A. H. Jastram

Second Vice President, Mrs. O. H. Nitzschke

Secretary, Mrs. Edwin Holtgrewe

Treasurer, Mrs. S. B. Johnson

Chaplain, Mrs. O. H. Huewe

Historian, Mrs. M. R. Faber

Sergeant-at-Arms, Mrs. John Engelbrecht

Music Chairman, Mrs. S. M. Fideler

Plymouth County President, Mrs. Edwin Holtgrewe

# DAVIDSON'S

THE BIG FRIENDLY STORE  
THAT HAS EVERYTHING!

## HEAR OUR RADIO PROGRAMS

THEY'RE ON THE AIR FOR YOUR ENTERTAINMENT

### "LOVE NOTES"

STATION KTRI

10:45 A. M.

Monday, Wednesday  
and Friday

### "BETTY & BOB"

STATION KSCJ

AT 10 A. M.

From Monday  
through Friday

### "HOLLYWOOD PRE-VIEW"

Station KSCJ at 9:30 P. M. Sunday

# DAVIDSON'S

Sioux City

# Veterans of Foreign Wars Have Active Organizations



## Diekmann Post V. F. W.

Among the civic and fraternal organizations that flourish in Remsen is that of the Veterans of Foreign Wars, which has an active history.

Joseph B. Diekmann Post, No. 3328, V. F. W., of Remsen, was organized here by Dept. Commander E. R. Crane during the winter of 1934-35.

On June 11, 1935, the post was instituted with the attendance of members from posts in various towns throughout the Eighth district.

The first commander, Marcel Matgen, Sr., was chosen unanimously because of his part in organizing the post, which flourished from the very beginning.

The post was named after Joseph B. Diekmann, son of the late Mr. and Mrs. Frank B. Diekmann, pioneers in the farming community adjacent to Remsen. Joseph Diekmann passed away while in the service and during the influenza epidemic that raged through the country during World War I. He was a member of the 88th division, with service in England and France.

Diekmann post takes a lead in all patriotic celebrations and anniversaries and several times has been host to county and district conventions. Its members are particularly interested in welfare work, veterans' rehabilitation and works for the benefit of disabled veterans in the government hospitals of Iowa.

Present officers of Diekmann post are:

Commander, E. E. Nelson (LeMars).  
Senior Vice Commander, John Sanny.  
Junior Vice Commander, Joe Bohnenkamp.  
Quartermaster, Milo C. Bellmyer.  
Adjutant, Aloy S. Pick.  
Chaplain, C. Langendorfer (LeMars).  
Officer of the Day, Carl Baertling (Marcus).  
Service Officer, Math. Diederich.  
Trustees—Herman Boever, John Sanny,  
Nick H. Hatz.



## Diekmann Post Auxiliary

The auxiliary to Diekmann post was organized September 10, 1935, under authority issued to Mrs. Gus. Brosalis of Cherokee, by the national president.

First officers were: President, Mrs. Enoch Johnson; senior vice president, Mrs. Aloy S. Pick; junior vice president, Mrs. Gene Diers; chaplain, Mrs. Otto H. Nitzschke; guard, Mrs. Math. Diederich and conductress, Mrs. Earl Hanno.

The organization is active in all projects helpful to Diekmann post, sponsors the essay contest each year, works for the comfort and rehabilitation of veterans and has taken an active part in many local civic projects.

Present officers of Diekmann post Auxiliary are:

President, Mrs. S. M. Fideler.  
Senior Vice President, Mrs. Wm. Colling.  
Junior Vice President, Mrs. O. H. Nitzschke.  
Treasurer, Mrs. A. S. Pick.  
Secretary, Miss Mary Ann Gramke.  
Chaplain, Mrs. Clara Bjork.  
Patriotic Instructor, Mrs. John M. Kennedy.  
Guard, Mrs. Math. Diederich.  
Musician, Miss Edna Mae Fideler.  
Conductress, Miss Margaret Diederich.  
Flag Bearer, Mrs. Earl L. Hanno.  
Banner Bearer, Mrs. Herman Boever.  
Color Bearers—Mrs. Anton Schiltz, Mrs. John Haack, Mrs. Gilbert Blum and Miss Sally Theisen.

*Our Kindest Wishes  
for the Future Welfare of  
The Grand Duchy of Luxembourg*



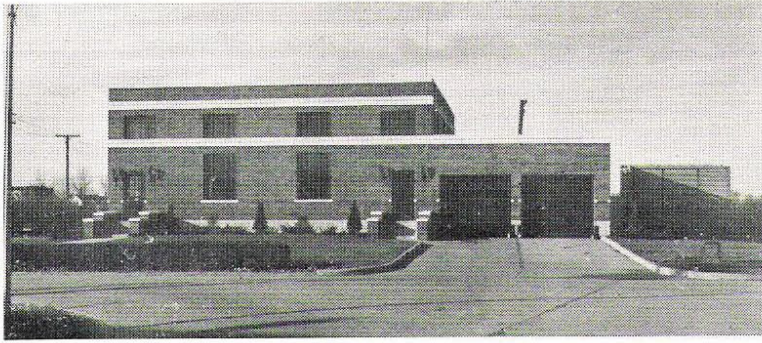
# SIoux CITY STOCK YARDS

THE GREAT MIDWEST MARKET

Sioux City, Iowa

# Remsen Municipal Utilities

Any accomplishment that requires skill, unceasing labor, and a devotion to community welfare, is usually prized very highly when the objective is reached. This can be said of the municipal electric light and power plant in Remsen.



MUNICIPAL ELECTRIC PLANT

had town officials like J. F. Gamerding, Nicholas Hatz, Michael Brucher, Henry Falke, John Ahmann, and Fred T. Phillips, who, when they believed they were right, had the determination and courage to fight until the last obstacle was overcome.

Some difference of opinion exists as to what brought about the agitation for a municipally owned plant. Apparently it was due primarily to the expenditure of over \$2,500 annually for lighting the streets of Remsen and the unsuccessful attempt of the council to obtain a reduction in rates.

The matter was frequently discussed at board meetings; the council obtained information from various towns and it appeared that the only solution to a reduced cost of maintaining an adequate all-night street lighting system was the installation of a municipal plant. Data from municipally owned plants was obtained and the mayor and councilmen personally inspected many of these plants, interviewed town officials, ascertaining the costs of plants, operating expenses, income and profits.

After fully satisfying themselves of the advisability of such a move, they discussed the proposition with many of the citizens of Remsen and received almost unanimous endorsement of their proposed plans. Legal counsel and an engineer were employed and a special election was held on Sept. 3, 1931, at which the electors voted upon a proposition to establish and erect a municipal electric light and power plant and the issuing of \$75,000 in bonds to cover the cost of same.

The power company then serving Remsen vigorously opposed the plans of the town council and until the Supreme Court of Iowa approved the legality of the election and the bond issue, left no stone unturned to obstruct every move made by the council and in every way hinder and delay the construction of the plant. The electors endorsed the judgment of the council by carrying the election by a vote of 456 to 130. It was an accomplishment during the depression period for any municipality to vote a bond issue.

It was very fortunate for Remsen to have

The plant was constructed in 1933 and the lines were energized at Christmas time of that year. Originally the power units consisted of a three and four cylinder Diesel engine of a rated H. P. of 240 and 320 respectively. R. W. Strohmeier, the foreman of the construction work for the contractor, was employed by the council as superintendent of the plant, with E. H. Holtgrewe and Norbert Ahmann as operators. The plant was a success from the start and during the first year of operation generated 418,660 K.W. The load has shown a consistent increase and since the fiscal year of 1940 has exceeded an annual output of over 1,000,000 K.W.

## THEN EXPAND

As the load of the plant increased it soon became apparent that additional standby power was necessary and in 1938 the building was altered, and improved equipment and an additional six cylinder Diesel engine of a rated H. P. of 450 were installed. Revenue bonds to the extent of \$30,800 were sold to match a 45 pct. WPA grant.

In 1935 a special election was held placing the light plant and the water system under the direct management of a board of trustees operating as provided under a section of the Code of Iowa. Upon placing the municipal utilities under trusteeship it was deemed advisable to employ an all-time clerk. George Wess has served in this capacity continuously, acting not only as clerk for the council and also for the board of trustees, but efficiently has rendered a varied municipal service to the public in general.

## PERSONNEL

Personnel of the Municipal Utilities are: Trustees—Nicholas Hatz, chairman, Otmar H. Huewe, and W. G. Sievers. E. H. Holtgrewe is plant superintendent, with John Wiebersch, Al Zeimen, John Zimmerman and Frederick Schmidt as operators, and George Wess, clerk of the board.

# COUNCIL OAK STORE

LeMars, Iowa



*“Your Friend at Mealttime”*



A SAFE WAY TO SAVE

# Farmers Lumber & Supply Co.

STOCKYARDS DISTRICT

Sioux City, Iowa

Phone 5-7601



LUMBER AND BUILDING MATERIAL  
STOCK RACKS AND TRAILERS  
GENERAL FARM STORE  
FEEDS AND RIVERSIDE TIRES



# LIONS CLUB



Affiliated with Lions International is the Remsen Lions Club, organized six years ago and which meets the first and third Tuesdays of each month.

Meetings are held in the evening with dinner followed by a business session. The Lions are interested in civic improvement and development and, to the extent of their ability as a group, support all worthy enterprises that tend toward the betterment of the community.

An annual project sponsored by this active group is an ice skating rink, using the baseball diamond, and besides an excellent skating surface the Lions supply a warming shack, electric lighting and chaperonage. In the project they are supported by the town council which grants them the use of the ball park; donates the water and the lighting.

Throughout the war the Lions have had as their dinner guests, servicemen home on leave or furlough, also those recently discharged.

Present officers of the Remsen Lions club are:

President, Clifford A. Dorr.

First Vice President, E. H. Holtgrewe

Second Vice President, W. P. Kelsey.

Third Vice President, E. R. Stephenson.

Immediate Past President, Burton Parriott.

Past President, A. M. Beck.

Secretary-Treasurer, Marcel W. Matgen.

Lion Tamer, Jos. V. Fisch.

Tail Twister, Roman Groff.

Directors—J. W. Zimmerman, E. F. Kieffer, Robert Schumacher.

# AMERICAN RED CROSS



Assisting in all emergency relief work for the American Red Cross Society is the Remsen branch of the Plymouth county chapter, organized in 1918.

The Remsen branch has given aid to numerous local families in financial distress but its major project to date came along with the fire of July 4, 1936, when property in the amount of a half million dollars was destroyed. A number of local families were left homeless and in need of clothing. The national organization sent a representative to direct the emergency relief work and the local branch footed the emergency bills.

The branch maintains a sewing and a knitting department headed by Mrs. Edwin Holtgrewe and Mrs. Clarence Frank, respectively.

Among the half dozen branches in Plymouth county, the Remsen branch has always been, and still is, the strongest, financially.

Officers are:

President, Dr. A. H. Jastram.

Vice President, E. F. Kieffer.

Secretary, John A. Ulveling.

Treasurer, M. H. Niggeling.

Home Service Officer, N. B. Homan.

Directors—Mrs. Holtgrewe, E. H. Spiecker, John Keffeler,  
M. M. Gripenburg, Burton Parriott.

## We Write All Kinds of Insurance

More than thirty years in business in  
Remsen is your guarantee that we can  
give you the best at lowest rates and  
can handle your losses efficiently.

**M. M. GRIEPENBURG**

NOTHING BUT INSURANCE

Remsen, Iowa

Office Telephone, 62

Residence Telephone, 295

## GET EXTRA ENERGY

-with-

Energy - Charged

# WONDER BREAD

No Big Holes, Ever

*Greetings from*

**SIOUX CITY BOTTLING WORKS**



HIRES ROOT BEER

BLATZ BEER

CLICQUOT CLUB

ORANGE CRUSH

DR. PEPPER



1501 East Fourth Street



**SIOUX CITY, IOWA**



## In Memoriam



**Sgt. John W. Lanzendorf, USMCR**  
Son of Mr. and Mrs. George Lanzendorf of  
Oyens  
Born at Oyens Nov. 22, 1923  
Killed in action July 7, 1944, on Saipan

**Sgt. Alphone T. Ludwig, Infantry**  
Son of Mr. and Mrs. Mike Ludwig  
Born at Remsen, April 12, 1916  
Killed in action, Sept. 12, 1944, in France

**Lieut. Richard J. Treinen, Army Air Force**  
Son of Mr. and Mrs. Charles Treinen  
Born at Remsen March 31, 1923  
Killed in plane crash January 20, 1945, at  
Redmond Army Air Base, Oregon

**Pvt. Roman Leo Kosse, Army**  
Son of Mr. and Mrs. Martin Kosse  
Born at Remsen, April 28, 1924  
Killed in action February 1, 1945, in France

**Pfc. Leland P. Letsche, Infantry**  
Son of Mr. and Mrs. Herman Letsche  
Born on Farm in Cherokee County March 5,  
1918  
Killed in action April 28, 1944,  
Anzio Beachhead, Italy

**Eilert Seggermann, Navy**  
Son of Mr. and Mrs. Harm Seggermann  
Born at Remsen February 8, 1918  
Lost in action March 3, 1943, in Greenland

**Pfc. John Stoos, Jr., Coast Artillery**  
Son of John Stoos, Sr.  
Born at Remsen, June 16, 1912  
Killed in action on Corregidor, May 6, 1942

**Donald Harnack, Army Air Force**  
Son of Mr. and Mrs. John Harnack  
Born at Remsen, December 13, 1921  
Killed in plane crash March 10, 1943,  
at Thunderbird Field, Phoenix, Arizona

**T/Sgt. Laurence J. Brandenburg, Army Air Force**  
Son of Mr. and Mrs. George Brandenburg  
Age 25 Years  
Lost in aerial action over Germany, April, 1943

**Sgt. Vernon E. Miller, Army Air Force**  
Son of Mrs. Tina Miller  
Born at Remsen May 29, 1920  
Killed in plane crash in California,  
January 19, 1944

**Second Lieut. Edmund Rohde, Army Air Force**  
Son of Mrs. Alma Rohde  
Born at Remsen September 30, 1921  
Lost in aerial action over Germany  
October 6, 1944

**Pfc. Frank P. Lanners, Army**  
Son of Mr. and Mrs. Peter Lanners  
Born at Remsen January 6, 1918  
Killed in action July 12, 1943, in North Africa

**T/Sgt. Raymond Kohnke, Army**  
Son of Mr. and Mrs. O. H. Kohnke  
Born at Remsen January 20, 1914  
Killed in action at Corregidor March 26, 1943



## Twenty-Seven Years of Service

Volume is the Key to the Success of Any Business

The nearly \$1,000,000 in dividends paid in the past twenty-six years  
to members, speaks for our volume.

We have a highly specialized sales force. Each class of every  
species of livestock is sold by men of long experience.

### Farmers Union Live Stock Commission

SIoux CITY 11, IOWA

8-2292

**Old Home**  
**is**  
**Good Bread**



*War Veterans  
Buried in Remsen Cemeteries*

**CIVIL WAR**

Wilhelm Long  
Wilhelm Sievers  
Nicholas Becker  
Theodore Paskert

**SPANISH  
AMERICAN WAR**

Louis Schmitz  
Albert Moser

**WORLD WAR I**

William Pieper  
Albert Fromme  
Charles Schnepf  
Peter Osip  
Peter Kirpes  
Nick Clemmens  
Joseph Wagner  
Joseph Fiderer  
Fred Thiel  
Carl Bock  
Albert Koerner  
Louis Reinholdt  
Aloys Nothem  
Roland Wentz  
Joseph Diekman

**WORLD WAR II**

Silas Ritz  
Donald Harnack  
Vernon Miller  
Richard Treinen

*Our Best Wishes*

**SIoux CITY  
DISTRIBUTING COMPANY**

Distributors of

**Storz Gold Crest Beer**

Sioux City, Iowa

Compliments of

**TRITZ CATTLE COMPANY**

RAY M. TRITZ

GORDON TRITZ

Remsen, Iowa

Dealers in

**LIVE STOCK**



**Weekly Auction Sales**

Tuesday Nights, Thursday Afternoons

A WESTERN MARKET IN THE CORN BELT



## Oyens---A Good Neighbor

Closely linked with the history of Remsen is the town of Oyens, population 100, located four miles to the west. For numerous former Remsen people now make up the population of that thriving little town, and always there has existed a friendly spirit between the two.

The town of Oyens is considerably older than Remsen in years, although not as old as an incorporated unit. The first settlers of that community appeared there in the late sixties when the present site of Remsen still was an unbroken prairie.

The settlement of Oyens thrived for years without town ordinances, the movements of its people guided by federal, state and county township laws and regulations. Not until 1909 was the town incorporated. The first settlers were governed in their location under the Homestead laws enacted during Abraham Lincoln's presidency.

### EARLY SETTLERS OF OYENS

Among those recalled as early settlers around Oyens are David Baldwin, who settled in now Fredonia township, one mile west and three miles north of Oyens. Mr. and Mrs. Baldwin were the parents of Fred, Walter, Herbert and Laura, all well known among present day residents. Mr. and Mrs. John Tovey came also in the late 60's, settling one mile west and two miles north of the village.

The only original homestead house to be found today in Oyens territory is that erected in the early 60's by E. P. Towns, on his homestead one mile west of town.

Among the old-time business men of the town recalled are John Meis, Nick Freymann, Henry Wisser, Steve Ellingsworth, Mike Reard, Paul Wanderscheid, John Kaiser, Jos. J. Kemp,

C. Ludwig, John Galles, Jacob Fiedler, Henry Masuen, Nick Feller, Paul Peterson, Charles Masuen, J. L. Doud, Joe Strohbeen, Harry Kemp, Charles Kuster, Jens Kloster, Charles Peebles, J. M. Hentges and hosts of others, and some of these are still in business there.

Mrs. J. L. Doud is the Oyens postmistress and according to postal inspectors is "doing a swell job." Less than \$50 more business was required in 1944 to put the office in third class.

The town was incorporated in 1909. With but one ticket in the field the first elected results as follows:

Mayor, Nicholas Freymann.

Clerk, John Meis.

Councilmen—Paul Peterson, Mike Reard, Jacob Fiedler, Henry Masuen and Nick Feller.

Town Marshal, John Galles.

Oyens has two churches, St. Catherine's Catholic of which the Rev. H. B. Karhoff is pastor, and Gethsemane Lutheran, served by the Rev. John Christensen of Marcus.

There are numerous business places, substantial dwellings and 100 good citizens.

### PRESENT OFFICERS

The "official family" of Oyens, "the biggest little town in Iowa," today is as follows:

Mayor, Paul Peterson.

Clerk, Jos. J. Kemp.

Treasurer, Mike Weber.

Councilmen—J. L. Doud, J. A. Kloster, Thorvald Kloster, and J. M. Hentges. There is a vacancy on the council at this time through death of Charles Kuster.

GREETINGS  
AND BEST WISHES

to

*The Luxembourgers*

and their friends

of

*Remsen and Vicinity*

-from-

TRINITY COUNCIL

(1466)



KNIGHTS OF COLUMBUS

LeMars, Iowa



Schaafs Hardware Store was founded in 1885 by Henry Schaafs, born in the Grand Duchy of Luxembourg, who, after serving an enlistment in the French army, migrated from Paris to America at the age of 21 years.

He arrived with but little capital and embarked in his business career by buying and selling pocket knives, buying one or two knives at a time, and, as his business grew, added more items of hardware, finally opening his store and adding buggies, wagons, and the usual farm implements to his line.

Shortly thereafter, he married Susan Lucas of Luxemburg, Iowa, to which union were born nine children, one of whom, Catherine (Mrs. Fred T. Phillips), is still living.

Henry Schaafs died in September, 1928.

In 1910 Fred T. Phillips entered into the active management of the Schaafs Hardware Store, at which time additional lines of farm machinery, tractors and trucks, were added, and continued in the active management of the business until his death, on August 10, 1944.

The business is now being carried on by Mrs. Phillips, with the help of her three sons, Frederick, now in the Navy, Wallace and Wendell, both of whom were recently discharged from the Army.

Prior to the present war there were a total of 22 employees, exclusive of the Phillips family, six of whom average 18 years of service. The oldest employee in point of service is Henry Foxen with 40 years, next being Gene Diers with 25 years of continuous service. In the past sixty years this business has grown from pocket knives to the modern farm equipment of today and covers more than 25,000 square feet of floor space under roof.

We, the management and the entire staff of the Schaafs Hardware Store, wish to extend our thanks to our customers in Remsen and the surrounding trade territory for their loyal support in making this business what it is today.

*Compliments of*

**PALMER FRUIT COMPANY**

Sioux City, Iowa

Compliments of

**J. L. SCHARFF**

AUTOMOBILES

■  
Remsen, Iowa

**NU-ART  
BEAUTY SALON**

■  
MACHINE AND MACHINELESS

PERMANENTS

Wella Cold Wave

■  
ELNORA KELSEY



# WEST IOWA TELEPHONE COMPANY

(A Service Institution)

In retrospect one can only visualize the desire of the founders of Remsen and her early farm settlers. They were seeking a land offering an abundance, both materially and spiritually, that compared with fair Luxembourg which they left behind. Each passing year, and each succeeding generation, gives attest to the wisdom of their choice.

This company is proud that its general offices are located in Remsen, and we are glad to be part of her communal life. We admire the enterprise of her business, the industry of her farms and her well groomed homes. We congratulate those who have made this book possible.

The Employees and Management



Chesterman & Co., Sioux City, Iowa

Greetings to the Grand Duchy of Luxembourg  
and to Remsen

**CITY CLUB  
BEVERAGE CO., INC.**

Distributors of

**SCHMIDT'S CITY CLUB BEERS**

306 S. W. Ninth St.

Des Moines, Iowa

## *This Is the Man*



G. D. HAGAR

And here are some of the things he says it is wise to remember in making a sound investment.

First—The REALTOR who refuses to sell you something he believes you will be unable to pay for, or that has no actual resale value.

That the pocketbook is a family affair, when it comes to making an investment, and is one of many lessons still unlearned by those who think themselves infallible, and their judgment above reproach.

Never expect more for anything than you would pay for it yourself.

A wise investment is based upon what each dollar will earn for you in actual returns, in comparison to the earning power of your dollar invested in any safe security, providing the investment you wish to make is as safe as the security you held while making the dollar you wish to invest.

Before you buy or sell your home, or realty of any kind, if you do not feel competent to make the decision, ask the advice of many. For great foundations are layed, and substantial institutions are builded by and through accepting the advice of many.

For a safe investment or dependable loan, at money market value, write or consult—

## **GEORGE D. HAGAR, Realtor**

**Remsen, Iowa, Phone 215, P. O. Box 246**

**BEST WISHES FOR THE SUCCESS OF THE LUXEMBOURG  
RELIEF COMMITTEE AND ITS HUMANITARIAN ACTIVITIES.**

## **Corn Belt Supply Company, Inc.**

**Sioux City, Iowa**



### **JOBBERS AND WHOLESALERS**

Linseed Meal and Pellets

Soybean Meal and Pellets

Cottonseed Meal, Cake and Screenings



**Archer's, Sargent's, Hubbard's**

**Feeds for Livestock and Poultry**

Compliments of

# The Kay Dee Feed Company

1825 Grand Avenue

Sioux City, Iowa

Manufacturers of

Worth-Mor and K-D Feeds and Minerals

Compliments of

# HI-WAY

on No. 5

Remsen, Iowa

ENOCH JOHNSON

# TAVERN

Jobbers of  
SOCONY-VACUUM  
PRODUCTS

ELECTRICAL EQUIPMENT  
TIRES AND  
ACCESSORIES



CONGRATULATIONS  
AND GREETINGS

-to the-

LUXEMBOUGERS

of Remsen, Iowa

and their friends



Sioux City Live Stock Exchange

*Greetings and Best Wishes*

from

**FLOYD A. MYLAN, D.V.M.**

IN REMSEN SINCE 1918

For permanent independence and  
a bright future for  
The Grand Duchy of Luxembourg

—and—

**PEACE AND GOOD WILL ON EARTH**

I THANK THE PEOPLE OF REMSEN AND VICINITY FOR THEIR  
GOODWILL AND FAVORS THESE TWENTY-SEVEN YEARS



Breeder of

**REGISTERED ABERDEEN ANGUS CATTLE**

ALWAYS SOME CHOICE INDIVIDUALS FOR SALE

Your Inspection of Our Herd Invited

*Best Wishes from*

**RITZ SUPER SERVICE**

(YOUR MOTOR CAR HOSPITAL)



Complete Service in Repairing, Overhauling

**BATTERIES**

**TIRES AND TUBES**



**JOHN E. RITZ, Proprietor**

# McQuirk & Taylor Seed Store

ALFALFAS, CLOVERS

GRASS SEEDS

BULK GARDEN SEEDS

HYBRID SEED CORN



305 Pearl St.

Sioux City (14,) Iowa

L. S. HOMAN

HENRY DALDRUP

COMPLIMENTS OF

## HOMAN & DALDRUP

J. I. CASE FARM IMPLEMENTS

PUMPS, WINDMILLS

GRASS SEEDS



Remsen, Iowa



# Heidel-Brau

One of  
America's  
Great Regional  
BEERS!

Choice golden-ripe grain, the finest malt, and tastiest hops are all combined by the latest brewing methods to produce HEIDEL-BRAU Beer.

Drink a refreshing bottle of smooth, mellow, fully-aged HEIDEL-BRAU after a hard day's work—enjoy it with your friends or with a home-cooked meal.

Whatever the occasion — HEIDEL-BRAU will make it a bit more pleasant!

BREWED AND BOTTLED BY THE  
SIOUX CITY BREWING CO.  
SIOUX CITY, IOWA

*Greetings from*

Goetz Country Club Beer Distributing Co., Inc.

Distributors of

*Goetz Country Club Beer*

Lager  
Green Label

Pilsener  
Red Label

Blue and Silver  
Label



515 Pearl St.

SIOUX CITY, IOWA

ERROR: stackunderflow  
OFFENDING COMMAND: ~

STACK: