



SDA
LD
5101
.S367
.A165

THE
LIBRARY OF THE
UNIVERSITY OF TORONTO

*G*reetings

from

**SOUTHERN
MISSIONARY
COLLEGE**

McKEE LIBRARY

Southern Missionary College

Collegedale, Tennessee 37315

SDA
LD
5101
.5367
.A165

THE BOARD OF TRUSTEES OF SOUTHERN
MISSIONARY COLLEGE TAKES PLEASURE IN
EXTENDING THIS PERSONAL INVITATION TO

VISIT

Collegedale, Tennessee

Come and enjoy the natural beauty of the college campus; visit the new library; attend some of the classes; have a look at the rooms in the Residence Halls; see the varied industries operated principally by student labor; inspect the dairy herd and tramp over the farms connected with the college; and go to the students' cafeteria and be served a variety of tasty vegetarian dishes. The Board believes that such a visit would be both enjoyable and profitable to you and your friends, that you would be delighted to get some first-hand knowledge of the Christian "College of Standards," and that you would find Southern Missionary College ready to serve you or any member of your community at any time.

WILL YOU NOT COME AT YOUR EARLIEST
OPPORTUNITY? WE THANK YOU.

SMC



THE MAIN entrance to Lynn Wood Memorial Hall, at present the most important building on the campus of SMC, is symbolic of the real gateway to Christian service which this college offers.

1 1 9 4 1 0

CHARACTER EDUCATION



SOUTHERN MISSIONARY COLLEGE BELIEVES THAT:

"The greatest want of the world is the want of men,—men who will not be bought or sold; men who in their inmost souls are true and honest; men who do not fear to call sin by its right name; men whose conscience is as true to duty as the needle to the pole; men who will stand for the right though the heavens fall."

"Such a character is not the result of accident; it is not due to special favors or endowments of Providence. A noble character is the result of self-discipline, of the subjection of the lower to the higher nature, the surrender of self for the service of love to God and man."

Therefore the abiding aim of Southern Missionary College is ever to be a genuine Christian institution with a carefully selected and maintained Christian environment in which young people of high purpose can come together to seek the effective help of consecrated, inspiring teachers while they prepare themselves and help to prepare each other to supply that "greatest want of the world," and to render effective Christian service at home and abroad.





THE LIBRARY is one of the most frequented buildings on the campus. It has readily accessible knowledge with which to reward all energetic students and to assist them in securing the broadest possible knowledge in their brief years at college.

THE NEW COLLEGE LIBRARY



THE Arthur G. Daniells Memorial Library, completed early in 1947, is the latest addition to the physical plant of Southern Missionary College. As the heart of the college, the library is the chart room of the institution it serves. It is maintained as an orderly, well-regulated, and well-catalogued storehouse of useful and indispensable knowledge.





Cooking Laboratory



Radio Laboratory

HISTORY AND DEVELOPMENT

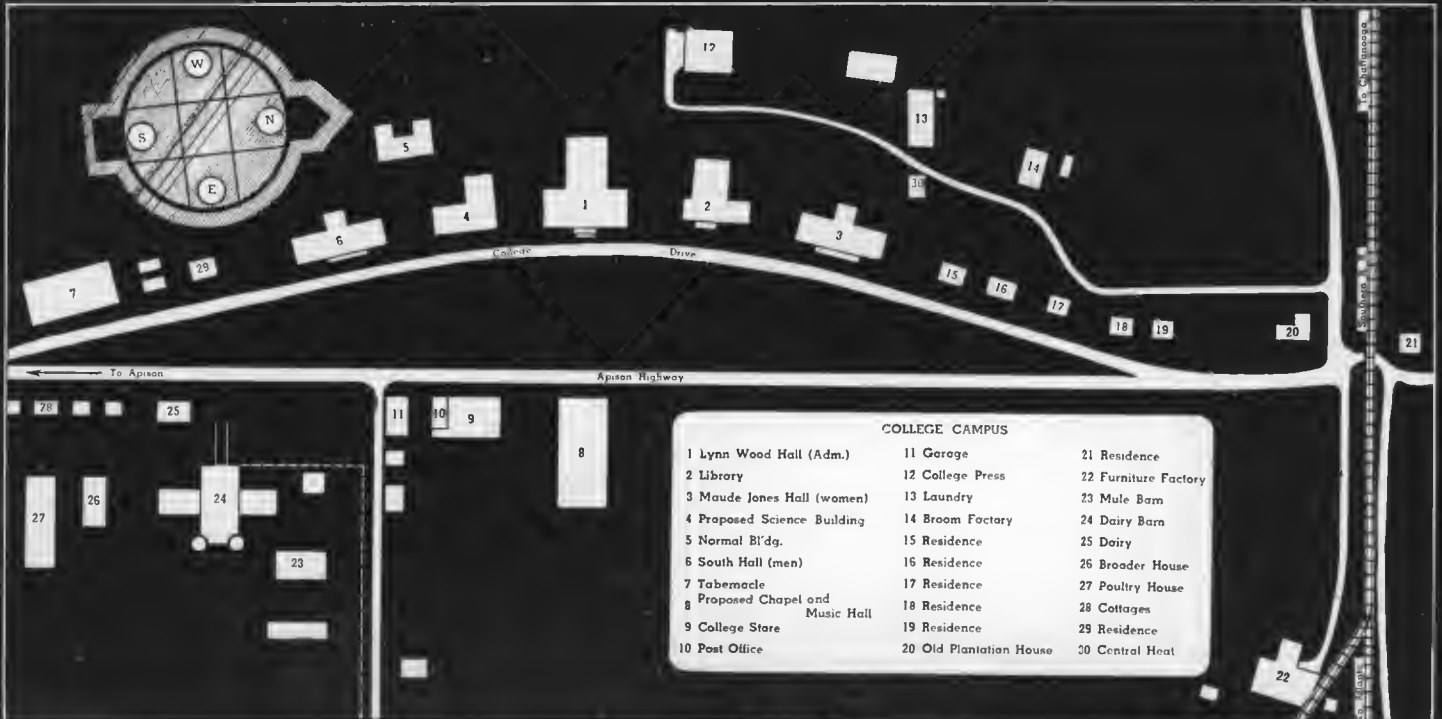


It has been said that men and ideals combine to produce institutions; that institutions in turn make men; and that men foster and perpetuate the idealism of their extraction. It was indeed a happy combination of both men and ideals which in 1916 brought about the transfer of the Southern Training School from Graysville to a small farm some three and one-half miles from Ooltewah, Tennessee. It was renamed Southern Junior College. No college man would have accepted this institution as a college, but those humble men were endowed with a strong faith and a clear vision that would make their dreams come true. Today Southern Missionary College stands as a monument to the faith of those pioneers. There were a number of buildings on the new school farm, the best of which, the old planta-

tion house, was made to serve as dormitory for the young ladies and kitchen and general dining room for the school family. Four of the seven cottages formerly used as slave houses were turned into dwelling houses for teachers, while the other three, together with a number of tents, served the boys as their temporary homes. An old barn was fitted up as an administration building, though it looked so bad that everybody spoke of it as "the cracker box." The self-sacrifice of a loyal constituency provided more and more land and buildings, until at present there is nearly a thousand-acre estate and campus with a physical plant valued at one million dollars, which constitutes a splendid testimony to a people's firm faith in God.

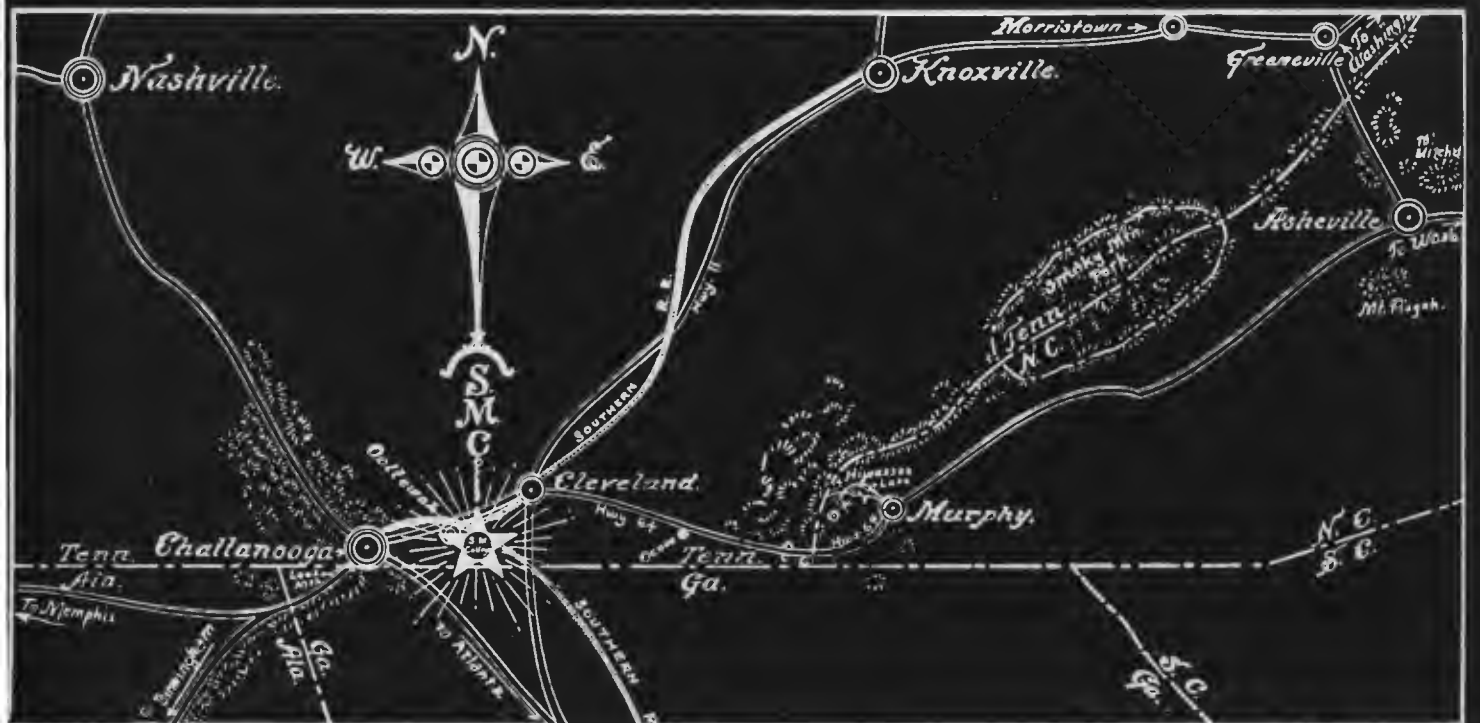


ON THESE pages there is a panoramic view of the central portion of the campus of Southern Missionary College and a chart giving the exact location of the various buildings now being used and indicating the approximate site of the several proposed buildings which are planned for in the present expansion program.





THIS MAP should make it very easy for you and your friends to drive to Collegedale when you come to visit the "School of Standards." Beyond the buildings on the hill overlooking the whole campus is a beautiful site suitable for a sanitarium.





Portion of Main
Dining Hall



Maude Jones Hall

INDUSTRIAL



Southern Missionary College aims to provide the highest and the best in mental and moral culture and to furnish the most helpful facilities it can afford for intellectual and physical development as well as for industrial training. Although the majority of the graduates enter professional lines of work, students are encouraged to learn at least one trade or occupation whereby, if need be, they may earn a livelihood when they leave school. Thus it sends forth its

product trained in habits of industry and skilled in lines of useful and productive labor.

Practical instruction is offered in agriculture, dairying, poultry raising, animal husbandry, furniture manufacturing, broom making, printing, building, campus maintenance, and in the domestic sciences, and with the anticipated addition of a new gymnasium the ideal vocational and physical training dreamed of by our founders will be consummated.



Composition Room
College Press

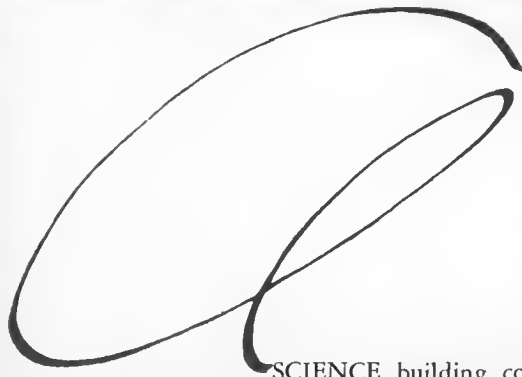
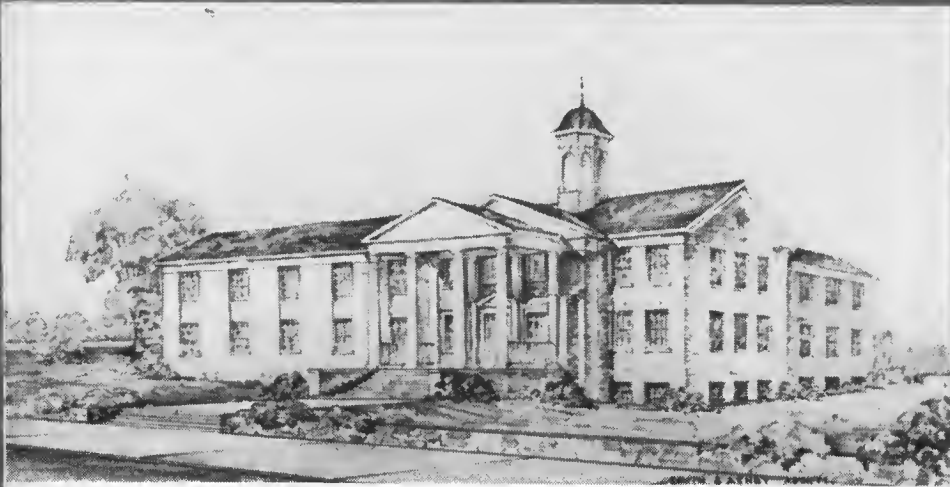


College Broom Shop



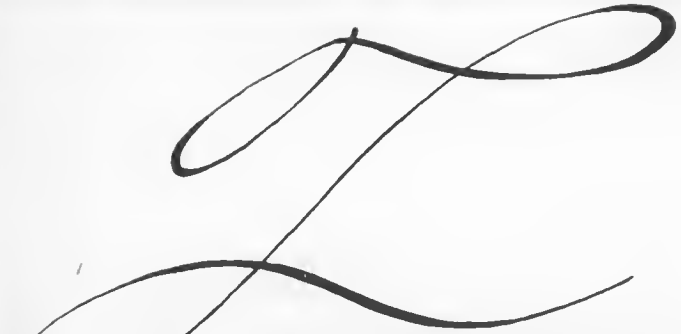
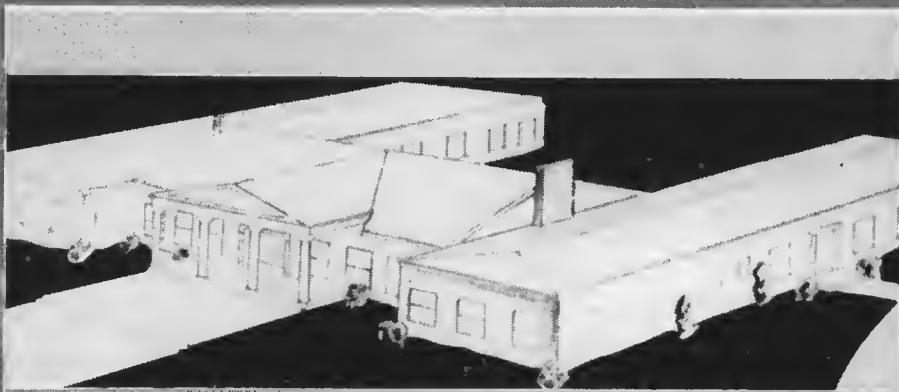
College Wood Products
Assembling Furniture

P
R
O
P
O
S
A
L
I



SCIENCE building commensurate with the needs of Southern Missionary College has already been envisioned by an architect, and will, when the funds needed for its erection have been subscribed, furnish excellent class and lecture rooms for the departments of biology, chemistry, health, home economics, and physics. It will also provide all the laboratories required by these departments. How soon this great need can be supplied will be answered in a large measure by the response every friend and supporter of the cause of Christian education makes to this, the first general appeal Southern Missionary College has made to you for help for its expansion program.

P
R
O
P
O
S
A
L
I
T
I



HE race of mankind would perish, did they cease to aid each other . . . we cannot exist without mutual help. All, therefore, that need aid have a right to ask it from their fellow mortals; no one who holds the power of granting can refuse it without guilt." *Sir Walter Scott.*

Realizing this community's need of a health center where the well-known Battle Creek treatments could be offered to a needy public, Southern Missionary College has reserved a beautiful site on its campus for such a health center. There are many especially trained physicians who are willing and ready to operate such a health center. Let every potential giver be challenged.



CHAPEL
SOUTHERN MISSIONARY COLLEGE
SMITH & ASHBY ARCHITECTS



TO COMPLETE its training of the head, the hand, and the heart, Southern Missionary College needs a suitable auditorium for the social and spiritual side of its work. Such a building could be so constructed that it could house the music department which now has no proper quarters. The artist's vision of such a building is shown above.

THE BOARD OF TRUSTEES OF SOUTHERN
MISSIONARY COLLEGE APPRECIATES
THE INTEREST YOU HAVE MANIFESTED
AND OFFERS ITS

THANKS

To you for the time you have spent in becoming better acquainted with this "College of Standards."

Your sincere and friendly attitude toward and your helpful interest in a college that has served your community in a unique way for so many years is genuinely appreciated by the Board. So also is the fact that you will henceforth interpret the work of this institution as an important asset to the whole community.

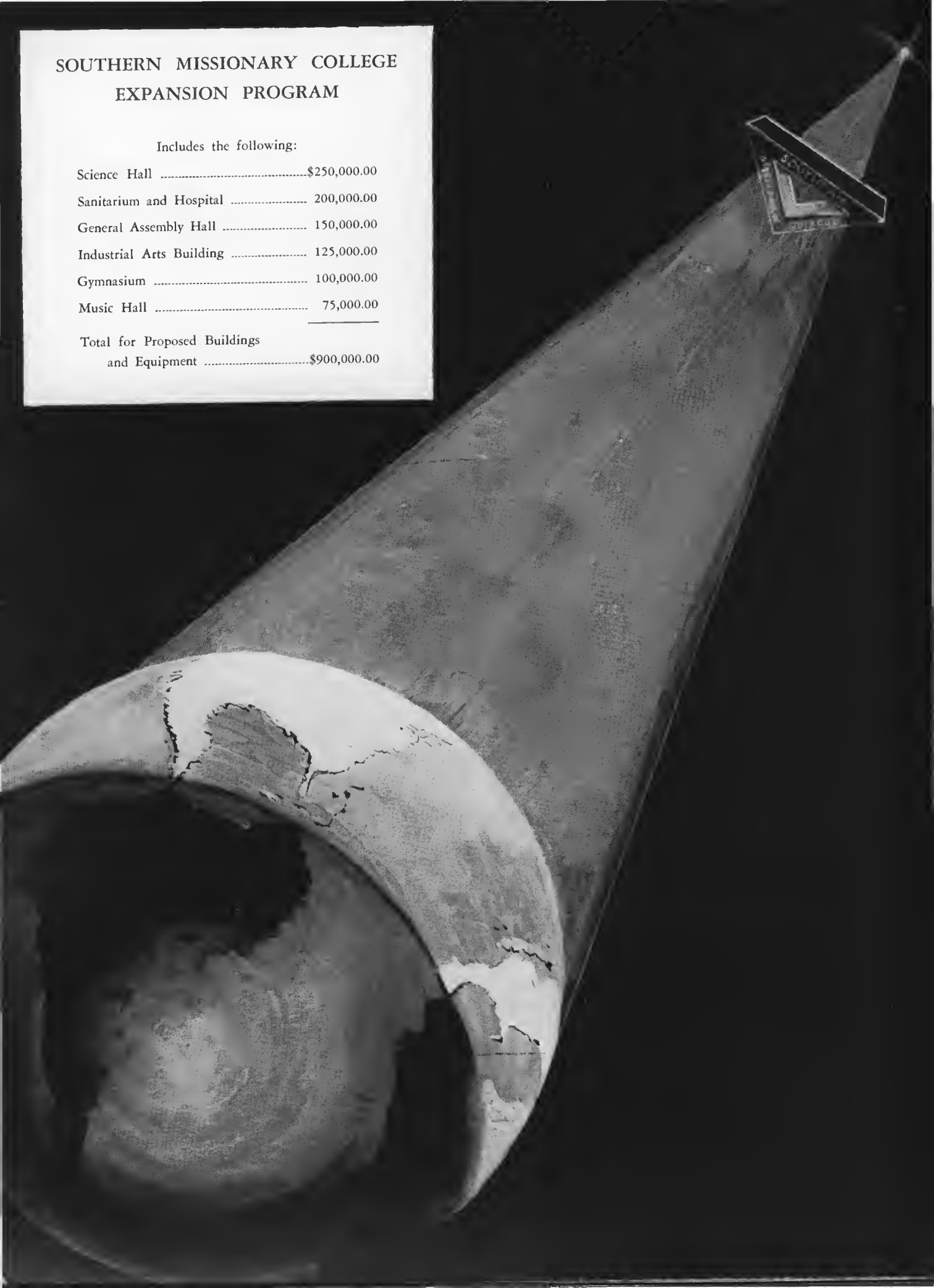
The Board is certain that you will manifest your appreciation of this fundamental Christian college in a very material way by a generous response to the appeals made on the last three pages of this brochure. The Board believes that you will measure up to your full opportunity so that the expansion program urged on Southern Missionary College by both natural growth and post-war circumstances can be quickly carried to completion and that a bigger and better college may be yours and theirs who in the future shall come to it to receive a training for Christian service.

THANK YOU FOR YOUR VERY BEST

SOUTHERN MISSIONARY COLLEGE
EXPANSION PROGRAM

Includes the following:

Science Hall	\$250,000.00
Sanitarium and Hospital	200,000.00
General Assembly Hall	150,000.00
Industrial Arts Building	125,000.00
Gymnasium	100,000.00
Music Hall	75,000.00
<hr/>	
Total for Proposed Buildings and Equipment	\$900,000.00

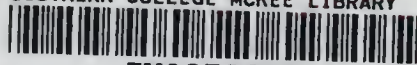


For Reference

Not to be taken

from this library

SOUTHERN COLLEGE MCKEE LIBRARY



TMS073489

