

Hark to Philomela singing

A Glee for 4 VOICES, with an Accompaniment for the

PIANO FORTE,

Composed & Dedicated by Permission to

His Royal Highness

The Duke of Cambridge,

BY

W. KNYVETT.

Ent^d at Sta. Hall.

Price 2/6.^d

London, Printed & Sold by R.^t Birchall, 133, New Bond Street.

ACCOMP^T

MODERATO

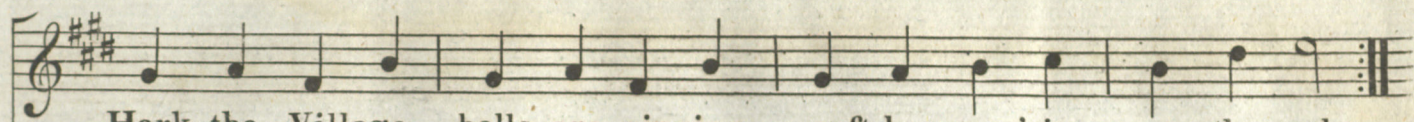
Hark to Phil - o - - mel - a singing sweetly warbling in the Vale

Hark the village bells are ringing soft-ly murm'ring on the gale.

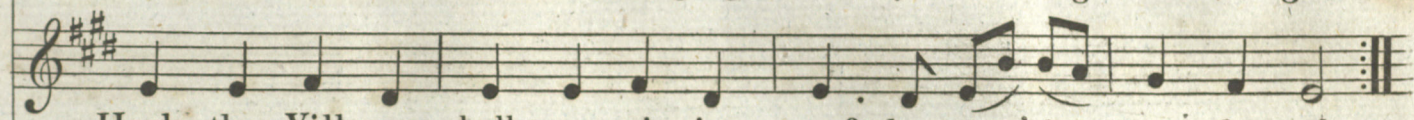
Hark to Phil-o - - mel - a singing sweetly warbling in the Vale

Hark to Phil-o - - mel - a singing sweetly warbling in the Vale

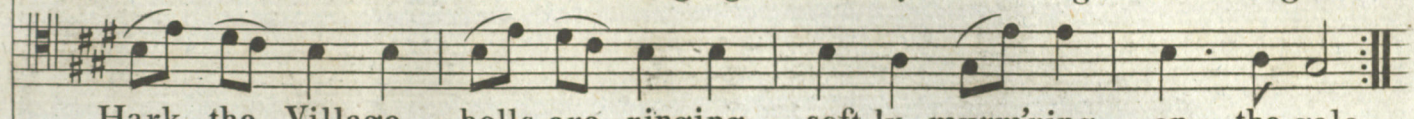
Hark to Phil-o - - mel - a singing sweetly warbling in the Vale



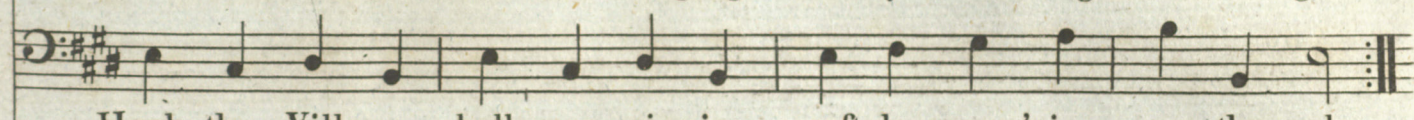
Hark the Village bells are ringing soft-ly murm'ring on the gale



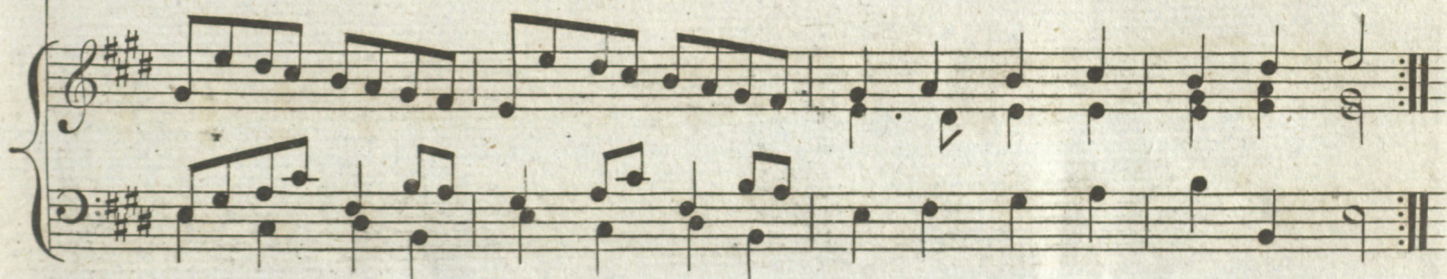
Hark the Village bells are ringing soft-ly murm'ring on the gale



Hark the Village bells are ringing soft-ly murm'ring on the gale



Hark the Village bells are ringing soft-ly murm'ring on the gale



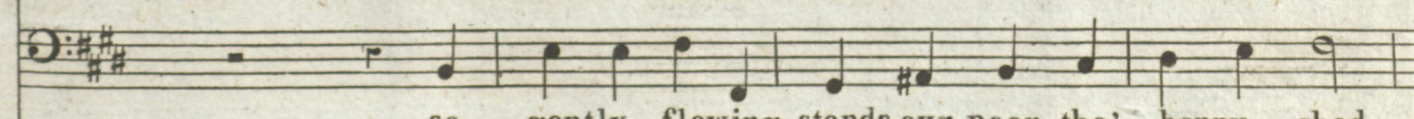
By that stream so gently flowing stands our poor tho' happy shed



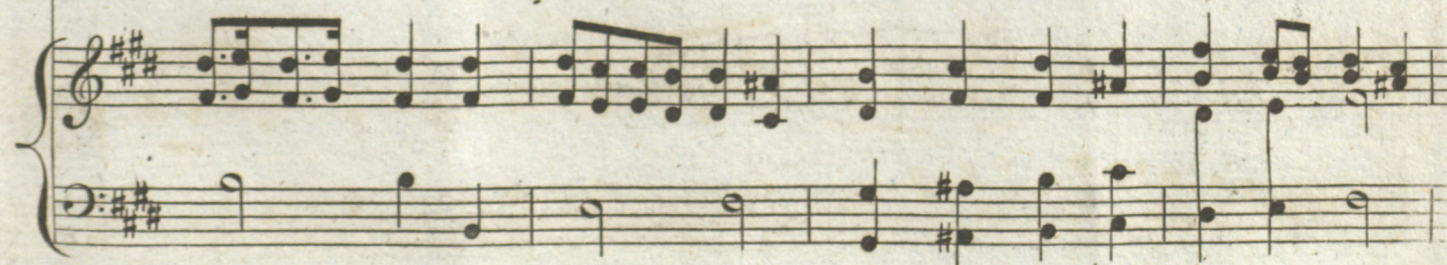
By that stream so gently flowing stands our poor tho' happy shed



By that stream so gently flowing stands our poor tho' happy shed



so gently flowing stands our poor tho' happy shed



o'er its un-pro - tected head

Winds that ev-er kindly blowing o'er its un-pro - tected head by

Winds that ev-er kindly blowing o'er its un-pro - tected head

Winds that ev-er kindly blowing o'er its un-pro - tected head

by that stream so gently flowing stands our poor tho' hap-py shed

- - - that stream so gently flowing stands our poor tho' hap-py shed

by that stream so gently flowing stands our poor tho' hap-py shed

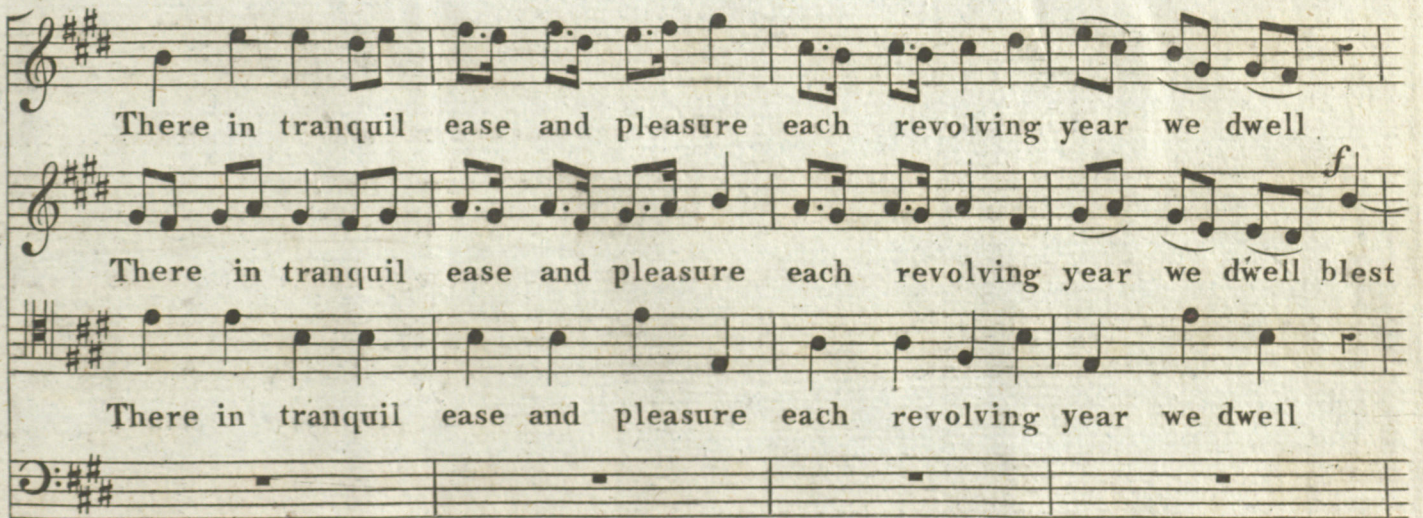


Winds that ev-er kindly blowing o'er its un-pro - tected head

Winds that ev-er kindly blowing o'er its un-pro - - tected head

Winds that ev-er kindly blowing o'er its un-pro - - tected head

Winds that ev-er kindly blowing o'er its un-pro - - tected head



There in tranquil ease and pleasure each revolving year we dwell.

There in tranquil ease and pleasure each revolving year we dwell blest

There in tranquil ease and pleasure each revolving year we dwell



blest with ev' - - ry heart - felt trea - sure in our poor and

with ev' - - ry heart - felt treasure in our poor and

blest with ev' - - ry heart - felt trea - sure in our poor and

blest with ev' - - ry heart - felt trea - sure in our poor and

Dynamic markings: *f*, *Dim^o*, *p*

hum - ble Cell blest with ev' - - ry heartfelt treasure

hum - ble Cell blest - - with ev' - - ry heartfelt treasure

hum - ble Cell blest with ev' - - ry heartfelt treasure

hum - ble Cell blest with ev' - - ry heartfelt treasure

Dynamic markings: *f*, *Dim^o*

p
in our poor and humble Cell
in our poor and humble Cell
in our poor and humble Cell
in our poor and humble Cell

