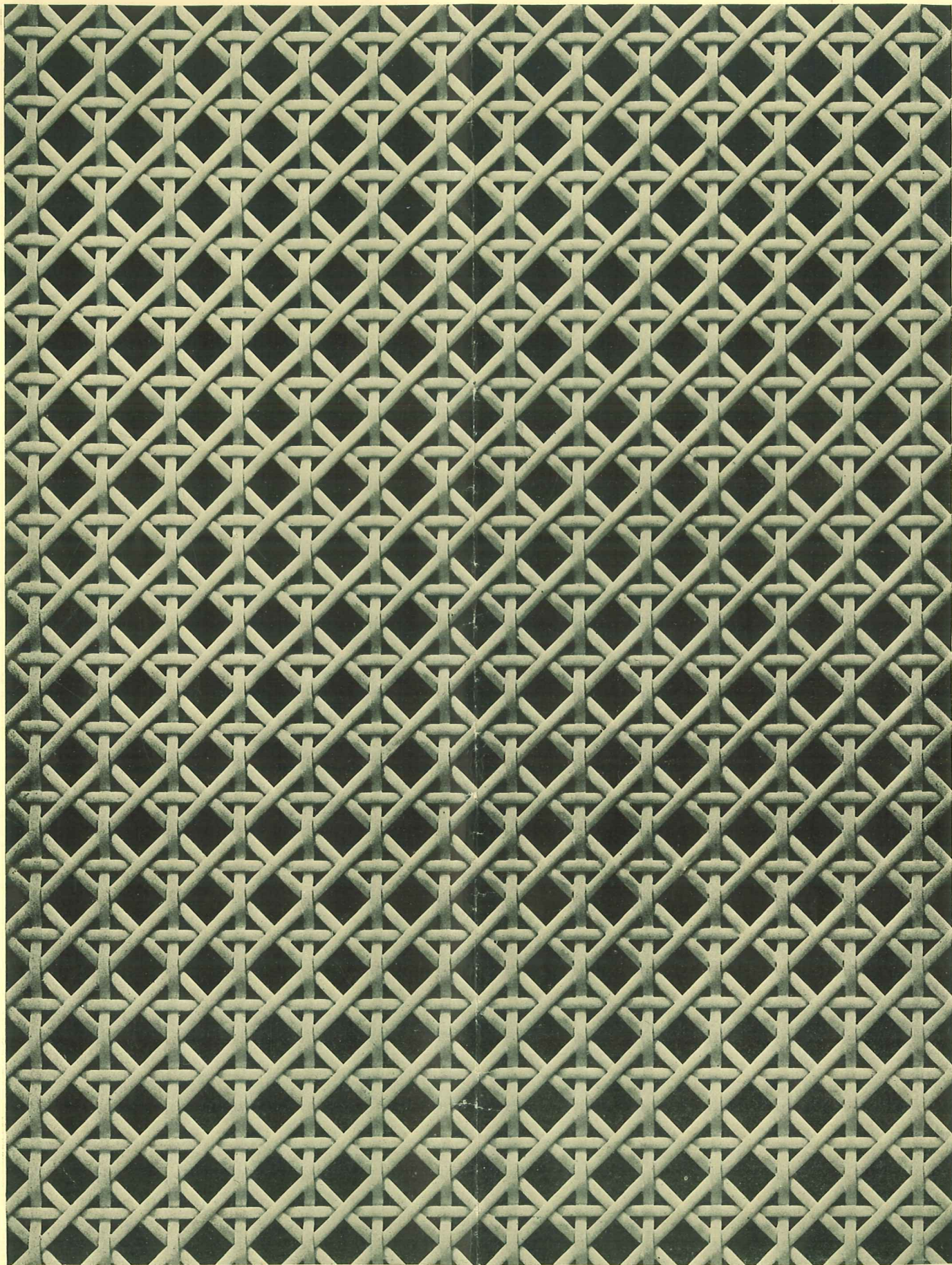


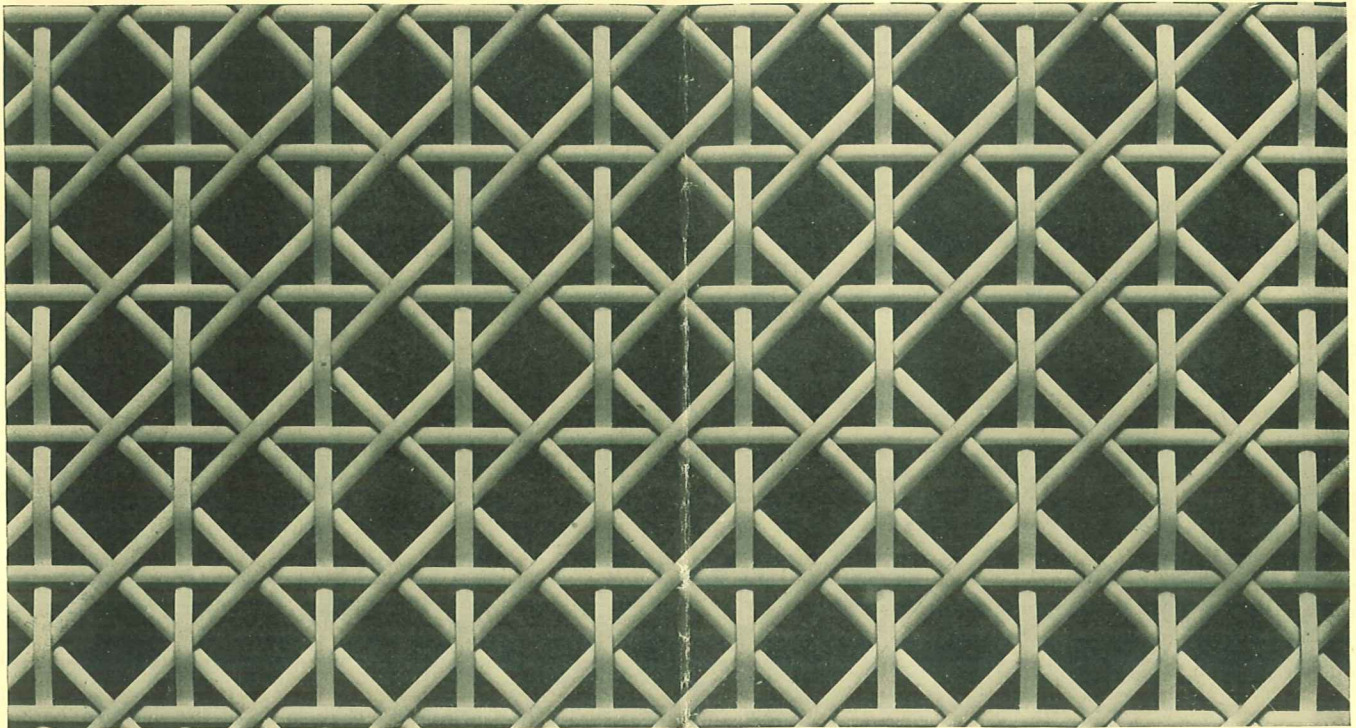
METALACE

REGISTERED TRADE NAME

THE METALACE CORPORATION
SOUTH BOSTON, MASSACHUSETTS

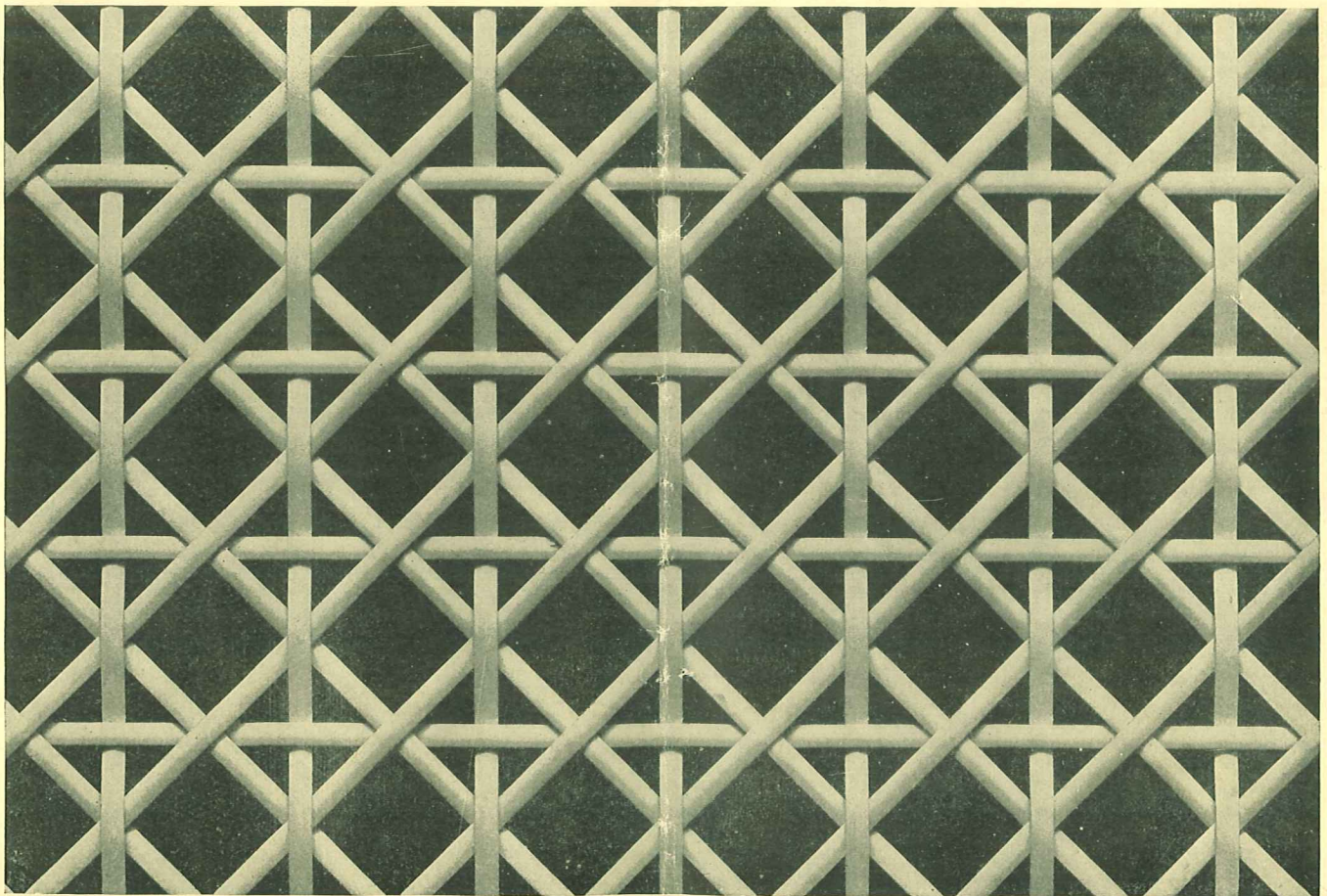
LICENSEE OF THE
RILEY LOOM CORPORATION





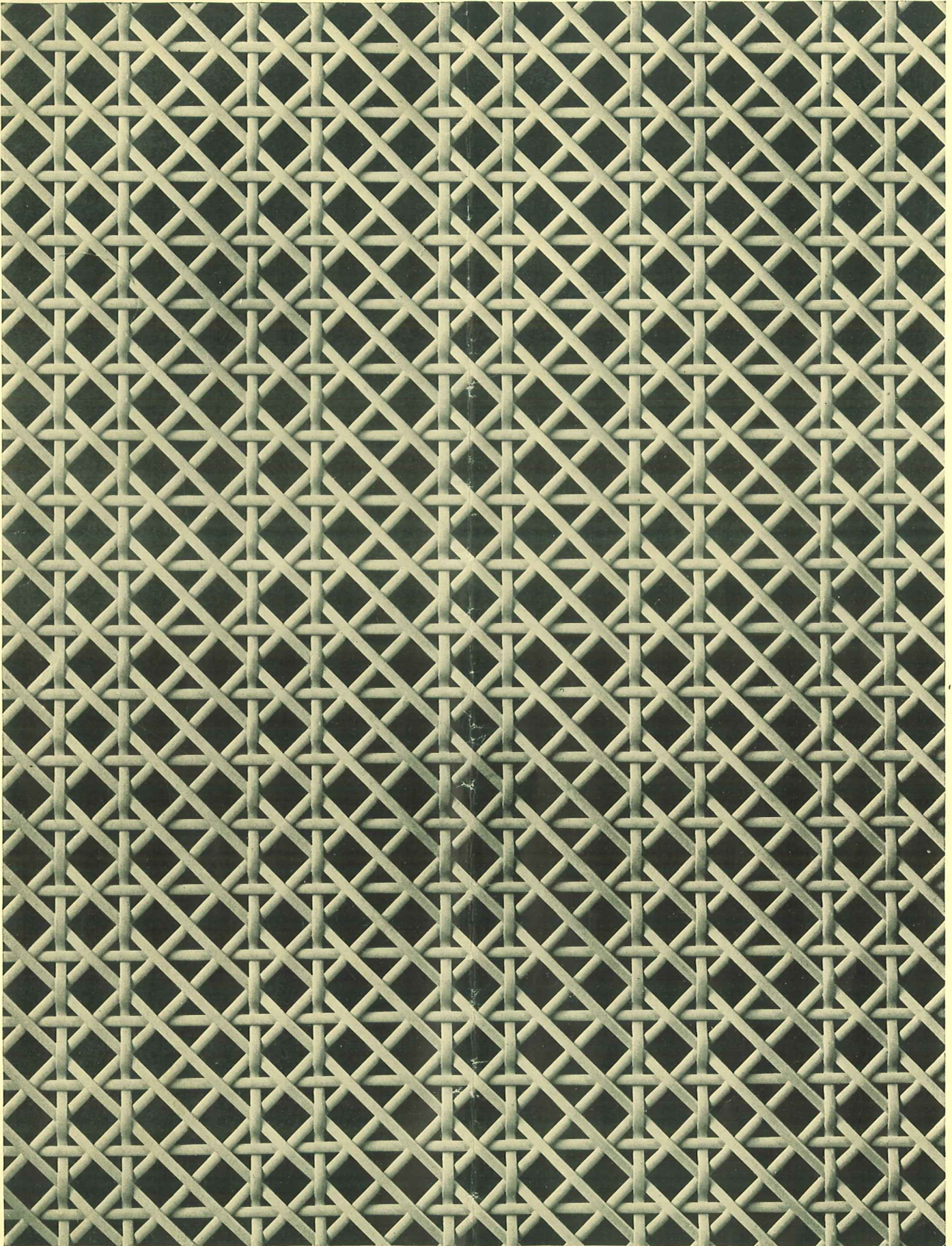
Actual Size

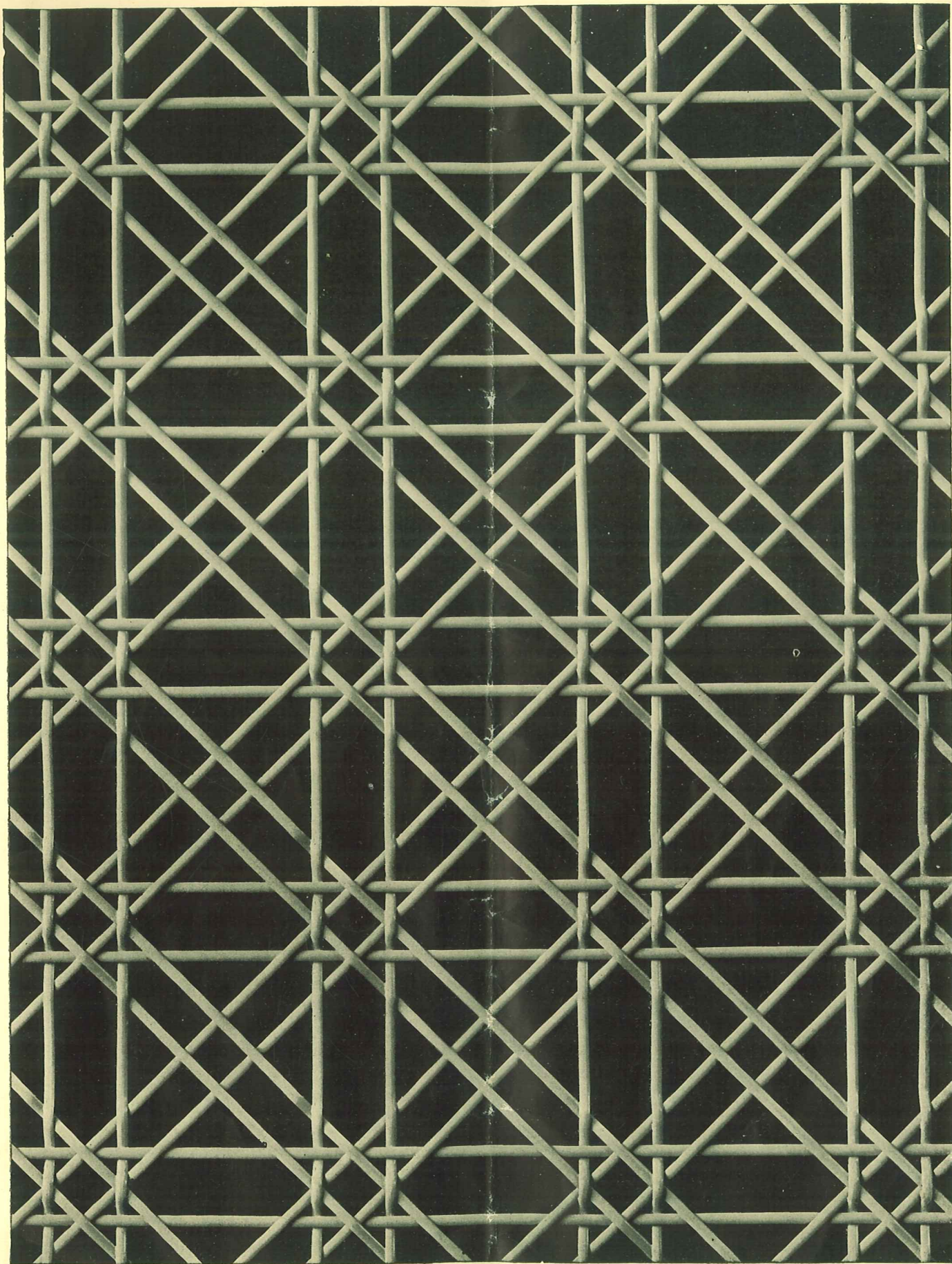
METALACE GRILLE NO. 41

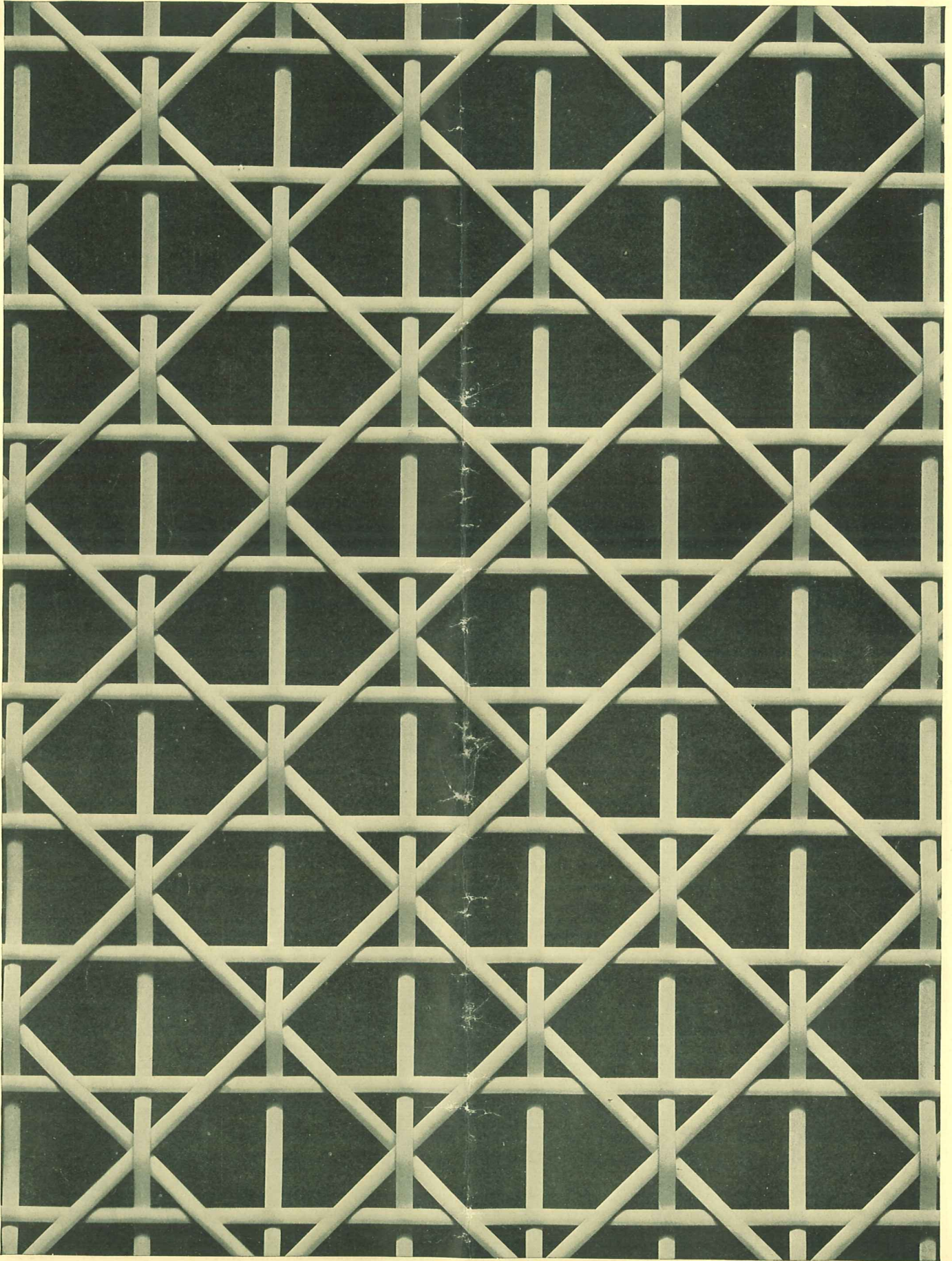


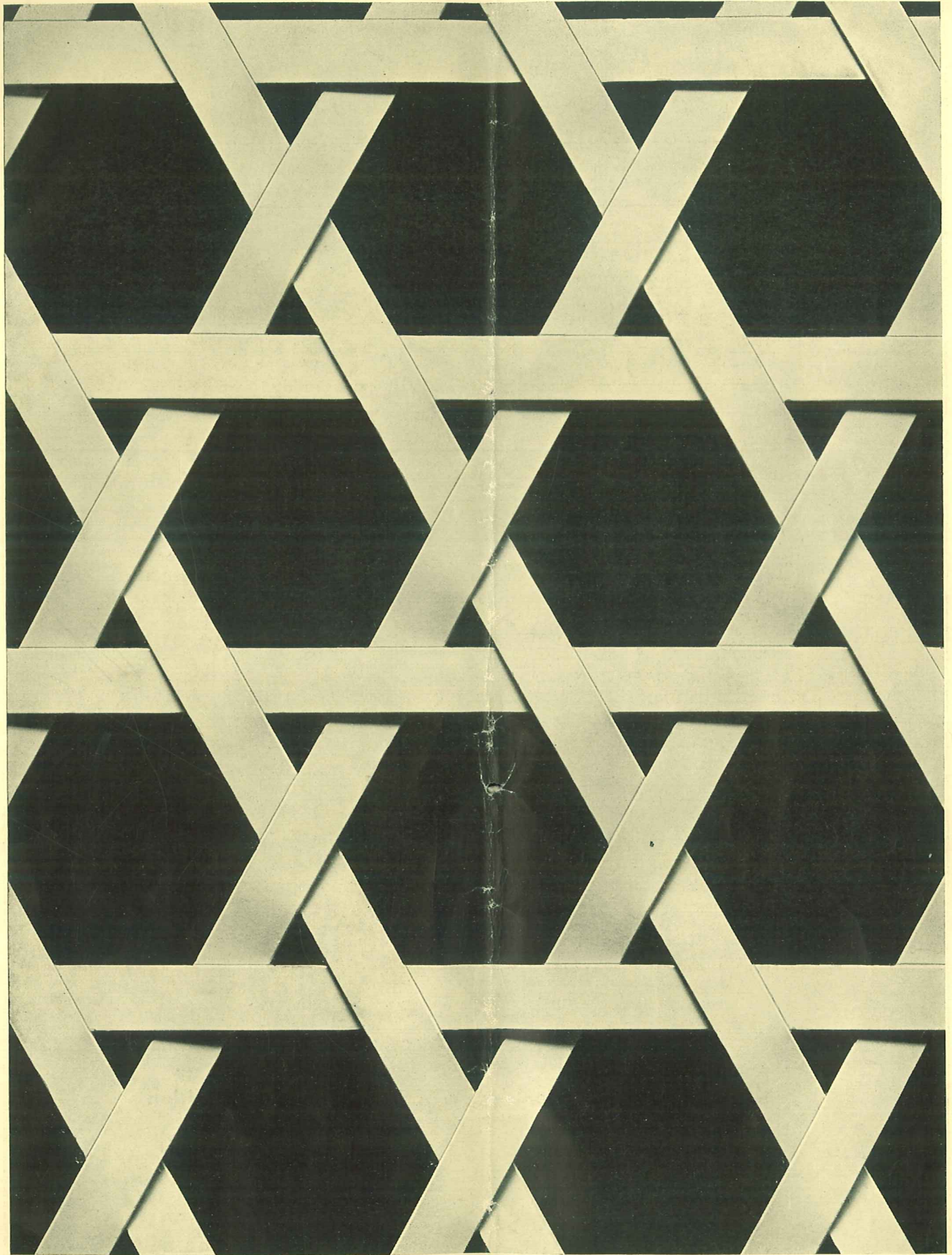
Actual Size

METALACE GRILLE NO. 70









METALACE SPECIFICATIONS

Grille No.	Size of Wire	Furnished in		Wire Curved on One Side	Shipped in	Length of Rolls	Code Name
		C. R. Steel	Bronze				
10	.080" x .026"	Yes	Yes	Yes	Rolls	50'	Grusta
22	.080" x .026"	"	"	"	"	50'	Esseta
41	.105" x .035"	"	"	"	"	50'	Mabia
70	.125" x .040"	"	"	"	"	50'	Yurvia
80	.125" x .040"	"	"	"	"	50'	Unvera
143	.500" x .052"	"	"	—	Flat	—	Oxepra

SHIPPED IN ROLLS

METALACE is shipped in long rolls (not painted or plated). It unrolls perfectly flat, due to its patented lock-stitch, diagonal-strand construction.

NO DIFFICULTY IN CUTTING

The cutting of METALACE to required sizes and shapes is a simple matter with either hand shears or standard machine cutters.

USUAL METHODS FOR PANELING

The paneling or setting of METALACE in frames is readily accomplished by any of the usual methods. For wood frames it is generally fitted into slots or held in place by moulding. In the case of metal frames it can be spot welded, soldered, riveted, bolted or clamped in position.

READY FOR ANY FINISH REQUIRED

METALACE may be finished to obtain any desired effect. It is beautiful when painted or enameled. Spraying, dipping and brushing may be employed as desired, though spraying usually gives the best results.

Magnificent electroplated grilles of METALACE may be produced in nickel, brass, bronze, copper, cadmium, zinc, silver or gold.

IMPORTANT

In specifying or in ordering Metalace, always state—*Metalace Grille No.* —. Always state whether steel or bronze is desired.

When ordering by wire, the use of the code name in addition to the Grille Number is always advisable.

