

NACOMATIC

Effective: 08-April-2010

Expires: 06-May-2010

Your Ad Here

~ 100,000 Page views/month

Contact:

Doug Ranz

248-318-0011

NACOMATIC@hotmail.com

Warranty

I make absolutely no warranty nor guarantee whatsoever about the accuracy, availability, applicability and/or correctness of any of the information in this document.

The official, original NACO documents are available for your downloading pleasure from: <http://naco.faa.gov/index.asp?xml=naco/onlineproducts>

Copyright

This compilation is protected by US copyright laws and international copyright treaties.

Limitations

The sale, hosting and/or distribution of this document in any and all forms, is prohibited.

Release from Liability

All users of this compilation must agree to be legally bound hereby, that Douglas R. Ranz ("Released Party") SHALL NOT BE LIABLE FOR MY DEATH OR INJURY TO MY PERSON, OR FOR ANY LOSS FOR DAMAGE TO MY PROPERTY OR REPUTATION caused in any manner whatsoever, whether attributable to the negligence of the Released Party, or for any other reason, occurring during the time that I am operating an aircraft.

I do hereby waive any right of action against the Released Party from any and all causes or claims that I may have against them from the beginning of time. I further agree not to sue on any such cause or claim. This agreement shall not release liability for gross negligence or willful misconduct of the Released Party. I agree to indemnify and hold the Released Party harmless for any losses, judgments, damages or fees he may incur, including but not limited to attorneys fees, arising out any lawsuit related to the planning, flight and/or enforcement of or legal challenge to this agreement. It is my intention that this agreement be interpreted and enforced to the maximum extent allowed by Michigan law.

VI Min Alt#3	-	5
VI Min TO#3	-	10
STT	-	31
STX	-	36

VI Mins - Alternates #3	-	5
VI Mins - Take-Off #3	-	10
CHARLOTTE AMALIE ST STT	-	31
CHRISTIANSTED ST. C STX	-	36



INSTRUMENT APPROACH PROCEDURE CHARTS

A IFR ALTERNATE AIRPORT MINIMUMS

Standard alternate minimums for non precision approaches are 800-2 (NDB, VOR, LOC, TACAN, LDA, VORTAC, VOR/DME, ASR or WAAS LNAV); for precision approaches 600-2 (ILS or PAR). Airports within this geographical area that require alternate minimums other than standard or alternate minimums with restrictions are listed below. NA - means alternate minimums are not authorized due to unmonitored facility or absence of weather reporting service. Civil pilots see FAR 91. IFR Alternate Airport Minimums: Ceiling and Visibility Minimums not applicable to USA/USN/USAF. Pilots must review the IFR Alternate Airport Minimums Notes for alternate airfield suitability.

NAME ALTERNATE MINIMUMS

APALACHICOLA, FL

APALACHICOLA RGNL RNAV (GPS)-A
RNAV (GPS) Rwy 6
RNAV (GPS) Rwy 13
RNAV (GPS) Rwy 24
RNAV (GPS) Rwy 31

NA when local weather not available.

BARTOW, FL

BARTOW MUNI RNAV (GPS) Rwy 5
RNAV (GPS) Rwy 9L
RNAV (GPS) Rwy 23
RNAV (GPS) Rwy 27R

NA when local weather not available.

BROOKSVILLE, FL

HERNANDO COUNTY RNAV (GPS) Rwy 3
RNAV (GPS) Rwy 9
RNAV (GPS) Rwy 21
RNAV (GPS) Rwy 27

NA when local weather not available.

CHARLOTTE AMALIE, ST. THOMAS, VI

CYRIL E. KING ILS Rwy 10¹, 700-2
VOR-A, 1200-3

¹NA when control tower closed.

CHRISTIANSTED, ST. CROIX, VI

HENRY E ROHLSSEN ILS or LOC Rwy 10¹
NDB Rwy 10¹²
RNAV (GPS) Rwy 10³
VOR Rwy 28¹⁴

¹NA when control tower closed.

²Category A,B, 1200-2; Category C,D, 1200-3.

³Category A,B, 1000-2; Category C,D, 1000-3.

⁴Category A,B, 900-2; Category C,D, 900-3.

NAME ALTERNATE MINIMUMS

CRESTVIEW, FL

BOB SIKES ILS Rwy 17¹²
RNAV (GPS) Rwy 17¹
RNAV (GPS) Rwy 35¹
VOR-A³

¹NA when local weather not available.

²Category D, 700-2.

³Category D, 800-2 $\frac{1}{4}$.

DAYTONA BEACH, FL

DAYTONA BEACH INTL.. ILS or LOC Rwy 7L¹
LOC BC Rwy 25R¹
VOR Rwy 16²

¹NA when local weather not available.

²Category D, 800-2 $\frac{1}{4}$.

DELAND, FL

DELAND MUNI- SIDNEY H.
TAYLOR FIELD RNAV (GPS) Rwy 5
RNAV (GPS) Rwy 12
RNAV (GPS) Rwy 23
RNAV (GPS) Rwy 30

NA when local weather not available.

FORT LAUDERDALE, FL

FORT LAUDERDALE
EXECUTIVE ILS or LOC Rwy 8
ILS, Category D, 700-2.

FORT LAUDERDALE-HOLLYWOOD

INTL ILS or LOC Rwy 9L¹
ILS or LOC Rwy 27R¹
LOC Rwy 9R²
LOC/DME Rwy 13²
RNAV (GPS) Rwy 13²
RNAV (GPS) Y Rwy 9R²
RNAV (GPS) Z Rwy 9L²
RNAV (GPS) Rwy 27L²
RNAV (GPS) Y Rwy 27R²
RNAV (GPS) Rwy 31²
RNAV (RNP) Z Rwy 27R, 800-2 $\frac{1}{4}$
VOR Rwy 27R²

¹ILS, Categories A,B,C, 700-2, Category D,

700-2 $\frac{1}{4}$. LOC. Category D, 800-2 $\frac{1}{4}$.



ALTERNATE MINS



NAME ALTERNATE MINIMUMS

FORT MYERS, FL

PAGE FIELD ILS Rwy 5¹
RNAV (GPS) Rwy 13²

¹NA when FMY tower closed.
²NA when local weather not available.

SOUTHWEST

FLORIDA INTL ILS or LOC Rwy 6¹²

¹NA when control tower closed.
²ILS, Category E, 700-2½; LOC, Category E, 800-2½.

FORT PIERCE, FL

ST LUCIE

COUNTY INTL ILS or LOC Rwy 10R¹

NDB Rwy 28L¹
RNAV (GPS) Rwy 10R
RNAV (GPS) Rwy 14
RNAV (GPS) Rwy 28L
RNAV (GPS) Rwy 32
VOR/DME Rwy 14

NA when local weather not available.
¹NA when control tower closed.

GAINESVILLE, FL

GAINESVILLE RGNL RNAV (GPS) Rwy 7¹
RNAV (GPS) Rwy 25¹
RNAV (GPS) Rwy 29¹
VOR Rwy 25²

¹NA when local weather not available.
²Categories A,B, 900-2; Category C 900-2½.

JACKSONVILLE, FL

CECIL FIELD ILS or LOC RWY 36R

NA when control tower closed.
NA when local weather not available.

CRAIG MUNI ILS or LOC Rwy 32

RNAV (GPS) Rwy 14¹
RNAV (GPS) Rwy 32
VOR Rwy 14¹
VOR/DME Rwy 32

NA when local weather not available.
¹Category C, 800-2½; Category D, 800-2½.

JACKSONVILLE INTL ILS Rwy 7¹

ILS Rwy 13²
ILS or LOC Rwy 25²
RADAR-1³
RNAV (GPS) Rwy 31⁴
VOR/DME Rwy 31³

¹ILS, Category D, 700-2, Category E, 800-2½.
LOC, Category E, 800-2½.
²ILS, Category D, 700-2.
³Category E, 800-2½.
⁴NA when local weather not available.

NAME ALTERNATE MINIMUMS

KEY WEST, FL

KEY WEST INTL RNAV (GPS) Rwy 9
RNAV (GPS) Rwy 27

NA when local weather not available.

LAKELAND, FL

LAKELAND LINDER RGNL . ILS or LOC Rwy 5
NDB Rwy 5
RNAV (GPS) Rwy 5
RNAV (GPS) Rwy 9
RNAV (GPS) Rwy 23
RNAV (GPS) Rwy 27
VOR Rwy 9
VOR Rwy 27¹

NA when control tower closed.
¹Category C 800-2½; Category D, 800-2½.

LEESBURG, FL

LEESBURG INTL RNAV (GPS) Rwy 3
RNAV (GPS) Rwy 13
RNAV (GPS) Rwy 31

NA when local weather not available.

MARATHON, FL

THE FLORIDA KEYS MARATHON NDB-A
RNAV (GPS) Rwy 7
RNAV (GPS) Rwy 25
RNAV (GPS) Rwy 31

NA when local weather not available.

MAYAGUEZ, PR

EUGENIO MARIA
DE HOSTOS VOR or GPS Rwy 9
Categories A,B, 1000-2; Category C, 1000-3.
NA except for operators with approved weather reporting service.

MERRITT ISLAND, FL

MERRITT ISLAND RNAV (GPS) Rwy 11
NA when local weather not available.



ALTERNATE MINS



NAME ALTERNATE MINIMUMS

MIAMI, FL

KENDALL-TAMIAMI

EXECUTIVE ILS or LOC Rwy 9R¹
RNAV (GPS) Rwy 9L
RNAV (GPS) Rwy 9R
RNAV (GPS) Rwy 27L
RNAV (GPS) Rwy 27R

NA when local weather not available.

¹Category D, 700-2.

MIAMI INTL ILS or LOC Rwy 27¹
ILS or LOC Rwy 30²

¹NA when local weather not available.

²Categories A,B, 900-2; Category C 900-2½;
Category D, 900-2¾.

OPA LOCKA ILS Rwy 9L
ILS Rwy 12
ILS/DME Rwy 27R

NA when control tower closed.

NAPLES, FL

NAPLES MUNI... RNAV (GPS) Rwy 5
RNAV (GPS) Rwy 23

NA when local weather not available.

OCALA, FL

OCALA INTL-JIM

TAYLOR FIELD.. ILS or LOC/DME Rwy 36
RNAV (GPS) Rwy 18
RNAV (GPS) Rwy 36
VOR Rwy 36

NA when local weather not available.

OKEECHOBEE, FL

OKEECHOBEE COUNTY... RNAV (GPS) Rwy 5
RNAV (GPS) Rwy 14
RNAV (GPS) Rwy 23
RNAV (GPS) Rwy 32

NA when local weather not available.

ORLANDO, FL

EXECUTIVE ILS or LOC Rwy 7
LOC BC Rwy 25
VOR/DME Rwy 7
VOR/DME Rwy 25

¹Category D, 800-2½.

ORLANDO INTL ILS or LOC Rwy 17L
ILS or LOC Rwy 17R
ILS or LOC Rwy 18R
ILS or LOC Rwy 35L
ILS or LOC Rwy 35R
ILS or LOC Rwy 36R

ILS, 700-2.

NAME ALTERNATE MINIMUMS

ORLANDO, FL (CON'T)

ORLANDO SANFORD

INTL ILS or LOC Rwy 9L¹²
ILS or LOC Rwy 9R¹²
ILS or LOC Rwy 27R¹²
NDB-B²
NDB-C²
RNAV (GPS) Rwy 9L¹
RNAV (GPS) Rwy 9R¹
RNAV (GPS) Rwy 27R¹

¹NA when local weather not available.

²NA when control tower closed.

PANAMA CITY, FL

NORTHWEST FLORIDA-PANAMA

CITY INTL ILS or LOC/DME Rwy 16
NA when control tower closed.

PANAMA CITY-BAY

COUNTY INTL ILS Rwy 14¹²
NDB Rwy 14¹
VOR or TACAN-A³
VOR or TACAN Rwy 14¹
VOR or TACAN Rwy 32¹
RNAV (GPS) Rwy 14⁴
RNAV (GPS) Rwy 32⁴

¹NA when control tower closed.

²ILS, Category D, 700-2.

³Category D, 800-2¼.

⁴NA when local weather not available.

PENSACOLA, FL

PENSACOLA RGNL ILS or LOC Rwy 17¹
VOR Rwy 8²

¹NA when Pensacola tower closed.

²Category D, 800-2¼.

POMPANO BEACH, FL

POMPANO BEACH AIRPARK LOC Rwy 15¹
RNAV (GPS) Rwy 6
RNAV (GPS) Rwy 15
RNAV (GPS) Rwy 24
RNAV (GPS) Rwy 33

NA when local weather not available.

¹NA when control tower closed.

PUNTA GORDA, FL

CHARLOTTE COUNTY RNAV (GPS) Rwy 4
RNAV (GPS) Rwy 15
RNAV (GPS) Rwy 22
RNAV (GPS) Rwy 33
VOR Rwy 4
VOR Rwy 22

NA when local weather not available.

08 APR 2010 to 06 MAY 2010



NAME ALTERNATE MINIMUMS

ST. AUGUSTINE, FL

ST. AUGUSTINE RNAV (GPS) Rwy 13¹
 RNAV (GPS) Rwy 31¹
 VOR Rwy 13²
 VOR Rwy 31²

¹NA when local weather not available.

²NA when control tower closed.

ST. PETERSBURG, FL

ALBERT WHITTED RNAV (GPS) Rwy 7
 RNAV (GPS) Rwy 18
 RNAV (GPS) Rwy 36
 VOR Rwy 18

NA when local weather not available.

ST. PETERSBURG-CLEARWATER, FL

ST. PETERSBURG-CLEARWATER
 INTL ILS or LOC Rwy 17L¹²
 ILS or LOC/DME Rwy 35R¹²
 RNAV(GPS)-A²
 RNAV (GPS) Rwy 17L²
 RNAV (GPS) Rwy 35R²
 VOR Rwy 4³

¹Category E, 1000-3.

²NA when local weather not available.

³Categories A,B, 1000-2; Category C, 1000-2½; Category D, 1000-3.

SAN JUAN, PR

LUIS MUNOZ MARIN INTL ILS Rwy 10¹
 VOR or TACAN Rwy 8²
 VOR or TACAN Rwy 10²
 VOR or TACAN Rwy 26²

¹ILS, Category E, 700-2¼. LOC, Category E, 800-2¼.

²Category E, 900-3.

SARASOTA(BRADENTON), FL

SARASOTA/
 BRADENTON INTL ILS or LOC Rwy 14¹
 ILS or LOC Rwy 32¹
 VOR Rwy 32²

¹NA when control tower closed.

²Categories A,B, 900-2; Category C, 900-2½; Category D, 900-2¾.

STUART, FL

WITHAM FIELD RNAV (GPS) Rwy 12
 RNAV (GPS) Rwy 30

NA when local weather not available.

NAME ALTERNATE MINIMUMS

TALLAHASSEE, FL

TALLAHASSEE RGNL ... ILS or LOC Rwy 27¹²³
 ILS or LOC/DME Rwy 36¹
 NDB Rwy 36¹
 RNAV (GPS) Rwy 18⁵
 RNAV (GPS) Rwy 27⁵
 VOR/DME or TACAN Rwy 36⁴
 VOR Rwy 18¹⁵

¹NA when control tower closed.

²NA when local weather not available.

³ILS, Categories A,B, 800-2; ILS, LOC, Category C, 800-2¼; Category D, 800-2½; Category E, 1000-3.

⁴Category E, 1000-3.

⁵Category D, 800-2¼.

TAMPA, FL

TAMPA INTL ILS or LOC Rwy 18R
 ILS or LOC Rwy 36L
 RNAV (GPS) Rwy 18R
 RNAV (GPS) Rwy 36L
 RNAV (GPS) Rwy 36R

Category E, 1000-3.

PETER O KNIGHT NDB-A¹
 RNAV (GPS) Rwy 21
 RNAV (GPS) Rwy 35

NA when local weather not available.

¹Categories A,B, 900-2; Category C, 900-2¾.

TAMPA EXECUTIVE ILS or LOC Rwy 23¹
 RNAV (GPS) Rwy 23

NA when local weather not available.

¹ILS, Categories B, C, 800-2.

TITUSVILLE, FL

SPACE COAST RGNL ILS or LOC Rwy 36¹
 RNAV (GPS) Y Rwy 9²
 RNAV (GPS) Y Rwy 18²
 RNAV (GPS) Z Rwy 18³
 RNAV (GPS) Rwy 36²

¹ILS, 700-2, LOC, NA when control tower closed.

²NA when local weather not available.

³NA when control tower closed.

VERO BEACH, FL

VERO BEACH MUNI RNAV (GPS) Rwy 4
 RNAV (GPS) Rwy 11R
 RNAV (GPS) Rwy 22
 RNAV (GPS) Rwy 29L

NA when local weather not available.



ALTERNATE MINS

E5



10098

NAME ALTERNATE MINIMUMS

WEST PALM BEACH, FL

PALM BEACH INTL ILS or LOC Rwy 10L¹
 ILS or LOC Rwy 28R¹
 RNAV (GPS) Y Rwy 14²
 VOR Rwy 14³

¹ILS, Categories C,D, 700-2.

²Category D, 800-2¼.

³Category A,B, 900-2; Category C, 900-2½;
Category D, 900-2¾.

WINTER HAVEN, FL

WINTER HAVEN'S

GILBERT RNAV (GPS) Rwy 11¹
 VOR/DME-A

Category D, 800-2¼.

¹NA when local weather not available.

INSTRUMENT APPROACH PROCEDURE CHARTS

IFR TAKE-OFF MINIMUMS AND (OBSTACLE) DEPARTURE PROCEDURES

Civil Airports and Selected Military Airports

ALL USERS: Airports that have Departure Procedures (DPs) designed specifically to assist pilots in avoiding obstacles during the climb to the minimum enroute altitude, and/or airports that have civil IFR take-off minimums other than standard, are listed below. Take-off Minimums and Departure Procedures apply to all runways unless otherwise specified. Altitudes, unless otherwise indicated, are minimum altitudes in MSL.

DPs specifically designed for obstacle avoidance are referred to as Obstacle Departure Procedures (ODPs) and are described below in text, or published separately as a graphic procedure. If the (Obstacle) DP is published as a graphic procedure, its name will be listed below, and it can be found in either this volume (civil), or a separate Departure Procedure volume (military), as appropriate. Users will recognize graphic obstacle DPs by the term "(OBSTACLE)" included in the procedure title; e.g., TETON TWO (OBSTACLE). If not assigned a SID or radar vector by ATC, an ODP may be flown without ATC clearance to ensure obstacle clearance.

Graphic DPs designed by ATC to standardize traffic flows, ensure aircraft separation and enhance capacity are referred to as "Standard Instrument Departures (SIDs)". SIDs also provide obstacle clearance and are published under the appropriate airport section. ATC clearance must be received prior to flying a SID.

CIVIL USERS NOTE: Title 14 Code of Federal Regulations Part 91 prescribes standard take-off rules and establishes take-off minimums for certain operators as follows: (1) Aircraft having two engines or less - one statute mile. (2) Aircraft having more than two engines - one-half statute mile. These standard minima apply in the absence of any different minima listed below.

MILITARY USERS NOTE: Civil (nonstandard) take-off minima are published below. For military take-off minima, refer to appropriate service directives.

NAME	TAKE-OFF MINIMUMS
------	-------------------

AGUADILLA, PR

RAFAEL HERNANDEZ (BQN)

ORIG 09071 (FAA)

DEPARTURE PROCEDURE: **Rwy 8**, climb on a heading between 262° CW to 158° from DER. **Rwy 26**, climb on a heading between 230° CW to 082° from DER.

NOTE: **Rwy 8**, vehicles on roadway beginning 1489' from DER, left and right of centerline, up to 15' AGL/242' MSL. **Rwy 26**, vehicles on roadway beginning 751' from DER, left and right of centerline, up to 17' AGL/275' MSL. Trees beginning 939' from DER, 447' right of centerline, up to 100' AGL/343' MSL.

APALACHICOLA, FL

APALACHICOLA RGNL

NOTE: **Rwy 6**, multiple trees beginning 22' from departure end of runway, 15' right of centerline, up to 99' AGL/108' MSL. Multiple trees beginning 1153' from departure end of runway, 97' left of centerline, up to 92' AGL/101' MSL. **Rwy 13**, multiple trees beginning 207' from departure end of runway, 147' left of centerline, up to 95' AGL/97' MSL. Bush 427' from departure end of runway, 276' left of centerline, 15' AGL/32' MSL. Multiple trees beginning 2951' from departure end of runway, 68' right of centerline, up to 90' AGL/99' MSL. **Rwy 18**, multiple trees beginning 1032' from departure end of runway, 43' left of centerline, up to 22' AGL/56' MSL. Multiple trees beginning 1438' from departure end of runway, 219' right of centerline, up to 22' AGL/72' MSL.

NAME	TAKE-OFF MINIMUMS
------	-------------------

APALACHICOLA MUNI (CON'T)

Rwy 24, multiple trees beginning 24' from departure end of runway, 17' right of centerline up to 75' AGL/84' MSL. Multiple trees beginning 71' from departure end of runway, 77' left of centerline, up to 79' AGL/88' MSL. Multiple light poles beginning 583' from departure end of runway, 268' left of centerline, up to 32' AGL/47' MSL. Bush 1018' from departure end of runway, 394' left of centerline, 41' AGL/47' MSL. **Rwy 31**, multiple trees beginning 52' from departure end of runway, 88' left of centerline, up to 73' AGL/82' MSL. Multiple trees beginning 137' from departure end of runway, 75' right of centerline, 78' AGL/87' MSL. **Rwy 36**, multiple trees beginning 686' from departure end of runway, 260' left of centerline, up to 81' AGL/90' MSL. Multiple trees beginning 991' from departure end of runway, 179' right of centerline, up to 81' AGL/90' MSL.



AVON PARK, FL

AVON PARK EXECUTIVE (AVO)

AMDT 1 09351 (FAA)

TAKE-OFF MINIMUMS: **Rwy 5**, 300-1 or std. w/min. climb of 430' per NM to 500.

NOTE: **Rwy 5**, trees beginning 219' from DER, 84' left of centerline, up to 100' AGL/284' MSL. Trees beginning 1007' from DER, 298' right of centerline, up to 100' AGL/289' MSL. Building 327' from DER, 431' right of centerline, 21' AGL/182' MSL. **Rwy 10**, buildings beginning 293' from DER, 251' left of centerline, up to 30' AGL/285' MSL. Line of trees beginning 298' from DER, 149' right to 229' left of centerline, up to 100' AGL/269' MSL. **Rwy 23**, trees beginning 52' from DER, 118' right of centerline, up to 26' AGL/186' MSL. Trees beginning 23' from DER, 93' left of centerline, up to 38' AGL/198' MSL. Power lines beginning 2691' from DER, 1019' left to 2034' right of centerline, up to 79' AGL/235' MSL. **Rwy 28**, numerous trees beginning 371' from DER, 218' right of centerline, up to 100' AGL/259' MSL. Buildings and light poles beginning 1491' from DER, 187' left of centerline, up to 40' AGL/194' MSL. Power pylons beginning 2082' from DER, 935' left to 252' right of centerline, up to 79' AGL/233' MSL.

BARTOW, FL

BARTOW MUNI (BOW)

ORIG 08157 (FAA)

NOTE: **Rwy 5**, trees beginning 816' from departure end of runway, 7' left of centerline, up to 79' AGL/198' MSL. Trees beginning 164' from departure end of runway, 9' right of centerline, up to 65' AGL/184' MSL. **Rwy 9L**, vehicles on roadway and trees beginning 16' from departure end of runway, 19' left of centerline, up to 55' AGL/174' MSL. Trees beginning 49' from departure end of runway, 54' right of centerline, up to 54' AGL/173' MSL. **Rwy 9R**, trees beginning 637' from departure end of runway, 113' left of centerline, up to 64' AGL/173' MSL. Trees beginning 1311' from departure end of runway, 253' right of centerline, up to 69' AGL/178' MSL. **Rwy 23**, trees beginning 143' from departure end of runway, 87' left of centerline, up to 72' AGL/191' MSL. Trees beginning 419' from departure end of runway, 33' right of centerline, up to 100' AGL/239' MSL. **Rwy 27L**, trees beginning 939' from departure end of runway, 644' left of centerline, up to 100' AGL/249' MSL. Trees beginning 2007' from departure end of runway, 517' right of centerline, up to 36' AGL/175' MSL. Tower 2880' from departure end of runway, 1015' left of centerline, 50' AGL/188' MSL. **Rwy 27R**, trees beginning 2433' from departure end of runway, 1069' left of centerline, up to 100' AGL/249' MSL. Vehicles on roadway, poles and multiple trees beginning 1179' from departure end of runway, 260' right of centerline, up to 100' AGL/249' MSL.

BOCA RATON, FL

BOCA RATON

TAKE-OFF MINIMUMS: **Rwy 23**, 300-1, or std. w/a min. climb of 230' per NM to 300. Alternatively, with standard takeoff minimums and a normal 200'/NM climb gradient, takeoff must occur no later than 1700' prior to departure end of runway.

NOTE: **Rwy 5**, numerous trees and poles beginning 185' from departure end of runway, 20' left of centerline, up to 35' AGL/49' MSL. Numerous trees and poles beginning 6' from departure end of runway, 267' right of centerline, up to 28' AGL/45' MSL. **Rwy 23**, numerous trees, poles, and buildings beginning 278' from departure end of runway, 41' left of centerline, up to 137' AGL/154' MSL. Numerous trees, poles and buildings beginning 626' from departure end of runway, 171' right of centerline, up to 154' AGL/171' MSL.

BONIFAY, FL

TRI COUNTY

DEPARTURE PROCEDURE: **Rwys 1, 19**, climb runway heading to 2000 before turning west.

BROOKSVILLE, FL

HERNANDO COUNTY (BKV)

ORIG 09183 (FAA)

TAKE-OFF MINIMUMS: **Rwy 9**, 300-1½ or std. w/a min. climb of 220' per NM to 300, or alternatively, with standard takeoff minimums and a normal 200'/NM climb gradient, takeoff must occur no later than 1200' prior to DER.

NOTE: **Rwy 3**, obstruction light and trees beginning 297' from DER, 34' right of centerline, up to 81' AGL/151' MSL. Trees beginning 1681' from DER, 29' left of centerline, up to 83' AGL/153' MSL. **Rwy 9**, trees 9' from DER, 287' right of centerline, up to 69' AGL/73' MSL. Trees beginning 2021' left and right of centerline, up to 92' AGL/171' MSL. **Rwy 21**, pole and trees beginning 46' from DER, 27' right of centerline, up to 70' AGL/138' MSL. Building and trees beginning 108' from DER, 39' left of centerline, up to 85' AGL/155' MSL. **Rwy 27**, trees 2143' from DER, 891' left of centerline, up to 89' AGL/189' MSL. Trees 4755' from DER, 1684' right of centerline, up to 99' AGL/199' MSL.





CAPE CANAVERAL AFS SKID STRIP (KXMR)

COCOA BEACH, FL 07046
 DEPARTURE PROCEDURES: **Rwy 13**, diverse departure authorized. Cross DER at or above 20' AGL/29' MSL for Take Off Minima Standard with Climb Gradient 200 ft/NM. **Rwy 31**, diverse departure authorized 322° CCW to 143° only.
 TAKE-OFF OBSTACLES: **Rwy 13**, numerous trees 500' left and right of centerline beginning from DER and numerous trees left and right of centerline beginning 1100' from DER, up to 80' AGL/100' MSL.
Rwy 31, light pole 1795' from DER, 498' left of centerline, 35' AGL/67' MSL. Trees 2042' from DER, 162' right of centerline, 45' AGL/72' MSL. Brush 500' from DER, 300' right of centerline, 18' AGL/48' MSL. Brush 144' from DER, 500' left of centerline, 8' AGL/38' MSL. Pylon 4347' from DER, 700' right of centerline, 61' AGL/135' MSL. Pylon 4534' from DER, 1069' right of centerline, 78' AGL/150' MSL. Terrain 101' to 500' left of DER, 17' MSL. Terrain 185' from DER, 138' to 585' right of centerline, 18' MSL. Trees 1031' from DER, 114' left of centerline, 45' AGL/70' MSL. Trees 3864' from DER, 393' left of centerline, 80' AGL/120' MSL. Trees 3760' from DER, 490' right of centerline, 80' AGL/120' MSL.

CHARLOTTE AMALIE, ST. THOMAS, VI
 CYRIL E. KING (STT)
 AMDT 1 08157 (FAA)

TAKE-OFF MINIMUMS: **Rwy 10**, 400-1 with minimum climb of 462' per NM to 1400 or 2100-2½ for climb in visual conditions. **Rwy 28**, 800-3 or std. w/min. climb of 366' per NM to 1000.
 DEPARTURE PROCEDURE: **Rwy 10**, climbing right turn heading 120° to 2000 before turning north or for climb in visual conditions, cross Cyril E King airport at or above 2000 before proceeding on course. **Rwy 28**, climb heading 280° to 2000 before turning north.
 NOTE: **Rwy 10**, antenna on building 258' from departure end of runway, 485' left of centerline, 25' AGL/41' MSL. Multiple trees beginning 729' from departure end of runway, 244' right of centerline up to 100' AGL/259' MSL. Pole 300' from departure end of runway, 430' right of centerline, 23' AGL/39' MSL. **Rwy 28**, antenna 33' from departure end of runway, 412' left of centerline, 16' AGL/29' MSL. Bush 175' from departure end of runway, 178' right of centerline, 2' AGL/29' MSL. Bush 206' from departure end of runway, 121' left of centerline, 2' AGL/29' MSL. Trees beginning 2.39 NM from departure end of runway, 4351' right of centerline, 100' AGL/710' MSL.

CHRISTIANSTED, ST. CROIX, VI
 HENRY E. ROHLSSEN

TAKE-OFF MINIMUMS: **Rwy 10**, 300-1½ or std. w/a min. climb of 300' per NM to 300.
 DEPARTURE PROCEDURE: **Rwy 10**, climb via heading 103° to 1300 before proceeding on course. **Rwy 28**, climb via heading 280° to 1100 before proceeding on course.
 NOTE: **Rwy 10**, pole and bushes beginning 103' from departure end of runway, 283' right of centerline, up to 30' AGL/44' MSL. Bushes, trees, pole, elevator, strobe on elevator, obstruction light on stack, building, and refinery beginning 127' from departure end of runway, 324' left of centerline, up to 203' AGL/231' MSL. **Rwy 28**, tree 517' from departure end of runway, 553' right of centerline, 54' AGL/114' MSL. Tower 1499' from departure end of runway, 802' right of centerline, 50' AGL/140' MSL.

CLEWISTON, FL
 AIRGLADES (2IS)
 ORIG 09071 (FAA)

NOTE: **Rwy 31**, vehicle on road, 362' from DER, 578' right of centerline, 15' AGL/38' MSL.

CRESTVIEW, FL
 BOB SIKES (CEW)
 ORIG 08213 (FAA)

NOTE: **Rwy 17**, trees beginning 92' from departure end of runway, 248' right of centerline up to 100' AGL/203' MSL. Trees beginning 171' from departure end of runway, 9' left of centerline, up to 100' AGL/205' MSL. **Rwy 35**, trees beginning 329' from departure end of runway, 222' right of centerline up to 100' AGL/272' MSL. Trees beginning 152' from departure end of runway, 184' left of centerline, up to 100' AGL/278' MSL.

CROSS CITY, FL
 CROSS CITY (CTY)
 ORIG 08157 (FAA)

NOTE: **Rwy 4**, trees beginning 527' from departure end of runway, left and right of centerline, up to 100' AGL/149' MSL. **Rwy 13**, trees beginning 158' from departure end of runway, left and right of centerline, up to 100' AGL/149' MSL. Tank 3302' from departure end of runway, 927' right of centerline, 101' AGL/141' MSL. **Rwy 22**, trees beginning 1510' from departure end of runway, left and right of centerline, up to 100' AGL/149' MSL. Powerlines 2807' from departure end of runway, 58' left of centerline, 73' AGL/114' MSL. **Rwy 31**, trees beginning 195' from departure end of runway, left and right of centerline, up to 100' AGL/149' MSL.



CRYSTAL RIVER, FL

CRYSTAL RIVER (CGC)

ORIG 10098 (FAA)

TAKE-OFF MINIMUMS: **Rwy 9**, std. w/min. climb of 260' per NM to 600, or 500-2¾ with min. climb of 210' per NM to 900, or 900-2½ for climb in visual conditions. **Rwys 18, 36**, NA-Environmental.

DEPARTURE PROCEDURE: **Rwy 9**, climb heading 096° to 700 before turning right, or for climb in visual conditions cross Crystal River airport at or above 800 before proceeding on course.

NOTE: **Rwy 9**, vehicles on road beginning 6' from DER, from left to right of centerline, up to 15' AGL/24' MSL. Multiple trees beginning 364' from DER, from 680' left of centerline to 820' right of centerline, up to 100' AGL/129' MSL. **Rwy 27**, trees 17' from DER, 484' right of centerline, up to 100' AGL/109' MSL. Vehicles on road beginning 368' from DER, from left to right of centerline, up to 15' AGL/24' MSL. Power line beginning 474' from DER, from left to right of centerline, up to 26' AGL/45' MSL. Building 916' from DER, on centerline, 26' AGL/35' MSL. Multiple trees beginning 762' from DER, from 915' left of centerline to 641' right of centerline, up to 100' AGL/119' MSL.

DAYTONA BEACH, FL

DAYTONA BEACH INTL (DAB)

AMDT 4 09239 (FAA)

NOTE: **Rwy 7L**, multiple trees beginning 1834' from DER, 646' right of centerline, up to 64' AGL/95' MSL. **Rwy 7R**, tower, trees beginning 1042' from DER, 413' right of centerline, up to 100' AGL/135' MSL. Hanger, multiple trees beginning 901' from DER, 55' left of centerline, up to 67' AGL/101' MSL. **Rwy 16**, multiple trees beginning 57' from DER, 19' left of centerline, up to 75' AGL/104' MSL. Multiple trees beginning 871' from DER, 3' right of centerline, up to 83' AGL/112' MSL. **Rwy 25L**, multiple trees beginning 123' from DER, 75' left of centerline, up to 80' AGL/109' MSL. Multiple trees and antenna beginning 1002' from DER, 85' right of centerline, up to 72' AGL/101' MSL. **Rwy 25R**, multiple trees, signs, and poles beginning 428' from DER, 38' right of centerline, up to 88' AGL/115' MSL. Multiple trees beginning 1254' from DER, 41' left of centerline, up to 84' AGL/108' MSL. **Rwy 34**, multiple trees, building and obstruction light beginning 1013' from DER, 90' left of centerline, up to 82' AGL/111' MSL. Multiple trees, beginning 1108' from DER, 6' right of centerline, up to 78' AGL/107' MSL.

DEFUNIAK SPRINGS, FL

DEFUNIAK SPRINGS (54J)

ORIG 09127 (FAA)

TAKE-OFF MINIMUMS: **Rwy 9**, 400-2¼ or std. w/min. climb of 254' per NM to 800. **Rwys 18, 36**, NA - dirt.

NOTE: **Rwy 9**, multiple roads, railroad, building, fence, light on pole, poles, signs, towers and trees beginning 25' from DER, 1' left of centerline, up to 431' AGL/617' MSL. Multiple trees and roads beginning 71' from DER, 118' right of centerline, up to 74' AGL/343' MSL. **Rwy 27**, multiple trees, poles, fences, roads and building beginning 8' from DER, 39' left of centerline, up to 64' AGL/353' MSL. Multiple trees, poles, roads, buildings and light on pole beginning 82' from DER, 15' right of centerline, up to 53' AGL/342' MSL.

DELAND, FL

DELAND MUNI/SIDNEY H. TAYLOR FIELD

DEPARTURE PROCEDURE: **Rwy 5**, climb via heading 054° to 1800 before proceeding on course. **Rwy 12**, climb via heading 122° to 1800 before proceeding on course. **Rwy 23**, climb via heading 234° to 1800 before proceeding on course. **Rwy 30**, climb via heading 302° to 1800 before proceeding on course.

NOTE: **Rwy 5**, numerous trees beginning 64' from departure end of runway, 245' left of centerline, up to 100' AGL/143' MSL. Numerous trees beginning 869' from departure end of runway, 410' right of centerline, up to 100' AGL/154' MSL. **Rwy 12**, numerous trees beginning 154' from departure end of runway, 129' left of centerline, up to 100' AGL/153' MSL. Numerous trees beginning 456' from departure end of runway, 289' right of centerline, up to 100' AGL/162' MSL. **Rwy 30**, numerous trees beginning 624' from departure end of runway, 9' left of centerline, up to 100' AGL/156' MSL. Numerous trees beginning 159' from departure end of runway, 341' right of centerline, up to 100' AGL/162' MSL. **Rwy 23**, light pole and numerous trees beginning 381' from departure end of runway, 44' right of centerline, up to 100' AGL/132' MSL. Pole, building, vent on building, hangar, and trees beginning 164' from departure end of runway, 26' left of centerline, up to 100' AGL/129' MSL.

DESTIN, FL

DESTIN-FORT WALTON BEACH

DEPARTURE PROCEDURE: **Rwy 14**, climb runway heading to 400 before making turn.

DUNNELLON, FL

DUNNELLON/MARION CO & PARK OF COMMERCE (X35)

ORIG 10042 (FAA)

NOTE: **Rwy 5**, trees beginning 17' from DER, 279' left of centerline, up to 100' AGL/169' MSL. Trees beginning 481' from DER, 304' right of centerline, up to 100' AGL/179' MSL. **Rwy 9**, trees beginning 315' from DER, 281' right of centerline, up to 100' AGL/164' MSL. Trees beginning 693' from DER, 332' left of centerline, up to 100' AGL/164' MSL. **Rwy 23**, tree 705' from DER, 455' left of centerline, 100' AGL/164' MSL. Tree 2132' from DER, 212' right of centerline, 100' AGL/164' MSL. **Rwy 27**, trees beginning 354' from DER, 417' right of centerline, up to 100' AGL/174' MSL. Trees beginning 921' from DER, 273' left of centerline, up to 100' AGL/164' MSL.

**FERNANDINA BEACH, FL**

FERNANDINA BEACH MUNI (FHB)

ORIG 09323 (FAA)

NOTE: **Rwy 4**, vehicles on roadway, beginning 443' from DER, left and right of centerline, up to 15' AGL/29' MSL. Trees beginning 573' from DER, 442' right of centerline, up to 100' AGL/114' MSL. Trees beginning 705' from DER, 484' left of centerline, up to 100' AGL/114' MSL. **Rwy 8**, trees beginning abeam DER, 402' right of centerline, up to 100' AGL/114' MSL. Trees beginning 221' from DER, 247' left of centerline, up to 100' AGL/114' MSL. Vehicles on roadway, 452' from DER, left and right of centerline, up to 15' AGL/34' MSL. **Rwy 13**, trees beginning 31' from DER, 323' right of centerline, up to 25' AGL/36' MSL. Vehicles on roadway, 403' from DER, left and right of centerline, up to 15' AGL/29' MSL. Trees beginning 432' from DER, 574' left of centerline, up to 100' AGL/119' MSL. **Rwy 22**, trees beginning 163' from DER, 503' right of centerline, up to 100' AGL/114' MSL. **Rwy 26**, trees beginning 279' from DER, 460' left of centerline, up to 74' AGL/79' MSL. Trees beginning 869' from DER, 331' right of centerline, up to 88' AGL/93' MSL. **Rwy 31**, tree 29' from DER, 458' left of centerline, 8' AGL/18' MSL. Trees beginning 518' from DER, 530' left of centerline, up to 91' AGL/96' MSL. Trees beginning 757' from DER, 563' right of centerline, up to 70' AGL/75' MSL. Trees beginning 1965' from DER, 170' left of centerline, up to 89' AGL/94' MSL.

FORT LAUDERDALE, FL

FORT LAUDERDALE-EXECUTIVE

DEPARTURE PROCEDURE: **Rwy 26**, climb heading 267° to 600 before turning left.

NOTE: **Rwy 8**, tree 1905' from departure end of runway, 482' right of centerline, 80' AGL/89' MSL. Building 4721' from departure end of runway, 47' right of centerline, 150' AGL/159' MSL. **Rwy 13**, hangar 252' from departure end of runway, 302' right of centerline, 29' AGL/39' MSL. Light pole 634' from departure end of runway, 354' left of centerline, 44' AGL/54' MSL. Tree 808' from departure end of runway, 166' right of centerline, 29' AGL/39' MSL. Tree 2237' from departure end of runway, 258' right of centerline, 91' AGL/101' MSL. Antenna on tower 5130' from departure end of runway, 1825' right of centerline, 137' AGL/147' MSL. **Rwy 26**, multiple trees beginning 2041' from departure end of runway, 256' left of centerline, up to 106' AGL/116' MSL. Six towers 2.3 NM from departure end of runway, 5031' left of centerline, 399' AGL/409' MSL. **Rwy 31**, multiple trees beginning 704' from departure end of runway, 263' right of centerline, up to 71' AGL/81' MSL.

FORT LAUDERDALE, FL (CON'T)

FORT LAUDERDALE-HOLLYWOOD INTL

DEPARTURE PROCEDURE: **Rwy 9L**, climb heading 093° to 500 before turning left. **Rwy 13**, climb heading 138° to 800 before turning right. **Rwy 27L**, climb heading 273° to 600 before turning left. **Rwy 27R**, climb heading 273° to 500 before turning left.

NOTE: **Rwy 9L**, railroad, light pole, and antenna on building beginning 469' from departure end of runway, 379' left of centerline, up to 43' AGL/47' MSL. Light pole 1332' from departure end of runway, 634' right of centerline, 42' AGL/46' MSL. Tree 1977' from departure end of runway, 272' right of centerline, 55' AGL/59' MSL. **Rwy 9R**, light pole 545' from departure end of runway, 335' left of centerline, 27' AGL/41' MSL. Tree 783' from departure end of runway, 396' left of centerline, 30' AGL/44' MSL. Antenna on building, fence, light pole, and multiple trees beginning 254' from departure end of runway, 133' right of centerline, up to 56' AGL/70' MSL. **Rwy 13**, multiple trees beginning 844' from departure end of runway, 206' left of centerline, up to 76' AGL/80' MSL. Antenna on building 534' from departure end of runway, 431' left of centerline, 11' AGL/20' MSL. Pole 910' from departure end of runway, on centerline, 30' AGL/39' MSL. Railroad crossing arm 1104' from departure end of runway, 14' right of centerline, 42' AGL/56' MSL. Multiple trees and light poles beginning 563' from departure end of runway, 53' right of centerline, up to 81' AGL/95' MSL. **Rwy 27L**, fence 154' from departure end of runway, 120' left of centerline, 5' AGL/13' MSL. Road 212' from departure end of runway, 80' left of centerline, 11' AGL/20' MSL. Sign, multiple buildings, poles and trees beginning 622' from departure end of runway, 227' left of centerline, up to 97' AGL/106' MSL. Bush, multiple light poles, trees and towers beginning 221' from departure end of runway, 41' right of centerline, up to 105' AGL/114' MSL. **Rwy 27R**, antenna on building, road, railroad and sign beginning 262' from departure end of runway, 6' left of centerline, up to 37' AGL/46' MSL. Multiple trees beginning 1206' from departure end of runway, 279' left of centerline, up to 93' AGL/97' MSL. Road 584' from departure end of runway, 557' right of centerline, 24' AGL/33' MSL. Multiple trees beginning 2288' from departure end of runway, 848' right of centerline, up to 103' AGL/112' MSL. **Rwy 31**, rod on tower 299' from departure end of runway, 382' left of centerline, 14' AGL/23' MSL. Tree 1332' from departure end of runway, 458' left of centerline, 34' AGL/43' MSL. Road 3384' from departure end of runway, 711' left of centerline, 84' AGL/94' MSL. Multiple trees and poles beginning 1180' from departure end of runway, 405' right of centerline, up to 111' AGL/116' MSL.



**FORT MYERS, FL**

PAGE FIELD (FMY)

AMDT 5 09239 (FAA)

NOTE: **Rwy 5**, bush, train, and multiple trees beginning 81' from DER, 52' right of centerline, up to 73' AGL/90' MSL. Multiple antennas and trees beginning 330' from DER, 81' left of centerline, up to 70' AGL/86' MSL.

Rwy 13, bush, road, buildings and multiple trees beginning 66' from DER, 138' right of centerline, up to 52' AGL/66' MSL. Rod on light pole 306' from DER, 375' right of centerline, up to 22' AGL/37' MSL. Trees 644' from DER, 375' right of centerline, up to 72' AGL/87' MSL. Fence 241' from DER, 138' left of centerline, 10' AGL/24' MSL. Obstruction light on building 829' from DER, 447' left of centerline, 34' AGL/48' MSL.

Rwy 23, sign, concrete pole, obstruction light on pole, tree and antenna beginning 98' from DER, 95' right of centerline, up to 36' AGL/49' MSL. Vehicles, concrete pole, obstruction light on pole, and trees beginning 288' from DER, 8' left of centerline, up to 62' AGL/75' MSL.

Rwy 31, concrete pole, power poles, light poles, floodlights, vehicles, trees, antenna towers and bridge beginning 5' from DER, 285' right of centerline up to 113' AGL/126' MSL. Power poles, concrete pole and trees beginning 67' from DER, 235' left of centerline, up to 74' AGL/88' MSL.

SOUTHWEST FLORIDA INTL

NOTE: **Rwy 6**, trees beginning 1398' from departure end of runway, 582' left of centerline, up to 84' AGL/104' MSL. Trees beginning 1763' from departure end of runway, 860' right of centerline, up to 95' AGL/115' MSL.

Rwy 24, tree 1692' from departure end of runway, 916' right of centerline, 78' AGL/98' MSL.

FORT PIERCE, FL

ST. LUCIE COUNTY INTL (FPR)

AMDT 3 10014 (FAA)

TAKE-OFF MINIMUMS: **Rwys 10L, 28R**, NA-Environmental.

NOTE: **Rwy 10R**, bush 91' from DER, 496' left of centerline, 11' AGL/31' MSL. Tree 1044' from DER, 458' right of centerline, 36' AGL/51' MSL. Trees beginning 1124' from DER, 332' left of centerline, up to 100' AGL/144' MSL. **Rwy 14**, poles beginning 274' from DER, 385' right of centerline, up to 38' AGL/58' MSL. Trees beginning 963' from DER, 470' right of centerline, up to 61' AGL/81' MSL. Trees beginning 1082' from DER, 425' left of centerline, up to 49' AGL/69' MSL. **Rwy 32**, trees beginning 187' from DER, 153' right of centerline, up to 73' AGL/93' AGL/93' MSL. Trees beginning 1832' from DER, 133' left of centerline, up to 66' AGL/86' MSL.

GAINESVILLE, FL

GAINESVILLE RGNL

NOTE: **Rwy 7**, multiple trees beginning 1397' from departure end of runway, 348' left of centerline, up to 99' AGL/229' MSL. Multiple trees beginning 1444' from departure end of runway, 144' right of centerline, up to 72' AGL/202' MSL. **Rwy 11**, multiple trees beginning 653' from departure end of runway, 438' right of centerline, up to 30' AGL/134' MSL. Tree 522' from departure end of runway, 402' left of centerline, 18' AGL/122' MSL. **Rwy 25**, tower and multiple trees beginning 2415' from departure end of runway, 9' left of centerline, up to 126' AGL/291' MSL. Obstruction light on localizer and multiple trees beginning 208' from departure end of runway, 463' right of centerline, up to 82' AGL/243' MSL. **Rwy 29**, multiple trees beginning 1279' from departure end of runway, 8' right of centerline, up to 76' AGL/233' MSL. Multiple trees beginning 2679' from departure end of runway, 366' left of centerline, up to 88' AGL/240' MSL.

HOLLYWOOD, FL

NORTH PERRY (HWO)

AMDT 3 09267 (FAA)

TAKE-OFF MINIMUMS: **Rwys 9L/R, 18L/R, 36L/R**, NA - ATC request.

DEPARTURE PROCEDURE: **Rwys 27L/R**, climb heading 274° to 1100 before turning.

NOTE: **Rwy 27L**, trees, building and poles beginning 37' from DER, 13' right of centerline, up to 102' AGL/112' MSL. Trees, building and poles beginning 1115' from DER, 28' left of centerline, up to 87' AGL/95' MSL. **Rwy 27R**, trees and poles beginning 17' from DER, 65' right of centerline, up to 82' AGL/90' MSL. Trees, poles, and building beginning 15' from DER, 28' left of centerline, up to 102' AGL/112' MSL.

HOMESTEAD ARB (KHST)

HOMESTEAD, FL (03331)

Departure headings 260°-350° not authorized.

CAUTION: Unmarked and lighted balloon and cable to 14,000' in R-2916, 77 NMSW of arpt.

TAKE-OFF OBSTACLES: **Rwy 5**, 22' MSL (15' AGL) vehicle on road 1350' from departure end of rwy, from 150' left of centerline to 300' right of centerline. 38' MSL (31' AGL) aircraft at hold line 281' left of centerline. **Rwy 23**, 39' MSL (32' AGL) aircraft at hold short line at departure end of rwy, 300' right of centerline. 22' MSL (15' AGL) vehicle on road 1390' from departure end of rwy, from 520' left of centerline to 810' right of centerline.

HURLBURT FLD (KHRT)

MARY ESTHER, FL

TAKE-OFF OBSTACLES: **Rwy 36**: 85' AGL tree, 3140' from departure end of rwy, 707' right of centerline.



**IMMOKALEE, FL**

IMMOKALEE RGNL (IMM)

AMDT 1 09239 (FAA)

TAKE-OFF MINIMUMS: **Rwy 18**, 300-2½ or std. with a min. climb of 221' per NM to 500, or alternatively, with standard take-off minimums and a normal 200' per NM climb gradient, take-off must occur no later than 1900' prior to DER.

NOTE: **Rwy 9**, tree 45' from DER, 438' right of centerline, 4' AGL/38' MSL. Trees beginning 1144' from DER, 312' left of centerline, up to 100' AGL/134' MSL. **Rwy 18**, buildings beginning 255' from DER, 475' left of centerline, up to 16' AGL/50' MSL. Tree 2844' from DER, 1235' right of centerline, 100' AGL/134' MSL.

Tower 1.7 NM from DER, 2984' right of centerline, 297' AGL/322' MSL. **Rwy 27**, fence 4' from DER, 473' right of centerline, 6' AGL/41' MSL. Trees beginning 187' from DER, 150' right of centerline, up to 40' AGL/79' MSL. Vehicle on road beginning 669' from DER, 508' right of centerline, 15' AGL/54' MSL. Trees beginning 732' from DER, 231' left of centerline, up to 53' AGL/87' MSL. Pole 1223' from DER, 50' right of centerline, 35' AGL/70' MSL. Pole 1320' from DER, 258' left of centerline, 35' AGL/69' MSL. **Rwy 36**, trees beginning 192' from DER, 262' left of centerline, up to 22' AGL/61' MSL. Trees beginning 411' from DER, 173' right of centerline, up to 23' AGL/57' MSL.

ISLA DE VIEQUES, PR

ANTONIO RIVERA RODRIGUEZ (VQS)

AMDT 2 10042 (FAA)

TAKE-OFF MINIMUMS: **Rwy 9**, 500-2½ w/ min. climb of 260' per NM to 900 or 1600-2½ for climb in visual conditions. **Rwy 27**, 500-2½ w/ min. climb of 280' per NM to 2700 or std. w/ min. climb of 570' per NM to 1300 or 1600-2½ for climb in visual conditions.

DEPARTURE PROCEDURE: **Rwy 9**, climb heading 090° to 900 before proceeding on course or for climb in visual conditions, cross Antonio Rivera Rodriguez airport at or above 1500 before proceeding on course.

Rwy 27, climb heading to 270° to 2700 before proceeding on course or for climb in visual conditions, cross Antonio Rivera Rodriguez airport at or above 1500 before proceeding on course.

NOTE: **Rwy 9**, vehicles on roadway beginning 26' from DER, left and right of centerline, up to 15' AGL/80' MSL. Trees beginning 70' from DER, 504' right of centerline, up to 100' AGL/165' MSL. Trees beginning 579' from DER, on centerline, up to 100' AGL/165' MSL. Trees beginning 1750' from DER, 956' right of centerline up to 100' AGL/493' MSL. **Rwy 27**, trees beginning 15' from DER, 225' left of centerline, up to 100' AGL/165' MSL. Trees beginning 16' from DER, 274' right of centerline, up to 100' AGL/165' MSL. Trees beginning 186' from DER, left and right of centerline, up to 100' AGL/165' MSL. Trees beginning 1206' from DER, 794' left of centerline, up to 100' AGL/493' MSL.

JACKSONVILLE, FL

CECIL FIELD

NOTE: **Rwy 18L**, tree 1499' from departure end of runway, 699' right of centerline, 34' AGL/113' MSL.

CRAIG MUNI (CRG)

AMDT 3 08325 (FAA)

TAKE-OFF MINIMUMS: **Rwy 23**, std. w/ min. climb of 360' per NM to 1500' or 1300' and 2½ for climb in visual conditions.

DEPARTURE PROCEDURE: **Rwy 5**, climb heading 049° to 500 before proceeding on course.

Rwy 14, climb heading 139° to 700 before turning right. **Rwy 23**, for climb in visual conditions: Cross Craig Muni airport at or above 1200 before proceeding on course.

NOTE: **Rwy 5**, trees beginning 1617' from departure end of runway, 182' right of centerline, up to 99' AGL/143' MSL. Trees beginning 571' from departure end of runway, 113' left of centerline, up to 99' AGL/143' MSL. **Rwy 14**, trees beginning 1848' from departure end of runway, 807' left of centerline, up to 89' AGL/128' MSL. **Rwy 23**, trees beginning 519' from departure end of runway, 510' left of centerline, up to 84' AGL/133' MSL. Trees beginning 1601' from departure end of runway, 427' right of centerline, up to 69' AGL/119' MSL. Pole 1570' from departure end of runway, 580' left of centerline, 45' AGL/85' MSL. **Rwy 32**, trees beginning 194' from departure end of runway, 222' left of centerline, up to 54' AGL/101' MSL. Trees beginning 494' from departure end of runway, 104' right of centerline, up to 50' AGL/99' MSL.

HERLONG

DEPARTURE PROCEDURE: **Rwy 7**, climb heading 060° to 800 before proceeding on course. **Rwy 11**, climb runway heading to 800 before proceeding on course.

JACKSONVILLE INTL

NOTE: **Rwy 7**, bush 83' from departure end of runway, 262' right of centerline, 6' AGL/30' MSL. Multiple trees beginning 2737' from departure end of runway, 429' right of centerline, up to 89' AGL/118' MSL. **Rwy 13**, electrical equipment 79' from departure end of runway, 292' left of centerline, 3' AGL/27' MSL. Multiple trees beginning 1761' from departure end of runway, 563' left of centerline, up to 100' AGL/121' MSL. Multiple trees beginning 899' from departure end of runway, 151' right of centerline, up to 102' AGL/121' MSL. Pole 755' from departure end of runway, 700' left of centerline, 33' AGL/52' MSL. **Rwy 25**, multiple trees beginning 2341' from departure end of runway, 793' right of centerline, up to 80' AGL/102' MSL. **Rwy 31**, tree 2816' from departure end of runway, 691' left of centerline, 83' AGL/102' MSL. Multiple trees beginning 2227' from departure end of runway, 576' right of centerline, up to 89' AGL/108' MSL.





JACKSONVILLE NAS (TOWERS FIELD)(KNIP)

JACKSONVILLE, FL. 09155

DEPARTURE PROCEDURES: **Rwy 10**, Diverse departures only between 095° through 275° CW. **Rwy 14**, Diverse departures only between 095° through 320° CW. **Rwy 32**, Diverse departures only between 351° through 141° CCW.

TAKE-OFF OBSTACLES: **Rwy 28**: Pole 1064' from DER, 782' left of centerline, 65' MSL. **Rwy 32**: Trees 222' from DER, 241' right of centerline, 56' MSL. Trees 430' from DER, 226' right of centerline, 46' MSL. Trees 680' from DER, 530' right of centerline, 59' MSL. Pole 750' from DER, 559' right of centerline, 67' MSL. Road and vehicle 769' from DER at Rwy centerline, 35' MSL. Trees 819' from DER, 642' left of centerline, 84' MSL. Pole 872' from DER, 285' left of centerline, 59' MSL. Trees 945' from DER, 137' left of centerline, 77' MSL. Trees 1048' from DER, 98' right of centerline, 72' MSL. Trees 1081' from DER, 185' right of centerline, 48' MSL. Trees 1317' from DER, 366' left of centerline, 94' MSL. Trees 1547' from DER, 421' left of centerline, 104' MSL. Trees 1737' from DER, 131' left of centerline, 108' MSL. Trees 1907' from DER, 462' left of centerline, 128' MSL. Trees 2037' from DER, 321' left of centerline, 130' MSL. Trees 2497' from DER, 561' left of centerline, 133' MSL. Tower 2744' from DER, 616' left of centerline, 87' MSL.

KEY WEST, FL

KEY WEST INTL

DEPARTURE PROCEDURE: **Rwys 9, 27**, climb on a heading between 087° clockwise to 033° from departure end of runway to avoid R-2916 and unmarked tethered balloon up to 14000 MSL.

NOTE: **Rwy 9**, rod on antenna, dome on building, poles, and numerous trees beginning 38' from departure end of runway, 199' right of centerline, up to 75' AGL/82' MSL. Obstruction light on building, pole, and numerous trees beginning 4' from departure end of runway, 220' left of centerline, up to 38' AGL/45' MSL. **Rwy 27**, pole and numerous trees beginning 27' from departure end of runway, 116' right of centerline, up to 83' AGL/90' MSL. Numerous bushes and trees beginning 202' from departure end of runway, 78' left of centerline, up to 37' AGL/44' MSL.

KEY WEST NAS(BOCA CHICA FLD) (KNQX)

KEY WEST, FL. 10042

DEPARTURE PROCEDURE: **Rwy 3**, Cross DER at or above 25' AGL/31' MSL. Diverse departures authorized between 028° CCW 216°. Left turn to departure heading only. **Rwy 7**, Diverse departures authorized 087° CW 257°. Crossing DER climb on heading 065° until reaching 3 DME from NQX TACAN, then turn right to departure heading. Other headings and left turns on departure expect radar vectors. Do not exceed 310 KIAS until established on heading or receiving radar vectors. If no vectors are received within 6 DME of NQX TACAN or 12 DME of EYW VORTAC, make climbing right turn direct EYW VORTAC for enroute aircraft and NQX TACAN for military aircraft intending use of local special use airspace. Turboprop cross VORTAC or TACAN at or above 3000, Turbojet cross VORTAC or TACAN at or above 5000. Do not exceed 310 KIAS until crossing VORTAC or TACAN. **Rwy 13**, Diverse departures authorized 084° CW 315°. **Rwy 21**, Diverse departures authorized 084° CW 315°. **Rwy 25**, Diverse departures authorized 084° CW 315°. **Rwy 31**, Diverse departures authorized 035° CCW 084°.

TAKE-OFF OBSTACLES: **Rwy 3**, Mast 58' AGL/63' MSL, 1374' from DER, 323' left of centerline. **Rwy 31**, Bldg 39' AGL/43' MSL, 1058' from DER, 558' right of centerline. Pole 54' AGL/58' MSL, 1551' from DER, 474' right of centerline.

KEYSTONE HEIGHTS, FL

KEYSTONE AIRPARK (42J)

ORIG 09015 (FAA)

NOTE: **Rwy 5**, trees beginning 363' from departure end of runway, 503' left of centerline, up to 100' AGL/309' MSL. Trees beginning 1165' from departure end of runway, 331' right of centerline, up to 100' AGL/309' MSL. **Rwy 11**, trees beginning 995' from departure end of runway, on centerline, up to 100' AGL/309' MSL. **Rwy 23**, trees beginning 375' from departure end of runway, on centerline, up to 87' AGL/257' MSL. Powerlines beginning 2436' from departure end of runway, 24' right of centerline, up to 100' AGL/279' MSL. **Rwy 29**, trees beginning 0' from departure end of runway, 263' right of centerline, up to 100' AGL/289' MSL. Trees beginning 563' from departure end of runway, on centerline, up to 100' AGL/289' MSL. Powerlines beginning 3048' from departure end of runway, 122' left of centerline, up to 100' AGL/279' MSL.





LA BELLE, FL

LA BELLE MUNI (X14)
ORIG 08045 (FAA)

NOTE: **Rwy 14**, vehicles on roadway, beginning 98' from departure end of runway, 483' left of centerline, up to 15' AGL/39' MSL. Trees beginning 70' from departure end of runway, 357' right of centerline, up to 100' AGL/124' MSL. Poles and trees beginning 305' from departure end of runway, 157' left of centerline, up to 40' AGL/94' MSL. Building 562' from departure end of runway, 238' left of centerline, 14' AGL/38' MSL. Poles and trees beginning 745' from departure end of runway, 93' right of centerline, up to 40' AGL/60' MSL. **Rwy 32**, airplanes on taxiway beginning 18' from departure end of runway, 130' left of centerline, up to 12' AGL/31' MSL. Trees beginning 35' from departure end of runway, 135' right of centerline, up to 100' AGL/119' MSL. Trees beginning 61' from departure end of runway, 6' left of centerline, up to 100' AGL/119' MSL. Vehicle on roadway beginning 136' from departure end of runway, 450' right of centerline, up to 15' AGL/34' MSL. Building 446' from departure end of runway, 214' right of centerline, 18' AGL/37' MSL. Pole 1578' from departure end of runway, 789' left of centerline, 43' AGL/62' MSL.

LAKE CITY, FL

LAKE CITY MUNI

TAKE-OFF MINIMUMS: **Rwy 28**, 300-1 or std. with a min. climb of 330' per NM to 500.

LAKE WALES, FL

LAKE WALES MUNI (X07)
ORIG 08325 (FAA)

NOTE: **Rwy 6**, trees beginning 1403' from departure end of runway, 165' left of centerline, up to 100' AGL/229' MSL. Trees beginning 2739' from departure end of runway, 899' right of centerline, up to 100' AGL/234' MSL. **Rwy 17**, trees beginning 534' from departure end of runway, 642' right of centerline, up to 100' AGL/224' MSL. **Rwy 24**, trees beginning 2462' from departure end of runway, 836' left of centerline, up to 100' AGL/224' MSL. **Rwy 35**, trees beginning 2567' from departure end of runway, 468' left of centerline, up to 100' AGL/234' MSL. Buildings beginning 691' from departure end of runway, 1' right of centerline up to 74' AGL/205' MSL.

LAKELAND, FL

LAKELAND LINDER RGNL

NOTE: **Rwy 5**, trees 720' from departure end of runway, 49' right of centerline, up to 47' AGL/191' MSL. Trees 869' from departure end of runway, 219' left of centerline, up to 39' AGL/183' MSL. **Rwy 9**, trees 423' from departure end of runway, 53' right of centerline, up to 68' AGL/212' MSL. Trees 590' from departure end of runway, 185' left of centerline, up to 66' AGL/210' MSL. **Rwy 27**, trees 70' from departure end of runway, 75' left of centerline, up to 78' AGL/207' MSL. Pole 383' from departure end of runway, 476' left of centerline, 16' AGL/155' MSL. Trees 1795' from departure end of runway, 116' right of centerline, up to 76' AGL/205' MSL.

LEESBURG, FL

LEESBURG INTL (LEE)
AMDT 3 09127 (FAA)

TAKE-OFF MINIMUMS: **Rwy 3**, 400-2 ¼ or std. w/ min. climb of 272' per NM to 600.

NOTE: **Rwy 3**, tower 1.78 NM from DER, 2631' left of centerline, 310' AGL/382' MSL. Sign and trees beginning 187' from DER, 259' left of centerline, up to 72' AGL/150' MSL. Poles and trees beginning 62' from DER, 209' right of centerline, up to 63' AGL/96' MSL. Blast fence 78' from DER, on centerline, 11' AGL/85' MSL. Vehicle on road 176' from DER, 2' left to right of centerline, 17' AGL/96' MSL. **Rwy 13**, trees beginning 265' from DER, 365' left of centerline, up to 86' AGL/150' MSL. Trees beginning 181' from DER, 370' right of centerline, up to 76' AGL/140' MSL. Vehicle on road 237' from DER 548' right to left of centerline 15' AGL/80' MSL. **Rwy 21**, tree 3614' from DER, 126' right of centerline, 109' AGL/82' MSL. Trees beginning 776' from DER, 202' left of centerline, up to 115' AGL/179' MSL. Vehicle on road 75' from DER, 390' left of centerline, 15' AGL/82' MSL. **Rwy 31**, poles and trees beginning 62' from DER, 265' left of centerline, up to 70' AGL/159' MSL. Poles and trees beginning 532' from DER, 104' right of centerline, up to 100' AGL/204' MSL. Vehicle on road 822' from DER, 682' right to left of centerline, 17' AGL/101' MSL. Building 1791' from DER, 85' right of centerline, 36' AGL/125' MSL.

MACDILL AFB (KMCF)

TAMPA, FL07102

TAKE-OFF OBSTACLES: **Rwy 4**; Palm tree 60' AGL/73' MSL 2134' from DER, 961' left of centerline. Pylon 71' AGL/101' MSL 3961' from DER, 166' left of centerline.





MARATHON, FL

THE FLORIDA KEYS MARATHON (MTH)

AMDT 1 07354 (FAA)

DEPARTURE PROCEDURE: **Rwy 7**, climbing right turn direct MTH NDB then via 307° bearing from MTH NDB to TIGAR Int before proceeding on course. **Rwy 25**, climb direct MTH NDB then via 307° bearing from MTH NDB to TIGAR Int before proceeding on course.

NOTE: **Rwy 7**, trees beginning 337' from departure end of runway, 324' right of centerline, up to 74' AGL/81' MSL, bush 166' from departure end of runway, 323' right of centerline, 9' AGL/16' MSL, pole 726' from departure end of runway, 589' right of centerline, 39' AGL/46' MSL, rod on obstruction light 1404' from departure end of runway, 655' right of centerline, 55' AGL/62' MSL, transmission pole 2360' from departure end of runway, 1029' right of centerline, 89' AGL/96' MSL, rod on obstruction light antenna 3366' from departure end of runway, 1010' right of centerline, 136' AGL/143' MSL, antenna 3270' from departure end of runway, 1253' right of centerline, 121' AGL/128' MSL, tower 3427' from departure end of runway, 1033' right of centerline, 115' AGL/121' MSL, trees beginning 242' from departure end of runway, 99' left of centerline, up to 75' AGL/82' MSL, antennas 1660' from departure end of runway, 371' left of centerline, up to 86' AGL/93' MSL, pole 876' from departure end of runway, 468' left of centerline, 39' AGL/46' MSL, concrete pole 1391' from departure end of runway, 534' left of centerline, 51' AGL/58' MSL. Pole 1441' from departure end of runway, 586' right of centerline, 55' AGL/62' MSL. **Rwy 25**, trees beginning 122' from departure end of runway, 224' right of centerline, up to 65' AGL/72' MSL, poles beginning 702' from departure end of runway, 470' right of centerline, up to 37' AGL/44' MSL, antenna 1752' from departure end of runway, 135' right of centerline, 49' AGL/56' MSL, trees beginning 223' from departure end of runway, 324' left of centerline, up to 66' AGL/73' MSL, rod on obstruction light antenna beginning 2353' from departure end of runway, 22' right of centerline, up to 138' AGL/145' MSL, antenna 2953' from departure end of runway, 745' left of centerline, 75' AGL/82' MSL, transmission pole 1545' from departure end of runway, 693' left of centerline, 60' AGL/67' MSL.

MARCO ISLAND, FL

MARCO ISLAND (MKY)

AMDT 2 09351 (FAA)

DEPARTURE PROCEDURE: **Rwy 35**, climb heading 005° to 700 before turning west. **CAUTION:** Strobe light and unmarked balloon on cable to 14000' in R-2916, 78 NM south of Marco Island. **All aircraft** should establish positive course guidance to ensure avoidance of this obstacle.

NOTE: **Rwy 17**, trees beginning 79' from DER, left and right of centerline, up to 48' AGL/52' MSL. Wind sock 76' from DER, 310' right of centerline, 21' AGL/25' MSL. **Rwy 35**, antenna 11' from DER, 384' left of centerline, 53' AGL/57' MSL. Sign 16' from DER, 255' left of centerline, 5' AGL/9' MSL. Trees beginning 64' from DER, left and right of centerline up to 51' AGL/55' MSL.

MARIANNA, FL

MARIANNA MUNI (MAI)

ORIG 09071 (FAA)

TAKE-OFF MINIMUMS: **Rwy 18**, 300-1½ or std. w/ min. climb of 222' per NM to 400.

NOTE: **Rwy 8**, trees beginning 2518' from DER, 1016' right of centerline, up to 100' AGL/219' MSL. **Rwy 18**, trees beginning 57' from DER, 275' right of centerline, up to 100' AGL/279' MSL. Trees beginning 1241' from DER, 366' left of centerline, up to 100' AGL/209' MSL. **Rwy 26**, trees beginning 3180' from DER, 1278' right of centerline, up to 100' AGL/209' MSL. **Rwy 36**, trees beginning 2230' from DER, 1003' left of centerline, up to 100' AGL/209' MSL. Trees beginning 2352' from DER, 1007' right of centerline, up to 100' AGL/209' MSL.

MAYAGUEZ, PR

EUGENIO MARIA DE HOSTOS

TAKE-OFF MINIMUMS: **Rwy 9**, 1400-3 or std. with a min. climb of 500' per NM to 1400.

DEPARTURE PROCEDURE: **Rwy 9**, climb via MAZ R-083 to 2500, aircraft northeastbound on G633 continue climb on course. All others turn left direct MAZ VOR/DME before proceeding on course. **Rwy 27**, climb via MAZ R-277 to 1500. Aircraft westbound on G633 continue climb on course. All others climbing right turn direct MAZ VOR/DME so as to cross at or above MEA for direction of flight.

MAYPORT NS (ADM DAVID L. MC DONALD FLD)(KNRB)

MAYPORT, FL 08073

TAKE-OFF OBSTACLES: **Rwy 5**, Vessels with masts to 150' MSL, 500' to 2900' from DER. **Rwy 23**, Vessels with masts to 150' MSL, 1600' right of runway centerline to 4000' from DER.

MELBOURNE, FL

MELBOURNE INTL

NOTE: **Rwy 5**, multiple trees 1584' from departure end of runway, 222' left of centerline, up to 43' AGL/64' MSL. **Rwy 9L**, tree 108' from departure end of runway, 479' left of centerline, 25' AGL/62' MSL. **Rwy 9R**, multiple trees 1855' from departure end of runway, 434' left of centerline, up to 43' AGL/73' MSL. Tree 1332' from departure end of runway, 434' right of centerline, 36' AGL/56' MSL. **Rwy 23**, bush 20' from departure end of runway, 217' right of centerline, 8' AGL/33' MSL, tower 6034' from departure end of runway, 750' right of centerline, 152' AGL/177' MSL. Multiple trees beginning 284' from departure end of runway, 121' left of centerline, up to 47' AGL/72' MSL. **Rwy 27R**, multiple trees beginning 543' from departure end of runway, 169' left of centerline, up to 51' AGL/81' MSL. Multiple trees beginning 1202' from departure end of runway, 114' right of centerline, up to 58' AGL/88' MSL.



MERRITT ISLAND, FL

MERRITT ISLAND

NOTE: **Rwy 29**, rod on airport beacon obstruction light, 138' from departure end of runway, 514' right of centerline, 61' AGL/67' MSL; pole, 82' from departure end of runway, 403' left of centerline, 34' AGL/40' MSL; pole, 468' from departure end of runway, 508' right of centerline, 37' AGL/43' MSL; hangar, 221' from departure end of runway, 278' right of centerline, 22' AGL/28' MSL; pole 490' from departure end of runway, 306' left of centerline, 28' AGL/34' MSL; tree, 987' from departure end of runway, 476' left of centerline, 40' AGL/46' MSL; tree 1287' from departure end of runway, 432' left of centerline, 47' AGL/53' MSL; tree 1415' from departure end of runway, 560' left of centerline, 48' AGL/54' MSL; building, 556' from departure end of runway, 530' right of centerline, 25' AGL/31' MSL; tree, 1654' from departure end of runway, 464' right of centerline, 48' AGL/54' MSL; obstruction light on windsock, 551' from departure end of runway, 234' right of centerline, 19' AGL/25' MSL; pole, 1306' from departure end of runway, 259' right of centerline, 37' AGL/43' MSL; building, 429' from departure end of runway, 436' right of centerline, 15' AGL/21' MSL; tree, 1953' from departure end of runway, 524' left of centerline, 49' AGL/55' MSL.

MIAMI, FL

KENDALL-TAMIAMI EXECUTIVE (TMB)

AMDT 8 09295 (FAA)

DEPARTURE PROCEDURE: **Rwy 9L**, climb heading 093° to 800 before turning right. **Rwy 9R**, climb heading 093° to 900 before turning right. **Rwy 13**, climb heading 133° to 1400 before turning right. **Rwy 27L**, climb heading 273° to 1400 before turning left. **Rwy 27R**, climb heading 273° to 1300 before turning left. **Rwy 31**, climb heading 313° to 900 before turning left.

NOTE: **Rwy 9L**, trees beginning 1731' from DER, 717' left of centerline, up to 100' AGL/119' MSL. Tree 3013' from DER, 687' right of centerline, 100' AGL/119' MSL. **Rwy 9R**, signs beginning 35' from DER, 182' left of centerline, up to 3' AGL/11' MSL. Trees beginning 1296' from DER, 516' left of centerline, up to 100' AGL/119' MSL. Tree 2712' from DER, 1185' right of centerline, 100' AGL/119' MSL. **Rwy 13**, tree 1100' from DER, 764' right of centerline, 100' AGL/119' MSL. Pole 1249' from DER, 588' right of centerline, 56' AGL/70' MSL. **Rwy 27L**, transmission towers beginning 1858' from DER, 910' left of centerline, up to 72' AGL/82' MSL. Tree 2106' from DER, 998' right of centerline, 100' AGL/119' MSL. **Rwy 27R**, trees beginning 149' from DER, 352' right of centerline, up to 100' AGL/119' MSL. Obstruction light on tower 372' from DER, 458' right of centerline, 54' AGL/64' MSL. Obstruction light antenna 385' from DER, 450' right of centerline, 49' AGL/59' MSL. **Rwy 31**, trees beginning 163' from DER, 410' left of centerline, up to 100' AGL/119' MSL. Tree 3583' from DER, 360' right of centerline, 100' AGL/119' MSL.

MIAMI, FL (CON'T)

MIAMI INTL

TAKE-OFF MINIMUMS: **Rwy 8L**, 300-1¼ or std. w/ min. climb of 382' per NM to 300. **Rwy 9**, std. w/ min. climb of 233' per NM to 1200.

DEPARTURE PROCEDURE: **Rwys 8L/R**, climb heading 092° to 1000 before turning right. **Rwy 12**, climbing right turn to intercept DHP VORTAC R-125 to 1100 before turning left.

NOTE: **Rwy 8L**, building 3391' from departure end of runway, 1024' left of centerline, 160' AGL/172' MSL. Glideslope antenna 804' from departure end of runway, 501' right of centerline, 32' AGL/46' MSL. Multiple towers and buildings beginning 1350' from departure end of runway, 691' left of centerline, up to 150' AGL/164' MSL. **Rwy 8R**, tree 4064' from departure end of runway, 959' right of centerline, 98' AGL/112' MSL. Antenna and multiple trees beginning 2719' from departure end of runway, 194' left of centerline, up to 85' AGL/98' MSL. **Rwy 9**, light 1232' from departure end of runway, 785' left of centerline, 39' AGL/48' MSL. Windsock 22' from departure end of runway, 438' right of centerline, 21' AGL/30' MSL. **Rwy 12**, railroad beginning 4' from departure end of runway, 356' right of centerline, 23' AGL/28' MSL. Building and tree beginning 1064' from departure end of runway, 118' right of centerline, up to 94' AGL/108' MSL. Windsock 681' from departure end of runway, 345' left of centerline, 21' AGL/30' MSL. **Rwy 26L**, tower and multiple trees beginning 1306' from departure end of runway, 638' right of centerline, up to 63' AGL/77' MSL. Tree and light pole beginning 1773' from departure end of runway, 568' left of centerline, up to 61' AGL/75' MSL. **Rwy 26R**, tower, building, multiple light poles and trees beginning 741' from departure end of runway, 1' right of centerline, up to 66' AGL/80' MSL. Pole, building, and tower beginning 255' from departure end of runway, 5' left of centerline, up to 34' AGL/48' MSL. **Rwy 27**, railroad, tree and multiple light poles beginning 750' from departure end of runway, 94' left of centerline, up to 62' AGL/76' MSL. **Rwy 30**, pole, multiple towers and trees beginning 1414' from departure end of runway, 189' right of centerline, up to 120' AGL/125' MSL. Tree 2058' from departure end of runway, 785' left of centerline, 52' AGL/66' MSL.



MIAMI, FL (CON'T)

OPA-LOCKA EXECUTIVE (OPF)

AMDT 8 09211 (FAA)

TAKE-OFF MINIMUMS: **Rwy 9R**, 300-1 or std. w/ min. climb of 365' per NM to 300.

DEPARTURE PROCEDURE: **Rwy 9L**, climb heading 089° to 1200 before turning north. **Rwy 9R**, climb heading 089° to 1000 before turning north. **Rwy 12**, climb heading 124° to 600 before turning north.

Rwy 27R, climb heading 269° to 500 before turning north.

NOTE: **Rwy 9L**, fence 48' from DER, 497' left of centerline, 7' AGL/17' MSL. Trees 3246' from DER, 885' right of centerline, 78' AGL/92' MSL. **Rwy 9R**, pole 1438' from DER, 737' right of centerline, 31' AGL/45' MSL. Trees beginning 1947' from DER, 366' left of centerline, up to 89' AGL/103' MSL. Tower 3832' from DER, 729' left of centerline, 165' AGL/181' MSL. **Rwy 12**, trees 1558' from DER, 610' right of centerline, 49' AGL/63' MSL. Trees 3564' from DER, 922' left of centerline, 100' AGL/109' MSL. **Rwy 27L**, poles beginning 1318' from DER, 258' left of centerline, up to 37' AGL/51' MSL. Trees 1781' from DER, 756' left of centerline, 100' AGL/109' MSL. **Rwy 27R**, trees 1127' from DER, 745' right of centerline, 72' AGL/86' MSL. Trees 1449' from DER, 312' left of centerline, 32' AGL/46' MSL. Trees 4225' from DER, 229' right of centerline, 100' AGL/114' MSL. **Rwy 30**, tree 1370' from DER, 437' left of centerline, 32' AGL/46' MSL. Trees beginning 1711' from DER, 614' right of centerline, up to 100' AGL/109' MSL. Towers beginning 2542' from DER 565' right of centerline, up to 100' AGL/105' MSL.

MILTON, FL

PETER PRINCE FIELD

NOTE: **Rwy 18**, power line 204' from departure end of runway on centerline, 40' AGL/119' MSL.

NAPLES, FL

NAPLES MUNI (APF)

AMDT 2 09351 (FAA)

DEPARTURE PROCEDURE: **Rwy 14**, climb heading 137° to 600 before turning left.

NOTE: **Rwy 5**, trees beginning 92' from DER, left and right of centerline, up to 82' AGL/92' MSL. Tanks 1308' from DER, 293' left of centerline, up to 34' AGL/44' MSL.

Rwy 14, trees beginning 97' from DER, left and right of centerline, up to 101' AGL/108' MSL. **Rwy 23**, trees beginning 126' from DER, left and right of centerline, up to 66' AGL/70' MSL. **Rwy 32**, trees beginning 339' from DER, left and right of centerline, up to 119' AGL/123' MSL.

NASA SHUTTLE LANDING FACILITY

(KTTS)

TITUSVILLE, FL

Rwy 15, Climb rwy heading to 800 before turning East.

NEW SMYRNA BEACH, FL

NEW SMYRNA BEACH MUNI

NOTE: **Rwy 2**, tree 1271' from departure end of runway, 628' left of centerline, 85' AGL/93' MSL, tree 1816' from departure end of runway, 585' right of centerline, 48' AGL/56' MSL. **Rwy 7**, transmission tower 348' from departure end of runway, 348' right of centerline, 43' AGL/51' MSL, transmission tower 1832' from departure end of runway, 150' left of centerline, 53' AGL/61' MSL. **Rwy 11**, tree 509' from departure end of runway, 499' left of centerline, 53' AGL/61' MSL, tree 1420' from departure end of runway, 485' right of centerline, 54' AGL/62' MSL. **Rwy 20**, tree 542' from departure end of runway, 397' right of centerline, 71' AGL/80' MSL, tree 1345' from departure end of runway, 322' left of centerline, 72' AGL/81' MSL. **Rwy 25**, tree 1674' from departure end of runway, 104' left of centerline, 90' AGL/100' MSL, tree 1835' from departure end of runway, 158' right of centerline, 86' AGL/96' MSL. **Rwy 29**, tree 1853' from departure end of runway, 197' left of centerline, 90' AGL/100' MSL, tree 1535' from departure end of runway, 394' right of centerline, 76' AGL/86' MSL.

MASSEY RANCH AIRPARK (X50)

ORIG 09323 (FAA)

NOTE: **Rwy 18**, trees beginning 132' from DER, left and right of centerline, up to 70' AGL/84' MSL. Vehicles on road beginning 23' from DER, left and right of centerline, up to 15' AGL/29' MSL. Power line, 2358' from DER, right and left of centerline, up to 100' AGL/109' MSL. **Rwy 36**, trees beginning 300' from DER, left and right of centerline, up to 70' AGL/84' MSL. Vehicles on road beginning 23' from DER, 156' right of centerline, up to 15' AGL/29' MSL. Building 962' from DER, 167' right of centerline, 33' AGL/45' MSL. Tower 5101' from DER, 401' right of centerline, 152' AGL/162' MSL.

OCALA, FL

OCALA INTL-JIM TAYLOR FLD (OCF)

ORIG 09015 (FAA)

DEPARTURE PROCEDURE: **Rwy 8**, climb heading 069° to 500 before proceeding on course.

NOTE: **Rwy 18**, trees beginning 316' from departure end of runway, 527' right of centerline, up to 30' AGL/106' MSL. **Rwy 26**, trees beginning 83' from departure end of runway, 255' left of centerline, up to 100' AGL/204' MSL. Trees beginning 272' from departure end of runway, 10' right of centerline, up to 100' AGL/194' MSL. **Rwy 36**, taxiing aircraft, 43' from departure end of runway, 305' right of centerline, up to 10' AGL/94' MSL. Trees beginning 196' from departure end of runway, 500' left of centerline, up to 70' AGL/164' MSL. Trees beginning 2668' from departure end of runway, 305' right of centerline, up to 70' AGL/162' MSL.





ORLANDO, FL

EXECUTIVE (ORL)

AMDT 3A 08297 (FAA)

TAKE-OFF MINIMUMS: **Rwy 25**, 500-2½ or std. with a min. climb of 260' per NM to 700.

DEPARTURE PROCEDURE: **Rwy 31**, climb heading 314° to 600 before turning left.

NOTE: **Rwy 7**, numerous trees beginning 194' from departure end of runway, 542' right of centerline, up to 114' AGL/132' MSL. **Rwy 13**, numerous trees and poles beginning 824' from departure end of runway, 126' right of centerline, up to 119' AGL/173' MSL. Pole 1275' from departure end of runway, 502' left of centerline, 119' AGL/160' MSL. **Rwy 25**, building 2 NM from departure end of runway, 4195' right of centerline, 439' AGL/547' MSL. Numerous trees beginning 1318' from departure end of runway, 277' right of centerline, up to 119' AGL/191' MSL. Tree 1823' from departure end of runway, 582' left of centerline, 109' AGL/156' MSL. **Rwy 31**, numerous poles and trees beginning 828' from departure end of runway, 392' right of centerline, up to 109' AGL/139' MSL. Numerous poles, trees, and antenna beginning 948' from departure end of runway, 229' left of centerline, up to 104' AGL/161' MSL.

KISSIMMEE GATEWAY

TAKE-OFF MINIMUMS: **Rwy 6**, 300-1.

ORLANDO INTL (MCO)

AMDT 1 08269 (FAA)

NOTE: **Rwy 17L**, multiple trees beginning 1073' from departure end of runway, 23' left of centerline, up to 84' AGL/151' MSL. **Rwy 17R**, tree 1784' from departure end of runway, 965' right of centerline, 74' AGL/138' MSL. **Rwy 35L**, light and bush beginning 134' from departure end of runway, 456' left of centerline, up to 84' AGL/129' MSL. **Rwy 35R**, multiple trees beginning 2164' from departure end of runway, 5' right of centerline, up to 89' AGL/187' MSL. Multiple trees beginning 2596' from departure end of runway, 4' left of centerline, up to 89' AGL/172' MSL. **Rwy 36L**, light on sign 1063' from departure end of runway, 775' right of centerline, 94' AGL/123' MSL. **Rwy 36R**, multiple trees beginning 1365' from departure end of runway, 193' right of centerline, up to 94' AGL/153' MSL. Light on sign 1063' from departure end of runway, 726' left of centerline, 94' AGL/123' MSL.

ORLANDO, FL(CON'T)

ORLANDO SANFORD INTL (SFB)

AMDT 9 08269 (FAA)

DEPARTURE PROCEDURE: **Rwy 27L**, climb heading 275° to 800 before proceeding northbound. **Rwy 27C**, climb heading 275° to 900 before proceeding northbound. **Rwy 27R**, climb heading 275° to 900 before proceeding northbound. **Rwy 36**, climb heading 005° to 2000 before proceeding on course.

NOTE: **Rwy 9L**, trees beginning 197' from departure end of runway, 25' left of centerline up to 55' AGL/79' MSL. Pole 2277' from departure end of runway, 12' left of centerline 32' AGL/61' MSL. Trees beginning 956' from departure end of runway, 280' right of centerline 65' AGL/90' MSL. **Rwy 9C**, bush 162' from departure end of runway, 276' left of centerline 8' AGL/57' MSL. Tree 2305' from departure end of runway, 90' right of centerline up to 81' AGL/111' MSL. **Rwy 9R**, utilities beginning 430' from departure end of runway, 206' left of centerline up to 36' AGL/55' MSL. Trees beginning 986' from departure end of runway, 13' left of centerline up to 52' AGL/71' MSL. Post 1' from departure end of runway, 277' left of centerline 6' AGL/25' MSL. Utilities beginning 430' from departure end of runway, 109' right of centerline up to 36' AGL/55' MSL. Tree 1078' from departure end of runway, 463' right of centerline 34' AGL/53' MSL. **Rwy 27L**, trees beginning 2733' from departure end of runway, 260' left of centerline up to 72' AGL/131' MSL. Fence 229' from departure end of runway, 16' right of centerline 12' AGL/51' MSL. **Rwy 27C**, tower 2341' from departure end of runway, 544' left of centerline 128' AGL/185' MSL. Rod on obstruction light tower 2,364' from departure end of runway, 551' left of centerline 125' AGL/184' MSL. **Rwy 27R**, tower 3434' from departure end of runway, 1332' left of centerline 115' AGL/171' MSL. Pole 1378' from departure end of runway, 790' left of centerline 37' AGL/96' MSL. Trees beginning 1355' from departure end of runway, 147' left of centerline up to 71' AGL/120' MSL. Antenna on building 130' from departure end of runway, 440' right of centerline 18' AGL/67' MSL. Trees beginning 1453' from departure end of runway, 179' right of centerline up to 63' AGL/112' MSL.

ORMOND BEACH, FL

ORMOND BEACH MUNI (OMN)

ORIG 09211 (FAA)

NOTE: **Rwy 8**, trees beginning 8' from DER, left and right of centerline, up to 100' AGL/124' MSL. **Rwy 26**, trees beginning 20' from DER, left and right of centerline, up to 100' AGL/129' MSL. **Rwy 17**, trees beginning 23' from DER, left and right of centerline, up to 100' AGL/129' MSL. Power poles beginning 540' from DER, 589' right of centerline, up to 36' AGL/60' MSL. Building 640' from DER, 660' right of centerline, 21' AGL/45' MSL. **Rwy 35**, trees beginning 208' from DER, left and right of centerline, up to 100' AGL/129' MSL. Light poles beginning 1231' from DER, 571' left of centerline, up to 70' AGL/99' MSL.



PALATKA, FL

PALATKA MUNI-LT KAY LARKIN FIELD (28J)
ORIG 09295 (FAA)

TAKE-OFF MINIMUMS: **Rwy 9**, 200-1¼ or std. w/min. climb of 207' per NM to 300, or alternatively, with standard take-off minimums and a normal 200'/NM climb gradient, take-off must occur no later than 1300' prior to DER.

NOTE: **Rwy 9**, trees beginning 558' from DER, 39' right of centerline, up to 100' AGL/105' MSL. Trees beginning 625' from DER, 7' left of centerline, up to 100' AGL/137' MSL. Tower 1.1 NM from DER, 1398' right of centerline, 164' AGL/199' MSL. **Rwy 12**, trees beginning at DER, 285' right of centerline, up to 100' AGL/131' MSL. Trees beginning 1337' from DER, 211' left of centerline, up to 64' AGL/93' MSL. **Rwy 17**, trees beginning 237' from DER, 100' right of centerline, up to 100' AGL/164' MSL. Trees beginning 796' from DER, 478' left of centerline, up to 100' AGL/169' MSL.

Rwy 27, trees beginning 15' from DER, 56' left of centerline, up to 78' AGL/112' MSL. Trees beginning 49' from DER, 269' right of centerline, up to 72' AGL/101' MSL. **Rwy 30**, trees beginning 401' from DER, 554' right of centerline, up to 100' AGL/129' MSL. Buildings beginning 1315' from DER, 408' right of centerline, up to 75' AGL, 104' MSL. Trees beginning 1387' from DER, 41' left of centerline, up to 100' AGL/129' MSL. **Rwy 35**, buildings beginning 504' from DER, 403' right of centerline, up to 75' AGL/104' MSL. Trees beginning 788' from DER, 222' left of centerline, up to 100' AGL/129' MSL. Trees beginning 1387' from DER, 81' right of centerline, up to 100' AGL/119' MSL. Buildings beginning 1454' from DER, 850' left of centerline, up to 75' AGL/104' MSL.

PALM COAST, FL

FLAGLER COUNTY (XFL)
ORIG-A 10098 (FAA)

DEPARTURE PROCEDURE: **Rwy 24**, climb heading 241° to 700 before turning Northbound. **Rwy 29**, climb heading 270° to 1700 before proceeding on course.

PAHOKEE, FL

PALM BEACH COUNTY GLADES

NOTE: **Rwy 17**, tower 1600' from departure end of runway, 690' left of centerline, 127' AGL/143' MSL.

PANAMA CITY, FL

NORTHWEST FLORIDA-PANAMA CITY INTL (ECP)

ORIG 10098 (FAA)

TAKE-OFF MINIMUMS: **Rwys 3, 21**, NA-Environmental.

NOTE: **Rwy 16**, trees beginning 2644' from DER, 382' right of centerline, up to 82' AGL/131' MSL.

PANAMA CITY, FL (CON'T)

PANAMA CITY-BAY COUNTY INTL

TAKE-OFF MINIMUMS: **Rwy 5**, 400-2¼ or std. with a min. climb of 233' per NM to 500.

NOTE: **Rwy 5**, towers 1.8 NM from departure end of runway, 3216' right of centerline, 319' AGL/338' MSL, trees beginning 296' from departure end of runway, 205' right of centerline, up to 61' AGL/74' MSL, trees beginning 225' from departure end of runway, 217' left of centerline, up to 69' AGL/79' MSL. **Rwy 5**, multiple trees beginning 1585' from departure end of runway, 232' left of centerline, up to 43' AGL/64' MSL, trees beginning 731' from departure end of runway, 200' right of centerline, up to 65' AGL/75' MSL. **Rwy 14**, trees and buildings beginning 445' from departure end of runway, 29' right of centerline, up to 80' AGL/110' MSL. Trees beginning 13' from departure end of runway, 374' left of centerline, up to 87' AGL/107' MSL. **Rwy 23**, numerous trees beginning 55' from departure end of runway, 236' left of centerline, up to 65' AGL/72' MSL.



PATRICK AFB (KCOF)

COCOA BEACH, FL 08017

Rwy 2, Diverse departure authorized. Cross DER at or above 10' AGL/18' MSL for Take-Off Minima Standard with climb gradient of 200 ft/NM. **Rwy 11**, Diverse departure authorized. Take-Off Minima Standard with climb gradient of 200ft/NM. **Rwy 20**, Diverse departure authorized. Cross DER at or above 20' AGL/25' MSL for Take-Off Minima Standard with climb gradient of 200ft/NM. **Rwy 29**, Diverse departure authorized. Take-Off Minima Standard with climb gradient of 200ft/NM. TAKE-OFF OBSTACLES: **Rwy 2**, Trees 150' AGL/ 170' MSL, 1 NM from DER, 1985' left of centerline; Sign 26' AGL/33' MSL, 940' from DER, 648' left of centerline; Road + Truck 37' AGL/45' MSL, max 726' from DER, 620' right of centerline; Flag Pole 85' AGL/96' MSL, 3325' from DER, 1273' left of centerline; Trees 50' AGL/76' MSL, max 1892' from DER, 994' left of centerline; Trees 75' AGL/100' MSL, max 2872' from DER, 1254' left of centerline; Trees 70' AGL/77' MSL, max 2740' from DER, 731' left of centerline; Antenna 79' AGL/104' MSL, 3066' from DER, 1290' left of centerline; Road + Truck 12' AGL/ 29' MSL, max 747' from DER, 574' right of centerline. **Rwy 11**, terrain 158' from DER, 381' right of centerline, up to 16' MSL; terrain 0' inward of DER, 500' left of centerline, 16' MSL; wind sock 77' from DER, 227' right of centerline, 28' AGL/34' MSL; terrain starting 376' inward of DER, 841' right of centerline, up to 28' MSL; road + truck starting 719' from DER, 438' left of centerline, up to 35' AGL/49' MSL; road + truck starting 1131' from DER, 240' right of centerline, up to 35' AGL/ 49' MSL; sailboard mast 914' from DER, 880' left of centerline, up to 0' AGL/21' MSL. **Rwy 20**, Trees 150' AGL/170' MSL, 1 NM from DER, 1801' and 1549' left of centerline; Trees 40' AGL/65' MSL, max 2526' from DER, 452' left of centerline; Trees 40' AGL/65' MSL, 2465' from DER, 620' left of centerline; Trees 40' AGL/100' MSL, 3503' from DER, 425' left of centerline. **Rwy 29**, terrain 86' from DER, 326' left of centerline, 13' MSL; terrain starting 0' from DER, out to 353' right of centerline, up to 16' MSL; road + truck starting 435' from DER, out to 310' right of centerline, up to 15' AGL/18' MSL; shrubs starting 380' from DER, 350' left of centerline, 60' AGL/65' MSL; bird cannon #22 88' from DER, 455' right of centerline, 5' AGL/9' MSL; fiber optic box #1 168' from DER, 133' left of centerline, 0' AGL 10' MSL; fiber optic box #1 139' from DER, 460' right of centerline, 20' AGL/29' MSL; sailboat mast 1583' from DER, 1221' right of centerline, 0' AGL/ 43' MSL; patrol boat starting 2' from DER, 775' left of centerline, up to 0' AGL/10' MSL; sailboat mast starting 786' from DER, 888' left of centerline, 0' AGL/43' MSL.

PENSACOLA, FL

PENSACOLA RGNL

DEPARTURE PROCEDURE: **Rwy 26**, climb runway heading to 800 before turning south.

PERRY, FL

PERRY-FOLEY

DEPARTURE PROCEDURE: **Rwys 6, 12, 30, 36**, climb on runway heading to 800 before turning.

PLANT CITY, FL

PLANT CITY (PCM)

ORIG 09127 (FAA)

NOTE: **Rwy 10**, trees beginning 264' from DER, 561' left of centerline, up to 100' AGL/229' MSL. Trees beginning 490' from DER, 13' right of centerline, up to 100' AGL/239' MSL. **Rwy 28**, trees beginning 50' from DER, 278' right of centerline, up to 100' AGL/254' MSL. Trees beginning 515' from DER, 15' left of centerline, up to 100' AGL/249' MSL. Train on railroad tracks, 380' from DER, 547' left of centerline, up to 23' AGL/172' MSL. Vehicles on roadway, 266' from DER, 137' left of centerline, up to 15' AGL/169' MSL.

POMPANO BEACH, FL

POMPANO BEACH AIRPARK

TAKE-OFF MINIMUMS: **Rwy 10**, 300-1¼ or std. w/ min. climb of 261' per NM to 300. **Rwy 15**, 400-2 or std. w/ min. climb of 424' per NM to 500. **Rwy 28**, 300-1. DEPARTURE PROCEDURE: **Rwy 10**, climb heading 101° to 500 before proceeding on course. **Rwy 15**, climb heading 146° to 500 before proceeding on course.

NOTE: **Rwy 6**, multiple trees beginning 102' from departure end of runway, 233' right of centerline, up to 70' AGL/84' MSL. Multiple trees beginning 298' from departure end of runway, 26' left of centerline, up to 79' AGL/88' MSL. **Rwy 10**, obstruction light pole 154' from departure end of runway, 132' left of centerline, 7' AGL/ 18' MSL. Multiple trees beginning 427' from departure end of runway, 12' left of centerline, up to 48' AGL/62' MSL. Pole 670' from departure end of runway, 23' left of centerline, 22' AGL/33' MSL. Multiple trees beginning 711' from departure end of runway, 67' right of centerline, up to 49' AGL/63' MSL. Building 760' from departure end of runway, 343' right of centerline, 29' AGL/40' MSL. Rod on light pole, 891' from departure end of runway, 733' right of centerline, 41' AGL/52' MSL. Multiple light poles beginning 1264' from departure end of runway, 417' right of centerline, up to 50' AGL/59' MSL. Multiple light poles beginning 1340' from departure end of runway, 194' left of centerline, up to 50' AGL/59' MSL. Multiple flag poles beginning 1447' from departure end of runway, 167' left of centerline, up to 50' AGL/59' MSL. Building 1648' from departure end of runway, 418' right of centerline, 43' AGL/52' MSL. Antenna on building 2404' from departure end of runway, 287' right of centerline, 63' AGL/72' MSL. Antenna on building 5670' from departure end of runway, 604' right of centerline, 181' AGL/190' MSL. Multiple buildings 1 NM from departure end of runway, 888' left of centerline, 201' AGL/210' MSL. **Rwy 15**, building 503' from departure end of runway, 569' left of centerline, 41' AGL/52' MSL. Multiple trees beginning 523' from departure end of runway, 152' left of centerline, up to 53' AGL/62' MSL. Multiple trees beginning 749' from departure end of runway, 190' right of centerline, up to 48' AGL/57' MSL. Rod on light pole 871' from departure end of runway, 387' left of centerline, 41' AGL/52' MSL. Light pole 1006' from departure end of runway, 453' left of centerline, 42' AGL/51' MSL. Buildings 1.1 NM from departure end of runway, 1259' left of centerline, 300' AGL/310' MSL. Antenna on building 1.1 NM from departure end of runway, 1131' left of centerline, 277' AGL/282' MSL. Building 1.7 NM from departure end of runway, 1385' right of centerline, 255' AGL/265' MSL.





POMPANO BEACH AIRPARK (CON'T)

Rwy 24, multiple trees beginning 191' from departure end of runway, 24' right of centerline, up to 54' AGL/73' MSL. Multiple trees 423' from departure end of runway, 3' left of centerline, up to 91' AGL/110' MSL. Tank 630' from departure end of runway, 600' right of centerline, 61' AGL/80' MSL. Rod on building 724' from departure end of runway, 418' right of centerline, 41' AGL/60' MSL. Obstruction light on light pole 916' from departure end of runway, 66' right of centerline, 30' AGL/49' MSL. Rod on obstruction light tank 968' from departure end of runway, 712' right of centerline, 54' AGL/73' MSL.

Rwy 28, multiple trees beginning 358' from departure end of runway, 140' left of centerline, up to 35' AGL/54' MSL. Light pole 722' from departure end of runway, 389' left of centerline, 28' AGL/47' MSL. Rod on building 777' from departure end of runway, 429' left of centerline, 41' AGL/60' MSL. Rod on building 869' from departure end of runway, 454' left of centerline, 42' AGL/61' MSL. Multiple trees 1001' from departure end of runway, 238' right of centerline, up to 43' AGL/62' MSL. Tank 1177' from departure end of runway, 422' left of centerline, 45' AGL/64' MSL. Pole 1781' from departure end of runway, 33' left of centerline, 45' AGL/64' MSL. Tower 2650' from departure end of runway, 1134' right of centerline, 190' AGL/207' MSL. **Rwy 33**, multiple trees beginning 136' from departure end of runway, 157' left of centerline, up to 59' AGL/78' MSL. Antenna on building 529' from departure end of runway, 399' left of centerline, 18' AGL/34' MSL. Multiple trees 702' from departure end of runway, 458' right of centerline, up to 37' AGL/56' MSL.

PONCE, PR MERCEDITA

TAKE-OFF MINIMUMS: **Rwy 30**, 500-1 or std. with a min. climb of 510' per NM to 600.

DEPARTURE PROCEDURE: **Rwy 12**, climb to 2100 direct PSE VOR/DME and PSE VOR/DME R-121, then climbing right turn direct PSE VOR/DME. Continue climb in holding pattern, hold SE, left turns, 301° inbound, until reaching enroute altitude. **Rwy 30**, immediate climbing left turn to 2100 direct PSE VOR/DME and PSE VOR/DME R-121, then climbing right turn direct PSE VOR/DME. Continue climb in holding pattern, hold SE, left turns, 301° inbound, until reaching enroute altitude.

PUNTA GORDA, FL CHARLOTTE COUNTY (PGD) AMDT 1 08157 (FAA)

TAKE-OFF MINIMUMS: **Rwys 9, 27**, NA-airport authority request.

NOTE: **Rwy 4**, multiple trees beginning 34' from departure end of runway, 292' right of centerline, up to 63' AGL/84' MSL. **Rwy 15**, multiple trees beginning 133' from departure end of runway, 449' right of centerline, up to 84' AGL/104' MSL. Multiple trees beginning 43' from departure end of runway, 129' left of centerline, up to 48' AGL/68' MSL. **Rwy 22**, multiple trees beginning 373' from departure end of runway, 390' right of centerline, up to 54' AGL/73' MSL. **Rwy 33**, tree 638' from departure end of runway, 618' left of centerline, 38' AGL/53' MSL.

QUINCY, FL

QUINCY MUNI (2J9) ORIG 09071 (FAA)

TAKE-OFF MINIMUMS: **Rwy 32**, 300-2 or std. w/ min. climb of 217' per NM to 600, or alternatively, with standard takeoff minimums and a normal 200'/NM climb gradient, takeoff must occur no later than 1700' prior to DER.

NOTE: **Rwy 14**, trees beginning abeam DER, 421' left of centerline, up to 100' AGL/299' MSL. Vehicles on road abeam DER, 340' left of centerline, 15' AGL/214' MSL. Trees beginning abeam DER, 255' right of centerline, up to 100' AGL/309' MSL. Vehicles on road abeam DER, 174' right of centerline, 15' AGL/224' MSL. **Rwy 32**, trees beginning abeam DER, 307' left of centerline, up to 100' AGL/329' MSL. Vehicles on road abeam DER, 398' left of centerline, 15' AGL/244' MSL. Trees beginning 910' from DER, 722' right of centerline, up to 100' AGL/329' MSL. Powerline beginning 1225' from DER, left and right of centerline, up to 79' AGL/327' MSL.

ST. AUGUSTINE, FL ST. AUGUSTINE

NOTE: **Rwy 2**, trees 1355' from departure end of runway, 314' right of centerline, 100' AGL/104' MSL. **Rwy 20**, aircraft on ramp abeam departure end of runway, 158' right of centerline, up to 32' AGL/41' MSL. Aircraft on taxiway 182' from departure end of runway, on centerline, up to 32' AGL/42' MSL. Buildings beginning 220' from departure end of runway, 402' right of centerline, up to 34' AGL/44' MSL. Hangars beginning 174' from departure end of runway, 180' left of centerline, up to 16' AGL/26' MSL. Vehicles on road and train on railroad beginning 419' from departure end of runway, 599' right of centerline, up to 23' AGL/37' MSL. Numerous trees beginning 589' from departure end of runway, 652' right of centerline, up to 100' AGL/114' MSL. Numerous trees beginning 754' from departure end of runway, 586' left of centerline, up to 100' AGL/109' MSL. **Rwy 24**, hangars beginning abeam departure end of runway, 400' left of centerline, up to 16' AGL/26' MSL. Aircraft on ramp 55' from departure end of runway, 119' right of centerline up to 32' AGL/41' MSL. Buildings beginning 150' from departure end of runway, 191' right of centerline, up to 34' AGL/44' MSL. Vehicles on road and train on railroad beginning 571' from departure end of runway, on centerline, up to 23' AGL/37' MSL. Numerous trees beginning 742' from departure end of runway, left and right of centerline, up to 100' AGL/114' MSL. **Rwy 31**, numerous trees beginning 87' from departure end of runway, 418' left of centerline, up to 89' AGL/98' MSL. Vehicles on road and train on railroad beginning at departure end of runway, 237' left of centerline, up to 23' AGL/37' MSL. Numerous trees beginning 242' from departure end of runway, 2' right of centerline, up to 85' AGL/99' MSL.

ST. PETERSBURG, FL

ALBERT WHITTED

TAKE-OFF MINIMUMS: **Rwy 36**, 300-1 or std. with a min. climb of 320' per NM until 500.

DEPARTURE PROCEDURE: **Rwy 18, 25**, climb runway heading to 500 before turning right. **Rwy 7, 36**, climb runway heading to 500 before turning left.

NOTE: **Rwy 25**, 70' MSL/63' AGL building 350' from departure end of runway, 375' left of runway centerline.





10098

ST. PETERSBURG, FL (CON'T)

ST. PETERSBURG-CLEARWATER INTL (PIE)
AMDT 1 08157 (FAA)

TAKE-OFF MINIMUMS: **Rwys 17R, 35L**, NA - VFR runway. **Rwy 22**, 200-1¼ or std. w/min. climb of 230' per NM to 300, or alternatively, with standard takeoff minimums and a normal 200' per NM climb gradient, takeoff must occur no later than 1700' prior to departure end of runway.

DEPARTURE PROCEDURE: **Rwy 9**, climb heading 090° to 500 before proceeding southbound.

NOTE: **Rwy 4**, trees beginning 175' from departure end of runway, 280' right of centerline, up to 72' AGL/76' MSL. Bush 496' from departure end of runway, 259' right of centerline, 27' AGL/31' MSL. Bush 511' from departure end of runway, 327' left of centerline, 17' AGL/21' MSL. Trees beginning 523' from departure end of runway, 226' left of centerline, up to 17' AGL/21' MSL. Boats beginning 775' from departure end of runway, on centerline, up to 25' AGL/25' MSL. **Rwy 9**, trees beginning 352' from departure end of runway, 469' right of centerline, up to 47' AGL/51' MSL. Trees beginning 1161' from departure end of runway, 386' left of centerline, up to 40' AGL/44' MSL. **Rwy 17L**, building 689' from departure end of runway, 418' right of centerline, 35' AGL/44' MSL. Building 833' from departure end of runway, 439' right of centerline, 35' AGL/44' MSL. Signs beginning 909' from departure end of runway, 98' right of centerline, up to 49' AGL/58' MSL. Poles beginning 970' from departure end of runway, 114' right of centerline, up to 49' AGL/58' MSL. Poles beginning 1015' from departure end of runway, 103' left of centerline, up to 38' AGL/47' MSL. Sign 1336' from departure end of runway, 198' left of centerline, 44' AGL/53' MSL. Tree 2100' from departure end of runway, 996' right of centerline, 96' AGL/105' MSL. Antenna on hopper 2,583' from departure end of runway, 801' right of centerline, 80' AGL/89' MSL. **Rwy 22**, trees 1007' from departure end of runway, 109' left of centerline, up to 65' AGL/74' MSL. Tree 1629' from departure end of runway, 88' right of centerline, 61' AGL/70' MSL. Tower 5591' from departure end of runway, 266' right of centerline, 153' AGL/168' MSL. **Rwy 27**, poles beginning 188' from departure end of runway, 138' right of centerline, up to 66' AGL/75' MSL. Hangar lights 552' from departure end of runway, 450' right of centerline, 25' AGL/34' MSL. Poles beginning 605' from departure end of runway, 179' left of centerline, up to 40' AGL/49' MSL. Trees beginning 1540' from departure end of runway, 224' left of centerline, up to 57' AGL/66' MSL. Antenna on tank 2188' from departure end of runway, 712' left of centerline, 71' AGL/80' MSL.

SAN JUAN, PR

FERNANDO LUIS RIBAS DOMINICCI

TAKE-OFF MINIMUMS: **Rwy 9**, 400-2 or std. with a min. climb of 290' per NM to 400. **Rwy 27**, 300-1.

NOTE: **Rwy 9**, numerous close-in trees and buildings to 177' AGL right of centerline within 3200' of departure end, additional buildings to 177' AGL left and right of centerline within 5500' of departure end. **Rwy 27**, ship maneuvering area within 5200' of departure end of runway.

SAN JUAN, PR (CON'T)

LUIS MUNOZ MARIN INTL (SJU)
AMDT 7 09239 (FAA)

DEPARTURE PROCEDURE: **Rwy 8**, climb on a heading between 109° CCW to 258° from DER, or minimum climb of 381' per NM to 5000 for all other courses. **Rwy 10**, climb on a heading between 91° CCW to 281° from DER, or minimum climb of 390' per NM to 4900 for all other courses. **Rwy 26**, climb on a heading between 255° CW to 078° from DER, or minimum climb of 311' per NM to 4800 for all other courses. **Rwy 28**, climb on a heading between 260° CW to 101° from DER, or minimum climb of 323' per NM to 4800 for all other courses.

NOTE: **Rwy 8**, trees beginning 21' from DER, left and right of centerline, up to 84' AGL/107' MSL. **Rwy 10**, trees beginning 157' from DER, left and right of centerline, up to 54' AGL/61' MSL. **Rwy 26**, building and trees beginning 8' from DER, 339' right of centerline, up to 138' AGL/154' MSL. Sign and bushes beginning 381' from DER, 374' left of centerline, up to 28' AGL/35' MSL. **Rwy 28**, bush and trees beginning 159' from DER, 476' left of centerline, up to 61' AGL/71' MSL. Pole 438' from DER, 587' left of centerline, 31' AGL/38' MSL.

10098





SARASOTA(BRADENTON), FL

SARASOTA/BRADENTON INTL (SRQ)

AMDT 1 08269 (FAA)

NOTE: **Rwy 4**, multiple trees beginning 831' from departure end of runway, 91' right of centerline, up to 57' AGL/87' MSL. Floodlight 521' feet from departure end of runway, 274' right of centerline, 23' AGL/48' MSL. Floodlight 786' from departure end of runway, 152' right of centerline, 22' AGL/47' MSL. Pole 989' from departure end of runway, 492' right of centerline, 35' AGL/65' MSL. Vehicle on road 370' from departure end of runway, 261' right of centerline, 17' AGL/42' MSL. Multiple trees beginning 926' from departure end of runway, 54' left of centerline, up to 71' AGL/96' MSL. Building 200' from departure end of runway, 506' left of centerline, 33' AGL/58' MSL. Camera on pole 1012' from departure end of runway, 250' left of centerline, 27' AGL/52' MSL. **Rwy 14**, multiple trees beginning 345' from departure end of runway, 277' right of centerline, up to 69' AGL/94' MSL. Multiple trees beginning 119' from departure end of runway, 365' left of centerline, up to 30' AGL/55' MSL. Railroad 431' from departure end of runway, 533' left of centerline, 24' AGL/44' MSL.

Rwy 22, tree 1383' from departure end of runway, 438' left of centerline, 53' AGL/73' MSL. Tree 1534' from departure end of runway, 338' left of centerline, 54' AGL/74' MSL. Light pole 1157' from departure end of runway, 530' left of centerline, 42' AGL/62' MSL. Vent on building 1688' from departure end of runway, 61' left of centerline, 55' AGL/75' MSL. Pole 1189' from departure end of runway, 349' left of centerline, 41' AGL/61' MSL. Sign 865' from departure end of runway, 162' left of centerline, 31' AGL/51' MSL. Light pole 881' from departure end of runway, 37' left of centerline, 30' AGL/50' MSL. Tree 1732' from departure end of runway, 51' right of centerline, 58' AGL/78' MSL. Sign 592' from departure end of runway, 382' right of centerline, 28' AGL/48' MSL. Flood light 643' from departure end of runway, 319' right of centerline, 27' AGL/47' MSL. Vehicle on road 527' from departure end of runway, 282' right of centerline, 17' AGL/37' MSL. **Rwy 32**, multiple trees beginning 606' from departure end of runway, 2' right of centerline, up to 51' AGL/71' MSL. Multiple trees beginning 775' from departure end of runway, 113' left of centerline, up to 68' AGL/88' MSL. Wall 119' from departure end of runway, 465' left of centerline, 29' AGL/49' MSL. Pole 945' from departure end of runway, 531' left of centerline, 41' AGL/61' MSL. Antenna 732' from departure end of runway, 168' left of centerline, 34' AGL/54' MSL. Vehicle on road 675' from departure end of runway, 277' left of centerline, 17' AGL/51' MSL. Light pole 837' from departure end of runway, 326' left of centerline, 34' AGL/54' MSL. Tower 5674' from departure end of runway, 1845' left of centerline, 162' AGL/177' MSL.

SEBRING, FL

SEBRING RGNL

NOTE: **Rwy 14**, trees 1716' from departure end of runway, 527' right of centerline, up to 100' AGL/150' MSL. **Rwy 18**, trees beginning 11' from departure end of runway, 216' right of centerline, up to 76' AGL/132' MSL. **Rwy 32**, trees 988' from departure end of runway, 23' right of centerline, up to 100' AGL/146' MSL. Railroad 500' from departure end of runway, on centerline, up to 23' AGL/77' MSL. **Rwy 36**, trees beginning 107' from departure end of runway, 157' right of centerline, up to 57' AGL/107' MSL. Trees beginning 107' from departure end of runway, 141' left of centerline, up to 51' AGL/101' MSL.

STUART, FL

WITHAM FIELD (SUA)

AMDT 2 09239 (FAA)

DEPARTURE PROCEDURE: **Rwy 25**, climb heading 290° to 1700 before proceeding on course. **Rwy 30**, climb heading 295° to 1300 before proceeding on course.

NOTE: **Rwy 7**, trees beginning 75' from DER, 289' left of centerline, up to 100' AGL/114' MSL. Trees beginning 268' from DER, 287' right of centerline, up to 100' AGL/109' MSL. **Rwy 12**, pole and trees beginning 35' from DER, 55' left of centerline, up to 59' AGL/73' MSL. Trees beginning 763' from DER, 45' right of centerline, up to 67' AGL/81' MSL. **Rwy 16**, trees beginning 627' from DER, 42' left of centerline, up to 46' AGL/60' MSL. Trees beginning 70' from DER, 202' right of centerline, up to 92' AGL/106' MSL. **Rwy 25**, storage racks and trees beginning 176' from DER, 17' left of centerline, up to 36' AGL/55' MSL. Trees beginning 123' from DER, 316' right of centerline, up to 55' AGL/79' MSL. **Rwy 30**, trees beginning 155' from DER, 47' left of centerline, up to 72' AGL/86' MSL. Poles and trees beginning 5' from DER, 28' right of centerline, up to 64' AGL/78' MSL. **Rwy 34**, trees beginning 362' from DER, 473' left of centerline, up to 100' AGL/109' MSL. Trees beginning 281' from DER, 385' right of centerline, up to 100' AGL/109' MSL.

TALLAHASSEE, FL

TALLAHASSEE RGNL

NOTE: **Rwy 9**, trees beginning 1068' from departure end of runway, 670' left of centerline, up to 29' AGL/95' MSL. Trees beginning 1299' from departure end of runway, 84' right of centerline, up to 66' AGL/126' MSL. Lighted hopper 2416' from departure end of runway, 965' right of centerline, 63' AGL/113' MSL. **Rwy 27**, trees beginning 2708' from departure end of runway, 34' left of centerline, up to 70' AGL/169' MSL. Trees beginning 2782' from departure end of runway, 190' right of centerline, up to 58' AGL/149' MSL. **Rwy 36**, trees beginning 1211' from departure end of runway, 426' left of centerline, up to 56' AGL/140' MSL. Trees beginning 1286' from departure end of runway, 559' right of centerline, up to 61' AGL/140' MSL.

TALLAHASSEE/HAVANA, FL

TALLAHASSEE COMMERCIAL (68J)

ORIG 08185 (FAA)

TAKE-OFF MINIMUMS: **Rwy 16**, 300-1½ or std. w/a min. climb gradient of 344' per NM to 500.

NOTE: **Rwy 16**, road beginning 0' from departure end of runway, 136' right of centerline, up to 15' AGL/164' MSL. Trees beginning 0' from departure end of runway, 149' right of centerline, up to 100' AGL/269' MSL. Trees beginning 0' from departure end of runway, 154' left of centerline, up to 100' AGL/259' MSL. **Rwy 34**, trees beginning 0' from departure end of runway, 41' left of centerline, up to 100' AGL/269' MSL. Trees beginning 0' from departure end of runway, 45' right of centerline, up to 100' AGL/259' MSL.





TAMPA, FL

PETER O KNIGHT (TPF)
AMDT 5 09211 (FAA)

TAKE-OFF MINIMUMS: **Rwy 3**, 300-1¼ or std. w/ min. climb of 497' per NM to 850 or 900 - 2½ for climb in visual conditions. **Rwys 17, 21**, 300-1½. **Rwy 35**, 700-2½.

DEPARTURE PROCEDURE: **Rwy 3**, for climb in visual conditions: cross Peter O Knight Field at or above 900 MSL before proceeding on course.

NOTE: **Rwy 3**, ship 296' from DER, 3' right of centerline, 177' AGL/185' MSL. Ship 1.0 NM from DER, 900' right of centerline, 177' AGL/185' MSL. Towers 1366' from DER, 279' left of centerline, up to 110' AGL/117' MSL. Tanks 1716' from DER, 19' right of centerline, up to 70' AGL/77' MSL. Crane 2684' from DER, 1047' left of centerline, 247' AGL/253' MSL. **Rwy 17**, ship 389' from DER, 460' left of centerline, 177' AGL/185' MSL. Ship 1.2 NM from DER, on centerline, 177' AGL/185' MSL. **Rwy 21**, ship 1967' from DER, 72' left of centerline, 177' AGL/185' MSL. Ship 1.2 NM from DER, on centerline, 177' AGL/185' MSL. **Rwy 35**, multiple buildings beginning 1.2 NM from DER, 127' left of centerline, up to 610' AGL/625' MSL. Ship 714' from DER, 48' right of centerline, 177' AGL/185' MSL. Tower 3032' from DER, 1117' right of centerline, 128' AGL/139' MSL. Building 1.4 NM from DER, 994' right of centerline, 330' AGL/337' MSL.

TAMPA EXECUTIVE

TAKE-OFF MINIMUMS: **Rwy 18**, 500-3 or std. with a min. climb of 220' per NM to 600.

TAMPA INTL (TPA)

AMDT 8 10098 (FAA)

DEPARTURE PROCEDURE: **Rwy 9**, climb heading 094° to 800 before turning right.

NOTE: **Rwy 9**, multiple trees 1281' from DER, 1' right of centerline, up to 106' AGL/118' MSL. Tower 4214' from DER 265' right of centerline, 105' AGL/145' MSL. Multiple trees beginning 134' from DER, 73' left of centerline, up to 103' AGL/114' MSL. **Rwy 18L**, antenna on obstruction light building, 3279' from DER, 1160' left of centerline, 145' AGL/155' MSL. Building 4755' from DER, 1522' left of centerline, 146' AGL/155' MSL. **Rwy 18R**, trees beginning 482' from DER, 578' right of centerline, up to 33' AGL/37' MSL. **Rwy 27**, building and antenna beginning 4354' from DER, 1162' left of centerline, up to 146' AGL/158' MSL. Multiple trees beginning 479' from DER, 419' right of centerline, up to 53' AGL/67' MSL. Multiple trees beginning 128' from DER, 3' left of centerline, up to 54' AGL/68' MSL. Pole 474' from DER, 436' left of centerline, up to 30' AGL/35' MSL. **Rwy 36L**, tree 752' from DER, 596' right of centerline, 42' AGL/66' MSL.

TITUSVILLE, FL

ARTHUR DUNN AIR PARK (X21)
AMDT 1A 08269 (FAA)

TAKE-OFF MINIMUMS: **Rwy 15**, 700-2 or std. with a min. climb of 350' per mile to 700.

NOTE: Multiple towers beginning 1.52 NM from departure end of runway, 1140' left of centerline, up to 399' AGL/419' MSL.

SPACE COAST RGNL

TAKE-OFF MINIMUMS: NOTE: **Rwy 36**, 60' AGL trees 254' from departure end of runway, 526' right of centerline.

TYNDALL AFB (KPM)

PANAMA CITY, FL. 06327

TAKE-OFF OBSTACLES: **Rwy 13L**, 29' MSL/13' AGL vehicle on road 127' from DER, 533' right of centerline. 39' MSL/20' AGL aircraft 6' inward of DER, 301' right of centerline. **Rwy 31L**, 27' MSL/11' AGL building 188' from DER, 519' left of centerline. 81' MSL/66' AGL aircraft 4' inward of DER, 302' left of centerline. **Rwy 31R**, 29' MSL/13' AGL vehicle 2' inward of DER, 458' right of centerline. 29' MSL/13' AGL vehicle 3' inward of DER, 383' left of centerline.

VENICE, FL

VENICE MUNI (VNC)
AMDT 1 08269 (FAA)

DEPARTURE PROCEDURE: **Rwy 4**, climb heading 047° to 700 before turning right. **Rwy 31**, climb heading 303° to 1500 before proceeding on course.

NOTE: **Rwy 4**, trees beginning 511' from departure end of runway, 586' right of centerline, up to 40' AGL/54' MSL. Poles/buildings beginning 526' from departure end of runway, 578' left of centerline, up to 50' AGL/64' MSL. **Rwy 13**, trees beginning 861' from departure end of runway, 419' left of centerline, up to 40' AGL/54' MSL. Trees beginning 965' from departure end of runway, 610' right of centerline, up to 40' AGL/49' MSL. **Rwy 22**, building 805' from departure end of runway, 327' left of centerline, 30' AGL/39' MSL. **Rwy 31**, trees beginning 691' from departure end of runway, 617' left of centerline, up to 40' AGL/54' MSL. Poles/buildings beginning 853' from departure end of runway, 693' right of centerline, up to 50' AGL/69' MSL.



**VERO BEACH, FL****VERO BEACH MUNI**

NOTE: **Rwy 4**, multiple trees beginning 813' from departure end of runway, 178' left of centerline, up to 100' AGL/120' MSL. Multiple trees beginning 3003' from departure end of runway, 93' right of centerline, up to 83' AGL/100' MSL. **Rwy 11L**, multiple trees beginning 171' from departure end of runway, 455' right of centerline, up to 57' AGL/74' MSL. Multiple trees and lights beginning 547' from departure end of runway, 259' left of centerline, up to 39' AGL/56' MSL. Storage tank 1813' from departure end of runway, 763' right of centerline, 45' AGL/74' MSL. **Rwy 11R**, pole 709' from departure end of runway, 522' left of centerline, 28' AGL/45' MSL. Spire 1622' from departure end of runway, 574' right of centerline, 44' AGL/61' MSL. **Rwy 22**, vehicles on road abeam departure end of runway, 421' left of centerline, up to 15' AGL/39' MSL. Vehicles on road 408' from departure end of runway, left and right of centerline, up to 15' AGL/39' MSL. Multiple trees beginning 1404' from departure end of runway, 272' left of centerline, up to 64' AGL/84' MSL. Multiple trees beginning 1989' from departure end of runway, 126' right of centerline, up to 68' AGL/88' MSL. **Rwy 29L**, multiple trees beginning 1206' from departure end of runway, 46' right of centerline, up to 100' AGL/120' MSL. Multiple trees beginning 1575' from departure end of runway, 135' left of centerline, up to 61' AGL/81' MSL. **Rwy 29R**, multiple antennas and trees beginning 1656' from departure end of runway, 111' right of centerline, up to 70' AGL/90' MSL. Multiple trees beginning 1782' from departure end of runway, 247' left of centerline, up to 65' AGL/85' MSL.

WAUCHULA, FL**WAUCHULA MUNI**

NOTE: **Rwy 18**, trees 450' from departure end of runway, 130' left of centerline, 22' AGL/126' MSL. **Rwy 36**, trees 183' from departure end of runway, 350' left of centerline, 49' AGL/145' MSL. Powerline 582' from departure end of runway, on centerline, 51' AGL/140' MSL. Tree, 323' from departure end of runway, 490' left of centerline, 100' AGL/200' MSL. Tree 39' from departure end of runway, 486' right of centerline, 100' AGL/185' MSL.

WEST PALM BEACH, FL**NORTH PALM BEACH COUNTY GENERAL AVIATION (F45)****ORIG 09015 (FAA)**

TAKE-OFF MINIMUMS: **Rwys 8L, 26R**, NA-turf runway.

NOTE: **Rwy 8R**, trees beginning 582' from departure end of runway, 47' right of centerline, up to 100' AGL/124' MSL. Trees beginning 950' from departure end of runway, 56' left of centerline, up to 100' AGL/124' MSL. **Rwy 13**, trees beginning at departure end of runway, 14' right of centerline, up to 100' AGL/124' MSL. Trees beginning 144' from departure end of runway, 29' left of centerline, up to 100' AGL/124' MSL. **Rwy 26L**, trees 43' from departure end of runway, 418' left of centerline, up to 8' AGL/23' MSL. **Rwy 31**, trees beginning 87' from departure end of runway, 26' right of centerline, up to 68' AGL/83' MSL. Craft 114' from departure end of runway, 425' left of centerline, up to 20' AGL/44' MSL. Trees beginning 458' from departure end of runway, 91' left of centerline, up to 100' AGL/124' MSL.

PALM BEACH COUNTY PARK

TAKE-OFF MINIMUMS: **Rwy 3**, 300-1 or std. with a min. climb of 330' per NM to 400. **Rwy 33**, 300-1 or std. with a min. climb of 460' per NM to 500.

DEPARTURE PROCEDURE: **Rwys 21, 33**, climb runway heading to 1000 before turning west. **Rwy 27**, climbing left turn to 1000 via heading 180° before proceeding on course.

NOTE: **Rwy 3**, crane 1.25 NM from departure end of runway, 1660' right of centerline, 260' AGL/285' MSL. **Rwy 33**, crane 4700' from departure end of runway, on centerline, 220' AGL/234' MSL.

PALM BEACH INTL (PBI)**AMD T 3 09351 (FAA)**

DEPARTURE PROCEDURE: **Rwy 28L**, climb heading 279° to 1200 before turning left. **Rwy 28R**, climb heading 279° to 1200 before turning left.

NOTE: **Rwy 10R**, antenna on hanger 177' from DER, 450' right of centerline, 38' AGL/57' MSL. **Rwy 10L**, light pole 1461' from DER, 843' right of centerline, 45' AGL/64' MSL. **Rwy 14**, transmission line tower, traffic signal, poles, and trees beginning 649' from DER, 24' left of centerline, up to 71' AGL/90' MSL. Vehicles on road, light poles, and trees beginning 168' from DER, 76' right of centerline, up to 87' AGL/106' MSL. **Rwy 28R**, light pole and trees beginning 1205' from DER, 323' left of centerline, up to 63' AGL/82' MSL. Sign, light pole, and trees beginning 1233' from DER, 155' right of centerline, up to 44' AGL/63' MSL. **Rwy 32**, trees beginning 1993' from DER, 444' left of centerline, up to 69' AGL/88' MSL. Trees beginning 1108' from DER, 548' right of centerline, up to 70' AGL/89' MSL.

WHITING FLD NAS-SOUTH (KNDZ)**MILTON, FL** 07354

TAKE-OFF OBSTACLES: **Rwy 5**, trees 809' from DER, 646' left of centerline, 40' AGL/200' MSL. **Rwy 32**, trees 435' from DER, 542' right of centerline, 62' AGL/258' MSL.



WILLISTON, FL

WILLISTON MUNI

TAKE-OFF MINIMUMS: **Rwy 5**, 400-2½ or std. w/ min. climb of 257' per NM to 600.

DEPARTURE PROCEDURE: **Rwy 5**, climb heading 049° to 500 before proceeding on course. **Rwy 14**, climb heading 142° to 600 before proceeding on course. **Rwy 23**, climb on a heading between 253° clockwise 048° from departure end of runway, or minimum climb of 248' per NM to 1900 for all other courses.

NOTE: **Rwy 5**, brush and multiple trees beginning 38' from departure end of runway, 54' left of centerline, up to 100' AGL/179' MSL. Tower 2 NM from departure end of runway, 2343' left of centerline, 324' AGL/399' MSL. Brush and multiple trees beginning 49' from departure end of runway, 234' right of centerline, up to 100' AGL/179' MSL. **Rwy 14**, multiple trees 799' from departure end of runway, on centerline, up to 30' AGL/99' MSL. Multiple trees beginning 1143' from departure end of runway, 381' left of centerline, up to 100' AGL/174' MSL. Road and multiple trees beginning 13' from departure end of runway, 208' right of centerline, up to 100' AGL/179' MSL. **Rwy 23**, multiple trees beginning 445' from departure end of runway, 8' left of centerline, up to 100' AGL/184' MSL. Multiple trees beginning 430' from departure end of runway, 403' right of centerline, up to 100' AGL/189' MSL. **Rwy 32**, multiple trees 799' from departure end of runway, on centerline, up to 50' AGL/124' MSL. Multiple trees beginning 719' from departure end of runway, 288' left of centerline, up to 100' AGL/194' MSL. Multiple trees beginning 497' from departure end of runway, 442' right of centerline, up to 100' AGL/194' MSL.

WINTER HAVEN, FL

WINTER HAVEN'S GILBERT

DEPARTURE PROCEDURE: **Rwy 23**, climb runway heading to 1000 before turning south.

ZEPHYRHILLS, FL

ZEPHYRHILLS MUNI

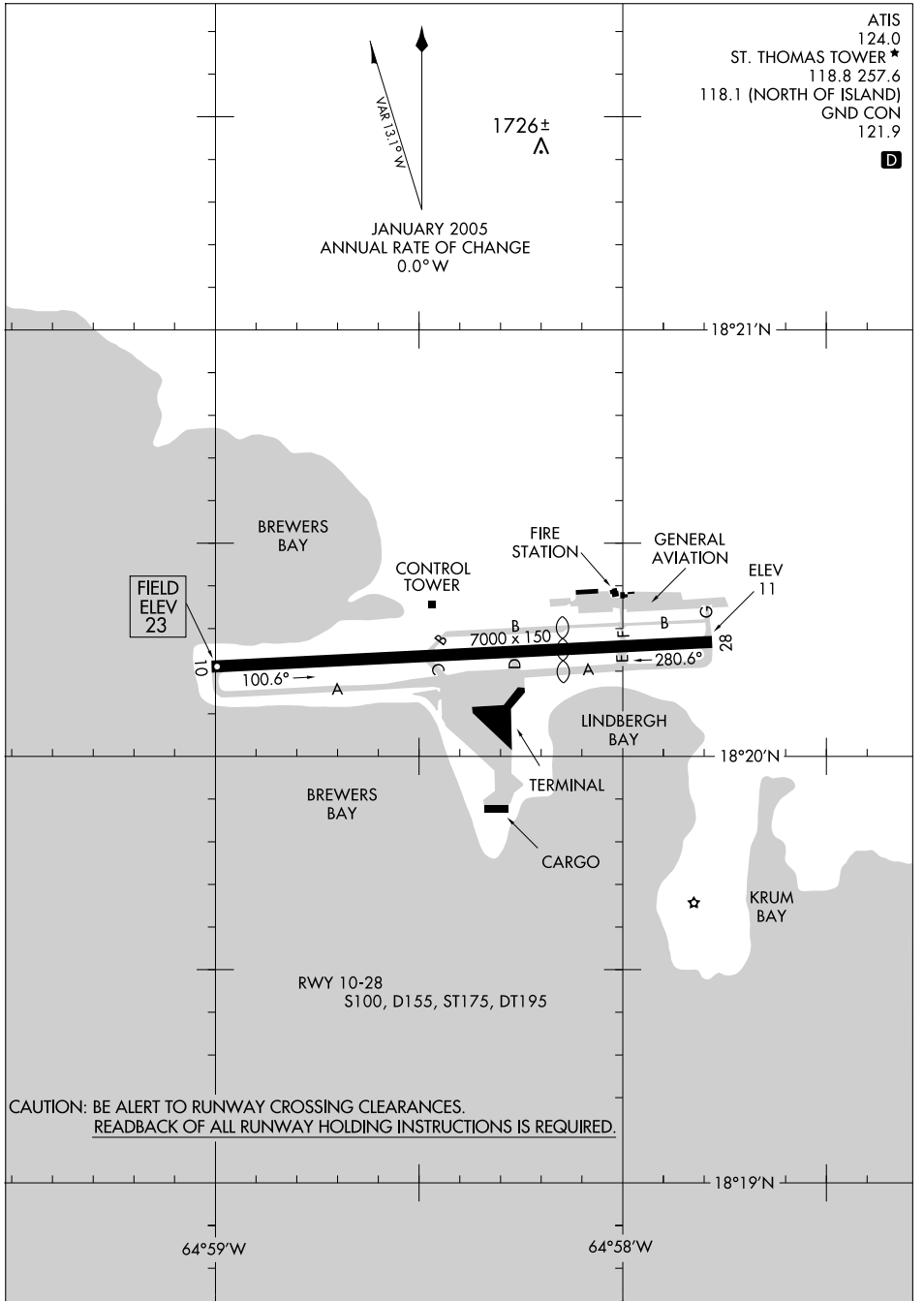
TAKE-OFF MINIMUMS: **Rwy 4**, 400-2 or std. with a min. climb of 280' per NM to 400.

DEPARTURE PROCEDURE: **Rwy 22**, climb runway heading to 500 before right turn.

NOTE: **Rwy 4**, tower 1.6 NM from departure end of runway, 2675' right of centerline, 260' AGL/346' MSL.

AIRPORT DIAGRAM

CHARLOTTE AMALIE/ CYRIL E KING (STT)(TIST)
AL-5005 (FAA) ST. THOMAS, VIRGIN ISLANDS



SE-3. 08 APR 2010 to 06 MAY 2010

ILS RWY 10

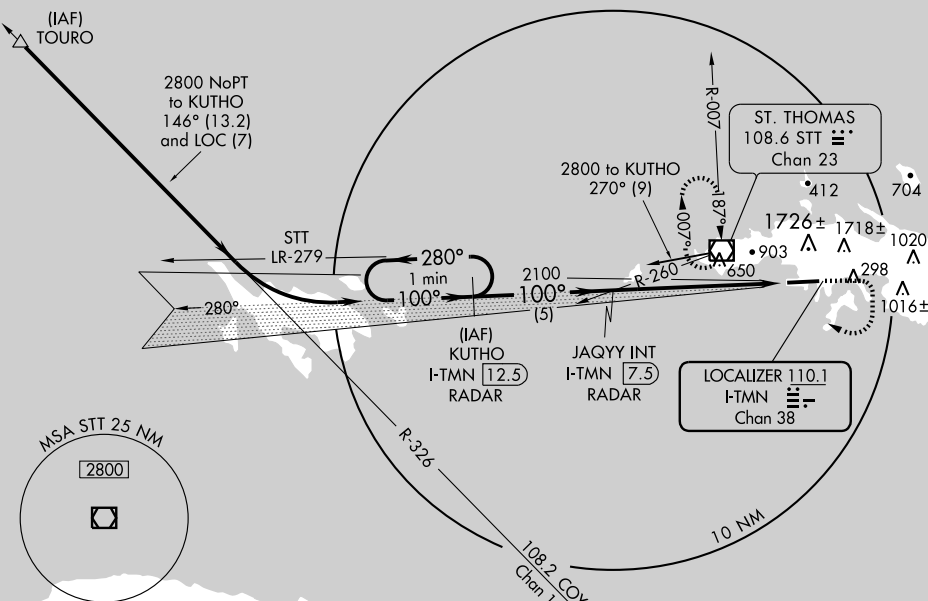
CHARLOTTE AMALIE/ CYRIL E KING (STT)(TIST)

LOC/DME I-TMN 110.1 Chan 38	APP CRS 100°	Rwy Idg 7000 TDZE 23 Apt Elev 23
---	------------------------	---

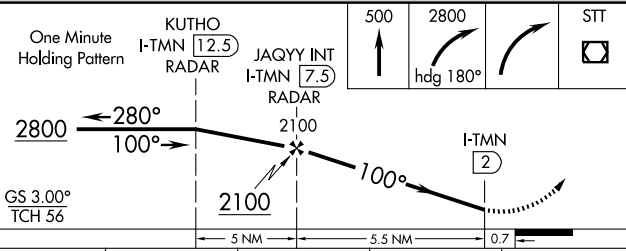
Procedure not authorized when control tower closed.
Circling not authorized north of Runway 10-28.
Circling not authorized at night.

MISSED APPROACH: Climb to 500 then climbing right turn to 2800 via heading 180° then right turn direct STT VOR/DME and hold.

ATIS 124.0	SAN JUAN CENTER 128.65 279.6	ST. THOMAS TOWER★ 118.8 (CTAF) 257.6 118.1 (NORTH OF ISLAND)	GND CON 121.9	UNICOM 122.95
----------------------	--	---	-------------------------	-------------------------



CAUTION: Pilots may encounter false illusory indications during night approaches to Runway 10 when using outside visual cues for vertical guidance.



ELEV 23	D
---------	---

Obstacle diagram showing terrain and obstructions:

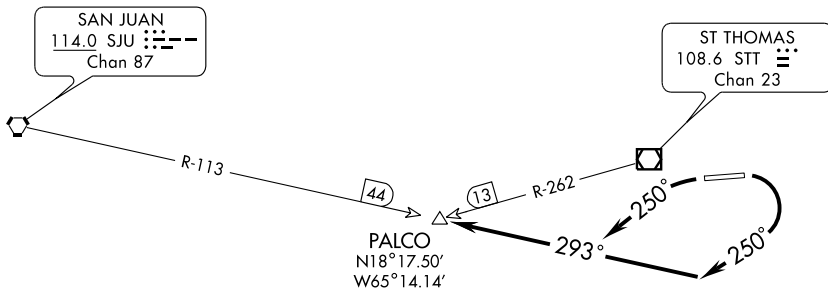
- Obstacles: 236, 363±, 181, 73±.
- TDZE 23.
- 100° 6.2 NM from FAF.
- Scale: 7000 X 150.

REIL Rwy 10	MIRL Rwy 10-28				
FAF to MAP 5.5 NM					
Knots	60	90	120	150	180
Min:Sec	5:30	3:40	2:45	2:12	1:50

SE-3.08 APR 2010 to 06 MAY 2010

PALCO SIX DEPARTURE

ATIS 124.0
GND CON
121.9
ST THOMAS TOWER ★
118.8 (CTAF) 257.6
118.1 (NORTH OF ISLAND)
SAN JUAN DEP CON
128.65 279.6



TAKE-OFF MINIMUMS:

Rwy 10: 400-1 with minimum climb of 462' per NM to 1400 or 2100-2½ for climb in visual conditions.

Rwy 28: 800-3 or STANDARD with a minimum climb of 366 feet per NM to 1000.

TAKEOFF OBSTACLE NOTES:

Rwy 10: Antenna on building 258 feet from DER, 485 feet left of centerline, 25 feet AGL/ 41 feet MSL. Multiple trees beginning 729 feet from DER, 244 feet right of centerline up to 100 feet AGL/259 feet MSL. Pole 300 feet from DER, 430 feet right of centerline, 23 feet AGL/39 feet MSL.

Rwy 28: Antenna 33 feet from DER, 412 feet left of centerline, 16 feet AGL/29 feet MSL. Bush 175 feet from DER, 178 feet right of centerline, 2 feet AGL/29 feet MSL. Bush 206 feet from DER, 121 feet left of centerline, 2 feet AGL/29 feet MSL. Trees beginning 2.39 NMs from DER, 4351 feet right of centerline, 100 feet AGL/ 710 feet MSL.

NOTE: Chart not to scale.

NOTE: DME or RADAR Required.

DEPARTURE ROUTE DESCRIPTION

TAKE-OFF RUNWAY 10: Turn right heading 250° (unless assigned otherwise) to intercept the SJU R-113 to PALCO INT, or climb in visual conditions to cross Cyril E. King airport at or above 2100, then on SJU R-113 to PALCO INT. Thence

TAKE-OFF RUNWAY 28: Turn left heading 250° (unless assigned otherwise) to intercept the SJU R-113 to PALCO INT. Thence

. . . . Maintain 3000' unless assigned lower altitude.

Expect clearance to flight level 280 or requested altitude if lower ten minutes after departure. Contact San Juan Departure.

SE-3, 08 APR 2010 to 06 MAY 2010

RNAV (GPS) Z RWY 10

CHARLOTTE AMALIE/CYRIL E. KING (STT)(TIST)

APP CRS 100°	Rwy Idg 7000
	TDZE 23
	Apt Elev 23

▼ Procedure NA when control tower closed.
▲ NA Circling NA at night.
 Circling NA north of Rwy 10-28.
 GPS or RNP-0.3 Required.
 DME/DME RNP-0.3 NA.

MISSED APPROACH: Climb to 2800 via LOGVY, then right turn via 166° course to OSSEL and hold.

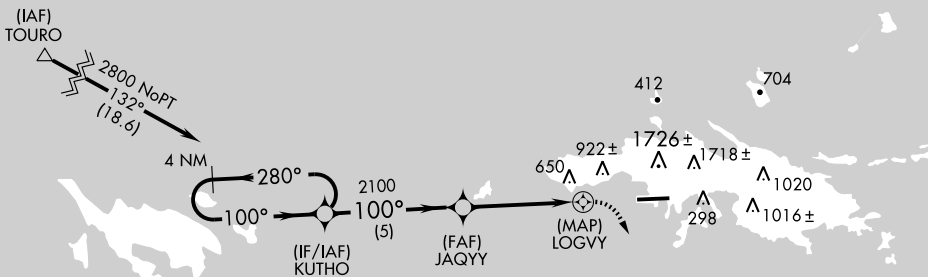
ATIS
124.0

SAN JUAN CENTER
128.65 279.6

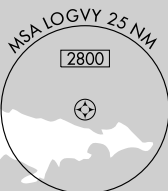
ST. THOMAS TOWER★
118.8 (CTAF) **0 257.6**
118.1 (NORTH OF ISLAND)

GND CON
121.9

UNICOM
122.95

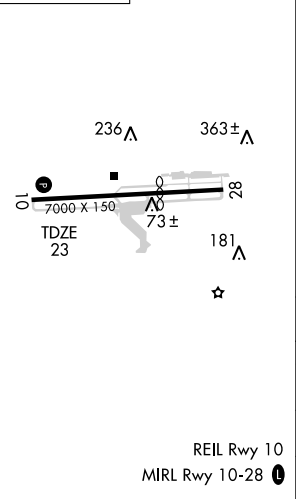


CAUTION: Pilots may encounter false illusory indications during night approaches to Rwy 10 when using outside visual cues for vertical guidance.

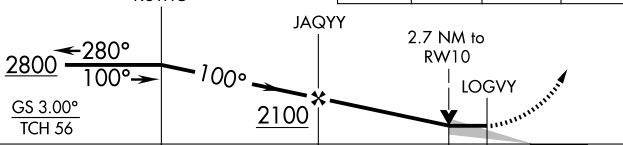


ELEV 23

D



4 NM Holding Pattern	VGSI and descent angles not coincident.	2800	LOGVY	OSSEL
		↑	⊕	△
			↷ crs 166°	



CATEGORY	A	B	C	D
GLS DA			NA	
LNAV/VNAV DA			NA	
LNAV MDA	960-2¼	937 (1000-2¼)	960-2¾ 937 (1000-2¾)	960-3 937 (1000-3)
CIRCLING	960-2¼	937 (1000-2¼)	960-2¾ 937 (1000-2¾)	960-3 937 (1000-3)

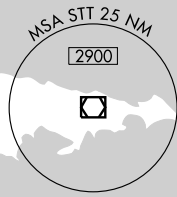
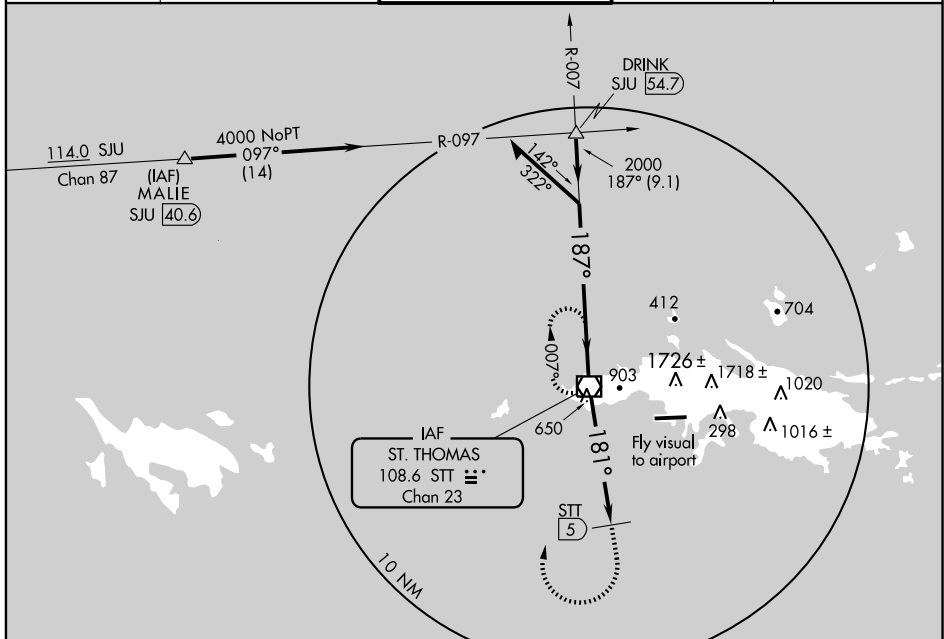
VOR/DME STT	APP CRS	Rwy Idg	N/A
108.6	181°	TDZE	N/A
Chan 23		Apt Elev	23

CHARLOTTE AMALIE/CYRIL E. KING (STT)(TIST)

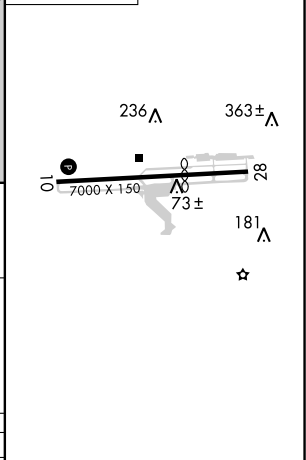
CAUTION: High terrain North of runway 10-28 extended. Circling North of runway 10-28 not authorized. Procedure NA when control tower not in operation. Procedure NA at night.

MISSED APPROACH: If unable to proceed visually to airport upon descent to 1160, climb to 2800 via heading 180°, then right turn direct STT VOR/DME and hold.

ATIS 124.0	SAN JUAN CENTER 128.65 279.6	ST. THOMAS TOWER ★ 118.8 (CTAF) 257.6 118.1 (NORTH OF ISLAND)	GND CON 121.9	UNICOM 122.95
----------------------	--	---	-------------------------	-------------------------



ELEV 23	D
---------	----------



Remain within 10 NM	VOR/DME	2800	STT	
2800	007°	↑ hdg 180°	☐	
2000	187°	1160	Visual flight required from MDA to airport.	
	181°	STT 5		
		5 NM		
CATEGORY	A	B	C	D
CIRCLING	1160-2	1145 (1200-2)	1160-3	1145 (1200-3)

REIL Rwy 10
MIRL Rwy 10-28

AIRPORT DIAGRAM

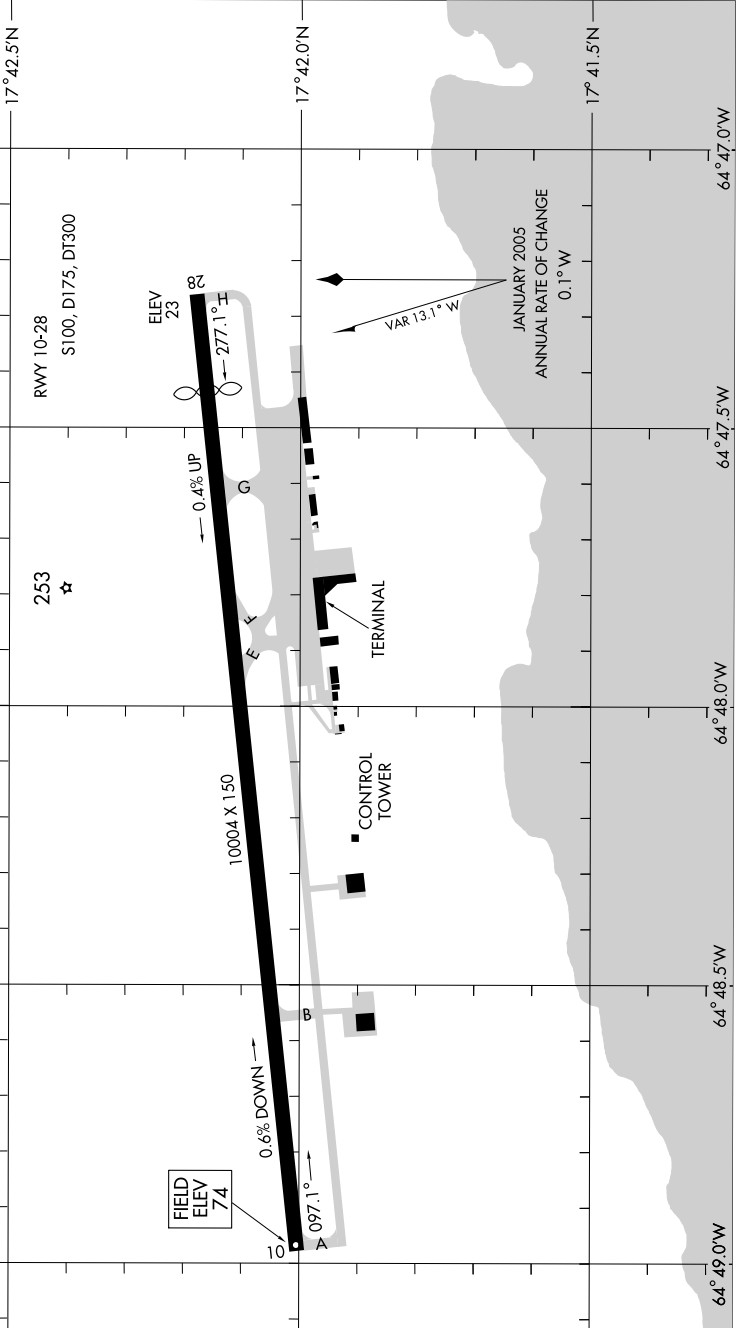
CHRISTIANSTED, ST. CROIX/ HENRY E ROHLSEN (STX)
AL-5008 (FAA)

CHRISTIANSTED, ST. CROIX, VIRGIN ISLANDS

ATIS
135.65
ST. CROIX TOWER ★
118.6 239.3
GND CON
121.7

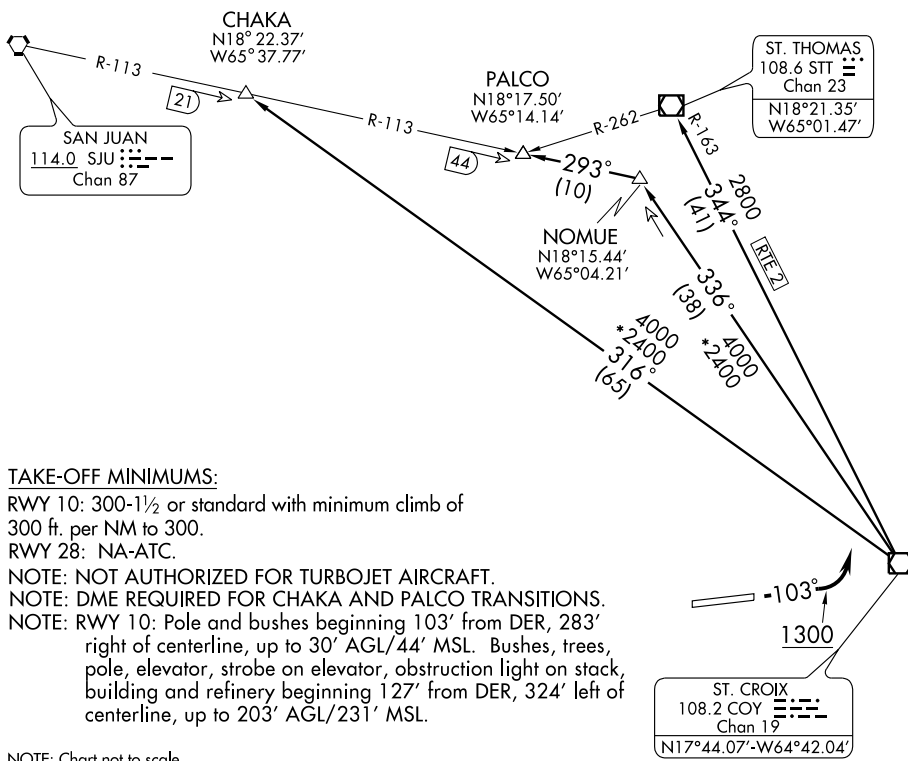
D

CAUTION: BE ALERT TO RUNWAY CROSSING CLEARANCES.
REARBACK OF ALL RUNWAY HOLDING INSTRUCTIONS IS REQUIRED.



CHRISTIANSTED, ST. CROIX, VIRGIN ISLANDS

ATIS 135.65
 GND CON
 121.7
 ST. CROIX TOWER★
 118.6 239.3
 SAN JUAN DEP CON
 128.65 279.6



TAKE-OFF MINIMUMS:

RWY 10: 300-1½ or standard with minimum climb of 300 ft. per NM to 300.
 RWY 28: NA-ATC.

NOTE: NOT AUTHORIZED FOR TURBOJET AIRCRAFT.
 NOTE: DME REQUIRED FOR CHAKA AND PALCO TRANSITIONS.
 NOTE: RWY 10: Pole and bushes beginning 103' from DER, 283' right of centerline, up to 30' AGL/44' MSL. Bushes, trees, pole, elevator, strobe on elevator, obstruction light on stack, building and refinery beginning 127' from DER, 324' left of centerline, up to 203' AGL/231' MSL.

NOTE: Chart not to scale.

DEPARTURE ROUTE DESCRIPTION

TAKE-OFF RUNWAY 10: Climb via heading 103° to 1300, then climbing left turn to intercept assigned transition. Maintain 6000 unless assigned lower altitude. Expect FL280 or requested altitude ten minutes after departure.

CHAKA TRANSITION (HMLTN7.CHAKA): From over COY VOR/DME via COY R-316 to CHAKA/SJU 21 DME.

PALCO TRANSITION (HMLTN7.PALCO): From over COY VOR/DME via COY R-336 and SJU R-113 to PALCO INT/SJU 44 DME.

ST. THOMAS TRANSITION (HMLTN7.STT): From over COY VOR/DME via COY R-344 to STT VOR/DME.

SE-3. 08 APR 2010 to 06 MAY 2010

ILS or LOC RWY 10

CHRISTIANSTED, ST. CROIX/HENRY E. ROHLSSEN (STX)(TISX)

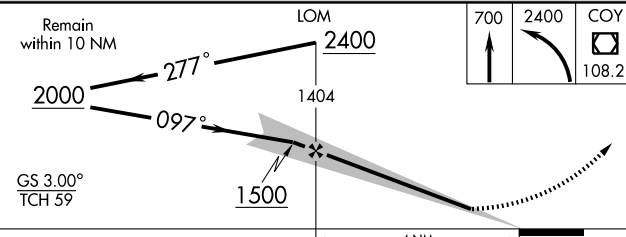
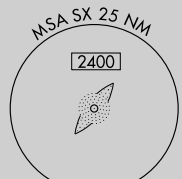
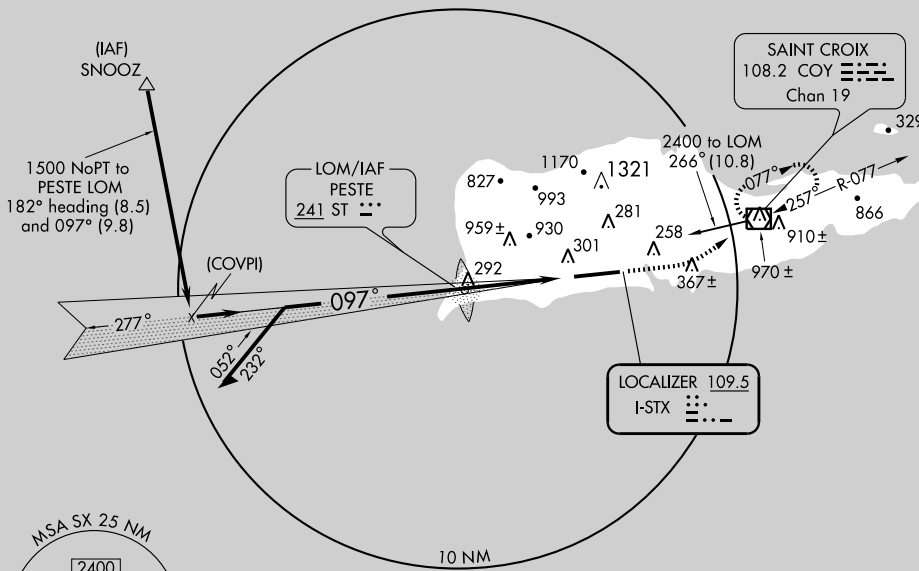
LOC I-STX 109.5	APP CRS 097°	Rwy Idg TDZE Apt Elev	9000 74 74
---------------------------	------------------------	-----------------------------	---------------------------------------

⚠ Circling NA N of Rwy 10-28. If local altimeter setting not received, procedure NA. For inoperative MALSR, increase S-LOC 10 Cat. D visibility to 1.

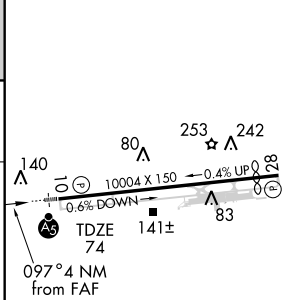
MALSR

MISSED APPROACH: Climb to 700 then climbing left turn to 2400 direct COY VOR/DME and hold, continue climb-in-hold to 2400.

ATIS 135.65	SAN JUAN CENTER 128.65 279.6	ST. CROIX TOWER ★ 118.6 (CTAF) 239.3	GND CON 121.7	UNICOM 123.0
-----------------------	--	--	-------------------------	------------------------



ELEV 74 **D**



CATEGORY	A	B	C	D
S-ILS 10	274-1/2 200 (200-1/2)			
S-LOC 10	400-1/2 326 (400-1/2)		400-3/4 326 (400-3/4)	
CIRCLING	440-1 366 (400-1)	540-1 466 (500-1)	540-1 1/2 466 (500-1 1/2)	640-2 566 (600-2)

REIL Rwy 28
HIRL Rwy 10-28 **D**
FAF to MAP 4 NM

Knots	60	90	120	150	180
Min:Sec	4:00	2:40	2:00	1:36	1:20

RNAV (GPS) RWY 10

CHRISTIANSTED, ST. CROIX/HENRY E. ROHLSSEN (STX)(TISX)

APP CRS	Rwy Idg	9000
097°	TDZE	74
	Apt Elev	74

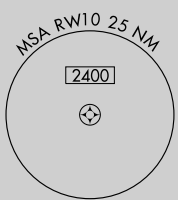
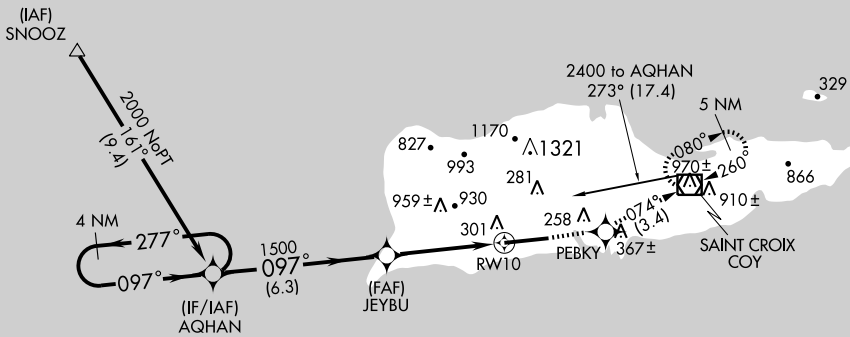
⚠ Circling NA N of Rwy 10-28. If local altimeter setting not received, procedure NA.
DME/DME RNP-0.3 NA.

MALSR



MISSED APPROACH: Climb to 2400 direct PEBKY and via 074° track to COY VOR/DME and hold.

ATIS 135.65	SAN JUAN CENTER 128.65 279.6	ST. CROIX TOWER ★ 118.6 (CTAF) 239.3	GND CON 121.7	UNICOM 123.0
-----------------------	--	--	-------------------------	------------------------



ELEV 74	D
---------	----------

4 NM Holding Pattern AQHAN

2400 PEBKY TRK 074° COY

2000 ← 277° 097° →

JYBU

1500

2.9 NM to RWY 10

3.04° TCH 59

6.3 NM 1.4 NM 2.9

140 80 253 242

10004 X 150 → 0.4% UP 0.6% DOWN

141± 83

097° to RWY 10

REIL Rwy 28
HIRL Rwy 10-28

CATEGORY	A	B	C	D
RNAV MDA	1040-3/4 966 (1000-3/4)	1040-1 966 (1000-1)	1040-2 1/2	966 (1000-2 1/2)
CIRCLING	1040-1 1/4 966 (1000-1 1/4)	1040-1 1/2 966 (1000-1 1/2)	1040-3	966 (1000-3)

RNAV (GPS) RWY 28

CHRISTIANSTED, ST. CROIX/HENRY E. ROHLSEN (STX)(TISX)

APP CRS	Rwy Idg	9000
277°	TDZE	40
	Apt Elev	74

⚠ Circling NA N of Rwy 10-28. DME/DME RNP-0.3 NA.
 Visibility reduction by helicopters NA. When local altimeter setting not received, procedure NA.

MISSED APPROACH: Climbing left turn to 2400 direct CODRA and hold.

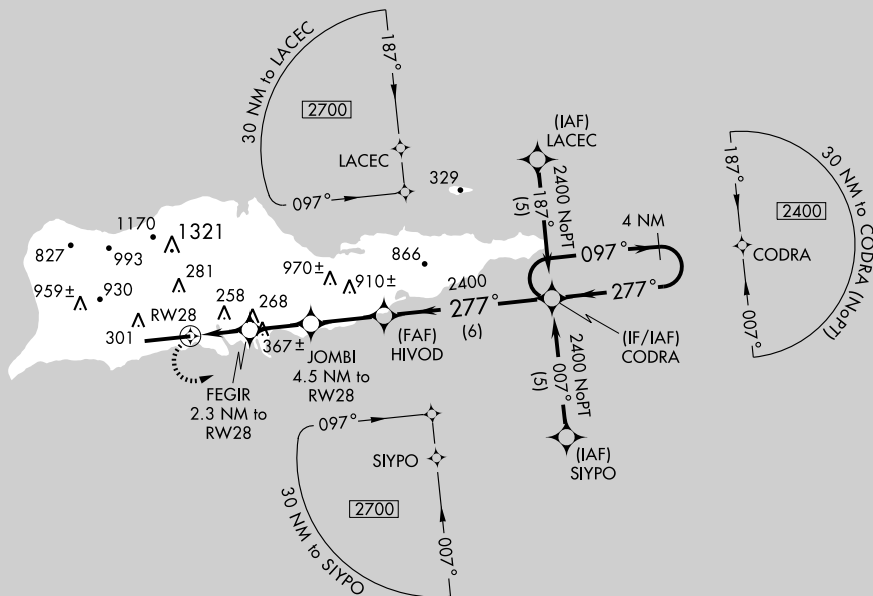
ATIS
135.65

SAN JUAN CENTER
128.65 279.6

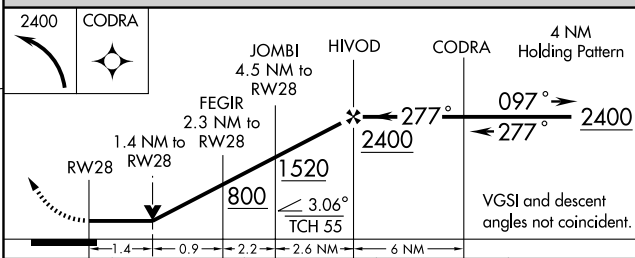
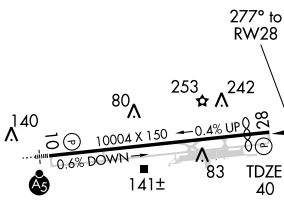
ST. CROIX TOWER ★
118.6 (CTAF) 239.3

GND CON
121.7

UNICOM
123.0



ELEV **74** **D**



CATEGORY	A	B	C	D
LNAV MDA	560-1	520 (500-1)	560-1½ 520 (500-1½)	560-1¾ 520 (500-1¾)
CIRCLING	560-1	486 (500-1)	560-1½ 486 (500-1½)	640-2 566 (600-2)

REIL Rwy 28
 HIRL Rwy 10-28 **D**

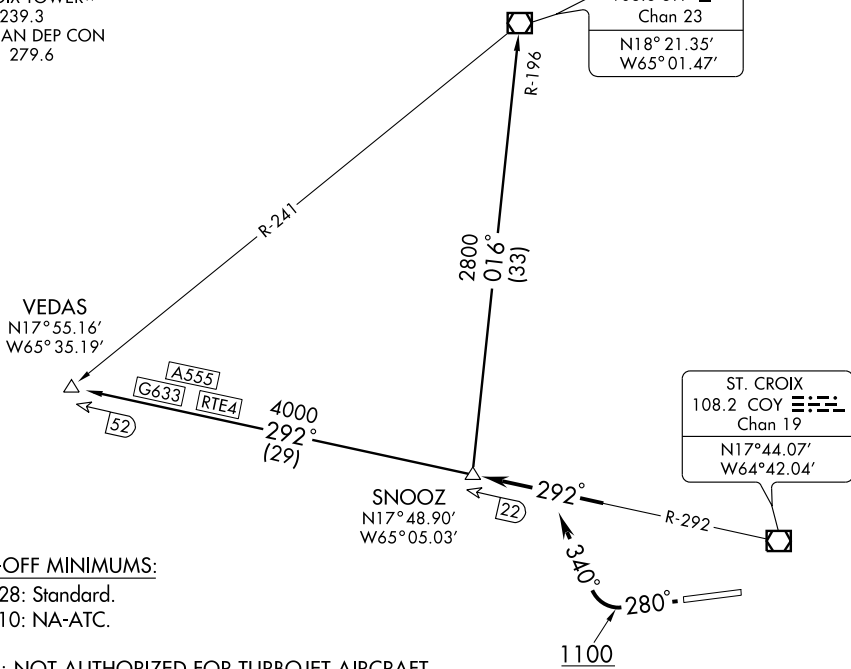
SNOOZ TWO DEPARTURE

SL-5008 (FAA)

CHRISTIANSTED, ST. CROIX, VIRGIN ISLANDS

ATIS 135.65
 GND CON
 121.7
 ST. CROIX TOWER★
 118.6 239.3
 SAN JUAN DEP CON
 128.65 279.6

ST. THOMAS
108.6 STT
Chan 23
N18° 21.35'
W65° 01.47'



TAKE-OFF MINIMUMS:

- RWY 28: Standard.
- RWY 10: NA-ATC.

NOTE: NOT AUTHORIZED FOR TURBOJET AIRCRAFT.
 NOTE: RWY 28: Tree 517' from DER, 554' right of centerline
 74' AGL/114' MSL; tower 1500' from DER, 803' right
 of centerline, 80' AGL/140' MSL.

NOTE Chart not to scale.



DEPARTURE ROUTE DESCRIPTION

TAKE-OFF RUNWAY 28: Climb via heading 280° to 1100, then climbing right turn via heading 340° to intercept COY VOR/DME R-292 to SNOOZ INT. Thence via assigned transition. Maintain 6000 unless assigned lower altitude. Expect clearance to FL280 or requested altitude, ten minutes after departure.

ST. THOMAS TRANSITION (SNOOZ2.STT): From over SNOOZ INT via STT R-196 to STT VOR/DME.

VEDAS TRANSITION (SNOOZ2.VEDAS): From over SNOOZ INT via COY R-292 to VEDAS INT.

SE-3, 08 APR 2010 to 06 MAY 2010

VOR RWY 28

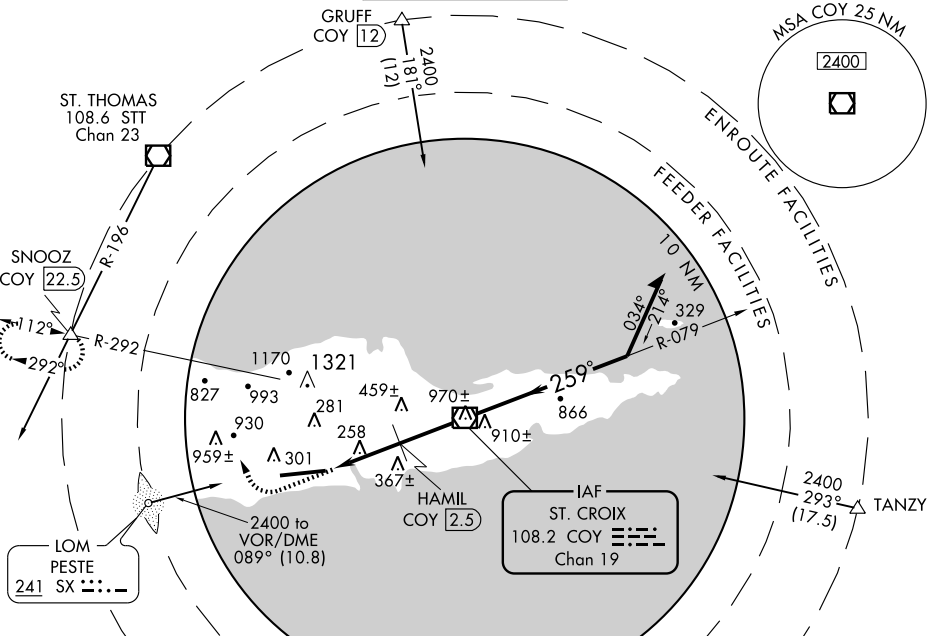
CHRISTIANSTED, ST. CROIX/HENRY E. ROHLSSEN (STX) (TISX)

VOR/DME COY 108.2 Chan 19	APP CRS 259°	Rwy ldg TDZE Apt Elev 9000 43 65
---	------------------------	--

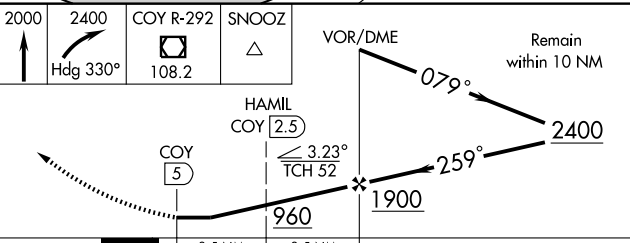
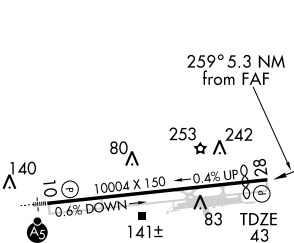
Procedure not authorized when control tower closed.
Circling NA North of Rwy 10-28.

MISSED APPROACH: Climb to 2000 then dimbing right turn to 2400 via heading 330° and COY R-292 to SNOOZ Int/COY 22.5 DME and hold.

ATIS 135.65	SAN JUAN CENTER 128.65 279.6	ST. CROIX TOWER★ 118.6 (CTAF) 239.3	GND CON 121.7	UNICOM 123.0
-----------------------	--	---	-------------------------	------------------------



ELEV 65	D
---------	----------



CATEGORY	A	B	C	D
S-28	960-1¼	917 (900-1¼)	960-2¾ 917 (900-2¾)	960-3 917 (900-3)
CIRCLING	960-1¼	895 (900-1¼)	960-2¾ 895 (900-2¾)	960-3 895 (900-3)

HAMIL FIX MINIMUMS

S-28	640-1	597 (600-1)	640-1½ 597 (600-1½)	640-1¾ 597 (600-1¾)
CIRCLING	640-1	575 (600-1)	640-1½ 575 (600-1½)	680-2 615 (700-2)

REIL Rwy 28
HIRL Rwy 28 (108.2)

FAF to MAP 5 NM

Knots	60	90	120	150	180
Min:Sec	5:00	3:20	2:30	2:00	1:40