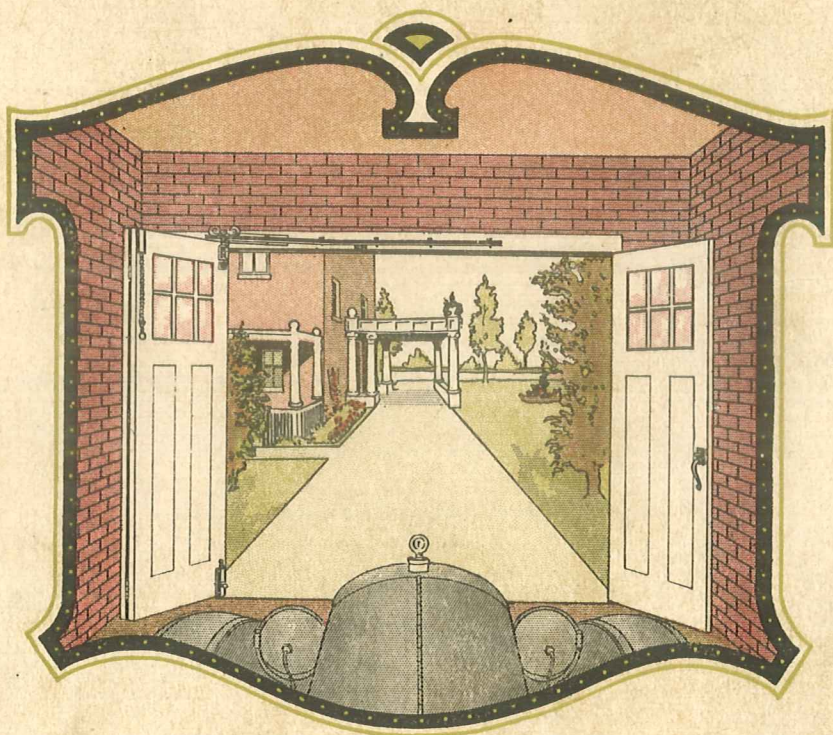
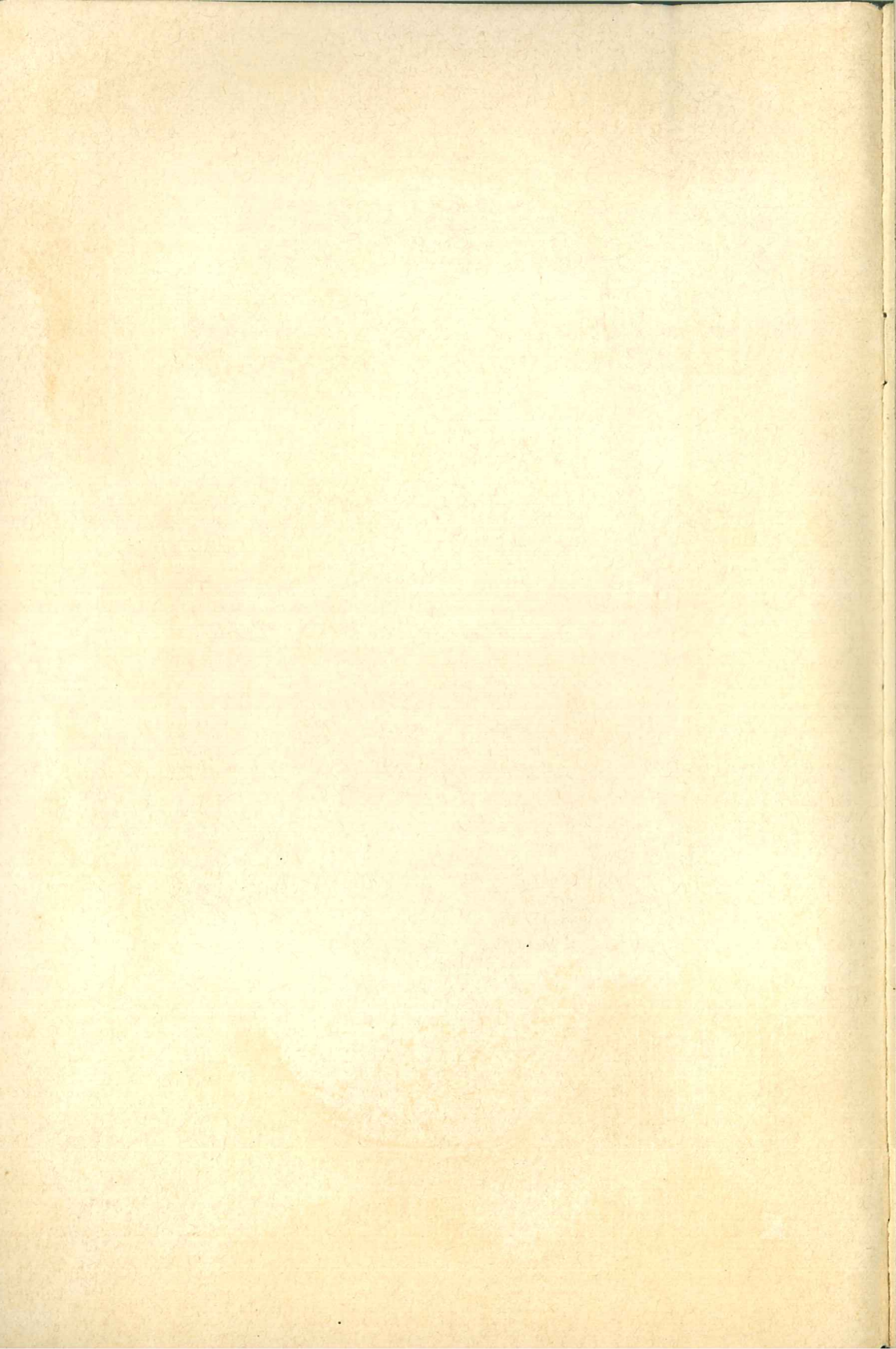


NATIONAL GARAGE HARDWARE



NATIONAL
MANUFACTURING
COMPANY
STERLING, ILL.





NATIONAL
" GARAGE "
HARDWARE



NATIONAL
MANUFACTURING
COMPANY
STERLING, ILL.

NATIONAL GARAGE HARDWARE

THE thousands of automobiles which are being sold every year are creating a demand for private garages in all sections of the country.

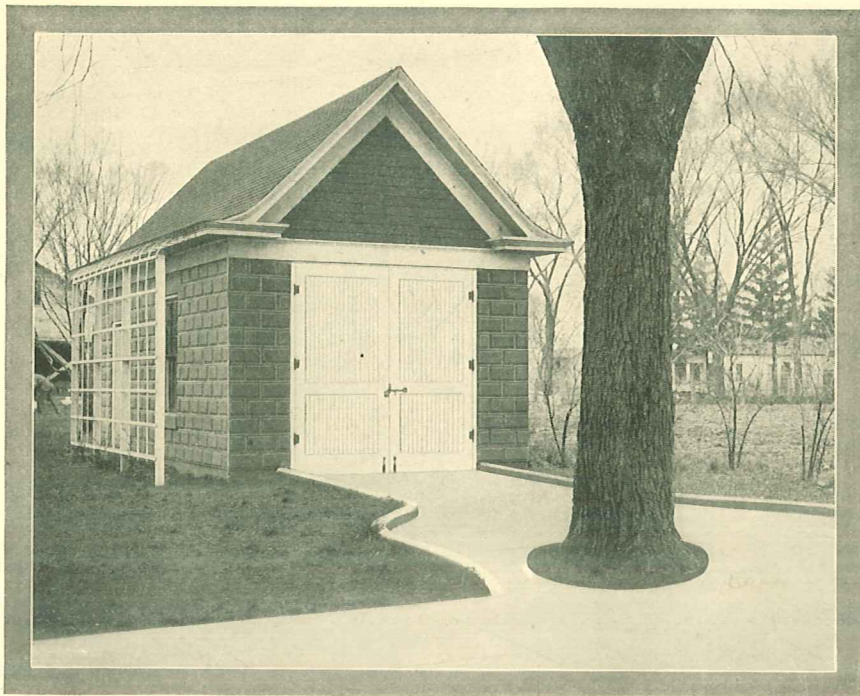
The garages presented herewith cover a number of suggestions to the prospective builder, ranging from those of simple design to those of more elaborate proportions. Practically all kinds of structural materials are used, such as wood, brick, concrete, stucco and stone.

Whenever possible the garage should be constructed to correspond to the residence to which it belongs.

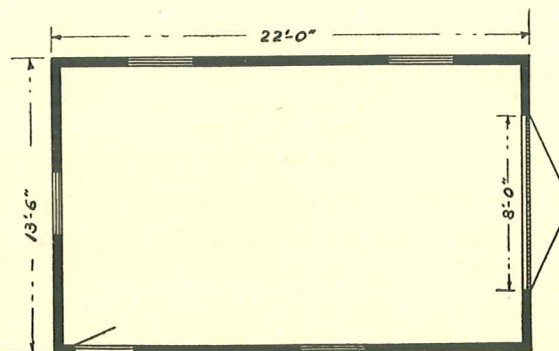
One of the most important details of a garage is the doors. There is nothing about the garage which is used as much and they should, therefore, be hung with the best equipment obtainable. Several methods, are suggested in this booklet which have proved very popular and satisfactory. The three-door swinging and sliding combination is very popular for either single or double garages. Another arrangement is for two doors sliding in parallel tracks, making it possible to open either half of the doorway in a two-car garage by moving one door toward the opposite side.

An important feature in connection with the doors is to have a large glass area at the top to provide abundant light inside.

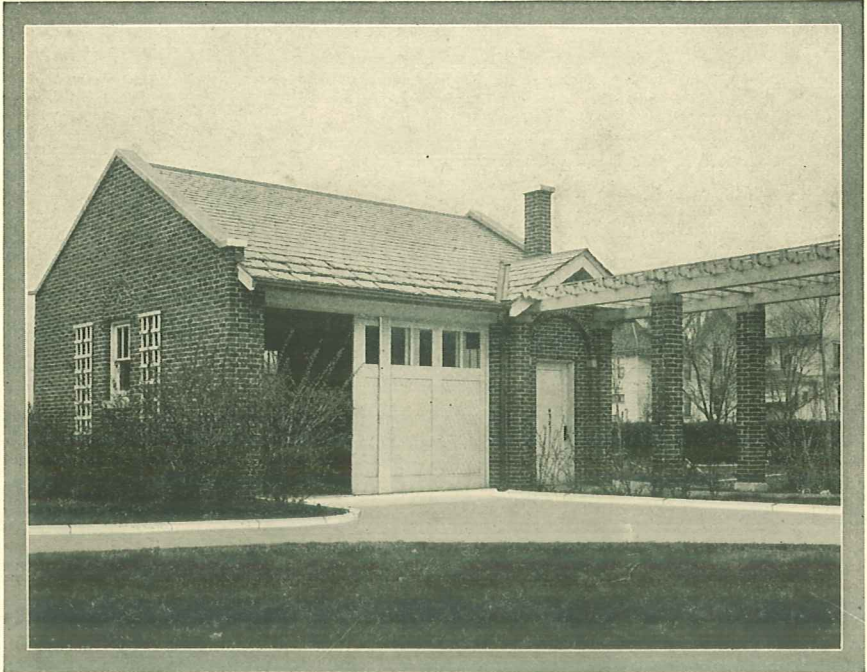
All the garage equipment illustrated in this booklet is practical, has been thoroughly tested under all conditions and will give long and satisfying service.



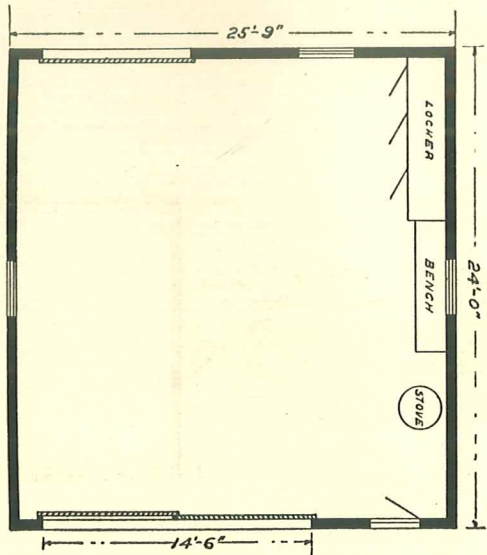
Doors hung with
No. 450 Ornamental
Butts and equipped
with No. 29 All-Steel
Latch.

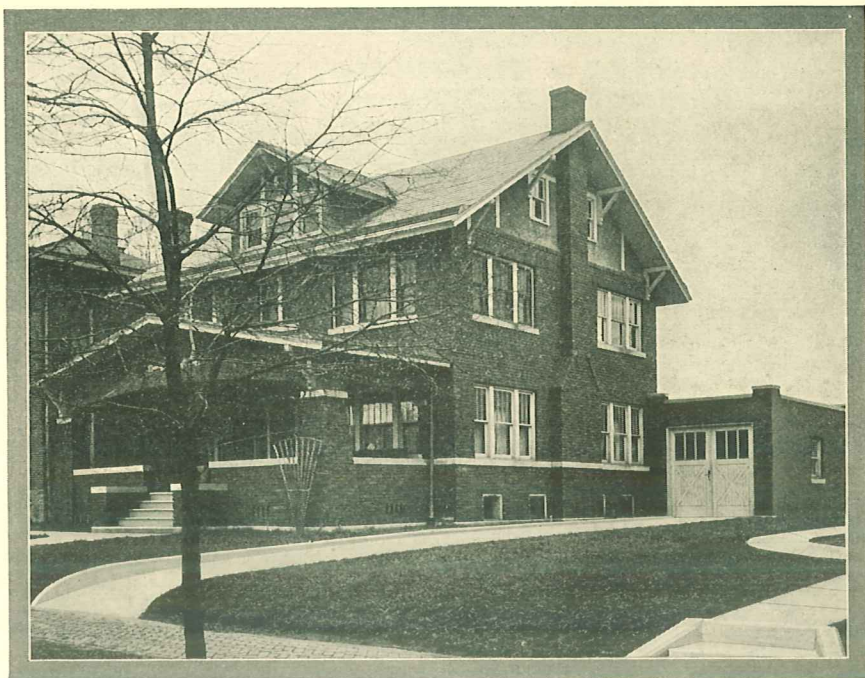


NATIONAL GARAGE HARDWARE

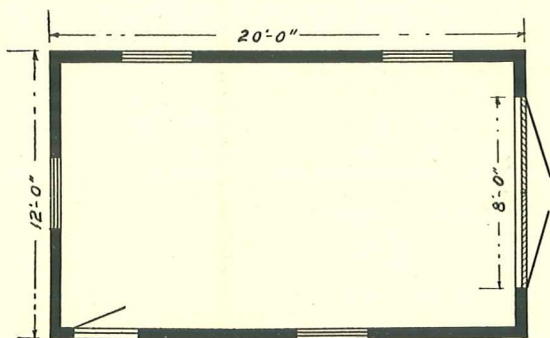


Doors hung to pass each other with No. 66 Storm-Proof Hangers and Storm-Proof Rail. (Equipment, page 32.)

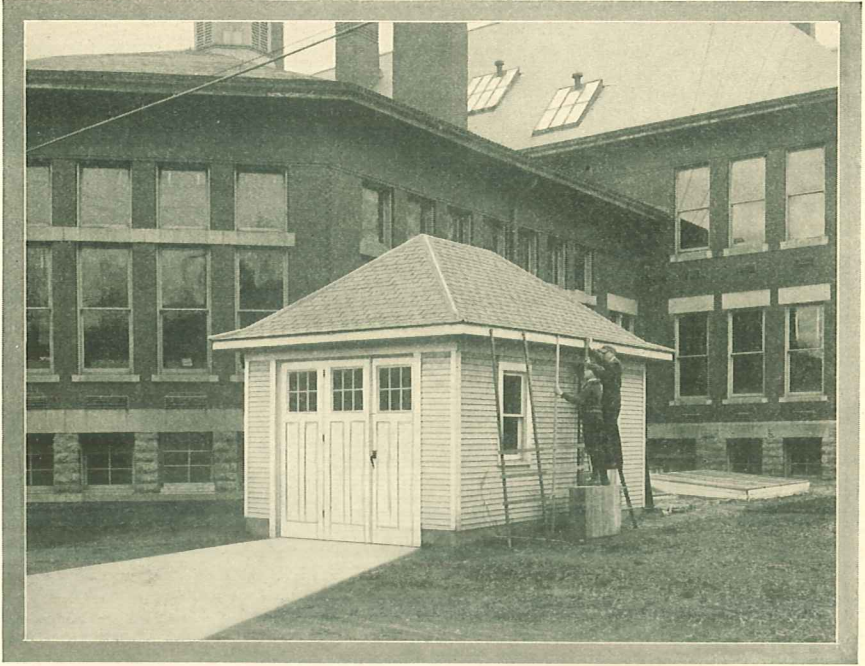




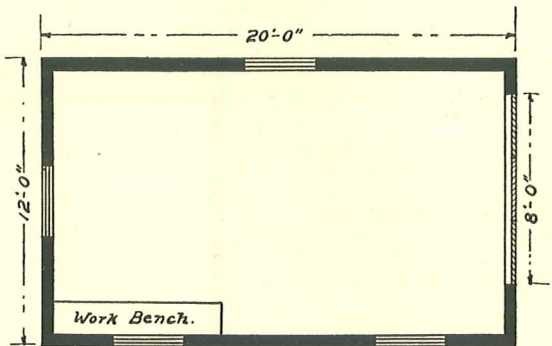
Doors hung with
No. 801 Garage Door
Set. (Equipment,
page 23.)

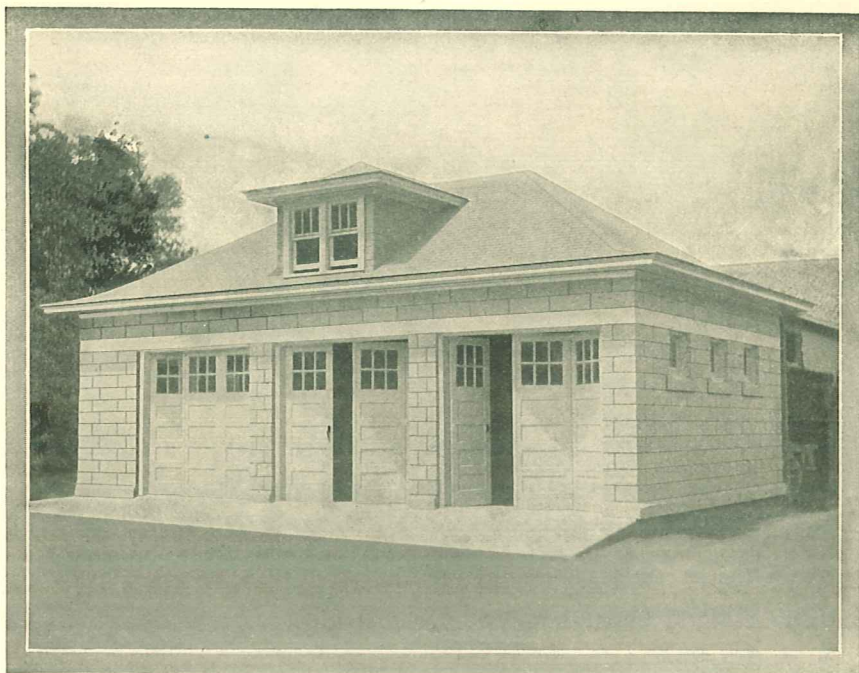


NATIONAL GARAGE HARDWARE

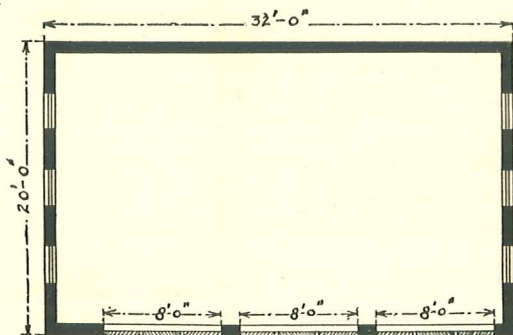


Doors hung with No. 806 Garage Door Set. Garage designed and erected by students in the Manual Training Department of the Sterling High School. (Equipment, pages 18 to 21.)

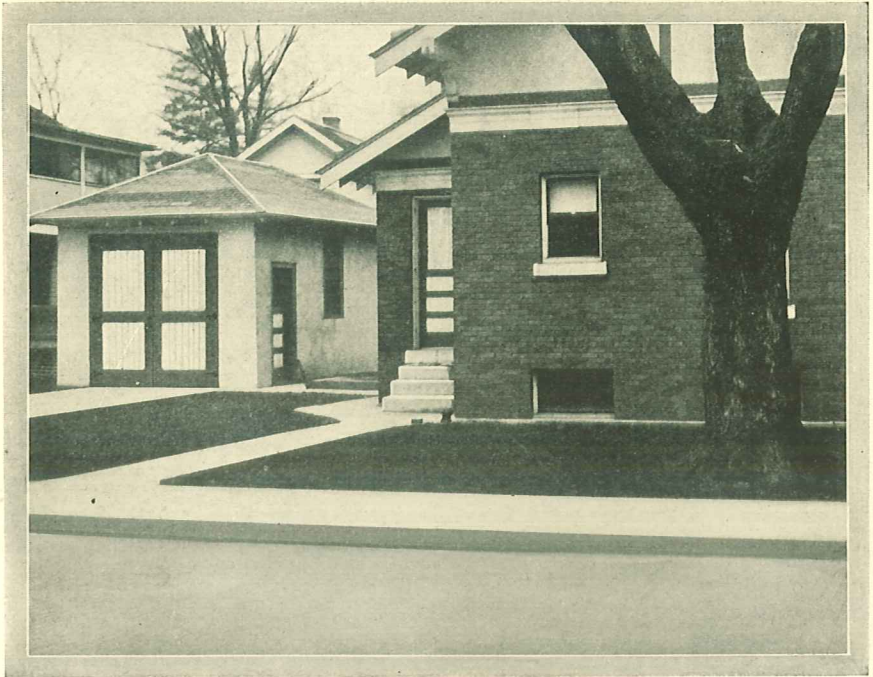




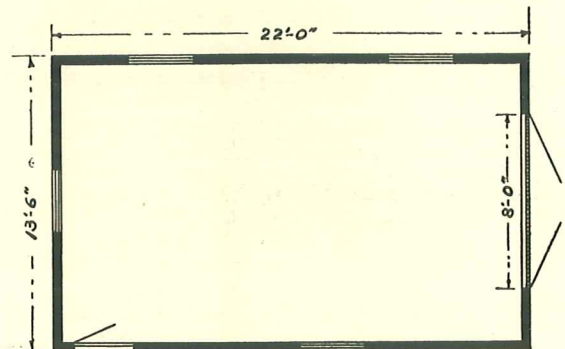
Doors hung with
No. 806 Garage Door
Set. (Equipment,
pages 18 to 21.)

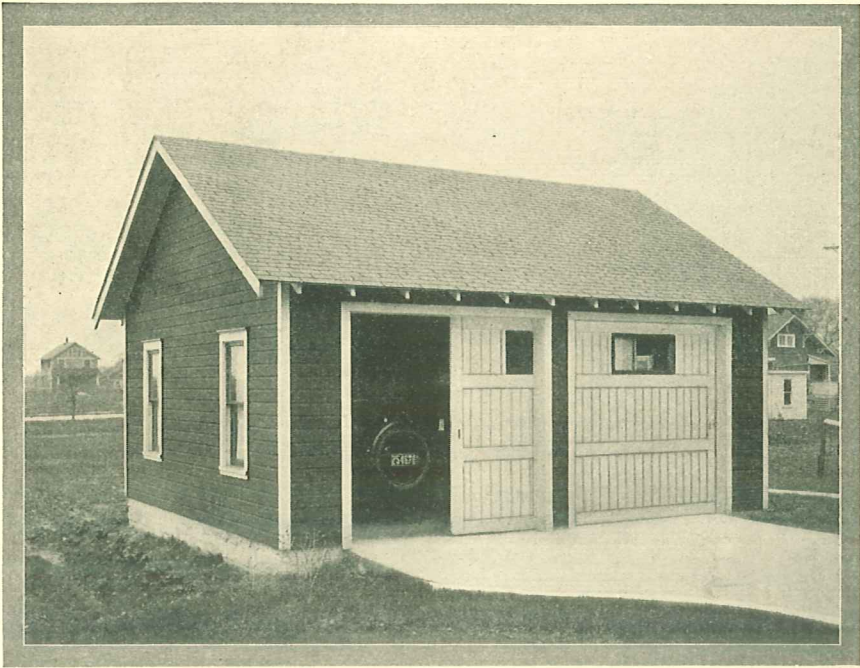


NATIONAL GARAGE HARDWARE

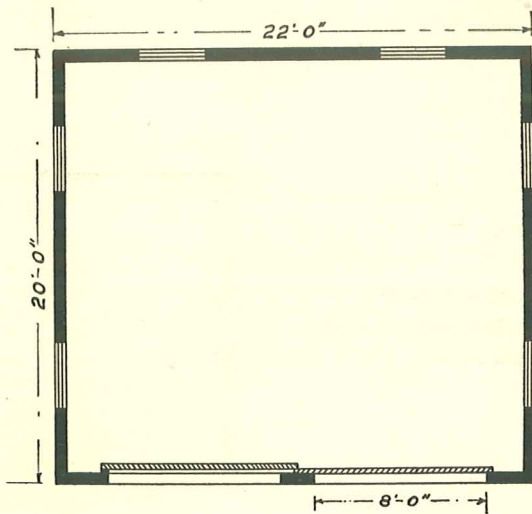


Doors hung with
No. 801 Garage Door
Set and equipped with
No. 810 Door Holders.
(Equipment, pages 23
and 25.)





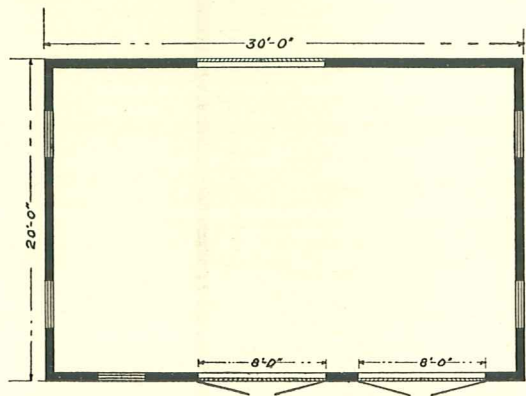
Doors hung to pass each other with No. 77 Storm-Proof Hangers and Storm-Proof Rail. (Equipment, page 32.)

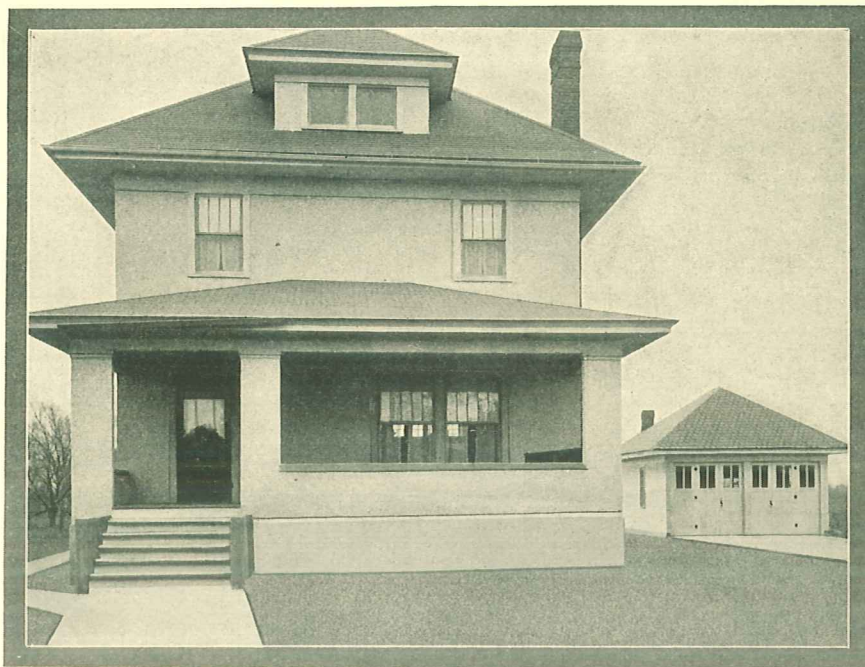


NATIONAL GARAGE HARDWARE

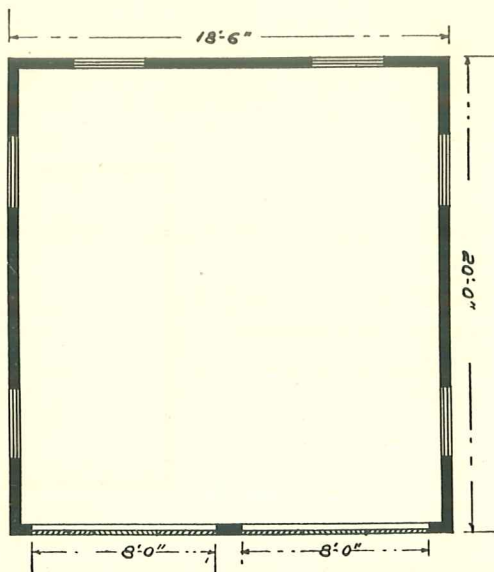


Doors hung with
No. 801 Garage Door
Sets and equipped with
No. 810 Door Holders.
(Equipment, pages 23
and 25.)

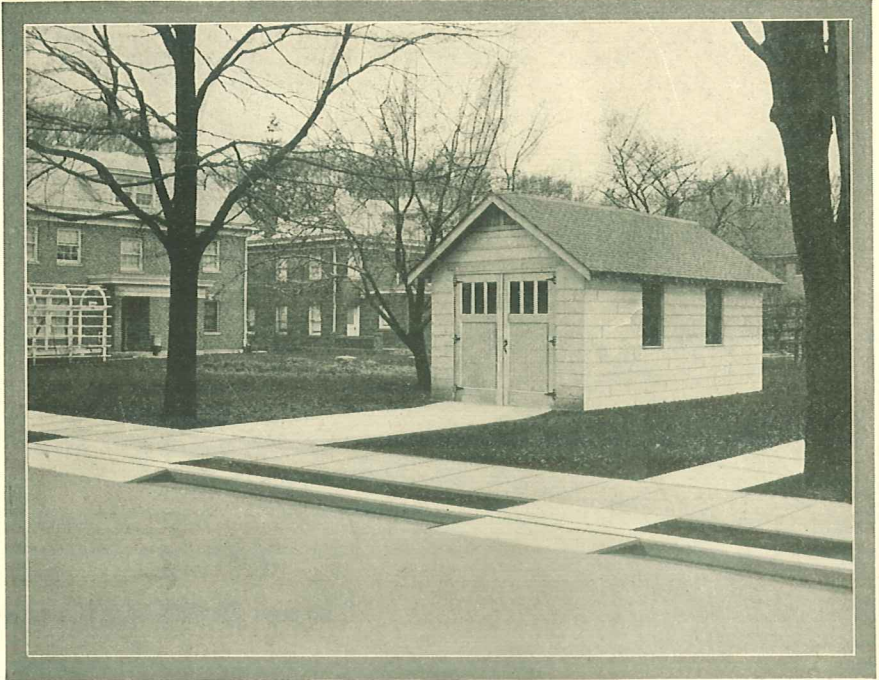




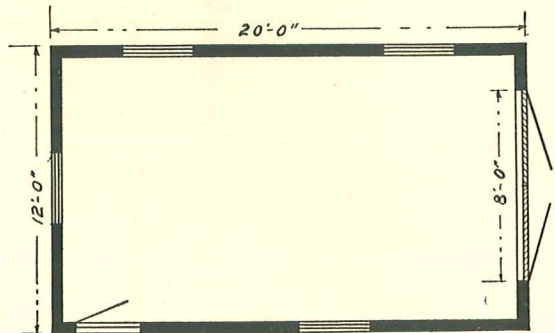
Doors hung with
No. 806 Garage Door
Set. (Equipment,
pages 18 to 21.)

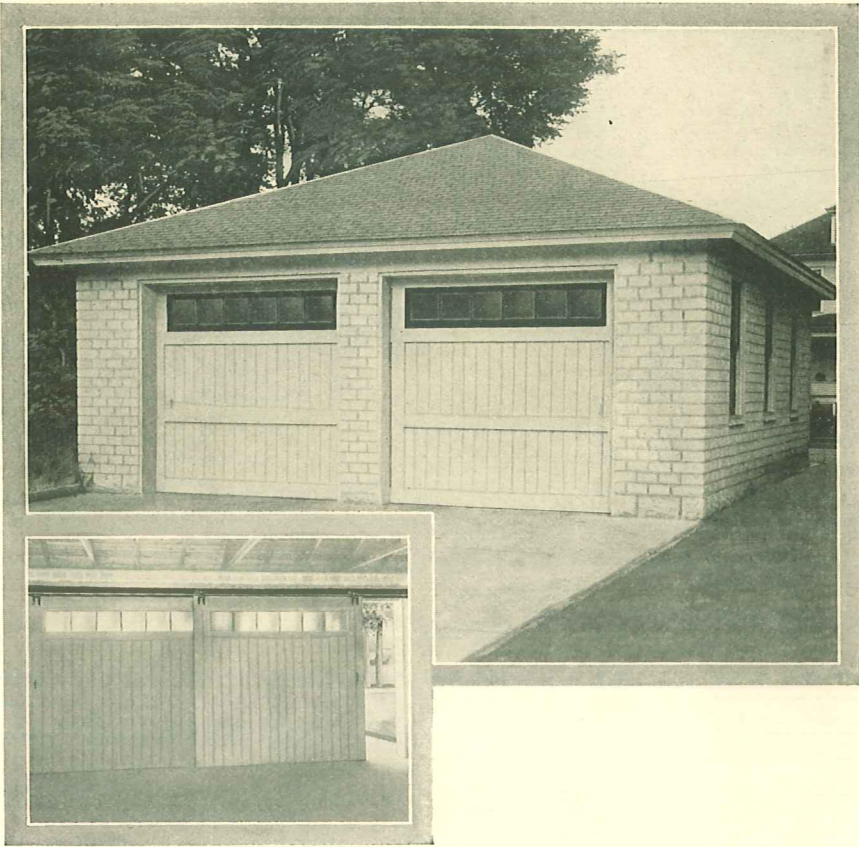


NATIONAL GARAGE HARDWARE

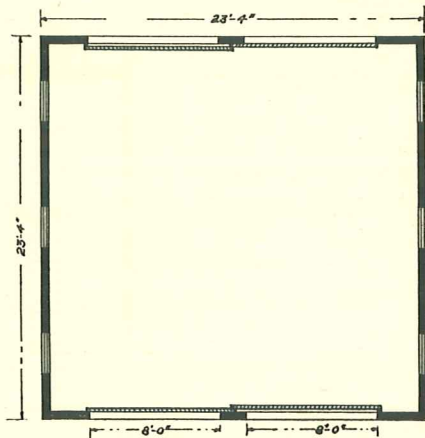


Doors hung with
No. 800 Garage Door
Set. (Equipment,
page 22.)

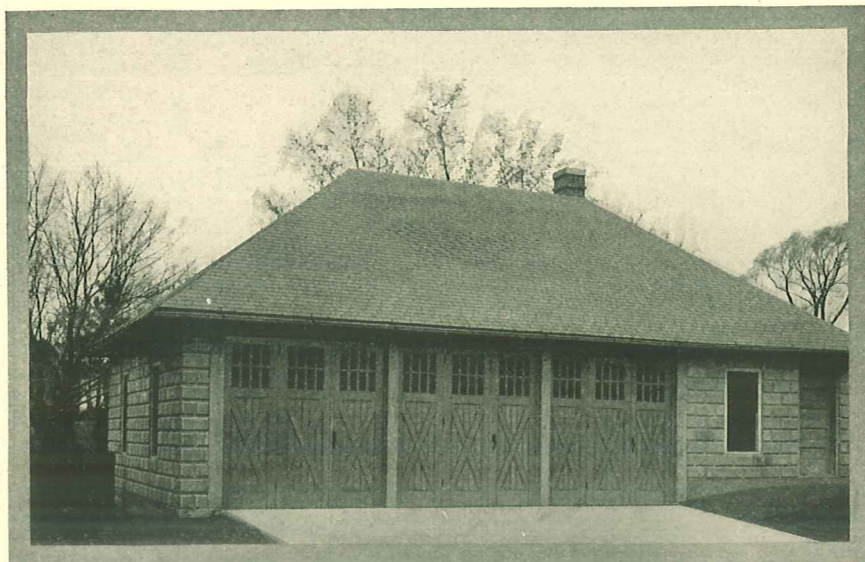




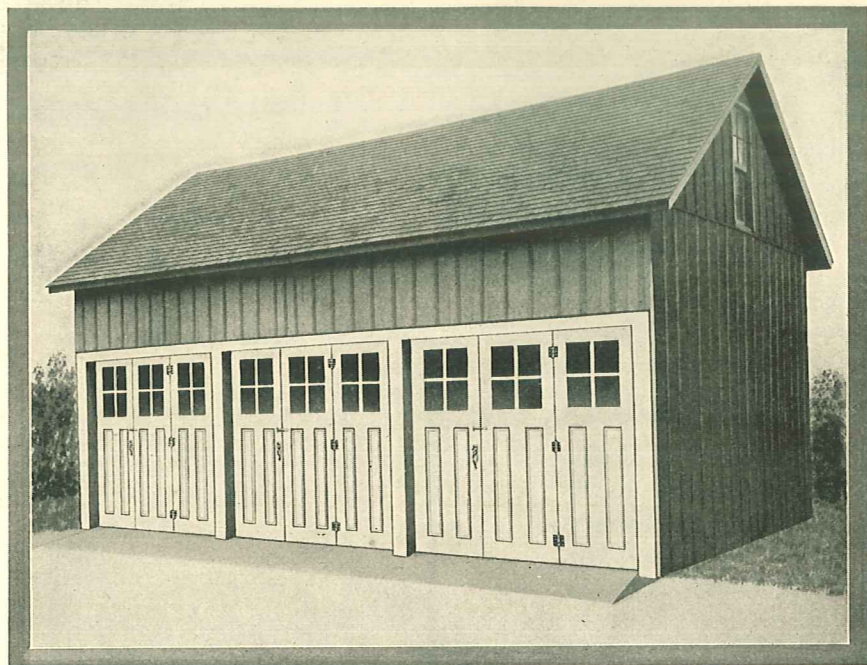
Doors hung to pass each other with No. 66 Storm-Proof Hangers and Storm-Proof Rail. (Equipment, page 32.)



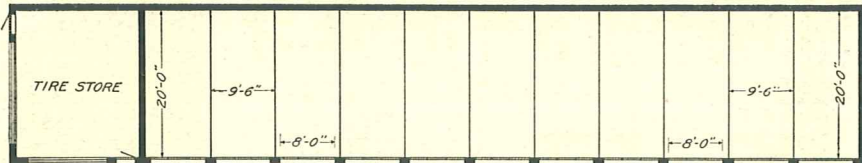
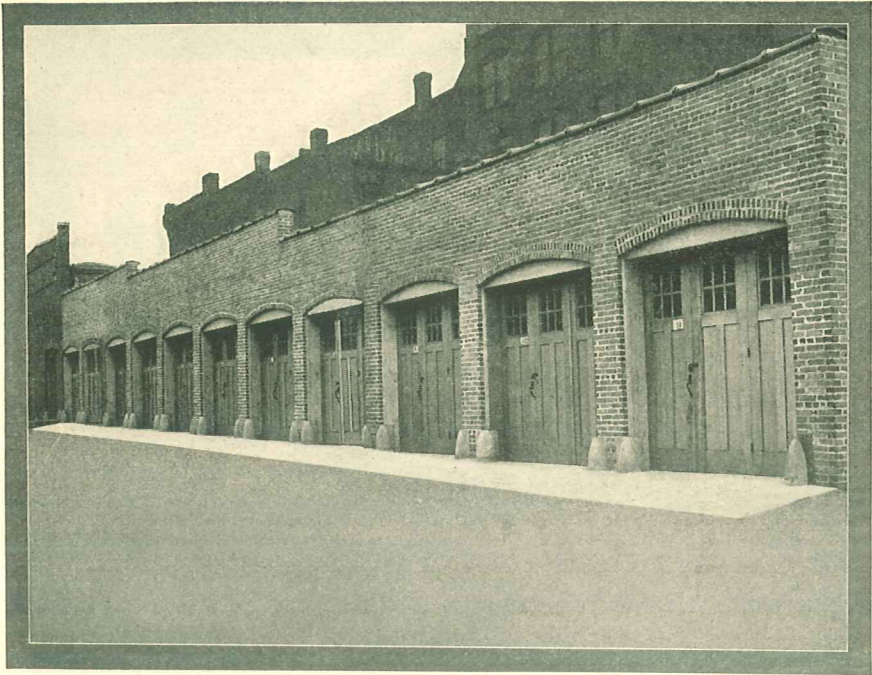
NATIONAL GARAGE HARDWARE



Doors hung with No. 806 Garage Door Sets. (Equipment, pages 18 to 21.)

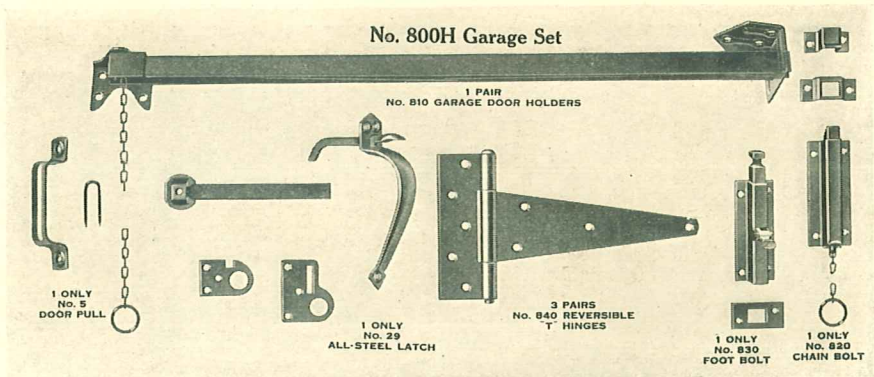


A practical method of remodeling an unused barn into a three-stall garage. An inexpensive method of converting an unprofitable building into a profit-producer. No skilled labor required. (Equipment, pages 18 to 21.)

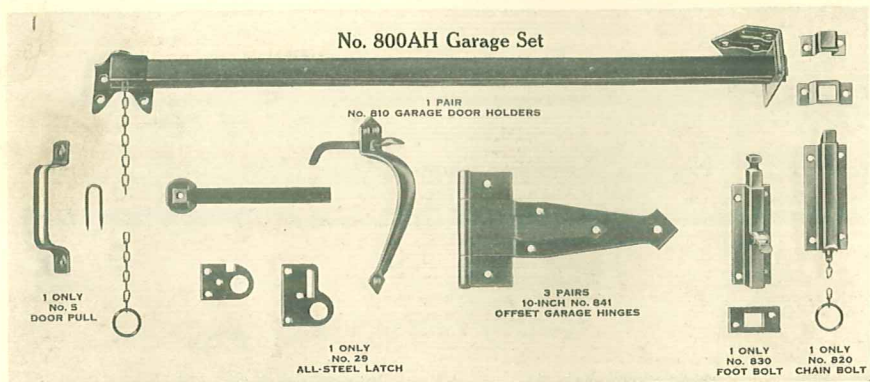


A garage with eleven private, steam-heated stalls.
Doors hung with No. 806 Garage Door Sets.
(Equipment, pages 18 to 21.)

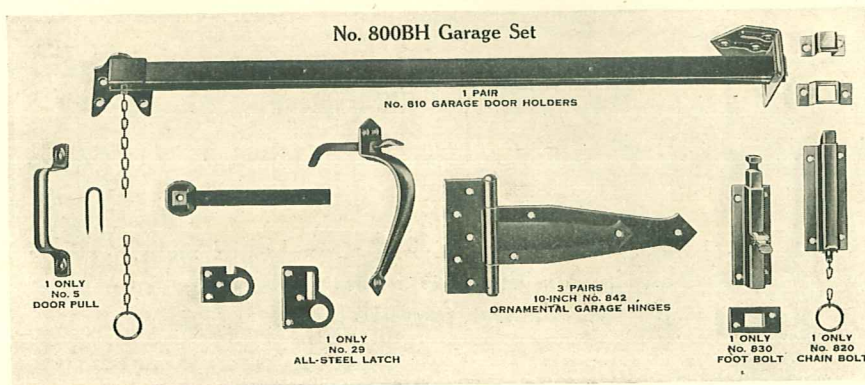
NATIONAL GARAGE HARDWARE



Packed one complete set in a wooden box.
 Weight, per set, 8-inch, 21½ pounds. Weight, per set, 10-inch, 26 pounds.



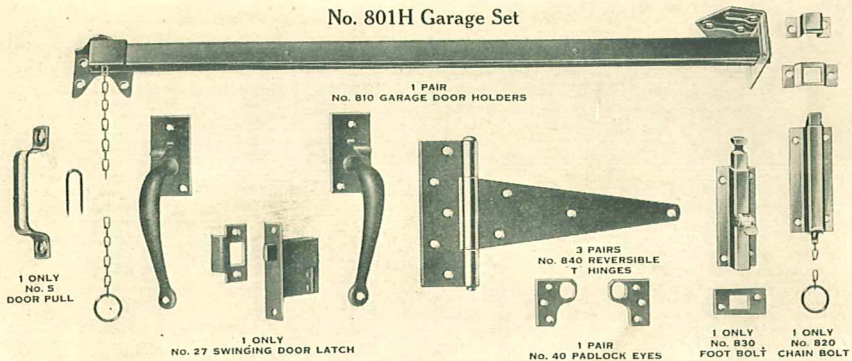
Packed one complete set in a wooden box. Weight, per set, 23¼ pounds.



Packed one complete set in a wooden box. Weight, per set, 23¼ pounds.
 Above sets furnished in Japan, Dead Black Japan, Sherardized, Sherardized and Dead Black Japan.

NATIONAL MANUFACTURING COMPANY

No. 801H Garage Set

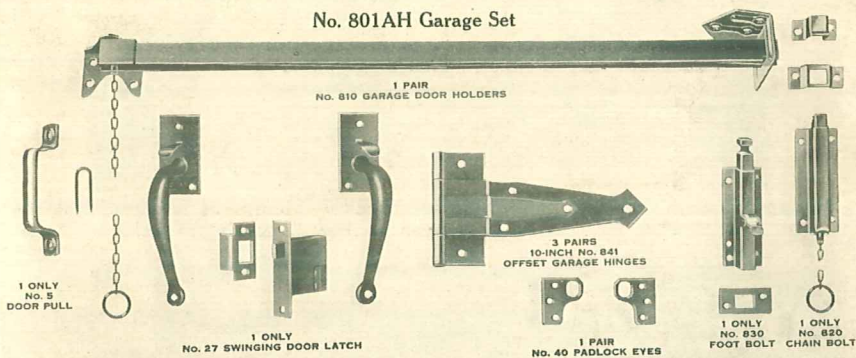


Packed one complete set in a wooden box.

Weight, per set, 8-inch, 24¼ pounds.

Weight, per set, 10-inch, 26¾ pounds.

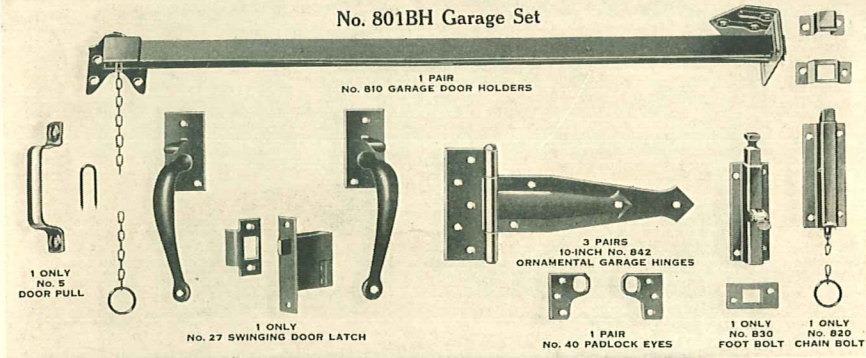
No. 801AH Garage Set



Packed one complete set in a wooden box.

Weight, per set, 25½ pounds.

No. 801BH Garage Set



Packed one complete set in a wooden box.

Weight, per set, 25½ pounds.

Above sets furnished in Japan, Dead Black Japan, Sherardized, Sherardized and Dead Black Japan.

NATIONAL GARAGE HARDWARE

Nos. 805 and 806, Sliding and Swinging Garage Door Sets



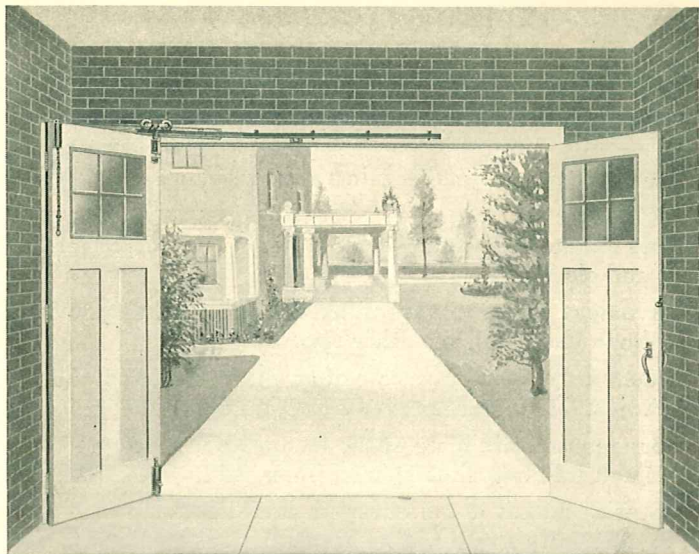
The appearance of garage from outside is enhanced by absence of any structural iron-work. Note how the one door opens without disturbing the others.



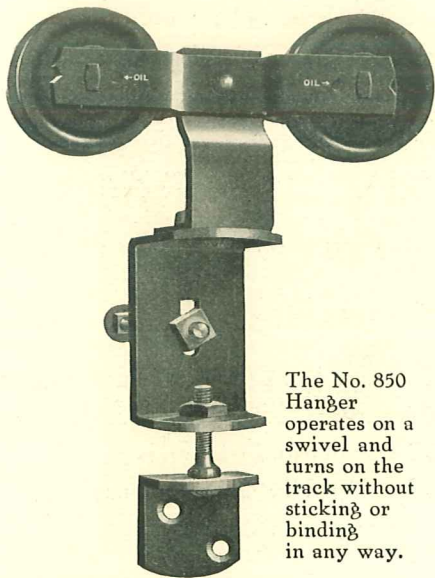
Inside view showing doors closed. As they open inward, no snow or ice interferes. Doors swing into jamb against stops. (For description see page 20.)

NATIONAL MANUFACTURING COMPANY

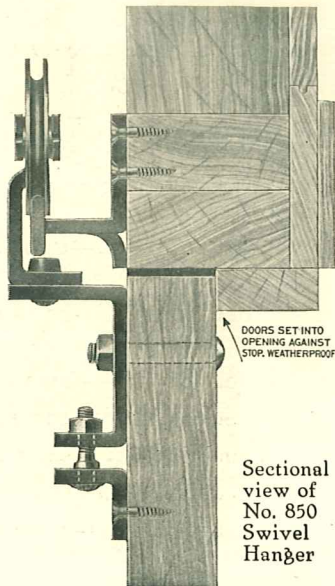
Nos. 805 and 806, Sliding and Swinging Garage Door Sets



This view shows how snugly the doors hug the inside walls when open
—allowing maximum space in the garage.



The No. 850
Hanger
operates on a
swivel and
turns on the
track without
sticking or
binding
in any way.



Sectional
view of
No. 850
Swivel
Hanger

(For description see page 20.)

NATIONAL GARAGE HARDWARE

Nos. 805 and 806, Sliding and Swinging Garage Door Sets

AN easy working garage door set—a simple push and the doors are open; a slight pull and they are closed. No binding or friction. Doors work as freely and easily as any house door.

Doors swing into jamb against stops, same as in high-class house construction.

Doors are weather-tight. Snow and ice cannot interfere with opening and closing.

Convenient access to garage, as one door is hung so it will open without disturbing the other two.

Hangers are adjustable in case of swelling or raising of cement floor. Adjustable feature prevents sagging doors.

Doors require minimum space in opening, as they are hung on inside and fold and slide against inner wall.

The price makes it the cheapest combination possible with which to efficiently equip garage doors.

Furnished regularly with six feet Braced Rail for eight-foot opening. When used on larger doors, width of opening should be given when ordering.

Set No. 805 includes: No. 29 Latch; 1 only Swivel Hanger; 6-foot Braced Rail; 4½ pair 4 x 4-inch Jap. No. 505 T. P. Butts; 1 only No. 820 Chain Bolt; 1 only No. 830 Foot Bolt; 1 only No. 5 Pull; 1 pair No. 40 Padlock Eyes. All necessary bolts and screws.

Set No. 805A—same as above except 1½ pair No. 505 Butts and 3 pair 10-inch No. 841 Hinges are used.

Set No. 805B—same as No. 805A except No. 842 Hinges are used.

Set No. 805C—same as No. 805A except No. 843 Hinges are used.

Set No. 805D—same as No. 805A except No. 844 Hinges are used.

Set No. 806—same as No. 805 except No. 27 Latch is used.

Set No. 806A—same as No. 805A except No. 27 Latch is used.

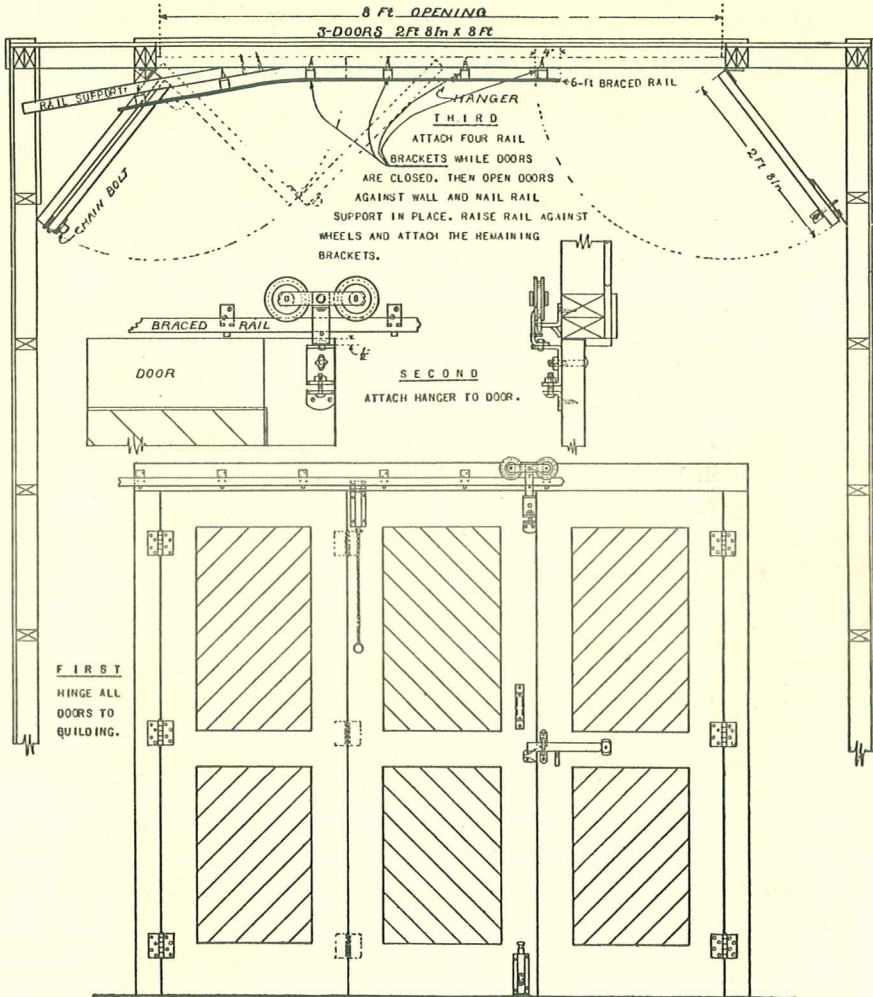
Set No. 806B—same as No. 805B except No. 27 Latch is used.

Set No. 806C—same as No. 805C except No. 27 Latch is used.

Set No. 806D—same as No. 805D except No. 27 Latch is used.

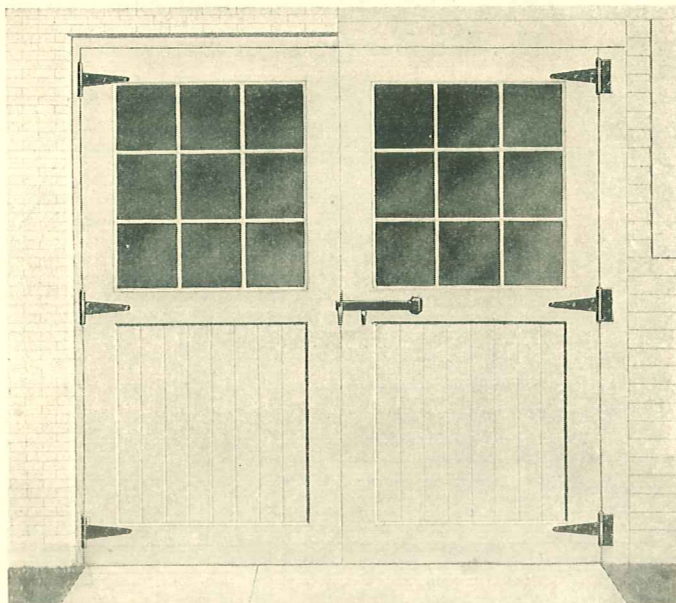
All Sets furnished in Japan Finish.

Method of Hanging Doors with No. 805 and No. 806 Garage Door Sets

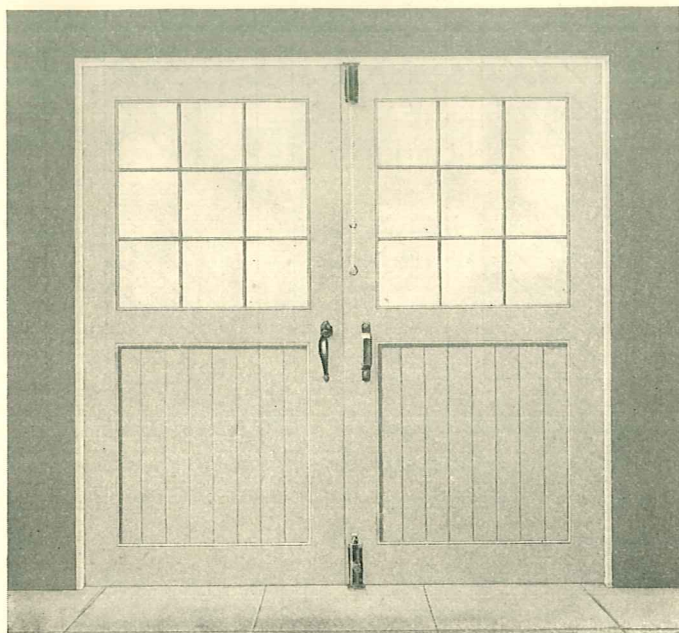


NATIONAL GARAGE HARDWARE

No. 800 Garage Door Set

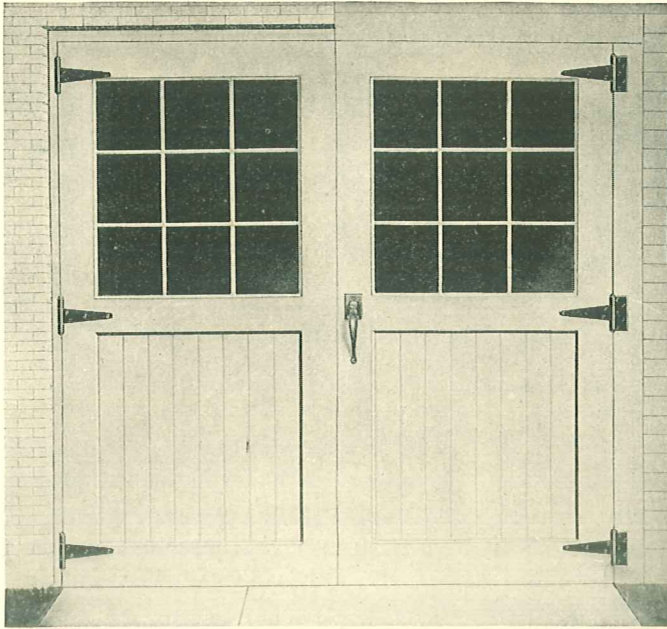


View outside garage

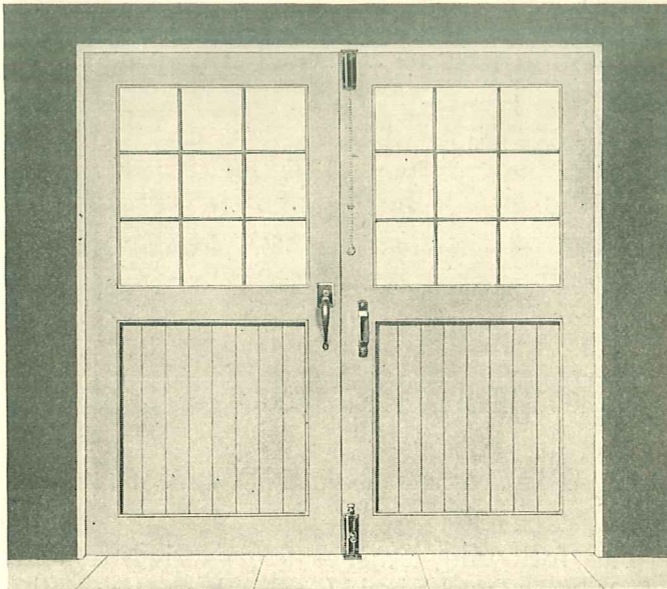


View inside garage
(For description see page 24.)

No. 801 Garage Door Set



View outside garage



View inside garage
(For description see page 24.)

NATIONAL GARAGE HARDWARE

Nos. 800 and 801 Garage Door Sets

DOORS constructed to swing on hinges have many advantages for garage use. They are always easily operated and give a close-fitting, weather-proof job. The cost is much less than for hanger and rail equipment.

One No. 800 set consists of the following, packed in a neat, strong carton, with screws:

- 3 pairs No. 840 Reversible "T"
Hinges, either 8-inch or 10-inch
- 1 only No. 820 Chain Bolt
- 1 only No. 830 Foot Bolt
- 1 only No. 5 Door Pull
- 1 only No. 29 All Steel Latch

No. 800A, same as above, except 1½ pairs No. 505 Butts and 3 pairs 10-inch No. 841 Hinges are used.

No. 800B, same as No. 800A, except No. 842 Hinges are used.

No. 800C, same as No. 800A, except No. 843 Hinges are used.

No. 800D, same as No. 800A, except No. 844 Hinges are used.

Set No. 801, same as No. 800, except that No. 27 Latch and one pair No. 40 Padlock Eyes are used instead of No. 29 All-Steel Latch.

No. 801A, same as No. 800A, except No. 27 Latch is used.

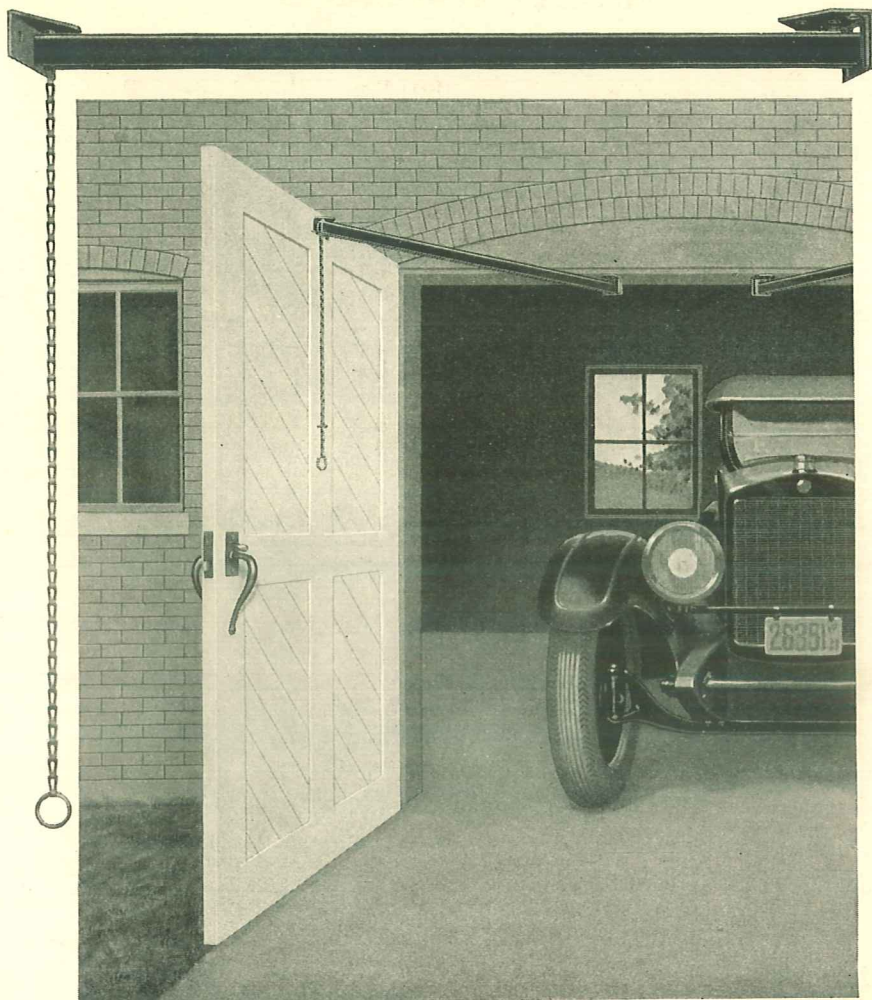
No. 801B, same as No. 800B, except No. 27 Latch is used.

No. 801C, same as No. 800C, except No. 27 Latch is used.

No. 801D, same as No. 800D, except No. 27 Latch is used.

The following finishes are carried regularly in stock: Japan, Dead Black Japan, Sherardized, Sherardized and Dead Black Japan.

No. 810 Garage Door Holder



GARAGE doors constructed to swing on hinges are rendered harmless when equipped with this Garage Door Holder. It holds the doors securely open and prevents them from damaging the car when entering or leaving the garage.

The holder has a rigid, U-shaped, steel arm, thirty-two inches long.

A swivel joint allows the holder to fold back out of the way along head jamb when the door is closed.

When the door is opened the long, U-shaped arm slides through the embossed steel catch plate and drops into two notches in the end of arm.

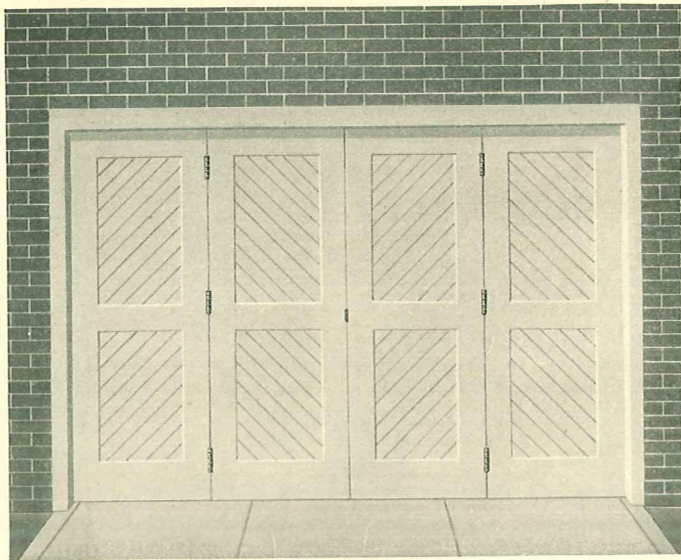
To close the door a light pull on the safety chain operates the trip-bar and releases the holder.

Packed one pair in a package, complete with screws, in the following finishes: Japan, Dead Black Japan, Sherardized, Sherardized and Dead Black Japan.

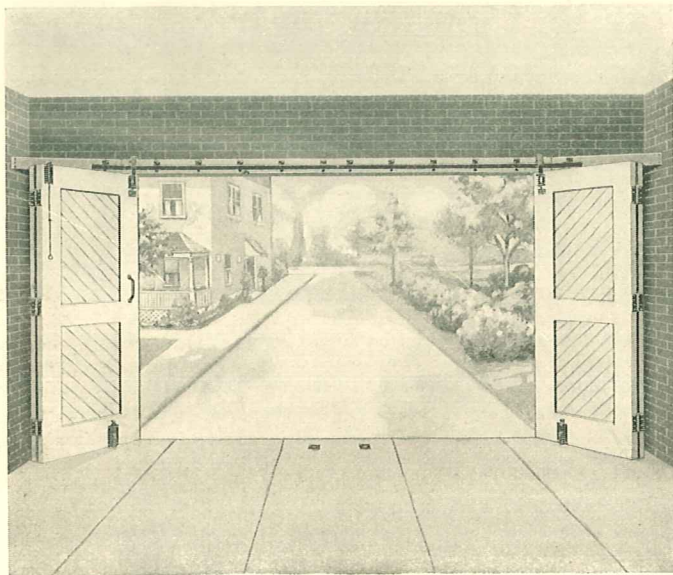
Weight, per pair, 6 $\frac{1}{4}$ pounds.

NATIONAL GARAGE HARDWARE

No. 804 Garage Door Set

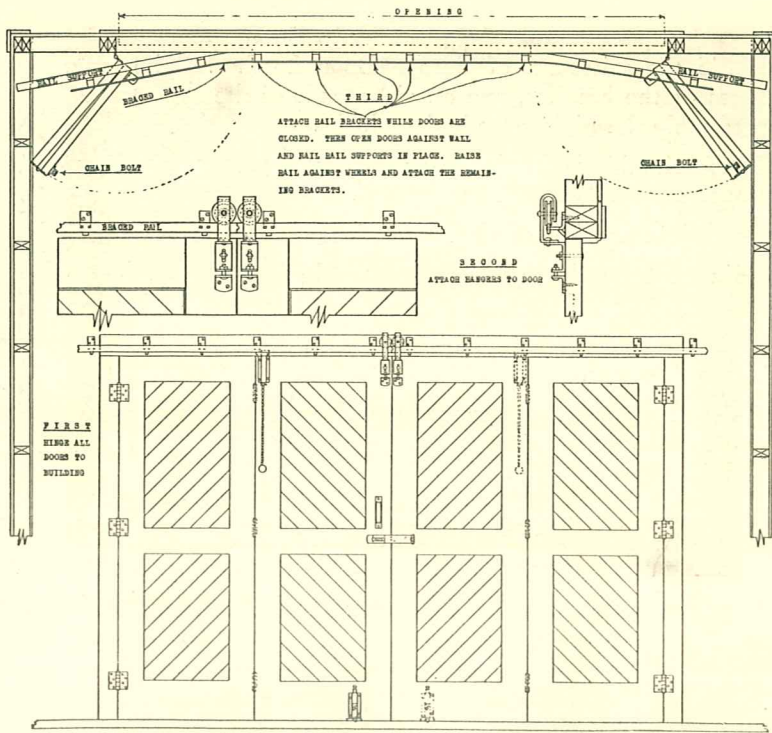


View outside garage



View inside garage
(For description see opposite page.)

No. 804 Garage Door Set



THIS set makes an absolutely weather-tight job. The hanger is so constructed that the doors swing into the jamb against stops.

The doors are hung on the inside and fold against the inner wall.

Four doors are required for this combination.

A strong, adjustable, roller-bearing hanger on the outer end prevents the doors from sagging.

The set is made up of the following:

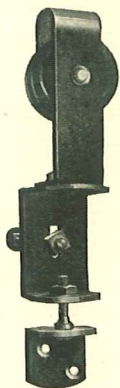
- 2 only Swivel Hangers (one wheel)
- 2 6-foot pieces Braced Rail
- 6 pairs 4 x 4-inch No. 505 Japanned T. P. Butts
- 2 only No. 820 Chain Bolts
- 2 only No. 830 Foot Bolts
- 2 only No. 5 Pulls
- 1 pair No. 40 Padlock Eyes

No. 804A—same as No. 804, except 3 pairs No. 505 Butts and 3 pairs 10-inch No. 841 Hinges are used.

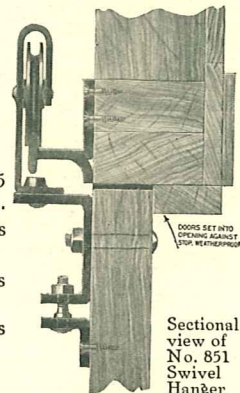
No. 804B—same as No. 804A, except No. 842 Hinges are used.

No. 804C—same as No. 804A, except No. 843 Hinges are used.

No. 804D—same as No. 804A, except No. 844 Hinges are used.



No. 851 Hanger



Sectional view of No. 851 Swivel Hanger

Furnished in Japan finish only.

NATIONAL GARAGE HARDWARE

No. 27 Garage Door Latch For Swinging Doors

HERE'S the aristocrat of Garage Door Latches. The long, graceful lines of the handles, one on either side of the door, resemble the higher grade door locks.

The mechanism is simple. No complicated parts to get out of order.

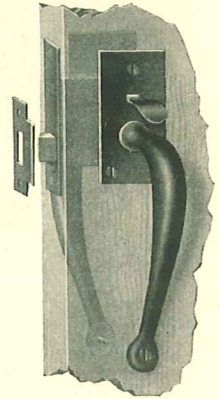
Reversible for right- or left-hand door.

Adjustable for doors $1\frac{1}{8}$ inches to $2\frac{1}{4}$ inches thick.

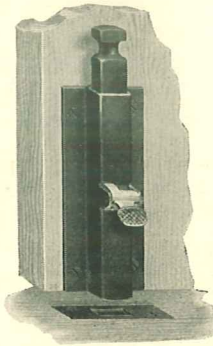
Packed one complete latch, with screws, in box. One dozen in a case.

Finished regularly as follows: Japan, Dead Black Japan, Sherardized and Dead Black Japan, Sherardized and Plated any finish.

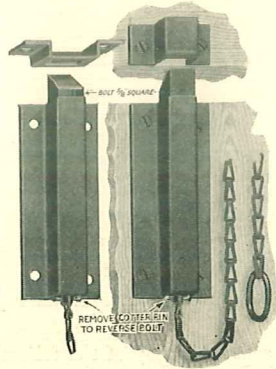
The long, graceful



Foot and Chain Bolt Set



No. 830 Foot Bolt



No. 820 Chain Bolt

CASES are made of wrought steel. Bolts are extra heavy, being $\frac{5}{8}$ -inch square.

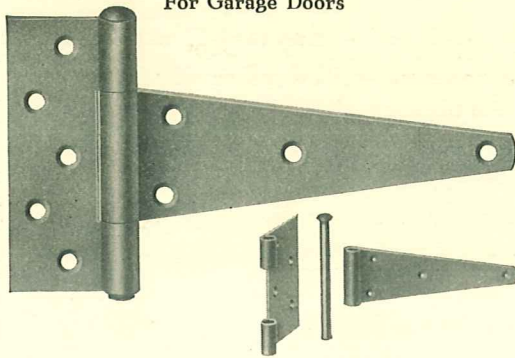
Foot Bolt—The lever has a positive action. The bolt is held in place when raised by an oil-tempered steel friction spring.

Chain Bolt—Equipped with safety chain which cannot pull apart. Reversible by removing cotter pin and turning bolt.

Packed one set in a box, one No. 820 and one No. 830, with 1-inch screws, staple for chain guide and two plates for head jamb, one for doors swinging in and one for doors swinging out. Packed separately, when so ordered, one-half dozen in a box. Any finish desired.

No. 840 Reversible "T" Hinge

For Garage Doors



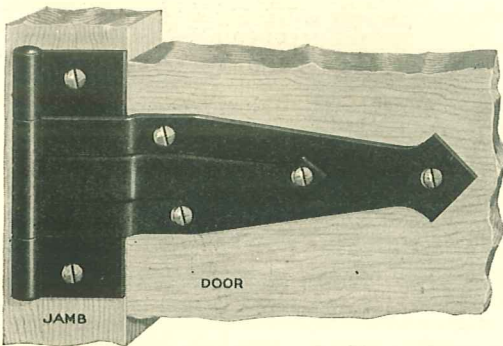
THIS hinge is made especially for use on garage doors. It can be reversed and used as a full surface hinge or mortised into the jamb when brick construction is used.

Packed one pair in a box with screws.

The following finishes are carried regularly in stock: Bright Steel, Japan, Dead Black Japan, Sherardized with Steel Pin, Sherardized and Dead Black Japan with Steel Pin.

Furnished in 6-inch, 8-inch and 10-inch sizes.

No. 841 Offset Garage Hinge



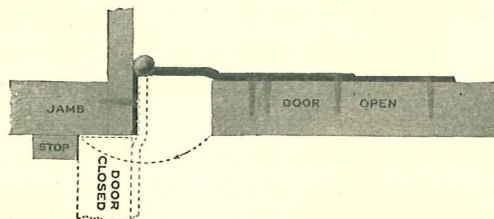
MADE with offset to swing doors clear of opening. See lower illustration.

Embossed leaf adds to attractiveness and strength of hinge.

Packed one pair in a box with screws.

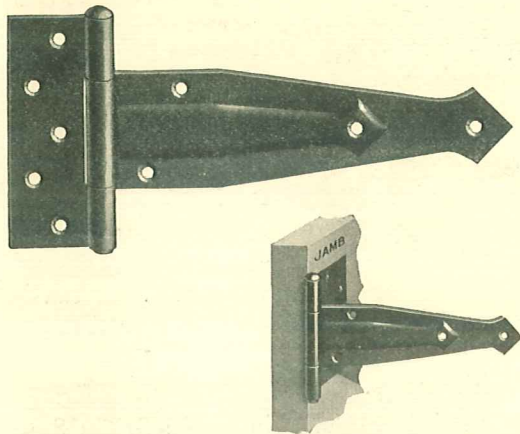
Japan finish only.

Size, 10-inch. Weight per dozen pairs, 43½ pounds.



No. 842 Ornamental Garage Hinge

MADE with a loose pin so that the "T" part can be reversed and used as a full surface hinge or mortised into the jamb when brick construction is used.



The embossed leaf adds to the attractiveness and strength of the hinge.

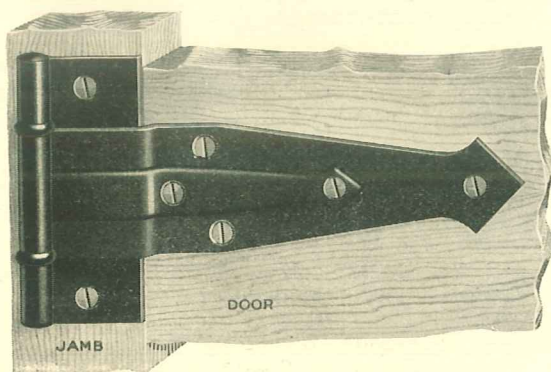
After hinge is placed in position, the end of pin can be slightly riveted to prevent its removal.

Packed one pair in a box with screws.

Japan finish only.

Size, 10-inch. Weight, per dozen pairs, 43³/₄ pounds.

~~No. 843 Offset Garage Hinge~~ Hardened Bearing Washers



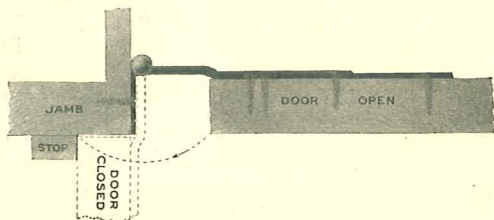
MADE with offset to swing doors clear of opening. See lower illustration.

Embossed leaf adds to attractiveness and strength of hinge.

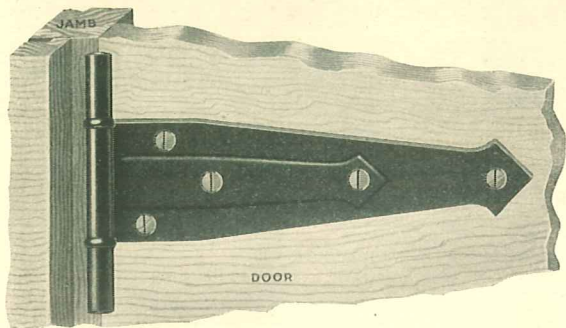
Packed one pair in a box with screws.

Japan finish only.

Sizes, 12-inch and 18-inch.



No. 844 Ornamental Garage Hinge
Hardened Bearing Washers



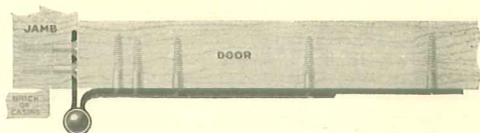
ORNAMENTAL leaf has offset (see lower illustration). Designed for use with brick or frame construction.

The embossed leaf adds to attractiveness and strength of the hinge.

Packed one pair in a box with screws.

Japan finish only.

Sizes, 12-inch and 18-inch.



No. 40 Padlock Eyes

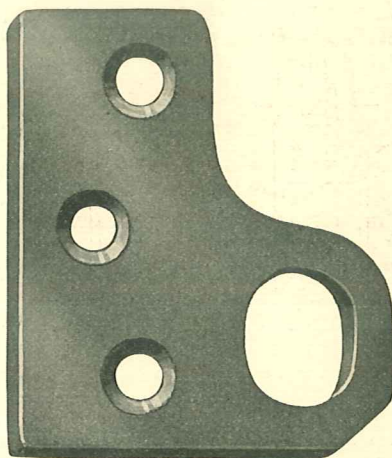
A CONVENIENT device for locking garage, barn or shed doors.

Mortised into edge of door, screws are concealed, preventing their removal when doors are closed.

Furnished in Japanned and Sherardized finishes.

Packed one pair in an envelope with screws, one dozen pairs in a box.

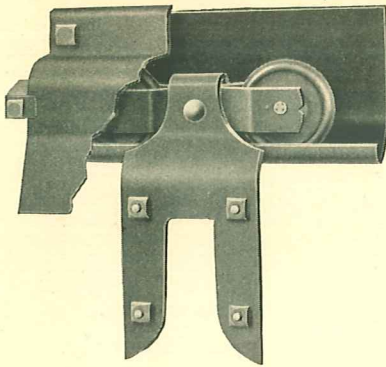
Weight, per dozen pairs, 2³/₄ pounds.



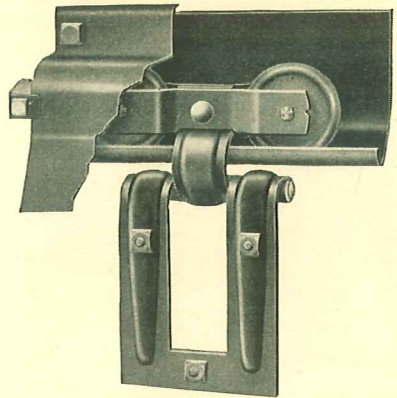
Cut full size

NATIONAL GARAGE HARDWARE

Equipment for Doors to Pass Each Other

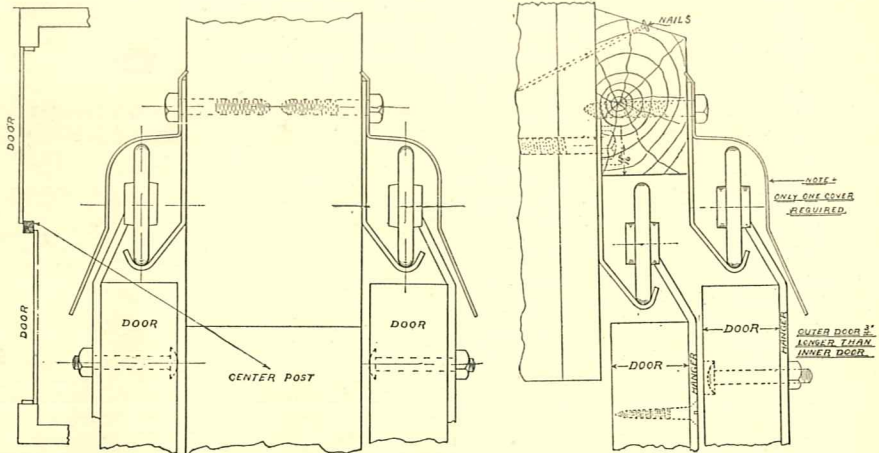


No. 66 Storm-Proof Hanger



No. 77 Storm-Proof Hanger

THE equipment illustrated on this page is especially adapted for use on doors to pass each other. (See drawings below.) Either the No. 66 or No. 77 Storm-Proof Hanger may be used in connection with the Storm-Proof Rail.



Methods of Hanging Doors to Pass Each Other

THE above drawing illustrates two interesting and practical methods of hanging doors to pass each other, using No. 66 or No. 77 Storm-Proof Hangers and Rail.

No special brackets or equipment are required. Note on one drawing only one cover is used, reducing the cost quite materially. Full-size drawings will be gladly sent on request.

