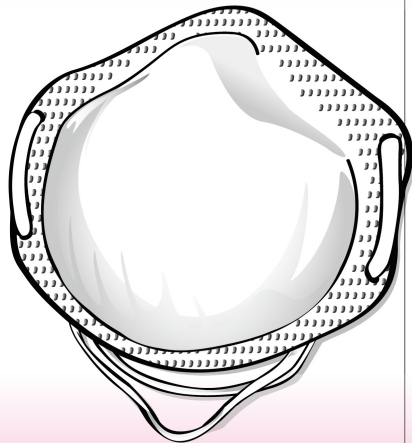


PASTURE™ A520S RESPIRATOR

Pasture A520S is a NIOSH certified N95 respirator, and is indicated to be used by the healthcare personnel during procedures to protect both the patient and the healthcare personnel from the transfer of microorganisms, body fluids, and particulate material.

- Single Use only. Do not reuse.
- Non-sterile



-5°C ~ +50°C

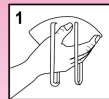
<60%



LOT :

MFG:

Instructions for fitting



1. Prepare to use respirator

- Check the respirator for holes, tears or other damage to surfaces, straps, and nose foam to ensure that your respirator works well. Replace with a new respirator if damaged.
- Place the mask within in hand, the nosepiece pointing at your fingertip and the headbands hanging downwards.

If you wear glasses, read steps 2 through 3 then remove your glasses before putting on the respirator.



2. Place respirator on face

- Place the respirator against your face, with the bottom under your chin and nosepiece across bridge of your nose.
- Pull the top elastic band over your head and place high at the top back of your head.
- Next, pull the bottom elastic band over your head and place around the neck below your ears.



3. Adjust the nosepiece

- Use both hands to fit snugly against your nose and face.
- Slide fingers down both sides of nosepiece to seal it against your nose and face.



4. Check the face seal

- Completely cover the middle panel of the respirator with one or both hands.
- Do not push the respirator against your face.
- With your hands in place on the surface of the respirator, exhale, or breathe out sharply.
- If you feel air blowing on your face or eyes, the respirator needs to be adjusted. To adjust, stretch the headbands again by pulling them backwards. Then correct the position of the respirator and check the face seal again.

When the respirator is a good fit, you will not feel any air blowing on your face or eyes.

Return eyewear to face, if applicable.

Proper fit of the respirator is critical to reducing wearer exposure to airborne germs. It is important to read User Instructions carefully.

Storage

The respirator should be placed in a container and stored in a clean cool and dry atmosphere to ensure that it is protected against dust, chemicals, moisture, excessive heat and direct sunlight.

The model Pasture A520S filtering facepiece respirator has been manufactured by Approval Holder Champak Enterprise Co., Ltd. for Pasture Pharma Pte Ltd under approval TC-84A-XXXX

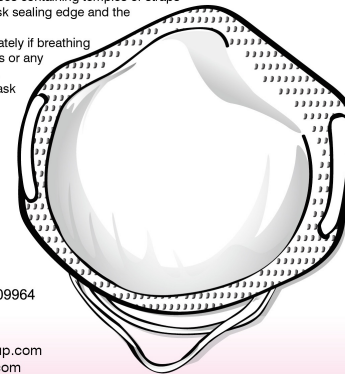
Qty: 20pcs

PASTURE™ A520S RESPIRATOR

Warning

This section contains critical information for the safe and effective use of the respirator.

1. Do not use this mask as protection against toxic particles, gases or vapors, solvents from spray-painting operations, or in explosive atmospheres.
2. Do not use this mask in tanks, enclosed places or in any circumstances where gas is likely to be present or in oxygen deficient atmospheres.
3. This mask should not be worn when conditions prevent a good face to face piece seal. Such conditions includes the growth of beards or mustache and sideburns and the use of spectacles or any other devices containing temples or straps which pass between the mask sealing edge and the wearers face.
4. Leave the work area immediately if breathing becomes difficult or dizziness or any other signs of distress occur.
5. It is not allowed to use the mask without proper fit.



Pasture Pharma Pte Ltd
8 Boon Lay Way #04-01 Tradehub21
Singapore 609964
TEL: +65 6515 6561
FAX: +65 6515 6513
Email: mask@pasturegroup.com
Web: www.pasturegroup.com
Distributed By:



Pasture Pharma Pte Ltd
8 Boon Lay Way #04-01 Tradehub21
Singapore 609964
+65-6515 6561



THIS RESPIRATOR IS APPROVED ONLY IN THE FOLLOWING CONFIGURATION:

TC-	Protection ¹	Respirator	Cautions and Limitations ²
		Pasture A520S	
84A-XXXX	N95	X	ABCJMNOPS

1. Protection

N95- Particulate Filter (95% filter efficiency level) effective against particulate aerosols free of oil; time use restriction may apply.

2. Cautions and Limitations

- A - Not for use in atmospheres containing less than 19.5 percent oxygen.
- B - Not for use in atmospheres immediately dangerous to life or health.
- C - Do not exceed maximum use concentrations established by regulatory standards.
- J - Failure to properly use and maintain this product could result in injury or death.
- M - All approved respirators shall be selected, fitted, used, and maintained in accordance with MSHA, OSHA, and other applicable regulations.
- N - Never substitute, modify, add, or omit parts. Use only exact replacement parts in the configuration as specified by the manufacturer.
- O - Refer to User's Instructions, and/or maintenance manuals for information on use and maintenance of these respirators.
- P - NIOSH does not evaluate respirators for use as surgical masks.
- S - Special or critical User's Instructions and/or specific use limitations apply. Refer to User's Instruction before donning.

Instructions for use

This section contains critical information for the safe and effective use of the respirator.

1. This mask must not be used for more than single shift (8 hours). Always discard and replace the mask, when the breathing resistance becomes excessive or at the end of every working shift.
2. No alteration or modification is allowed. Never use damaged masks, in that case discard these masks.
3. The wearer of the mask must be well trained to use properly before starting work. Facial hair (beard or sideburns) of the user within the area of the sealing edges of the mask may jeopardize the protection efficiency of the mask itself.
4. Before use of these respirators, a written respiratory protection program must be implemented, meeting all the requirements of OSHA 29 CFR 1910.134, including training, medical evaluation and fit testing.