

# D T TATONS

KNITTING BOOK

NO. 184



"LUCILLE"  
See page 10

64



"DIANA"  
*See page 3*

"PRIMROSE"  
*See page 4*

PATONS &  
BALDWIN'S



**PATONS BEEHIVE FINGERING, 4, 3 and 2 PLY**

is recommended exclusively in  
this Book

PATONS BEEHIVE FINGERING is treated with a SHRINK-RESIST FINISH known as "PATONISED." This process is the result of exhaustive tests by our chemists to find the most satisfactory Shrink-Resist Finish for our leading Hand Knitting Wool—Patons Beehive Fingering. Be sure and use the Knitting Wool recommended in the recipe.

**PATONS & BALDWIN'S LTD.**

Makers of the Best Hand Knitting Wools for over 150 years.

*Diana*

(WITH SHORT OR LONG SLEEVES—ILLUSTRATED AT LEFT ON PAGE 2)

**MATERIALS:—**

**PATONS BEEHIVE Fingering, 3-ply.**

**Quantities—**

**Short Sleeves—**

Brown . . . . .	3 ozs.
Green . . . . .	1 oz.
Lemon . . . . .	3 ozs.

**Long Sleeves—**

Brown . . . . .	3 ozs.
Green . . . . .	1 oz.
Lemon . . . . .	5 ozs.

- Knitting Needles . . . . . 1 pair each Nos. 10 and 12
- A Medium Sized Crochet Hook.
- Cotton Wool.
- Two Press Studs.

**MEASUREMENTS (to fit 34-35 in. bust):—**

Length from top of shoulder . . . . .	21 ins.
Length of sleeve from under-arm—	
Short . . . . .	5 ins.
Long . . . . .	17½ ins.
	(or length desired)

**ABBREVIATIONS:—**See page 18.

**TENSION:—**To get these measurements it is absolutely necessary to work at a tension to produce 8 stitches to the inch in width (measured over plain, smooth fabric).  
*Check tension—see page 18.*

**NOTE:—**When changing colors, the color to be used is twisted round, underneath and to the right of the color just used.

**THE FRONT.—**Using No. 10 Needles and Brown Wool, cast on 130 stitches.

**1st row.—**(Wrong side of work) K.2, (P.1, K.1) forty times, join in Green Wool, P.14, join in another ball of Brown Wool, (K.1, P.1) sixteen times, K.2.

**2nd row.—**K.1, (P.1, K.1) sixteen times, P.1 Brown, K.14 Green, (P.1, K.1) forty-one times Brown.

Repeat 1st and 2nd rows three times, then 1st row once. Keeping continuity of ribbed pattern and plain, smooth fabric stripe, decrease once at each end of needle in next and every following 6th row, until 116 sts. remain.

Continue without shaping until work measures 6 ins. from commencement, ending with wrong side facing.

Keeping continuity of ribbed pattern, and plain, smooth fabric stripe, increase once at each end of needle in next and every following 6th row, until there are 138 sts. on needle.

Continue without shaping until work measures 14 ins. from commencement, ending with wrong side facing.

Cast off 8 sts. at beginning of each of next 2 rows.

[Continued on page 14.]

# Primrose

(IN TWO SIZES—WITH LONG OR SHORT SLEEVES—  
ILLUSTRATED AT RIGHT ON PAGE 2)

**MATERIALS:—**

**PATONS CREPE.**

Quantities—	[A]	[B]
Long Sleeves . . . . .	9 ozs.	10 ozs.
Short Sleeves . . . . .	8 ozs.	8 ozs.
Knitting Needles . . . . .	1 pair No. 10	
A Medium Sized Crochet Hook.		
Cotton Wool.		
Eight Buttons.		

**MEASUREMENTS:—**

	[A]	[B]
Length from top of shoulder . . . . .	22 ins.	22 ins.
Width all round at under-arm . . . . .	34 ins.	36 ins.
Length of sleeve from under-arm—		
Long . . . . .	17½ ins.	17½ ins.
	(or length desired)	
Short . . . . .	5 ins.	5 ins.

**ABBREVIATIONS:—**See page 18.

**TENSION:—**To get these measurements it is absolutely necessary to work at a tension to produce 8 stitches to the inch in width. *Check tension—see page 18.*

*Instructions are written for smaller size [A]. Instructions for larger size [B] are written in brackets, thus [B—...].*

**THE LEFT FRONT.—**Cast on 70 [B—74] stitches.

**\*\* 1st row.—**K.50 [B—K.54], P.1, K.2 tog., w.r.n., P.1, K.1, P.1, K.2 tog., w.r.n., P.1, K.11.

**2nd row.—**K.1, P.10, K.1, P.2 tog., w.o.n., K.1, P.1, K.1, P.2 tog., w.o.n., K.1, P.49 [B—P.53], K.1.

**3rd row.—**K.50 [B—K.54], P.1, w.o.n., K.2 tog., P.1, K.1, P.1, w.o.n., K.2 tog., P.1, K.11.

**4th row.—**K.1, P.10, K.1, w.r.n., P.2 tog., K.1, P.1, K.1, w.r.n., P.2 tog., K.1, P.49 [B—P.53], K.1. \*\*

Repeat from \*\* to \*\* twice.

Keeping continuity of pattern, as given from \*\* to \*\*, decrease once at beginning of needle in next and every following 8th row, until 62 [B—66] sts. remain.

Work 13 [B—13] rows without shaping.

Continue in pattern, increasing once at beginning of needle in next and every following 6th row, until there are 69 [B—73] sts. on needle.

Work 5 [B—5] rows without shaping.

Proceed as follows:—

**\*\*\* 1st row.—**Increase once in first st., K.29 [B—K.33],

\* P.1, K.2 tog., w.r.n., P.1, K.1, P.1, K.2 tog., w.r.n., P.1, K.10, repeat from \* once, K.1.

**2nd row.—**K.1, \* P.10, K.1, P.2 tog., w.o.n., K.1, P.1, K.1, P.2 tog., w.o.n., K.1, repeat from \* once, purl to last st., K.1.

**3rd row.—**K.31 [B—K.35], \* P.1, w.o.n., K.2 tog., P.1, K.1, P.1, w.o.n., K.2 tog., P.1, K.10, repeat from \* once, K.1.

**4th row.—**K.1, \* P.10, K.1, w.r.n., P.2 tog., K.1, P.1, K.1, w.r.n., P.2 tog., K.1, repeat from \* once, purl to last st., K.1. \*\*\*

Keeping continuity of pattern, as given from \*\*\* to \*\*\*, increase once at beginning of needle in 3rd and every following 6th row, until there are 74 [B—78] sts. on needle.

Work 13 [B—13] rows without shaping.

Cast off 12 [B—14] sts. at beginning of needle in next row, then decrease once at beginning of needle in every alternate row, until 52 [B—54] sts. remain.

Work 19 [B—19] rows without shaping.

Continue in pattern, decreasing once at neck edge in every row, until 32 [B—32] sts. remain.

Work 1 [B—1] row without shaping.

Shape for shoulder as follows:—

**1st row.—**Work in pattern to last 6 [B—6] sts., turn.

**2nd and alternate rows.—**Work in pattern to end of row.

**3rd row.—**Work in pattern to last 12 [B—12] sts., turn.

**5th row.—**Work in pattern to last 18 [B—18] sts., turn.

**7th row.—**Work in pattern to last 25 [B—25] sts., turn.

**8th row.—**Like 2nd row. Cast off.

**THE RIGHT FRONT.—**Work to correspond with Left Front, working shapings at opposite ends of needle and making a button-hole in 5th and 6th and every following 27th and 28th rows, until 8 button-holes have been worked from commencement.

To make a button-hole:—

**1st row.—**K.3, cast off 2 sts., work in pattern to end of row.

**2nd row.—**Work in pattern to last 3 sts., cast on 2 sts., P.2, K.1.

**THE PATTERN:—**

**1st row.—**K.11, P.1, K.2 tog., w.r.n., P.1, K.1, P.1, K.2 tog., w.r.n., P.1, K.50 [B—K.54].

**2nd row.—**K.1, P.49 [B—P.53], K.1, P.2 tog., w.o.n., K.1, P.1, K.1, P.2 tog., w.o.n., K.1, P.10, K.1.

**3rd row.—**K.11, P.1, w.o.n., K.2 tog., P.1, K.1, P.1, w.o.n., K.2 tog., P.1, K.50 [B—K.54].

**4th row.—**K.1, P.49 [B—P.53], K.1, w.r.n., P.2 tog., K.1, P.1, K.1, w.r.n., P.2 tog., K.1, P.10, K.1.

**THE BACK.—**Cast on 120 [B—128] stitches.

**\*\* 1st row.—**K.46 [B—K.50], P.1, K.2 tog., w.r.n., P.1, K.1, P.1, K.2 tog., w.r.n., P.1, K.10, P.1, K.2 tog., w.r.n., P.1, K.1, P.1, K.2 tog., w.r.n., P.1, K.46 [B—K.50].

**2nd row.**—K.1, P.45 [B—P.49], K.1, P.2 tog., w.o.n., K.1, P.1, K.1, P.2 tog., w.o.n., K.1, P.10, K.1, P.2 tog., w.o.n., K.1, P.1, K.1, P.2 tog., w.o.n., K.1, P.45 [B—P.49], K.1.

**3rd row.**—K.46 [B—K.50], P.1, w.o.n., K.2 tog., P.1, K.1, P.1, w.o.n., K.2 tog., P.1, K.10, P.1, w.o.n., K.2 tog., P.1, K.1, P.1, w.o.n., K.2 tog., P.1, K.46 [B—K.50].

**4th row.**—K.1, P.45 [B—P.49], K.1, w.r.n., P.2 tog., K.1, P.1, K.1, w.r.n., P.2 tog., K.1, P.10, K.1, w.r.n., P.2 tog., K.1, P.1, K.1, w.r.n., P.2 tog., K.1, P.45 [B—P.49], K.1. \*\*

Repeat from \*\* to \*\* twice.

Keeping continuity of pattern, decrease once at each end of needle in next and every following 8th row, until 104 [B—112] sts. remain.

Work 13 [B—13] rows without shaping.

Continue in pattern, increasing once at each end of needle in next and every following 6th row, until there are 118 [B—126] sts. on needle.

Work 5 [B—5] rows without shaping.

Proceed as follows:—

**\*\*\* 1st row.**—Increase once in first st., K.25 [B—K.29], \* P.1, K.2 tog., w.r.n., P.1, K.1, P.1, K.2 tog., w.r.n., P.1, K.10, repeat from \* three times, K.14 [B—K.18], increase once in next st., K.1.

**2nd row.**—K.1, P.26 [B—P.30], \* K.1, P.2 tog., w.o.n., K.1, P.1, K.1, P.2 tog., w.o.n., K.1, P.10, repeat from \* three times, P.16 [B—P.20], K.1.

**3rd row.**—K.27, [B—K.31], \* P.1, w.o.n., K.2 tog., P.1, K.1, P.1, w.o.n., K.2 tog., P.1, K.10, repeat from \* three times, K.17 [B—K.31].

**4th row.**—K.1, P.26 [B—P.30], \* K.1, w.r.n., P.2 tog., K.1, P.1, K.1, w.r.n., P.2 tog., K.1, P.10, repeat from \* three times, P.16 [B—P.20], K.1. \*\*\*

Keeping continuity of pattern, as given from \*\*\* to \*\*\*, increase once at each end of needle in 3rd and every following 6th row, until there are 128 [B—136] sts. on needle.

Work 13 [B—13] rows without shaping.

Cast off 8 [B—10] sts. at beginning of needle in each of next 2 rows, then decrease once at each end of needle in next and every alternate row, until 92 [B—96] sts. remain.

Continue in pattern without shaping until arm-holes measure same as Front arm-holes, ending with wrong side facing.

Shape for shoulders as follows:—

**1st and 2nd rows.**—Work in pattern to last 6 [B—6] sts., turn.

**3rd and 4th rows.**—Work in pattern to last 12 [B—12] sts., turn.

**5th and 6th rows.**—Work in pattern to last 18 [B—18] sts., turn.

**7th and 8th rows.**—Work in pattern to last 25 [B—25] sts., turn.

**9th and 10th rows.**—Work in pattern to last 32 [B—32] sts., turn.

**11th row.**—Work in pattern to end of row. Cast off.

**THE LONG SLEEVES.**—Cast on 56 [B—60] stitches.

**\*\* 1st row.**—K.4, [B—K.6], \* K.10, P.1, K.2 tog., w.r.n., P.1, K.1, P.1, K.2 tog., w.r.n., P.1, repeat from \* once, K.14 [B—K.16].

**2nd row.**—K.1, P.3 [B—P.5], \* P.10, K.1, P.2 tog., w.o.n., K.1, P.1, K.1, P.2 tog., w.o.n., K.1, repeat from \* once, P.13 [B—P.15], K.1.

**3rd row.**—K.4 [B—K.6], \* K.10, P.1, w.o.n., K.2 tog., P.1, K.1, P.1, w.o.n., K.2 tog., P.1, repeat from \* once, K.14 [B—K.16].

**4th row.**—K.1, P.3 [B—P.5], \* P.10, K.1, w.r.n., P.2 tog., K.1, P.1, K.1, w.r.n., P.2 tog., K.1, repeat from \* once, P.13 [B—P.15], K.1. \*\*

Repeat from \*\* to \*\* six [B—six] times.

Keeping continuity of pattern, increase once at each end of needle in next and every following 8th row, until there are 96 [B—100] sts. on needle.

Continue in pattern without shaping until work measures  $17\frac{1}{2}$  [B—17 $\frac{1}{2}$ ] ins. (or length desired) from commencement, ending with wrong side facing.

**\*\*\*** Decrease once at each end of needle in next and every alternate row until 30 [B—34] sts. remain. Cast off. \*\*\*  
Work another Sleeve in same manner.

**THE SHORT SLEEVES.**—Cast on 86 [B—90] stitches.

**\*\* 1st row.**—K.19 [B—K.21], \* K.10, P.1, K.2 tog., w.r.n., P.1, K.1, P.1, K.2 tog., w.r.n., P.1, repeat from \* once, K.29 [B—K.31].

**2nd row.**—K.1, P.18 [B—P.20], \* P.10, K.1, P.2 tog., w.o.n., K.1, P.1, K.1, P.2 tog., w.o.n., K.1, repeat from \* once, P.28 [B—P.30], K.1.

**3rd row.**—K.19 [B—K.21], \* K.10, P.1, w.o.n., K.2 tog., P.1, K.1, P.1, w.o.n., K.2 tog., P.1, repeat from \* once, K.29 [B—K.31].

**4th row.**—K.1, P.18 [B—P.20], \* P.10, K.1, w.r.n., P.2 tog., K.1, P.1, K.1, w.r.n., P.2 tog., K.1, repeat from \* once, P.28 [B—P.30], K.1. \*\*

Repeat from \*\* to \*\* once.

Keeping continuity of pattern, increase once at each end of needle in next and every following 8th row, until there are 96 [B—100] sts. on needle.

Continue in pattern without shaping until work measures 5 [B—5] ins. (or length desired) from commencement.

Work as given from \*\*\* to \*\*\* for Long Sleeves.

Work another Sleeve in same manner.

**SHOULDER PADS.**—See page 18.

**TO MAKE UP JACKET.**—With a slightly damp cloth and warm iron, press lightly. Sew up side, shoulder and sleeve seams. Sew in sleeves, placing seams  $\frac{1}{2}$  an inch to front of side seams. Using Crochet Hook, work 2 rows of d.c. round outer edge of garment and lower edges of sleeves. Sew shoulder pads in position, with pads in sleeves and double-thicknesses along shoulder seams. Sew on buttons to correspond with button-holes.

# Moyra

(IN TWO SIZES — ILLUSTRATED OPPOSITE)

**MATERIALS:—**

**PATONS BLUEBELL Crepe (Equivalent to 5-ply).**

	[A]	[B]
Quantities . . . . .	12 ozs.	14 ozs.
Knitting Needles . . . . .	1 pair No. 8	
Cotton Wool.		
Eight Buttons.		

**MEASUREMENTS:—**

	[A]	[B]
Length from top of shoulder . . . . .	21 ins.	22 ins.
Width all round at under-arm . . . . .	34 ins.	36 ins.
Length of sleeve from under-arm . . . . .	18 ins.	18 ins.
	(or length desired)	

**ABBREVIATIONS:—** See page 18.

**TENSION:—**To get these measurements it is absolutely necessary to work at a tension to produce 1 pattern to 1½ inches in width. *Check tension—see page 18.*

*Instructions are written for smaller size [A]. Instructions for larger size [B] are written in brackets, thus [B— . . .].*

**THE LEFT FRONT.—**Cast on 61 [B—66] stitches.

Work 3 [B—3] rows in Garter Stitch.

Proceed as follows:—

**\*\* 1st row.—**K.1, \* P.1, K.1, P.1, K.3, K.1, with wool twice round needle, repeat from \* to last 11 [B—9] sts., P.1, (K.1, P.1) four [B—three] times, K.2.

**2nd and 4th rows.—**(K.1, P.1) five [B—four] times, K.1, \* wool front, slip 1 purlways, dropping next thread off needle (this will now be termed "Slip 1" throughout), P.3, K.1, P.1, K.1, repeat from \* to last st., K.1.

**3rd row.—**K.1, \* P.1, K.1, P.1, K.2, knit second st. on left-hand needle, and, before slipping it off, knit first st. with wool twice round needle, slip both sts. off needle together (crossing of these 2 sts. will now be termed "Twist" throughout), repeat from \* to last 11 [B—9] sts., P.1 (K.1, P.1) four [B—three] times, K.2.

**5th row.—**K.1, \* (P.1, K.1) twice, "Twist," K.1, repeat from \* to last 11 [B—9] sts., P.1, (K.1, P.1) four [B—three] times, K.2.

**6th row.—**(K.1, P.1) five [B—four] times, K.1, \* P.1, "Slip 1," P.2, K.1, P.1, K.1, repeat from \* to last st., K.1.

**7th row.—**K.1, \* P.1, K.1, P.1, "Twist," K.2, repeat from \* to last 11 [B—9] sts., P.1, (K.1, P.1) four [B—three] times, K.2.

**8th row.—**(K.1, P.1) five [B—four] times, K.1, \* P.2, "Slip 1," (P.1, K.1) twice, repeat from \* to last st., K.1.

**9th row.—**K.1, \* P.1, K.1, P.1, K.4, repeat from \* to last 11 [B—9] sts., P.1, (K.1, P.1) four [B—three] times, K.2.

**10th row.—**(K.1, P.1) five [B—four] times, K.1, \* P.4, K.1, P.1, K.1, repeat from \* to last st., K.1. \*\*

Keeping continuity of pattern, as given from \*\* to \*\*, decrease once at beginning of needle in next and every following 6th row, until 57 [B—62] sts. remain.

Work 1 [B—1] row in pattern without shaping.

In next row, work 12 [B—19] sts. in pattern, cast off 22 sts., work in pattern to end of row.

Leave these sts. until Pocket has been worked.

**THE POCKET.—**Cast on 22 [B—22] stitches.

Work 3 [B—3] rows in Garter Stitch.

**\*\*\* 1st row.—**K.1, P.1, \* K.3, K.1, with wool twice round needle, P.1, K.1, P.1, repeat from \* to last 6 sts., K.3, K.1, with wool twice round needle, P.1, K.1.

**2nd and 4th rows.—**K.2, \* wool front, "Slip 1," P.3, K.1, P.1, K.1, repeat from \* to last 7 sts. (wool twice round needle of previous row is counted as 2 sts.), wool front, "Slip 1," P.3, K.2.

**3rd row.—**K.1, P.1, \* K.2, "Twist," P.1, K.1, P.1, repeat from \* to last 6 sts., K.2, "Twist," P.1, K.1.

**5th row.—**K.1, P.1, \* K.1, "Twist," (K.1, P.1) twice, repeat from \* to last 6 sts., K.1, "Twist," K.1, P.1, K.1.

**6th row.—**K.2, \* P.1, "Slip 1," P.2, K.1, P.1, K.1, repeat from \* to last 7 sts., P.1, "Slip 1," P.2, K.2.

**7th row.—**K.1, P.1, \* "Twist," K.2, P.1, K.1, P.1, repeat from \* to last 6 sts., "Twist," K.2, P.1, K.1.

**8th row.—**K.2, \* P.2, "Slip 1," (P.1, K.1) twice, repeat from \* to last 7 sts., P.2, "Slip 1," P.1, K.2.

**9th row.—**K.1, P.1, \* K.4, P.1, K.1, P.1, repeat from \* to last 6 sts., K.4, P.1, K.1.

**10th row.—**K.2, \* P.4, K.1, P.1, K.1, repeat from \* to last 6 sts., P.4, K.2. \*\*\*

Repeat from \*\*\* to \*\*\* twice, then 1st row once.

Commencing again on sts. of Front, work across row, working across pocket sts. in place of cast-off sts.

Continue in pattern, decreasing once at beginning of needle in 3rd and every following 6th row, until 54 [B—59] sts. remain.

Work 5 [B—5] rows in pattern without shaping.

Still keeping continuity of pattern, increase once at beginning of needle in next and every following 6th row, until there are 61 [B—66] sts. on needle.

Work 21 [B—21] rows in pattern without shaping.

Cast off 6 sts. at beginning of needle in next row.

Decrease once at arm-hole edge in every alternate row, whilst at same time decreasing once at front edge (inside border) in 4th and every following 3rd row, until 44 [B—49] sts. remain.

Continue decreasing at front edge only (inside border) in 2nd and every following 3rd row, until 34 [B—34] sts. remain.

Work 13 [B—6] rows in pattern without shaping.

Shape for shoulder as follows:—

**1st row.—**Work in pattern to last 8 [B—9] sts., turn.

**2nd, 4th and 5th rows.—**Work in pattern to end of row.

**3rd row.—**Work in pattern to last 16 [B—18] sts., turn.

**6th row.—**Cast off 24 [B—25] sts., work to end of row.

Work 2 ins. in rib on remaining 10 [B—9] sts.

Cast off.

**THE RIGHT FRONT.**—Work to correspond with Left Front, working border and shapings at opposite ends of needle and making a button-hole in 4th and 5th and every following 15th and 16th rows, until 8 button-holes have been worked from commencement.

To make a button-hole:—

**1st row.**—K.2, P.1, K.1, cast off 2 sts., work in pattern to end of row.

**2nd row.**—Work in pattern to last 4 sts., cast on 2 sts., (P.1, K.1) twice.

**THE PATTERN:**—

**1st row.**—K.2, (P.1, K.1) four [B—three] times, P.1, \* K.3, K.1, with wool twice round needle, P.1, K.1, P.1, repeat from \* to last st., K.1.

**2nd and 4th rows.**—K.1, \* K.1, P.1, K.1, wool front, "Slip 1," P.3, repeat from \* to last 11 [B—9] sts., (K.1, P.1) five [B—four] times, K.1.

**3rd row.**—K.2, (P.1, K.1) four [B—three] times, P.1, \* K.2, "Twist," P.1, K.1, P.1, repeat from \* to last st., K.1.

**5th row.**—K.2, (P.1, K.1) four [B—three] times, P.1, \* K.1, "Twist," (K.1, P.1) twice, repeat from \* to last st., K.1.

**6th row.**—K.1, \* (K.1, P.1) twice, "Slip 1," P.2, repeat from \* to last 11 [B—9] sts., (K.1, P.1) five [B—four] times, K.1.

**7th row.**—K.2, (P.1, K.1) four [B—three] times, P.1, \* "Twist," K.2, P.1, K.1, P.1, repeat from \* to last st., K.1.

**8th row.**—K.1, \* (K.1, P.1) twice, P.1, "Slip 1," P.1, repeat from \* to last 11 [B—9] sts., (K.1, P.1) five [B—four] times, K.1.

**9th row.**—K.2, (P.1, K.1) four [B—three] times, P.1, \* K.4, P.1, K.1, P.1, repeat from \* to last st., K.1.

**10th row.**—K.1, \* K.1, P.1, K.1, P.4, repeat from \* to last 11 [B—9] sts., (K.1, P.1) five [B—four] times, K.1.

**THE BACK.**—Cast on 103 [B—110] stitches.

Work 3 [B—3] rows in Garter Stitch.

Proceed as follows:—

\*\* **1st row.**—K.1, \* P.1, K.1, P.1, K.3, K.1, with wool twice round needle, repeat from \* to last 4 sts., (P.1, K.1) twice.



"MOYRA"  
See page 6

PATONS & BALDWIN'S

**2nd and 4th rows.**—K.2, P.1, K.1, \* wool front, "Slip 1," P.3, K.1, P.1, K.1, repeat from \* to last st., K.1.

**3rd row.**—K.1, \* P.1, K.1, P.1, K.2, "Twist," repeat from \* to last 4 sts., (P.1, K.1) twice.

**5th row.**—K.1, \* (P.1, K.1) twice, "Twist," K.1, repeat from \* to last 4 sts., (P.1, K.1) twice.

**6th row.**—K.2, P.1, K.1, \* P.1, "Slip 1," P.2, K.1, P.1, K.1, repeat from \* to last st., K.1.

**7th row.**—K.1, \* P.1, K.1, P.1, "Twist," K.2, repeat from \* to last 4 sts., (P.1, K.1) twice.

**8th row.**—K.2, P.1, K.1, \* P.2, "Slip 1," (P.1, K.1) twice, repeat from \* to last st., K.1.

**9th row.**—K.1, \* P.1, K.1, P.1, K.4, repeat from \* to last 4 sts., (P.1, K.1) twice.

**10th row.**—K.2, P.1, K.1, \* P.4, K.1, P.1, K.1, repeat from \* to last st., K.1. \*\*

Keeping continuity of pattern, as given from \*\* to \*\*, decrease once at each end of needle in next and every following 6th row, until 89 [B—96] sts. remain.

Work 5 [B—5] rows in pattern without shaping.

Still keeping continuity of pattern, increase once at each end of needle in next and every following 6th row, until there are 103 [B—110] sts. on needle.

Work 21 [B—21] rows in pattern without shaping.

Cast off 6 sts. at beginning of needle in each of next 2 rows, then decrease once at each end of needle in next and every alternate row, until 77 [B—84] sts. remain.

Keeping 1 extra plain st. at each end of needle, continue in pattern without shaping, until arm-holes measure same as Front arm-holes.

Shape for shoulders as follows:—

**1st and 2nd rows.**—Work in pattern to last 8 [B—9] sts., turn.

**3rd and 4th rows.**—Work in pattern to last 16 [B—18] sts., turn.

**5th and 6th rows.**—Work in pattern to last 24 [B—25] sts., turn.

**7th row.**—Work in pattern to end of row. Cast off.

**THE SLEEVES.**—Cast on 54 [B—54] stitches.

Work 3 [B—3] rows in Garter Stitch.

Work from \*\* to \*\*, as given for Back, twice.

Continue in pattern, increasing once at each end of needle in next and every following 8th row, until there are 82 [B—82] sts. on needle.

Continue in pattern without shaping until work measures 18 [B—18] ins (or length desired) from commencement.

Decrease once at each end of needle in next and every alternate row until 52 [B—52] sts. remain.

Work 1 row without shaping. Decrease once at each end of needle in every row until 32 [B—32] sts. remain. Cast off.

Work another Sleeve in same manner.

**SHOULDER PADS.**—See page 18.

**TO MAKE UP CARDIGAN.**—With a slightly damp cloth and warm iron, press lightly. Sew up side, shoulder and sleeve seams. Sew in sleeves, placing seam to seam. Sew pocket linings in position on wrong side. Join together bands from Fronts and sew to back of neck. Sew shoulder pads in position with pads in sleeves and double-thicknesses along shoulder seams. Sew on buttons to correspond with button-holes.

# Connie

(ILLUSTRATED OPPOSITE)

## MATERIALS:—

**PATONS AZALEA Crochet and Knitting Wool.**  
 Quantity . . . . . 7 ozs.  
 Knitting Needles . . . . . 1 pair each Nos. 10 and 12  
 Cotton Wool.  
 Five Press Studs.

## MEASUREMENTS:—

Length from top of shoulder . . . . . 18 ins.  
 Width all round at under-arm . . . . . 34 ins.  
 Length of sleeve from under-arm . . . . . 6 ins.

## ABBREVIATIONS:—See page 18.

**TENSION:**—To get these measurements it is absolutely necessary to work at a tension to produce 1 pattern to 2 inches in width. *Check tension—see page 18.*

**THE FRONT.**—Using No. 12 Needles, cast on 115 stitches.

**1st row.**—K.2, \* P.1, K.1, repeat from \* to last st., K.1.  
**2nd row.**—\* K.1, P.1, repeat from \* to last st., K.1.

Repeat 1st and 2nd rows seventeen times.

Using No. 10 Needles, proceed as follows:—

**\*\* 1st row.**—K.1, \* P.3, P.2 tog., K.3, wl. fwd., K.1, wl. fwd., K.3, P.2 tog., P.2, repeat from \* to last 2 sts., P.1, K.1.

**2nd and alternate rows.**—K.1, purl to last st., K.1.

**3rd row.**—K.1, \* P.2, P.2 tog., (K.3, wl. fwd.) twice, K.3, P.2 tog., P.1, repeat from \* to last 2 sts., P.1, K.1.

**5th row.**—K.1, \* P.1, P.2 tog., K.3, wl. fwd., K.5, wl. fwd., K.3, P.2 tog., repeat from \* to last 2 sts., P.1, K.1.

**7th row.**—K.1, P.2 tog., \* K.3, wl. fwd., K.7, wl. fwd., K.3, P.3 tog., repeat from \* to last 16 sts., K.3, wl. fwd., K.7, wl. fwd., K.3, P.2 tog., K.1.

**8th row.**—Like 2nd row. \*\*

Keeping continuity of pattern, as given from \*\* to \*\*, increase once at each end of needle in next and every following 8th row, until there are 131 sts. on needle.

Continue in pattern without shaping until 12 patterns have been worked from commencement.

Cast off 11 sts. at beginning of needle in each of next 2 rows, then decrease once at each end of needle in next and every alternate row, until 97 sts. remain.

Continue in pattern without shaping until 17 patterns have been worked from commencement.

Work 7 rows in pattern without shaping.

In next row, K.1, P.36, cast off 23 sts., purl to last st., K.1.

Work on last 37 sts. as follows:—

Continue in pattern, decreasing once at neck edge in every row until 32 sts. remain, then in every alternate row until 28 sts. remain.

Work 2 rows in pattern without shaping.

Shape for shoulder as follows:—

**1st row.**—Work in pattern to last 10 sts., turn.

**2nd and 4th rows.**—Work in pattern to end of row.



**3rd row.**—Work in pattern to last 20 sts., turn.  
**5th row.**—Like 2nd row. Cast off.  
 Join in wool at neck edge and work on remaining sts. to correspond with other side.

**THE BACK.**—Work exactly as given for Front until 15 patterns have been worked from commencement.  
 Work 7 rows in pattern without shaping.

In next row, K.1, P.47, place remaining sts. on a spare needle.  
 Cast on 5 sts. and work on these 53 sts. as follows:—  
**1st row.**—K.4, work in pattern to end of row.  
 Keeping 4 sts. in Garter Stitch at centre edge, work in pattern without shaping until arm-hole measures same as Front arm-hole, ending at neck edge.  
 Shape for shoulder as follows:—

**1st row.** — Work in pattern to last 10 sts., turn.  
**2nd and alternate rows.**—Work in pattern to last 4 sts., K.4.  
**3rd row.** — Work in pattern to last 20 sts., turn.  
**5th row.** — Work in pattern to last 28 sts., turn.  
**7th row.** — Work in pattern to end of row.  
 Cast off.  
 Join in wool at neck edge, cast on 4 sts. and work on these 53 sts. to correspond with other side.

**THE SLEEVES.** — Using No. 12 Needles, cast on 83 stitches.  
**1st row.**—Knit plain. Repeat 1st row eleven times.  
 Using No. 10 Needles, work from \*\* to \*\*, as given for Front, once.  
 Continue in pattern, increasing once at each end of needle in next and every following 4th row, until there are 101 sts. on needle.  
 Work 7 rows in pattern without shaping.  
 Decrease once at each end of needle in next and every alternate row until 53 sts. remain.  
 Cast off.  
 Work another Sleeve in same manner.

**THE NECK - BAND.**  
 — Sew up shoulder seams.  
 With right side of work facing, and using No. 12 Needles, knit up 116 sts. evenly round neck.  
**1st row.**—Knit plain. Repeat this row nine times.

[Continued on page 15.]



'CONNIE'  
 See page 8

# Lucille

(ILLUSTRATED ON FRONT COVER)

**MATERIALS:—**

**PATONS BEEHIVE Fingering, 4-ply.**

Quantity . . . . . 12 ozs.

Knitting Needles . . . . . 1 pair each Nos. 10 and 12

Cotton Wool.

Eight Buttons.

**MEASUREMENTS (to fit 35-36 in. bust):—**

Length from top of shoulder . . . . . 21 ins.

Length of sleeve from under-arm . . . . . 17½ ins.  
(or length desired)

**ABBREVIATIONS:—**See page 18.

**TENSION:—**To get these measurements it is absolutely necessary to work at a tension to produce 7½ stitches to the inch in width. *Check tension—see page 18.*

**THE LEFT FRONT.—**Using No. 10 Needles, cast on 67 stitches.

**1st row.—**Knit plain.

**2nd row.—**Slip 1, knit plain to end of row.

Repeat 1st and 2nd rows five times.

Proceed as follows:—

**\*\* 1st row.—**K.1, P.4, \* K.1, P.9, repeat from \* to last 12 sts., K.1, P.3, K.8.

**2nd row.—**Slip 1, K.10, \* P.1, K.9, repeat from \* to last 6 sts., P.1, K.5.

Repeat 1st and 2nd rows once.

**5th row.—**K.1, P.4, \* K.1, P.4, K.1, slip this st. back on to left-hand needle, cast on 4 sts., slip fifth, fourth, third and second sts. over first st. in turn, knit remaining st. (casting on and crossing over of these sts. will now be termed "Knot" throughout), P.4, K.1, P.9, repeat from \* once, K.1, P.4, "Knot," P.4, K.1, P.3, K.8.

**6th row.—**Slip 1, K.10, \* P.1, K.9, repeat from \* to last 6 sts., P.1, K.5.

**7th row.—**K.1, P.4, \* K.1, P.3, "Knot," P.1, "Knot," P.3, K.1, P.9, repeat from \* once, K.1, P.3, "Knot," P.1, "Knot," P.3, K.1, P.3, K.8.

Repeat 6th row once, 5th and 6th rows once, then 1st and 2nd rows twice.

**15th row.—**K.1, P.4, \* K.1, P.9, K.1, P.4, "Knot," P.4, repeat from \* once, K.1, P.9, K.1, P.3, K.8.

**16th row.—**Slip 1, K.10, \* P.1, K.9, repeat from \* to last 6 sts., P.1, K.5.

**17th row.—**K.1, P.4, K.1, P.9, K.1, \* P.3, "Knot," P.1, "Knot," P.3, K.1, P.9, K.1, repeat from \* once, P.3, K.8.

Repeat 16th row once, then 15th and 16th rows once. \*\*

Keeping continuity of pattern, as given from \*\* to \*\*, decrease once at beginning of needle in next and every following 8th row, until 63 sts. remain.

Work 13 rows in pattern without shaping.

Continue working in pattern, increasing once at beginning of needle in next and every following 8th row until there are 71 sts. on needle (working extra sts. in purl fabric).

Work 7 rows in pattern without shaping.

Cast off 8 sts. at beginning of needle in next row, then decrease once at beginning of needle in every alternate row until 56 sts. remain.

Work 42 rows in pattern without shaping.

In next row, Slip 1, K.7, leave these sts. on a spare needle, work in pattern to end of row.

Cast off 4 sts. at beginning of needle in every alternate row four times.

Work 7 rows in pattern without shaping.

Shape for shoulder as follows:—

**1st row.—**Work in pattern to last 11 sts., turn.

**2nd row.—**Work in pattern to end of row.

**3rd row.—**Work in pattern to last 22 sts., turn.

**4th row.—**Like 2nd row. Cast off.

**THE RIGHT FRONT.—**Work to correspond with Left Front, working border and shapings at opposite ends of needle and making a button-hole in 5th and 6th and every following 27th and 28th rows, until 7 button-holes have been worked from commencement.

To make a button-hole:—

**1st row.—**Slip 1, K.3, (wl. fwd.) twice, K.2 tog., work in pattern to end of row.

**2nd row.—**Work in pattern to last 6 sts. (counting (wl. fwd.) twice of previous row as 1 st.), K.6.

**THE PATTERN:—**

**1st row.—**Slip 1, K.7, P.3, \* K.1, P.9, repeat from \* to last 6 sts., K.1, P.4, K.1.

**2nd row.—**K.5, \* P.1, K.9, repeat from \* to last 2 sts., K.2.

Repeat 1st and 2nd rows once.

**5th row.—**Slip 1, K.7, P.3, \* K.1, P.4, "Knot," P.4, K.1, P.9, repeat from \* once, K.1, P.4, "Knot," (P.4, K.1) twice.

**6th row.—**K.5, \* P.1, K.9, repeat from \* to last 2 sts., K.2.

**7th row.—**Slip 1, K.7, P.3, \* K.1, P.3, "Knot," P.1, "Knot," P.3, K.1, P.9, repeat from \* once, K.1, P.3, "Knot," P.1, "Knot," P.3, K.1, P.4, K.1.

Repeat 6th row once, 5th and 6th rows once, then 1st and 2nd rows twice.

**15th row.—**Slip 1, K.7, P.3, \* K.1, P.9, K.1, P.4, "Knot," P.4, repeat from \* once, K.1, P.9, K.1, P.4, K.1.

**16th row.—**K.5, \* P.1, K.9, repeat from \* to last 2 sts., K.2.

**17th row.—**Slip 1, K.7, P.3, K.1, P.9, K.1, \* P.3, "Knot," P.1, "Knot," P.3, K.1, P.9, K.1, repeat from \* once, P.4, K.1.

Repeat 16th row once, then 15th and 16th rows once. \*\*

**THE BACK.—**Using No. 10 Needles, cast on 121 stitches.

**1st row.—**Knit plain.

Repeat 1st row eleven times.

Proceed as follows:—

**\*\* 1st row.—**K.1 P.4, \* K.1, P.9, repeat from \* to last 6 sts., K.1, P.4, K.1.

**2nd row.—**K.5, \* P.1, K.9, repeat from \* to last 6 sts., P.1, K.5.

Repeat 1st and 2nd rows once.

**5th row.**—K.1, P.4, \* K.1, P.4, "Knot," P.4, K.1, P.9, repeat from \* to last 16 sts., K.1, P.4, "Knot," (P.4, K.1) twice.

**6th row.**—K.5, \* P.1, K.9, repeat from \* to last 6 sts., P.1, K.5.

**7th row.**—K.1, P.4, \* K.1, P.3, "Knot," P.1, "Knot," P.3, K.1, P.9, repeat from \* to last 16 sts., K.1, P.3, "Knot," P.1, "Knot," P.3, K.1, P.4, K.1.

Repeat 6th row once, 5th and 6th rows once, then 1st and 2nd rows twice.

**15th row.**—K.1, P.4, \* K.1, P.9, K.1, P.4, "Knot," P.4, repeat from \* to last 16 sts., K.1, P.9, K.1, P.4, K.1.

**16th row.**—K.5, \* P.1, K.9, repeat from \* to last 6 sts., P.1, K.5.

**17th row.**—K.1, P.4, \* K.1, P.9, K.1, P.3, "Knot," P.1, "Knot," P.3, repeat from \* to last 16 sts., K.1, P.9, K.1, P.4, K.1.

Repeat 16th row once, then 15th and 16th rows once. \*\*

Keeping continuity of pattern, as given from \*\* to \*\*, decrease once at each end of needle in next and every following 8th row, until 113 sts. remain.

Work 13 rows in pattern without shaping.

Continue working in pattern, increasing once at each end of needle in next and every following 8th row, until there are 129 sts. on needle (working extra sts. in purl fabric).

Work 7 rows in pattern without shaping.

Cast off 8 sts. at beginning of needle in each of next 2 rows, then decrease once at each end of needle in next and every alternate row until 99 sts. remain.

Continue in pattern without shaping until arm-holes measure same as Front arm-holes.

Shape for shoulders as follows:—

**1st and 2nd rows.**—Work in pattern to last 11 sts., turn.

**3rd and 4th rows.**—Work in pattern to last 22 sts., turn.

**5th and 6th rows.**—Work in pattern to last 32 sts., turn.

**7th row.**—Work in pattern to end of row. Cast off.

**THE SLEEVES.**—Using No. 10 Needles, cast on 55 stitches.

**1st row.**—Knit plain.

Repeat 1st row eleven times.

**13th row.**—K.1, P.1, \* K.1, P.9, repeat from \* to last 3 sts., K.1, P.1, K.1.

**14th row.**—K.2, P.1, \* K.9, P.1, repeat from \* to last 2 sts., K.2.

Repeat 13th and 14th rows once.

**17th row.**—K.1, P.1, \* K.1, P.4, "Knot," P.4, K.1, P.9, repeat from \* once, K.1, P.4, "Knot," P.4, K.1, P.1, K.1.

**18th row.**—K.2, P.1, \* K.9, P.1, repeat from \* to last 2 sts., K.2.

**19th row.**—K.1, P.1, \* K.1, P.3, "Knot," P.1, "Knot," P.3, K.1, P.9, repeat from \* once, K.1, P.3, "Knot," P.1, "Knot," P.3, K.1, P.1, K.1.

Repeat 18th row once, then 17th and 18th rows once.

Keeping continuity of pattern, increase once at each end of needle in 11th row (33rd row from commencement) and every following 8th row, until there are 75 sts. on needle, then in every 6th row, until there are 95 sts. on needle (working extra sts. in purl fabric).

Continue in pattern without shaping until work measures 17½ ins. (or length desired) from commencement.

Decrease once at beginning of needle in every row, until 35 sts. remain. Cast off.

Work another Sleeve in same manner.

**THE NECK-BAND.**—Sew up shoulder seams.

With right side of work facing, and using No. 12 Needles, slip 8 sts. from Right Front spare needle, join in wool and knit up 76 sts. evenly round neck, K.8 from Left Front spare needle (92 sts.).

**1st row.**—Slip 1, knit plain to end of row.

Repeat 1st row eight times.

**10th row.**—Slip 1, K.3, (wl. fwd.) twice, K.2 tog., knit plain to end of row.

**11th row.**—Knit plain (working (wl. fwd.) twice of previous row as 1 st.).

Repeat 1st row three times. Cast off.

**SHOULDER PADS.**—See page 18.

**TO MAKE UP COAT-JUMPER.**—With a slightly damp cloth and warm iron, press lightly. Sew up side and sleeve seams. Sew in sleeves, placing seam to seam. Sew shoulder pads in position with pads in sleeves and double-thicknesses along shoulder seams. Sew on buttons to correspond with button-holes.

# Penny

(IN TWO SIZES—ILLUSTRATED ON PAGE 12 AND BACK COVER)

**MATERIALS:—**

**PATONS BEEHIVE Fingering, 4-ply.**

Quantities—	[A]	[B]
The Jumper . . . . .	8 ozs.	9 ozs.
The Cardigan . . . . .	9 ozs.	10 ozs.

Knitting Needles . . . 1 pair each Nos. 8, 10, and 12  
Cotton Wool.  
A Medium Sized Crochet Hook.  
Seven Buttons.

**MEASUREMENTS:—**

The Jumper:	[A]	[B]
Length from top of shoulder ..	19 ins.	19½ ins.
Width all round at under-arm ..	33 ins.	35 ins.
Length of sleeve from under-arm	5 ins.	5½ ins.

The Cardigan :	[A]	[B]
Length from top of shoulder ..	19½ ins.	20 ins.
Width all round at under-arm ..	35 ins.	37 ins.
Length of sleeve from under-arm	18 ins.	18 ins.

(or length desired)

**ABBREVIATIONS:—**See page 18.

**TENSION:—**To get these measurements it is absolutely necessary to work at a tension to produce 7½ stitches to the inch in width (measured over plain, smooth fabric).

**Check tension—see page 18.**

Instructions are written for smaller size [A]. Instructions for larger size [B] are written in brackets, thus [B— . . .].

**THE JUMPER.**

**THE FRONT.**—Using No. 12 Needles, cast on 112 [B—120] stitches.

**1st row.**—K.2, \* P.1, K.1, repeat from \* to end of row. Repeat 1st row thirty-seven times.

Using No. 10 Needles, proceed as follows:—  
\*\* 1st row.—Knit plain.

**2nd row.**—K.1, purl to last st., K.1.

**3rd row.**—K.31 [B—K.35], \* slip next 5 sts. on to a spare needle and hold in front of next 5 sts. on left-hand needle, then knit together 1 st. from spare needle and 1 st. from left-hand needle (working of these 10 sts. will now be termed "Twist A" throughout), repeat from \* four times, K.31 [B—K.35].

**4th row.**—K.1, P.30 [B—P.34], \* pick up and purl loop before next st., P.1, repeat from \* to last 31 [B—35] sts., P.30 [B—P.34], K.1.

Repeat 1st and 2nd rows twice.

**9th row.**—K.31 [B—K.35], \* slip next 5 sts. on to a spare needle and hold at back of next 5 sts. on left-hand needle, then knit together 1 st. from left-hand needle and 1 st. from spare needle (working of these 10 sts. will now be termed "Twist B" throughout), repeat from \* four times, K.31 [B—K.35].

Repeat 4th row once, then 1st and 2nd rows once. \*\*

Keeping continuity of pattern, as given from \*\* to \*\*, increase once at each end of needle in next and every following 8th row, until there are 126 [B—134] sts. on needle.

Work 21 [B—21] rows in pattern without shaping.

Cast off 8 [B—9] sts. at beginning of needle in each of next 2 rows, then decrease once at each end of needle in next and every alternate row, until 92 [B—92] sts. remain.

Work 7 rows [B—1] row without shaping.

Using No. 8 Needles, proceed as follows:—

\*\*\* 1st row.—Knit plain.

**2nd row.**—K.1, purl to last st., K.1.

**3rd row.**—K.1, \* "Twist A," repeat from \* to last st., K.1.

**4th row.**—K.1, \* pick up and purl loop before next st., P.1, repeat from \* to last st., K.1.

Repeat 1st and 2nd rows twice.

**9th row.**—K.1, \* "Twist B," repeat from \* to last st., K.1.

Repeat 4th row once, then 1st and 2nd rows once. \*\*\*

Continue working in pattern, as given from \*\*\* to \*\*\* without shaping, until work measures 18½ [B—19] ins. from commencement.

Shape for shoulders as follows:—

**1st and 2nd rows.**—Work in pattern to last 7 [B—7] sts., turn.

**3rd and 4th rows.**—Work in pattern to last 14 [B—14] sts., turn.

**5th and 6th rows.**—Work in pattern to last 21 [B—21] sts., turn.

**7th and 8th rows.**—Work in pattern to last 28 [B—28] sts., turn.

**9th row.**—Work in pattern to end of row.

**10th and 11th rows.**—Cast off 28 [B—28] sts., work in pattern to end of row.

Work 6 rows in plain, smooth fabric on remaining 36 sts., increasing once at each end of needle in every row. Cast off.



**THE BACK.**—Using No. 12 Needles, cast on 112 [B—120] stitches.

**1st row.**—K.2, \* P.1, K.1, repeat from \* to end of row.

Repeat 1st row thirty-seven times.

Using No. 10 Needles, proceed as follows:—

**1st row.**—Knit plain.

**2nd row.**—K.1, purl to last st., K.1.

Repeat 1st and 2nd rows five times.

Continue working in plain, smooth fabric, increasing once at each end of needle in next and every following 8th row, until there are 126 [B—134] sts. on needle.

Work 21 [B—21] rows without shaping.

Cast off 8 [B—9] sts. at beginning of needle in each of next 2 rows, then decrease once at each end of needle in next and every alternate row, until 92 [B—92] sts. remain.

Continue without shaping until arm-holes measure same as Front arm-holes.

Shape for shoulders as follows:—

**1st and 2nd rows.**—Work to last 7 [B—7] sts., turn.

**3rd and 4th rows.**—Work to last 14 [B—14] sts., turn.

**5th and 6th rows.**—Work to last 21 [B—21] sts., turn.

**7th and 8th rows.**—Work to last 28 [B—28] sts., turn.

**9th row.**—Work to end of row.

**10th and 11th rows.**—Cast off 28 [B—28] sts., work to end of row.

Work 6 rows in plain, smooth fabric on remaining 36 sts., increasing once at each end of needle in every row. Cast off.

**THE SLEEVES.**—Using No. 12 Needles, cast on 80 [B—84] stitches.

**1st row.**—K.2, \* P.1, K.1, repeat from \* to end of row. Repeat 1st row for 1½ ins.

Using No. 10 Needles, proceed as follows:—

[A] **1st row.**—Increase once in first st., K.1, (increase once in next st., K.1) nine times, K.40, (K.1, increase once in next st.) nine times, K.1, increase once in last st. (100 sts.).

[B] **1st row.**—K.2, (increase once in next st., K.1) ten times, K.40, (K.1, increase once in next st.) ten times, K.2 (104 sts.).

**2nd row.**—K.1, purl to last st., K.1.

**\*\* 3rd row.**—K.30 [B—K.32], ("Twist A") four times, K.30 [B—K.32].

**4th row.**—K.1, P.29, [B—P.31], \* pick up and purl loop before next st., P.1, repeat from \* to last 30 [B—32] sts., P.29 [B—P.31], K.1.

**5th row.**—Knit plain.

**6th row.**—K.1, purl to last st., K.1.

Repeat 5th and 6th rows once.

**9th row.**—K.30 [B—K.32], ("Twist B") four times, K.30 [B—K.32].

**10th row.**—K.1, P.29, [B—P.31], \* pick up and purl loop before next st., P.1, repeat from \* to last 30 [B—32] sts., P.29 [B—P.31], K.1.

Repeat 5th and 6th rows twice. \*\*

Keeping continuity of pattern, as given from \*\* to \*\*, increase once at each end of needle in next and every following 8th row, until there are 106 [B—110] sts. on needle.

Continue without shaping until work measures 5 [B—5½] ins. from commencement.

Cast off 3 [B—4] sts. at beginning of needle in each of next 2 rows.

Decrease once at each end of needle in next and every alternate row until 50 [B—52] sts. remain, then in every row until 40 sts. remain. Cast off.

Work another Sleeve in same manner.

**SHOULDER PADS.**—See page 18.

**TO MAKE UP JUMPER.**—With a slightly damp cloth and warm iron, press lightly. Sew up side and sleeve seams. Sew up shoulder seams for 2 ins. from arm-hole edges. Sew in sleeves, placing seam to seam. Fold back facing at neck and sew in position on wrong side. Sew shoulder pads in position with pads in sleeves and double thicknesses along shoulder seams. Using Crochet Hook, work 1 button-hole loop on each front shoulder. Sew on buttons to correspond with loops.

**THE CARDIGAN.**

**THE LEFT FRONT.**—Using No. 12 Needles, cast on 62 [B—66] stitches.

**1st row.**—\* K.1, P.1, repeat from \* to last 2 sts., K.2.

Repeat 1st row thirty-seven times.

Using No. 10 Needles, proceed as follows:—

**1st row.**—Knit plain to last 10 sts., (K.1, P.1) four times, K.2.

**2nd row.**—K.2, (K.1, P.1) five times, purl to last st., K.1.

Continue working in plain, smooth fabric, keeping border of 10 sts. in rib at front edge, increasing once at beginning of needle in next and every following 8th row, until there are 70 [B—74] sts. on needle.

Work 5 [B—5] rows without shaping.

Continue working in plain, smooth fabric and keeping border of 10 sts. in rib at front edge, increase once at beginning of needle in 3rd row, whilst at same time decreasing once (inside border) in next and every following 6th row three times (67 [B—71] sts.).

Work 1 [B—1] row without shaping.

Cast off 8 [B—9] sts. at beginning of needle in next row.

Decrease once at beginning of needle in every alternate row eleven times, whilst at same time decreasing once at front edge (inside border) in 4th and every following 6th row three times (44 [B—47] sts.).

Continue decreasing once at front edge (inside border) in every 6th row, until 38 [B—40] sts. remain.

Work 4 [B—4] rows without shaping.

Shape for shoulder as follows:—

**1st row.**—Work to last 7 [B—8] sts., turn.

**2nd and 4th rows.**—Work to end of row.

**3rd row.**—Work to last 14 [B—16] sts., turn.

**5th row.**—Work to last 21 [B—24] sts., turn.

**6th and 7th rows.**—Like 2nd row.

8th row.—Cast off 28 [B—30] sts., work in rib to end of row.

Work 2½ ins. in rib of (K.1, P.1) on remaining 10 sts. Cast off.

**THE RIGHT FRONT.**—Work to correspond with Left Front, working border and shapings at opposite ends of needle and making a button-hole in 7th and 8th, following 27th and 28th, and every following 21st and 22nd rows three times (5 button-holes).

To make a button-hole:—

1st row.—K.2, P.1, K.1, P.1, cast off 2 sts., work to end of row.

2nd row.—Work to last 5 sts., cast on 2 sts., (K.1, P.1) twice, K.1.

**THE BACK.**—Using No. 12 Needles, cast on 110 [B—118] stitches.

1st row.—K.2, \* P.1, K.1, repeat from \* to end of row.

Repeat 1st row thirty-seven times.

Using No. 10 Needles, proceed as follows:—

1st row.—Knit plain.

2nd row.—K.1, purl to last st., K.1.

Continue working in plain, smooth fabric, increasing once at each end of needle in next and every following 8th row, until there are 128 [B—136] sts. on needle.

Work 17 [B—17] rows without shaping.

Cast off 8 [B—9] sts. at beginning of needle in each of next 2 rows, then decrease once at each end of needle in next and every alternate row, until 90 [B—96] sts. remain.

Continue working in plain, smooth fabric without shaping, until arm-holes measure same as Front arm-holes.

Shape for shoulders as follows:—

1st and 2nd rows.—Work to last 7 [B—8] sts., turn.

3rd and 4th rows.—Work to last 14 [B—16] sts., turn.

5th and 6th rows.—Work to last 21 [B—24] sts., turn.

7th and 8th rows.—Work to last 28 [B—30] sts., turn.

9th row.—Work to end of row. Cast off.

**THE SLEEVES.**—Using No. 12 Needles, cast on 56 [B—60] stitches.

1st row.—K.2, \* P.1, K.1, repeat from \* to end of row.

Repeat 1st row for 3 ins.

Using No. 10 Needles, proceed as follows:—

1st row.—Knit plain.

2nd row.—K.1, purl to last st., K.1.

Continue working in plain, smooth fabric, increasing once at each end of needle in next and every following 8th row, until there are 90 [B—94] sts. on needle.

Continue without shaping until work measures 18 [B—18] ins. (or length desired) from commencement. Decrease once at each end of needle in next and every alternate row until 30 [B—34] sts. remain.

Cast off.

Work another Sleeve in same manner.

**TO MAKE UP CARDIGAN.**—With a slightly damp cloth and warm iron, press lightly. Sew up side, shoulder and sleeve seams. Sew in sleeves, placing seam to seam. Join together bands from Fronts and sew to back of neck. Sew on buttons to correspond with button-holes.

## Diana *(continued from page 3)*

Break off both balls of Brown Wool and ball of Green Wool.

Join in Green Wool and work in plain, smooth fabric, decreasing once at each end of needle in every row, until 112 sts. remain, then decrease once at each end of needle in every alternate row, until 102 sts. remain.

Work 1 row without shaping.

Break off Green Wool. Join in Lemon Wool.

Proceed as follows:—

1st row.—K.20 Lemon, join in Green Wool, K.14 Green. Join in another ball of Lemon Wool, K.68 Lemon.

2nd row.—K.2, (P.1, K.1) thirty-three times Lemon, P.14 Green, K.1, (P.1, K.1) nine times, K.1 Lemon.

Continue working in ribbed pattern and plain, smooth fabric stripe, until work measures 19½ ins. from commencement, ending with wrong side facing.

In next row, work 36 sts., cast off 30 sts., work to end of row.

Continue in ribbed pattern on last 36 sts., decreasing once at beginning of needle in every alternate row, until 33 sts. remain.

Continue without shaping until work measures 20½ ins. from commencement, ending at neck edge.

Shape for shoulder as follows:—

1st row.—Work to last 11 sts., turn.

2nd row.—Work to end of row.

3rd row.—Work to last 22 sts., turn.

4th row.—Like 2nd row. Cast off.

Join in wool at neck edge, and, keeping continuity of plain, smooth fabric stripe and ribbed pattern, work to correspond with other side.

**THE BACK.**—Using No. 10 Needles and Brown Wool, cast on 130 stitches.

1st row.—(Wrong side of work), K.2, (P.1, K.1) sixteen times, join in Green Wool, P.14 Green, join in another ball of Brown Wool, (K.1, P.1) forty times, K.2 Brown.

2nd row.—(K.1, P.1) forty-one times Brown, K.14 Green, P.1, (K.1, P.1) sixteen times, K.1 Brown.

Keeping continuity of ribbed pattern, and plain, smooth fabric stripe, work to correspond with Front until arm-hole shapings have been completed (102 sts.).

Work 1 row without shaping.

Break off Green Wool, join in Lemon Wool.

Proceed as follows:—

1st row.—K.68 Lemon, join in Green Wool, K.14 Green, join in another ball of Lemon Wool, K.20 Lemon.

Keeping continuity of ribbed pattern, and plain, smooth fabric stripe, continue without shaping until arm-holes measure same as Front arm-holes.

Shape for shoulders as follows:—

1st and 2nd rows.—Work to last 11 sts., turn.

3rd and 4th rows.—Work to last 22 sts., turn.

5th and 6th rows.—Work to last 33 sts., turn.

7th row.—Work to end of row. Cast off.

# Christine

(WITH LONG OR SHORT SLEEVES—ILLUSTRATED AT LEFT ON PAGE 19)

**THE SHORT SLEEVES.**—Using No. 10 Needles and Lemon Wool, cast on 83 stitches.

**1st row.**—K.2, \* P.1, K.1, repeat from \* to last st., K.1.

**2nd row.**—\* K.1, P.1, repeat from \* to last st., K.1.

Repeat 1st and 2nd rows once.

Continue in ribbed pattern, increasing once at each end of needle in next and every following 4th row, until there are 102 sts. on needle.

Continue without shaping until work measures 5 ins (or length desired) from commencement.

\*\* Cast off 2 sts. at beginning of each of next 2 rows, then decrease once at each end of needle in next and every alternate row, until 51 sts. remain.

Work 1 row without shaping.

Cast off 6 sts. at beginning of each of next 4 rows.

Cast off. \*\*

Work another Sleeve in same manner.

**THE LONG SLEEVES.**—Using No. 12 Needles and Lemon Wool, cast on 65 stitches.

**1st row.**—K.2, \* P.1, K.1, repeat from \* to last st., K.1.

**2nd row.**—\* K.1, P.1, repeat from \* to last st., K.1.

Repeat 1st and 2nd rows twelve times.

Using No. 10 Needles, continue in ribbed pattern, increasing once at each end of needle in 7th and every following 6th row, until there are 103 sts. on needle.

Continue without shaping, until work measures 17½ ins. (or length desired) from commencement.

Work from \*\* to \*\*, as given for Short Sleeves.

Work another Sleeve in same manner.

**THE NECK-BAND.**—Sew up right shoulder seam. With right side of work facing, using No. 12 Needles and Lemon Wool, knit up 104 sts. evenly round neck.

**1st row.**—K.1, \* w.r.n., P.2 tog., repeat from \* to last st., K.1.

**2nd row.**—K.2, \* P.1, K.1, repeat from \* to end of row. Repeat 2nd row seven times. Cast off.

**SHOULDER PADS.**—See page 18.

**TO MAKE UP JUMPER.**—With a slightly damp cloth and warm iron, press lightly. Sew up side and sleeve seams. Sew up left shoulder seam for 2½ ins. Sew in sleeves, placing seam to seam. Using Crochet Hook and matching wools, work 1 row of d.c. along shoulder opening. Sew shoulder pads in position, with pads in sleeves and double-thicknesses along shoulder seams. Sew press studs in position on shoulder opening.

## Connie (continued from page 9)

**11th row.**—K.15, \* K.2 tog., K.10, repeat from \* to last 5 sts., K.5.

**12th row.**—K.12, \* K.2 tog., K.7, repeat from \* to last 6 sts., K.6. Cast off.

**SHOULDER PADS.**—See page 18.

**TO MAKE UP JUMPER.**—With a slightly damp cloth and warm iron, press lightly. Sew up side and sleeve seams. Sew in sleeves, placing seam to seam. Turn back facing on right side of centre back and sew in position on wrong side. Sew shoulder pads in position, with pads in sleeves, and double-thicknesses along shoulder seams. Sew press studs in position.

**MATERIALS:**—

**PATONS AZALEA Crochet and Knitting Wool.**

Quantities—

Long Sleeves . . . . . 9 ozs.

Short Sleeves . . . . . 8 ozs.

Knitting Needles . . . . . 1 pair each Nos. 10 and 12

Cotton Wool. . . . . 1 set of four No. 12

**MEASUREMENTS** (to fit 34-35 in. bust):—

Length from top of shoulder . . . . . 21½ ins.

Length of sleeve from under-arm—

Long . . . . . 17½ ins.

(or length desired)

Short . . . . . 5 ins.

(or length desired)

**ABBREVIATIONS:**—See page 18.

**TENSION:**—To get these measurements it is absolutely necessary to work at a tension to produce 8 stitches to the inch in width. *Check tension—see page 18.*

**NOTE.**—When casting on stitches, it is advisable to use two needles. This will give a loose edge for knitting up hem.

**THE FRONT.**—Using No. 10 Needles, cast on 126 stitches.

**1st row.**—K.1, P.24, (K.6, P.8) twice, K.6, purl to last st., K.1.

**2nd row.**—K.67, (P.6, K.8) twice, P.6, knit plain to end of row.

Repeat 1st and 2nd rows nine times.

Repeat 1st row, working corresponding sts. of cast-on edge with each st. to form a hem.

Repeat 2nd row once, then 1st and 2nd rows four times. Keeping continuity of pattern, decrease once at each end of needle in next and every following 6th row, until 110 sts. remain.

Work 7 rows without shaping.

Increase once at each end of needle in next and every following 6th row until there are 124 sts. on needle.

Work 5 rows without shaping.

Proceed as follows:—

**1st row.**—Increase once in first st., P.23, (K.6, P.8) three times, K.56, increase once in next st., K.1.

**2nd row.**—K.1, P.58, (K.8, P.6) three times, K.25.

**3rd row.**—K.1, P.24, (K.6, P.8) three times, K.59.

**4th row.**—K.1, P.58, (K.8, P.6) three times, K.25.

Repeat 3rd and 4th rows once.

**7th row.**—Increase once in first st., P.24, (K.6, P.8) three times, K.57, increase once in next st., K.1.

**8th row.**—K.1, P.59, (K.8, P.6) three times, K.26.

9th row.—K.1, P.25, (K.6, P.8) three times, K.6, P.53, K.1.  
 10th row.—K.54, (P.6, K.8) three times, P.6, K.26.  
 Repeat 9th and 10th rows once.  
 13th row.—Increase once in first st., P.25, (K.6, P.8) three times, K.6, P.52, increase once in next st., K.1.  
 14th row.—K.55, (P.6, K.8) three times, P.6, K.27.  
 15th row.—K.1, P.26, (K.6, P.8) three times, K.6, P.54, K.1.  
 16th row.—K.55, (P.6, K.8) three times, P.6, K.27.  
 Repeat 15th and 16th rows once.  
 19th row.—Increase once in first st., P.26, (K.6, P.8) four times, K.45, increase once in next st., K.1.  
 20th row.—K.1, P.47, (K.8, P.6) four times, K.28.  
 21st row.—K.1, P.27, (K.6, P.8) four times, K.48.  
 22nd row.—K.1, P.47, (K.8, P.6) four times, K.28.  
 Repeat 21st and 22nd rows once.  
 25th row.—Increase once in first st., P.27, (K.6, P.8) four times, K.46, increase once in next st., K.1.  
 26th row.—K.1, P.48, (K.8, P.6) four times, K.29.  
 27th row.—K.1, P.28, (K.6, P.8) four times, K.6, P.42, K.1.  
 28th row.—K.43, (P.6, K.8) four times, P.6, K.29.  
 Repeat 27th and 28th rows four times.  
 37th row.—K.35, (P.8, K.6) four times, P.8, K.35.  
 38th row.—K.1, P.34, (K.8, P.6) four times, K.8, P.34, K.1.  
 Repeat 37th and 38th rows three times.  
 45th row.—K.1, P.42, (K.6, P.8) four times, K.6, P.28, K.1.  
 46th row.—K.29, (P.6, K.8) four times, P.6, K.43.  
 Repeat 45th and 46th rows three times.  
 53rd row.—Cast off 10 sts., P.33, (K.6, P.8) four times, K.6, P.28, K.1.  
 54th row.—Cast off 10 sts., K.19, (P.6, K.8) four times, P.6, K.33.  
 Proceed as follows:—  
 1st row.—K.2 tog., K.37, (P.8, K.6) four times, P.17, K.2 tog.  
 2nd row.—K.18, (P.6, K.8) four times, P.37, K.1.  
 3rd row.—K.2 tog., K.36, (P.8, K.6) four times, P.16, K.2 tog.  
 4th row.—K.17, (P.6, K.8) four times, P.36, K.1.  
 5th row.—K.2 tog., K.35, (P.8, K.6) four times, P.15, K.2 tog.  
 6th row.—K.16, (P.6, K.8) four times, P.35, K.1.  
 7th row.—K.2 tog., K.34, (P.8, K.6) four times, P.14, K.2 tog.  
 8th row.—K.15, (P.6, K.8) four times, P.34, K.1.  
 9th row.—K.2 tog., P.41, (K.6, P.8) three times, K.6, P.13, K.2 tog.  
 10th row.—K.14, (P.6, K.8) three times, P.6, K.42.  
 11th row.—K.2 tog., P.40, (K.6, P.8) three times, K.6, P.12, K.2 tog.  
 12th row.—K.13, (P.6, K.8) three times, P.6, K.41.  
 13th row.—K.2 tog., P.39, (K.6, P.8) three times, K.6, P.11, K.2 tog.  
 14th row.—K.12, (P.6, K.8) three times, P.6, K.40.  
 15th row.—K.2 tog., P.38, (K.6, P.8) three times, K.6, P.10, K.2 tog.  
 16th row.—K.11, (P.6, K.8) three times, P.6, K.39.  
 17th row.—K.2 tog., P.37, (K.6, P.8) three times, K.6, P.9, K.2 tog.  
 18th row.—K.10, (P.6, K.8) three times, P.6, K.38.  
 19th row.—K.2 tog., K.42, (P.8, K.6) three times, P.8, K.2 tog. (94 sts.).  
 20th row.—K.9, (P.6, K.8) three times, P.42, K.1.  
 21st row.—K.43, (P.8, K.6) three times, P.8, K.1.

22nd row.—K.9, (P.6, K.8) three times, P.42, K.1.  
 Repeat 21st and 22nd rows twice.  
 27th row.—K.1, P.50, (K.6, P.8) three times, K.1.  
 28th row.—K.9, (P.6, K.8) twice, P.6, K.51.  
 Repeat 27th and 28th rows five times.  
 In next row, K.1, P.35, turn; leave remaining sts. on a spare needle.  
 Continue working in purl fabric, decreasing once at neck edge in every alternate row, until 32 sts. remain.  
 Work 16 rows in purl fabric without shaping.  
 Shape for shoulder as follows:—  
 1st row.—Work to last 7 sts., turn.  
 2nd and alternate rows.—Work to end of row.  
 3rd row.—Work to last 14 sts., turn.  
 5th row.—Work to last 20 sts., turn.  
 7th row.—Work to last 26 sts., turn.  
 8th row.—Like 2nd row. Cast off.  
 Leave next 22 sts. on a spare needle, join in wool, and, keeping continuity of stripes, work on remaining sts. to correspond with other side.

**THE BACK.**—Using No. 10 Needles, cast on 126 stitches.

1st row.—K.1, purl to last st., K.1.  
 2nd row.—Knit plain.  
 Repeat 1st and 2nd rows nine times.  
 Repeat 1st row, working corresponding sts. of cast-on edge with each st. to form a hem.  
 Repeat 2nd row once, then 1st and 2nd rows four times.  
 Decrease once at each end of needle in next and every following 6th row, until 110 sts. remain.  
 Work 7 rows without shaping.  
 Increase once at each end of needle in next and every following 6th row, until there are 134 sts. on needle.  
 Work 11 rows without shaping.  
 Proceed as follows:—  
 1st row.—Knit plain.  
 2nd row.—K.1, purl to last st., K.1.  
 Repeat 1st and 2nd rows three times.  
 9th row.—K.1, purl to last st., K.1.  
 10th row.—Knit plain.  
 Repeat 9th and 10th rows three times.  
 17th row.—Cast off 10 sts., purl to last st., K.1.  
 18th row.—Cast off 10 sts., knit plain to end of row.  
 Work 8 rows in plain, smooth fabric, decreasing once at each end of needle in next and every alternate row (106 sts.).  
 Work 10 rows in purl fabric, decreasing once at each end of needle in next and every alternate row.  
 Work 8 rows in plain, smooth fabric, decreasing once at each end of needle in next row (94 sts.).  
 Continue working in purl fabric until arm-holes measure same as Front arm-holes.  
 Shape for shoulders as follows:—  
 1st and 2nd rows.—Work to last 7 sts., turn.  
 3rd and 4th rows.—Work to last 14 sts., turn.  
 5th and 6th rows.—Work to last 20 sts., turn.  
 7th and 8th rows.—Work to last 26 sts., turn.  
 9th and 10th rows.—Work to last 32 sts., turn.  
 11th row.—Work to end of row. Cast off.

**THE LONG SLEEVES.**—Using No. 12 Needles, cast on 54 stitches.

1st row.—K.2, \* P.1, K.1, repeat from \* to end of row.  
 Repeat 1st row thirty-five times.  
 Using No. 10 Needles, proceed as follows:—  
 1st row.—K.1, purl to last st., K.1.  
 2nd row.—Knit plain.



Continue working in purl fabric, increasing once at each end of needle in 7th and every following 8th row, until there are 74 sts. on needle, then in every 6th row, until there are 94 sts. on needle.

Continue without shaping until work measures 17½ ins. (or length desired) from commencement.

\*\* Decrease once at each end of needle in next and every alternate row until 32 sts. remain. Cast off. \*\*  
Work another Sleeve in same manner.

**THE SHORT SLEEVES.**—Using No. 12 Needles, cast on 84 stitches.

**1st row.**—K.2, \* P.1, K.1, repeat from \* to end of row. Repeat 1st row eleven times.

Using No. 10 Needles, proceed as follows:—

**1st row.**—K.1, purl to last st., K.1.

**2nd row.**—Knit plain.

Continue working in purl fabric, increasing once at each end of needle in 5th and every following 6th row, until there are 94 sts. on needle.

Continue without shaping until work measures 5 ins. (or length desired) from commencement.

Work from \*\* to \*\* as given for Long Sleeves.

Work another Sleeve in same manner.

**THE NECK-BAND.**—Sew up shoulder seams.

With right side of work facing, and using four No. 12 Needles, knit up 124 sts. evenly round neck.

**1st round.**—\* K.1, P.1, repeat from \* to end of round.

Repeat 1st round eleven times. Cast off in rib.

**SHOULDER PADS.**—See page 18.

**TO MAKE UP JUMPER.**—With a slightly damp cloth and warm iron, press lightly. Sew up side and sleeve seams. Sew in sleeves, placing seam to seam. Sew shoulder pads in position with pads in sleeves and double-thicknesses along shoulder seams.

## Marion

(ILLUSTRATED AT RIGHT ON PAGE 19)

**MATERIALS:**—

**PATONS TOTEM Knitting Wool.**

Quantity . . . . . 1 lb. 2 ozs.

Knitting Needles . . . . . 1 pair No. 7

Cotton Wool.

Four Buttons.

**MEASUREMENTS:**—

Length from top of shoulder . . . . . 23½ ins.

Width all round at under-arm . . . . . 35 ins.

Length of sleeve from under-arm . . . . . 17½ ins.  
(or length desired)

**ABBREVIATIONS:**—See page 18.

**TENSION:**—To get these measurements it is absolutely necessary to work at a tension to produce 6 stitches to the inch in width. *Check tension—see page 18.*

**THE LEFT FRONT.**—Cast on 57 stitches.

\*\* 1st row.—\* K.1, P.1, repeat from \* to last 7 sts., K.7.

**2nd row.**—K.1, P.1, K.4, P.1, \* K.1, P.1, repeat from \* to last 2 sts., K.2.

**3rd row.**—K.1, \* K.1, P.1, repeat from \* to last 8 sts., K.8.

**4th row.**—K.1, P.1, K.4, P.1, \* P.1, K.1, repeat from \* to end of row. \*\*

Repeat from \*\* to \*\* six times, then 1st and 2nd rows once.

Keeping continuity of pattern, as given from \*\* to \*\*, decrease once at beginning of needle in next and every following 8th row, until 53 sts. remain.

Work 7 rows without shaping.

Continue working in pattern, increasing once at beginning of needle in next and every following 8th row, until there are 58 sts. on needle.

Work 15 rows without shaping.

Cast off 5 sts. at beginning of needle in next row, then decrease once at beginning of needle in following alternate row (52 sts.).

Work 1 row without shaping.

Continue decreasing once at beginning of needle in next and every alternate row six times, whilst at same time decreasing once at front edge (inside border of 7 sts.) in next and every following 4th row three times (41 sts.).

Continue decreasing once (inside border) in every 4th row, until 32 sts. remain.

Shape for shoulder as follows:—

**1st row.**—Work in pattern to last 6 sts., turn.

**2nd row.**—Work in pattern to end of row.

**3rd row.**—Work in pattern to last 12 sts., turn.

**4th row.**—Work in pattern to last 9 sts., K.2 tog., K.7.

**5th row.**—Work in pattern to last 18 sts., turn.

**6th and 7th rows.**—Work in pattern to end of row.

**8th row.**—Cast off 23 sts., work in pattern to end of row.

**9th row.**—K.1, P.1, K.4, P.1, K.1.

**10th row.**—Knit plain.

Repeat 9th and 10th rows for 2 ins. Cast off.

**THE RIGHT FRONT.**—Work to correspond with Left Front, working border and shapings at opposite ends of needle and making a button-hole in 57th and 58th and every following 17th and 18th rows, until 4 button-holes have been worked from commencement.

To make a button-hole:—

**1st row.**—K.3, cast off 2 sts., work in pattern to end of row.

**2nd row.**—Work in pattern to last 3 sts., cast on 2 sts., K.1, P.1, K.1.

**THE BACK.**—Cast on 87 stitches.

\*\* 1st row.—\* K.1, P.1, repeat from \* to last st., K.1.

**2nd row.**—K.2, \* P.1, K.1, repeat from \* to last st., K.1. Repeat 2nd row once, then 1st row once. \*\*

Repeat from \*\* to \*\* six times, then 1st and 2nd rows once.

Continue working in pattern, decreasing once at each end of needle in next and every following 8th row, until 79 sts. remain.

Work 7 rows without shaping.

Continue in pattern, increasing once at each end of needle in next and every following 8th row, until there are 89 stitches on needle.

Work 15 rows without shaping.

Cast off 3 sts. at beginning of needle in each of next 2 rows, then decrease once at each end of needle in next and every alternate row, until 67 sts. remain.

Continue working in pattern without shaping until arm-holes measure same as Front arm-holes.

Shape for shoulders as follows:—

1st and 2nd rows.—Work in pattern to last 6 sts., turn.

3rd and 4th rows.—Work in pattern to last 12 sts., turn.

5th and 6th rows.—Work in pattern to last 18 sts., turn.

7th and 8th rows.—Work in pattern to last 23 sts., turn.

9th row.—Work in pattern to end of row. Cast off.

**THE SLEEVES.**—Cast on 39 stitches.

Work from \*\* to \*\*, as given for Back, twice.

Continue working in pattern, increasing once at each end of needle in next and every following 6th row, until there are 73 sts. on needle.

Continue without shaping until work measures 17½ ins. (or length desired) from commencement.

\*\* Cast off 2 sts. at beginning of needle in each of next 2 rows, then decrease once at beginning of needle in each of next 4 rows. \*\*

Repeat from \*\* to \*\* five times (25 sts.).

Cast off 2 sts. at beginning of needle in each of next 2 rows. Cast off:

Work another Sleeve in same manner.

**SHOULDER PADS.**—See below.

**TO MAKE UP COAT.**—With a slightly damp cloth, and warm iron, press lightly. Sew up side, shoulder and sleeve seams. Sew in sleeves, placing seams ½ an inch to front of side seams. Join together bands from Fronts and sew to back of neck. Fold back 1 st. at front edge and slip stitch in position on wrong side. Sew shoulder pads in position with pads in sleeves and double-thicknesses along shoulder seams. Sew on buttons to correspond with button-holes.

## SHOULDER PAD COVERINGS

Using Patons Beehive Fingering, 3-ply (or similar wool), and No. 9 Needles, cast on 12 sts.

1st row.—Knit plain.

2nd row.—K.1, purl to last st., K.1.

Continue working in plain, smooth fabric, increasing once at each end of needle in next and every alternate row, until there are 26 sts. on needle.

Work 9 rows without shaping.

Decrease once at each end of needle in every row until 12 sts. remain. Work 1 row without shaping.

Increase once at each end of needle in every row until there are 26 sts. on needle. Work 9 rows without shaping. Decrease once at each end of needle in next and every alternate row until 12 sts. remain.

Work 2 rows without shaping.

Cast off.

Work another Shoulder Pad Covering in same manner.

Fold Shoulder Pad Covering in half and sew side edges together. Fill widest part of covering with cotton wool. Sew top edges together.

## SOME IMPORTANT INFORMATION

Avoid disappointment—buy the wool recommended. Buy wisely—buy enough—the same blend cannot be repeated.

**TENSION** is the number of stitches in width to measure one inch. On this depends the success of the finished article. If the tension is not obtainable on the needles recommended, use a size finer or coarser, as required.

### ABBREVIATIONS:—

K. = Knit plain

P. = Purl

sts. = stitches

ins. = inches

tog. = together

wl. fwd. = wool forward

p.s.o. = pass slip stitch  
over

w.o.n. = wool over needle

w.r.n. = wool round

needle

t.b.l. = through the back  
of the loops

ch. = chain

tr. = treble

s.c. = single crochet

d.c. = double crochet

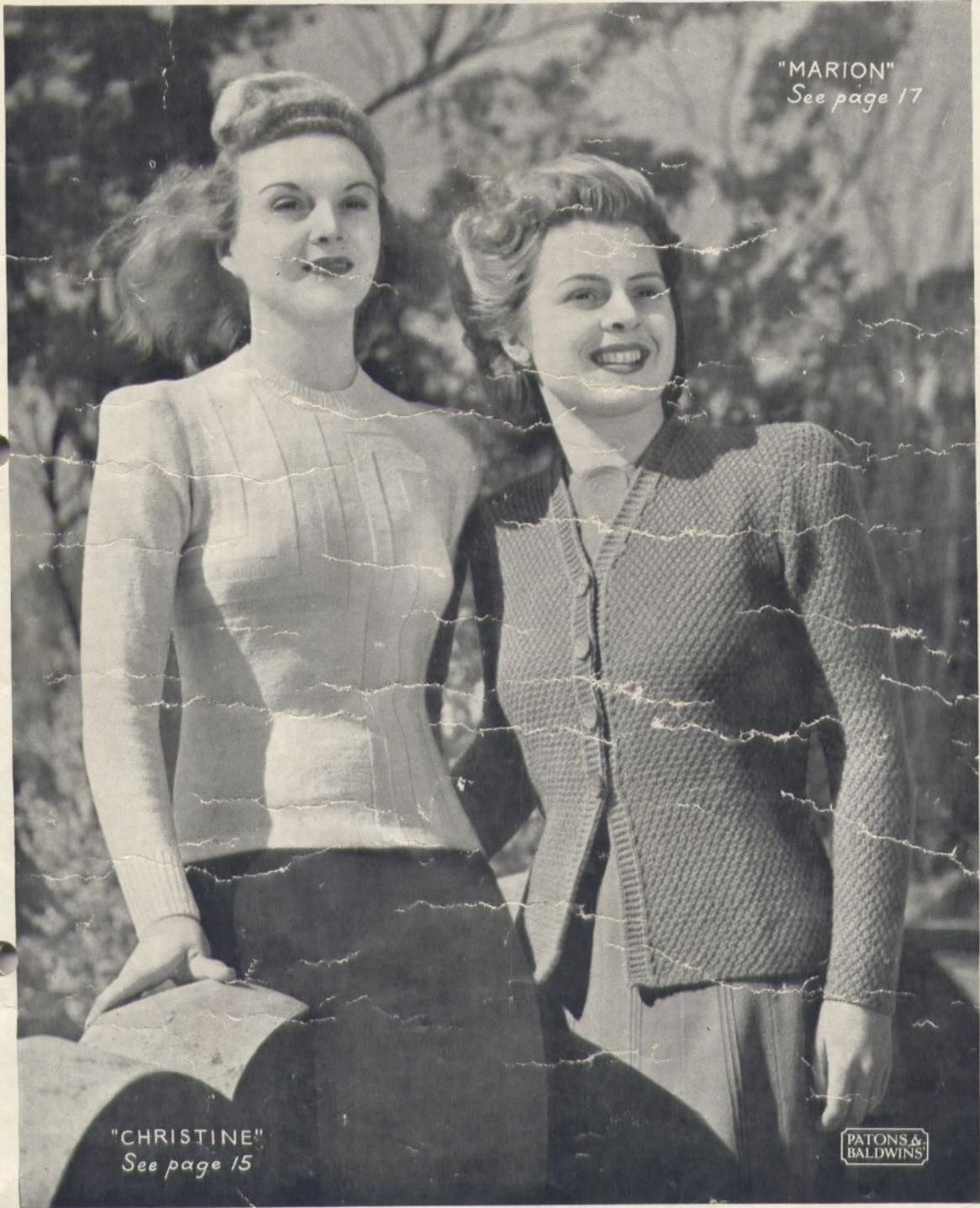
l.tr. = long treble (wool  
over hook twice)

sl. st. = slip stitch

sp. = space

garter stitch = every row  
plain

When the instructions read, "Cast off 2 stitches, K.2" (or similar stitches), the stitch on the right-hand needle, after casting off, is counted as one stitch.



"MARION"  
*See page 17*

"CHRISTINE"  
*See page 15*

PATONS & BALDWIN'S

Wholly Set Up and Printed in Australia

Published With All Rights Reserved by

# PATONS & BALDWIN'S LTD.

MELBOURNE BRANCH  
84-94 Flinders Lane

SYDNEY BRANCH  
181 Clarence Street



# Patons

KNITTING BOOK

NO. 184



"PENNY"  
*See page 11*