

The

# OVERHEAD DOOR

REG. U.S. PAT. OFF.

The TRULY MODERN Door



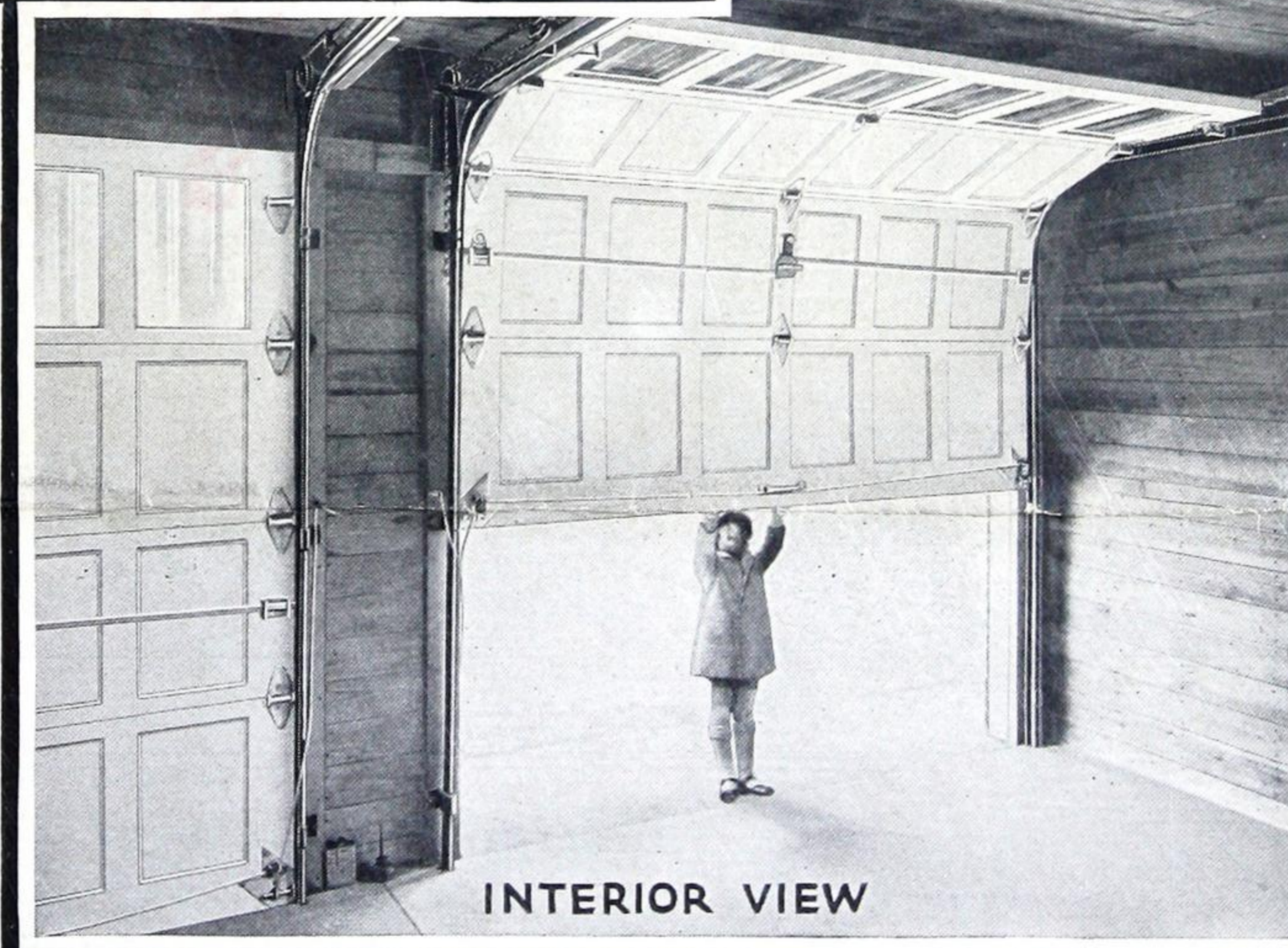
STANDARD STOCK DESIGN

for  
OLD OR NEW  
PRIVATE GARAGES  
•  
PUBLIC GARAGES  
•  
FACTORIES  
•  
WAREHOUSES  
•  
GREASING STATIONS  
•  
BOAT HOUSES  
•  
AIRPLANE HANGARS  
and  
similar buildings

Backed by a  
**NATION-WIDE  
SALES SERVICE  
ORGANIZATION**

of Trained Door Engineers  
which assures each purchaser  
the utmost in satisfactory door  
service at all times.

•  
"Our interest in the  
'Overhead Door' does  
not terminate with the  
sale but continues long  
thereafter."



INTERIOR VIEW

## OVERHEAD DOOR CORPORATION

Hartford City, Indiana, U. S. A.

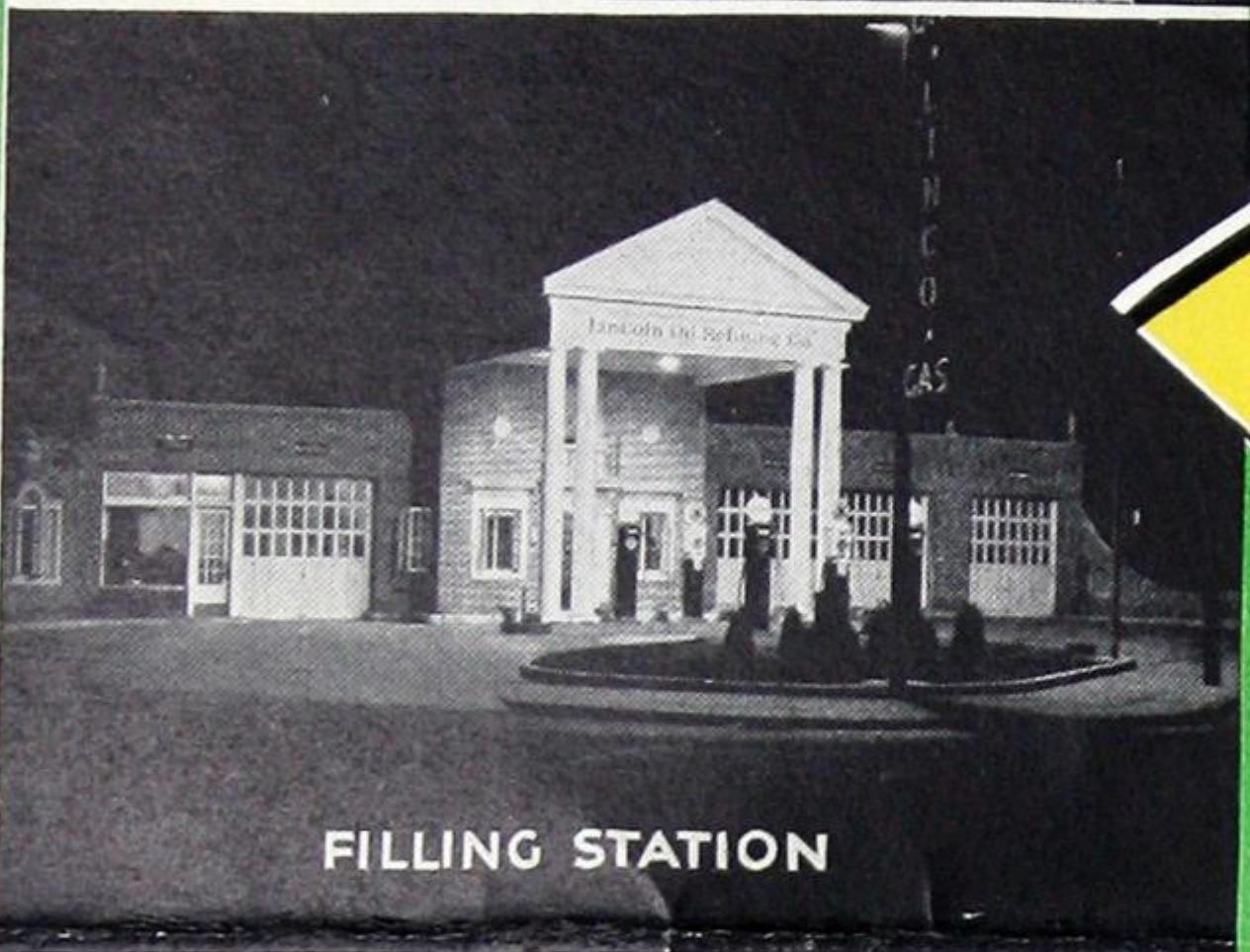
For Ten Years

The Standard of Comparison in Garage Door DESIGN - OPERATION - CONSTRUCTION

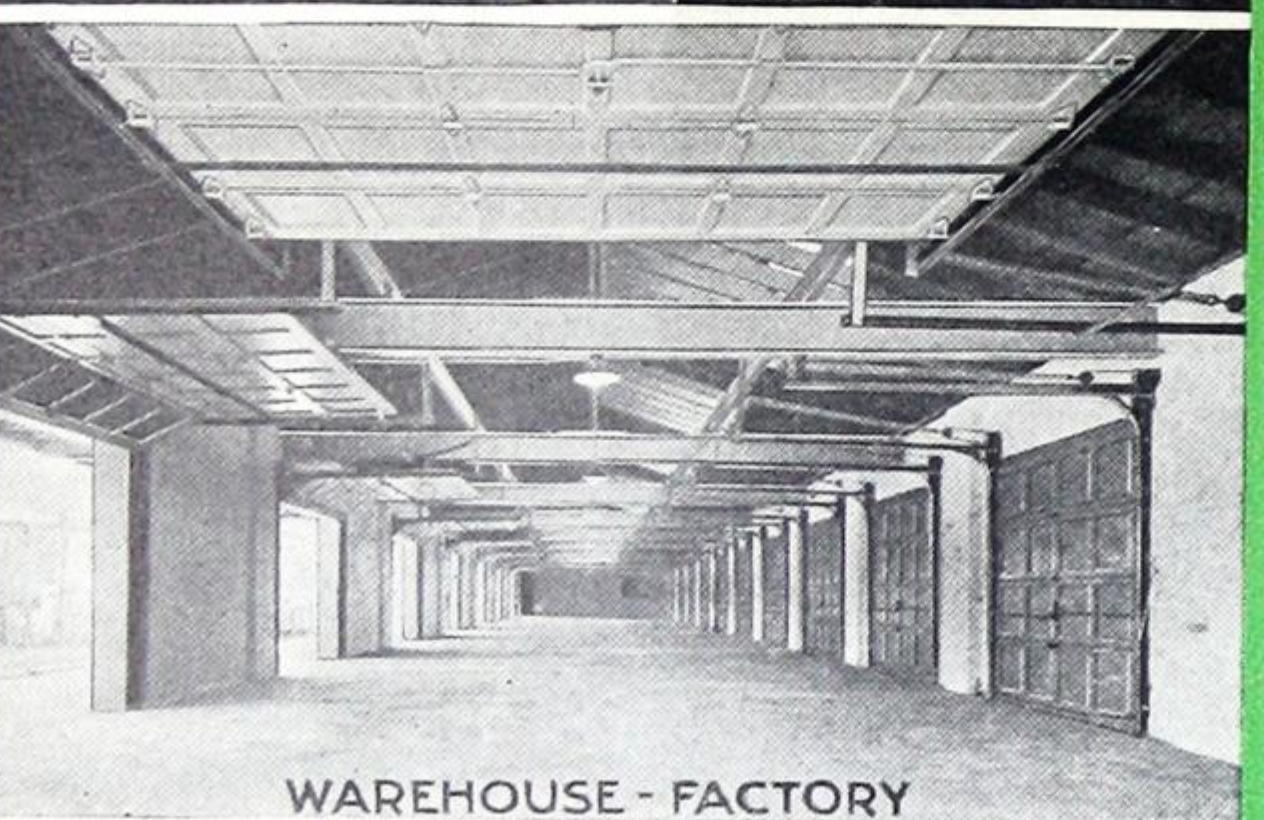




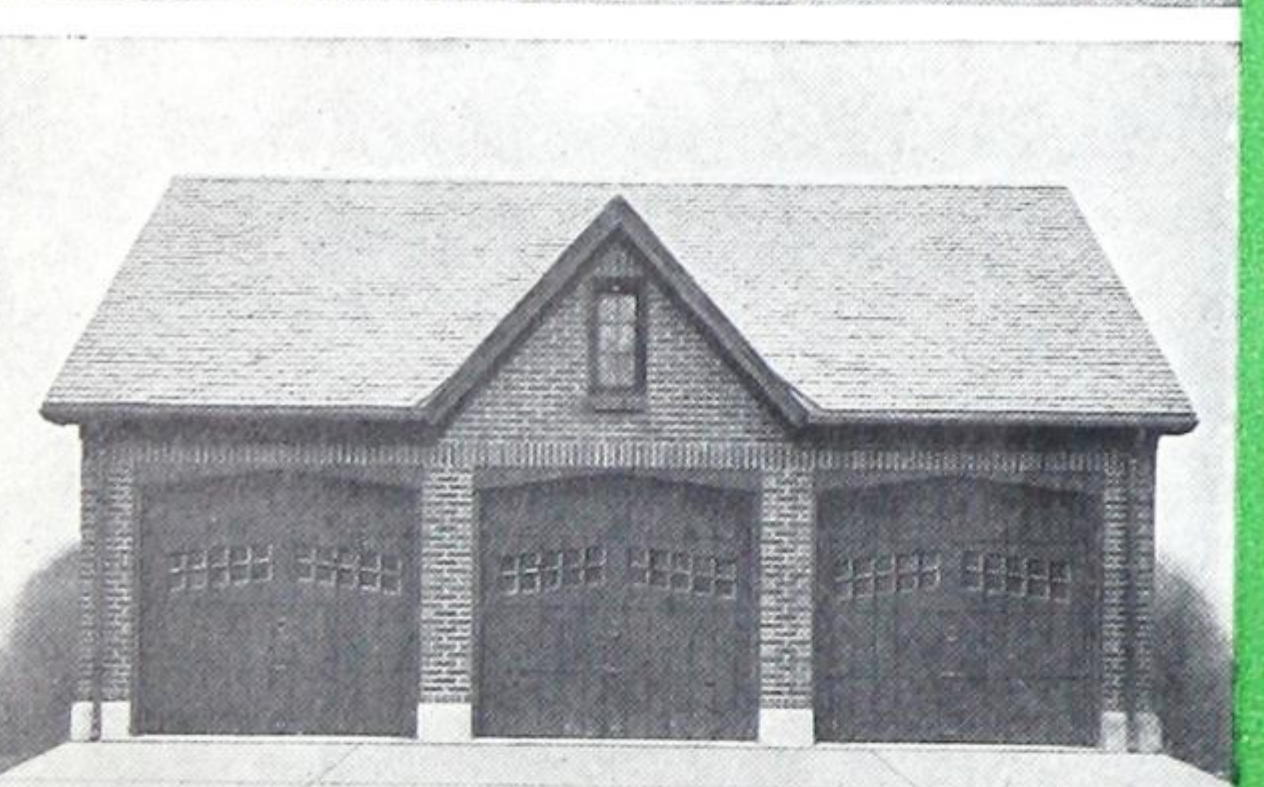
SPECIAL DESIGN DOORS



FILLING STATION



WAREHOUSE - FACTORY



PRIVATE GARAGE - SPECIAL DESIGN DOORS



OUTSIDE KEY SWITCH OPERATION

# The "OVERHEAD DOOR"

Hardware and Wood Parts of each "OVERHEAD DOOR" are specially engineered to the opening for which they are intended. Varying gauge and size hardware is used in accordance with varying size and weight doors. All hardware is manufactured by us.

*Manufactured Complete* with all necessary hardware attached, The "OVERHEAD DOOR" is ready to install when delivered on the job.

*Installation* on old as well as new buildings is simple and may be accomplished by any competent mechanic in a short time. (Our installation specialists in all parts of the country will be glad to assume this responsibility.) Complete installation instructions furnished with each door.

*Ball Bearing* construction throughout all rollers and all moving parts of the hardware.

*Wood Parts*, unless otherwise specified, are clear kiln dried Sitka Spruce stiles and rails, full 1 3/4 inches thick, and three-ply 3/8-inch fir laminated panels. All joints are waterproof glued and steel doweled. Construction in other woods on specification. Red Oak, White Pine, Cypress or Chestnut woods are carried in stock.

*Glass* is not supplied unless specified. Any or all sections may be arranged for glass at no additional cost.

*Stock Size* doors are for openings 8'0" wide by 8'0" high; 8'0" wide by 7'6" high; 8'0" wide by 7'0" high. These sizes are carried in stock for immediate shipment or delivery by all "OVERHEAD DOOR" representatives throughout the country.



Private Garages • Warehouses • Greenhouses • Airplane Hangars

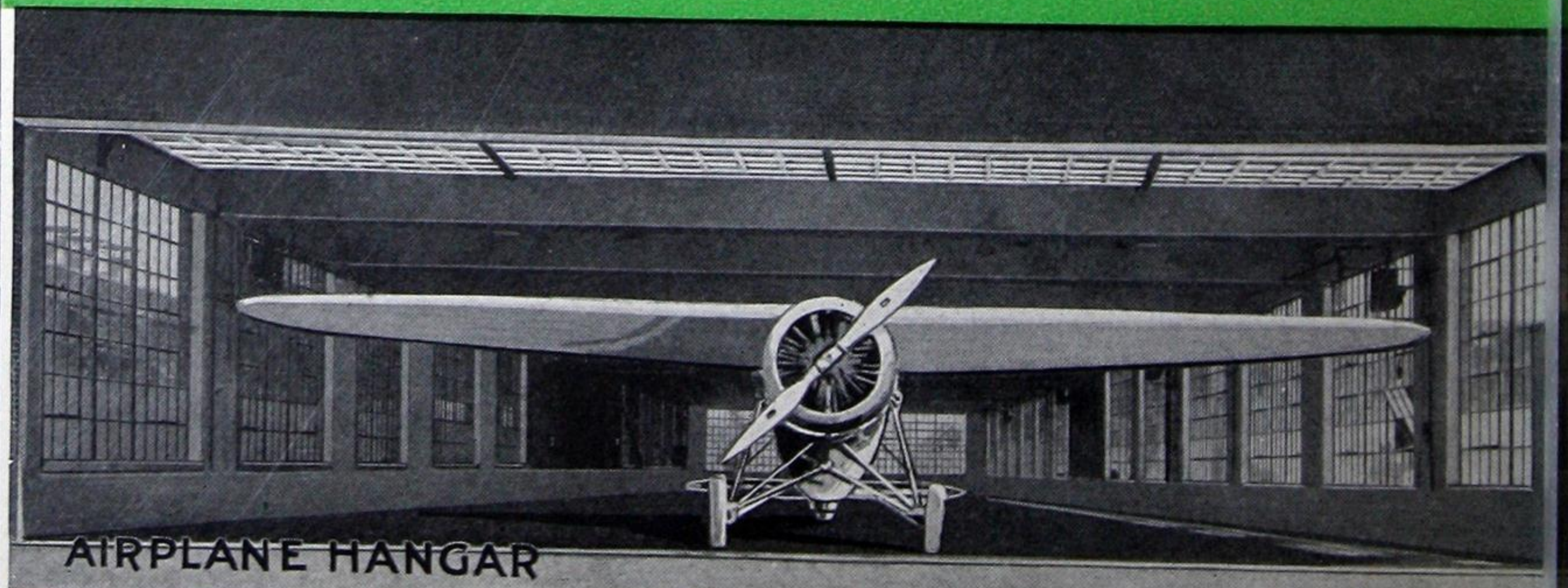
- Stays open
- Operates easily
- Cannot wedge
- Fits tightly against
- Cannot twist
- Takes up no valuable space
- Provides full width of opening
- May be locked
- Is not affected by weather
- Is perfectly counterbalanced
- May be had in any color
- Harmonizes with any architectural treatment

*Stock Sizes* are designed with standard sections.

*Special Sizes* and designed doors "OVERHEAD DOOR" may be arranged with any architectural treatment.

**OVERHEAD DOOR**  
HARTFORD, CT.

Manufactured by  
**OVERHEAD DOOR COMPANY**  
TORONTO, CANADA

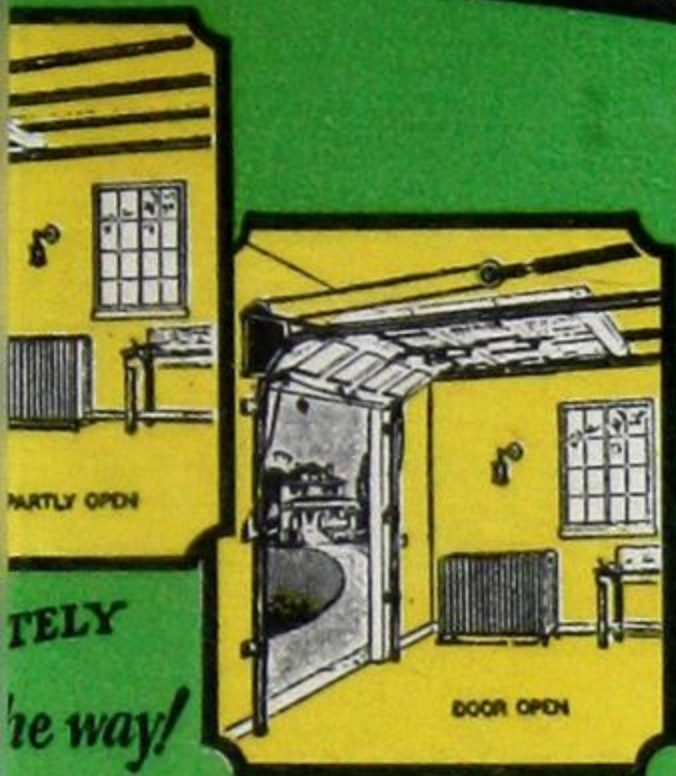


AIRPLANE HANGAR



# OVERHEAD DOOR

PAT. OFF.



Public Garages • Factories  
Stations • Boat Houses  
and similar buildings

**FEATURES:**  
• Stays closed quickly, quietly  
• Jam in ice or snow  
• Sides and bottom  
• Do not sag out of shape  
• No floor or wall space  
• No height of opening  
• Can be locked from either side  
• Resistant to rain, snow or sleet  
• Can be painted in all positions  
• Available in design to conform  
• Available in design to conform  
• Adds beauty to the building

our horizontal, five center stile,  
s are supplied promptly. The  
in any size or design to conform

**OVERHEAD DOOR CORPORATION**  
INDIANA, U.S.A.

Canada by  
COMPANY of CANADA, Limited  
ONTARIO

*Tracks* of heavy gauge steel are inclined rearwardly from jambs, assuring a tight fitting door at all points when closed, and permitting free action of door while opening by preventing all scraping and binding.

*Hinges* are of special off-set type, each being assembled with a sleeve tubing through which roller stem floats, eliminating roller friction.

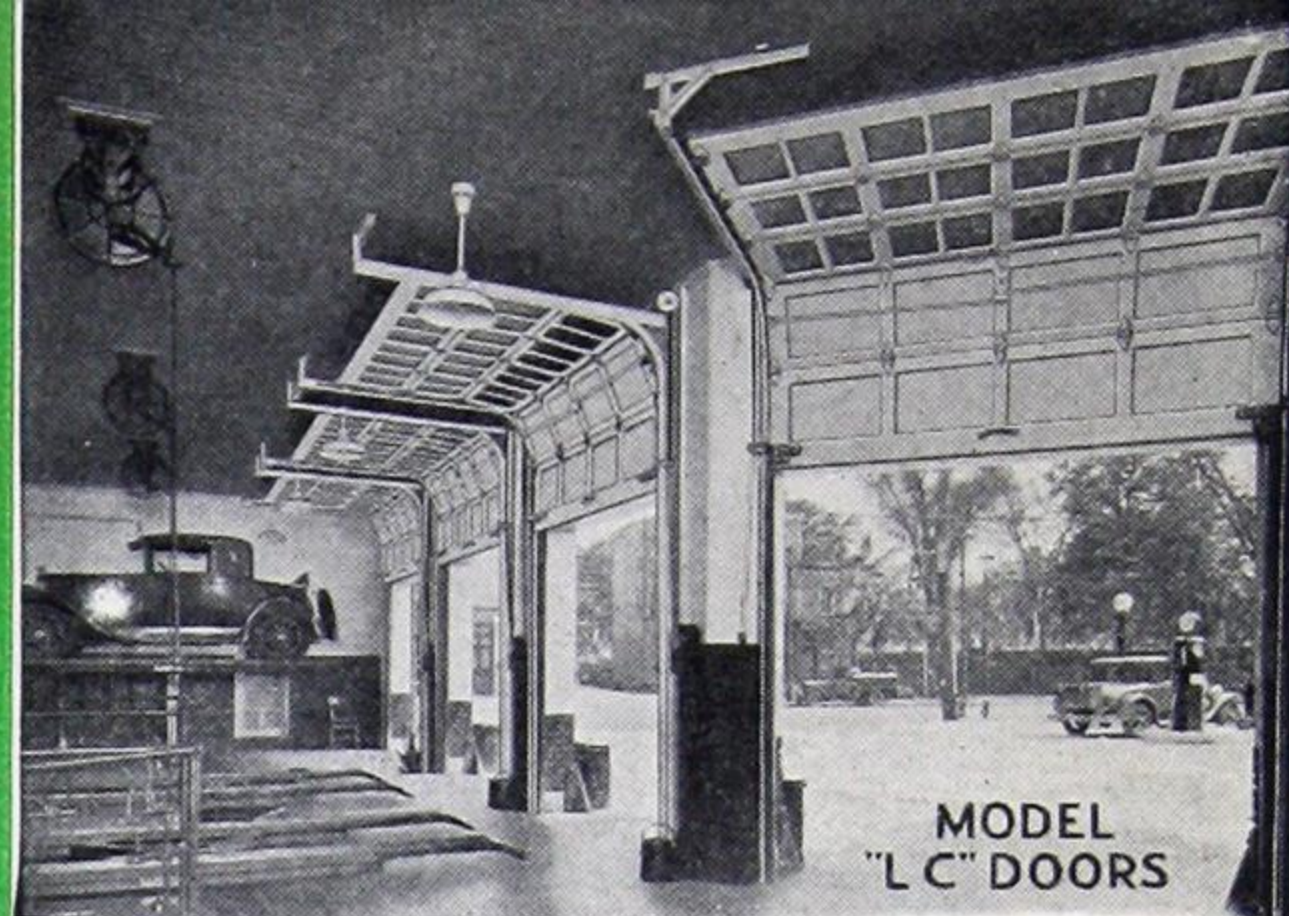
*Perfect Counterbalance* is accomplished with two oil-tempered springs of large capacity. The size and weight of the door governs the capacity and size of spring used. Each spring is rigidly inspected and tested.

*Special Locking Device* working in combination with a Yale Cylinder Lock securely locks and bolts the door across its entire width. Doors may be locked or unlocked from either side. Doors may be keyed alike or separately. Master keying is provided at a small additional charge.

*Electric Operation*—quiet, quick and positive—is provided by The "OVERHEAD DOOR" CONTROL. Key switch control stations may be conveniently located in the house or driveway. Lights in and about the garage or driveway may be automatically lighted with the operation of the door.

*Metal and Metal Clad Doors* are offered. Complete information supplied upon request.

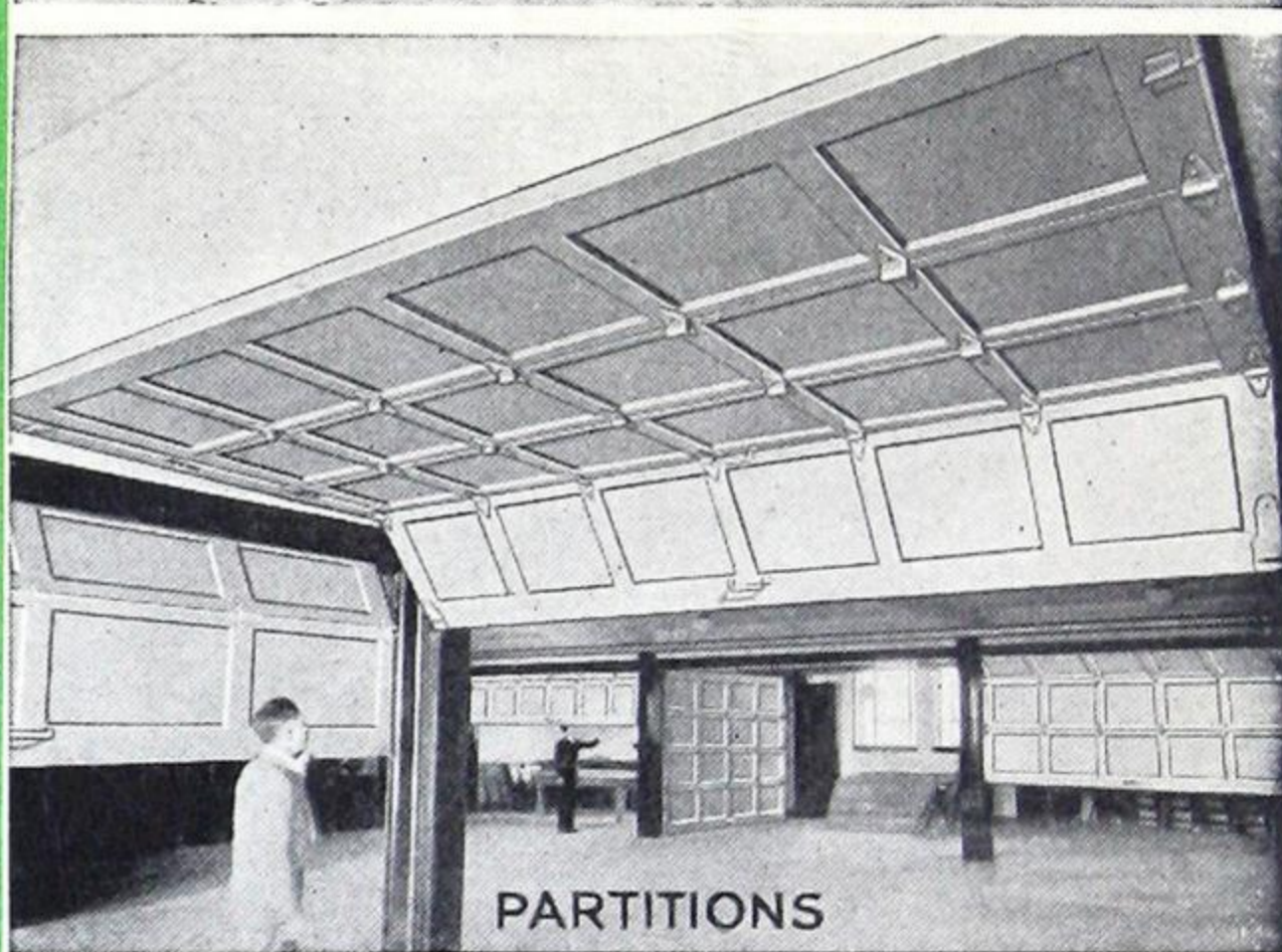
*Accessories* such as chain hoists (hand or motor operated); rolling or movable center posts; semi-automatic opening devices are available. Our engineering department will gladly confer with you concerning unusual door problems.



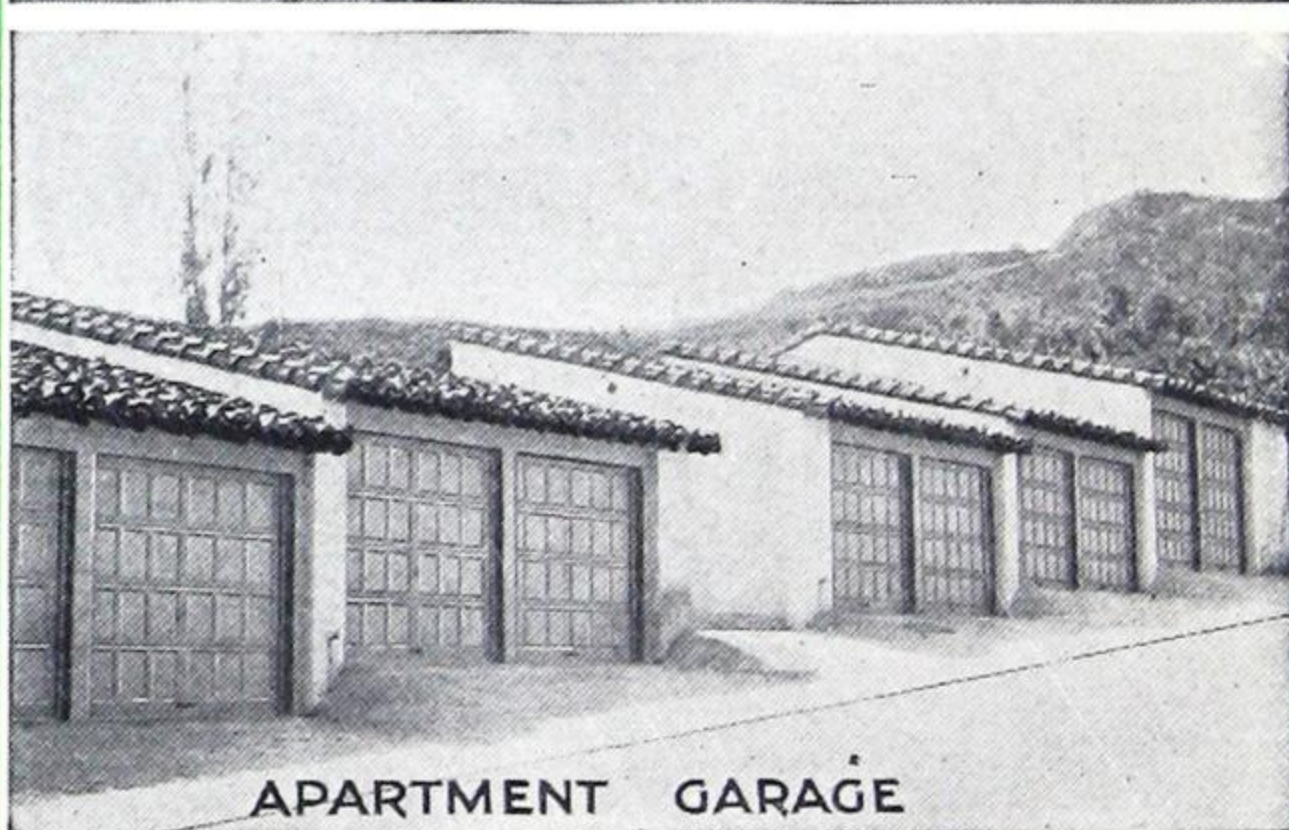
MODEL "L" C" DOORS



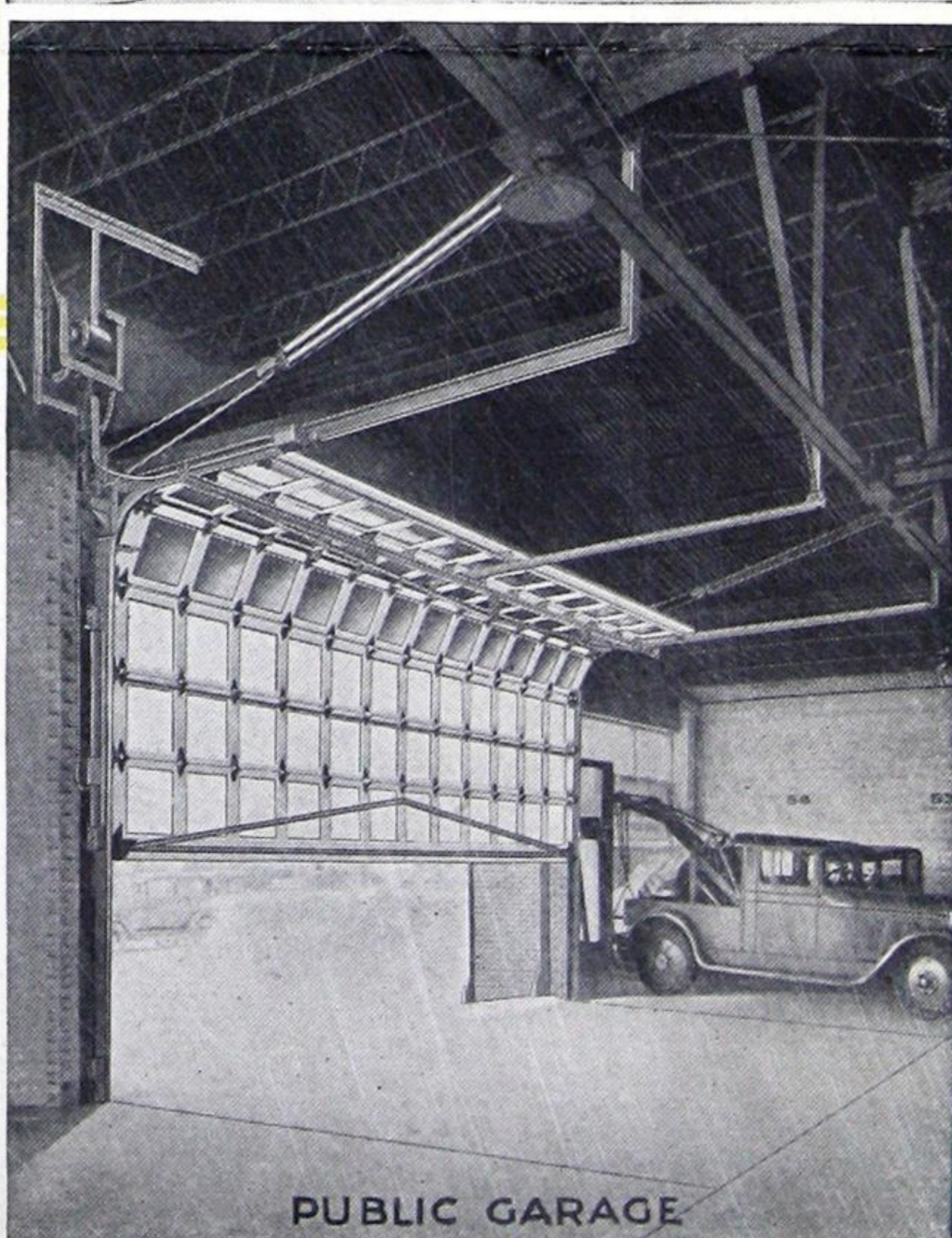
FIRE STATION



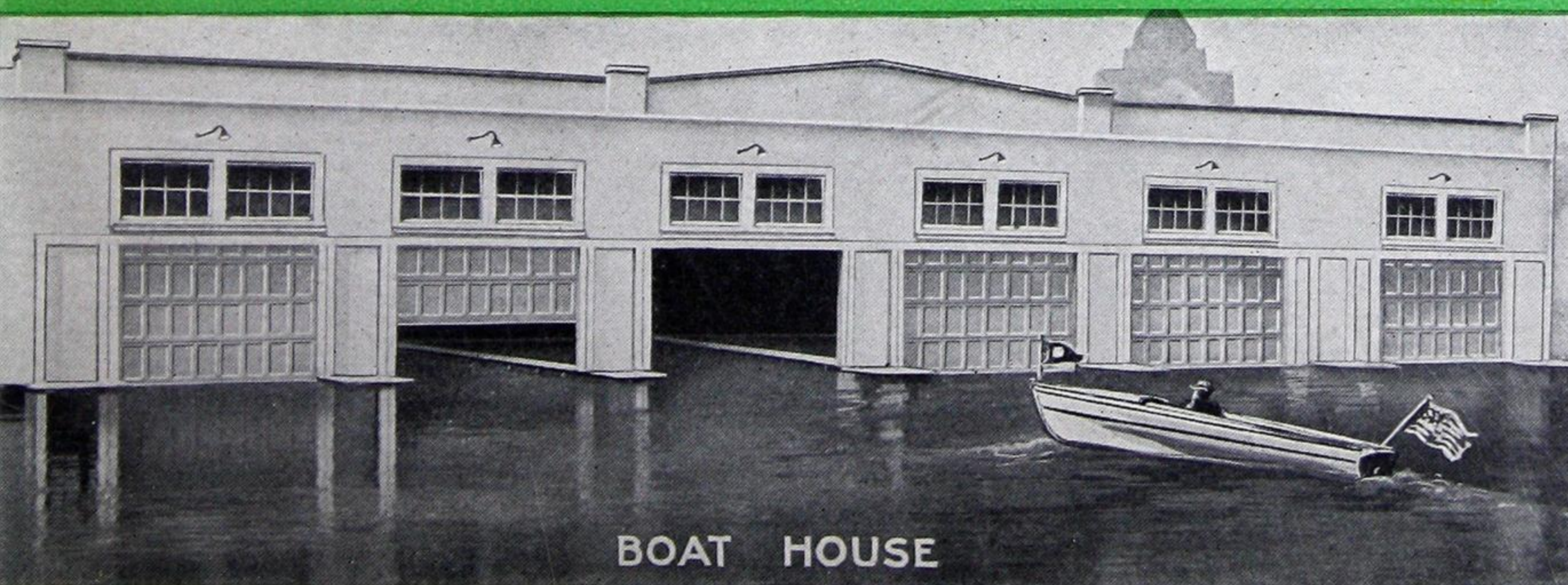
PARTITIONS



APARTMENT GARAGE



PUBLIC GARAGE



BOAT HOUSE



The

REG. U.S. PAT. OFF.

# "OVERHEAD DOOR"

The TRULY MODERN Door



STANDARD STOCK DESIGN

for

- OLD OR NEW PRIVATE GARAGES
- PUBLIC GARAGES
- FACTORIES
- WAREHOUSES
- GREASING STATIONS
- BOAT HOUSES
- AIRPLANE HANGARS

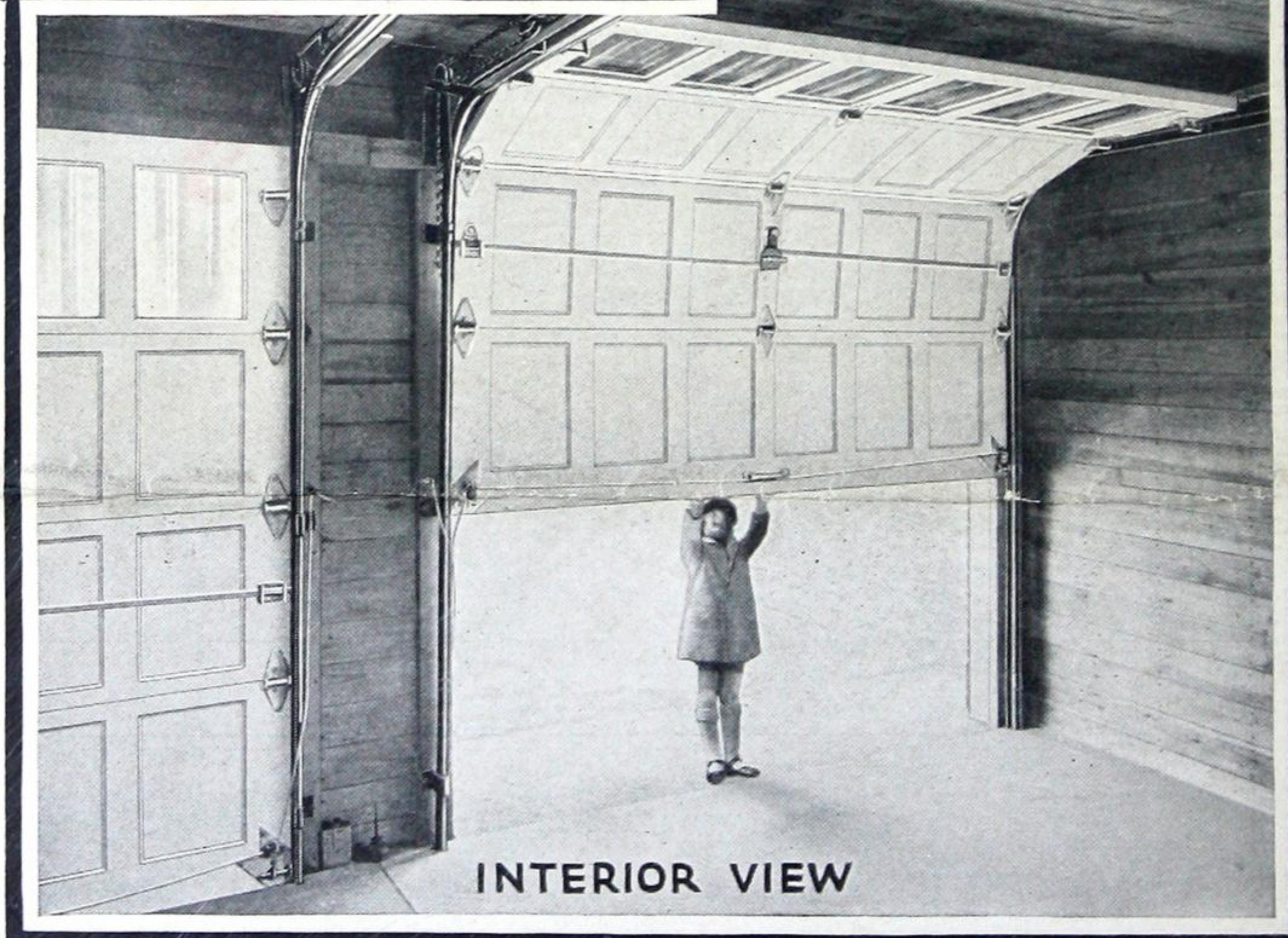
and similar buildings

Backed by a

**NATION-WIDE SALES SERVICE ORGANIZATION**

of Trained Door Engineers which assures each purchaser the utmost in satisfactory door service at all times.

"Our interest in the 'Overhead Door' does not terminate with the sale but continues long thereafter."



INTERIOR VIEW

## OVERHEAD DOOR CORPORATION

Hartford City, Indiana, U. S. A.

For Ten Years

The Standard of Comparison in Garage Door DESIGN - OPERATION - CONSTRUCTION