

Zenith

OF NINETEEN FORTY THREE

WREYN MEMORIAL LIBRARY
HIGH POINT COLLEGE
HIGH POINT, N. C.



THE NINETEEN FORTY-THREE

Lerith

OF HIGH POINT COLLEGE
HIGH POINT, NORTH CAROLINA

F O R

BOOK ONE COLLEGE
BOOK TWO FEATURES
BOOK THREE ORGANIZATIONS
BOOK FOUR ATHLETICS



DOROTHY PRESNELL, EDITOR-IN-CHIEF
ROBERT KIRCHGESSNER, BUSINESS MANAGER



E W O R D

"The time has come," the students said, "to talk of many things—

Of books and quips and freshman caps, of dates and college rings,

Of basketball and pep parades, fraternities and dames,

Of classes, dances, and debates, of bands and football games!"

So we, the Staff, rolled up our sleeves, and then began to write

Of this and that; to check class rolls, read copy half the night.

We made group photos, portraits, snapshots of students here and there,

And worried o'er financial woes until we tore our hair.

Gallons of our own sweat and tears we shed, dear students, all for thee,

To give you this, your own yearbook—The ZENITH of '43 . . .



IN RECOGNITION OF

A Citizen of Good Repute
And a Genial Gentleman;
A Churchman Whose Loyalty Is Recognized
And Who Is Interested in People;
A College Trustee Whom We Appreciate
And Who Believes in Youth;
The Staff Dedicates to
Gurney H. Kearns—Son of Randolph
County, Local Manufacturer,
and Public Spirited North
Carolinian

THE 1943 ZENITH



G U R N E Y H . K E A R N S

College

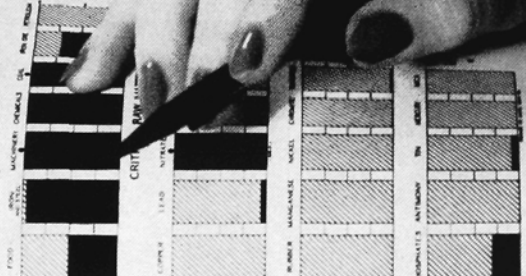
GREAT BRITAIN

NATIONAL SELF-SUFFICIENCY IN FOODSTUFFS
ESSENTIAL INDUSTRIAL PRODUCTS AND RAW MATERIALS

FOR THE YEAR 1943

PREPARED BY THE ECONOMIC WAR DEPARTMENT

GREAT ESSENTIALS



The following table shows the percentage of national self-sufficiency in various categories for the year 1943. The categories are: FOOD (90%), FIBRE (100%), CRITICAL RAW MATERIALS (80%), FUELS (100%), METALS (100%), MANUFACTURE (100%), and PRODUCTS (100%). The chart uses different patterns for each bar: solid black for Food, diagonal lines for Fibre, horizontal lines for Critical Raw Materials, vertical lines for Fuels, and a grid pattern for Metals, Manufacture, and Products. A hand with a pen is pointing at the 'CRITICAL RAW MATERIALS' bar.





PRESIDENT GIDEON IRELAND HUMPHREYS, A.M., D.D., LL.D.

**BOARD
OF
TRUSTEES**

H. A. MILLS	President	
F. LOGAN PORTER	Vice-President	
N. M. HARRISON	Secretary-Treasurer	
Paul N. Garber	C. C. Robbins, Jr.	J. Norman Wills
C. A. Dillon	Charles W. McCrary	G. Ray Jordan
S. W. Taylor	J. E. Pritchard	Horace S. Haworth
L. F. Ross	Mrs. C. F. Finch	G. H. Kearns
W. A. Lambeth	J. M. Millikan	J. Clyde Auman
C. K. Proctor	J. D. Williams	B. K. Milloway
H. F. Hunsucker		Ernest W. Teague
CLARE PURCELL	Resident Bishop Charlotte Area	
G. I. HUMPHREYS	President of High Point College	

FACULTY AND ADMINISTRATION



LOUISE ADAMS
A.B., M.A.
Assistant Professor of
Mathematics



J. HOBART ALLRED
A.B., A.M.
Professor of Modern
Languages



HELEN R. BARTLETT
A.M., Ph.D.
Professor of History



ALDA T. BERRY
A.B., M.A.
Instructor of Business
Administration



ELIZABETH JO CHAPMAN
B.S., M.A.
Director of Physical Edu-
cation for Women



ELIZABETH H. CONNOR
B.S., M.A.
Instructor of Biology



CARL G. N. CRONSTEDT
B.M. Ed., M.S.
Instructor of Music



E. O. CUMMINGS
B.S., Ph.D.
Professor of Chemical
Engineering



E. BARTON DULAC
B.S., M.A.
Assistant Professor of
Business Administration



ERNESTINE FIELDS
B.Mus., B.S., M.Mus.
Instructor of Music



LILLIAN M. GREEN
House Mother of Boys'
Dormitory



R. HOWARD GUNN
A.B.
Instructor of Business
Administration and
Bursar



N. M. HARRISON
A.B., B.D.
Vice-President and Di-
rector Public Relations



IDYL F. HARVILLE
Dietitian



BENJAMIN H. HILL
M.S., Ph.D.
Professor of Biology



CLIFFORD R. HINSHAW
A.M., Litt.D.
Professor of Education
and Director of In-
struction



ELIZABETH VERA IDOL
A.B., A.M.
Professor of English



ADA B. JOHNSON
B.S., M.S., M.A.
Head of Department of
Home Economics



C. LUCILE JOHNSTON
Ph.B.
Assistant Bursar and
Secretary to President



PERCY ELLIOT LINDLEY
A.M., Litt.D.
Professor of Religious
Education and Dean of
Students



A. C. LOVELACE
A.B., M.Ed.
Assistant Professor of
Education



MABEL T. MILLIKAN
Social Director



J. HARLEY MOURANE
B.S., M.S.
Professor of Chemistry
and Physics



FRANKLIN RIKER
Voice Instructor



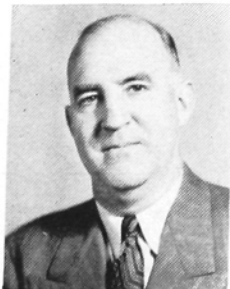
THOMAS W. SPRINKLE
A.B., J.D.
Assistant Professor of
Business Administration



MABEL MYRA WARLICK
A.B.
Manager of Bookstore
and Assistant Director of
Public Relations



ALICE PAIGE WHITE
A.B., A.M.
Acting Librarian and
Professor of Greek and
Latin



ARTHUR S. WITHERS
A.B., M.A.
Professor of English

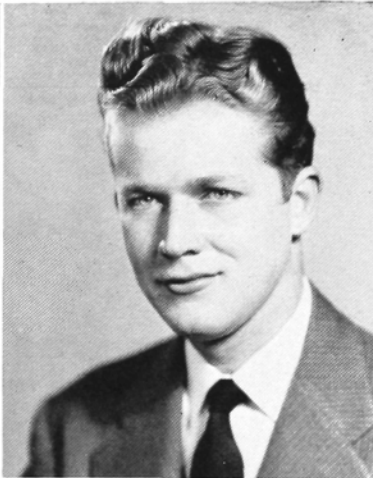
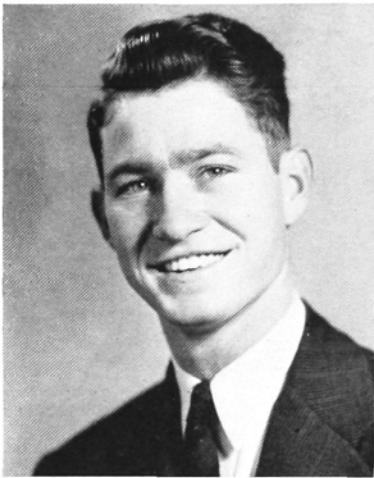


NATHANIEL PATTON
YARBROUGH
A.B., A.M.
Professor of Modern
Languages and Registrar



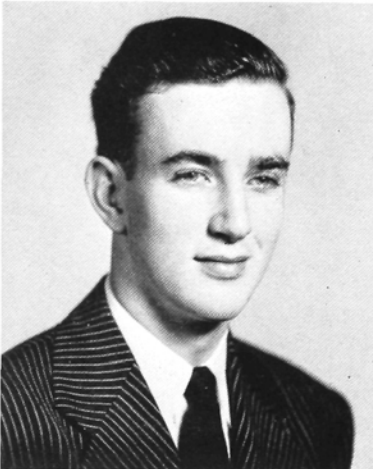
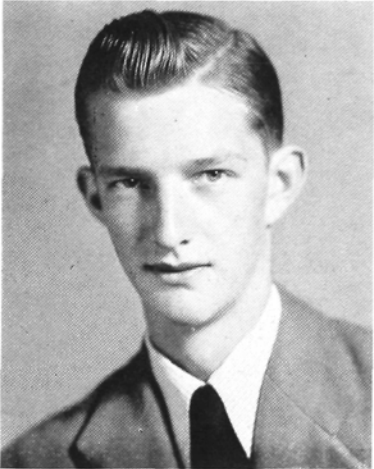
C. VIRGIL YOW
A.B.
Director of Physical
Education for Men

T H E C L A S S O F F



ROLAND GARMON
Senior Class President

TALMADGE COLE
Junior Class President



BOB PORTER
Sophomore Class President

SYDNOR ELKINS
Freshman Class President

S E N I O R — J U N I O R — S O P H O M O R E

I C E R S



SENIOR CLASS

LeROY FOSTER Vice-President
GENEVA CROWDER Secretary
ZELMA PARNELL Treasurer



JUNIOR CLASS

FRANCIS BOWEN Vice-President
D. L. USHER Secretary-Treasurer



SOPHOMORE CLASS

GARNETT HINSHAW Vice-President
RUBY PARKER Secretary
GEORGE HUMPHREYS Treasurer

FRESHMAN CLASS

MARION WORKMAN Vice-President
MARJORIE PAYNE Secretary
THOMAS COLE Treasurer



- FRESHMAN

SENIORS

MARY ANDREWS



JOHN ASTRELLA



VIRGINIA BECK



OSWALD BLATT



ALVIN BOLES



GWENDOLYN CANDLER



MARY LEE CANTRELL



KENNETH CROUSE



MARY LILLIAN ANDREWS

ASHEBORO, N. C.

A.B.

W. A. A., 1, 2; Nikanthen Literary Society, 1, 2, 3; Folk Dancing Club, 3; International Relations Club, 1; Future Teachers, 3, 4; Gamma Club, 4.

JOHN FRANCIS ASTRELLA

WEST NEW YORK, N. J.

B.S. in Business Administration
Iota Tau Kappa

Student Government, 2, 3, 4; Pan-Hellenic Council, 3, 4; Vice-President Student Body, 3, 4.

VIRGINIA B. BECK

LEXINGTON, N. C.

A.B.

Appalachian State Teachers College, 1, 2, 3; W. A. A., 4; Cheerleader, 4; Managing Editor Hi-Po, 4.

OSWALD BLATT

BRONX, N. Y.

Soccer, 2; Thalean Literary Society, 2; Footballers, 2, 3; Hi-Po, 2, 3, 4; Chemical Engineers Club, 2, 3, 4; Debating Team, 4.

ALVIN OSCAR BOLES

HIGH POINT, N. C.

B.S. in Business Administration
Epsilon Eta Phi

Football, 1, 2, 3, 4; Tri-Captain Football, 4; Student Government, 2, 4; Senior Superlative.

GWENDOLYN CANDLER

HICKORY, N. C.

A.B.

Appalachian State Teachers College, 1, 2, 3.

MARY LEE CANTRELL

HIGH POINT, N. C.

Sigma Alpha Phi

Woman's College of the University of North Carolina, 1; Honor Roll, 2, 3, 4.

KENNETH DEWEY CROUSE

LEXINGTON, N. C.

Ministerial Association, 1, 2, 3; Chaplain, 1, Vice-President, 2, President, 3; Thalean Literary Society, 1, 2, Critic, 1, 2; Vice-President Methodist Student Association, 2; President Christian Student Organization, 3; Vice-President State Methodist Student Association, 3; Student Representative National Methodist Student Conference, 2; Chief Marshal, 3; Who's Who, 3; Lighted Lamp, 3.

S E N I O R S

GENEVA CROWDER



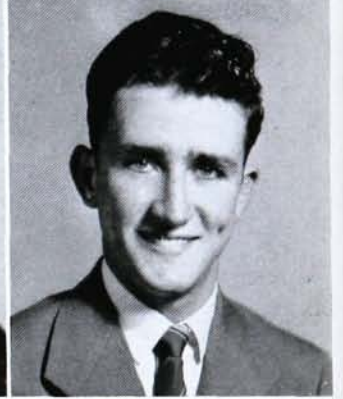
GEORGE DALTON



JOSEPHINE DEAL



LeROY FOSTER



ROLAND GARMON



HUGH GOERNER



WILLIAM GOSSARD



ELEANOR GRIFFITH



GENEVA LAMBETH CROWDER

HIGH POINT, N. C.

B.S. in Physical Education

W. A. A., 1, 2, 3, 4, Vice-President, 3, President, 4; Class Secretary, 2, 3, 4; Cheerleader, 3, 4, Chief, 4; I. R. C., 1; Artemesian Literary Society, 1, 2, 3; Gamma Club, 4; Choir, 4; Footlighters, 2, 3; Future Teachers, 4; Square Dance Club, 3; Honor Roll, 4; Senior Superlative; May Queen.

ROLAND CLARENCE GARMON

HIGH POINT, N. C.

B.S.

Epsilon Eta Phi

Soccer, 1, 2, 3, 4; Engineers Club, 2, 3; College Marshal, 3; Class President, 4; Senior Superlative, 4.

GEORGE WILLIE DALTON

LEWISVILLE, N. C.

A.B.

Brevard College, 1, 2; Ministerial Association, 3, 4.

HUGH KARL GOERNER

WOOD-RIDGE, N. J.

A.B.

Iota Tau Kappa

Basketball, 1, 2, 3; Soccer, 2, 3; Akrothian Literary Society, 1, 2; Hi-Po, 3.

MYRA JOSEPHINE DEAL

HIGH POINT, N. C.

A.B.

Sigma Alpha Phi

Honor Roll, 2, 3, 4; Day Student Council, 4; Lighted Lamp, 4; Who's Who; Senior Superlative.

WILLIAM HERBERT GOSSARD

ELIZABETH CITY, N. C.

A.B.

Louisburg College, 1; Choir, 2, 3, 4; Honor Roll, 2, 3; Band, 2, 3, 4; Thalean Society, 2, 3, 4, Vice-President, 3, President, 4.

LeROY FOSTER

MELBOURNE, FLA.

B.S.

Delta Alpha Epsilon

Band, 1, 2, 3, 4; Akrothian Literary Society, 1, 2; Zenith, 3; Boy's Dormitory Council, 4; Class Vice-President, 4.

ELEANOR ISABEL GRIFFITH

HIGH POINT, N. C.

B.S. in Business Administration

Greensboro College, 1; Corcord State Teachers College, 2, 3.

S E N I O R S

RUTH GRIFFITH



WANDA HARVILLE



HARRY HAUSER



JOSEPH HELMREICH



BILLY HENDERSON



MARY HOLTON



ALICE HONBARRIER



KATHLEEN HOWARD



RUTH GRIFFITH

HIGH POINT, N. C.

A.B.

Alpha Theta Psi

W. A. A., 1, 2, 3; Artemesian Literary Society, 1, 2; Future Teachers, 1, 2, 3, Secretary, 3; Hi-Po, 2, 3, 4, Associate Editor, 3, Editor, 4; Day Student Council, 3, 4, President, 4; Student Council, 4; Pan-Hellenic Council, 4; Honor Roll, 1, 2, 3, 4; Senior Superlative, 4; Who's Who, 4; Lighted Lamp, 4.

WANDA HARVILLE

HIGH POINT, N. C.

B.S. in Physical Education

Sigma Alpha Phi

Artemesian Literary Society, 1, 2, 3; W. A. A., 1, 2, 3, 4; International Relations Club, 1; Future Teachers, 2, 3, 4.

HARRY LEE HAUSER

HIGH POINT, N. C.

A.B.

Delta Alpha Epsilon

Honor Roll, 1, 2, 3, 4; Band, 1, 2, 3, 4; Thalean Society, 4.

JOSEPH HELMREICH

NEW YORK, N. Y.

A.B.

C. C. N. Y., 1, 2; Debating Team, 4; Soccer Team, 4.

BILLY R. HENDERSON

BURLINGTON, N. C.

B.S. in Business Administration

Delta Alpha Epsilon

President of Student Body, 4; Vice-President of Junior Class; Dormitory Council, 3; Pan-Hellenic Council, 4; Cheerleader, 3; Track Team, 3; Who's Who, 4; Social Committee, 4; Dramatic Club, 1, 2, 3; Thalean Literary Society, 1, 2, 3, Secretary, 2.

MARY HOLTON

HIGH POINT, N. C.

B.S. in Business Administration

Theta Phi

Student Government, 1; Artemesian Literary Society, 1, 2, 3; Gamma Club, 4; W. A. A., 3, 4; Hi-Po Staff, 3; International Relations Club, 1; Secretary, Pan-Hellenic Council, 4.

ALICE HONBARRIER

SALISBURY, N. C.

A.B.

Pfiefer Junior College, 1, 2; Future Teachers, 3.

BELVA KATHLEEN HOWARD

MADISON, N. C.

B.S. in Home Economics

Sigma Alpha Phi

Appalachian State Teachers College, 1; Nikanathan Literary Society, 2, 3; Modern Priscilla Club, 2, 3, 4, Secretary, 4; W. A. A., 2, 3; Footlighters, 2, 3; Pan-Hellenic Council, 4.

S E N I O R S

WILLIAM HOWELL



THOMAS HUTCHINS



CAROLINE HUTTON



JESSE JOHNSON



MILDRED JONES



EVELYN KEARNS



BAYNE KEEVER, JR.



ELA KINSEY



WILLIAM HOWELL

NORWOOD, N. C.

B.S. in Business Administration
Epsilon Eta Phi

MILDRED JONES

HIGH POINT, N. C.

Greensboro College, 2; International Relations
Club, 1; Artemesian Literary Society, 1, 2, 3;
Band, 1, 3, 4.

THOMAS HUTCHINS

HIGH POINT, N. C.

A.B.

Epsilon Eta Phi

Ministerial Association, 2, 3, 4; Secretary, 2.

EVELYN KEARNS

RANDLEMAN, N. C.

B.S. in Home Economics

W. C. U. N. C., 1, 2; Modern Priscilla Club,
2, 3, 4, Vice-President, 3, 4; Nikanathan Literary
Society, 2, 3, Treasurer, 2; Future Teachers
Club, 2, 3, 4; Christian Endeavor, 2; Religious
Council, 4; Gamma Club, 4.

CAROLINE YORK HUTTON

HIGH POINT, N. C.

A.B.

Sigma Alpha Phi

International Relations Club, 1; W. A. A., 1,
2, 3; Future Teachers Club, 4; Artesian Literary
Society, 1, 2.

BAYNE PHARR KEEVER, JR.

INDIAN HEAD, MD.

A.B.

Delta Alpha Epsilon

Law Club, 1, 2; Akrothinian Literary Society,
1, 2; Choir, 3; Cheerleader, 3; Basketball, 1;
Assistant Football Trainer, 3.

JESSE L. JOHNSON

SILER CITY, N. C.

A.B.

Louisburg College, 1, 2; Ministerial Association,
3, 4, Secretary, 4; Choir, 3, 4; Thalean Literary
Society, 3, 4; Religious Council, 4.

ELA MATHILDIA KINSEY

HOUSTON, TEXAS

Nikanathan Literary Society, 3; Gamma Club, 4;
Modern Priscilla Club, 3, 4, Treasurer, 4.

S E N I O R S

ROBERT KIRCHGESSNER



WADE KOONTZ



WAYNE LINDLEY



THOMAS LINDSEY



ROWLAND LONG



JAMES LOWDER



MARTHA MICKEY



HENRY MINER



ROBERT FRANK KIRCHGESSNER

JERSEY CITY, N. J.

A.B.

Delta Alpha Epsilon

Rutgers University, 1; Kansas State College, 2; Football, 4; Thalean Literary Society, 3, 4; Footlighters, 3; Square Dance Club, 3; Zenith, 3, 4, Assistant Business Manager, 3, Business Manager, 4; Hi-Po Business Manager, 4; Ministerial Association, 3, 4; Religious Council, 4; Honor Roll, 3, 4; Senior Superlative.

J. WADE KOONTZ

HIGH POINT, N. C.

A.B.

Choir, 1, 2, 3, 4; Quartet, 2.

L. WAYNE LINDLEY

GRAHAM, N. C.

B.S. in Business Administration

Band, 2, 3, 4; Choir, 2, 3, 4; Thalean Literary Society, 2, 3, 4; Honor Roll, 3, 4.

THOMAS T. LINDSEY

HIGH POINT, N. C.

A.B.

Ministerial Association, 4; Who's Who, 4.

ROWLAND VEACH LONG

HIGH POINT, N. C.

Carolina, 1, 2, 3; Medical Club, 3, 4, President, 3; Who's Who, 4.

JAMES MAURY LOWDER

CONCORD, N. C.

B.S. in Business Administration
Epsilon Eta Phi

Football, 1, 2, 3, 4, Tri-Captain, 4; Who's Who, 4; President, Boy's Dormitory Council, 4; Class Treasurer, 3; "H" Club, 2, 3, 4.

MARTHA GREY MICKEY

WINSTON-SALEM, N. C.

A.B.

Lighted Lamp, 3, 4; Who's Who, 4; International Relations Club, 2; Nikanathan Literary Society, 1, 2, 3, Reporter, 2; W. A. A., 1; Gamma Club Publicity Director, 4; Hi-Po, 3; Zenith, 4; B. S. U., 1, 2, 3, 4, Secretary, 2, Vice-President, 3, 4; Honor Roll, 1, 2, 3, 4; Senior Superlative.

HENRY HAWKEN MINER

BELLMORE, N. Y.

B.S.

Tennis, 3; Thalean Literary Society, 1; Football, 1, 2, 3, 4.

SENIORS

ANNA MOWERY



LEO PAPPAS



MARIE PARKER



ZELMA PARNELL



JOSEPH PETACK



DORIS POINDEXTER



DOROTHY PRESNELL



PAULINE ROACH



ANNA LEROY ELLISON MOWERY

HIGH POINT, N. C.

B.S. in Business Administration
Theta Phi

Artemesian Literary Society, 1, 2, 3, Chaplain, 2, Treasurer, 3; Gamma Club, 4; Future Teachers Club, 3, 4; Baptist Student Union, 1, 2, 3.

LEO BASIL PAPPAS

BROOKLYN, N. Y.

A.B.

International Relations Club, 1; Junior Varsity Basketball, 2, 3, 4; Soccer, 1, 2, 3, 4, Captain, 4; Tennis, 3; Footlighters, 2, 3; Block "H," 2, 3, 4; Track, 2.

LILLIAN MARIE PARKER

DOBSON, N. C.

A.B.

Brevard College, 1, 2; Honor Roll, 3, 4; Who's Who, 4; Girls' Dormitory Council, 3, 4, Secretary, 3, President, 4; Chaplain Gamma Club, 4; Future Teachers Club, 4; Nikanathan Literary Society, 3.

CHARLOTTE ZELMA PARNELL

ELIZABETH CITY, N. C.

B.S. in Music
Theta Phi

Artemesian Literary Society, 1, 2, 3; Gamma Club, 4; W. A. A., 1, 2, 3; Choir, 1, 2, 3, 4, President, 4; Class Treasurer, 4; Who's Who, 4; Lighted Lamp, 4; Pan-Hellenic Council Secretary, 4; Honor Roll, 1, 2, 3, 4; Quartet, 2, 3; Marshal, 3; Student Government Representative, 3; A. A. U. W. Scholarship, 4; Tomlinson Voice Award, 3; International Relations Club, 1.

JOSEPH PATRICK PETACK

ERIE, PA.

A.B.

Football, 1, 2, 3, 4; Basketball, 1.

DORIS SPEASE POINDEXTER

WINSTON-SALEM, N. C.

A.B.

Theta Phi

International Relations Club, 1, 2; Artemesian Society, 1, 2, 3, Vice-President, 3; Hi-Po, 1, 2; W. A. A., 1, 2; Choir, 1, 2, 3, 4; Future Teachers Club, 3, 4; Miss High Point College 3.

DOROTHY PRESNELL

ASHEBORO, N. C.

A.B.

Theta Phi

Honor Roll, 1, 2, 3, 4; Nikanathan Literary Society, 1, 2, 3, Vice-President, 3; W. A. A., 1, 2, 4, Reporter, 2; Hi-Po, 1; Student Government Representative, 2; College Marshal, 3; Lighted Lamp, 3, 4; Vice-President Dormitory Council, 3; ZENITH Staff, 2, 3, 4, Editor-in-Chief, 4; President Gamma Club, 4; Who's Who, 4; Senior Superlative.

PAULINE ROACH

ERLANGER, N. C.

A.B.

S E N I O R S

RONDA SEBASTIAN



ARNOL SETZER



DORIS SETZER



DAN SIDES



ROBERT TRUESDELL



ROGER TUCKER



JULE WARREN



MARY WARREN



RONDA ARLENE SEBASTIAN

HIGH POINT, N. C.

B.S. in Business Administration
Sigma Alpha Phi

W. A. A., 1, 2, 3, 4; Intramural Manager, 4;
International Relations Club, 1; Artemesian
Literary Society, 1, 2, 3; May Queen Attendant,
1, 2, 3, 4; Secretary Student Council, 4.

ARNOL SETZER

WINSTON-SALEM, N. C.

A.B.

Appalachian State Teachers College, 1, 2; Future
Teachers Club, 3; W. A. A., 4; Hi-Po, 4;
Honor Roll, 4.

DORIS HILDA SETZER

WINSTON-SALEM, N. C.

A.B.
Theta Phi

Appalachian State Teachers College, 1; Artemesian
Literary Society, 2, 3; Footlighters, 2;
Choir, 3, 4; W. A. A., 2, 3, 4; Honor Roll, 2, 3.

ALFRED DANIEL SIDES

WINSTON-SALEM, N. C.

A.B.

Delta Alpha Epsilon
N. C. State, 1; Band, 2, 3, 4; Senior Superlative.

ROBERT TRUESDELL

HIGH POINT, N. C.

B.S. in Business Administration
Delta Alpha Epsilon
Band, 1, 2, 3, 4.

ROGER WILKINS TUCKER

MADISON, N. C.

A.B.

Oak Ridge, 1, 2; Ministerial Association, 3, 4;
Debating Team, 3; Baseball, 3.

JULE FRANCES WARREN

BURLINGTON, N. C.

B.S. in Home Economics
Theta Phi

Nikanthan Literary Society, 1, 2, 3; Gamma
Club, 4; Modern Priscilla Club, 1, 2, 3, 4,
Treasurer, 2, Secretary, 3, President, 4; Class
Treasurer, 1; College Marshal, 3; International
Relations Club, 1; Student Government Representative,
4; W. A. A., 1, 2, 3; Senior Superlative.

MARY MEANS WARREN

SPARTA, N. C.

B.S. in Business Administration

Woman's College of the University of North
Carolina, 1, 2; Vice-President of Baptist Student
Union, 4; Nikanthan Literary Society, 3.

S E N I O R S

FRANCIS WASHBURN



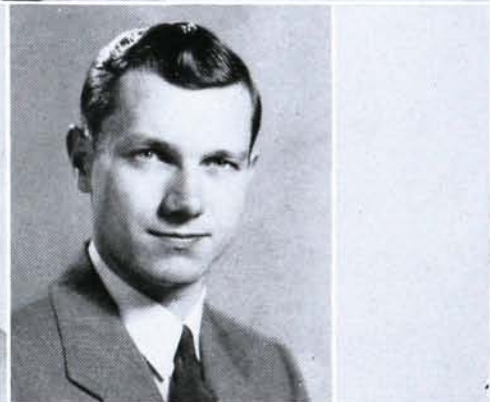
BILL WELBOURNE



NINA WHITAKER



ROBERT WILLIAMS



ELLIOT WYNNE



FRANCIS THOMAS WASHBURN

LEXINGTON, N. C.

A.B.

Presbyterian Junior College, 1, 2; Ministerial Association, 3, 4.

BILL WELBOURNE

TRINITY, N. C.

A.B.

NINA LEE WHITAKER

ENFIELD, N. C.

A.B.

Choir, 1, 2, 3, 4; Vice-President, 4; W. A. A., 1, 2, 3; Honor Roll, 1, 3, 4; Hi-Po, 2, 3; Footlighters, 2, 3.

ROBERT ERNEST WILLIAMS

ROCKY MOUNT, N. C.

A.B.

Delta Alpha Epsilon

Band, 1, 2, 3, 4; A Capella Choir, 3; Who's Who, 4; Chief Marshal, 3; Senior Superlative.

ELLIOT G. WYNNE

WILLIAMSTON, N. C.

B.S. in Business Administration

Band, 1, 2, 3, 4; Choir, 1, 2, 3; President, Thalean Society, 4; Marshal, 3; Honor Roll, 1, 2, 3, 4.



J U N I O R S

FIRST ROW

JOHN ADCOCK Stokesdale, North Carolina
MILDRED ALLEN High Point, North Carolina
MERKLE MAXUM BINGHAM Thomasville, North Carolina

SECOND ROW

JOSEPH BOSTICK Raleigh, North Carolina
HILLARD BUNN Concord, North Carolina
ELOISE CECIL High Point, North Carolina

THIRD ROW

PAUL CHAPPELL Tyner, North Carolina
NAN CLAPP High Point, North Carolina
TALMADGE COLE Asheboro, North Carolina

FOURTH ROW

CLYDE COLLINS Troutman, North Carolina
KATHERINE CRANFORD High Point, North Carolina
LOIS CRAVER High Point, North Carolina

FIFTH ROW

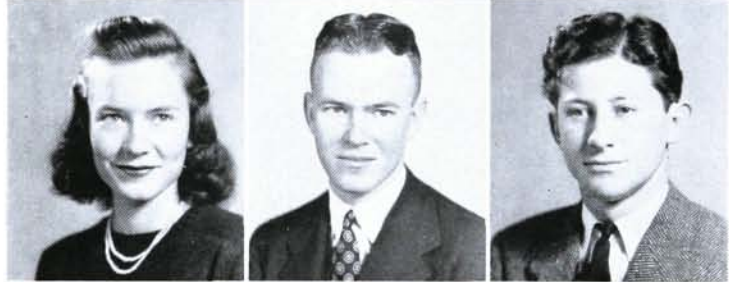
CHARLES EDWARDS High Point, North Carolina
FLORENCE ELLIS High Point, North Carolina
WILMA FARABEE Lexington, North Carolina

SIXTH ROW

JOHNSIE FARLOW Sophia, North Carolina
NELL FLETCHER Greenville, North Carolina
STANLEY FREEDMAN St. Augustine, Florida

SEVENTH ROW

RAYMOND FREEMAN Newport News, Virginia
HORTENSE FUTRELLE High Point, North Carolina
RUBY GORE Clinton, North Carolina



J U N I O R S

FIRST ROW

WILLIS GUPTON Hallister, North Carolina
ALFREDA HARDIE High Point, North Carolina
NELL HARTMAN Advance, North Carolina

SECOND ROW

ALBERT HELLER Weehawken, New Jersey
GARNETT HINSHAW High Point, North Carolina
CLARICE HOOVER Asheboro, North Carolina

THIRD ROW

LOUIS HORNE Archdale, North Carolina
MARTHA HOWELL Charlotte, North Carolina
NORWOOD JONES Clayton, North Carolina

FOURTH ROW

FRED KAPPELMAN Lynnbroom, New York
AILENE KIRKMAN Greensboro, North Carolina
JOE LEPKOWSKI Erie, Pennsylvania

FIFTH ROW

BONNIE LEWIS High Point, North Carolina
J. G. LONG Seaboard, North Carolina
JOHN MAIDES Maysville, North Carolina

SIXTH ROW

HAROLD MENDENHALL Thomasville, North Carolina
LILLIE MAE MOORE High Point, North Carolina
JESSIE McNEILL Jonesboro, North Carolina

SEVENTH ROW

MARGARET McNEILL Jonesboro, North Carolina
RUSSELL NIXON Elizabeth City, North Carolina
SAM OSBOURNE Independence, Virginia



J U N I O R S

FIRST ROW

GLENN PAYNE High Point, North Carolina
JOHN PERRY Enfield, North Carolina
NELL PRICE Kannapolis, North Carolina

SECOND ROW

JUDY PRIMM High Point, North Carolina
EDWARD ROBBINS High Point, North Carolina
PATSY SIFFORD Stanley, North Carolina

THIRD ROW

WALTER TALMADGE SINK High Point, North Carolina
LULA SMITH High Point, North Carolina
MARTIN SPINELLI Lynbrook, New York

FOURTH ROW

EUGENE STALEY High Point, North Carolina
JOHN STASULLI Washington, D. C.
RAY SWINK Lexington, North Carolina

FIFTH ROW

SIDNEY UNDERWOOD Trinity, North Carolina
DOROTHY LEE USHER Toledo, Ohio
AGNES WARD High Point, North Carolina

SIXTH ROW

NANCY WATSON Pinnacle, North Carolina
RUTH WOOD Dobson, North Carolina
SUE WOODRUFF Walnut Cove, North Carolina

S O P H O M O R E C L A S S

Dorothy Alexander
Grace Alexander
Edith Bailey
Mittie Lou Bell
Betty Brady
Thelma Carlberg
Dorothy Chamberlain
Helen Clark
Mary Ann Coe
Kathryn Cross
Johnsie Curry
Enola Sue Flowers
Frances Gatewood
Edith Glidewell
Jeanne Graff
Melba Gregory
Frances Holton

Mymalee Howard
Ruth Hull
Nancy Isenhour
Betty Deane Knox
Dorothy Koontz
Marguerite Koontz
Lucile Lanier
Dallie Liner
Helen Meredith
Irna Miller
Catherine Minnis
Juanita Morgan
Miriam McCall
Ethel Norton
Ruby Parker
Dorothy Price

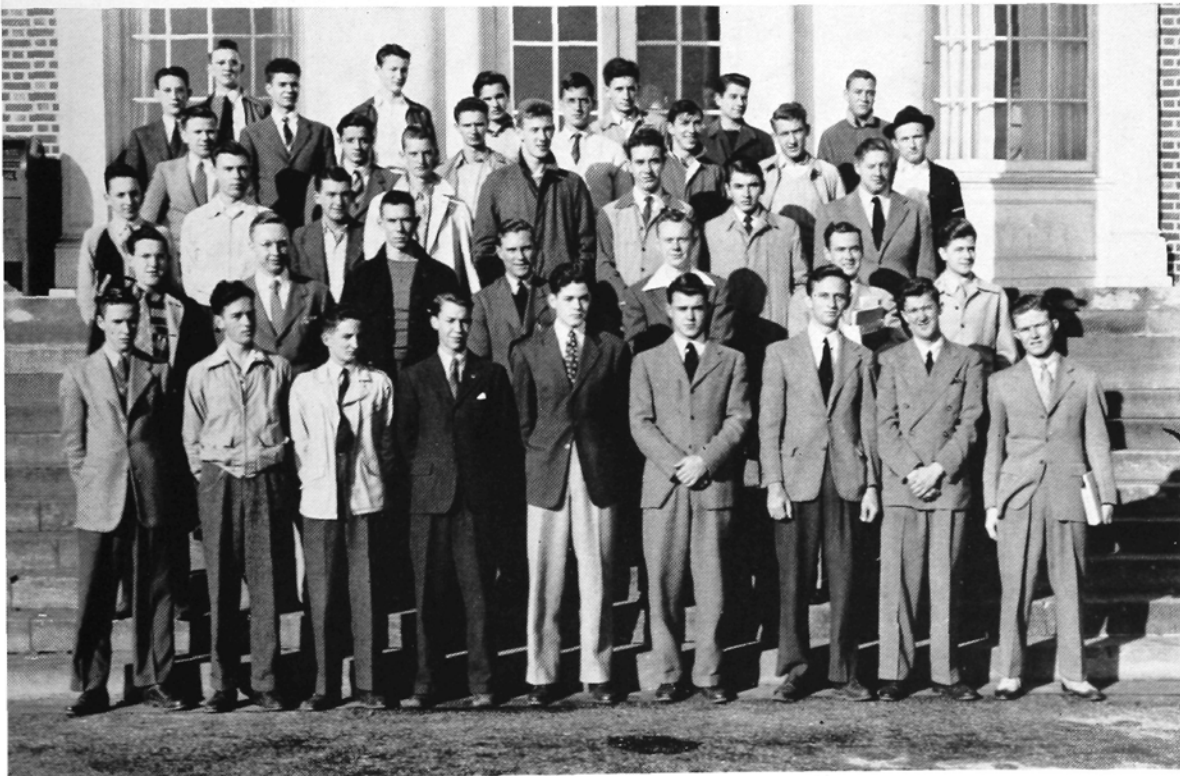
Lessie Price
Wanona Rash
Lena Sale
Lillian Self
Alice Sparger
Irene Strother
Damaris Taussig
Mary Ellen Taylor
Frances Thigpen
Mimi Waggar
Mildred Wagoner
Sara Warren
Betty Welch
Alma Blanch White
Iris Grace White
Daphne Elise Williamson
Ruth Wood



Homer Barrett
Tom Beasley
William Beaver
Francis Bowen
Luther Brown
John Carter
Albert Wayne Cagle
Stanton Cecil
Ollie Clark
Charles Coffey
Eugene Collette
George Compton
Harold Conner
Maurice Couturier
James Daniels
William Davis
Richard DiTullio

Perry England
William Hall
James Harris
Douglas Holbrook
George Humphreys
Andrew Hunt
James Kennerly
Edwin Knight
Kelly Lawson
Robert Lilly
Robert Lloyd
Robert Lumsden
John Miller
Jack Minnis
Futrelle Moore
Howard Moran
Johnny Millikan

Robert McCall
Charles McMurray
Charles Noell
George Nostrand
John Peele
Robert Porter
Ray Rider
Richard Smith
Howard Snow
Henry Stroud
Lacy Walters Summers
James Terry
Lindsay Weaver
Eugene Wiley
John Wilson
Herman Winfreys
Richard Zarbock



FRESHMAN CLASS

Maxine Aldridge
Nellie Allen
Clara Bell Allred
Colleen Bailey
Dorothy Brown
Frances Buchanan
Ernestine Burchfield
Blanche Burgess
Frances Anita Burton
Mary Frances Canady
Lethetic Clifton
Genevieve Couch
Mary Forrest Covington
Nancy Covington
Helen Craven
Eloise Crawford
June Dinkins
Lorraine Durham
Mattie Ruth Durham
Julia Folger

Billie Frazier
Carolyn Fletcher
Leria Freeman
Marian Fulton
Mary Goolsby
Olivia Greenway
Doris Hall
Margaret Hancock
Cornelia Harville
Melvin Hayes
Geraldine Geneva Hedrick
Ruth Henderson
Betty Henderson
Mildred Henderson
Clara Herbert
Virginia Hudgins
Jane Hylton
Nellie Gray Inscore
Ethel Jacobs
Treva Jones

Charlotte Kile
Sarah King
Margaret Long
Janice Mann
Doris Maske
Beverly Merchant
Irene Moose
Mattie Kate Muse
Madeline Myers
Alice McGhee
Elise Parker
Margaret Paschal
Anne Paquet
Marjorie Payne
Edna Louise Pearce
Helen Iretta Pierce
Elizabeth Pitts
Juanita Poindexter
Margaret Qualls
Frances Rand

Dorothy Ray
Lucille Sherrill
Margaret Short
Louise Smith
Sally Smith
Doris Snow
Marie Spencer
Arline Steelman
Phyllis Anne Steidley
Frances Storey
Hope Tarkington
Dina Taylor
Julia Thompson
Frances Viverette
Ophelia Webster
Nelda Widenhouse
Doris Wooters
Violet Yokeley
Betsy York



Jack Ahl
 Henry Albrecht
 William Amos
 William Anderson
 Clayton Andrews
 William Atkins
 Johnnie Aycock
 Gibson Beazley
 Brewster Berg
 Howard Berg
 Nixon Bingham
 Buren Blackwelder
 Bill Blaylock
 Juan Blondet
 Kostica Boria
 Frank Bostian
 John Bowman
 Orin Boyles
 Henry Bradley
 Charles Brown
 Lester Brown
 Willard Brown
 Lynn Buck
 Roy Burchfield
 Billy Carroll
 Dewey Cates
 LeRoy Clark

Julius Coggin
 Thomas Cole
 Frank Conrad
 Billy Connor
 John Crowder
 Jimmy Current
 James Dimmette
 Vernon Dull
 Benson Dunn
 Henry Elder
 Sydnor Elkins
 Michael Fedyshyn
 Jack Foster
 Elvin H. Frazier
 Robert Garle
 Charles Gordon
 Walter Grandjean
 Charles Green
 Paul Greene
 Russell Grogan
 Raymond Gunn
 Homer Guyer
 Banks Hamilton
 James Harmon
 Reid Harris
 Earl Hedrick

Robert Hicks
 Charles Horton
 Willis James
 Thomas Jarrell
 Howard Jarrell
 Douglas Johnson
 Jedly Johnson
 Clarence Keever
 James Kivett
 Clark Lassiter
 James Leach
 Logan Leathers
 Newman Reid Lemonds
 Harold LeRoy
 William Lewis
 Henry Linthicum
 Grady Long
 William Lugani
 Paul Marsden
 Henry Moore
 Donald Myers
 John McAllister
 Robert McGinn
 Donald Nance
 Robert Palmer
 Phil Parodi

William Payne
 Latham Conrad Peak
 Jesse Poindexter
 Walter Razanauskas
 James Reed
 Lonnie Renegar
 Worth Richardson
 Gabriel Sabbagh
 Joseph Sanders
 William Sizemore
 Boyd Smith
 Anthony Soscia
 James Stepp
 Michael Varchola
 Robert Vaughan
 Garrett Wade
 Aubrey Warlick
 Wesley Webb
 William Welch
 James Whichard
 Richard Whitehead
 Arthur Williams
 Clyde Williams
 Paul Willyard
 Harvey Winslow
 Marion Workman



Features





☆ *Miss Zelma Parnell*

SENIOR SPONSOR

☆ *Miss Nan Clapp*

JUNIOR SPONSOR

MISS HIGH POINT COLLEGE

Selected by John Robert Powers





☆ *Miss Dorothy Alexander*

SOPHOMORE SPONSOR

☆ *Miss Beverley Merchant*

FRESHMAN SPONSOR



May Day, 1943

GENEVA CROWDER

QUEEN





COLLEGE MARSHALS



KENNETH CROUSE First Semester Chief

TALMADGE COLE Second Semester Chief

ELOISE CECIL

BONNIE LEWIS

CLYDE COLLINS

GLENN PAYNE

CHARLES EDWARDS

JOHN PERRY

GARNETT HINSHAW

D. L. USHER

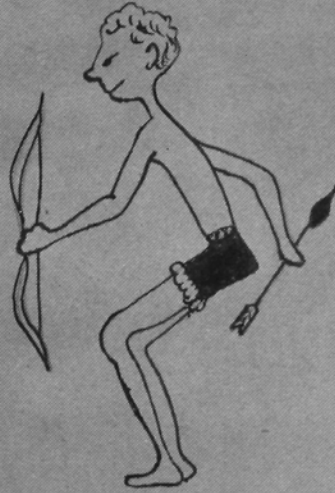
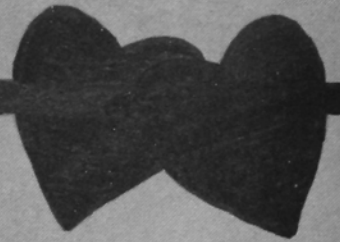


One Day, 1943



Dear Mom,
School is wonderful this year! - especially the "co-ed" part!
I've met the cutest
such good times
other night
we 4







Best Sports
Ruth Griffith
+
James Lowder

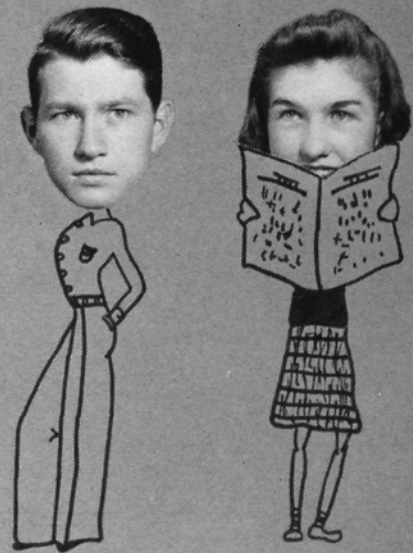


Most Athletic
Geneva Crowder
+
Alvin Boles

SUPER



Most Popular
Geneva Crowder
+
Bill Henderson



Most Intellectual
Martha Guy Mickey
+
Roland Garmon



Most Versatile
Jo Deal
+
Bill Henderson



Best Looking
Julie Warren
+
Sam Sides

SENIORS



D. PRESNELL
SO SAD WAS THE
MOMENT
WHEN, WITH HER
LAST BREATH,
SHE SIGHED, "THIS
~~IS~~ ZENITH
HAS WORKED ME
TO DEATH!"
1922-1943
R. I. P.

B. KIRCHGESSNER
MARVEL AT HIS
DEEDS,
AS ON HIS GRAVE
YE LOOK!
HE RAISED ALL
THE COUGH
FOR THIS BLANKET
BOOK!
19 - 1943
R. I. P.

Most Original
Dorothy Presnell
+
Bob Kirchgessner

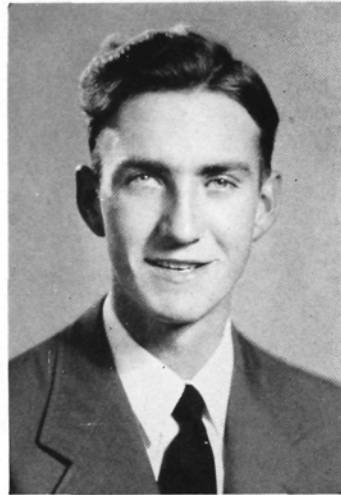


Most Friendly
Geneva Crowder
+
Bob Williams

Organizations



STUDENT GOVERNMENT



BILLY HENDERSON
President of the Student Body



Boles, Astrella, Sebastian, Parker.
Lowder, Carter, Griffith, Coe, Woodruff.
Payne, Henderson, Lloyd, Warren.

To the Student Government go our praises for a year's work well done. The officers and the two representatives from each class serve as a link between the administration and the student body, and it is through them that our social activities are arranged and our student regulations formed. Under the capable leadership of Billy Henderson, president, and Jack Astrella, vice-president, dances, teas, formal dinners, and parades have made our social life on the campus delightful.

The success of this organization has depended upon the individual and collective work of its members, and we shall long remember the regular Monday night meetings in which our problems and everyday affairs were worked out.

DORMITORY GOVERNMENT

OLLIE CLARK
LeROY FOSTER
JAMES LOWDER
RUSSELL NIXON

MARTIN SPINELLI
JOHN STASULLI
KATHLEEN HOWARD
NANCY ISENHOUR

MARIE PARKER
D. L. USHER
SUE WOODRUFF



DAY STUDENT GOVERNMENT

JOHN CARTER
ELOISE CECIL
RUTH GRIFFITH
RUBY PARKER
GLENN PAYNE

S I G M A
A L P H A
P H I



SORES IN COLLEGIO

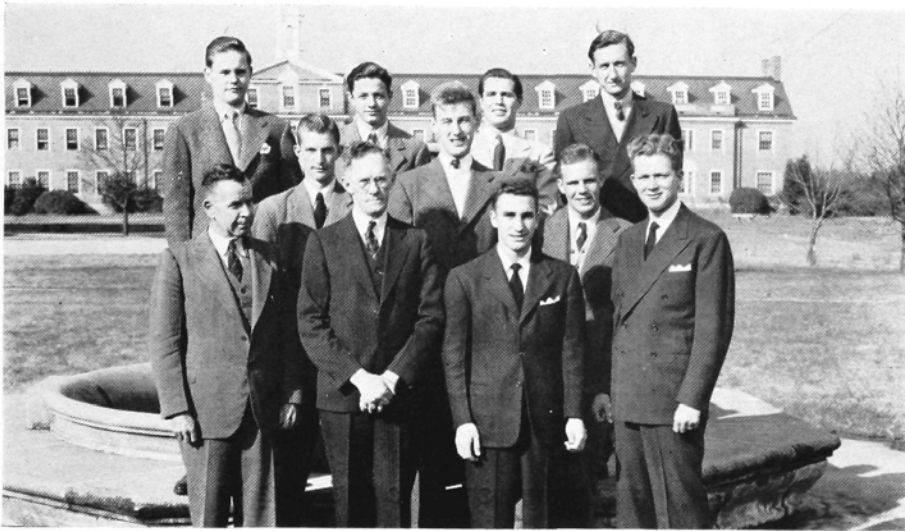
DOROTHY ALEXANDER	NANCY ISENHOUR
MARY LEE CANTRELL	MARGUERITE KOONTZ
DOROTHY CHAMBERLAIN	BONNIE LEWIS
NAN CLAPP	IRNA MILLER
JOSEPHINE DEAL	WANONA RASH
EDITH GLIDEWELL	RONDA SEBASTIAN
NELL HARTMAN	LILLIAN SELF
WANDA HARVILLE	PATSY SIFFORD
KATHLEEN HOWARD	MIMI WAGGER
RUTH HULL	CAROLINE YORK

HONORARI SORES

DR. HELEN R. BARTLETT	MISS E. VERA IDOL
MRS. P. E. LINDLEY	



IOTA TAU KAPPA



FRATRES IN COLLEGIO

JACK ASTRELLA
TAL COLE
THOMAS COLE
SYDNOR ELKINS
RAYMOND FREEMAN
HUGH GOERNER

GEORGE HUMPHREYS
HOWARD MORAN
CHARLES NOELL
GEORGE NOSTRAND
ROBERT PORTER
TONY SOSCIA

HONORARI FRATRES

C. R. HINSHAW
O. A. KIRKMAN

P. E. LINDLEY
A. C. LOVELACE

THETA PHI



SORORES IN COLLEGIO

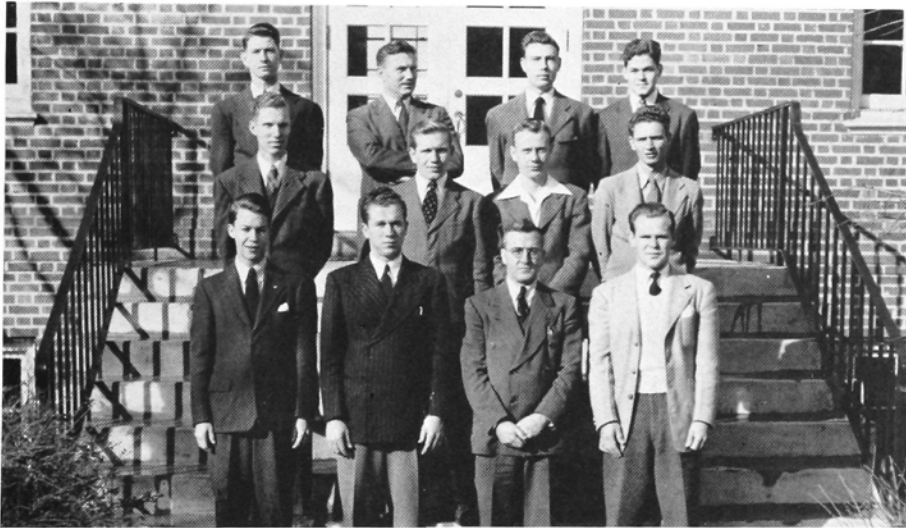
BETTY BRADY	DORIS POINDEXTER
MARY ANN COE	DOROTHY PRESNELL
GARNETT HINSHAW	LENA SALE
MARY HOLTON	DORIS SETZER
BETTY DEANE KNOX	DOROTHY LEE USHER
MIRIAM McCALL	JULE WARREN
ANNA ELLISON MOWERY	NINA WHITAKER
ZELMA PARNELL	SUE WOODRUFF

HONORARI SORORES

MISS LOUISE ADAMS	MRS. GLENN MUSE
MISS PRISCILLA DEAN	MRS. N. P. YARBOROUGH
MRS. N. M. HARRISON	MRS. C. V. YOW



EPSILON ETA PHI



FRATRES IN COLLEGIO

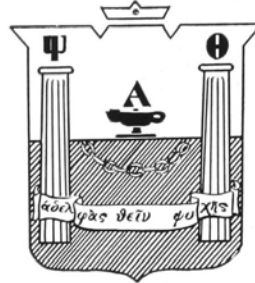
ALVIN BOLES	THOMAS HUTCHINS
PAUL CHAPPELL	BOB LILLY
GEORGE COMPTON	BOB LLOYD
HAROLD CONNOR	JAMES LOWDER
ROLAND GARMON	PAUL MARSDEN
BILL GOSSARD	GABRIEL SABBAGH
BILL HALL	DICK SMITH
JEFF HARMON	BILL WELBORNE

HONORARI FRATRES

BEN H. HILL	J. H. MOURANE
N. P. YARBOROUGH	

GENEVA CROWDER, Fraternity Sweetheart

ALPHA
THETA
PSI



SORORES IN COLLEGIO

ELOISE CECIL

RUTH GRIFFITH

KATHRYN CRANFORD

RUBY PARKER

JUDY PRIMM

HONORARI SORORES

MRS. C. R. HINSHAW

MRS. S. O. PEBBLES

MRS. ALICE PAIGE WHITE



DELTA ALPHA EPSILON



FRATRES IN COLLEGIO

CHARLES COFFEY	BOB KIRCHGESSNER
CHARLES EDWARDS	JACK MINNIS
LeROY FOSTER	RUSSELL NIXON
WILLIS GUPTON	DAN SIDES
HARRY LEE HAUSER	RAY SWINK
BILL HENDERSON	BOB TRUESDELL
FRED KAPPELMANN	BOB WILLIAMS
BAYNE KEEVER	ELLIOT WYNNE

HONORARI FRATRES

J. H. ALLRED	OLIN BLICKENSERFER
E. C. GLASGOW	



PAN-HELLENIC COUNCIL

J. H. MOURANE Permanent Chairman
 MARY HOLTON Secretary

REPRESENTATIVES

MARY HOLTON Theta Phi
 MISS LOUISE ADAMS Theta Phi
 KAT HOWARD Sigma Alpha Phi
 MISS MABEL WARLICK Sigma Alpha Phi
 RUTH GRIFFITH Alpha Theta Psi
 MRS. ALICE PAIGE WHITE Alpha Theta Psi
 JACK ASTRELLA Iota Tau Kappa
 A. C. LOVELACE Iota Tau Kappa
 JAMES LOWDER Epsilon Eta Phi
 J. H. MOURANE Epsilon Eta Phi
 BILL HENDERSON Delta Alpha Epsilon
 MR. J. H. ALLRED Delta Alpha Epsilon

The purpose of the Pan-Hellenic Council is to provide active supervision of all the activities of the Greek clubs on the campus. Their work includes the study of the constitution of the council in order that it might meet present needs. With this thought in mind, the permanent chairman, J. H. Mourane, has introduced amendments which better enable the organization to exist harmoniously under the present war conditions.



HOME MANAGEMENT HOUSE

The cry, "Do I smell something burning?" is followed by a mad scramble to the Practice House kitchen to see how the pie is baking. The oven door opens to reveal a delicately browned apple pie. The girls (six seniors this year) gather around to set the table, and prepare one of the many meals they have in their six weeks' stay at the large white house on College Drive. Their routine runs smoothly, and each girl has her own duty in making the Practice House work like a scientific and modern home.

The girls are well prepared for penny-pinching and feather dusting with home economics courses, and the Practice House enables them to put their studies into actual experience, thereby benefiting by solving practical home problems. Their shining kitchen is an example of their efficiency; as Miss Ada Johnson, the home economics instructor, helpfully repeats, "Clean as you go!" Another real evidence of their ability is exemplified by their weekly formal dinners, which are included in the budget.



MISS ADA JOHNSON

In the morning the girls rush down the stairs to fry eggs for breakfast, then to vacuum the living room, which is really the date room. They work hard all day as all good housekeepers should, but they do have plenty of fun and, we suspect, plenty of good food. The girls who are enjoying the Practice House life are Ruby Gore, Kathleen Howard, Evelyn Kearns, Ela Kinsey, Jesse McNeill, and Jule Warren.



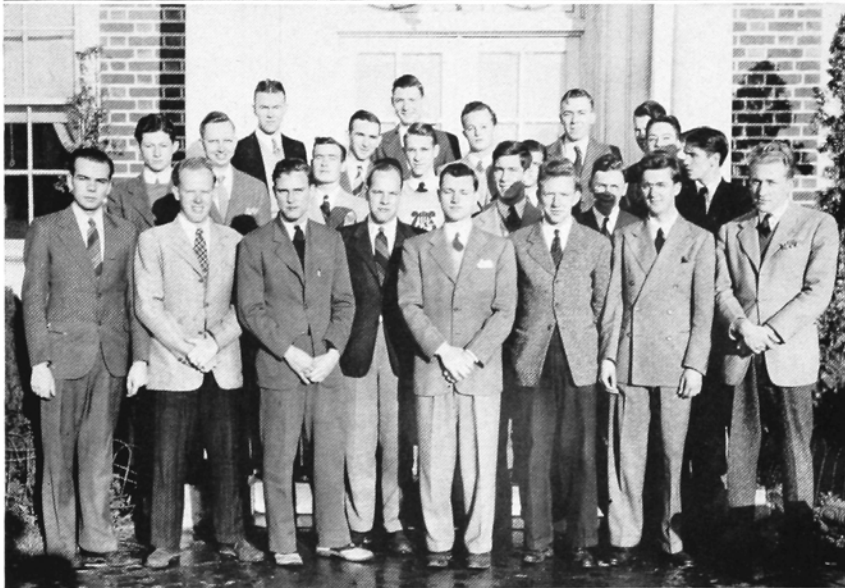
GAMMA CLUB

DOROTHY PRESNELL
President

DOROTHY LEE USHER
Vice-President

MARY ANN COE
Secretary

GARNETT HINSHAW
Treasurer



THALEAN LITERARY SOCIETY

ELLIOTT WYNNE
President

BILL GOSSARD
Vice-President

LUTHER BROWN
Secretary

CHARLES COFFEY
Treasurer



FUTURE TEACHERS CLUB

GRACE MCKAUGHAN
President

JUDY PRIMM
Vice-President

AILENE KIRKMAN
Secretary-Treasurer

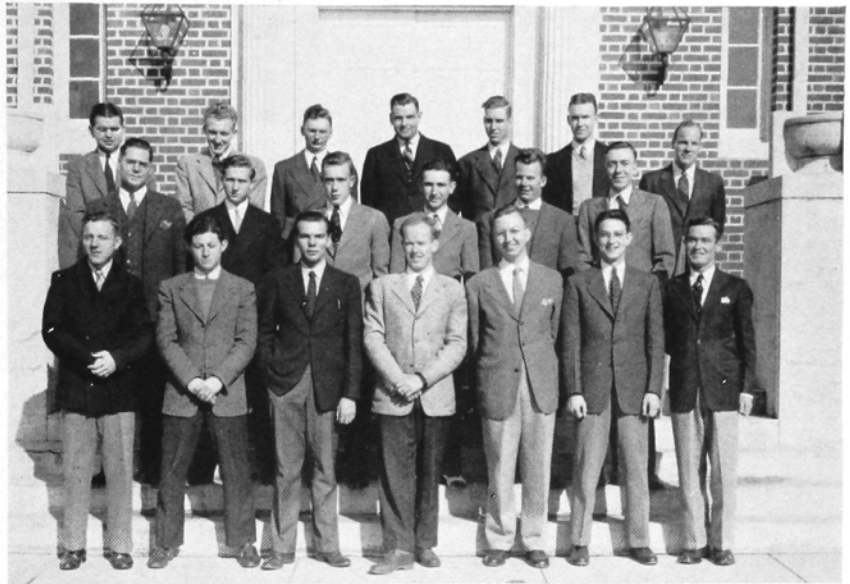
MINISTERIAL ASSOCIATION

JOHN CARTER
President

PERRY ENGLAND
Vice-President

RAY SWINK
Secretary-Treasurer

MARION WORKMAN
Chaplain



RELIGIOUS COUNCIL

CLYDE COLLINS
MAURICE COUTURIER
KENNETH CROUSE
WANONA RASH
RAY SWINK
DEAN LINDLEY



MODERN PRISCILLA CLUB

JULE WARREN
President
EVELYN KEARNS
Vice-President
KATHLEEN HOWARD
Secretary
ELA KINSEY
Treasurer

We tried and tried to take a presentable picture of the Modern Priscilla members, but each time a darn little Gremlin put his naughty fist over the camera lens and spoiled the photograph. Apologies to the M. P. girls! We're so sorry that we couldn't feature you in this place that was reserved for your club.

The blame should be placed on the cadets, who brought those bad Gremlins to the campus in the first place!

The Editor
2



CHEERLEADERS

GENEVA CROWDER
Chief

VIRGINIA BECK

SYD ELKINS

"PINKIE" HEDRICK

VIOLET YOKELY



DEBATERS

OSWALD BLATT

JOSEPH HELMREICH

STAN FREEDMAN

DOUGLAS HOLBROOK

RAY SWINK

JAMES TERRY



MEDICAL CLUB

DOUGLAS HOLBROOK
President

LUTHER BROWN
Vice-President

BOB GAYLE
Secretary-Treasurer

B A N D

OLIN BLICKENSERFER
Conductor

BOBBIE WILLIAMS
Assistant Conductor

PAUL MARSDEN
Drum Major

DOROTHY AND GRACE
ALEXANDER
Drum Majorettes



C H O I R

ZELMA PARNELL
President

NINA WHITAKER
Vice-President

LENA SALE
Secretary



ENGINEERS CLUB

FRED KAPPELMANN
President

JOHN PERRY
Vice-President

JOHN PEELE
Secretary

RUSSELL NIXON
Treasurer





THE LIGHTED LAMP

MEMBERS

Kenneth Crouse
Josephine Deal

Ruth Griffith
Martha Grey Mickey

Zelma Parnell
Dorothy Presnell



Membership in the Lighted Lamp, the only honor society on the campus, is the most coveted honor a student may receive. Not only must a student excel in scholarship, but also he must excel in character, leadership, and service. This honor can come to a student only in his junior or senior year. His scholastic average must drop no lower than a "B" during the five preceding semesters, and he must have no conditions or failures. Students are nominated by the members and elected by the faculty. This is an honor few achieve, and those who do maintain such standards in character, leadership, scholarship, and service deserve such honor. Since the beginning of the society in 1935, there have been only 46 members tapped.



JOSEPHINE DEAL

RUTH GRIFFITH

MARTHA GREY MICKEY

MARIE PARKER

ZELMA PARNELL

DOROTHY PRESNELL

KENNETH CROUSE

BILLY HENDERSON

THOMAS LINDSEY

ROLAND LONG

JAMES LOWDER

BOBBY WILLIAMS

W H O ' S W H O

THE ZENITH



DOROTHY PRESNELL
Editor-in-Chief



BOB KIRCHGESSNER
Business Manager

EDITORIAL STAFF

THELMA CARLBERG
CHARLES COFFEY
GARNETT HINSHAW
BONNIE LEWIS
MARTHA GRAY MICKEY
LOUISE SMITH
D. L. USHER

BUSINESS STAFF

ALVIN BOLES
WILLIS GUPTON
HARRY HAUSER
BAYNE KEEVER
JACK MINNIS
RAY SWINK
NELDA WIDENHOUSE

BOLES

CARLBERG

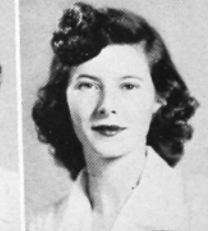
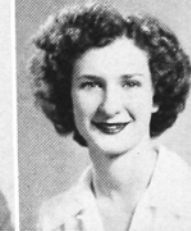
COFFEY

GUPTON

HAUSER

HINSHAW

KEEVER



LEWIS

MICKEY

MINNIS

SMITH

SWINK

USHER

WIDENHOUSE



RUTH GRIFFITH
Editor-in-Chief



BOB KIRCHGESSNER
Business Manager

THE HI-PO

EDITORIAL STAFF

VIRGINIA BECK
GEORGE HUMPHREYS
NELDA WIDENHOUSE
RUBY PARKER
KATHRYN CROSS
LERIA FREEMAN
ARNOL SETZER

THELMA CARLBERG
JUDY PRIMM
JAMES TERRY
OSWALD BLATT
PHIL PARODI
WAYNE CAGLE
DAMARIS TAUSSIG

BUSINESS STAFF

CHARLES COFFEY
ELOISE CECIL
BETTY HENDERSON

HUGH GOERNER
FRANK BOSTIAN
JEDDY JOHNSON

BECK

BLATT

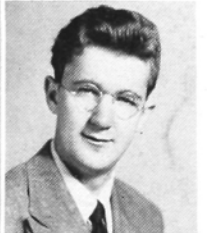
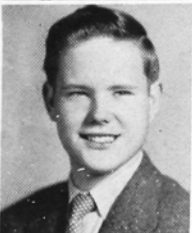
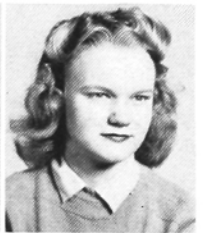
BOSTIAN

CARLBERG

COFFEY

CROSS

FREEMAN



HUMPHREYS

PARKER

PARODI

PRIMM

SETZER

TAUSSIG

TERRY

Athletics



ATHLETIC ASSOCIATION



ATHLETIC COUNCIL

Dr. G. I. Humphries

Dr. C. R. Hinshaw
Mr. C. V. Yow

Mr. N. P. Yarborough

INTRAMURAL COMMITTEE

Miss Jo Chapman

Mr. C. V. Yow
Mr. J. H. Allred

Dr. E. O. Cummings

COACH YOW



The most evident function of the Athletic Council is its direct supervision over all athletic contests. Less noticeable, but far more important, is its task of extending the athletic program to every student by means of the physical education classes and the intramural sports. In order to better promote an intramural program, the Intramural Committee was formed this year. With the cessation of many of the inter-collegiate sports, intramurals have become even more important in the extra-curricula life of the college students. The task of guiding this phase of campus life has been assigned to this committee.

V A R S I T Y S Q U A D

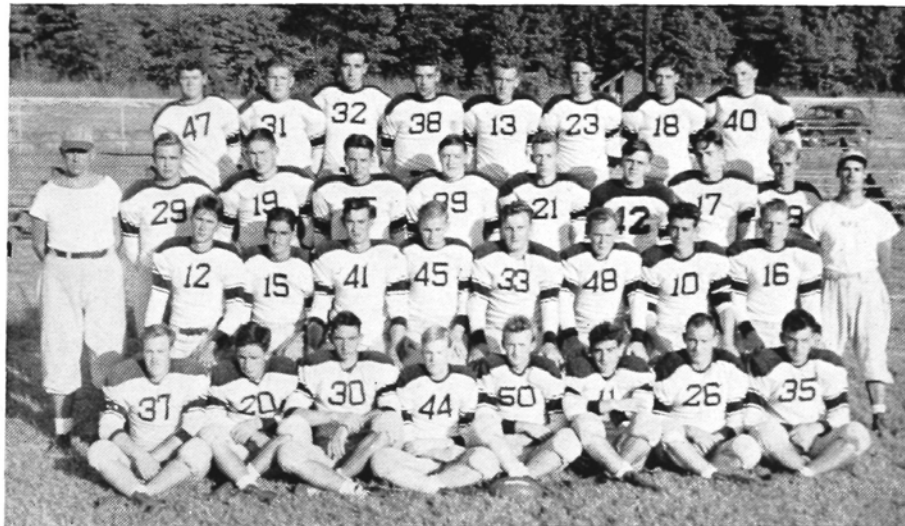
Lepkowski
 Petack
 Webb
 Freeman
 Boles
 Lumsden
 Spinelli
 Bowen
 Davis
 Lowder
 Long
 Razanauskas
 Varchola
 DiTullio
 Blaylock
 Weaver
 Cecil

H

Miner
 Beazley
 Whitehead
 Conrad
 Boles
 B. Berg
 H. Berg
 Kivett
 Cates
 Green
 Fedyshyn
 Reed
 Hauser
 MacAllister
 Zarback
 Boyles

RESULTS

High Point	0; Milligan	6
High Point	14; Catawba	38
High Point	0; Appalachian	27
High Point	0; Camp Davis	20
High Point	50; Guilford	0
High Point	0; Appalachian	44
High Point	7; Catawba	33
High Point	0; Naval Apprentice	0





MASCOT FREDDIE

• • T H E 1 9 4 2 •

Guilford 0, High Point 50. Good old Guilford, what would we do if they ever discontinued football? Perhaps next year we should play them more often, so we can have more victories. Unfortunately, we have to play other schools, and—as has been happening all too often—lose to them.

We opened with an inexperienced team because many of last year's reserves were gone, war having taken many from our ranks, and lost to a fair Milligan College team, 6-0.

Next, Catawba invited us over to their yard, and sent us back stinging from a 38-14 setback. They had plenty of power, but it looked for a

while as if we were good, too, for we were leading for most of the first half.

The Panthers came back from Boone on the short end of a 27-0 defeat, completely out-classed and a victim of the "T" formation.

Camp Davis added another defeat to a really fighting Panther team, with a 20-0 score. We should be proud of our fellows, though, for they were up against plenty of good college ball-players with All-American ratings.

Then came Guilford and victory; sweet victory, even if it was only over Guilford. The reserves were used freely, and even Kirchgessner and Sides played about half of the game.

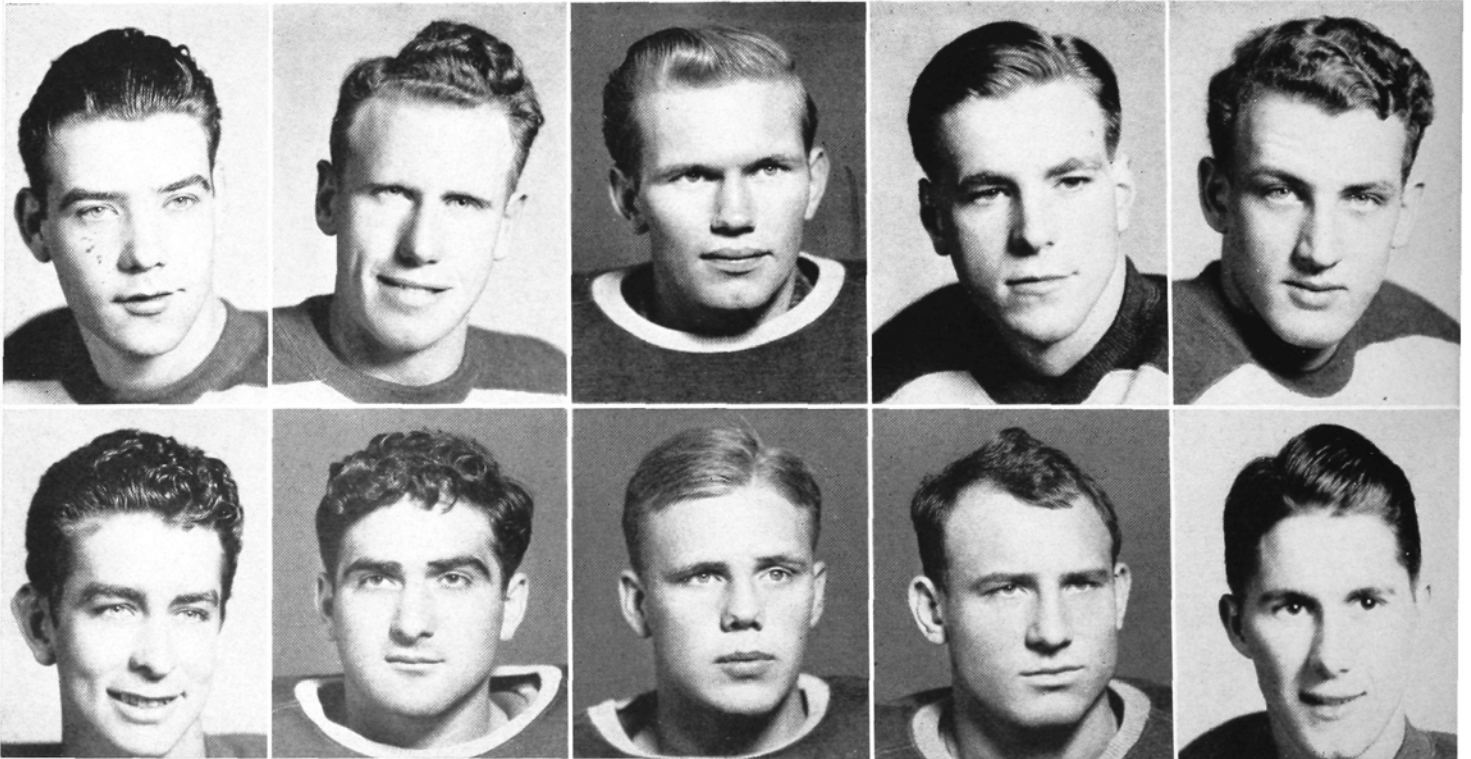
BEAZLEY
DAVIS

BLAYLOCK
DITULLIO

BOLES
FREEMAN

BOWEN
LEPKOWSKI

CECIL
LONG



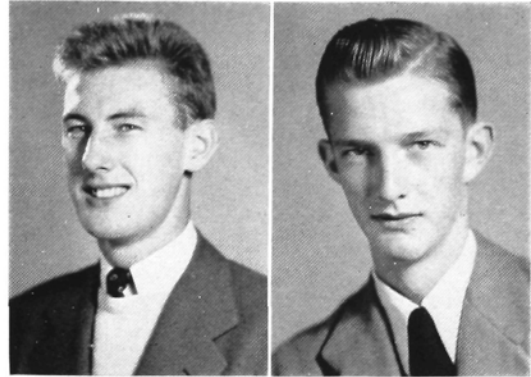
F O O T B A L L T E A M

Appalachian came down here and took the joy from our first victory, running up and down the gridiron to a 44-0 score.

In our return game with Catawba, we went down under a 33-7 score, Catawba proving once again that the Panthers did not have enough power to stop them.

The Panthers closed with a scoreless tie, before 14,000 people at Newport News. They continually thwarted scoring threats by the Naval Apprentice team, composed of many college stars.

It is hard to keep up a fighting spirit on a losing team, but fellows like Joe Lepkowski can't say quit. Joe was a fighting dynamo throughout the season and always fought harder when the chips were down. Alvin Boles, slight of weight, came in for plenty of punishment but kept trying, too. Others like Petack, Lumsden, Bowen, Lowder, and Weaver played good ball. Raza-



GEORGE NOSTRAND
Manager

ROBERT PORTER
Manager

nauskas, Varchola, Conrad, and Fedyshyn turned in stellar performances and deserve special mention.

Next year we should play Vassar, St. Mary's, W. C., and G. C.—and, who knows, we may have a few victories. If not, there will be plenty of fun trying.

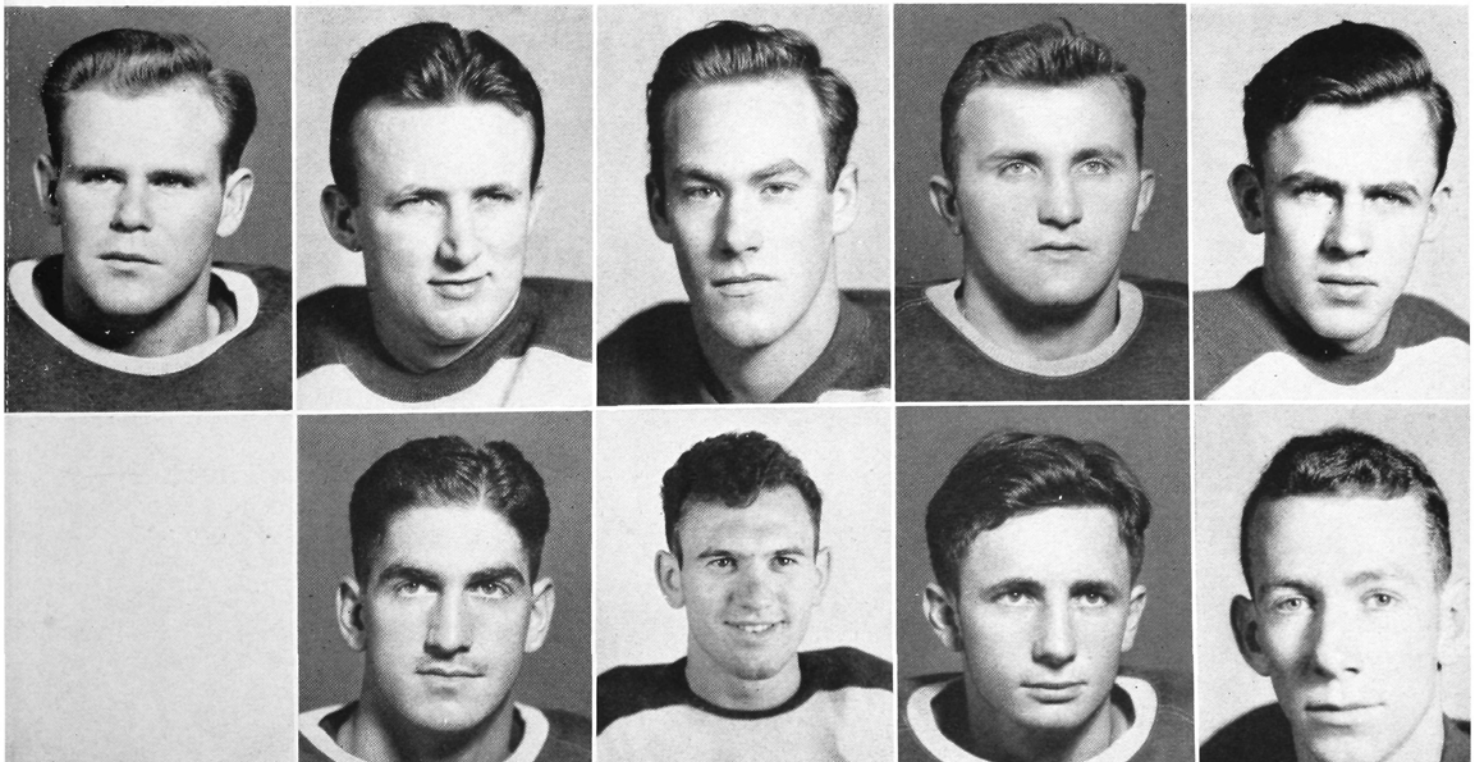
LOWDER

LUMSDEN
SPINELLI

MINER
VARCHOLA

PETACK
WEAVER

RAZANAUSKAS
WHITEHEAD



B A S K E T B A L L

This year's basketball squad was never in the top running. After last year's wonder team, we expected a falling off, but not to the depth that this squad experienced. However, Coach Yow was handicapped when many of his hold-overs from the previous season failed to return. Then, when he did seem to get a team together, Uncle Sam needed the boys for his team, which was fighting a tougher battle and for higher stakes.

The fellows that finally did wear the

fall to pieces, only to come to life too late.

Captain Johnny Stasulli was the spark-plug of the team and played a fast, clean, heads-up type of ball. With him was LeRoy Clark, a real war horse, a dead-eye on shots, and a fast, shifty ball player, who was at home on any basketball court. Dick DiTullio showed flashes of brilliant ball-playing and kept us in many a ball game with his shots, but he lacked the coolness of Clark and Stasulli. Porter



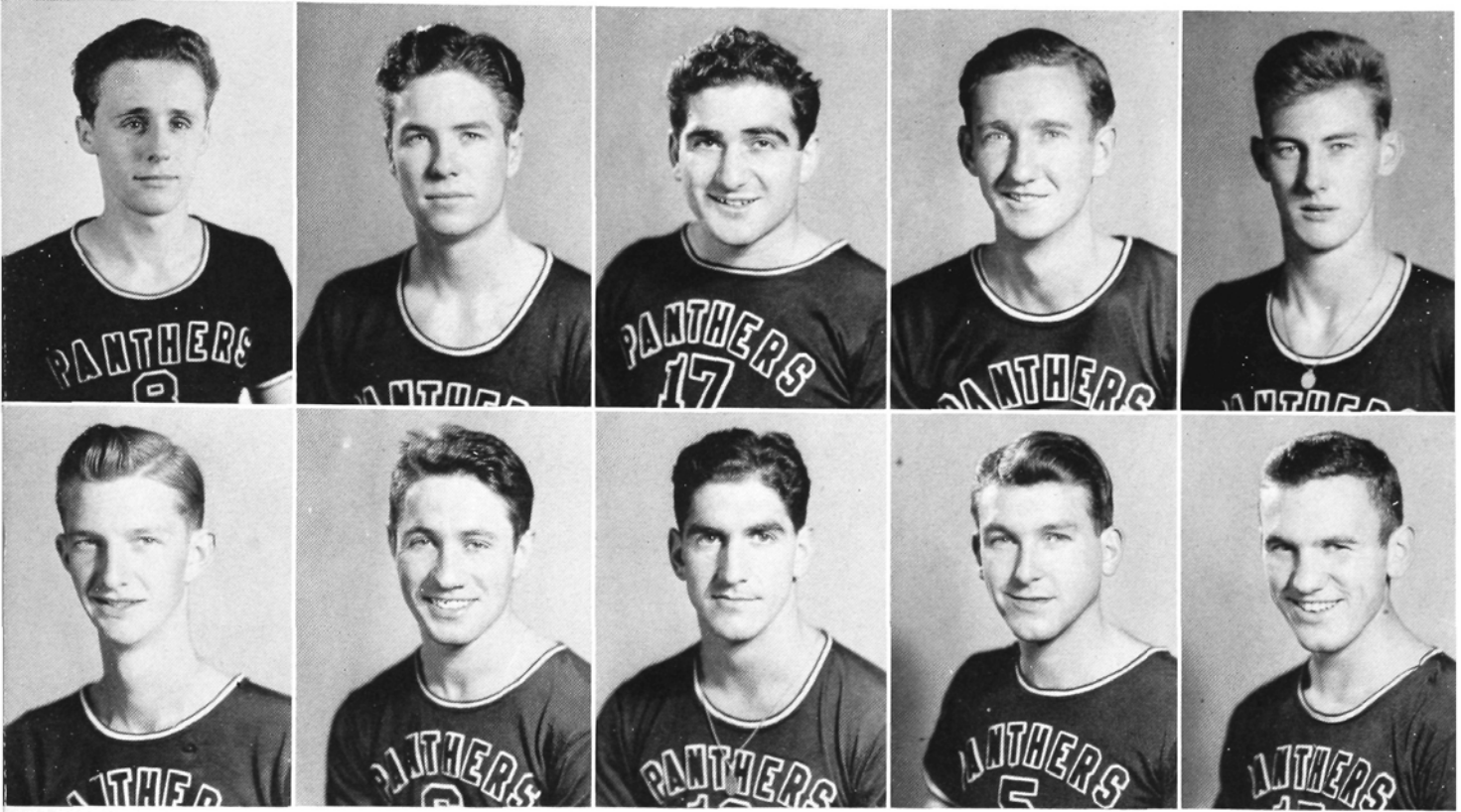
JOE LEPKOWSKI
Manager

Panther colors tried hard, but lacked experience and seemed to lose their heads when the going got tough. Continually in games, they would blow leads and then

played a steady floor-game but lacked the scoring threat.

It was at the center position that we lacked an experienced player. Goerner

1 9 4 2 - 1 9 4 3



CHAPPELL
PORTER

CLARK
STASULLI

DiTULLIO
SPINELLI

GOERNER
STROUD

NOSTRAND
VARCHOLA

played good ball, but lacked height and was not given the proper support of his teammates. Nostrand had the height but not the necessary experience. He was continually faked out of position and was often not in position for shots which he could have made. He deserves a lot of credit, however, for ringing up points on the Panthers' side of the scoreboard.

Mike Varchola, Paul Chappell, Lynn

Buck, and J. L. Poindexter saw service, but they were not quite ready for varsity ball, although Varchola did show a good eye in shooting long range baskets at different times. With more playing experience, these boys could make a fine winning combination.

Thus we ended basketball season with some victories and, we must admit, more defeats.



JUNIOR VARSITY BASKETBALL

The High Point Kittens did not amount to much this year, the team being made up of a few boys who simply wanted to get out on the court and play ball for the fun of it. There were several men who came out with a determination to advance to the Varsity squad, and whenever Coach Yow found his Panther ranks depleted by a call from some branch of the service, he brought up some of these yearlings to follow the play of the Big Team from the bench. He sent them into the lineup from time to time, when he felt that they could materially aid the team. Thus Chappell, Buck, and Poindexter found themselves called up from the J. V.'s in the early part of the season. Keeping this fact in mind, we can understand the poor showing of the Kittens with their tiny string of victories. Without apology or alibi, we can say that the Kittens were out there for the fun of it, and before the "main attraction of the evening," would entertain the crowd with some "Brooklyn Dodger" type of ball-playing. Win, lose, or draw, the loyal Panther fans were always out rooting for them; and if the game got out of hand and they became victims of one-sided scores, the cheering section kept on rootin' and a-tootin' for them as if the conference title hung in the balance.



THE 1942 SOCCER TEAM

JOHNNY STASULLI Player-Coach
 LEO PAPPAS Captain

KOSTICA BORIA
 FRANK BOSTIAN
 HUGH GOERNER
 CHARLES GREEN
 ROLAND GARMON

JEFF HARMON
 REID HARRIS
 ROSS HEDRICK
 JOE HELMREICH
 RAY RIDER

GABRIEL SABBAGH

RESULTS

High Point 7; High Point Y. M. C. A. 0
 High Point 6; Davidson 2
 High Point 0; N. C. Naval Pre-Flight 2
 High Point 3; University of Virginia 3

W O M E N ' S S P O R T S A T

SOCCKER VARSITY

Mildred Allen
Geneva Crowder
Jeanne Graff
Dottie Kountz
Dallie Liner
Lillie Mae Moore
Ethel Norton
Doris Snyder
Sally Smith
Frances Thigpen
Betty Welch



HOCKEY VARSITY

Mildred Allen
Geneva Crowder
Jeanne Graff
Betty Deane Knox
Dallie Liner
Ethel Norton
Dorothy Presnell
Ronda Sebastian
Sally Smith
Margaret Long
Doris Snyder

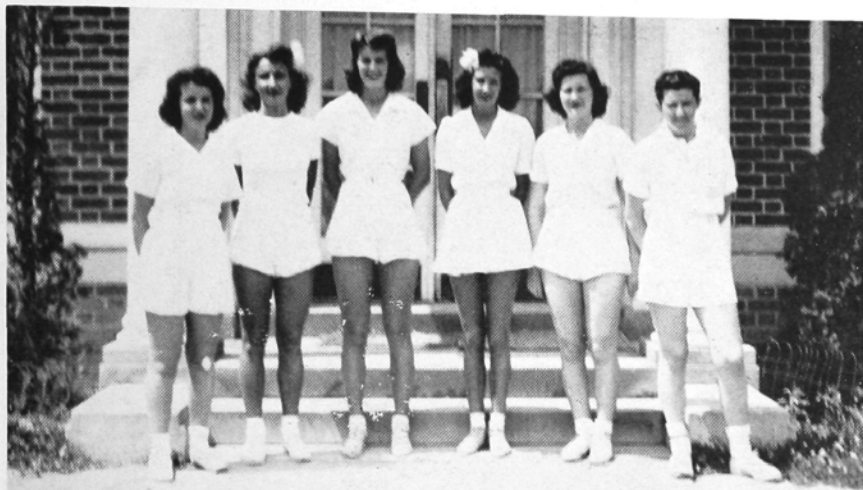


VOLLEY BALL VARSITY

Grace Alexander
Geneva Crowder
Melba Gregory
Betty Deane Knox
Ethel Norton
Ronda Sebastian
Doris Snyder
Arnol Setzer
Betty Welch

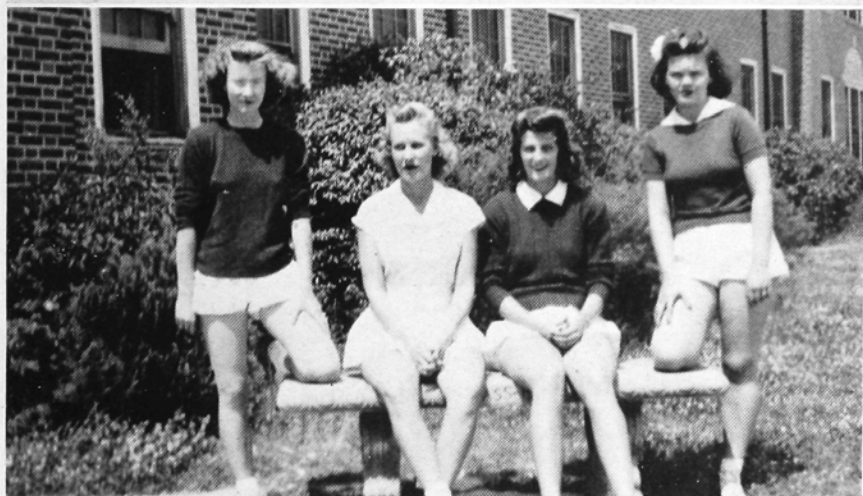


H I G H P O I N T C O L L E G E



BASKETBALL VARSITY

Grace Alexander
Geneva Crowder
June Dinkins
Nancy Isenhour
Dottie Koontz
Dallie Liner



BADMINTON VARSITY

Grace Alexander
Geneva Crowder
Lucille Lanier
Dorothy Presnell



SOFTBALL VARSITY

Mildred Allen
Geneva Crowder
June Dinkins
Johnsie Farlow
Jeanne Graff
Nancy Isenhour
Dottie Koontz
Lucille Lanier
Lillie Moore



W O M E N ' S A T H L E T I C A S S O C I A T I O N

"Let's beat the Sophs today!" cheered the seniors, staunchly trying to defend their honor on the hockey field. The intramural games caused much excitement among the classes; the freshmen upset the senior superiority in basketball, and the sophomores won the hockey tournament. Volley ball, softball, ping-pong, soccer, tennis, and badminton were played by the girls, and almost every afternoon they came into the locker room dusty, tired, but happy from playing a hard game.

The Woman's Athletic Association, under the able supervision of Miss Jo Chapman, popular physical education instructor, has sponsored a banquet and dance, and has promoted bowling, hiking, and swimming. Every girl had to have a required number of sports points to be eligible for membership. At their meetings once a month, the members planned activities and initiated new girls into the association with an impressive ceremony.

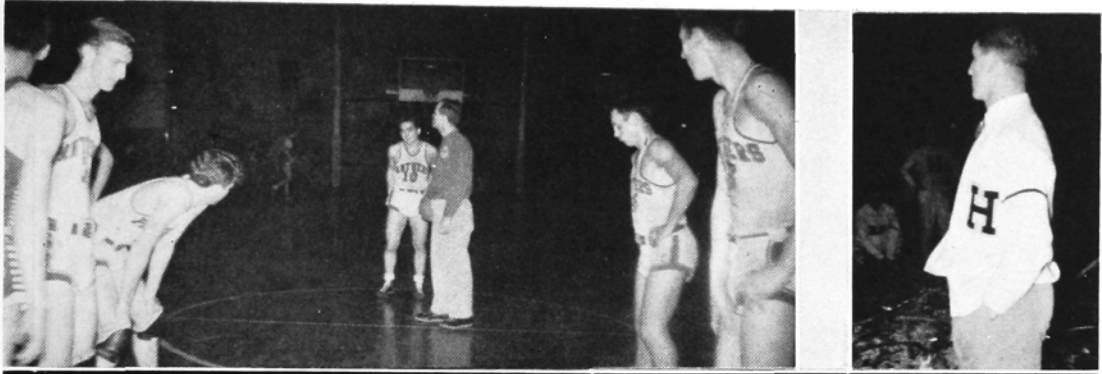
The joy of sports and outdoor life is the spirit which governs W. A. A., and one feels this friendly spirit as the girls sit around a campfire singing softly in the shadows of the flickering fire.

OFFICERS

GENEVA CROWDER	President
MILDRED ALLEN	Vice-President
NANCY ISENHOUR	Secretary
GARNETT HINSHAW	Treasurer



MISS JO CHAPMAN



WILLIAMS FLOWER SHOP

Flowers for All Occasions

5-5931

Phones

3-5459

SHACKELFORD'S
MEN'S WEAR

KOONCE FUNERAL HOME

Incorporated

PHONE 4545

Compliments of

DELUXE DINER

Compliments of

SLANE HOSIERY MILLS

ELLIOTT

FLORAL COMPANY

Phone 2586

FLOWERS BY WIRE

**HEDGECOCK LUMBER
COMPANY**

1215 Ward St.

Phones 4006, 44232



COMPLIMENTS

OF

SUNSHINE LAUNDRY

ANNOUNCEMENT

BOB KIRSCHGESSNER, Business Manager, and DOT PRESNELL, Editor

OF THE

ZENITH OF 1943

Are dissolving their partnership, having mutually agreed that they have no further opportunity to milk the students of their nickels and dimes. Mr. Kirchgessner will go back to his sandwiches and milk at the shipyards, and Miss Presnell will go back to her milking on her farm in Asheboro, where she can take those dern store-bought shoes off.

**FURNITURE
CITY UPHOLSTERING CO.**

Incorporated

DESIGNERS AND
MAKERS OF THE
"DALLAS"
LINE

HIGH POINT, NORTH CAROLINA

COMPLIMENTS

OF

NEW SERVICE LAUNDRY



**BEESON HARDWARE
COMPANY**



"Your Sporting Goods
Headquarters"

TRAVEL BY BUS

AND

SAVE THE DIFFERENCE



**GREENSBORO-FAYETTEVILLE
BUS LINE, INC.**

ASHEBORO, NORTH CAROLINA

Without Printing Modern Education
Would Be Impossible



HALL PRINTING COMPANY

PHONE 2385

Compliments of

**NORTH CAROLINA
THEATRES**

- CENTER
- BROADHURST
- PARAMOUNT
- RIALTO

N. L. GARNER, AGENCY

PERFECT
ROTECTION
AYS

EVERY WAY
VERY DAY

226 Professional Bldg.

Phone 4648

OCCIDENTAL LIFE INSURANCE CO.

FOR IMPORTED AND DOMESTIC

**Champagne, Wine, Beer, Ale
Potato Chips**

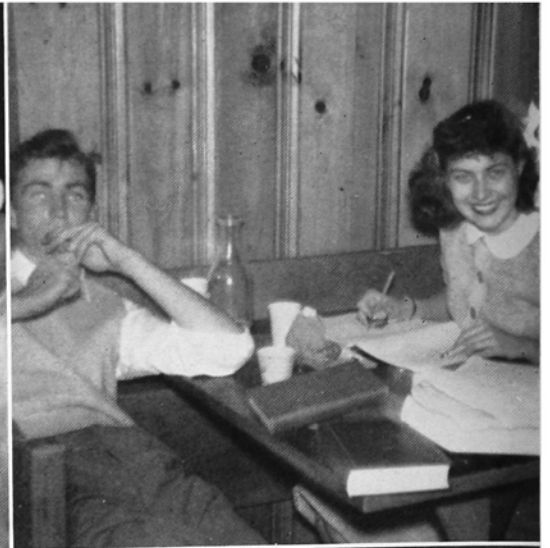
Always Fresh

Fried Daily

**PAUL YOUNT'S PACKAGE
STORE**

790 N. Main St.

Phone 2661





THE
PHOTOGRAPHS

IN THIS ANNUAL
WERE MADE BY

Daniel and Smith
Studios

134 Fayetteville Street

Raleigh, North Carolina



FINE PORTRAITS
PROMPT SERVICE



Largest College Annual
Photographers In The South

DRINK

Coca-Cola

IN BOTTLES

COCA-COLA BOTTLING COMPANY

OF HIGH POINT

SARTIN DRY CLEANING CO.

Dial 4501

1670-76 Eng. St.



DUTCH LAUNDRY, INC.

Dial 3319

829-33 S. Main St.

GRACE
FLOWER SHOP

Dial 4085

MAIN AT WASHINGTON STREET

The Best in Flowers

FOR QUALITY DAIRY
PRODUCTS

Lindale
DAIRY CORP.

"It's Our Pleasure to Serve You"

WEST LEXINGTON AVE.

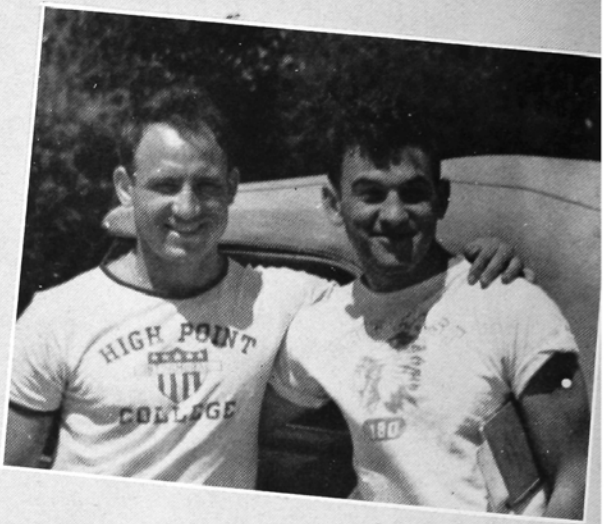
HIGH POINT, N. C.

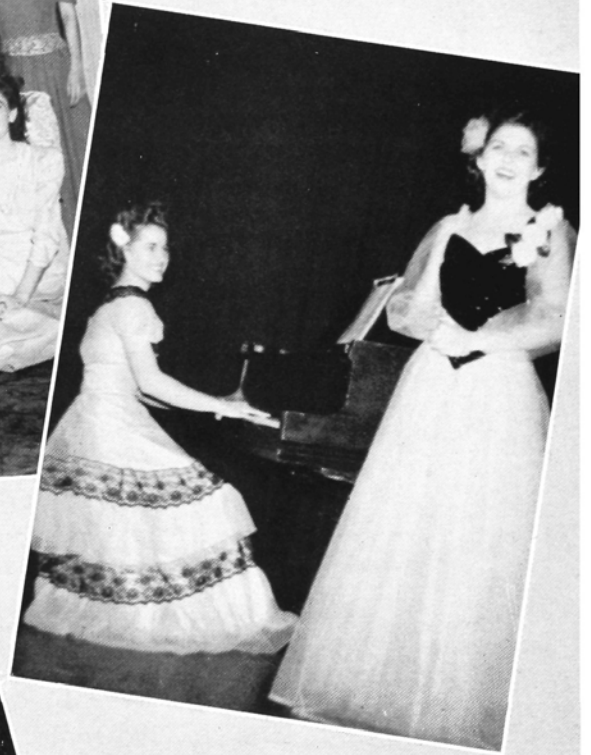
The good will of men, women, and children who contact this organization casually or in business constitutes the principal asset which maintains it as a service institution. Our sincere desire to serve our many patrons well and unselfishly is widely recognized and our ability to do this is established.



HIGH POINT, THOMASVILLE
& DENTON RAILROAD CO.

"Nothing But Service to Sell"





Compliments of
J. C. PENNEY COMPANY
HIGH POINT, N. C.

Welcome to
THE SHERATON HOTEL
"Noted for Good Food"
W. G. MALONE, Manager

**Lewis & Holmes Motor Freight
CORPORATION**
High Point, N. C. Atlanta, Ga.
Serving the Southeastern States
High Point Office Phone 4503

Compliments of
CECIL'S DRUG CO.

CUT RATE FURNITURE CO.
Complete Home Furnishings
615-617 East Green St.
High Point, N. C. Phone 2879

Compliments of
CHARLES DEPARTMENT STORE
Ready-to-Wear and Fashion Merchandise

Compliments of
**CENTRAL ICE DELIVERY
COMPANY**
Phone 4507 512 W. Broad St.

Compliments of
PRINCESS CAFE

Compliments of
S. H. KRESS
5-10-25c Store
High Point, North Carolina

Compliments of
S. E. HAUSER & CO.

**GUILFORD GENERAL
HOSPITAL**

Compliments of
BETTY LOU SHOPPE
High Point's Leading Ladies' Store
111 South Main St.

NORTH STATE TELEPHONE CO.
Serving High Point and Vicinity

Compliments of
AMERICAN BAKERIES CO.
920 West Broad

Harlee's
High Point's Quality Department Store

Compliments of
RUBY'S JEWELRY STORE
159 South Main

Let's Win the War—

AND MAKE IT A WAR WORTH WINNING!

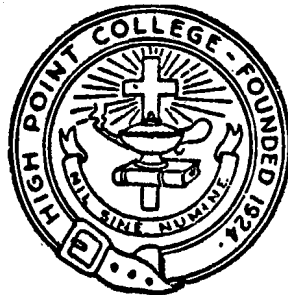
In the lifetime of the Class of '43 Electric Service in the Piedmont Carolinas has greatly modified Industry, Commerce, Agriculture and the Home. Business initiative and scientific farming give promise of even greater opportunities in the productive years ahead.

May each of you find a worthy place in the enterprising world of tomorrow!

DUKE POWER COMPANY

General Office

Charlotte, N. C.



HIGH POINT COLLEGE

HIGH POINT, N. C.

ALL OUT FOR DEFENSE

Courses Geared to Wartime Both as to Time and Content

For Further Information Apply to

PRESIDENT OR SECRETARY OF ADMISSION

STUDENTS

Welcome to Gibson's

781 N. Main 104 N. Main 329 N. Main

MANN'S

CUT-RATE DRUG STORE

HIGH POINT, N. C.
GREENSBORO, N. C.
THOMASVILLE, N. C.

KANNAPOLIS, N. C.
REIDSVILLE, N. C.
BURLINGTON, N. C.

Compliments of

W. A. DAVIS MILLING CO.

Compliments of

DIXIE HOT SHOPPE

Compliments of

EFIRD'S DEPARTMENT STORE

HIGH POINT, N. C.

CLOVER BRAND DAIRIES

Incorporated

PASTEURIZED PRODUCTS

Phone 4553

Milk

Butter

Ice Cream

Compliments of

PEGGY ANN SHOPPE

SEARS, ROEBUCK & CO.

All the Latest Records

Compliments of

HIGH POINT BARBER SHOP

6 Barbers to Serve You
300 N. MAIN STREET

Compliments of

ROSE FURNITURE CO.

Compliments of

ASIA RESTAURANT

Compliments of

**ANDERSON WEST END
DRUG STORE**

1550 English Street

Compliments of

BELK-STEVENSON CO.

HIGH POINT, N. C.

Compliments of

ROSAINE SHOP

139 South Main

Congratulations From

A FRIEND

Compliments of

KOONTZ-McGHEE DRUG CO.

308 South Main
Opposite Post Office

QUALITY WATCHES, DIAMONDS, JEWELRY, SILVERWARE,
CLOCKS, GIFTS, LUGGAGE

WAGGER JEWELRY COMPANY

ELWOOD HOTEL CORNER

HIGH POINT, N. C.

Thrift Is Essential for Intelligent Citizenship

HIGH POINT SAVINGS & TRUST CO.

SERVING SINCE 1905

Member Federal Deposit Insurance Corporation

STUDENTS' HEADQUARTERS

HIGH POINT COLLEGE BOOK STORE

Books—School Supplies—Refreshments

OFFICIAL COLLEGE RINGS AND JEWELRY

J. W. SECHREST AND SON

Since 1897

AMBULANCE SERVICE

Dial 3349



Achievement

~ ACHIEVEMENT IN ANY LINE OF ENDEAVOR IS THE NATURAL RESULT OF ABILITY AND EXPERIENCE, PLUS OPPORTUNITY.



~ THIS ORGANIZATION TAKES PRIDE IN ITS SUCCESS~~ SUCCESS EARNED BY THE ABILITY OF ITS MEMBERS, THE EXPERIENCE GAINED IN TWENTY YEARS OF EFFORT, AND THE OPPORTUNITIES OFFERED BY ITS CLIENTS.

CHARLOTTE ENGRAVING
COMPANY INC.

ARTISTS-PHOTO-ENGRAVERS-DESIGNERS

CHARLOTTE
NORTH
CAROLINA

ESTABLISHED NINETEEN FIFTEEN



World's Largest Publishers

THIS BOOK DESIGNED AND PRINTED BY

BENSON

PRINTING COMPANY ★ NASHVILLE

of College Annuals

FINANCIAL STATEMENT

THE 1943 ZENITH

INCOME

Sale of books	\$115.00
Sale of staff nominations (to D. A. E. and Theta Phi)	600.00
Faculty subscriptions25
Organizations78
Bribes accepted for revealing May Queen (from Nelda)12
Bribes for putting snapshots in book	73.17
Bribes for keeping certain snapshots out of book (from girls going with cadets)	705.00
Advertisements	300.00
Rent paid by Editor, including use of one 10-watt bulb (no wonder the book looks like this!)53
	<hr/>
	\$1,794.85

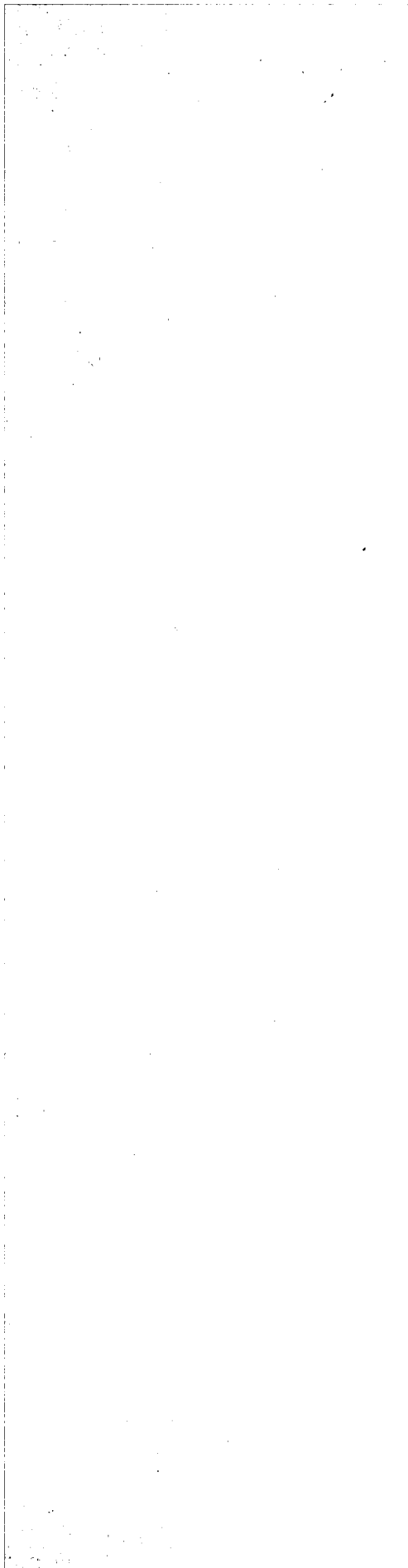
EXPENDITURES

Printing	\$1,575.12
Engraving	763.38
Photographs	532.19
Vitamin pills for Editor	19.20
Sleeping pills for Editor98
Dinners (Steaks at the Princess for B. Mgr. and girl friend)	57.14
Dinners (Chow Mein at the Asia for Editor and boy friend)	49.13
Postage	699.99
Shoes for myself	6.50
Ration Coupon No. 17 (bought from Presnell, who won't need shoes when she goes back to Asheboro)	7.50
Nerve Tonic (Champagne, Vintage '03)	10.50
Bribes to Professors to pass Editor and B. Mgr. (6 at \$25)	150.00
Cost of help from staff	000.00
Train Ticket (to get out of town before creditors get wise)	17.55
	<hr/>

(You add this column: I didn't have time)

Respectfully submitted,

ROBERT F. KIRCHGESSNER,
Business Manager



666 46

