

# THE BUILDER.

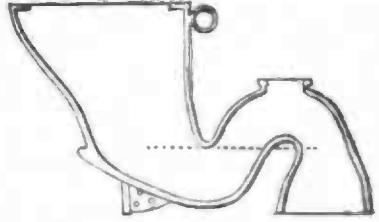
## NEW AND IMPROVED CLOSET PANS.

STEPHEN GREEN AND CO.

IMPERIAL POTTERIES, LAMBETH.  
 These Pans will be found to combine all the latest improvements, with the advantage of having a larger water surface than any other kind of trapped Pan, by which arrangement the sides are kept perfectly clean. The Trap is not larger than usual, and has the smallest diameter at the bottom of the Pan, tapering to the end, so that anything remaining the next cannot possibly stop or clog the drain.

Manufactured in superior double glazed Stoneware white and smooth inside, at the SAME PRICE AS THE COMMON PAN.  
 If with Patent Valve, 8s. 6d. extra.

MANUFACTURERS OF THE PATENT SYPHON FLUSHING-BASIN, AND IMPROVED DRAIN PIPES.

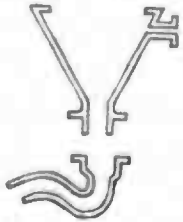


COTTAM AND HALLEN, 2, WINSLEY-STREET, OXFORD-STREET, AND CORNWALL-ROAD, LAMBETH

CLOSET PANS IN CAST-IRON,  
 From 7s. each.

These Pans cannot be broken in service attempting to raise them when stopped up, as is occasionally the case with those made in earthenware; they are not liable to be choked, and with the Siphon Trap are perfect in preventing the smell.

Can be had PLAIN, GALVANIZED, or ENAMELLED.  
 Variety of Patterns.



TO IRONMONGERS, BUILDERS, AND THE TRADE IN GENERAL.  
**LOW PRICE OF CASTINGS.**

RAIN-WATER PIPE	2 in.	3 in.	4 in.	5 in.	6 in.	8 in.	10 in.	12 in.	14 in.	16 in.	18 in.	20 in.	24 in.	30 in.	36 in.	42 in.	48 in.	54 in.	60 in.
EARTH OUTLET	2 1/2 in.	3 1/2 in.	4 1/2 in.	5 1/2 in.	6 1/2 in.	8 1/2 in.	10 1/2 in.	12 1/2 in.	14 1/2 in.	16 1/2 in.	18 1/2 in.	20 1/2 in.	24 1/2 in.	30 1/2 in.	36 1/2 in.	42 1/2 in.	48 1/2 in.	54 1/2 in.	60 1/2 in.
WATER WEIGHTS	1 lb.	2 lb.	3 lb.	4 lb.	5 lb.	6 lb.	7 lb.	8 lb.	9 lb.	10 lb.	11 lb.	12 lb.	13 lb.	14 lb.	15 lb.	16 lb.	17 lb.	18 lb.	19 lb.
ELLIPTIC STOVES	12 in.	14 in.	16 in.	18 in.	20 in.	22 in.	24 in.	26 in.	28 in.	30 in.	32 in.	34 in.	36 in.	38 in.	40 in.	42 in.	44 in.	46 in.	48 in.
STOVE METAL	1 lb.	2 lb.	3 lb.	4 lb.	5 lb.	6 lb.	7 lb.	8 lb.	9 lb.	10 lb.	11 lb.	12 lb.	13 lb.	14 lb.	15 lb.	16 lb.	17 lb.	18 lb.	19 lb.
COTTAGE HANGERS	1 lb.	2 lb.	3 lb.	4 lb.	5 lb.	6 lb.	7 lb.	8 lb.	9 lb.	10 lb.	11 lb.	12 lb.	13 lb.	14 lb.	15 lb.	16 lb.	17 lb.	18 lb.	19 lb.

These Stoves are fitted up in the best manner, and the price they are usually sold at is full thirty-five per cent higher than now quoted.  
 A LARGE STOCK OF BUILDERS' CASTINGS, consisting of every article usually sold in the trade, at PRICES EQUALLY LOW, the above consisting of Pipe of every description: AIR Castings, Dampers and Rail Bars, Panels, Privy Pans, Grates, and Frames, Pan Ties, Light, Furnace Bars.

COTTAM AND HALLEN, 2, WINSLEY-STREET, OXFORD-STREET, AND CORNWALL-ROAD, LAMBETH

GEORGE JENNINGS, PATENTEE of the  
 INDIA-RUBBER TUBE COCK;  
 INDIA-RUBBER TUBE WATER-CLOSET;  
 NEW EASTERN-TUBE WATER-CLOSET;  
 NEW HELL-TRAP;  
 SELF-CLEANING STOOL-COCKS, for common Closet Pans;  
 LAVATORY COCKS, for Asylums, Schools, Unions, &c.;  
 With respectfully to all Architects' attention to the above.  
 Experience has enabled the Patentee to make his inventions most perfect, and his study has been to produce them at a lower rate than articles heretofore used for the same purpose.  
 A large stock of GAS and WATER MAIN COCKS, HYDRANTS, or FIRE COCKS, always kept ready.  
 JENNINGS' BALL COCKS cannot set fast, and they fill a sphere in half the usual time.  
 References of the highest order to public works finished and in hand.  
 Apply—GEORGE JENNINGS,  
 General Engineer and Ironfounder,  
 2, GREAT CHARLOTTE-STREET, BLACKFRIARS ROAD.

HYDRO-PNEUMATIC  
 SELF-ACTING  
 WATER CLOSET.

LAMBERT'S PATENT.

Any kind of Basin may be used  
 with this Valve Apparatus.



**SIMPLICITY and SELF-ACTION.**—The Two Essentials of an efficient Closet are by this arrangement obtained at the LOWEST POSSIBLE COST. The descent of the bowl does not exceed a quarter of an inch, is scarcely perceptible, and produces no inconvenience in use. It is complete in itself, very easily fixed, and dispenses entirely with Cranks, Rods, Wire, &c. The latest Union is connected to the Main Supply pipe, or to a Cistern, no matter how great the pressure, or how far distant.  
 THOMAS LAMBERT and SON,  
 Brass Founders, 8, St. John-street, New Cut, Lambeth.

JOHN DOULTON, JUN.



ST. HELEN'S, LANCASHIRE.  
 The most economical and efficient system of drainage is formed with  
 DOULTON'S STONE-WARE PIPES.  
 Testimonials as to their superiority have been received from the Borough Engineers of Liverpool, Glasgow, and other cities.  
 FIRE-CLAY PLUM PIPES.  
 TERRA COTTA CHIMNEY TOPS, &c.  
 WARHOUSE, 7, SOUTH-STREET, LIVERPOOL.

**IMPORTANT to FAMILIES FURNISHING,**  
 who study Economy with Economy.—French polished Cast-iron, and other articles, in great quantities; Bedsteads, Bath-tubs, Wash-basins, and a variety of Warehouses. Estimates free, and a list of prices sent post-free.  
 JAMES COOK, BROMPTON HOUSE, 22 and 24, QUEEN'S-BUILDINGS, KNIGHTSBRIDGE.



WILLIAM NORTHEN'S  
 WHITE ENAMELLED STONWARE,  
 UNION POTTERY, 14, VAUXHALL-WALK, LAMBETH, LONDON.  
 W. N. solicits an inspection of his IMPROVED WHITE ENAMELLED STONWARE CLOSET PANS, being an entire new description of stoneware, perfectly vitrified and highly glazed, far surpassing anything of the kind yet offered to the public.  
 SAME PRICE AS BROWN STONWARE—7s. 6d. Pan and Trap. WITH BLUE INSIDE, ENAMEL, 1s. extra.

DOULTON AND WATTS'S  
 REGISTERED CLOSET PANS IN  
 ENAMELLED STONE WARE,  
 LAMBETH POTTERY, LONDON.

These Closet Pans are manufactured in a new kind of stone ware, HIGHLY GLAZED, vitreous, of a light colour, are much improved in form, and are used and recommended by the engineers connected with the General Board of Health.  
 The Traps are smaller at the inlet, gradually enlarging towards the outlet, as a security against the introduction of improper substances into the drain.  
 They may also be had turned down.

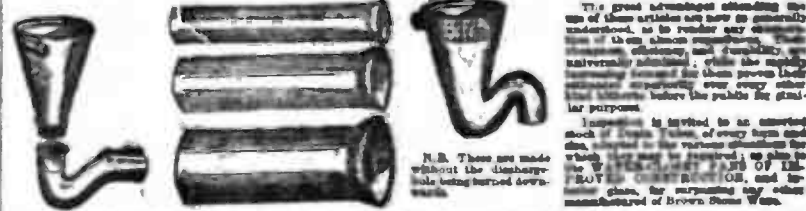
PRICE 7s. 6d. EACH,  
 The same as for ordinary stone ware, and may be had fitted with copper fans of the best construction at 1s. 3d. each extra.

HENRY DOULTON and CO'S DRAIN PIPES in GLAZED STONE WARE.

OFFICES—HIGH-STREET, LAMBETH, LONDON, and Great-Street Wharf, Broad-street, Birmingham.  
 MANUFACTORIES—HIGH-STREET, LAMBETH, LONDON; ROWLEY ROAD, STAFFORDSHIRE; AND SKETWICK, NEAR BIRMINGHAM.  
 May also be had at below:

- |                   |                                   |                      |                                    |
|-------------------|-----------------------------------|----------------------|------------------------------------|
| BIRMINGHAM.....   | Granville-street Wharf.           | WOLVERHAMPTON.....   | Mr. R. Shelton.                    |
| BLOUNCEVILLE..... | Mr. J. and Co. Birmingham.        | TABERTON.....        | Mr. G. P. Fisher.                  |
| GLoucester.....   | Messrs. Admitt and Greenough.     | STAFFORD-BURTON..... | Messrs. J. Cox and Son.            |
| NORTHAMPTON.....  | Messrs. Rowland and Son.          | JERSEY.....          | Mr. John Le Gros, Castle Street.   |
| Worcester.....    | Mr. J. Abbott.                    | WARWICK.....         | Mr. C. Adams, Messrs. Pitts Wharf. |
| WENTWORTH.....    | Mr. J. H. B. B. B.                | DEBY.....            | Messrs. Tomlinson and Baynes.      |
| CHELTENHAM.....   | Mr. J. H. B. B. B.                | BATH.....            | Mr. Wm. Davy, Broad Quay.          |
| LEAMINGTON.....   | Mr. Chas. Nelson, Warwick-street. | ROSWICH.....         | Mr. J. H. B. B. B.                 |
| LEICESTER.....    | Messrs. J. and W. Jackson.        | SOUTHAMPTON.....     | Mr. W. Tomlinson, Broad Quay.      |
| LYONS.....        | Mr. M. Verrill, Micklegate.       | BRISTOL.....         | Mr. D. J. B. B. B.                 |
| MANCHESTER.....   | Mr. J. H. B. B. B.                | GLoucester.....      | Mr. D. J. B. B. B.                 |

**JAMES STIFF, MANUFACTURER of GLAZED STONE WARE DRAIN PIPES, BENDS, JUNCTIONS, TRAPS, &c., 22, HIGH STREET, LAMBETH, LONDON. Established 1771.**  
 Water Closet Pans with Siphon Traps, 7s. 6d. each.  
 STRAIGHT TUBES, in Socket Joints, in 3 feet lengths.



The great advantages attending the use of these articles are now so generally understood, as to render any description of them almost superfluous. Their strength, economy, and durability, are universally admitted; and the quality is so superior, that they prove their superiority in every case, and are the only articles before the public for similar purposes.  
 It is invited to an unvaried stock of every form and size, adapted to the various situations for which they may be required; or also to the WATER-CLOSET PANS, and to the ENAMELLED STONWARE, and to the various glass, for supplying any other manufacturer of Brown Stone Ware.  
 N.B. These are made without the disadvantage of being turned down.  
 May be had also of Messrs. GLADDISBURY LIME WHARFS, Portland-ware, Westminster, City-road Wharf, Clay Basin, Dock-head, Birmingham; Darnley's Wharf, end of Brompton-street, London; Finsbury Wharf, King's-road, London; New York; J. T. K. A. South Wharf, Broad-street, Paddington; and at OLDWELL, Pershore, St. Bridget's, Covent Garden.  
 Drawings and List of Prices will be forwarded free on application.