

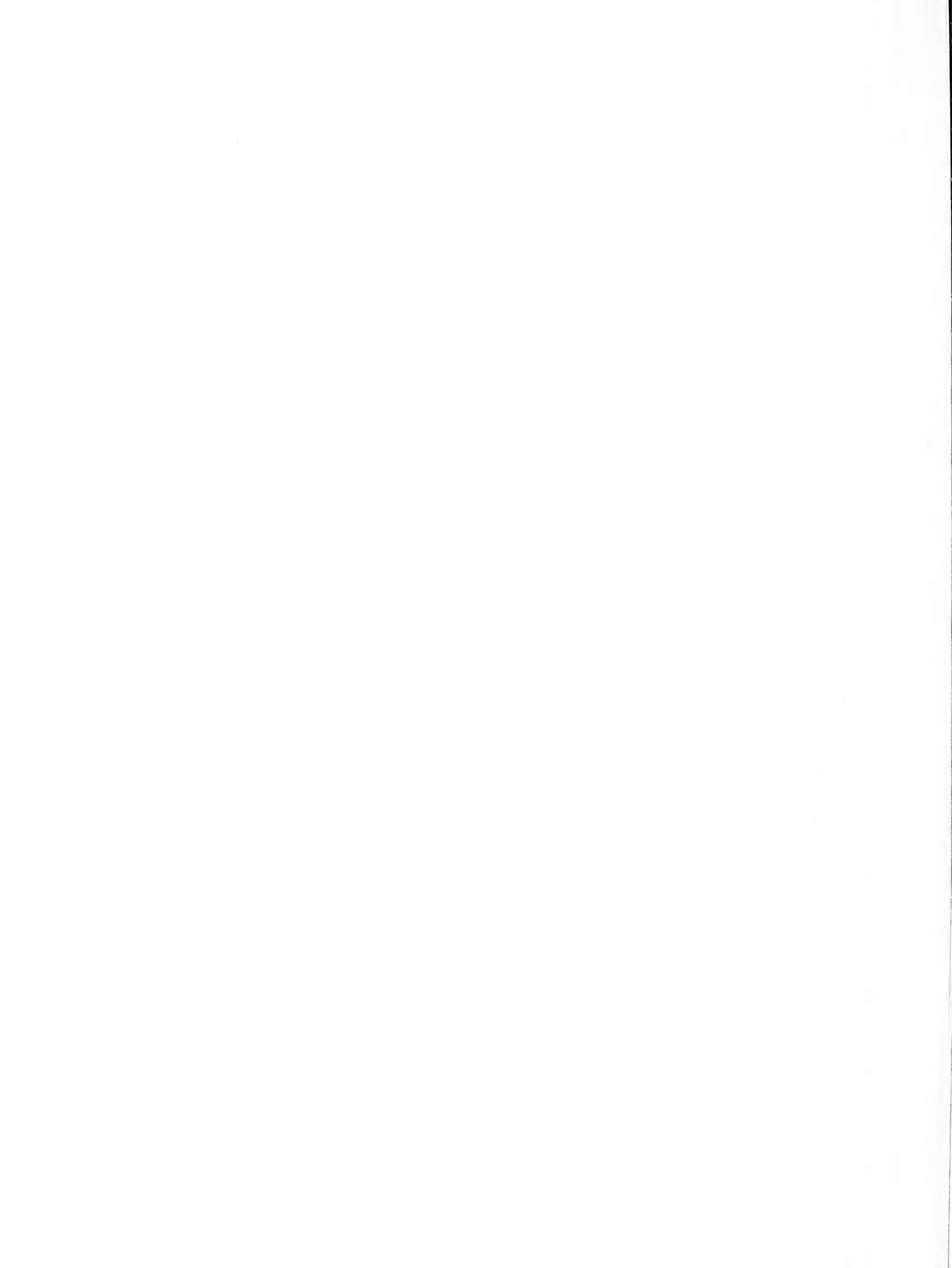
Historic, archived document

Do not assume content reflects current scientific knowledge, policies, or practices.

aSF601
.AIU5

**THIS ITEM HAS BEEN DIGITIZED
AND IS AVAILABLE ONLINE**

**DO NOT CIRCULATE
DO NOT USE W/O MGMT APPROVAL**





United States
Department of
Agriculture

Animal and Plant
Health Inspection
Service

Veterinary
Services

19 1981

245

reprinted

Adult Scabies Mites: Comparative Features



(mouth parts, pedicels and suckers)

Sarcoptes

- Body—Rounded, short, backward projecting spines on dorsum
- Mouthparts—Blunt
- Pedicels (leg stalks)—Long and unjointed; third and fourth pair of legs do not usually extend beyond rim of body
- Sucker disks
Female: on legs 1 and 2
Male: on legs 1, 2 and 4
- Maximum size
Female: about 0.50mm
Male: about 0.30mm



(mouth parts, pedicels and suckers)

Chorioptes

- Body—Oval, compressed laterally
- Mouthparts—Blunt
- Pedicels (leg stalks)—Short and unjointed; third pair of legs extend from the indentation in the body wall
- Sucker disks
Female: on legs 1, 2 and 4
Male: on legs 1, 2, 3 and 4
- Maximum size
Female: about 0.40mm
Male: about 0.35mm

CURRENT CONTENTS

MAY 8 '87

NATIONAL LIBRARY



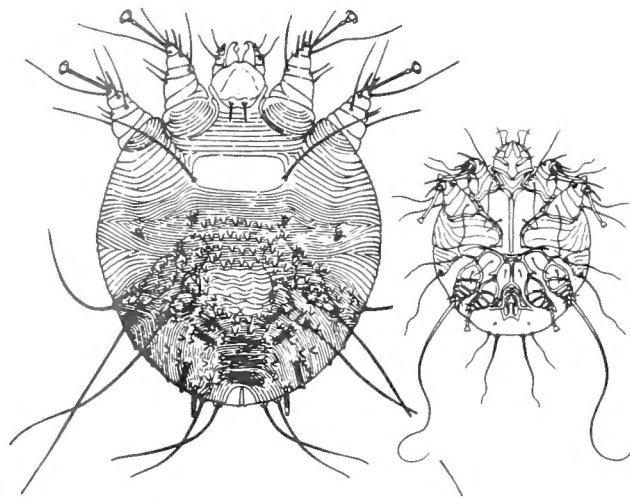
(mouth parts, pedicels and suckers)

Psoroptes

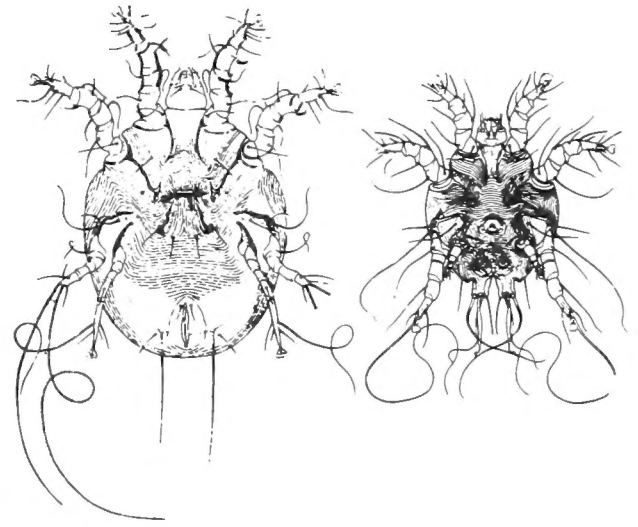
- Body—Oval
- Mouthparts—Sharp, piercing, and elongated
- Pedicels (leg stalks)—Long and jointed
- Sucker disks
Female: on legs 1, 2 and 4
Male: on legs 1, 2 and 3
- Maximum size
Female: about 0.80mm
Male: about 0.70mm

Received by: MAY
3 Indexing Branch

Mites Found on Livestock

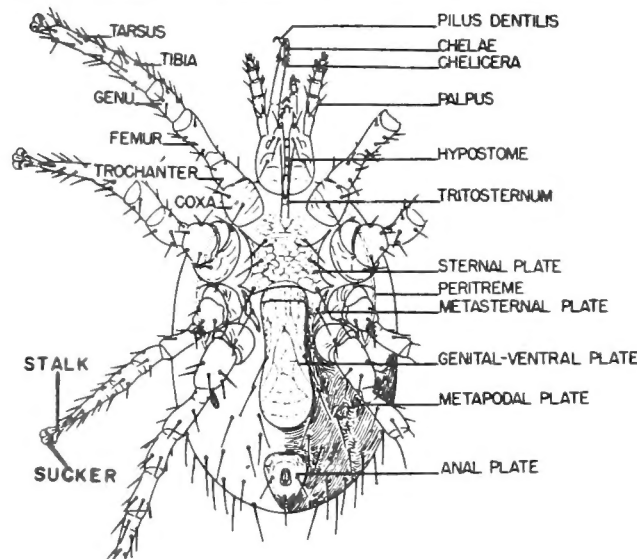


Mange Mite
Sarcoptes scabiei (Degeer)
 Left: dorsal view of female
 Right: ventral view of male

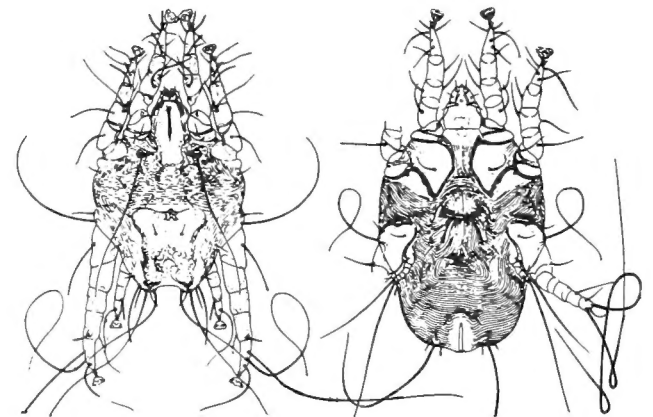


Mange Mite
Chorioptes bovis (Gerlach)
 Left: ventral view of female
 Right: ventral view of male

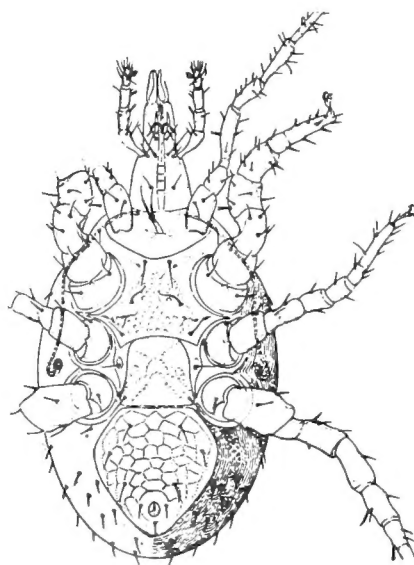
Mites Found on Other Animals



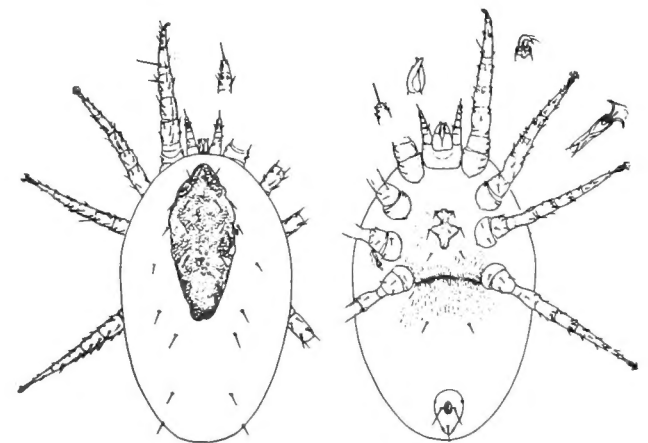
Common Rodent Mite
Haemolaelaps glasgoui (Ewing)
 Ventral view of female with morphological characters labeled.



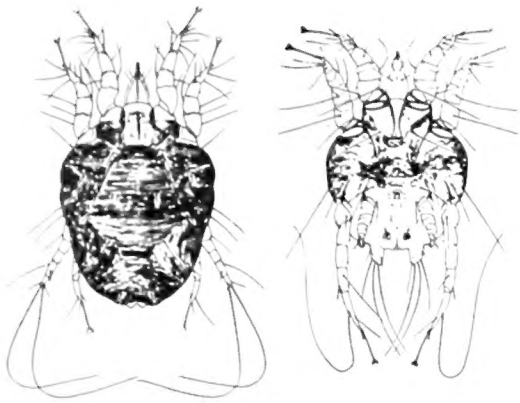
Ear Mite
Otodectes cynotis (Hering)
 Left: dorsal view of male
 Right: ventral view of female



House Fly Mite
Macrocheles muscaedomesticae (Scopoli)
 Ventral view of female



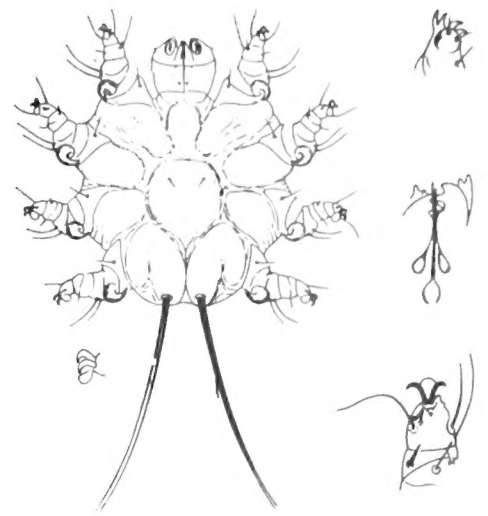
Dog Nasal Mite
Pneumonyssus caninum (C. and R.)
 Left: dorsal view of female
 Right: ventral view of female



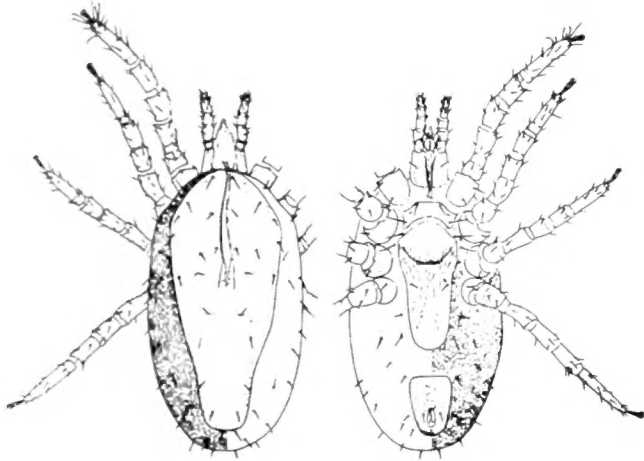
Common Scabies Mite
Psoroptes equi (Hering)
 Left: dorsal view of female
 Right: ventral view of male



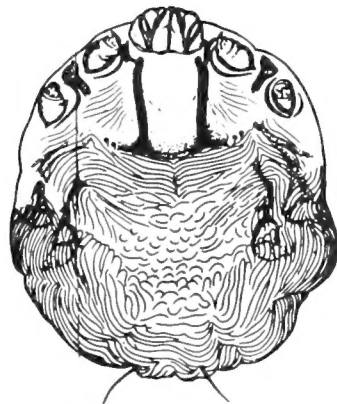
Follicle Mite
Demodex
 Ventral view of female



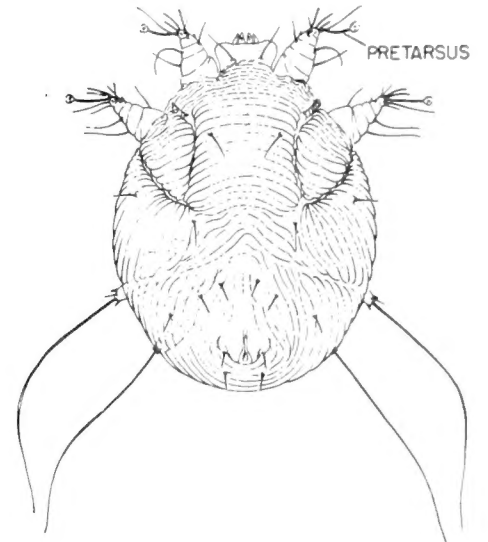
Sheep Itch Mites
Psorergates simplex (Tyrell);
 Left: female
 Right: *P. ovis*; palps, chelicera
 and tarsus I



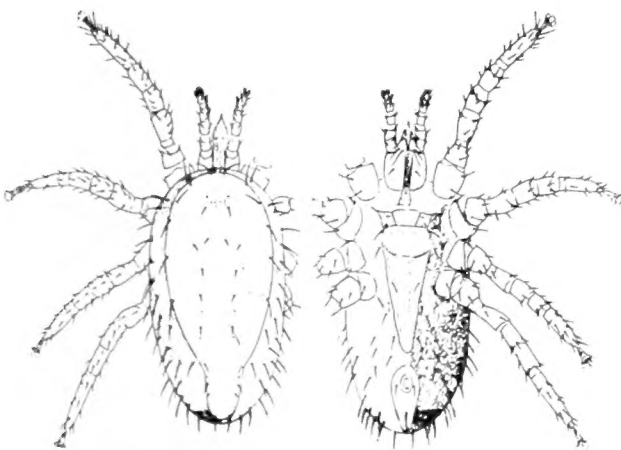
Chicken Mite
Dermanyssus gallinae (Degeer)
 Left: dorsal view of female
 Right: ventral view of female



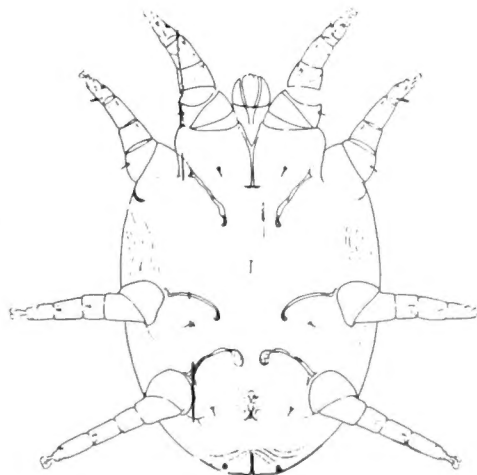
Scaly-Leg Mite
Cnemidocoptes mutans
 Dorsal view of female



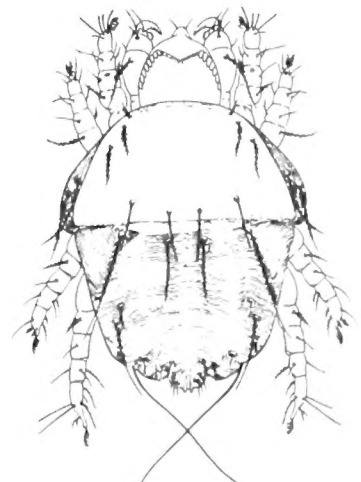
Notoedres sp.
 Dorsal view of female
 Taken from squirrel



Northern Fowl Mite
Ornithonyssus sylviarum (C. and F.)
 Left: dorsal view of female
 Right: ventral view of female



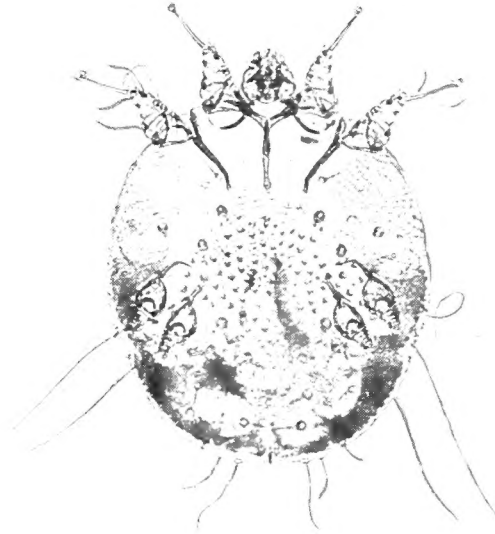
Air-Sac Mite
Cytodites nudus (Vizioli)
 Ventral view of male



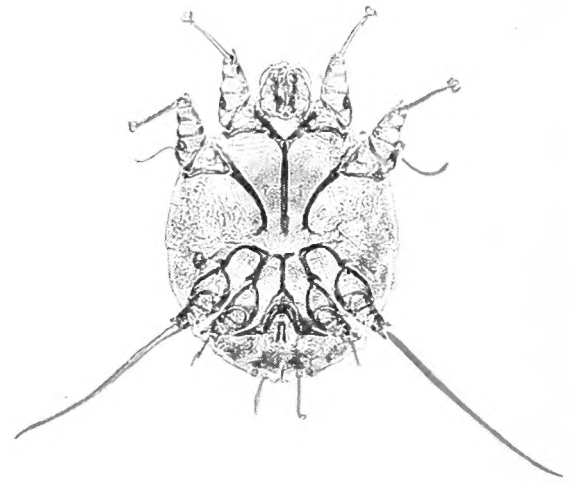
Rabbit Fur Mite
Cheyletiella parasitivorax (Megnin)
 Dorsal view of female

Photomicrographs

Sarcoptes

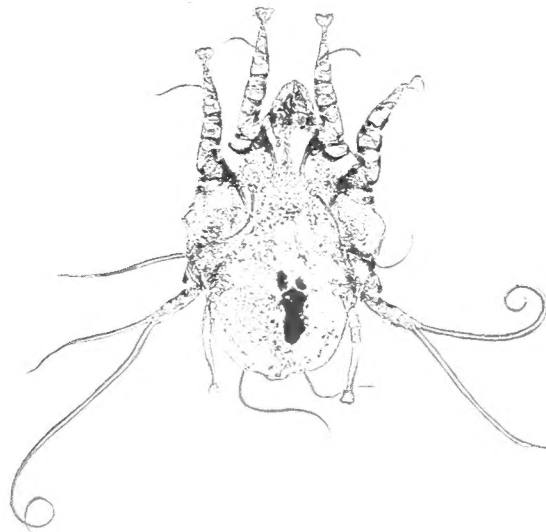


Female

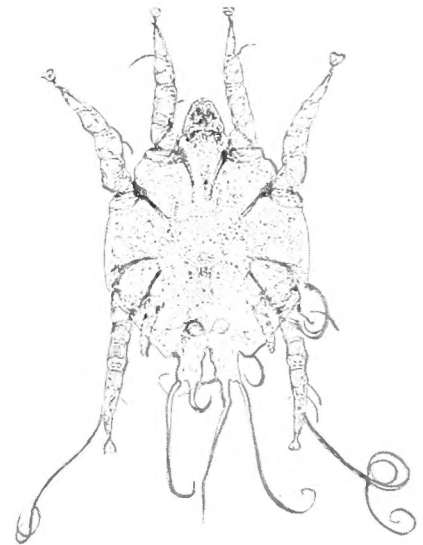


Male

Chorioptes



Female

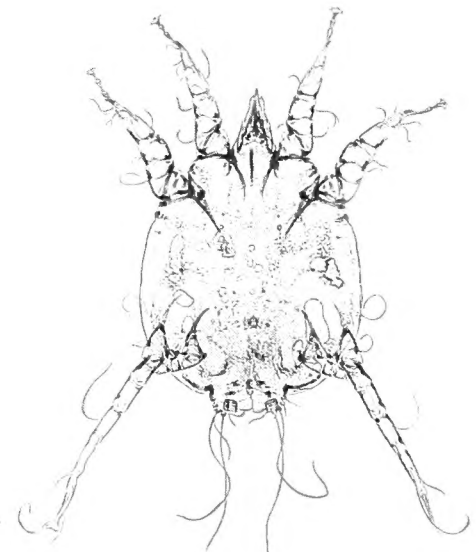


Male

Psoroptes



Female



Male

APHIS 91-19
(Formerly APHS 91-2)
Approved for reprinting
December 1981