

NYPL RESEARCH LIBRARIES



3 3433 03516696 0



microfiche:

\* XLG-33

G 8551

copy  
11/12



Digitized by the Internet Archive  
in 2008 with funding from  
Microsoft Corporation





# ALDEN-FULLER RECORD.

---

A RECORD OF THE DESCENDANTS OF

LEMUEL FULLER, SR.<sup>2</sup>

Fifth from John Alden and Priscilla Mullins.

Fourth from Dr. Samuel Fuller.

---

“ ‘Prithee, John, why do you not speak for yourself.’

“ The kindness of the surgeon, Dr. Fuller, was shown in his making no charge for his professional services, although he might justly have sent in a bill.”—Plymouth and the Pilgrims (Pp. 82 and 182).

---

COMPILED BY

M. PERCY BLACK,  
ST. LOUIS, MO.

1896.

162 29

8702 of 1901. 9chs.

AND WASH  
D.C.  
WASH



## My Sincere Thanks

Are due to Dr. T. B. Drew, Custodian of Plymouth Hall; The New England Geneological Rooms; Alexander Corbett, Jr.; and members of the different branches of the family who have responded, with but few exceptions, to my request for records, by sending me the fullest and most complete ones in their possession.

Among the latter I desire to mention especially: Mr. Linus E. Fuller,<sup>42</sup> Miss Ada M. Rouse<sup>103</sup> and Mrs. Fanny B. Gale,<sup>51</sup> who in addition to their records sent interesting and valuable newspaper clippings.

Excepting where reliable data to the contrary has been in my possession, no deviation has been made from the records sent in by the different branches of the family, I having simply acted as

THE COMPILER.

## EXPLANATION.

The first time a name occurs in this Record it is given a signature (or superior number). Wherever that name occurs, that same signature will be found joined to it. Consorts are designated by the same signature with the suffix "A" for the first, "B" for the second, etc. In the Alden Branch the letter "A" is prefixed to all signatures and in the Fuller Branch the letter "B."

This system of signatures will be found very useful in distinguishing between different persons of the same name, and originated with

THE COMPILER.

# NOTICE.

As this Record will soon be placed in a number of Geneological Libraries throughout the country, we request that you will please report any mistakes discovered immediately to headquarters. Although great care has been used, we are aware that in a work of this character errors will creep in.

I desire at some future day to issue a complete Record of ALL the descendants of Lieut. Isaac Fuller's<sup>B11</sup> children, viz.: Polly,<sup>1</sup> Lemuel,<sup>2</sup> Isaac,<sup>3</sup> Barsillia (Tilden),<sup>4</sup> Deacon Alden,<sup>5</sup> Dr. Hosea,<sup>6</sup> Mrs. Eunice (Drake),<sup>7</sup> Alpheus,<sup>8</sup> Rufus<sup>9</sup> and Otis,<sup>10</sup> with brief biographical sketches of each one. This Record is only of the descendants of Lemuel Fuller.<sup>2</sup>

Those who have taken this Record will therefore please keep me posted on all the changes in their families. Also please send me, at your earliest convenience, short biographical sketches of those already published in this Record. Please try to limit the sketches to 125 or 150 words each.

Any newspaper articles bearing on the subject will also be thankfully received.

Any one reading this who can assist in securing the records above-mentioned, will confere a great favor on me by sending such information to

M. PERCY BLACK,  
ALDEN-FULLER RECORD LIBRARY,  
2803 Morgan Street, ST. LOUIS, MO.

# ADDENDA.

Since this pamphlet has been printed, my attention has been called to the following:

Page 1. 34th line from top, read: "1620."

Page 20. 14th line from top, in place of "Dalton," read: "Stoughton."

The second Note on Page 1 is wrong, for Gov. Carver had 3 servants, Edward Winslow had 2, Isaac Allerton had 1; Christopher Martin had 2, and William White 2, making ten additional servants besides the two belonging to Wm. Mullins and Dr. Samuel Fuller. I have always understood that these were members of their households, i. e. relatives, until informed to the contrary since publishing this Record.



In explanation of the first Note on Page 1, please permit the following: The Pilgrims landed on Clark's Island, Saturday, Dec. 9, 1620, Old Style. They rested there on the 10th, and "marched into the land," over the "Rock," on the 11th. Adding ten days, to make up the difference between the Old Style and the New Style, and we have Dec. 19, 20 and 21, the latter date, of course, being the one on which we now celebrate their landing.

Also, on Page 3. Dr. Isaac Fuller<sup>86</sup> must have been nearly 68 years old when Lieut. Isaac<sup>81</sup> was born. This is unusual but not without precedent. The Compiler has a cousin who was born when his father was 63 years old, only 5 years younger than Dr. Isaac Fuller<sup>86</sup> was when Lieut. Isaac<sup>81</sup> was born.

As our Lieut. Isaac Fuller<sup>81</sup> came from Bridgewater, married a Mary Alden<sup>85</sup> and their first child was born in 1766, we do not think there can possibly be a mistake, but that Lemuel Follen<sup>87</sup>'s father, Isaac and Dr. Isaac Fuller's<sup>86</sup> son, Isaac<sup>81</sup> who married Mary Alden<sup>85</sup> in 1764, according to Mitchell, are identically the same.

# ALDEN-FULLER RECORD.



## ALDEN BRANCH.

John Alden<sup>A1</sup> married Priscilla Mullins<sup>A1A</sup> daughter of William Mullins, in 1623; all of whom came over in the Mayflower and landed on Plymouth Rock, Monday, December 21st, N. S., 1621.\*

Among their children was:

Joseph <sup>A2</sup>

John Alden<sup>A1</sup> was the last survivor of the Signers of the Compact of November, 1620, in the cabin of the Mayflower. He died September 12, 1687, aged over 84 years.

---

\* We know that they must have used the New Style, as history states "That they passed Sunday on Clark's Island" and the Old Style, December 21st, would have been Thursday.

William Mullins and Dr. Samuel Fuller <sup>B1</sup> were the only two that had servants. Robert Carter of the former, and William Butten, who died on the way over, of the latter.

Joseph Alden<sup>A2</sup> had at least one child :

Joseph <sup>A3</sup> (Deacon) .

Deacon Joseph Alden<sup>A2</sup> married Hannah Dunbar<sup>A1A</sup> of Plymouth, in the early part of 1690.

One of their children was :

Daniel <sup>A4</sup> born the latter part of 1690.

Daniel Alden<sup>A4</sup> married Abigail Shaw.<sup>A4A</sup>

One of their children was :

Mary <sup>A5</sup> born Aug. 5, 1745.\*

He removed with his family to Stafford, where he died, aged 80 years.



### FULLER BRANCH.

Dr. Samuel Fuller<sup>B1</sup> also landed at Plymouth, December 21st, 1620. He was the first physician in the Colony. He married (according to records still existing in Leyden, Holland, first, to Elsie Glasscock,<sup>B1A</sup> and second, to Agnes Carpenter<sup>B1B</sup> but his children are by his third wife) Bridget Lee,<sup>B1C</sup> of Plymouth.

---

\* In MITCHELL'S HISTORY OF BRIDGEWATER, p. 87, it states that Mary Alden <sup>A5</sup> was born in 1737 and married Isaac Fuller <sup>B11</sup> in 1764.

They had two children :

Samuel <sup>82</sup> and Mercy <sup>83\*</sup>

He died in 1633.

Rev. Samuel Fuller<sup>82</sup> was minister at Middleboro.

He had three sons :

Samuel, <sup>84</sup> John <sup>85</sup> and Isaac. <sup>86</sup>

He died in 1695.

Dr. Isaac Fuller<sup>86</sup> was born in 1670. He married Mary Eddy.<sup>86A</sup>

They had five sons :

Micah, <sup>87</sup> Samuel, <sup>88</sup> Jabez, <sup>89</sup> Isaiah <sup>810</sup> and Isaac. <sup>811</sup>

Dr. Isaac Fuller<sup>86</sup> died in 1727. †



### ALDEN-FULLER BRANCH.

Isaac Fuller<sup>811</sup> was born Dec. 15, 1738.

Mary Alden<sup>85</sup> was born Aug. 5, 1745.

They were married in 1764.

---

\* In LOWELL'S INSTITUTE LECTURES, p. 268, are accounts of the Fullers. Dr. Fuller's will, dated July 30, 1633, was the earliest will on record. His wife and son gave to Plymouth Church a lot for the Parsonage.

† The Records of Dr. T. B. Drew, Custodian of Plymouth Hall, state that Dr. Isaac Fuller <sup>86</sup> died 1727. This is evidently a mistake, as is also the date of Mary Alden's <sup>85</sup> birth in Mitchell's History of Bridgewater, for all our Family Records give the year, month and day of their birth as used in this Record. The date of their marriage is probably correct.

## ALDEN-FULLER RECORD.

Their children were as follows :

- Polly <sup>1</sup> born Oct. 15, 1766.  
 Lemuel <sup>2</sup> born May 12, 1768.  
 Isaac <sup>3</sup> born Dec. 15, 1769.  
 Barsilla <sup>4</sup> born Jan. 29, 1772. (Also called Tilden.)  
 Alden <sup>5</sup> born Aug. 16, 1773. (Afterwards Deacon.)  
 Hosea <sup>6</sup> born March 23, 1775. (Afterwards Doctor.)  
 Eunice <sup>7</sup> born May 23, 1778. She married a Mr. Drake of Stone-  
 Alpheus <sup>8</sup> born Dec. 3, 1779. [bridge  
 Rufus <sup>9</sup> born Nov. 20, 1781.  
 Otis <sup>10</sup> born Sept. 13, 1785.

In response to an inquiry addressed to the War Department, the following was received :

RECORD AND PENSION OFFICE,  
 WAR DEPARTMENT.

— 0 —

WASHINGTON, Nov. 11, 1895.

Respectfully returned to

MR. M. PERCY BLACK,  
 2803 Morgan Street,  
 ST. LOUIS, MO.

A return showing the "vacancies in several regiments and companies in Col. Frye's Brigade \* \* \* Sept. 20, 1775," shows Isaac Fuller, a 1st lieutenant, in the 28th Continental Regiment of foot, commanded by Col. Paul Dudley Sergeant, Revolutionary War.

A list of officers in the 16th Regiment, commanded by Col. Paul Dudley Sergeant, dated Jan. 28th, 1776 shows Isaac Fuller a 1st lieutenant; and a return of field officers and staff officers of the same Regiment, dated Oct. 4, 1776, shows "Lieut. — Fuller fit for duty,"

No further information relative to his service has been found of record.

It is suggested as a possibility that further information may be obtained from the Secretary of State of Massachusetts.

\* \* \* \* \*

By authority of the Secretary of War.

F. C. AINSWORTH,  
 Colonel, U. S. Army, Chief of Office.

He must have enlisted in Connecticut, as he is



mentioned only as a "private" in the Connecticut Records.

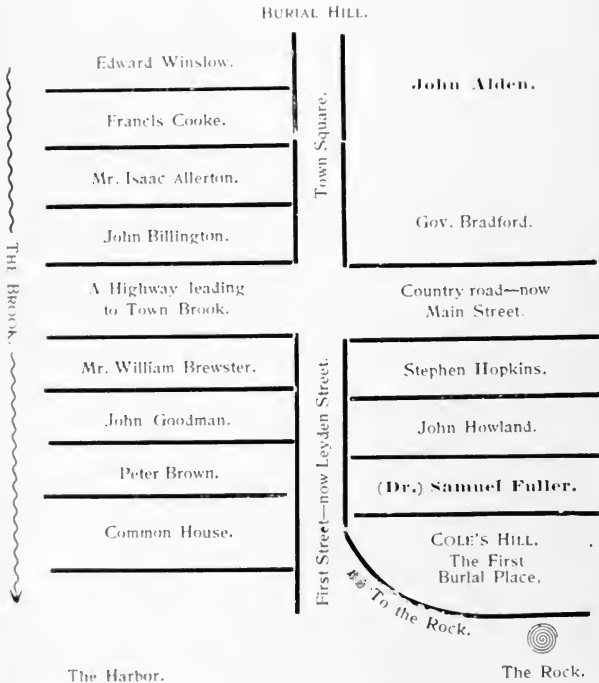
Lieut. Isaac Fuller<sup>B11</sup> died \_\_\_\_\_

Mary (Alden) Fuller<sup>A5</sup> died \_\_\_\_\_



This Diagram is copied from an old paper and is inserted to show where our ancestors first resided.

The heavy type is our own.



#### LEYDEN STREET IN 1621.

(Originally named First Street, afterwards in records called Great and Broad Street, named Leyden Street in 1823.)

## 5 — FIRST GENERATION. — 4

Generation from	from	Generation from
John Alden <sup>1</sup>	Isaac Fuller <sup>B11</sup>	Dr. Samuel Fuller <sup>B1</sup>

Lemuel Fuller<sup>2</sup> was born May 12, 1768.

Fanny Briggs,<sup>2A</sup> daughter of Stephen Briggs and Sarah Pratt, was born in Easton, Mass., in 1778.

They were married in Dalton, Mass., about 1794.

Their children were :

- Fanny <sup>11</sup> born Aug. 8, 1796.
- Mary <sup>12</sup> born June 7, 1798.
- Persis <sup>13</sup> born March 11, 1800.
- Abigail Maria <sup>14</sup> born Jan. 17, 1804.
- Lemuel <sup>15</sup> born Feb 14, 1807.
- Caroline Elvira <sup>16</sup> born Aug. 11, 1811.
- William Nelson <sup>17</sup> born April 22, 1815.

They were all born in Massachusetts.

Fanny Fuller<sup>2A</sup> died in Dalton, Mass., Feb. 14, 1831, and was buried in that place.

Copied from the tombstone of Fanny Fuller<sup>2A</sup> :

In memory of Fanny, wife of Lemuel Fuller, who died Feb. 14, 1831,  
aged 54 years.

No sickness, or sorrow, or pain,  
Shall ever disquiet her now ;  
For death to her spirit was gain  
Since Christ was her life when below.

Lemuel Fuller<sup>2</sup> died Feb. 23, 1850, in his 83rd year. He lived the last years of his life with his son, Lemuel,<sup>15</sup> in what was then know as Paper Mill Village, now called Bennington Falls, Vt., and at his own request was buried in the lot of his son, Lemuel,<sup>15</sup> in Hinsdillville Cemetery in that place.



## 6—SECOND GENERATION.—5

## Fanny Fuller—Glover.

Fanny Fuller<sup>11</sup> was born in Mansfield, Mass., Aug. 8, 1796.

Jarvis Glover<sup>11A</sup> was born in Stoughton, Mass., in 1792.

They were married in Stoughton, in 1820 and moved to Springfield, Mass., about 1826.

They had six children, all born in Springfield, Mass. :

Martha M. <sup>18</sup>

Mary E. <sup>19</sup>

Fanny M. <sup>20</sup>

George H. <sup>21</sup>

Samuel Jarvis <sup>22</sup>

Frank W. T. <sup>23</sup>

Jarvis Glover<sup>11A</sup> and Martha A. Glover<sup>18</sup> died and were buried in Springfield, Mass. In 1870 the family moved to Chicago, Ills.

Fanny Glover<sup>11</sup> died in 1880 and was buried in the family lot on Dell Avenue, in Graceland Cemetery, Chicago, Ills. Afterwards the remains of Jarvis<sup>11A</sup> and Martha A. Glover<sup>18</sup> were removed to Chicago, Ills.

**Mary Fuller—Allen.**

• Mary Fuller<sup>12</sup> was born in Easton, Mass., June 7, 1798.

She married Timothy Allen,<sup>12A</sup> of Springfield, Mass., May 19, 1824.

Their children were :

Martha Josephine<sup>24</sup>

Sarah Frances<sup>25</sup>

Mary Allen<sup>12</sup> died in New York, Aug. 15, 1876, and was buried in Bennington Falls Cemetery, Vt.

**Persis Fuller—Black.**

• Persis Fuller<sup>13</sup> was born in Dalton, Berkshire Co., Mass., March 11, 1800.

William Malcolm Black<sup>13A</sup> was born in New York City, June 28, 1785.

They were married Sept. 3, 1819. They moved, a year or two afterwards, to Lee, in the same county.

Their children were :

James<sup>26</sup> born May 17, 1820.

Born in Dalton, all the rest were born in Lee, Mass.

William Malcolm<sup>27</sup> born Sept. 17, 1821.

Mary<sup>28</sup> born March 5, 1823.

Jane<sup>29</sup> born Feb. 18, 1825.

John<sup>30</sup> born March 4, 1820.\*

George Nelson<sup>31</sup> born March 15, 1833.

Julia Maria<sup>32</sup> born June 10, 1834; and died Sept. 24, 1856.

Alexander Malcolm<sup>33</sup> born Feb. 22, 1836.

\* Owing to an accident in the printing office the first sixteen pages of this Record had to be reprinted and the dates of John Black's<sup>30</sup> birth and Julia Maria Black's<sup>32</sup> death were corrected hence the note on page 20 is void.

William Malcolm Black<sup>13A</sup> was the son of James Black and Mary McHench.

A short time prior to the Revolutionary War, William Malcolm and James Black, relatives, came to the United States from Nithsdale, Ayrshire, Scotland.\* When the War broke out they espoused the cause of their adopted country, as the following will show :

RECORD AND PENSION OFFICE,  
WAR DEPARTMENT.



WASHINGTON, Dec. 11, 1895.

Respectfully returned to

MR. M. PERCY BLACK,

2803 Morgan Street,

ST. LOUIS, MO.

It appears from the records of this office that James Black was a Captain in Col. Spencer's (previously Col. Malcolm's) regiment of Continental Troops. His name has been found only on a muster roll of the "Resigned and Super-numerary Officers" of said regiment. This roll reports Captain Black as commissioned March 11, 1777, and resigned April 23, 1779.

\* \* \* \* \*

By authority of the Secretary of War.

F. C. AINSWORTH,  
Colonel, U. S. Army, Chief of Office.

\* NITH, a river of Scotland in Ayrshire. After a course of 60 miles, it falls into the Solway Firth, 3 miles below Dumfries.

NITHSDALE, the western stewartry or district of Dumfriesshire.—BEETON'S UNIVERSAL DICTIONARY.

Extreme southern point of Scotland where it touches England; about 55° 7½' North Latitude and 3° 36' West from Greenwich.

From the Public Archives in Washington, D. C.:

**Extract from Statement of Samuel Young, Esq., of Mount Pleasant, Westchester Co., N. Y., who served in the same regiment.**

Soon after **Tyran's** Retreat, Col. Delancy, who commanded the British Refugees, in order to secure them against surpris, erected a Block-House on a rising ground below Delancy's Bridge. This Col. Burr resolved to destroy. I was in that expedition and recollect the circumstances. He procured a number of hand-grenades and rolls of port-fire, and canteens filled with inflammable materials, with contrivances for attaching them to the sides of the Block-House. He set out with his troops early in the evening and arrived within a mile of the Block-House by two o'clock in the morning. The Colonel gave Captain Black the command of about forty volunteers who were first to approach. Twenty of them were to carry the port-fire, etc., etc. Those who had hand-grenades had short ladders to enable them to reach the port-holes, the exact height of which Col. Burr had ascertained. Col. Burr gave Capt. Black his instructions in the hearing of his Company, assuring him of his protection if they were attacked by superior numbers, for it was expected that the enemy, who had several thousand men at or near Kingsbridge, would endeavor to cut us off, as we were several miles below them. Burr directed those who carried combustibles to march in front, as silently as possible. That, on being hailed, they were to light the hand-grenades, etc. with a slow-match, provided for that purpose, and throw them into the port-holes. I was one of the party that advanced. The Sentinel hailed and fired. We rushed on. The first hand-grenade that was thrown in drove the enemy from the upper story, and before they could take means to defend it, the Block-House was on fire in several places. Some few escaped and the rest surrendered, without our having lost a single man. Though many shots were fired at us, we did not fire again.

Capt. James Black was drowned in the year 179—

William Malcolm Black<sup>13A</sup> died April 20, 1850, aged 64 years.

Persis Black<sup>13</sup> died Aug. 18, 1879, at 2 P. M. Both died and are buried in Lee, Berkshire Co., Mass.



**Abigail Maria Fuller—Hollister.**

Abigail Maria Fuller<sup>14</sup> was born in Dalton, Mass., Jan. 17, 1804.

Gurdon James Hollister<sup>14A</sup> was born in Lenox, Mass., in 1799.

They were married in Lee, Mass.

They removed to Geneva, Kane Co., Ills., in 1846.

Their children were:

Edwin Perrin <sup>34</sup> born March 15, 1828.

George Loomis <sup>35</sup> born Aug. 3, 1829.

Mary A. <sup>36</sup> born Sept. 12, 1832.

James Birney <sup>37</sup> born July 4, 1837.

William J. <sup>38</sup> born Aug. 6, 1840.

All born in Lee, Mass.

Mrs. Abigail Maria Hollister<sup>14</sup> died Aug. 24, 1875, and was buried in the West Side Cemetery, in Geneva, Ills.

Gurdon James Hollister<sup>14A</sup> died in Batavia, Ills., Aug. 2, 1880.

**Lemuel Fuller—Putnam.**

Lemuel Fuller<sup>15</sup> was born in Pittsfield, Mass., Feb. 14, 1807.

He married Lucy Putnam <sup>15A</sup> in Becket, Mass., Nov. 16, 1828 (first wife). She was a descendant of General Israel Putnam.

Their children were :

Caroline <sup>39</sup> born in Dalton, Mass., Dec. 20, 1829.

A boy, who died unnamed.

Emily J. <sup>40</sup> born Oct. 20, 1836.

Lucy P. <sup>41</sup> born Aug 13, 1841.

Last three born in Bennington Falls, Vt.

Mrs. Lucy Fuller<sup>15A</sup> died Aug. 13, 1841, aged 37 years, and was buried in Bennington Falls, Vt.

Lemuel Fuller<sup>15</sup> married Sophronia Lyon<sup>15B</sup> Jan. 1, 1842 (second wife). She was the daughter of Elisha Lyon, of Woodford, Vt.

They had one child :

Linus E. <sup>42</sup> born in Bennington Falls, Vt., May 2, 1844

Mrs. Sophronia Fuller<sup>15B</sup> died in North Bennington, Vt., Sept. 16, 1860, aged 37 years, 4 months and 14 days, and was buried in Hinsdillville Cemetery, Bennington Falls, Vt.

Lemuel Fuller<sup>15</sup> married Anna E. Potter<sup>15C</sup> April 25, 1863 (third wife).

They had no children.

Lemuel Fuller<sup>15</sup> died in North Bennington, Vt., Jan. 1, 1893; he was buried in Hinsdillville Cemetery.

Mrs. Anna E. Fuller<sup>15C</sup> recently married (December, 1895).

**Caroline Elvira Fuller—Lamb.**

• Caroline Elvira Fuller<sup>16</sup> was born Aug. 11, 1811. She married Lewis Lamb,<sup>16A</sup> of Springfield, Mass.

They had two children :

John Jerome <sup>43</sup>

Mary Fuller <sup>44</sup>

They removed to New Britain, Conn., where he died. He was buried in Springfield, Mass.

Mrs. C. E. Lamb<sup>16</sup> then moved to Hartford, Conn., where she died, March 2, 1872. She was buried beside her husband, in Springfield, Mass.

**William Nelson Fuller—Comstock.**

• William Nelson Fuller<sup>17</sup> was born in Dalton, Mass., April 22, 1815.

He was married by Rev. A. S. Cooper, to Harriet Newell Comstock,<sup>17A</sup> in Dalton, Mass., April 15, 1834 (first wife).

They had four children :

William Nelson <sup>45</sup> born Feb. 3, 1835; died Sept. 19, 1837.

Nelson William <sup>46</sup> born July 29, 1838.

George Nelson <sup>47</sup> born Dec. 11, 1840; died Aug. 14, 1846.

Harriet Newell <sup>48</sup> born April 14, 1843.

All above born in Dalton, Mass.

Mrs. Harriet N. Fuller<sup>17A</sup> died May 17, 1843, aged 29 years.

Wm. N. Fuller<sup>17</sup> married Caroline Lovina Nelson,<sup>17B</sup> in Dalton, Mass., Nov. 29, 1843 (second wife).

They had five children :

Mathias George Langton<sup>49</sup> born Aug. 22, 1847.

Carra Lovina<sup>50</sup> born July 2, 1849.

Fanny Briggs<sup>51</sup> born March 22, 1852.

Jerom Minot<sup>52</sup> born Sept. 7, 1855; died Jan. 27, 1856.

All above born in Dalton, Mass.

Mary Maria<sup>53</sup> born in Oconee, Ills., Dec. 25, 1850.

Mrs. C. L. Fuller<sup>17B</sup> died in Oconee, Ills., Jan. 22, 1879.

William Nelson Fuller<sup>17</sup> died in Oconee, Ills., Nov. 23, 1887.



## 7—THIRD GENERATION.—6

## GLOVER.

## Mary E. Glover—Simmons.

Mary E. Glover<sup>19</sup> married John J. Simmons<sup>19A</sup> in Springfield, Mass., and afterward moved to Chicago.

Fanny M. Glover<sup>20</sup> and George H. Glover<sup>21</sup> are still living in Chicago.

Samuel Jarvis Glover<sup>22</sup> died Oct. 8, 1892.

## Frank W. T. Glover—Bernard.

Frank W. T. Glover<sup>23</sup> when a young man went to Hartford, Conn.

He married Lida J. Bernard<sup>23A</sup> in 1868. She was the daughter of Henry and Eunice Clark Bernard.

They had two daughters:

Clara Bernard 54

Fanny Bernard 55

One died in 1869 and the other in 1876.

Frank W. T. Glover<sup>23</sup> and wife are still living in Chicago, Ills.

## ALLEN.

**Martha Josephine Allen—Strickland.**

Martha Josephine Allen<sup>21</sup> married John Wilkins Adams Strickland<sup>24</sup> in Springfield, Mass., Sept. 24, 1850.

They had five children :

Grace <sup>56</sup> died in infancy.

Ailen Collamore <sup>57</sup> † p. 30

Helen Josephine <sup>58</sup>

Charles Hobart <sup>59</sup>

Martha <sup>60</sup>

Mr. and Mrs. Strickland<sup>24</sup> are still living in the City of New York.

Sarah Frances Allen<sup>25</sup> is still living in Bennington, Vt.

---

 BLACK.
**James Black—Videtts.**

James Black<sup>26</sup> was born at Dalton, Mass., May 17, 1820.

He married Sarah Jane Videtts<sup>26a</sup> in Dalton, Mass., in 1854, and soon after removed to Plainfield, Kent Co., Mich.

Their children were :

Malcolm James <sup>61</sup> born about 1856

Louisa Jane <sup>62</sup> born about 1860.

James Black<sup>26</sup> died in Indianapolis, Ind., July 26, 1882.

**William Malcolm Black—Dale.**

William Malcolm Black<sup>27</sup> was born in Lee, Mass., Sept. 17, 1821. He left home, April 18, 1837, for Vandalia, Ills. His father accompanied him as far as N. Y., and the rest of the journey was made entirely alone and occupied twenty-four days.

He married Elizabeth Gundaker Dale<sup>27A</sup> in Lancaster, Pa., April 2, 1846. She was the daughter of Judge Samuel F. and Eliza Dale. Her father was in the forces at Erie in 1812; and her Grandfather was a Captain in the Militia, known as the Pennsylvania Associators in the Revolutionary War.

They made their home in Vandalia, Ills., till 1851, when they moved to St. Louis, Mo.

Their children were :

Anna Catharine <sup>63</sup> died in infancy in Vandalia.  
 Mary Jane <sup>64</sup> died in St. Louis, Mo., Feb. 5, 1867.  
 William James <sup>65</sup>

Above three born in Vandalia, Ills.

Samuel Dale <sup>66</sup> died in infancy, born and died in Springfield, Ills.

Clementina Dale <sup>67</sup>

Dale Gundaker <sup>68</sup> died in infancy, in St. Louis, Mo.

Lizzie Dale <sup>69</sup>

Malcolm Percy <sup>70</sup>

George Nelson <sup>71</sup> died in infancy.

The last five were born in St. Louis, Mo. All who died are buried in Springfield, Ills., except Anna C.<sup>63</sup> who is buried in Vandalia, Ills.

William Malcolm Black<sup>27</sup> died in St. Louis, Jan. 11, 1888, and was buried in the family lot in Oak Ridge Cemetery, in Springfield, Ills.

Mrs. Elizabeth G. Black<sup>27\*</sup> is still living with her three unmarried children, Clementina,<sup>67</sup> Lizzie<sup>69</sup> and Percy,<sup>70</sup> in St. Louis, Mo.

**Mary Black—Remann.**

Mary Black<sup>28\*</sup> was born in Lee, Mass., March 5, 1823.

Henry Christian Remann<sup>28\*</sup> was born in Germany, Aug. 22, 1817.

They were married in Vandalia, Ills., April 15, 1841.

Their children were :

Josephine Emilie<sup>72</sup> born April 28, 1842. — D A R. 6403

Mary Julia<sup>73</sup> born March 6, 1844.

Elizabeth Dorothy<sup>74</sup> died in infancy.

Annie-Jane<sup>75</sup> born Jan. 7, 1847, died in infancy.

All born in Vandalia, Ills.

Henry Christian<sup>76</sup> born in Springfield, Ills., April 6, 1850.\*

Henry C. Remann<sup>28\*</sup> died Dec. 10, 1849.

Mary Remann<sup>28</sup> died Feb. 7, 1888.

Jane Black<sup>29</sup> is still living, with her brother, Alexander Malcolm Black<sup>33</sup> in Lee, Mass.

**John Black—Shellabarger.**

John Black<sup>30</sup> was born in Lee, Mass., March 4, 1829. †

\* Aunt Fanny Glover<sup>11</sup> once told Henry Remann<sup>76</sup> that she remembered her mother taking her, when a little girl, to see her uncle Alden Fuller.<sup>5</sup>

† Incorrectly given on page 10, as is also the death of Julia Mari Black<sup>32</sup> which should be 1856. They are both correctly given in Appendix C



He married Katharine Shellabarger<sup>30A</sup> of Decatur, Ills., Nov. 1, 1877.

They had four children :

Katharine Julia <sup>77</sup> born Sept. 3, 1879.

John Shellabarger <sup>78</sup> born Oct. 17, 1881.

Clarence Fuller <sup>79</sup> born Jan. 28, 1883.

Frances Glover <sup>80</sup> born July 27, 1885; died Jan. 28, 1887.

John Black<sup>30</sup> died of heart failure, in Springfield, Ills., Sept. 7, 1888, and is buried in Oak Ridge Cemetery, in that place.

Mrs. Katharine S. Black<sup>30A</sup> is still living, with her three children, in Springfield, Ills.

#### George Nelson Black—Williams.

George Nelson Black<sup>31</sup> was born in Lee, Mass., March 15, 1838.

Louisa Iles Williams<sup>31A</sup> was born in Springfield, Ills., Dec. 22, 1840.

They were married in Springfield, Ills., Oct. 24, 1859.

They had four children :

Julia <sup>81</sup> born Oct. 27, 1860; died in Springfield, Ills., Jan. 24, 1861.

John Williams <sup>82</sup> born May 19, 1862.

Annie Louise <sup>83</sup> born June 17, 1864.

George Edward <sup>84</sup> born Sept. 18, 1866; died in Faribault, Minn., May 29, 1880.

All born in Springfield, Ills.

George N. Black<sup>31</sup> and wife are still living in Springfield, Ills.

## HOLLISTER.

Edwin Perrin Hollister<sup>34</sup> was born in Lee, Mass., March 15, 1828. He died in New Orleans, La., Jan. 12, 1855; and was buried in the family burial lot, in Geneva, Ills.

**George Loomis Hollister—Waring.**

George Loomis Hollister<sup>35</sup> was born in Lee, Mass., Aug. 3, 1829.

He married Hattie Waring<sup>35A</sup> and died, without issue, Jan. 20, 1874. He was buried in Geneva, Ills.

**Mary A. Hollister—Young.**

Mary A. Hollister<sup>36</sup> was born in Lee, Mass., Sept. 12, 1832.

She married N. S. Young<sup>36A</sup> of Batavia, Ills., Sept. 2, 1862.

Their children were:

Edwin H. <sup>85</sup> born Aug. 29, 1863; died Oct. 6, 1863.

Fanny <sup>86</sup> born Oct. 1, 1868.

Justin H. <sup>87</sup> born Aug. 17, 1871.

**James Birney Hollister—Prescott.**

James Birney Hollister<sup>37</sup> was born in Lee, Mass., July 4, 1837.

Mary Alice Prescott<sup>37A</sup> was born in the State of New York, July 21, 1844.

They were married June 23, 1863.

Their children were:

Florence <sup>88</sup> born March 26, 1864.

Charles <sup>89</sup> born Nov. 21, 1865; died Oct. 28, 1867, and buried in Graceland Cemetery, Chicago, Ills.

James B. Hollister<sup>37</sup> died in Chicago, Ills., Nov. 20, 1868, and was buried in Graceland Cemetery, in that place.

**William J. Hollister—Carpenter.**

William J. Hollister<sup>38</sup> was born in Lee, Mass., Aug. 6, 1840.

He married Eva Carpenter<sup>38A</sup> Nov. 21, 1866.

Their children are:

Bertha M. <sup>90</sup> born Sept. 27, 1867.

Fred <sup>91</sup> born July 13, 1870.

Robert <sup>92</sup> born Oct. 1, 1877.

Wm. J. Hollister<sup>38</sup> and wife are still living in Batavia, Ills.

---

FULLER.

**Caroline Fuller—White.**

Caroline Fuller<sup>39</sup> was born in Dalton, Mass., Dec. 20, 1829.

She married Salem White.<sup>39A</sup>

Their children were :

- Caroline Maria <sup>93</sup> born April 7, 1851.  
 Willard <sup>94</sup> born June 20, 1852; died May 20, 1873.  
 Frank Herbert <sup>95</sup> born Nov. 26, 1854.  
 Fred <sup>96</sup> born Sept. 4, 1856; died Nov. 28, 1876.  
 Kittie <sup>97</sup> born Feb. 14, 1858; died Sept. 28, 1860.  
 Libbie Gertrude <sup>98</sup> born May 15, 1861.  
 Salem H. <sup>99</sup> born Dec. 26, 1862.  
 Lucy <sup>100</sup> born March 29, 1864; died Feb. 10, 1872.  
 Linus Fuller <sup>101</sup> born Aug. 20, 1867.  
 Nettie Edith <sup>102</sup> born Aug. 15, 1868.

All born in Bennington (or Bennington Falls), Vt. Those who died were buried in the same cemetery with their mother, at that place.

Mrs. Caroline White<sup>39</sup> died March 31, 1871.

Salem White<sup>39A</sup> died

#### Emily J. Fuller—Rouse.

Emily J. Fuller<sup>40</sup> was born in Bennington Falls, Vt., Oct. 20, 1836.

She married Henry D. Rouse<sup>40A</sup> in North Bennington, Vt., Oct. 6, 1858.

Their children were :

- Ada W. <sup>103</sup> born Nov. 26, 1864.  
 Fred F. <sup>104</sup> born Nov. 28, 1866.  
                     Both born in Rutland, Vt.  
 Harry D. <sup>105</sup> born in Philadelphia, Penn., March 14, 1876.

Henry D. Rouse<sup>40A</sup> died in Philadelphia, Penn., Aug. 11, 1885.

Mrs. Emily J. Fuller<sup>40</sup> is still living with her children in Philadelphia, Penn.

**Lucy P. Fuller—Hicks.**

Lucy P. Fuller<sup>11</sup> was born in Bennington Falls, Vt., Aug. 13, 1841.

She married Eli B. Hicks<sup>11A</sup> in North Bennington, Vt., Dec. 22, 1862.

They had twelve children:

May <sup>106</sup> born Nov. 21, 1863.

Charles H. <sup>107</sup> born Oct. 29, 1865.

Harry <sup>108</sup> born March 24, 1868.

Twins (unnamed), born Dec. 24, 1869, one died the same day, the other five weeks later.

Viva C. <sup>109</sup> born Jan. 10, 1871.

All above born in N. Bennington, Vt.

Elm ra Estella <sup>110</sup> born April 16, 1873.

Twins, { Fred <sup>111</sup> }  
          { Frank <sup>112</sup> } born Aug. 2, 1875.

Anna F. <sup>113</sup> born April 15, 1877; died Aug. 5, 1877.

Walter <sup>114</sup> born April 12, 1880; died Nov. 21, 1880.

Ada Amelia <sup>115</sup> born Aug. 9, 1884.

Above six born in North Adams, Mass. All who died were buried in Bennington Falls, Vt.

All live together in North Adams, Mass. None married.

**Linus E. Fuller—Surdam.**

Linus E. Fuller<sup>12</sup> was born in North Bennington, Vt., May 2, 1844.

He married Amelia J. Surdam<sup>12A</sup> Oct. 17, 1866. She was the daughter of Isaac and Jennette Surdam of North Bennington, Vt.

They have no children.

They live in New York.

## LAMB.

**John Jerome Lamb—Merriman.**

John Jerome Lamb<sup>43</sup> married Emma Griggs Merriman<sup>43A</sup> in Hartford, Conn., Sept. 10, 1867.

They had one child:

Cosie Merriman<sup>116</sup>

John J. Lamb,<sup>43</sup> his daughter, Cosie,<sup>116</sup> and sister, Mary F. Lamb<sup>44</sup> are still living in Hartford, Conn.

---

 FULLER.
**Nelson William Fuller—Craig.**

Nelson William Fuller<sup>46</sup> was born in Dalton, Mass., July 29, 1838.

Elizabeth J. Craig<sup>46A</sup> was born on Ceascero Creek, Montgomery Co., Ills., March 5, 1840.

They were married, by Rev. A. T. Cooly, in Hillsboro, Montgomery Co., Ills., Sept. 16, 1863.

Their children were:

Alberta G. <sup>117</sup> born Nov. 5, 1865.

Ada Maude <sup>118</sup> born June 2, 1863; died June 16, 1888, and buried in Union Cemetery, Kansas City, Mo.

Harriet E. <sup>119</sup> born Feb. 17, 1872; died March 29, 1872, and buried in Elmwood Cemetery, Litchfield, Montgomery Co., Ills.

Ola Bell <sup>120</sup> born in Walchville, Montgomery Co., Ills., Sept. 25, 1874.

Nelson William Fuller<sup>46</sup> and wife, with their daughter Ola Bell,<sup>120</sup> are living in Kansas City, Mo.

**Harriet Newell Fuller--Hagar.**

Harriet Newell Fuller<sup>48</sup> was born in Dalton, Mass., April 14, 1843.

She married George E. Hagar<sup>48A</sup> April 19, 1865.

Their children were :

Kate H. <sup>121</sup> born June 17, 1867; died April 6, 1870, and buried in Dalton, Mass.

Susie B. <sup>122</sup> born Dec. 10, 1869.

Harriet Wilson <sup>123</sup> born Aug. 20, 1872.

George Smith <sup>124</sup> born Dec. 1, 1876.

Lucy Gibbs <sup>125</sup> born Nov. 11, 1879.

James Wilson <sup>126</sup> born Jan. 5, 1883.

Catharine Olive <sup>127</sup> born Jan. 17, 1886.

Mr. and Mrs. Hagar<sup>48</sup> and their children are still living in Dalton, Mass.

**Mathias George Langton Fuller--Wheeler.**

Mathias George Langton Fuller<sup>49</sup> was born in Dalton, Mass., Aug. 22, 1847.

He married Jennie Wheeler,<sup>49A</sup> in Patoka, Ills., Jan. 10, 1884.

They live in Oconee, Ills.

**Carra Lovina Fuller—McKnight.**

Carra Lovina Fuller<sup>50</sup> was born in Dalton, Mass., July 2, 1849.

She married Henry McKnight<sup>50A</sup> in Decatur, Ills., Dec. 17, 1868.

They had five children :

Beatrice B. <sup>128</sup> born Jan. 15, 1873.

Roma R. <sup>129</sup> born Nov. 16, 1874.

Louie E. <sup>130</sup> born March 11, 1876.

Fanny M. <sup>121</sup> born May 12, 1878.

Chad. C. <sup>132</sup> born Aug. 6, 1884.

All born in Ramsey, Ills.

Mr. and Mrs. McKnight<sup>50</sup> and family are living in Caldwell, Kans. None married.

**Fanny Briggs Fuller—Gale.**

Fanny Briggs Fuller<sup>51</sup> was born in Dalton, Mass., March 22, 1852.

She married Chadwick Gale<sup>51A</sup> Dec. 28, 1876.

Their children are :

Lottie L. <sup>133</sup> born May 17, 1878.

Bessie C. <sup>134</sup> born Sept. 5, 1879.

Charles Chadwick <sup>135</sup> born June 28, 1886; died Feb. 14, 1887.

Gertrude Fannie <sup>136</sup> born June 25, 1889.

George Nelson <sup>137</sup> born March 20, 1891.

All born in Oconee, Ills.

Mr. and Mrs. Gale<sup>51</sup> and family are living in Oconee, Ills.



**Mary Maria Fuller—Burr.**

Mary Maria Fuller<sup>53</sup> was born at Ramsey, Ills.,  
Dec. 25, 1859.

She married George Burr<sup>53A</sup> in Ramsey, Ills.,  
June 4, 1890.

Their children are :

Mabel Adania <sup>138</sup> born April 27, 1891.

Guy Fuller <sup>139</sup> born June 15, 1895.

Both born in Ramsey, Ills.

Mr. and Mrs. Burr<sup>53</sup> and family are living in  
Ramsey, Ills.



## 8 — FOURTH GENERATION. — 7

## STRICKLAND.

**Allen Collamore Strickland—Buck.**

Allen Collamore Strickland<sup>57</sup> was born in New York City, Jan. 19, 1854.

He married Julia Anna Buck<sup>57A</sup> May 5, 1874.

They had five children:

Margaret Halsey <sup>140</sup>

Anna Allen <sup>141</sup>

John Frederick <sup>142</sup> died Dec. 8, 1830, buried in Woodlawn Cemetery, N. Y.

Helen Brockway <sup>143</sup>

Mabelle Dean <sup>144</sup>

Mr. A. C. Strickland<sup>57</sup> and wife are living in New York City, with their unmarried children.

---

 BLACK.
**Malcolm James Black.**

Malcolm James Black<sup>61</sup> was born about 1856.

He married; and died in Texas, leaving a wife and several children.

**Louisa Jane Black—Dwinell.**

Louisa Jane Black<sup>62</sup> was born about 1860.

She was married in Lee, Mass., to Charles L. Dwinell,<sup>62A</sup> of Indianapolis, Ind.

They still reside in the latter place.

---

**William James Black—Hagaman.**

William James Black<sup>65</sup> married Martha Beekman Hagaman<sup>65A</sup> at Ivory Station, Mo., April 16, 1874. She was the seventh daughter of Rev. Abraham Hagaman and Louisa Somerville Dunbar (who was a grand-daughter of Leonard Marbury, Lieut. Col. in the Revolutionary Army).

They have had nine children :

Martha Beekman <sup>145</sup> born June 13, 1875.

William Malcolm <sup>146</sup> born Aug. 13, 1877.

Abram Hagaman <sup>147</sup> born Jan. 19, 1880.

Samuel Dale <sup>148</sup> born March 7, died Oct. 4, 1882.

Elizabeth Dale <sup>149</sup> born Nov. 8, 1885; died June 17, 1887.

Lizzie Dale <sup>150</sup> born Aug. 23, 1887; died July 8, 1888.

Charles Dale <sup>151</sup> born Jan. 12, 1890; died July 6, 1890.

Clementina Catharine <sup>152</sup> born Aug. 4, 1892.

Malcolm Alden Fuller <sup>153</sup> born July 8, 1895.

William Malcolm <sup>146</sup> was born in St. Louis, all the rest were born at Ivory Station, Mo. The four that died, died there and are buried in the Odd Fellows Cemetery at that place.

Wm. J. Black<sup>65</sup> and family all live at Ivory Station, Mo. None married.

## REMANN.

**Josephine Emilie Remann—Edwards.**

Josephine Emilie Remann<sup>72</sup> was born in Vandalia, Ills., April 28, 1842.

Albert S. Edwards<sup>72A</sup> was born Dec. 15, 1839. He was the nephew of President Abraham Lincoln's wife, and has had a noble and illustrious ancestry for many generations.

They were married in Springfield, Ills., June 3, 1863.

They had five children :

Georgie Hortense <sup>154</sup> born July 22, 1865.

Mary Elizabeth <sup>155</sup> born Sept. 20, 1866.

Ninian Wirt <sup>156</sup> born June 30, 1868.

Anna Josephine <sup>157</sup> born July 7, 1872; died Jan. 17, 1877.

Remann <sup>158</sup> born April 27, 1876; died Jan. 25, 1878.

All born in Springfield, Ills.

Mr. and Mrs. Edwards<sup>72</sup> are living in Springfield, Ills., with their unmarried children.

Mary J.<sup>73</sup> and Henry C.<sup>76</sup> Remann live together in Springfield, Ills.

---

 BLACK.

John W. Black<sup>72</sup> is living with his parents in Springfield, Ills.

**Annie Louise Black—Sterricker.**

Annie Louise Black<sup>81</sup><sup>3</sup> was born in Springfield, Ill., June 17, 1864.

Dr. George Frederick Sterricker<sup>82A</sup> was born in England, Sept. 1, 1861.

They were married in Springfield, Ills., Dec. 1, 1892.

Their children are:

Helen<sup>159</sup> born Jan. 22, 1894.

George Black<sup>160</sup> born May 31, 1895.

Both born in Springfield, Ills.

Dr. and Mrs. Sterricker<sup>82</sup> are living in Springfield, Ills.

**HOLLISTER.****Florence Hollister—Haviland.**

Florence Hollister<sup>88</sup> was born March 26, 1864.

Wm. C. Haviland<sup>88A</sup> was born in Rahway, N. J., July 13, 1856.

They were married in Aurora, Ills., May 9, 1888.

Their children are:

James Thomas<sup>161</sup> born June 2, 1889.

Fred Hobert<sup>162</sup> born May 20, 1891.

Both born in Aurora, Ills.

Mr. and Mrs. Haviland<sup>88</sup> live in Aurora, Ills.

**Bertha M. Hollister—Prindle.**

Bertha M. Hollister<sup>89</sup> was born Sept. 27, 1867.  
She married Albro B. Prindle<sup>89A</sup> in Batavia, Ills.  
Oct. 3, 1894.

Mr. and Mrs. Prindle<sup>89</sup> live in Batavia, Ills.

---

 WHITE.
**Caroline Maria White—Northup.**

Caroline Maria White<sup>93</sup> was born in Bennington  
Vt., April 7, 1851.

She was married to George H. Northup<sup>93A</sup> in  
Cambridge, N. Y., Dec. 6, 1866.

They had three children :

Agnes A. <sup>163</sup> born Aug. 29, 1867; died Dec. 24, 1870.

Charles E. <sup>164</sup> born Feb. 25, 1869; died Dec. 30, 1870.

Myrtle E. <sup>165</sup> born March 7, 1872.

All born in Bennington, Vt., and the two died there.

Mr. and Mrs. Northup<sup>93</sup> are living in Worcester  
Mass.

**Frank Herbert White—Gardner.**

Frank Herbert White<sup>95</sup> was born in Bennington  
Vt., Nov. 26, 1854.

He was married in Bennington, Vt., to Ida E. Gardner<sup>95A</sup> of Hoosick Falls, N. Y., Sept. 29, 1873.

They had one child:

Guy Herbert<sup>166</sup> born April 25, 1878; died March 4, 1884, and was buried in Maple Crove Cemetery, Hoosick Falls, N. Y.

Frank H. White<sup>95</sup> and wife are living in Hoosick Falls, N. Y.

**Libbie Gertrude White—Wilde.**

Libbie Gertrude White<sup>98</sup> was born in Bennington, Vt., May 15, 1861.

She was married in Bennington, Vt., to Samuel John Wilde<sup>98A</sup> of Brighton, Mass., Nov. 22, 1881.

They had one child:

William S.<sup>167</sup> born Nov. 25, 1886; died March 15, 1888, and was buried in Evergreen Cemetery, Brighton, Mass.

Mr. and Mrs. Wilde<sup>98</sup> live in Brighton, Mass.

**Salem H. White—Sweet.**

Salem H. White<sup>99</sup> was born in Bennington Falls, Vt., Dec. 26, 1862.

He married Carrie A. Sweet<sup>99A</sup> in Hoosick Falls, N. Y., Dec. 12, 1883.

They have one child:

Farest S.<sup>168</sup> born in Hoosick Falls, N. Y., Aug. 3, 1889.

Salem H. White<sup>99</sup> and family live in Hoosick Falls, N. Y.

**Linus Fuller White—Tabor.**

Linus Fuller White<sup>101</sup> was born in Bennington, Vt., Aug. 20, 1867.

He married May Elizabeth Tabor<sup>101A</sup> in Hoosick Falls, N. Y., Nov. 14, 1889.

They still live in Hoosick Falls, N. Y.

**Nettie Edith White—Rockwood.**

Nettie Edith White<sup>102</sup> was born in Bennington, Vt., Aug. 15, 1868.

She was married in Bennington, Vt., to Sheldon H. Rockwood<sup>102A</sup> Oct. 5, 1887.

They have had two children :

Clarence Robert<sup>102B</sup> born Sept. 2, 1888; died Feb. 9, 1896.

Percy Earl<sup>102C</sup> born Feb. 8, 1890; died Sept. 13, 1890.

Both children are buried in Bennington Cemetery, Bennington, Vt.

Mr. and Mrs. Rockwood<sup>102</sup> are living in Bennington, Vt.

---

**ROUSE.**
**Fred F. Rouse—Erickson.**

Fred F. Rouse<sup>104</sup> was born in Rutland, Vt., Nov. 28, 1866.

He married Dell Erickson<sup>104A</sup> in Chicago, Ill., May 31, 1894.

They live in Philadelphia, Penn.



## FULLER.

**Alberta G. Fuller—Henkle.**

Alberta G. Fuller<sup>117</sup> was born Nov. 5, 1865.  
She married Alexander G. Henkle<sup>117A</sup> Sept. 20,  
1886.

Mr. and Mrs. Henkle<sup>117</sup> are living in Kansas  
City, Mo.

---

**HAGAR.****Susie B. Hagar—Bliss.**

Susie B. Hagar<sup>122</sup> was born Dec. 10, 1869.  
She married Frank O. Bliss<sup>122A</sup> Oct. 18, 1893.  
Frank O. Bliss<sup>122A</sup> died Nov. 21, 1895.



## 9—FIFTH GENERATION.—8

## STRICKLAND.

**Margaret Halsey Strickland—Wood.**

Margaret Halsey Strickland<sup>140</sup> married Theodore Edgar Wood<sup>140\*</sup> in New York City, Nov. 12, 1895.

---

## EDWARDS.

**Mary Elizabeth Edwards—Brown.**

Mary Elizabeth Edwards<sup>155</sup> was born in Springfield, Ills., Sept. 20, 1866.

Charles Roland Brown<sup>155\*</sup> was born in Versailles, Ky., Oct. 8, 1857.

They were married May 4, 1886.

They have one child:

Remann Alexander <sup>171</sup> born in Springfield, Mo., April 5,  
1888.

## NORTHUP.

**Myrtle E. Northup—Dunkerton.**

Myrtle E. Northup<sup>165</sup> was born in Bennington, Vt., March 7, 1872.

She married Edward E. Dunkerton<sup>165A</sup> of Worcester, Mass., April 28, 1892.

Their children are :

Lyle S. <sup>172</sup> born Nov. 23, 1892.

Fitzmaurice E. <sup>173</sup> born Sept. 17, 1893.

Both born in Worcester, Mass.





FULLER  
COAT OF ARMS.



"He beareth argent three bars gules; on a canton of the last, a castle or. Crest—a dexter arm embowed, habited argent, cuffed sable, the hand holding a sword, blade argent, hilt and pommel or. By the name of Fuller."

Motto: "Semper Paratus" (Always Ready).

# DESCRIPTION OF THE SIGNIFICANCE OF THE FULLER ARMS,

By ALEXANDER CORBETT, JR., Heraldic Artist,  
BOSTON, MASS.

The following interpretation of the Fuller Arms is derived from several ancient heraldic lexicographers, including John Gwillim and Aaron Crossley, both of whom were pre-eminent authorities about two hundred years ago. The significance of the various charges contained in the Arms is given practically in their own antiquated and inimitably quaint style of phraseology, as being more interesting, as well as more appropriate, than a more modern form embodying the same matter could possibly be.

Gwillim says: "As colors may be resembled to thyngs of greatest Nobility or Reputation, so is their worthyness accounted of accordingly. A shield of Argent or Silver is white, which is emblematick of Light. According to that Noble and Esteemed French author, Colombiere, Silver signifyes of virtues and Spiritual Qualities: Humility, Temperance and Truth; it is also the emblem of Gentleness. Of the planets it doth typify the Moon; of the four elements, the Water; of Human Constitutions, the Flegmatick; of Precious Stones, the Pearl; of Trees, the Palm; of Flowers, the Flower-de-Luce; of Beasts, the Ermine, which is all white, without any spot; of the parts of Man, the Brain; and of his Ages, that in which his powers are the most highly cultivated and developed. I have read in a Spanish author that those which have a Shield of Silver are obliged to relieve Maidens and Orphans.

"Bars, such as do appear in the Fuller Arms, are derived from Military Belts, or Girdles, of Honor, which from remotest antiquity, have been held in Noblest Esteem by the warrior which has had such a trophy bestowed upon him by his Sovereign, forasmuch as such Belts were the reward especially reserved for those who did great personal service for the Ruler of the Realm. In the sacred Book of Samuel, indeed, we read: 'Why didst thou not smit him there to the ground? and I would have given thee ten Shekels of Silver, and a Girdle.'—II. Sam. xviii: 11.

"When a Canton is born (for so the square charge in the upper corner is called) it is usually what is termed an argumentation in arms—something added since the original adoption of the Coat of Arms. Most frequently it may be considered to be the badge or cognizance of some defeated enemy of the bearer of the Arms, since anciently the victor was privileged to appropriate the heraldic emblems of a Knight whom he had slain or taken into captivity, and to add it, in the form of a Canton, to his own shield.

"A Castle was frequently given to him who had been the first to mount the walls of a captured stronghold of that nature.

"Gules, or Red, hath ever been the military color, par excellence, notably among the Egyptians, Romans, Gauls and ancient Britons, who esteemed it best fit to strike terror to the hearts of ignorant or superstitious enemies, by reason of its sanguinary tincture. Of surpassing utility was this color, also, to the warrior, by concealing the effusion of his own blood when that he be wounded, in order that his enemies might not be, by its discovery, thereupon emboldened, and his followers correspondingly discouraged.

"An Arm wielding a Sword is the emblem of power and justice against traitors to their Prince and the oppressors of the innocent. In the Sacred Scriptures we read: 'I will render vengeance to mine enemies, and will reward them that hate me.'—Deut. xxxii: 41. And again: 'The sword shall devour and it shall be satiate and made drunk with their blood.'—Jer. xlvi: 10."





# APPENDICES.



# Appendix A

Descendants of

**FANNY FULLER.<sup>11</sup>**

· Fanny Fuller<sup>11</sup> married Jarvis Glover<sup>11A</sup>

They had six children :

Martha A. 18

Mary E. 19

Fanny M. 20

George H. 21

Samuel Jarvis 22

Frank W. T. 23

Mary E. Glover<sup>19</sup> married John J. Simmons.<sup>19A</sup>

---

Frank W. T. Glover<sup>23</sup> married Lida J. Bernard<sup>23A</sup>

They had two daughters :

Clara Bernard 54

Fanny Bernard 55

One died in 1869 and the other in 1876.

# Appendix B

Descendants of

**MARY FULLER.**<sup>12</sup>

• Mary Fuller<sup>12</sup> married Timothy Allen<sup>12A</sup>

Their children were :

Martha Josephine <sup>24</sup>

Sarah Frances <sup>25</sup>

Martha Josephine Allen<sup>24</sup> married John Wilkins  
Adams Strickland.<sup>24A</sup>

They had five children :

Grace <sup>56</sup> died in infancy.

Allen Collamore <sup>57</sup>

Helen Josephine <sup>58</sup>

Charles Hobart <sup>59</sup>

Martha <sup>60</sup>

A. C. Strickland<sup>57</sup> married Julia Anna Buck.<sup>57A</sup>

They had five children :

Margaret Halsey <sup>140</sup>

Anna Allen <sup>141</sup>

John Frederick <sup>142</sup> died Dec. 8, 1880, buried in Woodlawn  
Cemetery, N. Y.

Helen Brockway <sup>143</sup>

Mabelle Dean <sup>144</sup>

Margaret Halsey Strickland<sup>140</sup> married Theodore  
Edgar Wood.<sup>140A</sup>

## Appendix C

Descendants of

**PERSIS FULLER.**<sup>13</sup>

· Persis Fuller<sup>13</sup> married Wm. M. Black<sup>13A</sup>

Their children were :

James<sup>26</sup> born May 17, 1820.

Born in Dalton, all the rest in Lee, Mass.

William Malcolm<sup>27</sup> born Sept. 17, 1821.

Mary<sup>28</sup> born March 5, 1823.

Jane<sup>29</sup> born Feb. 18, 1825.

John<sup>30</sup> born March 4, 1829.

George Nelson<sup>31</sup> March 15, 1833.

Julia Maria<sup>32</sup> born June 10, 1834 ; and died Sept. 24, 1856.

Alexander Malcolm<sup>33</sup> born Feb. 22, 1836.

James Black<sup>26</sup> married Sarah Jane Videtts.<sup>26A</sup>

Their children were :

Malcolm James<sup>61</sup> born about 1856.

Louisa Jane<sup>62</sup> born about 1860.

Malcolm James Black<sup>61</sup> married ——— ———

They had several children.

---

Louisa J. Black<sup>62</sup> married Charles L. Dwinell.<sup>62A</sup>

Wm. M. Black<sup>27</sup> married Elizabeth G. Dale.<sup>27A</sup>

Their children were :

Anna Catharine <sup>63</sup> died in infancy in Vandalia.

Mary Jane <sup>64</sup> died in St. Louis, Mo., Feb. 5, 1867.

William James <sup>65</sup>

Above three born in Vandalia, Ills.

Samuel Dale <sup>66</sup> died in infancy, born and died in Springfield, Ills.

Clementina Dale <sup>67</sup>

Dale Gundaker <sup>68</sup> died in infancy, in St. Louis, Mo.

Lizzie Dale <sup>69</sup>

Malcolm Percy <sup>70</sup>

George Nelson <sup>71</sup> died in infancy.

The last five were born in St. Louis, Mo. All who died are buried in Springfield, Ills., except Anna C.<sup>63</sup> who is buried in Vandalia, Ills.

Wm. J. Black<sup>65</sup> married Martha B. Hagaman.<sup>65A</sup>

They have had nine children :

Martha Beekman <sup>145</sup> born June 13, 1875.

William Malcolm <sup>146</sup> born Aug. 13, 1877.

Abram Hagaman <sup>147</sup> born Jan. 19, 1880.

Samuel Dale <sup>148</sup> born March 7, died Oct. 4, 1882.

Elizabeth Dale <sup>149</sup> born Nov. 8, 1885; died June 17, 1887.

Lizzie Dale <sup>150</sup> born Aug. 23, 1887; died July 8, 1888.

Charles Dale <sup>151</sup> born Jan. 12, 1890; died July 6, 1890.

Clementina Catharine <sup>152</sup> born Aug. 4, 1892.

Malcolm Alden Fuller <sup>153</sup> born July 8, 1895.

William Malcolm <sup>146</sup> was born in St. Louis, all the rest were born at Ivory Station, Mo. The four that died, died there and are buried in the Odd Fellows Cemetery at that place.

---

Mary Black<sup>28</sup> married Henry C. Remann.<sup>28A</sup>

Their children were :

- Josephine Emilie <sup>72</sup> born April 28, 1842.  
 Mary Julia <sup>73</sup> born March 6, 1844.  
 Elizabeth Dorothy <sup>74</sup> died in infancy.  
 Annie Jane <sup>75</sup> born Jan. 7, 1847, died in infancy.  
     All born in Vandalia, Ills.  
 Henry Christian <sup>76</sup> born in Springfield, Ills., April 6, 1850.

Josephine Emilie Remann<sup>72</sup> married Albert S. Edwards.<sup>72A</sup>

They had five children :

- Georgie Hortense <sup>154</sup> born July 22, 1865.  
 Mary Elizabeth <sup>155</sup> born Sept. 20, 1866.  
 Ninian Wirt <sup>156</sup> born June 30, 1868.  
 Anna Josephine <sup>157</sup> born July 7, 1872; died Jan. 17, 1877.  
 Remann <sup>158</sup> born April 27, 1876; died Jan. 25, 1878.  
     All born in Springfield, Ills.

Mary Elizabeth Edwards<sup>155</sup> married Charles Roland Brown.<sup>155A</sup>

They have one child :

- Remann Alexander <sup>171</sup> born in Springfield, Mo., April 5, 1888.

John Black<sup>30</sup> married Katharine Shellabarger.<sup>30A</sup>

They had four children :

- Katharine Julia <sup>77</sup> born Sept. 3, 1879.  
 John Shellabarger <sup>78</sup> born Oct. 17, 1881.  
 Clarence Fuller <sup>79</sup> born Jan. 28, 1883.  
 Frances Glover <sup>80</sup> born July 27, 1885; died Jan. 28, 1887.

George N. Black<sup>31</sup> married Louisa I. Williams.<sup>31A</sup>

They had four children :

Julia <sup>81</sup> born Oct 27, 1860 ; died in Springfield, Ills., Jan.  
24, 1861.

John Williams <sup>82</sup> born May 19, 1862.

Annie Louise <sup>83</sup> born June 17, 1864.

George Edward <sup>84</sup> born Sept. 18, 1866 : died in Faribault,  
Minn., May 29, 1880.

All born in Springfield, Ills.

Annie Louise Black<sup>83</sup> married Dr. George Frederick Sterricker.<sup>83A</sup>

Their children are :

Helen <sup>159</sup> born Jan. 22, 1894.

George Black <sup>160</sup> born May 31, 1895.

Both born in Springfield, Ills.





# Appendix D

Descendants of

**ABIGAIL MARIA FULLER.<sup>14</sup>**

· Abigail Maria Fuller<sup>14</sup> married Gurdon James Hollister<sup>14A</sup>

Their children were :

Edwin Perrin <sup>34</sup> born March 15, 1828,

George Loomis <sup>35</sup> born Aug. 3, 1829.

Mary A. <sup>36</sup> born Sept. 12, 1832.

James Birney <sup>37</sup> born July 4, 1837.

William J. <sup>38</sup> born Aug. 6, 1840.

All born in Lee, Mass.

George L. Hollister<sup>35</sup> married Hattie Waring<sup>35A</sup>  
and died without issue.

---

Mary A. Hollister<sup>36</sup> married N. S. Young.<sup>36A</sup>

Their children were :

Edwin H. <sup>85</sup> born Aug. 29, 1863; died Oct. 6, 1863.

Fanny <sup>86</sup> born Oct. 1, 1868.

Justin H. <sup>87</sup> born Aug. 17, 1871.

---

J. Birney Hollister<sup>37</sup> married Mary Alice Prescott.<sup>37A</sup>

Their children were :

Florence <sup>88</sup> born March 26, 1864.

Charles <sup>89</sup> born Nov. 21, 1865; died Oct. 28, 1867, and  
buried in Graceland Cemetery, Chicago, Ills.

Florence Hollister<sup>88</sup> married Wm. C. Haviland.<sup>88A</sup>

Their children are :

James Thomas <sup>161</sup> born June 2, 1889.

Fred Hobert <sup>162</sup> born May 20, 1891.

Both born in Aurora, Ills.

---

William J. Hollister<sup>38</sup> married Eva Carpenter.<sup>38A</sup>

Their children are :

Bertha M. <sup>90</sup> born Sept. 27, 1867.

Fred <sup>91</sup> born July 13, 1870.

Robert <sup>92</sup> born Oct. 1, 1877.

Bertha M. Hollister<sup>90</sup> married Albro B. Prindle.<sup>90A</sup>



# Appendix E

Descendants of

**LEMUEL FULLER.<sup>15</sup>**

Lemuel Fuller<sup>15</sup> married Lucy Putnam<sup>15A</sup> (first wife).

Their children were :

Caroline <sup>39</sup> born in Dalton, Mass., Dec. 20, 1829.

A boy who died unnamed.

Emily J. <sup>40</sup> born Oct. 20, 1836.

Lucy P. <sup>41</sup> born Aug. 13, 1841.

Last three born at Bennington Falls, Vt.

Lemuel Fuller<sup>15</sup> married Sophronia Lyon<sup>15B</sup> (second wife).

They had one child :

Linus E. <sup>42</sup> born at Bennington Falls, Vt., May 2, 1844.

Lemuel Fuller<sup>15</sup> married Anna E. Potter<sup>15C</sup> (third wife).

They had no children.

Caroline Fuller<sup>39</sup> married Salem White.<sup>39A</sup>

Their children were :

- Caroline Maria <sup>93</sup> born April 7, 1851.  
 Willard <sup>94</sup> born June 20, 1852; died May 20, 1873.  
 Frank Herbert <sup>95</sup> born Nov. 26, 1854.  
 Fred <sup>96</sup> born Sept. 4, 1856; died Nov. 28, 1876.  
 Kittie <sup>97</sup> born Feb. 14, 1858; died Sept. 28, 1860.  
 Libbie Gertrude <sup>98</sup> born May 15, 1861.  
 Salem H. <sup>99</sup> born Dec. 26, 1862.  
 Lucy <sup>100</sup> born March 29, 1864; died Feb. 10, 1872.  
 Linus Fuller <sup>101</sup> born Aug. 20, 1867.  
 Nettie Edith <sup>102</sup> born Aug. 15, 1868.

All born in Bennington (or Bennington Falls), Vt. Those who died were buried in the same cemetery with their mother, at that place.

Caroline M White<sup>93</sup> married Geo. H. Northup.<sup>93A</sup>

They had three children :

- Agnes A. <sup>163</sup> born Aug. 29, 1867; died Dec. 24, 1870.  
 Charles E. <sup>164</sup> born Feb. 25, 1869; died Dec. 30, 1870.  
 Myrtle E. <sup>165</sup> born March 7, 1872.

All born in Bennington, Vt., and the two died there.

Myrtle E. Northup<sup>165</sup> married Edward E. Dunkerton.<sup>165A</sup>

Their children are :

- Lyle S. <sup>172</sup> born Nov. 23, 1892.  
 Fitzmaurice E. <sup>173</sup> born Sept. 17, 1893.  
 Both born in Worcester, Mass.

Frank H. White<sup>95</sup> married Ida E. Gardner.<sup>95A</sup>

They had one child :

- Guy Herbert<sup>166</sup> born April 25, 1878; died March 4, 1884,  
 and was buried in Maple Crove Cemetery, Hoosick  
 Falls, N. Y.

Libbie Gertrude White<sup>98</sup> married Samuel John Wilde.<sup>98A</sup>

They had one child:

William S.<sup>167</sup> born Nov. 25, 1886; died March 15, 1888, and was buried in Evergreen Cemetery, Brighton, Mass.

---

Salem H. White<sup>99</sup> married Carrie A. Sweet.<sup>99A</sup>

They have one child:

Farest S.<sup>168</sup> born in Hoosick Falls, N. Y., Aug. 3, 1889.

---

Linus Fuller White<sup>101</sup> married May Elizabeth Tabor.<sup>101A</sup>

---

Nettie Edith White<sup>102</sup> married Sheldon H. Rockwood.<sup>102A</sup>

They have had two children:

Clarence Robert<sup>169</sup> born Sept. 2, 1888; died Feb. 9, 1896.

Percy Earl<sup>170</sup> born Feb. 8, 1890; died Sept. 13, 1890.

Both children are buried in Bennington Cemetery, Bennington, Vt.

---

Emily J. Fuller<sup>40</sup> married Henry D. Rouse.<sup>40A</sup>

Their children were:

Ada M.<sup>103</sup> born Nov. 26, 1864.

Fred F.<sup>104</sup> born Nov. 28, 1866.

Both born in Rutland, Vt.

Harry D.<sup>105</sup> born in Philadelphia, Penn., March 14, 1876.

Fred F. Rouse<sup>104</sup> married Dell Erickson.<sup>104A</sup>

---

Lucy P. Fuller<sup>41</sup> married Eli B. Hicks.<sup>41A</sup>

They had twelve children:

May<sup>106</sup> born Nov. 21, 1863.

Charles H.<sup>107</sup> born Oct. 29, 1865.

Harry<sup>108</sup> born March 24, 1868.

Twins (unnamed), born Dec. 24, 1869, one died the same day, the other five weeks later.

Viva C.<sup>109</sup> born Jan. 10, 1871.

All above born in N. Bennington, Vt.

Elm ra Estella<sup>110</sup> born April 16, 1873.

Twins, { Fred<sup>111</sup> }  
 { Frank<sup>112</sup> } born Aug. 2, 1875.

Anna F.<sup>113</sup> born April 15, 1877; died Aug. 5, 1877.

Walter<sup>114</sup> born April 12, 1880; died Nov. 21, 1880.

Ada Amelia<sup>115</sup> born Aug. 9, 1884.

Above six born in North Adams, Mass. All who died were buried in Bennington Falls, Vt.

---

Linus E. Fuller<sup>42</sup> married Amelia J. Surdam.<sup>42A</sup>



# Appendix F

Descendants of

**CAROLINE E. FULLER.<sup>16</sup>**

- Caroline E. Fuller<sup>16</sup> married Lewis Lamb<sup>16A</sup>

The had two children :

John Jerome <sup>43</sup>

Mary Fuller <sup>44</sup>

John J. Lamb<sup>43</sup> married Emma G. Merriman,<sup>43A</sup>

They had one child :

Cosie Merriman<sup>116</sup>

## Appendix G

Descendants of

### • WILLIAM NELSON FULLER.<sup>17</sup>

William Nelson Fuller<sup>17</sup> married Harriet Newell Comstock<sup>17A</sup> (first wife).

They had four children :

William Nelson <sup>45</sup> born Feb. 3, 1835; died Sept. 10, 1837.

Nelson William <sup>46</sup> born July 29, 1838.

George Nelson <sup>47</sup> born Dec. 11, 1840; died Aug. 14, 1846.

Harriet Newell <sup>48</sup> born April 14, 1843.

All above born in Dalton, Mass.

Wm. N. Fuller<sup>17</sup> married Caroline Lovina Nelson<sup>17B</sup> (second wife).

They had five children :

Mathias George Langton <sup>49</sup> born Aug. 22, 1847.

Carra Lovina <sup>50</sup> born July 2, 1849.

Fanny Briggs <sup>51</sup> born March 22, 1852.

Jerom Minot <sup>52</sup> born Sept. 7, 1855; died Jan. 27, 1856.

All above born at Dalton, Mass.

Mary Maria <sup>53</sup> born at Oconee, Ills., Dec. 25, 1859.

Nelson W. Fuller<sup>46</sup> married Elizabeth J. Craig.<sup>46A</sup>



Their children were :

Alberta G. <sup>117</sup> born Nov. 5, 1865.

Ada Maude <sup>118</sup> born June 2, 1868; died June 16, 1888, and buried in Union Cemetery, Kansas City, Mo.

Harriet E. <sup>119</sup> born Feb. 17, 1872; died March 29, 1872, and buried in Elmwood Cemetery, Litchfield, Montgomery Co., Ills.

Ola Bell <sup>120</sup> born in Walchville, Montgomery Co., Ills., Sept. 25, 1874.

Alberta G. Fuller<sup>117</sup> married Alexander G. Henkle.<sup>117A</sup>

---

Harriet N. Fuller<sup>48</sup> married George E. Hagar.<sup>48A</sup>

Their children were :

Kate H. <sup>121</sup> born June 17, 1867; died April 6, 1870, and buried in Dalton, Mass.

Susie B. <sup>122</sup> born Dec. 10, 1869.

Harriet Wilson <sup>123</sup> born Aug. 20, 1872.

George Smith <sup>124</sup> born Dec. 1, 1876.

Lucy Gibbs <sup>125</sup> born Nov. 11, 1879.

James Wilson <sup>126</sup> born Jan. 5, 1883.

Catharine Olive <sup>127</sup> born Jan. 17, 1886.

Susie B. Hagar<sup>122</sup> married Frank O. Bliss<sup>122A</sup>

---

M. G. L. Fuller<sup>49</sup> married Jennie Wheeler.<sup>49A</sup>

---

Carra L. Fuller<sup>50</sup> married Henry McKnight.<sup>50A</sup>

They had five children :

Beatrice B. <sup>128</sup> born Jan. 15, 1873.

Roma R. <sup>129</sup> born Nov. 16, 1874.

Louie E. <sup>130</sup> born March 11, 1876.

Fanny M. <sup>131</sup> born May 12, 1878.

Chad. C. <sup>132</sup> born Aug. 6, 1884.

All born in Ramsey, Ills.

---

Fanny B. Fuller<sup>51</sup> married Chadwick Gale.<sup>51A</sup>

Their children are :

Lottie L. <sup>133</sup> born May 17, 1878.

Bessie C. <sup>134</sup> born Sept. 5, 1879.

Charles Chadwick <sup>135</sup> born June 28, 1880; died Feb. 14,  
1887.

Gertrude Fannie <sup>136</sup> born June 25, 1889.

George Nelson <sup>137</sup> born March 20, 1891.

All born in Oconee, Ills.

---


Mary M. Fuller<sup>53</sup> married George Burr.<sup>53A</sup>

Their children are :

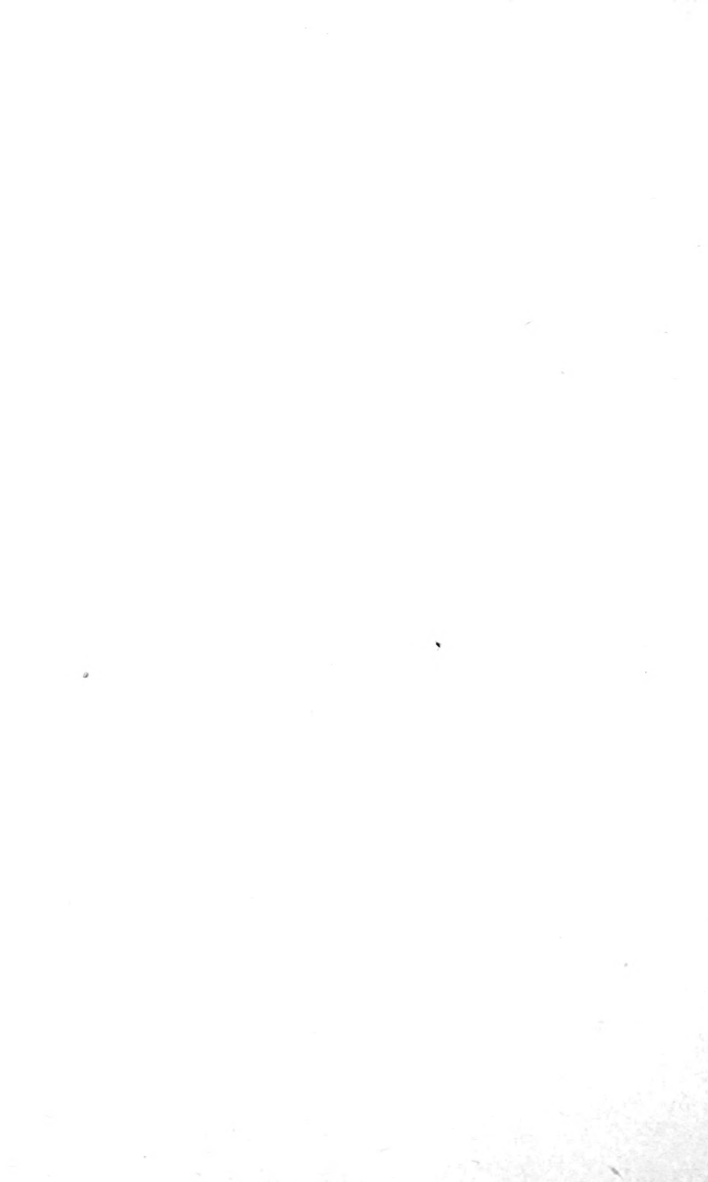
Mabel Adania <sup>138</sup> born April 27, 1891.

Guy Fuller <sup>139</sup> born June 15, 1895.

Both born in Ramsey, Ills.

# INDEX.



# Index.

The figures refer to the pages—the letters to the appendices.

- Alden, Daniel <sup>A</sup>4.....2  
 Alden, John <sup>A</sup>1.....1  
 Alden, Joseph <sup>A</sup>2.....1, 2  
 Alden, Joseph <sup>A</sup>3.....2  
 Alden, Mary <sup>A</sup>5.....2, 3, 5  
 Allen, Martha Josephine <sup>24</sup>.....10, 18, B  
 Allen, Sarah Frances <sup>25</sup>.....10, 18, B  
 Allen, Timothy <sup>12A</sup>.....10, B  
 Appendix A.....47  
 Appendix B.....48  
 Appendix C.....49 to 52  
 Appendix D.....53, 54  
 Appendix E.....55 to 58  
 Appendix F.....59  
 Appendix G.....60 to 62
- Bernard, Lida J. <sup>23A</sup>.....17, A  
 Black, Abram Hagaman <sup>147</sup>.....31, C  
 Black, Alexander Malcolm <sup>33</sup>.....10, 20, C  
 Black, Anna Catharine <sup>63</sup>.....19, C  
 Black, Annie Louise <sup>83</sup>.....21, 33, C  
 Black, Capt. Jas., Services of.....11, 12  
 Black, Charles Dale <sup>151</sup>.....31, C  
 Black, Clarence Fuller <sup>79</sup>.....21, C  
 Black, Clementina Catherine <sup>152</sup>.....31, C  
 Black, Clementina Dale <sup>67</sup>.....19, 20, C  
 Black, Dale Gundaker <sup>68</sup>.....19, C  
 Black, Elizabeth Dale <sup>149</sup>.....31, C  
 Black, Frances Glover <sup>80</sup>.....21, C  
 Black, George Edward <sup>84</sup>.....21, C  
 Black, George Nelson <sup>31</sup>.....10, 21, C  
 Black, George Nelson <sup>71</sup>.....19, C  
 Black, James <sup>26</sup>.....10, 18, C  
 Black, Jane <sup>29</sup>.....10, 20, C  
 Black, John <sup>30</sup>.....10, 20, 21, C  
 Black, John Shellabarger <sup>78</sup>.....21, C  
 Black, John Williams <sup>82</sup>.....21, 32, C  
 Black, Julia <sup>81</sup>.....21, C  
 Black, Julia Maria <sup>32</sup>.....10, C  
 Black, Katharine Julia <sup>77</sup>.....21, C  
 Black, Lizzie Dale <sup>69</sup>.....19, 20, C  
 Black, Lizzie Dale <sup>150</sup>.....31, C  
 Black, Louisa Jane <sup>62</sup>.....18, 31, C  
 Black, Malcolm Alden Fuller <sup>153</sup>.....31, C  
 Black, Malcolm James <sup>61</sup>.....18, 30, C  
 Black, Malcolm Percy <sup>70</sup>.....19, 20, C  
 Black, Martha Beekman <sup>145</sup>.....31, C  
 Black, Mary <sup>28</sup>.....10, 20, C  
 Black, Mary Jane <sup>64</sup>.....19, C  
 Black, Samuel Dale <sup>66</sup>.....19, C  
 Black, Samuel Dale <sup>148</sup>.....31, C  
 Black, William James <sup>65</sup>.....19, 31, C  
 Black, William Malcolm <sup>13A</sup>.....10, 12, C  
 Black, William Malcolm <sup>27</sup>.....10, 19, C  
 Black, William Malcolm <sup>146</sup>.....31, C  
 Bliss, Frank O. <sup>122A</sup>.....37, G  
 Briggs, Fanny <sup>2A</sup>.....7  
 Brown, Charles Rowland <sup>155A</sup>.....38, C  
 Brown, Remann Alexander <sup>171</sup>.....38, C  
 Buck, Julia Anna <sup>57A</sup>.....30, B  
 Burr, George <sup>53A</sup>.....29, G  
 Burr, Guy Fuller <sup>139</sup>.....29, G  
 Burr, Mabel Adania <sup>138</sup>.....29, G  
 Rutten, William.....Note on 1
- Carpenter Agnes <sup>61B</sup>.....2  
 Carpenter, Eva <sup>38A</sup>.....23, D  
 Carter, Robert.....Note on 1

- Comstock, Harriet Newell 17A. . . . . 15, G  
 Craig, Elizabeth J. 46A. . . . . 26, 27, G  
 Dale, Elizabeth Gundaker 27A. . . . . 19, 20, C  
 Dunbar, Hannah 83A. . . . . 2  
 Dunkerton, Edward E. 165A. . . . . 39, E  
 Dunkerton, Fitzmaurce E. 173. . . . . 39, E  
 Dunkerton, Lyle S. 172. . . . . 39, E  
 Dwinell, Charles L. 62A. . . . . 31, C  
 Eddy, Mary 86A. . . . . 3  
 Edwards, Albert S. 72A. . . . . 32, C  
 Edwards, Anna Josephine 157. . . . . 32, C  
 Edwards, Georgie Hortense 154. . . . . 32, C  
 Edwards, Mary Elizabeth 155. . . . . 32, 38, C  
 Edwards, Ninian Wirt 156. . . . . 32, C  
 Edwards, Remann 158. . . . . 32, C  
 Erickson, Dell 104A. . . . . 36, E  
 Fuller, Abigail Maria 14. . . . . 7, 13, D  
 Fuller, Ada Maude 118. . . . . 26, G  
 Fuller, Alberta G. 117. . . . . 26, 37, G  
 Fuller, Alden 5. . . . . 4  
 Fuller, Alpheus 8. . . . . 4  
 Fuller, Barsillia 4. . . . . 4  
 Fuller, Carra Lovina 50. . . . . 16, 28, G  
 Fuller, Caroline 39. . . . . 14, 23, 24, E  
 Fuller, Caroline Elvira 16. . . . . 7, 15, F  
 Fuller Coat of Arms. . . . . 42  
 Fuller Coat of Arms, Description of. . . . . 43  
 Fuller, Dr. Samuel 81. . . . . Note on 1, 2  
 Fuller, Emily J. 40. . . . . 14, 24, E  
 Fuller, Eunice 7. . . . . 4  
 Fuller Fanny 11. . . . . 7, 9, A  
 Fuller, Fanny Briggs 51. . . . . 16, 28, G  
 Fuller, George Nelson 47. . . . . 15, G  
 Fuller, Harriet E. 119. . . . . 25, G  
 Fuller, Harriet Newell 48. . . . . 15, 27, G  
 Fuller, Hose 6. . . . . 4  
 Fuller, Isaac 86. . . . . 3  
 Fuller, Isaac 811. . . . . 3, 4, 5  
 Fuller, Isaac 3. . . . . 4  
 Fuller, Isaiah 810. . . . . 3  
 Fuller, Jabez 89. . . . . 3  
 Fuller, Jerom Minot 52. . . . . 16, G  
 Fuller, John 85. . . . . 3  
 Fuller, Lemuel 2. . . . . 4, 7, 8  
 Fuller, Lemuel 15. . . . . 7, 8, 13, 14, E  
 Fuller, Lieut. Isaac 811, Services of. . . . . 5  
 Fuller, Linus E. 42. . . . . 14, 25, E  
 Fuller, Lucy P. 41. . . . . 14, 25, E  
 Fuller, Mary 12. . . . . 7, 10, B  
 Fuller, Mary Maria 53. . . . . 16, 20, G  
 Fuller, Matthias G. L. 49. . . . . 16, 27, G  
 Fuller, Mercy 83. . . . . 3  
 Fuller, Micah 87. . . . . 3  
 Fuller, Nelson William 46. . . . . 15, 26, 27, G  
 Fuller, Ola Bell 120. . . . . 26, 27, G  
 Fuller, Otis 10. . . . . 4  
 Fuller, Persis 13. . . . . 7, 10, 12, C  
 Fuller, Polly 1. . . . . 4  
 Fuller, Rufus 9. . . . . 4  
 Fuller, Rev. Samuel 82. . . . . 3  
 Fuller, Samuel 84. . . . . 3  
 Fuller, Samuel 88. . . . . 3  
 Fuller, William Nelson 17. . . . . 7, 15, 16, G  
 Fuller, William Nelson 45. . . . . 15, G  
 Gale, Bessie C. 134. . . . . 28, G  
 Gale, Gertrude Fannie 136. . . . . 28, G  
 Gale, George Nelson 137. . . . . 28, G  
 Gale, Chadwick 51A. . . . . 28, G  
 Gale, Charles Chadwick 135. . . . . 28, G  
 Gale, Lottie L. 133. . . . . 28, G  
 Gardner, Ida E. 95. . . . . 35, E  
 Glascock, Eisie 81A. . . . . 2  
 Glover, Clara Bernard 54. . . . . 17, A  
 Glover, Fanny Bernard 55. . . . . 17, A  
 Glover, Fanny M. 20. . . . . 9, 17, A  
 Glover, Frank W. T. 23. . . . . 9, 17, A  
 Glover, George H. 21. . . . . 9, 17, A  
 Glover, Jarvis 11. . . . . 9, A  
 Glover, Martha A. 18. . . . . 9, A  
 Glover, Mary E. 19. . . . . 9, 17, A  
 Glover, Samuel Jarvis 22. . . . . 9, 17, A

- Hagaman, Martha Beekman 65A.... 31, C  
Hagar, Catharine Olive 127..... 27, G  
Hagar, George E. 48A..... 27, G  
Hagar, George Smith 124..... 27, G  
Hagar, Harriet Wilson 123..... 27, G  
Hagar, James Wilson 126..... 27, G  
Hagar, Kate H. 121..... 27, G  
Hagar, Lucy Gibbs 125..... 27, G  
Hagar, Susie B. 122..... 27, 37, G  
Haviland, Fred Hobart 162..... 33, D  
Haviland, James Thomas 161..... 33, D  
Haviland, William C. 88A..... 33, D  
Henkle, Alexander G. 117A..... 37, G  
Hicks, A a Amelia 115..... 25; E  
Hicks, Anna F. 113..... 25, E  
Hicks, Charles H. 107..... 25, E  
Hicks, Eli B. 41A..... 25, E  
Hicks, Elmira Estella 110..... 25, E  
Hicks, Frank 112..... 25, E  
Hicks, Fred 111..... 25, E  
Hicks, Harry 108..... 25, E  
Hicks, May 106..... 25, E  
Hicks, Viva C. 109..... 25, E  
Hicks, Walter 114..... 25, E  
Hollister, Bertha M. 90..... 23, 34, D  
Hollister, Charles 89..... 23, D  
Hollister, Edwin Perrin 34..... 13, 22, D  
Hollister, Florence 88..... 23, 33, D  
Hollister, Fred 91..... 23, D  
Hollister, George Loomis 35..... 13, 22, D  
Hollister, Gurdon James 14A..... 13, D  
Hollister, James Birney 37... 13, 22, 23, D  
Hollister, Mary A. 36..... 13, 22, D  
Hollister, Robert 92..... 23, D  
Hollister, William J. 38..... 13, 23, D  
Lamb, Cosie Merriman 116..... 26, F  
Lamb, John Jerome 43..... 15, 26, F  
Lamb, Lewis 16A..... 15, F  
Lamb, Mary Fuller 44..... 15, 26, F  
Lee, Bridget 81c..... 2  
Leyden Street in 162r (Diagram). .... 6  
Lyon, Sophronia 15B..... 14, E  
McKnight, Beatrice 128..... 28, G  
McKnight, Chad. C. 132..... 28, G  
McKnight, Fanny M. 131..... 28, G  
McKnight, Henry 50..... 28, G  
McKnight, Louie E. 130..... 28, G  
McKnight, Roma R. 129..... 28, G  
Merriman, Emma Griggs 43A..... 26, F  
Mullins, Priscilla A1A..... I  
Mullins William ..... (also Note on) I  
Nelson, Caroline Lovina 17B..... 16, G  
Northup, Agnes A. 163..... 34, E  
Northup, Charles E. 164..... 34, E  
Northup, George H. 93A..... 34, E  
Northup, Myrtle E. 165..... 34, 39, E  
Potter, Anna E. 15c..... 14, E  
Prescott, Mary Alice 37A..... 22, D  
Prindle, Albro B 89A..... 34, D  
Putnam, Lucy 15A..... 13, 14, E  
Remann, Annie Jane 75..... 20, C  
Remann, Elizabeth Dorothy 74..... 20, C  
Remann, Henry Christian 28A..... 20, C  
Remann, Henry Christian 76..... 20, 32, C  
Remann, Josephine Emilie 72..... 20, 32, C  
Remann, Mary Julia 73..... 20, 32, C  
Rockwood, Clarence Robert 169..... 36, E  
Rockwood, Percy Earl 170..... 36, E  
Rockwood, Sheldon H. 102A..... 36, E  
Rouse, Ada M. 103..... 24, E  
Rouse, Fred F 104..... 24, 36, E  
Rouse, Henry D. 40A..... 24, E  
Rouse, Harry D. 105..... 24, E  
Shaw, Abigail A4A..... 2  
Shellabarger, Katharine 30A..... 21, C  
Simmons, John J. 19A..... 17, A  
Sterricker, Dr. Geo. Frederick 83A... 33, C  
Sterricke, Helen 159..... 23, C

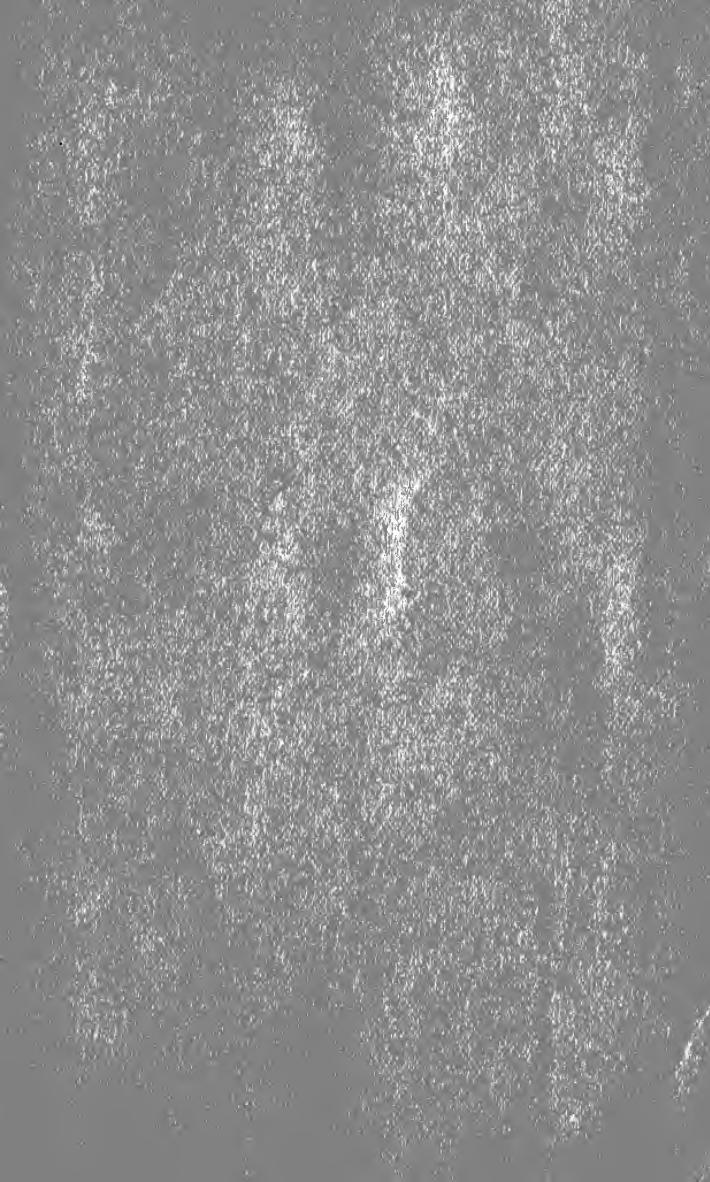
- Sterricker, George Plack 160.... 33, C  
 Strickland, Allen Collamore 57...18, 30, B  
 Strickland, Anna Allen 141..... 30, B  
 Strickland, Charles Hobert 59.....18, B  
 Strickland, Grace 56..... 18, B  
 Strickland, Helen Brockaway 143... 30, B  
 Strickland, Helen Josephine 58.....18, B  
 Strickland, John Frederick 142.... 30, B  
 Strickland, John Wilkins Adams 24A, 18, B  
 Strickland, Mabel Dean 144..... 30, B  
 Strickland, Margaret Halsey 140, 30, 38, B  
 Strickland, Martha 60 .....18, B  
 Srdam, Amelia J. 42A..... 25, E  
 Sweet, Carrie A. 99A..... 35, E  
  
 Tabor, May Elizabeth 101A..... 36, E  
  
 Vidett, Sarah Jane 26A.....18, C  
  
 Waring, Hattie 35A..... 22, D  
 Wheeler, Jennie 49A..... 27, G  
 White, Caroline Maria 93.....24, 34, E  
 White, Forest S. 168..... 35, E  
 White, Frank Herbert 95..... 24, 34, 35, E  
 White, Fred 96..... 24, E  
 White, Guy Herbert 166..... 35, E  
 White, Kittie 97..... 24, E  
 White, Libbie Gertrude 98..... 24, 35, E  
 White, Linus Fuller 101..... 24, 36, E  
 White, Lucy 100..... 24, E  
 White, Nettie Edith 102..... 24, 36, E  
 White, Salem 39A..... 23, 24, E  
 White, Salem H. 99..... 24, 35, E  
 White, Willard 94..... 24, E  
 Wilde, Samuel John 98A..... 35, E  
 Wilde, William S. 167..... 35, E  
 Williams, Louisa Iles 31A..... 21, C  
 Wood, Theodore Edgar 140A..... 38, B  
  
 Young, Edwin H. 85..... 22, D  
 Young, Fanny 86..... 22, D  
 Young, Justin H. 87..... 22, D  
 Young, N. S. 36A..... 22, D













MAR 13 1930

