

T 485

· A2A4

Hollinger Corp.
pH 8.5

485
2 A4
py 1

ENTS.

T485
A2A4



About The Pan-American City and Vicinity.

Published By

The Baldwin Publishing Co.

451 Ellicott Square, Buffalo, N. Y.

THE BUFFALO NEWS COMPANY, GENERAL SALES AGENTS.

Copyrighted 1901, by the Baldwin Publishing Co.

Wood's Motor Vehicle Co. OF BUFFALO.

401 Franklin Street.

TELEPHONE : Tupper 470.

*ELECTRIC AUTOMOBILES of every description,
BUSSES, WAGONETTES,
COACHES, BROUGHAMS and CABS.*

INSURANCE

485
A2A4

THE LIBRARY OF
CONGRESS,
TWO COPIES RECEIVED
JUN. 7 1901
COPYRIGHT ENTRY
Jan 14 1901
CLASS. XXc. No.
912
COPY B.



Fire
Life
Accident
Health
Plate Glass
Elevator
Boiler
and Employers'
Liability

None But First-Class Companies Represented

Fidelity Insurance Agency

230 PRUDENTIAL BUILDING

Tel., Seneca 1986

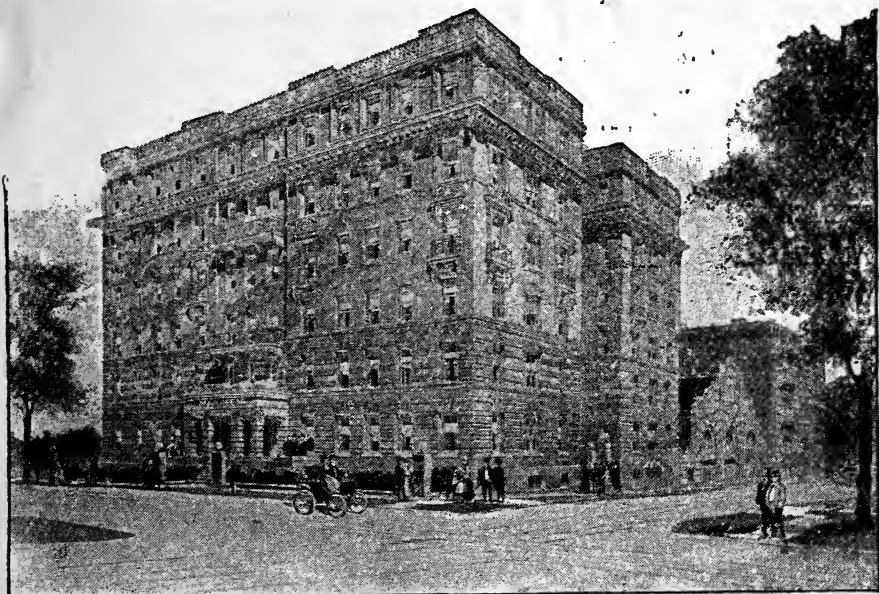
BUFFALO, N. Y.

Markeen

Main and Utica Streets,

BUFFALO, N. Y.

AMERICAN AND EUROPEAN PLANS



Five and ten minutes' ride to all entrances Pan-American Grounds.
Gentlemen's Cafe in Rathskeller, exclusively *à la carte*, 6 A. M.
to 12:30 P. M. *Table d' Hôte* from 6 P. M. to 9 P. M.

SAMUEL E. LAIRD, Owner

JAMES T. TWITTY'S

Riding Academy

Main & North Sts., BUFFALO, N. Y.

THE New Continental Hotel

MARK A. CADWELL, Proprietor

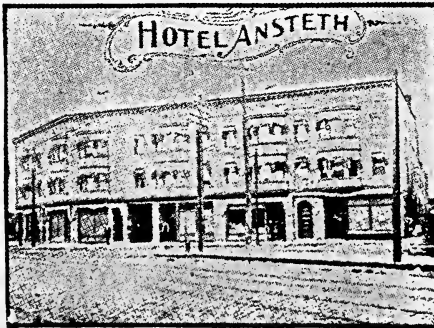
STEAM HEAT ELEVATOR ELECTRIC LIGHTS
AMERICAN AND EUROPEAN PLANS TWO HUNDRED ROOMS

Convenient to all Railroad Stations, New
York Central Belt Line and Trolley Lines
to Pan - American Exposition Grounds

Cor. Exchange and Michigan Streets, **BUFFALO, N. Y.**

Hotel Ansteth

AMERICAN AND EUROPEAN PLANS.



FIREPROOF BRICK BUILDING.

Airy and well-lighted rooms. Grand view of Pan-American grounds, buildings and electric displays from roof garden, accommodating 1000 people—free to guests.

1073 Grant St., Opposite Austin St., **BUFFALO, N. Y.**

Five minutes' walk to Main Entrance Pan-American Exposition.

CONTENTS

<p>Amusements 103</p> <p>Automobile Rates..... 107</p> <p>Banks 91</p> <p>Bicycle Rules 107</p> <p>Buffalo 51-53</p> <p>Bureaus of Information 103</p> <p>Cab and Carriage Rates..... 107</p> <p>Churches 95-99</p> <p>City and County Offices..... 83</p> <p>Clubs 103</p> <p>Courts 87</p> <p>District Messenger Offices 89</p> <p>Entrances to Exposition Grounds 48</p> <p>Exchanges 91</p> <p>Excursion Steamers 71</p> <p>Express Offices..... 69</p> <p>Ferries 69</p> <p>Government Offices 81</p> <p>Hospitals..... 99</p> <p>Hotels 73-75</p> <p>Joint Agency—Railroad Tickets 69</p> <p>Libraries 103</p> <p>Map of Buffalo 48-49</p>	<p>Map of Exposition Grounds ... 7</p> <p>Midway 35-45</p> <p>Newspapers..... 91</p> <p>Niagara Falls..... 109-111</p> <p>Office Buildings 81</p> <p>Pan-American Exposition ... 5-47</p> <p>Pan-American Midway..... 35-45</p> <p>Parks 105</p> <p>Police Stations 87</p> <p>Postal Information..... 77-79</p> <p>Public Buildings..... 105</p> <p>Railroad Stations 67</p> <p>Railroad Ticket Offices 69</p> <p>Safe Deposit Vaults 93</p> <p>Savings Banks..... 93</p> <p>Steamer Lines 71</p> <p>Steamer Ticket Offices..... 71</p> <p>Steamer Wharves 71</p> <p>Street Car Routes 55-63</p> <p>Suburban Trolley Lines 63-65</p> <p>Telegraph Offices..... 89</p> <p>Telephone Pay Stations 85-87</p> <p>Theaters 103</p> <p>Transfer Tickets—Street Cars.. 55</p> <p>Trust Companies 93</p>
--	---

If you want
Correct Railway Information

You want
Baldwin's Official Railway Guide

The Only Railway Guide Published in Buffalo

For Sale by All Newsdealers

D. L. HAMILL

*Manufacturer and
Jobber of*



Plumbers Supplies

60 to 62 Delaware Ave. and 97 to 109 West Eagle St.
Opposite City Hall

TELEPHONE,
SENECA 317

BUFFALO, N. Y.

Souvenir Spoons of Pan-American Exposition and Niagara Falls

All Styles and Prices

W. A. WANDER
JEWELER

❖ ❖ ❖ *237 MAIN STREET, 3d door above Seneca Street*

WHERE QUALITY COUNTS

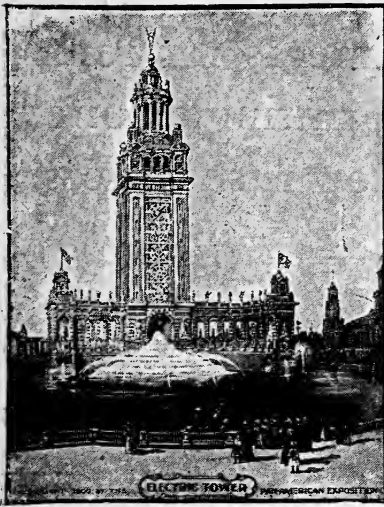
WE WIN

Gerhard Lang Brewery

PAN-AMERICAN EXPOSITION

Buffalo, N. Y.

May 1—November 1, 1901.



ELECTRIC TOWER.



THE purpose of the Pan-American Exposition is to illustrate the progress made by the countries of the Western Hemisphere during the Nineteenth Century, and when the gates are thrown open a scene of unexampled beauty will meet the visitor, well worth many an effort and sacrifice. Millions of dollars have been expended in its production, and the highest skill in science and art has been employed to bring to perfection an Exposition

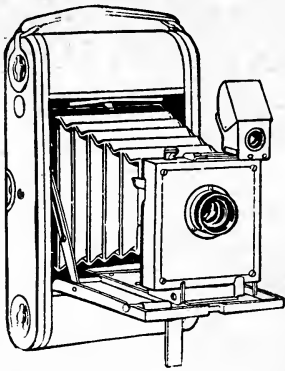
worthy of this wonderful era of development.

While the Exposition will concern itself strictly with the progress of the States and countries of the Western Hemisphere and the new possessions of the United States, its scope is, nevertheless, so broad as to include all departments of human effort.

Every department will be complete in its most minute detail, and its great object—the bringing into closer relationship, commercially and socially, of the people of the Western Hemisphere—cannot fail of accomplishment.

The Exposition grounds are situated in the northern part of the city, adjacent to and including a part of Delaware Park, and are about one mile in length from north to south, and one-half mile wide. They contain 350 acres, of which 133 acres are improved park lands and lakes. The grounds are very

VISITORS have not seen **BUFFALO** until they have visited the **RATHSKELLER** at the **MARKEEN**, Main and Utica Streets.



If you want plates
or films for your
camera you will find
fresh ones here.

Cameras for rent.
Developing and printing done.
No extra charges for rush orders.

**BUTTS
&
ADAMS**

*The Leading Photo-Supply
Dealers*

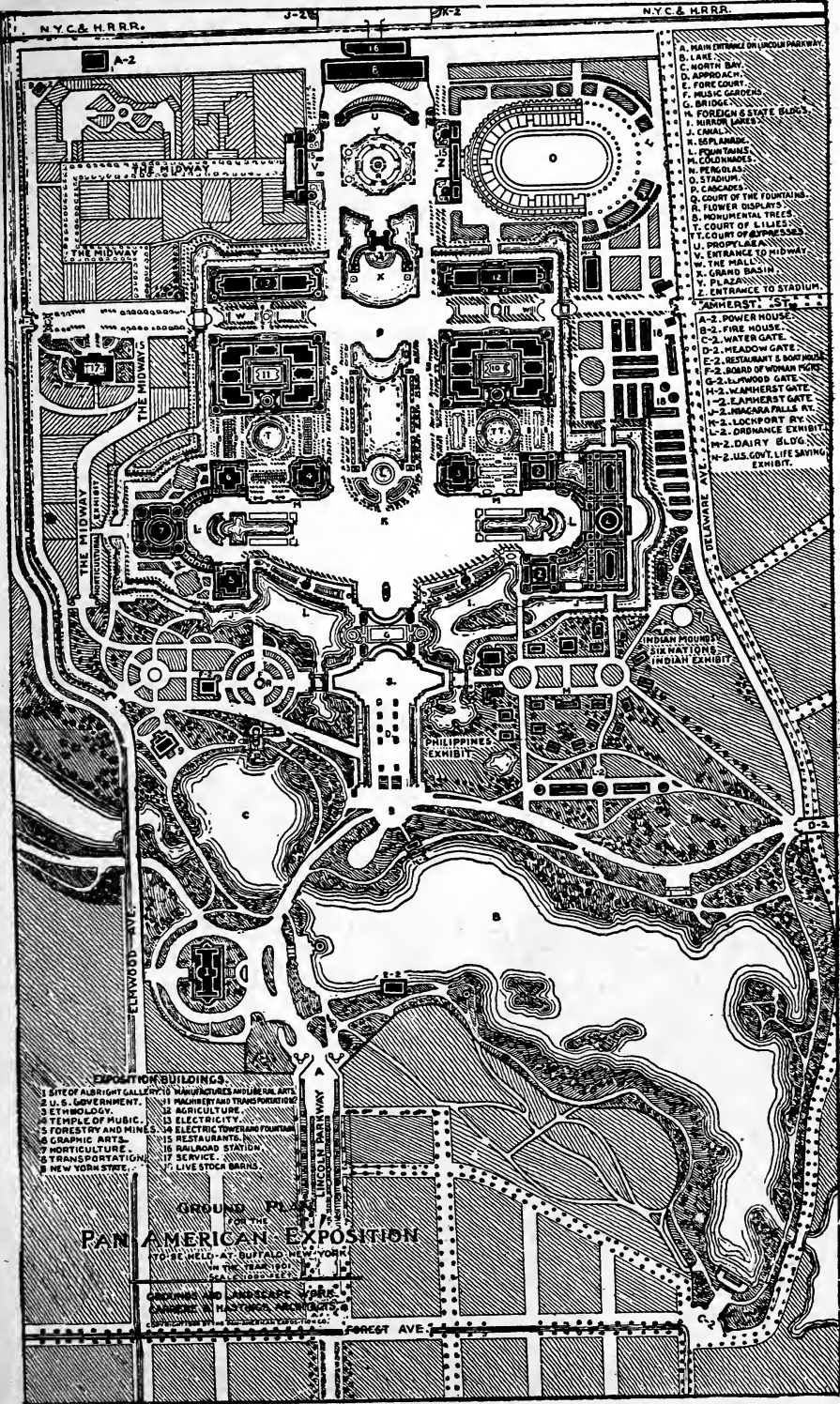
459 WASHINGTON ST.
NEAR LYCEUM THEATER.



**NATIONAL
CASKET CO.**

BUFFALO BRANCH:
42 NIAGARA STREET,
BUFFALO, N. Y.

HEADQUARTERS FOR VISITING FUNERAL DIRECTORS.



- A. MAIN ENTRANCE ON LINCOLN PARKWAY
- B. LAKE WATER
- C. NORTH BAY
- D. APPROACH
- E. FLOWER COURT
- F. MUSIC GARDEN
- G. BRIDGE
- H. FOREIGN & STATE BARGES
- I. HURON LAKES
- J. CHAMBERS
- K. ESPLANADE
- L. FOUNTAINS
- M. COLONNADES
- N. PERGOLAS
- O. STADIUM
- P. COURTYARD
- Q. COURT OF THE FOUNTAINS
- R. FLOWER BASKET
- S. MONUMENTAL TREES
- T. COURT OF LILIES
- U. COURT OF SPRINGES
- V. PROPYLEAN
- W. ENTRANCE TO MUSEUM
- X. THE MALL
- Y. GRAND BASIN
- Z. PLAZA
- AA. ENTRANCE TO STADIUM
- AB. HERBERT ST.
- A-2. POWER HOUSE
- B-2. FIRE HOUSE
- C-2. WATER GATE
- D-2. MEADOW GATE
- E-2. RESTAURANT & BOTTLING
- F-2. BOARD OF WOMAN SCHOOLS
- G-2. LINDWOOD GATE
- H-2. WAMHERST GATE
- I-2. LAMHERST GATE
- J-2. MACARA FALLS AV.
- K-2. LOCKPORT BR.
- L-2. DRUGGIST EXHIBIT
- M-2. DAIRY BLDG.
- N-2. U.S. GOV. LIFE SAVING EXHIBIT

EXHIBITION BUILDINGS.

- 1. SITE OF ALBRIGHT GALLERY
- 2. U. S. GOVERNMENT
- 3. ETHNOLOGY
- 4. TEMPLE OF MUSIC
- 5. FORESTRY AND MINES
- 6. GRAPHIC ARTS
- 7. HORTICULTURE
- 8. TRANSPORTATION
- 9. NEW YORK STATE
- 10. MANUFACTURES AND MINERAL ARTS
- 11. PACKAGING AND TRANSPORTATION
- 12. AGRICULTURE
- 13. ELECTRICITY
- 14. ELECTRIC TOWER AND FOUNTAIN
- 15. RESTAURANTS
- 16. RAILROAD STATION
- 17. SERVICE
- 18. LIVE STOCK BARRIS

GROUND PLAN

PAN AMERICAN EXPOSITION

TO BE HELD AT BUFFALO, NEW YORK
IN THE YEAR 1901

DESIGNED BY JAMES H. HARRIS
ARCHITECTS

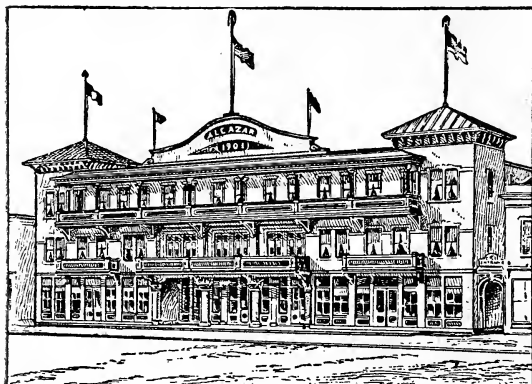
FOREST AVE.

BUFFALO SPECIALTY MFG. CO.

PATENTEES AND MANUFACTURERS OF
Hardware, Bicycle *and* Household
SPECIALTIES

375 and 377 ELLICOTT STREET, BUFFALO, N. Y.

Hotel Alcazar



Overlooking West Amherst gate and the Pan-American Exposition Grounds. A strictly first-class hotel, accommodating 500 guests. European plan. Prices moderate. Convenience and beauty of location unsurpassed. View from balconies never before equalled. All exposition cars run direct to waiting rooms opposite hotel. Send for rate card and particulars.

ALCAZAR HOTEL CO.

BUFFALO, N. Y.

If you want
Correct Railway Information
You want
Baldwin's Official Railway Guide

For Sale by All Newsdealers



The Maximo Mantle Co.

SPECIAL AGENTS FOR

MAGNESIUM CENTER SUPPORTS
and VICTOR ARC LIGHTS

WHOLESALE and RETAIL

F. A. HALL, MANAGER



643 Main Street, BUFFALO, N. Y.

P

RENTS

at reasonable rates

O

NEW WHEELS

W

REPAIRS

promptly

E

R

SELLS

Cash or Credit

S

B

I

C

Y

C

L

E

S

OUR LINE CONSISTS OF

DAYTON, KEATING,
OLIVE AND BUFFALO

Standard Sewing Machine Agency,
643 MAIN STREET

PAN-AMERICAN EXPOSITION



THE PLAZA.

accessible, being not more than twenty minutes' ride from the business center of the city.

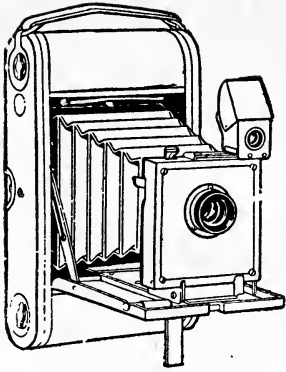
The principal buildings of the Exposition, as will be seen by the ground plan shown on page 7, surround a broad and beautiful court, in the form of an inverted letter T. The transverse section of this court, known as the Esplanade, runs east and west, and is over 1,700 feet in length. The Court of Fountains, which lies north of the transverse court, is 500 feet wide, and 2,000 feet from north to south.

The general style of architecture is a free treatment of the Spanish Renaissance, chosen in compliment to the many Latin-American countries that will take part in the Exposition. The color effects employed in accentuating this style of architecture have never been equaled, and have given rise to the term the "Rainbow City," frequently used in referring to the Exposition.

The electrical display will be the most complete and extensive ever made. The nearness of Niagara Falls, where the greatest electric power plants in the world have been installed, makes this possible. In addition to the Electric Tower, 375 feet high, upon which are to be displayed electrical phenomena never before attempted, the magic of electrical science will turn night into day, and make the courts and fountains of the Exposition a fairyland of unprecedented loveliness.

The Plaza, which extends from the Propylæa to the Electric Tower, and is flanked on one side by the entrance to the Midway, and on the other by the Stadium entrance, is about 500 feet in diameter, and affords space for the thousands of visitors who will be constantly passing through it to other portions of the Exposition grounds. In the center of the Plaza will be found the Sunken Gardens, resplendent with many

The Cafe and Rathskeller at the MARKEEN surpass anything outside of New York City. German Cooking a Specialty.



15 Niagara Street

LEADING PHOTO-STOCK
HOUSE OF BUFFALO

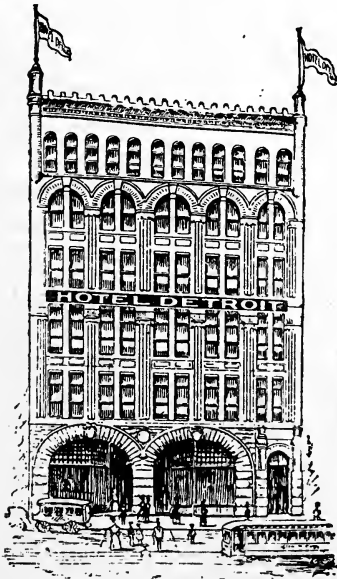
Fresh and Complete Stock of Plates, Films and Photo Supplies for Pan-American Visitors. Full Line of Kodaks and Cameras. Developing and Finishing. *Rush Orders Our Specialty.*

Buffalo Photo-Material Co.

15 Niagara St., BUFFALO, N. Y.

Only "DOWN - TOWN" Stock House

Hotel Detroit



Modern, Permanent, New Hotel.
Brick Building, Beautifully Furnished. *Cuisine Unsurpassed.*
Located in heart of city. All street car lines at door.

EUROPEAN PLAN, \$1.00 AND UP.
Suites with Private Bath, \$1.50 and up.

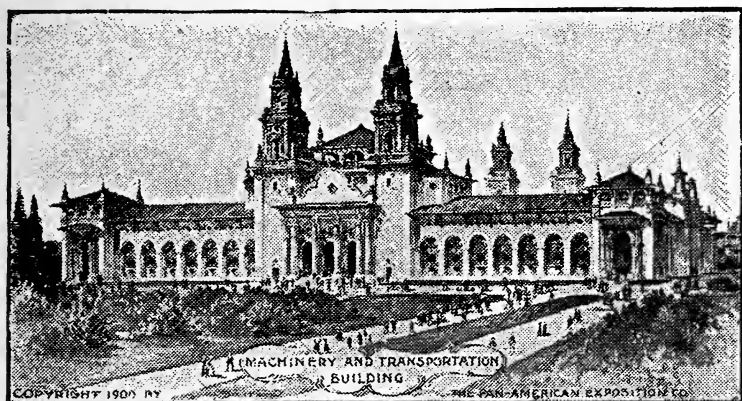
FOR INFORMATION ADDRESS

J. C. GRIFFIN

HOTEL DETROIT

Niagara and Pearl Streets
One block from Main Street
BUFFALO, N. Y.

PAN-AMERICAN EXPOSITION



MACHINERY AND TRANSPORTATION BUILDING.

colored plants and flowers. In its center is a beautiful band stand, where concerts will be given every day during the Exposition by the famous bands of America and Europe.

The building devoted to Machinery and Transportation exhibits is one of the largest structures of the Exposition. Its dimensions are 500 feet from east to west and 350 feet from north to south. The northern side fronts on the Mall, and its eastern façade fronts the Court of Fountains. In the machinery division, as in all divisions of the Exposition, the aim will be to place before the public exhibits possessing distinct novelty and educational value. Among the transportation exhibits, the automobiles, which have come into existence within a very few years, will form a great attraction. The exhibit of fine railway cars and trains, steam and electric locomotives, will be up-to-date and full of interest.

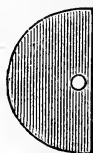
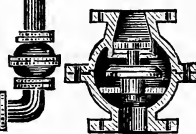
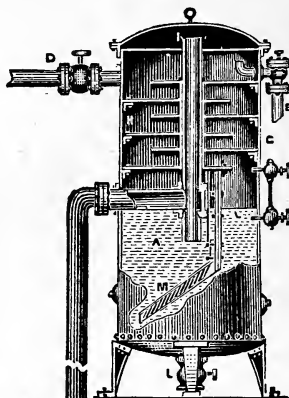
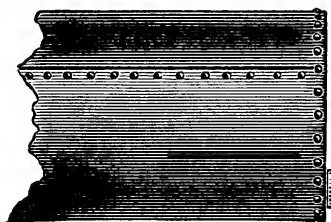
The splendid building devoted to exhibits of electrical machinery and appliances is on the Mall, opposite the Machinery and Transportation Building. It is 500 feet by 150 feet, and contains 75,000 square feet of exhibition space. In it will be installed the service plant, for the transformation and distribution of the 5,000 horse-power transmitted from Niagara Falls for lighting and power purposes.

The ornamental features of the Manufactures and Liberal Arts Building will command the admiration and attention of the Exposition visitor. Its dimensions are 350 by

The MARKEEN is centrally located, being within 10 minutes' ride of all Railroad Stations and Steamer Landings.

Robert Learmonth, Patentee

THE BUFFALO
FEED WATER
HEATER
AND PURIFIER.



Every Purifier Guaranteed to Remove the Sediment or Scale-Forming Substance, and Heat the Feed Water to the Temperature of the Steam in the Boiler.

ROOM 100,
WHITE BUILDING
BUFFALO, N. Y.

Sheet-Metal Stampings *and* Screw-Machine Products of All Kinds for All Purposes

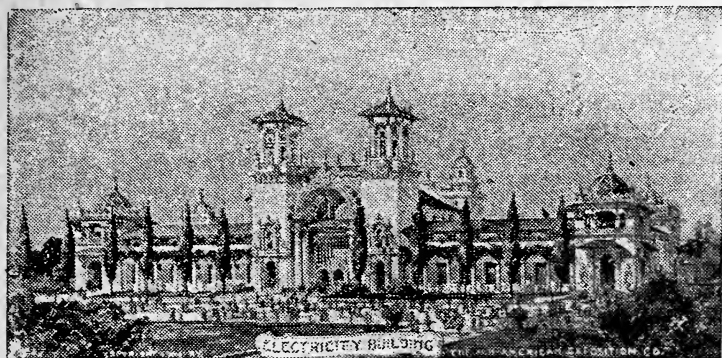
SPECIAL DIE, TOOL AND MACHINE WORK FOR FINE RESULTS. AUTOMOBILE FORGINGS FOR ENGINES AND RUNNING GEARS ✂ ✂
SMALL HIGH-SPEED ENGINES AND HIGH-TEST BOILERS, ESPECIALLY ADAPTED FOR AUTOMOBILES AND MARINE EQUIPMENTS ✂ ✂
SHEET-METAL BICYCLE PARTS, HUBS, PEDALS, CRANK HANGERS, ETC. BICYCLE FRAMES IN EVERY STATE OF COMPLETION ✂ ✂ ✂

John R. Keim

Telephone, "Park 42"

*Kensington and Liberty
Avenues*

BUFFALO, N. Y.



ELECTRICITY BUILDING.

500 feet and it is located on the western side of the Court of Fountains, opposite the Machinery and Transportation Building. In this building will be shown the highest attainments of Western civilization, in artistic skill and handicraft, in all the useful arts and in the broad fields of education, literature, physical science, the drama, architecture, civil engineering, hygiene, sanitation, medicine, surgery and many other elements of progress.

The Agriculture Building stands on the north side of the Mall, opposite the Manufactures and Liberal Arts Building. It covers about two acres, and ample provision has been made to give this important industry the attention it deserves. The exhibits will embrace plans and specifications for farm buildings, literature and statistics regarding farm machinery, farm organizations, agricultural papers, experiment station bulletins and agricultural college work. The vast collections that will be brought together from all portions of the United States, Canada and Mexico, as well as from Central and South America, together with the exhibits from Cuba, Porto Rico, Hawaii, Alaska, and the Philippine Islands, will afford a grand object lesson in methods and systems of agriculture.

The Exposition will offer a splendid opportunity to breeders of live stock. A large collection of the finest animals bred in the Western Hemisphere will give to this division high educational value. About ten acres are to be devoted to the live stock displays, and the building, which

The MARKEEN, Main and Utica Sts.—Ladies' and Gentlemen's Cafe,
open from 6:00 A. M. to 12:30 P. M. Cuisine and Service Unexcelled.

The Otis Tubular Feed Water Heater



is guaranteed to heat the feed water to the BOILING POINT (210° or 212°) with the exhaust steam without causing any back pressure. Also to EXTRACT THE OIL from the exhaust, so that the exhaust steam, after being passed through the heater, can be used for heating purposes and the water of condensation from the heating system be returned to the boilers without the extra expense of an eliminator.

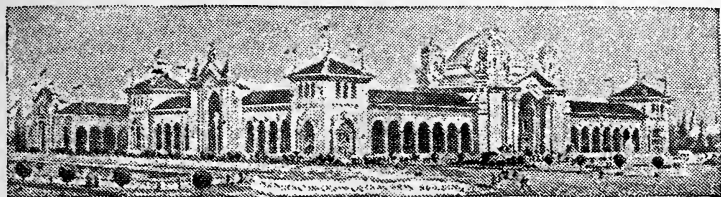
WE PAY ALL THE
COST OF THE
TRIAL

of our Heaters, freight, cartage and all piping, if they fail to do what we claim for them. Send for catalogue and reduced prices to

The Stewart Heater Co.,

35 NORFOLK AVE.,
BUFFALO, N. Y.

PAN-AMERICAN EXPOSITION



MANUFACTURES AND LIBERAL ARTS BUILDING.

adjoins the Agriculture Building on the east, will accommodate nearly 6,000 animals.

The building devoted to Forestry and Mines is one of a group of three, Horticulture and Graphic Arts, at the western end of the Plaza. It is 150 feet square with four corner pavilions, having a height of 98 feet. In this building the exhibits will illustrate the progress in two of our most important industries. A scientific presentation of forestry interests will be made by means of maps, each map showing the habitat of a particular species of tree. Large logs, sections of trees and woods, polished, varnished and unfinished, will also be shown. The importance of preserving the forests with a view of securing from them a continuous supply of useful woods, will be brought forcibly to the attention of the public.

In the division of Mines and Metallurgy will be shown recent improvements in methods of mining and in the development of mineral industries in the various States and countries.

The building assigned to Horticulture stands at the extreme west end of the Esplanade. It is flanked on the north by the Graphic Arts Building and on the south by the Forestry and Mines Building. The Horticulture Building is 220 feet square with a dome and lantern rising to a height of 236 feet. The exhibits will include the popular fruits, with many new varieties, together with all articles and appliances used in horticulture.

The outdoor display will be very fine, including every variety of flower and plant. The display of greenhouse plants, in the large conservatories north and south of the Horticulture Building, will be very complete.

VISITORS have not seen BUFFALO until they have visited the RATHSKELLER at the MARKEEN, Main and Utica Streets.

Bidwell Park Hotel

188 - 196 Bidwell
Parkway

BUFFALO, N. Y.



New and Fireproof.
Strictly First Class.

In the Most Pleasant Part of
the City.

On the Leading Parkway to
Main Entrance of
Exposition.

JOS. V. DARCY, Manager

The A. F. BROWN COMPANY

AGENTS for
WESTERN NEW
YORK for

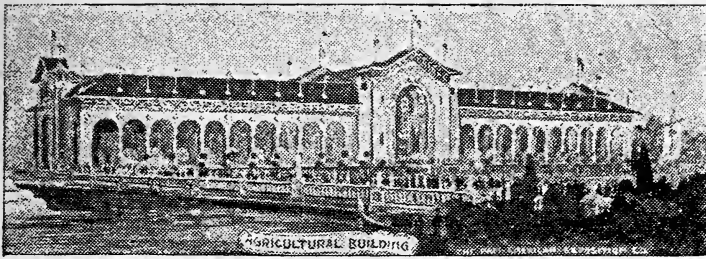
Dealers and Jobbers of



EVERYTHING
ELECTRICAL

21 COURT ST., BUFFALO, N. Y.

Telephone, Seneca 2059.



AGRICULTURE BUILDING.

The advance in the graphic arts has been quite as marked in recent years as in any department of skill or knowledge. In this division the visitor will have the opportunity to study not only the newest inventions, but to trace the progress of development of the several arts that are included under this title. The history of printing, lithography, engraving, book-binding and kindred trades will be presented in a display of tools, machinery, implements and devices used by the masters of these useful industries from early times down to the present day.

The building devoted to Ethnology and Archæology is circular, with four main entrances connected by a continuous colonnade, and the entire building presents a strikingly ornate appearance. Among the many exhibits in this building, that of the Indian will be of special value to students of their customs.

The Temple of Music, situated at the north-west corner of the Esplanade and the Court of Fountains, will be a place of entertainment rather than for exhibition purposes. The auditorium is planned to seat 1,200 persons on the main floor, with a large additional seating capacity in the balconies. The principal feature of the Temple of Music will be the great church organ—one of the largest in the United States. It will be equipped with all the latest improvements and will be complete in every detail.

Besides the Temple of Music and the band stands in various parts of the grounds, music gardens capable of accommodating audiences of many thousands have been laid out south of the Horticulture Building.

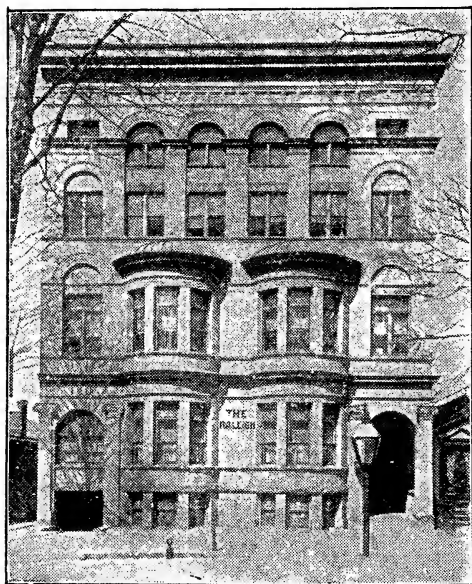
The Cafe and Rathskeller at the **MARKEEN** surpass anything outside of New York City. German Cooking a Specialty.

Adams = CUT 
FLOWERS
FLORIST *Artistic Designs*

Out-of-Town Orders Carefully Attended To

479 Main St.,
BUFFALO, N. Y.

W. A. ADAMS, Manager
Telephone, Seneca 556



THE
Raleigh

352 FRANKLIN ST.

A modern fireproof hotel. Newly furnished. Accommodations for 250 guests. Located on quiet residence street within two minutes' walk of all cars and theaters. All conveniences. Electric lights and elevator. *Cafe à la carte.*

No charge for reservations in advance

PRICES MODERATE
Correspondence Solicited

If you want
Correct Railway Information
You want
Baldwin's Official Railway Guide

For Sale by All Newsdealers

PAN-AMERICAN EXPOSITION



FORESTRY AND MINES—HORTICULTURE—GRAPHIC ARTS.

The Stadium, covering 10 acres of ground, and having a seating capacity of 12,000, is devoted to sports of all kinds. It has a quarter-mile track, and a large space for athletic events. The programme, in which amateur athletics and college sports are to be a special feature, will make the Stadium a center of attraction for all lovers of athletic sports.

The United States Government will have an interesting exhibit, Congress having appropriated \$500,000 for the purpose. The buildings will be much more beautiful than those at the Columbian Exposition, while the space for exhibition purposes is very little less. The various departments of the Government will contribute exhibits, illustrating the manner of conducting the nation's business.

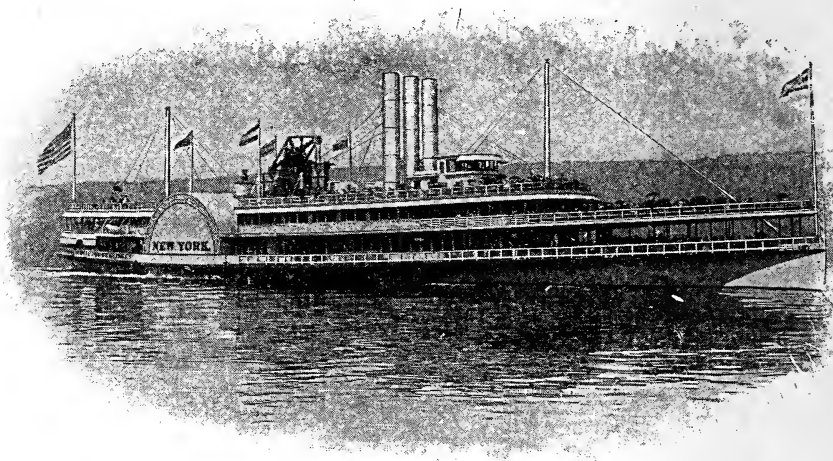
The display to be made by the Department of Agriculture will be of great value and interest to those concerned in the agricultural, horticultural and live-stock industries, comprehending, as it will, all their varied features.

The workings of the different Bureaus of the Department of State will be illustrated by means of blanks, sample letters, circular letters, etc., and much can be learned by the people of the manner of intercourse between the United States and other nations. The coining of money will be a feature of the exhibit by the Treasury Department. A coin press will be in operation, coining money at the rate of 80,000 coins per hour, each coin being struck with a force equal to the weight of 100 tons.

There will be a very complete collection of coins of all nations, a complete set of medals struck by the mint at Philadelphia, and a complete series of currency issued by the Government. Included in this exhibit will be a model of a

The MARKEEN is centrally located, being within 10 minutes' ride of all Railroad Stations and Steamer Landings.

PAN-AMERICAN ROUTE
Hudson River by Daylight!



The most charming inland water trip on the American Continent

The Palace Iron Steamers of the Hudson River Day Line

“New York” and “Albany”

TIME TABLE, 1901—DAILY EXCEPT SUNDAY

Leave New York, Desbrosses Street 8.40 a. m.
Leave New York, West 22d Street, N. R. 9.00 a. m.
Leave Albany, Hamilton Street 8.30 a. m.

Season opens May 29th, closes October 26th.

The Attractive Route for Summer Pleasure Travel

By special arrangements all first-class **through** tickets, reading via the New York Central & Hudson River and West Shore Railroads, between **Albany** and **New York** only, in either direction, will be available via the Day Line Steamers or by rail, at the option of the passenger. This arrangement does not apply on local business.

Through Tickets via the Day Line are on sale at all Ticket Offices.

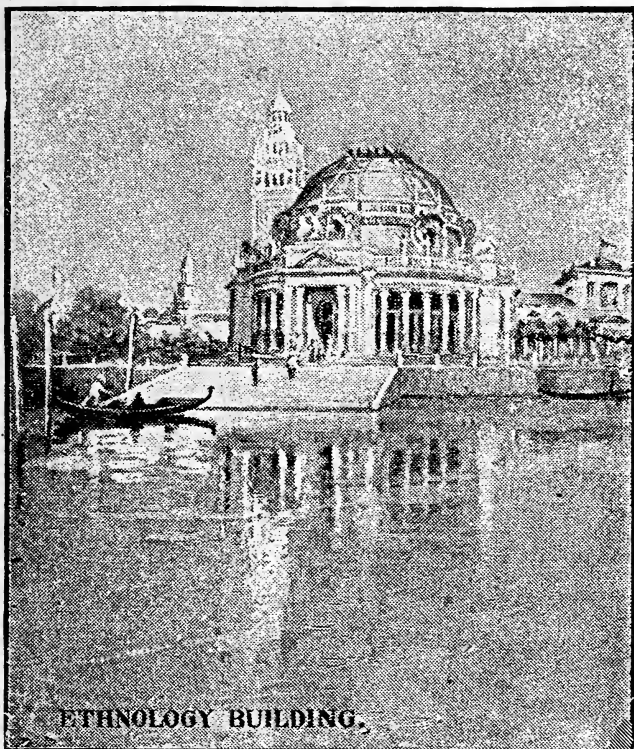
A trip on one of these famous steamers, on the noblest stream in the country, offers rare attractions. Their great speed, fine orchestra, spacious saloons, private parlors and luxurious accommodations in every respect render them unexcelled.

The Steamers “New York” and “Albany” are the fastest ever built, and are unrivalled in point of elegance, comfort and the quality of the service in every respect. Being constructed exclusively for summer tourist travel, and carrying no freight, they have the lightness, grace and beauty of a yacht, and are known the world over as the finest vessels afloat.

Send six cents for a copy of “Summer Book” to

F. B. HIBBARD, GENERAL PASSENGER AGENT

Desbrosses Street Pier, NEW YORK



ETHNOLOGY BUILDING.

lighthouse fully equipped and in operation, a model of a quarantine station, models of marine hospital operating rooms, and a model of a vessel constructed for deep-sea sounding. Upon the shore of the Park Lake will be a life-saving station, completely equipped with up-to-date apparatus, while the means employed in the saving of life on the sea will be daily illustrated by a captain and crew of ten men with life and surf boats, with their appurtenances.

The Post-Office Department will occupy a larger space than was ever before devoted to it at an exposition. The methods of mail transportation will be fully illustrated, and a Post-Office, equipped with all the latest devices used in the larger post-offices, will be a feature of the exhibit.

The exhibit of the National Museum, under the auspices of the Smithsonian Institution, will be of absorbing interest.

The MARKEEN, Main and Utica Sts.—Ladies' and Gentlemen's Cafe,
open from 6:00 A. M. to 12:30 P. M. Cuisine and Service Unexcelled.

A Safe Drink

IN THE PAN-AMERICAN CITY IS

Niagara Club Ginger Ale

The pure kind. Note its smoothness—connoisseurs do

Grocers, Druggists and Saloons

THE HUDOR CO.

DISTILLED WATERS AND SODAS



The VICTORIA HOTEL

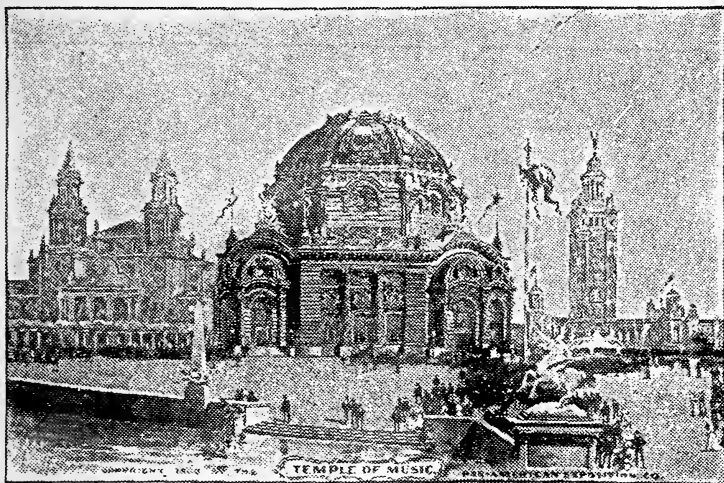
Cor. Niagara, Eagle & Franklin Sts.

BUFFALO, N. Y.

Newly Furnished. Up-to-date.
Modern. Rates \$1.50 and upwards
per day. European Plan. First
class Cafe and Buffet in connec-
tion.

*All Correspondence Promptly
Answered*

E. J. SMITH, PROP.



TEMPLE OF MUSIC.

It will display the resources of North America, South America, Central America, the West Indies, and the new possessions of the United States. One of the important exhibits will be a celostal, an instrument that reflects the light of a star or other heavenly body in a fixed horizontal direction.

The Government Ordnance Exhibit will be very interesting. It will include the best of former exhibits, and will, in addition, have novelties never before shown. The heavy ordnance will be mounted outside the Government Building. This branch of the exhibit will include the 12-inch gun with disappearing carriage and the 16-inch seacoast half-mast rifle now in process of manufacture at the Watervliet Arsenal, the most powerful piece of ordnance ever constructed in the United States, having a maximum range of 20½ miles. It will be the greatest display of heavy ordnance ever made.

Another exhibit of ordnance will be made by manufacturers, but in a different part of the grounds. It will be very large, as all the makers will naturally want to make as good a showing as possible. Here a considerable number of important inventions not yet accepted by any government will be shown.

VISITORS have not seen **BUFFALO** until they have visited the **RATHSKELLER** at the **MARKEEN**, Main and Utica Streets.

The PORTER

Corner Porter and Plymouth Avenues



THE PORTER recommends itself to all parties desiring a quiet, first-class home while visiting the Exposition or as a permanent home.

Situated in one of the finest residential districts, easily accessible to all street car lines, some of which pass the door.

Built of stone and brick, with all modern improvements. Handsomely furnished single rooms, suites or apartments can be engaged at reasonable rates for any length of time.

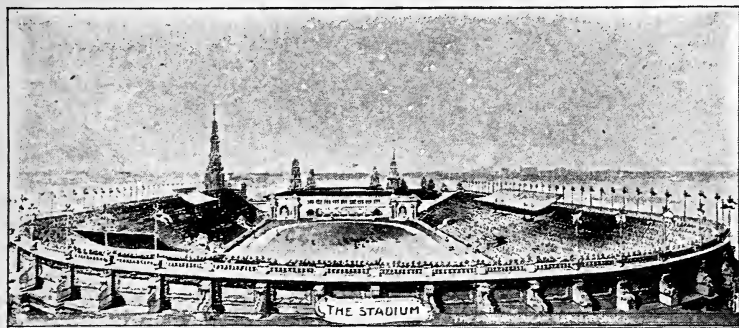
Cuisine of cafe VIRGINIA STYLE. Service unsurpassed.

Within walking distance of the beautiful Lake Front Park, the Niagara River and Fort Porter.

Niagara Falls can be reached by cars passing the door. Only ten minutes' ride to Exposition Grounds, or business district.

CLARENCE PERINE, Manager.

PAN-AMERICAN EXPOSITION



THE STADIUM.

There will be great guns and small guns and guns of all kinds, and their accessories. To many visitors this will be one of the most attractive features. The study of the weapons with which the great powers wage war is ever an interesting one, and the many wonderful discoveries and inventions in this line during the past few years have a tendency very naturally to accentuate the interest.

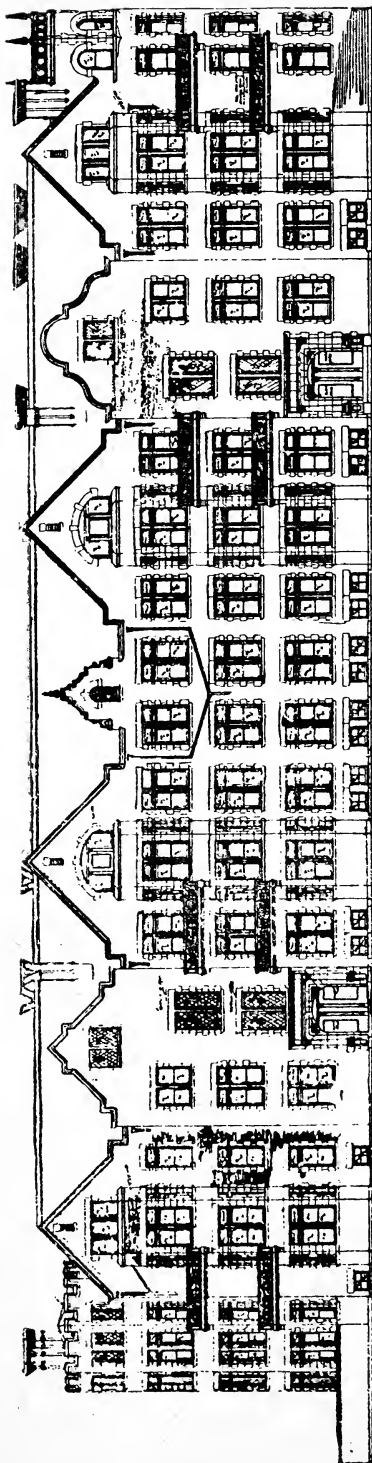
The exhibits of the War, Navy and other Departments of the Government will be the largest and most complete ever made at any exposition.

Most of the States of the Union, our new possessions, the Dominion of Canada, Central and South American Republics, and the Islands of the West Indies will be represented officially and by individual exhibitors.

Of the \$300,000 appropriated by the State of New York, \$100,000 is devoted to its building, which stands on the North Bay in the park grounds. It is a permanent building of solid and enduring character, and will become the home of the Buffalo Historical Society after the Exposition. The Society added \$45,000, and the City of Buffalo \$25,000 to the State appropriation for this building. The exhibits provided by the State of New York will be shown in various departments of the Exposition, and not in this building.

The Albright Art Gallery is a permanent edifice of white marble and classical architecture. This building cost over \$350,000, and is the gift of Mr. J. J. Albright, of Buffalo. The architecture is Ionic, and is after the style of the

The Cafe and Rathskeller at the MARKEEN surpass anything outside of New York City. German Cooking a Specialty.



Chapin Parkway Apartments

Cor. Chapin Parkway and
Potomac Avenue

These handsome fireproof residential apartments will be completed about the 15th of June, when it is proposed to throw them open for the use of guests coming to the

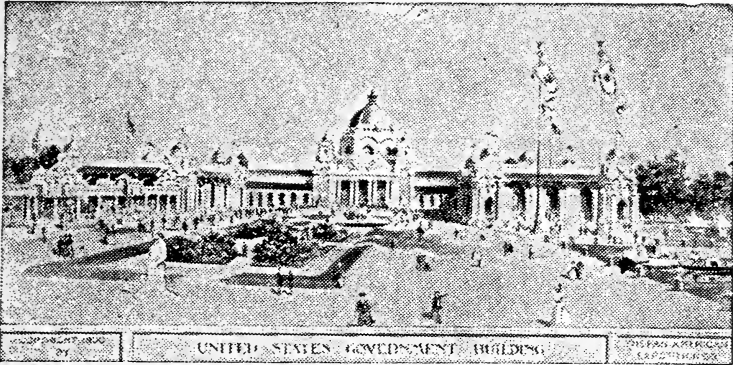
PAN-AMERICAN EXPOSITION

This building is situated on Buffalo's finest parkway, at its junction with the direct drive into the Exposition Grounds, one-eighth of a mile from Main Entrance to Exposition Grounds and one block from

Direct Car Line
to City and Exposition Grounds

FOR INFORMATION ADDRESS
W. L. SCHMOLLE
Ellicott Square Building
BUFFALO, N. Y.

PAN-AMERICAN EXPOSITION



UNITED STATES GOVERNMENT BUILDING.

Erechtheum, one of the famous buildings of the Acropolis, at Athens. After the Exposition it will become the permanent home of the valuable collections of the Buffalo Fine Art Academy, which is made the custodian of the property.

The Propylæa will consist of two monumental entrances connected by a colonnade which has a graceful curve to the north. The structure is 500 feet long and the gateways are broad arches, 54 feet high and 36 feet wide. Two high, open towers surmount the arches on either side, and above the 20 tall Ionic columns that form the colonnade is a pergola, over which growing vines will spread their fresh, green foliage. Statuary will be placed between the columns against a background of color. The architectural work upon the Propylæa is very elaborate, and its massive size and rich ornamentation will make it a feature that will win the admiration of every visitor.

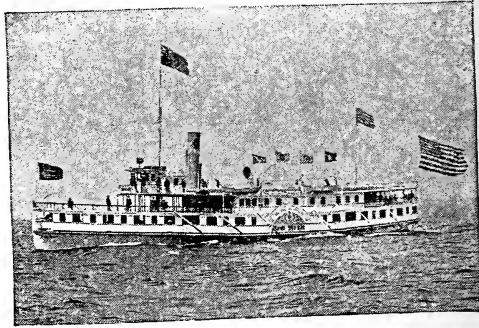
The Grand Canal, over a mile in length and 30 feet in width, extends around the central group of large buildings. Winding lagoons, connecting with the canal, branch off in various directions. The Mirror Lakes, in the southern reaches of the canal, will form a picturesque feature. The outer bank of the canal and the banks of the lagoons are sodded and set with young trees and flowers, producing vistas of unusual interest and beauty. Upon the Grand Canal electric launches, gondolas and other small craft will ply from place to place, to afford a means of transit to Exposition

The MARKEEN is centrally located, being within 10 minutes' ride of all Railroad Stations and Steamer Landings.

THE PICTURESQUE ROUTE

BY STEAMER FROM

Buffalo to Niagara Falls



A delightful sail on the beautiful Niagara River, the greatest waterway on the American continent, abounding in historical features and marvelous scenery.

PALATIAL STEAMERS

OBSERVATION DECKS

ELECTRIC LIGHTED

Furnished and equipped with every modern convenience.

MOONLIGHT AND SEARCHLIGHT TRIPS

very evening to NIAGARA FALLS. Grand illumination of the American and Horseshoe Falls, Niagara Gorge and Rapids by powerful marine searchlights.

INTERNATIONAL BELT LINE TRIP,

embracing the HISTORIC NIAGARA FRONTIER, combining the routes of the International Navigation Co., Canadian Scenic Route, Great Gorge Route, and Buffalo and Niagara Falls Electric Railway.

FAVORITE WATER TRIP TO TORONTO,

in connection with Niagara Falls Park and River Railway, and Niagara Navigation Co.

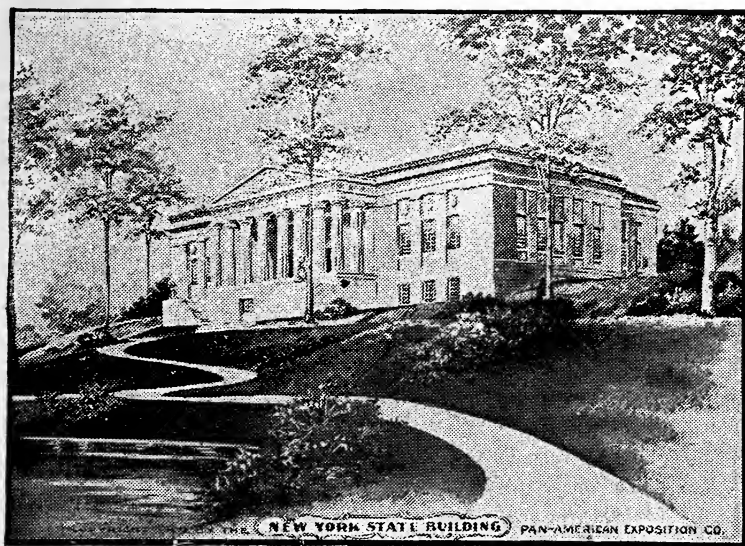
FOR FURTHER PARTICULARS ADDRESS

International Navigation Co.

Foot of Ferry Street, BUFFALO, N. Y.

M. C. EBEL, GENERAL MANAGER,
Buffalo, N. Y.

W. E. TUTTLE, G. P. A.
Niagara Falls, N. Y.



NEW YORK STATE BUILDING.

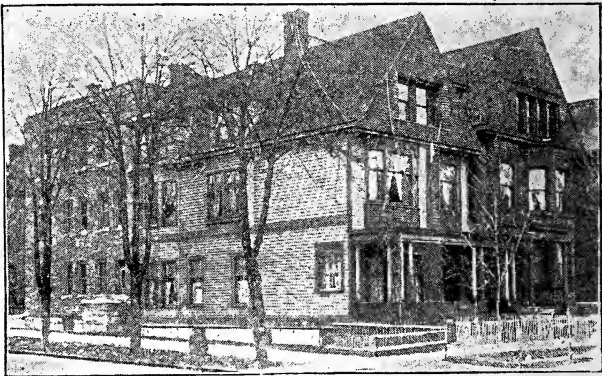
visitors. The ride will be a refreshing one, with charming views at every turn. Romantic and picturesque bridges will span the waterway at convenient points, and statuary placed here and there will add to the picturesque effect.

One of the most majestic and distinctive decorative features of the Exposition will be the Triumphal Bridge. This will span the Grand Canal between the Mirror Lakes and lead the visitor from the Fore Court to the Esplanade. The composition is intended to express the pride of the people of the North American Union in their country. There will be four large piers, upon which mounted standard-bearers will hold aloft the national emblem. Below them will be trumpeters, and heaped about the base will appear trophies of peace and power. Other groups of statuary, each expressing some phase of national greatness, will embellish other portions of the bridge.

A Board of Women Managers, having a membership of 25 representative women of Buffalo, will perform the duty of entertaining eminent women who attend the Exposition, and will have in hand the work of bringing to public attention the distinctive accomplishments of women in the arts and

The MARKEEN, Main and Utica Sts.—Ladies' and Gentlemen's Cafe, open from 6:00 A. M. to 12:30 P. M. Cuisine and Service Unexcelled.

THE ARMSTRONG



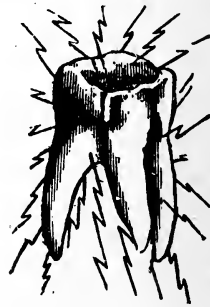
93 & 95 West Mohawk Street, **BUFFALO, N. Y.**
Corner of Delaware Avenue

Furnished Apartments, Rates \$1.00 Per Day and Upward

M. M. ARMSTRONG, } PROPRIETORS
MARION ARMSTRONG, }

We
Fill and
Extract
Teeth
Without
Pain

ALL WORK GUARANTEED
Crown and Bridge Work a Specialty



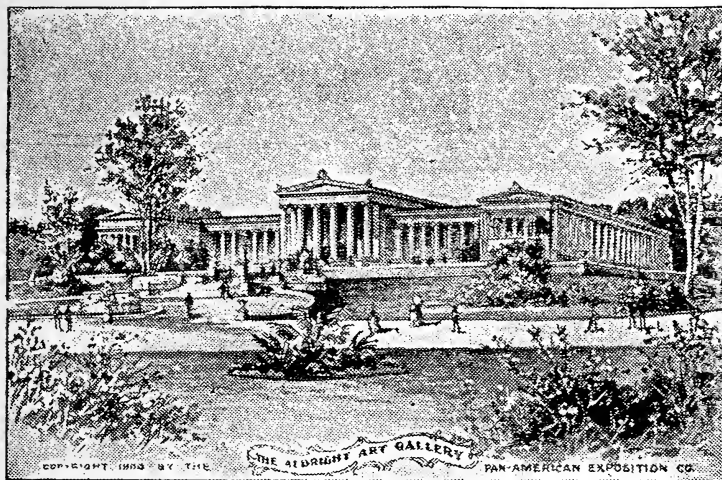
COME AND SEE US

White Dental Parlors

368 Main St., Opposite Hotel Iroquois

BUFFALO, N. Y.

PAN-AMERICAN EXPOSITION



THE ALBRIGHT ART GALLERY.

sciences. The headquarters of the board will be in the building upon the grounds formerly occupied by the Country Club, which has been remodeled and handsomely furnished. The honorary members of the board from various States and foreign countries will make their headquarters here during their stay in the city.

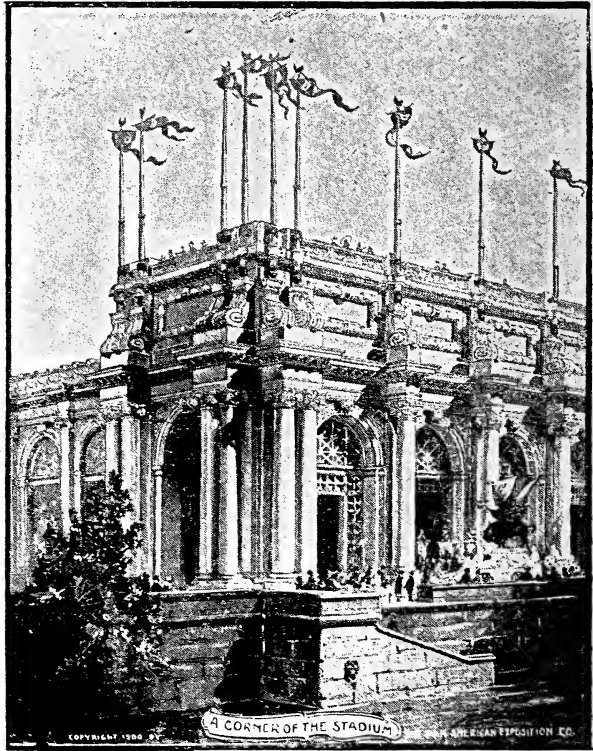
The Exposition will be a great object lesson in modern progress and development, yielding the most liberal and valuable returns both to the exhibitor, whether State or individual, and to the visitor. A visit to this Exposition will constitute an important epoch in the life of every one, particularly in the lives of the young, and the knowledge acquired in the few days spent here will be of practical value throughout the remainder of one's career.

Our limited space will not permit an extended description of the many features of the Exposition. Suffice it to say, that it will far surpass former enterprises of this kind in its electrical effects, hydraulic and fountain effects, horticultural, floral and garden effects, sculptural ornamentation, color decorations and court settings.

The Midway, the amusement feature of the Exposition, will be the greatest and most complete gathering of unique entertainments ever seen at an exposition.

VISITORS have not seen **BUFFALO** until they have visited the **RATHSKELLER** at the **MARKEEN**, Main and Utica Streets.

PAN-AMERICAN EXPOSITION



A CORNER OF THE STADIUM.



SCENOGRAPH—JOHNSTOWN FLOOD.

One of the most unique and marvelously real exhibits on the Midway will be the Scenograph of the Johnstown Flood, for which concession a large and handsome building has been erected, as shown above. In this building, which will contain one of the most handsomely decorated and luxurious auditoriums on the Exposition Grounds, will be given a graphic illustration of the storm which caused the breaking of the banks of the artificial lake, and the awful flood in the Conemaugh River, which overwhelmed the city of Johnstown, Pa., in 1889.

The representation will be so real that the spectator need make no effort to imagine that he is looking upon the actual storm.

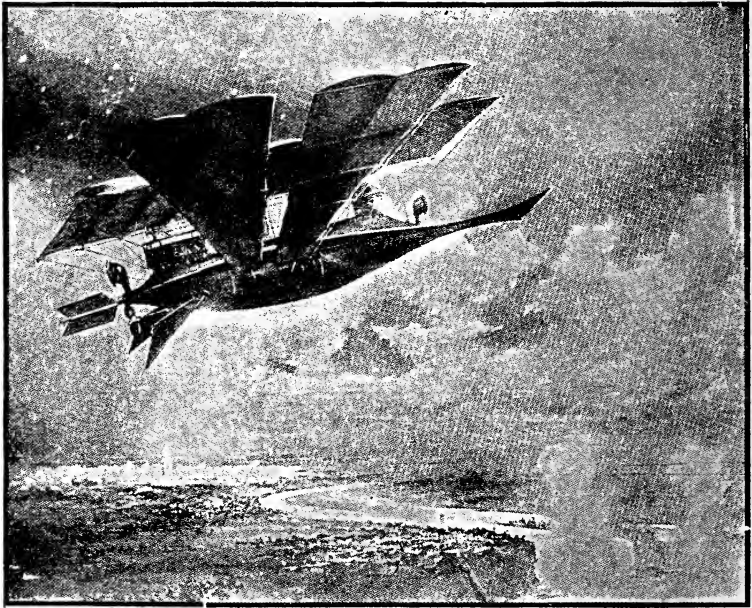
This magnificent production is made possible through a combination of art, nature, marvelous electrical effects, and ingenious mechanical devices.

The concession for this interesting and beautiful exhibit has been granted to Albert E. Swift and Randolph McNutt, two well known Buffalo business men. Associated with them is the celebrated artist, Mr. E. J. Austin, who with a large staff of trained assistants has produced the Scenograph.

No other provision having been made for an educational headquarters, a front room on the ground floor of this building has been set aside for the free use of teachers and school officers. It is very handsomely furnished and contains every convenience.

The Cafe and Rathskeller at the MARKEEN surpass anything outside of New York City. German Cooking a Specialty.

PAN-AMERICAN EXPOSITION



A TRIP TO THE MOON.

PAN-AMERICAN EXPOSITION

Rising heavenward as if borne aloft by some mighty bird; basking at dizzy eminence in the refulgent glory of the setting sun; rushing onward and upward through limitless space; veering now and then to one side to avoid some roaring comet; blinded by the glittering brilliancy of some monster meteor; deafened by the clamorous harmony of the music of the spheres; gliding peacefully through the iridescent loveliness of the atmosphere of the moon, and landing safely at last at the very gateway of the gorgeous palace of his Lunar Excellency, will be one of the experiences which Pan-American visitors will undergo this summer, when they journey skyward in Frederick Thompson's airship Luna, on "A Trip to the Moon."

This aerial craft is the most interesting and sensational feature of the many interesting and sensational attractions booked for the Exposition Midway. More than any other it bears the stamp of novelty and high-grade merit.

When the Exposition visitors enter the docking place of the airship they will take seats in the cabin of the weird, uncanny craft, and when loaded and ready for a trip, the "LUNA" will rise slowly from its mooring place, ascend to a height of a mile or more, pause momentarily for bearings and then begin its long aerial flight. It will sweep through feathery heaps of fleecy clouds, dash through vast areas of starlit radiancy, swerve by rushing, devouring comets, hurry past lazy, dignified old planets, wend its way through showers of glittering meteors and land at last in the City of the Moon, the weirdest, strangest, most picturesque city ever conceived.

The voyagers will be sumptuously entertained at the royal revels of the court of His Excellency, the Monarch-of-all-the-Lunarites, and will have wondrous tales to tell on their return to earth.

Equally startling and grand will be "Darkness and Dawn," J. J. Dunnivant's concession, which is to reproduce Heaven and Hell, with graphic realism, after descriptions set forth in the immortal lines of Milton's "Paradise Lost," and Dante's "Inferno." The impenetrable gloom, the picturesque horror, the infinite misery, and the despair and suffering

The **MARKEEN** is centrally located, being within 10 minutes' ride of all Railroad Stations and Steamer Landings.

PAN-AMERICAN EXPOSITION



DARKNESS AND DAWN.

PAN-AMERICAN EXPOSITION

prevailing in the region of the lost will be graphically portrayed, and then will be shown the contrast of the peace, serenity and ineffable happiness of the celestial realms. Aided by the electrical energy of Niagara's thundering cataract, the electrical spectacle will surpass all previous undertakings.

Life as it existed in the South "befo' de Wah" will be pictured in E. S. Dundy's concession, the "Old Plantation." The dominant feature of this concession is to be an old-time Southern homestead, with its white walls, green blinds and stately colonial pillars. Near it will be the negro cabins, and not far away a quaint old Southern chapel, such as may be seen even now-a-days in remote villages below Mason's and Dixon's line. As a special feature, Mr. Dundy has secured the cabin which was originally the home of "Uncle Tom," of Mrs. Stowe's immortal story, and another feature, the dwelling in which formerly lived President Jefferson's valet. Surrounding these buildings will be broad acres of cotton and cane with Southern darkies at work therein. When their labors are finished each day, the negroes will gather in front of their lowly homes and sing sweet Southern melodies to banjo accompaniment, just as their grandfathers and greatgrandfathers did in the happy days of long ago.

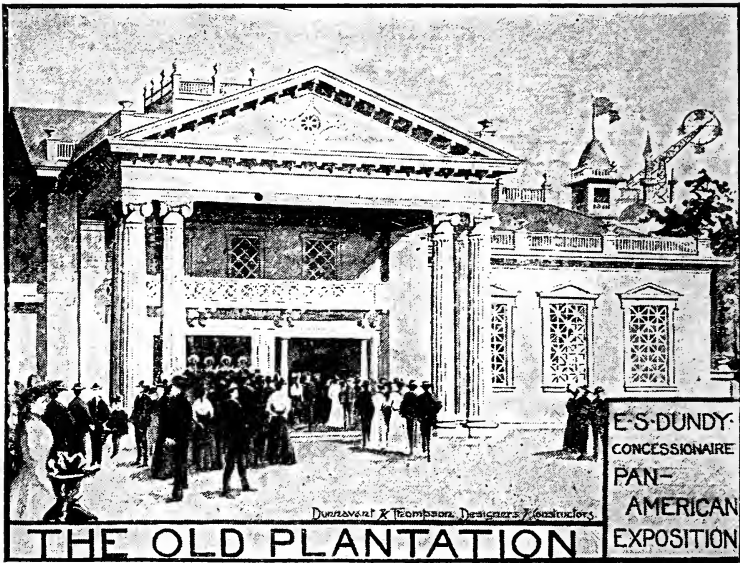
Exposition elevating machinery has evolved from the plain revolving Ferris Wheel at Chicago to the double-extenso reciprocating Aerio-Cycle of the Pan-American Midway. From the days of our ancestors, down through the ages, to the present time, an elevation has always proved attractive, although attainment in this direction has, until recent years, been accompanied with more or less fatiguing exertion.

Many kinds of elevators have been invented, but it has remained for the Pan-American Exposition to present a feature of this nature having size and motion enough to please everybody.

The Aerio-Cycle has an extreme elevation of 275 feet, which is eleven feet higher than the famous Ferris Wheel. The tower for this structure is 140 feet in height. The walking beam, the middle of which rests on the top of this tower, has a length of 240 feet. Attached at the ends of this im-

**The MARKEEN, Main and Utica Sts.—Ladies' and Gentlemen's Cafe,
open from 6:00 A. M. to 12:30 P. M. Cuisine and Service Unexcelled.**

PAN-AMERICAN EXPOSITION



THE OLD PLANTATION.

P A N - A M E R I C A N E X P O S I T I O N

mense truss, are wheels similar in design to the Ferris Wheel, each wheel having a diameter of 40 feet. At the periphery of each wheel four cars are hung, each of which will carry 18 people. In regard to safety, the strength of the structure is seven times stronger than necessary, a factor anyone will admit is amply sufficient to inspire confidence.

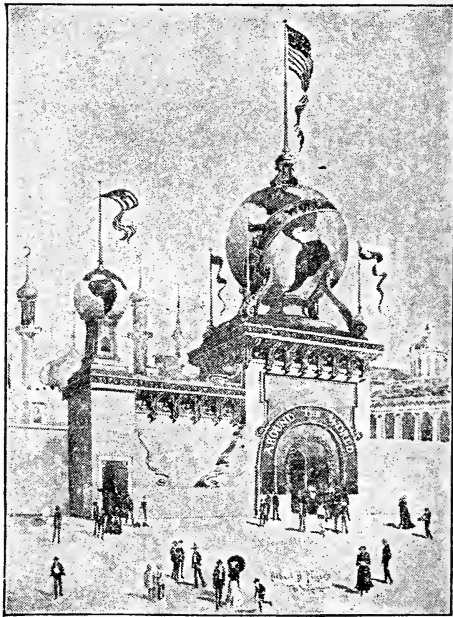
The electric current from Niagara Falls will be used to operate the motors, as well as to light the structure at night. Two searchlights, of 90,000 candle power each, will be used to point out objects of interest, and 2,000 incandescent lamps of different colors will deck the gigantic framework in a variation of light and color. This will be one of the most spectacular features of the Midway. The revolving, lighted wheels, with their illuminated cars, high up in the air, will make an unusual, as well as an interesting sight.

One of the most attractive features of the Midway is found in the "Around the World" building. The American people are always seeking novelties in their form of amusements and the above attraction is the latest importation from Europe. The idea of representing the civilization of the world by dances has never been carried further than in this production, which was first introduced at the Paris Exposition of last year, known as "Tour de Monde," and is here reproduced in all its glory with American modifications.

The building of the Around the World Company is of unique style of architecture, somewhat suggestive of the Moorish in its bizarre lines. A massive globe, representing the world, with decorations symbolical of the two Americas, surrounded by a glow of electric lighting, marks the entrance to the World building. Passing through the vestibule, a magnificent spectacle meets the gaze of the visitor; beautiful women passing to and fro in the weird corridors and mazes, from every clime and country—the almond-eyed Celestial in her glittering gown and sparkling raiment is seen arm in arm with possibly a delightful brunette from far Russia or a dusky damsel of the Maori type, chatting with the American visitors, endeavoring to gain a better knowledge of the English tongue, or perchance engage the

VISITORS have not seen BUFFALO until they have visited the RATHSKELLER at the MARKEEN, Main and Utica Streets.

PAN-AMERICAN EXPOSITION



AROUND THE WORLD.

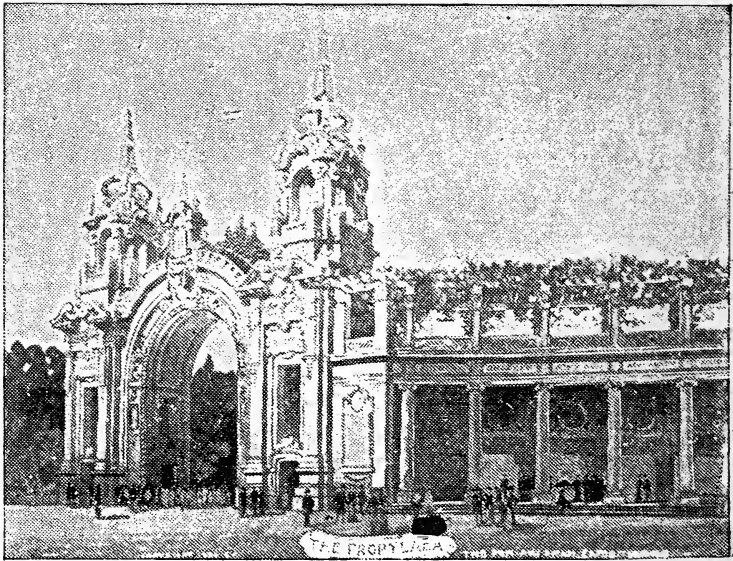
PAN-AMERICAN EXPOSITION

visitor's interest in some souvenir or ornament brought from foreign lands. It is the stolid individual who can always resist the wiles of these persuasive sirens. Almost every type of beauty is represented, of the various races of mankind. After passing through the grottoes and admiring the decorative features of the exhibit, the theater proper is entered—a spacious auditorium where the scenic and lighting effects are marvelous in their brilliancy and splendor. Taking seats in the theater, the eyes rest upon one of the beautiful scenes accurately representing one of the countries chosen by the Exposition Company. The electric effects are here shown and are startling in their reproduction of Nature—the breaking dawn with the glint of sun over the mountain tops. The lights gradually increasing, disclose a native dancer in the haze, wildly, merrily cavorting or gracefully, sinuously gliding into the national dance of her country, accompanied by weird strains of mellifluous harmony. Evolutions of seemingly impossible intricacy and fascinating witchery, constant changing iridescent prismatic lighting and rainbow effects, culminate in a grand climax of phosphorescent glow and terpsichorean bewilderment.

H. Roltair, the celebrated illusionist, will present the "House Upside-Down," one of the oddest features of the Midway. It will be given in connection with his famous and extensive "Palace of Illusions," which has undergone steady improvement. This is one of the features that attracted so much attention at the Paris Exposition and it will undoubtedly prove a great success at the Pan-American. The building represents a feudal castle standing on its roof and battlements, with its basement and cellars in the air. Everything in the castle appears to be inverted. The visitor enters seemingly through the roof and after going up—or down—several flights of stairs reaches the cellar. The cellar is a garden hanging bottom side up in mid-air. The various apartments of the castle are furnished sumptuously, but the topsy-turvy arrangement extends through all the rooms. The idea of "upside-down" is carried out completely. The pictures are fastened in such a way that they seem to be hanging just opposite

The **MARKEEN** is centrally located, being within 10 minutes' ride of all Railroad Stations and Steamer Landings.

PAN-AMERICAN EXPOSITION

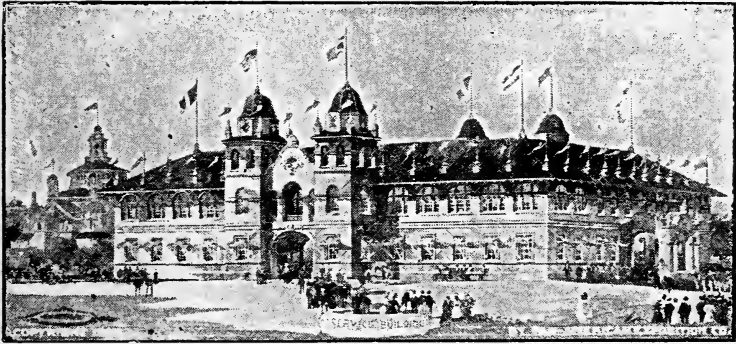


THE PROPYLAEA.

PAN-AMERICAN EXPOSITION

from any way you have ever seen them before. Everything—the rugs, chairs, musical instruments, etc.—utterly defies the law of gravitation.

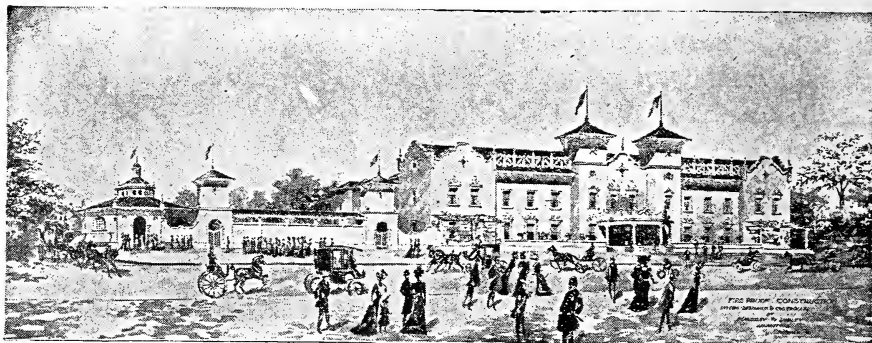
As an inventor of odd things M. Roltair is certainly a genius.



ADMINISTRATION BUILDING.

The MARKEEN is centrally located, being within 10 minutes' ride of all Railroad Stations and Steamer Landings.

THE PARK HOTEL



Delaware Avenue,
corner Amherst Street, } **BUFFALO, N. Y.**
EUROPEAN PLAN.

ABSOLUTELY FIREPROOF. *ACCOMMODATIONS FOR 1,000.*
Café Chantant Adjoining.

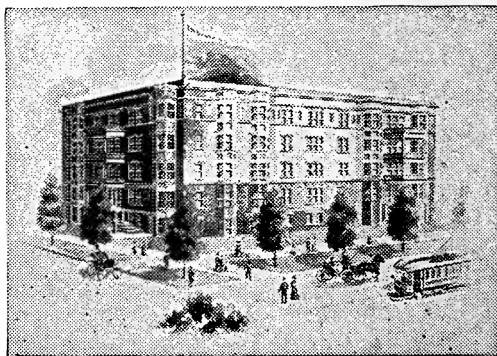
F. E. SCHENCK, MANAGER,
Late Manager "The Forge," Old Forge, N. Y. (The Adirondacks).

THE Kenilworth, ^{BUFFALO,} N. Y.

Elmwood Ave. and Anderson Place

A first-class, fireproof hotel located in the center of Buffalo's finest residence district; out of the dirt and noise of the business section, but still within five minutes' ride of the main entrance to the Exposition.

The **PALM ROOF GARDEN** with its magnificent view will be a special feature for our guests. Secure accommodations now for any period of the Exposition.



RATES:

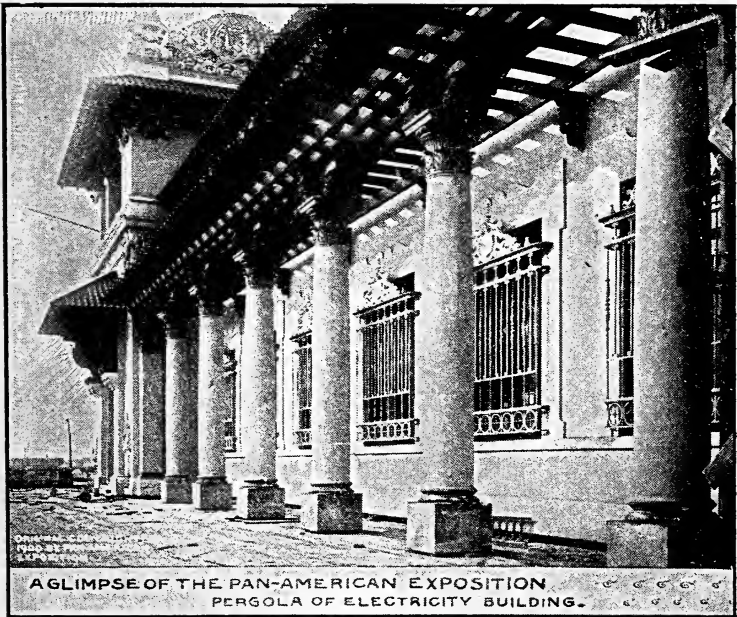
(European Plan)

\$1.00 per day and upward.

Address: MURRAY S. CLARK, Manager,

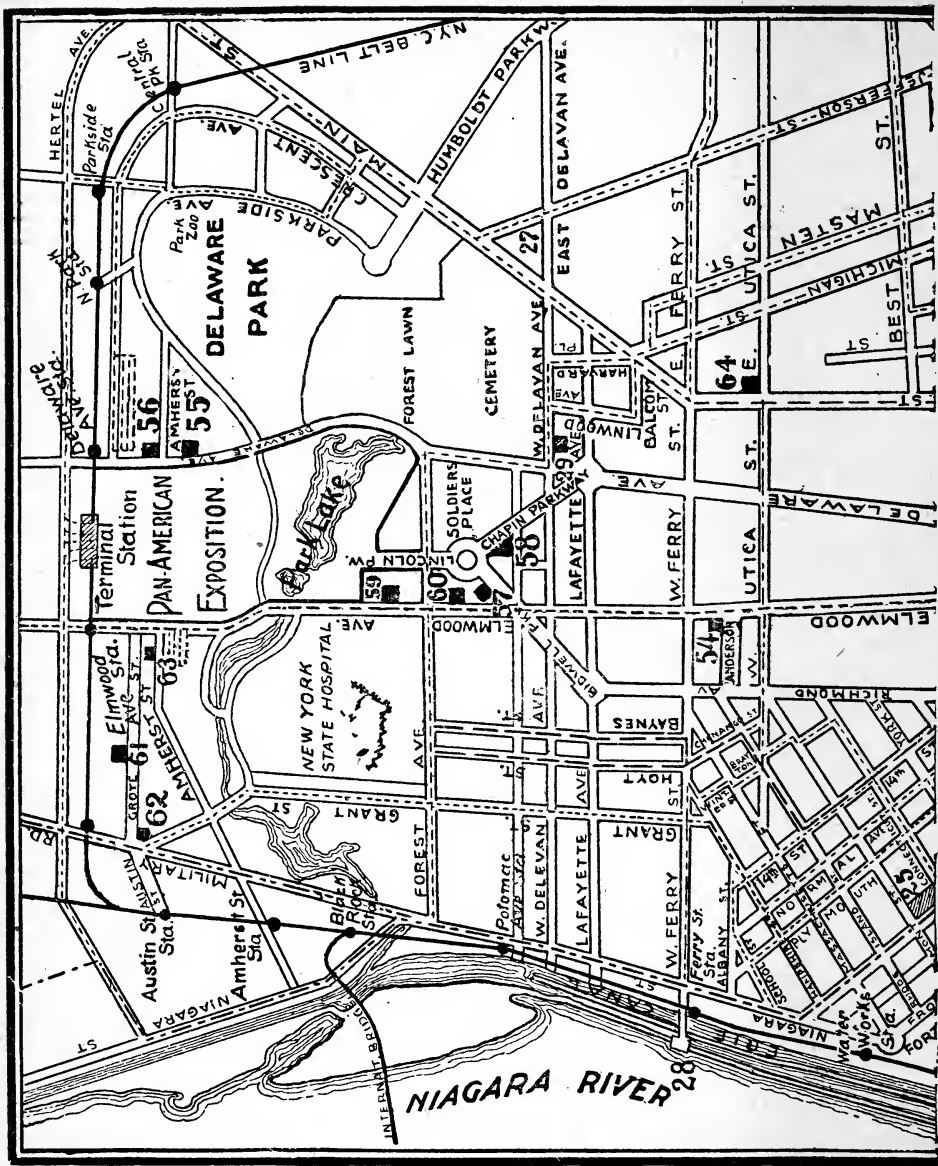
THE KENILWORTH,
BUFFALO, N. Y.

PAN-AMERICAN EXPOSITION



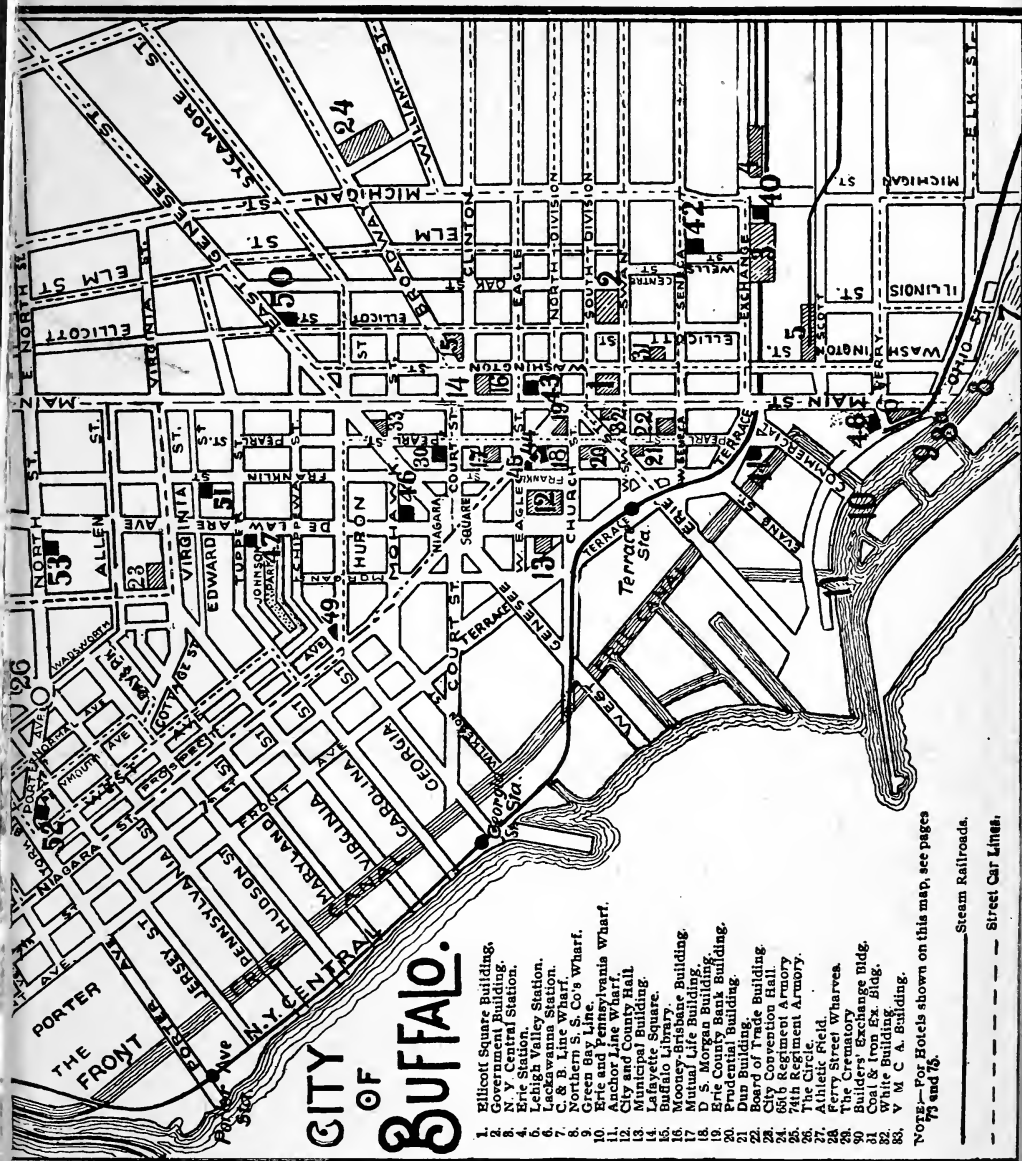
PERGOLA OF ELECTRICITY BUILDING.

The MARKEEN, Main and Utica Sts.—Ladies' and Gentlemen's Cafe,
open from 6:00 A. M. to 12:30 P. M. Cuisine and Service Unexcelled.



ENTRANCES TO PAN-AMERICAN EXPOSITION.

TERMINAL STATION on northern side, ELMWOOD AVENUE GATE and AMHERST STREET GATE on western side, MEADOW GATE, WATER GATE and LINCOLN PARKWAY GATE on southern side, and EAST AMHERST STREET GATE on eastern side. (For nearest street car routes to these entrances see pages 55 to 63.)



CITY OF BUFFALO.

1. Ellicott Square Building.
2. Government Building.
3. N. Y. Central Station.
4. Erie Station.
5. Lehigh Valley Station.
6. Cayuga Station.
7. C. & S. Station.
8. Northern S. S. Co's wharf.
9. Green Bay Line.
10. Erie and Pennsylvania wharf.
11. Chicago Line wharf.
12. Municipal Building.
13. City Hall.
14. Lafayette Square.
15. Buffalo Library.
16. Mooney-Strasburg Building.
17. N. Y. State Building.
18. D. S. Morgan Bldg.
19. Erie County Bank Building.
20. Prudential Building.
21. Bup Building.
22. City Convention Hall.
23. 66th Regiment Armory.
24. 74th Regiment Armory.
25. The Circle.
26. Armory Field.
27. Ferry Street Wharves.
28. The Crematory.
29. Builders' Exchange Bldg.
30. Coal & Iron Ex. Bldg.
31. The Exchange Building.
32. V. M. C. Bldg.
33. V. M. C. Bldg.

Notes—For Hotels shown on this map, see pages 15 and 16.

— Steam Railroads.

--- Street Car Lines.

If you want
 Correct Railway Information
 You want
 Baldwin's Official Railway Guide
 For Sale by All Newsdealers



ONE BLOCK FROM MAIN ENTRANCE TO EXPOSITION.

\$1.00 paid now will give you a contract guaranteeing rooms and meals at the largest and best located Hotel in Buffalo during your visit to the

PAN-AMERICAN --- EXPOSITION

A limited number of Contract Reservations will be made for any desired period, at the following popular rates, based on two persons in each room:

\$2.00 per day, including Lodging, Breakfast and Evening Dinner. THIRD FLOOR.

\$2.50 per day, including Lodging, Breakfast and Evening Dinner. FIRST AND SECOND FLOORS.

\$4.00 and \$5.00 Rooms with Private Bath.

The above rates will be advanced 50 per cent. after a certain number of reservations have been booked.

REFERENCES: Niagara Bank of Buffalo; Hon. Erastus C. Knight, Comptroller State of New York; Dun's and Bradstreet's Agencies.

STAMP BRINGS DESCRIPTIVE CIRCULARS AND MAPS.

Under the same management as
Statler's Ellicott Square Restaurant.

THE PAN-AMERICAN CITY



BUFFALO is an ideal city in which to hold an exposition. Its situation at the eastern extremity of the Great Lakes insures cool, delightful weather during the summer months, and its early fall months are unequaled, while within a radius of 500 miles will be found more than one-half of the population of the United States and more than three-fourths of the population of Canada, with a through-train service in daily operation to nearly all principal cities.

The census of 1900 gave Buffalo a population of 352,387—the eighth largest city in the United States. It ranks as the fourth shipping city in the world, being the principal eastern port for the commerce of the great lakes. It is also one of the principal railroad centers of North America, having 26 lines radiating in all directions.

Buffalo is a manufacturing point of great importance, having some 3,500 factories, many using electric power developed at Niagara Falls. This power is also used in lighting the city and in the operation of its street car system. The electric railway system is in the highest state of development, and with its suburban lines consists of about 300 miles of tracks.

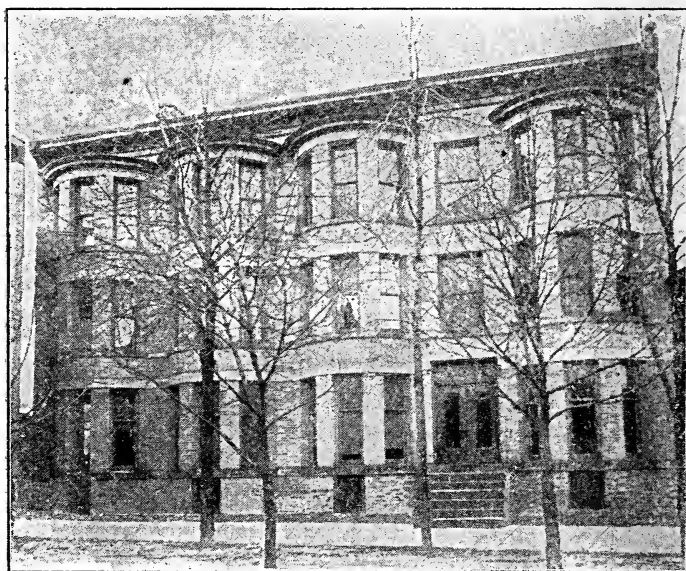
Buffalo is famed for its many beautiful streets, the artistic beauty of its homes, the healthfulness of its climate, and its excellent and abundant water supply from Lake Erie. Natural gas, of which there is an unlimited supply, is extensively used for domestic purposes. It has 223 miles of smooth asphalt pavements—more than any city in the world—which makes it a paradise for wheeling. The park system is very extensive, there being more than 1,000 acres of park lands, and 25 miles of beautiful park drives.

Buffalo is fortunate in her immediate surroundings, the far-famed Falls of Niagara being only 22 miles distant, while within a few hours' ride in any direction are situated some of the most famous resorts in the world.

VISITORS have not seen **BUFFALO** until they have visited the **RATHSKELLER** at the **MARKEEN**, Main and Utica Streets.

Hotel Zenobia

16 & 18 PROSPECT AVE., AND
181, 183 & 185 W. HURON STREET



Accommodations for One Hundred Guests
Building and Furniture New
Light and Airy Rooms, Six Porcelain Baths
Location Central, near Depots, City Hall, Theaters,
Department Stores and Three Electric Car Lines

DON'T WAIT

until you arrive in Buffalo. Secure accommodations
NOW, it will save you much inconvenience.

Write for particulars to

A. L. Brainard, Jr., Manager

16, 18 PROSPECT AVENUE

D. F. BOECHAT, Proprietor, 218 Pearl Street

THE PAN-AMERICAN CITY

SOME FACTS

Buffalo has a population, according to the 12th census, of 352,387, a gain of 96,723 in 10 years, making it the Eighth largest city in the United States.

It is the Fourth shipping city in the world.

It has 26 Railway Lines, with 250 passenger trains arriving and departing daily. There are nearly 700 miles of track within the city limits.

It is the principal Eastern Port for the commerce of the Great Lakes.

It is the great Commercial gateway between the East and the West.

It is one of the largest Coal distributing points and has the largest Coal Trestle in the world—nearly one mile long.

It is the largest Flour Depot in the world.

It is one of the largest Lumber, Grain and Live-Stock markets.

It has 41 Elevators, with a capacity of over 20,000,000 bushels.

It has 3,500 Manufactories, with over 100,000 operatives.

It has 15 Commercial Banks, 2 Trust Companies and 4 Savings Banks.

It has 223 miles of streets paved with Asphalt—more than any city in the world.

It has 1,000 acres in its Park System, and 25 miles of Park Driveways.

It has an unlimited supply of Pure Water from Lake Erie

It has an abundance of Natural Gas.

It has 300 miles of Street Railways, including Suburban Lines.

It has 187 Churches and Chapels.

It has 60 Public Schools.

It has 9 Theaters.

The Breakwater, now in course of construction, will be nearly four miles in length—the longest in the world.

IT HAS UNLIMITED ELECTRIC POWER.

The Cafe and Rathskeller at the MARKEEN surpass anything outside of New York City. German Cooking a Specialty.

PROMINENT
PEOPLE
REFER
PHOENIX



BUFFALO'S
BEST
BEER
BEVER



Visitors to the Falls

*Office,
Washington
and
Virginia
Sts.*

Strangers in the City

Endorse its Purity

*Telephone,
TUPPER
341 A*

Note its Excellence

IF YOU WANT THE BEST TO BE HAD

TRY PHOENIX BEER

STREET CAR ROUTES

INTERNATIONAL TRACTION COMPANY

OPERATING

Buffalo Street Railways

Main Office, 178 Main Street

Waiting Rooms, Main Street and Terrace

A uniform fare of FIVE CENTS is charged for a continuous trip
by the most direct route

TRANSFER TICKETS

Conductors will give passengers a transfer to a car reaching their destination by the most direct route, subject to the following conditions:

Transfer Tickets are good only on the first car passing the Transfer Point after the time punched on ticket.

Transfer Tickets will not be received at other than Transfer Points.

Ask for Transfer Ticket when paying your fare, and see that your Transfer is correctly punched, for the date, time and line.

Transfer Tickets punched for Main Street cars are not good on Buffalo & Lockport cars.

Transfer Tickets punched for Niagara Street cars are not good on Buffalo & Niagara Falls cars.

Transfer Tickets punched for Broadway cars are not good on Buffalo, Bellevue & Lancaster cars.

ALBANY & SCHOOL STREETS LINE

ROUTE: Cleveland & Buffalo Line Docks, on Illinois St., to Perry, to Main, to Virginia, to Elmwood, to Allen, to Wadsworth, to Fourteenth, to Albany, to School, to Niagara St. RETURNING: School, to Hampshire, to Normal Ave., to York, to Plymouth, to Hudson, to Cottage, to Virginia, to Main, to Perry, to Illinois, to Cleveland & Buffalo Line Docks. RUNNING TIME, 27 minutes in each direction.

BAILEY AVENUE LINE

ROUTE: Terrace and Erie St., on Erie, to South Division, to Cedar, to Swan, to Seneca, to Bailey Ave., to South

The MARKEEN is centrally located, being within 10 minutes' ride of all Railroad Stations and Steamer Landings.

STREET CAR ROUTES—CONTINUED

Park Ave., to City Line. RETURNING: South Park Ave., to Bailey Ave., to Seneca, to Swan, to Erie, to Terrace. RUNNING TIME, 37 minutes in each direction.

BAYNES & HOYT STREETS LINE

ROUTE: Michigan and Exchange Sts., on Exchange, to Main, to Allen, to Wadsworth, to Fourteenth, to Rhode Island, to Chenango, to Baynes, to Forest Ave. RETURNING: Forest Ave., to Hoyt, to Hampshire, to Eighteenth, to Seventeenth, to Connecticut, to Normal Ave., to Jersey, to Plymouth Ave., to Hudson, to Cottage, to Day's Park, to Allen, to Main, to Seneca, to Michigan and Exchange Sts. RUNNING TIME, 35 minutes in each direction.

NIGHT CARS leave Michigan and Exchange Sts. 12:30 A. M., Forest Ave. and Hoyt St. 1:05 A. M., and every 30 minutes thereafter.

EXPOSITION GROUNDS: Cars of this line, when so marked, run to Exposition Grounds.

BEST STREET LINE

ROUTE: Terrace and Erie St., on Erie, to South Division, to Ellicott, to Elm, to Best, to Walden Ave., to New York Central Belt Line. RETURNING: Walden Ave., to Best, to Elm, to Swan, to Erie St., to Terrace. RUNNING TIME, 26 minutes in each direction.

BROADWAY LINE

ROUTE: Main and Seneca Sts., on Seneca, to Washington, to Broadway, to City Line. RETURNING: Broadway, to Main, to Seneca. RUNNING TIME, 34 minutes in each direction.

NIGHT CARS leave Main and Seneca Sts. 12:30 A. M., City Line 1:04 A. M., and hourly thereafter.

CAZENOVIA STREET LINE

ROUTE: Seneca St., on Cazenovia, to Abbott Road, to Bailey Avenue. RETURNING: Same route. RUNNING TIME, 10 minutes in each direction.

STREET CAR ROUTES—CONTINUED

CHICAGO STREET LINE

ROUTE. Terrace and Erie St., on Erie, to South Division, to Chestnut, to Swan, to Chicago, to Perry, to Hamburg, to Erie Railroad. RETURNING: Hamburg, to Perry, to Chicago, to Swan, to Erie St., to Terrace. RUNNING TIME, 16 minutes in each direction.

CLINTON & EAGLE STREETS LINE

ROUTE: Main and North Division Sts., on Main, to Eagle, to Michigan, to Clinton, to City Line: RETURNING: Clinton, to Michigan, to North Division, to Main St. RUNNING TIME, 32 minutes in each direction.

NIGHT CARS leave Main and North Division Sts. 12:36 A. M., City Line 1:15 A. M., and hourly thereafter.

CONNECTICUT & BRAYTON STREETS LINE

ROUTE: Euclid and Elk Sts., on Elk, to Michigan, to Perry, to Main, to Court, to Niagara, to Connecticut, to Fourteenth, to Rhode Island, to Brayton St. RETURNING: Brayton, to Seventeenth, to Connecticut, to Niagara, to Court, to Main, to Seneca, to Washington, to Perry, to Michigan, to Elk, to Euclid St. RUNNING TIME, 40 minutes in each direction.

EAST FERRY STREET LINE

ROUTE: Main and Ferry Sts., on Ferry, to Bailey Ave., to Delavan Ave., to City Line. RETURNING: Same route. RUNNING TIME, 46 minutes in each direction.

EAST UTICA STREET LINE

ROUTE: New York Central Belt Line, on Ferry St., to Kehr, to French, to Fillmore Ave., to Utica, to Chango, to Ferry, to Niagara St. RETURNING: Ferry St., to Hampshire, to Winter, to Brayton, to Utica, to Fillmore Ave., to Kehr, to Ferry, to New York Central Belt Line. RUNNING TIME, 28 minutes in each direction.

The MARKEEN, Main and Utica Sts.—Ladies' and Gentlemen's Cafe,
open from 6:00 A. M. to 12:30 P. M. Cuisine and Service Unexcelled.

STREET CAR ROUTES—CONTINUED

ELK STREET LINE

ROUTE: Main and Exchange Sts., on Main, to Seneca, to Washington, to Perry, to Michigan, to Elk, to Seneca St. RETURNING: Elk, to Michigan, to Perry, to Main, to Exchange Street. RUNNING TIME, 30 minutes in each direction.

NIGHT CARS leave Main and Exchange Sts. at 12:30 A. M., Seneca and Elk Sts. 1:05 A. M., and hourly thereafter.

ELMWOOD AVENUE LINE

ROUTE: Main and Exchange Sts., on Main, to Virginia, to Elmwood Ave., to Hertel Ave. RETURNING: Elmwood Ave., to Allen, to Main, to Seneca, to Pearl, to Terrace, to Exchange and Main Sts. RUNNING TIME, 36 minutes in each direction.

NIGHT CARS leave Main and Exchange Sts. 12:50 A. M., Hertel Ave. 1:30 A. M., and hourly thereafter

EXPOSITION GROUNDS: Cars of this line run to Exposition Grounds.

GENESEE STREET LINE

ROUTE: Perry and Washington Sts., on Washington, to Genesee, to City Line. RETURNING: Same route. RUNNING TIME, 38 minutes in each direction.

NIGHT CARS: Leave Perry and Washington Sts. 12:30 A. M., City Line 1:10 A. M., and hourly thereafter.

HERMAN STREET LINE

ROUTE: Terrace and Erie St., on Erie, to South Division, to Spring, to William, to Mortimer, to Peckham, to Smith, to Herman, to Walden Ave. RETURNING: Herman, to Smith, to Peckham, to Spring, to South Division, to Cedar, to Swan, to Erie St., to Terrace. RUNNING TIME, 26 minutes in each direction.

HERTEL AVENUE LINE

ROUTE: Main St. and Hertel Ave., on Hertel Ave.,

STREET CAR ROUTES—CONTINUED

to Niagara St. RETURNING: Same route. RUNNING TIME, 22 minutes in each direction.

EXPOSITION GROUNDS: Cars of this line run to Exposition Grounds.

JEFFERSON STREET LINE

ROUTE: Main and Exchange Sts., on Main, to Exchange, to Louisiana, to Seneca, to South Cedar, to Swan, to Jefferson, to Main, to Florence, to Parkside Ave., to Hertel Ave. RETURNING. Same route. RUNNING TIME, 35 minutes in each direction.

EXPOSITION GROUNDS: Cars of this line, when so marked, run to Exposition Grounds.

KENSINGTON LINE

ROUTE: Foot of Main St., on Main, to East Ferry, to Grider, to Kensington, to Bailey Ave. RETURNING: Same route. RUNNING TIME, 40 minutes in each direction.

MAIN STREET LINE

ROUTE: Foot of Main St., on Main, to City Line. RETURNING: Same route. RUNNING TIME, 40 minutes in each direction.

NIGHT CARS leave Main and Exchange Sts. 12:30 A. M., Hertel Ave. 1:12 A. M., and every 30 minutes thereafter.

EXPOSITION GROUNDS: Cars of this line, when so marked, run to Exposition Grounds.

MICHIGAN STREET LINE

ROUTE: Main and Exchange Sts., on Exchange, to Michigan, to Delavan Ave., to Forest Ave., to Niagara St. RETURNING: Forest Ave., to Linwood Ave., to Balcom, to Masten, to North, to Michigan, to Exchange, to Main St. RUNNING TIME, 43 minutes in each direction.

EXPOSITION GROUNDS: Cars of this line, when so marked, run to Exposition Grounds.

VISITORS have not seen BUFFALO until they have visited the RATHSKELLER at the MARKEEN, Main and Utica Streets.

“Take the Yellow Car”

BUFFALO & NIAGARA FALLS

ELECTRIC RAILWAY

The cars of this popular line run from corner of Main Street and Terrace, and the Exposition Grounds to Niagara Falls, and afford the passenger a most delightful trip through the Tonawandas, LaSalle and the beautiful fruit section of the country along the Niagara River.

Connection is made at NIAGARA FALLS with the famous “CANADIAN SCENIC ROUTE,” the Niagara Falls Park & River Railway, over the new Steel Arch Bridge for Queenston, Brock’s Monument, Whirlpool, Horse-shoe Falls, Dufferin Islands and Chippawa, and the Niagara Gorge Road for Lewiston, and at SLATER’S POINT with the steamers of the International Navigation Company from and to Buffalo. Connecting at QUEENSTON with the Niagara River Line Steamers for Toronto, and over the Queenston-Lewiston Suspension Bridge with the Niagara Gorge Road for Niagara Falls via American side.

BUFFALO & LOCKPORT RAILWAY

Cars for Lockport leave Main Street and Terrace, running out Main Street to Erie Railroad tracks—a beautiful ride through the country on a modern suburban road. At Lockport connection is made by trolley cars (Lockport & Olcott Railway) for Olcott Beach, on Lake Ontario, a charming lake resort.

RATES OF FARE BETWEEN

Buffalo and Niagara Falls, one way, 35 cents; round trip, 50 cents.

Buffalo and Tonawanda, one way, 15 cents; round trip, 25 cents.

Buffalo and North Tonawanda, one way, 17 cents; round trip, 30 cents.

Buffalo and Lockport, one way, 40 cents; round trip, 60 cents. Saturdays,

Sundays and Holidays, round trip, 50 cents.

Buffalo and Olcott Beach, round trip, \$1.00.

Buffalo and Queenston, round trip, \$1.00.

Buffalo and Lewiston, round trip, \$1.25

Niagara Falls, N. Y., to Chippawa, one way, 25 cents; round trip, 35 cents.

Niagara Falls, N. Y., to Queenston, one way, 35 cents; round trip, 60 cents.

Niagara Falls, N. Y., to Canadian side, and round trip over the entire

“Canadian Scenic Route,” 75 cents.

The **COVINGTON** 437 Prospect Avenue

10 Minutes' Ride to Exposition or Business District

BREAKFAST SERVED IF DESIRED

Rates Reasonable

MRS. H. C. BLANDFORD

STREET CAR ROUTES—CONTINUED

NIAGARA STREET LINE

ROUTE: Main and Exchange Sts., on Main, to Niagara, to Hertel Ave., to Tonawanda, to O'Neil St. (City Line). RETURNING: Tonawanda, to Hertel Ave., to Niagara, to Pearl, to Terrace, to Exchange and Main St. RUNNING TIME, to Hertel Ave. 28 minutes, to O'Neil St. 38 minutes, in each direction.

NIGHT CARS leave Main and Exchange Sts. 1:30 A. M., Hertel Ave. 2:10 A. M., and every 30 minutes thereafter.

EXPOSITION GROUNDS: Cars of this line, when so marked, run to Exposition Grounds.

SENECA STREET LINE

ROUTE: Main and Seneca Sts., on Seneca, to City Line. RETURNING: Same route. RUNNING TIME, 35 minutes in each direction.

NIGHT CARS leave Main and Seneca Sts. 12:30 A. M., City Line 1:07 A. M., and hourly thereafter.

SYCAMORE STREET LINE

ROUTE: Perry and Washington Sts., on Washington, to Huron, to Sycamore, to Walden Ave., to City Line. RETURNING: Same route. RUNNING TIME, 38 minutes in each direction.

NIGHT CARS leave Main and Exchange Sts. 12:00 midnight, City Line 12:40 A. M., and hourly thereafter.

UTICA STREET LINE

ROUTE: Michigan and Exchange Sts., on Exchange, to Main, to Utica, to Chenango, to Ferry, to Niagara St. RETURNING: Ferry, to Hampshire, to Winter, to Brayton, to Utica, to Main, to Seneca, to Michigan, to Exchange St. RUNNING TIME, 35 minutes in each direction.

EXPOSITION GROUNDS: Cars of this line, when so marked, run to Exposition Grounds.

The Cafe and Rathskeller at the MARKEEN surpass anything outside of New York City. German Cooking a Specialty.

Noye Manufacturing Co.

• 50 LAKE VIEW AVENUE,

BUFFALO, N. Y.

ENGINEERS,
FOUNDERS *AND*
MACHINISTS

MAKERS OF

ALL DESCRIPTIONS OF
FLOUR MILL MACHINERY

BUILDERS OF

HIGH-GRADE STEAM ENGINES

STREET CAR ROUTES—CONTINUED

WEST AVENUE & GRANT STREET LINE

ROUTE : Main and Exchange Sts., on Main, to Niagara, to Carolina, to West Ave., to York, to Plymouth, to Hampshire, to Grant, to Military Road, to New York Central Belt Line. RETURNING : On Military Road, to Grant, to Hampshire, to Normal Ave., to Jersey, to Plymouth Ave., to Hudson, to West Ave., to Carolina, to Niagara, to Huron, to Pearl, to Terrace, to Exchange and Main Sts. RUNNING TIME, 37 minutes in each direction.

EXPOSITION GROUNDS : Cars of this line, when so marked, run to Exposition Grounds.

WILLIAM STREET LINE

ROUTE : Main and North Division Sts., on Main, to Eagle, to Michigan, to William, to City Line. RETURNING : William to Michigan, to North Division, to Main St. RUNNING TIME, 30 minutes in each direction.

NIGHT CARS leave Main and North Division Sts. 12:06 A. M., City Line 12:40 A. M., and hourly thereafter.

SUBURBAN TROLLEY LINES

BUFFALO & NIAGARA FALLS ELECTRIC RAILWAY

ROUTE : Main and Exchange Sts., on Main, to Niagara, to Tonawanda, to Amherst, to Military Road, and from North Terminal Station, Pan-American Exposition Grounds, on Hertel Avenue, to Military Road, thence through Tonawanda, North Tonawanda, La Salle and Echota to Niagara Falls. (*Adv. page 60.*)

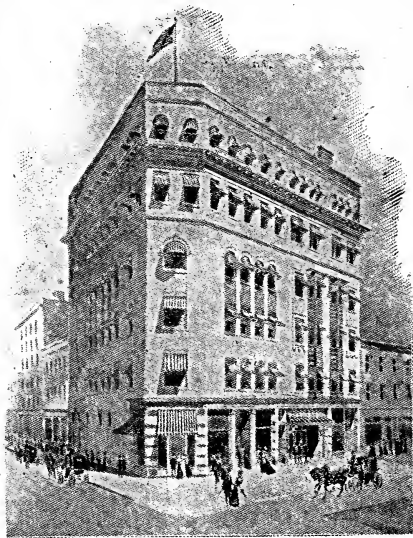
BUFFALO & LOCKPORT RAILWAY (ELECTRIC)

ROUTE : Main and Exchange Streets, on Main, to Erie Railroad tracks, and from North Terminal Station, Pan-American Exposition Grounds, on Hertel Avenue, to Main, to Erie Railroad tracks, thence through Tonawanda, North

The MARKEEN is centrally located, being within 10 minutes' ride of all Railroad Stations and Steamer Landings.

HOTEL DAVENPORT

Main and Webster Streets, N. TONAWANDA, N. Y.



EUROPEAN PLAN

EXCELLENT CAFE
RATES, \$2.00 TO \$4.00

*One Block from Trolley or
Steam Cars.*

The Davenport is only 15 minutes' ride by trolley or steam cars from Pan-American Grounds. Also Tally-Ho or Carriage Line.

It is on the route to Niagara Falls and off the crowded lines.

It is cool, pleasant, comfortable and convenient.

Write us before booking elsewhere.

When visiting the Pan-American, room at the

Mohawk Turkish Bath

Separate Baths for Gentlemen and Ladies



Nice Clean Beds !

Use of Shower and
Plunges !

Your Valuables in
Burglar-Proof Vault !

All for \$1.00

OPEN ALL NIGHT

Mohawk and Washington Streets.
One Block from Main Street.

BUFFALO, N. Y.

Tonawanda, Martinsville and Pendleton Center to Lockport, connecting at Lockport with Lockport and Olcott Railway (Electric) for Olcott Beach. (*Adv. Page 60.*)

BUFFALO, BELLEVUE & LANCASTER RAILWAY
(ELECTRIC)

ROUTE: Main and Clinton Streets, to Broadway, to City Line, through Bellevue and Depew to Lancaster.

BUFFALO & DEPEW RAILWAY (ELECTRIC)

ROUTE: (Connects with Genesee Street Line) From Genesee Street at City Line to Depew and North Lancaster.

BUFFALO, GARDENVILLE & EBENEZER RAILWAY
(ELECTRIC)

ROUTE: (Connects with Seneca Street Line) Cars leave Seneca Street, City Line, for Gardenville and Ebenezer.

BUFFALO & GRAND ISLAND RAILWAY (ELECTRIC)

ROUTE: Niagara Street and Hertel Avenue to City Line, to River Road, to Grand Island Ferry.

BUFFALO, HAMBURG & EAST AURORA RAILWAY
(ELECTRIC)

ROUTE: (Connects with Bailey Avenue Line) From City Line at South Park to Roland, Blasdell, Hamburg and East Aurora.

BUFFALO & KENMORE RAILWAY (ELECTRIC)

ROUTE: Main and Exchange Sts., on Main, to Florence Place, to Parkside Avenue, to Crescent Ave., to Virgil St., to Delaware Ave., to Tonawanda, to Gratwick.


BUFFALO & WILLIAMSVILLE RAILWAY
(ELECTRIC)

ROUTE: (Connects with Main St. Line) City Line and Main St., to Eggertsville, Snyder and Williamsville.

The MARKEEN, Main and Utica Sts.—Ladies' and Gentlemen's Cafe, open from 6:00 A. M. to 12:30 P. M. Cuisine and Service Unexcelled.

TO THE
Rockies and Beyond



FROM UNION STATIONS AT 
St. Louis and Kansas City

TO
Pueblo, Colorado Springs, Denver

Making direct connections with the

ROCKY MOUNTAIN ROUTES TO THE PACIFIC COAST

Four daily trains St Louis to Hot Springs, Ark. (the Carlsbad of America), Dallas, Fort Worth, El Paso, San Antonio, Austin, Houston, Galveston, Shreveport, New Orleans, Laredo, and all points in New and Old Mexico, Arizona and California.

*Do not fail to see our exhibit at the
Pan-American Exposition.*

For Sleeping Car Reservations, Time Folders and further information, call on or address:

J. P. McCANN, Traveling Passenger Agent, 391 Broadway, NEW YORK.
JOHN R. JAMES, Central Pass. Agent, Room 905, Park Bldg., PITTSBURG, PA
W. E. HOYT, General Eastern Passenger Agent, 391 Broadway, NEW YORK.
C. G. WARNER, Vice-President, ST. LOUIS, MO.
RUSSELL HARDING, Vice-President and General Manager, ST. LOUIS, MO.
H. C. TOWNSEND, General Passenger and Ticket Agent, ST. LOUIS, MO.

RAILWAY STATIONS

ERIE STATION

Exchange and Michigan Streets

(No. 4 on Map, Page 49)

All trains of the Erie, New York, Chicago & St. Louis (Nickel Plate), and Wabash Railroads arrive at and depart from this station. All cars passing New York Central Station pass this station.

LACKAWANNA STATION

Foot of Main Street

(No. 6 on Map, Page 49)

All trains of the Delaware, Lackawanna & Western Railroad arrive at and depart from this station.

Take cars of the Main St., Albany & School Sts., East Ferry St., and Kensington Lines.

LEHIGH VALLEY STATION

Washington and Scott Streets

(No. 5 on Map, Page 49)

All trains of the Lehigh Valley Railroad and connecting trains of the Grand Trunk Railway arrive at and depart from this station.

Cars of the Genesee St., Sycamore St., and Elk St. Lines pass this station, or take Main St., Albany & School Sts., East Ferry St. and Kensington Lines to Scott St.

NEW YORK CENTRAL STATION

Exchange Street, opposite Wells Street

(No. 3 on Map, Page 49)

All trains of the New York Central & Hudson River, West Shore, Lake Shore & Michigan Southern, Michigan Central, Toronto, Hamilton & Buffalo, Buffalo & Allegheny Valley Division of the Pennsylvania, Buffalo, Rochester & Pittsburg Railroads and Grand Trunk Railway, via International Bridge, arrive at and depart from this station.

Take cars of the Baynes & Hoyt Sts., Utica St., Michigan St., and Jefferson St. Lines.

VISITORS have not seen BUFFALO until they have visited the RATHSKELLER at the MARKEEN, Main and Utica Streets.

C. W. Miller Transfer Co.

Baggage Called For and Checked to Destination

GENERAL OFFICE : 8 East Eagle Street

Telephone, Seneca 435.

Coaches, *At a Moment's Notice,*

Coupes, *Day or Night*

Largest Stables Broughams,

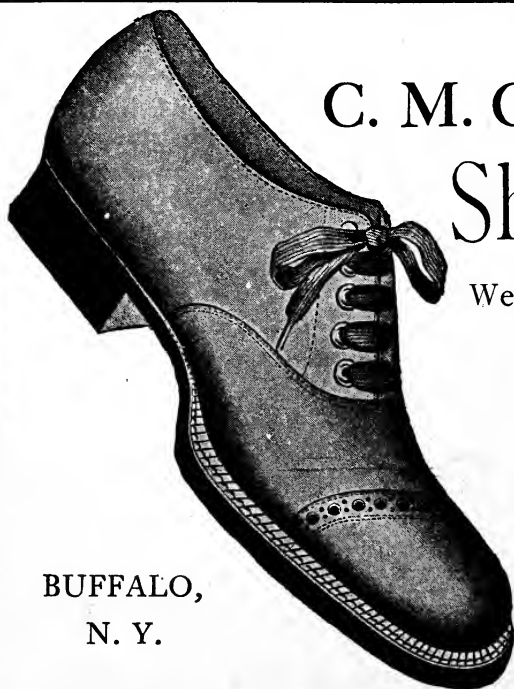
in America

Victorias, Etc.

73, 75 and 77 West Huron Street

Telephone, Seneca 435

BUFFALO, N. Y.



THE
C. M. Clapp Co.'s
Shoes

are
Famous
FOR

Wearing Qualities,
Latest Styles,
Lowest Prices.

OUR

\$2.50 Shoes for Men

AND

\$3.00 Shoes for Women

Lead the World

388 MAIN STREET

BUFFALO,
N. Y.

RAILWAY TICKET OFFICES

- Buffalo & Lockport Electric—178, 233, 345 and 346 Main Street.
Buffalo and Niagara Falls Electric—178, 233, 345 and 346 Main Street.
Buffalo, Rochester and Pittsburg—305 Main Street, Ellicott Square.
Canadian Pacific—Main and Seneca Streets.
Chicago and Northwestern—301 Main Street, Ellicott Square.
Erie—309 Main Street, Ellicott Square.
Grand Trunk—285 Main Street, Ellicott Square.
Lackawanna—289 Main Street, Ellicott Square.
Lake Shore & Michigan Southern—297 Main Street, Ellicott Square.
Lehigh Valley—369 Main Street, Iroquois Hotel.
Michigan Central—299 Main Street, Ellicott Square.
New York Central—377 Main Street, corner Eagle Street.
Nickel Plate—291 Main Street, Ellicott Square.
Northern Central—307 Main Street, Ellicott Square.
Pennsylvania—307 Main Street, Ellicott Square.
Wabash—287 Main Street, Ellicott Square.
West Shore—377 Main Street, corner Eagle Street.

JOINT TICKET AGENCY

50 and 52 Exchange Street.

EXPRESS OFFICES

- Adams—5 South Division Street, Ellicott Square.
American—309 and 585 Main Street.
Canadian—5 South Division Street, Ellicott Square.
National—5 South Division Street, Ellicott Square.
Northern Pacific—5 South Division Street, Ellicott Square.
Pacific—Swan and Washington Streets, Ellicott Square.
United States—Swan and Washington Streets, Ellicott Square.
Wells, Fargo & Co.—22 West Eagle Street.
-

FERRIES

- Fort Erie, Ont., from Ferry Street Wharf.
Grand Island, from Ferry Street Wharf and from River Road.
-

The Cafe and Rathskeller at the MARKEEN surpass anything outside of New York City. German Cooking a Specialty.

W. A. Case & Son

WHOLESALE

Plumbers' & Engineers' Supplies

OUR SPECIALTIES

Empire State Baths
Avondale Baths
Regina Baths

Queen City Low-Down Closets
Buffalo Syphon-Jet Closets
Erie Washout Closets

Ormal Porcelain Tank and Bowl
Syphon Jet Combination

Office and Salesroom, 31 Main St. and 42-48 Washington St.

BUFFALO, N. Y.

CALL ON US WHEN IN THE CITY

The United States Hotel

Visitors to Pan-American Exposition
will find the above Hotel convenient
to all Railroad Depots, Steamer
Docks and Electric Street Car Lines

*Large, cool rooms with separate individual
beds for each guest at 75 cents and one dollar*

MEALS TO ORDER ONLY

Corner Terrace and Pearl Street, one block
from Main Street at head of Exchange Street

BUFFALO, N. Y.

STEAMER LINES AND WHARVES

*Number following wharf shows its location on Map of
Buffalo, pages 48, 49.*

- CLEVELAND & BUFFALO LINE—Wharf (7) foot of Illinois Street. Cars of Main Street Line run direct to Wharf.
- GREEN BAY LINE—Wharf (9) foot of Main Street. Take cars of Main Street Line.
- NIAGARA EXCURSION CO.—Wharves foot of Main Street and foot of Ferry Street (28).
- NORTHERN STEAMSHIP CO.—Wharf (8) foot of Main Street. Take cars of Main Street Line.
- ERIE & WESTERN TRANS. CO. (Anchor Line)—Wharf (11) Atlantic Dock, foot of Evans Street.
- BUFFALO & ERIE LINE—Wharf (10) foot of Commercial Street.
- INTERNATIONAL NAVIGATION CO.—Wharf (28) foot of Ferry Street.
- EXCURSION STEAMERS—Wharves foot of Main Street (8) and foot of Ferry Street (28).

STEAMER TICKET OFFICES

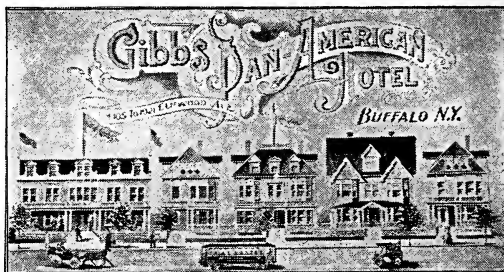
- ANCHOR LINE—Atlantic Dock, foot of Evans Street.
- CLEVELAND & BUFFALO TRANSIT CO.—289 Main Street, Ellicott Square, and Wharf, foot of Illinois Street.
- BUFFALO & ERIE LINES—Foot of Commercial Street.
- GREEN BAY LINE—289 Main Street, Ellicott Square, and Wharf, foot of Illinois Street.
- INTERNATIONAL NAVIGATION CO.—Foot of Ferry Street, and principal railroad offices and hotels.
- NORTHERN STEAMSHIP CO.—408 Prudential Building, 369 Main Street, Iroquois Hotel and Wharf, foot of Main Street.

The MARKEEN is centrally located, being within 10 minutes' ride of all Railroad Stations and Steamer Landings.

Hotel Gibbs

1005 - 1021 Elmwood Ave., BUFFALO, N. Y.

Rates \$1.00 to \$3.00
per Day



Accommodates

1,000

EUROPEAN PLAN.

A high - class family hotel, located within five minutes' walk of
Main Entrance to Pan-American Grounds

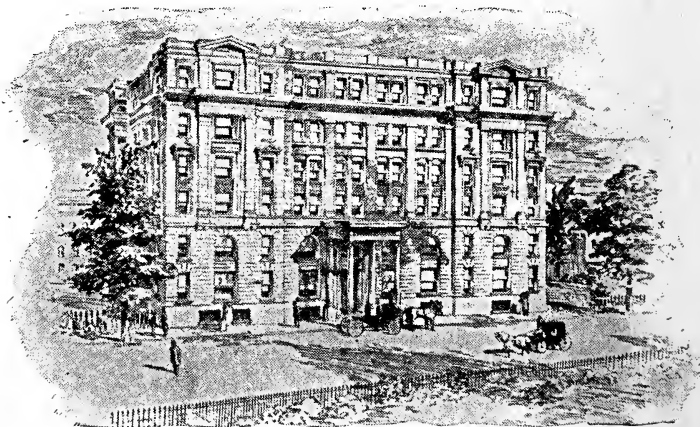
Elmwood Avenue Cars Run Direct to Hotel

SEND FOR BOOKLET

JOHN W. GIBBS, Proprietor

W. CHAPIN SQUIRES, Manager

The Berkeley BUFFALO, N. Y.



JOHNSON PARK—DELAWARE AVENUE

Absolutely Fireproof
Rooms en Suite or Single

Private Bath with Every Suite
Terms Moderate

J. S. BLISS, Proprietor

HOTELS

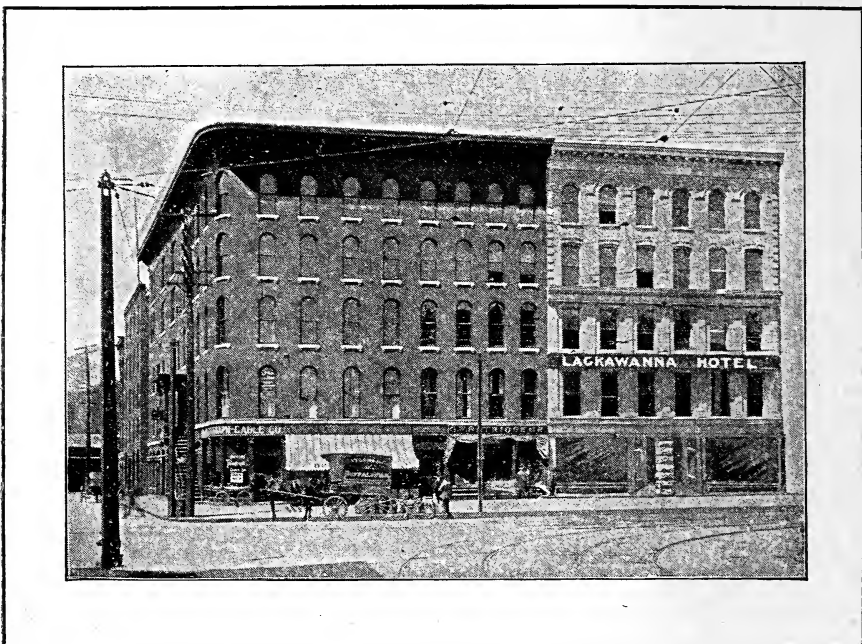
The figure following name of Hotel indicates location on Map, pages 48, 49.

- Alcazar (63)—Amherst Street near Elmwood Avenue (Adv. page 8).
Ansteth (62)—1073 Grant Street, opposite Austin (Adv. page 2).
Arlington—Exchange and Wells Streets.
Armstrong, The (46)—West Mohawk Street and Delaware Avenue
(Adv. page 32).
Bank—28 East Genesee Street.
Barnes—280 Pearl Street.
Berkeley, The (47)—Delaware Avenue and Johnson Park (Adv. page 72).
Bidwell Park (57)—Bidwell Parkway near Soldiers' Place (Adv. page 18).
Brainard House—1039 William Street.
Broezel (42)—Seneca and Wells Streets (Adv. page 84).
Castle Inn, The—Niagara Square and Delaware Avenue.
Camp Jewett—Oakland Place and Parkside Avenue (Adv. page 96).
Carleton—Washington and Exchange Streets.
Chapin Parkway (58)—Chapin Parkway and Potomac Avenue (Adv.
page 28).
Chapin Place, The—Delaware Avenue and Chapin Place.
City, The—Michigan and Exchange Streets.
Columbia—101-107 Seneca Street.
Crandall House—965 William Street.
Davenport—North Tonawanda (Adv. page 64).
Detroit (44)—Niagara, Eagle and Pearl Streets (Adv. page 12).
Fenton—Main and West Ferry Streets.
Fillmore House—Michigan and Carroll Streets.
Fornes, The—Court and Pearl Streets.
Genesee—Main and Genesee Streets.
Grant, The—Grant and Ferguson Streets.
Gibbs (60)—1005-1021 Elmwood Avenue (Adv. page 72).
Hotel Schenley Co., The—200 Niagara Street.
Hudson, The—Hudson Street, opposite Plymouth Avenue.
Iroquois (43)—Main and Eagle Streets (Adv. page 100).
Jefferson, The—1350-1352 Jefferson Street (Adv. page 110).
Kenilworth, The (54)—Elmwood Avenue and Anderson Place (Adv.
page 46).

The MARKEEN, Main and Utica Sts.—Ladies' and Gentlemen's Cafe,
open from 6:00 A. M. to 12:30 P. M. Cuisine and Service Unexcelled.

Lackawanna Hotel

62, 64 MAIN STREET, BUFFALO, N. Y.



EUROPEAN PLAN MODERN IMPROVEMENTS

Adjoining D., L. & W. Passenger Depot and all
Lake Passenger Boat Landings

Electric Cars from Hotel every Three Minutes
for Exposition

200 ROOMS - - - - - 50 WITH BATH

Dining Room Seating 600 People

Rates \$1.00 and upwards. Meals a la Carte

G E O. M. T A Y L O R, M A N A G E R

HOTELS—CONTINUED

- Lackawanna (48)—62-64 Main Street (Adv. page 74).
- Lenox, The (53)—North Street, near Delaware Avenue (Adv. cover).
- Mansion House.—Main and Exchange Streets.
- Markeen (64)—Main and Utica Streets (Adv. page 1 and margins).
- Moeller House—Main and Scott Streets.
- National—Exchange and Ellicott Streets.
- New Continental (40)—Exchange and Michigan Streets (Adv. page 2).
- New Gruener—Washington and Huron Streets.
- New Tift—465 Main Street, near Broadway.
- Niagara—Porter Avenue and Seventh Streets.
- Northland (50) 385-387 Ellicott Street (Adv. page 102).
- Ohio—West Huron and Main Streets.
- Orton, The—Hudson Street and Orton Place (Adv. page 94).
- Park House—744 Main Street.
- Park, The (55)—Delaware Avenue, near Amherst Street (Adv. page 46).
- Porter, The (52)—Porter and Plymouth Avenues (Adv. page 26).
- Palmer House—881 Main Street.
- Raleigh, The (51)—352-354 Franklin Street (Adv. page 20).
- Robinson—Washington and Eagle Streets.
- Rockford, The—1411 Main Street (Adv. cover).
- Rienzi, The—356 Main Street, near Niagara Street.
- Sheldon—North Tonawanda (Adv. page 86).
- Stafford House—Washington and Carroll Streets.
- Statler's (59)—Elmwood Avenue, near Forest Avenue (Adv. page 50).
- Strand—Huron and Oak Streets.
- Temperance—220-222 Ellicott Street.
- Tremont House—Seneca and Washington Streets.
- 20th Century (56)—Delaware Avenue, near Amherst Street (Adv. page 86).
- Victoria (45)—Niagara, Eagle and Franklin Streets (Adv. page 24).
- Woman's Christian Association Lodge (61)—266-270 Grote Street, near Amherst Street (Adv. page 112).
- Zenobia (49)—16-18 Prospect Avenue (Adv. page 52).

VISITORS have not seen **BUFFALO** until they have visited the **RATHSKELLER** at the **MARKEEN**, Main and Utica Streets.



NEW GOVERNMENT BUILDING.

POSTAL INFORMATION

BUFFALO POST-OFFICE, GOVERNMENT BUILDING

(No. 2 on Map, page 49)

Ellicott, Swan, Oak and South Division Streets

Main Entrances on Ellicott and Swan Streets

GENERAL DELIVERY—Open at all hours *Week Days*. *Sundays* and *Holidays* from 10.00 to 11.30 A. M. only.

BOX DELIVERY—All mail matter addressed to box placed therein, and all matter addressed to any person known as being a box holder is placed in the proper box.

MAILING DIVISION—The Mailing Division window is open for weighing packages, giving information, etc., from 7.00 A. M. to 11.00 P. M. *Sundays* and *Holidays* from 10.00 to 11.30 A. M.

REGISTRY DIVISION—Open from 8.00 A. M. to 6.00 P. M. Closed on *Sundays* and *Holidays*.

MONEY-ORDER DIVISION—Hours of business from 9.00 A. M. to 5.00 P. M. Closed on *Sundays* and *Holidays*.

POSTAGE STAMPS, STAMPED ENVELOPES, ETC.
—The stamp window will be open for the sale of stamps, etc., from 7.00 A. M. to 11.00 P. M. Stamps in small quantities during the night can be had at the General Delivery; and on *Sundays* and *Holidays* from 10.00 to 11.30 A. M.

SPECIAL DELIVERY LETTERS—Delivered at all times—day or night, *Sundays* or *Holidays*.

DROPS FOR RECEIVING MAIL MATTER are open at all hours.

LATE MAILS—For the reception of mail too late for the Post-Office, boxes have been placed in the New York Central Station and Erie Station. Mail is taken from these boxes 15 minutes before the departure of trains carrying mail cars.

(Continued on page 79)

The Cafe and Rathskeller at the MARKEEN surpass anything outside of New York City. German Cooking a Specialty.

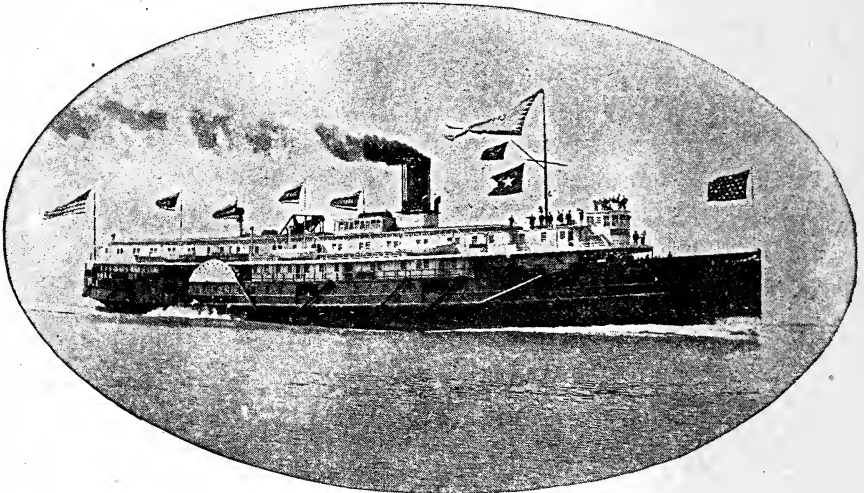
Pan-American Route



CLEVELAND
BETWEEN *and* BUFFALO

Steamers "CITY OF BUFFALO" and "CITY OF ERIE"

of the BUFFALO DIVISION, are the Fastest, Staunchest and the Best Throughout of any Steamers Plying the Waters of the Great Lakes.



C. & B. LINE NEW STEAMER, "CITY OF ERIE."

TIME CARD—DAILY—TO DECEMBER 1ST, 1901.

Leave Cleveland 8.00 P. M.	Leave Buffalo 8.00 P. M.
Arrive Buffalo 6.30 A. M.	Arrive Cleveland 6.30 A. M.

ADDITIONAL SERVICE DURING JULY AND AUGUST—DAILY EXCEPT SUNDAY.

Leave Cleveland 8.00 A. M.	Leave Buffalo 8.00 A. M.
Arrive Buffalo 6.00 P. M.	Arrive Cleveland 6.00 P. M.

Also leave Cleveland Tuesdays, Thursdays and Saturdays 5 P. M.; arrive Buffalo 5.30 A. M. Also leave Buffalo Mondays, Wednesdays and Fridays 5 P. M.; arrive Cleveland 5.30 A. M.

All Central Standard Time. Orchestra accompanies each steamer.

Connections made at Buffalo with trains for all Eastern and Canadian points, at Cleveland for Detroit and all points West and Southwest.

Ask ticket agents for tickets via C. & B. Line. Send four cents for illustrated pamphlet.

For all information relative to special low rates and tickets, apply to

FRANK A. GROSS, City Ticket Agent,
289 Main Street, Ellicott Square, Buffalo, N. Y.

H. S. FISHER, General Agent,
Wharves, Ohio, cor. Illinois St.,
Buffalo, N. Y.

W. F. HERMAN,
General Passenger Agent,
Wharves, 137 River St., Cleveland, O.

POSTAL INFORMATION

STATIONS :

- Station A—799 William Street.
Station B—71 Forest Avenue.
Station C—939 West Ferry Street.
Station D—755 Seneca Street.
Station E—551 East Genesee Street.

Open from 7.00 A. M. to 7.30 P. M. On Sundays and Holidays open from 11.30 A. M. to 12.30 Noon. Money Order and Registry Division open 8.00 A. M. to 6.00 P. M. Closed on *Sundays and Holidays* :

SUB-STATIONS :

Stamps and Money Orders can be purchased, and letters registered, at these Stations.

- | | |
|---------------------------|------------------------------------|
| No. 1—2137 Seneca St. | No. 27—720 Elmwood Ave. |
| “ 2—1491 Elk St. | “ 28—399 West Ave. |
| “ 3—312 Elk St. | “ 29—937 Clinton St. |
| “ 4—569 Walden Ave. | “ 30—695 Genesee St. |
| “ 5—1175 Lovejoy St. | “ 31—197 Genesee St. |
| “ 6—1223 Jefferson St. | “ 32—346 South Division St. |
| “ 7—2321 Main St. | “ 33—276 Triangle St. |
| “ 8—225 Allen St. | “ 34—220 Carolina St. |
| “ 9—Niagara Bank. | “ 35—80 School St. |
| “ 10—1985 Niagara St. | “ 36—1167 Niagara St. |
| “ 11—306 West Ferry St. | “ 37—209 Fourteenth St. |
| “ 12—238 Lexington Ave. | “ 38—Live Stock Exchange. |
| “ 13—1129 Broadway. | “ 39—9 Walden Ave. |
| “ 14—586 Main St. | “ 40—1133 Seneca St. |
| “ 15—282 Amherst St. | “ 41—279 Bryant St. |
| “ 16—Prudential Building. | “ 42—705 Broadway. |
| “ 17—150 Rhode Island St. | “ 43—1540 Clinton St. |
| “ 18—594 Niagara St. | “ 44—69 West Ave. |
| “ 19—351 Potomac Ave. | “ 45—429 Rhode Island St. |
| “ 20—1376 Fillmore Ave. | “ 46—335 Herkimer St. |
| “ 21—380 William St. | “ 47—D. S. Morgan Building. |
| “ 22—524 Niagara St. | “ 48—Erie County Bank
Building. |
| “ 23—776 Tonawanda St. | “ 49—35 State St. |
| “ 24—1095 Broadway. | “ 50—Dun Building. |
| “ 25—931 Main St. | “ 51—268 Main St. |
| “ 26—2648 Main St. | |

There will also be a fully-equipped Postal Station in the Government Building on the Exposition grounds.

The MARKEEN is centrally located, being within 10 minutes' ride of all Railroad Stations and Steamer Landings.



CITY AND COUNTY HALL.

GOVERNMENT OFFICES

Post Office, First Floor	Government Building.	
U. S. Inspector of Boilers, Second Floor	“	“
U. S. Inspector of Hulls, Second Floor	“	“
Custom House, Third Floor	“	“
Internal Revenue Office, Third Floor	“	“
U. S. Immigration Inspector, Third Floor	“	“
U. S. Life Saving Station, Third Floor	“	“
U. S. Navy Lighthouse, Third Floor	“	“
U. S. District Attorney, Fourth Floor	“	“
U. S. Marshal, Fourth Floor.....	“	“
U. S. Circuit Court, Fourth Floor.....	“	“
U. S. District Court, Fourth Floor.....	“	“
U. S. Pension Agency, Fourth Floor.....	“	“
U. S. Engineer's Office, Fifth Floor.....	“	“

OFFICE BUILDINGS

- Anderson Building—534, 536 Main Street.
- Austin Building—Franklin and Eagle Streets.
- Beecher Building—South Division and Ellicott Streets.
- Board of Trade Building—Seneca and Pearl Streets.
- Brown Building—Main and Seneca Streets.
- Builders' Exchange—Court and Pearl Streets.
- Caxton Building—45 North Division Street.
- City National Bank Building—319 Main Street.
- Coal and Iron Exchange Building—257 Washington Street.
- Dun Building—Franklin and Swan Streets.
- Ellicott Square Building—Main, Swan, Washington and S. Division Sts.
- Erie County Savings Bank Bldg.—Main, Niagara, Church and Pearl Sts.
- Exchange Building—196, 202 Main Street.
- German-American Bank Building—Main and Court Streets.
- German Insurance Building—Main Street and Broadway.
- Glenny Building, 251 Main Street.
- Gould Building—361, 363 Washington Street.
- Kremlin Block—Niagara, Pearl and West Eagle Streets.
- Lewis Block—Swan and Washington Streets.
- Marine Bank Building—Main and Seneca Streets.
- Matthews Building—Washington and Exchange Streets.
- Mooney-Brisbane Building—Main, Washington and Clinton Streets.
- D. S. Morgan Building—Niagara and Pearl Streets.
- Music Hall Building—Main and Edward Streets.
- Prudential Building—Pearl and Church Streets.
- Stafford Building—Pearl and Church Streets.
- Western Savings Bank Building—Main and Court Streets.
- White Building—292, 298 Main Street.

The MARKEEN, Main and Utica Sts.—Ladies' and Gentlemen's Cafe, open from 6:00 A. M. to 12:30 P. M. Cuisine and Service Unexcelled.



MUNICIPAL BUILDING.

CITY AND COUNTY OFFICES

*(City and County Hall No. 12, Municipal Building No. 13,
on Map of Buffalo—pages 48 and 49.)*

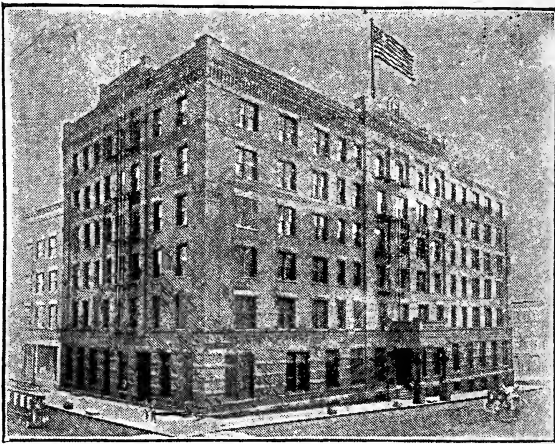
Mayor.....	Room 12, City and County Hall
Board of Public Works	“ 1, “ “ “ “
City Treasurer.....	“ 2, “ “ “ “
Comptroller	“ 3, “ “ “ “
City Clerk	“ 4, “ “ “ “
Park Commissioners.....	“ 5, “ “ “ “
Superintendent of Streets	“ 7, “ “ “ “
Sheriff	“ 8, “ “ “ “
County Clerk.....	“ 9, “ “ “ “
County Treasurer	“ 11, “ “ “ “
City Engineer	“ 13, “ “ “ “
Assessors	“ 15, “ “ “ “
District Attorney.....	“ 16, “ “ “ “
Commissioner of Jurors	“ 25, “ “ “ “
Board of Councilmen	“ 28, “ “ “ “
Board of Aldermen	“ 29, “ “ “ “
Corporation Counsel.....	“ 31, “ “ “ “
Supervisors	“ 35, “ “ “ “
County Auditor.....	“ 37, “ “ “ “
Bureau of Buildings.....	Room 1, Municipal Building
Bureau of Water.....	“ 6, “ “ “
Department of Public Instruction.....	“ 10, “ “ “
Department of Health.....	“ 14, “ “ “
Registrar of Vital Statistics.....	“ 13, “ “ “
Examiners Stationary Engineers and Boilers	“ 22, “ “ “
Coroners.....	241 Terrace, near Church Street
Department of Poor	44 W. Seneca Street
Grade Crossing Commissioners.....	436 Ellicott Square Building
Civil Service Commissioners	805 “ “ “
Excise Commissioners	586 “ “ “
Department of Fire.....	Court and Staats Streets
Police Commissioners, Headquarters Building,	Franklin and Seneca Streets
Superintendent of Police, “ “ “ “ “	“ “ “ “ “

VISITORS have not seen **BUFFALO** until they have visited the **RATHSKELLER** at the **MARKEEN**, Main and Utica Streets.

Hotel Broezel

B U F F A L O , N . Y .

THE LATEST CONSTRUCTED AND MOST MODERN
HOTEL IN THE PAN-AMERICAN CITY.



MAGNIFICENT BRICK FIREPROOF HOTEL. ✿ Two hundred rooms, with and without private baths. Entire building devoted to hotel purposes—no stores. ✿ Most elegantly and completely fitted and furnished hostelry in northern and western New York. ✿ Within a block of the Central and Erie Depots. ✿ Electric cars pass the door for every point in the city; direct to Exposition Grounds without change.

European Plan, \$2.50 per day and up

TELEPHONE PAY STATIONS

For rates and information regarding points outside of Buffalo, call "Toll 75"

THE BELL TELEPHONE CO.—TELEPHONE, SENECA 67

RAILROAD STATIONS

New York Central Station. Erie Station.
Lehigh Valley Station. Lackawanna Station.

HOTELS

Iroquois—Main and Eagle Streets. The Markeen—Main and Utica Sts.
Mansion House—Main and Exchange Streets. The Berkeley—Delaware Avenue and Johnson Park.
Broezel—Seneca and Wells Streets. The Hollenden—271 Franklin St. (W. Chippewa).
The Arlington—Exchange and Wells Streets. Ansteth—1073 Grant St. (Austin).
New Continental—Michigan and Exchange Streets. Robinson—Washington and Eagle Streets.
The Genesee—Main and Genesee Streets. Brainard—1035 William St. (East Buffalo).
New Tiff—465 Main Street. Stock Exchange—1009 William St. (East Buffalo).
The Castle Inn—Niagara Square and Delaware Avenue

OFFICE BUILDINGS

Ellicott Square Building. Mutual Life Building.
D. S. Morgan Building. Mooney-Brisbane Building.
Prudential Building. Erie County Savings Bank Building.

THEATERS

Star—Mohawk and Pearl Streets. Lyceum—Washington St. (Broadway).
Shea's Garden—Pearl St. (Niagara)

RESTAURANTS

Almendinger's — D. S. Morgan Building. Statler's—Ellicott Square Building.
Ackerman's—19 Court Street.

DRUG STORES

35 West Eagle Street (Niagara). Normal Avenue and Hampshire St.
Main and Exchange Streets. 887 Prospect Avenue (Hampshire).
73 Genesee Street (Ellicott). 150 Rhode Island Street (Fargo).
76 East Huron Street (Oak). 186 Vermont Street (West Ave.).
Main and Virginia Streets. 69 West Avenue (Virginia).
Main and Allen Streets. 720 Elmwood Ave. (Breckenridge).
Main and Sumner Streets. 238 Lexington Avenue (Ashland).
Seneca and Michigan Streets. 2351 Main Street (Leroy).
467 Michigan Street (Clinton). Main and Parker Streets.
Seneca and Louisiana Streets. 109 Baynes Street (Auburn).
169 Allen Street (Park). 306 West Ferry Street (Grant).
234 Allen Street (College). 72 Forest Avenue (West Avenue).
279 Bryant Street (Elmwood). 1843 Niagara Street (Amherst).

The Cafe and Rathskeller at the MARKEEN surpass anything outside of New York City. German Cooking a Specialty.

20th Century Hotel and Restaurant

OPEN DAY
AND NIGHT

*Delaware Avenue, opposite entrance to Pan-American
Exposition, and in front of Buffalo Bill's Wild West Show*



Splendid panoramic view of the Grounds. Electric
Tower within 200 yards. Every comfort and
convenience. The best of service. Unexcelled
Menu.



HAGAN & CONNERS, Props.

Telephone, Bryant 165.

Write to-day and secure rooms.

Hotel Sheldon

North Tonawanda, N. Y.

SUBURB OF BUFFALO

Old Established Hotel. Newly Furnished Throughout.
Ten minutes' ride to Pan-American Grounds. Eleven miles
to Niagara Falls. Electric Cars and Tally Ho's pass door.

EUROPEAN PLAN—Cuisine Unsurpassed

Grand view of Exposition Grounds and Electrical Display.
New York Central, Lehigh and Erie R. R. Depots oppo-
site Hotel. 100 trains daily direct to Pan-American Grounds.

W. P. COBB, Proprietor.

TELEPHONE PAY STATIONS—CONTINUED

- | | |
|------------------------------------|-------------------------------------|
| 124 Chenango St. (Massachusetts). | 1872 Niagara Street (Amherst). |
| 330 Connecticut St. (Plymouth). | 1172 West Avenue (Delavan). |
| 283 Niagara Street. (Carolina). | 181 William Street (Cedar). |
| 588 Niagara Street (Jersey). | 312 Elk Street (Louisiana). |
| 836 Niagara Street (Rhode Island). | 821 Elk Street (Smith). |
| Plymouth Ave. and Pennsylvania St. | 1315 Jefferson Street (East Utica). |
| Porter and Normal Avenues. | 1233 Michigan St. (Southampton). |

MISCELLANEOUS

- | | |
|--|---|
| Dodds Bros.—63 West Chippewa Street (Franklin). | R. F. Sherman & Co.—586 Main Street (Chippewa). |
| Buffalo Republican Club—575 Elliott Square Building. | Women's Christian Association—10 Niagara Square. |
| The Wm. Hengerer Co.—256 Main Street. | Manufacturers' & Traders' Bank—270, 272 Main Street. |
| Statler's Cigar Store—Ellicott Sq. Building. | Buffalo Public Library—Washington Street and Broadway. |
| City National Bank—319 Main St. | The Buffalo Yacht Club—Foot of Porter Avenue. |
| H. Kleinhans & Co.—Main and Clinton Streets. | S. J. Heath—399 West Avenue (Porter). |
| Murray & Meyers Cigar Store—366 Main Street (Eagle). | Central Park Market Co.—2652 Main Street (Amherst). |
| Western Union Telegraph Co.—537 Main Street (Genesee). | Live Stock Exchange—William and Depot Streets (East Buffalo). |
| Doll's Turkish Baths (The Genesee Hotel). | R. J. Devine—1628 Main Street (Balcom). |
| Otowega Flats—74 Day's Park. | |

COURTS

- Supreme Court—Part 1, City and County Hall Building.
 Supreme Court—Part 2, City and County Hall Building.
 Supreme Court—Part 3, City and County Hall Building.
 Supreme Court—City and County Hall Building.
 Municipal Court—City and County Hall Building.
 Surrogate Court—City and County Hall Building.
 Police Court—Police Headquarters Building.

POLICE STATIONS

POLICE HEADQUARTERS—Franklin and Seneca Streets.

- | | |
|---|-----------------------------------|
| No. 1—Police Headquarters Bldg. | No. 7—355 Louisiana Street. |
| No. 2—403 Seneca Street. | No. 8—884 William Street. |
| No. 3—425 Pearl, near Chippewa St. | No. 9—Seneca and Babcock Sts. |
| No. 4—Sycamore and Ash Streets. | No. 10—566 Niagara Street. |
| No. 5—West Delavan Avenue and Greenwood Street. | No. 11—Broadway and Bailey Ave. |
| No. 6—1444 Main Street. | No. 12—1186 Genesee Street. |
| | No. 13—Austin and Joslyn Streets. |

The MARKEEN is centrally located, being within 10 minutes' ride of all Railroad Stations and Steamer Landings.

Stranger: Stop! Read!

Why not visit all the POINTS OF INTEREST? *Remember* NIAGARA FALLS and all PLEASURE RESORTS can be reached by BICYCLE. We have the largest and most complete BICYCLE LIVERY in the city and our charges are moderate ♡ ♡ ♡

Glouster Cycle Co.

71 East Genesee Street

TELEPHONE, SENECA 835

BUFFALO, N. Y.

YANKEE FLYER
THISTLE
GLOUSTER
RECORD

Bicycles



THERE'S REAL COMFORT

IN THE REEVES

Ideal Spring Seat Post.

It relieves all jolts and jars, and converts any Bicycle, new or old, into a Cushion Frame. Fits any wheel. Sent prepaid to any address on receipt of \$1.75. Money back after three days' trial if you want it. Send size of present post.

D. E. ORVIS & CO., 71 E. Genesee St. Buffalo, N. Y.

Reference, Buffalo Commercial Bank.

TELEGRAPH OFFICES

WESTERN UNION TELEGRAPH CO.

Main Office, 281 Main Street, Ellicott Square Building.

To Telephone Telegrams, Seneca 398.

To order Messengers, Telephone Seneca 41.

Messengers will be promptly furnished on application to Main Office or any Branch Office.

BRANCH OFFICES

Room 35, Board of Trade Bldg.	194 Main Street.
319 Main Street.	Erie County Bank Building.
537 Main Street.	943 Main Street.
935 W. Ferry Street.	1593 Niagara Street.
Live Stock Exchange.	488 William Street.
211 Vermont Street.	413 Niagara Street.
Tift House.	Hotel Broezel.
New York Central Station.	Erie Station.
Lackawanna Station.	173 Perry Street.

Branch Offices will also be located in various parts of the Exposition Grounds.

POSTAL TELEGRAPH CABLE COMPANY

Main Office, 207 Main Street.

To Telephone Telegrams, Seneca 85.

To order Messengers, Telephone Seneca 85.

Messengers will be promptly furnished on application to Main Office or any Branch Office.

BRANCH OFFICES

56 Main Street.	194 Main Street.
Hotel Iroquois.	22 Palace Arcade.
Mooney-Brisbane Building.	143 Michigan Street.
Board of Trade Building.	187 Tonawanda Street.
Prudential Building.	Mutual Life Building.
64 Exchange Street.	Jacob Dold Packing Co.,
Snow Steam Pump Works,	703-753 William Street.
Roesser Ave. and Snow St.	Live Stock Exchange.
D. S. Morgan Building.	15½ Wadsworth Street.
Niagara and Maryland Streets.	

Branch Offices will also be located in various parts of the Exposition Grounds.

The MARKEEN, Main and Utica Sts.—Ladies' and Gentlemen's Cafe,
open from 6:00 A. M. to 12:30 P. M. Cuisine and Service Unexcelled.

*I*t matters not where you are—in Buffalo or a thousand miles away—you will enjoy the news and splendid illustrations of the

Pan-American Exposition

TO BE FOUND CONSTANTLY IN THE

ILLUSTRATED

BUFFALO EXPRESS

On receipt of \$1.00 it will be sent by mail to any address in the United States for six months.

EVERY ISSUE will contain something about the Exposition. To thoroughly enjoy your visit here, you should keep informed before you get here and after your return home. You can best do this by subscribing to the

ILLUSTRATED EXPRESS FOR SIX MONTHS.

3 3 3 3 3 3 3

AFTER SEEING THE EXPOSITION, if you desire to extend your trip “UP THE LAKES,” DOWN THE ST. LAWRENCE, to the ADIRONDACKS, or on to the NEW ENGLAND or NEW JERSEY COAST, we can give you, free of charge, all the necessary information about rates, hotels, etc., through our

TRAVEL DEPARTMENT

which has been maintained for the benefit of our readers for nearly ten years.

Better send a dollar anyway and receive the Illustrated Express each week for six months. Sample copy free.

Established 1846. THE EXPRESS, Buffalo, N. Y.

NEWSPAPERS

The Express (morning) daily.
The Courier (morning) daily.
The Review (morning) week-days.
The Commercial (evening) week-days.
The Enquirer (evening) week-days.
The News (evening) daily.
The Times (evening) daily.
The Demokrat (evening, German) week-days.
The Freie Presse (evening, German) week-days.
The Volksfreund (evening, German) daily.
Polok W. Ameryce (evening, Polish) week-days.

EXCHANGES

Merchants'—Board of Trade Building.
Builders'—Builders' Exchange Building.
Brewers'—Mutual Life Building.
Lumber—Board of Trade Building.
Produce—West Market and Perry Streets.
Live Stock—Live Stock Exchange Building, East Buffalo.
Merchant Tailors'—192 Pearl Street.

BANKS

Bank of Buffalo—Main and Seneca Streets.
Buffalo Commercial—Seneca and Pearl Streets.
Citizens'—William and Sherman Streets.
City National—319 Main Street.
Columbia National—Prudential Building.
Fidelity Trust Co.—Erie Co. Savings Bank Building; Branch at Exposition Grounds.
German-American—Court and Main Streets.
German—Main and Broadway.
Manufacturers' and Traders'—270, 272 Main Street.
Marine—Main and Seneca Streets.
Merchants'—208 Main Street.
Metropolitan—Main and Mohawk Streets.
Niagara—Ellicott Square Building.
People's—257 Washington Street.
Third National—Main and Swan Streets.
Union—Main and Mohawk Streets.
Buffalo Clearing House—Marine Bank Building.
Bankers' Association of Buffalo—Marine Bank Building.

VISITORS have not seen **BUFFALO** until they have visited the **RATHSKELLER** at the **MARKEEN**, Main and Utica Streets.

MANUFACTURERS
& TRADERS

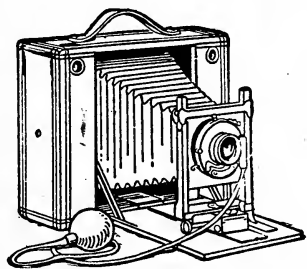
of
BUFFALO,
N. Y.

BANK *Capital and Surplus*
\$1,500,000.00

STRONGEST AND MOST IMPROVED
SAFE DEPOSIT VAULTS
EVER CONSTRUCTED

A PRIVATE SAFE FOR \$5.00 PER YEAR

270 AND 272 MAIN STREET



*This is the place
to buy plates
or films for your
cameras. Develop-
ing and printing*

*done on short notice. No charge
for reloading kodaks. Cameras
for rent at the old established re-
liable photographic supply house,
37 Court Street, Buffalo, N. Y.*

David Tucker

SAVINGS BANKS

Buffalo	-	-	-	-	Main and Genesee Streets
Empire State	-	-	-	-	D. S. Morgan Building
Erie County	-	-	-	-	Erie County Bank Building
Western	-	-	-	-	Main and Court Streets

TRUST COMPANIES

Buffalo Loan, Trust & Safe Deposit Co.	-	-	-	-	449 Main Street
Fidelity Trust Co.	-	-	-	-	Erie County Bank Building

SAFE DEPOSIT VAULTS

Buffalo Loan, Trust and Safe Deposit Co.	-	-	-	-	449 Main Street
Manufacturers and Traders Bank	-	-	-	-	}
<i>(Adv. opposite page)</i>					
Marine Bank	-	-	-	-	}
<i>(Adv. this page)</i>					
The Security Safe Deposit Co.	-	-	-	-	Ellicott Square Building

The Marine Bank

Capital,	\$	200,000
Surplus,		1,000,000
Deposits,		8,500,000

Safe Deposit Vaults

Main and Seneca Sts. Open 9 a. m. to 4 p. m.

PAN-AMERICAN EXPOSITION
BUREAU *of* INFORMATION
THIRD CHURCH OF CHRIST, SCIENTIST
526-528 Ellicott Square, BUFFALO, N. Y.

The City Laundry

9 West Eagle Street, near Main, BUFFALO, N. Y.
COLLARS, CUFFS AND SHIRTS a Specialty

GALLAGHER & YOUNG BARBER SHOPS

Erie Co. Bank Building, Niagara and Pearl Sts.
Ellicott Square, Main Entrance.
Ellicott Square, Room 627, 6th Floor.

Buffalo, N. Y.

Manicure and Chiropody Parlors

594 ELLICOTT SQUARE, BUFFALO, N. Y.

Mrs. A. A. Reilly

Mrs. E. Ford

THE ORTON

344 Hudson Street, cor. Orton Place.

The most convenient location
in the city. Rates reasonable.

BUFFALO, N. Y.

CHURCHES

BAPTIST

Cedar Street—South Division and Cedar Streets.
Delaware Avenue—Delaware Avenue near Bryant Street.
Emmanuel—Rhode Island Street and Normal Avenue.
Fillmore Avenue—46 Fillmore Avenue.
First—North and North Pearl Streets.
First Free Baptist—Hudson Street near Fargo Avenue.
Glenwood Avenue—Glenwood Avenue and Purdy Street.
Parkside Avenue—Parkside Avenue and Central Park.
Prospect Avenue—Prospect Avenue and Georgia Street.

CHURCH OF CHRIST—SCIENTIST

First—Jersey Street near Plymouth Avenue.
Second—135 Linwood Avenue near Summer Street.
Third—20th Century Hall, Delaware Avenue near Allen Street.

CONGREGATIONAL

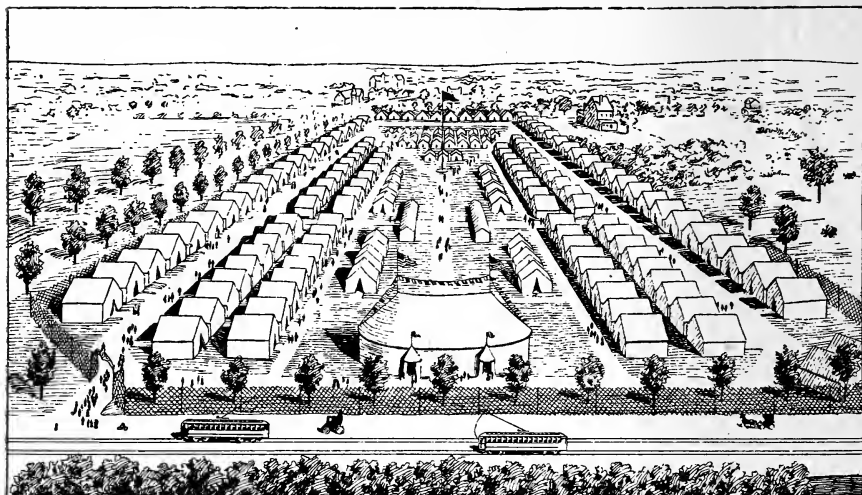
First—Elmwood Avenue and Bryant Street.
People's—Niagara Square.
Pilgrim—Richmond Avenue and Breckenridge Street.
Plymouth—Grote Street and Military Road.

EPISCOPAL

All Saints'—Main and Utica Streets.
Church of Ascension—North Street and Linwood Avenue.
Church of the Good Shepherd—Jewett Avenue near Main Street.
Grace—Niagara and Penfield Streets.
St. Andrew's—Goodell Street near Michigan Street.
St. Barnabas'—Riley and Roehrer Streets.
St. James'—Spring and Swan Streets.
St. John's—Bidwell Parkway and Lafayette Avenue.
St. Luke's—Richmond Avenue and Summer Street.
St. Mary's-on-the-Hill—Niagara and Vermont Streets.
St. Paul's—Main and Erie Streets.
Trinity—Delaware Avenue near Tupper Street.

The MARKEEN is centrally located, being within 10 minutes' ride of all Railroad Stations and Steamer Landings.

CAMP JEWETT



If you are coming to the Pan-American Exposition, the following will undoubtedly interest you.

A large attendance is expected and we believe that hotel accommodations will be more or less limited. We have perfected arrangements for a fine camp, situated near the Exposition, in a most beautiful part of the city. The Pan-American Grounds can be reached in a walk of fifteen minutes, or in five minutes by trolley line passing the camp. The beautiful Delaware Park and the Zoo are immediately adjoining.

Located Corner Oakwood Place and Parkside Avenue.

The camp will be composed of 175 12 x 14 feet wall tents, with fly, floored, electric lighted and furnished the same as a first-class hotel bedroom. We shall have all conveniences, such as baggage room, post-office, telephone, toilet rooms, etc., board walks to all points, and laundry will be called for and delivered. Our rate will be \$2.00 per day for each tent containing two double beds, or \$1.50 for tent containing one double bed. This will make the expense very low when used by four persons and much cheaper than hotel prices. A large dining hall will be provided, in which meals will be furnished at reasonable prices, or they can be procured at the Exposition Grounds.

To reach Camp Jewett, take any Main Street, Jefferson Street or Lockport car and leave car at Oakwood Place. If at Exposition Grounds, take any down-town car at Amherst Street, east gate.

REFERENCES : For further information, address

CITIZENS BANK,
DUNNING & STEVENS,

Buffalo, N. Y.

DAVIS & STEVENS,

Camp Jewett, Highland Park, BUFFALO, N. Y.

CHURCHES—CONTINUED

FREE METHODIST

First—Virginia and Tenth Streets.
Second—175 Potomac Avenue.
Marion Avenue—96 Marion Avenue.

LUTHERAN

Church of the Redeemer—Elmwood and Highland Avenues.
Holy Trinity—Ellicott and Tupper Streets.
Zion—West Ferry and Nineteenth Streets.

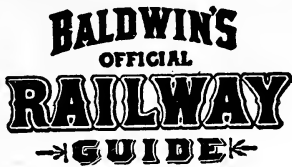
METHODIST EPISCOPAL

Asbury—Pearl and Chippewa Streets.
Delaware Avenue—Delaware Avenue and Tupper Street.
Glenwood—1434-1436 Main Street.
Grace—Michigan between North and South Division Streets.
Hampshire Street—Hampshire and Thirteenth Streets.
Humboldt Parkway—195 Winslow Avenue.
Linwood Avenue—Linwood Avenue and West Utica Street.
Plymouth—Jersey Street and Plymouth Avenue.
Richmond Avenue—Richmond Avenue and West Ferry Street.
Riverside—Bird and West Avenues.
Sumner Place—Sumner Place near Walden Avenue.

PRESBYTERIAN

Bethany—Fifteenth Street near Vermont Street.
Bethlehem—Bird Avenue and Hoyt Street.
Calvary—Delaware Avenue.
Central—Genesee and Pearl Streets.
Church of the Covenant—East Ferry and Michigan Streets.
Church of the Redeemer—Elmwood and Highland Avenues.
First—Pennsylvania and Wadsworth Streets.
First United—Richmond Avenue and Summer Street.
Lafayette Avenue—Lafayette and Elmwood Avenues.
North—Main between Huron and Chippewa Streets.
West Avenue—West Avenue and Ferry Street.
Westminster—Delaware Avenue near North Street

The **MARKEEN**, Main and Utica Sts. — Ladies' and Gentlemen's Cafe,
open from 6:00 A. M. to 12:30 P. M. Cuisine and Service Unexcelled.



BALDWIN'S
OFFICIAL
RAILWAY
→**GUIDE**←

Of course you will want a Railway Guide if you come to the Pan-American—and you will want the *BEST*.

Baldwin's Official Railway Guide is an old established institution and the only Railway Guide published in Buffalo. As to its reliability, ask anybody. It contains the official time of the arrival and departure of all trains and steamers in Buffalo, as well as those in Western New York and Northern and Western Pennsylvania, with other information useful to the traveling public. The Guide is for sale at all news stands at 10 cents a copy.

The Baldwin Publishing Co.

PUBLISHERS

451 Ellicott Square Building, **BUFFALO, N. Y.**

CHURCHES—CONTINUED

ROMAN CATHOLIC

- Church of the Annunciation—Lafayette Avenue and Grant Street.
Church of the Assumption—347 Amherst Street.
Holy Angels'—Porter Avenue near Fargo Avenue.
Immaculate Conception—146-148 Edwards Street.
St. John the Baptist—Hertel Avenue and East Street.
St. Joseph's Cathedral—Swan and Franklin Streets.
St. Louis (French and German)—Main and Edward Streets.
St. Michael's (German)—751 Washington Street.
St. Vincent's (German)—Main Street near Humboldt Parkway.
-

UNITARIAN

- Church of Our Father—Delaware Avenue near Mohawk Street.
Parkside—Amherst and Fairfield Streets.
-

UNIVERSALIST

- Church of the Messiah—North and Mariner Streets.
Grace—Chenango Street near West Ferry Street.
-

MISCELLANEOUS

- Church of Christ (Disciples)—Richmond Avenue and Bryant Street.
Church of Christ (Disciples)—Forest Avenue.
Church of Christ (Disciples)—Jefferson Street near East Utica Street.
First (Spiritualists)—Prospect Avenue and Jersey Street.
Temple Beth Zion (Jewish)—Delaware Avenue near Allen Street.
-

HOSPITALS

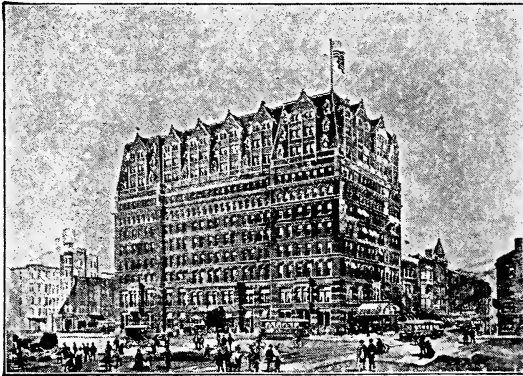
- Buffalo General—100 High Street.
Buffalo Homeopathic—Cottage and Maryland Streets.
Buffalo (Sisters of Charity)—1883 Main Street, near Delavan Avenue.
Children's—219 Bryant Street.
Emergency—Michigan and South Division Streets.
German—740 Jefferson Street, near Genesee Street.
Maternity—191 Georgia Street.
State Hospital for Insane—West Forest Avenue, near Elmwood Ave.
-

VISITORS have not seen **BUFFALO** until they have visited the
RATHSKELLER at the **MARKEEN**, Main and Utica Streets.

HOTEL IROQUOIS

BUFFALO, N. Y.

THE LEADING HOTEL of the QUEEN
CITY OF THE LAKES.
And the only ABSOLUTELY FIREPROOF
HOTEL IN THE CITY.



Finest Hotel between New York and Chicago.

Metropolitan in its Arrangement and Management.

Headquarters for Railroad Men, Conventions, etc.

Rendezvous for Niagara Falls and Lake Tourists.

European Plan

THE IROQUOIS HOTEL Co., Proprietors

BUREAUS OF INFORMATION

*These Bureaus are Endorsed by The Pan-American
Exposition Co. as being Reliable*

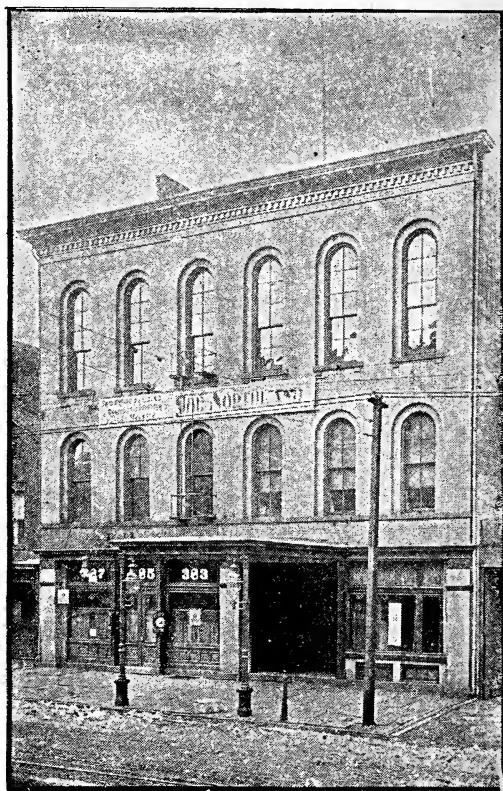
Buffalo Business Men's Association	217 Main Street
The Teachers' Pan-Tourist Co.....	433 Mooney-Brisbane Building
The Visitors' Information Co.....	538-540 Ellicott Square Building
The "Weekly Trips" Company, Rotunda Floor, Ellicott Square Building	
Arthur W. Decker & J. G. Roesser	912 Prudential Building
I. O. O. F. Bureau.....	213 Ellicott Square Building
The Courier and Enquirer Tourist Bureau.....	250 Main Street
Pan-American Accommodation Co.	680 Ellicott Square Building
Pan-American Accommodation Bureau...	605 Mooney-Brisbane Building
Dr. Pierce's Information Bureau.....	652 Main Street
Pan-American Room-Renting Bureau.....	482 Ellicott Square Building
The H. A. Meldrum Company Bureau of Free Information, 460 Main St.	
Clark's Home Comfort Bureau of Information, 441 Ellicott Square Building	
Epworth League Christian Endeavor Rooming Bureau, 10 W. Chippewa St.	
Linwood Avenue Methodist Church Bureau, Utica St. and Linwood Ave.	
Warner & Co. Locating Bureau	607 Mooney-Brisbane Building
The Keese Information Bureau	405 Ellicott Square Building
Buffalo Saloonkeepers' Union.....	120 Seneca Street
Williams Pan-American Renting Bureau.....	1314 Prudential Building
The Queen City Accommodation Co.....	605 Main Street
Order of the Iroquois Bureau	644 Ellicott Square Building
Elks' Bureau	Builders' Exchange
German Evangelical Synod Bureau	197, 199 E. Genesee Street
A. C. Bidwell's Bureau of Information	244 Main Street
Knights of Columbus' Bureau of Information ..	Main and Virginia Streets
Hall's Exposition Rooming Bureau	543 Ellicott Square Building
Volgamore's Room-Renting and Information Bureau	
.....	201 D. S. Morgan Building and 40 Exchange Street
"The Elite" Information Bureau	305 W. Utica Street
Brooklyn Eagle Information Bureau.....	Seneca and Main Streets
Ancient Order of Foresters' Registration Bureau	311 Main Street

The Cafe and Rathskeller at the MARKEEN surpass anything outside of New York City. German Cooking a Specialty.

The Northland

383, 385, 387
Ellicott Street,

BUFFALO, N. Y.



MODERN brick structure. Entirely new furnishings and fittings of the latest and most up-to-date pattern. Chambers light, airy and well ventilated. Dining hall seats 300 persons comfortably. Spacious office and lounging room. Room and breakfast \$1.50 per day, per person. Other meals *à la carte*. The location is in the heart of the city, 25 minutes from the Exposition Grounds, and 15 minutes from the Armory, the meeting place of conventions and the great National Sangerfest. Theaters within four blocks. Trolley lines to and from every section of the city pass the door. Book now and save annoyance, time and money.

HUGO KIRCHNER & CO.

Proprietors

THEATERS AND AMUSEMENTS

- Athletic Field—Main Street and Delavan Avenue.
Concert Hall—Main and Edward Streets.
Convention Hall—Virginia Street and Elmwood Avenue.
Court Street Theater—Court Street (Pearl).
German-American Hall—Main and High Streets.
Lyceum Theater—447, 449 Washington Street (Broadway).
Museum of Anatomy—Main and North Division Streets.
Olympic Park (Base Ball)—East Ferry Street (Main).
People's Arcade—261 Main Street (Seneca).
Shea's Garden Theater—170 Pearl Street (Niagara).
Star Theater—Mohawk and Pearl Streets.
Teck Theater—778 Main Street (Edward).
-

CLUBS

- Acacia Club (Masonic)—Masonic Temple, 43 Niagara Street.
Buffalo Club—Delaware Avenue and Trinity Place.
Buffalo Yacht Club—Foot of Porter Avenue.
Press Club—536 Mooney-Brisbane Building.
Whist and Chess Club—750 Ellicott Square Building.
Colonial Club—509 Lafayette Avenue (Ashland).
Country Club—Main Street.
Ellicott Club—Ellicott Square Building.
Falconwood Club—Grand Island.
Oakfield Club—Grand Island.
Otowega Club—Starin and Linden Avenues (Central Park).
Saturn Club—Delaware Avenue and Edward Street.
20th Century Club—595 Delaware Avenue (North).
Union Club (Catholic)—Main and Virginia Streets.
University Club—295 Delaware Avenue (Johnson Park).
-

LIBRARIES

- Buffalo Public Library (Free)—Washington Street and Broadway.
Historical Society Library—Buffalo Public Library Building.
Catholic Institute Library—Main and Virginia Streets.
German Young Men's Association Library—Main and Edward Streets.
Y. M. C. A. Library—Mohawk and Genesee Streets.
-

BUREAUS OF INFORMATION

- The Pan-American Official Bureau—213 Ellicott Square Building.
Third Church of Christ, Scientist—526-528 Ellicott Square Building.
(Adv. page 94.)
The Guide Travel Bureau (Baldwin Pub. Co.)—451 Ellicott Square Bldg.
For additional Bureaus of Information, see Page 101.
-

The MARKEEN is centrally located, being within 10 minutes' ride of all Railroad Stations and Steamer Landings.

IF YOU ARE COMING TO THE
Pan-American Exposition

*your FIRST DUTY to yourself is to arrange
the Details of the Visit IN ADVANCE.*

FIRST:

*“Remember
the Red Tag”*

THEN WRITE THE

Weekly Trips Co.

Rotunda Floor, Ellicott Square,
BUFFALO, N. Y.

Send them Four Cents in Postage for All Information about
your Hotel or Private House Accommodations.

W H Y ?

For the reason that it relieves you of all trouble. It has Seven
Hotels and 140 Private Houses in which it can locate you.

PUBLIC BUILDINGS AND POINTS OF INTEREST

Number following name shows location on Map of Buffalo, pages 48, 49.

- Albright Art Gallery—Delaware Park.
Buffalo Library Building (15)—Washington Street and Broadway.
Buffalo Art Gallery—Buffalo Library Building.
Buffalo Historical Society—Buffalo Library Building.
Buffalo Society of Natural Sciences—Buffalo Library Building.
Buffalo Central High School—Court and Franklin Streets.
Buffalo Crematory (29)—West Delavan Avenue (Delaware).
City and County Hall (12)—Franklin Square.
City Convention Hall (23)—Virginia Street and Elmwood Avenue.
Erie County Almshouse—3399 Main Street, near City Line.
Erie County Jail—Delaware Avenue and Church Street.
Erie County Morgue—241 Terrace (Church).
Erie County Penitentiary—Trenton Avenue and Pennsylvania Street.
Fire Department Headquarters—Court and Staats Streets.
Forest Lawn Cemetery—Entrances: Delaware and Forest Aves. and Main St.
Fort Porter (U. S. Army Post)—Foot of Front Avenue.
Masonic Temple—43 Niagara Street (Franklin).
Masten Park High School—Masten and Best Streets.
Municipal Building (13)—42 Delaware Avenue (Eagle).
New Government Building (2)—Ellicott, Swan, Oak and S. Division Sts.
Niagara University Building—255 Ellicott Street (Broadway).
N. Y. State Arsenal (24), 65th Reg't Armory—Broadway and Potter St.
Odd Fellows' Temple—378 William Street (Jefferson).
Police Headquarters Building—Seneca and Franklin Streets.
74th Regiment Armory (25)—Niagara and Connecticut Streets.
Soldiers' and Sailors' Monument—Lafayette Square.
State Normal School—Jersey Street and Normal Avenue.
U. S. Life Saving Station—Opposite foot of Erie Street.
U. S. Weather Bureau—Prudential Building.
The Zoo.—Delaware Park.
Y. M. C. A. Building (33)—Mohawk and Genesee Streets.

PARKS

- Botanical Gardens—South Park.
Bennett Park—Pine, Eagle and Clinton Streets.
Cazenovia Park—2311 Seneca Street (Cazenovia).
Delaware Park—Forest Avenue.
The Front—Foot of Porter Avenue.
Humboldt Park—Genesee and Best Streets.
Prospect Park—Prospect and Porter Avenues.
Riverside Park—Niagara River at City Line.
South Park—South Park Avenue and City Line.

The MARKEEN, Main and Utica Sts.—Ladies' and Gentlemen's Cafe,
open from 6:00 A. M. to 12:30 P. M. Cuisine and Service Unexcelled.

Merry Christmas,

and a

Happy New Year.

This may seem a little out of season, but if it has called your attention to CATON'S SCHOOL OF BUSINESS it has accomplished its purpose.

Caton's School of Business

is located on the corner of Main and Huron Streets, and occupies 15,000 square feet of floor. It is the largest and best School of Business in the State of New York. It is a strictly high-grade school, comprising seven departments, namely :

Business, Office Training,
Shorthand and Typewriting,
Telegraphy and Railroading,
Mechanical Drawing,
Mechanical and Electrical Engineering *and*
the Elementary English Branches.

A copy of "Business Education Up-to-Date," and an 80-page catalog free. Terms easy. Rates low. Day and evening sessions the entire year. No better school at any price.

MARTIN JENNINGS CATON, PRESIDENT
AUGUST HARTKORN, SECRETARY

Main, Huron, Pearl and Genesee Streets

B U F F A L O , N . Y .

BICYCLE RULES

You must have a bell on your wheel that can be heard at a distance of 100 feet.

Always turn to the right when meeting.

Always pass on the left side.

Keep your feet on the pedals and hands on the handle bars.

Do not ride on Main Street south of Chippewa Street faster than five miles per hour. In other parts of the city you may ride eight miles per hour.

Do not ride upon the sidewalks.

Go slowly at intersecting streets and in turning corners.

Do not ride more than two abreast.

You are not allowed to do any fancy or trick riding within the City Limits.

CAB AND CARRIAGE RATES

The legal rate for cabs or other vehicles used in the conveyance of passengers is as follows:

One passenger, any distance over one mile and not exceeding two miles, 50 cents. Each additional passenger 25 cents.

One passenger over two miles, \$1.00, and 50 cents for each additional mile or fraction thereof. Each additional passenger half that rate.

For the use of any such vehicle by the hour, for one or more passengers, with the privilege of going from place to place and stopping as often as may be required, \$1.50 for the first hour and \$1.00 for each additional hour.

For the use of any such vehicle for one day, for one or more passengers, \$8.00.

Distances shall be measured by the most direct route, and in all cases where the hiring of such vehicles is not specified to be by the day or hour, it shall be deemed to be by the mile.

Each passenger shall be allowed to have carried on such vehicles, one trunk, valise, saddle bag, carpet bag, portmanteau, box, bundle, basket or other articles used in traveling, without extra charge; but for each article carried in addition to one of those enumerated above, an additional charge of 5 cents will be made for carrying the same within a distance of one mile, and 10 cents for more than one mile.

AUTOMOBILE RATES

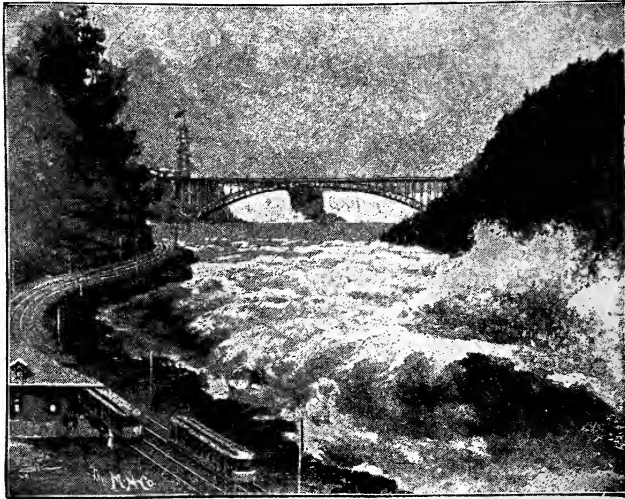
Trip rates, based on two-mile limit, including Railway Stations, Pan-American Exposition, Clubs, etc., same as Cab and Carriage Rates.

Special rates made for the use of vehicles for one-half day or more.

Omnibuses and Wagonettes, holding eight to sixteen people, per hour, \$5.00; per trip, for Theater, parties, etc., and return, \$5.00.

VISITORS have not seen BUFFALO until they have visited the RATHSKELLER at the MARKEEN, Main and Utica Streets.

Great Gorge Route



*The Most Magnificent Scenic Route in
the World*

Running through the grand Canyon of Niagara, close to the water's edge, at the foot of the towering cliffs.

The only perfect way to see the great Niagara Gorge, the wonderful Whirlpool Rapids, the grand Whirlpool, the picturesque Devil's Hole Rapids and the whole series of magnificent pictures in Niagara's Wonderland below the Falls.

Cars leave Prospect Park, Niagara Falls, every five minutes, passing all the principal hotels and railroad stations for Lewiston, where connections are made with Niagara River Line Steamers for Toronto and all Canadian points.

The Niagara Falls Steel Observation Tower

is situated on Riverway, directly opposite Prospect Park. The tower is of steel construction, 300 feet high, and is equipped with two Otis electric safety elevators. The view from the top of the tower is grand, and gives the visitor a comprehensive idea of the country surrounding Niagara Falls.

GODFREY MORGAN, General Manager

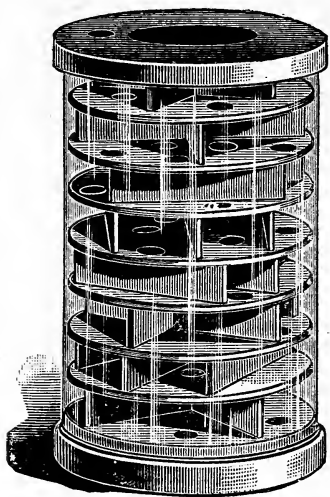
NIAGARA FALLS, N. Y.



VIEW OF NIAGARA FALLS.

The Cafe and Rathskeller at the **MARKEEN** surpass anything outside of New York City. German cooking a specialty.

Pan-American Tower Puzzle



The Only Puzzle Recognized by the
**PAN - AMERICAN
EXPOSITION CO.**

*The Best Souvenir on the Market.
Price 25 cents. On Sale Everywhere.
Sent post-paid on receipt of price*

Cash
Prizes

\$200

Full
particulars
enclosed
with each
puzzle

PAN-AMERICAN PUZZLE CO.

716 Mutual Life Building, BUFFALO, N. Y.

“THE JEFFERSON”

1350-1352 Jefferson St.

Modern Brick Block of Eight Flats.
Five Rooms in Each Flat.
Also Cottage.

Hot and Cold Water, Gas and Bath.
Especially Fitted for Families and
Parties.

Dining Room in Building.

The Jefferson Street Electric Cars run from Union Depot

PAST DOOR to the EXPOSITION GROUNDS

Only ten minutes' ride from “THE JEFFERSON.”

Rates for Lodging and Breakfast, \$1.25, \$1.50, \$2.00

Engage Your Rooms in Advance.
Correspondence Solicited.

Baggage will be called for and
delivered to Depot.

Address all Communications to

A. KOBLER, Manager

1350 Jefferson Street

BUFFALO, N. Y.

NIAGARA FALLS



NIAGARA FALLS, famed in song and story, are less than an hour's ride from Buffalo, with frequent communication from the Exposition Grounds by steam and trolley.

There has been so much said and written about the grandeur and beauty of Niagara Falls, that we will not attempt any description here, and will only say that a person can spend a week there and find new pleasures each day.

The Niagara River receives the waters of Lakes Superior, Michigan, Huron and Erie, and discharges them into Lake Ontario. At Niagara Falls there is a sheer descent of 160 feet. The width of the Falls, including Goat Island, which divides the American from the Horseshoe Falls, is nearly four-fifths of a mile. Millions of tons of water plunge unceasingly over these dizzy heights, and surge and seethe in the gorge below. The gorge itself, with the Whirlpool Rapids and the mighty Whirlpool below them, is scarcely less fascinating and interesting. There is every provision here for the comfort and convenience of the sightseer, and all points of interest are of easy access. The State of New York a few years ago bought the land immediately bordering on the Niagara River at the Falls, together with Goat Island, consisting of 75 acres, lying between the two great cataracts, and made the whole a public park. On the Canadian side the Ontario Government has also acquired several miles of land bordering the river and gorge, which is free to the public and is known as Queen Victoria Park. From Prospect Park the visitor has his first view of the wonderful scenery. Here he may almost dip his hand into the stream that instantly leaps far out into the deep gorge.

The Niagara Gorge is spanned just below the Falls by a steel arch bridge, so that one may take an electric car at the American side and spend a full afternoon with profit and pleasure viewing the scenery from Canadian points. A new suspension bridge between Queenston and Lewiston may be crossed by the traveler, where he may take the Gorge Road and return to Niagara Falls on the American side, close to the river's edge nearly the entire distance. This is a ride of most fascinating interest and one learns to realize more fully the irresistible power of the great river current. Observation cars upon the New York Central branch also run between Lewiston and Niagara Falls.

NEW YORK CENTRAL for NIAGARA FALLS. Frequent
train service. Fare, 50 cents round trip.

July-16 1901

111

June-16-1901

JUN 7 1901

WOMAN'S CHRISTIAN ASSOCIATION LODGE

266 - 268 - 270 - GROTE STREET

BUFFALO, N. Y.

Near Pan-American Exposition Grounds

THE DIRECTORS OF THE WOMAN'S CHRISTIAN ASSOCIATION of Buffalo take great pleasure in announcing that they have opened a commodious lodging house for the especial use of women who visit the Exposition alone, or in groups, and also for those accompanied by husbands and children.

The Lodge is entirely new, and is but two stories in height, thereby removing all danger from fire. It contains 144 comfortable, well-ventilated and well-lighted rooms, equipped with good beds, plenty of clean linen and all other necessities.

One or more members of the Association will be in daily attendance, and the building will be kept scrupulously clean throughout, and be made perfectly safe in every respect.

The Lodge is centrally located, near one of the main entrances to the Pan-American Exposition, near the Elmwood Avenue street-car line and within easy walking distance of the steam railroad station at the Exposition Grounds.

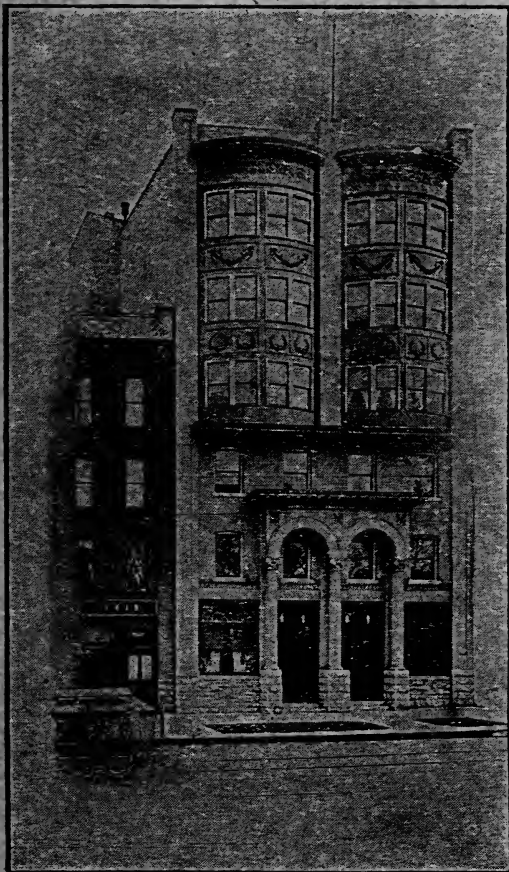
Terms moderate. \$1.00 to \$1.50 per day for each person. Light breakfast, 25 cents.

Applications for rooms should be made to

WOMAN'S CHRISTIAN ASSOCIATION LODGE

Hotel Rockford

1411 MAIN STREET



European Plan

NEW AND ABSOLUTELY
FIREPROOF

*The most central and
accessible location in the
city, combined with quiet
and refined surroundings*

CAFE AND
RESTAURANT

Street Cars Passing Door Will
Take You to Any Part
of the City in 15
Minutes

*NIAGARA FALLS
EASILY ACCESSIBLE*

TARIFF OF RATES

SINGLE ROOMS (Bathroom Adjoining)	\$2.00 to \$3.00
DOUBLE ROOMS " " " "	{ 1 Person	3.00
	{ 2 Persons	4.00
SUITES of Parlor, Bedroom and Bath	{ 1 Person . \$4.00, \$5.00, \$7.00	
	{ 2 Persons . 5.00, 6.00, 8.00	
SUITES of Parlor, 2 Bedrooms and Bath	\$7.00, \$8.00, \$10.00

E. T. RUNG, MANAGER

Telephone 647 Bryant

Main St., Near Glenwood Ave.

BUFFALO, N. Y.

Give checks for your baggage to C. W. MILLER
Agent. Only baggage transfer company in Buffalo

LIBRARY OF CONGRESS



0 019 713 559 1



ADAM, MELDRUM & ANDERSON

The Great Pan-American Store

EVERY COMFORT and EVERY CONVENIENCE offered to visitors. Bureau of Information at their service. Ladies' parlors and waiting room. Ladies' and gentlemen's refreshment room, where meals are served at any and all hours between 8.00 A. M. and 6.00 P. M., at moderate prices. Best assortment of Pan-American souvenirs in the city. Pan-American handkerchiefs and art squares with Beck design and flag border, can be bought only from us.

ADAM, MELDRUM & } *Buffalo's Great Dry Goods and*
ANDERSON CO. } *Carpet House.*
396 to 402 Main St., BUFFALO, N. Y. (The American Block.)

The LENOX

North Street,
near
Delaware Ave.



BUFFALO'S MOST LUXURIOUS HOTEL

*Conducted on the
EUROPEAN PLAN*

Located in the fashionable residence section—yet central

A strictly modern, elegantly equipped, entirely FIREPROOF hotel

The only first-class hotel on the direct trolley line to the PAN-AMERICAN EXPOSITION, and within a short ride of the grounds.

GEO. DUCHSCHERER,
Proprietor



LIBRARY OF CONGRESS



0 019 713 559 1