

- Informative
- Historical
- Pictorial
- Review of



Brown County





LIBRARY
OF THE
UNIVERSITY
OF ILLINOIS

917.73

Am 3 i

v. 11

Illinois Historical Survey

THE AMERICAN AERIAL COUNTY HISTORY SERIES, No. 11

This is
Brown County, Illinois

**An Up-To-Date Historical Narrative with County
Map and Many Unique Aerial Photographs
of Cities, Towns, Villages and Farmsteads**

By

JOHN DRURY

*Author Historic Midwest Houses, Midwest Heritage, etc.,
and member of American Association for
State and Local History*

1955

PUBLISHED BY

THE LOREE COMPANY

3094 Milwaukee Avenue

Chicago 18, Illinois

PRICE \$25.00

COPYRIGHT 1955 BY THE LOREE CO. ALL RIGHTS RESERVED. PRINTED IN U.S.A

The American Aerial County History Series, No. 11

Already published for Illinois:

Macon County
Fulton County
Champaign County
Vermillion County
Tazewell County
Pike County
McDonough County
Logan County
De Witt County
Cass County
Brown County

Printed in offset lithography
by The Loree Company,
Chicago, Illinois, 1955

2 7 72
1 1 12
1 1 11

Acknowledgments

This is the eleventh of a series of new-style county histories which will include all of the 102 counties in Illinois and, ultimately, all of the 3,103 counties in the United States. The project, specializing in aerial photographs of cities, towns, villages and homesteads, is known as The American Aerial County History Series.

In the preparation of this work on Brown County, Illinois, the author and publisher hereby acknowledge their gratitude, for advice and assistance generously given them, to Mr. Joseph C. Wolf and Mrs. Ellen Chase of the Newberry Library, Chicago; to Mr. Herbert H. Hewitt, Mrs. Roberta Sutton and Miss Winifred Baum, all of the Chicago Public Library, Chicago; and to various librarians, public officials, business executives and private citizens of the city of Mount Sterling and the county of Brown, Illinois. The author also wishes to express special acknowledgment to his wife, Marion Neville Drury, for research, editorial and proof-reading assistance.

Grateful appreciation is also shown here to officials of the Bureau of Public Roads of the U.S. Department of Commerce and to officials of the Department of Public Works & Planning of the State of Illinois (in particular to those in charge of that department's Bureau of Research and Planning in the Highway Department), for permission to use the Brown County maps included in this book.

Sources used by the author in preparing this book were: *Inventory of the County Archives of Illinois, No. 5, Brown County* (the Historical Records Survey, Chicago, 1938); *Illinois: A Descriptive and Historical Guide*, The American Guide Series (A.C. McClurg & Company, Chicago, 1939); *County and City Data Book, 1952* (United States Bureau of the Census, Washington, 1952); *The Editor and Publisher Market Guide for 1954* (The Editor and Publisher Company, New York, 1954); and *The Rand McNally Commercial Atlas for 1954* (Rand McNally Company, Chicago, 1954).

TABLE OF CONTENTS

Map of Brown CountyVI
Story of Brown County	1
City of Mount Sterling	7
Buckhorn Township (<i>Benville, Morrelville</i>)	8
Cooperstown Township (<i>Cooperstown</i>)	10
Elkhorn Township (<i>Gilbirds</i>)	12
Lee Township (<i>Timewell, Buckhorn</i>)	14
Mount Sterling Township (<i>Mt. Sterling, Hersman</i>)	6
Missouri Township (<i>Daisy</i>)	18
Pea Ridge Township (<i>Damon</i>)	20
Ripley Township (<i>Ripley</i>)	22
Versailles Township (<i>Versailles, Perry Springs</i>)	24

The Story of Brown County, Illinois

Especially noted in the past for its potters' ware, building stone and fire clay, Brown County, in the west central part of Illinois, is today one of the leading agricultural counties of the great Grain Belt in that sector of the Prairie State. It is also of interest for its historic courthouse at Mount Sterling, now almost ninety years old, and for its Siloam Springs State Park, a natural recreation area of 2,046 acres maintained by the State of Illinois.

Located on the Illinois River about half way between the cities of Springfield and Quincy, Brown County is a fertile farming region of 397 square miles. In 1950 it had a population of 7,132. The county is bounded on the north and northeast by Schuyler County, on the south by Pike County, on the west by Adams County, and on the east by the Illinois River.

Under Three Flags

First white men to view the future site of Brown County were, of course, the French explorers, Father Marquette and Louis Jolliet. After having discovered the Upper Mississippi River in 1673, they were returning to Montreal by way of the Illinois River when they passed land that was in aftertimes to become Brown County. With their exploration of this vast wilderness region of interior America, Marquette and Jolliet claimed it for their King and thus it became New France.

One hundred years later, after the close of the French and Indian Wars, this great domain came into the possession of the British. But by that time the thirteen colonies on the Atlantic seaboard had been firmly established. Then came the American Revolution of 1775-1783. After George Rogers Clark and his handful of backwoodsmen captured Vincennes and several other key British posts in Indiana and Illinois, the new American flag was for the first time raised over what is now Illinois and the eastern half of the Midwest.

There followed the formation of the Northwest Territory, out of which later were carved the states of Ohio, Indiana, Illinois, Michigan, Wisconsin and part of Minnesota. When the Territory of Illinois was created in 1809, future Brown County was part of St. Clair County, then in 1812 it became part of Madison County. Seven years after Illinois was admitted to statehood (1818), what is now Brown County was attached to newly-organized Schuyler County, and here it remained until Brown County was created in 1839.

First Settlers

Although a squatter named Sheppard is known to have arrived in the region of future Brown County as early as 1823, he did not become a permanent settler. After building a pole cabin on the bluffs of Camp Creek, not far from the Illinois River in what is now Versailles Township, Sheppard evidently did not remain here for very long. For when, a year later, there came to the same region Cornelius Vandeventer and his three sons, they found Sheppard's cabin deserted and partially burned.

Unlike Sheppard, Vandeventer and his sons remained in the region and thus became the first permanent settlers of what is now Brown County. They built a log cabin, staked out a farm, and soon had brought other settlers to the area. At a later date, Cornelius Vandeventer became the first justice of the peace and postmaster of the community that grew up about his early cabin.

When Schuyler County was created in 1825, with Rushville as county seat, the southern portion of it embraced what is now Brown County. As more and more settlers built cabins in this southern portion, and as such new villages in the region as Mount Sterling and Ripley began to grow in influence, a movement was started to have Schuyler's county seat removed to Ripley, which was more centrally located in the county than Rushville. When this movement failed, the settlers of the region began to talk of forming a new county.

Mount Sterling Founded

It was in 1830 that Robert Curry arrived at the future site of Mount Sterling, and, after being favorably impressed with a mound located there and the terrain surrounding it, decided to settle on the spot and possibly plat a town on it. He built a home on the mound and soon was laying plans for the establishment of a village. Subsequently, he named the village after the mound on which he had settled and after the "sterling" quality of the soil surrounding it. When Brown County was created in 1839, Curry's village was designated county seat --- a title it has retained to the present day.

Pottery-Making Village

In addition to Mount Sterling, another early community of Cass County is Ripley, located near Crooked Creek and which today has a population of 177. This village was established in the 1830's, before Cass County was formed, and for several decades afterwards was widely known for its fine pottery ware. At the peak of its fame it had eighteen potteries in operation, which employed most of the male population of the village. No evidence of these kilns may be found in Ripley today.

Brown County Organized

After enough settlers, many of whom had come to the region by crossing the Illinois River at Thomas Beard's ferry (now Beardstown), had built homes in the southern portion of Schuyler County, the demands for the formation of a new county here had grown so loud that action was finally taken.

When the proper petitions were filed, the Illinois state legislature enacted a law for the creation of a new county, to be named after General Jacob Brown, and this was signed by Governor Thomas Carlin on February 1, 1839. Thus was Brown County born out of the southern half of Schuyler County.

As was the custom of the time, three commissioners from outside the new county were appointed by the state legislature to select a county seat for Brown. They chose Mount Sterling, in accordance with the wishes of most residents. At a later date, Robert Curry, founder of Mount Sterling, loaned the new county \$50 to buy its first record books.

General Jacob J. Brown

The new county was named after Jacob Jennings Brown, an outstanding American general in the war of 1812. Soon after the American Revolution, Brown purchased several thousand acres of land on the shore of Lake Ontario, near Sackets Harbor, New York, and there founded the town of Brownville. In the War of 1812 he commanded 900 soldiers who defeated the British at Sackets Harbor. Later, as a major general, Brown defeated the British again, this time at the Battle of Lundy's Lane, near Lake Ontario. From 1821 until his death in 1828 (before Brown County, in Illinois, was established), Brown was general-in-chief of the United States Army.

First Election

At Brown County's first election, held in May, 1839, Thomas Brockman, Joseph Robinson and Joseph Stoner were elected county commissioners, and Jacob Vandeventer was chosen county clerk. Then, on July 10, the county's probate court held its first session, with Daniel R. Lucas as probate justice of the peace. It was not until the following year that the circuit court held its first session; this took place in the Presbyterian Church at Mount Sterling and was presided over by Judge Peter Lott of the First Judicial Circuit (with James M. Burt serving as clerk of the court).

First Courthouse

When Brown County was first organized, it occupied a temporary seat of justice in Mount Sterling. In the meantime, plans were formulated for the construction of a permanent courthouse; one that would be suitable and spacious enough for the business of the county and the keeping of records.

This building was completed in 1844. It was of brick construction and was erected at a cost of \$11,000. After serving the county for more than twenty years, this first courthouse became outmoded and was replaced by Brown County's second courthouse.

Second Courthouse

When Brown County's second courthouse was completed in 1868, it was widely admired for its architecture. The building, a two-story edifice of brick construction designed in the Georgian style, was erected at a cost of \$21,299. It is still standing today and has

become something of an historical and architectural landmark in Illinois. Fronted by a portico of four Doric columns and surmounted by an ornamental cupola, Brown County's Courthouse in Mount Sterling has the appearance of an early New England church or town hall. As such, it forms an interesting contrast to many of the more modern buildings around it.

Siloam Springs State Park

In the southwest portion of Brown County today there is located an attraction that brings hundreds of visitors to the county each year. This is Siloam Springs State Park. Situated just north of State 104, which connects Springfield with Quincy, this park is maintained by the State of Illinois and consists of more than 2,000 acres of natural woodland and rolling countryside. Near it is the village of Benville, which in 1950 had a population of 38.

Brown County Today

On the basis of the latest United States census figures, Brown County in 1950 had a total population of 7,132 --- which placed it 2,634th on population rank among the 3,103 counties of the United States. Its principal city, Mount Sterling, had a population of 2,246. Occupying a land area of 307 square miles, the county's density of population was 23 persons per square mile.

Of the county's total population, 3,618 were classified as rural farm dwellers and 3,514 as rural non-farm residents. There were 688 babies under five years of age in the county in 1950, and 1,120 persons sixty-five years old and over; the median age of the total population was given as 35.7 years. At that time there were 4,678 potential voters in the county.

Under the heading of vital statistics, 127 babies were born that year, 107 deaths occurred (including two infants), and 59 marriages were performed. The number of families (two or more persons related by marriage or blood) was 2,120, and the median income of all of these families was \$2,194. Of the county's total of 2,590 who were employed, 48.8 per cent were engaged in agricultural pursuits and 5.9 per cent in manufacturing (practically all of which is done in Mount Sterling). There were 2,496 dwelling units, and 1,352 of these were classified as non-farm units. The median value of the latter was given as \$4,450. More than 94 per cent of all dwelling units in the county had radios.

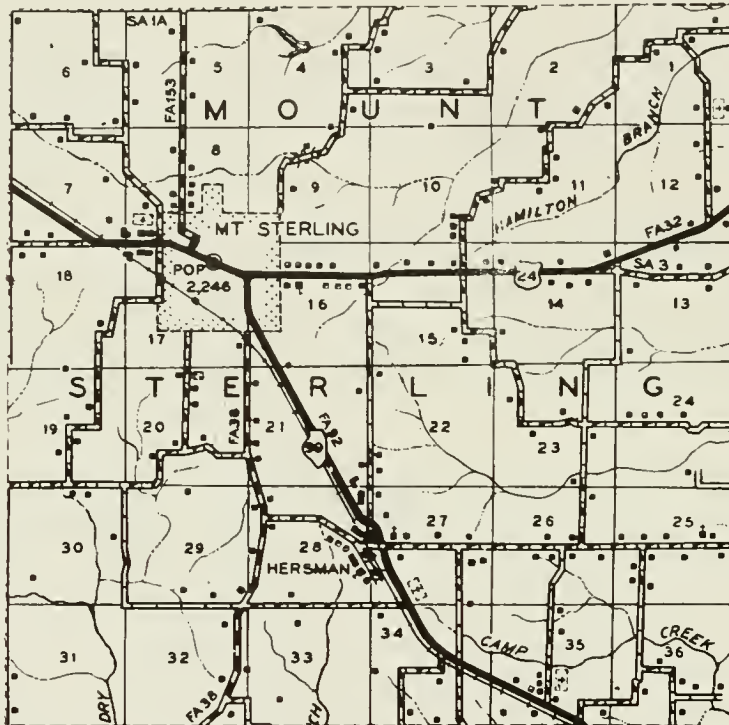
When the U.S. Business census was last taken in 1948, Brown County had 97 retail stores whose total sales amounted to \$6,364,000. The largest group in this category were food stores, which numbered 20 and which grossed \$1,065,000 in sales. In 1947 the county had 5 manufacturing establishments, which produced goods and articles in the amount of \$92,000.

Of the county's total of 957 farms (in 1950), 865 were classified as commercial farms. The average value of land and buildings per farm for all farms was placed at \$17,347. In 1949, the value of all farm products sold was \$4,913,000. Expenditures that same year were \$713,000 for feed (livestock and poultry), and \$199,000 for hired labor.

STERLING TOWNSHIP GENERAL HIGHWAY MAP

PREPARED BY THE
BUREAU OF RESEARCH AND PLANNING
 DIVISION OF HIGHWAYS
 DEPARTMENT OF PUBLIC WORKS & BUILDINGS
 IN COOPERATION WITH THE
 US DEPARTMENT OF COMMERCE
 BUREAU OF PUBLIC ROADS

ORIGINAL DATA 1950			
REVISIONS			
ROAD TYPE ETC	CULT FEAT	DATE	BY
12-31-52 D B			
12-3-53 J L W			





CITY of MOUNT STERLING

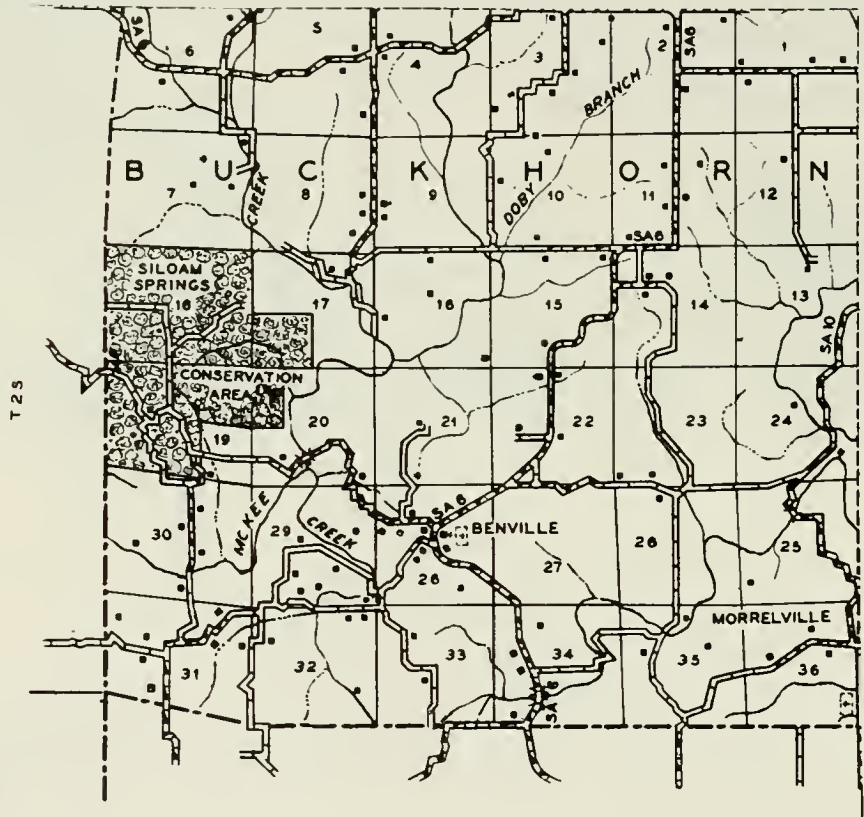
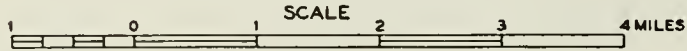
Situated in the geographical center of Brown County, Mount Sterling is that county's seat of justice and principal city. In 1950 it had a total population of 2,246. The city is served by the Wabash Railroad and by US 24 and State 99. Mount Sterling is the oldest community in Brown County. It was founded in 1839 by Robert Curry, an early settler. At that time Brown County was not yet in existence.

After being favorably impressed with a mound there, and with the terrain surrounding it, Robert Curry decided to settle on the site of future Mount Sterling. He built a home on the mound and began formulating plans for the establishment of a village. He later named his village after the mound on which his home stood and after the "sterling" quality of the soil around it. When Brown County was created in 1839, Mount Sterling was designated county seat --- a title it has retained to the present day.

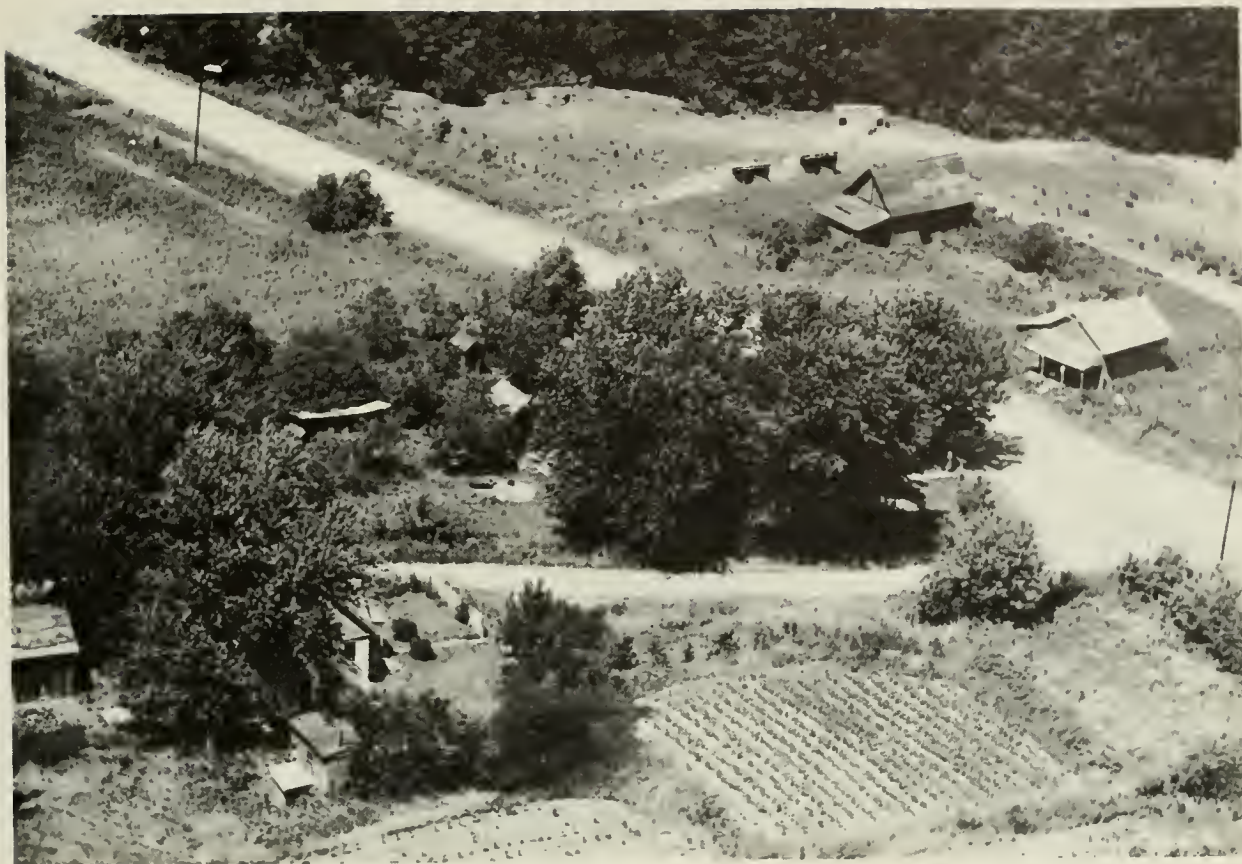
BUCKHORN TOWNSHIP GENERAL HIGHWAY MAP

PREPARED BY THE
BUREAU OF RESEARCH AND PLANNING
DIVISION OF HIGHWAYS
DEPARTMENT OF PUBLIC WORKS & BUILDINGS
IN COOPERATION WITH THE
US DEPARTMENT OF COMMERCE
BUREAU OF PUBLIC ROADS

ORIGINAL DATA			
1950			
REVISIONS			
ROAD TYPE, ETC.	CULT FEAT	DATE	BY
12.3.52	D B		
12.3.53	J L W		



R 4 W



BENVILLE

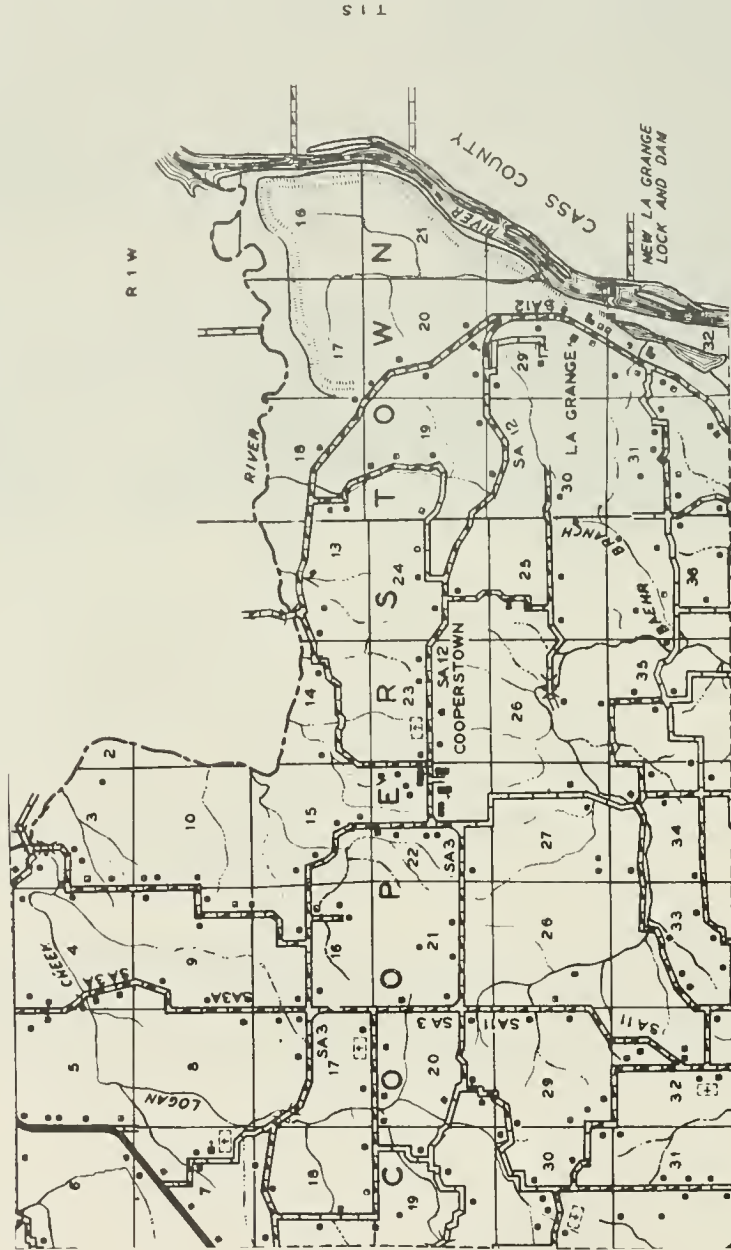
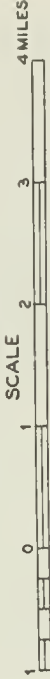
Another community in Buckhorn Township is the hamlet of Benville. In 1950 it had a population of 38. This community is also served by the postoffice at Mount Sterling. Near it is located Siloam Springs State Park, a natural recreation area of more than 2,000 acres maintained by the State of Illinois.

COOPERSTOWN TOWNSHIP

GENERAL HIGHWAY MAP

PREPARED BY THE
BUREAU OF RESEARCH AND PLANNING
DIVISION OF HIGHWAYS
DEPARTMENT OF PUBLIC WORKS & BUILDINGS
IN COOPERATION WITH THE
U.S. DEPARTMENT OF COMMERCE
BUREAU OF PUBLIC ROADS

ORIGINAL DATA	
1950	
ROAD TYPE	CULT FEAT
DATE BY	DATE BY
12.31.52 D B	
12.3.53 J L W	





COOPERSTOWN

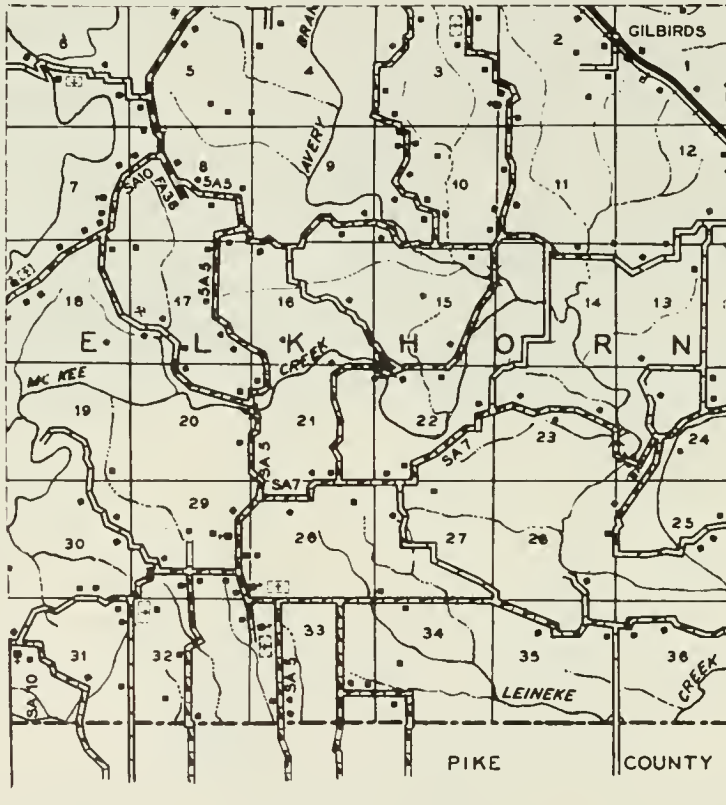
Only community of Cooperstown Township is the village of Cooperstown. It is served by the postoffice at Mount Sterling. The village is located in a fertile farming area and its soil is drained by both the Illinois River and Crooked Creek, which form its east and north boundaries, respectively. Cooperstown Township was organized in 1854.

ELKHORN TOWNSHIP

GENERAL HIGHWAY MAP

PREPARED BY THE
 BUREAU OF RESEARCH AND-PLANNING
 DIVISION OF HIGHWAYS
 DEPARTMENT OF PUBLIC WORKS & BUILDINGS
 IN COOPERATION WITH THE
 U.S. DEPARTMENT OF COMMERCE
 BUREAU OF PUBLIC ROADS

ORIGINAL DATA			
1950			
REVISIONS			
ROAD TYPE ETC	DATE	CULT FEAT	DATE
BY	BY	BY	BY
12-31-52	D. B.		
12-31-53	J. L. W.		



R 3 W



Mt. S T E R L I N G

G I L B I R D S

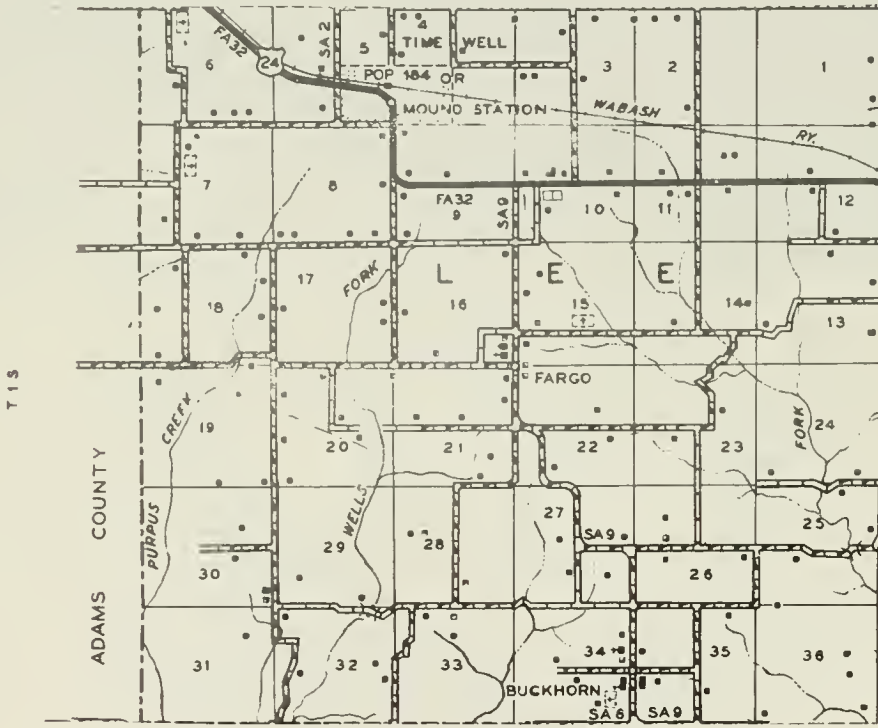
A thriving agricultural area Elkhorn Township has as its only community the hamlet of Gilbirds. It is served by the postoffice at nearby Versailles (in Versailles Township). Gilbirds is located on the Wabash Railroad and on State 99. The township in which it is situated was established in 1854 and has since then remained a farming community.

LEE TOWNSHIP

GENERAL HIGHWAY MAP

PREPARED BY THE
 BUREAU OF RESEARCH AND PLANNING
 DIVISION OF HIGHWAYS
 DEPARTMENT OF PUBLIC WORKS & BUILDINGS
 IN COOPERATION WITH THE
 U.S. DEPARTMENT OF COMMERCE
 BUREAU OF PUBLIC ROADS

ORIGINAL DATA 1950			
REVISIONS			
ROAD TYPE ETC	CULT FEAT.	DATE	BY
12-3-52 D.B.			
12-3-53 J.L.W.			



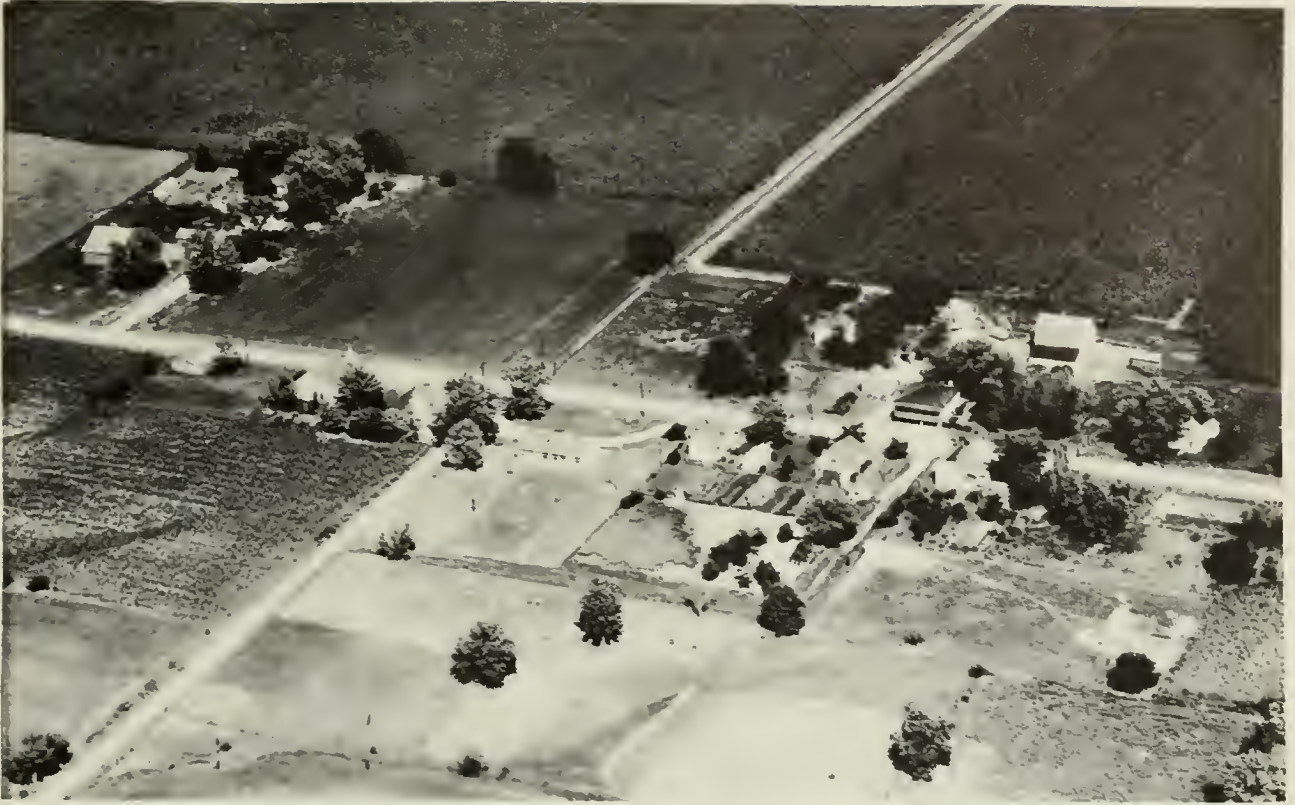


T I M E W E L L

At the western edge of Brown County is located the incorporated village of Timewell, which in 1950 had a population of 184. It is situated on the Wabash Railroad and on US 24. In addition to several retail stores and service establishments, Timewell has a bank and postoffice. The village was originally called Mound Station. It is the largest community of Lee Township, which was formed in 1854.



F A R G O



BUCKHORN

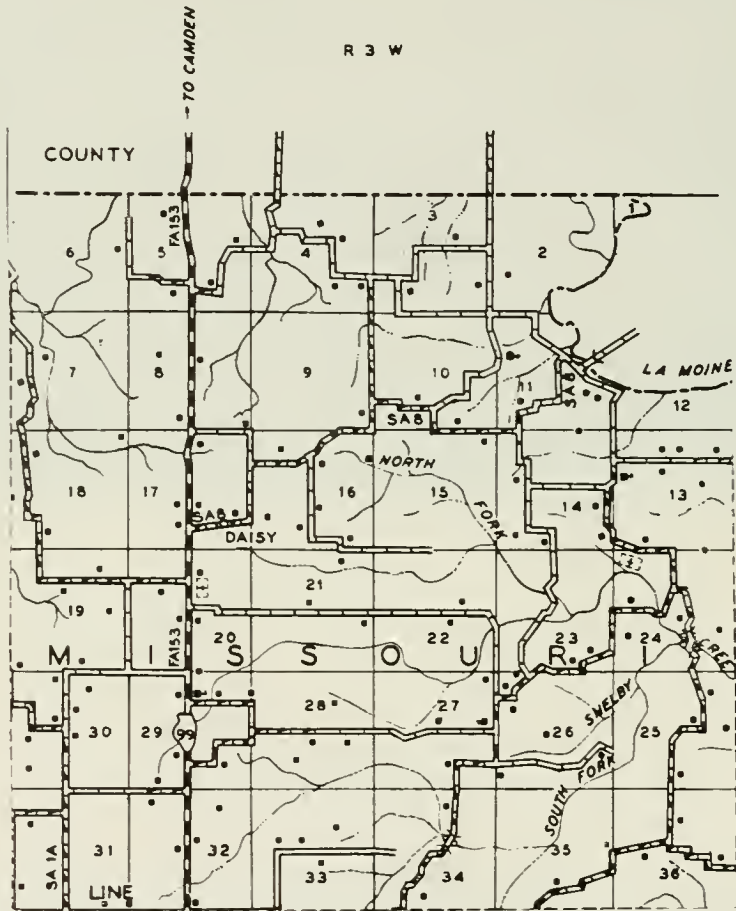
Another community in Lee Township is the village of Buckhorn, which in 1950 had a population of 20. It is served by the postoffice at Mount Sterling. Buckhorn is located in the midst of a level, fertile farming region.

MISSOURI TOWNSHIP

GENERAL HIGHWAY MAP

PREPARED BY THE
 BUREAU OF RESEARCH AND PLANNING
 DIVISION OF HIGHWAYS
 DEPARTMENT OF PUBLIC WORKS & BUILDINGS
 IN COOPERATION WITH THE
 U.S. DEPARTMENT OF COMMERCE
 BUREAU OF PUBLIC ROADS

ORIGINAL DATA 1950			
REVISIONS			
ROAD TYPE ETC	CULT FEAT	DATE	BY
12-30-52 D.B.			
12-3-53 J.L.W.			





Mt. S T E R L I N G

Population 2,246

DAISY

Daisy is a small hamlet located north of Mount Sterling on State 99. In 1950 it had a population of 15. It is served by the postoffice at Mount Sterling. This hamlet is the only community of Missouri Township, which was created in 1854. The township is noted for its thriving farms and abundant harvests.

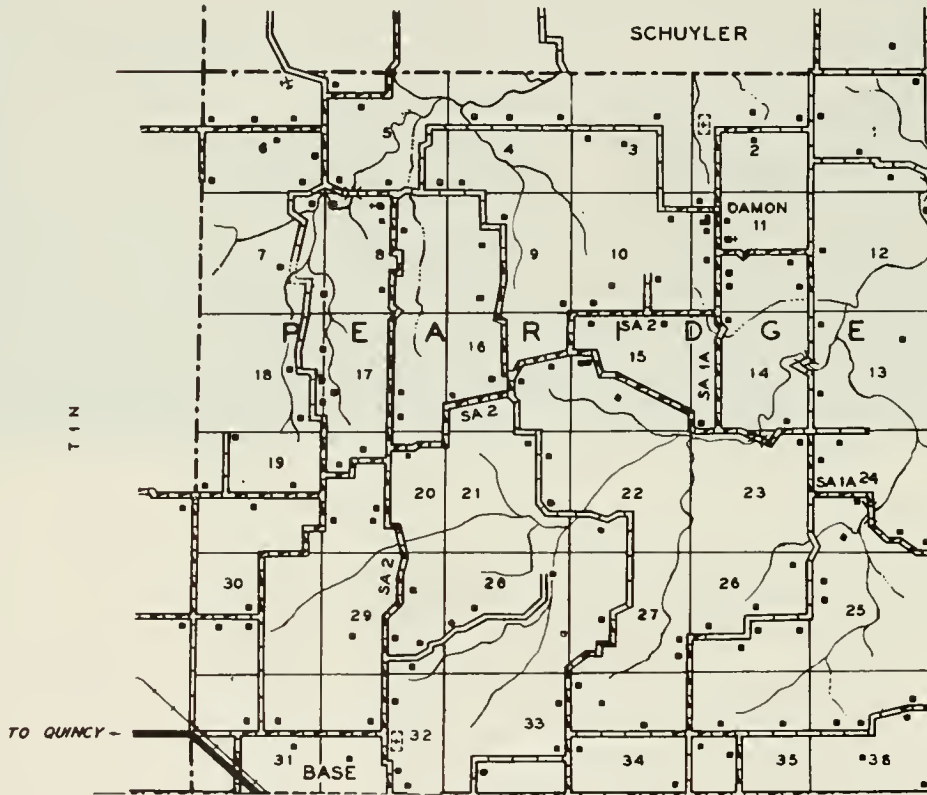
PEA RIDGE TOWNSHIP GENERAL HIGHWAY MAP

PREPARED BY THE
BUREAU OF RESEARCH AND PLANNING
DIVISION OF HIGHWAYS
DEPARTMENT OF PUBLIC WORKS & BUILDINGS
IN COOPERATION WITH THE
U.S. DEPARTMENT OF COMMERCE
BUREAU OF PUBLIC ROADS

ORIGINAL DATA 1950			
REVISIONS			
ROAD TYPE ETC.	BY	CULT FEAT.	DATE BY
12-21-52	D B		
12-31-53	J L W		



R 4 W





V E R S A I L L E S

Population 600

D A M O N

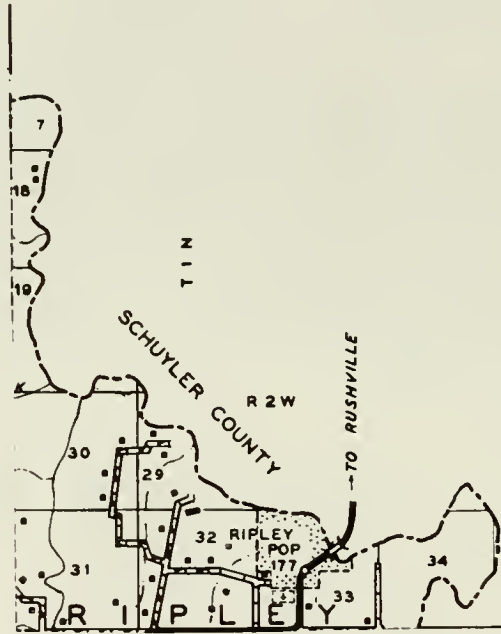
In the northwest corner of Brown County may be found the village of Damon, which in 1950 had a population of 39. It is served by the postoffice at Mount Sterling. Damon is the only community in Pea Ridge Township, which was organized in 1854 and at a later date, named after the Civil War battle of Pea Ridge, in Arkansas. The township has, since its beginning, remained an agricultural region.

RIPLY TOWNSHIP

GENERAL HIGHWAY MAP

PREPARED BY THE
 BUREAU OF RESEARCH AND PLANNING
 DIVISION OF HIGHWAYS
 DEPARTMENT OF PUBLIC WORKS & BUILDINGS
 IN COOPERATION WITH THE
 U.S. DEPARTMENT OF COMMERCE
 BUREAU OF PUBLIC ROADS

ORIGINAL DATA 1950			
REVISIONS			
ROAD TYPE ETC.	CULT FEAT	DATE	BY
12-3-52	D B		
12-3-53	J L W		





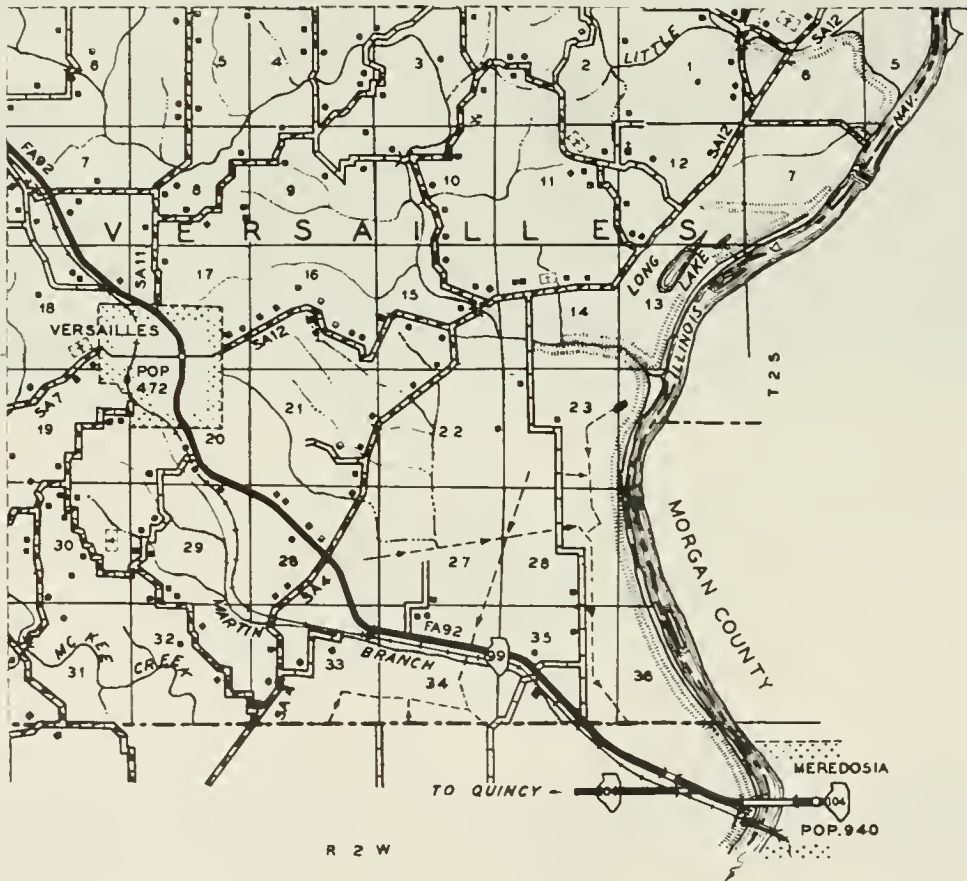
R I P L E Y

One of the oldest villages in the county, Ripley today has a population of 177. It is an incorporated village and has its own postoffice. Located near Crooked Creek, the village was founded in the early 1830's and was at one time widely known for its pottery ware. It is the only community in Ripley Township, which was created in 1854.

VERSAILLES TOWNSHIP GENERAL HIGHWAY MAP

PREPARED BY THE
BUREAU OF RESEARCH AND PLANNING
DIVISION OF HIGHWAYS
DEPARTMENT OF PUBLIC WORKS & BUILDINGS
IN COOPERATION WITH THE
US DEPARTMENT OF COMMERCE
BUREAU OF PUBLIC ROADS

ORIGINAL DATA	
1950	
REVISIONS	
ROAD TYPE ETC.	CULY FEAT
DATE BY	DATE BY
12-31-52 O.B.	
12-31-53 J.L.W.	

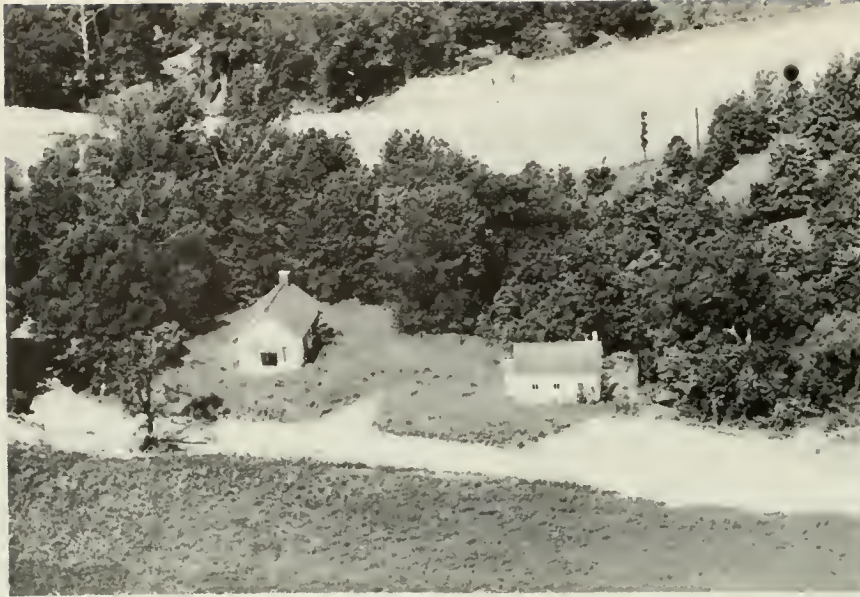


R 2 W

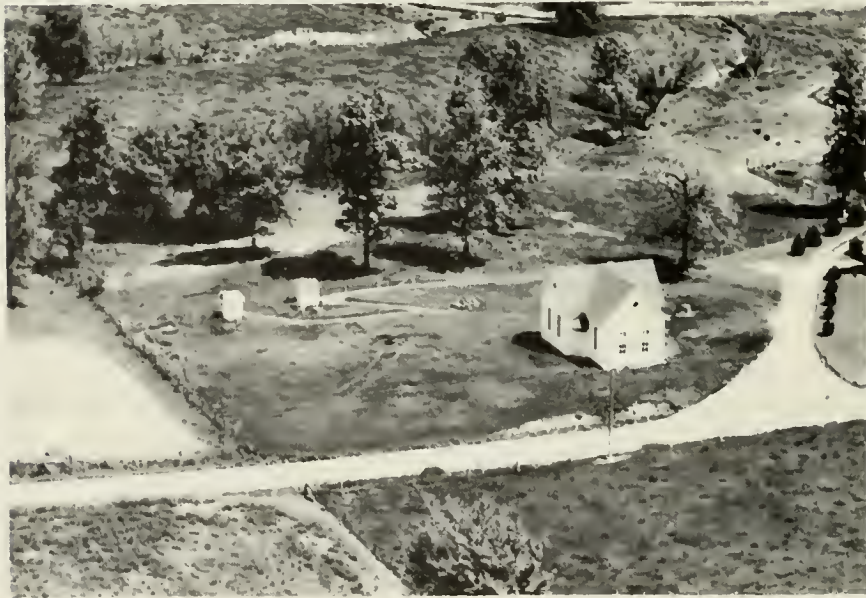


VERSAILLES

Versailles is a town of 472 population. It is located on the Wabash Railroad and on State 99, in the southeast portion of Brown County. In addition to numerous retail stores and service establishments, the town has its own postoffice and banking facilities. It is the largest community in Versailles Township, which was formed in 1854. The township is bounded on the east by the Illinois River.



PLEASANT HILL UNION CHURCH & SCHOOL District No. 43



MT. GILEAD BAPTIST CHURCH

Mt. Sterling



ZION LUTHERAN CHURCH & CEMETERY

Chambersburg



UNION CHURCH & CEMETERY

Mt. Sterling



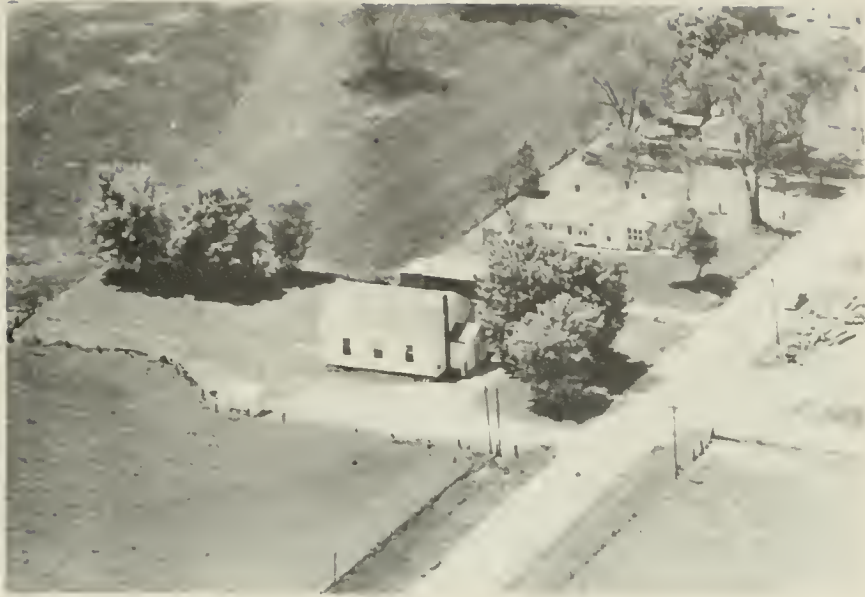
LA GRANGE CHAPEL (1919)

Mt. Sterling



CHRISTIAN CHURCH

Ripley



COOPERSTOWN BAPTIST CHURCH & PARSONAGE Mt. Sterling



DAYMON CHURCH Mt. Sterling



LEE PRESBYTERIAN CHURCH
TOWN HALL

Timewell
Lee Township



PCES CHURCH

Clayton



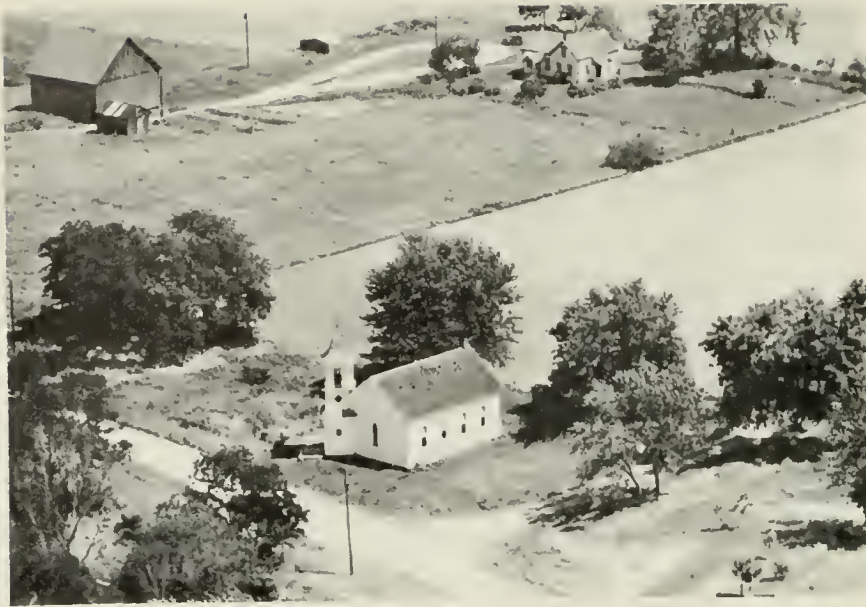
ST. MARY'S CHURCH & ACADEMY

Mt. Sterling



NEW SALEM CHURCH (Closed)

Mt. Sterling



MORRELLVILLE METHODIST CHURCH

Mt. Sterling



HERSMAN PRESBYTERIAN CHURCH

Hersman



MARDIN CHURCH & CEMETERY (1909)

Mt. Sterling



COMMUNITY CENTER (formerly Mt. Zion Church) Versailles



BAPTIST CHURCH

Timewell



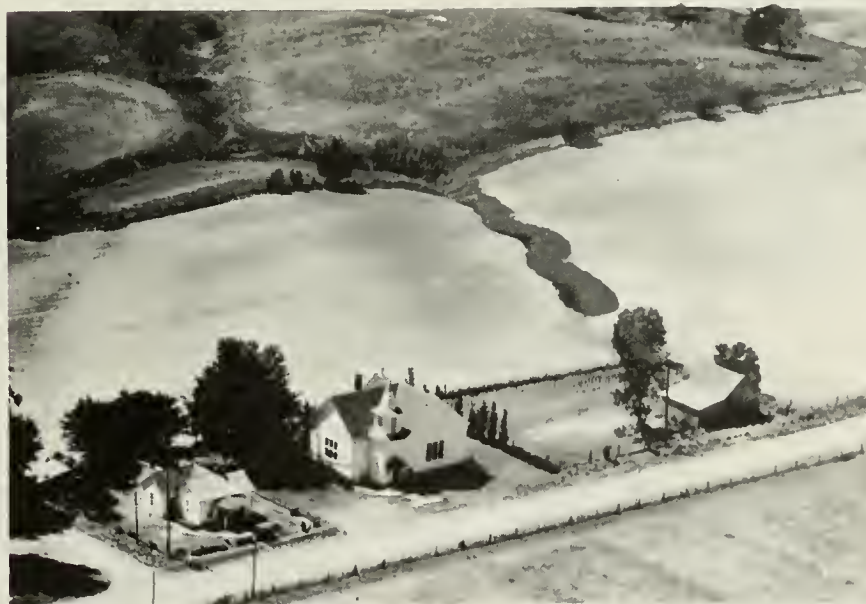
CHRISTIAN CHURCH (1913)

Timewell



LYNN CHAPEL CHURCH

Timewell



METHODIST CHURCH at Buckhorn

Mt. Sterling



COOPERSTOWN CHRISTIAN CHURCH

Mt. Sterling



PRIMITIVE BAPTIST CHURCH (Pontiac)

Chandlerville



WILLIAMS SCHOOL

Timewell



SHANK SCHOOL

Clayton



WASHINGTON SCHOOL Dist. 58

Versailles



RIPLEY SCHOOL

Ripley



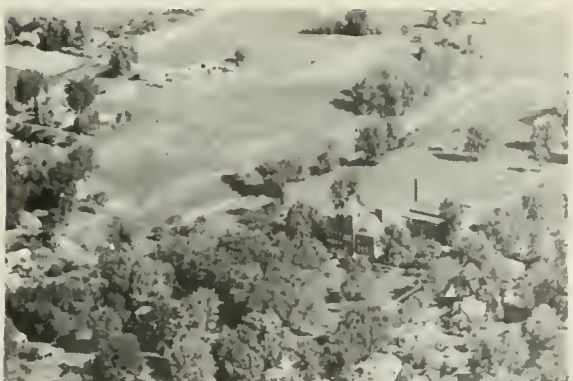
EBENEZER SCHOOL (1911)

Mt. Sterling



PLEASANT VIEW SCHOOL

Mt. Sterling



ST. MARY'S PAROCHIAL SCHOOL Mt. Sterling



PERRY SCHOOL (Closed)

Mt. Sterling



POES SCHOOL (Vacant)

Clayton



GROVE SCHOOL

Versailles



MORRELLVILLE SCHOOL

Mt. Sterling



HERSMAN GRADE SCHOOL (1915)

Hersman

TELEPHONE OFFICE &

Gerald Christner



SHANK SCHOOL
John May, Prop.

Clayton
440 acres



HERSMAN GRADE SCHOOL Brown Co. District



LESTER SCHOOL

Timewell



HALL SCHOOL Dist. 57

Versailles



CLARK SCHOOL Mt. Sterling



ELEMENTARY SCHOOL Mt. Sterling



GILBERT SCHOOL Dist. 42 Versailles



COOPERSTOWN GRADE SCHOOL Mt. Sterling



FERNDALE SCHOOL Dist. 29 Mt. Sterling



TIMEWELL GRADE SCHOOL (1915) Timewell



FARGO SCHOOL Timewell



COUNCIL SCHOOL District 46 Mt. Sterling



BOTTOM PRAIRIE SCHOOL Dist. 60 Mt. Sterling



BROWN COUNTY HIGH SCHOOL Mt. Sterling



BENVILLE SCHOOL Mt. Sterling



BROWN COUNTY COMMUNITY GRADE SCHOOL Dist Versailles



BELL SCHOOL (Closed) Mt. Sterling



PATTERSON SCHOOL Versailles



BYRNES SCHOOL (Vacant) Mt. Sterling



CROSSROAD CEMETERY Versailles



RIPLEY CEMETERY

Ripley



VINE HENRY CEMETERY

Versailles



COOPERSTOWN CEMETERY

Mt. Sterling



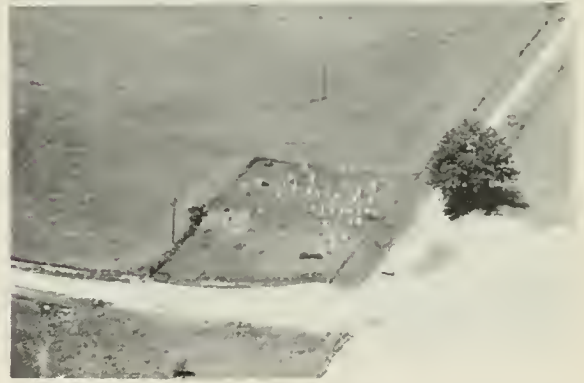
HEBRON CEMETERY

Chambersburg



MT. ZION CEMETERY

Versailles



SIMPSON CEMETERY

Mt. Sterling



VANDEVENTER SCHOOL Dist. 49
VANDEVENTER CEMETERY

Versailles
Rt. 1



HERSMAN CEMETERY

Hersman



MT. STERLING CITY CEMETERY Mt. Sterling



LOGAN CREEK CEMETERY Mt. Sterling



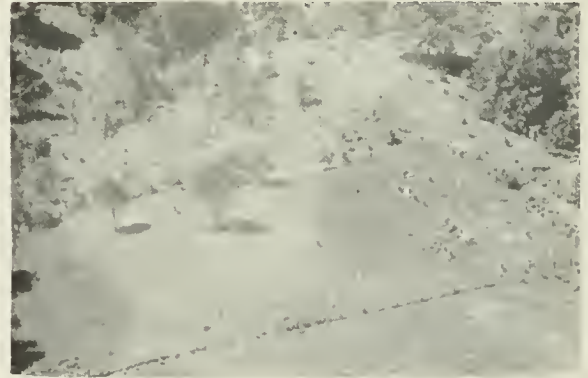
RIGG CEMETERY Mt. Sterling



HOWELL CEMETERY Timewell



VERSAILLES CEMETERY Versailles



BECKMAN CEMETERY Timewell



MT. GILEAD CEMETERY Mt. Sterling



ST. MARY'S CATHOLIC CEMETERY Mt. Sterling



MORRELLVILLE CEMETERY

Mt. Sterling



AUSMAS CEMETERY

Timewell



STONER CEMETERY

Chambersburg



MOUND CEMETERY
Mounds School (Vacant)

Timewell
Rt. 1



BUCKHORN CEMETERY

Mt. Sterling



LAKE WELDON SPRING STATE PARK

Clinton



FARGO CEMETERY

Timewell



RIPLEY SCHOOL

Ripley



TIMEWELL POST OFFICE-TIMEWELL MASONIC LODGE
TIMEWELL STATE BANK



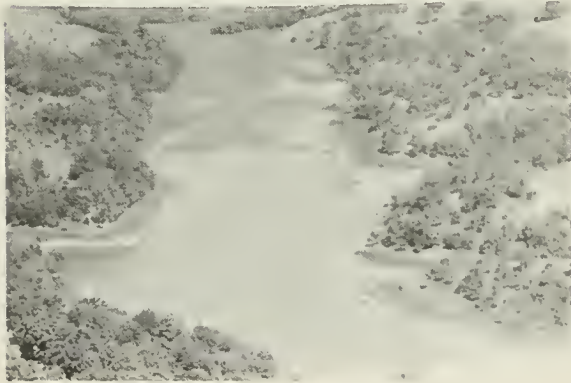
FIELD HOUSE New LaGrange Lock Versailles
Daniel A. Ballard (Center) Walter Carlock



M & B Agricultural Service Co. Mt. Sterling
Harry McGurk, Prop.



BROWN COUNTY FAIR GROUNDS Mt. Sterling



LAKE MT. STERLING Mt. Sterling



DEPT. of AGRICULTURE Commodity Credit Corp
Grain Storage Reserve Mt. Sterling



ELKHORN TOWN HALL Mt. Sterling



BUCKHORN TOWN HOUSE Mt. Sterling



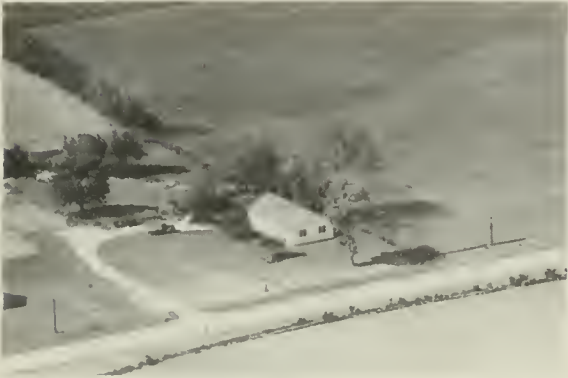
ABER, C. D.
Rt. 2

Mt. Sterling
140 acres



ALFORD, ELMER
Rt. 1

Timewell
124 acres



ABER, GEORGE
Rt. 3

Mt. Sterling
1½ acres



ALLEN, FRANK N.
Rt. 1

Timewell
40 acres



ADAMS, MISS LILLIE
Rt. 4

Mt. Sterling
90 acres



ANDERSON, MRS. FLORENCE
Rt. 2

Versailles
105 acres



ALCORN, LOREN
Rt. 2

Mt. Sterling
135 acres



ARMEL, ELI
Rt. 3

Mt. Sterling



ARMEL, ELI
Rt. 3

Mt. Sterling
200 acres



AUSMUS, ALBERT
Rt. 2

Baylis
240 acres



ARMSTRONG, W. D.
Rt. 1

Mt. Sterling
175 acres



AVERY, ANDREW
Rt. 1

Mt. Sterling
280 acres



ASHBAKER, J. EMMETT
Rt. 4

Mt. Sterling
120 acres



BAILLEY, RUBY E.
Rt. 1

Versailles
129½ acres



ATTEBERRY, ALVA
Rt. 3

Mt. Sterling
172 acres



BAKER, MRS. CLARA
Rt. 2

Mt. Sterling
128 acres



BAKER, MILES
Rt. 2

Versailles
213 acres



BALDWIN, ED
Rt. 3

Mt. Sterling
Tenant House



BAKER, PERRY
Rt. 2

Versailles
275 acres



BALDWIN, ED.
Rt. 3

Mt. Sterling
80 acres



BAKER, RALPH
Rt. 2

Versailles
15 acres



BAPBIST, HUGO
Rt. 1

Mt. Sterling
205 acres



BAKER, ROY R.
Rt. 2

Versailles
140 acres



BAPTISTA, FRANK
Rt. 1

Versailles
160 acres



BARCLIFT, W. L.
Rt. 3

Mt. Sterling
170 acres



BATES, JOHN
Rt. 1

Mt. Sterling
165 acres



BARRY, FRANK
Rt. 2

Versailles
80 acres



BATTERTON, TOM G.
Rt. 2

Mt. Sterling
163½ acres



BARTH, PAUL
Rt. 2

Versailles
135 acres



BAUCH, DENNIS
Rt. 1

Chambersburg
40 acres



BARTLEY, MRS. LORRAINE
Rt. 1

Versailles
370 acres



BAUCH, EDWIN
Rt. 1

Chambersburg
40 acres



BEEBE, HOWARD
Rt. 4

Mt. Sterling
40 acres



BEIDE, C. J.
Rt. 1

Versailles
172 acres



BEHREND, LEO
Rt. 4

Mt. Sterling
44 acres



BELLOMY, J. R.
Rt. 1

Timewell
83 acres



BEHREND, SYBEL
Rt. 2

Hersman
80 acres



BEMIS, O. L.
Rt. 2

Versailles



BEHREND, SYBEL
Rt. 2

Hersman
160 acres



BEMIS, O. L.
Rt. 2

Versailles
302 acres



BEMIS, O. L.
Rt. 2

Versailles
267 acres



BIXBY, WALTER JR.
Rt. 2

Versailles
121 acres



BENSON, GROVER C.

Versailles



BIXBY, WALTER JR.
Rt. 2

Versailles
121 acres



BENSON, GROVER C.

Versailles



BLACK, LULA
Rt. 1

Timewell
120 acres



BIXBY, WALTER JR.
Rt. 2

Versailles
148 acres



BLAKEY, FORREST
Rt. 2

Mt. Sterling
149 acres



BLOOMFIELD, WILLIAM
Rt. 4

Mt. Sterling
160 acres



BOKER, ARTHUR
Rt. 1

Mt. Sterling
46 acres



BLOSS, FRED
Rt. 3

Mt. Sterling
1 acre



BOND, FLOYD
Rt. 1

Timewell
155 acres



BOBO, GEORGE
Rt. 1

Mt. Sterling
112 acres



BOND, FLOYD
Rt. 1

Mt. Sterling
160 acres



BOBO, GEORGE C.
Rt. 2

Mt. Sterling
112 acres



BOND, FLOYD
Rt. 1

Mt. Sterling
80 acres



BOND, HAROLD
Rt. 1

Mt. Sterling
Tenant House



BORDENKIRCHER, CHARLES
Rt. 1

Mt. Sterling
400 acres



BOND, HAROLD E.
Rt. 1

Mt. Sterling
90 acres



BORDENKIRCHER, MRS. JOE
Rt. 1

Timewell
118½ acres



BOND, HAROLD E.
Rt. 1

Mt. Sterling
170 acres



BOSS, LAVINIA
Rt. 4

Mt. Sterling
80 acres



BORDENKIRCHER, HENRY
Rt. 1

Mt. Sterling
160 acres



BOWEN, MRS. HARVEY
Rt. 1

Timewell
80 acres



BOWEN, MARY J.
Rt. 1

Timewell
80 acres



BOWEN, TIMOTHY (ESTATE) , Mt. Sterling
Rt. 4 160 acres



BOWEN, MARY J.
Rt. 1

Timewell
160 acres



BOYDSTUN LUMBER COMPANY Mt. Sterling
Wayne Peacock, Mgr.



BOWEN, SELDON
Rt. 1

Timewell
230 acres



BRADBURY, LEO
Rt. 1

Chambersburg
80 acres



BOWEN, TED
Rt. 1

Timewell
80 acres



BRADBURY, OVERTON
Rt. 3

Mt. Sterling
11 acres



BRADNEY, CORA L.
Rt. 1

Timewell
90 acres



BRIDGEWATER, CHARLES A.
Rt. 2

Versailles
80 acres



BRATTON, RAY
Rt. 2

Mt. Sterling
62 acres



BRIDGEWATER, OTTO
Rt. 1

Versailles
80 acres



BREIDENBEND, MRS. LIZZIE
Rt. 2

Mt. Sterling
240 acres



BRIDGEWATER, RAYMOND
Rt. 1

Versailles
5 acres



BREIDENBEND, WILLIAM (ESTATE)
Rt. 2

Versailles
400 acres



BRIERTON, HENRY H.
Rt. 2

Mt. Sterling
195 acres



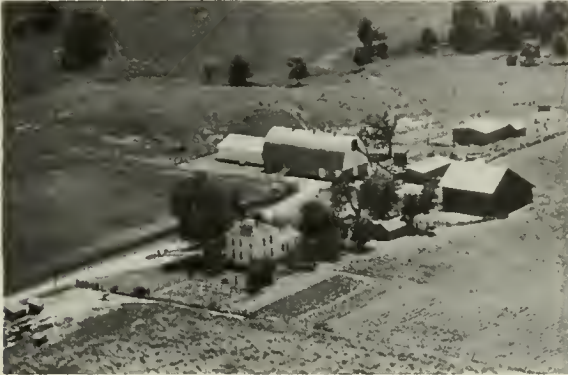
BRIGGLE, LESLIE
Rt. 3

Mt. Sterling
80 acra



BRIGGS, O. T.
Rt. 4

Mt. Sterling
95 acres



BRIGGS, CHARLES
Rt. 4

Mt. Sterling
230 acres



BRIGGS, MRS. RUIH
Rt. 4

Mt. Sterling
134 acres



BRIGGS, CHARLES
Rt. 4

Mt. Sterling
80 acres



BRIGGS, VERNON
Rt. 4

Mt. Sterling
105 acres



BRIGGS, LYLE A.
Rt. 4

Mt. Sterling
185 acres



BRIGGS, WILLIAM
Rt. 2

Mt. Sterling
60 acres



BRIMM, R. L.
Rt. 1

Chambersburg
120 acres



DORMIRE, BROOKE
Rt. 3

Mt. Sterling
40 acres



BRINEY, ELDEN C.
Rt. 1-Formerly Pell School

Mt. Sterling
60 acres



BROS, GEISLER
Rt. 1

Mt. Sterling
120 acres



BROCKHOUSE, CLIFFORD
Rt. 1

Mt. Sterling
93 acres



BROWN COUNTY FARM
Clinton Clapp, Mgr.

Timewell
107 acres



BRODERICK, ROBERT
Rt. 3

Mt. Sterling
80 acres



BROWN, MARTHA (ESTATE)
Rt. 2

Versailles
101 acres



BROWN COUNTY BANK
Rt. 3

Mt. Sterling



BROWNRIGG, WILLIAM H.
Rt. 4

Mt. Sterling
320 acres



BROWN COUNTY BANK
Rt. 3

Mt. Sterling
120 acra



BUCKLES, W. ERNEST
Rt. 2

Mt. Sterling
122 acres



BROWN COUNTY MOTOR CO.

Mt. Sterling



BUCKLEY, D. K.
Rt. 1

Clayton
160 acres



BROWN, V.E. & C.W.
Rt. 1

Versailles
190 acres



BULLARD, MRS. A. D.
Rt. 4

Mt. Sterling
40 acres



BULLARD, GLENN
Rt. 2

Baylis
83 acres



BUNFILL, FRANK
Rt. 3

Mt. Sterling
165 acres



BULLARD, HARRY
Rt. 1

Timewell
160 acres



BUNFILL, FRANK
Rt. 3

Mt. Sterling
80 acres



BULLARD, ROBERT
Rt. 4

Mt. Sterling
100 acres



BUNFILL, FRANK
Rt. 3

Mt. Sterling
3 acres



BULLOCK, ELIZABETH
Rt. 4

Mt. Sterling
100 acres



BUNFILL, LOZELLE
Rt. 3

Mt. Sterling
80 acres



BUNFILL, RAY
Rt. 3

Mt. Sterling



BUSEN, HARRY J.
Rt. 1

Timewell
160 acres



BUNGER, GEORGE
Rt. 2

Clayton
152 acres



BUTLER, LUCY H.
Rt. 2

Mt. Sterling
115 acres



BURNS, CYRIL
Rt. 1

Mt. Sterling
260 acres



BUXTON, MRS. EDITH
Rt. 2

Mt. Sterling
110 acres



BUSEN, EMILY
Rt. 4

Mt. Sterling
237 acres



PERRY SCHOOL (Closed)

Mt. Sterling



CAIN, BEN
Rt. 2

Clayton
190 acres



CARNICLE, MRS. HENRY
Rt. 2

Mt. Sterling
90 acres



CALVO, HORACE
Rt. 2

Mt. Sterling
180 acres



CARNICLE, MRS. HENRY
Rt. 2

Mt. Sterling
93 acres



CAMPBELL, CORLIS E.
Rt. 1

Mt. Sterling
200 acres



CARNICLE, J. H.
Rt. 2

Mt. Sterling
80 acres



CAMPBELL, ROBERT N.
Rt. 1

Mt. Sterling
160 acres



CARNICLE, J. H.
Rt. 2

Mt. Sterling
130 acres



CARNICLE, J.H. AND MRS. HENRY Mt. Sterling
Rt. 2 140 acres



CAVANAUGH, JOHN & ELLEN PATTERSON Rt. 3
160 acres Mt. Sterling



CARPENTER, ALZIA Mt. Sterling
Rt. 2 18 acres



CHAMBERLAIN, MARION Mt. Sterling
Rt. 1 182 acres



CARPENTER, DENNIE Timewell
Rt. 1 73½ acres



CHAMBERLIN, ROLLIN Timewell
Rt. 1 120 acres



CASTEEN, J. C. Versailles
Rt. 2 172 acres



CHAPMAN, SHIRLEY Timewell
Rt. 1 176 acres



GRAVEL PIT, Chas. Childers, Prop. Versailles



CHRISTIAN, H. O.
Rt. 1

Timewell
98 acres



CHILDERS, CHARLES
Rt. 1

Versailles
120 acres



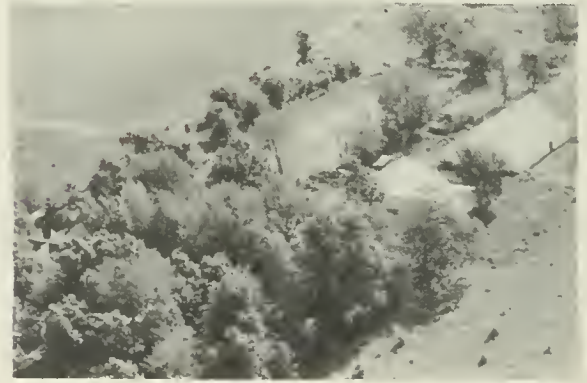
CHRISTNER, HENRY
Rt. 1

Mt. Sterling
160 acres



CHILDERS, DELLA
Rt. 1

Timewell
240 acres



CLARK, CHARLES
Rt. 1

Mt. Sterling
300 acres



CHILDERS, DELLA
Rt. 1

Timewell
200 acres



CLARK, COLLIS
Rt. 2

Mt. Sterling
40 acres



CLARK, MRS. CORA F.
Rt. 1

Mt. Sterling
98 acres



CLARK, NANCY
Rt. 1

Versailles
10 acres



CLARK, EDWIN
Rt. 1

Versailles
147 acres



CLARK, ORIS
Rt. 1

Versailles
40 acres



CLARK, JAMES
Rt. 2

Mt. Sterling
400 acres



CLARK, ORIS
Rt. 1

Versailles
79½ acres



CLARK, JAMES R.
Rt. 4

Mt. Sterling
80 acres



CLARK, O. B.
Rt. 1

Mt. Sterling



CLARK, H. RAY
Rt. 2

Mt. Sterling
80 acres



CLAYTON, BERT
Rt. 1

Mt. Sterling
120 acres



CLARK, O. B.
Rt. 1

Mt. Sterling
215 acres



CLEAVES, HOBART (ESTATE)
Rt. 1

Timewell
80 acres



CLARK, RUBY
Rt. 1

Versailles
120 acres



CLEAVES, IDA
Rt. 1

Timewell
114 acres



CLAYTON, BERT
Rt. 1

Mt. Sterling
80 acres



COFFMAN, JOSEPHINE (ESTATE)
Rt. 1

Mt. Sterling
130 acres



COFFMAN, W. K.
Rt. 1
Timewell
165 acres



COLGAN, CHARLES
Rt. 3
Mt. Sterling
79 acres



COLCLASURE, FOLLA L.
Rt. 3
Mt. Sterling
160 acres



COOK, MRS. C. W.
Rt. 1
Mt. Sterling
140 acres



COLCLASURE, FOLLA L.
Rt. 3
Mt. Sterling
226 acres



COOK, F. S.
Rt. 1
Timewell
4 acres



COLGAN, CHARLES
Rt. 3
Mt. Sterling
77½ acres



COOLEY, CLEVE
Rt. 3
Mt. Sterling
100 acres



COOPER, HOMER
Rt. 1

Versailles
120 acres



CORY, HUGH
Rt. 4

Mt. Sterling
200 acres



COOPER, H. M.
Rt. 1

Versailles
80 acres



COX, ANNA G. (ESTATE)
Rt. 2

Versailles
260 acres



COOPER, H. M.
Rt. 1

Versailles
131 acres



COX, CHARLES A.
Rt. 2

Versailles
160 acres



COOPER, JIMMIE
Rt. 1

Versailles
157 acres



COX, E. HISLE
Rt. 2

Mt. Sterling
80 acres



COX, JOSEPHINE
Rt. 1

Versailles
200 acres



COX, HOLLAND F.
Rt. 3

Mt. Sterling
100 acres



COX, LEE
Rt. 1

Timewell
5 acres



CRAWFORD, CHARLES
Rt. 2

Mt. Sterling
200 acres



COX, MARSHALL F.
Rt. 1-Grain & Livestock Farm

Versailles
160 acres



CRAWFORD, JAMES
Rt. 1

Versailles
80 acres



COX, RAE & WILMA
Rt. 2

Mt. Sterling
200 acres



CRAWFORD, JAMES
Rt. 1

Versailles
168½ acres



CROSIER, VAIL
Rt. 4

Mt. Sterling
115 acres



CURTIS, T. OLIVER
Rt. 3

Mt. Sterling
200 acres



CROSS, GEORGE W.
Rt. 3

Mt. Sterling
109 acres



GILBERT SCHOOL Dist. 42

Versailles



CURRAN, CLARENCE
Rt. 1

Versailles
120 acres



DAAB, CARL E.
Rt. 1

Mt. Sterling
120 acres



CURRAN, EDWARD
Rt. 2

Versailles
1 7/8 acres



DAAB, CARL E.
Rt. 1

Mt. Sterling
125 acres



DAVIS, FRED H.
Rt. 1

Timewell
100 acres



DAVIS, CECIL
Rt. 3

Mt. Sterling
115 acres



DAVIS, CYRIL
Rt. 3

Mt. Sterling
80 acres



DAVIS, CECIL
Rt. 3

Mt. Sterling
80 acres



DAVIS, CLARENCE
Rt. 2

Mt. Sterling
200 acres



DAVIS, CECIL
Rt. 3

Mt. Sterling
32 acres



DAVIS, CLARENCE
Rt. 2

Mt. Sterling
140 acres



DAVIS, DWIGHT
Rt. 1

Versailles
110½ acres



DALTON, MRS. FRED
Rt. 4

Mt. Sterling
20 acres



DAVIS, ROY
Rt. 1

Mt. Sterling
197 acres



DAVIS, ED (MRS.)
Rt. 2

Versailles
130 acres



DAVIS, W. S.
Rt. 2

Mt. Sterling
74 acres



DAVIS, RUSSELL S.
Rt. 2

Clayton
254 acres



DAVIS, WILLIAM L.
Rt. 1

Timewell
1½ acres



DAVIS, RUBEN
Rt. 1

Timewell
180 acres



DAVIS, WILLIAM L.
Rt. 1

Timewell
480 acres



DAVIS, ROY M.
Rt. 1

Mt. Sterling
197 acres



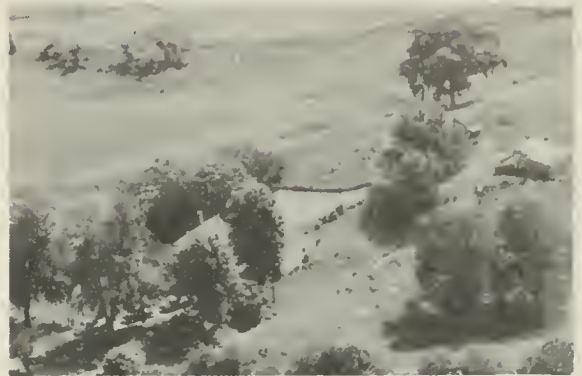
DAVIS, LYDIA
Rt. 3

Mt. Sterling
15 acres



DAVIS, NORMAN
Rt. 9

Versailles
20 acres



DAVIS, HAROLD F.
Rt. 2

Mt. Sterling
100 acres



DAVIS, MILES W.
Rt. 2

Mt. Sterling
103 acres



DAVISON, GUY (ESTATE)
Rt. 1

Timewell
126½ acres



DAVIS, LYDIA
Rt. 3

Mt. Sterling
70 acres



DAVISON, GUY
Rt. 2

Clayton
182 acres



DENNIS, EDWARD
Rt. 1

Versailles



DEWITT, FRANK
Rt. 2

Versailles
105 acres



DELANEY, KENNETH W.
Rt. 2

Mt. Sterling
120 acres



DE WITT, JOE
Rt. 4

Mt. Sterling
132 acres



DEVLIN, GEORGE
Rt. 4

Mt. Sterling
123 acres



DEWITT, LORA C.
Rt. 3

Mt. Sterling
5 acres



DEWITT, MRS. CORA
Rt. 3

Mt. Sterling
200 acra



DEWITT, LEWIS
Rt. 2

Versailles
120 acres



DEWITT, RALPH
Rt. 2

Mt. Sterling
40 acres



DOBEY, ANGUS
Rt. 2

Versailles
120 acres



DISS, FRANK
Rt. 1

Timewell
160 acres



DOBEY, ESTEL
Rt. 4

Mt. Sterling
138 acres



DIXON, ALBERT
Rt. 1

Chambersburg
137 acres



DOBEY, OREN
Rt. 4

Mt. Sterling
170 acres



DIXON, EDWIN
Rt. 1

Chambersburg
40 acres



DORMIRE, BERLIN
Rt. 3

Mt. Sterling
80 acres



DORMIRE, BERLIN
Rt. 3

Mt. Sterling
152 acres



DOZIER, FRANK
Rt. 2

Versailles
160 acres



DORMIRE, BROOKE
Rt. 3

Mt. Sterling
120 acres



DOZIER, FRANK
Rt. 2

Versailles
142 acres



DORMIRE, EUGENE
Rt. 3

Mt. Sterling
217 acres



DREW, MRS. ABBIE
Rt. 1

Mt. Sterling
120 acres



DORMIRE, JOHN
Rt. 3

Mt. Sterling
160 acres



DREW, DAN
Rt. 1

Mt. Sterling
100 acres



DREW, J. E. (ESTATE)
Rt. 1

Mt. Sterling
200 acres



DUNBAR, RUSSELL
Rt. 3

Mt. Sterling
200 acres



DREW, MRS. NINA
Rt. 1

Mt. Sterling
120 acres



DUNBAR, VERNON
Rt. 1

Versailles
80 acres



DREW, S. A.
Rt. 1

Mt. Sterling
83 acres



DUNAWAY, VERNON
Rt. 4

Mt. Sterling
320 acres



DUMBAR, OTHA
Rt. 3

Mt. Sterling
120 acres



DUNLAP, L. W.
Rt. 2

Mt. Sterling
310 acres



DUNN, LAWRENCE
Rt. 1

Mt. Sterling
160 acres



EBBING, BERNARD H.
Rt. 2

Mt. Sterling
80 acres



DURING, MRS. ANNA
Rt. 3

Mt. Sterling
178 acres



EBBING, HERBERT H.
Rt. 2

Mt. Sterling
248 acres



HERSMAN GRADE SCHOOL (1915) Hersman
TELEPHONE OFFICE & Gerald Christner



ELBUS, BERNARD
Rt. 4

Mt. Sterling
290 acres



EASLEY, JOHN
Rt. 1

Mt. Sterling
80 acres



ELBUS, CYREL
Rt. 1

Timewell
200 acres



ELBUS, FRANK
Rt. 1

Mt. Sterling
80 acres



ESELA, JACOB
Rt. 2

Mt. Sterling
80 acres



ELBUS, FRANK
Rt. 1

Mt. Sterling
178 acres



EVANS, KERMIT A.
Rt. 3

Mt. Sterling
40 acres



ELBUS, FRED A.
Rt. 3

Mt. Sterling
156 acres



EDLIN, EARL & LOCK VIEW GROCERY (left)
Rt. 1-32 acres Mrs. Mary Bradbury, Prop.



ELLIOTT, MRS. LILLIE
Rt. 2

Mt. Sterling
44 acres



FARREL, DEWEY
Rt. 2

Mt. Sterling
120 acres



FERGUSON, CLARENCE
Rt. 4

Mt. Sterling
80 acres



FLEIGER, MRS. FERN
Rt. 4

Mt. Sterling



FERRELL, MILLIE
Rt. 2

Clayton
100 acres



FLUCKEY, DELL
Rt. 1

Versailles
54 acres



FEY, WILLIAM
Rt. 1

Mt. Sterling
114 acres



FLUCKEY, ERNEST
Rt. 1

Mt. Sterling
180 acres



FITZSIMONS, MRS. MARGARET
Rt. 1

Mt. Sterling
80 acres



FLYNN, EMERY D.
Rt. 4-Box 1

Mt. Sterling
10 acres



FOOTE, FRANK A.
Rt. 3

Mt. Sterling
195 acres



FORSYTHE, R. F.
Rt. 1

Mt. Sterling
150 acres



FORD, MRS. PEARL T.
Rt. 3

Mt. Sterling
100 acres



FRANKLIN, GEORGE
Rt. 4

Mt. Sterling
80 acres



FOREMAN, MRS. AMANDA
Rt. 2

Versailles
120 acres



FRANKLIN, GLEN
Rt. 4

Mt. Sterling
80 acres



FORSYTHE, R. F.
Rt. 1

Mt. Sterling
97 acres



FRANKLIN, JACK
Rt. 1

Mt. Sterling
120 acres



FRANKLIN, LAWRENCE
Rt. 4

Mt. Sterling
80 acres



FREDERIC BRICK & TILE CO. Mt. Sterling



FRANKLIN, LAWRENCE
Rt. 1

Timewell
173 acres



FREDRICKS, FRED
Rt. 1

Timewell
161 acres



FRANKS, GUY
Rt. 4

Mt. Sterling
150 acres



FREELAND, DONALD E.
Rt. 3

Mt. Sterling
87 acres



FREDLIN, EARL E.
Rt. 2

Mt. Sterling
80 acres



FREEMAN, WENDELL
Rt. 1

Versaillea
200 acres



FROST, HERSCHEL
Rt. 2

Versailles
125 acres



FRY, JIM
Rt. 2

Mt. Sterling
155 acres



FROST, NED
Rt. 1

Versailles
30 acres



FUQUA, CHARLES
Rt. 3

Mt. Sterling
240 acres



FRY, EDWIN
Rt. 3

Mt. Sterling
84 acres



COOPERSTOWN GRADE SCHOOL

Mt. Sterling



FRY, ELIZABETH
Rt. 3

Mt. Sterling
80 acres



GAIST, JIM
Rt. 1

Timewell
342 acres



GARNER, STEWART
Rt. 1

Timewell
80 acres



GASKILL, OMAR
Rt. 2

Mt. Sterling
138 acres



GARNER, STEWART
Rt. 1

Timewell
220 acres



GATES, MRS. MAGGIE
Rt. 1

Mt. Sterling
140 acres



GARRISON, FRANKLIN D.
Rt. 3

Mt. Sterling
178 acres



GEBER, ALFRED
Rt. 2

Versailles
25 acres



GARTHAUS, JOHN
Rt. 2

Mt. Sterling
140 acres



GEISLER, EDWARD

Mt. Sterling
Rt. 2-Orig. Geisler Homestead 240 acres



GEISLER, ELIZABETH
Rt. 4

Mt. Sterling
160 acres



GERDES, ANDY
Rt. 2

Clayton
40 acres



GEISLER, RUDOLPH
Rt. 2

Mt. Sterling
200 acres



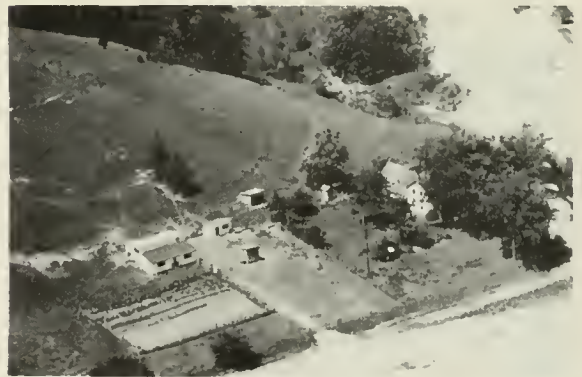
GERDES, JURGEN
Rt. 2

Clayton
122 acres



GEISLER, SOPHIA
Rt. 4

Mt. Sterling
133 acres



GERRISH, JOE
Rt. 4

Mt. Sterling
180 acres



GEISLER, MRS. SOPHIA
Rt. 2

Mt. Sterling
139 acres



GIBSON, MRS. ETHEL
Rt. 1

Timewell
134 acres



GIBSON, O. R.
Rt. 2

Mt. Sterling
72 acres



GORDLEY, ELTON
Rt. 3-Black Angus Cattle

Mt. Sterling
75 acres



GIVENS, MRS. HATTIE
Rt. 1

Mt. Sterling
172 acres



GOUDSCHAAL, ALBERT
Rt. 2

Clayton
172 acres



GLASCOW, RANDALL
Rt. 1

Mt. Sterling
80 acres



GRADY, J. F.
Rt. 2

Versailles
5 acres



GORDLEY, DAYTON
Rt. 3

Mt. Sterling
80 acres



GRAHAM, RUSSELL
Rt. 2

Mt. Sterling
60 acres



GRANT, MRS. BELLE
Rt. 1

Timewell
199 acres



GRIEWE, ROLLIE & LEOLA
Rt. 4

Mt. Sterling
100 acres



GRIEWE, CLARENCE
Rt. 1

Chambersburg
40 acres



GRIEWE, ROLLIE & LEOLA
Rt. 4

Mt. Sterling
100 acres



GRIEWE, HENRY
Rt. 1

Chambersburg
140 acres



GRIEWE, ROLLIE & LEOLA
Rt. 4

Mt. Sterling
100 acres



GRIEWE, PAUL
Rt. 3

Mt. Sterling
82 acres



GROBER, MERLE O.
Rt. 2

Mt. Sterling
80 acres



GROSS, EARL
Rt. 2

Clayton
210 acres



GROVER, LLOYD
Rt. 2

Versailles
120 acres



GROSS, HAROLD
Rt. 2

Clayton
40 acres



GROVER, MISS LUCINDA
Rt. 2

Versailles
95 acres



GROSS, J. D.
Rt. 2

Clayton
194 acres



GROVER, MRS. MINNIE
Rt. 2

Mt. Sterling
110 acres



GROSS, JOHN
Rt. 1

Timewell
530 acres



GROVER, MINNIE
Rt. 3

Mt. Sterling
111 acres



GUTHRIE, ESEL
Rt. 1

Mt. Sterling
168 acres



HALEY, RITA & BERTHA
Rt. 2

Mt. Sterling
159 acres



EBENEZER SCHOOL (1911)

Mt. Sterling



HALL, CALLIE & EARL
Rt. 2

Versailles
160 acres



HADDICAN, DANIEL
Rt. 1

Timewell
80 acres



HALL, JOHN E.
Rt. 2

Versailles
76 acres



HADDICAN, ED
Rt. 1

Timewell
160 acres



HALL, JOHN E.
Rt. 2

Versailles
90 acres



HALL, JOHN
Rt. 2

Versailles
96 acres



HAM, MAUDE E.
Rt. 1

Versailles
80 acres



HALL, JOHN E.
Rt. 2

Versailles
162 acres



HAMILTON, FLORENCE
Rt. 2

Versailles
Tenant House



HALL, RALPH R.
Rt. 2

Versailles
80 acres



HAMILTON, FLORENCE
Rt. 2

Versailles
40 acres



HALL, RICHARD
Rt. 4

Mt. Sterling
210 acres



HANEY, EARL
Rt. 5

Mt. Sterling
130 acres



HAPKE, VERNON
Rt. 1

Timewell
520 acres



HARPER, LESLIE
Rt. 1

Mt. Sterling
160 acres



HARBOUR, JOHN & PAUL
Rt. 4

Mt. Sterling
315 acres



HARPER, ROY
Rt. 2

Mt. Sterling
110 acres



HARMAN, I. A.
Rt. 1

Mt. Sterling
120 acres



HARPER, TOD
Rt. 2

Mt. Sterling
160 acres



HARP, R. L.
Rt. 2

Versailles
120 acres



HARRIMAN, ROSE
Rt. 1

Timewell
80 acres



HARRIS, HAROLD
Rt. 4

Mt. Sterling
70 acres



HATCH, HENRY (ESTATE)
Rt.

Timewell
200 acres



HARRIS, HAROLD
Rt. 1

Timewell
190 acres



HATCH, OSBORN & WILMA
Rt. 1

Timewell
180 acres



HART, C. S.
Rt. 1

Mt. Sterling
120 acres



FITZSIMONS, HAZARD
Rt. 1

Mt. Sterling
184 1/2 acres



HATCH, ALDA & ANNIS DAAB
Rt. 1

Timewell
160 acres



HECOX, WILBERN
Rt. 1

Timewell
160 acres



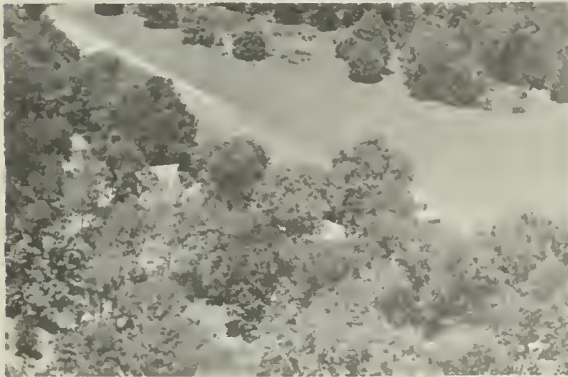
HEDRICK, EUGENE
Rt. 1

Timewell
40 acres



HENDRICKS, VERNON
Rt. 2

Mt. Sterling
186 acra



HEDRICK, EUGENE
Rt. 1

Timewell
70 acres



HENRICKS, HENRY (ESTATE)
Rt. 1

Timewell
240 acres



HEMPHILL, ED
Rt. 1

Versailles
109 acres



HENRICKS, CALATIUS
Rt. 1

Mt. Sterling
40 acres



HENDRICKS, VENIA L.
Rt. 3

Mt. Sterling
204 acres



HENRICK, MRS. CLARISSA
Rt. 4

Mt. Sterling
73 acra



HENRICK, EARNEST
Rt. 2

Mt. Sterling
100 acres



HENRICK, ROY
Rt. 4

Mt. Sterling
120 acres



HENRICKS, LEO
Rt. 4

Mt. Sterling
54 acres



HENRY, MRS. JESS B.
Rt. 2

Versailles
90 acres



HENRICK, LEO C.
Rt. 4-Original Henrick Homestead

Mt. Sterling
116 acres



HERALD, WAYNE
Rt. 1

Versailles
40 acres



HENRICK, MRS. NINA
Rt. 4-Original Sullivan Homestead

Mt. Sterling
54



HERALD, WAYNE
Rt. 1

Versailles
60 acres



HERALD, WILLIAM
Rt. 1

Versailles
92 acres



HESS, MARK
Rt. 4

Mt. Sterling
117 acres



HERREN, ALBERT
Rt. 2

Clayton
80 acres



HETRICK, IVAN
Rt. 2

Mt. Sterling
154 acres



HERRON, KENNETH
Rt. 3

Mt. Sterling
8 acres



HILL, CHARLES
Rt. 2

Mt. Sterling
80 acres



HERSMAN TRADING POST

Hersman



HILL, JACK
Rt. 2

Mt. Sterling
7 acres



HILL, J. W. (ESTATE) Mt. Sterling
Rt. 4 135 acres



HIPPEN, ORENTJE (ESTATE) Timewell
Rt. 1 230 acres



HILL, RAY Versailles
Rt. 2 80 acres



HIPPEN, TRIENTJE Timewell
Rt. 1 114 acres



HIPPEN, HARMKE Timewell
Rt. 1 150 acres



HOBBS, CARL Versailles
Rt. 2 202 acres



HIPPEN, H. J. Timewell
Rt. 1 160 acres



HODGES, S. E. Mt. Sterling
Rt. 2 80 acres



HODGES, S. E.
Rt. 2

Mt. Sterling
258½ acres



HOELSCHER, HENRY
Rt. 4

Mt. Sterling
120 acres



HODGIN, GEORGE
Rt. 4

Mt. Sterling
80 acres



HOFSESS, ELIZA
Rt. 4

Mt. Sterling
80 acres



HOELSCHER, BERNARD
Rt. 5

Mt. Sterling
225 acres



HOFSESS, MRS. FRANK
Rt. 2

Versailles
126 acres



HOELSCHER, HAROLD D.
Rt. 4

Mt. Sterling
120 acres



HOLLER, EARL R.

Versailles



HOFSESS, FRED
Rt. 4

Mt. Sterling
120 acres



HOLTKAMP, URBIN
Rt. 3

Mt. Sterling
157 acres



HOFSESS, LOZELLE
Rt. 4

Mt. Sterling
158½ acres



HOOSIER, EARL R.
Rt. 1

Versailles
40 acres



HOLMES, HOWARD
Rt. 1

Timewell
59 acres



HOOVER, LYNDE C.
Rt. 1

Timewell
93 acres



HOLTKAMP, URBIN
Rt. 3

Mt. Sterling
98 acres



HOOVER, VADA
Rt. 4

Mt. Sterling
1 acre



HOOVER, VADA
Rt. 4

Mt. Sterling
160 acres



HOWELL, MRS. MART
Rt. 2

Mt. Sterling
63 acres



HOPPING, SHERMAN
Rt. 1

Timewell
280 acres



HUFFMAN, JAY H.
Rt. 1

Mt. Sterling
80 acres



HOSFORD, FRED
Rt. 2

Versailles
120 acres



HUFFMAN, JAY H.
Rt. 1

Mt. Sterling
100 acres



HOWE, GUY
Rt. 1

Mt. Sterling
160 acres



HUGHES, HARRY
Rt. 4

Mt. Sterling
40 acres



HUGHES, HARRY
Rt. 4

Mt. Sterling
181 acres



HUME, FORREST
Rt. 2

Versailles
48 acres



HUGHES, MELVIN
Rt. 3

Mt. Sterling
144 acres



HUNTER, BILL
Rt. 3

Mt. Sterling
120 acres



HULETT, O. C.
Rt. 1

Mt. Sterling
80 acres



HURST, COLEMAN C.
Rt. 3

Mt. Sterling
80 acres



HUME, ELVIS
Rt. 2

Versailles
120 acres



HURST, HUGH
Rt. 2

Mt. Sterling
60 acres



HUSEMAN, FRANK
Rt. 1

Mt. Sterling
160 acres



ILLMAN, FRANK
Rt. 2

Mt. Sterling
263 acres



HUSTED, ED
Rt.1-Rolling Hereford Farm

Mt. Sterling
160 acres



INGELS, JAMES C.
Rt. 3

Mt. Sterling
40 acres



MORRELLVILLE SCHOOL

Mt. Sterling



INGRAM, FRED (ESTATE)
Rt. 2

Versailles
280 acres



IDEUS, BOHLE
Rt. 2

Clayton
173 acres



INGRAHAM, GUY
Rt. 2

Versailles
160 acres



INGRAM, JOHN
Rt. 2

Versailles
135 acres



JACKSON, T. G.
Rt. 1

Timewell
277 acres



INNES, ARTHUR
Rt. 1

Mt. Sterling
1 acre



JENSEN BROS.
Rt. 1

Timewell
350 acres



INNES, ROY
Rt. 2

Mt. Sterling
79 acres



JENNINGS, HERBERT
Rt. 1

Timewell
180 acres



PLEASANT VIEW SCHOOL

Mt. Sterling



JENNINGS, JOHN C.
Rt. 1

Timewell
200 acres



JOHNSON, MRS. PEARL
Rt. 2

Clayton
120 acres



JONES, ALBERT
Rt. 4

Mt. Sterling
50 acra



JOHNSON, MRS. PAULINE
Rt. 3

Mt. Sterling
120 acres



JONES, HARVEY
Rt. 4

Mt. Sterling
67 acres



JOHNSON, MRS. ROLLIE
Rt. 1

Timewell
80 acres



JONES, MRS. MARIE
Rt. 2

Mt. Sterling
12 acres



JONES, ALBERT & EVA
Rt. 4

Mt. Sterling
120 acres



JONES, NEWTON C.
Rt. 1

Mt. Sterling
164 acres



JONES, ORLIE E.
Rt. 3

110 acres
Mt. Sterling



KALLENBACH, JOHN
Rt. 2

Versailles
80 acres



SHANK SCHOOL

Clayton



KALLENBACH, JOHN
Rt. 2

Versailles
260 acres



KAEHLERT, ADOLPH
Rt. 4

Mt. Sterling
160 acres



KASSING, JAMES W.
Rt. 2

Mt. Sterling
25 acres



KALLENBACH, FRANK C.
Rt. 1

Chambersburg
80 acres



KAUFMAN, JOHN
Rt. 2

Clayton
40 acres



KAUFMAN, JOHN
Rt. 2

Clayton
80 acres



KELTZ, WENDELL (ESTATE)
Rt. 2

Mt. Sterling
40 acres



KEITH, OLLIE
Rt. 1

Mt. Sterling
170 acres



KELTZ, WENDELL (ESTATE)
Rt. 2

Mt. Sterling
200 acres



KELTZ, FRANK
Rt. 2

Mt. Sterling
80 acres



KENDRICK, ROY
Rt. 2

Clayton
220 acres



KELTZ, GEORGE L.
Rt. 3

Mt. Sterling
95 acres



KENDRICK, VIRGIL A.
Rt. 1

Mt. Sterling
145 acres



KENNEDY, ELDON
Rt. 4

Mt. Sterling



KERR, ALLIE
Rt. 2

Mt. Sterling
240 acres



KENNEDY, ELDON
Rt. 4-Orig. J. Wilson Homestead

Mt. Sterling
196 acres



KERR, FRED
Rt. 2

Mt. Sterling
160 acres



KERLEY, MRS. ANNA
Rt. 1

Timewell
60 acres



KERR, FRED
Rt. 2-Edsel Kerr, Mgr.

Mt. Sterling
310 acres



KERLEY, MRS. ANNA
Rt. 1

Timewell
60 acres



KERR, KERMIT
Rt. 1

Timewell
200 acres



KEYES, MARSHALL S.
Rt. 3

Mt. Sterling
100 acres



KING, ELVA
Rt. 1

Mt. Sterling
120 acres



KIEFER, GEORGE
Rt. 1

Timewell
160 acres



KINNETT, MRS. ETHEL
Rt. 1

Versailles
200 acres



KIEFER, GEORGE
Rt. 1

Timewell
230 acres



KIRGAN, JOHN R.
Rt. 4

Mt. Sterling
104 acres



KINDHART, CECIL
Rt. 1

Mt. Sterling
212 acres



KIRKHAM, EARL
Rt. 1

Mt. Sterling
120 acres



KLEINLEIN, DONALD E.
Rt. 2

Versailles
117 acres



KLEINLEIN, VIRGIL L.
Rt. 2

Mt. Sterling
100 acres



KLEINLEIN, DONALD E.
Rt. 2

Versailles
142 acres



KLEINLEIN, W. E.
Rt. 1

Chambersburg
100 acres



KLEINLEIN, OLIVER
Rt. 1

Chambersburg
6 acres



KLINGELE, CLETUS
Rt. 1

Mt. Sterling
80 acres



KLEINLEIN, LYLE
Rt. 1

Chambersburg
120 acres



KLINGELE, CLETUS
Rt. 1

Mt. Sterling
122 acres



KLINGELE, CLETUS
Rt. 1

Mt. Sterling
160 acres



KNIGHT, EARL
Rt. 1

Timewell
120 acres



KLINGELE, HENRY E.
Rt. 3

Mt. Sterling
100 acres



KNIGHT, EARL S.
Rt. 1

Timewell
160 acres



KLINGELE, ROSA
Rt. 4

Mt. Sterling
90 acres



KNOWLES, HALLIE
Rt. 2

Versailles
80 acres



KNIGHT, EARL
Rt. 1-In family since 1885

Timewell
80 acres



KOCH, ALBERT A.
Rt. 2

Mt. Sterling
120 acres



KOCH, AMIEL J.
Rt. 1

Timewell
10 acres



KOCH, CLETUS
Rt. 2

Mt. Sterling
163 acres



KOCH, AMIEL J.
Rt. 1

Timewell
160 acres



KOCH, RAYMOND J.
Rt. 2

Mt. Sterling
203 acres



KOCH, CATHARINE
Rt. 1

Mt. Sterling
240 acres



KOCH, RUSSELL A.
Rt. 2

Mt. Sterling
80 acres



KOCH, CLETUS
Rt. 2

Mt. Sterling
158 acres



KOCH, SILVEY
Rt. 2

Versailles
145 acres



KOCH, WILLIAM E.
Rt. 2

Mt. Sterling
200 acres



KRUPPS, LILLIE ROSE
Rt. 4

Mt. Sterling
Vacant



KROPPS, ANNA
Rt. 2

Mt. Sterling
45 acres



KRUPPS, LILLIE ROSE
Rt. 4

Mt. Sterling
278 acres



KRUPPS, ANNA
Rt. 2

Mt. Sterling
45 acres



KUNKEL, FRANK
Rt. 1

Mt. Sterling
120 acres



KRUPPS, LAVERNE J.
Rt. 2

Mt. Sterling
320 acres



KUNKEL, JOSEPH W.
Rt. 2

Mt. Sterling
60 acres



KUNKEL, MINNIE & RAYMOND
Rt. 2

Mt. Sterling
240 acres



LANGAN, FRANCIS & GEORGE
Rt. 2

Mt. Sterling
144 acres



KURFMAN, ROSS
Rt. 2

Mt. Sterling
81 acres



LANGAN, MICHAEL
Rt. 1

Mt. Sterling
138 acres



KURFMAN, W. C.
Rt. 2

Mt. Sterling
143 acres



LANIER, ALBERT
Rt. 2

Mt. Sterling
80 acres



LESTER SCHOOL

Timewell



LANIER, OLIVER
Rt. 3

Mt. Sterling
46½ acres



LANING, WAYNE L.
Rt. 2

Mt. Sterling
210 acres



LEAR, WILLIAM R.
Rt. 3

Mt. Sterling
189 acres



LANING, FRANK
Rt. 2

Mt. Sterling
45 acres



LEE, KENNETH
Rt. 1

Timewell
160 acres



LARSON, DONALD A.
Rt. 1

Mt. Sterling
280 acres



LEEZER, LULA (ESTATE)
Rt. 2

Mt. Sterling
5 acres



LATHAM, E. L.

Versailles



LEGGET, ELSA
Rt. 4

Mt. Sterling
324 acres



LEHNE, MRS. FLORENTINE
Rt. 2

Mt. Sterling
199 acres



LEWIS, ELMO
Rt. 2

Clayton
120 acres



LEHNE, WALTER C.
Rt. 2

Mt. Sterling
270 acres



LICHTSINN, WILLIAM
Rt. 1

Timewell
80 acres



LEVERTON, GEORGE W.,
Rt. 3

Mt. Sterling



LIDGARD, WILLIAM
Rt. 1

Chambersburg
10 acres



LEWIS, DANA
Rt.

Hersman
118 acres



LIPCAMON, ALBERT
Rt. 1

Chambersburg
40 acres



LIPCAMAN, LLOYD
Rt. 2

Mt. Sterling
127 acres



LOGSDON, DORRIS E.
Rt. 3

Mt. Sterling
80 acres



LOGSDON BROS.
Rt. 2

Mt. Sterling
80 acres



LOGSDON, ED ;
Rt. 2

Mt. Sterling
160 acres



LOGSDON, CLYDE
Rt. 4

Mt. Sterling
80 acres



LOGSDON, ETHEL
Rt. 2

Versailles
70 acres



LOGSDON, LULA
Rt. 3

Mt. Sterling
160 acres



LOGSDON, ERNIE
Rt. 2

Versailles
86 acres



LOGSDON, EVERETT
Rt. 3

Mt. Sterling
120 acres



LOGSDON, DORRIS & LULA
Rt. 3

Mt. Sterling
100 acres



LOGSDON, FORD
Rt. 4

Mt. Sterling
78 acres



LOGSDON, R. B.
Rt. 3

Mt. Sterling
120 acres



LOGSDON, HOBART & DESAMOND
Rt. 3

Mt. Sterling
80 acres



LOGSDON, TED
Rt. 3

Mt. Sterling
1 acre



LOGSDON, HOWARD E.
Rt. 2

Versailles
89 acres



LOGSDON, W. M.
Rt. 3

Mt. Sterling
100 acres



LONG, GEORGE
Rt. 2

Mt. Sterling
160 acres



MacDANIEL, ROY
Rt. 1

Mt. Sterling
100 acres



LUCAS, H. M.
Rt. 1

Timewell
130 acres



MANNY, BERTHA (ESTATE)
Rt. 1

Timewell
120 acres



LUCAS, SADIE & JESSIE
Rt. 1

Timewell
80 acres



MANNY, FRED H.
Rt. 1

Timewell
235 acres



HALL SCHOOL Dist. 57

Versaillea



MANNY, NELL
Rt. 1

Timewell
160 acres



MANAR, OMAR
Rt. 2

Mt. Sterling
360 acres



MARKERT, GEORGE
Rt. 4

Mt. Sterling
300 acres



MARKERT, CHARLES
Rt. 4

Mt. Sterling
160 acres



MARKERT, GEORGE
Rt. 3

Mt. Sterling
500 acres



MARKET, GEORGE
Rt. 3

Mt. Sterling
 $\frac{1}{2}$ acre



MARKERT, HAROLD
Rt. 4

Mt. Sterling
New Home



MARKERT, GEORGE
Rt. 1

Mt. Sterling
160 acres



MARKERT, HAROLD
Rt. 4

Mt. Sterling
153 acres



MARKERT, HAROLD
Rt. 4

Mt. Sterling
220 acres



MARKET, SAM
Rt. 2

Mt. Sterling
175 acres



MARKERT, JACOB
Rt. 4

Mt. Sterling
240 acres



MARKERT, SAMUEL
Rt. 1

Mt. Sterling
72 acres



MARKERT, JACOB
Rt. 4

Mt. Sterling
Tenant House



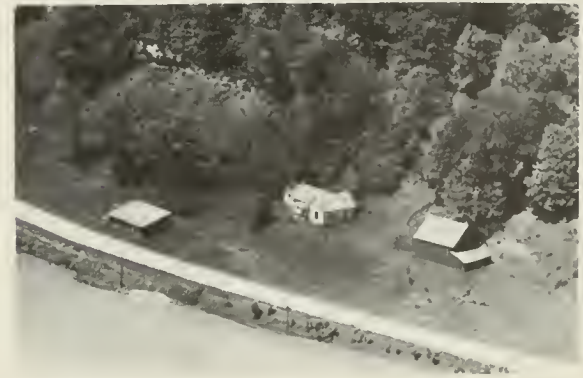
MARKERT, SAMUEL J.
Rt. 4

Mt. Sterling
160 acres



MARKERT, LOUIS F.
Rt. 1

Mt. Sterling
210 acres



MAQUARD, R. J.
Rt. 1

Versailles
Vacant



MARQUARD, R. J.
Rt. 1

Versailles
820 acres



MASTERSON, FRED D.
Rt. 4

Mt. Sterling
Tenant



MARS, MRS. LOUISE
Rt. 1

Timewell
80 acres



MASTERSON, FRED D.
Rt. 4

Mt. Sterling
333 acres



MARSHALL, MARY (ESTATE)
Rt. 1

Timewell
82½ acres



MAYFIELD, BERT
Rt. 1

Timewell
Tenant House



MARTIN, JAMES
Rt. 1

Versailles
123 acres



MAYFIELD, BERT
Rt. 1

Timewell
143 acres



MAYFIELD, LAWRENCE
Rt. 4

Mt. Sterling
170 acres



McCONNELL, W. R.
Rt. 1

Timewell
310 acres



McCASKILL, ROY (ESTATE)
Rt. 1

Timewell
160 acres



McCOY, A. A.
Rt. 2

Mt. Sterling
40 acres



McCASKILL, FRANK L.
Rt. 1

Timewell
212 acres



McCOY, A. A. (ESTATE)
Rt. 4

Mt. Sterling
50 acres



McCAW, JOHN L.
Rt. 1

Mt. Sterling
130 acres



McCOY, A. A. (ESTATE)
Rt. 2

Mt. Sterling
80 acres



McCOY, A. A. (ESTATE)
Rt. 2

Versailles
140 acres



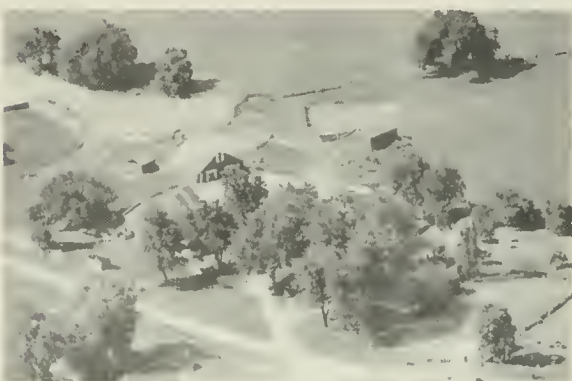
McCOY, A. A.
Rt. 4

Mt. Sterling
220 acres



McCOY, A. A.
Rt. 3

Mt. Sterling
160 acres



McCOY, A. A. (ESTATE)
Rt.

Hersman
298 acres



McCOY, A. A.
Rt.

Mt. Sterling
160 acres



McCOY, ARTHUR A.
Rt. 3

Mt. Sterling
320 acres



McCOY, A. A.
Rt. 3

Mt. Sterling
200 acres



McCOY, A. A. (ESTATE)
Rt. 4

Mt. Sterling
345 acres



McCOY, A. A. (ESTATE)
Rt. 4

Mt. Sterling
820 acres



McCOY, GEORGE A.
Rt. 2

Mt. Sterling
160 acres



McCOY, DONALD
Rt. 2

Mt. Sterling



McCOY, GEO. S. & R.R.
Rt. 2

Mt. Sterling
148 acres



McCOY, M. ELEANOR
Rt. 4

Mt. Sterling
67 acres



McCOY, GEO. S. & R. R.
Rt. 2

Mt. Sterling
148 acres



McCOY, GEORGE

Hersman



McCOY & VALE
Rt. 4

Mt. Sterling
78 acres



McCLELLAND, BEN
Rt. 1

Mt. Sterling
43½ acres



McCLELLAND, MELVIN E.
Rt. 1

Timewell
119 acres



McCLELLAND, CHARLES A.
Rt. 3

Mt. Sterling
120 acres



McDANIELS, ROY
Rt. 1

Mt. Sterling
140 acres



McCLELLAND, EDGAR
Rt. 1

Mt. Sterling
300 acres



McDANNOLD, ROY
Rt. 1

Mt. Sterling
200 acres



McCLELLAND, GEORGE
Rt. 1

Mt. Sterling
200 acres



McDONALD, ROY
Rt. 1

Mt. Sterling
240 acres



McDOWELL, MOSES D.
Rt. 2

Baylis
66 acres



McGLASSON, ORMANDE K.
BROWN, V.E. & C.W.

Versailles
130 acres



McDOWELL, VIRGIL
Rt. 2

Baylis
250 acres



McGLAUCHLEN, FRED
Rt. 1

Timewell
164 acres



McGANN, DR. R. C.
Rt. 2

Mt. Sterling
410 acres



McKEON, TOM
Rt. 1

Mt. Sterling
88 acres



McGLASSON, ORMANDE K.
Rt. 1

Versailles
36 acres



McKEOWN, MARCUS
Rt. 1

Timewell
80 acres



McKEOWN, MARCUS
Rt. 1

Timewell
160 acres



McNEFF, EMMETT
Rt. 1

Timewell
420 acres



McNEAR, VERNON
Rt. 4

Mt. Sterling
1 acre



McNEFF, J. O.
Rt. 4

Mt. Sterling
Tenant



McNEAR, VERNON
Rt. 4

Mt. Sterling
379 acres



McNEFF, J. O.
Rt. 1

Timewell
Tenant



McNEFF, EMMETT
Rt. 1

Timewell
Tenant



McNEFF, J. O.
Rt. 1

Timewell
Tenant



McNEFF, JOE
Rt. 1

Timewell
40 acres



McNEFF, J. O.
Rt. 4

Mt. Sterling
160 acres



McNEFF, J. O.
Rt. 4

Mt. Sterling
80 acres



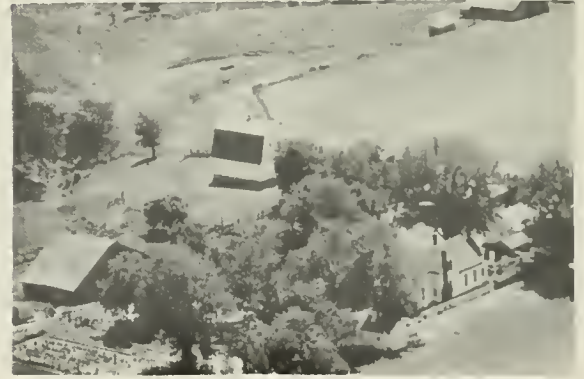
McNEFF, J. O.
Rt. 1

Timewell
317 acres



McNEFF, J. O.
Rt. 1

Timewell
117 acres



McNEFF, J. O.
Rt. 4

Mt. Sterling
2220 acres



McNEFF, JOE
Rt. 1

Timewell
160 acres



McPHAIL, ENOS E.
Rt. 1

Timewell
70 acres



McPHAIL, ENOS E.
Rt. 1

Timewell
200 acres



McPHAIL, JOHN L.
Rt. 1

Timewell
80 acres



McPHAIL, ENOS E.
Rt. 1

Timewell
220 acres



McPHAIL, JOHN L.
Rt. 1-In McPhail Family 100 yrs.

Timewell
240 acres



McPHAIL, JOHN L.
Rt. City

Timewell
9 acres



MEANS, HENRY
Rt. 2

Hersman
75 acres



McPHAIL, JOHN L. & ALTA
Rt. 1

Timewell
70 acres



MERRITT, PERRY
Rt. 1

Mt. Sterling
180 acres



MESERVEY, ESTEL
Rt. 1

Timewell
193 acres



MEYERS, MILTON & DONALD
Rt. 4

Mt. Sterling
Tenant



METZ, WILLIAM R.
Rt. 3

Mt. Sterling
 $\frac{1}{4}$ acres



MEYERS, MILTON & DONALD
Rt. 4

Mt. Sterling
1420 acres



MEYERS, EUGENE A. & MARION D.
Rt. 2

Mt. Sterling
420 acres



MITCHELL, MRS. HAZEL
Rt. 3

Mt. Sterling
80 acres



MEYER, MRS. LOUISE
Rt. 1

Timewell
168 acres



MITCHELL, W. T.
Rt. 1

Mt. Sterling
240 acres



MOBLEY, J. W.
Rt. 3

Mt. Sterling
260 acres



MOODY, JAMES H.
Rt. 3

Mt. Sterling
80 acres



MOBLEY, W. D.
Rt. 2-Meadow View Farms

Mt. Sterling
110 acres



MOORE, C. E.
Rt. 4

Mt. Sterling
150 acres



MOBLEY, W. D.
Rt. 2-Meadow View Farms

Mt. Sterling
120 acres



MOORE & McPHAIL
Rt. 1

Timewell
140 acres



MOHRMAN, RUSSEL M.
Rt. 3

Mt. Sterling
160 acres



MORATH, FRANCIS & MRS.
Rt. 2-Box 86

Versailles
197 acres



MORRELL, RALPH
Rt. 3-John Bowe Homestead

Mt. Sterling
203 acres



MYERS, CLYDE
Rt. 2

Mt. Sterling
587½ acres



MOSSHOLDER, R.
Rt. 2

Versailles
7 acres



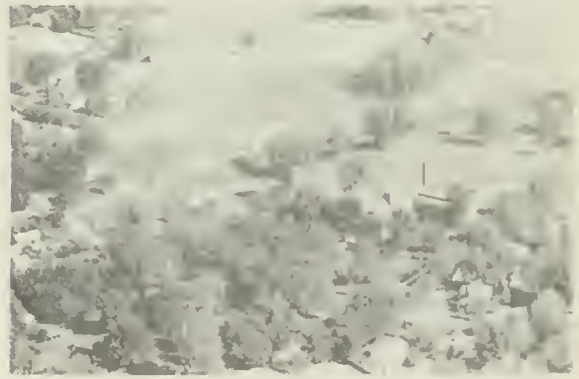
MYERS, ED
Rt. 2

Versailles
80 acres



MUELLER, CLARENCE
Rt. 1

Versailles
611 acres



ST. MARY'S PAROCHIAL SCHOOL Mt. Sterling



MUMFORD, BARRY
Rt. 2

Mt. Sterling
320 acres



NATION, FRED
Rt. 4

Mt. Sterling
198 acres



NELSON, EUGENE P.
Rt. 1

Timewell
105 acres



NEUSCHAFER, HAZEL & KAY
Box 155

Meredosia
280 acres



NELSON, GLENN M.
Rt. 4

Mt. Sterling
204 acres



NEUSCHAFER, HAZEL & KAY
Rt. 1

Versailles
309 acres



NELSON, HERMAN J.
Rt. 1

Mt. Sterling
80 acres



NEW, CLARENCE
Rt. 4

Mt. Sterling
269 acres



NELSON, OWEN F.
Rt. 1

Mt. Sterling
192 acres



NEWENHAM, MANLEY
Rt. 4

Mt. Sterling
423 acres



NEYLON BROS.
Rt. 1

Mt. Sterling
43 acres



NOBLE, IVAN
Rt. 2

Versailles
227 acres



NEYLON BROS.
Rt. 1

Mt. Sterling
80 acres



NOFTZ, CECIL
Rt.

Kellerville
167 acres



NICHOLSON, R. C.
Rt. 1

Mt. Sterling
160 acres



NORTON, C. A.
Rt. 1

Timewell
120 acres



NOBLE, IVAN
Rt. 1

Chambersburg
60 acres



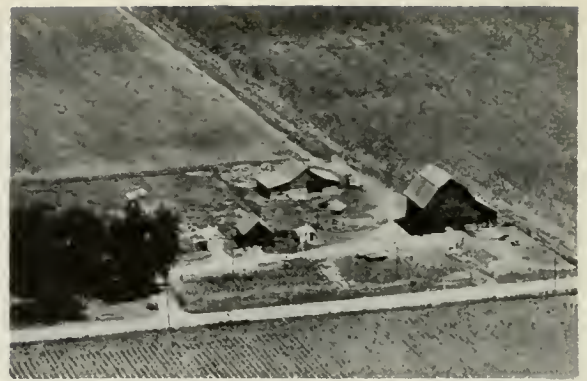
NOIAN, EULALIA
Rt. 1

Timewell
220 acres



NORTON, ROY
Rt. 1

Timewell
139 acres



ORMOND, MRS. WILLIAM
Rt. 1

Timewell
85 acres



NORTON, WILLIAN
Rt. 1

Timewell
33 acres



ORR, CLARA
Rt. 4

Mt. Sterling
338 acres



COUNCIL SCHOOL District 46 Mt. Sterling



ORR, CLARA
Rt. 4

Mt. Sterling
296 acres



O'CONNOR, JAMES J.
Rt. 1

Mt. Sterling
80 acres



ORR, CLARA
Rt. 4

Mt. Sterling
200 acres



ORR, GEORGE
Rt. 4

Mt. Sterling
580 acres



ORR, HERBERT
Rt. 1

Timewell
160 acres



ORR, GEORGE
Rt. 4

Mt. Sterling
500 acres



ORR, HERBERT
Rt. 1

Timewell
170 acres



ORR, HERBERT
Rt. 4

Mt. Sterling
240 acres



ORR, HERBERT
Rt. 1

Timewell
185 acres



ORR, HERBERT
Rt. 4

Mt. Sterling
160 acres



ORR, LLOYD
Rt. 4

Mt. Sterling
378 acres



ORR, LLOYD
Rt. 4

Mt. Sterling
1 acre



WILLIAMS SCHOOL

Timewell



ORR, ROY
Rt. 4

Mt. Sterling
240 acres



PADGETT, MRS. EVELYN
Rt. 3

Mt. Sterling
180 acres



ORR, WILLIS
Rt. 2 Box 92

Versailles
80 acres



PAISLEY, W. FRED
Rt. 3

Mt. Sterling
337 acres



OTIS, SNYDER
Rt. 3

Mt. Sterling
80 acres



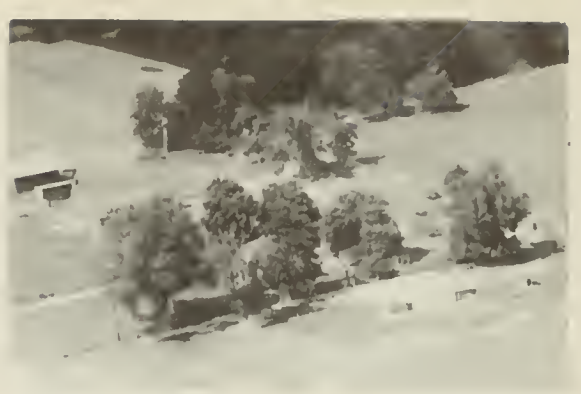
PARKER, ARTHUR
Rt. 3

Mt. Sterling
160 acres



PARKER, CLARENCE E.
Rt. 3

Mt. Sterling
118 acres



PARKER, J. FRED
Rt. 1

Mt. Sterling
120 acres



PARKER, EARL
Rt. 1

Mt. Sterling
80 acres



PARKER, J. FRED
Rt. 1

Mt. Sterling
155 acres



PARKER, FRED
Rt. 4

Mt. Sterling
317 acres



PARKER, ROBERT
Rt. 2

Versailles
60 acres



PARKER, FERREL
Rt. 1

Timewell
80 acres



PARKS, R. H.
Rt. 3

Mt. Sterling
320 acres



PARKS, R. H.
Rt. 3

Mt. Sterling
80 acres



PATTERSON, H. K.
Rt. 1-Tenant House

Timewell
15 acres



PARN, FRED
Rt. 1

Mt. Sterling
225 acres



PATTERSON, LEE R.
Rt. 3

Mt. Sterling
160 acres



PATE, FRED
Rt. 2

Versailles
123 acres



PATTON, LESLIE
Rt. 2

Mt. Sterling
16 acres



PATTERSON, H. K.
Rt. 1

Timewell
150 acres



PAYNE, LELAND J.
Rt. 3

Mt. Sterling
112 acres



PEACOCK, VERN E.
Rt. 2

Versailles
156 acres



PERRY, CLARENCE
Rt. 2

Mt. Sterling
90 acres



PENICK, FRANK & TAYLOR ESTATE
Rt. 1

Mt. Sterling
209 acres



PERRY, DAVID
Rt. I

Timewell
120 acres



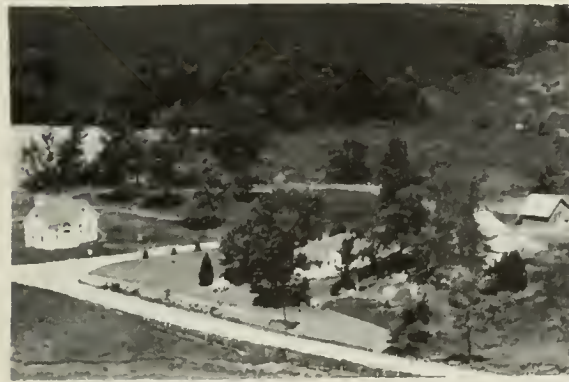
PERISH, BERTHA
Rt. 1

Timewell
40 acres



PERRY, FRANKIE
Rt. 2

Mt. Sterling
100 acres



PERRY, MRS. BELVA
Rt. 3

Mt. Sterling
79 acres



PERRY, MISS IRENE
Rt. 2

Versailles



PERRY, LA URICE
Rt. 3

Mt. Sterling
61 acres



PETEFISH, ROWENA
Rt. 1

Timewell
154 acres



PERRY, RAY
Rt. 3

Mt. Sterling
80 acres



PIPER, CLARA (ESTATE)
Rt. 1

Mt. Sterling
179 acres



PERRY, WILKERSON
Rt. 3

Mt. Sterling
83 acres



POOL, ENOS
Rt. 1

Versailles
57 acres



PETEFISH, ROWENA
Rt. 1

Timewell
243 acres



POOL, OLIVE
Rt. 1

Versailles
40 acres



POOL, OLIVE
Rt. 1

Versailles
57 acres



PRUDEN, CECIL
Rt. 2

Versailles
117 acra



PORTER, IVAN
Rt. 2

Mt. Sterling
80 acres



PRUDEN, HOYT
Rt. 1

Versailles
129 acres



POWELL, MR.
Rt. 4

Mt. Sterling



PUTMAN, MURRAY H.
Rt. 3

Mt. Sterling
100 acres



FRILLMAYER, LOUIS B.
Rt. 3

Mt. Sterling
120 acres



GROVE SCHOOL

Versailles



QUINN, ARK
Rt. 3

Mt. Sterling
151 acres



QUINN, RAYMOND E.
Rt. 2

Versailles
110 acres



QUINN, ARK
Rt. 3

Mt. Sterling
151 acres



FARGO SCHOOL

Timewell



QUINN, DALE
Rt. 2

Versailles
129 acres



RANG, SUZIE
Rt. 2

Mt. Sterling
80 acres



QUINN, MRS. EDITH
Rt. 3

Mt. Sterling
160 acres



RAY, EDWARD
Rt. 3

Mt. Sterling
87 acres



RAY, FRANCIS
Rt. 3

Mt. Sterling
160 acres



REDMOND, ESTHER
Rt. 1

Mt. Sterling
160 acres



RAY, FRED G.
Rt. 3

Mt. Sterling
258½ acres



REDMOND, LEO T.
Rt. 1

Mt. Sterling
240 acres



RATCLIFF, CARL H.
Rt. 1

Timewell
60 acres



REICH, ELLIS H.
Rt. 3

Mt. Sterling
310 acres



RATCLIFF, CARL H.
Rt. 1

Mt. Sterling
230 acres



REICH, J. A.
Rt. 2

Versailles
40 acres



REICH, J. A.
Rt. 2

Versailles
94 acres



REID, CHARLES A.
Rt. 4

Mt. Sterling
100 acres



REICH, MARSHALL J.
Rt. 2

Versailles
20 acres



REISCHE, EARL S.
Rt. 2

Mt. Sterling
40 acres



REICH, MARSHALL J.
Rt. 2

Versailles
180 acres



REISCHE, HOMER
Rt. 2

Mt. Sterling
69½ acres



REICH, PEARL
Rt. 4

Mt. Sterling
240 acres



REISCHE, RICHARD
Rt. 2

Mt. Sterling
100 acres



REISCHE, ROLAND
Rt. 1

Mt. Sterling
120 acres



REISCHE, WAYNE E.
Rt. 3

Mt. Sterling
80 acra



REISCHE, SELDON
Rt. 2

Mt. Sterling
59 acres



RENAKER, SELDON
Rt. 1

Timewell
120 acres



REISCHE, SELDOM D.
Rt. 2

Mt. Sterling
80 acres



RICHE, GEORGE
Rt. 1

Mt. Sterling
90 acres



REISCHE, WAYNE F.
Rt. 3

Mt. Sterling
5 acres



RIGG, S. R.
Rt. 2

Mt. Sterling
40 acres



RIGGS, GEORGE
Rt. 2

Mt. Sterling
60 acres



ROATE, RANDAL W.
Rt. 2

Versailles
40 acres



RING & KINSELL
Rt. 1

Versailles



ROATE, RAYMOND
Rt. 4

Mt. Sterling
120 acres



RING & KINSELL
Rt. 1

Versailles
640 acres



ROBBINS, ALBERT
Rt. 2

Versailles
40 acres



RITTENHOUSE, LOWELL
Rt. 3

Mt. Sterling
40 acres



ROBERTS, G. LEON
Rt. 1

Mt. Sterling
80 acres



ROBERTS, GEORGE G.
Rt. 1

Mt. Sterling
160 acres



ROBINS, LEONARD
Rt. 3

Mt. Sterling
102 acres



ROBERTS, HENRY E.
Rt. 2

Mt. Sterling
50 acres



ROBISON, MRS. FRED
Rt. 1

Timewell
Tenant House



ROBERTS, LEONARD
Rt. 1

Mt. Sterling
160 acres



ROBISON, MRS. FRED
Rt. 1

Timewell
240 acres



ROBERTS, PAUL N.
Rt. 2

Mt. Sterling
15½ acres



ROLF, JOHN
Rt. 4

Mt. Sterling
80 acres



ROLF, JOHN L.
Rt. 2

Mt. Sterling
80 acres



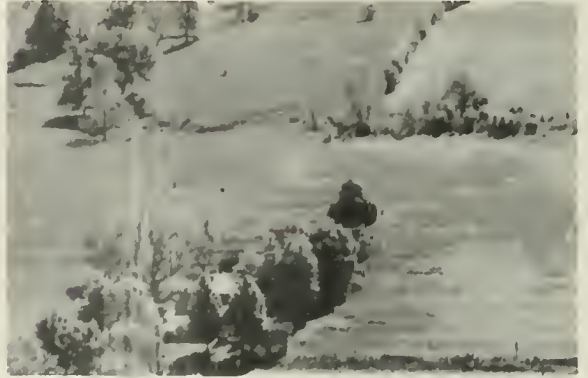
ROOT, ROLAND E.
Rt. 2

Versailles
133 acres



ROOKS, ARTHUR
Rt. 1

Timewell
117½ acres



ROSE, BARBARA
Rt. 3

Mt. Sterling
40 acres



ROOT, MOSES A.
Rt. 2

Versailles
113 acres



ROSE, EUGENE
Rt. 3

Mt. Sterling
40 acres



ROOT, NORLYN
Rt. 4

Mt. Sterling
97 acres



ROSE, EUGENE
Rt. 3

Mt. Sterling
40 acres



ROUNDS, BERTHA-DENNIS & GLADYS Mt. Sterling
Rt. 3 100 acres



ROUNDS, BERTHA-DENNIS & GLADYS Mt. Sterling
Rt. 3 420 acres



RUSSELL, McCOY Mt. Sterling
Rt. 2 80 acres



RUTKOSKI BROS. Versailles
Rt. 1 80 acres



RUTKOSKI BROS. Chambersburg
Rt. 1 220 acres



RYAN, LEO Mt. Sterling
Rt. 1 160 acres



RYAN, MRS. MARGARET Mt. Sterling
Rt. 1-S. O. Ryan, Mgr. 189 acres



TIMEWELL GRADE SCHOOL (1915) Timewell



SAILER, GILES
Rt. 2

Mt. Sterling



SALRIN, RAYMOND
Rt. 1

Mt. Sterling
80 acres



SALRIN, JAMES
Rt. 1

Mt. Sterling
80 acres



SALRIN, WILLIAM J.
Rt. 1

Mt. Sterling
80 acres



SALRIN, JESSE M.
Rt. 1

Mt. Sterling
40 acres



SAXER, ROY F.
Rt. 2

Versailles
240 acres



SALRIN, JESSE M.
Rt. 1

Mt. Sterling
120 acres



SAXER, ROY F.
Rt. 2

Versailles
402 acres



SAYLOR, HARRY T.
Rt. 2

Mt. Sterling
80 acres



SCHENK, PAUL
Rt. 2

Mt. Sterling
80 acres



SCHACHT, MAYME: ORPHA RAY &
JENNIE L.

Versailles
123 acres



SCHLEMMER, A.
Rt. 1

Mt. Sterling
120 acres



SCHAEFFER, CLIFF
Rt. 3

Mt. Sterling
1½ acres



SCHNEIDER, CORRINE (ESTATE)
Rt. 4

Mt. Sterling
51 acres



SCHENK, HENRY J.
Rt. 2

Mt. Sterling
100 acres



SCOGGAN, W. D.
Rt. 1

Timewell
160 acres



SEABORN, CLYDE E.
Rt. 3

Mt. Sterling
103 acres



SELLERS, OLIVE
Rt. 2

Versailles
120 acres



SECKMAN, FRANCIS
Rt. 3

Mt. Sterling
40 acres



SETTLES, FLOYD
Rt. 4

Mt. Sterling
1 acre



SECKMAN, GUY D.
Rt. 2

Mt. Sterling
300 acres



SHANK, WALTER E.
Rt. 2

Mt. Sterling
1 acre



SCHULZ, ALBERT
Rt. 1

Mt. Sterling
282 acres



SHELLEY, JOAN
Rt. 1

Timewell
100 acres



SHERMAN-QUINN ESTATE
Rt. 3

Mt. Sterling
240 acres



SHOOTMAN, GLENN
Rt. 3

Mt. Sterling
120 acra



SHIELDS, GLEN
Rt. 1

Timewell
300 acres



SIDES, GLENN
Rt. 1

Versaillea
171½ acres



SHOOPMAN, MRS. EMMETT
Rt. 4

Mt. Sterling
200 acres



SIDES, GLENN
Rt. 1

Versailles
1 acre



SHOOPMAN, GLEN
Rt. 4

Mt. Sterling
240 acres



SIDES, L. WAYNE
Rt. 1

Versailles
326 acra



SIDES, RAY W.
Rt. 1

Versailles
120 acres



SIX, DOLLIE
Rt. 1

Versailles
60 acres



SILTMAN, MRS. EMMA J.
Rt. 2

Mt. Sterling
269 acres



SIX, DOLLIE
Rt. 1

Versailles
244 acres



SIMMONS, MRS. JOSEPH
Rt. 4

Mt. Sterling
72 acres



SIX, GLENN
Rt. 1

Chambersburg
160 acres



SIMPKIN, J. T.
Rt. 1

Timewell
185 acres



SLAGLE, BASIL
Rt. 1

Mt. Sterling
80 acres



SMITH, CHET
Rt. 2

Clayton
200 acres



SMITH, GROVER C.
Rt. 2

Mt. Sterling
141 acres



SMITH, ELMER
Rt. 4

Mt. Sterling
143 acres



SMITH, HOMER
Rt. 2

Versailles
64 acres



SMITH, ELMER
Rt. 4

Mt. Sterling
2 acres



SMITH, JESSE
Rt. 5

Mt. Sterling
17 acres



SMITH, FRANK
Rt. 3

Mt. Sterling
80 acres



SMITH, JOHN
Rt. 1

Chambersburg
150 acres



SMYERS, DAVID JR. Mt. Sterling
Rt. 2-Formerly Hazel Dell School 1 acre



SNYDER, WAYNE C. Mt. Sterling
Rt.3-Orig. Snyder Homestead 294 acres



SNYDER, OTIS Mt. Sterling
Rt. 3 235 acres



SOMMER, GEORGE Mt. Sterling
Rt. 1 117 acres



SNYDER, OTIS Mt. Sterling
Rt. 3 80 acres



SORRELLS, JOSHUA Mt. Sterling
Rt. 2 100 acres



SNYDER, ROBERT Mt. Sterling
Rt. 3



SORRELLS, LAWRENCE Timewell
Rt. 1 120 acres



STAPELTON, CLARA
Rt. 2

Mt. Sterling
78 acres



STILL, RENETTA

Mt. Sterling



STEIGER, CHARLES
Rt. 1

Versailles
16 acres



STILL, ROBERT
Rt. 3

Mt. Sterling
232 acres



STILL, HARVEY L.
Rt. 4

Mt. Sterling
123 acres



STILL, WILLIS

Mt. Sterling



STILL, RENETTA
Rt. 3

Mt. Sterling
110 acres



STINEBAKER, ALFRED
Rt. 4

Mt. Sterling
40 acres



STONE, GEORGE H.
Rt. 2

Versailles
160 acres



STOUT, RAYMOND
Rt. 2

Mt. Sterling
178 acres



STONE, LEWIS
Rt. 1

Versailles
97½ acres



STOUT, RAYMOND L.
Rt. 3 - Orig. Stout Homestead -

Mt. Sterling
178 acres



STOUT, E. O. (ESTATE)
Rt. 1

Mt. Sterling
83 acres



STRAWHACKER, STEVE
Rt. 2

Clayton
140 acres



STOUT, J. LEE
Rt. - Orig. Stout Homestead

Ripley
160 acres



STULLER, EARL
Rt. 2

Mt. Sterling
187 acres



STULLER, EARL
Rt. 2

Mt. Sterling
107 acres



SURRATT, MR. & MRS. RAYMOND
Rt. 1

Versailles
32 acres



SULLIVAN, JAMES
Rt. 2

Mt. Sterling
130 acres



SURRATT, SILVEY
Rt. 1

Versailles
8 acres



SURRATT, IRA
Rt. 4

Mt. Sterling
301 acres



SWEENY, J. C.
Rt. 2

Mt. Sterling
110 acres



SURRATT, L. M. (ESTATE)
Rt. 4

Mt. Sterling
35 acres



SWEARINGEN, RICHARD & ERMA
Rt. 2

Mt. Sterling
66 acres



TAYLOR, EARL
Rt. 2

Clayton
120 acres



TEEFY, FRANK
Rt. 4

Mt. Sterling
13½ acres



TARRANT, EDWARD
Rt. 2

Versailles
43 acres



TEST, MARSHALL
Rt. 4

Mt. Sterling
280 acres



TARRANT, MAX
Rt. 2

Mt. Sterling
160 acres



THIELE, OLIVER
Rt. 2

Versailles
147 acres



TARRANT, ORVAL
Rt. 1

Timewell
120 acres



THOMAS, CHARLES S.
Rt. 3

Mt. Sterling
199 acres



THOMAS, ELIJAH F. Mt. Sterling
Rt. 1 200 acres



THOMAS, FRANK Mt. Sterling
Rt. 2 80 acra



THOMAS, EVERETT G. Versailles
Rt. 2 80 acra



THOMAS, GAVEN Versailles
Rt. 2 85 acres



THOMAS, MR. & MRS. EVERETT Versailles
Rt. 2 99 acres



THOMAS, HOMER Versailles
Rt. 2 191 acres



THOMAS, FRANK Mt. Sterling
Rt. 2 40 acres



THOMAS, IVAN W. Versailles
Rt. 2-Polled Shorthorn Cattle 200 acres



THOMAS, J. GLENN
Rt. 3

Mt. Sterling
297 acres



THOMPSON, MRS. MABEL
Rt. 3

Mt. Sterling
80 acres



THOMAS, JACK
Rt. 2-Putnam Cemetery (back)

Mt. Sterling
80 acres



THOMPSON, THOMAS M.
Rt. 3

Mt. Sterling
26 acres



THOMAS, SHERMAN
Rt. 2

Mt. Sterling
80 acres



THORMAN, ALLIE A.
Rt. 2

Versailles
144 acres



THOMPSON, MRS. ANNA
Rt. 1

Versailles
103 acres



THORNBERRY, FRED
Rt. 1

Versailles
109 acres



THOROMAN, A. A.
Rt. 2

Versailles
7 acres



THOROMAN, A. A.
Rt. 2

Versailles
410 acres



THOROMAN, A. A.
Rt. 2

Versailles
97 acres



THURMAN, EARL
Rt. 2

Mt. Sterling
330 acres



THOROMAN, A. A.
Rt. 2

Versailles
120 acres



TICE, CLARENCE
Rt. 2

Mt. Sterling
80 acres



THOROMAN, ALLEN A.
Rt. 1

Versailles
240 acres



TICE, MISS EDNA
Rt. 3

Mt. Sterling



TICE, FRANK
Rt. 1

Timewell
160 acres



TIMEWELL ELEVATOR CO.
Clyde W. Cutforth & Haward Deterding, Prop.

Timewell



TICE, GEORGE W.
Rt. 2

Mt. Sterling
80 acres



TIMEWELL GRAIN CO.
Quincy Soybean Products Co.

Timewell



TICE, HARRY
Rt. 3

Mt. Sterling
200 acres



TRACY, JOHN (ESTATE)
Rt. 4

Mt. Sterling
140 acres



TICE, JAMES
Rt. 2

Mt. Sterling



TRAMMELL, HOLLIE W.

Ripley
104 acres



TUCKER, JESSE
Rt. 2

Versailles
232 acres



UNDERWOOD, DALE
Rt. 2

Versailles
120 acra



TURNER, RAYMOND W.
Rt. 1-English Yorkshire Hogs

Versailles
345.5 acra



UNDERWOOD, NEIL
Rt. 2

Mt. Sterling
80 acres



TURNER, RAYMOND W.
Rt. 1-English Yorkshire Hogs

Versailles
81½ acres



URISH, EDGAR H.
Rt. 2

Mt. Sterling
120 acres



UNDERWOOD, DALE & VERNA
Rt. 2

Versailles
200 acres



URVEN, MARION
Rt. 1

Mt. Sterling
44 acres



VALE, MYRTLE
Rt. 4

Mt. Sterling
90 acres



VANDEVENTER, HARRY
Rt. 1

Versailles
67 acres



VAN, NICHOLAS
Rt. 3

Mt. Sterling
27 acres



VANDEVENTER, WENDELL
Rt. 1

Versailles
420 acres



VANDEVENTER, CHARLES
Rt. 1

Versailles
113 acres



VARNER, MRS. ROSE
Rt. 1

Timewell
100 acres



VANCIL, ROBERT
Rt. 2

Versailles
170 acres



VEITH, MRS. LARENCE
Rt. 1

Mt. Sterling
80 acres



VENVERTLOH, FRED & JOE
Rt. 4

Mt. Sterling
80 acres



VOLK, HENRY M.
Rt. 3

Mt. Sterling
145 acres



VERMILLION, KATHRIN
Rt. 4

Mt. Sterling
70 acres



VOLK, JAMES C.
Rt. 3

Mt. Sterling
130 acres



VIETH, MARY & ROSIE KLINGELE
Rt. 1

Mt. Sterling
120 acres



VOLK, MATT JR.
Rt. 3

Mt. Sterling
139 acres



VOLK, FRANCIS
Rt. 3

Mt. Sterling
200 acres



VOLK, MATT JR.
Rt. 3

Mt. Sterling
167 acres



VOLK, MATT
Rt. 3

Mt. Sterling
250 acres



VURNETT, JOHN R.
Rt. 3

Mt. Sterling
228 acres



VOLK, MATT
Rt. 3

Mt. Sterling
293 acres



POES SCHOOL (Vacant)

Clayton



VOLK, MATHIAS SR.
Rt. 3

Mt. Sterling
80 acres



WAECHTER, ALBERT
Rt. 4

Mt. Sterling
40 acres



VOLK, WILLIAM A.
Rt. 1

Mt. Sterling
200 acres



WAGNER, CASPER
Rt. 4

Mt. Sterling
150 acres



WAGNER, EMMETT
Rt. 1

Mt. Sterling
160 acres



WAGNER, MRS. LOUIS
Rt. 1

Mt. Sterling
410 acres



WAGNER, HAROLD J.
Rt. 1

Mt. Sterling
120 acres



WAGGONER, ROSS E.
Rt. 4

Mt. Sterling
140 acres



WAGNER, MRS. JULIA A.
Rt. 2

Mt. Sterling
200 acres



WALKER, CARL
Rt. 2

Mt. Sterling
232 acres



WAGNER, L.
Rt. 3

Mt. Sterling
19 acres



WALKER, CARL
Rt. 4

Mt. Sterling
320 acres



WALKER, JOHN
Rt. 2

Versailles
135 acres



WARD, MERLE
Rt. 2

Mt. Sterling
160 acres



WALSH, SYBIL
Rt. 1

Versailles
104 acres



WARD, MERLE
Rt. 2

Mt. Sterling
67 acres



WARD, BILLIE
Rt. 3

Mt. Sterling
100 acres



WARD, SHERMAN
Rt. 3

Mt. Sterling
80 acres



WARD, MERLE E.
Rt. 2

Mt. Sterling
190 acres



WATERS, ROBERT
Rt. 2

Baylis
40 acres



WATTS, JIM
Rt. 1

Versailles
150 acres



WEBEL, GUY
Rt. 1

Chambersburg
133 acres



WEAR, ELDON S.
Rt. 2

Mt. Sterling
40 acres



WEBEL, MRS. ROSS
Rt. 1

Chambersburg
140 acres



WEAR, ELDON
Rt. 4

Mt. Sterling
110 acres



WEGS, HENRY
Rt. 4

Mt. Sterling
43 acres



WEAR, WILLIAM
Rt. 2

Mt. Sterling
40 acres



WELTY, DELBERT & ORVILLE
Rt. 1

Mt. Sterling
160 acres



WESTERFIELD, ROY E.
Rt. 4

Mt. Sterling
108 acres



WHITED, DEAN
Rt. 2

Mt. Sterling
202 acres



WEVER, LAWRENCE
Rt. 2

Clayton
200 acres



WHITE, FRED
Rt. 1

Versailles
36 acres



WHEWELL, LEONARD
Rt. 1

Versailles
200 acres



WHITESIDE, DEAN & MYRTLE
Rt. 4

Mt. Sterling
90 acres



WHITED, CHARLES
Rt. 1

Chambersburg
235 acres



WIESE, GEORGE H.
Rt. 1

Versailles
240 acres



WILKERSON, GEORGE
Rt. 3

Mt. Sterling
213 acres



WILLEY, WILFORD
Rt. 2

Versailles
17 acres



WILKERSON, HORACE
Rt. 3

Mt. Sterling
80 acres



WILLIAMS, IRWIN
Rt. 1

Mt. Sterling
140 acres



WILLEY, HARRY B.
Rt. 2

Versailles
120 acres



WILLIAMS, MRS. MAMIE
Rt. 4

Mt. Sterling
80 acres



WILLEY, W. W.
Rt. 3

Mt. Sterling
240 acres



WILSON, HARRY
Rt. 1

Chambersburg
200 acres



WILSON, HARRY
Rt. 1

Chambersburg
200 acres



WORT, MRS. ELIZABETH
Rt. 4

Mt. Sterling
155 acres



WILSON, HOY
Rt. 1

Versailles
160 acres



WORT, MRS. ELIZABETH
Rt. 4

Mt. Sterling
20 acres



WOOD, MARGARET
Rt. 4

Mt. Sterling
160 acres



WORT, EVERETT
Rt. 2

Mt. Sterling
125 acres



WOODS, JOHN
Rt. 3

Mt. Sterling
80 acres



WORT, F. M.
Rt. 1

Mt. Sterling
120 acres



WORT, FRANK
Rt. 4

Mt. Sterling
200 acres



WORTHINGTON, ARTHUR
Rt. 1

Mt. Sterling
80 acres



WORT, HARRY
Rt. 4

Mt. Sterling
80 acres



WORTHINGTON, FRANK
Rt. 1

Timewell
80 acres



WORT, JOE
Rt. 2

Mt. Sterling
100 acres



WORTHINGTON, MARY A.
Rt. 1

Mt. Sterling
170 acres



WORT, MRS. LORETTA
Rt. 2

Mt. Sterling
86 acres



WORTHINGTON, PAUL
Rt. 1

Mt. Sterling
50 acres



WRIGHT, NANCY (ESTATE). Mt. Sterling
Rt. 3 116 acres



YARBROUGH, LAWRENCE Mt. Sterling
Rt. 1 200 acres



YAKLE, ED Timewell
Rt. 1 120 acres



YATES, CHARLES Mt. Sterling
Rt. 1 260 acres



YAKLE, RUSSELL E. Timewell
Rt. 1 80 acres



YOKEL, FRANK Chambersburg
Rt. 1 80 acres



VANCIL, LEO W. Versailles
Rt. 2 160 acres



ZEHR, DANIEL Versailles
Rt. 1



ZIMMERMAN, ROY & MAY
Rt. 4

Mt. Sterling
110 acres



ZIMMERMAN, ROY
Rt. 2

Versailles
200 acres

THE STORIES OF SOME OF THE GREAT SIRES USED IN OUR BREEDING PROGRAM



SOVEREIGN SHORE 1233533 "EX"

Above Sire a son of the "EX" Mantvic Rag Apple Sovereign—All Canadian 1944-1945; Reserve 1946-1947; Member All-Canadian Produce, 1944-45-46-47.

And DARKEY LAMBERT WAYNE "EX"

At 9 years 365d, 2x: 23,092 lbs.; milk 3.59%, 830 fat; in 6 lact: 115,753 milk, 3.59%, 4160 fat.

We are trying to breed great cows because we believe they are the profitable kind for the practical Doirymen to own.

We almost always have SONS AND DAUGHTERS OF THESE SIRES from CLASSIFIED TESTED DAMS for sale.

ORVILLE LOOS & SONS
PAYSON, ILLINOIS

HICKORY CREEK PRINCE CHARMING 1188547

Son of Willowsprings CRESCENT PRINCE V. G. 949159 NY; Sire, Res. All-American "Get," 1952; Jr. Champion, Nebraska State and Kansas Free Fair, 1946; SIRE: 1st Sr. "Get," Wisconsin, 1952-53; 1st Jr. and Sr. "Get," Texas, 1952; 1st Jr. "Get," Michigan, Illinois B & W, and Ohio, 1952; 1st Sr. "Get," International & Ohio, 1951; 1st Sr. "Get," Illinois, 1950; 1st Jr. "Get," Ohio, 1950; 1st Jr. "Get," Waukesha Dairy Show, 1951.

Classified offspring in Hickory Creek Herd average score 82.4, with an average age of 3 years, 10 months; 2 "E" and 3 "VG" in other herds.

ELMWOOD JULE CORA V.G. 3059776

D. H. I. A. Record (3½ years) 3650—18,678.00 milk, 623.30 fat.

HICKORY CREEK CORNERSTONE 1219401

This Jr., Sire has 14 Excellents in pedigree.

Son of HICKORY CREEK GOMAR 1111083 "EX"; All-American Jr. Yearling, 1951; Grand Champion, Ohio State Fair, 1952; Jr. Champion, Ohio State Fair, 1951; 1st Jr. Yearling, Waterloo, International, Illinois B & W, Wisconsin and Ohio, 1951; Sire: 1st Jr. "Get," Iowa, 1953; 2nd Jr. Yearling, Illinois State Fair, 1951; Sire: 2nd Jr. "Get," International, 1953; 3rd 2-year old, Illinois State Fair, 1952; 4th 2-year old, Texas Pan-American, 1952; 5th 2-year old, Wisconsin, 1952; Sire: 5th Jr. "Get," Waterloo, 1953; 6th 2-year old, Waterloo, 1952.

MT. PLEASANT POSCH LASS 2903118 "EX"

DAM of Hickory Creek Cornerstone.

H. T. Record—Fat 365d, 3½ years 499.90 milk (3x-3.7%), 13444.00. D. H. I. A. Records—Fat 278d, 5 years 431.00 milk (2x), 11610.00. Fat 189d, 5½ years 399.00 milk (2x), 10440.00. (Record in Progress). Res. Grand Champion, Iowa State Fair, 1952; 1st prize 4-year old, Iowa State Fair, 1952; 3rd prize 4-year old, Wisconsin State Fair, 1952; 4th prize 4-year old, Waterloo, 1952.

Roster of State Officers

UNITED STATES SENATORS FROM ILLINOIS

Name	Term of service	Residence	Remarks
Ninian Edwards, Dem	1818-1819	Kaskaskia	
Jesse B. Thomas, Dem	1818-1823	Kaskaskia	
Ninian Edwards, Dem	1819-1824	Edwardsville	Own successor. Resigned 1824.
Jesse B. Thomas, Dem	1823-1829	Edwardsville	Own successor.
John McLean, Dem	1824-1825	Shawneetown	Vice Edwards, resigned.
Elias Kent Kane, Dem	1825-1831	Kaskaskia	To succeed McLean.
John McLean, Dem	1829-1830	Shawneetown	Died Oct. 14, 1830.
David J. Baker, Dem	Nov. 12-Dec. 11, 1830	Kaskaskia	Appointed, vice McLean, deceased.
John M. Robinson, Dem	1830-1835	Carmi	To succeed Baker.
Elias Kent Kane, Dem	1831-1835	Kaskaskia	Own successor. Died Dec. 12, 1835.
John M. Robinson, Dem	1835-1841	Carmi	Own successor.
William L. D. Ewing, Dem	1835-1837	Vandalia	Vice Kane, deceased.
Richard M. Young, Dem	1837-1843	Jonesboro	To succeed Ewing.
Samuel McRoberts, Dem	1841-1843	Waterloo	Vice Robinson. Died Mar. 22, 1843.
Sidney Breese, Dem	1843-1849	Carlyle	To succeed Young.
James Semple, Dem	1843-1847	Alton	Appointed, vice McRoberts deceased.
Stephen A. Douglas, Dem	1847-1853	Quincy	To succeed Semple.
James Shields, Dem	1849-1855	Springfield	To succeed Breese.
Stephen A. Douglas, Dem	1853-1859	Chicago	Own successor.
L. Trumbull, Anti-Neb., Dem	1855-1861	Belleville	To succeed Shields.
Stephen A. Douglas, Dem	1859-1861	Chicago	Own successor. Died June 3, 1861.
Lyman Trumbull, Rep	1861-1867	Chicago	Own successor.
Orville H. Browning, Rep	1861-1863	Quincy	Appointed, vice Douglas.
William A. Richardson, Dem	1863-1865	Quincy	To succeed Browning.
Richard Yates, Rep	1865-1871	Jacksonville	To succeed Richardson.
Lyman Trumbull, Rep	1867-1873	Chicago	Own successor.
John A. Logan, Rep	1871-1877	Chicago	To succeed Yates.
Richard J. Oglesby, Rep	1873-1879	Decatur	To succeed Trumbull.
David Davis, Ind	1877-1883	Bloomington	To succeed Logan.
John A. Logan, Rep	1879-1885	Chicago	To succeed Oglesby.
Shelby M. Cullom, Rep	1883-1889	Springfield	To succeed Davis.
John A. Logan, Rep	1885-1886	Chicago	Died Dec. 26, 1886.
Charles B. Farwell, Rep	1887-1891	Chicago	Vice Logan, deceased.
Shelby M. Cullom, Rep	1889-1895	Springfield	To succeed himself.
John M. Palmer, Dem	1891-1897	Springfield	To succeed Farwell.
Shelby M. Cullom, Rep	1895-1901	Springfield	To succeed himself.
William E. Mason, Rep	1897-1903	Chicago	To succeed Palmer.
Shelby M. Cullom, Rep	1901-1907	Springfield	To succeed himself.
Albert J. Hopkins, Rep	1903-1909	Aurora	To succeed Mason.
Shelby M. Cullom, Rep	1907-1913	Springfield	To succeed himself.
*William Lorimer, Rep	1909-1912	Chicago	To succeed Hopkins.
James Hamilton Lewis, Dem	1913-1919	Chicago	To succeed Cullom.
Lawrence Y. Sherman, Rep	1913-1915	Springfield	In place of Lorimer.
Lawrence Y. Sherman, Rep	1915-1921	Springfield	To succeed himself.
Medill McCormick, Rep	1919-1925	Chicago	To succeed Lewis.
William B. McKinley, Rep	1921-1927	Champaign	To succeed Sherman.
Charles S. Deneen, Rep	1925-1931	Chicago	To succeed McCormick.
†Frank L. Smith, Rep	1927-	Dwight	To succeed McKinley.
Otis F. Glenn, Rep	1928-1933	Murphysboro	In place of Frank L. Smith.
James Hamilton Lewis, Dem	1931-1937	Chicago	To succeed Deneen.
William H. Dieterich, Dem	1933-1939	Beardstown	To succeed Glenn.
James Hamilton Lewis, Dem	1937-1939	Chicago	Died April 9, 1939.
Scott W. Lucas, Dem	1939-1945	Havana	To succeed Dieterich.
James M. Slaterry, Dem	1939-1940	Chicago	Appointed; vice Lewis, deceased.
C. Wayland Brooks, Rep	1940-1943	Chicago	Elected to fill Lewis term.
C. Wayland Brooks, Rep	1943-1949	Chicago	
Scott W. Lucas, Dem	1945-1951	Havana	
Paul H. Douglas, Dem	1949-1955	Chicago	
Everett McKinley Dirksen, Rep	1951-1957	Pekin	

* Unseated, election being declared illegal by Senate.

† Refused his seat by action of the Senate.



State Memorials

Mt. Pulaski Courthouse, 26 miles northeast of Springfield on U.S. 54. One of the courthouses on the old Eighth Circuit where Lincoln practiced law.

Postville Court House State Memorial near Junction 10 and 66.

Colleges and Universities

Lincoln College on U. S. 66, north of Lincoln.

State Institutions

Lincoln State School and Colony, 1 mile southwest of Lincoln on US 66.

Airports

Logan County Airport - 3/4 mile northeast of Lincoln, off US 66.

Lincoln Flying Service - 1/4 mile west of Lincoln, off State Rt. 10.

WILLIAM G. STRATTON

Governor

Born at Ingelside in Lake County
on February 26, 1914

PAST GOVERNORS OF ILLINOIS

Name	Date of birth	Place of birth	Inaugurated	From what county	Date of death	Place of death
Shadrach Bond, Dem.....	Nov. 24, 1773	Frederickstown, Md.....	Oct. 6, 1818	St. Clair.....	Apr. 12, 1832	Kaskaskia
Edward Coles, Dem.....	Dec. 15, 1786	Albermarle County, Va.....	Dec. 5, 1822	Madison.....	July 7, 1868	Philadelphia
Ninian Edwards, Dem ¹	Mar. 17, 1775	Montgomery County, Md.....	Dec. 6, 1826	Madison.....	July 20, 1833	Belleville
John Reynolds, Dem ²	Feb. 26, 1788	Montgomery County, Pa.....	Dec. 6, 1830	St. Clair.....	May 8, 1865	Belleville
William L. D. Ewing, Dem ³	Aug. 31, 1795	Logan County, Ky.....	Nov. 17, 1834	Fayette.....	Mar. 25, 1846	Springfield
Joseph Duncan, Dem.....	Feb. 22, 1794	Paris, Ky.....	Dec. 3, 1834	Morgan.....	Jan. 15, 1844	Jacksonville
Thomas Carlin, Dem.....	July 18, 1789	Fayette County, Ky.....	Dec. 7, 1838	Greene.....	Feb. 14, 1852	Carrollton
Thomas Ford, Dem.....	Dec. 5, 1800	Uniontown, Pa.....	Dec. 9, 1842	Ogle.....	Nov. 3, 1850	Peoria
Augustus C. French, Dem ⁴	Aug. 2, 1808	Hill, N. H.....	{Dec. 8, 1846 Jan. 8, 1849}	Crawford.....	Sept. 4, 1864	Lebanon
Joel Aldrich Matteson, Dem.....	Aug. 8, 1808	Watertown, N. Y.....	Jan. 10, 1853	Will.....	Jan. 31, 1873	Chicago
William H. Bissell, Rep ⁵	Apr. 25, 1811	Painted Post, N. Y.....	Jan. 12, 1857	Monroe.....	Mar. 18, 1860	Springfield
John Wood, Rep.....	Dec. 20, 1798	Moravia, N. Y.....	Mar. 21, 1860	Adams.....	June 11, 1880	Quincy
Richard Yates, Rep.....	Jan. 18, 1815	Warsaw, Ky.....	Jan. 14, 1861	Morgan.....	Nov. 27, 1873	St. Louis, Mo.
Richard J. Oglesby, Rep.....	July 25, 1824	Oldham County, Ky.....	Jan. 16, 1865	Macon.....	Apr. 24, 1899	Elkhart
John M. Palmer, Rep.....	Sept. 13, 1817	Eagle Creek, Ky.....	Jan. 11, 1869	Macoupin.....	Sept. 25, 1900	Springfield
Richard J. Oglesby, Rep ⁶	July 25, 1824	Oldham County, Ky.....	Jan. 13, 1873	Macon.....	Apr. 24, 1899	Elkhart
John L. Beveridge, Rep.....	July 6, 1824	Greenwich, N. Y.....	Jan. 23, 1873	Cook.....	May 3, 1910	Hollywood, Calif.
Shelby Moore Cullom, Rep ⁷	Nov. 22, 1829	Wayne County, Ky.....	{Jan. 8, 1877 Jan. 10, 1881}	Sangamon.....	Jan. 28, 1914	Washington
John M. Hamilton, Rep.....	May 28, 1847	Union County, Ohio.....	Feb. 6, 1883	McLean.....	Sept. 23, 1905	Chicago
Richard J. Oglesby, Rep.....	July 25, 1824	Oldham County, Ky.....	Jan. 30, 1885	Macon.....	Apr. 24, 1899	Elkhart
Joseph W. Fifer, Rep.....	Oct. 28, 1840	Staunton, Va.....	Jan. 14, 1889	McLean.....	Aug. 6, 1938	Bloomington
John P. Altgeld, Dem.....	Dec. 30, 1847	Felters, Germany.....	Jan. 10, 1893	Cook.....	Mar. 12, 1902	Joliet
John R. Tanner, Rep.....	Apr. 4, 1844	Warrick County, Ind.....	Jan. 11, 1897	Clay.....	May 23, 1901	Springfield
Richard Yates, Rep.....	Dec. 12, 1860	Jacksonville.....	Jan. 14, 1901	Morgan.....	Apr. 11, 1936	Springfield
Charles S. Deneen, Rep.....	May 4, 1863	Edwardsville.....	{Jan. 9, 1905 Jan. 18, 1909}	Cook.....	Feb. 5, 1940	Chicago
Edward F. Dunne, Dem.....	Oct. 12, 1853	Waterville, Conn.....	Feb. 3, 1913	Cook.....	May 24, 1937	Chicago
Frank O. Lowden, Rep.....	Jan. 26, 1861	Sunrise, Minn.....	Jan. 8, 1917	Ogle.....	Mar. 20, 1943	Tucson, Ariz.
Len Small, Rep.....	June 16, 1862	Kankakee.....	{Jan. 10, 1921 Jan. 12, 1925}	Kankakee.....	May 17, 1936	Kankakee
Louis L. Emmerson, Rep.....	Dec. 27, 1863	Albion.....	Jan. 14, 1929	Jefferson.....	Feb. 4, 1941	Mt. Vernon
Henry Horner, Dem ⁸	Nov. 30, 1879	Chicago.....	{Jan. 9, 1933 Jan. 4, 1937}	Cook.....	Oct. 6, 1940	Winnetka
John H. Stelle, Dem.....	Aug. 10, 1891	McLeansboro.....	Oct. 6, 1940	Hamilton.....		
Dwight H. Green, Rep.....	Jan. 9, 1897	Ligonier, Ind.....	{Jan. 13, 1941 Jan. 8, 1945}	Cook.....		
Adlai E. Stevenson, Dem.....	Feb. 5, 1900	Los Angeles, Calif.....	Jan. 10, 1949	Lake.....		

¹ Territorial governor, 1809-1818. ² Governor Reynolds resigned November 17, 1834, to become representative in Congress; succeeded by William L. D. Ewing. ³ W. L. D. Ewing was acting Lieutenant Governor and became Governor during the interim between Governor John Reynolds' resignation and election to Congress and the election of Governor Joseph Duncan. ⁴ Governor French was re-elected under the Constitution of 1848. ⁵ Governor Bissell died March 18, 1860; succeeded by John Wood, Lieutenant Governor. ⁶ Governor Oglesby resigned January 23, 1873, to become U.S. Senator; succeeded by John L. Beveridge, Lieutenant Governor. ⁷ Governor Cullom resigned February 8, 1883, to become U.S. Senator; succeeded by John M. Hamilton, Lieutenant Governor. ⁸ Governor Horner died October 6, 1940; succeeded by John H. Stelle, Lieutenant Governor.

LEGAL HOLIDAYS IN THE VARIOUS STATES

JAN. 1—New Year's Day (all the States, Territories and possessions).

JAN. 8—Battle of New Orleans (in La.).

JAN. 19—R. E. Lee's Birthday (in Ala., Ark., Fla., Ga., Ky., Miss., N. C., S. C., Tenn. and Va.).

JAN. 20—Inauguration Day, beginning 1937 and every fourth year thereafter—by the 20th Amendment to the Constitution (in the Dist. of Col. only).

FEB. 12—Lincoln's Birthday (Alaska, Cal., Col., Conn., Del., Ill., Ind., Ia., Kan., Ky., Md., Mich., Minn., Mo., Mont., Neb., Nev., N. J., N. Y., N. M., N. Dak., Ohio, Ore., Pa., S. Dak., Tenn., Utah, Wash., W. Va., Wyo., and observed by Governor's proclamation in Mass.)

FEB. 22—Washington's Birthday (all the States, Territories and possessions).

APRIL 16—Good Friday (Conn., Del., Fla., La., Md., Minn., N. J., Pa., Tenn., Philippines and Puerto Rico.)

APRIL 19—Patriots' Day (in Me. and Mass.).

APRIL 21—Anniv. Battle of San Jacinto (in Tex.).

APRIL 26—Confederate Memorial Day (in Ala., Fla., Ga., and Miss.; World War Mem. Day, also, in Ga.).

APRIL 26—Fast Day (fourth Monday) in New Hampshire.

MAY 10—Confederate Memorial Day (in N. Car. and S. Car.).

MAY 30—Decoration or Memorial Day (all states and possessions, except Ala., Ark., Fla., Ga., La., Miss., N. Car. and S. Car.).

MAY 30—Confederate Memorial Day (in Va.).

JUNE 3—Birthday of Jefferson Davis (in Ala., Ark., Fla., Ga., La., Miss., S. C., Tex. and Va.).

JUNE 3—Confederate Memorial Day (in Ky. and Tenn.)

JUNE 15—Pioneer Day (in Idaho).

JULY 4—Independence Day (all the States, Territories and possessions).

JULY 13—Birthday of Gen. Bedford Forrest (in Tenn.).

JULY 24—Pioneer Day (in Utah).

AUG. 1—Colorado Day (in Col.)

AUG. 16—Anniv. Battle of Bennington (in Vt.).

SEPT. 6—Labor Day (1st Monday) (every State, Territory and possession).

SEPT. 9—Admission Day (in Cal.).

SEPT. 12—Defender's Day (in Md.).

OCT. 12—Columbus Day (Ark., Ariz., Cal., Col., Conn., Del., Fla., Idaho, Ill., Ind., Kan., Ky., La., Me., Md., Mass., Mich., Mo., Mont., Neb., Nev., N. H., N. J., N. Y., N. Dak., Ohio, Ore., Pa., R. I., Tex., Utah, Va., Vt., Wash., W. Va., also Puerto Rico. In Arkansas and Kansas it does not affect notes or judicial proceedings).

OCT. 31—Admission Day in Nev.).

NOV. 2 — Election Day (1st Tuesday after 1st Monday in Nov.). Every State and Territory except Alaska, Conn., Dist. of Col., Hawaii, Ill., Mass., Miss., Ohio, Philippines and Vt. In Illinois it is a legal holiday in Chicago, Springfield, East St. Louis, Galesburg, Danville, Cairo and Rockford. In Ohio it is a half holiday. In Maine it is a legal holiday only as to the courts, which also close on the State Election Day (biennially in even years, 2nd Monday in Sept.).

NOV. 11—Armistice Day (all the States, Territories and Possessions).

NOV. 25 — Thanksgiving Day (Fourth Thursday) Every State, Territory and Possession. President Roosevelt, on Dec. 26, 1941, approved House Joint Resolution 41: "Resolved by the Senate and House of Representatives of the United States of America in Congress assembled. That the fourth Thursday of November in each year after the year 1941 be known as Thanksgiving Day."

DEC. 25 — Christmas Day (every State, Territory and possession).

TIME DIFFERENCES

At Twelve O'Clock U.S. Eastern Standard Time, the clocks in U. S. cities are:

Atlanta, Ga.....	12.00 Noon
Baltimore, Md.....	12.00 Noon
Birmingham, Ala.....	11.00 A. M.
Boston, Mass.....	12.00 Noon
Buffalo, N. Y.....	12.00 Noon
Charleston, S. C.....	12.00 Noon
Chicago, Ill.....	11.00 A. M.
Cincinnati, Ohio.....	12.00 Noon
Cleveland, Ohio.....	12.00 Noon
Dallas, Tex.....	11.00 A. M.
Denver, Col.....	10.00 A. M.
Detroit, Mich.....	12.00 Noon
El Paso, Tex.....	10.00 A. M.
Galveston, Tex.....	11.00 A. M.
Indianapolis, Ind.....	11.00 A. M.
Kansas City, Mo.....	11.00 A. M.
Los Angeles, Cal.....	9.00 A. M.
Louisville, Ky.....	11.00 A. M.
Memphis, Tenn.....	11.00 A. M.
Milwaukee, Wis.....	11.00 A. M.
Minneapolis, Minn.....	11.00 A. M.
Nashville, Tenn.....	11.00 A. M.
New Orleans, La.....	11.00 A. M.
New York City.....	12.00 Noon
Norfolk, Va.....	12.00 Noon
Omaha, Neb.....	11.00 A. M.
Philadelphia, Pa.....	12.00 Noon
Pittsburgh, Pa.....	12.00 Noon
Richmond, Va.....	12.00 Noon
Salt Lake City, Utah.....	10.00 A. M.
San Francisco, Cal.....	9.00 A. M.
Savannah, Ga.....	12.00 Noon
Seattle, Wash.....	9.00 A. M.
St. Louis, Mo.....	11.00 A. M.
Toledo, Ohio.....	12.00 Noon
Washington, D. C.....	12.00 Noon

State Forests and Game Preserves

Lake Argyle Public Fishing and Recreation Area. Near Colchester in McDonough County. 1,052 acres. Fishing, recreation, picnic areas. Boats available.

Colleges and Universities

Western Illinois State College - 2 miles north of Macomb, State Route 67, 1 mile west on State Route 20.

Airports

Macomb Airport -- $2\frac{1}{4}$ miles east of Macomb, State Route 67.

Picnic Grounds and Roadside Tables

- 1 mile southwest of Tennessee, U. S. 136
- 3 miles southwest of Tennessee, U. S. 136
- 2 miles east of Macomb, U. S. 136 and 67
- $2\frac{1}{4}$ miles north of Adair, U. S. 136
- $1\frac{1}{2}$ miles south of Good Hope, U. S. 67
- $1\frac{1}{2}$ miles northeast of Bushnell, State Rt. 9
- 2 miles south of Prairie City, State Rts. 41 & 9

NUMBER OF CHICKENS - DAIRY CATTLE - ALL CATTLE - HOGS

ILLINOIS - 102 Counties

Source: Based on 1953 Data

USDA

County	Number Chickens	Number Dairy Cattle	Number All Cattle	Number Hogs
Adams	243,700	15,700	57,800	140,200
Alexander	34,900	1,100	4,300	5,700
Bond	192,000	7,800	23,900	40,000
Boone	117,300	19,800	45,900	32,100
Brown	86,900	2,700	16,300	58,000
Bureau	296,300	13,700	92,800	187,500
Calhoun	89,900	2,800	11,100	31,000
Carroll	185,200	13,900	67,900	100,600
Cass	89,900	3,600	18,000	34,000
Champaign	292,200	11,400	53,900	60,500
Christian	201,700	7,000	37,300	79,100
Clark	230,100	6,500	23,200	36,800
Clay	290,300	5,300	20,800	19,700
Clinton	339,900	13,200	27,800	26,100
Coles	159,300	5,200	23,600	46,600
Cook	234,600	12,500	27,700	42,400
Crawford	191,200	4,800	21,500	31,700
Cumberland	201,800	5,800	16,900	19,300
DeKalb	236,900	13,600	93,600	163,400
DeWitt	105,600	4,100	26,400	41,900
Douglas	138,100	3,200	16,900	22,300
DuPage	171,300	8,300	21,700	24,200
Edgar	162,800	7,400	33,100	59,900
Edwards	148,800	2,100	12,900	31,500
Effingham	332,800	12,100	28,200	17,500
Fayette	385,800	11,500	32,400	25,300
Ford	226,000	5,300	31,100	46,400
Franklin	156,900	4,600	14,900	15,800
Fulton	209,500	9,600	64,800	149,500
Gallatin	116,600	2,000	10,600	19,600
Greene	131,200	6,400	36,800	24,100
Grundy	136,100	4,900	26,000	18,100
Hamilton	263,400	4,700	14,600	18,600
Hancock	237,900	12,100	64,800	149,500
Hardin	44,300	1,900	8,700	5,600
Henderson	74,100	3,800	30,900	91,600
Henry	353,300	13,900	101,400	288,000
Iroquois	534,200	13,500	61,500	71,000
Jackson	172,100	7,600	22,100	23,200
Jasper	385,800	6,000	23,900	33,400
Jefferson	311,700	7,200	24,000	28,200
Jersey	121,500	5,500	22,600	47,000
Jo Daviess	247,800	97,100	69,600	83,800
Johnson	102,400	3,500	16,700	11,300
Kane	192,400	27,500	83,900	59,900
Kankakee	258,000	9,900	34,900	35,500
Kendall	138,400	4,600	31,400	52,600
Knox	203,800	9,600	70,200	165,700

County	Number Chickens	Number Dairy Cattle	Number All Cattle	Number Hogs
Lake	187,700	13,400	33,200	25,400
LaSalle	380,000	18,500	102,600	114,300
Lawrence	116,800	2,700	11,600	17,100
Lee	233,600	14,700	79,900	83,800
Livingstone	586,800	14,000	62,900	61,600
Logan	207,400	7,400	37,000	54,500
McDonough	143,900	7,900	52,500	149,500
McHenry	246,300	46,400	89,300	38,700
McLean	399,600	17,100	99,600	150,300
Macon	165,900	6,200	34,100	39,200
Macoupin	298,900	16,100	57,600	102,100
Madison	349,900	18,600	46,000	53,100
Marion	269,000	6,400	24,300	19,300
Marshall	147,000	5,200	30,200	62,200
Mason	94,300	3,600	17,900	22,400
Massac	92,500	2,500	12,700	14,400
Menard	98,000	3,000	21,300	45,400
Mercer	151,000	6,300	51,500	198,100
Monroe	248,400	4,000	11,400	29,200
Montgomery	323,200	14,200	43,300	71,100
Morgan	167,700	5,400	40,500	100,100
Moultrie	120,400	5,500	17,900	15,400
Ogle	302,000	22,900	101,300	125,000
Peoria	211,100	8,200	42,600	84,600
Perry	169,900	6,100	17,800	20,100
Piatt	118,700	4,900	24,400	38,200
Pike	189,500	8,200	56,600	176,200
Pope	62,400	2,500	11,600	3,500
Pulaski	71,900	2,500	10,500	16,500
Putnam	45,600	1,900	13,700	25,900
Randolph	241,900	11,400	32,000	36,400
Richland	208,900	5,200	17,300	14,100
Rock Island	168,100	7,200	39,500	103,600
St. Clair	302,900	10,200	26,500	43,100
Saline	152,800	3,100	15,800	16,300
Sangamon	194,400	8,300	52,000	116,100
Schuyler	101,200	5,500	23,400	62,600
Scott	80,200	2,100	14,700	54,100
Shelby	346,900	13,400	40,500	49,600
Stark	84,800	3,000	27,200	85,300
Stephenson	373,200	38,700	93,600	125,000
Tazewell	182,800	10,300	45,500	61,500
Union	104,600	6,000	17,600	16,500
Vermilion	267,100	8,000	42,200	76,800
Wabash	78,400	1,600	8,400	14,000
Warren	124,000	6,100	60,400	192,400
Washington	274,600	12,800	27,400	19,100
Wayne	416,300	8,900	32,000	33,100
White	166,900	2,900	15,600	32,400
Whiteside	313,400	20,100	81,600	135,600
Will	305,000	14,500	48,300	33,900
Williamson	115,500	4,600	14,200	10,800
Winnebago	179,500	19,600	66,100	67,100
Woodford	188,500	7,900	43,800	51,700
STATE TOTAL	20,948,000	931,000	3,869,000	6,297,000

PLACES IN U. S. A. OF 25,000 AND OVER

1950 Census

ALABAMA
 Anniston..... 31,066
 Bessemer..... 28,445
 Birmingham... 326,037
 Gadsden..... 55,725
 Mobile..... 129,009
 Montgomery... 106,525
 Tuscaloosa... 46,396

ARIZONA
 Phoenix..... 106,818
 Tucson..... 45,454

ARKANSAS
 Fort Smith... 47,942
 Hot Springs... 29,307
 Little Rock... 102,213
 North Little
 Rock..... 44,097
 Pine Bluff... 37,162

CALIFORNIA
 Alameda..... 64,430
 Alhambra..... 51,359
 Arcadia..... 28,733
 Bakersfield... 34,784
 Berkeley..... 113,805
 Beverly Hills.. 29,032
 Burbank..... 78,577
 Compton..... 55,645
 E. Bakersfield. 38,177
 Fresno..... 91,669
 Glendale..... 95,702
 Huntington Pk. 29,450
 Inglewood... 46,185
 Long Beach... 250,767
 Los Angeles... 1,970,358
 Lynwood..... 25,823
 Oakland..... 384,575
 Ontario..... 26,279
 Palo Alto..... 25,475
 Pasadena..... 104,577
 Pomona..... 35,405

Redondo Beach 25,226
 Redwood City. 25,544
 Richmond..... 99,545
 Riverside..... 46,764
 Sacramento... 137,572
 San Bernardino 63,058
 San Diego..... 334,387
 San Francisco. 775,357
 San Jose..... 95,280
 San Leandro.. 27,542
 San Mateo..... 41,782
 Santa Ana.... 45,533
 Santa Barbara 44,913
 Santa Monica. 71,595
 South Gate... 51,116
 Stockton..... 70,853
 Torrance..... 31,834
 Vallejo..... 26,038
 Whittier..... 29,265

COLORADO

Colorado
 Springs..... 45,472
 Denver..... 415,786
 Pueblo..... 63,685

CONNECTICUT

Bridgeport... 158,709
 Bristol..... 35,961
 East Hartford. 29,933
 Fairfield..... 30,489
 Greenwich... 40,835
 Hamden..... 29,715
 Hartford..... 177,397
 Manchester... 34,116
 Meriden..... 44,088
 Middletown... 29,711
 Milford..... 26,870
 New Britain... 73,726
 New Haven... 164,443
 New London.. 30,551
 Norwalk..... 49,460

1950 Census

Stamford..... 74,293
 Stratford..... 33,428
 Torrington... 27,820
 Waterbury... 104,477
 West Hartford. 44,402
 West Haven... 32,010

DELAWARE
 Wilmington... 110,356

DISTRICT OF COLUMBIA
 Washington... 802,178

FLORIDA
 Daytona Beach 30,187
 Ft. Lauderdale. 36,328
 Gainesville... 26,861
 Jacksonville... 204,517
 Key West..... 26,433
 Lakeland..... 30,851
 Miami..... 249,276
 Miami Beach.. 46,282
 Orlando..... 52,367
 Panama City.. 25,814
 Pensacola.... 43,479
 St. Petersburg. 96,738
 Tallahassee.. 27,237
 Tampa..... 124,681
 W. Palm Beach 43,162

ILLINOIS

Alton..... 32,550
 Aurora..... 50,576
 Belleville... 32,721
 Berwyn..... 51,280
 Bloomington.. 34,163
 Champaign... 39,563
 Chicago..... 3,620,962
 Cicero..... 67,544
 Danville..... 37,864
 Decatur..... 66,269
 East St. Louis. 82,295
 Elgin..... 44,223
 Evanston..... 73,641
 Galesburg... 31,425
 Granite City.. 29,465
 Joliet..... 51,601
 Kankakee.... 25,856
 Maywood..... 27,473
 Moline..... 37,397
 Oak Park..... 63,529
 Peoria..... 111,856
 Quincy..... 41,450
 Rockford... 92,927
 Rock Island... 48,710
 Springfield... 81,628
 Waukegan... 38,946

INDIANA

Anderson..... 46,820
 Bloomington.. 28,163
 East Chicago. 54,263
 Elkhart..... 35,646
 Evansville... 128,636
 Fort Wayne... 133,607
 Gary..... 133,911
 Hammond... 87,594
 Indianapolis.. 427,173
 Kokomo..... 38,672
 Lafayette... 35,568
 Marion..... 30,081
 Michigan City 28,395
 Mishawaka... 32,913

GEORGIA
 Albany..... 31,155
 Athens..... 28,180
 Atlanta..... 331,314
 Augusta..... 71,508
 Columbus.... 79,611
 La Grange... 25,025
 Macon..... 70,252
 Rome..... 29,615
 Savannah... 119,638

IDAHO
 Boise City... 34,393
 Pocatello... 26,131

1950 Census

Muncie..... 58,479
 New Albany.. 29,346
 Richmond.... 39,539
 South Bend... 115,911
 Terre Haute... 64,214

IOWA

Burlington... 30,613
 Cedar Rapids. 72,296
 Clinton..... 30,379
 Council Bluffs. 45,429
 Davenport... 74,549
 Des Moines... 177,965
 Dubuque..... 49,671
 Fort Dodge... 25,115
 Iowa City.... 27,212
 Mason City... 27,980
 Ottumwa..... 33,631
 Sioux City... 83,991
 Waterloo.... 65,198

KANSAS

Hutchinson... 33,575
 Kansas City... 129,553
 Salina..... 26,176
 Topeka..... 78,791
 Wichita..... 168,279

KENTUCKY

Ashland..... 31,131
 Covington... 64,452
 Lexington... 55,534
 Louisville... 369,129
 Newport..... 31,044
 Owensboro... 33,651
 Paducah..... 32,828

LOUISIANA

Alexandria... 34,913
 Baton Rouge. 125,629
 Lafayette... 33,541
 Lake Charles. 41,272
 Monroe..... 38,572
 New Orleans. 570,445
 Shreveport... 127,206

MAINE

Bangor..... 31,558
 Lewiston.... 40,974
 Portland.... 77,634

MARYLAND

Baltimore... 949,708
 Cumberland... 37,679
 Hagerstown... 36,260

MASSACHUSETTS

Arlington.... 44,353
 Belmont.... 27,381
 Beverly..... 28,884
 Boston..... 801,444
 Brockton... 62,860
 Brookline... 57,589
 Cambridge... 120,740
 Chelsea..... 38,912
 Chicopee.... 49,211
 Everett..... 45,982
 Fall River... 111,963
 Fitchburg... 42,691
 Framingham. 28,086
 Gloucester... 25,167
 Haverhill... 47,280
 Holyoke.... 54,661
 Lawrence.... 80,536
 Lowell..... 97,249
 Lynn..... 99,738
 Malden..... 59,804
 Medford.... 66,113
 Melrose.... 26,988
 New Bedford. 109,189
 Newton..... 81,994
 Northampton. 29,063
 Pittsfield... 53,348
 Quincy..... 83,835
 Revere..... 36,763
 Salem..... 41,880
 Somerville... 102,351
 Springfield... 162,399
 Taunton.... 40,109

1950 Census

Waltham..... 47,187
 Watertown... 37,329
 Weymouth... 32,690
 Worcester... 203,486

MICHIGAN

Ann Arbor... 48,251
 Battle Creek.. 48,666
 Bay City..... 52,523
 Dearborn... 94,994
 Detroit..... 1,849,563
 Ferndale... 29,675
 Flint..... 163,143
 Grand Rapids. 176,515
 Hamtramck... 43,355
 Highland Park. 46,393
 Jackson..... 51,088
 Kalamazoo... 57,704
 Lansing..... 92,129
 Lincoln Park.. 29,310
 Muskegon... 48,429
 Pontiac..... 73,681
 Port Huron... 35,725
 Royal Oak... 46,898
 Saginaw..... 92,918
 Wyandotte... 36,846

MINNESOTA

Duluth..... 104,511
 Minneapolis.. 521,718
 Rochester... 29,885
 St. Cloud... 28,410
 St. Paul..... 311,349
 Winona..... 25,031

MISSISSIPPI

Biloxi..... 37,425
 Greenville... 29,936
 Hattiesburg... 29,474
 Jackson..... 98,271
 Laurel..... 25,038
 Meridian... 41,893
 Vicksburg... 27,948

MISSOURI

Columbia.... 31,994
 Independence.. 39,963
 Jefferson City.. 25,099
 Joplin..... 38,711
 Kansas City... 456,622
 St. Joseph... 78,588
 St. Louis.... 856,796
 Springfield... 66,731
 University City 39,892

MONTANA

Billings..... 31,834
 Butte..... 33,251
 Great Falls... 39,214

NEBRASKA

Lincoln..... 98,884
 Omaha..... 251,117

NEVADA

Reno..... 32,497

NEW HAMPSHIRE

Concord..... 27,988
 Manchester... 82,732
 Nashua..... 34,669

NEW JERSEY

Atlantic City.. 61,657
 Bayonne.... 77,203
 Belleville... 32,019
 Bloomfield... 49,307
 Camden..... 124,555
 Clifton..... 64,511
 East Orange.. 79,340
 Elizabeth... 112,817
 Garfield.... 27,550
 Hackensack... 29,219
 Hamilton.... 41,156
 Hoboken.... 50,676
 Irvington... 59,201
 Jersey City... 299,017
 Kearny..... 39,952
 Linden..... 30,644
 Maplewood... 25,201
 Montclair... 43,927

1950 Census — continued

Newark..... 438,776
 New Brunswick 38,811
 North Bergen.. 41,560
 Nutley..... 26,992
 Orange..... 38,037
 Passaic..... 57,702
 Paterson..... 139,336
 Perth Amboy.. 41,330
 Plainfield.... 42,366
 Teaneck..... 33,772
 Trenton..... 128,009
 Union..... 38,004
 Union City... 55,537
 W. New York.. 37,683
 West Orange. 28,605
 Woodbridge... 35,758

NEW MEXICO

Albuquerque.. 96,815
 Roswell..... 25,738
 Santa Fe..... 27,998

NEW YORK

Albany..... 134,995
 Amsterdam... 32,240
 Auburn..... 36,722
 Binghamton.. 80,674
 Buffalo..... 580,132
 Elmira..... 49,716
 Hempstead... 29,135
 Ithaca..... 29,257
 Jamestown... 43,354
 Kingston..... 28,817
 Lackawanna.. 27,658
 Lockport.... 25,133
 Mt. Vernon... 71,899
 Newburgh... 31,956
 New Rochelle. 59,725
 N. Y. City... 7,891,957
 Niagara Falls. 90,872
 Poughkeepsie. 41,023
 Rochester.... 332,488
 Rome..... 41,682

Schenectady... 91,785
 Syracuse..... 220,583
 Troy..... 72,311
 Utica..... 101,531
 Valley Stream. 26,854
 Watertown... 34,350
 White Plains.. 43,466
 Yonkers..... 152,798

NORTH CAROLINA

Asheville..... 53,000
 Charlotte.... 134,042
 Durham..... 71,311
 Fayetteville.. 34,715
 Greensboro... 74,389
 High Point... 39,973
 Kannapolis... 28,448
 Raleigh..... 65,679
 Rocky Mount. 27,697
 Wilmington... 45,043
 Winston-Salem 87,811

NORTH DAKOTA

Fargo..... 38,256
 Grand Forks.. 26,836

OHIO

Akron..... 274,605
 Alliance..... 26,161
 Barberton.... 27,820
 Canton..... 116,912
 Cincinnati... 503,998
 Cleveland.... 914,808
 Cleveland Heights..... 59,141
 Columbus.... 375,901
 Cuyahoga Falls 29,195
 Dayton..... 243,872
 East Cleveland 40,047
 Elyria..... 30,307
 Euclid..... 41,396
 Hamilton.... 57,951
 Lakewood.... 68,071
 Lima..... 50,246

1950 Census

Lorain..... 51,202
 Mansfield.... 43,564
 Marion..... 33,817
 Massillon... 29,594
 Middletown.. 33,695
 Newark..... 34,275
 Norwood.... 35,001
 Parma..... 28,897
 Portsmouth... 36,798
 Sandusky.... 29,375
 Shaker Heights 28,222
 Springfield... 78,508
 Steubenville. 35,872
 Toledo..... 303,616
 Warren..... 49,856
 Youngstown.. 168,330
 Zanesville... 40,517

OKLAHOMA

Enid..... 36,017
 Lawton..... 34,757
 Muskogee.... 37,289
 Norman..... 27,006
 Oklahoma City 243,504
 Tulsa..... 182,740

OREGON

Eugene..... 35,879
 Portland.... 373,628
 Salem..... 43,140

PENNSYLVANIA

Aliquippa.... 26,132
 Allentown... 106,756
 Altoona..... 71,177
 Bethlehem... 66,340
 Chester..... 66,039
 Easton..... 35,632
 Erie..... 130,803
 Harrisburg... 89,544
 Hazleton.... 35,491
 Johnstown... 63,232
 Lancaster... 63,774
 Lebanon..... 28,156

McKeesport... 51,502
 New Castle... 48,834
 New Kens'gton 25,146
 Norristown... 38,126
 Philadelphia. 2,071,605
 Pittsburgh... 676,806
 Reading..... 109,320
 Scranton.... 125,536
 Sharon..... 26,454
 Washington... 26,280
 Wilkes-Barre.. 76,826
 Wilkinsburg.. 31,418
 Williamsport. 45,047
 York..... 59,953

RHODE ISLAND

Cranston.... 55,060
 East Providence 35,871
 Newport..... 37,564
 Pawtucket... 81,436
 Providence... 248,674
 Warwick..... 43,028
 Woonsocket... 50,211

SOUTH CAROLINA

Charleston... 70,174
 Columbia.... 86,914
 Greenville... 58,161
 Spartanburg.. 36,795

SOUTH DAKOTA

Rapid City... 25,310
 Sioux Falls... 52,696

TENNESSEE

Chattanooga. 131,041
 Jackson..... 30,207
 Johnson City.. 27,864
 Knoxville.... 124,769
 Memphis.... 396,000
 Nashville... 174,307
 Oak Ridge... 30,229

TEXAS

Abilene..... 45,570
 Amarillo.... 74,246

1950 Census

Austin..... 132,459
 Beaumont.... 94,014
 Brownsville.. 36,066
 Corpus Christi 108,287
 Dallas..... 434,462
 El Paso..... 130,485
 Fort Worth... 278,778
 Galveston.... 66,568
 Houston..... 596,163
 Laredo..... 51,910
 Lubbock..... 71,747
 Odessa..... 29,495
 Port Arthur.. 57,530
 San Angelo... 52,093
 San Antonio.. 408,442
 Temple..... 25,467
 Tyler..... 38,968
 Waco..... 84,706
 Wichita Falls. 68,042

UTAH

Ogden..... 57,112
 Provo..... 28,937
 Salt Lake City 182,121

VERMONT

Burlington... 33,155

VIRGINIA

Alexandria... 61,738
 Charlottesville. 25,969
 Danville.... 35,066
 Lynchburg... 47,277
 Newport News. 42,358
 Norfolk..... 213,513
 Petersburg... 35,054
 Portsmouth... 80,039
 Richmond.... 230,310
 Roanoke..... 91,921

WASHINGTON

Bellingham... 34,112
 Bremerton... 27,678
 Everett..... 33,849
 Seattle..... 467,591

Spokane..... 161,721
 Tacoma..... 143,673
 Vancouver... 41,664
 Yakima..... 38,486

WEST VIRGINIA

Charleston... 73,501
 Clarksburg... 32,014
 Fairmont.... 29,346
 Huntington... 86,353
 Morgantown... 25,525
 Parkersburg.. 29,684
 Wheeling.... 58,891

WISCONSIN

Appleton.... 34,010
 Beloit..... 29,590
 Eau Claire... 36,058
 Fond du Lac.. 29,936
 Green Bay... 52,735
 Kenosha.... 54,368
 La Crosse... 47,535
 Madison.... 96,056
 Manitowoc... 27,598
 Milwaukee... 637,392
 Oshkosh.... 41,084
 Racine..... 71,193
 Sheboygan... 42,365
 Superior (city) 35,325
 Wausau.... 30,414
 Wauwatosa... 33,324
 West Allis... 42,959

WYOMING

Cheyenne... 31,935

U. S. TERRITORIES

Alaska..... 128,643
 American Samoa..... 18,937
 Canal Zone... 52,822
 Guam..... 59,498
 Hawaii..... 499,795
 Puerto Rico. 2,210,703
 Virgin Islands. 26,665

Weather Bureau

Explanation of Flag Signals.

- No. 1. White Flag. No. 1, alone, indicates fair weather, stationary temperature.
-  No. 2, alone, indicates rain or snow, stationary temperature.
- Clear or Fair No. 2. Blue Flag. No. 3, alone, indicates local rain, stationary temperature.
-  No. 1, with No. 4 above it, indicates fair weather, warmer.
- Rain or Snow. No. 3. White and Blue Flag. No. 1, with No. 4 below it, indicates fair weather, colder.
-  No. 2, with No. 4 above it, indicates warmer weather, rain or snow.
- Local Rains. No. 4. Black Triangular Flag. No. 2, with No. 4 below it, indicates colder weather, rain or snow.
-  No. 3, with No. 4 above it, indicates warmer weather, with local rains.
- Temperature. No. 5. White Flag. Black Centre. No. 3, with No. 4 below it, indicates colder weather, with local rains.
-  No. 1, with No. 5 above it, indicates fair weather, cold wave.
-  No. 2, with No. 5 above it, indicates wet weather, cold wave.
- Forecasts made at 10 a.m., and displayed between 12 and 1 p.m., forecast the weather for the following day until 8 p.m.

**States: Capitals, Settled,
Entry into Union**

State	Capital	Settled	Entered Union
Ala.....	Montgomery...	1702	1819, Dec. 14
Ariz.....	Phoenix.....	1848	1912, Feb. 14
Ark.....	Little Rock...	1785	1836, June 15
Cal.....	Sacramento...	1769	1850, Sept. 9
Colo....	Denver.....	1858	1876, Aug. 1
Conn....	Hartford.....	1635	1788, Jan. 9
Del.....	Dover.....	1638	1787, Dec. 7
Fla.....	Tallahassee...	1565	1845, Mar. 3
Ga. . . .	Atlanta.....	1733	1788, Jan. 2
Idaho...	Boise.....	1842	1890, July 3
Ill.....	Springfield....	1720	1818, Dec. 3
Ind.....	Indianapolis...	1733	1816, Dec. 11
Iowa....	Des Moines....	1788	1846, Dec. 28
Kan.....	Topeka.....	1727	1861, Jan. 29
Ky.....	Frankfort.....	1774	1792, June 1
La.....	Baton Rouge...	1699	1812, Apr. 30
Me.....	Augusta.....	1624	1820, Mar. 15
Md.....	Annapolis.....	1634	1788, Apr. 28
Mass....	Boston.....	1620	1788, Feb. 6
Mich....	Lansing.....	1668	1837, Jan. 26
Minn....	St. Paul.....	1805	1858, May 11
Miss....	Jackson...	1699	1817, Dec. 10
Mo.....	Jefferson City.	1764	1821, Aug. 10
Mont. . .	Helena.....	1809	1889, Nov. 8

**States: Capitals, Settled,
Entry into Union**

State	Capital	Settled	Entered Union
Nebr....	Lincoln.....	1847	1867, Mar. 1
Nev. . .	Carson City...	1850	1864, Oct. 31
N. H....	Concord.....	1623	1788, June 21
N. J. . .	Trenton.....	1664	1787, Dec. 18
N.M....	Santa Fe.....	1605	1912, Jan. 6
N. Y....	Albany.....	1614	1788, July 26
N. C....	Raleigh.....	1650	1789, Nov. 21
N.D....	Bismarck.....	1766	1889, Nov. 2
Ohio....	Columbus.....	1788	1803, Mar. 1
Okla....	Oklahoma City.	1889	1907, Nov. 16
Ore.....	Salem.....	1811	1859, Feb. 14
Pa.....	Harrisburg...	1682	1787, Dec. 12
R. I....	Providence...	1636	1790, May 29
S. C....	Columbia.....	1670	1788, May 23
S. D....	Pierre.....	1856	1889, Nov. 2
Tenn....	Nashville.....	1757	1796, June 1
Texas...	Austin.....	1691	1845, Dec. 29
Utah....	Salt Lake City..	1847	1896, Jan. 4
Vt.....	Montpelier...	1724	1791, Mar. 4
Va.	Richmond.....	1607	1788, June 26
Wash...	Olympia.....	1811	1889, Nov. 11
W. Va...	Charleston....	1727	1863, June 20
Wisc. . .	Madison.....	1766	1848, May 29
Wyo....	Cheyenne.....	1834	1890, July 10

**PRESIDENTS
OF THE UNITED STATES**

NAME	Born	Inaug.	Died	Native	Party
George Washington	1732	1789	1799	Va.	Fd.
John Adams.....	1735	1797	1826	Mass.	Fd.
Thomas Jefferson..	1743	1801	1826	Va.	D-R
James Madison...	1751	1809	1836	Va.	D-R
James Monroe.....	1758	1817	1831	Va.	D-R
John Quincy Adams	1767	1825	1848	Mass.	Cl.
Andrew Jackson...	1767	1829	1845	S.C.	D.
Martin Van Buren..	1782	1837	1862	N.Y.	D.
William H. Harrison.	1773	1841	1841	Va.	W.
John Tyler.....	1790	1841	1862	Va.	W.
James K. Polk.....	1795	1845	1849	N.C.	D.
Zachary Taylor...	1784	1849	1850	Va.	W.
Millard Fillmore...	1800	1850	1874	N.Y.	W.
Franklin Pierce...	1804	1853	1869	N.H.	D.
James Buchanan...	1791	1857	1868	Pa.	D.
Abraham Lincoln..	1809	1861	1865	Ky.	R.
Andrew Johnson...	1808	1865	1875	N.C.	R.
Ulysses S. Grant...	1822	1869	1885	Ohio	R.
Rutherford B. Hayes	1822	1877	1893	Ohio	R.
James A. Garfield..	1831	1881	1881	Ohio	R.
Chester A. Arthur..	1830	1881	1886	Vt.	R.
Grover Cleveland..	1837	1885	1908	N.J.	D.
Benjamin Harrison.	1833	1889	1901	Ohio	R.
Grover Cleveland..	1837	1893	1908	N.J.	D.
William McKinley..	1843	1897	1901	Ohio	R.
Theodore Roosevelt	1858	1901	1919	N.Y.	R.
William H. Taft...	1857	1909	1930	Ohio	R.
Woodrow T. Wilson	1856	1913	1924	Va.	D.
Warren G. Harding.	1865	1921	1923	Ohio	R.
Calvin Coolidge...	1872	1923	1933	Vt.	R.
Herbert C. Hoover.	1874	1929	Iowa	R.
Franklin Roosevelt.	1882	1933	1945	N.Y.	D.
Harry S. Truman..	1884	1945	Mo.	D.
Dwight Eisenhower	1890	1953	Texas	R.

Points of Constitutional Law.

Congress must meet at least once a year.
 Congress may admit as many new states as desired.
 One State cannot undo the act of another.
 By the Constitution every citizen is guaranteed a speedy trial by jury.
 Congress cannot pass a law to punish for a crime already committed.
 A person who commits a felony in one State cannot find refuge in another.
 Treaties with foreign powers are made by the President and ratified by the Senate.
 The territories each have a delegate to Congress who is allowed the privilege of debate, but not the right to vote.
 The Vice-President, who ex-officio presides over the Senate has no vote in that body except in case a tie ballot.
 If the President holds a bill longer than ten days while Congress is in session it becomes a law without his signature.
 An act of Congress cannot become a law over the President's veto except on a two-thirds vote of both houses.
 The House of Representatives may impeach the President for any crime, but the Senate has the sole power to try all impeachments.
 Amendments to the Constitution of the United States require a two-third vote of each House of Congress, and must be ratified by at least three-fourths of the States.
 The President of the United States must be at least 35 years of age; a Senator, 30; a Congressman, 25; The President must have been a resident of the United States fourteen years.
 A naturalized citizen is not eligible to the office of President of the United States. A male child born in a foreign land to American parents has an equal chance to become the President with one born on American soil.
 The United States shall guarantee to every State a Republican form of government, and shall protect each of them against invasion, and on application of the Legislature or of the Executive (when the Legislature cannot be convened), against domestic trouble.

LEGAL HOLIDAYS IN ILLINOIS

NEW YEAR'S DAY	January 1
LINCOLN'S BIRTHDAY	February 12
WASHINGTON'S BIRTHDAY	February 22
GOOD FRIDAY	Friday immediately before Easter Sun- day each year
MEMORIAL DAY	May 30
INDEPENDENCE DAY	July 4
LABOR DAY	First Monday in September
COLUMBUS DAY	October 12
ARMISTICE DAY	November 11
THANKSGIVING DAY	The day being recom- mended by the Gover- nor or by the Presi- dent of the U. S.
CHRISTMAS DAY	December 25
ELECTION DAY	Election of Members of General Assembly (even number years only)

When such holiday fall on Sunday, the Monday next following shall be held and considered such holiday



UNIVERSITY OF ILLINOIS-URBANA
917.73AM31 C001 V011
AMERICAN AERIAL COUNTY HISTORY SERIES C



3 0112 025337228