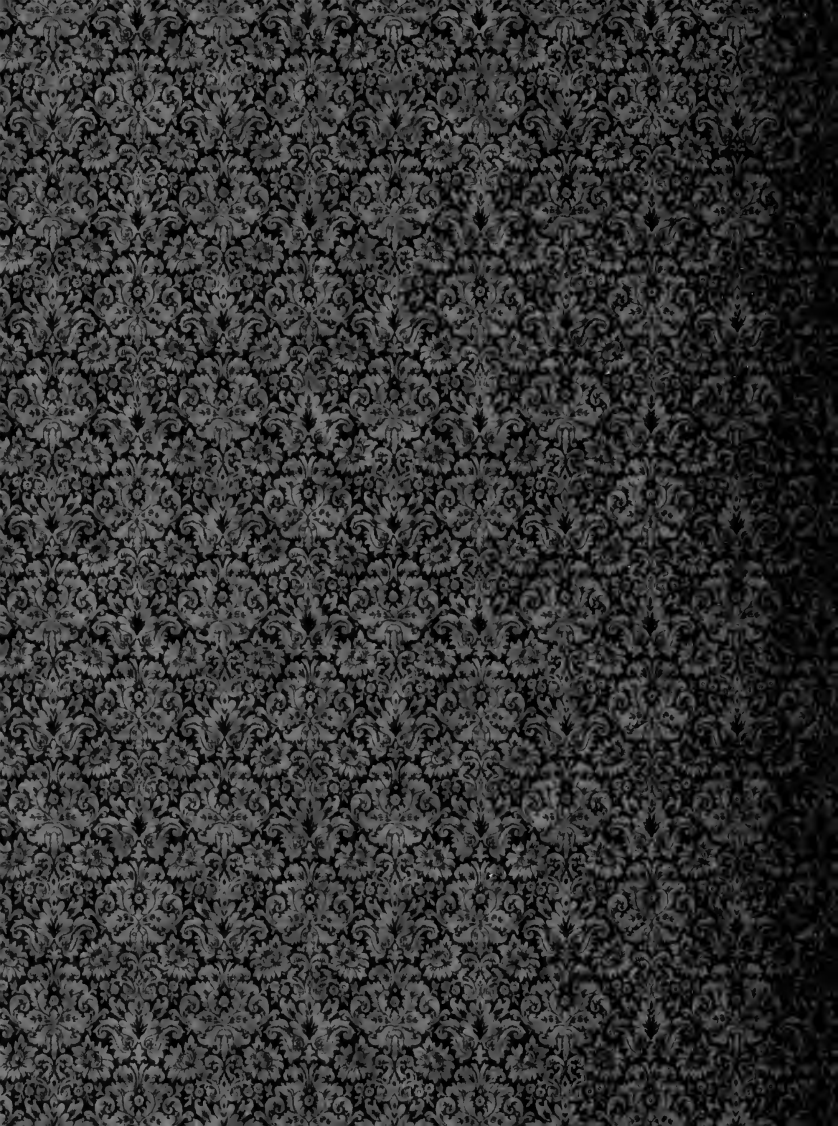
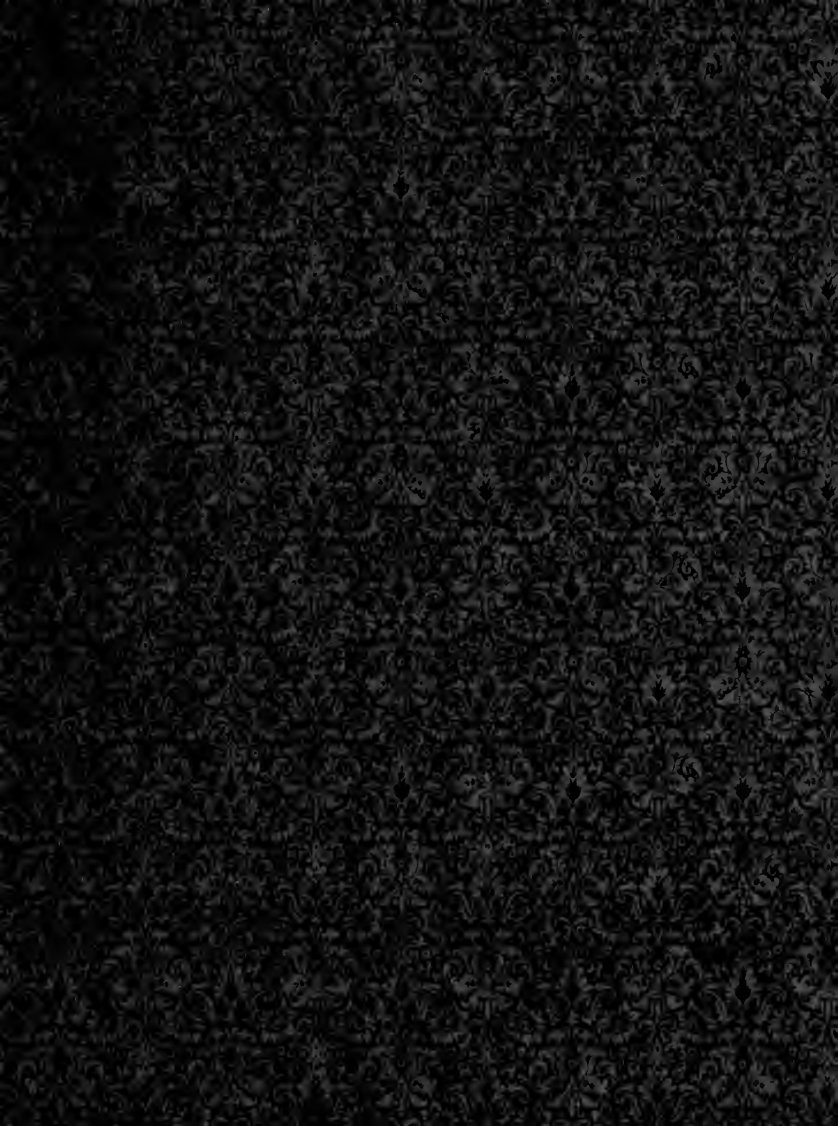


TS 1615
.U6 A6
1921
Copy 1



AMERICAN
WOOLEN COMPANY
▪ MILLS. ▪









AMERICAN · WOOLEN · COMPANY · MILLS



Library Edition

5
2
3
3
3

AMERICAN WOOLEN COMPANY

WM. M. WOOD, PRESIDENT

245 STATE STREET

BOSTON, MASS.

TS1615
.U6A6
1921

Copyright, 1921
AMERICAN WOOLEN COMPANY
Boston, Mass.

Arranged and Printed by
LIVERMORE & KNIGHT CO.
Providence—New York

gjs
J. P. Nicholson
Ja 9. 1922

22-11580

· · PREFACE · ·

THE American Woolen Company is by far the largest manufacturer of woolen and worsted fabrics in the world. It owns, controls and operates fifty-six mills, besides other plants and storehouses, in thirty-nine places, in eight different states.

This book gives views of many of the properties of the American Woolen Co., together with some interesting matter as to some of the cities, towns and villages where these properties are located. The views of the mills are grouped according to states, and the names of the towns and cities are arranged alphabetically in each state. There is also an alphabetical index of the names of the mills, giving the pages where the views of the different properties may be found.

This book has been prepared for libraries, in response to many requests for detailed information concerning the magnitude and facilities of this organization.

WILLIAM M. WOOD, President.



· LIST OF MILLS ·

ALPHABETICALLY ARRANGED

	PAGE
✓ Anchor-Inman Mills	Harrisville, R. I. 81
✓ Anchor-Sheffield Mills	Pascoag, R. I. 81
✓ Anderson Mills	Skowhegan, Maine 78
✓ Arden Mills	Fitchburg, Mass. 16
✓ Arms Mills	Skowhegan, Maine 77
✓ Assabet Mills	Maynard, Mass. 37
✓ Ayer Mills	Lawrence, Mass. 25
✓ Baltic Mills	Enfield, N. H. 97
✓ Bay State Mills	Lowell, Mass. 32
✓ Beaver Brook Mills	Dracut, Mass. 13
✓ Beoli Mills	Fitchburg, Mass. 17
✓ Bradford Mills	Louisville, Ky. 115
✓ Brown Mills	Dover, Maine 53
✓ Burlington Mills	Winooski, Vt. 111
✓ Champlain Mills	Winooski, Vt. 112
✓ Chase Mills	Webster, Mass. 49
✓ Dracut Mills	Dracut, Mass. 33
✓ Forest Mills	Bridgton, Maine 51
✓ Foxcroft Mills	Foxcroft, Maine 57
✓ Fulton Mills	Fulton, N. Y. 107
✓ Globe Mills	Utica, N. Y. 109
✓ Hartland Mills	Hartland, Maine 59
✓ Hecla Mills	Uxbridge, Mass. 47
✓ Indian Spring Mills	Madison, Maine 61
✓ Kennebec Mills	Fairfield, Maine 55
✓ Lebanon Mills	Lebanon, N. H. 99
✓ Manton Mills	Manton, R. I. 83
✓ Mascoma Mills	Lebanon, N. H. 100
✓ Moosup (lower) Mills	Moosup, Conn. 105
✓ Moosup — Glen Falls Mills	Moosup, Conn. 105
✓ Narragansett Worsted Mills	Warren, R. I. 93
✓ National and Providence Worsted Mills	Providence, R. I. 87
✓ Newport Mills	Newport, Maine 63
✓ Oakland Mills	Oakland, Maine 67
✓ Ounegan Mills	Oldtown, Maine 69
✓ Pioneer Mills	Pittsfield, Maine 71
✓ Prospect Mills	Lawrence, Mass. 24

· AMERICAN · WOOLEN · COMPANY ·

	PAGE
Puritan Mills	41
Ram's Head Yarn Mills	34
Ray Mills	19
Riverina Mills	39
Riverside Worsted Mills	88
Rochdale Mills	43
Royalston Mills	45
Saranac Mills	11
Sawyer Mills	95
Sebasticook Mills	72
Sebasticook Mills Yarn Plant	73
Valley Mills	89
Vassalboro Mills	65
Washington Mills	22
Waverly Mills	74
Weybosset Mills	90
Whitstone Mills	103
Wood Worsted Mills	23
Wool Storehouses	26-28
Plymouth, Mass.	41
Lowell, Mass.	34
Franklin, Mass.	19
Medford, Mass.	39
Providence, R. I.	88
Rochdale, Mass.	43
So. Royalston, Mass.	45
Blackstone, Mass.	11
Dover, N. H.	95
Pittsfield, Maine	72
Pittsfield, Maine	73
Providence, R. I.	89
No. Vassalboro, Maine	65
Lawrence, Mass.	22
Pittsfield, Maine	74
Providence, R. I.	90
Elmville, Conn.	103
Lawrence, Mass.	23
Lawrence, Mass.	26-28



· LIST OF MILLS ·

GROUPED BY STATES

MASSACHUSETTS		PAGE
Blackstone . . .	Saranac Mills	11
Dracut	Beaver Brook Mills	13
Fitchburg	Arden Mills	16
	Beoli Mills	17
Franklin	Ray Mills	19
Lawrence	Washington Mills	22
	Wood Worsted Mills	23
	Prospect Mills	24
	Ayer Mills	25
	Lawrence Storehouse	26
	Merrimac Storehouse	27
	Washington No. 10 Storehouse	28
Lowell	Bay State Mills	32
Dracut	Dracut Mills	33
Lowell	Ram's Head Yarn Mills	34
Maynard	Assabet Mills	37
Medford	Riverina Mills	39
Plymouth	Puritan Mills	41
Rochdale	Rochdale Mills	43
South Royalston	Royalston Mills	45
Uxbridge	Hecla Mills	47
Webster	Chase Mills	49
MAINE		
Bridgton	Forest Mills	51
Dover	Brown Mills	53
Fairfield	Kennebec Mills	55
Foxcroft	Foxcroft Mills	57
Hartland	Hartland Mills	59
Madison	Indian Spring Mills	61
Newport	Newport Mills	63
North Vassalboro	Vassalboro Mills	65
Oakland	Oakland Mills	67
Oldtown	Ounegan Mills	69
Pittsfield	Pioneer Mills	71
	Sebastcook Mills	72
	Sebastcook Mills Yarn Plant	73
	Waverly Mills	74

· AMERICAN · WOOLEN · COMPANY ·

	PAGE
MAINE (continued)	
Skowhegan . . . Arms Mills	77
	Anderson Mills (two views) 78
RHODE ISLAND	
Harrisville . . . Anchor-Inman Mills	81
Pascoag Anchor-Sheffield Mills	81
Manton Manton Mills	83
Providence . . . National and Providence Worsted Mills	87
	Riverside Worsted Mills 88
	Valley Mills 89
	Weybosset Mills 90
Warren Narragansett Worsted Mills	93
NEW HAMPSHIRE	
Dover Sawyer Mills	95
Enfield Baltic Mills (two views)	97
Lebanon Lebanon Mills	99
	Mascoma Mills 100
CONNECTICUT	
Elmville Whitestone Mills	103
Moosup Moosup (lower) Mills	105
	Glen Falls Mills 105
NEW YORK	
Fulton Fulton Mills	107
Utica Globe Mills	109
VERMONT	
Winooski Burlington Mills	111
	Champlain Mills 112
KENTUCKY	
Louisville Bradford Mills	115

· ILLUSTRATIONS ·

of the

Mills of the AMERICAN WOOLEN COMPANY
with some facts concerning the cities,
towns and villages in which
they are located.



· BLACKSTONE · MASS ·

BLACKSTONE is practically at the boundary line between Massachusetts and Rhode Island, and was named for the first white settler within the limits of Rhode Island — William Blackstone — who came from Boston in 1635 to what is now known as Cumberland, R. I. Near the Blackstone River, also named for him, are his grave, and a well which he dug, which can be seen at the present day.

Blackstone is situated on the New York, New Haven & Hartford Railroad, thirty-six miles from Boston, in the centre of a picturesque country.

Several small streams empty into Fox Brook, which flows through the town, while three hills add to the beauties of the landscape. The town was incorporated in 1845. Its principal industries are woolen, cotton and rubber. The town has several schools, churches, a library and weekly papers.

THE AMERICAN WOOLEN CO.'S MILLS
AT BLACKSTONE

SARANAC MILLS.

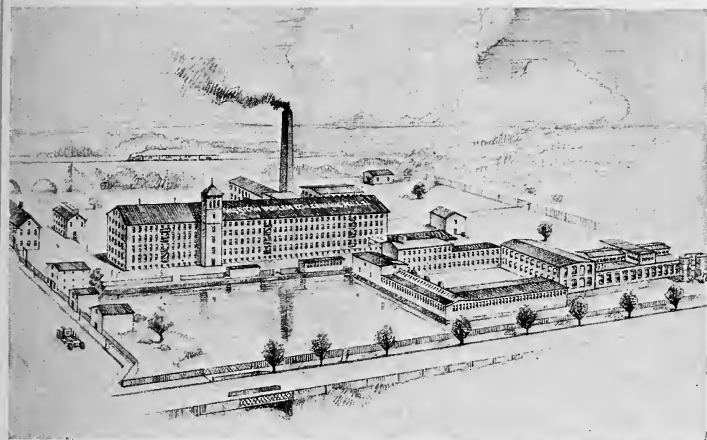
PRODUCT — Fancy woolens and worsteds for men's wear.

EQUIPMENT — 10 sets of cards, 180 broad looms, 8 narrow looms, 4312 woolen spindles, 4 boilers, 3 water wheels.

Employ 600.

These mills dye and finish.

AMERICAN · WOOLEN · COMPANY ·



SARANAC MILLS

· BLACKSTONE · MASS ·

• DRACUT • MASS •

DRACUT is situated in an agricultural country, and is a pleasant town twenty-seven miles northwest of Boston, on the banks of the Merrimac River, opposite Lowell, with which it is connected by two handsome bridges. The town's principal industry is woolen.

Beaver Brook passes through the town into the Merrimac, and from a number of beautiful hills—Whortleberry Hill, Marsh Hill and Loon Hill—delightful views may be obtained.

Gen. Joseph B. and Gen. James M. Varnum, distinguished in the war of the Revolution, were from Dracut, and Capt. Peter Colburn and his company from this town did effective service at the battle of Bunker Hill.

THE AMERICAN WOOLEN Co.'s MILLS
AT DRACUT

BEAVER BROOK MILLS.

PRODUCT — Bed blankets.

EQUIPMENT — 38 sets of cards, 134 broad looms, 14,056 spindles, 6 boilers,
2 water wheels.

Employ 700.

These mills dye and finish.

• AMERICAN • WOOLEN • COMPANY •



BEAVER BROOK MILLS

• DRACUT • MASS •

· FITCHBURG · MASS ·

FITCHBURG, one of the county-seats of Worcester County, is situated on the north branch of the Nashua River, fifty miles west-northwest of Boston, and is served by the Boston & Maine and New York, New Haven & Hartford Railroads, and two trolley lines. While it was settled in 1719, it was part of Lunenburg until 1764, when it was incorporated as a town. It received its name from John Fitch, one of the committee in the matter of incorporation. It was incorporated as a city in March, 1872.

Fitchburg is a city of beautiful scenery, and views of charming landscapes may be obtained from its hills. In its suburbs are Whalom Park, a beautiful and attractive resort, and Wachusett Mountain, which is a state reservation. Main Street is the principal thoroughfare, and runs along the left bank of the Nashua River. Fitchburg has a number of parks, in one of which is a fine fountain designed by Herbert Adams. In a park presented by one of its citizens, are the court house, post office, and principal public buildings. Fitchburg has an excellent system of public playgrounds.

The city has a high altitude, an adequate and pure water supply, and a million dollar sewerage system. It owns and operates its own waterworks, and has the highest water pressure for fire service in New England.

There are thirty miles of trolley tracks within the city limits, and in normal times, 100 passenger trains arrive and depart from the Union Station every week day.

Fitchburg contains a free public library, an art gallery, a high school, State Normal School, large musical library, Burbank Hospital, an old ladies' home, and other charitable institutions. While the city has large mercantile and financial interests, manufacturing is its principal industry. Its manufactures are quite varied, including worsted goods, paper, bicycles, revolvers, steam boilers, edge tools, cotton goods, steam engines, saws, machinery, and auto-trucks. Fitchburg also has quarries of granite. In the suburbs are large market gardens and one of the finest apple orchards in the United States.

THE AMERICAN WOOLEN Co.'s MILLS
AT FITCHBURG

ARDEN MILLS.

PRODUCT — Worsted dress goods.

EQUIPMENT — 168 broad looms, 3 boilers, 1 water wheel.

These mills dye and finish.

BEOLI MILLS.

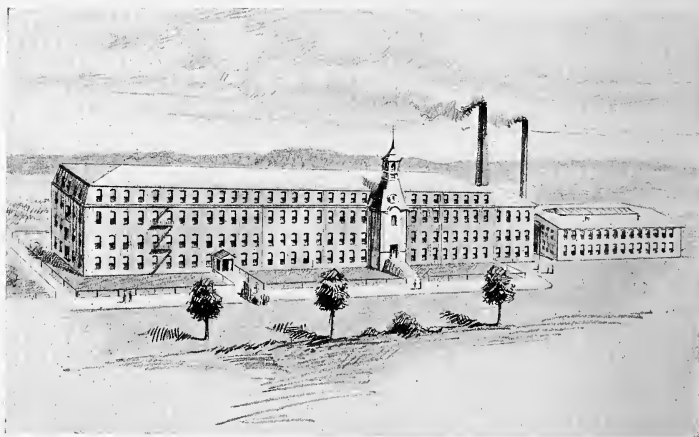
PRODUCT — Fancy woolens and worsteds.

EQUIPMENT — 18 sets of cards, 150 broad looms, 8 narrow looms, 6216 spindles, 6 boilers.

Employ 500.

These mills dye and finish.

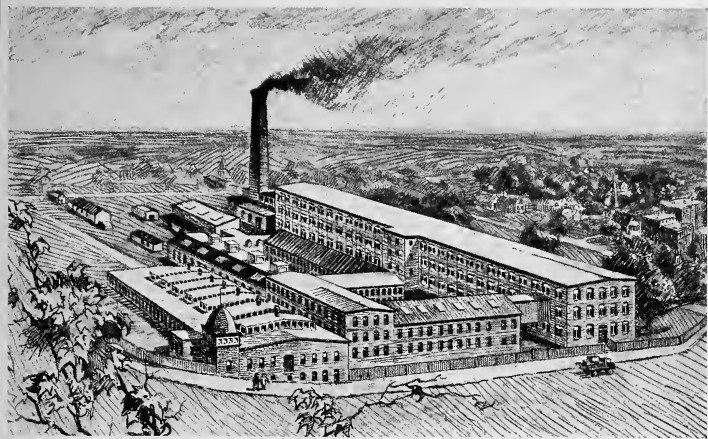
· AMERICAN · WOOLEN · COMPANY ·



ARDEN MILLS

· FITCHBURG · MASS ·

· AMERICAN · WOOLEN · COMPANY ·



BEOLI MILLS

· FITCHBURG · MASS ·

· FRANKLIN · MASS ·

THERE are now many places in our country named Franklin in honor of Benjamin Franklin, but the first one to bear his name was Franklin, Massachusetts, in Norfolk County, on the New York, New Haven & Hartford Railroad, some twenty-seven miles southwest of Boston. Dr. Franklin was informed that the town was to bear his name, and it was suggested that it would be very appropriate for him to present the town with a bell to call the people to church. His reply was thoroughly characteristic — he said he presumed that the people “were more fond of sense than sound,” and he sent them a well-selected library of one hundred and sixteen volumes, of which ninety-one are still preserved.

The town was incorporated in 1778, being separated from Wrentham. A battle with the Indians took place in Franklin in 1676 and “Indian Rock” is the name of a memorial perpetuating this fact.

Franklin is surrounded by a fine farming country, and is the seat of Dean Academy, and was the birth-place of Horace Mann, a noted early educator. The manufactures of the town are woolen goods, felts, shoddy, cotton goods and straw hats.

THE AMERICAN WOOLEN Co.'s MILLS
AT FRANKLIN

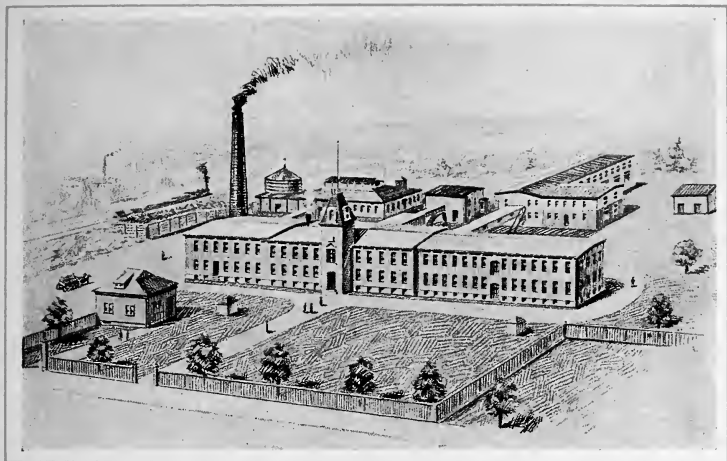
RAY MILLS.

PRODUCT — Fancy woolens.

EQUIPMENT — 9 sets of cards, 52 broad looms, 3000 spindles, 4 boilers.
Employ 250.

These mills dye and finish.

· AMERICAN · WOOLEN · COMPANY ·



RAY MILLS

· FRANKLIN · MASS ·

· LAWRENCE · MASS ·

THE city of Lawrence, which has been well called the "Worsted City of America," received its name from Abbott Lawrence, a brother of the founder of Lawrence Scientific School at Harvard, who was grandfather of Bishop Lawrence. The city is situated on both sides of the Merrimac River, twenty-six miles north-north-east of Boston, on the Boston & Maine Railroad.

Here is an enormous water power, with a fall of 28 feet in one-half mile. A great stone dam, 900 feet long, crosses the river and is bolted to a solid ledge at the bottom of the river, producing over 12,000 h. p., and driving more than a million spindles and looms.

The great textile manufactures of Lawrence are its most important industry.

The American Woolen Co.'s Washington Mills, Ayer Mills, Prospect Mills, and the new Wood Worsted Mills (the Wood Worsted Mills being the largest worsted mills in the world, and covering 29 acres) are here. Here are the Pacific Mills and Arlington Mills, here are large cotton mills, and the largest print mills in the world. In Lawrence also are many other large industries, among them the Champion International Paper Co., which has one of the largest paper plants in the world.

It is said that one-half of the population of Lawrence is foreign-born.

Near the centre of the city is a fine green square surrounded by churches and various city and county

buildings. There are fine civic buildings, a large public library, a Masonic Temple, the Lawrence General Hospital, and large and well-kept public parks.

THE AMERICAN WOOLEN CO.'S MILLS
AT LAWRENCE

WASHINGTON MILLS.

PRODUCT — Men's wear and 8 to 60 worsted yarns.

EQUIPMENT — 101 worsted cards, 114 worsted combs, 1432 broad looms, 1 narrow loom, 81,648 worsted spindles, 22 boilers, 10 water wheels, electric.

Employ 6500.

These mills dye and finish.

WOOD WORSTED MILLS.

PRODUCT — Men's worsted wear and worsted yarns.

EQUIPMENT — 18 sets woolen cards, 140 worsted cards, 1500 broad looms, 146 worsted combs, 14,400 woolen spindles, 210,128 worsted spindles.

PROSPECT MILLS.

PRODUCT — 8 to 60 worsted yarns.

EQUIPMENT — 6400 worsted spindles, 2800 twister spindles, 2 boilers, 2 water wheels.

Employ 200.

AYER MILLS.

PRODUCT — Men's-wear worsteds.

EQUIPMENT — 50 worsted cards, 400 broad looms, 1 narrow loom, 60 worsted combs, 44,732 spindles, 9 boilers of 600 rated h. p. each.

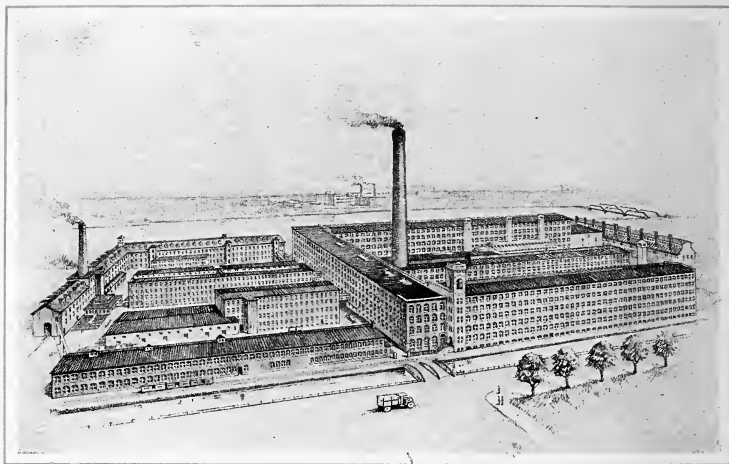
STOREHOUSES

Lawrence storehouse — 160' x 170' — 6 stories and a basement.

Merrimac storehouse — 390' x 108' — 7 stories and a basement.

Washington No. 10 storehouse — 154' x 165' — 10 stories.

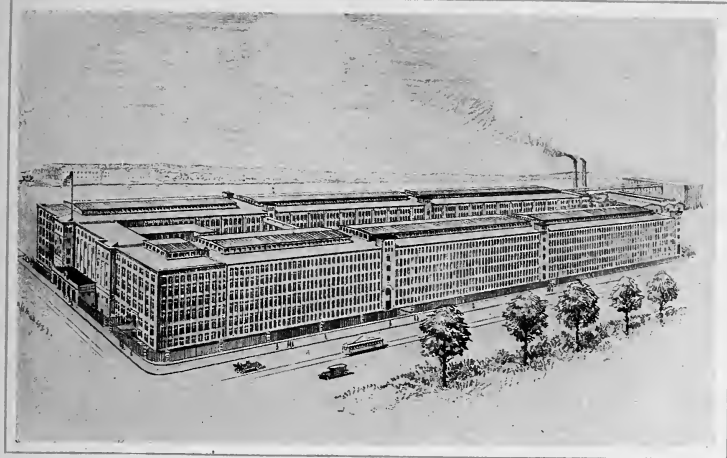
• AMERICAN • WOOLEN • COMPANY •



WASHINGTON MILLS

• LAWRENCE • MASS •

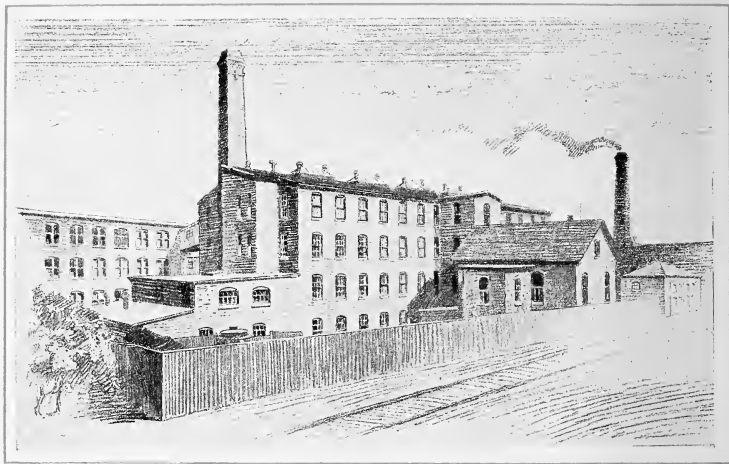
· AMERICAN · WOOLEN · COMPANY ·



WOOD WORSTED MILLS

· LAWRENCE · MASS ·

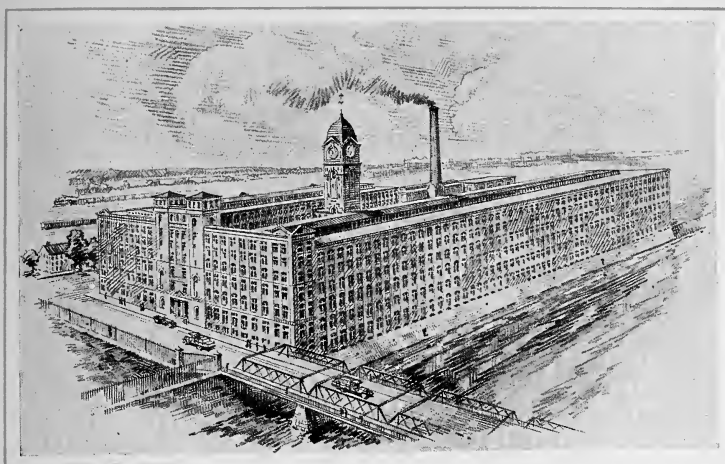
· AMERICAN · WOOLEN · COMPANY ·



PROSPECT MILLS

· LAWRENCE · MASS ·

· AMERICAN · WOOLEN · COMPANY ·



AYER MILLS
· LAWRENCE · MASS ·

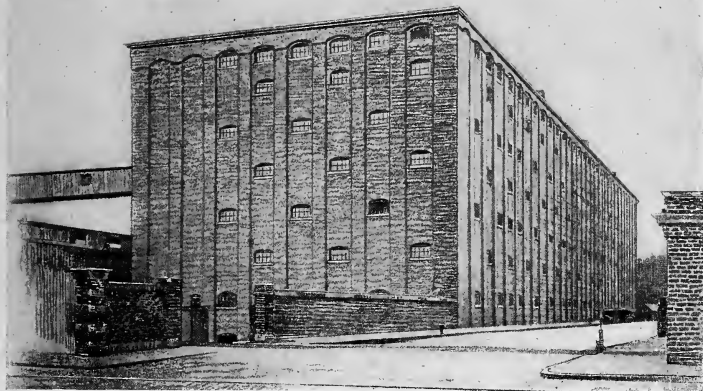
· AMERICAN · WOOLEN · COMPANY ·



LAWRENCE STOREHOUSE

· LAWRENCE · MASS ·

• AMERICAN • WOOLEN • COMPANY •



MERRIMAC STOREHOUSE

• LAWRENCE • MASS •

· AMERICAN · WOOLEN · COMPANY ·



WASHINGTON NO. 10
STOREHOUSE

· LAWRENCE · MASS ·



· LOWELL · MASS ·

LOWELL is twenty-five miles northwest of Boston, on the New York, New Haven & Hartford and Boston & Maine Railroads, and on the Merrimac River, at the mouth of the Concord. In the year 1792 a company was formed to construct a canal around Pawtucket Falls at the point where Lowell is now situated, and in 1826 the Merrimac Manufacturing Co. erected a factory here. Lowell was incorporated as a town in 1826, and as a city in 1836.

The site of Lowell is uneven and picturesque, with a fine view of the mountains of New Hampshire. There are four bridges across the Merrimac, and three across the Concord River. The business centre of the city runs along the bank of the river, while the residences are up on the hills. In Monument Square, in the centre of the city, are the City Hall and Memorial Hall. Lowell has many public institutions, among others the State Normal School and the Lowell Textile School (the latter the largest and best-equipped school of its kind in the world).

The falls of the Merrimac, thirty-two feet, with six and a half miles of distributing canals, furnish an immense water power for use of manufacturers, and from these great factories a large part of the prosperity of the city is derived. The names "Spindle City" and "Manchester of America" are applied to Lowell, it being one of the great textile manufacturing cities of the world. Woolen goods, cotton goods of many kinds, flannels, carpets, cassimeres, beavers, and serges are made here. Among other manufactures are machinery, boilers, cartridges, tools, paper, screws, files

and patent medicines. The largest bleacheries in the country are in Lowell. It was given its name in honor of Francis Cabot Lowell, who developed the power loom and other cotton machinery.

THE AMERICAN WOOLEN CO.'S MILLS
AT LOWELL

BAY STATE MILLS.

PRODUCT — Cloakings and worsteds.

EQUIPMENT — 25 sets of cards, 115 broad looms, 11,160 spindles, 5 boilers,
2 water wheels.

Employ 700.

These mills finish.

RAM'S HEAD YARN MILLS.

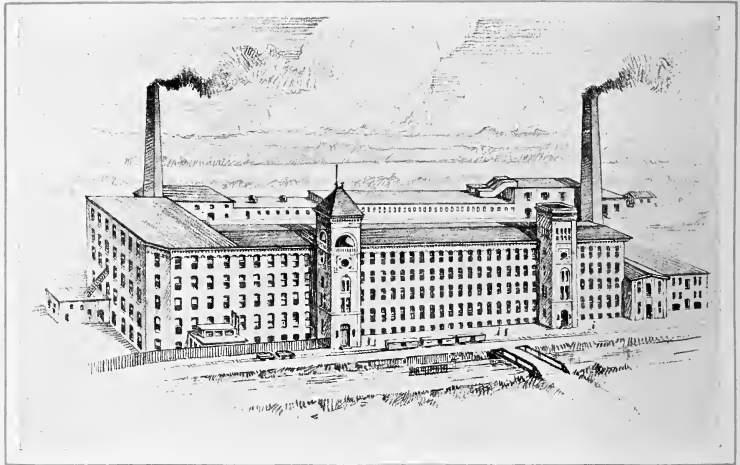
PRODUCT — Woolen yarns.

EQUIPMENT — 16 sets of cards, 7920 spindles, 3 boilers.

DRACUT MILLS, at DRACUT, MASS.

EQUIPMENT — 10 rag pickers, 8 cards, and carbonizing equipment.

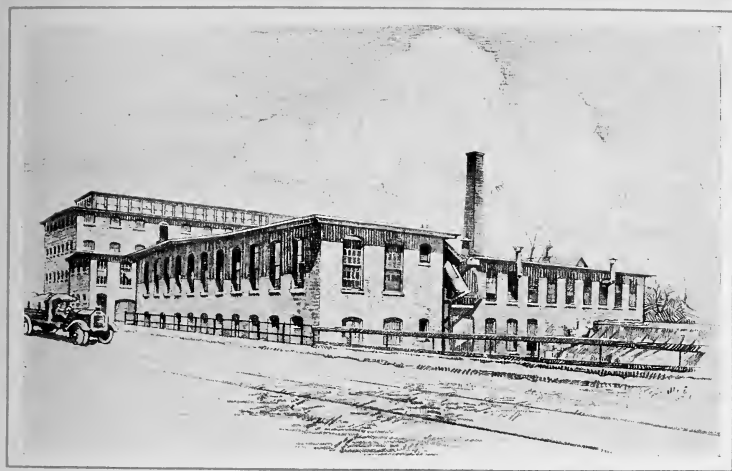
• AMERICAN • WOOLEN • COMPANY •



BAY STATE MILLS

• LOWELL • MASS •

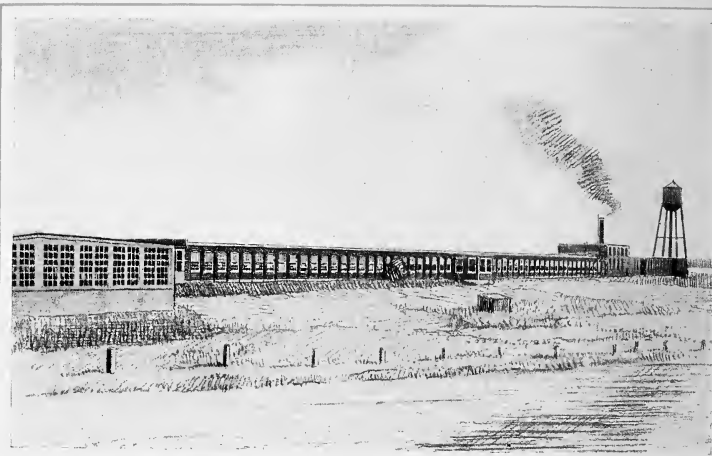
· AMERICAN · WOOLEN · COMPANY ·



DRACUT MILLS

· DRACUT · MASS ·

• AMERICAN • WOOLEN • COMPANY •



RAM'S HEAD YARN MILLS

• LOWELL • MASS •



• MAYNARD • MASS •

ON the Assabet River, and served by the Boston & Maine Railroad, Maynard is ten miles east-southeast of Marlboro, and twenty-seven miles from Boston. It was incorporated April 19, 1871.

The Assabet River furnishes a very valuable water power to the woolen and powder mills, which are the chief industries of the place. The regular flow of this river is maintained in the dry season by water stored in two reservoirs—Fort Meadow Reservoir, which was the original reservoir for the water supply of the city of Boston, and Boon Pond, near which is the grave of Mathew Boon, with a stone bearing the following inscription:

“On this hill lived Mathew Boon, one of the first two settlers in Stow. Was killed by Indians about February 14, 1676.”

The Assabet Mills of the American Woolen Company at Maynard are the largest woolen mills in the world.

THE AMERICAN WOOLEN CO.'S MILLS
AT MAYNARD

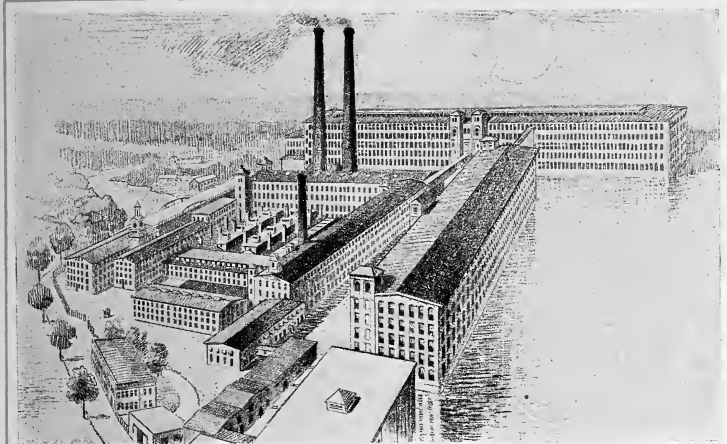
ASSABET MILLS.

PRODUCT — Men's wear.

EQUIPMENT — 128 sets of cards, 760 broad looms, 55,360 spindles, 5 boilers of 945 rated h. p. each, 1 water wheel.

These mills also dye.

• AMERICAN • WOOLEN • COMPANY •



ASSABET MILLS

• MAYNARD • MASS •

• MEDFORD • MASS •

MEDFORD is a residential suburb of Boston, is situated on the Mystic River, and served by the Boston & Maine Railroad. For many years it was noted for its ship building. As a matter of fact, one of the first ships launched in America was built in Medford as early as 1631, but for the past fifty years this industry has been eliminated. Medford now has manufactures of woolen goods, print goods, felt boots, brick, chemicals, etc. It was first settled in 1630, by those who landed at Salem, who called the place "Meadford," and much of its area was originally the plantation of Mathew Cradock, the first governor of the Massachusetts Bay Company. Medford also included a portion of Governor Winthrop's "Ten Hills Farm." Paul Revere, on his famous ride, rode through Medford, and in response to his alarm the Medford "minute men" were soon on their way to Lexington and Concord.

Medford is the seat of Tufts College, a Universalist institution of some twenty college buildings. Medford was chartered as a city in 1892.

THE AMERICAN WOOLEN Co.'s MILLS
AT MEDFORD

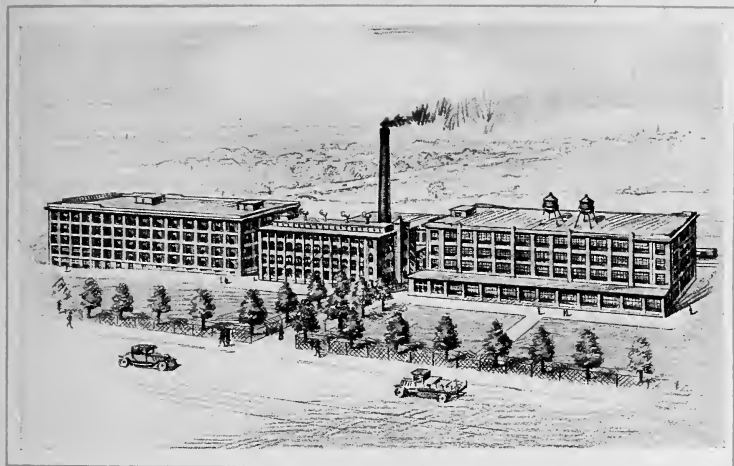
RIVERINA MILLS

Reclamation of wool.

EQUIPMENT — 2 sets woolen cards, 2 worsted cards, 6 garnetts, 4 pickers, electric.

Employ 300.

· AMERICAN · WOOLEN · COMPANY ·



RIVERINA MILLS

· MEDFORD · MASS ·

· PLYMOUTH · MASS ·

HISTORIC old Plymouth — the first permanent white settlement in New England — dates its founding from the landing of the Pilgrims from the “Mayflower” on Plymouth Rock, December 21st, 1620. It was named Plymouth because the Pilgrims sailed from Plymouth, England, its Indian name being Patuxet. Plymouth abounds with interesting historical landmarks, among them being Plymouth Rock, a granite boulder on which the Pilgrim fathers are said to have landed; Pilgrim Hall, erected in 1824 and remodeled in 1880, which contains many relics of the Pilgrims; Pilgrim Monument, built entirely of granite, commenced in 1859 and dedicated in 1889; Cole’s Hill, where, in their first winter in America, the Pilgrims buried half their number.

Plymouth is situated on Plymouth Bay, thirty-seven miles by rail southeast of Boston, on the New York, New Haven & Hartford Railroad, and in summer there are steamers to Boston.

The industries of Plymouth are important and varied, and comprise woolens, rubber goods and cordage — the cordage works being among the largest in the world. Great quantities of cranberries are raised in the vicinity of Plymouth.

THE AMERICAN WOOLEN Co.’s MILLS
AT PLYMOUTH

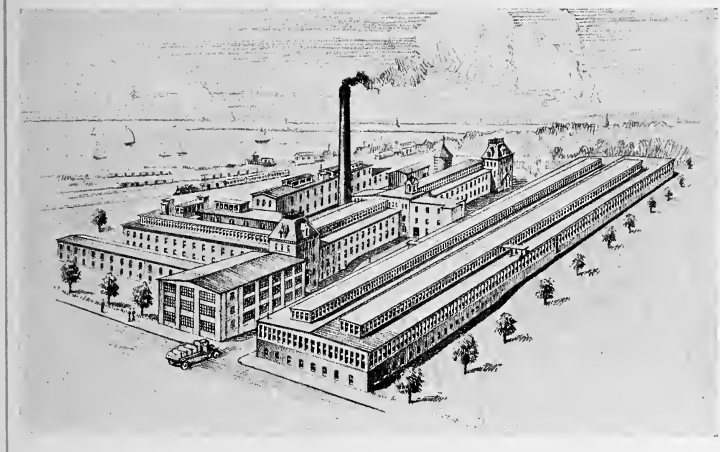
PURITAN MILLS.

PRODUCT — Men’s wear.

EQUIPMENT — 226 broad looms, 14 narrow looms, 8 boilers.

These mills dye and finish.

AMERICAN • WOOLLEN • COMPANY •



PURITAN MILLS

• PLYMOUTH • MASS •

· ROCHDALE · MASS ·

THE village of Rochdale is a part of Leicester, and the territory embraced by it was bought from the Nipmuck tribe of Indians for 15 pounds New England money, by nine gentlemen from Roxbury and vicinity. The deed was signed January 27, 1686, by the heirs of the Sachem, Oraskaso, who had died shortly before. The first settlers of Rochdale were English, and the town was first known as South Leicester, afterwards named Clappville, from Joshua Clapp, who purchased the mill property in 1829. The name was changed to Rochdale in 1869.

Rochdale is situated on the Boston & Albany Railroad, nine miles southwest of Worcester, and its manufactures are woolens, satinets, and machine knives.

THE AMERICAN WOOLEN CO.'S MILLS
AT ROCHDALE

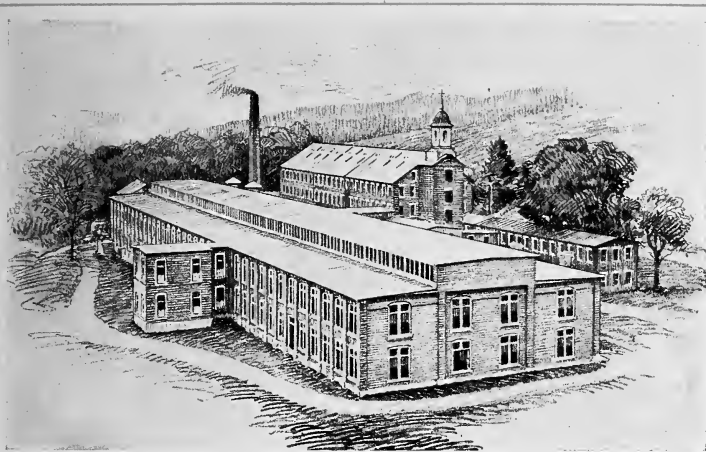
ROCHDALE MILLS.

PRODUCT — Fancy woolens.

EQUIPMENT — 16 sets of cards, 84 broad looms, 2 narrow looms, 6720 spindles, 3 boilers, 1 water wheel.

These mills also dye.

· AMERICAN · WOOLEN · COMPANY ·



ROCHDALE MILLS

· ROCHDALE · MASS ·

· SOUTH · ROYALSTON · MASS ·

SOUTH Royalston is in Royalston township, on Miller's River, twenty-seven miles west of Fitchburg, and is served by the Boston & Maine Railroad. Among the grantees of this territory, the grant being made in 1752, was Col. Isaac Royal of Medford, for whom Royalston was named.

A number of watercourses furnish fine water power for the industries of the place. The town has a woolen mill, a number of sawmills, and other industries.

The Royal Glen, a wild and romantic spot two miles from the centre, attracts many visitors.

THE AMERICAN WOOLEN CO.'S MILLS
AT SOUTH ROYALSTON

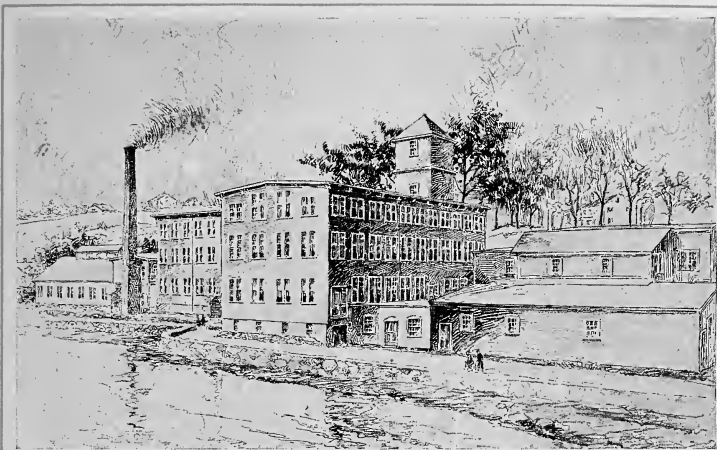
ROYALSTON MILLS.

PRODUCT — Yarns and bed blankets.

EQUIPMENT — 10 sets of cards, 82 broad looms, 2976 woolen spindles, 3 boilers, 3 water wheels.

These mills also dye.

· AMERICAN · WOOLEN · COMPANY ·



ROYALSTON MILLS

· SOUTH · ROYALSTON · MASS ·

· UXBRIDGE · MASS ·

ORIGINALLY a part of Mendon, Uxbridge was incorporated in 1727, and was named in honor of the Earl of Uxbridge. Its Indian name was Waucantuck. It is situated on the Blackstone River, is served by the New York, New Haven & Hartford Railroad, and is fifteen miles south-southeast of Worcester.

Uxbridge has several woolen mills, worsted mills, and cotton mills. There are also granite quarries here. The surrounding country has many flourishing farms, and the scenery is very beautiful. There is an old inn in Uxbridge, where it is said Washington stopped over night.

THE AMERICAN WOOLEN CO.'S MILLS
AT UXBRIDGE

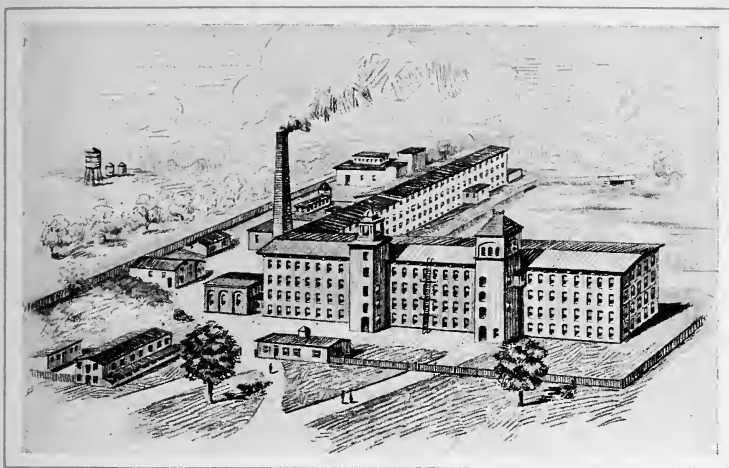
HECLA MILLS.

PRODUCT — Satinets and all sizes woolen yarns.

EQUIPMENT — 9 sets of cards, 140 broad looms, 2 narrow looms, 5720 woolen spindles, 3 boilers, 3 water wheels.

These mills also dye.

· AMERICAN · WOOLEN · COMPANY ·



HECLA MILLS

· UXBRIDGE · MASS ·

· WEBSTER · MASS ·

WEBSTER is a railroad and manufacturing centre, named in honor of Daniel Webster, and is situated on French River, sixteen miles south by west of Worcester, and is served by the Boston & Albany and New York, New Haven & Hartford Railroads, and was set off from the towns of Oxford and Dudley in 1832. Here, in 1812, Samuel Slater, the "Father of American Manufactures," founded a cotton mill, later a woolen mill; and he is buried here.

Webster has a number of handsome public and private buildings. The surrounding country is beautiful with hill, lake and stream.

Lake Chaugoggagoggmanchaugagoggagungamaug, with an area of over 1200 acres, serves as a reservoir to supply the mills in the village, and this lake probably has the longest name of any lake in the country. The manufactures of Webster are woolen goods, cotton goods, boots and shoes.

THE AMERICAN WOOLEN CO.'S MILLS
AT WEBSTER

CHASE MILLS.

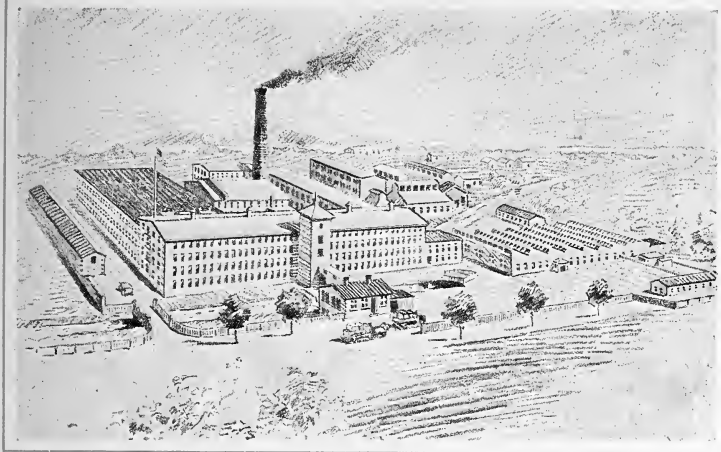
PRODUCT — Fancy cassimeres and worsteds.

EQUIPMENT — 17 sets of cards, 164 broad looms, 3 narrow looms, 9980 spindles, 5 boilers, 2 water wheels.

Employ 600.

These mills also dye.

· AMERICAN · WOOLEN · COMPANY ·



CHASE MILLS

· WEBSTER · MASS ·

· BRIDGTON · MAINE ·

THIS active and important town, formerly known as Pondicherry, is situated forty miles northwest of Portland. It was set over in 1761 by Massachusetts, and it is interesting to note that when it was set over it was divided into shares; one of these shares was for the first white settler; two were set apart for the support of the ministry and minister; one was for Harvard College; still another was devoted to the support of the schools, and 61 were for the proprietors.

The town was settled in 1770, incorporated in 1794, and was named Bridgton for one of the proprietors, Moody Bridges.

Bridgton is popular as a summer resort. The main street runs through the centre of the town, and from it many glimpses may be had of the beautiful surrounding country from Poland Springs to Mount Washington. In Bridgton are woolen mills and canneries.

THE AMERICAN WOOLEN CO.'S MILLS
AT BRIDGTON

FOREST MILLS.

PRODUCT — Cassimeres.

EQUIPMENT — 8 sets of cards, 40 broad looms, 2 narrow looms, 2700 woolen spindles.

These mills dye and finish.

• AMERICAN • WOOLEN • COMPANY •



FOREST MILLS

• BRIDGTON • MAINE •

• DOVER • MAINE •

SITUATED on the south bank of the Piscataquis River, Dover is the centre of an agricultural district. It is on the Maine Central and Bangor & Aroostook Railroads, fifty-three miles northwest of Bangor.

On the north side of Dover is Foxcroft Village, which is connected with Dover by a bridge 265 feet long; as a matter of fact, the two villages seem as one. Fine maples and elms shade the streets and materially add to the attractiveness of the town. The manufactures of Dover are woolen goods, dyes, etc.

THE AMERICAN WOOLEN CO.'S MILLS
AT DOVER

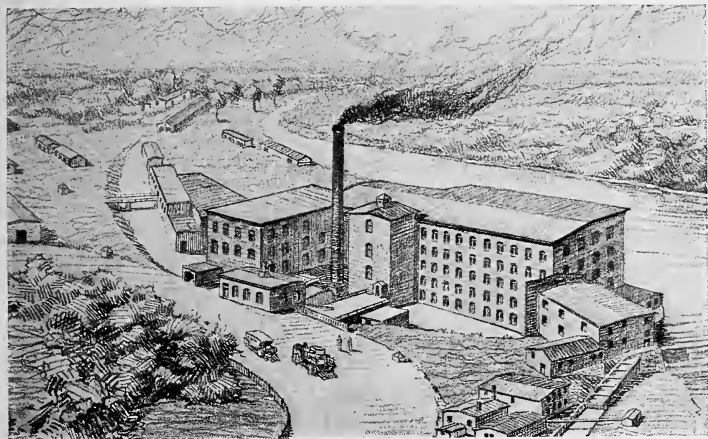
BROWN MILLS.

PRODUCT — Kerseys and broadcloths.

EQUIPMENT — 11 sets of cards, 60 broad looms, 4520 spindles, 3 boilers,
4 water wheels.

These mills dye and finish.

• AMERICAN • WOOLEN • COMPANY •



BROWN MILLS

• DOVER • MAINE •

· FAIRFIELD · MAINE ·

FAIRFIELD is on the west bank of the Kennebec River, twenty-one miles north-east of Augusta, on the Maine Central Railroad, and was settled in 1774. Its name was that of a plantation on the site of the present village, this name being descriptive of the general appearance of the surrounding country.

The whole appearance of the town is neat and prosperous. It contains the Central Maine Sanitarium and a very fine high school, unequalled by that of any place of its size in the state, given by one of its citizens.

Fairfield is an active industrial town, with a large woolen mill and a large pulp mill. In this pulp mill are manufactured pulp plates, there being but one other mill in the world with a like product. The town is also an agricultural centre, the crops in the surrounding country being chiefly grain, hay, and potatoes.

THE AMERICAN WOOLEN CO.'S MILLS
AT FAIRFIELD

KENNEBEC MILLS.

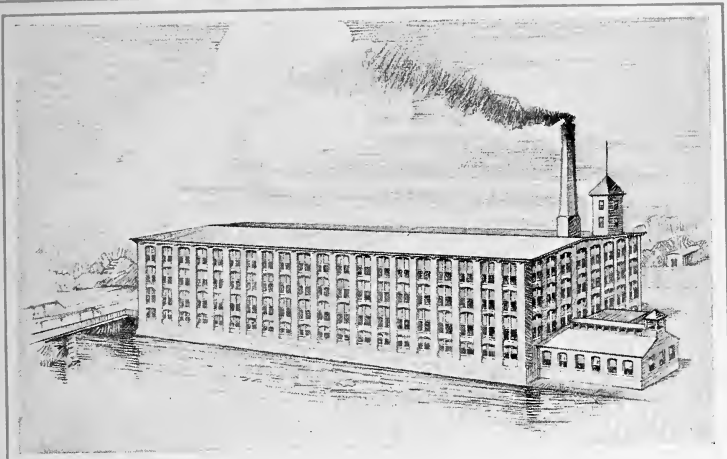
PRODUCT — Overcoatings and fancy woolsens.

EQUIPMENT — 10 sets of cards, 59 broad looms, 5320 spindles, 2 boilers,
2 water wheels.

Employ 230.

These mills dye and finish.

· AMERICAN · WOOLEN · COMPANY ·



KENNEBEC MILLS

· FAIRFIELD · MAINE ·

· FOXCROFT · MAINE ·

COL. Joseph E. Foxcroft of New Gloucester, in the year 1800, purchased what is now the township of Foxcroft, for about forty-five cents an acre. Foxcroft was one of the six townships given to Bowdoin College by Massachusetts. It is situated on the north bank of the Piscataquis River, nearly opposite Dover, on the Bangor & Aroostook and Maine Central Railroads, fifty-three miles northwest of Bangor. Near the town is Sebec Lake, with an area of twenty-two square miles.

At Foxcroft are manufactories of woollens, lumber, dyes, spools, pianos, vinegar, and canoes; there are also canneries and creameries.

THE AMERICAN WOOLEN CO.'S MILLS
AT FOXCROFT

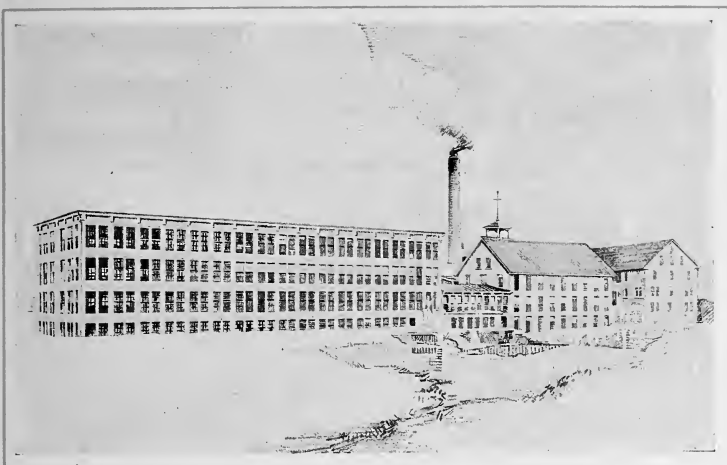
FOXCROFT MILLS.

PRODUCT — Men's cassimeres.

EQUIPMENT — 10 sets of cards, 50 broad looms, 1 narrow loom, 3780 woolen spindles, 3 boilers, 2 water wheels.

These mills dye and finish.

• AMERICAN • WOOLLEN • COMPANY •



FOXCROFT MILLS

• FOXCROFT • MAINE •

· HARTLAND · MAINE ·

THE Sebasticook River, on which Hartland is situated, is the outlet of Moose Lake, and is the principal water power of the town for its manufactures of woolens and lumber. Hartland is some forty miles from Bangor, on a branch of the Maine Central Railroad running from Harmony to Pittsfield. The surface of the town is very uneven, although it has no hills, and the underlying rock is chiefly granite.

Hartland is very prettily situated, and contains a number of churches and attractive homes. There is excellent fishing in Moose Lake, of landlocked salmon, black bass, and pickerel.

To Hartland come quite a number of summer visitors. Many prominent and successful Americans have received their education at the well-known Hartland Academy.

THE AMERICAN WOOLEN CO.'S MILLS
AT HARTLAND

HARTLAND MILLS.

PRODUCT — Woolens.

EQUIPMENT — 15 sets of cards, 74 looms, 5850 spindles, 3 boilers, 3 water wheels.

These mills also dye.

· AMERICAN · WOOLEN · COMPANY ·



HARTLAND MILLS

· HARTLAND · MAINE ·

· MADISON · MAINE ·

SETTLED about 1730, incorporated in 1804, the town was named after President Madison. It is situated eight miles northwest of Skowhegan, on the east bank of the Kennebec, at Norridgewock Falls, and two dams on the river furnish abundant water power. It is both a farming and manufacturing town, and hemlock, cedar, maple, birch, and oak abound in the forests. The surrounding country produces apples, oats, and hay. Here are manufactures of woolen, lumber, paper, and pulp.

Madison has a Carnegie Library, and an electric light plant owned by the village corporation.

At Old Point, near here, came the end of the Norridgewock Indian tribe. In 1724, in an attack upon the village by the Indians, Rasle, a missionary to the Abnaki Indians, was killed. A monument erected to him is in the southwestern part of the town, on the site of the church in which he formerly ministered. The scenes of this attack are described in Whittier's poem, "Mogg Megone."

THE AMERICAN WOOLEN Co.'s MILLS
AT MADISON

INDIAN SPRING MILL.

PRODUCT—Fancy woolsens.

EQUIPMENT—12 sets of cards, 52 broad looms, 1 narrow loom, 4368 spindles, 2 boilers, 2 water wheels.

• AMERICAN • WOOLEN • COMPANY •



INDIAN SPRING MILLS

• MADISON • MAINE •

· NEWPORT · MAINE ·



NEWPORT is on the Maine Central Railroad, about twenty-seven miles west of Bangor, and was incorporated as a town in June, 1814.

The first formal gathering of the citizens of the town was in 1812, for the purpose of mutual defence against the Indians, and at this meeting a committee of five, after due deliberation, brought in the following report: "That each head of family should prepare himself with a pound of powder and balls, put new flints in guns and keep them well loaded and hung up over the fire-place for immediate use in case of attack. Also, that the women should keep kettles of water hot with suitable articles to throw the same, and that all the boys should keep a sharp look-out that they may not be surprised."

Picturesquely located on the shores of beautiful Sebasticook Lake, which has a wide reputation for its excellent white perch fishing, Newport is headquarters for campers. While its chief manufactures are woolens and condensed milk, an excellent quality of granite for building is found here in abundance.

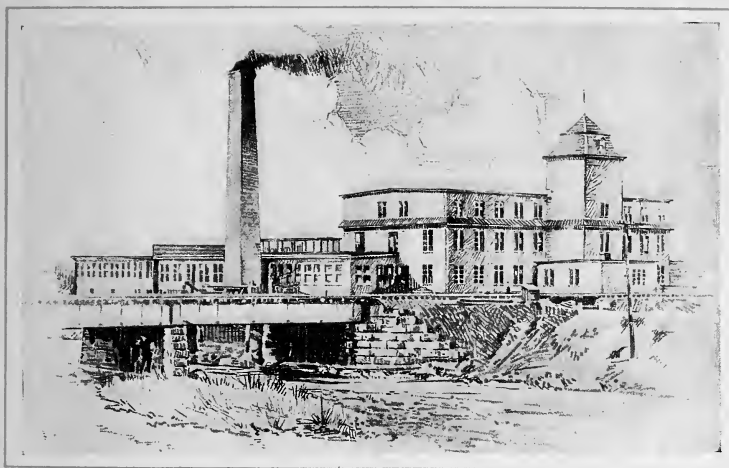
THE AMERICAN WOOLEN CO.'S MILLS
AT NEWPORT

NEWPORT MILLS.

PRODUCT — Fancy woolens.

EQUIPMENT — 9 sets of cards, 45 broad looms, 2 narrow looms, 2 pickers, 3540 woolen spindles, 2 boilers, 2 water wheels.

· AMERICAN · WOOLEN · COMPANY ·



NEWPORT MILLS

· NEWPORT · MAINE ·

· NORTH VASSALBORO · MAINE ·

VASSALBORO, of which North Vassalboro is a part, is on the Maine Central Railroad, in Kennebec County, on the east side of the Kennebec River, north of and adjoining Augusta.

The first settlers came to Vassalboro in 1760, and were largely from towns on Cape Cod. Vassalboro was incorporated April 26, 1771.

The soil of this section is excellent, the farmers are thrifty, and the town is prosperous, particular attention being given to the cultivation of fruits. There are several mills here — a woolen mill, sawmills, a grist and excelsior mill, paper mill, shingle mill, and machine shop.

THE AMERICAN WOOLEN Co.'s MILLS
AT NORTH VASSALBORO

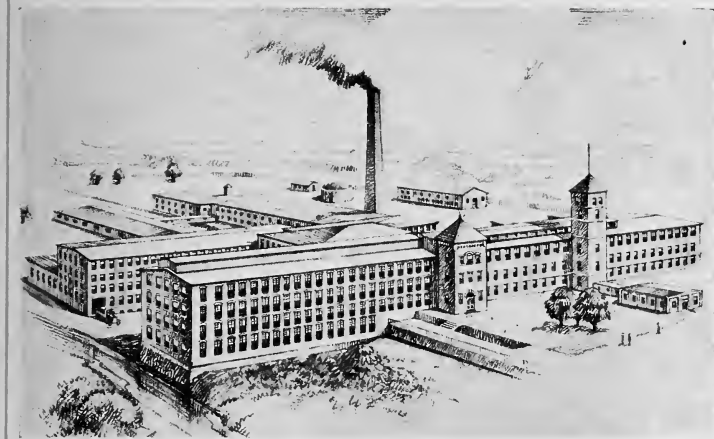
VASSALBORO MILLS.

PRODUCT — Overcoatings and fancy woolens.

EQUIPMENT — 22 sets of cards, 106 broad looms, 4 narrow looms, 8640 spindles, 4 boilers, 1 water wheel.

These mills dye and finish.

· AMERICAN · WOOLEN · COMPANY ·



VASSALBORO MILLS

· NORTH · VASSALBORO · MAINE ·

• OAKLAND • MAINE •

OAKLAND is a fine town, six miles west of Waterville, on the Maine Central and Somerset Railroads, and is connected by trolley with Waterville. Here are manufactured woolens, axes, scythes, yarns, carriages, lumber, and shovel handles.

Lake Messalonskee, on which Oakland is situated, abounds with fine salmon, trout, bass, and perch. There is good hunting here in the fall, and there are summer camps and many summer visitors.

THE AMERICAN WOOLEN CO.'S MILLS
AT OAKLAND

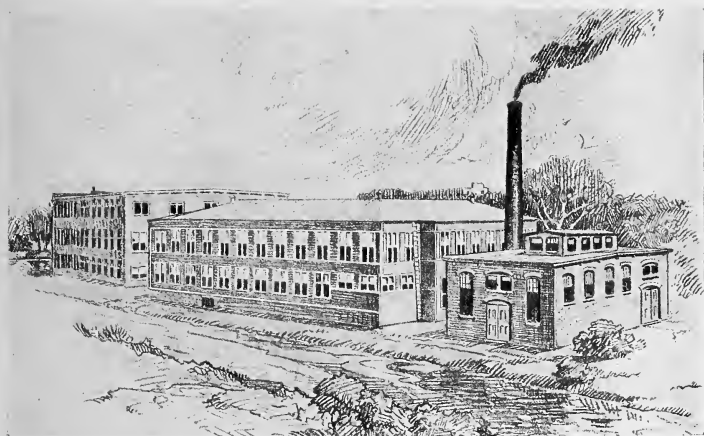
OAKLAND MILLS.

PRODUCT — Women's and men's woolens.

EQUIPMENT — 9 sets of cards, 46 broad looms, 1 narrow loom, 2820 woolen spindles, 2 boilers. Electric.

These mills also dye.

• AMERICAN • WOOLEN • COMPANY •



OAKLAND MILLS

• OAKLAND • MAINE •

· OLDTOWN · MAINE ·

THE city of Oldtown is thirteen miles north-east of Bangor, on the Maine Central and Bangor & Aroostook Railroads, and comprises two islands in the Penobscot River, as well as part of the mainland on the west bank of the river. The first white settler, who came to this vicinity in 1774, settled on Marsh Island, the old name for the large island which is now Oldtown proper. It is said that a Roman Catholic mission was started here soon after the settlement at Jamestown. In 1840, Oldtown was incorporated as a separate township, and in 1891 it was chartered as a city.

One of the oldest railways in the United States, between Oldtown and Bangor, was completed in 1836. There is a railroad bridge which crosses the Penobscot and connects the city with Milford.

Oldtown is headquarters for guides for the backwoods, and a settlement of Penobscot Indians on Indian Island is of much interest to visitors. The Penobscot River furnishes extensive water power, and here are manufactured woolens, boots and shoes, boats and canoes, lumber, and chemical fats.

THE AMERICAN WOOLEN CO.'S MILLS
AT OLDTOWN

OUNEGAN MILLS.

PRODUCT — Fancy woolens.

EQUIPMENT — 8 sets of cards, 52 broad looms, 2 narrow looms, 3000 spindles, 2 boilers. Electric.

· AMERICAN · WOOLEN · COMPANY ·



OUNEGAN MILLS

· OLDTOWN · MAINE ·

· PITTSFIELD · MAINE ·

PITTSFIELD is an active little place, with diversified manufacturing in the way of woolen and flour mills, a corn-canning establishment, lumbering, etc. Formerly known as Plymouth Gore, it is pleasantly situated on the Sebasticook River, thirty-four miles west of Bangor, and is served by the Maine Central Railroad.

The farmers of this section give much attention to fruit growing, and have particularly fine apple orchards. About here is excellent fishing. In Pittsfield is the Maine Central Institute, an elegant old building, and here are fitted many students for Bates and other colleges.

THE AMERICAN WOOLEN CO.'S MILLS
AT PITTSFIELD

PIONEER MILLS.

PRODUCT — Fancy woolens.

EQUIPMENT — 17 sets of cards, 80 broad looms, 4 narrow looms, 7248 spindles, 4 boilers, 2 water wheels.

These mills dye and finish.

SEBASTICOOK MILLS.

PRODUCT — Fancy Woolens.

EQUIPMENT — 10 sets of cards, 40 broad looms, 3900 woolen spindles, 1 boiler, 1 water wheel.

WAVERLY MILLS.

PRODUCT — Fancy woolens.

EQUIPMENT — 9 sets of cards, 45 broad looms, 2 narrow looms, 3304 woolen spindles, 3 boilers, 3 water wheels.

These mills dye and finish.

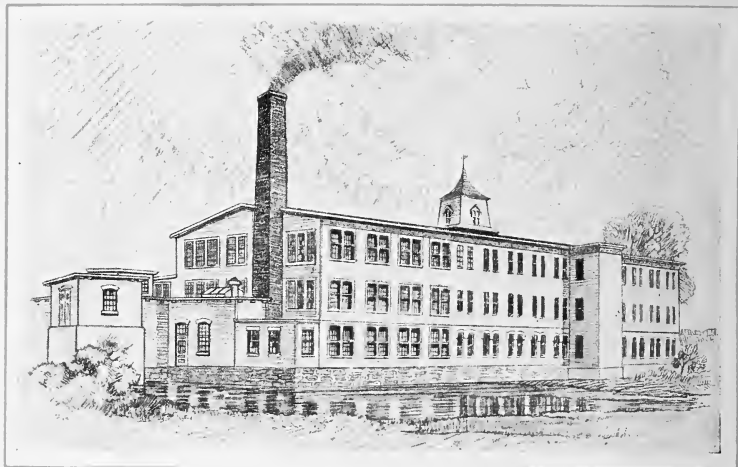
• AMERICAN • WOOLEN • COMPANY •



PIONEER MILLS

• PITTSFIELD • MAINE •

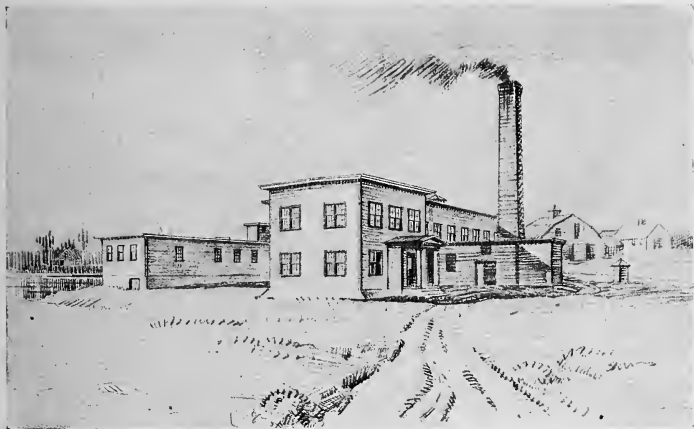
• AMERICAN • WOOLEN • COMPANY •



SEBASTICOOK MILLS

• PITTSFIELD • MAINE •

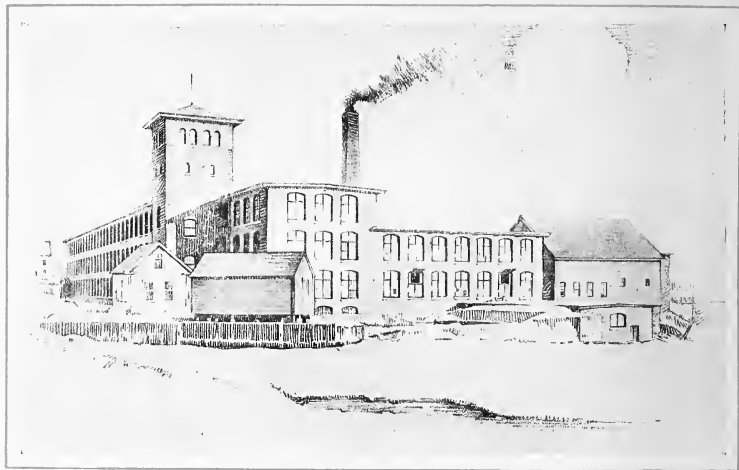
• AMERICAN • WOOLEN • COMPANY •



SEBASTICOOK MILLS
YARN PLANT

• PITTSFIELD • MAINE •

· AMERICAN · WOOLEN · COMPANY ·



WAVERLY MILLS

· PITTSFIELD · MAINE ·



· SKOWHEGAN · MAINE ·

THE first settlement upon the site of Skowhegan was made in 1775. The name is an Indian word and is said to mean "a place of watch," it being a place where the Indians gathered to watch and catch salmon and other fish. The first incorporation was as Milburn in 1823, the present name dating from 1836.

Situated at Kennebec Falls, on both sides of the Kennebec River, on the Maine Central Railroad, thirty miles from Augusta, Skowhegan is a very pleasant town, with beautiful drives along the river road.

It has a fine court house, a public library, Coburn Park, Somerset Hospital and Kennebec Valley Hospital. The manufactures of Skowhegan are woolen goods, paper and pulp, sash, doors and blinds, and cigars. It is particularly important as a shipping-point for various dairy products.

THE AMERICAN WOOLEN COMPANY'S MILLS
AT SKOWHEGAN

ARMS MILLS.

PRODUCT — Fancy worsteds.

EQUIPMENT — operated in conjunction with Anderson Mills.

ANDERSON MILLS.

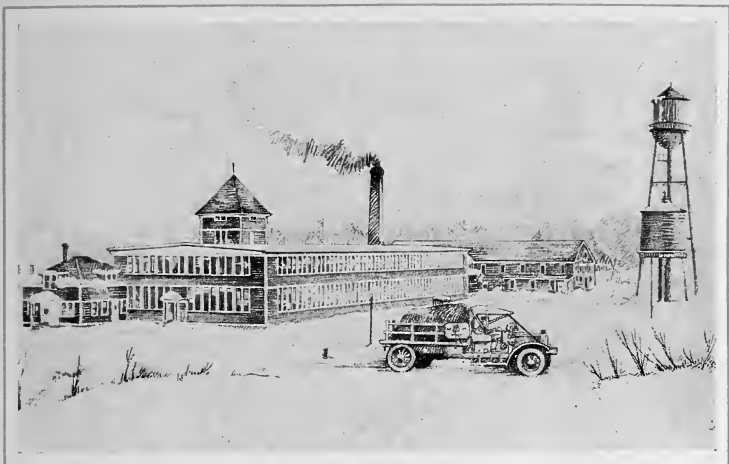
PRODUCT — Fancy cassimeres, etc.

EQUIPMENT — of the Combined Anderson Mills — 24 sets of cards, 121 broad looms, 8 narrow looms, 9240 spindles, 3 boilers, 1 water wheel.

Employ 200.

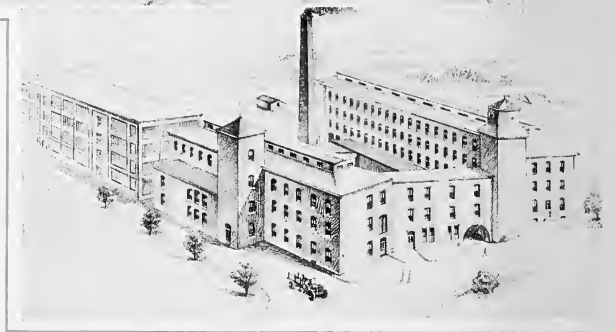
These mills dye and finish.

• AMERICAN • WOOLEN • COMPANY •



ARMS MILLS
• SKOWHEGAN • MAINE •

· AMERICAN · WOOLEN · COMPANY ·



NO. 4 ANDERSON MILLS

· SKOWHEGAN · MAINE ·

ANDERSON MILLS (LOWER)

· SKOWHEGAN · MAINE ·



HARRISVILLE AND PASCOAG · R · I ·

BOTH Harrisville and Pascoag are in the town of Burrillville, which is situated on the New York, New Haven & Hartford Railroad, about twenty-three miles northwest of the city of Providence, and was named after the Hon. James Burrill. The territory was originally included in the town of Gloucester, but was set off in 1806.

Harrisville is a post-village, and has manufactures of woolen goods, its banking point being Pascoag.

Pascoag is said to have been named after an Indian tribe called the Pas-co-ag Indians. It is tradition that in the Indian dialect "coag" meant snake. The country, being ledgy, offered secure retreat for snakes, and when the Indians went by this locality they said "Pass-coag." It is the largest village in the town of Burrillville, and contains a number of mills and stores. The Freewill Baptist Church of Pascoag was the first society of this denomination organized in the State.

THE AMERICAN WOOLEN CO.'S MILLS AT HARRISVILLE AND PASCOAG

ANCHOR MILLS (Inman Mills at Harrisville, Sheffield Mills at Pascoag).

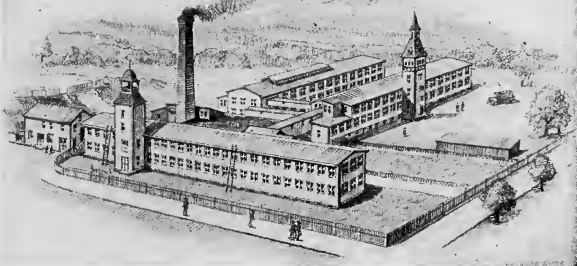
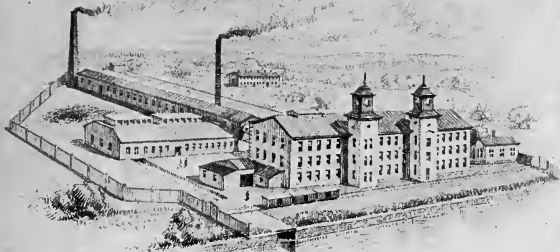
PRODUCT — Men's-wear worsteds.

EQUIPMENT — of the Combined Anchor Mills, 158 broad looms, 8 narrow looms, 5 boilers, 2 water wheels.

Employ 425.

These mills dye and finish.

• AMERICAN • WOOLEN • COMPANY •



ANCHOR-INMAN MILLS

• HARRISVILLE • R • I •

ANCHOR-SHEFFIELD MILLS

• PASCOAG • R • I •

• MANTON • R • I •

MANTON is a suburb of the city of Providence, in the town of Johnston, four miles west by north of Providence. It was named after Edward Manton, who located where the Edward Manton homestead stands. It is believed that the homestead was built as early as 1683, by Edward Manton, son of Shadrach Manton, an associate of Roger Williams. Members of the Manton family were among the great landowners of the early days of the plantations.

THE AMERICAN WOOLEN Co.'s MILLS
AT MANTON

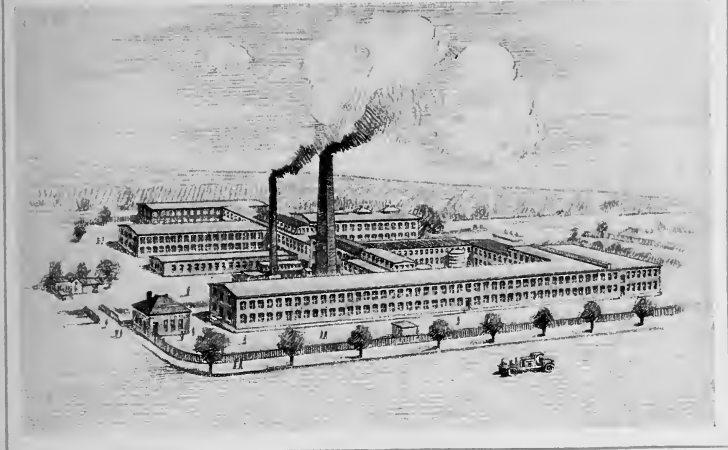
MANTON MILLS.

PRODUCT — Fancy worsteds.

EQUIPMENT — 190 broad looms, 5 boilers, 2 water wheels.

These mills also dye.

AMERICAN · WOOLEN · COMPANY ·



MANTON MILLS

· MANTON · R · I ·

· PROVIDENCE · R · I ·

PROVIDENCE, the capital of Rhode Island, the second city in New England, with an area of over eighteen square miles, is situated on the Providence River, at the head of Narragansett Bay, thirty-five miles from the ocean. It is said that Providence, like Rome, was built on seven hills. Its streets are pleasantly irregular and singularly uneven. It has many beautiful residences and many interesting old houses of the eighteenth century — fine examples of Colonial architecture — many of them set well back from the street, with an occasional walled garden. A fine park system embraces over forty city parks. Among the handsome public buildings are the State House, new Federal Building, City Hall, the Union Station, State Armory, Public Library, and State Normal School.

In Providence is Brown University, founded in 1764. The meeting-house of the First Baptist Church was built in 1775, and retains the old custom of ringing the curfew bell at nine o'clock every evening. The widely-known Rhode Island School of Design is here. There are many churches and charitable institutions, and the school system is excellent.

Roger Williams, who was banished from Massachusetts Colony, and with his associates founded Providence in 1636, settled first on the east side of the Seekonk, afterwards moving to the west side of the river. Roger Williams was the first apostle of civil and religious liberty, and the settlement of Rhode Island and Providence Plantations was the first where absolute freedom of conscience prevailed — it was the earliest separation of church and state. The town took

an active part in the War of the Revolution, and much privateering was carried on from here. Rhode Island was among the first of the Colonies to protest against taxation without representation, and a short distance down the bay from Providence one of the first acts of aggression was committed against Great Britain, in June, 1772, by the burning of the British schooner "Gaspee." In the Old State House on North Main Street, in May, 1776, two months before the Declaration of Independence at Philadelphia, Rhode Island declared itself independent of the government of Great Britain.

Providence ranks tenth among the seaports of the United States in bulk of tonnage and value of cargoes. It is served by the New York, New Haven & Hartford Railroad, and steamers to various ports. The manufactures are many and varied. It is the first city in the country in the manufacture of many things, including jewelry and silverware, screws, and machinists' tools, and is the business centre for many large textile factories in Rhode Island and other parts of New England. Providence was incorporated as a town in 1649, and as a city in 1832.

THE AMERICAN WOOLEN CO.'S MILLS
AT PROVIDENCE

NATIONAL AND PROVIDENCE WORSTED MILLS.

PRODUCT — Worsted yarns (all sizes) and cloths.

EQUIPMENT — 26 worsted cards, 8 woolen cards, 26 worsted combs, 303 broad looms, 6 narrow looms, 22,728 worsted spindles, 13 boilers, 2 water wheels.

Employ 2200.

These mills dye and finish.

RIVERSIDE WORSTED MILLS.

PRODUCT — Suitings.

EQUIPMENT — 23 worsted cards, 22 worsted combs, 382 broad looms,
9 narrow looms, 19,828 worsted spindles, 20 boilers.

Employ 1800.

These mills also dye.

VALLEY MILLS.

PRODUCT — Worsted yarns.

EQUIPMENT — 28 woolen cards, 12,870 woolen spindles, 10 boilers.

These mills also dye.

WEYBOSSET MILLS.

PRODUCT — Fancy cassimeres and worsteds.

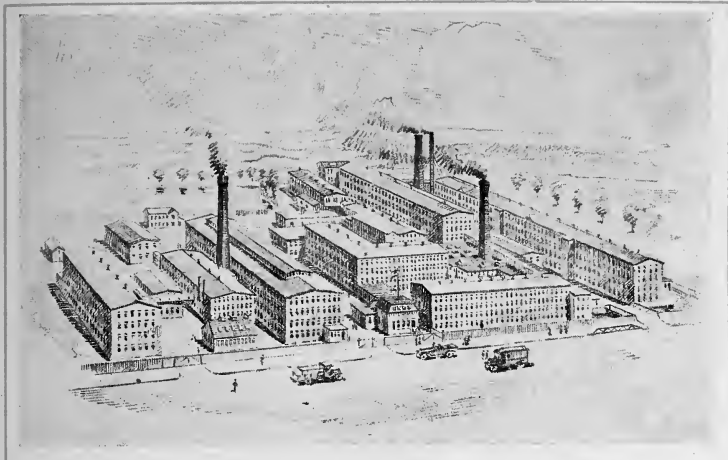
EQUIPMENT — 20 sets of cards, 271 broad looms, 7 narrow looms, 9300
woolen spindles, 8 boilers.

Employ 800.

These mills dye and finish.



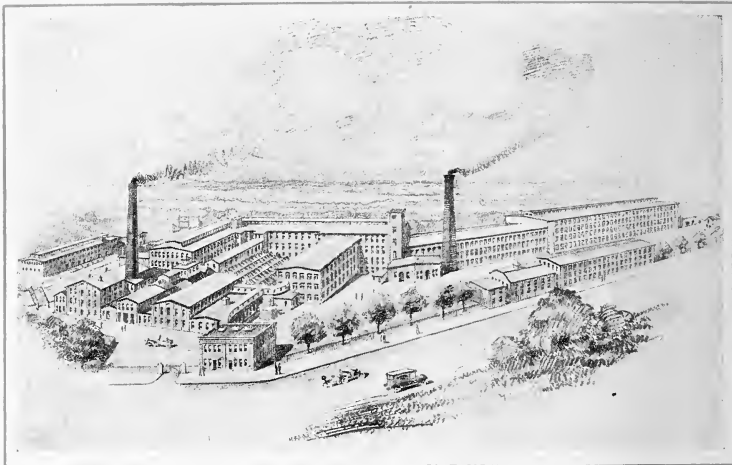
· AMERICAN · WOOLEN · COMPANY ·



NATIONAL AND PROVIDENCE
WORSTED MILLS

· PROVIDENCE · R · I ·

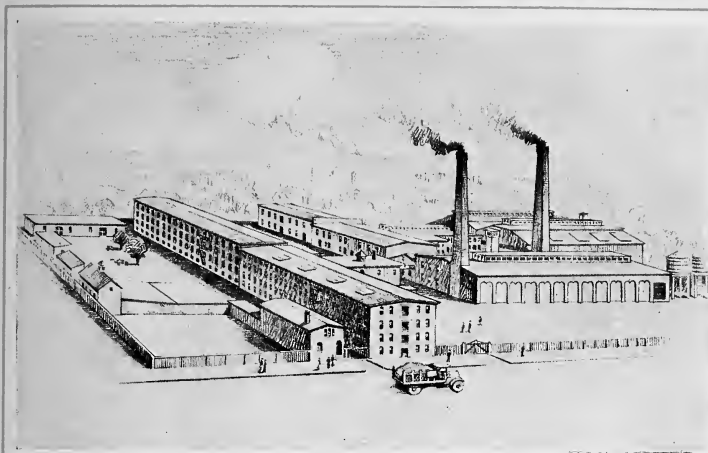
AMERICAN · WOOLEN · COMPANY ·



RIVERSIDE WORSTED MILLS

· PROVIDENCE · R · I ·

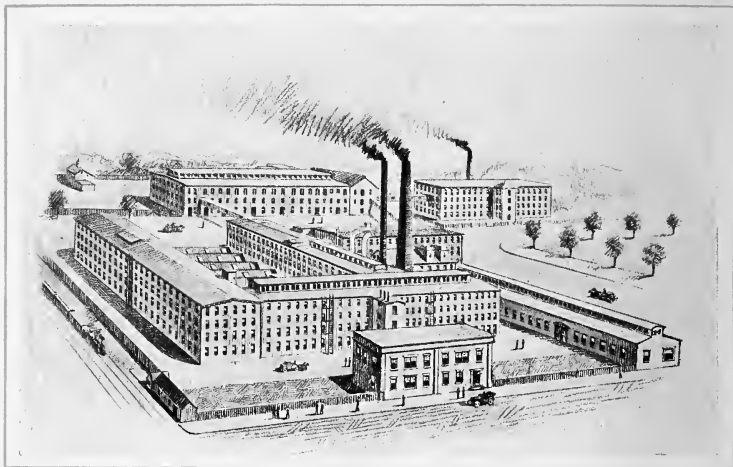
• AMERICAN • WOOLLEN • COMPANY •



VALLEY MILLS

• PROVIDENCE • R. I. •

• AMERICAN • WOOLEN • COMPANY •



WEYBOSSET MILLS

• PROVIDENCE • R • I •



· WARREN · R · I ·

THE site of Warren is said to have been a favorite resort of Massasoit, the old Indian chief. It is not known when the first house was built in Warren, although it is said there was a dwelling there as early as 1635, but in 1746 part of Swansea and Barrington, and a small part of Rehoboth, were incorporated into a township by the name of Warren. The settlement is said to have been named in honor of Admiral Sir Peter Warren, an admiral of the English fleet which assisted in the capture of Louisburg in 1745.

From 1764 to 1770 this was the seat of Rhode Island College, afterwards Brown University at Providence.

Before the Revolutionary War, during which it lost fourteen of its vessels, the town was largely engaged in whale fishing and foreign commerce, and years ago its harbor was filled with shipping. This commerce has now gone, and its great industries are woolen and cotton.

Warren is a pleasant old town, ten miles south of Providence, on Narragansett Bay and the Warren River, and is surrounded by a fine farming country.

THE AMERICAN WOOLEN Co.'s MILLS
AT WARREN

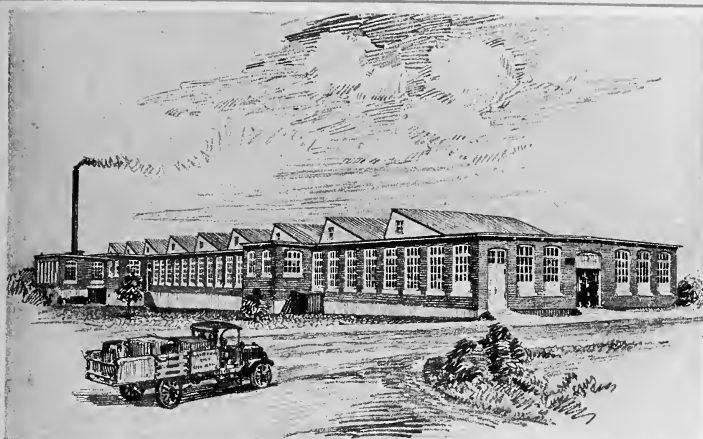
NARRAGANSETT WORSTED MILLS.

PRODUCT — Worsted yarns.

EQUIPMENT — 4608 spindles. Electric.

Employ 100.

• AMERICAN • WOOLEN • COMPANY •



NARRAGANSETT MILLS

• WARREN • R • I •

· DOVER · N · H ·

DOVER is one of the two oldest towns in New Hampshire, being settled in 1623 and receiving its city charter in 1755. Its Indian name was Cocheco, which name is perpetuated by that of the Cocheco River, on both sides of which Dover is situated. During the seventeenth century Dover was a frontier town and suffered greatly from Indian attacks, and in such an attack in June, 1689, many of the houses were burned and many persons were carried into captivity.

The Cocheco River has a direct fall at Dover of 32 feet, and furnishes fine water power for the use of the factories. Here are situated woolen mills and cotton mills; and boots and shoes, machinery, castings, belting, and lumber are made here.

Dover has a fine city hall, court house, public library and other public buildings. The streets of the city are irregular. It has quite a number of old houses and a number of historic spots. There is an observatory at the top of Garrison Hill, in the northern part of the city, and from this a fine view of the surrounding country can be obtained. The city operates its own water works.

THE AMERICAN WOOLEN CO.'S MILLS
AT DOVER

SAWYER MILLS.

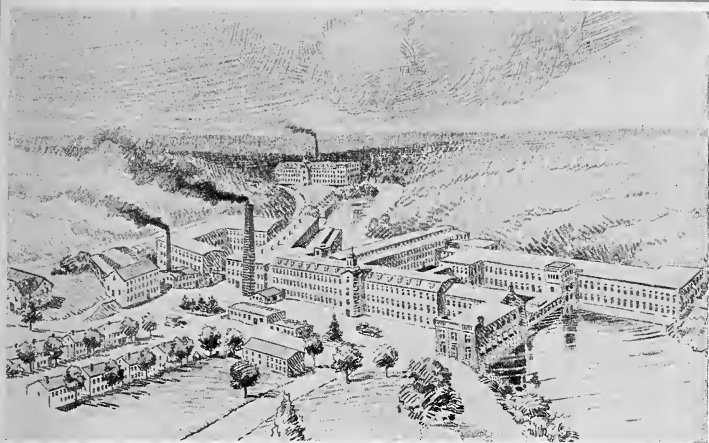
PRODUCT — Fancy woolens and worsteds for men's wear.

EQUIPMENT — 32 sets of cards, 140 broad looms, 7 narrow looms, 13,000 woolen spindles, 7 boilers, 3 water wheels.

Employ 550.

These mills dye and finish.

· AMERICAN · WOOLEN · COMPANY ·



SAWYER MILLS

· DOVER · N · H ·

· ENFIELD · N · H ·

ENFIELD is quite a popular summer resort, the surrounding country being particularly lovely and attractive, dotted with beautiful hills and lakes; and the neighborhood offers excellent opportunities for fishing and hunting. It is situated on Mascoma Lake, which is five miles long and is on the Concord Division of the Boston & Maine Railroad, 134 miles from Boston. Enfield was incorporated August 18th, 1778, and the town boundaries were settled in 1802.

On the south bank of Mascoma Lake is a Shaker village, of particular interest to tourists and other visitors. Nine miles from Enfield is Hanover, the seat of Dartmouth College. The agricultural and mechanical products of Enfield are known in every New England market.

THE AMERICAN WOOLEN Co.'s MILLS
AT ENFIELD

BALTIC MILLS.

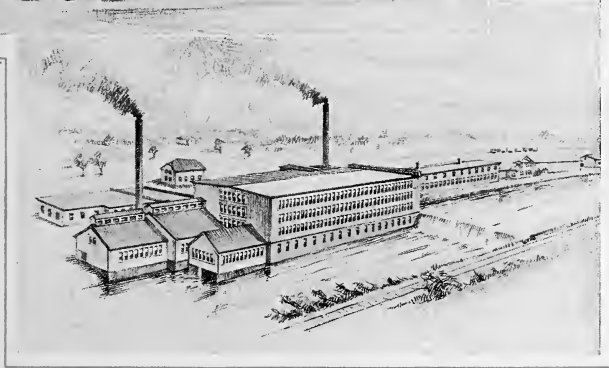
PRODUCT — Overcoatings.

COMBINED EQUIPMENT — 16 sets of cards, 80 broad looms, 1 narrow loom, 6336 spindles, 4 boilers, 3 water wheels.

Employ 300.

These mills dye and finish.

· AMERICAN · WOOLEN · COMPANY ·



BALTIC MILLS

· ENFIELD · N · H ·

· LEBANON · N · H ·

THE territory in which Lebanon, New Hampshire, is situated, was granted July 4th, 1761, to Nehemiah Estabrook. Lebanon was settled in 1762, and was named after the village of Lebanon, Connecticut. Situated in the Mascoma Valley near Mascoma Lake, on the Concord Division of the Boston & Maine Railroad, Lebanon is sixty-five miles by rail northwest of Concord.

It is a clean, prosperous, progressive New England town, with good water and sewerage, finely laid-out streets shaded by stately elm trees, with a beautiful park in its centre. The surrounding country is very attractive, and in the vicinity is a Shaker community, of interest to visitors.

The industries of the town are diversified — it has woolen mills, machine shops, knitting mills, overall factories, wood-working shops, etc.

THE AMERICAN WOOLEN Co.'s MILLS
AT LEBANON

LEBANON MILLS.

PRODUCT — Woolen goods.

EQUIPMENT — 10 sets of cards, 48 broad looms, 3600 woolen spindles,
3 boilers, 2 water wheels.

These mills dye and finish.

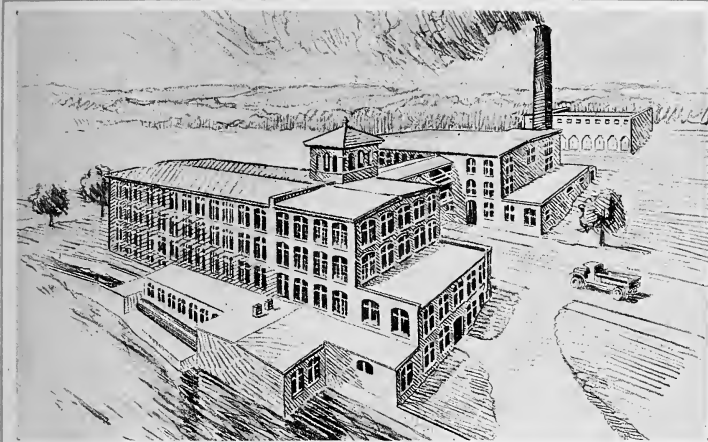
MASCOMA MILLS.

PRODUCT — Woolen goods.

EQUIPMENT — 16 sets of cards, 82 broad looms, 6120 spindles, 3 boilers,
2 water wheels.

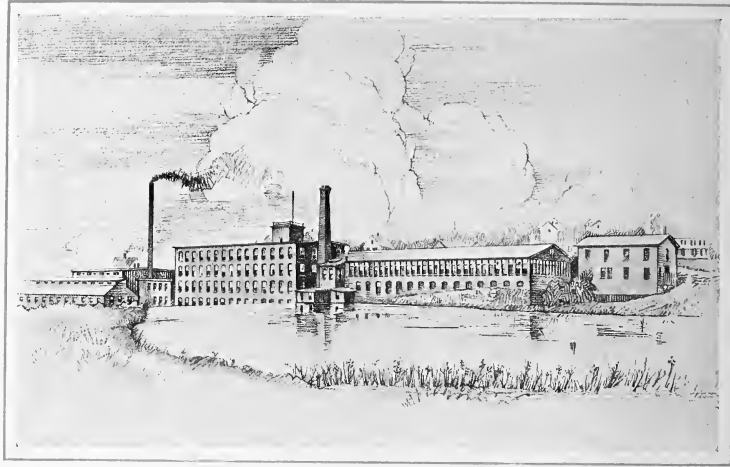
These mills dye and finish.

· AMERICAN · WOOLEN · COMPANY ·



LEBANON MILLS

· LEBANON · N · H ·



MASCOMA MILLS

• LEBANON • N • H •



· ELMVILLE · CONN ·

ELMVILLE is a pleasantly situated village, twenty-five miles northeast of Norwich. The Quinebaug River and Five Mile River join at Danielson, and furnish water power for the woolen, cotton, tire, duck and other industries.

The general tone and character of the village are excellent, and its surroundings are attractive.

THE AMERICAN WOOLEN Co.'s MILLS
AT ELMVILLE

WHITESTONE MILLS.

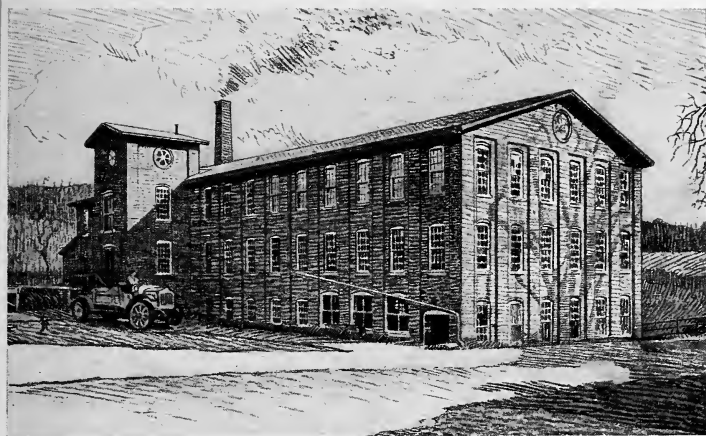
PRODUCT — Woolens and worsteds.

EQUIPMENT — 40 broad looms, 1 narrow loom, 1 boiler, 1 water wheel.

Employ 80.

These mills dye and finish.

· AMERICAN · WOOLEN · COMPANY ·



WHITESTONE MILLS

· ELMVILLE · CONN. ·

· MOOSUP · CONN ·

MOOSUP is on the Moosup River, thirty-two miles west-southwest of Providence, and is served by the New York, New Haven & Hartford Railroad. It really is part of the town of Plainfield, which was settled in 1689 by men and women from Chelmsford. Its plains were called "Egypt," from the great amount of corn which was raised. It was incorporated in May, 1699.

Its manufactures are woolen and cotton goods, carriages, etc. In the surrounding country the farms are in a high state of cultivation, and the farmers are thrifty and prosperous.

THE AMERICAN WOOLEN Co.'s MILLS
AT MOOSUP

MOOSUP (LOWER) MILLS AND GLEN FALLS MILLS.

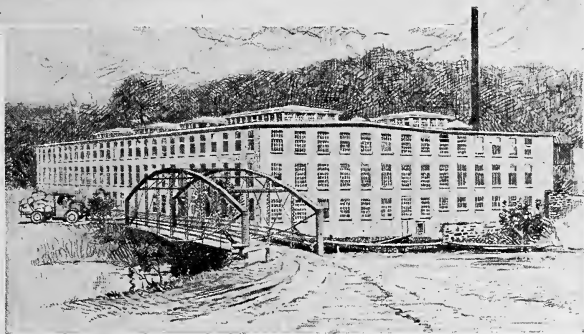
PRODUCT — Woolens and worsteds.

EQUIPMENT — 15 sets of cards, 100 broad looms, 5 narrow looms, 6000 woolen spindles, 4 boilers, 4 water wheels.

Employ 500.

These mills dye and finish.

• AMERICAN • WOOLEN • COMPANY •



MOOSUP (LOWER) MILLS

• MOOSUP • CONN •

GLEN FALLS MILLS

• MOOSUP • CONN •

· FULTON · N · Y ·

THE city of Fulton is in Oswego county, on the banks of the Oswego River, twenty-five miles northwest of Syracuse. Its means of communication are the New York Central; New York, Ontario & Western, and the Delaware & Lackawanna Railways; the Oswego Branch of the New York State Barge Canal, and an electric railway to Oswego and Syracuse. Fulton was really settled about 1793, although Captain John Bradstreet, soon after a successful battle with the Indians in 1756, erected a fort on the site of Fulton. It was incorporated as a village in 1835, and, combined with Oswego Falls, was incorporated as a city in 1902. It has a public library, city hall, opera house, and other public buildings. It owns and operates its water works.

The water power is abundant, produced by two falls of the Oswego River which are made famous in Cooper's "Pathfinder." The industries of Fulton include woolen, flour, chocolate, steel, gun, knife, and paper; there are also machine shops. In 1914, there were within the city limits fifty-one industrial establishments of factory grade, employing nearly 3,300 persons.

THE AMERICAN WOOLEN Co.'s MILLS
AT FULTON

FULTON MILLS.

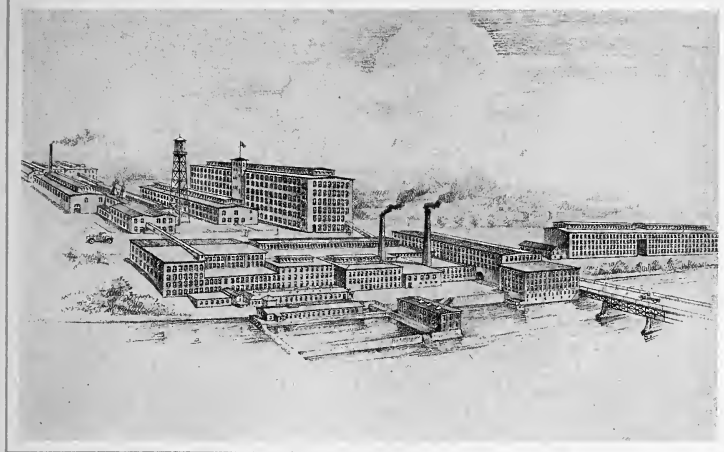
PRODUCT — Piece-dyed men's wear.

EQUIPMENT — 744 broad looms, 2 narrow looms, 26 worsted cards, 26 worsted combs, 16,800 twister spindles, 48,000 worsted spindles, 21 boilers, 3 sets of water wheels of 1500 h. p. each. Electric.

Employ 1500.

These mills also dye.

· AMERICAN · WOOLEN · COMPANY ·



FUTLON MILLS

· FULTON · N · Y ·

· UTICA · N · Y ·

A SETTLEMENT was begun on the present site of Utica shortly after the close of the War of Independence, and, until its incorporation as a town in 1798 under its present name, it was known as "Old Fort Schuyler." It was incorporated as a city in 1832. The Erie Canal was completed in 1825, and assisted materially in the growth of Utica, which had been slow up to that time.

Utica is the shipping point for the products of large dairies — cheese particularly. The surrounding country is very fertile, and hop growing is an important industry. Here are many large manufactories of woolen goods, cotton goods, hosiery and knit goods, clothing, steam fittings and heating apparatus, firearms, lumber products, foundry and machinery products.

Utica is pleasantly situated on the south bank of the Mohawk River, about 52 miles east of Syracuse, and is a very pleasant city, Genesee street being a particularly handsome thoroughfare. The city has a large number of charitable organizations and institutions.

THE AMERICAN WOOLEN CO.'S MILLS
AT UTICA

GLOBE MILLS.

PRODUCT — Fancy worsteds and woolen men's wear.

EQUIPMENT — 18 sets woolen cards, 1 set worsted cards, 8 combs, 185 broad looms, 11 narrow looms, 7920 woolen spindles, 6390 worsted spindles, 8 boilers. Electric.

These mills also dye.

· AMERICAN · WOOLEN · COMPANY ·



GLOBE MILLS

· UTICA · N · Y ·

· WINOOSKI · VT ·

THE village of Winooski was settled in 1772 and incorporated in 1888. It is situated on the Winooski River, two miles north-east of Burlington, and is served by the Central Vermont Railroad. This pleasant village is surrounded with beautiful scenery, and near the village is a monument to Ethan Allen, a noted Revolutionary commander and the colonel of the "Green Mountain Boys."

There is an extensive water power at Winooski, the river here falling about thirty-five feet. The manufactures of the village are woolen goods, cotton goods, lumber, lime, and screens. It is said that the village of Winooski produces more wire screens than any other town or city in the world.

THE AMERICAN WOOLEN CO.'S MILLS
AT WINOOSKI

BURLINGTON MILLS.

PRODUCT — Kerseys, Friezes, Meltons, Thibets, worsted dress goods, etc.

EQUIPMENT — 26 sets of cards, 312 broad looms, 6 narrow looms, 15,160 spindles, 13 boilers, 4 water wheels.

Employ 1500.

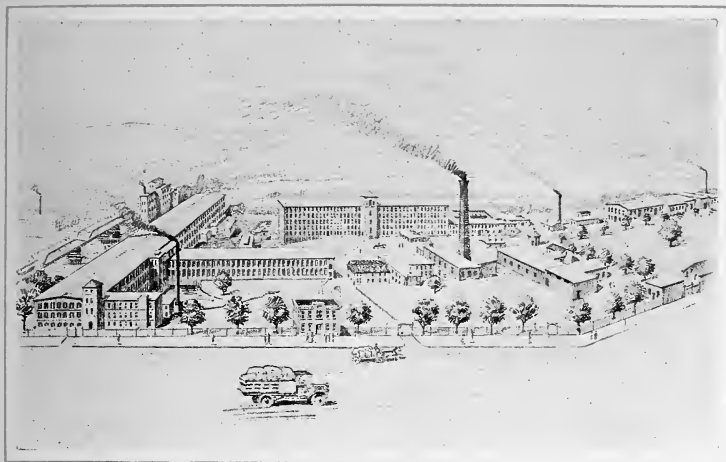
These mills dye and finish.

CHAMPLAIN MILLS.

PRODUCT — Piece-dyed worsteds and serges.

EQUIPMENT — 4 worsted combs, 295 broad looms, 10,000 worsted spindles, 2 boilers, 2 water wheels.

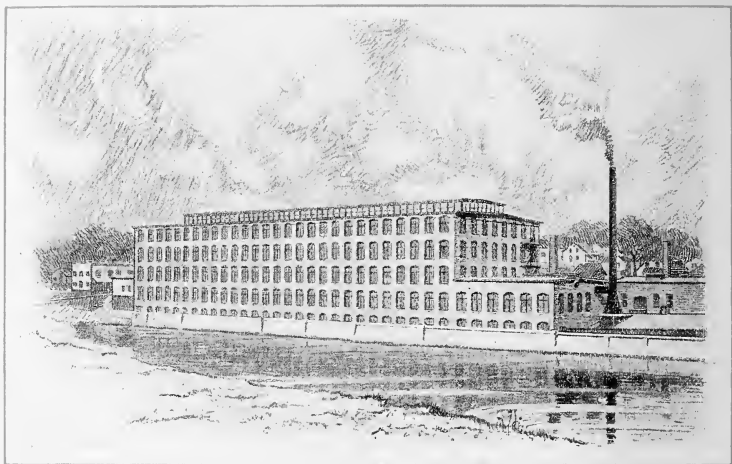
· AMERICAN · WOOLEN · COMPANY ·



BURLINGTON MILLS

· WINOOSKI · VT ·

· AMERICAN · WOOLEN · COMPANY ·



CHAMPLAIN MILLS

· WINOOSKI · VT ·



• LOUISVILLE • KY •

SITUATED at the falls of the Ohio River, Louisville is 130 miles by water and 110 miles by rail southwest of Cincinnati. Ten great railroad systems centre here. Built upon a plateau sixty feet above low-water mark of the river, there is a frontage of between seven and eight miles on the river-front. The river is spanned by three steel railroad bridges, which connect the city with New Albany and Jeffersonville.

La Salle visited the falls in 1669 or 1670, and Louisville was settled in 1779 and named in honor of Louis XVI of France. In 1780, Louisville was incorporated under its present name. It received its first charter as a city in 1828, its second in 1851, its third in 1870, and its fourth in 1893. Louisville has many imposing buildings and three beautiful parks, and is noted as a centre of education.

Louisville not only has the largest leaf tobacco market in the world, and an extensive trade in pork, wheat, and corn, but it has large manufactories, among them woolen mills, iron foundries, and canneries. It is the great commercial gateway to the Southwest.

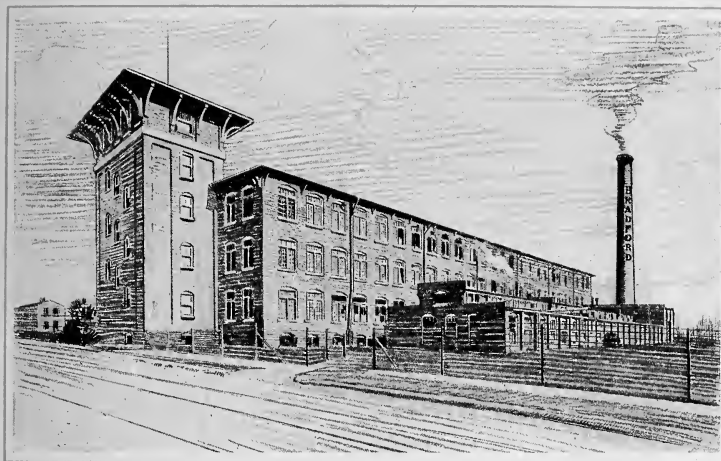
THE AMERICAN WOOLEN Co.'s MILLS
AT LOUISVILLE

BRADFORD MILLS.

PRODUCT — Worsted weaving and knitting yarns.

EQUIPMENT — 5 cards, 5 worsted combs, 7760 worsted spindles, 3640 twister spindles, 3 boilers.

• AMERICAN • WOOLEN • COMPANY •



BRADFORD MILLS

• LOUISVILLE • KY •













LIBRARY OF CONGRESS



0 018 532 854 5