



Concerning
CHAIRS AND TABLES

MADE BY

“*Andrews*”

CATALOG
M-16

THE A.H. ANDREWS CO.
115-117 So. Wabash Ave.
CHICAGO

NK2265

A56

TL

Andrews Metal Furniture

FOR



Drug Stores, Confectioneries, Restaurants, Clubs,
Billiard Parlors, Barber Shops, Shoe Stores,
Offices and Reception Rooms

*“Even on the cloudiest day there is still the glint
of merry sunshine on every piece—a suggestion
of cheerful brightness that is irresistible!”*

The A. H. Andrews Co.
115-117 South Wabash Avenue
CHICAGO, ILL.

NEW YORK, N. Y.
1472 Broadway

SEATTLE, WASH.
508-512½ First Ave., South

SAN FRANCISCO, CAL.
728 Mission St.

PORTLAND, ORE.
203 Orpheum Theater Bldg.

REAL WORTH



First in the field,—and still leading!

It was our Mr. A. H. Andrews who first produced and marketed twisted steel wire furniture such as this catalog illustrates. Practically every new design and every important betterment of the older patterns has originated in our big factory, where advanced ideas are constantly being developed and tested out by the experimental department.

Consequently, notwithstanding imitative competition, *ANDREWS* metal furniture still leads the world in quantity and quality of output; and those jobbers are few and far between who, at equal prices, do not prefer *ANDREWS* goods and *ANDREWS* service. The *ANDREWS* plant (the greater part of it five and six stories high) now covers more than a city block in the heart of Chicago's manufacturing district, and probably contains more floor space than all the rest of the metal furniture factories put together.

Why should there be such a marked preference for "*ANDREWS*?"

There's just one answer—"Quality." From the time the wire enters the straightening machines until the finished *ANDREWS* furniture has been packed for shipment, incessant and particular care is exercised in its manufacture.

The material must be right—the steel full size, absolutely accurate in



diameter, with a smooth clean surface and of just a certain degree of hardness and temper. The veneer in the seats is the best that money can buy—heavy 3-ply and cemented under hydraulic pressure. The varnish, the bolts, the nuts, all must be fully up to our high standard. Every incoming shipment of material, of whatever kind, is rigidly inspected.



Andrews' 730M Settee

And each operation must be done properly. The bending, the twisting, the forming, the assembling, the plating, the buffing, the lacquering—all are equally important; no one of them may be slighted without marring the appearance of the finished piece. Imperfect work—all of it—is rejected.

So, as time has passed, jobbers have come to know that *ANDREWS* wire furniture is absolutely dependable; that it *wears* better, because the plating is heavier and more carefully done; that despite the general similarity in appearance of much of the wire furniture on the market, "*ANDREWS*" gives by far the best service, and from every standpoint is the most satisfactory line to purchase, whether for resale or for use.

Backed by our guarantee that the material and workmanship on every piece we send out must be right, you simply can't lose out on the *ANDREWS* line, Mr. Dealer. On the contrary we are sure your sales will show a material increase if you will study its many points of excellence and push only *ANDREWS* metal furniture this season. It is better; and costs no more.

To Our Customers

IN ORDERING: Give the catalog number of the piece you have selected, say whether you want it in oak or birch mahogany, and whether the metal parts are to be finished in Japanese copper, nickel plate, or white enamel. In the absence of definite instructions we will send oak trim, and finish the metal parts in Japanese copper.



DIMENSIONS—UPHOLSTERING: If the article is made in different heights (as stools, for instance), specify the height wanted. If it can be upholstered in different materials, say whether plush, genuine leather or imitation leather is desired.

ROUTING: Say whether you want the shipment made by freight, express, or parcel post, and if the latter, whether you want the shipment insured. Be particular to give the correct shipping address in full.

In the case of a freight or express shipment, it is always well to give the name of the county, as well as the town and the state, for frequently the same town name appears in different counties of the same state.

TRANSPORTATION LINE: If you want the shipment routed over some particular railroad or via a certain express company, mention it in your order. In the absence of such instructions, we will use our best judgment.

PRICES: All quotations are for the goods free on board cars (or vessel, if it is to go by water) at Chicago, Ill., unless otherwise stated. This has reference, of course, to goods for domestic shipment. Where the goods have to be packed for ocean shipment, see the clause under the heading EXPORT PRICES.

PACKING: No charge is made for packing for domestic shipment, unless some departure from our regular method is demanded. In that case, the extra packing expense, if any, must be borne by the purchaser.

EXPORT PRICES: To estimate the cost of goods including packing for ocean shipment and delivering f. o. b. cars at any export shipping point on our Atlantic seaboard or the Gulf Coast, add 20 per cent to the list prices named herein, and deduct our regular discount to the trade.

TERMS: Our terms of payment are invariably net cash 30 days after date of shipment, but for prompt cash within 10 days from date of invoice, we make a cash discount of 2 per cent, which purchaser may deduct in remitting. In

the case of goods for export, except where past business relations with the purchaser have given him a satisfactory credit standing with us, our terms are draft against shipping documents, at New York.

THE SALES DEPARTMENT.



ANDREWS COSY CORNER STORE BOOTHS

For cheery brightness and worthy service, *ANDREWS'* wire rod furniture, in its rich Japanese copper finish, is mighty hard to beat. No competitor has ever produced its equal in respect to mechanical construction, nor approached its record for durability, nor improved upon our splendid plating methods. Consequently, this furniture still holds its place as the best general purpose equipment money can buy; and, whatever else may be offered, there will *always* be a big demand for *ANDREWS'* wire chairs and tables.

We believe, however, that the time is ripe for bringing out several very practical wood booth designs to supplement the splendid metal line with which you have so long been familiar; for, among the ever increasing number of patrons of the Soda Fountains are hundreds—yes, thousands—who long for a certain degree of comfortable privacy, with opportunity for quiet conversation. In a busy confectionery a certain amount of crowding and jostling is almost unavoidable as those who have been served leave the tables and others push in to take the unoccupied chairs. All this is done away with when *ANDREWS'* "Cosy Corners" are installed, because this furniture is massive and heavy and cannot be shifted about on the floor as is the case with the light and graceful wire furniture.

Where floor space and window lighting permit, therefore, we strongly advise the installation of a few of the Cosy Corners. A store so equipped invariably draws an increasing number of regular customers and the slightly heavier installation cost is quickly made up in new patronage that grows by leaps and bounds. It is the old story over again of the handsomely-appointed store taking the business away from the one that gets along year after year with the old furniture.

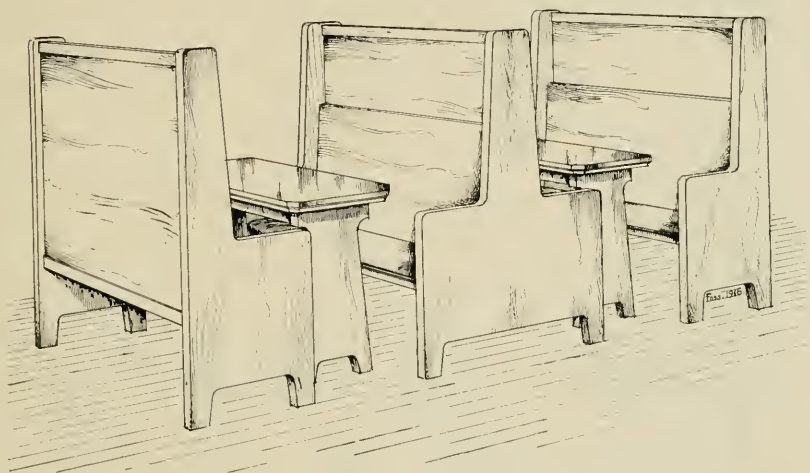
Who, among the fountain owners of your own acquaintance, is most successful? The man who features low prices and depends upon that for his appeal? No, indeed. It's the fellow who, having selected a good location, fits up his place with an eye to the comfort and convenience of his customers, and then gives them service to match. People *like* that sort of a store; and going there soon becomes a habit, let the prices be what they may.

Designs A, B, and C are all built to the following dimensions: Height over all 54". Width (outside measurement), 4' 6". Depth of seat, 16". Length of seat 50". A "single" seat requires 23", and a "double" seat 41", lineal floor space. Then there must be added the space required for the table—say 20".

ANDREWS' COSY CORNERS

Note particularly that the following Cosy Corner prices are based on an "all-wood" construction—wood ends, wood back and seat, and wood top table; and that in each case the illustration is intended primarily to show the style of the wood work and only incidentally various possible additions to, or elaborations of, the original design.

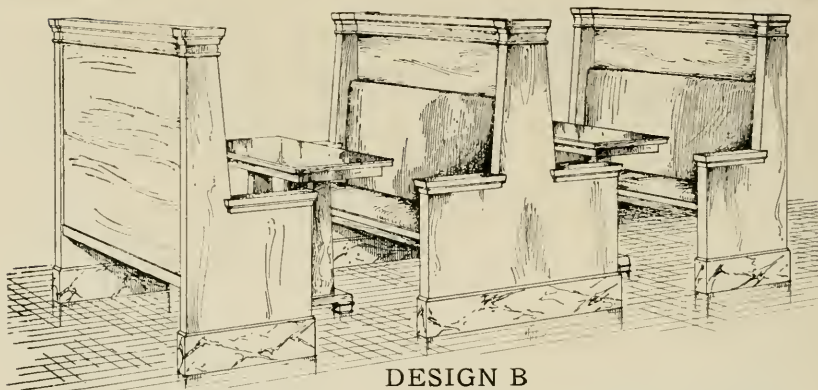
For anything other than an all-wood construction, then, add as per table of extras.



DESIGN A

Andrews' Cozy Corner No. 1 (54" wide). See Design A.

KIND OF WOOD	SINGLE	DOUBLE	TABLE ONLY
Plain oak	\$30.00	\$50.00	\$15.00
Quartered oak	34.00	57.50	18.00
Birch mahogany	28.00	45.00	12.50
Genuine mahogany	58.00	77.50	30.00
EXTRAS			
Glass top on table.....		\$ 8.80
Bronze plated shoes	\$ 2.50	\$ 2.50	1.90
Tennessee marble base.....	10.00	15.00
Imitation leather seat and back...	9.50	19.00
Genuine leather seat and back...	16.50	33.00
Spring seat	3.80	7.60
Tufted back	1.90	3.80

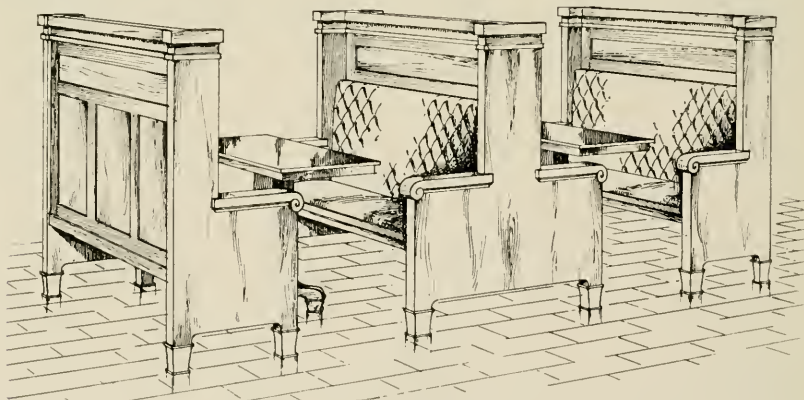


DESIGN B

(Before figuring prices read the matter at the top of page 7.)

Andrews' Cozy Corner No. 2 (54" wide). See Design B.

KIND OF WOOD	SINGLE	DOUBLE	TABLE ONLY
Plain oak	\$32.50	\$55.00	\$15.00
Quartered oak	36.50	62.50	17.50
Birch mahogany	30.00	50.00	12.50
Genuine mahogany	62.50	95.00	30.00
EXTRAS			
Glass top on table.....			\$ 8.80
Bronze plated shoes.....	\$ 2.50	\$ 2.50	1.90
Tennessee marble base.....	10.00	15.00
Imitation leather seat and back.....	9.50	19.00
Genuine leather seat and back.....	16.50	33.00
Spring seat	3.80	7.60
Tufted back	1.90	3.80

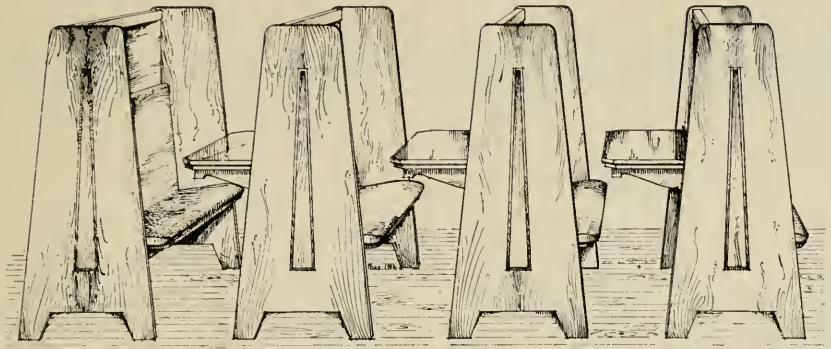


DESIGN C

(Before figuring prices read the matter at the top of page 7.)

Andrews' Cozy Corner No. 3 (54" wide). See Design C.

KIND OF WOOD	SINGLE	DOUBLE	TABLE ONLY
Plain oak	\$37.50	\$60.00	\$18.00
Quartered oak	41.50	67.50	20.00
Birch mahogany	35.00	55.00	15.00
Genuine mahogany	70.00	100.00	37.50
EXTRAS			
Glass top on table.....			\$ 8.80
Bronze plated shoes.....	\$ 2.50	\$ 2.50	1.90
Tennessee marble base.....	10.00	15.00
Imitation leather seat and back.....	9.50	19.00
Genuine leather seat and back.....	16.50	33.00
Spring seat	3.80	7.60
Tufted back	1.90	3.80



DESIGN D. THE "SNUGGLE-UP"

A Cosy Corner for two people—and certain to be popular. Note that the table for each booth is carried on the back of the seat ahead, being firmly attached thereto. A "rear seat" (see price list below) has no table on the back, being intended, as its name indicates, for use at the rear end of a row of these Cosy Corner Booths. At the front end of the row the seat can either be utilized as a settee, or a table to match (see Fig. DD on page 10) can be added.

Measurements: Height, 4' 6". Length over all, 48". Seat, 44" long by 15" deep. The table attached, which is made shorter than the seat to allow space for occupants to get in and out, is 36" long by 18" wide. These Snuggle-Ups, when set in place, measure about 3 ft. from front edge of one seat to the front edge of the next one.

Andrews' Cozy Corner No. 4 (The "Snuggle-up"). See Design D.

KIND OF WOOD	COMBINATION		DETACHED
	REAR SEAT	SEAT AND TABLE	TABLE
Plain oak	\$30.00	\$38.00	\$15.00
Quartered oak	34.00	43.00	18.00
Birch mahogany	28.00	35.00	12.50
Genuine mahogany	58.00	70.00	30.00
EXTRAS			
Glass top on table.....	\$ 8.80
Bronze plated shoes	\$ 2.50	\$ 2.50	1.90
Tennessee marble base.....	15.00	15.00
Imitation leather seat and back...	8.80	8.80
Genuine leather seat and back...	15.00	15.00
Spring seat	3.80	3.80
Tufted back	1.90	1.90

Bear this in mind, too—that these booth patterns are not cheap carpenter construction, but the very highest class of cabinet work, such as we are turning out right along in our Bank Fixture Department. If you are not familiar with the reputation of the A. H. Andrews Co. in that line, ask your banker. He can tell you, for we have fitted up some of the finest banking rooms and court-houses in the country.

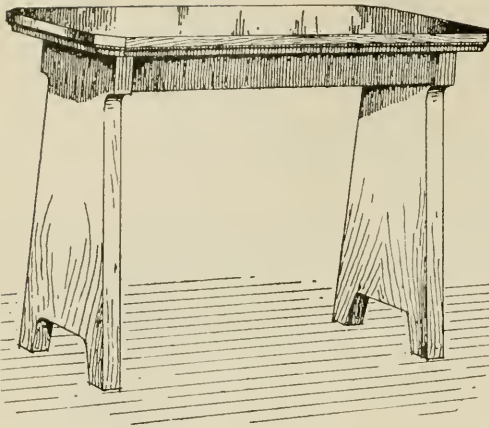


Fig. AA

Table for Booth Cosy Corner as shown in Fig. A. See page 7 for prices. Width of top, 20". Length of top, 42".

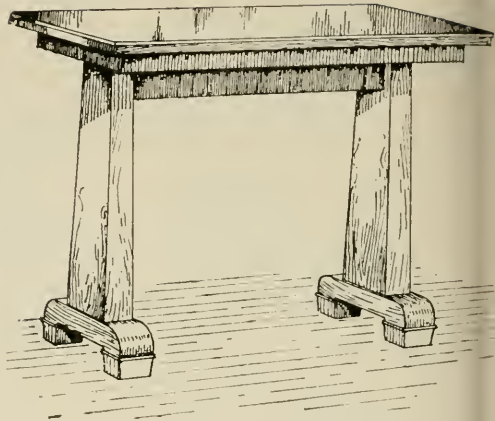


Fig. BB

Table for Booth Cosy Corner as shown in Fig. B. See top of page 8 for prices. Width of top, 20". Length of top, 42".

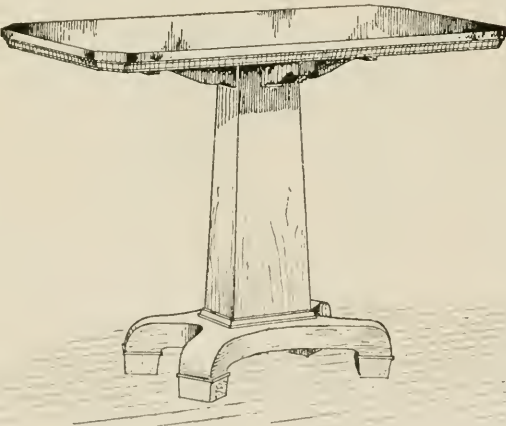


Fig. CC

Table for Booth Cosy Corner as shown in Fig. C. See bottom of page 8 for prices. Width of top, 20". Length of top, 42".

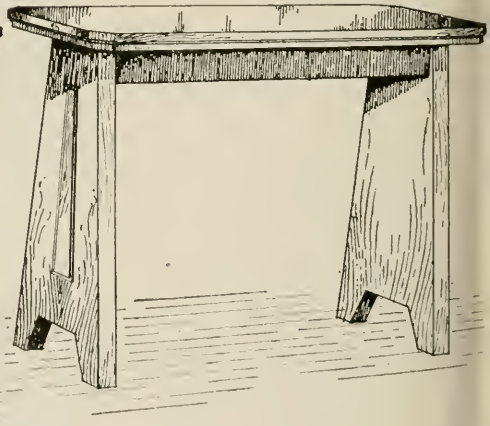


Fig. DD

Table which can be used (if a table is wanted there) at the front end of a row of Snuggle-Up Cosy Corner Booths. See price list on page 9.



JUVENILE FURNITURE

No. 9M. Child's chair, weight 5 pounds, seat 9½ inches in diameter, of Quartered Oak or Birch Mahogany veneer. Frame, regularly finished in Japanese copper. Height of seat from floor, 12 inches.

PRICES: { Japanese copper\$1.50
 { Nickel plated 2.50
 { White enamel 2.50

No. 331M. Child's table, weight 7 pounds, top of Quartered Oak or Birch Mahogany, 16 inches in diameter, height from floor 17 inches. Frame, regularly finished in Japanese copper.

PRICES: { Japanese copper\$2.00
 { Nickel plated 3.00
 { White enamel 3.00

No. 332M. Child's Table. Has an 18-inch diameter top of white quartz onyx, with the edge slightly raised to prevent spilled liquids from running off onto the floor. Weight about 28 pounds. Metal parts regularly finished in Japanese copper. It's a beauty.

PRICES:
 Japanese copper finish.....\$ 9.00
 Nickerled or white enameled..... 10.00

ANDREW'S Metal Furniture for the children has a well recognized place in the list of seating needed for a Soda Fountain or Confectionery; while the practical indestructibility of these juvenile chairs and tables, not less than their attractive appearance and the permanent interest they hold for the little people, makes their selection for the play room almost a foregone conclusion.





3M CHAIR

A standard chair for all purposes. Heavy 3-ply veneer seat (either quartered oak or birch mahogany) 14¼ inches in diameter. Frame of a special grade of Bessemer steel, regularly finished in durable Japanese copper, but can be had if desired in nickel plate or in white enamel. Weight 12½ pounds.

Japanese copper finish	\$2.00
Nickel plated finish	3.00
White enamel finish	3.20

Specify whether oak or birch mahogany veneers are wanted, and also indicate the finish desired on the metal parts (chairs finished in white enamel will have seats enameled also).

In an *ANDREW'S* chair, you have a springy, cushionlike support for your back—a support that yields slightly with each movement of one's body, but comes back to place instantly when the pressure is removed.

No wooden chair can compare with an *ANDREW'S* in respect to durability and sanitary cleanliness.



6M CHAIR

Here's a design that meets every demand for a comfortable chair for constant service. Veneer back and seat, either quartered oak or birch mahogany. Frame, Japanese copper or nickel plate, or the whole chair may be had in white enamel if desired. Weight 14 pounds.

PRICES:

Japanese copper	\$3.00
Nickel plated	4.00
White enamel	4.20

At soda fountains and in confectioneries generally *ANDREWS* metal furniture long since established itself as the most satisfactory equipment that could be installed, both because of its shining and attractive appearance, and because of its sanitary cleanliness. Go where you will—east, west, north, south—everywhere you will find this durable and comfortable furniture in use.



13M CHAIR

It may be had in plush, genuine leather or imitation leather upholstered seat; frame Japanese copper finish, nickel plated finish or white enamel, as desired. Weight, 14 pounds.

A chair that is very attractive in appearance, and as good as it looks.

PRICES:	*GENUINE LEATHER.	IMITATION LEATHER.
Japanese copper finish.....	\$5.00	\$3.50
Nickel plated finish.....	6.00	4.50
White enamel finish.....	6.20	4.70

*Plush upholstering takes the same price as Genuine Leather.

Note the continuous bracing of the *ANDREWS* chair construction—see how it is woven into and becomes a part of each leg. No brazed or soldered joints here to give way—no loosely fitting loops to rattle—no extra bolts and nuts to keep tightened up that the chair may not fall apart. *ANDREWS*' metal furniture is built for *service*.



17M CHAIR

This chair has quartered oak or birch mahogany veneer back, seat upholstered in plush, genuine leather or imitation leather as desired, and frame regularly finished in Japanese copper. Nickel plated or white enamel finish can be had if so ordered. Weight 16 pounds.

PRICES:	*GENUINE LEATHER.	IMITATION LEATHER.
Japanese copper finish	\$6.00	\$4.50
Nickel plated finish.....	7.00	5.50
White enamel finish.....	7.20	5.70

*Plush upholstery takes the same price as genuine leather.

In the construction of this chair, we had in mind comfort, style, finish and durability. That we have incorporated all of these features in this handsome pattern is evident. It is made for practical use, too—not just for show.



21M UPHOLSTERED CHAIR

The comfortable appearance of this handsome chair makes it particularly desirable where something out of the ordinary is wanted. Upholstered in plush, it is largely used as a theater box chair; in genuine leather, it is the chair *de luxe* for high class confectioneries and ice cream parlors.

We earnestly commend it to the man who wants "something different."

NO.	UPHOLSTERED IN	JAPANESE	NICKEL	WHITE
		COPPER,	PLATED,	ENAMEL.
21M	Plush	\$11.00	\$12.00	\$12.20
22M	Imitation Leather	9.50	10.50	10.70
23M	Genuine Leather	11.00	12.00	12.20

No. 32M Tete-a-Tete chair, weight 30 pounds, Quartered Oak or Birch Mahogany veneer seats and table. Frame, regularly finished in Japanese copper.

PRICES:

Japanese copper	\$ 7.50
Nickel plated	10.00
White enamel	10.50

When we brought out this Tete-a-Tete outfit, we created another original and exclusive design in Metal Furniture. In its construction, we use two of our regular No. 3M chairs, joined together with our improved center table rack, which is bolted to the rim of each chair.

Size of table, $17\frac{1}{2} \times 9\frac{1}{2}$ inches; height from floor, 28 inches. Total floor space covered by Tete-a-Tete chair outfit, 37×17 inches.



No. 34M Tete-a-Tete chair, weight 32 pounds. Seats, backs and table Quartered Oak or Birch Mahogany. Frame, regularly finished in Japanese copper.

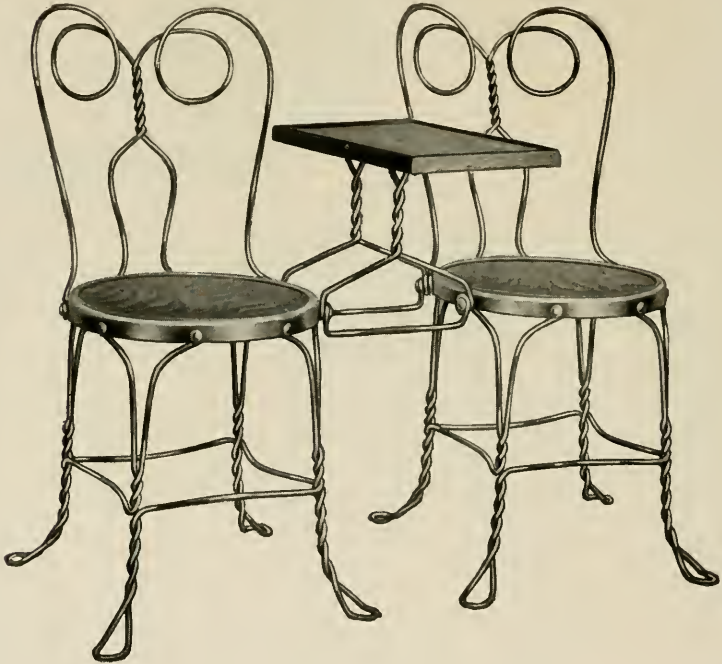
PRICES:

Japanese copper	\$ 9.50
Nickel plated	12.00
White enamel	12.50

This outfit is similar to the No. 32M, illustrated above, except that the No. 6M chair is used instead of the No. 3M. The table dimensions remain the same.

These Tete-a-Tete sets are deservedly popular, for couples, especially, like to be "by themselves."





COMBINATION SET

No. 38M Combination Set, weight 30 pounds, Quartered Oak or Birch Mahogany seats and table. Metal parts regularly finished in Japanese copper.

PRICES:

Japanese copper	\$ 7.50
Nickel plated	10.00
White enamel	10.50

This combination is very effective as a space saving device, and is particularly well adapted for use along a wall or partition. It combines two of our No. 3M chairs, facing in the same direction, with the table such as is described in connection with No. 32M Tete-a-Tete chair outfit on page 17.



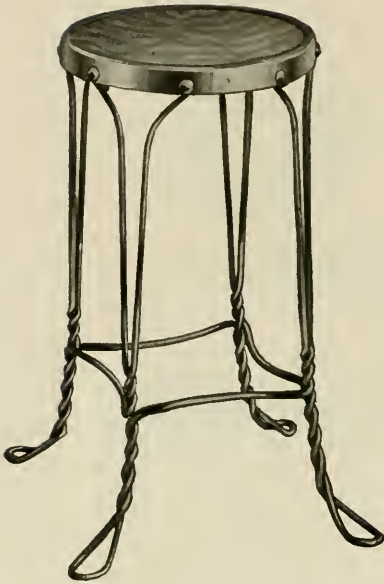
COMBINATION SET

No. 44M Combination Set, weight 32 pounds. Quartered Oak or Birch Mahogany veneer seats, backs and tables. Metal parts regularly finished in Japanese copper.

PRICES:

Japanese copper	\$ 9.50
Nickel plated	12.00
White enamel	12.50

This combination is similar to the one shown on the opposite page, except that the No. 6M chair is utilized instead of the No. 3M, and for those who prefer a wood back to their chairs, this outfit should make an especial appeal, as it is both comfortable and very attractive in appearance.



No. 237M stool, weight 9 pounds. Seat, Quartered Oak or Birch Mahogany veneer. Diameter of seat, 12½ inches. Metal parts regularly finished in Japanese copper. Made in various heights as shown below.

PRICES:	24 or 26	28	30
	INS.	INS.	INS.
Japanese copper...	\$1.60	\$1.70	\$1.80
Nickel plated.....	2.40	2.50	2.60
White enamel.....	2.60	2.70	2.80

No. 231M stool, weight 9 pounds; exactly the same as the No. 237M stool, except that the seat is only 9½ inches in diameter, instead of 12½ inches. To get at the list price of the No. 231M stool, deduct 10 cents from the price given for the corresponding height and style of finish of No. 237M.

No. 225M counter stool, made in two heights, 24 inches and 26 inches; size of seat, 14½ inches in diameter; upholstered either in Plush, Genuine Leather or Imitation Leather. The price is the same for either 24 inches or 26 inches, but customer should indicate clearly what height he desires.

PRICES:	*GENUINE IMITATION	
	LEATHER.	LEATHER.
Japanese copper.	\$4.50	\$3.00
Nickel plated....	5.30	3.80
White enamel...	5.50	4.00

*Plush upholstery takes the same price as Genuine Leather.



No. 238M stool, weight 11 pounds, Quartered Oak or Birch Mahogany veneer seat 12 inches in diameter. Metal parts regularly finished in Japanese copper. Made in two heights, 24 inches and 26 inches.

PRICES:

Japanese copper	\$2.30
Nickel plated	3.30
White enamel	3.50

It is made up also in the regular chair height (18 inches), in which case the price in Japanese copper is \$2.00 (see illustration on page 32). In ordering stools, be particular to say what height is wanted.



GROUPING STOOLS, FOR PHOTOGRAPHERS



Here is a combination of seven stools (No. 231M) in three heights. Two of the stools are 11 inches high, three 17 inches high, and two 24 inches high. They have Quartered Oak or Birch Mahogany veneer seats 9½ inches in diameter, and the metal parts are finished in Japanese copper. The prices for any height up to and including 26 inches is \$1.50

each, or if nickel plated finish is desired, the price would be \$2.30. For white enamel finish, the price would be \$2.50.



**REVOLVING COUNTER
STOOL No. 175M**

A most attractive design, with a conical base of excellent proportions tapering gracefully from the floor line to the seat. Unquestionably the handsomest and strongest counter stool on the market. Made either with or without nickel plated seat ring, and with the wood seat of either oak or birch mahogany. Cover all these points when you order, and mention the height wanted.



PRICES—Style No. 175M

HEIGHT OVER ALL	BLACK JAPAN BASE		JAP. COPPER BASE		PORC. ENAMEL BASE	
	WITHOUT RING	WITH N. P. RING	WITHOUT RING	WITH N. P. RING	WITHOUT RING	WITH N. P. RING
21 in.	\$2.10	\$3.50	\$2.70	\$4.10	\$4.10	\$4.60
25 in.	2.30	4.20	2.90	4.80	4.30	4.80
27 in.	2.40	4.40	3.00	5.00	4.40	5.00
30 in.	2.60	4.60	3.10	5.20	4.50	5.10



**REVOLVING COUNTER
STOOL No. 185M**

Another pattern preserving the same general proportions as the preceding design, but carrying out the square effect. Very popular. Made both with and without nickel-plated seat ring. Say which style seat you want, whether the wood part is to be oak or birch mahogany, what the finish on the base is to be, and indicate what height you desire.



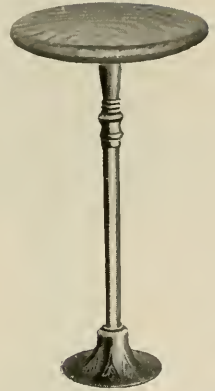
PRICES—Style No. 185M

HEIGHT OVER ALL	BLACK JAPAN BASE		JAP. COPPER BASE		PORC. ENAMEL BASE	
	WITHOUT RING	WITH N. P. RING	WITHOUT RING	WITH N. P. RING	WITHOUT RING	WITH N. P. RING
21 in.	\$2.00	\$2.90	\$2.50	\$3.50	\$3.90	\$4.40
25 in.	2.30	3.20	2.80	3.70	4.10	4.70
30 in.	2.50	3.50	3.00	4.10	4.40	4.90

REVOLVING COUNTER STOOL
No. 195M

Another very neat and attractive design, not as heavy as either of the other two patterns we show here, but still a strong and practical stool for those buyers who want something less expensive. It comes either with or without nickel seat ring. Exceptionally good value for the money.

Say whether you want the seat in oak or birch mahogany, and what finish is desired on the base. Be sure to tell what height is wanted.



PRICES—Style No. 195M

HEIGHT OVER ALL	BLACK JAPANNED		JAP. COPPER FINISH		NICKEL FINISH	
	WITHOUT RING	WITH N. P. RING	WITHOUT RING	WITH N. P. RING	WITHOUT RING	WITH N. P. RING
21 in.	\$1.30	\$1.80	\$1.90	\$2.40	\$1.90	\$2.30
25 in.	1.40	1.90	2.00	2.46	2.00	2.40
27 in.	1.50	1.96	2.06	2.50	2.10	2.50
30 in.	1.60	2.00	2.10	2.56	2.20	2.60



REVOLVING COUNTER STOOL
No. 100M

A very popular stool for use at lunch counters and soda fountains; neat in appearance, and serviceable. The solid wood seat (oak or birch finished in imitation mahogany) is encircled by a nickel-plated ring. Base finished in black japan. See also other combinations and finishes below. Order by number, specify height, and say whether oak or mahogany birch is wanted.

HEIGHT OVER ALL	WITH BLACK JAPANNED BASE		WITH JAPANESE COPPER BASE	
	NO. 102M WITHOUT N. P. RING	NO. 100M WITH N. P. RING	NO. 103M WITHOUT N. P. RING	NO. 101M WITH N. P. RING
21 in.	\$1.90	\$3.20	\$2.40	\$3.80
25 in.	2.10	3.80	2.60	4.40
27 in.	2.20	3.90	2.70	4.50
30 in.	2.50	4.40	3.10	5.00

REVOLVING CHAIR BACK STOOLS



160M (with Round Base)
161M (with Square Base)



162M (with Round Base)
163M (with Square Base)

GOLDEN OAK, GLOSS

QUARTERED OAK, RUBBED

HEIGHT	BLK. JAPAN	JAP. COPPER
18 in.	\$6.30	\$6.90
21 in.	6.40	7.00
25 in.	6.50	7.10
30 in.	6.70	7.20

HEIGHT	BLK. JAPAN	JAP. COPPER
18 in.	\$9.60	\$10.20
21 in.	9.70	10.30
25 in.	9.80	10.40
30 in.	9.90	10.60



164M (with Round Base)
165M (with Square Base)



166M (with Round Base)
167M (with Square Base)

GOLDEN OAK, GLOSS

GOLDEN ELM SEAT AND BACK

HEIGHT	BLK. JAPAN	JAP. COPPER
18 in.	\$5.20	\$5.80
21 in.	5.30	5.90
25 in.	5.40	6.00
30 in.	5.60	6.20

HEIGHT	BLK. JAPAN	JAP. COPPER
18 in.	\$6.50	\$7.10
21 in.	6.90	7.50
25 in.	7.20	7.80
30 in.	7.50	8.25

REVOLVING CHAIR BACK STOOLS



165M (with Square Base)
154M (with Round Base)



168M (with Square Base)
169M (with Round Base)

GOLDEN OAK, GLOSS			GOLDEN OAK, POL. SADDLE VEN. SEAT		
HEIGHT	BLK. JAPAN	JAP. COPPER	HEIGHT	BLK. JAPAN	JAP. COPPER
18 in.	\$5.20	\$5.80	18 in.	\$8.60	\$9.20
21 in.	5.30	5.90	21 in.	8.70	9.30
25 in.	5.40	6.00	25 in.	8.80	9.40
30 in.	5.60	6.20	30 in.	9.00	9.60



170M (with Square Base)
171M (with Round Base)

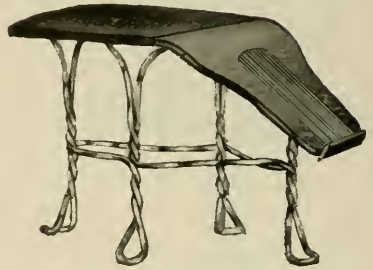


172M (with Square Base)
173M (with Round Base)

GOLDEN OAK, GLOSS			GOLDEN OAK		
HEIGHT	BLK. JAPAN	JAP. COPPER	HEIGHT	BLK. JAPAN	JAP. COPPER
18 in.	\$5.60	\$6.10	18 in.	\$6.70	\$7.20
21 in.	5.70	6.20	21 in.	6.80	7.30
25 in.	5.90	6.40	25 in.	6.90	7.40
30 in.	6.20	6.70	30 in.	7.10	7.60

SHOE FITTING STOOLS

No. 701M. The neatest and most practical shoe stool and foot rest obtainable. Top is made of 5-ply oak or birch veneer, covered with leatherette, padded; foot rest is covered with corrugated rubber. Woodwork is finished in golden oak or mahogany (as specified); frame in Japanese copper. Price, \$2.70.



"Note the continuous brace"

No. 710M. Same as the No. 701M in every respect, except that the top has no leatherette covering or padding. Price, \$2.40.



703M HANDY SHOE SHINER

Designed for use when patron is in the barber's chair. The metal shelf holds the brushes, etc., and the relative position of seat and foot rest is such as to afford comfort and convenience to both operator and patron.

PRICES:

	JAPANESE COPPER.	NICKEL PLATED.	WHITE ENAMELED.
No. 703M.....	\$5.00	\$5.80	\$6.20



705M SHOE SHINING CHAIR

Constructed wholly of metal with the exception of the seat and arm rests. Will look good and last a lifetime.

Platform and drawer of sheet steel. Foot rests malleable iron. Frame Japanese copper finish. Seat heavy veneer, either of golden oak or mahoganized birch, as preferred.

Weight, packed for shipment, about 42 pounds.

PRICES:

Japanese copper finish.....	\$11.50
Nickel plated finish.....	14.50
White enamel finish.....	15.50



115M SPRING BACK COUNTER STOOL

The very latest idea in a comfortable revolving seat stool. The steel rods are flexible and give with each movement of the body, supplying a "springy" satisfying support for the back.

No. 115M Stool. Seat and wood back, quartered oak or birch, mahogany finished; height, 21 and 25 inches; base and wire back, Japanese copper finish.

Price\$6.00
Same, finished in black japan..... 5.00

In ordering specify height wanted and finish desired.



350M

BARGAIN DISPLAY TABLES

Do not confuse the *ANDREWS* bargain display tables with the cheaper grades of tables on the market in which the trays are made of veneer instead of solid stock.

Every retail store needs one or more of these tables. We sell more of the 30x48 inch size than any other, and therefore do not list anything else here, though on a quantity of six or more of a size we shall be glad to quote on whatever you need to meet available space conditions.

Is made both in solid quartered oak and in mahoganized birch, and unless otherwise specified will be furnished with the metal parts finished in Japanese copper.

	METAL PARTS	METAL PARTS	METAL PARTS
	JAPANESE	NICKEL	WHITE
	COPPER.	PLATED.	ENAMELED.
No. 350 30x48 ins.....	\$15.00	\$16.50	\$18.90

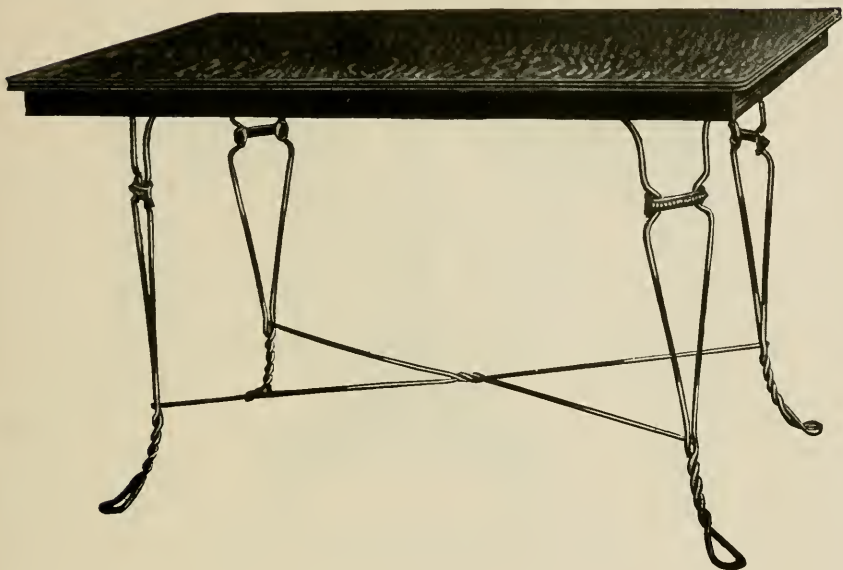


No. 353M SQUARE TABLE

No. 353M. The standard square table for restaurants and confectioneries, illustrated here, measures 27x27 inches. Note the solid construction of the top, and bear in mind that the lumber in *all* kinds of *ANDREWS* tables is thoroughly seasoned and kiln-dried.

Oak or mahoganized birch, as desired. Weight, 37 pounds.

PRICES:	JAPANESE COPPER.	NICKEL PLATED.	WHITE ENAMELED.
No. 353M 27 in. square.....	\$6.00	\$7.50	\$8.70



No. 351M RECTANGULAR TABLE

For a rectangular table, we recommend the 30x48 inch size as being more popular than any other. This is our No. 351M, the general construction being identical with that of the square table shown in the illustration on the opposite page.

Oak or mahoganized birch, as desired.

PRICES:	JAPANESE COPPER.	NICKEL PLATED.	WHITE ENAMELED.
No. 351M 30x48 ins. (rectangular) . . .	\$8.50	\$10.00	\$12.40



ANDREWS' SPACE SAVERS

No. 333M TABLE

This table, with the No. 238M chair shown, makes an outfit that will at once appeal to those who are crowded for space.

No. 333M table, weight 25 pounds, 16 inches in diameter, either Quartered Oak or Birch Mahogany. Cast iron base.

PRICE OF TABLE:

Base in Black Japan.....	\$4.00
Base in Japanese Copper.....	4.50
Base in Nickel Plate	6.50
Base in White Enamel.....	6.00

No. 238M chair, weight 10 pounds, height 18 inches, Quartered Oak or Birch Mahogany veneer seat 12½ inches in diameter. Price, finished in Japanese copper, \$2.00 each; if nickel-plated, \$3.00; in White Enamel, \$3.20.



ROUND WOOD TOP TABLES

Note that all our round wood tops, solid quartered oak or birch mahogany, in addition to being thoroughly seasoned, are made, *always*, with a reinforcing wood ring on the under side, and will not warp. It may be added that we have never put them out any other way. Note also that in *ANDREWS'* tables the legs are now seated in pressed steel—not cast iron—sockets, so that breakage at this point, in setting up tables, is practically impossible.

PRICES:

CATALOG.	DIAMETER.	WEIGHT.	WITH	WITH	WITH WHITE
			JAP. COPPER	NICKELED	ENAMELED
			BASE.	BASE.	BASE.
No. 300M	18 in.	20 lbs.	\$3.80	\$ 5.30	\$ 5.80
No. 301M	24 in.	25 lbs.	4.60	6.10	7.10
No. 303M	30 in.	35 lbs.	6.20	7.70	9.20
No. 305M	36 in.	44 lbs.	7.50	9.00	11.10
No. 307M	42 in.	53 lbs.	9.00	10.50	13.40

The above prices contemplate the regular finish (golden oak or imitation mahogany) for the tops, except where white enamel finish is called for, in which case the tops, as well as the bases, will be white enameled.



323M

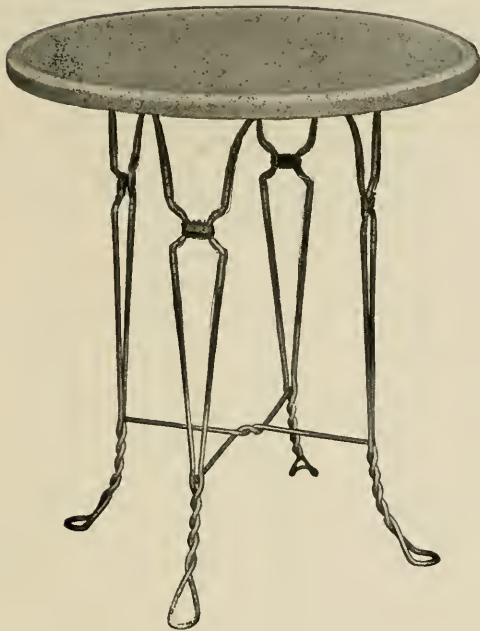
323M ROUND MARBLE TOP TABLES

There is a certain elegance about a piece of beautiful marble which no imitative material possesses. Marble top tables, once installed, require no attention other than to keep them clean—and, with a damp cloth, that is but the work of an instant.

Our tables are made with our improved metal base, bolted securely to the white or gray marble top. In ordering, specify color of marble wanted.

PRICES:	JAPANESE COPPER.	NICKEL PLATED.	WHITE ENAMELED.
No. 321M Top, 24 in. diameter.....	\$12.00	\$13.50	\$13.50
No. 323M Top, 30 in. diameter.....	17.50	19.00	19.00

In both the marble top and the quartz onyx top tables, the twisted steel rod used in the base is slightly heavier than is employed for the wood top tables. This is because of the greater weight it has to sustain.



ANDREWS' "PORCELSTEEL" TABLES

Something new—and a distinct advance in table construction. In combination with a strong and well proportioned metal base we provide a snow-white top that *looks* like white glass, but is really made of pressed steel to which successive coats of the finest *porcelain enamel* have been carefully applied and baked on at high temperature.

These "Porcelsteel" tops are made with a slightly raised edge, same as our quartz onyx top tables.

Each has a durably constructed core, or body, of wood to which the top is fastened (at equidistant points around the flange) by means of small oval head nickeled screws seated in raised rim nickel-plated washers. The result is a strong, handsome table of practical worth and durability.

PRICES:	JAPANESE COPPER.	NICKEL PLATED.	WHITE ENAMELED.
No. 360M 24 in. diameter.....	\$ 8.50	\$10.00	\$11.00
No. 362M 30 in. diameter.....	11.80	13.30	14.80



313M SHELF TABLES

Top and shelf solid quarter-sawed oak, or birch finished in imitation mahogany. A handsome and serviceable table, of which hundreds have been sold. Metal parts are finished in Japanese copper unless otherwise specified.

PRICES:		JAPANESE COPPER.	NICKEL PLATED	WHITE ENAMELED.
No. 313M	30 in. diameter.....	\$ 8.40	\$ 9.90	\$12.10
No. 315M	36 in. diameter.....	10.40	11.90	15.10
No. 317M	42 in. diameter.....	13.00	14.50	18.90

It may not be out of place here to call attention to the possibilities of this table, nickel-plated or white enameled, for use in ice cream parlors or confectioneries. Think how shoppers would appreciate a table that provided a place for the temporary deposit of bundles or packages instead of having to lay them on the floor!

Whatever a storekeeper does to serve the comfort and convenience of his customers is appreciated—and bears fruit.



325M

325M QUARTZ ONYX TOP TABLES

Quartz onyx is a beautiful snow-white material with a surface as smooth as polished glass. It is very dense in texture, being produced under intense heat, and is therefore non-absorbent, and cleans as readily as a glass dish. From a sanitary point of view, nothing could be more desirable.

Made up with the twisted steel wire base as illustrated above, and with the metal parts richly finished in Japanese copper, it would be difficult to conceive of a more attractive table for soda fountain or confectionery service, or for restaurant use.

PRICES :		JAPANESE	NICKEL	WHITE
		COPPER.	PLATED.	ENAMELED.
No. 325M	24 in. diameter.....	\$12.00	\$13.50	\$13.50
No. 327M	30 in. diameter.....	17.50	19.00	19.00
No. 329M	36 in. diameter.....	24.00	25.50	25.50
No. 332M	18 in. Child's Table.....	9.00	10.00	10.00



No. 345M IRON BASE PEDESTAL TABLE

Here is a good solid 36 in. diameter table with heavy pedestal base. The illustration shows it with quartz onyx top, but below we give prices on both the quartz onyx and the oak top tables.

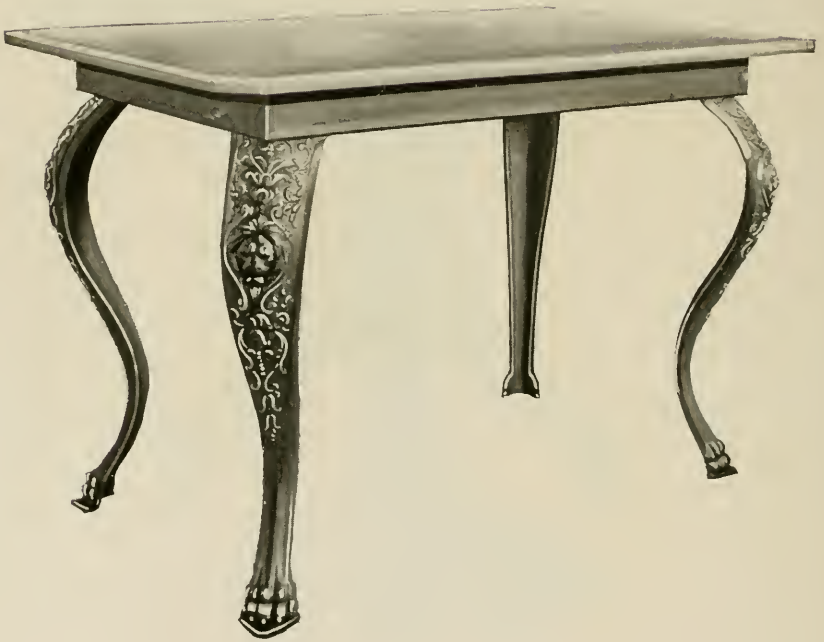
	BLACK JAPAN.	JAPANESE COPPER.	WHITE ENAMEL.
No. 345M With Quartz Onyx Top.....	\$20.50	\$23.50	\$24.00
No. 346M With Golden Oak Top.....	13.50	19.50	20.00



No. 334M IRON BASE TABLE

With snow-white Quartz Onyx top and best quality cast iron base finished in Black Japan or Japanese Copper.

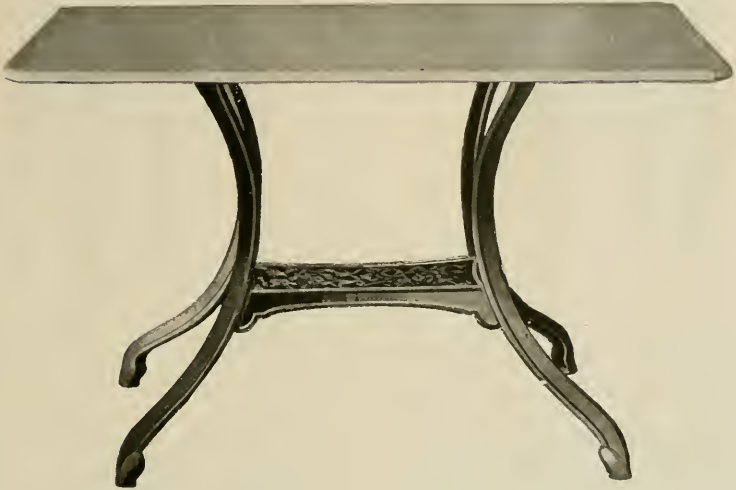
		BLACK JAPAN BASE.	JAPANESE COPPER BASE.	APPROXIMATE WEIGHT.
No. 334M	24 in. diameter.....	\$ 9.20	\$10.40	60 lbs.
No. 335M	30 in. diameter.....	10.40	14.10	75 lbs.
No. 336M	36 in. diameter.....	18.40	19.50	100 lbs.



No. 341M QUARTZ ONYX TOP TABLE

A handsome design. Has cast iron French legs, with 30x48 raised edge opal onyx top. Stands about 30 in. high. Weight, 180 lbs.

	BLACK	JAPANESE	WHITE
	JAPAN.	COPPER.	ENAMEL.
No. 341M 30x48	\$30.00	\$33.50	\$34.00



No. 339M RESTAURANT TABLE

With quartz onyx tops, having slightly raised edges. Bases, Black Japan or Japanese Copper finish, as may be specified.

NO.	SIZE	FINISH		APPROXIMATE WEIGHT
		BLACK JAPAN	JAPANESE COPPER	
337M	24 x 36	\$13.60	\$15.00	85 lbs.
338M	24 x 48	17.70	19.10	105 lbs.
339M	30 x 48	21.20	22.60	120 lbs.

DEPENDABLE BENT WOOD FURNITURE



No. 1000B—Cane or Veneer
Oak or Mahogany Finish.
Price, each\$3.20



No. 1006B—Cane or Veneer
Oak or Mahogany Finish.
Price, each\$4.20



No. 1007B—Cane or Veneer
Oak or Mahogany Finish.
Price, each\$4.90



No. 1008B—Hand Caned
Oak or Mahogany Finish.
Price, each\$7.40

DEPENDABLE BENT WOOD FURNITURE



No. 1005B—Veneer Seat

(Perforated Imitation Cane.)
Oak or Mahogany Finish.

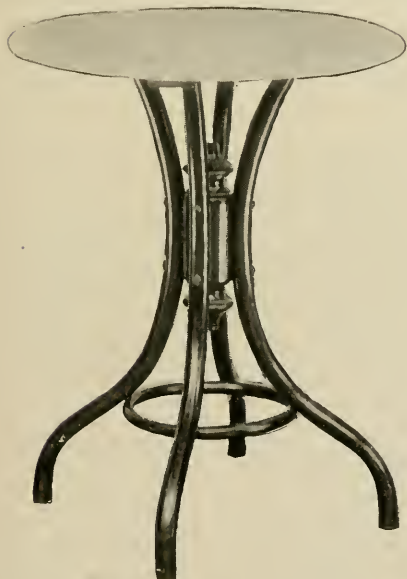
Price, each\$3.90



No. 1004B—Veneer Seat

Golden Oak or Mahoganyed Birch.

Price, each.....\$4.60



Quartz Onyx Top Tables

No. 3050B 24-inch diameter...\$35.00

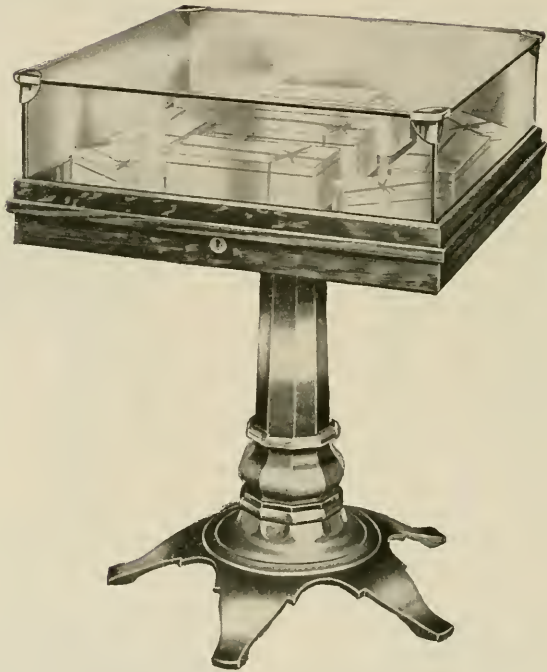
No. 3051B 30-inch diameter... 49.00



Wood Top Tables

No. 3000B 24-inch diameter...\$17.00

No. 3001B 30-inch diameter... 21.50



358M

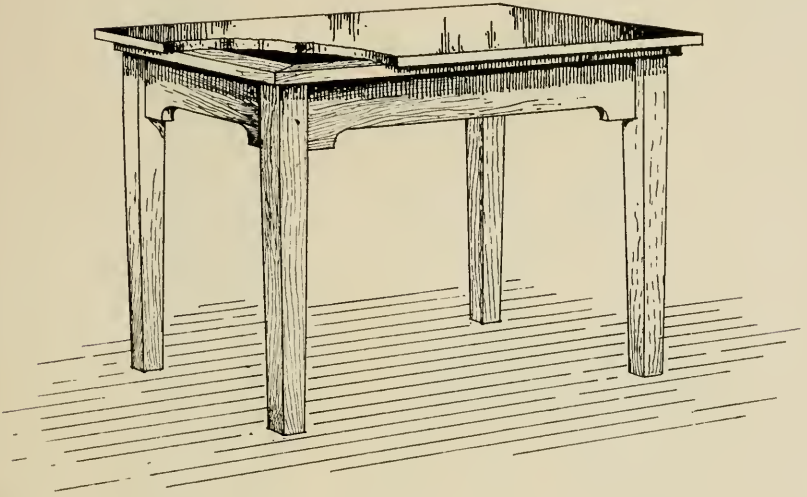
DISPLAY SHOW-CASE TABLE

Our Display Show-Case Table has a heavy cast iron base, which insures perfect rigidity, and the spread at the bottom is such as to prevent tipping. The heavy plate glass top operates on brass hinges and when lifted up is entirely free from the wood bottom, making it possible to easily arrange the contents of the case, which may be used for the display of candies, etc. Wood is quartered oak or birch, mahogany finished, top of table is 24 inches square, and stands 31 inches from floor (*the regular table height*).

Four of our No. 3M chairs, No. 237M or No. 238 M stools, 18 inches high, should be used in connection with it for this purpose.

PRICES:

No. 358M	Table as above, Japanese copper finish.....	\$42.00
No. 358M	Table as above, black japan finish.....	40.00
No. 358M	Table as above, white enamel finish.....	44.00
No. 358M	Table as above, nickel plated finish.....	45.00



WOOD BASE TABLES

In the illustration the top is cut away to show the excellent construction of the base. Clearly, strength and rigidity are assured. These tables are made with 3 in. tapered square legs and with a 4 in. apron below the top of the wood frame. The outer edge of the wood frame is finished to match the finish on the legs and apron. The table top may be either oak or birch mahogany, or snow-white quartz onyx, as desired by purchaser. See list below for prices on both styles. In ordering say what finish is wanted and whether top is to be wood or quartz onyx.

NO.	SIZE OF TOP.	MADE ENTIRELY OF	
		OAK OR BIRCH.	BASE OAK OR BIRCH, TOP QUARTZ ONYX.
393M	30x36	\$5.50	\$10.75
394M	36x36	6.25	12.25
395M	30x42	6.75	13.25
396M	30x48	7.25	14.65



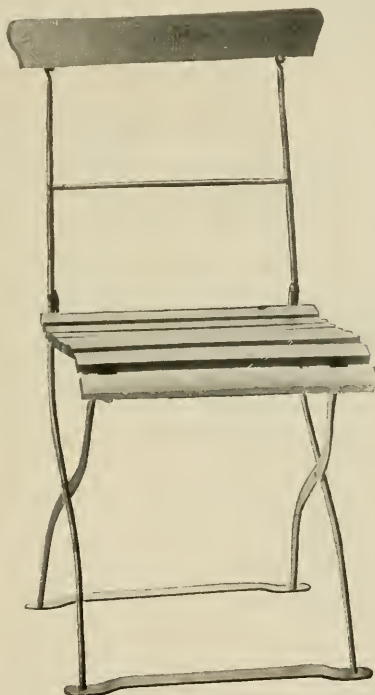
No. 395M FOLDING LAWN TABLE

The top is sheet steel, finished in white enamel. The base is finished in olive green. We can supply them in either 25 in. or 29 in. diameter, weighing respectively 20½ lbs. and 25 lbs.

Not carried in stock, so that the number required has much to do with determining the price. Let us have your specifications.



Closed



Open

No. 98M FOLDING LAWN CHAIR

Frame finished in olive green, with the seat and back woods in weathered oak. Height (over all) 34 inches. Seat measures $15\frac{1}{2}$ inches by 12 inches. Weighs 12 lbs. Not carried in stock, but made up after receipt of order. Hence the quantity wanted has considerable bearing on the price. Write for quotation on your requirements.

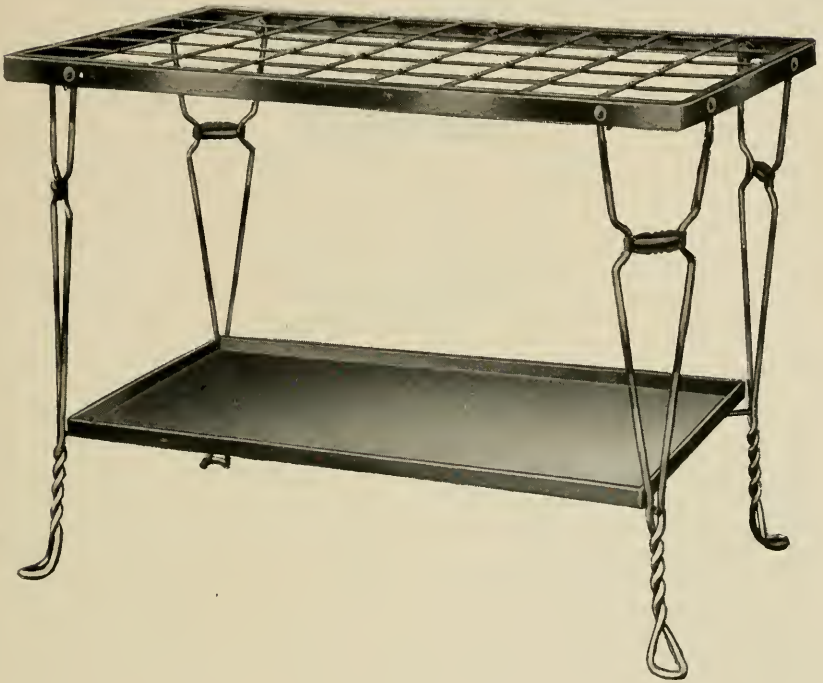


No. 390M SWINGING SEAT TABLE

While the demand for this table is limited to certain sections of the country, we catalog it for the benefit of those of our jobbers who have occasional calls for it.

Made with either 30 in. or 36 in. quartz onyx top on a heavy iron base. Does not need to be fastened to the floor. The 30 in. table weighs about 315 lbs.

		BLACK	JAPANESE	WHITE
		JAPAN.	COPPER.	ENAMEL.
No. 390M	30 in. square.....	\$42.00	\$45.60	\$47.50
No. 391M	36 in. square.....	47.50	50.80	53.00



750M

THE ANDREWS ALL-MÉTAL UMBRELLA STAND

This umbrella stand has been designed for use in stores, restaurants, and factory departments where there are a large number of umbrellas to be taken care of, for which purpose it is admirably adapted, as it has capacity for forty-five of them. The stand is shipped in knocked down form, being readily assembled at destination.

The drip pan is made so that it can be removed, if desired, although in actual service it is found more desirable to simply sop up the accumulated water with a sponge, squeezing it out afterward into a pail, in which it can be carried out by the janitor or porter.

The price, finished in Japanese copper, with top grill and pan finished in black, is \$13.00.



30M ARM CHAIR

The generous proportions of this chair, its graceful lines and durable construction, combine to make it an exceptionally desirable seat for lobby or cafe use. Regularly finished in Japanese copper, but can be had with metal parts nickel plated or finished in white enamel. The seat is either quartered oak or mahoganzed birch, made of the very best grade of heavy veneer.

In the small illustration below, we show this same chair made with an upholstered seat, in which style it is known as No. 31M. Be sure to order by number, and if the upholstered type is wanted, indicate whether genuine leather or imitation leather is to be furnished.

	SEAT.	JAPANESE COPPER.	NICKEL PLATED.	WHITE ENAMELED.
No. 30M	Veneer	\$3.20	\$4.20	\$4.40
No. 31M	Genuine leather	6.20	7.20	7.40
No. 36M	Imitation leather	4.70	5.70	5.90



31M

This upholstered seat pattern (No. 31M or 36M) makes an ideal chair for lodge rooms.



60M ARM CHAIR

For those who prefer the wood back we offer this adaptation of the chair illustrated on the opposite page. Roomy, attractive in appearance, and in its construction embodying all those features that have made *ANDREW'S* metal chairs so satisfactory, it is splendid value for the money.

We also make it with the seat upholstered in either genuine leather or imitation leather. Order by number.

PRICES:

	SEAT.	JAPANESE COPPER.	NICKEL PLATED.	WHITE ENAMELED.
No. 60M	Oak or birch veneer.....	\$4.00	\$5.00	\$5.20
No. 61M	Genuine leather	7.00	8.00	8.20
No. 62M	Imitation leather	5.50	6.50	6.70

With the upholstered seat this is an excellent chair for hotel lobby use. It looks well, wears well and is exceedingly comfortable.

8M BILLIARD CHAIR



A chair especially designed for billiard and pool rooms, the construction being such as to make it practically indestructible. We ship thousands of them every year. Seat is 25 inches high.

Regularly supplied with quartered oak or mahogany birch veneer seat. Metal parts Japanese copper finish.

The smaller illustration shows the same chair with upholstered seat—either in genuine leather or imitation leather. Order by number.

	SEAT.	JAPANESE COPPER.	NICKEL PLATED.	ENAMELED, WHITE
No. 8M	Veneer	\$3.50	\$4.50	\$4.70
No. 19M	Genuine leather	6.50	7.50	7.70
No. 20M	Imitation leather	5.00	6.00	6.20

19M AND 20M

WITH UPHOLSTERED SEAT: A happy combination of practical utility and comfortable elegance.

All of us respond unconsciously to pleasant environment. This is as true in billiard halls as in drug stores and confectioneries.



63M BILLIARD CHAIR

This style, showing the regular billiard chair (see opposite page) fitted with wood back, will appeal to those who want something more elaborate.

Made regularly with heavy veneer seat and back of quartered oak, or of birch, mahogany finished. Height of seat, 25 inches. Frame finished in rich Japanese copper.

For prices see list below.



We also make this same chair with upholstered seat, in which case it is known as No. 64M or No. 65M. Whether in genuine leather or imitation leather, this upholstering gives a very comfortable and attractive appearance, and chairs so supplied are well worth the difference in price. For style of seat see small cut on opposite page.

	SEAT.	JAPANESE COPPER.	NICKEL PLATED.	WHITE ENAMELED.
No. 63M	Vencer	\$4.30	\$5.30	\$5.50
No. 64M	Genuine leather	7.30	8.30	8.50
No. 65M	Imitation leather	5.80	6.80	7.00

ANDREWS' No. 1-F FLAT-FOLD CHAIR

Best Flat Fold Folding Chair for All Purposes, both Indoors and Outdoors. A Favorite with Lodges. It folds Absolutely Flat.



In Position



Folded Absolutely Flat



Seat Raised to Permit Free Passage Between Rows

The No. 1-F Flat Fold is a favorite with Lodges. Strong in construction, it will stand the racket of hard usage, and the Assembly Hall may be rapidly cleared for dancing, drilling or other purposes. The chair folds absolutely flat—to the thickness of a side support, insuring a nice even stack when the chairs are piled up out of the way.

Specifications*

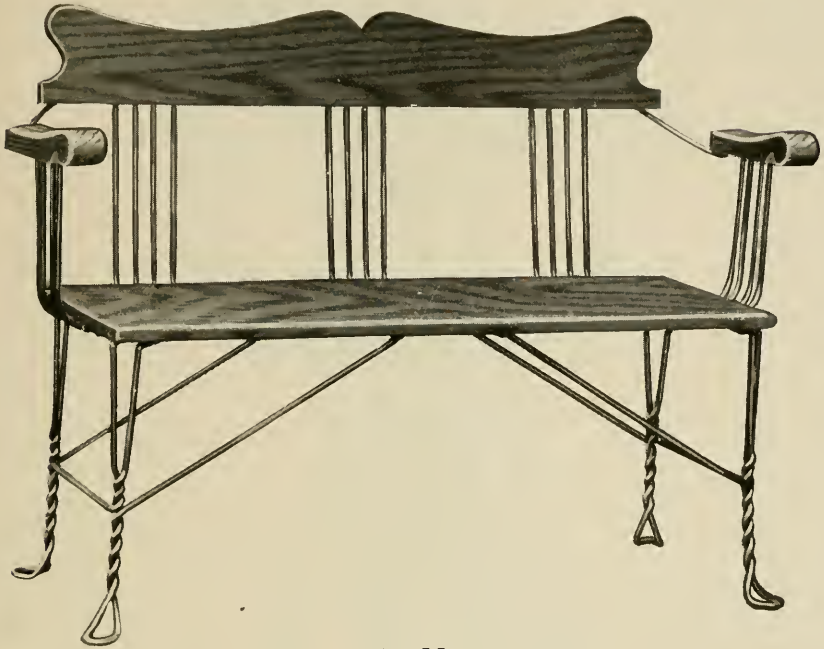
- Height of seat from floor 18 inches.
- Width of seat $13\frac{3}{8}$ inches.
- Width of chair 15 inches.
- Length of seat $12\frac{1}{4}$ inches.

The seat may be raised without folding the legs of the chair. When the chairs are arranged in rows this special and independent folding of the seat gives more room between rows and permits one person to pass in front of another with comfort.

Price and Weight No. 1-F Flat Fold

Net Weight Per Dozen, 111 lbs.
 Weight Per Dozen, packed for Shipment, 115 lbs.

No. 1-F Maple, Natural Finish,
 Price Per Dozen.....\$12.50
 No. 1-F Maple, Stained Finish,
 Price Per Dozen..... 14.00



730M

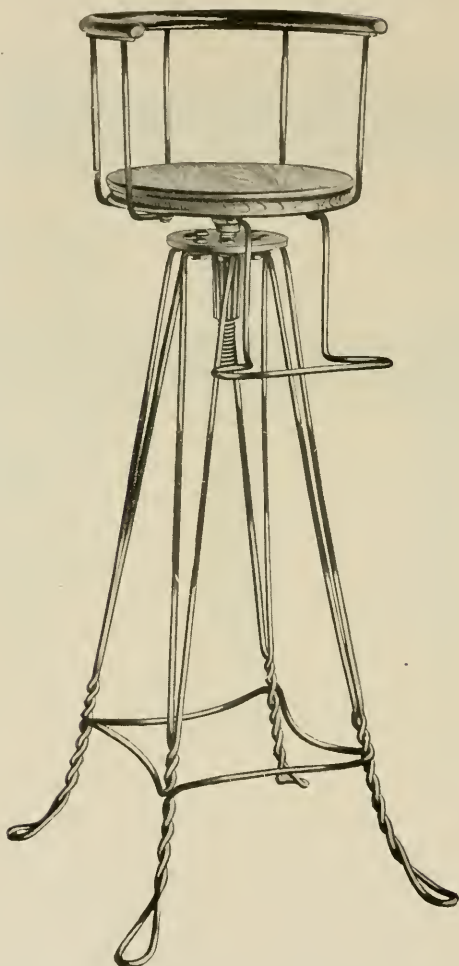
THE ANDREWS WIRE SETTEE

No. 730M Settee: Seat and back oak or mahoganzed birch, as ordered. Holds three persons comfortably. Weight, about 55 pounds. Price, \$10.00.

Here is one of the best things, in a comfortable and durable seat, ever put upon the market. The metal parts are extra heavy Bessemer steel rod, handsomely finished in the rich Japanese copper, and are so twisted and braced as to give an exceptionally rigid construction. Yet the back has just enough spring to it to make it very restful—a feature to which the generously proportioned arm supports and the width of the seat itself also contribute in no small degree.

We originally designed it for shoe stores, but it is rapidly being adopted in other lines of business, and particularly as a general purpose seat for waiting or reception rooms; for physicians' offices and dental parlors; in drug stores and confectioneries; in barber shops; in manicuring and beauty parlors; in billiard rooms; in purchasing departments and sales offices; indeed, there seems scarcely any limit to the field for this comfortable seat.

Do not fail to include some of these in your next order for stock.



90M CHILD'S HAIRCUTTING CHAIR

The barbers' favorite. Constructed with our improved metal base 30 inches high. Has solid wood seat, supported back and arm rail and foot rest. Seat revolves and chair is adjustable for height. It's a winner!

Regularly supplied with quartered oak or mahoganized birch woodwork and with the metal parts finished in Japanese copper, but can be had nickel plated or white enameled if desired. Designate finish wanted.

PRICES:

	METAL PARTS JAPANESE COPPER.	METAL PARTS NICKEL PLATED.	ENTIRE CHAIR WHITE ENAMELED.
No. 90M	\$5.50	\$7.50	\$8.00



HAIRDRESSING CHAIR AND STOOL

A handsome and practical outfit. The chair has side arms and stationary base, with a revolving seat having a 7-inch range of elevation.

No. 85M Chair: Woodwork of seat and back either quarter-sawed oak or mahogany finished birch, as ordered. Frame Japanese copper finish unless otherwise specified.

No. 404M. Footstool: Heavy twisted wire base, the top being upholstered in durable leatherette. Metal parts regularly finished in Japanese copper.



	PRICES:	JAPANESE NICKEL		WHITE
		COPPER.	PLATED.	ENAMEL.
No. 85M Chair..	\$9.00	\$11.00	\$11.00	
No. 404M Stool..	3.00	3.50	3.50	



357M MANICURING TABLE

A well-proportioned table of handsome appearance, much in favor with manicurists. Size 15x35 inches. Made of quartered oak or of mahoganized birch. The cabinet work is exceptionally good, and the rich golden finish the best obtainable with high-grade varnishes skillfully applied. It has one drawer.

The metal base is regularly finished in our standard Japanese copper, but can be nickel plated or white enameled, if desired.

Specify the finish wanted.

PRICES:

No. 357M with Japanese coppered base.....	\$10.00
No. 357M with nickel-plated base.....	11.50
No. 357M with white enameled base and top.....	13.00



355M MANICURING TABLE

This is a beauty. Has 15x35 inch heavy plate glass top, with ornamental end rails and center drawer. The glass top is removable, and a pretty effect is secured by inserting an embroidered piece beneath it.

Woodwork quartered oak finished golden; or birch, finished in imitation mahogany. End rails and base finished in Japanese copper, nickel plate or white enamel, as may be specified by purchaser.

Weight, crated, 87 pounds.

	JAPANESE COPPER.	NICKEL PLATED.	WHITE ENAMELED.
No. 355M	\$15.00	\$16.50	\$18.00

Note: The "white enamel" finish will also be applied to the wood top.



765M COSTUMER

A coat and hat rack is a necessity in every place of business. Here is one that is handsome in appearance, yet reasonable in price; and being all of metal, it will last indefinitely.

We know of nothing better at anything like the figure at which we offer this excellent pattern.

In black japan	\$7.50
In Japanese copper	8.30
Nickel plated	9.80
White enameled	8.00

Note: We reserve the right to ship these costumers either from Detroit or from Chicago, according to the condition of our stock.



399M TYPEWRITER TABLE

Here's honest value in a well-made typewriter stand, with single drawer and sliding shelf.

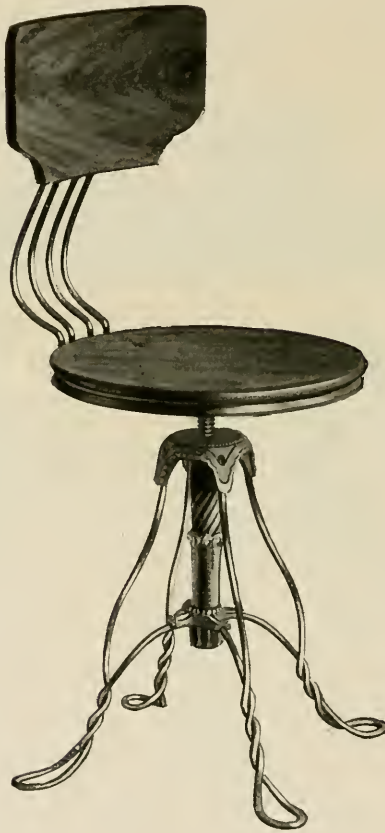
The frame is finished in Japanese copper. The woodwork is quarter-sawed oak, finished golden, or birch finished in imitation mahogany. In ordering, say what color you prefer. Either the No. 75M or the 51M chair shown elsewhere in this catalog harmonizes well with this stand.

Weight of typewriter table about 31 pounds.

*PRICE:

Japanese copper finish\$7.00

*This does not include the chair shown—just the stand itself.



86M REVOLVING CHAIR

This style has an extra wide stationary back. The revolving seat has a range of elevation of seven inches.

The woodwork of this chair is quartered oak finished golden, or birch finished in imitation of mahogany. The metal parts are finished in Japanese copper unless ordered otherwise.

While there are many places where this chair can be used to advantage, there have been frequent calls for it from hairdressing and manicuring parlors.

Regular Japanese copper finish.....	\$5.50
Nickel plated finish.....	6.50
White enamel finish.....	6.70



82M STENOGRAPHER'S CHAIR

Here's a chair that needs only to be tried to be appreciated. A more comfortable seat was never provided for a stenographer's use.

Constructed with our improved adjustable back, which is adjustable up or down, as well as from and toward the seat. Back and seat are upholstered in leather (or imitation leather, if wanted), wire spring fabric being used under the leather of the seat.

The frame is finished in Japanese copper. A thoroughly good chair.

PRICES:

NO.	UPHOLSTERING.	
82M	Genuine leather	\$13.00
83M	Imitation leather	11.00



51M DESK OR TYPEWRITER CHAIR

A strong and serviceable pattern. Has 14-inch diameter revolving seat, with stationary wire back bolted to metal rim. Metal parts finished in Japanese copper. The veneer seat may be had in quartered oak, or in birch finished in imitation mahogany.

In ordering, mention whether oak or birch veneer seat is desired.

Price\$5.00



75M STENOGRAPHERS' AND PHOTOGRAPHERS' CHAIR

An adjustable back chair for which there is a steady demand the year round, both for the photographic studio and for the office. The back is adjustable for height, and also has a sliding adjustment of six inches to and from the seat. The springiness of the steel rods in the back makes for comfort, while the whole construction is such as to insure durability.

The seat and back are of quartered oak, finished golden, or birch, finished in imitation mahogany, at purchaser's option. Metal parts are finished in Japanese copper. Price, \$5.50.



93M PHOTOGRAPHERS' POSING CHAIR

In its adjusting mechanism, this chair is similar to the No. 97M shown on the opposite page, but has a quartered oak or mahoganzed birch back, and a perforated leather seat, encircled by metal rim. The frame is finished in Japanese copper. In ordering say whether the wood back is wanted in the oak or the imitation mahogany. Price, \$9.00.

No. 91M. Same as above, but fitted with veneer seat (oak finished golden, or birch finished in mahogany) instead of the perforated leather. Price, \$7.00.



97M PHOTOGRAPHERS' POSING CHAIR

While this is quite often sold as a photographer's posing chair, and is catalogued here as such, it is equally popular as a stenographer's chair, and, when so used, harmonizes well with the very highest grade of office equipment.

It is made with our adjustable back, which can be raised, lowered, or set at any desired angle, and when satisfactorily adjusted, may be locked in position by means of the thumb clamps back of and beneath the seat.

In addition the chair has the regular screw adjustment for regulating the height of seat.

Seat and back upholstered in plush or genuine leather, as preferred. Frame Japanese copper finish.

Price\$10.00



79M DESK OR SWITCHBOARD CHAIR

Made in two heights, 24 inch and 28 inch, both sizes having a vertical adjustment of 6 inches. Stationary wood back and revolving seat, of quartered oak or mahoganzed birch. Frame Japanese copper finish.

Be sure to specify height wanted and kind of wood.

Price\$6.50



81M DESK OR SWITCHBOARD CHAIR

A chair embodying every feature that could contribute to the user's comfort and convenience. Back and seat upholstered in genuine leather or leatherette, as desired. Furnished either in 24-inch or 28-inch height (when seat is at lowest point), the screw allowing 6 inches of adjustment. The back may be set at any desired angle, by means of the improved hand screw. Frame finished in Japanese copper. Weight about 35 pounds.

PRICE:

Genuine leather	\$10.50
Leatherette	8.50



78M CASHIER'S CHAIR

Has revolving seat and adjustable back. Woodwork oak or mahoganzed birch. Frame Japanese copper finish.

Made in two heights—24 and 28 inches, with range of 6 inches adjustment in elevation.

Note: The "height" (24 or 28 inches) is the height when seat is at the lowest point.

In ordering, indicate the size wanted and the kind of wood.

Price\$6.50



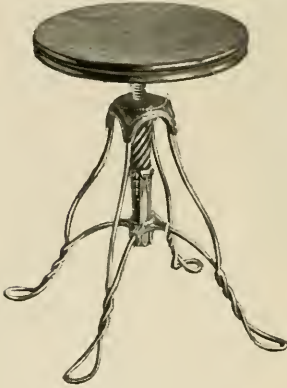
99M MOTION PICTURE OPERATOR'S CHAIR

In many of the large cities the law provides that no wood shall be used in the equipment of the operating rooms of moving picture theatres—a wise provision designed to minimize the fire risk. This handsome and comfortable chair has been constructed to meet this requirement, and is made entirely of metal, beautifully and durably finished in rich Japanese copper. Seat is adjustable for height. A most satisfactory chair in every respect. Weight about 33 pounds.

Price\$8.50

REVOLVING SEAT STOOLS FOR OPTICIANS, JEWELERS AND PHYSICIANS

Superior in every way to the old style wooden stools—neater in design—less liable to breakage—and retaining almost indefinitely the bright and attractive appearance afforded by the rich Japanese copper finish of the metal parts.



275M Stool

No. 275M. Revolving solid wood seat, either quartered oak or birch mahogany; frame, Japanese copper finish. Weight 19 pounds.

Price	\$4.00
Same nickel plated.....	5.00
White enameled	5.20

No. 251M. Revolving veneer seat of either quartered oak or birch mahogany, encircled with metal rim. Frame and rim Japanese copper finish. Weight 17 pounds.

Price	\$4.00
Same, nickel plated.....	5.00
White enameled	5.20



251M Stool

No. 252M. Revolving seat stool of the same general design as Nos. 251M and 275M, but with padded seat, stuffed with hair and covered with genuine leather. Weight 19 pounds.

PRICES:

Japanese copper finish.....	\$7.00
Nickel plated	8.00
White enameled	8.20



725M OPTICIANS' FITTING TABLE

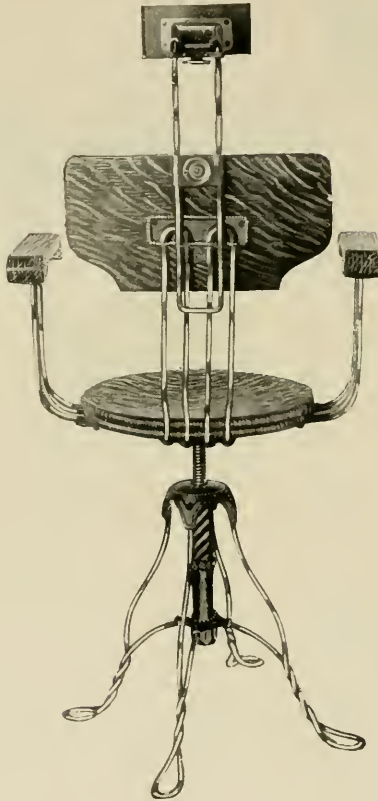
The desirability of a compact optical fitting table so designed that the knees of the optician do not bump against those of the customer is obvious.

This handsome and practical outfit seems to meet every requirement. It has a drawer for the optician's tools, etc., and the plate glass display case top is hinged at one side, and is also provided with lock and key.

Chair seats and backs, as well as the woodwork of the cabinet, are either oak, finished golden, or birch finished in imitation mahogany. The chair frames and the supporting braces of the cabinet are finished in rich Japanese copper.

NO.		
725M	As illustrated and described above.....	\$24.00
	Same with metal parts nickel plated	26.50
	Same with metal parts white enameled	27.00

NO.		
726M	Same as above, except that it does not have the plate glass display case:	
	In Japanese copper	\$20.00
	In nickel plate	22.50
	In white enamel	23.00



84M SPECIALIST'S CHAIR

Revolving seat, adjustable head rest, comfortable arm supports. Woodwork quartered oak or mahoganyed birch. Frame Japanese copper finish.

A convenient chair for facial massage or hair dressing parlors, and well adapted for eye specialists or for physicians who give special attention to diseases of the nose and throat.

Well made and attractively finished. Weighs about 45 pounds.

Price\$12.00

In white enamel finish, if desired, at \$15.00.

Each day *ANDREWS* metal furniture is being adapted for some new purpose; each week we are shipping to some new point in the world's market-place.



702M

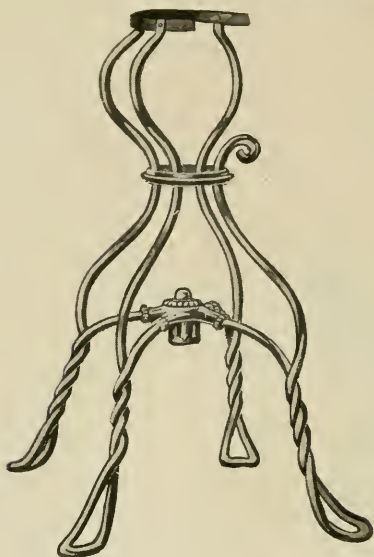
UMBRELLA HOLDER

Made entirely of metal, twisted and interwoven. Beaded top and tray. Handsomely finished in durable Japanese copper. A beauty, and practically indestructible.

Just the thing for store or office, or for the home. Indicate what finish is desired.

	JAPANESE COPPER.	NICKEL PLATED.	WHITE ENAMELED.
No. 702M	\$6.00	\$6.80	\$7.00

Where a rack for a large number of umbrellas is needed, you will require the type shown on page 49.

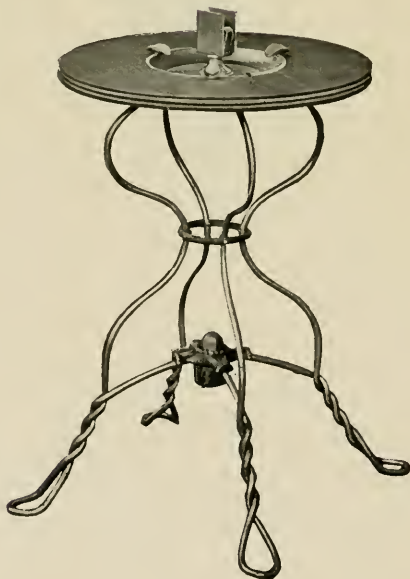


405M

405M CUSPIDOR HOLDER

Designed for the use of physicians and hospitals. So constructed as to stand firmly. All metal.

In Japanese copper.....	\$3.00
In nickel plate.....	4.00
In white enamel.....	4.00



745M SMOKER'S STAND

A popular piece of furniture for club or den, the top being wide enough to accommodate glasses or other items of comfort for him who would take life easy. Ash tray and match-box holder of brushed brass. Wood top of quartered oak, or solid birch finished in imitation of mahogany. Metal parts finished in Japanese copper.

Goes well with the No. 40M chair on page 77. Price.....\$3.60



40M PHYSICIAN'S ARM CHAIR

No illustration can possibly do this chair justice. It's just simply solid comfort. Seat, back and arms are upholstered in genuine leather, heavily padded. The framework is all of metal, richly finished in Japanese copper.

It makes an ideal chair for a hotel lobby or a club, and will stand any amount of hard service. Can be had also with upholstering of imitation leather, if desired.

		JAPANESE
		COPPER.
PRICES:		
No. 40M	Genuine leather	\$15.00
No. 41M	Imitation leather	12.00

(No. 404M. Upholstered foot stool. See page 57.)



10M

BATH ROOM AND HOSPITAL CHAIR

This white enameled chair is all steel, including the seat. It has been very popular with the surgical trade, as has also the sanitary stool No. 200M, illustrated on the opposite page.

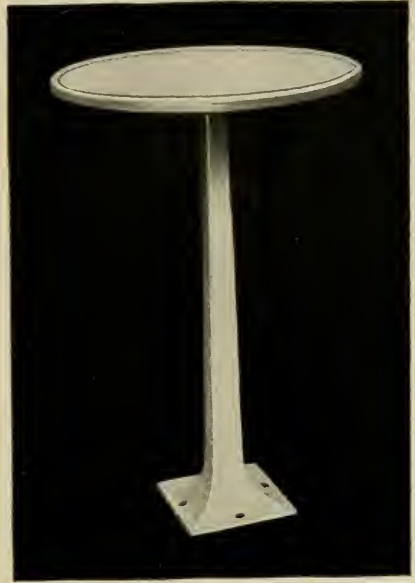
PRICE:

No. 10M Chair.....\$4.00

**310M PHYSICIANS'
TABLE**

This table, designed to be permanently fastened to wood floor with four screws, has 20-inch quartz onyx top (with raised rim to prevent instruments from rolling off). The base is enameled white. Table stands 30 inches high, and weighs 42 lbs.

Price\$8.00



No. 310M

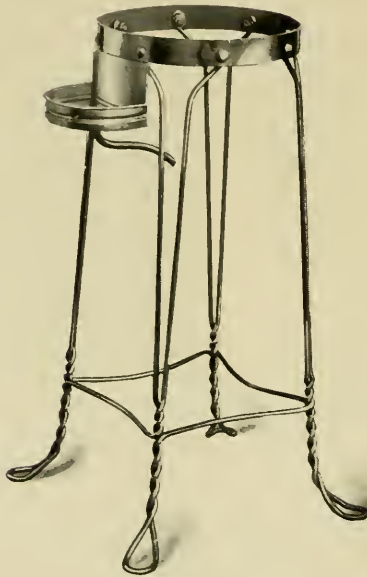


200M

**200M SANITARY
STOOL**

Made entirely of steel (including the seat) and enameled white. Unequaled for use in hospitals and bathrooms. Height 15 inches.

Price\$3.00



WATER COOLER STANDS

Not carried in stock and manufactured only on quantity orders for makers of water coolers or others requiring a light and graceful stand of this general type.

In asking for prices, state quantity wanted, give inside diameter of top ring and height of stand, and say how they are to be finished—whether in black japan, Japanese copper, nickel plate, or white enamel.

