

590
C98
v.9
pt.2

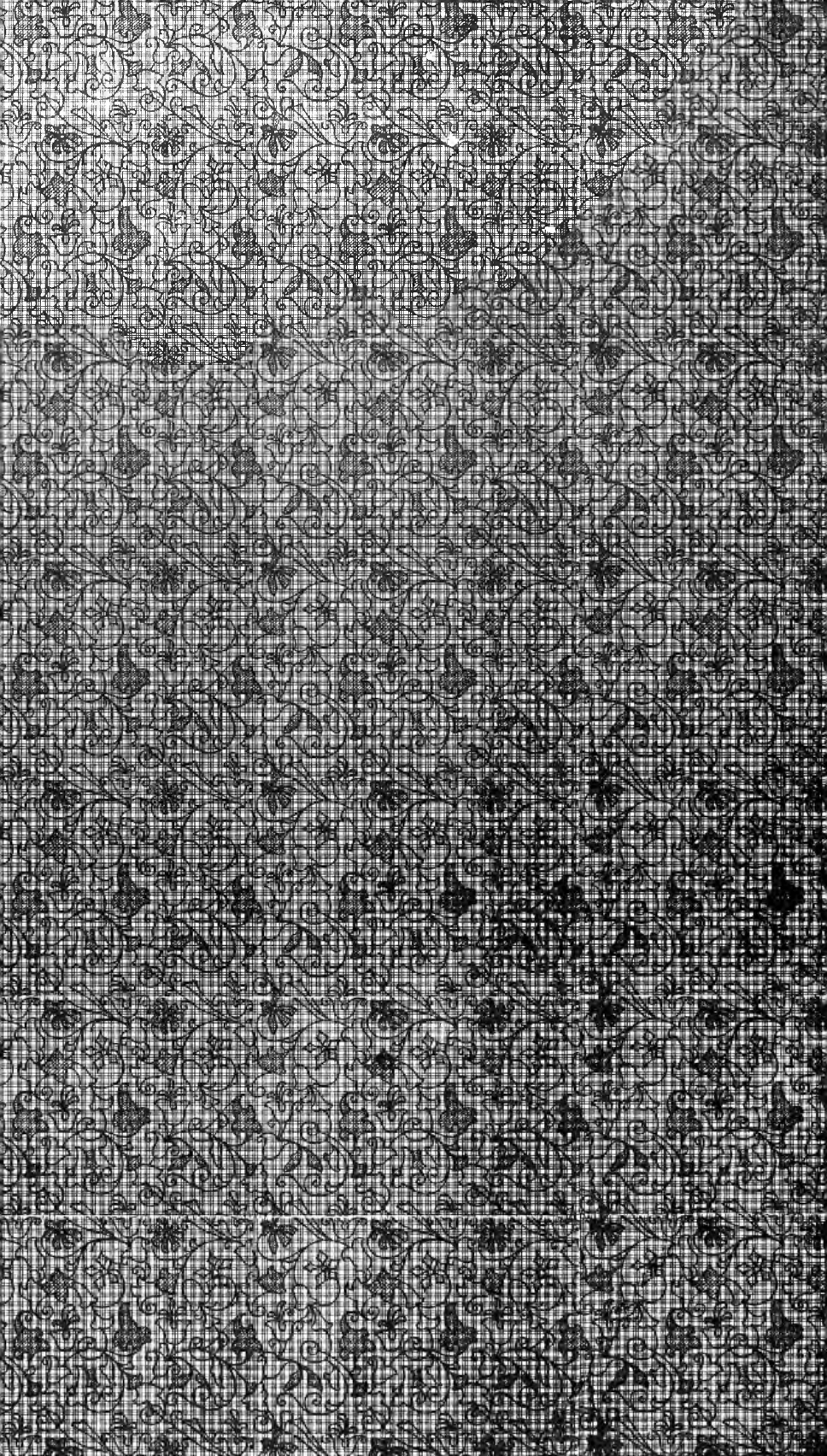
BIOLOGY

A SYNOPSIS OF THE SPECIES
OF THE
CLASS REPTILIA
J. E. Gray



UNIVERSITY MICROFILMS, INC. • Ann Arbor, Mich.

BIOLOGY



Return this book on or before the
Latest Date stamped below.

Theft, mutilation, and underlining of books
are reasons for disciplinary action and may
result in dismissal from the University.

University of Illinois Library

SEP 7 1966

AUG 10 1967

AUG 10 1967

Digitized by the Internet Archive
in 2011 with funding from
University of Illinois Urbana-Champaign



THE
ANIMAL KINGDOM

ARRANGED IN CONFORMITY WITH ITS
ORGANIZATION,

George
BY THE BARON CUVIER,

MEMBER OF THE INSTITUTE OF FRANCE, &c. &c. &c.

WITH

ADDITIONAL DESCRIPTIONS

OF

ALL THE SPECIES HITHERTO NAMED, AND OF
MANY NOT BEFORE NOTICED,

BY

EDWARD GRIFFITH, F.L.S., A.S.,

CORRESPONDING MEMBER OF THE ACADEMY OF NATURAL SCIENCES
OF PHILADELPHIA, &c.

AND OTHERS.

VOLUME THE NINTH.

LONDON:

PRINTED FOR WHITTAKER, TREACHER, AND CO.
AVE-MARIA-LANE.

MDCCLXXXI. &

1831

12
8522

LIST OF PLATES IN THE NINTH VOLUME.

590
C 98
v. 9
pt. 2

4-20-59 Bramble

	To face Page
Head of Genus <i>Cecilia</i> , &c.	234
Durville's <i>Pseudopus</i>	807
Punctated <i>Amphisbœna</i>	326
Vertebræ of <i>Boa-Constrictor</i> , &c.	326
The <i>Jiboya</i>	330
Peron's <i>Python</i>	331
The Common Snake, &c.	334
Wanna Pam Snake.	336
Brazilian Varied Snake	ib.
Striped-headed <i>Coluber</i>	ib.
Ornamented Snake	ib.
Banded <i>Bungarum</i>	385
Spiral <i>Hydrus</i>	386
White Faced Horned Frog, and <i>Agua Toad</i>	395
Green Frog	442
Variable or Green <i>Toad</i>	400
<i>Pipa</i>	464
Gigantic <i>Salamander</i>	475
Harlan's <i>Menobranchus</i>	ib.
<i>Axoltl.</i>	ib.

ERRATA IN THE PLATES.

Green Lizard, &c. For *Lachydromus*, read *Tachydromus*, bis. To the *Chuckeerabora*, add "*La Vipere elegante*, Daud. Russ. vij."

ERRATA.

Page	Line				
68	9 and 20	for	teutoria	read	tentoria
96	3	..	Tierce	..	Fierce, and for ferx read ferox
204	25	..	bicarivata	..	bicarinata
223	32	..	Molychrus	..	Polychrus
255	19	..	arms	..	anus
267	17	..	Bathrops	..	Bothrops

A

SYNOPSIS OF THE SPECIES

OF THE

CLASS REPTILIA.

BY J. E. GRAY, Esq. F.G.S., &c. &c.

N.B.—In the following List those species alone are included, which have either been seen by the author, or which have been well figured or described.*

REPTILES.

Vertebrated animals, respiring by lungs, having warm red blood, heart with one ventricle and two auricles and the skin covered with scales.

* In forming this list, the collection of reptiles of the British Museum, the College of Surgeons, and of Mr. Bell, in London, of the Gardens of Plants and Ecole de Medicine at Paris, of the Royal Museum of Leyden and Berlin, and the Free Town of Francfort, have been studied with attention through the kindness of their several keepers.—J. E. Gray. Oct. 1830.

CLASS REPTILIA.

Section I. CATAPHRACTA.

Body covered with two shields. The vent longitudinal or circular: the ossa quadrata, and the pterygoid processes forming part of the skull; the organs of generation simple and single in both sexes.

Order I. TESTUDINATA, or TORTOISES.

Ribs, vertebræ and sternum united together in a bony case, enclosing the body, and protecting the head and limbs; the jaws toothless.

The case is usually covered with horny shields, which are granular in the newly-hatched animal, and which increase in size by the addition of layers on the under side of the edge, and having the first formed granular part marked on their surface; this part is called the areola. The shields of the upper shell are called, from their position, discal, consisting of the vertebræ or central series, and costal, composed of the two lateral series and marginal plates, which have often an additional small narrow plate placed on the back of the neck, called the nuchal plate.

The under shell is usually covered with six pair of shields, one called the gular (which have sometimes an additional intergular plate between them), the second the humeral, the third the pectoral, the fourth the abdominal, the fifth the femoral, and the sixth the anal plates; the suture between the upper and lower shell is generally covered by the end of the pectoral and abdominal plates, and there is a small plate placed at each end of it, the front called the axillary, and the hinder the inguinal plate.

Genus I. TESTUDO.

Feet club-shaped, claws five before, four behind blunt; jaws horny. Shells hemispherical, solid, covered with horny plates; the hinder marginal plate broad, incurved.

ORDER OPHIDIA.

I. *Shell and sternum immoveable, sternal plates in the gular pair being separate. Testudo.*

Indian Tortoise. Test. Indica, Lin. Test. Retusa, Merrem. Test. Elephantopus, Harlan. Test. Nigra, and Test. Californicæ, Gaimard. Test. Gigantea, Schw. and Test. Dussumieri, Schegel. Shaw, t. 3. Frey. Voy. t.

Shell black, nuchal plate, often deficient; pectoral plates short. India, naturalized in California, Isle of France and Galapago Isles. Length three feet.

Hercules Tortoise. Testudo Hercules, Spix. Braz. t. 14. Test. Carbonaria, Spix. t. 16.

Shell subquadrate, depressed, contracted in the sides, black, areola yellow, rarely exceeds three quarters of an inch in width. Nuchal plate none. Sternum behind roundly lobed, leg red spotted, length twenty-four inches. South America, Var. *Truncata*. Shield and bones beneath elevated, conical, truncated.

Tabular Tortoise, Shaw. Test. Tabulata, Walb. Schoepf. t. 12. f. 2. t. 13. T. Sculpta, Spix. t. 15. T. Cagado, Spix. t. 17. Young, T. denticulata, Lin.

Shell oblong, depressed, deeply grooved; black brown areola large; the sternum behind rather acutely lobed. Brazils.

Schweiger Tortoise. Test. Schweigeri, n.

Shell oblong, depressed, pale brown, obscurely brown dotted; beneath brown rayed; areola small central; sternum before acutely cut. Hab. —?

Gopher Tortoise. Test. Polyphemus, Bartram. T. depressa, Lesueur, Mss. Guerin. Icon. t. 1. f. 1. T. Carolina, Leconte Mus. Paris.

Shell oblong, depressed pale brown grooved; nuchal plate

CLASS REPTILIA.

broad, square; front of sternum projecting; tail obsolete. North America.

Bell-shaped Tortoise. Test. Marginata. Schoepf. t. 11, 12, f. 1. *T. Graji.* Herm. *T. Gracæ,* Lacep. *T. Campanulata,* Walb.

Shell oblong, ventricose; hinder margin flattened, expanded toothed; shields grooved; blackish yellow varied; areola yellow, contracted; nuchal plate, very slender, long. Egypt?

Radiated Tortoise, Shaw. *Test. Radiata,* Shaw. Zool. t. 2. *J. Coui,* Daud. *T. Calcarata,* Merrem.

Shell hemispherical; black, yellow rayed, areola sunk; nuchal plate none. Madagascar.

Sulcated Tortoise. Test. Sulcata, Shaw, Miller, Cym. Phys. t. *Test. Calcarata,* Merr. *Test. radiata,* Var. Gray, Syn. Rept.

Shell sub-globular, yellow; shield rather convex, deeply grooved; areola small, superior; nuchal plate none. Senegal. Dongola. Dr. Ruppell.

Leopard Tortoise. Test. Pardalis, Bell. Zool. Jour. t. 15. *T. armata,* Boie Mss. *Test. Bipunctata,* Cuv. R.A.

Shell hemispherical; yellowish, black spotted; nuchal plate none. Cape of Good Hope.

Starred Tortoise. Test. Stellata, Test. Actinodes, Bell. Z. Jour. t. 23. *Test. Elegans,* Shaw, t. 6. f. 1. and Schoepf. t. 26. *T. Stellata,* Schw.

Shell globular; shields convex, grooved; black, yellow-rayed; areola yellow, large; nuchal plate none. India. Ceylon.

ORDER OPHIDIA.

Geometrical Tortoise, Shaw. *Test. Geometrica*, Lin.

— Shaw. t. 1. f. 1. Jun. *T. Luteola*, Daud.

Shell globular oblong, black; shields yellow-rayed; nuchal plate long; β nuchal plate short. *Test. Tentoria*, Bell. Z. Jour. t. 26. Cape of Good Hope, Madagascar.

Greek Tortoise. *Test. Græca*, Lin. *T. Carolina*, Herm.

T. Geometrica, Brunn. *Test. Hermanni*, Schn. Edw. t. 204. Shaw. t. 1.

Shell oblong, globose; black, yellow-rayed; nuchal plate, slender; caudal plate incurved. Var. β hinder margin expanded, Schoepf. t. 9. Inhab. South of Europe, Var. no nuchal plate. *Test. Zolhafa*, Forsk.

Areoluted Tortoise, *Test. Areolata*, Thumb. Schoepf. t. 23.

Shell oblong, rather depressed; shields yellowish, deeply grooved; areola brown; sutures deep; nuchal plate, narrow. Var. β greenish; hinder lobe of sternum mobile. Cape of Good Hope, variable in number of dorsal and marginal plates.

Marked Tortoise. *Test. Signata*, Walb. Schoeff. t. 28.

T. Cafra? and *T. Juvencella*? Daud.

Shell rather depressed; dorsal shields flattish; yellowish, black-rayed; areola blackish; nuchal shields narrow. Africa?

II. *Dorsal shell and sternum both solid; sternal plates eleven, the gular pair produced united into one.* *Chersina*. Gray.

Angular Tortoise, *T. (Chersina) Angulata*, Dumeril.

Test. Bellii, Gray Spec. Zool. t. 3, f. 1. *Test. Pusilla*, Lin. *T. miniata*, Lacep.

Shell oblong, ventricose; black, shields grooved; areola yellow; nuchal plate very narrow. Cape of Good Hope.

CLASS REPTILIA.

III. *Hinder part of dorsal shell mobile, united to the anterior by a carious ligamentous suture; sternum solid, shields twelve.* *Kinyxis. Bell.*

Home's Tortoise. Test. (Kinyxis) Homeana. Bell.
Lin. Trans. xiv. t. f. 2.

Shell brown; hinder edge reflexed; upper edge of fifth vertebral plates prominent; nuchal shield long, narrow; front of sternum expanded. Demerara. Guadaloupe.

Bells Tortoise. Test. (Kinyxis) Belliana, Gray.

Shell brown, edge hardly expanded; centre of hinder vertebral plates convex; nuchal shield long, narrow; front of sternum, narrow. Inhab. ?—Mus. Gray.

Worn Tortoise. Test. (Kinyxis) Erosa.

Shell brown; hinder edge reflexed, denticulated; centre of fifth vertebral plates prominent; nuchal shield none. Young, back rounded. *K. Castanea. Bell. l. c. t. f. 1. Test. Denticulata, Shaw. Zool. t. 13. Test. Erosa, Schw. Inhab.*

IV. *Dorsal shell solid; front lobe of sternum mobile.*
Pyxis. Bell.

Radiated Box Tortoise. Test. (Pyxis) Aranoides, Bell.
Lin. Trans. xv. t. 16.

Shell hemispherical, varied black and yellow; length 6, breadth 4 inches. Inhab.

Genus II. EMYS.

Feet palmated; claws five—four, sharp; nostrils pervious; jaws horny; shell solid, covered with horny plates, marginal plates twenty-three or twenty-five, hinder pair free; sternal shields eleven or twelve; neck retractile; pelvis only attached to the vertebra.

ORDER OPHIDIA.

I. *Shell hemispherical ; sternum rounded before, divided by a transverse suture ; both lobes mobile, and united to the back shell by a cartilaginous suture ; sternal plates twelve.*
Cistuda, Gray.

American Box Terrapin, E. (*Cistuda*) *Carolinæ*, Test. *Carolinæ*, Lin. Test. *Brevicaudata*, Lacep. Test. *Clausæ*, and *T. Irregularata*, Daud. *Terrapene Carolinæ*, Ter. *Nebulosa*, and *Ter. Guttata*, Bell. Edw. t. 205.

Shell hemispherical, brown yellow varied, convex, lowly keeled ; marginal plates twenty-six or twenty-seven. North America ; Var. β . *fusca*, brown, not spotted.

Eastern Box Terrapin. E. (*Cistuda*) *Amboinensis*, Illust. Ind. Zool, t. f. 1. *Emys Couro*, Schw. *Terrapene Bicolor*, Bell. Zool. Jour. ij. t. 14. Test. *Amboinensis*, Daud.

Shell hemispherical, slightly tri-keeled, blackish, margin expanded, broad ; nuchal plate linear ; sternum yellow and black varied ; head with two yellow lines on each side. Java and Penang, Var. *Leveriana*. Shell oblong, with back flattened, not keeled.

Three-banded Box Terrapin. E. (*Cistuda*) *Trifasciata*, Gray. *Sternothærus Trifasciatus*, Bell. Zool. Jour. iij. t. 13.

Shell oval, keeled, dull yellow, varied with black and reddish, with three dorsal streaks ; sternum behind nicked ; head yellow, with two brown bands on each side. Inhab.—

European Box Terrapin. E. (*Cistuda*) *Europea*. *Testudo Europeæ*, Schn. Test. *Flava*, Lacep. *T. Punctata*, Gotw. *T. Orbicularis*, Linn.? *T. Lutaria*, Merrem. *T. Meleagris*, Shaw, Zool. t. 5. Jun. *T. Pulchella*, Schoeff. t. 26.

Shell depressed, oval, yellow spotted ; sternum behind nicked

CLASS REPTILIA.

before rounded; body and head black and yellow spotted; tail long. South of Europe. These are the only Water Tortoises known which have concave sternums.

II. *Sternum united to the back shell by a horny suture; solid, before and behind lobed; sternal plates twelve.*
Emys.

A. *Margin of shell acutely toothed; sides of sternum rounded.*
Found in the Old World.

Spinous Terrapin. Emys Spinosa, Gray, Illust. Ind. Zool. t.

Shell suborbicular, pale brown; edge sharply toothed; areola with a central spine. Penang.

Dhor Terrapin. Emys Dhor, Gray, Illust. Ind. Zool. t.

Shell suborbicular, hinder edged, acutely toothed; areola punctate; brown, black spotted: India.

Spengler Terrapin. Emys Spengleri. Test. Spengleri, Walb. t. 3. Test. Serrata, Shaw, t. 9. T. Tricarinata, Bory, Atlas. t.

Shell oblong, pale brown; tri-keeled; hinder margin deeply toothed. Africa.

Thick-necked Terrapin. Emys Crassicollis, Bell, Gray, Illust. Ind. Zool. t.

Shell ovate, black, tri-keeled; hinder edge toothed. Sumatra.

Thuryi Terrapin. Emys Thuryi, Gray, Illust. Ind. Zool. t.

Shell oblong, black, slightly tri-keeled; hinder edge slightly toothed; head blackish, eyebrow and chin yellow lined. Bengal.

ORDER OPHIDIA.

Hamilton's Terrapin. Emys Hamiltonii, Gray, Illust. Ind. Zool. t.

Shell oblong, black, yellow-rayed; hinder edge toothed; head, and body, and limbs yellow spotted. India.

Eyebearing Terrapin. Emys Occilifera, Kuhl. Beytr.

Shell hemispherical; behind toothed; above with blackish eyed rings, beneath yellow; a doubtful species.

B. Shell margin entire; sternum with the sides keeled. Living in the Old World.

Tented Terrapin. Emys Tecta, Bell, Gray, Illust. Ind. Zool. t.

Shell ovate, oblong, solid; olive, beneath varied brown and red; animal red and yellow lined.

Lined Terrapin. Emys Lineatâ, Gray, Illust. Ind. Zool. t.

Shell oblong, olive; head blueish ash; chin and cheeks yellow varied; nape and eyebrow scarlet lined. India.

Batagur Terrapin. Emys Batagur, Gray, Illust. Ind. Zool.

Shell suborbicular, depressed, pale olive; margin dilated; body ash; chin and lips yellowish. Var. β *Test. Baska*. Shell oblong, ovate.

Common Terrapin, or Mud Tortoise. Emys vulgaris. Test. Lutaria, Lin.?

Shell ovate, olive, black dotted, clouded and ringed with blackish and orange, head and limbs orange lined. Adult smooth, young rugose. South of Europe. Spain.

Caspian Terrapin. Emys Caspia, Ruppell. *Test. Caspia*, Gmel. Trav. t. bad.

Shell oblong, slightly contracted on the sides, olive yellow netted; beneath black, irregular yellow spotted, head olive brown, with narrow sub-concentric yellow lines. Caspian Sea. Dr. Ruppell.

ORDER OPHIDIA.

C. Shell margin sub-entire; sternum sides rounded. Living in the New World.

Rough Terrapin. Emys Scabra, Lacep. t. 8. f. 2. *Emys Dorsata*, Schoepft.

Shell ovate oblong, acutely keeled; head with a fork band over each eye. South America.

Dotted Terrapin. Emys Punctularia, Schweiger, (not figured.)

Shell oblong, convex, brown; shield blackish edged; head with red lines and spots. South America.

Marbled Terrapin. Emys Marmoræa, Spix, t. 10.

Shell oval, greenish, varied with black and yellow; shields yellow edged; head with yellow lines. —Brazils.

Muhlenberg's Terrapin. Emys Muhlenbergii, Schw. *Emys Bipunctata*, Say. Schoeff, t. 31.

Shell oval, low, side contracted; shields grooved, varied with yellow; head blackish, with two yellow spots. North America.

Spotted Terrapin. Emys Guttata, Schw. *Test. Punctata*. Bosc. Schoeff, t. 5.

Shell low, oval, smooth, black, yellow dotted; head yellow spotted. North America.

Painted Terrapin. Emys Picta, Schw. Schoeff, t. 4.

Shell oblong, flattish, smooth, olive; shields pale edged; head and neck yellow lined. Young. *Cinereous Tortoise*, Brown, Illust. 48. North America.

Specious Terrapin. Emys Speciosa, Gray, Syn. Rept.

Shell oval, flattish, keeled; shields grooved, black, yellow spotted; beneath yellow with black areola. North America?

CLASS REPTILIA.

Concentric Terrapin. Emys Concentrica, Schw. Schoeff.
t. 15. *Test. Palustris*, Gmel. *T. Centrata*, Bosc.

Shell oval, side edges recurved; shield, brown ringed; head and limbs ash, black speckled. North America. *Var. polita* shell, black polished.

Reticulated Terrapin. Emys Reticulata, Gray. *Test. Reticulata*, Latr. Daud. t. 22, f. 3.

Shell oblong, olive, pale netted; beneath yellow, with four round black spots on side of the margin, and one at each end of the sternocostal suture. North America.

Banded Terrapin. Emys Vittata, Gray, Syn. Rept.

Shell oblong, olive; behind doubly toothed, varied with unequal yellow lines; beneath yellowish, with squarish eyed spots on the sutures of the marginal plates, and roundish ones on the end of the symphysis; head and feet yellow lined. North America?

Furrowed Terrapin. Emys Decussata, Gray.

Shell oblong, pale brown, shields rugulose; beneath yellowish, with subocellated spots, on the sutures of the marginal plates; animal greenish. North America.

Lettered Terrapin. Emys Scripta, Gray. *Test. Serrata*, Daud. t. 21. f. 1. Schoeff. t. 3. f. 5. Jun.

Shell oblong, longitudinally rugose, brown, sides yellow banded; beneath yellow, with a series of roundish spots on the middle of each marginal plate, or two on the gular plates, and four on each sternocostal symphysis. North America.

Serrated Terrapin. Emys Serrata, Gray.

Shell oblong, longitudinally rugulose, irregularly cross-banded; beneath yellowish, with a series of subocellated spots on the sutures of the marginal plates, and dark-edged pale lines on the symphysis. North America.

CLASS REPTILIA.

Ornamented Terrapin. Emys Ornata, Gray.

Shell oblong, longitudinally rugose olive; vertebral shields, irregularly ringed; beneath, pale yellow, with an irregular black band down the centre, and on each side, and squarish-eyed spots on the suture of the marginal shields. South America. Young, beautifully orange and green-ringed.

Rugose Terrapin. Emys Rugosa. Test. Rugosa, Shaw, Zool. t.

Shell oblong, rugulose; black, with yellow lines and dots; beneath yellow with black dots and lines; Var. β shell livid, black dotted. North America.

Lake Erie Terrapin. Emys Lesueurii, Gray, Syn. Rept.

Shell oval, smooth, tuberculately keeled; behind, toothed; olive, with anastomosing black-edged pale lines; beneath, yellow, shields, black edged, margin, black ringed; head, yellow lined. β *Emys Geographica*, Lesueur, Jour. Acad. N. Philad. t. North America.

Bell's Terrapin. Emys Bellii, Gray, Syn. Rept.

Shell oblong; dorsal line, depressed; olive, netted with green and black dots; beneath blackish, yellow dotted, surrounded by an irregular yellow margin.

White Spotted Terrapin. Emys Kinosternoides, Gray, Syn. Rept.

Shell oblong, pale brown, with black-edged white keel, and side-spots, and with a dentated white edge; beneath yellow spotted; sternum rounded at both ends. (—?)

Ring-bearing Terrapin. Emys Annulifera, Gray, Syn. Rept.

Shell oblong, depressed; pale brown, yellow lined with

ORDER OPHIDIA.

yellow ring placed across the sutures of the vertebral plates ;
beneath pale brown, varied with darker brown. (—?)

III. *Sternum united to the back shell by a horny suture ;
before rounded, behind rounded, or slightly nicked,
divided by one or two cross sutures ; sternal plates, eleven
gular pair united.* Kinosternon. Spix.

Three-keeled Kinosternon. E. (*Kinosternon*) *Scorpoides.*
Test. Scorpoides, Lacep. *Test. Tricarinata*, Daud. *Ki-
nosternon Shavianum*, Bell. *Kin. Longicaudatum*, Spix,
t. 12? Shaw Zool. t. 15. Jun. *Test. Retzii*, Daud.
Shaw, t. 11.

Shell oblong, olive polished, rather compressed three-
keeled, keels continued, dorsal shields long, hexangular, sub-
imbricate ; sternum as broad as the opening of the shell.
South America.

Three Ridged Kinosternon. E. (*Kinosternon*) *Triporcata*,
Gray. *Terrapena Triporcata*, Wiegmann, Mus. Berl.]

Shell, oblong, olive, with three very high compressed ridges ;
sternum cross shaped, very narrow ; the largest species of
the genus.

Pennsylvanian Kinosternon. E. (*Kinosternon*) *Penn-
sylvanica.* *Test. Pennsylvanica*, Bosc. *Test. Subrufa*,
Lacep. Edw. t. 287. Var. *Test. Glutinata*, Daud.
Test. Boscii, Merrem.

Shell oval, brown ; dorsal shields, flattened ; sternum,
rather narrower than the opening of the back shell ; behind
nicked. North America.

Musky Kinosternon, E. (*Kinosternon*) *Odoratum.* *Test.*
Odorata, Bosc. *Cistuda Odorata*, Say. *Sternotheros*
Odoratus, Bell.

Shell ovate, keeled ; sides declivate ; sternum very narrow ;

CLASS REPTILIA.

before acute, behind acutely nicked; head brown, yellow lined on each side. North America.

IV. *Sternum very narrow, cross-shaped, rounded at both ends, united to the back shell by very long bony processes. Sternal plates five pair, and a pair over the symphysis.* Chelydra Schw.

Serrated Alligator Tortoise. Emys (Chelydra) Serpentina. Test. Serrata, Penn. Chelydra Lacertina, Schw. Young. Test. Serpentina. Lin. Shaw, t. 29.

Shell oblong; vertebral shields flat; upper edge of costal plates, prominent; behind bluntly six toothed. Young sharply three-keeled and toothed. North America.

III.—CHELYS, Gray.

Feet palmated; claws five—four, sharp; nostrils sub-tubular; shell solid, covered with horny plates; hinder pair of marginal plates separate; sternal plates thirteen, with an intergular one; neck contractile on the side; pelvis attached to the sternum and vertebræ.

I. *Lips horny; sternum front, and sometimes hinder lobes mobile; intergular plate marginal.* Sternotherus, Bell (part.) Gray.*

Chestnut Chelys. Ch. (Sternotherus) Castaneus, Gray.

Emys Castaneus, Schw. Testudo Subniger, β Daud.

Sternotherus Castaneus, Bell. Zool. Jour. t. 14.

Shell oval, sharply keeled, convex, chestnut; shields radiately rugose; areola black. Var. β hinder lobe, mobile.

* I have used as the name of the sub-genera those which have been given by authors to what they considered genera in this family; but I have generally restricted their signification, so as to render them more definite.

ORDER OPHIDIA.

Test. Subniger, Lacep. 2. O. t. 7. f. r. *Test. Nigricans*, Merrem.

II. *Jaws horny; sternum solid; intergular plates six sided between the gular and pectoral plates.* Chelodina.

Long-necked Chelys. Ch. (Chelodina) Longicollis, Gray.
Testudo Longicollis, Shaw. New Holland. t. 7.

Shell oblong flat; sternum yellow, shields brown edged.

III. *Jaws horny; sternum solid, intergular plate small, marginal; nostrils short, tubular.* Hydraspis. Bell.

Species of the Old World or its Islands.

Cape Chelys. Ch. (Hydraspis) Subrufa. n. *Test. Subrufa*, Lacep. Q. O. t. 12. *Test. Indica*, Daud.—Jun. *Test. Galeata*, Schoeff. t. 3. f. 1. *Test. Scabra*, Retz. *T. Senegalensis*, Daud.; and *Emys Olivacea*, Schw.

Shell oblong, low, pale brown, smooth; nuchal plate, none; vertebral plate depressed. Cape of Good Hope. Senegal.

Adamson's Chelys. Ch. (Hydraspis) Adamsonii, Emys Adamsonii. Schw.

Shell low, oval, very broad behind, yellow, black spotted; nuchal plate none; vertebral plates keeled, first urn-shaped, hinder triangular. Africa. Nigritia.

Macquary's Chelys. Ch. (Hydraspis) Macquarii. Emys Macquarii. Cuv. R. A.

Shell oval, depressed, contracted in front, behind subdentate, dark olive; shields rugulose; dorsal line sunk; nuchal plate narrow. New Holland.

CLASS REPTILIA.

Species of America.

Flat Headed Chelys. Ch. (*Hydraspis*) *Planiceps*. Test.
Planiceps, or *T. Platycephala*. Schn. Berb. Naturf. t.
16. *T. Martinella*, Cuv. R. A. *Emys Discolor*, Thumb.
E. Caniculata? Spix, t. 8. *E. Carunculata*, Cuv. R. A.
Emys Geoffroyana, Schw.

Shell oblong, flattened, black brown, centre concave; nuchal plate narrow; sternum yellow edged. *E. Aspera*, Cuv. R.A. is a variety with larger warts in the neck.

Depressed Chelys. Ch. (*Hydraspis*) *Depressa*, Gray. Test.
Depressus. Pr. Max. t. not Spix.

Shell elliptical, pale brown, black rayed; nuchal plates narrow; head and neck black spotted. Brazils.

Radiated Chelys. Ch. (*Hydraspis*) *Radiolata*, Gray. *Emys*.
Radiolata, Mikan. Pr. Max. *T. Depressa*, Spix, t. 3. f. 12.

Shell oval, slightly narrowed before, yellowish, black rayed; nuchal plate distinct; neck beneath yellow, eyelids streaked. Brazils.

Red Footed Chelys. Ch. (*Hydraspis*) *Rufipes*, Gray,
Spix, t. 6, Jun. *Emys Stenops*, Spix, t. 9, f. 3, 4.

Shell elliptical, keeled in front, brown, beneath yellowish; nuchal shield linear; head and neck thick, olive brown, beneath yellowish. South America.

Green Chelys. Ch. (*Hydraspis*) *Viridis*, Gray. *Emys Viridis*, Spix, t. 2, f. 4.; t. 3, f. 1.

Shell elliptical, olive green, brown dotted; nuchal shield linear; intergular shield large, cordate. Brazils.

CLASS REPTILIA.

Expanded Chelys. Ch. (*Hydraspis*) *Expansa*, Gray. *Emys Expansa*, Schw. *E. Amazonica*, Spix, t. 1. *E. Tracaxa*. Spix, t. 5, f. 1. 2.

Shell ovate, depressed, brown, black spotted; margin very much expanded; nuchal shield none; nose longitudinally grooved, Var. β *Emys Erythrocephala*, Spix, t. 7, is perhaps the same. It is from a stuffed specimen. Brazils.

Dumeril's Chelys. Ch. (*Hydraspis*) *Dumerilliana*, Gray. *Emys Icterocephala*, Spix, t. 4.

Shell ovate, black, discal shields flat, hinder margin expanded; head globose; nose convex, smooth. Brazils.

Cayenne Chelys. Ch. (*Hydraspis*) *Cayennensis*, Gray, *Emys Cayennensis*, Schw.

Shell ovate, convex, tuberculately keeled; smooth, yellow green, black varied; nuchal shield none; head brown, with two yellow spots. β *Emys Gibba*, Schw. Shell black. Guiana.

Demerara Chelys. Ch. (*Hydraspis*) *Lata*, Bell MSS.

Shell suborbicular, depressed, black; head and neck black orange spotted. Demerara. Bell.

Consult also, 1, *Emys Bitentaculata*, Cuv. MSS.—2, *Emys Barbatula*, Gravenhorst, Delic. t. 5. f. 3. 4.—3. *Emys Constricta*, Cuv. MSS.—4. *E. Maximiliana*, Michan, and—5, *Hydraspis Pachyura*, Boie MSS.

IV. *The beak very broad, depressed, covered with soft lips; the nostrils long, tubular; intergular plate marginal; Chelys, Dumeril.*

Brazilian Matamata. *Chelys Matamata*, Test. *Matamata*, Brong. Jour. H. N. 7, t. 13. Ch. *Fimbriata*, Schn.

Shell oblong; shields elevated acute, forming three keels. South America.

CLASS REPTILIA.

IV.—TRIONYX. Geoff.

Feet palmated, claws three, sharp; the shell covered with a soft skin expanded on the edge into a flexible margin. *Living in fresh water in tropical climates.*

I. *The margin of the shields cartilaginous and the sternum narrow.* Trionyx, Gray.

Fierce Trionyx. *Trionyx Ferox*, Merrem. Pen. Phil. Trans. lxi. t. 10. *Trionyx Georgicus*, Geoff.

Shell rather convex, obscurely keeled; front and hinder margin wanting; sternum callosities four, two hinder, large, united into one. *Trionyx Spiniferus*, Lesueur, Mem. Mus. xi. appears to be the young, as may also be *Test. Brongniartii*, Sch. and *T. Carinatus*, Geoffroy.

Armless Trionyx. *Trionyx Muticus*, Lesueur, Mem. Mus. xv. t.

Shell elliptical, confounded with the neck, and armless in the front; sternal callosities four, two hinder large, united together. North America.

Egyptian Trionyx. *Trionyx Ægyptiacus*, Geoff. Rept. Egypt. t. 1. *Test. Triunguis*, Forsk.

Green, white spotted; shell convex, slightly keeled; sternum callosities four, the hinder ones triangular, separate. Egypt.

Indian Trionyx. *Trionyx Indicus*, Gray, Illust. Ind. Zool. t.

Olive green, with black-edged irregular pale tortuous and forked streaks; sternal callosities four, the hinder ones rounded triangular. India.

Hurum Trionyx. *Trionyx Hurum*, Gray, Illust. Ind. Zool. *Trionyx Gangeticus*, Cuv. Oss. Fos.

Dull brown; head green, with two yellow spots on each side

CLASS REPTILIA.

over the eyes ; sternum with four callosities, the lateral truncate on the inner hinder angles, and the hinder ovate-triangular. India.

Javan Trionyx. *Trionyx Javanicus*, Geoff. Ann. Mus. xiv. t. Illust. Ind. Zool. t.

Dull green, with numerous narrow lines of minute white granular specks. Head green, with five or six diverging black lines, and a streak between the eyes. Sternal callosities two, linear, lateral. When young, back black ocellated. Java and India.

Flat Trionyx. *Trionyx Subplanus*, Geoff. Ann. Mus. xiv. Illust. Ind. Zool. t.

Shield nearly flat ; front edge smooth ; sternum without any callosities. India.

Euphratic Trionyx. *Trionyx Euphraticus*, Geoff. *Test. Rascht*, Oliv. Voy. t. 41. This needs a better description. Euphrates.

Margin of the shield with a series of small bones in front and behind, limbs covered, when withdrawn, by the valves on the side of the sternum. Emyda. Gray.

Punctuated Trionyx. *Tri. (Emyda) Punctatus*, Lacep. Q. O. t. 7. f. 1. Schoepf. t. 20. A. B. *Trionyx Coromandelicus*, Geoff. Gray, Illust. Ind. Zool. t.

Deep green, occiput white spotted ; sternum with seven large callosities, the hinder of them united. India.

N. B.—M. Cuvier informed me on his late visit to this country that there has been lately received at the Paris Museum a species of this genus, with 4 claws on each foot ; it will form a section (*Tetraonyx*), and it may be indicated by the name of *Trionyx (Tetraonyx) Cuvieri*.

CLASS REPTILIA.

5. CHELONIA, Brongn.

Feet fin-shaped, compressed; shell with a bony margin all round, and a ring-like sternum.

Living in the sea; eating algæ and mollusca.

I. *Shell covered with a leathery skin. Sphargis, Merrem. Coriaceous Turtle, Ch. (Sphargis) Coriacea. Testudo Coriacea. Lin. Pen. Brit. Zool. 4. t. 1.*

Shell with three longitudinal dorsal ridges; when young the skin granular, and fins very long. See Schoepft. t. 29. Mediterranean Ocean.

II. *Shell covered with horny scales. Chelonia.*

A. shields depressed. Chelonia.

Green Turtle. Chelonia Mydas. Testudo, Lin. Lacep. 2. O. t. 1. f. 1

Shell cordate, greenish brown, slightly keeled, shelving on both sides; lower jaw deeply denticulated. Varies first in the number of the dorsal shields, and thus *Test. Atra, Lin.*, and *Test. Multiscutata, Kuhl.* Second in the number of sternal shields, thus *Test. Cepediana, Daud.* Sometimes the shields are variously coloured, and thus *Chelonia Virgata, Dumeril*, and *Chelonia Radiata, Ch. Maculosa* and *Ch. Lachrymata, Cuv., R. A. Testudo Japonica, Thumberg*, appears to be only a variety with the shields so thin, that he mistook the sutures of the bones for the edge of the scales.

Loggerhead Turtle, Chelonia Caretta, Testudo Caretta, Lin. Schoepf. t. 16.

Shell convex, vertebral shields gibbous; head very large; when young the nose produced, *Testudo Nasicornis, Lacep. Edw. t. 206, Var.* Vertebral shields sometimes seven. *Chelonia Olivacea, Eschscholtz Atlas, t. 3. Mediterranean and other seas.*

CLASS REPTILIA.

B. Shields Imbricate.

4. *Imbricated Turtle.* *Chelonia Imbricata*, Schw. *Testudo*,
Schoepf. t. 18, a.

Shell elliptically keeled; shields yellow, spotted and rayed. In the young, the ends of the shields are obliquely truncated, and scarcely imbricate, *Caretta Nasicornis*, Merrem. Schoepf. t. 17, f. 1. Indian and Atlantic Ocean,

Ord. 3. EMYDOSAURI.

Vertebrae of the back and the ribs free, mobile; the mouth toothed; the feet digitate, webbed; above and beneath covered with imbedded squarish plates, with small scales on the sides.

Gen. 1. CROCODILUS.

Toes 4, 5, claws 3, 3; tail compressed, above keeled, serrated; teeth conical in a single series; tongue fleshy.

1. *The head depressed; the canine teeth of the lower jaw received in a pit in the upper jaw.* Alligator.

* *Feet digitate.* South America.

Spectacled Alligator. *Croc. (Alligator) Sclerops*, Schw. Seba, 1, t. 104, f. 10, Spix. Braz.

With a cross rib between the orbits; nape with a band of shields. South America and Brazil. The frontal cross rib varies in shape.

Eye-browed Alligator. *Croc. (Alligator) Palpebrosus*, Cuv. Eyelids bony; nape with a band of shields, each bearing a crest. Var. the nuchal shields are sometimes irregular. *Croc. Trigonatus*, Seba, 1, t. 108, f. 3. Guiana.

† *Feet, subpalmated.* North America.

Pike-muzzled Alligator. *Cayman Croc. (Alligator) Lucius*. Cuv. *Croc. Cuvieri*, Leach Zool. Misc. t.

Head depressed, parabolic, nuchal shields 4. North America.

CLASS REPTILIA.

II. *The head oblong ; canine teeth of the lower jaw received in a notch in the edge of the upper ; feet palmated.*
Crocodilus.

Common Crocodile. Crocodilus Vulgaris, Ann. Mus. x.
t. 3.

The head equal, broad ; nuchal plates six ; cervical six, sub-equal ; the dorsal shields quadrate, six rowed. Africa and India.

Ruppell's Crocodile. Croc. Octophractus, Ruppell, MSS.

The head equal, long ; nuchal plates four, cervical eight, unequal ; the dorsal shields slightly keeled. Africa, Dongola, and Senegal.

Double-crested or Indian Crocodile. Crocodilus Biporcatus, Cuv.

The forehead with two nearly parallel longitudinal ridges ; nuchal shields six ; dorsal shields ovate, eight rowed. India and its islands.

Rhombic Crocodile. Crocodilus Rhombifer, Cuv.

The forehead convex, with two diverging ridges ; nuchal shields six ; dorsal scales quadrate, six rowed ; scales of the limbs thick, keeled.

Siam. Crocodile. Crocodilus Galeatus, Cuv. Hist. Anim.
Par. 6, a.

Crown of the head with a two-toothed elevated crest ; nuchal shields six. India. Siam.

Two-shielded Crocodile. Crocodilus Biscutatus, Cuv.

Nuchal shields two ; the middle dorsal scales quadrate, the outer irregular, scattered.

West Indian Crocodile. Crocodilus Acutus, Cuv. Geoff.
Ann. Mus. Par. II. t. 37.

Head produced, convex at the base ; middle dorsal scales

CLASS REPTILIA.

quadrate, outer irregularly scattered; nuchal scales six.
West Indies.

Armed Crocodile. Crocodilus Cataphractus, Cuv. Oss.
Foss. f.

Head produced; nape with four bands of bony shields like
the Alligators. Mus. Col. Surgs.

Flat-headed Crocodile. Croc. Planirostris, Graves.

Head, base, flat; shields tubercular; nuchal plates six, distant.
Africa?

Intermediate Crocodile. Crocodilus Intermedius, Graves.

Head produced, sub-cylindrical; dorsal shields, six-rowed,
nuchal, six. America?

III. *Head long, produced, muzzle cylindrical; teeth and
feet like Crocodiles. Gavialis.*

Common Gaviol. Croc. (Gavialis) Gangeticus.

The nuchal shield united to the dorsal plates; the crown
and orbits appear to dilate with age. See Faugas. Hist.
Mont. St. Petri, t. 46, 48; from whence *Croc. Tenuirostris*,
Cuv. Ganges.

Order III.? ENALIOSAURI. *Conybeare.*

Vertebrae of the back and the ribs free, mobile; the mouth
toothed; the feet fin-shaped. Only found in the fossil state;
perhaps not of this section.

Gen. 1. ICHTHYSAURUS, Koenig.

Head large; teeth conical, placed in a groove; neck short.

For the anatomy and species of this genus, consult Home
Phil. Trans. Conybear. Geolog. Trans. and Cuv. Os. Fos.
vol 5.

Ichthyosaurus Communis, Conybeare. Cuv. Os. Fos. t. 29.
f. 1, 9.

CLASS REPTILIA.

Ichthyosaurus Platyodon, Conybeare, teeth compressed.
Cuv. Os. Fos. t. 26. f. 4, 5.

Ichthyosaurus Tenuirostris, Conybeare, Cuv. Os. Fos.
t. 29. f. 8, 9.

Ichthyosaurus Intermedius, Cuv. Os. Fos. t. 29. f. 2, 5.

Ichthyosaurus Latifrons, Koenig. Icon. Sect. t. f. ined.
Mus. Brit.

Ichthyosaurus Grandipes, Sharp. Geol. Trans. 1830.

Gen. 2. PLESIOSAURUS, Conybeare.

The head small; neck very long, of many vertebræ; the
teeth placed in pits.

For the anatomy of this genus, consult Conybeare, Geolog.
Trans. and Cuv. Os. Fos. v.

Plesiosaurus Dolichodeirus, Conybeare, Geolog. Trans. Cuv.

Os. Fos. v. t. 31 and 32. f. 1, 2, &c. Lyme Regis.

Plesiosaurus Recentior, Conybeare, Kimmeridge.

Plesiosaurus Carinatus, Cuv. Os. Fos. v. 486.

Plesiosaurus Auxois, Cuv. L. c. v. 486.

Plesiosaurus Pentagonus, Cuv.

Plesiosaurus Trigonus, Cuv.

Gen. 3. SAUROCEPHALUS, Harlan. *Saurodon*, Hay.

Teeth like incisors, placed in pits with a regular hole on
the inner edge of the Alveola.

Saurocephalus lanciformis, Hay. Amer. Phil. Trans. y.

t. 16. *Saurocephalus, Leanus*, l. c. t. 16.

Section II. SQUAMATA.

Tongue free, organs of generation double, ossa quadrata
separated from the skull.

Order I. SAURI.

Mouth not dilatatile, skin covered with various unequal scales.

CLASS REPTILIA.

Division I.

*Tongue long, deeply bifurcated, teeth placed on the inner edge of the jaws.**

Gen. I. MONITOR.

Tongue retractile, head covered with small polygonal shields. *Inhabiting the old world, living near water.*

1. *Tail compressed, nostrils subapical, or medial, open;*
Monitor, nob.

Two Banded Monitor, Mon. bivittatus, nob. Tupinambis bivittatus. Kuhl.

Black, with five cross rows of white spots or rings, back of head spotted, above banded; cheeks, with two black streaks; nostrils subapical. India. Jun., more spotted. *Tup. exilis.* Reinw. Mss. Mus. Brit.

Laced Monitor, Mon. Varia, n. Lacerta Varia, Shaw. White.
Voy. t. p. 253. Phil. Voy. t. at p. 279.

Nostrils one-third from the tip of the nose; toes short; subequal. New Holland. *Tup. Marmoratus*, Oppel. of Manilla, appears to be a variety. Mus. Brit.

Yellowish Monitor, Mon. Flavescens, nob. Uran. Russelii, Schegel.

Yellowish, brown netted, scales very large; toes very short, nearly equal, India. Mus. Ruppel.

Eyed Monitor, Mon. Ocellatus, Von Heyden Ruppel Atlas, t.

Yellowish brown, with pale eyed spots, dorsal scales oblong,

* All the species of the genera of this section require a complete re-examination, the following is only an attempt at noting the species which I have seen named in collections.

CLASS REPTILIA.

surrounded by small granular scales, ventral scales square. Dongola, Senegal. Mus. Ruppel.

Green Spotted Monitor, Mon. Chlorostigma, nob.

Black; head, body, and tail, white spotted; scales, rather large; toes very unequal, nostrils one-third from the tip. Young, belly whitish, black spotted. Rawack, Mus. Paris.

Timor Monitor, Mon. Timorensis, nob. *Tup. viridomaculatus*, Daud.

Like *T. Bengalensis*, but the scales are larger, especially those of the tail, toes longer, nostrils more than one-fourth from the tip. Timor. Mus. Paris.

Green Monitor. Mon. Viridis.

Nostrils medial, scales large, yellow, with large dark spots, Mus. Leyd.

Elegant Monitor. Mon. Exanthematica, n. *Lac. Exanthematica*, Bosc. t. 5, f. 3. *Tup. Cepedianus*, Daud. t. 29. *Lac. Argus*, Daud. from Seba 1, t. 85. f. 3. *Uran Elegans*, Mer.

Nostrils medial, with a black streak from the eye; head with black edged white spots, throat black spotted, belly black banded. Africa.

Brown Spotted Monitor. Mon. Bengalensis, n. *Tup. Bengalensis*, Daud. *Uran Punctatus*, Mer.

Nostrils medial, head black, dotted; back, black dotted and slightly eyed; throat black dotted; scales rather large; toes short. India. *Lac. Dracæna*, Lin. from Seba. 1, t. 101, f. 1, now in Mus. Par. The *Tup. Caudivertus*, Daud. has the nostrils medial, and is very like this species.

CLASS REPTILIA.

Clouded Monitor. Mon. Nebulosus.

Nostrils medial, above green brown, white dotted, loins and base of tail, with bands of eyed spots; beneath white, black netted, toes unequal, rather long, head long, angular. Java. Mus. Par.

Ornamented Monitor. Mon. Ornatus, Tup. Ornatus, Daud.
Ann. Mus. II. t. 48. *Lac. Capensis, Sparrm.*

Nostrils medial, above black, beneath white; throat, with nine black bands, nape, with four or five curved lines, and with seven bands of round white spots. Africa. Mus. Leyd.

Nilotic Monitor. Mon. Niloticus, Lac. Niloticus, Hasselq.
Geoff. Rept. Egypt, t. 3, f. 1.

Pale, varied and eyed with brown; toes very unequal. North Africa and India. Mus. Brit.

Heraldic Monitor. Mon. Heraldicus.

Nostril submedial, rather nearer the eyes; head with regular and variously placed white lines; nape and back with a ring of eyed white spots. Toes short, subequal. Bengal. Mus. Paris.

Varied Monitor. Mon. Pulcher, Leach. Uran Elegans, Merrem. Lac. Monitor, Linn. Tup. Stellatus, Daud.
n. t. 31? Seba, 1. t. 94, f. 1, 2. y. t. 30. f. 2. y. 68. f. 2.

Nostrils submedial, brown; head and neck with concentric white rings of dots; back, white dotted, with nine bands of round white dots; beneath white, brown dotted. Central and South Africa. Mus. Brit.

II. *Tail round, nostrils large, valvular, placed near the orbits. Psammosaurus.*

Grey Ouran. Mon. (P.) Scincus, Licht. Tup. Grisseus, Daud. Geoff. Rept. Egypt. t. 3. f. 2. t. 4. f. 14, 15.

CLASS REPTILIA.

Grey, dotted with brownish scales, nearly square, edged with small grains. North Africa. Mus. Brit.

White throated Ouran. Mon. P. *Albogularis.* Tup. *Albogularis,* Daud. iij. t. 32.

Head, and neck, beneath, and sides, whitish, brown, dotted with two white lines, from the eye to the nape. Inhab.

N.B. The *Dragon* figured by Klein Tent Herpet, t. is an animal of this genus which has had the head united to the skin of the body, just behind the fore legs, so that it appears only to have two legs.

Gen. II. HOLODERMA. Wiedeman.

Tongue contractile? Head broad, depressed, covered with crowded, irregular, many sided, convex, tubercular shields. Palate not toothed; body squamulose with parallel transverse ridges of larger distant tuberiform long scales; abdominal scales, four sides, smooth; femoral pores none; tail round.

Horrid Monoxillo. *Holoderma Horridum.* Wied. *Tachydermun Horridum,* Wagler, II. t. 18.

Brown, yellow spotted, tail with close yellow rings. New Spain.

Gen. III. TEIUS.

Tongue contractile, head shielded, palate mostly toothed. Femoral pores distinct. Found only in America.

I. *Abdominal scales square, as long as broad, smooth; dorsal scales keeled. Tail compressed, keeled.* *Crocodilurus,* Spix. Ada Gray.

Great Dragon, Lacépède. *Common Ada, Teius (A.)* *Crocodilus,* Merrem. Lacep. t. 9. Daud. t. 28.

Back with scattered keeled scales. Guiane.

CLASS REPTILIA.

Double Crested Ada. Teius (A.) Bicarinata, Lac. Bicarinata, Gm. Tup. Lacertinus, Daud. Croc. Amazonicus, Spix, t. 21.

Back with equal keeled scales, belly with eight series of scales. South America. Young, side of body spotted. *Croc. Ocellatus, Spix, t. 22. f. 1.*

II. *Abdominal scales smooth, longer than broad; dorsal scales smooth; tail round; collar small. Teguxin.*

Variigated Safeguard. Teius. (T.) Monitor, Merrem. Lacerta Teguxin, Lin. Seba, i. t. 96. f. 23. t. 97. f. 1; 5. t. 99. f. 1. Tup. Nigropunctatus, Spix, t. 20. Pr. Max. Beytr. t.

Black, with bands of yellow spots; beneath yellow; tail, black and yellow-banded. *Tup. Maculatus, Daud. Tup. Monitor, Spix, t. 19.,* appears to be the young.

According to Mr. Caup's account of his genus *Exypestes*, which he says, has the scales of the Monitor, and the tongue, teeth, head, plates, and country of *Teius*, it must belong to this subgenus. He described the back as finely and equally scaled, and the palate toothless.

III. *Abdominal scales smooth, broader than long; tail round; dorsal scales smooth; collar none. The young streaked with black on the sides. Ameiva.*

The Ameiva. Teius Ameiva Vulgaris, Licht. Spix, t. 23. Lac Ameiva, Lin. Ameiva Argus, Fitz.

Green, black spotted, sides with four bands of black-edged white spots. Young *Teius Ocellifer, Spix.*

Lettered Ameiva. Teius (A.) Litterata, Daud. Seba, i.

CLASS REPTILIA.

t. 83. and *Lac. Gutturosa*, Daud. from Seba. ij. t. 103, f. 3, 4.

Blue green, varied with oblong black dots; sides with white-eyed black cross-bands; neck beneath plaited. South America, not Germany.

Blue-headed Ameiva. Teius (A.) Cæruleocephalus, Seba. i. t. 91, f. 3.

Head blue; dorsal line white, with two yellow lines along each side; thighs white spotted.

Blue Ameiva. Teius (A.) Cyaneus, Lacep. i. t. 31, Seba. ij. t. 105, f. 2.

Bluish, sides with roundish white spots.

Side-streaked Ameiva. Teius (A.) Lateristriga, Cuv. Seba, i. t. 90, f. 7. (Spix, t. 24, f. 1?)

With a dark white-edged line on each side.

Striped Ameiva. Teius (A.) Lemniscatus, Lac. Lemniscatus, Gmel. Seba, i. t. 92, f. 54. Daud. ij. t. 36, f. 1.

Dusky blue, back with eight white lines, tail round, limbs white spotted, with three white lines.

Three-streaked Ameiva. Teius (A.) Tritæneatus, Spix. t. 24, f. 2.

Checkered Ameiva. Teius (A.) Tesselata, Say, Long. Exp. ij. 50.

Black, with nine or ten longitudinal, and eighteen or twenty cross lines; dorsal scales small, beneath whitish. Tail long, brownish olive, black spotted. North America, Say.

Blue and black Ameiva. Teius (A.) Cyanomelas, Pr. Max. Beytr. v. t.

Head short; tail and back black, with a central broad band, and the sides with two narrow whitish blue streaks. Brazils.

CLASS REPTILIA.

Green Ameiva. Teius (A.) Viridis, Merrem. *Lacerta*.
Teyou, Daud. *Ameiva Teyu*, Lecht.

Top of head and dorsal line green; body olive violet, with six white longitudinal lines; throat and belly silvery white.

Collared Ameiva, Teius (A.) Collaris. Agama Collaris, Say,
Long. Exp.

Olive, with five or six alternate broad dusky and narrow yellow or grey spotted fibrous bands; sides greenish yellow; sides of neck fibrous, varied with red and black bands, beneath pale. North America, Arkansa Territory.

IV. *Abdominal scales lanceolate, keeled; tail round; collar distinct.* *Kentropyx*, Spix.

Intermediate Centropyx. Teius (C.) Intermedius, Schlegel.
Back with three pale lines; dorsal scales minute. Surinam,
Mus. Leyd.

Spurred Centropyx. Teius (C.) Calcaratus, Spix. t. 22,
f. 2.

Scales of the back and throat granular. Males with two small spine-like scales on each side of the vent; scales of the belly, legs, and tail, keeled, green; sides of the back blackey. Brazils.

Striated Centropyx. Teius (K.) Striata. Lacerta Striata,
Daud. *Pseudo-Ameiva Striata*, Fitz. Merrem. Wetter.
Ann. i. t. 1, Pr. Max. Beytr. xiii.

Grey, sides blue, with two longitudinal brown lines; abdominal scales twelve rows; dorsal scales keeled.

Genus IV. LACERTA.

Tongue contractile; head shielded; palate toothed; lateral line, none; the bones of the skull advanced over the temples

CLASS REPTILIA.

and orbits; femoral pores distinct. *Inhab. temperate parts of Old World.*

1. *Back with granular scales; belly with a collar of large plates; femoral pores numerous. Lacerta.*

A. collar separate the whole length from the chest-plates by small granular scales; the frontal plate nearly as broad before as behind.

Eyed Lizard. Lac. Ocellata, Edw. t. 202.

Belly with eight or ten rows of plates; occipital plate large, Young. *Lac. Lepida, Daud. iij. t. 37. f. 1.* South of Europe. *Lac. Rhombica, Merrem, Lac. Jamaicensis, Daud.,* are from Edwards' figure.

Green Lizard. Lac. Viridis, Lin. Daud. t. 34., and Lac. Bilineata, Daud. t. 55. f. 1.

Scales of back slender, keeled; of tail, sharply keeled; collar free, serrated; occipital plate rudimentary; abdominal plates six-rowed; hinder legs not reaching the armpits. Europe. Length, twelve inches.

Wall Lizard. Lac. Muralis, Merr. Daud. iij. t. 8. f. 1. Lac. Vivipara, Jacq. Act. Helv. j. t. 1.

Scales of back and sides smooth; of the tail, octant above, slightly keeled; collar entire, adnate; belly, scales six-rowed; hinder legs reaching the armpits; length five inches.

Schreber's Lizard. Lac. Schrebersiana, Edw. An. Sci. t. 5. f. 5. Lac. Fusca, Daud.

Occipital plate rudimentary; abdominal plates six-rowed; temples covered with granular scales and a cheek-plate; hind legs long. Mus. Par.

Cape Lizard. Lac. Lalandii, Edw. An. Sci. t. 5. f. 6, and t. 8. f. 5.

Occipital plate rudimentary; abdominal plates six rowed;

CLASS REPTILIA.

temples covered with granular scales only ; hind legs short, with medial scales before the vent. Cape. Length thirteen inches.

Duges Lizard. Lac. *Dugesii*, Edw. t. 6. f. 2.

Occipital plate rudimentary ; belly plates, six-rowed ; temples with granular plates only ; hind legs long ; one medial plate before the vent. Madeira.

Edwards' Lizard. Lac. *Edwardsiana*, Duges.

Abdominal plates eight-rowed ; scales of back imbricate, pointed ; four sub-maxillary plates on each side ; limbs slender ; thighs cylindrical. Shore of the Mediterranean.

B. Collar free the whole length ; the frontal plate small, and narrowed behind.

Olivier's Lizard. Lac. *Olivieri*, Ardouin. Sav. Rept. Egypt. t. 2. f. 3.

Abdominal plate six or eight-rowed ; one large medial scale before the vent. North Africa.

Savigny's Lizard. Lac. *Savignii*, Ardouin. Sav. Rept. Egypt. t. 1. f. 8.

Abdominal plates six or eight-rowed ; three larger medial plates before the vent. Egypt.

Shielded Lizard. Lac. *Scutellata*, Ardouin. Sav. Rept. Egypt. t. 1. f. 2.

Abdominal plates twelve or fourteen-rowed ; interparretal plate rudimentary ; three large medial scales before the vent ; the hinder larger than the side ones. Egypt.

Dumerill's Lizard. Lac. *Dumerillii*, Edw.

Abdominal plates twelve or fourteen-rowed ; interparretal plates rudimentary ; three larger medial scales before the

CLASS REPTILIA.

vent, the hinder smaller than the side ones. Senegal. Mus. Par.

Knox's Lizard. Lac. *Knoxii*, Edw. t. 6. f. 8.

Abdominal plates twelve or fourteen-rowed; interparietal plates large. South Africa.

Variable Lizard. Lac. *Variabilis*, Licht. *L. Variabilis*,
L. Arguta, *L. Velox*, and *L. Cruenta*, Pallas.

Abdominal plates fourteen or sixteen-rowed; head rather acute; scales small, rather triangular or roundish, smooth; caudal scales closer keeled. Perhaps *L. Deserti*, Lepech, and *L. Corunea*, Merrem. Tartary.

C. Collar united in the middle to the abdominal plates, free on the sides.

Panther Lizard. Lac. *Pardalis*, Licht.

Abdominal scales ten rowed; head rather acute; scales of the back smooth; of the tail rhombic above, keeled; tail little longer than the body. Egypt.

Bosc's Lizard. Lac. *Boscii*, Daud. iij. t. 36. f. 2. Lac. *Velox*, Edw. Savig. Rept. t. 1. f. 9.

Abdominal plates ten-rowed; scales keeled; cervical ones small; dorsal large, rhombic, blunt; tail twice as long as the body. Egypt.

Red-spotted Lizard. Lac. *Rubropunctata*, Licht. Savign. Rept. Egypt. t. 1. f. 1?

Abdominal plates ten-rowed; head acute; scales of the back small, smooth; of the tail large, sub-quadrate, olive, keeled; tail twice as long as the body. Egypt.

Spotted Lizard. Lac *Guttulata*, Licht. Sav. t. 1. f. 8?

Abdominal plates eight-rowed; head rather acute; scales of

CLASS REPTILIA.

back very small ; of tail sub-rhombic, above keeled ; tail long.
Egypt.

Grammic Lizard. Lac. *Grammica*, Licht. Sav. t. 1. f. 7.

Abdominal plates fourteen or twenty-rowed ; head acute ; scales of the back small, scarcely keeled ; of tail rhombic, keeled ; collar sometimes obsolete ; tail half as long again as the body. Egypt.

Indian Lizard. Lac. *Leschenaultii*, Edw. t. 6. f. 9.

Abdominal plates six-rowed. Inhab. Coromandel.

11. *Back with granular scales ; belly with small plates ; collar indistinct.* Psammodromus. Fitz.

Spanish Lizard. L. (*Psammodromus*) *Hispanicus*, Fitz MSS. See also Var. of *Lac. grammica*, Licht.

Blackish blue, lighter underneath. Spain.

III. *Back and tail with keeled scales, belly with smooth imbricate scales, collar none, femoral pores numerous.*
Algyra Cuv.

Common Algyra. Lac. (*Algyra*) *Cuvieri*, Lac. *Algyra*, Lin.

Tail long, round, brown, beneath yellowish, with two yellow streaks on each side ; length four inches. Spain.

IV. *Back and tail with lanceolate imbricate keeled scales, abdomen with smooth imbricate scales, collar none, femoral pores none.* *Tropidosaurus*, Boie.

Mountain Lizard, Lac. (*Tropidosaurus*) *Montanus*, Boie.

Olive dark metallic green, blackish on the sides, and with a narrow black dorsal, and two narrow white lines on each side. Java. I have seen this genus both at Paris and Leyden, it has much more the appearance of a scinct than a lizard, but I could not see its tongue, which I suppose caused Cuvier to place it in this group.

CLASS REPTILIA.

Gen. V. TACHYDROMUS. Opper.

Tongue contractile; head shielded; back, belly, and tail, with square keeled scales; lateral line distinct, with small scales; femoral pores one on each side the vent; body very long; feet very far apart and small.

Chinese Tachydrome. Tachydromus Sexlineatus, Daud.
ij. t. 39.

Silvery, with six brown bands. Tail three or four times as long as the body. Java and China. Common in insect boxes from China. The other species, *Quadrilineatus*, Daud. in the Paris Museum, is in too bad a state to distinguish it from the former. Is this *Lac. Sept.* of Linne?

Section II.

Tongue short, contractile, end slightly lobed.

Gen. I. IGUANA.

Teeth three lobed or toothed, placed in the inner edge of the jaw. Body and head compressed, palate mostly toothed.

A. Ribs simple; throat dilatible; head short; back crested; palate toothed; femoral pores numerous. Iguana, nob.

I. Tail equally scaly; toes unequal; head shields flatish; dewlap denticulated. Iguana.

Common Guana. Iguana Tuberculata, Laur. *Squamosa*, t. 5, *I. Viridis*, t. 6, and *I. Emarginata*, t. 8, Spix.

Sides of neck with convex scales; front edge of dewlap toothed; sides of lower jaw with orbicular plates. Var. Nose plates prominent, hornlike. *Iguana Cornuta*, Em. t. 4. f. 4. Young, dorsal spines lower. *Iguana Cærulea*, Daud. and *I. Lophyroides*, Spix, t. 9. South America, Mus. Brit.

CLASS REPTILIA.

Smooth-necked Guana. Iguana Delesatissima, Laur. I
Nudicollis, Merrem. Mus. Bresl. t. 13. f. 1.

Sides of neck smooth; front of dewlap slightly toothed; sides of lower jaw with small plates. Brazils and Gaudaloupe.

2. *Tail equally scaly; toes unequal; head shield, flatish; dewlap entire. Brachylophus. (Les Brachylophes.)*
Cuv.

Banded Guana. Iguana (Brachylophus.) Fasciatus,
Brongn. Bul. Soc. Philom. t. 61. f. 1.

Green, brown banded. South America, not Java, as said by Brongniart. Mus. Brit.

4. *Tail compressed, with rings of spinous scales; toes nearly equal; head shields convex. Amblyrhynchus*,
Bell.

Rough headed Guana. Iguana (A.) Cristatus, n. Bell.
Zool. Jour. i. t. 12.

Brown, sides and belly yellow? Galapagos.

Black Guana. Iguana (A.) Ater, nob.

Nearly black; beneath dusky. Galapagos.

B. Ribs simple, throat with a cross fold.

I. *Head long, scutellated; back crested; tail with rings of spinous scales; back with square scales; femoral pores distinct. Cyclura* nob.

Palate toothed. Ctenosaura. Weigmann.

Cycluroid Guana. Iguana. (Ctens.) Cyclurcides. n. Ctenosaura Cycluroides. Wiegmann, Iris xxi.

Dorsal crest continued; scales of back and sides, obsoletely

CLASS REPTILIA.

keeled; of sacrum mucronate. Palatine teeth many, small; tail very long and round, crested with a series of spines. Mus. Berl.

Spiny Tailed Guana. Iguana. (Ctenosaura) Acanthura.
Lac. Acanthura. Shaw. Zool. iij. 326. *Cyclura*
Shawii, Gray Ann. Phil.

Pale brown; dorsal crest interrupted over the sacrum; tail cylindrical, with a ring of depressed scales between each ring of spiny ones; palatine teeth few, large. Mus. Brit.

Armed Iguana. Iguana (Ctenosaura) Armata.

Head long, pyramidal; tail with rings of spines, having two rings of depressed scales between them at the base; teeth three or five lobed; palatine teeth small, in one row. Mus. Bell.

Allied Iguana. Iguana (Ctenosaura) Similis.

Grey, black dotted, body with four oblique dark bands; occiput forming a concave band behind; dorsal crest low but continued over the sacrum. Teeth blunt, three lobed; palatine on two raised lines on each side. Head two, body nine inches. Mus. Bell.

Lancet Toothed Iguana. Iguana (Ctenosaura) Lanceolata.

Grey, black dotted. Tail black banded, base black spotted; head scales rather large, convex; dorsal crest, completely interrupted over the sacrum. Palatine teeth, in two bunches; the teeth of the jaw, long lanceolate sharp-edged, two or three lobed; femoral pores six. Length of body and head fourteen, of tail twenty-four inches. Mus. Bell.

Bell's Iguana. Iguana (Ctenosaura) Bellii. Gray MS.

Grey, black netted; dorsal and caudal crest of short, broad scales, interrupted over the sacrum. Scales of the occiput and

CLASS REPTILIA.

sides of the head, convex; scales of the mastoid ridge, small, conical. Palatine teeth in two bunches; tail, base smooth, middle and end with distant rings of slightly elevated scales, having four rings of small scales between each; toes short, thick. Mus. Bell. Length of body eighteen inches.

Iguana Cyclura of Cuvier may be probably one of these species, but his account of it is too general to distinguish it.

Palate toothless. Cyclura. Harlan.

Keeled Guana. Iguana (Cyclura) Carinata. Cyclura Carinata. Harlan. Acad. Nat. Sci. Phil. iv. t. 15.

Deep dirty brown; dorsal crest interrupted over the shoulders and loins; scales of body uniform; legs and feet minutely square. Tail above keeled, with three rings of depressed scales between each ring of spiny scales. Inhab. Turk's Islands, Bahama.

Round Guana. Iguana (Cyclura) Teres, n. Cyclura Teres. Harlan. l. c. t. 16.

Dark green, teeth small, uniform pointed; dorsal crest interrupted over the loins; scales of the sides square, of the thighs and legs bristly. Tail cylindrical, with two rings of depressed scales between each rings of spines. Tampico.

Clouded Guana. Iguana (Cyclura) Nubila. Gray.

Blue with oblique bands of roundish spots; tail compressed, with four rows of small depressed scales between each ring of spines. South America? Brit. Mus. Figured here under the name of *Clouded Lizard. L. Nebulosa.*

II. *Head covered with convex scales, and often some superciliary plates; back, covered with small scales slightly crested, femoral pores none. Ophyesa, Boie.*

1. *Tail, simple, compressed, dorsal scales, minute, (Xiphura, nob.)*

CLASS REPTILIA.

Sword Tailed Ophyessa. *Oph. Superciliosa*, *Lacerta*, Lin.
from Seba, l. t. 199. f. 4. *Lophyrus Xiphurus*, Spix,
t. 10, good.

Head with sub-equal, keeled scales, occiput with cross rows of convex tubercles. Back with small, belly and limbs and tail with larger keeled scales. Brazils. Mus. Brit.

Pearly Ophyessa. *Oph. Margaritaceus*, *Lophyrus*, Spix,
t. 12, f. 2.

Back and tail slightly crested, superciliary scales, small. Brazils. *Loph. Auroniteus*, Spix, t. 13, scarcely appears to differ from this except in age.

Lozenge Ophyessa. *Oph. Rhombifer*, *Lophyrus*, Spix, Braz.
t. 11, adult. *Loph. Albomaxillaris*, Spix, t. 13, f. 2.
Young; *Agama Catenata*, Pr. Max. t.

Brown, beneath paler, limbs pale banded, back with two sinuous, brown bands, forming a series of rhombic spots, super-orbital scales small. Brazils.

9. *Tail round, slender, with imbricate scales*. Plica, nob.

Brazilian Ophyessa. *Oph. Braziliensis*.

Head with rather convex, keeled scales, superciliary ones rather smaller, bluish; chest, inside of legs, belly, and vent, whitish. Scales of back and throat granular, of belly rather larger, of limbs and tail largest, keeled; tail round; back and loins with a small toothed crest. Brazils.

Painted Ophyessa. *Ophyessa Picta*, *Agama*, Pr. Max. t.
Lophyrus Ochrocollaris, Spix, t. 12, f. 2. *L. Panthera*.
Spix, Braz. t. 13, f. 1. Young.

Brown; body, face and limbs darker banded; beneath pale, Superciliary scales oblong; occipital plate, distinct; back slightly crested. Brazils.

CLASS REPTILIA.

Umber Ophyessa. Ophyessa Plica. Lac. Plica, Lin. Agama Plica, and A. Umbra, Daud. Loph. Agamoides, Gray. Ann. Phil.

Back with minute scales, sides of neck behind the ear with four bundles of spines.

3. *Tail round, tapering, with spinose, whorled scale; ears spinose in front, back and belly scaly. Tropicidurus, Pr. Max.*

Palate toothed, Oplurus, Cuv.

Collared Tropicidurus. Trop. Torquatus, Pr. Max. t. Agama Taraguira, Licht.

Green; black stripe on each side the neck; eyelid black rayed, back with lines of spot when young. Mus. Brit. See *Agama Nigricollis*, Spix, t. 16, f. 2, but Spix says it has no palatine teeth. This may be, *Ephimotes*, Cuvier 47, but certainly it has no pores.

Tubercular Tropicidurus. Trop. Tuberculata, Gray. Agama Tub. Spix, t. 15, f. 1, ♂ 2, ♂

Green, black spotted; streak on side of neck black; scales of back and feet keeled; the dorsal ones the largest. Brazils.

Cuvier's Tropicidurus. Trop. Cuvieri, Gray. Oplurus Torquatus, Cuv. ij. 48. Seba. j. t. 94. f. 4. Cop. Shaw Zool t. 69.

Dorsal scales minute, keeled; caudal scales large, keeled; with a black half collar on each side the neck. Braz.

* * "Palate toothless," Spix.

Half-banded Tropicidurus. Trop. Semitæniatus. Agama sem., Spix, t. 15. f. 1.

CLASS REPTILIA.

Green-brown, smooth; dorsal line blue; dorsal scales minute; abdominal rather larger; caudal largest, keeled.

Cyclurid Tropidurus. Trop. Cyclurus. Agama Cyclurus.
Spix, t. 17. f. 1.

Olive brown, longitudinally keeled; back and tail black-banded; beneath brown. See also Seba, t. 97. f. 4. Pr. Max. Bon. Trans. xiv. t. 15.

4. *Tail tapering, with large verticillate spinose scales; head and body with minute granular scales.* Uranocentron, Caup. Doryphorus, Cuv.

Long-tailed Doryphorus. Oph. (Uran) Azureus. Agama Azureus, Daud. iv. t. 46.

Bright blue, spotless; tail long. Inhab. Surinam.

Short-tailed Doryphorus. Oph. Uran. Brevicaudatus. Agama Brevi, Daud. iv. t. 47. *Lac. Azurea,* A. Gmel.

Blue, black-banded; tail short, depressed. Mus. Col. Surg.

III. *Head with numerous small regular shields; back and tail with large keeled spines, converging towards the back, and forming a crest; femoral pores none.* Leiocephalus, Gray.

Keeled Leiocephalus. Leiocephalus Carinatus, Gray. Ann. Phil.

Green, blackish-banded; dorsal scales large, broad, keeled; keels forming oblique ridges; the vertebral keel the highest. — ? Mus. Brit.

IV. *Head covered with small shields; back and tail with large keeled scales; belly with smooth scales; tail long, with imbricate keeled scales; femoral pores large.* America. *Tropidolepis,* Cuv. *Sceloporus,* Wiegmann.

CLASS REPTILIA.

Northern Tropidolepis. *Tropidolepis Undulatus*, Gray.
Agama Und., Daud. *Lacerta Hyacenthina*, and *Lac.*
Faciata, Green.

Ash, with irregular brown cross-bands; head with regular flat plates. North America. Mus. Brit.

Thorny Tropidolepis. *Tropidolepis Aculeatus*, Gray.

Head with convex irregular scales: eyebrow plates band-like, back with a crest of short compressed scales; scales of body and limbs dagger pointed. Martinique.

Cuvier places *Agama Nigricollis*, and *A. Cyclurus*, Spix, in this genus; but Spix says they have no femoral pores, they are more like *Ophyessa*.

Collared Tropidolepis. *Trop. Torquatus*, Gray. *Sceloporus*, Weigmann. Iris xxi. *Tecoixin* Hernandez.

Olive brown, with a black collar, in an orange band; dorsal scales large, keeled; rhombic, smooth, tip denticulated. Mexico. Mus. Brit.

Spinous Tropidolepis. *Trop. Spinusus*, Gray. *Sceloporus*, Weigmann.

Grey brown, back with a series of brown spots; scales rhombic, tooth-edged; apex longly pointed, acute; abdominal ones, smooth truncate. Mexico.

Side Streaked Tropidolepis. *Trop. Pleurostictus*, Gray. *Sceloporus*, Wiegmann.

Olive grey; sides black and yellow spotted; scales rhombic, keeled, tooth-edged, mucronate; those in base of tail largest. Mexico.

Green Tropidolepis. *Trop. Grammicus*. Gray. *Scelerophorus*. Weigmann.

Shining coppery olive, with black flexuous cross lines;

CLASS REPTILIA.

scales rhombic keeled, mucronate. Variety, scales smaller Mexico. Mus. Brit.

Æneous. Tropidolepis. Trop. Æneus, Gray. Sclerophorus, Wiegmann.

Shining coppery; scales ovate, lanceolate, keeled, toothed. Mexico.

Banded Tropidolepis. Trop. Scalaris, Gray. Sclerophorus, Wiegmann.

Grey brown; side band white, with white edged brown semi-lunar spots; scales ovate, keeled entire. Mexico. Mus. Brit.

Bell's Tropidolepis. Trop. Bellii, Gray.

Metallic green, scales of the back and upper part of the body, and tail long, strongly keeled, dagger pointed, the keels forming 14-16 ridges; of the belly broad, blunt, those of the limbs and tail smaller, becoming larger near the end; length 10 inches. Mus. Bell.

Banded Tropidolepis. Trop. Fasciatus, Gray.

Pale brown; back with wavy cross bands; head varied, pale and dark brown; scales of back tail and limbs moderate keeled, keels 18-20; continued, oblique, entire; of the limbs and tail smaller. Mus. Bell.

V. Head, short; round, dilated behind, covered with convex scales, and crowned with spines. Body and tail short, depressed, covered with irregular keeled spines; belly with larger scales, fringed on each side; pores distinct, palate toothless. Phrynosoma. Weigmann. America.

Douglass' Toad Lizard. Phrynosoma Douglassi, Gray. Agama Bell. Lin. Trans. good.

Yellow; brown spotted. Mus. Brit.

CLASS REPTILIA.

Orbicular Lizard, or Horned Toad Lizard. *Phrynosoma Cornuta.* Gray. *Agama cornuta.* Harlan. Journ. Acad. N. S. Phil. good.

Brown; with two large hornlike spines behind the head. Mus. Brit.

Common Toad Lizard. *Phrynosoma Buffonium,* Weigm. Isis, xxi. Seba, 1. t. 83. f. 1, 2.

Scales of the belly keeled; spines on side of body two rowed, short, straight, three sided. Surinam. Mus. Berl.

Orbicular Toad Lizard. *Phrynosoma Orbiculare,* Weigmann.

Abdominal scales smooth; spines on side of body one rowed, large, recurved, rather compressed. Mexico. Mus. Berl.

C. Ribs forming complete circles; head scutellated; throat extensile.

I. *Head hooded; back crested; pores o.; toes margined on the side.* Basilicus, nob. (part Cuvier.)

Mitred Basilisc. *Bas. Americanus,* Laur. *Lac. Basiliscus,* Lin. Seb. i. t. 100. f. 1. Guiana. Mus. Brit.

Banded Basilisc. *Basiliscus Vittatus,* Boie.

Blue, with two series of spots down the sides of the back, and white streak along each side of the dorsal ridge, another edging the two lips and extended to the shoulders; beneath white; throat brown marbled. Dorsal ridge scarcely elevated; hood small. Length about nine inches. Mus. Berl.

II. *Head squarish, occiput compressed, produced into a crest; back lowly crested; pores none.* Chamæleopsis, Wiedemann, MSS. Mus. Berl.

Hernandy's Chameleopsis. *Chamæleopsis Hernandezii,* Wiedemann, MSS. Gray. Mus. Brit.

Black, white speckled; scales minute, thin. Mexico. Mus. Brit.

CLASS. REPTILIA.

III. *Head elongate, simple ; toes, last joint but one dilated, pear-shaped beneath.* Anolis, Merrem. Anolius, Cuv.

Equestrian Anolis. *Anolis Equestris*, Merrem. Cuv. R.A. t. 5. f. 2.

Purple ash, scapular band white ; dorsal line toothed.

Edwards Anolis. *Anolis Edwardsii*, Merrem. Edw. Glean. i. t. 245. f. 21.

Uniform slate colour, and nearly allied to Equestris.

Two-spotted Anolis. *Anolis Bimaculata*, Daud. Lac. *Bimaculata*, Sparmann, Swed. Acad. v. t. 4. f. 1. bad.

Cuvier's Anolis. *Anolis Cuvieri*, Merrem. *Anol. Velifer*, Cuvier, R.A. t. 5. f. 1.

Lined Anolis. *Anolis Lineatus*, Daud. Rept. t. 48. f. 1. Lac. *Strumosa*, Lin. Seba, ij. t. 24. f. 4 ?

Dotted Anolis. *Anolis Punctatus*, Daud. t. 40. f. 2.

Gouty Anolis. *Anolis Podargicus*, Daud. Catesby Car. t. 3.

Violet Anolis. *Anolis Violaceus*, Spix, Braz. t. 17. f. 2. Brazils.

Green Anolis. *Anolis Viridis*, Pr. Max. Good. Brazils.

All these species are so very much alike that it is impossible to distinguish them without long descriptions ; indeed the genus requires a complete revision, which I hope shortly to be able to publish : the following is very distinct.

Slender Anolis. *Anolis Gracilis*, Pr. Max.

Head elongate, slender, two keeled in front ; back slightly keeled. Dull brown, with seven cross-bands of white spots ; throat orange. Brazils.

CLASS REPTILIA.

IV. *Head angular; body with smooth scales, larger beneath; back simple; tail round; toes simple; femoral pores distinct.* Polychrus, Cuv.

Common Marble. *Polychrus Marmoratus*, Lac. *Lac. Marmorata*, Lin. Spix, Wagler, t. 21.

Eyelids black rayed; scales above, small, blunt, beneath lanceolate, keeled, of the tail largest. *P. Virescens* and *P. Strigiventer*, Wagler, and *P. Acutirotris*, Spix, t. 14. appear to be scarcely distinct, though they are said to have no femoral pores. *Polychrus Fasciatus*, La Porte, if from Molucca, must be an *Agama*. See also *Agama Molinaii*, Lesson. Bul. Sci. from Chili.

Genus III.—GECKO.

Head and body depressed; scales small, tubercular, usually larger beneath; toes five, sub-equal, generally furnished with transverse scales beneath; claws retractile; throat simple; palate toothless; eyes large, nocturnal.

Toes with a single row of broad cross scales beneath; last joint compressed, attached. *Platydactylus nob.*

A. Toes free, clawless, dilated; thumb small. *Phelsuma.*

Clawless Platydactyle. *Gecko Inunguis*, Cuv. R. A. t. f. 1.

Femoral pores none. Violet; beneath white, with a black streak on each side. Isle of France.

Eyed Platydactyle. *Plat. Ocellatus.* *Gecko*, Cuv. R. A. t. f. 4.

Femoral pores none. Grey, with white-eyed brown spots. Isle of France.

Cepedian Platydactyle. *Plat. Cepedianus.* *Gecko*, Merr. Cuv. R. A. t. f. 5.

CLASS REPTILIA.

Orange, marked with blue, and a white streak on the side; femoral pore distinct. Isle of France.

Ornamented Platydactyle. Plat. Ornatus. Phelsuma, Gray.
Ann. Phil.

Brown; back with six rows of red oval spots. New Holland.

B. Toes, first and fourth clawed, free, dilated; pores none.
Tarentola, Gray.

Fasciculated Gecko. Plat. Fascicularis. Gecko, Daud.
Grey; head rough; back with twelve series of groups of three or four small acute spines. South of Europe.

Annulated Gecko. Plat. Ægyptiacus. Gecko, Cuv. Gecko
Annulaire, Geoff. Egypt. t. 5. f. 7.

Grey; scales granular, with rows of large, flat, simple, round tubercles. Egypt.

American Gecko. Platydactylus Americanus, Gray.

Pale, lined and varied with brown; scales granular, with twelve or fourteen close rows of blunt, simple, equal tubercles. New York. Mus. Par.

C. Toes clawed, thumb clawless, subanal pores distinct.
Gecko.

Toes free, dilated the whole length. Gecko, Gray.

Common Gecko. Gecko Guttatus, Daud. t. 49. Lac.
Gecko, Lin.

Body black, with white spots; scales minute, with low rounded simple tubercles. Java. Mus. Brit.

Chinese Gecko. Gecko Reevesii.

Black, with cross band of white spots, and some obscure rather larger tubercular scales. China.

CLASS. REPTILIA.

Madagascar Gecko. Gecko Madagascariensis. Gray.

Scales smooth, with large tubercles on the sides; femoral and subanal pores in two straight diverging lines; young, with a black and white lateral line. Madagascar.

Banded Gecko. Gecko vittatus, Houttyn. Act Ulys. ix. t. 11. f. 2. Daud. iv. t. 50.

Brown, with a white dorsal band, forked over the head and the base of the tail. Java.

D. Toes free, scarcely dilated. Eublepharis, Gray.
Stenodactylus, Part. Licht.

Hardwicke's Gecko. Eublepharis, Hardwickii, Gray.

Grey, brown banded; back tubercular. Java.

Ascolobates Stenodactylus. Licht. Savigny, Egypt. *Phyllo-*
dactylus Marmoratus. Mus. Franc. *St. guttatus,* Cuv.

Scales above small; white spotted; tail, black, with irregular white rings. Egypt.

E. Toes dilated, webbed, sides of body and tail margined.
Pteroplura, Gray. *Ptychozoon,* Kuhl.

Horsfield's Gecko. Pte. Horsfeldii, Gray. *Lac. Homalo-*
cephala, Creicht.

Brown, with darker cross bands; beneath pale; tail, when reproduced, roundish, not pinnated.

E. Toes and thumb clawed, subwebbed, sides sub-finned.
Leache's Gecko. Gecko Leachianus, Cuv.

Grey, with large white spots; scales uniform, smooth.

II. *Toes, with a series of cross scales, divided by a groove, beneath, last joint compressed, sheathed. Thecodactylus.*

CLASS REPTILIA.

a. *Toes dilated to base, scales under toes transverse, thumb clawless, femoral pores, none.* Thecodactylus, Cuv.

Smooth Sheath claw. Thecadactylus lævis, Daud.

Tail round, conical; grey, brown marbled; tail when reproduced, turnip shaped. Gecko rapicauda, Daud. iv. t. 31.

b. *Toes, base, slender; scales 2 or 3 at the tips.* Phyllodactylus, Gray.

Beautiful sheath claw. Phyllodactylus pulchellus, Gray, Spic. Zool.

c. *Tail round, femoral pores, none.*

Porphyry sheath claw. Thec. porphyreus, Gecko, Daud.

Pale reddish, marbled with many roundish pale spots, Java.

d. *Scales under the toes radiating, toes, slender, tail round, slender, femoral pores, distinct.* Ptyodactylus, Cuv.

Egyptian sheath claw. Thecodactylus Lobatus, Gecko, Geoff. Rept. Egypt. t. 3, f. 5. Gecko Ascolobates, Merrem.

Pale brown, with larger scattered scales. Egypt. Ptyodactylus Guttatus, Ruppel. t. 4, appears scarcely distinct.

e. *Toes bare, webbed; tail, body, and limbs, margined.* Uroplates.

Fimbriated sheath claw. Thecodactylus fimbriatus, Gecko, Daud. iv. t. 52.

Pale brown, scales minute, with scattered larger ones. Madagascar, Mus. Brit. Gecko Sarroube, appears to differ very little, if at all, and Lacerta Caudiverbera, Seba, ij. t. 103, f. 2, is only known from La Feuille's account.

III. *Toes, base dilated, with a double row of oblique scales beneath, last joint compressed.* Hemidactylus.

Warty Gecko. Gecko Verrucosus, Cuv. Lac. Turcica. Lin. Edw. t. 204?

Reddish grey; back scattered with roundish tubercles; subanal pores only.

CLASS REPTILIA.

Mabuia Gecko. Gecko Mabuia, Cuv.

Grey, varied with brown; back with about six or seven rows of small scattered tubercles on each side. South America.

It is very difficult to determine the species of this genus as the individuals vary in the size of the larger tubercular scales, and in the presence or absence of the femoral pores, which have hitherto been considered good specific characters. They are however named as follows. *Thecodactylus Policaris*, Spix, t. 18. f. 2. *Gecko Aculeatus*, Spix, t. 18. f. 2, 3. *Gecko Spinicauda*, Houttyn, Act. Ulys. ix. t. *Gecko Trihedrus*, Daud. *Stellio Platyrurus*, Schn. *Stellio Argyropus*, Tiles. Mem. Acad. Petersb. viii. t. ii. a., and *Hemidactylus Gronosus*, Ruppell. Atlas. t. 5. f. 1. The two last are said to have no pores.

Margined Hemidactyle. Hemidactylus Marginatus, Cuv. Sides of body and tail, hinder edge of thighs and legs, slightly fringed. Bengal. Mus. Ind. Comp.

IV. *Toes slender, compressed, free, and fringed on the edge, end compressed, bent and arched. Cyrtodactylus, Gray.*

a. *Tail round; pores none. Cyrtodactylus, Gray. Gonyodactylus, Kuhl. Stenodactylus, Licht. Gymnodactylus, Spix.*

Beautiful Cyrtodactyle. Cyrtodactylus Pulchellus, Gray, Zool. Jour.

Pale, with chocolate cross-bands. India.

Marbled Cyrtodactyle. Marmoratus Gonyodactylus, Kuhl. MSS.

Ash brown, marbled with darker spots, beneath ash. Java.

Eyed Cyrtodactyle. Cyrtodactylus Ocellatus, Gray.

Pale brown, with ocellated yellowish spots. Mus. Brit.

CLASS REPTILIA.

Brasilian Cyrtodactyle. Cyrtodactylus Spixii, Gray. *Gymnodactylus Geckoides*, Spix, t. 18. f. 1.

Brown, back with six series of small angular warts. Brazils.

Piping Cyrtodactyle. Cyrtodactylus? Pipiens. Stenodactylus, Licht. *Lac. Pipiens*, Pallas.

Tail, not annulated.

b. Tail depressed, subanal pores distinct. Phyllurus, Cuv.

Flat-tailed Cyrtodactyle. Cyrtodactylus Platira. Lacerta, Shaw. *Agama*, Merrem. *Phyllurus Cuvierii*, Bory. White Voy. t. 32. f. 2.

Tail cordate; grey, brown marbled, scales, with scattered pointed tubercles.

Nilius's Cyrtodactyle. Cyrtodactylus Nilli. Phyllurus, Bory. Dict. Class. t.

Tail bluntish, spathuliform, above brick-red with a black half collar and three bands.

c. Toes free, ending in a small simple round disk, without any plates beneath; claws retractile. Sphæriodactylus, Gray.

Banded Sphæriodactyle. Sphæriodactylus Sputator. Gecko, Lacep. 2. O. t. 28. f. 1.

Reddish, with brown cross-bands.

See also *Lac. Sputator Var.* Lacep. Rept. i. t. 28. f. 2. *Lac. Sputator*, Sparrmann. Nov. Act. Stock. 1784. t. 4. f. 1, 3.

Gen. IV.—CHAMELEON.

Teeth placed on the upper edge of the jaws; toes united into two groups to the claws; tail prehensile; body compressed, covered with squarish scales. Africa or India.

CLASS REPTILIA.

a. *With a series of spines along the belly and chin.*

Common Chameleon. Chameleo Vulgaris. Lac. Africana.

Occiput keeled, arched; scales equal. Grey, banded and streaked with yellow. Africa and India.

Beaded Chameleon. C. Verrucosus, Cuv. Ch. Monilifer, Boic.

Occiput keeled, arched; with larger scales on the sides.

Senegal Chameleon. Chameleo Senegalensis. Ch. planiceps.

Mer. Seba, 1. t. f. 2. *Ch. Gymnocephalus, Lacep.*

Occiput flat; side parallel edges not margined. Senegal. *Cham. Galeoratus* appears to be a variety of this species.

Eared Chameleon. C. Dilepis. Leach. Gray. Spic. Zool. t.

f. 4. *Ch. Planiceps. Merrem. C. Bilobus. Kuhl.*

Occiput flat, rather wider behind, under edged with two flaps; a white band on each side. Interior of Africa.

Streaked-sided Chameleon. Chameleo Lateralis, Gray.

Lead colour, sides white streaked; occiput compressed, slightly keeled; scales granular, with a series on the back.

b. *With a series of processes on throat, none on belly or tail.*

Panther Chameleon. C. Tigris. Kuhl. Gray. Spic.

Scales minute, regular; brown, with minute black specks.

Cape Chameleon. Chameleo Pumillus. Daud. iv. t. 53.

Ch. Margaritaceus. Mer. Seba, i. t. 32. f. 4, 5.

Scales minute, larger on the sides; olive varied. Var.

With larger processes on the head. *Ch. Pardalis, Cuv.*

C. Fimbriatus. Wied. Cape of Good Hope.

Brookes Chameleon. Chameleo Brookesii, Gray. Spic.

Zool. t. 3. *Cham. Superciliaris, Kuhl.*

Scales minute; back with a series of processes on each side; eyebrows produced into horns. Mus. Brit.

CLASS REPTILIA.

c. *Without any spines on the chest, belly, or tail.*

Two Horned Chameleon. Cham. *Bifidus*, Brongn. Daud.
t. 54. Ch. *Bifurcus*, Kuhl.

Scales square; occiput flat, dilated behind; the sides with groups of white scales; male with two compressed horns over the nostrils; female hornless. Isle of France.

Hooded Chameleon. Cham. *Cucullatus*, Gray.

Scales oval, unequal; occiput compressed, flattened, with 2 flat processes on each side of its hinder edge, nose produced. Madagascar. Mus. Brit.

Three Horned Chameleon. Cham. *Owenii*, Gray.

Scales square, small; head short, with three long, conical, curved horns over the nostrils. Fernando Po.

Parson's Chameleon. Cham. *Parsonii*, Cuv. Fos. v.
f. 30, 31. Phil. Trans. viii. t. 8.

Scales ovate, equal; occiput flat, truncated behind; eyebrow crest, produced and elevated on each side the muzzle into a long irregular lobe. Mus. Bell., and Col. Surg.

Gen. V. AGAMA.

Teeth placed on the edge of the jaws, toes free, long, head and body depressed, covered with imbricate scales. Old World.

A. *Femoral pores, none.*

a. *Head, lyrate, back and tail crested.* Lyriocephalus.

Scutated Lizard. Lac. *Scutata*, Lin. Seba, 1, t. 109.

Nose with two rounded tubercles, body with cross bands of larger scales, Mus. Fort. Pitt. Chatham.

CLASS REPTILIA.

b. *Head, lyrate, ears distinct, back and tail crested, Agama.*
Gariocephalus, Boie.

Agama Tigrina, Merrem. Shaw, t. 68. *Lophyrus gigas*,
Boie.

Pale brown, with transverse spotted bands.

Lophyrus Kuhlii, Boie, MS.

Crest less elevated, back with five or six oblique white bands.

c. *Cytophanes.*

Cyrtophanus Cristatus, Boie. *Agama*
Cristata, Merrem. Seba, 1, t. 94, f. 4.

Scales of body, smooth, of limbs and tail, larger and keeled.

d. *Back scales large, shelving upwards.* Calotes, Boie.

Common Calotes. *Calotes Ophiomachus*, Kaup. *Lac. Calotes*,
Lin. Seba, 1, t. 93, f. 2.

Blue, sides white banded, with two rows of compressed spines behind the ears, scales large, rounded, vertical on back.

Indian Calotes. *Calotes Tiedemani*, Kaup. Isis. xx. t. 8.
Young. *Agama Versicolor*, Daud. t. 44. *Ag. Flavigularis*, Daud. and *Agama Indica*, Gray.

Brown, varied with spots, with two or three groups of small conical spines over the ears. India.

Smaller Calotes. *Agama Minor*, Gray, Zool, Jour.

Tail short, back brown, with larger brown spots.

e. *Back scales, small, horizontal.* Bronchocela, Kaup.

Blue Calotes, *Agama Cristatella*, Kuhl. Seba, 1, t. 89, f. 1.

Blue, not banded, nuchal crest, very small, low, scales of body, keeled, smaller than on tail and limbs.

CLASS REPTILIA.

Long-legged Calotes. Agama vultuosa, Harlan. Jour. Acad. Phil. iv. t. 19. *Agama Calotes*, Kuhl. Seba, 1, t. 89, f. 2. *Calotes Gutturosa*, Cuv. Guerin, Icon. t. 7, f. 3.

Blue; crest short, scales, all keeled. India. *Le Geleote*, Lacep. 1, t. 12, is perhaps this species. *Agama Gutturosa*, according to Merrem and Lichterstein, is an American species, and is not this. Seba, 1, t. 89, f. 1, is an *Iguana*. *Col. Gutturosa*, Mus. Berl. with a blue neck, is white banded.

Kuhl's Calotes. Calotes Tympanistra, Kuhl.

Blue; crest, very small, scales of belly subequal, keeled. Mus. Berl.

f. *Acanthosaura*.

Armed Calotes. Agama Armata, Gray, Zool. Jour. When young, with very thin scales. *Calotes Lepidogaster*, Cuv. R. A. *Tropidogaster*. Mus. Paris.

Head, with long cylindrical spines over eyes, a dorsal crest.

g. *Agama*.

Tubercular Agama. Agama Tuberculata, Gray Zool. Jour.

Head moderate; scales of back rather smaller than on limbs and tail; of neck and nape with ridges of rather larger triangular scales; under side of legs with short strong keeled scales. India. Mus. Brit.

Obsoletely Crested Agama. Agama Dorsalis, Gray.

Head large, dilated behind; scales rather small, smooth; nape, and back, and tail with very obscure crest of rather larger scales. India. Mus. Brit.

Occipital Agama. Agama Occipitalis, Gray.

Head moderate; scales of back broad, ovate, lanceolate, keeled,

CLASS REPTILIA.

spinose, of head smooth and thin; nape with a very obscure crest, and bundle of short three-sided spines. Africa. Mus. Brit.

Common Agama. Agama Spinosa. Lac. Agama, Lin.?

Brown; head moderate; scales of back large, smooth; of limbs larger, keeled; of belly moderate, nearly smooth; nape with a slight crest; back of head and sides of neck with bundle of long subulate scales. Africa. Brit. Mus.

Sitana. Cuv. Semiphorus. Wag.

Pondichery Sitana. Agama Pondicerana, Nob.

Body and limbs with keeled imbricate scales; fulvous with two series of large rhombic brown spots. Male with very large pouch extending to between the front legs. Hence the genus *Sitana*, Cuvier, called *Tropidosaura* in Mus. Paris.

b. Head rounded, depressed; ears distinct; back with band of larger scales; tail with whorled bands of large spinous scales. Stellio.

Common Stellio. Lac. Stellio, Lin. Stellio Vulgaris, Daud.

Olive spotted with black. Rup. Atlas. f. 2.

c. Head ovate lyrate; ears distant; back and tail not crested; tail tapering, with imbricate scales. Trapelus.

Cape Agama. Trapelus hispidus, Kaup. Iris. xx. t. 7.

Agama Orbicularis, Merr.? Seba, j. t. 83. f. 1, 2.

Scales unequal, with trihedral spinous scales. Cape.

Yellow-striped Agama. Ag. Ater, Daud. Ag. Subspinosa, Gray, Ann. Phil. 1827. Trapelus Subhispidus, Kaup.

Brown, striped with a yellow dorsal line and red spot on each side; scales small; of occiput large, ovate, smooth.

CLASS REPTILIA.

Mutable Agama. *Ag. Ruderata*, Oliv. Voy. t. 29. *Trapelus Mutabilis*, Cuv. *T. Ægyptiacus*, Geof. Rept. Egypt. t. 5. *Ag. Orbicularis*, Daud. t. 45. *Ag. Deserta*, Licht. ?

Tail one-half as long again as the body ; scales of the head convex ; of the body unequal, irregular. Egypt. Mus. Brit. *Trap. Savignii*, Ardouin. Savigny Rept. Egypt. f. 3 and 4, scarcely appears to differ.

Ruppel's Agama. *Agama Sinaita*, Ruppel. t. 3. *Agama Straminea*. Mus. Berl.

Brownish grey, with paler spots ; dorsal scales unequal, slightly keeled, margined ; edge of ear one-spined ; a scaleless pit before the shoulder. Egypt. Perhaps same as former.

Sand Agama. *Agama Arenaria*, Van Heyden.

Yellowish grey, spotless ; dorsal scales equal, slightly keeled, not margined ; edge of ears one-spined ; but pit before the shoulder with scales. Egypt.

Aral Agama. *Ag. Aralensis*, Licht. *Lac. Sanguinolenta*, Pall. ?

Body dirty straw colour ; reddish, spotted ; scales equal, semicircular, keeled, ending in a spine ; tail black ringed.

Slender Agama. *Agama Agilis*, Oliver. Voy. Savigny Rept. Egypt. f. 5. *Agama Isodactyli*. Mus. Berl.

Scales small, equal, nearly smooth ; tail long, slender, black banded ; legs, especially the hinder, long and slender. Egypt

d. Head round depressed ; ears covered ; claws sharp ; back and tail with irregular scales. Phrynocephalus.

* *Margin of lips produced ; toes fringed ; claws long.*

Eared Phrynocephale. *Ph. Auritus*, Kaup. *Lac. Aurita*, and *Lac. Mystacea*, Pallas. *Lac. Lobata*. Shaw.

Brown with a small lobe on each side the neck.

CLASS REPTILIA.

** *Margin of lips simple, claws moderate.*

Pallas's Phrynocephalus. P. Caudevolvula. Lac. Caudevolvula, Pallas. Lac. Guttata, Lepech. Reis, t. 22.

Scales of body very minute, smooth; tail long, smooth.

Eyed Phrynocephale. Ph. Ocellatus. Agama. Licht.

With unequal sized black-eyed white spots.

Ural Toad Lizard. P. Uralensis, Kaup. Lac. Uralensis, Lepech. Rees, t. 22. Lac. Helioscopea, Pallas?

Scales of back unequal. Bucharra.

e. Head roundish; throat three pouched; sides with wing-like expansions supported by the ribs. Draco, Lin.

Short-Pouched Dragon. Draco Abbreviata, Gray, Zool. Jour. Draco Fimbriatus, Kuhl?

Scales large; thighs fringed behind; throat pouches short, central reaching to the thorax. Wings spotted beneath.

Banded Dragon. Draco 5 Fasciatus, Gray, Zool. Jour. Draco Viridis, and Draco Fuscus, Daud. t. 41?

Wings ash, with four continued blackish bands.

Lined Dragon. Draco Lineatus, Daud.

Back ash; wings brown, with numerous white lines; scales of tail large, blunt, and uniform.

Timor Dragon. Draco Timorensis, Kuhl.

Middle dorsal scales larger, keeled. Brownish; wings and body glaucous, and brown marbled; pouch black. Kuhl.

Black Pouched Dragon. Draco Hæmatopogon, Boie. Is peculiar for a black spot on each side of the throat pouch.

B. Femoral Pores distinct.

f. Head long; eyes large; tail round; back and tail with irregular imbricate scales. Gemmatophora.

CLASS REPTILIA.

Bearded Gemmatophore. Gem. Barbata. Agama, Cuv.

Back with cross bands of larger scales; scales of throat, sides, and back of ears elongated, bristle pointed. New Holland, Mus. Bell. and Col. Surgeons.

Muricated Gemmatophore. G. Muricata, Lac. Muricata, Shaw. Zool. A. Grandoculis, Lac. and A. Jacksoniensis, Kuhl.

Black brown, with a series of pale spots; back with longitudinal series of elevated scales. New Holland.

g. Head long, having a large pleated frill on each side of the neck behind the ears. Back and tail with irregular scales. Clamydosaurus.

Frilled Lizard. Clamydosaurus Kingii, Gray, Kings. Voy. Pale brown, scales keeled, of back limbs and tail larger, of belly small, and of sides smallest. Frill with large keeled scales on both sides. New Holland. Mus. Brit. Mr. Frazer.

h. Head squarish; back and tail compressed, crested. Lophura.

Amboina Lophura. Lophura Amboinensis. Lac. Javanica, Hornsted. Lac. Lophura, Shaw, Zool. t. 62.

Tail above compressed, fin-shaped.

Cuvier's Lophura. Lophura Cuvieri, Gray, Mus. Paris.

Brown green spotted; body with four or five oblique bands of blue-eyed spots; scales of body and tail small subequal; back and end of tail with a series of distant, short, compressed spines. Tail compressed, interrupted by distant rings, upper and lower edge two keeled. Cochin China.

Lesueur's Lophura. L. Lesueurii, Gray, Mus. Paris.

Dark brown, varied with pale netted lines; scales of head conical, with scattered acute conical tubercles on the head and

neck; back with a crest of short compressed spines, forming a double crest about two-thirds the length of the back, sides with eight or nine cross bands of oval larger keeled scales, and others similar across the base of the tail and limbs. Paramatta, Lesueur.

Beautiful Lophura. *Lophura Concinna*, *Physignathus Concinnus*, Cuv. R. A. t. f. *Ph. Iguanoides*. Mus. Paris.

A crest of conical compressed scales the whole length of the back; head with granular scales. Body and tail with small squarish scales, the scales of the tail becoming larger near the end; tail much compressed; young with scarcely any crest. Dark blue, with some oblique white bands on the side, and whitish beneath, with some rather larger compressed scales on the side of the chin.

i. Head short, arched; back, with minute scales, not crested; tail with whorled scales. Uromastyx.

* *Scales of tail large, spinose,* Uromastyx. Cuv. *Mastigura*. Flern.

Common Uromastyx. *Uromastyx Spinipes*, Merrem. *U. Acanthinurus*, Bell. Zool. Jour. *Stellio Spinipes*, Daud. Geoff. Egypt, t. 2.

Olive dull greenish brown, subcaudal segment, with subdentate scales, placed in two or three series. North Africa.

Two Coloured Uromastyx. *Uromastyx Dispar*.

Tail like the former, male, black brown; female, ash yellow.

Ornamented Uromastyx. *Uromastyx Ocellatus*, Licht. *Uromastyx Ornatus*, Heyden, Ruppel, Trav.

Dull green, body brown, ringed subcaudal segment consists of a single series of armless scales. Africa. Dongola.

CLASS REPTILIA.

Black Uromastyx. *Uromastyx Niger*, Merrem. *Stellio Niger*, Daud.

Tail twice as long as the body, with twenty-seven rings of spines; toes long, sub-depressed; scales small, rhombic.

Hardwick's Uromastyx. *Uromastyx Hardwickii*, Gray, Zool. Jour. *U. Reticulatus*, Cuv. R.A.

Greenish, marbled with black dots; a large black spot in front of each thigh. Hindostan.

Cuvier indicates *Uromastyx Grisseus*, from New Holland,

** Tail with rings of small armless spines. *Lecolepis*, Cuv. *Cynosaura*, Schegel.

Bell's Uromastyx. *Uromastyx Bellii*, Gray, Zool. Jour. *Lecolepis Guttatus*, Cuv. Guerin. Icon, t. 7. *L. Guttato Lineatus*, Mus. Paris. *Cyn. Punctatus*, Schegel. Mus. Leyd.

Olive; back, with three lines alternating with black edged white spots; limbs white-eyed; sides black spotted.

Reeves Uromastyx. *Uromastyx Reevesii*, Gray, Mus. Brit. Olive, with a series of bright red spots down each side.

Spotted Uromastyx. *Uromastyx Maculatus*, Gray. *Lecolepis Maculatus*, Cuv. Mus. Par.

Pale brown; head, with a black streak from the eye to the neck; back, legs and tail with six rows of oblong black spots, sides of the legs black netted.

Order II. OPHIOSAURI.

Mouth not dilatable, skin covered with regular equal scales.

Section I.

Body with equal similar scales, above and below, and a compressed line of small scales on each side; tongue short, contractile, two cut. Ptygopleura.

CLASS REPTILIA.

Gen. I. ZONURUS.

Teeth placed on the side of the jaws; legs four, moderate; ears, exposed; vent medial.

1. Toes 5, 5; femoral pores distinct; tail with spinose whorled scales. Africa. Zonurus.

Common Zonurus. Lac. *Cordylus*, Linn. *Cordylus Griseus*, Seba, i. t. 48. f. 4.

Brown with a yellow line down the back; the scales nearly equal. *Cor. Niger*, Cuv., is from a badly preserved specimen, and *Cor. Dorsalis*, from a good coloured specimen. Cape.

Armed Zonurus. Zonurus Cataphractus. Bonn. Trans.

Head with large scales; scales of the body large and hard, of the sides three toothed; of the thighs, neck, and tail, ending in a trigonal spine.

Small scaled Zonurus. Zonurus Microlepidotus. Gray.

Dorsal scales about half the size of ventral, bluntly keeled.

2. Toes 5, 5, femoral pores distinct; tail unarmed. *Cicigna*, Gray, 1815. *Gerrhosaurus*, Wiegmann.

Common *Cicigna. Cicigna Sepiformis. Scincus*, Merrem.

Lac. *Seps*, Lin. *Gerrhosaurus Flavigularis*, Weigmann.

Olive brown, beneath white, chin, throat, and upper lateral scales, yellow; fore, middle, and hinder toes longest.

Smooth Cicigna. Cordylus Lævigatus, Cuv.

Brown, with four black and yellow lines on each side the back, and two series of black and yellow spots; scales obliquely four sided. keeled. Perhaps the same as former.

CLASS REPTILIA.

Madagascar Cicigna. Cicigna Madagascariensis. Gray.

Green, with yellow lines on each side the back; back and sides brown spotted; scales smooth; when young, scales keeled; variety. β *Ornata*. Back with five yellow and six black lines, and sides black, yellow spotted. Madagascar. Mus. Brit.

C. Toes 5, 5; femoral pores, none; tail with whorled, unarmed scales. America. *Gerrhonotus*, Wiedman.

Burnet's Gerrhonote. Gerrhonotus Burnettii, Gray.

Scales of back, and sides of body and tail, obliquely four sided, slightly keeled; dark brown; sides, with dark band and cross rows of white spots beneath.

Depp's Gerrhonote. Gerr. Deppii, Wieg. Isis. xxi.

Dorsal scales four angular, smooth; olive black, irregularly white spotted, beneath white; tail round, white ringed. Mexico.

Retired Gerrhonote. Gerrhonotus Tæniatus. Wieg.

Dorsal scales four angular, smooth; bluish, with black angular cross bands; tail black, ringed.

Blue Gerrhonote. Gerrhonotus Cæruleus, Wieg.

Dorsal scales, four angular; olive bluish, with three series of black spots; tail round, hemeolate. Brazils.

Rough-necked Gerrhonote. Gerrhonotus Rudicollis, Wieg.

Head rough, with elevated shields; scales four, angular; placed in cross series. Grey green, base of tail, four angular.

Imbricate Gerrhonote. Gerrhonotus Imbricatus, Wieg.

Head shields elevated; dorsal scales keeled, four angular, olive grey, tail, hemiolate. Mexico. Brit. Mus.

CLASS REPTILIA...

Smooth-headed Gerrhenote. Gerr. Leiocephalus, Weigm.

Head smooth, scales four angular, in cross series, of middle of back keeled, of nape and sides smooth; grey green, bluish beneath, with nine longitudinal lines. Mexico.

Toes 4, 4, femoral pores—Saurophis Fitz. Tetradactylus, Merrem.

New Holland Saurophis. Saurophis Lacepedii, Lac. Tetradactylus, Lacep. Ann. Mus. ij. t. 59. f. 2. Tetradactylus Chalcidices, Merrem.

Gen. II. OPHISAURUS.

Teeth on the side of the jaw; legs rudimentary; ears distinct; lateral line distinct; vent medial.

a. Hinder extremities only rudimentary, on the side of the vent, undivided. Pseudopus, Merrem.

Pallas's Scheltopusik. Pseu. Serpentinus, Merrem. Ps. Pallasii, Cuv. Lac. apoda, Pall. Nov. Com. xix. t. 9.

Scales smooth; caudal scales square; front feet rudimentary, length two feet. Russia.

Durville's Pseudopus. Pseutopus Durvillii, Cuv.

Brown; dorsal and caudal scales keeled, rough. Brit. Mus.

b. Legs none. Ophisaurus, Daud. Hyalinus, Merrem.

Common Glass Snake. O. Ventralis, Daud. Anguis, Linn.

Yellow green, black spotted. Sometimes the spots form continued lines. *Oph. Striatus* and *Oph. Punctatus*, Cuv. MSS. differ very little, if at all, from this species.

Gen. III. CHALIDES.

Teeth on the side of the jaws? Legs four, distinct; ears hid under the skin; vent medial, linear.

a. Toes 5, 5. Chalcides, Fitz.

Common Chalcides.

Ferruginous with six dorsal lines.

CLASS REPTILIA.

b. Toes 4, 5; femoral pores distinct. Heterodactylus. Spix's Heterodactyle. *Het. Imbricatus*, Spix, Braz. t. 27.

Olive brown; sides of body and tail yellow-lined; tail long; central dorsal scales acutely keeled. Brazils.

c. Toes 4, 4. Brachypus, Fitzinger.

Common Brachypus. *Bra. Abdominalis*, Thunb.

Brown, with stripes on the belly.

d. Toes very small, rudimentary, 5 before, 3 behind. Chalchis and Colobus, Merrem. *Cophias*, Fitz.

Annulated Chalchides, Shaw. *Cophias Flavescens*, Gray.

Le Challide, Lacep. t. 32. *Chamæsaura Cophias*, Schn.—

Chalchide Menodactylus, Daud. *Chalchydes Flavescens*,

Bonnat. *Chalchide Tridactylus*, Daud. *Colobus Daudini*,

Merrem. Guiana.

Gen. IV. AMPHISBÆNA.

Teeth in sockets; ears hid; vent roundish, subterminal.

a. Legs two, very small; subanal pores distinct Chirotes.

Worm-like Bimane. *Lacerta Lumbricoides*, Shaw. *Cha-*

masaurus Propus, Schn. Lacep. t. 41. Mexico.

b. Legs none, subanal pores distinct; thoracic rings regular.

Amphisbæna, Lin.

White *Amphisbæna*. *Am. Alba*, Lin. Lacep. ij. t. 21. f. 1.

Eyes small; occiput smooth. Perhaps same as next.

Sooty *Amphisbæna*. *Amph. Fuliginosa*, Linn. Seba,

t. 18. f. 2. t. 100. f. 3. t. 83. f. 4.

Eyes small; occiput grooved; black, white-varied.

See *Amp. flavescens*. Pr. Max. t. *Amp. pathyura*, Wolf.—

Amp. punctata, Bell.—*Amp. vermicularis*, Wagler.—

Ampt. Cinerea, Vandelle. *Amp. cxyura*, Wagler, Braz.

t. 25. f. 1. *Blanus*, Wagler.

CLASS REPTILIA.

Blind Amphisbæna. Amph. Cæca, Cuv.

Eyes none. Martinique.

c. *Legs and subanal pores none ; thoracic rings irregular ; the plates united together in front. Leposternon, Spix.*

*Dotted Leposternon- Leposternon Microcephalus, Spix
Amph. Punctata, Pr. Max.*

Blue gray, with numerous black dots.

*Sharp-nosed Leposternon. Leposternon Oxyrhychus. Dekay
Siliman Jour. xiv. 907.*

Yellowish ; back with three longitudinal grooves ; nose pointed, not mucronate.

11. *Body covered with imbricate scales.*

Gen. V. SCINCUS.

Body covered with uniform imbricate scales ; head long ; tongue short, contractile, two-cut.

A. *Legs four ; ears distinct.*

a. *Toes 5, 5, margined ; muzzle acute, produced. Scincus.*

Shop. Scinc. Scincus Officinalis, Linn. Egypt.

b. *Toes 5, 5 ; muzzle rounded ; body moderate ; scales very hard, bony ; tail broad, depressed. Trachydosaurus.*

Rugose. Trachydosaurus. Tra. Rugosa, Gray. King's Voy.

Scincus Pachyurus. Peron MSS.

c. *Toes 5, 5 ; muzzle rounded ; body moderate ; scales thin, silvery ; tail conical Tiliqua, Gray.*

New Holland Tiliqua. Tiliqua Whitii. Lacerta Scin-

coides, Shaw. White Jour. at p. 242. Cyclodus, Wag-

ler. Sc. Tuberculatus, Merrem.

Large ; pale ; scales large, whitish ; six series on the back of neck. New Holland. Brit. Mus. *Cyclodeus Flacigularis*, Wagler, t. 6, appears to differ little from this.

CLASS REPTILIA.

Black and yellow Tiliqua. *Tiliqua Nigroluteus.* *Scincus*,
Quoy and Gaim. Frey. Voy. t. 41. New Holland.

New Holland Tiliqua. *Tiliqua Crotaphomelas.* New Hol-
land.

Indian Tiliqua. *Tiliqua carinatus*, Schn. Gray, Zool, Jour.
Scincus rufescens, Cuv. *S. multicarinatus*, *Sc. li-*
neatus, and *Sc. nigro fasciatus*, Kuhl. Mus. Par.

Greenish, with a yellow line along each side, scales, three
keeled. India, Java, &c.

Cape Tiliqua. *Tiliqua Capensis*, Gray. *Sc. trivittatus*,
Cuv.

Brown, with three longitudinal pale lines, on the back and
tail, with black spot between the lines. Cape.

Three Streaked Tiliqua. *T. trivittatus*, Gray, Zool, Jour.
Pale brown, with three broad black edged yellow streaks on
back and tail; sides, pale black spotted. India.

Ribbon Galley-Wasp. *T. tæniolata*, Lac. *tæniolata*, White,
Jour. t. ap. p. 245. *Sc. octolineatus*, Daud. *Sc. decem-*
lineatus, Lacep. *Sc. undecemstriatus*, Kuhl.

Brown, back with ten or twelve white bands, with black
sides, the two dorsal ones on each side uniting into one over
the eyes, scales thin polished. New Holland.

Many scaled Galley-Wasp. *Tiliqua multiscutatus* Sc. Cuv.
Anolis parcé, Geoff. Rept. Egypt, t. 4. f. 4.

Large Galley-Wasp. *Tiliqua Cyprinus* Sc. Cuv. *Anolis*
gigantesque, Geoff. Rept. Egypt, t. 3. f. 3.

Scales smooth, tail longer than the body, brown, with a pale
line on each side. Egypt.

Eyed Galley-Wasp. *Tiliqua ocellatus* Sc. Schn. *Sc.*
variegatus, Cuv. Daud. t. 56. *Anolis marbré*, Geoff.

CLASS REPTILIA.

Rept. Egypt, t. 5. f. 1. Savigny, Rept. Egypt, t. 2. f. 2.
Sc. Tiligugus, Merrem. Oliv. Voy. 1. t. 16.

Pale brown, with semilunar, black spot divided in the centre, by a short whitish band. South of Europe, and Egypt. See also *Sc. vittatus*, Oliver, Voy. t. 29. f. 1. Varied with a pale line on each side the back. Brit. Mus.

Common Galley-Wasp. Tiliqua occidua, Lacerta occidua,
Shaw, Sloane, Jam. y. t. 273. f. 9. *Sc. fossar.* Merrem.

Large; pale brown; scales moderate, about twelve series of scales on the back of the neck. Brit. Mus. Jamaica.

Lacepedes Galley-Wasp. Sc. Mabouya, Sh. Lacep. t. 24.

Smooth, greenish brown, back black dotted, and a brown band from the temple over the shoulder.

Doubled Galley-Wasp. Tiliqua bistratus Sc. Spix, t. 26.
f. 1.

Coppery brown with a broad black streak from the nostrils to the nose, edged with white on each side. Brazils.

Five lined Galley-Wasp. Tiliqua quinquelineatus, Lacerta quinquelineatus, Lin.

Greenish blue, with five dorsal lines, the central one forked over the head. Tail reproduced, blue. *Lacerta fasciata*, Lin. Catesby, Car. t. 67.

Seven Striped Galley-Wasp. Tiliqua homolocephalus,
Wiegmann.

Olive brown, with seven black longitudinal streaks.

Black spotted Galley-Wasp. Tiliqua nigro-punctatus
Sc. Spix, t. 26. f. 2.

Black brown, golden, with an unobscured black band along each side to the thigh, back, black punctate, tail short.

CLASS REPTILIA.

Coppery Galley-Wasp, Tiliqua ænea, Gray.

Golden green ; back with five lines of black spots, sides from the eyes, with a dark brown band, beneath pale, sides of belly black spotted. Brazils. Brit. Mus.

Sloan's Galley-Wasp. Tiliqua Sloanii, Sc. Daud. t. 55. f. 2.

Pr. Max. x. 11. t. 1. f. 1.

Golden green, with four longitudinal black streaks extended over the base of the tail, paler beneath, scales thin, smooth, Toes short thick. Brit. Mus.

Red-headed Galley Wasp. Ti. Erythrocephala. Sc. Erythrocephalus, Gilliams, Jour. Acad. N.S. Phil. i.

Reddish brown cupreous, beneath whitish, head above red.

Two Coloured Galley Wasp. Ti. Bicolor. Sc. Harlan.

Acad. N. S. Phil. iv. t. 18. f. 1.

Dusky brown, darkest on the head, beneath silvery, two longitudinal whitish lines on each side the body ; tail tapering with two obsolete lines on the hinder part of the thighs.

*Lateral Galley Wasp. Tiliqua Lateralis. Scincus, Say
Sc. unicolor, Harlan.*

Light brown, with blackish lateral lines, beneath greenish white ; a cross row of scales behind the plates larger than the remaining cervical scales.

Bell's Galley Wasp. Tiliqua Bellii, Gray.

Pale brown, with irregular cross bands of small white scales, with central black bands, sides varied with dark brown, scales small, smooth, about four series on back of neck.

Double-streaked Galley Wasp. Tiliqua bistriatus, Gray.

Brown, sides with two narrow streaks, back with five series of black spots, with a central yellow triangle in each.

CLASS REPTILIA.

Thin Scaled Galley Wasp. Tiliqua Tenuis, Gray.

Pale brown, back with irregular black spots, forming a band on each side the back, scales thin polished.

Fine Scaled Galley Wasp. Tiliqua Microlepis, Gray.

Pale, with numerous irregular transverse brown bands; head very depressed, forehead flat, eyes large, tail slender, toes very unequal. Scales very thin, closely adpressed keeled.

Banded Galley Wasp. Tiliqua Fasciatus.

Silvery blue, head with three, neck with one, back and tail with six broad black bands, toes, hinder rather unequal, five last in Brit. Mus.

Spix has placed his genus *Lepidosoma* near the Scinks. In one of my notes made on the animal at Paris I have remarked that it is nearly allied to *Polychrus*, but has no pores or keeled scales.

d. Toes 4, 5, rest like *Tiliqua*, but no eyelids. *Gymnotolamus, Merrem.*

Four-lined Galley Wasp. Gym. quadrilineatus, Merrem.

Lacerta lineata, Lin. Seba, y. t. 41. f. 6. Lac. quadrilineatus, Lin. Pr. Max. Beytr. xiii. f. 2. Sc. Cyanurus, Sching.

Blackish, with four yellowish dorsal bands.

e. Toes 5, 5, muzzle rounded, body very long slender, feet small, far apart, ears distinct. *Lygosoma, Gray.*

Short-footed Lygosoma. Scincus Brachypus, Schn. Geoff.

Rept. Egypt, t. f. 9, 10. Spænops Capistrata, Wagler.

Hinder toes unequal, long; pale brown, with narrow brown longitudinal band, and a black streak through each eye.

Dotted Lygosoma. Lygosoma Punctata, Gray.

Hind toes unequal, long; pale brown, with many series of minute dark spots; head brown; tail long, dotted.

CLASS REPTILIA.

Scincord Lygosoma. Lygosoma Scincoides, Seps. Cuv.

Ears large; hind toes unequal, long. Pale brown, with black slender bands formed of spots on the centre of each scale. Mus. Paris.

Lygosoma Serpens, Lacerta Serpens, Gmel. Blo. Naturfosh. y. t. 2.

Hinder toes subequal short.

Golden Ligosoma. Ly. Aurata, Gray. L. Serpens, Gray.

Golden brown, with many longitudinal black lines, one between each series of scales; hind toes unequal, rather short.

f. Toes 4, 4, or 3, 3; body very long and slender; feet far apart: ears distinct. Seps.

Four-toed Seps. Seps Peronii, Fitz.

Toes 4, 4, hinder unequal; golden brown, with streaks; sides brown and white spotted; beneath white, with cross black spots.

Peron's Seps. Tridactylus Decresiensis, Peron.

Toes, 3, 3; hinder unequal, one short and two long, subequal; pale brown, with long dark lines; beneath netted.

Common Seps. Seps Chalcides Zygnis, Fitz.

Grey, with four longitudinal lines on the back. Brit. Mus.

Striated Seps. Seps Striata. Zygnis Striata, Fitz.

Grey, with eight or nine equal spaced dorsal lines.

g. Toes 3, 3; body long; feet far apart, slender; ears 0; femoral pores 0. Saiphos, Gray. Cophias, Fitz.

Lacertine Saiphos. Saiphos Equalis, Gray. Seps Equalis, Gray Ann. Phil. Anguis Lacertina, E. W. Gray, MSS.

Grey; scales of the head equal; toes short, subequal. Brit. Mus.

CLASS REPTILIA.

h. Feet four, undivided, oblong, scaly; scales of body and tail keeled, pointed subverticulate. Monodactylus, Merrem. Chamæ Saura, Fitzinger.

Anguine Monodactyle. Monodactylus Anguinus. Lacerta Anguinus, Linn. Lac. Monodactyle, Lacep. Ann. Mus. ij. t. 49. f. 1. The scales of the back in straight, and those of the belly in oblique whorles.

Gen. VI. BIPES.

Feet two, posterior imperfect; scales uniform, imbricate, the ventral rather the largest; head long; tongue short, contractile, two-cut.

a. Feet undivided, oblong; scales smooth; femoral pores none; ears 0; Ophoides, Wagler. Pygopus, Spix.

Brazilian Bipes. Ophiodes Striatus, Wagler. Pygopus Cariococca, Spix, t. 28. f. 1., adult. Pygopus Striatus, Spix, t. 28. f. 2. Young. Seps fragilis, Raddi. Pseudopus Olfersii, Licht. Brazils. Mus. Brit. Bipes Lineata, Cuv. Mus. Paris. The lines become double near the head.

Wagler cites another species, *O. Gronovii*, Wagler. *Pygopus Striatus*, Fitzinger. *Pygodactylus Gronovii*, Merrem.; but I have not seen it.

b. Feet undivided, oblong; scales smooth; femoral pores none; ears distinct. Delma, Gray.

Fraser's Bipes. Bipes Fraseri, Gray. Brit. Mus.

Tail one-third longer than the body; black; beneath paler; head with four narrow pale cross bands. New Holland.

c. Feet undivided, oblong; scales of back keeled; femoral pores distinct. Pygopus, Merrem.

New Holland Bipes. Pygopus Lepidopus, Merrem. Bipes

CLASS REPTILIA.

Lepidopus, Lacep. Ann. Mus. iv. t. 65. Tail when perfect, longer than the body.

d. Feet with two unequal toes ; scales keeled ; femoral pores none. *Bipes*, Merrem. *Scelotes*, Fitz. *Pygodactylus*, Merrem. *Zignis*, Wagler.

Cape *Bipes*. *Bipes Anguinus*, Merrem. *Anguis Bipes*, Linn. *Lacerta Bipes*, Gmel. Seba, j. t. 85. f. 3.

Golden brown ; back with ten longitudinal black lines, of which the four lateral are the most distinct. The feet are considered as the generative organs by Seba. *Seps. Sex lineata*. Harlan. Jour. Acad. N. S. Philad. iv. t. 10. f. 1., according to Cuvier is a variety.

Gen. VII. ANGUIS.

Legs 0 ; body and tail covered with smooth imbricate scales ; femoral pores none.

a. Ears distinct. *Siguana*.

Otto's Blind-worm. Siguana Ottonis, Gray.

Brown, with darker lines ; beneath paler ; tail rather longer than the body. Breslau. Discovered by Dr. Otto.

b. Ears hidden by the skin. *Anguis*.

Common *Blind-worm. Anguis Fragilis*, Lin. *Anguis Eryx*, Daud., the young. *Anguis clivica*, Wolf. *A. Lineata*, Laur.

Silvery grey, when young with a black dorsal line and black sides. Europe.

American Blind-worm. Anguis Eryx, Linn., said to have four nostrils, I have not been able to see them.

Gen. VIII. TORTRIX.

Body long, cylindrical ; back covered with imbricate scales ;

CLASS REPTILIA.

beneath with a series of larger scales ; tongue short, contractile, two-cut ; head long.

a. *Tail blunt, with a single series of larger scales beneath ; Anilius Oken. Tortrix Oppel., not Linn. Ilysia, Hemprick. Torquatrix, Haworth. Cylindrophis, Wagler.*

Scytale Coral Snake. Anilius Scytale. Anguis, Linn. Mus. Adolph. t. 6. Daud. vii. t. 87. Seba, ji. t. 20.

With irregular black and white rings. S. America.

Common Coral Snake. Anilius Corallinus. Anguis, Laur. Seba, ij. t. 73. f. 1. 2, 3. S. America.

Black Coral Snake. Anilius Rufus. Anguis Ater, Cuv. Seba, ij. t. 25. f. 1. t. 7. f. 3. Anguis Rufa, Laur. A. Striatus, Gmel. Eryx Rufus, Daud. Tortrix Rufa, Merr. Ilysia Rufa, Mempr. Cylindrophis Resplendens, Wagler. Russel Ind. Serp. ij. t. 27. t. 28.

Copper colour, with white spot on tail.

Spotted Coral Snake. Anilius Maculatus. Anguis, Linn. Mus. Adolph. t. 21. f. 3. and A. Tessellata, Laur. Seba, j. t. 53. f. 7. ? ij. t. 100. f. 2 Russell, ij. t. 89.

Yellow, with black dorsal band.

Dotted Coral Snake. An. Melanostictus. Anguis, Schn. Eryx, Daud. Tortrix Punctatus, Cuv., from Seba, ij. t. 2. f. 1, 4. Ind. Serp. j. t. 42.

Pale, yellowish punctated, with different coloured spots.

Black-eared Coral Snake. Anilius Melanotis. Cylindrophis, Wagler. Tortrix, Remw. MSS.

Like L. Resplendens ; but tip of tail black ; occipital band red ; forehead black, and bands of body nearer together.

Indian Coral Snake, Anilius Latta, Tortrix, Cuv. Seba, ij. t. 30. f. 3. Russel, t. 46.

CLASS REPTILIA.

b. Tail obliquely truncated, with a double series of larger scales beneath ; muzzle pointed. *Uropeltis*, Cuv.

Cuvier has indicated, but not described, two species of this genus.

Gen. IX. ACONTIAS.

Body sub-cylindrical, covered with uniform imbricate scales ; tongue ——— ? head short, blunt, masked ; ears hid ; tail short.

Cape Pintado Snake. Acontias Meleagris, Merrem. *Anguis*, Linn. *Eryx*. Daud.

Eyes distinct ; back with eight lines of black spots. Cape. *Netted Pintado Snake. Acontias Reticulata*, Merrem. Eyes distinct ; scales rough.

Blind Pintado Snake. Acontias Cæcus, Cuv.

Eyes covered. Africa.

Gen. X. TYPHLOPS.

Body sub-cylindrical, covered with uniform imbricate scales ; tongue long, forked ; muzzle produced ; vent subterminal.

a. Head same size as body, blunt.

Bramin Typhlops. Typhlops Braminus, Cuv. from Russel. t. 43. *Eryx*, Daud., and *Tortrix Russelli*, Merrem.

b. Muzzle depressed and blunt, with many plates in front, *Stenostoma*, Spix.

Netted Typhlops. Typhlops Reticulatus, Merrem. *Anguis*. Cuv. Sch. Phys. Scer. t. 757. f. 4.

Ash Typhlops. Ty. Cinereus, Merrem.

Ash coloured.

CLASS REPTILIA.

Banded Typhlops. Ty. Fasciatus, Merrem.

Body equal, tail ending in a spine.

Yellow Typhlops. Ty. Crocotatus. Anguis, Schn. *T. Rostralis*, Merrem.

Body depressed, and then compressed, tail acute.

White-bellied Typhlops. Typhlops Leucogaster, Prin. Max. Beytr. j. 495.

Olive brown, beneath white.

Cuvier here also indicates, by name, two undescribed species. *T. Undecimstriatus* and *T. Leucorrhous*.

c. *Muzzle covered with a single sharp edged plate in front.*
Typhlops.

Worm-like Typhlops. Ty. Lumbricalis. T. Vermicularis, Merrem. *Le Lombic. Anguis*, Lacep. ij. t. 20. f. 1. Seba, t. 86. f. 2.

Tail conical, blunt.

White-fronted Typhlops. Typhlops Albifrons. Stenosoma Albifrons, Spix, Braz. t. 25. f. 3.

Forehead white.

d. *Muzzle ending in a conical point; eyes quite hid; tip of tail enveloped in an oval horny shield.* Rhinophis, Wagler.

Phillipine Typhlops. Typhlops Phillipinus, Cuv.

Blackish; length eight inches. The Phillipines.

Sharp-nosed Typhlops. Ty. Oxyrhynchus, Merrem.

e. *Muzzle covered with a single large convex shield; eyes none.* Typhlina, Wagler.

Seven-streaked Typhlops. Typhlops Septemstriatus, Merr. Tail ending in a spine.

Lined Typhlops. Typhlops Lineatus Acontias, Reimw.

CLASS REPTILIA.

Order OPHIDI. *Serpents.**

The jaws very dilatile; the mastoid bones free from the skull, and the branches of the lower jaws free in front; legs 0, body with a row of larger scales benenth.

I. *Upper jaw toothless, fangs large, distinct vertebral plates broad; tail short, conical.* Venemous.

Gen. 1. CROTALUS. Rattle-snakes.

Head broadly triangular, with a large pit before the eyes.

A. *Tail with a rattle, head covered with scales like the back.*

Crotalus. New World.

Common Rattle Snake. Crotalus Horridus, Lin. Catesby, ij. t. 41. Crot. Catesbæi. Hempr.—Lozenge spotted Rattle-snake. Crotalus Durissus. Cr. Horridus. Pr. Max. Ch. Rhombifer, Boie. Cr. Cascavella, Spix, t. 24.—add Cr. Confluentus, as North America, and Boie has indicated, in the Leyden Mus. C. Atricaudatus, and C. Drijinus; and Humboldt in his Zoological observation describes Crotalus Loefflingii. Crot. Strepitans, Daud. Seba, ij. t. 96. f. 2, is said to be Boa Canina; and Crot. triseriatus, Weigmann. Is referred to Mexico.

B. *Tail with a rattle, head with shields.* Crotalophorus, Gray. Caudisona, Fitz.

Miliar Rattle-snake. Crotalophorus Miliaris. Crotalus, Lin. Catesby, ij. t. 42. Mus Brit. See also Crot. Tergeminus, Say. North America.

* It has been found absolutely necessary to omit the specific characters of the ensuing divisions of this class Ed.

The Catalogue on the Species, is greatly dependant on the one published by Boie, in the Iris, Vol. xx. The species are separated by a short dash, thus —. J. E. G.

CLASS REPTILIA.

C. Tail ending in a spine; subcaudal plates simple, one rowed, head with shields behind the eyes. Tisiphone Fitz. Cenchris. Daud.—Ancistodan, Pallas.

Catesby's Tisiphone. Tisiphone Shausii, Gray. Coluber Tisiphone, Shaw. Catesby Car. ij. t. 45. Peleas Niger fusens, Merrem. Cenchris Mockeson, Daud, t. 60, and t. 70. f. 3, 4.—See also Tisiphone Cupoea, Fitz. South America.

D. Tail ending in a spine; subcaudal plates double and single; head with scales. Lachesis.

L. Rhombeata. Pr. Max. Crotalus Mutus, Lin. Boa Mutus, Lacep. Scytale Catenata, Licht. Lachesis Mutus, Daud. Cophias Crotalinus, Merrem. Curuacea, Margr. Bothrops Suruacea, Wagler. Braz. t. 23.

E. Tail simple; sub-caudal plates double; head scaly. Cophias, Merrem. Crassedocephalus, Fitzinger. Bothrops, Spix. Trigenocephalus, Oppel. Alecto, Megæra, Atropos, and Tropicolæmus, Wagler.

American.

Cophias Lanceolatus. Coluber, Lacep. ij. t. 5. f. 1. Vipera, Daud. Col. Megæra, Shaw. Brazils.—Cophias Mægera. Bothrops, Spix, t. 19.—Cophias Furia, Boie. Bothrops, Spix, t. 20.—Cophias Leucostigma. Bothrops, Spix, t. 21. f. 1.—Cophias Tessalatus. Bothrops, Spix, t. 21. f. 2.—Cophias Tæniatus. Bothrops, Spix, t. 21. f. 3.—Cophias Triangulum, Boie. Mus. Leyd. Vip. Brasiliana, Lacep.—Cophias Jacaraca, Pr. Max. adult and jun. Col. Atrox, Pr. Max. not Merrem.—Cophias Atrox, Merrem. Col. Atrox, Linn. Mus. Adolph. j. t. 23. f. 9. Vip. Atrox, Laur. Col. Ambiguum, Weigl. Vip. Weigellii, Daud. Vip. Tigrina, Daud.—Vipera Tigrina, Licht. Cophias Neuweidii. C. Bothrops, Spix, t. 21. f. 1.—

CLASS REPTILIA.

Cophias Leucurus, Boie, *Bothrops*, Spix, t. 22. f. 2. appears to be the young. *Cophias Bilineatus*. Pr. Max. *Vipera Chloris*, Gravenhorst.

Asiatic,

Cophias Trionocephalus, Merrem. Col. Capite Triangularis, Lacep. t. 5. f. 2. Col. *Trionocephalus*, Dau. Vip. *Trionocephalus*, Daud. Sch. P. S. t. 749. f. 11. Inhab. Isle of St. Eustach. Asia. Boie.—*Cophias Viridis*, Merrem. *Trimesurus Viridis*, Lacep. Ann. Mus. iv. t. 56. f. 2. *Coluber gramineus*, Shaw. Brodro. Pam. Russel, t. 9. Green, with a narrow yellowish line on each side. *Coph. Punicea*, Boie. *Atropos*, Wagler. Java.—*Cophias Sumatrana*, n. Col. Sumatranous, Raffles. *Coph. Wagleri*, Boie. Seba, ij. t. 68. f. 4. *Tropidolæmus*, Wagleri.—*Cophias Russelii*, n. Russel, ij. t. 22. Inhab. Phillipine Islands. Mus. Paris.

F. Tail, end simple ; subcaudal plates double ; head shielded
Trionocephalus, Fitz.

Old World.

Trionocephalus Rhodostoma, Reinw. *Vipera Pretextata*, Gray. India.—*Trigon. Hypnale*, Boie. *Cophias Hypnale*, Merrem. Col. *Lebetinus*, Linn. *Vipera Lebetina*, Daud. Inhab. North Africa and Southern Europe and Asia.—*Trionocephalus Haly.*, Boie. Col. *Halys*, Pall. *Vipera Halys*, Daud. *Vipera Aspis*, B. *Pallasii*, Merrem. Lichten, Reese. Siberia.—*Trionocephalus Blomhoffi*, Boie. Iris. 1826, 214. Bul. Sci. Nat. x. 151. Japan.—*Trionocephalus Orophyas*, Oppel. Boie.—*Trionocephalus Boeii*, Boie. Iris. xx. 561. Inhab. Levant. Olivier.

American.

Trionocephalus Cacodæmon, Boie. Col. *Cocadæmon*.

CLASS REPTILIA.

Shaw. Pelais Niger, Merrem. 2 Catesby, Car. t. 44.
 Scytale Niger, Daud.—Trigonocephalus Boiei. Iris, xx.
 561. Inhab. Carolina.

Gen. II. VIPERA.

Head broad, without any pit; covered with scales or small shields.

A. Head covered with scales like the back; subcaudal plates double; nostrils large. Vipera. Echidna, Merrem. (not Geoffrey.) Cerastes, Wagler!

Vipera Nasicornis, Daud. Coluber, Shaw. Nat. Misc. t. 94. Zool. t. 104. Brit. Mus.—Vipera Russelii. Coluber, Shaw. Zool. t. 108. Russel Ind. Serp t. 7. Col. Trinoculus, Schn. Vipera Elegans, Daud. Col. Triseriatus, Herm. Bengal. Brit. Mus.—Vipera Cerastes; male with horn before the eyes. Col. Cerastes, Hasselq. Ellis Phil Trans 4. vi. t. 14. Shaw Zool. t. 103. Lacep. ij. t. 1. f. 9. Daud, vi. t. 47. f. 1. Col. Cornutus, Hasselq; female hornless. Col. Vipera, Hasselq. Aspis Cleopatra, Laur. Col. Egyptianus, Lacep. Vipera Ægyptia, Latr. Vipera Ægyptica, Daud. North Africa. Brit. Mus.—Vipera Lophophris, Cuv. Vipera Flava, Merrem.? Paterson, Africa. t. 15.—Vipera Arietans, Echidna, Merrem. Vipera Inflata, Burchel. Seba, ij. t. 30. f. 1. Col. Intumescens, Donnd. Vipera Severa, Daud. Col. Dubius, Gmel. Col. Hebriacus, Lacep. Col. Bitis, Bonnat. Vip. Brachyura, Cuv.—Vipera Daboia, Daud. Daboia Lacep. t. 13. f. 2. Col. Braziliensis, Lacep. t. 4. f. 2.—Vipera Ocellata, Latr. Aspic, Lacep. ij. t. 2. f. 1.—Vipera Atropos. Coluber, Linn. Mus. Adolph. t. 13. f. 1.

B. Head covered with granular scales; sub-caudal plates double; nostrils moderate, Berus.

CLASS REPTILIA.

Berus Vulgaris. Col. *Berus*, Lin. Var. Col. *Aspis*, Linn. Sturm Fauna, t.—*Berus Ammodytes*. Col. *Ammodytes*, Jacq. Coll. iv. t. 24, 25. Vip. *Illyrica*, Ald. Sturm Fauna, t.

C. Head covered with scales, with three larger scales on the forehead ; sub-caudal plates double ; nostrils moderate. *Pelias*, Merrem.

Pelias Chersea. Col. *Berus*, Laur. and Daud. Col. *Chersia*, Linn. Sturm. Fauna, *Pelias Berus*, Merrem. *Vipera Berus*, Fitz. Var. black. Col. *Prester*, Linn. Sturm Fauna.

D. Head covered with small scales ; sub-caudal plates simple. *Echis*, Merrem. *Scytale*, Daud. *Pseudoboa*, Schn.

Echis Carinata, Merrem. *Pseudoboa Carinata*, Schn. *Scytale Bizonata*, Daud. t. 70. *Boa Horatta*, Shaw. *Russel*, t. 2. India. — *Echis Krait*, Merrem. *Boa Krait*, Williams. *Pseudoboa*, Schn. *Scytale*, Daud. India.—*Echis Arenicola*, Boie. Geoff. Rept. Egypt, t. 7. f. 1. *Savigny*, t. 4. f. 1—4. North Africa.

E. Head covered with scales in front ; tail ending in a hook ; sub-caudal plates simple and double. *Acanthopis*, Daud. *Ophrias*, Merrem.

Acanthopis Cerastinus, Daud. v. t. 77. Merrem. *Beytr.* ij. t. 9. *Boa Palpebrosa*, Shaw. *Ophria Acanthropis*, Merrem. *Boa Aculeata*, E. W. Gray MSS. 1796. Mus. Brit. New Holland.—*Acanthopis Brownii*, Leach Zool. Misc. j. t. 3. *Boa Antartica*, Shaw. New Holland.

Gen. 3. NAIA.

Head moderate, without any pit, covered with large regular shields.

CLASS REPTILIA.

A. Head broad ; neck not dilatile ; sub-caudal plates double.
 Sepedon, Merrem. Ophis, Spix. Naia, Boie. Hæmachatus, Flem. Causus, Wagler.

Sepedon Rhombeata, Licht. Col. Vip. Nigrum, Licht. Scheush. Ph. Sac. iv. t. 717. Naia Rhombeata, Boie. Mus. Leyd.—Sepedon Hæmachates, Merrem. Hæmachate, Lacep. L. O. ij. t. 3. f. 2. Vipera Hæmachates, Seba, ij. t. 58. f. 1, 3. Naie Hæmachate, Boie.—Sepedon Porphyraceus. Coluber Shaw, Zool. iij. 423.—Sepedon Merremii. Ophis Merremi Spix, Braz. t. 17.

B. Head narrow ; neck dilatile ; dorsal scales linear ; tail conical ; sub-caudal plates two-rowed. Naja, Daud. Uræus and Aspis, Wagler.

Naia Tricuspidans, Merrem. Col. Naja. Latr. Russel, I. S. j. t. 5 and 6. ij. t. 1. Daud iv. t. 60. Lacep. ij. t. 3. f. 1. Has been divided into two several species by Laurente.—Naja Haje, Merrem. Col. Haje, Hasselq. Vipera Haje. Daud. Geoff. Rept. Egypt, t. 7. Savigny, t. 3. Africa.—Naja Nivea, Cuv. Boie. Isis, xx. 557. Vipera Flava, Merrem. Cape of Good Hope.—Naja Spectatrix. Reinw. Boie. Iris, xx. 557. Elaps Fuscus, Merrem. Col. Castaneus, Oppel. Russel. ij. t. 36.—Naie Latratus. Boie. Col. Latratus, Kuhl. Beytr. 69.

C. Head narrow ; neck not dilatile ; dorsal scales equal ; tail conical, moderate ; sub-caudal plate two-rowed
 Elaps.

Elaps Anguiformis, Schn.—Elaps Lacteus. Col. Domicella, Lin. Col. Domicellarum, Lac. Col. Lacteus, Lin. Mus. Adolph. t. 17. f. 1. Seba, ij. t. 35. f. 2. 54. f. 1. —Elaps Lemniscatus, Cuv. Col. Lemniscatus, Lin. Seba, j. t. 10. ij. t. 76. f. 2.—Elaps Surinamensis, Cuv.

CLASS REPTILIA.

Seba, ij. t. 6. f. 2, and t. 86. f. 1.—Col. Surinamensis, Merrem, n. 184. Inhab. Surinam. Mus. Leyd. (Perhaps var. of former.)—Elaps Latonius. Col. Latonius, Merr. j. t. 2. Seba, 3. ij. t. 34. f. 4. t. 43. f. 3. Col. Lubricus, Merrem. Cape of Good Hope.—Elaps Flavius. Col. Flavius.—Elaps Micurus. Micurus Spixii, Wagler, Spix, t. 18.—Elaps Ibibaboca, Merr. Inhab. Brazils.—Elaps Corallinus, Merrem, 10. Pr. Max.—Elaps Corallinus Merrem, 61. Vipera Psyches, Daud. t. 100. f. 1. Inhab. Brazils. Mus. Leyd.—Elaps Coccineus, Merrem.—E. Collaris, Boie. n. 5.—Elaps Furcatus, Schneider. Russel, ij. t. 19. Java—Elaps Bivirgatus, Kuhl. Boie. Isis, xx. 556. Java.—Elaps Boie nob. Elaphoides Fusca, Boie. Isis, xx. Java.—Elaps Chalybeum, Latostoma, Wagler.

D. Head indistinct; body cylindrical; dorsal scales equal; tail compressed, two-edged; caudal plates two-rowed.
Platurus, Latr.

Platurus Laticaudatus. Col. Laticaudatus, Lin. Hydrus Colubrinus, Shaw. Platurus Faciatus, Boie. Daud. viii. t. 85. Lin. Mus. Alolph. j. t. 16. f. 1.—Platurus Semifaciatus, Reinw. Boie. (Mus. Leyden,) adult. Laticauda Scutale, Laur. Bechst. ij. t. 20. f. 1. Shaw, Zool. ij. t. 233.

E. Head distinct; body fusiform; dorsal scales ———; tail conical; caudal plates partly double, partly simple. Trimesurus, Lacep.

Trimesurus Leptocephalus, Lacep. Ann. Mus. iv. t. 56. f. 1.

F. Head distinct; body fusiform; dorsal scales ———; tail conical; caudal plates all simple. Oplocephalus, Cuvier.

Oplocephalus Cuvieri, nob. Mus. Paris.

CLASS REPTILIA.

II. Upper jaw toothed, fangs none, or small.

Gen. 3. COLUBER.

Ventral shields broad, anal spurs none, tail, usually conical, and elongate.

A. Body subcylindrical, scales equal, subcaudal plates, double or single, head moderate, above shielded.

a. Head regularly shielded, nose acute, recurved. Heterodon.

Coluber constrictor, Lin. (Ed. 10.) Boa contortrix, Lin. (Ed. 12.) Col. Heterodon, Daud. Heterodon platyrhincus, Latr. Boa porcaria, Lacep. Catesby, 7. t. 56.—Heterodon simus. Col. simus, Lin. Merrem. 96. Col. borealis, Schoeff. —Heterodon nasua, Vipera nasua, Opperl. Rhinostoma nasua, Wagler. Rhinostoma proboscideum, Fitz.

b. Head regularly shielded, nose rounded, Coluber.

A. Head distinct, oblong, ovate before, slightly truncated, gape, very wide, body long, cylindrical, tail half as long as the body, continued, acute, scales imbricate lanceolate, mostly keeled, placed in longitudinal series, abdominal shields, simple, arched. Tropidonotus, Kuhl.

European.

Trepidomurus natrix, Col. natrix, Lin. Col. murorum. Col. mur. Fitz.—Col. Oppelii, Dumeril. C. Murorum, Mus.—Col. Viperinus, Daud. Latr. Col. pseudo echidna, Herm.—Col. hybridus, Merrem.—Tr. scaber, Boie. Col. scaber, Lin. Mus. Adolph. t. 10, f. 1. Dacypeltis scaber, Wagler.

Asiatic.

Tr. melanozostus, Gravenh. Iris, 1826, 206.—Tr. funebris, Opperl.—Tr. chrysargus, Kuhl.—Trop. sub-

CLASS REPTILIA.

miniatus. Col. subminiatus, Reinw. n. 5.—Col. stolatus, Lin. Mus. Adolph. t. 22. f. 1. Coronella cervina, Laur. Col. malpolon, Lacep. C. cervinus. Gm. Vipera stolata, Lat. Col. sibirians, Lat.—Tr. cyanocephalus, Boie, n. 5.—Col. palustris, Mer. 121. Hydrus palustris, Schn. Col. Braminus, Daud. Russel, t. 20.—Tr. spilogaster, Boie, n. 5.—Tr. rhodomelas, Kuhl. and V. H. n. 5.—Tr. trianguliferus. Col. trianguligerus, Reinw.—Tr. Mortuarius, Kuhl. Russel, t. 28.—Tropidonotus hypostictus, Boie, n. 5.—Tropidonotus piscator, Mer. Hydrus piscator, Seb. Enchydrus piscator, Latr. Col. anastomosatus, Daud. Russel, t. 33. Tropidonotus dora. Col. dora, Merrem, 104. Russel.—Tropidonotus, t. 5, lugubris, Oppel.—Tropidonotus lacrimans, Oppel.—Tropidonotus vibikari, Boie, Iris, 1826. 207.—Tropidonotus tigrinus, Boie, Do. 206.

American.

Col. variabilis, Pr. Max.—Tropodontus tessellata. Coronella tessellata. Laur. Col. viperinus, Daud. Col. Hydrus, Palas. Natrix cherscoides. Var. bivittatus and Natrix ocellata, Wag.—Trop. æstirus, Boie. Col. æstirus, Lin. Catesb. Col. subvirides, Lac.—Tr. poecilostoma. Col. poecilostoma, Pr. Max. Natrix sculptura, Wag.—Col. saurita, Lin. Ribon Snake, Cates. Daud. vi. t. 81. f. 2.—Tr. vittatus. Col. vittatus, Lin. Mus. Adolph. t. 18. f. 2. Scheuchz, t. 66. f. 8. Seba, t. 15. f. 3.—Col. fasciatus, Lin. Wampum Snake, Cates. t. 58. Dirty yellow with two white lines down the back, and cross black bars.—Tr. Nattereri, Pr. Max.—Tr. parietalis. Col. parietalis, Say, Isis, 1824, 255.—Tr. proximus. Col. proximus, Say, Isis, 1824.—Tr. ordinatus. Col. ordinatus, Lin.—Tr. dimidiatus, Boie.—Tr. porcatus, Boie. Col. porcatus, Latr. Cates. Col. erythrogaster, Sh.

CLASS REPTILIA.

B. Head distinct; gape very small; tail half the length of the body; scales placed in longitudinal series, mostly smooth, abdominal shields angularly recurved. Coluber.

American.

Col. punctatus, Lin.—Col. cyaneus, Lin. Col. viridicæruleus, Lac. Seba, 17. t. 48. f. 2.—Col. azurus, Lac. —Col. caninana, Merr. Seba, ij. t. 20. f. 1. &c. C. pullatus, Lin. Mus. Adolph. Col. peruvianus. Sh. Col. plutonicus, Daud. C. humanus and C. coronatus, Gm. Spiletes pullatus, Wag. Col. Nova Hispaniæ, Gm. Col. leucomelas, Gm. Col. variabilis, Pr. Max.—Col. Lichtenstenii, Pr. Max. Wag. Col. capistratus, Lich.—Col. bifossatus, Radd.—Col. pantherinus, Merr.—Col. scurrula, Wag. Natrix scurrula, Wag. Braz. t. 8.—Col. pileatus, Pr. Max. i. 344. Col. olfersii, Hemp. Col. olivaceus, Olfers. Philodryas olfersii, Wag.—Col. plumbeus, Pr. Max.—Col. triangulum, Lac.—Col. corais, Daud. Boie. Isis, 1826, 538.—Col. getulus, Daud.—Col. bahaiensis, Spix. Braz. t. 10. f. 1.—Col. variabilis, Kuhl.

Africa.

Col. Hippocrepis, Lin. Col. canus, Lin. Periops hippocrepis, Wag. Lin. Mus. Adolph. — Col. barbarus, Boie. —Col. Geoffroyii. Coulèvre aux raies pallelles, Geoff. Rept. Egypt. Periops, Wag.—Col. trabalis, Pall.—Var. *a.* fuliginosus, Oppel. *b.* minochronis, Cuv.

European.

Col. Elaphis.—Col. scalaris, Sh. Col. Meifrenii, Oppel. Col. bilineatus, Dumeril.—Col. flavescens, Scop.—Col. viridiflavus, Scop. Col. personatus, Daud. young, Col. atrovirens, Metaxa. Zamerinus viridiflavus, Wag.—Col. Æsculapii, Lacep. not Lin. Metaxa. Zamenis Æsculapii, Wag.

CLASS REPTILIA.

Asiatic.

Col. Oppelii, Wag. Russel, ii. t. 30.—Col. melano-
pis, Opper. Col. flavolineatus, Rienw.—Col. trivergatus,
Boie. Iris, 1826, 209.—Col. clamacophorus, Do. 210.
—Col. vulneratus, Do. 212.—Col. conspicillatus, Do.
211. Col. canus, Lin. Merrem. i. t. 7. C. cinarascens, Lacep.
C. ammobates, Shaw, Seba, ii. t. 3. f. 2. t. 78. f. 2. young
C. margaritaceus, Daud. B. ij. t. 9. C. crucifer, Sh. C.
Parias, Hem.—Col. radiatus, Russel, t. 42.—Col. mu-
cosus, Lin.—Col. melanurus, Opper.—Col. cancella-
tus, Opper. Col. korros, Rein. Col. Saturninus, Merr. 84.
—Col. tricolor, Boie.—Col. geminiatus, Opper. Isis,
1826.—Col. oxycephalus, Rein. Gonyosoma viride, Wag.
t. 9.—Col. trabalis, Pallas.—Col. Helena, Daud. Rus.
t. 32.—Col. obscurus, Daud. Rus. t. 18.

*C. Head large, distinct, depressed; gape very wide; nostrils
large, open; body fuciform, thick; tail shorter than half
the length of the body; scales equal, placed in oblique
transverse series. Xenodon, Boie.*

American, Ophis, Wagler.

Col. severus, Lin. Col. versicolor, Lin. Sch. Phy. Sac.
t. 661. f. 7. Seba, j. t. 85. f. 1.—X. Merremii, Ophis
Merremii, Wag. Spix, Braz. t. 17.—Col. rhapdocephalus,
Pr. Max. Braz. i. 351.—Dipsas scholti, Fitz.—
X. aneus, Boie, n. 5.—X. ocellatus, Boie.—X. sauro-
cephalus, Boie. Col. saurocephalus, Boie, Pr. Max.

D. Asiatic, Xenodon, Wagler.

Xenodon inornatus, Boie. Col. inornatus, Kuhl.

*Head short, blunt, and narrow: tail short, continued,
Oligodon, Boie.*

O. bitorquatus, Boie.—O. atriventus, Boie. Col. atri-

CLASS REPTILIA.

ventus, Daud. Merr. Seba, ij. t. 86. f. 5. Col. lutrix, Lin. ? Homalosoma arctiventris, Wag. Elaps Lutonia and E. Duberria, Sch. Duberria arctiventris, Fitz.—O. punctatus. Col. punctatus, Latr. Homalosoma punctatum, Wagler.

E. Head, very long, very distinct ; gape very wide ; tail, very long ; scales small and oblique series, partly keeled. Herpotodryas, Wag. Erpetodryas, Boie. Inhab. South America.

C. carinatus, Boie. Col. carinatus, Lin. Merr. Seba, ii. t. 54, t. 56, f. 3, t. 71, f. 12. C. fuscus, Lin. Col. subfuscus, Lacep. Natrix bicarinatus, Wag.—E. lævicollis, de Col. lævicollis, Pr. Max.—E. exoletus, Lin. Mus. Adolph. Col. bicarinatus, Pr. Max.—Col. carinatus, var. Merr. Natrix exoleta, Lau.—Col. quadricarinatus, Fitz. Erpet, Boie. Col. pyrhopogon. Pr. Max.—Col. sexcarinatus, Pr. Max. Natrix cinnamomea, Wag. Without epidermis, back with six series of keeled scales.

F. Tail conical, sub-caudal plates first simple, then two rowed, dorsal scales uniform. Hurria, Daud.

Hurria bilineatus, Daud, Rup.—Hurria Nympha, Mer. Col. Nympha, Daud. from Russel, t. 36, 37.

G. Head scarcely distinct from the body, gape small or moderate, teeth colubrine, the hinder rather larger, scales imbricate, very smooth, abdomen arcuate, Coronella Laur. Erythrolampus Liophis and Cloelia, Wag.

American.

Cor. venustissima. Col. venustissima, Pr. Max. Col. binatus, Lich.—Col. agilis, Lin. Col. Æsculapii, Lin. Mus. Adolph. t. 21.—Col. poecelogyrus, Pr. Max. Liophis poc. Wag. Body marbled the whole length.—Col. formosus, Pr. Max. Ery. formosus, Wag.—Col. cloelia, Daud.

CLASS REPTILIA.

t. 78.—Col. melanocephalus, Lin. Mus. Adolph. t. 15, f. 2. Col. capite niger, Lacep. Cloelia melanocephalus, Wag.—Col. cobella, Lin. Elaps Cob. Sch. Cerastes Cob. Laur. Merr. Col. serpentinus, Daud. Cates. Leophis Cobella, Wag.—Col. miliaris, Lin. Col. Merremii, Pr. Max. Col. Dictyodes, Id. Natrix chiametla, Wag. t. 2, f. 2. Col. ammobates, Shaw. Liophis miliaris, Wag.—Natrix Forsteri Wag. t. 4, f. 1. Liophis Forsteri, Id.—Col. typhlus, Lin. Lac.—Col. viridissimus, Lin. Mer. 1, t. 12. Col. Ianthinius, Daud. Chlorosoma viridissima, Wag. Col. crassicaudatus, Mer. C. Africanus, Bonat. Seba, ij. 35, f. 4. Col. Reginæ, Lin. Liophis Reginæ, Wag. Natrix semilinea, Wag. t. 11, f. 2. Natrix alamensis, jun. Wag. t. 10, f. 3.—Col. Boddartii, Seitz.—Col. doliatus, Daud. Pr. Max. 368.—Col. meleagris, Sh. from Seba, ij. 32, f. 1, 56.—Col. orythrogastra, Pr. Max.—Natrix occipitalis, Wag. Spix, Braz. t. 6. Cloelia occipitalis, Wag. Col. melanocephalus, Boie. Elaps melanocephalus, Wag. t. 2, f. 1. Cloelia dorsata, Wagler.—Col. lineatus, Lin.—Col. Nicandri, Mer.—Col. bicinctus, Herm.—Col. raninus, Boie, from Seba, ij. t. 9.—Elaps triscalis, Mer.

Africa.

Col. annulatus, Lin. Mus. Adol. t. 8. Col. ignobilis. Laur. Col. atrofuscus, Lacep. C. caudiolus, Lac. C. orientalis, Gm. C. epidaurius, Herm. Seba, Thes. i. t. 72. ij. t. 9, t. 13, t. 52, 57, 82, f. 2.—Col. rufulus, Lich. Col. 1823.—Col. rufescens, Gm. Coron. Kotamboija, Laur. C. Hitambocia, Gm. Seba, t. 33, f. 6.—Col. Aurora, Lin. Cloelia aurora, Wag. Lin. Merr. Adol. 19. Seb. ij. 22.—Col. annulatus, Boie. Lin. Mus. Adolph. i. t. 8. Seba, i. t. 54. Merrem, t. 11. Oxyrhopus annulatus, Wagler.—Cor. Petolarius. Coluber pet. Lin. Ib. t. 6. Col. pethola, Bech.

CLASS REPTILIA.

Lacep. t. 3. Oxyrhopus pet. Wagler.—Col. rhombeatus, Boie. Col. rhom. Lin. Ib. t. 24. f. 1.

Asiatic.

Col. Baliedeira, Boie. Col. bal., Kuhl.—Col. octolineatus, Boie. Elaps oct., Schneid. Russel, 4, 38.—Col. Bilineatus, Boie. Col. bilineatus, Lac.—Col. tæniolatus, Boie. Col. tæn. Russel, t. 19.

European.

Col. meridionalis, Daud.—Col. lævis, Lacep.—Col. tessalata, Lat.

H. Head not distinct from body ; no hind frontal scale ; body cylindrical, tail very short, blunt abdominal shields, entire caudal shields, in two rows, scales smooth. Calamaria, Boie.

Col. Linnæ, Boie. Col. calamarius, Lin. Mus. Adol. 1. t. 6. f. 1. Anguis calamaria, Laur.—Col. lumbricoides, Boie.—Col. tessalata, Boie.—Col. maculosa, Boie.—Col. multipunctata, Boie.—Col. virgulata, Boie.—Col. reticulata, Boie.

I. Head not distinct ; eyes small ; tail short, acute. Brachyorrhos, Kuhl. Atractos, Wagler.

Br. Albus, Kuhl. Col. albus, Lin. Mus. Adol. t. 14, f. 2. Anguis alba, Laur. Mer. t. 7. Col. brachyurus, Shaw.—Br. dimidiatus, Kuhl. Col. dimidiatus, Opper.—Br. Kuhlii, Boie. Br. brachyurus, Kuhl.—Br. Decussata, Kuhl.—Br. torquatus.—Br. badius, Boie.—Br. flam-migerus, Boie.—Br. trilineatus, Atractus trilineatus, Wagler. Isis, 1828.—Br. Schach, Boie.

K. Body, long ; sub-compressed ; tail continued short, abdominal shields convex ; scales rhomboidal, nearly square, imbricate. Lycodon, Boie.

CLASS REPTILIA.

Col. Maximiliana, Merr. Col. audax, Daud. Col. cancellatus, Merr. Col. cattenularis, Daud. Tar tutta, Russel, 1, t. 15.—Lycodon Hebe, Boie. Col. Hebe, Daud. Col. fasciolatus, Sh. Russel, 1, t. 21.—Lycodon aulicus, Boie. Col. aulicus, Lin. Mus. Adol. t. 12, f. 2.; Seba, t. 91. f. 5. Nat. aulica, Laur. Lappiata, Lacep.—Lycodon subcinctus, Boie. Col. sub. Rein; Seba, t. 109, f. 7; Russel, ij. t. 41. Ophites, sub. Wagler.—Lyc. capucinus, Boie; Russel, 11, t. 37. Col. aulicus, Kuhl.—Lyc. fuliginosus, Boie.—Lyc. pethola. Col. pethola, Lin.; Seba, t. 28, f. 2, t. 54; f. 4, t. 110; f. 3.: ii. t. 38, f. 2. Cor. pethola, Laur.—Lyc. leucocephalus. Col. leucocephalus, Merr.—Lyc. Russelii. Col. Russelius, Daud. Katla tutta, Russel, 1, t. 38.—Lyc. unicolor, Boie; Russel, ij. 39.—Lyc. malignus, Boie. Col. Malignus, Merr.—Lyc. macrochinus. Col. macro, Boie.—Lyc. galathea, Boie. Col. galathea, Daud. Russel, 1, t. 26.

L. Nose rounded; head shielded; shield triangular, larger than the dorsal scales; tail conical. Xenopeltis.

Xen. Concolor Rein. Boie. Isis. 564.—Xen. Unicolor. Rein. Boie. Ib. 564. Col. alvearius Oppel.—Xen. leucocephalus, Rien. Boie. Isis, 564.

M. Head ovate indistinct, shielded; body cylindrical, scales equal, tail conical, with a single series of subcaudal scales. Scytale. Merr. not Daud. Pseudoboa. Schn.

Scytale coronata. Mer. Seba, ij. t. 41. f. 1. Pseudoboa coronata. Schn.—Scy. coronata. Pr. Max.—Hurria carinata. Kuhl. Ceraspis carinata. Wag.—Scy. Brachyorrhos, Boie. Isis, 20. Aspidura Brachyorrhos. Wag.

N. Head regularly shielded; body long; slender scales, equal; head long; muzzle acute; tail very long; subcau-

CLASS REPTILIA.

dal plates in two rows. Dryophis. Fitz. Dryinus, Mer. Oxybelis, Wag.

Col. fulgidus, Daud., t. 80. Seba, ij. t. 53. Col. nasutus, Shaw, and Col. purpurascens, Shaw. Dryophis fulgidus, Wag.—Col. acuminatus. Pr. Max. Dryinus Æneus. Spix. Braz. Oxybelis Æneus, Wag. Dryinus auratus. Bell.—Dryophis Panthoraria, Kuhl.

O. Head very long, regularly shielded; body very long; dorsal scales triangular, lateral scales linear.

Muzzle acute appendaged. Passerita.

Dryinus oxyrhynchus, Bell. Dryophis nasutus, Boie. Col. nasutus, Russel, 1. t. 12. Tragops, Wagler. Dryinus nasutus, Merr. Dryophis Russelii, Bottla. Passericki, Russel, t. 13. —Dry. pavoninus. Cuv. Boie. Tragops, Wag. —Dry. xanthozonica, Kuhl. Tragops, Wag.—Dry. prasina, Rein. Russel, ij. t. 25. Seba, ij. t. 53. f. 4. Dry. nasutus, Bell. Tragops, Wag.—D. rostratus, Reinw.

Muzzle blunt, rounded: ventral plates angularly keeled on the sides. Ahæetula. Leptophis, Wagler.

Ahæ Linnei. Col. ahætuta, Lin. Natrix ahætula, Laur. Boiga. Lacep. ij. t. 2. Dendrophis ahætula, Boie.—Ahæ. Richardi. Col. Richardi, Bory.—Ahæ. liocercus. Col. liocercus, Pr. Max. Dendrophis lio, Boie. These two are considered by Wagler as varieties of the first.—Col. caracus, Gm. Seb. ij. Bungarus filiformis, Oppel.—Daud. periophthalmica, Boie.

Psamnophis, Boie.

Psam. Girondicus, Boie. Col. Girond, Daud. Col. Gallicus, Hem. Zacholus Girondicus, Wagler.—Coronella Austriaca, Laur. Zacholus Austriacus, Wagler.—Col. Crucifer, Daud. Mer. Seba, j. t. 109. f. 8.—Col. moniliger, Lac. Col. sibelans, Seba, ij. t. 56.—Macrosoma elegans,

CLASS REPTILIA.

Leach. Col. elegans, Sch.—Psam. pulverulenta, Kuhl. Boie. Isis. xx. 547.—Psam. schokari, Boie. Col. schokari, Forsh.—Psam. lacertina, Boie. Col. lac. Spix, t. 5. Coclopetes, Lac. Wag. Geoff. Egypt, t. 5. f. 2.—Psam. rhombeatus. Col. Rhom. Lin. Mus. Ad. t. 24. f. 2. Col. Tyria, Kuhl. Coclopetis, Wagler.—Col. condanarus, Mer. Russel, t. 27. j. t. 27.—Psam. bicolor, Wag.

Dendrophis, Boie.

Den. chaireacos, Boie. Russel, ij. t. 26. Elaps bilineatus, Sch.—Den. maniar, Russel, ij. 25. Leptophis mancas, Bell. Zool. Jour.—Den. tristis. Col. tristis, Daud. Col. scandens, Mer. Russel, t. 31.—Den. formosa, Rien. Boie.—Den. picta, Boie. Col. pictus, Gm. Col. decorus, Sh. Col. cœruleus. Bonnat. Dips. Schokari, Kuhl. Bungarus filum, Opper. Seba, j. t. 99.—Den polychroa, Boie.—Den scandens, Col. scandens, Mer. Russel, j. t. 31.

Ventral plates two keeled. Chysopelea, Boie.

Col. ornatus, Mer. Col. libicea, Daud. Russel, ij. f. 2. Seba, j. t. 94. ij. t. 7. f. 1. t. 56. f. 1. t. 61. f. 2.—Chrys. rhodopleura, Rern.—Chup. pardalis, Boie.—Chry. paradisi, Boie. Isis, 20. 547. Seba, i. 94. f. 7. i. j. 61. f. 2.

P. Head very high, above flat, shielded before, truncate; body compressed, with one or three series of longer vertebral scales, lateral scales imbricate. Amblicephalus, Kuhl. Pareas, Wag.

A. carinata, Boie. Dipsas carinata, Kuhl. Pareas car. Wag.—A. mikani. Col. mikani, Fitz.—A. coccineus. Col. coccineus, Blum.—A. lævis, Kuhl.—A. Nattereri. Col. Nattereri, Mikan. Dryophyllax Nattereri, Wag.—Natrix punctatissima, Wag. t. 14. Col. lineolatus, Opper. Thammodynastes punctatissima, Wag.—Rhinostomus probiscidens, Fitz.

CLASS REPTILIA.

Q. Head short and broad, above shielded ; body long, compressed ; vertebral scales square ; lateral scales linear.
Dipsas.

a. Subcaudal scales double. Dipsas, Laur. Bungarus, Opperl.

Dipsas Indica, Laur. Col. bucephalus, Shaw, Seba, i. t. 43. Col. atrox, Gmel. Dipsas bucephalus, Boie.—Dipsas dendrophila, Rein. Wagler, t. 8. Col. peruvianus, Sh.—Dip. Drapiezii, Boie, Isis, xx. 549.—Dipsas multomaculata, Rein. Russ. t. 23.—Dipsas cynodon, Cuv. Boie, Isis.—Dipsas trigonatus, Boie.—Dipsas irregularis. Col. irreg, Mer. t. 4. Hurria pseudotrigo, Daud.—Dip. cenchoa, Boie. Col. cenchoa, Lin. Seba, ij. t. 16. f. 2.—Dip. Catesbœi. Col. Cates. Weig. Bungarus, Opperl.—Dip. nebulatus. Col. nebulatus, Lin.—Dip. compressus, Boie. Col. compressus, Daud.—Dip. Savignii, Boie.

b. Sub-caudal plates simple, fangs, with the teeth. Bungarus, Daud.

Bungarus cœruleus, Daud, Boie, Russel, t. 1. Boa latotecta Herm. — Bungarus annularis, Daud. Russel, t. 3. — Bung. semifasciatus, Opperl. Seba. Col. candidus, Lin.

R. Head, scales, with small plates over the face and between the eyes, with plates, simple, double, a simple and double.
Cerebus, Cuv. Homolopsis, Boie.

Col. cerberus, Daud. Hydrus rhynchops, Schn. Eubydris rhynchops, Latr. Hydrus cinereus, Sh. Python rhynchops, Mer. Homalophis rhynchops, Boie.—Homolopsis obtusatus, Boie.—Hern. erythrogammus, Boie. Col. erythrogammus, Daud.—Hern. carinicaudatus, Boie. Col. carinicaudatus, Pr. Max.—Col. monilis, Lin. Col. buccatus, Lin. Mus. t. 19. Vipera buccata, Daud. Vipera

CLASS REPTILIA.

semifasciata, Merr. Col. varius, Merr. Seba.—Col. angulatus, Lin. Merr. t. 9. Natrix aspera, Spix. Braz.—Homolophis aer, Boie. Col. aer, Oppel.—Col. plicatus, Lin. Mus. t. 6. f. 1. Bali. Lacep. Elaps plicatilis, Schn. Cerastes plicatilis, Laur.—Col. Æneus, Spix.—Hom. moluroides, Boie. Col. molurus, Lac. t. 10.—Hom. plumbea, Kuhl, Boie.—Hom. Jara, Boie. Col. Jara, Shaw, Russel, t. 14. Col. Linnæi, Merrem.

Genus. BOA.

Ventral shields narrow; body thick; anal spurs distinct; nostrils opical; subcaudal plates simple, a double tail conical.

Body compressed fusiform; head depressed; tail prehensile; back of the head scaly; subcaudal plates simple. America. Boa.

Muzzle covered with scales; labial scales flat. Boa, Wagler. Boa constrictor, Lin. Devin or Boa, Empereur, Daud.

Muzzle covered with scales; labial scales pitted. Epicrates, Wagler.

Epicrates Cenechria. Boa cenchrus, Lin. Daud. Seba. Boa cenchrus, Pr. Max.

Muzzle covered with plates; labial scales flat. Eunectes, Wag.

Eunectes murina. Boa murina. Boa scytale, Linn. Seba. Boa aracondo, Daud. Boa aquatica, Pr. Max.—Eunectes lateristrigota. Boa lateristriga, Boie.

Muzzle covered with plates; labial scales pitted. Xiphosoma, Wag.

Xiphosoma canina. Boa canina. Lin. Boa hypnale, Lin. Xip. araramboya, Wag.—Xiph. hortulana. Boa hortulana.

CLASS REPTILIA.

Lin. Sel. *Vipera* et *Echidna cærulescens*. Mer. *Vip. moderans* and *Boa elegans*, Daud. *Coluber glaucus*, Gm. *Xiphes dorsale*, and *X. ornatum*, Wag.—*Xip. Merrem. Corallus obtusirostris*, Daud. accidental deformity.

Body much compressed, keeled; head obliquely cut behind and truncated in front, covered with small shields in front; sub-caudal plates simple. Cenchris, Gray, Engyrus, Wagler. India.

Cenchris regia, Boa regia, Shaw. Boa carinata, Merrem. Wetter, Amer. t. 9. — Cenchris ocellata, Boa ocellata, Oppel. Boa carinata, Var. C. Mer.

Body fusiform; head covered with scales; muzzle with small plates; sub-caudal plates, two rowed. Python. Asia.

a. Labial scales with deep pits, dorsal scales rhombic. Constrictor, Wagler.

Python Schneideri, Mer. Boa reticulata and Boa rhombeata, Schn. Python Javanicus, Kuhl. Seba, t. 62. Col. Javanicus, Shaw.—Python Poda, Boie, Pedda Poda. Russel. t. 23. Col. boaformis, Sh. Python Tigris, Daud.—Python bivittatus, Kuhl. Col. Sebœ, Lin.—Python amethystina, Schn.—Boa orbiculata, Schn. Bora, Russel, t. 39.

a. Labial scales equal, flat. Python, Wagler.

Python Peronii, Cuv. Wag. Python punctatus, Mer. K. H.

Body fusiform; head covered with keeled scales like the back; tail short; sub-caudal plates simple; spurs distinct. Gongylophis, Wagler, Boa, part Cuv. Asia.

Boa conica, Schn. Boa ornata, Daud. Boa viperina, Shaw. Padani Cootoo, Russel, t. 4. Mus. Brit.

Body cylindrical; head covered like the back with small

CLASS REPTILIA.

scales ; muzzle shielded, tail short. Eryx and Clothonia, Daud.

Eryx jaculus and E. turcica, Daud. Boa Tartarica, Lich. but Cuvier states that this is without spurs.—Eryx anguiformis. Boa anguiformis, Schn. Eryx Indica, Cuv.

HYDRUS, WATER OR SEA SNAKES.

Ventral shields narrow, formed of two united scales ; body compressed ; anal spurs none ; tail compressed, except in Achrocordus ; nostrils vertical operculated.

A. Head small, shielded ; body covered with scales. Hydrophis, Hydrus, Wagler.

a. Abdomen with two rows of larger scales.

Hydrus major, Sh.—Hyd. nigrocinctus, Merr. from Russel, t. 6. Anguis Xiphura, Herm.—Hyd. chloris, Mer. Russel, t. 7.—Hyd. obscurus, Merr. Russel, t. 8. Leio-seloma obscura. Var. a. Fitz.—Hyd. schistosus, Mer. from Russel, t. 10.—Hyd. cyanocinatus, Mer. from Russel.

b. Abdomen with two rows of larger scales united into a band.

Hydrus Shawii, Hyd. major, var. Sh. MSS.—Hyd. cœrulescens, Sh. Mus. Brit.—Hyd. leiolepis, Gray.—Hyd. lanceolatus, Gray. Mus. Brit.—Hyd. spiralis, Shaw.—Hyd. doliatus, Mer. Distera, Lacep. Pelamis, Wag.—Hyd. striatus, Mer.—Hyd. lævis, Mer.—Hyd. Brugmansii, Boie.—Hyd. atricapillus, Rein.

B. Head large, depressed, dilated behind, shielded ; body with square plates. Pelamis, Hydrophis, Wag.

a. The central abdominal line with a series of scales on each side.

Pelamis bicolor, Daud. Hyd. platura, Lin.—Pelamis ornatus, Gray, Mus. Brit.—Pelamis gracilis, Hydrus gra-

CLASS REPTILIA.

cilis, Sh. Pel. Valakadin, Boie, Russ. t. 11. Disteria, Fitz.
—Pelamis Rupelii, Hyd. Schiddil, Boie, Russ. t. 12.—
Pel. melanurus, Hyd. melanurus, Wag. t. 3.

b. The central abdominal line formed of a series of long plates.

Pelamis fasciatus, Daud. Hydrus, Sh. Russ. t. 44. Anguis laticauda, Lin.—Pel. Kadll, Russ. t. 13.—Pelamis curtus, Hyd. curtus, Shaw.—Pelamis carinatus, Hyd. carinatus, Cuv. Pel. Lindsayi, Gray. Mus. Brit.

c. Head and body covered with small keeled scales ; tail compressed. Chersydrus, Cuv.

Ch. granulatus, Mer. Achrocordus fasciatus, Sh. Hydrus granulatus, Schn.

d. Head and body covered with small keeled scales ; tail conical. Achrocordus, Horst.

Ach. dubius, Sh. Ach. Javanicus, Horst.

e. Head shielded, with two soft scaly tentacula, ventral plates narrow ; tail long. Herpeton, Wagler.

Herpeton tentaculatus, Daud. Erpeton, Lacep. Merrem.

AMPHIBIA.

Body with a naked skin.

Order 1. MUTABILIA.

Undergoing a transformation ; gills deciduous, covered with a deciduous operculum.

Gen. 1. RANA.

Body thick, tailless ; feet four, long ; sternum and clavicles distinct. Larva elongate, fishlike, tailed and without legs ; gills four on each side.

CLASS REPTILIA.

A. Tongue and tympanum distinct ; mouth toothed ; skin smooth ; toes clawless. Rana.

a. Toes simple, eyebrows rounded.

Green Frog. *Rana esculenta*, Lin.—Common Frog. *Rana temporaria*, Lin.—*Rana cultripes*, Cuv.—*Rana punctata*, Daud. *R. Daudini*, Mer. *Hypscaphelia*, Boie.—*R. plicata*, Daud. *R. Daudini*, β Mer.—*R. paradoxa*, Lin.—*R. tigrina*, Daud. *R. pipiens*, Daud. t. 18—*R. cyanophlyctis*, Schn. *Bufo cyanophlyctis*, Latr.—*R. rudibunda*, Pallas. *Bufo*, Sch.—*R. vespertina*, Pal. *Bufo*, Schn.—*R. pipiens*, Lin. not Daud. *R. maxima*, Cates. *R. Catesbiana*, Shaw. *R. mugiens*, Mer.—*R. palmpipes*, Spix.—*R. Virginica*, Gm. *R. Halecina*, Daud. *R. pipiens*, Mer. Shad Frog, Bartram.—*R. clamitans*, Latr. Daud. t. 16. Grunting Frog, Bartram. Argus Frog, Shaw. *R. ocellata*, Lin. *R. pentadactyla*, Laur. *R. sonans*, Bonnat. *Cystignathus*, Wag. *R. gruniens*, Daud. is thought by Harlan to be the same.—*R. melanota*, Raffinesque.—*R. cutricularis*, Harlan.—*R. scapularis*, Harlan.—*R. flaviventris*, Har. *R. fontinalis*, Leconte. Spring Frog, Bartram.—*R. sylvatica*, Leconte.—*R. palustris*, Leconte. *R. pardalis*, Harl.—*R. pumilla*, Leconte.—*R. Gryllus*, Id.—*R. dorsalis*, Harlan. Savannah Cricket of the Americans.—*R. nigrita*, Leconte.—*R. typhonia*, Daud. *R. Virginica*, Mer. *Cystignathus*, Wagler.—*R. Gigas*, Spix. *R. coriacea*, Id. *R. pachypus*, Spix. *Cystignathus pachypus*, Wag.—*R. sibilatrix*, Pr. Max. *R. pygmœa*, Spix. *Cystignathus*, Wagler.—*R. rubella*, Latr. *R. Daudini*, Mer.—*R. mystacea*, Spix. *Cystignathus*, Wagler.—*R. miliaris*, Spix.—*R. labyrinthica*, Spix. *Cystignathus*, Wagler.—*R. maculata*, Latr. Daud.

CLASS REPTILIA.

b. *Toes simple ; eyebrows horned.* Ceratophys.

America. *Ceratophys cornuta*, Pr. Max. *C. varius*, Boie. *C. cornuta*, Lin. Seba, j. t. 72. f. 1. 2. *Ceratophys dorsata*, Pr. Max. Back with separate shield-like plates, the front one the largest.—*Ceratophys Spixii*, Cuv. *R. megastoma*, Spix, perhaps the same species.—*Cer. clypeata*, Cuv. Mus. Par.—*Cer. Boiei*, Pr. Max. *Cer. granosus*, Cuv.—*Cer. scutata*. *R. scutata*, Spix. *Hemiphractus Spixii*, Wagler.—Asia. *Cer. montanus*, *Megalophrys Montana*, Kuhl. Wagler.

c. *End of toes dilated.* *Hyla*, *Laurent*. *Calamita*, *Schn*.
Tree Frogs.

Hyla arborea. *R. arborea*, Lin. *Hyas*, Wagler.—*Hyla ranœformis*, Lau. *Calamita*, Mer. La Bossue, Lacep. Seba.—*Hyla Indica*, Gray.

Hy. bilineata Daud.—*Hy. Blochii*, Daud. *Calamita cinereus*, Schn. *Cal. bilineatus*, β Mer.—*Hyl. Scychellerii*, Peron.—*Hy. vermiculata*, Peron.—*Hy. Leschenaultii*, Gray.—*Hy. Peronii*, Gray.—*H. pulchra*, Gray.—*Hy. bicolor*, Daud. *Phyllomedusa*, Wagler.—*Hy. boans*, *R. Boans*, Lin. *R. maxima*, Lau. *Calamita maximus*, Schn. *Hyla palmata*, Latr. *Rana Zebra*, Shaw. *Auletris*, Wagler.—*Hy. venulosa*, Latr. *Rana ven.*, Laur. *Hy. viridi-fusca*, Laur. *Calamita Boans*, Schn. *Hyla Boans*, Mer. *Rana Meriana*, Shaw. *Rana arborea*, Var. Gm. *R. squamigera*, Walb.—*Hy. marmorata*, Latr. *Rana gibbosa*, β Gm.—*Hy. tinctoria*, Latr. Daud. *Rana*, Shaw. *Rametta a tapiner*, Lacep.

* Some of the Indian species deposit their eggs on the under side of leaves, hanging over water. General Hardwicke has observed them place the eggs on a leaf which stood over a pail of water, so that the young dropt into the water.

CLASS REPTILIA.

Hy. Surinamensis, Daud. Calamita, Mer.—Hy. hypochondrialis, Latr. Daud. Calamita, Mer.—Hy. intermixta.—Hy. ruber, Laur. La Rouge, Lacep. Hy. sceleton, Laur. — Hy. aurantiaca, Daud. Auletris, Wagler.—Hy. lactea, Laur. Rana lactea, Lin. Calam. melanorabdotos, Sch. Hy. Boans, Daud.—Hy. tibiatricix, Laur. H. aurantiaca, Laur.—Hy. lactea, Latr. Daud. Hy. verrucosa, Daud. Hy. variegata, Daud. Hy. lecophyllatus, Beirus. Hy. frontalis, Latr.—Hy. bufonia, Spix.—Hy. geographica, Id.—Hy. albomarginata, Id.—Hy. papillaris, Id.—Hy. pardalii, Id.—Hy. cinerascens. Id.—Hy. affinis, Id.—Hy. trivittata, Id.—Hy. abbreviata, Id.—Hy. lateralis, Daud. Rana arborea, β Gm. Hyla viridis, Laur. Calamita Carolinensis, Penn. C. cinerea, Schn. Rana bilineata, Shaw.—Hy. femoralis, Daud.—Hy. syuirella, Daud. H. ocellaris, var Leconte.—Hy. delitescens, Leconte.—Hy. versicolor, Id.—Hy. ocellaris, Latr.—Hy. Quoyii, Bory.—Hy. Gaimardii, Id.—Hy. Seuerii, Desm. Hy. bifasciata, Gray, Mus. Paris.—Blue tree-frog, White's Journal, Hy. Cyanea, Daud. R. austraciæ, Schn. R. cærulca, Daud.

White's specimen of the last mentioned seems to have wanted a toe on its hind feet, and from this Fitzinger has made of it a genus, under the name Calamita. Hyla violaceopoda, and Hyla erythropoda, of the French museum, appear to be nearly applied to, and probably the young of this species. Hyla bufonoides of the Paris Museum, of which H. centripoda of the same Museum may be a variety. Hy. ocellata, and Hy. rubeola, all also of the same Museum, are from New Holland.

d Tongue and tympanum distinct; mouth toothless. Nose rounded. Bufo.

Common Toad, Rana Bufo, Lin. Bufo cinereus, Schn.

CLASS REPTILIA.

Bufo vulgaris, Laur. *Bufo Roeselii*, Latr. Daud. t. 27?—
Bufo roseus, Wasserkrote, Meyer.—*Bufo fuscus*, Laur.
Rana bombina, Gm. Roesel, Fro. t. 15. *Pelobates fuscus*,
Wagler.—*Bufo variabilis*, Mer. *R. variabilis*, Pallas. t. 6,
f. 12. *Bufo viridis*, Laur. *Rana viridis*, S^t zw. *Bufo Schre-*
berianus, Laur. *Rana sitibunda*, Pallas. *Bufo sitibundus*,
Lepeche. See also Geoffroy Reptiles of Egypt, t. 4. *Bufo*
obstetricans, Laur. *R. obstetricans*, Sturm. *Bombina ob-*
stetricans, Mer. *Alytes*, Wagler.—*Bufo calamita*, Laur.
R. protentosa, Blumen. *R. Bufo*, var. Gm. *B. cruciatus*,
Schn. *R. fætïdissima*, Hern. *R. mephitica*, Shaw. *Bufo*
salsus Schrank, Daud. Common on heaths near London.—
Bufo marina, Daud. t. 37. *B. maculiventris*, Spix.—*Rana*
marina, Lin. *Bufo marinus*, Sch., is from Seba; t. 76, f. 7, it
has toes like an *Hyla*. Copied *R. maxima*, Shaw.—*Bufo*
ictericus, Spix, Brazils. —*B. lazarus*, Id.—*B. stellatus*,
Id.—*B. scaber*, Id.—*Bufo cinctus*, Pr. Max.—*B.*
Agua, Id.—*Bufo scaber*, Daud.—*Bufo pustulosus*, Laur.
Bufo melanostrictus, Schn. Seba.—*Bufo cognatus*, Say,
Brickcoloured toad, Bartram.—*Bufo musicus*, Latr. Daud.
—*Rana musica*, Lin? *Bufo clamosus*, Schn. Land-frog,
Bartram.—*Bufo Bengalensis*, Daud. *Bufo marinus*, Mer.
R. dubia, Shaw.—*Bufo flaviventris*, Daud. *B. chlorogaster*,
Daud.—*Bufo prætextatus*, Boie, MSS.

e. Nose acute, head rounded behind. *Rhinella*, Fitz. *Oxy-*
rynchus, Spix.

Rhinella proboscideus, *Bufo*, Spix. —*Rhi. semilineatus*,
Bufo, Spix.—*Rhi. granulatus*.—*Rhi. acutirostris*—
Rhi. nasicus—all *Bufo*, Spix, t. 21, and 24.

f. Nose acute; head with a crest extending on each side, to
the paratoids. *Otilopha*, Les Otilophes, Cuv.

Otilopha typhonia, *R. typhonia*, Lin. Seba. *R. margira-*

CLASS REPTILIA.

tifera, Laur. *Bufo margaritifera*, Daud.—*Oli. ocellata*, Tympanum, obscurely seen through the skin. Dark brown, with white edged brown spots.

B. Tongue distinct; tympanum hidden; toes 3, innerclawed; mouth toothed. *Dactylethra*, Cuv. *Engystoma*, Fitz. not *Merrem*. *Xenopus*, Wagler.

Xenopus Boiei, Wag. *Pipra Buffonia*, Mer. *Bufo lævis*, Daud. *Pipa lævis*, Mer. *Engystoma ovalis*, Fitz. ?—*Rana fasciata* of Burchel's Travels, may belong to this genus.—*Xenopus ovalis*, *Rana ovalis*, Schn. *Microps unicolor*, Wag.

C. Tongue distinct, tympanum hidden; toes clawless; mouth large, eyebrows rounded. *Bombinator*.

B. igneus. *Rana bombina*, Gm. *variegata*, Lin.—*Bombinator Daudini*, *Bufo ventricosus*, Daud. *Engystoma ventricosa*, Fitz.

D. Mouth large; eyebrows acute. *Srombus*, Gray.

Ceratophys granulata, Cuv. *C. Boiei*, Pr. Max. *Physalaxis Cuvieri*, Fitz.

E. Mouth and head small, paratoides none; toes, 5, 4. *Breviceps.* *Engystoma*, part Fitz.

Breviceps gibbosus, *Bufo gibbosus*, Daud. *Engystoma dorsatum*, Cuv. Seba. *R. systoma*, Schn.—*Breviceps marmoratum*, *Engyst. marmoratum*, Cuv. not described.—*Bre. granosus*, *Engyst. granosus*, Cuv.—*Bre. Surinamensis*, *R. Suninamensis*, Daud. *R. Bufonia*, Mer.—*Bre. globulosus*, *Bufo, glo. Spix*, t. 19, f. 1. *Chaunus marmoratus*, Wagler.—*Bre. albifrons*, *Bufo albifrons*, Spix, t. 19, f. 2. *Paludicola albifrons*, Wagler.—*Bufo ephippium*, Spix. This species has only three toes on all the feet, and Fitzinger has made a genus of it, therefore, under the name of *Brachycephalus*.

CLASS REPTILIA.

F. Tongue indistinct, tympanum, hidden, end of toes, four, cut. Pipa, Daud. Asterodactylus, Wagler.

Common Pipa, R. Pipa, Lin. Seba, j. t. 77. The females of this species hatch their eggs on the back.—Pipa Curucura, Spix, t. 22. The female of this species do not carry their eggs on the back. Inhabits the bottom of the lakes in Brazil.

Gen. 2. SALAMANDRA.

Body subcylindrical, tailed, feet four, short; sternum clavicles none. Larva, with four feet, gills, three on each side.

* Toes 4, 4. Salamandrina.

Salamandrina perspicilleta. Savi; les trois doigts, Lacep. ij. t. 36. Molge tridactylus, Merrem. Salam. tridactylus, Daud. See also, Salam. Savi, Gosse, with the toes half webbed. Mus. Paris.

** Toes 4, 5. Salamandra.

a. Skin smooth, paratoids glandular, with group of tubercles on the sides, in two series down the back and tail, each ending in a large pore, lateral line, simple.

Common Salamandra. Salamandra maculosa, Laur. Lac. Salamandra. Lin. Black, yellow spotted.—Black Salamandra. Salamandra atra, Laur. Sal. fusca Gesner, Sturm fauna. Black may be only a variety.

b. Skin granular, granicles ending in a group of minute pores, paratoids porous, with a series of pores on each side, forming a line between the legs.

Common Salamander. Salamandra palustris. Salam. cristata, Latr.—The Marbled Salamander. Salam marmorata, Latr. Triton Gesneri, Laur., and the Alpine Salamander.

CLASS REPTILIA.

Salam. *alpestris*, Bechst. Lacep. t. 20, perhaps belong to this section.

c. *Skin and paratoids granular, each granule ending in a large pore, lateral line porus. Pleurodeles?*

Spanish Salamander. *Salamandra major*, nob, Mus. Brit. Salam. *fenestrata*, Mus. Par. Inhab. Gibraltar, Mus. Col. Surg. and Brit. length ten, or twelve inches. This species is very like *Pleurodeles* Waltl. Michaelis, Isis, 1830, t. 2, said to be found in the South of Spain, and said to differ from the other Salamanders, by having fourteen perfect ribs.

d. *Skin and paratoids smooth, with scattered granules, each ending in a pore, place of lateral line occupied by a large blood vessel.*

Common Eft. *Salamandra vulgaris*. Sal. *punctata*, Latr. —The Webfooted Eft. Salam. *palmata*, Latr., scarcely appears to be distinct.

e. *Skin and paratoids smooth, minutely punctulated, the pustules along the upper surface of the tail rather larger, and more distinct.*

Violet Salamander. *Salamandra subvioleta*, Barton. Scargus Valeno. Mus. Par. Sal. *Venenosa*, Barton, Amer. Phil. Trans. vi. t. 1. Brit. Mus.

f. *Skin and paratoids smooth, minutely punctated, lateral line none, toes long and free, Molge. nob.*

Glutinous Salamander. *M. glutinosa*. *Salamandra glutinosa*, Green. Mus. Brit.—Red backed Salamander. *Salamandra Erythronota*, Green. Brit. Mus.—Cuvier says that Salam. *Japonica*, Bechst. Lacep. ij. t. 10, f. 1, is allied to this species.—Ashy Salamander. *Salamandra cinerea*, Green.—Banded Salamander. *Salamandra fasciata*, Green, J. A. N. S. Phil. Mus. Brit.

CLASS REPTILIA.

Probably the following American species belong to this section.

Punctate Salamander. Salam. symetrica. Sal. punctata, Bechst. Lacep. ij. t. 10, f. 2.—Tigerine Salamander. Salam. tigrina, Green. N. America.—Two lined Salamander. Salam. bislineata, Green, New Jersey.—Red Salamander. Salam. rubra, Daud. Salam. rubiventris, Green. North America.—Variolated Salamander. Salam. vario-lata, Gilliams. Jour. Sic. Nat. Philad. 1, t. 18, f. 1, Pennsylvania.—Cylindrical Salamander. Salam. cylindracea, Harlan. South Carolina.—White faced Salamander. Salamandra frontalis. Sal. sinciput-alba, Green.—Brown Salamander. Salamandra fusca, Green, Jour. Acad. Philad. New Jersey.—Dorsal Salamander. Salamandra dorsalis, Harlan. South Carolina.—Painted Salamander. Salamandra picta, Harlan. Pennsylvania.—Yellow Salamander. Salamandra flavissima, Harlan. Pennsylvania.—Capt. Beechy's Salamander. Salamandra Beechii, Gray.—Spotted Salamander. Salamandra maculata, Green. New Jersey. Mus. Brit.—Brownish Salamander, Salamandra subfusca, Green. New Jersey.—Long Tail Salamander. Salamandra longicaudata, Green.—Black Salamander. Salamandra nigra, Green. Pennsylvania.—Green's Salamander. Salamandra Greeni, Gray.

g. Skin and paratoids smooth, minutely punctuated; lateral line none; toes very short webbed.

Salamandra variegata. Gray. Sal. platydactylus. Cuv. Mus. Paris. Brown, with irregular dorsal bands. Mexico.

Sect. II. AMPHIPNEUSTA. Not undergoing transformation.

Gen. I. PROTEUS.

Gills free, persistent; skull formed of several distinct bones;

CLASS REPTILIA.

body rather depressed; tail compressed; legs four; muzzle depressed.

a. *Toes 3 before, 2 behind.* Hydochthon.

Common Proteus. *Proteus anguinus*, Laur. *Siren anguinus*, Schn. See Configliachi, Monografa and Schriber's, Monograph, Carniola.

b. *Toes 4 before, 4 behind.* Menobranthus, Harlan. *Necturus*, Raffin. *Phanerobranthus*, Fitz.

Say's Menobranthus. *Menobranthus lateralis*, Harlan. *Triton lateralis*. Acad. Nat. Sci. Philad. iv. t. 21. Ann. Lyc. N. ij. 1. 16. *Proteus of the Lakes*, Mitchell, Silliman Jour, iv. and vii.—*Salamandra alleghaniensis*, Jun. Say. —*Lacepedes Menobranthus*. *Menobranthus Lacepedii*. *Proteus tetradactylus*. Lacep. Ann. Mus. x. t.

c. *Toes 4 before, 5 behind.* Phyllhydrus, Brooks, *Gyrinus*. Shaw not Lin. *Siredon*, Wagler.

Common Axolotl. *Phyllhydrus pisceformormis*. *Siren pisciformis*. Shaw Zool. iij. t. 140. Misc. t. Axolotl Humboldt. Obs. Zool. t. 12. Home Phil. Trans. and Lacep. Anat. *Siredon Axolotl*, Wagler. Mexico. Consult also *Proteus Nove Cæsarcenris*, Green. Jour Acad. Phil. and *Siren operculata*, Pal de Beauv. Amer. Phil. Trans. iv.

Gen. II. SIREN.

Gills free, persistent; skull of distinct bones: body sub-cylindrical; tail compressed; legs two, anterior.

a. *Toes 4, 4.* *Siren*, Linn. *Muræna*, Gmel.

Common *Siren*. *Siren lacertina*, Linn. Mud Iguana. Ellis Phil. Trans.—Intermediate *Siren*. *Siren intermedia*, Leconte Ann. Lyc. New York ij. t. 1.

CLASS REPTILIA.

b. Toes 3. 3. Pseudobranchus, Gray.

Striated Siren. *Pseudobranchus striatus*. *Siren striata*, Leconte Ann. Lyc. New York, j. t. 4. Captain Leconte has unjustly and unscientifically attacked this genus. See Ann. Lyc. New York, ij. 133, though it was established originally on the authority of his erroneous account of the Opercula.

Gen. III. AMPHIUMA.

Gills none; skull formed of a solid bony substance; body subcylindrical; tail compressed; legs four.

a. Legs rather strong; toes 4, 5, outer edge of the feet fringed. Abranchus.

Large Hellbender. *Abranchus horridus*. *Salamandra gigantea*. *Salamandra horrida*, and *Protonopsis horrida*, Barton. *Menopoma Alleghaniensis*, Harlan. *Triton Alleghaniensis*, Daud. *Molge gigantea*, Merrem. *Salamandra Alleghaniensis*, Michaux. *Abranchus alleghaniensis*, Leconte, Ann. Lyc. j. t. 17.

b. Legs weak, boneless. Amphiuma.

Common Congo Snake. *Amphiuma means*. Garden. Florida and Georgia. Mus. Brit. *Chrysodonta larvaformis*, Mitchel.—Three Toes Congo Snake. *Amphiuma tridactylum*. Cuv. Mem. Mus. xiv. t. 1. Mus. Col. Surg. Four footed. Siren. *F. ton*.

Gen. IV. CÆCILIA. Linn.

Gills none, head depressed, formed of a solid bony substance; legs none; body cylindrical; tail short, blunt; vent roundish, nearly terminal—perhaps this should be placed near *Amphisbœna*.

CLASS REPTILIA.

a. *Muzzle blunt; nostrils bearded; body distinctly ringed.*

Cæcilia. Siphonops, *Wagler*.

Ringed *Cæcilia*. *Cæcilia annulata*, Spix, t. 27. f. 1.—

Interrupted Ringed *Cæcilia*. *Cæcilia interrupta*, Cuv.—

Bearded *Cæcilia*. *Cæcilia tentaculata*, Linn. Amon. Acad. j.

t. 17. f. 1. *Cæcilia albiventris*, Daud. vii. t. 122. f. 2.—

Glutinous *Cæcilia*. *Cæcilia glutinosa*, Lin. Mus. Adolph, t. 4.

f. 1. Seba, t. 25. f. 2. Ceylon.—Two Banded *Cæcilia*.

Cæcilia bivittata, Cuv. America.—Sharp-nosed *Cæcilia*.

Cæcilia rostrata, Cuv.

b. *Muzzle prominent, body slender, very long, smooth, tentacula distinct.* Ichthyophis, *Fitz.* *Cæcilia*, *Wagler*.

Wormlike *Cæcilia*. *Cæcilia lumbricoides*, Cuv. Daud.

t. 92, f. 2, Lin. Mus. Adolph. t. 5, f. 2.

c. *Muzzle depressed, bearded; body, rather fusiform, very closely ringed, eyes small.* *Epicrium*, *Wagler*.

Javanese *Cæcilia*. *Cæcilia hypocyana*, Van. Hasselt, Isis.

1827. *Epicrium Hasseltii*, *Wagler*, Java. *Cæcilia nasuta*,

is said to be a fish, the *Sphagebranchus Coromandelicus* of

Russel, t. 37.

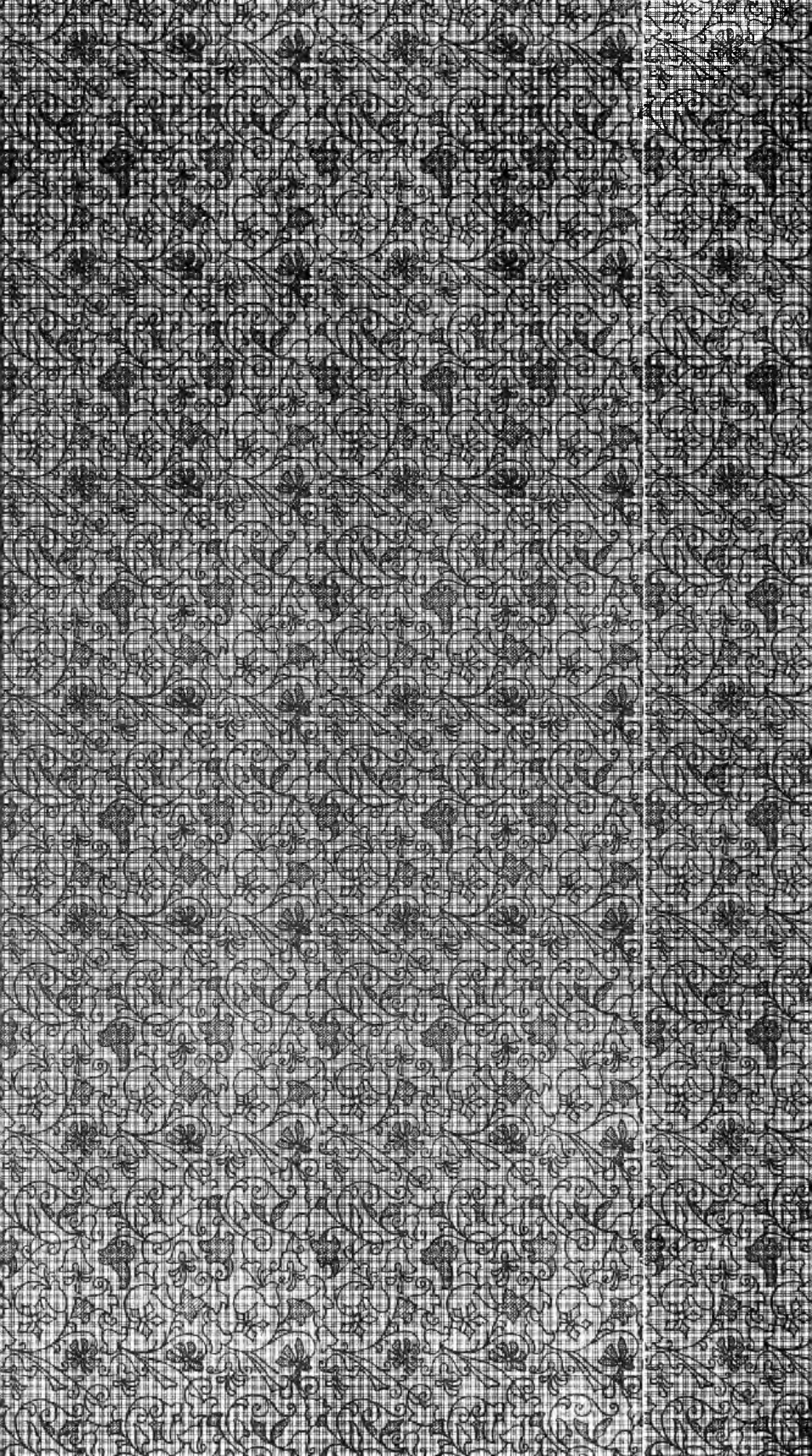
THE
ANIMAL KINGDOM.

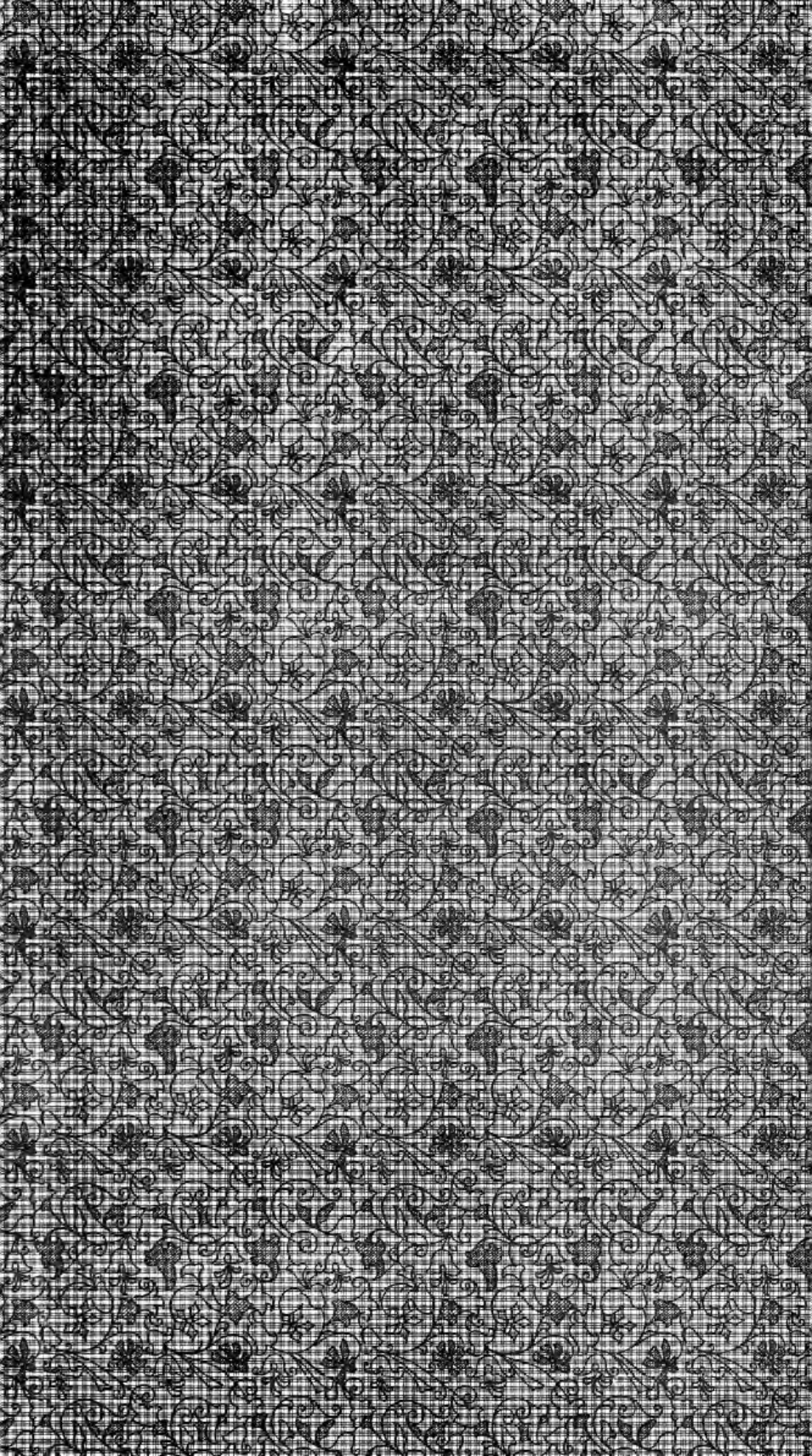
CLASS REPTILIA.

REPTILES have the heart disposed in such a manner, as that, on each contraction, it sends into the lungs only a portion of the blood which it has received from the various parts of the body, and the rest of that fluid returns to the several parts, without having passed through the lungs, and undergone the action of respiration.

From this it results, that the oxygen acts less on the blood than in the mammifera. If the quantity of respiration in the latter animals in which the whole of the blood passes through the lungs, before returning to the parts, be expressed by unity, the quantity of respiration in the reptiles must be expressed by a fraction of unity so much the smaller, as the portion of the blood sent to the lungs on each contraction of the heart, is less.

As respiration communicates to the blood its heat, and to the fibres their nervous irritability, so we find





UNIVERSITY OF ILLINOIS-URBANA

590C98 C001
THE ANIMAL KINGDOM ARRANGED IN CONFORMIT
9 PT.2



3 0112 009999324