

BOSTON PUBLIC LIBRARY



3 9999 03290 937 4

NOV ANGLICA

No 4353.50

27-31.



GIVEN BY

Board of Commissioners of Dept.
of Parks of Dept.

City of Boston
DEPARTMENT OF PARKS

TWENTY-SEVENTH ANNUAL REPORT

OF THE

BOARD OF COMMISSIONERS

FOR THE

YEAR ENDING JANUARY 31, 1902



PRINTED FOR THE DEPARTMENT

1902



Board of Commissioners of Dept. of Parks.
August 15, 1902.

WASHINGTON
D. C.
AUG 15 1902

CONTENTS.

	Page.
Commissioners' Report	5
Superintendent's Report	9
Engineer's Report	27
Financial Statements for financial year 1901-1902:	
Expenditures for Land, Construction, and Maintenance	34
Expenditures in Detail	36
General Exhibit of Appropriations	55
Appropriations and Balances in Detail	56
Summary of Expenditures on Account of Park and Playground Construction from the Organization of the Board	60
Summary of Expenditures on Account of Public Parks and Playgrounds, Land, Construction, and Betterments from the Organization of the Board	68
Park Betterments Collected by City Collector	70
Public Park Debt	70
Playground Debt	70
Park Statistics	71
Appendix	74

Digitized by the Internet Archive
in 2010 with funding from
Boston Public Library

DEPARTMENT OF PARKS.

COMMISSIONERS' REPORT.

HON. PATRICK A. COLLINS,

Mayor of the City of Boston :

SIR, — The Board has the honor herewith to submit this report for the year ending January 31, 1902.

In our last annual report we recommended a further appropriation of \$150,000 to enable us to complete the work of park construction, but no action was taken by the last city government on this recommendation. We need this appropriation of \$150,000 to finish the construction of those parks upon which comparatively little additional work remains to be done. Estimates, in detail, for this work have already been sent to you. These include shelter and sanitary buildings, which are imperatively needed for the convenience and health of the public in many of the parks; the extension of the conduits connecting the Fens with Charles river, which will allow of the small square north of Beacon street, on Charles river, between Charlesgate east and Charlesgate west, to be filled and graded, and the completion of grading, loaming, and planting in various parts of the park system.

The foul condition of the water in the Fens basin, from the flow of sewage into it from Stony brook, is a subject requiring prompt consideration. It is evident that it will be impossible to prevent the pollution of the Fens' basin until the waters of the brook cease to flow into the basin. This can be brought about either by connecting Stony brook with Charles river by a culvert large enough to carry directly into the river the entire flow of the brook at all times, or by connecting Stony brook with some general sewerage system built to prevent the pollution of the Charles river basin.

Under an order of the City Council, approved by the Mayor July 3, 1901, making an appropriation of \$225,000 for completing the Strandway, we took, on August 7, Burnham's wharf and the adjoining estates, aggregating about twelve and one-half acres of land and flats. The area required for the extension of Columbia road over this tract is three acres, leaving about nine acres available for playground purposes when the dock is filled up, the buildings cleared away, and the grounds levelled off, which work is now in progress.

On May 20, 1901, the Board took possession of a small square, containing 52,800 square feet, known as Berners square, and held in trust under the will of David Sears, which provided that the square should be forever kept open for ornament and exercise for the benefit of the residents on his Longwood property on Brookline avenue, of which it formed a part. The Board also took a lot of land on Camden street, containing 2,190.6 square feet, for an addition to the Columbus avenue playground.

Insufficient appropriations have delayed the necessary developments of several of the playgrounds in charge of the Board. Our policy is to make all playgrounds available for use as fast as they are needed, but not to expend money on them in advance of legitimate demands. The needs of the playgrounds are pointed out in the annexed report of our Superintendent. We shall require at least \$50,000 for their improvement to give the public the full benefit of the large expenditures already made for the acquisition of the land.

Appropriations for improving Billings Field and for equipping First street playground as an out-door gymnasium were made by the City Council last November. Work on the former has begun, and plans for a locker and lavatory building for the latter are being prepared.

The Refectory building at Franklin Park has proved not to be a public success, and no tenant has been able to carry on there a successful restaurant. The last lease having expired, we are considering whether it might not serve a better purpose if used in part as a reading-room and library, similar to those established in the Brooklyn and New York parks, to contain chiefly books relating to natural history, for

the use and enjoyment of the general public, as well as for students of landscape gardening, botany, ornithology, and similar subjects. A representation of the animal and vegetable life of our New England States, if it can be secured, would add to the interest and value of the library. The building will also be used for purposes of a shelter and for sanitary purposes.

Full details of the work of the department during the year will be found in the accompanying reports of our Superintendent and Engineer.

Respectfully submitted,

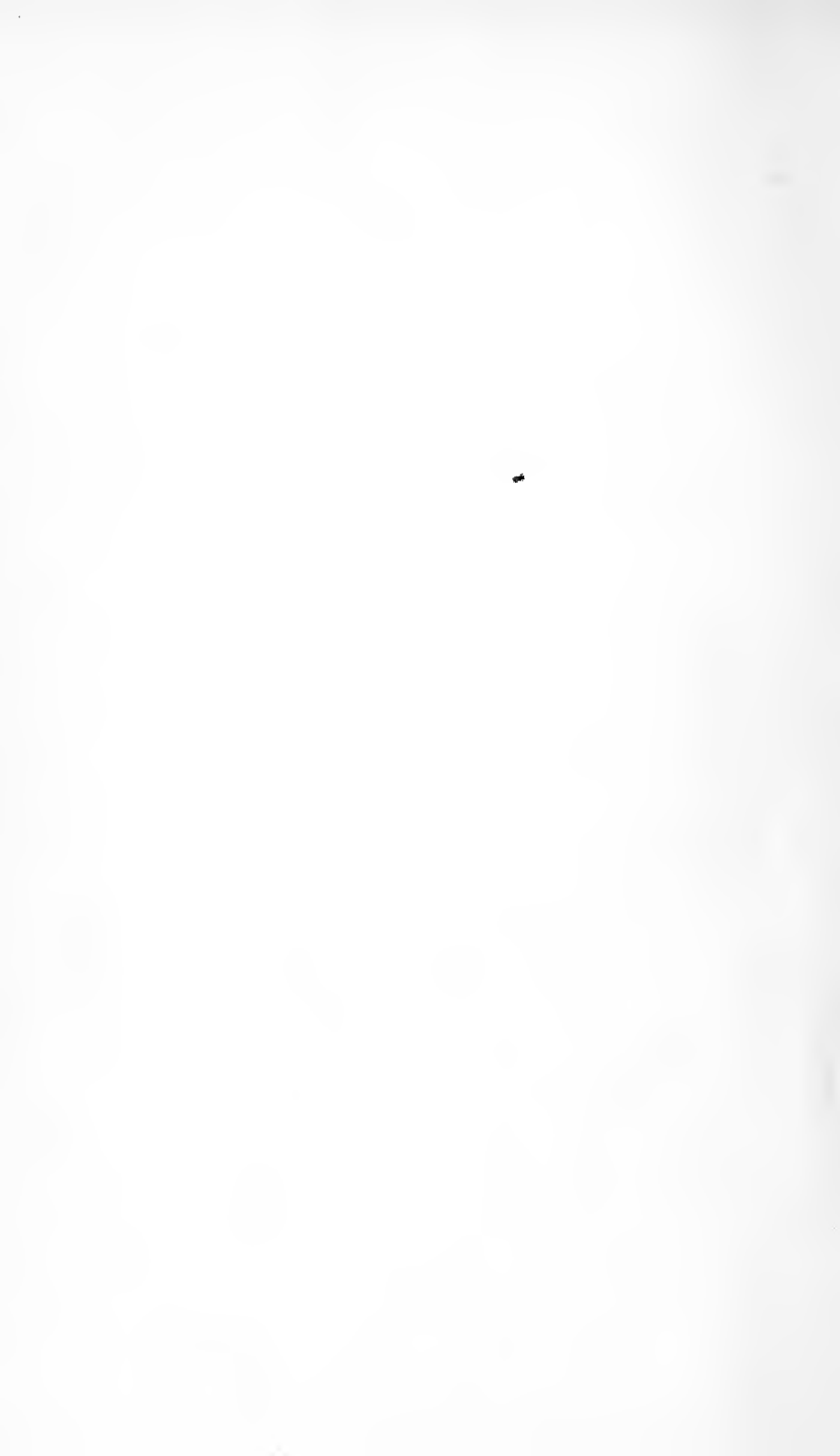
CHARLES E. STRATTON,

LABAN PRATT,

JAMES M. PRENDERGAST,

Commissioners.

BOSTON, January 31, 1902.



SUPERINTENDENT'S REPORT.

TO CHARLES E. STRATTON, LABAN PRATT, AND JAMES
M. PRENDERGAST, *Commissioners* :

Gentlemen, — I herewith submit a report of the work performed, under the direction of your board in this department, during the year 1901 :

FRANKLIN PARK.

The principal work of planting has been completed in Franklin Park, that of the past year having been confined to the finishing up of details in the general scheme. The bordering plantations of trees are fast producing the effect of seclusion in the park. Thrifty young woodlands now may be found, where once open views of the adjacent streets marred the prospect, and detracted from the enjoyment of persons driving or walking in the park. To produce as quickly as possible this desired effect of a screen, and to provide mutual protection, the trees were planted thickly; this has necessitated considerable thinning out to avert damage from overcrowding. The surplus material has been used in making new plantations. From this time on the work of planting in Franklin Park might properly be charged to maintenance, as the greater part of the material used will be obtained from plantations which require thinning out.

The thinning out of diseased and surplus trees in the old woodlands, which has been prosecuted for the past five years, continues to bear fruit. The gradual spread on top of a healthier growth, made possible by the admission of air and light, makes each tree a better specimen of its kind, and at the same time enhances the natural woodland effect.

The floors of many of the woodlands, notably those in the Wilderness, need attention in the way of grubbing out tree weeds, such as locust, cherry, and other seedlings, which

grow rankly to the detriment or the exclusion of the more natural ground cover of wild shrubbery and herbaceous plants. Some work of this character has been done in Long Crouch Woods, which was badly infested with wild cherry seedlings. This piece of woodland is much frequented by picnic parties; and as the loam covering originally was very thin, over a rocky foundation, the trees have suffered from lack of nutrition and from hard usage. To ameliorate these conditions about 9,000 cubic yards of loam were spread over a large part of the wood. This gives an additional covering of loam, averaging about six and one-half inches in thickness over the treated part, which will greatly tend to the improvement of the trees, which have been starving in a thin and impoverished soil.

Other woodlands in Franklin Park are suffering from the thinness of the soil covering. Fine tree growth is one of the chief features of a pleasing landscape; and as loam at present is offered freely at cheap rates, it would seem to be wise to make liberal appropriations for the purchase of this prime necessity for producing a good growth of trees on the rocky, sterile portions of Franklin Park.

During most of the season two gangs of four men each were kept at the important work of tree pruning. Considerable additional under-drainage was laid in Nazingdale, with good results. The greater part of the length of the old brook (now carried in a pipe below the surface) was levelled and seeded, which made a vast improvement in what was once a rough and swampy hollow.

To improve the entrance to the park from Seaver street and Columbus avenue, Walnut avenue was widened between Seaver street and the Walnut avenue entrance to seventy feet. The foundation was laid for a boundary wall on the park side, and the work of the superstructure will commence with the opening of spring.

A decrease in the interest taken in golf, during the past season, was noticeable, the total number of players that went over the course being 31,007, a decrease of twenty-two and one-half per cent. from the attendance of the previous season. Early in the year a rearrangement of the links was made,

by laying out for experienced players a nine-hole course around the borders of the meadow, and for beginners a six-hole course through the centre and within the lines of the nine-hole course. The first tees were changed from the old location to Schoolmaster Hill, where a golf house has been fashioned out of the tiled shelter. Accommodations are there furnished for checking and storing golfing bags and clothing. Dressing-rooms for men and women are provided also in the building.

Tennis seems to be increasing in favor. All the available ground in Ellicottdale was in use last season. The courts were in constant demand, and frequently on Saturday afternoons and holidays all who wished to play could not be accommodated at once. The Franklin Field courts also were well patronized.

ARNOLD ARBORETUM.

The only work done during the past season in the Arboretum consisted of the ordinary maintenance of roads and walks, of which the raising of a part of the lower drive formed the principal item, it having settled into the peat bed over which it is built.

OLMSTED PARK AND RIVERWAY.

With the exception of a little additional planting and the erection of a sanitary building Olmsted Park is completed, as far as construction has been planned. The rearrangement of the shrubberies along the water side has greatly added to the charm of the lower walk along the Riverway. The plantations made during the past four years are doing well. A quantity of shrubs were planted the past season, among which may be noted the rhododendrons on the slope of the bank from Perkins street, at Ward's pond. These are hybrids between our native species, which give the required hardiness, and the Asian species which impart splendor of bloom. Two thousand kalmias are in preparation in our nurseries for planting on the east and north slopes of the pond, the intention being to continue the slightly gardenesque treatment in this pretty little hollow. The lilies, lotus, and

colonies of semi-aquatic plants fringing the pond produced a beautiful effect last season.

The preparation of the water's edge of the Riverway and Leverett pond, for planting with semi-aquatic and water-loving plants remains to be done. This will give a more natural effect at the water line than now exists along the rough, stony shore. The plants will be mostly herbaceous; and will include, rushes, sedges, and grasses, also arrow-heads, water plantain, willow herbs, lythrums, with occasional colonies of water lilies, lotus flowers, and many other plants of like character.

THE FENS.

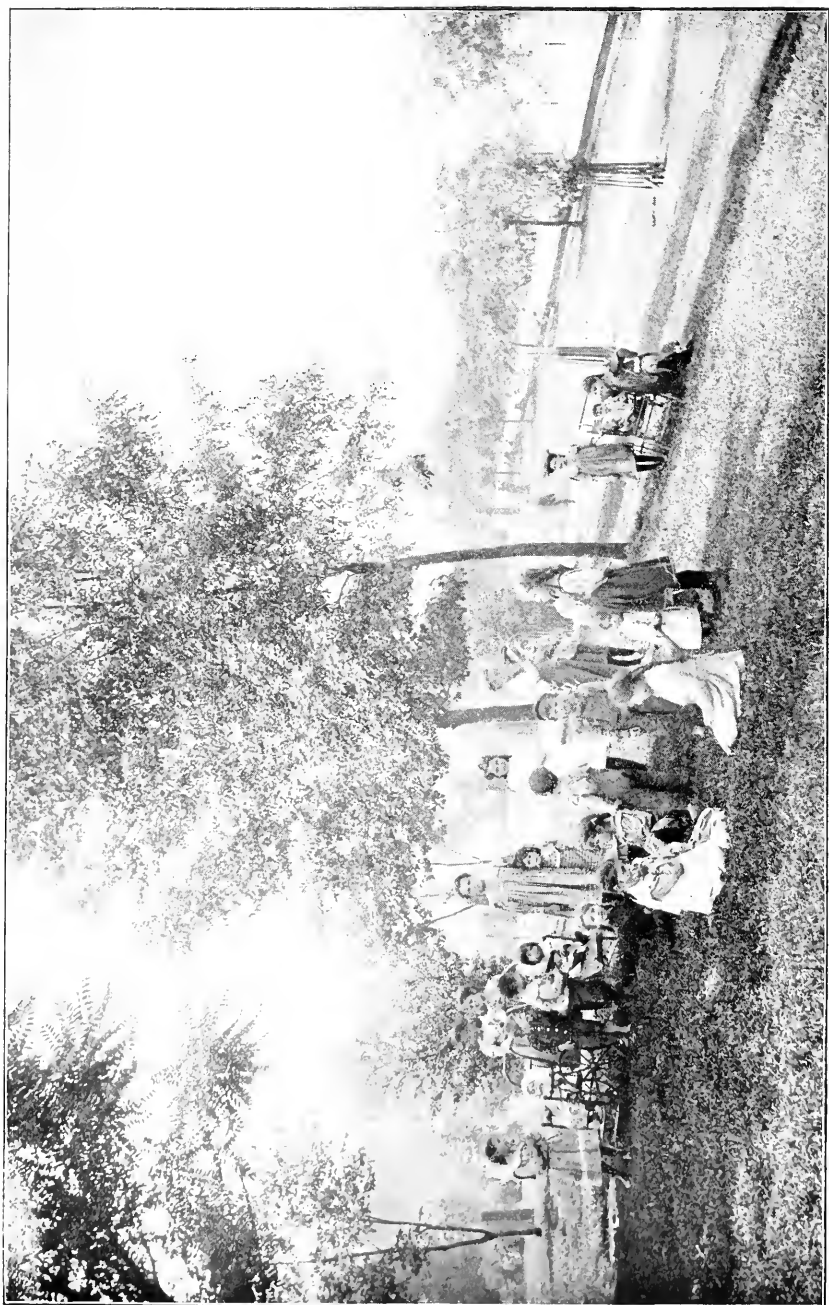
On the south side of the Fens considerable planting was done on the areas where additional loam had been spread the previous season. This consisted principally of roses, wax myrtle, and a variety of other shrubs. On the north side, large plantings were made of goldenbells, honeysuckle, matrimony vine, and aromatic sumac.

In preceding reports attention has been called to the necessity of increasing the depth of loam that covers the dry gravel of which the Fens is composed. This is a matter of great importance to the future of the trees, which have grown to the point where their roots are confined within gravelly limits, a condition that prevents further growth and development, and dooms to disappointment the expectation that, in the near future, fine trees will grace the Fens and give shelter from its wind-swept openness.

The amount of sewage and filth discharged into the Fens pond continues to increase. The condition of the pond steadily grows worse; and, during storm periods, the odor from the contaminated waters is quite perceptible over the whole area covered by the Fens and driveways.

COMMONWEALTH AVENUE.

The crowded condition of the trees on that portion of Commonwealth avenue lying between Arlington and Dartmouth streets made it desirable to remove such trees as were injuring the better ones. An improvement was at once



CHARLES BANK.



noticeable. The remaining trees, many of them being good specimens of European and American elms, could be seen to better advantage; while the sunshine admitted, here and there, into the damp floor encouraged the growth of the turf, and very much improved the general conditions necessary for tree growth.

CHARLESBANK.

The great use made of the mounds by women and children, during the summer season, makes it hard to maintain good turf, especially if the season is a dry one. In a great measure this could be corrected by the equipment of a water system, to which, at frequent intervals, hose and sprinkling nozzles could be attached. By dividing the ground to be irrigated into sections controlled by valves the work of sprinkling could be made almost automatic.

The trees planted in the past two years have been protected by stout tree-boxes. This protection was found to be indispensable, as many of the trees were broken down by the rough and careless usage to which they were subjected. A number of additional trees were planted, and holes, three feet in depth by ten feet in width, were prepared and filled with good loam for further planting in the spring.

The men's gymnasium, under the supervision of Mr. John W. Bowler, was well patronized. The women's gymnasium also had a successful season. The winter work at the women's gymnasium has been increased to eight classes per week, four in the afternoon for children, and four in the evening for women. To accommodate these classes the partition wall in the gymnasium hall was moved, thus adding some spare office and locker space to the hall. A detailed report, by the Massachusetts Emergency and Hygiene Association, of the work of the gymnasium will be found in the appendix.

WOOD ISLAND PARK.

The bare, bleak hillsides of two or three years ago, at Wood Island Park, now are covered with trees, which are sufficiently umbrageous to cast a grateful shade over the

grounds, of which full advantage is taken by the frequenters of the park.

During the past year little work of construction has been done. The unsightly man-hole basins on the shore have been removed. The base-ball grounds have been improved, by grading and levelling, and a number of fixed seats have been constructed to accommodate those who gather to watch the games. A flight of stone steps, leading from Prescott street down to the playground, also has been built.

A slight improvement in the gymnasium attendance over that of the preceding season can be noted. The attendance in 1900 was 48,065; that of the past season was 48,909. Two days in the week the gymnasium was open to women and girls, and four days in the week to men and boys. The work is still under the direction of Mr. James L. Walsh.

CHARLESTOWN HEIGHTS.

During the past season the only work of consequence done in this park consisted of a partial rearrangement of the shrubberies, the planting of some fresh material, and the erection of iron fences at each side of the shelter on the Bunker Hill-street front.

The asphalt floor of the open pavilion, which forms the roof for the sanitariums and shelter, is in a bad condition, and it is doubtful if it can be repaired. A new one, probably, will be necessary.

MARINE PARK.

To meet the requirements of this very popular resort, a line of fixed seats was constructed from Q street on the south to the Farragut monument on the north, a distance of 1,281 feet. The walk on which they were placed was widened to a width of eighteen feet. At the junction of the walks, opposite the Head House, a bubble fountain was erected.

Pending the erection of a permanent fence on the Q-street boundary, a temporary wire fence has been built to protect the newly-planted shrubberies. A number of European elms and lindens, which seem to be well adapted for bleak sea-side



PLAYGROUND, ROGERS PARK.

planting, were added to the plantations last season. These young plantations are thriving well, and, even now, give a wood-like appearance to the park when viewed from the harbor. Shrubbery also was planted on the slopes surrounding the ponds, a path or beach being left around the margin of each pond of a sufficient width to permit of the free use of the ponds for miniature yacht sailing, which is a favorite pastime with the smaller boys. For the accommodation of the frequenters of Pleasure Bay, a landing for row-boats was constructed at the pier.

No work, other than that of regular maintenance, was done at Castle Island, except the building of a number of fixed seats.

STRANDWAY.

The land necessary for completing the Strandway and Columbia road between Mercer and Atlantic streets having been taken by your Board, the work of construction between these points was commenced last fall by this department, and was continued until closed down by bad weather. The construction of Columbia road throughout the rest of the Strandway will be done by the Street Department, plans for which have been prepared and adopted jointly by the Park and Street departments.

COLUMBIA ROAD.

During the past season a line of Norway maples was planted on Columbia road between Blue Hill avenue and Edward Everett square. This planting was made in the border of the electric car reservation, and completes the tree planting on Columbia road between Blue Hill avenue and Dorchester avenue.

CHESTNUT HILL PARK.

During the past year bordering plantations were made along the north boundary of this park from the Commonwealth avenue entrance to the Newton line. The nursery was removed and the ground it occupied was planted with a variety of trees from which permanent trees can be selected.

Young spruces were planted on the south boundary. These trees will be allowed ample space for individual development.

The ordinary work of maintenance was done during the year. The unnecessary width of the driveway at this park, which approximates seventy-five feet, is a source of expense, not being nearly covered by wheel traffic it permits of a growth of weeds and grasses on its surface which are hard to keep down. The cobble gutters, too, are very much out of repair and require constant attention. A plan has been prepared by the department for narrowing the roadway and adding to the width of the planting space on the sides next to the park boundaries. This plan, if it could be put into execution, would decrease materially the expense of road maintenance and at the same time would widen and improve in appearance and effectiveness the bordering belt of planting between the park drive and the streets. The estimate of our engineer of the cost of this work, which includes the loaming and planting, is \$33,750.

BERNERS SQUARE.

(Area 1.2 acres.)

This square, located on Bellevue and Plymouth streets, near Longwood avenue, was taken the past season by the department. It contains a number of good elms and maples. The trees are injuring each other from their closeness and will require some little thinning out. The ground also requires grading, but no work other than that of a little clearing up has been done. Probably the best treatment would be to grade the ground to a gentle slope from the sides to the centre, with provision for carrying off the drainage from the centre.

At Copp's Hill Terraces, Dorchester Park, and West Roxbury Parkway no work was done during the past season, except the necessary maintenance work.

NURSERIES.

In the new addition to the nursery at Franklin Field a quantity of material from the seed beds has been set out in



COLUMBUS AVENUE PLAYGROUND.

nursery rows. If a suitable appropriation for the purpose is made by the City Council the remainder of the nursery will be planted with young material, which will include a large number of fine seedling oaks, two years old. This will increase the area of the nursery to 7.7 acres.

It has been necessary to retain the nursery at West Roxbury parkway for the present, or until the trees and shrubs can be planted in the parks. The nursery ground at Chestnut Hill has been cleared and planted with permanent trees, as has also the old nursery at Franklin Park, with the exception of the ground occupied by the seed beds.

PLAYGROUNDS.

FRANKLIN FIELD.

(Area, 77 Acres.)

At present the Street Department is laying an underground conduit across Franklin Field to receive the drainage of the neighboring district. In the progress of the work the surface of the ground has been very much cut up by the heavy teaming over it, and will require extensive repairs. The old drainage ditches, too, should be filled, as the completion of the drainage work now in progress will render them unnecessary.

Furthermore, as set forth in the twenty-fifth annual report, the surface of nearly the entire field is in a poor condition from settlements. To remedy this, either sufficient loam to level the inequalities should be spread over the surface or the ground should be ploughed, harrowed and seeded. The first plan would be preferable, as the addition of loam to the present peaty, spongy surface would make more stable turf. The latter plan, however, would be the cheaper one, and in the present state of our finances would seem to be the only one to adopt.

While this necessary drainage work interferes with the free use of a part of the field for games, and entirely cut off skating the past winter, yet the advantages that will accrue at the completion of the work in a measure will compensate the public for this deprivation.

Baseball, football, tennis and cricket grounds are provided. All have been used freely during the past season.

CHRISTOPHER GIBSON PLAYGROUND.

(Area, 5.8 Acres.)

Dorchester avenue and Park street. Elms, for bordering shade trees, have been planted around the larger piece of this playground, the smaller triangular piece being bordered with Norway maples.

The baseball and football grounds have been in great demand during the past season, and many applications for the reservation of the grounds for games have had to be refused.

The triangle was flooded for skating the past winter and thousands enjoyed the sport.

SAVIN HILL BEACH.

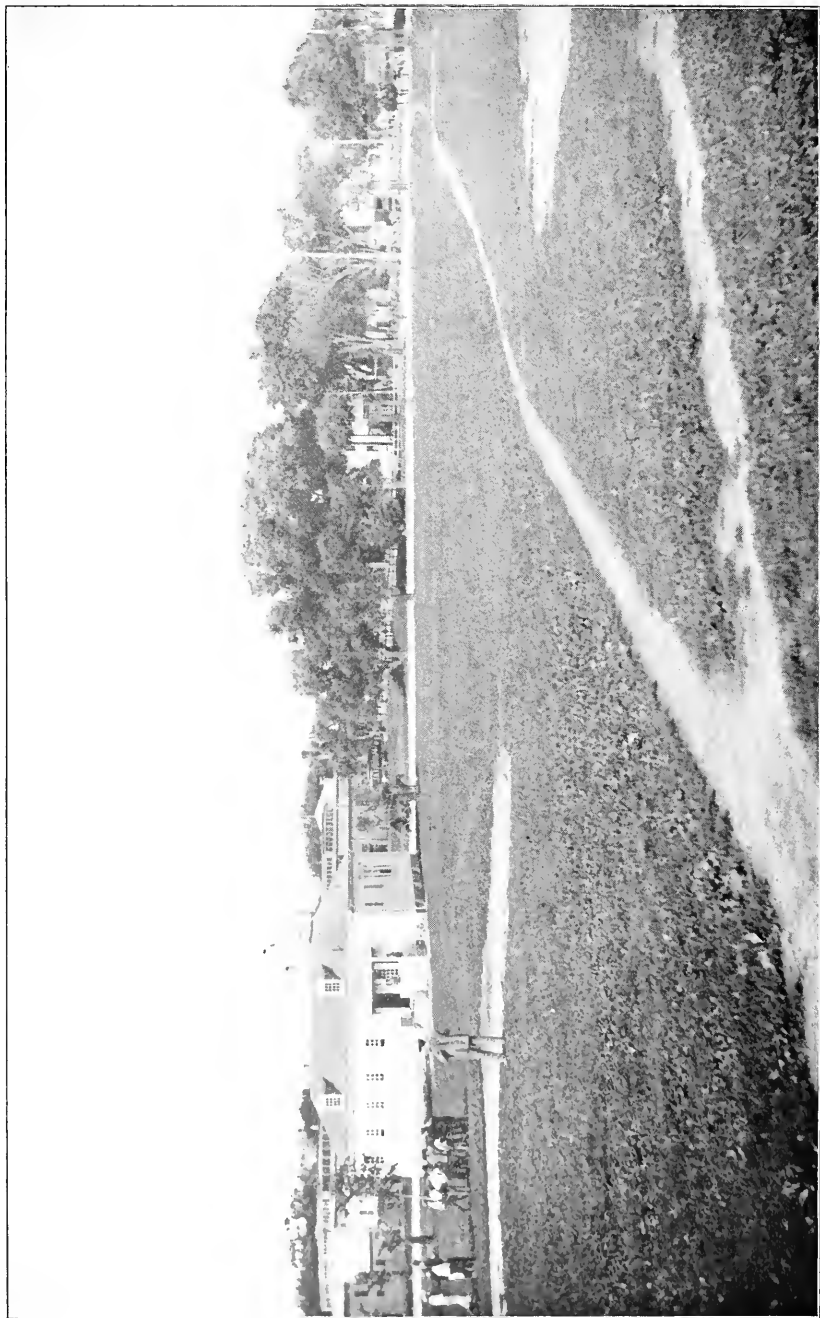
(Area, 18.6 Acres.)

Springdale street, Dorchester. Last spring the squatters' shanties on the beach were removed and a bath-house was erected in time for the commencement of the bathing season. The bath-house contains thirty-one bathing closets for women and fifty-four bathing closets for men, which are free to the public, the patrons bringing their own suits and towels. Attendants of both sexes are in charge, and the results have been very satisfactory. The attendance for the summer was 14,749.

NEPONSET PLAYGROUND.

(Area, 18 Acres.)

Neponset avenue. During the past season no work, other than that of maintenance, has been done on this playground. The gravel filling laid on a part of the salt meadow has not proved satisfactory by reason of the unequal settlement of the ground from the added weight of the filling. Additional filling has been put into these depressions, yet the settlement still continues, and probably further settlement will occur until sufficient solidity is attained. As there now seems to



CHRISTOPHER GIBSON PLAYGROUND.
(Locker and Lavatory Building on the left.)

be no necessity for raising the grade of the meadow the filling up of the slight inequalities of the surface with loam would appear to be a better plan of treatment for the remainder of the playground. As far as material for the purpose could be obtained, this plan has been adopted and is working very well.

An area of 3.3 acres was flooded and used by skaters during the winter. A sanitary building is much needed at these grounds.

MYSTIC PLAYGROUND.

(Area, 2.3 Acres.)

Chelsea street and Mystic river. At present this playground is a bare, cindered surface, with fixed seats at the sides. A few pieces of apparatus, suitable for the use of small children, such as swings, teeters, sand-boxes, etc., are being made in the shops of the department. The addition of the apparatus will render the playground more inviting to the children of the locality and will enlarge its opportunities for usefulness, which would still further be enhanced by the erection of an open shelter near the sand-boxes, and the employment of a female playground-keeper or kindergartner. Sanitary accommodations and a drinking fountain are greatly needed.

CHARLESTOWN PLAYGROUND.

(Area, 14 Acres.)

Corner Main and Alford streets. Norway maples were planted, last spring, along the Alford-street boundary, within the playground fence. The Main-street border is ready for planting, but it has been considered best to defer this until the fence is erected, in order that the trees may have its additional protection. Wherever planting has been done in the playgrounds it has been found necessary to protect the trees by strong wooden boxes, six feet high. Even with such guards the trees frequently are mutilated, undoubtedly with wilful intent.

The filling and grading of this playground have not been fully completed, yet sufficient well-graded ground is available for present needs.

A skating rink of 2.2 acres was flooded for skating the past winter, and was much used. Drinking fountains and a sanitary building are much needed; and, could the Main-street fence, for which bids have been obtained, be built, it would add greatly to the appearance of that front.

ROGERS PARK.

(*Area, 6.9 Acres.*)

Foster and Lake streets, Brighton. During the past year the work of maintenance only has been done at this park and playground. Filling is needed for playground extension, also sanitary conveniences.

NORTH BRIGHTON PLAYGROUND.

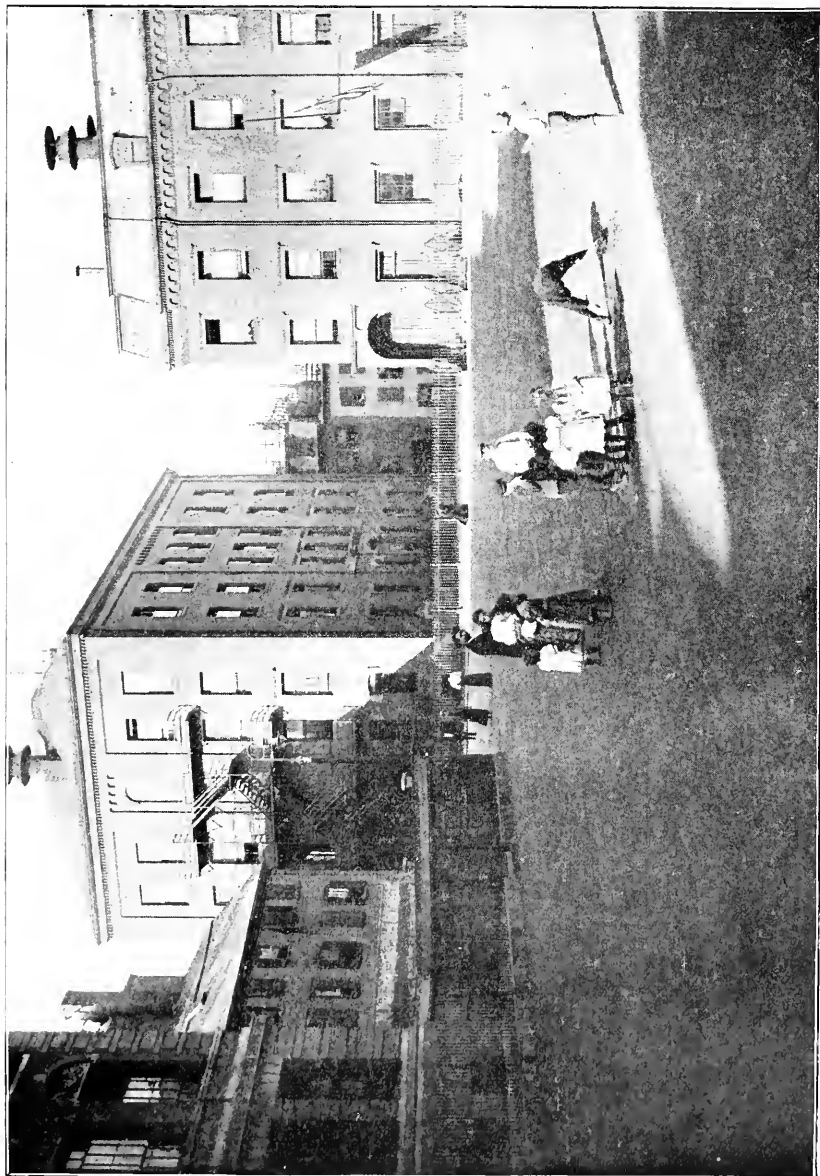
(*Area, 1 $\frac{1}{4}$ Acres.*)

Western avenue and Harvard street. Only the regular work of maintenance was carried on here the past season. This playground is very popular, and a further extension of graded playground area is necessary. This can be accomplished by levelling up the uneven surface of the meadow, and, as the rougher grading has been done, it will not be a difficult matter. Shelter and sanitary buildings and fencing are needed. An area of 3.3 acres of ice was prepared, and was much enjoyed by skaters the past winter. The principal games played at this playground are baseball and football. Ground has been prepared also for a quoit club, the members of which seemed to fully appreciate the privilege.

BILLINGS FIELD.

(*Area, 11 Acres.*)

Lagrange street, near Centre street, West Roxbury. During last season the under-drainage of this playground was finished. To afford a deeper drainage outlet from the field, Mr. Samuel B. Dana kindly permitted the department to lay a drain across his property. This will greatly improve the drainage of the playground, and, unless further settlements occur, will render additional filling unnecessary, which would be a much more expensive operation.



PRINCE STREET PLAYGROUND.

The slope of the hill from Bellevue street, which is too steep for playground purposes, has been prepared for and planted with trees, to afford a wooded shelter for viewing the games. At the foot of the slope tennis grounds are being graded, on which five courts, if necessary, can be laid out.

Last winter a toboggan slide of 800 feet in length was built and kept in order, as also were five acres of ice for skating.

ROSLINDALE PLAYGROUND.

(Area, 3.7 Acres.)

South Walter and Robert streets. With the exception of the planting of Norway maples around the street borders, no work of construction was done at these grounds the past season.

This playground is very popular for ball games. An ice field of 1.6 acres was prepared for skating last winter, which was enjoyed by many. Sanitary buildings, grading, and a retaining wall are the present requirements.

COLUMBUS AVENUE PLAYGROUND.

(Area, 4.8 Acres.)

Within the fence line, on the Camden street and Columbus avenue boundaries of this playground, a loam bed, twelve feet wide, was prepared and planted with Norway maples. The smoke and coal dust from the adjacent round-house make rather hard conditions for tree growth. A considerable amount of grading was done, and a granite bubble fountain, for furnishing drinking water, was erected.

The Civic League was given the management of the grounds during the summer and fall, the League paying the expenses of the instructors, while the Park Department maintained the grounds. The playground was very popular, and fully demonstrated the wisdom of its purchase.

A portion of the grounds on the Camden street end was fenced off for the children, for whom the Civic League erected a shelter, and furnished sand-boxes and several pieces of simple gymnastic apparatus adapted to the little folks.

During the winter an ice field of 2.6 acres was formed, by means of a dam, and a large number of people enjoyed the sport. To enlarge the area for skating a retaining wall is needed on the north line to permit of the raising of the dam. A sanitary building also is much needed.

PRINCE STREET PLAYGROUND.

(Area, 0.4 Acres.)

Prince and North Bennet streets. No work, except that of maintenance, was done on this playground last year. Its crowded condition, in a densely populated neighborhood, would justify a large expenditure to increase its area.

FIRST STREET PLAYGROUND.

(Area, 4.6 Acres.)

First and M streets, South Boston. As a special appropriation of \$9,550 has been made by the City Council for the improvement of this playground, plans are under consideration for an open-air gymnasium and a sanitary and locker building.

The grounds were well patronized, last season, for ball playing and bicycle racing. During the winter the ice rink of 3.1 acres was enjoyed by thousands.

FELLOWS STREET PLAYGROUND.

(Area, 0.85 Acres.)

Fellows and Hunneman streets. In its present bare condition, this playground is not very inviting, and is not as popular with the children as the surrounding sidewalks seem to be. A small building has been placed on the grounds, and a few pieces of apparatus, consisting of swings, swing-ladders, teeter-boards, and sand-boxes are under construction at the department shops. The assistance of a kindergartner would greatly aid in bringing out the possibilities of this playground.

ICE SPORTS.

The winter of 1901-1902 proved to be a good one for all ice sports. Although Franklin Field, generally the most



FELLOWS STREET PLAYGROUND.

popular of our skating areas, could not be used, the total number of skaters at the various places exceeded that of 1900-1901. Thirteen horse-planers were in use, and the ice was kept in very good condition. Ice was maintained at thirteen parks and playgrounds, making a total area of 106.6 acres. At Jamaica Pond a measured track was laid out, and proved to be quite an added attraction. Hockey rinks were made at Scarboro' and Jamaica Ponds, Billings Field, Wood Island Park, and at Columbus avenue, North Brighton, and Roslindale playgrounds.

By permission of your Board, the Boston Curling Club made Scarboro' Pond its headquarters for this grand old game. A number of friendly contests were fought, of which one was with the Country Club at Clyde Park, that relieved the Country Club of the district medal, which it had held for a year. An itemized table following will give further skating details.

SKATING — SEASON 1901-1902.

Name.	Area.	Hockey Rinks.	No. of days Skating.	Approximate Attendance.
Abbotswood Pond.....	4.5 acres	1	100
Billings Field.....	5.0 "	1	46	17,900
Charlesbank.....	1.4 "	44	64,050
Charlestown Playground.....	2.2 "	48	27,750
Columbus Avenue Playground....	2.6 "	1	42	31,125
First Street Playground.....	3.1 "	40	42,800
Christopher Gibson Playground..	1.95 "	45	21,350
Jamaica Pond.....	64.5 "	2	43	159,400
Neponset Playground.....	3.3 "	42	26,750
North Brighton Playground.....	3.3 "	1	43	30,100
Roslindale Playground.....	2.1 "	1	45	23,425
Scarboro' Pond.....	4.75 "	1	42	27,825
Wood Island Park.....	7.9 "	1	45	60,125
Totals.....	106.6 acres	8		532,700

INSECT ENEMIES OF TREES.

During the past year Boston has been subjected to an invasion of the elm-leaf beetle and the brown-tailed moth.

Both are pests of the most dangerous character. The elm-leaf beetle confines its ravages to the elm tree, and is more easy to control than the brown-tailed moth. Then, too, the elm-leaf beetle does not commence to eat until the foliage is partly developed. This gives an opportunity of spraying the foliage with an arsenical solution, which kills the beetle when it begins to feed upon the poisoned foliage. The brown-tailed moth hibernates in the larval state in nests containing from fifty to one hundred each, and then emerges on the first warm days of spring and attacks the buds and unfolding leaves of the elm, maple, and various other kinds of trees, including apple and pear trees. In August or early September a second brood of larvæ attacks the second growth of leaves. The second crop of larvæ may be successfully combated by arsenical spraying. The greatest mischief is to be apprehended from the first brood, as it cannot be reached by poison, and the only remedy known is to pick off the nests and burn them. This is a difficult and expensive matter in high trees as the nests are found only on the small twigs at the ends of the branches. An evidence of the prolific nature and energy of the brown-tailed moth is found in the fact, that, from an importation into Somerville (supposedly on roses from France), in 1897, the moth has spread north to central New Hampshire, and south to Scituate. In Allston, Brighton, Cambridge, and Somerville, last summer, trees were entirely defoliated by them.

Provision has been made by your Board to fight these pests. A gasoline power sprayer, with a capacity of twelve gallons per minute, has been constructed in the shops of the department. The machinery, comprising a Daimler motor and a Fairbanks & Morse triplex pump, is set on a tank of 470 gallons capacity, and the whole is mounted on a four-wheeled contractor's wagon. Our hand spraying apparatus has been increased by the purchase of six additional barrel-pumps on wheels. With this equipment we expect to be able to keep these insects down. They cannot, however, be exterminated without concerted action on the part of the city authorities, and also of private individuals.



GASOLINE POWER SPRAYER.

MAINTENANCE.

Each year it is becoming more difficult to maintain the parks and playgrounds on the amount appropriated for that purpose by the city government. During the past five or six years the work of construction has proceeded with great rapidity, especially in the matter of planting and on account of playground extension. Plantations laid out for ornamental effect are expensive to maintain. As compared with other park systems the Boston parks contain a large percentage of such planted areas. Playgrounds, too, are found to average high in the cost per acre for maintenance, as compared with parks of large size. Furthermore, when the eight-hour law came into effect, the hours of labor were reduced one-ninth; and the half-holiday on Saturday has since been extended, and now covers the whole year. Thus maintenance charges have increased to the point where we are only able to keep the parks in a mediocre manner, and not at all with the degree of perfectness expected of Boston, whose parks have a reputation for excellence that is world-wide. In comparison with other cities Boston's appropriation for park maintenance, per acre, ranks very low, as the following table of the comparative cost of maintaining the parks of various cities will show.

Details of measurements and quantities of work done during the past year will be found in the report of Mr. C. E. Putnam, engineer of the department.

Respectfully submitted,

J. A. PETTIGREW,

Superintendent.

Comparative Cost of Maintaining Parks.

NAME.	Acres.	Total maintenance cost.	Average per acre.	Water and lighting.	Police.	Greenhouses and flower gardening.	Skating.	Year.
Union Park, Chicago.....	17.3	\$9,759 04	\$564 10	Included	Included	Flower gardening	Included	1900
Lincoln Park, "	312.5	* 140,618 05	* 449 90	"	"	Greenhouses and flower gardening	"	1891-93, 1900-01
Borough Manhattan and Richmond, N. Y.	1,337.7	† 545,350 66	† 407 67	"	"	"	"	1899-1900
Douglass Park, Chicago	182	56,380 95	309 20	"	"	"	"	1900
Brooklyn and Queens, New York, N. Y.....	1,573	469,000 00	298	"	"	"	"	1899
Garfield Park, "	187.5	47,823 65	200 01	"	"	"	"	1900
Humboldt Park, "	205.8	44,973 87	218 50	"	"	"	"	1900
Bushnell Park, Hartford.....	42	† 7,129 82	† 169 75	"	Not included	Flower gardening	"	1898-1900
Boston.....	1,721	† 156,766 66	† 91 09	Not included	"	Not included.	"	1898-1900

* Average per annum for five years.

† Average per annum for two years.

‡ Average per annum for three years.

ENGINEER'S REPORT.

MR. JOHN A. PETTIGREW,

Superintendent :

DEAR SIR,— The following report, for the year ending January 31, 1902, is respectfully submitted :

COMMONWEALTH AVENUE.

Northerly driveway, from Arlington street to Massachusetts avenue, resurfaced with two inches of macadam,	15,400 square yards.
Flagstone cross-walks raised and relaid,	327 square yards.
Gravel walks resurfaced	8,500 square yards.
Loam bought and spread on plantations,	139 cubic yards.

THE FENS.

Curbstone reset	75 linear feet.
Loam bought and spread on plantations,	1,421 cubic yards.

RIVERWAY.

Catch-basins built	3.
Drain-pipe laid, 8-inch	157 linear feet.
Driveway raised and resurfaced	150 square yards.

OLMSTED PARK.

Walks surfaced with four inches of cinders, 1 mile	8,839 square yards.
Walks surfaced with four inches of macadam, 0.44 mile	4,344 square yards.
Stone stairways built in walks, two	34 granite steps.
Drain pipe laid :	
8-inch	190 linear feet.
Catch-basins built	4.

Loam bought and spread on plantations,	7,727 cubic yards.
Iron pipe fence built	516 linear feet.
Driveway raised and resurfaced	375 square yards.

ARBORWAY.

8-inch drain pipe laid	120 linear feet.
Catch-basins built	7.
Loam bought and spread on plantations,	86 cubic yards.
Driveway raised and resurfaced	528 square yards.

ARNOLD ARBORETUM.

Driveway raised and resurfaced	900 square yards.
------------------------------------------	-------------------

FRANKLIN PARK.

Walks built ($\frac{1}{2}$ mile)	2,928 square yards.
Drain pipe laid:	
4-inch	120 linear feet.
3-inch	1,562 linear feet.
Foundation for boundary wall laid	400 linear feet.
Excavation for widening Walnut avenue	3,500 cubic yards.
Loam bought and spread on plantations	9,805 cubic yards.

A flight of four stone steps has been built opposite Angel street, and a flight of 39 stone steps at Hagborne Hill has been removed.

The arrangement of drives, walks and planting spaces at the junction of Pierpont and Playstead roads has been changed to conform to the construction of the glade, in place of the proposed greeting, and the slopes have been regraded.

The gate posts and parapet wall at Forest Hills bridge have been taken down, and the stone hauled to the site of the proposed sanitary building on Schoolmaster Hill.

The trellis at Schoolmaster Hill arbor has been taken down and the stone hauled to the site of the proposed sanitary building in Long Crouch woods.

The potting house has been moved into the yard in front of the repair shops, and rearranged for a storehouse and office building; and the greenhouses have been torn down.

Drilling and pipe-cutting machines have been placed in the machine shop.

An outfit for spraying trees has been made, by mounting a $1\frac{1}{2}$ horse power gasoline engine and a $2\frac{1}{2}$ -inch by 3-inch triplex pump on a 470 gallon tank. The pump and engine are coupled directly together, and will deliver twelve gallons per minute, against a pressure of 120 pounds per square inch; or, through $\frac{1}{8}$ -inch nozzles, will throw two streams to a height of 35 feet.

FRANKLIN FIELD.

The large surface drains, that are being built here, are to be completed in May. The unsightly drainage ditch can then be filled, the slope along Talbot avenue can be graded, and the draining and grading of the field can be completed.

Drinking fountain erected 1.
Loam bought and spread on plantations, 659 cubic yards.

COLUMBIA ROAD.

The New York, New Haven & Hartford Railroad has completed its bridge over Columbia road, at Richfield street; and the unfinished section at that place is being completed by the Street Department.

The Street Department has also completed the abutments, and put in place the iron work of the bridges over the Old Colony division and Shoreham street.

Of the section, 1,175 feet in length, between Mercer and Atlantic streets, that is being constructed by this department, 500 feet have been subgraded; 150 feet are flats, and will require about 12,000 cubic yards of filling before the road can be completed.

Walks macadamized 350 square yards.

MARINE PARK.

The shallow water at the end of the channel from Q street wharf interferes considerably with the boats running to Castle Island. The channel is 1,000 feet long, and has a

minimum depth of $6\frac{1}{2}$ feet at mean low water. For the first 400 feet the channel is 100 feet wide, for the remaining 600 feet it is only 60 feet wide. It ends abruptly about 400 feet from a point where the natural depth is $6\frac{1}{2}$ feet. But little dredging would be required to extend the channel this 400 feet, as the natural depth is $4\frac{1}{2}$ to 6 feet.

Drinking fountain erected . . .	1.
Permanent seats built . . .	1,281 linear feet.
Boat-landing at iron pier built . . .	1.
Drain pipe laid (6-inch) . . .	177 linear feet.

CASTLE ISLAND.

Permanent seats built . . .	779 linear feet.
-----------------------------	------------------

WOOD ISLAND PARK.

Stone stairway built, one . . .	30 granite steps.
Permanent seats built . . .	236 linear feet.
Manholes and tide-gates built . . .	4.

CHARLESTOWN HEIGHTS.

Iron fence erected . . .	123 $\frac{1}{2}$ linear feet.
--------------------------	--------------------------------

CHARLESBANK.

The women's gymnasium apparatus has been covered with a wood and canvas roof.

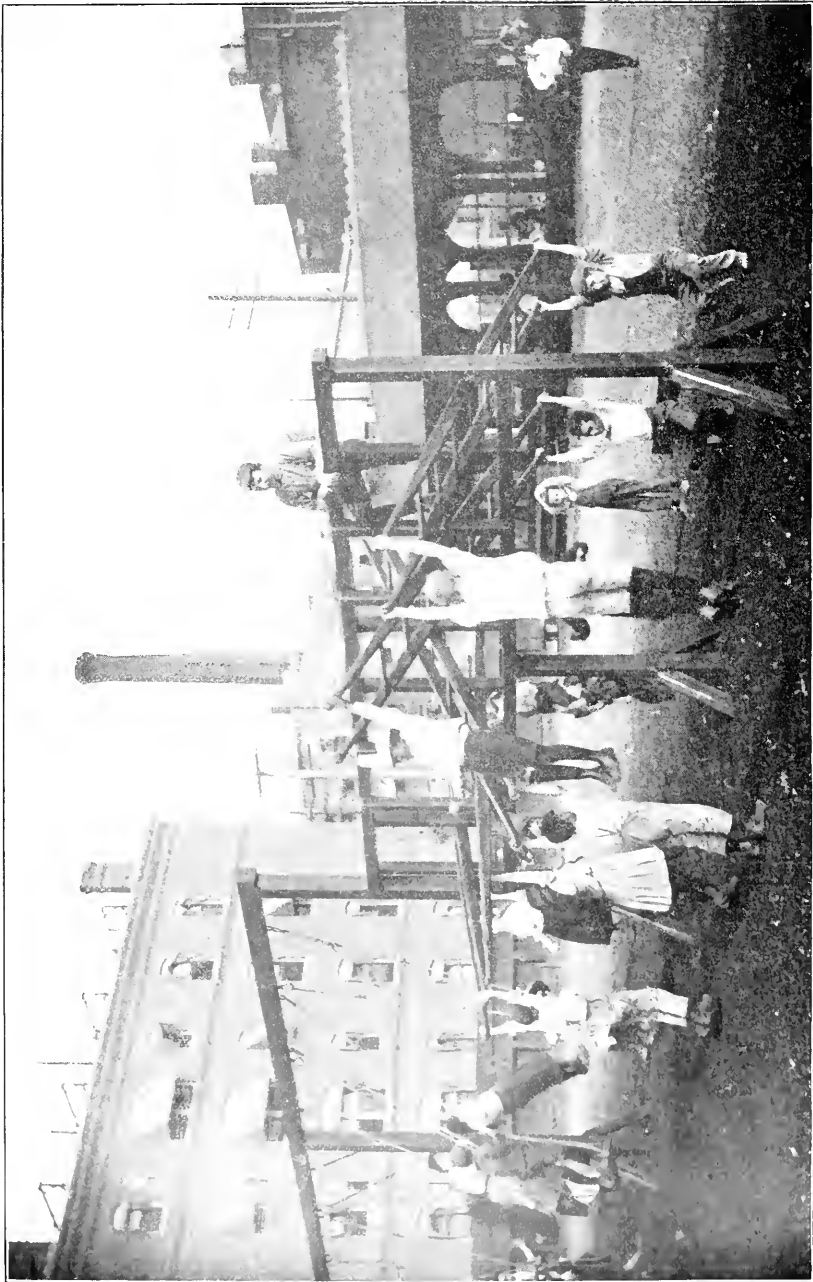
Loam bought and spread on plantations . . .	133 cubic yards.
---------------------------------------------	------------------

COPP'S HILL TERRACES.

Permanent seats built . . .	216 linear feet.
-----------------------------	------------------

NORTH END BEACH.

The Fiske Wharf and Warehouse Trust has built a bulkhead and deposited about 1,200 cubic yards of filling under the platform, in the rear of the women's bath-house.



COLUMBUS AVENUE PLAYGROUND.
(Children's Shelter and Gymnastic Apparatus)

COLUMBUS AVENUE PLAYGROUND.

Drinking fountain erected	1.
Open-air shower-baths installed	6.
4-inch drain pipe laid	150 linear feet.
2-inch water pipe laid	200 linear feet.

The Civic League has erected a children's shelter and playhouse, two frames of gymnastic apparatus, and two observation stands with a seating capacity of 1,100; also 80 linear feet of shelter sheds.

NORTH BRIGHTON PLAYGROUND.

Loam bought and used for surfacing	143 cubic yards.
----------------------------------------------	------------------

BILLINGS FIELD.

Drain pipe laid :	
10-inch	975 linear feet.
3-inch tile.	1,680 linear feet.
Water pipe laid (3-inch)	50 linear feet.
Loam bought and used for surfacing	351 cubic yards.

NEPONSET PLAYGROUND.

Loam bought and used for surfacing	175 cubic yards.
----------------------------------------------	------------------

SAVIN HILL PLAYGROUND.

A bath locker building, containing 85 lockers, 4 showers, an office room and toilet-rooms has been built.

Water pipe laid :	
8-inch	125 linear feet.
1-inch	325 linear feet.
6-inch sewer laid	475 linear feet.
Filling bought and used on dike and beach	1,100 cubic yards.

The beach has been cleared of old bath shanties and of stones.

Cost of Maintenance Per Acre, 1895-1901, Inclusive.

NAME OF PARK.	Area in Acres.	COST PER ACRE.						
		1895.	1896.	1897.	1898.	1899.	1900.	1901.
Commonwealth avenue.....	30	\$448	\$528	\$519	\$458	\$485	\$534	\$601
Fens.....	115	122	121	125	98	119	126	142
Riverway.....	40	155	212	201	207	177	247	266
Olmsted Park.....	180	51	94	97	72	71	110	112
Arborway.....	36	60	90	140	136	119	126	172
Arnold Arboretum.....	223	27	23	19	26	24	19	33
West Roxbury Parkway.....	150	3	6	3
Franklin Park.....	527	44	55	65	62	75	115	107
Columbia road.....	18.5	} 284	247
Dorchesterway.....	6	32	45	54	25	61		
Strandway.....	40	6	41
Marine Park.....	34	147	185	180	212	270	189	174
Dorchester Park.....	26	1	4	1	2	18	15
Chestnut Hill Park.....	42	99	86	86	72
Wood Island Park.....	46	79	162	146	117	151	176	186
North End Beach.....	2.7	†2,338	†3,308	551	26	30
Copps Hill Terraces.....	0.6	715	480	513
Prince Street Playground.....	0.4	444	825	910	680	525
Charlesbank.....	10	1,313	1,374	1,223	970	1,092	984	1,068
Columbus Avenue Playground...	4.8	1	166	666
North Brighton Playground.....	14	9	12	38	70
Rogers Park.....	6.9	100	89	59
Fellows Street Playground.....	0.85	191	*1,900	46	60	253
Forest Hills Playground.....	10.3	13
Roslindale Playground.....	3.7	28	354	325
Billings Field Playground.....	11	30	77	70	94	178
Neponset Playground.....	18	13	48	92	36	60
Ashmont Playground.....	2.2	3
Christopher Gibson Playground..	5.8	1	97	189	312	315
Franklin Field.....	77	11	36	30	35	60	113	146
Savin Hill Playground.....	6	76	183
First Street Playground.....	4.6	113	221	300	101	198
Mystic Playground.....	2.3	*994	47	11	16	80
Charlestown Playground.....	14	5	4	5	27	61	159	113
Charlestown Heights.....	4	458	682	606	525	579	563	541
Berners square.....	1.2	150

* Including filling and grading.

† Including maintenance of bath-houses.

Cost of maintenance (repairs, cleaning and sprinkling) of drives, walks, and rides per square yard, not including brick and artificial stone walks, 1895 to 1901, inclusive, at Commonwealth avenue, the Fens, Riverway, Olmsted Park, Arborway, Arnold Arboretum, Franklin Park, Columbia road and Marine Park.

YEAR.	Area of Drives. Square Yards.	Area of Walks. Square Yards.	Area of Rides. Square Yards.	Total Area. Square Yards.	Cost Per Square Yard.	Area of Drives in Per Cent. of Total Area.
1895.....	472,900	169,500	81,700	724,100	\$0.063	65.3
1896.....	481,900	177,400	83,900	743,200	0.064	64.8
1897.....	500,500	186,700	86,700	773,900	0.056	64.7
1898.....	529,800	199,900	87,400	817,100	0.051	64.8
1899.....	553,400	217,700	87,400	858,500	0.06	64.5
1900.....	600,100	240,600	87,400	928,100	0.062	64.6
1901.....	600,800	249,300	87,400	937,500	0.064	64.1

The drives are macadamized, the walks are surfaced with macadam or cinders, and the rides are surfaced with gravel and loam.

Respectfully submitted,

C. E. PUTNAM,

Assistant Engineer.

FINANCIAL STATEMENTS.

I.

*Expenditures for Land, Construction and Maintenance from
February 1, 1901, to January 31, 1902.*

PARKS.	Page.	Land.	Construc- tion.	Mainte- nance.	Totals.
Main Park System:					
Commonwealth avenue ...	36	\$569 17	\$17,102 44	\$17,671 61
Fens	36	6,778 08	15,461 04	22,239 12
Riverway	37	1,894 93	10,085 52	11,980 45
Olmsted Park	38	21,176 53	19,068 84	40,245 37
Arborway	39	2,704 43	5,893 75	8,598 18
Arnold Arboretum	39	581 99	6,934 43	7,516 42
West Roxbury Parkway..	40	462 14	465 92	928 06
Franklin Park	41	36,546 81	53,726 79	90,273 60
Marine Park System:					
Columbia Road*	42	\$4,833 23	75,640 40	4,332 82	84,806 45
Dorchesterway	42	134 56	7 00	141 56
Strandway	43	42,179 08	15,518 81	153 60	57,851 49
Marine Park	43	4,822 87	5,625 01	10,447 88
Wood Island Park	45	1,991 82	8,098 20	10,090 02
Charlesbank	45	1,307 17	10,124 13	11,431 30
Charlestown Heights	46	727 81	2,049 56	2,777 37
Charlestown Playground ...	47	166 70	1,503 48	1,670 18
Dorchester Park	47	19 87	380 34	400 21
Franklin Field	47	4,652 75	10,687 83	15,340 58
North End Beach	48	1,917 48	77 00	1,994 48
Copp's Hill Terraces	49	124 85	292 69	417 54
Chestnut Hill Park	49	3,449 81	1,623 54	2,875 96	7,949 31
North Brighton Playground,	49	3,454 39	924 09	4,378 48
Neponset Playground	50	1,016 27	1,016 27
Billings Field	50	6,750 24	1,859 61	8,609 85
First Street Playground....	51	865 30	865 30
Prince Street Playground...	51	198 80	198 80
<i>Carried forward</i>	\$50,462 12	\$189,567 34	\$179,810 42	\$419,839 88

* Of this amount \$79,315.13 was expended by Street Department.

EXPENDITURES FOR LAND, ETC. — *Concluded.*

PARKS.	Page.	Land.	Construction.	Maintenance.	Totals.
<i>Brought forward</i>	\$50,462 12	\$189,567 34	\$179,810 42	\$419,839 88
Mystic Playground.....	51	173 75	173 75
Fellows Street Playground..	52	365 34	204 06	569 40
Christopher Gibson Play- ground	52	1,731 43	1,731 43
Rogers Park.....	52	382 93	382 93
Columbus Avenue Play- ground	52	19,154 65	3,029 35	22,184 00
Ashmont Playground.....	53	7 00	7 00
Savin Hill Playground.....	53	2,500 00	1,039 89	3,539 89
Roslindale Playground	53	1,174 22	1,174 22
Investigating sites for Play- ground (Ward 15).....	54	7 00	7 00
Berners Square.....	54	170 75	170 75
Office expenses.....	54	10,298 44	10,298 44
Totals.....	\$69,623 77	\$192,432 68	\$198,022 24	\$460,078 69

II.

Expenditures of this Department in detail from February 1, 1901, to January 31, 1902.

COMMONWEALTH AVENUE.

CONSTRUCTION.

Roadways, Gutters and Drainage.

Roads and walks: labor		
and materials . . .	\$414 20	
Drainage: labor . . .	6 00	
	<hr/>	\$420 20

Grading, Loam and General Work.

Loam: materials . . .	\$91 94	
Engineers: labor . . .	8 75	
	<hr/>	100 69

Plantations.

Labor and materials . . .	48 28	
	<hr/>	\$569 17

MAINTENANCE.

Roadways, Grounds, Drainage and General Work.

Roads and walks: labor and materials	\$13,105 47	
Grounds: labor and materials	2,034 84	
Stable account: equipment and supplies	1,533 13	
Drainage: labor and materials	271 93	
Engineers: labor and materials	80 00	
General work: materials	77 07	
	<hr/>	17,102 44
		<hr/>
		\$17,671 61

FENS.

CONSTRUCTION.

Plantations.

Labor and materials	\$4,889 15
-------------------------------	------------

Grading, Loam and General Work.

Loam: materials	\$947 25
Gradings: labor and materials	375 78
Fence: labor and materials	61 02
Engineers: labor and materials	34 60
General work: labor and materials	18 68
	<hr/>
	1,437 33

<i>Amounts carried forward,</i>	\$6,326 48	<hr/>	\$17,671 61
---------------------------------	------------	-------	-------------

Amounts brought forward, \$6,326 48 \$17,671 61

Roadways, Gutters and Drainage.

Roads and walks: labor,	\$394 54		
Drainage: labor and materials	57 06		
	<u> </u>	451 60	
		<u> </u>	\$6,778 08

MAINTENANCE.

Roadways, Grounds, Drainage and General Work.

Roads and walks: labor and materials	\$9,269 84		
Grounds: labor and materials	3,960 12		
Stable account: equipment and supplies	1,154 48		
General work: labor and materials	324 15		
Engineers: labor	301 25		
Sea-wall and gate chamber: materials	281 33		
Drainage: labor	164 17		
Live stock: labor and materials	5 70		
	<u> </u>	15,461 04	
		<u> </u>	22,239 12

RIVERWAY.

CONSTRUCTION.

Plantations.

Labor and materials \$1,044 34

Roadways, Gutters and Drainage.

Roads and walks: labor and materials	\$446 15		
Drainage: labor and materials	348 95		
	<u> </u>	795 10	

Fence.

Labor 36 87

Grading, Loam and General Work.

Engineers: labor	\$14 00		
General work: labor	2 62		
Grading: labor	2 00		
	<u> </u>	18 62	
		<u> </u>	1,894 93

MAINTENANCE.

Roadways, Grounds, Buildings, Drainage and General Work.

Roads and walks: labor and materials	\$4,282 74		
Grounds: labor and materials	3,390 17		
	<u> </u>		
<i>Amounts carried forward,</i>	\$7,672 91	\$1,894 93	\$39,910 73

<i>Amounts brought forward,</i>	\$7,672 91	\$1,894 93	\$39,910 73
Buildings: labor and materials . . .	1,264 43		
Stable account: equipment and supplies	676 59		
General work: labor and materials,	329 43		
Engineers: labor	82 00		
Drainage: labor and materials	60 16		
	<u> </u>	10,085 52	
			11,980 45

OLMSTED PARK.

CONSTRUCTION.

Roadways, Gutters and Drainage.

Roads and walks: labor and materials	\$6,863 93		
Drainage: labor and materials	389 83		
	<u> </u>	\$7,253 76	

Plantations.

Labor and materials	6,723 71		
-------------------------------	----------	--	--

Grading, Loam and General Work.

Loam: material	\$5,147 07		
Grading: labor and materials	1,165 49		
General work: labor and materials	288 63		
Engineers: labor and materials	108 89		
	<u> </u>	6,710 08	

Fence.

Labor and materials	331 21		
-------------------------------	--------	--	--

Signs.

Signs: materials	92 33		
----------------------------	-------	--	--

Lawns and Woods.

Labor and materials	52 00		
-------------------------------	-------	--	--

Boating Service.

Labor	13 44		
	<u> </u>	\$21,176 53	

MAINTENANCE.

Roadways, Grounds, Buildings, Drainage and General Work.

Roads and walks: labor and materials	\$5,913 09		
Grounds: labor and materials	5,528 85		
General work: labor and materials,	2,703 21		
Buildings: labor and materials	1,986 35		
Skating: labor and materials	1,554 76		
Stable account: equipment and supplies	746 78		
	<u> </u>		
<i>Amounts carried forward,</i>	\$18,433 04	\$21,176 53	\$51,891 18

<i>Amounts brought forward,</i>	\$18,433 04	\$21,176 53	\$51,891 18
Drainage: labor	351 92		
Engineers: labor	271 00		
Boating service: labor	8 88		
Loam: materials	4 00		
	<hr/>	19,068 84	
		<hr/>	40,245 37

ARBORWAY.

CONSTRUCTION.

Plantations.

Labor and materials \$1,222 94

Roadways, Gutters and Drainage.

Roads and walks: labor
and materials \$756 20
Drainage: labor and ma-
terials 326 94

1,083 14

Lighting.

Electric lights 187 98

Signs.

Signs: materials 100 48

Grading, Loam and General Work.

Loam: materials \$57 07
Engineers: labor 19 25
Grading: labor 13 13
General work: materials, 5 10

94 55

Lawns and Woods.

Labor 15 34

2,704 43

MAINTENANCE.

Roadways, Grounds, Drainage and General Work.

Roads and walks: labor and mate- rials	\$4,309 54		
Grounds: labor and materials	981 49		
Stable account: equipment and supplies	322 43		
Drainage: labor	166 20		
Engineers: labor	92 00		
General work: materials	22 09		
	<hr/>	5,893 75	
		<hr/>	8,598 18

ARNOLD ARBORETUM AND BUSSEY PARK.

CONSTRUCTION.

Roadways, Gutters and Drainage.

Drainage: labor and ma-
terials \$286 59
Roads and walks: labor
and materials 58 08

\$344 67

<i>Amounts carried forward,</i>	\$344 67	<hr/>	\$100,734 73
---------------------------------	----------	-------	--------------

Amounts brought forward, \$344 67 \$100,734 73

Grading, Loam and General Work.

Engineers: labor . . .	\$74 25	
Loam: material . . .	44 09	
	<hr/>	118 34

Boundary Walls and Gateways.

Fence: materials	116 48
----------------------------	--------

Plantations.

Labor	2 50	
	<hr/>	\$581 99

MAINTENANCE.

Roadways, Grounds, Drainage and General Work.

Roads and walks: labor and materials	\$5,802 36	
Drainage: labor and materials	573 94	
General work: labor and materials,	351 01	
Stable account: equipment and supplies	83 22	
Engineers: labor	49 50	
Grounds: labor and materials	45 00	
Live stock: materials	29 40	
	<hr/>	6,934 43
		<hr/>
		7,516 42

WEST ROXBURY PARKWAY.

CONSTRUCTION.

Plantations.

Labor	\$274 67
-----------------	----------

Grading, Loam and General Work.

Engineers: labor and materials	\$120 55	
Grading: labor	2 75	
	<hr/>	123 30

Roadways, Gutters and Drainage.

Roads and walks: labor	64 17	
	<hr/>	\$462 14

MAINTENANCE.

Grounds, Buildings, Drainage and General Work.

Grounds: labor	\$441 92	
Roads and walks: labor	7 62	
Engineers: labor	7 00	
General work: materials	6 75	
Buildings: materials	2 63	
	<hr/>	465 92
		<hr/>
		928 06

Amount carried forward,

\$109,179 21

Amount brought forward,

\$109,179 21

FRANKLIN PARK.

CONSTRUCTION.

Grading, Loam and General Work.

Grading: labor and materials	\$9,473 16	
Loam: material	6,535 88	
General work: labor and materials	530 60	
Engineers: labor and materials	199 85	
	<u> </u>	\$16,739 49

Plantations.

Labor and materials	11,958 25
-------------------------------	-----------

Roadways, Gutters and Drainage.

Roads and walks: labor and materials	\$3,036 58	
Drainage: labor and materials	462 09	
	<u> </u>	3,498 67

Arbor and Shelter, Schoolmaster Hill.

Amount paid under contract	\$1,550 00	
Labor and materials	1,113 89	
Plumbing: labor and materials	425 04	
Architect's commission,	200 40	
	<u> </u>	3,289 33

Repair Shops and Storehouse.

Labor and materials	705 33
-------------------------------	--------

Lawns and Woods.

Labor and materials	209 40
-------------------------------	--------

Settees.

Materials	117 75
---------------------	--------

Shelter, Overlook and Terrace Wall.

Steps: labor	16 50
------------------------	-------

Fences.

Labor	12 09	
	<u> </u>	\$36,546 81

MAINTENANCE.

Roadways, Grounds, Buildings, Drainage and General Work.

Grounds: labor and materials	\$23,119 07	
Roads and walks: labor and materials	13,195 91	
	<u> </u>	
Amounts carried forward,	\$36,314 98	\$36,546 81
		<u> </u>
		\$109,179 21

<i>Amounts brought forward,</i>	\$36,314 98	\$36,546 81	\$109,179 21
General work: labor and materials,	6,785 78		
Buildings: labor and materials	5,503 84		
Stable account: equipment and supplies	3,228 95		
Drainage: labor and materials	730 20		
Engineers: labor and materials	459 11		
Live stock: labor and materials	344 64		
Skating: labor	310 42		
Water supply: materials	48 87		
	<hr/>	53,726 79	
			90,273 60

COLUMBIA ROAD.

LAND.

Proportion of amount paid by Street Department for land, and expenses chargeable to this department	\$4,833 23
---------------------------------------------------------------------------------------------------------------	------------

CONSTRUCTION.

Proportion of amount paid by Street Department for construction, chargeable to this department	\$74,481 90
----------------------------------------------------------------------------------------------------------	-------------

Roadways, Gutters and Drainage.

Roads and walks: labor	446 43
----------------------------------	--------

Plantations.

Labor and materials	355 18
-------------------------------	--------

Settees and Signs.

Signs: materials	220 39
----------------------------	--------

Grading, Loam and General Work.

Engineers: labor	136 50	
	<hr/>	75,640 40

MAINTENANCE.

Roadways, Grounds, Drainage and General Work.

Roads and walks: labor and materials	\$3,020 12		
Stable account: equipment and supplies	722 59		
Grounds: labor and materials	328 27		
Drainage: labor	121 92		
Engineers: labor	119 00		
General work: materials	20 92		
	<hr/>	4,332 82	
			84,806 45

DORCHESTERWAY.

CONSTRUCTION.

Roadways, Gutters and Drainage.

Roads and walks: materials	\$120 56		
<i>Amounts carried forward,</i>	\$120 56		\$284,259 26

Amounts brought forward, \$1,335 58 \$342,252 31

Settees.

Labor and materials 1,150 96

Boat Service.

Boat landing : labor and materials, 979 48

Roadways, Gutters and Drainage.

Drainage: labor and materials \$175 00
 Roads and walks : labor, 128 26
303 26

Head House.

Labor and materials 238 41

Water Supply and Fountains.

Fountains : labor and Materials . 120 36

Grading, Loam, and General Work.

Engineers : labor . . . \$56 65
 Grading: labor . . . 11 28
 General work: materials, 5 10
73 03 \$4,201 08

CASTLE ISLAND.

Settees.

Labor and materials \$459 07

Structures.

Tool-house : labor and materials, 162 72
621 79

MAINTENANCE.

Roadways, Grounds, Buildings, Drainage and General Work.

Grounds : labor and materials . . \$2,115 03
 Buildings : labor and materials . . 1,556 53
 Roads and walks : labor and materials 1,034 64
 Stable account : equipments 325 00
 General work : labor and materials, 232 11
 Engineers : labor 156 00
 Drainage: labor 121 25
 Boating service : materials 84 45
5,625 01 10,447 88
Amount carried forward, \$352,700 19

Amount brought forward,

\$352,700 19

WOOD ISLAND PARK.

CONSTRUCTION.

Roadways, Gutters and Drainage.

Drainage: materials . . .	\$528 57	
Roads and walks: labor and materials . . .	420 53	
Steps: labor and mate- rials	64 50	
	<u> </u>	\$1,013 60

Water Supply, Fountains and Settees.

Settees: labor and mate- rials	\$436 18	
Fountains: materials . .	35 00	
	<u> </u>	471 18

Plantations.

Labor and materials	460 12	
-------------------------------	--------	--

Grading, Loam and General Work.

Engineers: labor	\$28 00	
Grading: labor	16 92	
General work: labor	2 00	
	<u> </u>	46 92
		\$1,991 82

MAINTENANCE.

Roadways, Grounds, Buildings, Drainage and General Work.

Men's gymnasium —		
Grounds, apparatus and building:		
labor and materials	\$4,483 10	
Grounds: labor and materials . .	1,710 94	
General work: labor and mate- rials	715 07	
Skating: labor	772 60	
Roads and walks: labor and mate- rials	312 06	
Drainage: labor and materials . .	100 93	
Engineers: labor	3 50	
	<u> </u>	8,098 20
		10,090 02

CHARLESBANK.

CONSTRUCTION.

Plantations.

Labor	\$648 96	
-----------------	----------	--

Structures.

Women's gymnasium building:		
labor and materials	525 03	
	<u> </u>	

Amounts carried forward \$1,173 99

\$362,790 21

Amounts brought forward, \$1,173 99 \$362,790 21

Grading, Loam and General Work.

Loam: materials . . .	\$112 54	
General work: labor . . .	6 89	
	<u> </u>	119 43

Walks and Drainage.

Drainage: labor		8 25
---------------------------	--	------

Settees.

Labor	5 50	
	<u> </u>	\$1,307 17

MAINTENANCE.

Grounds, Walks, Buildings and General Work.

Men's gymnasium—		
Grounds, apparatus and building:		
labor and materials	\$3,438 86	
Women's gymnasium—		
Grounds, apparatus and building:		
labor and materials	2,951 02	
Grounds and walks: labor and materials	2,843 13	
General work: labor and materials	551 06	
Skating: labor and materials	233 72	
Fence: labor and materials	56 16	
Drainage: labor	21 18	
Engineers: labor	17 50	
Boating service: materials	11 50	
	<u> </u>	10,124 13
		<u> </u> 11,431 30

CHARLESTOWN HEIGHTS.

CONSTRUCTION.

Plantations.

Labor and materials	\$346 27
-------------------------------	----------

Fence.

Fence: labor and materials	187 85
--------------------------------------	--------

Walks, Gutters and Drainage.

Walks: labor	\$140 86	
Drainage: labor and materials	48 08	
	<u> </u>	184 94

Grading, Loam and General Work.

General work: labor	\$3 00	
Engineers: labor	1 75	
	<u> </u>	4 75
		<u> </u> \$727 81

Amounts carried forward,

 \$727 81 \$374,221 51

Amounts brought forward, \$727 81 \$374,221 51

MAINTENANCE.

Grounds, Walks, Buildings, Drainage and General Work.

Grounds and walks: labor and materials	\$1,597 58	
Buildings: labor and materials	434 28	
General work: materials	12 45	
Drainage: labor	5 25	
	<hr/>	2,049 56
		<hr/>
		2,777 37

CHARLESTOWN PLAYGROUND.

CONSTRUCTION.

Water Supply and Fountains.

Fountains: materials	\$166 70
--------------------------------	----------

MAINTENANCE.

Grounds, Walks, Drainage and General Work.

Skating: labor and materials	\$752 69	
Grounds and walks: labor and materials	569 30	
Engineers: labor	85 00	
General work: materials	56 64	
Stable account: equipment and supplies,	37 85	
Drainage: labor	2 00	
	<hr/>	1,503 48
		<hr/>
		1,670 18

DORCHESTER PARK.

CONSTRUCTION.

Plantations.

Labor	\$19 87
-----------------	---------

MAINTENANCE.

Grounds, Walks, Buildings, Drainage and General Work.

Grounds and walks: labor	\$296 76	
Engineers: labor	39 00	
Skating: labor	27 69	
Buildings: labor	16 89	
	<hr/>	380 34
		<hr/>
		400 21

FRANKLIN FIELD.

CONSTRUCTION.

Plantations.

Labor and materials	\$3,036 31	
<i>Amounts carried forward,</i>	<hr/>	<hr/>
	\$3,036 31	\$379,069 27

Amounts brought forward, \$3,036 31 \$379,069 27

Grading, Loam and General Work.

Grading: labor and materials	\$634 07	
Loam: materials	439 31	
Engineers: labor and materials	23 15	
General work: materials,	10 20	
	<u> </u>	1,106 73

Water Supply and Fountains.

Fountains: labor and materials	226 85
------------------------------------------	--------

Walls.

Labor	171 86
-----------------	--------

Walks, Gutters and Drainage.

Drainage: labor	\$101 00	
Walks: materials	10 00	
	<u> </u>	111 00
		<u> </u> \$4,652 75

MAINTENANCE.

Grounds, Walks, Buildings, Drainage and General Work.

Grounds and walks: labor and materials	\$5,640 01	
Skating: labor and materials	2,169 39	
Sheepfold: labor and materials	1,615 98	
General work: labor and materials	475 58	
Stable account: equipment and supplies	339 69	
Engineers: labor and materials	224 18	
Buildings: labor and materials	122 75	
Drainage: labor and materials	100 25	
	<u> </u>	10,687 83
		<u> </u> 15,340 58

NORTH END BEACH.

CONSTRUCTION.

Clearing, Grading, Loam and General Work.

Judgment for damages	\$1,859 73	
Engineers: labor	57 75	
	<u> </u>	\$1,917 48

MAINTENANCE.

Grounds, Walks and Buildings.

Engineers: labor	\$42 50	
Grounds: labor and materials	34 50	
	<u> </u>	77 00
		<u> </u> 1,994 48

Amount carried forward, \$396,404 33

Amount brought forward,

\$396,404 33

COPP'S HILL TERRACES.

CONSTRUCTION.

Settees.

Labor and material . . . \$68 18

*Plantations.*Labor 56 67

\$124 85

MAINTENANCE.

*Grounds, Walks, Drainage and General Work.*Grounds and walks: labor and materials . . . 292 69

417 54

CHESTNUT HILL PARK.

Land.

Amount paid for land \$3,449 81

CONSTRUCTION.

Plantations.

Labor and materials . . . \$908 51

*Roadways, Gutters and Drainage.*Roads and walks: labor
and materials . . . \$638 84
Drainage: labor . . . 18 00

656 84*Grading, Loam and General Work.*Engineers: labor . . . \$42 50
Grading: labor . . . 15 69

58 19

1,623 54

MAINTENANCE.

*Roadways, Grounds, Buildings, Drainage and General Work.*Grounds: labor and materials . . \$1,423 32
Roads and walks: labor and mate-
rials 1,326 07
Engineers: labor 46 00
Drainage: labor and materials . . 42 22
General work: labor and materials, . 20 35
Buildings: materials 18 00

2,875 06

7,949 31

NORTH BRIGHTON PLAYGROUND.

CONSTRUCTION.

*Grading, Loam and General Work.*Grading: labor and mate-
rials \$1,529 22
General work: labor and
materials 312 73
Loam: materials 95 59
Engineers: labor 59 50

\$1,997 04

Amounts carried forward,

\$1,997 04

\$404,771 18

Amounts brought forward, \$1,997 04 \$404,771 18

Filling.

Materials 870 47

Plantations.

Labor and materials 475 08

Walks, Gutters and Drainage.

Drainage: labor and materials \$76 52

Walks: labor 35 28

111 80

\$3,454 39

MAINTENANCE.

Grounds, Walks, Drainage and General Work.

Grounds and walks: labor and materials \$464 61

Skating: labor and materials 437 58

General work: materials 14 90

Engineers: labor 7 00

924 09

4,378 48

NEPONSET PLAYGROUND.

MAINTENANCE.

Grounds, Walks, Drainage and General Work.

Grounds and walks: labor and materials \$475 58

Skating: labor and materials 344 35

Loam: materials 106 62

General work: materials 45 00

Filling: materials 41 22

Engineers: labor 3 50

1,016 27

1,016 27

BILLINGS FIELD.

CONSTRUCTION.

Walks and Drainage.

Drainage: labor and materials \$2,561 17

Grading, Loam and General Work.

Grading: labor \$1,457 97

Loam: materials 234 28

Engineers: labor 198 50

General work: labor and materials 18 08

1,908 83

Plantations.

Labor and materials 1,566 24

Amounts carried forward, \$6,036 24

\$410,165 93

Amounts brought forward, \$6,036 24 \$410,165 93

Gymnasium Apparatus.

Gymnasium apparatus:
 materials . . . \$279 05
 Toboggan slide: labor . 123 31
402 36

Filling.

Materials 234 40

Water Supply.

Materials 77 24
6,750 24

MAINTENANCE.

Grounds, Walks, Drainage and General Work.

Skating: labor and materials . \$796 70
 Grounds and walks: labor and
 materials 611 89
 Drainage: labor and materials . 241 53
 Filling: materials 130 07
 General work: materials . . . 57 17
 Buildings: labor 9 75
 Stable account: equipment and
 supplies 9 00
 Engineers: labor 3 50
1,859 61
8,609 85

FIRST STREET PLAYGROUND.

MAINTENANCE.

Grounds, Walks, Drainage and General Work.

Skating: labor and materials \$414 95
 Grounds and walks: labor and materials . . 332 35
 Loam: materials 98 03
 Drainage: labor 16 47
 Engineers: labor 3 50
865 30

PRINCE STREET PLAYGROUND.

MAINTENANCE.

Grounds, Walks, Drainage and General Work.

Grounds and walks: labor and materials . . \$190 80
 Engineers: labor 7 00
 General work: materials 1 00
198 80

MYSTIC PLAYGROUND.

MAINTENANCE.

Grounds, Walks, Drainage and General Work.

Grounds: labor and materials \$171 55
 General work: materials 2 20
173 75

Amount carried forward, \$420,018 63

Amount brought forward,

\$420,013 63

FELLOWS STREET PLAYGROUND.

CONSTRUCTION.

Plantations.

Labor \$249 85

Grading, Loam and General Work.

Grading: labor \$70 49

General work: materials, 45 00

115 49

\$365 34

MAINTENANCE.

*Grounds and Walks.*Grounds: labor and materials 204 06

569 40

CHRISTOPHER GIBSON PLAYGROUND.

MAINTENANCE.

Grounds, Walks, Buildings, Drainage and General Work.

Grounds: labor and materials \$695 68

Buildings: labor and materials 669 86

Skating: labor and materials 341 01

General work: materials 17 38

Settees: labor 7 50

1,731 43

ROGERS PARK.

MAINTENANCE.

Grounds, Walks, Drainage and General Work.

Grounds: labor and materials. 382 93

COLUMBUS AVENUE PLAYGROUND.

LAND.

Amount paid for land \$19,119 65

Expenses 35 00

\$19,154 65

MAINTENANCE.

Grounds, Walks, Buildings, Drainage and General Work.

Grounds and walks: labor and materials \$1,207 05

Skating: labor and materials 1,187 43

Water supply and fountain: materials 182 74

Stable account: equipment and supplies 144 71

Loam: materials 74 79

General work: materials 71 08

Amounts carried forward,

\$2,867 80

\$19,154 65

\$422,697 39

<i>Amounts brought forward,</i>	\$2,867 80	\$19,154 65	\$422,697 39
Filling: materials	65 60		
Buildings: materials	51 98		
Drainage: labor and materials	33 47		
Engineers: labor	10 50		
	<u> </u>	3,029 35	
			22,184 00

SAVIN HILL PLAYGROUND.

CONSTRUCTION.

Bath House.

Amount paid under con- tract	\$1,830 00		
Labor	194 14		
	<u> </u>	\$2,024 14	

Grading, Loam and General Work.

Grading: labor	\$172 06		
Engineers: labor	35 00		
	<u> </u>	207 06	

Filling.

Material	160 56		
--------------------	--------	--	--

Walks and Drainage.

Drainage: labor	108 24		
	<u> </u>	\$2,500 00	

MAINTENANCE.

Grounds, Walks, Buildings, Drainage and General Work.

Bath house: labor and materials	\$562 42		
Grounds: labor and materials	145 01		
General work: materials	100 81		
Drainage: materials	79 46		
Filling: material	66 57		
Water supply: materials	63 52		
Engineers: labor and materials	22 10		
	<u> </u>	1,039 89	
			3,539 89

ROSLINDALE PLAYGROUND.

MAINTENANCE.

Grounds, Walks, Drainage and General Work.

Grounds: labor and materials	\$567 55		
Skating: labor and materials	404 25		
Drainage: labor and materials	141 99		
General work: materials	45 00		
Fence: materials	15 43		
	<u> </u>		1,174 22

ASHIMONT PLAYGROUND.

MAINTENANCE.

Grounds and Walks.

Engineers: labor	7 00		
<i>Amount carried forward,</i>			\$449,602 50

Amount brought forward,

\$449,602 50

BERNERS SQUARE.

MAINTENANCE.

Grounds and Walks.

Grounds: labor	170 75
--------------------------	--------

PLAYGROUNDS.

INVESTIGATING SITES, WARD 15.

Engineers: labor	7 00
----------------------------	------

OFFICE EXPENSES.

MAINTENANCE.

Salaries	\$7,831 00	
Printing	1,275 28	
Telephones and expenses	477 81	
Carriage-hire	454 00	
Park Investigation expenses	115 00	
Stationery	67 85	
Travelling expenses	42 00	
Office furniture	19 00	
Office library	16 50	
		10,298 44
		\$460,078 69

III.

General Exhibit of Appropriations, 1901-1902.

OBJECTS OF APPROPRIATION.	Page	Balances January 31, 1901.	Appropriations and Transfers, 1901-1902.	Total Credits.	Expenditures, 1901-1902.	Balances January 31, 1902.	Trans- ferred or Merged.
Public Parks, Land and Construction.....	56	\$80,613 44	\$42,065 68	\$122,679 12	\$131,679 12
North Brighton Playground.....	56	3,454 39	3,454 39	3,454 39
Fellows Street Playground.....	56	365 34	365 34	365 34
Chestnut Hill Park.....	57	92,234 60	92,234 60	3,449 81	\$88,784 79
Playgrounds.....	57	149,731 57	149,731 57	19,161 65	130,569 92
Gymnasium, Ward 10.....	57	\$3,500 00
Speedway, Franklin Field.....	57	25,000 00	3,500 00
Columbia Road.....	57	25,000 00	25,000 00
Billings Field.....	57	79,315 13	79,315 13
Savin Hill Beach.....	57	10,000 00	10,000 00
Strandway.....	58	2,750 24	2,750 24	3,249 76
Playground, Ward 9.....	58	225,000 00	225,000 00
Gymnasium, First Street Playground.....	58	25,000 00	25,000 00
Parks, Brighton District.....	58	25,000 00	25,000 00
Playground, Ward 22.....	58	30,000 00	30,000 00
Park Department, Maintenance.....	59	198,140 35	198,140 35
		\$363,893 34	\$646,571 16	\$1,010,464 50	\$460,078 69	\$546,773 70	\$3,618 11

* Transferred to Public Parks, Land and Construction.

IV.

Appropriations and Balances in Detail for the Financial Year 1901-1902.

PUBLIC PARKS.

Balance unexpended January 31, 1901	\$89,613 44	
Loan issued September 4, 1901	21,000 00	
Amount transferred by City Auditor	17,565 68	
Amount transferred from Gymnasium, Ward 10	3,500 00	
	<u> </u>	<u>\$131,679 12</u>

EXPENDITURES.

Commonwealth Avenue	\$569 17	
Fens	6,778 08	
Riverway	1,894 93	
Olmsted Park	21,176 53	
Arborway	2,704 43	
Arnold Arboretum and Bussey Park	581 99	
West Roxbury Parkway	462 14	
Franklin Park	36,546 81	
Dorchesterway	148 56	
Strandway	42,317 12	
Marine Park	4,822 87	
Wood Island Park	1,991 82	
Charlesbank	1,307 17	
Charlestown Heights	727 81	
Charlestown Playground	166 70	
Dorchester Park	19 87	
Franklin Field	4,652 75	
North End Beach	1,917 48	
Copp's Hill Terraces	124 85	
Chestnut Hill Park	1,623 54	
Columbia Road	1,144 50	
	<u> </u>	<u>\$131,679 12</u>

NORTH BRIGHTON PLAYGROUND.

Balance unexpended January 31, 1901	\$3,454 39
-----------------------------------------------	------------

EXPENDITURES.

Paid on account of construction	<u>\$3,454 39</u>
-------------------------------------------	-------------------

FELLOWS STREET PLAYGROUND.

Balance unexpended January 31, 1901	<u>\$365 34</u>
-----------------------------------------------	-----------------

EXPENDITURES.

Paid on account of construction	<u>\$365 34</u>
-------------------------------------------	-----------------

CHESTNUT HILL PARK (*Land*).

Balance unexpended January 31, 1901	<u>\$92,234 60</u>
-----------------------------------------------	--------------------

EXPENDITURES.

Paid on account of land	\$3,449 81
Balance unexpended January 31, 1902	<u>88,784 79</u>
	<u>\$92,234 60</u>

PLAYGROUNDS (*Land*).

Balance unexpended January 31, 1901	<u>\$149,731 57</u>
-----------------------------------------------	---------------------

EXPENDITURES.

Columbus Avenue Playground	\$19,154 65
Investigating sites for Playground, Ward 15	7 00
Balance unexpended January 31, 1902	<u>130,569 92</u>
	<u>\$149,731 57</u>

GYMNASIUM, WARD 10.

Amount appropriated under general loan order, dated October 1, 1897	<u>\$3,500 00</u>
----------------------------------------------------------------------------------	-------------------

EXPENDITURES.

Amount transferred to Public Parks, Land and Construction,	<u>\$3,500 00</u>
------------------------------------------------------------	-------------------

SPEEDWAY, FRANKLIN FIELD.

Amount appropriated under loan order approved by the Mayor, January 5, 1901	<u>\$25,000 00</u>
------------------------------------------------------------------------------------------	--------------------

EXPENDITURES.

Balance unexpended January 31, 1902	<u>\$25,000 00</u>
-----------------------------------------------	--------------------

COLUMBIA ROAD.

Proportion of highway loan, issued as Public Park Loan, in year 1901, under Chap. 319, Acts of 1897	<u>\$79,315 13</u>
------------------------------------------------------------------------------------------------------------------	--------------------

EXPENDITURES.

Paid on account of land	\$4,833 23
Paid on account of construction	<u>74,481 90</u>
	<u>\$79,315 13</u>

BILLINGS FIELD.

Amount appropriated under loan order approved by the Mayor, November 1, 1901	<u>\$10,000 00</u>
-------------------------------------------------------------------------------------------	--------------------

EXPENDITURES.

Paid on account of construction	\$6,750 24
Balance unexpended January 31, 1902	<u>3,249 76</u>
	<u>\$10,000 00</u>

SAVIN HILL BEACH.

Amount transferred from Reserve Fund, by order of City Council, June 13, 1901	<u>\$2,500 00</u>
-----------------------------------------------------------------------------------------	-------------------

EXPENDITURES.

Paid on account of construction	<u>\$2,500 00</u>
-------------------------------------------	-------------------

STRANDWAY.

Amount appropriated under general loan order approved by the Mayor, July 3, 1901	<u>\$225,000 00</u>
--------------------------------------------------------------------------------------------	---------------------

EXPENDITURES.

Expenses on account of land	\$30 00
Paid on account of construction,	15,350 77
Balance unexpended January 31, 1902	<u>209,619 23</u>
	<u>\$225,000 00</u>

PLAYGROUND, WARD 2.

Amount appropriated under loan order approved by the Mayor, October 22, 1901	<u>\$25,000 00</u>
----------------------------------------------------------------------------------------	--------------------

EXPENDITURES.

Balance unexpended January 31, 1902	<u>\$25,000 00</u>
-----------------------------------------------	--------------------

GYMNASIUM, FIRST STREET PLAYGROUND.

Amount appropriated under loan order approved by the Mayor, November 1, 1901	<u>\$9,550 00</u>
----------------------------------------------------------------------------------------	-------------------

EXPENDITURES.

Balance unexpended January 31, 1902	<u>\$9,550 00</u>
-----------------------------------------------	-------------------

PARKS, BRIGHTON DISTRICT.

Amount appropriated under loan order approved by the Mayor, December 18, 1901	<u>\$25,000 00</u>
-----------------------------------------------------------------------------------------	--------------------

EXPENDITURES.

Balance unexpended, January 31, 1902	<u>\$25,000 00</u>
------------------------------------------------	--------------------

PLAYGROUND, WARD 22.

Amount appropriated under loan order approved by the Mayor, January 4, 1902	<u>\$30,000 00</u>
---------------------------------------------------------------------------------------	--------------------

EXPENDITURES.

Balance unexpended January 31, 1902	<u>\$30,000 00</u>
-----------------------------------------------	--------------------

PARK DEPARTMENT.

MAINTENANCE.

Appropriation for financial year 1901-1902 .	\$190,000 00	
Amount contributed by abutters, Commonwealth avenue	6,000 00	
Amount transferred by City Auditor	1,800 00	
Collections on account of labor credited to appropriation	340 35	
	<u> </u>	<u>\$198,140 35</u>

EXPENDITURES.

Paid on account of maintenance as per Exhibit, page 28	\$198,022 24	
Balance merged into General City Funds	118 11	
	<u> </u>	<u>\$198,140 35</u>

INCOME.

RECEIPTS.

Received from rents, sale of buildings, wool, sheep, grass, wood, etc.		<u>\$2,603 39</u>
--------------------------------------------------------------------------------	--	-------------------

PAYMENTS.

Income carried to General City Income	\$2,486 37	
Balance on hand January 31, 1902	117 02	
	<u> </u>	<u>\$2,603 39</u>

V.

Summary of Expenditures on Account of Park and Play-ground Construction from the Organization of the Board, October 8, 1875, to January 31, 1902.

MAIN PARK SYSTEM.

COMMONWEALTH AVENUE.

Roadways, sidewalks, gutters and drainage,	\$84,842 41	
Plantations	12,741 87	
Electric lighting	5,690 65	
Lawns and woods, grading, loam, and general work	3,268 14	
Machinery, tools, etc.	884 90	
Settees and signs	458 41	
Plans and designs	22 90	
	<hr/>	\$107,909 28

FENS.

Filling	\$576,811 15	
Excavating, lawns and woods, grading, loam and general work	550,289 62	
Roadways, sidewalks, gutters and drainage	354,908 18	
Retaining walls, curb and fence	118,177 77	
Plantations	96,974 15	
Boylston bridge	92,011 43	
Charlesgate bridge	65,287 67	
Agassiz bridge	52,013 50	
Sea-wall, gate-chamber and filling	48,442 99	
Stony brook bridge	40,007 11	
Railroad bridge	39,995 04	
Fen bridge	29,427 80	
Plans, designs and superintendence	27,280 28	
Machinery, tools, etc.	14,188 99	
Office and general expenses	14,114 92	
Electric lighting	7,015 30	
Surveying	5,472 16	
Stony brook channel and gate-house	2,181 28	
Water supplies, settees and live stock	1,766 70	
Duck-house	350 00	
Boating-service	306 04	
	<hr/>	2,137,022 08

RIVERWAY.

Excavating, lawns and woods, grading loam and general work	\$193,269 05	
Filling	104,143 90	
Roadways, sidewalks, gutters and drainage	101,050 47	
√ Longwood avenue bridge	66,925 90	
√ Audubon bridge	39,654 27	
√ Bridle-path bridge	32,929 09	
	<hr/>	\$537,972 68
<i>Amounts carried forward,</i>		\$2,244,931 36

<i>Amounts brought forward,</i>	\$537,972 68	\$2,244,931 36
Plantations	28,676 39	
Administration building	27,005 12	
Foot-bridges and culverts	14,345 00	
Tremont street bridge	13,273 53	
Brookline avenue bridge	8,936 82	
Retaining walls	8,852 06	
Bellevue street bridge	8,163 96	
Surveys, plans, designs and superintendence,	7,196 67	
Shelter	4,513 65	
Electric lighting	2,895 97	
Water supplies, settees and fence	2,298 18	
Machinery, tools, etc.	468 75	
Boating-service	181 21	
Gate-house	105 15	
	<hr/>	664,885 14

OLMSTED PARK.

Excavating, lawns and woods, grading, loam and general work	\$343,631 54	
Roadways, sidewalks, gutters and drainage,	153,208 88	
Plantations	70,163 24	
Retaining-walls, steps and culverts	67,285 21	
Pine Bank House and horse-sheds	32,774 10	
Electric lighting	10,484 39	
Surveys, plans, designs and superintendence,	10,368 43	
Leverett pond bridge	9,850 59	
Water supply, fountains, settees and signs	9,115 00	
Foot-bridges and culverts	6,843 46	
Machinery, tools, etc.	6,167 55	
Boating-service	1,612 18	
Iron railing and fence	1,494 84	
Gate-house	80 73	
	<hr/>	723,080 14

ARBORWAY.

Roadways, sidewalks, gutters and drainage,	\$171,145 01	
Lawns and woods, grading grounds, loam and general work	89,244 83	
Arches	64,631 57	
Plantations	19,928 39	
Water supply, settees and signs	10,567 97	
Culverts	5,489 53	
Walls	5,063 52	
Stony brook bridge	4,503 43	
Electric lighting	3,638 48	
Filling	2,819 16	
Machinery, tools, etc.	2,360 62	
Plans and designs	281 94	
Gas-lamps	80 00	
	<hr/>	379,754 45

ARNOLD ARBORETUM AND BUSSEY PARK.

Roadways, sidewalks, gutters and drainage,	\$310,015 68	
Lawns and woods, grading, loam and general work	31,927 03	
Boundary walls and gateways	30,951 66	
Machinery, tools, etc.	3,607 23	
Plans, designs and superintendence	1,652 47	
	<hr/>	
<i>Amounts carried forward,</i>	\$378,154 07	\$4,012,651 09

<i>Amounts brought forward,</i>	\$378,154 07	\$4,012,651 09
Plantations	1,109 65	
Water supply and settees	514 20	
Surveying	100 00	
	<hr/>	379,877 92

WEST ROXBURY PARKWAY.

Lawns and woods, grading grounds, loam and general work	\$12,705 19	
Roadways, gutters and drainage	4,525 87	
Plantations	2,761 02	
Plans, designs and superintendence	577 01	
Walls	12 88	
	<hr/>	20,581 97

FRANKLIN PARK.

Roadways, sidewalks, gutters and drainage,	\$810,738 28	
Lawns and woods, grading grounds, loam and general work	573,626 18	
Plantations	217,996 34	
Refectory building	109,793 15	
Park wall and gateways	89,881 56	
Seaver-street improvement	84,817 75	
Shelter, Overlook and Terrace wall	64,534 09	
Forest Hills bridge	52,972 17	
Scarboro' Pond	40,943 11	
Arbor and Shelter, Schoolmaster Hill	32,803 44	
Plans, designs and superintendence	28,343 95	
Reservoir	27,634 39	
Stable building, repair shops and store- house	26,959 72	
Scarboro' Pond bridges	26,703 10	
Water supply, fountains and settees	26,484 31	
Ellicott Arch	16,732 21	
Pergola wall, steps and terrace	16,244 30	
Carriage-sheds	15,510 98	
Ellicott House	14,922 87	
Ellicottdale	12,542 94	
Machinery, tools, etc.	12,413 15	
Temporary buildings and structures	12,299 11	
Playstead	10,399 76	
Propagating-house	8,205 55	
Electric lighting	6,182 09	
Concourse, Scarboro' Hill	3,569 80	
Culverts	3,129 34	
Carriage shelter	2,694 70	
Fences	1,547 45	
Boating-service	51 16	
	<hr/>	2,350,676 95

MARINE PARK SYSTEM.

COLUMBIA ROAD.

Construction by Street Department	\$299,481 90	
Roadways, gutters and drainage	446 43	
Plantations	355 18	
Settees and signs	220 39	
Grading, loam and general work	136 50	
	<hr/>	300,640 40

Amount carried forward,

\$7,064,428 33

Amount brought forward,

\$7,064,428 33

DORCHESTERWAY.

Roadways, sidewalks, gutters and drainage .	\$31,660 41	
Filling	21,821 82	
Grading loam and general work	9,578 09	
Plans, designs and superintendence	1,317 24	
Culverts	653 00	
Plantations	156 56	
	<hr/>	65,187 12

STRANDWAY.

Sea-wall and grading	\$129,578 38	
Filling	104,657 72	
Lawns and woods, grading, loam and gen- eral work	41,248 45	
Public landing and shelter	15,013 13	
Roadways, gutters and drainage	5,149 60	
Plantations	3,263 31	
Fence	1,739 38	
Plans, designs and superintendence	479 77	
Fountains	290 44	
Electric lighting	178 00	
Culverts	60 50	
	<hr/>	301,658 68

MARINE PARK.

Filling, lawns and woods, grading, loam and general work	\$581,774 04	
Iron pier and railing	175,571 99	
Head-house	111,074 54	
Pier head	67,232 97	
Structures, temporary pier and gas-lights .	43,829 05	
Roadways, sidewalks, gutters and drainage	41,454 47	
Plantations	12,986 21	
Bulkhead	4,996 00	
Plans, designs and superintendence	3,870 46	
Water supply, settees and fence	3,478 08	
Electric lighting	2,453 04	
Boating-service	2,003 09	
Dredging	1,114 20	
Machinery, tools and implements	38 00	
	<hr/>	1,051,876 14

CASTLE ISLAND.

Temporary buildings and structures	\$25,751 42	
Clearing, grading grounds and drainage	3,837 98	
Water supply, settees and tent	2,509 17	
Plantations	486 98	
Shelter plans	100 00	
	<hr/>	32,685 55

WOOD ISLAND PARK.

Lawns and woods, grading, loam and gen- eral work	\$103,396 00	
Neptune bridge	32,320 63	
Filling	29,852 82	
Field-house	20,283 89	
Plantations	15,795 15	
Roads, walks, gutters and drainage	15,740 84	
	<hr/>	

Amounts carried forward,

\$217,389 33 \$8,515,835 82

<i>Amounts brought forward,</i>	\$217,389 33	\$8,515,835 82
Bath-house	9,880 66	
Gymnasium grounds, apparatus and play-ground	7,280 92	
✓ Foot-bridge and culverts	3,551 90	
Iron fence and frame	3,039 99	
Water supply and settees	3,011 29	
Electric lighting	2,163 53	
Plans, designs and superintendence	1,688 03	
Tool-house	217 59	
Machinery, tools and implements	42 80	
	<hr/>	248,266 04

CHARLESBANK.

Sea-wall and filling	\$176,353 90	
Gymnasium grounds, apparatus, filling, loam and general work	53,430 65	
Men's Lavatory building	23,250 53	
Women's Lavatory building and children's shelter	18,876 91	
Plantations	14,863 44	
Walks and drainage	11,777 52	
Iron railing, fence and gaslights	10,024 55	
Plans, designs and superintendence	2,076 27	
Water supply and settees	1,078 22	
Damages	972 51	
Machinery, tools, etc.	56 00	
	<hr/>	312,760 50

CHARLESTOWN HEIGHTS.

Grading, lawns and woods, filling, loam and general work	\$32,934 00	
Shelter building	27,240 32	
Retaining wall	18,338 98	
Sidewalks, gutters and drainage	8,561 03	
Plantations	8,273 85	
Steps	3,971 42	
Plans, designs and superintendence	1,430 59	
Fence	672 17	
Water supply, settees, fountains and flag-staff	486 51	
Electric lighting	334 00	
	<hr/>	102,742 87

CHARLESTOWN PLAYGROUND.

Grading, loam and general work	\$12,583 94	
Fence	1,703 09	
Plantations	484 60	
Plans, designs and superintendence	204 99	
Water supply and fountains	171 60	
Walks and drainage	148 86	
Tool-house	94 93	
	<hr/>	15,392 01

DORCHESTER PARK.

Grading, lawns and woods, loam and general work	\$4,469 13	
Walls	3,623 82	
	<hr/>	
<i>Amounts carried forward,</i>	\$8,092 95	\$9,194,997 24

<i>Amounts brought forward,</i>	\$8,092 95	\$9,194,997 24
Shelter	963 32	
Plans, designs and superintendence	797 40	
Temporary structures	774 95	
Water supply	105 53	
Plantations	57 90	
Walks and drainage	4 48	
	<hr/>	10,796 53

FRANKLIN FIELD.

Grading, lawns and woods, loam and general work	\$33,914 82	
Walks, gutters and drainage	28,723 93	
Plantations	15,627 30	
Buildings	6,744 98	
Fence, flagstaff and wall	1,584 83	
Plans, designs and superintendence	815 06	
Machinery, tools, etc.	480 55	
Water supply and fountains	273 74	
	<hr/>	88,165 21

NORTH END BEACH.

Clearing, grading, loam, and general work, Administration Building and Women's bath-house	\$62,964 27	
Piers	42,683 16	
Men's bath-house	31,823 84	
Walls	13,052 97	
Iron railing	8,422 73	
Walks and drainage	3,698 88	
Filling	1,946 63	
Plans, designs and superintendence	1,302 04	
Boating-service	1,189 14	
Band-stand	578 32	
Electric lighting	571 44	
Water supply, settees and fence	407 00	
Boring	346 50	
Temporary building	224 62	
Plantations	33 73	
	17 00	
	<hr/>	169,262 27

COPP'S HILL TERRACES.

Walls, drainage, grading, loam, and general work	\$29,771 52	
Fences	1,225 63	
Plantations	461 67	
Electric lighting	245 25	
Plans, designs and superintendence	110 83	
Sidewalks	90 58	
Settees	68 18	
	<hr/>	31,973 71

CHESTNUT HILL PARK.

Plantations	\$2,138 73	
Roadways, gutters and drainage	816 84	
Grading, lawns and woods, loam and general work	255 86	
Fence	31 74	
	<hr/>	3,243 17

Amount carried forward,

\$9,498,438 13

Amount brought forward,

\$9,498,438 13

NORTH BRIGHTON PLAYGROUND.

Grading, loam and general work	\$5,801 89	
Filling	2,778 30	
Walks, gutters and drainage	1,428 02	
Plantations	495 06	
	<hr/>	10,503 27

NEPONSET PLAYGROUND.

Filling	\$5,026 78	
Grading, loam and general work	2,651 64	
Walks and drainage	2,566 14	
Bulkhead	553 10	
Plans and designs	239 21	
Water supply	152 48	
	<hr/>	11,189 35

BILLINGS FIELD.

Walks and drainage	\$3,850 95	
Lawns and woods, grading, loam and general work	3,731 19	
Filling	3,620 46	
Plantations	1,566 24	
Gymnasium apparatus	402 36	
Plans and designs	239 37	
Water supply	77 24	
	<hr/>	13,487 81

FIRST STREET PLAYGROUND.

Grading, loam and general work	\$5,320 40	
Gutters and drainage	2,272 41	
Filling	987 28	
Water supply	912 96	
Plantations	61 80	
	<hr/>	9,554 85

PRINCE STREET PLAYGROUND.

Grading, loam and general work	\$24 90	
Plantations	9 00	
	<hr/>	33 90

MYSTIC PLAYGROUND.

Fence	\$817 65	
Grading, loam and general work	742 00	
Plantations	158 34	
	<hr/>	1,717 99

FELLOWS STREET PLAYGROUND.

Fence	\$524 04	
Filling	496 28	
Plantations	274 08	
Grading and general work	140 99	
Settees	60 89	
	<hr/>	1,496 28

Amount carried forward,

\$9,546,421 58

Amount brought forward,

\$9,546,421 58

CHRISTOPHER GIBSON PLAYGROUND.

Locker and Lavatory building	\$6,111 20	
Grading, loam and general work	2,304 84	
Filling	1,515 04	
Plantations	90 92	
Walks and drainage	10 75	
Water supply	10 00	
	<hr/>	10,042 75

ROGERS PARK.

Walks and drainage	\$1,263 22	
Fence	563 03	
Plantations	95 58	
Grading, loam and general work	78 17	
	<hr/>	2,000 00

COLUMBUS AVENUE PLAYGROUND.

Grading, loam and general work	\$5,080 20	
Walks and drainage	791 01	
Plantations	51 68	
	<hr/>	5,922 89

SAVIN HILL PLAYGROUND.

Filling	\$2,430 46	
Bath-house	2,024 14	
Grading, loam and general work	827 55	
Walks and drainage	253 99	
	<hr/>	5,536 14

ROSLINDALE PLAYGROUND.

Grading, loam and general work	\$4,052 75	
Walks and drainage	1,302 56	
Walls	226 00	
Plantations	16 00	
	<hr/>	5,597 31

SUNDRY ACCOUNTS.

General account	\$73,987 50	
Park Nursery	29,947 07	
Betterment expenses	13,356 10	
	<hr/>	117,290 67

\$9,692,811 34

VI.

Summary of Expenditures on account of Public Parks and Playgrounds, Land, Construction and Betterments, from the Organization of the Board, October 8, 1875, to January 31, 1902.

LAND.

Main Park System:

Fens	\$596,254	49	
Riverway	457,457	53	
Olmsted Park	1,081,947	60	
Arborway	245,584	25	
Arnold Arboretum and Bussey Park	79,343	65	
West Roxbury Parkway	135,265	29	
Franklin Park	1,551,196	63	
	<hr/>		\$4,147,049 44

Marine Park System:

Columbia Road	\$395,833	23	
Dorchesterway	63,735	54	
Strandway	565,496	17	
Marine Park	232,972	57	
	<hr/>		1,258,037 51

Wood Island Park			132,800 00
Charlesbank			373,916 99
Trinity Triangle			30,000 00
Charlestown Heights			50,538 02
Charlestown Playground			172,923 31
Dorchester Park			63,239 97
Franklin Field			157,341 22
North End Beach			328,364 44
Copp's Hill Terraces			90,858 19
Chestnut Hill Park			61,215 21
North Brighton Playground			22,107 12
Neponset Playground			24,804 39
Billings Field			47,068 98
Freeport street Triangle			4,000 00
Prince street Playground			160,974 70
Mystic Playground			50,125 00
Fellows street Playground			14,503 72
Christopher Gibson Playground			37,709 58
Columbus avenue Playground			287,911 13
Ashmont Playground			87 18
Savin Hill Playground			27,147 30
Roslindale Playground			24,825 11
Forest Hills Playground			156 75
Playgrounds, Investigation of sites			175 79
			<hr/>
			\$7,567,881 05

CONSTRUCTION.

Main Park system:

Commonwealth Avenue	\$107,909	28	
Fens	2,137,022	08	
	<hr/>		

Amounts carried forward, \$2,244,931 36

\$7,567,881 05

<i>Amounts brought forward,</i>	\$2,244,931 36	\$7,567,881 05
Riverway	664,885 14	
Olmsted Park	723,080 14	
Arborway	379,754 45	
Arnold Arboretum and Bussey Park	379,877 92	
West Roxbury Parkway	20,581 97	
Franklin Park	2,350,676 95	
	<hr/>	\$6,763,787 93
Marine Park System :		
Columbia Road	\$300,640 40	
Dorchesterway	65,187 12	
Strandway	301,658 68	
Marine Park	1,051,876 14	
Castle Island	32,685 55	
	<hr/>	1,752,047 89
Wood Island Park		248,266 04
Charlesbank		312,760 50
Charlestown Heights		102,742 87
Charlestown Playground		15,392 01
Dorchester Park		10,796 53
Franklin Field		88,165 21
North End Beach		169,262 27
Copp's Hill Terraces		31,973 71
Chestnut Hill Park		3,243 17
North Brighton Playground		10,503 27
Neponset Playground		11,189 35
Billings Field		13,487 81
First Street Playground		9,554 85
Prince Street Playground		33 90
Mystic Playground		1,717 99
Fellows Street Playground		1,496 28
Christopher Gibson Playground		10,042 75
Columbus Avenue Playground		5,922 89
Savin Hill Playground		5,536 14
Roslindale Playground		5,597 31
Rogers Park		2,000 00
General Account		73,987 50
Park Nursery		29,947 07
		<hr/>
		9,679,455 24

BETTERMENTS.

Betterment Expenses	13,356 10
	<hr/>
	<u>\$17,260,692 39</u>

VII.

**Park Betterments Collected by City Collector,
To February 1, 1902.**

	Assessm'ts committed to Collector.	Abated.	Net Assess- ments.	Collected.	Outstand- ing Feb. 1, 1902.
Public Park, Back Bay....	\$434,600 00	\$144,195 73	\$290,404 27	\$290,404 27	
Marine Park.....	23,543 00	12,616 80	10,926 20	10,926 20	
Franklin Park.....	135,029 00	122,000 66	13,028 34	13,028 34	
Parkway, Old Harbor. ...	60,789 00	50,426 00	10,363 00	8,256 00	\$2,107 00
“ Muddy River...	108,972 00	82,252 25	26,719 75	22,862 75	3,857 00
“ West Roxbury..	154,107 00	113,658 00	40,449 00	30,238 00	10,211 00
“ Dorchester.....	9,713 00	3,055 54	6,657 46	5,927 74	729 72
	\$926,753 00	\$528,204 98	\$398,548 02	\$381,643 30	\$16,904 72

VIII.

Public Park Debt.

Liabilities.

Total loan outstanding, January 31, 1902 . . . \$13,991,300 00

Resources.

Resources of Sinking-Fund, January 31, 1902 . . . 3,904,629 34

Net Debt, January 31, 1902 . . . \$10,086,670 66

*** Playground Debt.**

† Outstanding loans, January 31, 1902 . . . \$787,060 98

*The funds for the payment of this debt being part of the General Sinking-Fund cannot be specifically stated.

† Of this amount \$2,454.15 was expended by the Public Grounds Department.

Park Statistics to January 31, 1902.

PARKS.	Year of Taking.	COST OF DATE.		Area.	Length of Drive-ways.	Length of Walks.	Length of Rides.	Area of Ponds and Rivers.	
		Land.	Construction.						Total.
MAIN PARK SYSTEM:									
Commonwealth avenue.....	1894.....	\$107,909 28	30 acres.....	2.8 miles	4.13 miles			
* Fens.....	1879.....	\$596,254 49	2,733,276 57	115 ".....	4 "	6.7 "	1.1 miles	28 acres	
* Riverway.....	1890.....	457,457 53	1,122,342 67	40 ".....	1.4 "	2.8 "	1.2 "	8 "	
* Olmsted Park.....	1890 and 1892	1,081,947 60	1,805,027 74	180 ".....	2.7 "	5.8 "	1.6 "	77 "	
* Arborway.....	1892.....	245,584 25	379,754 45	36 ".....	3.4 "	1.25 "	1.4 "		
* Arnold Arboretum.....	1882 and 1895	79,843 65	379,877 92	223 ".....	3.4 "	5.65 "	0.6 acre	
* West Roxbury Parkway....	1894.....	135,265 29	29,581 97	150 ".....	2.8 "	4.3 "	2.4 "		
* Franklin Park.....	1883 and 1884	1,551,196 63	2,350,676 95	527 ".....	7.3 "	14.5 "	1 mile	7.4 "	
MARINE PARK SYSTEM:									
Columbia Road.....	1899.	395,833 23	300,640 40	696,473 63					
* Dorchesterway.....	1892.....	63,735 54	65,187 12	128,922 66	{ 94 " land } { 200 " flats }	4.2 "	5.75 "		
Strandway.....	{ 1890, 1892 } { 1897 and } { 1901 }	565,496 17	301,658 68	867,154 85	{ 34 " land } { 150 " flats }	0.5 mile	1.3 "	4.4 "	
* Marine Park....	1883.....	232,972 57	1,051,876 14	1,284,848 71					
†Castle Island.....	1890.....	32,685 55	32,685 55	{ 21 " land } { 83 " flats }				
* WOOD ISLAND PARK.....	1882 and 1891	132,800 00	243,266 04	381,066 04	{ 46 " land } { 165 " flats }	0.3 "	2.1 "		
<i>Carried forward</i>	\$5,537,886 95	\$3,764,101 86	\$14,301,988 81	2,094 acres.....	32.8 miles	54.28 miles	8.7 miles	125.4 acres

Park Statistics to January 31, 1902. — Continued.

PARKS.	Year of Taking.	COST TO DATE.		Area.	Length of Drive-ways.	Length of Walks.	Length of Rides.	Area of Ponds and Rivers.
		Land.	Construction.					
<i>Brought forward</i>		\$5,537,886 95	\$8,764,101 86	2,094 acres.	32.8 miles.	54.28 miles.	8.7 miles.	125.4 acres
* CHARLESBANK.....	1883.....	373,916 99	312,760 50	10 " land.	1.5 "
* TRINITY TRIANGLE.....	1885.....	30,000 00	0.12 acre.
* CHARLESTOWN HEIGHTS.....	1891.....	50,538 02	102,742 87	{ 4 acres land. 6 " flats. }	0.4 mile.
* CHARLESTOWN PLAYGROUND.....	1891.....	172,923 31	15,392 01	{ 14 " land. 4 " flats. }	0.6 "
* DORCHESTER PARK.....	1891.....	63,239 97	10,796 53	26 "
* FRANKLIN FIELD.....	1892.....	157,341 22	88,165 21	77 "
* NORTH END BEACH.....	1893.....	328,364 44	169,262 27	{ 2.7 " land. 4 " flats. }
* COPP'S HILL TERRACES.....	1893.....	90,858 19	31,973 71	0.6 acre.	0.11 "
CHESTNUT HILL PARK.....	1898 and 1899	61,215 21	3,243 17	42 acres.
* NORTH BRIGHTON PLAYGROUND,	1894.....	22,107 12	10,503 27	14 "	2.4 miles.
NEPONSET PLAYGROUND.....	1896.....	24,804 39	11,189 35	18 "
* BILLINGS FIELD.....	1896.....	47,068 98	13,487 81	11 "
§ FIRST STREET PLAYGROUND.....	1897.....	9,554 85	4.6 "	0.4 "
* FREEPORT STREET TRIANGLE.	1897.....	4,000 00	0.14 acre.
PRINCE STREET PLAYGROUND.....	{ 1897, 1899, } and 1901	160,974 70	33 90	0.4 "
* MYSTIC PLAYGROUND.....	1897.....	50,125 00	1,717 99	2.3 acres.
* FELLOWS STREET PLAYGROUND,	1897.....	14,503 72	1,496 28	0.85 acre.
<i>Carried forward</i>		\$7,189,868 21	\$9,546,421 58	2,333.71 acres.	35.2 miles.	57.29 miles.	8.7 miles.	125.4 acres.

Park Statistics to January 31, 1902.—Concluded.

PARKS.	Year of Taking.	COST TO DATE.			Area.	Length of Drive-ways.	Length of Walks.	Length of Rides.	Area of Ponds and Rivers.
		Land.	Construction.	Total.					
<i>Brought forward</i>		\$7,189,868 21	\$9,546,421 58	\$16,736,289 79	2,335.71 acres.	35.2 miles.	57.29 miles.	8.7 miles.	125.4 acres.
*CHRISTOPHER GIBSON PLAY'G'D.	1897.....	37,709 58	10,042 75	47,752 33	5.8 acres.				
COLUMBUS AVENUE PLAYGROUND.	1899 and 1900.....	287,911 13	5,922 89	293,834 02	4.8 "				
ASHMONT PLAYGROUND.....	1899.....	87 18	87 18	2.2 "				
*SAVIN HILL PLAYGROUND.....	1899.....	27,147 30	5,536 14	32,683 44	{ 6 acres land, 12.6 " flats.				
*ROSLINDALE PLAYGROUND.....	1899.....	24,825 11	5,597 31	30,422 42	3.7 "				
FOREST HILLS PLAYGROUND.....	1900.....	156 75	156 75	10.3 "				
§ ROGERS PARK.....	1899.....	2,000 00	2,000 00	6.9 "				
BERNERS SQUARE.....	1901.....	1.2 "				
LAND FOR PLAYGROUNDS, EXECU- TIONS, ETC.....		175 79	175 79					
General account.....		\$7,567,881 05	\$9,575,520 67	\$17,143,401 72					
Park Nursery.....		73,987 50	73,987 50					
Betterment Expenses.....		29,947 07	29,947 07					
		13,356 10	13,356 10					
		\$7,567,881 05	\$9,692,811 34	\$17,260,692 39	2,389.21 acres.	35.2 miles.	57.29 miles.	8.7 miles.	125.4 acres.

* The lands in these parks and playgrounds have been paid for in full.

† An additional area of 16½ acres is within the limits of the town of Brookline.

‡ An additional area of 18 acres is within the limits of the town of Brookline.

§ Transferred by order of the City Council from Public Grounds Department. Original cost of Rogers Park land, \$30,000.

|| Transferred to Street Department.

¶ Custody given to city by Act of Congress.

Of the above total lengths of driveways, walks, and rides, there have been completed to date, respectively, 29.8 miles, 46.57 miles, and 6.3 miles.

APPENDIX.

 REPORT OF THE COMMITTEE OF THE MASSACHUSETTS EMERGENCY AND HYGIENE ASSOCIATION IN CHARGE OF THE WOMEN'S AND CHILDREN'S DIVISION AT CHARLESBANK.

Boston, January 13, 1902.

To the Board of Park Commissioners :

GENTLEMEN, — In submitting to you our report for the eleventh year of our superintendence at Charlesbank, we would express, first, our appreciation of the wooden roof which you have so wisely provided for the out-door gymnasium. The children have been able to exercise longer and more vigorously during the heat of the day than was possible before its erection. The growth in agility and strength of our young gymnasts acts as a stimulus upon their neighbors, inducing them also to try the cure of Charlesbank for their anæmic condition of health.

During the spring and summer there were four weekly classes for women, and six for children (the latter being held only during the public school vacations), with a large increase in the daily average number of those in the latter. There has also been a daily increase since May 15, when the Women's Division opened for the season, in the number of those playing in the sand-boxes, and playing or resting on the green and in the lodge; and not an accident has occurred in the whole place.

For the first time a public exhibition of work was given, on August 29, by the children, before their schools re-opened, that represented both their first year and their advanced work in which they proudly took part. On following days their raffed work and their games on the green were also specially witnessed by the public, and their scrap books and other rainy day occupations were duly inspected.

The winter work is now so closely connected with that of the summer, that our influence over the children in morals, manners and cleanliness has become a marked feature in the district of the city from which most of them come. We have three afternoon classes, and one on Saturday mornings for them, with four evening classes for the older girls and women. As the upper hall of the lodge has been enlarged by moving back the partition there is now ample space for gymnastic exercises.

During the summer Miss Harriet S. Cutler, the Superintendent, was assisted in her management by Miss Mary Otis Brigham and Miss Gabriella Eliot. The committee feel that the large success of the work in all its various phases is due to their fidelity, kindness, and good judgment.

Respectfully submitted,

KATE GANNETT WELLS,
ANNA PHILLIPS WILLIAMS,
MABEL DELANO LORD,

For the Committee.

STATUTES OF THE COMMONWEALTH RELATING
TO PUBLIC PARKS IN THE CITY OF BOSTON.

[Stat. 1901. — Chap. 187.]

AN ACT TO AUTHORIZE THE SALE OR ABANDONMENT OF CERTAIN LANDS TAKEN FOR PLAYGROUND PURPOSES IN THE CITY OF BOSTON.

SECTION 1. The City of Boston is hereby authorized, upon the recommendation of its Board of Park Commissioners, to sell and convey, for a nominal consideration, to the President and Fellows of Harvard College, all or any part of the lands on Washington street, in the City of Boston, heretofore taken by it from the President and Fellows of Harvard College for playground purposes, and for the taking of which the President and Fellows of Harvard College have received no compensation. Said conveyance shall vest the title to said lands in the President and Fellows of Harvard College, their successors and assigns, and may be pleaded in reduction of damages in any suit for the taking of said land.

SECT. 2. This act shall take effect upon its passage.

(Approved March 26, 1901.)

[Stat. 1901. — Chap. 488.]

AN ACT TO PROVIDE FOR WIDENING WALTER STREET IN THE CITY OF BOSTON.

SECTION 1. Section one of chapter two hundred and ninety-two of the acts of the year eighteen hundred and ninety-two is hereby amended by striking out the whole of said section and inserting in place thereof the following: *Section 1.* The Board of Street Commissioners of the City of Boston may, in that part of Boston known as West Roxbury, widen Walter street to a width not exceeding sixty feet, and may take therefor a strip of land from the burial-ground situated on the easterly side of said street near Weld street, and shall, at the expense of the City of Boston, remove the remains of the dead, if any there be, in the part so taken, to some other part of the said burial-ground or to some other cemetery; and may also take therefor a strip of land from the Arnold arboretum, so-called, on

the easterly side of said street between the cemetery and Centre street: *provided, however*, that in taking any of the land within the arboretum the provisions of the leases to Harvard College relating to the land shall be observed; and *provided, further*, that in making any such widening the Board of Street Commissioners shall not be bound by any plan heretofore made relating thereto; and the board shall determine and the city shall pay all damages to property sustained by any person or corporation by such taking.

SECT. 2. This act shall take effect upon its passage.

(Approved June 13, 1901.)

NOTE. — An index to the Statutes relating to Public Parks in or near the City of Boston, together with an index to all the preceding park reports, will be found in the appendix to the last annual report.

