

BOSTON PUBLIC LIBRARY



3 9999 03290 929 1

Annual Report
of the
Department
of Parks
City of Boston
1904

PERIODICAL

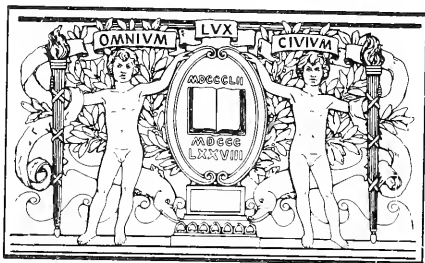
07

4353

.50

1904 c.2





**BOSTON
PUBLIC
LIBRARY**



WITH THE COMPLIMENTS OF THE

BOARD OF COMMISSIONERS OF THE
DEPARTMENT OF PARKS.

City of Boston
DEPARTMENT OF PARKS

THIRTIETH ANNUAL REPORT

OF THE

BOARD OF COMMISSIONERS

FOR THE

YEAR ENDING JANUARY 31, 1905




PRINTED FOR THE DEPARTMENT

1905



CONTENTS.

	Page
Commissioners' Report	5
Superintendent's Report	8
Report of Committee of Massachusetts Emergency and Hygiene Association in Charge of the Women's and Children's Division at Charlesbank	20
General Exhibit of Appropriations	23
Expenditures on Account of Land and Construction from Feb- ruary 1, 1904, to January 31, 1905	24
Expenditures on Account of Maintenance from February 1, 1904, to January 31, 1905	26
Income	28
Park Betterments Collected by City Collector	28
Public Park and Playground Debt	28
Park Statistics	29



Digitized by the Internet Archive
in 2010 with funding from
Boston Public Library

DEPARTMENT OF PARKS.

COMMISSIONERS' REPORT.

HON. PATRICK A. COLLINS,

Mayor of the City of Boston:

SIR, — The Board has the honor herewith to submit this report for the year ending January 31, 1905.

No appropriations for general park construction by loans have been made since October 30, 1902, and these appropriations are exhausted. The absence of any money for construction purposes is a serious handicap to this department, as there are many necessary expenditures which cannot well be postponed, and which cannot be paid out of our maintenance appropriation. We need money for buildings for sanitary and other purposes, and for the planting of trees and shrubs and the care of plantations. Our maintenance appropriation will not admit of these expenditures, and a small annual appropriation for these purposes will continue to be necessary for some years to come, if we are to put the parks into the best condition for future use and enjoyment. As it is, with our insufficient appropriation, our roadways are falling into bad condition, and, worst of all, our young plantations are liable to suffer permanent injury because we have not the money to give them the needed cultivation.

We have also, since 1902, received no appropriations for additions to our playgrounds, or for their improvement.

Additional playgrounds are needed in those sections of the city that are not served by the playgrounds already existing, and improvements are needed in many of these playgrounds

in order to make them more useful to the community. We should be pleased to submit to you a list of our most pressing needs in this particular.

More bath closets should be provided at Savin Hill Beach, as the present number is insufficient to accommodate the large number of bathers who, at certain hours of the day, throng this beach. A bathhouse should also be erected at the southerly extremity of the Strandway, near Mt. Vernon street, and the beach improved. Many persons now bathe there without proper facilities, and many more would avail themselves of the privileges of a bathhouse, which would be of great value to this growing section of Dorchester.

The opening of the Strandway, which is expected to occur early in the coming season, will furnish a new and attractive drive of nearly two miles along the water front, and will serve to increase the use of this shore, always thronged on hot summer days by the seekers of health and recreation.

The act of 1903, amending the law of 1898, which gives this Board jurisdiction over streets and lands in the neighborhood of parks and parkways, while placing under our control and direction the planting and care of trees, failed to provide for the removal of those which for various causes have served their usefulness and should be cut out or replaced. We have, therefore, with your approval, petitioned the Legislature for a further amendment of the act to cure this defect.

Before entering upon the construction of the Charles river embankment, under the Charles River Basin Act of 1903, it will be necessary to obtain an amendment of this act to authorize the extension of the embankment to the westerly side of the Fens, and also to provide means for its construction, the loan authorized in the original act being insufficient for the work that is now being done in the Fens by the Street Department. This work consists of dredging, to remove the foul deposits in the Fens, rebuilding the old seven-foot Stony Brook conduit, and constructing a new

twelve-foot conduit in continuation of the Commissioners' channel, so-called, which enters the Fens at Huntington entrance.

This new foul-flow conduit and gatehouse will be completed this season, and, Stony brook being turned into its new channel, the cause of the foul deposits which have made the Fens pond unsanitary will be removed.

The readjustment of the Huntington entrance, due to the work of extending the Commissioners' channel to Charles river, enabled this department to join with the Trustees of the Art Museum in a plan to revise the lines of the Fens at this point, so as to give the Art Museum site a rectilinear instead of a curvilinear frontage. A bill to accomplish this purpose was passed by the last Legislature, but further study of the problem has shown some changes to be necessary, which will be the subject of further legislation at the present session.

At the solicitation of those in charge of the erection of the Harvard Medical School buildings on Longwood avenue, we have prepared some studies with the view of bringing this beautiful group of buildings into closer relation with the Fens, by the projection of a wide avenue from the Fens to Longwood avenue, on the line of the axis of the Medical School quadrangle. The matter is now in the hands of the Harvard Medical authorities and those interested in the lands through which the avenue will run.

Full details of the work of the department during the year will be found in the accompanying report of our Superintendent.

Respectfully submitted,

CHARLES E. STRATTON,
 LABAN PRATT,
 JAMES M. PRENDERGAST,
Commissioners.

BOSTON, January 31, 1905.

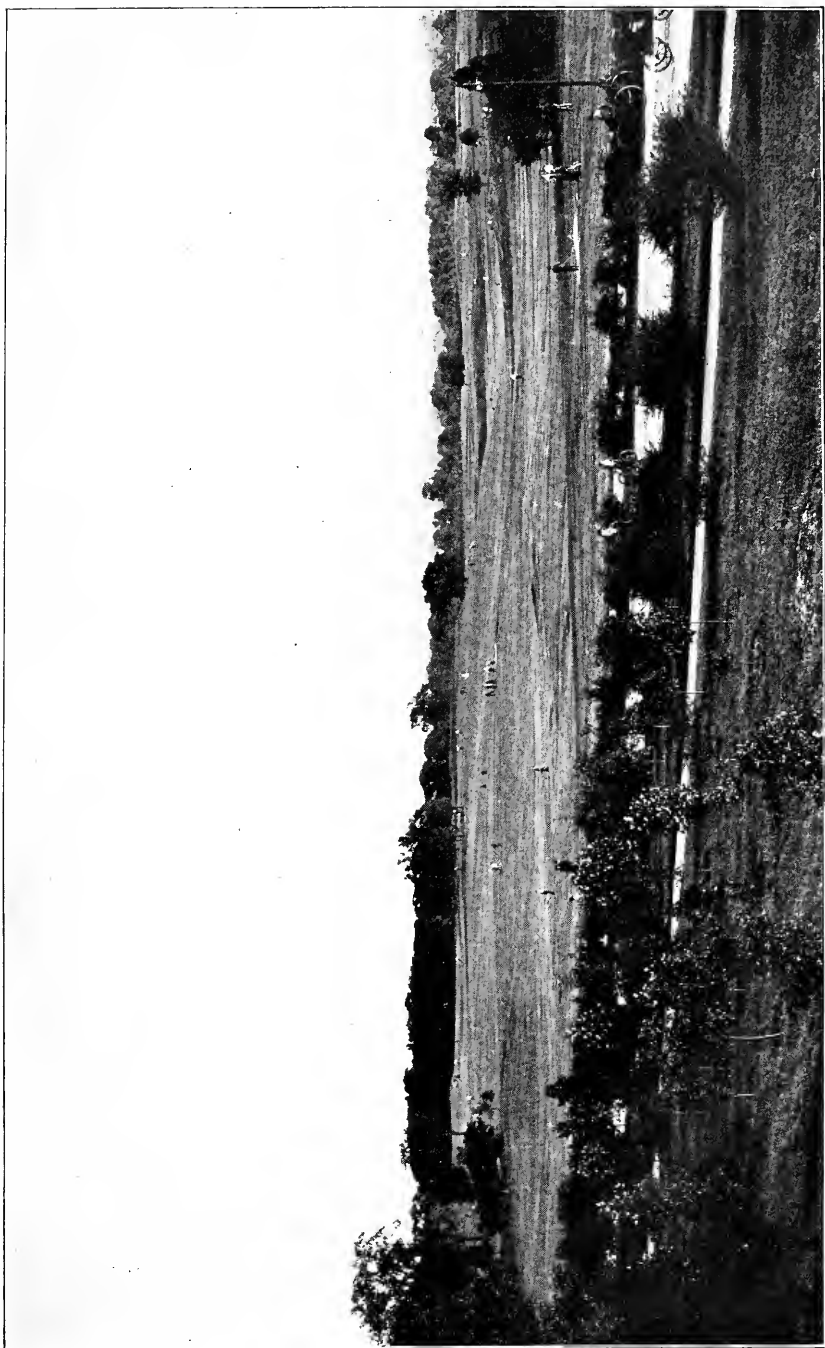
SUPERINTENDENT'S REPORT.

TO CHARLES E. STRATTON, LABAN PRATT, AND JAMES
M. PRENDERGAST, *Commissioners* :

GENTLEMEN, — I herewith submit a report of the work performed under the direction of your Board during the year 1904.

FRANKLIN PARK.

The woodlands and plantations have been carefully looked over, and all overcrowding, diseased, and unhealthy material has been cut out and removed. Under the method of treatment practised the past few years, — that of thinning out, and, in some cases, of mulching with loam, — the old woodlands have greatly improved in appearance. The young plantations, too, are in good condition; yet they do not show the rapid growth that might have been accomplished by thorough cultivation, which it is to be regretted we have been unable to give. During the past winter preparation has been made in the Wilderness for planting a large number of oaks, flowering dogwoods, witch hazels, thorns, and similar material. Ground is being also prepared in the young plantations for the planting of young oaks next spring. All this material will be furnished from the department nurseries. Among the thorns will be a quantity of the new species lately discovered by Prof. Charles S. Sargent. The positions of the thorns will be located on a plan of the ground, from which, in case of the loss of labels, the individuals may be readily relocated.



FRANKLIN PARK — GOLF LINKS.

ARNOLD ARBORETUM.

No work, other than that of the maintenance of roads, walks, and fences has been done in the Arboretum by the department during the past year.

OLMSTED PARK AND RIVERWAY.

With the exception of the planting of a group of tulip trees on the old Francis Parkman place, no work of improvement has been done during the year in Olmsted Park or the Riverway. Considerable additions to the groupings of native azalias in the Riverway will be made in the spring in ground which has already been prepared. This interesting stretch of park land, with its varied features, grows more attractive each season.

THE FENS.

The new conduit connecting the Commissioners' and the Stony Brook channels with the Charles river is now nearly completed. The work of pumping out sludge from the Fens basin is still in progress. These works are being done by the Sewer Division of the Street Department of the city. The restoration of the surfaces of the roads and loam spaces — disturbed by construction operations — and also the replanting, is being done by the Park Department. Work has also been commenced on the filling up of a part of the Fens basin, near the Fens bridge, for a playground.

Arrangements have been made with the Trustees of the Art Museum, under authority obtained from the Legislature, for an interchange of land at the site of the new museum. This, together with changes planned in the alignment of the driveways, and in the filling up of the Commissioners' channel at the Huntington entrance, will materially add to the appearance and dignity of the entrance into the Fens at that point.

COMMONWEALTH AVENUE.

English elms were planted on each side of the central promenade of Commonwealth avenue, between Dartmouth street and Brookline avenue, the ground having been well prepared for them the previous season by digging holes, twenty feet square and four feet deep, in the dry gravel, and filling the holes with composted loam.

CHARLESBANK.

This useful and convenient breathing spot was, as usual, largely used by the West End populace. The grassy slopes of the central mounds are thrown open to women and to children under ten years of age, and on hot summer nights they are crowded, while the wide promenade and the long line of seats are filled with people who come to enjoy the cool refreshing breezes from the valley of the Charles river.

The men's gymnasium, as in the past, was well patronized. In addition to the free use of the apparatus, classes for young men and boys were conducted by a competent instructor. During the winter the gymnasium grounds were flooded, as usual, for skating purposes.

The women's gymnasium, under the management of the Massachusetts Emergency and Hygiene Association, had a very successful season, as the report of the committee of the association, which will be found elsewhere in this report, will show.

WOOD ISLAND PARK.

A number of trees were planted early in the year, and preparations were made in the fall for additional planting next spring. The trees planted a few years ago now begin to shade the turf slopes and to give a general appearance of comfort and restfulness, which is very inviting to visitors, who come in increasing numbers each season. With its fine



RIVERWAY — FOOT PATH.

harbor views, its cricket and baseball fields, its tennis courts, and its gymnasium, Wood Island Park is, deservedly, very popular.

CHARLESTOWN HEIGHTS.

Charlestown Heights required only the work of ordinary maintenance. A few trees were planted on its slopes in the spring.

MARINE PARK AND STRANDWAY.

Marine Park, as well as Castle Island, has maintained its reputation as a place of popular resort for the citizens of Boston. Here visitors can always depend upon a cool sea breeze, while splendid harbor views, passing shipping, bathing, and good restaurant accommodations lend additional interest.

On the Strandway the work of road construction was completed between Marine Park and Newman street. The planting of the loam spaces was also completed between these points. Work on the roadway and loam spaces of that part lying between Newman street and the railroad bridge is still in progress, with the prospect of completion in early summer.

A large quantity of filling has been received at what was formerly Burnham's wharf, thus enlarging very materially the playground area. This playground is much used in summer for ball games; in winter its surface is flooded for skating.

CHESTNUT HILL PARK.

The usual thinning out of the old woods and the young plantations of trees and shrubbery was done last winter. Considerable work is needed on the recently acquired land, for which an appropriation will be necessary.

Chestnut Hill Park has become very popular as a resort for

immigrants from Central Europe. On Sundays and holidays many thousands of this class use the park for an outing.

Facilities for tennis and baseball are provided; football is also played in its season.

FRANKLIN FIELD.

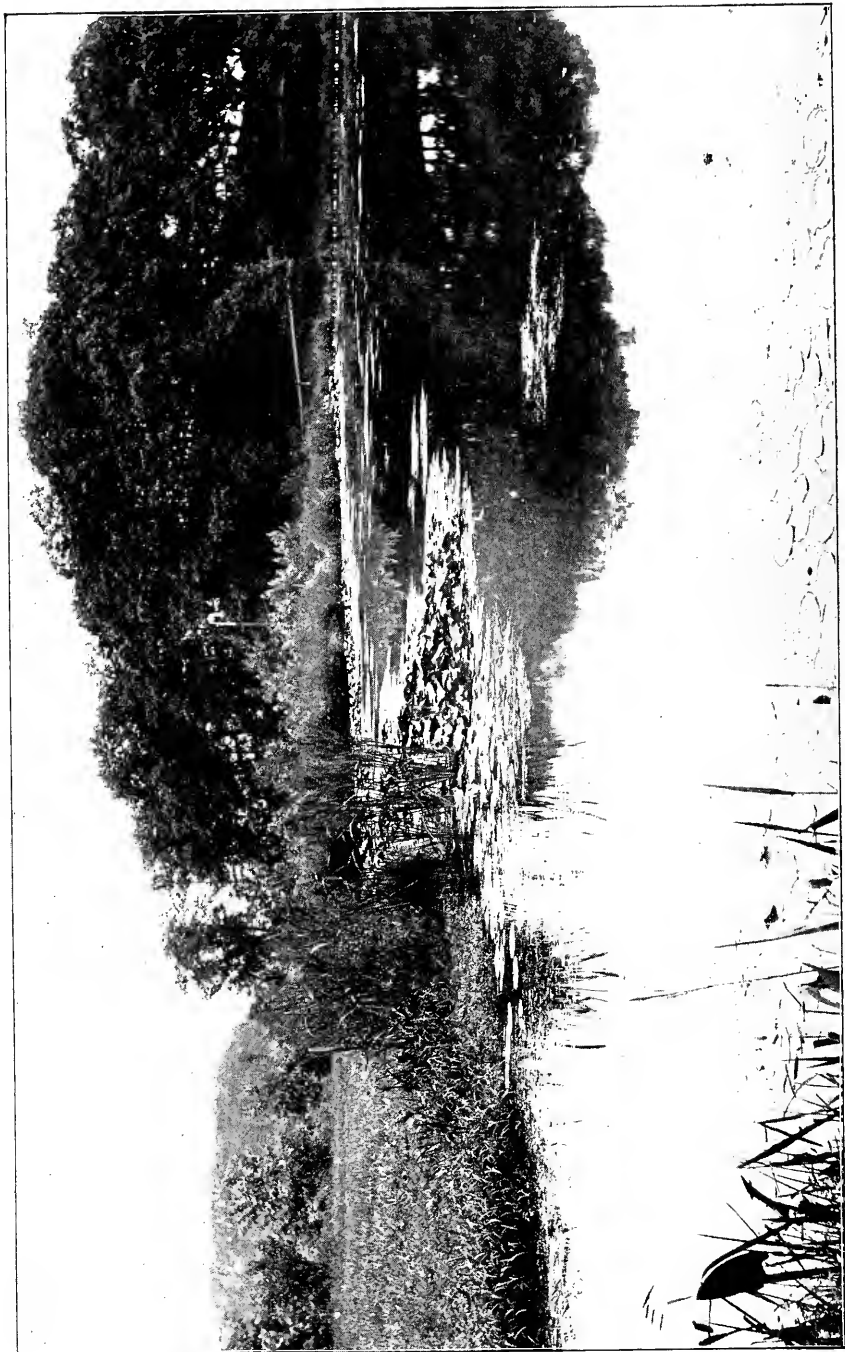
(77 Acres.)

During the past season Stratton street, between Lyons street and Talbot avenue, was constructed by the department, the construction being a solid macadam roadway with a covering of loam two inches in thickness. This improvement will serve the purpose of a speedway, so long as this is found desirable, and at the same time will afford a convenient connection for general driving between Talbot and Blue Hill avenues.

The use of Franklin Field continues to increase each year, and the time has now arrived when more of its area should be levelled off and brought into use. The forty acres of level ground are fairly swarming on Saturdays and holidays with cricketers, baseball players, and tennis players; while in winter thousands of skaters disport on its frozen surface.

About seven acres of the most uneven part of the field was ploughed last fall, to be levelled and seeded in the spring. This operation should be continued each season until the whole present available part of the field has been so treated. An appropriation for this purpose and for field extension is very desirable, as well as for a field house to contain locker, bath, and shelter accommodations.

A bowling green was constructed last season on the upland near Blue Hill avenue. It is expected that the sod will be tough enough for use about the first of July, and that it will prove a very popular addition to the sports of Franklin Field.



OLMSTED PARK — WARD'S POND.

CHRISTOPHER GIBSON PLAYGROUND.

Dorchester Avenue and Park Street.

(5.8 Acres.)

A portion of this playground is set apart for the use of children, for whom simple apparatus is furnished. A female teacher is in charge, and the results have been very satisfactory. Tennis courts are provided; baseball is also a popular feature of the playground. A part of the ground is flooded for skating in winter. No work, other than that of maintenance, has been done during the past season.

SAVIN HILL BEACH.

Springdale Street, Dorchester.

(18.6 Acres.)

The addition of a house for boys was made at this beach last season. The house is 15 feet by 25 feet, and contains 210 lockers. This addition somewhat relieved the pressure for accommodation. There is, however, great necessity for a larger number of bath closets, and a corresponding extension of beach improvement.

NEPONSET PLAYGROUND.

Neponset Avenue.

(18 Acres.)

This is a convenient and popular playground for baseball games. A playground for children was established here last season. Swings, teeter-boards, tilting-ladders, and other simple apparatus were installed, and the children's playground was placed in charge of a female teacher.

An appropriation is needed for the purchase of loam for levelling the inequalities of the marsh, as the levelled portion is now too small for the demand for baseball diamonds, and preparations for utilizing more of the marsh should now be made. A good area of ice for winter skating is provided at this playground.

MYSTIC PLAYGROUND.

Chelsea Street and Mystic River.

(2.3 Acres.)

No work was performed on this playground, except the usual care of the grounds, which contain a children's corner, with apparatus, under the care of a teacher. A baseball diamond is also maintained.

CHARLESTOWN PLAYGROUND.

Main and Alford Streets.

(14 Acres.)

This is a much used playground. It contains four or five ball grounds, and has facilities for flooding for skating. An open-air gymnasium is under construction, the fencing having been finished. Filling is still in progress on the outside of the graded area, on the edges of the playground bordering the water.

ROGERS PARK.

Lake and Foster Streets.

(6.9 Acres.)

An appropriation is required to place the brook, which runs across the lower end of Rogers Park, underground. This will permit of the enlargement of the levelled area for play, which is a work much needed. It would also be desirable to prepare the ground and to plant trees on the boundaries of the playground.

NORTH BRIGHTON PLAYGROUND.

Western Avenue and Harvard Street.

(14 Acres.)

An extension of the graded area of this playground, to meet the growing demand for ball diamonds, is desirable, and

an appropriation for the purchase of loam, to fill up the inequalities of the meadow lands, is required.

Trees should be planted on the boundaries of the playground without unnecessary delay. This will require an additional appropriation for the preparation of the ground.

BILLINGS FIELD.

La Grange Street, near Centre Street, West Roxbury.

(11 Acres.)

No work except that of maintenance was done at this playground during the past season. Another large sink has developed in the centre of the playground; this is caused by the shifting of the boggy subsoil, over which the original filling was placed. Tennis, baseball, and football are the favorite summer games; in winter the ball field is flooded for skating. Shelter and sanitary accommodations are needed.

ROSLINDALE PLAYGROUND.

South Walter and Robert Streets.

(3.7 Acres.)

About one hundred linear feet of bleachers were erected in this playground last spring. A shelter and sanitary building is needed. The playground is very much used, the summer games being tennis and baseball; in winter the field is flooded for skating.

COLUMBUS-AVENUE PLAYGROUND.

(5 Acres.)

During the past season a retaining wall of reinforced concrete was built, which enabled us to carry the grading out to the northeast line, adding thereby about one-half of an acre of useful space.

The work of the playground is carried on by a committee of the Civic League. This organization bears the expense of kindergarten and athletic instructors, and also of a teacher in gardening work. Provision is made for baseball games, while for boys and small children separate enclosures are provided, in which gymnastic apparatus, sand-boxes, etc., are installed for their use. The grounds are flooded for skating in the winter.

PRINCE-STREET PLAYGROUND.

Prince and North Bennet Streets.

(0.4 Acre.)

Teeter-boards, swings, tilting-ladders, etc., were set up last season, and a female teacher was placed in charge. This little playground is very much appreciated by the children of the densely populated district in which it is located.

FIRST-STREET PLAYGROUND.

Corner of M Street, South Boston.

(4.6 Acres.)

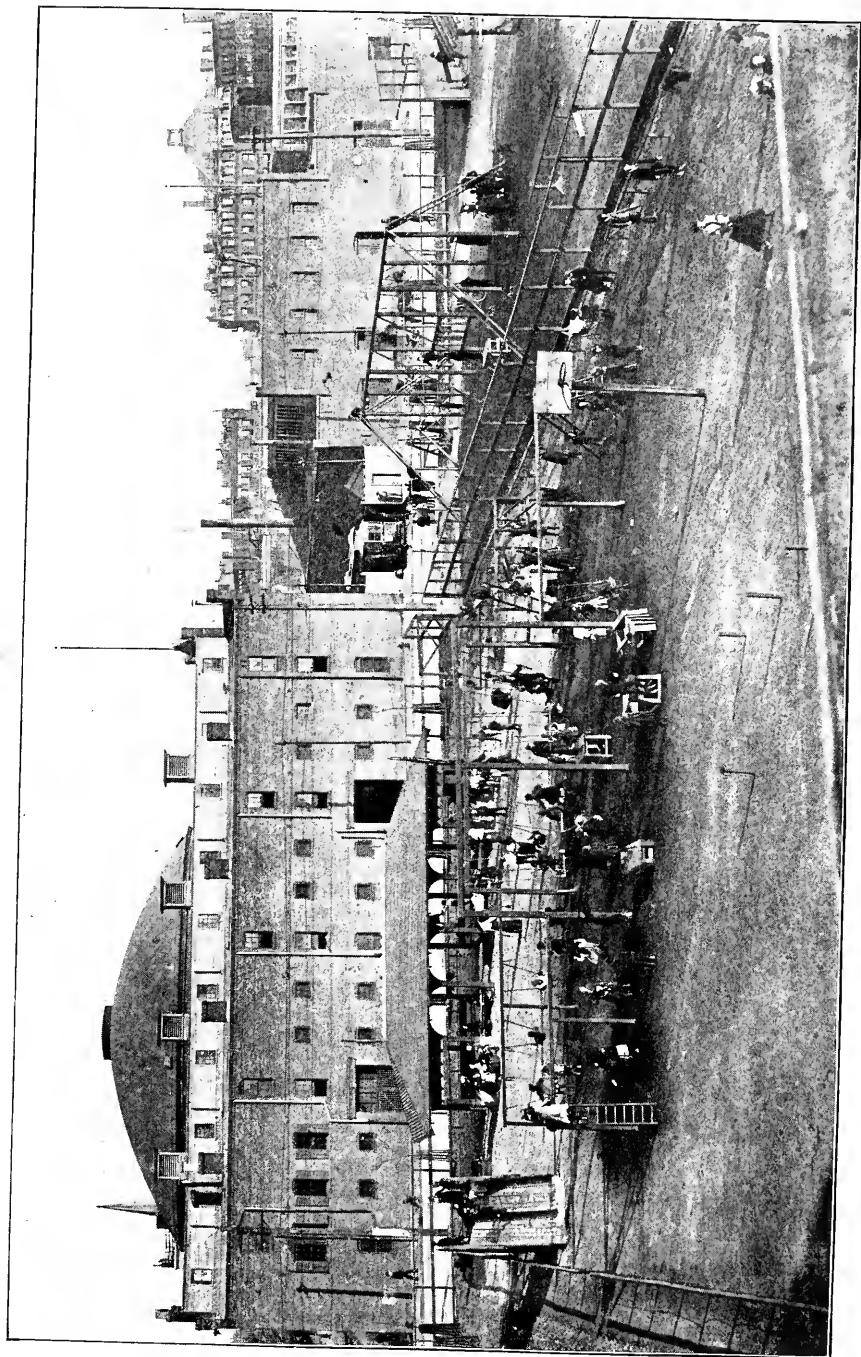
The frame work of the out-door gymnasium was set up during the past season; an appropriation is needed to complete its equipment. The grounds, as usual, were flooded in the winter for skating.

FELLOWS-STREET PLAYGROUND.

Fellows and Hunneman Streets.

(0.85 Acre.)

This playground required only the usual work of maintenance during the past season. It is equipped with simple gymnastic apparatus for children, a female teacher being in charge. A sanitary building is needed.



COLUMBUS AVENUE PLAYGROUND—CHILDREN'S CORNER.

COTTAGE-STREET PLAYGROUND.

Cottage Street, near Maverick Street, East Boston.

(3.85 Acres.)

Ailantus trees were planted on the border of this playground last spring. During the past winter the grounds were flooded for skating. The needs of the playground are sanitary accommodations and fencing.

FOREST HILLS AND MT. HOPE PLAYGROUND.

Between Washington and Florence Streets.

(9.6 Acres.)

During the past season the drainage of this playground was much improved by deepening the brook and running a series of tile drains through the lowest parts of the grounds. While the field is in fairly good condition and space can be found for at least three diamonds, an appropriation for grading would largely increase its usefulness. Sanitary accommodations, too, are needed.

MARCELLA-STREET PLAYGROUND.

Marcella and Ritchie Streets.

(4.5 Acres.)

No work of improvement has been done on this playground during the past season, except the cutting down of the high fence to five feet in height. The matter of the removal of the old "Home" building, and the erection of a building for shelter and sanitary accommodations, is now under consideration. The grounds were much used during the past season for baseball.

RANDOLPH-STREET PLAYGROUND.

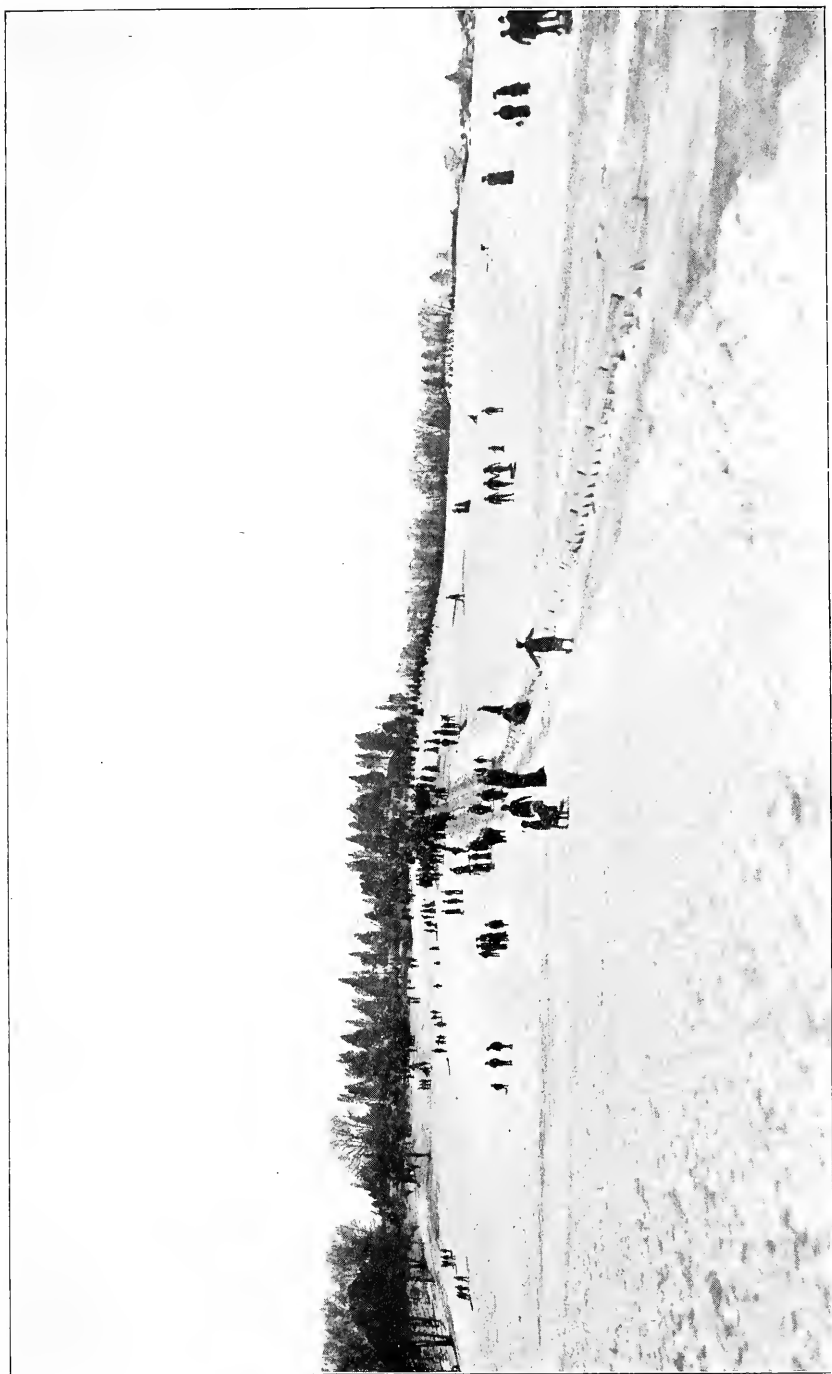
Albany and Randolph Streets.

(2.8 Acres.)

This newly acquired playground was graded and drained last spring, the grades being arranged to permit of flooding the grounds in winter for skating. Loam beds were made, around the borders of the playground, fifteen feet in width and three and one-half feet in depth. These were planted with white ash on the sides bordering the street, and with Lombardy poplars on the property lines. Enclosing fences of expanded metal were also built on the inner line of the spaces, low fences being constructed on the street lines. The loam spaces so enclosed can be used for children's gardens. A corner for children has been fenced off, in which simple gymnastic apparatus has been installed. The brick building on the Randolph street side is now being fitted up with sanitary accommodations. There is also ample room in the building for gymnastic work. This playground has been extremely popular with the ball players during the past summer; and in winter thousands enjoyed the skating provided for them.

PARKWAYS AND MAINTENANCE.

It is to be regretted that the appropriations made by the City Council are too small to maintain the department in proper condition. The roads of the parks and parkways are now worn in many places down to the foundations. Such surfacing as we have been able to give has been mainly done in the effort to make wheeling as smooth as possible under the circumstances. Conditions are such now, however, that extensive repairs are absolutely necessary. Our young and growing plantations, too, are suffering from inadequate cultivation; in fact, every line of our work shows a lack of the



FRANKLIN PARK—TOBOGGAN CHUTE.

care and attention we are unable to give, and the matter is earnestly presented for the serious consideration of your Board.

SPORTS.

The various sports provided for by the department were fully enjoyed. Sixteen distinct sheets of ice, with an area of about one hundred acres, in various parks and playgrounds, were kept in condition for skating during the winter. The toboggan chute on Schoolmaster Hill grows in popularity with each season; it is estimated that about 27,000 persons used it during the past winter. Baseball on about fifty well kept diamonds claimed the interest of many thousands. Tennis seemed to lead the list in public favor; about one hundred courts, in different localities, were needed to meet the demand of its devotees. About 32,000 golfers used the links during the year, a falling off from the previous season of about 6,500. The curlers enjoyed a long season and good ice. Facilities for football were provided in various playgrounds. Generally speaking, the interest in all sports seems to be on the increase.

Respectfully submitted,

J. A. PETTIGREW,

Superintendent.

REPORT OF THE COMMITTEE OF THE MASSACHU-
SETTS EMERGENCY AND HYGIENE ASSOCIATION
IN CHARGE OF THE WOMEN'S AND CHILDREN'S
DIVISION AT CHARLESBANK.

BOSTON, January 17, 1905.

To the Board of Park Commissioners:

GENTLEMEN, — This, the fourteenth year of our superintendence at Charlesbank, has afforded ample proof, if any were needed, of the far-sighted wisdom that established playgrounds in crowded city centres. For notwithstanding many minor inconveniences due to the building of the bridge, women and children still have been eager to go to their beautiful playground (and when once inside the enclosure have been as sheltered as if no pile driving were going on).

Though, owing to the kindness of Mr. Pettigrew, an entrance for the Superintendent and her assistant was effected through the shrubbery, access to the Lodge and consequently to the playground has been much impeded for the general public. In the daytime children did not mind going round through the Park, but for busy women, obliged to be punctual at the stores where they were employed, and for mothers, whose moments of leisure were limited, especially at night, the circuitous distance they had to traverse to reach the Lodge resulted in a somewhat less attendance than heretofore, the children's afternoon and the women's evening classes being noticeably smaller. But those who did come attended quite regularly, and were visibly improved in health. Miss Rosamond Lang, Miss Marjorie Phelps, and Miss Marion Cutler kindly volunteered as pianists for the classes, and winter and summer season alike had its delights for those who came.

It is not alone the physical benefits that promote the value of Charlesbank, but the moral atmosphere of justice and kindness which surrounds the work and discipline of Miss Harriet Cutler, the Superintendent, and her assistant, Miss Margaret S. Horst; for the children and grown-up girls who go to the place year after year are distinctly benefited by its influences.

Since the opening of this division of Charlesbank, there has been a marked change in the nationalities of its frequenters. Fourteen years ago, the Irish and colored people preponderated. Now the Jews lead in numbers, then come the Italians, the Irish, and, last of all, the colored people. The evening classes, when Miss Ida H. Crowley was the regular pianist, were largely composed of young American women. In both the afternoon and evening work much indoor gymnastic exercise is obtained through games that are greatly enjoyed, which, when properly directed, are as conducive to health as if exclusive attention were given to free developing movements, or to work with gymnastic appliances.

The numbers who pass through the Lodge out-doors or remain awhile inside of it varied from 1,500 to 2,000 a day, with occasional days when there were not more than 1,000 present. Attendance in the gymnasium proper ranged from 600 to 700 a day.

Times have changed since we first were asked to take charge of this division of Charlesbank as a playground, gymnasium, and Lodge. Then it all was an experiment and a novelty. But its success helped to create the demand for playgrounds in different parts of the city, with their gymnasiums, more or less well equipped, and Charlesbank has become part of a system instead of being an unique experiment.

It is pleasant to recall that seventeen years ago city school yards were first opened as playgrounds during the summer vacation through the initiative of the Massachusetts Emergency and Hygiene Association, and to remember that each

summer since that time the Association has supported and cared for, as playgrounds, a certain number of school yards which have been placed at its disposal by the courtesy of the city. It is pleasant, also, to note that this idea has been adopted by others.

As it is as helpful as ever to connect private with public work, your committee look forward to another year, when the bridge will be finished. Then will mothers and children each day throughout the year, and all day in summer, find at Charlesbank rest for weary nerves, health and muscular development for weak bodily conditions, good morals and manners for low standards of what is right, and fun for the inactivity of dullness. Playground ethics infused through gymnastic training help to make good citizens out of boys and girls.

Respectfully submitted,

KATE GANNETT WELLS,
ANNA PHILLIPS WILLIAMS,
MABEL DELANO LORD,

For the Committee.

General Exhibit of Appropriations, 1904-1905.

OBJECT OF APPROPRIATION.	Balances, January 30, 1904.	Appropriations and transfers, 1904-1905.	Total Credits.	Expenditures, 1904-1905.	Balances, January 31, 1905.
Park Department, maintenance.....	*\$217,649 67	\$217,649 67	\$217,649 67	\$273 79
Public Parks, land and construction.....	\$8,082 04	8,082 04	7,808 25	15 64
Chestnut Hill Park.....	86,446 61	36,300 00	122,746 61	122,730 97	2,496 80
Playgrounds.....	2,514 30	2,514 30	17 50	634 92
Speedway, Franklin Field.....	25,000 00	25,000 00	24,365 08	18 33
Columbia Road.....	52,760 73	52,760 73	† 52,760 73	30,000 00
Strandway.....	133,430 64	68,700 00	197,130 64	197,112 31	601 55
Playground, Ward 22.....	30,000 00	30,000 00	3,000 00
Wood Island Park, shelter and sanitary building.....	3,711 53	3,711 53	3,109 98	1,771 32
Castle Island, sanitary building.....	3,000 00	3,000 00	3,626 86
Dorchester Park, open-air gymnasium.....	1,771 32	1,771 32	1,771 32	622 31
Charlestown Playground, gymnastic apparatus, etc.....	7,133 22	7,133 22	3,606 36	3,034 23
Mystic Playground, gymnastic apparatus.....	1,002 89	1,002 89	380 58	221 81
Columbus-avenue Playground, sanitary building.....	9,190 25	9,190 25	6,156 02
Ashmont Playground, grading, etc.....	1,560 19	1,560 19	1,338 38
Neponset Playground, shelter and sanitary building.....	414 30	414 30	414 30
Playground, Wards 7 and 9.....	297,909 15	297,909 15	60,613 48	237,295 67
Charlesbank Extension.....	48 00	48 00	48 00
	\$611,166 44	\$370,458 40	\$981,624 84	\$609,882 93	\$281,741 91

* Collections on account of labor credited to appropriation, \$5,149.67.
 † Expended by Street Department and charged to Highway loan (Issued as Public Park loan) under Stat. 1897, Chap. 319.

Expenditures on Account of Land and Construction,

	Roads and Walks.	Drainage.	Grading.	Loam.	General Work.
Commonwealth Avenue.....					
The Fens.....					
Olmsted Park.....					
Arnold Arboretum and Bussey Park					
Franklin Park.....	\$85 85		\$864 51		
Columbia Road.....	33,289 51	\$19,471 22			
Strandway.....	4,280 14		796 98	\$616 33	\$13 50
Marine Park					156 50
Wood Island Park.....	52 81		255 92		3 25
Charlesbank Extension					48 00
Charlestown Playground.....		3 00	1,135 07		
Dorchester Park.....	11 00		340 89	20 72	
Franklin Field	24,365 08				
Chestnut Hill Park.....					
North Brighton Playground.....					
Neponset Playground.....	56 27	13 25	26 96		
First-street Playground.....					
Prince-street Playground					
Mystic Playground			92 00		
Columbus-avenue Playground... ..			115 62		
Ashmont Playground.....			1,109 02		
Rogers Park					
Randolph-street Playground....	152 62	561 31	5,317 24	2,842 15	
Playgrounds					
Totals	\$62,293 28	\$20,048 78	\$10,054 21	\$3,479 20	\$221 25

* This amount was expended by Street Department, being proportion

from February 1, 1904, to January 31, 1905.

Plantations.	Water Supply.	Buildings.	Gymnasium Apparatus and Fences.	Filling.	Walls.	Land and Expenses.	Totals.
		\$176 04					\$176 04
		1,918 65					1,918 65
\$20 25							20 25
		1,801 06					1,801 06
21 75		2,023 29					2,995 40
							*52,760 73
2,830 02			\$14 00			\$188,561 34	197,112 31
							156 50
2,379 71	\$6 85	411 44					3,109 98
							48 00
		11 00	2,457 29				3,606 36
			1,398 71			210 00	1,981 32
							24,365 08
						122,730 97	122,730 97
16 50							16 50
			310 05	\$7 77			414 30
			108 25				108 25
			163 32				163 32
			288 58				380 58
			29 13		\$6,011 27		6,156 02
49 13			180 23				1,338 38
				242 28			242 28
311 21	111 16	2,262 84	5,429 95			43,625 00	60,613 48
						17 50	17 50
\$5,628 57	\$118 01	\$8,604 32	\$10,379 51	\$250 05	\$6,011 27	\$355,144 81	\$482,233 26

of highway loan, issued as Public Park loan, under Chap. 319, Acts of 1897.

Expenditures on Account of Maintenance from

	Roads.	Walks.	Grounds.	Buildings.
Commonwealth Avenue	\$12,440 21	\$1,558 30	\$3,970 16	\$311 72
The Fens	9,550 68	1,045 79	4,335 03	950 51
Riverway	5,862 59	553 65	4,208 85	1,622 99
Olmsted Park	5,313 93	770 64	9,751 71	2,335 74
Arborway	4,300 75	307 29	2,703 70
Arnold Arboretum	3,748 45	569 14	204 85	632 16
West Roxbury Parkway	6 75	413 64	18 75
Franklin Park	10,649 53	2,066 71	24,952 17	10,619 92
Columbia Road	5,524 92	333 82	2,222 29
Strandway	1,217 45	12 00	2,632 54
Marine Park	882 24	910 95	2,940 47	931 78
Wood Island Park	14 67	249 14	1,709 38	655 91
Charlesbank	84 34	3,615 22	308 30
Trinity Triangle	16 75	4 00
Charlestown Heights	189 36	1,237 32	444 26
Charlestown Playground	115 43	711 25
Dorchester Park	27 97	1,023 88
Franklin Field	1,321 40	589 84
North End Beach	5 50	44 83
Copp's Hill Terraces	470 91
Chestnut Hill Park	1,347 14	213 19	2,888 79
North Brighton Playground	4 67	285 56
Neponset Playground	16 00	520 88	460 52
Billings Field	7 50	572 46
First-street Playground	61 43	758 05	1,421 46
Prince-street Playground	619 12
Mystic Playground	31 00	271 80
Fellows-street Playground	223 09
Christopher Gibson Playground	16 00	385 80	592 85
Columbus-avenue Playground	59 01	1,056 37
Ashmont Playground	71 54
Savin Hill Playground	166 00	1,471 91
Roslindale Playground	1 00	584 18
Forest Hills Playground	2 75	330 73
Rogers Park	1,814 05
Oak Square	11 91
Cottage-street Playground, Ward 2	542 14
Randolph-street Playground	20 50	65 96	455 62
Marcella-street Playground	14 31	1,280 92	33 25
Office Expense
Miscellaneous
	\$60,859 31	\$9,264 14	\$80,922 95	\$23,856 89

February 1, 1904, to January 31, 1905.

Drainage.	General Work.	Sheep and Water Fowl.	Skating.	Men's Gymnasium.	Women's and Children's Gymnasium.	Office Expense.	Totals.
	\$390 38						\$18,670 77
	430 75	\$119 49					16,432 25
	523 78						12,771 26
	1,031 62	752 65	\$1,236 64				21,192 93
	533 00						7,844 74
\$204 74	576 00						5,935 34
							439 14
	2,472 26	1,332 39	655 27				52,748 25
	4 00						8,085 03
			553 76				4,415 75
	124 14						5,789 58
	120 92		715 44	\$3,103 03			6,568 49
	480 16		129 32	3,209 24	\$1,737 17		9,563 75
							20 75
							1,870 94
1 50			665 95	39 75			1,533 88
3 00			46 75	8 37			1,109 97
	369 58	1,710 92	1,526 12				5,517 86
							50 33
							470 91
							4,449 12
			708 15				998 38
			203 34		150 51		1,351 25
			488 91				1,068 87
			310 32	613 71			3,164 97
					440 55		1,059 67
	3 50				320 36		626 66
					240 23		463 32
			236 83		212 03		1,443 51
	15 37		348 62		62 68		1,542 05
							71 54
							1,637 91
			425 10				1,010 28
1,286 34							1,619 82
							1,814 05
							11 91
			66 75				608 89
	356 83		182 12	133 15			1,214 18
				337 10			1,665 58
						\$10,095 69	10,095 69
	700 10						700 10
\$1,495 58	\$8,132 39	\$3,915 45	\$8,499 39	\$7,444 35	\$3,163 52	\$10,095 69	\$217,649 67

INCOME.

RECEIPTS.

Received from rents, sale of buildings, wool, sheep, grass, wood, etc.	\$2,484 45	
Received for labor	6,975 85	
		<u>\$9,460 30</u>

PAYMENTS.

Income carried to General City Income	\$2,484 45	
Appropriation Park Department	5,149 67	
Balance on hand, January 31, 1905	1,826 18	
		<u>\$9,460 30</u>

**Park Betterments Collected by City Collector,
to February 1, 1905.**

	Assessm'ts committed to Collector.	Abated.	Net Assess- ments.	Collected.	Outstand- ing Feb. 1, 1905.
Public Park, Back Bay....	\$434,600 00	\$144,195 73	\$290,404 27	\$290,404 27	
Marine Park.....	23,543 00	12,616 80	10,926 20	10,926 20	
Franklin Park.....	135,029 00	122,000 66	13,028 34	13,028 34	
Parkway, Old Harbor.....	60,789 00	50,426 00	10,363 00	8,256 00	\$2,107 00
“ Muddy River....	108,972 00	82,927 25	26,044 75	22,863 75	3,181 00
“ West Roxbury..	154,107 00	113,658 00	40,449 00	31,763 00	8,686 00
“ Dorchester	9,713 00	3,055 54	6,657 46	5,927 74	729 72
	<u>\$926,753 00</u>	<u>\$528,879 98</u>	<u>\$397,873 02</u>	<u>\$383,169 30</u>	<u>\$14,703 72</u>

Public Park and Playground Debt.

Liabilities.

Total loans outstanding, January 31, 1905 \$15,983,910 98

Resources.

Sinking-Fund, January 31, 1905 5,194,240 65

Net Debt, January 31, 1905 \$10,789,670 33

Park Statistics to January 31, 1905.

PARKS.	Year of Purchase or Taking.	COST TO DATE.			Area.	Length of Drive-ways.	Length of Walks.	Length of Rides.	Area of Ponds and Rivers.
		Land.	Construction.	Total.					
MAIN PARK SYSTEM:									
Commonwealth avenue.....	1894	\$121,607 93	30 acres	2.8 miles	4.13 miles	1.1 miles	28 acres	
Fens	1877-1879	\$596,254 49	2,746,126 81	115 "	4 "	6.7 "	1.2 "	8 "	
† Riverway.....	1890	457,457 53	674,109 35	1,131,566 88	1.4 "	2.8 "	1.6 "	77 "	
† Olmsted Park.....	1890 and 1892	1,081,947 60	734,244 59	1,816,192 19	2.7 "	5.8 "	1.4 "		
Arborway.....	1892	245,564 25	381,374 16	626,938 41	3.4 "	1.25 "		
Arnold Arboretum.....	1892 and 1895	79,354 15	388,372 84	467,726 99	3.4 "	5.65 "	0.6 acre	
West Roxbury Parkway.....	1894	135,265 29	22,123 21	157,388 50	2.8 "	4.3 "	2.4 "		
Franklin Park.....	1833 and 1884	1,551,196 63	2,428,372 32	3,979,568 95	7.3 "	14.5 "	1 mile	7.4 acres	
MARINE PARK SYSTEM:									
* Columbia road.....	1899	447,328 63	536,650 70	984,179 33					
Dorchesterway.....	1892	65,735 54	65,187 12	128,922 66		4.2 "	4.5 "		
* Strandway.....	{ 1890, 1892, 1897, and 1901 }	755,007 51	385,446 24	1,140,455 75					
Marine Park.....	1883	232,972 57	1,054,973 45	1,287,946 02		0.5 mile	1.3 "	4.4 "	
<i>Carried forward</i>	\$5,646,304 19	\$8,942,386 23	\$14,888,640 42	1,654.9 acres	50.93 miles	8.7 miles	125.4 acres	

Park Statistics to January 31, 1905. — Continued.

PARKS.	Year of Purchase or Taking.	COST TO DATE.		Area.	Length of Drive-ways.	Length of Walks.	Length of Rides.	Area of Ponds and Rivers.
		Land.	Construction.					
<i>Brought forward</i>	\$5,646,804 19	\$8,942,386 23	\$14,588,640 42	32.5 miles	50.98 miles	8.7 miles	125.4 acres
† Castle Island.....	1890	32,685 55	32,685 55				
WOOD ISLAND PARK.....	1882 and 1891	132,800 00	258,832 55	391,632 55	0.3 mile	2.1 "		
CHARLESBANK.....	1883	373,916 99	313,448 13	687,365 12	1.5 "		
TRINITY TRIANGLE.....	1885	30,000 00	30,000 00				
CHARLESTOWN HEIGHTS.....	1891	50,538 02	103,107 56	153,645 58	0.4 mile		
CHARLESTOWN PLAYGROUND,	1891	172,923 31	19,365 15	192,288 46	0.6 "		
DORCHESTER PARK.....	1891 and 1903	64,165 37	13,561 18	77,726 55				
FRANKLIN FIELD.....	1892	157,341 22	118,061 98	275,403 20	0.35 mile	0.35 "		
NORTH END BEACH.....	1893	328,364 44	169,262 27	497,626 71				
COPP'S HILL TERRACES.....	1893	90,858 19	32,001 46	122,859 65	0.11 "		
** CHESTNUT HILL PARK.....	1895, 1899 } and 1902 }	210,239 06	6,940 60	217,179 66	1.4 miles			
NORTH BRIGHTON PLAY- GROUND.....	1894	22,107 12	10,601 77	32,708 89				
* NEFONSET PLAYGROUND.....	1896	24,804 39	16,189 35	40,993 74				
BILLINGS FIELD.....	1896	47,068 98	16,758 00	63,826 98				
§ FIRST-STREET PLAYGROUND	1897	26,340 40	26,340 40	0.4 "		
<i>Carried forward</i>	\$7,381,431 28	\$10,073,492 18	\$17,454,923 46	34.55 miles	56.39 miles	8.7 miles	125.4 acres

Park Statistics to January 31, 1905. — Continued.

PARKS.	Year of Purchase or Taking.	COST TO DATE.			Area.	Length of Drive-ways.	Length of Walks.	Length of Rides.	Area of Ponds and Rivers.
		Land.	Construction.	Total.					
<i>Brought forward</i>	\$7,351,431 28	\$10,079,492 18	\$17,430,923 46	2,221.72 acres	34.55 miles	56.89 miles	8.7 miles	125.4 acres
= FREPORT-STREET TRI-ANGLE.....	1897	4,000 00	4,000 00	0.14 acre
PRINCE-STREET PLAY-GROUND.....	{ 1897, 1899 } { and 1901 }	180,474 70	434 07	180,908 77	0.4 "
MYSTIC PLAYGROUND.....	1897	50,125 00	3,595 68	53,720 68	2.3 acres
FELLOWS-STREET PLAY-GROUND.....	1897	14,503 72	5,014 87	19,518 59	0.85 acre
CHRISTOPHER GIBSON PLAY-GROUND.....	1897	37,709 58	10,042 75	47,752 33	5.8 acres
COLUMBUS-AVENUE PLAY-GROUND.....	{ 1899, 1900 } { 1901, 1902 }	327,563 84	13,052 23	340,556 07	5 "
ASHMONT PLAYGROUND.....	1899	43,990 09	3,778 19	47,768 28	2.2 "
SAVIN HILL PLAYGROUND....	1899	27,147 30	6,129 36	33,276 66	6.9 acres land 11.7 " " flats
ROSLINDALE PLAYGROUND....	1899	24,825 11	5,992 71	30,817 82	3.7 "
FOREST HILLS PLAYGROUND,	1902	25,166 75	25,166 75	9.6 "
COTTAGE-ST. PLAYGROUND,	1902	47,002 32	2,997 68	50,000 00	3.85 acres
WARD 2.....	43,625 00	19,079 83	62,704 33	2.8 "
* RANDOLPH-ST. PLAYGROUND,	1903
<i>Carried forward</i>	\$8,177,504 69	\$10,149,609 05	\$18,327,113 74	2,276.56 acres	34.55 miles	56.89 miles	8.7 miles	125.4 acres

Park Statistics to January 31, 1905. — Concluded.

PARKS.	Year of Purchase or Taking.	COST TO DATE.			Area.	Length of Drive-ways.	Length of Walks.	Length of Rides.	Area of Fords and Rivers.
		Labd.	Construction.	Total.					
<i>Brought forward</i>		\$8,177,504 69	\$10,149,609 05	\$18,327,113 74	2,276.96 acres	34.55 miles	56.39 miles	8.7 miles	125.4 acres
MARCELLA-ST. PLAYGROUND,	1903	655 28	655 28	4.5 "				
2 ROGERS PARK.....	1899	30,000 00	3,688 38	33,688 38	6.9 "				
3 BERNERS SQUARE.....	1901	294 70	294 70	1.2 "				
4 OAK SQUARE.....	1902	682 84	682 84	0.22 acre				
PLAYGROUNDS, INVESTIGATING SITES.....		243 29	243 29					
General account.....		\$8,207,747 98	\$10,154,929 75	\$18,362,677 73					
Park Nursery.....		73,987 50	73,987 50					
Betterment Expenses.....		29,947 07	29,947 07					
		13,356 10	13,356 10					
		\$8,207,747 98	\$10,272,220 42	\$18,479,968 40	2,289.78 acres	34.55 miles	56.39 miles	8.7 miles	125.4 acres

* The lands in these parks and playgrounds have not been paid for in full.

† An additional area of 16½ acres is within the limits of the town of Brookline.

‡ An additional area of 18 acres is within the limits of the town of Brookline.

** 49 acres transferred from Water Department; an additional area of 169.65 acres, including water area of 122.70 acres, is under the control of the Metropolitan Water and Sewerage Board.

§ Transferred from, and \$454.15 expended by, the Public Grounds Department.

¶ Custody given to city by Act of Congress.

== Transferred to Street Department.

1 25,470 square feet transferred from, and \$2,000 expended by, the Public Grounds Department.

2 Transferred from, and \$30,000 expended for land by, the Public Grounds Department.

3 Originally dedicated for a square by David Sears and released to the city by his heirs.

4 Transferred from School Department.

Of the above total lengths of driveways, walks, and rides, there have been completed to date, respectively, 31.5 miles, 49.5 miles, and 6.3 miles.



