

BOSTON PUBLIC LIBRARY



3 9999 03290 937 4

NOV ANGLICA

No 4353.50

27-31.



GIVEN BY

Board of Commissioners of Dept.
of Parks of Dept.

City of Boston

DEPARTMENT OF PARKS

TWENTY-NINTH ANNUAL REPORT

OF THE

BOARD OF COMMISSIONERS

FOR THE

YEAR ENDING JANUARY 31, 1904



PRINTED FOR THE DEPARTMENT

1904



City of Boston

DEPARTMENT OF PARKS

TWENTY-NINTH ANNUAL REPORT

OF THE

BOARD OF COMMISSIONERS

FOR THE

YEAR ENDING JANUARY 31, 1904

WITH THE COMPLIMENTS OF THE

BOARD OF COMMISSIONERS OF THE
DEPARTMENT OF PARKS.

PRINTED FOR THE DEPARTMENT

1904



City of Boston

DEPARTMENT OF PARKS

TWENTY-NINTH ANNUAL REPORT

OF THE

BOARD OF COMMISSIONERS

FOR THE

YEAR ENDING JANUARY 31, 1904



e

PRINTED FOR THE DEPARTMENT

1904

Printed by the Government
London, E.C. 4



CONTENTS.

	Page
Commissioners' Report	5
Superintendent's Report	9
Report of Committee of Massachusetts Emergency and Hygiene Association in Charge of the Women's and Children's Divi- sion at Charlesbank	23
General Exhibit of Appropriations	25
Expenditures on Account of Land and Construction from Feb- ruary 1, 1903, to January 30, 1904	26
Expenditures on Account of Maintenance from February 1, 1903, to January 30, 1904	28
Income	30
Park Betterments Collected by City Collector	30
Public Park and Playground Debt	30
Park Statistics	31



DEPARTMENT OF PARKS.

COMMISSIONERS' REPORT.

HON. PATRICK A. COLLINS,

Mayor of the City of Boston :

SIR, — The Board has the honor herewith to submit this report for the year ending January 31, 1904.

The only additions to our parks and playgrounds made during the year are as follows: We have acquired a small addition to Dorchester Park for the purpose of obtaining an entrance to the park from Richmond street. On July 20, 1903, the Board took 4.5 acres of city property on Marcella street, containing some buildings formerly occupied by the Children's Institutions Department, for a playground. The buildings, which are of no use to this department, will have to be removed before the playground can be constructed. On August 7, 1903, 2.8 acres of land on Albany and Randolph streets were taken by the Board for a playground. The buildings are now being removed preparatory to opening the playground in the spring.

A tract of land on Burnham street, between Massachusetts avenue and Southampton street, Ward 17, was leased from the owners for playground purposes, without expense to this department except the small sum necessary to maintain the grounds in a condition suitable for play. A small addition to our appropriation for maintenance, which would permit of the payment of rent for lands for this purpose, would enable the Board to supply temporarily the need for playgrounds in other localities. We have reluctantly parted with 3,208 feet of the Prince-street playground for the building

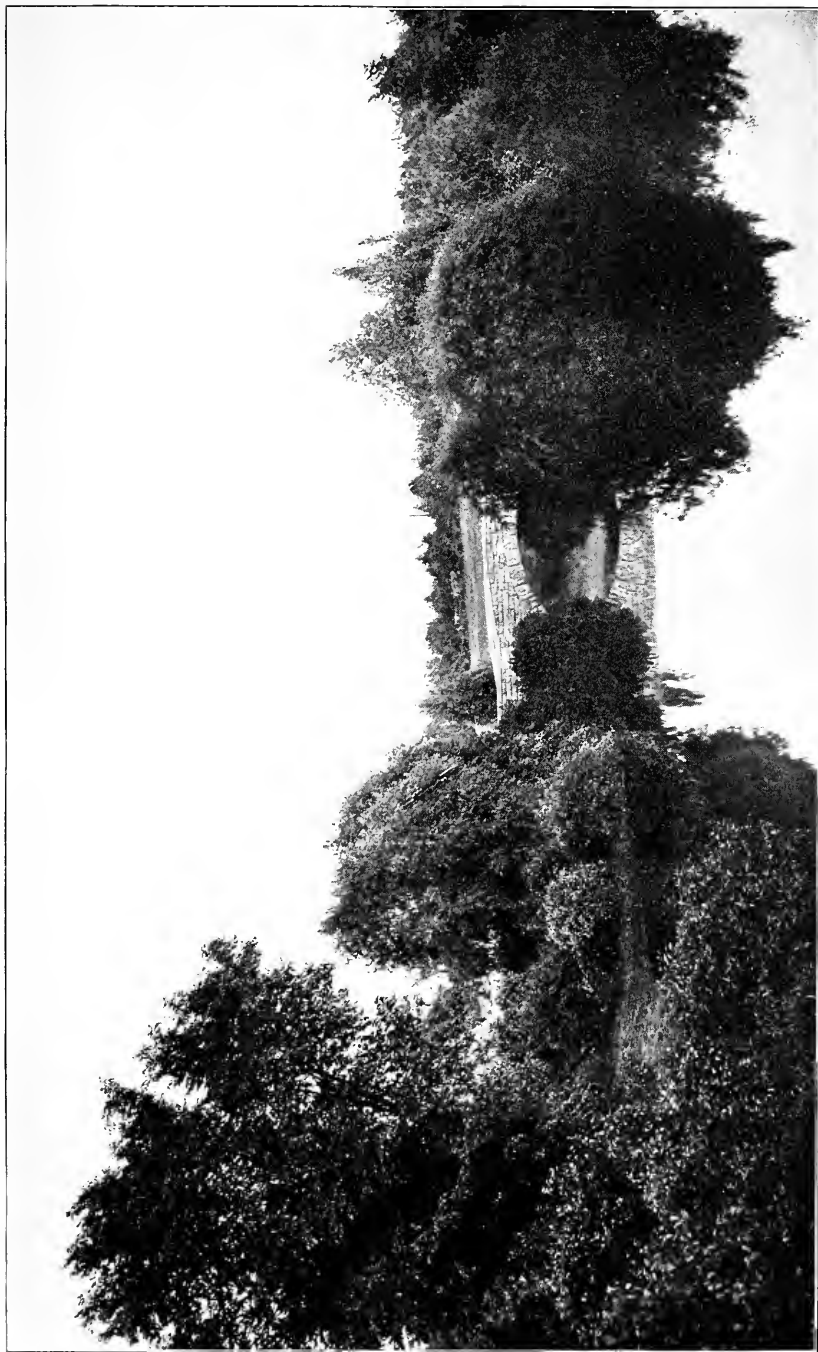
of a bathhouse by the Bath Department. We sincerely trust that we shall be given the means to make good this loss in area.

The question of providing sufficient playground areas for the use of the people of Boston has been carefully considered by the Board, which feels that it would not fulfil its duty to the community now living in the city, and to the larger community which will sooner or later occupy it, if it did not again call your attention to the importance of this subject.

Boston is abundantly well supplied with rural parks and parkways, but these cannot be generally used as playgrounds without interfering with the objects for which they were specially created. The city lacks, however, public grounds which can be used by young men for purposes of sport and recreation, and by young children for the pastimes suited to their age. Some progress has been made in recent years in supplying this want, but Boston, which has set an example to the cities of the world in municipal improvement, is still behind other cities in playground equipment. The large use and great popularity of the recently acquired Columbus-avenue playground are additional evidence of the need of such open spaces in other congested districts, and it would seem the part of wisdom to acquire land in the still thinly populated parts of the city before the increase of population makes the price of such land prohibitive.

The proposed improvements in connection with the building of the Charles-river dam will increase the area available for public use at the foot of Beacon Hill, but the dense population of the North End demands a more ample provision for its children than now exists. The Board believes that the city can wisely expend a large sum of money in acquiring land for such a playground. Such land will always be valuable even if the time should ever come when it is not needed for purposes of public recreation.

A playground somewhere on the line of or adjacent to Huntington avenue seems very essential for the rapidly increasing population of that part of the city. Jamaica Plain is entirely unprovided with playground space, and it is large enough to demand the establishment of two playgrounds.



FRANKLIN PARK — UPPER END OF SCARBORO' POND.

Other playgrounds are needed in other districts. Small neighborhood playgrounds, too, are required all through the city, that small children may obtain fresh air and exercise out of the streets. Such playgrounds as these need not have an area of more than a few hundred feet if they are conveniently located.

Our Board cannot but repeat its hope that our public-spirited citizens will bear in mind that there is no gift to the city which is of greater public use and enjoyment, and brings more lasting honor to the name of the donor, than a public playground.

The Board is gratified with the progress that is being made by the Street Department in the construction of that part of Columbia road which borders the Strandway, the completion of which will bring to a conclusion this important work, which was begun in 1897, and will permit of the opening of the road throughout its whole length, from Franklin Park to Marine Park, during the present season. The Board has completed the construction of its part of the road over what was formerly Burnham's wharf. It remains to plant the several acres reserved for plantations. This will be done by this department under an arrangement with the Street Department, by which the expense of this work will be paid by the latter as part of the cost of construction under the statute of 1897.

The action of the Legislature in adopting the recommendations of the Commission on the Charles-river dam, and the creation of a new commission, by chapter 465 of the Acts of last year, to carry out these recommendations, puts upon the Board the duty of constructing an embankment on the Boston side of Charles river, from Cambridge bridge to the Back Bay Fens, whenever the Board, with the approval of the Mayor, considers it advisable. We are now studying plans for such an embankment. The act also calls for the building of channels to divert the waters of Stony brook from the Fens to the river and the doing of the necessary dredging in the Fens. This work is now being done by the Street Department. When it is completed the Fens will at last be put into a satisfactory sanitary condition.

The accompanying report of our Superintendent gives full details of the work of the department during the year.

Respectfully submitted,

CHARLES E. STRATTON,
LABAN PRATT,
JAMES M. PRENDERGAST,
Commissioners.

BOSTON, January 30, 1904.

SUPERINTENDENT'S REPORT.

TO CHARLES E. STRATTON, LABAN PRATT, AND JAMES
M. PRENDERGAST, *Commissioners* :

GENTLEMEN,—I herewith submit a report of the work performed under the direction of your Board during the year 1903.

FRANKLIN PARK.

The systematic thinning out of diseased and overcrowding trees in the old woodlands, which has been carried on for several years past generally throughout the park system, is bearing abundant fruit in the improvement in the general effect of the woodlands, as well as in the more healthy appearance of the trees individually. The cutting having been done gradually, the effect of mass has not been impaired, and the letting in of light and air has encouraged the growth of side branches.

The important work of pruning, which is tedious and expensive, has also been prosecuted as thoroughly as means have allowed. By the end of next year it is expected that the old woodlands in the main part of the system will have had their initial pruning completed, and that, thereafter, they will require only ordinary maintenance care.

While the West Roxbury Parkway woods have been thinned regularly, no pruning has been done except on the group of fine oaks near Weld street.

Dead branches, or stumps of branches, carry decay into the heart of the trees and do irreparable injury; hence the necessity of provision for carrying on this essential work of pruning.

The young plantations generally are looking well. Thinning out has been carefully done, but more rapid growth would have resulted had we had an appropriation large enough to give more cultivation. With each year the area of planted ground has increased, with no material increase of funds provided for its maintenance, and, consequently, we cannot obtain the best possible results in growth. Considerable plantings of oaks were made in the young plantations, and also in Long Crouch Woods. About seven acres of the meadow (Nazingdale) were plowed, levelled, and seeded with red fescue (*Festuca rubra*). It would be well to continue this work, as circumstances may permit, until the levelling of the whole is completed.

By the erection of a brick building at the administration yard, much needed room has been acquired for the growth of our repair department and for storage purposes. Space has been left in the building for needed public sanitary accommodation, which it is hoped will be provided the coming season.

An extension to the winter house for wild ducks has been made, to accommodate the flock of swans purchased last summer. The collection of wild fowl has proved a great attraction to visitors, not only while in their summer home in Scarboro' pond, but in their winter quarters, where a stream of water runs through their yards, and where they can be studied at close range.

A sanitary building for men and women was erected on Schoolmaster hill during the past summer. The building is of seam-faced Rockport granite, with slate roof, tiled floors, and marble and brass fixtures. Two other sanitary buildings of similar design have been built, one in the Arboretum and the other in the Fens.

ARNOLD ARBORETUM.

A decided improvement has been effected in the lower road by the removal of the remainder of the cobble-stone gutters and the extension of the macadam to the turf line, thus affording more room to the driveway. No other work, outside of the regular maintenance work, has been done here.



ARNOLD ARBORETUM — MOUNTAIN LAUREL.

OLMSTED PARK AND RIVERWAY.

The extension of the loam bed to a point below the surface of the waters of Leverett pond and the Riverway was completed last spring in time for planting. Ferns, rushes, sedges, loosestrifes, marsh marigolds, mallows, iris, and various aquatic and semi-aquatic plants were planted along the margins, tending to greatly soften and beautify the shore line of the waterway.

A flock of swans and another of wild geese were purchased last season for Jamaica pond. These, with the semi-wild mallards and black ducks, proved a very pleasing attraction for many persons. It is to be regretted that there are no suitable nesting places for swans and geese in Jamaica pond. We endeavored to provide these by anchoring brush-covered rafts, but without success. Mallard and black ducks, however, found nesting places on the rafts as well as on the islands of the Riverway and Fens.

Jamaica pond was kept in condition for skating during the winter, and many thousands enjoyed the sport.

THE FENS.

A conduit for carrying the flow of Stony brook from Commissioners' channel to Charles river is now in course of construction. The work is being done by the Street Department, and is a part of the work authorized under the Charles River Basin Act. When completed, the conduit will relieve the Fens' basin of the filth now being poured into it from Stony brook. It is estimated that about 75,000 cubic yards of foul deposit exists in the Fens' basin. This, it is expected, will be removed by the Street Department.

We have done no work of importance in the Fens during the past year, except the usual work of maintenance. The need of additional loam for the Fens must again be called to the attention of your Board. In no cheaper way can any improvement be made to the condition of trees and shrubbery than by adding loam to the plantations. The Fens are bleak and wind-swept; the subsoil, a clean gravel. These conditions, when coupled with a thin loam covering, are prohibitive of healthy and free growth.

COMMONWEALTH AVENUE.

Between Brookline avenue and Dartmouth street, about one hundred tree holes were prepared in the centre of the lawns on each side of the central promenade of Commonwealth avenue for planting with English elms. The character of the ground, which is a filling of clean washed gravel, necessitated careful preparation. The holes were dug twenty feet square and four feet deep, and filled with good turfy loam.

CHARLESBANK.

Charlesbank received the usual renovation of its shrubbery borders, and the replacement of the plants broken and worn by the great use made of the grounds.

The men's gymnasium maintained its reputation for popularity among young men and boys. Classes were drilled twice a day in physical culture by an instructor, who also supervised the regular athletic work of the gymnasium.

The women's gymnasium was well patronized during the season. A report in detail of the work will be found elsewhere in this report.

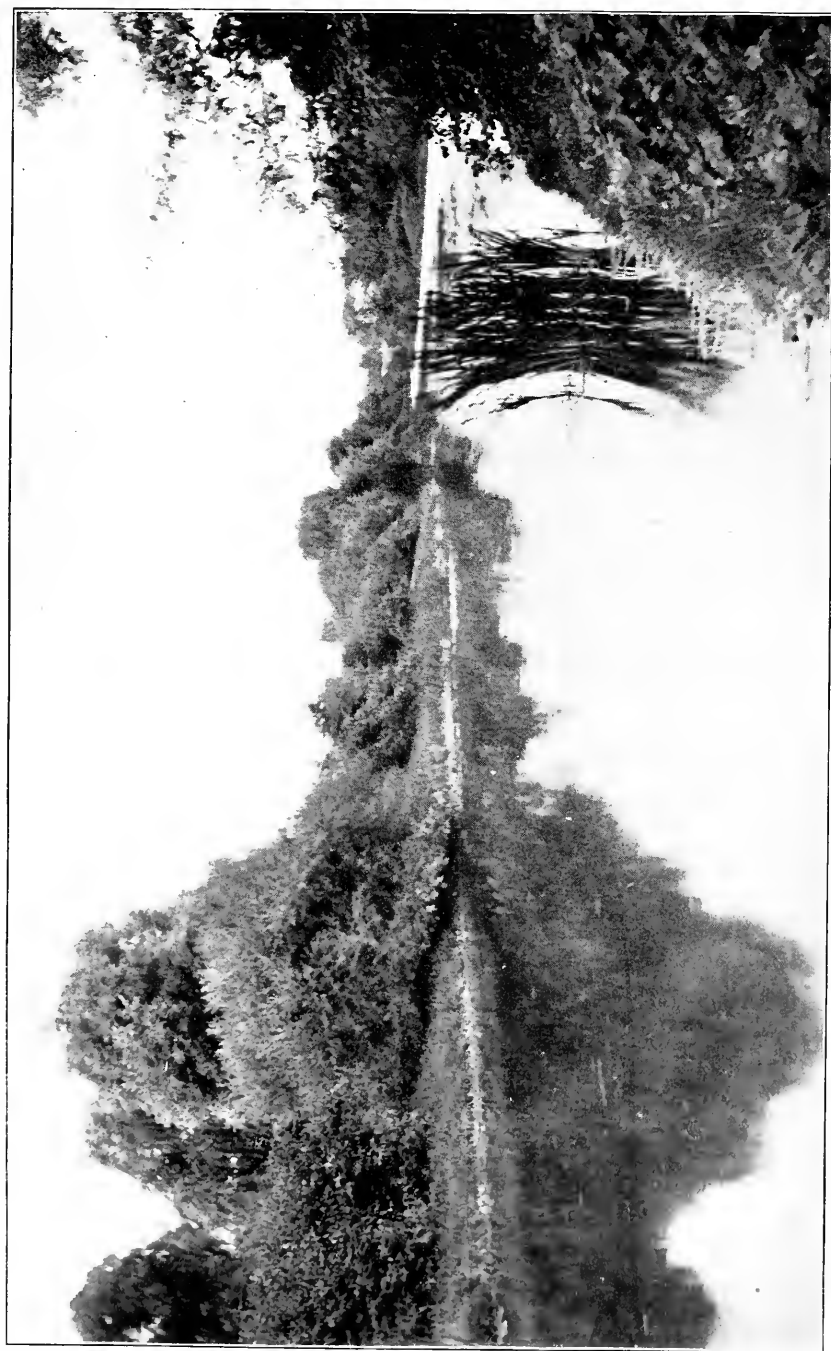
The men's gymnasium was flooded, as usual, and used by thousands for skating.

WOOD ISLAND PARK.

An open-sided shelter was constructed here last summer, for use in sudden storms. A building was also put up, containing a workshop, a storeroom, and sanitary accommodation for women. The plantations continue to thrive, and bid fair, in a short time, to give a wooded appearance to the park. Preparation was made, the past fall, for the planting of a number of trees in the spring. The cricket, baseball, and tennis grounds are in good condition, and, together with the gymnasium, have been much used by the public.

CHARLESTOWN HEIGHTS.

Little has been required at Charlestown Heights, except the regular work of maintenance. A number of trees and shrubs were planted in the bordering plantations.



RIVERWAY.

MARINE PARK AND STRANDWAY.

By reason of their peculiar advantages, Marine Park and Castle Island, during the hot weather, are the most popular parks in the system. The cooling breezes from the bay, the views of the harbor and of the passing ships, and the bathing, all together make Marine Park one of the most valuable of Boston's parks. Between the Boston Yacht Club house and the Head House a promenade, with loam spaces for trees, was constructed during the past season.

Work on the Strandway was resumed last spring by the Street Department, and is nearly completed as far as Burnham's wharf. Between Burnham's wharf, or Newman street, and the railroad bridge, to the south, the work is under construction by the Street Department, with the prospect of completion by the end of next summer. That portion of the Strandway which is covered by the Burnham wharf property purchase was nearly finished last summer by the Park Department. Filling is still being received here, and we shall be enabled in the spring to add a considerable area of newly-filled ground to the playground already established. This playground is very conveniently situated, and is much used for ball-playing and skating.

An arrangement between the Street Department and your Board has been made, by which the Park Department will do the planting of the loam spaces throughout the length of the Strandway. The expense of the work will be charged to the fund in the hands of the Street Department on account of Columbia-road construction. The completion of this work will give a continuous parkway connection, twelve and one-half miles in length, extending from the Public Garden, by way of Commonwealth avenue, the Fens, Riverway, Olmsted Park, Arborway, Franklin Park, and Columbia road to Marine Park.

CHESTNUT HILL PARK.

The drainage of the beech plantation was completed early in the season, and a number of oaks and conifers was planted in various places in the bordering plantations. Pruning and

thinning of the woodlands was continued, and the woody slope used for picnic purposes received a dressing of loam about four inches in thickness. This will much improve the condition of the trees, which were suffering from exposure of the roots by the erosion of the soil. The lawn near Beacon-street entrance has been opened for play, and was well used last season.

FRANKLIN FIELD.

(77 Acres.)

The bordering belt of trees on the Stratton-street side, and on a part of the Blue Hill-avenue side, was planted last spring. The construction of a bowling green was commenced last fall; but, on account of the early setting in of winter weather, the completion had to be deferred until spring. It is expected that the green will be ready for play early in the summer. The game is becoming very popular, and the opportunity for indulging in it here presented will be appreciated by the public.

The ball ground, an area of about forty acres, is in very poor condition from the unequal settlement of its surface. On summer Saturday afternoons there are usually from twelve to eighteen match games played. In addition there are the players on sixteen tennis courts, and the cricketers on the two cricket creases. Last year the cricket grounds were enlarged by moving the tennis courts over to the edge of Talbot avenue. Additional courts were made on the Blue Hill-avenue end, using up all the level ground to the tree belt. The courts are all in good condition, and are provided with wire-netting backstops.

An appropriation for levelling the grounds is very much needed, in view of the large use that is made of them. Another essential need is that of a field-house, where shelter, sanitary arrangements, spray baths, and lockers can be furnished under one roof. Were these improvements made, Franklin Field would soon become an important centre for out-door sports.

A new roof of tar and gravel was put on the sheep barn last summer. Our flock of sheep is in good condition.

About two hundred sheep are kept over winter, which number generally increases to about three hundred and seventy-five in the spring. The pastoral effect they give to the hillsides and meadows of Franklin Park is very pleasing.

About thirty acres of the ball ground at Franklin Field were flooded for skating during the winter.

CHRISTOPHER GIBSON PLAYGROUND.

Dorchester Avenue and Park Street.

(5.8 Acres.)

This playground furnishes accommodation for ball games, quoits, putting the shot, and similar sports. The children occupy the triangle east of Geneva avenue, where simple apparatus has been set up for their use, which has proved very popular. A woman teacher is employed to guide them in their play. Tennis courts and facilities for playing basketball are also provided. In the winter arrangements are made for skating.

SAVIN HILL BEACH.

Springdale Street, Dorchester.

(18.6 Acres.)

Bathing closets are furnished at this beach for the public, free of charge. They number fifty-four for men and thirty-one for women. The beach is much frequented, and the accommodations are entirely inadequate. An extension of the closets to double or treble their number is necessary to fully meet the demand.

NEPONSET PLAYGROUND.

Neponset Avenue.

(18 Acres.)

A building containing sanitary accommodations for men and women was erected last summer. An iron picket fence was put up on the Neponset-avenue side of the field. The slope adjoining the fence was loamed, and a line of trees planted.

Considerable trouble is experienced from the settlement of that portion of the field which was covered with heavy sub-soil to form a basin for skating. The bottom is a compressible salt meadow peat, and yields in places under the filling, yet not to such an extent as to interfere with its use as a ball ground. The remainder of the field, however, can readily be made into a good playground surface by levelling up the slight inequalities with loam, and seeding with grass.

During the winter months skating was provided at this playground.

MYSTIC PLAYGROUND.

Chelsea Street and Mystic River.

(2.3 Acres.)

An open-sided pavilion was erected in the children's corner, for the use of mothers and children. This playground being small, only boys under fourteen years of age are permitted to play ball. Quoits and basket-ball equipments are furnished. In the children's corner, which is fenced off by wire netting, light apparatus and sand-boxes are provided. A woman teacher is in charge.

CHARLESTOWN PLAYGROUND.

Main and Alford Streets.

(14 Acres.)

At the extreme edges of this playground filling is still in progress. Ample ground, however, has been finely graded for a skating field, for ball games, and for quoiting. The department mechanics are now at work on the gymnasium frames and apparatus for the open-air gymnasium. An iron picket fence is under contract to enclose the gymnasium. Further appropriations for an athletic house and for a fence on the Main-street side are needed. Large use of the playground, for out-door sports, including skating, has been made the past year.



SAVIN HILL BEACH.

ROGERS PARK.

Lake and Foster Streets.

(6.9 Acres.)

The objectionable pond in this park has been roughly filled. Loaming the surface and seeding down remains to be done. The playground is now too small to meet the demands, but could be extended were means available for carrying the open brook into a conduit. A little grading would then enable us to nearly double the playground area.

NORTH BRIGHTON PLAYGROUND.

Western Avenue and Harvard Street.

(14 Acres.)

No work, other than that of maintenance, was performed at this playground during the past season. The increasing use made of the grounds requires that provision should be made for further grading of the meadow to the north of the ball ground. A shelter and sanitary building is also needed. An ice field was maintained for skating during the winter.

BILLINGS FIELD.

La Grange Street, near Centre Street, West Roxbury.

(11 Acres.)

Outside of the preparation of the ground and the planting of a line of Norway maples on the La Grange-street side, no work other than that of maintenance was done at this playground, an important item of which was the filling up of a large sink over the bog. Baseball, football, and tennis are the principal summer games. The ball field was flooded, as usual, for skating. Sanitary and shelter accommodations are needed.

ROSLINDALE PLAYGROUND.

South Walter and Robert Streets.

(3.7 Acres.)

A division fence was erected last spring between the playground and the Pearce property. The playground is very

popular, and is equipped for baseball and tennis. In winter the ball field is flooded for skating. Its needs are a shelter and sanitary building, bleachers, and a retaining-wall on Robert street.

COLUMBUS-AVENUE PLAYGROUND.

(5 Acres.)

To mitigate the annoyance from the many passing trains and to hide the glaring advertisements painted on the fence, a loam space was made last spring, on the north line, and planted with Lombardy poplars.

An appropriation of \$10,000 has been made by the City Council for a sanitary building. This amount is too small to meet the requirements of a building suitable for the needs of the playground. A suitable building should contain sanitary, shelter, and locker accommodations, and possibly, to meet the desire of the Playground committee of the Civic League, a room for winter gymnasium and class work. The Civic League has furnished and maintained the pavilions and gymnasium apparatus; it has also borne the expense of the instructors and kindergartners. The Park Department assumes the general maintenance of the grounds, and provides for winter skating.

The playground is largely used, the frequenters ranging, in their lines of interest, from athletes to baby gardeners.

The construction of a retaining-wall on the north line would add about twenty feet to the available width of the playground. This consideration, where room is scant, is a strong argument in favor of an appropriation for the building of the wall.

PRINCE-STREET PLAYGROUND.

Prince and North Bennet Streets.

(0.4 Acre.)

A temporary wooden structure, with a canvas roof, was put up on this playground, and a few fixed seats were placed. To prevent the playground, which is a narrow strip between two streets, from being used as a thoroughfare, an iron picket

fence is under contract for the Prince-street side, the pickets of which are so spaced as to permit the passing in or out of small children, while large boys and adults will be kept out. The North Bennet-street fence can be furnished with a gate or opening; construction on this, however, will have to be deferred until the completion of the bathhouse, which is to be erected on North Bennet street.

Some simple gymnastic apparatus, for children's use, is now being made in the department shops, and will be set up in the spring. This equipment, with the assistance of a woman instructor, or kindergartner, will add very much to the value of this small breathing spot amid the tenements.

FIRST-STREET PLAYGROUND.

Corner of M Street, South Boston.

(4.6 Acres.)

In this playground a brick building has been erected. It contains a locker-room, sanitary accommodations for both sexes, and spray baths. It is well and conveniently planned, and suits the purpose admirably. The heating plant of this building, as well as those of the various sanitariums and repair shops built during the past season, was designed and installed by employees of the Park Department.

The out-door gymnasium was enclosed last fall by an iron picket fence. The frames and apparatus for the equipment of the gymnasium are now being prepared in the department shops, and will be set up in the spring.

Heavy loam having been spread on the ball ground last season permitted its flooding for skating this winter. While the job was not a perfect one, some leaching of water still occurring, yet the ice gave pleasure to many.

FELLOWS-STREET PLAYGROUND.

Fellows and Hunneman Streets.

(0.85 Acre.)

This little playground, with its apparatus, its kindergarten, and fence enclosure, is a real boon to the children of the

densely populated neighborhood. The small gardens were a failure last year because of predatory boys. A trial will again be made this year, using seeds instead of plants. Perhaps, from such small beginnings, and slow development, they may not attract unusual attention, and mischievous boys may become gradually accustomed to them.

An open-sided pavilion was erected in this playground, during the past season, by workmen of the Park Department. A sanitary building is needed.

COTTAGE-STREET PLAYGROUND, WARD 2.

Cottage Street, near Maverick Street, East Boston.

(3.85 Acres.)

This playground was entirely graded last season, and provision was made for flooding the whole area for skating. Large holes were dug around the borders and filled with loam in readiness for planting. Backstops were erected for ball playing. The needs of the playground include sanitary and shelter accommodation, fencing and water service.

FOREST HILLS AND MT. HOPE PLAYGROUND.

Between Washington and Florence Streets.

(9.6 Acres.)

No work of improvement on this fine piece of ground has yet been done other than rolling with a steam roller. Baseball diamonds have been laid out, and the grass has been kept as short as the rough character of the surface would permit. The field has been well used and merits improvement. An appropriation is needed for levelling and for water service.

MARCELLA-STREET PLAYGROUND.

Marcella and Ritchie Streets.

(4.5 Acres.)

This playground, which was acquired from the city last summer, is well located in a populous district. Little has been done towards its improvement, other than to provide

sanitary accommodations for men in the old asylum building, and the same for women and children in the lodge. A little cleaning up of the grounds made them available for play.

The buildings now on the ground are neither suitable nor conveniently situated for adaptation to any probable use in connection with playground work. On the contrary, they occupy valuable playground space, besides cutting off or disconnecting parts of the grounds, and they would better be removed. The whole area of the playground, including the ledge in the northeast corner, could then be graded to a level suitable for playground purposes.

RANDOLPH-STREET PLAYGROUND.

Albany and Randolph Streets.

(*2.8 Acres.*)

This newly acquired playground is located near a thickly settled district, and, in size and shape, is well adapted for playground purposes. The ground was not cleared of buildings until late in the fall, consequently we were able to complete only the drainage of the grounds before the setting in of winter. Grading will be commenced as early as possible in the spring, and the playground can be opened for use in early summer. Studies are now being made of the brick building on Randolph street, with a view to its adaptation for playground requirements. Gymnasium apparatus for children and boys of large size is now being made at the department shops.

BERNERS SQUARE.

Plymouth and Bellevue Streets, near Longwood Avenue.

(*1.2 Acres.*)

An appropriation is needed for grading, draining, and seeding this square. It is, however, available for use, although very uneven.

OAK SQUARE.

Brighton.

(*0.22 Acre.*)

This square required only ordinary maintenance care.

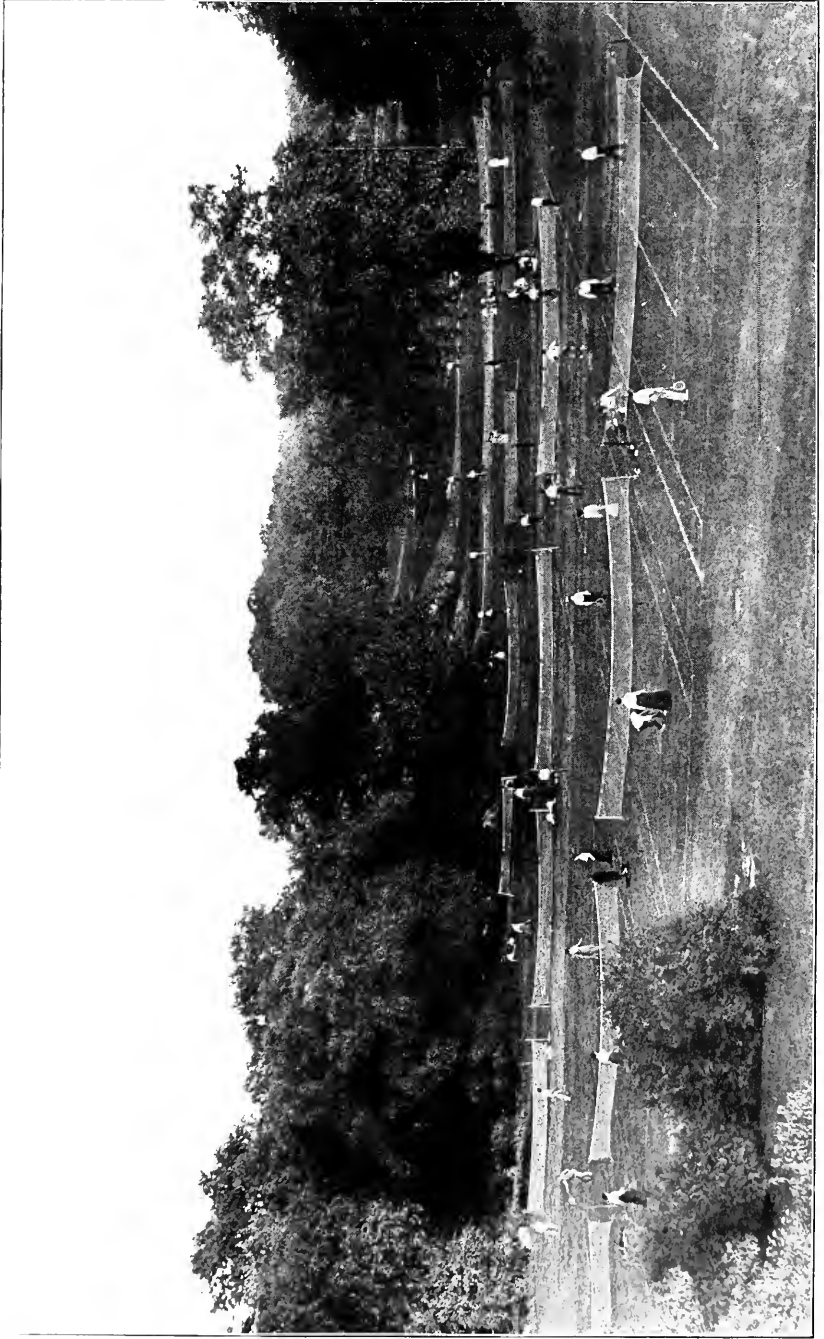
SPORTS.

From year to year an increased interest is manifested in athletic sports. Fifty-two baseball diamonds, in seventeen playgrounds, and ninety-three tennis courts, in various parts of the system, were maintained; this latter game is very popular. Facilities were provided also, in various playgrounds, for football; the attendance at many of the games was very large. Attendance at the golf links was not so large as in previous years; 38,290 players went over the course this year as against 47,469 last year.

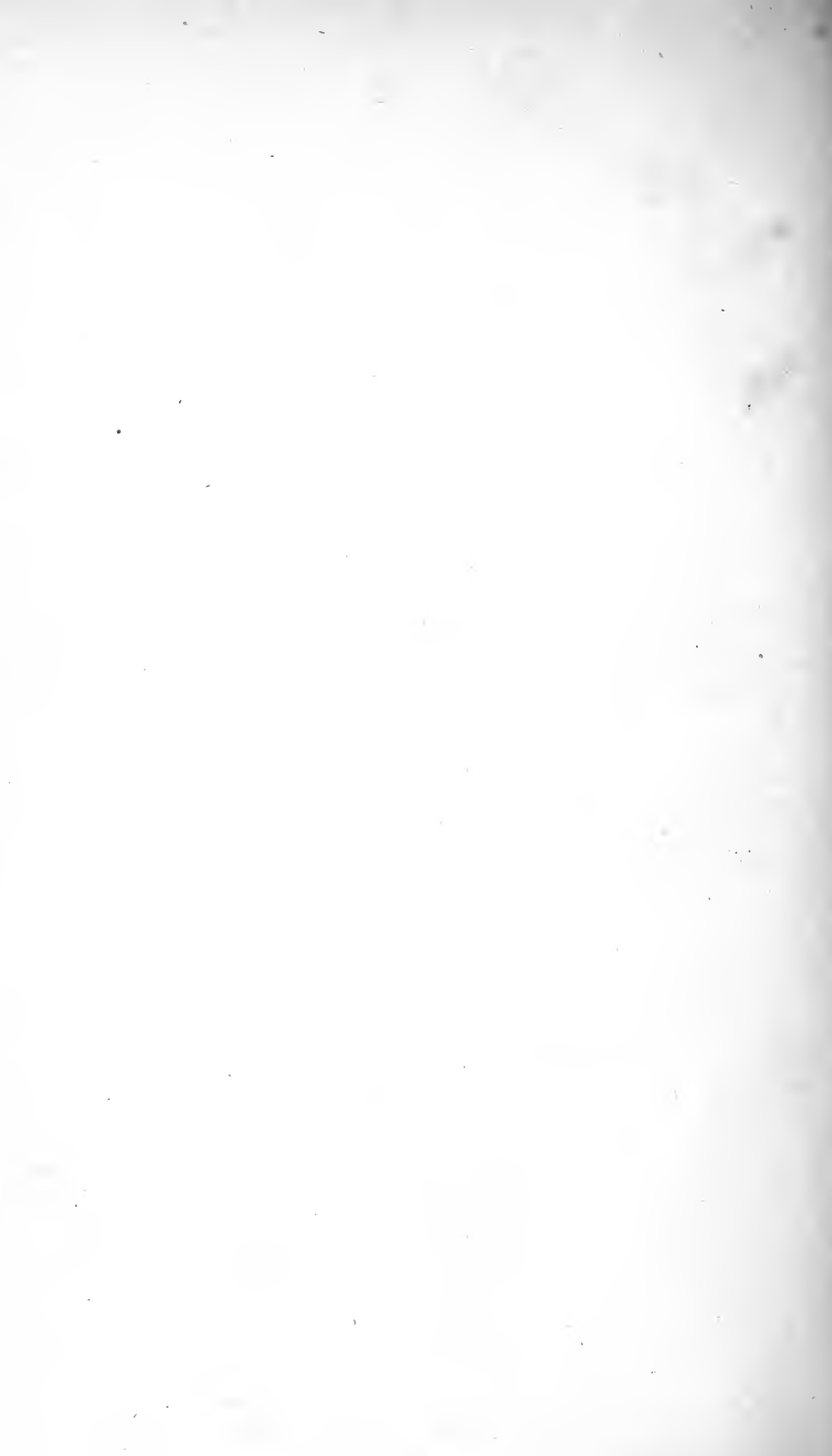
Thirteen distinct sheets of ice, in various parks and playgrounds, were kept in order for skaters; and it is estimated that they were used by 385,000 persons during the skating season. Curlers and hockey players enjoyed a long season for their games, which was fully taken advantage of by lovers of these sports. A toboggan chute was laid down the hill from the golf-house and another down Scarboro' hill to the Nazingdale meadow in Franklin Park. The season was favorable for making a good course, and 12,300 persons enjoyed the sport.

Respectfully submitted,

J. A. PETTIGREW,
Superintendent.



FRANKLIN PARK — ELLICOTTDALE TENNIS GROUNDS.



REPORT OF THE COMMITTEE OF THE MASSACHU-
 SETTS EMERGENCY AND HYGIENE ASSOCIATION
 IN CHARGE OF THE WOMEN'S AND CHILDREN'S
 DIVISION AT CHARLESBANK.

BOSTON, January 9, 1904.

To the Board of Park Commissioners :

GENTLEMEN, — In submitting to you our report for the thirteenth year of our superintendence of the gymnastic training and playground work and of the general hygienic and educational values of Charlesbank, we have no unusual items of interest to present.

The work has gone steadily forward on the same lines of progress as heretofore. The attendance has been somewhat larger than in the previous season, notwithstanding the hindrances necessarily caused by the building of the bridge. The enthusiasm among the older pupils in the classes has been very marked, women and girls, who are at work all day, coming regularly for their gymnastic exercise and constantly acknowledging their indebtedness to it for such measure of health as they possess.

During the summer season, from May 15 to October 1, it was all out-door work save when it rained, women, young girls, children, babies, each division in age having its favorite occupation. There is no happier spot in Boston than Charlesbank playground when several hundred children are frolicking upon it.

The in-door work from October 1 to May 15, except when the weather permitted the classes to meet out doors, has been in three divisions; two evening classes with an average attendance of 50 plus, two morning classes with 20 as the average number, and three afternoon and one morning class for the little children, who emulate their elders in their zeal.

As reward for their gymnastic skill they are allowed certain intervals of time for making picture scrap books, a pastime they greatly enjoy.

Miss Crowley is the pianist for the evening classes, Miss Rosamond Lang and Miss Marjorie Phelps kindly giving their services for the morning classes.

Towards the close of the winter evening classes, last spring, Dr. Dudley A. Sargent of Harvard University brought some of his own pupils to assist him in obtaining tests of the average strength of the Charlesbank pupils according to certain exercises on simple apparatus which he has arranged. The exhibition was novel, interesting and satisfactory. Its results, tabulated in a chart that now hangs on the wall of the large class-room, serve as incentive and as caution to the pupils in endeavoring to obtain an all-round development.

Miss Harriet S. Cutler is the wise, kind, efficient Superintendent, whose influence over her pupils is of very large value to their character. Miss Agnes O. Brigham, who so long has been the admirable first assistant, though with us last summer, has resigned her position to accept similar work in a Western college. Miss Margaret L. Horst served excellently as second assistant in the summer.

The committee is grateful for the kind consideration with which any suggestion of theirs has always been received by Superintendent John A. Pettigrew and his assistants.

Respectfully submitted,

KATE GANNETT WELLS,
ANNA PHILLIPS WILLIAMS,
MABEL DELANO LORD,

For the Committee.

General Exhibit of Appropriations, 1903-1904.

OBJECTS OF APPROPRIATION.	Balances, January 31, 1903.	Appropriations and Transfers, 1903-1904.	Total Credits.	Expenditures, 1903-1904.	Balances, January 30, 1904.
Park Department, Maintenance.....	*\$202,601 07	\$202,601 07	\$202,601 07	\$8,082 04
Public Parks, Land and Construction.....	\$115,254 42	115,254 42	107,172 38	86,446 61
Chestnut Hill Park.....	88,761 16	88,761 16	2,314 55	2,514 30
Playgrounds.....	2,547 30	2,547 30	33 00	25,000 00
Speedway, Franklin Field.....	25,000 00	25,000 00
Columbia Road.....	203,485 73	203,485 73	†203,485 73	133,430 64
Strandway.....	170,987 71	170,987 71	37,557 07
Playground, Ward 2.....	2,997 68	2,997 68	2,997 68
Gymnasium, First-street Playground.....	15,086 99	15,086 99	15,086 99
Parks, Brighton District.....	1,045 30	1,045 30	1,045 30
Playground, Ward 22.....	30,000 00	30,000 00	30,000 00
Wood Island Park, shelter and sanitary building.....	10,000 00	10,000 00	6,288 47	3,711 53
Castle Island, sanitary building.....	3,000 00	3,000 00	3,000 00
Dorchester Park, open-air gymnasium.....	2,000 00	2,000 00	228 68	1,771 32
Charlestown Playground, gymnastic apparatus, etc.....	7,500 00	7,500 00	366 78	7,133 22
Mystic Playground, gymnastic apparatus.....	2,500 00	2,500 00	1,497 11	1,002 89
Columbus-avenue Playground, sanitary building.....	10,000 00	10,000 00	809 75	9,190 25
Ashmont Playground, grading, etc.....	4,000 00	4,000 00	2,439 81	1,560 19
Neponset Playground, shelter and sanitary building.....	5,000 00	5,000 00	4,585 70	414 30
Playground, Wards 7 and 9.....	300,000 00	300,000 00	2,090 85	297,909 15
	\$795,680 56	\$406,086 80	\$1,201,767 36	\$590,600 92	\$611,166 44

* Collections on account of labor credited to appropriation, \$2,601.07.

† Expended by Street Department and charged to Highway loan (Issued as Public Park loan) under Stat. 1897, chap. 319.

Expenditures on Account of Land and Construction, from

	Roads and Walks.	Drainage.	Grading.	Loam.	General Work.	Lawns and Woods.
Commonwealth Avenue.....	\$75 00		\$5,200 69	\$4,592 89	\$81 25	\$108 89
The Fens.....	463 43	\$1,170 22	73 40	15 30	452 75	36 35
Riverway.....			96 62	725 89	151 91	37 64
Olmsted Park.....	349 08	23 50		593 40	234 24	838 02
Arborway.....					46 02	125 41
Arnold Arboretum and Bussey Park.....	1,555 86	354 62			227 86	
West Roxbury Parkway.....						533 29
Franklin Park.....	1,814 94	1,965 73	5,948 98	2,498 95	2,107 78	1,983 36
Columbia Road.....	100,624 47	49,917 25			23 50	
Strandway.....	18,689 05	465 92	2,703 89	4,293 43	688 75	
Marine Park.....	445 91		48 75	34 11	170 56	18 11
Wood Island Park.....	72 42	82 29	84 20		392 75	
Charlesbank.....				51 28	30 75	
Charlestown Heights.....						
Charlestown Playground.....					62 00	
Dorchester Park.....					10 50	31 21
Franklin Field.....		56 71	1,273 44	32 83	32 25	2 50
Copp's Hill Terraces.....						
Chestnut Hill Park.....		310 04	234 83	855 99		141 91
North Brighton Playground.....					11 50	
Neponset Playground.....	94 53	511 70	66 82	332 67	282 75	
Billings Field.....						
First-street Playground.....		14 41			293 63	
Prince-street Playground.....					44 00	
Mystic Playground.....					63 51	
Fellows-street Playground.....		63 37	47 94		26 50	
Columbus-avenue Playground.....				262 21	76 50	
Ashmont Playground.....		102 60	2,088 19	184 58	45 00	
Savin Hill Playground.....		25 25	567 97			
Roslindale Playground.....						
Rogers Park.....			66 98			15 92
Berners Square.....					17 00	118 25
Oak Square.....				361 83		
Cottage-street Playground, Ward 2.....		177 66	2,639 97	14 88	50 00	
Marcella-street Playground.....			381 63		3 75	
Randolph-street Playground.....		341 50	1,462 41		60 77	
Playgrounds.....						
Totals.....	\$124,184 69	\$55,582 77	\$22,986 76	\$14,850 24	\$5,687 78	\$3,990 86

* Of this amount, \$203,485.73 was expended by Street Department, being proportion

February 1, 1903, to January 30, 1904.

Plantations.	Water Supply.	Buildings.	Gymnasium Apparatus and Fences.	Filling.	Water Fowl.	Dredging.	Settees.	Land and Expenses.	Totals.
\$1,225 93		\$696 88							\$11,981 53
899 87	\$623 59	4,970 37	\$574 31						9,279 59
5,417 94				\$308 15					6,738 15
4,630 94					\$772 22				7,441 40
760 77									932 20
	38 82	4,042 18						\$10 50	6,229 84
69 70	337 03								940 02
7,809 05	46 36	25,887 47			171 00				50,233 62
547 92								52,957 56	*204,070 70
405 93	83 27			10,226 83					37,557 07
614 91	58 27					\$700 00			2,090 62
815 83	59 50	5,498 37							7,005 36
88 22									170 25
116 18									116 18
			285 52				\$19 26		366 78
			218 18						259 89
981 96	13 41	218 08							2,611 18
20 50									20 50
235 54								2,314 55	4,142 91
				70 50					82 00
	125 41	2,175 09	866 08	111 39			19 26		4,585 70
20 43									20 43
		11,665 11	3,071 28				715 71		15,760 14
		145 60	47 25						236 85
11 00		1,120 01	243 08	25 00			34 51		1,497 11
2 00		1,354 32	24 46						1,518 59
573 84	60 77								973 32
							19 44		2,439 81
									593 22
5 40			390 00						395 40
52 43		25 00		1,275 27					1,435 60
									133 25
									361 83
		108 17		7 00					2,997 68
		177 43	92 47						655 28
			226 17						2,090 85
								33 00	33 00
\$25,356 29	\$1,446 43	\$58,084 08	\$6,038 80	\$12,024 14	\$943 22	\$700 00	\$808 18	\$55,315 61	\$387,999 85

of highway loan, issued as Public Park loan, under Chap. 319, Acts of 1897.

Expenditures on Account of Maintenance from

	Roads.	Walks.	Grounds.	Buildings.	Drainage.
Commonwealth Avenue	\$14,038 25	\$1,958 00	\$3,046 25	\$430 28	\$256 13
The Fens	6,377 10	533 73	5,594 91	160 72	406 05
Riverway	5,221 33	389 53	5,410 62	1,668 10	244 86
Olmsted Park	4,609 23	605 61	10,409 79	2,371 18	221 94
Arborway	4,327 02	147 69	1,766 63	107 25
Arnold Arboretum	3,508 00	218 58	44 30	40 75	191 60
* West Roxbury Parkway	7 89	361 79	27 25
Franklin Park	12,327 59	1,496 83	24,401 41	9,597 63	532 99
Columbia Road	3,309 59	134 49	163 42	197 32
Strandway	24 44	12 67	638 85
Marine Park	731 38	1,227 12	2,148 52	1,403 29	20 97
Wood Island Park	40 83	407 00	1,871 94	2,587 04	31 25
Charlesbank	44 88	3,665 85	28 75
Charlestown Heights	110 27	1,468 50	524 43	21 00
Charlestown Playground	70 64	1,072 95
Dorchester Park	415 30	21 29
Franklin Field	20 13	1,887 66	310 64	7 50
North End Beach	53 00
Copp's Hill Terraces	3 50	462 64
Chestnut Hill Park	1,369 08	201 31	3,015 17	68 22	67 64
North Brighton Playground	65 42	628 30	1 89
Neponset Playground	435 06	78 56	6 75
Billings Field	7 50	692 77	6 44	10 50
First-street Playground	435 06	321 72
Prince-street Playground	281 34
Mystic Playground	18 00	253 59	6 00
Fellows-street Playground	17 50	305 72	4 28	2 50
Christopher Gibson Playground	653 18	447 18
Columbus-avenue Playground	54 33	1,270 86	1 75	15 89
Savin Hill Playground	559 53	142 88	9 25
Roslindale Playground	2 00	313 56	3 00	45 37
Forest Hills Playground	286 17	3 00
Rogers Park	857 47	1 89
Berners Square	4 60
Oak Square	77 47
Cottage-street Playground, Ward 2	128 65
Marcella-street Playground	29 35	267 34	6 00	3 00
Office Expense
	\$55,891 73	\$7,776 98	\$75,355 17	\$20,227 52	\$2,436 42

February 1, 1903, to January 30, 1904.

General Work.	Sheep and Water Fowl.	Skating.	Library.	Men's Gymnasium.	Women's and Children's Gymnasium.	Office Expense.	Totals.
\$564 10							\$20,293 98
689 57	\$61 89						13,823 97
842 74							13,777 18
2,734 28	493 16	\$992 66					22,437 85
94 50							6,443 09
402 92							4,406 15
6 75							403 68
5,673 64	671 40	570 24	\$685 04				55,956 77
77 00							3,881 82
6 70		303 14					985 80
314 65							5,845 93
286 81		411 50		\$1,221 15			6,857 52
450 18		148 87		3,425 20	\$2,690 87		10,454 60
19 94							2,144 14
15 40		326 63					1,485 62
		16 85					453 44
71 80	2,052 12	1,303 32					5,653 17
3 50							56 50
							466 14
96 60							4,818 02
21 50		295 47					1,012 58
10 20		203 82					734 39
		262 30					979 51
41 41		102 85		152 94			1,053 98
							281 34
40 30				400 35			718 24
36 25				284 45			650 70
3 75		304 79		218 99			1,632 89
23 84		491 30			11 49		1,869 46
							711 66
13 05		186 67					563 65
							289 17
							859 36
							4 60
							77 47
3 07							131 72
3 50							309 19
						\$10,075 84	10,075 84
\$12,547 95	\$3,278 57	\$5,920 41	\$685 04	\$5,703 08	\$2,702 36	\$10,075 84	\$202,601 07

Income.

RECEIPTS.

Received from rents, sale of buildings, wool, sheep, grass,
wood, etc. \$3,679 23

PAYMENTS.

Income carried to General City Income . . . \$3,632 53
Balance on hand, January 30, 1904 . . . 46 70
\$3,679 23

**Park Betterments Collected by City Collector,
to February 1, 1904.**

	Assessm'ts committed to Collector.	Abated.	Net Assess- ments.	Collected.	Outstand- ing Feb. 1, 1904.
Public Park, Back Bay....	\$434,600 00	\$144,195 73	\$290,404 27	\$290,404 27	
Marine Park.....	23,543 00	12,616 80	10,926 20	10,926 20	
Franklin Park.....	135,029 00	122,000 66	13,028 34	13,028 34	
Parkway, Old Harbor....	60,789 00	50,426 00	10,363 00	8,256 00	\$2,107 00
“ Muddy River....	108,972 00	82,927 25	26,044 75	22,863 75	3,181 00
“ West Roxbury..	154,107 00	113,658 00	40,449 00	31,763 00	8,686 00
“ Dorchester.....	9,713 00	3,055 54	6,657 46	5,927 74	729 72
	<u>\$926,753 00</u>	<u>\$528,879 98</u>	<u>\$397,873 02</u>	<u>\$383,169 30</u>	<u>\$14,703 72</u>

Public Park and Playground Debt.*Liabilities.*

Total loans outstanding, January 30, 1904 . . . \$15,748,910 98

Resources.

Sinking Fund, January 30, 1904 . . . 4,738,155 48

Net Debt, January 30, 1904 . . . \$11,010,755 50

Park Statistics to January 30, 1904.

PARKS.	Year of Purchase or Taking.	COST TO DATE.			Area,	Length of Drive-ways.	Length of Walks.	Length of Rides.	Area of Ponds and Rivers.
		Land.	Construction.	Total.					
MAIN PARK SYSTEM:									
Commonwealth avenue.....	1894.....	\$121,431 89	\$121,431 89	30 acres.....	2.8 miles	4.13 miles		
Fens	1877-1879....	\$596,254 49	2,147,363 67	2,744,208 16	115 "	4 "	6.7 "	1.1 miles	28 acres
† Riverway.....	1890.....	457,457 53	674,109 35	1,131,566 88	40 "	1.4 "	2.8 "	1.2 "	8 "
† Olmsted Park.....	1890 and 1892	1,081,947 60	734,224 34	1,816,171 94	180 "	2.7 "	5.8 "	1.6 "	77 "
Arborway.....	1892.....	245,584 25	381,374 16	626,958 41	36 "	3.4 "	1.25 "	1.4 "	
Arnold Arboretum.....	1882 and 1895	79,354 15	386,571 78	465,925 93	223 "	3.4 "	5.65 "	0.6 acre
West Roxbury Parkway.....	1894.....	135,265 29	22,123 21	157,388 50	150 "	2.8 "	4.3 "	2.4 "	
Franklin Park.....	1883 and 1884	1,551,196 63	2,425,376 92	3,976,573 55	527 "	7.3 "	14.5 "	1 mile	7.4 acres
MARINE PARK SYSTEM:									
* Columbia road.....	1899.....	447,528 63	483,889 97	931,418 60					
Dorchesterway.....	1892.....	63,735 54	65,187 12	128,922 66	102.5 " land } 194 " flats }	4.2 "	4.5 "		
* Strandway.....	{ 1890, 1892, 1897, and } 1901	566,446 17	376,897 27	943,343 44					
Marine Park.....	1883.....	232,972 57	1,054,816 95	1,287,789 52	{ 52.5 " land } 4.9 " flats }	0.5 mile	1.3 "	4.4 "
<i>Carried forward</i>	\$6,457,742 85	\$8,873,956 63	\$14,331,699 48	1,654.9 acres....	32.8 miles	53.03 miles	8.7 miles	125.4 acres

Park Statistics to January 30, 1904. — Continued.

PARKS.	Year of Purchase or Taking.	COST TO DATE.		Area.	Length of Drive-ways.	Length of Walks.	Length of Rides.	Area of Ponds and Rivers.
		Land.	Construction.					
<i>Brought forward</i>		\$5,457,742 85	\$8,873,956 63	\$14,331,699 48	32.8 miles.	53.03 miles.	8.7 miles.	125.4 acres.
† Castle Island.....	1890.....	32,685 55	32,685 55
WOOD ISLAND PARK.....	1882 and 1891.....	132,800 00	255,722 57	388,522 57	0.3 miles.	2.1 "
CHARLESBANK	1883.....	373,916 99	313,400 13	687,317 12	1.5 "
TRINITY TRIANGLE.....	1885.....	30,000 00	30,000 00
CHARLESTOWN HEIGHTS	1891.....	50,538 02	103,107 56	153,645 58	0.4 mile.
CHARLESTOWN PLAYGROUND.	1891.....	172,923 31	16,758 79	188,682 10	0.6 "
DORCHESTER PARK.....	1891 and 1903.....	63,955 37	11,789 86	75,745 23
FRANKLIN FIELD	1892.....	157,341 22	93,696 90	251,038 12
NORTH END BEACH.....	1893.....	328,364 44	169,262 27	497,626 71
COPP'S HILL TERRACES.....	1893.....	90,858 19	32,001 46	122,859 65	0.11 "
** CHESTNUT HILL PARK.....	{ 1898, 1899 } { and 1902 }	87,508 00	6,940 60	94,448 69	1.4 miles.
NORTH BRIGHTON PLAY- GROUND.....	1894.....	22,107 12	10,585 27	32,692 39
* NEPOMSET PLAYGROUND.....	1896.....	24,804 39	15,775 05	40,579 44
BILINGS FIELD	1896.....	47,068 98	16,758 00	63,826 98
§ FIRST-STREET PLAYGROUND	1897.....	26,232 15	26,232 15	0.4 "
<i>Carried forward</i>		\$7,039,928 97	\$9,977,672 79	\$17,017,601 76	34.2 miles.	56.04 miles.	8.7 miles.	125.4 acres.

Park Statistics to January 30, 1904. — *Continued.*

PARKS.	Year of Purchase or Taking.	COST TO DATE.		Area.	Length of Drive-ways.	Length of Walks.	Length of Rides.	Area of Ponds and Rivers.
		Land.	Construction.					
<i>Brought forward.</i>	\$7,033,928 97	\$9,977,672 79	2,221.72 acres.	34.2 miles.	56.04 miles.	8.7 miles.	125.4 acres.
FREEPORT STREET TRI-ANGLE.....	1897.....	4,000 00	0.14 acre.				
PRINCE STREET PLAY-GROUND.....	{ 1897, 1899 } { and 1901 }	180,474 70	270 75	0.4 "				
MYSTIC PLAYGROUND.....	1897.....	50,125 00	3,215 10	2.3 acres.				
1 FELLOWS STREET PLAY-GROUND.....	1897.....	14,563 72	5,014 87	0.85 acre.				
CHRISTOPHER GIBSON PLAY-GROUND.....	1897.....	37,703 58	10,042 75	5.8 acres.				
COLUMBUS AVENUE PLAY-GROUND.....	{ 1899, 1900 } { 1901, 1902 }	327,503 84	6,896 21	5.0 "				
ASHMONT PLAYGROUND.....	1899.....	43,990 09	2,439 81	2.2 "				
SAVIN HILL PLAYGROUND.....	1899.....	27,147 30	6,129 36	{ 6.9 acres land, 11.7 " irks.				
ROSLINDALE PLAYGROUND.....	1899.....	24,825 11	5,992 71	3.7 "				
2 FOREST HILLS PLAYGROUND,	1902.....	25,166 75	9.6 "				
3 ROGERS PARK.....	1899.....	30,000 00	3,446 10	6.9 "				
4 BERNERS SQUARE.....	1901.....	294 70	1.2 "				
5 OAK SQUARE.....	1902.....	682 34	0.22 acre.				
<i>Carried forward.</i>	\$7,805,375 06	\$10,022,097 49	2,275.63 acres.	34.2 miles.	56.04 miles.	8.7 miles.	125.4 acres.

Park Statistics to January 30, 1904.—Concluded.

PARKS.	Year of Purchase or Taking.	COST TO DATE.			Area.	Length of Drive-ways.	Length of Walks.	Length of Rides.	Area of Ponds and Rivers.
		Land.	Construction.	Total.					
<i>Brought forward</i>									
COTTAGE-ST. PLAYGROUND, WARD 2.....	1902.....	\$7,805,375 06	\$10,022,097 49	\$17,827,472 55	2,278.63 acres.	56.04 miles.	8.7 miles.	125.4 acres.	
RANDOLPH-ST. PLAYGROUND, WARD 9.....	1903.....	47,002 82	2,997 68	50,000 00	3.85 acres.				
PLAYGROUND, MARCELLA ST..	1903.....		2,090 85	2,090 85	2.8 acres.				
LAND FOR PLAYGROUNDS, EXECUTIONS, ETC.....		168 79	655 28	655 28	4.5 acres.				
PLAYGROUNDS, INVESTIGATING SITES.....		57 00		57 00					
General account.....		\$7,852,003 17	\$10,027,841 30	\$17,880,444 47					
Park Nursery.....			73,987 50	73,987 50					
Betterment Expenses.....			29,947 07	29,947 07					
			13,356 10	13,356 10					
		\$7,852,003 17	\$10,145,131 97	\$17,997,735 14	2,289.78 acres.	56.04 miles.	8.7 miles.	125.4 acres.	

* The lands in these parks and playgrounds have not been paid for in full.
 † An additional area of 16½ acres is within the limits of the town of Brookline.
 ‡ An additional area of 18 acres is within the limits of the town of Brookline.
 ** 49 acres transferred from Water Department; an additional area of 160.65 acres, including water area of 122.70 acres, is under the control of the Metropolitan Water and Sewerage Board.
 †† Transferred from, and \$454.15 expended by, the Public Grounds Department.
 ‡‡ Transferred to Street Department.
 § 25,470 square feet transferred from, and \$2,000 expended by, the Public Grounds Department.
 ¶ Costody given to city by Act of Congress.
 ††† 10.3 acres additional, taken from Harvard College in 1900, to be abandoned.
 ‡‡‡ Transferred from, and \$96,000 expended for land by, Public Grounds Department.
 §‡‡ Originally dedicated for a square by David Sears.
 §‡‡‡ Transferred from School Department.
 Of the above total lengths of driveways, walks, and rides, there have been completed to date, respectively, 29.9 miles, 47.9 miles, and 6.3 miles.

