

BOSTON PUBLIC LIBRARY



3 9999 03290 933 3

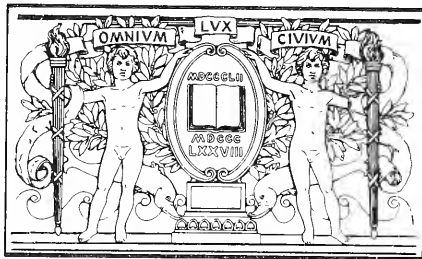
Annual Report  
of the  
Department  
of Parks  
City of Boston  
1905

RECEIVED

e7

4353  
.50  
1905 c.2

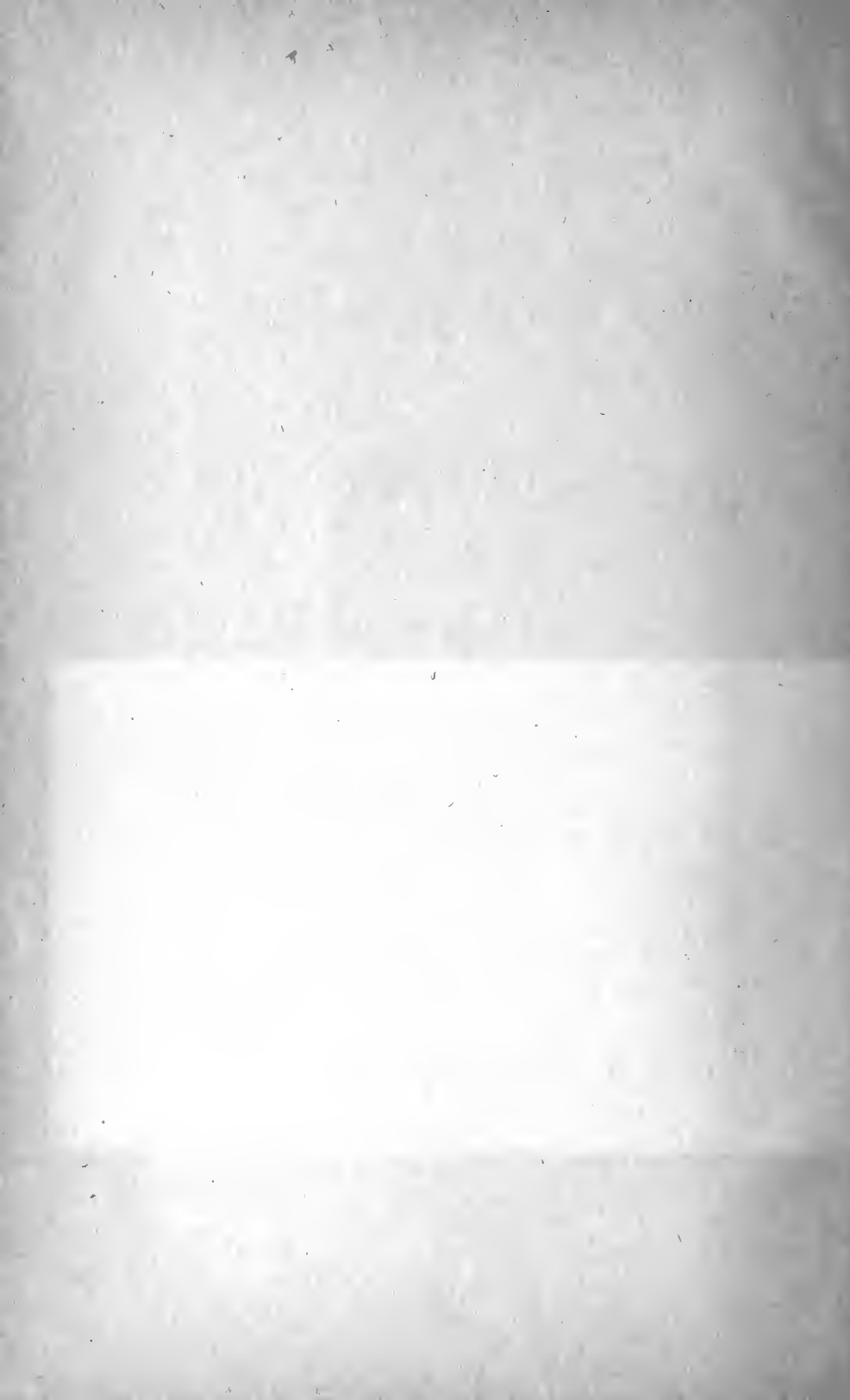




**BOSTON  
PUBLIC  
LIBRARY**

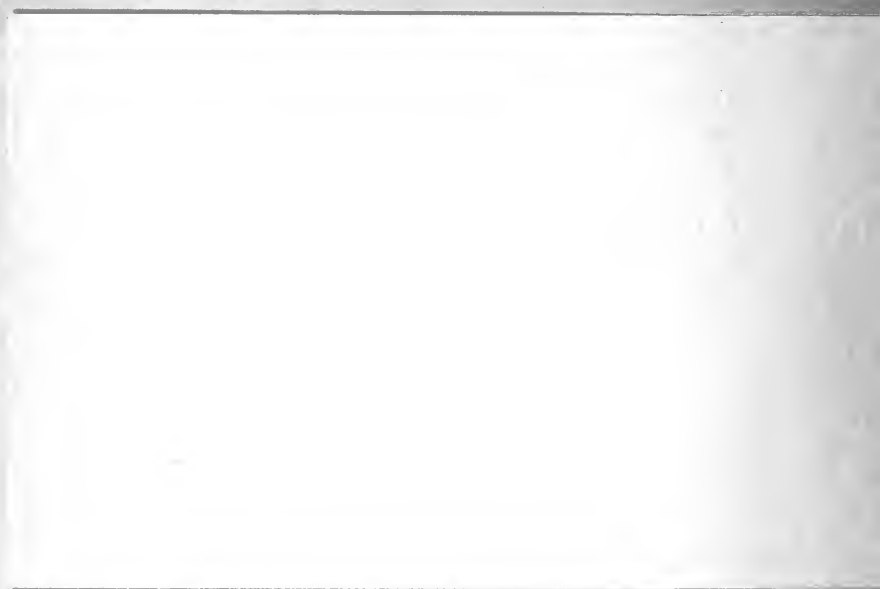






WITH THE COMPLIMENTS OF THE

BOARD OF COMMISSIONERS OF THE  
DEPARTMENT OF PARKS.



City of Boston  
DEPARTMENT OF PARKS

---

THIRTY-FIRST ANNUAL REPORT

OF THE

BOARD OF COMMISSIONERS

FOR THE

YEAR ENDING JANUARY 31, 1906



PRINTED FOR THE DEPARTMENT

1906





## CONTENTS.

---

	Page
Commissioners' Report . . . . .	5
Superintendent's Report . . . . .	9
Report of Committee of Massachusetts Emergency and Hygiene Association in Charge of the Women's and Children's Division at Charlesbank . . . . .	21
General Exhibit of Appropriations . . . . .	23
Expenditures on Account of Land and Construction from Feb- ruary 1, 1905, to January 31, 1906 . . . . .	24
Expenditures on Account of Maintenance from February 1, 1905, to January 31, 1906 . . . . .	26
Income . . . . .	28
Park Betterments Collected by City Collector . . . . .	28
Public Park and Playground Debt . . . . .	28
Park Statistics . . . . .	28



Digitized by the Internet Archive  
in 2010 with funding from  
Boston Public Library

<http://www.archive.org/details/annualreport1905bost>

# DEPARTMENT OF PARKS.

---

## COMMISSIONERS' REPORT.

---

HON. JOHN F. FITZGERALD,

*Mayor of the City of Boston:*

SIR, — The Board has the honor herewith to submit this report for the year ending January 31, 1906.

The only construction work of importance done by the department during the past year, for which special appropriations were provided, has been the improvement of several of our playgrounds. The principal work was done at the Marcella-street, Randolph-street, and Columbus-avenue playgrounds, which have been graded and fenced, and shelter and sanitary buildings constructed. A small addition was made to Marcella-street playground by taking land, reserved, in the first instance, for a street, which was afterwards found to be unnecessary. The removal of the buildings formerly on the land, and the building of a retaining-wall, now in progress and which will permit of filling out to the new line, will make a large addition to the area of this playground. The new locker and sanitary building adds much to the usefulness of this playground.

Commonwealth playground, located on the filled land belonging to the Commonwealth at South Boston, has been put in charge of the Board by the City Council, and we have built there a small sanitary building and put the playground in good condition for use. The uncertain tenure under

which the City has this playground prevents the Board from considering further construction work here.

The part of Columbia road remaining unfinished east of the bridge over the Old Colony Railroad has been practically completed. This is the last of the work which the Street Department was authorized to do under the Parkway Act of 1897. The opening of this road throughout its entire length from Franklin Park to Marine Park adds a little more than four miles to the parkways now under control of the Board, and unites the urban and Marine Park systems, making a continuous park drive of about twelve miles.

The retention of Fort Independence by the United States Government still postpones provision for proper shelter and conveniences for the public on Castle Island. This delay in turning over the fort to this department has been due to the storage in the fort of submarine mining property, which is awaiting accommodations to be provided elsewhere. We are constantly urging the War Department to remove this property so that the control of these buildings shall pass to our hands, as was contemplated by the resolve of Congress placing the island under the control of the City as part of its park system.

The Street Department, under authority of the Charles River Basin Act of 1903, has completed the new foul-flow conduit in the Fens and rebuilt the seven-foot Stony brook conduit, through which the water of Stony brook now finds access to Charles river. This relieves the Fens from the contamination to which it has long been subject from this source. The dredging of the Fens' basin, provided for in the act referred to, has also been completed in the upper basin.

Chapter 89 of the acts of 1905 authorized the Board to exchange land with the Museum of Fine Arts and to enter into an agreement with it for relocating and reconstructing the Huntington avenue entrance, upon the southerly side of which the new Art Museum is to be built. Mutual con-

veyances of the lands in question were accordingly made, by which the City conveyed to the Art Museum 22,481 square feet of land adjoining the Museum site, receiving from its Trustees a deed for 34,559 square feet of land in exchange. We also conveyed to the Museum, for the consideration of twenty-three thousand dollars, 9,676 square feet of land on the opposite side of the Huntington avenue entrance, and made an agreement with the Trustees, for the above-named consideration, for them to reconstruct the entrance and the parts of the Fens in the vicinity of the entrance which required rearrangement. These changes will give a better shaped lot for the new Art Museum, and are also to the public advantage in improving the park lines.

Commonwealth avenue from Beacon street to the Newton boundary line was, late in the year, placed in charge of this Department by the City Council. The roadways are very much worn and need resurfacing, for which work we shall require an appropriation, as well as for loam and trees, which are now much needed. The poor condition of the roadways is partly due to automobiles and the high speed at which they have been run. This addition of 9.3 miles of roadway, giving us forty-two miles of macadamized roads which can only be maintained in good condition by frequent rolling with a heavy roller and judicious watering, will necessitate a further addition to the number of steam rollers and water carts in use by the department, and will make a considerable increase in our expenditures for maintenance.

We regret to be obliged to state that, under the present inadequate appropriations for maintenance, the general quality of the upkeep of our parks and playgrounds is deteriorating. A certain amount of new work is given to the department each year, to meet which insufficient or no provision is made. The result is that many of our roads are worn to the foundations and are in need of heavy repairs, and our trees and shrubs show the lack of good cultivation. This deficiency in the appropriations is very much to be

regretted, most of all for the sake of the trees, on whose health and proper growth depends so much the beauty and value of Boston's parks and playgrounds.

Respectfully submitted,

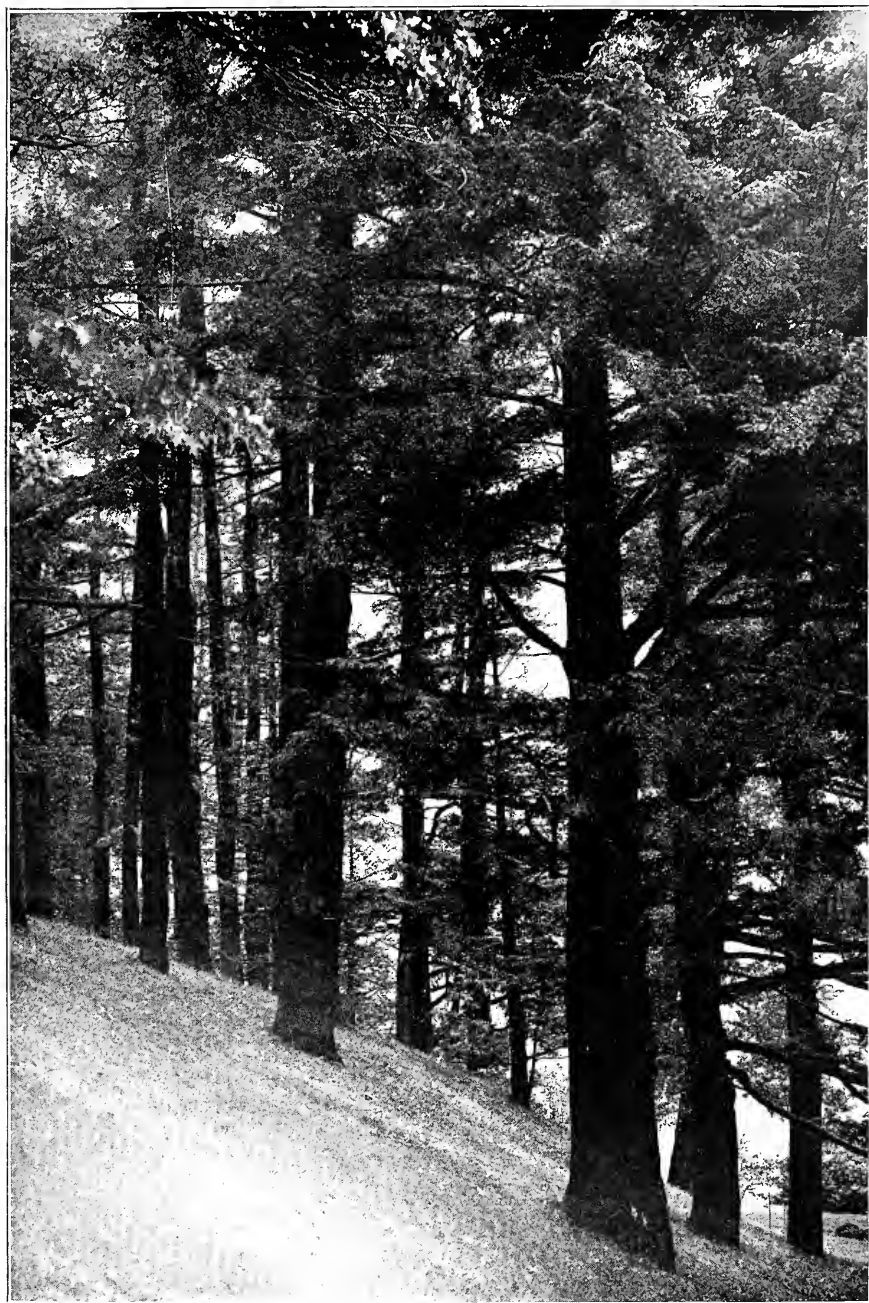
CHARLES E. STRATTON,

LABAN PRATT,

JAMES M. PRENDERGAST,

*Commissioners.*

Boston, January 31, 1906.



OLMSTED PARK — PINE BANK.





## SUPERINTENDENT'S REPORT.

---

TO CHARLES E. STRATTON, LABAN PRATT AND JAMES  
M. PRENDERGAST, *Commissioners* :

GENTLEMEN, — I herewith submit a report of the work performed under the direction of your Board during the year ending January 31, 1906.

### FRANKLIN PARK.

The improvement in the woodlands generally throughout the department becomes more noticeable with each season. Our work in thinning out overcrowding or worthless growth, and the cutting off of dead and diseased limbs, shows its good results in the feathering out of the trees and the more vigorous undergrowth of native shrubs and herbaceous plants, strengthened by our letting in light and air. Another factor in the improvement of these woodlands has been the mulching of the surface with loam where the soil covering was found to be thin or poor in quality. We have done considerable of this work, yet much remains to be done. Many of the old woodlands in Franklin Park are situated on rocky slopes with a light covering of loam for their support. Additions of loam (for which we need additional appropriations) to trees growing under such conditions would materially increase their growth and beauty.

During the past fall and winter extensive preparations were made for spring planting, a large number of holes being carefully prepared along the Canterbury-street border for young oaks. On Juniper hill ground was prepared for planting oaks and junipers, and preparations were made along

the face of the slope of Scarboro hill for planting thorns, dogwood and other large-growing shrubbery. Arrangements for this sort of planting were also made on the edge of the young plantations on the opposite slope of the hill, along the Circuit Drive. The material for this work is all at hand in the nurseries of the department. Ground was prepared last spring in the Wilderness for a colony of mountain laurels. The plants were collected from native stock, which had been cultivated in the department nurseries for four years, and were in fine condition. The planting forms an irregular grouping along the road and bridle-path in the Wilderness, and promises, in a little time, to be a very pleasing feature. The young tree plantations are generally in good condition. Much better growth, however, would accrue each year did our means permit of a higher degree of cultivation.

Smoke conditions are becoming more serious with each season. Evergreens especially show the effect very markedly. At the present rate of increase of smoke pollution in the atmosphere a very few years will see the end of evergreen conifers in our parks, except as stunted, blackened specimens. Therefore the planting of conifers for permanent effect would seem to be unwise.

Efforts have been made for the past two seasons to breed pheasants in the park, by using domestic hens as brooders. Last year about fifty were carried through until fall, enough of which still remain to interest visitors to the park. Quail, too, are protected and fed in winter, and are fairly plentiful in the Arboretum and in Franklin Park.

#### ARNOLD ARBORETUM, THE ARBORWAY AND JAMAICAWAY.

Except the ordinary work of maintenance, no work of importance was done in the Arboretum. Along the Arborway, Jamaica way and Riverway a heavy thinning out of large shrubs was made. These were principally cornels and viburnums, which encroached, by overhanging growth, on roads and paths.

## OLMSTED PARK.

In Olmsted Park little was required outside of the work of maintenance. As in the Riverway, the remarkable growth of the tree and shrubbery plantations called for a large amount of thinning out.

## THE FENS.

The work of the Sewer Department in the Fens, together with the changes consequent on the new alignment of the property of the Museum of Fine Arts, and the filling in of the new Fens' playground, made this part of the park system anything but an agreeable place during the past season. The Fenway drive and adjoining planting spaces over the conduit were restored, and some planting was done. Work is now in progress on the grading near the Museum grounds and gatehouses, with the prospect that the greater portion of this ground will be ready for planting in the spring.

The work of filling the new Fens' playground is still in progress, the material being mostly received from the Sanitary Department. At the present rate of progress the filling will not be completed until the end of summer.

The pumping of sewage from the bottom of the Fens' pond by the Sewer Department is not yet completed.

## COMMONWEALTH AVENUE.

The young elms planted in the spring of 1904, between Dartmouth street and Brookline avenue, have made an excellent growth.

## CHARLESBANK.

The construction work of the Charles River Basin Commission has interfered sorely with the comfort and convenience of those using this recreation ground. However, the marginal conduit along Charles street is now completed, and the work of restoration of the surface can be undertaken.

The gymnasiums were as usual well patronized. In the men's outdoor gymnasium classes for boys and young men were conducted, as in the past. The report of the Massachusetts Emergency and Hygiene Association, giving an account of the work done in the women's and children's gymnasium, will be found elsewhere in this report.

#### WOOD ISLAND PARK.

The trees at this attractive resort continue to make excellent growth. In consequence, the slopes, which six or seven years ago were bare and wind-swept, now give a pleasant shade to the many thousands who visit the park during the season. The success attending the efforts to establish tree growth on Wood Island demonstrates clearly that the islands in the harbor could be much enhanced in beauty were such portions as could be devoted to the purpose planted with suitable trees.

The gymnasium, also the tennis, baseball and cricket grounds were well patronized during the summer season. As usual, the gymnasium and baseball grounds were flooded in winter for skating.

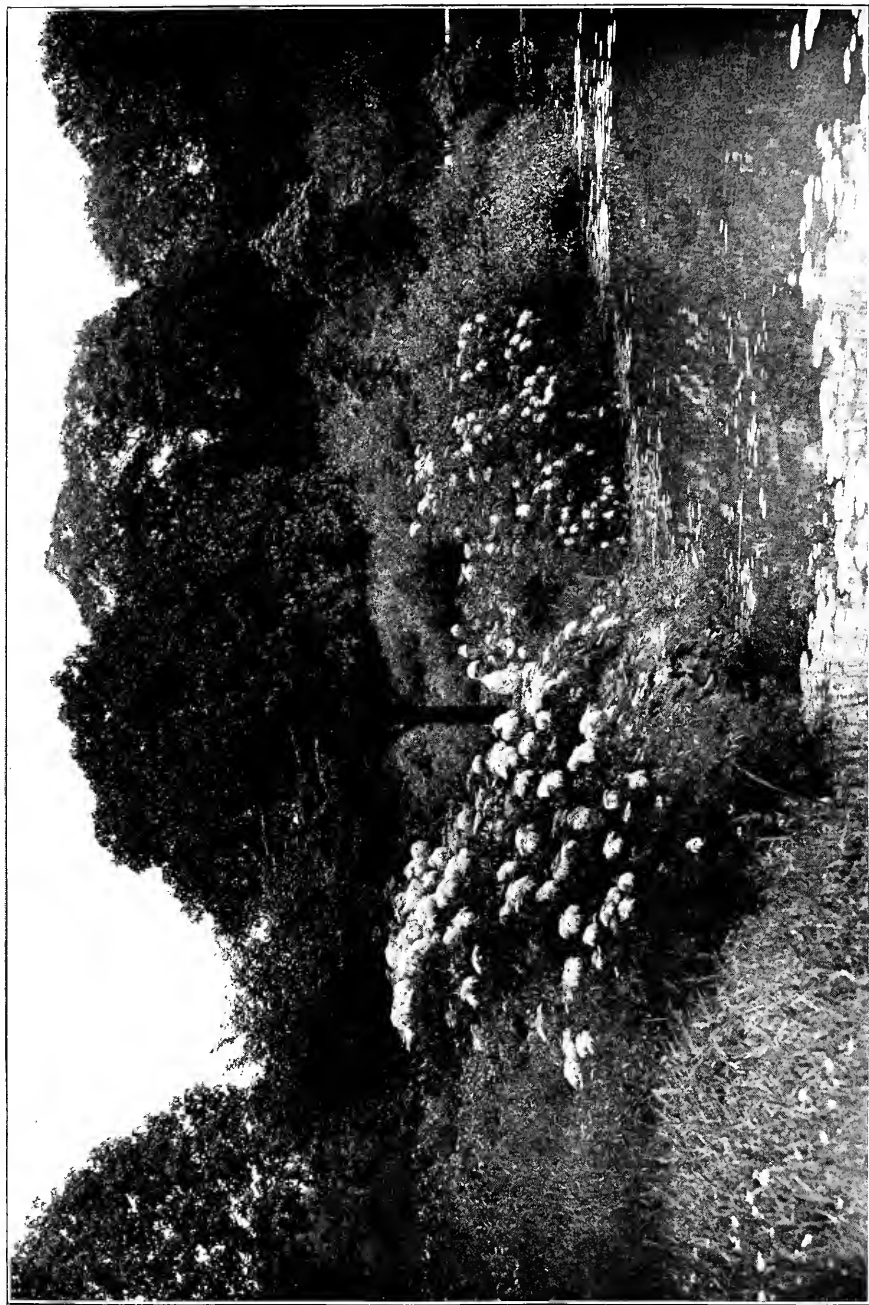
#### CHARLESTOWN HEIGHTS.

Only the ordinary work of maintenance was required here.

#### MARINE PARK AND STRANDWAY.

During the hot weather Marine Park and Castle Island are the most popular portions of Boston's system of parks. On the bridge or pier promenades, on the soft turf under the walls of Fort Independence, or under the fine old horsechestnuts and elms of Castle Island, a cooling breeze can always be found. The harbor views, also, are attractive. Many thousands enjoy these advantages on fine Sundays and holidays.

The Strandway drive is now completed, making a continuous drive on well-kept parkways from Marine Park to the



ARNOLD ARBORETUM — LILY POND.



Public Garden, a distance of twelve and one-half miles, passing on the way through Franklin Park, by the Arnold Arboretum, through Olmsted Park, the Riverway and the Fens.

The portion of the Strandway lying between Newman street and the railroad bridge is not yet planted. The ground, however, is prepared and planting will be commenced with the opening of spring. This planting, with the loaming of the railroad slopes and the grading between the walk and the beach, was not done by the Street Department as part of the Strandway construction. An appropriation is needed for this work, also for the erection of a fence on the loam space extending through the section where it is impossible otherwise to protect the trees and shrubbery.

Filling is still being received opposite Newman street. A large part of the newly filled area is now levelled and is used as a playground. This area could be somewhat enlarged were an appropriation made for the removal of the barn and the establishment of an administrative yard on a lot nearby, owned by your department.

#### CHESTNUT HILL PARK.

The dwelling-house and barn fronting on Commonwealth avenue have been sold and removed, the cellars filled up, and some grading done. From lack of an appropriation, no work has been done toward the development of the land last purchased for the planting of a screen belt.

Large crowds frequent Chestnut Hill Park on Sundays. Tennis, football and baseball fields are furnished on the playground and many enjoy the sports.

#### FRANKLIN FIELD.

Talbot and Blue Hill Avenues.

(77 Acres.)

Franklin Field, with its forty acres of level field, offers great advantages for sport and is the most popular of the

department's playgrounds. It cannot be termed a local playground; it is a meeting place for contestants in athletic sports from every part of Boston and the surrounding towns. Eighteen or twenty baseball games between regularly organized clubs are frequently played on a Saturday afternoon. Three cricket creases and nineteen tennis courts are also furnished and are much in demand.

The seven or eight acres which were plowed, levelled and seeded last spring, although used during the summer, have a fairly good sod considering the adverse conditions. Another area, of about the same size, of the roughest part of the ground, was turned under by the plow in the fall and will be levelled and seeded next spring. An enlargement of the levelled ground is much needed. A large piece of the nursery will be cleared next spring. An appropriation, however, will be required to get it into suitable condition for play. A building, too, is much needed to serve for sanitary and locker accommodations. At present the players have no facilities for changing or for safe-storing their clothing. An appropriation for the above-mentioned purposes is much needed. The field, as usual, was flooded and used for skating last winter.

#### CHRISTOPHER GIBSON PLAYGROUND.

Dorchester Avenue and Park Street.

(5.8 Acres.)

A portion of this playground is furnished with simple apparatus for the use of the children. A female teacher is in charge, and the results have been very satisfactory. Tennis and baseball are popular features of the playground. In the winter a part of the ground is flooded for skating. No work, other than that of maintenance, has been done during the past season.



## SAVIN HILL BEACH.

Springdale Street, Dorchester.

*(18.6 Acres.)*

There is need of further extension of facilities for bathers at this popular resort. We now have eighty-five closets for men and women and two hundred and ten clothing lockers for boys. To relieve overcrowding, plans are in preparation by your department for the erection of a building to contain five hundred and forty-eight lockers for men. This will enable us to turn over the old building of eighty-five closets to the exclusive use of women. The beach is in need of sand. An appropriation for this purpose is desirable. Skating was provided at this playground during the past winter.

## NEPONSET PLAYGROUND.

Neponset Avenue.

*(18 Acres.)*

This is a convenient and popular playground for baseball games. A playground for children was established here two seasons ago. Swings, teeter-boards, tilting-ladders and other simple apparatus were installed, and this part of the playground was placed in charge of a female teacher.

An appropriation is needed for the purchase of loam for levelling the inequalities of the marsh, as the levelled portion is now too small for the demand for baseball diamonds, and preparations for utilizing more of the marsh should be made. A good area of ice for winter skating is provided at this playground.

## MYSTIC PLAYGROUND.

Chelsea Street and Mystic River.

*(2.3 Acres.)*

No work was performed on this playground, except the usual care of the grounds, which contain a children's corner, with apparatus, under the care of a teacher. A baseball diamond is also maintained.

## ROGERS PARK.

Lake and Foster Streets.

*(6.9 Acres.)*

An appropriation is required to place the brook, which runs across the lower end of Rogers Park, underground. This will permit of the enlargement of the levelled area for play, which is a work much needed. It would also be desirable to prepare the ground and to plant trees on the boundaries of the playground. A dam was placed across the outlet of the brook last fall, and a skating pond made.

## NORTH BRIGHTON PLAYGROUND.

Western Avenue and Harvard Street.

*(14 Acres.)*

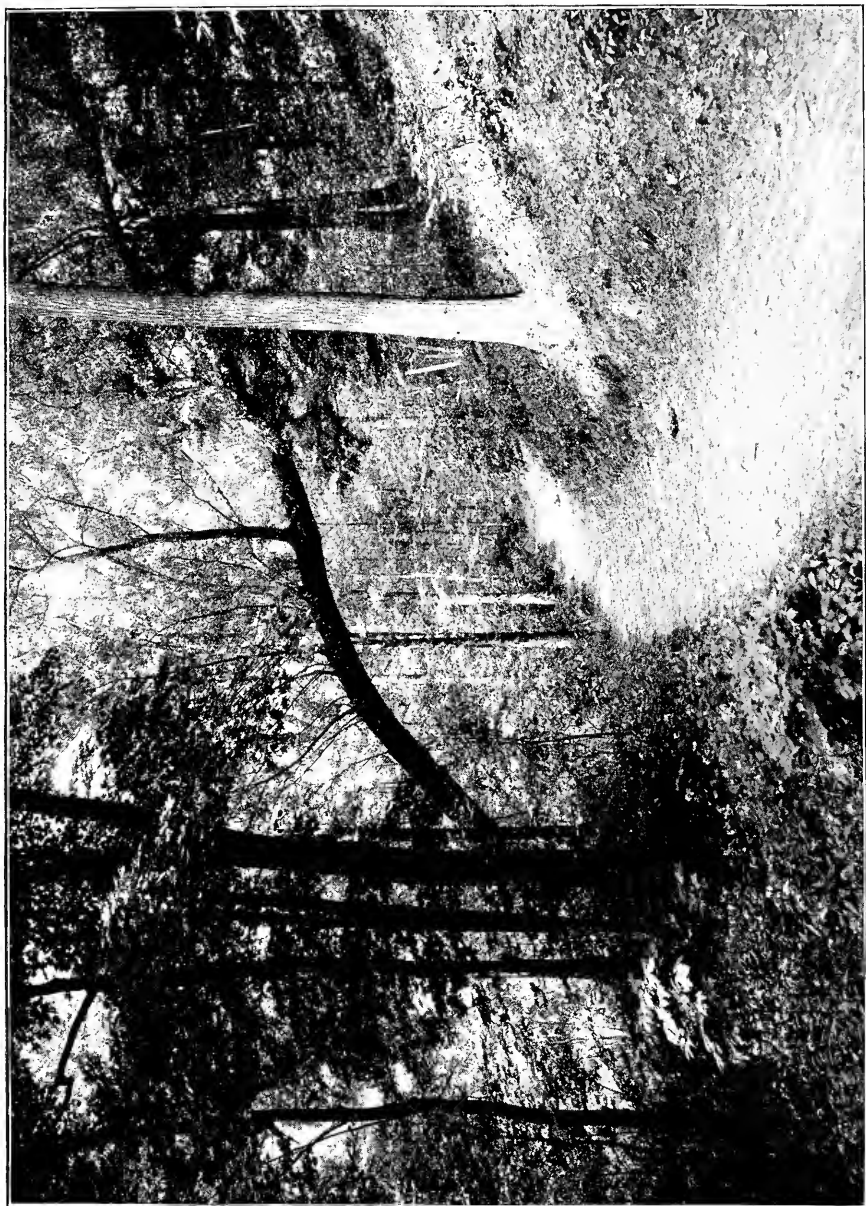
An extension of the graded area of this playground, to meet the growing demand for ball diamonds, is desirable, and an appropriation for the purchase of loam, to fill up the inequalities of the meadow lands, is required. Trees should be planted on the boundaries of the playground without unnecessary delay. This will require an additional appropriation for the preparation of the ground. The playground is flooded for skating.

## BILLINGS FIELD.

La Grange Street, near Centre Street, West Roxbury.

*(11 Acres.)*

No work except that of maintenance was done at this playground during the past season. Another large sink has developed in the centre of the playground. This is caused by the shifting of the boggy subsoil, over which the original filling was placed. Tennis, baseball and football are the favorite summer games; in winter the ball field is flooded for skating. Shelter and sanitary accommodations are needed.



WEST ROXBURY PARKWAY — BRIDLE PATH



## ROSLINDALE PLAYGROUND.

South Walter and Robert Streets.

(3.7 Acres.)

About one hundred linear feet of bleachers have been erected in this playground. A shelter and sanitary building are needed. The playground is very much used, the summer games being tennis and baseball; in winter the field is flooded for skating.

## COLUMBUS-AVENUE PLAYGROUND.

(5 Acres.)

Here the Civic League bears the expense of kindergarten and athletic instructors, and also of a teacher in gardening work. Provision is made for baseball games, while for boys and small children separate enclosures are provided, in which gymnastic apparatus, sand-boxes, etc., are installed for their use, and many little gardens are cultivated. The grounds are flooded for skating in winter.

## PRINCE-STREET PLAYGROUND.

Prince and North Bennet Streets.

(0.4 Acre.)

This playground, located in one of the most congested districts, contains teeter-boards, swings, tilting-ladders, etc., with a female teacher in charge. This all too little playground is very much appreciated by the children of the district in which it is located.

## FIRST-STREET PLAYGROUND.

Corner of M Street, South Boston.

(4.6 Acres.)

The frame work of the out-door gymnasium was set up during the past season; an appropriation is needed to com-

plete its equipment. The grounds, as usual, were flooded in the winter for skating.

#### FELLOWS-STREET PLAYGROUND.

Fellows and Hunneman Streets.

*(0.85 Acre.)*

This playground required only the usual work of maintenance during the past season. It is equipped with simple gymnastic apparatus for children, a female teacher being in charge. A sanitary building is needed.

#### COTTAGE-STREET PLAYGROUND.

Near Maverick Street, East Boston.

*(3.85 Acres.)*

This playground is much used for baseball, and is flooded in winter for skating. The pressing needs are fencing and sanitary accommodations.

#### FOREST HILLS AND MT. HOPE PLAYGROUND.

Between Washington and Florence Streets.

*(9.6 Acres.)*

The drainage of this playground has been much improved by deepening the brook and running a series of tile drains through the lowest parts of the grounds. While the field is in fairly good condition and space can be found for at least three diamonds, an appropriation for grading would largely increase its usefulness. Sanitary accommodations, too, are needed.

#### MARCELLA-STREET PLAYGROUND.

Marcella and Ritchie Streets.

*(4.5 Acres.)*

During the past season a contract was made for the removal of the old "Home" building and the erection of a

sanitary and locker building. The sanitariums are completed and are now in regular use. The lockers, however, are not yet constructed. To overcome the steep grade of the playground a retaining-wall, with return wings, was built at the lower end adjoining the yard of the City Sanitary Department, and the entire playground was graded to an average pitch of 27 inches per 100 feet. The grading is now nearly completed. The result is very satisfactory, the new grade being easy and no obstacle to good play, while, at the same time, a large amount of useless space has been made available. This playground is in a populous locality and cannot fail to be of great benefit to a large number.

#### RANDOLPH-STREET PLAYGROUND.

Albany and Randolph Streets.

*(2.8 Acres.)*

This playground is located in a populous district and contains facilities for ball playing. Children's gardens border it on three sides. These gardens are protected from flying balls by high expanded-metal fencing, and from wandering dogs and careless feet, on the street side, by low pipe fences, the panels of which are filled with woven wire. Sanitary accommodations were provided during the past season. A children's corner, provided with simple apparatus, occupies one corner of the playground. This is supervised by a female teacher. The grounds are flooded in winter for skating.

#### COMMONWEALTH PLAYGROUND.

This playground, the fee of which is in the Commonwealth, recently put in our charge, has accommodations for five baseball diamonds. It has also a corner well adapted for a children's playground. Sanitary accommodations for men have been provided during the past season. The grounds are suitable for arrangements for flooding in winter for skating.

## SPORTS.

On account of the mildness of the past winter, there was not much opportunity for skating, tobogganing and curling. There was a slight falling off in golf attendance during the season, the number being 28,000 against 32,000 of last year. Tennis was very popular. Baseball, as usual, took the lead; of all sports it seems to be the favorite and to retain its hold the longest. The demand for football grounds was greater than ever before.

Respectfully submitted,

J. A. PETTIGREW,  
*Superintendent.*





ARNOLD ARBORETUM — BLUE HILLS FROM BUSSEY HILL.



REPORT OF THE COMMITTEE OF THE MASSACHUSETTS EMERGENCY AND HYGIENE ASSOCIATION IN CHARGE OF THE WOMEN'S AND CHILDREN'S DIVISION AT CHARLESBANK.

---

BOSTON, January 17, 1906.

*To the Board of Park Commissioners :*

GENTLEMEN,—Our report for this, the fifteenth year of our superintendence at Charlesbank, presents no new features of special value. The everyday occurrences among the women and children, who pass so many of their hours at the lodge, on the green or in the gymnasium, though of interest to us, have not sufficient importance for a public record. Yet it is in the management of such trivial incidents that we find encouragement for the friendly supervision we give.

The numbers in attendance have been surprisingly good when the inconveniences connected with reaching the lodge are remembered. Before another season it is expected that they will be done away with by the completion of the bridge and the laying of the big sewer, when the place again will be in order.

Miss Cutler, the superintendent, was assisted through the summer by Miss Mary J. Price, who won the love of the children, interested them in their games and was skilful as teacher of gymnastics.

With the closing of the autumn work in October, Miss Cutler's resignation, which was tendered several months previously, took effect. She has been the devoted, efficient, wise superintendent for many years, giving a personal attention to the children that greatly benefited their health and their

character. Her sincerity enforced the value of her discipline, while her cordiality made the children feel at ease with her. She has left to the lodge the many books she had collected as reading matter for the women and girls, also numerous games, scrap and picture books.

Owing to the difficulty of access, the evening classes have been discontinued for the winter. The lodge, however, with its big upper playroom, is open every afternoon for several hours, and in the autumn and spring there is much time which the children can spend on the playground. Miss Emma A. Phelps, who so often has acted as vacation superintendent, is in sole charge of this daily afternoon care of the children.

Respectfully submitted,

KATE GANNETT WELLS,  
ANNA PHILLIPS WILLIAMS.

*For the Committee.*

## General Exhibit of Appropriations, 1905-1906.

OBJECT OF APPROPRIATION.	Balances, January 31, 1905.	Appropriations and Transfers, 1905-1906.	Total Credits.	Expenditures, 1905-1906.	Balances, January 31, 1906.
Park Department, maintenance.....	.....	* \$241,549 16	\$241,549 16	\$241,549 16	
Public Parks, land and construction.....	\$273 79	2,040 54	2,314 33	1,583 08	\$ 731 25
Chestnut Hill Park.....	15 64	.....	15 64	1 15 64	
Playgrounds.....	2,496 80	.....	2,496 80	2,496 80	
Speedway, Franklin Field.....	634 92	.....	634 92	634 92	
Columbia Road.....	.....	3,861 23	3,861 23	† 3,861 23	
Strandway.....	18 33	13,000 00	13,018 33	12,681 00	337 33
Playground, Ward 22.....	30,000 00	.....	30,000 00	10,616 49	19,383 51
Wood Island Park, shelter and sanitary building.....	601 55	.....	601 55	2 601 55	
Castle Island, sanitary building.....	3,000 00	.....	3,000 00	.....	3,000 00
Charleston Playground, gymnastic apparatus, etc.....	3,526 86	.....	3,526 86	2,720 25	806 61
Mystic Playground, gymnastic apparatus.....	622 31	.....	622 31	3 622 31	
Columbus-avenue Playground, sanitary building.....	3,034 23	.....	3,034 23	3,034 23	
Ashmont Playground, grading, etc.....	221 81	.....	221 81	221 81	
Playground, Wards 7 and 9.....	237,295 67	.....	237,295 67	4,727 16	232,568 51
Commonwealth Playground.....	.....	10,000 00	10,000 00	1,604 77	8,395 23
	\$281,741 91	\$270,450 93	\$552,192 84	\$286,970 40	\$205,222 44

\* Collections on account of labor credited to appropriation, \$5,349.86.

† Expended by Street Department and charged to Highway loan (issued as Public Park loan) under Stat. 1897, Chap. 319.

1 Transferred to Public Parks.

2 \$211.32 of this transferred to Public Parks.

3 \$413.68 of this transferred to Public Parks.

## Expenditures on Account of Land and Construction,

	Roads and Walks.	Drainage.	Grading.	General Work.
The Fens.....	\$93 00			
Olmsted Park.....	115 00			
Arborway .....				
Franklin Park .....				
Columbia Road.....	3,861 23			
Strandway.....				
Wood Island Park.....	5 00		\$24 00	
Charlestown Playground.....		\$127 70	2,275 49	
Franklin Field.....	634 92			
Mystic Playground.....			206 07	
Columbus-avenue Playground.....			24 55	
Ashmont Playground.....			221 81	
Rogers Park.....			90 89	
Randolph-street Playground.....		34 85		\$6 00
Commonwealth Playground.....		29 10	371 37	
Playgrounds.....				
Marcella-street Playground.....		1 50	4,129 91	
Totals.....	\$4,709 15	\$193 15	\$7,344 09	\$6 00

\*This amount was expended by Street Department, being proportion

from February 1, 1905, to January 31, 1906.

Plantations.	Water Supply.	Buildings.	Gymnasium Apparatus and Fences.	Walls.	Land and Expenses.	Totals.
				\$910 12		\$1,003 12
						115 00
\$70 75						70 75
213 19		\$39 38				252 57
						*3,861 23
					\$12,681 00	12,681 00
411 98						440 98
			\$317 06			2,720 25
						634 92
			2 66			208 73
				5,504 48		5,529 03
						221 81
						90 89
		4,299 15	387 16			4,727 16
	\$50 05	1,087 64	66 61			1,604 77
					2 00	2 00
	90 00	2,763 09	28 25	3,603 74		10,616 49
\$695 92	\$140 05	\$8,189 26	\$801 74	\$10,018 34	\$12,683 00	\$44,780 70

f highway loan, issued as Public Park loan, under Chap. 319, Acts of 1897.

## Expenditures on Account of Maintenance from

	Roads.	Walks.	Grounds.	Buildings.
Commonwealth Avenue.....	\$14,096 24	\$1,411 94	\$4,885 72	.....
The Fens.....	6,497 60	358 33	9,420 75	\$670 28
Riverway.....	7,175 83	368 24	5,506 73	1,370 51
Olmsted Park.....	5,838 43	575 12	12,551 58	1,838 86
Arborway.....	4,593 26	163 80	4,496 94	.....
Arnold Arboretum.....	4,139 76	336 59	.....	447 94
West Roxbury Parkway.....	.....	.....	924 67	17 75
Franklin Park.....	11,063 23	1,324 94	32,749 86	8,827 72
Columbia Road.....	5,043 48	276 91	1,721 88	.....
Strandway.....	1,122 17	92 55	2,998 04	26 00
Marine Park.....	1,081 10	1,857 84	4,209 80	1,273 68
Wood Island Park.....	37 50	139 67	3,227 97	687 07
Charlesbank.....	.....	198 37	3,560 54	.....
Charlestown Heights.....	.....	238 69	1,744 43	485 40
Charlestown Playground.....	.....	76 72	971 28	.....
Dorchester Park.....	.....	2 00	1,255 15	.....
Franklin Field.....	472 34	.....	4,111 71	639 10
Copp's Hill Terraces.....	.....	.....	372 75	.....
Chestnut Hill Park.....	1,242 69	54 42	4,574 63	.....
North Brighton Playground.....	.....	25 50	614 60	.....
Neponset Playground.....	.....	16 00	714 06	394 93
Billings Field.....	.....	2 00	800 71	.....
First-street Playground.....	.....	10 91	668 62	999 95
Prince-street Playground.....	.....	.....	620 78	.....
Mystic Playground.....	.....	32 00	384 36	.....
Fellows-street Playground.....	.....	7 86	356 93	.....
Christopher Gibson Playground.....	.....	20 00	695 24	630 13
Columbus-avenue Playground.....	.....	37 66	4,698 98	.....
Ashmont Playground.....	.....	.....	685 11	.....
Savin Hill Playground.....	.....	.....	850 63	.....
Roslindale Playground.....	.....	8 00	638 74	.....
Forest Hills Playground.....	.....	.....	790 20	.....
Rogers Park.....	.....	.....	1,207 62	.....
Oak Square.....	.....	.....	24 67	.....
Cottage-street Playground, Ward 2.....	.....	.....	590 85	.....
Randolph-street Playground.....	.....	11 25	1,024 59	443 16
Marcella-street Playground.....	.....	2 25	1,529 94	464 79
Office Expense.....	.....	.....	.....	.....
Commonwealth Park.....	.....	.....	38 73	.....
Miscellaneous.....	.....	.....	.....	.....
	\$62,403 63	\$7,649 56	\$116,219 79	\$19,217 27



February 1, 1905, to January 31, 1906.

Drainage.	General Work.	Sheep and Water Fowl.	Skating.	Men's Gymnasium.	Women's and Children's Gymnasium.	Office Expense.	Totals.
	\$365 30						\$20,759 20
	378 55	\$57 79					17,383 30
	394 61						14,815 92
	485 17	385 15	\$701 95				22,376 26
	350 00						9,604 00
\$576 09	388 30						5,888 68
							942 42
	924 59	730 88	385 72				56,006 94
							7,042 27
	350 00		511 23				5,099 99
	415 20						8,837 62
	350 00		425 50	\$2,797 54			7,665 25
	411 92		79 71	3,175 69	\$1,532 15		8,958 38
							2,468 52
			388 77				1,436 77
			19 28				1,276 43
		1,369 60	1,446 04				8,038 79
							372 75
			609 24				5,871 74
2 00			96 32	165 96			1,249 34
			125 43				1,389 27
			298 81	4 00			928 14
							1,982 29
					246 63		867 41
					361 61		777 97
					298 74		663 53
			101 67		226 47		1,673 51
208 00			89 16		105 52		5,139 32
			26 04				711 15
			210 71				1,061 34
			196 78				843 52
339 05							1,129 25
			23 29				1,230 91
							24 67
63 50			273 91				928 26
			282 90	187 64			1,949 54
							1,996 98
						\$9,795 97	9,795 97
			1 50				40 23
	2,321 33						2,321 33
1,188 64	\$7,134 97	\$2,543 42	\$6,293 96	\$6,330 83	\$2,771 12	\$9,795 97	\$241,549 16

## INCOME.

## RECEIPTS.

Balance from last year . . . . .	\$1,826 18	
Received for labor . . . . .	4,174 66	
Received from rents, sale of buildings, wool, sheep, grass, wood, etc. . . . .	3,362 21	
		<u>\$9,363 05</u>

## PAYMENTS.

Appropriation Park Department . . . . .	\$5,748 01	
Income carried to General City Income . . . . .	2,419 42	
Sinking Fund . . . . .	993 77	
Balance on hand, January 31, 1906 . . . . .	201 85	
		<u>\$9,363 05</u>

**Park Betterments Collected by City Collector,  
to February 1, 1906.**

	Assessm'ts committed to Collector.	Abated.	Net Asses- ments.	Collected.	Outstand- ing Feb. 1, 1906.
Public Park, Back Bay....	\$434,600 00	\$144,195 73	\$290,404 27	\$290,404 27	
Marine Park.....	23,543 00	12,616 80	10,926 20	10,926 20	
Franklin Park.....	135,023 00	122,000 66	13,028 34	13,028 34	
Parkway, Old Harbor.....	60,789 00	50,426 00	10,363 00	8,256 00	\$2,107 00
“ Muddy River...	108,972 00	83,594 25	25,377 75	23,238 75	2,139 00
“ West Roxbury..	154,107 00	113,658 00	40,449 00	31,763 00	8,686 00
“ Dorchester.. ....	9,713 00	3,055 54	6,657 46	5,927 74	729 72
	<u>\$926,753 00</u>	<u>\$529,546 98</u>	<u>\$397,206 02</u>	<u>\$383,544 30</u>	<u>\$13,661 72</u>

**Public Park and Playground Debt.**

*Liabilities.*

Total loans outstanding, January 31, 1906 . . . . . \$16,073,410 98

*Resources.*

Sinking Fund, January 31, 1906 . . . . . 5,664,417 85

Net Debt, January 31, 1906 . . . . . \$10,408,993 13

Park Statistics to January 31, 1906.

PARKS.	Year of Purchase or Taking.	COST TO DATE.			Acre.	Length of Drive-ways.	Length of Walks.	Length of Rides.	Area of Ponds and Rivers.
		Land.	Construction.	Total.					
<b>MAIN PARK SYSTEM.</b>									
Commonwealth avenue.....	1894	.....	\$121,607 93	\$121,607 93	112.7 acres	12.1 miles	11.9 miles	1.1 miles	28 acres
Fens.....	1877-1879	\$596,254 49	2,150,875 44	2,747,129 93	115 "	4 "	6.7 "	1.1 miles	8 "
Riverway.....	1890	457,457 53	674,109 35	1,131,566 88	40 "	1.4 "	2.8 "	1.2 "	77 "
Ohmsted Park.....	1890 and 1892	1,081,947 60	734,359 59	1,816,307 19	180 "	2.7 "	5.8 "	1.6 "	"
Arborway.....	1892	245,684 25	381,444 91	627,029 16	36 "	3.4 "	3.2 "	1.4 "	"
Arnold Arboretum.....	1882 and 1895	79,354 15	388,373 84	467,726 99	223 "	3.4 "	5.65 "	.....	0.6 acre
West Roxbury Parkway.....	1894	135,265 29	23,123 21	157,388 50	150 "	2.8 "	4.3 "	2.4 "	"
Franklin Park.....	1883 and 1884	1,551,196 63	2,428,624 80	3,979,821 52	527 "	7.3 "	14.5 "	1 mile	7.4 acres
<b>MARINE PARK SYSTEM:</b>									
*Columbia road.....	1899	447,528 63	540,511 93	988,040 56					
Dorchesterway.....	1892	63,735 54	65,187 12	128,922 66	102.5 " land } 194 " flats }	4.2 "	4.5 "		
*Strandway.....	{ 1890, 1892, 1897, and 1901	67,688 51	388,446 24	1,153,186 75					
Marine Park.....	1883	232,972 57	1,054,973 45	1,287,946 02	52.5 " land } 4.9 " flats }	0.5 mile	1.3 "	.....	4.4 "
<i>Carried forward.</i> .....	.....	\$5,658,985 19	\$8,947,638 90	\$14,606,624 09	1,730.00 acres	41.80 miles	60.65 miles	8.7 miles	125.4 acres

Park Statistics to January 31, 1906. — Continued.

PARKS.	Year of Purchase or Taking.	COST TO DATE.			Area.	Length of Drive-ways.	Length of Walks.	Length of Rides.	Area of Ponds and Rivers.
		Land.	Construction.	Total.					
<i>Brought forward</i> .....					41.80 miles	60.65 miles	8.7 miles	125.4 acres	
† Castle Island.....	1890	\$5,658,985 19	\$8,947,638 90	\$14,606,624 09	1,786.60 acres				
WOOD ISLAND PARK.....	1882 and 1891	.....	32,085 55	32,085 55	{ 25.7 " land 78.3 " flats }	2.1 "			
CHARLESBANK.....	1883	132,800 00	259,273 53	392,073 53	{ 53.6 " land 156.4 " flats }	0.3 mile			
TRINITY TRIANGLE.....	1885	373,916 99	313,448 13	687,365 12	10 acres	1.5 "			
CHARLESTOWN HEIGHTS.....	1891	30,000 00	.....	30,000 00	0.12 acre				
CHARLESTOWN PLAYGROUND,	1891	50,538 02	103,107 56	153,645 58	{ 6.1 acres land 4.3 " flats }	0.4 mile			
DORCHESTER PARK .....	1891 and 1903	172,923 31	22,085 40	195,008 71	{ 14 " land 4 " flats }	0.6 "			
FRANKLIN FIELD.....	1892	64,165 37	13,561 18	77,726 55	26 "				
NORTH END BEACH.....	1893	157,341 22	118,696 90	276,038 12	77 "	0.35 "			
COPP'S HILL TERRACES.....	{ 1893, 1899 and 1902 }	328,364 44	169,262 27	497,626 71	{ 3.7 " land 3 " flats }	0.11 "			
* CHESTNUT HILL PARK.....		90,888 19	32,001 46	122,889 65	0.6 acre				
NORTH BRIGHTON PLAY- GROUND .....	1894	210,239 06	6,940 60	217,179 66	55.4 acres				
* NEPONSET PLAYGROUND.....	1896	22,107 12	10,601 77	32,708 89	14 "				
BILLINGS FIELD .....	1896	24,804 39	16,189 35	40,993 74	18 "				
§ FIRST-STREET PLAYGROUND,	1897	47,068 98	16,758 00	63,826 98	11 "	0.4 "			
== FREET-STREET TRI- ANGLE.....	1897	.....	26,340 40	26,340 40	4.6 "				
<i>Carried forward</i> .....		4,000 00	.....	4,000 00	0.14 "				
		\$7,364,112 28	\$10,088,591 00	\$17,452,703 28	2,304.42 acres	66.11 miles	8.7 miles	125.4 acres	

## Park Statistics to January 31, 1906. — Continued.

PARKS.	Year of Purchase or Taking.	COST TO DATE.		Area.	Length of Drive-ways.	Length of Walks.	Length of Rides.	Area of Ponds and Rivers.
		Land.	Construction.					
<i>Brought forward</i> .....	.....	\$7,364,112 28	\$10,088,591 00	2,304.42 acres	43.85 miles	66.11 miles	8.7 miles	125.4 acres
PRINCE-STREET PLAY-GROUND.....	{ 1897, 1899 } { and 1901 }	180,474 70	434 07	0.4 acre	180,908 77			
MYSTIC PLAYGROUND.....	1897	50,125 00	3,804 41	2.3 acres	53,929 41			
<sup>1</sup> FELLOW-STREET PLAY-GROUND.....	1897	14,503 72	5,014 87	0.85 acre	19,518 59			
CHRISTOPHER GIBSON PLAY-GROUND.....	1897	37,709 58	10,042 75	5.8 acres	47,752 33			
COLUMBUS-AVENUE PLAY-GROUND.....	{ 1899, 1900 } { 1901, 1902 }	327,503 84	18,551 26	5 "	346,055 10			
ASHMONT PLAYGROUND.....	1899	43,590 09	4,000 00	2.2 "	47,590 09			
SAVIN HILL PLAYGROUND.....	1899	27,147 30	6,129 00	6.9 acres land 11.7 " flats	33,276 06			
ROSLINDALE PLAYGROUND. <sup>2</sup>	1899	24,825 11	5,992 71	3.7 "	30,817 82			
FOREST HILLS PLAYGROUND,	1902	25,106 75	.....	9.6 "	25,106 75			
COTTAGE-STREET PLAY-GROUND, WARD 2.....	1902	47,002 32	2,997 68	3.85 "	50,000 00			
*RANDOLPH-ST. PLAYGROUND,	1903	43,625 00	23,806 49	2.8 "	67,431 49			
MARCELLA-ST. PLAYGROUND,	1903	.....	11,271 77	5.1 "	11,271 77			
<sup>2</sup> ROGERS PARK.....	1899	30,000 00	3,779 27	6.9 "	33,779 27			
<i>Carried forward</i> .....	.....	\$8,190,186 69	\$10,109,394 60	2,359.66 acres	43.85 miles	66.11 miles	8.7 miles	125.4 acres

## Park Statistics to January 31, 1906. — Concluded.

PARKS.	Year of Purchase or Taking.	COST TO DATE.			Area.	Length of Drive-ways.	Length of Walks.	Length of Rides.	Area of Ponds and Rivers.
		Land.	Construction.	Total.					
<i>Brought forward</i> .....		\$8,190,185 69	\$10,169,394 60	\$18,359,580 29	2,353.66 acres	43.85 miles	66.11 miles	8.7 miles	125.4 acres
<sup>3</sup> BERNEYS SQUARE.....	1901	.....	294 70	294 70	1.2 "				
<sup>4</sup> OAK SQUARE.....	1902	.....	682 34	682 34	0.22 acre				
<sup>5</sup> COMMONWEALTH PLAY-GROUND.....	1905	.....	1,604 77	1,604 77	8.07 "				
PLAYGROUNDS, INVESTIGATING SITES.....	.....	245 29	.....	245 29					
General account.....		\$8,220,430 98	\$10,187,027 45	\$18,407,458 43					
Park Nursery.....		.....	73,987 50	73,987 50					
Betterment Expenses.....		.....	29,947 07	29,947 07					
		\$8,220,430 98	\$10,304,318 12	\$18,524,749 10	2,351.15 acres	43.85 miles	66.11 miles	8.7 miles	125.4 acres

\* The lands in these parks and playgrounds have not been paid for in full.

† An additional area of 164 acres is within the limits of the town of Brookline.

‡ An additional area of 18 acres is within the limits of the town of Brookline.

\*\* 49 acres transferred from water department; an additional area of 160.65 acres, including water area of 122.70 acres, is under the control of the Metropolitan Water and Sewerage Board.

§ Transferred from, and \$454.15 expended by, the Public Grounds Department.

¶ Custody given to city by Act of Congress.

|| Transferred to Street Department.

1 25,470 square feet transferred from, and \$2,000 expended by, the Public Grounds Department.

2 Transferred from, and \$30,000 expended for land by, the Public Grounds Department.

3 Originally dedicated for a square by David Sears and released to the city by his heirs.

4 Transferred from School Department.

5 Custody given to City by Stat. 1891, Chap. 421.

Of the above total lengths of driveways, walks, and rides, there have been completed to date, respectively, 4.08 miles, 59.2 miles, and 6.3 miles.









