

790.9773

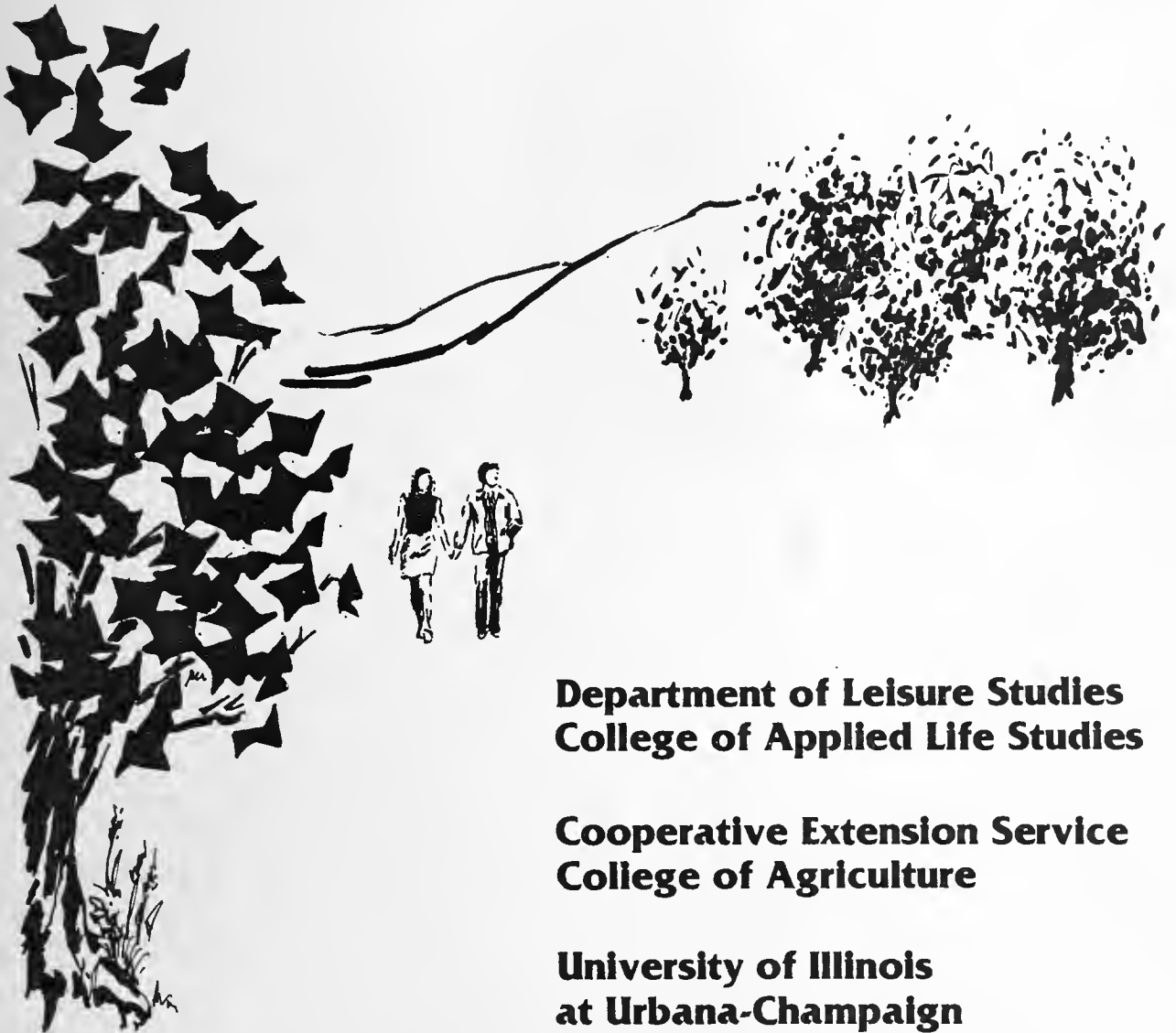
IL65

1982/83

LIBRARY U. OF I. URBANA-CHAMPAIGN

1982-1983
annual report

office of recreation and park resources



**Department of Leisure Studies
College of Applied Life Studies**

**Cooperative Extension Service
College of Agriculture**

**University of Illinois
at Urbana-Champaign**

LIBRARY U. OF I. URBANA-CHAMPAIGN

NOTICE: Return or renew all Library Materials! The Minimum Fee for each Lost Book is \$50.00.

The person charging this material is responsible for its return to the library from which it was withdrawn on or before the **Latest Date** stamped below.

**Theft, mutilation, and underlining of books are reasons for disciplinary action and may result in dismissal from the University.
To renew call Telephone Center, 333-8400**

UNIVERSITY OF ILLINOIS LIBRARY AT URBANA-CHAMPAIGN



1982-1983
ANNUAL REPORT
OFFICE OF RECREATION AND PARK RESOURCES

Department of Leisure Studies
College of Applied Life Studies

and the

Cooperative Extension Service
College of Agriculture

University of Illinois
at
Urbana-Champaign

September, 1983

TABLE OF CONTENTS

	Page
Office of Recreation and Park Resources	i
Organization Chart	v
Personnel of the Office of Recreation and Park Resources	vi
Annual Report Summary	vii
Office of the Chief and Outdoor Recreation Specialist	1
Community Recreation Specialist	7
Educational Resources Specialist	11
Therapeutic Recreation Specialist	18
Publications by ORPR Staff	26
Publications	27
APPENDIX A	28
APPENDIX B	29

Digitized by the Internet Archive
in 2011 with funding from
University of Illinois Urbana-Champaign

<http://www.archive.org/details/annualreport198283univ>

THE OFFICE OF RECREATION AND PARK RESOURCES

The Office of Recreation and Park Resources has become the principal link between the University's Cooperative Extension Service and Department of Leisure Studies and the public in the field of leisure services. In 1969 the Field Service of the Department of Recreation and Park Administration (now the College of Applied Life Studies) merged with in the College of Physical Education (now the College of Applied Life Studies) merged with the Rural Recreation Section of the Cooperation Extension Service in the College of Agriculture. The merged unit is called the Office of Recreation and Park Resources (see organization chart).

Purposes of the Office of Recreation and Park Resources

The primary purposes of the Office of Recreation and Park Resources are:

- . To generate new and improved methods of leisure service delivery through applied research efforts and demonstration projects.
- . To enhance professional development through inservice and preservice educational services and related materials development.
- . To develop and disseminate information resources.
- . To provide consultant services and technical assistance.
- . To contribute to the development and strengthening of the leisure service professions.
- . To establish and enhance cooperative liaison communication networks within the University, State and Nation.

ORPR Resource Sections

The Office of Recreation and Park Resources operates through four recreation resource sections: Outdoor, Educational, Community, and Therapeutic.

The Outdoor Recreation Resource Section, through consultation and research projects, deals primarily in planning, organization, and administration of county and regional park systems such as Conservation Districts, Forest Preserve Districts, and River Conservancy Districts. This section also secures, prepares, and disseminates educational materials as they relate to outdoor recreation resources. It also concerns itself with cooperation among the various state and federal agencies involved in outdoor recreation. These agencies include the National Park Service in the Department of Interior, U.S. Department of Agriculture, and state agencies such as the Illinois Department of Conservation and the Department of Commerce and Community Affairs.

The Educational Resources Section concerns itself with providing information and educational materials to professional and lay personnel in recreation and parks. It is responsible also for the examination of program techniques and the solutions to problems that relate to the conduct of recreation and park programs. Personnel of this section collect, prepare, and disseminate information and materials relating to new leadership development, thus enabling recreation and park groups to provide a more effective service

The Community Recreation Resources Section is responsible for consultation and research dealing with recreation and park problems affecting rural, urban and suburban communities. It attempts to enhance community decision-making processes in the planning, organizing and improving of comprehensive leisure service systems. Personnel of this section consult directly with recreation and park professionals, other government officials, citizen committees, and civic organizations.

The Therapeutic Recreation Resources Section engages in multifaceted services to improve the delivery of leisure services to handicapped, ill and aging populations in residential, treatment and community settings. Included in the services of the section is materials development and dissemination, consultation regarding all aspects of program design, implementation and evaluation, professional development training materials and workshops, research related to programming intervention and delivery strategies in therapeutic recreation.

ORPR Clients

There are several principal client groups with which ORPR works on a daily basis in providing services to assist in meeting various forms of leisure service demands. Some of these principal client groups are:

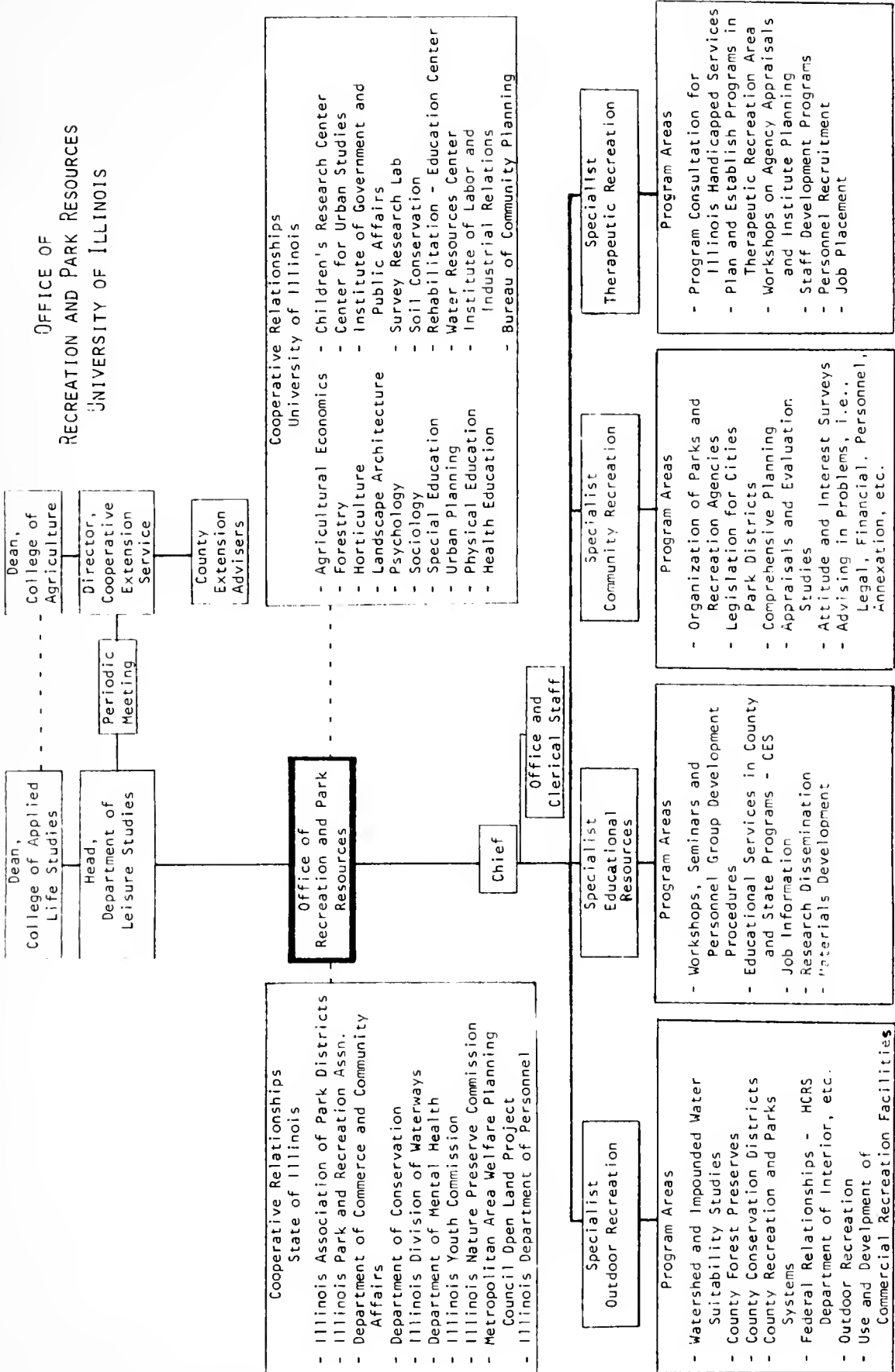
- * Cooperative Extension Service Personnel
- * Public Parks and Recreation Professionals
- * Private Leisure Enterprise Personnel
- * Related Human Services Personnel
- * Volunteers, Lay Leaders, Citizen Groups
- * Faculty and Staff of Educational Institutions
- * Individuals of all ages and families, who seek to improve the richness of personal life through the wise use of leisure.
- * Students who are preparing for careers in the leisure service profession, public and private.

Cooperative Relationships

The Office of Recreation and Park Resources facilitates many cooperative relationships both within the university and with other institutions. For example, major sources of assistance to the office is the contact with County Extension Advisers. At present, there are over three-hundred and fifty advisers assigned throughout the state. Their knowledge of local conditions and their influence in the community is invaluable to the ORPR staff. Efforts were also made to strengthen the relationship between ORPR and the Illinois Association of Park Districts and the Illinois Park and Recreation Association. Other cooperative relationships include the Department of Commerce and Community Affairs, Department of Personnel, State Comptroller's Office, Department of Public Health, State Department of Corrections, Department of Conservation and the Illinois Municipal League. As the Office of Recreation and Park Resources expands its service, other important relationships will be developed.

The establishment of the Office of Recreation and Park Resources is a concerted effort on the part of the University of Illinois to provide the best possible service in parks and recreation to the citizens of Illinois. This unit places the State of Illinois in the forefront in providing public service and continuing education in the essential field of leisure services.

OFFICE OF
RECREATION AND PARK RESOURCES
UNIVERSITY OF ILLINOIS



PERSONNEL OF THE OFFICE OF RECREATION AND PARK RESOURCES

Robert D. Espeseth
Chief and
Outdoor Recreation Specialist

Associate Professor

D. James Brademas, Ph.D.
Community Recreation Specialist

Associate Professor

Peg Connolly, Ph.D.
Therapeutic Recreation Specialist

Assistant Professor

George Lowrey, Jr., Ph.D.
Educational Resources Specialist

Assistant Professor

E.H. Regnier
Program Specialist, Emeritus

Norma Anderson
Secretary-Steno

Cheryl Hahn
Clerk-Steno

Carol Courtney
Graduate Assistant

John Dattilo
Graduate Assistant

Tom Makowski
Graduate Assistant

Norma Stumbo
Graduate Assistant

ANNUAL REPORT SUMMARY

The following Annual Report covers the period from September 1, 1982 through August 31, 1983.

The staff of the Office of Recreation and Park Resources (ORPR) annually participates in identifying and establishing goals and objectives for the coming year. This staff planning culminated in the Annual Plan of Work. This year a new four-year Plan of Work process was instituted by the Cooperative Extension Service which will provide a better long-range view of goals, objectives and evaluation plans than have occurred in the past.

The Specialists in ORPR have made many personal visits to Illinois communities, responded to hundreds of phone requests and mailed dozens of brochures and printed material to agencies and individuals. The Office continues to be recognized nationwide as one of the best models in the Cooperative Extension Service for delivery of information on recreation and leisure services. The more significant activities of the Office are detailed under each specialists section.

This summary is prepared to reflect on the goals of the Office and the Cooperative Extension Service which are aimed at improving the effectiveness of both public and private recreation and the wise use of natural resources as they relate to outdoor recreation.

OFFICE OF THE CHIEF
AND
OUTDOOR RECREATION SPECIALIST

In September, 1982 the Outdoor Recreation Specialist was appointed Chief of the Office of Recreation and Park Resources after several months in an Acting capacity. During the year many municipal park and recreation agencies, park districts, county conservation and forest preserve districts, state and federal agencies as well as private enterprises and individuals were assisted during the year. Some of the highlights of the year are noted for general information.

Research and Demonstration Projects

Illinois-Indiana Sea Grant

Marine Extension Project

The new project, for which the Chief of ORPR is also the Project Coordinator on a 50% time commitment, completed its first year on 1 April 1983 and was funded by the University of Illinois Cooperative Extension Service through a joint agreement with the Indiana Cooperative Extension Service, Purdue University.

Total funding for the second year is \$160,720 of which the National Sea Grant College Program will contribute about \$99,980 or 62% of the total and the two institutions contributing \$60,740.

Lake Michigan is a valuable natural resource which the two states rely on economically and recreationally. The focus of the new program continues to be the environs of Lake Michigan and marine resource problems related thereto.

Tabor Park Plan - Sullivan

Students in the Leisure Studies 341 class, under the direction of the Outdoor Recreation Specialist, worked with a Planning Committee from Sullivan to prepare a plan for a new park in the community. The class held several meetings with the Committee, analyzed the area, obtained necessary planning data, prepared and presented plans to the Committee and a community meeting. A final report was prepared and submitted.

The community provided funds for travel and incidental expenses of the students and specialist.

Champaign Park District Plan

ORPR contracted with the District for this Plan which was undertaken by a multi-disciplinary team from the Department of Landscape Architecture, Department of Leisure Studies and ORPR. Several graduate students from each department were used in the project. Public meetings, staff meetings, a community survey, commissioner interviews and on-site analysis of each park were used as primary input to the Planning Team.

Recommendations on future directions and development of the District were presented to provide a guide for Commissioners and Staff in the future.

Media Participation and Exposure

Seventeen radio tapes were made with Agriculture Communications which were aired throughout the state over the past year. The sessions were aired by 60 stations on "Illini Consumer Report," and 20 stations on the "Illini Actualities" Program. One TV short was made on Fall Tourism in Illinois. Ten tapes were cut with the University News Service and used by an average of 34 radio stations.

Five news releases were released through the Sea Grant Communicator and Ag Communications. Six newsletters were prepared for the Association of Illinois Marine Enterprises.

These media efforts were aimed at acquainting the citizens of Illinois with the excellent outdoor recreational and historical opportunities available to them. A goal of this effort is to raise the image of tourism in Illinois.

Professional Involvement

Presentations

"Professional Involvement"
Iowa Association of County Conservation Districts
Ames, Iowa
September 17, 1982

"Sea Grant Today"
Illinois-Indiana Sea Grant Program Workshop
Crown Point, Indiana
November 4, 1982

"Professional Certification in Illinois"
IPRA-IAPD Annual Conference
Chicago, Illinois
November 19, 1982

"A Great Lakes Heritage Program"
Sea Grant 4-H Marine Sciences Workshop
University of Illinois-Chicago
December 8, 1982

"Design and Re-Design of Campgrounds"
University of Wisconsin
Recreation Resource Center and WACO Workshop
Wisconsin Dells, Wisconsin
January 11-12, 1983

"Park Maintenance"
Panel Member
Great Lakes Park Training Institute
Angola, Indiana
February 22-23, 1983

"Sea Grant Today"
Charterboat Operators Workshop
Chicago, Illinois
March 3, 1983

"Risk Management" and "Hospitality Training"
 Association of Illinois Rural Recreation Enterprises Conference
 Mt. Vernon, Illinois
 March 11-12, 1983

"Redesign and Improvement of Your Campground"
 Wisconsin Association of Campground Owners Convention
 Appleton, Wisconsin
 March 26, 1983

"Professional Certification in Illinois"
 CIRCLE Workshop
 Canton, Illinois
 April 20, 1983

"Determining Standards for Parks, Recreation
 and Open Space"
 Illinois Association of Conservation Districts Workshop
 Hennepin, Illinois
 July 18, 1983

Attendance

Sea Grant Advisory Service Leaders Workshop
 Rochester, New York
 October 13-15, 1982

National Recreation and Park Association Annual Congress
 Louisville, Kentucky
 October 23-27, 1982

Cooperative Extension Service Annual Staff Training
 UIUC
 December 13-17, 1982

I&M Canal Corridor Workshop
 Morris, Illinois
 January 17, 1983

Mid-Year Meeting of National Recreation and Park Association
 and National Society for Park Resources Board
 Anaheim, California
 February 11-12, 1983

State 4-H Camp Committee Workshops
 University of Illinois
 Urbana, Illinois
 April 7-8, 1983

Great Lakes Sea Grant Network, Marine Extension
 Leaders/Advisers Seminar
 Traverse City, Michigan
 April 19-21, 1983

Urban Waterfront Improvement Workshop, Sea Grant
 Sea Grant
 Peoria, Illinois
 June 15-16, 1983

Computer Workshop
 Association of Marine Enterprises and Sea Grant
 Waukegan, Illinois
 July 19, 1983

National Society for Park Resources Executive Board Seminar
 Kings Gap, Pennsylvania
 August 12-14, 1983

University, College and Department Committees

University

Member - Allerton Park Improvement Committee
 Member - University YMCA, Board of Governors
 Chairman - Bailey Scholarship Committee
 Member - Natural Areas Committee
 Official - Track Meets at University of Illinois

College of Applied Life Studies

Member - Alleged Capricious Grading Committee

Cooperative Extension Service

Member - State 4-H Camping Committee
 Member - CRD Program Evaluation Task Force

Department of Leisure Studies

Member - Undergraduate Committee
 Member - Graduate Committee
 Member - Promotion and Tenure Committee
 Member - Advisory Committee

Teaching

Leisure Studies 341 - Outdoor Recreation Resource Planning

Leisure Studies 241
 and 493 - Land Between the Lakes Outdoor
 Recreation Consortium

Leisure Studies 100 - Guest Lecturer

Leisure Studies 310 - Budget Review

Leisure Studies 110 - Guest Lecturer

Leisure Studies 490 - Guest Lecturer

Professional Offices

National Recreation and Park Association

- Member - National Forum
- Member - Parks and Open Space Standards Revision Task Force

National Society for Park Resources

- Elected - President (1983-1984)
- Served as - First Vice-President (1981-1982)
- Chairman - Budget and Planning Committee
- Member - Executive Committee
- Member - Nominating Committee
- Member - Speakers Bureau
- Member - Park Maintenance Standards Project Task Force, and Co-Chairman - Classification and Terminology Sub-Committee

Illinois Park and Recreation Association

- Member - Admissions and Standards Committee
- Member - PNRMS Past Directors Council

Council of Sea Grant Directors

- Member - Executive Committee

Advisory Appointments

Illinois Department of Conservation

- Advisory Committee for State Natural Heritage Plan
- Advisory Committee for State Trails Plan
- Advisory Committee for State Comprehensive Outdoor Recreation Plan

Association of Illinois Marine Enterprises

- Research and Education Advisor

Association of Rural Recreation Enterprises

- Research and Education Advisory

Civic Service

Champaign County Forest Preserve District

- Member - Board of Commissioners (1974-present)
- Vice-President (1976-1983)
- President (1983-present)

COMMUNITY RECREATION SPECIALIST

Personnel Assessment Center - Northern Illinois Camp Association

In September, 1982, the Community Recreation Specialist conducted a personnel assessment center for the position of Director of 4-H Camp, Shaw-waw-nas-see, in Kankakee, Illinois. The assessment center was a first for 4-H camp associations and was deemed highly successful resulting in the selection of an outstanding director from four finalists.

Personnel Assessment Center - City of Evanston, Illinois

In October, 1982, a second assessment center was coordinated and directed by the Community Recreation Specialist for the position of Community Center Director for the Evanston Park and Recreation Department. Again, this was a successful undertaking resulting in the selection of a Community Center Director from a field of five candidates.

Final Phase - Development of Standardized Evaluative Instruments for Personnel in Public Parks, Recreation and Leisure Studies

It was decided to again implement the model for the development of tests for leisure service professionals. The first phase of the development of the model resulted in 6 personnel examinations suitable for use in either recruitment or for professional certification. However, no questions had been developed on such areas as history, philosophy and theories of play in recreation. A new group of incumbents and academicians was assembled for a two-day workshop in developing questions in the areas of history, philosophy and theories of play.

This new set of questions was refined and field tested with incumbents at five testing stations throughout the state and with students in leisure studies, physical education, business administration and education. The final results showed significant differences among the groups. This new set of questions will be incorporated into the previously developed examinations. The final result is a set of examinations which are content valid and may be used for personnel selection or professional certification.

Accreditation Visitation Team Member

In April, 1983, the Community Recreation Specialist served as a member of the National Recreation and Park Association Accreditation Visitation Team. The Team spent four days at the University of Nebraska in Lincoln in an in-depth study of the University's Recreation and Leisure Studies Program.

First Annual Illinois Professional Development School

January 23-26, 1983

In January, 1983, the Office of Recreation and Park Resources in cooperation with the Illinois Park and Recreation Association sponsored the first Illinois Professional Development School for leisure service professionals. The theme of this first school was Using Human Resources - Contemporary Wage and Salary Program. The Community Recreation Specialist was responsible for the coordination of the school. Thirty professionals from across the state attended the three-day school. An examination was given at the end of the school and 2 Continuing Education Units (CEUs) were awarded to those completing the school. The awarding of CEUs was a first for ORPR. An evaluation of the school was done at the conclusion with very favorable results. A followup evaluation is planned for September, 1983 to determine what changes were implemented in agencies as a result of the school.

State 4-H Community Workers Workshop

In December, 1982, the Community Recreation Specialist was responsible for a Leisure Training session of 4-H Community Workers held at the Ramada Inn.

Professional Involvement

During the past year the Community Recreation Specialist responded to numerous phone calls and letters requesting assistance on a wide variety of topics related to community recreation.

A Model Playground for the Multiply Handicapped

Approximately 500 copies of this publication has been distributed nationwide and in Canada. In August, 1983, the playground was officially opened with some landscaping in place, all concrete pathways and several pieces of play equipment.

Conferences and Continuing Education Activities

Speaker - "Analyzing Jobs for Officers, Committees
or Special Committees"
North Central State Presidents' Home Economics Association
Oak Brook Terrace, Illinois
October 1, 1982

Coordinator and Speaker - Test Construction Workshop
Elmhurst, Illinois
October 7-8, 1983

Speaker - "A Model for the Development of Content Valid
Selection Examinations for Leisure Service Personnel"
Leisure Research Symposium, National Recreation and Park
Association Congress
Louisville, Kentucky
October 25, 1982

Speaker - "Job Analysis Methods"
Cooperative Extension Service Annual Conference
December, 1982

Coordinator - Followup meeting to
Professional Development School
Wheaton Park District, Wheaton, Illinois
March 11, 1983

Speaker - Seminar on Personnel Recruitment Methods
Institute of Labor and Industrial Relations
University of Illinois
June 30, 1983

University, College and Department Committees

University

Member - Campus Council on Continuing Education
and Public Service

College of Applied Life Studies

Member - 25th Anniversary Committee

Department of Leisure Studies

Advisory Committee
Administrative Option Committee
Undergraduate Committee
Chairman - Brightbill Banquet Committee
Search Committee

Honors and Recognition

The Community Recreation Specialist was inducted as a Fellow
in the Academy of Park and Recreation Administration at the
Annual National Recreation and Park Association Congress in
October, 1983.

Promoted to Associate Professor with Tenure
August 21, 1983

EDUCATIONAL RESOURCES SPECIALIST

The Educational Resources Specialist is on a nine-month appointment with a primary assignment of on-campus teaching. Extension tasks center around continuing education and field research.

Education

Professional Development School

The first Professional Development School was carried out in January. The topic was Wage and Salary Administration and the three and one-half day school was conducted by J. Gary Berg, a private consultant from Dallas, Texas. The program was jointly planned with the Community Development Specialist and co-sponsored by the Administration and Finance Section of the Illinois Park and Recreation Association. The program was quite successful, providing the IPRA with a nice profit and the Section is in the process of planning a second school. Inexplicably they have not come to ORPR for help in this endeavor although the school was a brainchild of ORPR and ORPR did all the work on the first one. Consequently we have been essentially stalled in planning for 1984.

Extramural Classes

Off-campus semester long courses taught by faculty of the Department of Leisure Studies have been suspended pending an in-depth study of the needs in the field by practitioners who are the main beneficiaries of such courses. The proliferation of continuing education efforts on the part of the professional society, its various sections and other educational institutions has placed a real time constraint on those who are interested in continuing their education. The professional society has instituted a state-wide committee to

monitor continuing education and to try to coordinate the many efforts. Consequently ORPR and the Department of Leisure Studies should not move into more extensive offerings unless there is a demonstrated need. The field is glutted at present.

Commissioner's Training School

Last year the Educational Resources Specialist developed a prospectus for a two-year training school for Park District Commissioners, who are elected lay people with governing functions in the state-wide park district system. The IAPD (Illinois Association of Park Districts) elected not to pursue the training school at this time.

Field Training Program

The Educational Resources Specialist has full responsibility for the Field Training Program for students in the Department of Leisure Studies.

This involves:

1. Assessment of agencies as field training sites.
2. Establishment of contractual arrangements with all field training agencies.
3. Assignment of students to agencies.
4. Supervision and assessment of students in the professional Field Practicum - about 60 students per year.

In addition to the practicum, which is a 16-week, supervised, full-time work and study program taken in the senior year, all students are required to work and document preliminary, unsupervised, field experiences of no less than 320 hours. All such field experiences are verified by the Field Training Office. In addition to the work experiences students are required to begin their professional life by joining a professional society and, for the practicum,

they must secure personal and professional liability insurance. Supervision and administration of this major aspect of the undergraduate program is assisted by a graduate student but the program remains the major time commitment for the Educational Resources Specialist.

On-Campus Teaching

Courses taught in 1982-83 were:

Leisure Studies 200 - Leadership (Fall 1982)
30 students

Leisure Studies 280 - Pre-Practicum Seminar (Fall and Spring)
60 students

Leisure Studies 215 - Program Development (Spring)
35 students

Leisure Studies 284 - A and B Field Practicum (Fall and Spring)
60 students

Leisure Studies 381 - Management Internship (Fall and Spring)
6 students

Guest Lectures -- Leist 100, 110, 210 and P.E. 210

Thesis Committees

Masters

Alan Ledgin
Kim Gress

Doctoral

Carol Unzicker - Chairman

Student Advising

20 Undergraduates
5 Masters
2 Doctoral

Service

Job Mart and Job Opportunities Bulletin

ORPR has just completed a ninth year of providing a comprehensive job information service in cooperation with the Illinois Park and Recreation Association. This consists of a classified listing of position vacancies nationwide and a monthly Job Opportunities Bulletin of positions open in the State of Illinois. The Bulletin is mailed as a service to all member agencies of the IPRA and to an extensive subscription list of individuals. Reciprocal sharing of job information is carried out with about 20 other states with similar services. In conjunction with this service the Educational Resources Specialist sets up and operates a Job Mart Service at the annual fall conference of the Illinois Park and Recreation Association.

International Liaison and Study Abroad

The Educational Resources Specialist advises and counsels students who are planning to study overseas. Each spring, from 6 to 8 students participate in study abroad programs with the majority electing a Park and Recreation study program in Edinburgh, Scotland.

Research

Test Construction Project

The test construction project which was initiated and carried out for most of last year was continued and completed during 1982-83. A second phase was added during the fall of 1982, the data gathered and analyzed and the report completed. The Educational Resources Specialist was involved in data collection and data analysis.

Alumni Family Camp Survey

This project was stalled for most of a year but the graduate student involved did complete the work and made a report to the state committee in the fall of 1982. The Educational Resources Specialist continues to work with the student in completing the final write up for thesis purposes.

Professional InvolvementSpeeches and Workshops

Test Construction Workshop
Task Development Sessions
Elmhurst, Illinois
October 7-8, 1982

Personnel Assessment Center
Assessment Team Member
Evanston, Illinois
October 18-19, 1982

National Recreation and Park Association Congress
Assistance with Research Presentation
Louisville, Kentucky
October 22-27, 1982

Alumni Family Camp Meeting
Reporting Results of Survey
Joliet, Illinois
November 7, 1982

Illinois Park and Recreation Conference
Operation of Job Mart
Rosemont, Illinois
November 18-20, 1982

Conducted Orientation in Scotland For Students
in Study Abroad Program
Edinburgh, Scotland
January 7-18, 1983

Illinois Association of Professional Preparation
in Health, Physical Education and Recreation
Conducted evening recreational session
Allerton Park
Monticello, Illinois
February 11, 1983

State 4-H Organization
Two Workshops on Motivation
Mascoutah, Illinois
February 26, 1983

State 4-H Leadership Conference
 Conducted Recreational Dance Session
 Campus
 March 4, 1983

University of Illinois Retirement Conference
 Session on "Turning Your Hobby Into Cash"
 Campus
 March 19, 1983

Mid-Year Educational Forums
 Illinois Park and Recreation Association
 Test Construction Phase 2 Data Collection
 Champaign, Illinois
 April 18-19, 1983

Leisure, Craft and Conseling Camp
 Recreational Dance Sessions
 Allerton Park
 Monticello, Illinois
 April 26, 1983

University of Tennessee
 National Recreation and Park Association Accreditation
 Team Member
 Knoxville, Tennessee
 May 23-27, 1983

University, College and Department Committees

University

Coordinating Committee on Career Planning and Placement

College of Applied Life Studies

Promotion and Tenure Committee

College of Agriculture

Arts Advisory Council - Cooperative Extension Service

Department of Leisure Studies

Advisory Committee
 Awards Committee
 Promotion and Tenure Committee
 Graduate Committee
 Undergraduate Committee
 Social Committee

Professional Memberships and Offices

National Recreation and Park Association

Society of Park and Recreation Educators Branch
National Accreditation Program - Team Member
Internship and Fieldwork Committee

Illinois Park and Recreation Association

Recreation Program Section
Technical Advisory Committee
University and College Relations Committee

World Leisure and Recreation Association

International Association for the Child's Right To Play

International Park and Recreation Federation

THERAPEUTIC RECREATION SPECIALIST

It is estimated that approximately 20% of the Illinois population may be permanently or temporarily disabled or over age 65. This leads to an estimate of over 2 million citizens who may require specialized recreation services. Additionally, over 2,500 health and human services agencies in the state employ over 2,700 full-time, part-time and seasonal workers to provide specialized recreation services to special populations. Countless numbers of volunteers participate in the provision of specialized recreation services through the Special Olympics, 4-H, and other voluntary sources. Many diverse agencies and individuals were assisted during the past year by the Therapeutic Recreation Specialist with regard to recreation services for special needs populations.

As the field of therapeutic recreation continues to grow and expand, new areas of professional development needs emerge. The Therapeutic Recreation Specialist maintains active involvement in both innovative areas of service delivery development, as well as concern for providing continuing education opportunities and resources to enhance professionals' current skills and technology for accountable service delivery systems.

The concern with the provision of viable extension services for this rapidly growing profession has led to an emphasis on three major areas of the Specialist's activities. First, research and demonstration projects a timely data base for all other activities of the Therapeutic Recreation Specialist. Second, the Specialist's involvement in professional activities provides a link not only in determining which of the current trends and needs

in the field may best be addressed through ORPR services, but further, to provide continuing education information to professionals through workshops, presentations, and speeches. Third, theory and data based information are translated to the applied setting through the development of publications and information materials, as well as through the technical assistance services of the Therapeutic Recreation Specialist.

The activities of the ORPR Therapeutic Recreation Specialist during 1982-83 are best summarized through the three major categories described above: (1) Research and Demonstration Projects; (2) Professional Involvement and Development; and (3) Information Development and Dissemination.

Research and Demonstration Projects

A primary mission of the Therapeutic Recreation Specialist is to address the professional development needs and to conduct applied research directed toward the improvement of therapeutic recreation services in the state of Illinois. During 1981-82, a comprehensive study was completed in November, 1982. The wealth of data collected in this study has become the basis for the development of long range planning for therapeutic recreation extension activities for ORPR. This study also seems to have major implications for national needs in the field. Several efforts have been enacted to replicate this study of professional status concerns of therapeutic recreation professionals throughout the nation, including the states of Georgia, Oklahoma, Missouri, and the New England Region.

The Therapeutic Recreation Specialist has been involved in several other research and demonstration project efforts. She served as the Project Evaluator on one federal grant, participated on a grant review

panel for the Rehabilitation Services Administration of the U.S. Department of Education, and participated in the development of a federal grant proposal with the U.S. Department of Education. The Specialist also functioned as Principal Co-Investigator of a national survey of Assessment Practices in Therapeutic Recreation with Dr. David Compton of the University of Missouri.

Professional Involvement and Development

During 1982-83, the Therapeutic Recreation Specialist had contacts with over 2,350 professionals and persons concerned with recreation and special populations through professional meetings, workshops and conferences. The following educational workshops, presentations, and speeches were made in relation to therapeutic recreation:

"Formative Program Evaluation"

Hillcrest Medical Center, Tulsa, Oklahoma
September, 1982

"Goals and Objectives in Rehabilitation Programming"

Hillcrest Medical Center, Tulsa, Oklahoma
September, 1982

"Community Recreation Services for the Handicapped"

Tri-County Planning Commission, Peoria, Illinois
September, 1982

"Evaluation Techniques"

Illinois Parks and Recreation Annual Conference
Rosemont, Illinois
November, 1982

"Report on the Manpower Study"

Illinois Therapeutic Recreation Section Annual Business Meeting
Rosemont, Illinois
November, 1982

"Assessment Processes"

Therapeutic Recreation Management School
Wheeling, West Virginia
March, 1983

"Treatment Planning Procedures"

Therapeutic Recreation Management School
Wheeling, West Virginia
March, 1983

"Post-Doctoral Institute on Therapeutic Recreation"
University of Maryland
March, 1983

"Research Report on the Illinois Manpower Study"
Research Forum, Midwest Symposium on Therapeutic Recreation
Springfield, Illinois
April, 1983

"Entry Level Outlook for Therapeutic Recreation Professionals"
Midwest Symposium on Therapeutic Recreation, Springfield, Illinois
April, 1983

"Value and Importance of Leisure to Human Development"
Upper Midwest Hospital Conference, Minneapolis, Minnesota
May, 1983

"Accountability in Therapeutic Recreation Services"
Upper Midwest Hospital Conference, Minneapolis, Minnesota
May, 1983

"Activity Programming Trends"
Illinois Activity Professionals Association Annual Convention
Collinsville, Illinois
May, 1983

"Advanced Concepts in Evaluation"
University of Oregon
May, 1983

Pre-service education of students who have selected therapeutic recreation as a career option is critical to the continued advancement of this field. The Specialist taught and guest lectured the following courses in the Department of Leisure Studies, thus addressing pre-service education needs:

Courses Taught

Leisure Studies 239 - "Senior Professional Seminar in Therapeutic Recreation," Fall, 1982.
25 students, 1 hour credit, team taught
Dr. Navar and Dr. Peterson

Leisure Studies 230 - "Clinical Aspects of Therapeutic Recreation,"
Fall, 1982. 35 students, 4 hours credit.

Guest Lectures

- Leisure Studies 490 - "Research in Leisure," September, 1982
- Leisure Studies 332B - "P.E.R.T.," October, 1982
- Leisure Studies 332A - "Evaluation," November and December, 1982
- Leisure Studies 310 - "Budget Hearings," December 1982 and May, 1983
- Leisure Studies 210 - "Personnel Evaluation," April, 1983
- Leisure Studies 331 - "Behavior Management," April, 1983

Thesis

- Leisure Studies 499 - Norma Stumbo, Summer, 1983

Teaching efforts in Leisure Studies 230 resulted in the Specialist's listing on the University of Illinois Incomplete List of Teachers Ranked as Excellent by Their Students in Spring of 1983 for the fourth consecutive year. Additional academic responsibilities include advising one Ph.D. candidate, three M.S. candidates, and 30 undergraduate students. Over 150 individual advising sessions were held with departmental students throughout the year. The Specialist also served on the following Department and College committees:

- Graduate Committee
- Undergraduate Committee
- Student Awards Committee
- College Election and Credentials Committee, Chair
- Applied Research Group

The ORPR Therapeutic Recreation Specialist continues to be very involved in state and national professional organizations and activities. During 1982-83, she served the third of a three-year term as the Great Lakes Regional Director on the National Therapeutic Recreation Society Board of Directors and

will continue in this capacity until October of 1983. In 1982-83, she served on the following professional organization committees:

National Therapeutic Recreation Society

Philosophical Statement Committee, Chair
 Newsletter Editor Selection Committee, Chair
 Research Committee, Chair
 Nominations Committee
 Newsletter Policies Committee

Illinois Therapeutic Recreation Section

Research Committee, Chair
 Awards Committee

Illinois Parks and Recreation Association

Technical Assistance Committee

Society of Park and Recreation Educators

Applied Research Symposium, Special Populations

Developing and maintaining contacts through these various professional service activities enhances the Specialist's knowledge and understanding of the needs and concerns of practitioners, educators and students in the field of therapeutic recreation. The Therapeutic Recreation Specialist also participated in several continuing education opportunities to enhance her current skills and develop new skills necessary for providing the highest quality of therapeutic recreation extension activities. As the field of therapeutic recreation continues to expand and develop, the Specialist must stay abreast of innovative techniques and a rapidly changing technology of information. The following conferences and short courses were completed in 1982-83:

Professional Conferences

National Therapeutic Recreation Society Institute
October, 1982

National Recreation and Park Association Congress
October, 1982

Illinois Park and Recreation Association Conference
November, 1982

1983 Midwest Symposium on Therapeutic Recreation
April, 1983

Post-Doctoral School

University of Maryland Faculty Development Institute
on Therapeutic Recreation
March, 1983

Information Development and Publication

Dissemination of information on the field of therapeutic recreation via printed materials and technical assistance efforts is a vital component of ORPR therapeutic recreation extension activities. The Specialist published one major professional book chapter, began the fourth volume of Research Into Action: Applications for Therapeutic Recreation Programming, published three professional society newsletter articles as well as reviewing a therapeutic recreation textbook prospectus for Prentice-Hall.

The Specialist continues to receive a substantial number of requests for technical and general information concerns, and educational opportunities in therapeutic recreation. The following list describes the three major areas of technical assistance information requested:

Delivery of Services

- . funding resources
- . adaptive equipment and devices
- . accessibility resources
- . program development resources
- . evaluation methods

Professional Issues

- . career opportunities
- . general information on professional organizations
- . research and development grant resources
- . specific professional society committee work

Educational Resources and Opportunities

- . curriculum information
- . continuing education offerings
- . publication and film resources

This area of materials development and dissemination remains a critical concern in this rapidly changing and expanding field. As similar requests have been received, resource materials have been developed to address these needs.

Summary

Throughout the 1982-83 year, countless contacts with therapeutic recreation professionals were made through a variety of meetings and conferences. Numerous letters and phone calls were made to provide technical assistance and resource information to professionals throughout the state and the nation. The Therapeutic Recreation Specialist advised and worked with students in leisure studies, therapeutic recreation, and related fields. The above activities represent the major highlights of this past year.

PUBLICATIONS BY ORPR STAFF

Peer Review Policy

The Office of Recreation and Park Resources has continued the policy of peer review of selected reports produced by members of the staff. To ensure that ORPR reports convey the most accurate and useful information, it is our policy that selected reports be evaluated by outside reviewers before being released. The reviewers' suggestions and critiques will be carefully considered in preparing final reports for publication.

Report Evaluation Form

In addition to the above review, each ORPR report sent out carries an evaluation form (see Appendix A). The evaluation forms are uniform in nature generally for all reports, however selected reports may have an evaluation form particular to the individual report (see Appendix B). The response to the evaluation forms has been positive.

PUBLICATIONS

Connolly, P., Stumbo, N., and Holmes, P. Research Into Action: Applications for therapeutic recreation programming, Vol. III, Office of Recreation and Park Resources, Department of Leisure Studies and Cooperative Extension Service, University of Illinois at Urbana-Champaign, October 1982.

Journal Articles

- Brademas, D.J. A model for the development of content valid selection examinations for leisure service personnel. Journal of Park and Recreation Administration, 1983, 1(1), 63-68.
- Brademas, D.J. An evaluation of a management development training program. Journal of Performance and Instruction, 1982, XXI (8), 12-14.
- Espeseth, R.D. The sophisticated, discerning recreation customer. Visions in Leisure and Business-An International Journal, 1 (3), 1982. 4-7.

Articles Reviewed

Espeseth, R.D. Journal of Community Development Society, "Local Perceptions of Reservoir Impacts - A Test of Vested Interests."

ORPR Reports

- Espeseth, R.D. and Musser, D. Illinois State Fair Visitors Study - 1982. Office of Recreation and Park Resources, UIUC, December 1982, 30 pp.
- Espeseth, R.D. Guidelines for Selecting Park and Recreation Consultants. ORPR-26, September 1982, 4th ed., 24 pp.
- Espeseth, R.D. Site Planning of Park Areas. ORPR-36, September 1982, 3rd ed., 28 pp.

Technical Reports and Proceedings

Brademas, D.J., Connolly, P., Wallrich, P. and Rodgers, J. A Model Playground for the Multiply Handicapped. Office of Recreation and Park Resources, The Cooperative Extension Service, University of Illinois, September 1982.

Evaluation of Office of Recreation and Park Resources Publication

Publication Title: HIRING PRACTICES FOR PART-TIME AND SEASONAL LEISURE SERVICES PERSONNEL

In an effort to assess the impact of our written materials, we ask you to take a few minutes and fill out this evaluation questionnaire after you have read the publication.

1. The publication was useful to me.

Very Useful 5 4 3 2 1 Not Useful At All
(circle one)

2. I felt the publication was directed to me.

Exactly 5 4 3 2 1 Not At All

3. Compared to others of its type, this publication was credible.

Very Credible 5 4 3 2 1 Not Credible At All

4. I will consider changes in my program or agency as a result of this publication.

Definitely 5 4 3 2 1 Absolutely Not

If change is considered, please explain briefly.

5. Please identify your agency or program.

6. Suggestions for other types of publications. _____

Please complete this questionnaire and return it in the enclosed, pre-addressed, pre-paid envelope.

Thank you very much for your help.

EVALUATION FORM

0
Code

FOR

MODEL JOB ANALYSIS REPORT

Please read the Model Job Analysis Report enclosed, answer the following questions and return this form in the enclosed self-addressed stamped envelope.

- | | <u>Check One</u> | |
|---|------------------|-------|
| 1. Are the mechanics of the process clear to you? | ___Yes | ___No |
| 2. Are the mechanics of the process feasible to implement in your agency? | ___Yes | ___No |
| 3. Are the statistical analyses described in Chapter 3 clear and understandable? | ___Yes | ___No |
| 4. Are the methods of calculation described in Appendix C clear and understandable? | ___Yes | ___No |
| 5. Do you have a background in statistics? | ___Yes | ___No |
| 6. Do you have resources within your agency to carry out the calculations? | ___Yes | ___No |
| 7. Do you have resources available outside of your agency to carry out the calculations? | ___Yes | ___No |
| 8. Does the Model Job Description for the Director of Parks and Recreation found in the Report appear to be reasonable and understandable? | ___Yes | ___No |
| 9. Does the relationship of traits to tasks as given in the examples in Chapter 3 appear to be reasonable and understandable? | ___Yes | ___No |
| 10. Based on the Illustrations of traits related to tasks, found in Chapter 3, do you feel such results have merit for developing selection procedures? | ___Yes | ___No |
| 11. Do you consider the job analysis process tested in the study as demanding? | (Check One) | |

- _____ Little amount of effort
- _____ Moderate amount of effort
- _____ Large amount of effort

- | | | |
|--|--------|-------|
| 12. Would you consider adopting the job analysis process in your agency? | ___Yes | ___No |
|--|--------|-------|

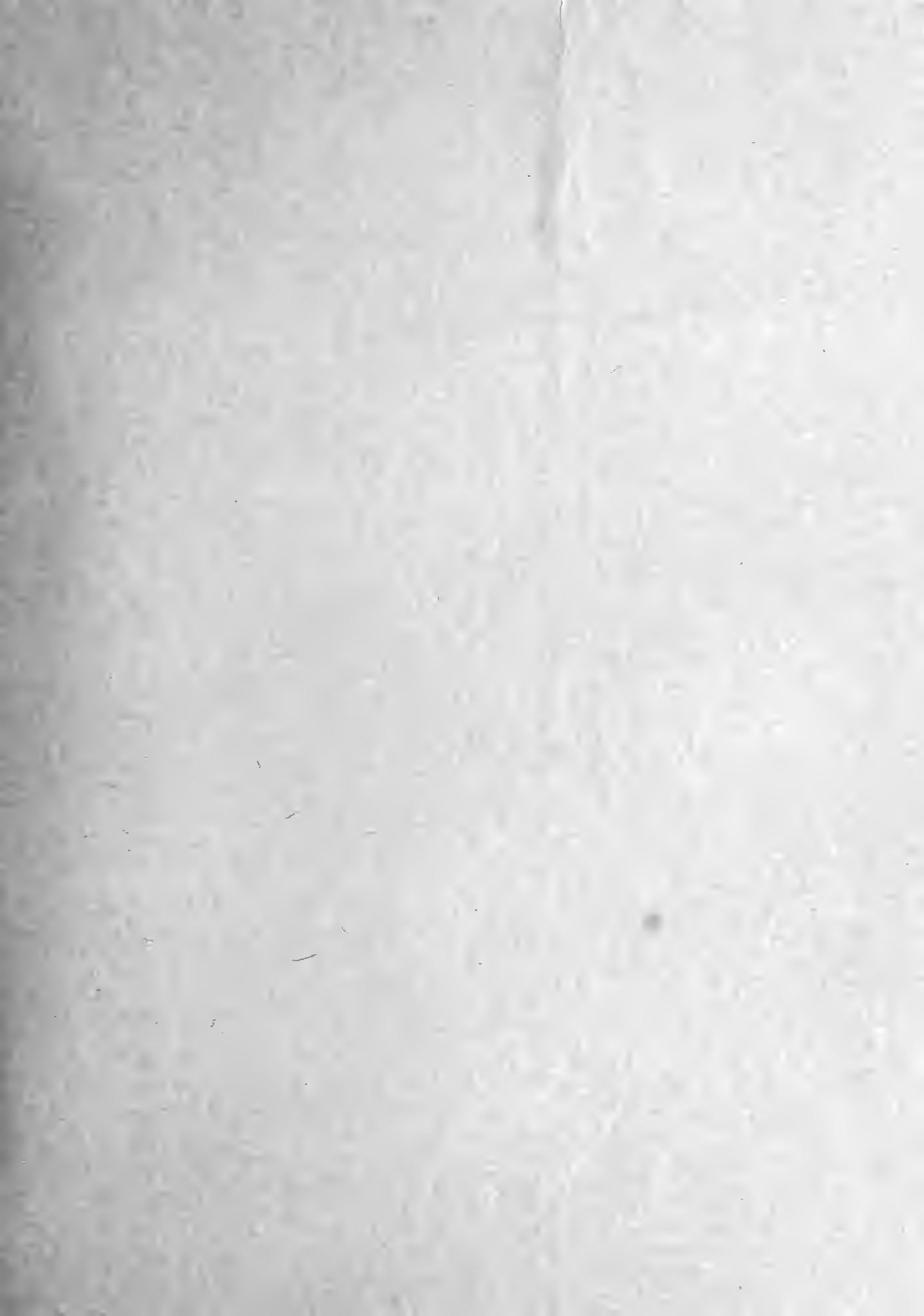
Check One

- 13. Is the job description as developed valuable for recruitment and selection of job candidates? Yes No
- 14. Is the job description as developed helpful as a guide for employee training? Yes No
- 15. Is the job description as developed helpful as a guide for the development of a performance appraisal system? . . . Yes No
- 16. Will this process, if implemented, contribute to a greater employee understanding of job responsibilities? . . Yes No

COMMENTS

THANK YOU

Please Return to: Jim Brademas, ORPR, 312 Armory Bldg., University of Illinois,
Champaign, IL 61820



UNIVERSITY OF ILLINOIS-URBANA
790.9773L65 C001
ANNUAL REPORT CHAMPAIGN
1982/83



3 0112 023457382