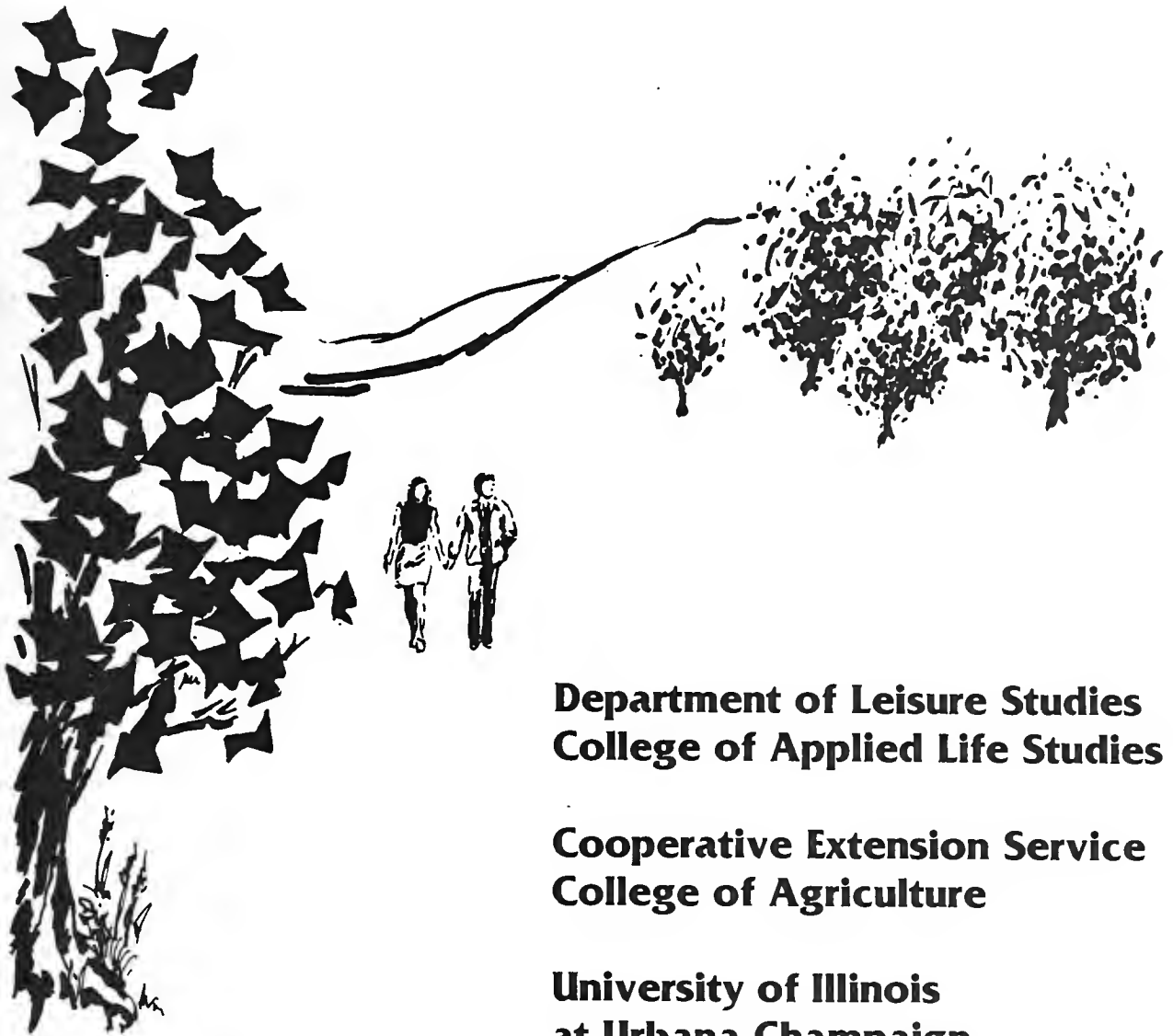


790.9113  
IL 65  
1983/84

LIBRARY U. OF I. URBANA-CHAMPAIGN

1983-1984  
annual report

# office of recreation and park services



**Department of Leisure Studies  
College of Applied Life Studies**

**Cooperative Extension Service  
College of Agriculture**

**University of Illinois  
at Urbana-Champaign**

**NOTICE: Return or renew all Library Materials! The *Minimum Fee* for each Lost Book is \$50.00.**

The person charging this material is responsible for its return to the library from which it was withdrawn on or before the **Latest Date** stamped below.

**Theft, mutilation, and underlining of books are reasons for disciplinary action and may result in dismissal from the University.  
To renew call Telephone Center, 333-8400**

UNIVERSITY OF ILLINOIS LIBRARY AT URBANA-CHAMPAIGN



1983-1984  
ANNUAL REPORT  
OFFICE OF RECREATION AND PARK RESOURCES

Department of Leisure Studies  
College of Applied Life Studies

and the

Cooperative Extension Service  
College of Agriculture

University of Illinois  
at  
Urbana-Champaign

September, 1984

Digitized by the Internet Archive  
in 2011 with funding from  
University of Illinois Urbana-Champaign

<http://www.archive.org/details/annualreport198384univ>

## TABLE OF CONTENTS

|  | Page |
|--|------|
| Office of Recreation and Park Resources                  | i    |
| Organization Chart                                       | v    |
| Personnel of the Office of Recreation and Park Resources | vi   |
| Annual Report Summary                                    | vii  |
| Office of the Chief<br>and Outdoor Recreation Specialist | 1    |
| Community Recreation Specialist                          | 7    |
| Educational Resources Specialist                         | 9    |
| Therapeutic Recreation Specialist                        | 15   |
| Publications by ORPR Staff                               | 21   |
| Publications   | 22   |
| APPENDIX A   | 23   |



## THE OFFICE OF RECREATION AND PARK RESOURCES

The Office of Recreation and Park Resources has become the principal link between the University's Cooperative Extension Service and Department of Leisure Studies and the public in the field of leisure services. In 1969 the Field Service of the Department of Recreation and Park Administration (now the College of Applied Life Studies) merged with in the College of Physical Education (now the College of Applied Life Studies) merged with the Rural Recreation Section of the Cooperation Extension Service in the College of Agriculture. The merged unit is called the Office of Recreation and Park Resources (see organization chart).

### Purposes of the Office of Recreation and Park Resources

The primary purposes of the Office of Recreation and Park Resources are:

- . To generate new and improved methods of leisure service delivery through applied research efforts and demonstration projects.
- . To enhance professional development through inservice and preservice educational services and related materials development.
- . To develop and disseminate information resources.
- . To provide consultant services and technical assistance.
- . To contribute to the development and strengthening of the leisure service professions.
- . To establish and enhance cooperative liaison communication networks within the University, State and Nation.





## ORPR Resource Sections

The Office of Recreation and Park Resources operates through four recreation resource sections: Outdoor, Educational, Community, and Therapeutic.

The Outdoor Recreation Specialist Section, through consultation and research projects, deals primarily in planning, organization, and administration of county and regional park systems such as Conservation Districts, Forest Preserve Districts, and River Conservancy Districts. This section also secures, prepares, and disseminates educational materials as they relate to outdoor recreation resources. It also concerns itself with cooperation among the various state and federal agencies involved in outdoor recreation. These agencies include the National Park Service in the Department of Interior, U.S. Department of Agriculture, and state agencies such as the Illinois Department of Conservation and the Department of Commerce and Community Affairs.

The Educational Resources Section concerns itself with providing information and educational materials to professional and lay personnel in recreation and parks. It is responsible also for the examination of program techniques and the solutions to problems that relate to the conduct of recreation and park programs. Personnel of this section collect, prepare, and disseminate information and materials relating to new leadership developments, thus enabling recreation and park groups to provide a more effective service.

The Community Recreation Resources Section is responsible for consultation and research dealing with recreation and park problems affecting rural, urban and suburban communities. It attempts to enhance community decision-making processes in the planning, organizing and improving of comprehensive



leisure service systems. Personnel of this section consult directly with recreation and park professionals, other government officials, citizen committees, and civic organizations.

The Therapeutic Recreation Resources Section engages in multifaceted services to improve the delivery of leisure services to handicapped, ill and aging populations in residential, treatment and community settings. Included in the services of the section is materials development and dissemination, consultation regarding all aspects of program design, implementation and evaluation, professional development training materials and workshops, research related to programming intervention and delivery strategies in therapeutic recreation.

#### ORPR Clients

There are several principal client groups with which ORPR works on a daily basis in providing services to assist in meeting various forms of leisure service demands. Some of these principal client groups are:

- \* Cooperative Extension Service Personnel
- \* Public Parks and Recreation Professionals
- \* Private Leisure Enterprise Personnel
- \* Related Human Services Personnel
- \* Volunteers, Lay Leaders, Citizen Groups
- \* Faculty and Staff of Educational Institutions
- \* Individuals of all ages and families, who seek to improve the richness of personal life through the wise use of leisure.
- \* Students who are preparing for careers in the leisure service profession, public and private.



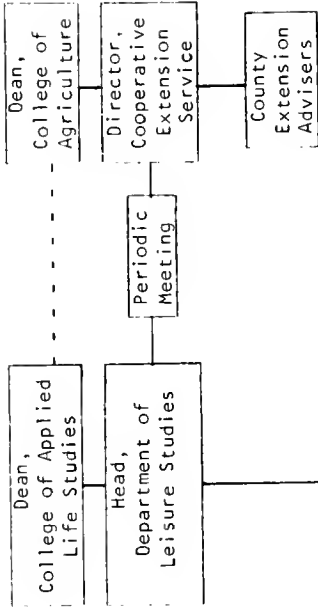
## Cooperative Relationships

The Office of Recreation and Park Resources facilitates many cooperative relationships both within the university and with other institutions. For example, major sources of assistance to the office is the contact with County Extension Advisers. At present, there are over three-hundred and fifty advisers assigned throughout the state. Their knowledge of local conditions and their influence in the community is invaluable to the ORPR staff. Efforts were also made to strengthen the relationship between ORPR and the Illinois Association of Park Districts and the Illinois Park and Recreation Association. Other cooperative relationships include the Department of Commerce and Community Affairs, Department of Personnel, State Comptroller's Office, Department of Public Health, State Department of Corrections, Department of Conservation and the Illinois Municipal League. As the Office of Recreation and Park Resources expands its service, other important relationships will be developed.

The establishment of the Office of Recreation and Park Resources is a concerted effort on the part of the University of Illinois to provide the best possible service in parks and recreation to the citizens of Illinois. This unit places the State of Illinois in the forefront in providing public service and continuing education in the essential field of leisure services.



OFFICE OF  
RECREATION AND PARK RESOURCES  
UNIVERSITY OF ILLINOIS



- Cooperative Relationships  
State of Illinois
- Illinois Association of Park Districts
  - Illinois Park and Recreation Assn.
  - Department of Commerce and Community Affairs
  - Department of Conservation
  - Illinois Division of Waterways
  - Department of Mental Health
  - Illinois Youth Commission
  - Illinois Nature Preserve Commission
  - Metropolitan Area Welfare Planning Council Open Land Project
  - Illinois Department of Personnel

- Cooperative Relationships  
University of Illinois
- Agricultural Economics
  - Forestry
  - Horticulture
  - Landscape Architecture
  - Psychology
  - Sociology
  - Special Education
  - Urban Planning
  - Physical Education
  - Health Education
  - Children's Research Center
  - Center for Urban Studies
  - Institute of Government and Public Affairs
  - Survey Research Lab
  - Soil Conservation
  - Rehabilitation - Education Center
  - Water Resources Center
  - Institute of Labor and Industrial Relations
  - Bureau of Community Planning

Chief  
Office and Clerical Staff

Specialist:  
Educational Resources

- Program Areas
- Workshops, Seminars and Personnel Group Development Procedures
  - Educational Services in County and State Programs - CES
  - Job Information
  - Research Dissemination
  - Materials Development

Specialist:  
Community Recreation

- Program Areas
- Organization of Parks and Recreation Agencies
  - Legislation for Cities Park Districts
  - Comprehensive Planning
  - Appraisals and Evaluation Studies
  - Attitude and Interest Surveys
  - Advising in Problems, i.e., Legal, Financial, Personnel, annexation, etc.

Specialist:  
Therapeutic Recreation

- Program Areas
- Program Consultation for Illinois Handicapped Services
  - Plan and Establish Programs in Therapeutic Recreation Area
  - Workshops on Agency Appraisals and Institute Planning
  - Staff Development Programs
  - Personnel Recruitment
  - Job Placement

Specialist:  
Outdoor Recreation

- Program Areas
- Watershed and Impounded Water Suitability Studies
  - County Forest Preserves
  - County Conservation Districts
  - County Recreation and Parks Systems
  - Federal Relationships - HCRS Department of Interior, etc.
  - Outdoor Recreation
  - Use and Development of Commercial Recreation Facilities









## ANNUAL REPORT SUMMARY

The following Annual Report covers the period from September 1, 1983 through August 31, 1984.

The staff of the Office of Recreation and Park Resources (ORPR) annually participates in identifying and establishing goals and objectives for the coming year. This staff planning culminated in the Annual Plan of Work. This year a new four-year Plan of Work process was instituted by the Cooperative Extension Service which will provide a better long-range view of goals, objectives and evaluation plans than have occurred in the past.

The Specialists in ORPR have made many personal visits to Illinois communities, responded to hundreds of phone requests and mailed dozens of brochures and printed material to agencies and individuals. The Office continues to be recognized nationwide as one of the best models in the Cooperative Extension Service for delivery of information on recreation and leisure services. The more significant activities of the Office are detailed under each specialists section.

This summary is prepared to reflect on the goals of the Office and the Cooperative Extension Service which are aimed at improving the effectiveness of both public and private recreation and the wise use of natural resources as they relate to outdoor recreation.



OFFICE OF THE CHIEF  
AND  
OUTDOOR RECREATION SPECIALIST

During the year many municipal park and recreation agencies, park districts, county conservation and forest preserve districts, state and federal agencies as well as private enterprises and individuals were assisted during the year. Some of the highlights of the year are noted for general information.

Research and Demonstration Projects

Illinois-Indiana Sea Grant Program

This program, for which the Chief of ORPR is also the Project Coordinator on a 50% time commitment, completed its second year on 31 March 1984, the program is administered by the University of Illinois Cooperative Extension Service through a joint agreement with the Indiana Cooperative Extension Service, Purdue University.

Funding for the third year is \$158,000 from the National Sea Grant College Program and \$85,000 in in-kind services provided by the two cooperating institutions.

Lake Michigan is a valuable natural resource which the two states rely on economically and recreationally. The focus of the new program continues to be the environs of Lake Michigan and marine resource problems related thereto. This year for the first time, four research projects were approved and the program thereby becomes a Coherent Program in the hierarchy of Sea Grant program designations. A significant amount of time has been committed by the Coordinator in administering the program.



### Salt Fork River Forest Preserve - Champaign County

Students in the Leisure Studies 341 class, under the direction of the Outdoor Recreation Specialist, worked with the Director and staff of the Forest Preserve District in preparing an analysis of the Salt Fork Forest Preserve to determine the best locations for a swimming beach and a family campground. The class divided into two study teams to focus on the two developments. Analyses were prepared, design standards researched and preliminary plans prepared and presented to the Director. Final reports were prepared and submitted.

### Champaign Park District Plan

ORPR contracted with the District for this Plan which was completed by a multi-disciplinary team from the Department of Landscape Architecture, Department of Leisure Studies, and ORPR. Several graduate students from each department were used in the project. Public meetings, staff meetings, a community survey, commissioner interviews and on-site analysis of each park were used as primary input to the Planning Team.

Recommendations on future directions and development of the District were presented to provide a guide for Commissioners and Staff in the future. The Plan was approved and accepted by the Park District Board in June, 1984.

### Media Participation and Exposure

Eighteen radio tapes were made with Agriculture Communications which were aired throughout the state over the past year. The sessions were aired by 60 stations on "Illini Consumer Report," and 20 stations on the "Illini Actualities" Program. Ten tapes were cut with the University News Service





and used by an average of 45 radio stations. The Outdoor Recreation Specialist appeared live on "Penny for you thoughts," WDWS, Champaign, along with Florence Gerstung, Executive Director, AIRRE, to discuss the Camping Industry in Illinois.

Eight news releases were released through the Sea Grant Communicator and Ag Communications. Six newsletters were prepared for the Association of Illinois Marine Enterprises. Four articles were published in magazines.

These media efforts were aimed at acquainting the citizens of Illinois with the excellent outdoor recreational and historical opportunities available to them. A goal of this effort is to raise the image of tourism in Illinois.

## Professional Involvement

### Presentations

"Design and Development of Campgrounds"  
University of Wisconsin Recreation Resource Center  
and WACO Workshop  
Wisconsin Dells, Wisconsin  
January 10-11, 1984

"County Level Services for Leisure"  
Urbana Exchange Club  
Urbana, Illinois  
February 15, 1984

"Travel Planning and Vacations in Illinois"  
Moultrie County Homemakers Association  
Sullivan, Illinois  
February 22, 1984

"Community Relationships in Tourism"  
Great Lakes Regional Sea Grant Network Workshop  
Traverse City, Michigan  
April 24, 1984

"The Future of Tourism in Illinois"  
Region 4, Cooperative Extension Service, Staff Seminar  
Bishop Hill, Illinois  
April 26, 1984



Attendance

NRPA Annual Congress  
Kansas City, Missouri  
October 1-6, 1983

Northwest Indiana Tourism Conference  
Co-Sponsored by Sea Grant  
Merrillville, Indiana  
November 10, 1983

Council of Sea Grant Directors  
Washington, DC  
November 13-15, 1983

International Joint Commission (Great Lakes)  
Indianapolis, Indiana  
November 15-17, 1983

Illinois Park and Recreation Association Conference  
Chicago, Illinois  
November 18-19, 1983

Sea Grant Marine Advisory Service Leaders  
Chicago, Illinois  
December 19, 1983

CIRCLE Workshop on Convention Centers, Theaters, etc.  
Springfield, Illinois  
February 10, 1984

Council of Sea Grant Directors  
Honolulu, Hawaii  
March 21-23, 1984

Congressional Immersion Day Conference  
Chicago, Illinois  
July 11, 1984

Sea Grant Week Conference  
Minneapolis, Minnesota  
July 15-19, 1984

NSPR Executive Committee  
Washington, DC and Kings Gap, Pennsylvania  
August 10-12, 1984

Illinois Parks and Recreation Association Summer Conference  
Springfield, Illinois  
August 23-24, 1984



## University, College and Department Committees

### University

- Member - Allerton Park Improvement Committee
- Member - University YMCA, Board of Governors
- Chairman - Bailey Scholarship Committee, YMCA
- Member - Natural Areas Committee
- Official - Track Meets at University of Illinois

### College of Applied Life Studies

- Member - Alleged Capricious Grading Committee

### Cooperative Extension Service

- Member - State 4-H Camping Committee
- Member - CRD Program Evaluation Task Force
- Member - Search Committee, Business Management Specialist
- Member - North Central Region, Historic and Rural Preservation Interest Network
- Member - Alternate Land Use Task Force

### Department of Leisure Studies

- Member - Undergraduate Committee
- Member - Graduate Committee
- Member - Promotion and Tenure Committee
- Member - Advisory Committee

### Teaching

- Leisure Studies 341 - Outdoor Recreation Resource Planning
- Leisure Studies 241 - Land Between the Lakes Outdoor  
and 493 Recreation Consortium
- Leisure Studies 100 - Guest Lecturer
- Leisure Studies 310 - Budget Review
- Leisure Studies 110 - Guest Lecturer
- Leisure Studies 490 - Guest Lecturer

### Thesis Committees

- Doctoral - Tom Kettelkamp and Doug Musser
- Master's - Forestry, David Rank



Professional Offices

## National Recreation and Park Association

- Member - National Forum
- Member - Parks and Open Space Standards Revision Task Force
- Member - Long Range Planning Committee

## National Society for Park Resources

- Elected - President (1983-1984)
- Member - Executive Committee
- Member - Nominating Committee
- Member - Speakers Bureau
- Member - Park Maintenance Standards Project Task Force, and Co-Chairman - Classification and Terminology Sub-committee

## Illinois Park and Recreation Association

- Member
- Member - PNRMS Past Directors Council

## Council of Sea Grant Directors

- Member - Executive Committee

## Great Lakes Regional Council-NRPA

- Nominated as Board of Trustees Candidate

Advisory Appointments

## Illinois Department of Conservation

- Advisory Committee for State Natural Heritage Plan
- Advisory Committee for State Trails Plan
- Advisory Committee for State Comprehensive Outdoor Recreation Plan

## Association of Illinois Marine Enterprises

- Research and Education Advisory

Civic Service

## Champaign County Forest Preserve District

- Member - Board of Commissioners (1974-present)
- Vice-President (1976-1983)
- President (1983-present)

## Kiwanis

- Chair - Camp Kiwanis Committee





## COMMUNITY RECREATION SPECIALIST

### Personnel Assessment Center - City of Evanston, Illinois

In January, 1984, the Community Recreation Specialist conducted a Personnel Assessment Center for the position of Community Center Director for the City of Evanston, Illinois. This Center resulted in the selection of an outstanding person from a field of five candidates. However, the candidate did not accept the offer and a second Assessment Center had to be conducted in March, 1984. This Center resulted in the selection of a top individual who did accept the position.

### Conferences and Continuing Education Activities

Speaker - Presentation of ORPR to New Cooperative Extension  
Service Advisers  
Urbana, Illinois  
November, 1983

Speaker - "The Personnel Assessment Center"  
Cooperative Extension Service Annual Conference  
Urbana, Illinois  
December 7, 1983

Telenet Presentation - Town and Country Art Exhibition  
Urbana, Illinois  
January 19, 1984

Speaker - Summer Institute on Innovative Techniques in  
Personnel Management  
New York University, New York

- "Job Analysis Methods" - June 4, 1984
- "Personnel Test Construction" - June 5, 1984
- "Personnel Assessment Center" - June 11, 1984
- "Performance Appraisal" - June 12, 1984



Teaching

Leisure Studies 210 - Theories and Methods of Supervision  
Fall, 1983

Leisure Studies 412 - Personnel Administration  
Spring, 1984

University, College and Department CommitteesUniversity

Member - Campus Committee on Continuing Education  
and Public Service

College

Member - College Alumni Committee  
Coordinator - Town and Country Art Show, College  
of Agriculture

Department of Leisure Studies

Chairman - Brightbill Banquet Committee  
Member - Department Advisory Committee  
Member - Graduate Committee  
Member - Grievance Committee  
Member - Promotion and Tenure Committee  
Member - Search Committee

Professional

Member - Committee on Relations with Other  
Professions, American Academy for Parks  
and Recreation Administration



## EDUCATIONAL RESOURCES SPECIALIST

The Educational Resources Specialist is on a nine-month appointment with a primary assignment of on-campus teaching. Extension tasks center around continuing education, field research and services to the profession.

### Continuing Education

#### Professional Development School

We did not conduct a Professional Development School in 1984. We were bypassed by the Administrative and Finance Section of the Illinois Park and Recreation Association who appropriated the school to run as their own. They contracted the Northern Illinois University to run the program form 1984. However we have, through diplomacy and some extra effort, succeeded in being requested to do a full 17-hour program for next year and a part of this year has been spent on planning for the event, now scheduled for January 21-23, 1985.

#### Extramural Classes

The long hiatus in the offering of extramural courses to practitioners in the field continues. While there is some demand for these courses, we have been unable to free faculty from on-campus responsibilities and the requirement of research and publication to conduct the courses. We continue to work on some kind of system for working this phase into the responsibilities of the Department.

#### Technology Transfer Series

This popular program of one-day workshops on campus, was abandoned to concentrate on the longer Professional Development School. There has been an interest, at least with faculty, for reviving the series. The problem



again appears to be the proliferation of continuing education efforts by the profession itself. That proliferation has been a result of mandatory requirements for continuing education in order for professionals to renew their professional certification. However, continuing education, conducted by the State Association and its many sub-units, has also been inspired by a profit motive. Continuing education is one way to produce revenue! In spite of this, we are doing some preliminary planning in this area.

### Field Research

#### Easter Seal Society Survey

The Educational Resources Specialist contracted with the Easter Seal Society of Peoria to conduct a four-county survey of leisure interests and accessibility for Special Populations. The Society supported one graduate student who did the bulk of the legwork, data collection and data reduction. However the Educational Resources Specialist carried out the data analysis, the preparation of tables and consultation on the interpretation of results. It is hoped that a major result of the survey will be a somewhat greater commitment to the support of and the organizational development necessary to carry out expanded services.

#### Test Development

A considerable amount of time and effort has gone into cleaning up a series of test instruments which were generated in the Test Construction project of the last two years. The Test Construction project was a demonstration of a methodology for taking the results of well constructed Job Analyses and using them for the development of content valid selection examinations. Seven common professional positions in the Parks and Recreation field were utilized and,





as a result of carrying out the methodology, we now have seven content valid examinations. The objective now is to clean these examinations and make them available for use in the field.

### Service to the Profession

#### Job Mart and Job Opportunities Bulletin

ORPR has now completed a tenth year of providing a fairly comprehensive job information service. This consists of a classified listing of position vacancies on a national scope and the printing and distribution of a monthly bulletin of positions in the State of Illinois. The Job Opportunities Bulletin (JOB), which is partially support by the Illinois Park and Recreation Association, is mailed out to all agency members of the Association and to a subscription list of about 700 individuals. Reciprocal job information is carried out with about twenty (20) other states with similar services. In accordance with this service ORPR sets up a Job Mart service at the annual Fall Conference of the Illinois Park and Recreation Association.

### On-Campus Responsibilities

#### Field Training Program

The Educational Resources Specialist has full responsibility for the Field Training Program for students in the Department of Leisure Studies. This involves:

1. Assessment of agencies as suitable Field Training sites.
2. Establishment of contractual arrangements with all field training agencies.
3. Assignment of students to agencies.
4. Supervision and assessment of students in the Professional Field Practicum - about 60 students per year.



In addition to the Practicum, which is a 16-week, supervised, full-time work and study program taken in the senior year, all students are required to work and document preliminary, unsupervised, field experiences of no less than 320 hours. All such field experiences are verified by the Field Training Office. Supervision and administration of this major aspect of the undergraduate program is assisted by a graduate student but the program remains the major time commitment for the Educational Resources Specialist.

### On-Campus Teaching

Courses taught in 1983-84 were:

#### FALL

|  |               |
|--|---------------|
| Leisure Studies 110 - Foundations of Leisure Services Delivery | - 50 students |
| Leisure Studies 280 - Pre-Practicum Seminar                    | - 25 students |
| Leisure Studies 284 - Professional Field Practicum             | - 26 students |
| Leisure Studies 381 - Management Internship                    | - 3 students  |

#### SPRING

|   |               |
|---|---------------|
| Leisure Studies 210 - Supervision in Leisure Services | - 30 students |
| Leisure Studies 280 - Pre-Practicum Seminar           | - 25 students |
| Leisure Studies 284 - Professional Field Practicum    | - 24 students |
| Leisure Studies 381 - Management Internship           | - 2 students  |

### Thesis Committees

Masters - Alan Ledgin

Doctoral - Carol Unzicker - Chairman  
 Norma Stumbo - Chairman



International Liaison and Study Abroad

The Educational Resources Specialist advises and counsels students who are planning to study overseas. Each spring approximately five students participate in study abroad programs with most electing a study program for students in Parks, Recreation and Leisure Services in Edinburgh, Scotland.

Professional Involvement

National Recreation and Park Association Congress  
 Conducted a full-day workshop on Survey Research for CEU Credit  
 Kansas City, Missouri  
 October 1-5, 1983

Overseas Study Program  
 Clarification of administrative changes in the program  
 Edinburgh, Scotland  
 October 17-24, 1983

Overseas Study Program  
 Conducted Orientation for students in the program  
 Edinburgh, Scotland  
 January 3-16, 1984

University, College and Department CommitteesUniversity

Coordinating Committee on Career Planning and Placement

College of Applied Life Studies

Promotion and Tenure Committee  
 Executive Committee

College of Agriculture

Arts Advisory Council - Cooperative Extension Service

Department of Leisure Studies

Advisory Committee  
 Awards Committee  
 Promotion and Tenure Committee  
 Graduate Committee  
 Undergraduate Committee  
 Social Committee



Professional Memberships and Offices

National Recreation and Park Association

Society of Park and Recreation Educators Branch  
National Accreditation Program - Team Member  
Internship and Fieldwork Committee

Illinois Park and Recreation Association

Recreation Program Section  
Technical Advisory Committee  
University and College Relations Committee

World Leisure and Recreation Association

International Association for the Child's Right To Play

International Park and Recreation Federation





## THERAPEUTIC RECREATION SPECIALIST

For the nine-month period of August, 1983 to May, 1984, the Therapeutic Recreation Specialist position was filled in an Acting capacity by a half-time employee.

### Introduction

It is estimated that approximately 20% of the Illinois population may be permanently or temporarily disabled or over age 65. This leads to an estimate of over 2 million citizens who may require specialized recreation services. Additionally, over 2,500 health and human services agencies in the state employ over 2,700 full-time, part-time and seasonal workers to provide specialized recreation services to special populations. Countless numbers of volunteers participate in the provision of specialized recreation services through the Special Olympics, 4-H, and other voluntary sources. Many diverse agencies and individuals were assisted during the past year by the Therapeutic Recreation Specialist with regard to recreation services for special needs populations.

As the field of therapeutic recreation continues to grow and expand, new areas of professional development needs emerge. The Therapeutic Recreation Specialist maintains active involvement in both innovative areas of service delivery development, as well as concern for providing continuing education opportunities and resources to enhance professionals' current skills and technology for accountable service delivery systems.

This concern with the provision of viable extension services for this rapidly growing profession has led to an emphasis on three major areas of the



Specialist's activities. First, research and demonstration provides a timely data base for all other activities of the Therapeutic Recreation Specialist. Second, the Specialist's involvement in professional activities provides a link not only in determining which of the current trends and needs in the field may best be addressed through ORPR services, but further, to provide continuing education information to professionals through workshops, presentations, and speeches. Third, theory and data based information are translated to the applied setting through the development of publications and information materials, as well as through the technical assistance services of the Therapeutic Recreation Specialist.

The activities of the ORPR Therapeutic Recreation Specialist during 1983-84 are best summarized through the three major categories described above: (1) Research and Demonstration Projects; (2) Professional Involvement and Development; and (3) Information Development and Dissemination.

#### Research and Demonstration Projects

A primary mission of the Therapeutic Recreation Specialist is to address the professional development needs and to conduct applied research directed toward the improvement of therapeutic recreation services in the state of Illinois and in the nation. During 1983-84, a comprehensive national study was conducted to identify and validate entry-level knowledge for therapeutic recreation practice. This study involved approximately 1,400 therapeutic recreation professionals across the nation. This study has major implications for future professionalization efforts such as certification, curriculum development, accreditation and professional standards. The results should impact both the state of Illinois and the nation with regard to therapeutic recreation practice.



For this project, the Therapeutic Recreation Specialist was awarded a Graduate College Research Fellowship in April 1984.

A second applied research project dealt with the status of credentialing programs for therapeutic recreation personnel. This national study was conducted to gain information relative to future directions to be taken by the Illinois Therapeutic Recreation Section, the state professional membership association.

### Professional Involvement and Development

During 1983-84, the Therapeutic Recreation Specialist had contacts with over 50 professionals and persons concerned with recreation and special populations through professional meetings, workshops and conferences. The following educational workshops, presentations and speeches were made in relation to therapeutic recreation:

"Educators and Students Together"  
National Recreation and Park Association Congress  
Kansas City, Missouri  
October, 1983

"Content Validation Study of Knowledge Needed for Entry-Level  
Therapeutic Recreation Specialists"  
Midwest Symposium on Therapeutic Recreation  
St. Louis, Missouri  
April, 1984

Pre-service education of students who have selected therapeutic recreation as a career option is critical to the continued advancement of this field. The Specialist taught and guest lectured the following courses within and outside the Department of Leisure Studies, thus addressing pre-service education needs:

### Courses Taught

Leisure Studies 130B - Introduction to Therapeutic Recreation  
Fall, 1983  
40 Students; 2 Hours Credit



### Guest Lectures

- Leisure Studies 230 - "Spinal Cord Injury"  
September, 1983
- Landscape Architecture - "Designing for the Disabled"  
November, 1983
- Leisure Studies 231 - "Proctor Examination"  
February, 1984
- Leisure Studies 340 - "Designing for the Disabled"  
February, 1984
- Leisure Studies 130B - "Physical Disabilities"  
March, 1984
- Leisure Studies 310 - "Budget Review"  
April, 1984

The Therapeutic Recreation Specialist was also a Faculty Career Contact for 10 undergraduate therapeutic recreation students.

The Specialist also served on two Departmental Committees:

- Faculty Evaluation Committee
- Undergraduate Committee

The ORPR Therapeutic Recreation Specialist continued to be very involved in state and national professional organizations and activities. During 1983-84, she served on the third of a five-year term on the National Council for Therapeutic Recreation Certification. In 1983-84, she served on the following professional committees:

National Council for Therapeutic Recreation Certification

- Test Development Committee, Chair
- Finance Committee, Member

Illinois Therapeutic Recreation Section

- Credentialing Review Committee, Member

Midwest Symposium on Therapeutic Recreation

- Professional Development Institute, Co-Coordinator
- Evaluation Committee, Chair
- Steering Committee, Member





Developing and maintaining contacts through these various professional service activities enhances the Specialist's knowledge and understanding of the needs and concerns of practitioners, educators, and students in the field of therapeutic recreation. The Therapeutic Recreation Specialist also participated in several continuing education opportunities to enhance her current skills and develop new skills necessary for providing the highest quality of therapeutic recreation extension activities. As the field of therapeutic recreation continues to expand and develop, the Specialist must stay abreast of innovative techniques and a rapidly changing technology of information.

The following conferences were completed in 1983-84:

National Therapeutic Recreation Society Institute  
October, 1983

National Recreation and Park Association Congress  
October, 1983

Illinois Therapeutic Recreation Section Metro Workshop  
February, 1984

1984 Midwest Symposium on Therapeutic Recreation  
April, 1984

Activity Directors Workshop  
April, 1984

#### Information Development and Publications

Dissemination of information on the field of therapeutic recreation via printed materials and technical assistance efforts is a vital component of ORPR therapeutic recreation extension activities. A major project undertaken by the Therapeutic Recreation Specialist was the fourth volume of Research Into Action: Applications for Therapeutic Recreation Programming. This volume contained works of many new contributors, and added a new feature review panel. In addition to editing this volume, the Specialist completed several articles for publication



The Specialist continues to receive a substantial number of requests for technical and general information concerns, and educational opportunities in therapeutic recreation. The following list describes the three major areas of technical assistance information requested:

#### Delivery of Services

- . specific disability information
- . adaptive equipment and devices
- . accessibility resources
- . program development resources
- . community needs assessment
- . evaluation and research methods

#### Professional Issues

- . credentialing status and requirements
- . career opportunities
- . general information on professional organizations
- . research and development grant resources
- . specific professional society committee work

#### Educational Resources and Opportunities

- . curriculum information
- . continuing education offerings
- . publication and film resources

This area of materials development and dissemination remains a critical concern of this rapidly changing and expanding field. As similar requests have been received, resource materials have been developed to address these needs.

#### Summary

Throughout the 1983-84 year, countless contacts with therapeutic recreation professionals were made through a variety of meetings and conferences. Numerous letters and phone calls were made to provide technical assistance and resource information to professionals throughout the state and the nation. The Therapeutic Recreation Specialist advised and worked with students in leisure studies, therapeutic recreation, and related fields. The above activities represent the major highlights of this past year.



## PUBLICATIONS BY ORPR STAFF

### Peer Review Policy

The Office of Recreation and Park Resources has continued the policy of peer review of selected reports produced by members of the staff. To ensure that ORPR reports convey the most accurate and useful information, it is our policy that selected reports be evaluated by outside reviewers before being released. The reviewers' suggestions and critiques will be carefully considered in preparing final reports for publication.

### Report Evaluation Form

In addition to the above review, each ORPR report sent out carries an evaluation form (see Appendix A). The evaluation forms are uniform in nature generally for all reports, however selected reports may have an evaluation form particular to the individual report (see Appendix B). The response to the evaluation forms has been positive.



## PUBLICATIONS

Articles in a Book

- Brademas, D.J. Motivation and recognition: Important for productivity. Administrative Practice of Park, Recreation and Leisure Services. Joseph J. Bannon, Ed., Management Learning Laboratories, 1984.
- Brademas, D.J. The personnel assessment center: A viable approach when selecting park and recreation staff. Administrative Practice of Park, Recreation and Leisure Services. Joseph J. Bannon, Ed., Management Learning Laboratories, 1984.
- Stumbo, N.J. Attitudes of and toward commercial recreation providers. In J.P. Witman and L.G. Powell (Eds.), Attitudes: Barrier or Enabler of Full Recreation Participation for Individuals with Disabilities. University of New Hampshire, 1983, p. 73-80.
- Stumbo, N.J. and Coffey, F. Evaluation of the 1983 Midwest Symposium on Therapeutic Recreation. In G. Hitzhusen (Ed.), Expanding Horizons on Therapeutic Recreation XI, University of Missouri, 1984, p. 288-297.
- Stumbo, N.J. and Dickenson, J. Progress update: National Council for Therapeutic Recreation Certification. In G. Hitzhusen (Ed.), Expanding Horizons in Therapeutic Recreation XI, University of Missouri, 1984, p. 61-29. p. 61-29.
- Stumbo, N.J. and Cleary, L. Evaluation of the 1984 Midwest Symposium on Therapeutic Recreation. In G. Hitzhusen (Ed.) Expanding Horizons in Therapeutic Recreation XII, University of Missouri, (accepted for publication, 1985).
- Stumbo, N.J. Content validation study of knowledge needed by entry-level therapeutic recreation specialists. In G. Hitzhusen (Ed.), Expanding Horizons in Therapeutic Recreation XII, University of Missouri, (accepted for publication, 1985).

Articles in Journals

- Espeseth, R.D. and Makowski, T. "Foundations-An asset to leisure agencies." Illinois Parks and Recreation, Vol. 15, No. 2. Mar/Apr 1984, p. 14-15.
- Espeseth, R.D. "How to plan and design physical facilities for a campground." Campground Management, Vol. 15, No. 5. May, 1984, p. 6-10.
- Espeseth, R.D. "Lake Michigan's rebirth enhances recreation, culture, sports, entertainment, and tourism." Illinois Parks and Recreation, Vol. 15, No. 3. May/June 1984, p. 19 and 29.





Articles in Journals (continued)

Espeseth, R.D. "Camp Kiwanis - A continuing love affair." The Illinowan.  
August, 1984, p. 3.

Stumbo, N.J. "Systematic observation as a research tool for assessing client  
behavior." Therapeutic Recreation Journal, 1983, 17 (4), p. 53-63.

Articles Reviewed

Brademas, D.J. The Journal of Park and Recreation Administration. "Evaluation:  
In search of valid performance standards."

Technical Reports

Brademas, D.J. and Lowrey, G. Analyzing jobs: A systematic procedure.  
Management Learning Laboratories, June, 1984.



# Evaluation of Office of Recreation and Park Resources Publication

Publication Title: HIRING PRACTICES FOR PART-TIME AND SEASONAL  
LEISURE SERVICES PERSONNEL

In an effort to assess the impact of our written materials, we ask you to take a few minutes and fill out this evaluation questionnaire after you have read the publication.

1. The publication was useful to me.

Very Useful    5        4        3        2        1        Not Useful At All  
(circle one)

2. I felt the publication was directed to me.

Exactly    5        4        3        2        1        Not At All

3. Compared to others of its type, this publication was credible.

Very Credible    5        4        3        2        1        Not Credible  
At All

4. I will consider changes in my program or agency as a result of this publication.

Definitely    5        4        3        2        1        Absolutely Not

If change is considered, please explain briefly.

---



---



---

5. Please identify your agency or program.

---

6. Suggestions for other types of publications.

---



---

Please complete this questionnaire and return it in the enclosed, pre-addressed, pre-paid envelope.

Thank you very much for your help.





UNIVERSITY OF ILLINOIS-URBANA  
790.9773L65 C001  
ANNUAL REPORT CHAMPAIGN  
1983/84



3 0112 023457390