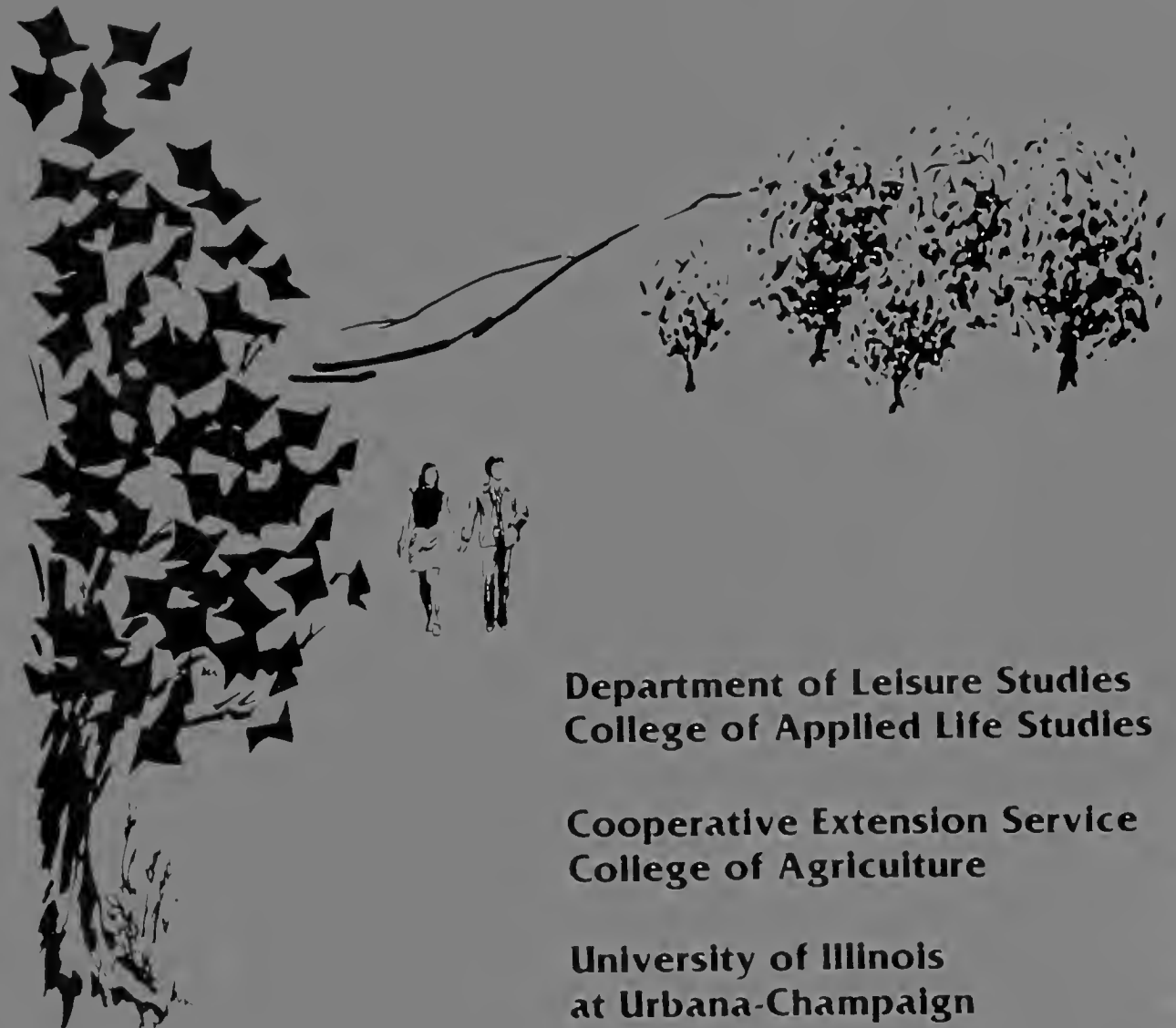


790.9773
IL 65
1984/85

LIBRARY U. OF ILLINOIS-CHAMPAIGN

1984-1985
annual report

office of recreation and park resources



Department of Leisure Studies
College of Applied Life Studies

Cooperative Extension Service
College of Agriculture

University of Illinois
at Urbana-Champaign

NOTICE: Return or renew all Library Materials! The *Minimum Fee* for each Lost Book is \$50.00.

The person charging this material is responsible for its return to the library from which it was withdrawn on or before the **Latest Date** stamped below.

Theft, mutilation, and underlining of books are reasons for disciplinary action and may result in dismissal from the University.
To renew call Telephone Center, 333-8400

UNIVERSITY OF ILLINOIS LIBRARY AT URBANA-CHAMPAIGN



1984—1985
ANNUAL REPORT
OFFICE OF RECREATION AND PARK RESOURCES

Department of Leisure Studies
College of Applied Life Studies
and the
Cooperative Extension Service
College of Agriculture
University of Illinois
at
Urbana-Champaign

September, 1985

TABLE OF CONTENTS

	Page
Office of Recreation and Park Resources	i
Organization Chart	v
Personnel of the Office of Recreation and Park Resources	vi
Annual Report Summary	vii
Office of the Chief and Outdoor Recreation Specialist	1
Community Recreation Specialist	9
Educational Resources Specialist	16
Therapeutic Recreation Specialist	21
Publications	29
Appendix A	30

THE OFFICE OF RECREATION AND PARK RESOURCES

The Office of Recreation and Park Resources has become the principal link between the University's Cooperative Extension Service and Department of Leisure Studies and the public in the field of leisure services. In 1969 the Field Service of the Department of Recreation and Park Administration (now the College of Applied Life Studies) merged with in the College of Physical Education (now the College of Applied Life Studies) merged with the Rural Recreation Section of the Cooperation Extension Service in the College of Agriculture. The merged unit is called the Office of Recreation and Park Resources (see organization chart).

Purposes of the Office of Recreation and Park Resources

The primary purposes of the Office of Recreation and Park Resources are:

- . To generate new and improved methods of leisure service delivery through applied research efforts and demonstration projects.
- . To enhance professional development through inservice and preservice educational services and related materials development.
- . To develop and disseminate information resources.
- . To provide consultant services and technical assistance.
- . To contribute to the development and strengthening of the leisure service professions.
- . To establish and enhance cooperative liaison communication networks within the University, State and Nation.

Digitized by the Internet Archive
in 2011 with funding from
University of Illinois Urbana-Champaign

<http://www.archive.org/details/annualreport198485univ>

ORPR Resource Sections

The Office of Recreation and Park Resources operates through four recreation resource sections: Outdoor, Educational, Community, and Therapeutic.

The Outdoor Recreation Specialist Section, through consultation and research projects, deals primarily in planning, organization, and administration of county and regional park systems such as Conservation Districts, Forest Preserve Districts, and River Conservancy Districts. This section also secures, prepares, and disseminates educational materials as they relate to outdoor recreation resources. It also concerns itself with cooperation among the various state and federal agencies involved in outdoor recreation. These agencies include the National Park Service in the Department of Interior, U.S. Department of Agriculture, and state agencies such as the Illinois Department of Conservation and the Department of Commerce and Community Affairs.

The Educational Resources Section concerns itself with providing information and educational materials to professional and lay personnel in recreation and parks. It is responsible also for the examination of program techniques and the solutions to problems that relate to the conduct of recreation and park programs. Personnel of this section collect, prepare, and disseminate information and materials relating to new leadership developments, thus enabling recreation and park groups to provide a more effective service.

The Community Recreation Resources Section is responsible for consultation and research dealing with recreation and park problems affecting rural, urban and suburban communities. It attempts to enhance community decision-making processes in the planning, organizing and improving of comprehensive

leisure service systems. Personnel of this section consult directly with recreation and park professionals, other government officials, citizen committees, and civic organizations.

The Therapeutic Recreation Resources Section engages in multifaceted services to improve the delivery of leisure services to handicapped, ill and aging populations in residential, treatment and community settings. Included in the services of the section is materials development and dissemination, consultation regarding all aspects of program design, implementation and evaluation, professional development training materials and workshops, research related to programming intervention and delivery strategies in therapeutic recreation.

ORPR Clients

There are several principal client groups with which ORPR works on a daily basis in providing services to assist in meeting various forms of leisure service demands. Some of these principal client groups are:

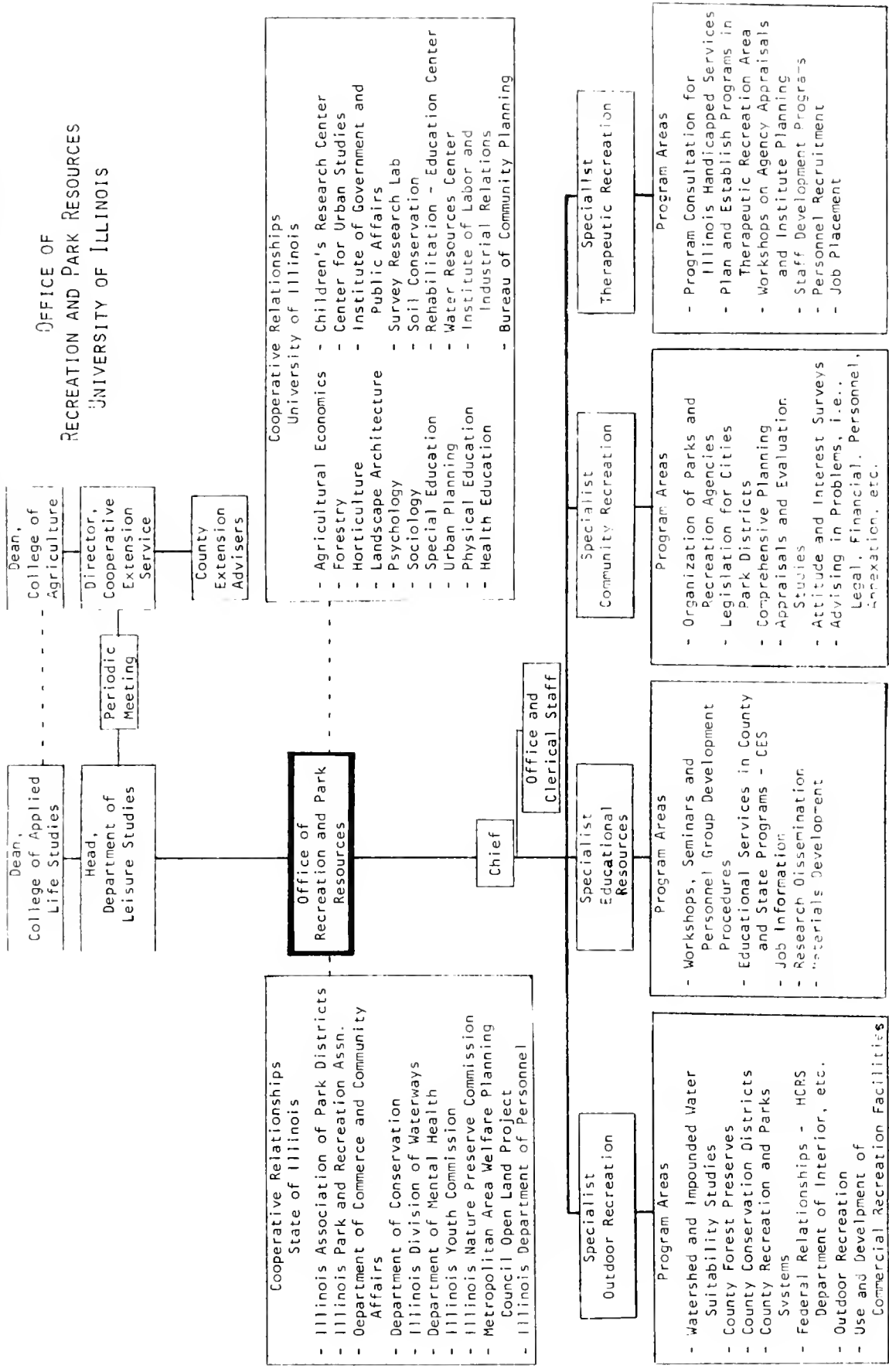
- * Cooperative Extension Service Personnel
- * Public Parks and Recreation Professionals
- * Private Leisure Enterprise Personnel
- * Related Human Services Personnel
- * Volunteers, Lay Leaders, Citizen Groups
- * Faculty and Staff of Educational Institutions
- * Individuals of all ages and families, who seek to improve the richness of personal life through the wise use of leisure.
- * Students who are preparing for careers in the leisure service profession, public and private.

Cooperative Relationships

The Office of Recreation and Park Resources facilitates many cooperative relationships both within the university and with other institutions. For example, major sources of assistance to the office is the contact with County Extension Advisers. At present, there are over three-hundred and fifty advisers assigned throughout the state. Their knowledge of local conditions and their influence in the community is invaluable to the ORPR staff. Efforts were also made to strengthen the relationship between ORPR and the Illinois Association of Park Districts and the Illinois Park and Recreation Association. Other cooperative relationships include the Department of Commerce and Community Affairs, Department of Personnel, State Comptroller's Office, Department of Public Health, State Department of Corrections, Department of Conservation and the Illinois Municipal League. As the Office of Recreation and Park Resources expands its service, other important relationships will be developed.

The establishment of the Office of Recreation and Park Resources is a concerted effort on the part of the University of Illinois to provide the best possible service in parks and recreation to the citizens of Illinois. This unit places the State of Illinois in the forefront in providing public service and continuing education in the essential field of leisure services.

OFFICE OF
RECREATION AND PARK RESOURCES
UNIVERSITY OF ILLINOIS



- Cooperative Relationships
State of Illinois**
- Illinois Association of Park Districts
 - Illinois Park and Recreation Assn.
 - Department of Commerce and Community Affairs
 - Department of Conservation
 - Illinois Division of Waterways
 - Department of Mental Health
 - Illinois Youth Commission
 - Illinois Nature Preserve Commission
 - Metropolitan Area Welfare Planning Council Open Land Project
 - Illinois Department of Personnel

- Cooperative Relationships
University of Illinois**
- Agricultural Economics - Children's Research Center
 - Forestry - Center for Urban Studies
 - Horticulture - Institute of Government and Public Affairs
 - Landscape Architecture - Survey Research Lab
 - Psychology - Soil Conservation
 - Sociology - Rehabilitation - Education Center
 - Special Education - Water Resources Center
 - Urban Planning - Institute of Labor and Industrial Relations
 - Physical Education - Bureau of Community Planning
 - Health Education

**Specialist
Outdoor Recreation**

- Program Areas**
- Watershed and Impounded Water Suitability Studies
 - County Forest Preserves
 - County Conservation Districts
 - County Recreation and Parks Systems
 - Federal Relationships - HCPS Department of Interior, etc.
 - Outdoor Recreation
 - Use and Development of Commercial Recreation Facilities

**Specialist
Educational Resources**

- Program Areas**
- Workshops, Seminars and Personnel Group Development Procedures
 - Educational Services in County and State Programs - CES
 - Job Information
 - Research Dissemination
 - Materials Development

**Specialist
Community Recreation**

- Program Areas**
- Organization of Parks and Recreation Agencies
 - Legislation for Cities Park Districts
 - Comprehensive Planning
 - Appraisals and Evaluation Studies
 - Attitude and Interest Surveys
 - Advising in Problems, i.e., Legal, Financial, Personnel, Annexation, etc.

**Specialist
Therapeutic Recreation**

- Program Areas**
- Program Consultation for Illinois Handicapped Services
 - Plan and Establish Programs in Therapeutic Recreation Area
 - Workshops on Agency Appraisals and Institute Planning
 - Staff Development Programs
 - Personnel Recruitment
 - Job Placement

PERSONNEL OF THE OFFICE OF RECREATION AND PARK RESOURCES

Robert D. Espeseth
Chief¹ and
Outdoor Recreation Specialist

Associate Professor

D. James Brademas, Ph.D.
Community Recreation Specialist

Associate Professor

Carol Ann Peterson, Ph.D.
Therapeutic Recreation Specialist

Associate Professor

George Lowrey, Jr., Ph.D.
Educational Resources Specialist

Assistant Professor

E.H. Regnier
Program Specialist, Emeritus

Candy Ashton-Shaeffer
Graduate Assistant

Cindy Schneider
Graduate Assistant

Doug Musser
Graduate Assistant

Lynn Wheeler
Graduate Assistant

¹On August 21, 1985, Candace Goode replaced Robert Espeseth as Chief of the office.

ANNUAL REPORT SUMMARY

The following Annual Report covers the period from September 1, 1984 through August 31, 1985.

The staff of the Office of Recreation and Park Resources (ORPR) annually participates in identifying and establishing goals and objectives for the coming year. This staff planning culminated in the Annual Plan of Work. This year a new four-year Plan of Work process was instituted by the Cooperative Extension Service which will provide a better long-range view of goals, objectives and evaluation plans than have occurred in the past.

The Specialists in ORPR have made many personal visits to Illinois communities, responded to hundreds of phone requests and mailed dozens of brochures and printed material to agencies and individuals. The Office continues to be recognized nationwide as one of the best models in the Cooperative Extension Service for delivery of information on recreation and leisure services. The more significant activities of the Office are detailed under each specialists section.

This summary is prepared to reflect on the goals of the Office and the Cooperative Extension Service which are aimed at improving the effectiveness of both public and private recreation and the wise use of natural resources as they relate to outdoor recreation.

OFFICE OF THE CHIEF
AND
OUTDOOR RECREATION SPECIALIST

On August 21, 1985, Candace Goode relieved Robert Espeseth as Chief of ORPR. Mr. Espeseth will continue as Outdoor Recreation Specialist.

During the year many municipal park and recreation agencies, park districts, county conservation and forest preserve districts, state and federal agencies as well as private enterprises and individuals were assisted during the year. Some of the highlights of the year are noted for general information.

Research and Demonstration Projects

Illinois-Indiana Sea Grant Program

This program, for which the Chief of ORPR is also the Project Coordinator on a 50% time commitment, completed its third year on 31 March 1985. The program is administered by the University of Illinois Cooperative Extension Service through a joint agreement with the Indiana Cooperative Extension Service, Purdue University.

Funding for the fourth year is \$190,000 from the National Sea Grant College Program and \$143,410 in in-kind services provided by the two cooperating institutions.

Lake Michigan is a valuable natural resource which the two states rely on economically and recreationally. The focus of this program continues to be the environs of Lake Michigan and marine resource problems

related thereto. Again this year, four research projects were approved and the program continues as a Coherent Program in the hierarchy of Sea Grant program designations. A significant amount of time has been committed by the Coordinator in administering the program.

Things to See and Do in Illinois

In response to numerous requests for information or programs from county advisers in Home Economics and Homemakers Clubs on vacations and short trips in Illinois, the Outdoor Recreation Specialist, working with Robin Goettel and Pat Francek (Ag Communications) developed a training and information module. The module consisting of a coordinated slide-tape presentation, a lesson or presentation outline and examples of information and promotional materials available through state agencies, can be used by extension advisers, homemaker groups, civic organizations and others who seek this information without having a specialist committed to these wide ranging meetings.

The module was pilot tested in the spring of 1985 and received excellent comments. Three sets of materials will be available for loan to those requesting use of them.

Media Participation and Exposure

Twenty-four radio tapes were made with Agriculture Communications, Media Section. These tapes were aired throughout the state on 60 radio stations on "Illini Consumer Report." Fourteen tapes were cut with the University News Service and used by an average of 42 radio stations.

Eighteen news releases were generated by the Sea Grant Communicator. Five newsletters were prepared for the Association of Illinois Marine Enterprises. This service to AIME was ended in July 1985; however, the ORS will

continue to work with AIME on other matters. Five articles were published in magazines.

These media efforts were aimed at acquainting the citizens of Illinois with the excellent outdoor recreation, historic and cultural opportunities available to them. A goal of this effort is to help raise the image of tourism in Illinois.

Rural Conservation and Historic Preservation

The National Trust for Historic Preservation is working with Cooperative Extension Services in the Midwest to bring attention to the need for preserving our cultural and historic heritage in rural areas. Previously the focus for historic preservation had been primarily beamed at the urban areas. After attending a North Central Region Interest Network meeting on the subject, the ORS designed and directed a statewide survey of CES county offices to determine how CES personnel had been involved in historically related projects, what needs there were for information on this subject and whether training sessions would be desired.

Results of the survey were published and were part of presentations made at the CES Annual Staff Conference and the Illinois Landmark Preservation Council Conference. Subsequent to the survey the ORS has responded to about 14 requests on the subject from CES advisers.

The ORS has recently been invited to serve on a Rural Conservation Advisory Board by the National Trust for Historic Preservation. The Board will assist the Coordinator for this program in formulating a long-range program, assisting with workshops and in other areas.

Campground Case Study

The ORS participated in a comparative case study of two campgrounds, Lake Victoria in Springfield, Illinois and Robin Hood Woods near Shelbyville, Illinois and Lake Shelbyville. Lake Victoria is in a highly urbanized area and Robin Hood Woods in a rural area in Central Illinois.

Both campgrounds had been obtained by new owners, neither of whom had ever operated a campground. Both campgrounds had been inadequately or poorly operated and maintained for several years resulting in a significant drop in use and image. The ORS met with and worked with the new owners to help develop management goals and objectives and to do a physical analysis to the sites.

The first phase of the study, dealing with the physical aspects of the campgrounds and related management, has been completed. The results were provided to the owners who agreed to permit publication in Campground Management where it will appear shortly. It is hoped that the second phase will begin shortly.

Professional Involvement

Presentations

- National Recreation and Park Association Annual Conference
Orlando, Florida
- "Risk Management in Park and Recreation Agencies"
October 21, 1984
- "Theory and Use of Conservation Easements"
October 22, 1984
- Small Lakes Management Seminar
Springfield, Illinois, November 8, 1984
"Planning for Recreational Use of Water"
- Illinois Cooperative Extension Service Annual Conference
UIUC, December 4, 1984
"Rural Conservation and Historic Preservation"

Presentations (continued)

Wisconsin Campground Owners Short Course
Wisconsin Dells, Wisconsin; January 24-25, 1985
"Design and Development of Campgrounds"

Lake County (IN) Tourism and Hospitality Training Workshop
Gary, Indiana; March 11, 1985
"Courtesy in the Hospitality Industry"

Landmarks Preservation Council of Illinois
Charleston, Illinois; June 8-9, 1985
"Use of Easements in Rural Conservation
and Historic Preservation"

Attendance

National Recreation and Park Association (NRPA) Annual Congress
Orlando, Florida
October 20-25, 1984

Sea Grant Research Symposium
University of Illinois, Urbana-Champaign
November 6, 1984

Small Lakes Management Seminar
Springfield, Illinois
November 8, 1984

Council of Sea Grant Directors and NASULGC
Denver, Colorado
November 12-14, 1984

Illinois Park and Recreation Association (IPRA) and
Illinois Association of Park Districts (IAPD) Annual Conference
Chicago, Illinois
November 15-17, 1984

Illinois CES Annual Staff Conference
University of Illinois, Urbana-Champaign
December 3-6, 1984

NRPA Midyear Board Conference
Washington, DC
February 22-24, 1985

Outdoor Recreation Trends Symposium II
Myrtle Beach, South Carolina
February 25-27, 1985

Attendance (continued)

Council of Sea Grant Directors
Washington, DC
March 4-6, 1985

Sea Grant/ECOP Marine Extension Conference
Clearwater Beach, Florida
May 6-9, 1985

Landmarks Preservation Council Meeting
Charleston, Illinois
June 7-8, 1985

Great Lakes Regional Council
Dubuque, Iowa
July 19-20, 1985

NSPR Executive Committee
Arlington, Virginia
August 19-20, 1985

University, College and Department CommitteesUniversity

Member - Allerton Park Improvement Committee
Member - University YMCA, Board of Governors
Chair - Bailey Scholarship Committee, YMCA
Co-Chair - Membership Committee, YMCA
Member - Natural Areas Committee
Official - Track Meets at University of Illinois
Member - Military Education Council

College of Applied Life Studies

Member - Alleged Capricious Grading Committee

Cooperative Extension Service

Member - State 4-H Camping Committee
Member - North Central Region, Historic and
Rural Preservation Interest Network
Member - Alternate Land Use Task Force

Department of Leisure Studies

Member - Undergraduate Committee
Member - Graduate Committee
Chair - Promotion and Tenure Committee
Member - Advisory Committee

University, College and Department Committees (continued)

Teaching

Leisure Studies 341 - Outdoor Recreation Resource Planning
 Leisure Studies 100 - Guest Lecturer
 Leisure Studies 310 - Budget Review
 Leisure Studies 110 - Guest Lecturer
 Leisure Studies 490 - Guest Lecturer

Thesis Committees

Doctoral - Tom Kettelkamp and Doug Musser
 Master's - Leo Masulla
 Steve Anderson
 Glen Martin

Professional Offices and Awards

National Recreation and Park Association

Member - National Forum
 Member - Long Range Planning Committee

National Society for Park Resources

Elected - President (1983-1984)
 Serving - Past President (1984-1986)
 Member - Executive Committee
 Chair - Nominating Committee
 Member - Speakers Bureau
 Member - Park Maintenance Standards Project Task Force
 and Co-Chair - Classification and
 Terminology Subcommittee

Awarded the President's Plaque

Illinois Park and Recreation Association

Member - PNRMS Past Directors Council
 Awarded the Fellow Award

Council of Sea Grant Directors

Member - Executive Committee
 Chair - Coastal Recreation Issues Committee

Great Lakes Regional Council-NRPA

NSPR Representative
 Awarded the Outstanding Professional Award

Professional Offices and Awards (continued)Advisory Appointments

Illinois Department of Conservation

Advisory Committee for State Natural Heritage Plan

Advisory Committee for State Trails Plan

Advisory Committee for State Comprehensive Outdoor
Recreation Plan

Association of Illinois Marine Enterprises

Research and Education Adviser

Civic Service

Champaign County Forest Preserve District

Member - Board of Commissioners

Vice President - 1976-1983; 1984-1986

President - 1983

Kiwanis

Member - Camp Kiwanis Committee

Member - Circle K Club Committee

COMMUNITY RECREATION SPECIALIST

The Community Recreation Specialist has responsibility for public service, continuing education, on-campus teaching and applied research. Technical assistance was given to a number of agencies and individuals on topics including the design of playgrounds and golf courses, forming new park districts, job analysis and performance appraisal systems, affirmative action guidelines and recruiting staff. In addition, the following activities were conducted by the Community Recreation Specialist.

Seminar on Performance Appraisal
Illinois Park and Recreation Association
Rosemont, Illinois; November 16, 1984

Lecture/Discussion on the Personnel Assessment Center
Champaign County Forest Preserve Board
Mahomet, Illinois; November 8, 1984

Workshop on Job Analysis Procedures
Cooperative Extension Service Annual Conference
Urbana, Illinois; December 5, 1984

Workshop on Writing Job Descriptions for Local
Government Officials
Community Information and Education Service
Lakeland College
Mattoon, Illinois; January 22, 1985

Telnet Presentation on Town and Country Art Show
33 Counties
Urbana, Illinois; January 21, 1985

Conducted three-day training program for
Personnel Assessment Center Assessors
Glenview, Illinois; April 24-26, 1985

Conducted workshop on Performance Appraisal/Program
Evaluation
4-H Camp Directors and Camp Association Presidents
Champaign, Illinois; May 3, 1985

Town and Country Amateur Art Program

The Community Recreation Specialist serves as the Coordinator of the Town and Country Amateur Art Program. In 1984, there were 59 counties and 9 regions participating in the program. There were 3,276 amateur artists who entered 7,141 pieces of art in the various shows. There were one hundred eighty-eight (188) blue ribbon winners who entered their art work in the State Exhibition which was held at Lincoln Square Mall in Urbana from October 26 to November 4, 1984. The Community Recreation Specialist conducted a survey of exhibitors and visitors in selected counties to determine participation levels of exhibitors and visitors and effectiveness of the art program in terms of personal and community benefits. State show exhibitors and visitors were also surveyed. The data were analyzed and the results distributed to county and regional staff and others interested in the art program. All results indicate the Town and Country Amateur Art Program provides significant personal and community benefits and continues to be a very positive program.

Three major changes adopted by the State Town and Country Art Program Committee for the 1985 State Show include a change of location to Market Place Mall, the elimination of ribbons (to be replaced by the awarding of a certificate to all exhibitors) and the addition of a workshop on a specific art form. Seven counties are participating in an evaluation of the 1985 program. In addition, an evaluation will be done of the State Show in October.

Task Force for the State Assessment and Economic Significance of Recreation Study and Governor's Conference

This Task Force was established to design the guidelines for a statewide study of the economic significance of recreation. Several meetings were held and a proposal drafted and submitted to the coordinator of the committee for the preparation of guidelines for the state study. The proposal was rejected due to lack of funding. About the same time period, Governor James Thompson announced the first Governor's Conference on the Economic Significance of Sports and Recreation to be held April 30-May 1, 1986 in Springfield. The Task Force has now shifted its emphasis away from the statewide study to concentrate its efforts on the details of the Governor's Conference. The Community Recreation Specialist emphasized the necessity of preparing the guidelines for the statewide study simultaneously with the planning of the Governor's Conference. The Task Force agreed to again seek financing for the guidelines and such financing was approved in late September. The Governor's Conference offers an excellent opportunity for involvement by University of Illinois faculty and efforts have been made to place faculty in several parts of the program.

Teutopolis Park Planning

The Community Recreation Specialist has met several times with a volunteer citizens planning group interested in forming a new park district for Teutopolis and in designing a 20-acre plot of ground for a recreation complex. The decision was made to place the formation of the park district on the ballot for the spring 1986 elections. In the meantime we will be working with the group on an information campaign and on the design of the

park. The group is interested in applying for matching grant funds either through the Federal Land and Water Conservation Program or the Department of Conservation's new Open Space Land Acquisition Development Program. Some legal complications have arisen on the acquisition of the 20 acres from the Teutopolis School Board. We are exploring alternative methods to acquire the land. Faculty in the Department of Landscape Architecture have agreed to take on the design of the 20 acres either as a class project, or individual study, for the spring semester, 1986.

Sabbatical Leave

The Community Recreation Specialist will be on sabbatical leave in the spring semester, 1986. The sabbatical leave study will be concerned with leisure service delivery systems in Greece on the national level and in several selected cities. Two colleges in Athens have requested sessions with faculty and local business leaders on the Cooperative Extension Service and how it functions. In addition, the Community Recreation Specialist has been asked by the American Farm School in Thessaloniki to advise on the construction of a community center for the school. The American Farm School is a 40-year old institution devoted to teaching Greek youth modern American agriculture methods. The school is located on a functioning farm outside of Thessaloniki in northern Greece.

Applied Research

The Office of Recreation and Park Resources is currently conducting three field studies in cooperation with the Administration and Finance Section of the Illinois Park and Recreation Association. The studies include:

Personnel Performance Appraisal Practices Study

There is considerable interest among professionals in the field for more information on effective performance appraisal systems and for continuing education on the topic. A 42-question survey was designed to obtain information on the types of appraisal systems currently in use; how they were developed; how they are implemented; opinions on effectiveness; adherence to affirmative action guidelines and the need for further training. The questionnaires were sent to the directors of 280 leisure service agencies in Illinois. The results of this study will be reported at the annual Illinois Park and Recreation Conference in November, 1985.

Employment Resumé Study

A key element in the beginning professional life of every student is the resumé. Literature on the subject of resumé preparation is conflicting. The purpose of this study is to obtain information from agency directors on what they consider to be the most important elements of the resumé in terms of personal information, professional objectives, education, work experience, activities/honors, references and general layout and length of the resumé. The final product of this study will be to design a sample "ideal" resumé which will be made available to all students and others interested in designing an effective resumé. Survey instruments were sent to 280 agency directors.

Survey on Use of Obsolete School Buildings

The current demographic situation has forced the closing of many public schools throughout the State of Illinois. Many of these schools have been converted to alternative uses by both public and private agencies. The intent of this study is to determine how extensively public park and recreation systems are using these buildings and what type of use is being made of them. The survey is designed to determine the types of schools in use, the uses to which the schools are put, purchase/lease costs and satisfaction with the use of the buildings. This information will be shared with agency directors and boards who might be considering purchasing or leasing obsolete school buildings. The Illinois State Board of Education has expressed an interest in the results of the study. Survey instruments were sent to 280 agency directors.

Teaching

Leisure Studies 210 - Theories and Methods of Supervision
Fall, 1984

Leisure Studies 412 - Personnel Administration
Spring, 1985

Leisure Studies 110 - Guest Lecturer

Labor and Industrial
Relations 448 - Guest Lecturer

Leisure Studies 310 - Budget Review

University, College and Department Committees

University

- Member - Campus Committee on Continuing Education
and Public Service

College

- Member - College Alumni Committee
Coordinator - Town and Country Amateur Art
Exhibition - College of Agriculture
Member - Weber Committee - College of Agriculture

Cooperative Extension Service

- Member - Local Government Officials Education
Impact Committee

Department of Leisure Studies

- Chair - Annual Awards Banquet
Chair - Social Committee
Member - Departmental Advisory Graduate Committee
Promotion and Tenure Committee

Professional

- Member - Committee on Relations with other
Professions, American Academy for Park
and Recreation Administration
- Member - Task Force for the State Assessment and
Economic Significance of Recreation Study,
IAPD/IPRA

Professional Memberships

Epsilon Sigma Phi
American Academy of Park and Recreation Administration
National Recreation and Park Association
Illinois Park and Recreation Association (IPRA)
World Leisure and Recreation Association
International Personnel Management Association

EDUCATIONAL RESOURCES SPECIALIST

The Educational Resources Specialist has a primary assignment of on-campus teaching in the Department of Leisure Studies and is on a nine-month appointment, August-May. Extension tasks are in the areas of continuing education, field research and services to the profession.

Continuing Education

Professional Development School

In 1983 ORPR conducted the first Professional Development School for practitioners in the field of Leisure Services in Illinois. It was based on-campus and proved to be quite successful. In 1984, the Administrative Finance Section of the Illinois Park and Recreation Association appropriated the idea, contracted with Northern Illinois University to conduct the school, and offered it at Starved Rock State Park Lodge. In 1985, ORPR managed to be requested to conduct half of an expanded Professional Development School and did conduct a 17-hour (1.7 CEU) training course in Staff Development. We are now in the planning stages of an improved course on the same topic for the 1986 school which will be held in late January at the Starved Rock State Park. Our goal is to be able to continue developing special courses for this annual school aimed at the management level of the state's leisure services delivery systems.

Extramural Classes

We continue to hold off on offering extramural classes around the state as our faculty continue to be tied up in on-campus teaching, research and publication.

Technology Transfer Series

While there is still somewhat of a glut on the market of continuing education efforts, particularly by the state association and its many sub-sections, we feel that there is room for a highly innovative series of the Technology Transfer Series of one-to two-day workshops utilizing the expertise of faculty of the University of Illinois both in Leisure Services and other departments, colleges and units on campus. Preliminary planning is being carried out as to the best times, locations and the uniqueness of program content in order to compete successfully with, or to artfully supplement, current efforts within the state.

Field Research

Field research activities have consisted mostly of cleaning up and improving the results of some of the research studies conducted last year and some preliminary planning and development for a series of surveys of practitioners in Leisure Services. These surveys are to be conducted in late summer with analysis carried out during the fall semester. They consist of a survey on use of obsolete school buildings, one on employment resumé and one on performance appraisal practices.

Services to the Profession

Job Mart and Job Opportunities Bulletin

ORPR has been providing a job information service for the last eleven years consisting of a classified listing of position vacancies nationally, including other job bulletins, and a monthly publication of an Illinois job vacancy bulletin. Financial problems surfaced toward the end of the year and we have completely reworked the method of assembly,

by computer, the printing and the maintenance and use of the mailing list to effect certain economies. The Bulletin is partially supported by the Illinois Park and Recreation Association which has increased their contribution for a mailout to all member agencies. In addition, a subscription mailing list is maintained for some 500 individuals and the subscription rate has been increased. Reciprocal Job Information is carried out with a number of other states. Additionally, ORPR sets up a Job Mart at the annual conference of the state association.

On-Campus Responsibilities

Field Training Program

The Educational Resources Specialist has full responsibility for the Field Training Program for students in the Department of Leisure Studies. This involves:

1. Assessment of agencies as suitable Field Training sites.
2. Establishment of contractual arrangements with all field training agencies.
3. Assignment of students to agencies.
4. Supervision and assessment of students in the Professional Field Practicum - about 60 students per year.

In addition to the Practicum, which is a 16-week, supervised, full-time work and study program taken in the senior year, all students are required to work and document preliminary, unsupervised, field experiences of no less than 320 hours. All such field experiences are verified by the Field Training Office. Supervision and administration of this major aspect of the undergraduate program is assisted by a graduate student but the program remains a major time commitment of the Educational Resources Specialist.

On-Campus Teaching

Courses taught in 1984-85 were:

Fall

- Leisure Studies 110 - Foundations of Leisure Services
Delivery
70 students
- Leisure Studies 280 - Pre-Practicum Seminar
25 students
- Leisure Studies 284 - Professional Field Practicum
26 students
- Leisure Studies 381 - Management Internship
3 students

Spring

- Leisure Studies 210 - Supervision in Leisure Services
50 students
- Leisure Studies 280 - Pre-Practicum Seminar
20 students
- Leisure Studies 284 - Professional Field Practicum
26 students
- Leisure Studies 381 - Management Internship
2 students

Thesis Committees

Doctoral - Carol Unzicker - Chairman
Norma Stumbo - Chairman - completed

International Liaison and Study Abroad

The Educational Resources Specialist advises and counsels students who are planning to study overseas. Each spring approximately five students participate in study abroad programs with most electing a study program for students in Parks, Recreation and Leisure Services in Edinburgh, Scotland.

Professional Involvement

Professional Development School
 3-day Workshop on Staff Development for
 CEU Credit
 Starved Rock State Park, Illinois
 January 20-22, 1985

Overseas Study Program
 Conducted Orientation for students in the program
 Edinburgh, Scotland
 December 29 - January 19, 1985

University, College and Department CommitteesUniversity

Coordinating Committee on Career Planning and Placement

College of Applied Life Studies

Executive Committee

College of Agriculture

Arts Advisory Council - Cooperative Extension Service

Department of Leisure Studies

Member - Advisory Committee
 Member - Awards Committee
 Member - Promotion and Tenure Committee
 Member - Graduate Committee
 Member - Undergraduate Committee
 Member - Social Committee

Professional Memberships and Offices

National Recreation and Park Association

Society of Park and Recreation Educators Branch
 National Accreditation Program - Team Member

Illinois Park and Recreation Association

Recreation Program Section
 University and College Relations Committee

World Leisure and Recreation Association

International Park and Recreation Federation

THERAPEUTIC RECREATION SPECIALIST

The Therapeutic Recreation Specialist is on an eleven-month appointment with the primary assignment of on-campus teaching. She participates in and oversees the therapeutic recreation projects and tasks which are carried out by a quarter-time graduate assistant, other faculty members, and graduate students. This report therefore represents the combined efforts of several people. The primary Extension goals of professional development, technical assistance, consultation, materials development and dissemination, and improvement of the therapeutic recreation service delivery system remain the center in this combined innovative approach.

Introduction

The primary mission of the Therapeutic Recreation Section in the Office of Recreation and Park Resources focuses on the improvement of the delivery of recreation and leisure services to the ill, disabled, and elderly. As such, the Therapeutic Recreation Specialist functions as educator, researcher, consultant, and advocate for therapeutic recreation services on both the state and national level.

Four major areas of responsibilities were addressed by the Therapeutic Recreation Section in 1984-85. These areas were:

1. Material development and publication,
2. consultation and technical assistance,
3. professional involvement and development, and
4. on-campus responsibilities.

Material Development and Publication

During 1984-85, the Therapeutic Recreation Specialists were involved with the development and publication of information in the field of therapeutic recreation through journal articles, conference papers, monographs, and manuals. This information was related to general therapeutic recreation philosophy, as well as specific procedures and processes in therapeutic recreation. The following is a list of the major contributions in this area:

Peterson, C.A. (1984). A matter of priorities and loyalties, Therapeutic Recreation Journal, Third Quarter.

Peterson, C.A. (1984). Challenges, changes, and concerns: Leisure services in institutional and clinical settings, Leisurability, accepted for publication.

Peterson, C.A. Leisure lifestyle perspectives: An alternative mission and approach to the delivery of public parks and recreation services, Recreation and Parks, submitted Spring, 1985

Peterson, C.A. Special populations: A professional core content area. Undergraduate Curriculum: Content and Process. SPRE Workshop on Undergraduate Curriculum, Bradford, IN, March 28 and 29. Published proceedings.

Two major materials development projects were undertaken by the Therapeutic Recreation Section: Volume V of Research Into Action: Applications for Therapeutic Recreation Programming, edited by Peterson, Connolly, and Ashton-Shaeffer; and Therapeutic Recreation: Activities Services in Long Term Care Facilities, by Carruthers, Sneegas and Ashton-Shaeffer. Research Into Action continues to be a highly requested publication which helps to translate research into appropriate application for the field of therapeutic recreation. Volume V will be published in the fall of 1985.

Therapeutic Recreation: Activities Services in Long Term Care Facilities is a comprehensive manual for therapeutic recreation practitioners and activity directors who provide leisure services in long term care facilities. This publication was requested by the Joint Commission on the Accreditation of Hospitals (JCAH) as a resource for the development and implementation of an activities services program which would meet quality standards and was long term specific. ORPR accepted the challenge of developing this important publication. The project began in spring of 1984, and is expected to be completed by fall of 1985.

Consultation and Technical Assistance

The Therapeutic Recreation Specialist provides consultation services and technical assistance and information to practitioners and other interested consumers as requested. This continues to be an important function of the Specialist, with many requests received each month.

In 1984-85, therapeutic recreation curriculum consultation was provided for Eastern Illinois University, and the University of Nebraska, Lincoln. Other assistance was requested and provided for via the telephone and mail in such areas as playground assessibility, leisure education in clinical and municipal settings, leisure counseling for the developmentally disabled adult, activity programming in long term care, and publication and film resources.

Professional Involvement and Development

During 1984-85, the Therapeutic Recreation Specialists actively participated in and contributed to the professional movement in therapeutic recreation at the state, regional, national, and international levels. The following educational workshops, presentations, and speeches were made in relation to therapeutic recreation:

Peterson, C.A.

"What Is The Role of A Recreation Therapist?"
 "Components of Therapeutic Recreation"
 "A Comprehensive Leisure Services Model"
 "Future Trends in Therapeutic Recreation"
 Ready, Set, Grow Conference, Alberta, Canada
 October 10-12, 1984

Closing Session at the NRPA Congress
 Orlando, Florida
 October 23, 1984

"National Issues Programs: Health and Wellness"
 NRPA Congress, Orlando, Florida
 October 23, 1984

"Leisure Lifestyles and Therapeutic Recreation"
 "Issues and Action"
 Virginia Therapeutic Recreation Section Conference
 Virginia Beach, Virginia
 March 1-2, 1985

"Documentation and Evaluation"
 "Quality Assurance"
 "Professionalism"
 Therapeutic Recreation Management School
 Oglebay, West Virginia
 March 17-22, 1985

"Leisure Lifestyle Programming in Community Settings"
 D.C. Metro Therapeutic Recreation Association
 Laurel, Virginia
 March 23, 1985

Professional Involvement and Development (continued)

"Special Population A Professional Core
Content Area"
SPRE Workshop on Undergraduate Curriculum
Bradford Woods, Indiana
March 28, 1985

"The Leisure Lifestyle Perspective"
Workshop sponsored by the
Nebraska Recreation and Park Association and
the University of Nebraska
April 3, 1985

Ashton-Shaeffer, C.

"Leadership Techniques for Special Populations"
Annual Cooperative Extension Conference
University of Illinois
December 3, 1984

"Client Intervention Techniques for Therapeutic
Recreation
Midwest Symposium on Therapeutic Recreation
Geneva, Wisconsin
May 22, 1985

Other conferences attended:

Illinois Park and Recreation Association Conference
Rosemont, Illinois
November 15-17, 1984

Illinois Therapeutic Recreation Section Metro Workshop
Triton College
February, 1985

Other service to the profession:

Peterson, C.A.

Council member - National Recreation and Park Association/
American Association of Recreation and
Leisure, Council on Accreditation

Commissioner - American Association of Recreation and
Leisure, Goals Commission

Liaison - National Therapeutic Recreation Society,
Office of Personnel Management

University, College and Department Committees

Peterson, C.A.

University

Member - Undergraduate Specialization in Gerontology

College of Applied Life Studies

Member - Promotion and Tenure Committee

Department of Leisure Studies

Member - Advisory Committee
 Member - Fellowship Committee
 Member - Graduate Committee
 Member - Promotion and Tenure Committee
 Chair - Therapeutic Recreation Search Committee
 Chair - Undergraduate Committee
 Chair - Undergraduate Curriculum Revision Committee

Ashton-Shaeffer, C

Department of Leisure Studies

Member - Brightbill Banquet Committee

Teaching Responsibilities

Teaching, guest-lecturing, undergraduate and graduate advising, curriculum development, and committee membership are all responsibilities of the Therapeutic Recreation Specialist. The Specialist served as a committee member on five (5) Ph.D. committees, and five (5) M.S. committees; advised six (6) Ph.D. students, and five (5) M.S. students; and had 12 undergraduate career advisees in 1984-85.

The following courses were taught and guest-lectured by the Specialists:

Peterson, C.A.

- Leisure Studies 239 - Senior Seminar in Therapeutic Recreation
Fall, 1984
22 students, 3 credit hours
- Leisure Studies 332 - Program Planning and Evaluation
Spring, 1985
25 students, 3 credit hours
- Leisure Studies 493 - Guest Lecturer
"Comprehensive Planning," Clinical
Aspects of Therapeutic Recreation
September 5 and 10, 1984
- Leisure Studies 490 - Guest Lecturer - Graduate Seminar
"Leisure Lifestyle"
September 21, 1984
- Leisure Studies 200 - Guest Lecturer
"Leadership of Groups Involving
Disabled Individuals," Leadership
November 5, 1984
- Leisure Studies 331 - "Reality Therapy"
Facilitation Techniques
April 8 and 15, 1985

Guest Lecturer at other schools:

University of Nebraska, Lincoln
April 4-5, 1985

"An Innovative Perspective on Leisure"
Graduate Seminar

"Trends in Therapeutic Recreation"
Presentation to students

"Leisure Education Revisited"
REC 366, Facilitation Techniques

"Systematic Programming"
REC 268, Recreation Programming Planning

Ashton-Shaeffer, C.

- Leisure Studies 331 - "Values Clarification"
Facilitation Techniques
February 25, 1985

Other curriculum involvement:

- Leisure Studies 331 - Lab Leader
Facilitation Techniques
Spring, 1985

PUBLICATIONS BY ORPR STAFF

Peer Review Policy

The Office of Recreation and Park Resources has continued the policy of peer review of selected reports produced by members of the staff. To ensure that ORPR reports convey the most accurate and useful information, it is our policy that selected reports be evaluated by outside reviewers before being released. The reviewers' suggestions and critiques will be carefully considered in preparing final reports for publication.

Report Evaluation Form

In addition to the above review, each ORPR report sent out carries an evaluation form (see Appendix A). The evaluation forms are uniform in nature generally for all reports, however selected reports may have an evaluation form particular to the individual report (see Appendix B). The response to the evaluation forms has been positive.

PUBLICATIONS

Articles in Journals

- Brademas, D.J. "Hiring a 4-H Camp Director: An Innovative Approach." The Journal of Extension, (under review).
- Peterson, C.A. (1984). "A Matter of Priorities and Loyalties." Therapeutic Recreation Journal, Third Quarter.
- Peterson, C.A. (1984). "Challenges, Changes, and Concerns: Leisure Services in Institutional and Clinical Settings." Leisurability, (accepted for publication).
- Peterson, C.A. "Leisure Lifestyle Perspectives: An Alternative Mission and Approach to the Delivery of Public Parks and Recreation Services." Recreation and Parks, (submitted Spring, 1985).

Proceedings

- Peterson, C.A. Special Populations: A Professional Core Content Area. Undergraduate Curriculum: Content and Process. SPRE Workshop on Undergraduate Curriculum, Bradford, IN, March 28-29, 1985. Published proceedings.

Technical Reports

- Brademas, D.J. "Progress Report: William W. Fox Developmental Center, Dwight, Illinois." Office of Recreation and Park Resources, April, 1985.

Evaluation of Office of Recreation and Park Resources Publication

Publication Title: HIRING PRACTICES FOR PART-TIME AND SEASONAL
LEISURE SERVICES PERSONNEL

In an effort to assess the impact of our written materials, we ask you to take a few minutes and fill out this evaluation questionnaire after you have read the publication.

1. The publication was useful to me.

Very Useful 5 4 3 2 1 Not Useful At All
(circle one)

2. I felt the publication was directed to me.

Exactly 5 4 3 2 1 Not At All

3. Compared to others of its type, this publication was credible.

Very Credible 5 4 3 2 1 Not Credible
At All

4. I will consider changes in my program or agency as a result of this publication.

Definitely 5 4 3 2 1 Absolutely Not

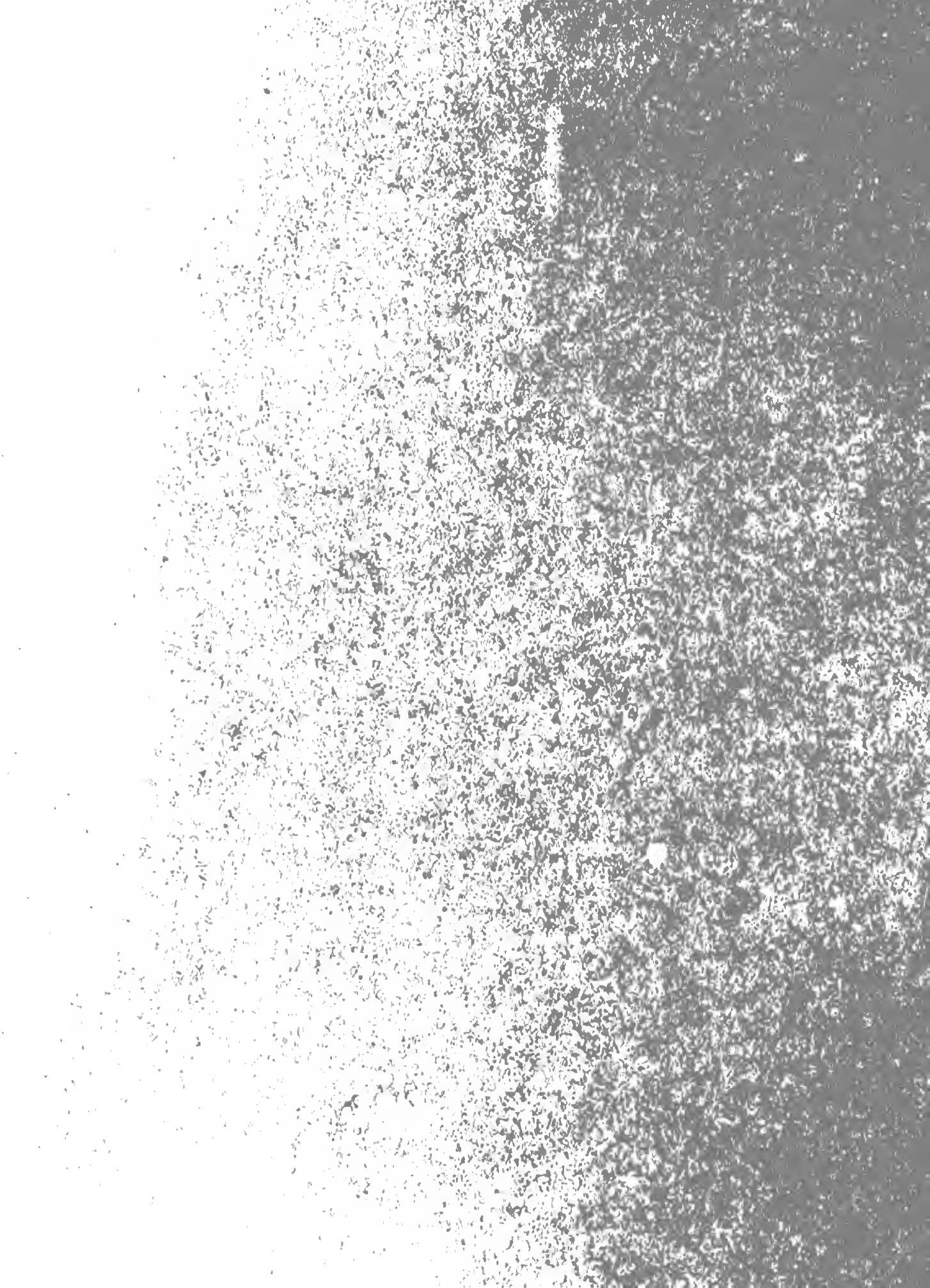
If change is considered, please explain briefly.

5. Please identify your agency or program.

6. Suggestions for other types of publications. _____

Please complete this questionnaire and return it in the enclosed, pre-addressed, pre-paid envelope.

Thank you very much for your help.



UNIVERSITY OF ILLINOIS-URBANA

790.9773IL65 C001
ANNUAL REPORT CHAMPAIGN
1984/85



3 0112 023457408