

TO PUBLIC LIBRARY



3 9999 03290 977 0

CITY OF BOSTON—PARK DEPARTMENT

FIFTY-SECOND ANNUAL REPORT

OF THE

BOARD OF COMMISSIONERS

FOR THE

YEAR ENDING DECEMBER 31, 1926

07
NovANGLICA

NovANGLIC

No. 1353.50

1926



GIVEN BY

Park Department

Digitized by the Internet Archive
in 2010 with funding from
Boston Public Library

City of Boston
PARK DEPARTMENT

FIFTY-SECOND ANNUAL REPORT

OF THE

BOARD OF COMMISSIONERS

FOR THE

YEAR ENDING DECEMBER 31, 1926



PRINTED FOR THE DEPARTMENT

1927

* 4353.50

Rec. Department.
Nov. 1, 1929.

RECORDED
INDEXED
NOV 1 1929



ANNUAL REPORT
OF THE
PARK DEPARTMENT
FOR THE
YEAR ENDING DECEMBER 31, 1926.

BOSTON, December 31, 1926.

HON. MALCOLM E. NICHOLS,
Mayor of Boston.

DEAR SIR,— In accordance with section 15 of chapter 185, Acts of 1875, the Park Commission herewith submits its annual report for the year 1926.

The past year has been distinguished by many important improvements. We will cover, however, only the major ones in this report.

FENS.

One of the most important improvements of the past year was the rearrangement of the Fens roadways. A section of Boylston street and Audubon road in the Back Bay Fens, between Charlesgate West and Agassiz road, was transformed from a winding narrow drive to two one-way drives, with center grass reservation between, of ample width to handle the matter of traffic for a good many years, removing one of the most dangerous traffic situations in the Park System, removing as it did the extreme reverse curves. The new boulevard, as constructed, is well lighted and replaces an area that was unsuitable for present conditions.

The work was done under contract at a total cost of \$544,463.

A contract has been let for \$47,715 for reconstructing the next section of Audubon road, between Agassiz road and Fens Bridge. This improvement provides for similar construction as on the section completed last year. The work will be completed on or about June 1, 1927.

PARK ROADWAYS.

The policy of permanent pavement on parkways and boulevards was continued. The main drive on Commonwealth avenue, between Sutherland road and Chestnut Hill avenue, was resurfaced at a cost of approximately \$40,000. The traffic road on Commonwealth avenue, between Washington street and Leamington road, was resurfaced with the same type of pavement.

A portion of the Arborway on the west drive, between Prince street and Centre street, was also resurfaced with this pavement. The latter two sections of the Parkway was done under contract at a total cost of \$43,685.

This year's work on park roads has brought to the parkways an enviable position with the other roads of the country. The policy, started in 1915 when Columbia road was first built, now reaches all over the Park System.

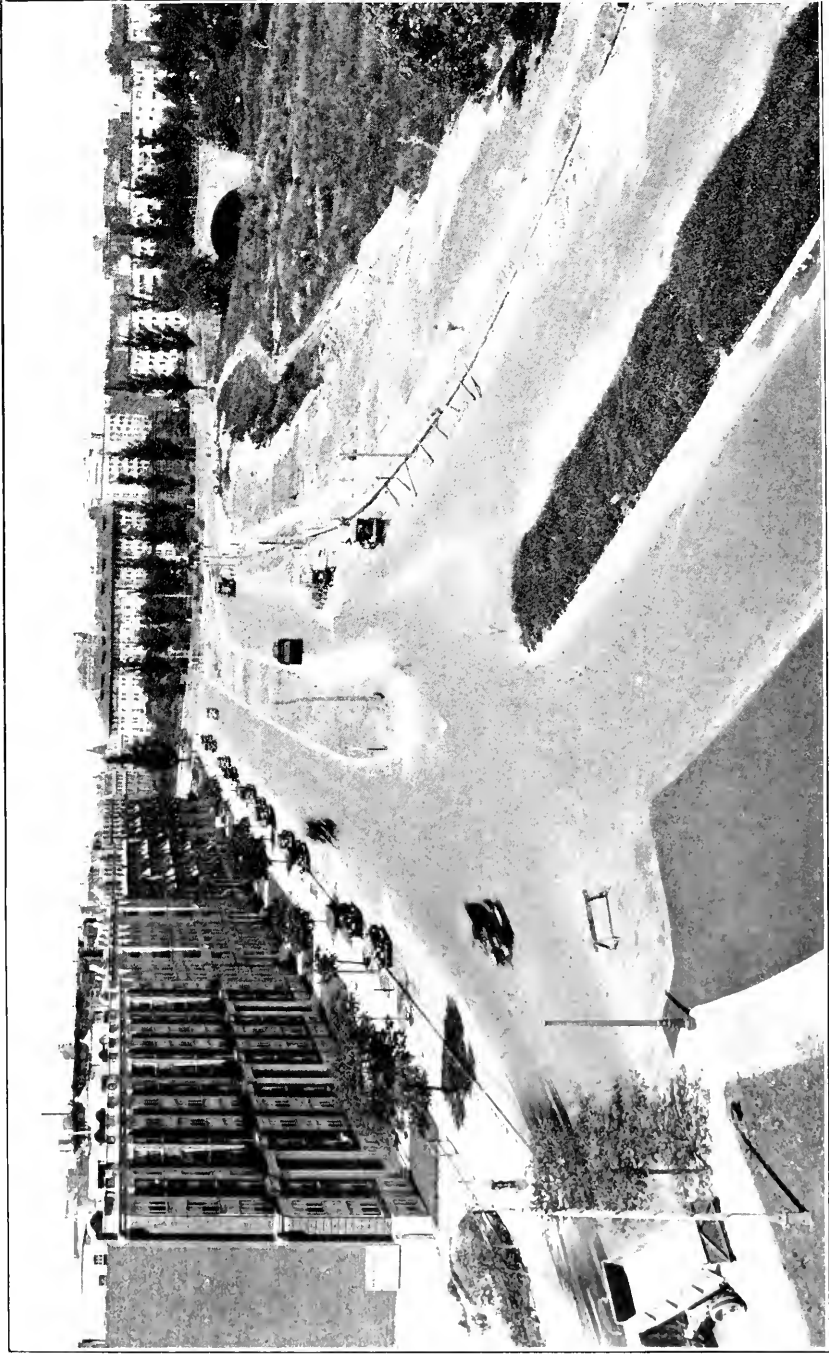
BOSTON COMMON.

A granite monument with a bronze tablet thereon inscribed with the Declaration of Independence was erected to commemorate the One Hundred Fiftieth Anniversary of the signing of the Declaration of Independence.

A contract was let for erecting iron fence along the curb line on Boylston street. This fence, when erected, should eliminate the promiscuous crossing on Boylston street by pedestrians.

A monster celebration was held July 4th at the Frog Pond which was a great success and together with the fire works display was very largely attended — over 40,000 people enjoyed same.

The trees on Boston Common were carefully pruned during the winter months and the younger trees fertilized to a great extent. The trees at the present time are in better condition than they have been for years.



NEW BOULEVARD UNDER CONSTRUCTION — BOYLSTON STREET, BACK BAY FENS.

PUBLIC GARDEN.

The main walk on the Public Garden, between Charles and Arlington streets, was reconstructed of a brown color concrete. This concrete replaced the old brown gravel walk that has served the garden for so many years and while it was very easy to walk on in dry weather, it was a distinct source of annoyance on wet days, due to its muddy condition.

The department has solved the serious trouble of this heavily traveled way and still has a walk pleasant to the eye, soft in color and harmonizing with this beautiful floral garden of our city.

A contract was let for resetting edgestone around the pond. This work will be completed early in the spring of 1927 and will remedy an unsightly edgestone and eliminate the serious dangers to children who play on the edge of the pond.

A contract was let to rebuild and repair the cast-iron boundary fence which was erected in 1863 and has never generally repaired.

The floral displays this year were more beautiful than ever and drew tremendous crowds all through the season. The garden is still the show place of the city and the wonderful showing last year will make it very difficult for any garden in the country to become its equal.

FRANKLIN PARK.

The new motor road through Franklin Park, opened for travel late in 1925, has drawn many additional people to the park to enjoy its scenery and to indulge in the various sports conducted there. This park, with its 527 acres, is the picnic ground of Boston and is an incentive for all people to get away in the summer from the hot city surroundings.

The Golf Course was more heavily patronized than ever,—in fact it was the record year for attendance, there being over 55,000 golfers tramping over the course. The amount of revenue derived from same was \$30,240. The cost of maintenance was approximately \$15,900. The yearly golf fee of \$10 has not eliminated the congestion on Saturdays, Sundays and holidays. The congestion on these days has been so serious that it may become necessary to raise the daily golf fee in

order to make the course playable on these days. Another golf course should be provided in or near the city to accommodate the ever increasing demand for more golf facilities. A bill is scheduled to be drafted in the State Legislature for the State Metropolitan District Commission to buy, develop and maintain another golf course within the Metropolitan District of Boston.

The subpolice station in the Overlook Building has been renovated and remodelled, under contract, at a cost of approximately \$10,000. The police now have a building with modern conveniences, which is a great improvement over the old antiquated conditions at this building.

A number of improvements were made in the city greenhouses,—the wooden plant benches being removed and permanent concrete ones installed at a cost of \$2,700. This work was done during the summer months.

The toboggan chutes on Schoolmaster Hill were heavily patronized during February and December, which were the only months when sufficient snow was on the ground to provide tobogganning.

The Rose Garden and Herbaceous Garden drew tremendous crowds to view these stellar attractions.

ZOOLOGICAL GARDEN.

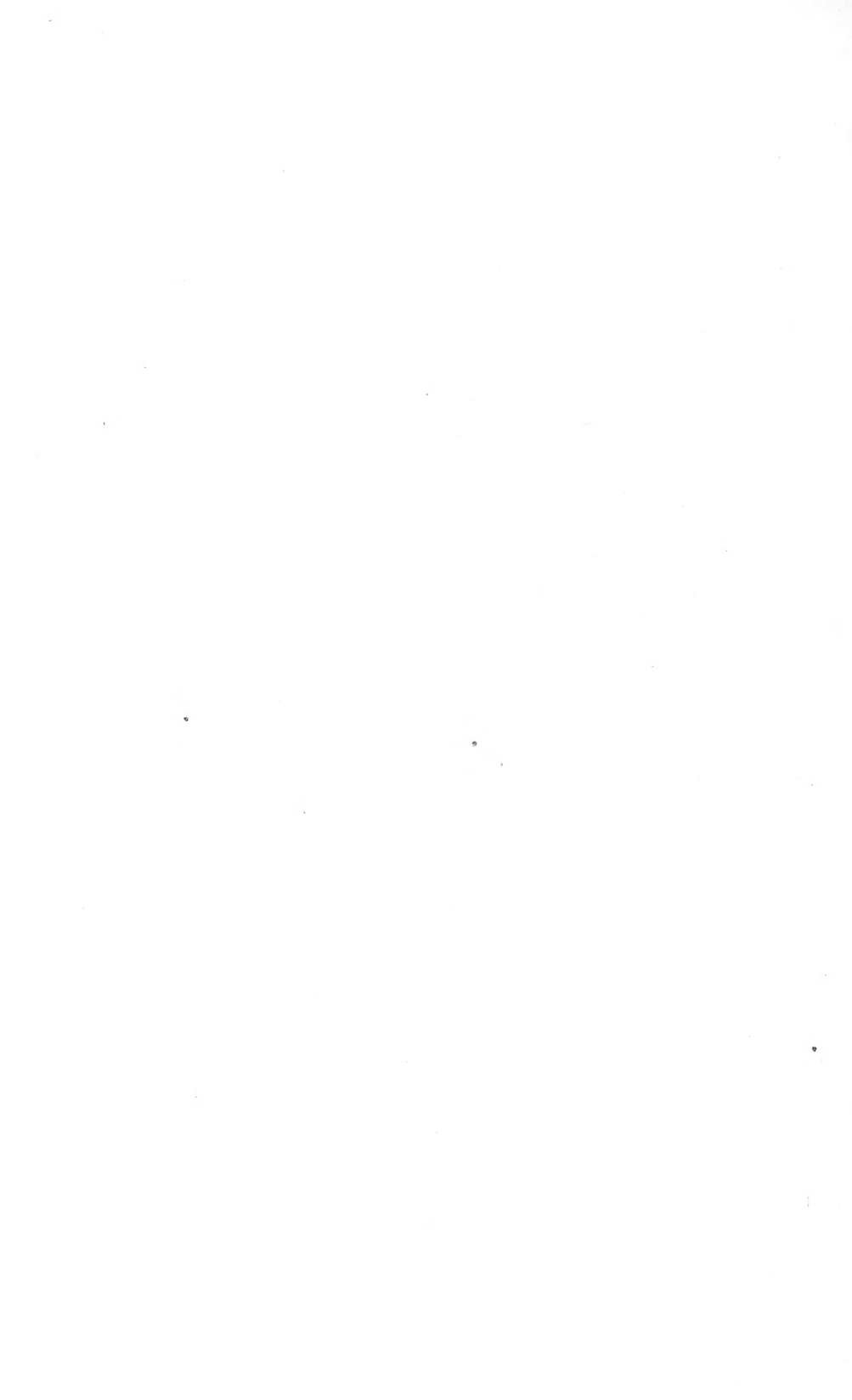
The Zoo still proves to be the main attraction in Franklin Park. The enormous crowds of visitors show ever-increasing public interest in the institution.

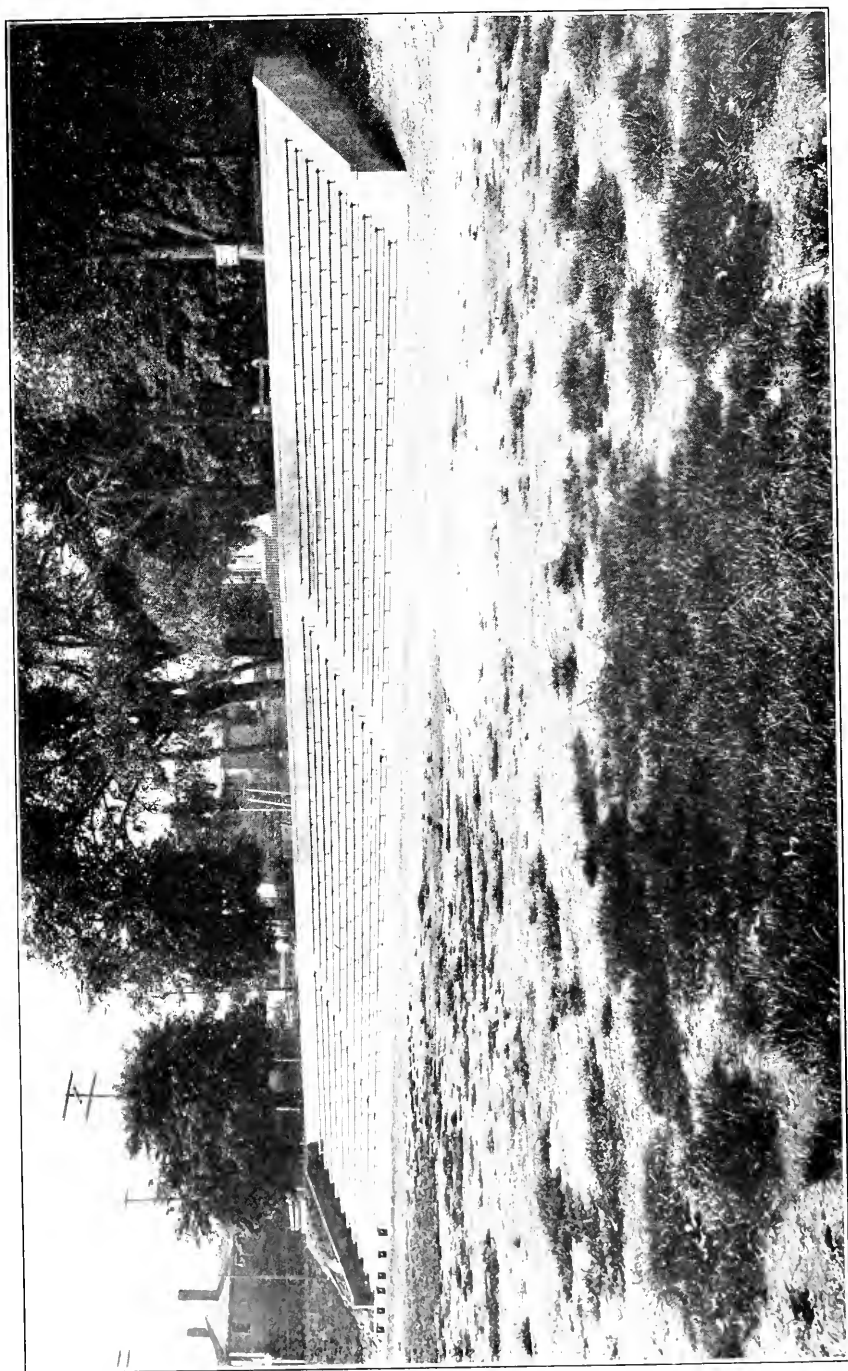
A number of purchases were made during the past year which have been exhibited in our collection for the first time. Among them were: One pair nilgai; one pair Stanley cranes; one brindled gnu; one ceram cassowary; one emu; one rhea; one pair vulturine guinea fowl; one adult llama; one young male Chapman zebra; one tiger.

The death rate among the animals was exceptionally low last year. The department lost, by violence, four raccoons which were stoned to death after dark by vandals, and a male ostrich which was killed by a man under the influence of liquor. The death of animals after dark by vandals is serious enough to warrant the enclosing of the entire Zoo with a permanent fence. An ornamental iron fence to extend all around the Zoo would cost a considerable sum, but would eliminate all vandalism and allow the department to control the entire Zoological Garden both day and night. The

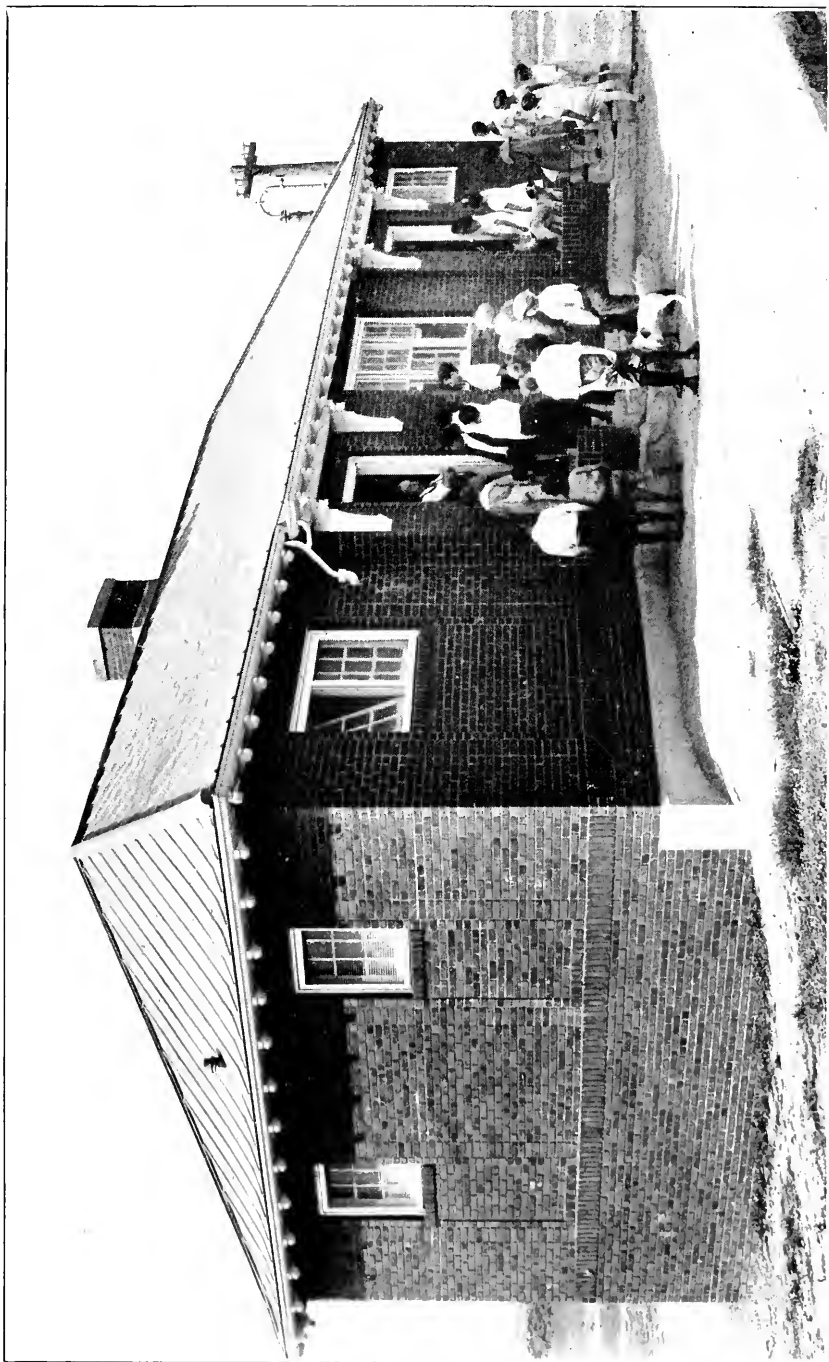


NEW FIELD HOUSE — WILLIAM H. GARVEY PLAYGROUND, NEPONSET.
(Standard Playground Building for larger playground.)





NEW CONCRETE BLEACHERS — WILLIAM H. GARVEY PLAYGROUND, NEPONSET.



NEW FIELD HOUSE — JOHN H. L. NOYES PLAYGROUND, EAST BOSTON.
(Standard Playground Building for smaller playground.)

death and injury to animals, the possible escape of animals and the danger of an incendiary fire at some of the houses and sheds are a constant menace to the community and also to some of the fine specimens of animals we have in our Zoo.

A very fine planting of evergreens was made around the Bear Dens, consisting principally of hemlocks, spruces and *taxus cuspidata*.

PLAYGROUNDS AND SMALL PARKS.

William H. Garvey Playground.—A new modern field house was erected at a cost of \$23,788. This building is of brick and concrete construction of the very latest design and lay-out and was constructed under contract. Concrete bleachers with a seating capacity of 1,200 people were constructed under contract at a cost of \$10,162. The filling and loaming of this playground in 1925 and the new building and bleachers have brought this playground to a state of development that puts it among the real good playgrounds of the city.

John H. L. Noyes Playground.—A new field house was constructed of brick and concrete construction at a cost of \$21,210. The filling and loaming of the remainder of the undeveloped area has made the playground one of the best in the East Boston section. It is claimed by the athletes to be the best football field in Boston. It is in such great demand that during the football season two different games of football were played every Sunday afternoon. Great throngs of spectators have enjoyed these games which encourages us to further developments as it shows the interest the older people are taking in the sports on the playgrounds when they go out and enjoy the wholesome recreation as onlookers.

Brookside Avenue Playground.—A field house was constructed of brick and concrete at a cost of \$10,506. A wire fence was erected around the playground to keep the activities within the area of the lot. A wooden shelter was erected to provide a shelter for organized games for the small children, and also for swings which are entirely under the shelter and away from the sun's hot rays during the summer months. This playground is now wholly developed, and from a rough unkempt parcel of land a modern playground stands for the younger children.

Francis Parkman Playground.— This playground was developed by excavating on the high ground and the material was used for filling on the low ground. The playground is now graded so that baseball and football can be played by the smaller boys. It has also been graded so that it can be flooded, and skating was inaugurated there in December.

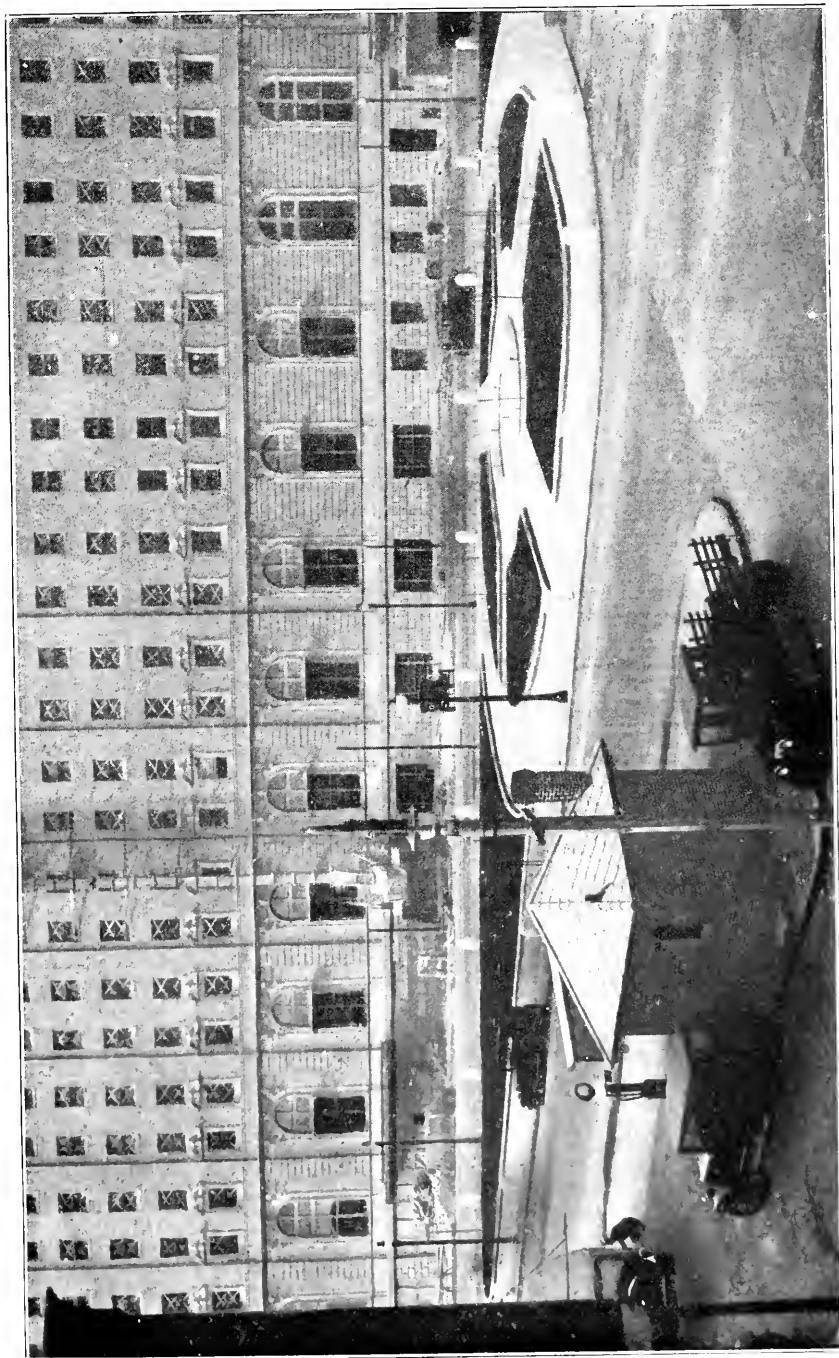
Franklin Field.— The old grandstand used in the old horse racing days has been more or less abandoned during the last ten years. The old track in front of the grandstand was filled in with loam and graded so as to provide an area large enough for two baseball games. The ground was seeded and this section of the field should be in fine condition for baseball next spring. This improvement not only develops this portion of the field but it also puts to use the old concrete grandstand for the spectators.

Mary Hemenway Playground.— A wooden shelter was erected and the ball field was resurfaced with screened loam. A wire fence was erected on two of the boundary lines of the playground so as to keep the children from trespassing on the abutting properties.

Statler Park.— The area bounded by Columbus avenue, Stuart and Church streets was razed of the old buildings and a small triangular park was constructed. This park is located opposite the new Statler Hotel on Columbus avenue. It has removed some very unsightly, dilapidated buildings from a section opposite Boston's newest hotel, and an open space has been made of beauty, harmonizing with the architecture of this modern hotel. The area was named "Statler Park" in honor of the man operating the hotel, who has brought to Boston additional modern hotel facilities much needed for the advancement of the entire city.

Almont Street Playground.— A portion of the property of the Park Department on Almont street, Mattapan, was developed by filling and loaming. This portion of the playground will be in use for the children next spring and in a very rapidly developing district it will fill a much needed want.

Charlesbank.— The locker building constructed in the year 1895 was generally remodelled and repaired under contract at a cost of \$19,250. The entire building was overhauled, strengthened and relaid out to meet modern conditions. All new fixtures were installed, new flooring



STATLER PARK — WITH THE NEW STATLER HOTEL IN THE BACKGROUND.

laid, interior walls replaced and the surface of the exterior walls covered with cement stucco.

Webster Avenue Playground.— The buildings purchased by the city in 1925 just off Hanover street near North Bennet street were torn down this past year to prepare for the construction of a small playground. This playground will provide another breathing space in this very congested section of the North End. The area of this small playground is 13,448 square feet.

GYMNASIUMS AND PHYSICAL TRAINING.

The gymnastic classes were held during the winter, spring and fall months and were very well attended by the public. The classes for women and girls were held on Mondays and Thursdays; for men and boys Tuesdays and Fridays; and for boys on Wednesdays and Saturdays. The indoor baths and swimming pools have been very well attended during the year.

At the Boston Arena on April 7, 1926, the department staged its annual demonstration of the gymnastic classes of all the local districts. It was a monster demonstration and the public who attended were very well satisfied.

In 1926 an innovation was started in the department when the physical instructors were detailed to the various larger playgrounds of the city to promote organized athletic sports. Baseball and track teams were formed, and a baseball league was organized; games were played between district baseball teams and the members of the champion team of the league were given prizes. The department held a general field and track meet at Franklin Field on Saturday, September 4, 1926.

BATHING BEACHES.

The outdoor bathing season for 1926 was carried through in a very satisfactory manner. The public used the beaches with greater attendance than in the previous year. The department was decidedly fortunate in not having a bathing fatality during the year.

The beaches were supplied with new clean sand before the start of the season and were maintained throughout the season in a condition surpassing anything in the past. The beach houses were all put in first-class condition preparatory to the summer season.

The L Street Bath House, Boston's old standby, was renovated and remodelled, especially the men's section. Additional locker facilities were provided in the men's section for 585 additional bathers. A new roof was laid, an additional handball court built, fences were repaired and other general repairs made and the entire exterior was freshly painted. The total cost of this work was \$25,644.

Swimming meets were held during the summer at all the beaches, and the winners of the local meets of all the beaches engaged in the final meet on August 29 at Marine Park Beach.

BAND CONCERTS.

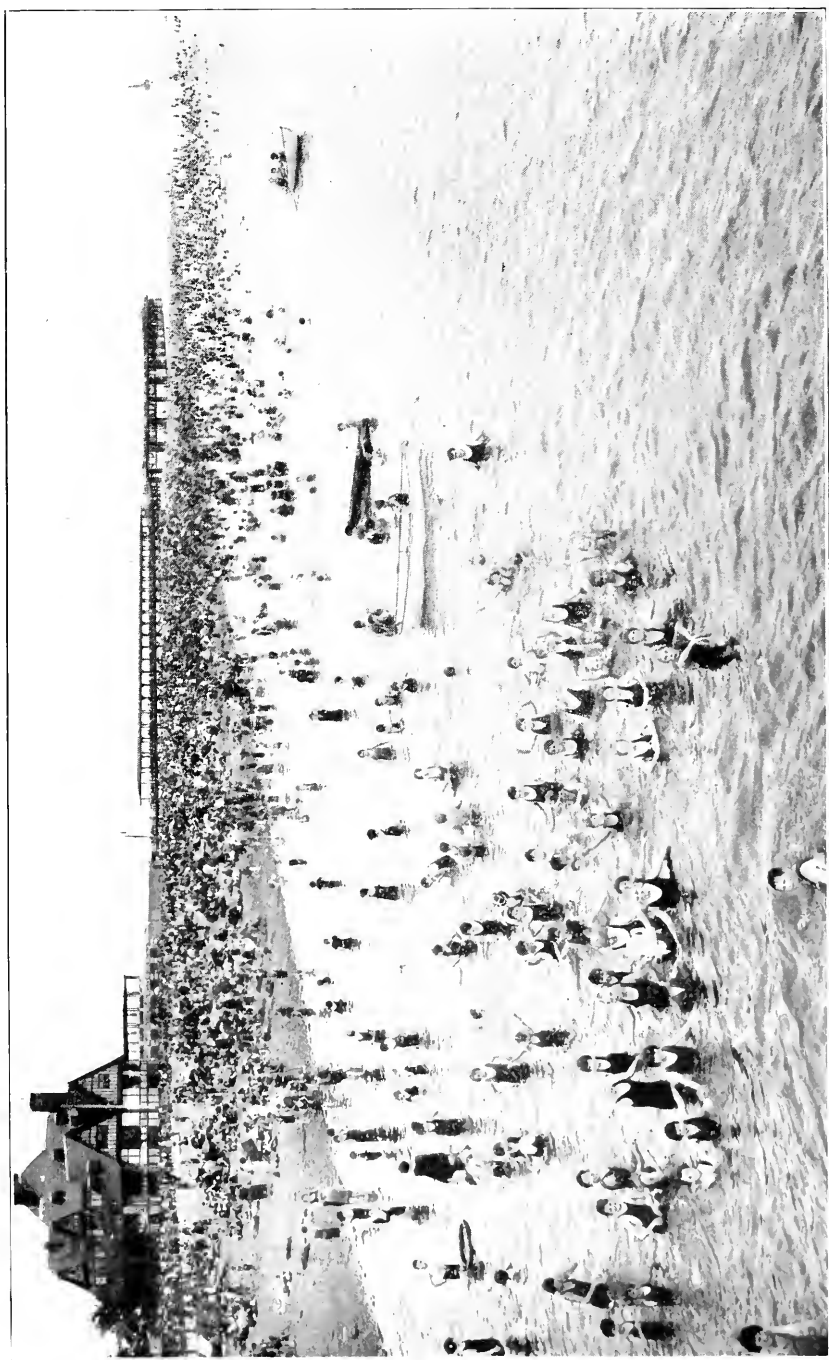
The department furnished forty band concerts during the past summer in various parts of the city. Band concerts were enjoyed on Boston Common, Franklin Park and Marine Park every Sunday during July and August. At Jamaica Pond, McConnell Park and World War Memorial Park concerts were given on alternate Sundays during the same months.

A Christmas tree 70 feet in height was erected during December and was illuminated with 1,200 colored lights. A monster Christmas Eve celebration was staged December 24 with a band concert and organized choral singing and with other special features.

The main events of the year were received by radio at the Parkman Bandstand, Boston Common and amplified, using the public address system for the benefit of the citizens of the city. Such events as the World Series Baseball Games and some of the major football games attracted thousands of our people.

SNOW REMOVAL.

The advent of winter and the removal of snow from our parkways and boulevards is another special maintenance duty we have to perform. The department has for its equipment eight tractors and six trucks attached with plows for the removal of snow. The department is proud of its record for the removal of snow, for no matter how bad the storm has been the department has never failed to have its roads open for travel. The removal of the snow from a length of roadway totaling forty-one miles, and averaging 40 feet in width forms a part of our winter duties.



BATHING SCENE—MARINE PARK BEACH.



BATHING SCENE — COLUMBUS PARK BEACH, SOUTH BOSTON.

THE AQUARIUM.

The Aquarium had a record number of visitors in 1926, totaling 350,000.

The department has the following exhibits:

American fresh water	2,650 specimens.
Massachusetts marine	108 specimens.
Tropical marine	442 specimens.
European marine	1 specimen.
Bal Aquaria	52 specimens.
Mammals	4 specimens.
Salamanders	44 specimens.
Turtles	24 specimens.

The department is proud of possessing the following record exhibits:

- Green Moray — Largest of species, longest in captivity.
- Wreckfish — Only specimen exhibited alive in America.
- Mackerel — Established new record for life in captivity.
- Bluefish — Established new record for life in captivity.

Six of the old wooden exhibition fish tanks were taken out and concrete tanks installed. The remainder of the wooden tanks will have to be replaced as they are beyond repairing. A contract has been let for taking out the old galvanized-iron piping in the Fresh Water System and replacing same with new brass piping.

MOTH AND TREE DIVISION.

The department forces inspected during the past year all the trees growing in the city and those which were found infested with moths were sprayed.

All the trees in the city on private and city property were inspected for moths from January to March, and October to December, inclusive. The oriental moth was found to be the most numerous and was infecting some of the trees in Dorchester, Roxbury and a few in Brighton. The satin moth was found in smaller quantities scattered over the entire city. The gypsy moth was found only in a very few places in different sections of the city. The brown-tail moth has been practically eliminated from the city, only a small number were found on one street in Roxbury. All the infested trees were sprayed during the months of May, June, July and August. Tent caterpillars and the

fall web worm were found on some trees and same were cut off and burned. All the moth work done on private property was charged to the owners of the land at cost.

The street, playground and park trees were pruned, old ones removed and on some streets new ones planted.

CEMETERY DIVISION.

All the cemeteries were put in first-class condition for Memorial Day. The cemeteries never looked better than during the year 1926.

Mt. Hope Cemetery.— Two parts of the single grave section were turned over and the rock removed; all work being done by contract. Repairs were made to the roads by our own forces and then treated with tar preparation and pea stone. We have removed several dead trees and pruned numerous other trees and shrubbery.

Fairview Cemetery.— A section was turned over and the stones removed, for new graves of various sizes. A new piece of road was rebuilt of asphalt macadam. Some general repairs were made on the office building and chapel.

Evergreen Cemetery.— A large parcel of land was turned over and the stones removed by our forces.

General repairs and the maintenance of roads, buildings, graves, trees and shrubs were made on the other seventeen cemeteries of the city under the control of this department.

RECOMMENDATIONS.

The most pressing demand on the department is the modernizing of the park roads by straightening, widening or constructing parallel one-way drives, so as to adequately carry the ever-increasing number of motor vehicles using the parkways. A step in the right direction has been made on the reconstruction of Audubon road and Boylston street in the Back Bay Fens.

The traffic during rush hours at Governor square intersection has reached the unbearable stage and steps must be taken to give some relief. A diagonal intersection of two main highways, Commonwealth avenue and Beacon street, forms one of the worst points of traffic congestion in our city. The traffic at this square, with eight intersecting motor roads with

all their corresponding motor travel and two main lines of electric cars, is a problem for experts. The Boston Elevated Railway Company could eliminate much of the trouble by running its street cars under the square. The objection of the Boston Elevated Railway Company to this plan is the cost, especially as same would have to be borne by the street car riders. It would be advisable now to try out a new traffic plan at the square by not allowing any left turns.

The policy of the improvement of the existing playgrounds rather than the purchasing of land for new playgrounds should be continued.

Field houses should be constructed at Jefferson Playground, Roxbury; Barry Playground, Charlestown and Christopher Gibson Playground, Dorchester. The field house at Billings Field, West Roxbury, is inadequate to handle the present needs of the district, and in its present antiquated condition, the better policy is to demolish it and build a new modern building.

The Leverett pond silt nuisance carried through from the Brookline Town brook and emptying into our pond has not been remedied. This material has almost blocked the flow of water in Leverett pond. The removal of this material from Leverett pond and Muddy river should be done this year, but the major part of the expense should be borne by the town of Brookline.

Further repairs and alterations should be made to the women's section at the L Street Bath House.

At the Aquarium, more of the galvanized iron piping should be removed and new brass piping installed. More of the old wooden fish tanks should be taken out and new ones of concrete constructed.

The purchase of additional trucks and tractors has more than taxed the garage facilities of the department. A new modern garage large enough to house all of our motor equipment should be built in Franklin Park.

Respectfully submitted,

WILLIAM P. LONG,
Chairman.

MYRON P. LEWIS,
CHARLES P. NORTON,
Acting Commissioners.

Location, Area and Equipment of Parks and Gardens, 1926.

PARKS AND GARDENS.	Area.	Location.	Equipment.
Andrew Henry Square*	2,068 sq. ft.	Junction of Adams and Granite streets.	Grass area.
Fred C. W. Olsen Square*	.048 acre 700 sq. ft.	Junction of Adams and Codman streets.	Grass area.
Algonquin Square.	1,728 sq. ft. .04 acre	Algonquin and Bradlee streets.	Grass area and three flower beds.
Alvah Kittredge Park.	5,600 sq. ft. .129 acre	Highland street and Highland avenue.	Tree-planted parkway.
Arboretum	36 acres	Prince street to Franklin Park.	Tree-planted area.
Arnold Arboretum.	223 acres	South, Centre and Walter streets.	Sanitary building, roads and walks.
Avenue Louis Pasteur.	138,968 sq. ft. 3.19 acres	Fenway to Longwood avenue.	Entrance road to Back Bay Fens.
Belmont Square.	30,000 sq. ft. 689 acre	Webster, Sumner, Lamson and Seaver streets.	Fence, seats and fountain.
Berners Square.	57,200 sq. ft. 1.3 acres	Longwood avenue, Pilgrim road and Plymouth street.	Two tennis courts, trees.
Berwick Park.	3,800 sq. ft. .087 acre	Off Columbus avenue, near New York, New Haven & Hartford Railroad.	Three grass lawns.
Blackstone Square.	105,100 sq. ft. 2.41 acres	Washington, West Brookline, West Newton streets and Shawmut avenue.	Ornamental fountain, drinking fountain and seats.
Boston Common.	2,090,020 sq. ft. 48.4 acres	Park, Tremont, Boylston, Charles and Beacon streets.	Ball ground and children's corner. Skating during the winter.
Brighton Square.	25,335 sq. ft. .574 acre	Between Chestnut Hill avenue and Rockland street.	Flagstaff and grass lawn.
Bromley Park.	20,975 sq. ft. .482 acre	From Albert street to Bleckford street.	Fence, grass area, trees.
Camp Meigs.	124,500 sq. ft. 2,806 acres	Clifford, Stanley and Irving streets	Flagstaff, grass.
Gustav Emmet Square*	750 sq. ft. .017 acre	South Conway, South Fairview and Robert streets.	Grass area.
Cedar Square.	26,163 sq. ft. .601 acre	Cedar street, between Juniper and Thornton streets.	Grass area, trees.
Centervale Park.	9,740 sq. ft. .224 acre	Between Upland avenue and Bournside street.	Grass area.
Central square.	40,310 sq. ft. .925 acre	Meridian and Border streets.	Flagstaff, trees.
Cornelius J. Mahoney Square*	3,200 sq. ft. .074 acre	Centre and Perkins streets.	Seats.
Charlesbank.	10 acres	Charles street, from Cambridge street to Leverett street.	Three and one-half acres playground area. Outdoor gymnasium, basket ball, children's playground, skating, shower baths, floating baths and women's indoor gymnasium and boating.

Charlestown Heights.....	6.1 acres	Bunker Hill and Medford streets.....	One acre children's playground, field house.
Chestnut Hill Park (reservoir and adjacent lands, 160.65 acres).	55.4 acres	Beacon street and Commonwealth avenue, Brighton.....	Four acres playground area. Three ball grounds and tennis. One Rugby football ground and one Soccer football ground.
City Hall grounds.....	7,700 sq. ft. 177 acre	School street.....	Lawns and statues.
City Square.....	8,739 sq. ft. 201 acre	Head of Bow and Main streets.....	Flagstaff.
Columbia Road.....	31.2 acre	Franklin Park to Marine Park.....	Tree planted parkway.
Columbus Square.....	2,230 sq. ft. 51.6 acre	Junction of Columbus and Warren avenues.....	Underground tool house, grass.
Commonwealth avenue.....	112.7 acres	Arlington street to Newton line.....	Fence, grass area, fountain.
Concord Square.....	5,000 sq. ft. 115 acre	Between Tremont street and Columbus avenue.....	Curb inclosed grass area.
Copley Square.....	28,399 sq. ft. 652 acre	Between Huntington avenue, Boylston and Dartmouth streets.....	Mothers' and children's shelter, sanitary and flagstaff.
Copp's Hill Terraces.....	.6 acre	Commercial and Charter streets.....	
John F. Donovan Park *	56,200 sq. ft. 1.29 acres	Between Church, Adams and Winter streets, Meeting House Hill.....	One acre playground area. One ball ground.
Dorchester Park.....	30.4 acres	Dorchester avenue and Richmond street.....	One Soccer football ground, skating and children's corner.
Drolau square.....	10,241 sq. ft. 235 acre	Edison green, between Pond street and Dorchester avenue.....	
Eaton Square.....	13,280 sq. ft. 305 acre	Between Church, Adams and Bowdoin streets.....	Ornamental fountain, curb, trees and flowers.
Edward Everett Square.....		Junction Massachusetts avenue, Columbia road and Boston street.....	Statue of Edward Everett, curb and grass.
Elm Hill avenue.....	6,920 sq. ft. 159 acre	Between Seaver and Schuyler streets.....	Tree-planted strip of land on east side of street.
Elm Hill Park.....	930 sq. ft. 921 acre	Off 550 Warren street, between Intervale and Gaston streets.....	Grass and trees.
Essex Square.....		Between Essex and Lyndeboro' streets.....	Five acres of playground area. Two ball grounds. One Soccer football ground 'bleaching' and children's corner and sanitary building.
Fens.....	117 acres	Beacon street to Brookline avenue.....	
Fern Square.....	1,990 sq. ft. 444 acre	Between Franklin and Fern streets.....	
Florida street.....	21,193 sq. ft. 555 acre	Between King and Ashmont streets, (Seven inclosures.).....	
Fort Hill Square.....	29,459 sq. ft. 677 acre	High street, near Oliver street.....	
Francis C. Hanlon Square *.....	1,662 sq. ft. 638 acre	Junction Huntington avenue, Tremont and Francis streets.....	Thirty-six acres playground area. Twelve ball grounds. Four Soccer football grounds, tennis, golf, tobogganning, skating, shower baths and Zoological Garden.
Franklin Park.....	527 acres	Seaver street to Morton street and Blue Hill avenue to Forest Hills street.....	

* Named for soldier killed in World War.

Location, Area and Equipment of Parks and Gardens, 1926.—Continued.

PARKS AND GARDENS.	Area.	Location.	Equipment.
Francis G. Kane Square *	1,600 sq. ft.	Bowdoin, Winter and Hancock streets.	Children's corner, fountain, trees and grass.
Franklin Square.	105,205 sq. ft. 2.41 acres	Washington, East Brookline, East Newton and James streets.	
Greenwood Square.	220 sq. ft. .005 acre	Junction Thatcher street and Central avenue.	
Herbert J. Wolf Square *	966 sq. ft. .022 acre	Abbotsford, Crawford and Harold streets.	
Hayes Square.	4,484 sq. ft. .103 acre	Bunker Hill, Vine and Moulton streets.	Fence, grass area, flagpole.
General Heath Square.	2,419 sq. ft. .056 acre	Old Heath, New Heath and Parker streets.	
Highland Park.	158,421 sq. ft. 3,637 acres	Fort avenue.	
Horatio Harris Park.	110,040 sq. ft. 2,526 acres	Walnut avenue, between Munroe and Townsend streets.	
Independence Square.	279,218 sq. ft. 6.41 acres	Broadway, Second, M and N streets.	
Irving W. Adams Park *	33,977 sq. ft. .778 acre	Junction Washington and South streets.	
Jackson Square.	4,300 sq. ft. .099 acre	Chestnut Hill avenue, Union and Winship streets.	
Lincoln Square.	9,510 sq. ft. .218 acre	Emerson, Fourth and M streets.	
Linwood Park.	3,625 sq. ft. .083 acre	Centre and Linwood streets.	
Longwood Park.	21,000 sq. ft. .482 acre	Deaconess road, Brookline avenue, Pilgrim road and Austin street.	
Madison Park.	122,191 sq. ft. 2,805 acres	Sterling, Marble, Warwick and Westminster streets.	
Gordon E. Denton Square *	3,605 sq. ft. .83 acre	Junction Wayland, Bird and Magnolia streets.	
Marine Park and Castle Island (land, 78.2; flats, 83.2).	161.40 acres	Farragut road, City Point.	Beach, bathing, boating, Aquarium, tennis and swings, recreation pier, flagpole, Farragut statue and convenience station.
Massachusetts avenue.	106,500 sq. ft. 2,446 acres	Between Albany street and Columbus avenue. (Four sections.)	
Maverick Square.	4,596 sq. ft. 101 acre	Summer and Maverick streets.	
Lieut. Parker B. Jones Square *	220 sq. ft. .005 acre	Junction Milton avenue and Highland street.	
Mt. Bowdoin Green.	25,170 sq. ft. .578 acre	Top of Mt. Bowdoin, Bowdoin avenue.	Trees, grass area and seats.

Oak Square.....	9,796 sq. ft. .92 acre	Washington and Faneuil streets.	
Oakview Terrace.....	5,237 sq. ft. .121 acre	Off 426 Centre street.	
Olmstead Park (in Brookline, 18 acres).....	180 acres	Huntington avenue and Brookline line to Prince street.	Three acres playground area. Two ball grounds. One Rugby and two Soccer football grounds, tennis, boating, fishing and skating on Jamaica pond. Children's wading pool and shelter. Emancipation group statue.
Orchard Park.....	111,705 sq. ft. 2,564 acres	Chadwick, Orchard park and Yeoman streets....	
Abraham Lincoln Square.....	2,867 sq. ft. .066 acre	Columbus avenue, Eliot and Pleasant streets....	
Peabody Square.....	1,963 1/2 sq. ft. .045 acre	Junction Dorchester avenue and Ashmont street.	
Prescott Square.....	12,284 sq. ft. .282 acre	Trenton, Eagle and Prescott streets.	
Public Garden.....	1,056,300 sq. ft. 24.25 acres	Charles, Boylston, Arlington and Beacon streets.	Outdoor floral displays and boating during summer months, skating during the winter.
Public land, Dorchester.....	10.35 acres	Victory road and Park street, Dorchester.	
Public Park (Park Square District).....	5,841 sq. ft. 0.13 acre	Columbus avenue, Stuart and Church streets.	
Vincent Cuttillo Park, Morton street, North End *.....	21,181 sq. ft. .48 acre	Morton and Stillman streets, North End.	
Putnam Square.....	11,628 sq. ft. .267 acre	Putnam, White and Trenton streets.	
Richardson Square.....	46,035 sq. ft. 1,057 acres	Between Pond and Cottage streets.	
Riverway (in Brookline, 16.5 acres).....	40 acres	Brookline avenue and Brookline line to Huntington avenue.	
Rutland Square.....	7,400 sq. ft. .17 acre	Between Tremont street and Columbus avenue.	
St. Stephen Square.....	100 sq. ft. .002 acre	Corner St. Stephen and Batavia streets.	
Savin Hill Park.....	8.26 acres	Grampian way.....	Tennis.
Seaver Street.....	2,500 sq. ft. 0.57 acre	Seaver street and Blue Hill avenue.	
Soldiers' Monument lot.....	5,870 sq. ft. .135 acre	South and Centre streets.	
Edmund M. Cunningham Square *.....	7,449 sq. ft. .171 acre	Junction Cambridge, Brighton, Murdock and Spartawick streets.	
Spaulding Square.....	6,264 sq. ft. .143 acre	Junction Freeport street and Neponset avenue.	Bath houses and beach bathing during summer at L Street Beach.
Strawday.....	74.31 acres	Columbia road railroad bridge to Marine Park.	

* Named for soldier killed in World War.

Location, Area and Equipment of Parks and Gardens, 1926.—Concluded.

PARKS AND GARDENS.	Area.	Location.	Equipment.
Sullivan Square.....	56,428 sq. ft.	Main, Cambridge, Sever and Gardner streets.	
Thomas Park (Telegraph Hill).....	1,295 acres	Thomas Park.	
Town Meeting Park.....	190,000 sq. ft.	Pond, Pleasant and East Cottage streets, Dorchester.	
Tremlett Square.....	4,362 acres	Tremlett street, between Hooper and Waldeck streets.	
Trinity Triangle.....	9,765 sq. ft.	Between Huntington avenue, Trinity place and St. James avenue.	
Union Park.....	.22 acre	Between Tremont street and Shawmut avenue.	
Horace Campbell Woodworth Square *.....	7,107 sq. ft.	Beacon street, Metropolitan and Vose avenues.	
Walnut Park.....	5,380 sq. ft.	Between Washington street and Walnut park.	
Waltham Square.....	123 acre	Harrison avenue, between Union Park and Waltham streets.	
Warren Square.....	3,000 sq. ft.	Warren street, St. James and Regent streets.	
William B. Corbett Park *.....	1,330 sq. ft.	Washington and Claybourne streets, near Crown path, Dorchester.	
Washington Park.....	.032 acre	Dale, Bainbridge and Paulding streets.	
Webster Square.....	40,829 sq. ft.	Junction Webster street and Central avenue.	
Wellesley Park.....	396,125 sq. ft.	Between Melville avenue and Park street.	
West Roxburyway.....	9,094 acres	Walter to Centre street, Centre street to Weld street.	
Williams Square.....	220 sq. ft.	Junction Williams avenue and Prospect street.	
Winthrop Square.....	.016 acre	Winthrop, Common and Adams streets.	
Wolcott Square.....	38,450 sq. ft.	Hyde park avenue, Milton and Prescott streets.	
World War Memorial Park.....	.883 acre	Neptune road, from Bennington street.	
Worcester Square.....	220 sq. ft.	Between Washington street and Harrison avenue.	
	.005 acre		
	55.6 acres		
	16,000 sq. ft.		
	.367 acre		

Ten acres playground. Three ball grounds.
 One Rugby and three Soccer football grounds.
 Outdoor gymnasium, cricket, tennis, skating,
 shower baths and beach bathing.

* Named for soldier killed in World War.

Location, Area and Equipment of Playgrounds and Gymnasias, 1926.

NAME.	Area, Acres.	Location.	Equipment.
Stanley A. Ringer Playground *	12.12	Allston street and Griggs place, Brighton district.	Locker building, shower baths. One ball ground and tennis.
James L. Cronin Playground *	2.24	Bent street, near Talbot avenue, Dorchester district.	Sanitary building. One ball ground, tennis, skating and children's corner.
Billings Field	10.83	La Grange and Bellevue streets, near Centre street, West Roxbury district.	Field house, shower baths. Two ball grounds, one Rugby and two Soccer football grounds, tennis, skating, concrete bleachers and flag pole.
John W. Murphy Playground *	4.17	Carolina avenue, Jamaica Plain.	Field house, shower baths. One ball ground, one Rugby and one Soccer football ground, tennis, skating, concrete bleachers and flag pole.
Charlestown Playground (land 13.72 acres; 4 acres).	17.73	Main and Alford streets, Charlestown district.	Sanitary building. Four ball grounds, one Rugby and three Soccer football grounds, two hand ball courts, Quoit rinks and running tracks.
William E. Carter Playground *	5.02	Columbus avenue and Caunden street, Roxbury district.	Field house, shower baths. One ball ground, one Rugby and one Soccer football ground, skating, boys' athletic field, children's corner and concrete bleachers.
Bennett Playground.	.11	Charles Street place, Charlestown.	
Carroll Pond Playground.	.47	Carroll street, West Roxbury.	
Cherry Street Playground.	.55	Shawmut avenue and Cherry street.	Covered shelter, children's corner and drinking fountain.
Columbus Park.		Part of Strandway at head of Dorchester bay, South Boston.	Field house, shower baths. Five ball grounds, one Rugby and one Soccer football ground, tennis, basket ball, skating, children's corner, bath house, beach bathing during summer, flag pole.
Factory Hill Playground.	5.20	Town street, near Sunnyside street, Hyde Park district.	Sanitary building, children's playground, basket ball. Two hand-ball courts, flag pole.
J. M. and J. J. Sullivan Playground *	.85	Fellows and Hunneman streets, Roxbury district.	Field house, shower baths. One ball ground, one Rugby football ground, tennis, basket ball, skating, children's corner, concrete bleachers and flag pole.
Christopher J. Lee Playground *	5.20	First and M streets, South Boston district.	

* Named for soldier killed in World War.

Location, Area and Equipment of Playgrounds and Gymnasias, 1926.—Continued.

NAME.	Area, Acres.	Location.	Equipment.
James F. Healy Playground *	9.63	Washington and Florence streets, Roslindale, West Roxbury district.	Sanitary and locker building, shower baths. Three ball grounds, one Rugby and one Soccer football ground, children's corner and flag pole.
Franklin Field.	77.00	Talbot and Blue Hill avenues, Dorchester district.	Sixty acres playground, field house, shower baths, eighteen ball grounds, two Rugby and three Soccer football grounds, tennis, cricket, bowling, curling, skating, running track, children's corner and flag pole.
Christopher Gibson Playground.	4.34	Dorchester avenue, Bourneside and Park streets, Dorchester district.	One ball ground, one Rugby and one Soccer foot ball ground, tennis, concrete bleachers and shower baths.
John Windthrop Playground.	1.57	Dacia and Danube streets.	Sanitary and locker building. One ball ground, one Soccer football ground and children's corner.
Malloch's Wharf (1.15 acres upland; 2.54 acres flats).	3.69	Freeport street, near foot of Park street, Dorchester district.	Boat landing.
John J. Connolly Playground *	5.10	Ritchie, Highland and Marcella streets, Roxbury district.	Field house, shower baths. One ball ground, one Rugby and one Soccer football ground, basket ball, children's corner and concrete bleachers.
Mission Hill Playground.	4.24	Tremont and Smith streets, Roxbury district.	Sanitary and locker building, shower baths. Two ball grounds, one Rugby football ground, children's corner and flag pole.
John F. Holland Playground *	1.07	Mozart, Bolster and Wyman streets, Jamaica Plain.	Locker building, shelters. One ball ground and seats.
William J. Barry Playground *	5.27	Medford and Chelsea streets and Mystic river, Charlestown.	One ball ground, one Rugby football ground, concrete bleachers, skating and children's corner.
William H. Garvey Playground *	16.68	Neponset avenue, Dorchester district.	Field house, shower baths. Two ball grounds, one Rugby and one Soccer football ground, concrete bleachers, skating and children's corner.
George H. Walker Playground *	6.21	Norfolk street, Mattapan, Dorchester district.	Sanitary and locker building, shower baths. Two ball grounds, one Rugby and one Soccer football ground, tennis, skating and children's corner.
William Francis Smith Playground *	14.00	Western avenue, near North Harvard street, Allston, Brighton district.	Sanitary and locker building, shower baths. Four ball grounds, one Rugby and two Soccer football grounds, basket ball, skating, children's corner and flag pole.

John H. L. Noyes Playground (5.24 acres land, 3.07 acres flats).....	8.31	Saratoga and Boardman streets, Orient Heights, East Boston district.....	Field house, shower baths. Two ball grounds one Rugby and one Soccer football ground skating and children's corner. Children's playground.
Paris Street Playground.....	1.27	Paris street, East Boston.....	
Paul Gore Street Playground.....	.74	Northeast side of Paul Gore street, between Centre street and Chestnut avenue.....	Field house, shower baths. Two ball grounds, one Rugby and one Soccer football ground, children's corner and flag pole.
Portsmouth Street Playground.....	4.29	Portsmouth street, Brighton.....	Sanitary building. Children's playground.
Prince Street Playground.....	.40	Prince and North Bennet streets, city proper.....	Field house, shower baths. Two ball grounds, one Rugby and one Soccer football ground, basket ball, skating and children's corner.
Lester J. Rotch Playground *.....	2.80	Albany and Randolph streets, city proper.....	Sanitary building. Children's playground and tennis.
Ripley Playground.....	.86	Trescott street, near Harvard street, Dorchester district.....	Field house, shower baths. Two ball grounds, one Rugby and one Soccer football ground, Locker building, shower baths. One ball ground, one Rugby football ground, tennis, children's corner and flag pole.
Rogers Park.....	6.90	Lake and Foster streets, Brighton district.....	Sanitary building. One ball ground, one Rugby football ground, tennis, skating, children's corner and flag pole.
Roman Park.....	11.65	Top of Mt. Ida, Meeting House Hill, Dorchester district.....	Locker building, shower baths. One ball ground, one Rugby football ground, tennis, children's corner and flag pole.
Fallon Field Playground *.....	3.87	South, Robert and South Walter streets, Roslindale, West Roxbury district.....	Sanitary building. One ball ground, one Rugby football ground, tennis, skating, children's corner, shelter, seats and flag pole.
Fredertek D. Emmons Playground *.....	1.07	Rutherford avenue, Washington and Union streets, Charlestown district.....	Locker building, shower baths. One ball ground, shelter and children's corner.
Arthur E. McLean Park.....	.43	Between Saratoga and Bennington streets, near Moore street, East Boston.....	Children's playground and shelter building.
McConnell Park * (8.35 acres upland; 24.35 acres flats).....	32.70	Springdale and Deuny streets, Savin Hill, Dorchester district.....	Three ball grounds. One Rugby and one Soccer football ground, skating, beach bathing, shelter and children's corner.
Mary E. Hemenway Playground.....	4.41	Adams and Gustine streets.....	One ball ground. One Rugby football ground and skating.
Smith's Pond.....	14.51	Stony Brook Reservation, Hyde Park.....	Field house, shower baths. Two ball grounds, one Rugby football ground and skating.
Tenean Beach Playground.....	8.7	Tenean street, opposite Conley street, Dorchester, Tyler street, city proper.....	Bathhouse, football ground and beach bathing. Children's corner and shelter.
West Third Street Playground.....	.26	West Fifth street, between D and E streets, South Boston district.....	Sanitary building, children's playground and shelter.
Matthew J. Sweeney Playground *.....	.41	West Third street, corner of B street, South Boston district.....	Sanitary building, children's playground and shelter.
West Third Street Playground.....	.28		

* Named for soldier killed in the World War.

Location, Area and Equipment of Playgrounds and Gymnasias, 1926.—Concluded.

NAME.	Area, Acres.	Location.	Equipment.
William Enstis Playground.....	7.60	Norfolk avenue and Proctor street, Roxbury district.	Field house, shower baths. Three ball grounds, one Rugby and one Soccer football ground, skating and concrete bleachers.
Ceylon Street Playground.....	4.03	Ceylon and Intervale streets, Dorchester.....	One ball ground, skating, shelter and flag pole.
Francis Parkman Playground.....	2.06	Wachusett street, Forest Hills.....	Children's corner, skating and tennis.
Jefferson Playground.....*	7.51	Heath, Floyd and Cranford streets.....	One ball ground and one Rugby football ground.
John A. Donerty Playground.....	1.47	Park street and Dorchester avenue.....	Field house.
American Legion Playground, Boston.....	3.38	East Eagle, Condor and Glenlton streets.....	Shelter.
Playground, Hyde Park.....	5.01	Readville, Bullard and Milton streets.....	Indoor gymnasium and shower baths.
Playground, Matapan.....	17.81	Almont street.....	Indoor gymnasium, shower baths and swimming pool, 75 feet by 30 feet.
Playground, Jamaica Plain.....	1.32	Brookside avenue and Cornwall street.....	Indoor gymnasium and shower baths.
Rev. F. F. Buckley Playground.....	.07	West Third and Bolton streets, South Boston.....	Indoor gymnasium and shower baths.
Playground, East Boston District.....	4.06	Gove, Geneva, Porter and Wellington streets, East Boston district.	Indoor gymnasium and shower baths.
Playground, North End District.....	.03	Webster avenue, North End.	Indoor gymnasium and shower baths.
Lexington Street Gymnasium and Bath.....		Bunker Hill and Lexington streets, Charlestown district.	Indoor gymnasium and shower baths.
Tyler Street Gymnasium and Bath.....		Tyler street, city proper.....	Indoor gymnasium and shower baths.
Harrison Avenue Gymnasium and Bath.....		Harrison avenue and Plympton street, city proper.....	Indoor gymnasium, shower baths and swimming pool, 40 feet by 33 feet.
Columbia Road Gymnasium.....		Columbia road, near Upham's Corner, Dorchester district.	Indoor gymnasium, shower baths and basket ball courts.
Paris Street Gymnasium and Bath.....		Paris street, East Boston district.....	Indoor gymnasium, shower baths and swimming pool, 75 feet by 30 feet.
Cabot Street Gymnasium and Bath.....		Cabot street, near Whittier street, Roxbury district.	Indoor gymnasium, shower baths and swimming pool, 75 feet by 30 feet.
Curtis Hall Gymnasium and Bath.....		South street, corner Sedgwick street, Jamaica Plain district.	Indoor gymnasium, shower baths and swimming pool, 75 feet by 30 feet.
Hyde Park Gymnasium and Bath.....	14.51	River street, Hyde Park.	Indoor gymnasium and shower baths.
Roslindale Gymnasium and Bath.....		Ashuel and Washington streets, Roslindale.....	Indoor gymnasium and shower baths.
North Bennet Street Gymnasium and Bath.....		North Bennet street at playground, city proper.....	Indoor gymnasium and shower baths.
Vine Street Gymnasium and Bath.....		Dudley and Vine streets, Roxbury.....	Indoor gymnasium and shower baths.
West Brookline Street Gymnasium.....		Brookline street and Shawmut avenue.....	Indoor gymnasium and shower baths.

* Named for soldier killed in World War.

Location, Area and Equipment of Baths and Beaches, 1926.

NAME.	Area, Acres.	Location.	Equipment.
Columbus Park Beach Bath.		Columbus Park, South Boston.	Bathing beach during summer months.
Medford Street Convenience Station.		Medford street, Charlestown Heights.	
Dewey Beach Bath.	4.30	Medford street, at Charlestown Heights, Charlestown district.	Beach bathing during summer months.
Dover Street Bath.		Dover street, near Harrison avenue, city proper.	Shower baths.
Preopert Street Bath.		Preopert street, Dorchester district.	Beach bathing during summer months.
L Street Bath.		On Standway, Dorchester Bay, South Boston.	Beach bathing during entire year.
Marine Park Beach Bath.		Near Head House, Marine Park, South Boston.	Beach bathing during summer months.
Ward 10 Municipal Building.		Broadway, near H street, South Boston.	Shower baths.
North End Beach Bath (land, 3.70 acres; flats, 3 acres).	6.70	Commercial street, at Charles river.	Beach bathing during the summer months for men, women and children.
Savin Hill Beach Bath.		At Savin Hill Playground.	Shower baths and beach bathing during summer months.
Tenanc Beach Bath.	8.7	Tenanc street, Dorchester district.	Beach bathing during summer months.
World War Memorial Beach Bath.		At Wood Island Park.	Beach bathing during summer months.
East Boston Wharf.		Condor street, corner of Meridian street, East Boston district.	Storage basin and repair shop.
Dover Street Laundry.		Dover street, near Harrison avenue.	Full laundry equipment.
North End Park Laundry, Commercial street.		North End Park.	Full laundry equipment.

Expenditures Under the Maintenance Appropriation by Items of
the Segregated Budget, from January 1, 1926, to December
31, 1926.

A.	PERSONAL SERVICE AS PER SCHEDULE A	\$1,145,907 16
	1. Permanent employees	1,081,276 90
	2. Temporary employees	55,330 76
	3. Unassigned	9,299 50
B.	SERVICE OTHER THAN PERSONAL	215,354 71
	1. Printing and binding	2,157 20
	3. Advertising and posting	172 00
	4. Transportation of persons	1,219 09
	5. Cartage and freight	308 82
	6. Hire of teams and auto trucks	40,260 51
	8. Light, heat and power	15,102 73
	10. Rent, taxes and water	5,541 25
	12. Surety bond and insurance premiums	27 00
	13. Communication	3,652 75
	14. Motor vehicle repairs and care	6,562 46
	15. Motorless vehicle repairs	1,307 12
	16. Care of horses	15 00
	17. Care of persons	—
	18. Cleaning	104 70
	19. Removal of ashes, dirt and garbage	—
	20. Disposal of ashes, dirt and garbage	—
	21. Removal of snow	5,514 29
	22. Medical	237 00
	28. Expert	2,529 00
	29. Stenographic, copying and indexing	135 31
	34. Jurors	—
	35. Fees, service of venires, etc.	171 00
	37. Photographic and blueprinting	1,076 40
	39. General plant	119,492 38
	42. Music, concerts, etc.	9,768 70
C.	EQUIPMENT	46,654 26
	1. Apparatus, cable, wire, etc.	—
	2. Machinery	—
	3. Electrical	—
	4. Motor vehicles	19,992 21
	5. Motorless vehicles	347 86
	6. Stable	585 40
	7. Furniture and fittings	6,118 20
	8. Educational and recreational	2,164 29
	9. Office	258 58
	10. Library	27 50
	11. Marine	—
	12. Medical, surgical, laboratory	—
	13. Tools and instruments	7,564 41
	14. Live stock	1,144 53
	16. Wearing apparel	6,992 64
	17. General plant	1,458 64
D.	SUPPLIES	116,062 88
	1. Office	5,173 92
	2. Food and ice	757 60
	3. Fuel	46,156 88
	4. Forage and animal	31,379 43
	5. Medical, surgical, laboratory	198 25
	8. Laundry, cleaning, toilet	6,502 95
	9. Educational and recreational	2,674 70
	Carried forward	\$92,843 73

<i>Brought forward</i>		\$92,843 73
10.	Agricultural	12,378 50
11.	Motor vehicle	7,413 74
13.	Chemicals and disinfectants	1,160 76
14.	Marine	—
15.	Tobacco	—
16.	General plant	2,266 15
17.	Electrical	—
E.	MATERIALS	48,008 45
1.	Building	6,911 06
2.	Highway	—
3.	Bridges	—
4.	Ferries	—
5.	Sewer	—
6.	Water	—
9.	Machinery	647 31
10.	Electrical	903 67
11.	Marine	—
12.	Parks and recreational	31,486 98
13.	General plant	8,059 43
F.	SPECIAL ITEMS	10,633 66
2.	Damages	—
3.	Sinking funds	—
4.	Serial loans	—
5.	Interest	—
6.	Military	—
7.	Pensions and annuities	8,439 59
8.	State and military aid, soldiers' relief and burials	—
9.	Care of dependents	—
10.	Mothers' aid	—
11.	Workingmen's compensation	2,194 07
13.	Industries	—
G.	MISCELLANEOUS	1,196 00
1.	Probation officers' expenses	—
2.	Special investigations	—
6.	Christmas tree celebration	1,196 00
Total		<u>\$1,583,817 12</u>

Expenditures for Maintenance, December 31, 1926.

OBJECT.	Personal Service.	Service Other Than Personal.	Equipment.	Supplies.	Materials.	Special Items.	Christmas Tree.	Totals.
Abraham Lincoln square.....	\$129 75							\$129 75
Algonquin square.....	185 50			185 00				185 50
Alvah Kittredge park.....	79 00							79 00
Andrew Henry square.....	84 50							84 50
Aquarium.....	27,318 35	\$9,045 34	\$161 47	\$5,004 61	\$621 42			42,151 19
Arborway.....	5,756 02	1,325 62		121 00	191 70			7,394 34
Arnold Arboretum.....	6,968 74	947 40			69 14			7,985 28
Belmont square.....	291 00							291 00
Berners square.....	156 00							156 00
Berwick park.....	171 50							171 50
Blackstone square.....	1,782 58	772 50						2,555 08
Boston Common.....	40,074 06	3,649 05	3 57	2,021 61	611 30		\$1,151 00	47,510 59
Brighton square.....	20 00							20 00
Bromley park.....	416 00	50 98						466 98
Camp Meigs.....	436 50							436 50
Cedar square.....	535 00	45 25						580 25
Centerville park.....	170 00							170 00
Central square.....	403 00							403 00
Charlesbank.....	15,529 20	335 82	28 02	1,227 43	250 58			17,371 05
Charlestown heights.....	3,674 48	1,299 68		17 25				4,991 41

Chestnut Hill park.....	8,903 02	144 12	3 40	313 18	9,303 72
City square.....	222 00				222 00
Columbia road.....	3,919 12	1,484 06		17 50	5,440 18
Columbus square.....	222 40	393 00			615 40
Commonwealth avenue.....	30,107 68	6,677 07	369 92	605 48	37,939 20
Concord square.....	233 82	194 75			428 57
Copley square.....	1,054 42	110 73			1,165 15
Copp's Hill terraces.....	2,044 25	605 04			3,309 29
Cornelius T. Mahoney square.....	169 00	7 50			176 50
Dorchester park.....	1,133 50	459 24			1,592 74
Drohan square.....	439 00				439 00
Eaton square.....	470 50	50 50		34 10	555 10
Edward Everett square.....	40 00	6 35			46 35
Edmund M. Cunningham square.....	78 00				78 00
Elm Hill park.....	154 00	20 75			174 75
Essex square.....	84 75				84 75
Fens.....	18,046 80	4,804 59	450 00	281 70	25,058 37
Florida street.....	385 00				385 00
Fort Hill square.....	1,292 50	524 29			1,816 79
Francis G. Hanlon square.....	29 50	68 00			97 50
Francis G. Kane.....	85 00				85 00
<i>Carried forward.....</i>	\$174,495 44	\$83,081 63	\$1,016 38	\$9,330 68	\$1,151 00
				\$3,131 15	\$222,206 28

Longwood park.....	84 50							84 50	
Madison park.....	1,069 70	385 79	7 50						2,062 99
Marine park.....	12,481 07	4,242 46				962 07			17,688 60
Massachusetts avenue.....	1,757 13	1,041 80				23 00			2,821 93
Maverick square.....	227 00								227 00
Mount Bowdoin green.....	439 50	5 25							444 75
Oak square.....	23 50								23 50
Oakview terrace.....	145 00								145 00
Olmsted park.....	11,479 86	4,137 27	259 76			819 36			16,716 25
Orchard park.....	1,614 38	253 87	7 50						1,875 75
Peabody square.....	40 00								40 00
Prescott square.....	185 00								185 00
Public Garden.....	31,773 76	1,726 78	259 53		2,107 22	1,222 36			37,089 65
Putnam square.....	554 50	10 50							565 00
Richardson square.....	529 36	81 50							610 86
Riverway.....	12,006 00	12,127 72			260 33	1,284 02			25,678 07
Rutland square.....	205 50	171 75							377 25
Savin Hill park.....	628 45	10 35							638 80
Seaver street.....	152 50								152 50
Soldiers' Monument lot.....	276 00	13 00							289 00
Spaulding square.....	47 50								47 50
<i>Carried forward,.....</i>	\$423,525 28	\$72,518 81	\$12,318 51	\$36,996 33	\$29,964 27		\$1,176 00	\$576,409 20	

PARK DEPARTMENT.

World War Memorial park.....	18,558 96	2,981 42	1 25	572 60	335 80	22,450 03
Zoological Gardens.....	67,486 44	3,345 40	2,235 53	25,249 05	3,084 32	101,400 74
Arthur F. McLean park.....	758 42	75	9 50	768 67
Billings Field Playground.....	4,322 74	2,598 70	208 47	17 88	20 00	7,467 79
Brookside Avenue Playground.....	1,655 10	1,217 47	12 71	134 20	233 80	3,253 28
Charlestown Playground.....	6,109 03	815 75	3 73	631 64	1,221 51	8,782 56
Ceylon Street Playground.....	1,186 54	953 59	2,140 13
Cherry Street Playground.....	1,405 24	52 89	1,458 13
Christopher Gibson Playground.....	2,619 80	436 65	444 46	3,500 91
Christopher J. Lee Playground.....	5,306 22	678 27	608 76	403 68	6,996 93
Columbus Park Playground.....	7,604 99	1,542 97	898 24	491 78	10,537 98
Eagle Hill (American Legion) Playground.....	1,069 00	1,069 00
Fallon Field Playground.....	3,705 17	406 44	135 00	4,246 61
Franklin Field Playground.....	17,108 19	12,739 66	133 60	2,762 77	107 67	32,851 89
Frederick D. Emmons Playground.....	2,570 28	166 32	345 73	3,082 33
George H. Walker Playground.....	3,334 52	478 18	201 30	4,014 00
Jefferson Street Playground.....	163 00	1,447 00	1,610 00
James L. Cronin Playground.....	3,735 82	174 71	134 20	90	4,045 63
James F. Healy Playground.....	4,251 53	196 96	274 29	27 44	4,750 22
John J. Connoolly Playground.....	4,682 90	408 53	338 70	38 31	5,468 44
<i>Carried forward.....</i>	\$602,733 80	\$107,862 09	\$14,768 09	\$69,585 80	\$36,914 21	\$833,059 99

Expenditures for Maintenance, December 31, 1926.—Continued.

OBJECT.	Personal Service.	Service Other Than Personal.	Equipment.	Supplies.	Materials.	Special Items.	Christmas Tree.	Totals.
<i>Brought forward</i>	\$602,733 80	\$107,862 09	\$14,768 09	\$69,585 80	\$36,914 21	\$1,196 00	\$883,059 99
John F. Holland Playground.....	2,651 00	11 08	270 00	2,932 08
John H. L. Noyes Playground.....	2,921 57	106 73	16 00	233 11	3,277 41
J. M. and J. J. Sullivan Playground.....	2,800 70	431 25	16 50	80 52	3,328 97
John W. Murphy Playground.....	2,796 62	336 91	270 00	3,403 53
John Winthrop Playground.....	2,979 76	9 11	134 20	3,123 07
Lester J. Rotch Playground.....	3,415 74	174 90	291 60	288 92	4,171 16
Mary E. Hemenway Playground.....	1,079 43	154 30	1,233 73
Mattapan Playground.....	425 00	8 64	27 25	460 89
Matthew J. Sweeney Playground.....	2,181 02	292 34	348 46	2,821 82
McConnell Park Playground.....	2,099 67	104 90	296 47	2,501 04
Mission Hill Playground.....	6,291 08	1,232 23	459 80	161 30	8,144 41
Paris Street Playground.....	546 38	546 38
Portsmouth Street Playground.....	2,711 92	18 94	404 20	3,135 06
Prince Street Playground.....	2,803 72	2,803 72
Readville Playground.....	612 03	6 90	618 93
Ripley Playground.....	1,027 25	103 45	1,130 70
Rogers Park Playground.....	3,626 82	2,072 75	208 21	54 86	5,962 64
Ronan Park Playground.....	5,977 83	1,780 77	268 40	8,027 00
Smith's Pond Playground.....	4,255 68	397 05	11 50	188 20	4,852 43

PARK DEPARTMENT.

Stanley H. Ringer Playground.....	3,213 18	144 60	345 13	4 00	3,706 91
Rev. Father Buckley Playground.....	174 29	216 90	391 19
Tyler Street Playground.....	1,750 56	1,750 56
Wachusett Street Playground.....	1,503 32	5,231 45	3 85	279 07	7,107 69
Webster Avenue Playground.....	492 60	492 60
Wellington Street Playground.....	200 00	200 00
West Third Street Playground.....	2,058 80	93 62	2,152 42
William Eustis Playground.....	4,150 78	1,140 82	479 69	88 16	5,859 45
William J. Barry Playground.....	1,204 04	605 00	1,809 04
William E. Carter Playground.....	4,519 76	256 48	482 16	27 05	5,315 45
William H. Carvey Playground.....	4,655 15	518 28	75 95	203 65	144 00	5,597 03
William F. Smith Playground.....	3,506 88	108 10	187 50	166 60	4,359 08
Property, C and Athens street.....	14 85	14 85
Cabot Street Gymnasium and Bath.....	31,276 86	4,540 43	63 01	2,938 72	353 92	39,172 94
Columbia Road Gymnasium and Bath.....	8,872 67	58 35	228 50	31 68	9,194 20
Curtis Hall Gymnasium and Bath.....	13,613 79	17 15	28 50	106 97	49 68	13,846 09
Hyde Park Gymnasium and Bath.....	6,216 33	3 50	14 25	77 06	6,311 14
Lexington Street Gymnasium and Bath.....	8,053 90	43 70	14 25	19 68	8,131 53
North Bennet Street Gymnasium and Bath.....	23,152 09	3,520 72	310 02	2,538 94	249 06	29,780 83
Paris Street Gymnasium and Bath.....	23,116 02	2,549 21	119 70	1,774 43	526 81	28,086 08
<i>Carried forward.....</i>	\$795,590 29	\$13,645 16	\$15,709 12	\$81,751 23	\$40,111 24	\$1,068,904 04

Expenditures for Maintenance, December 31, 1926.—Concluded.

OBJECT.	Personal Service.	Service Other Than Personal.	Equipment.	Supplies.	Materials.	Special Items.	Christmas Tree.	Totals.
<i>Brought forward.</i>	\$735,500 29	\$134,045 16	\$15,700 12	\$81,751 23	\$40,111 24	\$1,196 00	\$1,068,904 04
Rosindale Gymnasium and Bath.....	6,688 26	11 59	14 25	56 45	6,770 55
Tyler Street Gymnasium and Bath.....	6,974 35	29 05	14 74	41 03	7,059 17
Vine Street Gymnasium and Bath.....	11,025 35	5 50	23 25	15 74	11,069 84
West Brookline Street Gymnasium and Bath.....	13,928 35	14 75	79 25	43 98	14,066 33
Columbus Park Beach Bath.....	21,739 83	2,285 18	523 35	431 10	98 83	25,078 38
Dewey Beach Bath.....	4,785 41	900 33	99	40 26	68 70	5,795 69
Dover Street Bath and Laundry.....	48,783 09	2,950 90	165 70	10,520 41	364 88	62,785 58
Freeport Street Bath.....	2,392 25	1,121 11	17 35	2 75	5 53	3,538 99
L Street Bath.....	29,384 57	28,083 58	551 03	295 29	141 24	58,456 31
Marine Park Beach Bath.....	13,226 00	800 50	473 05	403 42	16 23	14,919 20
North End Beach Bath.....	21,502 79	2,008 74	7 97	196 85	2,525 43	26,241 78
Savin Hill Beach Bath.....	4,345 17	2,097 48	26 15	35 50	6,504 30
Tenean Beach Bath.....	4,364 03	1,315 11	4 60	16 06	5,699 80
Ward 10 Municipal Building Showers.....	14,452 22	46 60	14,498 82
World War Memorial Beach Bath.....	4,623 86	29 85	4,653 71
Repair Room, Sewing Squad, East Boston.....	15,487 55	23 81	11,592 37	29 54	27,133 27
Repair Yard, East Boston.....	3,180 10	1,702 00	35 17	54 32	434 01	5,414 60
Randidge Fund.....	240 00	240 00	240 00

Central Office and General Expense:									
Administration.....	43,466 58	18,088 21	1,298 08	7,174 39	592 22				70,619 48
Suppression of moths.....	13,911 80	1,607 89	10 08	370 45	2,179 98				18,080 20
Automobiles.....	25,770 58	3,298 78	15,525 46	6,250 01	935 74				51,780 57
Stables.....	21,956 60	7 88	574 85	8,399 29	288 64				31,227 26
Street trees.....	12,736 17	4,228 47		141 57					17,106 21
Miscellaneous work done for other departments..	5,432 36	330 14		70	7 48				5,770 68
Celebrations and entertainments.....		9,768 70							9,768 70
Pensions and annuities.....								\$8,439 59	8,439 59
Compensation for injuries received.....								2,194 07	2,194 07
Totals.....	\$1,145,907 16	\$215,354 71	\$46,654 26	\$116,062 88	\$48,008 45	\$10,633 66	\$1,196 00	\$1,583,817 12	

RECAPITULATION.

Parks and gardens.....	\$727,315 49
Playgrounds.....	207,050 89
Gymnasias.....	173,303 55
Baths and beaches.....	260,960 43
General expenses.....	205,218 06
Celebrations and entertainments.....	9,768 70
	<u>\$1,583,817 12</u>

CASH RECEIPTS.

For Twelve Months Ending December 31, 1926.

PARK DIVISION.

From golf permits and use of lockers at Franklin Park	\$30,248 00	
For labor, suppression of gypsy and brown-tail moths	5,987 75	
For use of towels and soap in playground houses,	2,919 30	
From permits, openings, occupations, etc.	1,609 66	
Commission on telephones	20 82	
From use of bandstands	145 00	
From labor and use of equipment	370 64	
From rents	25,783 94	
From French Fund, income	200 00	
From sale of buildings	505 00	
		\$67,790 11

BATH DIVISION.

For use of bathing suits, towels, etc.	\$37,211 20	
Commission on telephones	72 24	
Vending machine concession	15 00	
From rents	1,033 31	
		38,331 75
		<u>\$106,121 86</u>

Above receipts were credited as follows:

General revenue, city income	\$102,298 47	
Sinking Fund and sale of city property	3,623 39	
Department appropriation	200 00	
		<u>\$106,121 86</u>

Expenditures of Loan, Revenue and Special Appropriations from
January 1, 1926, to December 31, 1926.

Departmental Equipment:

Snow plows, Dyer Sales and Machinery Company	\$520 00	
Snow plows, The Good Roads Machinery Company	519 40	
Repairs, Rotary Snow Plow Company	225 00	
	<hr/>	\$1,264 40

Animals, Birds, etc.:

Animals and birds, Ellis S. Joseph	\$1,750 00	
Animals and birds, Louis Ruhe	1,289 00	
Traveling expenses, C. H. Townsend	550 00	
Freight charges, American Railway Express Company	343 15	
Animals, National Zoological Park, Washington, D. C.	250 00	
Traveling expenses, William J. O'Brien	172 48	
Birds, William J. Mackenses	170 00	
Birds, Henry Bartels	131 32	
Freight charges, Boston & Albany Railroad,	42 01	
	<hr/>	4,697 96

Arnold Arboretum, Improvements:

Wire fence, contractor, W. A. Snow Iron Works Company	\$1,133 86	
Cleaning drains and repairs, Thomas J. Shea	925 00	
Building seats, John J. Flynn	594 00	
Repairs, P. J. Dinn & Co.	370 00	
Advertising, <i>City Record</i>	13 00	
	<hr/>	3,035 86

Boston Common, etc., Maintenance Equipment:

Radio Equipment, Graybar Electric Company	160 00	
---	--------	--

Boston Common and Public Garden, Improvements:

Payments on account:

Concrete walks, contractor, John McCourt Company	\$4,424 75	
Settlement of claim, W. A. Snow Iron Works Company	3,650 00	
Repairing fountain, steps, driveway, etc., John McCourt Company	1,743 90	

Completion of payments:

Concrete walks, contractor, Carmine Antonellis	\$43 68	
Painting, William P. Dolan	800 00	
Repairing fence, P. J. Dinn & Co.	662 16	
Filling, Howard E. Burns	490 05	

<i>Carried forward</i>	<hr/>	<hr/>
	\$12,614 54	\$9,158 22

<i>Brought forward</i>	\$12,614 54	\$9,158 22
Repairing flagpole, The Gow Company, Inc.	417 21	
Gravel, Thomas J. Holland	316 30	
Repairs, John Y. Gillespie	115 00	
Architect, Arthur A. Shurtleff	105 90	
Installing wire, Charles E. Gallagher	105 00	
Advertising, <i>City Record</i>	50 00	
Photographs, Frank B. Conlin	35 64	
Typewriting, Mary L. Loughlin	18 25	
	<hr/>	13,777 84
<i>Carolina Avenue Playground:</i>		
Land, Jerome L. Kelly	\$1,384 20	
Expert service, Marie L. Reynolds	20 00	
	<hr/>	1,404 20
<i>Castle Island, Improvements, etc.:</i>		
<i>Payments on account:</i>		
Walk, A. G. Tomasello & Son	\$3,108 55	
Advertising, <i>City Record</i>	6 50	
	<hr/>	3,115 05
<i>Charlesbank Improvements:</i>		
Locker building, contractor, Frank J. Gallagher & Co.	\$19,249 23	
Architect, Clifford Allbright	1,924 92	
Concrete posts, John J. Flynn	793 00	
Oak seats, R. A. Bossi Company	620 00	
Repairs, P. J. Dinn & Co.	75 62	
Electric supplies, Lewis Electrical Supply Company	44 07	
Advertising, <i>City Record</i>	6 00	
	<hr/>	22,712 84
<i>Columbus Park, Improvements:</i>		
<i>Payments on account:</i>		
Shelter, contractor, Beaver Construction Company	\$1,275 00	
Granolithic walk, D. F. Reardon & Sons	678 15	
Stenographic service, Joseph F. Mellyn	339 39	
Transportation, Daniel J. Byrne	61 60	
	<hr/>	2,354 14
<i>Dorchester Park, Improvements:</i>		
Grading, D. F. Reardon & Sons	\$336 60	
Cinder walk, B. & B. Company	250 00	
	<hr/>	586 60
<i>Fens, Athletic Field:</i>		
Bleachers, R. A. Bossi Company		175 00
<i>Fens, Improvements:</i>		
Reconstructing roads, contractor, J. C. Coleman & Sons Company	\$54,463 44	
Architect, Arthur A. Shurtleff	743 11	
Plants, R. & J. Farquhar Company	502 92	
Repairs, R. A. Bossi Company	184 00	
	<hr/>	
<i>Carried forward</i>	\$55,893 47	\$53,283 89

PARK DEPARTMENT.

37

<i>Brought forward</i>	\$55,893 47	\$53,283 89
Patching on roads, Warren Brothers Company	150 00	
Advertising, <i>City Record</i>	26 50	
	<hr/>	56,069 97
<i>Franklin Park, Building, Improvements, etc.:</i>		
<i>Payments on account:</i>		
Concrete benches, contractor, Maplewood Construction Company	\$2,252 50	
Wire fences and repairs, P. J. Dinn & Co.	1,356 59	
Painting, William P. Dolan	1,225 00	
Electrical mains and washing machine, Charles E. Gallagher	1,118 03	
Reindeer shed, contractor, Frank J. Gallagher	1,065 00	
Loam and cleaning, M. McGinnis & Co.	602 52	
Repairs, John F. Shea & Co.	570 00	
Repairs, Trask Heating Company	430 00	
Repairs, P. J. Tuffy	350 00	
Fordson tractor and golf wheels, Burnett & Sherman, Inc.	321 25	
Repairs, Cambridge Cement Stone Company	215 00	
Lockers, Lyon Metallic Manufacturing Company	189 00	
Breaking stone, John McCourt Company	182 00	
Electric light service, Edison Electric Illuminating Company	171 00	
Trees, R. & J. Farquhar Company	148 50	
Irrigator sprinklers, G. G. Green, Jr.	139 68	
Repairs, R. A. Bossi Company	116 00	
Painting, Barnes & Westover	76 23	
Architect, Arthur A. Shurtleff	72 65	
Advertising, <i>City Record</i>	54 75	
	<hr/>	10,655 70
<i>Franklin Park, Improvements:</i>		
<i>Payments on account:</i>		
Repairing building, contractor, R. A. Bossi Company	\$7,169 49	
Installing fence, P. J. Dinn & Co.	790 02	
Trees, Charles G. Curtis Company	750 00	
Repairing wall, John McCourt Company	635 00	
Painting, William P. Dolan	140 00	
Service, Edison Electric Illuminating Company	132 00	
Freight charges, Boston & Maine Railroad	60 80	
	<hr/>	9,677 31
<i>Highland Park, Improvements:</i>		
Photographs, Frank B. Conlin	\$53 46	
Advertising, <i>City Record</i>	12 75	
	<hr/>	66 21
<i>Jamaicaway, Improvements:</i>		
<i>Completion of payments:</i>		
Improvements, contractor, Carmine Antonellis		410 24
		<hr/>
<i>Carried forward</i>		\$130,163 32

Brought forward \$130,163 32
Marine Park, Improvements, etc.:

Payments on account:

Water pipe, contractor, C. M. Callahan, Inc.,	\$4,094 60	
Repairs, T. F. McGrath & Co.	632 00	
Repairs, P. J. Dinn & Co.	510 00	
Repairs, R. A. Bossi Company	485 00	
Professional service, Charles R. Gow	250 00	
Painting, William P. Dolan	125 00	
Repairs, P. J. Riley & Co.	107 28	
Advertising, <i>City Record</i>	11 50	
		<hr/>
		6,215 38

Mary Hemenway Playground, Improvements:

Payments on account:

Grading and shelter, contractor, J. C. Coleman & Sons Company	\$2,661 99	
Wire fence, contractor, P. J. Dinn & Co.	1,089 28	
Grading, D. F. Reardon & Sons	183 15	
Advertising, <i>City Record</i>	29 00	
Architect, Arthur A. Shurtleff	21 42	
		<hr/>
		3,984 84

North End Park, Improvements:

Architect, O'Connell & Shaw	\$2,820 00	
Fitting pipes, Roy B. Rendle & Co., Inc.	900 00	
		<hr/>
		3,720 00

Orient Heights Playground, Improvements:

Filling and loaming, contractor, Edward J. McHugh & Son	\$11,516 48	
<i>Completion of payments:</i>		
Field house, contractor, John P. Curley	7,941 64	
<i>Payments on account:</i>		
Filling, loaming and shelter, contractor, Edward J. McHugh & Son	6,782 98	
Wire fence, contractor, P. J. Dinn & Co.	1,383 37	
Installing backstop, P. J. Dinn & Co.	485 10	
Service pipe, Public Works Department	325 09	
Frames and covers, Gibby Foundry Company	207 25	
Advertising, <i>City Record</i>	38 50	
Typewriting, Mary L. Loughlin	20 00	
		<hr/>
		28,700 41

Park, Park Square District:

Payments on account:

Grading, loaming and concrete work, contractor, Samuel J. Tomasello	\$10,534 81	
Architect, Arthur A. Shurtleff	503 02	
Shrubbery, R. & J. Farquhar Company	347 74	
Sods, J. J. McCarthy	242 30	
Frames and covers, Gibby Foundry Company	94 50	
Expert service, Marie L. Reynolds	20 00	
Advertising, <i>City Record</i>	11 50	
		<hr/>
		11,753 87

Carried forward \$184,537 82

<i>Brought forward</i>		\$184,537 82
<i>Playground at Bolton and West Third Streets:</i>		
Grading and shelter, contractor, J. J. McCarthy & Co.	\$3,736 15	
<i>Payments on account:</i>		
Wire fence, contractor, P. J. Dinn & Co.	718 28	
Excavation, etc., John McCourt Company	645 00	
Expert service, Francis F. Harrington	75 00	
Typewriting, Mary L. Loughlin	22 50	
Advertising, <i>City Record</i>	20 50	
Architect, Arthur A. Shurtleff	4 82	
	<hr/>	5,222 25
<i>Playground, Brookside Avenue and Cornwall Street:</i>		
<i>Payments on account:</i>		
Field House, contractor, R. A. Bossi Company	\$8,930 52	
Shelter, contractor, John P. Curley	1,020 00	
Link fence, P. J. Dinn & Co.	810 00	
Grading, D. F. Reardon & Sons	207 90	
Typewriting, Mary L. Loughlin	48 75	
Advertising, <i>City Record</i>	18 75	
Blueprints, Boston Blueprint Company	10 80	
	<hr/>	11,046 72
<i>Playground, Cottage Street District, East Boston:</i>		
<i>Payments on account:</i>		
Spreading loam, contractor, Maplewood Construction Company	\$2,380 00	
Spreading and rolling cinders, contractor, Edward J. McHugh & Son	1,865 63	
Advertising, <i>City Record</i>	11 00	
	<hr/>	4,256 63
<i>Playground, District Bounded by Castle, Washington, Dover and Tremont Streets:</i>		
Land, Harold L. French		8,900 00
<i>Playground, Eagle Hill District, East Boston:</i>		
Filling, John McCourt Company	\$395 00	
Filling, Edward J. McHugh & Son	55 00	
	<hr/>	450 00
<i>Playground, Mattapan:</i>		
<i>Payments on account:</i>		
Grading and shelter, contractor, M. Solimando	\$8,659 46	
Service, Public Works Department	59 34	
Architect, Arthur A. Shurtleff	43 59	
Advertising, <i>City Record</i>	16 25	
	<hr/>	8,778 64
<i>Playground, Readville District:</i>		
Cleaning grounds, Thomas J. Shea		275 00
<i>Playground, vicinity of Jefferson School, Roxbury:</i>		
Loam, John McCourt Company		918 00
<i>Carried forward</i>		<hr/> \$224,385 06

<i>Brought forward</i>		\$224,385 06	
<i>Playground, Wachusett street, Forest Hills:</i>			
Advertising, <i>City Record</i>			13 00
<i>Playground, Webster Avenue Section, North End:</i>			
Land:			
Generoso Ferullo	\$28,000 00		
Guiseppe and Marianna DeStefana	12,500 00		
Rocco Lombardo <i>et al.</i>	9,000 00		
Nellie Carney	2,500 00		
		\$52,000 00	
Repairs, R. A. Bossi Company		480 91	
Advertising, Robert T. Fowler		254 50	
Razing buildings, New York Building Wrecking Company		150 00	
Expert service, Francis P. Harrington		50 00	
Expert service, Marie L. Reynolds		40 00	
Expert service, Thomas F. Kerrigan		37 50	
			53,012 91
<i>Putnam Square, Improvements:</i>			
Iron fence, contractor, Hub Steel & Iron Works, Inc.			1,193 50
Reconstructing and repairing parkways and roadways by contract:			
Pavement, contractor, A. G. Tomasello & Son		\$57,715 29	
Pavement, contractor, Warren Brothers Company		22,811 58	
Completion of payments:			
Pavement, contractor, J. C. Coleman & Sons Company		1,790 58	
Repairs, John McCourt Company		497 00	
Testing holes, D. F. Reardon Sons		32 00	
Advertising, <i>City Record</i>		7 00	
			82,853 45
<i>William J. Barry Playground, Enlargement and Improvement:</i>			
Land, Patrick H. Furey <i>et al.</i>	\$2,000 00		
Fence, P. J. Dinn & Co.	75 00		
Expert service, Marie L. Reynolds	20 00		
			2,095 00
<i>William Eustis Playground, Extension and Improvements:</i>			
Payments on account:			
Shelter, contractor, Beaver Construction Company			1,190 00
<i>William H. Garvey Playground, Improvements:</i>			
Concrete bleachers, contractor, John P. Curley		\$20,958 95	
Completion of payments:			
Field house, contractor, Nicola Gentile		17,079 80	
Laying pipe, Thomas J. Kelly & Co.		926 39	
Manhole, M. Doyle & Co., Inc.		550 00	
Grass seed, Hovey & Co.		373 50	
Test borings, B. F. Smith & Co.		230 10	
Frames and grates, Gibby Foundry Company,		169 50	
Carried forward		\$40,288 24	\$364,742 92

PARK DEPARTMENT.

41

<i>Brought forward</i>	\$40,288 24	\$364,742 92
Repairs, Dorgan Electric Company	166 81	
Typewriting, Mary L. Loughlin	43 25	
Repairs, John E. Stanley	15 00	
Advertising, <i>City Record</i>	13 50	
Blueprints, Boston Blueprint Company	13 50	
	40,540 30	
Totals		\$405,283 22

Public Park and Playground Debt.

Liabilities.

Total loans outstanding, December 31, 1926	\$8,029,250 00
--	----------------

Resources.

Sinking Funds, December 31, 1926	3,518,035 38
Net debt, December 31, 1926	\$4,511,214 62

Park Department Statistics to December 31, 1926.

PARKS.	Year of Acquisition.	COST TO DATE.		Area.	Length of Drive-ways.	Length of Walks.	Length of Rides.	Area of Ponds and Rivers.
		Land.	Construction.					
MAIN PARK SYSTEM:								
Commonwealth avenue.....	1894-1905.....	\$419,441 26	112.7 acres	12.1 miles	11.9 miles	1.1 miles	22 acres
Fens.....	1877-1879..	\$736,854 49	2,511,059 06	116.99 "	4.32 "	7.04 "	1.2 "	8 "
‡Riverway.....	1890.....	457,457 53	751,296 32	40 "	1.4 "	2.8 "	1.6 "	77 "
†Olmsted Park.....	1890-1892..	1,081,947 60	799,754 81	180 "	2.7 "	5.8 "	1.4 "
Arborway.....	1892.....	245,584 25	399,807 79	36 "	3.4 "	3.2 "	0.6 acre
Arnold Arboretum.....	1882-1895..	79,354 15	436,435 16	223 "	3.4 "	5.65 "
West Roxbury Parkway.....	1894.....	135,265 29	22,123 21	75.47 "	1 mile	2 "	1.04 "
Franklin Park and Zoologi- cal Garden.....	1883-1884..	1,551,896 63	3,521,968 78	527 "	7.91 miles	14.9 "	1 mile	7.4 acres
MARINE PARK SYSTEM:								
Columbia road.....	1899.....	447,528 63	540,511 93
Dorchesterway.....	1892.....	63,735 54	93,804 34	109 "	4.2 "	4.5 "
Strandway and Columbus Park.....	{1890-1892 } {1897-1901 }	772,515 12	1,910,393 94	187.5 "
Marine Park and Aquarium..	1883.....	232,972 57	1,445,264 18	{ 52.5 "	0.5 mile	1.39 "
Castle Island.....	1890.....	44,441 55	{ 4.9 "
*McCONNELL PARK.....	1899-1914..	50,759 33	201,030 17	{ 25.7 "
SAVIN HILL PARK.....	1909.....	31,925 55	251,789 50	{ 78.3 "
*IRVING W. ADAMS PARK...	1919.....	50,000 00	43,518 00	{ 50.55 "
			69,513 59	8.26 "	0.78 acre

**WORLD WAR MEMORIAL PARK.....	{1882-1891..	132,800 00	357,619 55	520,419 55	{ 55.6 acres land 155.4 " flats}	0.3 "	2.1 "
CHARLESBANK.....	1883.....	373,916 99	372,515 49	746,462 48	10 "	1.5 "
TRINITY TRIANGLE.....	1885.....	30,000 00	30,000 00	0.12 acre
CHARLESTOWN HEIGHTS, DEWEY BEACH.....	{1891.....	50,538 02	151,217 56	204,755 58	{ 6.1 acres land 4.3 " flats}	0.4 mile
CHARLESTOWN PLAYGROUND,	1891.....	172,923 31	54,931 93	227,855 24	{ 14.03 " land 3.7 " flats}6 "
DORCHESTER PARK.....	1891-1903..	64,165 37	31,474 23	95,639 60	30.4 "
FRANKLIN FIELD.....	1892-1910..	157,341 22	194,228 38	351,569 60	77 "	0.05 "	1.09 miles
NORTH END BEACH.....	1893.....	328,364 44	223,897 37	552,261 81	{ 3.7 " land 3 " flats}
*VINCENT CUTILLO PARK, NORTH END.....	1917.....	160,350 00	40,338 95	200,688 95	0.48 acre
*WILLIAM B. CORBETT PARK, DORCHESTER CENTRE.....	1917.....	22,904 86	1,691 37	24,596 23	0.94 "
COPP'S HILL TERRACE.....	1893.....	90,858 19	55,641 05	146,499 24	0.6 "	0.11 mile
§ CHESTNUT HILL PARK.....	{1898-1899 (and 1902 }	210,239 06	6,940 60	217,179 66	55.4 acres	1.4 miles
PLAYGROUND, SHAWMUT AVENUE, CHERRY STREET, SOUTH END.....	1922.....	108,001 78	16,714 35	124,719 13	0.55 acre
PLAYGROUND, MATTAPAN DISTRICT, ALMOST STREET,	1924.....	11,995 24	10,649 09	21,744 33	17.81 acres
PLAYGROUND, MISSION HILL,	1913-1915..	260,733 94	73,277 02	334,010 96	4.21 "
<i>Carried forward</i>	88,112,032 10	\$14,752,665 48	\$22,864,697 58	2,281.80 acres	43.28 miles	64.98 miles
							7.34 miles
							115.0 acres

* Named for soldier killed in World War.

** World War memorial.

† An additional area of 18 acres is within the limits of the town of Brookline.

‡ An additional area of 16 acres is within the limits of the town of Brookline.

§ Custody given to the city by Act of Congress.

¶ 49 acres transferred from Water Department; an additional area of 160.65 acres, including water area of 122.7 acres, is under control of the Metropolitan Water and Sewerage Board.

Park Department Statistics to December 31, 1926.—Continued.

PARKS.	Year of Acquisition.	COST TO DATE.		Area.	Length of Drive-ways.	Length of Walks.	Length of Rides.	Area of Ponds and Rivers.
		Land.	Construction.					
<i>Brought forward</i>		\$8,112,032 10	\$14,752,665 48	2,281.80 acres	43.28 miles	64.98 miles	7.34 miles	115.0 acres
* JOHN F. HOLLAND PLAY- GROUND, ROXBURY.....	1917.....	13,700 00	29,297 16	1.07 "				
RONAN PARK PLAYGROUND, Mt. Ida SECTION.....	1912-1916..	101,957 78	105,315 92	11.65 "		0.83 mile		
* FREDERICK D. EMMONS PLAYGROUND, CHARLES- TOWN.....	1912.....	80,946 47	8,746 53	1.07 "				
PRINCE STREET PLAYGROUND	{ 1897-1899 } { 1901-1902 }	180,474 70	8,304 61	0.4 acre				
TENEAN BEACH PROPERTY..	1915.....	55,000 00	71,390 53	8.7 acres				
* WILLIAM F. SMITH PLAY- GROUND, NORTH BRIGHTON.	1894.....	22,107 12	30,802 77	14 "				
* WILLIAM H. GARVEY PLAYGROUND, NEPONSET..	1896.....	24,804 39	106,220 09	16.68 "				
BILLINGS FIELD, WEST ROX- BURY.....	1896-1906..	47,068 98	43,336 58	10.83 "		0.23 "		
* † CHRISTOPHER J. LEE PLAYGROUND, SOUTH BOSTON.....	1897.....		128,092 19	5.2 "				
1 SPAULDING SQUARE.....	1897.....	4,000 00						
ORCHARD PARK, ROXBURY..		3,500 00	9,663 55					
WINTHROP SQUARE, CHARLES- TOWN.....			2,445 98					
MARY HEMENWAY PLAY- GROUND, DORCHESTER....	1920.....	29,730 76	43,898 66	4.41 "				

* WILLIAM J. BARRY PLAY-GROUND, CHARLESTOWN...	1897.....	202,263 00	90,455 21	292,718 21	5.27 "			
* J. M. AND J. J. SULLIVAN PLAYGROUND, ROXBURY...	1897.....	14,503 72	11,065 22	25,568 94	0.85 acre			
CHRISTOPHER GIBSON PLAY-GROUND, DORCHESTER.....	1897.....	37,709 58	60,042 75	97,752 33	4.34 acres			
* WILLIAM E. CARTER PLAYGROUND, ROXBURY...	{1899-1900 } {1901-1902 }	327,503 84	61,615 62	389,119 46	5.02 "			
* JAMES L. CRONIN PLAY-GROUND, DORCHESTER.....	1899.....	43,990 09	9,000 09	52,990 09	2.24 "			
* FALLOON FIELD PLAY-GROUND, ROSLINDALE.....	{1899-1913 } { and 1917 }	26,325 11	33,805 71	60,130 82	3.87 "	0.20 "		
* JAMES F. HEALY PLAY-GROUND, ROSLINDALE.....	1902.....	25,166 75	15,000 00	40,166 75	9.63 "			
* LESTER J. ROTCH PLAY-GROUND, SOUTH END.....	1903.....	256,440 63	27,302 32	283,742 95	2.8 "			
* JOHN J. CONNOLLY PLAY-GROUND, ROXBURY.....	1903-1905.....		85,901 88	85,901 88	5.1 "			
* ROGERS PARK, BRIGHTON...	1899.....	30,000 00	31,350 80	61,350 80	6.9 "	0.44 "		
⁴ BERNERS SQUARE, ROXBURY.....	1901.....		294 70	294 70	1.31 "			
³ OAK SQUARE.....	1902.....		1,279 89	1,279 89				
CARROLL POND, WEST ROXBURY.....	1921.....		8,376 75	8,376 75	0.47 acre			
<i>Carried forward</i>		\$9,639,225 02	*\$15,775,670 90	\$25,414,895 92	2,403.61 acres	43.28 miles	67.08 miles	7.34 miles
								115.0 acres

* Named for soldier killed in World War.

¹ Transferred from and \$454.15 expended by the Public Grounds Department.

² Transferred to Street Department and from Street Department to Public Grounds Department.

³ 23,470 square feet transferred from and \$2,000 expended by the Public Grounds Department.

⁴ Transferred from and \$30,000 expended for land by the Public Grounds Department.

⁵ Acquired by gift.

Park Department Statistics to December 31, 1926.—Continued.

Parks.	Year of Acquisition.	Cost to Date.		Totals.	Area.	Length of Driveways.	Length of Walks.	Length of Rides.	Area of Ponds and Rivers.
		Land.	Construction.						
<i>Brought forward</i>		\$9,639,225 02	\$15,775,670 90	\$25,414,895 92	2,403.61 acres	43.28 miles	67.08 miles	7.34 miles	115.0 acres
JOHN H. L. NOYES PLAYGROUND, EAST BOSTON....	1909.....	10,015 00	89,347 91	99,362 91	5.24 " land 3.07 " flats				
WEST THIRD STREET PLAYGROUND, SOUTH BOSTON....	1909.....	10,201 30	4,000 00	14,201 30	0.28 acre				
*MATTHEW J. SWEENEY PLAYGROUND, SOUTH BOSTON....	1909.....	10,201 30	4,597 40	14,798 70	0.41 "				
WILLIAM EUSTIS PLAYGROUND.....	1909.....	116,220 06	78,493 27	194,713 33	7.60 acres				
JOHN WINTHROP PLAYGROUND.	1911.....	20,994 26	38,236 99	59,231 25	1.57 "				
*GEORGE H. WALKER PLAYGROUND, DORCHESTER....	1912.....	22,011 33	40,406 41	62,417 74	6.21 "				
*STANLEY A. RINGER PARK, ALLSTON.....	1916.....	54,550 00	48,632 98	103,182 98	12.12 "				
*ARTHUR F. MCLEAN PLAYGROUND, EAST BOSTON....	1917.....	20,754 17	15,489 97	36,244 14	0.43 acre				
PARIS STREET PLAYGROUND..	1912.....	50,630 64	4,988 50	55,619 14	1.27 acres				
TYLER STREET PLAYGROUND.	1912.....	26,239 19	12,203 86	38,443 05	0.25 acre				
*JOHN W. MURPHY PLAYGROUND, JAMAICA PLAIN....	1912-1919..	26,861 80	66,604 11	93,465 91	4.17 acres				
PORTSMOUTH STREET PLAYGROUND.....	1912.....	15,000 00	30,547 87	45,547 87	4.20 "				
TOWN MEETING PARK, DORCHESTER.....	1921.....	5,859 00	2,295 00	8,154 00	0.22 acre				
GYMNASIUM, SOUTH BOSTON.	40,000 00	8,500 00	48,500 00					
*MALLOCH'S WHARF, FREEPORT STREET, DORCHESTER.	1912.....	28 00	28 00	1.15 acres land 2.54 " flats				

2 FACTORY HILL PLAYGROUND, 1912.....	8,837 89	8,837 89	5.2	"		
3 PAUL GORE STREET PLAYGROUND 1913.....			0.74	acre		
4 RIPLEY PLAYGROUND.....	13,465 75	13,465 75	0.86	"		
5 SMITH'S POND PLAYGROUND, 1914.....	49,295 74	49,295 74	14.51	acres		
PLAYGROUND, CEYLON AND INTERVALE STREETS.....	19,017 22	49,134 00	4.03	"		
AMERICAN LEGION PLAYGROUND, EAST BOSTON.....	6,326 07	69,626 07	3.38	"		
PLAYGROUND, READVILLE, BULLARD, MILTON AND REGENT STREETS, HYDE PARK.....	4,211 35	17,628 69	5.01	"		
JEFFERSON PLAYGROUND, HEATH FLOYD AND CRAWFORD STREETS, ROXBURY.....	17,312 12	84,641 92	7.51	"		
FRANCIS PARKMAN PLAYGROUND, WACHUSETT STREET, FOREST HILLS.....	4,692 93	16,692 93	2.06	"		
REV. FATHER BUCKLEY PLAYGROUND, SOUTH BOSTON.....	7,790 00	59,222 00	0.65	acre		
3 BENNETT PLAYGROUND, CHARLESTOWN.....			0.11	"		
PLAYGROUND, WEBSTER AVENUE SECTION, NORTH END.....	2,087 90	109,087 90	0.3	"		
PARK, PARK SQUARE DISTRICT.....	12,248 87	281,848 87	0.13	"		
<i>Carried forward.....</i>	\$10,682,958 99	\$16,365,329 01	2,498.92	acres	43.28	miles
		\$27,048,288 00			67.08	miles
						115.0
						acres

* Named for soldier killed in World War.
 1 Transferred from Public Works Department, Sanitary Service.
 2 Acquired by annexation of Hyde Park.
 3 Transferred from School Department.
 4 Acquired by gift.
 5 Transferred from Metropolitan Park.

Park Department Statistics to December 31, 1926.—Concluded.

PARKS.	Year of Acquisition.	Cost to Date.		Area.	Length of Drive-ways.	Length of Walks.	Length of Rides.	Area of Ponds and Rivers.
		Land.	Construction.					
<i>Brought forward.</i>		\$10,682,958 99	\$10,365,329 01	2,498.92 acres	43.28 miles	67.08 miles	7.34 miles	115.0 acres
PLAYGROUND, BROOKSIDE AVENUE AND CORNWALL STREET.....	1925.....	11,600 00	15,289 27	1.32 "				
PLAYGROUND, COTTAGE STREET DISTRICT, EAST BOSTON.....	1925.....	37,949 50	10,826 93	4.06 "				
¹ CENTRYALE PARK.....	1918.....							
² Land, Victory road and Park street, Dorchester.....	1916.....			10.35 "				
³ JOHN A. DOHERTY PLAYGROUND.....	1897.....			1.47 "				
BATHING BEACH, JEFFRIES POINT.....			896 38					
HIGHLAND PARK, FORT AVENUE AND BEECH GLEN STREET.....			66 21	3.64 "				
PUTNAM SQUARE, IMPROVEMENTS.....			1,193 50	.27 acre				
		\$10,732,508 49	\$16,393,601 30	2,520.03 acres	43.28 miles	67.08 miles	7.34 miles	115.0 acres

¹ Transferred from Public Works Department.

² Transferred from Street Laying-Out Department.

³ Formerly part of Christopher Gibson Playground, set apart and named, November 9, 1920.

Of the above total lengths of driveways, walks and rides, there have been completed to date, respectively, 40.8 miles, 60.9 miles and 6.3 miles.

Attendance at Playground, Season of 1926.

NAME OF PLAYGROUND.	Attendance.
Billings Field Playground	101,159
William E. Carter Playground	415,859
James L. Cronin Playground	205,605
Charlestown Playground	387,265
Charlestown Heights Playground	122,913
Columbus Park Playground	314,513
John J. Connolly Playground	394,440
Charlesbank Park Playground *	78,667
Doherty Gibson Playground	567,295
Frederick D. Emmons Playground	253,039
William Eustis Playground	393,615
Fallon Field Playground	111,052
Franklin Field Playground	853,552
William H. Garvey Playground	162,642
James F. Healy Playground	364,845
John Holland Playground	84,676
Christopher F. Lee Playground	1,082,667
John W. Murphy Playground	113,544
Mission Hill Playground	260,020
Portsmouth Street Playground	111,292
Ronan Park Playground	295,936
Rogers Park Playground	141,070
Stanley J. Ringer Playground	78,120
Lester J. Rotch Playground	83,805
Matthew J. Sweeney Playground	66,631
J. M. Sullivan Playground	83,805
Smith Pond Playground (Hyde Park)	158,250
William F. Smith Playground	431,726
George H. Walker Playground	105,185
West Third Street Playground	42,795
John Winthrop Playground	122,576
World War Memorial Playground	475,365
John H. L. Noyes Playground	45,048
Total	8,510,972

* Building opened July 23, 1926. Playground opened June 30, 1926.

Franklin Park Golf Course, 1926, Financial Report with Record of Attendance.

Registered attendance, 53,034	
Annual permits issued at \$10 each, 1,739	\$17,390 00
Daily permits issued at \$1 each, 9,699	9,699 00
Sundays and holidays, permits issued at \$3, 448	1,344 00
Locker rental at \$3, 585	1,755 00
Professional concessions at 10 per cent	60 00
Total	\$30,248 00

Toboggan Slide.

FRANKLIN PARK.

Fourteen days coasting; attendance, 22,000.

OLMSTED PARK.

Eighteen days coasting, attendance, 1,100.

Gymnasias, Class and Individual Attendance, 1926.

	Indi- viduals.	Men.	School Boys.	Working Boys.	Women.	Girls.	Mothers.	Total.
Cabot Street Gymnasium.....	2,428	1,409	3,810	797	2,630	2,277	13,351
Curtis Hall Gymnasium.....	664	2,766	3,027	1,562	3,318	3,592	2,221	17,150
Columbia Road Gymnasium....	6,878	8,324	4,765	2,339	8,361	5,745	2,104	38,516
Hyde Park Gymnasium.....	2,974	2,313	2,280	1,066	1,706	2,198	12,537
John J. Williams Gymnasium..	206	4,857	3,752	1,035	3,959	2,390	843	17,042
Lexington Street Gymnasium..	1,955	2,772	3,820	661	1,607	3,845	14,660
North Bennet Street Gymnasium,	164	612	1,235	310	499	1,088	3,908
Paris Street Gymnasium.....	5,825	5,995	6,106	2,700	3,291	5,201	29,118
Roslindale Gymnasium.....	150	2,375	4,385	2,700	1,564	4,108	15,282
Tyler Street Gymnasium.....	212	1,259	2,336	335	2,579	1,208	361	8,310
Vine Street Gymnasium.....	2,582	3,831	2,911	1,908	4,655	716	16,603
Total.....	21,456	35,264	39,347	16,436	31,422	36,307	6,245	186,477

Shower Baths, Attendance, 1926.

	Men.	Boys.	Women.	Girls.	Total.
Cabot Street Bath.....	116,487	39,571	37,297	27,189	220,544
Curtis Hall Bath.....	43,666	25,402	18,676	11,622	99,366
Columbia Road Bath.....	45,075	34,250	7,525	8,350	95,200
L Street Bath House.....	357,005	129,650	40,240	71,970	598,865
Broadway Bath House.....	76,200	22,890	35,365	17,970	152,425
Dover Street Bath.....	171,876	6,510	19,338	19,003	216,727
Hyde Park Bath.....	13,715	9,550	1,694	2,956	27,915
John J. Williams Bath.....	197,100	10,420	77,830	7,144	292,494
Lexington Street Bath.....	44,507	35,975	12,484	22,816	115,782
North Bennet Street Bath.....	143,272	38,338	50,670	28,796	261,076
Paris Street Bath.....	159,680	29,147	44,405	14,610	247,842
Roslindale Bath House.....	15,159	6,578	1,935	3,285	26,957
Tyler Street Bath House.....	57,918	15,149	10,773	7,979	91,819
Vine Street Bath House.....	69,811	24,709	15,452	22,679	132,651
Total.....	1,511,471	428,139	373,684	266,369	2,579,663

Beaches and Swimming Pools, Attendance, 1926.

	Men.	Boys.	Pool.	Women.	Girls.	Total.
Cabot Street Pool.....			26,571			26,571
Curtis Hall Pool.....			25,966			25,966
Columbus Park Beach.....	55,360	20,570		40,990	19,930	136,850
Dewey Beach.....	27,420	68,630		44,655	52,585	193,290
Freeport Street Beach.....	2,856	18,886		2,599	17,846	42,187
Marine Park Beach.....	380,608	62,298		178,337	45,114	666,357
North End Park Beach.....	4,908	69,650		5,107	37,819	117,484
Savin Hill Beach.....	9,357	16,365		7,050	13,540	46,312
Tenean Beach.....	23,027	35,990		28,402	43,060	130,479
World War Memorial Park Beach.....	9,810	34,125		15,945	44,456	104,336
L Street Beach.....	357,005	129,650		40,240	71,970	598,865
Total.....	870,351	456,164	52,537	363,325	346,320	2,088,697

Skating Attendance, 1926.

Barry Playground	4,800
Billings Field Playground	11,200
William E. Carter Playground	6,100
James L. Cronin Playground	4,700
Charlestown Playground	6,200
Columbus Park Playground	5,900
Charlesbank Playground	2,700
Doherty Gibson Playground	9,400
William Eustis Playground	4,675
Fallon Field	5,340
Franklin Field	18,000
William H. Garvey Playground	5,200
John W. Murphy Playground	1,600
Mission Hill Playground	1,300
Stanley Ringer Playground	1,100
Lester J. Rotch Playground	900
William F. Smith Playground	1,200
Smith Pond Playground (Hyde Park)	17,000
George H. Walker Playground	1,200
World War Memorial Park	9,000
Total	<u>117,515</u>

Band Concerts, Season of 1926.

DATE, 1926.	Name of Band.	Name of Place.	Number of Men.
May 15..	Ives'.....	Boston Common.....	30
June 20..	Gate of Heaven.....	Franklin Field.....	25
July 4..	Crook's Military.....	Boston Common.....	40
July 11..	Ives'.....	Boston Common.....	40
July 11..	Crook's Military.....	Marine Park.....	26
July 11..	Ward's.....	Jamaica Pond.....	26
July 11..	Letter Carriers'.....	Franklin Park.....	26
July 18..	Clarke's.....	Marine Park.....	26
July 18..	Stone's Military.....	Boston Common.....	40
July 18..	Fusilier.....	McConnell Park.....	24
July 18..	Ward's.....	Franklin Park.....	26
July 18..	Letter Carriers'.....	World War Memorial Park.....	26
July 25..	First Corps Cadets.....	Boston Common.....	40
July 25..	182d Regiment.....	Franklin Park.....	26
July 25..	241st Artillery.....	Marine Park.....	26
July 25..	Ives'.....	Jamaica Pond.....	26

Band Concerts, Season of 1926.— Concluded.

DATE. 1926.	Name of Band.	Name of Place.	Number of Men.
August 1..	Commonwealth.....	Marine Park.....	26
August 1..	Stone's Military.....	McConnell Park.....	26
August 1..	101st Engineers'.....	World War Memorial Park.....	26
August 1..	101st Regiment Infantry,	Franklin Park.....	26
August 1..	Pompeo's.....	Boston Common.....	40
August 8..	Stewart's.....	Boston Common.....	40
August 8..	General Edwards.....	Marine Park.....	26
August 8..	101st Veterans'.....	Franklin Park.....	26
August 8..	Bostonia.....	Jamaica Pond.....	26
August 8..	Old Colony.....	McConnell Park.....	26
August 15..	182d Regiment.....	Franklin Park.....	26
August 15..	Stone's Military.....	World War Memorial Park.....	26
August 15..	Fusilier.....	Boston Common.....	40
August 15..	Alhambra.....	Marine Park.....	26
August 15..	101st Veterans'.....	McConnell Park.....	26
August 22..	241st Artillery.....	Jamaica Pond.....	26
August 22..	Cecil W. Fogg Post.....	Everett square, Hyde Park.....	26
August 22..	First Corps Cadets.....	Franklin Park.....	26
August 22..	Ives'.....	Boston Common.....	40
August 22..	Fusilier.....	Marine Park.....	26
August 29..	First Corps Cadets.....	Marine Park.....	26
August 29..	Stewart's Military.....	Boston Common.....	40
August 29..	Ward's.....	McConnell Park.....	26
August 29..	101st Engineers'.....	Franklin Park.....	26
August 29..	Allston Post, V. F. W....	World War Memorial Park.....	26
August 29..	Hub City.....	Madison Park.....	26
October 5..	Ward's.....	Lighting, Massachusetts avenue...	26

PARK DEPARTMENT — CEMETERY DIVISION.

The following annual report is presented for the Cemetery Division from January 1, 1926, to December 31, 1926:

DEPARTMENT CEMETERIES.

The burying grounds, cemeteries and tombs which are owned by and in charge of the City of Boston are as follows, with a total area of about 7,040,708 square feet.

EAST BOSTON.

Ward 1.

	Square Feet.
<i>Bennington Street</i>	157,500

Ward 2.

<i>Rainsford Island</i>	43,560
-----------------------------------	--------

CHARLESTOWN.

Ward 3.

<i>Bunker Hill</i>	48,202
<i>Phipps Street</i>	76,740

CITY PROPER.

Ward 5.

<i>Copp's Hill, Hull street</i>	89,015
<i>King's Chapel, Tremont street</i>	19,344
<i>Granary, Tremont street</i>	82,063

Ward 6.

<i>South End South, Washington street</i>	64,570
---	--------

PARK DEPARTMENT.

55

Ward 8.

	Square Feet.
<i>Central, Common</i>	60,693

SOUTH BOSTON.

Ward 10.

<i>Hawes, Emerson street</i>	11,232
--	--------

DORCHESTER.

Ward 11.

<i>North, Upham's Corner</i>	142,587
--	---------

ROXBURY.

Ward 12.

<i>Eliot, Eustis street</i>	34,830
<i>Warren, Kearsarge avenue</i>	54,500

DORCHESTER.

Ward 21.

<i>South, Dorchester avenue</i>	95,462
---	--------

WEST ROXBURY.

Ward 23.

<i>Westerly, Centre street</i>	39,450
<i>Walter Street</i>	35,100

Ward 24.

Mt. Hope, Walk Hill street, 117 acres and 36,536 square feet. Opposite *Mt. Hope* are two lots of unused land on *Berry street*, north corner *Manning street*, 7,150 square feet, and *Berry street*, south corner *Manning street*, 5,262 square feet.

HYDE PARK.

Ward 24.

Fairview Cemetery, *Fairview avenue*, about fifty acres.

BRIGHTON.

Ward 26.

Evergreen, *Commonwealth avenue*, 604,520 square feet.
Market street, 18,072 square feet.

CITY TOMBS.

Twenty-five in the South Ground; six in Phipps Street Ground, Charlestown; one tomb for infants in South Ground; one tomb for infants and one for adults in Copp's Hill Ground; one for adults and one for infants in the Granary Ground; one for infants in King's Chapel Ground; one for infants in the Central Ground; two receiving tombs in East Boston; one receiving tomb in Dorchester North; one receiving tomb in Dorchester South; one receiving tomb in Evergreen Cemetery, Brighton; one receiving tomb in Mt. Hope Cemetery and one receiving tomb in Fairview Cemetery, Hyde Park.

Expenditures for Maintenance, Year Ending December 31, 1926.

OBJECT.	Personal Service.	Service Other than Personal.	Equipment.	Supplies.	Special Materials.	Totals.
Office.....	\$7,665 73	\$25 00	\$396 25	\$8,086 98
Park Department.....	8,293 24	8,293 24
Mt. Hope.....	71,978 26	13,625 64	\$7,034 10	5,317 41	\$2,098 99	100,054 40
Fairview.....	10,925 61	7,068 90	392 36	1,578 77	767 34	20,732 98
Evergreen — Market street.....	9,662 59	682 74	282 91	542 87	347 98	11,489 09
Dorchester North.....	4,678 80	607 80	69 80	578 57	12 30	5,947 27
Dorchester South.....	2,308 22	18 90	5 63	34 13	2,366 88
Hawes.....	88 50	1 60	67	90 77
Bennington Street.....	1,640 00	20	5 71	13 42	1,659 33
Bunker Hill.....	1,310 00	523 00	72	1,833 72
Central.....	2 36	2 36
Copp's Hill.....	1,705 00	1 00	3 20	34 13	5 84	1,749 17
Eliot.....	844 50	4 04	41 98	890 52
Granary.....	1,595 00	770 33	19 57	77 43	2,462 33
King's Chapel.....	1,612 00	1 00	16 04	41 43	1,670 47
Phipps Street.....	831 00	796 75	8 22	68 27	1 70	1,705 91
South End South.....	855 50	30	1 42	20 71	877 93
Westerly.....	88 50	2 00	67	91 17
Totals.....	\$126,082 45	\$24,125 16	\$7,847 42	\$8,715 37	\$3,234 15	\$170,004 55

Cemetery Receipts,

SOURCE.	Mt. Hope.	Fairview.	Evergreen.	Dorchester North.	Dorchester South.
Lots sold.....	\$8,212 50	\$2,560 00	\$2,100 00		
Graves sold.....	11,836 00	997 00	1,830 00		
Interments.....	15,004 50	2,345 00	1,426 00	\$61 00	\$49 00
Foundations.....	2,569 30	897 75	670 35	18 00	10 50
Planting.....	1,516 50	47 00	16 00		
Evergreen.....	822 00	144 00	222 00	6 00	3 00
Device.....	561 00	171 00	156 00	4 00	2 00
Seed, sod.....	396 00	64 00	3 00		
Care.....	389 50	66 00	285 50	54 00	6 00
Receiving tomb.....	301 00	34 00	76 00		
Use of chapel.....	295 00	20 00	15 00		
Preparing.....	65 00	10 00	10 00		
Plants, sale, use.....	44 00				
Use of tent.....			15 00		
Totals, general receipts.....	\$42,012 30	\$7,355 75	\$6,824 85	\$143 00	\$70 50
SPECIAL TRUST FUNDS.					
Perpetual care (principal).....	\$245,839 82	\$46,455 84	\$66,445 00	\$9,828 50	\$3,444 50
Interest on same, 1926.....	9,463 05	1,836 01	2,573 70	377 26	123 88
Receipts credited on principal.....	12,357 50	3,215 00	4,961 00	133 00	264 00

Department Expenditures, 1926, as per Budget Sheet
December 31, 1926.

GROUP AND ITEM.	Total Expenditures to Date.
A. PERSONAL SERVICE AS PER SCHEDULE A.....	\$126,082 45
1. Permanent employees.....	109,118 17
2. Temporary employees.....	13,292 33
3. Unassigned.....	3,671 95
B. SERVICE OTHER THAN PERSONAL.....	24,125 16
3. Advertising and posting.....	25 00
4. Transportation of persons.....	30 95
6. Hire of teams and auto trucks.....	24 00
8. Light, heat and power.....	217 32
12. Surety bond and insurance premiums.....	23 00
13. Communication.....	382 97
14. Motor vehicle repairs and care.....	301 25
16. Care of horses.....	553 50
18. Cleaning.....	20 00
28. Expert.....	104 65
39. General plant.....	22,442 52
C. EQUIPMENT.....	7,847 42
4. Motor vehicles.....	5,127 76
6. Stable.....	210 50
7. Furniture and fittings.....	113 50
13. Tools and instruments.....	677 02
16. Wearing apparel.....	29 11
17. General plant.....	1,689 73
D. SUPPLIES.....	8,715 37
1. Office.....	999 43
2. Food and ice.....	50 00
3. Fuel.....	1,661 30
4. Forage and animal.....	1,286 98
5. Medical, surgical, laboratory.....	15 00
8. Laundry, cleaning, toilet.....	34 45
10. Agricultural.....	4,484 56
16. General plant.....	183 65
E. MATERIALS.....	3,234 15
1. Building.....	16 74
2. Highway.....	2,496 09
13. General plant.....	721 32
Total.....	\$170,004 56

Summary Statement of Cemetery Activities for Year Ending December 31, 1926.

CEMETERY.	Interments.	Lots Sold.	Graves Sold.	Lots in Perpetual Care.	Graves in Perpetual Care.	Lots in Annual Care.	Graves in Annual Care.	Foundations Built.	Preparing and Planting.	Various Orders.
Mt. Hope	1,637	185	474	2,899	843	34	52	255	279	11
Fairview	228	36	47	423	222	7	3	63	3	14
Evergreen	129	12	76	434	732	34	24	64	4	1
Dorchester North	6			108		7	1	1		3
Dorchester South	4			28		1		2		
Bennington Street	2									
Central	2									
Copp's Hill	1									
Westerly	1									
	2,010	233	597	3,892	1,797	83	80	385	286	29

Accretions to Cemetery Accumulating Fund, 1913-1926.

SOURCE.	1913-14.	1914-15.	1915-16.	1916-17.	1917-18.	1918-19.
Mt. Hope.....	\$22,205 56	\$23,503 49	\$21,174 55	\$25,795 40	\$21,684 74	\$32,734 45
Fairview.....	3,987 25	4,514 80	4,835 15	5,452 90	7,668 60	10,657 90
Evergreen.....	3,824 20	4,120 05	4,951 80	3,911 15	3,542 30	3,659 65
Dorchester North.....	346 95	281 75	245 00	268 60	252 85	281 50
Dorchester South.....	123 80	87 20	59 25	70 60	61 00	146 65
Copp's Hill.....	65 68	30 00	15 00
Bennington Street.....	51 00	50 00	40 00	32 00	54 00	85 00
Central.....	45 00	15 00	15 00	45 00	30 00	45 00
Westerly.....	36 00	9 90	1 00	5 00	7 00
Phipps Street.....	34 60	24 00	26 00	30 00
King's Chapel.....	29 45	3 00	9 50	3 00	3 00
South End South.....	15 00	15 00	15 00	—	—
Granary.....	8 72	7 69	15 00	15 00	15 00
Eliot.....	15 00	—	—	—
Bunker Hill.....	5 00	9 20
Hawes.....
Receipts by Years.....	\$30,773 21	\$32,621 88	\$31,437 25	\$35,647 85	\$33,331 49	\$47,617 15
Interest by Years.....	60 00	1,520 00	2,811 47	4,178 45	5,753 00	7,512 51

Grand total of accumulating fund, February 1, 1926, \$673,593.42.

(Chap. 117, Acts of 1913.)

1919-20.	1920-21.	1921-22.	1922-23.	1923-24.	1924-25.	1925.	1926.
\$26,893 30	\$30,381 70	\$32,279 13	\$32,777 04	\$34,455 45	\$34,074 65	\$34,940 20	\$42,012 30
9,061 75	7,404 20	6,327 70	11,726 35	7,485 30	6,995 50	6,754 80	7,355 75
3,682 50	3,993 65	4,912 56	4,550 10	6,440 10	6,709 70	5,876 00	6,824 85
310 70	167 65	186 00	205 75	247 00	246 30	186 35	143 00
113 00	76 50	95 75	136 25	68 15	111 00	77 35	70 50
30 00	4 00	15 00	15 00	—	—	30 00	15 00
106 00	71 00	80 00	20 00	46 00	44 50	67 75	24 00
90 00	15 00	15 00	15 00	—	30 00
64 00	42 00	10 00	42 50	5 00	10 00	58 00	27 00
15 00	15 00	15 00	10 00	—	—
6 00	55 00	3 00	38 00	—	—	—	—
—	—	—	—	—	—	—	—
.....	15 00	15 00	—	—
—	—	—	—	—	—	—	—
.....	12 50	—	10 00	—
.....	2 00	—	—
\$10,372 25	\$12,210 70	\$13,924 14	\$19,555 99	\$48,759 50	\$48,233 65	\$48,000 45	\$56,502 40
10,045 44	12,394 02	15,112 24	16,911 74	20,801 49	23,134 47	17,860 99	31,645 73

