

BOSTON PUBLIC LIBRARY



3 9999 03290 954 9

NOV ANGLICA

No. 4353.50

1936-42



GIVEN BY

Boston Park Department



Digitized by the Internet Archive  
in 2010 with funding from  
Boston Public Library

4353.50

City of Boston

PARK DEPARTMENT

APR 11 1944

SIXTY-FIFTH ANNUAL REPORT

OF THE

BOARD OF COMMISSIONERS

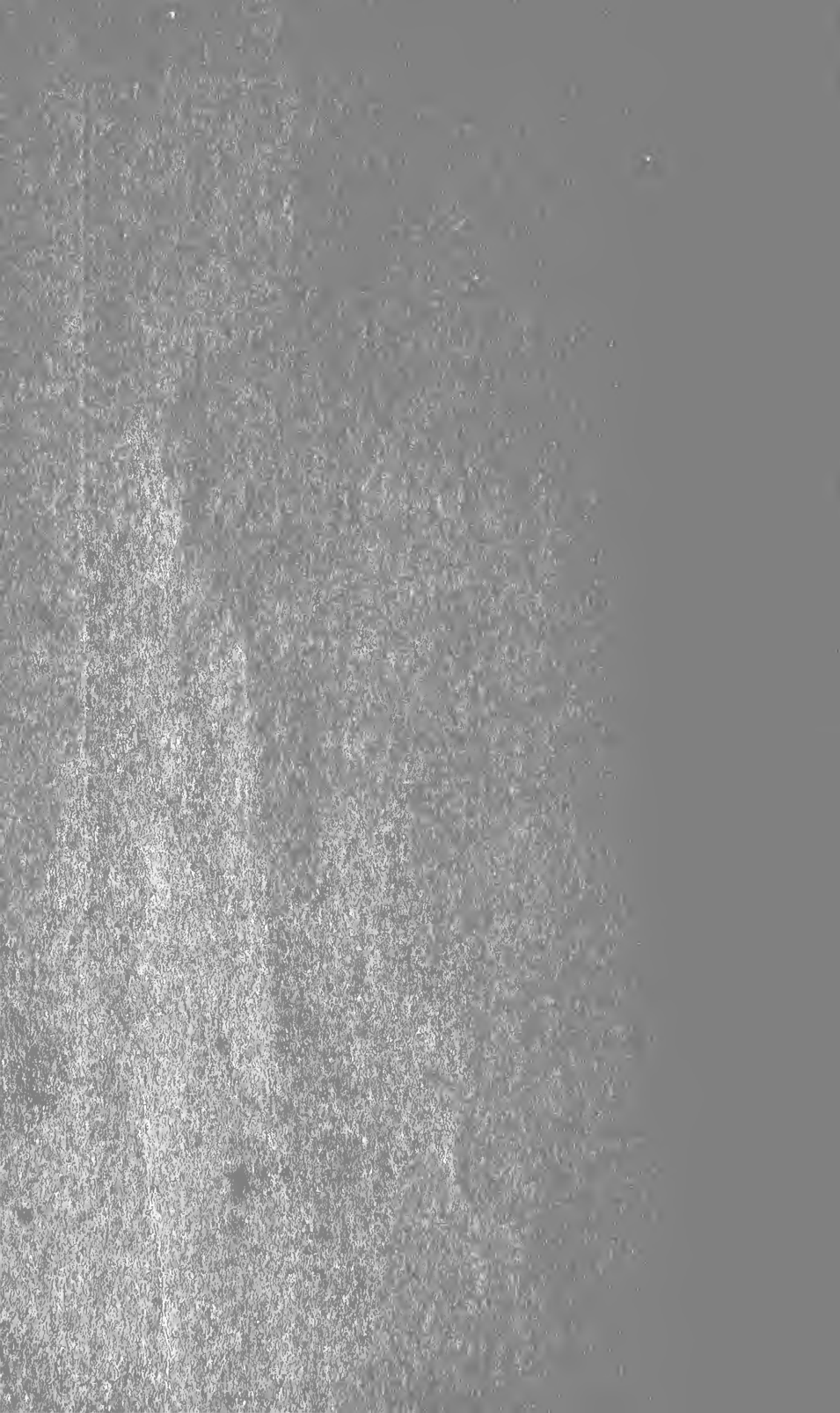
FOR THE

YEAR ENDING DECEMBER 31, 1939



PRINTED FOR THE DEPARTMENT

1940



City of Boston  
PARK DEPARTMENT

---

SIXTY-FIFTH ANNUAL REPORT

OF THE

BOARD OF COMMISSIONERS

FOR THE

YEAR ENDING DECEMBER 31, 1939



PRINTED FOR THE DEPARTMENT  
1940





[DOCUMENT 19 — 1940.]



ANNUAL REPORT

OF THE

PARK DEPARTMENT

FOR THE

YEAR ENDING DECEMBER 31, 1939.

---

Boston, December 31, 1939.

HON. MAURICE J. TOBIN,  
*Mayor of Boston.*

DEAR SIR,— In accordance with section 15 of chapter 185, Acts of 1875, the Park Commission herewith submits its annual report for the year 1939.

Respectfully submitted,

WILLIAM P. LONG,  
*Chairman.*

## Expenditures for Maintenance, January 1 to December 31, 1939.

## PARKS AND GARDENS.

Abraham Lincoln square . . . . .	\$10 00
Algonquin square . . . . .	57 27
Alvah Kittredge park . . . . .	35 00
Andrew Henry square . . . . .	47 27
Aquarium . . . . .	21,232 60
Arborway . . . . .	4,022 75
Arnold Arboretum . . . . .	1,479 52
Avenue Louis Pasteur . . . . .	36 78
Belmont square . . . . .	102 00
Berners square . . . . .	52 27
Blackstone square . . . . .	613 77
Boston Common Bandstand . . . . .	719 13
Boston Common, Deer Park . . . . .	812 55
Boston Common, Flagstaff Hill . . . . .	672 95
Boston Common grounds . . . . .	12,866 45
Boston Common kiosk . . . . .	390 00
Boston Common, Park Street Station . . . . .	2,183 54
Boston Common, West Street Station . . . . .	1,752 75
Braddock park . . . . .	31 68
Brigham Circle . . . . .	273 73
Brighton square . . . . .	54 54
Bromley park . . . . .	43 50
Camp Meigs . . . . .	66 25
Cedar square . . . . .	50 00
Centervale park . . . . .	50 00
Central square . . . . .	647 00
Chestnut Hill park . . . . .	2,376 47
City Hall grounds . . . . .	146 00
City square . . . . .	47 00
Cleveland circle . . . . .	122 50
Columbia road . . . . .	1,555 40
Columbus square . . . . .	167 71
Commonwealth avenue, extension . . . . .	4,536 10
Commonwealth avenue, main . . . . .	6,161 89
Concord square . . . . .	55 00
Copley square . . . . .	165 00
Copp's Hill terrace . . . . .	51 00
Cornelius T. Mahoney square . . . . .	22 00
Dorchester park . . . . .	3,329 45
Drohan square . . . . .	45 00
Eaton square . . . . .	211 50
Edward M. Cunningham square . . . . .	40 00
Edward Everett square . . . . .	40 00
Elm Hill park . . . . .	40 00
Essex square . . . . .	45 62
Fens . . . . .	15,818 74
<i>Carried forward</i> . . . . .	<u>\$83,279 68</u>

PARK DEPARTMENT.

3

<i>Brought forward</i> . . . . .	\$83,279 68
Fern square . . . . .	45 00
Florida street . . . . .	30 00
Fort Hill square . . . . .	562 50
Francis G. Hanlon square . . . . .	30 00
Francis G. Kane square . . . . .	25 00
Franklin Park, Administration Building, shops, etc. . . . .	26,063 92
Franklin Park, carpenter shop . . . . .	10,061 08
Franklin Park, golf course . . . . .	10,169 84
Franklin Park, greenhouse . . . . .	26,654 02
Franklin Park, grounds . . . . .	12,406 01
Franklin Park, herb garden . . . . .	463 50
Franklin Park, Overlook Buildings . . . . .	1,256 84
Franklin Park, paint shop . . . . .	4,850 05
Franklin Park, Refectory Building . . . . .	3,798 63
Franklin Park, rock garden . . . . .	1,087 35
Franklin Park, rose garden . . . . .	2,737 27
Franklin Park, Schoolmaster's Hill . . . . .	820 00
Franklin Park, storehouse . . . . .	12,871 83
Franklin Park, toboggan slides . . . . .	1,547 18
Franklin square . . . . .	710 50
Fred C. W. Olsen square . . . . .	32 03
General Heath square . . . . .	42 95
George Wright Golf Course . . . . .	27,735 48
Gordon E. Denton square . . . . .	20 00
Greenwood square . . . . .	20 00
Gustav Emmet square . . . . .	20 00
Hayes square . . . . .	45 00
Herbert J. Wolf square . . . . .	117 00
Highland park . . . . .	233 00
Horace C. Woodworth square . . . . .	20 00
Horatio Harris park . . . . .	541 00
Huntington avenue overpass . . . . .	18 20
Independence square . . . . .	873 00
Irving W. Adams park . . . . .	211 95
Jackson square . . . . .	15 00
Jamaica Pond Boat Landing . . . . .	269 46
John E. Donovan park . . . . .	291 00
Lieut. Parker B. Jones square . . . . .	20 00
Lincoln square . . . . .	31 00
Linwood park . . . . .	23 00
Longwood park . . . . .	40 00
Madison park . . . . .	817 00
Marine Park and Castle Island . . . . .	4,812 78
Massachusetts avenue . . . . .	451 54
Maverick square . . . . .	502 00
Michael J. Brophy park . . . . .	374 00
<i>Carried forward</i> . . . . .	<u>\$237,046 59</u>

<i>Brought forward</i> . . . . .	\$237,046 59
Mount Bowdoin green . . . . .	186 00
Oak square . . . . .	51 50
Oakview terrace . . . . .	27 00
Olmsted park . . . . .	6,726 96
Orchard park . . . . .	289 50
Peabody square . . . . .	22 00
Prescott square . . . . .	616 00
Public Garden . . . . .	15,813 98
Putnam square . . . . .	618 00
Richardson square . . . . .	128 50
Riverway . . . . .	7,149 70
Rutland square . . . . .	90 00
Savin Hill park . . . . .	1,840 68
Seaver street . . . . .	30 00
Soldiers' Monument lot . . . . .	27 95
Spaulding square . . . . .	34 00
Statler park . . . . .	53 00
St. Stephen square . . . . .	17 00
Strandway . . . . .	7,704 32
Sullivan square . . . . .	63 03
Thomas park . . . . .	205 00
Tremlett square . . . . .	30 00
Turner square . . . . .	42 50
Union park . . . . .	184 00
Vincent Cutillo park . . . . .	837 62
Walnut park . . . . .	132 00
Waltham square . . . . .	81 00
Warren square . . . . .	29 00
Washington park . . . . .	830 00
Webster square . . . . .	32 00
Wellesley park . . . . .	105 50
West Roxbury Parkway . . . . .	1,514 39
William B. Corbett park . . . . .	83 25
Williams square . . . . .	35 00
Winthrop square . . . . .	51 50
Wolcott square . . . . .	40 00
Worcester square . . . . .	386 66
World War Memorial park . . . . .	5,744 18
Zoological Garden, animal range . . . . .	1,820 37
Zoological Garden, antelope house . . . . .	1,793 07
Zoological Garden, bear dens . . . . .	3,622 86
Zoological Garden, bird house . . . . .	8,540 33
Zoological Garden, camel house . . . . .	9 00
Zoological Garden, elephant house . . . . .	2,659 50
Zoological Garden, general . . . . .	28,719 82
Zoological Garden, lion house . . . . .	2,296 40
Zoological Garden, monkey house . . . . .	2,399 44
Zoological Garden, service station . . . . .	48 00

---



---

**\$340,808 10**

## PLAYGROUNDS.

Almont Street Playground . . . . .	\$2,655 17
American Legion Playground . . . . .	1,460 62
Arthur F. McLean Playground . . . . .	123 00
Billings Field Playground . . . . .	3,103 09
Brookside Avenue Playground . . . . .	1,771 51
Carl H. Ahlsen Playground . . . . .	2,162 03
Ceylon Street Playground . . . . .	2,899 69
Charlesbank Playground . . . . .	3,562 00
Charlestown Playground . . . . .	2,785 98
Charlestown Heights Playground . . . . .	2,858 22
Cherry Street Playground . . . . .	965 96
Christopher J. Gibson Playground . . . . .	2,902 79
Christopher J. Lee Playground . . . . .	3,541 34
Columbus Park Playground . . . . .	6,977 86
Factory Hill Playground . . . . .	72 16
Fallon Field Playground . . . . .	2,551 20
Foster Street Playground . . . . .	92 56
Francis Parkman Playground . . . . .	796 91
Franklin Field Playground . . . . .	9,432 15
Frederick D. Emmons Playground . . . . .	1,705 00
George H. Walker Playground . . . . .	2,603 72
James L. Cronin Playground . . . . .	1,791 30
James F. Healy Playground . . . . .	3,370 33
Jefferson Playground . . . . .	2,472 86
John J. Connolly Playground . . . . .	2,454 14
John A. Doherty Playground . . . . .	214 30
John F. Holland Playground . . . . .	1,707 30
John W. Murphy Playground . . . . .	2,326 55
John H. L. Noyes Playground . . . . .	1,799 62
J. M. and J. J. Sullivan Playground . . . . .	1,191 83
John Winthrop Playground . . . . .	1,136 88
Joseph Lee Playground . . . . .	545 04
L. Gertrude Howes Playground . . . . .	640 47
Lester J. Rotch Playground . . . . .	2,064 34
Mary Draper Playground . . . . .	1,179 01
Mary E. Hemenway Playground . . . . .	2,720 21
Martin M. Lomasney Playground . . . . .	54 00
Matthew J. Sweeney Playground . . . . .	361 48
McConnell Park Playground . . . . .	1,083 85
McKinney Playground . . . . .	1,664 61
Mission Hill Playground . . . . .	2,542 86
Paris Street Playground . . . . .	141 40
Parker Hill Playground . . . . .	1,654 82
Portsmouth Street Playground . . . . .	2,107 77
Prince Street Playground . . . . .	196 68
Readville Playground . . . . .	794 17
Rev. Father Buckley Playground . . . . .	186 87
Ripley Playground . . . . .	277 16
<i>Carried forward</i> . . . . .	<hr/> \$91,702 81

<i>Brought forward</i> . . . . .	\$91,702 81
Rogers Park Playground . . . . .	2,253 59
Ronan Park Playground . . . . .	2,118 06
Smith's Pond Playground . . . . .	2,464 90
Stanley A. Ringer Playground . . . . .	1,966 15
Thomas J. Roberts Playground . . . . .	2,147 87
Tyler Street Playground . . . . .	74 18
Webster Avenue Playground . . . . .	1,687 09
West Third Street Playground . . . . .	863 61
William Amerena Playground . . . . .	1,043 92
William J. Barry Playground . . . . .	3,569 55
William E. Carter Playground . . . . .	2,712 13
William Eustis Playground . . . . .	2,593 97
William E. Garvey Playground . . . . .	1,628 99
William F. Smith Playground . . . . .	3,579 64
Wood Avenue Playground . . . . .	621 46
	<hr/>
	\$121,027 92

## GYMNASIA.

Cabot Street Gymnasium . . . . .	\$24,557 98
Columbia Road Gymnasium . . . . .	8,366 90
Curtis Hall Gymnasium . . . . .	12,568 30
Hyde Park Gymnasium . . . . .	7,275 10
John J. Williams Gymnasium . . . . .	10,242 48
Lexington Street Gymnasium . . . . .	5,854 82
North Bennet Street Gymnasium . . . . .	19,005 51
Paris Street Gymnasium . . . . .	16,505 59
Roslindale Gymnasium . . . . .	7,309 56
Tyler Street Gymnasium . . . . .	5,802 17
Vine Street Gymnasium . . . . .	9,933 80
	<hr/>
	\$127,422 21

## BATHS AND BEACHES.

Broadway Municipal Building . . . . .	\$8,926 75
Columbus Park Beach . . . . .	12,519 54
Dewey Beach . . . . .	5,168 87
Dover Street Bath House and Laundry . . . . .	48,269 07
Head House, Marine Park . . . . .	9,890 08
L Street Bath House and Beach . . . . .	30,222 28
North End Park Beach and Bath . . . . .	10,090 28
Savin Hill Beach . . . . .	47 40
Tenean Beach . . . . .	4,575 83
World War Memorial Park Beach . . . . .	6,413 43
Repair Room, Sewing Room and Stock Room, . . . . .	14,530 72
Repair Yard, East Boston . . . . .	3,770 46
	<hr/>
	\$154,424 71
	<hr/>
Boston Airport, East Boston . . . . .	\$38,342 81

## GENERAL EXPENSE.

Central Office — Administration . . . . .	\$69,935 11
Stables . . . . .	7,506 58
Street trees . . . . .	7,998 32
Suppression of moths . . . . .	10,571 70
Miscellaneous . . . . .	2,036 91
Pensions and annuities . . . . .	6,844 41
Automobiles, tractors, wagons, etc. . . . .	63,264 06
Emergency Relief projects . . . . .	401,012 91
	<hr/>
	\$569,170 00
	<hr/> <hr/>

## RECAPITULATION.

Parks and gardens . . . . .	\$340,808 10
Playgrounds . . . . .	121,027 92
Gymnasias . . . . .	127,422 21
Baths and beaches . . . . .	154,424 71
Boston Airport, East Boston . . . . .	38,342 81
General expense . . . . .	569,170 00
	<hr/>
	\$1,351,195 75
	<hr/> <hr/>

Expenditures of Loan, Revenue and Special Appropriations,  
January 1, 1939, to December 31, 1939.

## RECREATION.

Common and Parks in existence on January 12, 1887, Maintenance and Improvement of . . . . .	\$215,810 16
Franklin Park, Improvements . . . . .	560 96
Airport, Improvements . . . . .	4,398 52
Park and Playground, Improvements, etc. . . . .	1,364 84
Reconstructing and Repairing Parkways and Roadways by Contract . . . . .	962 60
	<hr/>
	\$223,097 08
	<hr/> <hr/>

## CASH RECEIPTS.

## For Twelve Months Ending December 31, 1939.

## PARK DIVISION.

Golf permits, Franklin Park . . . . .	\$12,835 50
Golf permits, Hyde Park . . . . .	16,797 50
Bowling Green, Franklin Field . . . . .	355 00
Permits for opening, signs, etc. . . . .	287 28
Use of equipment, labor . . . . .	330 00
Commission on telephone receipts . . . . .	373 31
Settlement of claims . . . . .	343 50
Sale of junk . . . . .	170 00
Refunds . . . . .	454 62
Moth suppression . . . . .	2,918 90
Use of towels, soap, etc., in playground houses . . . . .	2,009 65
	<hr/>
<i>Carried forward</i> . . . . .	\$36,875 26

<i>Brought forward</i>		\$36,875 26	
Rentals, concessions		18,112 00	
Rentals, Boston Airport		11,776 62	
Mary P. C. Cummings Estate, income		5,849 96	
Boston Common Tree Fund, income		140 58	
Special welfare fund		750 00	
			<u>\$73,504 42</u>

	BATHS.		
Use of towels, soap, etc.		\$32,794 97	
Commission on telephones		66 67	
			<u>32,861 64</u>
Total			<u><u>\$106,366 06</u></u>

Above receipts were credited as follows:

General revenue	\$87,848 90
Sinking Fund	11,776 62
Department appropriations	6,740 54
	<u>\$106,366 06</u>

### Report on Municipal Golf Courses, Season of 1939.

#### FRANKLIN PARK GOLF COURSE.

*Opening Date* — April 29. *Closing Date* — December 6.

Registered attendance, 25,280.

Estimated number of rounds played, 38,000.

Annual permits issued, 523 at \$15 each	\$7,845 00
Daily permits issued, 4,282 at \$1 each	4,282 00
Twilight permits issued, 1,407 at 50 cents each	703 50
Professional's concession	5 00
	<u>\$12,835 50</u>

#### GEORGE WRIGHT GOLF COURSE, HYDE PARK.

*Opening Date* — April 19. *Closing Date* — December 10.

Registered attendance, 24,651.

Season permits, 335 at \$35 each	\$11,725 00
Season permits, limited, 13 at \$32 each	416 00
Season permits, limited, 2 at \$28 each	56 00
Season permits, limited, 1 at \$25	25 00
Season permits (initial deposits only)	85 00
Saturday-Sunday permits, 1,313 at \$2 each	2,626 00
Week day permits, 1,073 at \$1.50 each	1,609 50
Special tournament fees	212 00
Rental of extra locker	3 00
Club house dance permits, 2 at \$15 each; 1 at \$10	40 00
	<u>\$16,797 50</u>



## Skating Attendance Report, 1939.

Tobogganing, seven days; attendance, 11,750; skating,  
twenty-eight days.

Name of Playground.	Attendance.
Almont Street Playground . . . . .	15,000
American Legion Playground . . . . .	20,500
Billings Field Playground . . . . .	32,800
Brookside Avenue Playground . . . . .	12,300
Charlestown Playground . . . . .	28,700
Christopher J. Lee Playground . . . . .	15,000
Columbus Park Playground . . . . .	38,250
Dorchester Park Playground . . . . .	12,600
Fallon Field Playground . . . . .	32,800
Francis Parkman Playground . . . . .	7,600
Franklin Field Playground . . . . .	93,500
George H. Walker Playground . . . . .	21,600
James L. Cronin Playground . . . . .	16,960
Jefferson Playground . . . . .	23,780
John A. Doherty Playground . . . . .	31,570
John W. Murphy Playground . . . . .	16,250
John H. L. Noyes Playground . . . . .	18,650
Joseph Lee Playground . . . . .	37,900
Lester J. Rotch Playground . . . . .	8,000
Marine Park Playground . . . . .	25,700
Mary Draper Playground . . . . .	21,400
Mary Hemenway Playground . . . . .	15,300
McConnell Park Playground . . . . .	34,900
McKinney Playground . . . . .	20,600
Public Garden . . . . .	125,000
Rogers Park Playground . . . . .	22,600
Smith's Pond Playground . . . . .	29,500
Stanley A. Ringer Playground . . . . .	19,000
World War Memorial Park Playground . . . . .	44,500
William Amerena Playground . . . . .	28,600
William J. Barry Playground . . . . .	21,600
William E. Carter Playground . . . . .	42,800
William Eustis Playground . . . . .	35,000
William J. Garvey Playground . . . . .	34,500
William F. Smith Playground . . . . .	35,500
	<hr/>
	1,040,260
	<hr/>

## Attendance at Playgrounds, Season of 1939.

Name of Playground.	Attendance.
Almont Street Playground . . . . .	83,400
Billings Field Playground . . . . .	174,700
Brookside Avenue Playground . . . . .	37,600
Carl H. Ahlsen Playground . . . . .	23,600
Ceylon Street Playground . . . . .	56,800
Charlesbank Playground . . . . .	70,760
Charlestown Playground . . . . .	306,370
Charlestown Heights Playground } . . . . .	
Cherry Street Playground . . . . .	40,560
Chestnut Hill Playground . . . . .	40,330
Christopher J. Lee Playground . . . . .	185,310
Columbus Park Playground } . . . . .	450,000
Columbus Park Stadium } . . . . .	
Dorchester Park Playground . . . . .	41,648
Fallon Field Playground . . . . .	335,110
Francis Parkman Playground . . . . .	35,600
Franklin Field Playground . . . . .	740,450
Frederick D. Emmons Playground . . . . .	23,500
George H. Walker Playground . . . . .	180,640
James L. Cronin Playground . . . . .	96,700
James F. Healy Playground . . . . .	255,630
Jefferson Playground . . . . .	305,350
John J. Connolly Playground . . . . .	320,500
John A. Doherty Playground . . . . .	440,760
John F. Holland Playground . . . . .	52,400
John W. Murphy Playground . . . . .	63,470
John H. L. Noyes Playground . . . . .	42,620
J. M. and J. J. Sullivan Playground . . . . .	45,900
John Winthrop Playground . . . . .	45,440
Joseph Lee Playground . . . . .	290,400
Lester J. Rotch Playground . . . . .	145,000
Mary Draper Playground . . . . .	68,000
Mary Hemenway Playground . . . . .	85,430
Matthew J. Sweeney Playground . . . . .	28,410
McConnell Park Playground . . . . .	204,800
McKinney Playground . . . . .	53,400
Mission Hill Playground . . . . .	147,400
Parker Hill Playground . . . . .	20,000
Portsmouth Street Playground . . . . .	143,725
Readville Playground . . . . .	150,640
Ripley Playground . . . . .	22,400
Rogers Park Playground . . . . .	255,800
Ronan Park Playground . . . . .	235,400
Savin Hill Playground . . . . .	35,490
Smith's Pond Playground . . . . .	80,810
Stanley Ringer Playground . . . . .	26,000
<i>Carried forward</i> . . . . .	6,489,253

Name of Playground.	Attendance.
<i>Brought forward</i> . . . . .	6,489,253
Thomas J. Roberts Playground . . . . .	256,960
Tyler Street Playground . . . . .	18,220
West Third Street Playground . . . . .	23,765
William Amerena Playground . . . . .	79,425
World War Memorial Park Playground . . . . .	245,800
William J. Barry Playground . . . . .	140,648
William E. Carter Playground . . . . .	260,850
William Eustis Playground . . . . .	265,690
William H. Garvey Playground . . . . .	235,900
William F. Smith Playground . . . . .	249,925
	<u>8,265,436</u>

Gymnasia, Class and Individual Attendance, 1939.

	Indi- viduals.	Men.	Boys.	Women.	Girls.	Mothers.	Total.
Abbot Street.....	797	1,624	7,267	1,156	2,723	552	14,119
Columbia Road.....	4,829	6,466	14,838	6,316	7,645	927	41,021
Curtis Hall.....	767	1,417	8,826	3,119	4,605	492	19,226
Lyde Park.....	190	2,295	4,850	440	2,295	.....	10,070
John J. Williams Building.....	38	3,442	7,306	2,131	1,695	735	15,347
Exington Street.....	4,240	2,765	7,811	487	4,672	.....	19,975
North Bennet Street.....	.....	701	4,321	296	1,178	.....	6,496
Paris Street.....	4,570	4,580	9,625	3,170	3,910	.....	25,855
Rosendale.....	2,082	3,455	14,270	1,752	5,080	.....	26,639
Tyler Street.....	.....	635	1,195	369	86	.....	2,285
Line Street.....	.....	4,605	19,925	4,960	6,520	.....	36,010
Totals.....	17,513	31,985	100,234	24,196	40,409	2,706	217,043

## Shower Baths, Attendance, 1939.

	Men.	Boys.	Women.	Girls.	Total.
Broadway Bath House.....	141,450	13,125	29,100	12,300	195,975
Cabot Street Bath House.....	32,135	12,498	7,085	4,023	55,741
Columbia Road Bath House.....	63,895	22,675	2,155	6,670	95,395
Curtis Hall Bath House.....	40,690	14,546	5,556	3,701	64,493
Dover Street Bath House.....	124,695	10,780	37,930	10,225	183,630
Hyde Park Bath House.....	42,295	17,756	4,137	2,962	67,150
J. J. Williams Building Bath House..	158,115	15,925	50,525	18,950	243,515
Lexington Street Bath House.....	44,913	41,960	17,606	19,428	123,907
North Bennet Street Bath House...	90,200	25,475	29,775	12,465	157,915
Paris Street Bath House.....	125,635	26,085	38,960	12,100	202,780
Roslindale Bath House.....	44,515	40,955	9,115	10,855	105,440
Tyler Street Bath House.....	58,825	14,925	10,250	3,925	87,925
Vine Street Bath House.....	128,892	56,345	51,588	34,495	271,320
L Street Bath House.....	312,004	153,910	40,031	52,300	558,245
Totals.....	1,408,259	466,960	333,813	204,399	2,413,431

## Beaches and Swimming Pools, Attendance, 1939.

	Men.	Boys.	Women.	Girls.	Total.
Cabot Street Pool.....	2,859	5,739	1,656	4,891	15,145
Curtis Hall Pool.....	2,861	10,664	3,290	6,183	22,998
Columbus Park Beach.....	175,755	90,762	124,620	75,295	466,432
Dewey Beach.....	32,050	78,025	36,200	93,925	240,200
Head House Beach.....	175,025	194,945	158,100	185,500	713,570
North End Park Beach.....	36,550	29,800	32,150	30,250	128,750
Tenean Beach.....	95,820	110,790	53,995	79,645	340,250
World War Memorial Park Beach.....	92,650	63,100	32,420	41,665	229,835
L Street Beach.....	275,000	153,910	40,031	52,300	521,241
Totals.....	888,570	737,735	482,462	569,654	2,678,421

PARK DEPARTMENT STATISTICS TO  
DECEMBER 31, 1939.

PARK DEPARTMENT STATISTICS TO DECEMBER 31, 1939.

PARKS.	Year of Acquisition.	COST TO DATE.			Area.	Length of Driveways.	Length of Walks.	Length of Rides.	Area of Ponds and Rivers.
		Land.	Construction.	Totals.					
<b>MAIN PARK SYSTEM:</b>									
Commonwealth avenue.....	1894-1905.....		\$573,656 09	\$573,656 09	112.7 acres	12.1 miles	11.9 miles	1.1 miles	22 acres
Fens.....	1877-1879.....	\$736,854 49	3,095,946 60	3,832,801 09	116.99 "	4.32 "	7.04 "		
2 Avenue Louis Pasteur.....	1922.....				3.19 "	0.27 mile	0.50 mile		
† Riverway.....	1883-1890.....	457,457 53	788,896 78	1,246,354 31	40 "	1.4 miles	2.8 miles	1.2 "	8 "
† Olmsted Park.....	1890-1892.....	1,081,947 60	818,579 62	1,900,527 22	180 "	2.7 "	5.8 "	1.6 "	77 "
Arborway.....	1892.....	245,584 25	462,455 15	708,039 40	36 "	3.4 "	3.2 "	1.4 "	
Arnold Arboretum.....	1882-1895.....	79,354 15	462,637 39	541,991 54	223 "	3.4 "	5.65 "	0.5 mile	0.6 acre
West Roxbury Parkway.....	1894.....	135,265 29	176,638 10	311,903 39	65.94 "	1 mile	2 "	0.94 "	
Joyce Kilmer Park.....					9.53 "				
Franklin Park and Zoological Garden.....	{1883-1884 1906-1912}	1,551,896 63	4,012,351 19	5,564,247 82	527 "	7.91 miles	14.9 "	1.19 miles	7.4 acre
<b>MARINE PARK SYSTEM:</b>									
Columbia road.....	1899.....	447,528 63	557,757 18	1,005,285 81	31.20 "	5.3 "	6.1 "		
Dorchester Way.....	1892-1895.....	63,735 54	93,804 34	157,539 88					
Strandway and Columbus Park.....	{1890-1892 1897-1901}	772,515 12	2,764,202 36	3,536,717 48	265.30 "				
Marine Park and Aquarium.....	1883.....	232,972 57	1,651,623 66	1,884,596 23	{52.5 " land 4.9 " flats}	0.6 mile	1.39 "		3.4 "
§ Castle Island.....	1890.....		154,236 51	154,236 51	{25.7 " land 78.3 " flats}	0.16 "	1.15 "		
* McCONNELL PARK.....	1899-1914.....	50,759 33	230,776 12	281,535 45	{9.78 " land 50.55 " flats}	0.20 "	0.29 mile		

PARK DEPARTMENT.

SAVIN HILL PARK.....	1909.....	31,925 55	11,592 45	43,518 00	8.26 "			
* IRVING W. ADAMS PARK...	1919.....	50,000 00	19,513 59	69,513 59	0.78 acre			
1 WORLD WAR MEMORIAL PARK.....	} 1882-1891..	132,800 00	462,527 60	595,327 60	{ 55.6 acres land 155.4 " flats }	0.3 "	2.1 miles	
CHARLESBANK.....	1883.....	373,916 99	374,832 65	748,749 64	22 "	.....	1.5 "	
TRINITY TRIANGLE.....	1885.....	30,000 00	.....	30,000 00	0.12 acre	.....	.....	
CHARLESTOWN HEIGHTS, DEWEY BEACH.....	} 1891.....	50,538 02	179,217 56	229,755 58	{ 6.1 acres land 4.3 " flats }	.....	0.4 mile	
CHARLESTOWN PLAYGROUND,	1891.....	172,923 31	54,931 93	227,855 24	{ 13.66 " land 3.7 " flats }	.....	0.6 "	
DORCHESTER PARK.....	1891-1903..	64,165 37	32,091 18	96,256 55	31.47 "	.....	.....	
FRANKLIN FIELD.....	1892-1910..	157,341 22	194,228 38	351,569 60	77 "	0.65 "	1.09 miles	
NORTH END BEACH.....	1893.....	328,364 44	459,822 76	788,187 20	{ 3.7 " land 3 " flats }	.....	.....	
* VINCENT CUTILLO PARK, NORTH END.....	1917.....	160,350 00	40,338 95	200,688 95	0.48 acre	.....	.....	
WILLIAM B. CORBETT PARK, DORCHESTER CENTRE...	1917.....	22,904 86	1,691 37	24,596 23	0.94 "	.....	.....	
COPP'S HILL TERRACE.....	1893.....	90,858 19	55,641 05	146,499 24	0.6 "	.....	0.11 mile	
CHESTNUT HILL PARK.....	{ 1898-1899 and 1902 }	210,239 06	34,866 92	245,105 98	55.4 acres	1.44 miles	0.10 "	
CHERRY STREET PLAY- GROUND, SOUTH END.....	1922.....	108,004 78	16,995 22	125,000 00	0.55 acre	.....	.....	
ALMONT STREET PLAY- GROUND, MATAPAN.....	1924.....	11,095 24	44,659 09	55,754 33	17.81 acres	.....	0.04 "	
<i>Carried forward.....</i>		\$7,851,298 16	\$17,826,511 79	\$25,677,809 95	2,293.45 acres	45.15 miles	68.66 miles	118.4 acres

See footnotes on page 21.

Park Department Statistics to December 31, 1939.—Continued.

PARKS.	Year of Acquisition.	COST TO DATE.			Totals.	Area.	Length of Drive-ways.	Length of Walks.	Length of Rides.	Area of Ponds and Rivers.
		Land.	Construction.							
<i>Brought forward</i> .....	.....	\$7,851,298 16	\$17,826,511 79	\$25,677,809 95	2,293.45 acres	45.15 miles	68.66 miles	7.93 miles	118.4 acres	
PLAYGROUND, MISSION HILL, .....	1913-1915..	260,733 94	73,277 02	334,010 96	4.24 "	.....	0.21 mile	.....	.....	
* JOHN F. HOLLAND PLAY- GROUND, ROXBURY .....	1917. ....	13,700 00	29,297 16	42,997 16	1.07 "	.....	.....	.....	.....	
RONAN PARK PLAYGROUND, DORCHESTER .....	1912-1916..	101,957 78	105,315 92	207,273 70	11.65 "	.....	0.83 "	.....	.....	
* FREDERICK D. EMMONS PLAYGROUND, CHARLES- TOWN .....	1912. ....	80,946 47	8,746 53	89,693 00	1.07 "	.....	.....	.....	.....	
PRINCE STREET PLAYGROUND, .....	{1897-1899 1901-1902 1914-1915 1928-1933 }	180,474 70	8,304 61	188,779 31	0.4 acre	.....	.....	.....	.....	
TENEAN BEACH DORCHESTER, .....	{1914-1915 1928-1933 }	102,140 00	84,847 03	186,987 03	20.01 acres	0.25 mile	0.35 "	.....	.....	
* WILLIAM F. SMITH PLAY- GROUND, NORTH BRIGHTON, .....	1894. ....	22,107 12	30,802 77	52,909 89	14 "	.....	.....	.....	.....	
* WILLIAM H. GARVEY PLAYGROUND, NEPONSET, .....	1896. ....	24,804 39	114,602 23	139,406 62	16.68 "	.....	0.28 "	.....	.....	
BILLINGS FIELD, WEST ROX- BURY .....	1896-1906..	47,068 98	69,147 77	116,216 75	10.83 "	.....	0.23 "	.....	.....	
* CHRISTOPHER J. LEE PLAYGROUND, SOUTH BOSTON .....	1897. ....	.....	128,106 19	128,106 19	5.2 "	.....	.....	.....	.....	
MARY HEMENWAY PLAY- GROUND, DORCHESTER .....	1920. ....	29,730 75	69,777 87	99,508 63	4.41 "	.....	.....	.....	.....	



* MARY P. C. CUMMINGS MEMORIAL PLAY- GROUND, WOBURN.....	1930.....					234 "			
PAUL CORE STREET PLAY- GROUND.....	1913.....					0.74 acre			
* WILLIAM J. BARRY PLAY- GROUND, CHARLESTOWN..	{ 1897-1923..	202,463 00	116,004 09	318,467 09		{ 4.95 acres land 0.32 acre flats	0.09 "		
* J. M. & J. J. SULLIVAN PLAYGROUND, ROXBURY..	1897.....	14,503 72	11,065 22	25,568 94		0.85 "			
CHRISTOPHER GIBSON PLAY- GROUND, DORCHESTER...	1897.....	37,709 58	60,042 75	97,752 33		4.34 acres	0.11 "		
* WILLIAM E. CARTER PLAY- GROUND, ROXBURY.....	{ 1899-1900 { 1901-1902 }	327,503 84	62,305 62	389,809 46		5.02 "			
* JAMES L. CRONIN PLAY- GROUND, DORCHESTER...	1899.....	43,990 09	9,000 00	52,990 09		2.24 "			
* FALLON FIELD PLAY- GROUND, ROSLINDALE.....	{ 1899-1913 { 1917-1931 }	91,325 11	73,394 57	164,719 68		7.57 "	0.36 "		
* JAMES F. HEALY PLAY- GROUND, ROSLINDALE.....	1902.....	25,166 75	39,156 44	64,323 19		9.63 "	0.14 "		
* LESTER J. ROTCH PLAY- GROUND, SOUTH END....	1903.....	256,440 63	27,302 32	283,742 95		2.8 "			
* JOHN J. CONNOLLY PLAY- GROUND, ROXBURY.....	1903-1905..		100,295 40	100,295 40		5.1 "			
* ROGERS PARK, BRIGHTON..	1899-1931..	45,998 30	49,103 88	95,102 18		8.20 "	0.44 "		
CARROLL FOND, WEST ROX- BURY.....	1921.....		8,376 75	8,376 75		0.47 acre			
<i>Carried forward.....</i>		\$9,760,063 32	\$19,104,783 93	\$28,864,847 25		2,669.24 acres	45.40 miles	72.10 miles	7.93 miles
									118.4 acres

See footnotes on page 21.

Park Department Statistics to December 31, 1939.—Continued.

PARKS.	Year of Acquisition.	COST TO DATE.		Totals.	Area.	Length of Drive-ways.	Length of Walks.	Length of Rides.	Area of Ponds and Rivers.
		Land.	Construction.						
<i>Brought forward.</i> .....		\$9,760,063 32	\$19,104,783 93	\$28,864,847 25	2,669.24 acres	45.40 miles	72.10 miles	7.93 miles	118.4 acres
JOHN H. L. NOYES PLAYGROUND, EAST BOSTON..	1909.....	10,015 00	94,054 52	104,069 52	{ 5.24 acres land 3.07 " flats}				
WEST THIRD STREET PLAYGROUND, SOUTH BOSTON.	1909.....	10,201 30	4,000 00	14,201 30	0.28 acre				
*MATTHEW J. SWEENEY PLAYGROUND, SOUTH BOSTON.....	1909.....	10,201 30	4,597 40	14,798 70	0.47 "				
WILLIAM EUSTIS PLAYGROUND.....	1909-1924..	116,220 06	79,971 46	196,191 52	7.6 acres				
JOHN WINTHROP PLAYGROUND.....	1911.....	20,994 26	38,236 99	59,231 25	1.57 "				
*GEORGE H. WALKER PLAYGROUND, DORCHESTER..	1912-1914..	22,011 33	40,406 41	62,417 74	6.21 "		.10 mile		
*STANLEY A. RINGER PARK, ALLSTON.....	1916-1931..	57,090 00	71,092 98	128,182 98	12.38 "		.35 "		
*ARTHUR F. McLEAN PLAYGROUND, EAST BOSTON..	1917.....	20,754 17	15,489 97	36,244 14	0.43 acre				
PARIS STREET PLAYGROUND,	1912.....	50,630 64	13,083 38	63,714 02	1.27 acres				
TYLER STREET PLAYGROUND,	1912.....	26,239 19	12,203 86	38,443 05	0.26 acre				
*JOHN W. MURPHY PLAYGROUND, JAMAICA PLAIN,	1912-1919..	26,861 80	66,679 08	93,540 88	4.17 acres				
FORTSMOUTH STREET PLAYGROUND.....	1912.....	15,000 00	30,547 87	45,547 87	4.29 "				

TOWN MEETING PARK, DORCHESTER.....	1921.....	5,859 00	2,889 53	8,748 53	0.22 acre		
GYMNASIUM SITE, SOUTH BOSTON.....	1921.....	40,000 00	8,500 00	48,500 00	0.36 "		
6 FACTORY HILL PLAYGROUND.....	1912.....		8,837 89	8,837 89	5.2 acres		
8 RIPLEY PLAYGROUND.....	1913.....		13,465 75	13,465 75	0.86 acre		
7 SMITH'S POND PLAYGROUND, DORCHESTER.....	1914-1931.....		74,326 47	74,326 47	12.91 acres		
CEYLON STREET PLAYGROUND, DORCHESTER.....	1923.....	30,116 78	19,017 22	49,134 00	4.03 "		
8 CARL H. AHLSEN PLAYGROUND, DORCHESTER.....	1916.....				10.35 "	.20 "	
9 JOHN A. DOHERTY PLAYGROUND, DORCHESTER.....	1897.....		35,939 45	35,939 45	1.47 "		
AMERICAN LEGION PLAYGROUND, CONNOR STREET, EAST BOSTON.....	1924.....	63,300 00	26,768 33	90,068 33	3.38 "		
PLAYGROUND, READVILLE, BULLARD, MILTON AND REGENT STREETS, HYDE PARK.....	1924.....	13,417 34	18,782 66	32,200 00	5.03 "		
JEFFERSON PLAYGROUND, HEATH, FLOYD AND CRANFORD STREETS, ROXBURY..	1924.....	67,329 80	42,670 20	110,000 00	7.51 "		
FRANCIS PAREMAN PLAYGROUND, WACHUSETT STREET, FOREST HILLS...	1924.....	12,000 00	16,706 32	28,706 32	2.06 "		
<i>Carried forward.....</i>		\$10,378,305 29	\$19,843,051 67	\$30,221,356 96	2,769.86 acres	45.40 miles	72.75 miles
						7.93 miles	118.4 acres

See footnotes on page 21.

## Park Department Statistics to December 31, 1939.—Concluded.

PARKS.	Year of Acquisition.	COST TO DATE.			Area.	Length of Drive-ways.	Length of Walks.	Length of Rides.	Area of Ponds and Rivers.
		Land.	Construction.	Totals.					
<i>Brought forward</i> .....		\$10,378,305 29	\$19,843,051 67	\$30,221,356 96	2,769.86 acres	45.40 miles	72.75 miles	7.93 miles	118.4 acres
REV. FATHER BUCKLEY PLAYGROUND, BOLTON AND WEST THIRD STREETS, SOUTH BOSTON.....	1925.....	51,432 00	13,893 00	65,325 00	0.65 acre				
NORTH END PRADO, NORTH END.....	1925.....	107,600 00	23,372 38	130,972 38	0.76 "				
STATLER PARK, COLUMBUS AVENUE, STUART AND TENNYSON STREETS.....	1925.....	352,200 90	15,918 88	368,119 78	0.25 "				
BROOKSIDE AVENUE PLAYGROUND, JAMAICA PLAIN.....	1925.....	11,600 00	17,668 00	29,268 00	1.32 acres				
* WILLIAM AMERENA PLAYGROUND, EAST BOSTON.....	1925.....	37,949 50	39,366 17	77,315 67	4.06 "				
<sup>1c</sup> AIRFORT, EAST BOSTON.....	{ 1928-1931 and 1932 }	107,060 45	1,868,397 71	1,975,458 16	370 "	.65 mile			
GERTRUDE HOWES PLAYGROUND, ROXBURY.....	1930.....	26,397 40	10,227 28	36,624 68	1.88 "				
* MCKINNEY PLAYGROUND, BRIGHTON.....	1930.....	59,950 00	14,931 20	74,881 20	5.94 "				
* <sup>11</sup> THOMAS J. ROBERTS PLAYGROUND, DORCHESTER	1930-1931...	21,360 08	75,881 73	97,241 81	10.40 "		.20 "		
<sup>12</sup> MARTIN M. LOMASNEY PARK, WEST END.....	1930.....	25,000 00	51,477 74	76,477 74	2.57 "				
PLAYGROUND, FOSTER AND COURT STREETS, NORTH END.....	1930.....	3,924 00	4,354 25	8,278 25	0.10 acre				

GEORGE WRIGHT GOLF COURSE, HYDE PARK, WEST ROXBURY.....	1930-1931.....	146,818 08	348,083 94	494,902 02	158.48 acres			
MARY DRAPER PLAYGROUND, WEST ROXBURY.....	1932.....	23,853 80	20,856 07	44,709 87	5.76 "	.02 "	.18 "	
13 PARKER HILL PLAYGROUND, ROXBURY.....	1931.....		19,945 49	19,945 49	11.54 "			
WOOD AVENUE PLAYGROUND, NEAR WESTMINSTER STREET, HYDE PARK.....	1936.....	10,000 00		10,000 00	13.03 "			
SNOW HILL STREET PLAYGROUND, NORTH END.....	1937.....				1.13 "			
CHANDLER'S POND, BRIGHTON.....	1937.....				13.4 "			13.0 "
EVERETT AND ELM STREETS, DORCHESTER.....	1939.....				1.16 "			
LEO F. MCCARTHY PLAYGROUND, MEAD AND LUDLOW STREETS, CHARLESTOWN.....	1938.....				.28 acre			
Totals.....		\$11,363,451 50	\$22,367,425 51	\$33,730,877 01	3,372.57 acres	46.07 miles	73.88 miles	7.93 miles
								131.4 acres

\* Named for soldier killed in World War.

† An additional area of 18 acres is within the limits of the town of Brookline.

‡ An additional area of 16½ acres is within the limits of the town of Brookline.

§ Custody given to the city by Acts of Congress.

|| 49 acres transferred from Water Department; an additional area of 160.65 acres, including water area of 122.7 acres, is under control of the Metropolitan Water and Sewerage Board.

1 World War Memorial.

2 Acquired by ordinance, chapter 7 of 1922.

3 Transferred from and \$454.15 expended by the Public Grounds Department.

4 25,470 square feet transferred from and \$2,000 expended by the Public Grounds Department.

5 Acquired by annexation of Hyde Park.

6 Acquired by gift.

7 Transferred from Metropolitan Park.

8 Transferred from Street Laying-Out Department.

9 Formerly part of Christopher Gibson Playground; set apart and named November 9, 1920.

10 256 acres leased from Commonwealth of Massachusetts.

11 7.92 acres transferred from School Committee by chapter 229, Acts of 1931.

12 Acquired by section 2, chapter 371, Acts of 1929, and chapter 91 of General Laws; indenture December 11, 1930, under provision of chapter 92, section 87, of General Laws; Act of City Council, approved May 25, 1933.

13 Transferred from Institutions Department by chapter 40, Acts of 1931.

## PARK DEPARTMENT — CEMETERY DIVISION.

The following annual report is presented for the Cemetery Division from January 1, 1939, to December 31, 1939.

## DEPARTMENT CEMETERIES.

The burying grounds, cemeteries and tombs which are owned by and in charge of the City of Boston are as follows, with a total area of about 7,040,708 square feet:

	Square Feet.	Estab-lished.
<i>Bennington Street</i> , East Boston . . . . .	157,500	1838
<i>Rainsford Island</i> . . . . .	43,560	
<i>Bunker Hill</i> , Charlestown . . . . .	48,202	1807
<i>Phipps Street</i> , Charlestown . . . . .	76,740	1630
<i>Copp's Hill</i> , Hull street, City . . . . .	89,015	1659
<i>King's Chapel</i> , Tremont street, City . . . . .	19,344	1630
<i>Granary</i> , Tremont street, City . . . . .	82,063	1660
<i>Central</i> , Common, City . . . . .	60,693	1756
<i>South End South</i> , Washington street, City . . . . .	64,670	1810
<i>Hawes</i> , Emerson street, South Boston . . . . .	11,232	1816
<i>Union</i> , East Fifth street, South Boston . . . . .	5,470	1841
<i>North</i> , Upham's Corner, Dorchester . . . . .	142,587	1633
<i>Eliot</i> , Eustis street, Roxbury . . . . .	34,830	1630
<i>South</i> , Dorchester avenue, Dorchester . . . . .	95,462	1814
<i>Westerly</i> , Centre street, West Roxbury . . . . .	39,450	1683
<i>Walter Street</i> , West Roxbury . . . . .	35,100	1711
<i>Evergreen</i> , Commonwealth avenue, Brighton, . . . . .	604,520	1848
<i>Market Street</i> , Brighton . . . . .	18,072	1764
<i>Mount Hope</i> , Walk Hill street, 125 acres and square feet . . . . .	14,330	1851
<i>Fairview</i> , Fairview avenue, Hyde Park, about 50 acres, . . . . .		1892

## CITY TOMBS.

Twenty-five in the South Ground; six in Phipps Street Ground, Charlestown; one tomb for infants in South Ground; one tomb for infants and one for adults in Copp's Hill Ground; one for adults and one for infants in the Granary Ground, one for infants in King's Chapel Ground; one for infants in the Central Ground; two receiving tombs in East Boston; one receiving tomb in Dorchester North; one receiving tomb in Dorchester South; one receiving tomb in Evergreen Cemetery, Brighton; one receiving tomb in Mount Hope Cemetery, and one receiving tomb in Fairview Cemetery, Hyde Park.

Cemetery Division Receipts, January 1 to December 31, 1939.

CEMETERIES.	General Receipts.	Perpetual Care Receipts.	Interest on Perpetual Care.
Mount Hope.....	\$41,697 95	\$9,633 50	\$8,735 55
Fairview.....	14,448 80	4,492 50	2,122 09
Evergreen.....	7,512 55	3,260 00	2,275 35
Dorchester North.....	134 00		302 73
Dorchester South.....	113 75		100 40
Bennington Street.....	48 00		
Copp's Hill.....	35 00		100 00
Westerly.....	17 00		192 38
Central.....	15 00		100 00
Bunker Hill.....			80
Granary.....			100 00
King's Chapel.....			100 00
Phipps Street.....			5 00
	\$64,022 05	\$17,486 00	\$14,134 30
Total, General Fund, December 31, 1938.....		\$1,894,869 19	
Interest, General Fund, 1939.....		75,148 05	
Revenue (General Receipts), 1939.....		64,022 05	
			\$2,034,039 29
Payments from Fund during 1939:			
To Cemetery Maintenance and Improvement ..		\$60,000 00	
To Premiums on Investments purchased.....		20,146 02	
To Interest on Investments purchased.....		1,121 32	
			81,267 34
			\$1,952,771 95
Total, Perpetual Care Fund, December 31, 1939.....			637,241 00
Total Cemetery Fund.....			<u>\$2,590,012 95</u>

**Summary Statement of Cemetery Activities, January 1 to  
December 31, 1939.**

CEMETERIES.	Interments.	Lots Sold.	Graves Sold.	Lots in Per- petual Care.	Graves in Per- petual Care.	Lots in Annual Care.	Graves in Annual Care.	Foundations Built.	Preparing and Planting.	Various Orders.
Mount Hope.....	1,527	180	349	5,504	1,965	7	.....	297	59	11
Fairview.....	365	14	188	791	691	.....	2	96	.....	7
Evergreen.....	156	22	45	652	1,739	8	3	71	2	8
Dorchester North.....	6	.....	.....	124	.....	3	.....	1	.....	1
Dorchester South.....	4	.....	.....	32	.....	.....	.....	1	.....	.....
Bennington Street.....	2	.....	.....	.....	.....	.....	.....	.....	.....	.....
Copp's Hill.....	2	.....	.....	.....	.....	.....	.....	1	.....	.....
Central.....	1	.....	.....	.....	.....	.....	.....	.....	.....	.....
Bunker Hill.....	.....	.....	.....	1	.....	.....	.....	.....	.....	.....
Phipps Street.....	.....	.....	.....	1	.....	.....	.....	.....	.....	.....
Westerly.....	.....	.....	.....	1	.....	.....	.....	3	.....	.....
Totals.....	2,063	216	582	7,106	4,395	18	5	470	61	27

**Cemetery Division Expenditures for Maintenance, Year Ending  
December 31, 1939.**

Office . . . . .	\$6,642 34
Park Department . . . . .	663 83
Mount Hope . . . . .	27,138 33
Fairview . . . . .	6,158 13
Evergreen . . . . .	3,807 60
Dorchester North . . . . .	1,405 80
Dorchester South . . . . .	754 73
Bennington Street . . . . .	464 23
South End South . . . . .	397 50
Granary . . . . .	875 80
King's Chapel . . . . .	554 00
Phipps Street . . . . .	399 73
Bunker Hill . . . . .	390 00
Central . . . . .	10 00
Copp's Hill . . . . .	869 73
Eliot . . . . .	407 50

\$50,939 25



Cemetery Division Maintenance and Improvement, Year Ending  
December 31, 1939.

Office . . . . .	\$2,000 00
Mount Hope . . . . .	37,685 90
Fairview . . . . .	7,278 50
Evergreen . . . . .	5,105 00
Dorchester North . . . . .	1,856 00
Dorchester South . . . . .	1,341 00
Bennington Street . . . . .	46 80
Bunker Hill . . . . .	437 50
Central . . . . .	6 50
Copp's Hill . . . . .	780 00
Eliot . . . . .	420 00
Granary . . . . .	796 50
King's Chapel . . . . .	1,392 80
Phipps Street . . . . .	437 50
South End South . . . . .	405 00
Westerly . . . . .	11 00
	<hr/>
	<u>\$60,000 00</u>





