

BOSTON
PUBLIC
LIBRARY



MAY 27 1986

Boston Police

The Annual Report

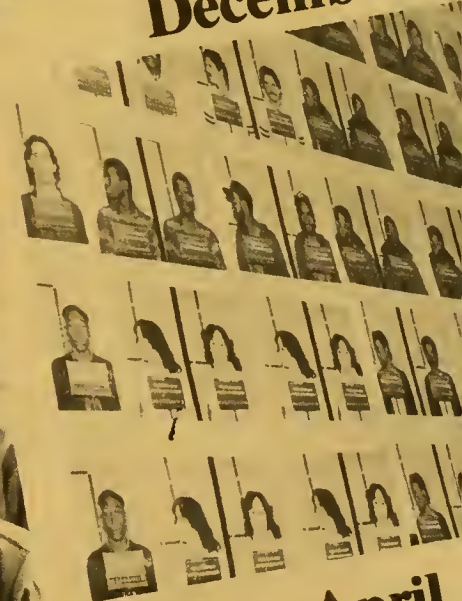
July 1982 - June 1983

August

July



December



November



April



March



1700
55
2
3



Kevin H. White
Mayor

Joseph M. Jordan
Commissioner

Index

City of Boston.....	2
Commissioner's Message.....	4
Command Staff.....	6
Organizational Chart.....	8
Office of the Commissioner.....	9
Bureau of Administrative Services.....	11
Bureau of Investigational Services.....	12
Bureau of Field Services.....	14
Part I and Part II Offenses.....	17
Area A Statistics.....	18
Area B Statistics.....	20
Area C Statistics.....	22
Area D Statistics.....	24
Area E Statistics.....	26
Response Times by Month.....	28
Calls for Services/Units Dispatched.....	29
Arrests-Adults.....	30
Arrests-Juveniles.....	32
Budget.....	33
Awards.....	34
In Memoriam.....	36

Boston

City of Boston Population

Metropolitan Population

Land Area

Metropolitan Land Area

City Parks

Paved Roadways

643,241

~~562,994~~

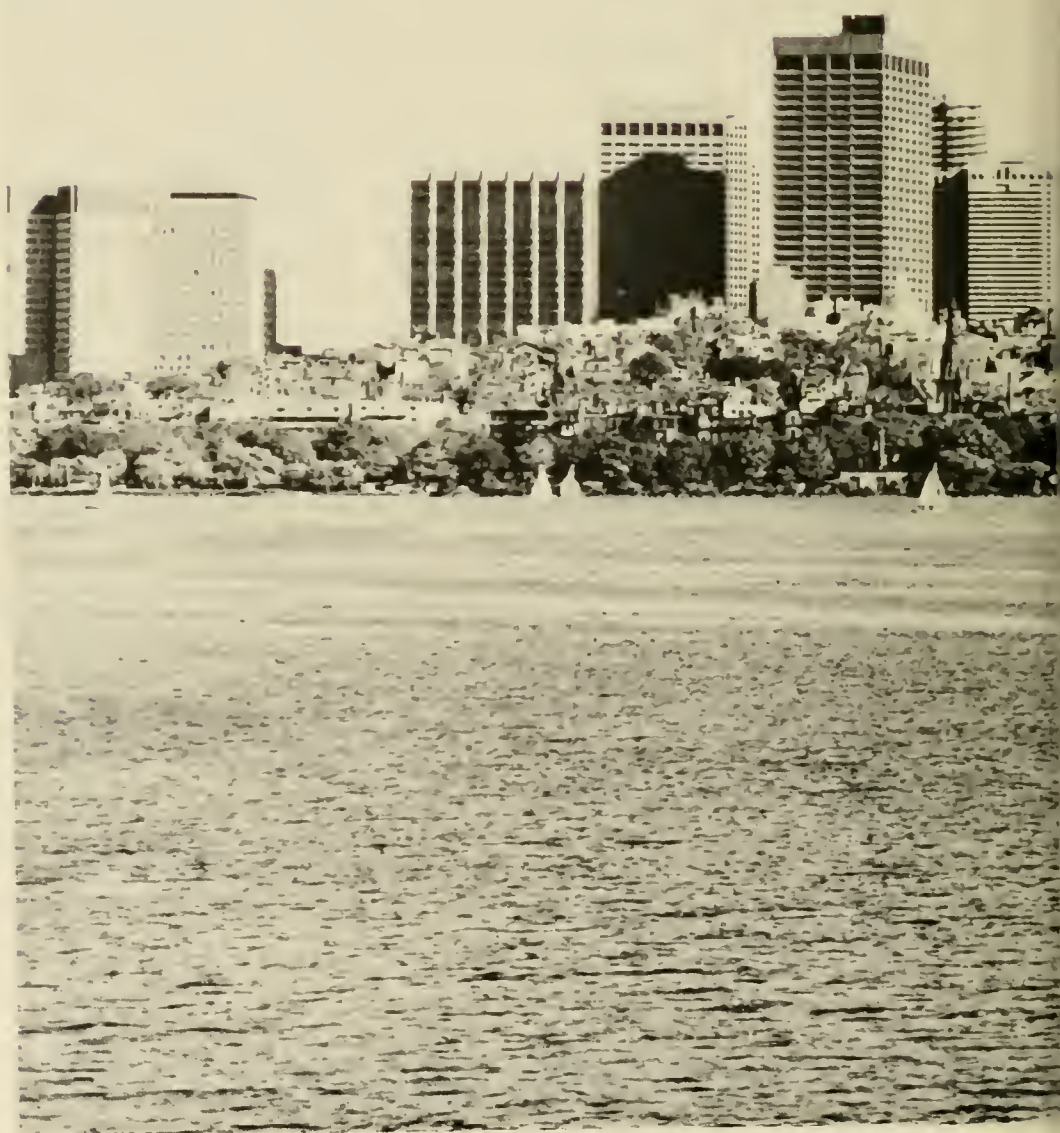
~~2,763,357~~ 2,900,

50.1 Square Miles

1237 Square Miles

2500 Acres

917 Miles





Mayor Kevin H. White

City Council
Members at Large

Bruce C. Bolling
Raymond L. Flynn
Maura A. Hennigan
Christopher A. Iannella
Frederick Langone
Michael J. McCormack
Terrence P. McDermott
Albert L. O'Neil
Joseph M. Tierney

A Message From The Police Commissioner

To: His Honor the Mayor, the City Council and the Residents of the City of Boston:

In many respects, Fiscal Year 1982-1983 was a year of notable gains by the Boston Police Department. Laid off police officers were recalled, new police officers and cadets were hired, much needed equipment was purchased and the crime rate dropped for the first time in ten years.

The year started with the recall of the last one hundred and sixty-three officers who had been laid off as a result of the budget deficits caused by the so-called Tregor rebates, school overspending and Proposition 2½. This improvement in the patrol force was augmented by the hiring of more than two hundred new police officers. Additional personnel were added to the department rolls by hiring sixty new cadets during August.

The promotion of Superintendent Francis J. Coleman to Superintendent-in-Chief was the first of a series of promotions which included nineteen Sergeants to the grade of Lieutenant and twenty-three police officers to the grade of Sergeant.

An increase in the department budget of almost 10 million dollars over the previous fiscal year made it possible to replace the department's obsolete motor vehicles and radios.

Shortly after the new year, plans were announce for a major reorganization of the Department that involved a fundamental shift in the basic patrol strategy. The plans attempted to maximize the visability and effectiveness of the patrol force by rationalizing the use of existing resources and by shifting those resources to the areas of the greatest need.

The cornerstone of the new plan was the assignment of priorities to calls according to their urgency, and the allotment of personnel to the calls according to their priority. This new system necessitated the use of one officer units for non-emergency service calls and the assignment of two officers to every call for a crime in progress or for a life threatening situation.

As a result of the changes implemented under the Reorganization Plan, the Department more than doubled the number of beats that it fields on a daily basis. There were increases in the number of walking officers and motorcycle units working on a daily basis.

The effect of these changes had was almost instantaneous and unmis-takeable. Response time to all categories of calls dropped and by the end of the fiscal year had gone from a response time average of nine minutes to one of five minutes.



Perhaps most important of all, the crime rate began to drop for the first time in more than ten years. By the end of June, the Department had recorded almost eleven percent fewer crimes than it had for the corresponding previous year.

However the Department and the city are still faced with the fact that the local recidivism rate is more than seventy percent. The bulk of suspects that the department deals with have been processed before and can be classified as career criminals. Until the judiciary in this city realize the full extent of the problem and begin to act more aggressively, we can look for little change. Without a change in the recidivism rate, the department will have to continue to put its major effort into visibility and rapid response to act as a deterrent.

As we enter the new fiscal year, these trends appear to be intensifying. The crime rate continues to drop and the visibility of the Department's personnel is providing better service for all residents of the City of Boston. As the Reorganization Plan is further refined and a number of newly created units, such as the Auto Task Force and Burglary Task Force, begin their work in earnest, conditions can be expected to improve even more.

Joseph M. Jordan
Police Commissioner



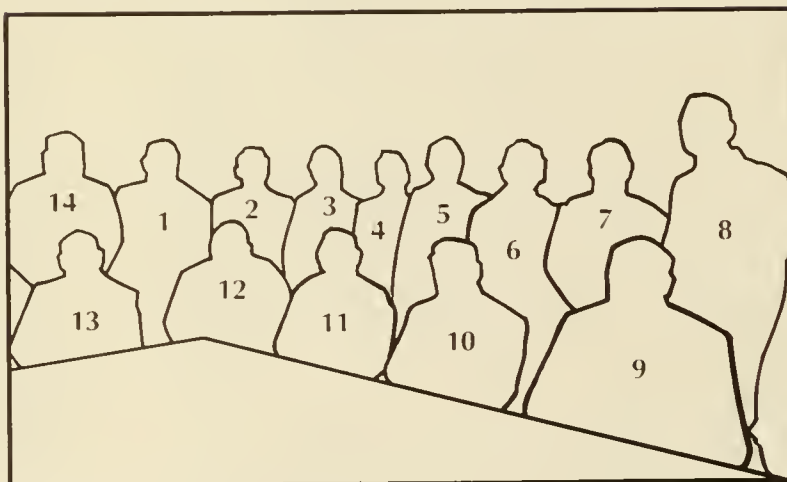
Command Staff

Francis J. Coleman (1)
Superintendent-In-Chief
Office of the Commissioner

John F. Geagan (2)
Executive Officer
Superintendent
Bureau of Field Services

Edward J. Walsh (3)
Deputy Superintendent
Bureau of Investigative Services
Intelligence Division

Stephen C. Delosh (4)
Deputy Superintendent
Bureau of Investigative Services
Internal Affairs Division





Herbert H. Stone (5)
Deputy Superintendent
Bureau of Field Services
Housing Patrol

William J. O'Brien (6)
Deputy Superintendent
Bureau of Field Services
Field Inspection Unit

Ronald X. Conway (7)
Deputy Superintendent
Bureau of Field Services
Special Operations Division

John E. Barry (8)
Deputy Superintendent
Bureau of Investigative Services
Homicide Unit

Martin F. Mulkern (9)
Superintendent
Bureau of Field Services
Special Operations Division

James J. MacDonald (10)
Superintendent
Chief, South District

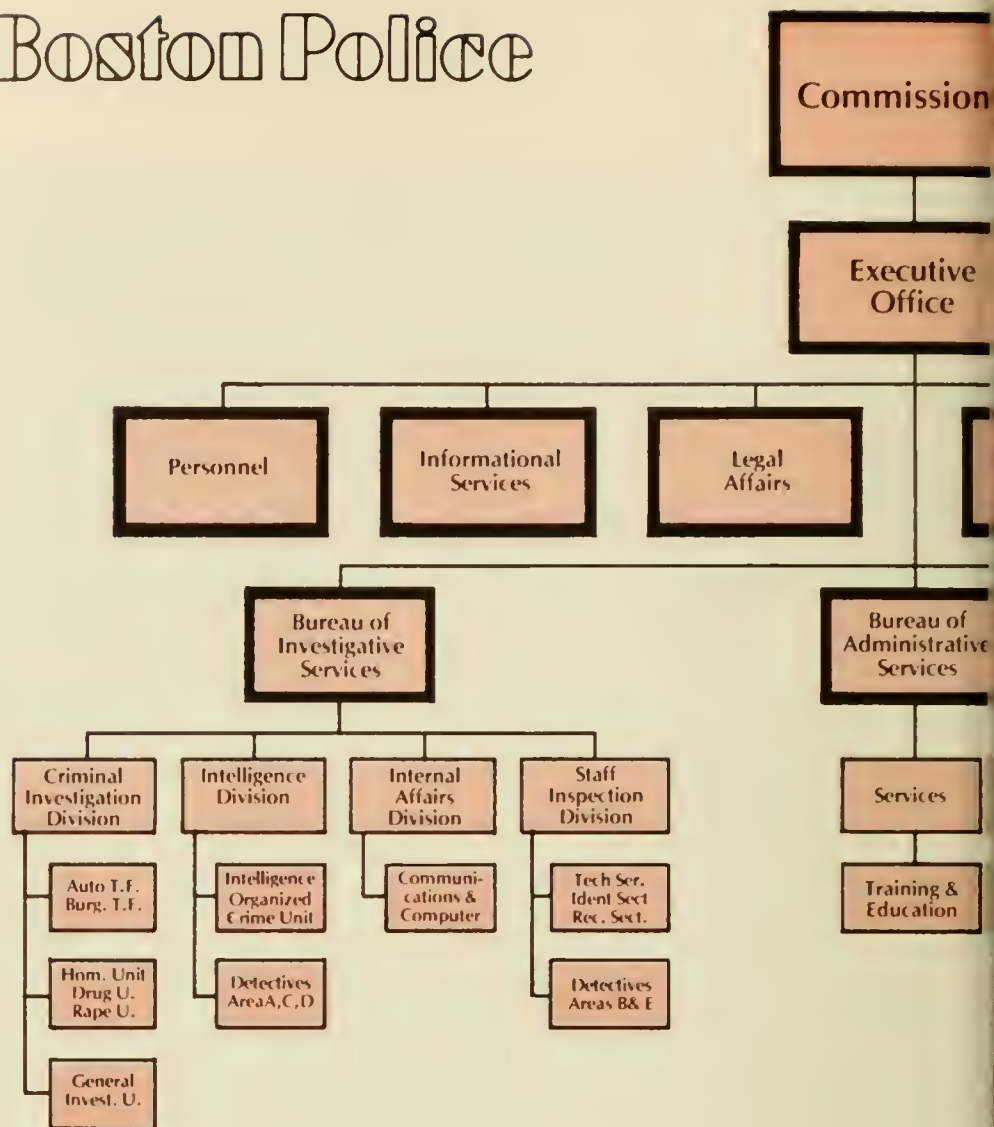
Anthony J. Leone (11)
Superintendent
Chief, North District

William K. Celester (12)
Superintendent
Bureau of Field Services (nights)

Edward F. Connolly (13)
Superintendent
Bureau of Administrative Services

Anthony J. DiNatale (14)
Superintendent
Bureau of Investigative Services

Boston Police



The Functions of the Boston Police Department

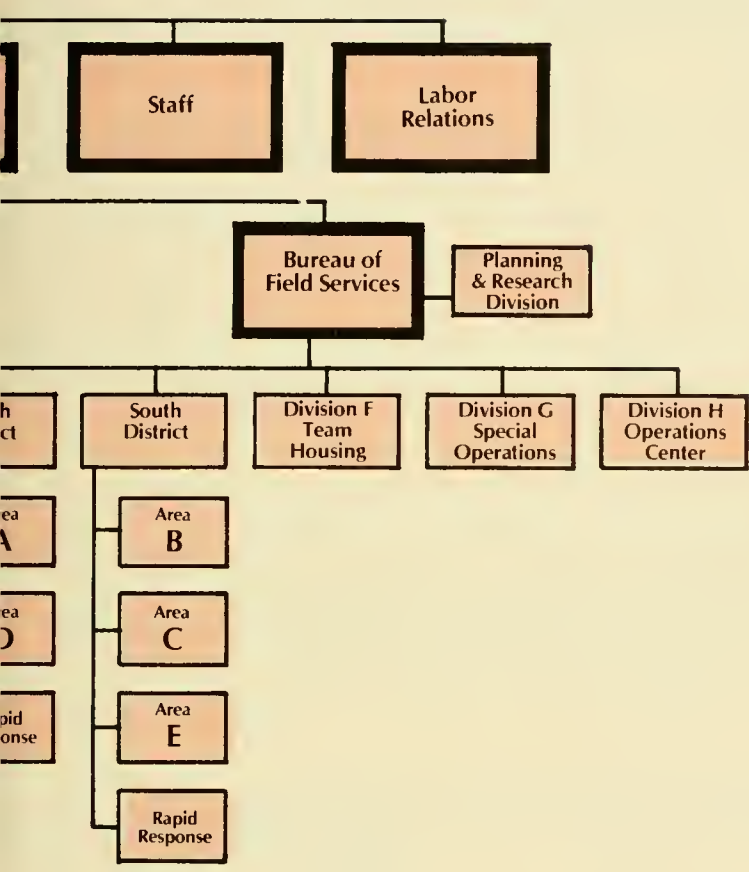
In March 1983, the Boston Police Department's organizational structure was changed to increase the Department's efficiency in meeting the changing needs of the Boston Community.

The new organizational structure (above) is organized into four major entities: the Office of the Commissioner, the Bureau of Administrative Services, the Bureau of Investigative Services, and the Bureau of Field Services.

The most evident changes of the Reorganization are the introduction of the one officer patrol cars, the two officer Rapid Response Units, and the greatly increased number of walking patrols in the city neighborhoods. As a result, there is a ninety-one percent increase in the number of patrols fielded by the Department.

Organization

Special
Investigation
Unit



The Office of the Commissioner

The Executive Office is responsible for ensuring that all orders, instructions and policies of the Police Commissioner are implemented. This Office also evaluates police services and insures successful service delivery by various Department Bureaus.

The Administrative Section manages and coordinates the activities of the Police Commissioner's Office. This Section also reviews and develops programs to improve the quality of police service.

Informational Services is responsible for keeping members of the Department and the public informed of police activities through interdepartmental literature, the Speakers Bureau and the news media.

The Office of the Commissioner continued...

The Labor Relations Section represents the Police Commissioner at employee collective bargaining negotiations, labor conferences and grievance discussions. This Section also assists the Police Commissioner in developing labor relations policies and advises the Command Staff in instituting compliance procedures.

The Legal Affairs Office maintains liaison with other criminal justice and judicial offices and agencies in order to develop responses to legal problems that are germane to police departments. This Office also handles all legal matters that transact in the Department.

The Management and Budget Section budgets, audits and analyzes all Department programs. The Section's Data Processing Unit provides the Department with statistical reports and improved management systems. Management and Budget also records, processes and administers the Department payroll.

The Personnel Division develops standards and policies for all personnel action, including establishment of job specifications, recruitment, selection and promotion, transfers, discipline, leaves, retirement and the monitoring of personnel activities. This Division also supervises the Department Medical Program and conducts various personnel service activities.

The Special Investigations Unit provides the Commissioner with information and recommendations concerning the integrity of the Department. This Unit also investigates all criminal activity within the Department and monitors the Department's actions to fight corruption.

Personnel

Superintendent	1	Lieutenant Detective	1
Lieutenant	4	Sergeant Detective	6
Sergeant	11	Detective	15
Police Officer, SPC	30	Civilian	104
Police Officer	104		
		Total Personnel	276



The Bureau of Administrative Services

The Bureau of Administrative Services provides support services to the Department's field activities. The Bureau is divided into the Services Division and the Training and Education Division.

The Services Division receives, records, and transmits to the City Treasurer all license fees collected by the Department. The Services Division also includes:

The Maintenance Section is responsible for the servicing of automobiles, buildings and communication equipment.

The Central Licensing Section regulates pawn shop operations, gun licensing and the City's Hackney Carriage Industry.

The Warrants Section serves as a clearinghouse for all warrants and summonses.

The Private Detail Section is responsible for the coordination of all off-duty police services rendered by members of the Department to private employers.

The Printing and Mailing Section prints and distributes all official Department documents necessary for the administration of the Department. This Section also is responsible for the handling and distribution of all U.S. and Department mail.

The Training and Education Division develops the Department Training Standards and administers all training and education programs.

Personnel

Superintendent	1	Police Officer, SPC	23
Captain	1	Police Officer	206
Lieutenant	2	Detective	1
Sergeant	9	Civilian	75
		Total Personnel	318

The Bureau of Investigative Services

The Bureau of Investigative Services oversees the activity of the various units that comprise the Criminal Investigation Division to assure that the best possible investigatory practices and procedures are maintained on a continuous basis. The Bureau is also responsible for the maintenance of proper liaison with Federal, state, and local departments and agencies which are concerned with all aspects of the criminal investigation process.

In March, the Department was reorganized to include the old Bureau of Inspectional Services, giving the Bureau the responsibility of overseeing the evaluation of police performance and investigation of complaints made against Department personnel.

The Bureau of Investigative Services is divided into four divisions: the Criminal Investigation Division, the Intelligence Division, the Internal Affairs Division and the Staff Inspection Division.

The Criminal Investigation Division consists of the following:

The Vice Control Section is responsible for investigating prostitution, gaming, Liquor Law Violations, pornography and drug trafficking. This Unit investigates reported attempts by criminal organizations to gain control of licensed establishments and businesses.

The Drug Control Unit is responsible for city-wide enforcement of the Massachusetts Controlled Substance Act, development and implementation of drug-related public education programs and liaison with public and private organizations involved in the prevention and control of drug abuse.

The Homicide Unit investigates and prepares for the Grand Jury cases of homicide, suspicious deaths, serious assaults and battered child cases.

The General Investigative Unit is responsible for city-wide investigations of crime against persons and property. This Unit will supplement other criminal investigation units by conducting surveillances, investigation and related activities.

The Rape Investigation Unit coordinates and supervises all Department investigations concerning rape and sex crimes. This Unit also maintains a continuous Liaison with agencies involved in aiding these victims.

The Technical Services Section maintains the Crime Laboratory, the Identification and Photography Unit and the Ballistics Unit.

Bureau of Investigative Services continued ...

The Intelligence Division keeps the Police Commissioner informed of all the operational responses of the Department to planned criminal occurrences. The Organized Crime Section of this Division conducts investigations of organized criminal activity for the purpose of court prosecutions. This Section also maintains liaison with other criminal justice agencies and maintains its own confidential records and files.

The Internal Affairs Division reviews complaint investigations and investigates allegations of police misconduct. While responsible for Department discipline, the Internal Affairs Division also advises the Police Commissioner as to where additional training and/or changes may be needed in order to reduce complaint frequency.

The Staff Inspection Division is responsible for the evaluation of Department performance towards primary goals. This includes assessing rules and regulations, making recommendations for improvement, assisting in policy and training development, and performing periodic inspections of units and districts to assess staffing needs and their level of performance. This Division also supervises the operations and performance of private towing companies working with the Police Department.

Personnel

Superintendent	2	Police Officer	13
Deputy Superintendent	2	Lieutenant Detective	4
Captain	2	Sergeant Detective	18
Lieutenant	4	Detective	98
Sergeant	6	Civilian	24
Police Officer, SPC	12		
		Total Personnel	185



The Bureau of Field Services

The Bureau of Field Services is responsible for the delivery of effective and efficient police services to the community.

On March 14, 1983, the new Reorganization and Deployment Plan was put into effect, restructuring the Bureau to include two districts, five areas, and four divisions.

The North and South Districts

The two District Commanders are responsible for the delivery of rapid response services in their respective districts.

Areas A-B-C-D-E

Each Area Commander is responsible for meeting the needs of the citizens by providing complete administrative and field supervision in the Area under his control. Area personnel are responsible for providing the best possible police services to their communities. These patrol forces also provide full cooperation with specialized units in seeking ways to improve the overall effectiveness of police operations within each area.

Each Area maintains a patrol force sufficient in size to provide continuous coverage and each maintains its own detective, administrative, supervisory and command personnel.

The Field Inspection Unit insures prompt and efficient police response to calls to the Department's emergency number "911" and the effectiveness of police enforcement activities.





The Bureau of Field Services continued...

The Planning and Research Division is responsible for researching operational and administrative problems in the Department and assisting units in developing effective responses to these problems. This Division works with other units in preparing long-range and contingency plans and is responsible for forms control, written directives, graphic arts, and the analysis of crime patterns and trends.

The Housing Patrol provides specialized coverage for the citizens in the various public housing developments throughout the city.

The Special Operations Division provides the Department with an array of highly specialized units that are utilized in situations where orthodox methods are insufficient. The Division consists of the following:

The Mobile Operations Patrol is the Department's motorcycle unit, which provides traffic enforcement, patrol and selective tactical operations.

The Canine Unit provides highly trained German Shepard dogs for patrol duty, drug searches, building searches and crowd control.

The Emergency Service Unit provides expertise in threat crisis situations that require special tools, lights, or equipment. These situations include bomb threats, hostage situations and snipers.

The Threat Management Teams are available for all life threat crisis situations.

The House of Detention is responsible for the care and custody of all women prisoners until the Court has disposed of their cases.



The Bureau of Field Services continued...

The Harbor Patrol Unit enforces the "Harbor Regulations" laws of the Commonwealth and the ordinances of the City of Boston in those areas of Boston Harbor that fall under the City's jurisdiction.

The Operations Division receives calls through the "911" Emergency Telephone System and assigns police resources to handle these calls. An Operations Center dispatches units in accordance with Department directives and plans developed by the Bureau of Field Services. The Operations Message Center contains communications facilities with LEAPS and NCIC computers as well as the Department Stolen Car Unit.

Personnel

Superintendent	6	Police Officer	863
Deputy Superintendent	14	Lieutenant Detective	1
Captain	7	Sergeant Detective	9
Lieutenant	44	Detective	90
Sergeant	111	Civilian	319
Police Officer, SPC	166		
		Total Personnel	1630

July 1982 through June 1983

Statistical Data

Offenses Reported by Month

Part I	July	Aug.	Sept.	Oct.	Nov.	Dec.	Jan.	Feb.	March	April	May	June	Total
1. Murder	5	6	9	4	11	9	5	10	7	0	4	6	77
1a. Mnslghter.	7	3	3	2	0	2	0	0	1	1	2	2	22
2. Rape	36	34	21	38	35	34	28	34	37	35	17	30	379
3. Robbery	435	506	486	557	606	726	629	537	498	507	499	561	6547
4. Aggr. Assault	345	386	335	421	334	297	323	245	318	367	366	410	4147
5. Burglary	1096	1012	1005	1016	951	1089	1125	867	973	895	895	854	11,778
6. Larceny	2179	2457	2397	2640	2367	2378	2119	1905	2259	2365	2363	2113	27,542
7. Auto Theft	1902	1920	1720	1925	1958	2048	1848	1807	2150	1773	1865	1374	22,290

Part II

8. Other Assault	303	301	273	295	266	254	246	205	261	320	345	318	3387
9. Arson	14	19	17	14	17	26	20	17	20	10	18	14	206
10. Forg./Cntftg.	21	28	22	37	25	34	10	10	10	20	13	26	256
11. Frauds	63	54	77	59	79	67	54	58	74	63	64	82	794
12. Embezzel.	2	1	0	0	1	1	1	1	1	1	1	1	11
13. Stol. Prop.	34	46	57	51	38	36	38	36	35	33	44	49	497
14. Vandalism	837	835	840	1045	942	885	830	713	949	1039	939	832	10,686
15. Weap. Viol.	17	18	22	39	20	21	30	16	20	15	24	24	266
16. Pros./C. Vice	94	121	119	108	93	85	80	89	121	110	129	109	1258
17. Sex Off.	21	25	31	31	24	15	11	20	21	22	23	41	285
18. Drug Laws	113	145	139	187	111	84	108	136	151	166	157	157	1654
19. Gambling	32	17	13	15	10	6	7	8	13	15	12	10	158
20. Fam. & Child	31	30	39	21	17	24	20	8	11	12	20	17	250
21. Driv. Intox.	54	57	69	61	83	69	54	57	76	92	102	84	858
22. Liq. Viol.	11	23	9	12	4	10	14	2	6	7	9	11	118
23. Dis. Cndct.	241	206	166	196	115	83	100	81	123	131	138	175	1749
24. Vagrancy	0	0	0	0	0	0	0	0	0	0	1	0	1
25. All Othr Off.	322	304	312	323	262	255	252	259	250	355	283	315	3492
26. Traffic Viol.	871	950	934	1253	1226	1138	1134	1160	1251	1306	1288	1140	13,651

Department Totals - Part 1

Offense/Clearance Comparison 1982 & 1983

Offense	Incidents 1981-82	Clearances 1981-82	Incidents 1982-83	Clearances 1982-83	Percentage Cleared 81-82	Percentage Cleared 82-83
Murder	101	58	77	54	57.4%	70.1%
Manslaughter	26	24	22	14	92.3%	63.6%
Rape	448	198	379	175	44.2%	46.2%
Robbery	9326	1451	6547	1572	15.5%	24.0%
Agg. Assault	3997	1752	4147	1978	43.8%	47.7%
Burglary	17280	1781	11778	2173	10.3%	18.4%
Larceny	27163	3407	27452	4084	12.5%	14.8%
Auto Theft	21820	688	22290	1037	3.2%	4.7%
Total Part I	80161	9358	72782	11087	11.7%	15.2%

The following pages contain these figures broken down into areas.



Deputy Joseph V. Saia
Area A (Days)



Deputy Norman J. Ebsary
Area A (Nights)

Area A North District

Part I - Offense / Clearance Comparison

Offense	Area A 1981-82	Area A 1982-83	Percentage Cleared 1981-82	Percentage Cleared 1982-83
Murder	20	13		
Clearance	11	10	55%	77%
Manslaughter	3	1		
Clearance	3	1	100%	100%
Rape	46	49		
Clearance	19	23	41.3%	46.9%
Robbery	1673	1132		
Clearance	277	255	16.6%	22.5%
Aggravated Assault	607	565		
Clearance	301	268	49.6%	47%
Burglary	2698	1479		
Clearance	203	201	7.5%	13.6%
Larceny	9642	8662		
Clearance	1458	1429	15.1%	16.5%
Auto Theft	5152	4662		
Clearance	171	366	3.3%	7.8%
Total	19841	16563		
Clearance	2443	2553	12.3%	15.4%



Station House



Area “A” consists of Charlestown, East Boston, Downtown and the North End.

Personnel

Superintendent	1
Deputy Superintendent	2
Captain	1
Lieutenant	4
Sergeant	17
Police Officer, SPC	10
Police Officer	174
Sergeant Detective	3
Detective	16
Civilian	37

Total Personnel

265



Deputy Paul E. Johnson
Area B (Days)



Deputy Maurice C. Flaherty
Area B (Nights)

Area B South District

Part I - Offense / Clearance Comparison

Offense	Area B 1981-82	Area B 1982-83	Percentage Cleared 1981-82	Percentage Cleared 1982-83
Murder	41	30		
Clearance	25	23	61%	76.7%
Manslaughter	5	4		
Clearance	6	2	120%	50%
Rape	182	161		
Clearance	67	77	36.8%	47.8%
Robbery	3385	2397		
Clearance	304	357	9%	14.8%
Aggravated Assault	1753	1859		
Clearance	701	917	40%	49.3%
Burglary	4326	3123		
Clearance	246	258	5.7%	8.3%
Larceny	4268	4365		
Clearance	343	442	8%	10.1%
Auto Theft	4607	5065		
Clearance	135	193	2.9%	3.8%
Total	18567	17004		
Clearance	1827	2269	9.8%	13.3%



Station House



Area "B" consists of Roxbury and Mattapan

Personnel

Deputy Superintendent	2
Captain	2
Lieutenant	4
Sergeant	14
Police Officer, SPC	3
Police Officer	172
Sergeant Detective	1
Detective	17
Civilian	35

Total Personnel	250
-----------------	-----



Deputy Daniel Flynn
Area C (Days)



Deputy John P. Boyle
Area C (Nights)

Area C South District

Part I - Offense/Clearance Comparison

Offense	Area C 1981-82	Area C 1982-83	Percentage Cleared 1981-82	Percentage Cleared 1982-83
Murder	21	17		
Clearance	14	7	66.7%	41.1%
Manslaughter	9	5		
Clearance	7	4	77.8%	80%
Rape	57	50		
Clearance	25	22	43.9%	44%
Robbery	1082	872		
Clearance	215	190	19.9%	21.8%
Aggravated Assault	577	598		
Clearance	302	269	52.3%	45%
Burglary	2793	1838		
Clearance	345	306	12.4%	16.6%
Larceny	3228	3677		
Clearance	403	526	12.5%	14.3%
Auto Theft	3142	3534		
Clearance	85	105	2.7%	3%
Total	10909	10591		
Clearance	1396	1429	12.8%	13.5%



Station House

Personnel

Superintendent	1
Deputy Superintendent	2
Captain	1
Lieutenant	6
Sergeant	18
Police Officer, SPC	4
Police Officer	145
Sergeant Detective	1
Detective	15
Civilian	36

Total Personnel	229
-----------------	-----

Area "C" consists of South Boston and Dorchester.



Deputy James J. Feeney
Area D (Days)



Deputy Paul F. Evans
Area D (Nights)

Area D North District

Part I - Offense / Clearance Comparison

Offense	Area D 1981-82	Area D 1982-83	Percentage Cleared 1981-82	Percentage Cleared 1982-83
Murder	14	8		
Clearance	7	8	50%	100%
Manslaughter	1	4		
Clearance		1	0%	25%
Rape	106	69		
Clearance	62	31	58.5%	45%
Robbery	2328	1611		
Clearance	472	631	20.3%	39.2%
Aggravated Assault	624	609		
Clearance	262	281	42%	46.1%
Burglary	4700	3542		
Clearance	630	970	13.4%	27.4%
Larceny	7455	7957		
Clearance	1011	1339	13.6%	16.8%
Auto Theft	6401	5903		
Clearance	220	208	3.4%	3.5%
Total	21629	19703		
Clearance	2664	3469	12.3%	17.6%



Area "D" consists of the Back Bay, South End and Brighton.

Personnel

Deputy Superintendent	2
Captain	1
Lieutenant	5
Sergeant	20
Police Officer, SPC	5
Police Officer	164
Sergeant Detective	2
Detective	25
Civilian	34
<hr/>	
Total Personnel	258



Deputy John E. Gifford
Area E (Days)



Deputy Phillip M. Vitti
Area E (Nights)

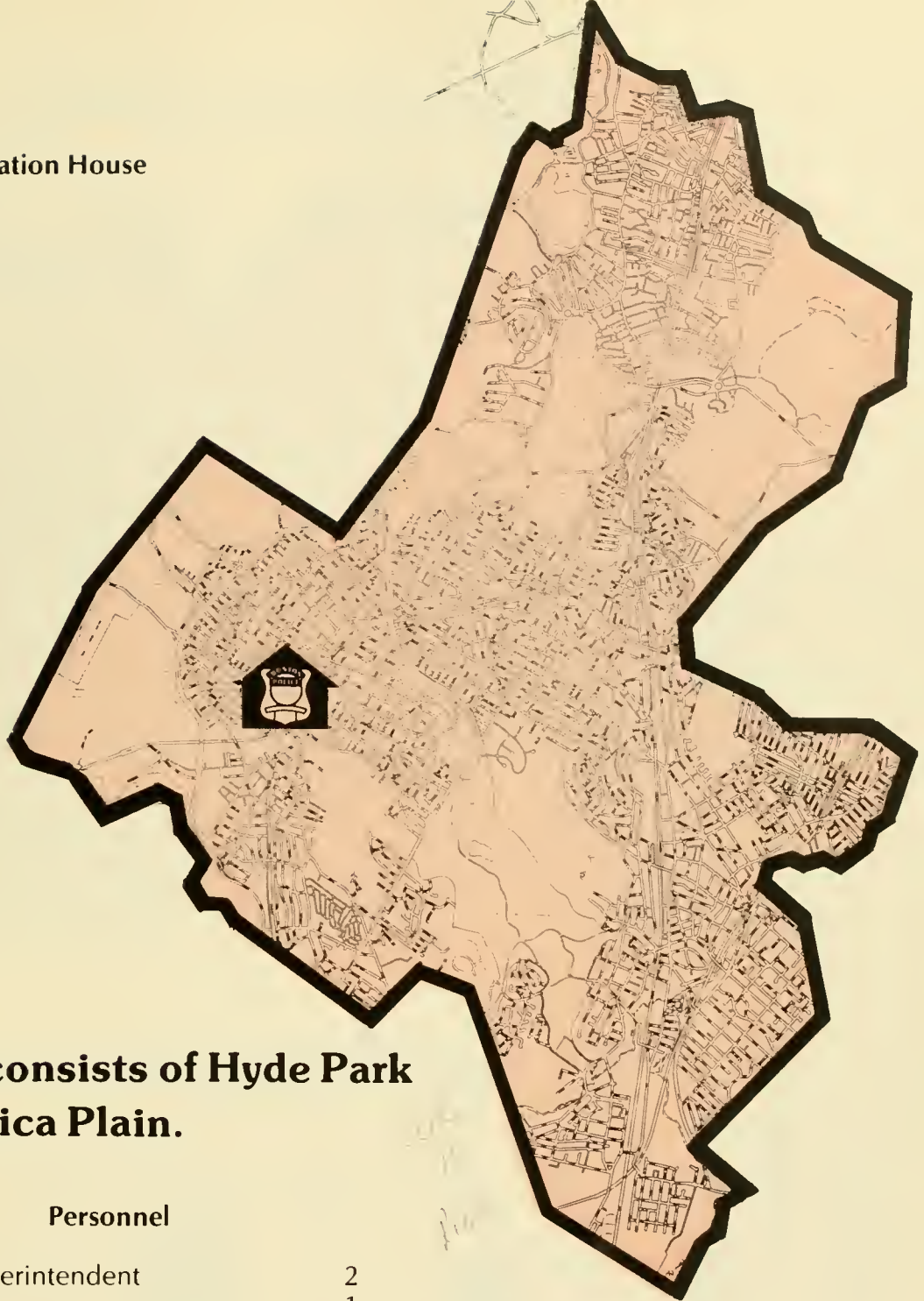
Area E South District

Part I - Offense / Clearance Comparison

Offense	Area E 1981-82	Area E 1982-83	Percentage Cleared 1981-82	Percentage Cleared 1982-83
Murder	5	9		
Clearance	1	6	20%	67%
Manslaughter	8	8		
Clearance	8	6	100%	75%
Rape	57	50		
Clearance	25	22	43.9%	44%
Robbery	858	535		
Clearance	182	139	21.2%	26%
Aggravated Assault	436	516		
Clearance	186	243	42.7%	47.1%
Burglary	2763	1796		
Clearance	357	438	12.9%	24.4%
Larceny	2570	2881		
Clearance	192	348	7.5%	12.1%
Auto Theft	2518	3126		
Clearance	77	165	3.1%	5.3%
Total	9215	8921		
Clearance	1028	1367	11.2%	15.3%



Station House



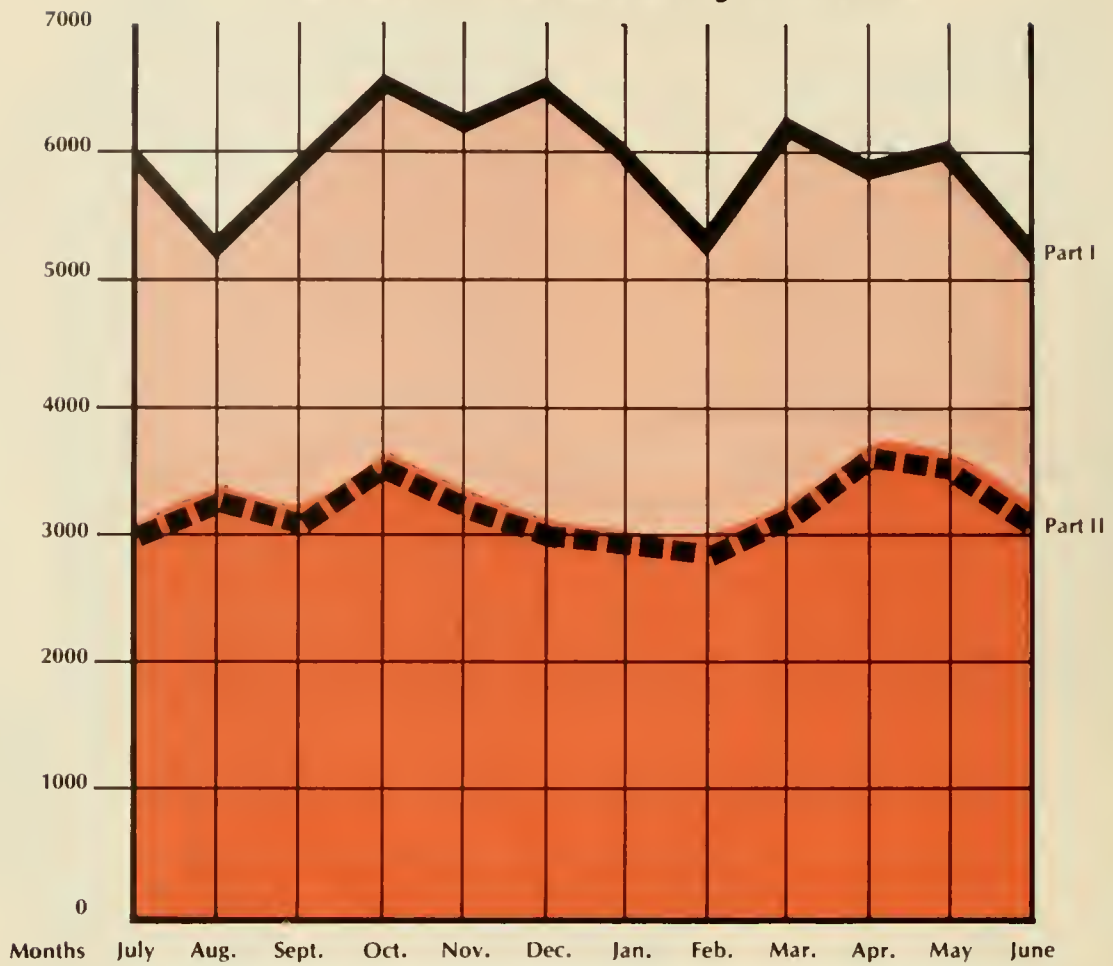
Area "E" consists of Hyde Park and Jamaica Plain.

Personnel

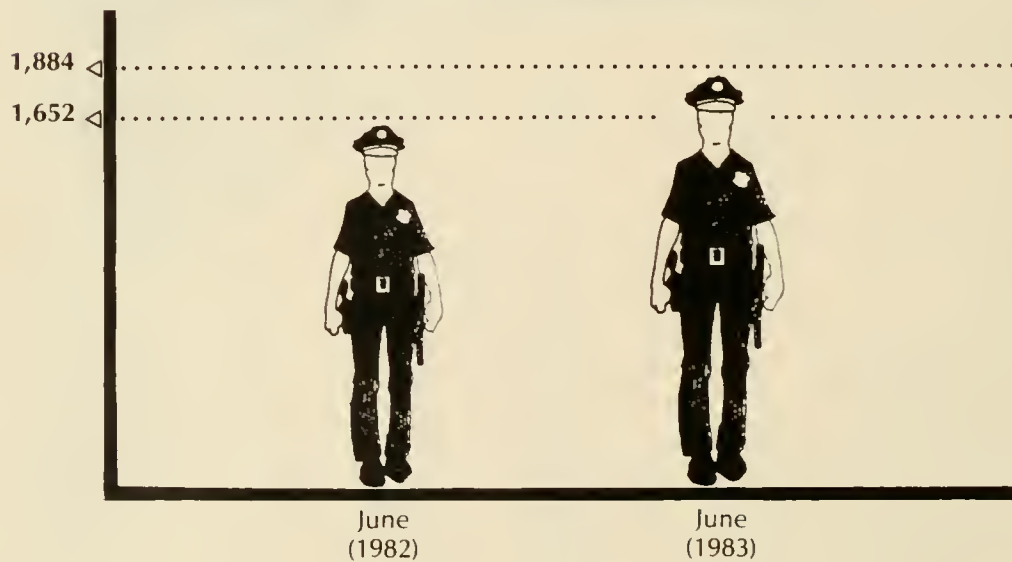
Deputy Superintendent	2
Captain	1
Lieutenant	8
Sergeant	15
Police Officer, SPC	6
Police Officer	121
Sergeant Detective	1
Detective	13
Civilian	37

Total Personnel	204
-----------------	-----

Part I/Part II Crimes by Month

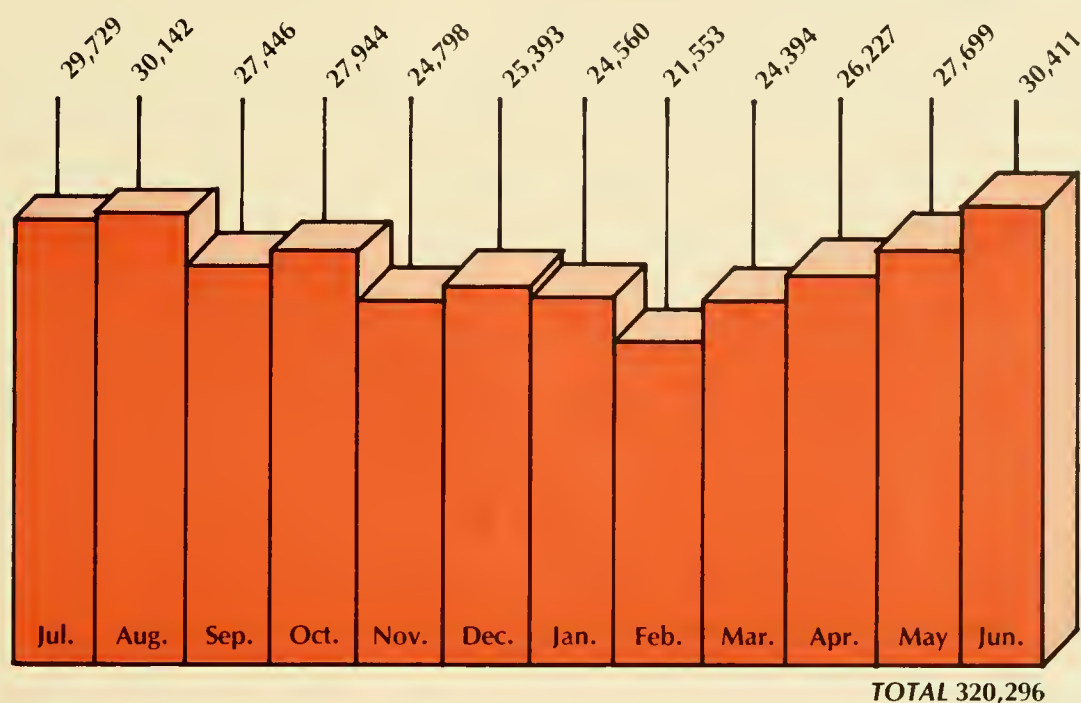


Manpower Comparison



Calls For Service (911) by Month

July 1982 to June 1983



Units Dispatched by Month

Month	Foot	M.O.P.	Mounted	Canine	Rpd. Rsp.	Car	Wagon	Gang
July	2294	1168	217	256		25,775	4870	3523
August	2573	1381	201	279		26,730	4760	3641
September	2186	1406	215	178		24,999	4328	2814
October	2427	1484	177	150		25,311	4213	2214
November	2024	974	143	98		22,703	3807	1580
December	1877	771	152	120		22,907	3455	1250
January	2142	701	250	99		22,241	3273	1020
February	2044	649	293	97		19,068	3184	1000
March	3999	8487	295	157	14,867 *	14,867	4822	1318
April	7114	1467	369	189	8864	14,295	5534	2171
May	6367	1191	300	124	9421	15,009	5775	2522
June	6983	1596	304	210	10,011	16,040	6192	4361
Total	42,030	21,275	2916	1957	43,163	249,945	54,213	27,414

* Note: The reorganization in March resulted in the introduction of one-man cruisers and two-man rapid response units.

Adult Arrests

Classification

Class I

	18	19	20	21	22	23
1. Murder.....	1	3	5	3	4	1
Manslaughter.....	0	0	0	1	0	0
2. Rape (forcible).....	14	11	11	13	10	11
3. Robbery.....	144	131	78	85	85	5
4. Aggravated Assault.....	122	102	102	99	82	8
5. Burglary.....	119	77	69	57	59	5
6. Larceny.....	239	199	183	149	132	11
7. Motor Vehicle Theft.....	151	122	81	71	68	5

Class II

8. Other Assault.....	53	53	64	49	61	5
9. Arson.....	4	2	3	3	5	0
10. Forgery and Counterfeiting.....	6	2	3	9	5	0
11. Fraud.....	2	1	0	2	1	0
12. Embezzlement.....						
13. Stolen Property.....	75	52	44	36	46	0
14. Vandalism.....	34	20	23	28	22	0
15. Weapons.....	19	27	29	16	15	0
16. Prostitution and Commercialized Vice....	105	135	183	133	136	1
17. Sex Offenses.....	11	9	11	8	7	0
18. Drug Abuse Violations.....	127	143	146	114	124	1
19. Gambling.....	5	12	14	14	16	0
20. Offenses Against Family & Children.....	3	4	11	8	8	0
21. Driving Under Influence.....	17	22	38	52	56	0
22. Liquor Laws.....	18	13	4	4	3	0
23. Drunkenness.....						
24. Disorderly Conduct.....	204	260	266	252	241	1
25. Vagrancy.....						
26. All Other Offenses.....	156	307	137	116	104	0

Total from July 1982 through June 1983

	25-29	30-34	35-39	40-44	45-49	50-54	55-59	60-64	65 +	Total
0	21	4	5	1	2	0	1	0	3	55
0	2	2	0	0	0	0	0	0	0	5
0	35	27	17	8	5	1	3	0	0	176
5	165	94	33	14	6	4	2	0	0	955
	317	227	110	75	33	39	9	12	7	1489
	187	73	39	26	2	5	1	0	0	808
5	552	347	155	81	58	42	27	13	9	2440
0	174	82	37	19	7	4	2	1	0	925
0	164	77	57	34	11	6	6	2	3	743
2	11	8	3	5	3	2	0	1	1	55
7	43	22	10	2	5	0	0	1	0	122
3	6	3	1	3	1	1	0	0	0	28
										0
	148	82	46	21	8	8	7	1	1	639
	64	31	21	15	7	7	3	2	0	315
	34	37	27	16	11	5	6	2	0	265
	328	127	36	6	10	1	1	4	1	1449
	28	20	12	10	6	5	4	1	2	149
	634	396	165	69	29	18	10	3	2	2226
	76	79	68	44	50	50	34	22	42	547
	6	36	15	8	6	2	0	0	0	121
	187	152	91	63	46	33	24	16	9	895
	18	19	21	13	13	4	10	7	6	158
										0
	495	213	90	52	20	15	9	6	4	2456
			0	0	0	0	0	0	0	0
	303	155	86	43	21	6	12	4	4	1629

Juvenile Arrests

Total from July 1982 through June 1983

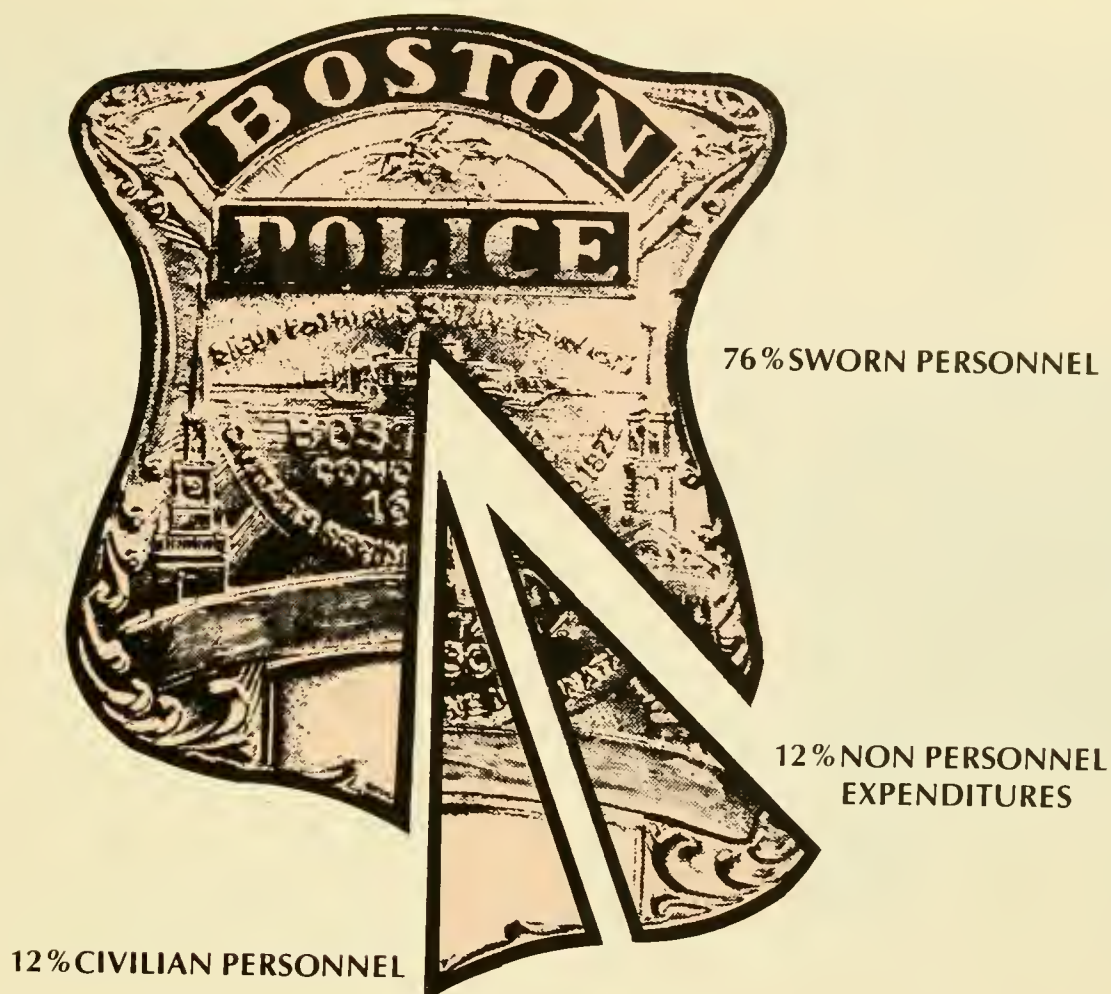
Classification

Class I

	10/under	11-12	13-14	15	16	17	Total
1. Murder.....			1	2	3	3	9
Manslaughter.....							
2. Rape (forcible).....	1		2	3	4	4	14
3. Robbery.....	4	12	54	78	115	163	426
4. Aggravated Assault.....	2	3	31	39	49	87	211
5. Burglary.....		9	55	54	63	93	274
6. Larceny.....	4	38	192	144	179	235	792
7. Motor Vehicle Theft.....	1	11	54	86	138	195	485

Class II

8. Other Assault.....		2	11	23	28	35	99
9. Arson.....		1	2	3	3	6	15
10. Forgery and Counterfeiting.....			1	1		1	3
11. Fraud.....						1	1
12. Embezzlement.....							
13. Stolen Property.....	1	2	11	27	45	64	150
14. Vandalism.....				10	12	15	37
15. Weapons.....			4	7	14	30	55
16. Prostitution and Commercialized Vice.....			4	7	14	31	56
17. Sex Offenses.....	1	1	1	4			7
18. Drug Abuse Violations.....		1	16	39	54	124	234
19. Gambling.....			1		1	1	3
20. Offenses Against Family & Children.....						1	1
21. Driving Under Influence.....					3	8	11
22. Liquor Law Violation.....		1	4	7	6	13	31
23. Drunkenness.....							
24. Disorderly Conduct.....		2	20	45	68	161	296
25. Vagrancy.....							
26. All Other Offenses.....		6	43	52	131	152	384
27. Suspicion.....							
28. Curfew/Loitering Law Violations.....			8	14	17	31	70
29. Run-Aways.....		1	8	5	5		19



1982 - 1983 Budget

Personnel Services

Permanent Employees.....	53,557,595.14
Overtime.....	2,287,075.27
TOTAL	55,844,670.41

Contractual Services

Communications.....	640,681.78
Light, Heat & Power.....	466,062.39
Bldgs Maintenance/Repair.....	141,001.19
Equipment Repairs/Service.....	451,817.37
Transportation.....	9,878.74
Misc. Contractual Services.....	416,002.04
TOTAL	2,125,443.51

Supplies/Materials

Auto Eng. Supplies.....	961,486.95
Food Supplies.....	51,107.54
Heating Supplies.....	116,109.27
Household Supplies.....	21,091.05
Medical, Dental.....	37.09
Office Supplies.....	97,859.34
Clothing Allowance.....	841,005.85
Misc. Supplies.....	433,807.26
TOTAL	2,522,504.35

Other Current Charges

952,379.83

Equipment

Auto Equipment.....	1,578,370.90
Office Furniture.....	24,679.01
Misc. Equipment.....	376,254.00
TOTAL	1,929,445.89

TOTAL

\$63,374,943.99

The Department Awards

The Boston Police Department Awards Board has selected the following named Department personnel as being worthy recipients of the Medals and Awards designated:



Officer Raynoldo C. Vialpando, District B,
was selected to receive the following:
The Schroeder Brothers Memorial Medal
The Department Medal of Honor
The Boston Police Relief Association Memorial Award
The Thomas F. Sullivan Award
The Boston Bank Award

The Department Medal of Honor, The Boston Police Relief Association Memorial Award, The Thomas F. Sullivan Award, and the Boston Bank Award were received by the following:

Officer Eugene I. Corbett, Dist. E
Officer John Foote, Team Police
Detective Vincent Hayes, Drug Control Unit
Officer Kenneth A. Lamb, Dist. C
Officer John A. Martel, Dist. D
Officer Paul Martin, Team Police

Detective Myles G. McGrail, Dist. A
Officer Francis M. McHowell, Jr. Data Processing Sect
Officer Joseph McLean, Personnel Div
Officer John J. Megnia, Dist. B
Officer Paul Varley, Dist. A

The William J. Taylor Meritorious Service Award, and The Boston Bank Award were received by the following:

Officer Charles M. Horsley, Team Police
Officer William Ingersoll, Dist. B

Officer Thomas L. Traylor, Dist. E
Officer Paul H. Williams, Team Police



Officer Joseph L. Olszowy, (Right) District A,
and **Officer Thomas P. Traynor**, (Left) District A,
were chosen to receive the following:

The Walter Scott Medal

The Department Medal of Honor

The Boston Police Relief Association Memorial Award

The Thomas F. Sullivan Award

The Boston Bank Award

Special Citations were received by the following:

Detective Kenneth Acerra, G.I.U.
Officer William T. Broderick, Dist. C
Officer Gerald Fabiano, Dist. A
Officer James M. Fong, Dist. A
Officer Richard M. Keefe, Dist. B
Officer Peter T. Lydon, District B
Detective William P. Lydon, Dist. C

Sergeant Thomas P. Maloney, Jr. Dist. D
Officer John A. Martel, Dist. D
Detective Emmett McNamara, Dist. A
Detective John D. Messia, Jr. Dist. C
Detective Kenneth Nave, Dist. A
Officer Joseph F. Supitkowsky, Dist. B
Officer Thomas H. Walsh, Dist. D

Board Members:

Supt. Anthony J. Leone
Dep. Supt. John A. Gifford
Dep. Supt. Paul E. Johnson
Lt. Joseph P. Sheridan
Sherwin B. Wexler
Supt. Francis J. Coleman (Chairman)

Police Officer's Prayer

*Oh Almighty God,
Whose great power and eternal
Wisdom embraces the universe.
Watch over all Police and
Law enforcement officers.
Protect them from harm
In the performance of their duty
To stop crime, robberies,
Riots and violence.
We pray, help them keep our streets
And homes safe day and night.
We recommend them to your loving care
Because their duty is dangerous.
Grant them your unending strength and
Courage in their daily assignments.
Dear God, protect these brave men,
Grant them your almighty protection,
Unite them safely with their families
After duty has ended.*

AMEN

In Memoriam

BOSTON POLICE RETIRE ASSOCIATION
Police Officer Spaulding H. Sanden
7-13-21 to 4-11-83 Appointed 9-8-48

Police Officer Charles D. Hubert
8-24-42 to 5-9-83 Appointed 5-29-67

Detective Pompeo A. Rufo
2-27-45 to 1-13-83 Appointed 10-1-56

Detective Sergeant James P. Chaisson
6-12-26 to 6-13-83 Appointed 8-23-50

Detective William J. Joyce
12-7-29 to 9-1-82 Appointed 9-22-54

Acknowledgements:

Editor:	Susan K. Locke
Assistant Editor:	James L. Burke, Jr.
Graphics:	Robert G. Neville Martha J. Healy
Photography:	Robert E. Stanton Susan K. Locke The Boston Globe The Boston Herald

BOSTON PUBLIC LIBRARY



3 9999 06313 964 4

