

707.4  
I&Gt  
1985

UNIVERSITY OF  
ILLINOIS LIBRARY  
AT URBANA-CHAMPAIGN  
BOOKSTACKS

707.4  
Il 6t  
1985

~~AGX~~

# TOWN and Country

State Amateur Art Exhibition



✓

✓

Digitized by the Internet Archive  
in 2011 with funding from  
University of Illinois Urbana-Champaign

<http://www.archive.org/details/annualtowncountr1985univ>

30th Annual

**TOWN** and  
*Country*  
State Amateur Art Exhibition

**State Critique and Gallery Feature**

Frank Gallo  
Professor of Art  
School of Art and Design  
University of Illinois

Presented by the University of Illinois  
Cooperative Extension Service,  
Colleges of Agriculture, Fine and  
Applied Arts and Applied Life Studies.

October 15 through October 27, 1985  
Market Place Mall, Champaign

The cover artwork, *Juice Bottles*, is from an oil painting done by Bernard Williams of Champaign County and is being exhibited in the 1985 Town and Country State Amateur Art Exhibition.

We welcome you to the 1985 Town and Country Amateur Art Exhibition and invite you to enjoy this display of work by Illinois amateur artists.

This show is the culmination of county and regional exhibitions throughout the state during the past spring and summer. The 113 works you will see are among the 6,675 pieces entered by 2,543 amateur artists in 53 county shows. There 1,094 blue-ribbon winners were selected for ten regional shows. To be included in this state show, the work had to receive a blue ribbon at a regional show.

In writing for the 25th year exhibition catalogue, Dr. Kenneth Lansing, U. of I. Professor of Art and Design, noted that little or no attention was given to amateur art in America until 1924. He made a point that amateur art is a superb visual resource and it should not be considered less important than professional art.

In characterizing amateur art, Dr. Lansing wrote that it frequently shows a high degree of knowledge, care and sensitivity with regard to subject matter. It also indicates a delightful lack of influence from current artistic fads, a surprising degree of originality in both idea and design, and it tells a lot about life. In addition, it tends to deal with the brighter side of life. Consequently, it has an uplifting effect upon the observer. In viewing the exhibition, we trust this will be your experience.

At the heart of the Town and Country Amateur Art program are the artists. To them, we extend congratulations on their creative achievement and acknowledge the important contribution they make to the cultural development in the state. We invite their continuing participation in the program.

To the dedicated volunteers, county advisers and faculty members who assure the program's continuing success, we express our appreciation.



K. Virginia Seidel, Chairperson  
State Town and Country Art Program  
Committee



The year 1985 marks the 30th anniversary of the Town and Country State Amateur Art Exhibition. It is also a time to reflect on how it came to be.

For three decades the University of Illinois has recognized the work of amateur artists through this statewide program. It began in 1956 as a rural arts show held in conjunction with the 55th Farm and Home Week. In the early years of the show, exhibitors were limited to residents of rural Illinois – the open country and towns of less than 10,000 population. The program has since been broadened to include all interested Illinois amateur artists.

Credit for the idea of a rural arts show in Illinois goes to Hadley Read, head of U. of I. Office of Agricultural Communications. Returning from the Minnesota Farm and Home Week in 1955, he brought a catalogue of their Rural Artists exhibit. Read suggested to E.H. (Duke) Regnier, a professor of rural recreation, that Illinois initiate a similar show for the Farm and Home Week.

Regnier and others agreed it was a good idea and thought the rural people of Illinois would be interested. At that time, some home advisers conducted programs to further the appreciation of arts and crafts. Also, the Cooperative Extension Service Program of Leisurecraft and Counseling Camp and the county craft schools could provide exhibitors.

The Division of University Extension was offering art courses conducted by Art Professor Walter M. Johnson. He accepted the idea enthusiastically as a way to unite the scattered efforts of educational, recreational and personal pursuits in arts and crafts.

The proposal received the active support and cooperation of the College of Fine and Applied Arts. Dean A.S. Weller met with members of the art staff – Glenn Bradshaw, Nicholas Britsky, George Foster, Don Frith, and Johnson – and the proceedings were presented to Dean Louis B. Howard of the College of Agriculture.

Howard approved the idea and appointed a committee consisting of L.E. Anderson, D.A. Brown, Jessie Heathman, Dorothy O. Twardock and Regnier to plan a rural arts show for the 55th Farm and Home Week. Bradshaw and Foster were consultants.

The response for the exhibit was greater than anticipated. The 100 entries crowded the Agriculture Library in Mumford Hall on the U. of I. campus. The show included the works of 42 artists from 19 Illinois communities. The jury, consisting of Johnson, Bradshaw, Foster and Frith, selected 10 pieces to receive special citations. Highlighting the first exhibit were a number of gallery features consisting of demonstrations in ceramics by Frith, oil painting by Foster, watercolors by Bradshaw, and miniatures by Nella Van Wyk, a guest artist from Johannesburg, South Africa.

The response and enthusiasm of Farm and Home Week participants, faculty, and staff were great enough to insure its becoming a regular part of Farm and Home Week.

Although the last Farm and Home Week was held in 1962, the Art Exhibition continues as an independent unit of the U. of I.

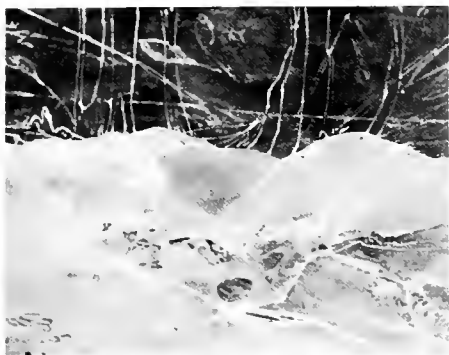
From the Agriculture Library the state show moved to the lower gym of the Women's Building (now the English Building), the Bevier Hall basement, then to the Architecture Gallery, and in 1968, the Town and Country State Amateur Art Exhibition opened in Lincoln Square, Urbana. For seventeen years, the Lincoln Square Management Association cooperated in staging the show there, giving thousands the opportunity to view the work of amateur artists from throughout the state.



The year 1985 marks the time to chart what is to be. In initiating a new wave of change, foremost is the move to a new location at the Market Place Shopping Center in Champaign with the cooperation of the Management in staging the show. Along with the move is a re-focus on educational experiences for artists with the return of a gallery feature on the final day of the exhibition. Developing human potential is a challenge of our time.

- |                                   |    |                                     |    |  |    |
|-----------------------------------|----|-------------------------------------|----|--|----|
| 1. Peter Albee . . . . .          | 12 | 40. Leslie M. Johnson . . . . .     | 17 | 93. Anand Talcherkar . . . . .         | 8  |
| 2. Marianna Anderson . . . . .    | 22 | 41. Teddy L. Johnson . . . . .      | 14 | 94. Rebecca Taubenheim . . . . .       | 12 |
| 3. Lorraine Bardell . . . . .     | 22 | 42. Ruby W. Jovanovich . . . . .    | 8  | 95. Myrabel Theobald . . . . .         | 7  |
| 4. Nancy L. Barker . . . . .      | 10 | 43. Sara Kelsey . . . . .           | 19 | 96. Mabel Thomson . . . . .            | 22 |
| 5. Donald W. Behymer . . . . .    | 19 | 44. Amy Kemmerer . . . . .          | 6  | 97. Thomas T. Tourlentes, M.D. . . . . | 7  |
| 6. Irene M. Beinor . . . . .      | 20 | 45. Mary M. Kerchner . . . . .      | 13 | 98. William D. Trousdale . . . . .     | 5  |
| 7. Marvin D. Blanton . . . . .    | 17 | 46. Jean Ketchem . . . . .          | 20 | 99. Shirley P. Ulis . . . . .          | 16 |
| 8. Alliene Bliss . . . . .        | 5  | 47. Darlene King . . . . .          | 14 | 100. Robert L. Veness . . . . .        | 6  |
| 9. Joannie Burkland . . . . .     | 16 | 48. Rosemary King . . . . .         | 15 | 101. Hazel L. Vogel . . . . .          | 14 |
| 10. David Campbell . . . . .      | 18 | 49. Barb Knoblawch . . . . .        | 21 | 102. Doris V. Welch . . . . .          | 21 |
| 11. Carole Casey . . . . .        | 16 | 50. Shirley Kusek . . . . .         | 10 | 103. William Westphal . . . . .        | 11 |
| 12. Sharon Conlee . . . . .       | 19 | 51. Cathy Lang . . . . .            | 9  | 104. Irene B. White . . . . .          | 10 |
| 13. Diane M. Cox . . . . .        | 17 | 52. Barbara K. Larcher . . . . .    | 5  | 105. Daniel A. Wickey . . . . .        | 18 |
| 14. Lori Curtis . . . . .         | 7  | 53. James H. Liles . . . . .        | 20 | 106. Bernard Williams . . . . .        | 16 |
| 15. Ruth J. Dahm . . . . .        | 11 | 54. Shirley Lindberg . . . . .      | 21 | 107. Dorothy Williams . . . . .        | 16 |
| 16. David Kent Dalton . . . . .   | 20 | 55. Bill Mahone . . . . .           | 10 | 108. Margaret Wilmouth . . . . .       | 13 |
| 17. Linda T. Devening . . . . .   | 22 | 56. Helen Mann . . . . .            | 12 | 109. Evelyn L. Wilson . . . . .        | 9  |
| 18. Nellie C. Dierker . . . . .   | 17 | 57. Fred Mannhardt . . . . .        | 15 | 110. Susan J. Winter . . . . .         | 18 |
| 19. Betty J. Erdmier . . . . .    | 7  | 58. Dan Martin . . . . .            | 19 | 111. Kathleen Wood . . . . .           | 13 |
| 20. Adele M. Estrin . . . . .     | 18 | 59. John W. Millard . . . . .       | 6  | 112. Beverly Woods . . . . .           | 15 |
| 21. Scott Gradle . . . . .        | 11 | 60. William K. Miller . . . . .     | 11 | 113. Elizabeth Woodworth . . . . .     | 14 |
| 22. Kate Greif . . . . .          | 19 | 61. Coral C. Mitchel . . . . .      | 21 |  |    |
| 23. Joseph M. Gross . . . . .     | 13 | 62. Lilli Nettell . . . . .         | 17 |  |    |
| 24. Mary Grossman . . . . .       | 10 | 63. Dan Nickrent . . . . .          | 7  |  |    |
| 25. Morris A. Hale . . . . .      | 21 | 64. Jan Noble . . . . .             | 19 |  |    |
| 26. Peg Hall . . . . .            | 18 | 65. Emily Ann North . . . . .       | 15 |  |    |
| 27. Merle Hilliwell . . . . .     | 11 | 66. Frances L. Pond . . . . .       | 13 |  |    |
| 28. Joan N. Hensley . . . . .     | 12 | 67. Dwyla Niccum Queen . . . . .    | 8  |  |    |
| 29. Loe Hicks . . . . .           | 20 | 68. Mary Redman . . . . .           | 5  |  |    |
| 30. Ken Highsmith . . . . .       | 9  | 69. Pamela Plata Reeter . . . . .   | 20 |  |    |
| 31. Edith E. Hise . . . . .       | 18 | 70. Marjorie D. Renwick . . . . .   | 14 |  |    |
| 32. Walter E. Hoffman . . . . .   | 16 | 71. Paul Riemer . . . . .           | 14 |  |    |
| 33. Lynn Huelsing . . . . .       | 11 | 72. David L. Rinkenberger . . . . . | 22 |  |    |
| 34. Eleanor A. Husser . . . . .   | 10 | 73. Marlene Rygh . . . . .          | 17 |  |    |
| 35. Arthur G. Hyde . . . . .      | 9  | 74. Flossie P. Savage . . . . .     | 10 |  |    |
| 36. Ann Jaun . . . . .            | 7  | 75. Cheryl A. Scarborough . . . . . | 22 |  |    |
| 37. Nona Issett . . . . .         | 8  | 76. Jane A. Scherer . . . . .       | 6  |  |    |
| 38. Ernest A. Jeanblanc . . . . . | 12 | 77. Richard J. Schicht . . . . .    | 12 |  |    |
| 39. Diane Johnson . . . . .       | 21 | 78. Jeanne Schurz . . . . .         | 15 |  |    |
|                                   |    | 79. Doris M. Schwarz . . . . .      | 13 |  |    |
|                                   |    | 80. Carolyn Scott . . . . .         | 13 |  |    |
|                                   |    | 81. Harry L. Scott . . . . .        | 8  |  |    |
|                                   |    | 82. Marilyn C. Shan . . . . .       | 6  |  |    |
|                                   |    | 83. Linda Mick Short . . . . .      | 6  |  |    |
|                                   |    | 84. William L. Short . . . . .      | 17 |  |    |
|                                   |    | 85. Phil Shragal . . . . .          | 20 |  |    |
|                                   |    | 86. Douglas A. Smithenry . . . . .  | 9  |  |    |
|                                   |    | 87. Orville Sommer . . . . .        | 6  |  |    |
|                                   |    | 88. Justyne Sondag . . . . .        | 15 |  |    |
|                                   |    | 89. L. Art Spomer . . . . .         | 5  |  |    |
|                                   |    | 90. Patricia Ann Stiens . . . . .   | 8  |  |    |
|                                   |    | 91. Michelle Sturgeon . . . . .     | 5  |  |    |
|                                   |    | 92. Bill Swango . . . . .           | 9  |  |    |





68



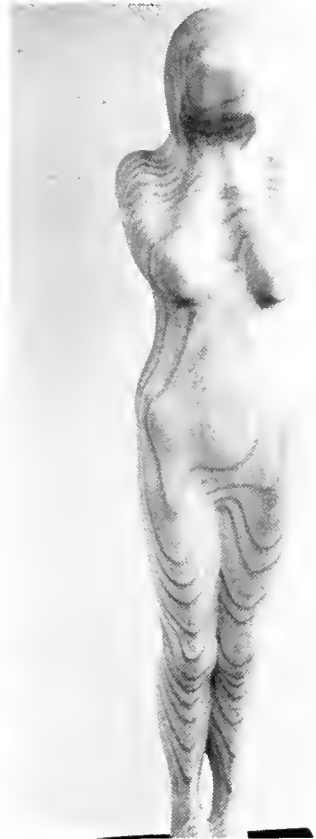
52



8



98



89

8. **Alliene Bliss**  
1215 South Quincy Drive, R.R.3, Clinton, IL 61727  
DeWitt County, Region 6  
*Dana/Oil/17 by 21 inches*  
(Not for Sale)

52. **Barbara K. Larcher**  
125 Walden Street, Jeisyville, Taylorville, IL 62568  
Christian County/Region 6  
*Still Life, Teapot/Watercolor/24 by 20 inches*  
(Not for Sale)

68. **Mary Redman**  
816 South Mill Street, Olney, IL 62450  
Richland County/Region 9  
*Shorelines/Watercolor/20 by 16 inches*  
(Not for Sale)

89. **L. Art Spomer**  
704 Burkwood Drive, Urbana, IL 61801  
Champaign County/Region 7  
*Study X/Wood Sculpture/4 by 16 inches*  
(See Artist)



91

91. **Michelle Sturgeon**  
5179 Rt. 64 West, Savanna, IL 61074  
Carroll County/Region 1  
*Moment of Reflection/Photography/18 by 11½ inches*  
(See Artist)

98. **William D. Trousdale**  
616 S. Grove Street, Kewanee, IL 61443  
Henry County/Region 3  
*Winter/Oil/24 by 16 inches*  
(Not for Sale)



83



100



87



44



59



76



82

44. **Amy Kemmerer**  
534 Burdick, Libertyville, IL 60048  
Lake County/Region 2  
*Premier Night*/Pen & Ink/28 by 26 inches  
(Not for Sale)

59. **John W. Millard**  
138 Kurlene Drive, Macomb, IL 61455  
McDonough County/Region 3  
*Von*/Colored Pencil/20 inches by 24 inches  
(Not for Sale)

76. **Jane A. Scherer**  
408 West Burkwood Court, Urbana, IL 61801  
Champaign County/Region 7  
*Untitled*/Photography/14 by 16 inches  
(Not for Sale)

82. **Marilyn C. Shan**  
R.R.2, Noble, IL 62868  
Richland County/Region 9  
*Sundown on a Snowy Field*/Acrylic/26½ by 22½ inches  
(See Artist)

83. **Linda Mick Short**  
426 Perkins, Mt. Vernon, IL 62864  
Jefferson County/Region 10  
*Iris*'84/Watercolor/18 by 23 inches  
(For Sale)

87. **Orville Sommer**  
2001 Independence Drive, Pekin, IL 61554  
Tazewell County/Region 4  
*The Pond*/Oil/20 by 16 inches  
(Not for Sale)

100. **Robert L. Veness**  
920 West State, Jacksonville, IL 62650  
Morgan County/Region 5  
*Flowers & Chair*/Watercolor/24 by 20 inches  
(Not for Sale)



19



97



63



36



14



95

14. **Lori Curtis**  
378-12 Eggers Drive, Macomb, IL 61455  
McDonough County/Region 3  
*Spanish Nettles/Photography/14 by 11 inches*  
(Not for Sale)

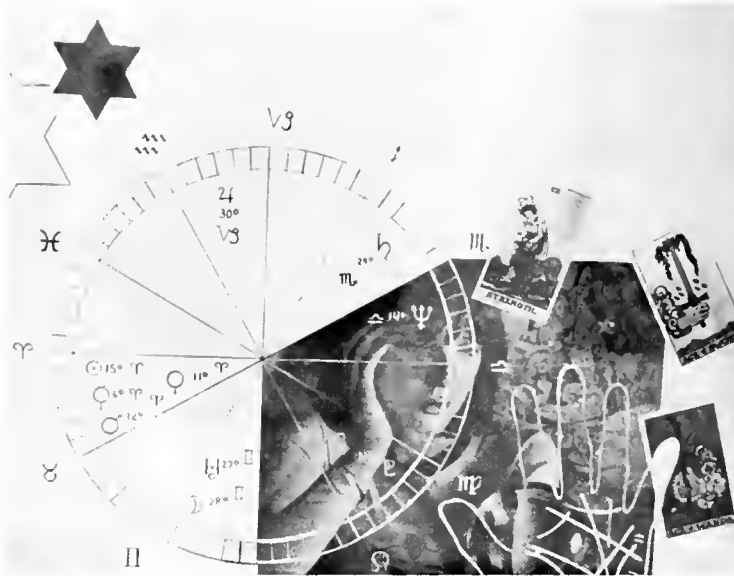
19. **Betty J. Erdmier**  
105 Highest Ct., P.O. Box 154, Shannon,  
IL 61078  
Carroll County/Region 1  
*Testing/Watercolor/31 by 25½ inches*  
(See Artist)

36. **Ann Iann**  
R.R.6, Olney, IL 62450  
Richland County/Region 9  
*Antiques For Sale/Watercolor/24 by 20 inches*  
(Not for Sale)

63. **Dan Nickrent**  
1601 Wiley, Urbana, IL 61801  
Champaign County/Region 7  
*Bass/Wood/5 by 12 inches*  
(Not for Sale)

95. **Myrabel Theobald**  
R.R.1, box 181, Buffalo, IL 62515  
Sangamon County/Region 6  
*Azaleas/Acrylic/28 by 22 inches*  
(For Sale)

97. **Thomas T. Turlentes, M.D.**  
Valleyview Road, R.R.2, Box 251, Galesburg,  
IL 61401  
Knox County/Region 3  
*Waiting for Spring/Photography/20 by 16*  
*inches*  
(For Sale)



67



90



81



42



93



37

37. **Nona Isett**  
 Richview Road, Route 2, Mt. Vernon, IL 62864  
 Jefferson County/Region 10  
*River's Edge*/Acrylic/20 by 16 inches  
 (Not for Sale)

42. **Ruby W. Jovanovich**  
 827 West Washington, Ottawa, IL 61350  
 LaSalle County/Region 4  
*Magnolia III*/Watercolor/24 by 18 inches  
 (See Artist)

67. **Dwyla Niccum Queen**  
 1012 Summit, Danville, IL 61832  
 Vermilion County/Region 7  
*Fortune-Teller*/Collage/27 by 23 inches  
 (See Artist)

81. **Harry L. Scott**  
 744 Goltra Avenue, Jacksonville, IL 62650  
 Morgan County/Region 5  
*Caught*/Woodcarving/12 by 16 inches  
 (See Artist)

90. **Patricia Ann Stiens**  
 Rt. 3, Box 69, Tamaroa, IL 62888  
 Jefferson County/Region 10  
*Charlotte Roslyn*/Pastel/18 by 24 inches  
 (Not for Sale)

93. **Anand Talcherkar**  
 1225 Streamwood, Carlinville, IL 62626  
 Macoupin County/Region 5  
*Sunset Gulf of Dubai Harbour*/Photography  
 (Not for Sale)



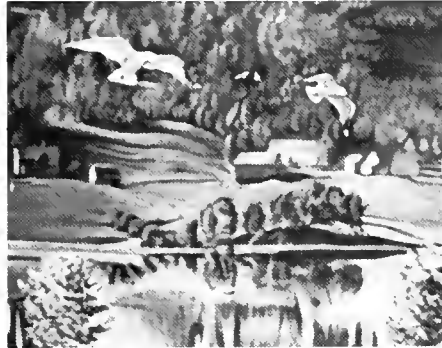
35



30



51



109



92



86

30. **Ken Highsmith**  
R.R.7, Box 141, Mt. Vernon, IL 62864  
Jefferson County/Region 10  
*Oyster Mushrooms*/Photography/14 by 11 inches  
(See Artist)

35. **Arthur G. Hyde**  
306 West 9th Street, Beardstown, IL 62618  
Cass County/Region 5  
*Rainbow Bridge*/Photography/21 by 21 inches  
(For Sale)

51. **Cathy Lang**  
R.R.2, Box 57, Cobden, IL 62920  
Union County/Region 10  
*O'Passoms*/Charcoal/20 inches by 16 inches  
(See Artist)

86. **Douglas A. Smithenry**  
R.R.3, Box 123, Newton, IL 62448  
Jasper County/Region 9  
*Only the Strong Survive*/Acrylic/48 by 36 inches  
(For Sale)

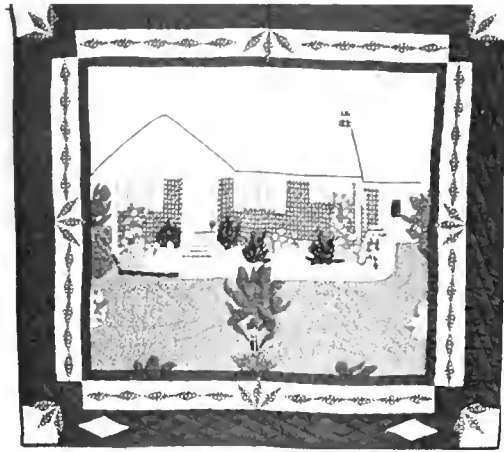
92. **Bill Swango**  
Rt. 1, Box 3, Smithfield, IL 61477  
Fulton County/Region 3  
*A Good Hunt*/Woodcarving/10 by 20 inches  
(Not for Sale)

109. **Evelyn L. Wilson**  
72 Hillcrest, R. 4, Clinton, IL 61727  
DeWitt County/Region 6  
*Sea Gulls*/Acrylic/24 by 18 inches  
(See Artist)





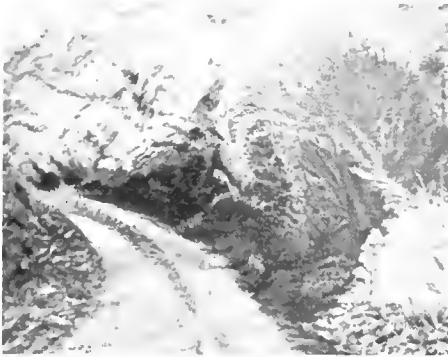
55



74



4



104



24



50



34

4. **Nancy L. Barker**  
1211 W. S. Third Street, Shelbyville, IL 62565  
Shelby County/Region 6  
*Alyssa*/Pastel/18 by 24 inches  
(Not for Sale)

24. **Mary Grossman**  
1839 Cornelia Road, Galesburg, IL 61401  
Knox County/Region 3  
*Hibiscus*/Photography/14 by 11 inches  
(Not for Sale)

34. **Eleanor A. Husser**  
215 Park Avenue West, Princeton, IL 61356  
Bureau County/Region 4  
*Lula Bell*/Oil/7¼ by 6 inches  
(Not for Sale)

50. **Shirley Kusek**  
Marguette Road, Spring Valley, IL 61362  
Bureau County/Region 4  
*Lamplight*/Oil/20 by 16½ inches  
(Not for Sale)

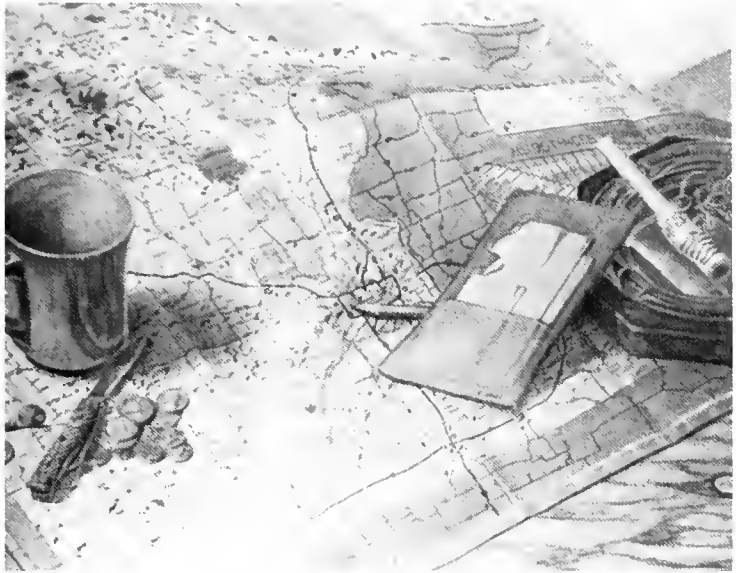
55. **Bill Mahone**  
R.R.1, Box 134, Moweaqua, IL 62550  
Christian County/Region 6  
*Hummingbird*/Wood Carving/6 by 6 inches  
(Not for Sale)

74. **Flossie P. Savage**  
605 York Drive, Fairfield, IL 62837  
Wayne County/Region 9  
*A Bit of Country*/Fiber/45 by 43 inches  
(Not for Sale)

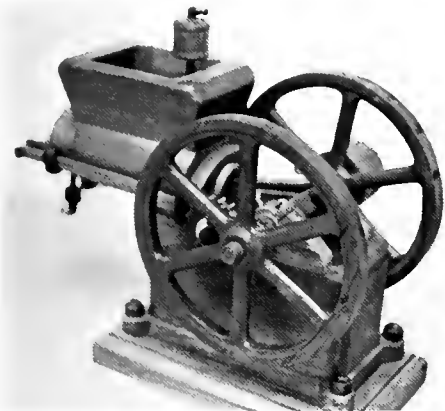
104. **Irene B. White**  
123 West Highee Street, Pittsfield, IL 62363  
Pike County/Region 5  
*Napoleon Hollow*/Oil/24 by 18 inches  
(See Artist)



15



21



27



33



103



60

15. **Ruth J. Dahm**  
204 South 27th Street, Belleville, IL 62221  
St. Clair County/Region 8  
*Resting in the Park*/Oil/31 by 43 inches  
(For Sale)

21. **Scott Gradle**  
320 Wabash, Mattoon, IL 61938  
Coles County/Region 7  
*Trip*/Pencil/24 by 18 inches  
(See Artist)

27. **Merle Hilliwell**  
Box 25, Winchester, IL 62694  
Scott County/Region 5  
*Gas Engine*/Wood/13 by 11½ inches  
(Not for Sale)

33. **Lynn Huelsing**  
109 East Lawrence, Effingham, IL 62401  
Effingham County/Region 9  
*Spring Cafe*/Watercolor/24 by 18 inches  
(For Sale)

60. **William K. Miller**  
R.R.1, Box 93, Little York, IL 61453  
Knox County/Region 3  
*Lap Robe*/Weaving/38 by 48 inches  
(Not for Sale)

103. **William Westphal**  
1205 Franklin, Danville, IL 61832  
Vermilion County/Region 7  
*Going Home*/Photography/14¼ by 22¼ inches  
(Not for Sale)



28



56



77



38



1

1. **Peter Albee**  
508 East Marion Street, Princeton, IL 61356  
Bureau County/Region 4  
*Metallic/Raku Clay & Glaze*/6 by 8 inches  
(See Artist)

28. **Joan N. Hensley**  
1809 South Mattis, Champaign, IL 61821  
Champaign, County/Region 7  
*Cindy/Pastel*/31 by 31 inches  
(Not for Sale)

38. **Ernest A. Jeanblanc**  
4753 South Derinda Road, Elizabeth, IL 61028  
JoDaviess County/Region 1  
*The Old Mill/Marquetry*/15¼ by 20½ inches  
(Not for Sale)

56. **Helen Mann**  
508 South Park, Marissa, IL 62557  
St. Clair County/Region 8  
*Memories/Oil*/12 by 16 inches  
(Not for Sale)

77. **Richard J. Schicht**  
1105 Hollycrest Drive, Champaign, IL 61821  
Champaign County/Region 7  
*Above the Clouds/Photography*/24 by 16 inches  
(For Sale)



94

94. **Rebecca Taubenheim**  
4324 Sassafras, Mt. Vernon, IL 62864  
Jefferson County/Region 10  
*Still Winter/Oil*/30 by 24 inches  
(See Artist)





80



45



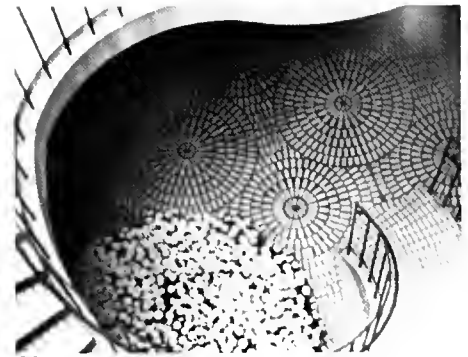
111



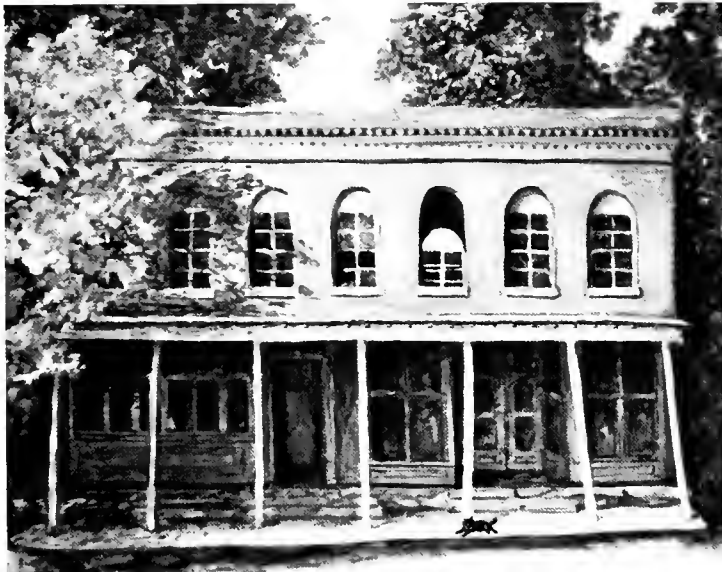
79



108



23



66

23. **Joseph M. Gross**  
398 West Cherry, Winchester, IL 62694  
Scott County/Region 5  
*Untitled III*/Photography/7 by 5 inches  
(Not for Sale)

45. **Mary M. Kerchner**  
408 Winslow Road, Belleville, IL 62221  
St. Clair County/Region 8  
*Fractured Landscape*/Watercolor/20 by 26 inches  
(Not for Sale)

66. **Frances L. Pond**  
R.R.1, R 34, Bluffs, IL 62621  
Scott County/Region 5  
*Downtown Exeter*/Oil/20 by 16 inches  
(Not for Sale)

79. **Doris M. Schwarz**  
501 Susan Court, O'Fallon, IL 62269  
St. Clair County/Region 8  
*Octopus*/Clay/14 by 9 inches  
(Not for Sale)

80. **Carolyn Scott**  
Route 2, Flora, IL 62839  
Clay County/Region 9  
*Serenity*/Photography/12 by 9 inches  
(Not for Sale)

108. **Margaret Wilmouth**  
300 Rosemary Drive, Collinsville, IL 62234  
Madison County/Region 8  
*Waterlilies*/Watercolor/27 by 18 inches  
(Not for Sale)

111. **Kathleen Wood**  
R.R.3, Box 287, Sullivan, IL 61951  
Moultrie County/Region 6  
*Mola*/Textile/17 by 21 inches  
(For Sale)



113



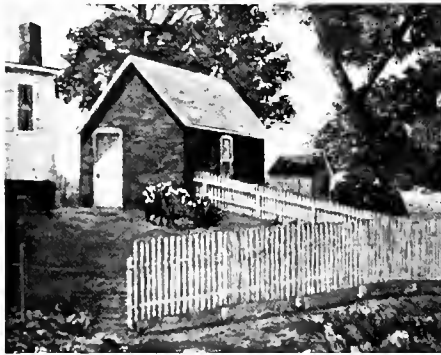
70



101



71



47



41

41. **Teddy L. Johnson**  
1515 North Cedar Street, Galesburg, IL 61401  
Knox County/Region 3  
*Twilight Splendor*/Pastel/16 by 20 inches  
(Not for Sale)

47. **Darlene King**  
25 Laurel, Canton, IL 61520  
Fulton County/Region 3  
*Jameson's*/Oil/36 by 30 inches  
(Not for Sale)

70. **Marjorie D. Renwick**  
523 Chapel Street, Ottawa, IL 61350  
LaSalle County/Region 4  
*J.P. Hopps*/Watercolor/44 by 24 inches  
(For Sale)

71. **Paul Riemer**  
R.R.2, Pleasant Plains, IL 62677  
Christian County/Region 6  
*Wild Flower*/Aluminum/5 feet, 11 inches by  
6 feet  
(Not for Sale)

101. **Hazel L. Vogel**  
332 Matilda, Pekin, IL 61554  
Tazewell County/Region 4  
*Solitude*/Oil/12 by 16 inches  
(See Artist)

113. **Elizabeth Woodworth**  
328 Hardin, Winchester, IL 62694  
Scott County/Region 5  
*Spring Crocus*/Photography/20 by 30 inches  
(See Artist)



78



112



65



88



57



48

48. **Rosemary King**  
408 Oak Ridge Drive, Ottawa, IL 61350  
LaSalle County/Region 4  
*Stir Fry/Oil*/24 by 18 inches  
(For Sale)

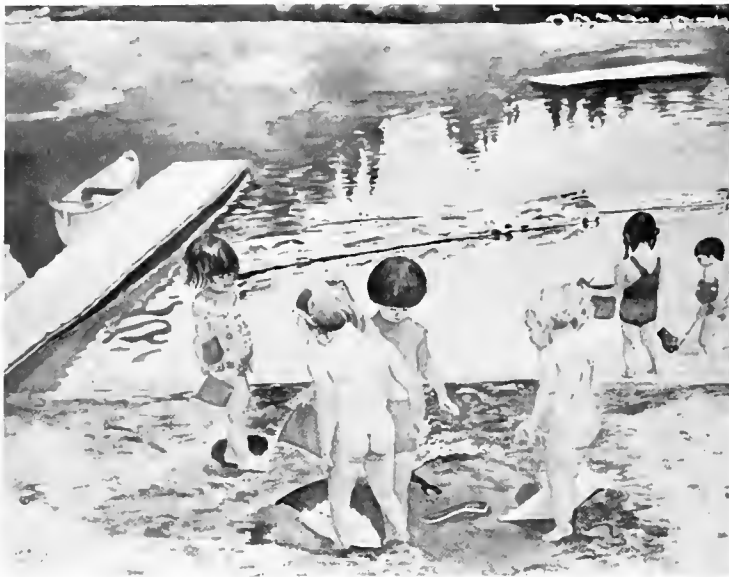
57. **Fred Mannhardt**  
c/o The Marigold, 275 East Carl Sandburg  
Drive, Galesburg, IL 61401  
Knox County/Region 3  
*The Marigold Band/Clay Model*/32 by 16  
inches  
(Not for Sale)

65. **Emily Ann North**  
150 Nevada Drive, Decatur, IL 62526  
Macon County/Region 6  
*Victorian Fantasy/Watercolor*/26 by 32 inches  
(See Artist)

78. **Jeanne Schurz**  
Box 326, Crossville, IL 62827  
White County/Region 10  
*Country Store/Photography*/14 by 18 inches  
(Not for Sale)

88. **Justyne Sondag**  
121 Roberta Lane, Belleville, IL 62223  
St. Clair County/Region 8  
*Carol's Garden/Watercolor*/36 by 28 inches  
(See Artist)

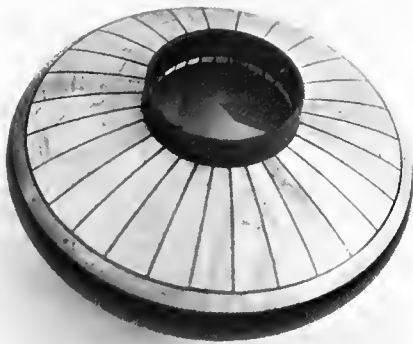
112. **Beverly Woods**  
104 Market Street, Pleasant Hill, IL 62366  
Pike County/Region 5  
*Pat's Place/Watercolor*/21 by 17 inches  
(See Artist)



99



11



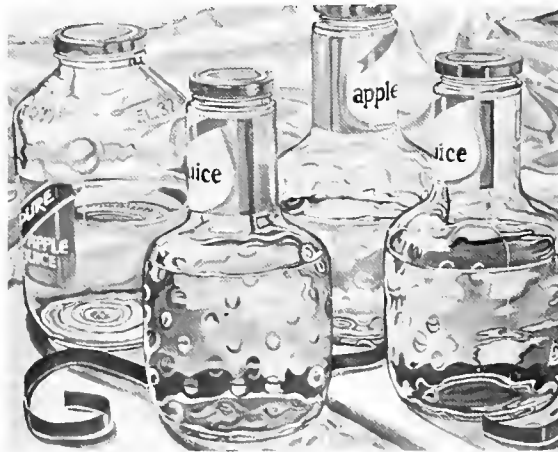
32



107



9



106

9. **Joannie Burkland**  
R.R.1, Paxton, IL 60957  
Ford County, Region 7  
*Sailboats/Watercolor/25 by 20 1/4 inches*  
(Not for Sale)

11. **Carole Casey**  
R.R.2, Box 42, Hamburg, IL 62045  
Calhoun County, Region 5  
*Hay Rake/Photography/11 by 14 inches*  
(Not for Sale)

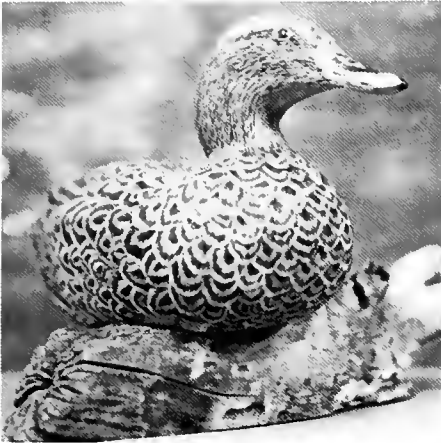
32. **Walter E. Hoffman**  
506 Witt Park Road, Sidney, IL 61877  
Champaign County/Region 7  
*Bowl/Wood/7 by 6 inches*  
(Not for Sale)

99. **Shirley P. Ulis**  
225 Sherman Street, Box 916, Seneca,  
IL 61360  
LaSalle County/Region 4  
*Beach Babies/Watercolor/33 by 28 inches*  
(Not for Sale)

106. **Bernard Williams**  
1205 South Randolph, Champaign, IL 61820  
*Juice Bottles/Oil/44 by 36 inches*  
(See Artist)

107. **Dorothy Williams**  
East Galaxy Drive, Woodlawn, IL 62898  
Jefferson County/Region 10  
*Basket of Blackeyed Susans/Acrylic/14 by 11 inches*  
(See Artist)





40



18



73



62



7



13



84

7. **Marvin D. Blanton**  
29 Lake Shore Drive, Danville, IL 61832  
Vermilion County, Region 7  
*Untitled*/Acrylic/13¾ by 17¼ inches  
(Not for Sale)

13. **Diane M. Cox**  
R.R.1, Box 72, Jerseyville, IL 62052  
Macoupin County, Region 8  
*Mystical*/Photography/13 5/8 by 16 1/8  
(Not for Sale)

18. **Nellie C. Dierker**  
2015 Illinois Avenue, Granite City, IL 62040  
Madison County/Region 8  
*Still Life # 1*/Watercolor/30½ by 24 inches  
(Not for Sale)

40. **Leslie M. Johnson**  
1253 East Fremont Street, Galesburg, IL 61401  
Knox County/Region 3  
*Mallard Hen*/Woodcarving/12 by 10 inches  
(See Artist)

62. **Lilli Nettell**  
206 East Hanover Place, Peoria, IL 61614  
Peoria County/Region 4  
*Outside Denver*/Oil/18 by 14 inches  
(Not for Sale)

73. **Marlene Rygh**  
6 Oakdale Court, Spring Valley, IL 61362  
Bureau County/Region 4  
*Julie*/Oil/16 by 20 inches  
(Not for Sale)

84. **William L. Short**  
426 Perkins, Mt. Vernon, IL 62864  
Jefferson County/Region 10  
*Landscape: Americana Series #1*/Acrylic/4 by 2 feet  
(For Sale)



10



31



110



105



26



20

10. **David Campbell**  
 Box 74, Nelson, IL 61058  
 Lee County, Region 1  
*Think/Paper & Ink/20 by 20 inches*  
 (Not for Sale)

20. **Adele M. Estrin**  
 14 Oakdale Avenue, Spring Valley, IL 61362  
 Bureau County/Region 4  
*Beulah Homestead-Michigan/Oil/16 by 12 inches*  
 (Not for Sale)

26. **Peg Hall**  
 123 East Elliott St., Paris, IL 61944  
 Edgar County/Region 7  
*Bed Spread/Textile & Lace/82 by 104 inches*  
 (Not for Sale)

31. **Edith E. Hise**  
 403 North 4th Street, Marshall, IL 62441  
 Clark County/Region 9  
*A Stroll with Domino/Oil/16 by 20 inches*  
 (Not for Sale)

105. **Daniel A. Wickey**  
 105 South Vine Street, Kewanee, IL 61443  
 Henry County/Region 3  
*Aiming High/Photography/14 by 12 inches*  
 (See Artist)

110. **Susan J. Winter**  
 314 Agnes, O'Fallon, IL 62269  
 St. Clair County/Region 8  
*Teapot/Watercolor/25 by 21 inches*  
 (Not for Sale)



43



12



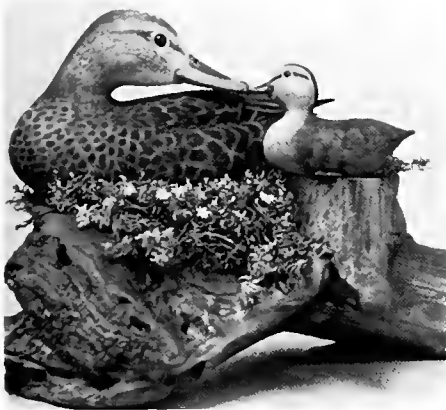
58



64



22



5

5. **Donald W. Behymer**  
P.O. Box 374, Rushville, IL 62681  
Schuyler County, Region 5  
*Mother Mallard*/Wood/16 by 16 inches  
[For Sale]

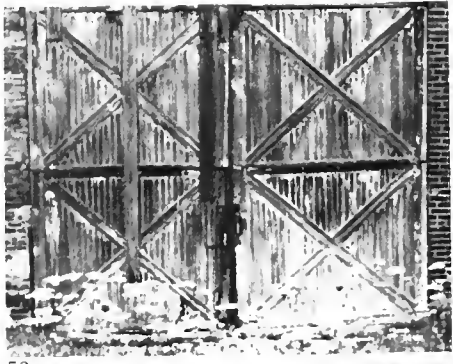
12. **Sharon Conlee**  
5116 W. Timbervue Ct., Peoria, IL 61615  
Peoria County, Region 4  
*East Coast*/Watercolor/24 by 20 inches  
[Not for Sale]

22. **Kate Greif**  
714 North West Street, Sandwich, IL 60548  
Kendall County/Region 2  
*Landscape*/Watercolor/21 by 17½ inches  
[For Sale]

43. **Sara Kelsey**  
R.R.1, Bone Gap, IL 62815  
Edwards County/Region 9  
*Grandpa and Ribbon - 1929*/Pencil/22 by 28 inches  
[Not for Sale]

58. **Dan Martin**  
R.R.3, Box 115, Carrollton, IL 62016  
Greene County/Region 5  
*Untitled*/Photography/15½ by 12 inches  
[Not for Sale]

64. **Jan Noble**  
419 East 16th Street, Gibson City, IL 60936  
Ford County/Region 7  
*Interlocking Tower*/Watercolor/28¾ by 36½ inches  
[See Artist]



53



69



85



29



46



6



16

6. **Irene M. Beinor**  
526 Oak Hill Drive, Edwardsville, IL 62025  
Madison County/Region 8  
*Untitled/Pastel/23 by 30 inches*  
(Not for Sale)

16. **David Kent Dalton**  
301 South Lafayette Street, Newton, IL 62448  
Jasper County/Region 9  
*Killer Whale/Woodcarving/10½ by 6½ inches*  
(See Artist)

29. **Loe Hicks**  
1190 Family Ct., Galesburg, IL 61401  
Knox County/Region 3  
*Silent Splendor/Oil/24 by 20 inches*  
(For Sale)

46. **Jean Ketchem**  
224 Dickinson, Springfield, IL 62704  
Sangamon County/Region 6  
*Sailboats/Pastel/40 by 29*  
(For Sale)

53. **James H. Liles**  
P.O. Box 375, Olney, IL 62450  
Clay County/Region 9  
*Yesterday's Doors/Photography/24 by 20 inches*  
(Not for Sale)

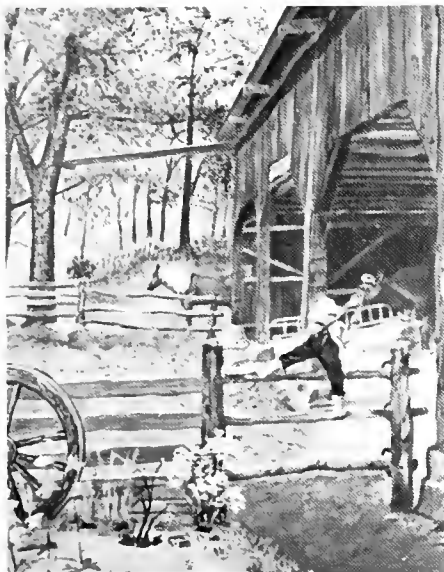
69. **Pamela Plata Reeter**  
607 Pepperidge Court, Edwardsville, IL 62025  
Madison County/Region 8  
*Blossoms/Watercolor/20 by 25 inches*  
(Not for Sale)

85. **Phil Shragal**  
195 Pennsylvania Avenue, Galesburg, IL 61401  
Knox County/Region 3  
*Foggy Sunrise/Photography/14 by 11 inches*  
(Not for Sale)





25



49

25. **Morris A. Hale**  
1 Litchfield Lane, Champaign, IL 61820  
Champaign County/Region 7  
*Optical Tracking Annex/Oil/24 by 30 inches*  
(Not for Sale)

39. **Diane Johnson**  
R.R.1, Box 44, Smithfield, IL 61477  
Fulton County/Region 3  
*Morning's Calm/Oil/24 by 20 inches*  
(Not for Sale)

49. **Barb Knoblawch**  
Lowpoint, IL 61545  
Woodford County/Region 4  
*Rustic Tranquility Ended/Oil/20½ by 26½ inches*  
(Not for Sale)

54. **Shirley Lindberg**  
510 N.E. 7th Avenue, Aledo, IL 61231  
Mercer County/Region 3  
*Proud Arabian/Charcoal/22 by 26 inches*  
(See Artist)



61



54



39

61. **Coral C. Mitchel**  
507 Charles Street, Newton, IL 62448  
Jasper County/Region 9  
*Homestead in Winter/Watercolor/24 by 20 inches*  
(For Sale)



102

102. **Doris V. Welch**  
1130 North Street, Mt. Vernon, IL 62864  
Jefferson County/Region 10  
*Early Moon and Afternoon Sunshine on Sylvester's Barn/Photography/12¾ by 12¾ inches*  
(Not for Sale)



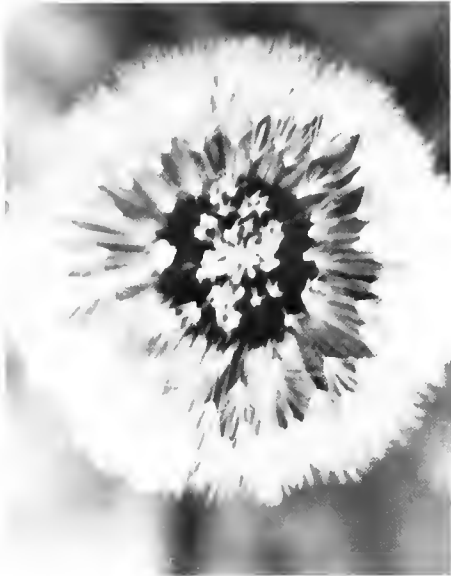
96



75



17



3



72



2

2. **Marianna Anderson**  
760 South Whitetail Circle, Mt. Zion, IL 62549  
Macon County/Region 6  
*Visions of Spring*/Watercolor/20 by 16 inches  
(See Artist)

3. **Lorraine Bardell**  
307 East Front Street, Wyand, IL 61379  
Bureau County, Region 4  
*Dandelion Fluff*/Photography/12 by 15 inches  
(For Sale)

17. **Linda T. Devening**  
500 East Fairground, Jerseyville, IL 62052  
*Untitled*/Photography/16¼ by 13½ inches  
(For Sale)

72. **David L. Rinkenberger**  
4 Old Orchard Lane, Streator, IL 61364  
LaSalle County/Region 4  
*A Keeper*/Woodcarving/14 by 7 inches  
(For Sale)

75. **Cheryl A. Scarborough**  
332 Riggan Road, Apt. 5, Troy, IL 62294  
Madison County/Region 8  
*Pastel Hawk*/Colored Pencil/21 by 20 inches  
(Not for Sale)

96. **Mabel Thomas**  
905 St. Louis Street, Hillsboro, IL 62049  
Montgomery County/Region 6  
*Early Sun's Rays*/Acrylic/34 by 29 inches  
(For Sale)

- K. Virginia Seidel**  
Extension Specialist  
Interior Design Home Furnishings  
Chairperson
- D. James Brademas**  
Extension Recreation Specialist  
Office of Recreation and Park Resources
- Vernon L. Brazle**  
Assistant Professor  
Extension Communications Specialist
- Robin C. Douglas**  
Lecturer  
School of Art and Design
- Susan Donahoe**  
Market Place Shopping Center
- Carol S. Fisher**  
Assistant Professor and Coordinator of  
Special Programs  
School of Art and Design
- Richard P. Kesler**  
Professor  
Extension Specialist Farm Management
- Harold J. Marshall**  
Associate Professor of Art and Design
- Jeri P. Marxman**  
Area Adviser  
Community Education
- Marisa R. Meador**  
Extension Communications Specialist  
Graphic Design
- Ann F. Rund**  
Extension Specialist  
4-H and Youth
- James C. Schmidt**  
Extension Specialist Home Horticulture
- L. Art Spomer**  
Artist – Participant  
Professor of Horticulture
- Ex-Officio:*
- Walter M. Johnson**  
Professor of Art and Design, Emerita
- Theodore Zernich, Jr.**  
Professor, Program Chairman  
School of Art and Design

- Region 1**  
Robert McCauley, Jurist  
Mt. Carroll
- Region 2**  
John Rogers, Jurist  
St. Charles
- Region 3**  
Dorothy Smith, Jurist  
Bishop Hill
- Region 4**  
John Hartmann, Jurist  
Princeton
- Region 5**  
Judy Felch, Jurist  
Jerseyville
- Region 6**  
Jerry Savage, Jurist  
Decatur
- Region 7**  
Alan Mette, Jurist  
Urbana
- Region 8**  
Don Davis, Jurist  
Fairview Heights
- Region 9**  
Cary Knoop, Jurist  
Marshall
- Region 10**  
Pat Covington, Jurist  
Mt. Vernon



Issued in furtherance of Cooperative Extension Work, Acts of May 8 and June 30, 1914, in cooperation with the U.S. Department of Agriculture. WILLIAM R. OSCHWALD, Director, Cooperative Extension Service, University of Illinois at Urbana-Champaign. The Illinois Cooperative Extension Service provides equal opportunities in programs and employment.

If you are interested in entering an exhibit in a county show next year and would like more information, contact your local Cooperative Extension Service county adviser.



## County Cooperative Extension Services Offices

ADAMS—Quincy 62301 330 S. 36th St., 217/223-8380	CUMBERLAND—Toledo 62468 Rt. 121 East, P.O. Box 218 217/849-3931	JASPER—Newton 62448 Rt. 1, Box 274 618/783-2521	MADISON—Edwardsville 62025 900 Hillsboro, Box 427 618/656-8400	ST. CLAIR—Belleville 62222 116 S. Charles, Box 331 618/233-1047
BOND—Greenville 62246 Lake & Harris Ave., Box 129 618/664-3665	DE KALB—DeKalb 60115 315 N. 6th St. 815/758-8194	JEFFERSON—Mt. Vernon 62864 R.R. 3, Route 15 West 618/242-0780	MARION—Salem 62881 1404 E. Main, Route 50 East 618/548-1446	SALINE—Harrisburg 62946 21½ W. Robinson 618/252-8391
BOONE—Belvidere 61008 930 W. Locust 815/544-3710	DE WITT—Clinton 61727 P.O. Box 347 217/935-5764	JERSEY—Jerseyville 62052 P.O. Box 408 618/498-4821	MARSHALL-PUTNAM—Henry 61537 300 Edward St. 309/582-2356	SANGAMON—Springfield 62792 P.O. Box 8467 217/782-4617
BROWN—Mt. Sterling 62353 109 W. North 217/773-3013	DOUGLAS—Tuscola 61953 900 S. Washington, R. 2, Box 2B 217/253-2713	JO DAVIESS—Elizabeth 61028 State Bank Bldg., Box 1 815/858-2273	MASON—Havana 62644 133 S. High, Box 170 309/543-3308	SCHUYLER—Rushville 62681 710 Maple Ave. 217/322-6033
BUREAU—Princeton 61356 R.R. 1, Rt. 26 North 815/875-2878	DU PAGE—Wheaton 60187 421 N. County Farm Rd. 312/682-7485	JOHNSON—Vienna 62995 208 E. Main, P.O. Box 158 618/658-5321	MASSAC—Metropolis 62960 R.R. 1, P.O. 489 618/524-2270	SCOTT—Winchester 62694 24 S. Main St. 217/742-3172
CALHOUN—Hardin 62047 Box 366, S. Park St. 618/576-2293	EDGAR—Paris 61944 210 W. Washington 217/465-8585	KANE—St. Charles 60174 535 Randall Road 312/584-6166	MENARD—Petersburg 62675 420 S. 7th St., Box 275 217/632-7491	SHELBY—Shelbyville 62565 P.O. Box 168 217/774-4321
CARROLL—Mt. Carroll 61053 Rt. 1, Box 5 815/244-9444	EDWARDS—Albion 62806 350 N. 7th St. 618/445-2934	KANKAKEE—Kankakee 60901-1366 K.C.C. Campus—River Rd. P.O. Box 2266 815/939-3626	MERCER—Aledo 61231 206 S.E. Third St., 309/582-5106	STARK—Toulon 61483 302 S. Downend St. 309/286-5421
CASS—Virginia 62691 210 S. Main St. 217/452-7255	EFFINGHAM—Effingham 62401 1209 Wenhe Dr. 217/347-7773	KENDALL—Yorkville 60560 4C Bonnie Lane 312/553-5824	MONROE—Waterloo 62298 P.O. Box 117 618/939-3434	STEPHENSON—Freeport 61032 Highland Comm. College Bldg. A, Pearl City Road 815/235-4125
CHAMPAIGN—Champaign 61821 1715 W. Springfield, P.O. Box 3367 217/352-3312	FAYETTE—Vandalia 62471 118 N. Sixth 618/283-2753	KNOX—Galesburg 61401 Box 1347, 180 S. Soangetaha Rd. 309/342-5108	MONTGOMERY—Hillsboro 62049 102 N. Main St. 217/532-3941	TAZEWELL—Pekin 61554 1505 Valle Vista 309/347-6614
CHRISTIAN—Taylorville 62568 1120 N. Webster 217/287-7246	FORD—Melvin 60952 100 N. Hunt St. 217/388-7791	LAKE—Grayslake 60030 33020 N. Highway 45 312/223-8627	MORGAN—Jacksonville 62650 104 N. Westgate Ave. 217/243-7424	UNION—Anna 62906 R.R. 1 618/833-5341
CLARK—Marshall 62441 R. 2 217/826-5422	FRANKLIN—Benton 62812 P.O. Box 539 618/439-3178	LASALLE—Ottawa 61350 125 Swanson St., Box 489 815/433-0707	MOULTRIE—Sullivan 61951 1102 W. Jackson, P.O. Box 223 217/728-4318	VERMILION—Danville 61832 3805 N. Vermilion 217/442-8615
CLAY—Louisville 62858 5.E. Corner, Square 618/665-3328	FULTON—Lewistown 61542 Rts. 97 & 100, Box 71 309/547-3711	LAWRENCE—Lawrenceville 62439 1406 Locust St., Box 657 618/943-5018	OGLE—Oregon 61061 Pines Rd., P.O. Box 99 815/732-2191	WABASH—Mt. Carmel 62863 Box 64, R.R. 1 618/262-5725
CLINTON—Breese 62230 E. Rt. U.S. 50, Box 9 618/526-4551	GALLATIN—Ridgway 62979 Murphy St., Box 487 618/272-4561	LEE—Amboy 61310 P.O. Box 119 815/857-3525	PEORIA—Peoria 61604 1716 N. University 309/686-6033	WARREN—Monmouth 61462 1000 N. Main, P.O. Box 325 309/734-5161
COLES—Charleston 61920 P.O. Box 159 217/345-7034	GREENE—Carrollton 62016 R.R. 3, Box 129C 217/942-6996	LIVINGSTON—Pontiac 61764 1412 South Locust 815/844-3622	PERRY—Pinckneyville 62274 113 E. South St., Box 347 618/357-2126	WASHINGTON—Nashville 62263 Box 192 618/327-8881
COOK—Chicago 60603 36 S. Wabash, Suite 1012 312/996-3535	GRUNDY—Morris 60450 116½ E. Washington 815/942-2725	LOGAN—Lincoln 62656 P.O. Box 38 217/732-8289	PIATT—Monticello 61856 427 West Marion, Box 407 217/762-2655	WAYNE—Fairfield 62837 1410 W. Main St., P.O. Box 647 618/842-3702
COOK—Chicago 60628 AREA 1 11033 S. Michigan Ave. 312/928-4000	HAMILTON—McLeansboro 62859 Courthouse 618/643-3416	MC DONOUGH—Macomb 61455 U.S. 136 West, Box 463 309/837-3939	PIKE—Pittsfield 62363 R.R. 3, Box 23 217/285-5543	WHITE—Carmi 62821 304 E. Robinson 618/382-2276
COOK—Chicago 60609 AREA II 5106 S. Western 312/737-1178	HANCOCK—Carthage 62321 550 N. Madison, R.R. 3, Box 114A 217/357-2150	MC HENRY—Woodstock 60098 789 McHenry Ave., P.O. Box 431 815/338-3737	POPE-HARDIN—Simpson 62985 Dixon Springs Agricultural Center, R.R. 2 618/695-2441	WHITESIDE—Morrison 61270 100 E. Knox 815/772-4075
COOK—Chicago 60618 AREA III 2804 W. Belmont 312/267-9838	HENDERSON—Stronghurst 61480 119 S. Broadway, P.O. Box 540 309/924-1471	MC LEAN—Bloomington 61701 402 Hershey Rd. 309/663-8306	PULASKI-ALEXANDER—Mounds 62964 124 N. Oak St. 618/745-6310	WILL—Joliet 60433 100 Manhattan Rd. 815/727-9296
COOK—Rolling Meadows 60008 4200 W. Euclid Avenue 312/991-1160	HENRY—Cambridge 61238 116 N. East St. 309/937-2424	MACON—Decatur 62526 985 Pershing Rd., Suite G4 Box 2219 217/877-6042	RANDOLPH—Sparta 62286 S. St. Louis & Belmont, Box C 618/443-4364	WILLIAMSON—Marion 62959 906 E. Reeves St. 618/993-3304
COOK—Tinley Park 60477 17500 S. Oak Park Ave., Suite 206 312/532-4369	IROQUOIS—Watska 60970 123 S. Fifth St. 815/432-5416	MACOUPIN—Carlinville 62626 210 N. Broad St. 217/854-9604	RICHLAND—Olney 62450 306 S. Fair, Box 364 618/395-2191	WINNEBAGO—Rockford 61102 4311 W. State St. 815/987-7379
CRAWFORD—Robinson 62454 309 S. Lincoln, P.O. Box 655 618/546-1549	JACKSON—Murphysboro 62966 P.O. Box 160 618/687-1727	ROCK ISLAND—East Moline 61244 1188 John Deere Road 309/796-0512	WOODFORD—Eureka 61530 P.O. Box 162 309/467-3789	



UNIVERSITY OF ILLINOIS-URBANA  
707.416T C001  
ANNUAL TOWN AND COUNTRY STATE ART EXHIBI  
1985



3 0112 020356892



UNIVERSITY OF ILLINOIS-URBANA



3 0112 059623279