

Historic, archived document

Do not assume content reflects current scientific knowledge, policies, or practices.



1915

LIBRARY
RECEIVED
★ ★
U. S. Department of Agriculture.



Armstrong Nurseries



JOHN S. ARMSTRONG

ONTARIO, CALIF.



Established 1889

POPULAR INTRODUCTION OFFER

Our introduction offer having met with universal favor with patrons the past few years, we continue it this season; it matters not whether you live in the country or town, here is a bargain you cannot afford to ignore:

MODEL HOME ORCHARD FOR FIVE DOLLARS

Ripening early to late, so as to have fresh fruit on the table from May to December. This collection is made up early in the season from the best varieties in our nurseries, hence we allow no changes of any kind.

- 4 Peach trees, popular sorts
- 4 Apple trees, for home use
- 1 Crab Apple tree, large variety
- 4 Plum trees, selected kinds
- 3 Pear trees, early to late
- 2 Apricot trees, table varieties

- 2 Cherry trees, standard kinds
- 1 Nectarine tree, best red
- 1 Quince tree, best for preserving
- 1 Soft Shell Almond tree
- 6 Grape Vines, assorted

No two fruit varieties alike

 PURCHASER PAYS FREIGHT OR EXPRESS 

YUCCA TREE PROTECTORS

Excellent for shading the trunks of young trees from the sun the first season, and as protection against rabbits and other pests. Being wired, are easily and quickly put around trees.

Length	Width	Weight	per 100	per 1000
24 inch.....	6 inch.....	18 lbs.....	\$1.80.....	\$17.50
18 inch.....	6 inch.....	13 lbs.....	1.60.....	15.00
16 inch.....	6 inch.....	12 lbs.....	1.40.....	13.50
14 inch.....	6 inch.....	10 lbs.....	1.25.....	12.00

PLEASE REMEMBER THESE THINGS

Remittances. Orders from unknown buyers must be accompanied by Bank Draft, Postoffice or Express Money Order or Registered Letter containing amount of order.

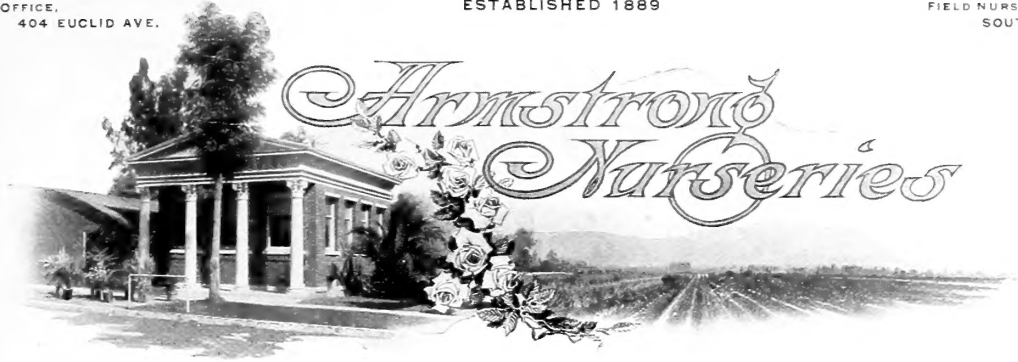
Club Orders. We will be pleased to have responsible parties solicit club orders, to whom will be given liberal discounts. From all such, correspondence is invited.

Substitutions. When ordering please state whether substitutions will be allowed. Should you permit of same, we will substitute similar, and when possible, better varieties.

General Special. Express shipments of nursery stock travel under what is known as the "General Special" rate, which is 20 per cent less than the first-class rate. We would advise having small shipments go by express, for while the cost is in excess of the freight rate, the difference is often more than made up by the prompt delivery and careful handling. Small packages, addressed to rural routes, or to places where there is no express office, provided they do not exceed in weight the parcel post limit, may be sent by parcel post (if prepaid), the rate depending on the zone location of the shipping point. Potted plants cannot be sent by mail.

Caution. Be careful in unpacking to note everything, and either plant or cover up with moist soil at once. Moisten the roots and do not allow them to become dry.

Get your order booked early for shipment at the proper season.



Ontario, Cal., 1915.

My Dear Patrons:

With pleasure I present you this catalog.

No matter what you want to plant, you will find it here. My 300 acres of nursery stock is at your command. My 26 years of practical experience will aid and guide you.

Look through this catalog carefully, write me, asking any questions you wish answered. Send in your mail orders and they will have prompt and careful attention. My prices are right, and I personally inspect each order shipped.

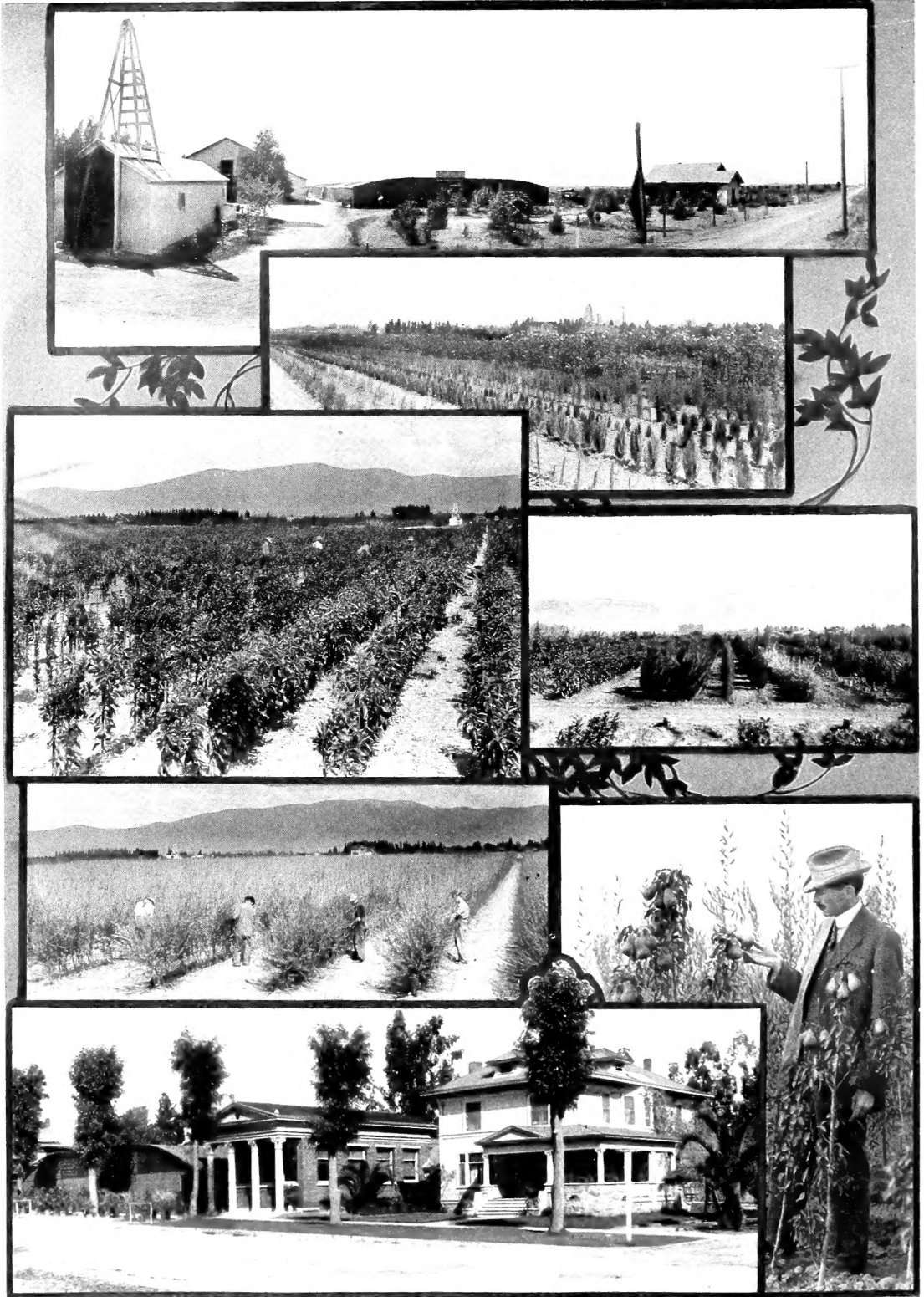
I cordially invite you to visit my nurseries in person at any time. Seeing will convince the most critical that my stock is superior and embraces a large and varied assortment.

Send for "Special Prices" on large orders. If you do not find what you want in this catalog, write me about it--because "If it's to plant, I may have it"--and I will endeavor to serve you.

Awaiting your valued orders and wishing you a prosperous season,

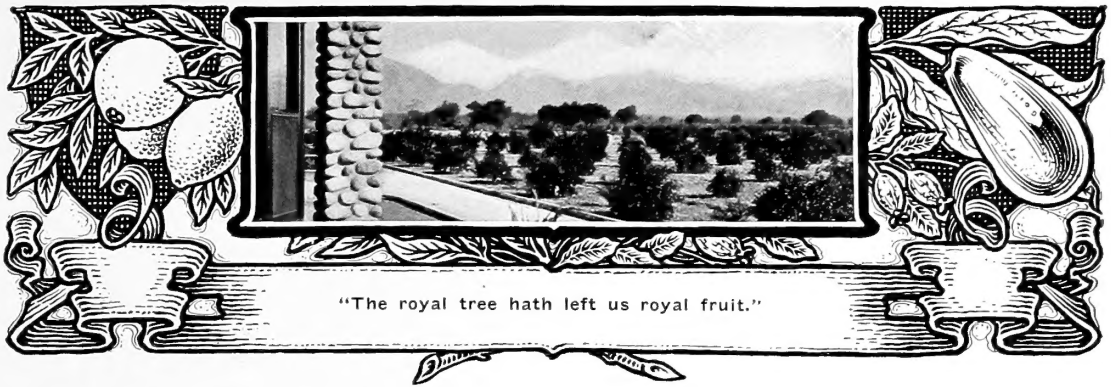
I am, sincerely yours,

J. S. Armstrong Propr.
ARMSTRONG NURSERIES



VIEWS IN THE ARMSTRONG NURSERY GROUNDS.

Lower picture—Salesyard, Office and Armstrong Residence on Euclid Ave., Ontario, Cal. We live with our trees.



Citrus and Tropical Fruits

Citrus fruits, being of greatest commercial importance in Southern California, naturally assume first place in this catalog. Realizing the importance of this industry and that good trees are so essential to the growing of good fruit, we have exercised particular care in the growing of the trees we now offer. Special attention is given to assortment orders for home planting.

Prices on Orange, Lemon, and Pomelo:

	Each	Per 10
¾ inch and up.....	\$1.25	\$10.00
⅝ to ¾ inch.....	1.00	8.00
½ to ⅝ inch.....	.80	7.00
⅜ to ½ inch.....	.60	5.00

Above prices include balling and packing for shipment. Write for prices on 100 and 1,000 lots.

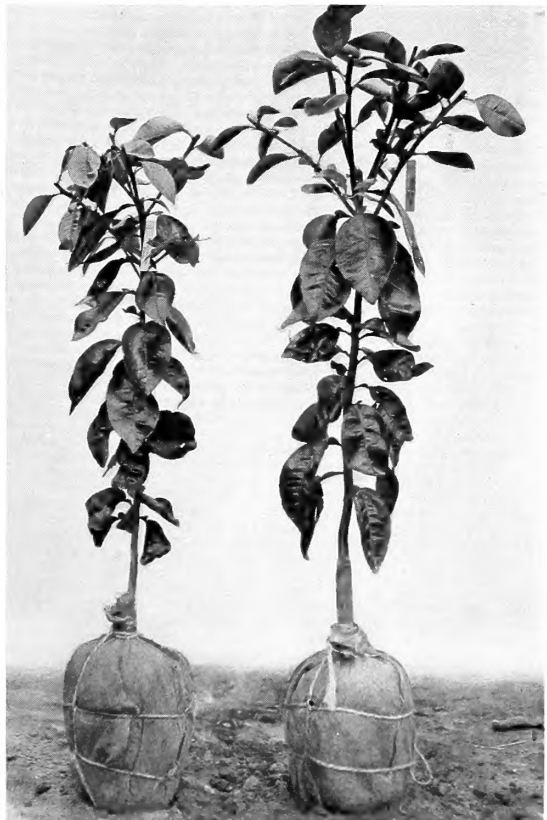
Oranges

Washington Navel. California's world-wide fame as the most profitable citrus country largely rests upon the Washington Navel, our leading commercial product, conceded by all to be without a peer. The tree is a thrifty grower, making a well-rounded, uniform top; bears heavily and regularly. The fruit is large and seedless, flesh meaty, tender, sweet and high-flavored; ripens early; good shipper; season from December to May.

Valencia. Tree strong, vigorous and very prolific; fruit medium size, oblong, firm and heavy; sub-acid; few seeds; ripens late and hangs well on the tree throughout the summer. The best late orange, having no competitor; when reaching market it usually commands good prices.

Mediterranean Sweet. Thornless, low, spreading tree; very productive; fruit oval, medium to large; rich orange color; inclining to thick skin; shipping quality of the best. Season middle to late.

Navelencia. A seedless variety of sterling merit. Fruit is uniform in size; pulp of fine texture and quality; skin thin and smooth. Growers who have fruiting orchards of this variety hold it in highest esteem. Ripens about with the Washington Navel.



BALLED CITRUS TREES.

Caliper ½ to ⅝ inch and ⅝ to ¾ inch.

Paper Rind St. Michael. Tree strong and vigorous grower; very productive; fruit rather small and round; skin thin and smooth, light color; pulp very juicy, sprightly, of fine quality; season medium, March to June; good shipper.

Ruby Blood. Medium size, nearly round; skin thin but tough; pulp rich, juicy and sweet, streaked with red. The tree is hardy, good grower and regular bearer.

Thomson's Improved Navel. Similar in character to the above; fruit ripens somewhat earlier; medium size, skin thin, smooth and highly colored.

Lemons

Eureka. The most popular variety cultivated in California. Fruit is of the highest quality, uniform in size, with but few seeds; rind smooth and glossy. The main crop usually matures in time for summer trade. The tree is a continuous and heavy bearer, and almost thornless. The latter point is an important advantage in connection with picking and pruning.

Villa Franca. Fruit of good form and substance; excellent flavor; thin rind; nearly seedless. Tree of strongest growth and abundant foliage, usually setting its fruit inside the tree.

Pomelo — Grape Fruit

Marsh Seedless. The Grape Fruit is becoming more popular each season. For medicinal purposes in the home, hotel or hospital it leads all other citrus fruits. We have now discarded all but this variety, as others contain so many seeds that they are undesirable. Fruit is round, much larger in size than the largest orange; pulp juicy, of rich, piquant flavor, almost seedless; rind thin, color lemon yellow.

Limes

Bearss Seedless Lime. Fruit large, more than twice the size of the Mexican; seedless, very juicy with pronounced acidity; quite hardy and exceedingly productive; fruits mature all the year round; one of the best in cultivation. More of a tree than a shrub. 2 year, \$1.50; 1 year, \$1.00.

Tangerines

Dancy's Tangerine. This is the most popular of the Mandarin family; orange-red skin; pulp of best quality, not very seedy; rind separates readily from flesh; juicy, highly flavored; tree strong grower and very prolific. 2-year \$1.25; 1-year 75c.

Satsuma or Oonshui. The best variety of the Japanese orange. Fruit of medium size; skin loose; deep orange; flesh fine grained, tender juicy, sweet and delicious. Tree rather dwarf; thornless; bears young and is one of the earliest of the citrus fruits to ripen. The hardiest orange grown. 2-year \$1.00.

Kumquats

The hardiest and most ornamental of all the orange family. The trees are of dwarf habit, producing in great abundance, small, handsome, olive-shaped fruit of a rich golden hue; has a pleasant aroma; used by the Orientals for preserving.

2-year trees \$1.50
3-year trees, well set with fruit..... 2.00

ORANGE SEEDLINGS

	Per 100	Per 1000
Sour Seedlings, 6 to 10 in. high.....	\$2.50	\$20.00
Sour Seedlings, 10 to 16 in. high.....	4.00	30.00



CLUSTERS OF GOLDEN GLOBES.

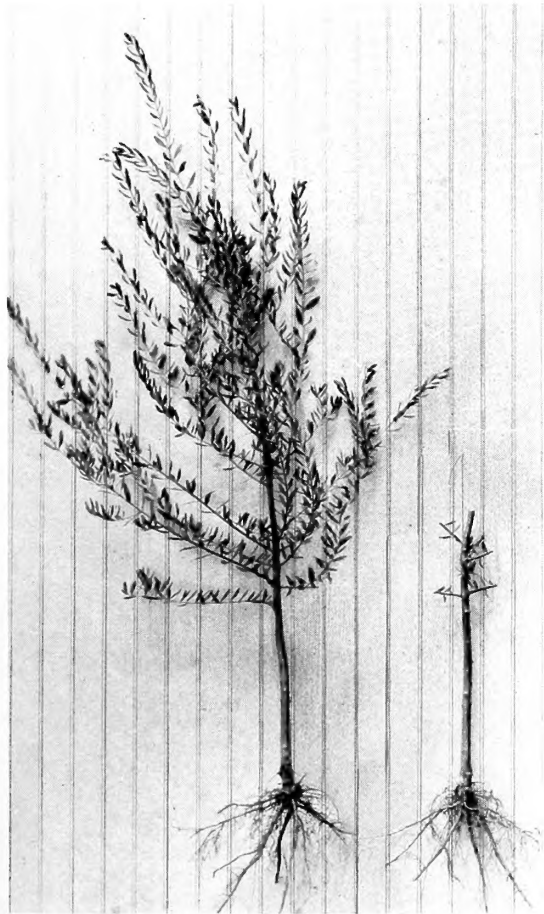
Valencia oranges. Kumquats. Washington Navel orange.

Olives

Olive growing is destined to become one of California's greatest commercial industries—producing immense profits to the growers.

Its importance will become gigantic with no fear or possibility of over-production. Olive pickling concerns are contracting with present growers at high prices for ten years in advance, which means an assured and profitable industry for all those engaged in olive growing.

The olive tree is long lived and thrives in a variety of situations. It is adapted to a wide range of locations in California, but like all fruit bearing trees, it responds and thrives more readily in good soil and with right treatment.



PROPERLY GROWN OLIVE TREE.
Showing method of pruning before planting.



MISSION OLIVES.

Branches of fruit taken from heavily laden trees.

NOTE: Our conditions for growing nursery stock are most favorable, owing to the formation of the soil, which is a sandy loam. Such soil maintains a loose friable condition, and produces the best and most fibrous root system obtainable. This is, we believe, an essential element in the growing of all trees, especially the olive, as it insures to a great extent its vitality, when transplanted in the field.

It will afford us much pleasure to have prospective tree planters, when possible, visit our Olive Nurseries here at Ontario and see the trees as they are growing in the nursery rows, which many of our visiting patrons can testify is worth a long trip to see.

We will also be glad to have you ask us many questions relative to olive tree planting, care of the trees, or regarding any other subject pertaining to the success of your project; such as soil, water, and climatic conditions, where plantings are intended to be made. Any information requested, personally or otherwise, will be cheerfully given.

Armstrong Nurseries

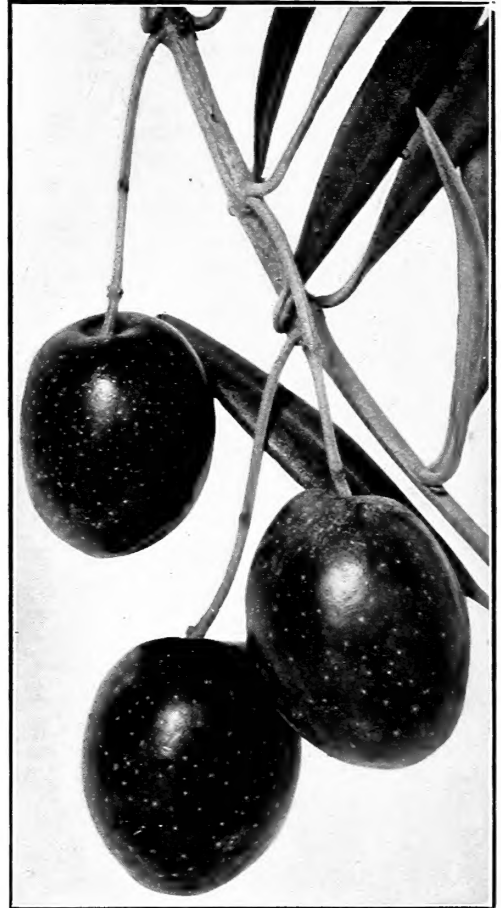
Pickling varieties are most profitable. Recognizing this fact, I have made special effort in growing the best and proven commercial kinds for pickling: the Manzanillo, Mission, Ascolano, and Sevillano.

Prices of Mission and Manzanillo Olive trees:

	Each	Per 10	Per 100	Per 1000
One inch and up.....	\$1.00	\$8.50	\$75.00
$\frac{3}{4}$ to one inch.....	.80	7.50	60.00	\$500.00
$\frac{5}{8}$ to $\frac{3}{4}$ inch.....	.60	5.50	50.00	400.00
$\frac{1}{2}$ to $\frac{5}{8}$ inch.....	.50	4.50	40.00	300.00
$\frac{3}{8}$ to $\frac{1}{2}$ inch.....	.40	3.50	30.00	200.00

Manzanillo. This fine olive is known as one of the leading commercial varieties. The tree is a free grower, having the tendency of throwing out many branchlets from the main branches. It is the most prolific bearer of the large sized olives. The fruit is large, purplish black, with light colored specks; ripens fully two weeks before the Mission, an important factor in districts subject to early frosts. The ripe olives when cured are unexcelled in flavor and quality; ripens October.

Mission. The well known standard variety introduced by the Spanish padres, large trees of which are still growing at some of the old Missions in California; has been extensively cultivated and is popular with growers and consumers alike. The tree is a handsome upright grower; fruit medium to large; makes a richly flavored pickle and a good quality of oil; ripens November.



MANZANILLO OLIVES.

Photograph of fruit taken from our trees.

	Each	Per 10	Per 100
$\frac{5}{8}$ inch and up.....	\$1.00	\$9.00	\$80.00
$\frac{1}{2}$ to $\frac{5}{8}$ inch.....	.80	7.00	65.00
$\frac{3}{8}$ to $\frac{1}{2}$ inch.....	.60	5.50	50.00

Ascolano. A superb Italian olive; fruit very large and fine; produces a fancy pickle, owing to its large size and handsome appearance. There is a growing demand for this variety put up in glass jars for the high class trade.

Sevillano. The largest of all olives, being known as the Queen Olive, under which brand it is exported from Spain. When ripe it is a bluish-black color; makes a fine pickled product, but requires more care in the process of curing than the smaller varieties.

Chemlaly. This variety has recently been introduced by the United States Department of Agriculture, from Algiers. It is used only as an oil olive, the fruit being small. The tree is a strong grower, and is remarkably productive. Recommended for street planting on account of its vigorous growth. 1 inch caliper, 75c; $\frac{3}{4}$ inch caliper, 65c.



PORTION OF OUR OLIVE NURSERY.

A superb block of two-year-old trees.

Avocados

So much has been said and written during recent years regarding the Avocado that it no longer needs a formal introduction to the planter. That this tropical fruit will succeed splendidly in Southern California is no longer a matter of conjecture. The numerous bearing trees throughout the state are ample evidence that it may be successfully cultivated in any latitude where the orange and lemon grows, and that it is adaptable to our climatic, soil and general conditions.

From a commercial standpoint, the Avocado should not be considered as fruit alone, but as a staple article of diet of the highest food value. For this reason no tropical fruit offers greater possibilities for culture and development. It is undoubtedly the coming fruit. No home orchard should be without one or more trees.

Our budded trees are grown in small red-wood boxes, which we have found to be the most successful method of handling them. When transplanting, the box may be taken apart, leaving the ball of earth intact. For orchard planting, the trees should be placed 30 to 40 feet apart each way, to allow for full development of the trees. In other respects, they demand care similar to citrus trees.

We have given much time and effort in our search for the ideal Avocado, and have selected from among the varieties fruiting in California the following as the best of both the thin and the thick skinned types, in regard to hardiness, vigor, productiveness and general adaptability.

Prices on Avocados, except where noted:

	Each	Per 10
Boxed, 4 feet.....	\$3.00	\$25.00
Boxed, 3 feet.....	2.50	20.00
Boxed, 2 feet.....	2.00	15.00

Write for quantity prices.

Ganter. Form oval to oblong, averaging 8 to 10 ounces; skin thin, of greenish color; flavor and quality excellent; tree a vigorous and uniform grower; an unusually prolific bearer; ripens September to December. The parent tree is located at Whittier, California.

Meserve. Another fine variety originating at Long Beach, Cal.; nearly round like the Wagner; skin greenish and quite thick; weight about 1 pound; matures its fruit in the spring during April and May; the flavor is unusually rich and buttery; tree vigorous and a prolific bearer. 3 to 4 feet, \$3.00.

Northrup. Form pear shape, of medium size, weighing 7 to 9 ounces; of fine texture; excellent quality and flavor; skin thin and of purplish color. A distinguishing feature of this variety is that it bears two crops a year, the main crop from October to December, and a lighter crop from April to June, thus covering a long ripening period. It is a vigorous grower with a large, spreading top. The Northrup appears to be the hardiest to date, of the better varieties that have come under our observation. Owing to the extreme hardiness, excellent flavor and bearing qualities, we recommend the Northrup above all others as the Avocado for the family orchard.



GANTER AVOCADO.

Showing method of growing budded trees in boxes.



HARMAN AVOCADO.

A hardy variety of fine appearance and good flavor.

Harman. Form irregular pear shape, of handsome appearance and uniform size, weighing 9 to 10 ounces; color green overspread with reddish brown, dotted with numerous lighter colored specks; skin thin; flesh greenish yellow; texture smooth and buttery; flavor rich and nutty; quality good. The original tree is growing at Sherman, California, and is a vigorous upright grower. Ripens October to January.

Hollywood Wagner. Said to be a seedling of Walker's Prolific. The original tree, although not over six years old, has this year an immense crop of fruit. The fruit is perfect in form for an Avocado, being round or slightly oval; of good size and quality; skin thick and strong, and of greenish color; matures in late summer and autumn; fruit hangs on well. 3 to 4 feet, \$3.00.

Taft. The best of the large thick skinned varieties to date; the parent tree is one of a number growing on the grounds of Mr. C. P. Taft near Orange. We consider it the premium Avocado of California. The fruit is pear shaped, weighing about one pound; the flesh is fine grained, rich and nutty; a summer fruit; ripens in June, July and August; the tree is a good bearer and a vigorous grower, forming a large spreading top.

Have the following choice varieties in limited quantities only:

Champion. A large variety, in shape and size closely resembling the Taft. 3 to 4 feet, \$2.50.

Fowler. A green, thin skinned fruit; flavor rich; quality fine; one of the hardiest. July to October. 3 to 4 feet, \$2.50.

Lyon. Fruit large; skin thick; flavor rich and nutty; winter fruiting. 2 to 3 feet, \$3.00.

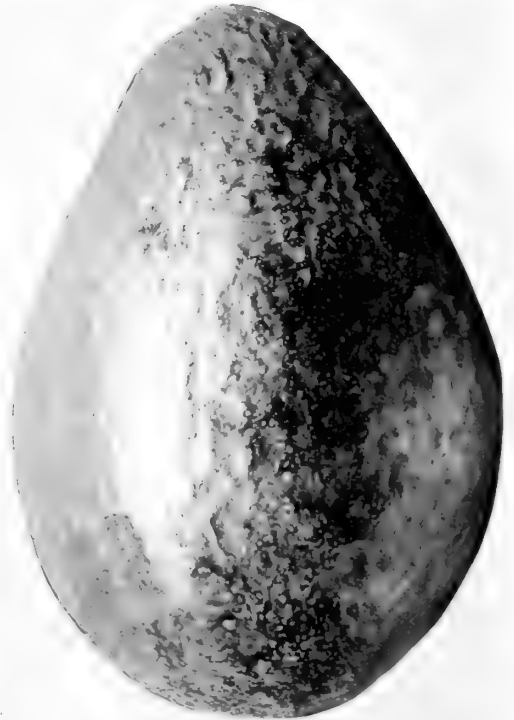
Miller. Large; thick skin; flesh yellow and fairly rich; a vigorous grower; February to April. 3 to 4 feet, \$2.00.

Pico. Medium small; skin thin and tender; good for home use only; July to August. 4 feet, \$2.00.

Pollock. A Florida variety; very large; flavor rich and quality of the best; July to October. 4 to 5 feet, \$2.50.

Sharpless. A superior thick skinned variety; fruit large, long, pear shaped, and of fine quality; seed very small; tree an erect grower. 2 to 3 feet, \$3.00.

Walker's Prolific. Medium large; quality and flavor fair; skin thick and tough; extremely prolific. 3 to 4 feet, \$3.00; 2 to 3 feet, \$2.50.



TAFT AVOCADO.

The best of the thick-skinned sorts.

Anona

Anona cherimolia. "The Custard Apple" or Cherimoya. This fruit can be highly commended for planting in situations where the lemon and orange tree do well. The tree grows to fair size and produces good fruits varying in size and shape; color usually grayish-brown; pulp a custard-like consistency, possessing a delicious flavor. The fruit should be picked green like the pear, when reaching maximum size, and laid away until it turns to a uniform brown. There are several varieties of this fruit, but we list only the one which has been found best adapted to Southern California conditions. Potted plants, 3 feet, 50c; 2 feet, 35c.

Feijoa

Feijoa sellowiana. No fruit introduced in California during the past few years, with the single exception of the Avocado, has met with such a popular reception as the Feijoa (pronounced Fay-zho-a). Though closely allied to the Guavas, all who have eaten the fruits prefer them to any Guava known in this state. In size and shape they resemble a large plum, from 1 to 2 inches in diameter, about an inch greater in length, and of a yellowish green color. The delicious flavor of the pulp is rivaled by its strong and agreeable aroma, both taste and color reminding one of the pineapple and banana combined. So lasting is this pleasing fragrance that receptacles having once held the ripened fruit will often retain a slight odor for weeks, reminding one of the oft-quoted couplet:

"You may break, you may shatter the vase, if you will,
But the breath of the roses will linger there still."



FEIJOA FRUIT.

Every garden in California should have a few plants.

This latest introduction has a double claim on popular favor, for as an ornamental shrub it vies with its sterling qualities as a bearer of fine fruits. It ultimately grows to a height of about eight feet, a rounded, compact shrub with glossy green leaves, having the under surface thickly covered with a whitish velvety growth. The flowers are large and showy, silvery-white in color with crimson stamens and golden-yellow anthers, making the whole bush unusually attractive. It is of easy culture and thrives in California in both coast and interior valley localities. Being a native of Uruguay, Paraguay and Argentina, it is hardy throughout this state, fruiting from November to January, but equally attractive throughout the year.

Prices:	Each	Per 10
Balled, 3 to 4 feet.....	\$1.00	\$7.50
Potted, 2 to 3 feet.....	.60	5.00
Potted, 1 to 2 feet.....	.40	3.00
Flats of 100, \$5.00.		



WHITE SAPOTA.
A richly flavored tropical fruit.

Sapota

The White Sapota, or *Casimiroa Edulis*, grows to a height of 15 to 20 feet. The tree is of spreading habit, with attractive ever-green foliage. Should be planted by all lovers of tropical fruits.

Maechtlen. A variety of much merit; fruit yellow; smooth skin; of delicious peach-like flavor; very prolific; no garden is complete without one of these ornamental fruit bearing trees. Budded trees \$1.50 each.

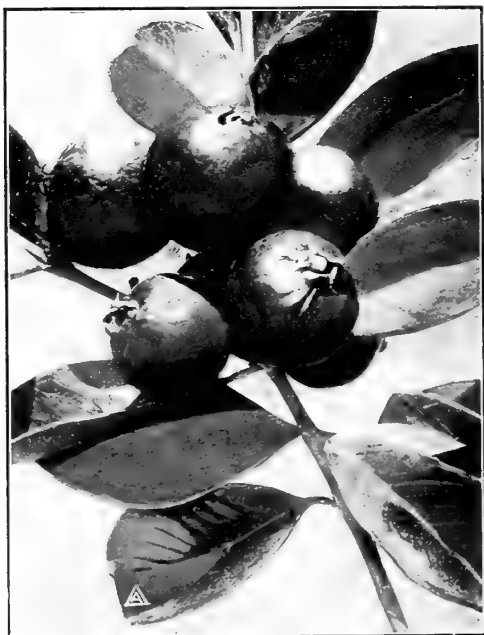
Guavas

The Guava is much sought for jelly making and preserving, and is greatly relished eaten out of the hand when fully ripe. The Strawberry Guava may be used as an ornamental shrub to advantage, either as a single specimen plant, in groups, and as a hedge or large border; at the same time losing none of its fruiting value.

Strawberry Guava. (*Psidium Cattleianum.*) A fine glossy-leaved shrub or small tree, which produces in abundance a luscious fruit about the size of a large strawberry; round and deep reddish-brown color. The fruit is highly prized for table use when fresh, and for jams and jellies has few equals. Aside from its economic value, the shrub is sufficiently ornamental to merit a place in any garden. Balled, 50c; potted, 25c.

Yellow Strawberry Guava. (*Psidium Lucidum.*) Similar to the common variety in habit of growth and shape of fruit. The fruit is yellow, somewhat larger, and of finer flavor. Balled, 75c; potted, 50c.

Lemon Guava. (*Psidium Guajava.*) One of the finest of the Guava family; large, pear shaped, yellowish fruit; the bush is somewhat tender and should be grown only in the most favored localities. Potted, 50c.



STRAWBERRY GUAVAS.

A shrub that makes a handsome hedge and bears pleasant tasting fruit.



ADVANCE LOQUAT.

Showing typical cluster of this choice early ripening fruit.

Loquats

The Loquat is highly esteemed for its agreeable acidulous aromatic flavor and on account of its ripening in the early spring. The tree itself is one of the most beautiful.

Prices, except on seedling trees:	Each	Per 10
Balled, 3 feet.....	\$1.50	\$12.00
Balled, 1½ to 2 feet.....	1.00	8.50

Advance. (New.) One of the best budded sorts; fruit pear shaped; borne in large compact clusters; color orange yellow; flavor a distinct and delightful sub-acid; ripens in May.

Champagne. Fruit clusters not so compact as the Advance, individual fruit larger; tree is of vase type with a tendency to broaden out; adaptable to different localities; ripens with the Advance.

Premier. Large, excellent fruit of fine flavor; matures its crop two weeks earlier than the Advance.

Seedling. Grown from selected seed; forms a larger tree than the budded varieties, but the fruit is somewhat smaller and the tree is later coming into bearing. 3 to 4 feet, 75c; 2 to 3 feet, 50c.



Winter Dormant Fruit Trees

The term "Winter dormant fruit trees" is applied to all fruit trees that shed their foliage during the winter months, and remain devoid of leaves until the advent of another spring; such are known as deciduous fruit bearing trees. Our selection of deciduous fruit trees is extensive and varied, embracing all the standard varieties. Exercising every care in the nursery rows, we have been successful in growing robust, healthy, and vigorous trees, true to name and free from insect pests and disease, all from selected buds taken from pedigreed and regularly bearing specimens. Our prices are reasonable, superior quality of stock considered.

Peaches

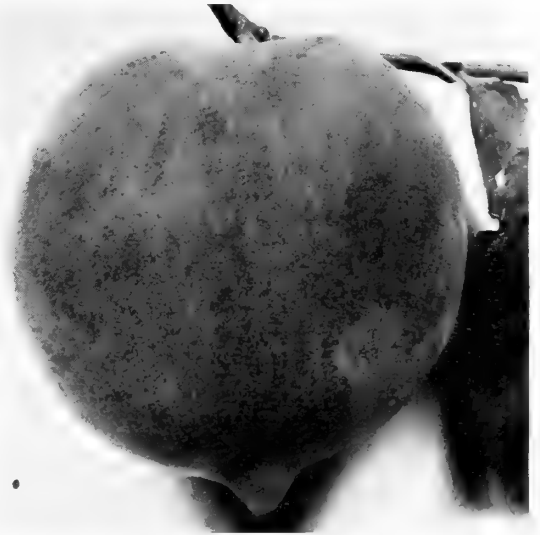
In its demands of soils and climatic conditions the Peach is not particular, doing well in any situation that will grow ordinary farm crops. It is, however, keenly susceptible to a well-drained sandy loam, appreciates thorough cultivation and intelligent pruning. In California and the Pacific States generally, it is a prime favorite as a commercial crop, for nowhere in the world may larger or more luscious peaches be grown than in the foothill sections and valleys of this state. To secure a strong stand of profitable trees, the nursery stock, on being transferred to orchard rows, should be headed low.

NEW VARIETIES

	Each	Per 10	Per 100
4 to 6 feet.....	\$.40	\$3.50	\$30.00
3 to 4 feet.....	.35	3.00	25.00
2 to 3 feet.....	.30	2.50	20.00

Mayflower. There is no better for home market than this beautiful "red all over" peach; extremely early; of splendid quality, and a good shipper; tree is healthy and hardy. May.

Miller's Late. The best late peach known; ripens in November; freestone; flesh white; excellent flavor and of fine quality. As a commercial peach it is of the best, coming to the market when no others are to be had, consequently commanding a high price. For home use it is unequalled.



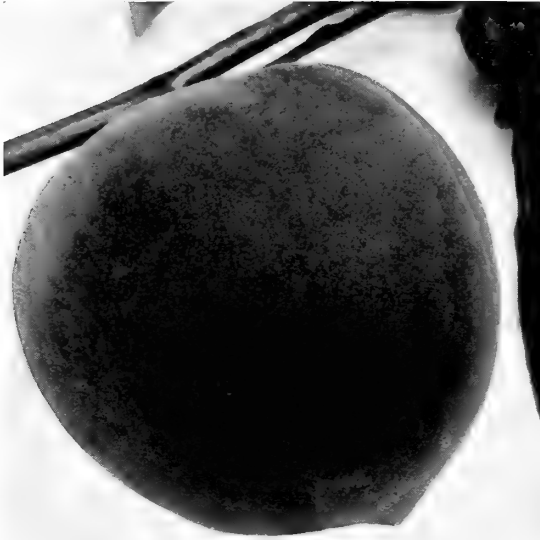
MILLER'S LATE.
Our best late Peach.

General assortment peaches. For family orchards, fresh fruit markets, canning and drying.

Prices, except where noted:

	Each	Per 10	Per 100
One year.....			
4 to 6 feet.....	\$.35	\$3.00	\$22.50
3 to 4 feet.....	.25	2.25	20.00

Write for special quotations on large lots.
Varieties listed in order of ripening.



THE LOVELL.

The leading commercial peach for canning and drying.

Australian Saucer. Earliest of all to ripen; flattened on both ends; pit and fruit small; flavor delicious and sweet. May.

Sneed. A fine new early peach; large, creamy-white with blush cheeks; flesh tender, juicy, melting and delicious; clings slightly to the pit; end of May.

Alexander. Medium size; skin greenish-white with red blush; flesh mellow, juicy and sweet. Early June.

Hale's Early. A popular early variety; skin greenish, splashed with red; flesh white, juicy and sweet. June.

Early Imperial. Tree a strong, vigorous grower and yields abundantly; fruit good size with small pit; skin yellow, nearly covered with red, deep crimson in the sun; after fruiting this variety for several years we can recommend it as being the best early yellow freestone peach; a splendid shipper and the best for home use. June.

Foster. An excellent early peach, resembling Crawford's Early and ripening a few days earlier. July.

Tuscan Cling. The true Tuscan Cling is highly esteemed as a fancy early canning variety; round, deep red on the sunny side; flesh rich, solid, clear yellow to the pit; prolific bearer; popular with growers, canners and consumers alike; ripens July.

Early Crawford. A well known yellow peach of good quality; tree vigorous and prolific; in the past years this was the earliest peach, but now much earlier kinds are grown. July.

Lovell. Large and round; yellow to the pit; a splendid variety for canning and drying; similar to Muir; the tree, however, is a much stronger grower; a free and regular bearer. August. 4 to 6 feet, \$16.00 per 100; 3 to 4 feet, \$14.00 per 100.

Muir. Large yellow freestone; of excellent quality; flesh yellow clear through; pit small; one of the most popular varieties for canning and especially adapted for drying. August. 4 to 6 feet, \$16.00 per 100; 3 to 4 feet, \$14.00 per 100.

Opulent. Originated by Mr. Luther Burbank; a peach of excellent quality for home use or near-by markets; extremely productive. Early August.

Lewkins Honey. Medium size, oval; skin whitish-yellow, with blush on sunny side; flesh creamy-white, juicy and mellow; very sweet with rich honeyed flavor; an excellent variety for eating out of hand or for table use. Early August.

Elberta. Large, yellow, with red cheek; juicy, sweet and highly flavored; tree grows strong and healthy; very productive; largely planted in the Southern States; one of the best paying varieties for the Southwest. August.

Late Crawford. Large, yellow, with red cheek; flesh yellow, juicy and excellent; freestone; an old and popular variety. August.

Buckhorn. The parent tree is a chance seedling near San Bernardino, Cal., which has attracted attention locally on account of the large size and excellent flavor of the fruit. It may be described as an improved George the Fourth; flesh white, reddish around the pit which separates readily from the flesh. A buck's horn placed in the fork of the tree when young is now imbedded in the trunk, hence the name. August.

George the Fourth. Large, round; skin creamy white with red cheek; flesh pale, juicy and rich. Esteemed for its exquisite flavor; desirable for the home garden. August.

Phillips Cling. This prime variety is well known and esteemed as the standard of excellence among canning peaches; large, round, with a small tit on the blossom end; flesh firm, clear yellow to the pit, which is small; as with the Tuscan Cling, several strains are in cultivation. We have the true Phillips. Ripens September.

Orange Cling. Fruit very large; skin yellow with red cheek; flesh golden yellow, rich and sugary; popular as a home canning variety. End of August.

Indian Blood Cling. A well flavored peach with reddish veins through the flesh; medium size; esteemed for preserving and pickling. Early September.

White Heath Cling. Creamy white, blush on sunny side; flesh white, tender, juicy and delicious. September.

Salway. Large, round; skin creamy yellow; sweet and rich flavor; free-stone; a valuable late sort; bears heavily and regularly; very popular. Late September.

Bell's October. Fruit large; skin yellow with red cheek; flesh yellow, juicy, and of excellent flavor; superior to Salway in every respect, and ripens three weeks later.

Sabichi Winter. Medium size; very late; flesh white, juicy, sweet and mellow; of excellent flavor; clings slightly to the pit; ripens November to December.

Apricots

The Apricot is one of the most delicious and richly flavored fruits we possess. Its earliness, ripening as it does before the Peach or Plum, creates a heavy demand for it wherever it may be grown, even under difficulties. Of late years Apricot culture is commanding increasing attention in sheltered regions of Arizona and Southwestern Texas, and also in some of the Southern States; but nowhere does it attain the importance and perfection that it does in California. No family orchard in this State is complete without several trees of the recognized standard sorts.

	Each	Per 10	Per 100
4 to 6 feet.....	\$.35	\$2.75	\$22.50
3 to 4 feet.....	.25	2.25	20.00

Varieties listed as nearly as possible in the order of ripening.

Newcastle Early. Medium sized; round; the best early variety; ripens two to three weeks before the Royal. May.

Royal. Medium size; oval; skin brownish-yellow; flesh yellow, with sweet, rich, vinous flavor; exceedingly productive. The leading commercial apricot cultivated in California for canning and drying purposes on account of its productiveness and excellent quality. Early June.

Blenheim. Fruit large, oval, orange color; flesh rich and juicy; both fruit and tree are very similar to the Royal. June.

Moorpark. Large, greenish-yellow, brownish-red on the sunny side, marked with numerous specks and dots. Fruit of the highest quality and has the finest flavor of any apricot grown, but is rather a shy bearer. August, the latest to ripen.

Plums

The Plum thrives throughout the Pacific Coast States, and since the introduction of the Japanese sorts a few years ago, varieties may be had for every purpose and suited to nearly every condition of soil and climate. Those listed below have been thoroughly tested and are offered with confidence that they are the best in their respective classes for market, canning or home use. Every home garden should have a few of these fine varieties ripening early to late.

NEW VARIETIES

40c each; \$3.50 per 10; \$30.00 per 100.

Formosa. In comparative tests during the last four or five years, this variety has proven itself to be the finest plum in existence. Fruit is of great size, uniform; yellow with pale bloom turning to a rich clear red; flesh pale yellow, unusually firm, sweet and deliciously rich, with a delightful apricot flavor; nearly freestone. Tree of luxuriant growth, and unailing prolificacy.

Gaviota. This new plum is recommended as being one of the very best of the latest varieties of table and shipping sorts. Fruit strikingly handsome, mostly deep reddish-purple when ripe. Flesh firm, honey-yellow, fragrant and sweet.

Santa Rosa. This fruit is a rich deep purple crimson in color, the flesh being pale amber near the stone, shading to deep purplish crimson near the skin. The quality is unsurpassed and it is a valuable plum for both shipping and home uses. Ripens about two weeks earlier than the Burbank. The tree is a splendid grower and of excellent bearing qualities. Fruit of beautiful appearance and delicious flavor.



APRICOT ORCHARD.

A model five-year-old Apricot orchard planted with Armstrong trees.



SANTA ROSA PLUM.

A Burbank introduction. Fruit handsome and of fine quality.

GENERAL ASSORTMENT

	Each	Per 10	Per 100
4 to 6 feet.....	\$.40	\$3.00	\$25.00
3 to 4 feet.....	.30	2.50	20.00

Burbank. Medium to large, round, having yellow dots and lilac bloom; flesh deep yellow; vigorous and productive. Ripens late in July.

Climax. Very large, heart-shaped; color deep, dark red; flesh yellow, of fine flavor and pleasing fragrance; tree vigorous and productive. A splendid early plum. June.

Kelsey. Very large, heart-shaped; skin greenish-yellow, sometimes overspread with red when ripe, with a fine bloom; flesh yellow, meaty, firm, pleasant flavor; very prolific. August and September.

Satsuma. The well-known Blood Plum which is generally conceded to be the best of the standard Japanese varieties. Unexcelled as a canning fruit, having a pleasant flavor and unlike all other varieties in having red flesh; medium to large; round and has a remarkably small stone. July.

Wickson. Another of Burbank's creations and the largest of all the plums. Flesh fine, deep amber yellow. A very handsome and well-flavored variety. Valuable for canning and shipping. August.

Prunes

By the term Prune is generally understood a Plum which dries successfully without the removal of the pit and produces the dried Prune of commerce. On the Coast as far north as Washington, Prune culture has assumed commercial importance, but in California it has found its greatest perfection. The following varieties are choice selections known to meet the requirements of planters for either drying or preserving, or marketing direct from the tree.

PRUNES: GENERAL COLLECTION

	Each	Per 10	Per 100
5 to 6 feet.....	\$.40	\$3.00	\$25.00
3 to 4 feet.....	.30	2.50	20.00

French Prune. The great commercial prune of California, and the most widely grown. Fruit of medium size, egg-shape, violet purple, very sweet and sugary; tree a steady and prolific bearer. Prune growing has of late years commanded wide attention, the demand for choice trees often being in excess of supply. Planters contemplating putting out orchards should order early.

Hungarian Prune. Sometimes known as Pond's Seedling Plum. Very large, oval; reddish violet; flesh yellow, juicy and sweet.

Sugar Prune. (New.) This valuable new prune was originated by Mr. Luther Burbank. Fruit very large; skin tender, dark purple, covered with white bloom; flesh yellow, tender and sugary.

Tragedy. A valuable early variety; large; handsome; skin dark purple; flesh greenish-yellow; sweet and rich. Excellent for eating out of hand.



FRENCH PRUNE.

The leading commercial sort.

Nectarines

The Nectarine is a most delicious fruit, requiring the same culture as the Peach, from which it differs by having a smooth skin like the Plum. The mellowness of the pulp combined with its rich, sweet, aromatic flavor renders it especially desirable as a dessert fruit, or for canning and preserving.

4 to 6 feet.....	Each	Per 10
	\$.35	\$3.00
3 to 4 feet.....	.30	2.50

Advance. A valuable early variety ripening in July. Skin green, blotched with red and brown on sunny side; flesh greenish-white and sugary; fruit large and round, and of a delicate sub-acid flavor. Its earliness renders it desirable for either family or commercial culture. Season early July.

Boston. Large, bright yellow and red cheek; flesh yellow, sweet and pleasant flavor; free-stone. The leading yellow-fleshed nectarine. Late July.

Humboldt. A superior sort. Very large; orange-yellow, blotched with red on sunny side; flesh orange, very tender and juicy. The only yellow nectarine except the Boston. Early August.

Stanwick. One of the leading varieties; large size; flesh white, tender, juicy, and of delicious flavor; skin greenish white shaded with reddish-purple in the sun. A prime table variety and especially to be recommended for family use. Good for drying and shipping. August and September.



RED ASTRACHAN.

A popular early summer apple.

Apples

No fruit of late years has commanded wider attention from commercial planters than the Apple. This interest is widespread, being as acute in the South and East as it is on this coast. In many of the mountain valleys, and along the Coast regions of this State, it finds congenial conditions, and when properly cultivated invariably gives good returns. Long experience has convinced us that the red varieties do best in the higher altitudes, while the green and yellow sorts thrive better in valley situations. We offer a variety of sorts which have proven adaptable to conditions in the Southwest.

	Each	Per 10	Per 100
4 to 6 feet.....	\$.25	\$1.75	\$12.00
3 to 4 feet.....	.20	1.50	10.00
2 to 3 feet.....	.15	1.20	8.00

SUMMER AND EARLY AUTUMN VARIETIES

Ripening in the order named.

Early Harvest. Medium size; pale yellow; tender, with mild, fine flavor. Tree a moderate grower and a good bearer. An excellent variety for orchard and garden; one of the first to ripen. Early July.

Red Astrachan. Large, nearly covered with deep crimson; handsome; juicy, with rich acid flavor; very productive; one of the very best Summer apples. July.



BOSTON NECTARINE.

The best of the yellow varieties.

Red June. Medium size; oblong; color deep red; one of the best table apples. June to July.

Gravenstein. A very large, striped, roundish apple of the first quality. Tree remarkably rapid, vigorous, and erect in growth and very productive. The finest of the early autumn apples. August.

Duchess of Oldenberg. A large, beautiful Russian apple; streaked red and yellow. Tender, juicy and pleasant. Tree a vigorous grower and very productive. A fine cooking apple and esteemed by many for dessert. Excellent in a hot, dry climate on account of its dense foliage. August.

Maiden Blush. Medium pale yellow with red cheek; tender and sweet but not highly flavored.

Fall Pippin. Large, round, yellowish-green; flesh tender, rich and delicious; very productive; one of the very best Fall apples.

Bismarck. One of the best apples for hot climates; fruit a beautiful golden yellow and of largest size; a grand dessert apple. Ripens early and keeps well.

Rhode Island Greening. A well-known variety that succeeds well in the Southwest; fruit very large, round, sub-acid, rich flavor.

20 Ounce Pippin. Large, round, yellow apple, striped with red; flesh coarse but of good flavor and quality. October.



DELICIOUS APPLE.

An excellent apple of high color and fine flavor.

LATE AUTUMN AND WINTER VARIETIES

Baldwin. A large, bright red apple having crisp, juicy, rich flesh. Tree very productive and vigorous. One of the best and most popular winter sorts.

Yellow Bellflower. Large, yellow; flesh crisp, juicy, with a sprightly aromatic flavor; an excellent and valuable variety; tree a fine grower and a good bearer. A commercial variety in California, adapting itself to all portions of the State.

Winter Banana. Fruit very large, perfect in form, golden yellow, and beautifully shaded with blush; flesh yellow, fine-grained, sub-acid, rich, aromatic flavor and of the highest quality. Tree bears while remarkably young, three-year-old trees often being heavily laden with fruit. Of strongest growth and very hardy, thriving well in almost any climate. Best all-around early winter apple for general planting in the farm valleys of the Southwest.

Jonathan. Medium size, conical, yellow and red; flesh tender, juicy and rich; very productive; one of the very best early Winter apples.

King David. Tree bears fruit quite young, and is very prolific. Fruit is rich deep red.

Grimes Golden. Medium to large; skin a rich yellow, marked with gray dots; flesh crisp, tender; tree hardy and very productive.

Missouri Pippin. (Stone's Eureka.) Large, round, yellow splashed with red; a popular market sort; very productive.



APPLE TREES.

Trees in nursery rows, showing size and uniformity of one-year budded stock.



JONATHAN APPLE.

The par excellence of winter varieties.

Stayman's Winesap. An early bearer and very productive. Fruit medium size, skin smooth, greenish-yellow striped with red and purple; flesh firm, juicy and mildly sub-acid.

Spitzenberg. Bright red or faintly striped with darker red and yellow; peculiarly pleasing flavor; flesh firm, crisp, juicy; an old standard variety, ripening November to March.

Delicious. A magnificent new and scarce variety, of fine appearance and delightful flavor; brilliant red, of large size, rather conical in form. Tree has good, strong habit of growth and excellent bearing qualities.

Black Ben Davis. The fruit is very handsome in color, being darker than Ben Davis, and superior in quality. The tree is of the Ben Davis habit of growth, but is even stronger and a better resister of drouth. Its beautiful solid deep red color and good keeping qualities give it a high market value.

Rome Beauty. A large, excellent variety which thrives well in the higher altitudes of the foothill and mountain districts; is a very late bloomer and therefore a regular bearer. The yellowish fruit is shaded and striped with red; of very fine appearance and good flavor.

White Winter Pearmain. Medium, oblong, greenish-yellow; tender, juicy, highly flavored; good bearer; one of the leading varieties grown in California.

Winesap. Medium, dark red; sub-acid; excellent quality. Tree a moderate grower and abundant bearer. A favorite market variety in the West, commanding the highest prices. Succeeds well in light, sandy soil.

Yellow Newtown Pippin. Large and of irregular shape; skin golden yellow; flesh firm, crisp and juicy; one of the standard varieties in California; keeps well and commands high prices.

Arkansas Black. Medium to large; somewhat conical; the color is a beautiful dark maroon over a yellow ground; flesh firm, fine grained, juicy and a long keeper.

Crab Apples

30c each, \$2.50 per 10.

Hyslop Crab. A very popular variety in the West on account of its size, beauty and hardiness; fruit deep crimson, covered with blue bloom.

Transcendent Crab. The best of all the crabs for general use. Tree remarkably vigorous and immensely productive. Fruit large, skin yellow, striped with red. Fruit especially fine for preserves and jellies, being of a pleasant aromatic flavor. August.

Whitney Crab. Large, averaging one and a half to two inches in diameter; skin glossy-green, striped with carmine; flesh firm, juicy and of pleasant flavor. Tree hardy and a vigorous grower.



RHODE ISLAND GREENING.

Of highest flavor and quality.

Cherries

There are few finer fruits than the Cherry, and when planted in suitable locations, invariably yields good crops. The Black Tartarian, Royal Ann and Bing belong to the Heart or Bigarreau class of Sweet Cherries. The Early Richmond and English Morello differ from the preceding in that they belong to the Dukes or Morello class, which are sour cherries.

	Each	Per 10	Per 100
4 to 6 feet.....	\$.35	\$2.75	\$22.00
3 to 4 feet.....	.25	2.25	18.00

Bing. This grand black Cherry is much sought after by shippers and canners alike on account of its large size, delicious flavor, and firmness. The tree is a remarkably strong grower and a prolific bearer. Middle of June.

Black Tartarian. Very large; purplish-black; flavor mild and pleasant. The tree is a vigorous, upright grower.

English Morello. Large, dark red; tender, juicy, rich acid; later than Early Richmond; an excellent acid variety. In our trial grounds has borne heavy successive crops for several years.

Early Richmond. An old favorite sort; an early, red, sub-acid cherry; tree a fine grower, hardy, healthy and productive.

Royal Ann. (Napoleon Bigarreau.) A magnificent cherry of the largest size; pale yellow with bright red cheek; flesh firm, juicy and sweet.



BLACK TARTARIAN CHERRY.
The best known of the Heart cherries.



KIEFFER PEAR.
An old standard variety, large and handsome.

Pears

Broadly speaking, the Pear will do well over a wide area of country, but prefers a heavy loam verging into adobe. For this reason it is a favorite fruit for planting in our heavy valley soils, where it attains its greatest perfection. It will withstand a larger percentage of alkali in the soil than any other of our commercial fruits. Plant from 20 to 25 feet apart; cut the nursery trees back to 18 inches when setting out in orchard; after first year prune regularly and intelligently to produce a stocky tree. Our trees this year are unusually good, possessing strong roots and splendid top growth, and in variety of kinds cover a range making possible ripe fruit mid-summer to spring.

	Each	Per 10	Per 100
6 to 8 feet.....	\$.40	\$3.00	\$25.00
4 to 6 feet.....	.35	2.50	22.00
3 to 4 feet.....	.30	2.00	18.00
2 to 3 feet.....	.25	1.75	14.00

Bartlett. The most widely cultivated pear in California; large, buttery and melting, with rich musky flavor; tree a vigorous grower; bears abundantly; ripens early. No pear now in the market possesses a wider popularity, being a good shipper, possessing keeping qualities and fine appearance. August.

Beurre D'Anjou. Large; russet-yellow shaded with crimson; flesh melting, juicy, rich and delicious; fine market and table variety. September.

Beurre Clairgeau. Large yellow; shaded with orange and crimson, covered with russet dots; flesh yellowish, buttery and juicy. September.

Beurre Bosc. A fine large pear with long neck; cinnamon-russet; handsome; flesh half melting, juicy and delicious; slightly perfumed. Tree hardy and prolific. September.

Clapp's Favorite. A splendid Summer pear, resembling the Bartlett and ripening a few days earlier. Tree is hardy and a vigorous grower. As with all varieties of pears (and especially with this), fruit should be picked at least ten days before it would ripen upon the tree. July.

Crocker Bartlett. (New.) This fine new winter pear is said never to have been attacked with blight. The fruit is large and of a rich golden yellow overspread with russet. Flesh yellowish, buttery, juicy and of high flavor. October.

Doyenne Du Comice. Large, yellow with a crimson and fawn cheek and russet dots; melting, rich, perfumed, and luscious. October.

Duchess D'Angouleme. Very large; dull greenish-yellow, spotted with russet; flesh white and buttery. September.

Easter Beurre. Large round fruit, often sprinkled with dots and patches; flesh white, fine grained, juicy, sweet and richly flavored; an excellent shipper; tree a rapid grower and abundant bearer. October to January.

Flemish Beauty. A large, beautiful, melting sweet pear. Strong grower and fruitful; an old standard Autumn variety. September and October.

Kieffer. (Kieffer's Hybrid.) Large; skin rich golden-yellow, sprinkled thickly with small dots, and often tinted with red on one side. Flesh slightly coarse, juicy and melting, with pronounced quince flavor. October.

Lawson. Large fruit; brilliant crimson color on yellow ground; flesh crisp, juicy and firm; one of the most attractive of the early pears. June to July.

Madeline. The first pear to ripen; size medium; skin pale yellow; flesh melting and juicy. Ripens in June.

Margaret. (Petite Marguerite.) Medium size; skin greenish-yellow with brownish red cheek, covered with greenish dots. Flesh melting, juicy, vinous and of fine quality; tree vigorous grower and prolific bearer. July.

Seckel. The standard of excellence in the pear; small but of the highest flavor. Tree a stout, erect, but rather dwarf grower. August to September.

Wilder Early. Excellent quality; greenish-yellow with brownish cheek; tree hardy and bears while very young.

Winter Bartlett. Fruit large, closely resembling the Bartlett in shape, appearance and quality, ripening three or four months later; remarkably productive. The bear late pear.

Winter Nelis. Medium size; dull russet; flesh melting and buttery with rich, sprightly flavor; tree a slender, irregular but free grower; bears heavily and regularly; one of the best early winter pears.

Worden Seckel. A seedling of the Seckel. Fruit medium size, borne in clusters, juicy and fine grained; flavor fully equal to that of its parent, which it surpasses in size and keeping qualities.



BARTLETT PEAR.

The standard commercial pear of California.

Dwarf Pears

We have the following Dwarf Pear trees, grafted on the quince root. Owing to the dwarf habit, they are desirable and especially adapted for small gardens; trees come to bearing early, and are very prolific.

40c each; \$3.00 per 10.

Bartlett
Crocker Bartlett
Seckel
Winter Bartlett

Doyenne du Comice
Duchess de Angouleme
Winter Nelis
Worden Seckel

Quinces

This fruit is desirable for sauces and preserves, hence forms a valuable adjunct to the garden. Thrives well along the Pacific Coast, and owing to its keeping qualities, can be shipped to eastern markets.

	Each	Per 10	Per 100
4 to 6 feet.....	\$.35	\$3.00	\$25.00
3 to 4 feet.....	.25	2.00	18.00

Orange. Large, roundish with short neck; greenish yellow color. The best known of the older varieties.

Pineapple. (New.) The name is suggested by the flavor. The fruit resembles the Orange Quince but is smoother. Of excellent quality.

Reas Mammoth. A very large, fine variety of the Orange Quince; a good grower and quite prolific. One of the best.

Smyrna. (New.) The fruit of this superb variety is very large and of a lively, lemon-yellow color; tender and delicious when cooked.



PINEAPPLE QUINCE.

A dependable Quince of sterling merit.

Pomegranates

Highly appreciated for its showy, ornamental, semi-dwarf habit; foliage is a rich light green, with bright scarlet colored blossoms. Fruit is about the size of a large apple, highly colored a dark red. There is a growing demand for choice Pomegranates in the Eastern markets, where they usually command fancy prices. We are offering the following varieties which have been tested and proven satisfactory in California.



WONDERFUL POMEGRANATE.

A delicious and handsome fruit.

35c each; \$2.50 per 10; \$20.00 per 100.

Papershell. (New.) As the name indicates this is a thin skinned variety of highest quality; fruit large; skin pale yellow with crimson cheek, the edible portion being a rich crimson color, sweet and aromatic. October.

Wonderful. (New.) A recent introduction of great merit. Large, highly colored and attractive; pulp a rich garnet. These qualities, together with an abundance of juice and an excellent flavor, mark it as the superior of all pomegranates. Valuable for shipping to Eastern markets. October.

Medlars

A medium sized tree of soft luxuriant foliage, often confused with the loquat. The fruit, which is about the size of a small apple, is gathered in late October and after being laid away to ripen is quite edible from the hand. The flavor is an agreeable acid. Desirable for preserving.

Large Dutch. Fruit large and flattened; eye wide open; flavor good; on account of its size it is the variety most cultivated in Europe. 3 to 4 feet, 50c.

Nottingham. Fruit smaller than the preceding variety, but has a superior flavor, rich and subacid. Tree very prolific. 3 to 4 feet, 50c.

Figs

Among California fruits the Fig always occupies a foremost position; the early Mission fathers invariably possessed a few trees in their gardens. It was not, however, until the eighties that Fig culture assumed commercial importance; neither did it attain full success until about 1898. Since that period Fig culture has attained great importance and no garden is complete without a few trees, while each succeeding year sees more and larger orchards planted over all the southern half of this State.

	Each	Per 10	Per 100
4 to 5 feet.....	\$.40	\$3.00	\$25.00
3 to 4 feet.....	.30	2.50	20.00
2 to 3 feet.....	.25	2.00	18.00

Brown Turkey. An excellent fig for marketing, ripening early; of large size; color violet-brown.

Calimyrna. (Smyrna.) The genuine commercial Smyrna fig as grown in Asia Minor; large size; skin lemon yellow; pulp reddish-amber; flavor and quality unsurpassed. For growing this variety successfully, it is necessary to have the aid of the fig wasp (*Blastophaga Grossorum*). These minute insects dwell in the wild or Capri figs and convey the pollen into the edible fig.

San Pedro Black. A fine table variety; fruit large, somewhat elongated, ovate, no stalk; skin smooth; color violet-black, tending to green toward the neck; pulp of a coppery-red color. Ripens early in September.

Verdal Longue. Tree of striking habit, the branches often drooping to the ground; fruit turbinate; plump, bright red; flavor aromatic and sweet; skin a bright green when ripe.

White Adriatic. Large; skin greenish yellow; flesh reddish; tree strong grower and prolific; largely planted in California.

White Pacific. The best of all figs for home use in Southern California. Medium size; skin thin, yellowish green; flesh light yellow; of excellent quality, rich and sweet. As it becomes ripe, a little dewdrop forms on the end, thus preventing infection by insects; does not crack or sour when ripe; bears heavily and almost continuously.

Japanese Persimmons

Superb fruits that are growing in popular esteem. They can be grown very successfully in all parts of California and the Southwest. The following are the best of the large number of varieties we have fruiting on our grounds.

	Each	Per 10	Per 100
4 to 6 feet.....	\$.50	\$4.00	\$35.00
3 to 4 feet.....	.35	3.00	25.00

Costata. Medium size, conical, slightly four-sided; distinct and handsome; skin salmon; flesh light yellow; ripens very late and keeps well; tree vigorous, upright and very prolific.

Hachiya. Large, oblong, conical; $3\frac{1}{2}$ in. longitudinally and 3 in. transversely; skin dark, bright red; flesh yellow, with some dark streaks and few seeds; astringent until ripe; of highest flavor and quality.

Hyakume. Large to very large, roundish oval, flattened on both ends; skin light buffish yellow; flesh dark brown, sweet, crisp, meaty; $2\frac{3}{4}$ in. longitudinally, $3\frac{1}{8}$ in. transversely.

Tane-Nashi. Large to very large, roundish conical, pointed, very smooth and symmetrical; diameter $3\frac{1}{4}$ in. longitudinally and $3\frac{3}{8}$ in. transversely; skin light yellow, changing to bright red at full maturity; flesh yellow and seedless; quality very fine; perhaps the most highly esteemed of the light-fleshed kinds; tree a prolific bearer.

Yeddo Ichi. A dark-meated persimmon of excellent quality, large oblate and regular, with slight depression at blossom end; rich, meaty and crisp; edible when quite hard.

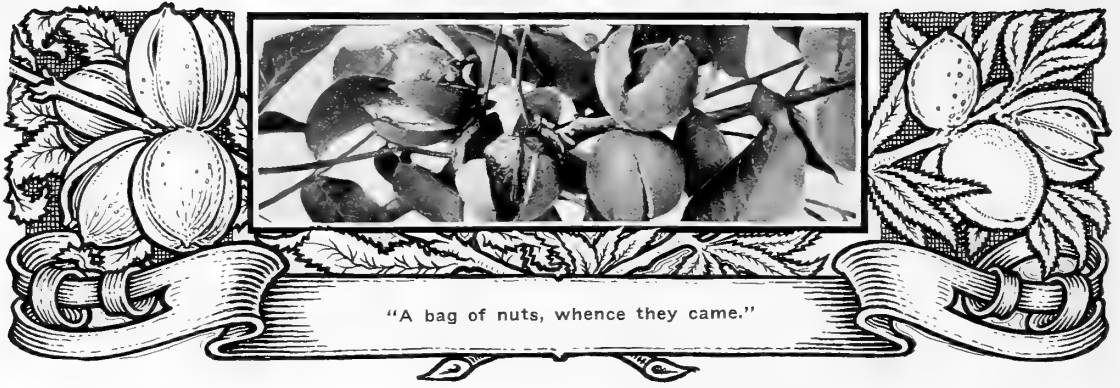
Zengi. Smallest of Japanese persimmons, yet very valuable and reliable; skin reddish yellow; flesh dark; quality superior; desirable for early market; begins ripening in late August, continuing for sixty days.



WHITE PACIFIC.
Best for the home garden.

Capri No. 1. The wild fig, which must be grown in connection with the Smyrna, the ratio being two Capri trees to an acre of Smyrnas.

Mission. The well-known California Black Fig. The tree is a very strong grower and good fruiter. The leading black variety for shipping and drying.



Nut-Bearing Fruit Trees

The growing of nuts of the recognized commercial varieties has become a great industry in California and is a feature in nearly all sections of this State, and in a lesser degree also in Arizona and other portions of the Southwest. Nut trees are indeed desirable both commercially and for family supplies and for shade and avenue planting.

Almonds

Considering that the Almond is one of the leading nuts known to commerce, too little attention has been devoted to its culture. It finds congenial conditions throughout California in favored sections free from killing spring frosts. Wickson, in his "California Fruits," says that "The almond prefers a loose, light, warm soil, and heavy, poorly-drained soils should be avoided. Though they need moisture enough to make good, thrifty growth, they will produce good crops on soils that are too light or dry to grow peaches." The trees we are offering are of exceptional quality, being grown on a friable sandy loam soil, which produces a strong development of fibrous roots, thus insuring robust prolific bearing trees when planted in orchard form.

	Each	Per 10	Per 100
4 to 6 feet.....	\$.35	\$2.50	\$20.00
3 to 4 feet.....	.25	2.00	16.00

Jordan. The largest, sweetest and finest flavored of all the almonds. The kernels are long, plump and thin-skinned; rich flavored and of fine texture. The Jordan has recently been introduced from Spain, where it is highly prized, the demand being greatly in advance of the supply.

Ne Plus Ultra. Nut large and long; soft shell; a regular and heavy bearer; tree of strongest growth; an old standard sort.

Nonpareil. A popular sort; shell thin, quality good; tree of a somewhat weeping habit; bears heavy and regularly.

Texas Prolific. The kernel is of medium size; plump; soft shell; blossoms late and usually bears a good crop.

Chestnuts

While Chestnuts are not grown as a commercial crop in this State, yet a tree or two planted in the home grounds is an attractive feature, forming as they do, a dense uniform crown. Owing to its early bearing qualities, as compared with other varieties, the Spanish Chestnut is the favorite among California's planters.

Spanish. A highly ornamental tree of free growth and fine foliage. The nut is sweet and generally of large size and one of the hardiest and best varieties for general planting. Owing to its early fruiting qualities, as compared with other kinds, the Spanish is the favorite among California planters. 6 to 7 feet, 75c; 4 to 5 feet, 50c.

Pecans

It is only within the last few years that our California conditions have been considered favorable to the successful growing of the Pecan. That it is adaptable is evidenced by the numerous bearing trees growing throughout the State. The tree does well in a variety of soils, ranging from stiff clay to porous sand. There seems to be no reason why the Pecan should not become of commercial importance on the Coast.

Frotscher. A large, oblong nut; shell thin, easily cracked; kernel large, plump and full; of good color, excellent quality; tree vigorous and thrifty; one of the best. Grafted trees, \$1.25 each; \$10.00 per 10.

Soft Shell Seedlings. Grown from selected nuts; fine for shade trees. 3 to 4 feet, 50c each.

Walnuts

Among the many commercial nuts grown in California, none has attained such large proportions and universal importance as the English Walnut. No nut yields larger and more profitable returns to the planter. Under favorable conditions the tree attains an immense size and yields a bountiful harvest.

As seedling trees are very uncertain in their bearing and quality of nuts, for commercial purposes it is generally recognized that only grafted trees from the best types and proven varieties should be planted.

For best results, much depends on the quality of the nursery tree. Our Walnut trees are free from blight, and are grown on upland soil, which produces a splendid root system. For commercial planting the trees should be set 40 to 50 feet apart to allow for full development. To insure activity of growth, good and thorough cultivation is necessary. However, when once established, very little pruning is required.

NEW VARIETIES

	Each	Per 10	Per 100
4 to 6 feet.....	\$1.25	\$10.00	\$90.00
3 to 4 feet.....	1.00	7.50	60.00

Eureka. The trees are upright, vigorous growers, with clean branches and open growth; bark slightly rough and not subject to sunburn; the most resistant to blight known at present, and one of the best producers; especially desirable in localities having late frosts, being a late bloomer and ripening about ten days later than the average; nuts large, soft shell, elongated, smooth and tightly sealed.

GENERAL COLLECTION

	Each	Per 10	Per 100
6 to 8 feet.....	\$1.00	\$ 9.00	\$80.00
4 to 6 feet.....	.75	6.00	50.00

Neff's Prolific. Highly resistant to blight and a heavy producer; soft shell; originated in the orchard of J. B. Neff, near Anaheim, Cal. Growth is upright rather than spreading and has clean branches with but a small amount of inside twigs; nuts large, oval, medium ribbed and tightly sealed; blooms late but ripens early.

Placentia Perfection. The favorite soft shell variety of the Southern California counties. Disseminated by Mr. J. B. Neff of Anaheim, Cal., whose claims for it have been fully realized. The tree is a vigorous grower and bears abundantly in the fifth year. The nut is large, uniform size, white meated, and of highest quality.

Franquette. A standard nut grown in the northern or less temperate walnut districts. Tree is hardy and vigorous; nut is large and elongated; meat is sweet and richly flavored; a late bloomer.

SEEDLING WALNUTS

Placentia Perfection Seedling. Grown from selected seeds; while we recommend the planting of grafted trees, yet seedlings may be used for roadside trees or for shade. 6 to 8 feet, 40c; 4 to 6 feet, 30c.

California Black. (*Juglans Californica*.) These native walnuts are found growing in many sections of California on the dry hillsides and valleys; forms a handsome shade tree; bears heavily a small sized nut of no commercial value. 6 to 8 feet, 40c; 4 to 6 feet, 30c.

Eastern Black. (*Juglans nigra*.) The Black Walnut of the Eastern states is of slower growth than our native species and the nut is larger, but of no value commercially. 4 to 6 feet, 40c; 3 to 4 feet, 30c.

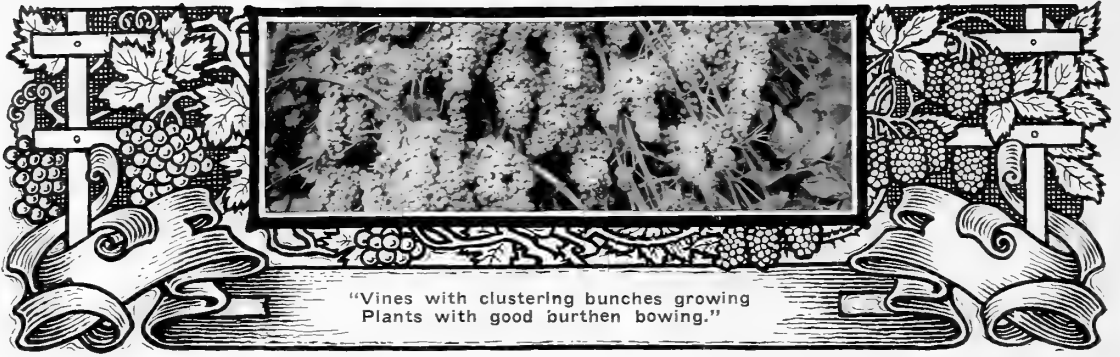


Eureka.

Neff's Prolific.

Placentia Perfection.

THREE FAVORITE WALNUTS FOR SOUTHERN CALIFORNIA.



Vine and Bush Fruits

Among fruits, grapes are perhaps the most certain in bearing qualities. In Southern California grape culture has attained great importance, the raisin, table and wine varieties occupying an immense acreage representing large investments. Our assortment is selected with a special view of meeting general requirements for home as well as for commercial culture. No home garden is quite complete without a few choice table sorts, lending an air of comfort when trained over trellis or arbor. Our assortment of the bush fruits such as blackberries, raspberries and strawberries, embraces the leading varieties for family use and commercial culture. Assorted orders for home planting will receive careful attention.

RARE FOREIGN TABLE GRAPES

	Each	Per 10	Per 100
Price	\$.20	\$1.50	\$5.00

Almeria. Bunches large, loose; berry large, oval, yellowish-green. This variety is grown extensively in Spain and exported to America packed in cork dust. Medium late.

Black Malvoise. Vine a strong grower; berries large, oblong, reddish-black with faint bloom; flesh juicy, flavor neutral. An immense bearer. A fine table and wine grape. September.

Black Morocco. Berries very large, oval; purplish-black when ripe; flesh firm, sweet and crisp; bunches medium to large, compact; an excellent late shipping grape.

Black Hamburg. A fine, tender grape; producing large, compact bunches. Berries coal black when fully ripe; very large and oblong in shape. A great favorite for table and market. September.

Cinsaut. Esteemed highly as a wine and table grape; produces large black berries of oval shape, firm, crisp and delicately flavored.

Dattier de Beyrouth. A magnificent new grape from Asia Minor. Excellent for either table or raisins; bunches large and loose; berries large and oval; of a rich golden amber, covered with a whitish bloom; fleshy, juicy and sweet. August.

Golden Chasselas. The berries of this variety are of a rich amber color, sweet and juicy; bunches medium size and compact. Ripens latter part of July.



BLACK MALVOISE.

Highly esteemed for table use. Fine for arbors.

Golden Queen. Fruit large, greenish yellow, becoming a golden color when fully ripe; flesh juicy, rich and finely flavored.

Gros Colman. Berries of this variety are as large as small plums, and are borne in immense clusters. Skin thin, very dark and covered with bloom; flesh firm, pleasant flavor. A very excellent table variety. Ripens late.

Muscattole Fino. (Black Muscat.) An excellent table grape; berries very large; skin well colored, thin but tough; flesh soft and juicy with delicate Muscat aroma. Rather late.

Olivette de Cadanet. Bunches large; berries very large, oval and greenish-yellow; crisp, juicy and of good quality; a good table grape; medium late.

Purple Damascus. Fruit is very large; deep purple when fully ripe; flesh meaty; bunches large and loose. Very desirable for table use. Ripens mid-season.

FOREIGN TABLE, WINE AND SHIPPING GRAPES			
	Each	Per 10	Per 100
Price	\$.15	\$1.00	\$4.00

Black Cornichon. Bunches long and loose, berries oval; skin thick, covered with bloom; firm, good quality; one of the best late shipping grapes.

Emperor. Bunches large, long and rather loose; berry large, oblate, wine colored, very firm; a very late variety, and considered one of the best for shipping.

Flaming Tokay. Bunches and berries very large, pale red with bloom; flesh firm and sweet; a handsome grape and a good shipper.

Malaga. One of the best table grapes; vine a strong grower, and very productive; bunches very large, compact; berry large, oval, yellowish-green.

Mission. Berries medium, round, black, sweet; bunches large, loose; an old standard variety; table and wine.

Muscat of Alexandria. The white raisin grape planted so extensively in California; bunches large and loose; berry oval; Muscat flavor; one of the richest flavored of all grapes; valuable for raisins, table and wine.

Seedless Sultana. Berries small, round, firm and crisp; golden yellow and without seeds; bunches very large and long. Vine vigorous grower and prolific bearer; largely planted for seedless raisins and table fruit. Early.

Thompson Seedless. Oval, greenish-yellow; as large or larger than Sultana; seedless; thin skinned; good, but not strong flavor; bunches very large. Valuable for either table use or seedless raisins. Ripens early.

HARDY AMERICAN GRAPES

This class of grapes is especially adapted for arbors.			
	Each	Per 10	Per 100
Price	\$.20	\$1.50	\$10.00

Concord. Undoubtedly the most widely known and popular of all the American grapes. The vine is a healthy, vigorous grower, and being hardy, it succeeds where the more tender foreign varieties fail. Color black, covered with thick bluish bloom.

Catawba. This excellent wine and table grape is produced in conical clusters of large, clear, coppery red berries; thin skin; pulp tender and juicy, with slight Muscat flavor; vinous and rich. September.

Delaware. Bunches are small and compact; berries small; light red with a violet bloom; sweet, sugary and vinous with a musky aroma.

Moore's Diamond. A large, juicy grape of a greenish-white color, almost without pulp and very few seeds. September.

Niagara. Fruit large; bunch medium, compact; skin thin but tough, pale yellow with whitish bloom; flesh tender and sweet; vine healthy and productive; ripens with Concord. Considered the best hardy white grape in cultivation.

Pierce. (California Concord.) Extremely large, sweet and of extraordinary quality; berries bluish-black; vine of vigorous growth and very prolific; an esteemed market variety.

GRAFTED GRAPES

The following varieties we can supply grafted on resistant roots, which are immune to the vine disease known as Phylloxera:

35c each; \$2.50 per 10.

Black Hamburg	Muscattole Fino
Black Malvoise	Seedless Sultana
Dattier de Beyrouth	Sultanina Rosea
Emperor	Thompson Seedless
Mission	Tokay
Muscat	



CONCORD.

The best among American grapes.

Blackberries

Crandall's Early. This is one of the earliest to ripen, and has a long fruiting season. It is a strong and vigorous grower, hardy, and productive; berries firm and of good size and form and rich black color; flavor of the best, rendering it desirable as a dessert fruit, and also for sauces. 10c each; 50c per 10; \$3.00 per 100.

Himalaya Giant. An introduction from the Himalaya Mountains through the efforts of Luther Burbank. This variety should be trained on a trellis, and pruning carried on during the winter months. It is a strong grower, canes sometimes reaching 40 feet; prolific bearer; berry a good shipper; having but few seeds, hence excellent for jellies. 15c each; 50c per 10; \$4.00 per 100.

Mammoth. A rampant grower, sometimes attaining a growth of 20 feet in one season. The foliage is heavy and of a deep green color. The fruit is very large and long, surpassing all other blackberries in size and flavor. Early and very productive. 10c each; 50c per 10; \$4.00 per 100.

Dewberry

Gardena Dewberry. The best of the trailing blackberries. The points in its favor are early ripening and great productiveness. It is wonderful to see the vines literally covered with the jet black berries. No family garden can be considered complete without a few Dewberry plants in the general assortment. 10c each; 50c per 10; \$3.00 per 100.

Loganberry

The Loganberry. A California production of the highest type; a hybrid between the wild California Blackberry and the Red Antwerp Raspberry. Color rich purplish red with a very pleasant yet decided vinous flavor. The best results are obtained by growing on a low trellis. During the dormant season the old last-year vines may be cut off, leaving the new canes for the next crop. May be planted in rows seven to eight feet apart and six to eight feet in the row. 10c each; 50c per 10; \$4.00 per 100.



GARDENA DEWBERRY.
A prolific and popular fruit.



MAMMOTH BLACKBERRIES.

The largest and best blackberry in cultivation.

Phenomenal

Phenomenal Berry. Originated by Luther Burbank, and said to be a cross between the California Dewberry and Cuthbert Raspberry. The largest berry known. Color bright crimson. Berries grow in clusters of from 5 to 10 and individual berries are exceedingly large, often measuring three inches around one way and four the other. Delicious for canning. 15c each; \$1.00 per 10; \$7.50 per 100.

Raspberries

Cuthbert. The best known of the red raspberries; large, conical; deep crimson; firm and of finest flavor. 10c each; 50c per 10; \$3.00 per 100.

St. Regis Everbearing. The new "early till late" Raspberry; said to be the earliest of all raspberries; color bright crimson; large size and surpassing quality; rich and sugary with full raspberry flavor; canes are of strong stocky growth with abundant foliage; a prolific bearer. 15c each; 75c per 10; \$5.00 per 100.

California Surprise. A valuable new raspberry, remarkable for its fine quality and early ripen-

ing; of large size, similar in form and color to the Cuthbert; begins to ripen in April, continuing through the entire berry season; the earliest of all to ripen. 15c each; 75c per 10; \$5.00 per 100.

Strawberries

A-1. Ripens from early to late; a sure and continuous bearer; large, dark red when ripe; exceedingly prolific. We recommend this as one of the best all-round strawberries grown. 75c per 100; \$5.00 per 1000.

Arizona Everbearing. Berry very large and handsome; for Arizona and warm, dry interior valleys of California; this variety is recommended on account of its strong constitution, vigorous growth and foliage. 75c per 100; \$5.00 per 1000.

Brandywine. A California production, possessing many good points. Berries are glossy red; firm and of excellent quality; ripens mid-season to late. 75c per 100; \$5.00 per 1000.

Gooseberries

Oregon Champion. This new variety originated in the state from whence it takes its name. The fruit is large and round; bush is a prolific bearer and free from mildew. 25c each; \$2.00 per 10.

Currants

Cherry. Vigorous and productive when grown on good soil and cultivated; berries large, deep red; rather acid. 25c each; \$2.00 per 10.

Perfection. A new variety of good quality; berries of good size; color a beautiful bright red; flavor rich, mild and sub-acid; exceedingly productive. 25c each; \$2.00 per 10.



BRANDYWINE STRAWBERRY.

Fine for marketing; firm of flesh and of good color.

The Vegetable Garden

Asparagus

10c each; 35c per 10; \$2.00 per 100.

Conover's Colossal. A mammoth variety of vigorous growth, sending up from fifteen to twenty sprouts each year. White.

Giant Argentuil. The favorite wherever known; the stalks grow to an enormous size; cooks tender and of delicious flavor.

Palmetto. The popular favorite with California growers for the early market; of superior size and flavor. Bright green.

Rhubarb

Giant Crimson Winter. Stalks of mammoth size, excellent flavor and quality; highly profitable as a commercial crop or for home use. This variety is propagated by root divisions, which is the only method of maintaining size and uniformity of the stalks. We do not offer seedling plants. Price of Giant Crimson Winter, whole roots, 35c each; \$2.50 per 10; divided roots, \$1.00 per 10.

Tomatoes

20c per 10; transplanted in boxes, \$1.00 per 100.

Ponderosa or Beefsteak. Of enormous size, smooth and solid; rich and meaty.

Earliana. The best early tomato.

New Stone. The favorite variety for shipping and canning; large, smooth and solid.

Sweet Potatoes

Yellow Nansemond. Medium size, yellow; the leading market variety. 50c per 100.

Note: Tomato and Sweet Potato plants ready March to May.

Horseradish

Maliner Kren. The best variety of this pungent vegetable. It may be easily grown by cutting up the roots in small pieces. It prefers a rich, moist loam. Plant in rows 18 in. apart. 5c each; 25c per 10; \$1.50 per 100.



The Rose Garden

The Rose is the most universally beloved of flowers and for all time has been the principal floral adornment in the gardens of both castle and cottage, shedding its delightful fragrance impartially over prince and pauper, and commanding the admiration of every one. They are found in a wild state in nearly every part of the globe and cultivated sorts find an equally wide dissemination. In no country do roses reach a higher degree of perfection than in the Golden State, where the peerless climate induces perfect blooms throughout the season and a robust growth each year, which equals all that other lands may produce in two or three.

Under such ideal conditions are our roses grown, warranting us in assuring our customers that for constitutional vigor, root development, rapidity of growth and production of a prolific crop of perfect flowers, our roses have no superiors and few equals. All our roses are grown in our own nursery from the best stock obtainable and we therefore feel that we can guarantee perfect satisfaction to every purchaser. While our stock is of the best, our prices are as low as any for plants of the same high grade. Except where otherwise specified, all our roses are grown upon their own roots.

THINGS TO OBSERVE

Unpacking Roses. Should plants, when received, have a withered appearance, caused by an unusual delay in transit (which seldom occurs), soak them in water for an hour or more so as to restore their vitality.

How to Plant. The rose delights in an open, airy situation; all types are partial to clay loam, but will succeed in any ordinary soil if enriched with well rotted barnyard manure. Dig up the soil thoroughly to a depth of twelve to fifteen inches. When the bush is planted press the soil firmly over the roots. Make a basin around the plant and water freely to exclude air and to settle the earth.

Pruning. This operation is best performed during the dormant season. Most roses do better if moderately pruned. We usually remove from one-third to two-thirds of the past year's growth, and all weak or decayed wood should be entirely cut out. As a rule the more vigorous the variety the less it should be pruned. Besides spring pruning, many of the Hybrid Perpetuals require to be pruned as soon as their first blooming is over, in order to grow new wood for later blooming. It is always the new growth which gives flowers. Most people are apt to prune too sparingly, which retards rather than enhances the free-blooming of the plants.

ROSE CLASSIFICATION

Banksias. Vigorous climbers; thornless; flowers in clusters in spring.

Bourbons, Bengals or Chinas. Strong, vigorous growers; free bloomers.

Brier Hybrids. Hardy roses with fragrant foliage and single flowers.

Dwarf Ramblers and Polyanthas. Of dwarf growth, flowering in clusters; everblooming.

Everblooming Teas. Of free blooming habit; persistent foliage and delicate tea fragrance.

Hybrid Perpetuals. Of strong upright growth; flowers usually very large and fragrant; very hardy.

Hybrid Tea. A hardy class of everblooming roses; usually sweet scented and in a great variety of colors.

Moss. Old-time favorites; very hardy.

Noisettes. Rampant climbers; inclined to bloom in clusters; varying shades of white and yellow.

Note: To purchasers not fully acquainted with the many varieties of Roses we would recommend that the selection be left to us.

Note: Roses are usually in a dormant condition and may be shipped safely with bare roots up to April 1st.

New Roses

The following new roses represent the best among recent introductions, being distinctive in character and well worthy of cultivation.

Prices of new roses, 50c each; one each of 16 new sorts, \$6.00.

Climbing Gruss an Teplitz. Hybrid Tea. A sport from the well-known bush of the same name; vigorous in growth and well covered with handsome foliage. Flowers identical with those of the bush variety. A perfect sheet of dazzling crimson throughout the summer.

Climbing Killarney. Hybrid Tea. A climbing form of the popular rose Killarney; a strong, rapid grower with a beautiful, deep green foliage; blooms continuously and bears long, pointed buds of deep shell-pink.

Edward Mawley. Hybrid Tea. Beautiful as the hundreds of roses at present in cultivation are—as an ideal variety—for any purpose, Edward Mawley is the most outstanding. This wonderful rose named after the well-known English Rosarian, is a splendid addition to the family of roses. It is a rich, velvety crimson color, a true hybrid tea. Its size, form, color, freedom of blooming and perfect habit of growth are all that could be desired.

George C. Waud. Hybrid Tea. A splendid, new fragrant, free-blooming rose; blooms large; full and long high pointed buds; color bright orange vermillion; a much to be desired color in roses. Both foliage and flowers are in all respects fully up to the requirements as an ideal garden rose.



HARRY KIRKE.

One of the finest of the new yellows.

Harry Kirk. Hybrid Tea. Deep sulphur-yellow, shading to lighter color at edge of petals; large, full and of perfect form; buds long and elegant; free and continuous bloomer.

His Majesty. Hybrid Perpetual. Resembles Frau Carl Druschki, except in color, which is a dark deep crimson, shaded deep vermillion crimson; blooms are large and full, having wonderful depth of petals; one of the sweetest perfumed roses in cultivation.

Jonkheer J. L. Mock. Hybrid Tea. A novelty of distinct merit; the color is a carmine changing to imperial pink; blooms are of a large size, perfect formation, and highly perfumed. We consider this Hybrid Tea the best of the new roses in its color.

Juliet. Hybrid Brier. A distinct rose; outer side of petals old gold, inside rich red; large, full and handsome; deliciously fragrant; free and constant bloomer.

Lady Alice Stanley. Hybrid Tea. The blooms are very large, fine, fragrant and of great substance; petals are deep coral rose on the outside, soft flesh color on the inside. It is a stout, vigorous grower, with free branching habit and beautiful foliage.



GEORGE C. WAUD.

Remarkable for brilliant color and beautiful bud.



MRS. ARTHUR ROBERT WADDELL.

None are more beautiful in this shade of color.

Mme. Jenny Guillemot. Hybrid Tea. Another superb new rose of excellent quality; for richness of coloring and habit of growth it is unexcelled; buds are long and pointed, of a deep saffron-yellow, opening into canary yellow, with dark golden shadings; petals unusually large.

Mme. Leon Pain. Hybrid Tea. Handsome foliage of a plum color; smooth wood and robust grower; flowers large and full; silvery salmon with yellow orange center, reverse bright red and yellow; profuse bloomer.

Mme. Segund Weber. Hybrid Tea. A magnificent rose, having excellent qualities; blooms persistently; long pointed buds of perfect form, unfolding to a flower of unusual size; splendid for cutting; color, light rosy-salmon.

Miss Cynthia Forde. Hybrid Tea. A grand new rose of special merit. Color deep brilliant rose-pink; large perfectly formed and very full.

Mrs. Aaron Ward. Hybrid Tea. Deep golden orange color, shading out to lemon or creamy yellow at the end of the petals. The buds are cupped and very deep, showing the glowing heart to the best advantage; flowers very large and full and exquisitely formed.

Mrs. Arthur Robert Waddell. Hybrid Tea. A delightfully refined rose with ornamental foliage; large, open flowers of deep apricot color; buds long and pointed; of delicate apricot fragrance; constant bloomer.

Sunburst. Hybrid Tea. This magnificent giant yellow rose has tested out well on our grounds this season. It has a long stem; color intense shades of golden orange and yellow; brilliant in effect. Its name typifies its glorious colorings, which are unapproachable in effects.

General Collection

Price of Roses: 30c each; \$2.50 per 10; \$20.00 per 100.

In order to aid the novice in making a selection to the best advantage, we have placed an asterisk (*) opposite those varieties which, because of their good qualities and easy cultivation, we can especially recommend for universal satisfaction. Other varieties are in many instances equal in quality, but as a rule, for the best results, demand more careful cultivation. In making your selection, do not fail to consider the starred varieties.

Agrippina. Bengal. For bedding or hedge this rose is admirably adapted; it is a vigorous grower, carries its foliage well and is always in bloom; color brilliant red; double and sweet.

Alfred Colomb. Hybrid Tea. Bright red shaded to bright crimson; very large, full and globular; free blooming and fragrant; a grand rose.

***Alice Roosevelt.** Hybrid Tea. A sport from Mme. Chatenay, of the brilliant color of Bon Silene, red in the bud, deep pink when open; one of the successful new roses.

American Beauty. Hybrid Perpetual. A rich rosy crimson, the beauty and fragrance of which is unsurpassed; the flowers are large, deep and very double. The varieties in this class are not, as a rule, ever-blooming, yet this grand rose will, with proper care, bloom throughout the entire summer.

Anna de Diesbach. Hybrid Perpetual. A lovely shade of carmine; large double flowers; fragrant; one of the hardiest.

Antoine Rivoire. Hybrid Tea. A beautiful large rose of fine form; double and fragrant; color rosy flesh, yellow ground, with border of carmine.

Baby Rambler. Polyantha. (Mme. N. Levavasseur.) The new ever-blooming dwarf Crimson Rambler is a phenomenal free bloomer. The plant is literally covered with clusters of pretty flowers from spring to fall.

Baron de Bonstetten. Hybrid Perpetual. Very dark red, almost black. Flowers fragrant, large and double.

Betty. Hybrid Tea. Unique coloring of ruddy gold or coppery yellow overspread with golden rose; blooms large, fairly full and profuse; of vigorous growth and spreading habit.

Bon Silene. Ever-blooming Tea. Beautiful crimson rose, perfect in every respect; producing flowers in profusion. Buds perfect.

Bride. Ever-blooming Tea. Pure white, sometimes delicately tinged with pink; large, fine form, fragrant, free bloomer; one of the most popular of white roses.

Captain Hayward. Hybrid Perpetual. This large rose ranks with the very best; flowers are of the largest size, full and cup-shaped, the outer petals finely reflexed, while the center petals stand well up, making a flower of striking beauty; color a deep glowing crimson, bright and rich.

Captain Christy. Hybrid Perpetual. Extra large flat flowers; color a lovely shade of pale peach, deepening at the center to crimson.

Catherine Zeimet. Polyantha. The newest addition to the Baby Ramblers. Grows to a height of 20 inches and produces small double white flowers in abundance; of free compact growth; foliage of clean appearance.

Clara Watson. Hybrid Tea. Salmon, tinted pink; a profuse bloomer and a valuable rose for cutting; a desirable sort for any collection.

Countess of Derby. Hybrid Tea. A delightfully fragrant rose, of vigorous growth; flowers large and full; buds sharp and pointed, on stems somewhat stiff and upright; color a delicate peach, shading to salmon in center.

Dean Hole. Hybrid Tea. An intense salmon-pink with bud of extraordinary length opening into a large bloom of splendid substance. A fine grower and bound to rank with the very best.

Duchess de Brabant. Ever-blooming Tea. Soft light rose; blooms in great profusion almost the year round; a strong grower.

Duchess of Albany. (Red La France.) Hybrid Tea. Rose pink; large and double; fragrant.

Emperor of Morocco. Hybrid Perpetual. Intensely dark velvety maroon, one of the darkest roses in cultivation; very double and free flowering. Sometimes known as Black Prince.



HELENA CAMBIER.
The picture tells the story.



FRAU KARL DRUSCHKI.

"The fairest among thousands altogether lovely."

***Etoile de France.** Hybrid Tea. A charming new French variety; has large, fine buds borne singly on long, stiff stems; dark crimson in color, center vivid cerise; fuller and deeper color than Gen. McArthur; fragrant and lasting; vigorous in growth, soon forming a fine upright bush with few thorns. Fine for cutting.

Florence Pemberton. Hybrid Tea. Without question one of the best roses of its color ever produced, combining many of the qualities sought for in a rose. Form of flower is perfect, exceptionally large and full with a high pointed center; color creamy-white suffused with pink, deepening at the base of the petals; has a delicious fragrance; bush is vigorous and easily grown.

***Francisca Kruger.** Ever-blooming Tea. A very satisfactory rose for open ground culture. Strikingly handsome and especially adapted to bedding, as it holds its foliage under all sorts of conditions. Flowers deep coppery yellow and of large size; a strong and vigorous grower.

Frau Karl Druschki. Hybrid Perpetual. This new hardy white rose is unquestionably the best in its class and color. The plant is remarkably handsome with its bright, heavy foliage and strong, upright growth. The flowers are perfect in form and snow-white in color, with large shell-shaped petals.

F. R. Patzer. Hybrid Tea. A grand garden rose of free flowering character. Color a creamy-buff changing to light orange-pink. The blooms are produced on stiff stems, and are of large size and substance.

General Jacqueminot. Hybrid Perpetual. An old popular variety; color brilliant crimson; large and effective.

***General McArthur.** Hybrid Tea. One of the most magnificent roses of recent introduction. Of remarkably strong growth and good habit. The bud and open flower are brightest crimson and retain their coloring until they drop their petals. Blooms continuously and profusely and flowers are large size and very fragrant.

Gloire des Rosomanes. Bengal. (Ragged Robin.) Without exception the most constant and free blooming of all roses; flowering well during the winter season unless checked by frost. Large semi-double flowers of brilliant crimson hue.

Gloire Lyonnaise. Hybrid Perpetual. White, tinted with yellow; large, full and good form; very distinct and pleasing.

***Gruss an Teplitz.** Hybrid Tea. The reddest of roses, bright scarlet shading to velvety crimson; as a bedding rose this is one of the finest and most useful varieties ever sent out; a free grower and most profuse bloomer of any ever-blooming rose; the mass of color produced is simply wonderful; the foliage is very beautiful, all the growth being a bronzy plum color; a clean, strong grower; blooms the entire summer.

Hector McKenzie. Hybrid Tea. This production is deserving of general cultivation; the color is deep pink changing to silvery crimson; large, full and sweetly perfumed. Two years in our trial grounds have demonstrated its value. It at once attracts attention, being without a peer as a double red garden rose.



LADY URSULA.

Color a soft shade of pink; unexcelled as a garden rose.

Helena Cambier. Hybrid Tea. Color lovely canary yellow, with deep peachy-red center, changing to creamy pink as the flower opens; it makes a neat, handsome bush, blooms quickly and abundantly all through the season, and the flowers are large, very double and sweet.

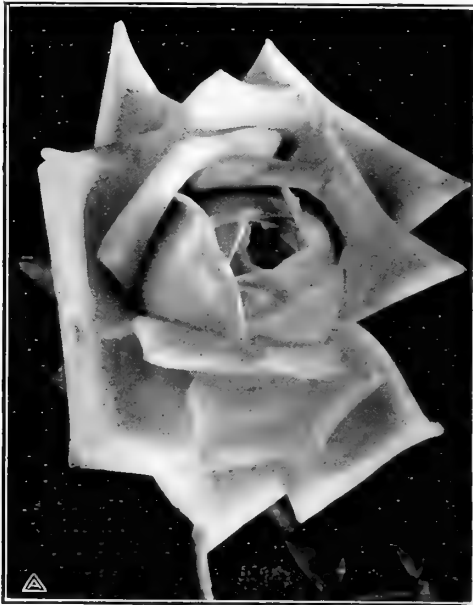
Helen Gould. Hybrid Tea. This is a most beautiful and satisfactory rose for outdoor culture; it is a cross between Kaiserin and Testout and possesses many of the good qualities of both; color bright glowing carmine; bud long and elegantly pointed, full and perfectly double; fine grower and constant bloomer.

Hugh Dickson. Hybrid Perpetual. A vigorous free grower and perpetual bloomer; fine foliage; color a rich brilliant crimson; very sweetly scented.

John Hopper. Hybrid Perpetual. The flowers are large, very regular and full; color bright rose, changing to glowing pink. An old standard.

***Kaiserin Augusta Victoria.** Hybrid Tea. Pure ivory white; the grandest of all white roses; is a strong grower, producing buds and flowers of enormous size; a grand garden rose, and the finest of all for cut flowers; no lover of roses can afford to be without it.

Killarney. Hybrid Tea. A grand new Irish rose of sterling quality; the buds are long and pointed;



KAISERIN AUGUSTA VICTORIA.

Queen of the rose family; royal in name and character.



LADY BATTERSEA.

Among red roses this bud has no peer.

color a soft shade of pink; handsome in both bud and full blown flower; a true ever-bloomer and a vigorous upright grower.

La Detroit. Hybrid Tea. A beautiful rose of recent introduction and a worthy addition to any collection. Foliage is rich and glossy and the large, cup-shaped blossoms are shell-pink, shading to soft rose. A rampant grower and very fragrant.

***Lady Battersea.** Ever-blooming Tea. A popular rose owing its charm to the unusual coloring and the long, graceful buds, which are full and pointed and of a beautiful cherry crimson, permeated with an orange shade.

Lady Penzance. Brier Hybrid. Beautiful soft tint of copper with a peculiar metallic luster; the base of each petal is a bright yellow, over which cluster the clear golden anthers; very free flowering, with a delicious perfume from foliage and flower; a luxuriant grower.

Lady Ursula. Hybrid Tea. The color is a beautiful shade of light pink; of good form and substance; petals large, circular and delicately perfumed; a remarkably upright grower. Among the hundreds of strong varieties on our grounds, few have the vigorous habit of growth of this variety.

***La France.** Hybrid Tea. A grand rose; unsurpassed in color, silvery rose shading to pink; large, full and of good form; exceedingly free blooming; sweetest scented of all roses. Superbly grand.

Mabel Morrison. Hybrid Perpetual. A strong, hardy grower; blooms snow white, often faintly tinged with pink.

***Maman Cochet.** Ever-blooming Tea. One of the most wonderful of roses; clear rich pink; large, full and of perfect form; free blooming, every shoot being crowned with a flower bud; a vigorous grower with handsome foliage; suitable for bedding, garden decorations or cut flowers. We recommend this rose with every confidence to all rose growers.

Marchioness of Lorne. Hybrid Perpetual. Flowers an exceedingly rich rose color, shaded to vivid carmine in center; an unusually fine rose.

***Marie Van Houtte.** Ever-blooming Tea. For outdoor culture this beautiful rose cannot be excelled by any of its color; the flowers are large and full, the color pale yellow shading to creamy white and tinged with pale rose; bush is a sturdy grower and a free bloomer.

Marquis de Querhoent. Ever-blooming Tea. Color beautiful China rose, salmon and yellow; a clean, strong grower and persistent bloomer; a beautiful rose of an unusual shade of color.

May Miller. Hybrid Tea. A strong growing, free flowering favorite, with large, dark foliage. The bud is long and pointed and opens into a flower of unusual beauty. The back of the petal is copper and bright pink, the upper surface peach and apricot.



MAMAN COCHET.

The queen of pink garden roses.



MME. JULES GROLEZ.

Superb in the bud, prolific in bloom, and beautiful in foliage.

Meg Merrilies. Brier Hybrid. Gorgeous crimson of the richest shade, robust habit of growth and free flowering; large foliage; one of the very best in its class, being an exceptionally free bloomer during the spring months. The foliage possessing that pleasing fragrance characteristic only to the Brier roses.

Meteor. Hybrid Tea. One of the very brightest colored deep red roses in existence; the color is a rich, deep, velvety crimson exceedingly bright and striking; both buds and flowers are large, elegantly formed, fully double and borne on long stems; vigorous and healthy; a constant bloomer; quite hardy.

***Mlle. Cecil Brunner.** Polyantha. An elegant little rose; rosy pink, shaded to bright salmon in the center; borne in large, open clusters; a perfect little gem.

Mme. Abel Chatenay. Hybrid Tea. A beautiful creamy rose color, shaded with rose vermillion and tinged with salmon; the flowers are borne on long stems; adapted for cut flowers.

Mme. Caroline Testout. Hybrid Tea. Clear, bright rose, very sweet; flowers large and double, resembling La France, but more sturdy habit; very free flowering; one of the very best new roses.

***Mme. Jules Grolez.** Hybrid Tea. This brilliant new rose has so many good qualities that it ought to find its way into every rose collection. It has been well named the Red Kaiserin Augusta Victoria on account of its similarity of foliage and

form of flower. It is an exceedingly free bloomer with large, finely formed flowers, the color of which is a pleasing shade of cherry red; the bush is of strong, vigorous growth.

Mme. Melanie Soupert. Hybrid Tea. Flowers very large with cupped petals; almost full and globular; color golden yellow; center orange yellow, the entire flower suffused with delicate pink; a grand flower.

Mme. Pernet Ducher. Hybrid Tea. "The Yellow La France." Flowers semi-double; color bright canary yellow; bush of strong, robust growth; a good garden variety.

Mrs. John Laing. Hybrid Perpetual. Exceedingly fragrant and a free bloomer; flowers a delicate pink and of beautiful form.

Mrs. Robert Garrett. Hybrid Tea. A valuable rose, closely resembling the Mme. Caroline Testout; blooms a beautiful shell-pink; large, fragrant and free flowering.

Miss Alice de Rothschild. Ever-blooming Tea. Flowers very large, full and of perfect form, with high pointed center; color a deep rich citron-yellow; a vigorous, erect grower, and continuous bloomer; deliciously scented.



MLLE. CECIL BRUNNER.

Universally known as a perfect little gem.

Papa Gontier. Ever-blooming Tea. This is probably the most popular red rose in the whole list; the bush, which is of strong growth and always furnished with an abundance of healthy foliage, is an incessant bloomer; it is much sought after for cut flowers on account of its magnificent buds; color, rich cherry red; no collection is complete without it.

***Paul Neyron.** Hybrid Perpetual. The largest rose in cultivation; a handsome upright grower, producing an immense flower at the end of every long stiff stem similar to American Beauty; color, a deep rose; a free bloomer; in every way a grand rose for general planting.

Persian Yellow. The old fashioned variety whose name describes its color, an intense yellow, and very hardy.

***Perle des Jardines.** Ever-blooming Tea. (Pearl of the Garden.) This grand old rose still maintains its popularity and is known as one of the best of its color; the flowers are large and full; clear golden yellow; succeeds in open ground.



MRS. JOHN LAING.

A hardy rose that always pleases.



WILLIAM SHEAN.

Showing specimen bloom from our field-grown plants.

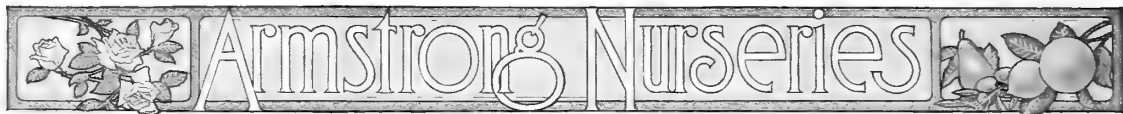
***President Carnot.** Hybrid Tea. Color a delicate rosy blush, shaded a trifle deeper at the center of the flower, which is very large and exquisitely shaped, with thick, shell-like petals; strong grower, free bloomer; fragrant; a superb rose; one of the best varieties introduced in recent years.

Prince Camille de Rohan. Hybrid Perpetual. Deep, velvety crimson; large, full; one of the best of dark roses.

Radiance. Hybrid Tea. A brilliant, rosy carmine, displaying beautiful, rich pink tints in the open flower; of fine form, large and full; a constant bloomer.

Rainbow. Ever-blooming Tea. The habit of growth and form of the flower is similar to Papa Gontier; color pink, striped crimson, center amber. A pretty rose.

Red Cochet. Ever-blooming Tea. Grows in almost any soil or situation, and produces its superb flowers in profusion; vigorous grower and free bloomer; flowers are full, perfectly double;



color warm rosy crimson; buds beautifully formed, long and pointed.

***Rhea Reid.** Hybrid Tea. The blooms of this handsome new rose are large and double, very free blooming and exquisitely fragrant; rich, dark velvety red; a good red garden rose. A variety of real merit that should find a place in every rosarian's collection.

Soliel d'Or. Blooms very large and globular, varying in color from gold and orange to reddish gold, shaded with nasturtium red.

Souvenir de Pierre Notting. Ever-blooming Tea. This grand rose is a seedling of Marechal Niel and Maman Cochet with beautiful, closely set foliage and strong, sturdy habit of growth. Color orange yellow, bordered with carmine; the bloom is large and full, and the buds are long and of elegant form.

Ulrich Brunner. Hybrid Perpetual. One of the grandest hardy roses; color a brilliant cherry red, a very effective color; flowers of fine form and finish, borne on strong stems nearly thornless; petals of great substance; plant hardy and vigorous; a free bloomer.

Viscountess Folkstone. Hybrid Tea. Very fine, large, splendidly formed and of fine substance; color creamy pink; bush a very strong grower and a constant bloomer; one of the very best garden varieties.

Wellesley. Hybrid Tea. A vigorous, healthy grower, remarkably free flowering, and possessing unusually fine keeping qualities; color a beautiful shade of pink, outside of petals being very bright in color, with silvery reverse.

White Killarney. Hybrid Tea. The counterpart of Killarney of which it is a sport. It shows the same vigorous habit of growth. The buds are long, large and snow-white.

White Lafrance. Hybrid Tea. (Augustine Guinoiseau.) Identical with Lafrance, except in color, which is pearly white, sometimes tinted with fawn; a very free and continuous bloomer; very fragrant.

***White Maman Cochet.** Ever-blooming Tea. This grand rose has proven to be the very best of white bedders; flowers of mammoth size, round and full; pure white throughout; a general favorite wherever known; identical with Maman Cochet, except in color, both of which are exceptionally fine roses for general culture.

Wm. Notting. Hybrid Tea. This is a grand bedding rose; flowers very large and full, of a bright rosy cerise color, center somewhat deeper; sweetly perfumed.

Wm. R. Smith. Hybrid Tea. A fine summer bedder which ranks well up with the two Cochets; produces a profusion of fine flowers of creamy white with pink shadings; has good glossy foliage and grows into a strong bush.

Wm. Shean. The flowers of this magnificent rose are of immense size and substance, and of perfect form. The petals are shell-shaped and the color is purest pink; free blooming and distinct. The bush is of strong, upright growth; a splendid garden rose.

Climbing Roses

Climbing and trailing Roses possess a value peculiarly their own for beautifying porches, fences, arbors, pergolas, rockeries, walls, trellises, etc. No garden is fully furnished without their presence in one form or another. All of the following varieties do well in California, and the plants we are offering are exceptionally robust and strong growers.

30c each; \$2.50 per 10.

Banksia Alba. White. A rapid growing, thornless climbing rose; flowers small, pure white; blooms in great profusion in early spring; as the flowers are produced on the old growth, they should be pruned very little.

Banksia Lutea. Yellow. Identical with the above, excepting in color, which is a fine, clear yellow.

Beauty of Europe. Color salmon pink; double; a very desirable rose.

Cherokee. Rosa Sinica. A splendid sort for covering verandas, arbors, etc., also for hedge; its leaves are smooth and glossy as if varnished; highly ornamental at all times, but particularly so when covered with large, snowy-white, single blossoms adorned with their fluffy golden yellow stamens; makes a fine defensive hedge.

Cherokee Pink. Rosa Leavigata, var. Anemone. While it is some years since this variety was introduced, its popularity has not waned. The flowers are a lovely salmon rose color with a circle of golden stamens. When in bloom during the spring and fall it presents a display unapproachable for delightful freshness and rosy fragrance. It may be used effectively by planting alternately with the well known White Cherokee and the new Red Cherokee, "Ramona."

Cherokee Red. Ramona. The new Climbing Red Cherokee; identical with the Pink Cherokee, excepting in color, which is a brilliant red. It has every desirable quality of the latter as regards the beautiful shining foliage—which holds the year around—and vigor of growth. Charmingly effective for pergolas, clinging on fences and arbors, and for covering banks and terraces. This new addition to the Cherokee family will form a pleasing contrast in combination with the White and Pink Cherokees.

***Climbing Belle Siebrecht.** Hybrid Tea. The flowers are large, exceedingly graceful, full and double; buds long and pointed; color is a brilliant, rich, deep pink.

***Climbing Cecil Brunner.** Polyantha. The flower is identical with the well-known bush variety, but of strong climbing habit.

Climbing Devoniensis. Ever-blooming Tea. A grand rose, very sweet and fragrant; blossoms white, tinged with blush.

Climbing Hermosa. Bourbon. Flowers of this rose are borne in great profusion and are a clear bright pink in color.

***Climbing Kaiserin.** Hybrid Tea. (Mrs. Robert Peary.) This is without doubt the grandest of all white climbing roses; of splendid substance; large, full, deep and double; it is one of the strongest growing, freest blooming and all around the most satisfactory white climber.

Climbing Meteor. Hybrid Tea. Flowers identical with Meteor; a robust grower.

climbing rose as one of the best in its class. Well worthy of cultivation in any situation where a vigorous growing climber is desired.

Crimson Rambler. Polyantha. A well-known hardy climbing rose that has attained widespread popularity; a very strong grower, producing blooms in great masses of a lovely crimson shade.

Dorothy Perkins. Hybrid Tea. Noted for its hardiness and vigorous habit of growth, beautiful color and freedom of bloom; the flowers are borne in large clusters; a beautiful shell pink color, which lasts a long time without fading;



CLIMBING KAISERIN.

The best white climbing rose for cutting.

***Climbing Papa Gontier.** Ever-blooming Tea. Originated recently in California. The flowers are identical in color, form and fragrance with the bush Papa Gontier. Is a good climber and a constant bloomer. A splendid addition to the list of climbing roses.

Climbing Caroline Testout. Hybrid Tea. A sport from the bush of the same name; bloom identical with its parent. The color is a solid cerise pink and does not fade. The bloom is large and fragrant.

***Climbing White Maman Cochet.** Ever-blooming Tea. It is enough to say the flower is identical with the well-known White Maman Cochet bush rose, with the addition of its climbing habit. It has apparently retained all the good qualities of its parent. We have all been looking for just such a climbing rose.

***Climbing Wooton.** Hybrid Tea. A sport from Souvenir de Wooton, and is identical with it, except that it is a strong grower; blooms in great profusion; color bright magenta, passing to a violet crimson. We highly recommend this red

this variety is suitable for situations where a trailing rose is desired, or can be trained over arches or other supports.

Gainsborough. Hybrid Tea. Delicately tinted flesh, almost white. Lustrous as satin.

Gold of Ophir. Noisette. Nasturtium yellow, suffused with coppery red; one of the most beautiful of the climbing roses, covered in spring with flowers in the greatest profusion; of strongest growth.

Lamarque. Ever-blooming Tea. Color white; beautiful buds, large, full flowers, very double and sweet; very popular.

Mme. Alfred Carriere. Noisette. Color rich creamy white, tinged with pale yellow; flowers are large and full; one of the best light-colored climbing roses; a strong grower, nice foliage and good bloomer.

Philadelphia Rambler. Polyantha. The flowers are borne in grand clusters, very double; color a deep rich crimson; it sends up strong canes with very luxuriant foliage; one of the best hardy climbing roses to date.



***Reine Marie Henriette.** Hybrid Tea. Brilliant cherry red; very large and double; an old variety that will always be popular.

Reve d'Or. Ever-blooming Tea. The best climbing rose in its color and always in demand. The flowers are a beautiful shade of buff and apricot; blooms freely during the spring and summer.

Tausendschon. A climbing rose of the Crimson Rambler type; flowers delicate shade of pink, changing to rosy carmine.

Wm. Allen Richardson. Ever-blooming Tea. Unique shade of coppery yellow suffused with carmine; bush of medium growth.

Grafted Climbing Roses

50c each; \$4.00 per 10.

The following varieties succeed best when grafted on strong growing roots.

Climbing Frau Carl Druschki. Hybrid Perpetual. An exact counterpart of the bush form of that superb rose, Frau Carl Druschki, except that it is a climber; like its parent it is hardy and vigorous and bears large white flowers, perfect in form and color. A recent addition to the list of climbing roses.

Climbing Perle des Jardines. The climbing form of this handsome yellow rose is too well known to require any description.

Duchess de Auerstadt. Ever-blooming Tea. The color of this beautiful climbing rose is a rich golden yellow; of good form and a fine bloomer; a rare and charming sort.

Francois Crousse. Hybrid Tea. Bush of strong growth, producing throughout the season a wealth of large, deep cherry red flowers. A gem for the south and west.

Marechal Niel. Ever-blooming Tea. The buds and flowers of this rose are superb; extra large, double and exquisitely perfumed; the color is a deep golden yellow; blooms very freely; throughout the South and West Coast it attains a degree of perfection seldom seen in any rose.

Potted Roses

Potted Roses. After April 1st we can furnish potted plants if desired at 10c per plant additional to prices named. Weight when packed about ten pounds each. It is advisable to ship potted roses by freight to reduce transportation charges.

Standard Tree Roses

These are grown in standard form, 3½ to 4 feet high, in the varieties and colors as named below:

1 year heads \$1.00
2 year heads \$1.50

White

Kaiserin
Lamarque (Climbing) White Cochet

Pink

Maman Cochet Miss Alice Roosevelt
Mlle. Cecil Brunner Mrs. David Jardine
President Carnot

Red

Captain Hayward Mme. Jules Grolez
Etoile de France Rhea Reid
General McArthur Wm. Notting

Salmon and Yellow

George C. Waud Mrs. A. R. Waddell
Marquis de Querhoent Perle des Jardines
Souv. de Pierre Notting

Three colors of best double varieties budded on one stock in following combinations:

Red, Pink and White.
Red, Yellow and White.
Red, Yellow and Pink.



TREE ROSES.

As they grow in our nursery.

SPECIMEN TREE ROSE.

One of our plants in detail.



Autumn Foliage-Shedding Trees

In the arid regions where sunshine is a consideration during the winter months, trees shedding their foliage in the fall of the year really possess a double value, viz., they provide a comforting shade and a beauty to the landscape during the warm summer, while in winter, which in California is often termed the rainy season, they allow sunshine to minister to our physical comfort, and to warm and revivify the soil. Hence, when used with judgment in the planting of home grounds, parks, and boulevards in conjunction with the evergreens, their autumnal colored foliage, coupled with their dormant appearance in the cool winter period, they not only serve the ends of utility, but also of ornamentation. In addition, many of them possess flowers of rare beauty and pronounced individual characteristics. No public or private plantings are quite complete without an intelligent selection of a few trees and shrubs that are free from foliage during the winter, when sunshine adds to the glory of the season.

CHESTNUT

Castanea Vesca (Chestnut) Spanish. See page 22.

CATALPA

Catalpa Bungei. "Chinese Catalpa." Used extensively in formal gardens, and makes a beautiful tree when grafted or budded on a high stem, as the trees we have to offer, are grown; forms a dense round umbrella-like head. \$1.50.

WALNUT.

Juglans. (Walnut.) American Black and California Black. See page 23.

MELIA. Texas Umbrella Tree.

Melia azedarach umbraculiformis. "Texas Umbrella." A splendid shade tree and one of the most useful for planting where dense shade is desired. Umbrella shaped, of dense growth and uniform habit, bearing numerous small lilac-colored flowers during the summer. 8 to 10 feet, strongly branched, \$1.50 each, \$12.50 per 10; 6 to 8 feet, well branched, \$1.00 each, \$7.50 per 10; 4 to 6 feet, branched, 50c each, \$4.00 per 10.

MORUS. Mulberry.

Morus Rubra. "Downing's Ever-bearing Mulberry." A very strong upright grower with large foliage, producing fruit of good quality. A splendid spreading shade tree. 6 to 8 feet, 50c.



TEXAS UMBRELLA TREES.

Admired on account of its dense shade and shapely form, adapting itself admirably to any situation.



PLANE TREE.

Useful for park and roadside planting.

Morus Alba. "White Mulberry." Strong, upright grower which makes a fine, large, spreading shade tree, having medium sized glossy leaves. This is the common Mulberry, the leaves of which are used for feeding the silk worm. 6 to 8 feet, 50c.

Morus Alba Tartarica. "Russian Mulberry." Tree of strongest growth and spreading habit. Desirable only as a shade tree; fruit of little or no value except for tolling birds away from other fruit; excellent for chicken yards or for shade in the back yard. 6 to 8 feet, 50c; 4 to 6 feet, 35c.

Morus Nigra. "Persian or English Mulberry." This variety produces the largest and finest fruit of all the Mulberries, much resembling a Mammoth Blackberry; very juicy and aromatic, with a sub-acid flavor; excellent for preserving; tree of stout and slow growth. 50c.

PISTACIA. Pistache.

Pistacia chinensis. The "Chinese Pistache" is a tall deciduous dioecious tree, strikingly ornamental, with large pinate leaves, wine red when young, changing to vivid green in summer and flaming scarlet and yellow in fall. Berries inedible. Highly recommended as a shade and ornamental tree. 3 to 4 feet, 75c.

PLATANUS. Plane Tree.

Platanus orientalis. "European Sycamore." "Oriental Plane." Valuable for park and avenue planting; it grows rapidly into a uniform tree; the foliage is bright green; leaves deeply cut, similar to the maple leaf. It thrives well in California; many fine specimens may be seen in many parts of the country. 10 to 12 feet, \$1.00; 6 to 8 feet, 75c; 4 to 6 feet, 50c.

POPULUS. Poplar.

Populus balsamifera candicans. "Balm of Gilead." Of extremely rapid and luxuriant growth; large glossy foliage. Valuable as a shade or avenue tree where quick growth is desired. 4 to 6 feet, 50c each; \$4.00 per 10.

Populus Monilifera. "Carolina Poplar." Of tall pyramidal form; robust habit of growth. 6 to 8 feet, 50c each; \$4.00 per 10.

Populus Nigra Italica. "Lombardy Poplar." A characteristic tree in many parts of Italy; remarkable for its erect growth and tall spire-like form. 6 to 8 feet, 35c each; \$2.75 per 10.

Weeping Deciduous Trees

Favorite subjects for lawn decoration, border plantations of shrubs, and peculiarly adapted to waterside planting.

Salix babylonica. The well known picturesque "Weeping Willow." Large spreading top and long pendulous branches. 6 to 8 feet, 50c; 4 to 6 feet, 35c.



WEeping WILLOW.

Of graceful drooping habit.

MORUS. Mulberry.

Morus pendula. "Tea's Weeping Mulberry." Very ornamental and of drooping habit. Its long, slender branches curve gracefully to the ground, forming a dense umbrella-shaped head. Useful for park and cemetery planting and worthy of a place on the lawn or home grounds. Easily grown, not being particular as to environment. 6 to 8 feet, branched, \$2.00 each; \$15.00 per 10.

ULMUS. Elm.

Ulmus scabra pendula. "Camperdown Weeping Elm." This handsome weeping tree is top grafted on tall stem. Its vigorous branches grow outward and downward, giving the tree a graceful aspect; large dark-green and glossy leaves cover the tree, presenting a pleasing appearance. 6 to 8 feet, \$2.00.

Hardy Flowering Shrubs

This class is represented by a large variety of shrubs growing from three to ten feet in height, producing a wealth of beautiful flowers in their season, or a mantle of bright colored foliage.

CYDONIA. Flowering Quince.

Cydonia japonica. "Japan Quince." A handsome early spring blooming variety, with semi-double scarlet flowers, which are produced in great profusion; foliage bright glossy green. 35c.



TEAS WEEPING MULBERRY.

The handsomest of the small weeping trees.



LAGERSTROEMIA.

No better summer-flowering shrub than the Crape Myrtle.

HYDRANGEA.

Hydrangea Hortensis. Very effective for border planting either as specimen plants or in masses. Immense blooms are produced with wonderful freedom and last well through the summer. The color of the flowers varies in different soils, ranging from white to shades of blue and pink. Soils impregnated with iron produce a bluish color. Where this element is lacking it may be supplied by adding iron filings or oxide of iron to the soil before planting. One year plants, 25c; two year plants, 50c.

LAGERSTROEMIA. Crape Myrtle.

Lagerstroemia indica rosea. "Pink Crape Myrtle." The best known of the Crape Myrtles and one of the few good summer flowering shrubs; very floriferous, the blooming period being July, August and September. 3 to 4 feet, 50c.

Lagerstroemia indica rubra. "Red Crape Myrtle." Similar to other varieties excepting the flowers are red. 3 to 4 feet, 50c.

LIPPIA. Lemon Verbena.

Lippia citriodora. "Lemon Verbena." A fast growing shrub with delightfully fragrant foliage; bears minute flowers in delicate pyramid spikes. 3 feet, 50c.

PERSICA. The Flowering Peach.

Persica alba plena. "Double White-Flowered Peach." Distinguished for its large, attractive blooms. Every branch is wreathed in flowers during the blooming period in the spring. Valuable for grouping or planting singly. 4 to 6 feet, 50c.

Persica sanguinea plena. "Double Red-Flowered Peach." Similar in habit to the above, excepting that the flowers are a lively red hue. 4 to 6 feet, 50c.

PHILADELPHUS. The Mock Orange.

Philadelphus grandiflorus. "Large-Flowered Mock Orange." A tall shrub with spreading, often arching branches, clothed with brown exfoliating bark. Leaves broadly lanceolate, bright green; flowers pure white, very showy. 35c each; \$3.00 per 10.

PUNICA. Flowering Pomegranate.

Punica alba. "White Flowering Pomegranate." A rapid growing shrub; flowers double, creamy white. 40c.

Punica rubra. "Red-Flowering Pomegranate." Blooms profusely during the summer and fall; a vigorous grower, and hardy. 40c.

Punica variegata. "Variegated-Flowering Pomegranate." Similar in habit to the above excepting that the flowers are variegated. 40c.

PYRUS. Flowering Crab Apple.

Pyrus ioensis bechteli. "Bechtel's Double Flowering American Crab." One of the most beautiful of the many fine varieties of flowering crabs. Tree of small to medium size, covered in early spring with large, beautiful, double fragrant flowers of a delicate pink color. From a distance the flowers have the appearance of small roses. Blooms when quite young. 50c.



BECHTEL'S FLOWERING CRAB.
Second year after planting.



BRIDAL WREATH.

Every branch is a bouquet of flowers.

SPIREA. Bridal Wreath.

Spirea van houttei. "Bridal Wreath." A charming garden shrub of moderate size. The white flowers are borne in profusion in the spring time, causing the slender branches to droop with a graceful arching wreath-like effect. Strong bushy plants, 40c each; \$3.50 per 10.

Spirea reevesii. Flowers double; a somewhat weaker grower than the above variety. Bushy plants, 40c each; \$3.50 per 10.

SYRINGA. Lilac.

Hardy free-flowering shrubs with fragrant flowers in spring and early summer. They are among the most popular and beautiful of flowering plants, and thrive in almost any fertile soil with moderate moisture. The following named varieties are the best of the improved grafted sorts.

Each, 50c.

Alphonse Levalle. Double. Blue shading to violet; extra large panicles.

Charles X. Single. The well known favorite, purplish-reddish variety; trusses long and graceful; strong, rapid grower.

Frau Dammann. Single. The truss is immense, the flowers of medium size, and pure white.

Gloire des Moulins. Single. Color, beautiful light pink.

La Tour d'Auvergne. Double. Color, violet-purple.

Marie Legraye. Single. The panicles of pure white; single flowers are very fine and fragrant; an excellent variety.

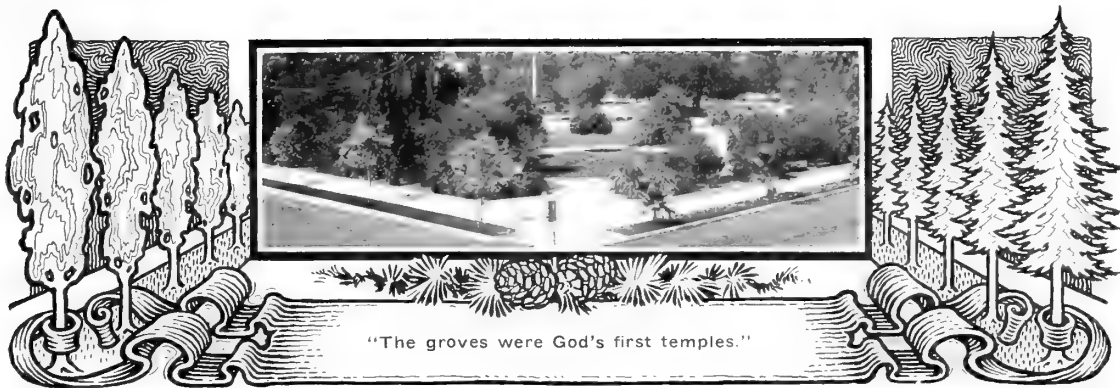
Mme. Abel Chatenay. Double. Pure white; large panicles.

Michael Buchner. Double. Dwarf growing; pale lilac; very double.

Toussaint L'Ouverture. Single. Very dark purplish flowers with oddly crinkled petals.

Vulgaris. The common Purple Lilac. Upright growth and fragrant flowers.

Vulgaris Alba. The common White Lilac. Same as above; flowers white.



Broad Leaved Evergreen Trees

In this section we are particularly fortunate in the wide variety of broad-leaved evergreen trees. In the common use of such varieties as Acacias, Camphors, Eucalyptus, Live Oaks and others in the group, we have a wealth of evergreens which adapt themselves readily to our semi-arid conditions, and afford an added charm to the landscape. Most of these plants are grown in pots and are easily transplanted with little danger of loss from removal. Ask for special prices on large plantings.

Acacias

Acacia armata. "Kangaroo Thorn." An interesting shrub of spreading habit, with undivided fine foliage and small thorns; in the spring small light yellow flowers are borne all along the branches; a good hedge shrub. 2 to 3 feet, 35c.

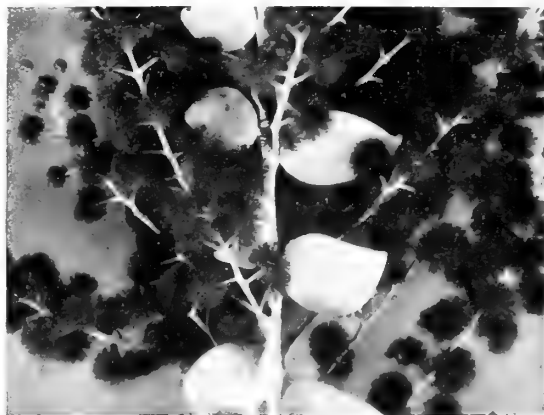
Acacia baileyana. One of the most strikingly beautiful of the Acacias. The fern-like foliage is of a bluish green cast. It blooms profusely in the spring, the long sprays of lemon-yellow flowers completely enveloping the tree. It is quite hardy and is easily grown where proper care is given for the first year or two. The green leaved variety, which we name the "Green Baileyana," is also a magnificent tree and if anything more floriferous than the well known Baileyana. Both are splendid specimens of avenue trees. 4 to 6 feet, 50c; 3 to 4 feet, 40c; 2 to 3 feet, 30c. Write for quantity prices.

Acacia cultriformis. A dwarf-growing variety, with bluish foliage and small, peculiarly-shaped triangular leaves; bright yellow flowers. 3 to 4 feet, 50c each; \$4.00 per 10.

Acacia Cyclops. A rather thick growing shrub which thrives particularly well near the coast. Owing to its rich yellow flowers and bright green foliage it is extremely ornamental, especially for group planting. 2 to 3 feet, 35c.

Acacia dealbata. "Silver Wattle." A magnificent, large spreading tree with finely-cut fern-like leaves of bluish-green, blooming profusely in late winter with a wealth of golden-yellow flowers. One of the very best for either street or garden use. 2 to 3 feet, 35c.

Acacia floribunda. An upright grower, with long, narrow leaves; small, yellow flowers; blooms all summer; a fine variety. 4 to 6 feet, 50c.



Above: ACACIA PODALYRIAEOFOLIA.
Below: ACACIA BAILEYANA.

Picturing characteristic foliage and clusters of bloom.



ACACIA MELANOXYLON.

Branch showing leaf and flower of the popular Black Acacia.

Acacia latifolia. Tree of a spreading, somewhat drooping habit. The flowers are yellow; leaves lance-shaped. One of the best Acacias for park and grounds, but not suitable for avenue planting. 4 to 6 feet, 50c.

Acacia melanoxylon. "Blackwood Acacia." The most extensively planted for street decoration in California. Its naturally pyramidal growth may be changed to a round-topped tree by cutting out the main terminal growth when about 12 feet high. Though thriving best in deep, moist soils, the Blackwood has proven wonderfully adapted to all conditions found in this state. The unusual demands of the last planting season have made large, fine specimens of the tree decidedly scarce. 5 to 6 feet, 50c; 4 to 5 feet, 35c; 3 to 4 feet, 25c. Write for quantity prices.

Acacia molissima. A fine, large spreading tree with feathery foliage; fast grower; flowers yellow and borne in racemes in early spring. Splendid for avenue planting and as individual lawn specimens. Can be recommended in cases where quick effects are a consideration. 2 to 3 feet, 35c.

Acacia podalyriaefolia. A very rare and beautiful tree, somewhat similar to *Acacia cultriformis*, having larger and rounder leaves and larger flowers, which are produced in great profusion about Christmas time, and for this reason is especially recommended for cut flowers. Foliage of beautiful grayish-green hue; flowers rich ca-

nary-yellow; hardy and easily grown; a very beautiful and attractive ornamental. 2 to 3 feet, 50c; \$4.00 per 10.

Acacia verticillata. Bushy, spreading habit, with linear lance-shaped leaves; flowers a beautiful deep yellow; a handsome ornament for parks and home grounds. 2 to 3 feet, 35c.

CERASUS. Evergreen Cherry.

Cerasus caroliniana. "Carolina Cherry Laurel." A handsome, broad-leaved evergreen tree, 30 to 40 feet high; a great favorite in the Southern States for general garden planting; also much used for hedges. A good medium sized subject for street planting. Potted, 3 to 4 feet, \$1.00.

Cerasus ilicifolia. "Mountain Evergreen Cherry." A beautiful shrub or small tree with rich green dense foliage. Leaves holly-like, very glossy and having prickly edges. A native of the foothills of Southern California. Very effective for hedge or landscape work. Balled, 1 to 1½ feet, 40c; potted, 1 to 1½ feet, 35c; 8 to 10 inches 25c.

Cerasus integrifolia. "Catalina Cherry." Of similar habits to the above but of greater size. The leaves are larger and less spiny. Tree grows rapidly under cultivation, making a compact, dark-green crown. A good street tree. Native of Catalina Island. Balled, 1½ to 2 feet, 50c; potted, 10 to 12 inches, 35c; 8 to 10 inches, 25c each; \$2.00 per 10.



CAMPHOR TREE.

Unexcelled for avenue planting.

CAMPHORA. Camphor Tree.

Camphora officinalis. "Camphor Tree." A fine ornamental tree with bright shining green leaves. Excellent for street planting where an evergreen tree of moderate growth and regular form is desired. From this tree the camphor of commerce is obtained. Potted, 4 to 5 feet, 50c; 3 to 4 feet, 40c; 2 to 3 feet, 30c. Field grown, balled, 4 to 6 feet, \$1.00 to \$1.50; flats of 100, \$5.00.

CASUARINA. Beefwood or She Oak.

Casuarina stricta. An interesting and unique subject, useful for avenue planting; remarkable for its rapid upright growth, and slender reed-like foliage. It will endure brackish and alkaline soils and considerable drought. 3 to 4 feet, 35c each; \$3.00 per 10; 2 to 3 feet, 25c each; \$2.00 per 10.

CERATONIA. Carob, St. John's Bread.

Ceratonia siliqua. "St. John's Bread." A handsome shade tree, with round, spreading top and small, glossy green leaves, bearing large edible pods. Often used for street planting. 3 to 4 feet, 80c each; \$7.50 per 10.

Eucalyptus — Australian Gums

No forest trees are so well adapted to California conditions as the Australian Eucalypti, as they are of easy culture, rapid growth, and possess great value for avenue, shade and ornamental planting. Their timber will take a finish equal to mahogany, and has the strength and durability of oak and hickory.

Eucalyptus citriodora. "Lemon-scented Gum." A fine ornamental tree with lemon-scented foliage; also supplying a useful timber; of tall slender growth. Potted, 3 to 4 feet, 35c.

Eucalyptus cornocalyx. "Sugar Gum." An erect and symmetrical tree of rapid growth, well adapted as a forest cover and timber tree; thrives near the coast and grows equally well in the dry valleys of the interior. While it profits by moisture, it will endure much drought. The trunk usually grows straight and tall, and the timber is lasting. These characteristics tend to make it valuable for telephone poles. Potted, 4 to 5 feet, 40c; 2 to 3 feet, 25c.

Eucalyptus ficifolia. "Scarlet Flowering Gum." An ornamental variety of dwarfish habit, with bright scarlet flowers; blooms in June. Potted, 3 to 4 feet, 50c.

Eucalyptus globulus. The most widely planted species in this country; an exceedingly rapid grower, and for this reason largely used for wind breaks and fuel. The wood is white, hard, close-grained, and durable, excepting in the ground, where it soon decays. Potted, 3 to 4 feet, 25c; flats of 100, \$1.25.

Eucalyptus leucoxylon. "Victorian Iron Bark." Tall tree usually branching not far from the ground; very hard, strong and durable; will thrive in a great variety of climates, ranging from the immediate coast region to the hot interior desert valleys. Flats of 100, \$2.00; flats of 50, twice transplanted, \$2.00.



BLUE GUM.

Desirable for wood lots, commercial plantations, avenues and windbreaks.

Eucalyptus polyanthema. "Red Box." This is commonly a medium-sized tree, but is said to reach a height of 150 feet in Australia; the tree is of a spreading habit, and with its characteristic foliage and profuse bloom presents a very pleasing appearance; leaves round and of an ashy or dull green hue; thrives well at or near the coast, in the foothills, on the mountain sides, and

in the hot, dry valleys of the interior. Potted, 4 to 6 feet, 40c; 2 to 3 feet, 20c each; \$15.00 per 100.

Eucalyptus rostrata. "Red Gum." As a commercial timber tree this variety is unsurpassed. It is a rapid grower, endures much heat, severe frost and considerable drouth. The timber is valuable for many purposes; in fact, can be used for any purpose where a hard, durable wood is required. The tree is adapted as a forest cover, wind break or shade tree. Potted, 6 to 8 feet, 40c; 3 to 4 feet, 20c each; \$15.00 per 100. Flats of 100, \$1.25; \$10.00 per 1000; flats of 50, twice transplanted, \$2.00.



EUCALYPTUS ROSTRATA.
Showing flat of one hundred plants.

Eucalyptus resinifera. "Forest Mahogany." A superior timber tree of large size, prized for its strength and durability; very hardy; will endure much heat and cold. Flats of 100, \$1.50.

Eucalyptus rudis. "Desert Gum." A valuable species; in habit, erect and stately; a vigorous and rapid grower; bark grayish; leaves of young tree round, later becoming lance-shaped; endures without injury minimum temperature of 15 degrees F., and maximum temperature of 110 to 118 degrees F. We recommend this variety very highly for the dry, hot sections of the interior. Potted, 3 to 4 feet, 25c each; \$18.00 per 100; 1½ to 2 feet, 15c each; \$10.00 per 100; flats of 100, \$1.50; flats of 50, twice transplanted, \$2.00.

Eucalyptus sideroxylon. "Red Iron Bark." An excellent tree of moderate growth; succeeds on dry soils near the coast and on plains and hillsides farther inland; tree is heavy, hard, strong and extremely durable. Potted, 1 to 2 feet, 25c.

Eucalyptus tereticornis. "Forest Red Gum." Similar in climatic requirements and uses to the *Eucalyptus rostrata*. When growing near together they are usually tall and straight, otherwise more branching and stocky. One of the best as a commercial timber tree. The wood is reddish, very hard, heavy and durable. Potted, 4 to 6 feet, 35c; 2 to 3 feet, 20c each; \$12.00 per 100; flats of 100, \$1.50.

Eucalyptus viminalis. "Manna Gum." A hardy, rapid grower, enduring well both heat and cold. This variety is exceeded in quickness of growth only by the Blue Gum; very useful for wind breaks, forest cover, and fuel. Flats of 100, \$1.25.

FICUS. Rubber Tree.

Ficus elastica. "India Rubber Tree." An elegant decorative tree with large, thick, glossy leaves. Grown as a potted plant it is useful for inside decoration, and when planted out of doors in frostless places will grow into a large and strikingly handsome tree. 75c to \$1.00.

GREVILLEA. Australian Silk Oak.

Grevillea robusta. "Silk Oak." A graceful tree, with fern-like leaves; covered in summer with golden-red flowers; valuable for avenue planting; very drought resistant. Potted, 2 to 3 feet, 35c.

ILEX. Holly.

Ilex aquifolium. "English Holly." A well known handsome tree of slow growth; leaves leathery dark-green with prickly edges. Balled, 2 to 3 feet, \$1.50.

MAGNOLIA. Bull Bay.

Magnolia grandiflora. "The Bull Bay." The well-known Magnolia of the South. The stateliness of form and lavish yield of immense, fragrant, white flowers, tend to place this magnificent tree in the foremost rank among our ornamental trees. Balled, 4 to 5 feet, \$1.25. Potted, 2 to 3 feet, 50c.



STERCULIA TREES.
Excellent for street planting.

QUERCUS. Oak.

Quercus agrifolia. "California Live Oak." The most picturesque trees that grace the landscape of California are the evergreen oaks. This variety is the best known of the native species. The leaves are small, edges spiny-toothed, easily grown under cultivation and soon form handsome trees. Potted, 2 feet, 50c.

Quercus chrysolepis. "Canyon or Golden Cup Oak." The handsome spreading evergreen oak which is found growing naturally in the mountain canyons of Southern California. Boxed, 2 to 3 feet, 50c.

Quercus suber. "Cork Oak." A native of Southern Europe. This splendid evergreen variety, with its roundish head and upright habit of growth, is a very desirable tree for the Southwest. From this variety the cork of commerce is obtained; the bark is spongy and deeply furrowed, which adds to its appearance as an ornamental tree. Field grown, established, 5 to 7 feet, \$1.50 to \$2.00. Potted, 3 to 4 feet, 75c.

SCHINUS. Pepper Tree.

Schinus molle. "The California Pepper Tree." A valuable tree for shade and wind breaks; planted extensively in the Southwest; endures much heat and drouth; covered in summer with red

berries. Field grown, 4 to 6 feet, 35c. Potted, 3 to 4 feet, 30c; 2 to 3 feet, 20c.

STERCULIA. Bottle Tree.

Sterculia diversifolia. "Bottle Tree." One of the many Australian trees that find favor in our Southwest. The tree grows tall and tapering, the leaves of which are deeply lobed. Remarkable for the great size of the trunk at the base. The tree is a light feeder, apparently forming but few heavy roots. A splendid avenue tree. 4 to 5 feet, 50c each; \$4.00 per 10; 3 to 4 feet, 40c each; \$3.50 per 10.

Sterculia populifolia. A form identical with the preceding variety excepting that the leaves resemble Poplar, and are not lobed. 4 to 5 feet, 50c each, \$4.00 per 10; 3 to 4 feet, 40c each, \$3.50 per 10.

UMBELLULARIA. California Laurel or Bay.

Umbellularia californica. "California Laurel or Bay." The well known native bay or laurel found growing in the canyons and foothills of California. The leaves are long, dark green and strongly aromatic, containing a volatile essential oil, the fragrance of which reminds one of bay rum. One of our finest native trees and well worthy of cultivation. Potted, 4 to 5 feet, 75c; 3 to 4 feet, 50c.

Coniferous Evergreen Trees

The Conifers, or Cone-bearing Evergreens, embrace a large variety of beautiful trees, admirably suited to the Pacific Coast. When Conifers are planted for specimens, they should be allowed to retain their lower branches, for if removed, it robs them of their symmetry and beauty. The native Monterey Cypress will endure severe trimming and is the best Conifer for a hedge or wind-break.

ARAUCARIA.

Araucaria bidwilli. This grand evergreen from the southwestern hemisphere is much prized as a specimen for the lawn. Seen at its best in the Coast section, and may be grown successfully in the interior valleys, in good soil. The branches extend gracefully in regular whorls, forming a magnificent tree. Boxed, 4 to 5 feet, \$5.00; 2 to 3 feet, \$3.00; 1½ feet, \$2.00.

Araucaria excelsa. "Norfolk Island Pine." A magnificent tree; stately and beautiful; pyramidal in form and absolutely symmetrical; branches grow in regular tiers, the ends forming a perfect star; leaves small, awl shaped, and curved; excellent for lawns or porch decoration. Boxed, 2½ to 3 feet, \$3.50.



ARAUCARIA BIDWILLI.
A handsome, well-grown specimen.



CEDRUS DEODARA.

A graceful and beautiful tree, useful for park and garden effects.

CEDRUS. Cedars.

Cedrus Atlantica. "Mt. Atlas Cedar." A large, rapid growing tree reaching a height of 120 feet. Of pyramidal but loosely formal outlines; foliage silvery green, contrasting well with the greenery of other trees. The hardiest of the cedars, adapting itself to a wide range of climates. Balled, 3 to 4 feet, \$2.00 each; \$15.00 per 10. 4 to 6 feet, \$2.50 each.

Cedrus deodara. "Himalayan Cedar." A magnificent and stately evergreen Conifer of towering pyramidal form, from the Himalaya Mountains. Foliage beautiful silvery green. One of the most handsome trees for the lawn. Thrives well in all parts of California and Arizona, enduring the desert conditions of the interior and not being particular as to soil. An excellent tree for broad avenues. Decidedly the best, most rapid grower of all cedars; it merits a place in any lawn or garden. Balled, 6 to 8 feet, \$5.00; 5 to 6 feet, \$3.50; 4 to 5 feet, \$2.50; 3 to 4 feet, \$1.50.

Cedrus deodara aurea. Of similar habit to the Cedrus deodara; foliage of a golden hue; succeeds better near the coast than in the interior. Balled, 5 to 6 feet, \$3.50. Boxed, 1½ to 2 feet, \$1.25.

Cedrus libani. "Cedar of Lebanon." This interesting tree appeals to us on account of its association with antiquity, and the sacred writings, being a native of the land known as the "Cradle of the Human Race," while its great size and beauty strongly commend it for park and garden. Foliage dark green and lustrous; hardy and thrives in any ordinary soil. Balled, 5 to 6 feet, \$3.00; 4 to 5 feet, \$2.00.

CUPRESSUS. Cypress.

Cupressus arizonica. "Arizona Cypress." A beautiful bluish-green cypress of narrow pyramidal form from the mountains of Arizona and Northern Mexico. A handsome ornamental tree and useful for hedge or wind break. This variety being very hardy, is especially suitable to the hot dry sections of the interior. Balled, 2 feet, 50c. Potted, 1 to 1½ feet, 25c; flats of 100, \$2.50.

Cupressus goveniana. "Gowen's Cypress." Of erect habit and medium growth with slender spreading branches, forming a broad pyramidal crown; native of California. A handsome ornamental cypress. Balled, 3 to 4 feet, 75c. Potted, 2 to 3 feet, 35c.

Cupressus macrocarpa. "Monterey Cypress." The well-known picturesque native California cypress. Widely planted and used for hedge, shade trees and wind breaks. When young it withstands pruning, and can be formed into a low, compact or tall hedge as desired. Balled, 2 to 3 feet, 40c. Potted, 1 to 2 feet, 20c; flats of 100, \$1.75; flats, per 1000, \$15.00.

Cupressus majestica. Tall, vigorous growing species of pyramidal form, with horizontal branches and drooping branchlets; foliage grayish green; splendid for wind breaks and tall hedges. Balled, 3 to 4 feet, 75c; 2 to 3 feet, 50c. Potted, 2 to 3 feet, 25c.

Cupressus sempervirens. "Italian Cypress." The classical Cypress of the Greek and Roman writers. Native of Southern Europe. A tall slender tree with erect branches, which gives to it a pillar or columnar effect. A useful subject for gateways, arches, tall borders, or for cemetery planting. Balled, 5 to 6 feet, \$1.00; 4 to 5 feet, 75c; flats of 100, \$2.50.



C. LAWSONIANA

C. LAWSONIANA ALUMI.

Among the best of the many varieties of Lawson Cypress.

CHAMAECYPARIS. Lawson Cypress.

Chamaecyparis Lawsoniana. "Lawson Cypress." Among the finest of our native California evergreens. The foliage is grayish-green; the ends of the branchlets have the pleasing tendency of slightly drooping, giving a somewhat weeping effect. Balled, 3 to 4 feet, \$1.50; 2 to 3 feet, \$1.00.

Chamaecyparis Lawsoniana alumi. One of the most beautiful varieties; of columnar habit; foliage glaucous with a bluish, metallic hue. Balled, 2 feet, \$1.00; flats of 100, \$5.00.

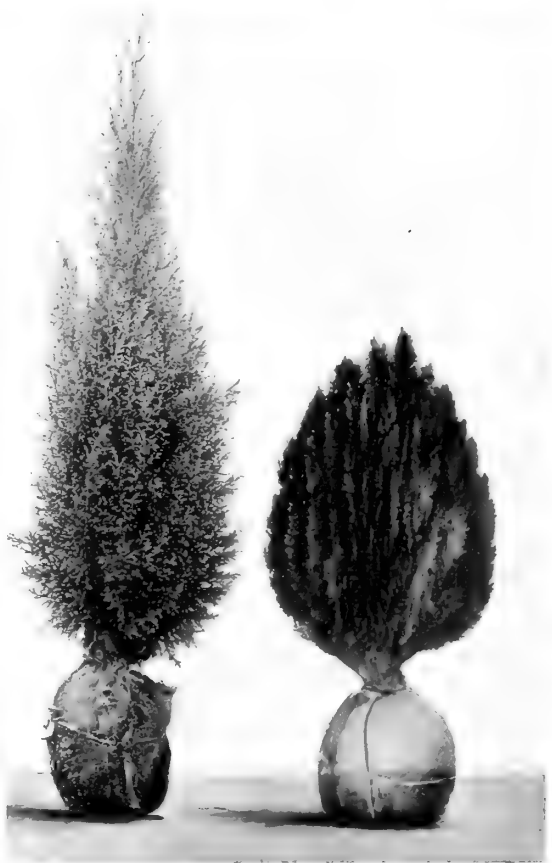
JUNIPERUS. Junipers.

Juniperus Bermudiana. "Bermuda Juniper." A rather rapid growing species, with pale bluish-green foliage; branchlets thickly set; pyramidal form; wood used for pencil making. Boxed, 1½ to 2 feet, \$1.25.

Juniperus Californica. "California Juniper." A native shrub or small tree of broad pyramidal habit; foliage a beautiful, rich, silvery green. Balled, 1 to 1½ feet, \$1.00.

Juniperus hibernica. "Irish Juniper." An erect, dense, columnar tree with foliage glaucous green. A handsome specimen for the formal garden. Balled, 2 to 3 feet, \$1.00. Boxed, 2 feet, 75c.

Juniperus japonica. "Japan Juniper." A shrub or tree of dwarf growth and pyradimal habit; foliage grayish-green; hardy and easily grown. Balled, 2 feet, \$1.00.



CUPRESSUS ARIZONICA AND THUJA ORIENTALIS AUREA NANA.

Balled trees as dug from nursery row.



PINUS CANARIENSIS.

The best pine for California—quick growing, picturesque.

PINUS. Pines.

Pinus canariensis. "Canary Island Pine." Of rapid growth and handsome appearance; sometimes known as the "Blue Pine." The young trees and the new growth on the older trees is a light silvery blue. A splendid pine for avenue planting. 3 to 4 feet, \$1.00.

Pinus coulteri. "Big Cone Pine." A native of California. The needle-like leaves are long, stiff and clustered at end of branchlets; color, dark bluish-green; cones of immense size; of rapid growth; handsome and distinct. Balled, 1½ to 2 feet, 75c.

Pinus maritima. "Cluster Pine." Uniform growth of pyramidal habit; a beautiful tree with twisted leaves 10 to 12 inches long, of a bright green color. The bark is coarse and deeply furrowed. Attains a height of 100 feet. Balled, 4 to 5 feet, \$1.25 each, \$10.00 per 10; 3 to 4 feet, \$1.00 each, \$7.50 per 10.

Pinus pinea. "Parasol Pine." Tree of picturesque habit and rather slow growth; with age it forms a wide spreading parasol-like head; the mature foliage is a deep green, contrasting with the young growth, which is silvery blue. Balled, 2 feet, \$1.00 each, \$7.50 per 10.

Pinus radiata. "Monterey Pine." The well-known native species. A handsome tree with bright green foliage and bushy habit when young. The fastest grower of all pines. Valuable for quick effect. Makes a good wind break, and adapts itself readily to single planting in private and public parks. Balled, 6 to 8 feet, \$1.00; 4 to 6 feet, 75c; 3 to 4 feet, 50c.

Pinus torreyana. "Soledad Pine." A native California Pine, with spreading and sometimes ascending branches; branchlets greenish or purplish; leaves rigid, dark green, ranging from eight to twelve inches long; a rather small tree; valued for its great rarity. Balled, 2 to 3 feet, \$1.00 each, \$7.50 per 10.



SEQUOIA SEMPERVIRENS.

The California redwood forms a beautiful and stately tree.

SEQUOIA. California Redwood.

Sequoia sempervirens. "Redwood." The well-known California Redwoods are among the largest and most picturesque trees known. They form handsome specimens, and are unexcelled for avenue planting and for park and garden effects. Boxed, 3 feet, \$1.50. Potted, 1 foot, 35c; flats of 100, \$5.00.

Sequoia gigantea. "California Big Tree." A handsome tree of perfect, symmetrical form; branches thickly furnished; foliage bluish green; decidedly excellent for the avenue, park, or large lawn. Potted, 6 to 8 inches, 35c.

TAXODIUM.

Taxodium mulcronatum. "Chapultepec Cypress." An extremely large, tall growing evergreen tree with foliage of a bluish tinge. Boxed, 2 to 3 feet, \$1.00.

TAXUS. Yews.

Taxus baccata. "English Yew." A low tree, dense-branched and of a dark somber hue. Foliage dark green above, pale beneath. Fruit bright scarlet. Often clipped into formal and fantastic shapes. Boxed, 3 feet, \$1.50; boxed or balled, 1½ feet, 75c.

Taxus baccata elegantissima. "Variegated English Yew." A fine, rare variety. Boxed, 2 feet, \$1.00.

Taxus hibernica. "Irish Yew." A remarkably compact shrub of upright habit; the glossy dark green leaves are spirally arranged on the closely compressed branches. Very distinct and formal. Boxed, 1½ feet, 75c.

Taxus hibernica aurea. "Golden Irish Yew." Leaves green in center and margined with yellow. Boxed or balled, 1½ feet, 75c.

THUYA. Arborvitae.

Thuja orientalis. "Oriental Arborvitae." A low-branched, bushy tree of pyramidal habit; native of Asia; foliage bright green turning bronze in the winter; useful as garden plants, and in tubs or vases as porch plants; can be trained into desirable shapes. Balled, 3 to 4 feet, \$1.00; 2 to 3 feet, 65c.

Thuja orientalis aurea nana. "Berckman's Dwarf Evergolden Arborvitae." Decidedly the best and most popular of the Arborvitae; of dwarf habit, compact and symmetrical; the branchlets are flattened, the tips of which retain their golden tint throughout the year. Suitable for tub culture, parks and formal gardens; may be planted singly or in clumps. Beautiful specimens, balled, 2 feet, \$1.50; 1 to 1½ feet, \$1.00.

Thuja orientalis compacta. "Compact Oriental Arborvitae." A low and very compact form, with bright green foliage; of more pyramidal and stronger growth than the Dwarf Golden; very formal and attractive. 1½ to 2 feet, \$1.00.

Thuja. "Rosedale Hybrid Arborvitae." A compact shrub of uniform habit; small cypress-like foliage; nice as single specimens or in groups. Balled, 2 to 2½ feet, \$1.00; potted, 10 to 12 inches, 50c.

Evergreen Shrubs

Evergreen shrubs are the best material we have for building landscape pictures; in small places where many trees would overcrowd, evergreen shrubs should form the framework of the garden.

ABELIA.

Abelia grandiflora. (*A. rupestris.*) "Hybrid Abelia." One of the prettiest shrubs in cultivation. The arching stems are clothed with dark glossy leaves, which are evergreen. Flowers small, fragrant and tube-like shaded a light-rose on the outside and white inside. Blooms the entire summer. Potted, 2 to 3 feet, 60c; 1 foot, 35c.

BERBERIS. Evergreen Barberry.

Berberis aquifolium. (*Mahonia aquifolium.*) A handsome ornamental shrub with dark, lustrous, spiny-toothed green leaves; in winter the foliage assumes a bronze or coppery hue; flowers yellow, in dense clusters, appearing in spring; berries blue or nearly black; thrives in most any kind of soil, but partial shade and ample moisture result in brighter and glossier foliage. Potted, 1 to 1½ feet, 50c.

Berberis darwinii. "Darwin's Barberry." A small shrub with silky, brown branches. Leaves usually with three spiny points at the tip, dark, glossy green; flowers orange-yellow, often tinged with red; berries dark purple. Potted, 25c to 50c.



DWARF BOX IS EFFECTIVE AS A BORDER.

Laurus Cerasus, Globe-shaped Box and *Cycas Revoluta* in background.

ARALIA. Rice Paper Plant.

Aralia papyrifera. "Rice Paper Plant." A tropical-looking tree or shrub, furnished with large, showy, deeply lobed leaves; of easy culture; a highly decorative plant for lawns or parking. Potted, 3 to 4 feet, \$1.00; 12 to 18 inches, 50c.

Aralia sieboldi. A beautiful plant with large, smooth glossy green leaves, deeply lobed; a highly decorative plant for pot culture. Boxed, 1 foot, 60c.

AUCUBA.

Aucuba japonica. "Japanese Laurel." A medium sized shrub of hardy growth; bears scarlet berries, contrasting well with the dark, glossy leaves. Boxed, 3 feet, bushy, \$2.00. Potted, small plants, 35c.

ARBUTUS. Strawberry Tree.

Arbutus unedo. "Strawberry Tree." Medium-sized shrub with clean, attractive foliage. They flower in the early winter, the blossoms being followed by red strawberry-like fruit which is edible. Balled, 3 feet, \$1.00; 1½ to 2 feet, 50c. Potted, 1 foot, 35c.

Berberis japonica. "Japanese Mahonia." Perhaps the most effective of the Mahonias on account of its large compound leaves, each having spiny-toothed leaflets of bright shining green. Flowers yellow, in long racemes, opening in early spring. Like all the Mahonias, it thrives in a partly shaded position. Boxed, 2 to 3 feet, \$1.50.

BUXUS. Box Trees.

Buxus sempervirens suffruticosa. "Dwarf Box." A fine small shrub of dense habit and small deep green foliage. If kept uniformly pruned, it is desirable as a garden or porch ornament. Smaller plants may be used to advantage for bordering walks or beds. Globed shaped, in ornamental boxes, 2 to 3 feet, \$3.50; balled, 1 to 1½ feet, 75c; potted, 10 to 12 inches, 40c; flats of 100, \$5.00.

Buxus sempervirens aurea-marginata. A form of *Sempervirens* with yellow edged leaves; a stronger grower than the above variety, ultimately making a small tree. Balled, 1 to 1½ feet, 75c; potted, 8 to 12 inches, 40c; flats of 100, \$3.50.

CAMELLIA.

Camellia japonica. Evergreen shrub with shining, dark-green leaves and producing beautiful waxy rose-like flowers of great substance and durability during the winter and spring. Thrives best in a shady spot. We offer a choice assortment in the following colors: Red, pink, white and variegated. 3 feet, \$2.00; 2 feet, \$1.50; 1½ feet, \$1.00.

CASSIA.

Cassia artemesoides. A native of Central Australia; a pretty shrub with finely cut silvery-gray foliage and clear yellow, sweet-scented flowers; will stand any amount of drought. Potted, 2 feet, 50c.

Cassia floribunda. A very floriferous shrub growing to a height of 6 feet; flowers yellow and showy; leaflets a grayish-green and known in medicine as "Senna Leaves"; of easy culture; will thrive in driest of soil. Potted, 2 to 3 feet, 35c.

CHOISYA. Mexican Orange.

Choisya ternata. "The Mexican Orange." A pretty shrub attaining a height of 4 to 6 feet. Of low-growing habit, leaves bright, glossy green and aromatically scented. Blooms freely throughout season, producing an abundance of snow-white, sweet-scented, orange-like flowers. Balled, 1 to 1½ feet, 60c each; \$5.00 per 10.

COPROSMA.

Coprosma baueri. Handsome, low-growing shrub. The round leaves are very glossy, as if varnished. Desirable as a bushy border around the porch or wall. Balled or potted, 1 to 1½ feet, 50c; potted, 10 to 12 inches, 35c.

Coprosma baueri variegata. A variety of the preceding with conspicuous yellow variegated leaves; extremely showy. Potted, 10 to 12 inches, 40c.

COTONEASTER.

Cotoneaster horizontalis. A low shrub with almost horizontal branches; leaves dark green; flowers pinkish-white, solitary or in pairs; fruit bright red; attractive for rockeries. Boxed, 3 feet, 75c; balled, 2 feet, 60c.

CRATAEGUS.

Crataegus pyracantha. "Burning Bush." A compact, much-branched evergreen shrub of low-spreading habit; foliage of a rich dark glossy green color; clusters of white flowers in the spring are followed by a wealth of orange-colored berries, which remain on the plant all winter, making it exceedingly attractive. Balled, 2 feet, 50c.

DAPHNE.

Daphne odora. A handsome medium sized shrub of compact habit, bearing numerous small intensely fragrant white flowers in the winter season. \$1.25.

Daphne odora variegata. Leaves handsomely variegated; flowers pink. \$1.25.

DIOSMA. Breath of Heaven.

Diosma alba. "Breath of Heaven." Dwarf, heath-like shrubs having small star-shaped white flowers, borne on the points of the twigs; being of a dainty and pretty appearance they are much used in floral work. Unexcelled as ornamental shrubs for the garden, park or cemetery; may be planted singly or in groups as desired. Potted, 1 to 1½ feet, 40c each; \$3.50 per 10.

ELEAGNUS. Evergreen Oleaster.

Eleagnus reflexa. "Bronze Oleaster." Shrub of spreading habit and striking appearance; leaves large, long and waxy, glossy above and silky beneath, with brown veins and dots; quite effective for clumps or single specimens. Potted, 1½ feet, 40c; 1 foot, 30c.

Eleagnus reflexa aurea variegata. "Golden-Leaved Oleaster." A variety of the same habit as the preceding, except that the leaves are beautifully variegated with golden yellow. Potted, 1½ feet, 40c.

Eleagnus simoni. Like the Reflexa but with few or no brown scales on the under side of the leaves. Balled, 1½ to 2 feet, 40c; potted, 1 foot, 30c.



CHOISYA TERNATA.

Showing leaf and flower of this favorite shrub.

EUONYMUS. Evergreen Euonymus.

Euonymus japonicus. A useful ornamental shrub with green glossy foliage; of easiest culture. It may be trimmed into a beautiful compact specimen, or may be used as a hedge plant. Balled, 1 to 1½ feet, 50c to 75c; potted, 10 to 12 inches, 35c; flats of 100, \$5.00.

Euonymus japonicus albo-marginatus. The leaves have a very narrow margin of silvery white. Potted, 10 to 12 inches, 35c; flats of 100, \$5.00.

Euonymus japonicus argentea marginatus. "Silver-Margined Euonymus." Leaves are edged and marked with silver; of upright growth; gives a lively effect. Balled, 1 to 1½ feet, 60c.

Euonymus japonicus aurea-marginatus. "Golden Margined Euonymus." A variety of dwarf and compact growth; leaves deep yellow toward the edges, blotched in the center with light and dark green. Flats of 100, \$5.00.

Escallonia rosea. A prettily foliaged shrub of free flowering habit; leaves are round, rough, and serrated; flowers dainty pink. Potted, 1 foot, 35c each; \$2.50 per 10.

Escallonia rubra. Compact shrub with large dark leaves, shining above, dull underneath, edges serrated; flowers deep red, in short terminal clusters. Potted, 1 to 1½ feet, 50c.

EUGENIA.

Eugenia myrtifolia. "Brush Cherry." Excellent shrub of easy culture; of erect and compact growth. Foliage glossy-green. The new growth takes on a reddish hue, which gives it a unique appearance. Flowers myrtle-like. Useful as an ornamental tree, or may be trained into a shapely specimen for tub culture, or for a medium sized hedge. Potted, 2 to 3 feet, 50c; 1 to 2 feet, 35c; 6 to 8 inches, 20c each; \$1.50 per 10; flats of 100, \$4.00.



1. *Euonymus Aurea-Variegatus*. 2. *Euonymus Albo Marginatus*. 3. *Euonymus Japonicus*.
4. *Rapheolepis Ovata*. 5. *Mrytus Communis*.

EVERGREEN SHRUBS BALLED READY FOR SHIPMENT.

Euonymus japonicus aurea-variegatus. "Golden Variegated Euonymus." Leaves green and golden yellow in center, dark green around edges. Balled, 1½ feet, 75c; flats of 100, \$5.00.

Euonymus japonicus viridi-variegatus. "Duc de Anjou." Leaves dark green toward the edges, with markings of light green and pale yellow in the center. A strong grower. Potted, 10 to 12 inches, 35c; flats of 100, \$4.00.

Euonymus pulchellus. "Small-Leaved Euonymus." A dwarf form of the above, with small dark green foliage; excellent for small borders or low hedge. They are usually grown 8 to 12 inches high; occasional clipping will cause them to grow very compact. Flats of 100, \$2.00.

ESCALLONIA.

Escallonia alba. An excellent white flowering shrub of upright bushy growth, attaining a height of 8 to 10 feet; leaves dark glossy green; flowers pure white, borne in large terminal cymes in autumn and early winter. Potted, 2 to 3 feet, 50c; 1 to 1½ feet, 35c.

GARDENIA.

Gardenia Florida. "Cape Jasmine." A beautiful flowering shrub with bright green glossy foliage. The double, wax-like flowers are exquisitely fragrant, and greatly in demand. Well known in the Southern States. Balled, 1 to 1½ feet, 75c.

GENISTA. Broom.

Genista alba. "Portugal Broom." Moderate sized shrub, with long slender branches, bearing in the spring a great profusion of dainty white flowers; of easy culture and not particular as to soil. Potted, 2 to 3 feet, 50c.

Genista canariensis. A free flowering shrub attaining a height of from 6 to 8 feet. The leaves are small and the bright yellow flowers are produced in great profusion. Useful for hedges or bedding. Potted, 2 feet, 40c.

Genista hispanica. "Spanish Broom." Upright growing; flowers yellow, produced on long pendulous, leafless branches. Potted, 1 to 1½ feet, 25c.

GREVILLEA

Grevillea thelemanniana. Beautiful evergreen shrubs having fine feathery foliage and producing throughout the summer clusters of brilliant scarlet flowers, borne on the ends of the branches. By occasional pruning they may be trained to a symmetrical, compact bush if desired. Potted, 1½ to 2 feet, 50c; 1 to 1½ feet, 35c.

HETEROMELES. California Holly.

Heteromeles arbutifolia. "California Holly." A highly ornamental shrub of easy culture, thriving best in moist, sandy loam, either in full sun or partial shade. A very striking object in winter with its large clusters of bright red berries ripening in December, and contrasting well with the glossy dark green foliage. Bears small white flowers in broad panicles in June and July. Potted, 1 foot, 35c.

HYPERICUM. Gold Flower.

Hypericum moserianum. "Gold Flower." Pretty, low-growing shrub; producing large, single, bright yellow flowers, which open out flat, showing numerous long stamens. Very fine for massing. Potted, 1 foot, 35c.

LAURUS. Laurels.

Laurus cerasus. "English or Cherry Laurel." A fine small tree or bush with broad, shining leaves and creamy white flowers, followed by purple berries. Balled, 3 to 4 feet, \$2.00; 2 to 3 feet, \$1.25; potted, 1 to 1½ feet, 40c.

Laurus lusitanica. "Portugal Laurel." Dark green, glossy-leaved shrub, flowers of which grow in large panicles and are quite fragrant, particularly at night. Balled, 2 to 3 feet, \$1.00; potted, 1½ to 2 feet, 50c.



HYPERICUM MOSERIANUM.

Its golden yellow flowers are intensely attractive.

Laurus nobilis. "Sweet Bay." A handsome ornamental tree of classical fame; from its branches were made the wreaths that crowned the victor's brow in the Olympic games of old; commonly used for tub culture and in formal gardening. Trained, globe-shaped specimens in tubs, 4 feet, \$15.00 per pair; 2 feet, \$5.00 per pair; boxed, untrained, 2 to 3 feet, 75c each.

LEPTOSPERMUM. Australian Tea Tree.

Leptospermum laevigatum. "Australian Tea Tree." Large spreading shrub with graceful arching branches; foliage grayish-green; covered in the spring with a profusion of small white flowers; grows rapidly and produces a quick effect. 1½ to 2 feet, 50c.

LIGUSTRUM. Evergreen Privets.

Ligustrum japonicum. "Japanese Privet." A large shrub or small tree with leathery dark green, glossy leaves and white flowers; useful for a tall hedge or single specimen. Balled, 2 to 3 feet, 40c; potted, 2 feet, 35c; flats of 100, \$3.50.

Ligustrum japonicum variegatum. "Japanese Variegated Privet." One of the few variegated plants that will endure the heat of summer and yet hold its beautiful coloring without fading. Flats of 100, \$3.50.

Ligustrum ovalifolium. "California Privet." Esteemed for hedge plants, and widely used in many parts of the country for this purpose. A strong growing pyramidal shrub, with bright green medium sized leaves; forms a compact hedge by occasional pruning; of easy culture. Field grown, 2 to 3 feet, 25c each; \$7.50 per 100; flats of 100, \$3.50.

Ligustrum spicatum macrophyllum. Shrub of spreading habit; leaves large, leathery, dark, glossy-green above and light-green beneath; a handsome shrub. Balled, 2 feet, 50c; flats of 100, \$4.00.

Ligustrum vulgare. "Evergreen or English Privet." Leaves small and dark green; bears spikes of fragrant white flowers in June, followed by clusters of shining black berries; splendid for hedge. Flats of 100, \$3.50.

MELALEUCA. Bottle Brushes.

Melaleuca alba. A fine shrub or small tree with slender leaves and white flowers in pendulous spikes. Thrives best in wet soils, but also grows well in dry locations. Potted, 2 to 3 feet, 50c.

Melaleuca decussata. A tall shrub with grayish leaves; adorned with lilac colored flowers on short spikes. Easily grown. Potted, 2 to 3 feet, 50c.

Melaleuca ericifolia. Shrub of spreading growth; leaves slender; flowers yellowish-white, borne on slender spikes. Potted, 2 to 3 feet, 40c.

METROSIDEROS. Bottle Bush.

Metrosideros floribunda. Commonly known as "Bottle Brush." The beauty of these plants lies in their long red anthers, which, projecting along the stem, form a cylindrical flower similar in shape to a bottle brush. The shrub is hardy and of rapid growth, thriving in almost any soil with little irrigation. Potted, 2 to 3 feet, 50c.

MYRTUS. Myrtle.

Myrtus communis. "Roman Myrtle." Valuable for either single specimens or small hedge. The foliage is a shining green and highly aromatic. Bears numerous small white flowers, followed by black berries. Splendid shrub or hedge plant. Succeeds well in hot, dry situations. Balled, 1½ to 2 feet, bushy, 50c; potted, 1½ to 2 feet, 25c; flats of 100, \$3.50.

Myrtus microphylla. A small leaved form of the above. A handsome shrub of branching habit. Balled, 1 to 1½ feet, 50c; potted, 1 foot, 30c; flats of 100, \$4.00.

NERIUM. Oleander.

Oleander, Rosea. The favorite double pink flowering Oleander; blooms continuously throughout the summer and revels in the hottest situations. Potted, 2 to 3 feet, 40c each.

NANDINA.

Nandina domestica. "Japanese Nandina." A beautiful, upright growing dwarfish shrub; native of China and Japan. Leaves compound, with numerous small leaflets, rich red when young—dark green at maturity and assuming beautiful coppery tones in winter. It thrives well in any well drained, loamy soil, and is fairly hardy. In the autumn it is covered with showy clusters of small red berries. Very desirable and should adorn every garden. Boxed, 1½ to 2 feet, \$1.50; potted, 8 to 10 inches, 35c.

OSMANTHUS. Sweet Olive.

Osmanthus aquifolium. "Holly-Leaved Olive." An evergreen shrub with spiny-toothed leaves, resembling those of the holly. In the autumn it produces short auxiliary clusters of deliciously fragrant flowers. Boxed or balled, 2½ to 3 feet, \$1.25.

PITTOSPORUM.

Pittosporum eugenioides. Small tree or shrub of symmetrical, upright growth, and light, shining-green foliage. A very satisfactory shrub for either single specimens, planting in masses or hedges. Potted, 2 to 3 feet, 50c.

Pittosporum tobira. Pretty winter flowering shrub from Japan. Forms a dense, globular head. Flowers white and fragrant; hardy and easily grown. Balled, 1 to 1½ feet, 60c; potted, 8 to 10 inches, 25c.

Pittosporum tobira variegatum. A variegated form of the above. The foliage is variegated with white which gives it a conspicuous and pleasing appearance. Balled, 1½ to 2 feet, 75c; potted, 8 to 10 inches, 25c.

RHAMNUS.

Rhamnus Californica. "California Wild Coffee." Handsome evergreen shrub, indigenous to California. It is quite attractive with its large red berries, which turn later to black. Potted, 1 foot, 40c.

RAPHIOLEPIS.

Raphiolepis ovata. Ornamental evergreen shrub with stout, upright branches and dark green, lustrous foliage; leaves thick and bush beautifully compact; covered in summer with white flowers, followed by clusters of purple berries in the autumn. Balled, 2 feet, 75c; potted, 1 to 1½ feet, 50c; 10 to 12 inches, 35c.



PITTOSPORUM TOBIRA.

Admirably adapted for like situations.

TEUCRIUM.

Teucrium fruticans. Wide branching and half trailing shrub; leaves grayish above, silvery-white underneath; bears light-blue flowers throughout the summer; suitable for dry places. Potted, 35c.

ULMUS. Evergreen Elm.

Ulmus Chinensis. "Chinese Elm." The evergreen elm of China and Japan; handsome, small tree or shrub with slender spreading branches, the small branchlets slightly drooped, giving the tree a semi-weeping aspect. Boxed, 3 to 4 feet, \$1.25; potted, 1 foot, 35c.

VERONICA.

Veronica argentea variegata. A handsome small shrub with silvery variegated leaves and violet blue flowers. Potted, 1 foot, 25c.

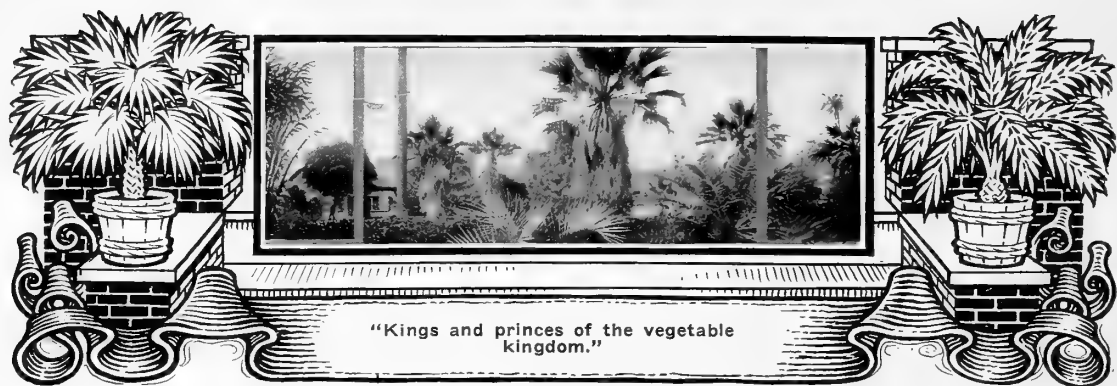
VIBURNUM. Laurestinus.

Viburnum tinus. "Laurestinus." Well known winter flowering shrubs bearing in profusion clusters of small flesh-colored blooms. Good subjects for single garden specimens and for ornamental hedge. Balled, 2 to 3 feet, bushy, 60c; potted, 1 to 1½ feet, 35c; 10 to 12 inches, 25c; flats of 100, \$4.00.

Viburnum tinus variegatum. A variegated form of the above; leaves beautifully blotched with silvery white. Potted, 1 foot, 40c.

Viburnum macrocephalum. "Chinese Snow Ball." A fine ornamental shrub of rather slow growth; flowers of snow ball style, 5 to 7 inches across; blooms profusely during the autumn and winter months; a beautiful, showy plant; evergreen in California. Boxed, 2 to 3 feet, \$2.00.

Viburnum odoratissimum. An attractive evergreen shrub of upright growth, attaining a height of ten feet; branches stout with large shining green leaves three to six inches long; flowers pure white, fragrant, in broadly pyramidal panicles. Boxed, 2 feet, 75c.



Palms and Bamboos

Palms are the sentinels of plant life in the arid regions of the Southwest; no plants lend such a sense of majesty and dignity to the landscape, when once the larger varieties attain mature age. And again, no group is capable of producing so strong a suggestion of tropic vegetation. The hardier sorts find congenial conditions in California and portions of Arizona in which to grow and luxuriate with reasonable care. Our selection embraces all the hardier sorts, adapted alike for conservatory, park, and garden and for street and avenue purposes. The Bamboos are certainly growing in popularity, and where dense foliage effects either in masses or single clumps are desirable, they can be commended, provided always that climatic conditions are right. Bamboos delight in a light, rich soil, and most species like plenty of water. Yuccas, Dracaenas, etc., lend a harmony to the garden of which palms and bamboos are a feature.

CHAMAEROPS

Chamaerops excelsa. "Windmill Palm." Trunk tall, slim and very hairy. Leaves fan-shaped, deeply cut; very hardy. A most useful palm for small lawns or for aligning narrow driveways, as it requires but little space. Boxed, 3 feet, \$2.00; potted, 1½ to 2 feet, 50c.

Chamaerops humilis. "Dwarf Fan Palm." Hardy, dwarf Palm of very slow growth; leaves small and fan-shaped, with spiny stalks; widely cultivated, as it is especially suitable for tub culture or small lawn. Boxed, 1½ to 2 feet, \$1.00.

COCOS

Cocos Australis. "Pindo Palm." The best of this genus for general planting. It is thoroughly hardy and is indeed a very handsome and ornamental palm. The pinnated leaves are of a grayish-green color, and are gracefully arched and recurved; one of the easiest palms to grow, and without doubt one of the most valuable. Boxed or balled, 3 to 4 feet, \$3.00 to \$5.00; 2 to 2½ feet, \$2.00.

CYCAS

Cycas revoluta. "Sago Palm." An excellent plant for either scenic planting or porch decoration. The round stem or bulb is crowned with dark green feathery leaves, shaped like ostrich plumes. Quite hardy. We have these in all sizes as follows: 10 to 25 leaves, \$1.50 to \$5.00; 4 to 8 leaves, 50c to \$1.00.



CYCAS REVOLUTA.

A handsome dwarf feathery-leaved palm.

WASHINGTONIA. Fan Palm

Washingtonia filifera. "Weeping Palm." The most characteristic palm of California, being native of Riverside county. Trunk attains a diameter three to four feet. The dead leaves droop downward, resting against the trunk and form a shaggy collar, making a striking and picturesque object; leaves fan-shaped with numerous divisions and whitish filaments. Boxed, 3 feet, \$1.00 each; \$7.50 per 10; potted, 1 foot, 35c.

Washingtonia robusta. (*Washingtonia Gracilis*.) One of the most beautiful of all palms. In its weeping habit, it closely resembles the above variety, yet in other respects it is quite distinct; of rapid growth, slender and tall, attaining a height of from 80 to 100 feet; leaves a clear deep green. Highly valued for street and park planting. Boxed, 3 feet, \$1.00 each; \$7.50 per 10; potted, 1½ feet, 40c.

ERYTHEA

Erythea armata. "Blue Palm." A distinct and attractive variety of comparatively slow growth. The large fan-shaped leaves have an unusual silvery blue hue, which contrasts admirably when planted with the green variety. Boxed, 2 to 3 feet, \$1.50 to \$2.00; potted, 1 foot, 75c.

Erythea edulis. "Guadalupe Palm." Among the fan-leaved palms this variety is undoubtedly the best. The leaves are large and always present



PHOENIX CANARIENSIS.

The best ornamental date palm for tub or garden culture.

a fresh appearance, even the under leaves hold their green color for many years; hardy and easily grown. 2 to 3 feet, \$1.00 to \$1.50.

RHAPIS

Rhapis flabelliformis. A highly ornamental cane-like palm, which suckers from the roots like bamboo; each stem is furnished with small fan-shaped leaves. Of fine tropical appearance, suitable for either garden planting or tub culture. \$5.00 to \$10.00.

PHOENIX. Date Palm

Phoenix canariensis. "Ornamental Date Palm." This is easily the best palm for general planting; well known and popular everywhere throughout California. The first year or two after transplanting it grows slowly, but when thoroughly established in good soil it grows rapidly and soon forms a magnificent palm. Highly decorative when grown in a tub or urn. Boxed or balled, established, 5 to 6 feet, \$3.00; 4 to 5 feet, \$2.25; 3 to 4 feet, \$1.50; 2 to 3 feet, \$1.00; potted, 1½ to 2 feet, 50c; small mailing size, 25c.

DRACAENA

Dracaena indivisa. Grows to a height of 10 to 15 feet, of fine tropical appearance with yucca-like leaves that arch and droop gracefully from a central stem. *Dracaena indivisa* is the hardiest of the species. A fine decorative plant for aligning walks or drives. Balled, 3 to 4 feet, \$1.00; 2 to 3 feet, 50c.

YUCCA

Yucca pendula. A valuable plant for hot or exposed places; leaves 18 to 20 inches long, and from 1 to 1½ inches wide; of a graceful, pendulous habit; excellent when potted or in Japanese tubs for porch decoration, entrances or other situations. Strong plants, 75c to \$1.50.

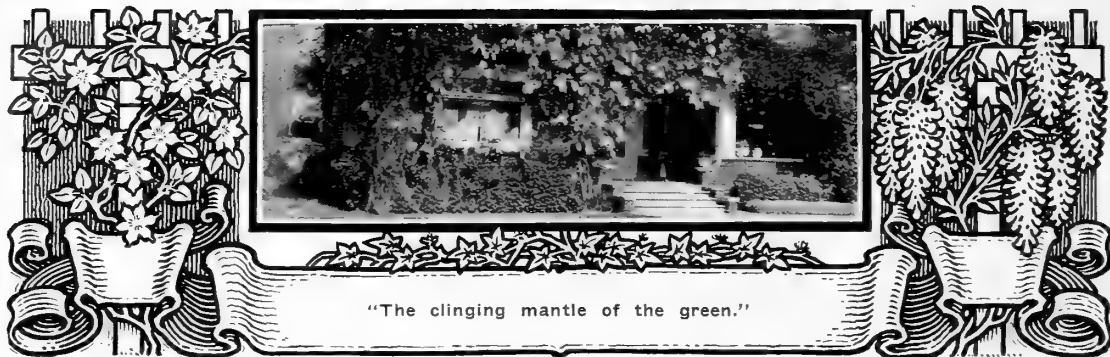
Bamboos

Strikingly ornamental plants are these giant grasses. As objects of grace and beauty in the garden, the Bamboos are invaluable. They delight in a deep, rich loam and generously respond to liberal watering.

Arundinaria gracilis. A graceful form of dwarf habit; the slender stems are beautifully arched and well furnished with bright green pinnate foliage; one of the finest of the smaller growing sorts, attaining a height of 10 feet. Balled, 3 to 4 feet, \$1.00.

Bambusa argentea. A fine decorative Bamboo, slender and graceful; leaves three inches long by one-half inch wide. Boxed, strong plants, \$1.50.

Bambusa vulgaris. "Arching Giant Bamboo." A very rapid grower, attaining a height of 40 feet and forming in two or three years a magnificent clump of immense canes 4 inches in diameter. \$2.50 to \$5.00.



Vines and Trailers

Climbing and trailing plants are quite as essential to a good scheme of garden planting as palms and roses. Indeed, they lend a charming appearance to what would otherwise be more or less offensive to one's sense of the beautiful. Appreciating this, we have here enumerated a most useful and ornamental selection especially suitable for covering pergolas, arbors, porches, walls, banks, festooning pillars, etc. Most of them are evergreen, but where this is not the case the exception is noted. Many afford flowers of striking beauty and gracefulness.

AMPELOPSIS

Ampelopsis quinquefolia. "Virginia Creeper." Large, green foliage, changing to brilliant scarlet in the fall and later dropping the leaves. 35c each; \$2.00 per 10.

Ampelopsis sempervirens. Beautiful evergreen slender climbing vine, with daintily cut leaves. Nothing can be more admirably adapted for covering pillars and light festooning. 2 to 3 feet, 50c; 1 foot, 35c.

Ampelopsis veitchi. "Japan or Boston Ivy." A graceful clinging vine useful for covering walls, chimneys and stone work. The leaves change from green in summer to gorgeous tints of scarlet and yellow in the autumn, and for a time in the winter season is leafless. 35c each; \$2.50 per 10.

BIGNONIA. Trumpet Flowers

Bignonia cherere. A beautiful evergreen climbing shrub, bearing long, tubular flowers; blood red, yellow at the base. One of the finest of the species. 50c each.

Bignonia siderifolia. A magnificent climbing vine for any purpose where a strong rampant grower is desired, requiring considerable space for its best de-

velopment; its beautiful tubular shaped yellow flowers hang in clusters among the dense foliage. 35c.

Bignonia tweediana. An excellent plant for covering walls; a very strong grower, sending up many long, slender shoots, which cling to any surface; flowers are trumpet-shaped, two inches long and orange yellow. 35c, \$2.50 per 10.

Bignonia violacea. The large, shining oval leaves are very attractive; flowers delicate, mauve color: 35c.

BOUGAINVILLEA

Bougainvillea Braziliensis. The flowers of this variety are large and of the most brilliant hue. It blooms profusely and gives a magnificent show of color in a delightful shade of red when in full bloom. 75c to \$1.50.

Bougainvillea sanderiana. One of the most beautiful and attractive flowering climbers in cultivation. During the blooming period, which covers most of the season, the gorgeous display of flowers is magnificent. Their beauty lies in the showy bracts which envelop the small greenish flowers. 50c to \$1.00.

Bougainvillea spectabilis lateritia. The most admired and desirable of the Bougainvilleas; flowers larger than the above; soft, brick-red, occasionally verging on a deep wine color; harmonizes well with other colors. Extremely difficult to propagate, hence the higher price. Potted, \$1.00 to \$2.00.

FICUS. Fig Fine

Ficus repens. A fine ornamental climbing plant. The best evergreen vine for covering buildings, walls, or other supports, either stone, brick or wood. Its small, deep green leaves and close clinging habit make it very attractive. Large plants 25c each, \$2.00 per 10, smaller plants 20c each, \$1.50 per 10.

HEDERA. Ivy

Hedera helix. "English Ivy." Too well known to need description; dark, glossy, green leaves; very hardy; nothing is better for a permanent covering of green than the English Ivy. 25c each, \$2.00 per 10, \$15.00 per 100.

Hedera helix hibernica. "Irish Ivy." Similar to the English but with smaller leaves. Potted, 25c each, \$2.00 per 10.

JASMINUM. Jasmine

Jasminum grandiflora. One of the best white species; blooms almost perpetually during the summer and fall; erect growing, branches drooping and angular. 25c each, \$2.00 per 10.

Jasminum Malayan. *Rhynchospermum jasminoides.* "Star" or "Confederate Jasmine." A beautiful free flowering and sweet scented climber of medium growth, blooming profusely in the spring; delightfully fragrant. 40c.



FICUS REPENS.

Admirable for covering stone or wood.



HALL'S JAPAN AND RED CORAL HONEYSUCKLES
Desirable rapid-growing climbers.

Jasminum Mandevillea suaveiciens. "Chili Jasmine." A beautiful climbing vine from South America, bearing clusters of waxy white flowers in great profusion; intensely fragrant. 25c.

Jasminum primulinum. The finest of all the climbing jasmines; blooms freely, the flowers being large and a rich golden yellow; a vigorous grower of easy culture. 25c each; \$2.00 per 10.

Jasminum revolutum. The well known yellow Jasmine; a half climbing plant of strong rapid growth; very fragrant. 25c.

LONICERA. Honeysuckle

Lonicera japonica halliana. "Hall's Japan." Evergreen, vigorous climber; flowers pure white, changing to yellow; deliciously fragrant; borne in great profusion during the summer and fall. One of the best. Succeeds where some of the others will not grow. Valuable for porches, fences, etc. Strong plants 25c each; \$2.00 per 10; \$15.00 per 100.

Lonicera periclymenum belgica. "Woodbine." A pretty trailing variety with dark green leaves; flowers yellowish-white within, usually carmine or purplish on the outside; very fragrant. 25c each; \$2.00 per 10.

Lonicera japonica aurea reticulata. An evergreen climbing vine with handsome, yellow-veined leaves; flowers white, changing to yellow. 25c each; \$2.00 per 10.

Lonicera sempervirens. "Red Coral." A high-climbing vine with stems ten to fifteen feet long; leaves oval or oblong, green or bluish-green above, glaucous beneath; flowers scarlet, about two inches long; profuse and very showy. 25c each; \$2.00 per 10.

MUEHLENBECKIA. Wire Vine

Muehlenbeckia complexa. Rapid growing twining vine, with dark wiry stems and tiny leaves; known sometimes as the Maiden Hair Vine. Excellent for covering trees, posts, fences, etc. 25c each; \$2.00 per 10.

PLUMBAGO. Leadwort

Plumbago capensis. Flowers a most delicate shade of azure-blue; unrivaled for their continuous blooming and drought-resisting qualities; foliage clean and smooth. May be grown as a spreading shrub or as a half climber. 35c each; \$2.50 per 10.

Plumbago larpentae. "Lady Larpent." A low-growing species of the plumbago; fine for edging or rockeries; flowers intense blue, very showy and unique. 35c.

Plumbago capensis alba. A white flowering form of the Plumbago. 35c.

PUERARIA. The Kudzu Vine

Pueraria thunbergiana. An immensely vigorous and rapid growing perennial vine, especially adapted for quick covering; stems grow fifty to sixty feet in one season; flowers purple, fragrant, pea-shaped, borne in long handsome racemes. Dormant roots, 25c each; \$2.00 per 10.

SOLANUM

Solanum jasminoides. Of strongest growth and a free bloomer. Flowers are white shaded purple. 25c.

TECOMA. Trumpet Flower

Tecoma australis. This beautiful vine is exceedingly useful for covering the sides of buildings. Its principal value lies in its elegant thick foliage and rampant growth. Flowers are small but produced in great profusion. Color creamy white. 40c.

Tecoma capensis. "Cape Honeysuckle." A half-climbing species usually grown on trellises or porches, or can easily be trained into shrub form by cutting the long shoots back severely; flowers glowing scarlet. A compact grower and almost continuous bloomer; excellent for sunny places. 40c.

Tecoma grandiflora. "Chinese Trumpet Flower." A handsome half climbing shrub and the most floriferous and gorgeous of all the climbing species. The flowers are large, of a brilliant orange hue and borne in large terminal clusters; like the *Tecoma radicans* it loses its leaves in the winter season. Field grown plants, 50c.

Tecoma jasminoides. Evergreen climbing shrub; flowers rosy-pink in the throat; leaves smooth and glossy; makes a very pretty plant, where a medium sized plant is wanted. 25c.

Tecoma mackenzii. A strong growing variety, which quickly develops into a large vine; the flowers are light pink of a pretty shade; of easiest culture. 25c.

Tecoma radicans. "American Trumpet Vine." A strong growing vine. The flowers differ by being longer and narrower; rich scarlet color. Very hardy; deciduous. 25c.

WISTARIA

Wistaria chinensis. "Chinese Wistaria." A very strong grower; a high climber and twines tightly. Flowers sky blue, in pendulous clusters. Blooms very profusely in early spring. 40c.

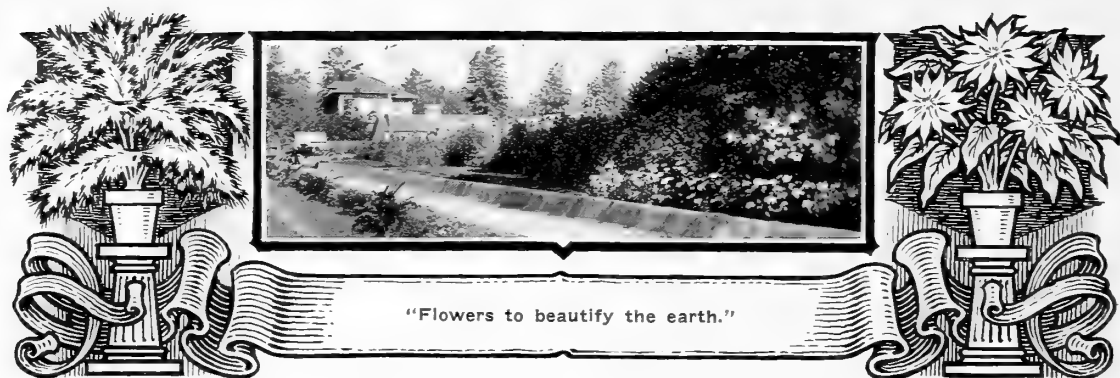
Wistaria chinensis alba. "White Chinese Wistaria." A fine with white flowers; otherwise same habit as preceding. 40c.

Wistaria multijuga. "Japanese Loose-clustered Wistaria." A rare species, bearing purplish or lilac-colored flowers in immense loose clusters, sometimes two feet in length. 40c.



WISTARIA.

Unsurpassed for festooning on porches and pergolas.



Flowers and Foliage Plants

Under this head we have grouped a variety of flowering and foliaged plants, which adapt themselves to diverse uses, such as beds and borders, cut flowers, indoor decorations, etc. Naturally, this somewhat elastic classification includes herbaceous perennials, ferns, bulbs, grasses, etc., and also potted specimens for hall and table decorations.

Ferns

Asparagus plumosus. This elegant fern-like plant has smooth stems and gracefully arching, fine feathery foliage. It is valuable as a potted plant and when planted in the ground forms long sprays which are used extensively with floral decorations. Potted, 25c, 50c and \$1.00.

Asparagus sprengeri. Desirable as a potted plant and particularly adapted for suspended baskets. Its finely cut fronds droop gracefully, giving it a very decorative appearance. It is hardy and easily grown. Being a strong feeder, it likes liberal waterings and fertilizing. Potted, 25c, 50c and \$1.00.



Asparagus sprengeri

Asparagus plumosus.

POPULAR HOUSE PLANTS.

Nephrolepis bostoniensis. "Boston Sword Fern." Well known tropical ferns. The wide arching fronds give a graceful effect. 50c to \$1.00.

Nephrolepis exaltata. "Common Sword Fern." Fronds narrow and upright growth. 35c to \$1.00.

Nephrolepis whitmani. "Ostrich Plume Fern." A variation of the Boston fern. The fronds are beautifully fringed. 50c to \$1.50.

Woodwardia radicans. This grand hardy fern is useful for outdoor planting in shady spots. The fronds grow from two to four feet in length; gracefully curved. 50c.

PAMPAS GRASS

Pampas Grass, Gynierium argenteum. The most widely cultivated of the Pampas Grass. Plumes white, large and feathery. Field clumps, \$1.00; potted, 50c.

Pampas Grass, Gynierium jubatum. The leaves are broader than the other sorts, and plumes more leathery and glossy. Of a lavender color. Potted, 50c.

Pampas Grass, Gynierium "Mme. Rendlateri." Plumes pink, shading to lavender. Potted, 50c.

USEFUL HERBS

Lavender, Lavendula vera. This is the true Sweet Lavender; grows about 18 inches high; delightfully fragrant; blue flowers in July and August. Potted, 20c; field clumps, 35c.

Rosemary, Rosmarinus officinalis. An old favorite aromatic herb; delightfully fragrant foliage; flowers light blue. Potted, 20c.



CARNATIONS.

Favorites everywhere alike for color and fragrance.

BEDDING AND BORDER PLANTS

Consisting of Bedding and Border Plants, Herbaceous Perennials, Bulbs, Grasses, Potted Plants for house decoration and conservatory, etc.

Asters. We can supply these beautiful flowering plants during the spring months. Colors: White, lavender, pink, red and purple. 35c per 12.

Begonia rex. Large, variegated leaves. 25c to 50c.

Begonia semperflorens. A flowering type which is constantly in bloom; fine for pot plant or dwarf borders; foliage shining green or bronze; flowers red. 15c to 25c.

Calla Lily. (*Richardia africana*.) The well-known white Calla Lily, which needs no description. 15c each; \$1.00 per 10.

Cannas. We have a splendid collection of this most popular bedding plant, which is highly esteemed for its tropical effect and rich colored flowers. Colors, pink, yellow, white, scarlet and deep crimson. 15c each; \$1.00 per 10.

Carnations. General favorites on account of their delicious fragrance and richness of colors. We propagate the sorts most adaptable for outdoor culture. Greenhouse varieties are not adapted for garden planting in Southern California. Price of plants, 10c each; \$1.00 for 12.

Dr. Choate. The best red Carnation for outdoor culture.

Fairmaid. A delightful shade of soft pink.

Los Angeles. An excellent white Carnation; a strong grower and free bloomer.

Roosevelt. Deep crimson flowers; very fine.

Chrysanthemums. Unsurpassed as autumn flowering plants. Their mammoth size together with the varieties in form and color of blooms are qualities which all flower lovers admire. Our selection includes the newer sorts and the choicest of the old standard varieties. 10c each; \$1.00 per 12.



MARGUERITE MRS. SANDER.

A new variety of sterling merit.

Coreopsis lanceolata. "California Sunshine." One of the most popular perennial plants. The flowers are rich golden yellow, of graceful form and invaluable for cutting; the main crop comes during June but the plant continues to bloom the entire summer and autumn. Succeeds everywhere. 10c each; 75c per 12; \$5.00 per 100.

Eulalia variegata. One of the finest of the ornamental grasses; leaves long and narrow, striped green, white and often pink or yellow. Flower stalks usually three to five feet. Strong plants 50c.

Eulalia zebrina. "Zebra Grass." The long blades of this variety are marked with broad yellow bands across the leaf; very ornamental. Strong plants 50c.

Fuchsias. Well known flowering plants for pot culture, or may be grown in good soil in partly shaded locations. Best varieties. 25c each; \$2.00 per 10.

Gazania aurantiaca. Large, showy, broad petaled flowers, which create a constant and brilliant display throughout the summer. Fine for edging and for low border plants. 10c each; 75c per 10.

Geraniums. The Geranium is an ideal flowering plant for California. It thrives well and blooms throughout the entire season. We can supply the leading varieties in the best colors, in both the Bush and Ivy Geraniums. 15c each; \$1.00 per 10.

Gladiolus "America." The finest of all Gladioli; of vigorous growth; the large flowers open well and are borne on strong spikes. Color a beautiful shade of soft solid pink. 10c each; 75c per 12.

Gladiolus. "Groff's Hybrid." One of the best strains of this popular flower. Assorted colors. 10c each; 75c per 12.

Heliotrope. Dark or light colored flowers, of best varieties. 25c each; \$2.00 per 10.

Hydrangea hortensis. A popular garden plant or shrub furnished with large foliage and immense heads of light pink flowers, having a tinge of blue when grown in soils containing iron. 2 year, 50c; 1 year, 25c.

Lantanas. We possess few bedding plants that afford a greater variety of color and bloom more continuously than the Lantana; we offer our four best varieties in the following colors: Orange, yellow, pink and white. 25c each; \$1.50 per 10.



PAMPAS GRASS.

Cultivated as a garden ornament and for its plumes.

Armstrong Nurseries

Lantana, Weeping. Of weeping or drooping habit; suitable for hanging baskets or trailing over rockeries; flowers shell pink. 25c each; \$2.00 per 10.

Lippia repens. The best substitute for lawn grass. It thrives well in any soil and endures the dry, hot conditions of the interior; likes the full sun, therefore does not do well in the shade. In making a new lawn, cut the sods in small pieces and plant 12 to 18 inches apart. It rapidly covers the ground with a dense matting; little or no mowing is necessary, and walking over it rather improves it. Requires water only occasionally. \$1.00 per box containing enough for 80 plants.

Marguerite, Giant White. Single flowers produced in great profusion; valuable in exposed places. 15c each; \$1.00 per 10.

Marguerite, Giant Yellow. Similar to the above; flowers deep yellow. 15c each; \$1.00 per 10.

Marguerite, Blue. A hardy bedding plant, with pale blue flowers. 15c each; \$1.00 per 10.

Marguerite, Mrs. Fred Sander. A new and superb Marguerite recently imported from Europe. The flowers are large and snow-white. 15c each; \$1.00 per 10.

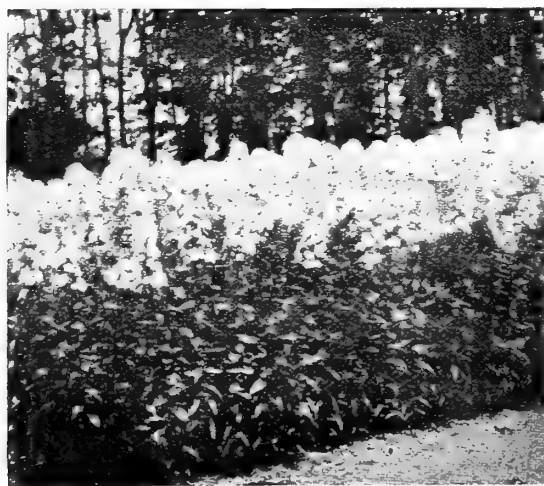
Pansies. We offer this year the "Royal Exhibition Strain." Magnificent flowers of largest size, with various markings and richest colors. 35c per 12; \$2.00 per 100.

Perennial Phlox. Among hardy perennial plants the Phlox is one of the most satisfactory. It is easily cultivated and flowers during the entire summer and until late in the fall. The best varieties are Athis, deep salmon; Bridesmaid, white; Coquelicot, orange-scarlet; Independence, white; Pantheon, bright pink; R. P. Struthers, cherry red. 15c each; \$1.50 per 12.

Philodendron pertusum. Highly interesting plants of grotesque appearance and climbing habit. They attach themselves to old stumps or other supports by long tendrils or rootlets. The leaves are large and perforated; adapted for conservatory or warm protected place. Price of fine specimens, 3 to 4 feet, \$5.00; 1 foot, \$1.00.

Poinsettia pulcherrima. The well known and highly ornamental "Christmas Flower," native of Mexico. Unsurpassed for the splendor of its immense brilliant scarlet flower bracts, and its bright green and showy leaves. A universal favorite in California gardens. 35c to 50c.

Romneya coulteri. "Matilija Poppy." The handsomest of our native flowering plants. It forms a shrub or large bush of silvery hue. The flowers are of immense size with poppy-like petals of pure white and a center of rich yellow stamens. The individual flowers are lasting and the plants bloom all summer. Potted, \$1.00.



PERENNIAL PHLOX.

As a tall border, showing profusion of bloom.



VERBENA.

Unsurpassed for color effects.

Santolina. "The Coral Plant." A dwarf, bushy plant, with silvery coral-shaped foliage. Effective as a border plant or low hedge along walks and flower beds. Occasional pruning will cause it to grow compact. Thrives in the interior, enduring heat, cold and drouth; not particular as to soil. 50c per 10; \$2.00 per 100.

Shasta Daisy. The flowers are immense, pure white with yellow centers and long stems, which as cut flowers maintain well their form and color. The plants bloom throughout the year, but are usually at their best in the spring and summer. 15c each; 75c per 12.

Solanum jasminoides. "Jerusalem Cherry." A well known old-fashioned shrub, furnished with bright red, cherry-like fruits. Suitable for pot plants or garden culture. Potted, 35c.

Strelitzia Nicolai. A magnificent plant, with large pale green leaves two to three feet long on four to six foot stalks. Of fine tropical appearance. The flowers are pure white, springing from purple spathes. 2 feet, \$1.50.

Verbenas. Very desirable bedding plants. They bloom profusely and make a fine display of color throughout the season. We grow these in separate colors from cuttings. Scarlet, white, pink and purple sorts. Potted, 75c per 12; \$5.00 per 100.

Violets. We offer this season the Princess of Wales Violet—the improved strain. The flowers are large and single, with long stems; color a deep blue and intensely fragrant. Potted plants, 50c per 12; rooted plants, not potted, 35c per 12; \$2.50 per 100.

GRASSES AND CLOVERS

No effect in the home grounds is quite so pleasant as a well-kept lawn, even though it is of small area. Appreciating this, we supply grass and clover seed in connection with our plant business.

Australian Rye Grass. Used extensively in some localities on account of its hardness; particularly good for arid localities. Per lb., 25c.

Bermuda Grass. Suitable for lawns in dry and arid situations where blue grass is apt to fail. Per lb., \$1.00.

Kentucky Blue Grass. Finest imported Kentucky seed, pure and free from weed seed. 40c per lb.; \$3.50 per 10 lbs.

White Clover. Excellent for lawns either sown alone or mixed with Blue Grass. 60c per lb.; \$5.00 per 10 lbs.



Topical Index

Fruit Department

	Page		Page		Page
Almonds	22	Figs	21	Peaches	11
Alligator Pear	7	Gooseberries	27	Pecans	22
Anona Cherimolia	9	Grapes	24	Persimmons	21
Apples	15	Grape Fruit	4	Phenomenal Berry	26
Apricots	13	Guavas	10	Plums	13
Asparagus	27	Horseradish	27	Pomelo	4
Avocados	7	Kumquats	4	Pomegranates	20
Blackberries	26	Lemons	4	Prunes	14
Cherimoya	9	Limes	4	Quinces	20
Cherries	18	Loganberries	26	Raspberries	26
Chestnuts	22	Loquats	10	Rhubarb	27
Citrus Fruits	3	Medlars	20	Sapota, Casimiroa	9
Crab Apples	17	Nectarines	15	Strawberries	27
Currants	27	Olives	5	Sweet Potatoes	27
Dewberries	26	Oranges	3	Tangerines	4
Dwarf Pears	19	Orange Seedlings	4	Tomatoes	27
Feijoa	9	Pears	18	Tropical Fruits	3
				Walnuts	23

Ornamental Department

Abelia	51	California Laurel	47	Date Palm	57
Acacias	43	Camellia	52	Diosma, Breath of Heaven.....	52
Ampelopsis	58	Camphora, Camphor Tree	45	Dracaena	57
Araucarias	47	Cannas	61	Dwarf Fan Palm	56
Aralia, Rice Paper Plant.....	51	Cape Jasmine	53	Eleagnus, Evergreen Oleaster.....	52
Arborvitae	50	Carnations	61	Elm	41
Arbutus, Strawberry Tree.....	51	Carob Tree	45	Erythea Palm	57
Arundinaria	57	Cassia	52	Escallonia	53
Asparagus Plumosus	60	Castanea	39	Evergreen Barberry	51
Asparagus Sprengeri	60	Casuarina	45	Evergreen Cherry	44
Asters	61	Catalpa	39	Evergreen Elm	55
Aucuba	51	Cedrus, Cedar Tree	48	Evergreen Oleaster	52
Bamboo	57	Cerasus, Evergreen Cherry.....	44	Eucalyptus, Gum Trees.....	45
Beefwood	45	Ceratonia, St. John's Bread.....	45	Eugenia, Brush Cherry	53
Begonias	61	Chamaerops Palm	56	Eulalia	61
Berberis, Evergreen Barberry.....	51	Chamaecyparis, Lawson Cypress.....	49	Euonymus	53
Bignonia, Trumpet Flower.....	58	Chapultepec Cypress	50	Fan Palm	57
Blue Palm	57	Choisya, Mexican Orange.....	52	Ferns	60
Boston Fern	60	Chestnut	39	Ficus, Rubber Tree.....	46
Bottle Brush	54	Chrysanthemums	61	Ficus, Fig Vine	58
Bottle Tree	47	Clover Seed	62	Flowering Crab Apple	42
Bougainvillea	58	Cocos Palm	56	Flowering Peach	41
Box Tree	51	Coprosma	52	Flowering Pomegranate	42
Breath of Heaven	52	Coral Plant	62	Flowering Quince	41
Bridal Wreath	42	Coreopsis	61	Fuchsias	61
Broom	53	Cotoneaster	52	Gardenia	53
Brush Cherry.....	53	Crape Myrtle	41	Gazania	61
Blue Bay	46	Crataegus, Burning Bush.....	52	Genista	53
Burning Bush	52	Cupressus, Cypress	48	Geraniums	61
Buxus, Box Trees	51	Cycas Palm	56	Gladiolus	61
California Sunshine	61	Cydonia, Flowering Quince.....	41	Gold Flower	54
Calla Lily	61	Cypress	43	Grass Seed	62
California Holly	54	Daphne	52	Grevillea	46-54

Ornamental Department (Continued)

	Page		Page		Page
Guadalupe Palm	57	Myrtus. Myrtle	55	Rubber Tree	46
Gum Trees	45	Nandina	55	Sago Palm	56
Hedera. Ivy	58	Nerium. Oleander	55	Salix. Weeping Willow	40
Heliotrope	61	Oak Tree	47	Santolina. Coral Plant.....	62
Heteromeles. California Holly.....	54	Oleander	55	Schinus. Pepper Tree	47
Holly	46	Osmanthus. Sweet Olive	55	Sequoia. California Redwood.....	50
Honeysuckle	59	Palms	56	Silk Oak	46
Hydrangea	41-61	Pampas Grass	60	Shasta Daisy	62
Hypericum. Gold Flower	54	Pansies	62	Solanum	59-62
Ilex. Holly	46	Pepper Tree	47	Spirea. Bridal Wreath	42
Ivy	58	Persica. Flowering Peach	41	Sterculia. Bottle Tree	47
Japanese Laurel	51	Philadelphus. Mock Orange.....	42	Strawberry Tree	51
Jasminum. Jasmine	58	Philodendron	62	St. John's Bread	45
Jerusalem Cherry	62	Phlox	62	Strelitzia	62
Juglans	39	Phoenix Palm	57	Sweet Olive	55
Juniperus. Juniper	49	Pinus. Pine Tree	49	Sycamore	40
Kudzu Vine	59	Pistacia	40	Syringa. Lilac	42
Lagerstroemia. Crape Myrtle.....	41	Pittosporum	55	Taxodium	50
Lantana	61	Platanus. Plane Tree	40	Taxus. Yews	50
Laurestinus	55	Plumbago. Leadwort	59	Tea Tree	54
Laurus. Laurel	54	Poinsettia	62	Tecoma. Trumpet Flower	59
Lawn Seed	62	Populus. Poplar	40	Teucrium	55
Lawson Cypress	49	Privet	54	Thuya. Arborvitae	50
Lavender	60	Pueraria. Kudzu Vine	59	Trumpet Flower	58-59
Leadwort	59	Punica. Flowering Pomegranate.....	42	Ulmus. Elm	41-55
Lemon Verbena	41	Pyrus. Flowering Crab Apple.....	42	Umbrella Tree	39
Leptospermum	54	Quercus. Oak Tree	47	Umbellularia. Calif. Laurel.....	47
Ligustrum. Evergreen Privet	54	Rapheolepis	55	Verbenas	62
Lilac	42	Redwood Tree	50	Veronica	55
Lippia. Lemon Verbena	41	Rhamnus. Wild Coffee	55	Viburnum	55
Lippia Repens	62	Rhapis Palm	57	Violets	62
Lonicera. Honeysuckle	59	Rice Paper Plant	51	Walnut	39
Magnolia	46	Romneya Coulteri	62	Washingtonia Palm	57
Mahonia	51	Rosemary	60	Wild Coffee	55
Marguerite	62	Roses—		Willow, Weeping	40
Matilija Poppy	62	Things To Observe	28	Weeping Mulberry	41
Melaleuca. Bottle Brush.....	54	Rose Classification	28	Weeping Lantana	62
Melia. Texas Umbrella	39	New Roses	29	Windmill Palm	56
Metrosideros	54	General Collection	30	Wire Vine	59
Mexican Orange	52	Climbing Roses	36	Wistaria	59
Morus. Mulberry	39-41	Grafted Roses	38	Yews	50
Muehlenbeckia. Wire Vine	59	Potted Roses	38	Yucca	57
Mulberry	39-41	Standard Tree Roses	38		



WHEN AND HOW TO PLANT

Early planting is advisable in California. More especially is this the case with deciduous trees, in order that the roots may be handled while dormant and become well settled in the ground with the winter rains.

The months in which trees may best be planted are given as a general rule:

BEST TIME TO PLANT

Citrus Trees January to June
 Olive Trees March to June
 Avocado Trees February to May
 Berry Plants January to March
 Deciduous Fruit Trees.. Jan. to March
 Deciduous Shade Trees.. Jan. to March

Deciduous Shrubs.. January to March
 Evergreen Trees January to June
 Evergreen Shrubs... January to June
 Roses—Dormant... January to March
 Roses—Potted September to June
 Palms January to July

After the land has been leveled and thoroughly tilled the holes are dug large enough to receive the roots without being cramped. Where irrigation is available, the earth should be well settled around the roots with water.

Do not put manure or other fertilizer in the hole, but a mulch of manure may be spread upon the ground after planting.

Peach and other deciduous trees must be pruned back when planted, this operation depending somewhat on the size of the trees and the style of pruning to be followed afterward.

Citrus trees, Loquats and field-grown Evergreen Ornamentals are usually dug with a solid ball of earth and wrapped with burlap to prevent the ball from breaking. **Do not remove the burlap** when planting, otherwise the ball of earth may break and cause the loss of the tree.

PLANTS TO AN ACRE AT GIVEN DISTANCES APART

Distance apart	No. of Plants
1 foot by 1 foot	43,560
2 feet by 1 foot	21,780
2 feet by 2 feet	10,890
3 feet by 1 foot	14,520
3 feet by 2 feet	7,260
3 feet by 3 feet	4,840
4 feet by 1 foot	10,890
4 feet by 2 feet	5,445
4 feet by 3 feet	3,630
4 feet by 4 feet	2,722
5 feet by 1 foot	8,712
5 feet by 2 feet	4,356
5 feet by 3 feet	2,904
5 feet by 4 feet	2,178
5 feet by 5 feet	1,742
6 feet by 6 feet	1,200

Distance apart	No. of Plants
8 feet by 8 feet	680
10 feet by 10 feet	435
12 feet by 12 feet	302
14 feet by 14 feet	222
15 feet by 15 feet	193
16 feet by 16 feet	170
18 feet by 18 feet	134
19 feet by 19 feet	120
20 feet by 20 feet	108
22 feet by 22 feet	90
25 feet by 25 feet	69
30 feet by 30 feet	48
33 feet by 33 feet	40
40 feet by 40 feet	27
50 feet by 50 feet	17
60 feet by 60 feet	12

PROPER DISTANCES BETWEEN TREES AND PLANTS

Variety	Feet apart
Orange and Lemon Trees	20 to 25
Avocado	25 to 35
Peach, Plum, Apricot, Cherry	20 to 25
Pear and Apple	20 to 35
Walnut	40 to 50
Olive	30 to 35

Variety	Feet apart
Almond	22 to 25
Grape Vines	6 to 10
Black and Dewberry Plants	6 by 7
Raspberry Plants	3 by 5
Strawberry Plants	1½ by 3
Eucalyptus for Wind Break	4 to 8

