



Digitized by the Internet Archive  
in 2010 with funding from  
Lyrasis Members and Sloan Foundation

<http://www.archive.org/details/athena12ohio>

*Copyright, 1917, by,*  
HARLAND W. HOISINGTON  
*and*  
HERBERT W. BASH

# The 1917 Athena



Published under the direction of  
THE SENIOR CLASS  
OF  
OHIO UNIVERSITY



Alma Mater, Ohio,  
Alma Mater, Brave and fair;  
Alma Mater, we hail thee  
For we own thy kindly care.  
Alma Mater, Ohio,  
As we read thy story o'er;  
We revere thee, and cheer thee  
As we sing thy praise once more.









*To You*

THOMAS N. HOOVER

*Our beloved Class Professor, for whom  
each of us holds the deepest  
admiration and respect, we  
affectionately dedicate  
this book.*





## The Editor's Foreward

**T**AKE this opportunity of expressing my appreciation to all those who have assisted in publishing this Annual. This includes the Engravers, the Publishers, the Photographer, the Staff, the Student Body and the Class of 1917. For the efficient Staff, I cannot say too much. The work of each one was beyond criticism and to them must go a great deal of the credit for publishing this Annual.

To Stanley M. Hastings, whose suggestions were invaluable, I express my sincere appreciation.

To you Prexy, for the use of the office, we are indeed grateful

To Mr. Durffee, "Old Faithful," who kept us company on many lonely evenings, we express our gratitude.

To the Readers: Perchance this Publication may be better than others, perhaps it may be worse, but please remember this, we have done our best.





## The Athena Staff

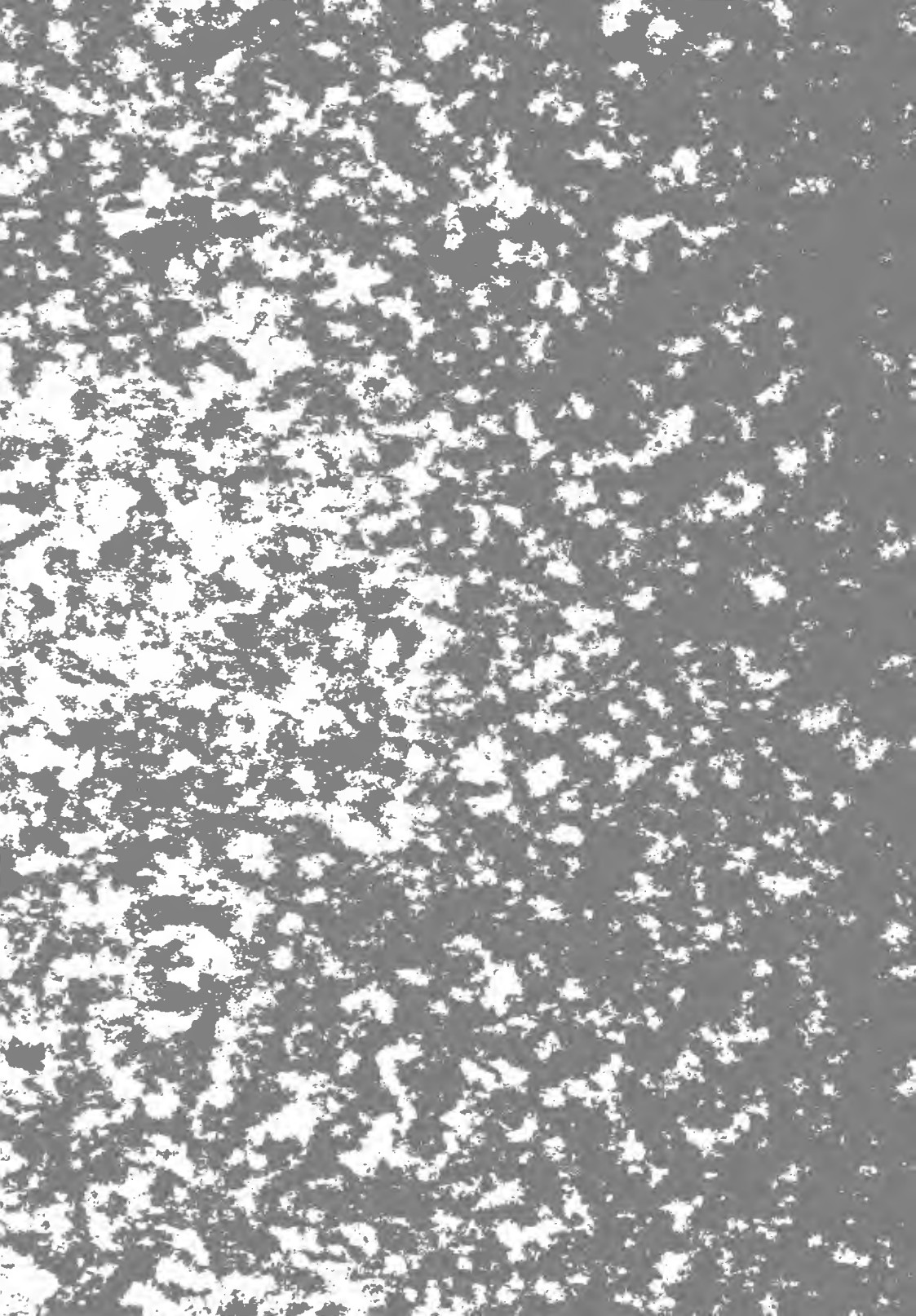
HARLAND W. HOISINGTON.....	<i>Editor-in-Chief</i>
HERBERT BASH.....	<i>Business Manager</i>
GLADYS VAUGHN /	<i>Assistants</i>
WALTER GRAFF \	
THOMAS M. WOLFE.....	<i>Organizations</i>
WALTER ROGERS.....	<i>Athletics</i>
Merle Danford /	<i>Senior Editors</i>
John R. Goddard \	
HAZEL THOMAS.....	<i>Junior Editor</i>
HOWARD BOBO.....	<i>Sophomore Editor</i>
MARY KERR.....	<i>Jokes</i>
ROSALIND UNKEFER.....	<i>Two-Year Senior Editor</i>
ROBERT MERKLE.....	<i>Faculty Editor</i>

(Editor's note) By some mistake Miss Unkefer's picture was left out by the Photographer. We regret this deeply as she was a faithful worker.



BOOK I

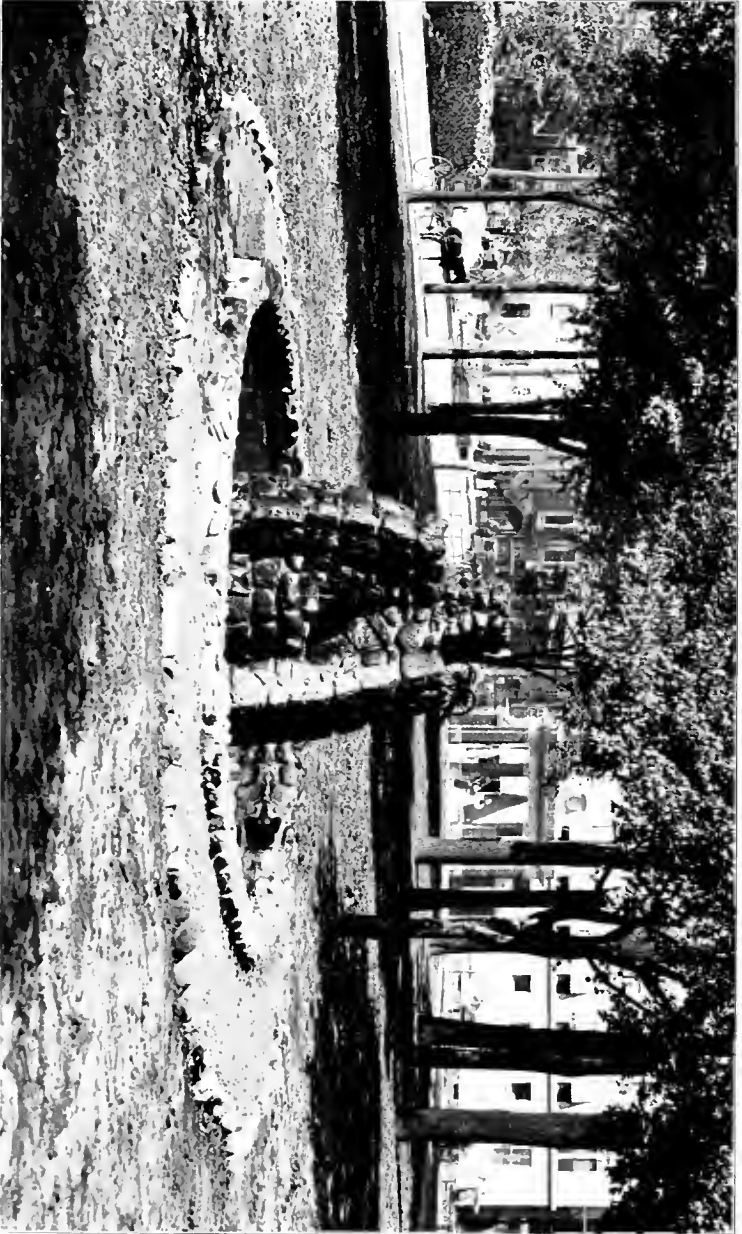
*The Faculty  
and the  
University*



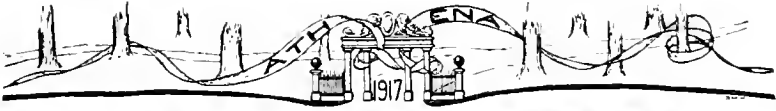




ALUMNI GATEWAY, 1915



CAMPUS FOUNTAIN, SENIOR CLASS, 1915



GATEWAY, PRESENTED BY THE CLASS OF 1912



PRESIDENT'S HOME.



ENTRANCE TO SCIENCE HALL



ENTRANCE TO CARNEGIE LIBRARY

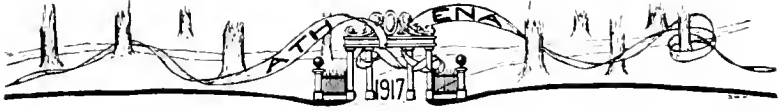


MUSIC HALL ENTRANCE

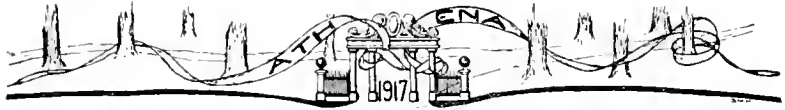


GYMNASIUM ENTRANCE

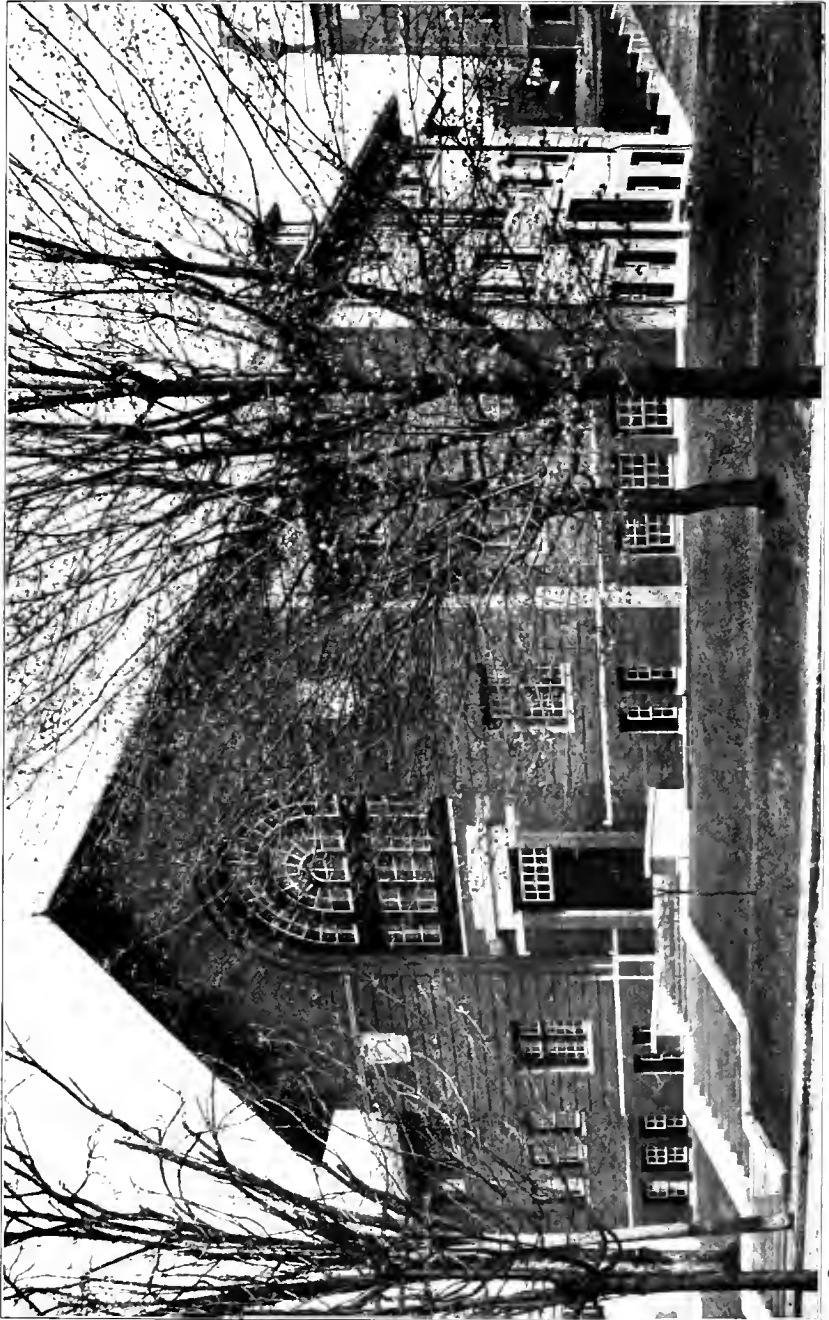




In this building are the homes of the Greek sororities. Hence the place where much reproach is heaped upon the heads of many Freshmen, and hence the source of many a tear on Pledge Day.

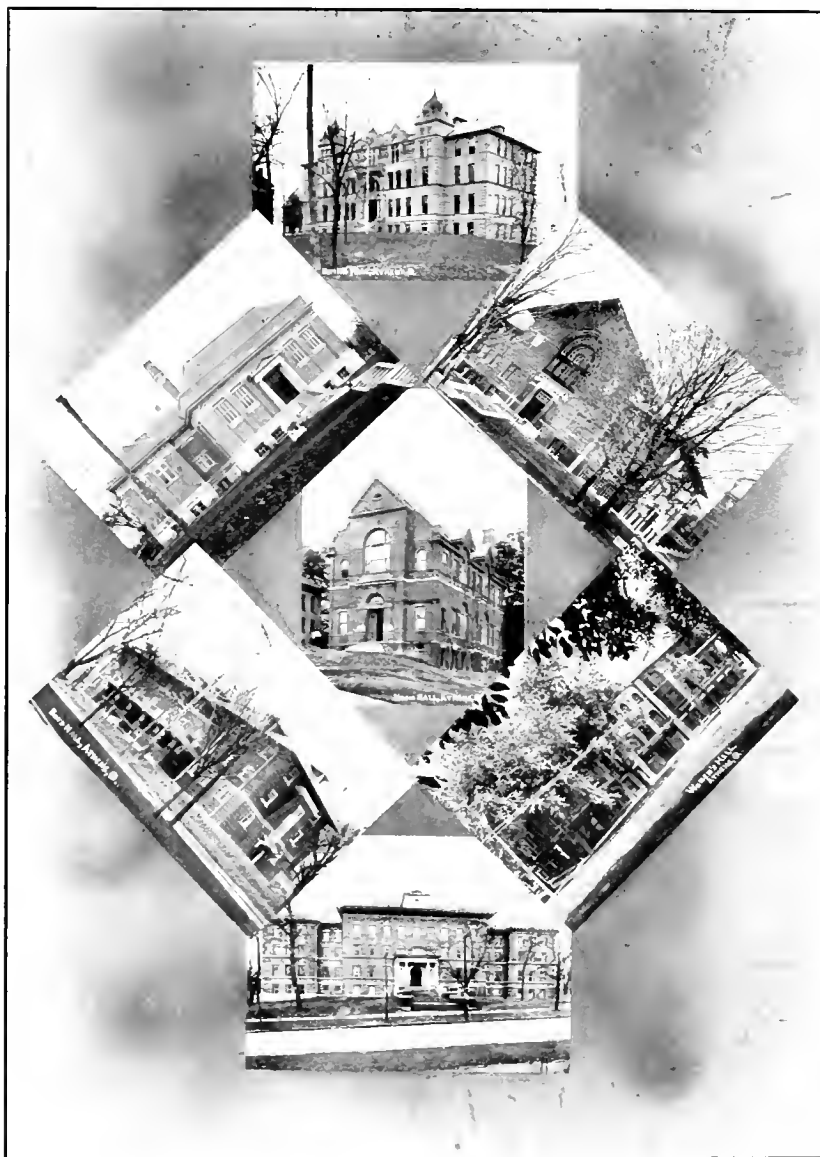


This is the home of the Athena. In this building, the Annual was planned and the material compiled. The Green and White office and the Y.M.C.A. Headquarters are also located here. Hence this building contains the Executive offices of the Student Body.













ALSTON ELLIS

B.S. Miami University, 1865; A.B. Miami University, 1867;  
A.M. Miami University, 1872; Ph.D. Wooster College, 1879; Ph.D.  
Ohio State University, 1887; LL.D. Ohio State University, 1890;  
LL.D. Miami University, 1894.



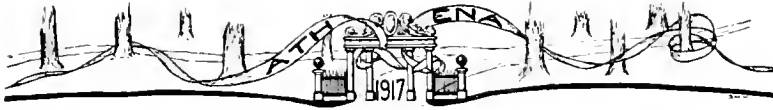


## To Prexy

For four years Prexy, you have guided our destinies. You have encouraged us, you have helped us and you have inspired us. The Class of 1917 is truly grateful for your many kindnesses. Soon we shall leave you, but we shall never forget you. And as we take our departure the refrain of our Alma Mater shall go with us, for:

*"We revere thee and cheer thee,  
As we sing thy praise once more."*

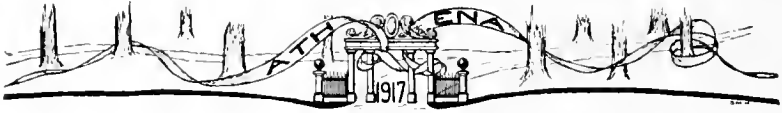




DEAN E. W. CHUBB

As Dean of the Liberal Arts College, Dr. Chubb has shown such ability that his services have become indispensable. Thru his generosity and kindness he wins the hearts of all his students.

We are strong for you, Baldy, and we hope that the coming years will bring you much happiness.

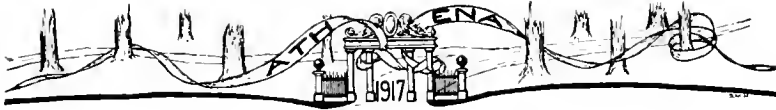




### DEAN J. J. RICHESON

John J. Richeson, Dean of the State Normal College, commands the respect and admiration of every man and woman at Ohio. He attained his present position thru hard efforts and by his tireless energy. The Normal College prospers under his direction and it will continue to prosper as long as Dean Richeson remains at its head.





### DEAN IRMA E. VOIGT

Dean Voigt has been at Ohio only four years. During that time, however, she has demonstrated that a Dean of Women was needed here. The improvements in the environment of Ohio girls which have been consummated thru her efforts, have been little short of wonderful.

Dean Voigt is versatile, aggressive and her courage is indomitable. She is admired by all the girls and respected by all the men.



Chubb



Richeson



Evans



Dunkle



C. M. Copeland



Martzolf



Hoover



Mills



Mercer



Crisman



Addicott



Bentley





ELI DULKLE, *Registrar and Professor of Greek.*

A.B. Ohio University, 1877; A.M. Ohio University, 1880.

DAFFYD J. EVANS, *Professor of Latin.*

A.B. Ohio University, 1871; A.M. Ohio University 1874; LL.D.;  
Lenox College 1914.

JOHN J. RICHESON, *Dean State Normal College.*

B. Ped; Ohio University, 1910; Ped.D. Miami, 1916.

EDWIN W. CHUBB, *Dean College Liberal Arts.*

A.B. Lafayette College, 1887; A.M. Ohio University, 1874; Litt.  
D. Lafayette College, 1896.

EDSON M. MILLS, *Professor of Mathematics.*

A.M. Ohio University, 1887; M.Ped. Ohio University, 1910.

THOMAS N. HOOVER, *Professor of History.*

B.Ped. Ohio University, 1905; M.Ped. Ohio University, 1906;  
A.M. Harvard University, 1917.

CLEMENT L. MARTZLOFF, *Professor of History.*

B.Ped. Ohio University, 1907; M.Ped. Ohio University, 1910.

CHARLES M. COPELAND, *Director of School of Commerce.*

B.Ped. Ohio University, 1896.

WILLIAM B. BENTLEY, *Professor of Chemistry.*

A.B. Harvard, 1889; A.M. Harvard, 1890. Ph.D. Harvard, 1890.



Wilson



Gard



W. F. Copeland



Coultrap



Matheny



Stahl



Thompson



Mardis



Cooper



Waite



Douthitt



Matthews



FLETCHER S. COULTRAP, *Professor of the Art of Teaching.*

A.B. Ohio University, 1875; A.M. Ohio University, 1878.

WILLIAM F. COPELAND, *Professor of Agriculture.*

Ph.B. Ohio University, 1902; Ph.M. Ohio University, 1903;  
Ph.D. Clark University, 1907.

WILLIS L. GARD, *Professor of History of Education.*

A.B. University of Indiana, 1896; A.M. University of Indiana,  
1903; Ph.D. Clark University, 1907.

HIRAM ROY WILSON, *Professor of English.*

A.B. Ohio University, 1896; A.M. Ohio University, 1897; Litt.D.  
Franklin College, 1911.

SAMUEL K. MARDIS, *Professor in Science of Education.*

Ph.B. Ohio University; Ped.D. Ohio University; Ped.D. Scio  
College.

ALEXANDER S. THOMPSON, *Director of the College of Music.*

MARIE LOUISE STAHL, *Instructor in Painting and Drawing.*

WILLIAM A. MATHENY, *Professor in Civic Biology.*

Ph.B. Ohio University, 1908; A.M. Clark University, 1909.  
Ph.D. Clark University, 1911.

W.H. COOPER, *Professor in Public Speaking.*

A.B. Northwestern University; A.M. Michigan University.

EMMA S. WAITE, *Principal of Training School.*

Classical Diploma, New York State Normal College; Graduate  
Richard Institute, Toronto, Canada.

C. M. DOUTHITT, *Instructor in Physical Education.*

CHARLES G. MATTHEWS, *Librarian.*

B.S. Ohio University; M.S. Ohio University.



Landsittle



Atkinson



Treudley



Doernenberg



Dambac



Brison



Tough



McLaughlin



FREDERICK C. LANDSITTLE, *Professor of the Art of Teaching.*

B.Ped. Ohio University, 1911; M.S. in Ed. Ohio University, 1912.

ALBERT A. ATKINSON, *Professor of Physics.*

Ph.B. Ohio University, 1891; M.S. Ohio University, 1894.

FREDERICK TREUDLEY, *Professor of Philosophy.*

A.B. University, 1871; A.M. Hiram College, 1906.

EMIL DORNENBERG, *Professor of German.*

Ph.B. Central Wesleyan College, 1907; A.M. Northwestern University, 1908.

THEOPHILE DAMBAC, *Professor of French.*

MARY J. BRISON, *Instructor in Drawing.*

B.S. Columbia University; Bachelor in Fine Arts, Columbia University.

MARY TOUGH, *Instructor in Domestic Science.*

GEORGE E. McLAUGHLIN, *Instructor in Electrical Engineering.*

B.S. in Ed. Ohio University.

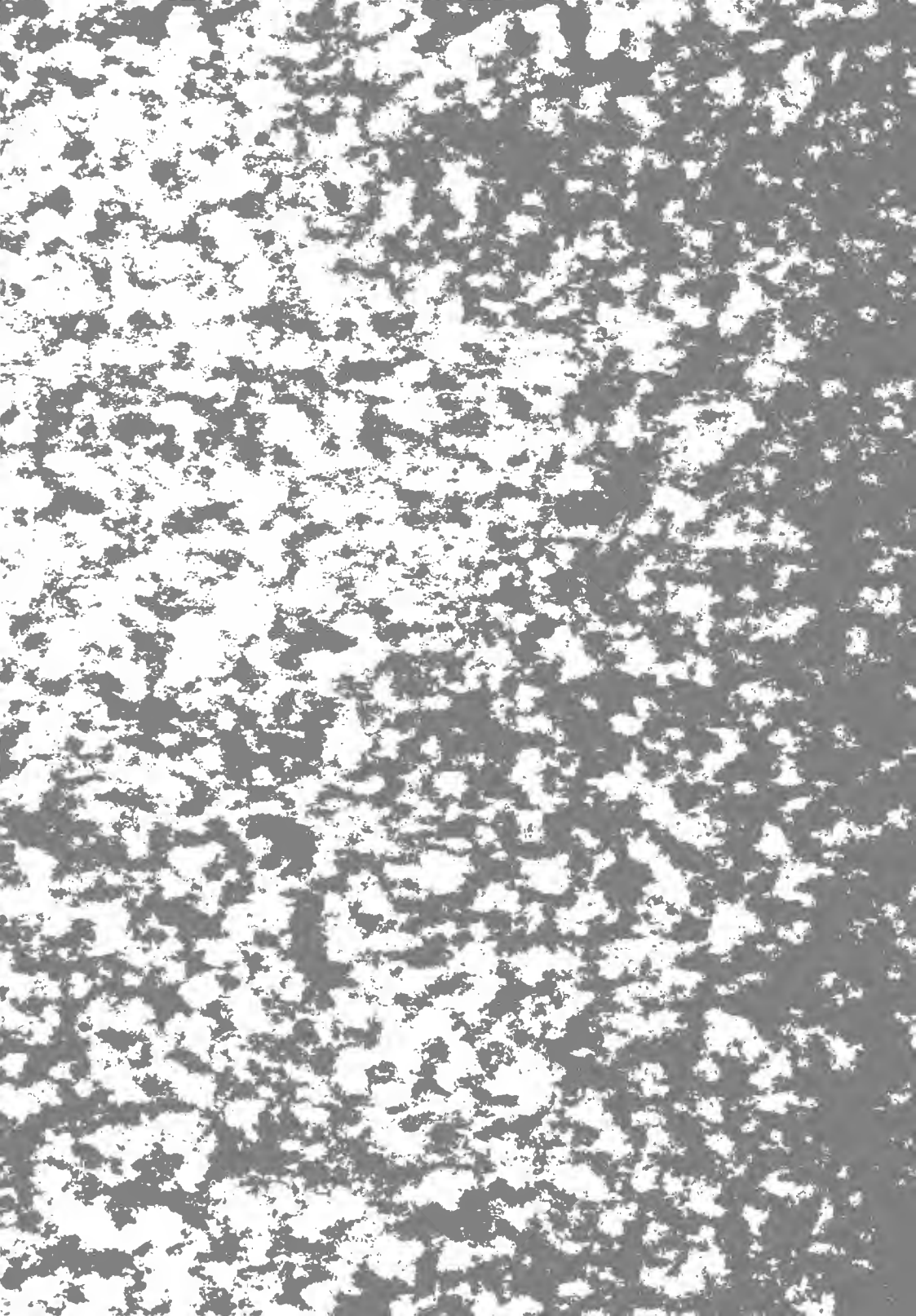


“THE OLD BEECH.”

It stands among its environs, tall, stately, and supreme.

BOOK III

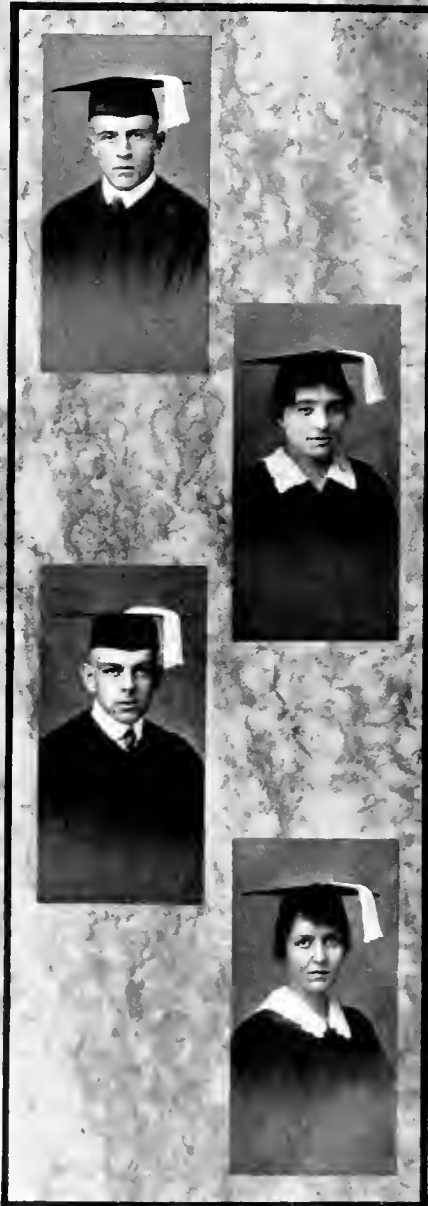
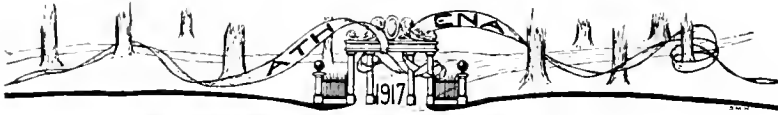
Classes







# SENIORS



MARK C. HENDRICKSON, A.B.  
Norwalk.  
Delta Tau, Delta; Torch, Pres.  
(4); Class President (2), (4);  
Football (2), (3), (4); Basket Ball  
(2), (3), (4), Captain (3); Track  
(3), (4); Senate.

MARIAN MAE ALLEN, B.S. in Ed.  
Corning.  
Delta Gamma, O.S.U.; Class  
Secretary (4); Y.W.C.A.

HARRY R. WILSON, A.B.  
Dunbar, Pa.  
Sigma Pi, Pres. (4); Baseball,  
Captain (2); Basket Ball (2);  
Vice-Pres. Senior Class; Biology  
Club.

ANNA P. GILLILAN, A.B.  
Salt Lake City, Utah.  
Alpha Gamma Delta; Cresset;  
Y.W.C.A., Pres. (2); Athenian;  
Biology Club (4); Cercle Francais  
(2); Advisory Board Woman's  
League; Class Historian (4).



MYRTLE MCBETH, B.S. in Ed.  
Georgetown.

Chrestomathean; B.S. in Ed. Club; Y. W. C. A.; Woman's League Club; Y. W. C. A.; Woman's League; Graduate O. S. U.



WALTER A. DOWNING, B.S. in Ed.  
New Madison.

Delta Tau Delta; Y. M. C. A. Pres. (3); Torch; Booklovers' Club; Board of Control Green and White; Varsity Track; Senate; Biology Club.



ELIZABETH G. BEATTY, B.S. in Ed.  
Athens.

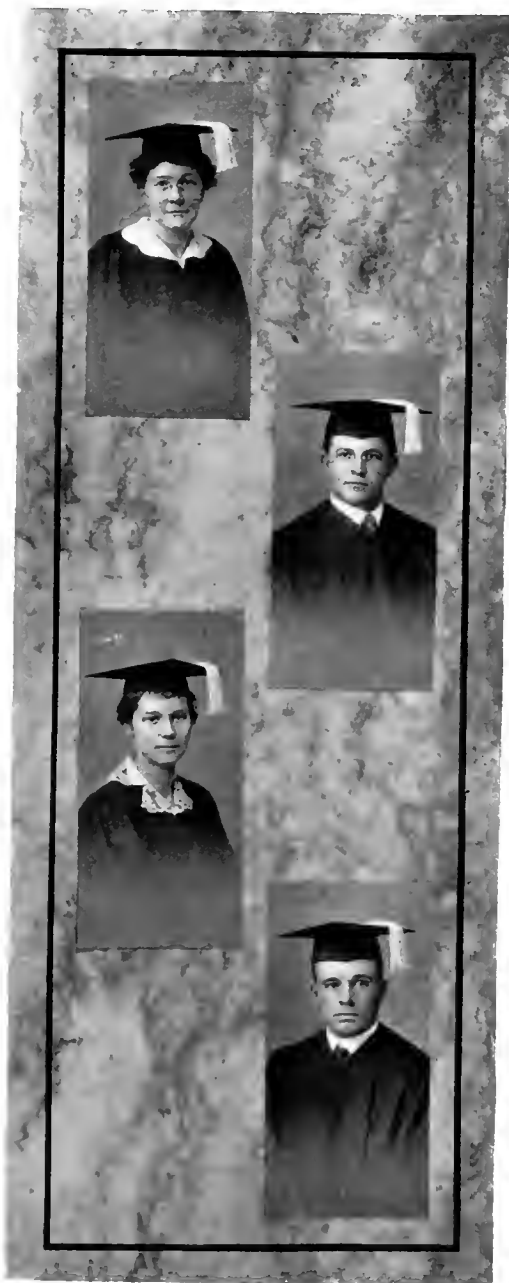
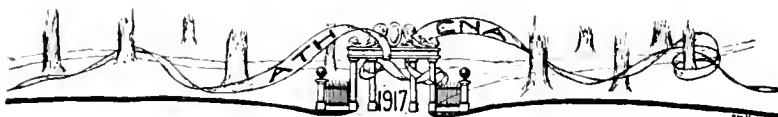
Aloquin; Athenian; Cresset; Advisory Board Woman's League; Oyo; Woman's Debating Council, Pres. (3); Cercle Francais; Biology Club.



WILLIAM C. HUNNICUTT, A.B.  
Zanesville.

Philomathean; Oratorical Association; Civics Club (3), (4); 2nd Prize Brown Oratorical Contest (3); Y. M. C. A.





MRS. MARIE C. BURNS, A.B.  
Guysville.

DANA E. BURNS, A.B.  
Guysville.  
Chrestomathean Winner  
Brown Oratorical Contest (3);  
Y. M. C. A.

MRS. MABEL S. REHARD, A.B.  
West Lafayette.  
Woman's League; Y. W. C. A.

WILLOUGHBY L. REHARD, A.B.  
West Lafayette.



JOSEPH E. GOODMAN, A.B.  
 Canton, O.  
 Athenian; Newman Club; Y.  
 M. C. A.; Student Mt. Union  
 College; Graduate Scientific  
 Course Valpariso University.



HAZEL P. ROACH, A.B.  
 Athens.  
 Alpha Gamma Delta; Home  
 Economics Club, Pres. (4); Junior  
 Prom Committee (3); Athena  
 Board of Control; Pan-Hellenic  
 Council.



TERESE CARUTHERS, A.B.  
 Middleport.  
 Pi Beta Phi; Girls' Glee Club;  
 Oyo; The Revelers; Woman's  
 League; Society Editor Green and  
 White (4); Graduate in Public  
 Speaking.



CHRISTOPHER J. BAHNSON, B.S.  
 in Ed.  
 Latchie.  
 Phi Delta Theta; Varsity Foot-  
 ball (2), (3); Varsity Basket Ball  
 (3); Varsity Baseball (2)





ROBERT MERKLE, A.B.  
Bourneville.

Philomathean, Pres. (4); Inter Society Debate (2), (3), (4); Oratorical Association; Civics Club (3); Y. M. C. A.; Athena Staff.

JESSIE B. STRONG, B.S. in Ed.  
Frederickstown.

Aloquin; Adelpian; Botanical Society, Pres. (4); B.S. in Ed. Club; Woman's League; Two Year Normal Graduate.

MARGARET DAVIS, A.B.  
Athens.

Alpha Gamma Delta; Y. W. C. A.

O. C. JACKSON, A.B.  
Woodsfield.

Science Club; Biology Club.



EDITH A. BUCHANAN, B.S. in Ed.  
Basis.  
Y. W. C. A.



CLINTON P. BIDDLE, A.B.  
Athens.  
Phi Delta Theta; Torch; Editor  
Green and White (4); Tau Kappa  
Alpha; The Revelers; Manager  
Football (4); Inter-Collegiate De-  
bating Team (3), (4).



ESTHER M. HOLLAND, A.B.  
Cadiz.  
Alpha Delta Pi; Philomathean;  
B.S. in Ed. Club; Y. W. C. A.



ROLAND A. FULLER, A.B.  
Columbus.  
Phi Kappa Tau; Football (2),  
(3), (4); Baseball (2), (3), (4);  
Captain (4); Chairman Green  
and White Board of Control;  
Treasurer Senior Class.





HELEN BURNHAM, A.B.  
 Milford Center.  
 Pi Beta Phi; Girls' Glee Club  
 (4); Woman's League; Y. W. C.  
 A.; Student Wooster University.

RAYMOND M. CLARK, B.S. in Ed.  
 Eron Valley, Pa.  
 Athenian, Pres. (4); Y. M. C. A.  
 Cabinet; B.S. in Ed. Club.

OMA JEAN PATTON, A.B.  
 New Rumley.

H. GLENN GRIFFIN, A.B.  
 Sherrodsville.  
 Phi Kappa Tau, Delegate National  
 Convention (3); Y. M. C. A.  
 Cabinet. (4) Graduate School of  
 Commerce.





FLOYD PARKER, A.B.  
Athens.  
Delta Tau Delta; Graduate of  
the School of Commerce.



ROSE M. MINDIGO, A.B.  
Cornine.  
Y. W. C. A.; Woman's League;  
The Teutons.



WILLIS L. FRENCH, A.B.  
Washington, C. H.



VIVIAN B. PERRY, B.S. in Ed.  
Chillicothe.  
Graduate Dension '15; B.Ph.;  
B.S. In Ed. Club; Music Club;  
Woman's League; Y. W. C. A.



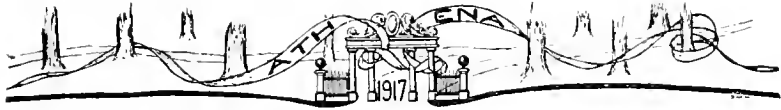


JOHN P. GRETHN, A.B.,  
Coboes, N. Y.  
Phi Delta Theta; College Play  
(4).

MARY E. HAMILTON, B.S. in Ed.  
Marysville.  
Philomathean; B.S. in Ed. Club;  
Woman's League; Y. W. C. A.

EDYTHA I. TRICKETT, A.B.,  
Chaubucy.

PING KEY CHAN, B.S.,  
Canton, China.



ARTHUR E. LAWRENCE, A.B.  
Coolville.  
Philomathean; Men's Glee Club  
(2), (3), (4); Track Manager (4);  
Music Club; Y. M. C. A.



LUCILE WELLS, A.B.  
Sharpsburg.  
Chi Omega; Woman's League;  
Girl's Glee Club; Y. W. C. A.

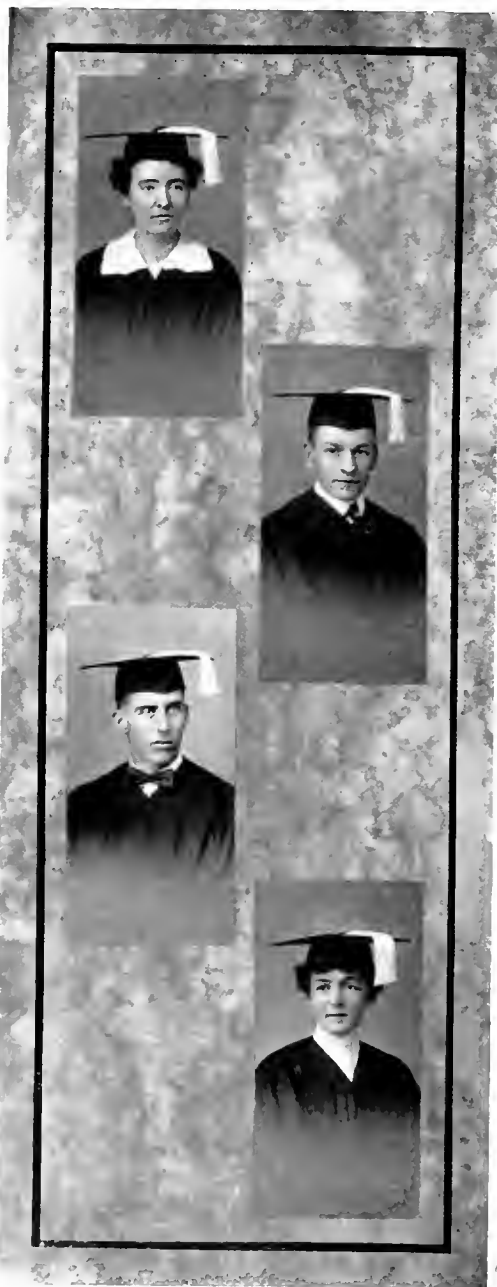


GARNET S. NOEL, B.S. in Ed.  
Portsmouth.  
Philomathean; Y. W. C. A.  
Woman's League.



EDWIN FINSTERWALD, A.B.  
Athens.  
Sigma Pi; Varsity Baseball (2,  
(3), (4), Captain (3); Varsity  
Football (2), (3), (4).





SALLIE POWELL, B.S. in Ed.  
Russell, Ky.  
Y. W. C. A.; Home Economics  
Club; B.S. in Ed. Club; Graduate  
in Domestic Science (3).

ROBERT B. POLING, A.B.  
Logan.  
Philomathean; Science Club;  
Men's Glee Club; Y. M. C. A.;  
Assistant in Department of Bi-  
ology.

H. W. LEHNING, B.S. in Ed.  
Berea.

CHARLOTTE COPELAND, B.S. in Ed.  
Athens.  
Alpha Gamma Delta; A.B. '14;  
Woman's League B. S. in Ed.  
Club.



GRETA A. LASH, A.B.  
Athens.

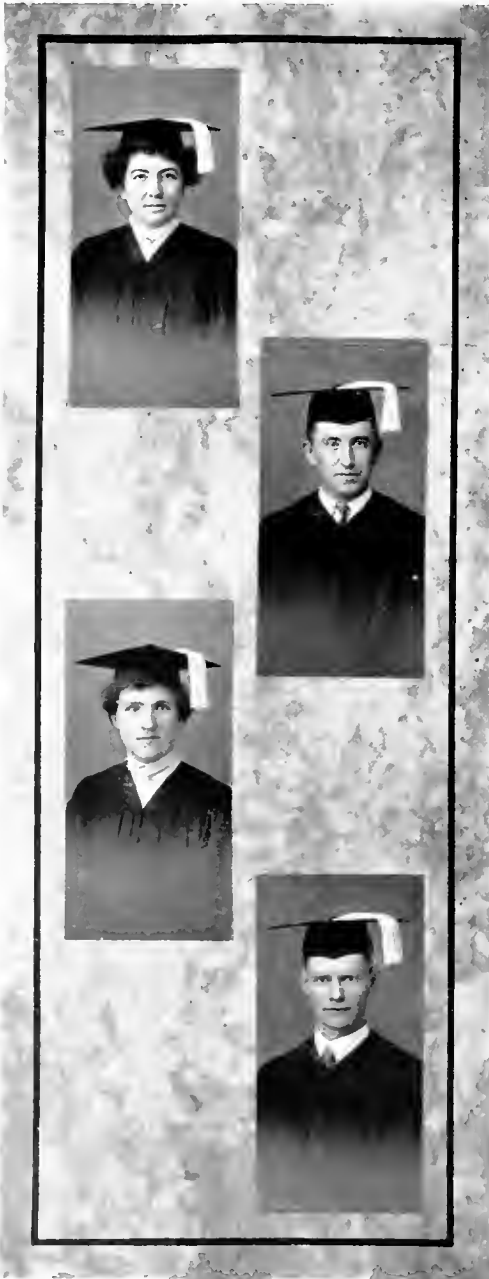
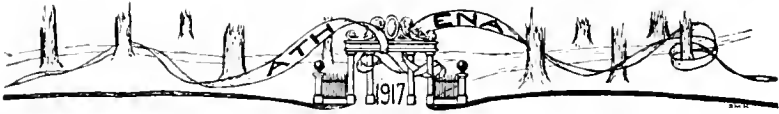
Alpha Gamma Delta; Woman's  
League Advisory Board, (3), (4);  
Y. W. C. A. Sec'y (2); English  
Club (3), (4); Cresset; Oyo;  
Philomathean; Pan-Hellenic  
Council.

FLETCHER C. BENTON, A.B.  
Jackson.  
Phi Delta Theta.

HELEN J. THOMAS, B.S. in Ed.  
Kingston.  
Philomathean; B.S. in Ed. Club;  
Advisory Board Woman's League;  
Y. W. C. A.

WALDO H. WEIK, A.B.  
Cincinnati.  
Torch; Science Club; Botany  
Club, Pres. (3); Senate, Pres. (4);  
Y. M. C. A. Cabinet.





MAUDE E. CRYDER, A.B.  
Chillicothe.

Moquin; Ciesset, Pres. (4);  
Oyo; Athenian; English Club; The  
Teutons; Woman's Debating  
Council; Advisory Board Woman's  
League; Green and White Board  
of Control; Y. W. C. A.

F. A. JACKSON, A.B.  
Woodsheld.  
Biology Club.

ELSIE V. HICKMAN, B.S. in Ed.  
Nelsonville.  
B.S. in Ed. Club; Woman's  
League; Y. W. C. A.

CLARENCE H. GROWDIX, B.S. in  
Ed.  
Chillicothe.  
Athenian; Inter-Society Debate  
(3), (4); Alpha Pi Kappa; Science  
Club (4); Oratorical Association  
3; Y. M. C. A.



WILLIAM I. WHITE, A.B.  
Mt. Orab.  
Chrestomathean; Biology Club;  
Y. M. C. A.



MARY M. SCHLEICHER, B.S. in Ed.  
Lancaster.  
Adelphian, Pres. (4); O. O.;  
Cresset; Woman's League, Pres.  
(4); The Teutons; Botany Club.

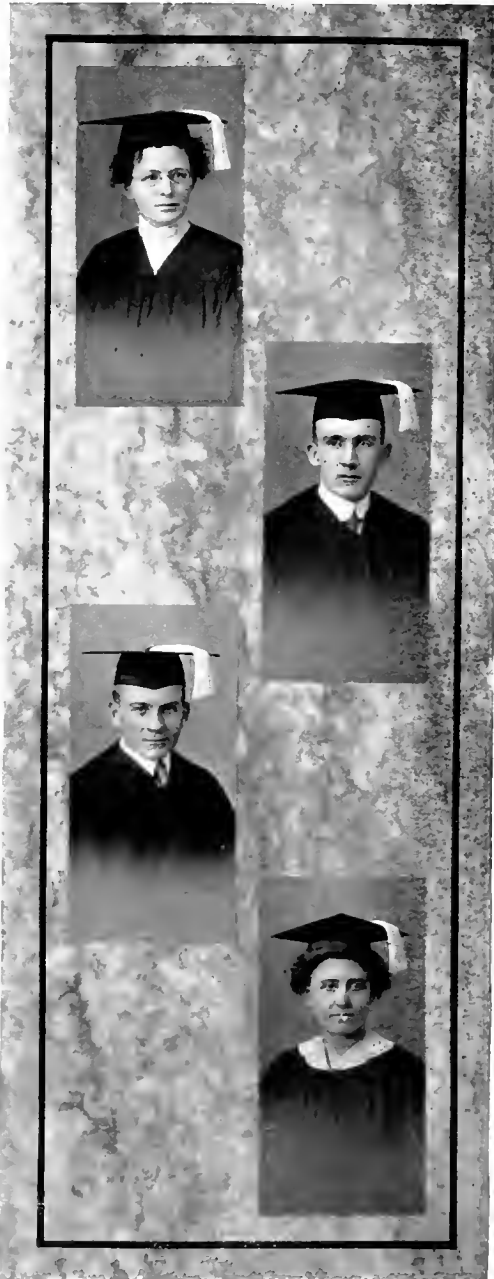


ALBERT W. BOETTICHER, B.S. in  
Ed.  
Athens.  
Chrestomathean; Alpha Pi  
Kappa; Science Club; Botany  
Club; Y. M. C. A.



MARGUERITE G. TAYLOR, A.B.  
Athens.  
Pi Beta Phi; Advisory Board  
Woman's League, Chairman  
Social Committee (4); Girls' Glee  
Club; Cercle Francais; Y. W. C. A.;  
Spanish Club (1).





CLARA F. VESTER, A.B.  
Chillicothe.  
Athenian; English Club; Kindergarten Club; The Teutons, (4); Oyo; Cercle Francaise; Woman's League; Y. W. C. A.; Emerson Prize Poem, 1913.

GEORGE N. GRAHAM, A.B.  
West Union.  
Phi Kappa Tau; Chrestomathian; Alpha Pi Kappa.

H. CLAY SKINNER, B.S. in Ed.  
Tobosco.  
Phi Kappa Tau; Adelpian; B.S. in Ed. Club; Y. M. C. A.

SUSAN A. THOUROT, B.S. in Ed.  
Stryker.  
Kindergarten Club; B.S. in Ed. Club; Woman's League; Y. W. C. A.





GEORGE L. CHAPMAN, A.B.  
Zanesville.  
Delta Tau Delta; Science Club;  
Chemical Society; Biology Club;  
Chrestomathean.



ELLA THOMPSON, B.S. in Ed.  
White Cottage.  
Y. W. C. A.; Woman's League;  
B. S. in Ed. Club.

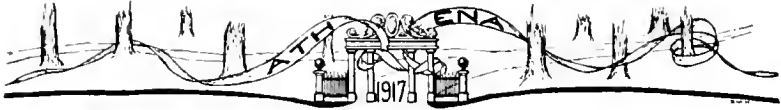


WESLEY WALBURN, B.S. in Ed.  
Athens.



VERNA M. TAYLOR, B.S. in Ed.  
New Waterford.  
Y. W. C. A.; Woman's League;  
B. S. in Ed. Club.





FRED W. OLDHAM, A.B.  
Bedford.  
Adelphian; Chemical Society;  
The Teutons; Engineering Society;  
Graduate Two Year Electrical and  
Two Year Civil Engineering.



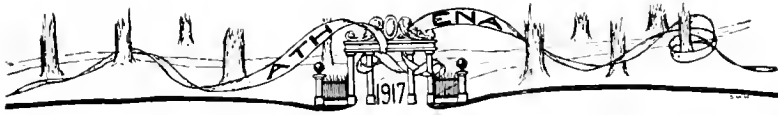
MARY A. STEWART, A.B.  
Ironton.  
The Teutons; Home Economics  
Club; Woman's League; Y. W.  
C. A.; Graduate in Domestic  
Science (3).



HARLEY E. MOLLER, A. B.  
Athens.  
Sigma Pi; Pres. O. U. Tennis  
Association (3); Varsity Tennis (3)  
Graduate School of Commerce.



CONSTANCE E. DINSMORE, B.S.  
in Ed.  
Athens.  
Woman's League; B.S. in Ed.  
Club; Y. W. C. A.



JOHN R. GODDARD, A.B.  
Amesville.  
Delta Tau Delta; Y. M. C. A.  
Pres. (4); Green and White Board  
of Control (4); Men's Glee Club;  
Senate; Torch; Varsity Football  
(2), (3), (4); Track; Baseball;  
Student Athletic Council; Athena  
Staff.



DICIE E. CUCKLER, B.S. in Ed.  
Athens.  
B.S. in Ed. Club; Woman's  
League; Y. W. C. A.

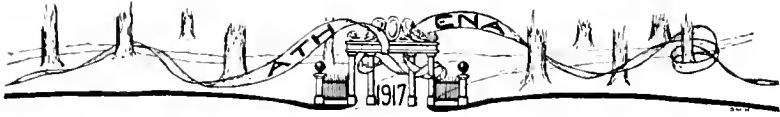


CELIA LONSINGER, B.S. in Ed.  
Walhonding.



ARTHUR BARNETT, B.S. in Ed.  
Fleming.  
B.S. in Ed. Club; Y. M. C. A.





HAROLD C. MARDIS, A.B.  
Athens.  
Delta Tau Delta; Senate (2),  
(3); The Revelers (3), (4); Cercle  
Francais; Colleez Play 3.

ELIZABETH G. Garber, B.S. in Ed.  
Bellville.  
Graduate in Public School  
Music; Graduate in Voice; Music  
Club, Pres. (4); Girls' Glee Club;  
B.S. in Ed. Club; German Club.

V. M. HART, A.B.  
Cambridge.

RUTH C. TILTERS, B.S. in Ed.  
Washington, C. H.  
Athenian; Cresset (4); German  
Club; Woman's League; Y. W.  
C. A.



LULU E. SHUMAN, B.S. in Ed.  
 Sherrodsville.  
 Cresset; Aloguin; Y. W. C. A.  
 Cabinet; Girls' Inter-Collegiate De-  
 bating Team; Oyo; Athenian;  
 The Teutons; Girls' Debating  
 Union, Pres. (4).



GEORGE E. McLAUGHLIN, B.S.  
 in Ed.  
 Wilkesville.  
 Graduate in Agriculture; Science  
 Club; Botany Club; Chemical  
 Society; Y. M. C. A.

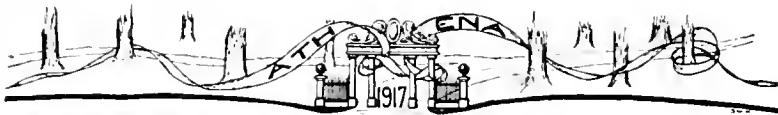


C. C. GODDARD, A.B.  
 Cutler.  
 Phi Kappa Tau; Adelpian;  
 Track; Circulation Manager Green  
 and White (3); Business Manager  
 Green and White (4).



LUCILE HENRY, A.B.  
 Athens.  
 Pi Beta Phi; Oyo; The Revelers;  
 Y. W. C. A. Cabinet; Biology  
 Club; Social Chairman Woman's  
 League (1), (2); Graduate in  
 Oratory.





**BERTHA A. LIVELY, B.S. in Ed.**  
 New Marshfield.  
 Philomathean; B.S. in Ed.  
 Club; The Teutons; Woman's  
 League; Y. M. C. A.

**CHARLES H. PARRETT, B.S. in Ed.**  
 Thornville.  
 Adelpgian; Y. M. C. A.

**KENNETH H. PICKERING, A. B.**  
 Athens.  
 Beta Theta Pi; Varsity Tennis  
 (2, 3, 4).

**CHLOE F. HENRY, A.B.**  
 Junction City.  
 Aloquing; Athenian; Cercle Fran-  
 cais; The Teutons; Woman's  
 League; Women's Debating Coun-  
 cil; Y. W. C. A.



VERNA McKELVEY, B.S. in Ed.  
Warnack.



JOSEPH E. JEWETT, A.B.  
Athens.  
Chemical Society; English Club;  
Science Club; Green and White  
Staff (3); Biological Club.

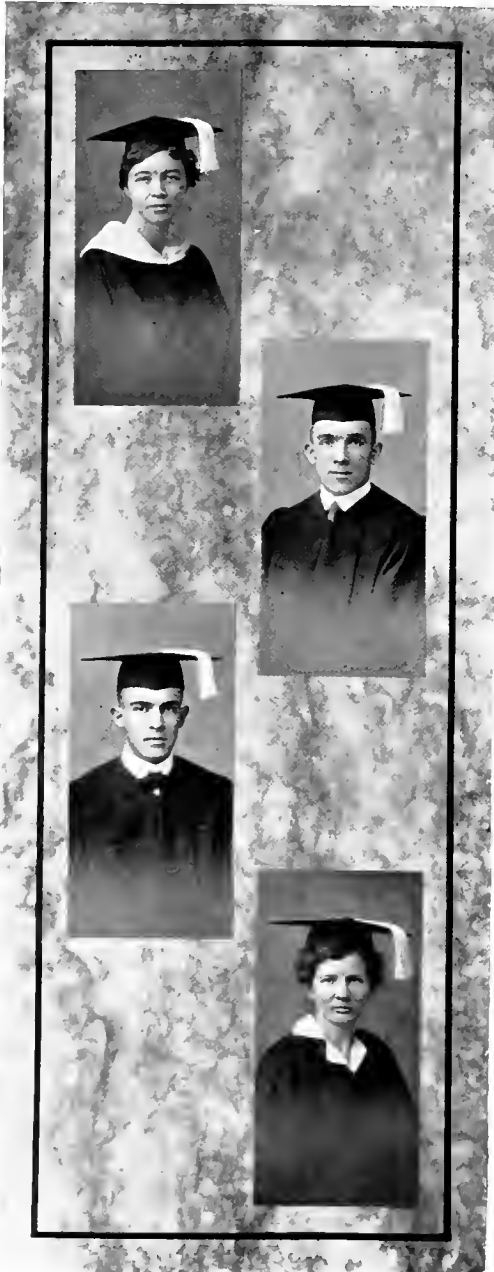


EARL M. TAYLOR, B.S. in Ed.  
Dresden.  
Adelphian; Y. M. C. A.; Grad-  
uate Two Year Agriculture.



JO ALMA MOORE, A.B.  
Athens.  
Alpha Gamma Delta, Pres. (4);  
Pan-Hellenic Council; Girls' Glee  
Club; Athenian Concert Com-  
pany; Graduate in Public School  
Music, (3).





EVA E. DU HADWAY, B.S. in Ed.  
Utica.  
Y. W. C. A.; Woman's League;  
B. S. in Ed. Club.

MELVIN L. McCRLARY, A.B.  
Freeport.  
Phi Kappa Tau; Philomathean;  
Football (2), (3), (4), Cap'n. (4);  
Baseball (2), (3); Y. M. C. A.

HARRY E. SECREST, A.B.  
Pleasant City.  
Phi Kappa Tau; Chemical  
Society; B.S. in Ed. Club; The  
Teutons; Men's Glee Club; Adel-  
phian.

MARY E. FISCHER, B.S. in Ed.  
Payne.  
Chrestomathean; Home Eco-  
nomics Club; B.S. in Ed. Club;  
Woman's League; Y. W. C. A.





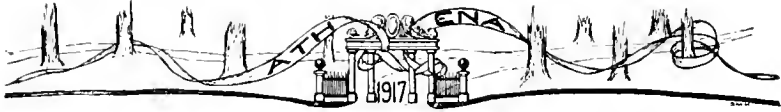
WILLIAM O. WHITE, A.B.  
Stockport.  
Phi Kappa Tau; Chrestomath-  
ean; Chemical Society, Pres.(4);  
Science Club; Biology Club.

CECILE G. SMITH, B.S. in Ed.  
South Charleston.  
B.S. in Ed. Club; Y. W. C. A.;  
Woman's League.

LUCILE BRUBAKER, B.S. in Ed.  
Urbana.  
Y. W. C. A.; Woman's League.

EDWARD H. PAKE, B.S. in Ed.  
Bainbridge.  
Athenian; Men's Glee Club;  
Oratorical Association; Book-  
lovers' Club; Y. M. C. A.





MARIA GROVER, B.S. in Ed.  
Athens.  
Athenian; Y.W.C.A.; Woman's  
League; Women's Debating Council.

WILLIAM J. SECREST, B.S.  
Pleasant City.  
Phi Kappa Tau; Adelpian;  
Science Club; Y. M. C. A.

EDNA RICKEY, A.B.  
Athens.  
Aloquin; Athenian; Oyo; The  
Teutons; Inter-Society Debate (3);  
Women's Debating Council; Girls'  
Inter-collegiate Debate (3).

L. LEO TAYLOR, B.S. in Ed.  
West Lafayette.  
Chemical Society; Track; Y.  
M. C. A.



HARLAND W. HOISINGTON, A.B.  
Columbus.

Beta Theta Pi, Pres. (4); Torch;  
Tau Kappa Alpha; Varsity Foot-  
ball (2), (3), (4); Editor Athena;  
Inter-Collegiate Debate (1), (2);  
Manager Baseball (4).



MARY H. KERR, A.B.  
Beverly.

Alpha Xi Delta, Pres. (4);  
Cresset; Y. W. C. A. Cabinet;  
Board of Control Green and  
White; Civics Club; Girls' Glee  
Club; Pan-Hellenic Council;  
Athena Staff.



HERBERT W. BASH, B.S. in Ed.  
White Cottage.

Sigma Pi; Torch; Philomathean;  
Pan-Hellenic Association (3), (4);  
Football (2), (3), (4); Basket Ball  
(2), (3), (4); Track (2), (3), (4);  
Baseball (2), (3), (4); Varsity  
Basket Ball Captain (4); Business  
Manager Athena.



MERLE E. DANFORD, A.B.  
Trimble.

Pi Beta Phi, Pres. (4); Cresset;  
Philomathean; The Teutons; Cer-  
cle Francais; Advisory Board  
Woman's League; Girls' Glee  
Club (2), (3); Y. W. C. A.; Pan-  
Hellenic Council; Athena Staff.





Roscoe E. Martin, B.S. in Ed.  
Sardinia.  
Chrestomathean; B.S. in Ed.  
Club; Inter-Society Debate (4);  
Y. M. C. A.



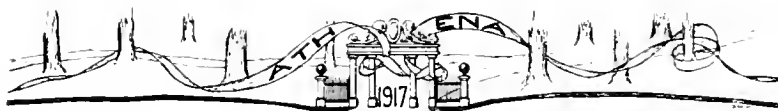
ETHEL MYERS, B.S. in Ed.  
Greenspring.  
Aloquin; B.S. in Ed. Club;  
Biology Club.



MABLE A. WILLERTON, B.S. in Ed.  
Bellaire.  
Woman's League; Y. W. C. A.;  
Graduate Two Year Elementary  
Course 1913; B.S. in Ed. Club.



JACOB B. CHRISTMAN, B.S. in Ed.  
Athens.



ELIZABETH FEARON, A.B.  
Wellston.  
Biological Club; The Teutons;  
Y. W. C. A.



LOUISE EBERSBACH, A.B.  
Pomeroy.  
Sigma Sigma Sigma; Philo-  
mathean, Pres. (4); Cresset; Pan-  
Hellenic Council Pres. (4); Ad-  
visory Board Woman's League;  
Y. W. C. A., Pres. (4), Delegate  
to Eaglesmere; The Teutons;  
Woman's Debating Council.

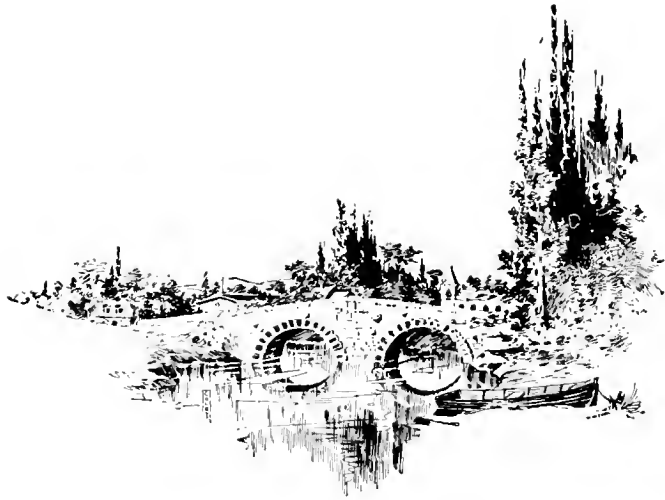


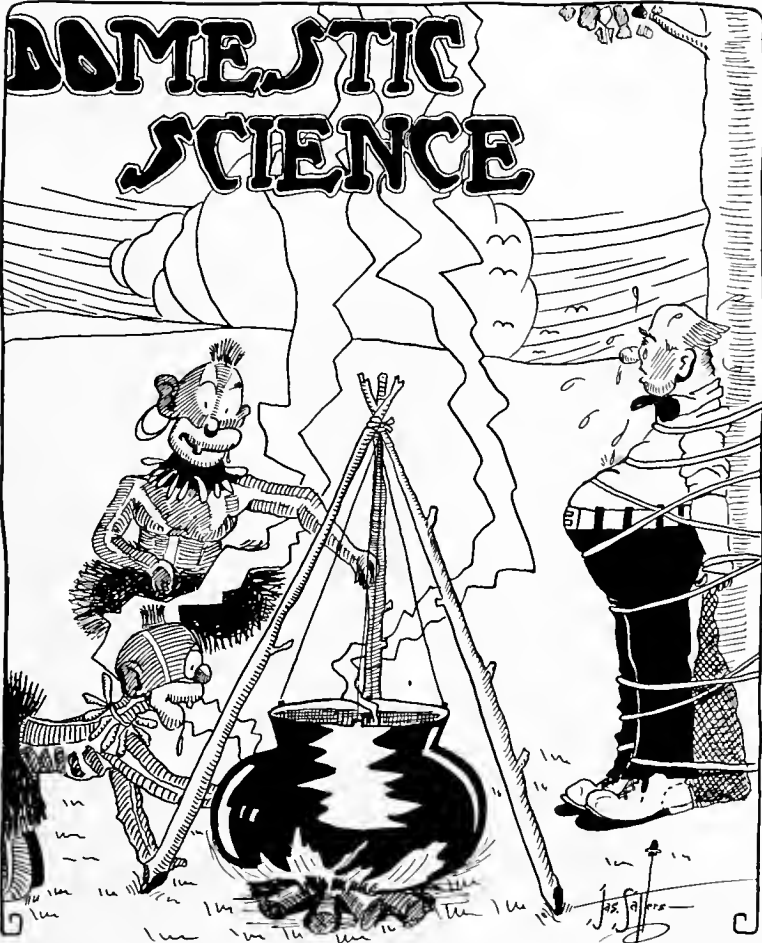
CHARLES H. PARADISE, A.B.  
Albany, N. Y.



RACHAEL J. HIGGINS, A.B.  
Zanesville.  
Chi Omega, Pres. (4); Woman's  
League, Vice-Pres. (4); Philo-  
mathean; Oyo; Cresset; Woman's  
Debating Council (4); Y. W. C. A.









ETHEL M. TRUMBO, Graduate in  
Domestic Science.  
La Rue.  
Y.W.C.A.; Woman's League.

RUTH ISABELLE SMITH, Graduate  
in Domestic Science.  
Cleveland.

ETHEL G. ECKERT, Graduate in  
Domestic Science.  
Lexington.  
Woman's League; Y.W.C.A.

RUBY VIVIAN ALLEN, Graduate  
in Domestic Science.  
Ravenswood, W. Va.  
Y. W. C. A.; Home Economics  
Club.





GRACE HALL, Graduate in Home Economics.  
Byesville.  
Y.W.C.A.; Woman's League.



HELEN M. ATWOOD, Graduate in Home Economics.  
Mt. Vernon.  
Alpha Gamma Delta; Y.W.C.A.

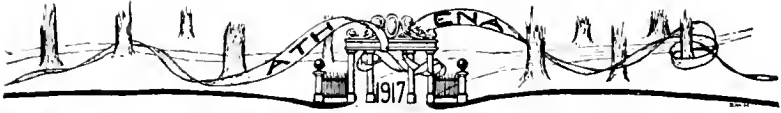


MAY F. HENDERSON, Graduate in Home Economics.  
Cleveland.  
Alpha Gamma Delta; Girls' Glee Club; Revelers.



FLORENCE M. SHERRICK Graduate in Home Economics.  
Wooster.  
Y.W.C.A.; Girls' Glee Club.



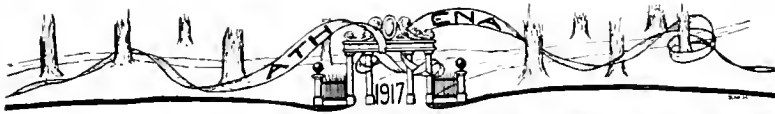


LUCY E. MALSTER, Graduate in  
Domestic Science.  
Waterford.  
Woman's League; Y.W.C.A.

HELEN M. DUNCAN, Graduate in  
Domestic Science.  
Canfield.  
Home Economics Club; Wom-  
an's League; Y.W.C.A.

RUBY A. SCHAAD, Graduate in  
Domestic Science.  
Rogersville.  
Woman's League.

RUTH VAUGHN, Graduate in Do-  
mestic Science.  
Cardington.  
Sigma Sigma Sigma; Woman's  
League; Y. W. C. A.



MARY OLIVE McNEAL, Graduate  
in Domestic Science.  
Waterford.  
Sigma Sigma Sigma; Art Club;  
Woman's League; Y.W.C.A.



HELEN M. BRANDLE, Graduate in  
Domestic Science.  
Chillicothe.  
Pi Beta Phi; Home Economics  
Club; Woman's League; Y. W. C.  
A.



ROSALIND F. UNKEFER, Graduate  
in Domestic Science.  
Minerva.  
Alpha Xi Delta; Y.W.C.A.  
Cabinet; Home Economics Club;  
Woman's League; Athena Staff.



BERTHA VAN PELT, Graduate in  
Domestic Science.  
Highland.



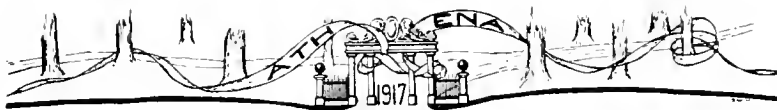


MAY SPEER, Graduate in Domestic Science.  
Wilmington.  
Woman's League; Y.W.C.A.

RUTH E. GARNER, Graduate in Domestic Science.  
Canton.  
Alpha Xi Delta; Home Economics Club; Woman's League; Y.W.C.A.; Pan-Hellenic Council.

HELEN E. WALLACE, Graduate in Home Economics  
Chardon.  
Woman's League; Y.W.C.A.

EVELYN R. PELDEER, Graduate in Home Economics.  
Frostburg, Md.  
Chi Omega; Woman's League; Y.W.C.A.

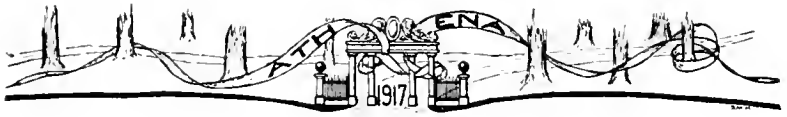


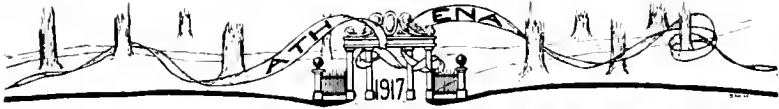
EVA WATKINS, Public School  
Drawing.  
Bellville.  
Adelphian; Art Club; Advisory  
Board Woman's League; Y. W.  
C. A.

GRACE E. MOORE, Graduate in  
Domestic Science.  
Middlefield.  
Aloquin; Woman's League; Y.  
W. C. A.; Home Economics Club,

BLOWDEN EVANS, Graduate in  
Domestic Science.  
Oak Hill.  
Woman's League; Y.W.C.A.







GERTRUDE MAIER, Two Year  
Elementary,  
Zanesville.  
Y.W.C.A.; Woman's League;  
Chrestomathean.



LUCY C. KRAFT, Two Year  
Elementary,  
Belpre.

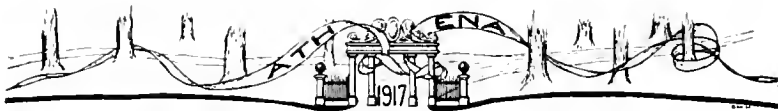


ELSIE M. FELL, Two Year Ele-  
mentary,  
Crooksville.



RUBY R. MILLER, Two Year Ele-  
mentary,  
Lancaster.  
Y.W.C.A.; Woman's League;  
Athenian.





EVA BORK, Two Year Elementary,  
Gibsonburg.



BERNICE F. FISH, Two Year  
Elementary.  
Troy,  
Sigma Sigma Sigma; Y.W.C.A.



HELEN M. CLEM, Two Year  
Elementary.  
Newark,  
Adelphian; Y.W.C.A.



VERGIE GIESEY, Two Year Ele-  
mentary.  
Detroit, Michigan.  
Adelphian; Y.W.C.A.





ANNA M. BUNGER, Two Year  
Elementary.  
Union City, Indiana.  
Kappa Kappa Kappa. Ind.  
U. Adelpian.



EDITH L. PORTER, Two Year  
Elementary.  
Vincent.



LUELLE PANCAKE, Two Year  
Elementary.  
Columbus.  
Y.W.C.A.; Woman's League.



JESSIE B. DUNN, Two Year Ele-  
mentary.  
Parkersburg, W. Va.  
Alpha Xi Delta.





IRENE M. ETTER, Two Year Elementary.  
Covington.  
Y.W.C.A.; Woman's League.



MARY O. ROBERTS, Two Year Elementary.  
Steubenville.



MILDRED BERNIER, Two Year Elementary.  
Steubenville.  
Woman's League.



ELIZABETH JOHNSON, Two Year Elementary.  
Glouster.



IVIA E. METCALF, Two Year  
Elementary.  
Columbus.



LUCILLE L. HARLAN, Two Year  
Elementary.  
West Middletown.  
Y.W.C.A.; Woman's League.

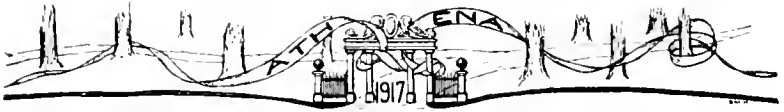


MARY PICKEREL, Two Year Ele-  
mentary.  
London.



IDA M. GRAHAM, Two Year Ele-  
mentary.  
Springfield.



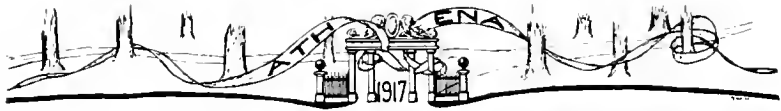


GRACE B. PATTON, Two Year  
Elementary.  
Greenfield.

EDNA R. KEELY, Two Year Ele-  
mentary.  
Lancaster.  
Aloquin; Athenian; Woman's  
League; Y.W.C.A.

BEULAH ARNOLD, Two Year Ele-  
mentary.  
La Rue.

CORA L. FULLS, Two Year Ele-  
mentary  
Jeffersonville.  
Athenian; Y.W.C.A; Woman's  
League.



FLORA CASE, Two Year Elementary,  
Burghill.



MERLE GRUNDER, Two Year Elementary,  
Minerva.



GRACE HAWTHORNE, Two Year Elementary,  
Bellefontaine.  
Y.W.C.A.; Woman's League.



MARY E. RODGERS, Two Year Elementary,  
Steubenville.  
Newman Club; Woman's League.





ESTELLA M. LINTON, Two Year  
Elementary.  
Nelsonville.  
Y.W.C.A.; Woman's League.



MARY B. HOSKINS, Two Year  
Elementary.  
New Vienna.  
Woman's League.



ADA L. FLOYD, Two Year Ele-  
mentary.  
Athens.



HELEN HILLIER, Two Year Ele-  
mentary.  
Newark.



EDNA A. THOMAS, Two Year  
Elementary.  
Barnesville.  
Y.W.C.A.; Woman's League.



ADA LAWRENCE, Two Year Ele-  
mentary.  
Monroeville.  
Y.W.C.A.; Woman's League;  
Philomathean.



ANNA J. ROEBUCK, Two Year  
Elementary.  
Rockford.  
Woman's League; Y. W. C. A.



RUTH A. MOWREY, Two Year  
Elementary.  
Jeffersonville.  
Y.W.C.A.





JOSEPHINE PEASE, Two Year  
Elementary,  
Ashley.

EDNA L. FISHER, Two Year Ele-  
mentary,  
Port Clinton.  
Y.W.C.A.; Woman's League.

HAZELENA BAIR, Two Year Ele-  
mentary,  
Mt. Vernon.  
Chrestomathean; Y.W.C.A.;  
Woman's League.

ETHEL M. DAWSON, Two Year  
Elementary,  
South Euclid.  
Adelphian; Y.W.C.A.; Woman's  
League.





BERTHA L. MAY, Two Year Elementary.  
Shelby.  
Girls' Glee Club.



GENEVIEVE K. DARST, Two Year Elementary.  
Port Clinton.  
Y.W.C.A.; Woman's League.



GRACE E. MESSER, Two Year Elementary.  
Walbridge.



BONNIE K. DAVIS, Two Year Elementary.  
Columbus.





EDNA FAYE JONES, Two Year  
Elementary.  
Granville.  
Woman's League.

BLANCHE BROOMHALL, Two Year  
Elementary.  
Somerton.  
Woman's League; Y.W.C.A.

JENNIE MEREDITH, Two Year Ele-  
mentary.  
Freeport.

SUSAN M. BETHUNE, Two Year  
Elementary.  
Chardon.  
Woman's League; Y.W.C.A.



CARRIE B. ROSS, Two Year Elementary.  
Duncan Falls.  
Woman's League; Y.W.C.A.



ORETHA V. JOHNSON, Two Year Elementary.  
Eureka.

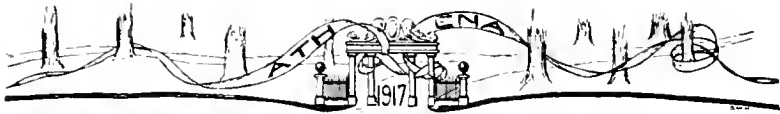


FLORENCE A. RING, Two Year Elementary.  
Valley City.  
Philomathean; Y. W. C. A.;  
Woman's League.



ALICE E. JONES, Two Year Elementary.  
Wellston.  
Y.W.C.A.; Woman's League.





MARY A. NICHOLS, Two Year  
Elementary.  
Galion.  
Y.W.C.A.

FERN L. LANG, Two Year Ele-  
mentary.  
Gallipolis.

FLORENCE M. GRAY, Two Year  
Elementary.  
Jackson.  
Woman's League; Y.W.C.A.

INA E. BLIND, Two Year Ele-  
mentary.  
Gnadenhutten.  
Y.W.C.A.; Woman's League.



DORIS M. CULLUM, Two Year  
Elementary.  
Nelsonville.  
Y.W.C.A.; Woman's League.



HELEN M. SMITH, Two Year Ele-  
mentary.  
Athens.  
Alpha Xi Delta; Woman's  
League; Y.W.C.A.



Mary S. Pinckney, Two Year  
Elementary.  
Columbia Station.



ELSIE E. ZEHRUNG, Public School  
Music.  
Roseville.  
Oberlin College (1), (2); Music  
Club; Girls' Glee Club; Woman's  
League.





OLA M. FISHER, Two Year Elementary,  
Fostoria.  
Y.W.C.A.; Woman's League.



MABLE RHOADES, Two Year Elementary,  
Circleville.



FLORENCE SYFRED, Two Year Elementary,  
Sabina.



CLARA M. WIGGL, Two Year Elementary,  
Paulding.  
Adelphian, Y.W.C.A.; Girls' Glee Club; Woman's League.



WILDA STUBER, Two Year Elementary.  
Sidney.



HELEN A. UMSTEAD, Two Year Elementary.  
Bellaire.



NELL RUSSELL, Two Year Elementary.  
Newark.  
Pi Beta Phi.



MARY L. ELVIN, Two Year Elementary.  
Conneaut.  
Sigma Sigma Sigma; Woman's League.





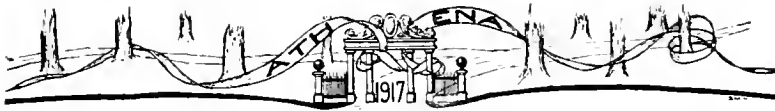
HULDAH MAE WARFIELD, Two  
Year Elementary.  
Belpre.  
Woman's League.

ISABLE WALKER, Two Year Ele-  
mentary.  
Zanesville.

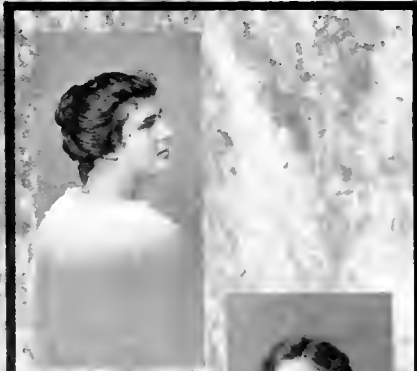
LISNA M. SMITH, Two Year  
Elementary.  
Woman's League; Y.W.C.A.

ELIZABETH R. BAKER, Two Year  
Elementary.  
Zanesville.  
Alpha Gamma Delta.





MARY L. WHITE, Two Year Elementary.  
Chandlersville.  
Athenian; Y.W.C.A.; Woman's League.



VERNON L. STONE, Two Year Elementary.  
Belpre.  
Y.W.C.A.



HELEN A. SWANK, Two Year Elementary.  
Murray.  
Woman's League; Y.W.C.A.



ALTHEA F. HYSSELL, Two Year Elementary.  
Pomeroy.  
Woman's League.





FANNY J. STONE, Two Year Elementary.  
Highland.  
Aloquin; Y.W.C.A.; Woman's League.

CELIA S. CHRISTMAN, Two Year Elementary.  
Waterville.  
Woman's League.

RUTH SMILEY, Two Year Elementary.  
Hilliard.  
Y.W.C.A.; Woman's League.

ALMA C. YOUNG, Two Year Elementary.  
Zanesville.  
Adelphian; Y.W.C.A.; Woman's League.



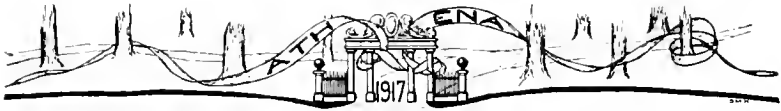
ANNA SMITH, Two Year Elementary.  
Marengo.

LA VINIA WARNER, Two Year Elementary.  
Dundas.  
Woman's League; Y.W.C.A.  
Chrestomathean.

ELSIE E. RITTER, Two Year Elementary.  
Put-in-Bay.  
Philomathean; The Teutons;  
Woman's League; Y.W.C.A.

FRANCES CHEEK, Two Year Elementary.  
Johnstown.  
Adelphian; Y.W.C.A.; Woman's League.



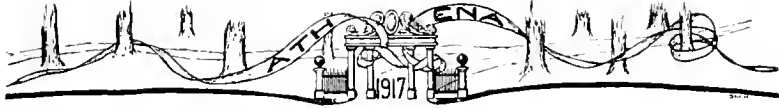


MARY CAMPBELL, Two Year Elementary,  
Sardinia.  
Chrestomathean.

LUCILLE DAVIS, Two Year Elementary,  
Columbus.  
Woman's League.

LOIS G. DAVISSON, Two Year Elementary,  
Hanging Rock.

CICILIA F. ADAM, Two Year Elementary,  
Newark.  
Chrestomathean; Newman Club; Woman's League.



MAY M. CHRISTMAN, Two Year  
Elementary.  
Zanesville.  
Woman's League.



FLORENCE E. HUGHES, Two Year  
Elementary.  
Lancaster.  
Sigma Sigma Sigma; Y.W.C.A.;  
Woman's League.

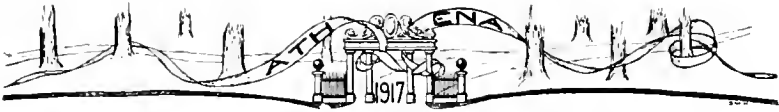


EDNA L. USHER, Two Year, Ele-  
mentary.  
Parkersburg.



BESSIE BROWN, Two Year Ele-  
mentary.  
Bainbridge.  
Adelphian; Woman's League;  
Y.W.C.A.



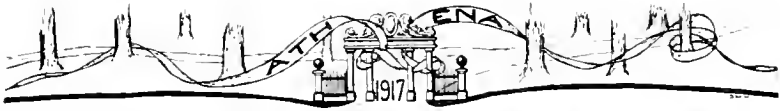


MARGARET J. BOSWELL, Two Year  
Elementary.  
Kinsman.  
Y.W.C.A.; Woman's League.

GAIL F. HIGGINS, Two Year Ele-  
mentary.  
Coalton.

AMELIA SHENKER, Two Year Ele-  
mentary.  
Woodsheld.  
Woman's League.

ANNA L. BLACK, Two Year Ele-  
mentary.  
Mt. Vernon.  
Chrestomathean; Y. W. C. A.;  
Woman's League.



IRAS I. OLDS, Public School  
Music.  
Mt. Gilead.  
Music Club; Woman's League;  
Y.W.C.A.

MARGUERITE CARPENTER, Public  
School Music.  
Albany.  
Pi Beta Phi; Advisory Board  
Woman's League; Girls' Glee  
Club; Y.W.C.A.

HELENE B. LEWIS, Public School  
Music.  
Jacksonstown.  
Girls' Glee Club; Woman's  
League.

EFFIE SILVUS, Public School  
Music.  
Athens.  
Pi Beta Phi; Girls' Glee Club;  
Woman's League; Y.W.C.A.





MILDRED W. LEWIS, Public School Music, Middleport.  
Pi Beta Phi; The Revelers; Girls' Glee Club; Music Club; Woman's League.

IDA MAY, Public School Music, Athens.  
Alpha Xi Delta; Art Club; Music Club; Woman's League; Y.W.C.A.

HAZEL M. HOOVER, Public School Music, West Carlisle.  
Adelphian; The Teutons; Music Club; Woman's League; Y.W.C.A.

FAUNFOBELLE LATTIMER, A.B. and Public School Music, Marysville.  
Chi Omega; Philomathean; Music Club; Girls' Glee Club; Woman's League; Y.W.C.A.





GLADYS VAUGHN, Public School  
Music.  
Columbus.  
Alpha Xi Delta; Y.W.C.A.;  
Woman's League; Pan-Hellenic  
Council; Athena Staff.

KATHRYN CUCKLER, Public School  
Music.  
Athens.  
Girls' Glee Club; Music Club

DOROTHY A. DANFORD, Public  
School Music.  
Glouster.  
Girls' Glee Club; Music Club.

FLORENCE ADAIR KESLING, Public  
School Music.  
Dresden.  
Pi Beta Phi; The Revelers;  
Woman's League; Y.W.C.A.





MARIE L. MILNER, Two Year  
Elementary.  
Swift.  
Y.W.C.A.; Woman's League.

FRANCES H. HAINES, Two Year  
Elementary.  
Zanesville.  
Chi Omega; Woman's League.

IDA FRI, Two Year Elementary.  
Creola.

MAUD MILLS, Two Year Ele-  
mentary.  
Delaware.



GEORGIA HERBST, Two Year Elementary.  
Athens.



CLARA L. BLUME, Two Year Elementary.  
Logan.

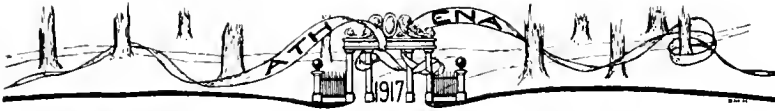


ELIZABETH T. BROWN, Two Year Elementary.  
Hebron.



VICTOR CONKEY, Civil Engineering.  
Mitchel, Ind.  
Sigma Pi.



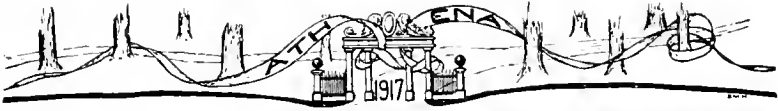


RALPH R. DOWNS, Electrical  
Engineering.  
Montour, Iowa.

HUGH M. CHADWELL, Electrical  
Engineering.  
Trimble.

LLOYD AUTEN, Electrical En-  
gineering.  
Fredericktown.

LESLIE O. JONES, Electrical En-  
gineering.  
Mt. Sterling.



MARGARET KERR, Kindergarten  
Education.  
Reading, Pa.  
Pi Beta Phi; Woman's League.



ALICE M. SIGLER, Kindergarten  
Education.  
Cortland.  
Y.W.C.A.



MARY V. EVERS, Kindergarten  
Education.  
Xenia.  
Kindergarten Club; Newman  
Club; Woman's League.



GRACE G. MCKEE, Kindergarten  
Education.  
Athens.  
Pi Beta Phi; Girls' Glee Club.



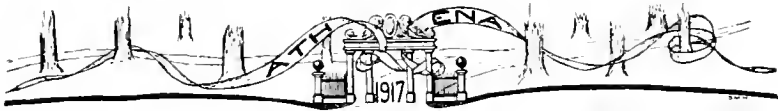


INA LUCILE BEVERAGE, Kindergarten Education.  
 Athens.  
 Chrestomathean; Y. W. C. A.;  
 Woman's League; Kindergarten Club.

NELLE R. OREBAUGH, Kindergarten Education.  
 Winchester.  
 Chrestomathean; Woman's League;  
 Kindergarten Club.

ANNA ROWAN, Public School Drawing.  
 Napoleon.  
 Advisory Board Woman's League; Art Club, Cercle Francais.

KATHERINE SPELLACY, Public School Drawing.  
 Wellston.



MABLE ROBERTS, Kindergarten  
Education.  
Springfield.  
Philomathean; Advisory Board  
Woman's League; Kindergarten  
Club; Music Club; Y W C.A.

MILDRED HEIFFNER, Kindergar-  
ten Education.  
Wakeman.  
Philomathean; Kindergarten  
Club; Woman's League; Y.W.C.  
A.

ALICE E. TOWNSEND, Kinder-  
garten Education.  
Bay City, Mich.  
Y.W.C.A.; Woman's League.

MARY FLORENCE KENT, Kinder-  
garten Education.  
Chagrin Falls.  
Y.W.C.A.; Woman's League;  
Kindergarten Club.





ARTHUR MILLER, Manual Training.  
Richwood.  
Phi Kappa Tau; Manual Training Club.



HOWARD E. CLEVELAND, Manual Training.  
La Rue.  
Phi Kappa Tau; Manual Training Club; Y.M.C.A.

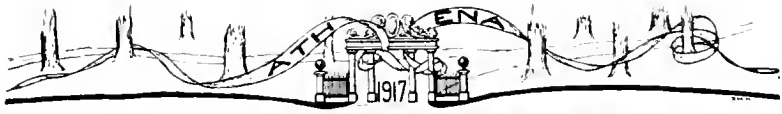


MIRZA N. KAHN, Graduate of School of Commerce.  
Teheran, Persia.



GLENN H. GRIFFIN, Graduate of School of Commerce.  
Sherrodsville.  
Phi Kappa Tau.





RALPH C. WOOD, Manual Training,  
Albany.



JAMES R. GLASS, Manual Training  
Joy  
Delta Tau Delta; Y.M.C.A.;  
Manual Training Club.



RUSSEL D. OWEN, Manual Training,  
Parkersburg, W. Va.  
Manual Training Club; Y.M.  
C.A.



DELBERT SWARTZ, Manual Training,  
McArthur.



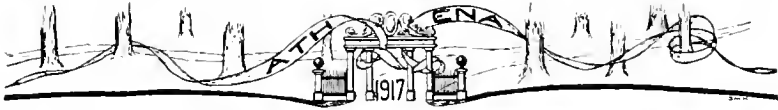


KATHERINE KLINGER, Graduate  
in Drawing,  
Greenville,  
Chi Omega; Woman's League;  
Y.W.C.A.; Art Club; Pan-Hel-  
lenic Council.

GRACE ELIZABETH STINES, Grad-  
uate in Drawing,  
Conneaut,  
Sigma Sigma Sigma; Advisory  
Board Woman's League; Girls'  
Glee Club; Art Club; Y.W.C.A.

EVA WATKINS, Graduate in Draw-  
ing,  
Bellville.

MARY ELIZABETH BECK, Grad-  
uate in Drawing,  
Napoleon,  
Alpha Delta Pi; Advisory Board  
Woman's League; Art Club;  
Y.W.C.A.



CLARA L. SHEPHERD, Public  
School Music,  
St. Clairsville,  
Girls' Glee Club; Music Club;  
Woman's League.

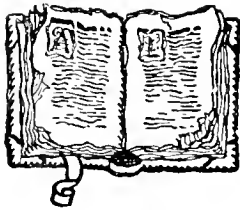


HELEN M. REDMON, Public School  
Music,  
Lancaster,  
Alpha Xi Delta; Girls' Glee  
Club; Oyo; Art Club.



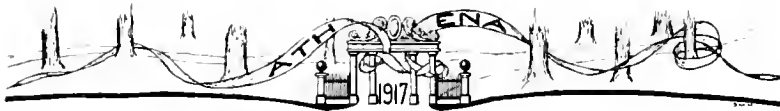
JENNIE M. GLEASON, Public  
School Music,  
Grove City, Pa.,  
Girls' Glee Club; Music Club;  
Woman's League.







# JUNIORS



1918



HOLLIE ELLIS. *"I will begin my career rather late, but I will go further than any other."*  
Phi Kappa Tau; President Junior Class;  
Varsity Football (2) (3).



BETHEL VANPELT. *"So the heart be right, is no matter which way the head lies."*  
Sigma Sigma Sigma; Secretary Junior Class.



THOMAS MORGAN. *"A university should be a place of light, of liberty and of learning."*  
Sigma Pi; Men's Glee Club (2) (3).



MERLE WAGONER. *"Instruction ladled out in a hurry is not an education."*  
Woman's Intercollegiate Debate; Philomathean



EVERETT POWER. *"Everything should be taken seriously, but nothing tragically."*



EUNICE JONES. *"Win hearts, and you will have all men's hearts and purses."*  
Alpha Gamma Delta; College Play (3).



IVAN AMERINE. *"Quarrels would not last long if the faults were only on one side."*  
Phi Kappa Tau; Adelphean.



HAZEL THOMAS. *"To be a student is to register in College; to be a scholar is to study after you get in College."*  
Alpha Gamma Delta; Athena Staff; Philomathean.



1918

VICTORIA ARPEE. *"God moves in a mysterious way his wonders to perform."*

Athenian; French Club; Girls Glee Club.



CAMERON GULLETTE. *"Memory is the thing I forget with."*

Men's Glee Club (2) (3); French Club.



HELEN BATTRICK. *"My mind to me a kingdom is."*

Cressett; Oyo; Athenian.



TEABOLDO CASANOVA. *"Gravity is the ballast of the soul which keeps the mind steady."*



MARGARET ICKIS. *"Silence, when nothing be said, is the eloquence of discretion."*

Alpha Delta Pi; Woman's League.



HARRY DENNIS. *"Above all things give me liberty."*

Alpha Tau Omega (Mt. Union College); Y.M.C.A.



EDITH CHRISMAN. *"Hang sorrow, care will kill a cat."*



ARTHUR SCHMELTZ. *"Let us then be what we are and speak what we think."*





1918



ESTER RITTER. *"I would rather be a poor beggar's wife, and be sure of heaven, than queen of all the world, and stand in doubt thereof, by reason of my own consent."*  
Alpha Gamma Delta.



GUY HORN. *"Life would be tolerable, were it not for its amusements."*  
Philomathean; Y.M.C.A.



ELSA JOHNSON. *"Say what you have to say in Spanish, then sit down."*  
Alpha Delta Pi; Assistant in Spanish.



H. D. NEWBERRY. *"I am inebriated with the exuberance of my own verbosity."*



GERTRUDE ATKINSON. *"Cramming is the tribute which idleness pays to the excellence of industry."*  
Alpha Gamma Delta; Y.W.C.A.



WALTER GRAF. *"All human knowledge here, is but methodized ignorance."*  
Sigma Pi; Graduate in Engineering.



MARIE WYCOFF. *"Great objects can only be seen at a distance."*



CHARLES ISAM. *"Lay me quietly in the earth and put a sun-dial over my grave and let me be forgotten."*





1918

BRENDA STILLMAN. *"I propose to get into fortunes  
easy."*  
Home Economics Club; Y.W.C.A.



HOWARD HENDERSHOTT. *"Fain would I climb,  
yet fear I to fall."*  
Phi Kappa Tau; Track (2) (3); Captain (3).



ROSALIND UNKEFER. *"Woman is like the reed,  
which bends to every breeze, but breaks not in  
the tempest."*  
Alpha Xi Delta; Athena Staff; Y.W.C.A.  
Cabinet.



HENRY SEIDENFELDT. *"A reform is a correction  
of abuses, a revolution is a transfer of power."*



EMMA WOODRUFF. *"While there is life, there is  
hope."*  
Alpha Gamma Delta; Ohio Wesleyan (1) (2).



J. L. FRI. *"I regret that there is but one life to give  
for my country."*  
Phi Delta Theta.

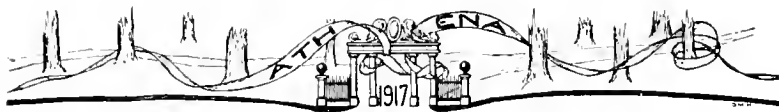


RUTH WILSON. *"I learn more from conversation  
than all the books I ever read."*  
Y.W.C.A.; Woman's League.



JUDD STINCHCOMB. *"I would rather feed on the  
luxuries of popularity, than to eat the dry crust  
at the Phi Kappa Tau table."*  
A.U.P.; Philomathean; Phi Kappa Tau.





1918



ETHEL MOORE. *"I would that my tongue could utter the thots that arise in me."*  
Alpha Delta Pi; Y.W.C.A.



O. E. SNYDER. *"Farewell, a long farewell to all my greatness."*



BERNICE FISH. *"Customs may not be as wise as laws, but they are always more popular."*  
Sigma Sigma Sigma;



JOHN EMDE. *"If I have done the public any service, it is due to nothing but industry and patient thot."*  
Phi Delta Theta; Varsity Football (2) (3);  
Basket Ball (2) (3).



CATHERINE CHUBB. *"Every absurdity has a champion to defend it."*  
Alpha Gamma Delta; English Club; French Club.



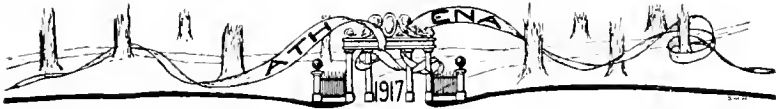
RUSSELL MARTIN. *"I do not think much of a man who is not wiser today than he was yesterday."*  
Phi Kappa Tau.



HELEN ATWOOD. *"I must arrange my pillows for another weary night."*  
Alpha Gamma Delta.



HARRY BENDER. *"What profiteth a man, if he gain the whole world and loose his soul?"*  
Science Club.



1918

VIRGINIA TILLY. *"One tongue is sufficient for a woman."*  
Alpha Gamma Delta.



JOHN RADER. *"The human face is my landscape."*



ALICE WOODRUFF. *"That which is called firmness in a king is called obstinacy in a donkey."*  
Alpha Gamma Delta; Ohio Wesleyan (2) (3).



GEORGE CARR. *"Life is just one d--m thing after another."*  
Phi Kappa Tau.



RUTH ROBERTS. *"A rolling stone gathers no moss"*  
Alpha Xi Delta; Woman's League Advisory Board.



MABEL FRY. *"Be ye always ready."*  
Aloquin; Y.W.C.A. Cabinet.



GLADYS VANSCHOYOC. *"We are only poor weak mortals after all."*  
Aloquin; Girls Glee Club.



LENORE SPRAGUE. *"The students life is strenuous."*  
Philomathean; French Club.



MELBA WHITE. *"Lenore Sprague is wrong."*  
Y. W. C. A.; Woman's League.





1918



MARY McNEAL. "*Give me back my youth.*"  
Sigma Sigma Sigma;



O. A. BURTON. "*I feel the flowers growing over me.*"



THURZA THOMAS. "*No one can be more willing to send me out of life, than I am desirous to go.*"  
Y.W.C.A.; Woman's League.



EDWARD PETRAS. "*Playing football, like parliamentary speaking, requires practice.*"  
Graduate in Commerce; Football (2).



NELLE BELLE ANDREWS. "*In me behold the end of the world with all its vanities.*"  
Pi Beta Phi; Girls Glee Club.



FRED WAGNER. "*I am a lonely wanderer.*"  
Adelphian; Botanical Club; Y.M.C.A.



GAIL HILL. "*To err is human; to forgive divine.*"  
Alpha Delta Pi; Cressett; Oyo.



ORALO SMITH. "*Everything in this world depends on will.*"  
Phi Kappa Tau, Y.M.C.A.





NILLIE OREBAUGH—Slow but steady.  
 HAROLD EBERT—An athletic shark.  
 NAOMI CALDWELL—Efficiency characterizes her work.  
 RAY YOCUM—He hasn't a single enemy.  
 VIRGINIA ZELLARS—The thotful one.



ERNEST AGUSTUS—A Chi Omega man.  
 HELEN CLEM—Liked by all.  
 EUGENE RUST—The River Rat.  
 NELLE MITCHELL—Has a mind of her own.  
 ERNEST BOLTON—Little but mighty.



MARY ELVIN—She is very studious.  
 JOHN WILLIAMS—Has Herculean strength.  
 RUTH VAUGHN—Possesses a lovely voice.  
 JAMMIE LAVERY—Happy-go-lucky Jammie.  
 RUTH SMITH—Neither a thot or care.



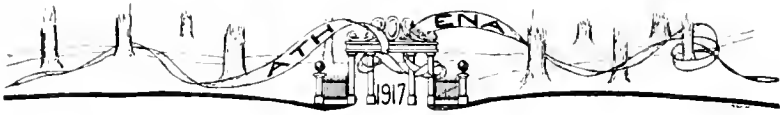
ARTHUR MILLER—A math shark.  
 JEANNETTE COEN—She is always smiling.  
 MANLY BERGIN—The Sig. fashion plate.  
 VERGIE GIESEY—Studiously inclined.  
 RALPH HUNT—An alleged athlete.



OWEN RICHLEY—The courageous man.  
 VERA STEPHENSON—Free from care.  
 EVERETT STOWE—Goodbye, girls, I'm thru.  
 BESSIE DARLING—Mama's darling.  
 CHAUNCY RIDENOUR—He's from New Lexington.



ALICE TOWNSEND—From way up in Michigan.  
 WALTER ROGERS—The star reporter.  
 HELEN MAUCK—Everybody's friend.  
 LLOYD DAILEY—A movie star.  
 MILDRED HEIFFNER—She's always working.



GRANVILLE EVANS—Sophomore prexy.  
 ELEANOR WARD—She has a sunny disposition.  
 CLARENCE PIRRUNG—Portsmouth on the Ohio  
 NELLE RUSSELL—Big Swede.  
 TOM WOLFE—"I never met a beautiful girl."



FRANCIS HAY—The drummer boy.  
 MARIE BECK—She takes art for art's sake.  
 ARTHUR KURTZ—Lorain forever.  
 WILDA STUBER—She used to be the slowest girl in town.  
 CLYDE BOWERS—In for a good time.  
 EDNA USHER—a suffragette.



MARY KENT—Oit does she sigh for him.  
 GREGG DE LONG—A boy with good habits.  
 MARGARIT KIRK—Redheaded Peggy.  
 EDWARD VOORHEES—From faraway New Jersey  
 GLADYS WATKINS—Has a case back home.





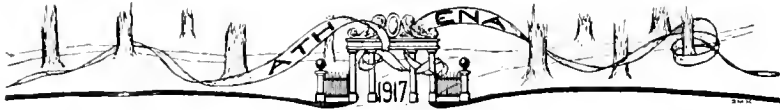
ROBERT BOWDEN—A thotful man.  
ESTHER JOHNSTON—A Gallipolis product.  
PAUL WETHERHOLT—The silent one.  
ALICE SIGLER—She sings beautifully  
KEITH HARDER—A harder guy was never seen.



HAROLD BENTLEY—He is very versatile.  
CECILIA ADAMS—No relation to John.  
RUMER YAW—"I love the ladies."  
MILDRED LEWIS—Cute as a doll.  
DELBERT SWARTZ—Of German descent.



MARY CAMPBELL—Oh, Mary, be careful.  
VIRGIL PETTIT—A Ford advocate.  
GRACE STINES—Her aim is efficiency.  
HAROLD FREDERICK—She is an Alpha Gamma girl.  
HELEN HILLIER—Has wonderful eyes.



OLIVE LEE—Very conscientious.  
 EDWARD SAGER—Just straight forward, that's all.  
 MARGARET BOSWELL—Oh, for a man.  
 JOHN BALDRIGI—His ideals are high.  
 PAULINE LEONARD—What her name indicates.

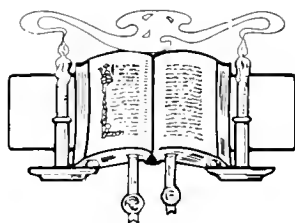


CARRIE ROSS—Every body loves a baby.  
 HARRY BLACKSTONE—A cafeteria devotee.  
 FRANCIS CHEEK—There's a little bit of bad, etc.  
 LOWELL PRICE—Price's are high.  
 BERLE MOLER—Just you and I alone.



DANA OWENS—West Virginia forever.  
 FLORENCE HUGHES—A cousin to Charles E.  
 RUSSELL GOLDSBERRY—Phi Delta Theta for aye.  
 MAY EVERS—A phantom of delight.  
 NELSON BEEM—Silence his constant companion.





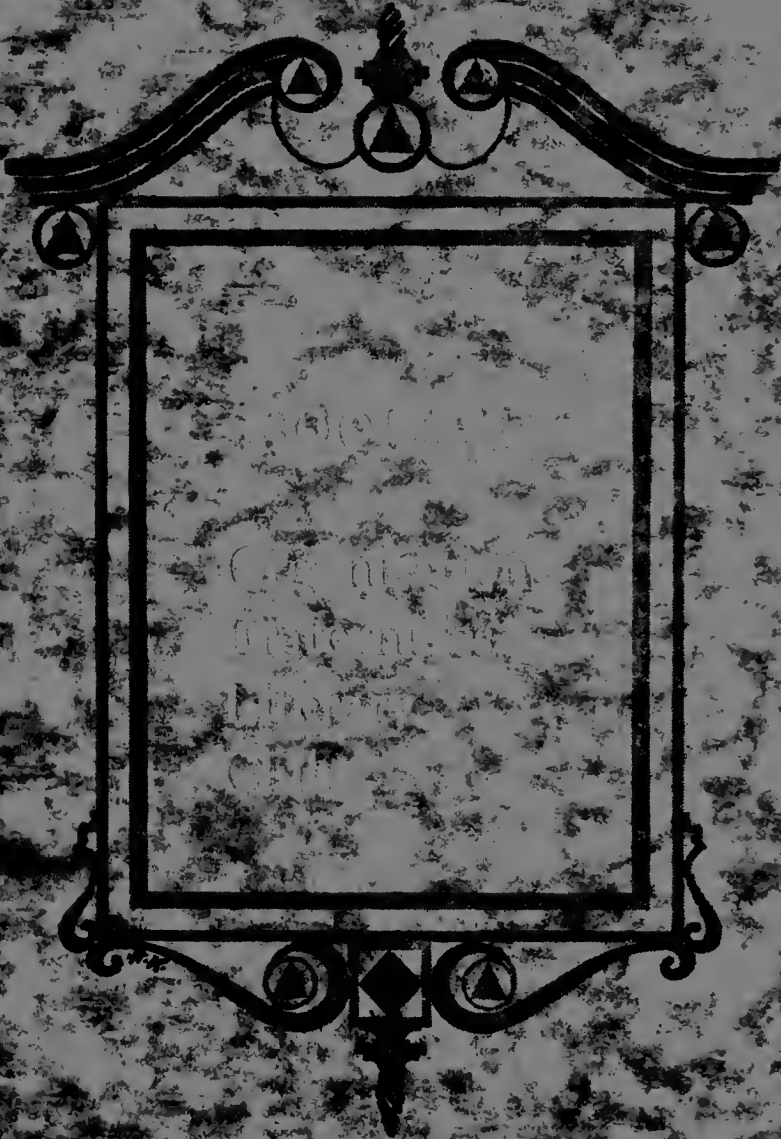


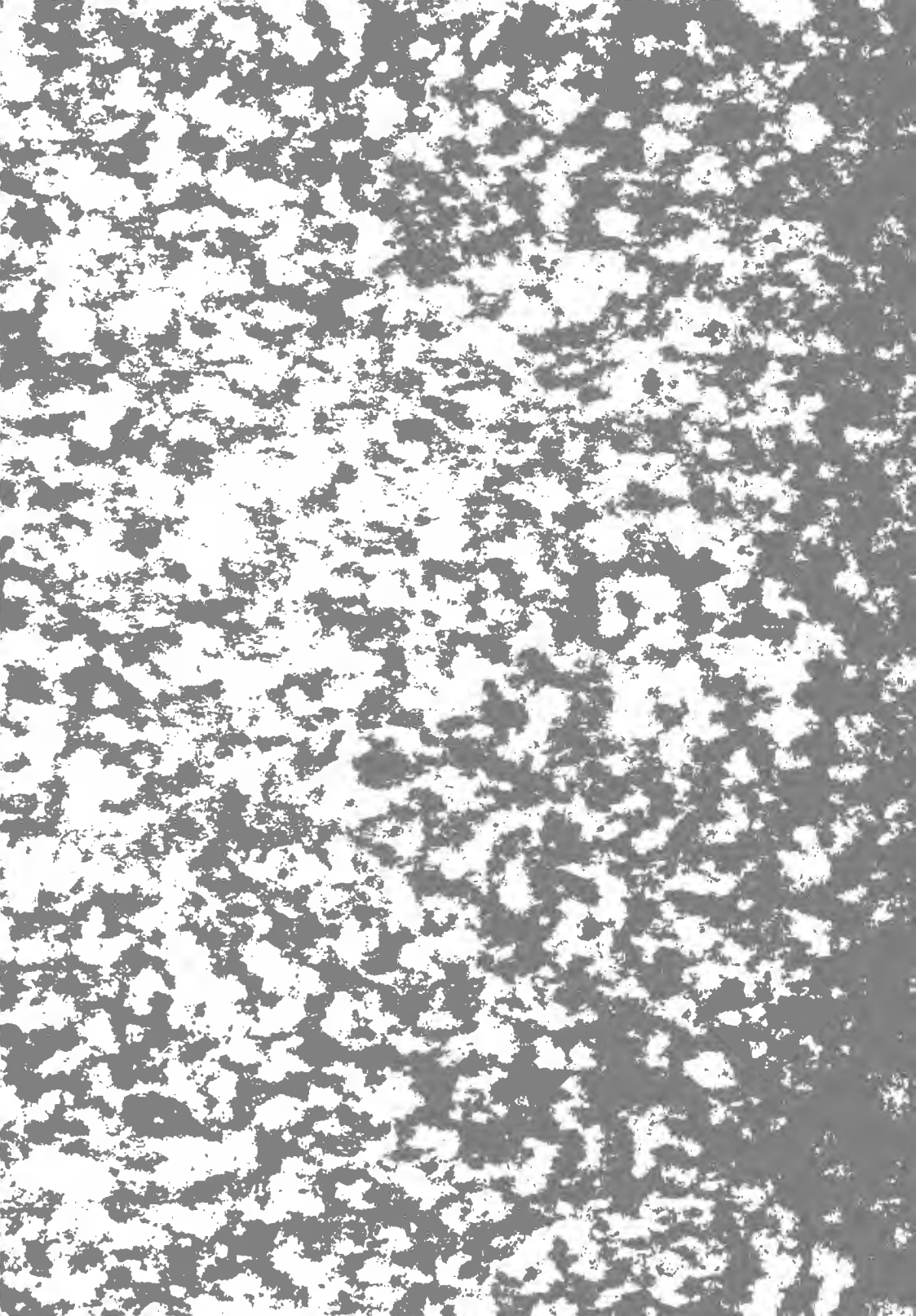














# FRATERNITIES



## BETA THETA PI

1917

HARLAND W. HOISINGTON

KENNETH H. PICKERING

1918

WILLIAM H. LOGAN  
THOMAS E. MORGAN

DANA M. KING  
ROBERT A. COTNER

1919

THOMAS M. WOLFE  
W. RUMER YAW  
LLOYD T. DAILEY  
FRANCIS E. HAY  
J. PAUL WETHERHOLT

C. EUGENE RUST  
HOWARD C. ALLISON  
ROBERT G. BOWDEN  
GARRETT C. ENLOW  
FRED PICKETT

ARTHUR S. KURTZ

1920

RALPH H. WHITE  
HOMER H. MARSHMAN  
DEAN B. COPELAND  
DONALD F. FAWCETT  
C. MARION JANES  
EDWARD D. BAKER  
LESLIE A. BENSON  
WALTER J. CAMERON

EARL SHADRACH  
ARTHUR E. ROBERTS  
H. WESCOTT ROACH  
ROY E. RIFE  
EARL KRIEGER  
JONH D. LOOMIS  
BELFORD NELSON  
RAYMOND T. BROWN

HOWARD L. HAMMOND





## DELTA TAU DELTA

1917

JOHN R. GODDARD  
GEORGE L. CHAPMAN  
HAROLD C. MARDIS

MARK C. HENDRICKSON  
W. FLOYD PARKER  
WALTER A. DOWNING

1918

WAITE P. FISHEL  
DALE JONES

C. O. WILLIAMS  
ARTHUR J. FRANCIS

1919

EVERETT M. STARR  
JAMES A. LAVERTY  
HAROLD T. LATHAM  
HAROLD G. EBERT  
EDWARD T. MCNAMARA

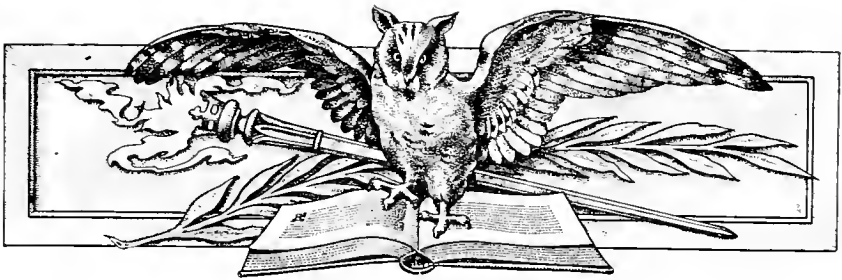
ROBERT S. BONE  
GORDON K. BOLEN  
HARRY L. MORRIS  
J. RUSSELL GLASS  
HAROLD E. FREDERICK

WILLARD WENDT

1920

JOHN W. GALBREATH  
ROBERT C. HESS  
BROWN B. WARD  
CHARLES W. FULLEN

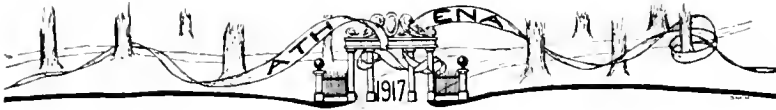
WILLIAM A. TRONE  
HAROLD J. STRAKEY  
GLEN JONES  
HALLA ROSE











# PHI DELTA THETA

1917

JOHN P. GRETHEN  
FLETCHER C. BENTON  
FRANK C. LE ROY  
CLINTON P. BIDDLE  
CHRISTOPHER J. BAINSON

1918

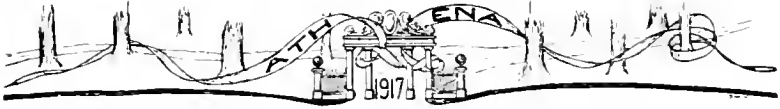
JOHN M. EMDE  
JAMES L. FRI  
FRED S. PICKERING

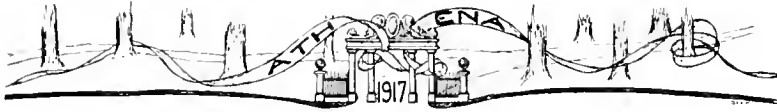
1919

GRANVILLE H. EVANS  
ERNEST AUGUSTUS  
EDWARD L. VOORHEES  
C. EMERSON BOWERS  
WALTER ROGERS  
J. RUSSELL GOLDSBERRY  
M. CLARENCE PIRRUNG  
R. LAMONT MORRISON  
HAROLD BENTLEY  
RUFUS C. HOPKINS  
CHARLES WITT

1920

GERALD FINNEY  
NILE HARKINS  
CHARLES SCHLEYER  
RAY DONNELLS  
MAX YOUNG  
FRANK COOK  
WILLIAM RUDOLPH  
JOHN HIBBARD  
D. WARD FORREST  
LEWIS BRAGG  
CHARLES LOWDEN  
NATHAN POFFENBARGER  
DONALD ACKER  
WILLIAMSON CRUIT  
KENNETH KLINGER  
CHARLES YONTZ





## PHI KAPPA TAU

Phi Kappa Tau appears in Ohio University this year for the first time as a Greek letter fraternity. After the last National Convention of Phrenocon the various chapters adopted a resolution changing the name to Phi Kappa Tau.

1917

H. GLENN GRIFFIN  
HARRY E. SECREST  
ROLAND A. FULLER  
WILLIAM J. SECREST

CURTIS C. GODDARD  
H. CLAY SKINNER  
MELVIN MCCREARY  
GEORGE GRAHAM

1918

GEORGE CARR  
HOLLIE ELLIS  
ROSCOE W. MARTIN  
IVAN R. AMERINE  
ORLO H. SMITH

GEORGE RAMO  
JUDD T. STINCHCOMB  
ARTHUR E. BUCHANAN  
BRANDON GROVER  
HARRY PLUMMER

HOWARD HENDERSHOTT

1919

MERRIL MURPHY  
R. BLAINE COOPER  
HOWARD CLEVELAND

EVERETT STOWE  
LOWELL M. PRICE  
ARTHUR MILLER

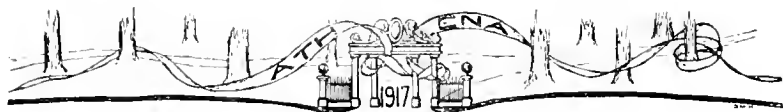
ARTHUR DUMAREE

1920

EARL E. KINCAID  
LLOYD REESE  
HARRY F. NEWMAN  
CLYDE GATCHEL

JOHN B. KERR  
CHARLES D. BROWN  
GLENN SMITH  
CARL STOCKDALE





## SIGMA PI

1917

HERBERT W. BASH  
EDWIN W. FINSTERWALD

HARRR R. WILSON  
HARLEY E. MOLER

1918

THOMAS W. MORGAN  
CHARLES H. PARR

WALTER W. GRAF  
FRED P. HELM

DARREL H. SAMS

1919

GREGG A. DE LONG  
WALTER W. WALLACE  
MANLEY E. BERGIN  
VICTOR P. CONKEY

DEAN A. COUCH  
MARION J. HAGLEY  
WILLIAM D. HIBBARD  
NELSON C. BEEM

WILLIAM S. WHITE

1920

ROSS A. TODD  
LINLEY V. SPRAGUE  
HARRY R. BARSTOW  
HAZEN A. SCHOFIELD

EARNEST N. PURDUM  
GLENMORE THOMAS  
VAUGHN WADLEY  
JOHN CALL JR.

VIRGIL C. DENT





## MEN'S PAN-HELLENIC COUNCIL

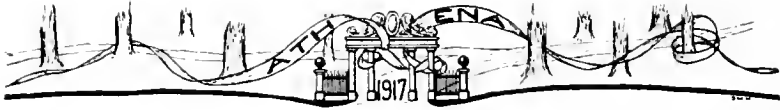
The Pan-Hellenic Council is supposed to act as a medium thru which the Greeks at Ohio University may see their rights and wrongs. It could be made a wonderful factor in Greek life and at the same time be a strengthening influence in the University. As it now stands the men's Pan-Hellenic organization is of little value. It is to be hoped that this will some day be realized, so that Ohio may have a strong Pan-Hellenic association like other schools.





## TORCH

TORCH is an honorary Junior-Senior organization. It was founded for the purpose of recognizing the accomplishments and honors of the versatile men at Ohio. At first eligibility to membership was based upon scholarship and general college activity, but of late it is generally recognized that a man must be more than an average student to gain admission. The wearer of a Torch key rightly feels that he has been honored. Clinton N. Mackinnon is the faculty member and adviser.



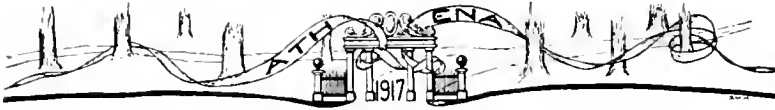
## TAU KAPPA ALPHA

Tau Kappa Alpha, the national honorary debating and oratorical fraternity, installed a chapter at Ohio University June 16, 1916. The following is the membership roll of the Ohio University chapter:

W. H. COOPER  
W. E. MCVEY  
C. DON MCVAY  
ROBERT G. BOWDEN  
THOMAS M. WOLFE

GEOFFREY F. MORGAN  
MAC S. BETHEL  
RUSSELL P. HERROLD  
CLINTON P. BIDDLE  
H. W. HOISINGTON





## ALPHA GAMMA DELTA

1917

ANNA GILLILAN  
MARGARET DAVIS

GRETA LASH  
HAZEL ROACH

JO ALMA MOORE

1918

VIRGINIA TILLEY  
RUTH THOMAS  
HAZEL THOMAS

CATHERINE CHUBB  
GETRUDE ATKINSON  
EUNICE JONES

GOLDIE LANTZ

1919

ELIZABETH BAKER  
HELEN ATWOOD

MAE HENDERSON  
ESTHER RITTER

1920

MERCEDES CUMMINGS  
CLARA CONGLETON  
MARGUERITE RICE  
MAUD CARY  
DOROTHY VORHES

JEAN LIPPINCOTT  
GRACE WALKER  
ALICE WOODRUFF  
EMMA WOODRUFF  
VERNA HENDERSON

HELEN MILLER





# ALPHA XI DELTA

1917

MARY KERR

1918

RUTH ROBERTS

ROSALIND UNKEFER

1919

JESSIE DUNN  
GLADYS VAUGHN  
DORIS KENNEDY  
HELEN REDMON

EDITH STOCKLEIN  
HAZEL NEEDHAM  
IDA MAY  
HELEN SMITH

RUTH GARNER

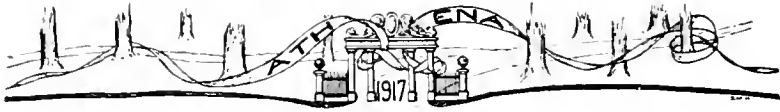
1920

JOSEPHINE MANSFIELD  
ELIZABETH SELLARS

DOROTHY DAUGHERTY  
ELIZABETH DOLBEAR

FLORENCE CUSACK





## PI BETA PHI

1917

HELEN BURNHAM	TERESE CARUTHIERS
MERLE DANFORD	RUTH MARTYN
MARGUERITE TAYLOR	PAULINE SHEPHERD
LUCILE HENRY	

1918

NELLE BELLE ANDREWS	HELEN BRANDLE
GRETCHEN SCHAEFFLER	EFFIE SILVUS
HELEN PICKETT	

1919

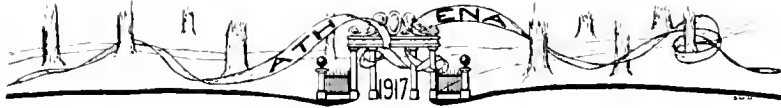
MARGUERITE CARPENTER	JENNETTE COEN
MARY FULTON	ESTHER JOHNSTON
MARGARET KERR	ADAIR KESLING
HELEN MAUCK	GRACE MCKEE
HAZEL MCKINSTRY	MILDRED LEWIS
NELLE RUSSELL	FLORENCE BITZER
FREDERICKA KASLER	VIRGINIA ZELLARS

1920

DOROTHY CAMPBELL	GEORGIA DAUTERMAN
HELEN GODDARD	HELEN SMITH







# CHI OMEGA

1917

RACHAEL HIGGINS

1918

LUCILE COOMBS  
RAMONA LOOMIS

GRACE KENAGA  
VIOLET JANE PATTERSON

1919

FRANCES HAINES

KATHERINE KLINGER

FAUNTOBELLE LATTIMER

1920

MARGARET McGRATH  
LENA BROOMHALL  
LUCY MORRIS  
MARLAN WALDEN

GERALDINE BURSON  
ELMA DULANEY  
GRACE SHEETS  
KATHERINE KEPLINGER





## SIGMA SIGMA SIGMA

1917

ANNA MCCABE

LOUISE EBERSBACH

1918

BETHEL VAN PELT

BERNICE FISH

MARY MCNEAL

KATHRYN DIAS

GRETA WALKER

1919

RUTH VAUGHAN

ELIZABETH STINES

MARY ELVIN

VERA STEPHENSON

FLORENCE HUGHES

1920

ELINOR ALTER

EDNA STALEY

MARY HARPER





# ALPHA DELTA PI

1917

MARIE HOLLAND

1918

GAIL HILL  
ELSA JOHNSON

MARGUERITE ICKIS  
ETHEL MOORE

1919

MARZUELA RICHARDS  
MARIE BECK

MARY STEWART  
RUTH BRUNNER

1920

RUTH LAFFERTY  
LILLIAN SEYMOUR  
FRANCES WRIGHT

MILDRED MEREDITH  
MILDRED BRUNNER  
MARGARET DURRETT  
ESTHER BONER





## ALOQUIN

1917

ELIZABETH BEATTY  
EDNA RICKEY  
CHILOE HENRY

MAUDE CRYDER  
LULU SHUMAN  
ETHEL MYERS

JESSIE STRONG

1918

HALLIE HOOPMAN  
MELBA WHITE

LE VAUGHN VAN SCOYOC  
HELEN MORRIS

NADA PARRISH

1919

VIRGINIA MARINER  
CLARA BLUME  
PATIENCE LEONARD  
FANNIE STOWE  
JESSIE SPELLMAN  
ZELLA NAYLOR  
GLADYS JOHNSON

BERTHA HURD  
PEARL LEE  
GRACE MOORE  
EDNA KEELY  
NELLIE MITCHELL  
NINA WHITTACRE  
EDITH PORTER

1920

LOUISE CHAPEN  
LULU REITER  
MARY SHIELDS

BERYL FISHEL  
AUDRIE LUDWICK  
RUTH HALL

BROOKS SHIELDS

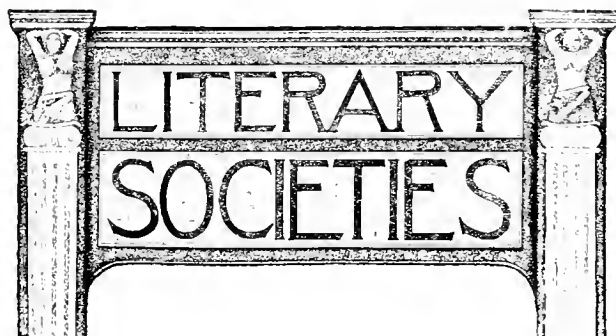






## CRESSET

Cresset, Ohio University's honorary organization for girls, was founded in 1913 and has grown steadily in influence. The number of members is limited to fourteen and vacancies are filled with great care. Each spring members are elected to fill the places of the outgoing Seniors. Sophomores and Juniors are eligible to membership. Eligibility to membership is based on scholarship and leadership in campus activities. On Tap Day the names of those elected are placed on a scroll which is hung on the Old Beech.





## ATHENIAN

The Athenian Literary Society has the distinction of being the first society of its kind organized west of the Appalachians. It was founded prior to 1812 under the name of the Telothian Literary Society of Ohio University, and in 1819 was given the name of Athenian. It is the desire of the Athenians that their society may be one of the best as well as the oldest of its kind and their motto has ever been, "Virtute, Scientia et Amicitia."



## PHIOMATHEAN

The Philomathean Literary Society was first organized on January 12, 1821. The word "Philomathean" means "lovers of learning." The motto, "Meleta to Pan," being translated is, "Diligence in Everything." The emblem—an owl perched on the Greek letter Phi—embodies both the name and the motto of the society, Phi being the initial letter of the name and the owl the reputed original lover of learning and also the personification of diligence. The colors are Crimson and White and the flower the Crimson Rose. Philomatheans meet every evening in the old and time-honored Philo Hall.



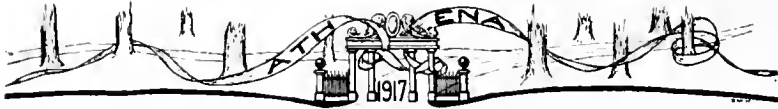
## CHRESTOMATHEAN

Altho one of the youngest literary societies in the University, being founded in May 1914, Chrestomathean has frequently made the older societies share honors in the Inter-Society Contests. In the two years in which Chrestomatheans have participated in such contests they have won both sides of the Inter-Society debates. The membership is limited to twenty-five men and twenty-five women. With this small but enthusiastic group of workers the society is looking forward to future success and achievement in all lines of literary endeavor.



## ADELPHIAN

The Adelphian Literary Society was founded because of the need, long felt by students in Ohio University, of securing training in forcible public expression. The society meets every Friday evening at seven-thirty o'clock in Adelphian Hall. At that time a program is offered by the members. It is the intention of the society to make the programs both interesting and instructive to the members and visitors. The drills in parliamentary law held by the society from time to time are an important part of the work. Membership in the society is limited to sixty persons.



## SENATE

The Senate, a literary organization which is composed of men only, first appeared on the campus in 1915. Work of a more serious nature than that usually attempted by most literary societies has been its aim. The Senate is managed somewhat differently from the other literary organizations in that its meetings are not held so frequently and that the rules governing the conduct of members are more rigorous. Strict parliamentary rules govern the work of the organization. Freshmen are not admitted to active membership and only men of Senior rank can hold office.





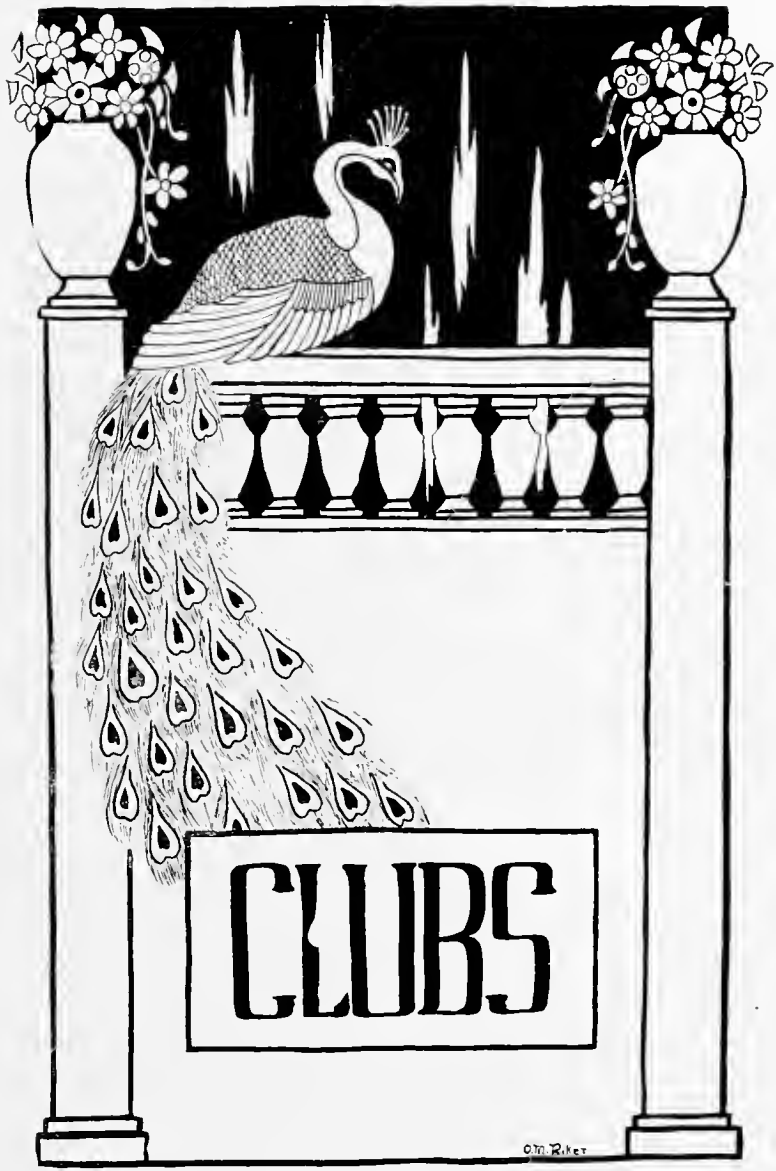
## OYO

Feeling the need of a girls' literary society of an honorary nature. Oyo was founded in the spring of 1914 by the members of Cresset and a few others whom they invited. Its purpose is to be strictly "honorary and so to include all women students of the University who shall prove themselves eligible." The literary work of the present day is taken up in round table discussion at the regular meetings, which are held on the third Wednesday of each month. The officers for 1916-17 are: President, Edna Rickey; Vice-President, Rachael Higgins; Secretary, Clara Vester.



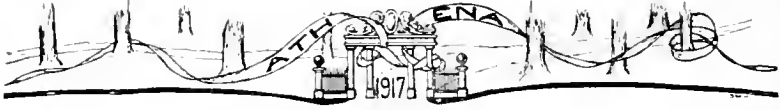
## ALPHA PHI CHI

Alpha Phi Chi was organized two years ago in response to the demand for a men's honorary literary society. Although membership in the society is considered a recognition of literary ability, it is not primarily an honorary organization, but is designed to give more thorough training to those interested in literary work. To this end representation is limited to those excelling in the work of the local literary organizations. Under the supervision of Dr. Hiram Roy Wilson the society has already justified the efforts of its organizers, and is recognized as a permanent factor in literary activities at Ohio.



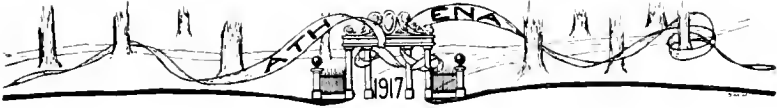
**CLUBS**

O.M. Riker



## ADVISORY BOARD WOMAN'S LEAGUE

In the fall of 1913 under the supervision of Irma E. Voigt, Dean of Women, the Woman's League of Ohio University was formed. The organization is similar to that existing in most of the leading universities of the country. The object of the League is to bring the girls at Ohio more closely together and to foster the "big sister" attitude of the upper class girls toward those of the lower classes. The parties of various forms given once a month by the League have contributed in no small measure to the success of the organization.



## ART CLUB

The Art Club is composed of all special Art students in the Normal College and students in the Art Department of the College of Liberal Arts. However no one interested in Art is refused membership. The Club has a double purpose: As a social force it helps to bring those students pursuing the same work into closer relationships; as an intellectual force it gives its members a broader knowledge of the history of art, the great masterpieces, modern tendencies in art and artistic principles in general.



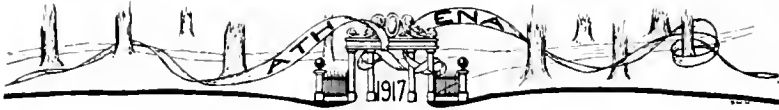
## B. S. IN ED. CLUB

The B. S. in Ed. Club is an organization in which all Seniors in the four-year course of the State Normal College are members. The Club was organized to give those students the advantages of closer association and in order that they may be privileged to listen to discussions of practical school questions by prominent educators. The Club was favored this year with an address by Hon. P. P. Claxton, United States Commissioner of Education. Monthly meetings are held in Dean Richeson's reception room.



## BIOLOGICAL CLUB

Having deemed it necessary, the Department of Biology and Geology organized the Biological Club in January 1916. The object of the club is self-evident—to inculcate a deeper interest in the study of some questions of biological interest. The club does not aim to be narrowed into a single phase of biological science but is concerned with a general conception of the study. The number of members of the club is limited to thirty-two persons. Those students having A's and B's in the Department, accompanied by at least eight hours of credit, are eligible to membership.



## BOTANICAL SOCIETY

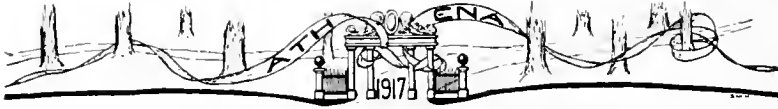
The Botanical Society was formed several years ago under the supervision of Dr. Matheny of the Department of Civic Biology. It is the purpose of the society to bring before its members present day questions arising in the field of botany and to instill in them an interest in research work along botanical lines. The club meets twice a month in the office of the director of the Department. Membership in the society is limited to sixteen persons.





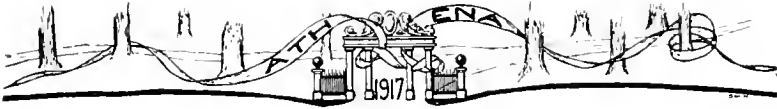
## CHEMICAL SOCIETY

The Chemical Society was organized for the purpose of furthering investigation and research in the field of chemistry. It is strictly an honorary organization, the members admitted being only those who have shown interest and proficiency in chemistry. Dr. Bentley and Professor Morton are advisory members. Each spring the society takes trips to different manufacturing plants where actual working conditions are studied. The officers for the present year are: President, W. Orr White; Vice-President, George Chapman; Secretary and Treasurer, J Everett Jewett.



## DEBATE COUNCIL OF WOMEN

The Debate Council of Women was organized almost two years ago by the Department of Public Speaking. Every woman in the University is eligible to membership. The purpose of the Council is proficiency in debate and oratory. In addition to its regular evening meetings of study and discussion, the organization carries on a series of Inter-Collegiate debates. The officers of the Council are: President, Lulu Shuman; Vice-President, Hallie Hoopman; Treasurer, Edna Rickey.



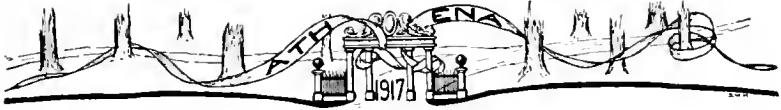
## ENGLISH CLUB

The English Club is the oldest of all the clubs: "You wrong me, Brutus, I said the oldest, not the best." Original poetry, original short stories, these are the meat upon which this Club has fed to grow so great. No dusty critical essays to prove that Shakespeare was great because he owned a Remington typewriter and that Dickens would have been a good novelist had he drunk postum instead of coffee, but live, gripping, heart-throbbing, blood-curdling, cervical-vertebrae-electrifying poems and stories that would have made Shakespeare and Dickens sit up in astonishment. Some of the honorary but active members of the Club are Dean Chubb, Professors Mackinnon, Matthews, Jefferson, and Miss Bessie Gorslene and Mr. Raymond Slutz.



## HOME ECONOMICS CLUB

Early in the fall of 1913 a number of Home Economics students felt the need of a club to further the social spirit among the girls of that department and to give them a wider viewpoint of their work and an acquaintance with the various phases of the Home Economics world. To fulfill this need the Home Economics Club was organized. Since the club has grown and become established, it is now co-operating with the District Nurse in doing social service work.



## MUSIC CLUB

The Music Club of Ohio University was organized at the beginning of the second semester of the school year 1915-16. The aim of the organization is to bring its members into closer touch with the works of the great composers of past generations as well as the present and to give its members a fuller understanding and keener appreciation of the artistic rendition of music. The membership is limited to those persons interested in music and taking some work along musical lines. The organization has experienced growing interest and encouragement and tho still in its infancy, bids fair to witness future years of success.



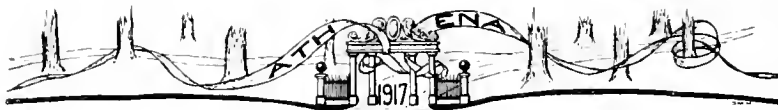
## NEWMAN CLUB

The Newman Club, which was named in honor of Cardinal Newman, the noted English convert and scholar, was organized at Ohio University in March, 1916, for the purpose of bringing together the Catholic students of the school. It is a chapter of the Newman Club of Ohio State University which was organized in 1906 and which is one of the most prominent organizations of that school. The Newman Club endeavors to instill in its members the highest social and religious ideals.



## SCIENCE CLUB

In the Science Club, which was founded October 18, 1902, the following collegiate departments are represented: Agriculture, Biology, Chemistry, Civil Engineering, Civic Biology, Mathematics, Physics and Electrical Engineering, and Psychology. The membership includes the heads of the various departments, the assistant professors, the instructors and assistants and three students from each of the departments represented, who are chosen on the basis of scholarship and interest in science. Nine meetings are held during the year.



## THE TEUTONS

The Teutons is composed of those students of German who do superior work in that study. The purpose of the organization is to enable the members to become familiar with the great men and the great literature which the German nation has given to the world. The first semester of the present year was devoted to the study of German musical composers; the second semester the lyric poets of Germany will be studied. The club meets on the second Tuesday of each month at the home of Professor Doernenburg.





## THE GREEN AND WHITE

### STAFF

CLINTON P. BIDDLE . . . . . *Editor-in-Chief*  
 BLAINE COOPER . . . . . *Athletics*  
 BLANCHE MATTHEWS . . . . . *Co-Ed Editor*  
 TERESE CARUTHERS . . . . . *Society Editor*  
 C. C. GODDARD . . . . . *Business Manager*  
 THOMAS LIGGETT . . . . . *Circulation Manager*  
 HAROLD BENTLEY. LLOYD REES. . . . . *Assistant Circulation Manager*

ERNEST BOLTON  
 THOMAS M. WOLFE

WALTER ROGERS  
 GEORGE CARR

### BOARD OF CONTROL

ROLAND A. FULLER, *Chairman*

MARY KERR  
 Wm. J. SECREST  
 HARRY PLUMMER

WALTER DOWNING  
 MAUDE CRYDER  
 JESSIE STRONG



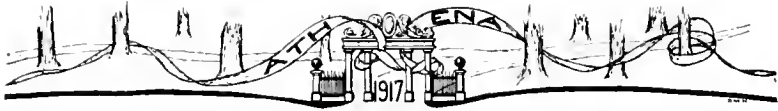
## Y. M. C. A. CABINET

<i>General Secretary</i> . . . . .	HARRY PLUMMER
<i>President</i> . . . . .	JOHN R. GODDARD
<i>Vice-President</i> . . . . .	R. L. CROSS
<i>Recording Secretary</i> . . . . .	THOMAS M. WOLFE
<i>Treasurer</i> . . . . .	RAYMOND M. CLARK

### COMMITTEES

<i>Social</i> . . . . .	JUDD STINCHCOMB
<i>Devotional</i> . . . . .	WALTER A. DOWNING
<i>Membership</i> . . . . .	C. O. RIDENOUR
<i>Publicity</i> . . . . .	HAROLD BENTLEY
<i>Church Relations</i> . . . . .	O. R. REICHLEY
<i>Missionary</i> . . . . .	EDWARD N. DABRITZ
<i>Music</i> . . . . .	ROBERT S. BONE
<i>Social Service</i> . . . . .	GLENN GRIFFIN



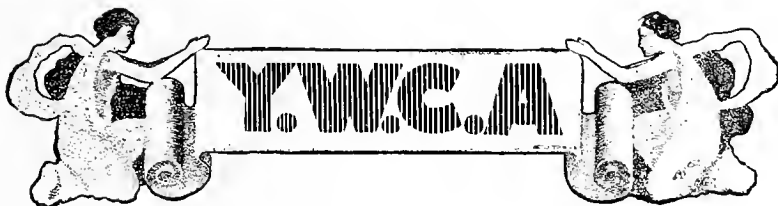
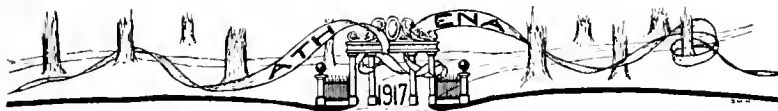


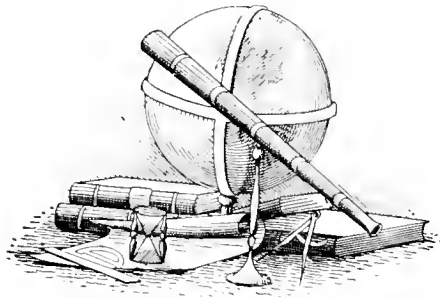
## Y. W. C. A. CABINET

<i>Student Secretary</i> . . . . .	HELEN BATTRICK
<i>President</i> . . . . .	LOUISE EBERSBACH
<i>Vice-President</i> . . . . .	GRETA LASII
<i>Recording Secretary</i> . . . . .	MERLE DANFORD
<i>Treasurer</i> . . . . .	MARY SCHLEICHER

### COMMITTEES

<i>Bible Study</i> . . . . .	LULU SHUMAN
<i>Social Service</i> . . . . .	MABEL FRY
<i>Conference and Nominating</i> . . . . .	GAIL HILL
<i>Social</i> . . . . .	CATHERINE CHUBB
<i>Finance</i> . . . . .	HALLIE HOOPMAN
<i>Religious Meetings</i> . . . . .	GERTRUDE ATKINSON
<i>Missions</i> . . . . .	ROSALIND UNKEFER
<i>Inter-Collegiate and Association Needs</i> . . . . .	MARY KERR





BOOK IV

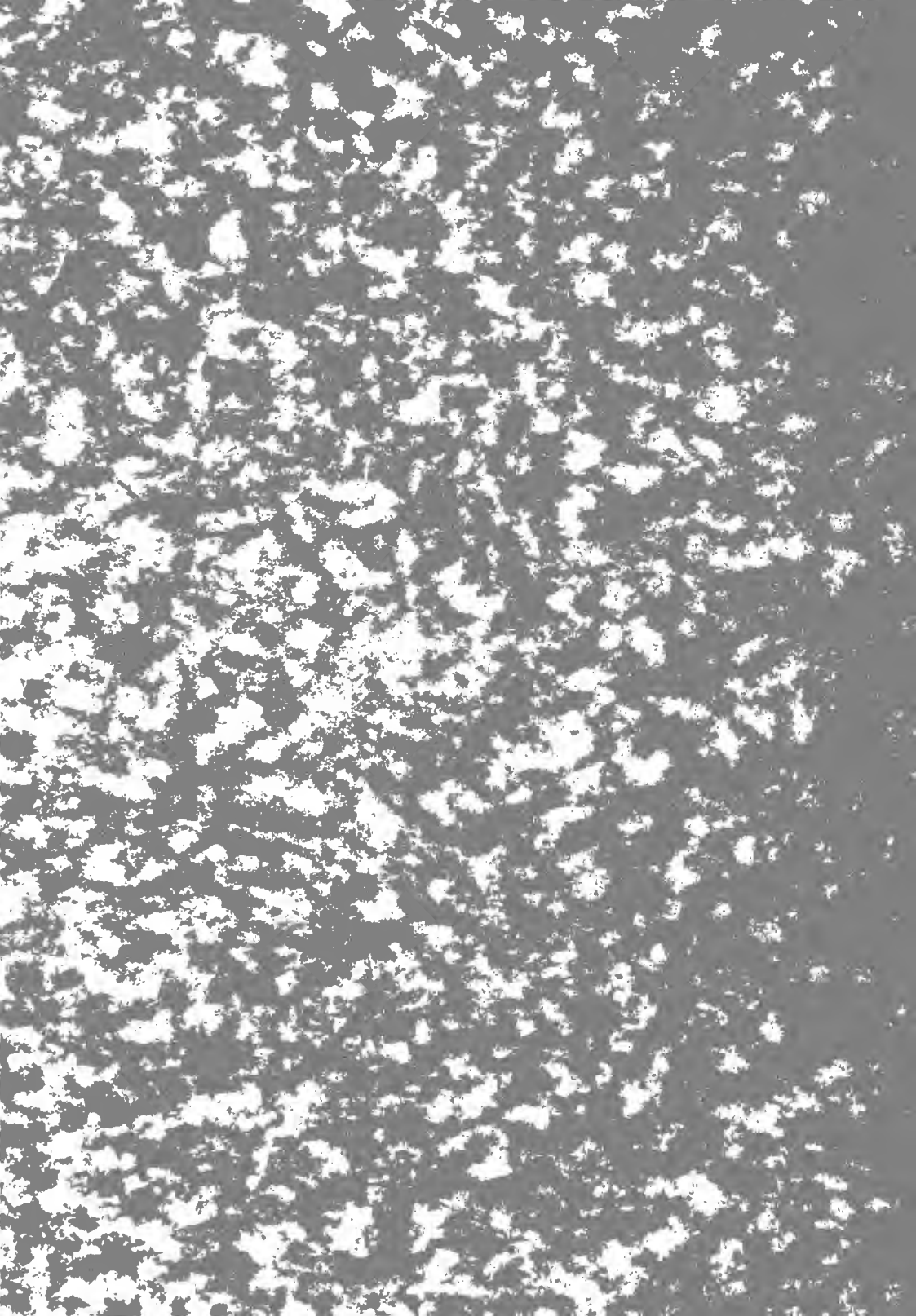
1847

Bradhall

B. Kerckhoff

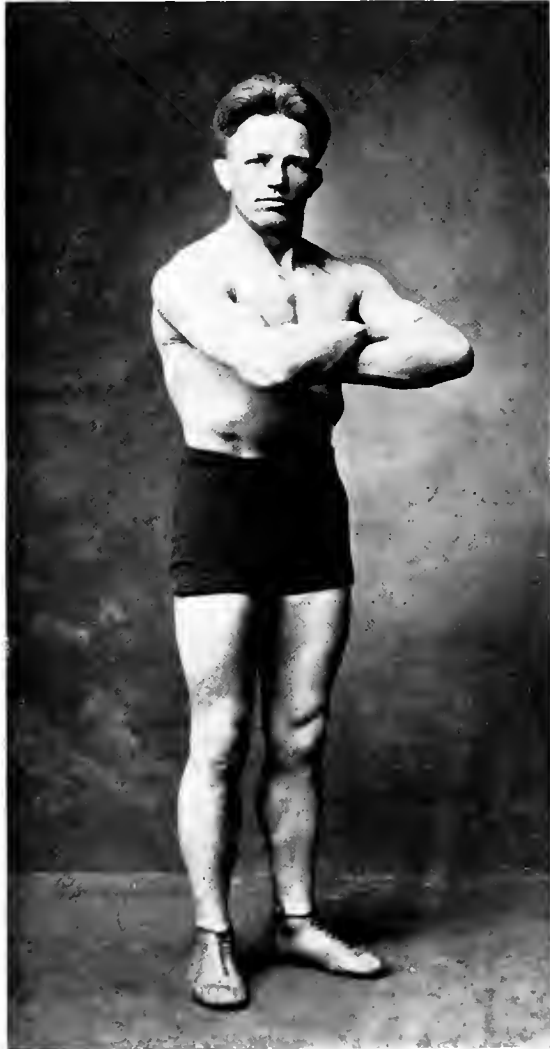
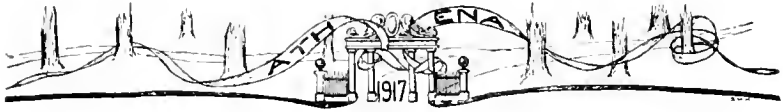
Trunk

no. Bradhall

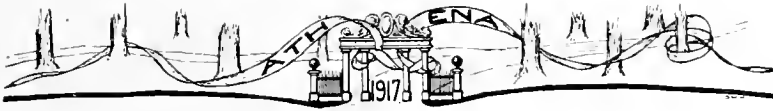








Olson  
*Ohio's Trainer*



M. B. BANKS  
*Coach*



GEORGE PARKS  
*Graduate Manager*



VARSITY FOOTBALL SQUAD





## FOOT BALL



THE 1916 football season at Ohio, in a strict sense of the word, may be called a very successful one. When the season closed the team had five victories, two defeats and one tie game for its record. The season's record was as follows.

Ohio	o	Ohio Wesleyan	o	Ohio	87	Wittenberg	o
Ohio	o	Syracuse	76	Ohio	33	Cincinnati	10
Ohio	10	Otterbein	o	Ohio	13	Oberlin	6
Ohio	6	Kenyon	o	Ohio	o	Wooster	9

The team was handicapped thruout the season by minor injuries received by Rogers and Ellis and by the very unfortunate injury received by Hendrickson prior to the Wesleyan game. Hendrickson had been touted for the pivot position and his injury crippled the team's chances to a great extent. However, Fuller and Wendt alternating at quarterback did creditable work and the team was run in very successful manner.

Goddard, Rogers and Captain McCreary were the three outstanding individuals on the team. Captain-elect Jones also performed in a manner that excited the admiration of all.

Too much credit cannot be given to Coaches Banks and Boughton for the success realized. Coach Banks thru his tireless energy and wonderful enthusiasm, has won the heart of every Ohio athlete and every Ohio Student. He has placed Ohio on the athletic map and we are grateful for his services.

Managers Parks and Biddle, Trainer Olson and Jim Osmond are also deserving of credit for their work towards making the season a success. The members of the Freshman team are also to be commended for their splendid work and excellent spirit.

The Following is the schedule for 1917:

September 29	Ohio Wesleyan at Ohio Field
October 6	Open
October 13	Wooster at Ohio Field
October 20	Carnegie Tech at Pittsburgh
October 27	Cincinnati at Cincinnati
November 3	Baldwin-Wallace at Ohio Field
November 10	Kenyon at Ohio Field
November 17	Oberlin at Oberlin
November 29	Marietta at Marietta

With such a difficult schedule arranged, Ohio's gridiron warriors must work harder than ever, but with an abundance of excellent Freshman material to add to the veterans left from the 1916 squad, the Green and White's chances of copping the Championship bunting in 1917 are par-excellent.



IVAN BOUGHTON  
*Line Coach*



M. L. McCREARY  
*Captain*



ROLAND FULLER  
*Quarterback*



"Ab" FINSTERWAL  
*End*





JOHN GODDARD  
*All-State Tackle*



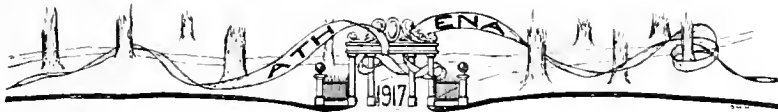
IKE HOISINGTON  
*Guard*



HERBERT BASH  
*Quarterback*



JACK EMDE  
*Half Back*



HOLLIE ELLIS  
*Guard*



C. J. BAHNSON  
*Guard*



WILLARD WENDT  
*Quarterback*



LLOYD DAILEY  
*Guard*



ARTHUR KURTZ  
*Half Back and End*



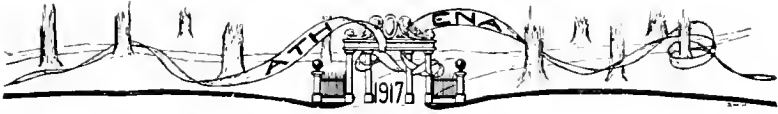
WALTER ROGERS  
*Fullback*



MONTROSE HAGLEY  
*Half Back*



DANA KING  
*End*

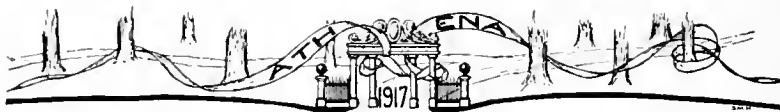


C. E. RUST  
*End*



BLAINE COOPER  
*Center*



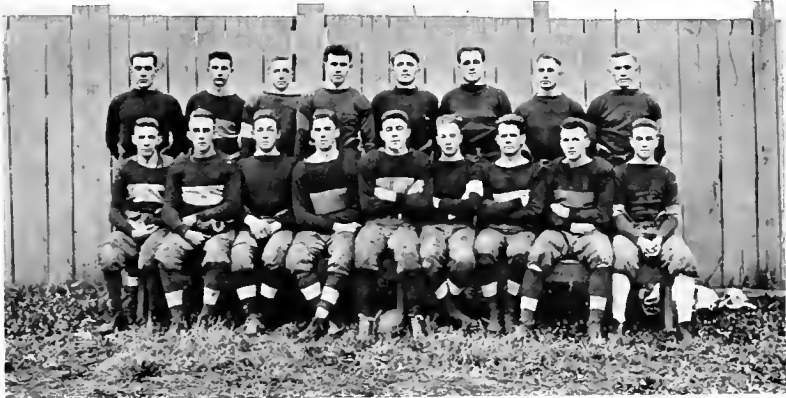
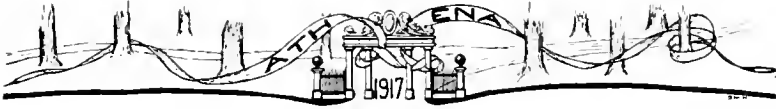


DALE JONES  
*Half Back*

Captain-elect

At a Football banquet held at the home of President Ellis, early in January, Dale Jones was chosen to lead the Green and White Football team thru the season of 1917. Jones has been a hard and consistent worker and he is deserving of the honor.

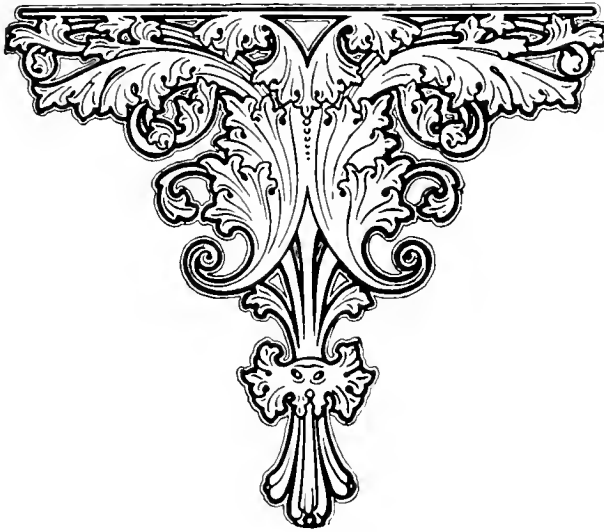
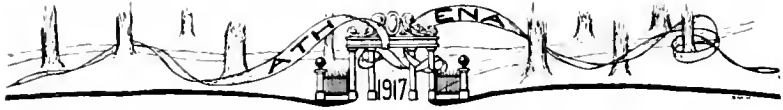


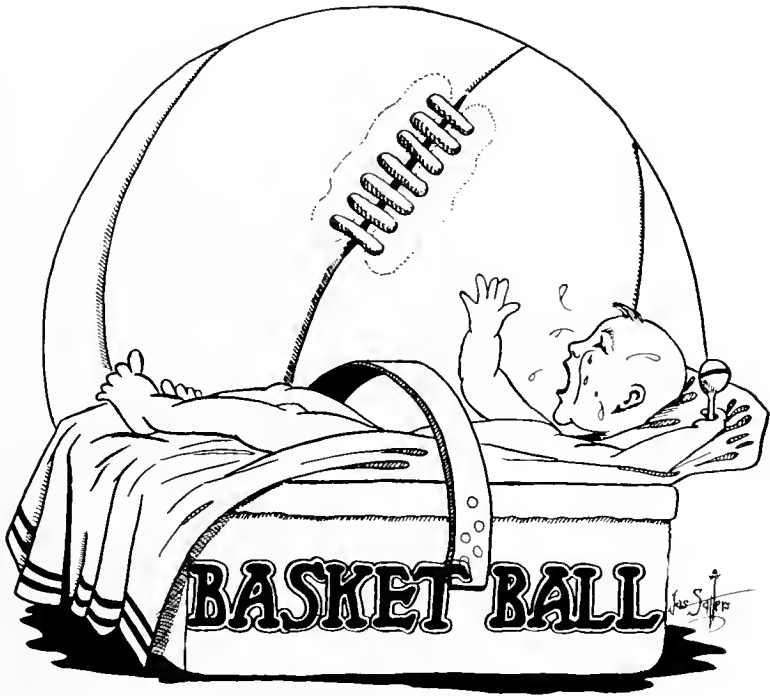


## FRESHMEN FOOTBALL SQUAD

This husky bunch of Footballers displayed a great deal of enthusiasm and also a lot of Football knowledge. The picture represents the best Freshman team that ever came to Ohio. The members of the team were awarded sweaters for their fine work.

Earl Kreiger, a Columbus High School product, captained the team.







## BASKETBALL

**A**S the Athena goes to press the basket ball situation is a difficult one to solve. So far three games have been played Antioch was defeated 21 to 20; Kenyon handed the Green and White a 48 to 16 defeat; and the University of Akron defeated Ohio 27 to 22.

However, with Captain Bash back in uniform and Jack Emde ready to play again, the team should show a decided improvement during the rest of the campaign.

With Grover, Hagley, Starr, Ebert, Kurtz and Smith playing their first year of basket ball and with men like Hunt, Smith, Stockdale, Kreiger, Loomis, Trone, and Williams coming from the Freshman class, the basket ball team next year should be a world-beater.



HERBERT BASH  
*Forward and Captain*



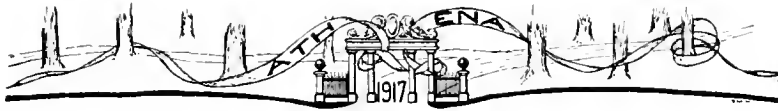
MARK HENDRICKSEN  
*Center*



MIKE HAGLEY  
*Forward*



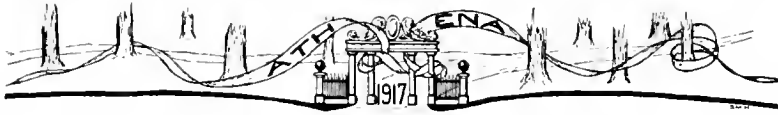
EVERETT STARR  
*Forward*



HAROLD EBERT  
*Center*



JACK EMDE  
*Guard*



BRANDON GROVER  
*Forward*



DALE JONES  
*Guard*

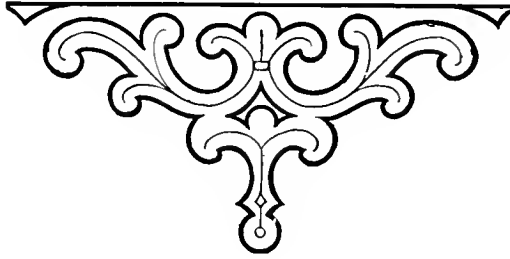
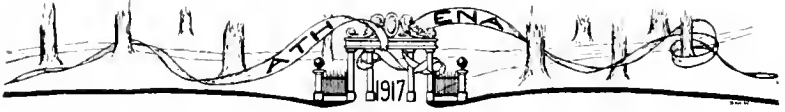


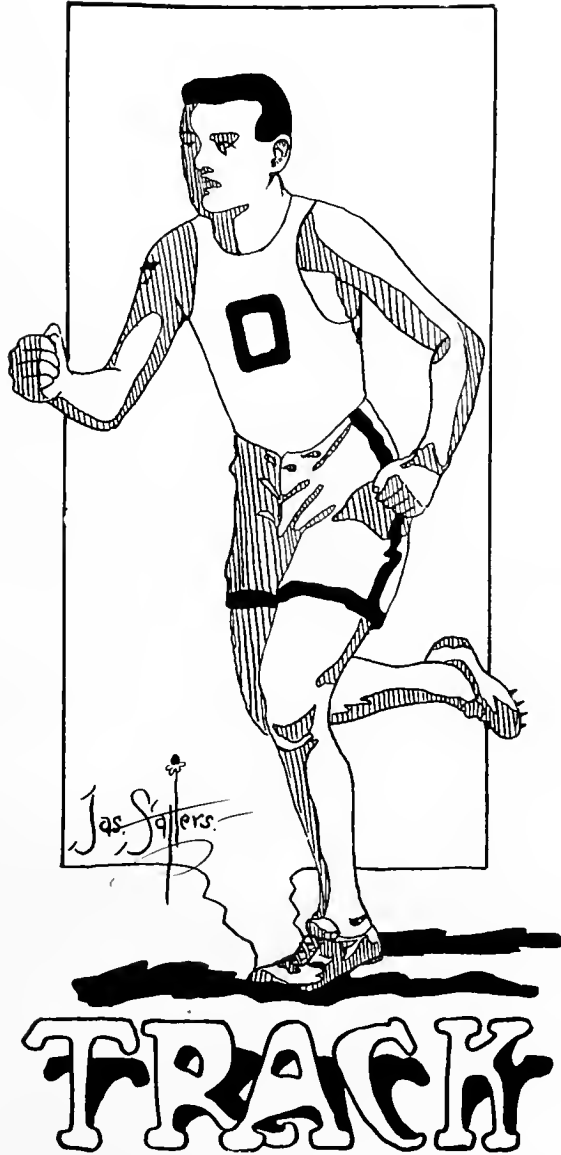


"RED" BAHNSON  
*Forward*



ORLO SMITH  
*Forward*







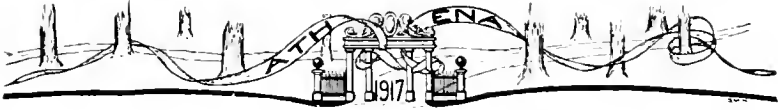
**T**RACK activities had not begun when the printer received the copy for the Athena but everything pointed to a successful season. Of last year's team there remains Captain Hendershott, Curtis Goddard, John Goddard, Downing, Taylor, Bash and Hendrickson. With such new men as Hagley, Ebert, Robinson, Kurtz and Starr eligible, the Green and White should triumph over all her cinder-path foes.

In the Annual Inter-Class meet, held in the Gymnasium, Saturday, January, 20, the Sophomores came out victorious by scoring Thirty Five points, while their nearest rivals, the Seniors scored Thirty points. The scoring was as follows:

Sophomores 35; Seniors 30; Juniors 19; Freshmen 15.

The individual scoring follows:

Hendershott, Junior 14; Taylor, Senior 13; Robinson, Sophomore 13; Eberts, Sophomore 12; Downing, Senior 12; C. Goddard, Senior 5; Forrest, Freshman 5; Weik, Senior 4; Klinger, Freshman 3; Weinrich, Freshman 3; Gatchel, Sophomore, 3; Bolton, Sophomore 3; Rader, Junior 3; Grover, Junior 2; Starr, Sophomore 2; Kurtz, Sophomore 2; Tocus, Sophomore 2; Porter, Freshman 1; Blackstone, Sophomore 1.



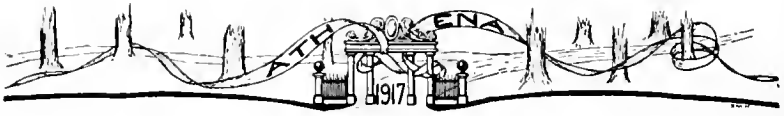
C. C. GODDARD, *distance*



HAROLD EBERT, *weights*



LEO ROBINSON, *dashes*



MARK HENDRICKSON, *high jump*



HERBERT BASH, *pole vault*



NELSON BEEM, *dashes*



WALTER DOWNING, *weights*



EVERETT STARR, *broad jump*



L. L. TAYLOR, *distance*



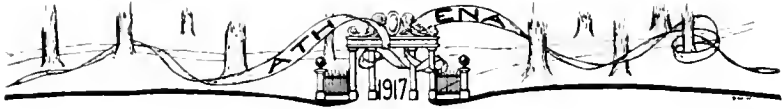
HOWARD HENDERSHOTT,  
*Captain*

Hendershott, who has been elected to captain the team during the 1917 campaign, is an excellent track man and should make a capable leader. In the recent interclass meet, he scored fourteen points out of the nineteen made by the Junior class. The form shown by him in this meet was of the highest order and this should be his banner year.





# BASE BALL



## BASEBALL

**T**HE Baseball situation for this Spring is rather unsettled. Altho several from last years nine have graduated there will be some excellent new material to fill these vacancies. Of last years team there remains Bash, Fuller, Grover, Hendrickson, Stuart, Goddard, Secrist and Bahnson. With these men to form a nucleus for a team, and with new men like Gatchel, Arkinson, Pickett, Rogers, King, and Kurtz eligible, Coach Banks should not experience much difficulty in developing a winning combination.

Rolland Fuller, star First Baseman, will captain the team and he should make a capable leader. The following schedule has been arranged:

- March 30—Akron at Athens.
- April 20—University of West Virginia at Morgantown.
- April 21—University of West Virginia at Morgantown.
- April 27—Marshall at Huntington.
- April 28—Marshall at Huntington.
- May 4—Otterbein at Westerville.
- May 5—Wooster at Wooster.
- May 12—Wooster at Athens.
- May 18—Pittsburg Collegians at Athens.
- May 19—Pittsburg Collegians at Athens.
- May 25—Leland Stanford at Athens.
- May 30—Ohio State at Athens.
- June 2—Ohio Wesleyan at Athens.
- June 20—Alumni game.





## DOUBT NOT THE WAY

*(Emerson Prize Poem of 1913)*

Doubt not the way to go,  
When Spring her lap with flowers gayly fills,  
And beauty over all the country spills,  
Her ecstasy to show.

Doubt not the way, for you  
May trace it by the sweetness in the air,  
And sounds of warbling singers everywhere,  
And things all fresh and new.

Doubt not the way; you'll find  
It leads by brooks with green-embroidered banks,  
Whose waters offer up a song of thanks,  
Then ripple on to wind.

About the feet of trees,  
Whose shading branches wave and point the way to you  
O'er hills and fields all drest in vernal hue,  
Swept over by the breeze.

Ah, when the drifts of snow  
Are washed away and violets peep about,  
When Spring comes up with laugh and merry shout,  
Doubt not the way to go.

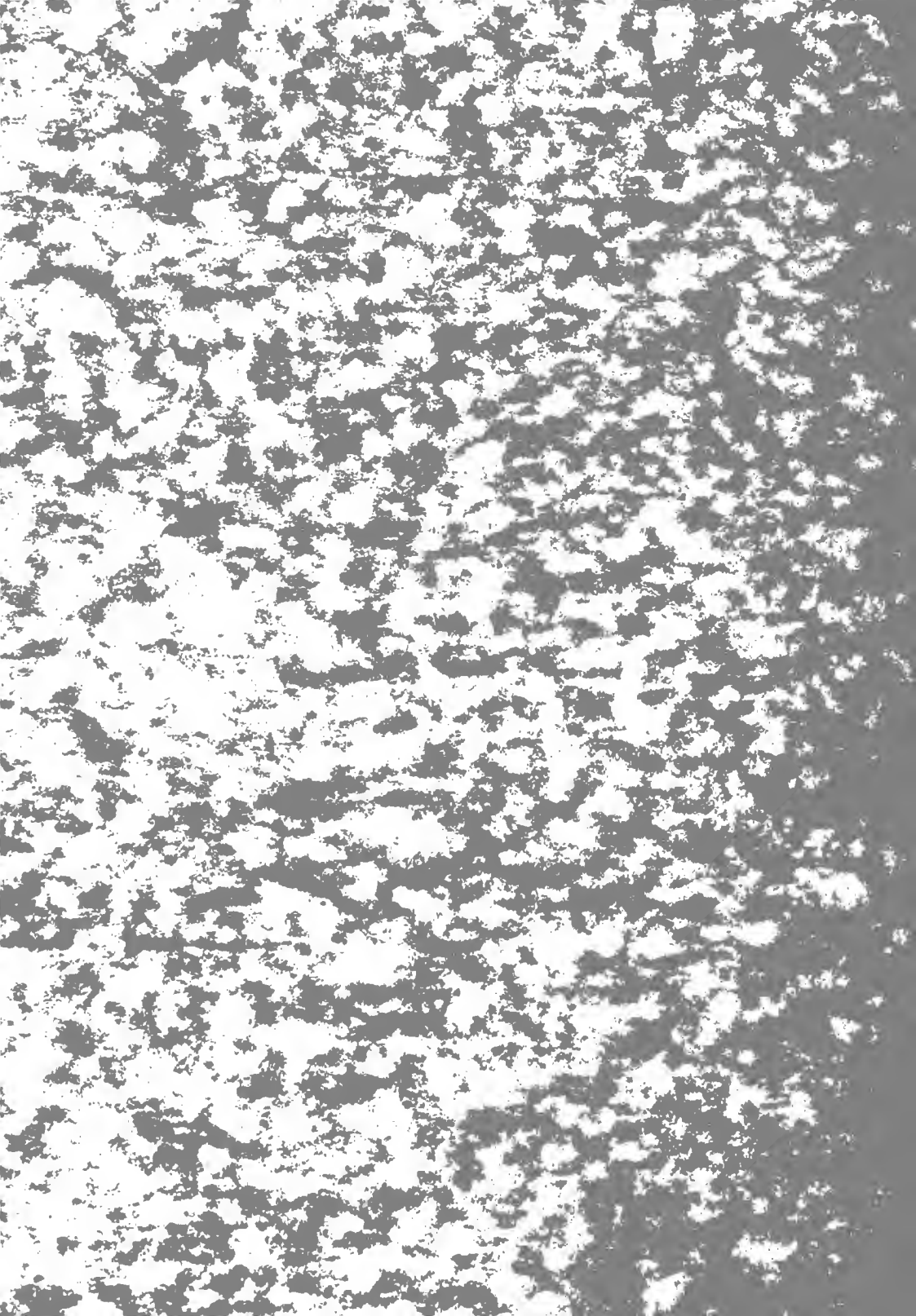
—*Clara E. Fester.*



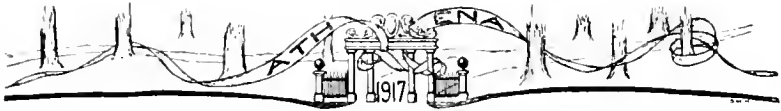
BIBLIOTHECA

MUSEI HISTORICO-NATURALIS

MUSEI HISTORICO-NATURALIS



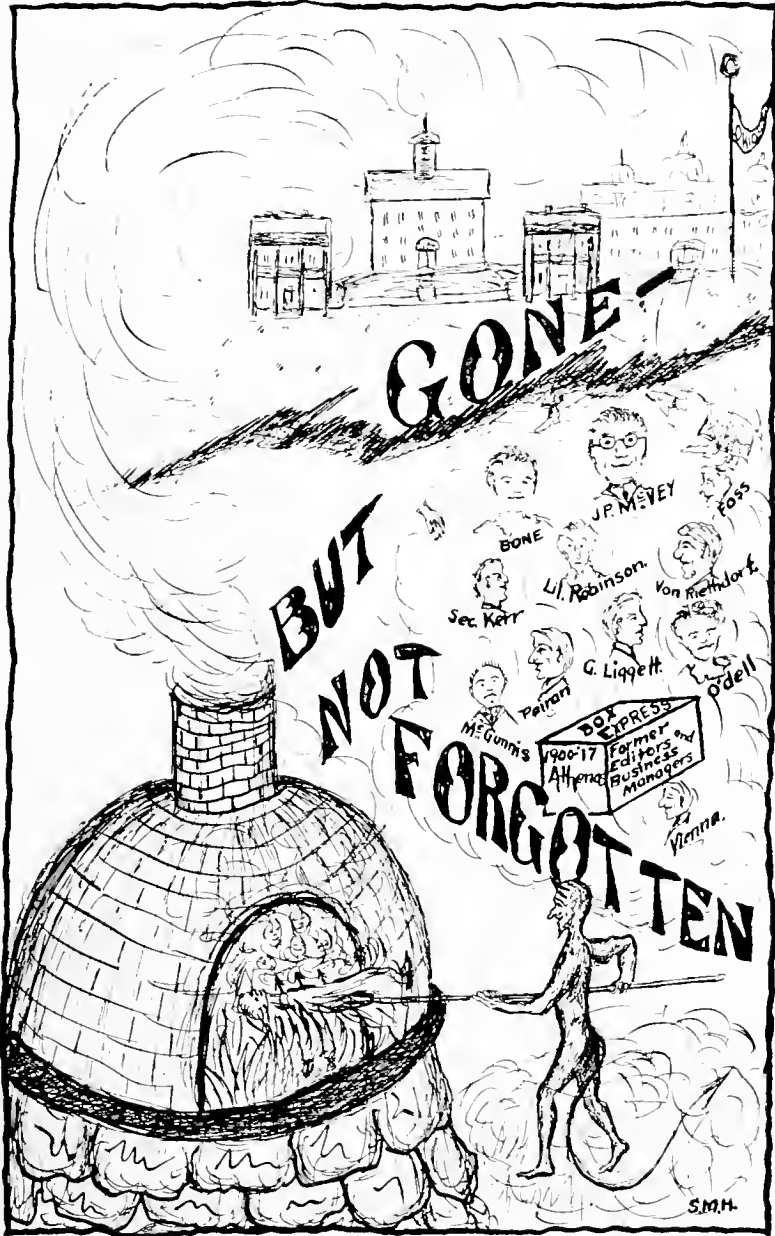
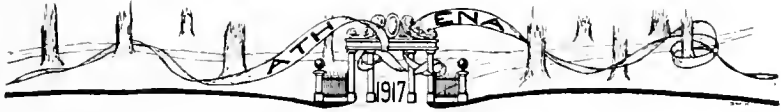




## PERTINENT POETRY

- A is for Atkinson and Addicott too;  
If you do any bluffing, you can't get thru.  
B is for Borger, at teaching a fake,  
But for dancing and star-gazing he sure takes the cake.  
C is for Chubby, our popular Dean,  
With shoes on his feet and a Shakesperean bean.  
D is for Dunkle who keeps the big books;  
A rival of Plato and in league with the crooks.  
E is for Ellis, the head of the gang,  
Who steers old Ohio with a zip and a bang.  
F is for Frederick, yea, Treudley by name;  
A friend of Ohio and covered with fame.  
G is for Gard, who on theory is great,  
But when it comes to practice, he sure is a fake.  
H is for Hoover, and Harvard—nicht wahr?  
And also for Hizey, the fiddle-string star.  
I is for Ivan—oh, don't you know him?  
He hits the high places and loafs 'round the gym.  
J is for Jones; we must tell about him;  
He deals in day history without any vim.  
K is for Kresge who sure hits the keys;  
Gone daffy on notebooks and correct harmonies.  
L is for Lantsittle; you wish you weren't born—  
For with "six-chapters ahead" your slumbers are torn.  
M is for Martzloff and Mackinnon too;  
We group them together for there's nothing else to do.  
N is for Naylor, who cooks up nice messes,  
And teaches dumb co-eds to make their own dresses.  
O is for Olson from Sweden afar;  
First aid to the injured and great wrestling star.  
P is for Parks, the miserly man;  
He takes all that's coming and more if he can.  
Q is for Quality and also for Queer;  
Two characteristics of our teachers so dear.  
R is for Richeson who gets you a job  
At forty a month with an ill-natured mob.  
S is for Stahl, our dear painted one,  
Who paints all the earth from her cheeks to the sun.  
T is for Thompsons, the musical pair;  
A mixture of chewing gum and store-bought hair.  
U is for University and Ohio at that  
Where you get all the knowledge tucked under your hat.  
V is for Voigt; to her girlies so fair  
She gives close attention and tenderest care.  
W is for Wilson. In English—oh, gee—  
You work your fool head off and then pull a D.  
X, Y and Z say our algebras kind  
Stand for the quantity you want to find.  
Now there are talent and beauty and wonderful skill,  
And Profs that will work you just fit to kill;  
So here's to the others, thanks to your time  
We could not include them in this little rhyme





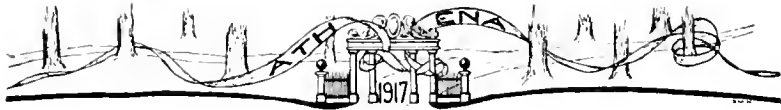
**GONE!**

**BUT NOT FORGOTTEN**

- BONE
- J.P. MEVEY
- Foss
- Sec. KERR
- L.I. Robinson
- Von Richtdorn
- G. Liggitt
- Odell
- McGinnis
- Petrari
- Ventura

**BOX EXPRESS**  
Former Editors and  
Business Managers  
1900-17  
Athens

S.M.H.



## ALFA DAM-PHILY FLY GAME

An astonishingly remarkable gridiron battle took place on Ohio Field Sunday morning, October 17, between the local chapters of Alfa Damma Delta and Phli Beta Fly. The game ended 0-0. Public opinion had predicted a tight battle but no one had expected such a deadly and bloody conflict as actually occurred. The teams lined up thusly:

### ALFA DAMMA DELTA

Bunice Jones  
 Katherine Chug  
 Alma More  
 Virginia Stillely  
 Hazel Tomas  
 Grace Walkher  
 Hazel Roche  
 Rusty Atwould  
 Maud Carry  
 Ruth Tomas  
 Ann Gillen

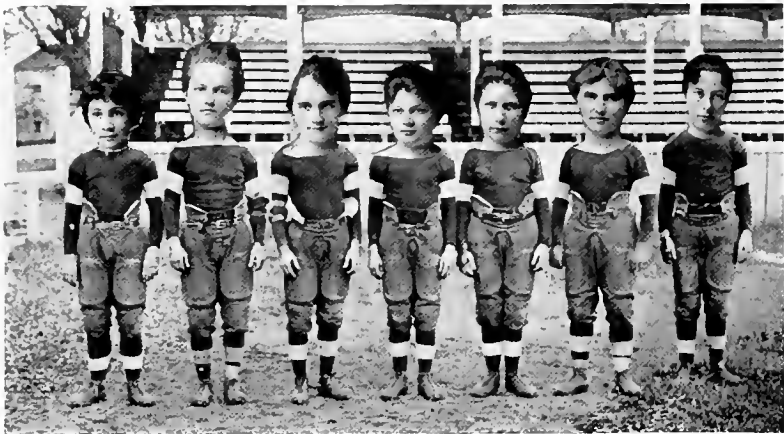
### PHILY BETA FLY

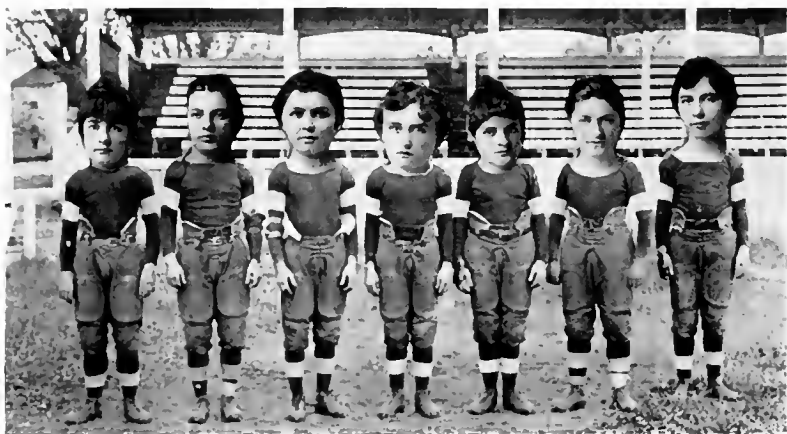
R. E. Marg Nayler  
 R. T. Dorothy Camel  
 R. G. Lucile Hennery  
 C. Jacie Kone  
 L. G. Hell Hustle  
 L. T. Helen Stoddard  
 L. E. Helen Brandy  
 Q. B. Peg Kurr  
 L. H. Marg Karpentier  
 R. H. Merle Damford  
 F. B. Adhair Kissling

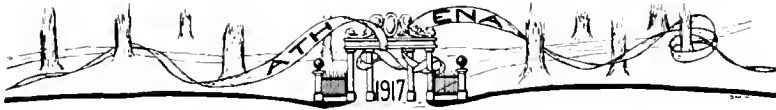
It was generally conceded that the Alfa Dams had the fastest bunch but the Phli Betas had better form. Peg Kurr, the fast little Phli Beta quarterback gained the admiration of the crowd by her off-tackle bucks. She also gained consistently thru the Alfa Dams' left guard. Maud Carry-ed the ball on nearly every occasion for the Alfa Dams, and she proved to be a very fast back. Hell Hustle played a stellar game at left guard for the Phi Betas, altho she sustained a severe charley-horse in the third quarter. However Swink Boughton, veterinary and surgeon, repaired the wounds and she was able to continue the game.

In the last few minutes of play the Alfa Dams by some terrific line plunging on the part of Gillen and Carry got the oval on the 30-yard line. Atwould then dropped back and tried a place kick but it missed by inches. A bloody pugilistic encounter between tackles Camel and Chug took place immediately after the game. The affair was really deplorable and the players should be censured for fighting on Sunday. Dean Void attempted to separate the combatants but it was of no avail.

Despite such an unpleasant occurrence, Prexy sanctioned the game and thot an inter-sorority schedule should be drawn up. He added however that all games should be played on Sunday as the Varsity plays on Saturday and the girls are busy with their school work during the week. Dean Void said that the game, while somewhat rough, could not help but create a more gentle and sisterly feeling between the sororities and that she was decidedly in favor of a schedule. Jim Osmind said, "Some of the girls showed the best (football) form I have ever seen."







## ADVICE TO THE LOVE LORN

by IRMA VOIGT

Dear Irma:

I am a young woman of great possibilities, yet I desire companionship. Could you tell me if I must teach until I am sixty-five in order to draw a teacher's pension?

Lulu Shuman

L. S. Your question expresses deep thought and foresight on your part, yet I would not advise you to teach until you are sixty-five, even for a pension. There is nothing in it.

Dear Miss Voigt:

I am a young professor in the University. My friends tell me I am interesting and attractive, yet I am not popular among the girls as I would like to be. How can I win my way into the hearts of all the girls of my classes?

R. L. Borger

R. L. B. Do not be downcast. Nature has bestowed her best upon you. What you lack is an air of domesticity. Try to cultivate this and then if you do not succeed, call at my office for further advice.

Oh Dean:

I am so young and handsome; I am a wonderful dancer, student, actor and editor—in fact there's nothing I can't do. Why am I not more important?

Chick Biddle

C. B. Do not have so many ambitions and I am sure you will be able to attain to the heights of prominence some day. No doubt you will be a Vernon Castle or a Charles Chaplin.

Dear Irma:

I am told my walk is slow and unsteady. I do not seem to have the pep I used to. Do you think it is from lack of strength?

Hebe Gahn

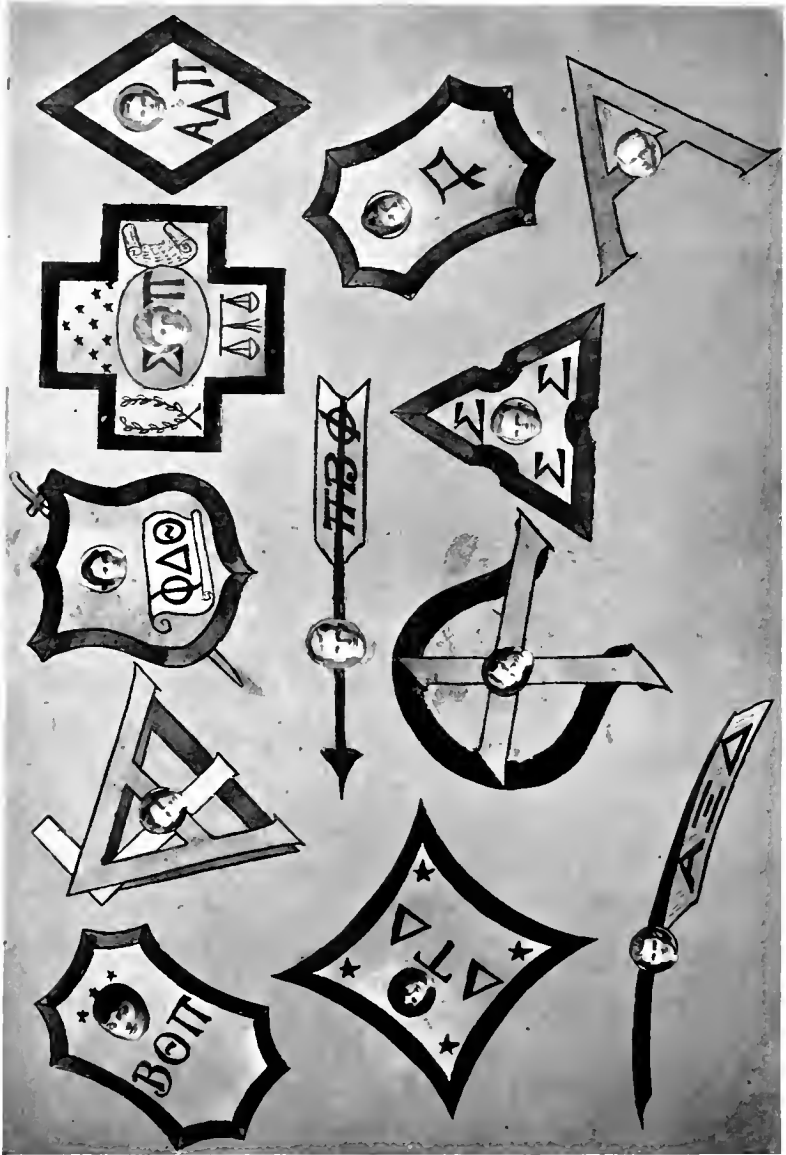
H. G. Your study brings tears to my eyes, but if you eat force for breakfast and onions for dinner you soon ought to be strong again.

Dear Dean:

I have a sweet tenor voice and I want to know how to get to sing in chapel some day. I play the piano by ear.

George Rambo

G. R. Unmuffle your voice. Wash your ears.





## JOKES AND JINGLES

**T**AKEN from examination papers of Spring term students:  
“Columbus made three trips to America. The first time he discovered the West Indies; the second trip he discovered Florida, and the last trip he discovered the Panama Canal.”

“All foreigners must be neutralized before they can become citizens of the U.S.”

“Among the great men of today, General Kaiser seems to take the lead.”

Squirrel Janes: “Brother Bowden, a girl in an evening dress puts me in mind of a turkey dinner.”

Bowden: “How’s that?”

S. J.: “Well, you see it’s just this way: plenty of white meat with a little dressing.”

Wilt thou take her for thy bride  
For better or for worse?  
To have, to hold and fondly guide  
Until hauled off in a hearse?

Wilt thou let her have her way?  
Consult her many wishes?  
Light the fire every day?  
And help her wash the dishes?

Wilt thou comfort and support  
Her father and her mother,  
Aunt Jemima, Uncle Jim,  
Three sisters and a brother?

His face grew pale and blank;  
It was too late to jilt;  
As to the altar floor he sank,  
He murmured, “Yes, I wilt.”



## WHAT'S WHAT AT OHIO

Girl's Glee Club; Composed of those who take lessons of Miss Thompson and a few invited friends. No musical ability required.

Torch; Requirement, Presidentship of at least five organization in school. A recommendation from Coach Banks. The Beta's Votes.

Woman's League; An august body which affords a good time for every girl in school. Also for Gus Hay.

Alpha Phi Chi; Honorary dramatics. Anyone may apply who can recite, "The boy stood on the burning deck," shift scenery or work the juice bulbs.

Cressett; A mixture of old maids, brains, cats, Dean Voigt's advice, bluffers and good stories.

Y.M.C.A.; An organization which keeps Plummer and Goddard out of mischief and in matches. For further information look any place on the campus.

Student Volunteers; Organized to keep Merle Danford, Mary Kerr and Otho Conoway out of town and the heathen abroad.

Tau Kappa Alpha; Entrance examinations given by Tom Wolfe, Bob Bowden and Chick Biddle.

Did you know that—

Jessie B. Dunn?  
Elsie Fell?  
Clara May Wiggle?  
Ruth Teeters?  
Willard Wendt?

Have you seen—

Nelle Russell?  
Chink Rust?  
Mabel Fry?  
Roland Fuller?  
Helen Pickett?





CAMPUS SHADOWS

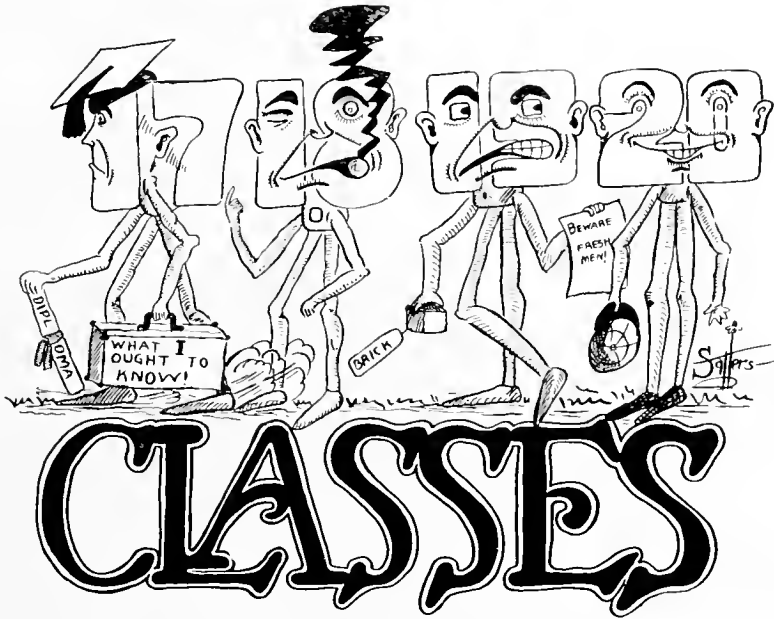


## WOULD'NT WE LAUGH IF-

Would'nt we laugh if—  
Tom Wolfe said, "I do not know?"  
Maw Thompson lost her gum?  
A squirrel got stuck on a Peg?  
Staats had a girl?  
The Senior's gift was practical?  
Someone called Benson's bluff?  
Exams lasted only two days?  
Puffy got all cleaned up?  
MacKinnon fell for Domestic Science?  
Twinkle Starr failed to shine?  
Our Registrar failed to get his nap at Chapel?  
The Green and White came out on time?  
The Seniors furnished towels for the birds?  
Rolland Fuller lost his nerve?  
Jokes we heard were new?

### FAMOUS COMEBACKS

Athena.	College Plays.
Class Elections.	Spring Fever.
Trouble with the Legislature.	Enthusiastic Alumni.
Girl's Glee Club.	Beta Serenades.
The Gasoline Lawn Mower.	7:30 Class.
Puff's smile.	Prexy's Medals.
Gym credits.	Torch Elections.
"That Book is out."	Check from home.
Exams.	Flunks.
Spring Fairies.	



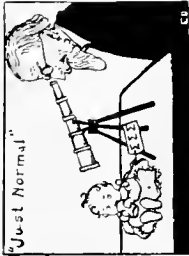
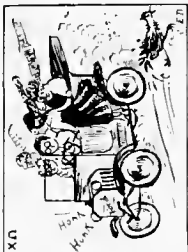


1 2 3 4 5 6 7 8 9 10



1 2 3 4 5 6

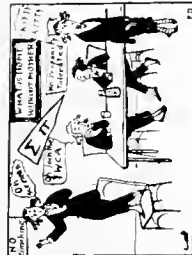
Anyone desiring to identify the above pictures, select the number, bring it to the Athena office, where the corresponding numbers are filed. (Faculty members barred).

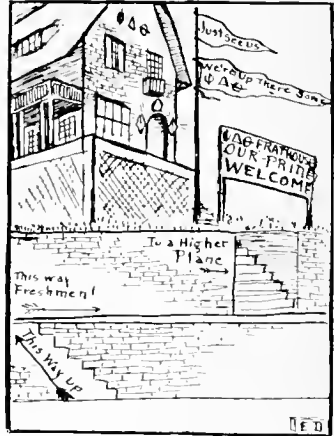


+ Rusty + Ernie + Jimmy + Billy + Bunny  
 + Clark + Biddle's + son + of + the + machine +  
 + Earth + imp + prices + + Catherine + and + Grace  
 + X + nose + Robert + + Uma + Marie  
 +  
 + The Rest of the Chapter +  
 + Services and Invaluable Suggestions  
 + of Dean Hoyt!  
 +  
**ALFIA GAMMA DELTA**  
 Can you wear Vaccines!



NAME *Mavis Chapman*  
 Home Credit *5* Subject *in epidemiology*  
 GRADE *A* *Mavis Chapman*  
 INSTRUCTOR







## FOUR-YEAR SENIORS

### ATHENA DATA

Name in Full. . . . . Harold Mardis  
Home Address. . . . . Delta Tau Delta House  
Organization. . . . . Delta Tau Delta  
Pledged Delta Tau Delta (1);  
Initiated Delta Tau Delta (2);  
College Honors. . . . . Rushed for Delta Tau Delta  
(3), (4); Girls' Pan-Hellenic (1),  
(2), (3), (4).

There are meters of measure  
And meters of tone,  
But the best of all meters  
Is to meet'er alone.

The Chios had a flivver,  
And all they did was gad;  
But gas went up and grades went down,  
Yet how much fun they had.

Officer: "Come along, young man, with me."  
Voice (from the depths of the Bird Fountain): "Save the  
women and children first. I can swim."

Prof. Mohler: "Parlez-vous francais?"  
Rosalind Unkefer: "Ja, ich parlez sehr viel."

Prof. Dambac: "Ze class may now er-er-er-go out ze hole."



## “JINGLES AND JOKES”

At seven-fifteen on a wintry morn  
The alarm goes off with a clang;  
You grab your clothes and notebooks too,  
And the door behind you bang.

Breathless and only the tenth in line  
At the cafeteria you wait;  
Seizing a bun and toothpick too,  
You leave the rest to Fate.

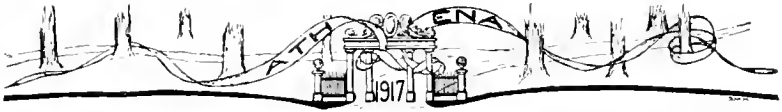
Across the campus and up the steps  
To the door of Chrisman's class:  
The foolish Virgins had a cinch;  
The door was shut! Alas!

Prof. Doernenburg: “Mr. Pirrung, how do you think Germany will come out in this war?”

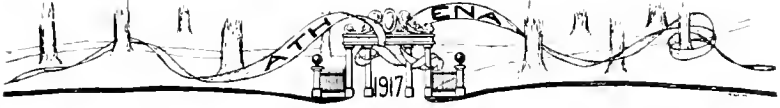
Joy: “Well, I don't hardly know. There are six countries against her. There are England, France, Russia, Italy, Roumania and them their Allies which seem to do the most against her.”

The young man lead for a heart;  
The maid for a diamond played;  
The Old Man came down with a club,  
And the sexton used a spade.









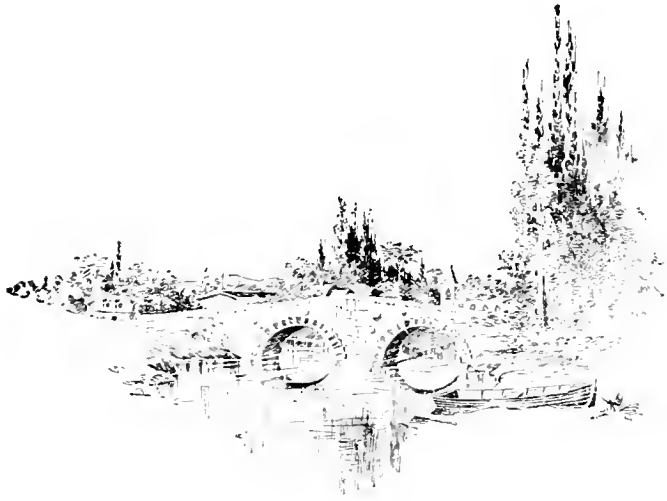




## A PSALM ON GERMAN

German getteth my goat; I did not want it. It causeth me to sit up late at nights: it leadeth me through turbulent dreams. It worries my soul; it sendeth me through paths of wickedness for just a little help. Yea, tho I ride thru the valley of the shadow of flunk, I still fear the stuff: for it is always with me. My teacher and fellow sufferers try to comfort me. They spread the whole matter before me in the presence of mine enemy; they tell me I am getting along fine; I begin to feel good. Surely Donner and Blitzzer will not follow me all my college days: and I will dwell with those whose calling and elections are sure, forever.

At the regular meeting of the Musical Club, Mrs. A.S. Thompson read an article, "To the Seven Devils." They were all present.





## The Right Store for College Men



In College the fellows judge you by your appearance to a great extent. A VARSITY FIFTY FIVE suit will speak well of you. It will show your good taste; help to give you confidence; always good looking and like a good friend it "Wears Well."

Varsity FIFTY FIVE is one name for a variety of models; all based on one big style idea; belt back models; double breasted; plain sack; different lapels and pockets.

**J. L. Beckley & Son**  
*"On the Corner"*

The Best  
\$2.00 Hat  
for Young Men

Nifty Caps  
Collars, Shirts  
and Neckwear



# FULWIDER'S RESTAURANT

We serve three meals a day

We Sell  
**\$2.50 Lunch Tickets**  
for  
**\$3.00**

BOTH PHONES  
17 East Washington St.  
Athens, Ohio

LOCATED OPPOSITE OPERA HOUSE

## High-Grade Engineering Instruments

and make accurately tested

Cement Testing  
and Field Supplies

*Send for Catalog*

**The J. C. Ulmer Co.**  
CLEVELAND, OHIO

## Athens County's Leading JEWELERS

Eyes Examined and  
Glasses Correctly Fitted

We Grind Our Own Lenses

Satisfaction Guaranteed is Cornwell's Creed

*Cornwells*

## CAFETERIA



Two

Good Places to Eat

HERE AND HOME

*Established by Act of the Ohio Legislature, February 18, 1804*

Offers unusual advantages to students seeking a broad and liberal education. Some courses lead to Degrees; others lead to Certificates and Diplomas. Attend an old and a well established institution which has an enviable record for thoroughness, culture and prestige.

Colleges, 8; Faculty, 110 Members; Different students enrolled, 1916, 4994; Books in Library, 47,000.

### FREE TUITION

THE UNIVERSITY NOW INCLUDES:—The College of Liberal Arts. The State Normal College. The School of Commerce. The College of Music. The School of Oratory. The Department of Physics and Electrical Engineering. The Department of Drawing and Painting. The State Preparatory School. The Department of Mathematics and Civil Engineering.

### SUMMER SCHOOL

June 23, 1917—August 3, 1917

*(1,994 Students in 1915)*

ADVANTAGES FOR TERM OF 1916—Faculty of 95 members. Provision for about 200 recitations daily. Model School, seven rooms with eight grades of primary pupils, in session every day. Rural Training School, three rooms, eight grades. Kindergarten School: elementary science; manual training; agriculture; home economics; fee of \$3.00 pays for all scheduled instruction selected by the student; a wide range of private instruction including foreign languages and vocal and instrumental music, at most reasonable cost; special opportunities for teachers, and those preparing for a Teacher's Certificate; expenses of every kind most reasonable. For Catalog, other printed matter, and special information, address

ALSTON ELLIS, President Ohio University,

ATHENS, OHIO.

### THE STATE NORMAL COLLEGE

THE STATE NORMAL COLLEGE of Ohio University opened Tuesday September 9, 1902. Training Schools, graded and rural, to illustrate the best methods of teaching are in successful operation.

Courses of Study—(1) Course for Teachers of Rural Schools; (2) A Two-Year Course in Elementary Education for Graduates of First Grade High Schools; (3) A Four-Year Course in Secondary Education for Graduates of First Grade High Schools; (4) A Four-Year Course in Supervision for Principals and Superintendents; (5) A One-Year Course for College Graduates; (6) A Two-Year Course in the Kindergarten School; (7) A Two-Year Course in School Agriculture. (8) A Two Year Course in Manual Training; and (9) A Two-Year Course in Home Economics.

Nos. (1), (2), and (6) lead to a Diploma, (3) (4), and (5) to a Diploma with Degree of Bachelor of Science in Education.

There is also a Diploma Course in Public School Music, and one in Public School Drawing.

Special Term for Teachers and Prospective Teachers:—April 28, 1917 to August 2, 1917. Tuition for special term \$6.00.

# ROLL OF HONOR BANK

"A place on the roll of honor is like a man's character—  
it is something money cannot buy, but is won by merit  
and worth alone."

## DIRECTORS

J. P. WOOD

D. H. MOORE

HENRY O'BLENESS

S. M. MOORE

C. L. POSTON

Make Our Bank Your Bank

Oldest bank in southeastern Ohio. U. S. Government,  
State and County depository. Government and Non-  
Taxable Municipal Bonds bought and sold.

Special attention given to the business of college people

## The First National Bank

## D R U G S

Henry W.  
COTNER



Rexall Druggist

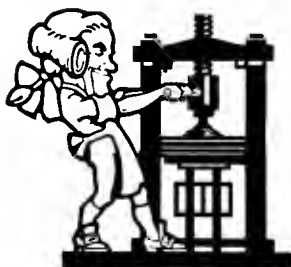
The Hotel Berry  
Barber  
Shop



*Always the*

**BEST SERVICE**

PATRONIZE OUR  
ADVERTISERS



# Our Big Daylight Store

Our Stocks at all times present for the young gentlemen and ladies of College life a "ready reference" on STYLES, QUALITIES and PRICES. In addition to our line of general Dry Goods,

## The Ready-to-Wear Departments

FOR LADIES—FOR GENTLEMEN

Are, both of these departments, important not only in large assortments, but noteworthy for lines that have won an established reputation for supremacy in their respective field, that embody strongly proper style features reinforced with quality and price. These are economical goods for you and the right ones, and

*we especially invite inspection*

*from O. U. students*

# THE F. L. PRESTON CO.

There is no accomplishment of

## Dry Cleaning

too difficult for our expert hands to tackle.

The benefit of saving is surely yours, not ours; for the cost is nominal.

### Pickering Cleaning Company

66 North Court Street

Bell Phone 111

Home 170

# MASONIC TEMPLE

Banquet

*and*

Ball Rooms

*with elegant*

Reception  
Rooms

Banquet Accommodations  
for 200 Guests

Finest in the City

## DeMolet & Cornwell

PLUMBING  
HEATING

Electrical Supplies and Contracting

Lighting Fixtures  
and Supplies

ATHENS,

OHIO

## HOW TO REDUCE

## Your School EXPENSES

Save money on your  
BOOKS, PENNANTS,  
POSTERS, DRAWING  
SETS, LABORATORY  
TOOLS, in short any-  
thing that makes the  
student's life worth  
the living.

*Give us a call and we will  
show show you how*

HOFFMEISTER

Co-op Book Store

# The Athens National Bank

---

Capital  
\$100.000

Surplus and Profit  
\$40.000

---

*We will be pleased to handle  
your banking business*

# Bason & Studer

## DENTISTS



Both Phones

Phoenix Block      Athens, Ohio

We Make Anything  
Made Out of Paper and Ink

Wedding Announcements,  
Invitations, Visiting Cards,  
printed or engraved.

*Fine Stationery  
a Specialty*

## The Athens Printery Co.

*Opposite Post Office*

ATHENS,

OHIO

# Base Ball Goods

Tennis Rackets,  
Nets and  
Balls

## The Kerr Hardware Company

Court Street

Athens, Ohio

When in Need of  
Good Things  
to Eat

SEE

Emmet H. Cotton  
THE GROCER

Swanson Furniture Co.

Furniture, Stoves  
and Pianos

*Storage Transfer*

68-70 NORTH COURT STREET

Brattin's Barber Shop

EXPERIENCED  
WORKMANSHIP

*Up-to-Date in Every Way*

SOUTH COURT STREET

Pierce's Restaurant

SELF SERVE—INSTANT SERVICE

*You Get the Best at  
Sensible Prices Here*

Everything in Season      Try It

Students Headquarters *for*

Good Shoes  
*and*  
Aristic Repairing

Hutchinson & Stickney

ATHENS CANDY  
KITCHEN

Home Made  
CANDIES

Ice Cream

Hot and Cold Drinks



THE D. ZENNER CO.

Cotrell & Leonard

ASBANY, N. Y.

*Makers of*

Caps, Robes and Gowns

To all American Colleges and  
Universities from the Atlantic  
to the Pacific.

Class Contracts a Specialty

Correct Hoods for all Degrees.  
Rich Gowns for Faculty Use,  
for Pulpit and Bench.

*Bulletins, Samples, Etc., on Request*

SCHLOSS  
MANUFACTURING  
COMPANY

College  
Pennants

ATHENS, OHIO

Let Us Enroll You

with other pleased  
patrons.

J. B. ROSE

Home of

Queen Quality Shoes

for the women who care.

25 N. COURT STREET

The Home of  
Good Clothes



THE SCOTT  
HANEY CO.

# The American Line of Clay Working Machinery

Education is an advantage. Every member of the Ohio University Army will concede the point.

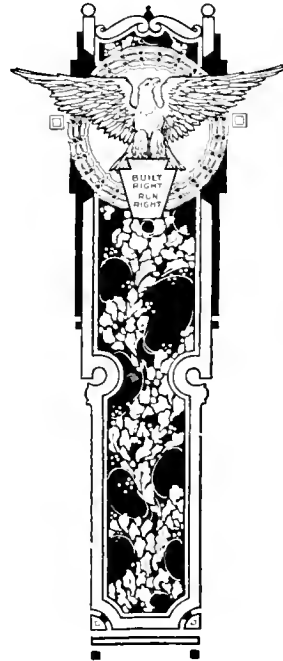
The advantage you get from an education depends upon making use of what you learn.

We have been educated in building Clay Working Machinery. For over 50 years we have been designing and improving the American Line.

This education we have gathered in half a century is reflected in our machinery and this education is just as valuable to the user of the machinery as it is to us.

Our knowledge and experience insures the successful operation of the machinery and the financial success of the Clay Plant.

We build every machine and appliance required for making every class of Clay Products. The American Line has no equals.



*We Solicit Inquiries*

## The American Clay Machinery Co.

BUCYRUS,

OHIO

---

CLINE'S  
Pharmacy

Where You Enjoy  
Those Chats

---

# P A L A C E

*Full Line of*

Home Made  
CANDIES

Ice Cream and Sodas

and Light Refreshments

Up-to-Date      Sanitary

HOME PHONE 33

Maniskas & Bachtis

# C. O. MOORE



A friend to BASH

## The Messenger Printery Company

### Quality Printing

Largest and Best Equipped Exclusive  
Commercial Printers in Southeastern  
Ohio. Where Quality Counts, We  
Get the Job.

A. T. LAWHEAD, Manager

Daily Messenger Building

ATHENS, OHIO

Home Phone 35      Bell Phone 59-R

## The Book Store

*A good place to find what you want  
and when you want it*

We Specialize in

School Supplies, Kodaks,  
Athletic Goods, Pennants

When you think of taking a few  
pictures don't forget we have a  
complete line of

Kodaks, Camera Supplies

*We do Developing and Printing,  
Picture Framing Picture Molding.*

We carry a complete line.

## The Athens Book & News Company

# FOSTER AND WELLS

Class 1895

Class 1908

## L A W

# SAM SOMMER'S STORE

## Satisfies Customers

Then Why Not Satisfy You?

## The Atheneon Restaurant

*Is the best place in town to eat*

Our Home Made  
Pies, Cakes and Bread  
are from Our Own Bakery

Give Us A Trial

South Court Street Athens, Ohio

The Only Up-to-Date  
White Enameled

## Barber Shop

in Town

Ask anyone they will tell you where

**McCOY'S**

is.

G. E. McPherson & Son

## Rapid Shoe Repairing

16 West Union St. Athens, Ohio



MILTON ANAS

*A Friend of the Bays'*

---

## Stultz & Bauer Pianos

---

OVER thirty years of continuous improvement and development. Founded on the one principle—honest effort to produce the best piano.

*Sold Only By*

**The Wilkin-Redman Co.**

97 North High Street

COLUMBUS, OHIO



WISE  
Photographer





# Home Furnishing Company

Athens, Ohio

---

*The Best in*

FURNITURE, RUGS  
Ranges, Wall Paper,  
Draperies.

---

Pianos and Victrolas



# THE



# MAJESTIC

Athens' Up-to-Date

# THEATRE

ATHENS, OHIO

*Home of*



MATINEE EVERY DAY

# HARDWARE

Baseball Goods,  
Tennis Goods,  
Pocket  
Cutlery

## F. L. Wheaton

Court Street

Athens

# Wood & Wood

Attorneys-at-Law



First National Bank Building

# STALL & DEAN MFG. CO.

Baseball and Football Clothing,  
Gymnasium Suits, Athletic Supporters,  
Baseball Gloves, Footballs, Boxing  
Gloves and Striking Bags.

*Outfitters to Ohio University*

855-857 Elston Avenue

CHICAGO, ILL.

## C. M. GILL & CO.

*District Agents*

The Michigan & Mutual  
Life Insurance Co.

All Policy Values Guaranteed

Fire,  
Accident

*and*

Health Surety Bonds

## Distinctive Jewelry

*Suggests Refinement of Character*

AT our store you will find  
distinctive and unique  
creations in DIAMOND and  
PRECIOUS GEM JEWELRY.

**GOODMAN BROTHERS**  
**JEWELERS**

100 98 NORTH HIGH ST

COLUMBUS,

OHIO





## Specialists in College Printing

**I**N 1916 we printed Annuals for fifty-four colleges and schools, also many College Catalogs, Views Bulletins and Calendars for institutions in twenty-five different states. Our representatives travel thousands of miles in response to requests for interviews.

**THE CHAMPLIN PRESS**

*College Printers*

Established 1893

Columbus, Ohio



THE ANNUAL you manage can be assured of just such a beautiful high finish paper as the text of this book if you specify SWANSDOWN ENAMEL—or if you want a high quality dull finish like this insert, specify EUCLID DULL COATED ENAMEL. We will gladly furnish you catalog dummies of your book in either or both papers.

THE CENTRAL OHIO PAPER COMPANY, Columbus, Toledo, Cleveland







