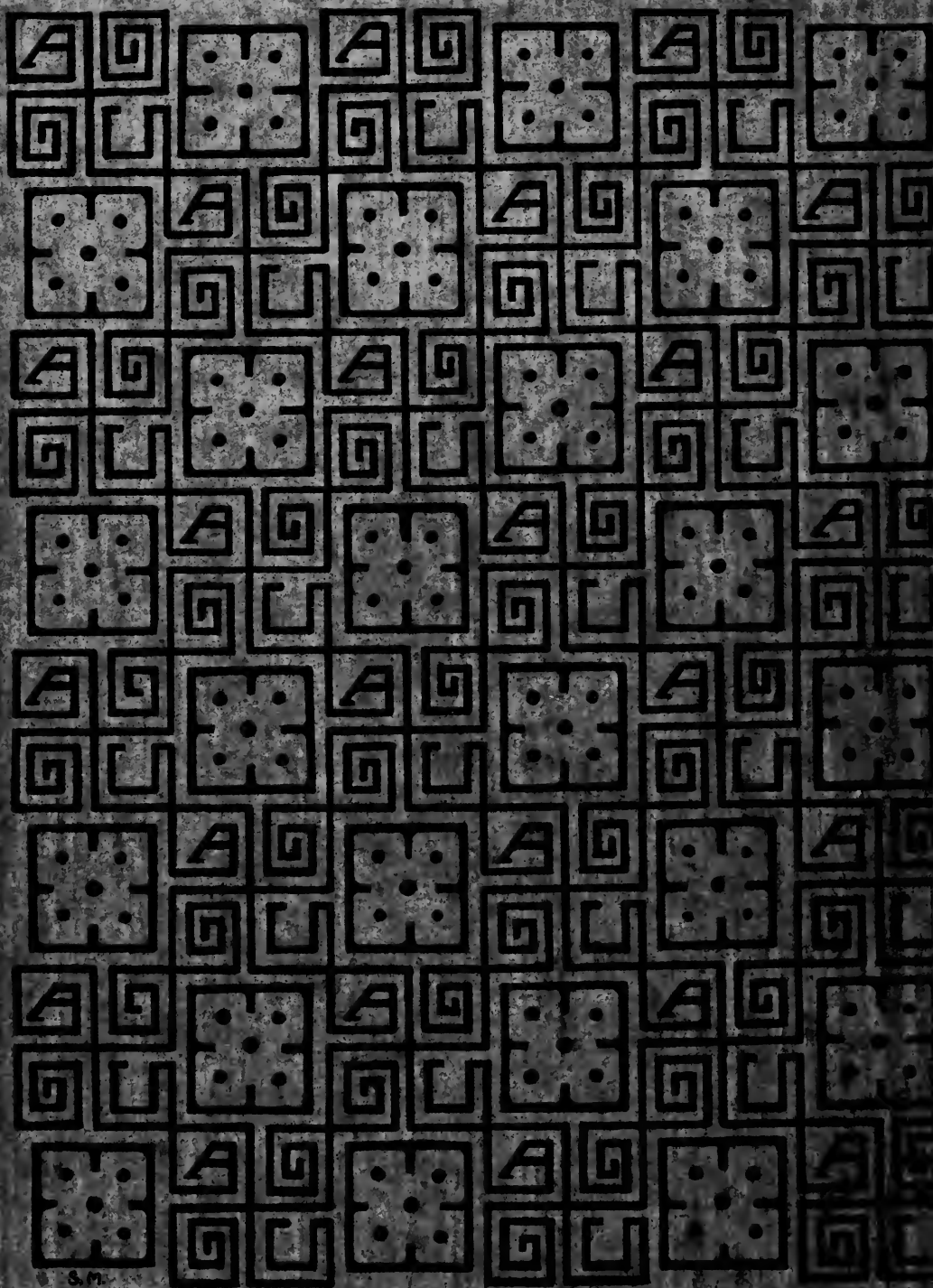


The Aucota



EX
LIBRIS





The
AUCOLA

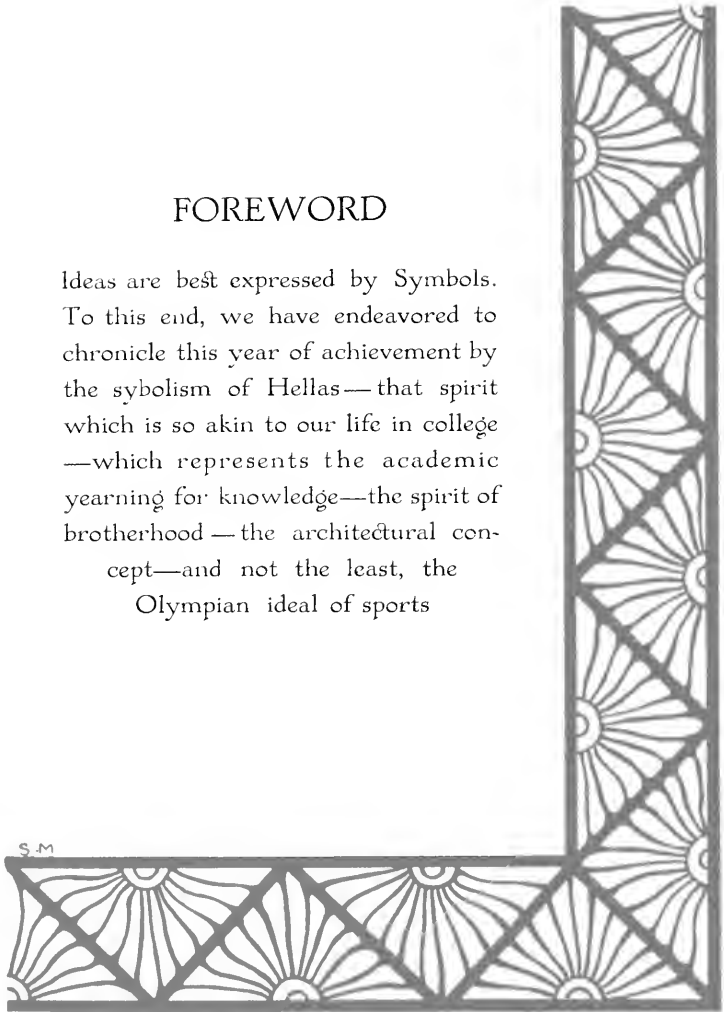
1931

Published by
THE JUNIOR CLASS
of
The American University
Washington, D. C.

S M

FOREWORD

Ideas are best expressed by Symbols.
To this end, we have endeavored to
chronicle this year of achievement by
the symbolism of Hellas—that spirit
which is so akin to our life in college
—which represents the academic
yearning for knowledge—the spirit of
brotherhood—the architectural con-
cept—and not the least, the
Olympian ideal of sports





To

DEAN GEORGE BENJAMIN WOODS

whose strength of personality and ceaseless
following of an ideal of education have
built the College of Liberal Arts from
the first beginnings to its present position,
we of the Junior Class dedicate
this AUCOLA

S M

CONTENTS

College

Campus
Administration

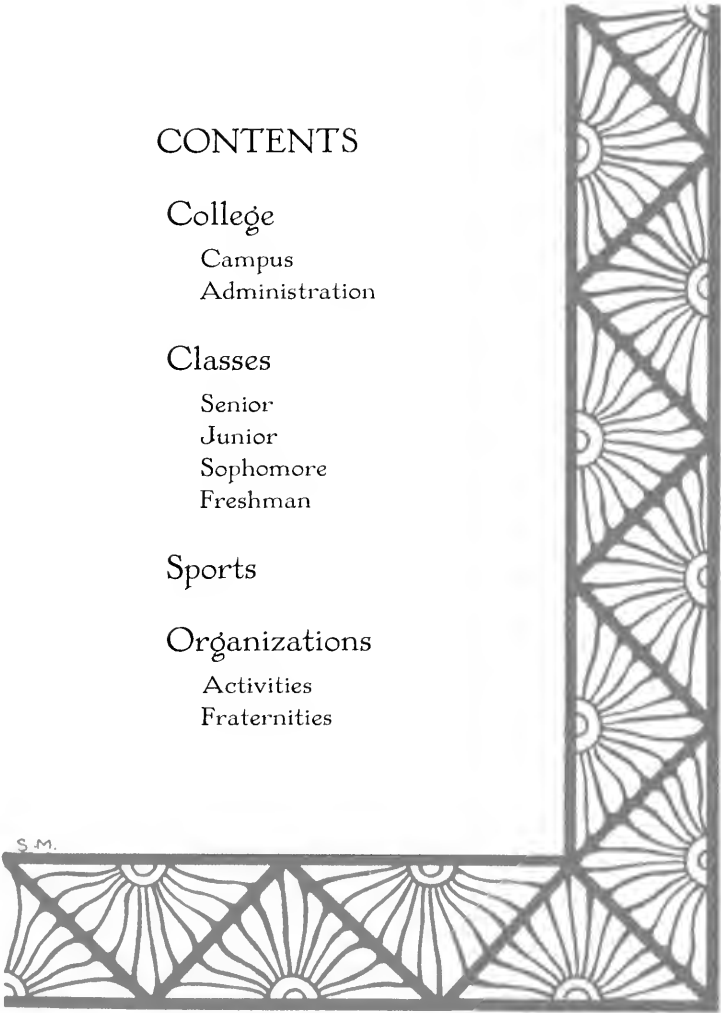
Classes

Senior
Junior
Sophomore
Freshman

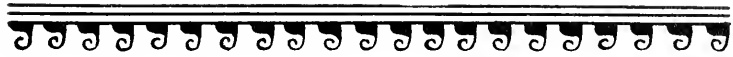
Sports

Organizations

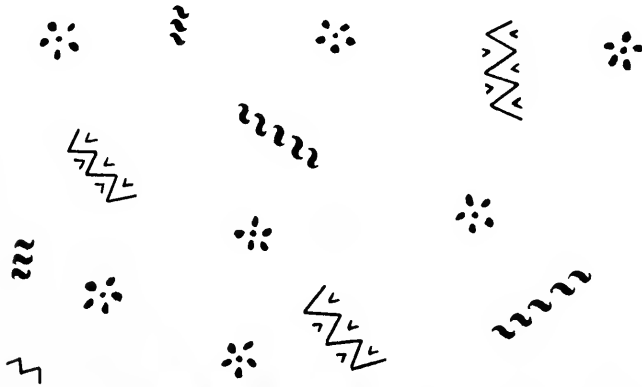
Activities
Fraternities



S.M.

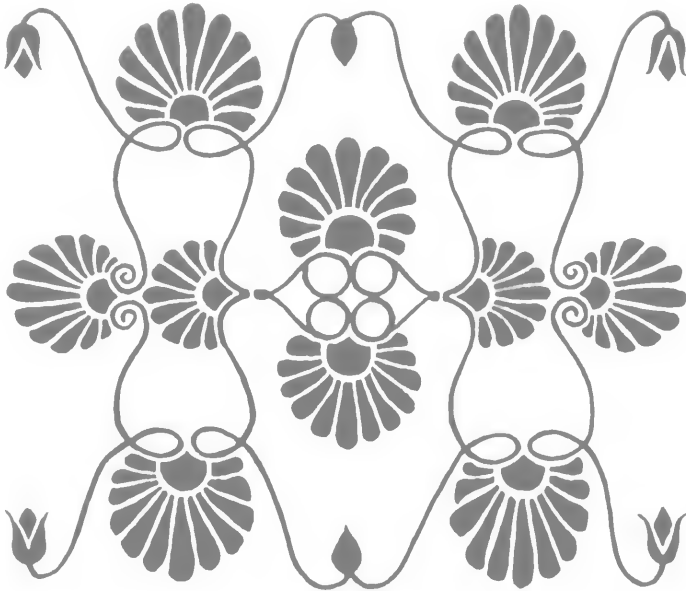


COLLEGE

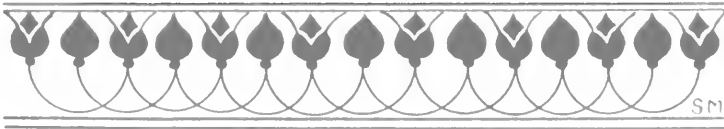


Digitized by the Internet Archive
in 2007 with funding from
Lyrasis Members and Sloan Foundation

<http://www.archive.org/details/aucola1931amer>



CAMPVS







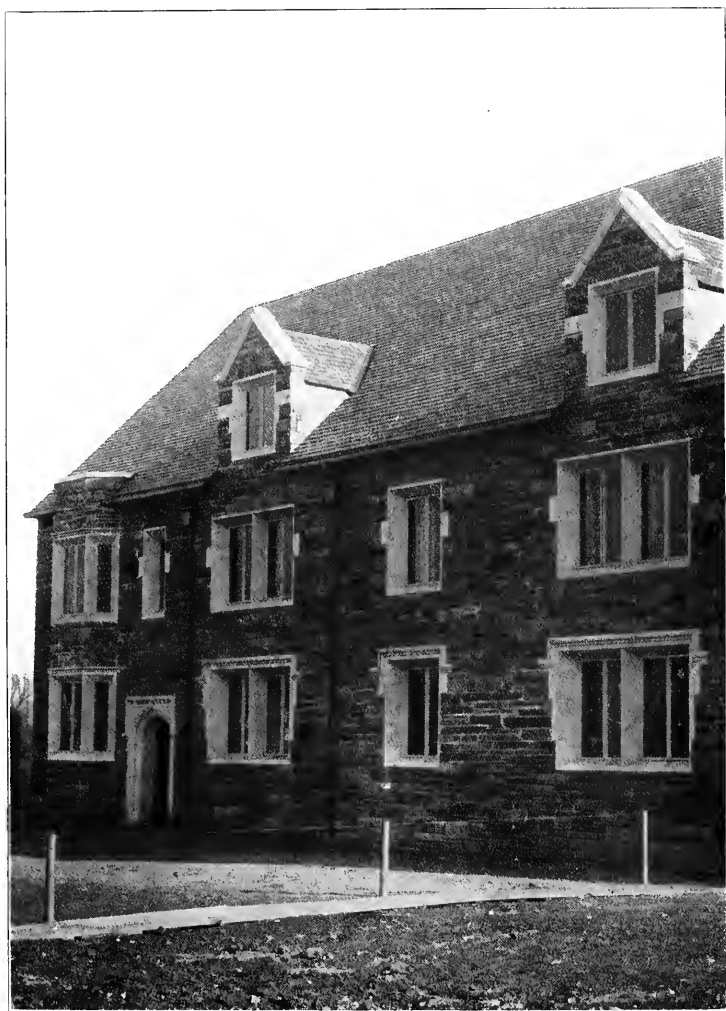




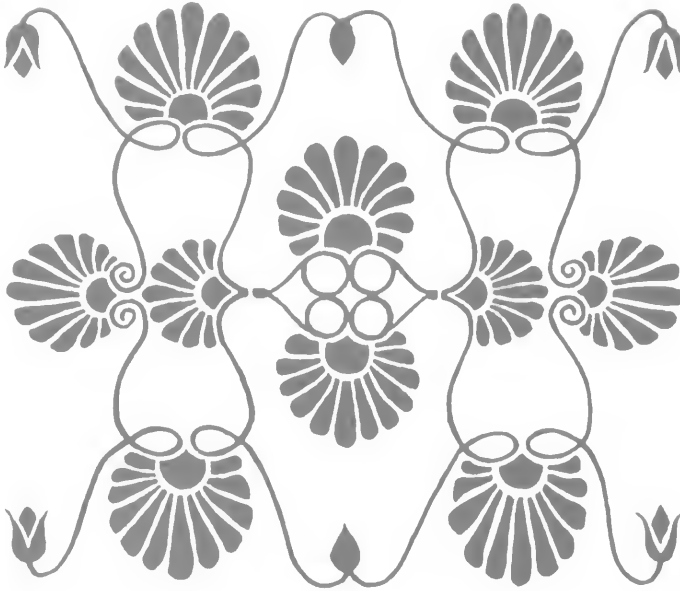




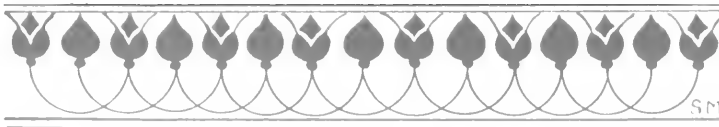








ADMINISTRATION





LUCIUS CHARLES CLARK, B. A., S. T. B., D. D.
Chancellor of the University





GEORGE BENJAMIN WOODS

B. A., M. A., Ph. D.

Dean of the College and Professor of English

B. A., Northwestern, 1903; M. A., Harvard, 1908; Ph. D., Harvard, 1910; Phi Beta Kappa;; Delta Sigma Rho; Sigma Nu; Member of Modern Language Association of America; Cosmos Club; Federal Schoolmen's Club; Torch Club of Washington, D. C.; *Who's Who*; Author of—*English Poetry and Prose of the Romantic Movement*; *Victorian Poetry*; *Problems in English*; *College Handbook of Writing*; *A Manual of English*; *Drills in English*.

MARY LOUISE BROWN, B. A., M. A.

Dean of Women and Associate Professor of English

B. A., DePauw, 1909; M. A., Michigan, 1922; Phi Beta Kappa; Alpha Gamma Delta; Member of the National Association of Deans of Women; President of the Regional Association of Deans of Women of Maryland, Virginia, and the District of Columbia.





JOHN EDWARD BENTLEY

M. A., M. R. E., S. T. B., TH. D.

Professor of Education and Psychology

M. A., Clark, 1916; S. T. B., Boston, 1917; M. R. E., Boston, 1920; Th. D., McGill, 1924; Member of American Psychological Association; National Society for Teachers of Education; Societe de Psychologie (Geneva); Federal Schoolmen's Club.

WILL HUTCHINS, B. A., B. F. A.

Professor of Art

B. A., Yale, 1901; B. F. A., Yale, 1909; Phi Beta Kappa; Beta Theta Pi; *Who's Who*; Associate Editor of *Christian Art*; Author—*Jeanne d'Arc de Vaucouleurs*; *The Day That Lincoln Died* (in collaboration).



WALTER F. SHENTON, B. S., M. A., PH. D.

Professor of Mathematics

B. A., Dickinson, 1907; M. A., Dickinson, 1909; Ph. D., Johns Hopkins, 1914; Phi Beta Kappa; American Association for Advancement of Science; American Mathematical Society; Mathematical Association of America; *American Men of Science*; Co-author—*Elementary Mechanics*.





DELOS OSCAR KINSMAN

B. L., M. A., Ph. D.

Professor of Economics

B. L., Wisconsin, 1896; M. A., Butler, 1898; Ph. D., Wisconsin, 1900; Pi Gamma Mu; Fellow of Royal Economic Society (England); American Economic Association; American Association for Labor Legislation; Federal Schoolmen's Club; *Who's Who*; Author—*The Income Tax in the Commonwealth of the United States; Local Governments of Wisconsin; Essentials of Civics; Economics or the Science of Business.*

WESLEY M. GEWEHR, Ph. B., M. A., Ph. D.

Professor of History

Ph. B., Chicago, 1911; M. A., Chicago, 1912; Ph. D., Chicago, 1922; Pi Gamma Mu; Phi Alpha Theta; Member of American Historical Association; American Association of University Professors; Mississippi Valley Historical Association; Federal Schoolmen's Club; Author—*The Great Awakening in Virginia, 1740-1790.*



WILLIAM B. HOLTON, B. S., M. S., Ph. D.

Associate Professor of Chemistry

B. S., Illinois, 1921; M. S., Illinois, 1923; Ph. D., Illinois, 1926; Phi Lambda Upsilon; Gamma Pi Upsilon; Sigma Xi; American Chemical Society.

A U C O L A 3 I



C. HENRY LEINEWEBER, Ph. D.
Associate Professor of Modern Languages
Ph. D., Fribourg, 1907.

HAROLD GOLDER, B. A., M. A., Ph. D.
Associate Professor of English

B. A., Carleton, 1920; M. A., Harvard, 1921;
Ph. D., Harvard, 1925; Phi Beta Kappa; Phi
Kappa Tau; Modern Language Association of
America.



JESSIE MARY FERGUSON
B. A., B. S., M. A., Ph. D.

Associate Professor of Education

B. A., Chattanooga, 1908; B. S., Ohio State,
1926; M. A., Ohio State, 1927; Ph. D., Ohio State,
1927; Phi Lambda Theta; Pi Mu Epsilon; Author
—*Research Adventures in College Teaching.*





WILLIAM LEE CORBIN, B. A., M. A.

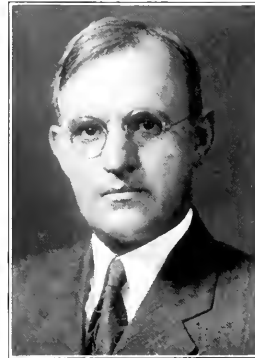
Lecturer in English

B. A., Amherst, 1896; M. A., Yale, 1902; American Association of University Professors; Modern Language Association of America; Poetry Society of America; Harvard, Yale, Torch, and Cosmos Clubs of Washington, D. C.

FERDINAND A. VARRELMAN, B. A., M. A.

Assistant Professor of Biology

B. A., California, 1915; M. A., Columbia, 1922; A. A. A. S., Biological Society of Washington; Botanical Society of America; Torrey Botanists Club; Entomological Society of New York; *American Men of Science*.



LOIS MILES ZUCKER, B. A., M. A.

Assistant Professor of Classics

B. A., Illinois, 1910; M. A., Illinois, 1914; Phi Beta Kappa; Alpha Delta Pi; Classical Association; Classical League; American Association of University Women; American Association of University Professors.





GLENN FRANCIS ROUSE
B. A., M. A., Ph. D.

Assistant Professor of Physics

B. A. Cornell College, 1920; M. A., Wisconsin, 1923; Ph. D., Wisconsin, 1925; Phi Beta Kappa; Sigma Xi; American Physical Society; Washington Philosophical Society.

HAROLD MERRIMAN DUDLEY
B. A., B. D., M. A., Ph. D.

Assistant Professor of History

B. A., Simpson, 1917; B. D., Garrett Biblical Institute, 1920; M. A., Northwestern, 1921; Ph. D., American University, 1928; American Association of University Professors.



ARTHUR JENNINGS JACKSON
B. A., B. D., M. Th., Th. D.

Assistant Professor of Religion

B. A., Geneva, 1921; B. D., 1923, Th. M., 1924, Th. D., Drew Theological Seminary, 1926; American Association of University Professors; American Society of Biblical Literature and Exegesis; Author—*Symbolism in the Fourth Gospel*.





WALTER H. YOUNG, B. A.

Assistant Professor of Physical Education for Men and Director of Athletics

B. A., Ohio Wesleyan, 1924; Alpha Sigma Phi.

R. DEANE SHURE, B. Mus.

Instructor in Music

B. Mus., Oberlin, 1907; studied under Draeseke and Wolff in Dresden, Germany; under DeBlois-Rowe in London, England; Composer's Club; Chamber Music Society; Friends of Music (Library of Congress).



DOROTHY WULF, B. S.

Instructor in Physical Education for Women

B. S., Connecticut College for Women, 1921; Central School of Hygiene and Physical Education, New York City.



Q A U C O L A 3 I Q



EDWARD WILLIAM ENGLE
B. S., M. A., PH. D.

Instructor of Chemistry

B. S., Union, 1925; M. A., Princeton, 1926;
Ph. D., Princeton, 1928; Sigma Xi; American
Chemical Society.

HENRY GRAHAM STATHAM, B. A., M. A.

Librarian

B. A., Syracuse, 1925; M. A., Illinois, 1929;
Phi Beta Kappa; American Library Association;
Author—*Some Aspects of the Relation Between
Circulation and Size of Staff in Five Branches of
the Chicago Public Library.*



EDWARD L. McADAM, JR., B. A., M. A.

Instructor in English

B. A., Carleton, 1927; M. A., Minnesota, 1929;
Phi Beta Kappa; Pi Delta Epsilon.





MARIE DELONGLEE, B. A.

Instructor in French

B. A., College de la Legion d'Honneur, 1927;
B. A., Chattanooga, 1928; Diplome de l'Universite
de Paris; Beta Pi Theta.

RUBERTA M. OLDS, Ph. B., M. A.

Instructor in Spanish

Ph. B., Chicago, 1926; M. A., Columbia, 1929;
American Association of Teachers of Spanish;
Modern Language Association of America;
American Association of University Women.





MARY MEARES GALT, B. A., M. A.

Assistant Professor of French

B. A., Randolph-Macon; M. A., Columbia; Modern Language Association of America; American Association of University Professors; Women's Overseas Service League.

JOSEPH CLEMENT SINCLAIR, B. A., M. A., Ph. D.

Instructor in Philosophy

B. A., Johns Hopkins, 1914; M. A., American University, 1926; Ph. D., American University, 1929.

HILDA MINDER FRENCH, B. A., M. A.

Instructor in Speech

B. A., Ohio Wesleyan, 1924; M. A., Ohio Wesleyan, 1925; Delta Delta Delta; Theta Alpha Phi; Delta Sigma Rho.

ETHEL G. STIFFLER, B. A., M. A.

Instructor in Biology

B. A., Goucher, 1922; M. A., Pennsylvania, 1924.

ROBERT NORMAN HISLOP, B. A.

Debate Coach

B. A., Bates, 1930; Phi Beta Kappa; Delta Sigma Rho.





EDWARD J. CARROLL, B. A., M. B. A.

Instructor in Business Administration

B. A., Buffalo, 1928; M. B. A., Northwestern, 1930; Taylor Society, American Society of Industrial Engineers; National Association of Teachers' Marketing and Advertising; National Sales Managers Society.

VERNON L. WILKINSON, B. A.

Teaching Fellow in Political Science

B. A., Whitman, 1930; Phi Beta Kappa; Delta Sigma Rho; Order of Waiilatpu.

M. ELLIS DRAKE, B. A., M. A.

Teaching Fellow in Political Science

B. A., Alfred, 1925; M. A., Syracuse, 1928; Delta Sigma Phi; Pi Gamma Mu; American Historical Association.

HORACE A. BACUS, B. A., M. A.

Teaching Fellow in Political Science

B. A., Texas Christian, 1929; M. A., Texas Christian, 1930; Pi Gamma Mu; Scholarship Society of the South; Author — *Utilitarian Background of Plato's "Republic."*

GILBERT MacVAUGH, B. A.

Teaching Fellow in Psychology

B. A., American, 1930.

ROLAND McLAREN RICE, B. A.

Assistant in Education

B. A., American, 1929; Delta Sigma Rho.





DOW SUMNER RANDOLPH YOUNG MOLER

Administration

MISS SARA H. DOW
Bursar

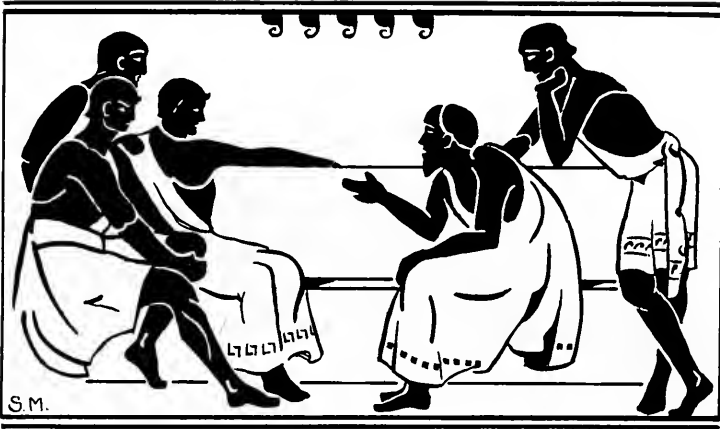
MR. WALDO YOUNG
Business Manager

MISS BERNICE MOLER
Registrar

MRS. SARA SUMNER
House Manager

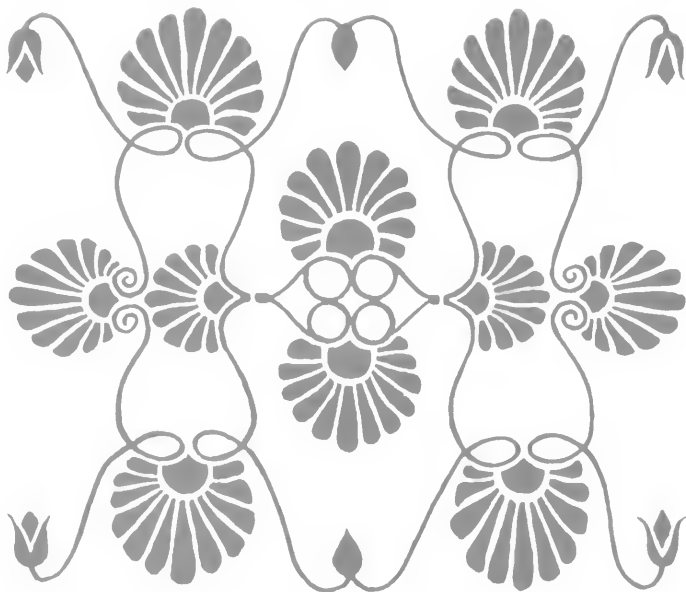
MISS DOROTHY RANDOLPH
Assistant Librarian



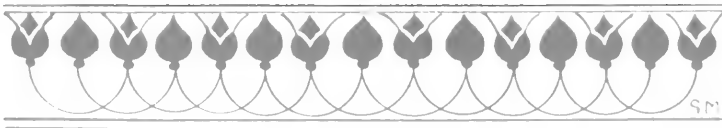


CLASSES





SENIORS





E-PEN
President

CLINE
Vice-President

MOORE
Secretary

CRAMER
Treasurer

Class History, 1931

The Class of 1931 has been noted throughout its four years of existence as a college group for its remarkably pugnacious spirit and class unity. Whatever it has set its hand to accomplish has been done, either by weight of diplomacy or of sheer noise.

It began its notable career by defying successfully the Freshman rules, but that did not prevent it from trying to enforce them on another class later. Having gained their point they proceeded to astonish the rest of the college by the magnificence of their dance, which was the first one to be given in the dining room of the Women's Residence Hall.

Filled with a laudable desire in their sophomore year again to do something never done before, they produced with great success "Nice Goin'," the one and only musical comedy that A. U. has witnessed, and set the college singing "Days That We Treasure" with great gusto.

Their third year witnessed the novel "Good News" dance, and a Junior Prom which was the first to be given without a banquet attached, and the decorations of which excelled all former efforts.

The senior dance harkened back to the "Days That We Treasure," and was reminiscent of all that had gone before. This year the class turned athletic, and clinched the Tompkins Basketball Trophy by turning in its third inter-class basketball championship.

The Class of 1931 made its last triumphant gesture in its class gift, an artistic stone walk across the campus from Hurst Hall to Battelle Memorial, thus leaving, if not *their* footprints on the sands of time, at least a place for the footprints of others.



CLAIR ATLAND

HARRISBURG, PENNSYLVANIA

Class Treasurer 3; ACCOLA Staff 3; French Club 1, 2, 3, 4; Vice-President 4; Glee Club 3, 4; Composer, Sophomore Musical Comedy 2; Junior Prom Committee 3.

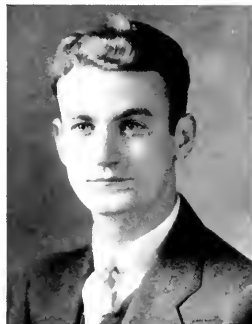
Clair is pointed out with pride to visitors as A. U.'s musical genius. As author of the musical comedy *Nice Goin'* he is looked upon with awe. Evidently being musical doesn't prevent him from being practical, for he was treasurer of his class in his junior year. He was a main prop of the French Club for three years, and a member of the Accola staff as a junior. Clair haunts Hurst Hall at odd hours and extracts melodies from unmelodious pianos.

S. CARLTON AYRES

ALTOONA, PENNSYLVANIA

Dickenson College, Pa.; *Eagle* Staff 2, 3; Assistant Editor 3; Associate Editor 4; Dramat 2, 3, 4; Debate 3; Glee Club 2, 3; Secretary-Treasurer 2; Business Manager 3; French Club 2, 3; Secretary 3; Omicron Epsilon Pi 2, 3, 4; President 4; Oxford Fellowship 2, 3; Story, Musical Comedy 2.

Carlton is a valued member of nearly every club on the campus. He is an aesthetic young man who does his best to live down the Christian name of Samuel. As the author of the story of *Nice Goin'* he shares the awe with Clair Atland. Carlton is far from an impractical visionary, since he efficiently managed and took care of the finances of the Glee Club. He fully realizes the importance of being earnest.



DOROTHEA BELZ

EAST FALLS CHURCH, VIRGINIA

Varsity Hockey 1, 2; Class Hockey 1, 2, 3, 4; Class Soccer 1, 2, 3; A Club 3, 4; Vice-President 4; French Club 1, 2; Breck's Club 1, 2; President 2; Class Honors 1, 2, 3, 4.

Bobbie is A. U.'s original "little girl" with curly hair, wide blue eyes and a charming quiet smile. One would never think to look at her that she is a very athletic young lady, equally at home on hockey field, on the basketball court, and behind the volleyball net. As vice-president of the A Club she is in every movement to further girls' athletics on the campus. Besides this she is a consistent honor student.





J. ELMER BENSON

FREDERICK JUNCTION, MARYLAND

Oxford Fellowship 2, 3, 4, Vice-President 3, Treasurer 4.

Benson is chiefly known around the campus for the abruptness with which he arrives and departs in his Ford, or whatever automobile he may at the moment have. Sharing one's time with a charge and American University does make one hurry, you know. Both in his Junior and Senior years, he has held offices in the Oxford Fellowship.

CALVIN FRANCIS BROWN

TAKOMA PARK, MARYLAND

Orchestra 1, 2, 3, 4; Librarian 2; Manager 3, 4.

Cal is the exponent of modern music as blared forth by the saxophone. He was for the last two years the head of the Orchestra and an earnest devotee of music. His saxophone solos have led American University to the opinion that that much maligned instrument is not so bad as it sounds. The orchestra without Cal is unthinkable.



JAMES CAIOLA

NORRISTOWN, PENNSYLVANIA

Delta Omicron 4; Class Basketball 1, 2, 3, 4; Class Football 1, 2; Class Soccer 4; Debate 1, 2, 3, 4, Manager 3; President, Debate Council 4; International Relations Club 4; Chapel Committee 4.

"Ladies and gentlemen, it is my pleasure to introduce James Caiola, known as Jimmie." As manager of the debate squad, Jimmie has a purpose in life, to have A. U. win. He spends his energy in sports, and lends support to the International Relations Club. Jimmie likes to study in empty rooms around Hurst Hall.



ACCOLA 31



CHESTER A. CARTER

WASHINGTON, D. C.

Alpha Theta Phi 2, 3, 4; Vice-President 2; President 3; Treasurer 4; Basketball 1, 2, 3, 4; Baseball 1, 2; Tennis 3, 4; Dramat 4; Western Club 4; Chairman Athletic Committee 4.

Chester Carter and Warren Colison seem to run Alpha Theta Phi between them, for both have been president and treasurer, and while one was vice-president the other was secretary. Who can beat that for a record? Ches is an athletic sort of fellow, for besides playing basketball, he is one of A. U.'s tennis stars. Ches takes an active interest in art.

ORRIS BELLE CLAFLIN

WASHINGTON, D. C.

Alpha Chi 2, 3, 4; President 4; Vice-President 3; Student Council 3, 4; Snapshot Editor ACCOLA 3; Dramat 1, 2, 3, 4; Secretary 3; Vice-President 4; Glee Club 1, 3; Bracky Club 1, 2; Gosling Court 2; Secretary Interfraternity Council 4; Big Sister Chairman 3; Vesper Committee 3; Junior Prom Committee 3; Class Honors 4.

Orris is one to whom all turn when something is to be done. As the Big Sister Chairman she endeared herself to the new girls and helped them to become real college students. Her acting in dramat is always one of the treats of the year, and as a member of the Student Council she is a factor in all things for student good.



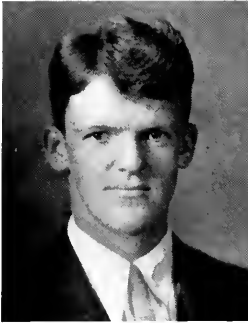
MARY H. CLINE

NORWALK, OHIO

Swagger 3, 4; President 4; Class Vice-President 4; Dramat 3, 4; Glee Club 3, 4; President 4; Class Honors 4.

Mary Cline is a quiet young woman whose tuneful voice is seldom heard except in Glee Club or Dramat. As a member of Swagger and its president she is prominent socially on the campus. Mary seems to run to president for she is likewise the head of the glee club and the vice-president of her class.





E. WARREN COLISON
WASHINGTON, D. C.

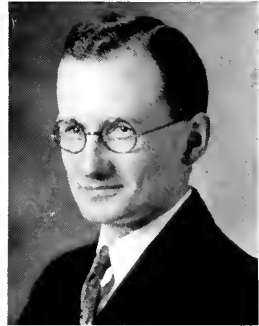
Alpha Theta Phi 2, 3, 4, Secretary 2, Treasurer 3, President 4; Student Council 4; Varsity Basketball 3, 4; Class Basketball 1, 2; Baseball 2; Brecky Club 1, 2, 3, Vice-President 3; French Club 2, 3, 4.

Warren is the man who comes to school in four different cars. As a talented member of the French Club he is in demand to play heroes, villains, irate fathers, and the like. He has been successively secretary, treasurer, and president of Alpha Theta Phi. He is one of A. U.'s star basketball players and lends the weight of his mature judgment to the Student Council.

NORMAN S. CRAMER
WEST BEND, WISCONSIN

Vice-President Class 1; Student Comptroller 4; Treasurer Student Council 4; Class Treasurer 4; Business Manager AUOLA 3; *Eagle* 1, 2, 3, 4, Circulation Manager 1, Business Manager 2, 3; Glee Club 1, 4; Chairman Class Gift Committee 2, 3, 4.

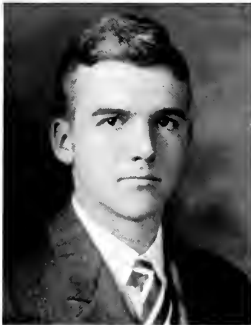
Anyone can see that Norman is a budding financier by looking at him. As business manager of both *Eagle* and AUOLA while a Junior he aided them smoothly over financial difficulties. As Student Comptroller and member of the Student Council he holds the student purse strings and on the side is class treasurer. In his lighter moments he sings in the Glee Club.



ROGER CRAVEN
WASHINGTON, D. C.

Eagle Staff, Circulation Manager 2, Assistant Editor 3, Editor 4; Debate 2, 3, 4, Business Manager 4; Glee Club 1, 2, Business Manager 2; French Club 1, 2, President 1; Honor Roll 1.

Roger is the owner of a car that has to be parked on a hill in order to start, but Roger doesn't take after his car. He is a self-made man, having risen from circulation manager, to assistant editor, to editor of the *Eagle*. He is responsible for the French Club, having organized it and been its first president. He first sang in the Glee Club and then transferred his activities to debate.





BLAKE B. ESPEY
WASHINGTON, D. C.

Class President 3, 4; Secretary Student Council 3; Brahmin 4; Aucola Staff 3; *Engle* Staff 1, 2, 3, 4; Dramat 3, 4; Orchestra 1, 2, 3; Librarian 1; Manager 2; Debate 1, 2, 3; Manager 2; President 3; Vice-President Omicron Epsilon Pi 2, 3, 4.

The secret is out. Blake is the original Jack of beanstalk fame. Whether he will find the princess at the top is conjecture; he found the presidency of the junior and senior classes at the bottom. Lately he has been running to dramatic villains, but on the other hand he was president of the poetry club. He seems likely to remain that thing so dear to every woman's heart an enigma.

BARBARA EVANS
WASHINGTON, D. C.

Alpha Chi 2, 3, 4; Varsity Hockey 1, 2; Class Hockey 1, 2, 3, 4; Class Volleyball 1, 2, 3; Class Soccer 1, 2, 3; Class Basketball 1, 2, 3; A Club 1, 2, 3, 4; French Club 1; International Relations Club 3, 4; Secretary 4; Class Honors 1, 3, 4.

Barbara Evans is one of the quietest people on the campus. Her hockey playing is par excellence and her international relations above reproach. She is an active member of campus, clubs, social and scholastic notably Alpha Chi, and a consistent honor student.



SARAH FRANCES FINCHER
BATTERY PARK, MARYLAND
Art Staff Aucola 3; French Club 2, 3.

Frances is the lady with no illusions. She is sensible of the fact that some people like her for her life savers and others because she listens politely to their woes. We suggest that she turn temperamental artist and have a few woes of her own. "Time is but the stream she goes a-fishing in" and though she is a very competent angler, she has never yet managed to land an English theme in on time. Strangely enough she makes us all want to go fishing with her.





ROSE FLOWERS

HARRISBURG, PENNSYLVANIA

Hood College, Md., 1; Varsity Basketball 2; Class Volleyball 2; Class Baseball 2; Class Soccer 2; A Club 2, 3, 4; Musical Comedy 2.

Rose is a yellow-haired miss with a strange attachment to books of educational psychology. One might almost suspect her of taking this college business seriously. At any rate, she takes sports seriously, for she plays volleyball, basketball, and soccer. It is rumored that she was mistaken for a yellow canary in the famous sophomore musical comedy.

EDITH GAYLORD

WASHINGTON, D. C.

Syracuse University, 1, 2; University of Rochester 3.

Edith is one of the campus mysteries, but she manages to make us pat ourselves on the back when we think that after going to two New York Universities she likes American U. Although she hasn't been here long enough to become very active in college life, we feel sure that we are the ones who are losing because of it.



DOROTHY L. GERTH

WYACONDA, MISSOURI

Swagger 2, 3, 4, Secretary 4; Class Vice-President 3; President Women's Student Government Association 4; Glee Club 1, 3, Secretary 1; French Club 2; Dramat 1.

Dot is one of those quiet persons that it is awfully hard to get along without. The number of clubs she is in testifies to that. Dot rules the Women's Government Association with one iron hand and probably takes the minutes of the Swagger Club with the other. Like little Tommy Tucker, she sings—for the Glee Club.





LOUISE GOLDENBURG
WASHINGTON, D. C.

Class Hockey 1, 2, 3, 4; Class Soccer 1, 2, 3; Class Volleyball 1, 2, 3; Class Basketball 2; A Club 4; Brecky Club 1, 2; French Club 1, 2.

Louise so seldom makes a noise that it is difficult to know much about her. She plays hockey with a fine seriousness, and belongs to the A Club. Her pet hobby is traveling, and her next pet hobby is golf but unlike so many people, Louise never bores others with anecdotes, or holes in one. Maybe her work in psychology has taught her wisdom that others get only by force.

KATHRYN G. HEATH
CINCINNATI, OHIO

Epsilon Kappa 3, 4, President 3; Brahmin Society 3, 4, Chairman, 4; Delta Omicron 2, 3, 4; Head Proctor Women's Student Government 4; Class Hockey 1, 2; Class Soccer 1, 2; Class Volleyball 1, 2; A Club 2, 3, 4; *Eagle* Staff 1, 2, 3, 4, Humor 2, 3, Associate Editor 4; Dramat 1, 2, 3, Wardrobe Mistress 1, 2, Secretary 2; Inter-Fraternity Council 3, 4; Debate 1, 2, 3; International Relations Club 3, 4.

Kay is always busy. Her activities are social and scholastic. She is a charter member of the Brahmins, on the debate squad, on the *Eagle*, and as proctor of the Women's Government Association is in touch with all phases of Dorm life.



LAWRENCE HETRICK
HARRISBURG, PENNSYLVANIA

Class Basketball 1, 2, 3, 4; Class Football 1, 2.

Larry spends his days in the lab wearing a gray smock in the hope that some day a passing visitor will say "Who is that young scientist?" We have a feeling that some day he will get his wish. He is given to boiling things in lab and perfuming Hurst Hall. Larry has played for four years on class basketball teams and is the hanc of the Junior team's existence.





MARY ELIZABETH HETRICK
HARRISBURG, PENNSYLVANIA

Epsilon Kappa 4; Class Basketball 1; Class Volleyball 1, 2, 3; Class Hockey 3, 4; Glee Club 1, 2, 3, Accompanist 3; Accompanist Men's Glee Club 4; Vesper Committee 1; Dramat 2; Class Honors 4.

Mary Liz is a versatile young woman. She plays basketball, volleyball, hockey, and the piano—all equally well. She graduated from a mere performer in the girl's Glee Club to its accompanist, and from there to greater heights as the accompanist of the men's Glee Club. She is not known as the sister of Lawrence Hetrick, nor is he known as the brother of Mary Liz. It is a rare accomplishment.

ETHELWYN HINE
WASHINGTON, D. C.

Delta Omicron 3, 4; Eagle 3, 4; Debate 1, 2, 3, 4; Brecky Club 1, 2, 3.

Ethelwyn cherishes a secret passion for sensible salads. She speaks with force and incontestable logic on all subjects and then answers to the nickname of "Bumpfs." Her activities in debate have resulted in American University victories innumerable times. She makes a delightful bus companion.

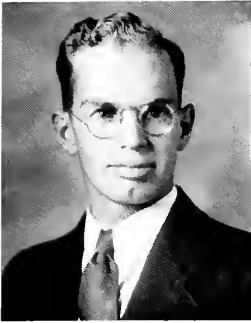


HELEN B. HOPE
ELLCOTT CITY, MARYLAND

Class Secretary 2; Class Hockey 1, 4; Class Basketball 1; Class Volleyball 1; Class Soccer 1; A Club 2, 3, 4; AUCOLA, Circulation Manager 3; Dramat 2, 3; Musical Comedy 2.

Helen is a spiritual looking young woman who plays hockey, basketball, volleyball, and soccer with equal efficiency. She dipped her fingers in ink while a sophomore and took the minutes of the class, and then in her junior year helped circulate the AUCOLA. In spite of all these activities she found time to be in Dramat and be lyrical in the sophomore musical comedy. She is interested in things Georgian.





L. RICHARD HORNER
WILMINGTON, DELAWARE

Jesters 3, 4; Vice-President-Treasurer 4; Advertising Manager AUCCOLA 3; President Student Religious Council 4; Basketball 1, 2, 3, 4; Debate 2, 3, 4; Glee Club 1, 2, 3, 4; Manager 4; Oxford Fellowship 1, 2, 3, 4; President 4; Vesper Committee 2.

Dick has contributed to the tunefulness of the Glee Club for four years, and has been a member of the ancient and honorable order of Jesters for two, but his nature is really attuned to more serious things. As president of the Oxford Fellowship and the Student Religious Council, he verges practically on the holy.

JOHN M. HOUSTON

MOUNTAIN LAKES, NEW JERSEY

Class Treasurer 2; Student Council 4; *Eagle* Staff 1, 2, 3, 4; Literary Editor 4; Assistant Editor AUCCOLA 3; International Relations Club 2, 3; Chairman the Brother Movement 2; Gosing Court 2; Dramat 3, 4; President 4; French Club 2, 3; Producer *Nice Goin'* 2; Lyric *Sons of A. U.* 1; Class Gift Committee 2, 3, 4; Chairman Junior Prom 3; Lyric—"We've Got a Team," 4.

John is one of those detested critics. He is a very dramatic fellow—in fact is president of Dramat. He has the interests of A. U. at heart and comes to Student Council meetings regularly. When he goes around with a dazed look he is composing lyrics, and it is then time for someone to wake him up.

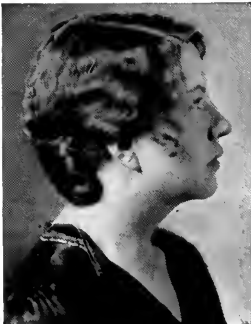


VIRGINIA HUMPHRIES

WASHINGTON, D. C.

Class Hockey 1, 2, 3, 4; Class Basketball 1, 2, 3, 4; Class Soccer 1, 2, 3, 4; Class Volleyball 1, 2, 3, 4; A Club 2, 3, 4; Secretary-Treasurer 4; Glee Club 3, 4; Secretary-Treasurer 4; French Club 2, 3, 4; Dramat 2, 3, 4.

Virginia is a dramatic lady who takes the morals of the biology department to heart. Her devotions to sports is apparent and persevering, while her rôles in Dramat are splendid. She has three majors and an exhaustive knowledge of the verb "amo."





BETTY JACOBY

HARRISBURG, PENNSYLVANIA

Swagger 3, 4; Vice-President Student Council 3; Social Chairman Women's Student Government Association 3; Brahmins 3, 4; Class Hockey, Basketball, Volleyball, Soccer 1, 2, 3, 4; A Club 3, 4; Varsity Hockey 1, 2; AUCOLA Staff 3; Dramat 1, 2, 3, 4; Glee Club 1, 2, 3, 4; Big Sister Chairman 2; Vesper Committee 2; Gosling Court 2.

Betty has a finger in every college pie, and both finger and pie are nice. She is a member of the famous senior hockey team; she has played heroines in Dramat, welcomed Frosh, and scared them into righteousness as a member of the Gosling Court. As a Student Council member, she has helped to run the college.

RICHARD E. JARVIS

WASHINGTON, D. C.

Ohio State University 1; Phi Beta Zeta 2, 3, 4, Treasurer 4; Football 2, 4; Class Basketball 2, 3, 4; Athletic Committee 4.

Dick is another of the big husky athletes who are so plentiful around the college. Besides being one of our football heroes, he plays on the basketball team and is a member of the athletic committee. For three years he has been a member of Phi Beta Zeta.



JAMES JOHNSON

RACINE, WISCONSIN

Jesters 2, 3, 4, President 2, 4; Student Council 1; Manager Basketball 2, 4; Manager Football 2; Dramat Business Manager 2, Treasurer 4; Chairman Social Committee 2, 4; Gosling Court 2.

Jimmie is rather dynamic but very pleasing. He is such a sociable person that for two years he was chairman of the social committee and superintended our hot-dog functions. He has a mind far above hot dogs, however, and for one year guided the destinies of A. U. as a member of the Student Council. Jimmie was born to manage things like sports, and dramat, and maybe a wife.





J. EARL KADAN

TAKOMA PARK, MARYLAND

Alpha Theta Phi 4; Basketball 4; Kittenball 4; Glee Club 4.

Earl's spare time, when he has any, is spent in that ancient American pastime, kittenball. He also plays with that invincible combination, the 1931 Class Basketball Team. To this example of athletic prowess, he has added the Glee Club. He is, moreover, a member of Alpha Theta Phi.

CARL LEVIN

JAMESTOWN, NEW YORK

Football 1, 2, 3, 4; Basketball 3, 4; Dramat 2, 3, 4; Orchestra 3; Vesper Committee 3.

Carl is one of the few men at A. U. that has played for four years on the football team. He is, moreover a great Shakesperian actor. One glance at the Dramat Club picture would convince anyone of that. In his third year he was a member of the seemingly inexhaustible Vesper Committee, and performed in the college orchestra.



NOLA E. LIVINGSTON

CLARENDON, VIRGINIA

President Epsilon Kappa 4; Treasurer 3; Brahmins 3, 4; Varsity Hockey 1; Assistant Editor AUCCOLA 3; Debate 1, 2, 3, 4; French Club 1, 2; Secretary Women's Discussion Group 4; Class Honors 1, 3.

Nola seems to be taking up the art of saxophone playing by proxy. Between lessons she runs Epsilon Kappa, debates heatedly, looks lofty for the Brahmins, and makes class honors. Nola is a very quiet person, perhaps to make up for the saxophone.





JANE E. LYTLE

ROSELLE PARK, NEW JERSEY

Vice-President Class 2; Treasurer Women's Student Government Association 2, 3; Delta Omicron 2, 3, 4; Brahmins 3, 4; *Eagle* 1, 2, 3, 4; Debate 1, 2, 3; Dramat 3, 4; Stage Manager 3; International Relations Club 2, 3, 4; Vice-President 4; Glee Club 1; Chapel Committee 3, 4; Vesper Committee 1, Chairman 3.

Jane is one of the busiest persons on the campus with activities in every branch. She is interested in every phase of college life, social or scholastic. As a tribute to her varied career she was chosen one of the charter members of the Brahmin Society.

SARAH E. McILVAINE

PHILADELPHIA, PENNSYLVANIA

Philadelphia Normal School 1, 2; Phi Sigma Beta 3, 4, Vice-President 3; Debate 3; French Club 3, 4.

Sally is a decided blond, very decided, in spite of the fact that she only debated for one year. She is one of the few faithful members of the French Club. Sally is also very much a member of Phi Sigma Beta, and was its vice-president in her junior year.



W. EVERETT McLAINE

WASHINGTON, D. C.

Everett is one of American University's genuine ivory ticklers. He plays for the Wesley Heights Club-house, fraternity dances, and such like, with real jazz orchestras. It is not often that A. U. entertains a jazz artist within her doors, whether aware of it or not.



ACCOLA 31



ESTHER P. McVEY

ALTOONA, PENNSYLVANIA

Swagger 1, 2, 3, 4, Vice-President 1, Social Chairman 4; President Women's Student Government Association 4; *Eagle* 1; Dramat 1, 2; Junior Prom Committee 3; *Nice Goin'* 2.

Jimmie started snooping out secrets for the *Eagle*, played in Dramat for two years, and ended up a member of the Swaggers. She was a member of the short lived and long mourned sophomore musical comedy, and on the junior prom committee.

MARGARETTA MOORE

SOMERSET, MARYLAND

Alpha Chi 1, 2, 3, 4, Vice-President and Social Chairman 4; Class Secretary 4; Class Hockey 4; Class Basketball, Volleyball, and Soccer 1, 2, 3, 4; A Club 2, 3, 4; International Relations Club 4; Class Honors 3.

Margaretta lays claim to fame by being a charter member of Alpha Chi, its vice-president and social chairman. She is a member of the justly famed senior hockey team and plays basketball, soccer, and volleyball. For all this she is a member of the A Club. Margaretta is internationally minded, gets class honors, and keeps class minutes.



MARGARET MOWBRAY

WASHINGTON, D. C.

Phi Sigma Beta 3, 4, Vice-President 3; Class Hockey 4; Art Editor *Accola* 3; Dramat 3, 4, Vice-President 4; Glee Club 3, 4, Secretary-Librarian 3.

Mickey is one of the few people that could go to Europe and not come back pseudo-sophisticated. She still gets ruling passions for stars, and wants to be a great artist. She began by being responsible for all the lovely posters that have decorated the college, and did the art work on the 1930 *Accola*.





HENRY V. MULLER
HERNDON, VIRGINIA

Class Kittenball 3; Class Football 1; Oxford Fellowship 3, 4, Secretary 4; Class Honors 1.

Henry is one of American University's contributions to the ministry. To this he adds kittenball in the spring. And tradition has it that way back in the primeval years, Henry was both on the class football team, and a shining scholar.

LYNETTE MULHOLLAND
RUPERT, VERMONT

Epsilon Kappa 3, 4; Glee Club 3; Chairman Vesper Committee 4.

Lynette wants to be a missionary, and as preparation used to sing in the Glee Club. She gave that up and became chairman of the Vesper Committee as more to the point. For two years she has been a respected member of Epsilon Kappa.



LOUISE MURRAY
CLARENDON, VIRGINIA

Glee Club 3, 4; Vice-President 3; French Club 2, 3, 4; Western Club 4; Dramat 3, 4; Chairman Committee for Revision of Women's Student Government Constitution 3.

Louise has all the gods of Tin Pan Alley at her finger tips, and all the classics to boot. No wonder she is in the Glee Club. She was once described as the kind of person, who when she draws flowers, draws the dirt for them to grow in. She writes charming poems that even survive being read at the lunch table.





MARY PUTNAM
WASHINGTON, D. C.

Epsilon Kappa 3, 4; Varsity Hockey 2; Class Hockey 1, 2, 3, 4; Class Volleyball 1, 2, 3, 4; Class Soccer 1, 2, 3, 4; Class Basketball 1, 2, 3, 4; A Club 3, 4; Manager Freshman Athletics 3; Student Sports Leader Senior Class 4; Western Club 4; French Club 1, 2, 3, 4; Dramat 3.

Mary is noted for playing the best hockey on the campus. As student sports leader it is her job to coax Frosh to march in line and keep from wiggling in pyramids. She is the prop of the A Club. She belongs to Epsilon Kappa and yet lives in peace with her roommate of Phi Sigma Beta. The eulogy is complete.

J. HAROLD RIGGLE
JERSEY SHORE, PENNSYLVANIA

Oxford Fellowship 2, 3, 4; Glee Club 2, 3, 4, President 2; Dramat 2, 3, 4; Quartette 2.

Harold is one of the few boys in the college who can wear false beards, moustaches, and the like in Dramat and get away with it. He also takes the part of Father Noah in Glee Club with great aplomb. He presides over the Glee Club with dignity and over the quartette with praise. He has foregathered with the elect in the Oxford Fellowship for three years.



ANNA MARY SANFORD
DANVILLE, VIRGINIA

Averett College 1, 2; Class Secretary 3; Glee Club 3; Dramat 4; Orchestra 3, 4; Vesper Committee 4.

Anna Mary plays "first Violin" and we predict she will always play it. She sings in Glee Club but her violin sings for her in Orchestra. She managed affairs of state as secretary of her class in her junior year, and in her last year, discovering herself to be dramatic, stalked the boards with the Dramat Club.





ETHEL SMITH

WASHINGTON, D. C.

Varsity Hockey 1, 2; Class Hockey, Volleyball, Basketball, Soccer 1, 2, 3, 4; A Club 2, 3, 4, Social Chairman 4; Varsity Basketball 2; French Club 1, 2; Dramat 2, 3, 4; Anglican Club 3, 4, Secretary-Treasurer 4.

Ethel gives Binet tests to unsuspecting friends and belongs to the Anglican Club. When nothing else serves to make the senior hockey team win Ethel scares the opponents. She makes a very sociable chairman of the A Club, and plays the parts of brisk heralds and frolicking fairies in Dramat with equal ease.

HELEN STAPLES

WASHINGTON, D. C.

Class Hockey 3, 4; Class Basketball 3, 4; Class Soccer 3, 4; Class Tennis 3, 4; Brecky Club 3.

Helen is so devoted to the goddess "sport" that she stays 'til the wee sma' hours of the evening practising for basketball, or hockey, or whatever occupies the boards at the time. She plays every game ever invented, even bridge. Her hobby is collecting shoes, and wearing them.

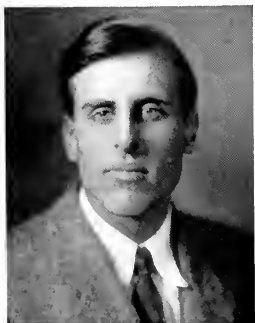


G. LEVERETT STOWELL

WASHINGTON, D. C.

International Relations Club 2, 3, 4; Anglican Club 3, 4, President 4.

Leverett spends his time practicing to be a modern Lord Chesterfield. He delights in bowing, picking things up that thoughtful young women drop, and running the Anglican Club. His affiliations with the International Relations Club lead one to believe that the future of nations is not as black as it is painted. Surely Leverett's diplomacy and tact could smooth over even another world war.





MILDRED SWEET
ANN ARBOR, MICHIGAN

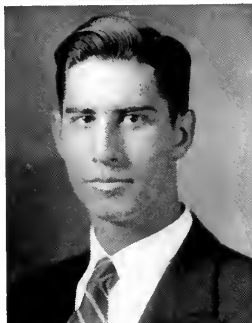
Glee Club 4; Debate 4; Class Hockey 4.

Mildred is one of the budding women debaters of this year. Although not starting debating formally until her last year she won a place on a woman's squad promptly. Women are always more or less skilled in the art any way according to the men. Mildred is also a member of the Glee Club and played on the senior hockey team that so completely wrecked the other class teams.

ELLSWORTH L. TOMPKINS
MOUNTAIN LAKES, NEW JERSEY

Phi Beta Zeta 2, 3, 4, President 4, Treasurer 2; Student Council 2; Interfraternity Council 2, 3, President 4; Class Basketball 1; Class Soccer 4; AUCOLA 3; Dramat 4; Band 4; Student Athletic Committee 2, 4, Chairman 2; Glee Club 1, 2, 3, 4, Vice-President 2, President 4; Assistant Manager Football 1; Manager Athletics 2; Class Gift Committee 4; Vesper Committee 4; Prom Committee 3.

Elzy has so many activities that discretion has to be used in selecting them. Some of us wonder just what will happen to A. U. when he graduates. It looks as if he has accomplished the miracle and made time stand still while he did all these things.



HELEN TUCKER
WASHINGTON, D. C.

Alpha Chi 2, 3, 4; Dramat 1, 2, 3, 4; Glee Club 3, 4, President 3; French Club 1, 2, 3, 4, President 4.

Helen is a great and tuneful Shakesperean actress, who yet stoops to run the French Club. When we have been very good little boys and girls, Helen is allowed to sing in chapel to entertain us. Helen also kept the Glee Club in the straight and narrow path, and learns the Greek alphabet for Alpha Chi on the side.





DORIS M. WILLIS

WASHINGTON, D. C.

AUCOLA Staff 3; Glee Club 1, 2, 3, 4, Business Manager 4; Vesper Quartette 2; Quartette 3, 4; Secretary-Treasurer Omicron Epsilon Pi 4; President Western Club 4.

Doris is one of the most tuneful of the many warblers that infest the college. She sings A la Glee Club, Quartette, or Solo. She is secretary-treasurer of Omicron Epsilon Pi, which the commoners know as the poetry club. Doris worked on the 1930 AUCOLA and then, dissatisfied with life, organized the Western Club. Very few hold it against her.

ESTELLE WOLFE

MERRICK, NEW YORK

President Phi Sigma Beta 3, 4; Interfraternity Council 3, 4; Treasurer 4; Advertising Staff AUCOLA 3; Advertising Staff Eagle 3, 4; Dramat 2, 3, 4; Chairman Class Gift Committee 4; French Club 1.

Estelle plays the breezy western rôles in Dramat, where there is plenty of room to expand. Although the campus is not lacking in great open spaces, she chooses to do her expanding in activities. For two years she has been president of Phi Sigma Beta; she is on the Eagle staff, a past member of the AUCOLA, and a member of the interfraternity council.



FRANCES YOUNG

WASHINGTON, D. C.

Swagger 3, 4, Secretary-Treasurer 3, Vice-President-Secretary 4; Class Secretary 1; Brecky Club 1.

Frances is noted for getting long letters from France regularly. She started her college career under auspicious circumstances by joining the Brecky Club, but like so many others, got lost by the wayside. Although not lost in Swaggers she seems in a fair way to being swamped by her duties.





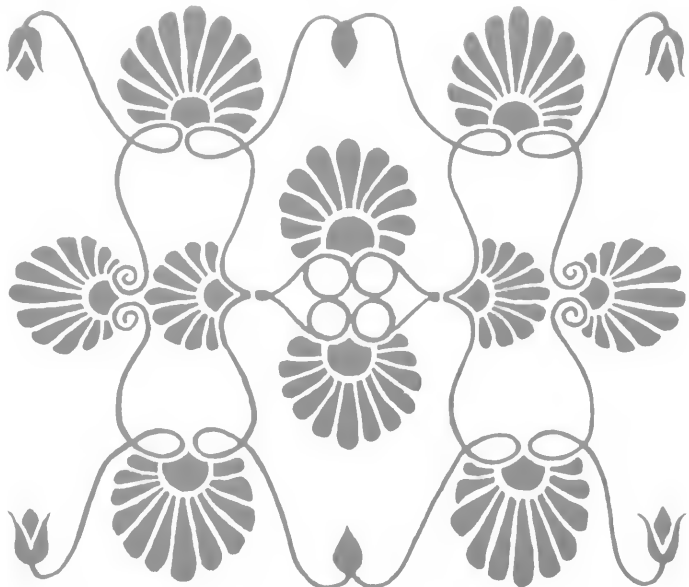
JUSTINE CROSSER

CLEVELAND, OHIO

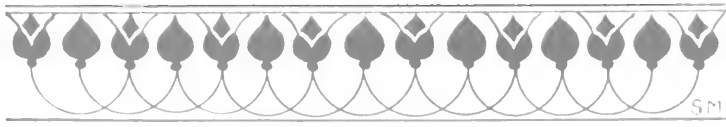
Justine was cut out to be a congressman's daughter. She is interested in American History, campaigning, and probably careers for women. She very nonchalantly drives a big car with a Congressional sign on it, and it is rumored that she is one of the few women who wouldn't get lost in the Capitol.

GAUCOLASIO





JUNIORS



S.M.

ACCOLA 31



BRIGHT
President

EDWARDS
Vice-President

JAMIESON
Secretary

FUCHS, W. B.
Treasurer

The Class of 1932

In the fall of 1928, the present Juniors made their first appearance on the campus, a group of pampered infants sadly in need of a nurse. Instead, they received the gentle administrations of the Gosling Court. Thus stimulated toward development into reasoning adults, the class wandered through the first year, with the usual mishaps and pleasures of childhood.

No longer infants, the class in 1929 entered that period of youthful exuberance which corresponds roughly to the Boy Scout Age. With added knowledge of the facts of college life, they successfully passed through the voice-changing stage, and became a little less gawky, a trifle more urbane.

Returning last fall, the class suddenly realized that college life was half over. Matured, but not yet weighed down by the dignity and necessity for grade points of the Senior, the Juniors set forth. Although they took an active part in all campus affairs, the two distinctively Junior functions, putting out the ACCOLA and putting on the Prom, were the chief interests of the class. The results speak for themselves.



A U C O L A 3 I



RUTH L. BELL
WASHINGTON, D. C.

George Washington University, 1, 2; Dramatics, 3.

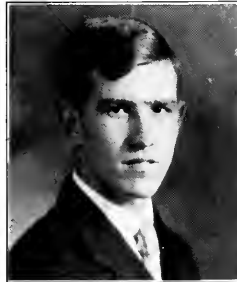


AUDREY L. BELT
WASHINGTON, D. C.

Secretary Student Council, 3; Junior Hockey Team, 3; *AUCOLA*, Assistant Editor, 3; *Eagle*, 1, 2; French Club, 1, 2, 3; Treasurer, 2; Brecky Club, 1, 2, Social Chairman, 2; Chairman Class Gift Committee, 3; Class Honors, 1, 2, 3.

B. BROOKE BRIGHT
WASHINGTON, D. C.

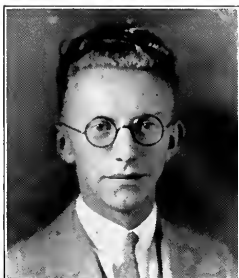
Alpha Theta Phi, 2, 3, Vice-President, 3; Class President, 3; Student Council, 2, 3; Football numerals, 2; Class Basketball, 1, 2, 3; Anglican Club, 2, 3, Treasurer, 2; *Eagle* Staff, 1, 2.



MARY FRANCES BROWN
WASHINGTON, D. C.

Phi Sigma Beta, 2, 3; Anglican Club, 2, 3.





WILLIAM M. BOWERS
 PHILADELPHIA, PENNSYLVANIA
 Glee Club, 2.



MARY JEANNETTE BRUNDAGE
 WASHINGTON, D. C.
 Archery, 3; French Club, 3; Glee Club, 3; Class
 Honors, 3.

LEON K. BRYNER
 DANVILLE, PENNSYLVANIA

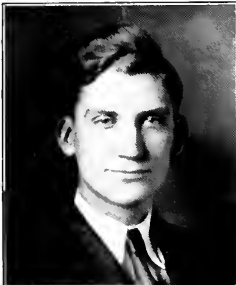
Phi Beta Zeta, 1, 2, 3; Glee Club, 1, 2, 3; Male Quar-
 tet, 1, 2, 3.



ROBERTS D. BURR
 SOUTH MANCHESTER, CONNECTICUT

Glee Club, 1, 2, 3, Secretary-Treasurer, 2; French
 Club, 1; Editor of College Handbook, 2; Chairman of
 Class Ring Committee, 2, 3; Vesper Committee, 3.





JOSEPH L. CARTER
ALTOONA, PENNSYLVANIA

Phi Beta Zeta, 2, 3; Assistant Manager of Basketball, 1; Oxford Fellowship, 1, 2, 3; French Club, 1; Glee Club, 1; *Eagle* Staff, 1; Aucola, 3; College Social Committee, 1; Junior Prom Committee, 3.



THOMAS J. CUDDY
MERWOOD PARK, PENNSYLVANIA

Jesters, 2, 3; Class Basketball, 1, 2, 3; Oxford Fellowship, 1, 2, 3, National Treasurer, 3.

DOROTHY M. DARBY
WASHINGTON, D. C.

Alpha Chi, 1, 2, 3, Class Vice-President, 2; Tennis, 1; Class Basketball, 1, 2; Class Hockey, 2, 3; French Club, 1, 2, 3; Brecky Club, 1, 2, Vice-President, 2; Glee Club, 2, 3, Secretary, 2.



BURKE EDWARDS
CHEVY CHASE, MARYLAND

Alpha Theta Phi, 1, 2, 3, Secretary, 1, Vice-President, 2; Basketball, 3; Class Football, 1, 2; Class Basketball, 1, 2; Golf Tournament Champion, 1, Runner-up, 2; Brecky Club, 1.



OSCEOLA 31



RUTH R. EDWARDS
MAPLEWOOD, NEW JERSEY

Alpha Chi, 1, 2, 3; Student Council, 1; Class Vice-President, 3; Class Hockey, 3; French Club, 1, 2; Glee Club, 2; Vesper Committee, 1; Big Sister Chairman, 3; Junior Prom Committee, 3; Chairman of Class Social Committee, 3.



NORMAN FABIAN
POUGHKEEPSIE, NEW YORK

Class Basketball, 1, 2, 3; Class Honors, 1, 2, 3.

KEELER FAUS
OSCEOLA MILLS, PENNSYLVANIA

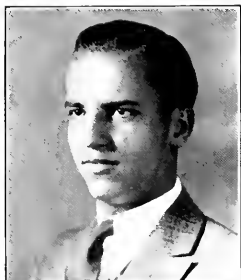
Omicron Epsilon Pi, 3.



W. YULE FISHER
WASHINGTON, D. C.

Alpha Theta Phi, 1, 2, 3; Class Treasurer, 1, 2; OSCEOLA Editor, 3; Football, Assistant Manager, 1; Varsity Manager, 2, 3; Athletic Manager, 4; Brecky Club, 1, 2, 3; President, 2; Debate Squad, 1, 2, 3; International Relations Club, 2, 3; *Eagle* Reporter, 1, 2; Chairman Student's Athletic Committee, 2; Big Brother Committee, 3; Junior Prom Committee, 3; Faculty Prize, 2; Class Honors, 1, 2.





ROBERT W. FUCHIS

WASHINGTON, D. C.

Phi Beta Zeta Associate, 2, 3; Basketball, 2; Football, 2.



W. BARRETT FUCHS

WASHINGTON, D. C.

Phi Beta Zeta, 1, 2, 3, Secretary, 2, Vice-President, 3; Class Treasurer, 3; Glee Club, 1, 2, 3, Vice-President, 3; Male Quartette, 1, 2, 3; Class Honors, 2, 3.

EUGENE GURNEY

WASHINGTON, D. C.

Kedder College, 1, 2; Glee Club, 3.



MARGARET HERBINE

READING, PENNSYLVANIA

Hood College, 1, 2; Class Hockey, 3.



A U C O L A 3 I



M. HAZEL JACOBS
GAITHERSBURG, MARYLAND

Alpha Chi, 1, 2, 3; Class Hockey, 2, 3; Class Volleyball, 2; Class Basketball, 2, 3; French Club, 1, 2, 3; Dramatics, 1, 2, 3.

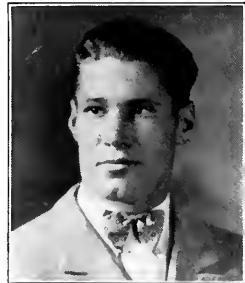


CHARLOTTE JAMIESON
CHEVY CHASE, D. C.

Epsilon Kappa, 2, 3; Class Secretary, 3; Class Basketball, 1, 2; Class Hockey, 1, 2, 3; Class Soccer, 1, 2; Class Volleyball, 1, 2; A Club, 1, 2, 3; AUCOLA, 3; Women's Student Government, Secretary, 3; Omicron Epsilon Pi, 1, 2, 3; Brecky Club, 2; Eagle Staff, 1; Orchestra, 2; Anglican Club, 2, 3.

HENRY B. JOHNSON
CABIN PARK, MARYLAND

Football, Varsity, 1; Basketball, 1; Class Basketball, 1, 2, 3; Dramatics, 1, 2, 3.



DOROTHY JONES
RACINE, WISCONSIN





ALTON H. KELLER
WASHINGTON, D. C.

Class Basketball, 2, 3; *Eagle*, 2, 3, Assistant Business Manager, 2, Business Manager, 3; Glee Club, 1, 2, 3, Vice-President, 2, Assistant Business Manager, 3; Debate, 1; Class Honors, 1.



FREMONT KNITTLE
SALINA, KANSAS

Kansas Wesleyan University, 1, 2; Phi Beta Zeta, 3.

RUSSELL W. LAMBERT

ROARING SPRINGS, PENNSYLVANIA

Phi Beta Zeta, 1, 2, 3, Secretary, 1; Class President, 1; Football, Varsity, 1, 2, 3; Class Football, 1, 2; Class Basketball, 3; Class Soccer, 3; Aucola, Photographic Manager, 3; International Relations Club, 1, 2, 3, Program Chairman, 2, President, 3; Oxford Fellowship, 1, 2, 3; *Eagle*, 1; Glee Club, 1; Chapel Committee, 2, 3.



RENE LUTZ
WASHINGTON, D. C.
Orchestra, 1, 2, 3.



AUCOLAZI



JEANETTE MACMAHON
MORRISTOWN, NEW JERSEY

Swagger, 2, 3.



VIRGINIA L. MAIDEN
CLARENDON, VIRGINIA

Shenandoah College, 1, 2; Swagger Club, 3; Orchestra, 3.

W. EARL MASINCUP
WASHINGTON, D. C.

Phi Beta Zeta, 2, 3; Treasurer, 2; Secretary, 3; AUCOLA Business Manager, 3; Debate, 2; Brecky Club, 1, 2, 3; *Eagle*, Advertising Manager, 2; International Relations Club, 3; Class Honors, 3; Big Brother Committee, 3.



ELIZABETH McBIRNEY
WASHINGTON, D. C.

University of Idaho, 1, 2; Alpha Chi, 3; Class Hockey, 3.



A U C O L A 3 I



F. WARD MITCHELL
BALTIMORE, MARYLAND
Jesters, 1, 2, 3; Athletic Committee, 1.



SUZANNE MULLETT
SILVER SPRINGS, MARYLAND
Class Basketball, 1, 2; Class Soccer, 1, 2; Class Volleyball, 1, 2; Class Hockey, 2, 3; AUCOLA, Art Editor, 3.

ARTHUR R. MURPHY
WASHINGTON, D. C.

Jesters, 3, Secretary, 3; AUCOLA, 3; Anglican Club, 2, 3, President, 3; French Club, 1, 2, 3, Treasurer, 2; Dramatics, 3; International Relations Club, 2, 3, Treasurer, 2; Debate, 1, 2, 3; Junior Prom Committee, 3.



GEORGE OLSEN
NEW YORK, NEW YORK

Jesters, 1, 2, 3, Vice-President, 3; Football, Varsity, 1, 2, 3; Basketball, Varsity, 1, 2, 3, Captain 2; AUCOLA, 3; Athletic Committee, 3.



AUCOLA 31



MARY JANE PEARCE
ENGLEWOOD, NEW JERSEY

Alpha Chi, 1, 2, 3, Treasurer, 2; Class Hockey, 3; AUCOLA, 3; Women's Student Government Association, 2, 3, Secretary, 2, Social Chairman, 3; Junior Prom Committee, 3.



OLIVE E. RODGERS
DENVER, COLORADO

Epsilon Kappa, 2, 3, Secretary, 3; Class Hockey, 1, 2; Class Soccer, 1, 2; Class Volleyball, 2; AUCOLA, 3; Vesper Committee, 2; Junior Prom Committee, 3; Class Social Committee, 3.

EDWIN A. ROSS
WASHINGTON, D. C.

Phi Beta Zeta, 2, 3; Class President, 2; Student Council, 3, Vice-President, 3; Class Basketball, 1, 2, 3; *Eagle*, Assistant Editor, 3; Dramatics, 3; Oxford Fellowship, 1, 2, 3, Vice-President, 3; Chairman of Big Brother Committee, 2; Class Gift Committee, 3.



SYLVIA K. SARD
SECRETARY, MARYLAND

Alpha Chi, 1, 2, 3; Class Hockey, 1, 2, 3; Class Volleyball, 2; Class basketball, 2, 3; French Club, 1, 2.



AUCOLA 31



DOROTHY SAUNDERS
WASHINGTON, D. C.

George Washington University, 1, 2; AUCOLA, 3;
Eagle, 3.



G. HAROLD SHIRLEY
CUMBERLAND, MARYLAND

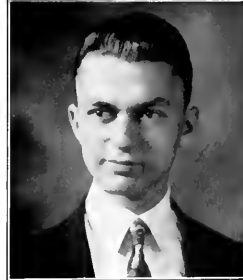
Shepherd College, 1, 2; AUCOLA, 3; Dramatics, 3;
Glee Club, 3; Oxford Fellowship, 3.



PERRY O. SNIDER
SALINA, KANSAS

Kansas Wesleyan University, 1; Phi Beta Zeta, 2, 3;
AUCOLA, Circulation Manager, 3; Class Honors, 2, 3.

*Congratulations
on your art.
Perry O. Snider*



LELAND W. SPRINKLE
WASHINGTON, D. C.



AUCOLA 31



RUDOLPH H. SWANSON
EAST GREENWICH, RHODE ISLAND

Phi Beta Zeta, 3; Class Soccer, 3; Class Basketball, 1, 2, 3; AUCOLA, Assistant Editor, 3; *Eagle*, 2, 3, Assistant Business Manager, 3; Glee Club, 1, 2, 3, Secretary-Treasurer, 3; French Club, 1, 2, 3; Band, 3; Oxford Fellowship, 3; International Relations Club, 3; Junior Prom Committee, 3; Ring Committee, 3; College Social Committee, 3; Athletic Committee, 3.



EDITH SWANTON
WASHINGTON, D. C.
Urbana University, 1, 2.

JOSEPH TARSHES
WASHINGTON, D. C.

George Washington University, 1, 2; AUCOLA, Advertising Staff, 3; *Eagle*, Advertising Staff, 3; Debate, 3.

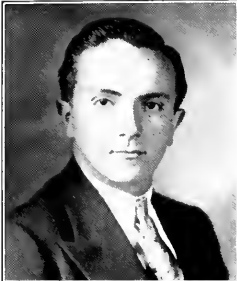


DANIEL S. TERRELL
ELKTON, MARYLAND

Assistant Cheerleader, 1; Cheerleader, 2, 3; *Eagle*, Reporter, 1, 2, Assistant Editor, 3; AUCOLA, Assistant Editor, 3; Class Honors, 2; Student Athletic Committee, 2, 3; Chairman of Junior Prom Committee, 3; College Social Committee, 3.



AUCOLAS



MAX TUCKER
KINGSTON, NEW YORK

Class Soccer, 3; Debate, 1, 2, 3; Orchestra, 1, 2, 3;
Band, 3.

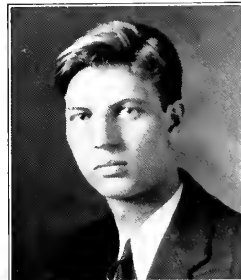


AGATHA M. VARELA
WASHINGTON, D. C.

Epsilon Kappa, 2, 3, Vice-President, 3; Anglican Club,
2, 3; *Eagle* Staff, 2, 3; Class Honors, 3.

WILLIAM WASHBURN
WASHINGTON, D. C.

Jesters, 2, 3; Basketball, 1, 2, 3; Varsity Manager, 2;
Tennis, 2, 3.



JEAN WREN

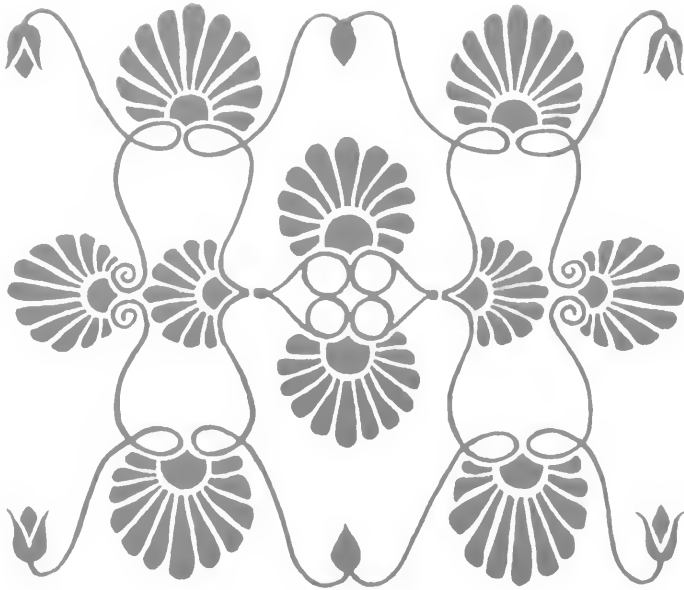
HARRISBURG, PENNSYLVANIA

Western College, 1, 2; Alpha Chi, 3; Class Hockey, 3;
AUCOLA Staff, 3; *Eagle* Staff, 3; International Relations
Club, 3; French Club, 3.

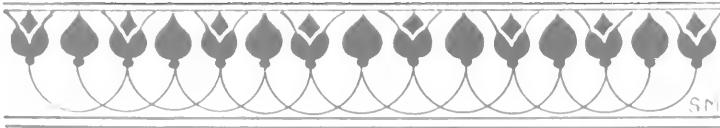


A U C O L A 3 I





SOPHOMORES





Sophomore Class

Gleason, Jorg, Holmes, Stewart, Lau, Dick, Carter, Underwood, Simpson
 Huntzberger, Bowers, Backenstoss, Harbaugh, Sell, Kohan, Cramer, F., Williams, J., Weeks, Larson
 Pederson, Wold, Rodriguez, Skeggs, Williams, G., Moffitt, Tate, E., Adelman
 Flemming, Somerville, Motley, Hamilton, Melville, Adams, Johnston, Smith, D., Eby, King, Marcan,
 Brundage, E.
 Schaul, Robbins, Sherier, Ford, Spense, Kirby, Hartshorn, Perce, Kirk, Woods
 Crandon, Taylor, Town, Blanchard, Spencer, Hoover, Reuter, Worley, Diamond, Buffington



HOOVER
President

REUTER
Vice-President

SPENCER
Secretary

BLANCHARD
Treasurer



Class History, 1933



IS a group somewhat altered both in spirit and personnel that takes the name of sophomore this year. We have been some time learning to think of ourselves as prospective juniors, seniors, and college graduates, for the freshman spirit, particularly as we had it, undiminished by upperclass restraint, is a Peter Pan spirit which is perpetually of today. But we are at last acquiring the forward look. It would hardly be exact to accuse us of being serious-minded yet, but anyone who had observed our freshman class meetings would find a hopeful contrast in attending those of our sophomore year. There are no riots, and since everyone is so anxious to continue to his next class, President Hoover (yes, we have one too) always dismisses us promptly.

Among the gala occasions early in the year was our Field Day with the downtrodden freshmen. Although the greencapped boys had a fatal victorious pull in the Tug-of-War, they were soundly defeated in soccer; and the girls' hockey game ran an extra period, which yielded a grim victory for the sophomore stick-swingers.

November first is memorable as the date of our Hallow'en dance. At that time we offered the innovation of a colored orchestra, the strains from which were as weird as the mural decorations of humpy black cats and hooked-nosed witches.

In addition to supplying the cream of A. U. athletes, *Eagle* reporters, and participants in the other activities, the Sophomore class leads the campus in its number of honor students.

The officers of the Sophomore Class are: President, Kenneth Hoover; Vice-President, Katherine Reuter; Secretary, Lois Spencer; Treasurer, Alan Blanchard.





Class of 1933

BEATRICE ADAMS
PHYLLIS ADELMAN
HENRY BACKENSTOSS
RUTH BELDEN
ALAN J. BLANCHARD
CHESTER BOWERS
ELIZABETH BRUNDAGE
HELEN BUFFINGTON
FRANCIS CRAMER
ALPHINE CRANDON
MARGARET CROSS
MARY DAUB
MARY DAVIS
LEONEL DICK
FORREST DIEHL
MARGARET DIMOND
EUGENE EBY

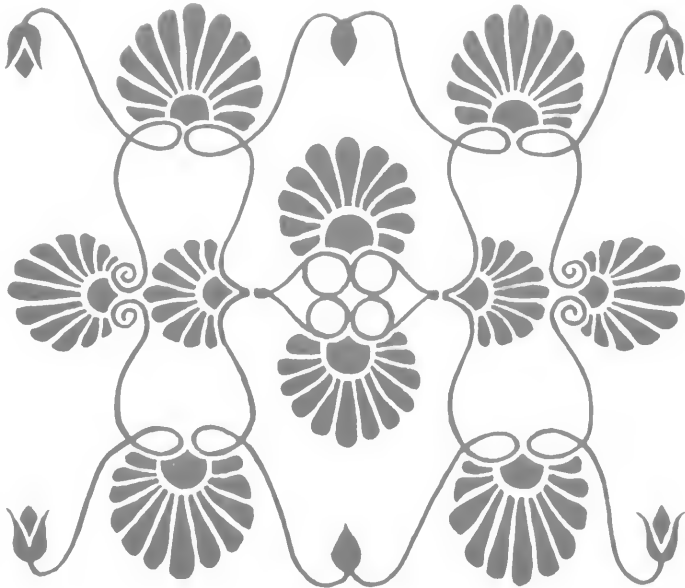
ANNE ENGLISH
BETTY FLEMMING
ALICE LOUISE FORD
VERONA GOETZ
DOROTHY HAMILTON
BETTY HANCOCK
HAROLD HARBAUGH
DONALD HARRIS
MILDRED HARRIS
VIRGINIA HARRISON
GRACE LOUISE HART
MARY E. HARTSHORN
KENNETH HOOVER
ANNA HUNTER
LEE HUNTZBERGER
ALFRED JOHNSON
ELEANOR MAE JOHNSTON

CHARLES JORG
ANNE KING
CORNELIA KIRBY
HAZEL KIRK
HYMAN KOHAN
MYRA KRIGER
WAYNE LARSON
ROBERT MARCUS
SALLIE ANN MAREAN
HELEN MARTIN
MAUD MELVILLE
CHARLES MINDER
HARRY MOFFETT
SARA MOTLEY
ANNA LORENA MURRAY
EUGENIA OLNEY
SAMUEL ORENSTEIN
CATHERINE OSBORNE
EDWARD PARKE
VIRGINIA PEDERSEN

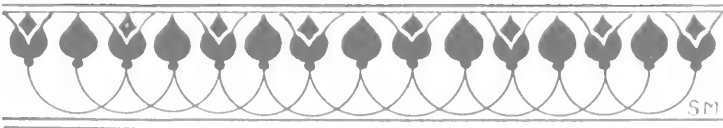
PRUTIA ANNA PEIRCE
KATHERINE REUTER
VERNON ROBBINS
MAX SCHAUL
ALFREDA SCOBEE
OSCAR SELLS
VIRGINIA SHERIER
MYRON LEE SIMPSON
CARLTON SKEGGS
CAMPBELL T. SMITH
DAN SMITH
GANEVIEVE SPENCE
LOIS ANNA SPENCER
JANET STEVENSON
FREDERIC STEWART
THEODORE STEWART
ELSE TAENZLER

EDWARD TATE
ELEANOR TAYLOR
ANGELO TEDESCO
ELIZABETH TOWNE
HARRY UNDERWOOD
CARRIE VANBUSKIRK
DOROTHY WALLER
HARRY WEEKS
AMELIA WEINBERG
GLADSTONE WILLIAMS
JOHN WILLIAMS
CATHERINE WOLD
JOHN WOODS
ADOLPHUS WORLEY
RITA YORK
MARIA ZURAS





FRESHMEN



SM



Freshman Class

Tuve, Thomas, Lytle, Cooley, Thompson, Fuchsle
 Kidder, Dannemiller, Lentz, Ehrhardt, Baker, Esper, Field, Norquist, Rodriguez, Clark, Hendrick,
 Farthing, Denit

Davidson, Buckingham, Noble, Seaton, Rice, Learned, Smith, A., Spitznas, Kernahan, Cowles
 Haines, Buchanan, McNeill, Cow-sill, Reeves, Tompkins, Waite, Billett, Coulter, Bishop, M., Warner
 Putney, Smith, K., Deane, Lee, Parker, Robb, Gallher, Miller, Melcar, Stuart, Ficklen, Leatherwood
 Skidmore, Nicklas, Goodner, Tate, H., Tate, C., Anderson, Bishop, J., Cooke, Robbins, Snyder



ANDERSON
President

TATE, C.
Vice-President

BISHOP, J.
Secretary

TATE, H.
Treasurer



Class of 1934

WILLIAM ANDERSON

DOROTHY BAKER

EVELYN BELLETT

JANE BISHOP

MILDRED BISHOP

GEORGE BORSARI

LUCILLE BROWN

WINONA BUCHANAN

DONALD CARRIER

PHILIP CHAVES

MILTON CHRISTIE

BEATRICE COMEAU

SARAH COOKE

EMERY COOLY

JOHN LEE COULTER, JR

MAJORIE COWLES

GLADYS COWSILL

LOUISE DANFORTH

BARBARA DANNEMILLER

EDWARD DAVIDSON

MARY OWEN DEAN

WILLET DENIT

ALICE LEE DIX

HELENE EHRHARDT

LEE ESPER

DOCK FAIRHING

IMOGENE FICKLEN

THEODORE FIELD

ANNA FORREST

WILLIAM FUCSLE

HILDA GALLIHIER

HENRIETTA GOODNER

CHARLOTTE GOULD

ELSA GRIFONI

NATALIE HAINES

HARLAN HENBRICK

SIDNEY HERRON

J. E. HOLMES, JR.

FRANCE JABAUT

EARL KERNAHAN

ARTHUR KIDDER

RUTH KNOBLOCH

DOROTHY LATHAM

JAMES LAU

LOUISE LEARNED

GENEVEVE LEATHERWOOD

ALICE LEE

RITA LENIZ

THEODORE LYTLE

ELIZABETH McNEILL

MARY LOUISE MELEAR

DOROTHY MILLER

ALICIA MOONLY

EMILY NICKLAS

FRANCES NOBLE

ROLAND NORQUIST

ROBERT PARKER

EDWIN POWERS

KATHLEEN PUTNEY

BRUCE QUADLEY

WEBSTER RAMSEY

LUCY REEVE

LAWRENCE RICE

PRISCILLA ROBB

MARY LOUISE ROBBINS

DANIEL RODRIGUEZ

WILLIAM ROGERS

DOROTHY SEATON

HADLEY SHELTON

MARCUS SCHWARTZMANN

MARTHA SKIDMORE

ARTHUR SMITH

KATHLEEN SMITH

PAULINE SNYDER

WILMA SOMERVILLE

JOHN SPIZNAS

MARJORIE STUART

HAROLD SWIFT

CLARA TATE

HUGH TATE

JOSEPH THOMAS

WELLS THOMPSON

PAUL THRAILKILL

RATIE TOMPKINS

RICHARD TUVE

ELEANOR WAITE

MARGARET WARNER





Class History, 1934

WITH fear and trembling in their hearts the Freshman Class arrived at A. U. in September, 1930. In a few short weeks, however, we felt that we had been here always. The get-together parties, the Big Brother and Sister party, and the pep meetings made us realize the spirit of cooperation and "togetherness" which prevails at A. U., and we soon settled down to our studies and various activities. Our one "bug-bear" was Freshman rules, and harder than English, Chemistry, or French was to remember not to use the cross-walk and to wear dinks and berets. However, the Freshman victory in the annual tug-of-war lifted the ban against the cross-walk, and very soon all rules were abolished.

The boys of the class of '34 were among those who were the first to occupy the new dormitory, and the freshman class also witnessed the first interfraternity prom, the organization of the Western Club, and the establishment of the new system of giving grades.

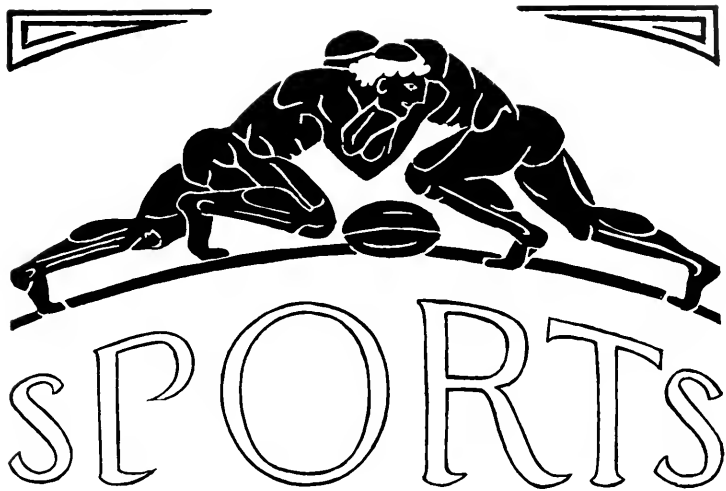
Resolved to assure the upper classes that we were capable of carrying on the college traditions, we loaned our talents to our individual interests, and the Freshman Class became well represented in the Men's and Women's Glee Clubs, the orchestra, dramatics, and athletics. Four members of the class played on the football team, some on the basketball team, and in a group of plays presented early in the year, several parts were taken by freshmen. A Freshman debate squad was organized and an attempt made to start a college band, and the Freshmen Valentine Dance provided an enjoyable evening.

At the end of the first semester in February, it was announced that five freshmen had made the honor roll.

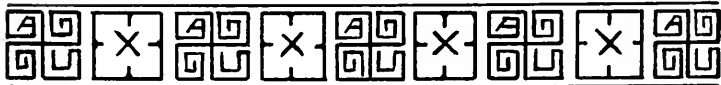
As we pass from freshmen to sophomores we appreciate more and more the duties which lie before us, and we will do our utmost to make the class of '34 worthy of American University and the high standard upon which she is built.

The class elected as its officers: William Anderson, President, First Semester; Clara Tate, Vice-President, First Semester; President, Second Semester; Jane Bishop, Secretary; and Hugh Tate, Treasurer, First Semester.





SMM





If competition in sport does not produce results that are valuable from an educational point of view, then such competition is out of place in a college. The lowering of eligibility standards, the participation of tramp athletes in all branches of sport, unnecessarily long absence from classes when long trips are taken, special inducements to men of exceptional athletic ability, are some of the evils that develop unless extreme care is taken. It must be kept rigidly in mind at all times that the athletic department is part, and an essential part, of an EDUCATIONAL INSTITUTION.

To maintain the whole system on such a plane is no small task with the pressure that is brought from many sources. We must meet those colleges in sport whose standards and ideals are more nearly like our own, who maintain the same standards of scholarship, who have the same attitude towards recruiting, and toward the relationship of the athletic system to the educational program of the college. In this way alone may clean, healthy, wholesome rivalries be developed.

We must use care here at American University to avoid the known dangers of intercollegiate sport. We must realize that even though we are a small college, meeting teams in our class, we are not denied the benefits that are to be derived from sport. In the final analysis, the size of the athlete has very little to do with the benefits. The man of small ability can reflect just as much credit on his institution. The ability to forget self for the benefit of the team, the self-control that is necessary in a hotly contested game, the will that drives one to do more than he himself thought he could do when the occasion demands, the ability to win like a gentleman and lose the same way, the qualities of leadership which often show up in those whom we least suspected to possess them, the ability to sacrifice selfish desires for the good of the organization—all these are benefits to be desired and are not limited to any certain type of individual. These are the benefits that are possible for the men who play on the teams of American University.

—WALTER H. YOUNG.

A U C O L A 3 I



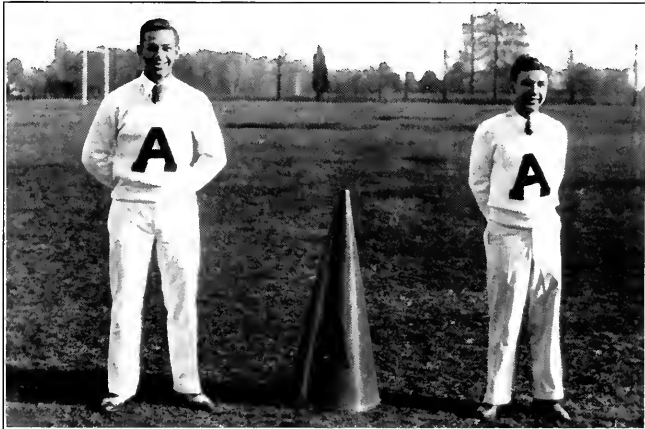
Student-Faculty Athletic Committee

DR. GOLDBERG
SWANSON

BRIGHT
LARSON
DR. ENGLE

TOMPKINS
CARTER
OLSEN

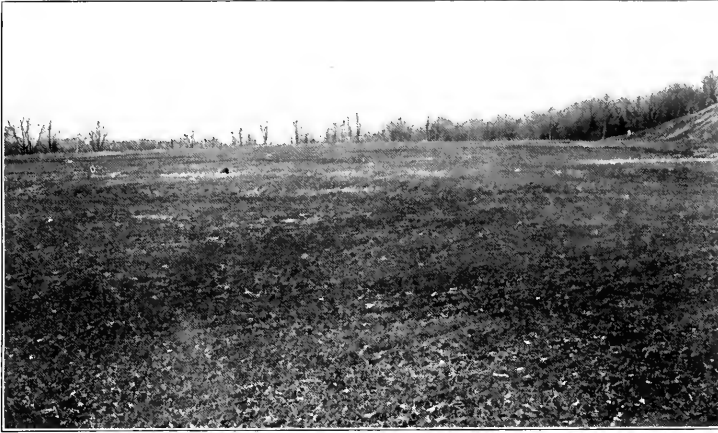
TERRELL
MOFFETT



TERRELL, *Cheerleader*

SPUZNAS, *Assistant*





Tomorrow

What lies ahead for Eagle sports?

Building on the foundations that have been laid in the first few years of intercollegiate competition, teams wearing the Orange and Blue of American University should forge ahead until they are even more definitely recognized as a factor in the world of sports.

In football, this college has never enjoyed the laurels of a really successful season. In five years it has not been possible to build a triumphant team in an institution of this size, particularly since the college does not approve scholarship or other inducements for athletes. But the college is growing, and the squads of the future will not number a mere twenty or less. The present tendency in the collegiate world is a reaction against too great over-emphasis in football; this will be another factor that will help the Eagles soon to gain a respected place in the football firmament. With the stadium completed, thereby providing an adequate place for practice, all things together should work toward a brilliant football future.

In basketball, the Eagles have made good records already. The development of this sport will undoubtedly continue. Other sports—tennis, golf, baseball, track, and swimming, all of which have been little developed as yet—are bound to come into importance within a few more years. A broader program will be made possible as the student body increases, and the collegiate athletic department gets on a firmer basis.

What lies ahead for Eagle sports?

Today we are just on the threshold of achievements that will one day place the name of American University high in local and national athletics.





Football Season

Any summary of the 1930 football campaign necessarily brings the realization that from the standpoint of games won and points scored, the Eagles did not have a successful season. They triumphed over Shenandoah and Shepherd, tied High Point, and lost to Gallaudet, Atlantic, St. John's, and Catholic.

Without attempting to make any excuses for a bad season, it is only fair to recall that the two worst defeats were administered to a greatly weakened team by the two strongest opponents on the schedule. Six members of the regular eleven were out of the St. John's game at one time or another, five of them for the entire second half. In the struggle against Catholic University, five first string men were unable to take part. The handicap of injuries was a great factor in the losses sustained; most of the "breaks" that the squad received were in the form of fractures.

A review of the season brings to mind flashes of greatness that are all too easily forgotten when the uniforms have been put away and the points have all been added—a line that held in more than one tight place—a forward passing attack that clicked so well that even a winning opponent gasped—touchdowns pushed over in the last few minutes, averting defeat in one instance and a coat of whitewash in the other. Tribute must be paid to "Frosty" Diehl, selected for the fullback berth on the mythical All-District team picked by the *Post*; to George Borsari, midget Frosh quarterback who ran the team with precision and completed his own runs with the same skill; to Jarvis, Johnson, and Levin, who starred until the time of their injuries; to the splendid fighting spirit of the whole squad.

This season will never be recorded as any great triumph for American University, but it was not so bad as the figures would indicate. New stars were developed out of a squad that was hard hit by graduation; the team struggled valiantly under the handicaps of injuries, an inadequate practice field, and more powerful opponents. Coach Young is not discouraged, but sees better days ahead for Eagle teams built on the foundations of these first few days.



YULE FISHER
Manager



HARRY MOFFETT
Assistant Manager



AUCOLAS 31

SCHEDULE

Sept. 27—American University.....14	Shenandoah	12	Diehl, Captain
Oct. 4—American University..... 6	Shepherd	0	Parke, Captain
Oct. 11—American University..... 6	Gallaudet	18	Johnson, Captain Lambert, Captain
Oct. 18—American University..... 6	High Point	6	Lambert, Captain
Oct. 25—American University..... 0	Atlantic Univ.	31	Levin, Captain
Nov. 1—American University..... 6	St. John's	59	Diehl, Captain
Nov. 8—American University..... 0	Catholic Univ.	60	Olsen, Captain

PLAYERS

BORSARI
BOWERS
CHATES
CLARK
DENT
DIEHL
ESPER
FOLSTON
FUCHSLE
HENDRICKS
HOOVER
JARVIS

JOHNSON, F.
KIDDER
LAMBERT
LARSON
LEVIN
LYTLE
OLSEN
PARKE
POWERS
RODRIGUEZ
TATE, H.
WOODS



A U C O L A 3 I



JOHNSON

FUCHSLE

BORSARI

AMERICAN UNIVERSITY 14—SHENANDOAH 12

Opening the season, the Eagles defeated the Virginians from Shenandoah College by the score of 14-12, with the game saved from ending in a tie by the precision of Fred Johnson's placement kicks. Starting the struggle with a series of brilliant plays by Borsari and Diehl that resulted in a touchdown within the first five minutes, the Eagles continued to outplay the Valleyemen during all of the first half. The whistle for the end of this frame found the score 7-0, Johnson's first boot having added the extra point.

The second half was begun with a vigorous drive by the visitors, who were able to push the ball over but failed to make the kick. The Eagles retaliated in the final period, with Borsari and Diehl again appearing as masters of the field, reaching the coveted stripe in six rushes, with much aid from the successful working of a triple-pass play. In the last few minutes of the game, Tinney emerged as Shenandoah's hero for the day, romping down the field for seventy yards and six more points.



A U C C O L A 3 I



HENDRICKS

BOWERS

HOOVER

AMERICAN UNIVERSITY 6—SHEPHERD COLLEGE 0

A "revamped" team of Eagles met the scrappy visitors from Shepherd College, in the second game of the season, and emerged victorious by scoring the one touchdown of the afternoon.

Shortly after the kick-off, a fifteen-yard pass, Diehl to Borsari, and a ten-yard run by the latter, placed the Eagles in scoring position, and before the quarter was half over, successive runs by the same two backs pushed the ball past the last white line. Another threat to score followed, but the ball was lost on downs after two long gains by Fuchsle and a pass by Diehl had carried the pigskin to the ten-yard line. An exchange of punts followed, neither team threatening to score during the rest of the half.

A determined thrust by Shepherd carried the ball to the eight-yard line at the opening of the second stanza, but the line rallied and successfully withstood the onslaught. Injuries featured the remainder of the game. Jarvis, end, and Hendrick, tackle, starred in the Eagle defensive play.



GALLAUDET COLLEGE



LAMBERT

DENT

FOLSTON

AMERICAN UNIVERSITY 6—GALLAUDET COLLEGE 18

The first defeat of the season was suffered by the Eagles at the hands of Gallaudet; but the team played good football throughout the game, making eleven first downs against twelve for the winners. The Silents, conceded to have the advantage, both in weight and experience, had a tough victory. Although they made a touchdown in each one of the first three periods, they failed to down the spirit of the fighting Methodists, who scored in the final period after Lambert had snagged a Gallaudet pass. Another example of the Eagle's invincible fight was shown when the line stiffened and held Gallaudet for four downs on the one-foot line.

For the Eagles, Diehl and Borsari showed up well on both offense and defense. Acting Captain Fred Johnson, whose consistent defensive play was a strong factor in the opposition provided by the Youngites, received the tough luck of the afternoon when in the final period he suffered injuries which kept him on the bench for the remainder of the season.





LYLE

LARSON

LEVIN

AMERICAN UNIVERSITY 6—HIGH POINT COLLEGE 6

Hitting the trail to the sunny southland, Coach Young's protégés visited High Point, North Carolina, and came home after playing a bitterly contested game which ended in a 6-6 tie.

The first half was a stiff, even battle, with brilliant defensive play by the linemen repulsing all threats at scoring by either team. The score at the end of this frame was 0-0. In the third quarter, a thirty-five-yard pass by Ludwig gave the Panthers a six-point advantage. Undaunted by this score, Diehl, Parke, and Borsari unleashed a powerful drive which resulted in the final touchdown of the game.

The game was marred by numerous penalties and fumbles, but these were distributed between the contestants. Although their own passing game was not up to what it should have been, the Eagles showed a strong defense against the aerial attack of the Panthers, whose passers were almost smothered except for two times when Ludwig's long tosses dropped into waiting arms.

The ends, Jarvis and Larson, performed with consistent brilliance, so that attempted end runs seldom passed the line of scrimmage.



A U C C O L A 3 I



OLSEN

AMERICAN UNIVERSITY 0—ATLANTIC UNIVERSITY 31

Outplayed and lacking the "touchdown punch," the Eagles returned from their encounter with the seadogs of Atlantic University with their plumage ruffled by a 31-0 defeat.

The first quarter was the only one that remained scoreless, the sailors scoring twelve points in each of the second and third quarters, and seven points in the final frame.

The Eagles made one real threat to score in the third quarter, a pass, Diehl to Clark, landing the ball on the seven-yard line. The advantage was lost, however, the ball being yielded on downs.

The play of Larson at left end made him the defensive star of the game for the Eagles. Jarvis also played a strong defensive game at end until he suffered a fractured collar bone in the second period. Atlantic University completed two passes, while American University completed five, but the former made fifteen first downs to the Eagles' three.

AMERICAN UNIVERSITY 6—ST. JOHN'S 59

Bucking up against a powerful football machine, and riddled by leg injuries, the Eagles found themselves on the short end of a 59-6 score at the close of the clash in historic old Annapolis.

Although a brilliant second period really saved them from a coat of unadulterated white-



A U C O L A 3 I

wash, the Methodist warriors never had a chance. The Johnnies scored furiously from the beginning of the game, ripping the lighter Eagle line to shreds.

The lone A. U. score came as a result of a pass, Dichl to Fuchsle, which gave the Eagles a first down on the three-yard line. Parke squeezed across for the six points.

The A. U. passing attack functioned most successfully in this contest, toss after toss landing in the arms of a waiting Eagle. Injuries kept Johnson and Jarvis from taking part at all, and Borsari, Dichl, Fuchsle, and Levin were able to render services for only a short time.

AMERICAN UNIVERSITY 0—CATHOLIC UNIVERSITY 60

With five first string men out of the entire game, the Eagles provided little opposition to the Cardinals of Catholic University, who romped down the field for nine touchdowns and a total of sixty points. The substitutes played valiantly but vainly against a team that was definitely out of their class. Long punts from the toe of Bill Fuchsle and gains by George Borsari were the few lightening touches for Eagle rooters.



BLANCHARD

MOFFETT

UNDERWOOD



Basketball Season

A glance at the past season on the court shows ten victories (counting the opener with the alumni) and six defeats, a record which, though it is not imposing, is at the same time comfortably ahead of an even break. Coach Walter Young's protégés performed capably, and if they did not equal the best efforts of some other seasons, nevertheless they had a successful year.

The first string five—Colison, Olsen, Sells, Woods, and Dick, were primarily a good team, not a collection of individuals attempting to be stars, but five men functioning as a well-oiled machine. The essential thing, teamwork, was evident in every game. Individually, Sells was perhaps the most outstanding, but let it be repeated, this was not a team of stars, but an all-star *team*—and there is a big difference.

Perhaps the most stirring clash of the campaign was the struggle at Annapolis, when by only the narrowest of margins did the Eagles fail to upset the dope and sink the Navy. There were many other moments, however, such as the second half of the early-season clash with Gallaudet, which provided the fans with some fine basketball. It was an interesting schedule, with something doing most of the time.



JAMES JOHNSON
Manager

HARRY UNDERWOOD
Assistant Manager

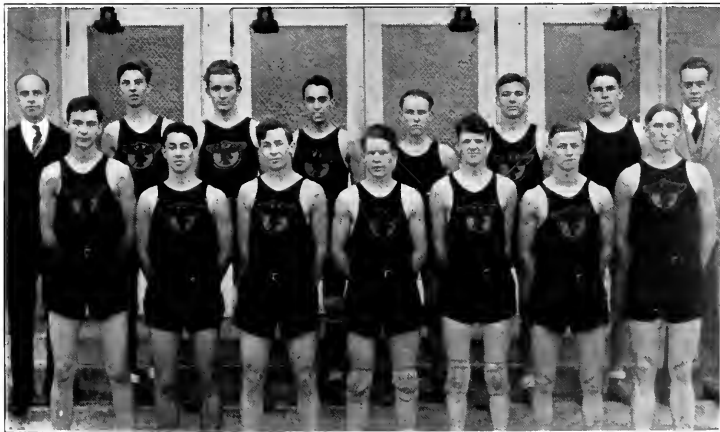
A U C O L A 3 I

SCHEDULE

Dec. 6—American University....44	American University Alumni....42—Washington
Dec. 12—American University....37	Maryland State Normal.....13—Washington
Jan. 9—American University....23	Gallaudet College21—Washington
Jan. 14—American University....18	Duquesne University32—Washington
Jan. 16—American University....50	Maryland State Normal.....18—Towson
Jan. 19—American University....30	Catholic University19—Brookland
Feb. 3—American University....26	Elon College20—Washington
Feb. 6—American University....26	Virginia Medical College.....24—Richmond
Feb. 7—American University....20	Hampden-Sidney College.....34—Hampden-Sidney
Feb. 12—American University....21	Carnegie Tech31—Pittsburgh
Feb. 13—American University....37	Davis-Elkins50—Elkins
Feb. 14—American University....42	Salem College25—Salem
Feb. 18—American University....25	Naval Academy30—Annapolis
Feb. 20—American University....35	Penn Military College.....32—Chester
Feb. 26—American University....16	St. John's College.....17—Annapolis
Feb. 28—American University....50	Virginia Medical College.....30—Washington

PLAYERS

CARTER	EDWARDS	SELLS
COLLSON	FUCHSLE	WASHBURN
DICK	LARSON	WILLIAMS
DIEHL	LEVIN	WOODS
	OLSON	



A U C O L A S I



CARTER

COLISON

AMERICAN UNIVERSITY 37—MARYLAND STATE NORMAL 13

The Eagles opened the 1930-31 campaign by overcoming the rather feeble opposition of Maryland State Normal School to the tune of 37-13. Oscar Sells, tall center, tallied six goals from the court and four foul shots, to lead the scoring for the evening, and his all-around play was the feature of the contest. Coach Young used practically his whole squad in the game, and Leonel Dick, Shakespearean left guard, ran up seven points during his participation in the fray, and gave promise of being a potent factor in future contests. The presence of the first A. U. band added enthusiasm to the sidelines, and altogether, the evening was recorded as a successful curtain raiser.

AMERICAN UNIVERSITY 23—GALLAUDET 21

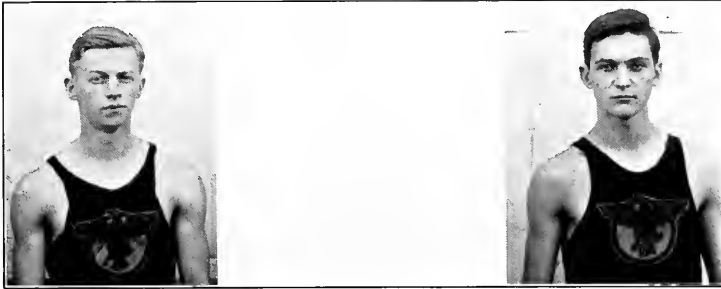
Oscar Sells grabbed a fast pass and sank it through the cords an instant before the final whistle, and thus broke up a 21-21 tie and gave the Eagles the second contest of the year by the narrow margin of two points. The game was played on the home court and was hotly contested from start to finish, with neither Gallaudet or American ever having a moment's breathing spell. Both teams were guarding closely, and the result was in doubt again and again, two Gallaudet rallies, one in each half, threatening to swing the decision to their favor. Sells, Dick, and Colison were the individual stars of the game, scoring eighteen of the twenty-three points for American University.

AMERICAN UNIVERSITY 18—DUQUESNE 32

Although they outscored their opponents in the last half, the Eagles' rally came too late to avert a defeat by Duquesne in the third tilt of the season, played at home on January 13th. Olsen and Sells, the main cogs in the attack made by the wearers of the Orange and Blue, ran up ten points between them, and received noble assistance from Warren Colison, but the struggle was vain against the formidable array of points rolled up by the visitors in the opening stanza. Larson, Washburn, and Diehl, who relieved the regulars, showed up well during their stay in the game.



A U C O L A 3 I G



DICK

LARSON

AMERICAN UNIVERSITY 50—MARYLAND STATE NORMAL 18

Playing their first game on a foreign court, the A. U. basketeers repeated their previous victory over the school teachers from Maryland State Normal School. It was a day of rest for the regulars, who appeared for about one quarter of the game, and then retired. The two skyscraping centers, Sells and Larson, both had their innings, and managed to chalk up ten points apiece, enough to have beaten the opposing team without assistance. The rest of the squad did not take life too easy, however, and the game ended with a complete triumph for the visiting Wesley Heigheters.

AMERICAN UNIVERSITY 30—CATHOLIC UNIVERSITY 19

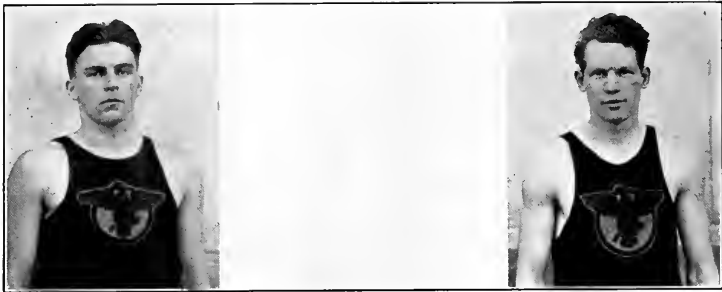
Entering a cool, steady basketball team against what turned out to a combination wrestling, boxing, track, and basketball squad, the Eagles hiked across the city on January 19th, and came home with the scalp of the Catholic University Cardinals. The contest, which began much like any other game, but included two fights and a near riot before it was ended, was marred from beginning to end by the "fighting" spirit displayed by members of the C. U. team. Assaults and battery were attempted by some members of the home team, and so obscured the real play of the evening, that spectators almost forgot that the Eagles were playing a clever game and were master of every situation, including the unscheduled boxing matches.

AMERICAN UNIVERSITY 26—ELON COLLEGE 20

Fighting every inch of the way, the American Five showed superior floorwork and doped out a system to successfully cope with a defense different from any displayed on the local court this season, and the result was a victory over the Carolinians from Elon College. Taking the lead at the very start, the Eagles relinquished it only for a brief instant in the middle of the first half, and after that remained in the lead steadily. Johnny Woods was high scorer for the contest, five tosses from the court giving him a three-point advantage over Leonel Dick, who made two tosses and three foul shots.



A U C O L A S I



LEVIN

OLSEN

AMERICAN UNIVERSITY 26—VIRGINIA MEDICAL COLLEGE 24

The fourth victory in a row was scored by the Eagles, playing against the Medicos of Virginia at Richmond. They ran up a substantial lead in the first frame of the fray, but a furious rally by the home team in the latter half made it necessary for "Red" Olsen to come through in the last seconds of the game and save the situation. He scored three points, a toss from the floor, and a free throw from the little white stripe, and as a result, the Eagles carried off the honors with just one basket to spare. Johnny Woods was high scorer, with eleven points.

AMERICAN UNIVERSITY 20—HAMPTON-SIDNEY 34

After three men were ejected by the foul route, the Eagles saw a chance of victory fading away, and the final score of the second game of a two-game trip to Virginia was 34-20. Although Dick scored eight points and Colison made five, their combined efforts were not enough to overcome the lead rolled up in the first half by the Virginians. The A. U. five did much better work in the second frame than in the first, but the ejection of Sells, Olsen, and Dick made victory far beyond their grasp.

AMERICAN UNIVERSITY 21—CARNEGIE TECH 31

"The best team in the history of Carnegie Tech" proved too strong for the ambitious Eagles, who invaded the Pittsburgh region for a game, but lost by ten points, in spite of a last half onslaught that gave them a slight edge over the Plaids for the last twenty minutes of play. Carnegie started the game with a rush, and rolled up a substantial margin that was never seriously threatened by the Eagles. Sells, with nine points to his credit, led his teammates in scoring, and came within one point of scoring honors for the fray.

AMERICAN UNIVERSITY 37—DAVIS-ELKINS 50

The Scarlet Hurricane of Davis-Elkins proved invincible against the visiting A. U.-ites, in spite of their valiant stand, and maintained a comfortable lead after the very first moments of the struggle. The result was never in doubt, although each team did a great deal of scoring. Olsen and Colison showed up best for the Washingtonians, with nine and eight points respectively. The loss of Oscar Sells for part of the game was keenly felt by the Eagles.



A U C O L A 3 I G



SELLS

WASHBURN

WOODS

AMERICAN UNIVERSITY 42—SALEM COLLEGE 25

Led by the barefoot boy from Tennessee, Oscar Sells, the Eagles crashed back into the win column by taking the last game of the week-end jaunt, 42-25. Starting to run up the markers from the very first, the comfort of a 20-8 lead eased the spirits of the visitors at the half. The second period was much like the first, with several substitutes in action. Sell's work was aided by the precision of Colison, who shot four from the floor and made two points from inside the circle.

AMERICAN UNIVERSITY 25—NAVAL ACADEMY 30

"The most thrilling game of the season" sums up the struggle between the Eagles and the admittedly much more powerful team called the Navy. Rushing the midshipmen off their feet in the first half, the score was 16-5 at the half, with no amount of work by the future sea-dogs able to stem the efforts of Colison and Dick. The second half told a different story, however. "Red" Olsen, whose careful guarding had been a feature, was removed on fouls, and then the Navy offensive got under way, and this time nothing could stop them. The final whistle found the losers trying desperately but vainly to rally and win.

AMERICAN UNIVERSITY 35—PENNSYLVANIA MILITARY COLLEGE 32

The team that all but sank the Navy found less difficulty in a contest with the Penn Cadets, and although the second frame was more closely contested than the first, had little real difficulty in defeating them, 38-32. Olsen and Sells starred on the Eagle offensive, though Woods and Dick were not far behind in the scoring.

AMERICAN UNIVERSITY 16—ST. JOHN'S COLLEGE 17

In a close game on the Annapolis court, the Eagles dropped the next to final game of the season by the narrow margin of one point. Leonel Dick was the high scorer for the team, which was not functioning up to its usual standard. The contest was marked by close guarding, and ended with a sensational one-hand shot by MacCartee that gave the decision to the home team.

AMERICAN UNIVERSITY 50—VIRGINIA MEDICAL COLLEGE 30

The curtain was rung down on the 1931 season with an easy victory over Virginia Medical College. There were few, if any, stirring moments in the clash, in which every A. U. substitute had an opportunity to display his ability. Little Johnny Williams closed the season with a tally which capped the half-century point.

This was the last game for three members of the squad and the manager, all of whom graduate in June. Colison, Carter, Levin, and Jimmy Johnson, will all be missed from the games next year.



Tennis

In the spring of 1930, the American University Tennis Team engaged in only two matches, both of them with Catholic University. One match was lost and one was won, so the players, Carter, Colison, Fuchs, Ohmstead, Schloss, Washburn, and Woods, had an even break on the season's play.

A more extensive schedule has been arranged for this spring, with the members of the varsity squad to be selected from the winners in the regular spring tennis tournament. All of last year's varsity, except Schloss and Ohmstead, have returned this year.

SCHEDULE

April 17.....	University of Maryland, at College Park
April 24.....	St. John's College, at Annapolis
May 1.....	Loyola College, here
May 4.....	Johns Hopkins University, here
May 8.....	St. John's College, here



CARTER

COLISON

WOODS

WASHBURN

FUCHS



HETRICK JOHNSON, G. JARVIS CAIOLA SWAN HORNER

Intramural Basketball

Winning the intramural basketball competition for the third straight year, the Class of 1931 this year gained permanent possession of the Tompkins Trophy. Managed by Dick Horner, the Seniors made a clean sweep of their games during the last campaign. Caiola, Hetrick, Jarvis, Johnson, and Swan were the successful warriors.

TOTALS

	WON	LOST	PERCENTAGE
Seniors	5	0	1.000
Juniors	3	2	.600
Sophomores	1	3	.250
Freshmen	0	4	.000

CLASS SUMMARIES

Seniors	22	Juniors	8
Sophomores	17	Freshmen	9
Seniors	11	Sophomores	9
Juniors	15	Sophomores	14
Seniors	42	Freshmen	8
Juniors	34	Freshmen	24
Seniors	28	Juniors	13
Seniors	22	Freshmen	11
Juniors	28	Sophomores	26



Intramural Sports

EVERY man taking part in some sport, is the ideal now being emphasized by the athletic department of the University. The program this year has been a particularly ambitious one.

Starting in the early fall with the field day events between the Freshman and Sophomore classes, the program continued throughout the winter with the stress on Interclass Basketball, which is at this time the leading interclass sport. A foul-shooting contest concluded the basketball court season. Volleyball followed basketball in the college gymnasium, and the other late winter competition was bowling on alleys in the city.

This spring sees the third kittenball season under way, with the interest running unusually high. In the campaign three years ago the Class of 1932 emerged victorious, and last year the Class of 1933 was the winner. Intramural Tennis is also on the spring card, the new courts giving added impetus to this sport, and Coach Walter H. Young rounds out his intramural plans with the inauguration of regular Intramural Horseshoes.





Women's Athletics

REVIEW OF THE SEASON



ATHLETIC competition for women at American University has taken the form of inter-class tournaments in the major sports—hockey, basketball, volleyball, and soccer. This tournament, in each case, is followed by a varsity color team game at the end of each season. The women in the college are divided into two groups, *orange* and *blue*, at the Annual Color Ceremony in the fall, and from these two all-college groups the color teams are chosen. In hockey, this fall, the Seniors won the inter-class championship and the Orange Varsity team won the varsity color championship. Several of the women enjoyed participation in the minor sports—archery, swimming, and tennis, in which various forms of competition are held.

In addition to the intra-mural games, American University participated in a Sports Day with George Washington University in the fall. This was held on the Ellipse in Potomac Park and the competition took place by classes in hockey and tennis and individual in archery. American University was successful in hockey and archery, but lost in tennis. However, the afternoon was a decided success and proved a congenial way of competing *with* each other instead of *against* each other. Another Sports Day is being planned for the 25th of April with other colleges.

For the success of the various athletic events, credit is due to the "A" Club, which is composed of those women who have won their A's in athletics. A's are awarded by a point system, points being given for being a member of a *class* team, for hiking, for extra hours of exercise, for keeping health charts, for attendance, and for receiving A in Physical Education.

This club elects class managers in the various sports, schedules games, and arranges for the Sports Days and the Annual Banquet. It also has charge of the Annual Color Ceremony in the fall, which takes place in the woods of our campus and includes a wiener roast followed by skits by the classes and a tug-of-war between the new members of the Orange and Blue camps. This year the "A" Club added a winter hike to its program, and Rock Creek Park was the destination where a steak roast was greatly enjoyed by the hikers. In the spring, a Treasure Hunt is planned.

Each year new events have been added, and it is hoped, as the college grows, that more activities will be introduced so that every woman may find satisfaction in her favorite form of recreation.

—DOROTHY WULF.





HOPE		EVANS		KING		HEATH
	PEIRCE		BRUNDAGE		WALLER	
SMITH	BELZ	WULF	PUTNAM	HUMPHRIES	MOTLEY	

Girls' "A" Club

A need became apparent in the spring of 1929 for some organization to control and organize intramural competition among the women of A. U. so that the same interest would still be accorded athletics as in the days of intercollegiate sports. The "A" Club was the result of this inspiration.

Conceived in the minds of its originators as a reward to those who had received even the first part of the three-fold letter, and dedicated to those ideals of athletics that are most beneficial as well as most interesting to the college woman, it began its career with the co-operation of Miss Wulf in 1929-30. The annual Color Choosing Ceremony was forthwith inaugurated. Thus all the women in college are divided into either *orange* or *blue*, and the end of each sport-season is climaxed by a game between the best players of each color, the nearest approach we have to Varsity.

In our first year we also originated the annual tradition of a Spring Banquet; on this occasion we welcome our new members and bring the work of the year to a formal close.

In spite of obstacles and mistakes we feel that our first year was a success. It launched the "A" Club very firmly upon what we hope is to be worth-while career.

We of 1930-31 have valiantly endeavored to live up to the expectations of the originators. We have profited by earlier mistakes; and gathering confidence from past successes, have broadened our program of activities. We realize, of course, that much remains to be done before the goals as set in 1929 can be achieved; but we feel that the honest effort we have expended on behalf of the "A" Club has not been in vain. The year 1930-31 has been, we are sure, a more successful year than 1929-30; just as we anticipate that the years to come will see even fuller realization of our ideals. We are confident in the knowledge that we have done our bit, and look with assurance to the "A" Club of tomorrow.





	MOWBRAY		SWEET		EVANS
HOPE		BELZ		JACOBY	HUMPHRIES
PUTNAM			SMITH		FINCHER

Interclass Hockey

In what was perhaps the most exciting inter-class hockey tournament ever staged at A. U., the Seniors successfully defended the championship which they won the year before. The Senior team, composed of practically the same members as last year, met stout opposition from the other classes, especially the Sophomores. Indeed, it was only after three games between these two teams that the Seniors finally emerged victorious by the slim margin of one point.

In the first game of the season the Seniors defeated the Juniors, 9-2. The first half was a continuous attack by the Seniors on the Junior goal, but during the second half the Juniors rallied and fought their opponents on nearly even terms.

The three Sophomore games were very closely contested and very exciting. The Seniors won the first, 5-4, and the Sophs the second, 3-0. A play-off was necessary, and this proved a real thriller with the Seniors winning by a score of 3-2.

The line-up of the Senior team was as follows:

R. Wing	Helen Staples
R. Inner	Helen Hope
Center	Ethel Smith
L. Inner	Barbara Evans
L. Wing	Virginia Humphries
R. Half	Margaretta Moore
C. Half	Mary Putnam
L. Half	Bobbie Belz
R. Full	Louise Goldenberg
L. Full	Betty Jacoby
Goal	Margaret Mowbray
Substitutes	Mildred Sweet, Frances Fincher

At the conclusion of the inter-class hockey season, the first real all-A. U. team was picked. Six Seniors were included on this mythical team. They were Smith, center; Evans, inner; Putnam and Belz, half-backs; and Jacoby, full-back. Humphries was also picked as a substitute on this team.



Evans, Peirce, Staples, Smith, Marean, Motley, Martin, King, Belz, Putnam, Humphries

All A. U. Hockey Team

"Six Seniors Make Mythical Team" so reads the *Eagle* headline announcing the selection of the 1930 honorary A. U. hockey team. This year the team was picked in rather a unique manner. Three judges, Miss Wulf, Mary Putnam, and Ethel Smith, each independently, submitted a team to the sport's department of the *Eagle*. Those teams were compared and out of them was compiled the all A. U. team.

The team was composed of six seniors, three sophomores, one junior, and one freshman. Since the seniors were the champions and the sophomores the runners-up of the inter-class tournament, it is only natural that these two teams should provide the majority of players for the all-star team.

The line-up was as follows:

L. Wing	King
L. Inner	Evans
Center	E. Smith
R. Inner	Darby
R. Wing	Staples
L. Halfback	Belz
C. Halfback	Putnam
R. Halfback	Marean
L. Fullback	Jacoby



PEIRCE
MAREAN

PUTNAM

EVANS
HUMPHRIES

KING

SMITH
MARTIN

Interclass Basketball

The Senior girls continued their string of wins for the last three years in winning the class basketball championship by defeating the Sophomores in two consecutive games.

The Freshmen started out the season with a bang, defeating the Seniors by an 18-15 score. Then the Sophomores beat the Juniors in a one sided tilt. In the following game the Seniors redeemed themselves by defeating the Juniors.

The most hotly contested game of the season was fought between the Freshmen and the Sophomores. At the end of the regulation time the score was tied so that an extra five minutes had to be played, resulting in the defeat of the Freshmen by a score of 30-28.

The interclass competition ended with the seniors defeating the sophomores by a score of 28-12, and a second time with a score of 24-11. The season closed with a game between the Orange and Blue teams composed of members from all classes. The Orange team was victorious by a score of 25-22.

The new "throw-in" method of putting the ball into play at the center, at the beginning of the game, after a goal is made, was used as an experiment this season.



SHERIER SCOBEY WOLD BRUNDAGE, M. T. LEATHERWOOD SANFORD

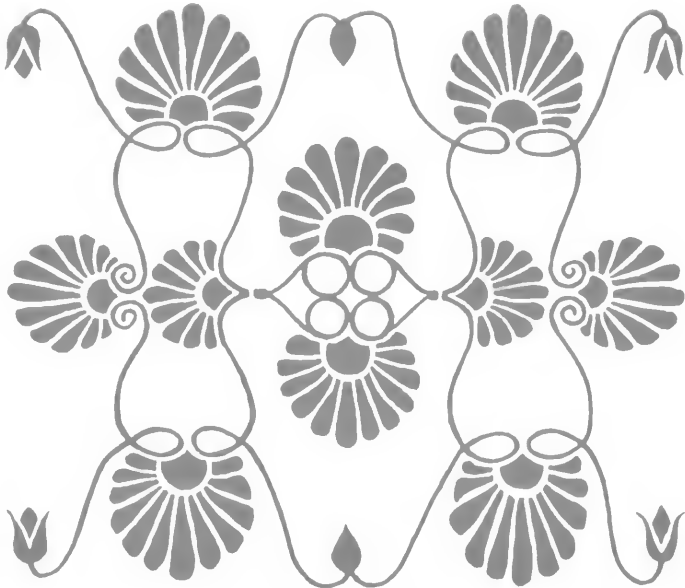
Archery

Archery has been emphasized on the campus for several years, both because of its historical significance and the interest and athletic advantages the game affords. With the target set up on the hockey field, classes have been organized each fall and spring, and have developed remarkable proficiency.

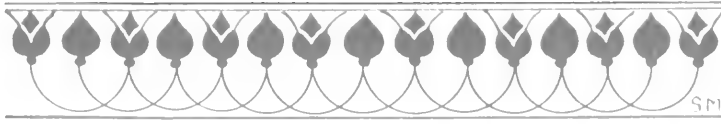
This year marks the commencement of competitive archery for the girls of American University. After the first fall classes had been held under Miss Wulf's direction, inter-class contests were held in the form of a half of a Columbia Round. Individual scores were kept and those holding the six highest were chosen to form the A. U. team. In October, Genevieve Leatherwood, Eleanor Wold, Anna Mary Sanford, Mary Jeannette Brundage, Virginia Sherier and Alfreda Scobey represented the college in archery in the field day activities with George Washington. This was the first event of this kind undertaken and is intended to be continued in future seasons.



ORGANIZATIONS



ACTIVITIES



AUCOLAS



W. YULE FISHER
Editor-in-Chief



W. EARL MASINCUP
Business Manager

The Aucola

EDITORIAL STAFF

Editor-in-Chief

W. YULE FISHER

Associate Editor

RUDOLPH H. SWANSON

Assistant Editors

AUDREY BELT

DANIEL S. TERRELL

ART EDITOR

SUZANNE MULLETT

Departmental Editors

JOSEPH CARTER
CHARLOTTE JAMIESON

RUSSELL LAMBERT

MARY JANE PEARCE
OLIVE E. RODGERS



AUCOLA 31



Saunders, Rodgers, Tarshes, Murphy, Lambert, Carter, Wren
Belt, Masincup, Fisher, Swanson, Terrell

The Aucola

BUSINESS STAFF

Business Manager

W. EARL MASINCUP

Assistant Manager in Charge of Advertising

ARTHUR MURPHY

SOLICITORS

DOROTHY SAUNDERS

JOSEPH TARSHES

JEAN WREN

Assistant Manager in Charge of Circulation

PERRY O. SNIDER

Accountant

GEORGE OLSEN

Commercial Artist

G. HAROLD SHIRLEY





King, Spitznas, Colison, Houston, Bright, Schaul, Clafin
Belt, Swan, Ross, Cramer

Student Council

OFFICERS

JAMES SWAN	<i>President</i>
EDWIN ROSS	<i>Vice-President</i>
AUDREY BELT	<i>Secretary</i>
NORMAN CRAMER	<i>Treasurer</i>

MEMBERS

Seniors

ORREL BELLE CLAFLIN
WARREN COLISON

NORMAN CRAMER
JAMES SWAN

Juniors

AUDREY BELT

BROOKE BRIGHT

EDWIN ROSS

Sophomores

ANNE KING

MAX SCHAUL

Freshmen

JOHN SPITZNAS

COMMITTEE CHAIRMEN

JAMES JOHNSON	<i>Social</i>
CHESTER CARTER	<i>Athletic</i>





REUTER

JAMIESON
GERTH

HEATH
DEAN BROWN

PEARCE

Women's Student Government

MARY LOUISE BROWN.....	<i>Dean of Women</i>
DOROTHY GERTH.....	<i>President—First Semester</i>
ESTHER McVEY.....	<i>President—Second Semester</i>
CHARLOTTE JAMIESON	<i>Secretary</i>
KATHERINE REUTER	<i>Treasurer</i>
KATHRYN HEATH	<i>Head Proctor</i>
MARY JANE PEARCE.....	<i>Social Chairman</i>

Q A U C O L A 3 I Q



LIVINGSTON
FISHER

HEATH
LYTLE

JACOBY
ESPEY



The Brahmin Honor Society

CHARTER MEMBERS

DELSIE APPEL, '30	ELIZABETH HULL, '30
MARTHA BRICKER, '30	BETTY JACOBY, '31
MILTON CRIST, '30	NOLA E. LIVINGSTON, '31
OTIS FELLOWS, '30	JANE E. LYTLE, '31
PAULINE FREDERICK, '30	LEON SILLOSS, '30
KATHRYN G. HEATH, '31	KATHERYNE SEVERANCE, '30
ALICE HETZEL, '30	GEORGE SINBLY, '30
RAYMOND SPAETH, '30	

OFFICERS

KATHRYN G. HEATH.....	<i>President</i>
NOLA E. LIVINGSTON.....	<i>Vice-President</i>
BETTY JACOBY.....	<i>Secretary</i>
JANE LYTLE.....	<i>Treasurer</i>

FEBRUARY MEMBERS—1931

BLAKE B. ESPEY	W. YULE FISHER
JAMES E. SWAN	

The Brahmin Honor Society was organized in the spring of 1930 in order to recognize outstanding qualities in student activities, leadership, service, and character. It is the purpose of this Honorary Fraternity "to coöperate with the faculty, study student problems, stimulate progress, and promote the interests of the American University."





ROGER W. CRAVEN
Editor-in-Chief



ALTON H. KELLER
Business Manager

The Eagle

EDITORIAL STAFF

Editor-in-Chief

ROGER W. CRAVEN, '31

Associate Editors

S. CARLTON AYERS, '31 KATHRYN G. HEATH, '31 JOHN M. HOUSTON, '31

Assistant Editors

EDWIN A. ROSS, '32

DANIEL S. TERRELL, '32

Faculty Adviser

DR. G. B. WOODS

BUSINESS STAFF

Business Manager

ALTON H. KELLER, '32

Assistant Business Managers

RUDOLPH H. SWANSON, '32 FRANCIS CRAMER, '33 ALAN BLANCHARD, '33

Advertising Manager

M. ESTELLE WOLFE, '31





The Eagle

REPORTERS

ETHELWYN HINE, '31
 JANE LYTLE, '31
 LEVERETT STOWELL, '31
 AGATHA VARELA, '32
 BEATRICE ADAM, '33
 BETTY BRUNDAGE, '33
 DOROTHY HAMILTON, '33
 HAROLD HARBAUGH, '33

ANNE KING, '33
 ROBERT MARCUS, '33
 SARA MOTLEY, '33
 VERNON ROBBINS, '33
 DAN SMITH, '33
 EDWARD TATE, '33
 BETTY TOWNE, '33
 DOROTHY BAKER, '34
 WINONA BUCHANAN, '34

JOHN COULTER, '34
 MARY DEAN, '34
 ALICE DIX, '34
 EMILY NICKLAS, '34
 MARY LOUISE ROBBINS, '34
 ARTHUR SMITH, '34
 MARJORIE STUART, '34
 ELEANOR WAITE, '34

BUSINESS ASSISTANTS

ADVERTISING

DOROTHY SAUNDERS, '32

JOSEPH TARSHES, '32
 JEAN WREN, '32

WILLIAM ANDERSON, '34

CIRCULATION

ALICE LOUISE FORD, '33
 LORENA MURRAY, '33

HARRY MOFFETT, '33
 LOUISE DANFORTH, '34
 HENRIETTA GOODNER, '34

RITA LENTZ, '34
 ROLAND NORQUIST, '34





Smith, Robbins, Harmon, Tate, Horner, Tucker
 Buchanan, Murphy, Dean, Sweet, Hine, Fisher, Adam, Kernahan, Warner
 Hamilton, Heath, Craven, Hislop, Caiola

The Debate Council

OFFICERS

JAMES R. CAIOLA.....*President*
 ROGER W. CRAVEN.....*Manager*
 ROBERT HISLOP.....*Coach*

VARSITY SQUAD

BEATRICE ADAM	ETHELWYN HINE
JAMES CAIOLA	ROBERT MARCUS
ROGER CRAVEN	ARTHUR MURPHY
YULE FISHER	MILDRED SWEET
DOROTHY HAMILTON	MAX TUCKER
HYLTON HARMON	AMELIA WEINBERG

FRESHMAN SQUAD

WINONA BUCHANAN	VERNON ROBBINS
MARY OWEN DEAN	ARTHUR SMITH
WILLETT DENIT	JOHN SPITZNAS
EARL KERNAHAN	HUGH TATE
THEODORE LYTLE	MARGARET WARNER



Debate

Today, debating at American University is one of the outstanding extra-curricular activities. It has attained this position because of two principles which it has always followed; first, having high standards in all debate work; and second, having forensic relations only with those colleges which are in sympathy with these standards. This policy has given American University the opportunity to meet many of the leading colleges of the Country.

THE 1931 SEASON

The schedule this year has been interesting in many respects. It gave extended trips up North for both the Women's and Men's teams; also, it afforded an opportunity for the debaters to broadcast; and for the first time, the Freshmen Team visited foreign platforms.

QUESTIONS USED

Resolved, That the United States should adopt a system of Federal liquor control.

Resolved, That the principle of unemployment insurance is sound.

Resolved, That chain stores are more beneficial than detrimental to the American public.

SCHEDULE

Haverford College	Syracuse University
Shepherd College	Carleton College
University of Cincinnati	Bates College
New York University	Lawrence College
Elmira College	University of Richmond
Colgate University	New York University
Rutgers University	Temple University





Billett, Towne, Snyder, Bishop, J., Brundage, M. J., Cooke, Skidmore, Nicklas, Bishop, M. Stuart, Johnston, Dimond, Hartshorn, Leatherwood, Rodgers, Sweet, Mowbray, Peirce Willis, Chae, Mrs. Shenton, Dr. Shenton, Tucker, Murray

Women's Glee Club

OFFICERS

MARY CLINE	<i>President</i>
HELEN TUCKER	<i>Vice-President</i>
CORNELIA KIRBY	<i>Secretary</i>
ELEANOR MAE JOHNSTON	<i>Recording Secretary</i>
LOUISE MURRAY	<i>Secretary-Librarian</i>
DORIS WILLIS	<i>Business Manager and Treasurer</i>
DR. WALTER F. SHENTON	<i>Director</i>
MRS. WALTER F. SHENTON	<i>Accompanist</i>

MEMBERS

EVELYN BILLETT, '34
 JANE BISHOP, '34
 MILDRED BISHOP, '34
 MARY JEANNETTE BRUNDAGE, '32
 SARAH COOKE, '34
 MARY CLINE, '31
 DOROTHY DABBY, '32
 MARGARET DIMOND, '33
 MARY ELIZABETH HARTSHORN, '33

ELEANOR MAE JOHNSTON, '33
 CORNELIA KIRBY, '33
 GENEVIEVE LEATHERWOOD, '34
 MARGARET MOWBRAY, '31
 LOUISE MURRAY, '31
 LORENA MURRAY, '33
 EMILY NICKLAS, '34
 PRUTIA PEIRCE, '33

OLIVE RODGERS, '32
 DOROTHY SEATON, '34
 MARTHA SKIDMORE, '34
 PAULINE SNYDER, '34
 MARJORIE STUART, '34
 MILDRED SWEET, '31
 BETTY TOWNE, '33
 HELEN TUCKER, '31
 DORIS WILLIS, '31



Parker, Bryner, Ayers, Tate, E., Kohan, Tedesco, Anderson, Gurney, Lytle, Robbins
 Burr, Esper, Coulter, Thomas, Tuve, Smith, D., Shirley, Skeggs, Riggle, Cramer, F., Cramer, R. N.
 Swanson, Tompkins, Cline, Randall, Hetrick, Horner, Keller

Men's Glee Club

OFFICERS

HARLAN RANDALL	<i>Director</i>
ELLSWORTH L. TOMPKINS	<i>President</i>
BARRETT FUCHS	<i>Vice-President</i>
RUDOLPH H. SWANSON	<i>Secretary-Treasurer</i>
L. RICHARD HORNER	<i>Manager</i>
ALTON KELLER	<i>Assistant Manager</i>
FRANCIS CRAMER	<i>Librarian</i>
MARY ELIZABETH HETRICK	<i>Accompanist</i>
MARY CLINE	<i>Assistant Accompanist</i>

MEMBERS

First Tenors

S. CARLTON AYRES LEON K. BRYNER JOHN L. COULTER NORMAN S. CRAMER

EUGENE GURNEY

Second Tenors

ALAN BLANCHARD L. RICHARD HORNER CARLTON SKEGGS

FRANCIS CRAMER ALTON KELLER EDWARD TATE

BARRETT FUCHS

ANGELO TEDESCO
 JOSEPH THOMAS
 HENRY VEDDER

First Basses

WILLIAM A. ANDERSON
 ROBERT FUCHS
 LEE ESPER
 HYMAN KOHAN

THEODORE LYTLE
 ROBERT PARKER
 LAWRENCE RICE

W. EVERETT MCLAINE
 RUDOLPH H. SWANSON
 G. HAROLD SHIRLEY
 DAN L. SMITH

Second Basses

ROBERTS D. BURR
 DONALD CARTER
 KENNETH HOOVER

ROBERT MARCUS
 J. HAROLD RIGGLE

VERNON ROBBINS
 ELLSWORTH L. TOMPKINS
 RICHARD TUVE





Spence, Dr. Leineweber, Buckingham, Sanford, Coulter, Thye, Parker, Maiden, Brown

Orchestra

OFFICERS

DR. C. H. LEINWEBER *Conductor*
 CALVIN BROWN *President*
 RENE LUTZ *Manager*

MEMBERS

RICHARD BUCKINGHAM	DAN RODRIGUEZ
JOHN COULTER	ANNA MARY SANFORD
LEE ESPER	GENEVIEVE SPENCE
VIRGINIA MAIDEN	EDWARD TATE
ROBERT PARKER	MAX TUCKER



Dramatic Club

THE
DRAMATIC CLUB OF THE AMERICAN UNIVERSITY

Under the Direction of
PROFESSOR WILL HUTCHINS

JOHN M. HOUSTON, *President*
MARGARET MOWBRAY, *Secretary*

ORREL BELLE CLAFLIN, *Vice-President*
JAMES T. JOHNSON, *Treasurer*

FALL PRODUCTIONS

A Program of Three One-Act Plays, November, 1930

THE LAND OF HEART'S DESIRE

By W. B. YEATS

(A Cottage in Ireland—Long ago)

Maurteen Bruin	WILLIAM ANDERSON
Shaun Bruin	HENRY BACKENSTOSS
Father Hart	THEODORE LUTLI
Mary Bruin	ORREL BELLE CLAFLIN
Bridget Bruin	MRS. ALLYN
Fairy	RUTH BELL
Song (off stage)	HELEN TUCKER

Assistant Director—ORREL BELLE CLAFLIN

THE DARK LADY OF THE SONNETS

By G. B. SHAW

(A Terrace of the Palace of Queen Elizabeth—Whitchall)

A Beekeeper	GLADSTONE WILLIAMS
Mr. Will Shakespeare	LEONEL DICK
Queen Elizabeth	ALFREDDA SCOBIE
Mary Fitton	MARY OWEN DEAN, III

Assistant Director—LUCILLE COOK

TRIFLES

By SUSAN GASPELL

(A Farmhouse Kitchen)

George Henderson, <i>county attorney</i>	ARTHUR SMITH
Henry Peters, <i>sheriff</i>	HAROLD RIGGLE
Lewis Hale	EARL KERNAHAN
Mrs. Peters	VIRGINIA HARRISON
Mrs. Hale	JANE LYTLE

Assistant Director—S. CARLTON AYERS

PILLARS OF SOCIETY

Tuesday, December 16, 1930

Karsten Bernick, <i>a shipbuilder</i>	BLAKE ESPY
Mrs. Bernick, <i>his wife</i>	ANNA MARY SANFORD
Olaf, <i>their son</i>	RUTH BELL
Martha Bernick, <i>Karsten Bernick's sister</i>	JANE LYTLE
Johan Tomneson, <i>Mrs. Bernick's brother</i>	JAMES SWAN
Lona Hessel, <i>Mrs. Bernick's elder half-sister</i>	ESTELLE WOLFE
Hilmar Tomneson, <i>Mrs. Bernick's cousin</i>	CARLTON AYERS
Dina Dorf, <i>a young girl</i>	BETTY JACOBY
Rorlund, <i>a schoolmaster</i>	ARTHUR MURPHY
Rummel, <i>a merchant</i>	HAROLD RIGGLE
Vigeland } tradesmen	LAWRENCE HETRICK
Sandstad }	ELLSWORTH L. TOMPKINS
Krap, <i>Bernick's clerk</i>	CARL LEVIN
Aunc, <i>foreman of Bernick's yard</i>	HENRY JOHNSON
Mrs. Rummel	MARY CLINE
Hilda Rummel, <i>her daughter</i>	DOROTHY HAMILTON
Mrs. Holt	VIRGINIA HUMPHREYS
Netta Holt, <i>her daughter</i>	HAZEL JACOBS
Mrs. Lyng	ETHEL SMITH
Maid in the Bernick household	VIRGINIA HARRISON
.....	MILDRED HARRIS
Townpeople	MEMBERS OF THE DRAMATIC CLUB





A Midsummer Night's Dream

PERSONS OF THE PLAY

Theseus, Duke of Athens.....	DONALD OLMSTEAD
EGEUS, father to Hermia.....	BLAKE ESPEY
Lysander	JAMES SWAN
Demetrius <i>In love with Hermia</i>	CARLTON AYERS
Philostrate, master of revels.....	GEORGE SIXBEY
Quince, a carpenter.....	JOHN M. HOUSTON
Snug, a joiner.....	J. HAROLD RIGGLE
Bottom, a weaver.....	OTIS FELLOWS
Flute, a bellows mender.....	CARLTON SKEGGS
Snout, a tinker.....	CARL LEVIN
Starveling, a tailor.....	CHARLES MANHERZ
Hippolyta, Queen of the Amazons.....	ESTELLE WOLFE
Hermia, daughter of Egeus.....	MARY CLINE
HELENA, in love with Demetrius.....	ORREL BELLE CLAFLIN
OBERON, King of the Fairies.....	SARA MARTZ
Titania, Queen of the Fairies.....	BETTY JACOBY
Puck.....	LAURA BARRETT
Peaseblossom.....	HAZEL JACOBS
Cobweb.....	SAIDEE MAE WHITE
Moth.....	MARY PUTNAM
Mustardseed.....	VIRGINIA HUMPHRIES
A Singing Fairy.....	DELSIE APPEL
Guards to Theseus.....	JOHN LAFAVRE
	HENRY JOHNSON
Huntsmen.....	HENRY BACKENSTOSS
	KEELER FAUS
	CLYDE WILLIAMS
Attendants on Hippolyta.....	LOUISE MURRAY
	ANITA DUNLAP
Fairies.....	LULA MAY LYBROOK
	ETHEL SMITH
	DOROTHY HAMILTON
	DOROTHY DARBY



Dramatic Club

MEMBERS

BEATRICE ADAM
 ELEANOR ALLYN
 WILLIAM ANDERSON
 CARLTON AYERS
 HENRY BACKENTOSS
 RUTH BELDEN
 RUTH BELL
 CHESTER CARTER
 ORREL BELLE CLAFLIN
 MARY CLINE
 JOHN COULTER
 LUCILLE COOK
 LOUISE DANFORTH
 MARY DAUB
 MARY OWEN DEAN
 LEONEL DICK
 ALICE DIX
 BLAKE ESPEY
 KEELER FAUS
 DOROTHY HAMILTON

DONALD HARRIS
 MILDRED HARRIS
 VIRGINIA HARRISON
 LAWRENCE HETRICK
 HELEN HOPE
 JOHN HOUSTON
 VIRGINIA HUMPHRIES
 HAZEL JACOBS
 JAMES JOHNSON
 HENRY JOHNSON
 EARL KERNAHAN
 GENEVIEVE LEATHERWOOD
 RITA LENTZ
 CARL LEVIN
 JANE LYTLE
 THEODORE LYTLE
 VIRGINIA MAIDEN
 SALLIE MAREAN
 MARGARET MOWBRAY
 ARTHUR MURPHY

LOUISE MURRAY
 VIRGINIA PEDERSON
 HAROLD RIGGLE
 MARY LOUISE ROBBINS
 EDWIN ROSS
 ANNA MARY SANFORD
 ALFREDDA SCOBIEY
 DOROTHY SEATON
 VIRGINIA SHERIER
 GRANVILLE SHIRLEY
 CARLTON SKEGGS
 ARTHUR SMITH
 ETHEL SMITH
 PAULINE SNYDER
 JAMES SWAN
 ELLSWORTH TOMPKINS
 HELEN TUCKER
 ESTELLE WOLFE
 GLADSTONE WILLIAMS



Bryner, Sells, Tompkins
Sanford, Dr. Jackson, Mulholland, Burr, Cowles

Vesper Committee

OFFICERS

LYNETTE E. MULHOLLAND.....*Chairman*
 ARTHUR JENNINGS JACKSON.....*Faculty Adviser*
 MARGARET MOWBRAY.....*Publicity Director*

MEMBERS

LEON K. BRYNER
 ROBERTS D. BURR

MARJORIE L. COWLES
 LYNETTE E. MULHOLLAND
 ANNA MARY SANFORD

OSCAR SELLS
 ELLSWORTH L. TOMPKINS



Bright, Weeks, Davidson, Shirley
Miss Galt, Mrs. Tucker, Mr. Hutchins, Ficklen, Coulter, Stowell
Towne, Wold, Murphy, Smith, Varela

Anglican Club

OFFICERS

MR. WILL HUTCHINS.....*Faculty Adviser*
 ARTHUR MURPHY*President*
 CATHERINE WOLD*Vice-President*
 ETHEL SMITH*Secretary-Treasurer*

MEMBERS

AUDREY BELT	IMOGEN FICKLEN	MR. EDWARD McADAM
BROOKE BRIGHT	BARRETT FUCHS	FRANCES NOBLE
MARY FRANCES BROWN	ROBERT FUCHS	EUGENIA OLNEY
MARY JEANNETTE BRUNDAGE	CEBRIC GLEASON	CATHERINE OSBORNE
JOHN COULTER	MISS MARY M. GALT	BRUCE QUIGLEY
EDWARD DAVIDSON	HENRIETTA GODNER	G. HAROLD SHIRLEY
MARY OWEN DEAN	CHARLOTTE JAMIESON	LEVERETT STOWELL
FORREST DIEHL	LEONARD JOHNSON	ELIZABETH TOWNE
WILLET DENT	ARTHUR KIDDER	AGATHA VARELA
ANNE ENGLISH	JEANETTE MACMAHON	HARRY WEEKS
BLAKE ESPEY	MARGARETTA MOORE	MRS. LOIS MILES ZUCKER
	BRENT MORGAN	



PAUCOLASIO



Lambert, Parker, Tedesco, Robbins, Esper
 Faus, Swanson, Cuddy, Ayers, Shirley, Kernahan
 Muller, Dr. Jackson, Horner, Ross, Benson

Oxford Fellowship

OFFICERS

RICHARD HORNER	<i>President</i>
EDWIN ROSS	<i>Vice-President</i>
ELMER BENSON	<i>Treasurer</i>
HENRY MULLER	<i>Secretary</i>
ARTHUR J. JACKSON.....	<i>Faculty Adviser</i>
THOMAS CUDDY.....	<i>National Treasurer</i>

MEMBERS

CARLTON AYERS	EARL KERNAHAN	HAROLD RIGGLE
RICHARD BUCKINGHAM	RUSSELL LAMBERT	VERNON ROBBINS
JOSEPH CARTER	ROBERT PARKER	G. HAROLD SHIRLEY
LEE ESPER	LAWRENCE RICE	RUDOLPH SWANSON
KEELER FAUS		ANGELO TEDESCO





Oxford Fellowship



IN THE fall of 1927, there came to this campus two new men who were to have a very significant part in the religious life of this college. The first of these was Dr. Arthur Jackson, who was appointed the head of the Religion Department in that year. Soon after he began his residence on the campus and became acquainted with the ministerial students, he recognized the need for an organization to promote their ideals. As a result, Dr. Jackson called the men together and formed a club. The second man who came in 1927 transferred as a Senior from Lawrence College. Lawrence College is the home of the Oxford Fellowship, and Randall Penhale came to American University with that pioneering spirit about which we had heard so much. So it came about that through Mr. Penhale, the club that Dr. Jackson was so instrumental in organizing became in the spring of 1928 a chapter of the National Oxford Fellowship. That year there were twenty student members, with Dr. Jackson as faculty adviser. Dr. Jackson is still the faculty adviser, and among those who were in this original group and who are still active around the campus in one form or another are: Mr. Roland Rice and Mr. Gilbert McVaugh, who are working in the psychology department; Mr. George Sixbey, who is a very active alumnus, and Mr. Richard Horner, a senior this year.

The Fellowship has enjoyed three spring banquets, and three fall receptions at the Chancellor's home. There have been gospel teams sent out to various Washington churches; prominent speakers have been brought to the campus; morning watch services are conducted the week before Easter; and the men are aided in any way possible towards the solving of problems of future work.

In the 1928 AU'COLA, we find the following aims: "Members are encouraged to participate in as many college activities as possible. The chief objective of the organization is to promote the spirit of fellowship among all students of whatever faith." We have stated a part of our aims; we leave it to the student body to judge whether we reached our goal or not.

At the National Convention in Grove City, Pennsylvania, during the Thanksgiving holidays in 1930, Thomas Cuddy was elected National Treasurer. This is the first National office to be held by an American University student.





Faus, Hoover, Swanson, Fisher, Schaul, Masincup
Heath, Towne, Evans, Lambert, Murphy, Wren, Moore

International Relations Club

OFFICERS

RUSSELL LAMBERT	<i>President</i>
JANE LYTLE	<i>Vice-President</i>
BARBARA EVANS	<i>Secretary</i>
ARTHUR MURPHY	<i>Treasurer</i>

MEMBERS

JAMES CAIOLA	RUSSELL LAMBERT	ELIZABETH TOWNE
BARBARA EVANS	JANE LYTLE	MAX SCHAUL
KEELER FAUS	ROBERT MARCUS	LEVERETT STOWELL
YULE FISHER	EARL MASINCUP	RUDOLPH SWANSON
KATHRYN G. HEATH	MARGARETTA MOORE	AMELIA WEINBERG
KENNETH HOOVER	ARTHUR MURPHY	JEAN WREN
	JOSEPH TARSHES	





Schauf, Harbaugh, Johnson, Darby, Murray, L., Field, Murphy, Adelman, Ficklen, Wren
 Moore, Evans, Spence, Sanford, Brundage, M., Ford, Murray, L., Adam
 Brundage, E., King, Smith, Tucker, Humphries, Motley, Putnam, Fincher

French Club

OFFICERS

HELEN TUCKER	<i>President</i>
CLAIR ALTLAND	<i>Vice-President</i>
ROBERT MARCUS	<i>Secretary</i>

MEMBERS

PHYLLIS ADELMAN	ELEANOR JOHNSTON	LOUISE MURRAY
CLAIR ALTLAND	ANNE KING	MARY PUTNAM
CARLTON AYERS	DOROTHY LATHAM	ANNA MARY SANFORD
AUDREY BELT	GENEVIEVE LEATHERWOOD	ALFREDDA SCOBAY
BETTY BRUNDAGE	ROBERT MARCUS	CARLTON SKEGGS
MARY JEANETTE BRUNDAGE	SALLY McILVAINE	GENEVIEVE SPENCE
DOROTHY DARRY	MARGARETTA MOORE	FREDERIC STEWART
BARBARA EVANS	SARA MOTLEY	ELIZABETH TOWNE
IMOGEN FICKLEN	SUZANNE MULLETT	HELEN TUCKER
FRANCES FINCHER	ARTHUR MURPHY	MAX TUCKER
JOHN HOUSTON	LORENA MURRAY	HARRY WEEKS
VIRGINIA HUMPHRIES		JEAN WREN



Ford, Denit, Espey, Tedesco, Faus, Dean
King, Jamieson, Ayers, Willis, Cross

Omicron Epsilon Pi

ALUMNI MEMBERS

LYNN CORSON
MARION CROSS
MARY DEFFENBAUGH
OTIS FELLOWS
PAULINE FREDERICK

J. COURTNEY HAYWARD
CHARLOTTE MAGEE
HELEN MCLEOD
GEORGE SIXBEY
HATTIE TEACHOUT

MEMBERS

BEATRICE ADAMS
CARLTON AYERS
MARGARET CROSS
MARY DAUB
MARY OWEN DEAN
WILLETT DENIT

BLAKE ESPEY
KEELER FAUS
ALICE LOUISE FORD
SALLY JAMIESON
ANNE KING
ANGELO TEDESCO

DORIS WILLIS





Hamilton, Eby, Gleason, Thomas, Moore, Murphy, Brown, Kidder, Fuchs, B., Field, Carter
Ficklen, Blanchard, Willis, Woods, Adelman, Stuart, Fuchs, R.

Westerner Club

OFFICERS

DORIS WILLIS	<i>President</i>
JOHN WOODS	<i>Vice-President</i>
PHYLLIS ADELMAN	<i>Secretary</i>
ALAN BLANCHARD	<i>Treasurer</i>

MEMBERS

PHYLLIS ADELMAN
ALAN BLANCHARD
MARY FRANCES BROWN
CHESTER CARTER
EUGENE EBY
IMOGEN FICKLEN

THEODORE FIELD
BARRETT FUCHS
ROBERT FUCHS
CEDRIC GLEASON
DOROTHY HAMILTON
ARTHUR KIDDER

MARGARETTA MOORE
ARTHUR MURPHY
MARJORIE STUART
JOSEPH THOMAS
DORIS WILLIS
JOHN WOODS





Tuve, Coulter
 Jorg, Fisher, Masincup, Smith, Underwood, Moffett
 Lentz, Williams, Motley

Brecky Club

OFFICERS

HENRY BACKENSTOSS	<i>President</i>
LOIS SPENCER	<i>Vice-President</i>
SARA MOTLEY	<i>Secretary</i>
JOHN WILLIAMS	<i>Treasurer</i>

MEMBERS

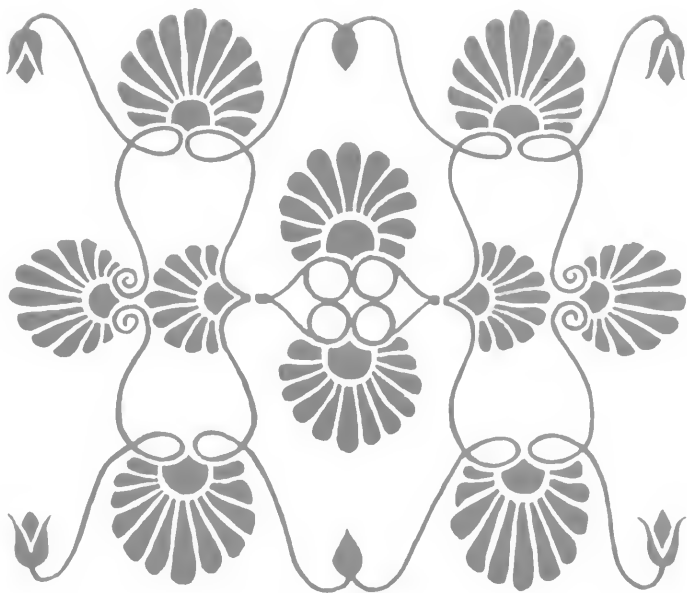
HENRY BACKENSTOSS
 JANE BISHOP
 BETTY BRUNDAGE
 JOHN COULTER
 GLADYS COWSILL
 MARGARET DIMOND
 DOCK FARTHING
 YULE FISHER

HENRY JOHNSON
 ELEANOR JOHNSTON
 CHARLES JORG
 EARL KERNAHAN
 ANNE KING
 ALICE LEE
 RITA LENTZ

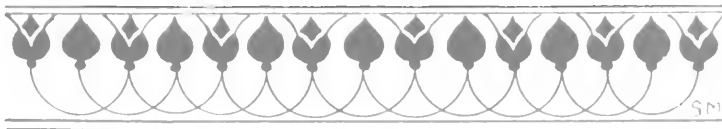
EARL MASINCUP
 HARRY MOFFETT
 SARA MOTLEY
 ARTHUR SMITH
 LOIS SPENCER
 RICHARD TUVE
 HARRY UNDERWOOD
 JOHN WILLIAMS

The Brecky Club is composed of graduates of Central High School at American University. Its aim is to foster interest in American University, not only among students at Central, but in the other Washington High Schools as well.

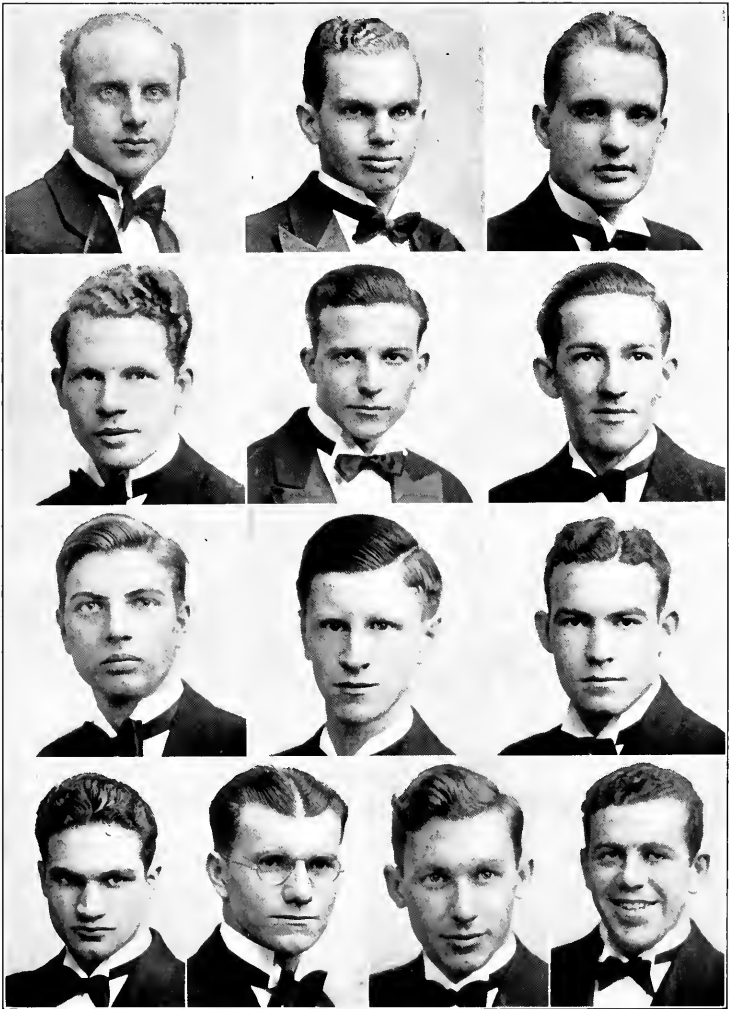




FRATERNITIES



Q A U C O L A 3 I G





Jesters Club

FOUNDED JANUARY 31, 1928

OFFICERS

JAMES JOHNSON*President*
RICHARD L. HORNER.....*Vice-President and Treasurer*
ARTHUR MURPHY*Secretary*
GEORGE OLSEN*Pseudo Secretary*

MEMBERS

Fratres In Urbe

FRED CARPENTER
FRED DIETRICH

HERBERT ELLIOTT
LELAND FULL
ERIC FRIEDHELM

CARL HEDBERG
WILLIAM WOLOWITZ

Seniors

RICHARD L. HORNER

JAMES JOHNSON

Juniors

WARD MITCHELL

ARTHUR MURPHY
GEORGE OLSEN

WILLIAM WASHBURN

Sophomores

ALAN BLANCHARD

MILTON CHRISTIE

Freshmen

HARLAN HENDRICK

Pledges

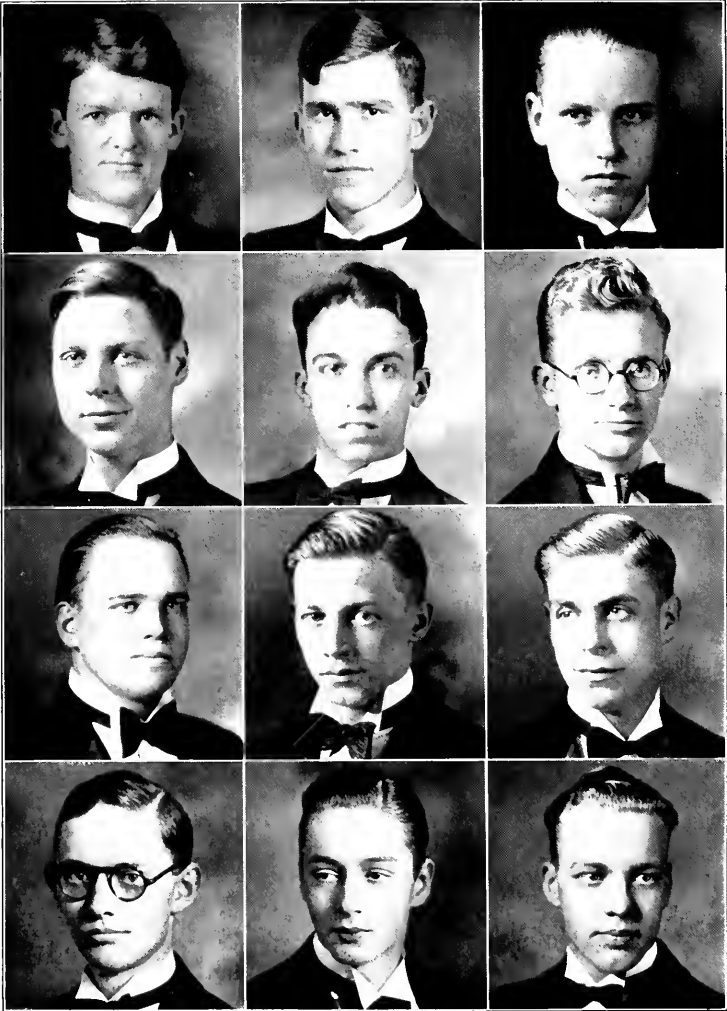
GEORGE BORSARI
PHILIP CHATES

THOMAS CUDBY
WILLIAM FUCHSLE

HYLTON HARMON
JOHN WOODS



COLLEGIATE





Alpha Theta Phi

FOUNDED NOVEMBER 23, 1928

OFFICERS

- E. WARREN COLISON.....*President*
- B. BROOKL BRIGHT.....*Vice-President*
- JOHN WILLIAMS.....*Recording Secretary*
- DAN SMITH.....*Corresponding Secretary*
- CHESTER CARTER.....*Treasurer*

MEMBERS

Fratres In Urbe

MILTON FOUSTON

SILLEY GRAY

ROLSTON LYON

Seniors

CHESTER CARTER

E. WARREN COLISON
EARL KADAN

LEVFRETT STOWELL

Juniors

B. BROOKL BRIGHT

BURKE EDWARDS

YULE FISHER

Sophomores

HARRY MOFFETT

DAN SMITH

JOHN WILLIAMS

Freshmen

RICHARD BUCKINGHAM

ARTHUR SMITH

ARTHUR KIDDER

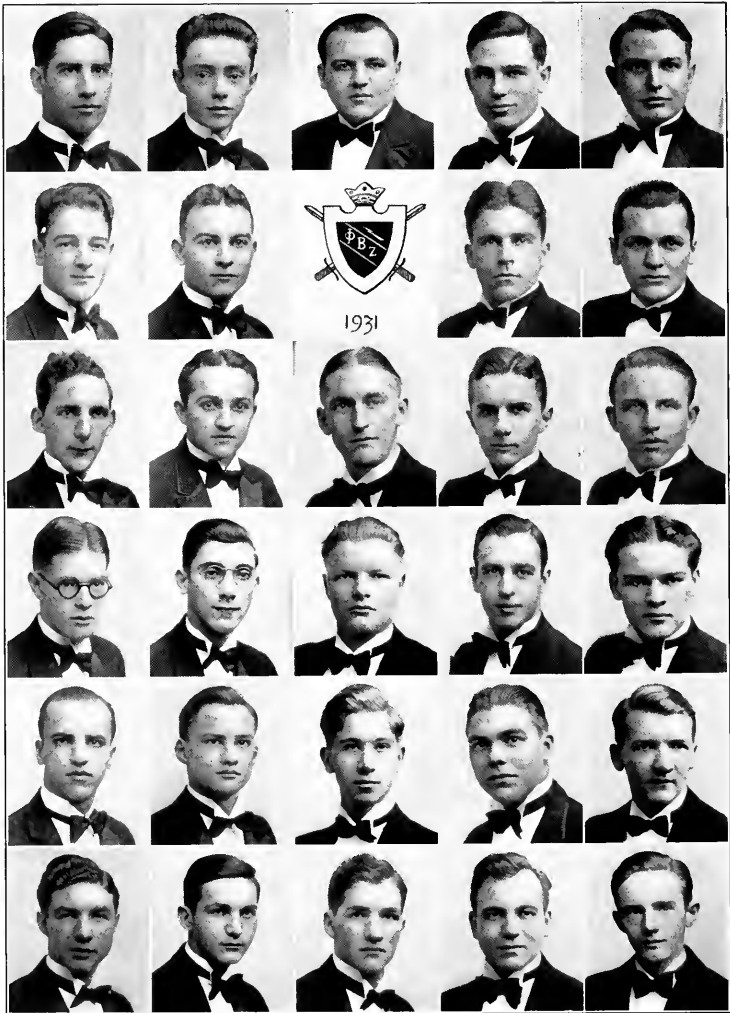
Pledges

LEONLL DICK

HARRY UNDERWOOD



COLLEGIATE





Phi Beta Zeta

FOUNDED MARCH 22, 1929

OFFICERS

ELLSWORTH L. TOMPKINS	<i>Sir Knight</i>
BARRETT FUCHS	<i>Squire</i>
W. EARL MASINCUP	<i>Scribe</i>
RICHARD JARVIS	<i>Chancellor of the Exchequer</i>
LEON K. BRYNER	<i>Seneschal</i>
EDWIN ROSS	<i>Chaplain</i>



RICHARD JARVIS

ELLSWORTH L. TOMPKINS

LEON K. BRYNER
BARRETT FUCHS
FREMONT KNITTLE

EDWIN ROSS
PERRY O. SNYDER
RUDOLPH H. SWANSON

CHESTER BOWERS
FRANCIS CRAMER

MAN SCHLAU
OSCAR SELLS

WILLETT DENT
THEODORE LAYLE

JOSEPH THOMAS
RICHARD TUMI

ROBERT FUCHS

EDWARD O. TATE

WILLIAM ANDERSON
WILLETT DENT

HUGH TATE, JR.
GLADSTONE WILLIAMS



CLASSIC



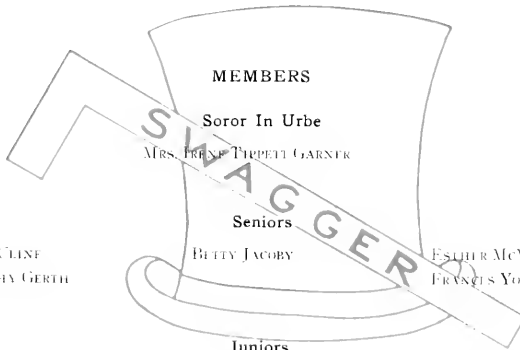


Swagger Club

FOUNDED SEPTEMBER, 1928

OFFICERS

- MARY CLINE *President*
 FRANCES YOUNG *Vice-President and Secretary*
 DOROTHY GERTH *Secretary*
 ESTHER McVEY *Social Chairman*



MEMBERS

Soror In Urbe

MRS. FRANK TIPPETT GARNER

Seniors

MARY CLINE
DOROTHY GERTH

BETTY JACOBY

ESTHER McVEY
FRANCES YOUNG

Juniors

JEANNETTE MACMATHON

VIRGINIA MAIDEN

Sophomores

PHYLLIS ABELMAN
RUTH BELDEN

MARY DAUB

VERONA GOETZ
KATHERINE KEUTER

Freshmen

DOROTHY MILLER

MARJORIE STUART

Pledges

ELIZABETH FLEMING

HELEN MARTIN
MARY LOUISE MELEAR

ELIZABETH SOMERVILLE



Q A U C O L A 3 I Q





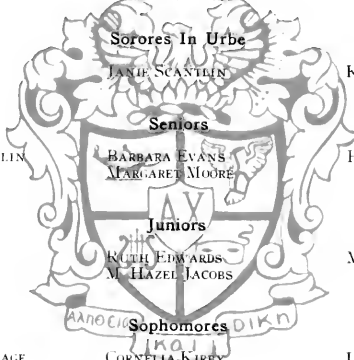
Alpha Chi

FOUNDED APRIL, 1928

OFFICERS

ORREL BELLE CLAFLIN *President*
 MARGARETTA MOORE *Vice-President*
 BARBARA EVANS *Secretary*
 HELEN TUCKER *Treasurer*

MEMBERS



Sorores In Urbe

SARA MARTZ JANIE SCANTLIN KATHERYNE SEVERANCE

Seniors

ORREL BELLE CLAFLIN BARBARA EVANS HELEN TUCKER
 MARGARETTA MOORE

Juniors

DOROTHY DARRY NUTH EDWARDS MARY JANE PEARCE
 M. HAZEL JACOBS

Sophomores

ELIZABETH BRUNDAGE LOIS SPENSER
 ANNE KING CORNELIA KIRBY GENEVIEVE SPENCE

Freshmen

JANE BISHOP HENRIETTA GOODNER MARTHA SKIDMORE
 HILDA GALLIHER EMILY NICKLAS CLARA TATE

Associate

ELIZABETH MCBIRNEY

Inactive

SYLVIA K. SARD

Pledges

MARY ELIZ. HARTSHORN SALLIE MAREAN RATIE TOMPKINS
 LOUISE LEARNED JEAN WREN



A U C O L A 3 I





Epsilon Kappa

FOUNDED NOVEMBER 5, 1929

OFFICERS

NOLA E. LIVINGSTON *President*
 AGATHA VARELA *Vice-President*
 OLIVE E. RODGERS *Secretary*
 PRUTIA PIERCE *Treasurer*



MARY CHADWICK

PAULINE FREDERICK

FRANCES FINCHER
 KATHRYN G. HEATH

LYNETTE MULHOLLAND
 MARY PUTNAM

Juniors

CHARLOTTE JAMIESON

OLIVE E. RODGERS

AGATHA VARELA

Sophomores

MARGARET DIMOND
 ELEANOR MAE JOHNSON

HAZEL KIRK
 PRUTIA PEIRCE

ADOLPHUS WORLEY
 RITA YORK

Pledges

DOROTHY BAKER
 LOUISE DANFORTH

DOROTHY LATHAM

RITA LENTZ
 PRISCILLA ROBB



Q A U C O L A 3 I Q



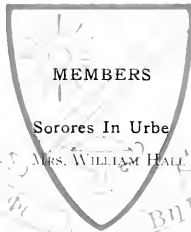


Phi Sigma Beta

FOUNDED SEPTEMBER, 1929

OFFICERS

- M. ESTELLE WOLFE.....*President*
 SARAH E. McILVAINE.....*Vice-President*
 MARY FRANCES BROWN.....*Secretary*
 GRACE HART.....*Recording Secretary*
 ELEANOR TAYLOR.....*Treasurer*



MRS. LUCILLE S. COOK

MRS. WILLIAM HALL

VIRGINIA GREGORY

Seniors

SARAH E. McILVAINE

MARGARET MOWBRAY

M. ESTELLE WOLFE

Juniors

MARY FRANCES BROWN

DOROTHY JONES

Sophomores

BETTY HANCOCK

GRACE HART

ELEANOR TAYLOR

Pledges

CATHERINE OSBORNE

ELSA GRIFONI





Tompkins, Dean Woods, Colison, Johnson
Cline, Wolfe, Dean Brown, Clafin, Livingston

Interfraternity Council

GEORGE B. WOODS.....*Dean of the College*
 MARY LOUISE BROWN.....*Dean of Women*
 ELLSWORTH L. TOMPKINS.....*President*
 ORREL BELLE CLAFLIN.....*Secretary*
 M. ESTELLE WOLFE.....*Treasurer*

MEN'S GROUP

Jesters
 JAMES JOHNSON

Alpha Theta Phi
 E. WARREN COLISON

Phi Beta Zeta
 ELLSWORTH L. TOMPKINS

WOMEN'S GROUP

Swaggers
 MARY CLINE

Alpha Chi
 ORREL BELLE CLAFLIN

Epsilon Kappa
 NOLA LIVINGSTON

Phi Sigma Beta
 M. ESTELLE WOLFE





Snapshots

ONE—FRESHMAN

The Tug-of-War goes to the Frosh—Sophs win in soccer—Some innocents—Frosh do their capers at Gallaudet and Shepherd—the Sophomore women finish the Field Day with a win.

TWO—FOOTBALL

Fighting at C. U.—Smearing a Gallaudet line plunge—Yea, team, fight—Lining up against Shenandoah and Gallaudet.—A fast play at Central Stadium—Stands at Kendall Green.

THREE—ABOUT THE CAMPUS

Feminine Attractions—and more—A relic—Madame le Professeur—On the Steps—A. D. 1928—From Wesley Heights.

FOUR—WOMENS' ATHLETICS

Hockey at the G. W., Field Day—A. U.'s Archers—Curiosity—More women and how—Honest Toil—A bright play in the Field Day—Somewhat Neurotic.

FIVE—HERE AND THERE

SCENES from "Mid-Summer Night's Dream—Last Thoughts—S. S. American University—Graduates of the University 1930—Three Little Bears—Crazy over Horses.



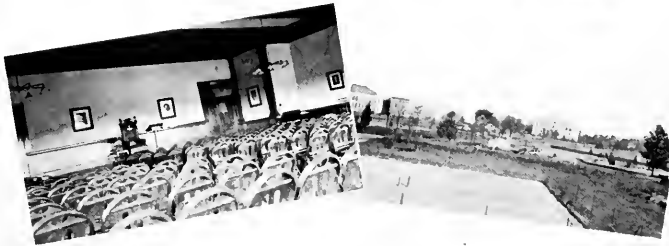
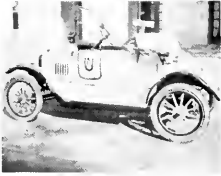
A U C C O L A 3 I



A U C O L A 3 I O



A U C C O L A 3 I



Q A U C O L A 3 I Q



AUCOLAZI





Marathon of Events

SEPTEMBER

- 15—Official business having been attended to, the Frosh, duly tagged and stamped, were herded to the gym for the Big Brother and Sister party.
- 16—Just another party.
- 17—Shortened class periods, with an arrangement as near to kindergarten as possible, gave the Frosh an idea of future joys.
- 18—A Dormitory party was arranged to give the new girls a chance to show their taste in pajamas.
- 19—A faculty reception in full dress parade completed the work on the new students and rendered them unfit for study the rest of the year.
- 26—At the Weenie Roast, opportunity was given to witness the burying of an old and much chipped hatchet by Dan Terrell and Mr. Hutchins.
- 27—The extent of the Frosh lung power was amply proved at the Shenandoah game, won by A. U.

OCTOBER

- 4—Inspired by the lusty yelling of the Freshmen, the football team won its second encounter, beating Shepherd. That night the Student Council dance was a great success.
- 9—The French Club opened its season by going back to the simple ways of nature and inaugurating folk-dancing.
- 10—The new students were taken down to Foundry for a reception and taught to play simple games, such as become very young children.
- 15—The first formal introduction to the famous "woods" of the campus was given to the Frosh at the Color Ceremony and Picnic.
- 19—Freshmen were allowed to receive visitors on Dad's Day, and Daddy Long-legs circulated over Hamilton House and the Dormitory.
- 24—Ministers disported themselves like lambs gambolling on the green at the Oxford Fellowship Reception at the Chancellor's.
- 25—A. U. devotees of picnics sat on rocks at Sugar Loaf Mountain and ate cold potatoes in an intermittent rain.

NOVEMBER

- 1—The Sophomores put one over on the rest of the school by engaging a colored orchestra. The theme included spooks, which may account for the drummer being late.
- 5—Miss Cornelia Sorabji spoke on India in chapel, and told of her work as a lawyer in her native country.
- 15—Field Day was a great success for those who participated and a blessing to the Frosh, who had rules removed as a result.
- 21—The Faculty-Student play surprised several of the underclassmen, who had different ideas of their profs.





THE AMERICAN UNIVERSITY

CHARTERED BY ACTS OF CONGRESS 1893-1895

LUCIUS C. CLARK, D. D., CHANCELLOR



COLLEGE OF LIBERAL ARTS

MASSACHUSETTS *and* NEBRASKA AVENUES

Four year course leading to A. B. degree. Campus of 90 acres. Fine buildings. Faculty of well-trained and experienced teachers. Students from 29 states and one foreign country.

GEORGE B. WOODS, DEAN



GRADUATE SCHOOL SCHOOL OF POLITICAL SCIENCES

1901, 1907 "F" STREET, N. W.

Graduate courses leading to the degrees of Master of Arts, Master of Political Science and Doctor of Philosophy. The students come from 37 states and 13 foreign countries. They represent 12 foreign universities and 93 colleges and universities in the United States.

Undergraduate courses leading to degree of Bachelor of Political Science and Bachelor of Science and Commerce. Two years of college work (60 hours) required for admission. Courses offered in department of Government, History, Diplomacy, Economics, Foreign Trade and Agricultural Economics.

WALTER M. W. SPLAWN, DEAN



For Catalog, Write Registrar of the School in Which You are Interested





L. G. BALFOUR COMPANY

(Official Fraternity Jewelers)

Fraternity Badges Jewelry Favors Novelties

STATIONERY AND PROGRAMS

MEDAL AND TROPHIES

STANDARD CLASS RINGS

Suite 204, 1319 F Street, N. W.

DECEMBER

December 5—The interfraternity dance pulled clever stunts with a nautical flavor and proved very successful.

December 6—The A. U. alumni went down to defeat in a thrilling game with the varsity basketball team.

December 13—The Men's Glee Club gave a tuneful concert and proved its growing popularity.

December 18—Vacation came in time to save the fainting Freshmen.

JANUARY

January 9—After losing the Gallaudet game, several A. U. students sat in a car and watched the visitors talk things over in their bus.

BOOKKEEPING, ADDRESSING AND DUPLICATING
MACHINES

**The United Typewriter
and Adding Machine Co. Inc.**

1227 N. Y. AVE., N.W. — WASHINGTON, D.C.

"Everything for the office"

MAIL ORDERS GIVEN PROMPT ATTENTION

FIRST CLASS REBUILT. GUARANTEED MACHINES



GAUCOLAS I



EVERY AVENUE IS A NATURE PICTURE

Spring Valley

AND

Wesley Heights

Washington's Outstanding Exclusive Communities

Nowhere else has nature been so lavish and unique in the bestowal of her beauties—rolling hills, flowering forests and rippling brooks.

Here and there like sparkling gems in the great mosaic of nature are set homes of artistic design with surroundings that are without counterpart elsewhere in the national capital.

W. C. and A. N. Miller

OWNERS and DEVELOPERS

1119 Seventeenth Street :: :: :: Decatur 0610



COAL——BUILDING MATERIALS——FUEL OIL

GRIFFITH-CONSUMERS COMPANY

Main Office 1319 G Street, N. W. :: :: Metropolitan 4840

January 10—The Freshmen had an opportunity to listen to A. U. out-talk Haverford College, which retired with what grace it could muster.

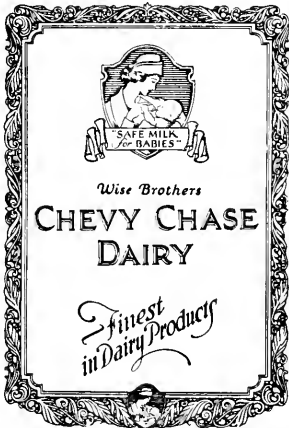
January 14—Just another basketball game.

January 17—The Swaggers gave an informal dance sitting before the fire-place of the Bethesda Women's Club.

January 24—The Frosh were again the center of the stage, with examinations beginning and upperclassmen playing the role of Job's Comforters.

FEBRUARY

February 4—The Juniors and Seniors were invited to a reception by Miss Galt in honor of the author, Mrs. Davis, who spoke on "Some Freudian Reasons for Twins."



COMPLIMENTS
OF
H. M. WAGNER & CO.
INCORPORATED



THE
PHOTOGRAPHS

USED

IN THE

AUCOLA

WERE MADE BY THE

EDMONSTON STUDIO

1333 F Street, N. W. :: :: Washington, D. C.

Duplicates May Be Had At Any Time



A U C O L A 3 I

District 8717

E. B. ADAMS COMPANY

CHINA GLASSWARE SILVER

Janitor Supplies and Utensils

COMPLETE
KITCHEN AND FOOD SERVICE

OUTFITS

614 Pennsylvania Avenue, Northwest
Washington, D. C.

BARBER AND ROSS, INC.

HARDWARE TOOLS CUTLERY
HOUSE FURNISHINGS
GAS RANGES
AUTO AND RADIO SUPPLIES
T—O—Y—S

MILLWORK, STRUCTURAL STEEL
CEMENT MIXERS

11th and G Streets, N. W.
Washington, D. C.

KELVINATOR—*The Oldest Domestic
Electric Refrigeration*

February 5—A set of little Tommy Tuckers, disguised as the Men's Glee Club, sang in a concert at Christ Church, Georgetown.

February 6—The Women's Faculty Club party was in the guise of a hard times party. A bread line, and a prize for the neediest couple were the bright spots of the evening.

February 14—Hearts were smashed and pieced together nonchalantly in almost complete darkness at the Valentine Dance of the Freshmen, but very few seemed perturbed.

February 18—The basketball game at Annapolis only proved that A. U. damsels are as susceptible to uniforms as the veriest flapper.

February 21—The history of A. U. as shown in the pageant celebrating the University's forty-ninth anniversary proved the biggest surprise of the year.

COMPLIMENTS

OF

WASHINGTON

COCA-COLA

BOTTLING

WORKS.

INC.

400 Seventh Street Southwest
Washington, D. C.

CHAS. G. STOTT & CO

INCORPORATED

1310 NEW YORK AVENUE

F—I—N—E

Stationery and Engraving

GREETING CARDS

Christmas and for Every Occasion

OFFICE SUPPLIES
OFFICE FURNITURE

Branch Stores

1513 K Street 824-17 Street
Washington, D. C.





JUDD & DETWEILER, INC.

M A S T E R

P R I N T E R S

Florida Avenue and Eckington Place, N. E.

Washington, D. C.



WONDER BREAD

IT'S SLO-BAKED

Superior in Quality, by Extra Amount of Milk, Sugar and Shortening
Baked Fresh Every Morning and Evening—Your Grocer Has It!

CONTINENTAL BAKING COMPANY
 CORBY BAKERY

WASHINGTON, D. C.

February 27—The Brecky Club kept up its reputation with a dance that began informally, became formal, and ended the way it began.

MARCH

March 3—The college was given an opportunity to see what the members of the speech class have been doing. Since the evening's program included two drunks and a snow-bird, it is rumored that next semester, enrollment will be heavier.

March 18—The college in its best bib and tucker went to the Women's Guild reception for the Chancellor and the Dean.

March 23—Mr. Martin MacLaughlin's speech on "Present Day Europe" was one of the most popular chapel talks of the year.

YOU'LL ALWAYS FIND THE HAPPY HOME WELL LIGHTED



Wherever there's a home well lighted...and most of them are...you'll find happiness and content within. Every member of the family enjoys that feeling of security afforded by "Matchless Service" during the hours when night has cast its shadow of darkness. The warmth and friendliness of good illumination have no equal.

Keep your home cheerful with light. Replace burned-out lamp bulbs with new ones . . . keep a supply always on hand . . . have lamps wherever you need them. And remember, the difference between good light and poor light is merely a matter of pennies.

"Matchless Service" Costs So Little That You Can Illuminate Your Entire House for a Few Pennies a Night!

POTOMAC ELECTRIC POWER CO.

"MATCHLESS SERVICE"

A U C O L A 3 I

THE WILLARD

Washington's Most Famous Hotel



ANNOUNCES

SPECIAL LUNCHEONS AND DINNERS

AS FOLLOWS

CRYSTAL ROOM

Luncheons at \$1.00 and \$1.50 Dinners at \$1.50 and \$2.50

Delightful Music During Dinner

SEVEN TO NINE O'CLOCK

COFFEE SHOP

Luncheons at 75c and \$1.00 Dinners at \$1.25

Also a la carte service in both rooms

UNEXCELLED FACILITIES

FOR

TEA DANCES, PROMS, PRIVATE DINNERS AND LUNCHEONS
OF ANY SIZE, LARGE OR SMALL

FRANK S. HIGHT

President



S. FREEDMAN AND SONS

PAPER

JANITOR SUPPLIES

DISTRIBUTORS

LILY CUPS AND CONTAINERS

618 K Street, N. W.

National 7234



March 27—The Senior Dance reminded the guests very vividly of "The Days That We Treasure."

APRIL

April 9—The A Club treasure hunt led the members over hill and dale and uncovered some uncanny detectives.

April 11—The banquet of the Women's Glee Club wound up a very successful season in a great big way.

April 16—Open house by the physics and chemistry departments was a great success, showing jumping molecules that wouldn't perform and countless other miracles.

T. A. CANNON

COMPANY

WHOLESALE

PRODUCE DEALERS

National 7715 Metropolitan 9706

606 Pennsylvania Avenue

Washington, D. C.

The House



of Courtesy

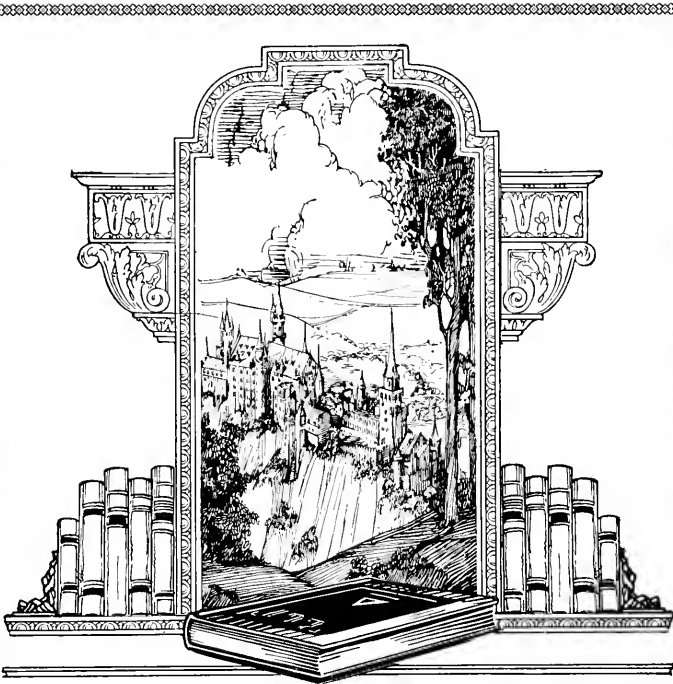
Always the new . . . the correct
in fashions for the modern
young woman of cultured
taste . . . priced well
within the school-
girl budget

Philipshorn

Eleventh Street

Between F and G Streets

A U C O L A 3 I



• DREAMS COME TRUE •

If a man can write a better
book - paint a better picture
build a better mousetrap than
his neighbor - the world will
make a beaten path to his door.

Hubbard.

The Lynchburg Engraving Company

DESIGNERS AND ENGRAVERS OF BETTER ANNUALS

Lynchburg

"A BETTER BOOK AT THE SAME COST"

Virginia

09 40 30



SOUTHERN HOTEL SUPPLY CO.

628 Pennsylvania Avenue, N. W.

CHOICE NEW YORK MEATS

National 8871-8872 :: :: :: Washington, D. C.

April 17—The Junior Prom at the Willard Hotel was the first off-campus dance in college history.

April 18—It was shown at the fourth annual athletic banquet that athletes, even if bedecked in Tuks, know how to do justice to a good meal.

MAY

May 1—The annual Cherry Blossom Dance of the Women's Student Government repeated the triumph of past dances with even nicer decorations than usual.

May 2—The A Club Field Day thrilled all devotees of sports and provided a chance for all to show their prowess.

EXCLUSIVE AGENTS

FOR

THE STANDARD

A. U. CLASS RINGS

Men's Size and Miniature

COLLEGE AND FRATERNITY JEWELRY

TROPHIES———PROM FAVORS———MEDALS

R. Harris & Co.

F Street at Eleventh :: :: Washington, D. C.

JEWELERS AND DIAMOND MERCHANTS FOR OVER HALF A CENTURY



CAUCOLAS 31

The Washington News Company

1121 Fifth Street, N. W. :: :: Washington, D. C.

WHOLESALE DISTRIBUTORS

BOOKS, STATIONERY, TOYS AND NOVELTIES

SUBSCRIPTIONS FOR ALL MAGAZINES AND NEWSPAPERS

M. E. HORTON, INC.

National 9890

R. R. Depot and Receiving Dept. 609-21 Va. Ave., S. W.

IMPORTERS AND WHOLESALEERS OF FOOD PRODUCTS

608-620 C Street S. W. :: Washington, D. C.

Washington Rapid Transit Co.

MOTOR COACHES FOR PRIVATE HIRE



LOCAL AND LONG DISTANCE
TRIPS

*"No Party Too Small,
None Too Large"*

PHONE

ADAMS 8921

TRAFFIC DEPT.

4615 Fourteenth Street N. W.

09 49 30

May 15—Romeo and Juliet lived again for a night and for many nights to come in the dreams of those seeing it.

May 22—Final exams descended like a plague on the unwary and left all with a rather weak-kneed feeling.

JUNE

June 1—Commencement, and good-by.



**UNITED STATES POSTER
COMPANY**

Manufacturers of

Pennants, Banners, and Pillow Tops

330 H Street Northeast—Washington, D. C.

Phone—Lincoln 2835





Autographs



