



AUCOLA

1934



Digitized by the Internet Archive
in 2010 with funding from
Lyrasis Members and Sloan Foundation

<http://www.archive.org/details/aucola1934amer>

EX LIBRIS



THIS edition is limited to
300 copies, of which this is

No. 255

The AU

•

*Compliments of the author,
Marilyn Coulter.
In slight compensation for the help
you have given me during the past year
on photographs, and some other pictures.*

COPYRIGHT 1934
MARGERY COULTER
Editor-in-Chief
GORDON SIEVERS
Business Manager
BARBARA PIERCE
Art Editor

COLA

1934

PUBLISHED BY
THE CLASS OF 1935
OF
AMERICAN UNIVERSITY





F O R E W O R D

AMERICAN UNIVERSITY is a young institution of learning, as yet comparatively small and not out of its first growth. Although its achievements in the past have been substantial, it is in the future that the greatness of the university lies.

American University, with the opportunities afforded by the national government close at hand and in the unique position of being the only non-sectarian university with an adequate campus in Washington, is ideally suited to become a great educational center. Its administration has shown a consistently progressive viewpoint, as evidenced by the recent establishment of a new School of Public Affairs. The staff of this AUOLA has, therefore, chosen as its theme the future of a Greater American University, the national university which is growing up in the national capital.



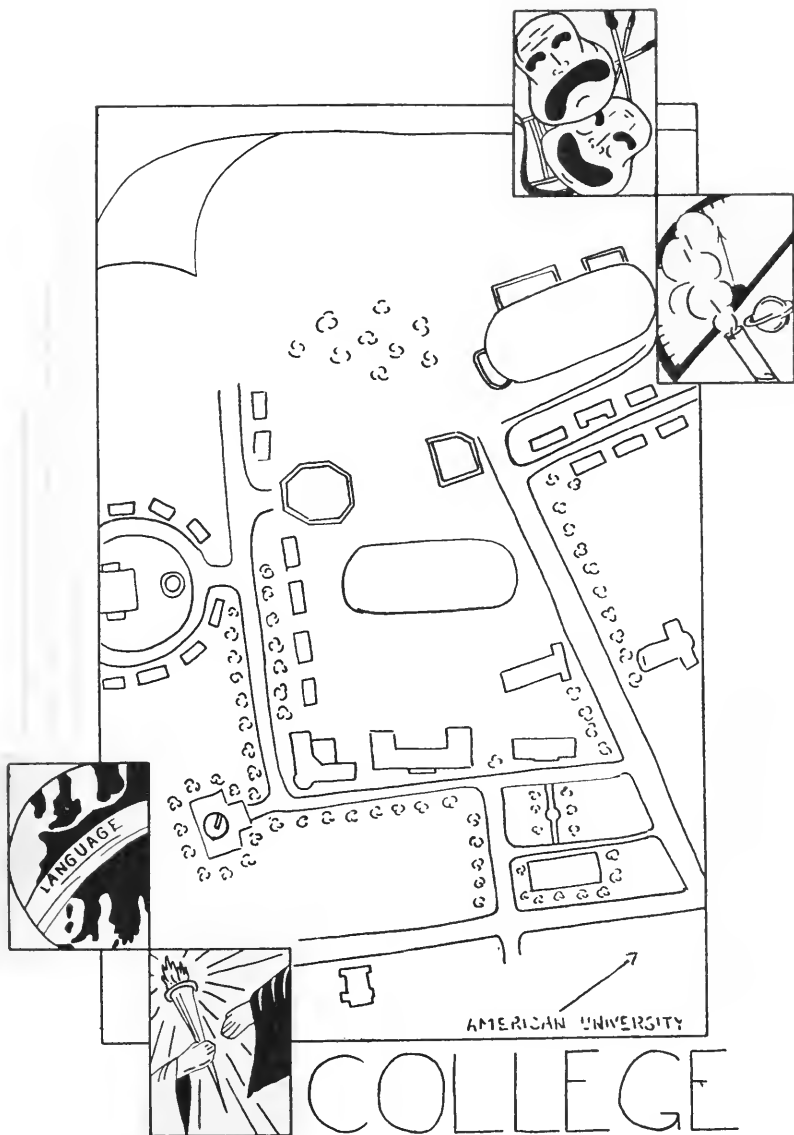
D E D I C A T I O N

SINCE the future of American University is the theme of this annual, it is fitting that the staff of the 1934 *AUCOLA* should dedicate the book to the man into whose hands the future has been entrusted and who will direct our progress toward the ideals we have expressed.

In his professional life prior to his arrival at American University, Dr. Gray showed a consistent progressiveness which, without disregarding all tradition, was not hampered by outworn custom. In the short term during which he has served our university, he has already introduced many innovations and changes. It is in a spirit of faith in Dr. Gray's purposes, and confidence in his ability to carry them out that we, the class of 1935, dedicate this *AUCOLA* to Chancellor Joseph M. M. Gray.

THE campus of American University is one ideally situated and with great possibilities for future development. With two dormitories, a gymnasium, an athletic field, a library, and two marble lecture buildings, as well as a beautiful church practically all our own, we are indeed adequately served. The acres of rolling campus provide ample room for future development.

The probable future development of the college physically, according to present plans, is here shown. In the side panels are the symbols of four branches of learning: science, language, art, and history.



AMERICAN UNIVERSITY

COLLEGE

VIEWS



WOMEN'S RESIDENCE HALL



GYMNASIUM



BATTELLE MEMORIAL



CHANCELLOR'S RESIDENCE



HAMILTON HOUSE



METROPOLITAN CHURCH



HURST HALL

ADMINISTRATION



JOSEPH M. M. GRAY, B.A., B.D., D.D., LITT.D., S.T.D.

Chancellor of the University

Dr. Gray's arrival on the campus was followed by a whirlwind of activity, which soon made the student body cognizant of the fact that American University now had an active chancellor. His habitual liberalism manifests itself in many ways, in his thinking, in his administrative actions, in his sympathetic tolerance of other points of view. Dr. Gray is the cultured scholar and the man of action, the preacher of inspiring vision and the realist of progressive administration. His eagerness to meet and know each student personally has already gained him wide popularity.

GEORGE B. WOODS, B.A., M.A., PH.D.

Dean of the College and Professor of English

It is as a leader of men and a fighter for causes in which he believes that Dr. Woods is most respected. Certainly we realize that to him more than to any other one person is due credit for the astounding progress of the college during its short history. Yet with his administrative ability is combined an unusual literary appreciation which has gained him a wide reputation as a Shakespeare scholar.



MARY LOUISE BROWN, B.A., M.A.

Dean of Women and Associate Professor of English

Miss Brown, as Dean of Women, brings to her task of creating a home at American University for out-of-town girls the same energy and charming hospitality she puts into every other project she undertakes. She has had adequate training for her present position, for not only has she taught, but at Ames College, Iowa, she filled the same position she holds here. She is famous for her waffle suppers and has an unconquerable fondness for chow mein.





JOHN E. BENTLEY, M.A., S.T.B., M.R.E., Th.D.

Professor of Education and Psychology

Dr. Bentley is well-known as a dynamic speaker and teacher, and his courses are popular for their stimulating and evocative discussions. He received his doctorate at McGill University and has studied at other institutions here and abroad. He has lectured and is the author of several books.

WILL HUTCHINS, B.A., B.F.A.

Professor of Art

Professor Hutchins has studied his subject far and wide in Europe and America and brings to it a profound love and appreciation. His courses are listed as "not to be missed" by all who believe in a liberal education. To Mr. Hutchins also goes the credit for many fine performances of the Dramatic Club, and for upholding (with Dr. Golder) the standards of the university on the campus golf course.



WALTER F. SHENTON, B.A., M.A., Ph.D.

Professor of Mathematics

Dr. Shenton's favorite campus activity is photography, and at any important college activity he may be seen indulging in his art. In class he devotes his energy to leading erring student footsteps along the path to higher mathematics by the most painless methods and to enrolling pupils in his OIC club. He received his education at Dickinson and Johns Hopkins Universities.



DELOS O. KINSMAN, B.L., M.A., Ph.D.

Professor of Economics

Dr. Kinsman brings to his professorship a wide experience in both the business and professional fields, having served as president of a bank, college instructor, and expert assistant on the Wisconsin State Tax Commission. He is well-known for his fatherly interest in his pupils and for his painstaking care in covering his courses. He is with Dr. Holton in his devotion to the art of Izaak Walton.





WESLEY M. GEWEHR, Ph.B., M.A., Ph.D.

Professor of History

Dr. Gewehr, a University of Chicago man, is so fond of his subject that he has written two books on it—one on the history of Virginia and one on the rise of nationalism in the Balkans. In his lighter moods he enjoys visiting Civil War battlefields in the vicinity of Washington. He is well-known as a leader of liberal thought on the campus.

C. HENRY LEINWEBER, Ph.D.

Professor of German

Dr. Leinweber is a master of the Teutonic, Romance, and Slavic languages and their dialects, and in addition knows Arabic, Hebrew, Babylonian, and Assyrian. But his attainments are not limited to linguistic facility, for he has served on a newspaper, writes poetry in his spare moments, and devotes much of his time to music.



WILLIAM B. HOLTON, B.S., M.S., Ph.D.

Associate Professor of Chemistry

Dr. Holton is fond of showing ignorant undergraduates just how to cast the long reel used in his favorite sport—trout-fishing. As an instructor, he combines a thorough knowledge of his subject with unrivaled energy, which expects similar energy from the student, and frequently gets it. He is a terror at volleyball.



HAROLD GOLDER, B.A., Ph.D.

Associate Professor of English

A Harvard man, Dr. Golder stands at the high point of American University's intelligentsia. His unbelievable flow of language in lectures and his pose of cynicism are usually objects of awe to freshmen. He plays as blithely with golf balls in moments of recreation as with "rewrites" in his official capacity. He also confesses to a passion for symphony concerts.





JESSIE M. FERGUSON, B.A., B.S., M.A., Ph.D.
Associate Professor of Education

Dr. Ferguson is a teacher who practises what she preaches, for her classes in education are conducted according to the most approved methods of up-to-date psychology. Freshmen early come into contact with her as the person who gives them the psychological examination in the opening weeks of school. She received her formal education at Chattanooga and Ohio State Universities and is the author of several works.

GLENN F. ROUSE, B.A., Ph.D.
Associate Professor of Physics

Dr. Rouse, who received his education at Cornell and Wisconsin, is remarkable for his unusual patience in explaining again and again all difficult points. A true scientist at heart, he spends his spare time building and improving apparatus for the physics laboratory. Occasionally he may be seen pitching horseshoes on the A.U. campus.



FERDINAND A. VARRELMAN, B.A., M.A.
Assistant Professor of Biology

Mr. Varrelman, head of the Department of Biology, is widely respected as a noted scientific investigator and as an authority in almost every scientific field. The recipient of degrees from California and Columbia, he is at present working on the development of a seedless apple which will give him his doctorate at Columbia. Mr. Varrelman is a member of many biological societies here and abroad.



LOIS M. ZUCKER, B.A., M.A., Ph.D.
Assistant Professor of Latin and Greek

Mrs. Zucker has degrees from Illinois and Catholic Universities, and her past includes teaching at the University of Maryland and in China. She has travelled widely and has a broad background of knowledge and a passion for her subjects which is communicated to her pupils. Her avocation is horseback riding.



MARY M. GALT, B.A., M.A.

Assistant Professor of French

Miss Galt's intimate acquaintance with France, to which she has made four trips, on war service and since, and her sincere appreciation and sympathy for French manners, have led many at American University to a new study of that nation's language and literature. On the social side, her evenings at home, at which the literature and politics of the day come in for thorough discussion, are a well-known A.U. institution. As an adviser on matrimonial problems, she ranks with Dorothy Dix.

ARTHUR J. JACKSON, B.A., M.A., M.Th., D.Th.

Assistant Professor of Religion

Dr. Jackson is the guiding spirit of the Department of Religion and the Oxford Fellowship. His seminars each summer to the Holy Land are justly famous, and he is also well-known for his many works on religious subjects. He has a reputation as a liberal thinker on problems of religion and personal relations.



WALTER H. YOUNG, B.A., LL.B.

Assistant Professor of Physical Education for Men

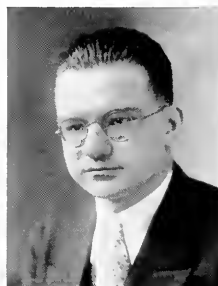
Coach Young surprised the college and student body by blossoming forth as a history and political science instructor. But his athletic proficiency should not have blinded us to his intellectual attainments nor to his knowledge of law, for he has passed his bar examination. Since his graduation from Ohio Wesleyan University, where he played football, he has devoted himself to coaching and to building clean, healthy athletic competition.



EDWARD W. ENGEL, B.S., M.A., Ph.D.

Assistant Professor of Chemistry

Clarity of explanation is the keynote of The Maestro's instruction in chemistry, and efficiency is the word that best describes the way his laboratories are run. Dr. Engel received his graduate degrees from Princeton University and he has a thorough background of knowledge for his subject. He tosses volleyballs in his lighter moments.





LOWELL F. HUELSTER, B.A., M.A., Ph.D.
Assistant Professor of Economics

Dr. Huelster successfully combats the idea that a young college instructor cannot deal with students. His dignity, his sense of humor, and his thorough knowledge of his subject command liking and respect from students and faculty members. He received his training at Lawrence College and the University of Illinois.

RUBERTA M. OLDS, Ph B., M.A.
Assistant Professor of Spanish

It is a sincere compliment to an instructor when she can be called a friend as well as a teacher, and this can truly be said of Miss Olds. There is no one on the campus who has not at some time come under her comradely influence, and she is a sympathetic and helpful adviser. Her reminiscences of life in South America add interest to her classes. Her life there and her study at Chicago and Columbia are Miss Olds' equipment for her calling.



CORNELIA M. COTTON, B.A., M.A.
Instructor in Biology

Although one of American University's newest instructors, Miss Cotton has already gained considerable popularity. Students really enjoy going to her classes, they are so interesting. And her physiology picnic, which is held at her home in Bethesda each spring, is an event. Miss Cotton graduated from Cornell University and received her master's degree from Syracuse.



HARLAN RANDALL
Instructor in Music

His studies under Herbert Witherspoon in Chicago and his fine talent in singing have fitted him for his present position. As a director of the glee clubs and choral club his success has been largely due to his inspiring personality, which has enabled him to weld the individual voices into a unified whole and to infuse a common spirit into their singing.





DONALD SHERBONDY, B.A., M.A.

Instructor in Political Science and Debating

For the past few years, Mr. Sherbondy has regularly turned out winning debating teams, each year starting apparently without particularly promising material and winding up the season with a corps of versatile, forceful debaters. In action as a debater, he is a pleasure to watch, as he ruthlessly and methodically devastates the opposition. He is well-known as a clear thinker on social and economic problems.

BERNICE V. MOLER, B.A., M.A.

Instructor in Political Science

Cool and serene, never excited or at a loss as to the proper procedure, Miss Moler runs the registrar's office as it ought to be run. Her academic record includes degrees from Maryland and American, which qualify her as an instructor in political science.



GEORGE L. SIXBEY, B.A., M.A.

Instructor in English

The tall, lanky individual still valiantly wearing a tooth-brush mustache is English instructor, authority on writing, and A.U. publicity man extraordinary. All freshmen in his classes can testify to the kindness of his criticisms, the simplicity of his explanations, and the pungency of his wit. He is one of our own graduates.



IRMA ZINK, B.A., B.S.

Instructor in Library Science

Soon after Miss Zink came to American University, things began to happen. The library was put on an efficient basis, leakage of books was stopped, and the cataloguing was brought up to date. Her smiling firmness makes her a pleasant and capable administrator and supervisor of students' classroom preparation.





FRANK A. LIOTARD, Litt. B., Th. B.

Instructor in French

Monsieur Liotard has quickly adjusted himself to American campus life, and his unflinching good humor and good sportsmanship have caused him to be accepted into the comradeship of students here, while his fascinating accent has made a decided hit. His education consists of a diploma from the Ecole du Louvre, Paris, and graduate study in Chicago and New York.

JAMES THURMOND

Instructor in Band Music

The "handsomest man on the campus," who created a stir among the feminine half of A.U., is a real musician, having studied at the Curtis Institute of Music and having had personal experience with almost every band instrument. In but one year he has already created a presentable band, which he has built and held together by force of his personality and his strict discipline.





Mr. Walter, Mr. Spaeth
Miss Moler, Miss Stover, Miss Zink, Miss Carmichael

MR. HERBERT E. WALTER
Business Manager

MISS ELIZABETH CARMICHAEL
Assistant to the Registrar

MR. RAYMOND J. SPAETH
Assistant Business Manager and Bursar

MISS IRMA ZINK
Librarian

MISS SARA H. DOW
Secretary of the Chancellor

MRS. PAULINE OLDS
Hostess, Women's Residence Hall

MISS SARA ANN STOVER
Secretary of the Business Manager

MRS. SARAH SUMNER
Director of Food Service and Dormitories

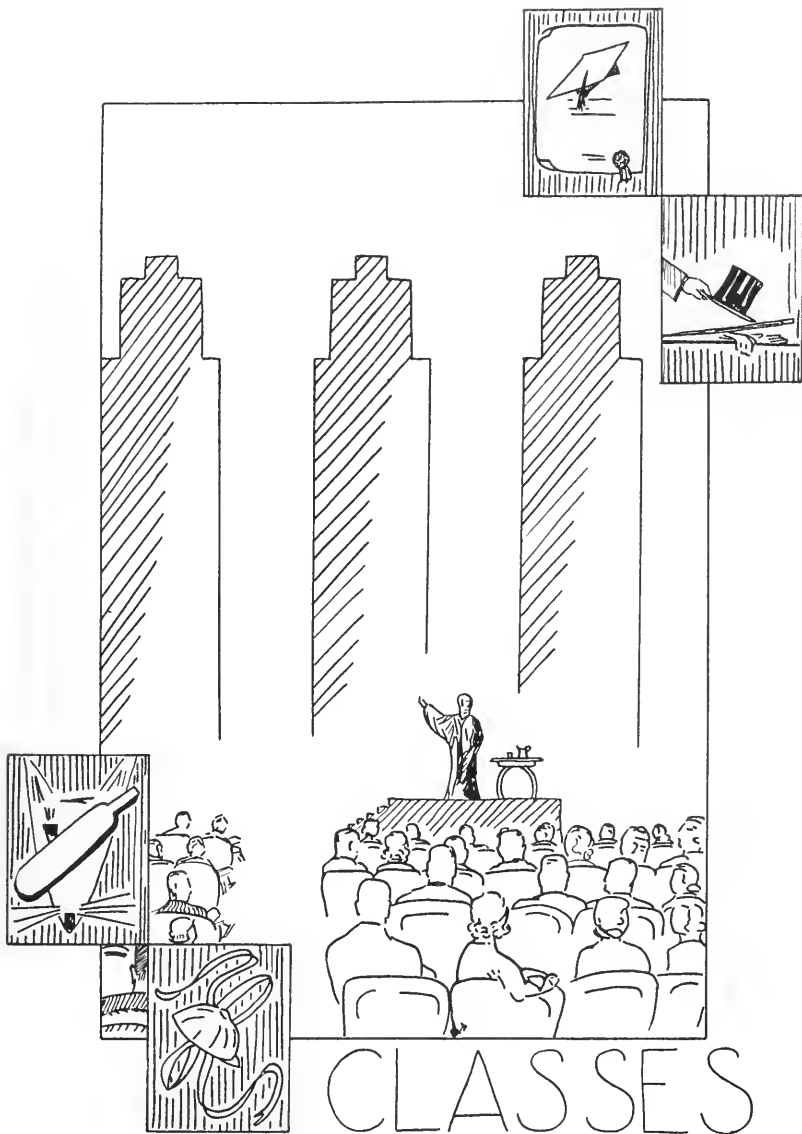
MISS BERNICE V. MOLER
Registrar and Secretary of the Dean of the College

MISS ETHEL MYERS
College Nurse

THE American University Alumni, through the medium of THE ACCOLA, take this opportunity to reaffirm an abiding faith in their Alma Mater, and to repledge allegiance to the furtherance of her cause that the day may not be far distant when a still greater national temple of learning shall stand in America's Capital.

THE foundation of academic standards in college is the system of graded credits for work completed and the division of students into the four classes. These are here represented at the sides by their traditional symbols, while in the central drawing the classes are assembled for some occasion of moment.

The natural advantages of the university make inevitable a steady growth in enrollment. And as it has already established recognized academic standards in the educational world, we may expect its achievements in the future in the work of spreading the flame of knowledge to be as steady and consistent as in the past.



CLASSES



SENIOR CLASS



DAVIDSON
President



GOODNER
Vice-President



BAKER
Secretary



PARKER
Treasurer



DOROTHY BAKER

Washington, D.C.

History

Epsilon Kappa, 1, 2, 3, 4, Social Chairman, 4, Class Vice-President, 3; Class Secretary, 4; Eagle Staff, 1, 2, 3, 4, News Editor, 3, Associate Editor, 4; Aucola Staff, 3, 4, Associate Editor, 3, International Relations Club, 2, 3, 4, Vice-President, 3, Glee Club, 2, 3, 4; French Club, 1, 2, 3, 4, Junior Prom Committee, 3, Big Sister Committee, 2; Student Christian Association, 2, 3, 4, Class Volleyball, 1, 3, Class Basketball, 4; Choral Club, 2, 3, 4, Eagle Business Staff, 2.

Brahmin Honor Society, 3, 4, Secretary, 4.

This petite young woman has an appeal that melts the masculine heart. From her size, however, you would not suspect she had the ability to carry on in so many activities. Dot has been News Editor and Associate Editor on the Eagle staff and Associate Editor of the Aucola, and she has held class offices twice.



JANE BISHOP

Washington, D.C.

Economics

Alpha Chi, 1, 2, 3, 4, Vice-President, 4, Glee Club, 1, 2, 3; Brecky Club, 1, Class Secretary, 1; Spanish Club, 2, 3, 4, Choral Club, 3.

Jane is an attractive blonde with a winning smile who has been a willing and ready worker in Alpha Chi for four years. In her Freshman year she was class Secretary and since has carried on in the Glee Club, Spanish Club, and the Aucola Staff.



WINONA BUCHANAN

Wells, Minnesota

Biology

Freshman Debate, 1, Varsity Debate Squad, 2, 3, 4; College Social Chairman, 4, International Relations Club, 2, 3, 4, Vice-President, 4; Student Christian Association, 1, 2, 3, 4, Vice-President, 3, 4; "A" Club, 1, 2, 3, 4.

Delta Sigma Rho, 3, 4, Brahmin Honor Society, 3, 4, Beta Beta Beta, 4.

What a debater! She has punch and fire which places her on a par with our finest masculine debaters. Winona is Efficiency personified and has made a success of every activity in which she has participated. She is a true sportsman, and a person well worth knowing.

CLASS HISTORY

SHORTLY after entering American University, the Class of '34 learned to live happily on the brink of financial disaster; and, realizing that upper classmen are no bigger than freshmen and slightly less intelligent, the class began to take a more lively interest in the affairs of the college microcosm.

The members accepted discipline with tolerable grace. The pleasure of pulling the sophomores through a stream of icy water more than compensated for the loss of the soccer and hockey games and gave them liberty to cut across campus.

They soon became completely acclimated to their new surroundings and entered campus activities vigorously. Led by Dick Buckingham, always anxious to beat his drum, they organized a band to encourage their three varsity football men, Borsari,

RICHARD BUCKINGHAM

Washington, D. C.

Religion

A quick review of Dick's activities clearly shows his marked ability as a campus leader. He combines interest in journalism and religion, as he was Editor of the Eagle and has led the Student Christian Association during the past year. On the lighter side, he is the best drummer A.U. has produced in many a year.



BEATRICE COMEAU

Lexington, Massachusetts

Biology

International Relations Club, 3, 4; French Club, 1, 2, 3, 4; Glee Club, 4; Choral Club, 4; "A" Club, 3, 4; Eagle Hockey Club, 3, 4; Eagle Staff, 3, 4; Aucola Staff, 3; Student Christian Association, 3; Dramat, 4; Class Soccer, 1, 2, 3; Class Hockey, 2, 3, 4; Class Basketball, 2, 3, 4; Class Volleyball, 2, 4; Orange Hockey Team, 3; Beta Beta Beta, 4

Bea is a tiny brunette with snapping black eyes and an undiminishing amount of energy. Her efficiency has led her into many pursuits and positions in which she has been very successful. Bea has been very active in sports and in the French Club, and those who attended the N.S.F.A. convention will remember Bea rapidly taking dictation from numerous outstanding delegates and typing at full speed into the wee small hours of the morning.



JOHN COULTER

Washington, D. C.

English

Sorbonne University, Paris, 3; Alpha Theta Phi, 2, 4; Omicron Epsilon Pi, 1, 2, 4; President, 4; French Club, 1, 2, 4; Vice-President, 4; International Relations Club, 4; Eagle Staff, 1, 2; Aucola Staff, 4; Dramat, 2, 4; Anglican Club, 1, 2, 4; Glee Club, 1, 4; Choral Club, 4; Orchestra, 1, 2; Band, 1, 2, 4

Wishing to round out his knowledge of French with some first-hand experience, John spent last year at the Sorbonne University in Paris. Even the gayety of Paris did not make him forget A.U., and so as a Senior, he is back as the class poet which he has been all through his college career.





MARJORIE COWLES

Perth Amboy, New Jersey

English

Vesper Committee, 1; Student Christian Association, 2, 3, 4; International Relations Club, 3, 4; German Club, 2; French Club, 3, 4; Omicron Epsilon Pi, 4
Class Honors, 3, 4

Our "Marge" is sweet and demure, but her most intimate friends know there is an impish side to her nature. While the rest of us are capering, however, she is working industriously to obtain class honors.



GLADYS COWSILL

Washington, D.C.

Mathematics

Epsilon Kappa, 2, 3, 4; Secretary, 3; Rush Chairman, 4; Class Secretary, 3; Eagle Staff, 3; Aucola Staff, Assistant Editor, 3; International Relations Club, 3, 4; Secretary, 4; Glee Club, 2, 3, 4; President, 4; French Club, 1, 2, 3, 4; Secretary, 4; Student Christian Association, 4; Class Volleyball, 1, 2, 3; Class Hockey, 1; Brecky Club, 1.
Class Honors, 1.

This co-ed is a likeable and popular red-head who has been active since her arrival on the A.U. campus in many organizations and offices—including Secretary of the Junior Class. Jodie has also found it possible to carry on as a socialite and make class honors. She is seen constantly with her "shadow," Dot Baker.



LOUISE DANFORTH

Washington, D.C.

Biology

Epsilon Kappa, 1, 2, 3, 4; President, 4; German Club, 2, 3, 4; Student Christian Association, 2, 3, 4; Westerner Club, 1, 2, 3, 4; Glee Club, 2; Eagle Staff, 1, 2, 3, 4; Assistant Business Manager, 3; Business Manager, 4; Aucola Staff, 3; Advertising Manager, 3.
Beta Beta Beta, 2, 3, 4; Historian, 4; Brahmin Honor Society, 4.

The three little pigs, of which "Danny" is the first, have been cutting up together since early dissections in Freshman lab which culminated in elections to Beta Beta Beta. Louise also has found time to guide Epsilon Kappa through a successful year and to handle the business end of A.U. publications and be active in athletics.

Esper and Lytle. Many joined the young glee clubs, under their new director, Mr. Randall; the bass Tuve took a part in the Men's Quarter, while John Coulter played trembling trombone solos in chapel and with the club. Bill Anderson, Mary Dean, Earl Kernahan, and Arthur Smirh distinguished the class in Dramat.

The class quickly gained notoriety when the subdued lighting of the Valentine

Dance aroused much comment among the faculty, but it was attributed to freshmen youthfulness.

Bill Anderson, Clara Tate, Jane Bishop, and Hugh Tate were class officers the first year, while John Spitznas was Student Council member.

The following fall the Class of '35 was cordially received by the new sophomores, led by Larry Rice, chairman of the Rules Enforcement Committee. An exaggerated

EDWARD DAVIDSON

Cherrydale, Virginia

English

Phi Beta Zeta, 3, 4, Vice-President, 4; Class Treasurer, 2, 3; Class President, 4; Student Handbook Committee, 2, Class Basketball, 1, 2, 4; Glee Club, 2, 3, 4; Student Athletic Committee, 2; Aucola Business Staff, 2; Aucola Staff, 3; Eagle Staff, 4; Junior Prom Committee, 3; French Club, 4; Omicron Epsilon Pi, 4.

Class Honors, 1, 2, 4; College Honor Society, 4.

The editor of "Fancy's Froth," being a true Southern gentleman, is one of the best dressers on campus. Eddie is not only a columnist, but a philosopher and a lover of the fine arts. His well-deserved popularity and his ability were recognized when he was elected Treasurer of the Sophomore and Junior Class, and this year he has guided the Senior Class in the capacity of President.



MARY DAVIS

Washington, D.C.

Art

Phi Sigma Beta, 3, Phi Mu, 4, Social Chairman, 4, French Club, 1, 2; Aucola Staff, 1, 3, Assistant Art Editor, 3; Student Christian Association, 3, 4; Publicity Staff, 4; Dramat, 3, 4, Stage Manager, 3; Eagle Hockey Club, 3.

All A.U. is wondering who will furnish us with clever posters for dances and Mr. Hutchins' dramatic attempts when Mary has gone. Not only will we miss her artistic ability, but her ready wit, good humor, and friendly spirit.



ILENE EHRHARDT

Washington, D.C.

German

Phi Sigma Beta, 2, 3, Treasurer, 3, Phi Mu, 4, Vice-President, 4; Spanish Club, 3, 4, German Club, 2, 3; Westerner Club, 1, 2.
Class Honors, 2.

Ilene is quiet and unassuming, but her determination has won class honors for her, and she has done outstanding work in German and Spanish. Her earliest ambition was to be a nurse, but she thinks she will be a private secretary—from the number of education courses she takes, however, one would suspect that she was going to teach school.





LEE ESPER

Altoona, Pennsylvania

Economics

Phi Beta Zeta, 3, 4; Football, 1, 2, 3, 4; Glee Club, 1, 2, 3, 4; Secretary, 3; President, 4; Hamilton House Government, 4; President, 4; Student Council, 3, 4; French Club, 1, 2, 3; Student Christian Association, 1, 2, 3; Oxford Fellowship, 1, 2, 3, 4; Treasurer, 3; Athletic Committee, 3, 4; Social Committee, 4; Junior Prom Committee, 3; Soccer, 1, 2, 3, 4; Class Basketball, 2, 3, 4; Class Kittenball, 1, 2, 3, 4; Choral Club, 4; Beta Beta Beta, 4.

A man's man, a gentleman, and still the ladies like him—that's Lee. In athletics he will try anything once, but finds greatest pleasure in football. All know Lee as a real fighter and the spirit behind the A.U. eleven for the past four years.



FRANCES FARMER

Washington Grove, Maryland

Spanish

Florida State College for Women, 1, 2; Phi Sigma Beta, 3; Phi Mu, 4; Class Teams, 3, 4; Eagle Hockey Team, 4; Student Christian Association, 3, 4; French Club, 3; Spanish Club, 4; German Club, 4; Glee Club, 4

From the Swamp Land of Florida came Fanny to join the ranks of the class of '34 in her Junior year. Fanny's good nature quickly won for her a large place in our hearts. She's a good sport and is always ready for a bull session. But she has two peculiarities—she dislikes being kissed by the weaker sex, and she nearly has convulsions when tickled under the chin.



THEODORE FIELD

Washington, D.C.

Art

French Club, 1, 2, 3, 4; President, 4; Student Christian Association, 1, 2, 3, 4; Westerner Club, 1, 2, 3, 4; Dramat, 2, 3, 4; Aucola Staff, 3; Art Editor, 3.

A tall, red-haired artist will be lost with graduation, but we all will long remember his many and varied performances in the French Club productions for the past four years. A few of us suspect he has a weakness for Garbo, for we have had many a boring chapel relieved by watching Ted sketch this fascinating Swede.

idea of their importance was quickly eradicated by the Sophomores, who gave them instruction in the art of paper-picking, grass-mowing, bleacher-erecting, and window-cleaning. Indeed, the Sophomores gave a demonstration of humility by losing the field-events.

The class preserved its reputation for ingenuity in its dances this year. Pumpkins and cornstalks, paper witches, cats, and skeletons decorated the gymnasium at the

Hallowe'en Dance. Dot Latham organized a "Leap Year" Tea Dance, held on April 29th, at which several prominent A.U. males found that their popularity was a figment of the fancy.

Members of the class were beginning to become more prominent this year. Larry Rice presided over the Oxford Fellowship during the year, and Arthur Kidder headed the Westerner Club. George Borsari, Lee Esper, and Harlan Hendrick received their

ANNA FORREST

Bellwood, Pennsylvania

Chemistry

International Relations Club, 3, 4; "A" Club, 3, 4; Student Christian Association, 2, 3, 4; German Club, 2, 3, 4; Dickinson Club, 3, 4; President, 3, 4; Eagle Business Staff, 3, 4; Aucola Staff, 3, 4; Editorial Staff, 3; Business Staff, 4; Class Hockey, 1, 4; Orange Hockey, 4; Eagle Hockey 4; Class Basketball, 1, 4; Class Volleyball, 3, 4; Orange Volleyball, 3.

Between the intricate elements of chemistry and the night watches for A.U. co-eds, Ann has been kept extremely busy, but with graduation she will have enough leisure time to eat as much Chow Mein as her heart desires.



HILDA GALLIHER

Washington, D. C.

Economics

Alpha Chi, 1, 2, 3, 4; Brecky Club, 1, 4; Glee Club, 4; Spanish Club, 2, 3

Hilda finds greatest pleasure in driving cars—anybody's car! This, however, hasn't occupied her whole four years of college life, for she has made plenty of friends, both male and female, and has learned a good deal of economics, to boot.



HENRIETTA GOODNER

Cherrydale, Virginia

Spanish

Alpha Chi, 1, 2, 3, 4; Secretary, 3; President, 4; Spanish Club, 1, 2, 3, 4; Secretary-Treasurer, 3; Westerner Club, 1, 2, 3, 4; Vice-President, 3; Junior Prom Chairman, 3; Eagle Staff, 1, 2, 3; Assistant News Editor, 3; Aucola Staff, 3.

Class Honors, 3.

The perfect lady—cool and serene and capable. All things she has undertaken (these have been many) have been successful, particularly the Junior Prom of which she was chairman. The Alpha Chis will long remember Henri as one of their finest leaders.





NATALIE HAINES
Forked River, New Jersey *Psychology*

French Club, 1, 2; "A" Club, 2, 3, 4; Student Christian Association, 1, 2, 3, 4, Publicity Vice-President, 4; Omicron Epsilon Pi, 3, 4, Secretary, 4; Class Hockey, 1, 2, 3, 4; Class Basketball, 1, 2, 3, 4
Class Honors, 2, 3, 4.

In Natalie we find that one can be a sportsman as well as a scholar, for she has played in every sport since she came to A.U. and has won class honors. In her spare time she writes verses for the "Loom."



VIRGINIA HALL
Washington, D.C. *Education*

National Cathedral School, 1; Swagger Club, 2, 3, 4, Secretary, 3, President, 4; Dramat, 2, 3, 4, President, 4; Basketball, 2, 3, 4; Hockey, 3; Soccer, 2, 3, 4; Volleyball, 2, 3; "A" Club, 3, 4; Spanish Club, 3, 4; Anglican Club, 2, 3, 4; Junior Prom Committee, 3.
Beta Beta Beta, 3, 4.

Good time "Ginna"—full of pep, vim, and vigor! In fulfilling her duty as President of Dramat, by answering Prof. Hutchins' continual plea for *more* men, she makes the campus Romeos think they can act like Barrymore.



BRACE HARTWELL
Beaumont, California *Biology*

Leland Stanford University, 1; Jesters Club, 2, 3, 4.

Because Brace came from Sunny California, it is a common sight to see him on our campus in a big, black, bear-skin coat. But "Who's Afraid of the Big Black Bear," cried all the girls and rushed to his side—until Brace soon decided that truly—"Variety is the Spice of Life."

football letters. Earl Kernahan and Virginia Hall took part in Dramat. John Coulter won the Memorial Day poetry prize. Marjorie Stuart represented the class in the AUCOLA beauty contest. And the class gained immortality by ringing the dismissal bell twenty minutes before the Christmas vacation!

Joe Thomas, Dot Latham, Rita Lentz, and Ed Davidson were the sophomore officers. Larry Rice and Ted Lytle represented the class in the Student Council.

The class entered upon its third year with an increased sense of assurance and of obligation, as its powers and responsibilities grew.

Larry Rice was elected president of the Student Christian Association and manager of the Glee Club, and Earl Kernahan became president of the International Relations Club. Robert Parker directed the band through its third year of sound and fury, and

HARLAN HENDRICK

Rochester, New York

History and Economics

Jesters Club, 1, 2, 3, 4; President, 3, 4; Football, 1, 2, 3, 4; Class Basketball, 1, 2; International Relations Club, 2, 3; Eagle Staff, 2, 3; Aucola Staff, 3; Photographic Editor, 3; Junior Prom Committee, 3; Student Council, 3, 4; Secretary, 4; N.S.F.A. Convention Social Chairman, 4; Chairman Class Git Committee, 4.

Harl is the forceful personality who gets things done around A.U. He has been an athlete, a scholar, and a student leader, and has made his way through college in spite of many obstacles.



CHARLES JORG

Washington, D.C.

Economics

Class Basketball, 1, 2, 3, 4; Captain, 2, 3, 4; Brecky Club, 1, 2, 4; Football, 4; Class Football, 1.

Whenever one heard an expressive and well-punctuated flow of words coming from beneath an old hack, he knew that Charlie was trying to persuade his car to "get goin'." Not daunted by the antics of his cars, however, he has permitted his love of mechanics to over-rule his major—economics.



STILLMAN KELSEY

Porter ville, New York

History

Antioch College, 1, 2, 3; Alpha Theta Phi, 4; Student Christian Association, 4; Class Basketball, 4.

Stillman did not come to A.U. until his senior year, but since he has been here, he has quickly gotten into step with the campus, and is now a member of Alpha Theta Phi, is seen at athletic events as a loyal rooter, and rarely misses an all-college dance.





Washington, D.C.

EARL KERNAHAN

English and History

Glee Club, 1, Band, 1, 2; Eagle Staff, 1, 2, 3; Aucola Editor, 3; French Club, 1, 2, 3, 4, Vice-President, 3, Oxford Fellowship, 1, 2, 3, 4; Secretary, 2, Vice-President, 3; Dramat, 1, 2, 3, 4, Vice-President, 4; International Relations Club, 2, 3, 4, President, 3, 4; Debate, 1, 2, 3, 4; Class Honors, 2; Brahmin Honor Society, 3, 4; Delta Sigma Rho, 4.

A.U. Dramat will lose one of its finest and most versatile character actors when Earl graduates. Also will be lost a vigorous debater and an all-around campus leader. We are indebted to Earl for the editing of THE AUCOLA of 1933.



Newton Hamilton, Pennsylvania

ROBERT KNOX

Religion

Dickinson Junior College, 1, 2; Student Christian Association, 3, 4; Dickinson Club, 3, 4.

Who would think that Bob, the serious minded ministerial student, would be A.U.'s most efficient bouncer? But he takes all his work seriously—from collecting gate receipts to mending the broken spring in the "Vic" in the Women's Residence Hall.



Fairfield, Maine

LOUISE LEARNED

Spanish

Alpha Chi, 1, 2, 3, 4, Secretary, 4; Glee Club, 1; Choral Club, 1; Class Hockey, 1, 2, 3, 4, Class Basketball, 1, 2, 3, 4; Women's Student Government, Social Chairman, 4; French Club, 1, 2; Spanish Club, 2, 3, 4.

Our loyal and sincere Louise brought to A.U. a delightful Maine accent and a superabundance of terrible puns. What is more, she was idealistic. Perhaps it was because her constant companion, Phil, came early in her career that she still retains this quality after four years.

held office as president of the Tri-State S.C.A. Joe Thomas presided over the Westerner Club and Anne Forrest directed the Dickinson Club.

Eleanor Waite's *Tale Feathers*, (nicknamed the Hen's Beak) established a rich tradition of Campus Gossip. Assisted by Winona Buchanan and Henrietta Goodner, Dot Baker and Dick Buckingham directed the news-snoopers throughout a successful year. The tenor voice of Joseph Thomas became an inevitable feature of campus programs,

and with Robert Parker, he starred in the quartet and in *Pinafore*. As *Tony Lumpkins*, Earl Kernahan proved himself the outstanding actor of the class. Lee Esper, as the best football player of the year, received a cup in recognition of his abilities. The egregious hallucination of Harold Swift, which still haunts the English Office, was probably the most remarkable individual feat.

The two big projects of the class, the AUCOLA and the Prom, were carried through

ALICE LEE

Washington, D.C.

Biology

"A" Club, 1, 2, 3, 4; Eagle Hockey Club, 2, 3, 4; Class Hockey, 1, 2, 3, 4; Class Volleyball, 1, 2, 3, 4; Class Soccer, 1, 2, 3; Student Christian Association, 3, 4; German Club, 2, 3, 4; Beta Beta Beta, 2, 3, 4; President, 2, 3, 4.

Quiet little Alice brings a touch of the Orient to our campus. She is the "second little pig" of the Tri-Betas, and, as well as being an able biologist, she is one of our best athletes.



MARY LIVINGSTON

Clarendon, Virginia

Biology

Yankton College, 1, 2; Epsilon Kappa, 3, 4; Secretary, 4; Student Christian Association, 3; Eagle Business Staff, 3; Westerner Club, 3, 4; German Club, 4; Secretary, 4; Student Social Committee, 4; Beta Beta Beta, 3, 4; Treasurer, 4; Scholarship to Wood's Hole, 3.

Snappy, dark eyes, a vivacious spirit, and an ever alert mind - this is Mary. Her splendid work in biology was awarded by a scholarship to the biological Utopia, "Wood's Hole," and election to Tri-Beta. Offices in Tri-Beta, the German Club, and Epsilon Kappa show her to be a leader.



ELIZABETH M. BIRNEY

Meridian, Idaho

English

University of Idaho, 1, 2; Associate Member Alpha Chi, 3, 4; Class Hockey, 3; Class Soccer, 3; Class Volleyball, 3; Class Honors, 4.

When Elizabeth transferred from the University of Idaho, A.U. gained a quiet, likeable, and studious co-ed. One of her attributes is her lovely contralto voice, which is a pleasing addition to the Wednesday morning choir.





LARRY McLENDON

Kenansville, North Carolina

Political Science

Mars Hill Junior College, N C., 1, 2; Phi Beta Zeta, 3, 4, Football, 3, 4, Class Basketball, 3, 4, Eagle Staff, 3, 4; Aucola Staff, 3; Spanish Club, 3, 4, Dramat, 3, 4; International Relations Club, 4.

"He's a great big man from the south," who lives up to the collegiate tradition with a wildly painted collegiate car, adorned with current wisecracks. Larry's slow southern drawl retards him neither on the football field nor in any other athletic pursuit.



EMILY NICKLAS

Washington, D C.

English

Alpha Chi, 1, 2, 3, 4, Eagle Staff, 1, 3, 4; Women's Glee Club, 1, 2, 3, 4, Brecky Club, 1, German Club, 3; Dramat, 4

Another one of the reasons why gentlemen prefer blondes is Emily with her tight curls and baby face. Always well-dressed and up on the latest gossip, she is a lively member of any social gathering.



FRANCES NOBLE

New York, New York

History

Swagger Club, 3, 4, Treasurer, 4; Class Hockey, 1, 2, Anglican Club, 1, 2, 3, 4; Women's Student Government Association, 3, 4, President, 4, French Club, 1, 2.

"Frankie," as President of the Women's Student Government Association, has a difficult time impressing the flighty co-eds with the rights and wrongs of things. Her impressions of East Side, New York, and her varied experiences in this great metropolis have made her a famous conversationalist.

to success. Earl Kernahan and Arthur Smith successfully published the 1933 AUCOLA, and (extraordinary circumstance) with a profit. And Henrietta Goodner's Prom at the Shoreham was remarkable for the smoothness of the orchestra and the perfection of the arrangements.

Joe Thomas, Dot Baker, Jodie Cowsill, and Ed Davidson were the class officers dur-

ing the junior year. On the Student Council were Lee Esper, Harlan Hendrick, and Larry Rice, and the latter held office as secretary of that organization.

Realizing that they, too, were soon to be freshmen in the larger university of the world, the seniors, the following fall, represented by Dick Buckingham, gave the freshmen a sympathetic welcome and introduced them to the college and the city.

ROBERT PARKER

Cumberland, Maryland

Religion

Glee Club, 1, 2, 3, 4; Orchestra, 1, 2; Male Quartet, 3, 4; Band, 1, 2, 3, 4; Manager, 2, 3; Student Director, 3, 4; Choral Club, 2, 3, 4; Oxford Fellowship, 1, 2, 3, 4; President, 4; Spanish Club, 3, 4; Class Soccer, 1, 2; Student Christian Association, 2, 3, 4; College Social Committee, 2; Student Council, 4; Class Treasurer, 4.

The genial head-waiter, the undaunted band leader, the President of the Oxford Fellowship, the money collector of the Senior Class, the baritone of the Men's Quartette, and one of the most popular men on the campus—to think Bob could do all this and do it so well.



WEBSTER RAMSAY

Washington, D.C.

Chemistry

University of Maryland, 1; Jesters Club, 3, 4; Student Athletic Committee, 2, 4; Chairman, 4; Brecky Club, 2, 4; German Club, 3, 4; Class Basketball, 2, 3, 4.

Between long periods of experimentation in the chemistry laboratory Web manages to find time to impress his "tall, dark, and handsome" appearance on the fairer sex. His other diversion is athletics which has attained for him the Chairmanship of the Student Athletic Committee.



MERLE RANDLE

Hampstead, Maine

History

Blue Ridge College, 1; Jesters Club, 3, 4; Corresponding Secretary, 3; President, 4; Pi Mu Kappa, 2; Football, 4; Basketball, 4; Class Basketball, 2, 3; Kittenball, 2, 3, 4; Soccer, 3; Athletic Committee, 4; Glee Club, 2, 3, 4; Aucola Staff, 3; Dramat, 3, 4; French Club, 3, 4; German Club, 3, 4.

Merle is a typical Jester in that he's an all-around good fellow, always ready for a party or any social fracas. He is a good student, a better athlete, and the finest type of friend—what more can you say?





LUCY REEVE

Virginia Highlands, Virginia

Spanish

Student Christian Association, 1, 2, 3, 4, German Club, 1, 2, 3, 4, Spanish Club, 2, 3, 4.

Lucy with her questioning attitude is eager to learn more and more. Desirous of pleasing and doing the right thing, she has been a real help to the German and Spanish Clubs for the last four years.



HOWARD REINARD

Wenonah, New Jersey

Religion

Dickinson Junior College, 1, Brothers' College of Drew University, 2; Oxford Fellowship, 3, 4, Treasurer, 4, Dickinson Club, 3, 4, Treasurer, 4; Football, 4; Varsity Basketball, 4; Dramat, 3, 4; Student Christian Association, 3, 4.

Not much more than five feet, he early acquired the name of "Pud," but all loyal basketball and football rooters will vouch that "Pud" did not let his lack of height handicap him much. This athletic ability, however, did not prevent him from being a serious minded ministerial student.



LAWRENCE RICE

Washington, D. C.

Religion

Glee Club, 1, 2, 3, 4, Business Manager, 3; Oxford Fellowship, 1, 2, 3, 4, President, 2; Student Council, 2, 3, 4, Secretary, 3, President, 4; Chairman Freshman Rules Committee, 2; Chairman Freshman Week Activities, 3; Student Christian Association, 2, 3, 4, President, 3; German Club, 2; International Relations Club, 2, 3; Vice-Chairman N.S.F.A. Convention, 4; Class Kittenball, 2; Class Basketball, 2, 3; Volleyball, 2; Chapel Committee, 3; Debate, 3; Senior Week Committee, 4; Class Honors, 1, 3, Brahmin Honor Society, 3, 4, President, 4.

Larry's leadership in student affairs is fully appreciated when it is realized that he had no opposition for the Student Council presidency. His speaking ability and the leading part he has taken in church work have earned the esteem of his fellow students, while his genial fellowship has made him one of the most popular men on the campus.

Members of the class were by now the recognized leaders in most campus activities. Larry Rice presided over student deliberations, if such they can be called, while Dick Buckingham edited the *Eagle* and Louise Danforth business managed it into a profit for the year. Winona Buchanan, Richard Buckingham, John Coulter, Lee Esper, Theodore Field, Anna Forrest, Frances Noble, Robert Parker, Webster Ramsey, Harold Swift, Margaret Warner—these are the names of some of those who have held executive positions in various activities.

Class members also continued their exertions in other activities. George Borsari, Lee Esper, Larry McLendon, Merle Randle, and Howard Reinard ably represented the class in football. Joe Thomas, in a baby-blue kimona, starred in *The Mikado* with Bob Parker, while Earl Kernahan and Hazel Kirk took outstanding parts in *The Truth About Blayds*. Winona Buchanan and Earl Kernahan were the outstanding

PRISCILLA ROBB

Washington, D.C.

Biology

Epsilon Kappa, 1, 2, 3, 4, Vice-President, 4; French Club, 1, 2, 3, 4, President, 2; German Club, 2, 3, 4, Vice-President, 4; Westerner Club, 1, 2, 3, 4; Anglican Club, 2, 3, 4, Treasurer, 3; Student Christian Association, 2, 3; Glee Club, 2, 3, 4; Choral Club, 3, 4

Class Honors, 1, 3, 4; Beta Beta Beta, 2, 3, 4, Historian, 2, 3, Vice-President, 4

"P" Robb, when not seen in her biology apron, or her riding habit, is donning costumes for the French Club. She is also a Tri-Beta, and a third little pig, but this one has a fondness for vocalizing.



MARY LOUISE ROBBINS

Washington, D.C.

Biology

Eagle Staff, 1, 2, 3; "A" Club, 1, 2, 3, 4, Secretary-Treasurer, 4; French Club, 2, 3, 4; Student Christian Association, 3, 4, Vice-President, 4; Class Hockey, 1, 2, 3, Class Basketball, 1, 2, Class Volleyball, 1, 2, Class Soccer, 1, 2; Eagle Hockey Club, 3.

Beta Beta Beta, 2, 3, 4, Secretary, 2, 3, 4.

Junior girls remember well the efforts of Mary Louise as chairman of the Big Sister Committee, to make their first few weeks happy ones. She is one of the most outstanding senior women athletes, having been secretary of the "A" Club, and a player on all the class teams.



MARTHA SKIDMORE

Washington, D.C.

Art

Alpha Chi, 1, 2, 3, 4, Social Chairman, 3, 4, Glee Club, 1, 2, 3, 4, Dramat, 3, 4.

Smart, clever, pretty, and chic is Martha Skidmore in four words. Besides keeping affairs in order for Prof. Hutchins' art department, she sees that A.U.'s actors have all the necessary properties—from a quill pen in scene one to Jubilee Port in the Death scene. As a sophomore, Marty had the coveted privilege of leading the Grand March at the Junior Prom.





Vienna, Virginia

KATHLEEN SMITH

Economics and History

French Club, 1, 2, 3; Aucola Staff, 3; International Relations Club, 4; Class Honors, 3, 4; Pi Gamma, Mu, 4.

Kathleen comes all the way from the Vinelands of Vienna. Although less than five feet tall, her small shoulders carry a brilliant mind, for all well remember the day the Dean announced that she made all A's in her Senior year.



Randallstown, Maryland

PAULINE SNYDER

Mathematics

Alpha Chi, 3, 4; Junior Prom Committee, 3; Glee Club, 1, 2, 3, 4; "A" Club, 2, 3, 4; French Club, 1, 2; Dramat, 1; Class Social Chairman, 4; Freshman Welcoming Committee, 2; Class Hockey, 1, 2, 3, 4; Class Basketball, 1, 2, 3, 4; Class Soccer, 1, 2, 3; Manager of Freshman Girls' Athletics, 3; Manager of Senior Girls' Athletics, 4; Choral Club, 3, 4; Senior Week Committee, 4.

If you haven't heard of Randallstown, just ask Jolly Polly to tell you about it. She's a true Sportsman and a social butterfly. But Polly's deepest love in college was French—*et Comment!* When Polly graduates, Glee Club concerts are not going to seem complete without one rendition of "Moo-Cow-Moo" and "Soap."



Cumberland, Maryland

JOHN SPITZNAS

Economics

Phi Beta Zeta, 1, 2, 3, 4; Treasurer, 3; Assistant Cheerleader, 1, 2; Cheerleader, 3; Student Council, 1; Junior Prom Committee, 3; Soccer, 1, 2; Athletic Committee, 3; Pi Gamma Mu, 3, 4; President, 4.

Johnnie has aspirations of being the Boy Mayor of Cumberland. Feature a half-pint politician! This curly-headed economist and Pi Gamma Mu president has progressive plans for his administration. If he leads Cumberland as well as he has led our cheering sections, the town will go rah! rah!

debaters of the year. Edward Davidson's *Fancy's Froth* recreated a literary tradition to replace the keyhole column by his classmate. The achievements of six members of the class were recognized when Dorothy Baker, Winona Buchanan, Louise Danforth, Harlan Hendrick, Earl Kernahan, and Lawrence Rice were chosen members of the Brahmin Society.

Class officers for the year were Edward Davidson, Henrietta Goodner, Dorothy Baker, and Robert Parker. The representatives on the Student Council were, in addition to Larry Rice, Lee Esper, Harlan Hendrick, who was secretary, Robert Parker, and Joe Thomas, who was vice-president.

The Class of 1934 attends a brighter future than its predecessors have known, for

MARJORIE STUART

Washington, D.C.

Spanish

Swagger Club, 1, 2, 3, 4, Corresponding Secretary, 3, President, 4; Spanish Club, 1, 2, 3, 4; Westerner Club, 1, 2, 3, 4; German Club, 2; Glee Club, 1, 2; Woman's Student Government, Head Proctor, 3; Interfraternity Council, Secretary, 4, Eagle Staff, 1, 2; Aucola Staff, 3; Class Honors, 3.

Sweet and gracious Marge is the brunette beauty of our campus. She is interested in languages, particularly Spanish; in this field she has been very active, being one of the few chosen for the Instituto de las Españas.



HAROLD SWIFT

Washington, D.C.

English and French

French Club, 1, 2, 3, 4, International Relations Club, 3; Class Honors, 1, 2.

Harold not only knows his French excellently, but he is so much a master of his mother tongue, English, that he was chosen as one of the assistants of the department which all Freshman and Sophomores fear. He is A.U.'s real literary scholar, a gentleman who prefers the studious life to one of participation in campus activities.



JOSEPH THOMAS

Washington, D.C.

Economics

Phi Beta Zeta, 1, 2, 3, 4, Social Chairman, 2, President, 4; Student Council, Vice-President, 4, Class President, 2, 3; Interfraternity Council, 4; Glee Club, 1, 2, 3, 4, Business Manager, 2; Male Quartet, 3, 4; Westerner Club, 1, 2, 3, 4, President, 3, French Club, 1, 2; Choral Club, 3, 4; N.S.F.A. Convention Committee Chairman, 4; Football, 2, Class Basketball, 2; Eagle Business Staff, 2; Junior Prom Committee, 3.

Combine a ready smile, a rotund figure, and a fine sense of humor, and you have a fair idea of Joe. This jovial fellow stands high in friendship and popularity at A.U. This is evidenced by his being class President his Sophomore and Junior years and Student Vice-President this year, but he has won his greatest fame with his beautiful tenor voice, which has been heard in the Glee Club, the Quartet, and Musical Comedies.





ELEANOR WAITE

Washington, D C.

English

Eagle Staff, 1, 2, 3, 4; Literary Editor, 3; Associate Editor, 4; Class Hockey, 1, 2, 3; Class Basketball, 1, 2, 3; Class Volleyball, 1, 2, 3; Omicron Epsilon Pi, 3, 4; Dramat, 2, 3, 4.

We all remember Eleanor for her pointed remarks in the notorious column, "Tale Feathers," not only about the "Royal Family of Buffingtons," but about the rest of the suffering campus. She has also added to her literary fame by writing poetry for Omicron Epsilon Pi. Her spare moments have been divided between dramat and athletics.



MARGARET WARNER

Baltimore, Maryland

Chemistry

French Club, 1; Debate, 1, 3, 4; German Club, 2; "A" Club, 2, 3, 4; President, 4; Eagle Hockey Club, 3, 4; Captain, 3, 4; Class Hockey, 1, 2, 3, 4; Class Basketball, 1, 2, 3, 4; Class Volleyball, 1, 2, 3, 4; Class Soccer, 1, 2, 3; International Relations Club, 3, 4; Omicron Epsilon Pi, 3, 4; Aucola Staff, 3; Student Christian Association, 1, 2, 3, 4; Beta Beta Beta, 4.

Margaret is famous in the dormitory for being the only one able to bathe and dress between the first and last bells for dinner. The reason for her tardiness in starting her toilette is her love for the chemistry laboratory, where she works until the night watchman puts her out. "Warner's" second love is sports, in which she is very proficient, and as a reward for her ability, she was chosen captain of the Hockey Club for two years.



MARIA ZURAS

Washington, D C

Economics

Glee Club, 3; Spanish Club, 3, 4; International Relations Club, 4; Student Christian Association, 4.

Maria has an interesting type of Latin beauty. Although not seen as frequently about the campus as many others, she has made a deep impression upon her professors, during her academic career at A.U., as a fine student.

the Depression seems to be ending. But it leaves the campus with the same trepidation it felt upon entering, having learned from past experience the ignorance of the beginner.

JUNIOR CLASS



HOOVER
President



HAWBECKER
Vice-President



SIMPSON
Secretary



ALLWINE
Treasurer



PIERCE
Social Chairman



MARTIN ALLWINE

Washington, D.C.

Economics

Alpha Theta Phi, 2, 3; Treasurer, 3; Eagle Staff, 1, 2, 3; Assistant Business Manager, 3; Aucola Staff, 1, 2, 3; Class Treasurer, 3; Class Basketball, 1, 2; Varsity Basketball Squad, 3; Spanish Club, 1, 2; Student Christian Association, 3.
Class Honors, 1, 2; Pi Gamma Mu, 3.



ELWOOD BACKENSTOSS

Washington, D.C.

French

Orchestra, 1; French Club, 1, 2, 3; German Club, 1, 2, 3; Brecky Club, 1, 2, 3; Student Christian Association, 3; Aucola Staff, 3.
Class Honors, 1, 2, 3.



GEORGE BARBER

Washington, D.C.

French

French Club, 1, 2, 3; Westerner Club, 1; German Club, 3; Spanish Club, 3; Student Christian Association, 3.
Class Honors, 2, 3.



RUTH BENNETT

Washington, D.C.

English

Rust Hall, 1, 2; Phi Mu, 3; Student Christian Association, 3; Glee Club, 3.

KATHRYN BROWN

Allenton, Rhode Island

History

Phi Sigma Beta, 1, 2, Phi Mu, 3, President, 3; Glee Club, 1, 2, 3; Orchestra, 1, 2; "A" Club, 3; Student Christian Association, 1, 2, 3; Spanish Club, 3; Aucola Staff, 3; Junior Prom Committee, 3; Women's Student Government Association, 3; Choral Club, 1, 2, 3.
Class Honors, 2.



EMORY BUCKE

Harrisburg, Pennsylvania

Religion

Phi Beta Zeta, 1, 2, 3, Pledgemaster, 3; Student Council, 2, 3; Student Christian Association, 1, 2, 3, First Vice-President, 2, 3; Oxford Fellowship, 1, 2, 3; International Relations Club, 3; Debate, 1, 2, 3, Manager, 3; Glee Club, 1, 2, 3; Quartet, 2, 3; Spanish Club, 2, 3; Editor of "Student Activities," 2, Choral Club, 1, 2, 3.



ANITA CLARK

Cherry Chase, Maryland

History

Epsilon Kappa, 1, 2, 3; Glee Club, 1, 2, 3, Anglican Club, 1, 2, 3; Westerner Club, 1, 2, 3; French Club, 1, 2, 3; Class Hockey, 2, 3; Class Volleyball, 3; Student Christian Association, 3; Aucola Staff, 3; Assistant Editor, 3; Choral Club, 2, 3.



EMILY COLEMAN

San Antonio, Texas

Political Science

Texas University, 2; Alpha Chi, 1, 3; Class Hockey, 1, 3; Class Volleyball, 1, 3; Class Basketball, 1, 3; Junior Prom Committee, 3; Student Council Social Committee, 3; Debate Squad, 3.
Class Honors, 1, 3; Pi Gamma Mu, 3.



• AUCOLA •

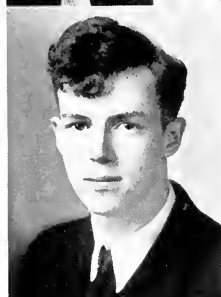


ALICE COMPTON

Belleville, New Jersey

History

Alpha Chi, 2, 3, Sergeant-at-Arms, 3, Pledgemiress, 3; Glee Club, 1, 2, 3; Aucola Staff, 3; French Club, 1, 2, 3; Freshman Welcoming Committee, 2; Manager of Freshman Girls' Athletics, 3; Manager of Sophomore Girls' Athletics, 2, Class Hockey, 1, 2, 3; Class Volleyball, 1, 2, 3, Class Basketball, 1, 2, 3, Class Soccer, 1, 2, 3, Dramat, 1.



KIRKLEY COULTER

Washington, D.C.

Economics

Alpha Theta Phi, 1, 2, 3, Corresponding Secretary, 2; Debate squad, 1, 2, 3; Dramat, 2; Choral Club, 2, 3; Glee Club, 2, 3; Band, 1, 2, 3; Orchestra, 1, 2, 3, Manager, 2; Eagle Staff, 1, 2, 3; Assistant Editor, 3; Aucola Staff, 2, 3, Editor-in-Chief, 3; Spanish Club, 1, 2, 3; French Club, 3; Student Christian Association, 3; Anglican Club, 1, 2, 3, President, 2, 3; International Relations Club, 2, 3, Treasurer, 3; Class Kittenball, 1; Soccer, 1, 2.

Class honors, 1, 2; Pi Gamma Mu, 3; Brahmin Honor Society, 3.



SCOTT CRAMPTON

Euclid, Ohio

Economics

Phi Beta Zeta, 1, 2, 3, Treasurer, 3; Class President, 1; Student Council, 2; Student Comptroller, 2, 3; International Relations Club, 3; Debate Squad, 1, 2, 3, President Debate Council, 3; Football, 1, 2, 3; Basketball, 1, 2, 3; Student Christian Association, 3.

Class honors, 1, 2, 3; Brahmin Honor Society, 3.



FRANCES DORR SMITH

Washington, D.C.

Psychology

Marjorie Webster School, 1; Epsilon Kappa, 2, 3; Glee Club, 2, 3; Spanish Club, 2, 3; Choral Club, 2, 3; "A" Club, 2, 3.

FLORENCE EVANS

Washington, D.C.

French

Phi Sigma Beta, 2, Phi Mu, 3, Secretary, 3; French Club, 1, 2, 3; Spanish Club, 1, 2, 3; Glee Club, 3; Choral Club, 3; Student Christian Association, 1, 2, 3; Brecky Club, 3.
Class Honors, 3.



FRANCES FELLOWS

Washington, D.C.

Spanish

Maryland University, 2; Swagger Club, 3; Class Secretary, 1; Aucola Staff, 3; French Club, 1, 3; Spanish Club, 3; Class Hockey, 1, 3; Class Volleyball, 3; Student Christian Association, 3; Junior Prom Committee, 3.



PHILIP FERRIS

Washington, D.C.

English

Duke University, 1, 2; Phi Beta Zeta, 3.



ARNOLD B. FORT

Washington, D.C.

Religion and English

Phi Beta Zeta, 3; Junior Prom Committee, 3; Glee Club, 1, 2, 3; Student Christian Association, 2, 3; French Club, 1, 2, 3; Debate Squad, 1, 2; Choral Club, 1, 2, 3.





PIERCE GELSINGER

Harrisburg, Pennsylvania

Chemistry

Alpha Theta Phi, 1, 2, 3; Band, 1, 2, 3, Assistant Manager, 2, Manager, 3; Orchestra, 1, 2, 3, Librarian, 2, Manager, 3, Glee Club, 3; German Club, 3; Aucola Staff, 3, Photographic Editor, 3; Eagle Staff, 2, 3; Student Christian Association, 1, 2, 3; Dramat, 1, 2, 3; Choral Club, 3.



GARLAND GOTT

Bramley, Missouri

History

Missouri University, 1, 2; Jesters Club, 3; Class Basketball, 3.



LOIS GREEN

Bethesda, Maryland

Education

Marjorie Webster School, 1, 2; Epsilon Kappa, 3; Spanish Club, 3; French Club, 3; Westerner Club, 3; Dramat, 3; Class Hockey, 3; Eagle Hockey Club, 3.



SARA HAWBECKER

Camp Hill, Pennsylvania

English

Phi Sigma Beta, 2, Phi Mu, 3, Treasurer, 3; Class Vice-President, 3; Class Basketball, 1, 2, 3, Manager, 1; Class Hockey, 1, 2, 3; Eagle Hockey Club, 2; Class Volleyball, 1, 2, 3; Class Soccer, 1, 2, 3; Orange Teams, 1, 2, 3; "A" Club, 2, 3, Social Chairman, 3; Glee Club, 1, 2, 3, Vice-President, Librarian, 3; French Club, 1, 2, 3; Spanish Club, 3; Student Christian Association, 1, 2, 3, Secretary-Treasurer, 3; Choral Club, 1, 2, 3.
Class Honors, 2.

THEODORA HEIMERLE

Kingston, New York

Psychology

Swagger Club, 1, 2, 3; Aucola Staff, 3, Assistant Editor, 3; Social Committee, 3.



LOUIS HEISS

Washington, D.C.

Chemistry

Jesters Club, 2, 3, Secretary, 3; Class Treasurer, 1, 2; Westerner Club, 2, Treasurer, 2; French Club, 1, 2.



ANN HENDERSON

Clarendon, Virginia

Speech

Alpha Chi, 1, 2, 3, Treasurer, 3; Class Vice-President, 1, 2; Band, 1, 2, 3, Assistant Manager, 3; Student Christian Association, 1, 2, 3; Class Hockey, 1, 2, 3, Class Volleyball, 1, 2, 3; Class Basketball, 1, 2, 3; French Club, 1, 2; Eagle Staff, 2, 3; Assistant Editor, 3; Eagle Business Staff, 2, 3; Aucola Staff, 2, 3; Varsity Debate Squad, 2, 3; "A" Club, 3; Junior Manager, 3; Dramat, 3.



PHILIP HINCKLEY

Abington, Massachusetts

History

Jesters Club, 1, 2, 3, Vice-President and Treasurer, 3, Secretary, 3; Football, 1, 3; Soccer, 1, 2, 3; Student Athletic Committee, 3, Secretary and Treasurer, 3; Spanish Club, 2, 3; Class Kittenball, 1, 2, 3; Basketball, Assistant Manager, 3; Junior Prom Committee, 3.





JOHN HOOVER

Altoona, Pennsylvania

Physics and Mathematics

Phi Beta Zeta, 1, 2, 3; Glee Club, 1, 2, 3; Secretary, 3; French Club, 1; Football, 1, 3; Vice-President of Hamilton House, 3; Class President, 3; Soccer, 1, 2, 3; Junior Prom Committee, 3; Class Kittenball, 1, 2, 3.



NANCY HORTON

Washington, D.C.

English

Sweet Briar College, 2; Dramat, 1; Eagle Staff, 1; French Club, 1, 3; Omicron Epsilon Pi, 1, 3; Anglican Club, 1, 3; Aucola Staff, 3; Student Christian Association, 3.



ALICE HOWELL

Roselle Park, New Jersey

Art and English

Skidmore College, 1; Alpha Chi, 2, 3; Glee Club, 2, 3; French Club, 2, 3; Student Christian Association, 2, 3; Choral Club, 2, 3.



CHARLES JARVIS

Washington, D.C.

Religion

Maryland University, 1; Alpha Theta Phi, 2, 3; Vice-President, 3; Oxford Fellowship, 2, 3; Secretary, 2; Vice-President, 3; Eagle Staff, 2, 3; Assistant Editor, 3; Student Christian Association, 2, 3; Vice-President, 3.

NANCY KEMPFER

Keyser, West Virginia

Mathematics

Potomac State College, 1, 2; Eagle Staff, 3; Aucola Staff, 3.



DOROTHY KIRSCH

Washington, D.C.

English and Spanish

Spanish Club, 1, 2, 3; French Club, 1, 2, 3; German Club, 1, 2, 3.
Class Honors, 1, 2, 3.



FRANCES KNAPP

Minot, North Dakota

Psychology

North Dakota State Teacher's College, 1, 2; Alpha Chi, 3; Class Hockey, 3, Class Volleyball, 3.



ERNEST LEVIN

Jamestown, New York

Political Science

Alpha Theta Phi, 1, 2, 3; Class Basketball, 1, 2; Varsity Basketball Squad, 3; German Club, 1, 2; Class Kittenball, 1, 2; Eagle Staff, 2.





SARA LOCKE

Amesbury, Massachusetts

Spanish

Phi Sigma Beta, 1, 2, Phi Mu, 3, Second Vice-President, 3, Women's Student Government, 2, 3, Secretary, 2, 3; Representative Dorm Girl of Junior Class, 3, Aucola Staff, 3, Associate Editor, 3; Student Christian Association, 1, 2, 3; Glee Club, 2, 3; "A" Club, 1, 2, 3, Band, 1, 2, 3, Orchestra, 1, 2, 3; Eagle Staff, 1, 2, 3; Blue Teams, 1, 2; Class Hockey, 1, 2, 3, Class Basketball, 1, 2, 3, Class Volleyball, 1, 2, 3, Class Soccer, 1, 2.



REEL McFARLAND

Logan, New Mexico

Economics

Orchestra, 1; Class Basketball, 1, 2, 3, International Relations Club, 2, 3, Band, 1.



MARGARETTA McILVAINE

Philadelphia, Pennsylvania

Education

Phi Sigma Beta, 1, 2, Phi Mu, 3, Student Christian Association, 1, 2, 3; French Club, 1, 2, 3; Class Volleyball, 1; Dickinson Club, 1, 2, Secretary, 2.



ARIEL McNINCH

Bethesda, Maryland

English

Queen's College, 1; Chevy Chase School, 2; Epsilon Kappa, 3; Glee Club, 3; Choral Club, 3; Omicron Epsilon Pi, 3; Student Christian Association, 3; Dramat, 3.

OLIVE MONARCH

Washington, D. C.

Psychology

Swagger Club, 1, 2, 3; Brecky Club, 3; Anglican Club, 3; Student Christian Association, 3; Spanish Club, 2; Basketball, 1; Aucola Staff, 3.



MARGARET MOSES

Washington, D. C.

English

Epsilon Kappa, 1, 2, 3; Treasurer, 3; Glee Club, 1, 2, 3; Secretary-Treasurer, 3; French Club, 1, 2, 3; Choral Club, 2, 3; Dramat, 2; Student Christian Association, 2, 3; International Relations Club, 2, 3; Westerner Club, 1, 2, 3; Class Secretary, 2; Student Council, 3; Class Social Committee, 2; Junior Prom Committee, 3; Aucola Staff, 2, 3; Business Staff, 2; Assistant Business Manager, 3; Eagle Staff, 1, 2, 3; Business Staff, 1, 2; Editorial Staff, 3; Big-Sister Committee, 3; Member of Committee for Revision of A. U. Handbook, 2; N. S. F. A. Committee Chairman, 3.

Class Honors, 1.



PAULINE PARISEAU

Bethesda, Maryland

German

Epsilon Kappa, 2, 3; German Club, 1, 2, 3; President, 3; Anglican Club, 1, 2, 3; Treasurer, 3; Dramat, 1; Glee Club, 3; Eagle Business Staff, 3; Spanish Club, 3.

Class Honors, 2, 3.



BARBARA ANNE PIERCE

Washington, D. C.

Education

Swagger Club, 1, 2, 3; Pledge Captain, 3; Dramat, 1, 2, 3; Treasurer, 3; French Club, 2, 3; Anglican Club, 1, 2, 3; Secretary, 3; Class Hockey, 1, 2, 3; Chairman of Junior Prom, 3; Westerner Club, 1, 2, 3; Aucola Staff, 2, 3; Assistant Art Editor, 2; Art Editor, 3.





MERCEDES ROCKEFELLER

Poughkeepsie, New York

Political Science

Dramat, 3; Glee Club, 3; Choral Club, 3; Student Christian Association, 1, 2, 3; German Club, 1, 2, 3; International Relations Club, 3; Aucola Business Staff, 3; Omicron Epsilon Pi, 3; Class Basketball, 3.



GEORGE SANDERLIN

Washington, D.C.

English

Class Basketball, 1, 2, 3; International Relations Club, 3; Eagle Staff, 3; Athletic Committee, 3; Aucola Staff, 3.
Class Honors, 1, 2, 3.



META SCANTLIN

Chery Chase, Maryland

Religion

Alpha Chi, 1, 2, 3; French Club, 1, 2; Westerner Club, 1, 2, 3; Secretary, 3; Eagle Staff, 1, 2; Aucola Staff, 3; Assistant Editor, 3; Glee Club, 1, 2, 3; Student Christian Association, 2; Student Council, 2.
Class Honors, 1, 2, 3; Faculty Prize, 2.



GORDON SIEVERS

Washington, D.C.

Economics

Phi Beta Zeta, 1, 2, 3; Secretary, 3; Class President, 2; Eagle Staff, 1, 2, 3; Assistant Editor, 3; Varsity Basketball, 2; Class Basketball, 1, 3; German Club, 1; Athletic Committee, 2; Aucola Staff, 3; Business Manager, 3; Student Christian Association, 3; Chairman Big Brother Committee, 2.
Class Honors, 3; Pi Gamma Mu, 3.

SAMUEL SILVER

Wilmington, Delaware

Political Science

University of Delaware, 1, 2; International Relations Club, 3; Varsity Debate Squad, 3; Class Basketball, 3; Class Soccer, 3;



RUTH-MARTIN SIMPSON

Takoma Park, Maryland

Speech and History

Alpha Chi, 2, 3; Class Secretary, 3; Aucola, 3; Assistant Editor, 3; Varsity Debate Squad, 3; Dramat, 1, 2, 3; Glee Club, 1, 2, 3; Choral Club, 1, 2, 3; Field Day Committee, 1; Spanish Club, 2; Class Social Committee, 2, 3; Brecky Club, 3; Freshman Rules Committee, 2.



W. EDWARD STILL

Zanesville, Ohio

Religion

Alpha Theta Phi, 1, 2, 3; President, 3; Oxford Fellowship, 1, 2, 3; Debate, 1, 3; Student Council, 3; Chairman Student Promotion Committee, 2; Class Volleyball, 1; Class Kittenball, 1; Class Basketball, 1; German Club, 1, 3; Chairman Freshman Rules Committee, 2; Aucola Staff, 2, 3; Assistant Editor, 3; Eagle Staff, 3.



RICHARD TUVE

Chevy Chase, Maryland

Chemistry

Phi Beta Zeta, 1, 2, 3; Class Soccer, 1; Glee Club, 1, 2, 3; Male Quartet, 1, 2, 3; Brecky Club, 1, 2; Orchestra, 1, 2; Dramat, 2, 3; German Club, 3; Choral Club, 2, 3.





JANE WEIGHTMAN

Chesapeake, Maryland

Romance Languages

Hollins College, 1, 2; Alpha Chi, 3; French Club, 3; Westerner Club, 3.



GERALDINE WHITAKER

Washington, D. C.

Psychology

George Washington University, 1, 2, Alpha Chi, 3; Brecky Club, 3; Glee Club, 3; Student Christian Association, 3; French Club, 3; Spanish Club, 3; Choral Club, 3; Class Honors, 3.



ROY WISEMAN

Washington, D. C.

Eagle Staff, 1, 3; Orchestra, 1, 2, 3; Band, 1, 2, 3; Class Basketball, 1; Brecky Club, 3; Football, 2, 3; Assistant Manager, 2; Varsity Manager, 3; Basketball, Varsity Manager, 3.

JUNIOR HISTORY

THE members of the class of '35 who returned to American University in the fall of 1933 as juniors had learned something from the two years of college experience. They had borne the hazing and tribulations of freshmen well and had shown their strength by taking most of the laurels in the Field Day events. Then in their second year they rose above the customary heights of silly sophistication, prevalent among sophomores, and showed their abilities in scholarship, debate, dramatics, and sport. These have been depression years, and each member has come to realize the value of money and a college education, and what it means to do without.

There were many hard-working, capable members of the class to fill positions of responsibility. The class chose Jack Hoover as its presiding officer during this year of the New Deal; Sara Hawbecker, Vice-President; Ruth-Martin Simpson, Secretary; and Martin Allwine, Treasurer. Margaret Moses was elected Student Council Representative to take the place of George Bevis, and, with Emory Bucke and Edward Still, represented the class in the student governing body, while Scott Crampton filled the position of Comptroller.

Memories of how Martin persistently followed the members about to collect the necessary money for Barbara Anne Pierce to promote the Junior Prom will not soon be lost. None have regretted the payment of their dues either, for the Junior Prom was an outstanding success as smart couples swayed to the scintillating rhythms of Norman Houseman's Orchestra in the spacious ballroom of the Congressional Country Club. The other major undertaking of the class, this 1934 AUCOLA, must be allowed to speak for itself.

In glancing over the records of activities, juniors are found in prominent view, for in the field of sports, Scott Crampton and Phil Hinckley were bright lights on the football field. Scott also starred at basketball, while Roy Wiseman took over the management of both major sports with unusual success.

Debating again presented Ann Henderson as an impressive first speaker of the varsity team. As actors members of the class shone, for Betty Gray, Bobbe Pierce, and Ruth-Martin Simpson were prominent in dramatic presentations throughout the year, while Emory Bucke and Dick Tuve combined song with their dramatics in an unusual manner.

As the class of '35 nears the end of its junior year, it realizes the magnitude of the task that lies before it next year when, as seniors, the members must take the positions of leadership and responsibility left vacant by this year's graduating class. Undaunted by difficulties or hard work, the class may be expected to continue on its path of success and to succeed in many more fields of endeavor.

LOWER CLASSES



WHEATLEY
President



HOWARD
Vice-President



CHURCH
Secretary



HOUGHTON
Treasurer

SOPHOMORES

THE immediate task facing the class of '36 upon its return to college last fall was the induction of the new class of '37 into the mysteries of college life via the proper initiation ceremonies. Eddie Hopper, Chairman of the Freshman Rules Enforcement Committee, put the new material into the proper frame of mind with humor and firmness. He was a "howling" success.

The class showed the college something new in dances with its Sophomore Spring Salute, held in March with an all-spring theme. Northrup Church's orchestra provided the music for this first of A.U. dances to be held in the Hurst Hall assembly room.

In participation in activities members of the class took an active part. Jay Buffington, Howard Duckworth, and Ed Porter were among those who helped to bolster the flagging fortunes of the football team, while the basketball team was almost entirely composed of sophomores, Ed Porter, Harold Sampson, Hugh Tate, and Melvin Wheatley being regular members of the team the second semester.

Dramatic talent was not lacking, for the beautiful soprano voice of the leading lady in *The Mikado* was that of Helen Shenton, while Bob Brundage took the leading parts in *Dramat* and was ably supported by Jay Buffington and Elbridge Church. On the forensic platform, also, the class was well represented, for Bob Brundage, Frank Hoadley, Eddie Hopper, Mary Lesta Wakeman, and Melvin Wheatley all represented the college in intercollegiate debate. Nor were scholastic attainments neglected, for the class had a larger number of honor students this year than last year.

Melvin Wheatley was chosen to preside over the consultations of the class while Jeannette Howard was vice-president; Catherine Church was secretary; and Worthington Houghton was in charge of the class funds. Harold Warner was reelected to the Student Council and as his colleague on the student governing body, Mary Lesta Wakeman was chosen.



Wolfe Samson, Hixson, Mueller, Cooper, E. Church, Morrill, Tate, Andrews, M. Esch
 M. Smith, Robinson, Wheeler, Beadle, Anderson, Kober, Wakeman, Fairchild, Tenny
 Stalker, Quimby, Hoadley, Brussart, Cramer, Gilbert, Shenton, Hild, Hayward, Reed
 Soper, Hopper, H. Warner, Brundage, Buffington, Parks, Book, Watrous, Cunningham, Grove
 Porter, H. Walker, Houghton, C. Church, Howard, Wheatley, Morris, E. Bright, E. Smith, Knight



TINKER
President

LEHMAN
Vice-President

WALLACE
Secretary

DODGE
Treasurer

FRESHMEN

IN the confusion of registration, during the Freshman Week program, the new class, at faculty teas, at the Big-Brother Big-Sister party in the gym, and at Vesper Service, learned the traditions of American University, which they will proudly uphold throughout their lives.

The first impression of this Freshman Class was a splash of gay green on campus—hair ribbons, large name-tags, stringy ties, and dinks (with orange buttons)—green trod under the crushing heel of the lone tyrant, Edward Hopper. The second and lasting impression was Spirit. No mere Sophomore heel could keep down these perennially popping-up Frosh. Of course, all revolt was legal and sportsmanlike, on the days set by for this purpose. Great figures, '37, still dominate the campus, from the activities of one sleepless night, although the comical dummy of Eddie Hopper, which hung high among the pillars of Hurst Hall, now lies buried in the attic. On Hell Day all was submission, but the green wore off entirely when on Field Day the Frosh won the Tug-of-War and the Soccer Game.

Having demonstrated their ability, the Freshmen cheered their departing good friend and adviser, Joe Thomas, and took on the reins of government. Robert Tinker was elected president, Mary Lehman, vice-president, Helen Wallace, secretary, Wesley Dodge, treasurer, and Robert McRae, Student Council member. The Constitution Committee, under Sidney Sachs, drew up an acceptable constitution, and the class of '37 became the thirteenth class of American University.

With the Soph-Frosh cumity more or less ended, there was no let-down in spirit. To demonstrate: Physical ability, the Freshman girls won the volleyball championship; mental ability, Freshmen were well represented in semester honors; creative ability, Robert True won honorable mention in a city-wide university Poetry Contest; social ability, the Freshman Dance was held March 10th, in a scarlet and silver gymnasium, with Lee Field's Orchestra.

With a great deal of fun and a great deal of glory behind, the class of '37 looks forward to three more victorious years at American University.



Shaw, Harbaugh, Tansill, Tinker, Eicher, Lowder, Hummer
 Nolan, Zook, Franck, Rauchenstein, McRae, Hatchett, Wayman, Scott, Willard, Stevens
 Follmer, Hale, Page, Meiring, Lehman, Wallace, Powell, Bryant, Simms, Taylor, Dodge, Sachs
 Paxton, Brawner, Showacre, Fisher, Gutteridge, Stevenson, Harrah, Stuart, Dove
 Payne, Stephan, H. Sanderlin, Warthen, M. Ward, D. Hall
 Brougner, Courtney, Coulson, Espenschied, Snavelly, Brownc, Brattain, Miller, Drager, Lathrop, Rastall,
 Furst, Cohen, M. Buckingham, Galloway
 Corkran, LeMasters, Stone, M. Hall, Bennett, Greer, Zens, M. Walker, Slinn, Woods, Whitlow, Brehm,
 R. Ward

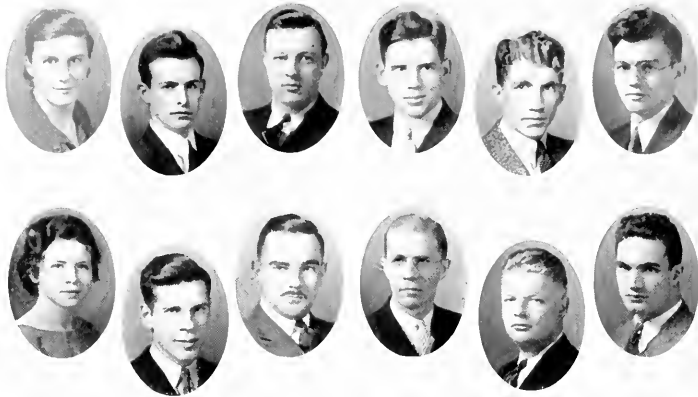
OUR activities at American University are in a state of incipient development. National honorary and social fraternities have been established here; college papers and glee clubs have won awards; forensic teams have defeated many notable opponents; dramatic productions have been acclaimed by critics; but it cannot be contended that the possibilities of development have been fully exploited.

Immediate objectives are the establishment of chapters of national scholastic and leadership honorary fraternities here, as well as other national honorary organizations and national social fraternities. More general aims are the gradual development of these important forms of education, our extra-curricular activities, together with the gain in facilities for their practice.



ACTIVITIES

ORGANIZATIONS



Wakeman, McRae, Still, Warner, Esper, Parker
Moses, Crampton, Bucke, Rice, Thomas, Hendrick

STUDENT COUNCIL

LAWRENCE RICE.....	<i>President</i>
JOSEPH THOMAS.....	<i>Vice-President</i>
HARLAN HENDRICK.....	<i>Secretary, first semester</i>
EMORY BUCKE.....	<i>Secretary, second semester</i>
SCOTT CRAMPTON.....	<i>Treasurer</i>

MEMBERS

Emory Bucke, '35	Harlan Hendrick, '34	Edward Still, '35
Scott Crampton, '35, <i>Student Comptroller</i>	Robert McRae, '37	Joseph Thomas, '34
Lee Esper, '34	Margaret Moses, '35	Mary Lesta Wakeman, '36
	Robert Parker, '34	Harold Warner, '36
	Lawrence Rice, '34	

THE Student Council is the executive body of the Student Government Association. Composed of representatives from the four classes, it carries through student projects, represents the student body in meetings with other organizations, and in general has supervisory power over many phases of student activity. In addition, it has in charge the distribution of the Student Activities Fund each year.

WOMEN'S STUDENT GOVERNMENT ASSOCIATION

FRANCES NOBLE.....	<i>President</i>
SARA LOCKE.....	<i>Secretary</i>
LOUISE LEARNED.....	<i>Social Chairman</i>
KATHRYN BROWN.....	<i>Head Proctor</i>
LOUISE HAYWARD.....	<i>Treasurer</i>

THE Women's Student Government Association regulates the activities of the women's dormitory. This year it has given several dinners and a tea dance. Members of the Association have served as hostesses at the various functions which have introduced strangers to the campus in the last year.



Brown, Noble, Locke, Hayward, Learned



Crampton, Danforth, Coulter, Hendrick
Buchanan, Baker, Rice, Kernahan

BRAHMIN HONOR SOCIETY

LAWRENCE RICE *President*
DOROTHY BAKER. *Secretary*

MEMBERS

Dorothy Baker, '34	Scott Crampton, '35	Harlan Hendrick, '34
Winona Buchanan, '34	Louise Danforth, '34	Earl Kernahan, '34
Kirkley Coulter, '35		Lawrence Rice, '34

THE Brahmin Honor Society recognizes outstanding qualities of leadership and character, and membership in it is one of the highest honors that can come to a student at American University. Achievement in extra-curricular activities is the primary qualification, and there is also a minimum scholastic requirement.

THE MIKADO

Presented by the MUSICAL AND DRAMATIC CLUBS

NOVEMBER 17 AND 20, 1933

By W. S. GILBERT AND SIR ARTHUR SULLIVAN

Under the Direction of PROFESSOR WILL HUTCHINS and MR. HARLAN RANDALL

HELEN WALLACE, *Accompanist*

<i>The Mikado of Japan</i>	Stanley Franck
<i>Nanki-Poo</i>	Joseph Thomas
<i>Ko-Ko</i>	Emory Bucke
<i>Poo-h-Bah</i>	Richard Tuve
<i>Pri-h-Tush</i>	Robert Parker
<i>Umbrella Bearer</i>	Richard Buckingham
<i>Yum-Yum</i>	Helen Shenton
<i>Pitri-Sing</i>	Sara Hawbecker
<i>Pep-Bo</i>	Ruth-Martin Simpson
<i>Katisha</i>	Mercedes Rockefeller

Chorus of Girls:

Haana Anderson, Dorothy Baker, Ruth Bennett, Kathryn Brown, Mary Buckingham, Anita Clark, Alice Compton, Rhoda Coulson, Frances Cramer, Frances Dorr, Florence Evans, Frances Farmer, Hilda Galliher, Maxwell Galloway, Georgeanna Hild, Alice Howell, Mary Lathrop, Mary Lehman, Margaret LeMasters, Sara Locke, Elizabeth MacDonald, Ariel McNinch, Margaret Moses, Patricia Paxton, Mary Qaimby, Priscilla Robb, Meredith Smith, Pauline Snyder, Lucile Stalker, Margaret Watrous, Geraldine Whitaker, Margaret Woods.

Nobles, Guards, and Coolies:

Robert Brundage, Elbridge Church, Albert Cooper, John Coulter, Kirkley Coulter, Wesley Dodge, Lee Esper, Arnold Fort, Pierce Gelsing, Merle Randle, Lawrence Rice, Haylett Shaw, Linn Simpson, Robert Tinker, Harold Wayman, Winthrop Wolfe.





THE TRAGEDY OF KING RICHARD III

MAY 18 AND 19, 1933

BY WILLIAM SHAKESPEARE

Under the Direction of PROFESSOR WILL HUTCHINS

<i>Edward IV</i>	George Bevis	<i>Sir Robert Brakenbury</i>	Edward Parke
<i>Edward, Prince of Wales</i>	Marian Mansfield	<i>Sir William Brandon</i>	Gordon Webner
<i>Richard, Duke of York</i>	Margaret Moses	<i>Duke of Norfolk</i>	Edward Parke
<i>George, Duke of Clarence</i>	Joseph Summers		Kirkley Coulter
<i>Richard III</i>	Leonel Dick	<i>Messengers</i>	George Borsari
<i>Son to Clarence</i>	Esther Smith		Larry McLendon
<i>Henry, Earl of Richmond</i>	Albert Buffington	<i>Murderers</i>	Fred Johnson
<i>Cardinal Bouchier</i>	Theodore Field		Henry Johnson
<i>Archbishop of York</i>	Robert Beebe	<i>Page</i>	Virginia Hall
<i>Bishop of Ely</i>	Emory Bucke	<i>Sheriff</i>	Edward Parke
<i>Duke of Buckingham</i>	Dan L. Smith		Oscar Sells
<i>Earl of Surrey</i>	Dorothy Terry	<i>Guards</i>	Larry McLendon
<i>Earl Rivers</i>	Jay Buffington		Lloyd Tyler
<i>Marquis of Dorset</i>	Merle Randle	<i>Elizabeth</i>	Ruth-Martin Simpson
<i>Lord Grey</i>	George Gibson	<i>Margaret</i>	Helen Astin
<i>Lord Hastings</i>	Robert Brundage	<i>Duchess of York</i>	Barbara Anne Pierce
<i>Earl of Derby</i>	Arthur Smith	<i>Lady Anne</i>	Mary Laurence Daub
<i>Lord Lovel</i>	Kirkley Coulter	<i>Margaret Plantagenet</i>	Esther Bright
<i>Sir Thomas Vaughn</i>	Charles Jarvis		
<i>Sir Richard Ratcliff</i>	Harlan Hendrick	<i>Stage Assistants:</i>	
<i>Sir William Catesby</i>	Harry Underwood	Beatrice Adam, Mary Davis, Pierce Gelsing,	
<i>Sir James Tyrell</i>	Richard Tuve	George Gibson, Virginia Hall, Fred Johnson,	
<i>Sir James Blount</i>	Scott Crampton	Henry Johnson, Howard Reinard, Virginia	
<i>Sir Walter Herbert</i>	Kirkley Coulter	Sherier, Carlton Skeggs, Esther Smith, Eleanor	
		Waite.	

THE DRAMATIC CLUB

VIRGINIA HALL..... *President*
 EARL KERNAHAN..... *Vice-President*
 ROBERT BRUNDAGE..... *Secretary*
 BARBARA ANNE PIERCE..... *Treasurer*



THE TRUTH ABOUT BLAYDS

DECEMBER 16, 1933

By A. A. MILNE

Under the Direction of PROFESSOR WILL HUTCHINS

<i>Oliver Blayds-Conway</i>	Jay Buffington
<i>A. L. Royce</i>	Elbridge Church
<i>Septima Blayds-Conway</i>	Ariel McNinch
<i>Marian Blayds-Conway</i>	Hazel Kirk
<i>William Blayds-Conway</i>	Robert Brundage
<i>Isobel</i>	Ruth-Martin Simpson
<i>Parsons</i>	Carol Furst
<i>Oliver Blayds</i>	Earl Kernahan

Stage Assistants:

Pierce Gelsing, Virginia Hall, Larry McLendon, Emily Nicklas, Barbara Anne Pierce, Howard Reinard, Martha Skidmore.



Kirk, Brundage, Furst, R. Simpson, E. Church
 McNinch, Kernahan, J. Buffington



RICHARD BUCKINGHAM
Editor-in-Chief

LOUISE DANFORTH
Business Manager

THE AMERICAN EAGLE

EDITORIAL BOARD

<i>Editor-in-Chief</i>	RICHARD W. BUCKINGHAM
<i>Associate Editors</i>	DOROTHY BAKER ELEANOR WAITE KIRKLEY COULTER CHARLES JARVIS ANN HENDERSON GORDON SIEVERS
<i>Assistant Editors</i>	ROBERT BRUNDAGE FAYE ESPENSCHIED PIERCE GELSINGER DORIS HALL FRANK HOADLEY MARY LESTA WAKEMAN
<i>Copy-readers</i>	MR. GEORGE L. SIXBEY
<i>Faculty Adviser</i>	

BUSINESS BOARD

<i>Business Manager</i>	LOUISE DANFORTH
<i>Assistant Business Manager</i>	MARTIN ALLWINE
<i>Advertising Manager</i>	WORTHINGTON HOUGHTON
<i>Circulation Manager</i>	MARGARET MOSES

THE EAGLE

RAPIDLY approaching deadline, jumbled page proofs, cub reporters, and new headline counts all failed to deter this year's energetic *Eagle* staff in its effort to provide American University with an accurate and readable bi-weekly review of campus news.

The great triumph of the year for the *Eagle* came when it was awarded first prize for its class at the Virginia Intercollegiate Press Association conference held in Richmond last fall.

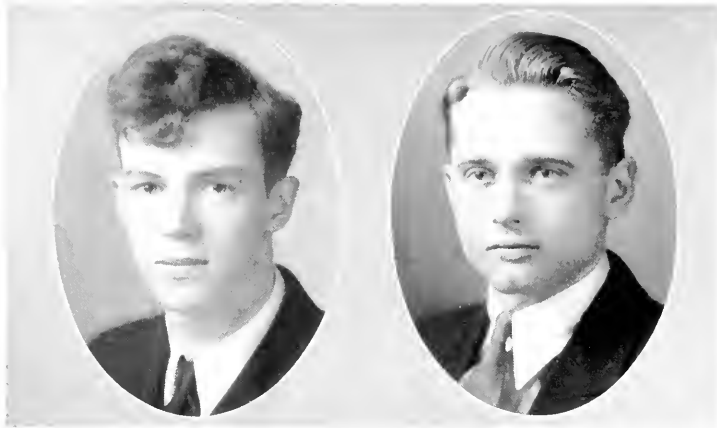
During the Buckingham regime, the staff was reorganized to conform more nearly with that of a metropolitan newspaper, with rotating positions, thereby giving staff members an opportunity to learn problems of newspaper work as they actually exist.

In order better to present the improved news and feature stories, the editors selected a new headline type chosen for its legibility and attractive appearance. New principles of make-up were introduced, especially on the editorial page, and the old cluster of column features was thoroughly renovated with the elimination or improvement of the old ones and the introduction of a society column and a forum for student opinion.

The business staff has done its part by supplying the backbone of any financial venture, the income necessary to pay expenses, and by handling the circulation.



Gelsing, Scott, Harbaugh, Wiseman, Hoadley, Nicklas, Rastall, Skidmore
 Locke, Espenschied, Stalker, Gilbert, Kernahan, Kempfer, M. Walker, Forrest, Follmer, McLendon
 Hummer, D. Hall, Cooper, Furst, E. Smith, Ward, Pariseau, Brehm, Comeau, E. Samsone
 Allwine, Browne, Jarvis, Sievers, Henderson, Whitlow, K. Coulter, H. Sanderlin
 Still, Houghton, Waite, R. Buckingham, Danforth, Moses, Baker



KIRKLEY COULTER
Editor-in-Chief

GORDON SIEVERS
Business Manager

THE AUCOLA

EDITORIAL STAFF

<i>Editor-in-Chief</i>	KIRKLEY COULTER
<i>Associate Editor</i>	... SARA LOCKE
<i>Art Editor</i>	BARBARA ANNE PIERCE
<i>Photographic Editor</i>	PIERCE GELSINGER
<i>Assistant Editors:</i>	
ANITA CLARK, THEODORA HEIMERLE, META DEAN SCANTLIN, RUTH-MARTIN SIMPSON, and EDWARD STILL.	
<i>Advisory Editor</i>	EARL KERNAHAN
<i>Faculty Adviser</i>	MR. GEORGE SIXBEY

BUSINESS STAFF

<i>Business Manager</i>	GORDON SIEVERS
<i>Advertising Manager</i>	MARGARET MOSES
<i>Circulation Manager</i>	GEORGE SANDERLIN
<i>Accounting Manager</i>	MARTIN ALLWINE

THE AUCOLA

IN an effort to produce an AUCOLA which will appeal to the student body even more than its predecessors, the staff of the 1934 volume has introduced several innovations in this volume, despite a necessary curtailment of expenditures to meet demands of a depression budget. These changes are shown in the art work, the photography, in the typography, and in the written material.

Choosing an art theme which relates distinctively to American University, the editors have designed an up-to-date cover, division pages, and page layouts to best express its spirit; they have abandoned the color borders on each page; and they have introduced color into the division pages. Exceptional photographic views of the campus have been secured, and all faculty members have had new photographs taken for the year-book.

A type face was selected which would fit most completely with the theme of the 1934 AUCOLA. In addition the linotype method of composition was abandoned in favor of the more artistic monotype, in which each letter is cast in a separate mold. The actual reading matter has been augmented with short descriptions of the year's activities in each line of endeavor and short personal sketches of certain campus personalities.

An administrative innovation has been the addition of Earl Kernahan, editor of the 1933 AUCOLA, to the staff in an advisory capacity. His help has been of the greatest value in all departments of the work.

To the business staff is due credit for securing the necessary income to finance the book, in the face of continued business depression and a slight drop in enrollment.



McLendon, J. Coulter, Heimerle, Monarch, Waite, Rockefeller, Backenstoss, Jarvis
 Harrah, Page, Stiller, Fairchild, Fellows, Nicklas, Wilkins, Skidmore
 Eicher, Hummer, Shenton, Kempfner, Baker, Clark, Snavelly, Henderson, Compton
 Soper, Allwine, Houghton, Furst, Reed, Hoadley, Forrest, Horton, R. Simpson, H. Sanderlin, Brown
 Scantlin, Still, Pierce, K. Coulter, Locke, Sievers, Moses, Gelsinger



Ruth Belden



Chester Bowers



Robert Marcus

DELTA SIGMA RHO

DONALD J. SHERBONDY *President*
WINONA BUCHANAN..... *Vice-President, Secretary-Treasurer*



Winona Buchanan

ELECTION to Delta Sigma Rho is the highest honor that a debater at American University can receive. To be eligible for election to the local chapter a student must have engaged in varsity debating over a period of at least two years and have participated in at least three inter-collegiate debates, in addition to meeting the scholastic requirements.

Delta Sigma Rho is a national honorary forensic fraternity which was founded in 1906 and now has more than sixty chapters at outstanding institutions of learning in all parts of the country. Every debate coach at American University has been a member of the fraternity.



Donald J. Sherbondy



George B. Woods

DEBATE COUNCIL

THE debate squad continued to uphold the fine record which The American University has maintained on the forensic platform. Much credit is due the sophomores who so commendably filled the positions left vacant by the graduation or withdrawal of the experienced debaters of last year.

A total of forty-four students enrolled in the varsity and preparatory squads. The varsity question was, "Resolved, that the principle of government control of industry, as exemplified in the National Industrial Recovery Act, should be continued as a permanent policy." The men engaged in contests with Johns Hopkins, Swarthmore, New York University, Rutgers, Allegheny, Ohio Wesleyan, Western Reserve, Wooster (2), and Denison.

The women met Swarthmore, Bucknell, New York University, West Virginia University, Oberlin, and Ohio Wesleyan. Of the decision contests only one was lost. Both men's and women's teams were sent to Ohio. One of the high spots of the season was the radio broadcast of the women's debate with New York University, over station WJSV of the Columbia Broadcasting System.

The preparatory squad contains much fine material that will be a great asset to the varsity next season. Two questions were debated among the teams in the class, "Resolved, that Hitlerism is for the best interests of the German people," and "Resolved, that compulsory military training in American colleges should be abolished." The teams which finished the season with the best records were given book awards by the Debate Council.

Dr. Gray was the speaker at the debate banquet, for both squads.



Shaw, Slinn, Reed, Furst, Espenschied, E. Church, Morrill, Tinker
 Baffington, R. Backingham, Robinson, Still, Cunningham, Howard, McFarland
 Hoadley, Brundage, Kernahan, Wakeman, R. Simpson, Wheatley
 K. Coulter, Hopper, Buchanan, Mr. Sherbondy, Bucke, Henderson



Marcus, R. Rice, Dr. Rouse, Sheppard, Mr. Hutchins, Belt, Dr. Golder, Dr. Huelster
Fisher, King, Blew, J. S. Rice, Mueller, Towne, Frederick, Motley, Belz, Mr. Sherbondy
Loving, Mrs. Adams, Dr. Adams, Dr. Shenton, Dr. Engel, Dr. Woods, Miss Brown, Miss Cotton

THE COLLEGE HONOR SOCIETY

FACULTY MEMBERS

Mary Louise Brown
Cornelia M. Cotton
Edward W. Engel
Harold Golder

William B. Holton
Lowell F. Huelster
Edwin Holt Hughes
Will Hutchins
Glenn F. Rouse

Walter F. Shenton
Donald J. Sherbondy
George B. Woods
Lois M. Zucker

ALUMNI MEMBERS

Cecelia Sheppard, '27
Hattie Teachout, '28
Roland Rice, '29
Sara Roher, '29

Pauline Frederick, '30
Winston Manning, '30
Janie Scantlin Rice, '30
Dorothea Belz, '31

Audrey Belt, '32
Margaret Cross, '32
W. Yule Fisher, '32
Mary J. B. Mueller, '32

STUDENT MEMBERS ELECTED 1933

Genevieve Spence Blew
Alice Louise Ford

Harold Harbaugh
Anne King
Robert Marcus

Sara Motley
Elizabeth Towne

STUDENT MEMBER ELECTED 1934

Edward Davidson

THE College Honor Society, founded in 1933, includes faculty members of Phi Beta Kappa and Sigma Xi and elects as its student members those seniors who have attained unusual distinction in scholarship. Its functions include an annual banquet and initiation ceremonies for new members and addresses by prominent men in varied fields of learning. Its purpose is to encourage the intellectual life of the college.

The officers for the past year were Dr. Shenton, president, and Dr. Engel, secretary-treasurer.

BETA BETA BETA

ALICE LEE.....	President
PRISCILLA ROBB.....	Vice-President
MARY LOUISE ROBBINS.....	Secretary
MARY LIVINGSTON.....	Treasurer
LOUISE DANFORTH.....	Historian

THE Alpha Upsilon Chapter of Beta Beta Beta, the national honorary biological fraternity, was installed at American University June 2, 1932. The local chapter has occupied itself with social affairs and meetings at which it was addressed by authorities on biological subjects.

In addition, the organization has sponsored a number of worth-while projects on the campus. Last year it sponsored Arbor Day and this year had charge of the Science Show. In addition it has offered five dollar prizes for the best collections of insects and flowers in the elementary biology classes and for the best collection of protozoa in the technique class.

Last year Kenneth Hoover was awarded first prize in the nation-wide Beta Beta Beta Annual Undergraduate Research Contest on his paper, *Biological Control of Harmful Insects*.



Buchanan, V. Hall, Mr. Varrelman, Comeau, Tenny
Danforth, Robb, Lee, Livingston, Robbins



Tuve, Parker, Thomas, Bucke
 Boss, Randle, Gelsinger, Shaw, Cooper, J. Coulter
 Tinker, E. Church, Hoover, K. Coulter, Clarke, Franck, Mr. Randall, Gilbert, Esper, Book, Davidson, Fort
 Morrill

MEN'S GLEE CLUB

LEE ESPER *President*
 JACK HOOVER *Secretary-Treasurer*
 EMORY BUCKE *Business Manager*

THE Men's Glee Club enlarged its program this year, increasing the number of appearances. New songs were learned and new variations on old ones were adopted. A large number of formal concerts and shorter programs were given, which usually consisted of songs by the entire group, solos by Joseph Thomas, tenor, and Chester Morrill, piano, and selections by the vocal quartet, composed of Emory Bucke, Robert Parker, Joseph Thomas, and Richard Tuve, and by the brass quartet, which included John Coulter, Pierce Gelsinger, Robert Tinker, and Roy Wiseman.

Concerts were presented in a number of churches and other places in and around town before various types of audiences, either jointly with the Women's Glee Club or alone. The season was brought to a climax by the trip to Harrisburg and York, where formal concerts, radio broadcasts, and high school programs were given. The only other out-of-town concert was that given in Baltimore jointly with the women's club. The campus concert was held late in March in Hurst Hall.

WOMEN'S GLEE CLUB

GLADYS COWSILL *President*

SARA HAWBECKER *Vice-President*

MARGARET MOSES *Secretary-Treasurer*

WITH a larger number of applicants this year than ever before, Mr. Harlan Randall, director of the club, was able to exercise greater choice in selecting the personnel of the club than in former years, and thus a finer group of voices was possible.

The season was opened with a joint concert with the Men's Glee Club at the Union Methodist Episcopal Church. This was followed by a joint entertainment for the Methodist Union dinner which was held late in January. In February the combined Glee Clubs broadcast over station WJSV. The annual campus concert of the two clubs was held in March, while other concerts were given during the year at various churches in Washington. The only out of town concert was held jointly with the men's group in Baltimore early in March.



Kirk, Watrous, R. Bennett, Stalker, Galliher, Rockefeller, Whitaker, Shenton, Hild, M. Smith,
M. Buckingham, Lathrop
Paxton, R. Simpson, Scantlin, Quimby, Woods, Whitlow, LeMasters, Coulson, Howell, Compton,
Nicklas, Lehman
Farmer, MacDonald, Pariseau, Skidmore, McNinch, Moses, Mr. Randall, Cowsill, Hawbecker, Baker,
Snyder, F. Smith, Robb



Locke, R. Buckingham, Tate, Wiseman, E. Church, Bryant, Kernahan, Tinker, Wheatley
K. Coulter, Henderson, Parker, Hopper, Gelsingser

BAND

MR. JAMES M. THURMOND, Director
 ROBERT PARKER, Student Director
 PIERCE GELSINGER, Manager
 ANN HENDERSON, Assistant Manager

Trumpets
 Roy Wiseman
 Pierce Gelsingser
 Kirkley Coulter
 Sara Locke
 Hugh Tate

Clarinets
 Robert Hill
 Rafael Miller

Saxophone
 Elbridge Church
Baritone
 Melvin Wheatley

Trombones
 John Coulter
 Robert Tinker
Alto Horn
 Richard Hummer

Piccolo
 Carl Stevens
Bass
 Herwil Bryant

Drums
 Richard Buckingham
 Ann Henderson
 Edward Hopper

THE band has progressed rapidly this year under the leadership of its new director, Mr. James M. Thurmond. The organization played at all the basketball games and gave a concert in February. Prospects for a fine band are bright under his leadership.

ORCHESTRA

DR. C. HENRY LEINWEBER.....*Director*

PIERCE GELSINGER.....*Manager*

ROY WISEMAN.....*Librarian*

Piano

Rhoda Coulson
Jean Fairchild

Cornets

Roy Wiseman
Kirkley Coulter
Pierce Gelsinger
Sara Locke

Trombone

Herwil Bryant

Violins

Richard Tuve
Richard Hummer
Kathryn Brown

Cello

Priscilla Lane



K. Coulter, Locke, Brown, Bryant
Coulson, Wiseman, Gelsinger, Fairchild



Gelsing, K. Coulter, Taylor, LeMasters, Bucke, Rice
 Livingston, Lee, Moses, L. Stuart, Lehman, Wallace, Evans
 Cooper, Danforth, Robb, Whitaker, R. Bennett, Brown, Tenny
 Hild, R. Ward, Robbins, R. Buckingham, Hawbecker, Buchanan

STUDENT CHRISTIAN ASSOCIATION

RICHARD BUCKINGHAM.....President
MARY LOUISE ROBBINS.....Vice-President
CHARLES JARVIS.....Men's Vice-President
WINONA BUCHANAN.....Women's Vice-President
SARA HAWBECKER.....Secretary-Treasurer
CATHERINE CHURCH.....Social Chairman
NATALIE HAINES.....Publicity Chairman

The present Student Christian Association of over 150 members has developed from a Vespers Committee which was formed at the opening of the College. Its functions consisted chiefly of sponsoring a Sunday Evening Vespers Service in the Women's Residence Hall and a Mother's Day and Dad's Day Program.

During the spring of 1931 a representative group of students augmenting the Vespers Committee met to consider a more adequate program of religious activity, which was felt to be necessary. The result was that the Vespers Committee was replaced by the Student Christian Association, with Russell Lambert as its first president. One of the contributions of the larger program was the inauguration of Freshman Week in the fall of 1931. Last year the work of the organization was carried on under the leadership of Lawrence Rice.

Other activities sponsored by the Association include a Sunday Evening Young People's Meeting in conjunction with Metropolitan Church, a monthly Supper Forum, Mother's and Dad's Day Programs, a Rock Creek Picnic, Special Easter Services, and monthly business meetings. Any student in the college who so desires may become a member.

OXFORD FELLOWSHIP

ROBERT PARKER	<i>President</i>
CHARLES JARVIS	<i>Vice-President</i>
MELVIN WHEATLEY	<i>Secretary</i>
HOWARD REINARD	<i>Treasurer, first semester</i>
ELGAR SOPER	<i>Treasurer, second semester</i>
DR. JACKSON	<i>Faculty Adviser</i>

THE Oxford Fellowship is the national non-secret organization of young men who are planning to enter the Christian Ministry. The American University Chapter was organized during the fall of 1927. Including the members of this year's graduating class, twenty-nine men will have gone into the Ministry from its membership.

The Fellowship sponsors Gospel Teams which conduct Church services from time to time. Conferences on the work of the ministry have been held with outstanding ministers of the city. During the college year special devotional meetings have been held for its members.

In addition to the regular monthly business meetings, social meetings are held in the homes of the members. A reception for new members and the annual banquet are the two major events of the year.



Sampson, Porter, Boss
 Soper, R. Buckingham, Still, Bucke, Kernahan, Rice
 Jarvis, Wheatley, Dr. Jackson, Parker, Reinard
Not in the picture: Clarke, Cooper, Esper, Stephens, Tyler



Stevenson, Horton, J. Coulter, Mr. Hutchins, Clarke, True, Cohen, Pariseau, Monarch
 F. Smith, Tenny, Hild, Wheeler, M. Smith, Robb, Clark
 Cooper, Fisher, Houghton, K. Coulter, Morris, E. Bright, Stalker

ANGLICAN CLUB

KIRKLEY COULTER.....	<i>President</i>
ELIZABETH MORRIS.....	<i>Vice-President</i>
BARBARA PIERCE.....	<i>Secretary</i>
PAULINE PARISEAU.....	<i>Treasurer</i>

UNDER the leadership of Dr. Anson Phelps Stokes, canon of Washington Cathedral, who was chosen to act as chaplain of the Anglican Club during the past year, the club held a series of discussions on "The Teachings of Christ and Their Application to Present-Day Problems." Dr. Stokes also administered a monthly corporate communion to the members in Bethlehem Chapel at the Cathedral. On one occasion the Club toured the Cathedral as a group.

The Club acted as joint host with the Episcopal Clubs of George Washington University and the University of Maryland to the Tri-Diocesan Conference, held in Washington from February 9th to 11th and attended by about thirty delegates from Maryland and the District of Columbia. Members of the local Club acted on the preparations committees and entertained visiting delegates in their homes. Two members attended all the sessions as delegates from American University, and many others were present at some of the meetings.

GERMAN CLUB

PAULINE PARISEAU *President*

PRISCILLA ROBB *Vice-President*

MARY LIVINGSTON *Secretary-Treasurer*

THE German Club, "Der Deutsche Literarische Verein," was founded in the fall of 1931 with a three-fold purpose: to promote German literature; to promote a speaking knowledge of German; and to promote an interest in and a knowledge of German culture.

In spite of its comparative youth the German Club has forty-six members this year. Besides having talks about Germany and its literature and culture, the members sing German songs at their meetings, which are held monthly.

Last December the club joined the Interscholastic Federation of German Clubs, an organization which consists of about 120 German clubs at universities, colleges, and high schools throughout the continent.



Beadle, H. Sanderlin, True, Mueller, Reeve, Randle, Andrews, Fellows, Monarch, Gelsinger
 Backenstoss, Stalker, Still, Rockefeller, Barber, Follmer, Hummer, Harrah
 Tuve, Shenton, Hayward, Horton, A. Browne, Cohen
 M. Esch, Danforth, Robb, Pariseau, Livingston, Forrest



Pender, Nicklas, Waite, True, Horton, Drager, Stevenson
 Stone, Andrews, Robb, Cowles, Hoadley, Baker, Wheeler
 Kober, Miss Galt, Swift, Howell, Houghton, K. Coulter, E. Smith
 Morrill, Reed, R. Ward, Fairchild, Shenton, Hild, Corkran, Moses
 Randle, Parks, Slinn, Green, Coulson, LeMasters, Tenny, Brougher
 Clark, Paxton, Compton, Snyder, M. Walker, Furst, Hawbecker, Brawner
 Wilkins, Evans, Whitlow, Courtnev, Hale
 Hartwell, Backenstoss, Barber, Comeau, Morris, Lathrop
 J. Coulter, Cowsill, Field, Fellows, Whitaker, MacDonald

FRENCH CLUB

HAROLD SWIFT.....	<i>President, first semester</i>
THEODORE FIELD.....	<i>President, second semester</i>
JOHN COULTER.....	<i>Vice-President</i>
GLADYS COWSILL.....	<i>Secretary</i>
PRISCILLA ROBB.....	<i>Treasurer</i>

LE CERCLE FRANÇAIS is primarily a social organization, its purpose being to acquaint students of the French language with the life and literature of France. Meetings are held once a month, consisting usually of a musical and dramatic program in which the students take part, though occasionally there is a guest speaker. A special French Table at dinner, following the social period after the meeting, is provided for those members who wish to remain.

During the year the club has presented a condensed version of Moliere's "L'Ecole des Maris," scenes from Moliere's "La Malade Imaginaire" and Romain's "Knock," and several short modern French comedies. At the Christmas meeting, there was a special program consisting of the singing of French Christmas carols by the members and French Christmas stories told by M. Liotard. On another occasion Dr. Adolf Zucker of Maryland University delivered in English an address on Ibsen, to which the members of the faculty and those of the other language clubs were invited, as being interested in literary subjects.

SPANISH CLUB

ALBERT COOPER...	<i>President</i>
EDWARD HOPPER...	<i>Vice-President</i>
MELVIN WHEATLEY...	<i>Secretary-Treasurer</i>

THE Spanish Club is organized in conformity with the rules and regulations of the Instituto de las Españas, which is a nation-wide organization. Its purpose is to enable those students who are interested in Spanish life and customs to have a practical means of applying their knowledge and talent outside of the classroom recitations. The monthly meetings of the organization, under student direction, give members a chance to perform in plays and sketches, to sing Spanish songs, and to learn the life and behavior of the Spanish speaking nations. The club offers membership to those who have had at least one year's work in the Spanish language.



Tansill, Woods, M. Buckingham, Kirsch, Furst, Evans, McLendon, M. Hall
 Compton, Whitaker, C. Church, F. Smith, Coulson, Monarch, Brown, Payne, L. Simpson
 Bucke, Parks, Barber, Reeve, Zuras, Zens, Fellows, Stuart, MacDonald, Locke
 Grove, Knight, Pariseau, Brehm, Hopper, Cooper, K. Coulter, Hawbecker, Parker



Cunningham, Cowles, Rice, Crampton, Rockefeller, G. Sanderlin
 M. Warner, J. Esch, Zuras, Baker, Forrest, Bucke
 Moses, K. Coulter, Mr. Sherbondy, Cowsill, Kernahan, K. Smith

INTERNATIONAL RELATIONS CLUB

EARL KERNAHAN <i>President</i>
WINONA BUCHANAN	<i>Vice-President</i>
GLADYS COWSILL <i>Secretary</i>
KIRKLEY COULTER <i>Treasurer</i>

THE International Relations Club is one of the few non-social organizations on the campus which places restrictions upon its membership and holds a ceremony of initiation for those chosen.

Under the leadership of Earl Kernahan, the Club carried out a well-rounded program which included talks by guests and members on subjects of current international interest. Addresses by outstanding men such as George Cox, Washington correspondent of the *Christian Science Monitor*, were supplemented with reviews of current books which members described in five-minute talks.

Two faculty members, Dr. Wesley M. Gewehr and Dr. Delos O. Kinsman, were inducted into honorary membership to join Mr. Donald Sherbondy, club adviser, as faculty members of the organization.

The club joined with George Washington University in acting as hosts to the Regional Conference held in Washington in December, and sent several members to the meetings as delegates.

OMICRON EPSILON PI

JOHN COULTER President
 NATALIE HAINES Secretary
 ALBERT COOPER Treasurer

IN the spring of 1928, after a series of informal meetings, the Poetry Club was organized with Dr. B. B. James and Mr. Varrelman as joint advisers and J. C. Hayward as first president. A constitution and by-laws were created in the second year.

S. Carlton Ayers, as president of the Club in 1931, was editor of the first *Loom*. Outstanding poems of this anthology were *Christine* by Anne King, *The Crystal Tree* by Helen MacLeod, and a *Sonnet on Death* by Blake Espy.

The second *Loom* was published in 1932, under the direction of Margaret Cross. Poems by John Coulter, Margaret Cross, Mary Daub, Alice Ford, and Nancy Horton were reprinted by the *Literary Digest*. Poems of John Coulter, Nancy Horton, and Anne King were included in a national collegiate anthology which was exhibited at the Chicago World's Fair.

In 1933 poems by Alice Ford and Anne King were awarded honorable mention in the first annual A.A.U.W. Collegiate poetry contest in Washington. John Coulter was awarded second prize and Robert True received an honorable mention in the second annual contest, in 1934.

In accordance with established tradition the club has taken an active interest in contemporary poetry and in original composition. The third *Loom*, published this year, pays tribute to the triumph of the two preceding issues, in its form and in its very existence, and in its contents it certainly proves worthy of comparison with its predecessors.

Dr. Golder is faculty adviser of the club.



Cowles, Kernahan, Wheeler, True
 Rockefeller, Waite, J. Coulter, Cooper, Horton, Harrah
 Not in the picture: Davidson, J. Esch, Haines, Lehman, McNinch, M. Smith, Swift, M. Warner



Morrill, Thomas, Clark, L. Simpson, Danforth, Wolfe, Tievsky
 Field, Fairchild, Tenny, Quimby, Weightman, Moses, Goodner, Miller, Rastall, Brougner
 Espenschied, Brawner, M. Hall, Brehm, M. Smith, Zens, M. Buckingham
 Scantlin, Pierce, Clark, Shenton, E. Church, Cramer, Woods, Lathrop

WESTERNER CLUB

ELBRIDGE CHURCH.

HELEN SHENTON..

FRANCES CRAMER..

President

Vice-President

Secretary-Treasurer

THE Westerner Club was established and formally approved by the faculty January 31, 1931. This club, which is made up of all former Western High School students, was organized for two reasons: to interest high school students in American University and to form a social organization in which there could be a continuation of friendships begun in high school.

The first president of the Westerner Club was Doris Willis, '31. She was succeeded by Arthur Kidder, under whose leadership the policy was inaugurated of sending a group of members to speak at the various Western High School assemblies concerning American University. Last year, under the leadership of Joseph Thomas, this policy was continued. A club picnic was also held at Great Falls.

This year a group of members presented a radio program at Western's annual Christmas Assembly. The Westerner Club and the Brecky Club of Central joined this year in giving a program in student assembly, and in sponsoring an all-college dance, both in April. The club also gave a series of programs at its regular meetings.

FRATERNITIES

INTERFRATERNITY COUNCIL

HENRIETTA GOODNER *President*

VIRGINIA HALL *Secretary*

LOUISE DANFORTH *Treasurer*

THE Interfraternity Council is made up of the presidents of each of the fraternal organizations on the campus. It strives to solve mutual problems and to create better feeling among the fraternal groups.

The Council had charge of formulating the rushing rules and enforcing them. The rushing season for the women's groups was set for October while that of the men's groups occupied most of November. Each organization was limited to two rush parties.

The Interfraternity Prom, the most important social function of the fall semester and an exclusive dance open only to fraternity men and women and their guests, took place late in the fall and was sponsored by the Council. Bernie Schultze's music and the Broadmoor combined to produce a most enjoyable evening.



Hendrick, Brown, Danforth, M. Stuart, Thomas,
Still, Dean Woods, Goodner, Miss Brown



K. Brown
Ehrhardt
Locke
Evans
Hawbecker

Farmer
McIlvaine
Davis

R. Bennett
Hayward
Wheeler
Shenton

Fairchild
MacDonald
Cunningham

LeMasters
Woods
E. Smith
Corkran

Slinn
Furst
M. Walker

PHI MU
GAMMA DELTA CHAPTER

LOCAL CHAPTER ESTABLISHED
NOVEMBER 19, 1933



KATHRYN BROWN	President
ILENE EHRHARDT	First Vice-President
SARA LOCKE	Second Vice-President
FLORENCE EVANS	Secretary
SARA HAWBECKER	Treasurer
ELIZABETH WHEELER	Editor
LOUISE HAYWARD	Historian
HELEN SHENTON	Registrar

MEMBERS

Kathryn Brown, '35	Frances Farmer, '34	Elizabeth MacDonald, '36
Katherine Cunningham, '36	Carol Furst, '37	Helen Shenton, '36
Mary Davis, '34	Sara Hawbecker, '35	Esther Smith, '36
Ilene Ehrhardt, '34	Louise Hayward, '36	Margaret Walker, '37
Florence Evans, '35	Sara Locke, '35	Elizabeth Wheeler, '36
Jean Fairchild, '36		Margaret Woods, '37

PLEDGES

Ruth Bennett, '35	Faye Espenschied, '37	Margaretta McIlvaine, '35
Pauline Corkran, '37	Margaret LeMasters, '37	Virginia Slinn, '37

THE most important event of the year for this group was the installation of the local Phi Sigma Beta as the national Gamma Delta Chapter of Phi Mu. On November 18th, 19th, and 21st the installation ceremonies were held, which included a Panhellenic tea given to the entire college, the formal pledging and installation, and a banquet. Mrs. Clara Rader, national president of Phi Mu, had charge of the ceremonies. The charter members of the chapter here are Kathryn Brown, Katherine Cunningham, Mary Davis, Ilene Ehrhardt, Florence Evans, Jean Fairchild, Sara Hawbecker, Louise Hayward, Sara Locke, Helen Shenton, and Elizabeth Wheeler. Charter alumnae are Helen Clevenger, Florence Fallgatter, Mrs. Louise G. Fisher, Mrs. Daisy Hall, Martha Jane Kopp, Mrs. Kathryn L. MacMaster, Ruberta Olds, Mrs. Helen Woods, and Irma Zink.

Two of the first semester social functions of the sorority were the tea for Mrs. Reed, and the informal dance at the Wesley Heights Club. The spring formal was held late in April at the Roosevelt Hotel.



J. Thomas
Davidson
Stivers
Crampton
Bucke

Tuve
McLendon
Spitznas
Esper

J. Hoover
Ferris
E. Church

Wheatley
Gilbert
Morrill
Tate

R. Clarke
McRae
Tinker
Dove
Franck

PHI BETA ZETA

FOUNDED MARCH 22, 1929



JOSEPH THOMAS President
 EDWARD DAVIDSON Vice-President
 GORDON SIEVERS Secretary
 SCOTT CRAMPTON Treasurer
 EMORY BUCKE Pledge Master

President
Vice-President
Secretary
Treasurer
Pledge Master

MEMBERS

Emory Bucke, '35	Philip Ferris, '35	Gordon Sievers, '35
Elbridge Church, '36	John Hoover, '35	John Spitznas, '34
Ray Clarke, '37	Edward Hopper, '36	Joseph Thomas, '34
Scott Crampton, '35	Larry McLendon, '34	Robert Tinker, '37
Edward Davidson, '34	Robert McRae, '37	Richard Tuve, '35
Lee Esper, '34	Chester Morrill, '36	Melvin Wheatley, '36

PLEDGES

Randall Book, '36	Arnold Fort, '35	Philip Gilbert, '36
Jay Buffington, '36		Hugh Tate, '36

PHI BETA ZETA put on an active rushing campaign, giving two parties during the rushing season. The first was an informal social evening at the home of Barrett Fuchs, an alumnus, while the second consisted of swimming and cards at the Ambassador Hotel.

An informal dance was held early in March at the Wesley Heights Club House. The formal dance was set for May 12th.



Howard
M. Stuart
F. Noble



V. Hall
Pierce



Fellows
Heimerle
Monarch



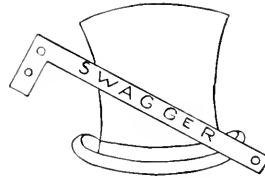
Robinson
Wilkins



L. Stuart
Payne
D. Hall
Tolman

SWAGGER CLUB

FOUNDED SEPTEMBER, 1928



VIRGINIA HALL
FRANCES FELLOWS
JEANNETTE HOWARD
FRANCES NOBLE
BARBARA PIERCE
FRANCES FELLOWS

President
Vice-President
Secretary
Treasurer
Pledge Captain
Social Chairman

MEMBERS

Frances Fellows, '35	Jeannette Howard, '36	Barbara Pierce, '35
Doris Hall, '37	Frances Noble, '34	Louisa Stuart, '37
Virginia Hall, '34	Isabelle Noble, '37	Sarah Tolman, '37

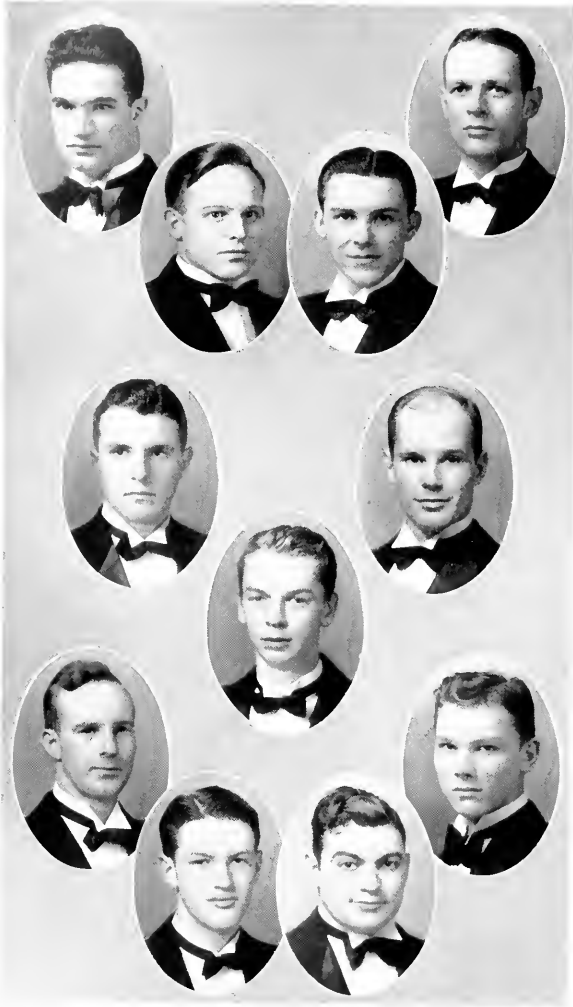
PLEDGES

Myrta Bronson, '34	Olive Monarch, '35	Frances Robinson, '36
Theodora Heimerle, '35	Dorothy Payne, '37	Harriet Wilkins, '36

THE Swagger Club began the year with the usual rush parties. The first was an informal get-together in the woods in the form of a weenie roast, while the second was a formal dinner held at the Columbia Country Club.

Betty Wilkins' home was the scene of the first semester club party. The Spring Formal was given at the Continental Hotel.

The Swaggers this year started a series of teas in honor of the other sororities in the college with the purpose of promoting more friendly relationships among the women's social organizations.



Hendrick
Hinckley
Heiss
Randle

Ramsay
Worden
Hartwell

Gutteridge
Hummer
L. Simpson
Gott

JESTERS CLUB

FOUNDED JANUARY 31, 1928



FIRST SEMESTER

HARLAN HENDRICK . . .	<i>President</i>
PHILIP HINCKLEY . . .	<i>Vice-President-Treasurer</i>
LOUIS HEISS . . .	<i>Recording Secretary</i>
MERLE RANDLE . . .	<i>Corresponding Secretary</i>

SECOND SEMESTER

MERLE RANDLE . . .	<i>President</i>
BRACE HARTWELL . . .	<i>Vice-President-Treasurer</i>
PHILIP HINCKLEY . . .	<i>Recording Secretary</i>
LOUIS HEISS . . .	<i>Corresponding Secretary</i>

MEMBERS

Garland Gott, '35	Harlan Hendrick, '34	Merle Randle, '34
Brace Hartwell, '34	Philip Hinckley, '35	James Spratt, '37
Louis Heiss, '35	Richard Hummer, '37	Edward Worden, '34
	Webster Ramsay, '34	

PLEDGES

George Borsari, '34	Seth Gordon, '34	Linn Simpson, '36
Howard Duckworth, '36	Robert Hill, '37	Lloyd Tyler, '35
Sam French, '35	Donald Pollock, '36	Roy Wiseman, '35

THE Jesters Club adopted the rushing policy of relying strictly upon individual rushing with no organized rush parties. This was carried on throughout the season with the result that nine new men were pledged, the largest number ever pledged by the club at any one time.

Informal stag parties characterized the first semester's social activities, and the semester was climaxed by an informal dance at the Wesley Heights Club.

A stag party for the alumni at Dick Hummer's home, at which eighteen alumni were present, was a feature of the second semester's activity. Seven men were formally initiated in the spring.



Danforth
 Robb
 Livingston
 Moses

Pariseau
 Baker
 McNinch
 Cowsill
 F. Smith

Brussart
 Green
 A. Clark
 Gramer
 C. Church

Stalker
 Cohen
 M. Smith
 Watrous
 Parks

R. Ward
 Whitlow
 Brehm
 Wallace
 Lehman
 Meiring

EPSILON KAPPA

FOUNDED NOVEMBER 5, 1929



LOUISE DANFORTH
 PRISCILLA ROBB
 MARY LIVINGSTON
 MARGARET MOSES

President
Vice-President
Secretary
Treasurer

MEMBERS

Dorothy Baker, '34	Louise Danforth, '34	Priscilla Robb, '34
Nancy Brehm, '37	Lois Green, '35	Meredith Smith, '36
Marianne Brussart, '36	Hazel Kirk, '34	Lucile Stalker, '36
Catherine Church, '36	Mary Lehman, '37	Helen Wallace, '37
Anita Clark, '35	Mary Livingston, '34	Ruth Ward, '37
Gladys Cowsill, '34	Mary Ellen Meiring, '37	Margaret Watrous, '36
Frances Cramer, '36	Margaret Moses, '35	Ethel Whirlow, '37
	Pauline Pariseau, '35	

PLEDGES

Harriet Parks, '36

EPSILON KAPPA inaugurated its rushing program with a tea at Anita Clark's home and closed with the formal dinner given at the Mayflower Hotel.

The first social event of the season was an informal dance at the Battery Park Club with Blanchard's orchestra in honor of the new pledges, who presented a program.

A supper given by the pledges for the members opened the second semester. In March ten pledges were inducted into membership. The social climax of the year was the formal dinner-dance given early in May.



Still
Jarvis
H. Warner
Brundage
Allwine

Gelsing
Kelsey
J. Coulter
Levin

H. Walker
Houghton
K. Coulter

W. Gray
H. Sampson
Pollock
Leith

ALPHA THETA PHI

FOUNDED NOVEMBER 23, 1928



EDWARD STILL	President
CHARLES JARVIS	Vice-President
HAROLD WARNER	Recording Secretary
MARTIN ALLWINE	Treasurer
ROBERT BRUNDAGE	Corresponding Secretary

MEMBERS

Martin Allwine, '35	Worthington Houghton, '36	Ernest Levin, '35
Robert Brundage, '36	Charles Jarvis, '35	Edward Porter, '36
John Coulter, '34	Stillman Kelsey, '34	Edward Still, '35
Kirkley Coulter, '35	William Leith, '37	Harold Walker, '36
Pierce Gelsing, '35		Harold Warner, '36

PLEDGES

William Gray, '37	Harold Sampson, '36	William Tansill, '37
-------------------	---------------------	----------------------

ALPHA THETA PHI maintained contact during the summer by regular meetings, one of which was an overnight house party at the Edgewater Beach cottage of John Williams.

The fraternity gave two parties during the rushing season, a swimming party at the Racquet Club and a midnight dinner at the Little Hatchet Inn. Rushing season was immediately followed by the fall informal held at the Cleveland Park Club.

A formal dance was given in April. Other projects such as outings and bowling matches were carried through. The practice of holding regular Sunday get-togethers at the homes of the members was continued.



Goodner
 Bishop
 Learned
 Henderson

Compton
 Snyder
 Nicklas
 Galliber
 Skidmore

Knapp
 Howell
 Coleman
 Scantlin

R. Simpson
 Weightman
 Whitaker
 Wakeman

Page
 Pearce
 Quimby
 Snavely
 Anderson

Paxton
 Brougher
 Stephan
 Brawner



ALPHA CHI

FOUNDED APRIL, 1928

HENRIETTA GOODNER.....	<i>President</i>
JANE BISHOP.....	<i>Vice-President</i>
LOUISE LEARNED.....	<i>Secretary</i>
ANN HENDERSON.....	<i>Treasurer</i>
ALICE COMPTON.....	<i>Sergeant-at-Arms</i>
MARTHA SKIDMORE.....	<i>Social Chairman</i>
META DEAN SCANTLIN.....	<i>Rush Chairman</i>
ALICE COMPTON.....	<i>Pledge Chairman</i>

MEMBERS

Hanna Anderson, '36	Ann Henderson, '35	Ruth-Martin Simpson, '35
Jane Bishop, '34	Louise Learned, '34	Martha Skidmore, '34
Doris Brougner, '37	Emily Nicklas, '34	Jean Snavely, '37
Emily Coleman, '35	Frances Page, '37	Betty Stephan, '37
Alice Compton, '35	Patricia Paxton, '37	Mary Lesta Wakeman, '36
Hilda Galliher, '34	Betty Ann Pearce, '37	Jane Weightman, '35
Henrietta Goodner, '34	Meta Dean Scantlin, '35	Geraldine Whitaker, '35

ASSOCIATE MEMBER

Elizabeth McBirney, '34

PLEDGES

Martha Brawner, '37	Alice Howell, '35	Mary Quimby, '36
Elisabeth Gray, '35	Frances Knapp, '35	Pauline Snyder, '34

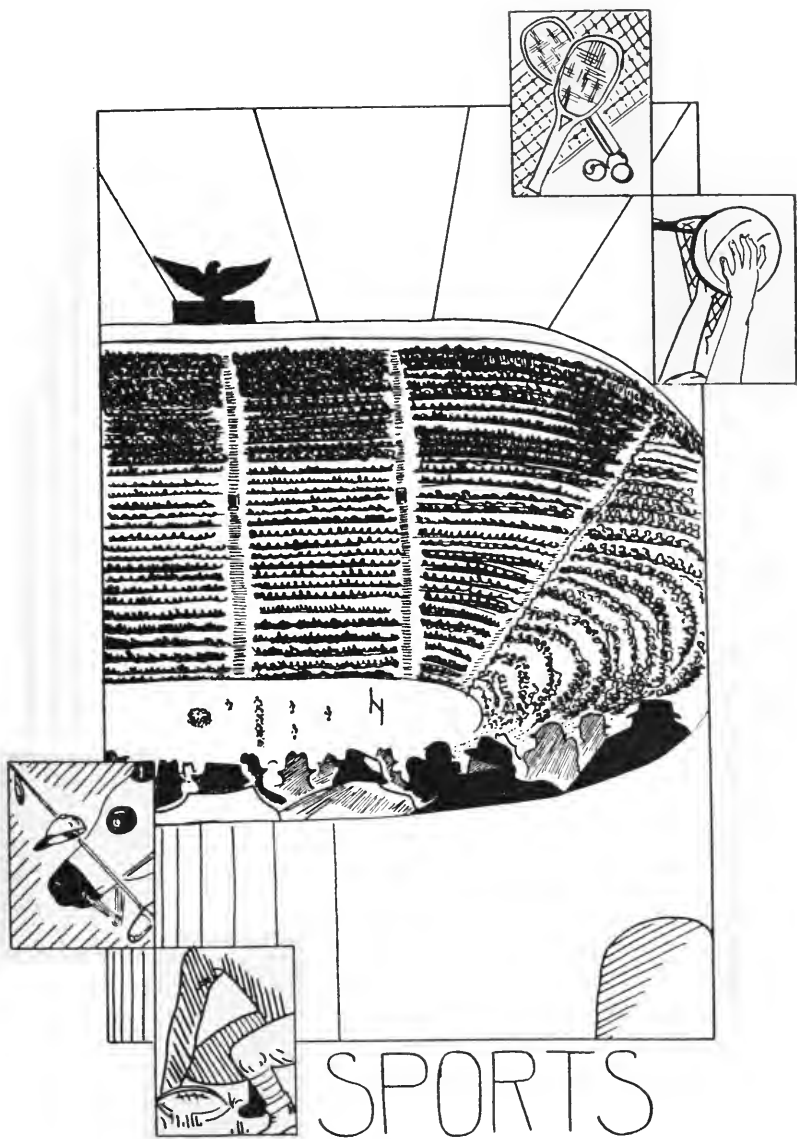
DURING the summer Alpha Chi continued its sorority activities, holding regular bi-monthly socials, which consisted of beach parties, tennis matches, card parties, and other functions.

The sorority started the academic year with an active rushing campaign that consisted chiefly of an overnight party at the beach and a formal banquet at the Congressional Country Club.

This spring the sorority devoted much of its time to working toward nationalization, and substantial progress was made. A formal dance in the spring climaxed the social season of the year for the organization.

American University has had varied success in its intercollegiate athletics. But it has had consistent recognition for its devotion to clean sport, untainted by any suggestion of professionalism, in every field of endeavor.

In the future with the broadening of athletic facilities we may expect that athletics at American University will keep pace with the other phases of our progress and that it will come to occupy a much greater position in the sporting program of the city. We look forward then to the day when the university shall be recognized as a center of athletic development.



SPORTS

THE FUTURE IN SPORTS



Coach
Young

THIS year has seen the initiation of the new Chesapeake Conference as a working organization. It has accomplished in many ways all that we had hoped, and has reinforced the original ideals of the founders of the organization.

A feeling of unity of purpose has been developed among the sister colleges and the future opens up to us with great possibilities of real achievement. The five colleges which make up this group are now in a position to go ahead with their relationships so as to make the greatest possible contribution to the educational purposes for which they exist.

American University has gone through a year filled with bitter disappointments as far as winning teams are concerned. It has made us realize more than ever that the margin of difference between a winning team and a losing team is, at the most, very small. To develop and produce that spark which marks a winner requires that we keep our faces turned forward undiscouraged, holding steadfastly to the ideals on which we have prided ourselves in the past.

The men on our teams this year have given their best. The opposition that they have faced, even among the smaller colleges, has been exceptionally strong. Now that the season is over, the present sentiment of those men is inspiring. They are looking forward to next year, armed with the experience and resourcefulness that has been acquired this year and determined that American University shall be represented in the field of sport in the manner that she deserves.

By COACH YOUNG.



Manager
Wiseman



Coach
Menke



Cheerleader
Hopper



H. Walker, Houghton, Randle
Hinckley, Ramsay, Esper, G. Sanderlin

ATHLETIC COMMITTEE

MEMBERS

Webster Ramsay, '34, *Chairman*

Lee Esper, '34

Worthington Houghton, '36

George Sanderlin, '35

Philip Hinckley, '35

Merle Randle, '34

Harold Walker, '36

THE Athletic Committee sponsors and has charge of the program of men's intramural sports. During the past year interclass or interfraternity tournaments in volleyball, basketball, and a number of spring sports have been held.



Gray, Eicher, Wiseman, Coach Young, Coach Menke, Leith, Simpson
C. Smith, Porter, Worden, McLendon, French, Crampton, Duckworth, Gutteridge, Dove
Reinard, Esper, Buffington, Lowder, Borsari, Hoover, Randle

FOOTBALL

At the beginning of the 1933 football season, prospects for a successful year were not particularly bright. The team was greatly handicapped from the beginning, because a large percentage of the players of the previous year had graduated. The Freshman Class had some new material to offer, but on the whole the squad lacked experience. On this account, nothing extraordinary was expected. Nevertheless, the coaches and men worked with determination against this disadvantage during the short pre-season practice period.

The season opened with the game at Hampden-Sydney, in which the Virginians met a game and fighting



Esper

Borsari



Hoover
Hinckley
Buffington

Reinard
McLendon



THAT FIGHTING A. U. TEAM

American University team that would not yield an inch voluntarily. But the Eagles were no match for the powerful home eleven, which showed its superiority by winning by a score of 32-0. Although the A.U. offensive was largely ineffective, considerable strength was displayed by the defensive in repulsing Hampden-Sydney's drives at our goal.

Not disheartened by the result of its first game, the team went to Bridgewater to try again its strength. It was there that the men played one of the best and hardest fought games in several years. The only scoring throughout the game was made by Bridgewater when Borsari fumbled and was downed behind his goal for a safety. The Eagles used a very aggressive passing attack on failing to gain through the opponents' line, and in this way threatened the Bridgewater goal several times. American U. made more first downs and it was the general opinion of the spectators that it played the better all-around game. The backfield was considerably weakened in this contest through injuries to some of the players, and this had its ill effects on the later games.

The annual Homecoming Game was played with St. John's on the American University

gridiron. Entirely outclassed, but not morally beaten, the Eagles went down to defeat after scoring a touchdown. It was by virtue of the Borsari-to-Gutteridge passing combination that the team was able to march down the field and cross the competitors' goal line. Courageous and desperate, the Eagles tried to withstand the onslaught of the powerfully superior St. John's eleven throughout the game, but the team was physically not capable of doing it.

The injuries inflicted on four of the first team players in this game had somewhat demoralized the A.U. team, and its showing against the Gallaudet team was rather weak. The 35-0 defeat which was brought against them cannot be judged, however, as an indication of any lack of spirit on the part of the Eagles. Weakened by substitutions, they could do little to stop Gallaudet's attack. Several additional players were injured in this game, and it was necessary to cancel the last game with Randolph-Macon.

During the season, the men on the A.U. squad all but made up in cooperation and fight what they lacked in weight and experience. Playing against consistently heavier and more powerful teams, the A.U. men showed a com-



THE BEGINNING OF A TOUCHDOWN



Hendrick
Porter

Duckworth
Lowder
Crampton



Randle
Gutteridge

Smith
Dove

mendable spirit of perseverance and a refusal to quit up to the final whistle. George Borsari, quarterback, was the guiding spirit of the team at all times and should be praised for his fine work. Lee Esper, Harlan Hendrick, Larry McLendon, Merle Randle, Howard Reinard, and Campbell Smith, other squad members who will not return next fall, also gave of their time and energy for the success of the team and deserve the commendation of the college, as do the members of the eleven.

Prospects for next year are somewhat brighter for a better football team for American University. Six lettermen will in all probability return, in addition to other members of the squad. There are indications that this group of men will be augmented by additions from the new freshman class. The probabilities are that Coach Young will be able, from the more experienced and more heavy material he will have to choose from, be able to build an eleven which will more powerfully, though not more spiritedly, represent American University.



A QUICK PUNT



Scott, Coach Young, Wiseman, Hinckley
Allwine, Randle, Tansill, Leith, Levin, Borsari
Wheatley, Tate, Crampton, Sampson, Porter

BASKETBALL

As an uninformed person views the 1933-34 basketball season in numerical retrospect, he is likely to see only defeat. One victory balanced against sixteen losses does not look good when it is entered in the "Won and Lost" column. But no American University student need be downcast at the record, for it represents real achievement. To have had a team with insurmountable courage against all odds is something of which no college need be ashamed.

At the beginning of the season Coach Young faced the problem of having only two men who had ever even been on a college basketball squad. Crampton and Sampson, guards, formed the nucleus of the green team. Hill, a freshman, held down the center position until forced to withdraw at the semester, and Reinard, regular forward, was also removed from the team at the semester, by graduation. Wheatley played forward with Reinard and these five men were the regular team during the first semester. During the second semester



Reinard



Sampson



Wheatley
Crampton
Leith

Porter
Tate

Porter took Reinard's place, Crampton was called upon to fill the pivot position, while Hugh Tate was recruited for the vacant guard position. Leith, another freshman, got the call as first substitute and entered most of the games during the second semester.

The entire team lacked weight, height, experience, stamina, in fact almost everything a team needs, except fight. Yet it was successful in maintaining team spirit and in making every game on its schedule a real fight.

The season was opened in December with a home game against Maryland State Normal, in which the team revealed a willing spirit, flashes of brilliance, and almost hopeless inexperience. January was chiefly occupied with two losing trips south.

Sandwiched between these two trips, however, was the victory over Hampden-Sydney College here in which the local team hit the top of its form, outplayed and outfought its opponents throughout, and maintained its lead to the finish. The season was closed with a succession of home games, in which the Eagle quint showed steady improvement and gain in experience, but in none of which was it able to gain victory, partly because of the loss of Hill and Reinard.

Reinard, the smallest man on the squad, played a brilliant brand of floor game and developed into a consistent scoring threat, outspeeding his opponents to get into scoring position. Hill furnished some of the height so badly needed by the team. A fast man, he quickly gained possession of the ball and knew where the basket was. Crampton, playing both center and guard, supplied strength to both offense and defense.

Hugh Tate, making his first appearance at the beginning of the second semester, proved to be a consistent scoring threat and an excellent guard. Melvin Wheatley, working his first year with the squad, filled one of the regular forward berths throughout the

year. Despite a handicap in weight and height, he developed into a fast and elusive player. Ed Porter, Wheatley's scoring partner, was one of the most dependable men on the team and a good shot at long distances.

Sampson, one of the two veterans of last year's squad, was the most consistent scorer on the entire team. As one of the most experienced men on the team, he exercised real leadership in directing team play, and his floor play was of high caliber.

Special mention should be given to Borsari and Randle, two seniors who, never having played intercollegiate basketball and having no chance to work up to the first team in coming years, were yet willing to work and contribute their time and energy for the sake of the college. The other men on the squad, Allwine, Hinckley, Leith, Levin, and Tansill, did not see regular service but were invaluable in substitute roles.

Prospects for next year are much better. Practically the entire first team and squad will return, the better for a year's experience. From these men and from the incoming freshmen, Coach Young will probably have better success in creating a winning quintet.

SEASON RECORD

	<i>Opps.</i>	<i>A.U.</i>
Maryland State Normal	33	19
Lynchburg	37	17
Hampden-Sydney	20	10
Elon	30	19
Guilford	42	12
Hampden-Sydney	22	26
Randolph-Macon	35	22
Virginia Medical	32	27
A.U. Alumni	25	16
Lynchburg	34	23
Gallaudet	28	22
St. John's	36	23
Bridgewater	39	21
Randolph-Macon	40	18
Bridgewater	18	15
St. John's	53	14
Virginia Medical	31	26



Allwine
Tansill
Levin

Randle
Borsari



Sievers, MacFarland, Sanderlin, French, Gott, Silver

MEN'S INTERCLASS BASKETBALL

SQUEEZING out the senior team in the closely-contested final game by a score of 17-14, the juniors were enabled to clinch the title in the interclass basketball series. Charles Beall, who had run wild throughout the entire series, was held more or less in check, and this was enough to give victory to the third-year men. Sanderlin and Tyler were the stars for the champions throughout the series.

Previously each team had sustained one defeat at the hands of its rival. Both had repeatedly beaten the two lower classes, which battled it out for the cellar position.

WOMEN'S "A" CLUB

MARGARET WARNER

MARY LOUISE ROBBINS

SARA HAWBECKER

President

Secretary-Treasurer

Social Chairman

ORGANIZED in the spring of 1929, the Women's "A" Club not only gives recognition by sport letters for outstanding work in interclass athletics, but sponsors programs for minor athletic events.

Early in the fall, the "A" Club held the annual color choosing ceremony, at which time each new woman cast her lot with either the orange or blue side for her four years in college. Following each interclass competition in hockey, basketball, volleyball, and soccer, orange and blue teams were chosen from among the stars of the class teams to compete against each other. The indoor sports of ping-pong and shuffle-board were also given a place in the athletic program.

The social program included a sleigh-riding party and a bicycling trip. The season was concluded with the annual spring banquet at which time new members were received into the club and all awards of letters and insignia were made.



F. Smith, Locke, C. Church, Comeau, Lee, Brown, Forrest, Morris
Compton, Snyder, M. Warner, Robbins, Hawbecker

Not in the picture: Buchanan, J. Esch, V. Hall, Haines, Henderson, Kirk, Wakeman



Morris, C. Church, Kempfer, Rastall, Follmer, M. Walker, Forrest, Drager, Comeau
F. Smith, Furst, Warner, Slinn, Woods, Knight
Not in the picture: Green, Lec, Motley, '33, Putnam, '32.

EAGLE HOCKEY CLUB

MARGARET WARNER.....*Captain*
MARY PUTNAM.....*Selection Committee Representative*
MISS MORRISON.....*Coach*

THE Eagle Hockey Club, made up of outstanding hockey players from the American University class teams, is the only women's athletic team that participates in inter-mural games. This year it played Marjorie Webster School and the Colonial team.

WOMEN'S INTERCLASS HOCKEY

AFTER playing an extra over-time tie game the Juniors and Sophomores were unable to decide the championship, and, because of the early winter, it was decided that the two teams would claim the championship jointly.

Both teams had previously defeated the Seniors and Freshmen by sizeable scores but had lost to each other. The final game between the two high teams was the second attempt to decide the victor.

Catherine Church captained the Sophomores and Ann Henderson headed the Juniors.

SOPHOMORES	Position	JUNIORS
Howard	RW	K. Brown
Morris	RI	Hawbecker
C. Church	CF	Coleman
Parks	LI	Dorr
Knight	LW	Green
Tenny	LH	Compton
Wakeman	RH	Fellows
Fairchild	CH	A. Clark
J. Esch	RF	Henderson
Cunningham	LF	Locke
Beadle	G	Kemphfer



Grove, Cunningham, Morris, Church, Fairchild, Parks, Tenny, Knight
Green, Kemphfer, Knapp, Henderson, Compton, Coleman, Clark, Brown, Hawbecker



Wallace, Whitlow, Coulson, Courtney, Drager, Pearce
Slinn, Furst, Woods, Rastall, Manager Compton, Walker, Greer, Zens

WOMEN'S INTERCLASS VOLLEYBALL

OUTCLASSING completely all other teams, the Freshman team suffered no defeats in the entire volleyball tournament. Through smooth-working team play, the Frosh, captained by Janet Rastall, won the championship with ease.

WOMEN'S INTERCLASS BASKETBALL

IN the most closely contested tournament of the women's sport season, the Junior team emerged victorious in the basketball series. Both undefeated, the Freshman and Junior teams met in the final game of the season to decide the championship. This was the hardest fought and most thrilling game that was played during the tournament. As a result of superb team work by the entire Junior team and an excellent eye for the basket by the forwards, the third year class earned a victory by a score of twenty to twelve.

Helen Wallace led the Freshmen and Ann Henderson was the Junior captain.

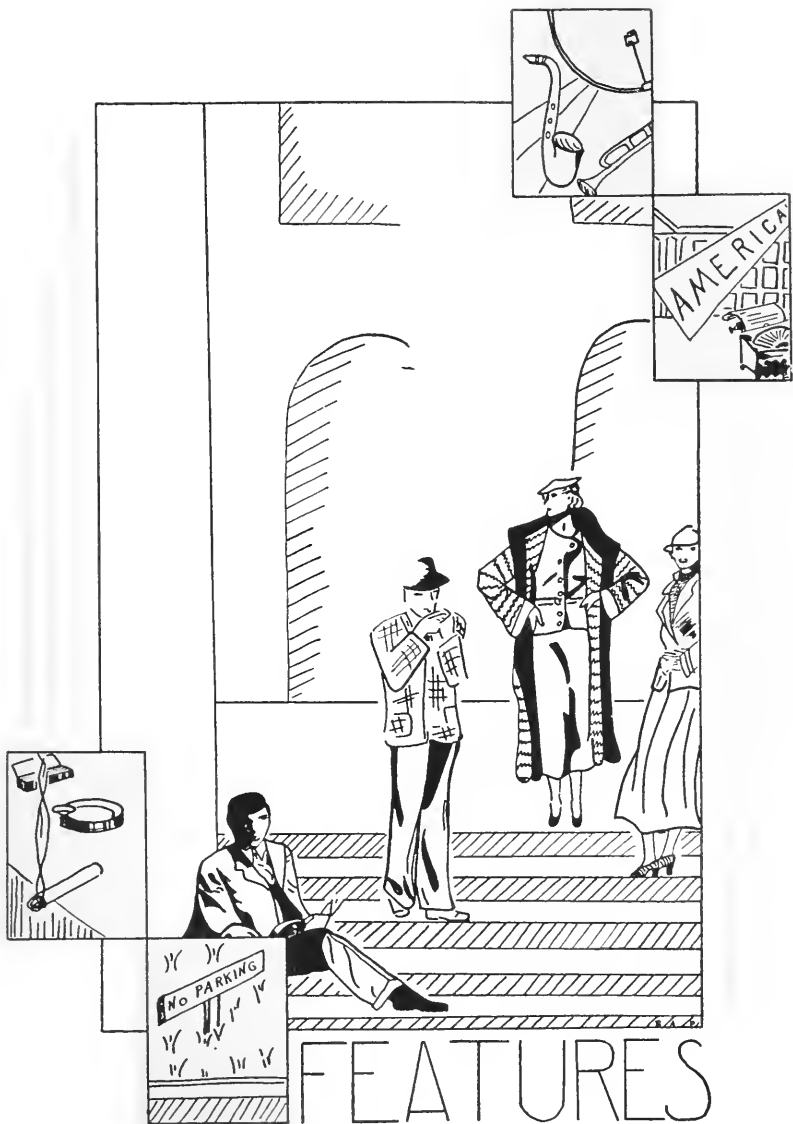
Coleman, <i>RF</i>	Brown, <i>S. Center</i>
Rockefeller, <i>RF</i>	Locke, <i>LG</i>
Compton, <i>LF</i>	Simpson, <i>LG</i>
Clark, <i>LF</i>	Hawbecker, <i>RG</i>
Henderson, <i>Center</i>	Fellows, <i>RG</i>



Clark, Compton, Coleman, Henderson, Brown, Hawbecker

WE are proud, here at American University, of our campus and of the campus life which it makes possible. Full appreciation of the American educational system cannot be gained without a taste of campus life, and American University is well fitted to supply this taste.

With the development of our physical facilities and the increase in number of our buildings and student body, the university will become even more a center of social life and will hold a larger place in the lives of the students as the center of their lives during their residence at college.



FEATURES



P. SNYDER



P. ROBB



W. F. S.



M. WOODS

Printed names in each case represent the donors of the photographs

CALENDAR

SEPTEMBER

16. Beginning of Freshman Orientation Program. Frightened Frosh find themselves seated among austere faculty members and listen to numerous dissertations on "Why Go to College?"

19. Big-Brother-Big-Sister Party wherein Professor Hutchins renders his immortal "Casey at the Bat" . . . the quartet sings "Dinah, blow your —umph!" . . . and Hopper tenderly places a large green tag about the neck of each "low, unimportant, and insignificant" freshman.

22. The Faculty holds a formal reception . . . a long line of revered profs and their respective spouses. We shall not forget those cup cakes.

26. The first Chapel service. A young hopeful, eager for a ring-side seat, barges recklessly into the Faculty Row.

28. S.C.A. picnic in the park. New dresses grass-stained from rolling down a hill . . . feet wet from climbing on rocks . . . hamburgers sizzling over a fire.

29. Freshmen on Parade! Dust . . . music . . . bare knees . . . absence of make-up . . . reversed coats . . . McLendon's erupting auto . . . propaganda stating "All Frosh Are Amoebas."

30. Annual Weenie Roast. Red-fire, tadpole sparks fly high . . . Hopper gives a one-man broadcast of a prize fight . . . damsels bemoan the loss of stockings torn to bits by brambles.

OCTOBER

1. A wailing cat is removed from the roof of Ham House in the wee, small hours.

5. A.U. maidens inaugurate the era of roller skating on the campus. Sprained ankles, cut faces, and bruised bodies ensue, turning the dormitory into hospital wards.

6. Sorority rushing starts with a bang. Epsilon Kappa holds a Koffee Klotch, in the real German style, with pumpernickel and Swiss cheese, and Phi Sigma Beta a Pirate Party, complete with pieces of eight, spiderwebs, and gingerbread.

7. Swagger's Breakfast-in-the-Woods . . . hidden along the trail tiny Swagger hats and canes. Alpha Chi's house-party at the beach . . . chasing a hungry cat out of the pumpkin pies . . . and pulling taffy at 3:00 A.M.

Hampden-Sydney football game (score omitted).

20. The freshman class, dutifully shrouded, buries its green tags with appropriate ceremonial wailings.

24. A.U. is wrapped in silence.

25. Pledge Day. Dignified sorority members become hopelessly emotional when the suspense is over.

26. Masked figures haunt Hurst Hall at the S.C.A. Hallowe'en party.

28. Another victory for the *Eagle*. The cup of the Virginia Intercollegiate Press Conference is captured for the third successive year. Eight A.U. journalists have an enjoyable time doing Richmond up brown.

28. A game team fighting its Homecoming Game against an overwhelming St. John's . . . Lee Field and the Homecoming Dance in the gym.



HOUGHTON



HOUGHTON



HOUGHTON



HOUGHTON



HOUGHTON



F. KNAPP



HOUGHTON



Printed names in each case represent the donors of the photographs

NOVEMBER

3. Freshman Hell Day . . . the persecution reaches its culmination. But revenge will come!

Expectant A.U. rooters attend the football game with Gallaudet. The lusty cheers of the faithful are heard to the bitter end.

4. The day of revenge. Freshmen struggle for their freedom, at hockey, volleyball, and a manly tug of war. Spectators are drenched by the badly functioning hose . . . happy freshmen!

11. Frat rushing starts. Fraternity men vie with one another for the favor of the recently insignificant freshmen, who are amazed at the new importance attached to their persons. Co-eds evince almost as much interest in the outcome as do the fraternity men.

17. The *Mikado*. A Japanese chorus mincing daintily across the stage . . . Mr. Bucke improving the script in his own unique manner—curiously reminiscent of various comedians of the air.

18-21. The first national social Greek-letter organization comes to the campus. Congratulations, Phi Sigma Beta; welcome, Phi Mu.

24. The Interfrat Council sponsors an all-college dance. A 25c per person admission and Bobo's band tooting merrily are distinctive features.

28. Another trying period of silence. New males are ostracized mercilessly by other students. Freshman girls try their wiles on upperclassmen and bemoan the temporary elimination of the audience most sensitive to their charms.

30. The timely arrival of Thanksgiving provides a short breathing space.

DECEMBER

6. We first become aware that we have a Liberal in our midst.

8. Event—an unforgettable Interfraternity Prom. Scene—The Broadmoor. Music Makers—Bernie Schultze's orchestra. Remarks—Even the crowded floor couldn't detract from the fun of the evening.

9. The first debate . . . N.R.A. . . . Brundage, Kernahan, and Wheatley . . . victory over Swarthmore.

12. Dr. Gray visits the campus. A.U. students get their first glimpse of the new chancellor.

Another forensic conquest when A.U. meets Hopkins.

16. *The Truth About Blayds*. A clever play, perfectly cast, provides an enjoyable evening.

18. A.U.'s first basketball game of the year. Never mind who won!

19. Christmas carolling. Dauntless music-makers wade through streams of water to arouse lethargic profs with their vigorous serenades.

20. Far-sighted students save stamps and overwork post office employes by anticipating the Christmas rush of greeting cards.

27-31. The convention of the National Student Federation of America, held at the Mayflower Hotel under American University's auspices . . . two hundred delegates from eighty-four colleges . . . Buckingham, Hendrick, Hoover, Marcus, Moses, Rice, Still, Thomas, heads of committees on preparations . . . senators and other public men and authorities as speakers . . . two glorious dances, the last one made unique by the dusky couples on the floor, and the chaperons, who stayed till the bitter end, almost three o'clock.



L. M. LENNON



P. ROBB



H. DULKWORTH



M. LIVINGSTON



M. WOODS



H. HOUGHTON



P. SNYDER

Printed names in each case represent the donors of the photographs

JANUARY

3. Back to work . . . no term papers written . . . no back work made up . . . no reviewing for exams . . . A general tendency toward animated conversation concerning the festivities of the Yuletide season is easily discernible.

9. Hampden-Sydney game. A.U. wins.

13. Junior Sport Dance. Fantastically arrayed Romeos, each attempting to display the most colorful suspenders. The famous McLendon buggy on the dance floor. A session of cheers and an inharmonious rendering of the *Fight Song* under the leadership of Mr. Bucke for the benefit of high school guests and to the detriment of the reputation of the school.

19. The grim spectre of exams arrives to haunt the campus.

27. Alumni night. An all-star alumni team fighting the varsity. Dignified profs arrayed in shorts for a sensational exposé of their recreational abilities—a rare treat for ogling students. A real stag line at the dance.

FEBRUARY

1. A month of snow is ushered in. The flakes begin to fall—and freeze. All A.U. turns out for coasting on Massachusetts Avenue . . . dodging cars while tearing into the roaring wind for a few blissful seconds . . . trudging up a seemingly interminable incline or cleverly chiseling up by hanging on the back of a car . . . a fire at the top of the hill burns noses and draws feet back to painful sensitivity.

7. Norman Thomas comes to the campus under the auspices of Sam Silver, Incorporated. From the front row a certain faculty member perceptibly beams his approval of the speech . . . the school goes Socialist for the next few days . . . the males tudent body discussing economic isolation and the possibility of a world war . . . the female reminiscing upon masculine strength, steel-blue eyes, and a dominating, fascinating personality.

St. John's basketball game. Again we omit the score.

8. The coldest night of the year—a 7 below official record. A good Samaritan on the basketball team, damp from a recent shower after practice, helps a fellow player to encourage his reluctant motor to start. The reward of virtue—a head of stiffly frozen hair.

9. The morning after . . . steaming radiators . . . temperamental batteries . . . ice-skating on the Reflecting Pool.

Buchanan, Wakeman, and Henderson debate against Swarthmore in a manner that almost pleases Sherbondy . . . a unanimous decision in favor of A.U.

10. Basketball game with Bridgewater.

12. A.U. goes sophisticated and undulates at the Senior Prom in trailing evening gowns and starched shirt-fronts.

14. *Il bo Sent the Comic Valentines?* The criminal was clever enough to use printed names from the catalogue.

Fraternity and Sorority Hell-weeks begin. Pledges enjoy it with silence and fantastic gestures difficult to interpret. Sorority pledges exhibit pale faces brightened only by the reflection of gaudy hair-ribbons and surprisingly deficient natural beauty. Fraternity men find the ever-present eggs quite tender.

17. Basketball game with Bridgewater.

19. And yet more snow . . . the wind shrieks, blowing the enormous flakes in powdery whirlpools. The faculty's "summary action" fails to daunt our young liberals.

22. HOLIDAY . . . enthusiasm over George Washington!



W.F.S.

Printed names in each case represent the donors of the photographs

23. The band gives a concert in Assembly . . . Henderson counting anxiously and crashing through with her cymbal solo.

Glee Clubs' Concert at First Congregational Church.

Bucknell debate in Hurst Hall and another unanimous decision for A.U. and women's debate team.

24. Fire in the dormitory! . . . well, at least a short circuit on the fire-alarm. Gongs sound in the middle of the night. Flustered co-eds, rudely awakened from their beauty sleep, throng the corridors—an inspiring picture with their nocturnal beauty treatments for hair and face plainly in evidence. They find seats on the steps from which to view the proceedings. The uniforms arrive to complete the picture. Spurred on by the women's appreciative applause the policemen and firemen bluster through the halls . . . and Ham House sleeps through it all.

28. Snow! Galoshes! Snowballs flying! Motors freezing! Garages snow-bound! No street cars running! The sun-dial obscured by a snow-drift. Will spring ever come?

MARCH

3. Dr. Gray is inaugurated as chancellor . . . stately Continental Hall . . . a colorful array of flags . . . the Navy Band . . . a long, impressive procession of college representatives in academic gowns . . . an endless half-hour of nervous expectancy before President Roosevelt's arrival . . . deafening applause when Roosevelt receives an honorary degree and becomes an alumnus of American University . . . unceasing camera clicks and disconcerting light flashes during Dr. Gray's speech, which is not a repetition of conventional platitudes, but an inspiring expression of ideals . . . and the President's message almost equals it . . . as a conclusion, the reception in the Women's Residence Hall . . . tired but happy people who participated in a day that will go down in the history of the university.

4. All hard feelings harbored toward the distracting newspaper men for their impertinence during the inaugural ceremonies are abandoned completely with the appearance of the Sunday papers . . . pictures and lengthy write-ups in all Washington journals . . . a front page headline in the *New York Times*.

5. First hour classes are rudely interrupted by shrilling fire sirens. Hurst Hall windows are crowded with the instinctively inquisitive.

Spring pays a premature visit . . . the roller-skating season opens, and a fashion parade of girls' gym suits is presented in front of the dormitory by swiftly rolling mannequins . . . a return to nature movement is inaugurated in the vicinity of the spring.

The women debaters leave for their trip in Miss Carmichael's car. The inadvisability of allowing four lone women to travel unchaperoned is proved conclusively when they return half a day late, having driven over eighty miles in the wrong direction!

8. Snow! The glee clubs, undaunted by the storm, skid to Baltimore, entertain their audience musically, and slide back to Washington the same evening.

10. Frosh Dance . . . innumerable silver stars twinkling down through a canopy of red . . . Lee Field's band . . . refreshments!

15-17. Hilarious trip to Harrisburg and York for the Men's Glee Club . . . seven programs in two days . . . frenzied appreciation at William Penn . . . doing Pennsylvania's capital up right.

16. Debate with Rutgers . . . another victory.

17. Warm weather returns with the accompanying feeling of lethargy.

19. The duly prophesied blizzard arrives to nip the spring fever epidemic in the bud. A white blanket of hail, snow, and sleet covers the ground.



R. SIMPSON



T. FIELD

Printed names in each case represent the donors of the photographs

The Jesters win the title in the tightly-contested interfraternity basketball series by crushing the Phi Betes in the final game.

20. The men leave on their debate trip. Various postcards to the fair sex record their progress.

The *Eagle* staff enjoys its annual banquet at the Westchester. Highlights of the evening . . . Dr. Gray's address, Dan Terrell's witticisms, the alternating toastmistresses, the brass quartet, and the announcement of the new editor and business manager. Congratulations to Ann Henderson, the first woman to edit the publication, and to Martin Allwine, the new business manager.

23. Winter's last outburst—we hope.

Mr. and Mrs. Randall entertain in morning assembly . . . tender love lyrics . . . a whooping cowboy song . . . "Sunny Italy" with a specially inserted chorus for American University.

The Men's Lounge is opened. Ping-pong tables, magazines, a radio, unrestricted smoking, and the exclusion of women contribute to the popularity of the new sanctuary.

The glee clubs present their annual campus concerts, featuring Emory Bucke's imitation of Elder Michaux, accompanied by Arnie Fort on the scriptural passage, "Old Mother Hubbard."

24. The Sophomore Spring Salute . . . dancing in the Assembly Hall for the first time . . . guilty feeling that the ghosts of bygone days are reproaching the irreverence . . . a lovely summer garden with pastel flowers and a white fence enclosing the orchestra compensate for the cold and snow without . . . a youthful Roy Atwell in the person of Eddie Hopper entertains a delighted audience during intermission.

30. A display of new spring frocks heralds the beginning of vacation. Happy Easter!

APRIL

13. A glamorous Junior Prom . . . the impressive halls of the Congressional Country Club . . . enticing music by Norman Houseman's Orchestra . . . fraternity and sorority songs and the strains of "Days That We Treasure," dear to every loyal A.U.-ite . . . a happy atmosphere of formality without stiffness.

20. Former rivals join hands to support their new Alma Mater . . . the Brecky and Westerner Clubs present a joint show in assembly—song, dance, and comedy—and sponsor an All-College Dance in the evening.

21. The first spring formals are given by the Phi Mus and the Swaggers.

26. The marvels of science are revealed to laymen in the annual science show.

28. The first fraternity formal is held by Alpha Theta Phi.

MAY

4. Epsilon Kappa ushers in the last month of the college year with its formal dance.

5. Alpha Chi's formal concludes the sorority dances.

6. Our new student president is elected.

9. And inaugurated.

11. *Winter's Tale* is presented in true Shakespearean and Hutchinsian manner.

12. Phi Betes and Jesters vie with one another to secure the patronage of the fair sex at their respective formal dances.

25. Final exams cut short the season of spring festivities on the campus.

JUNE

4. Commencement. A solemn line of seniors who receive their degrees and bid loving farewell to the scene of their happiest years.



M. LIVINGSTON



M. LIVINGSTON



M. LIVINGSTON



Printed names in each case represent the donors of the photographs

FAREWELL FOSTER MOTHER

Ten years from now
—Most of us married—
You will have forgotten
How much we harried
The chancellor because the beans were rotten.
But anyhow
—I'll bet we won't forget.

Fifty years from now
—Half of us buried,
The rest wearied—
You won't remember
The fuss we made one bleak November
Because a dink exposes the brow
And delicate ears to winter's jeers.

A hundred years from now
—All of us gone—
Will you recall
That first bright blinking dawn
We straggled into Hurst Hall?
You won't. But anyhow
Even dead I'll bet we won't forget!

J. L. C.

JUDD & DETWEILER
(INCORPORATED)

MASTER PRINTERS



FLORIDA AVENUE AND ECKINGTON PLACE
Northeast
WASHINGTON, D. C.

The Mayflower

Washington's Finest Hotel

R. L. POLLIO
Manager

FLOWER MART

Florists and Decorators

Place Your Order with
Mr. Harlan Hendrick

PROMPT DELIVERY

818 - 17th St., N. W.
ME. 8893

1528 Conn. Ave.
NO. 8272

The New

JELLEFF'S

1216-1220 F STREET

This Year—

Back to Quality with Clothes from

JELLEFF'S

EDMONSTON STUDIO

1333 F STREET, N. W.

OFFICIAL PHOTOGRAPHERS

for the

1934 "AUCOLA"

Portrait Negatives Kept on File

Compliments
of

SHOREHAM
HOTEL

*China—Glassware—Food Service Appliances
House Furnishings—Dining Room Furniture*

THE E. B. ADAMS CO.

District 8717

641-643-645 New York Avenue, N. W.
WASHINGTON, D. C.

Macomb Food Shoppe

3238 WISCONSIN AVE.

Corner Wise Ave. and Macomb St.

BREAKFAST—LUNCH—DINNER

Sandwiches, Salads, Cigars, Candy

Imported and Domestic Delicacies

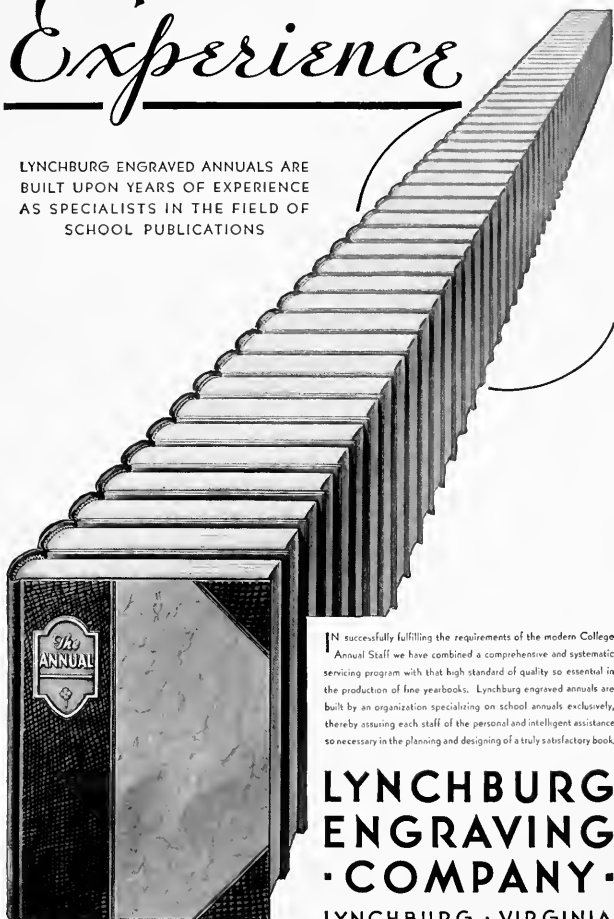
Private Booths

Counter—Service

Telephones, CLEVELAND 9774, 9724

Experience

LYNCHBURG ENGRAVED ANNUALS ARE
BUILT UPON YEARS OF EXPERIENCE
AS SPECIALISTS IN THE FIELD OF
SCHOOL PUBLICATIONS



IN successfully fulfilling the requirements of the modern College Annual Staff we have combined a comprehensive and systematic servicing program with that high standard of quality so essential in the production of fine yearbooks. Lynchburg engraved annuals are built by an organization specializing on school annuals exclusively, thereby assuring each staff of the personal and intelligent assistance so necessary in the planning and designing of a truly satisfactory book.

**LYNCHBURG
ENGRAVING
· COMPANY ·
LYNCHBURG · VIRGINIA**

Builders of Better Annuals

THOMSEN-ELLIS CO.

YEAR BOOKS · CATALOGS

ADVERTISING LITERATURE



Planned Printing for Over 30 Years

BALTIMORE

NEW YORK

INDEX TO ADVERTISERS

	PAGE
COLUMBIA HOTEL SUPPLY CO.	155
E. B. ADAMS CO.	152
EDMONSTON STUDIO	152
FLOWER MART	151
JELLEFF'S, INC.	151
JUDD & DETWEILER, INC.	151
LYNCHBURG ENGRAVING CO.	153
MACOMB FOOD SHOPPE	152
MAYFLOWER HOTEL	151
PHILIPSBORN	155
SHOREHAM HOTEL	152
THOMSEN-ELLIS CO.	154

Columbia Hotel Supply Co.

514 12TH ST., S.W.



NEW YORK BEEF
PROVISIONS
POULTRY

PHILIPSBORN

610 ELEVENTH STREET

College Corner Extends
Congratulations to the Seniors
at American University

*We thank you for your patronage and are looking
forward to other visits from you*

