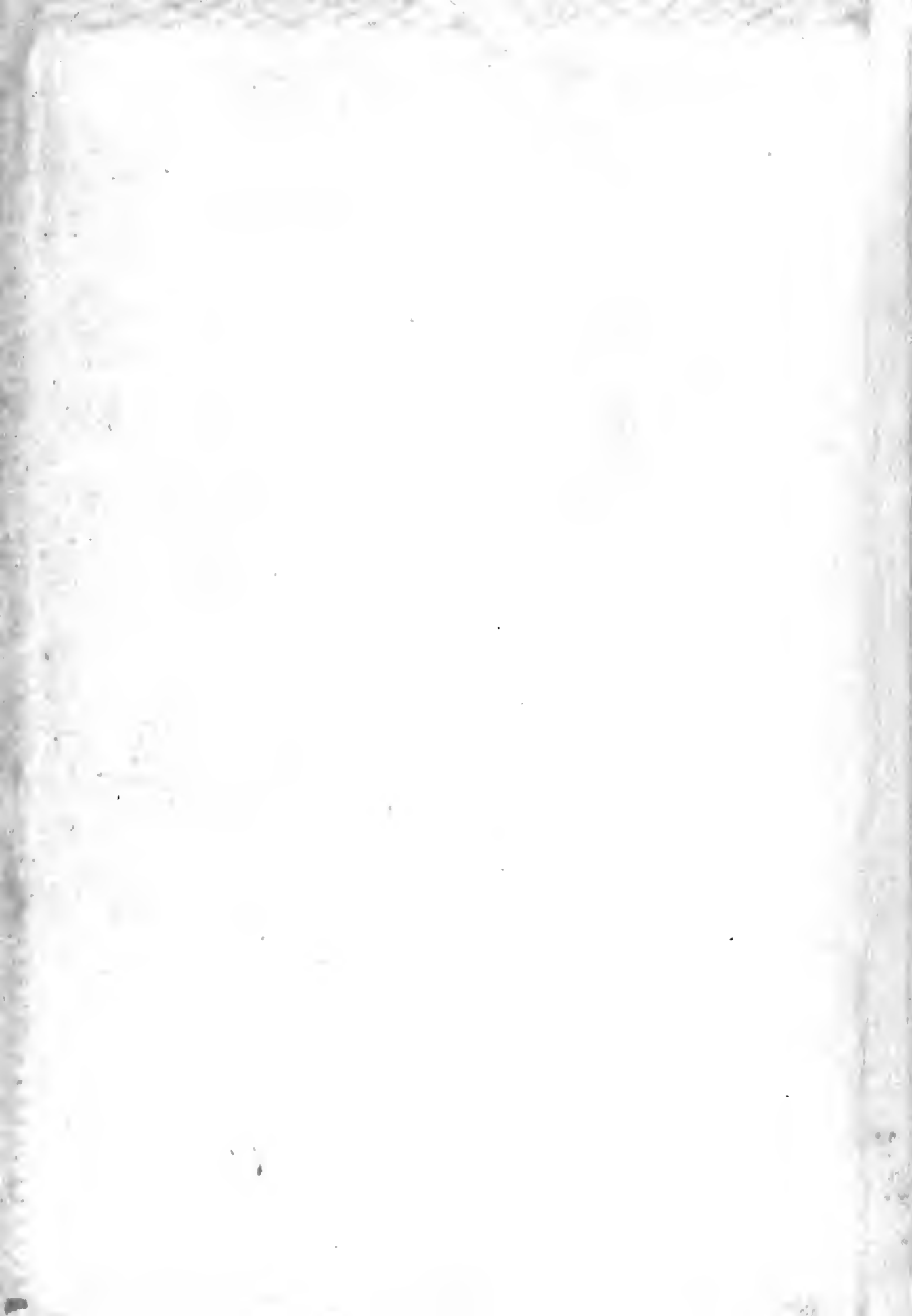
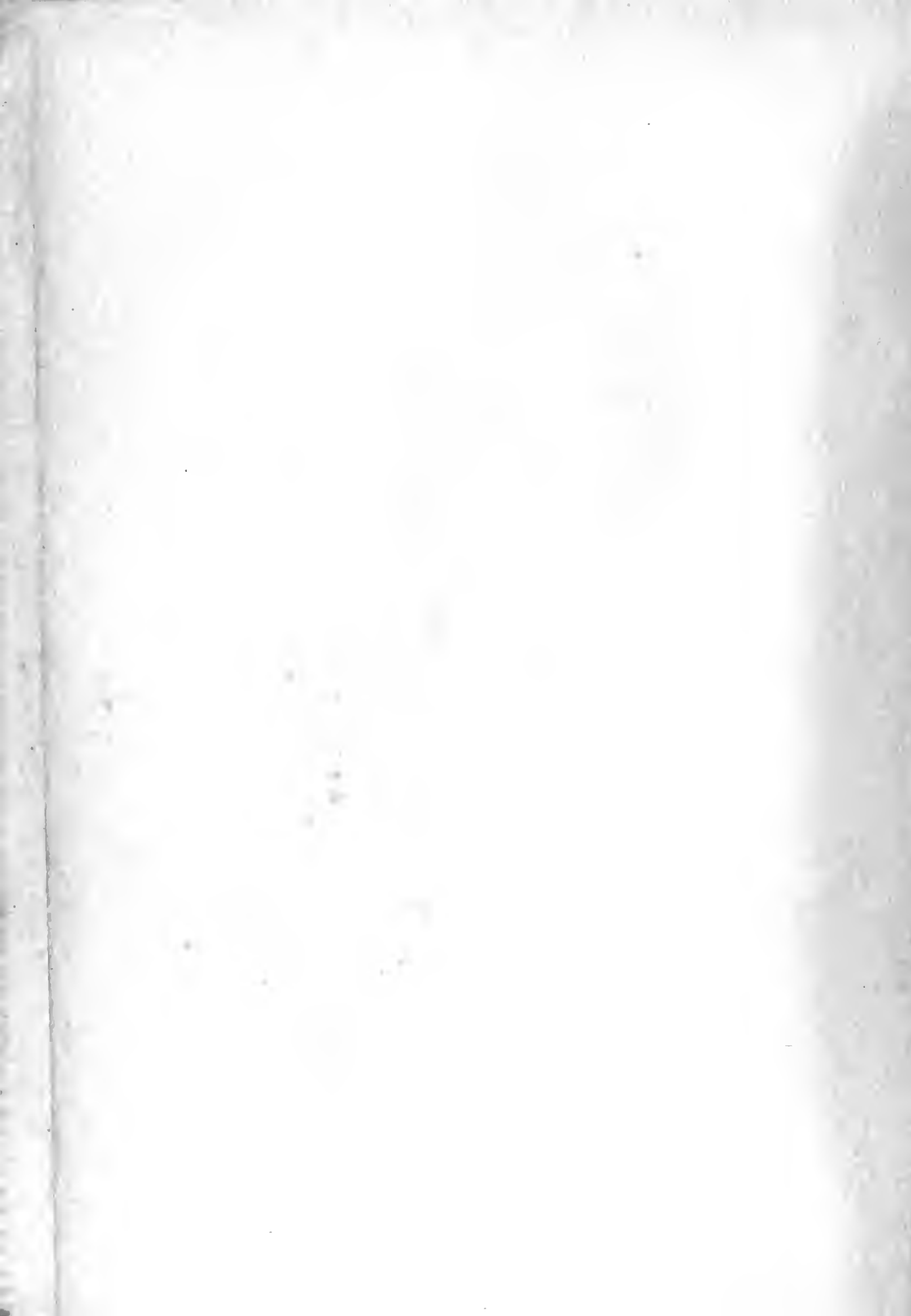


The
AUCOLA







Digitized by the Internet Archive
in 2010 with funding from
Lyrasis Members and Sloan Foundation

<http://www.archive.org/details/aucola1939amer>



ARTEMUS WARD MEMORIAL

TIME has brought the College of Liberal Arts of the American University to its fourteenth college year. Time alone has given us traditions which we revere year after year. Each year we are building more stately mansions of tradition, and each year upon this previous foundation we raise those finer things which produce culture—culture which is accumulated by time as the slow grains of the hour glass heap up their tangible form of the passage of time.

So we build; we build with tradition on time which ultimately leads to the cultured man, and too, we are creating something for those who follow us, something by which they will be able to extend still more broadening horizons for all time.

DEDICAT

WE humbly dedicate this book to Peace in hopes that our efforts as young American students will some day be felt by the whole world. Not because we are Americans, but for something greater, so that through our taste of the ideal life we may be able to give to the world a part of the faith which we as youth have in life; that we may be able to give of our faith so that in some way people will realize the real beauty which can be found in living.

NOT





"I count only the sunny hours"



Opening of school

WE, the staff of the Ancola, give to you this book as a token of remembrance for the year 1939— To the freshmen, we offer this as a challenge to meet; to the sophomores and juniors, as the heritage of each for the coming years; and to the seniors, as a glowing memory of “their” year.



Exam-Cram



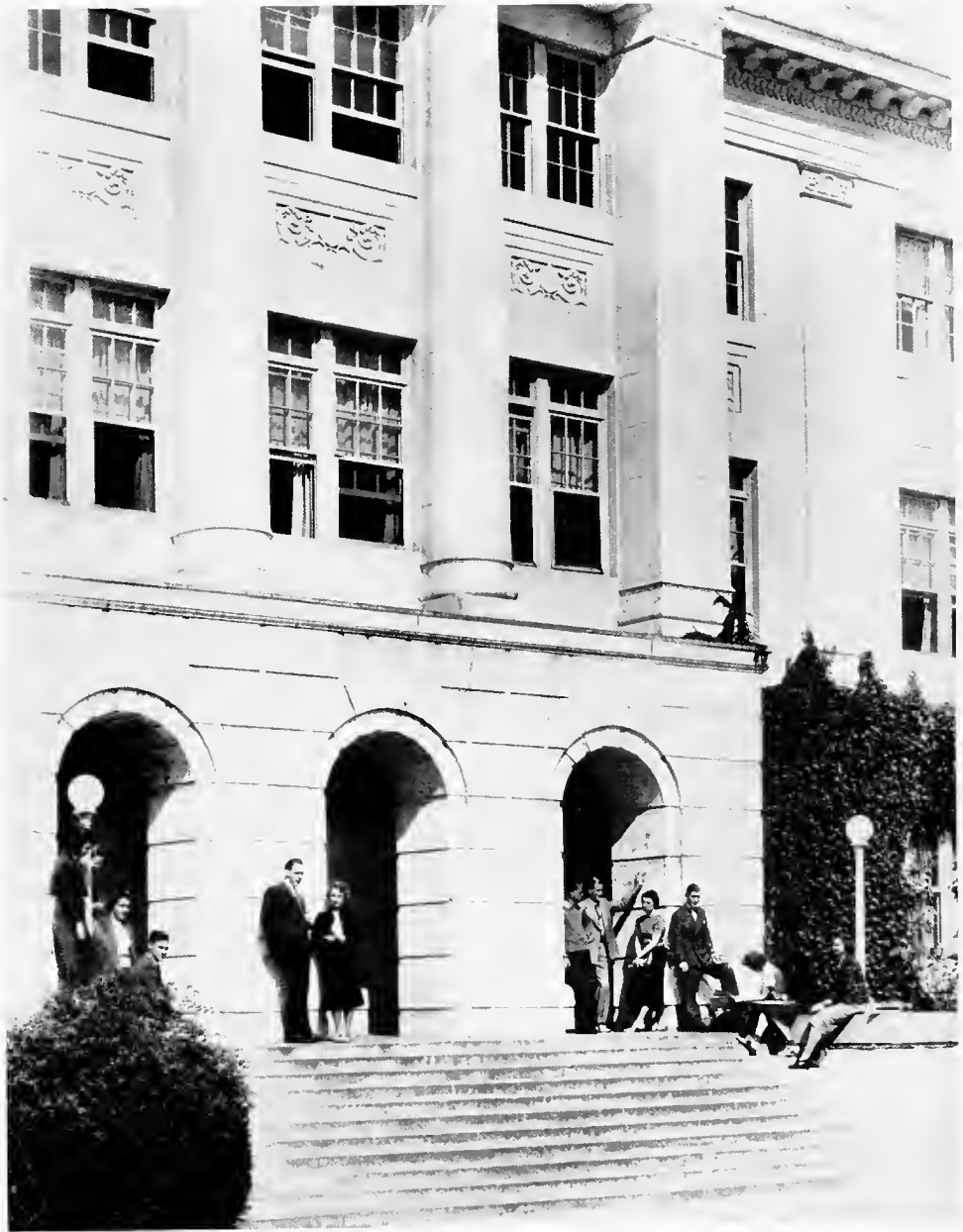
Baccalaureate Sunday

A
N
C
O
L
A

T
H
E
1
9
3
9



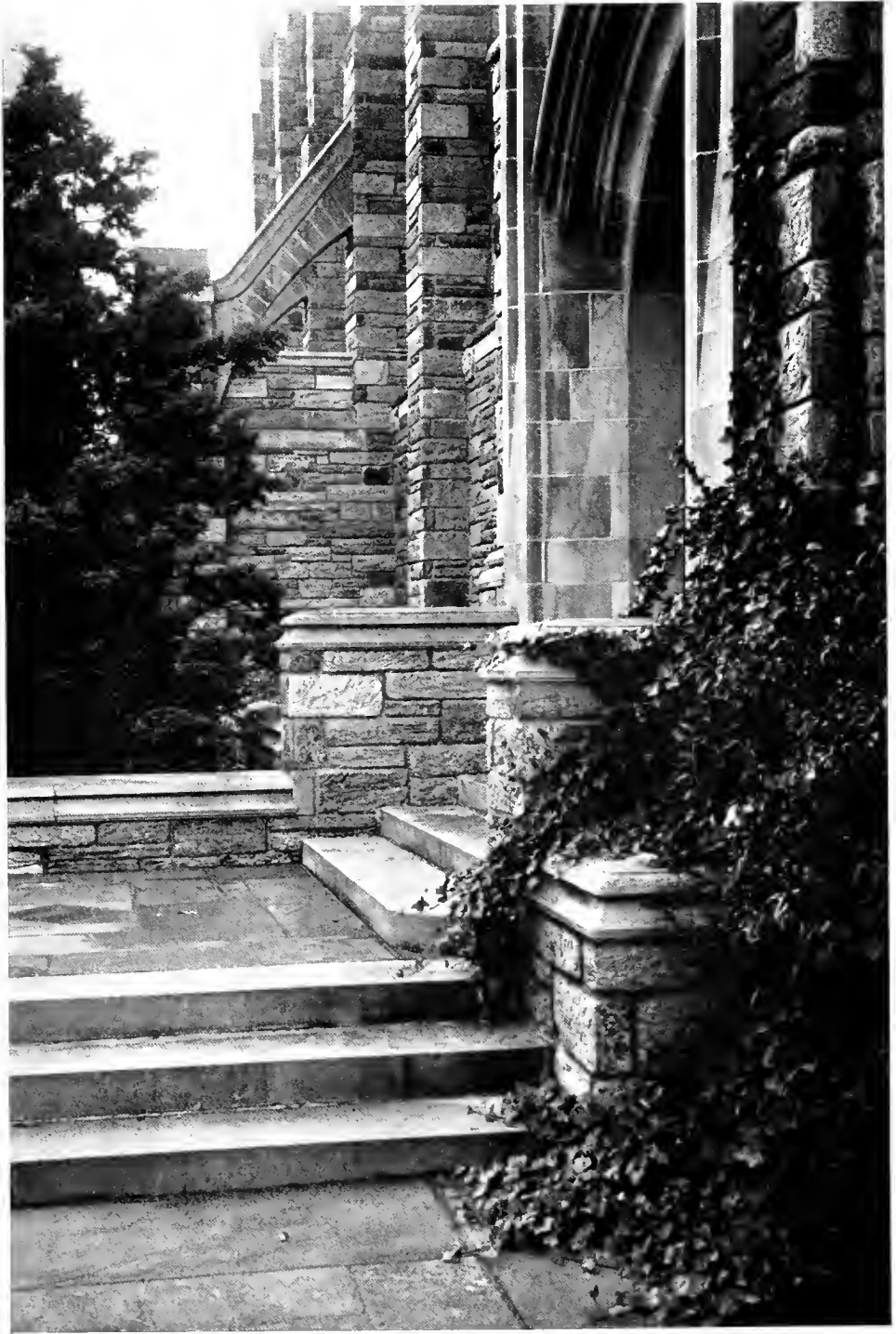














So this is "coo"-education!



KNAPP



“Stalling for Time?”



“Where’s the Bell?”



“Four Seconds to Go!!!”



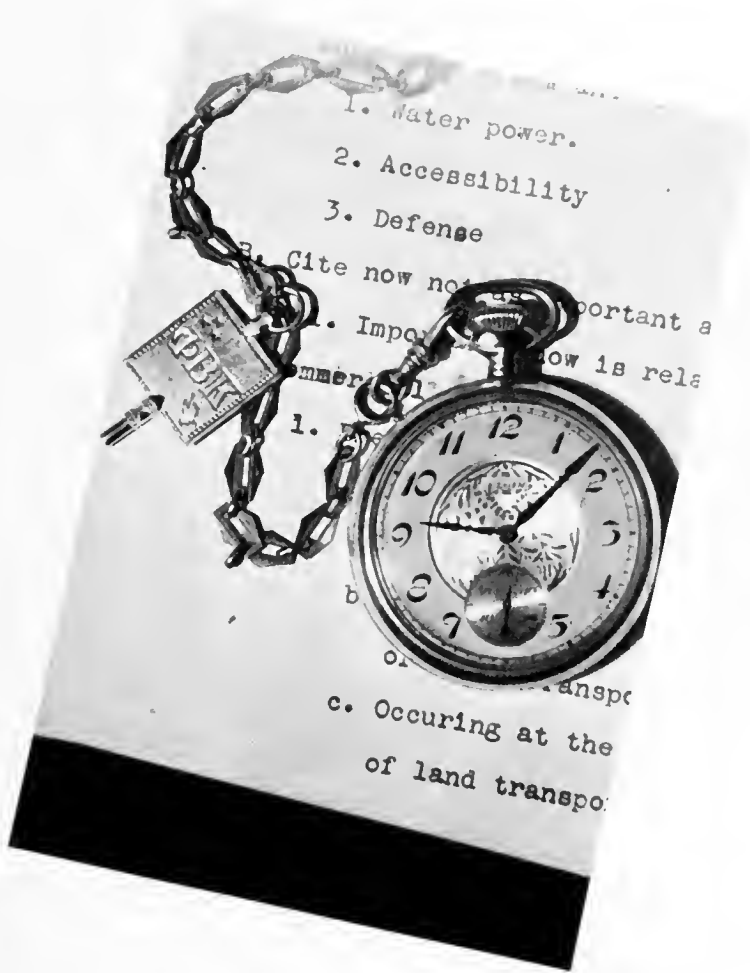
**“Informals • Interfrat
Prom • Formals.”**



Stalling for Time?

RED-CHECKERED sheriff and be-muscled damsels, scientific shouts, historic harangues, and barber shop harmony at faculty thespian attempt. . . . **Dr. Bentley** whipping off to **G. B.** and back. . . **Parking** space line-ups blind one with new chromium and baby-blue paint. . . . **Regular** bread-line of advice-seekers in offices. . . . **Dr. Bauer** rushing to meet **Mrs. B.** . . . **“Double-s Andersson or single-s ditto?”** . . . **Office** under capable and beguiling





thumbs, respectively, of Wolfe and son.
. . . Going to take up selling unemployed
apples, Prof Smith? . . . Mid-term exams,
or teacher's holiday! . . . Preparations
under way for reviving periodic frenzy
among studes in May!

History of A.U.

“So we are setting up on this hill as upon a high pedestal once more the compass of human life with its great needle pointing steadily at the lodestar of the human spirit. Let men who wish to know come and look upon this compass and thereafter determine which way they will go!”

Thus spoke President Woodrow Wilson on May 27, 1915, at the official opening of the American University. He with the rest of the brilliant assemblage was witnessing the birth of the youngest University in the United States at that time. On that day the hopes and plans of many years reached a final tangible culmination; it was soon after the Civil War that American Methodists began a movement aiming at the establishment of a great national Christian institution of higher learning in the Nation's Capital.

Physically the first step was taken by Bishop John Fletcher Hurst, the constructive mind hope behind the enterprise, when he purchased a 92-acre tract of land on Loughboro Road (now Nebraska Avenue) in 1890 and held it until 1891 when the American University had its inception as an organization to be chartered by an act of Congress in 1893. “Measuring his faith by his courage, in that transaction we perceive the spiritual foundation upon which the foundation of the University was established.” This was spoken in 1915 when the graduate school began its classes, but the speaker, Bishop Cranston, realized that the task was just beginning, for he warned his listeners that the impressive May program was prophetic rather than monumental.

And for the next twenty years plans and building programs continued to take form proving the wisdom of his utterance, with the College of History (now Hurst Hall) and the McKinley Building as material results. During the war, however, the campus was turned over to army occupation, its grounds being covered with tents and temporary buildings, some of which still stand. By necessity the Graduate School was removed to a more convenient down-town location where it has remained ever since. The half-finished laboratory building of the Chemical Warfare Society was taken over by the University and converted into the present Women's Residence Hall. In 1926 Battelle Memorial Library and the Gymnasium were added, continuing the classic principle of building construction in the early buildings.

In 1925 the University again held an opening ceremony, this time for the College of Liberal Arts, filling the empty campus of a decade before both physically and ideally as those great men first conceived it.



DR. JOSEPH M. M. GRAY
Chancellor of the University



DR. GEORGE B. WOODS
Dean of the College and Professor of English



MARY LOUISE BROWN

Dean of Women and Associate Professor of English

JOHN EDWARD BENTLEY, M.A., S.T.B.,
M.R.E., Th.D.

Professor of Philosophy

WILL HUTCHINS, B.A., B.F.A.

Professor of Art

WALTER FRANCIS SHENTON, B.A., M.A.,
Ph.D.

Professor of Mathematics

WESLEY M. GEWEHR, Ph.D., M.A., Ph.B.

Professor of History





C. HENRY LEINWEBER, Ph.D.
Professor of German

AUBERT BAIN POTORF, B.A., B.D., Th.D.,
Th.M., D.D.
Professor of Religion

LEON CARROLL MARSHALL, B.A., LL.D.
Professor of Political Economy

EUGENE N. ANDERSON, B.A., Ph.D.
Professor of European History

WILLIAM BULTMAN HOLTON, B.S., M.S.,
Ph.D.

Professor of Chemistry

THEODORE ANDERSSON, B.A., M.A., Ph.D.

Professor of Romance Languages

LOUIS CLARE HUNTER, B.A., M.A., Ph.D.

Professor of History

KATHERINE ROGERS ADAMS, B.A., M.A.,
Ph.D.

Visiting Professor of Ancient History





JESSIE MARY FERGUSON, B.A., Ph.D.
Associate Professor of Education

GLENN FRANCIS ROUSE, B.A., Ph.D.
Associate Professor of Physics

EDWARD WILLIAM ENGEL, B.S., M.A.,
Ph.D.
Associate Professor of Chemistry

LOWELL F. HUELSTER, B.A., M.A., Ph.D.
Assistant Professor of Economics

RUBERTA M. OLDS., Ph.B., M.A.
Assistant Professor of Spanish

MERRITT C. BATCHELDER, B.A., M.A.
Ph.D.
Assistant Professor of English

EARL AUBREY DENNIS, B.A., Ph.D.
Assistant Professor of Biology

RICHARD H. BAUER, B.A., M.A., Ph.D.
Assistant Professor of History





ROBERT SEE SACKETT, B.A., Ph.D.
Assistant Professor of Psychology

JOHN W. McCONNELL, B.A., Ph.D.
*Assistant Professor of Economics and
Sociology*

ALLAN J. FISHER, B.S., M.L., Ph.D.
Assistant Professor of Economics

ARTHUR S. FLEMING, B.A., M.A., LL.B.
*Director of School of Public Affairs and
Instructor in Political Science*

CORNELIA M. COTTON, B.A., M.A.
Instructor in Biology

DONALD WEEKS, B.A., Ph.D.
Instructor in English

JAMES L. McLAIN, B.A.
Instructor in Choral Music

LOUIS J. CABRERA, B.A., M.A., Litt.D.
Instructor in Spanish and Italian





FLOYD M. RIDDICK, B.A., M.A., Ph.D.
Instructor in Political Science

PAUL E. SMITH, B.A., M.A.
Instructor in English

ALTON A. LINDSEY, B.S., Ph.D.
Instructor in Botany and Chemistry

STAFFORD HENDRICKS CASSELL, B.A.
Instructor in Physical Education

NAIDA WILSON
Instructor in French

DORIS SNODGRASS, B.A., M.S.
*Instructor in Physical Education for
Women*

IRMA ZINK, B.A., B.S. in L.S.
Librarian

JOHN W. CRAWFORD, B.S., M.A.
Instructor in Speech





RICHARD RUSSEL HUTCHESON, B.S., M.A.
Instructor in Speech

JOHN L. NUELSEN, Jr., B.Mus., B.A.,
M.A., Ph.D.
*Instructor in German, French and Director
of Band and Orchestra*



Where is the Bell?

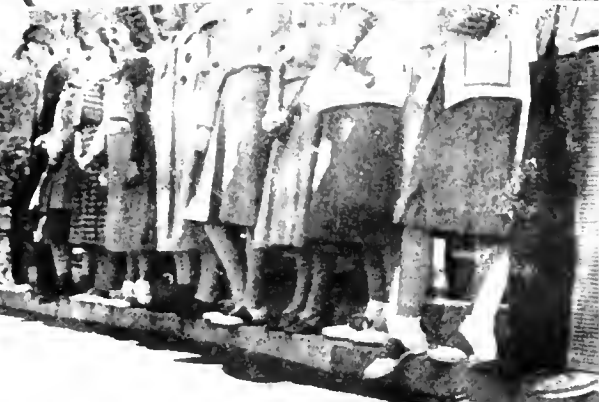
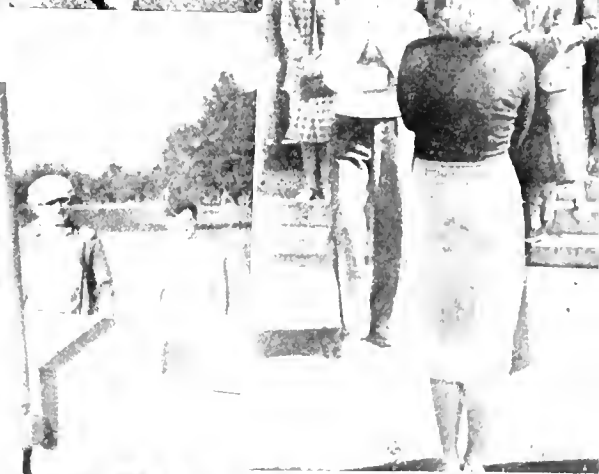
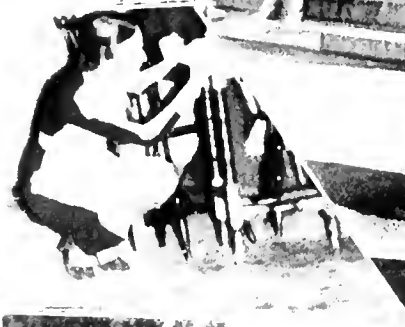
FROG-EYED Frosh tearing garound —
“Sound off, you”. . . . Buggy rides and ham
sandwiches. . . . Vic slopping paint around
for the exotic Waeky-Tacky. . . . Echoes
of Prexy Stewart’s laugh resounding
through Hurst. . . . Torrid dancing to
warm up a frigid Winter Wonderland.
. . . . Sporting blood breaking out for foot
and basket ball seasons, with the big-shot
seniors hitting tops again. . . . Literal
“jam session” in the bookstore at lunch





time. . . . White tie and tails for the Junior Prom. . . . “How about AUCOLA copy, keeds?” . . . Trickle over to chapel in the rain. . . . “Do you know about the bees and flowers?” . . . When it’s Springtime in the Grotto. . . . Two-dollar day before spring vacation remember. . . . All classes mingled into a boiled-brain mass of worry —“How’s your exam schedule?”







“The Green Taggers”

OFFICERS OF THE CLASS OF '42

George Blanchard
President

Midge Warner
Vice-President

Janet Wheeler
Secretary

Bart Reese
Treasurer

Ronald McCulloch
*Student Government
Representative*

As joyous, rushing, jitter-bug freshmen, the Class of '42 entered the formerly unknown adventure of university life. There was no time for homesickness or far-away looks during the first lurly-burly week of get-acquainted parties. Even the big all college dance with seemingly hundreds of upperclassmen could not faze the young collegiates wearing green name tags, hair ribbons and the traditional dinks.

But then came the dawn—one o'clock sessions on Hurst Hall steps were not so funny to the rookies as to the all-knowing sophomores. Cheers and A.U. songs were learned correctly, or else—! The one consolation was that there will be another class coming next year. Then duck waddles and “Fly, Eagles, Fly” demonstrations will be appreciated.

Campus sororities and fraternities rushed the confused freshies until finally everyone felt happy in his new environment.

Almost too soon the rookies found that all play and no work makes Jack fail his exams. Because experience is the best teacher, the Class of '42 warned the February members to study from the start.



"Thanks for the Buggy Ride"



OFFICERS
OF THE
CLASS OF '41

Paul Lentz
President

Sarah Anne Rapp
Vice-President

Mary Curry
Secretary

Charles Spencer
Treasurer

Ernest Webb
*Student Government
Representative*

“Hey! Yearlings”

THRUSTING its traditionally inquisitive nose forward, the Class of '41 wiggled prominently into campus activities. The A.U. arithmetic problem minus the sophomores would leave two-thirds of a football team, half a basketball team, a badly depleted girls' hockey team, one tennis champ missing, a Speakers' Bureau full of moth holes, practically no Women's Debate Team, with no reserves to back up men who do the arguing, and the bulletin board empty of a sheaf of clippings about our class president's prize-winning orations.





Moss would soon cover the Publications Office without the busy footsteps of the AUCOLA's sophomore scribblers, and the *Eagle's* henchmen beating about the news-story bush; Dramat would learn that dumb maids and super-sleuths aren't given away as free samples; even the Chorus and Glee Clubs would sound a trifle flat without us; February would have been exceedingly dull and dreary without the Sophomore hop; and the saucy freshmen would have been even more impertinent if we hadn't taken them in hand.

The sophomores aren't bragging about being indispensable, but . . .

“The Sophisticats”

JUNIOR PROM COMMITTEE

Bill Hutterly
Chairman

Barbara Marshall

Helen Miller

Arehie Norford

William Metcalf

Victor Purse

WE started as Freshmen with a Floy Floy. 12:30 meetings became a new thing with the “Organ Grinder Swing” and “Christopher Columbus.” Then there was the “Chicken Charlie” by our president. Further suggestions of our spirit: We rebelled successfully, and remember, at our Spring dance, how Mr. Ghost went to town?



“Now, it’s this way”



As shagging Sophomores we upheld our class tradition (and broke A.U.'s) with a Barn Yard Swing—hay slide, square dance, horseshoes, all the atmosphere. On the serious side we showed our Christmas spirit by making the holidays bright for one more family.

Now as Juniors we are really refined jitterbugs, for we have found our way into all sorts of activities: publications (even editors and managers), sports (teams and cheerleaders), Dramat, music (chorus and orchestra), and glee clubs. Our quota of honor students is usually filled, too, and socially—well, we scored again with our sumptuous Prom and our “Wacky Tacky Foo Dance.” (Did you goo?)

So, growing up a little, but still with much spirit, we're looking ahead to swinging on into our senior year.

OFFICERS
OF THE
CLASS OF '40

James Hewitt
President

Lillian Hawkins
Vice-President

Barbara Marshall
Secretary

William Adams
Treasurer

Helen Miller
Charles Mayer
*Student Council
Representatives*



William E. Adams, ΦΣΚ

WASHINGTON, D.C.

Economics

Class Honors, 2; Phi Sigma Kappa (Auditor, 2; Pledgmaster, 3); International Relations Club, 3; Student Comptroller-Business Manager, 3; Class Treasurer, 3.

Elizabeth Jane Andrews, ΦΜ

WASHINGTON, D.C.

History

Phi Mu (Historian, 3); Glee Club, 2.

Betty Ballou, ΦΜ

WASHINGTON, D.C.

Philosophy

Erva Barger, ΣΦΔ

WASHINGTON, D.C.

Sociology

Class Honors, 1, 2; National College Poetry Society, 2, 3; Glee Club, 1, 2, 3; Chorus, 2, 3; Debate, 2, 3; Student Christian Association, 1, 2, 3 (Recording Secretary, 3); International Relations Club, 3; Hockey, 1, 2, 3; Intramurals, 1, 2, 3.

Rene Ingham Beard, ΑΧΩ

CHEVY CHASE, MARYLAND

Art

Alpha Chi Omega (Historian, 3); Dramat, 2; Ancola (Art Staff, 2); Eagle (Art Staff, 2); Eyrie, 1; Student Christian Association, 1, 2, 3.

Philip Clough Bentley, ΦΕΑ

WASHINGTON, D.C.

Philosophy

Spanish Club (Treasurer, 2); Intramurals, 1, 2, 3.

Frances Brewster, ΗΔΕ, ΣΦΔ

WASHINGTON, D.C.

English

Class Honors, 1, 2, 3; Sigma Phi Delta (Secretary, 3); Ancola, 2, 3 (Literary Editor, 3); Eagle News Bulletin, 3; Newsnotes, 2; Glee Club, 1, 2, 3 (Vice-President, 3); Chorus, 2, 3; Panhellenic Council, 3.

George Brown

BALDWIN, NEW YORK

Mathematics

Class Honors, 1; Arbor Day (Chairman, 2); Student-Faculty Athletic Committee, 2; Athletic Board, 3; Varsity Club (Treasurer, 3); Track, 1; Baseball, 3; Football, 1, 2, 3; Basketball, 1, 2, 3.



Barbara Lucille Bryant, ΣΦΔ

WASHINGTON, D.C.

Social Science

Glee Club, 1, 2, 3; Student Christian Association, 1, 2, 3; International Relations Club, 2, 3; "A" Club, 2, 3; Hockey, 1, 2, 3; Intramurals, 1, 2, 3.

Frances Campbell, ΑΦ

FORT LEAVENWORTH, KANSAS

English, History

Class Honors, 1, 2, 3; Alpha Phi (Recording Secretary, 3); Eagle, 3; Glee Club, 1; Chorus, 2, 3.

Kathryn Chetham, ΦΜ

CHICAGO, ILLINOIS

Political Science

University of Chicago, 1, 2; International Relations Club, 3.

Harriette Christie, BBB, ΦΜ

WASHINGTON, D.C.

Biology

Class Honors, 1; Phi Mu (Social Chairman, 2); Glee Club, 1; Student Christian Association, 1, 2 (Social Chairman, 2).

LeRoy M. Cooke

GEORGETOWN, DELAWARE

Political Science

Freshman Rules Committee, 2; Chorus, 3; Glee Club, 3; Track, 1, 2, 3; Intramurals, 1, 2, 3.

Ruth Ellen Dewey, ΔΓ

WASHINGTON, D.C.

History

Delta Gamma (Recording Secretary, 3); Eagle, 1; Glee Club, 1; Class Secretary, 1, 2; Panhellenic Council, 3.

John Hobart Earle, ΑΤΣ

BROOKLYN, NEW YORK

English

Lambda Tau Sigma (President, 3); Eagle, 1.

Margaretta Anna Eckloff, ΦΜ

BROOKMONT, MARYLAND

English

Class Honors, 1; Ancola, 3; Speakers Bureau, 2, 3.



Ruth Genevieve Finch

WASHINGTON, D.C. *English*
Class Honors, 1, 2, 3; Chorus, 2, 3; Glee Club,
2, 3.

James Flaherty, ΚΣ

CHESTER, PENNSYLVANIA *Political Science*
Washington and Jefferson, 1, 2; Intramurals, 3.



Melvin J. Fox

WASHINGTON, D.C. *Economics*
Class Honors, 2; Debate 3.

Beatrice Gibson, ΑΦ

WASHINGTON, D.C. *Romance Languages*
William and Mary College, 1; Class Honors, 2;
Alpha Phi (Social Chairman, 3).



Robert Kendall Hall, ΦΣΚ

TROUT RUN, PENNSYLVANIA *Economics*
Dickinson Junior College, 1; Football, 2, 3;
Basketball, 2, 3 (Manager, 3).

Lillian Hawkins, ΦΜ

HARMANS, MARYLAND *English*
Class Honors, 2; Phi Mu (Treasurer, 3); Eagle,
1; Women's House Council, 3; Student Christian
Association (Social Chairman, 3); Class Vice-
President, 3.



James Arthur Hewitt, ΦΣΚ

WASHINGTON, D.C. *Economics*
Class Honors, 1, 2; Phi Sigma Kappa (Secretary
3); Student Christian Association (Social Chair-
man, 2; President, 3); Class Treasurer, 1; Class
President, 3; Intramurals, 1, 2, 3; New Student
Committee, 3 (Chairman).

Carol Hunsinger, ΔΓ

WASHINGTON, D.C.

Art

William U. Hutterly, Jr., ΑΘΦ

WASHINGTON, D.C. *Economics*
Alpha Theta Phi (Secretary, 3; Social Chairman, 3); Aucola, 1; Eagle, 2; Class President, 2; Intramurals, 1, 2, 3.



Mary Mae Jacobs, ΦΜ

GAITHERSBURG, MARYLAND *English*
Phi Mu (Registrar, 3); International Relations Club, 3; Student Christian Association, 3; French Club (Vice-President, 3).

Gordon Earl Jowers

WASHINGTON, D.C. *Economics*
Class Honors, 1, 2; National College Poetry Society, 1, 2, 3 (Recording Secretary, 2; Corresponding Secretary, 3); Eagle, 3; Publications Board, 3; Orchestra, 1, 2, 3.



Shirley Karns, ΑΦ

ARLINGTON, VIRGINIA *Romance Languages*
Lingnan University, Canton, China, 1; Eagle, 2, 3; Orchestra, 2, 3; International Relations Club, 2, 3 (Secretary, 3); Hockey, 3; Intramurals, 2, 3.

Charles W. Loughton, Jr., ΠΔΕ

HARTFORD, CONNECTICUT *Sociology*
Aucola, 2; Eagle, 1, 2, 3; Student Christian Association, 2, 3 (Secretary, 2; Treasurer, 3); International Relations Club, 3; Football, 1, 2, 3 (Assistant Manager, 1; Manager, 2, 3); Intramurals, 1, 2, 3.



Elizabeth Lawton, ΑΦ

WASHINGTON, D.C. *English*
Class Honors, 1, 2, 3; Alpha Phi (Vice-President, 3); National College Poetry Society, 1, 2, 3 (Corresponding Secretary, 2); Panhellenic Council, 3.

Robert S. Little

MERCER, PENNSYLVANIA *Political Science*
Eagle, 1; Speakers Bureau, 3; Orientation Board, 3; Debate, 1; Student Christian Association, 1, 2, 3; Football, 1, 2, 3 (Assistant Manager, 1; Co-Manager, 2, 3); Track, 2, 3; Intramurals, 1, 2, 3.



Barbara Marshall, ΑΧΩ

CHEVY CHASE, MARYLAND *History*
Alpha Chi Omega (Social Chairman, 3); Aucola, 3; Student Christian Association, 3; Class Secretary, 3; Hockey, 1; Panhellenic Council, 3.



Mary Alice Martz, ΦM

PHILADELPHIA, PENNSYLVANIA

History

Class Honors, 1; Phi Mu (Social Chairman, 2; Secretary, 3); Aucola, 3; Eagle, 1, 2, 3; Glee Club, 1, 2, 3; Student-Faculty Social Board (Chairman, 3); Student Christian Association, 3; International Relations Club, 3.

Alice E. Massey, ΦM

BUENOS AIRES, ARGENTINA

Mathematics

Student Christian Association, 3; International Relations Club, 3.

Charles H. Mayer, ATΣ

WASHINGTON, D.C.

American History and Government

College Council, 3; Lambda Tau Sigma (Vice-President, 3); Freshman Rules Committee (Chairman, 2); Debate, 2, 3; Class Social Chairman, 2; Interfraternity Council (Vice-President, 3).

Wilbur Metcalf, ATΩ

WASHINGTON, D.C.

Political Science

Washington and Lee, 1, 2; Alpha Theta Phi (Social Member, 3); Baseball, 3.

Doris Virginia Miller

COS COB, CONNECTICUT

English

Dickinson Seminary, 1; Temple University, 2; Chorus, 3; Glee Club, 3; Dramat, 3.

Helen A. Miller, HΔE, ΦM

WASHINGTON, D.C.

History

Class Honors, 1, 2; Student Council, 2; College Council, 3; Pi Delta Epsilon (Secretary-Treasurer, 3); Aucola, 1, 2, 3 (Editor, 3); Eagle, 1, 2; Handbook (Co-Editor, 3); Dramat, 3; Virginia Intercollegiate Press Association (President, 3); New Student Committee, 3; Panhellenic Council, 3; Phi Mu (Vice-President, 3).

Jean Andre Miller, ΔΓ

WASHINGTON, D.C.

Political Science

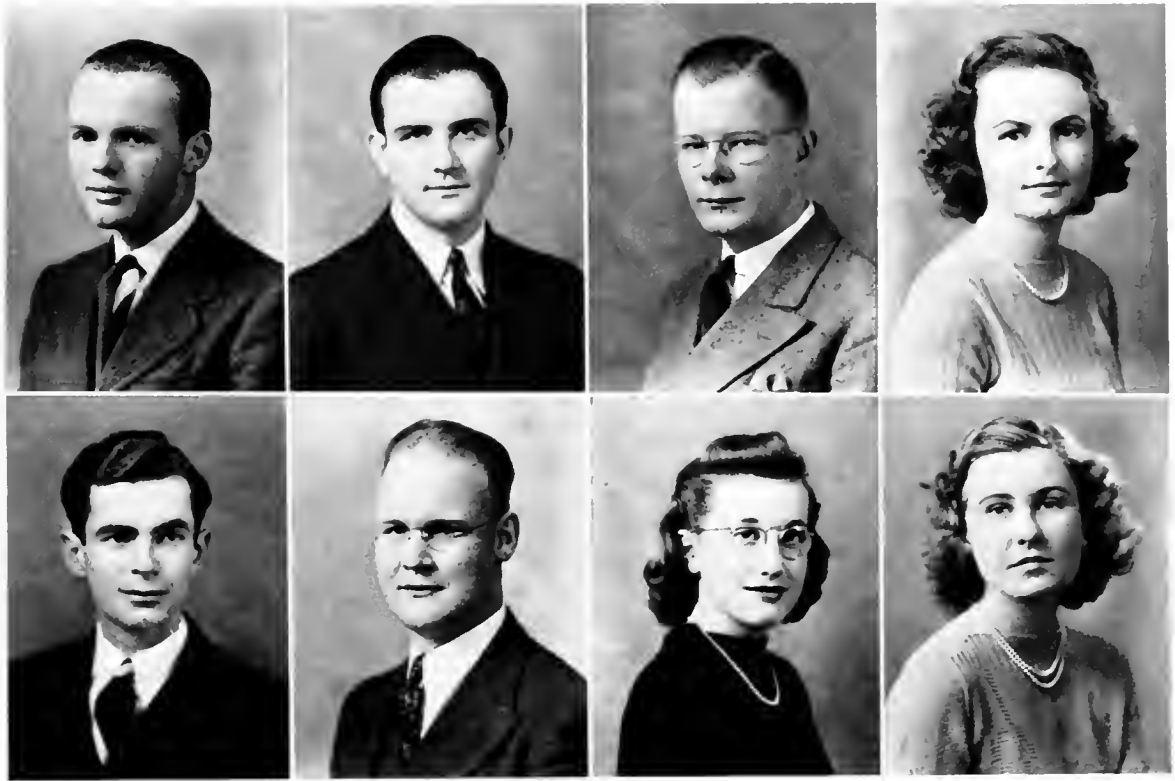
Class Honors, 1; Delta Gamma (Scholarship Chairman, 3); Dramat, 1, 2, 3; Aucola, 2; Eagle, 3; Debate, 2; Debate Bureau, 2; International Relations Club, 3.

Margaret Noel

WASHINGTON, D.C.

History

Hockey, 1, 2, 3; Intramurals, 1, 2, 3.



Archie Baynes Norford, ΑΘΦ

ALEXANDRIA, VIRGINIA

Hamilton House Association (Treasurer, 3); Football, 1, 2; Track, 2; Intramurals, 1, 2, 3.

Biology

Eugene S. Norton, ΑΘΦ

MORRIS PLAINS, NEW JERSEY

Morris Junior College, 1, 2; Dramat, 3.

English

C. Leland Parsons, ΑΤΣ

WASHINGTON, D.C.

Orchestra, 1, 2, 3; Band, 1, 2, 3 (Student Leader, 3).

Physics

Mary Ashby Posey, ΔΓ

WASHINGTON, D.C.

Eagle, 1, 3.

Spanish

Victor Purse, ΦΕΑ

WASHINGTON, D.C.

Dramat, 1, 2, 3; Aucola, 3; Eagle, 1, 2 (Advertising Manager, 2); Glee Club, 1, 2, 3; Chorus, 1, 2, 3; Student Christian Association, 1, 2, 3 (Social Chairman, 3); International Relations Club, 3; Cheerleader, 1, 2, 3; Intramural Sports, 1, 2, 3.

Political Science

Stanley Rauch, ΑΘΦ

KANE, PENNSYLVANIA

Intramurals, 3.

Economics, History

Beryl G. Reed, ΦΜ

HARTSDALE, NEW YORK

Class Honors, 1; Aucola, 1, 2, 3; Eagle, 1, 2, 3; Glee Club, 1, 2, 3; Women's House Council (President, 3); Student Christian Association, 1, 2, 3; College League of Women Voters (Vice-President, 3).

Sociology

Mary Jane Rogers, ΣΦΔ

WASHINGTON, D.C.

Class Honors, 2.

Romance Languages



Judith Adele Rose, ΔΓ

WASHINGTON, D.C. *English*
Class Honors, 1; Delta Gamma (Assistant Treasurer, 2; Treasurer, 3); Eagle, 2, 3; Glee Club, 1, 2, 3; Chorus, 2, 3; Student Christian Association, 1; Intramurals, 1, 2.

Walter S. Sanderlin

WASHINGTON, D.C. *History*
Class Honors, 1, 2, 3; International Relations Club, 3; Intramurals, 1, 2.



Gail L. Shaw

CHEVY CHASE, MARYLAND *Chemistry*
Glee Club, 2, 3; Intramurals, 1, 2, 3.

Dorothy Shepherd, ΣΦΔ

WASHINGTON, D.C. *Sociology*
Sigma Phi Delta (Vice-President, 3); Student Christian Association, 1, 2, 3; International Relations Club, 2, 3; "A" Club (Secretary, 3); College League of Women Voters (President, 3); Hockey (Chairman, 3).



Ruth Sherier

ALEXANDRIA, VIRGINIA *Sociology*
Hood College, 1; Aucola, 2, 3; Eagle, 2, 3; Newsnotes, 2; Student Christian Association, 2, 3.

Henry J. Shields, Jr., ΑΘΦ

SCRANTON, PENNSYLVANIA *Economics*
Keystone Junior College, 1, 2; Aucola, 3; Eagle, 3; Band, 3; Orchestra, 3; Hamilton House Association (Social Chairman, 3).



Dorothy Manning Smith, ΔΓ

WASHINGTON, D.C. *English*
Dramat, 1; Aucola, 2, 3; Eagle, 1, 2, 3; Class Vice-President, 2.

Martha Steer, ΣΦΔ

WASHINGTON, D.C. *Social Science*
Glee Club, 1, 2, 3; Student Christian Association, 1, 2; International Relations Club, 2, 3; Hockey 1.

Thomas Sunderland

SEAT PLEASANT, MARYLAND *Philosophy*
West Virginia Wesleyan, 1; Glee Club, 3; Chorus,
3; Speakers Bureau, 2, 3.



Reese T. Swain

GEORGETOWN, DELAWARE *Chemistry*
Track, 1; Intramurals, 1, 2, 3.

Alice May Swick, ΣΦΔ

CAPITOL HEIGHTS, MARYLAND *English*



Laura Talbott, ΦΜ

WASHINGTON, D.C. *French*
Class Honors, 2; French Club, 1, 2, 3 (Secretary-
Treasurer, 3); Student Christian Association, 1;
Intramurals, 1.

Eunice Alverta Thawley

SELBYVILLE, DELAWARE *Sociology*
Student Christian Association, 1, 2, 3; "A"
Club, 1, 2, 3; Hockey, 1, 2, 3.



Dorothy May Waterbury, ΣΦΔ

WASHINGTON, D.C. *Romance Languages*
Class Honors, 2.

John H. Stephenson, ΑΤΣ

WASHINGTON, D.C. *Political Science*
Lambda Tau Sigma (Treasurer, 3, 4); French
Club, 1, 2; Track, 2, 3; Intramural Sports, 1, 2,
3, 4.



Herman Winkler, ΑΤΣ

WASHINGTON, D.C. *Economics*
Football, 1, 2.

Elizabeth Acton, ΑΦ
SALEM, NEW JERSEY
Wellesley College. 1, 2; Hockey, 3.
Biology

Constantine Chaconas
WASHINGTON, D.C.
History

John Edwards, ΑΤΣ
WASHINGTON, D.C.
Economics

Phyllis Frantz
CUMBERLAND, MARYLAND
Sociology

Charlene Woolvin Graddick
CHEVY CHASE, MARYLAND
Gunston Hall, 1, 2.
English

Babette Liebman
BROOKLINE, MASSACHUSETTS
Green Mountain Junior College, 1, 2; Eagle, 3.
Political Science

William B. Persons
WASHINGTON, D.C.
Economics

Lloyd G. Schneider
WASHINGTON, D.C.
Football, 1; Class President, 1.
Economics

William P. Sorrels
WASHINGTON, D.C.
Economics

William L. Thompson, ΑΤΣ
WEST PITTSBURGH, PENNSYLVANIA
Political Science



“Old Fathers Time”

OFFICERS OF THE CLASS OF '39

Donald Creech
President

Claire Aubry
Vice-President

Mary Louise Klaas
Secretary

Frank Meloy
Treasurer

REALLY—a senior class that didn't lead the school would be news. But one that does—that's not unusual. We might simply boast that we have been here four years; “our deeds could answer for us” without wasting space, without saying anything, we know that we will be accorded our due as leaders.

But—here's the catch; here's why we can't just let the fact that we're seniors stand for our laurels; we are no ordinary senior class in the way we have gone about our job. For when the Class of '39 entered, we walked onto a campus full of gaping holes. Well, like the Dutch boy, we had to do something; we threw ourselves into the breach, took over the workings, and made ourselves indispensable as “'39-ers” in extra-curricular activities. Please try to fill the yawning chasms left by the uprooting of the “Big Three” from athletics, by the departure of the first “eight play” actress from Dramat, by the farewells of numerous editors and associates from publications, and by the closing speeches of haranguers for gracious' sake from Debate!



Harry W. Amtower

MAGNOLIA, MARYLAND

HISTORY

West Virginia University, 1, 2; Chorus, 4; Debate, 3; Speakers Bureau, 3, 4; Intramurals, 3, 4.

Genial parson and Speakers Bureau preacher . . . loves organ . . . hates English.



James Applegate, BBB, AΘΦ

WASHINGTON, D.C.

BIOLOGY

Beta Beta Beta, 3, 4 (Treasurer, 4); Student-Faculty Athletic Committee, 4; Band, 3, 4; Orchestra, 3, 4; Boxing, 1; Football, 1, 2 (Manager, 3); Track, 2, 3, 4; Intramurals, 3, 4.

Forester aspirations . . . plain-spoken, straightforward . . . loves New Year's Eve parties.



Claire Louise Aubry, AXΩ

WASHINGTON, D.C.

FRENCH, EDUCATION

Alpha Chi Omega (Chaplain, 3; Vice-President, 4); Ancola, 1, 4; French Club, 1, 2, 3, 4 (Vice-President, 3; President 4); Class Vice-President, 4.

Piano wizardry . . . French vivacity . . . Predicaments plus and an unwrinkled brow!



Muriel Bain, ΔΓ

MOUNTAIN LAKES, NEW JERSEY

HISTORY, POLITICAL SCIENCE

Eagle, 1, 2, 4; Glee Club, 1, 2, 3, 4; Chorus, 1, 2, 3, 4; Women's House Council (Proctor, 2, 4); Student Christian Association, 1, 2, 3; International Relations Club, 3, 4; Class Vice-President, 1.

Brisk stride . . . snapping black eyes . . . loyal, intensive . . . supports Kleenex Company.

Mary Adrian Banks, ΦM

WASHINGTON, D.C.

HISTORY

Meredith College, 1; University of London, 3; Student Christian Association, 1; International Relations Club, 1.

Sweet and lovely . . . fanatic on London . . . very well Reggie-mented.

Emerson Bartlett, ΠΓM, ΟΔK, ΛΘΦ

GROVE CITY, PENNSYLVANIA

ECONOMICS

Alpha Theta Phi (President, 4); Football, 1, 2, 3, 4; Basketball, 1, 2, 3, 4; Track, 1; Interfraternity Council (Secretary, 4).

Bundle of energy . . . serio-comic nature . . . won't be a preacher.

Walter Bastian, ΟΔK, ΦΕΑ

WASHINGTON, D.C.

ENGLISH

College Honor Society; Omicron Delta Kappa (President, 4); Phi Epsilon Alpha (President, 2, 3); Debate, 2, 3; Class President, 2; Intramurals, 3, 4.

Reticently brilliant . . . president of all Einstein organizations . . . reads Chinese poetry.

Helen Beal

WASHINGTON, D.C.

CHEMISTRY

A white lab coat bustling about . . . a ready cheerful "Hi!"



Eleanor Anderson Belden

MOUNTAIN LAKES, NEW JERSEY

SPEECH

Eagle, 4; Glee Club, 2, 3, 4; Varsity Debate, 2, 3; Women's House Council (Proctor, 3); International Relations Club, 4.

That certain something . . . lovely and umph-y! . . . laughter like measles . . . catching.

Leon Bick, IITM

WASHINGTON, D.C.

HISTORY

Class Honors, 1, 2; Debate, 1, 2; Intramurals, 1, 2.

Campus Red . . . looks somnolent . . . always a ready disputer . . . (Ask Leonard).

Katherine Biggs, ΣΦΔ

WASHINGTON, D.C.

HISTORY

Sigma Phi Delta (President, 4); Eagle, 4; Newsnotes, 3; Eyrle, 2, 3; Chorus, 4; Glee Club, 1, 2, 3, 4; Student Christian Association, 1, 3; Intramurals, 2, 3, 4.

Solemn eyes . . . an inordinate love of fun . . . laugh mocker.

Mildred Elizabeth Bishop

WASHINGTON, D.C.

RELIGION

Student Christian Association, 1.

Quiet, reserved . . . congenial . . . "Millie" to those who know her well.



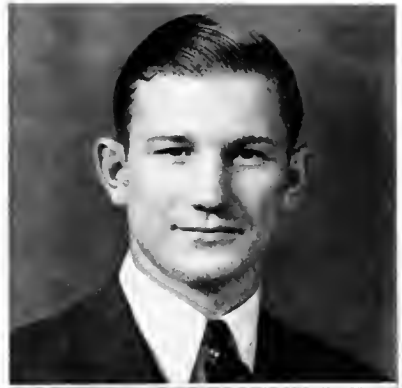
J. Harold Boudman, ΦΣΚ

HUGHESVILLE, PENNSYLVANIA

ECONOMICS

Publications Board, 4; Intramurals, 1, 2, 3, 4.

Perpetual smile expanding into an explosive laugh . . . library loafer.



Helen Janet Brundage

ALFRED, NEW YORK

HISTORY

Student Christian Association, 1, 2, 3; "A" Club, 1, 2, 3, 4
(Class Manager, 2; Treasurer, 4); Intramurals, 1, 2, 3, 4.

Sketches faces in Drama . . . easily-provoked broad grin and dimples.



Ann Cherrington, ΔΓ

WASHINGTON, D.C.

POLITICAL SCIENCE

Ohio State University, 1, 2; International Relations Club, 4.

Tall, slim . . . a flashing smile . . . has leanings toward the Scotch!



Hilda Comer

WASHINGTON, D.C.

HISTORY

Honey-colored hair . . . calm temperament . . . sudden illuminating smile.





J. Richard Connelly, ΦΣΚ

DETROIT, MICHIGAN

POLITICAL SCIENCE

Phi Sigma Kappa (Auditor, 3; Treasurer, 4); Dramat, 1; Eyrie (Business Manager, 3); International Relations Club, 1, 2, 3, 4; Class Treasurer, 3; Cheerleader, 1, 2, 3; Intramurals, 1, 2.

Co-pep inspirer at football games . . . money-man for publications.



Constance Cooley, ΑΦ

NEW YORK, NEW YORK

SPANISH

Class Honors, 2; Alpha Phi (Recording Secretary, 4); Women's House Council (Secretary, 3; Treasurer, 4); Spanish Club (Secretary, 2, 3).

New Yorker! . . . perspicacious . . . quietly snappy . . . a cheerful pessimist amenable to fun.



Donald Creech, ΟΔΚ, ΦΕΑ

WASHINGTON, D.C.

CLASSICS

College Honor Society; Phi Epsilon Alpha (Secretary, 2, 3); Debate, 2, 3, 4 (Assistant Manager, 2; Manager, 3); Chorus, 2, 3, 4 (Accompanist, 3, 4); Glee Club (Accompanist, 2, 3, 4); Accompanist, Women's Glee Club, 3; Class President, 4; Intramurals, 1, 2, 3.

Efficiency expert, piano virtuoso . . . English office resounds with some wicked falsetto.



William B. A. Culp

GOLD HILL, NORTH CAROLINA

HISTORY

Pfeiffer Junior College, 1, 2; Glee Club, 3, 4; Student Christian Association, 3, 4; Basketball, 3, 4.

Ministerial career threatened by home town interest . . . already a B.A.

Margery Davis, ΔΦ

WASHINGTON, D.C.

GERMAN

Student Council, 1; Alpha Phi (Treasurer, 4); Eagle 1; College League of Women Voters, 4.

Petite . . . quintessence of trimness . . . tactful . . . uncomplaining . . . no bait for "cats."

Virginia Catherine Dickey, ΔΓ

ARLINGTON, VIRGINIA

ECONOMICS

Delta Gamma (President, 4); Eagle, 1; Glee Club, 1, 2, 3, 4 (Secretary, 4); Student Christian Association, 1; Class Secretary, 3; Intramurals, 1, 2, 3, 4; Panhellenic Council, 4 (Treasurer, 4).

Sang froid and social ease . . . lugs Glee Club roll book.

Edward E. Dietz, ΠΔΕ

WASHINGTON, D.C.

GERMAN, HISTORY

Eagle (Assistant Editor, 2, 3; Editor, 4); Student Handbook, 4 (Co-Editor, 4); Track, 1; Intramurals, 1, 2, 3, 4.

Full of nervous energy . . . chews a pipe . . . hail-fellow-well-met.

Jean Evans

WASHINGTON, D.C.

ENGLISH

College Honor Society; National College Poetry Society, 2, 3, 4; Aucola, 2, 3, 4; Eagle, 2, 3, 4; Student Christian Association, 2, 3, 4.

Writes Chopinesque poetry and appreciates puns . . . English enthusiast, loves music.



Justine Louise Fairbank, ΔΔΔ

WASHINGTON, D.C.

POLITICAL SCIENCE

Goucher College, 1; Class Honors, 3; Glee Club, 2, 3; International Relations Club, 3, 4 (Vice President, 4).

Curly brown hair, steady eyes . . . an ardent pacifist . . . positive, cultured.

Lemuel Anderson Fraser, BBB, ΦEA

TAKOMA PARK, D.C.

BIOLOGY

College Honor Society; Beta Beta Beta, 2, 3, 4 (Treasurer, 3; President, 4); Phi Epsilon Alpha (Treasurer, 2); Glee Club, 4; Chorus, 4; Student Christian Association, 1, 2, 3.

Happiest with bugs . . . placid, level headed . . . booming bass, adept scalpel thrower.

Eliza C. Goddard

WASHINGTON, D.C.

ART

Class Honors, 1; Aucola, 2 (Art Editor, 2); Dramat, 1, 2, 3; Eyrice, 2, 3 (Art Editor, 2, 3).

Artistic, aesthetic . . . hates to recite in class . . . brilliant—by choice!

Virginia Lowell Goff, AXΩ

CHEVY CHASE, MARYLAND

ENGLISH

Class Honors, 1; Alpha Chi Omega (Rush Chairman, 3; President, 4); Aucola, 2; Student Christian Association, 3; Class Vice-President, 3; Intramurals, 2, 3, 4; Panhellenic Council, 3, 4 (President, 4).

The small, quiet executive . . . gracious manners . . . broad smile . . . neatness personified.



Marian Gordon, BBB, ΣΦΔ

WASHINGTON, D.C.

BIOLOGY

Biology hibernant . . . rapid-fire wit and speech . . . gripes over slides . . . "ghastly!"



Lansing Hall

WASHINGTON, D.C.

ENGLISH

Class Honors, 1, 2; Dramat, 1, 3.

Washington actress and dancer . . . Ophelia and Ariel . . . smooth . . . charming voice.



Walter K. Handy, Jr., ΠΓΜ, ΦΕΑ

ARLINGTON, VIRGINIA

ECONOMICS

Class Honors, 1, 4.

Scuttles into class late, scuttles out early . . . pleasing drawl.



Fred M. Horton, ΦΕΑ

WASHINGTON, D.C.

ENGLISH

National College Poetry Society, 3, 4; Glee Club, 1, 2, 3, 4; Track, 2, 3; Boxing, 2, 3.

Dramat discovery in class and on the boards . . . quietly industrious.





Howard R. Hudson, ΑΘΦ

WASHINGTON, D.C.

ECONOMICS

Alpha Theta Phi (Treasurer, 3; Corresponding Secretary, 4);
Class Treasurer, 1; Basketball, 1, 2, 4; Tennis, 1, 2, 3, 4.

Easy, effortless worker . . . subtle humorist . . . pounds tennis
and basketball courts.



Ruth Hudson

WASHINGTON, D.C.

ART

"Arch" young lady . . . also good at basketball . . . quiet . . .
gamin smile.



Marian Westcott Johnson, BBB, ΑΧΩ

WASHINGTON, D.C.

BIOLOGY

Class Honors, 1; Beta Beta Beta (Historian, 3; Vice-President,
4); Alpha Chi Omega (Social Chairman, 3; Chaplain, 4); Eagle,
2; Glee Club, 1, 2, 3, 4; Orchestra, 1, 2; Intramurals, 1, 2.

Ardent biologist . . . sunny and happy-go-lucky disposition
. . . and can she laugh!



Samuel J. Keke, ΟΔΚ, ΦΣΚ

DETROIT, MICHIGAN

POLITICAL SCIENCE

Omicron Delta Kappa (Vice-President, 4); College Council, 3,
4 (Vice-President, 4); Phi Sigma Kappa (President, 4); Dramat
1, 2, 3 (Treasurer, 2; Stage Manager, 3); Eagle, 1, 2; Student-
Faculty Social Committee, 3; International Relations Club, 1,
2, 3, 4; Intramurals, 1, 2, 3; Interfraternity Council, 3.

Leading man on stage and campus . . . does *not* prefer French.

Mary Louise Klaas, BBB, ΗΔΕ, ΑΧΩ

BETHESDA, MARYLAND

BIOLOGY

Pi Delta Epsilon (Vice-President, 4); Alpha Chi Omega (Corresponding Secretary, 4); Dramat (Stage Manager, 4); Ancola, 1, 2, 3, 4 (Associate Editor, 3; Advisory Associate, 4); Eagle, 1, 2, 3; "A" Club, 2, 3, 4; Class Secretary, 4; Intramurals, 1, 2, 3.

Reticent, hard working, and steadfast—on the surface . . . underneath—impish fun!

Catherine Ann Knockey, CAP AND GOWN, ΗΔΕ, ΑΧΩ

WASHINGTON, D.C.

MATHEMATICS, EDUCATION

Class Honors, 1, 2, 3, 4; Alpha Chi Omega (Vice-President, 3; Recording Secretary, 4); National College Poetry Society, 1, 2 (Reader, 2); Dramat, 1, 2, 3, 4 (Secretary, 3; President, 4); Ancola, 2, 3, 4 (Assistant Editor, 3; Associate Editor, 4); Handbook (Assistant Editor, 4).

Math plus Dramat equals infinity . . . intense, thorough, gesticulative . . . bangs, greasepaint.

Norma E. Lambke, ΑΧΩ

BUFFALO, NEW YORK

GERMAN

German Club, 1, 2, 3 (Secretary, 3); Student Christian Association, 1, 2, 3; Student-Faculty Social Committee, 4.

Penelope . . . slow of speech . . . life floats by . . . deep unpredictable humor.

Vivian J. Langewisch

PETERSBURG, VIRGINIA

LATIN

Richmond University, 1, 2.

Self-possessed . . . tall, slender and unruffled . . . some-day Latin teacher.



Norman H. Leonard, Jr., ΠΓΜ

TRAPPE, MARYLAND

POLITICAL SCIENCE

Class Honors, 2, 3; Pi Gamma Mu (Vice-President, 4); Glee Club, 1, 2, 3; Debate, 3, 4; Student Christian Association, 1, 2, 3, 4 (Treasurer, 3); Open Forum, 4 (Co-chairman, 4).

Little dynamo . . . tremulous drawl heard arguing against Communism . . . gets red easily.

Jean Lines, ΦΜΙ

SUMMIT, NEW JERSEY

SOCIOLOGY

Morris Junior College, 1, 2; Intramurals, 3.

Unique remarks made in Baby Snooks' voice . . . brilliant basketball player.

Dorothy Faye Loftis, CAP AND GOWN, ΔΓ

SILVER SPRING, MARYLAND

PSYCHOLOGY, EDUCATION

College Council, 3; Delta Gamma (Recording Secretary, 3); Dramat, 3; Chorus, 1, 2, 3, 4; Glee Club, 1, 2, 3, 4 (President, 4); Student Christian Association, 1, 2, 3, 4 (Secretary, 4); Orientation Board, 4; Song Fest Winner, 3; Class Secretary, 2; Intramurals, 2, 3, 4.

Warm voice . . . copper-gold curls always just so . . . witty and practical.

Gerald W. MacKellar, ΦΣΚ

ASHLAND, OHIO

HISTORY

Glee Club, 1, 2, 3; Chorus, 2, 3; Band, 1, 2, 3, 4; Orchestra, 1, 2, 3, 4; Student Christian Association, 1, 2; International Relations Club, 1, 2, 3, 4; Basketball, 1; Track, 1; Intramurals, 1, 2, 3, 4.

Amiable nit-wit . . . sings mellow tenor . . . inquisitive spectacles and engaging lisp.



Samuel B. Maize, Jr., ΦΣΚ

JERSEY SHORE, PENNSYLVANIA

ECONOMICS

Varsity Club, Football, 1, 2, 3.

Husky and compact . . . walks with coat-tails flying . . . broom-stick boy.



Frank Meloy, ΦΕΑ

CHEVY CHASE, MARYLAND

HISTORY

Class Honors, 2; Phi Epsilon Alpha (Social Chairman, 2, 3; Vice-President, 2, 3); National College Poetry Society, 2; Dramat, 3, 4; International Relations Club, 4; Class President, 3; Class Treasurer, 4.

Beau Brummel . . . urbane and politely witty . . . touch of the artistic.



Susan Moore, BBB, ΣΦΔ

WASHINGTON, D.C.

BIOLOGY

Southwestern Louisiana Institute, 1, 2; Sigma Phi Delta (Treasurer, 4); Aucola, 4.

Drawl, sleepy eyes . . . wide-awake thinker . . . another female biologist . . . shy, sincere.



Mary Elizabeth Morse, CAP AND GOWN, ΔΓ

LAKEWOOD, OHIO

GERMAN, ENGLISH

College Honor Society; Cap and Gown (President, 4); National College Poetry Society (President, 2, 3); College Council, 2; Eagle, 3; Alpha Chi Omega Achievement Award, 2, 3.

Wheat gold hair . . . unassuming, yet original . . . power behind the French Department.





Virginia Omo, BBB, ΦΜ

WASHINGTON, D.C.

BIOLOGY

Phi Mu (Historian, 3; Social Chairman, 4); Dramat, 1, 2, 3, 4; Aucola, 2, 3; Eagle (Society Editor, 2, 3); Chorus, 1, 2, 3, 4; Glee Club, 1, 2, 3, 4; Hockey, 1; Intramurals, 1, 2, 3, 4.

Heart points West . . . "Fidget" . . . always late—if she comes!



Paul Orshak, ΦΣΚ

KINGSTON, PENNSYLVANIA

POLITICAL SCIENCE

Phi Sigma Kappa (Auditor, 2); Eagle, 1, 2; Glee Club, 1, 2; Student Christian Association, 1, 2, 3; International Relations Club, 3; Intramurals, 1, 2, 3, 4.

Class dude . . . suave, easy-mannered . . . recommended for tooth-paste ad.



Helen Virginia Palmer, CAP AND GOWN, ΗΔΕ, ΔΓ

ARLINGTON, VIRGINIA

POLITICAL SCIENCE

Cap and Gown (Social Chairman, 4); Delta Gamma (Pledge-mistress, 3; Vice-President, 4); Aucola, 1; Eagle, 1, 2, 3, 4 (Circulation Manager, 3; Business Manager, 4); Glee Club, 1, 2, 3, 4; Chorus, 3, 4; Orchestra, 1, 2; "A" Club, 2, 3, 4 (President, 4); Intramurals, 1, 2, 3.

Little girl . . . strikingly businesslike . . . has enviable small hands and feet.



Wilbur Parker, ΦΕΑ

CUMBERLAND, MARYLAND

MATHEMATICS

Phi Epsilon Alpha (Treasurer, 4); Glee Club, 1, 2, 3, 4 (Secretary-Treasurer, 4); Chorus, 1, 2, 3, 4 (Manager, 4); Octet, 1, 2, 3; Student Christian Association, 1, 2, 3, 4; Student Comptroller, 3; Comptroller-Business Manager, 4.

Big business man . . . manages chorus—and director . . . supports bass section.

Gabe George Pawlush

OLYPHANT, PENNSYLVANIA

HISTORY

Eagle, 2; Glee Club, 1, 2, 3 (Secretary, 3); Chorus, 2, 3; Student Christian Association, 1, 2, 3, Intramurals, 1, 2, 3, 4 (Manager, 3).

"Here I is, Lawd!"—right on the dot . . . beams broadly.

James Pettus, ΠΔΕ, ΦΕΑ

CHEVY CHASE, MARYLAND

ECONOMICS

Phi Epsilon Alpha (Treasurer, 3); Aucola, 3 (Business Manager, 3); Intramurals, 1, 2, 3; Interfraternity Council (Secretary, 3).

Publications supporter . . . slow, one-sided grin . . . another snap-happy camera bug.

Jean Jordan Plier

WASHINGTON, D.C.

ENGLISH

Class Honors, 2.

Jolly . . . Miss Zink's right hand . . . doodler in Drama class.

Virginia Clare Rightor, ΑΦ

CHEVY CHASE, MARYLAND

ENGLISH

Marot Junior College, 1, 2; George Washington University, 3; National College Poetry Society, 4; Aucola, 4 (Activities Editor, 4).

Sincere . . . spontaneous . . . genuine interest, with a wide-eyed love of life.



Jean M. Sartwell

WASHINGTON, D.C.

ENGLISH

National College Poetry Society, 1, 2, 3, 4; Aucola, 1; Eagle, 1; Student Christian Association, 1.

Another poetess . . . wields a wicked pen . . . analytical mind . . . beauty lover.

Dorothy E. Seaton

WASHINGTON, D.C.

PSYCHOLOGY

Glee Club, 1, 2, 3, 4; Chorus, 1, 2, 3, 4; Choir, 3, 4; "A" Club, 1, 2; Hockey, 1, 2.

Beautiful soprano, which sounds well in chapel . . . tall, slender . . . efficient.

Josephine Shepherd, CAP AND GOWN, ΔΓ

LYNDHURST, NEW JERSEY

HISTORY

Barnard College, 1, 2; Eagle, 3, 4 (Editor, 4); Student Christian Association, 3, 4 (Vice-President, 4).

Precise and meticulous . . . has a surprisingly mischievous laugh . . . never gets ruffled.

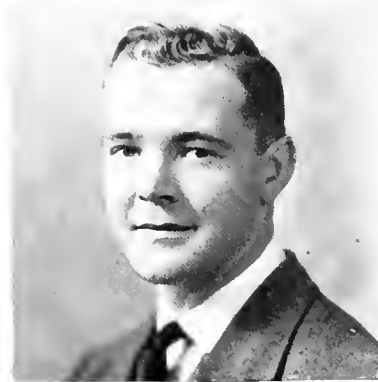
Kimber L. Shoop, ΠΓΜ, ΦΣΚ

SHAMOKIN, PENNSYLVANIA

HISTORY, POLITICAL SCIENCE

Phi Sigma Kappa (Inductor, 3; President 4); Dramat, 2, 3, 4; Speakers Bureau, 3; Student-Faculty Athletic Committee, 3; Student-Faculty Social Committee, 3; International Relations Club (President, 4); Freshman Rules Committee (Chairman, 2); Varsity Club; Track, 1, 2; Football, 1, 2, 3, 4; Intramurals, 1, 2, 3, 4; Interfraternity Council, 4.

Terpsichorean innovator . . . third athletic musketeer . . . as an actor "gilds the skies!"



Peter Sitnik

HICKSVILLE, NEW YORK

HISTORY

Lambda Tau Sigma (Secretary, 2, 3); Intramurals, 1, 2, 3, 4;
Football, 1, 2, 3; Basketball, 2; Tennis, 3, 4; Track, 1, 2, 3, 4;
Intramural Golf Champion, 4.

Football hero . . . photographic mind . . . swears in Russian
. . . big boy, little voice.



H. Elizabeth Smith, ΦM

WASHINGTON, D.C.

PSYCHOLOGY

Class Honors, 2; Phi Mu (Registrar, 2; Vice-President, 3);
Aeola, 1; Glee Club, 1, 2; Student Christian Association, 2, 3.

Smooth hair and disposition . . . calm eyes and voice . . .
future well-planned.



Ruth E. Smith, ΑΧΩ

ARLINGTON, VIRGINIA

ENGLISH

Class Honors, 1, 2; Alpha Chi Omega (Scholarship Chairman,
3; Treasurer, 4); Aeola, 2, 3, 4; Eagle, 2; Student Christian
Association, 1, 2; Intramurals, 1, 2, 3, 4.

Unpredictable . . . fun and efficiency . . . sharp, terse, clever
comments.



Carolyn Sorenson, ΔΓ

WASHINGTON, D.C.

ENGLISH

Eagle, 1; Student Christian Association, 1; Class Vice-Presi-
dent, 2.

A campus beauty . . . English assistant's assistant . . . co-
giggler in Romantic Lit.





Irving Asa Spalding, Jr., HΔE, OΔK, AΘΦ

SCRANTON, PENNSYLVANIA

ENGLISH

Scranton-Keystone Junior College, 1, 2; Aucola, 4; Eagle, 3 (Editor, 4); Student Christian Association, 3, 4; Hamilton House Association (President, 4); Speakers Bureau, 3; Intramurals, 3, 4.

Dana of the *Eagle* . . . journalistic innovator . . . "Addenda" . . . hard worker, wit.

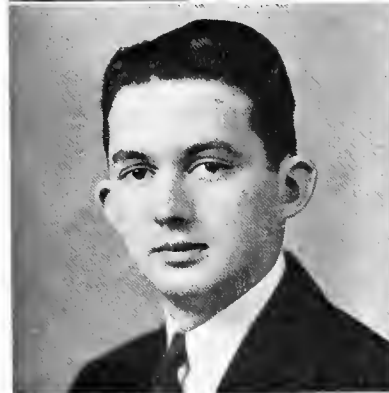


Catherine Caolmiris

WASHINGTON, D.C.

ENGLISH

A hard worker . . . intensely interested in all her courses.



Charles W. Stewart, Jr., OΔK, ΔΣP, ΠΓΜ, AΘΦ

WASHINGTON, D.C.

ECONOMICS, HISTORY

Class Honors, 1, 2, 3, 4; Omicron Delta Kappa (Treasurer, 4); Pi Gamma Mu (President, 4); Delta Sigma Rho, 3, 4 (President, 4); Student Body President, 4; Debate, 1, 2, 3, 4; Baseball, 4; Intramurals, 1, 2, 3, 4.

Campus boss . . . speaker, student . . . laughs like a hiccup . . . converted liberal.



Solange Strong, CAP AND GOWN, HΔE, AΦ

WASHINGTON, D.C.

CLASSICS

College Honor Society; Pi Delta Epsilon (President, 4); National College Poetry Society, 1, 2, 3, 4 (President, 4); Dramat, 1, 2, 3, 4 (Vice-President, 3, 4); Aucola Board, 3; Eyrie, 1 (Editor, 2, 3); Handbook (Co-Editor, 3); Glee Club, 1, 2, 3, 4; Chorus, 1, 2, 3, 4; College Council, 4 (Secretary, 4); Student-Faculty Committee, 3.

A brilliant polygot (note above!) . . . child of Puck defying characterization.

Glenn Sweigart, AΘΦ

WASHINGTON, D.C.

BIOLOGY

Glee Club, 1, 2, 3, 4; Chorus, 1, 2, 3, 4; Quartet, 1, 2, 3; Track, 1, 2; Intramurals, 1, 2, 3, 4.

War tank build . . . practical and sturdy . . . yodels like a native Swiss.

Carl Ramsey Taylor, AΘΦ

WASHINGTON, D.C.

ECONOMICS, SOCIOLOGY

Alpha Theta Phi (Ritual Officer, 3; Vice-President, 4); Aucola, 3, 4; Eagle, 4; Newsnotes, 3; Student Christian Association, 2, 3, 4 (Cabinet, 4); Student-Faculty Athletic Committee, 3; International Relations Club, 4; Religious Activities Committee, 4; Open Forum, 4 (Co-chairman, 4); Tennis, 1, 2, 3; Basketball, 2, 3, 4; Intramurals, 1, 2, 3, 4.

Columnist extraordinary . . . nonchalant . . . clear thinker . . . has careless drawl and slouch.

Robert Thompson, HFM

WASHINGTON, D.C.

ECONOMICS

Dramat, 1, 2, 3, 4; Orchestra, 3; Student Christian Association, 1; A.U. Fund Committee (Chairman, 4).

Batty over Brahms—hates swing . . . abysmal voice, stratospheric height . . . A.U. institution.

Mildred Todd, ΔΓ

SALINA, KANSAS

ENGLISH

Kansas Wesleyan University, 1, 2; Miami University, 3; Chorus, 4; Glee Club, 4.

Straightforward . . . sincere . . . ears and eyes glued to switchboard . . . calm, unruffled knitter.



Harold E. Toner, ΦΣΚ

WARREN, PENNSYLVANIA

PHYSICS, MATHEMATICS

Dramat. 3, 4; Aucola, 3, 4 (Sports Editor, 4); Hamilton House Association, (President, 3); Arbor Day (Chairman, 2); Varsity Club (President, 3, 4); Basketball, 2; Football, 1, 2, 3, 4; Intramurals, 1, 2, 3, 4.

Slow speaker . . . avid athlete . . . blows off steam in chem. lab.

Carroll Alden Vigeant, ΑΧΩ

WASHINGTON, D.C.

ENGLISH

Class Honors, 2; Alpha Chi Omega (Rush Chairman, 4); Dramat, 4; Aucola, 2, 3, 4; Glee Club, 1, 2, 3, 4.

Five-foot night owl . . . sleepy or completely and untiringly effervescent.

Charlotte L. Wells, ΑΦ

BALTIMORE, MARYLAND

HISTORY

Alpha Phi (Vice-President, 3; President, 4); Hockey, 1, 2, 3, 4; Intramurals, 1, 2, 3, 4; Panhellenic Council, 3, 4.

Utterly frank . . . logical thinker . . . hard fighter . . . accomplishes much—in bursts!

Adele White, BBB, ΣΦΔ

CABIN JOHN, MARYLAND

BIOLOGY

Beta Beta Beta (Secretary, 3); "A" Club, 4; Intramurals, 1, 2, 3.

Theme song: "I Love the Hosses" . . . small fussbudget . . . generous, warm-hearted.





Betsy Winter, CAP AND GOWN

WASHINGTON, D.C.

ENGLISH

Cap and Gown (Historian, 4); National College Poetry Society (Vice-President, Treasurer, 3); Eagle, 3, 4; Eyrice (Poetry Editor, 3).

Miss Americana . . . whiff of "Tweed," tinkle of a green grape-bracelet.

Marguerite Woodberry, ΦM

WASHINGTON, D.C.

CHEMISTRY

Phi Mu (Assistant Treasurer, 3; President, 4); Dramat, 1, 2; Glee Club, 4; Chorus, 4; Student Christian Association, 1, 2, 3; Panhellenic Council, 4 (Secretary, 4).

Army brat . . . harmonizing element among chemical unknowns . . . lovable, gracious, dainty.

Merritt L. Harding, ΦΣK

TUNKHANNOCK, PENNSYLVANIA

POLITICAL SCIENCE

Phi Sigma Kappa (Secretary, 3; Vice-President, 4); Ancola, 2 (Advertising Manager, 2); International Relations Club, 1, 2, 3, 4.

Brisk and lively . . . a cheery twinkle reflected in his specs.

Elizabeth Ellison

WASHINGTON, D.C.

SOCIOLOGY

Tennessee Wesleyan College, 1, 2; Student Christian Association, 3.

Clara Jane Langmack

WASHINGTON, D.C.

EDUCATION

University of Copenhagen, Denmark, 1; Marjorie Webster School, 2; Intramurals, 3, 4.

Mervin Harris

WASHINGTON, D.C.

ECONOMICS

Debate, 4.

Douglas Stephenson

WASHINGTON, D.C.

HISTORY

Student Christian Association, 1, 2, 3, 4; Basketball (Assistant Manager, 1, 2).

Margaret Thornton

WASHINGTON, D.C.

ROMANCE LANGUAGES

Organ Assistant, 3, 4.

“The Meeting was Adjourned at--”

“WORTHY opponents.” . . . Creech nonchalantly dashing off debate letters on the way to class. . . . Pile of chorns envelopes on the piano. . . . “The blend was good. Basses, cover that top tone.” . . . Mr. Mac’s harem. . . . Little Jo patiently correcting galleys. . . .irate editor demanding ad. copy from a slow-poke printer. . . . “Who stole the AUCOLA scissors?” . . . Stewart gleefully de-gluing brushes. . . . Pile of Xmas toys in the lobby of Hurst—“You too can help make poor chillun happy!” . . . “Le cerele francais,





jeudi, a quatre heures." . . . Patterson on the Lima Conference — Pol.sci. studes listen seriously. . . . "Speaker's Bureau? Oh, ask Amtower." . . . Poetry Club members in the little dining room munch and chuckle at Sartwell on Wordsworth. . . . This business of being wardrobe mistress, stage manager, scene shifter, *et al.* . . . Entr'aete tango by Shoop and Bartlett—Third bruiser, Toner, caught in a spring dance to *Greenfinger's* overture!



CAN YOU HAVE A DATE?
(Let us get ONE PARTY)

NAVY BEER
ΤΒ Φ







Dr. Weeks, Ronald McCulloch, Miss Cotton, Helen A. Miller, Dean Brown, Dean Woods, Miss Zink, Ernest Webb, Dr. Bauer, Wilbur Parker

College Council

OFFICERS

Charles Stewart, *President*

Samuel Keker

Vice-President

Solange Strong, *Secretary*

Wilbur Parker '38-'39

Bill Adams '39-'40

Comptroller-Business

Managers

Helen Miller

Charles Mayer

Junior representatives

Ernest Webb, Jr.

Sophomore representative

Ronald McCulloch

Freshman representative

Faculty representatives

Dr. Bauer

Miss Cotton

Miss Zink

Miss Brown

Dr. Woods

Dr. Weeks

Dr. McConnell

Dr. Gray

"**B**USINESS, business, all is business," saith the College Council, that new experiment in communal college government. This form of government replacing last year's Student Council is at present proving highly successful. An attempt at student-faculty-administration cooperation, it is made up of representatives of three groups, students, faculty and the Chancellor.

To meet student demands for evidence of more work and less talk, for more cooperation and less indignation, for more liberalism and less conservatism, the following plan was drawn up last year and passed through the College Questionnaire (which happily included everything from chapel, to council, to chow): technically, the main jobs of the council are to approve budgets, to distribute money among the various campus organizations, and to act as a clearing house for suggestions con-

cerning campus improvements and college policy changes. If a suggestion or a proposal originates in one of the campus boards, it is then referred to the council: from there it goes to the student body and to the faculty, finally returning to the council (that is, if there's a wisp of the original proposal still floating around).

When one delves into the mysteries of council personnel, there are four students on the council, chosen by their respective classes, and four seniors elected by the student body to fill the various offices, in addition to eight faculty members elected by the faculty at large. Voilà, gentlemen, we give you the College Council.



Charles Stewart, President of the Student Body

Social Activities Board

DOES your club or class feel the call of soft lights and swing? Then hie yourself to see Mary Martz, chairman of the Social Activities Board. This obliging young lady will fix you up with the proper date and tell you all the whys and wherefores of dance giving, such as the time, finances, and chaperons.

To be more explicit, this branch of the College Council is the coordinator of all social activities and must O.K. everything from the Waeky Tacky to the Junior Prom. Representatives from each class and the faculty committee on social affairs meet to decide the policy in regard to college functions. This year the board has attempted to give the college more and better dances with a most pleasing result.

Orientation Board

A BOON to Freshmen, the Orientation Board, acting in conjunction with the College Council, is made up of five students, two appointed by the board's president, the others elected from the three upper classes.

Programs were planned and executed with the help of $\phi\alpha\kappa$, Cap and Gown, and the S.C.A.; one innovation was the election of student advisors chosen from the faculty.



THE AMERICAN EAGLE

VOL. 14

WASHINGTON, D. C. FEBRUARY 21, 1939

NO. 9

Addenda

By Spalding

Guild To Meet

Warren Enley of the Bureau of Standards will discuss experiments of that bureau at the regular meeting of the Women's Guild, to be held today at 11 a. m., in Women's Residence Hall.

CALENDAR

Wednesday, February 22—
Holiday
Basketball, Gymnasium: A.U. vs. Johns Hopkins
Thursday, February 23—
International Relations Club
Hurst Hall, 7 45 p. m.
Friday, February 24—
Basketball, Gymnasium, A.U. vs. D.

Debaters Encounter Numerous Opponents

Representing the Men's Varsity team, Donald Crouch and Melvin Fox are to debate the Southeastern University at the Y.M.C.A. on February 21. On the 24th the affirmative team consists of Crouch and Fox.

A. U. Chorus Concert Tour Includes Radio Broadcasts

Dramatics

"The Tam" at Spring

Philadelphia Alumni Dinner Planned For Trip

thirty-one members

WITH smooth feathers and a polished beak the Eagle flapped down on us unawares this year. Before we knew it, sixty names were appearing on the masthead as keepers of A.U.'s bird-child.

Desks pockmarked by many pencils and three perforated typewriter ribbons on three dilapidated typewriters constitute the permanent features. Non-permanent features include gum-chewing editors, harassed head-writers looking for non-existent pencils, and feet-proping reporters who know and tell the latest dirt.

Take a bow, Editorial Board.





EDITORIAL BOARD

Edward Dietz

Jo Shepherd

Irving Spalding

ASSOCIATE EDITORS

Desk Editors Charles Coddry, Charles Laughton, William McClure
Daily Bulletin Ruth Sherier *Photography Editor* . . . Walter Barkdull

NEWS STAFF

Muriel Bain, Leon Bick, Mickey Binder, Margaret Bleth, Adelaide Bushong, Frances Campbell, Addison Clay, Frances Cruikshank, Jean Evans, Lois Evans, Virginia Goodwin, Marjorie Hale, Fred Horton, Gordon Jowers, Shirley Karns, Mary Janet Kenyon, Norman Leonard, Robert Little, Codelle Lushbaugh, Tina Marsh, Mary Martz, Betty Mathews, Jean Miller, Ronald McCulloch, Ralph Randell, Sara Ann Rapp, Beryl Reed, Hector Sherertz, Henry Shields, Dot Smith, Charles Stewart, Carl Taylor, Jacqueline Waldron, Nancy Warner, Daniel Wentz, Vivian Yeager, Margaret Ellison, Nell Sarles, Betty Sadler, Jean Aller, Elsie Stavely, Betsey Winter.

BUSINESS BOARD

Business Manager Helen Palmer *Accountant* Harold Boudman
Circulation Manager Judith Rose *Advertising Manager* . . . Levi McCrady

BUSINESS STAFF

Mary Curry, David Einstein, Babette Liebman, Marjorie Hale, Mary Posey, Jan Wheeler, Gordon Jowers.

1938 Member Associated Collegiate Press 1939



*Associate Editor, Catherine Knokey
Literary Editor, Frances Brewster
Editor (Chief "Time" Killer!) Helen A. Miller*

"Time" Killers

BRAIN trusters with literary leanings have done considerable leaning over the desks down in the AUCOLA office for the past few months. Saturday after Saturday has seen the Editor and her cohorts pasting, cutting, scribbling, and clawing their craniums for original ideas. Saturday after Saturday has seen the book crawl a little nearer toward completion. Innumerable quantities of pencils have been sharpened, uncountable sheets of copy paper have found a final resting place in the waste basket.

The AUCOLA this year has entered upon a new policy of informality as to write-ups and candid shots as to pictures—these innovations, by the way, making a terrific dent in tradition.

AUCOLA STAFF

Editor..... Helen A. Miller

EDITORIAL STAFF

Advisory Associate Editor..... Mary Lou Klaas
Associate Editor..... Catherine Knockey
Literary Editor..... Frances Brewster
Photographic Editor..... Ernest Webb
Activities Editor..... Virginia Rightor
Sports Editor..... Harold Toner

STAFF

Staff Assistant..... Adelaide Bushong

Charles Davidson, Barbara Marshall, Henry Shields, Sarah Stewart, Fred Horton, Shirley Karns, Sarah Anne Rapp, Elizabeth Lawton, Lois Taylor, Dorothy Loftis, Rene Beard, Lillian Hawkins, Mary Schaller, Mary Martz, Judith Rose, Margaret Ellison, Frank Meloy, Mary Hudson, Mary Curry, Margaretta Eckloff, Susan Moore, Nancy Warner.





“The Do’s and Don’ts”

EDITORS

Solange Strong
Helen A. Miller
Edward Dietz

Assistant Editor
Catherine Knoockey

INSTEAD of fooling around with stone tablets as Moses did, A.U. goes modern and sends out her commandments in a little black book. By the aid of this little jewel, size five inches by three inches, students of the old, new, and prospective varieties can find out all there is to know about American University.

The Handbook which is published by the College Council this year turned over tradition’s apple cart and included a complete list of the Panhellenic rushing rules. Explanations of the new set up in College government complete with diagrams and keys to the diagrams found a prominent place.

In short, if you want to know where to park, to eat, to sleep, to study, to dance, to buy your books, or to pay your bills we refer you to the Student Handbook.

Women's House Council

SHARE the wealth is the slogan of this year's House Council, carried out with feeds and spreads galore. Adopting the velvet glove policy, the new regime has brought about a better social relationship between the girls.

The dorm jitterbugs enjoyed most of all the niekleodian parties where pajama-clad girls swing and sway to the soft strains of Benny Goodman and Tommy Dorsey.

High spot of the year was the Christmas season with parties, Santa Clauses, and the formal dinner preceding Dramat's fall play.

Permanent signs marking progress are the additions to the office furniture presented by the girls. Office occupants can now swivel and read comfortably in the new chair and reminisce about cheese, crackers, and cokes, hardness of the floor in house meetings, and Speaker Reed of the House banging for order.



OFFICERS

Beryl Reed
President
Virginia Hozier
Secretary
Constance Cooley
Treasurer
Muriel Bain
Proctor
Lillian Hawkins
Social Chairman



The "Bull" Ring



Dorm's choice



Varsity Debate Squad

“The Hog Callers”

VARSITY debaters opened their mouths, polished up their larynxes, and officially started business this year when the Women’s Team clashed with Iowa State Teachers’ College. By this time the Pi Kappa Delta question, “*Resolved*, That the United States should cease the use of public funds to stimulate business” has been batted around so much that at mention of the word “*Resolved*” the team gives one grand shudder.

With verbosity, verbatim, and hope of victory, A.U. teams have uttered “Worthy opponents” against colleges from the stern and rock-bound coast to those from the middle of a sorghum field.

Charles Stewart and Norman Leonard, representing American University, made a tour of several Eastern Colleges, winning some debates and losing some and returning definitely not speechless.

As if the Varsity team was not enough, Freshman Manager Edgar Kellar, holding a pencil in one hand and a glass of water in the other, has put his team through vocalizations against freshmen of adjoining colleges and local high school teams.

At this point thirteen black arm bands are being prepared for thirteen men and women carrying little wooden debate boxes for the loss of their favorite coach, John Crawford.

Speakers' Bureau

UNDER the able nursing of genial Bishop Amtower, this baby organization romped through its second year as one of the most wide-awake extra-curricular activities on campus. Last year thirty-six members of the Bureau used both pulpit and piano on the programs of twenty-five different organizations.

Always bursting to express their opinions of their alert minds and bolstered by *Time* and the *Reader's Digest* (no ad!), this bunch of live wires promises to make the infant grow to gargantuan proportions.



Freshman Debate Team

Vocal Yokels

STUDENTS studying in the Hurst Hall Library are often vaguely aware of vigorous singing above them in the Assembly Room. If one is sufficiently annoyed to investigate, he will find the music producers to be either that choice group, the Chorus, or one of the glee clubs, concentrating with bulging eyes and quivering diaphragms on their exacting director, Mr. McLain.

Women's Glee Club



Men's Glee Club

For a time after resounding with rehearsals for a busy fall of town concerts and Christmas Chapel, the school is strangely silent on a Wednesday evening or two; everyone knows that the Chorus is on its annual concert tour. Aided by the spirited publicity of Mr. Wolfe, the Chorus not only sang programs in Harrisburg, in Philadelphia, and in East Orange, but also broadcast over several stations in these cities.

Later in the spring, not to be outdone, the Glee Clubs whetted up their tonsils and warbled at several local engagements.



Chorus and Chapel Choir



Just picture that! . . . Everybody bustling off to parts North, young man . . . Mr. Mac according to Curly—a wheel within a wheel . . . Wish somebody would tell us to keep our mouths shut . . . Talk about screen tests—or should we say scream tests . . . Faces that only a mother could love.



“The Two Timers”

WITH the strains of “Minuet in E,” “Who is Sylvia?” and one of Sousa’s marches the representatives of A.U.’s musical department made themselves known this year at the fall play—with tuxedos and music stands conspicuously filling the front of the gym. On the not-to-be-forgotten list is their music at the spring Shakespearian play. A postscript on that same list would include the annual concert given before the Student Assembly, followed, needless to say, by considerable whistles and clappings such as only an A.U. audience can render.

The band, after brushing off the spider webs, dragged out horns and traps for a session at football game and pep rally to the gratification of all concerned except the spiders.

Anyone who has ventured down near the band room on practice days can testify to the fact that both band and orchestra have practiced regularly. The final results show that Mr. Nuelson, the new director, must have done some pretty successful baton-waving during ‘38-’39.



Student Christian Association

OFFICERS

James Hewitt, *President*
 Josephine Shepherd
Vice-President
 Erva Barger
Recording Secretary
 Dorothy Loftis
Corresponding Secretary
 Charles Laughton
Treasurer
 Lillian Hawkins
 Victor Purse
Social Chairmen
 Carl Taylor
Publicity Chairman
 Virginia Hosier
 Ernest Webb
Campus Contactors
 Dr. A. B. Potorf
 Dr. J. W. McConnell
Advisers

A WELL-PLANNED and varied program, a progressive and hard-working cabinet, interested and helpful advisers—all have contributed to make the Student Christian Association one of the most active, influential organizations on campus. Throughout the year the group has striven to acquaint the students more fully with Washington and to present more vitally some of the social problems. The first of the many campus activities of the Association was Freshman Week, aiding the new students to familiarize themselves with the college. In the fall Dad's Day, and in the spring Mother's Day, were well carried off. Vesper services were conducted both at Thanksgiving and at Christmas.

The Association did not confine itself to the campus alone, but extended its work throughout Washington. At a Hallowe'en

Carnival it acted as host to the Christian Endeavor Union and the Epworth Leagues of the city. Interesting field trips were conducted to various community projects, notable various alley dwellings of the city and to Greenbelt.

Happiness was brought to some of the less fortunate people in the city by a Christmas party, given for one hundred fifty under-privileged Washington children; by a Valentine party given in February for children of the Swartzell Methodist Home for Orphans, and by a program given at the Old Folks' Home early in the spring.

Inter-racial understanding was bettered through a group discussion between members of the Student Christian Association and students of Howard University. Instead of discussing race problems the group considered juvenile delinquency, a subject of common interest to both races.

This year S.C.A. has featured inter-collegiate activities including a combined mass Easter service on Good Friday and a conference held in April with colleges from along the Atlantic seaboard.





Dr. Patterson and Kim Shoop, President
of the International Relations Club

International Relations Club

THE International Relations Club is an outgrowth of a desire on the part of the students of The American University to increase their knowledge of international affairs. By becoming acquainted with foreign countries through exchange students, the I.R.C. is endeavoring to destroy prejudices and to create an attitude of tolerance for the foreigner's ideals and ways of living.

The year's activities were opened by a picnic at which Dr. Riddick told of his year in Germany. Later Dr. Ellory Stowell of the Graduate School and Robert Eggart, international exchange student from the University of Berlin, spoke on current European problems. The Hall of Nations students from Holland, England, Hungary, Brazil, and Italy participated in a panel during the year.

Other speakers included Dr. John C. Patterson from the Graduate School, whose topic was "The Lima Conference," and Sir Wilmot Lewis, foreign correspondent for the *London Times*.

“Words-Worths”

OFFICERS

Nellie Strong
President

Fred Horton
*Vice-President and
Treasurer*

Sarah Anne Rapp
Recording Secretary

Gordon Jowers
*Corresponding
Secretary*

IT is the ambition of all campus poets to become members of Omicron Epsilon Pi better known as the Poetry Club. Requirements for entrance to this select group are very stringent, however, and an applicant must show that he is interested not only in pouring over the works of good poets but that he is a pretty fair pen-wielder himself. Once or twice a year the club sponsors a contest to encourage campus poets and those whose verses come up to the standards of the society are invited to become members.

Once a week the club meets to hear readings of the works of world-famous poetry as well as campus-noted writings. Occasionally the meetings become parties and are held at the homes of various members.

To encourage further the chewing of pen-tips for poetic inspiration, plans are now being made to print a monthly for poetic effusions.



Helen A. Miller, Addison Clay, Jacqueline Waldron, Alice Swick, Sarah Anne Rapp, Fred Horton, Jean Evans, Francis Hill, Gordon Jowers, Alicia Allen, Mary Slappey, Virginia Rightor.



Shakespeare's immortal "Hamlet" is American University's thirteenth Shakespearean production.

“Socks and Boots”

Catherine Knoockey
President

Mary Louise Klaas
Stage Manager

Eliza Goddard
Carroll Vigeant
Property Mistresses

Rene Beard
Wardrobe Mistress

Harold Toner
Electrician

IN the spring of 1938 Dramat seriously undertook the tremendous task of bringing Professor Hutchins' dream of ten years' standing to a final culmination. They produced *Hamlet* on Friday the 13th! No lightness of mood or flippancy of acting dared creep into the boards of the gym during the four months of intensive rehearsal; the cast disciplined itself gruelingly by keeping tragedy's boot firmly in place. The result—A.U. will never forget its own production of *Hamlet* that reached professional standards in its artistic perfection.

But the minds of college students can be suppressed just so long and then—they secure and present an opus title *Mystery at Greenfingers* containing enough gunshots and

screams to offset any possible permanent Hamletian infection. Indeed, the first production in this country of J. B. Priestley's comedy-mystery would make one think that Tragedy had stalked by forever, for the blooming flowers and trilling birds that heralded *Hamlet* returned, but Dramat, having tired of boots was doing a "Jiggs" in the comfortable socks of comedy, happily presenting the *Taming of the Shrew*.



"Mystery at Greenfingers" with Catherine Knoockey, American University's eight play actress, starring

SHERMAN LEE has graduated. But it is the privilege of the 1939 AUCCOLA to recognize the beauty and artistry of his portrayal of Shakespeare's most difficult character—*Hamlet*. The performance will become a milestone in American University history, and it is to Sherm that the credit is due.



Four Seconds To Go!!!!

MUSCULAR men, sore throats and lemons, pennants and goal posts crooking their arms to usher in the football season — watching from the grandstand both victory and defeat—football echoes dying away in the distance—Hutterly and Purse setting feet to stamping down in the gym with their “A basket, a basket, A.U. wants a basket” — whizzing balls and newly lined courts drawing back the curtains on our heroes of the tennis world in white shoes and calloused hands—women not to be outdone donning their Amazon togs and issuing forth in the direction of the





basketball court to wrangle over games in the inter-class and inter-Sorority series —“Where are my shin guards?”—Hockey sticks cracking at the crucial moment—smaller balls doing their part manfully on the ping pong tables—a stage full of athletic A.U.-ites and the curtain falls.





Eagles Overcome Randolph-Macon
 American U. Eagles Down
 In Homer V. Menke Appointed
 George V. Menke Appointed
 Football Coach For 1939
 Haverford Bartlett Scores
 Sixteen Varsity Athletes
 Are Awarded Major Letters
 Schulze, Bartlett
 Stand Out Battles
 In Exciting Battles
 Staff Cassell Appointed
 New Director of Athletics
 For Period of Two Years
 Frank Award
 Football Captain Virginia
 A. U. Downs Bucknell Team
 Organizes
 Baseball Team
 38-32 Tennis Vacation
 Team Track Team
 Bartlett Wins Planning Trip
 Enters C. U.
 Brown N. Around
 Meet;
 Ping-Pong Tilts
 To Be Held on Campus
 Youth



Athletic Board

MEMBERS

Dr. Anderson
Chairman
Dr. McConnell
Dr. Engel
James Applegate
George Brown
Hugo Schulze

In order to centralize the athletic policy the Athletic Board consists of faculty members and students, with the Chancellor, the Dean, and the coaches being ex-officio members. This has resulted in a marked improvement over the previous system. The combination of students and faculty on the board has solved many of the former problems, as both sides are represented in the discussions.

The function of the board is to make recommendations for personnel, to determine what sports the school shall engage in, to choose the opponents, and to control the athletic budget. In the field of intramurals, the Athletic Board determines the policy to be followed.

This board has started the University on a sound athletic policy this year. This same spirit of cooperation and understanding on the board can lead only to a better athletic program.



“A.U.’s Bird Men”

STARTING the season with only four veterans the Eagles were handicapped as they came up against several seasoned teams. The lack of substitutes made it impossible to bolster the defense in the final minutes of the games. With the same eleven men playing sixty minutes of hard fighting ball each game, it is only fair to say they were winning or holding their opponents to a tie at each half time; and only by the use of fresh men against them were the opponents able to score their victories.

The highlight of the season was the victory over Saint John's College of Annapolis, giving American University its first victory over the Johnnies since the beginning of their athletic relations. The scores of the games are no indication of the efforts put forth by the men who carried the burden throughout the season. The work of the freshmen was highly satisfactory; their eagerness to carry on was an inspiration to the veterans to do their best. With these freshmen, with the sophomores, and with the juniors returning next year, the fortunes of the football team should swing upward.

Coaches Welch, Cassell, and Menke did a great deal of work in putting their charges in condition to play each Saturday. To these coaches we owe a great deal for their inspiring leadership and help. Their work in turn was not shown by the record of wins and losses, but it is recognized and treasured by those fellows who played under them.

Recognition

At the close of the season the Touchdown Club of Washington presented a trophy donated by George Marshall and the Washington Redskins to George Brown, as the most valuable player. This trophy is given each year to the outstanding player on the team, and it is fitting that it should go to George, who is not a headline player, but who is a hard-working lineman whose value is usually appreciated only by the backfield men. To next year's captain we can say, "Carry on, George," and we know he will lead the boys to victory.

In the rating of the local newspapers we find the names of Bartlett, Shoop, and Toner among the honorable mentions for halfback, tackle, and quarterback respectively. This honor is not to be taken lightly, for the boys deserve it, having been the main cogs of the Eagle machine for their four years here. Those football fans who watched them perform are sorry to see them finish their football careers at American University.



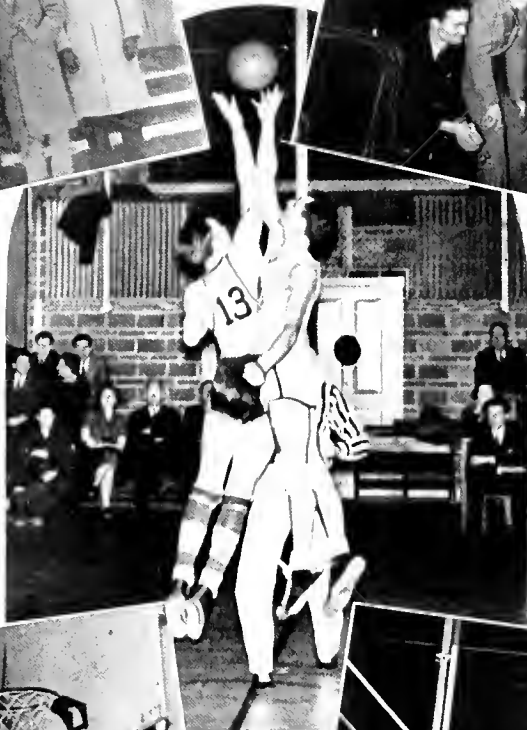
George Brown, most valuable player on American U.'s football team, receiving trophy from Coach Gus Welch

FOOTBALL SCORES, '38

A.U.	OPP.
0 Swarthmore	12
21 Saint John's	0
0 Hampden-Sydney	27
0 Haverford	31
7 Johns Hopkins University . . .	26



Local newspaper awards go to Barty, Shoop, and Toner



“It’s in the Basket!”

THE American University’s Varsity has left a splendid record, after going through one of the toughest schedules an Eagle quintet has ever faced. Competing with such teams as Georgetown, Manhattan, Bucknell, and Hampden-Sidney, the inspired Eagles did well to register nine victories against seven defeats. To those who watched the games, there was a definite feeling that the boys were working for a common purpose. Their excellent teamwork came as a result of hard practice and a spirit of cooperation; for this spirit the team owes much to their coach and friend, Stafford Cassell.

The work of Captain Bartlett was outstanding throughout the season, although he was hard pressed for honors by Hugo Shultze and George Brown. The appearance of Carl Byham on the Eagle court gave American University one of its most potential players. Among those men who made the team’s success possible through their unstinting efforts we find Webb, Riffenbary, and Hudson, the other lettermen on the team.





Stee--Rike Tha-Ree!!!

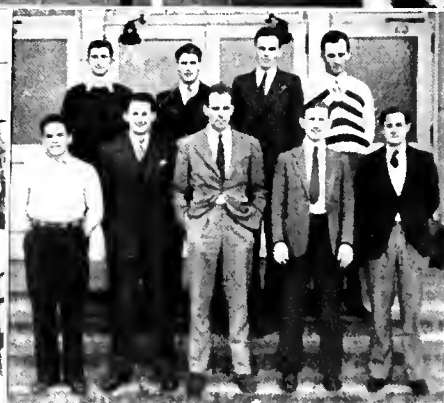
BASEBALL has returned to American University, after a lapse of several years, through requests of the students. The sport has been received with great enthusiasm, leading us to believe that in the future this sport will become an important part of our Athletic Department.

We are fortunate in having Stafford Cassell at the head of our baseball men. His experience at Dickinson Seminary, and for a time with Williamsport in the Ny-Penn League, will be valuable to the team. Should he prove as versatile in baseball as he has in the other sports he has coached, we are assured of a well-coached and alert nine.

Believing that a good start is half the battle, Staff has scheduled some of the best nines in this vicinity, among them are: Georgetown, Western Maryland, Juniata, Hampden-Sydney, and Randolph-Macon. With this type of opposition the team will be forced to produce some fast ball, and according to early predictions the boys will be able to hold their own throughout the schedule.

Deuce

PROCEEDING as in the past, Doc Holton, the tennis coach, has scheduled some of the finest tennis teams in the East for the Eagle opponents. Among them are Cornell, Wake Forest, Elon, Virginia Military Institute, Johns Hopkins, Georgetown, Bucknell, Hampden-Sydney, Wayne, Randolph-Macon, Bridgewater and Catawba. It is the opinion of the coach that this year's team will prove to be of the same high calibre as in the past. Led by Bud Fausold, one-time Pennsylvania State Junior Tennis Champion, supported by Webb, Hudson, and Sitnik, lettermen from last year, this team should prove to be one of the best the University has ever had.



Intramurals

THIS year the Intramural department under the direction of Stafford Cassell has endeavored to give a varied and active sporting program to all the men of the college. The program has for its objectives recreation, social contacts, group spirit, better health, a more varied interest in all sports, and better scholarship from the participants in its activities. The benefits of individual and group competition are enjoyed through basketball, soccer, table tennis, volley ball, horseshoe pitching, softball and swimming. Several coeducational functions such as a swimming party and a treasure hunt were held to aid the social activities of the University.

In addition to the campus program, contacts were maintained with the intramural departments of other colleges in the District. American University had the distinction of sponsoring the first table tennis tournament in the District of Columbia.

Next year new equipment will be obtained and gym instruction for its correct use will be given. Although a large percentage of the students not participating in varsity sports took part in the program this year, the aim for the coming season is to engage all of the students in at least one intramural sport.



Helen Brundage, Francis Hill, Sally Shepherd, Mary Lou Klaas, Helen Palmer, Erva Barger, Eunice Thawley, Dorothy Shepherd

"A" CLUB OFFICERS

Helen Palmer
President
Dorothy Shepherd
Vice-President
Helen Brundage
Secretary-Treasurer
Dorothy Shepherd
Hockey Manager
Helen Brundage
Minor Sports Manager

"A" AWARDS

Dorothy Shepherd, 2*
Sally Shepherd
Helen Brundage, 3
Erva Barger
Virginia Hozier
Helen Palmer, 2
Eunice Thawley, 2
Francis Hill
Mary Louise Klaas
Adele White, 2
Barbara Bryant

* Signifies total number of letters received in previous years

"A" Club

WITH the newly revised Girls' "A" Club offering an added impetus to participation in sports, girls galore turned out for the fall sports to win sixty points for their "A's."

The Eagle Hockey team swung into action with a bang. Many a ferocious Eagle bit the dust as she slithered along on her tailfeathers in the mud. In spite of hockey balls bouncing off heads and shins, we enjoyed our games with other Washington hockey teams. The hockey season closed with a dual meet held on the campus Homecoming Day.

Although the weather put a damper on the fall tennis tournament before the school champion could be determined, individual class winners proved their ability. To bring a successful season to a finish, the club awarded eleven deserving lassies beautiful new orange letters.



Informals • Interfrat Prom Formals

MINOR stampede in Sorority Hall on bid-day—"Pan Hell meeting today, chum."
... Sigma Phi Delta slumber party during Christmas. . . . Interfraternity heads together resulting in a samo-o-th dance— Invitation and programs to match. . . . Frat rushing—the weary willies dragging to school in between times. . . . A heavenly respite after Hell Nite. . . . Fifty-seven different varieties of practicing—Song Fest—Jaw-wide grins from A Chi O and Phi Ep. . . . Spalding, our new chorus director. . . . "Shall we go formal or not to that convention supper?" . . . No lounging at Alpha Thet-Phi Sig Fun Nite. . . .

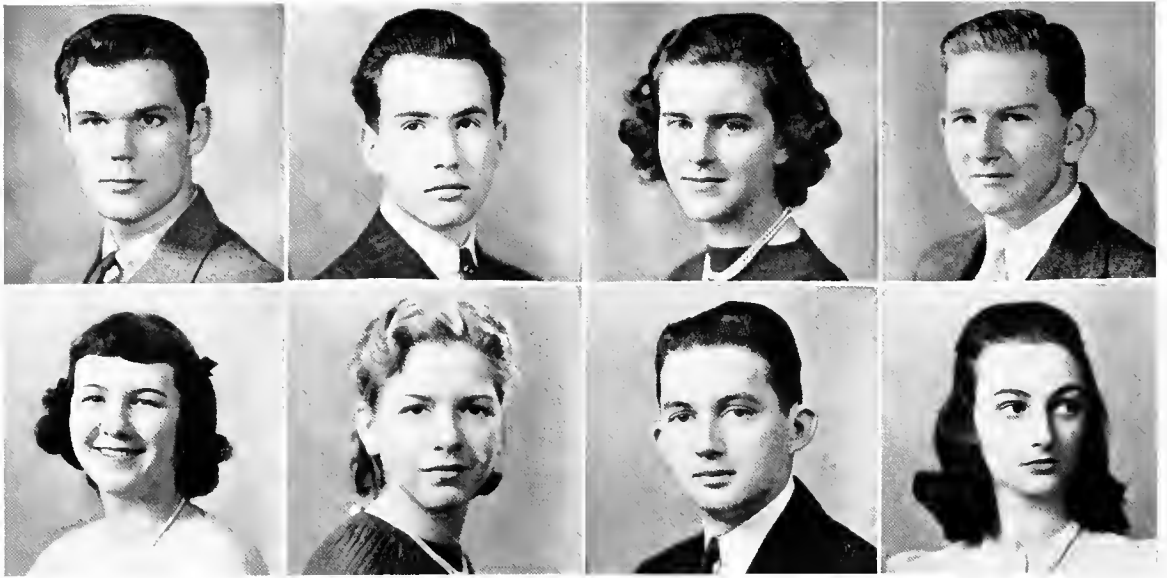




**More quartets on the loose! . . . Meloy a bit
bat-eyed from social meeting. . . . Elbows
on tables, bulling at Stouffer's. . . . D.G.-
Phi Mu district conventions coinciding—
respective presidents on their best. . . .
“Gee! Time for another set of rushing
rules!”**







College Honor Society

ONE of the most desired honors on campus is membership in College Honor, composed of seniors and of faculty members of Phi Beta Kappa and of Sigma Psi. This is recognition only for seniors who have unusual scholastic records and high standing in activities. The society notes not merely grades, but working, applicable knowledge, real scholastic achievement.

On April 11th an open meeting was held preceded by initiation of the entire group of seniors elected for the year. Dr. William Leisserson, chairman of the National Mediation Board, addressed the group.

OFFICERS

President Dr. Earl A. Dennis
Vice-President Dr. Lowell F. Huelster
Secretary-Treasurer Dr. Alton A. Lindsey

STUDENT MEMBERS

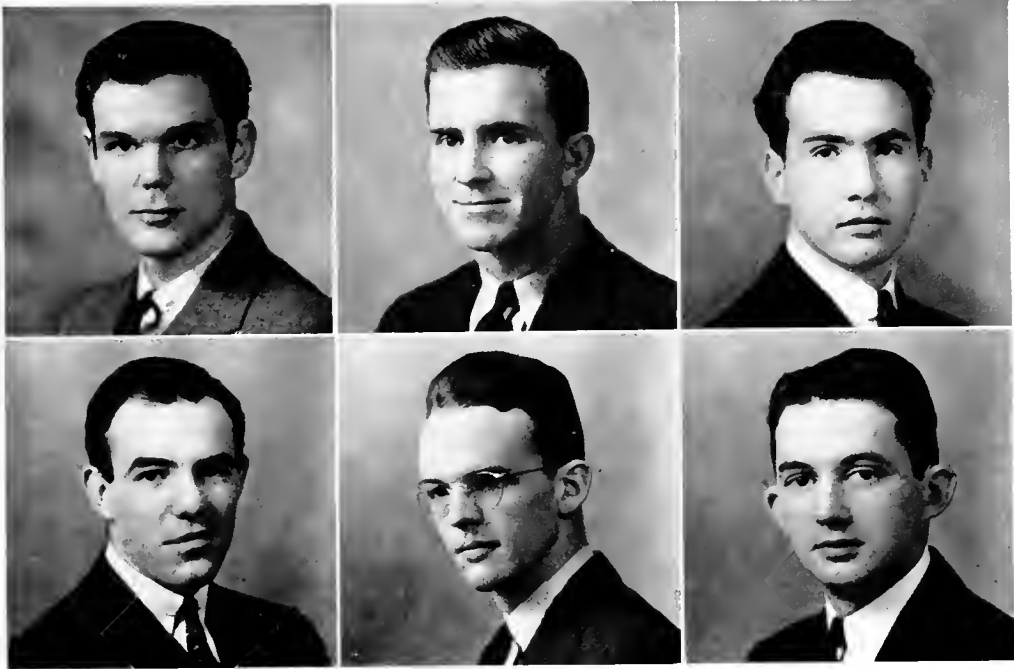
Walter Bastian, Donald Creech, Jean Evans, Lemuel Fraser, Catherine Knoockey, Mary Elizabeth Morse, Charles Stewart, Solange Strong.

FACULTY MEMBERS

Dr. George B. Woods, Miss Mary Louise Brown, Mr. Will Hutchins, Dr. Walter F. Shenton, Dr. Leon C. Marshall, Dr. Eugene Anderson, Dr. William B. Holton, Dr. Theodore Andersson, Dr. Louis C. Hunter, Dr. Glen F. Rouse, Dr. Edward W. Engel, Dr. Lowell F. Huelster, Dr. Earl A. Dennis, Dr. Robert S. Sackett, Miss Cornelia M. Cotton, Dr. Alton A. Lindsey.

ALUMNI MEMBERS—1936-38

Melvin Wheatley, Jr., '36; G. Albert Cooper, '36; Catherine E. Church, '36; Margaret R. Spiller, '36; Mary Lesta Wakeman, '36; Harriet A. Reed, '36; Carol Laise, '38; Susan Drager, '37; Margaret Hall, '37; Richard Hummer, '37; Frances Page, '37; William Powell, '37; Helen Sanderlin, '37; Owenita Sanderlin, '37; Marguerite Stevenson, '37; Ethel Whitlow, '37; Margaret Woods, '37; Mary Aiken, '38; David Copenhafer, '38; Jane Getz, '38; Rita Lentz, '38; Lucile Maris, '38.



The O.K.'s

In 1938 the local Brahmin Honor Society was awarded the Alpha Omega Circle of Omicron Delta Kappa, national honorary fraternity which recognizes men who have attained a high standard of efficiency in collegiate activities. It brings together the most representative men in all phases of college life and links members of the faculty and student body on the basis of mutual interest and understanding. This year a change was made in policy. From now on new members will be elected without previous petitioning.

The group helped in orientating the Freshmen and has spent much time in arousing interest in ODK in other schools.

The president for 1938-'39 is Walter Bastian. Other members include Sam Kecker, Charles Stewart, Emerson Bartlett, Donald Creech and Irving Spalding.



Omicron Delta Kappa tapping



“We are Seven”

**MEMBERS OF
CAP AND GOWN**

- Solange Strong
- Betty Morse,
President
- Dorothy Loftis
- Betsy Winter
- Catherine Knoockey
- Josephine Shepherd
- Helen Palmer

CAPS and Gowns didn't seem to cramp the style of seven senior women who appeared first behind the hot dog and candy counters at the football games earning enough sheekles to warrant making out a budget.

Budgeting both time and money, they managed to squeeze in teas, Freshmen and career ditto, charm school, and in collaboration with the Physical Education Department, an attempt to make of a May Fete a timely American tradition for American University.



“Cham Session”



Pi Gamma Mu

OFFICERS

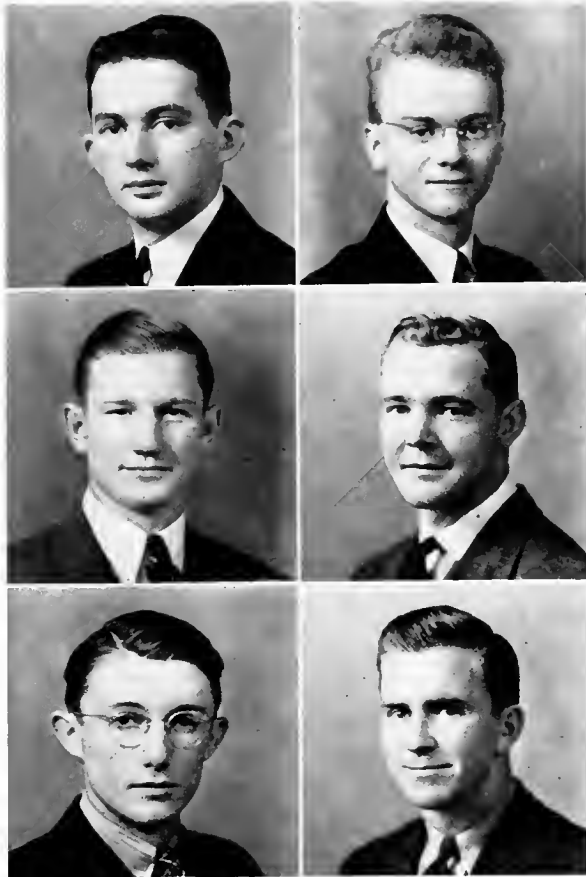
Charles Stewart
President

Norman Leonard
Vice-President

Dr. Lowell F. Huelster
*Secretary-Treasurer and
Faculty Adviser*

OTHER MEMBERS

Dr. Delos O. Kinsman, Dr. John McConnell, Dr. Allan Fisher, Kimber Shoop, Leon Bick, Emerson Bartlett, and Harold Boudman.



Charles Stewart, *President*
James Boudman
Leon Bick

Norman Leonard
Kimber Shoop
Emerson Bartlett

THE Gamma chapter of Pi Gamma Mu, National honorary Social Science fraternity, was installed at The American University in 1931. As its purpose, the fraternity chose the promotion and rewarding of scientific study of social questions. Membership is extended to students majoring in history, in addition to the usual membership including those majoring in economics and political science.

“Nature’s Noblemen”

FOR the many A.U. students who devote themselves cross-eyed to glaring patiently into microscopes in order to glean the exclusive facts of the private life of a hydroid or of a dahlia, there has been established a chapter of BBB, the national fraternity for biologists. Aspirants to this vegetal circle must have made superior grades in a definite number of hours—no loafing here!

Not content merely with the usual routine of study, BBB wishes to stimulate students to find out for themselves the number of feathers on a chicken or the history of a typhoid microbe. Seminars are usually held to benefit other members by reports on these research sessions.

To instruct wondering laymen in the mysteries of the universe, every other year the organization sponsors a science show. Here we see *literati* and world affairs experts reduced to open mouths and popped eyes wandering about the labs enjoying the sealy company of gila monsters and hop toads, the intimate squeeze of the blood-pressure gauge, and the sudden magnifying of the circulatory system of an egg.





“The P. D. Quills”

OFFICERS

Mary Lou Klaas
President

Helen A. Miller
Secretary-Treasurer

ONCE a week when the Student Council room is perhaps caught empty unawares, a stream of literary individuals with pens dripping behind their ears make the “pub” next door echo with talk about the “Literary.” These are members of Pi Delta Epsilon, the journalistic frat, elected because they have been chief slave drivers on newspaper and yearbook staffs for at least two years and have faithfully kept the publications office heaped high with pictures and papers.

Innovators not only in the physical forms of publications but also in plans and projects, the Pi Deltas have formed a Publicity Board for events on campus; in other words, if Murgatroyd Q. Boomer is elected to a praiseworthy organization, the home town is notified and the big boy is written up in an inch squib in the local gazette. Another philanthropic scheme is the school for embryonic college editors sponsored by the V.I.P.A., the all-high interpress association.



Charles Stewart, '39
President

Jane Getz, '38

Mary Lesta Wakeman, '36

Delta Sigma Rho

HIGHLIGHTING the year for Delta Sigma Rho, national forensic fraternity, is the National Student Congress of Delta Sigma Rho held here in Washington in the spring.

Members are elected to the organization on the basis of scholarship, two years' active work on the Varsity squad and participation in at least three intercollegiate debates. Charles Stewart is the only member on campus this year. Lesta Wakeman and Jane Getz are graduate members. Dean Woods is the faculty adviser.



Interfrat Council

OFFICERS

Walter Bastian
President

Charles Mayer
Vice-President

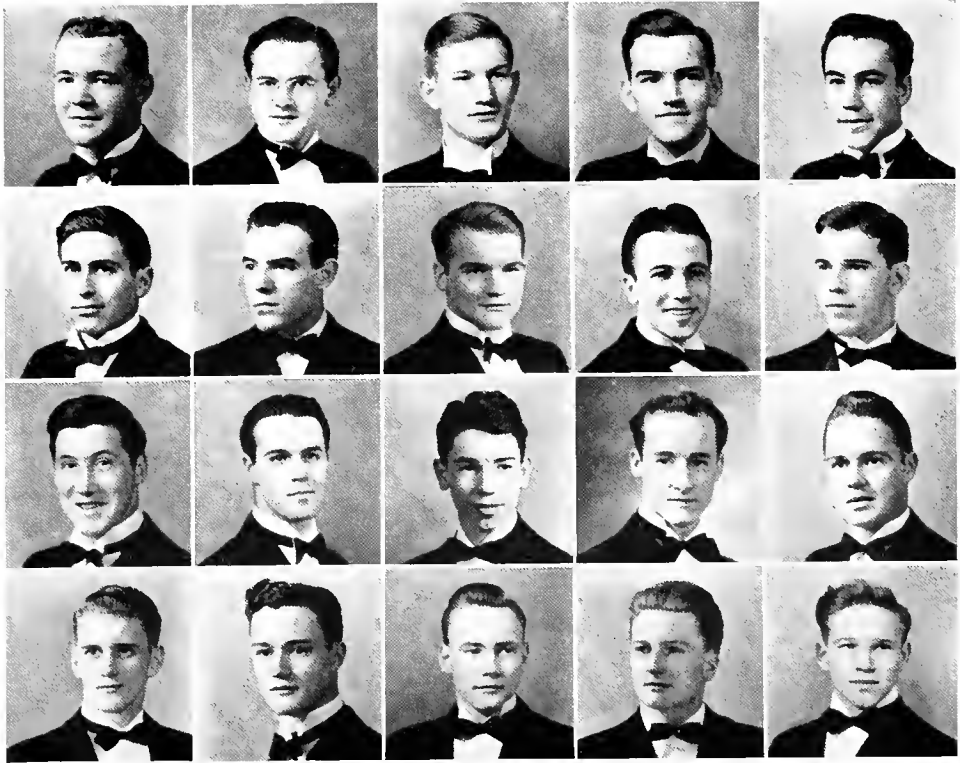
Kimber Shoop
Secretary

Emerson Bartlett
Treasurer

PRESIDENTS from all the fraternities and one additional brother from each group compose the Interfraternity Council. Its purpose in life is to promote better conditions among both frat and non-fraternity men on the campus. In addition to this the members pool their wits to draw up rushing rules and other regulations which pertain to all the fraternities.

Walter Bastian, gavel in hand, fills the executive position. Dr. Lowell F. Huelster is the faculty adviser. Other members include Jack Earle, Charles Mayer, Emerson Bartlett, Carl Taylor, Sam Keker, and Dick Connelly.

Brothers and sisters of the Interfraternity Council and Panhellenic Council, respectively, held a family reunion in a big way in the fall—the result being the Interfraternity Prom, a compliment to any family.



Sloop
Connelly
Hall
McClure

Harding
Keker
MacKellar
McCulloch

Boudman
Maize
Sparks
Byham

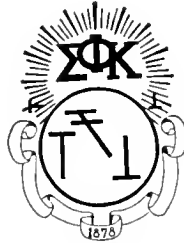
Hewitt
Orshak
Evans
Fox

Adams
Toner
Fausold
MacLane



Phi Sigma Kappa

Founded at MASSACHUSETTS STATE COLLEGE IN 1873



EPSILON TRITON CHAPTER

Established November 14, 1936

CHAPTER OFFICERS

<i>President</i>	Kimber Shoop
<i>Vice-President</i>	Merrit Harding
<i>Sentinel</i>	J. Richard Connelly
<i>Treasurer</i>	C. Harold Boudman William E. Adams
<i>Secretary</i>	James Hewitt

MEMBERS

Gregg Burns, Carl Byham, Latimer Evans, Bud Fausold, Robert Hall, Samuel Keker, Gerald MacKeller, Samuel Maize, Ellsworth McClane, Bill McClure, Ronald McCulloch, Paul Orshak, William Robinson, Jack Sparks, Harold Toner, Daniel Wentz.

Alpha Theta Phi

Founded at AMERICAN UNIVERSITY November 23, 1928

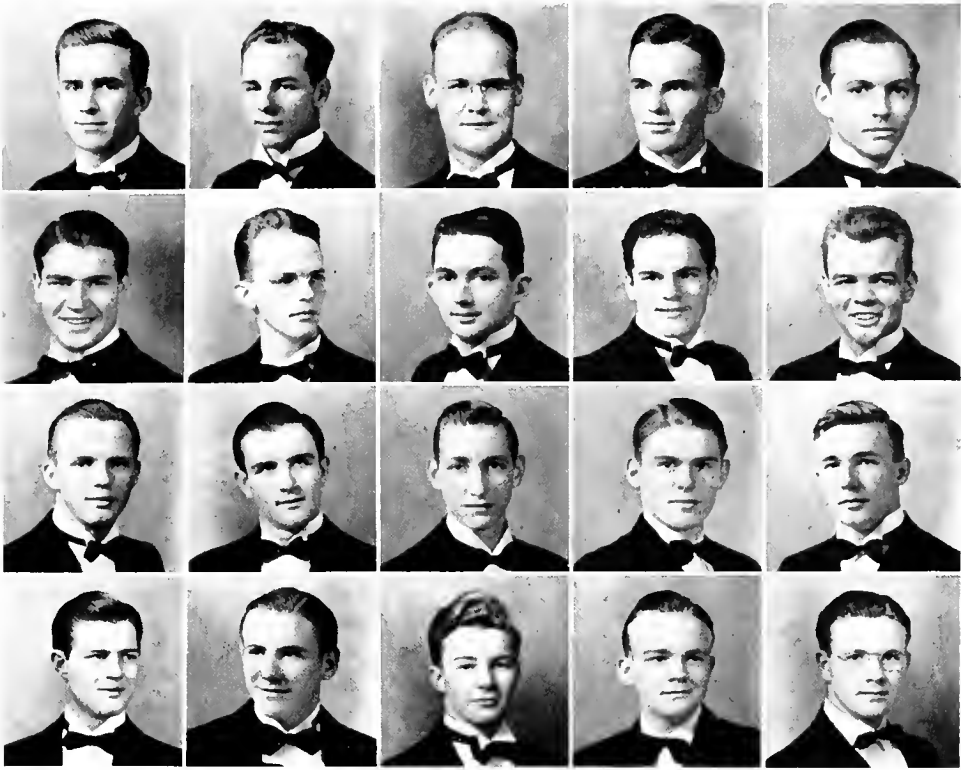


CHAPTER OFFICERS

President Emerson Bartlett
Vice-President Carl Taylor
Recording Secretary Bill Hutterly
Corresponding Secretary Howard Hudson
Treasurer Stanley Rauch

MEMBERS

James Applegate, George Blanchard, Charles Cordrey, Bruce Etehison, Hamilton Gewehr, John Jablonsky, B. M. Jacobson (social member), John Manchester, Wilbur Metealf (social member), Archie Norford, Eugene Norton, Bart Reese, Henry Shields, Irving Spalding, Charles Stewart, Glenn Sweigart, John Trowbridge, Ernest Webb.



Bartlett
Applegate
Norford
Trowbridge

Taylor
Spalding
Norton
Webb

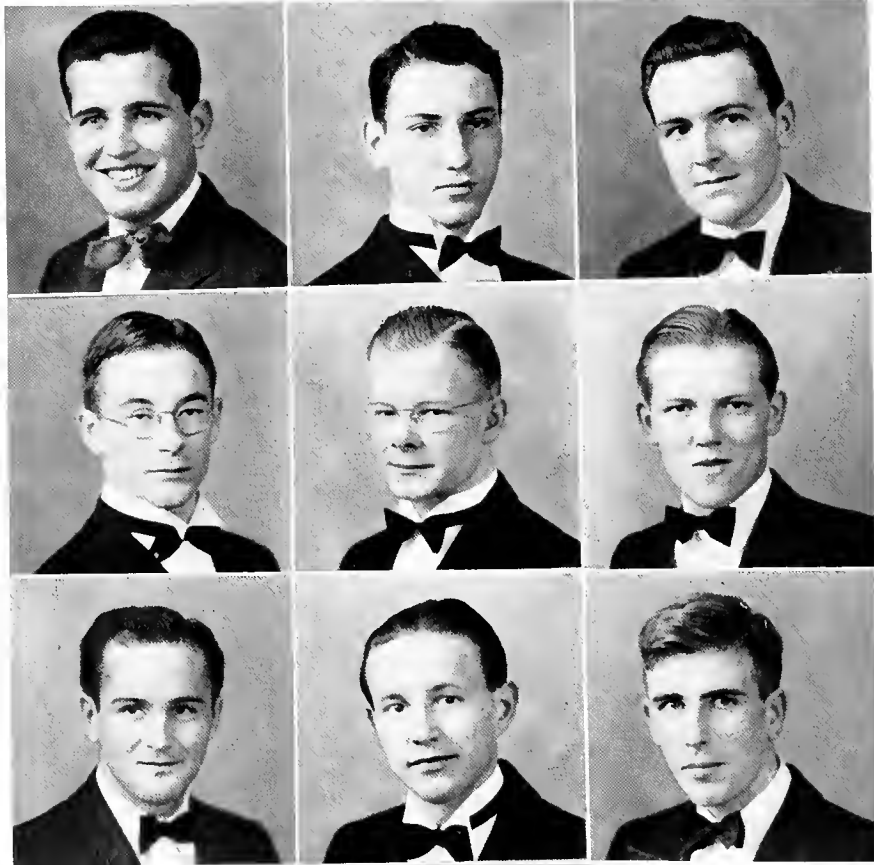
Rauch
Stewart
Etchison
Blanchard

Hudson
Sweigart
Gewehr
Manchester

Hutterly
Shields
Jablonsky
Reese



Founder's Day Banquet



Earle
Stevenson
Fuller

Walp
Winkler
Dixon



Mayer
Parsons
Ingalls
Narcera

Lambda Tau Sigma

Founded at AMERICAN UNIVERSITY 1937

CHAPTER OFFICERS

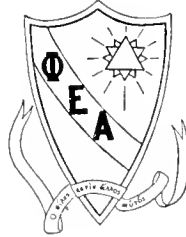
President John Earle
Vice-President Charles Mayer
Secretary William Thompson
Treasurer Joseph Walp

MEMBERS

Donald Davido, Robert Dixon, Dick Fuller, Charles Ingalls,
Joseph Nocera, Leland Parsons, George Schmedegaard, John Stephen-
son, Melvin Werksman, Herman Winkler.

Phi Epsilon Alpha

Founded at AMERICAN UNIVERSITY in 1937

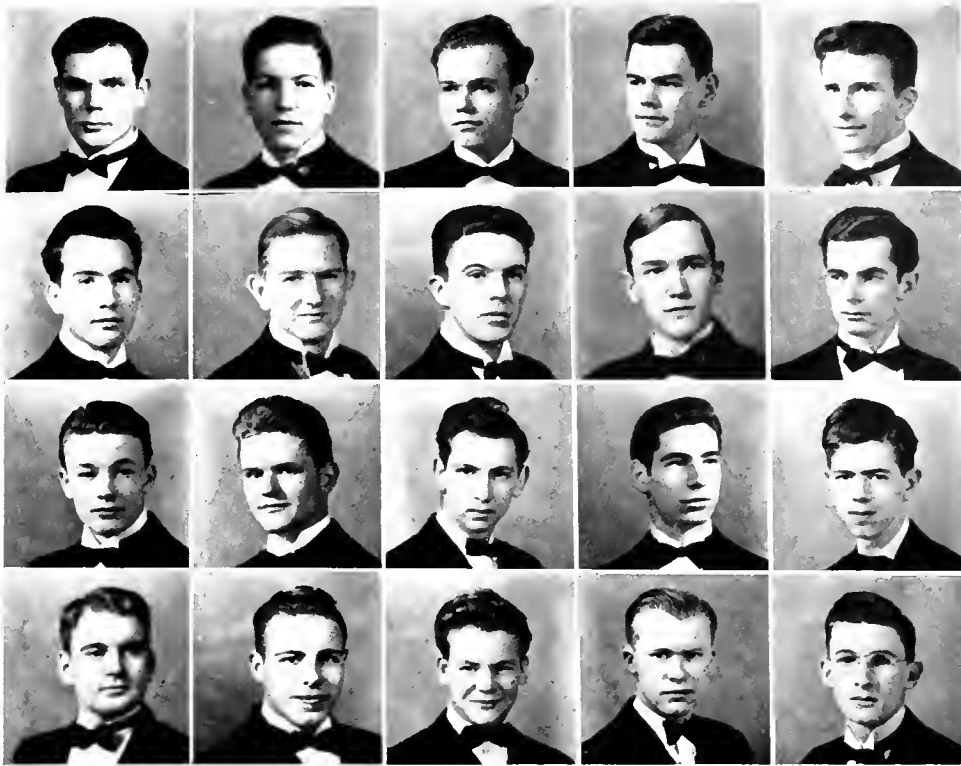


CHAPTER OFFICERS

President Walter Bastian
Vice-President James Donald Pettus
Corresponding Secretary Philip Bentley
Recording Secretary Fred Horton
Treasurer Wilbur Parker

MEMBERS

John Abbadessa, Walter Barkdull, Dura Chase, Donald Creech, Walter Handy, Burke Hertz, Gustave Hertz, David Hughes, Robert Lake, James MacFarlane, Frank Meloy, Robert Neff, Harry Newby, Edward Nicholson, Victor Purse, James Puryear, Charles Speuser, Samuel Stone, Clayton Wood.



Bastian
Creech
B. Hertz
Chase

Pettus
Fraser
Purveyar
Neff

Parker
Meloy
Spenser
Newby

Bentley
Handy
Abbadessa
Nicholson

Horton
Purse
Barkdull
Wood



Phi Epsilon Alpha Quartet



Bastian taps Creech for Omicron Delta Kappa



“Energetic Greeks”

OFFICERS

Virginia Goff, *President*

Charlotte Wells
Vice-President

Marguerite Woodberry
Secretary

Kitty Diekey
Treasurer

Barbara Marshall—
Alpha Chi Omega

Betty Lawton—Alpha
Phi

Ruth Dewey—Delta
Gamma

Helen Miller—Phi Mu

Katharine Biggs
Frances Brewster—
Associate Members
Sigma Phi Delta
Representatives

ACTIVE, energetic, enterprising—Panhellenic in its third year, is showing itself to be one of the most successful organizations on campus. By the able work of its members, who are the presidents and one representative from each sorority, Panhel has carried out a number of Herculean tasks, of which the classic example is the drawing up of rushing rules and the concurrent penalties for breaking, a job which leaves limp, but finally satisfied, sorority women.

Spectacular dates on Panhellenic's calendar were the tea for new women given at the beginning of the year, the Song Fest, one of the exceptionally entertaining events on campus, and the District Panhellenic Conference held in February.



THIRD ANNUAL SONG FEST WINNERS

Phi Epsilon Alpha, Fraternity first place

Alpha Chi Omega, Sorority first place

Phi Mu

Founded at MACON COLLEGE in 1852



GAMMA DELTA CHAPTER

Established November 19, 1933

CHAPTER OFFICERS

President Marguerite Woodberry
First Vice-President Helen Miller
Second Vice-President Elizabeth Smith
Secretary Mary Martz
Treasurer Lillian Hawkins

MEMBERS

Elizabeth Andrews, Elizabeth Ballou, Mary Banks, Patricia Cayo, Kathryn Chetham, Margaretta Eckloff, Lois Evans, Mary Mae Jacobs, June Jeffries, Jean Lines, Alice Massey, Virginia Omo, Ralpa Randall, Beryl Reed, Nellie Sarles, Corinne Seaton, Betty Stone, Laura Talbott.



Woodberry
Lines
Eckloff

H. Miller
Omo
Jacobs
Sarles

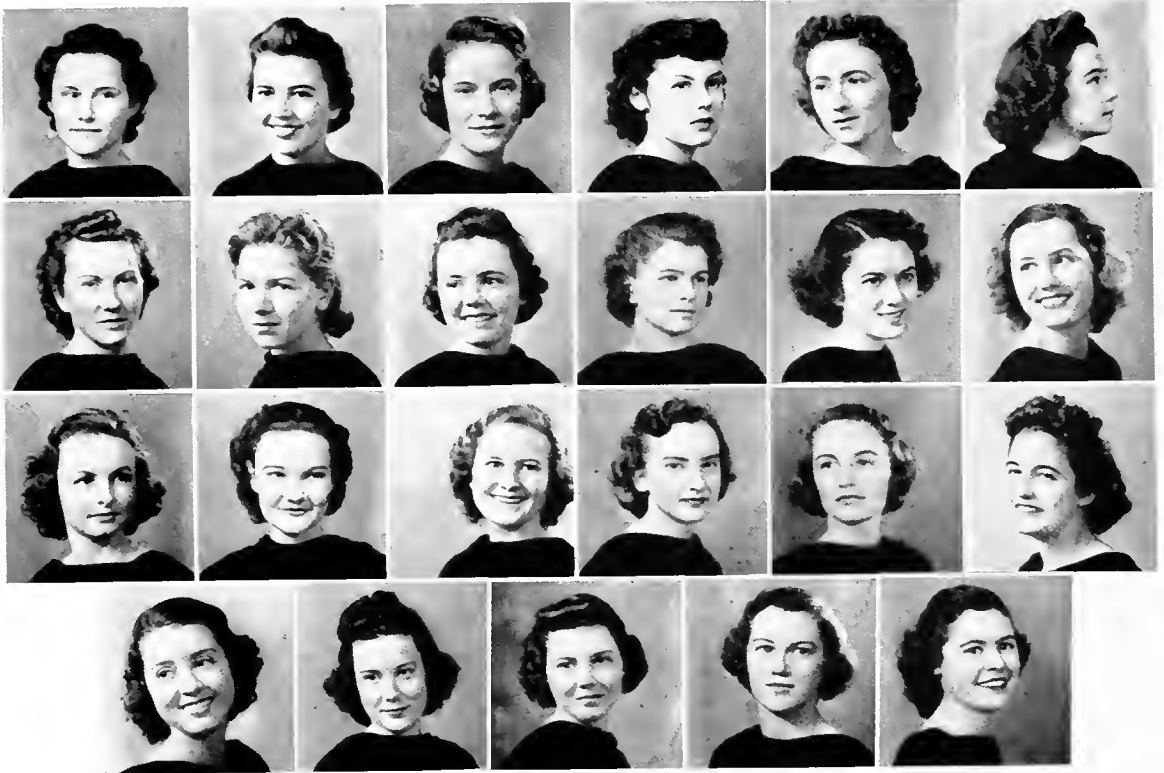
E. Smith
Andrews
Massey
Seaton

Martz
Ballou
Reed
Cayo

Hawkins
Chetham
Talbot
L. Evans

Banks
Christie
Jeffries





Dickey
Loftis
Posey

Harned
Palmer
Morse
D. Smith

R. Harris
Dewey
J. Shepherd
Howard

B. Smith
Hunsinger
Sorenson
M. Hudson

M. Warner
Rose
Todd
Marsh

Wheeler
Bain
J. Miller
Adams



Delta Gamma

Founded at UNIVERSITY OF MISSISSIPPI in 1876



BETA EPSILON CHAPTER

Established March 21, 1936

CHAPTER OFFICERS

President Catherine Dickey
Vice-President Helen Palmer
Recording Secretary Ruth Dewey
Corresponding Secretary Carol Hunsinger
Treasurer Judy Rose

MEMBERS

Betty Adams, Muriel Bain, Mary Curry, Ruth Harris, Beth Howard, Mary Hudson, Dorothy Loftis, Margaret Marsh, Jean Miller, Betty Morse, Mary Posey, Josephine Shepherd, Barbara Smith, Dorothy Smith, Carolyn Sorenson, Mildred Todd, Margery Warner, Janet Wheeler.

Alpha Chi Omega

Founded at DE PAUW UNIVERSITY in 1885



BETA RHO CHAPTER

Established June 3, 1937

CHAPTER OFFICERS

<i>President</i>	Virginia Goff
<i>Vice-President</i>	Claire Aubrey
<i>Corresponding Secretary</i>	Mary Lou Klaas
<i>Recording Secretary</i>	Catherine Knoockey
<i>Treasurer</i>	Ruth Smith

MEMBERS

Jean Aller, Rene Beard, Adelaide Bushong, Beth Drake, Jane Esterline, Virginia Hozier, Marian Johnson, Barbara Klein, Marjorie Letz, Norma Lambke, Codelle Lushbaugh, Barbara Marshall, Dorothy McCoy, Edith Mitchell, Sarah Anne Rapp, Wilda Smith, Carroll Vigeant, Nancy Warner.



Goff
Lambke
Esterline

Aubry
Vigeant
Forbes
Letz

Klaas
Beard
Hozier
McCoy

Knokey
Marshall
N. Warner
Mitchell

R. Smith
Bushong
Aller
W. Smith

M. Johnson
Drake
Klein





Wells
Rightor
Aldrich

Lawton
Strong
Binder
MacKennen

J. Rogers
Ellison
Costa
Parkhill

Campbell
Gibson
Gautier
Weible

Davis
Karns
Hale
Wilson

Cooley
Matton
Heimer



Alpha Phi

Founded at SYRACUSE UNIVERSITY in 1872



BETA XI CHAPTER

Established October 3, 1937

CHAPTER OFFICERS

<i>President</i>	Charlotte Wells
<i>Vice-President</i>	Elizabeth Lawton
<i>Corresponding Secretary</i>	Jane Rogers
<i>Recording Secretary</i>	Frances Campbell
<i>Treasurer</i>	Margery Davis

MEMBERS

Elizabeth Acton, Jean Aldrich, Margaret Binder, Constance Cooley, Tita Costa, Margaret Ellison, Mary Gautier, Beatrice Gibson, Margery Hale, Marjorie Heimer, Shirley Karns, Marguerite Mattoon, Klovia McKennon, Elizabeth Parkhill, Virginia Rightor, Solange Strong, Geraldine Weible, Betty Wilson.

Sigma Phi Delta

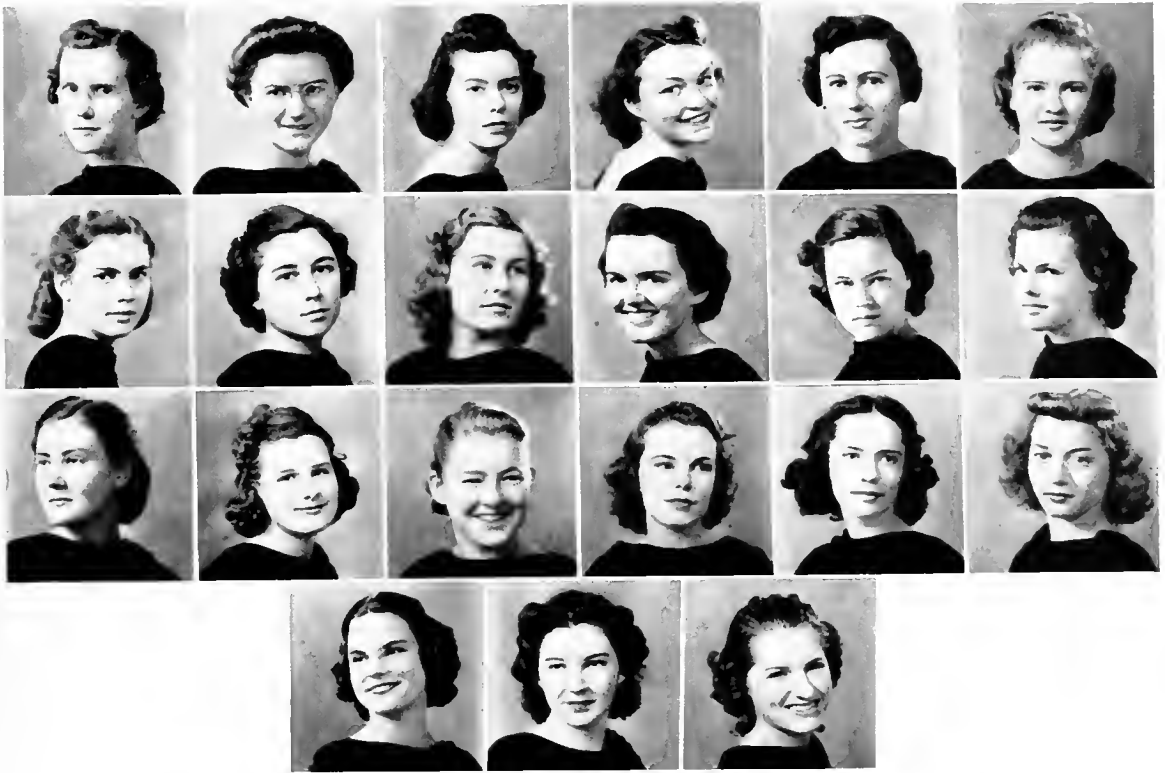
Founded at AMERICAN UNIVERSITY April 22, 1938

CHAPTER OFFICERS

President Katherine Biggs
Vice-President Dorothy Shepherd
Secretary Frances Brewster
Treasurer Susan Moore

MEMBERS

Erva Barger, Margaret Bleth, Priscilla Booth, Barbara Bryant, Marian Gordon, Frances Hill, Sue Horton, Mary Jane Rogers, Gere Dell Sale, Mary Shaller, Sally Shepherd, Nelva Ree Smith, Martha Steer, Betty Lou Sullivan, Alice Swick, Eloise Swick, Lois Taylor, Jackie Waldron, Dorothy Waterbury, Adele White, Vivian Yeager.



Biggs
Barger
Hill

D. Shepherd
Bryant
Horton

Sale

Brewster
Waterbury
Schaller

Taylor

Moore
Steer
N. Smith

Yeager

Gordon
A. Swick
Sullivan

White
M. J. Rogers
Bleth





TO THOSE WHO HAVE BEEN DE-FEETED

As "Time" marched on, numerous feet were vainly worn off so that the staff feels that a little hoot-licking is owed to those who are not quite all there

Acknowledgment

IT is not a very hard task for me to pick out those people who have worked on the staff of this year's AUCOLA—and it won't be hard for you to appreciate their work as a whole in this book. However, there are a few to whom special recognition should go—

“Ernie” Webb has been indispensable in his picture work—for which you are the judges.

Frances Brewster's nimble wit has given you all of the fire and enthusiasm found in the write-ups.

Mary Lou Klaas has done the side of the AUCOLA work which is very rarely appreciated publicly—not only for this year but four years she has cut and “pasted” the “Rogue's Gallery” of Juniors and Seniors.

To go further would mean to list every member of the staff—which has been exceedingly cooperative this year.

Whether you like the '39 AUCOLA, or whether you don't, you can praise or blame the whole staff.

However, we do hope that you will feel that this has been a very “timely” book—and that it warrants publication of the AUCOLA for many more years.

Sincerely,

THE EDITOR.



Purse and Hutterly celebrating the end of the 1939 AUCCOLA
"That's all there is, folks; there isn't any more!"

ADVERTISEMENTS



Patronize Our Advertisers

WESLEY HEIGHTS PHARMACY

YOUR COLLEGE DRUG STORE

3303 45th St., N. W.

WASHINGTON, D. C.

COMPLETELY REMODELED
MODERN FOUNTAIN *and*
LUNCHEONETTE



We serve: BREYER'S ICE CREAM

Prompt
Free Delivery

Phone
WO. { 6 2 0 0
 { 6 2 0 1

Under New Management

The Value OF KNOWLEDGE

..LONG EXPERIENCE in handling high-grade fuels has taught our experts to recognize standard quality. That's why we can safely recommend

'blue coal'

High-Grade Pennsylvania Anthracite

— ● —
GRIFFITH-CONSUMERS COMPANY

1413 NEW YORK AVENUE MEtropolitan 4840

Compliments

of

CHESTNUT FARMS -
CHEVY CHASE DAIRY



Sealtest
Approved Products



*Approved
by*



Served

at leading schools,
hotels and stores
from Maryland
to Florida

MILLWORK LUMBER

COMPLETE LINE
OF STOCK AND SPECIAL
MILL WORK

SASH - DOOR - BLINDS

CABINET WORK
PLYWOOD PANELS

SMALL ORDERS
GIVEN PROMPT ATTENTION

J. FRANK

KELLY

INC.

2121 GEORGIA AVE., N.W.

NO rth 1341

SUDDEN SERVICE

The Integrity of the store from which you buy is of Importance

Julius Garfinckel & Company

CORDIAL INVITATION
TO
THE YOUNG MEN AND WOMEN AT THE AMERICAN UNIVERSITY
to make this store
HEADQUARTERS FOR NEW SEASON OUTFITTING
FOR TOWN OR TRAVEL

We specialize in clothes and accessories of quality and style moderate in price, smart and correct for all occasions. We have unusually choice selections for young women on the Fourth Floor and for young men, fine assortments in our Sixth Floor Shop. Do see them soon.

F at Fourteenth

Just Call
Michigan 6363
TO CHARTER A BUS

CAPITAL TRANSIT CO.

Finest Equipment
Moderate Rates

Charter Bus Headquarters
1416 F STREET, N. W.
WASHINGTON, D. C.

Compliments

of

A FRIEND

THOMSEN ELLIS CO.

Baltimore - New York



Printers of

1939

Ancola

Compliments of

Dr. Pepper Bottling Co.
of Washington, D. C.



6101 BLAIRE ROAD Ge. 0153

The E. B. Adams Company

China - Glass - Silverware

*Paper Specialties - House Furnishings
Janitors' Supplies - Kitchen Equipment*

641-645 NEW YORK AVE., N.W.
WASHINGTON, D. C.

Phone: District 8717

Phone, NATIONAL { 2941
2942
2943

NATIONAL HOTEL
SUPPLY CO., INC.

Meats and Provisions

412 TWELFTH ST., S.W.
WASHINGTON, D. C.

*Office Furniture
Bookkeeping Supplies*

*Paper Supplies
Stationery*

Charles G. Stott Co., Inc.

1310 NEW YORK AVE., N.W.
WASHINGTON, D. C.

Branches:

1513 K ST., N.W.
823 - 17TH ST., N.W.
804 RHODE ISLAND AVE., N.E.

DEGREES IN COMMERCE

SECRETARIAL DIPLOMAS



Secretarial Courses planned for Academic, General, and Commercial High School graduates and for college students.

Intensive courses in Shorthand and Typewriting.

Review Classes in Shorthand, Dictation, and Typewriting.

Strayer College of Accountancy offers B.C.S. and M.C.S. degree courses, including C.P.A. preparation.

Day and Evening Sessions.

Ask for Secretarial or Accounting Catalog.

STRAYER training qualifies high school graduates and college students for Secretarial and Accounting positions in business and government. Specialized training is necessary both in making a favorable start and in winning advancement.

THE TIME TO BEGIN

Summer Term—June 26, July 10

Fall Term—September 11 and 18

Shorthand and Typewriting in high school and some college subjects may be counted as credit toward diplomas or degrees.

Superior Employment Service assists graduates in obtaining positions. Over 1500 employment calls were received during the past year.

STRAYER COLLEGE

HOMER BUILDING

Thirteenth and F Streets
National 1748

E. S. Donoho, President
E. G. Purvis, Vice President

L. G. Balfour Company

*Fraternity Badges - Fraternity Jewelry
Novelties, Favors, Stationery
Medals, Cups, Trophies, Class Rings, Class Pins
Club Pins, Buttons, Convention Badges*

204 INTERNATIONAL BUILDING
1319 F STREET, N.W. - WASHINGTON, D. C.
Telephone NAational 1045 STEPHEN O. FORD, Mgr.

Phone NAational 0910

ADAMS-BURCH CO., Inc.

6TH AND D STREETS, S.W.
WASHINGTON, D. C.

*Hotel and Restaurant
Equipment and Supplies*

LEATHER SETTEES CHROME—WOOD
AND CLUB CHAIRS AND STEEL
VENETIAN BLINDS FURNITURE

COMMERCIAL OFFICE FURNITURE CO.

Met. 4661 800 E STREET, N.W.
Nat. 8266 WASHINGTON, D. C.

Compliments of

R. W. WINSLOW CO.

922 NEW YORK AVE., N.W.
WASHINGTON, D. C.

American University's Florist

Two Stores

CONNECTICUT AVENUE FLOWER SHOP

2604 CONNECTICUT AVE., N.W. Co. 9004

CAPITOL FLORIST

818 - 17TH ST., N.W. Re. 0796

WE TELEGRAPH *Campus Rep.* GENE HOOVER

OUR MILK IS COMPLETELY PROTECTED

The milk we deliver to your home is handled by the most modern scientific methods. We test, we pasteurize, we sterilize. Through the entire process the highest standards of cleanliness are maintained. Then to make sure that all these benefits are carried right through to your table, we deliver our milk in Dacro Protected Bottles . . . everyone sealed airtight with a sturdy metal cap.

MODEL FARMS DAIRY

4115 KANSAS AVENUE
Phone Col. 6800

A modern setting for fashion that young moderns of cultured tastes will appreciate . . . priced well within the college girl's budget.

The Modern

PHILIPSBORN

ELEVENTH STREET
BETWEEN F AND G STREETS

Phone: RE. 3390

QUALITY
AND
SERVICE

S. A. FREAS COMPANY

*Wholesale Produce
Vegetables and Fruits in Season*

1221 MAINE AVENUE, S.W.
WASHINGTON, D. C.

PEAKE
NATIONAL 8979

444 NEW YORK AVENUE, N.W.
PRINTERS

Compliments of
Washington Coca Cola Bottling Works, Inc.

400 7TH STREET, S.W.
WASHINGTON, D. C.

Jelleff's---
Doorway to Youth
in quest of
Fashion-with-Value!

STANDARD ENGRAVING CO.

Makers of Fine Printing Plates
for School and College Publications

ENGRAVERS FOR
1939 AUCOLA

1214 19th STREET, N.W.

WASHINGTON, D. C.

EDMONSTON STUDIO

1333 F Street, N. W.

OFFICIAL PHOTOGRAPHERS

FOR THE

1939 AUCOLA



Portrait Negatives Kept On File





MALBY & CO
CHICAGO

WILSON & CO
BALTIMORE