




The AUCOLA  
1940

*The  
American  
University  
Library*

WASHINGTON, D. C.





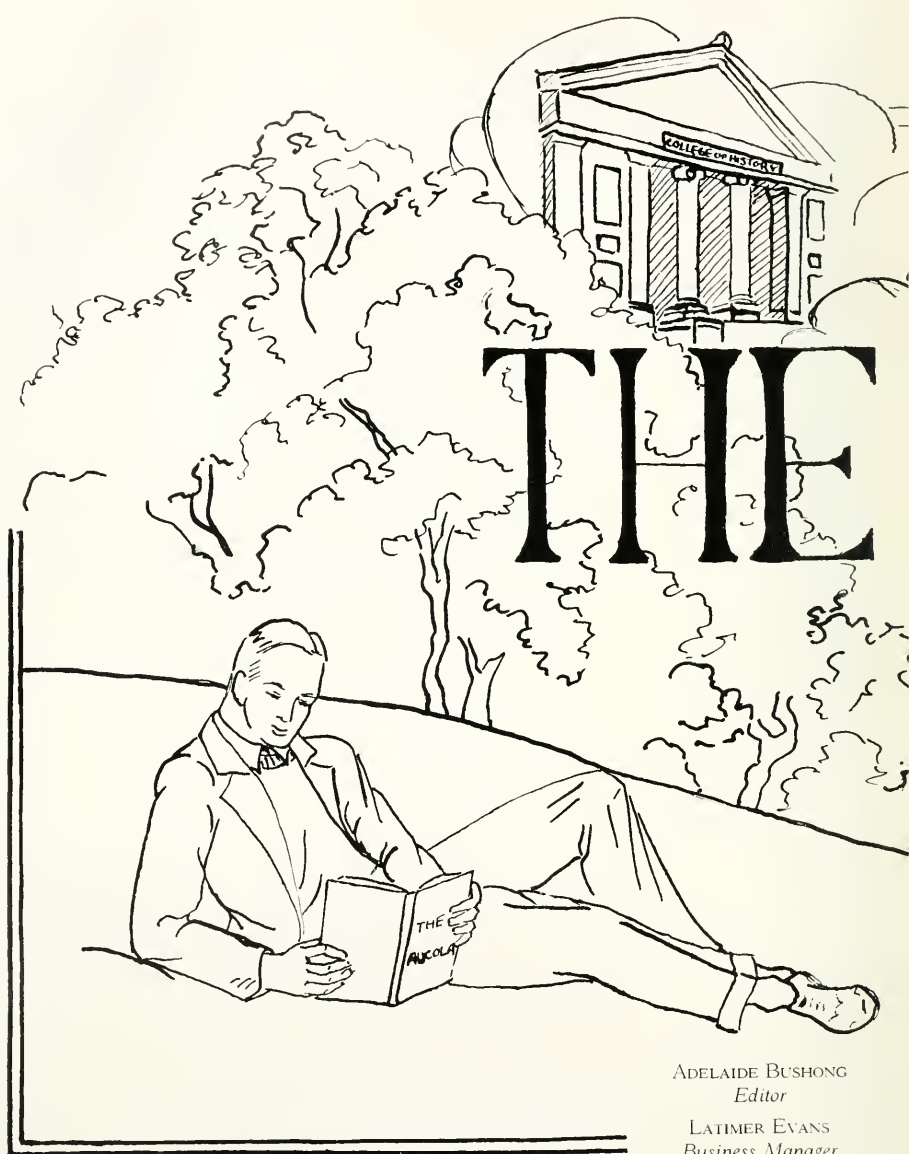


Digitized by the Internet Archive  
in 2010 with funding from  
Lyrasis Members and Sloan Foundation

<http://www.archive.org/details/aucola1940amer>



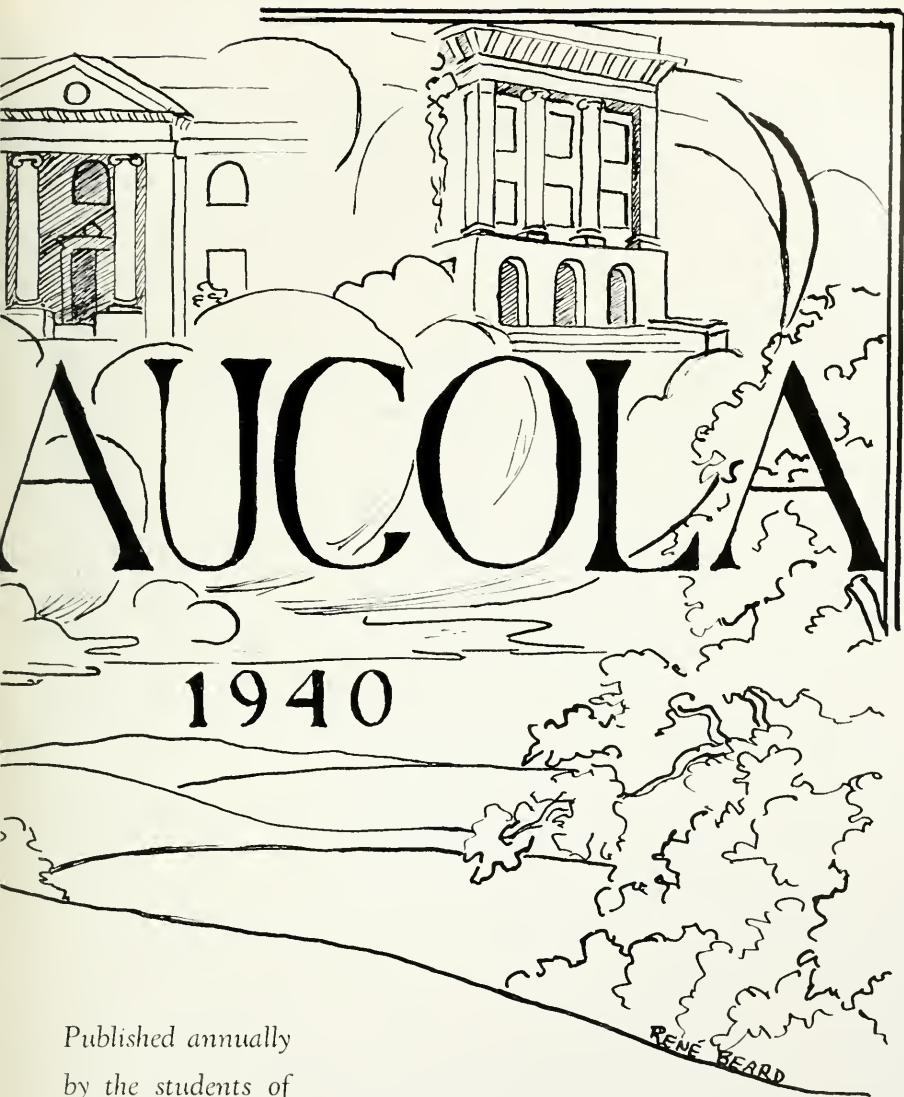




# THE

ADELAIDE BUSHONG  
*Editor*

LATIMER EVANS  
*Business Manager*



*Published annually  
by the students of*

THE AMERICAN UNIVERSITY

## D E D I C A T I O N

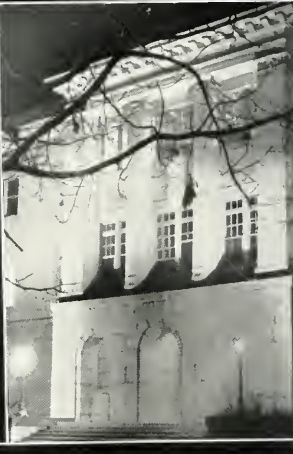
HIS thorough training of our choral clubs has proven that no propaganda is so effective as music . . . his devotion to the manifold tasks of an absorbing career reveal versatility and a capacity for hard work . . . his elfin humor lends gaiety whether it be a poker game on the chorus trip or *Mandalay* warbled around the piano.

A prime advertising promoter, a musician of superior ability, a spontaneous comrade . . . these are our memories of Mr. McLain.

In recognition of the contribution he has made at American University professionally and personally, the 1940 AUCOLA is dedicated to Mr. James L. McLain.



MR. JAMES L. McLAIN  
*Instructor in Choral Music*  
(Taken from an oil painting by René Beard)







HURST HALL—Concentrate on taking notes during a lecture . . . and then downstairs to the bookstore to eat a sandwich and to concentrate on that Goodman rhythm.



BATTELLE MEMORIAL—Retreat of both the research student and casual reader . . . weighty tomes and the daily funnies at your disposal.





McKIMLEY BUILDING—Brunelleschi's dome on A.U. campus . . . scientific domes underneath experiment with nitrogen.



METROPOLITAN MEMORIAL CHURCH—Sun through stained glass makes a rainbow round your shoulders . . . forget the weal and woe of living.



WOMEN'S RESIDENCE HALL—Be domestic in the red and white kitchen . . . gab marathon  
. . . sorority meeting . . . shower bath.





HAMILTON HOUSE—Incubator for plans that rock the campus . . . philosophies of life are evolved in bull sessions . . . forgotten during poker games.



MEN'S GYMNASIUM—Crane your neck to watch a ball slip through the basket . . . forget yourself in the spell of a great drama . . . dance 'neath a blue chesecloth sky.

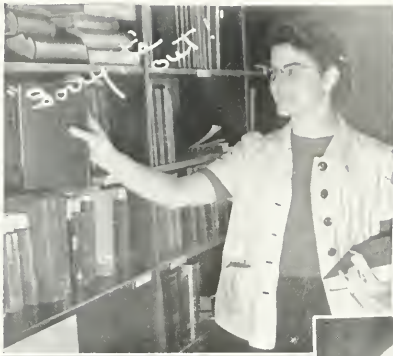


CHANCELLOR'S RESIDENCE—The campus White House, where state entertainments are something to write home about.

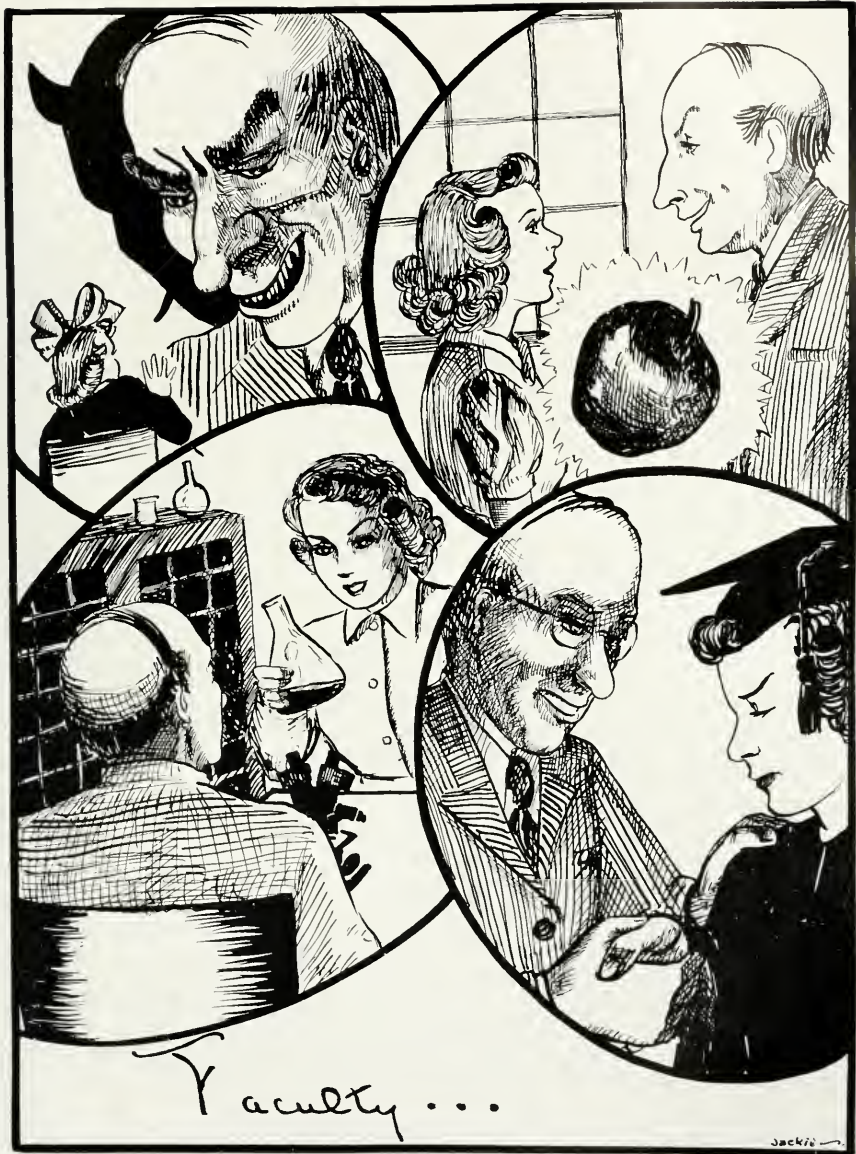




GROTTO—And the green grass grows all around . . . stage setting for spring romances and grass-hoppers.









DR. JOSEPH M. M. GRAY  
*Chancellor of the University*



DR. GEORGE B. WOODS

*Dean of the College and Professor of English*



MARY LOUISE BROWN  
*Dean of Women and Associate Professor of English*





*Joe Big Boss*



*The water cooling off.*



*I flunked  
the test!*



*Book storage  
for  
the grammar*



*Well, Tom  
and*



*Now if I had  
just said*



*read that article  
with his shoes  
-007-*



*You big  
dick!*

*"Ha, my friend  
beauty!"*



*2.6 - out  
The window be  
must go!*



ERNEST S. GRIFFITH, B.A., D.Phil. *Dean of Graduate School and  
Professor of Political Science*

Accommodating . . . pleasant with a capital P . . . bigwig in the Poly  
Sci Association . . . avowed Anglophile.



ELLERY CORY STOWELL, B.A. *Professor of International Law*

Armchair interventionist . . . heats blood of pacifists to boiling  
point.



JOHN EDWARD BENTLEY, M.A., S.T.B., M.R.E., Th.D.  
*Professor of Psychology*

A quizzical lifted eyebrow . . . a racy story of his own gay college  
days . . . specialist in child psychology.



WILL HUTCHINS, B.A., B.F.A. *Professor of Art*

Self-appointed tourist guide in the Washington Cathedral . . . an  
exacting (but lovable) taskmaster in art and dramatics.

WALTER FRANCIS SHENTON, B.A., M.A., Ph.D.

*Professor of Mathematics*

Founder of O.I.C. Club for bewildered math students . . . sees stars (through a telescope) . . . mellow baritone.



WESLEY M. GEWEHR, Ph.B., M.A., Ph.D.

*Professor of History*

Thunder booming through the halls when he lectures . . . believes in history for history's sake . . . jolly as the Wizard of Oz.



C. HENRY LEINEWEBER, Ph.D.

*Professor of German*

Omnibus of knowledge Greek, Chemistry, Latin, German, Sociology, Philosophy, Public Affairs all packed into his courses.



AUBERT BAIN POTORE, B.A., B.D., Th.M., Th.D., D.D.

*Professor of Religion*

Bible stories enlivened with gestures and sound effects . . . pungent arguments over ethical questions . . . but as for marks, "There shall be weeping and wailing and gnashing of teeth!"





LEON C. MARSHALL, B.A., LL.D., B.A., M.A.

*Professor of Political Economy*

Originator of a new system of education via the "eight basic processes of human living" . . . thought-provoking, mind-broadening.



JOSE FULGIERA, Escuela Nacional de Maestros

*Teaching Fellow in Spanish*

Passionate believer in democracy for Mexico . . . his ambition is to teach school in his homeland.



WILLIAM BULTMAN HOLTON, B.S., M.S., Ph.D. *Professor of Chemistry*

Give a man a pipe he can smoke . . . give a man a rod and a reel . . . and a test tube and a Bunsen burner.



THEODORE ANDERSSON, B.A., M.A., Ph.D.

*Professor of Romance Languages*

Long, tall Swede with a fetching grin and a repertoire of umpteen languages . . . cracks jokes in a slow drawl.



CATHERYNE SECKLER-HUDSON, B.S., M.A., Ph.D.

*Professor of Political Science and Public Administration*

Methodical as a filing-card system . . . broad-mindedness, justice,  
and consideration combined with a keen intellect.



IRMA ZINK, B.A., B.S. in L.S.

*Librarian*

Exponent of new books and symphony concerts . . . spirited  
conversationalist.



JESSIE MAY FERGUSON, B.A., B.S., M.A., Ph.D.

*Associate Professor of Education*

A rarely revealed flare for lightning calculation . . . dotes on true-  
false tests.



GLENN FRANCIS ROUSE, B.A., Ph.D. *Associate Professor of Physics*

Don't sit back and call him easy-going until you see your mark  
. . . organizing ability contributed to the successful campaign for  
the American University Fund.





EDWARD WILLIAM ENGEL, B.S., M.A., Ph D.

*Associate Professor of Chemistry, Registrar*

Quiet and unassuming . . . but a steady, conscientious worker.



MERRITT C. BATCHELDER, B.A., B.S., M.A., Ph D.

*Associate Professor of English*

Glorifier of the lowly detail . . . revels in Chaucer's rollicking *Canterbury Tales* . . . steeped in the culture of the Elizabethan era.



EARL AUBREY DENNIS, B.A., Ph D. *Associate Professor of Biology*

A liberal friend of the students . . . equally at home in a white smock peering through a microscope, or striding in hip boots through a frog pond.



HIRAM M. STOUT, B.A., M.A., Ph D. *Associate Professor of Political Science and Public Administration*

Soft and slow of speech . . . well informed . . . ponderous thinker . . . that inevitable dry sense of humor.

RUBERT A. M. OLDS, Ph B., M.A.      *Assistant Professor of Spanish*

A gracious and dignified senorita . . . cordial and friendly to all students



WILLIAM HARLEN GILBERT, Jr., B.A., M.A., Ph.D.

*Assistant Professor of Sociology*

A prof who can still blush . . . array of anecdotes picked up on travels in faraway lands . . . and a pantry full of polysyllables that would turn Webster green with envy.



HARRY W. KETCHUM, B.A., M.B.A.      *Assistant Professor of Economics*

Always lectures to the right side of the room . . . a good mixer who lost no time becoming "one of the boys."



JAMES McLAIN, B.A.

*Instructor in Choral Music*

Glamour boy of the faculty . . . with perfect equanimity can render Bach on the organ or swing St. Louis Blues on the piano.





STAFFORD HENDRICKS CASSELL, B.A. *Director of Athletics,  
Instructor in Physical Education*

Among the newlyweds . . . Christian sportsman and inspiring coach . . . "child prodigy" of college athletic directors . . . "Pop" to his intimates.



DORIS SNODGRASS, B.A., M.S. *Instructor in Physical  
Education for Women*

Versatility plus . . . proficient in every sport . . . exponent of modern dancing . . . swooning heroine in the faculty "meller-drammer."



JOHN L. NUELSEN, Jr., B.Mus., B.A., M.A. *Instructor in German and  
French and Director of Band and Orchestra*

Employs the ridiculous to explain the sublime . . . cellist . . . mountain climber . . . artistic photographer.



FRANK T. HOADLEY, B.A., M.A. *Instructor in English*

Local boy who made good . . . we suspect he nourishes a secret passion to be a Lothario . . . affectionately called "Screwball" by his enthusiastic pupils.

JOHN C. SLOVER, B.S., M.A.

*Instructor in Speech*

Power behind the debate team and the Speaker's Bureau . . . self-confidence plus boundless energy.



NO PICTURES

EUGENE N. ANDERSON, B.A., Ph.D.

*Professor of European History*

RUDOLPH A. CLEMEN, B.A., M.A., M.A.

*Professor of Economics*

GEORGE W. AUXIER, B.A., M.A., Ph.D.

*Lecturer in History*

LOUIS C. HUNTER, B.A., M.A., Ph.D.

*Professor of History*

ALTON A. LINDSEY, B.S., Ph.D.

*Instructor in Botany and Chemistry*

ELIZABETH S. MAY, A.B., Ph.D.

*Visiting Associate Professor of Economics*

MRS. HERBERT C. WILSON, Baccalureat-es-Lettres, Licence-es-Lettres (Diplome D'Etat),  
Graduate Study at Smith and Columbia.

*Instructor in French*





The Day

Enthusiasm

Durable stuff!

Shen hope - best in fact!

Ultimatum

Daily

Kerned

Let you see this

Kerned

Kerned



# Classes

backe-



"My salad days,  
when I was green in judgment."

*President*  
*Vice-President*  
*Secretary*  
*Treasurer*

..... Gilbert White  
..... Marion Mattes  
..... Germaine Coffey  
..... Walker Shumate

**T**RIAL and error brought the freshmen to the right address last fall,  
but *now* we know our own way around!

We didn't take long to learn—to the tune of the hickory stick  
wielded by the sophomores. Each noon rumors of a coming revolution



buzzed on the steps of Hurst Hall. But we were good sports about bowing and scraping before the illustrious upper classmen.

Our variety show at the pep rally created such a sensation that we were later starred in another skit, "The Little Man Who Wasn't There."

We joyfully obeyed the order to desist from wearing our emerald embellishments, disparagingly called "green tags." At the funeral, our fondest memories were buried beneath the red earth of the pine grove—until they returned the next day to haunt the cheerleader.

Throughout the year we have been growing from objects of curiosity and condescension into respected students. We clinched our reputation with our dance on April 13.

Are we going to have fun next year? Well, we guess so!





Nicholson, Abbadessa,  
Waldron, Wheeler

"Liddy girls, noisy boys"

President . . . . . Edward Nicholson  
 Vice-President . . . . . Jacqueline Waldron  
 Secretary . . . . . Janet Wheeler  
 Treasurer . . . . . John Abbadessa

THE Class of 1942 is going places," prophesied upper classmen and professors when we arrived at A.U., but they didn't realize just how far we were going. At the first of school we put the freshmen in their place as they had never been put before. When the football season came, the varsity team was filled with many of our boys, who also carried off the class championship. "Hay Fever" would have never been the success it was without certain members of our class.

(Will you ever forget the blonde who kept you rolling in the aisles?) When exams came along, we took them for what they were worth, and are still waiting for the person to top the five-point average made by one of our group. And don't forget the good time we showed you one windy night in March at the "Mad-Hatter Hop." Yes, the Sophomore class is indeed carrying out the prophecy made for them in a way that will long be remembered here at American University.





PROM COMMITTEE  
Fausold, chairman; Ellison, Hoover

PROM LEADERS



THE CHAPERONS  
Dr. Holton, Mrs. Cassell, Mrs. Gray  
Mrs. Holton, Mr. Cassell





President . . . Paul Lentz  
Vice-President Mary Hudson  
Secretary . . . Mary Curry  
Treasurer . . . Clayland Price

"*Getter ye resolved while ye may.*"

AIR raid posters plastered here and there . . . sirens warning of an attack. Will you ever forget our blackout dance? Even as sophomores, didn't we beat the weather man at our Winter Wonderland? White ties and tails ran a close second to tuxedos at our glittering Junior Prom.

Although we dance merrily through life, we're not frivolous flibbertigibbets. The forty-oners fill up a third of the football team, half the basketball team and a majority of the varsity debate team. Both the *Eagle* and *AUCOLA* are edited by our classmates. We do more than our share of emoting on the stage and warbling in the choral clubs.

Proud as we are of our prominent classmates, we're proudest of our honorary president, no less a personage than gang-busting Thomas Dewey.

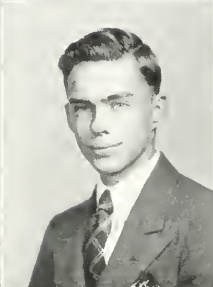
Throughout our three years we've always had plenty of "oomph" . . . and we're gaining momentum!





**Bettie Blumenthal**  
MILROSE PARK, PENNSYLVANIA    *Education*  
Marjorie Webster, 1, 2    Hockey, 3

**Adelaide S. Bushong, ΗΔΕ, ΑΧΩ**  
LEESBURG, VIRGINIA    *English*  
Class Honors, 3, Alpha Chi Omega (Social  
Chairman, 3, Rush Chairman, 3), Aucola  
Staff, 1, 2 (Editor, 3), Eagle Staff, 1, 2, De-  
bate, 1, 2, Women's House Government, 3;  
College Council, 3, Panhellenic Council, 3.



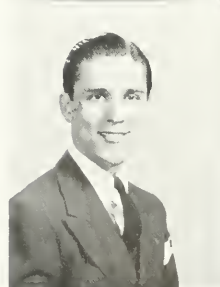
**Joseph F. Campbell**  
WASHINGTON, D.C.    *English*  
Glee Club, 1, 2, 3, Chorus, 2, 3, Speaker's  
Bureau, 1, 2

**Addison Clay**  
WASHINGTON, D.C.    *Political Science*  
Class Honors, 1, 2, 3, Glee Club (Vice-  
President, 2, 3), Chorus, 2, 3, Debate, 1, 2, 3  
Dramat (Business Manager, 3), Student  
Council, 3, Eagle, 1, 2, 3, Poetry Club, 2, 3,  
German Club, 3, Intramurals, 1, 2, 3



**Ruth Cooley**  
WASHINGTON, D.C.    *Psychology*

**B. Arthur Cram**  
WADENA, MINNESOTA    *Political Science*  
Northwestern University, 1, 2.



**Charles Corddry, ΗΔΕ, ΑΘΦ**  
SNOW HILL, MARYLAND    *American History,*  
*Political Science*  
Class Honors, 1, Alpha Theta Phi (Vice-Presi-  
dent, 3), Pi Delta Epsilon (Vice-President,  
3), Publications Board, 2, Eagle Staff, 1, 2,  
(Editor, 3).

**Francis Cruikshank**  
WASHINGTON, D.C.    *English, Spanish*  
Class Honors, 1, 2, 3, Glee Club, 1, 2, 3, Eagle  
Staff, 1, 2, 3, Publications Board, 3, Aucola, 3.

**Mary Curry, Δ1'**

WASHINGTON, D.C. *History*  
Delta Gamma (Secretary, 3), Class Secretary,  
2, 3, Aucola Staff, 2; Eagle Staff, 2, 3, Pan-  
hellenic Council, 3, New Student Committee, 3.

**Charles H. Davidson, ΦΕΑ**

SILVER SPRING, MARYLAND *Physics*  
Class Honors, 1, 2, 3, Dramat, 1, 2, 3; Social  
Activities Board, 2, A.U. Fund Committee  
(Chairman, 3).

**Robert M. Dixon, Jesters**

WASHINGTON, D.C. *Political Science*  
Jesters (Secretary, 3), Track, 1, 2.

**Beth Drake, ΑΧΩ**

WASHINGTON, D.C. *Sociology*  
Class Honors, 1, 2, Alpha Chi Omega (Treas-  
urer, 3), French Club (Secretary-Treasurer,  
3), Spanish Club, 2, Religion Board, 3.

**Carter Edmonds, ΔΧ**

FALLS CHURCH, VIRGINIA *History,  
Political Science*  
Alabama University, 1, Class Honors, 3,  
Eagle Staff (Associate Editor, 3), Baseball, 3.

**Margaret Ellison, ΑΦ**

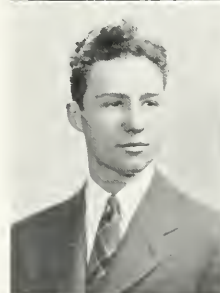
WASHINGTON, D.C. *Philosophy, Religion*  
Alpha Phi (Rush Chairman, 2, 3, Vice-Presi-  
dent, 3), Glee Club, 1, 2, Eagle Staff, 2, 3,  
Aucola Staff, 2, 3, Panhellenic Council, 3; Ju-  
nior Prom Committee, 3.

**Jane Esterline, ΑΧΩ**

ALTOONA, PENNSYLVANIA *Sociology*  
Aucola, 3; League of Women Voters, 3.

**Bruce Etchison, ΑΦΦ**

WASHINGTON, D.C. *Art*  
Student Christian Association, 1, 2, 3, Basket-  
ball, 1, 2, 3, Tennis, 2.





**Latimer Evans, ΦΣΚ**

WASHINGTON, D.C. *Chemistry*  
Class Honors, 1, 2, 3; Phi Sigma Kappa (Secretary, 3); Eagle Staff, 1; Aucola Staff, 2 (Business Manager, 3); Tennis, 1, 2; Intramurals, 1, 2, 3.

**William Fausold, ΦΣΚ**

SHAMOKIN, PENNSYLVANIA *History, Spanish*  
Junior Prom Chairman, 3; Chairman, New Student Committee, 3; Tennis, 1, 2; Intramurals, 1, 2.

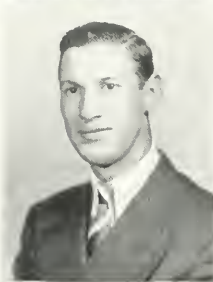


**Arnold J. Fine**

SUMMIT, NEW JERSEY *Political Science and History*  
International Relations Club, 1, 2; Eagle Staff, 2, 3; Sportscore Staff, 3; Arbor Day Committee, 2; Intramurals, 1, 2, 3; Football, 2; Basketball, 1, 2, 3; Baseball (Manager, 2).

**Watson B. Fisher, Jesters**

WASHINGTON, D.C. *History*  
Jesters, Football (Assistant Manager, 1, 2; Manager, 3).



**Hamilton Gewehr, ΑΘΦ**

WASHINGTON, D.C. *Economics*  
Alpha Theta Phi (Secretary, 3); Student Council, 1; Basketball, 1, 2, 3; Intramurals, 1, 2, 3.

**Elizabeth Anne Gude, ΑΦ**

ROCKVILLE, MARYLAND *Art*  
St. Mary's Junior College, 1, 2.



**Virginia V. Hatzes**

WASHINGTON, D.C. *Zoology*  
Mount Saint Mary, 1, 2; Debate, 3.

**Frances Hill, ΣΦΔ**

WASHINGTON, D.C. *History*  
Class Honors, 1, 2, 3; French Club, 1, 2, 3; Glee Club, 1, 2, 3; Poetry Club, 2 (Secretary, 3); League of Women Voters, 2, 3; "A" Club, 1, 2, 3; Basketball, 3; Eagle Hockey, 2.

Lars Holmquist

PHOENIX, ARIZONA *Mathematics*  
Phoenix Junior College, 1, 2; Dramat, 3.



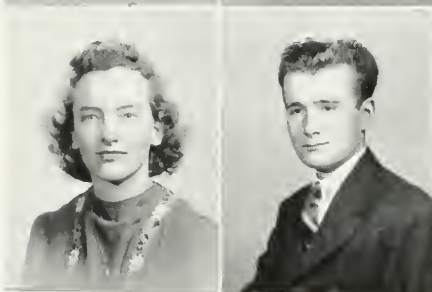
Sue Horton, ΣΦΔ

WASHINGTON, D.C. *Sociology*  
Sigma Phi Delta (Corresponding Secretary, 3); Eagle Staff, 1, 2. League of Women Voters, 3; Dramat (Property Mistress, 3).



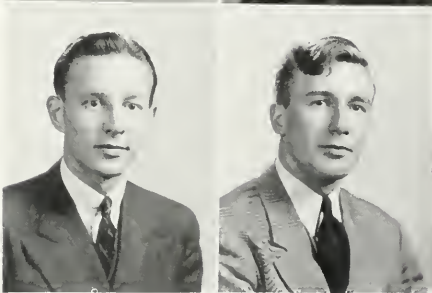
Beatrice Wyman, ΔΓ

WASHINGTON, D.C. *Economics*  
University of Wisconsin, 1; Women's House Council, 3.



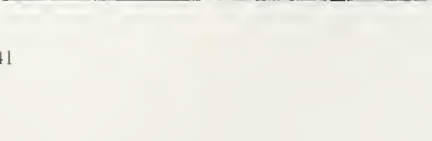
Virginia Hozier, ΑΧΩ

DUNDALK, MARYLAND *Sociology and Psychology*  
Alpha Chi Omega (Vice-President, 3); Student Christian Association, 1, 2, 3; Women's House Government, 2; "A" Club, 1, 2, 3; French Club, 1.



Mary Hudson, ΔΓ

WASHINGTON, D.C. *Sociology*  
Class Honors, 1; Delta Gamma (Corresponding Secretary, 3); S.C.A. (Corresponding Secretary, 3); Eagle Staff, 1. Glee Club, 1, 2, 3. Chorus, 3; Class Vice-President, 3.



Joseph R. Johler

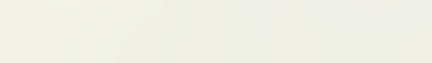
SCRANTON, PENNSYLVANIA *Biology*

Charles E. Ingalls, Jesters

BOLTON, MASSACHUSETTS *History*  
Class Honors, 2, 3; Jesters (Treasurer, 3).

John Jablonsky, ΛΘΦ

HICKSVILLE, LONG ISLAND, NEW YORK *Political Science*  
Football, 1, 2, 3; Track, 1, 3; Intramurals, 1, 2, 3; Men's Varsity Club, 2, 3. Athletic Board, 3.





**Estalyn Kreps, ΦM**  
 PALO ALTO, CALIFORNIA *Social Science*  
 Stanford University, 1, 2, Aucola Staff, 3,  
 Debate, 3, League of Women Voters, 3.

**Louise Latimer**  
 CHEVY CHASE, MARYLAND *Spanish*  
 Glee Club, 1, 2, 3.



**Charles J. Murphy**  
 WASHINGTON, D C *History*  
 University of Louisville, 1, Band, 2.

**Joseph L. Nocera, Jesters**  
 WEST HAVENSTRAW, NEW YORK *Chemistry*



**Charles Clayland Price, Jr., AΘΦ**  
 STEVENSVILLE, MARYLAND  
*Business Administration*  
 Class Honors, 2, Class Treasurer, 3, Football,  
 1, 2, Baseball, 2, Intramurals, 1, 2, 3.

**Sarah Anne Rapp, AXΩ**  
 WASHINGTON, D C *Socio'og*  
 Class Honors, 1, 2, 3, Alpha Chi Omega (Cor-  
 responding Secretary, 3), Eagle, 1, 2, Aucola,  
 1, 2, 3, League of Women Voters, 2 (Secre-  
 tary-Treasurer, 3), Poetry Club, 1, 2, 3, Class  
 Vice-President, 2, Social Board, 3, Glee Club,  
 1, 2, Chorus (Accompanist, 3).



**Jeanne Richards, AXΩ**  
 SCRANTON, PENNSYLVANIA *French*  
 Scranton Keystone Junior College, 1, 2, Glee  
 Club, 3, German Club, 3, League of Women  
 Voters, 3.

**Jane Rogers, AΦ**  
 HAMILTON, VIRGINIA *History*  
 Alpha Phi (Corresponding Secretary, 2, Re-  
 cording Secretary, 3).



**Jay Rutherford, ΦM**  
 NORWOOD, NEW YORK *History*  
 Keuka College, 1, Michigan, 2; Aucola Staff,  
 3, Hockey, 3, Band, 3, Orchestra, 3.

**Mary Sanders**  
 WASHINGTON, D.C. *English*  
 Class Honors, 1, Poetry Club, 1, 2, 3, Debate,  
 2, 3, Chorus, 3, May Fete, 1.



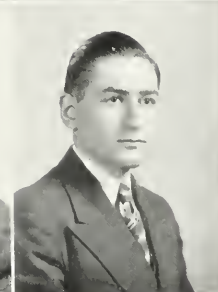
**Mary Schaller, ΣΦΔ**  
 WASHINGTON, D.C. *Chemistry*  
 Sigma Phi Delta (Treasurer, 3); Band, 1;  
 Aucola Staff, 2, League of Women Voters, 3,  
 Camera Club, 3, "A" Club, 3; Eagle Hockey,  
 1, 2, 3

**Dorothy Schneider**  
 WASHINGTON, D.C. *Mathematics*  
 League of Women Voters, 3, Glee Club, 2, 3,  
 Chorus, 3



**Hugo Schulze, ΑΦΦ**  
 WASHINGTON, D.C. *Business Administration*  
 Varsity Club, (Secretary, 3), Football, 1, 2, 3;  
 Basketball, 1, 2, 3, Baseball, 2, 3

**Marvin Schwartz**  
 WASHINGTON, D.C. *Chemistry*



**Hector Sherertz**  
 WASHINGTON, D.C. *Philosophy*  
 Debate, 1, 2, 3, International Relations Club,  
 1, 2, 3, Dramat, 2; Poetry Club, 1, 2, 3, S.C.A.,  
 1, 2, 3, Intramurals, 1, 2, 3.

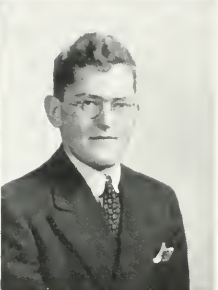
**Nelva Ree Smith, ΣΦΔ**  
 WASHINGTON, D.C. *English*  
 Sigma Phi Delta (Rush Chairman, 3), S.C.A.,  
 3, Glee Club, 3, Junior Prom Committee, 3.





**Charles F. Spencer, ΦΕΑ**  
 CHEVY CHASE, MARYLAND *History, Political Science*  
 Phi Epsilon Alpha (Rush Chairman, 2, Vice-President, 3), Class Treasurer, 2; Intramurals, 1, 2, 3.

**Annette B. Steinle, ΑΧΩ**  
 SCRANTON, PENNSYLVANIA *German*  
 Scranton-Keystone Junior College, 1, 2; Glee Club, 3, Chorus, 3, Poetry Club, 3, Eagle Staff, 3, German Club, 3.



**Janet Stoddard, ΔΓ**  
 BETHESDA, MARYLAND *English*  
 Blue Ridge College, 1, 2; Chorus, 3.

**Samuel B. Stone, ΦΕΑ**  
 HARRISBURG, PENNSYLVANIA *History, Economics*



**Eloise Swick, ΣΦΔ**  
 CAPITOL HEIGHTS, MARYLAND *Chemistry*  
 Class Honors, 1, 2; Debate, 1, 3; Aucola Staff, 3.

**John Trowbridge, ΑΘΦ**  
 PASADENA, CALIFORNIA *History, Political Science*  
 Basketball, 1, 2; Track, 1, 2; Tennis, 1, 2; Football, 2.



**James E. Vogts, Jesters**  
 WASHINGTON, D.C. *Economics*

**Millie Wagon, ΦΜ**  
 ATLANTA, GEORGIA *Education*  
 Wesleyan College, Macon, Georgia, 1, 2.

**Joseph E. Walp, Jesters**  
 NANTICOKE, PENNSYLVANIA *History*  
 Jesters (Treasurer, 2), Football, 2; Intra-  
 murals, 1, 2, 3.

**Nancy W. Warner, AXΩ**  
 PINE HILL, NEW YORK *History*  
 Class Honors, 1, 2, 3; Alpha Chi Omega (Re-  
 cording Secretary, 3), Debate, 1, 2, 3; Glee  
 Club, 1, 2, 3, Student Christian Association,  
 1, 2, 3; Eagle Staff, 1, 2; Aucola Staff, 3,  
 League of Women Voters, 3.

**Ernest C. Webb, Jr., ΗΔΕ, ΑΘΦ**  
 FREDERICK, MARYLAND *Business Administration*  
 Class Honors, 1, 2, 3; Alpha Theta Phi (Treas-  
 urer, 3), Band, 1, 2; Orchestra, 1, 2, College  
 Council, 2; Aucola Staff, 2, 3, Student Chris-  
 tian Association, 2, 3; Camera Club, 2, 3, Cur-  
 riculum Board, 3; Interfraternity Council, 3;  
 Intramurals, 1, 2, 3, Basketball, 1, 2, 3, Ten-  
 nis, 1, 2, 3.

**Charlotte Wood**  
 WASHINGTON, D.C. *English*



NO PICTURES

**Thomas Adams**  
 OAKLON, VIRGINIA *History, Government*

**Betty Ballou**  
 WASHINGTON, D.C. *Psychology, Philosophy*

**Edmund Becker**  
 WATERBURY, CONNECTICUT *Psychology*

**Nathaniel Briggs**  
 WASHINGTON, D.C.

**Marian Conner**  
 UTICA, NEW YORK *Sociology*

**Wilma Dinowitzer**  
 WASHINGTON, D.C. *Art*

**Irwin Krasnoff**  
 FREEPORT, NEW YORK *History*

**Harold Landsman**  
 WASHINGTON, D.C. *Biology*

**Paul Lentz**  
 OSHKOSH, WISCONSIN *Political Science*

**Edith Olsen**  
 CHICAGO, ILLINOIS *Economics*

**Frederick Plitt**  
 CHEVY CHASE, MARYLAND *Chemistry*

**Douglas Rollow**  
 WASHINGTON, D.C. *Chemistry*

**Mrs. Arletta Rudd**  
 CHEVY CHASE, MARYLAND *Sociology*

**Anna Small**  
 CLINTON, MARYLAND *English*

**Daniel Wentz**  
 HANOVER, PENNSYLVANIA *History*



Take a cue from the...



Book's...  
conveys



Self portrait?



Day...  
disorder



Small girl makes good



Now for that negative...



Quiet writing at...



See photos



Smile like...  
Dale



Visit over  
Washington



*President . . . George Brown  
Vice-President . . . Judith Rose  
Secretary . . . Lillian Hawkins  
Treasurer . . . James Hewitt*

*"many let us part and many meet again."*

FOUR years ago, the Class of 40 wore green tags, a look of bewilderment, and the moniker "Freshmen." A year's hard work, however, transformed us into all-knowing Sophomores. Another year, and we were sophisticated Juniors. Now we are the lofty Seniors, ready to leave, though not to forget, four full years of college life.

We've beaten all records for being different. We've produced the first woman student body president and the first man to win two Touchdown Club awards. And witness our dances, climaxed by the Hawaiian Serenade, with refreshments served at your table.

Old Timers now, we've lived to see our long-cherished hopes of a democratic college government realized, and a Student Union Building drive launched.

We're proud of a hard job well done . . . and confident in you up-and-comers.



**ELIZABETH ACTON, BBB, AΦ**

SALEM, NEW JERSEY

*Biology*

Wellesley College, 1, 2, Hockey, 2, 3.

*A dash of red . . . a shrug of a shoulder spins a yarn with big words and sober wide eyes.*

**WILLIAM E. ADAMS, OΔK, ΗΓΜ, ΦΣΚ**

WASHINGTON, D.C.

*Economics*

Class Honors, 2, Phi Sigma Kappa (Pledgemaster, 3; President, 4), Pi Gamma Mu (President, 4), Omicron Delta Kappa (Treasurer, 4), Eagle (Business Manager, 4), Student Comptroller, 3, Class Treasurer, 3, Track, 2, 3, 4, I.R.C. (President, 4), Debate, 3, 4, Aucola Staff, 2, 3  
*Keeps banker's hours . . . waggles a mean shoulder to swagtime . . . when not tooting own sax.*

**ELIZABETH JANE ANDREWS, ΦΜ**

WASHINGTON, D.C.

*History and Education*

Winthrop College, 1, Phi Mu (First Vice-President, 4); French Club, 2, Glee Club, 2.

*Sweet school marm . . . pores over biographies of famous men to enlighten her pupils.*

**ERVA BARGER, Cap and Gown, ΗΓΜ, ΣΦΔ**

WASHINGTON, D.C.

*Sociology*

College Honor Society; S.C.A., 1, 2, 3 (President, 4); Chorus, 2, 3, 4, Glee Club, 1, 2, 3, 4; Poetry Club, 2, 3, 4; League of Women Voters, 3, 4; Debate, 2, 3; "A" Club, 2, 3, 4; Hockey, 1, 2, 3, 4; Basketball, 1, 2, 3, 4.

*Friend of the proletariat . . . brisk hikes and energetic folk dancing . . . admires Carl Sandburg.*





**RENE INGHAM BEARD,  $\Lambda\chi\Omega$**

CHEVY CHASE, MARYLAND *Art and French*  
Dramat, 2, 3, 4, Aucola, 2; 4, Eagle Staff, 2; Eyrice, 1;  
French Club, 1, 2, 4 (Secretary, 3).  
*Britisher from glowing complexion to becn . . . paint-  
dauber making debut in art gallery.*

**GEORGE BENTLEY, Jesters**

WASHINGTON, D.C. *Psychology*  
University of Siena, 2; University of Perugia, 3, Band,  
Orchestra.  
*Worry isn't in his vocabulary . . . always relaxed for a  
blithe chat.*

**PHILIP BENTLEY,  $\Phi\epsilon\Lambda$**

WASHINGTON, D.C. *Philosophy*  
Class Honors, 3; Phi Epsilon Alpha (Corresponding  
Secretary, 3, President, 4); Spanish Club (Treasurer, 1,  
2); Orientation Board, 4, Interfraternity Council, 4.  
*Little boy grin on a six-foot stem . . . junior partner of  
family philosophy team.*

**FRANCES BURKHEAD BREWSTER**

WASHINGTON, D.C. *English*  
Cap and Gown,  $\Pi\Delta\epsilon$ ,  $\Sigma\Phi\Delta$   
College Honor Society; Sigma Phi Delta (Secretary, 3;  
President, 4); Chorus, 2, 3, 4, Aucola, 2, 3, 4, Newsnotes,  
2; Daily Bulletin, 3; French Club, 1, 2, 3, Panhellenic  
Council, 3, 4  
*Strain of a Debussy Arabesque . . . hectic laughter over  
snappy humor rocks the English office.*



**GEORGE BROWN, ΟΔΚ**

WASHINGTON, D.C.

*Physics*

Class Honors, 1, 3; Omicron Delta Kappa (President, 4); Class President, 4; Sports Score (Editor, 4); Arbor Day Chairman, 2; Dramat, 1, 3; Varsity Club (Secretary, 3, President, 4); Athletic Board, 1, 2, 3, 4; Football, 1, 2, 3 (Captain, 4); Basketball, 1, 2, 3 (Captain, 4); Baseball, 3, 4; Track, 1.

*Consistent effort plus athletic ability equal leader and touchdown champ . . . humble amid honor.*

**JANET CALLENDER, ΔΓ**

WASHINGTON, D.C.

*Art*

Canal Zone Junior College, 1; Wellesley College, 2, 3.

*Color scheme that poets write about . . . soon she'll sing, "We're in the Army now!"*

**FRANCES CAMPBELL, ΗΓΜ, ΑΦ**

FORT LEAVENWORTH, KANSAS

*History and English*

Class Honors, 1, 2; Chorus, 1, 2, 3, 4; Glee Club, 1, 2, 3, 4; Eagle Staff, 3, 4; Alpha Phi (Recording Secretary, 3); May Fete, 1, 2, 3; Tennis, 2.

*Devilish mimic . . . cheerful warbler . . . blond fluff and common sense.*

**KATHRYN CHETHAM, ΦΜ**

CHICAGO, ILLINOIS

*History and Economics*

University of Chicago, 1, 2; International Relations Club, 3, 4.

*Cool and poised . . . girl of few words . . . that diamond on her left hand isn't paste.*

**LEROY COOKE**

GEORGETOWN, DELAWARE *Political Science*  
Freshman Rules Committee, 2, 3, Chorus, 3, 4. Men's Glee Club, 3. Basketball, 1. Track, 1, 2, 4. Intramurals, 1, 2, 3, 4.  
*Connoisseur of feminine beauty, all types . . . but no entangling alliances.*

**HENRY R. DAILY, Jesters**

MORRISTOWN, NEW JERSEY *Economics*  
Chorus, 4; Glee Club, 4. Intramurals, 4. International Relations Club, 4.  
*Plate juggler par excellence . . . hits rock bottom bass . . . speed demon on motorcycle.*

**RUTH DEWEY, IIPM, ΔΓ**

WASHINGTON, D.C. *History*  
Class Honors, 3. Delta Gamma (Secretary, 3; President, 4). Panhellenic Council, 3, 4. Class Secretary, 1, 2. Glee Club, 1, 4. Eagle Staff, 1. Spanish Club, 1. Student Body Secretary, 4. Hockey, 3. Chorus, 4.  
*Bustling super-secretary . . . never ruffled . . . enthusiastic gum-chewer.*

**JOHN HOBART EARLE, Jesters**

BROOKLYN, NEW YORK *English*  
Class Honors, 3. Eagle Staff, 1. Jesters (President, 3).  
*Profile of a Greek hero . . . decidedly not a marble statue.*



**MARGRETTA ANNA ECKLOFF, ΦM**

BROOKMONI, MARYLAND

*English*

Class Honors, 1, 3, Glee Club, 4, Chorus, 4, Speaker's Bureau, 2, 3; Spanish Club, 1, 2.

*Distinctive soprano soars into the clouds . . . giggles heartily, all five feet of her.*

**RUTH GENEVIEVE FINCH**

WASHINGTON, D.C.

*English*

College Honor Society, French Club, 1, 2, 3, 4, Spanish Club, 2, 4, Chorus, 2, 3, Glee Club, 2, 3, Orchestra, 4, International Relations Club, 4, Independents.

*Now learning how to be the "perfect secretary" . . . goes for brass buttons on a certain uniform.*

**JAMES L. FLAHERTY, KΣ**

CHICSTER, PENNSYLVANIA

*Political Science*

Washington and Jefferson, 1, 2, Intramurals, 3, 4; Football, 4, Track, 3, 4, Baseball, 3, 4.

*Beware of his Fine line of blarney . . . just a football hero at heart.*

**BEATRICE GIBSON, ΑΦ**

WASHINGTON, D.C.

*Romance Languages*

William and Mary, 1, Class honors, 2; Alpha Phi (Treasurer, 4), French Club, 2, 3, 4, Spanish Club, 2, 3, 4.

*When Irish eyes are smiling . . . swanky roadster . . . assimilates book learning in spare moments.*







**CHARLENE GRADDICK**

CHEVY CHASE, MARYLAND

*English*

Gunston Hall, 1, 2.

*Purplish lipstick . . . dark goggles . . . our own Lamour sans sarong.*

**ROBERT KENDALL HALL, ΦΣΚ**

TROUT RUN, PENNSYLVANIA

*Economics*

Dickinson Junior College, 1, 2; Football, 2, 3, 4; Basketball (Manager, 3); Baseball, 3.

*Finally satisfied ambition just to "sit and listen" during classes . . . likes to Miller "round."*

**LILLIAN HAWKINS, ΦM**

HARMANS, MARYLAND

*English*

Class Honors, 2, 3, 4; Phi Mu (Treasurer, 3; Secretary, 4); Glee Club, 1, 2, 3; Student Christian Association (Secretary, 4); Women's House Government, 3; Class Vice-President, 3; Class Secretary, 4; French Club, 1, 2. *If you hear "Oh Johnny" in a wee Bonnie Baker voice . . . that's our Lil.*

**JAMES A. HEWITT, ΟΔΚ, ΗΓΜ, ΦΣΚ**

WASHINGTON, D.C.

*Economics*

Class Honors, 1, 2, 3; Phi Sigma Kappa (Sec., 3; Treas., 4); Class Treas., 1, 4; Class Pres., 3; S.C.A. (Pres., 3; Treas., 4); Chorus, 4; Debate, 4; Chm., New Student Committee, 3; Treas., Student Union Fund, 4; Chm., Open Forum, 4; Aucola (Bus. Mgr., 3); Football, 1.

*"Seek him here, seek him there" . . . co-switchboard operator . . . engaging grin.*



**DOROTHY MAY WATERBURY, ΣΦΔ**

WASHINGTON, D C

*Romance Languages*

Class Honors, 2, Sigma Phi Delta (Recording Secretary, 4); French Club, 1, 2, 3, 4, Spanish Club, 1, 2, 3, 4

*Agile fingers skipping over the keyboard . . . graceful gyrations in modern dance.*

**WILLIAM U. HUTTERLY, Jr., ΛΘΦ**

WASHINGTON, D.C.

*Economics*

Alpha Theta Phi (Secretary, 3; President, 4); Class President, 2, Junior Prom Chairman, 3; Aucola Staff, 1, 3; Eagle Staff, 2, 4, Interfraternity Council (President, 4), Vice-President of Student Body, 4, Basketball Manager, 4; Head Cheerleader, 4.

*White sweater model . . . friend to frosh . . . doesn't need a megaphone.*

**MARY MAE JACOBS, ΦΜ**

GAITHERSBURG, MARYLAND

*English*

International Relations Club, 2, 3, 4, Glee Club, 1, 2; French Club (Vice-President, 3).

*How'd you all evah guess? . . . she's southern . . . even her jallopy has an accent.*

**GORDON JOWERS**

WASHINGTON, D.C.

*Economics*

Class Honors, 1, 2; Poetry Club, 1 (Secretary, 2, 3; President, 4); Orchestra, 1, 2, 3, 4, Eagle Staff, 3 (Assistant Editor, 4); Chairman, Constitutional Committee, 4, Publications Board, 3, 4; Spanish Club, 1, 2.

*Tumultuous free verse . . . subtle humor in Georgia drawl . . . stirring march tunes . . . clever short stories.*

**CHARLES LAUGHTON, Jr., ΗΔΕ**

HARTFORD, CONNECTICUT *Sociology*  
Class Honors, 4; Aucola Staff, 2; Eagle, 1, 2, 3; Student Christian Association (Secretary, 2; Treasurer, 3; Vice-President, 4); J.R.C., 3; Football (Assistant Manager, 1; Manager, 2, 3); Intramurals 1, 2, 3.  
*Reformed bachelor . . . kept very Bizzy . . . plunging into social research (deep stuff).*

**ELISABETH LAWTON, ΑΦ**

WASHINGTON, D.C. *English*  
Class Honors, 1, 2; Alpha Phi (Vice-President, 3; President, 4); Poetry Club, 1, 2, 3, 4; French Club, 1, 2, 3, 4; Panhellenic Council, 3, 4.  
*Restless and moody . . . adventurous renegade . . . brilliant achievements—by spasms!*

**BABETTE LIEBMAN**

BROOKLINE, MASSACHUSETTS *Political Science*  
Green Mountain Junior College, 1, 2; Eagle Staff, 3 (Circulation Manager, 4); Aucola Staff, 4; League of Women Voters, 3, 4; Poetry Club, 4; Camera Club, 3, 4.  
*Luella Parson's closest rival . . . breakfast-in-one-hand-newspaper-in-the-other enthusiast.*

**ROBERT S. LITTLE**

MERCER, PENNSYLVANIA *Political Science*  
Class Honors, 2; Eagle Staff, 1, 3 (Sports Editor, 4); Orientation Board, 3, 4; Debate, 1; Student Christian Association, 1, 2, 3, 4; Football (Assistant Manager, 1, 2, 3); Aucola (Sports Editor, 4); Track, 2, 3 (Manager, 4).  
*Long legs that point to victory on the cinder track . . . but don't like to indulge in cult of Terpsichore.*



**GERALD W. MacKELLAR, ΦΣΚ**

ASHLAND, OHIO *American History and Government*  
Class Honors, 4; Glee Club, 1, 2, 3; Chorus, 2, 3; Band,  
1, 2, 3, 4; Orchestra, 1, 2, 3, 4; International Relations  
Club, 1, 2, 3, 4; Basketball, 1; Track, 1.  
*Hozier gal, Mac? . . . happy-go-lucky goon . . . flashes*  
*friendly pair of specs.*

**BARBARA MARSHALL, ΑΝΩ**

CHEVY CHASE, MARYLAND *History*  
Alpha Chi Omega (President, 4); Best Loved Girl in  
Dormitory, 4; Class Secretary, 3; Aucola Staff, 3, 4;  
Panhellenic Council, 3, 4; Badminton Champ, 3; Ping-  
Pong Champ, 2, 3.  
*A passion for cats great and small . . . whizz on basketball*  
*court . . . crowning glory always a curl.*

**MARY ALICE MARTZ, ΗΠΜ, ΦΜ**

PHILADELPHIA, PENNSYLVANIA *History*  
Class Honors, 1, 3; Phi Mu (Secretary, 3); International  
Relations Club, 3, 4; Aucola, 3; Eagle Staff, 1, 2, 3; Glee  
Club, 1, 2, 3; Social Board, 3; House Council (President,  
4); Panhellenic Council, 4; French Club, 1, 2.  
*Non-conformist with the beautiful brown eyes . . . wields*  
*gavel at House Council meetings.*

**CHARLES MAYER, Jesters**

WASHINGTON, D.C. *American History and Government*  
Jesters (Vice-President, 3; President, 4); College Council,  
3; Debate, 2, 3, 4; Class Social Chairman, 2; Inter-  
traternity Council, 3, 4; Tennis, 3, 4; Football, 4.  
*When he makes up his mind, it's made . . . socialite with*  
*subtle smile of male Mona Lisa.*





**DORIS VIRGINIA MILLER**

COS COB, CONNECTICUT

*English*

Dickinson Junior College, 1; Temple University, 2; Chorus, 3, 4; Glee Club, 3 (Secretary, 4); Speaker's Bureau, 3, 4; Dramat, 3, 4.

*To sing or not to sing, there is no question . . . has a Hall of her own . . . aims to be a pedagogue.*

**HELEN ADELE MILLER**

Cap and Gown, ΗΔΕ, ΗΓΜ, ΦΜ

WASHINGTON, D.C.

*History and Education*

Class Honors, 1, 2, 3, 4; Pres. Student Body, 4; College Council, 3; Phi Mu (Pres., 4); Pi Delta Epsilon (Pres., 4); V.I.P.A. (Pres., 4); Handbook (Co-editor, 3); Mgr. -Ed., 4; Panhel Council, 4; Aucola (Ed., 3); Eagle 4; "A" Club.

*"All the things you are" . . . not including her sincere smile . . . stateswoman and diplomat.*

**JEAN MILLER, ΗΓΜ, ΔΓ**

WASHINGTON, D.C.

*Political Science*

Class Honors, 1; Freshman Scholarship Cup, 1; Pi Gamma Mu, 3 (Vice-President, 4); Dramat, 1, 2, 3 (President, 4); Social Board, 4; International Relations Club, 4; Delta Gamma (Vice-President, 4); Eagle Staff, 3; French Club, 1, 2; Speaker's Bureau, 2, 3, 4.

*Slim and vibrant . . . flame-gold hair . . . a Noel Coward flutterbrain.*

**MARGARET NOEL, ΔΓ**

WASHINGTON, D.C.

*History*

Spanish Club, 1, 2; Hockey, 1, 2, 3; Basketball, 1, 2, 3; Tennis, 1, 2, 3.

*Never squabbles . . . among our fashion plates . . . interested in Crab Town.*





**EUGENE S. NORTON, ΑΘΦ**

MORRIS PLAINS, NEW JERSEY *History*  
Dramat, 3; Alpha Theta Phi (Corresponding Secretary, 4).

*Verbose philosopher . . . progressive conservative . . . speaks from depth of Adam's apple.*

**ARCHIE BAYNES NORFORD, ΑΘΦ**

ALEXANDRIA, VIRGINIA *Biology*  
Spanish Club, 1, French Club, 1; Hamilton House Association, 3, Football, 1, 2, 4; Basketball, 1, 2, 4; Track, 2; Tennis, 4, Intramurals, 1, 2, 3, 4.

*Virginia gentleman . . . rejoices in jutterbugging . . . supports nickelodeon company.*

**C. LELAND PARSONS, Jesters**

WASHINGTON, D.C. *Physics*  
Jesters; Orchestra, 1, 2, 3; Band, 1, 2, 3 (Student Leader).

*Suave rhythm . . . on the dance floor . . . in the orchestra . . . generous soul . . . math fiend.*

**WILLIAM PERSONS**

WASHINGTON, D.C. *Economics*  
Dramat, 1, 2, 3, 4.

*U'proariously funny mutterings . . . tinkers with wrecks on four wheels . . . Gunga Din.*

**MARY POSEY, ΔΓ**

WASHINGTON, D.C. *Spanish*  
Delta Gamma (Social Chairman, 4); Eagle Staff, 2, 3, 4;  
Anglican Club, 1, 2.  
*Popular, peppy pocket edition . . . catchy chuckle . . .  
tilted eyebrows.*

**VICTOR PURSE, ΦΕΑ**

WASHINGTON, D.C. *Political Science and Economics*  
Aucola (Business Manager, 3); Eagle Staff (Advertising  
Manager, 2); Chorus, 1, 2, 3, 4; Glee Club, 1, 2, 3, 4;  
Dramat, 1, 2, 3, 4; French Club, 1, 2; Spanish Club, 1, 2;  
Anglican Club, 1, 2, 3; I.R.C., 1, 2, 3, 4; Athletic Board,  
3; Cheerleader, 1, 2, 3; Track 3; Tennis, 4.  
*Piano rattles with rag-time tunes . . . will and idea that  
can't be squelched . . . Victor "Herbert" P.*

**C. STANLEY RAUCH, ΔΘΦ**

KANE, PENNSYLVANIA *Business Administration*  
Intramurals (Manager, 4).  
*Campus "Red" . . . hair and blush don't match . . . matre  
d'hotel . . . headwaiter to the ignorant.*

**BERYL G. REED, Cap and Gown, ΦΜ**

HARTSDALE, NEW YORK *Sociology*  
Aucola, 1, 2, 3; Eagle, 1, 2, 3; Glee Club, 1, 2, 3; Women's  
House Council (President, 3); Cap and Gown  
(President, 4); League of Women Voters (Vice-President,  
3); Student Christian Association, 1, 2, 3.  
*"Quiet, puh-lease," the librarian frowns . . . loves leetle  
chilluns . . . even orphans can't quench sense of humor.*



**MARY JANE ROGERS, ΣΦΔ**

WASHINGTON, D.C.

*Romance Languages*

Class Honors, 2, French Club, 1, 2, 3, 4, Spanish Club, 1, 2, 3, 4

*Wise cracks guaranteed to pop a button . . . tongue-twister in several languages.*

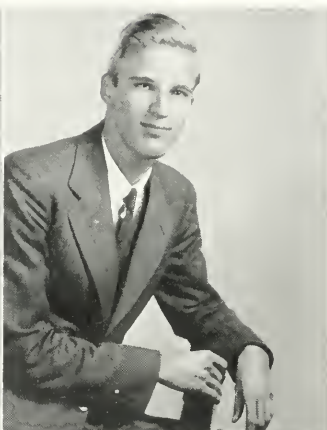
**JUDITH ADELE ROSE, Cap and Gown, ΔΓΨ**

WASHINGTON, D.C.

*English, German*

Class Vice-President, 4, Glee Club, 1, 2, 3, 4, Chorus, 2, 3, 4, Eagle Staff (Circulation Manager, 3), Aucola Staff, 3, German Club, 4, Intramurals, 2.

*Head froths with curls and quips . . . must be pried away from candy counter.*



**WALTER SANDERLIN, III**

WASHINGTON, D.C.

*History*

College Honor Society, German Club, 1, French Club, 3, 4, A.U. Fund Committee, 3, 4, International Relations Club, 3, Intramurals, 1, 2.

*Knows all but tells nothing about profs' private lives . . . forgets posture rules in history office.*

**GAIL SHAW**

CHEVY CHASE, MARYLAND

*Chemistry*

Glee Club, 2, 3, 4 (Secretary-Treasurer, 4), Intramurals, 1, 2, 3, 4.

*No introductions needed . . . pal to you . . . Frankenstein stalks through the laboratory.*



**DOROTHY SHEPHERD, ΠΓΜ, ΣΦΔ**

WASHINGTON, D.C.

*Sociology*

College Honor Society; Sigma Phi Delta (Vice-President, 3, 4); Student Christian Association, 1, 2, 3, 4; "A" Club, 2 (Secretary, 3, President, 4); Eagle Hockey Team, 1, 2, 3, Dramat, 4. League of Women Voters, 3 (President, 4).

*Methodical executive . . . swings a wicked hockey stick . . . vibrant booster of liberalism.*

**RUTH SHERIER**

ALEXANDRIA, VIRGINIA

*Sociology*

Hood College, 1, Aucola, 2, 3; Eagle, 2 (Associate Editor, 3), Newsnotes (Editor, 2).

*Positive in her likes and dislikes . . . frankness, challenging and outspoken.*

**HENRY SHIELDS, ΗΔΕ, ΑΘΦ**

SCRANTON, PENNSYLVANIA

*Economics*

Scranton-Keystone Junior College, 1, 2; Eagle Staff (Associate Editor, 4); Aucola, 3, 4; Band, 3, 4; Orchestra, 3, 4; Dramat, 3, 4; Hamilton House Association, 3, 4; Handbook Editor, 4.

*Falstaff . . . sweet creature of bombast . . . wildly gesticulative . . . not entirely lunatic.*

**DOROTHY MANNING SMITH, ΔΓ'**

WASHINGTON, D.C.

*English*

Eagle, 1, 2, 3, 4

*Dancing eyes . . . expressive hands . . . sing me a song of social significance.*



**JOHN STEVENSON, Jesters**

WASHINGTON, D.C. *Political Science*  
Jesters (Treasurer, 3, Vice-President, 4); French Club, 1, 2; Track, 1, 2; Intramurals, 1, 2, 3, 4  
*Commutes from classroom to Land of Nod . . . rare man (doesn't like to talk about himself)*

**THOMAS SUNDERLAND**

SEAT PLEASANT, MARYLAND *Philosophy and Psychology*  
West Virginia Wesleyan, 1, Speaker's Bureau, 2, 3; Chorus, 2, 3, Glee Club (President, 4).  
*Percolating parson . . . head askew, mischievous twinkle in his eye . . . Reverend Tommy.*

**ALICE MAY SWICK, ΣΦΔ**

CAPITOL HEIGHTS, MARYLAND *English*  
Guilford College, 1, 2; Poetry Club, 3, 4.  
*Spins ethereal poetry of moonlight . . . strains of Lohengrin beckoning.*

**LAURA TALBOTT, ΦΜ**

WASHINGTON, D.C. *Romance Languages*  
Class Honors, 2, 3, 4; Phi Mu (Second Vice-President, 4); French Club, 1, 2, 3, 4 (Secretary-Treasurer, 3; Vice-President, 4); Intramurals, 1.  
*Serenely dignified . . . one of those super-beings who make a 5-point average.*



**EUNICE ALVERTA THAWLEY**

SELBYVILLE, DELAWARE

*Religion*

Spanish Club, 1, 2, 3, Chorus, 4, Glee Club, 2, 4, "A"  
Club, 1, 2, 3, 4; Eagle Hockey Team, 1, 2.

*Always in a hurry . . . not responsible for every new table  
list.*



**CAROL HUNSINGER**

WASHINGTON, D.C.

*Art*

**JOHN McCORMACK**

FOREST HILL, TENNESSEE

*Political Science*

**RICHARD NORTHROP**

WASHINGTON, D.C.

*French*

**LELAND PARSONS**

WASHINGTON, D.C.

*Physics*

**E. L. SMITH**

DAWSON, PENNSYLVANIA

*Political Science*

**WILLIAM SORRELS**

WASHINGTON, D.C.

*Economics*

**ROBERT STEPHENS**

WASHINGTON, D.C.

**ADELE WHITE**

CABIN JOHN, MARYLAND

*Biology*

**HERMAN WINKLER**

WASHINGTON, D.C.

*Economics*



Schedule 36-37

Thursday

Class Meeting 1:00

Schedule 37-38

Tuesday

Eagle Staff 1:00

League of Women Voters 4:00

Dramat 7:30

Schedule 38-39

Wednesday

Prom. Committee 1:00

French Club 4:00

S.C.A. Cabinet 5:00

Science Show 7:30

Preparations

Schedule 39-40

Monday

Debate - Open Forum 11:00

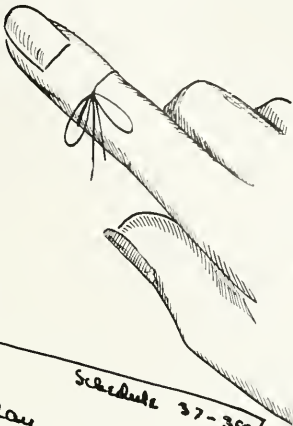
Poetry Club 1:00

Chorus 3:15

Hockey: vs. Wilson Mem. 4:00

Student Council 5:15

Society 7:30



# Activities

"of the people, by the people, for the people."

SINCE that first day we picked up our fall load of freshmen, the College Council and its special boards have jauntily ridden through the year past all stop signs.

President Miller said "Go!" and the Student Union Drive was launched.

Amid tense debates that made the Constitutional Convention look like a Sunday school class, a new constitution was framed and passed.

Our Council turned Dies Committee and investigated all campus organizations to get rid of "dead wood" clubs.

Freshmen, remember your first tour of the campus, the get-acquainted party, supper at faculty homes, and the Chancellor's tea? You owe your happy introduction to college to the Orientation Board.

Arbor Day left us dusty and tired, but wasn't it fun to see professors and apple polishers working to beautify the campus?

Rushing the freshman cuties occupied the swarms of stags at the Big Brother-Big Sister party. The Homecoming Dance and Alumni Night found the old grads out-jitterbugging the undergrads. Besides arranging all-college social events, our Social Board has approved petitions for class dances, fraternity hops, and other affairs. Our policy is first come, first served.

No Supreme Court decision was awaited more eagerly than the Publications Board's approval of national advertising in college publications, following years of student agitation. To demonstrate further our progressiveness, we were the first board to draw up a constitution and by-laws.



HELEN MILLER  
*President of the Student Body*





*Seated.* Dr. Woods, Dr. Rouse, Dr. Ferguson, Miller, Hutterly, Dewey, Dr. Shenton, Dr. Holton.  
*Standing* Reese, Clay, Fellows, Webb, Bushong

### COLLEGE COUNCIL

*President* . . . . . Helen Miller  
*Vice-President* . . . . . William Hutterly  
*Secretary* . . . . . Ruth Dewey  
*Comptroller-Business Manager*  
 William Adams

*Class Representatives—Junior:* Addison W. Clay, Adelaide Bushong; *Sophomore:* Bart Reese; *Freshman:* Philip Fellows.

### SOCIAL BOARD

*Faculty chairman:* Miss Mary Louise Brown; *Faculty members:* Miss Irma Zink, Dr. Theodore Andersson; *Class Representatives—Senior:* Jean Miller, chairman; *Junior:* Sarah Anne Rapp; *Sophomore:* Sarah L. Stewart; *Freshman:* Cartwright R. Doyle; *Junior Prom Chairman:* William Fausold.

### ORIENTATION BOARD

*Faculty members:* Dr. George B. Woods, Miss Mary Louise Brown, Dr. William B. Holton, Dr. Wesley M. Gewehr, Mr. Stafford H. Cassell. *Upper class members elected—Senior:* Bob S. Little, chairman; *Junior:* Charles H. Davidson; *Sophomore:* Barbara E. Smith. *Appointed members:* Philip C. Bentley, Sarah L. Stewart; *Freshman representative:* Elizabeth Carter.

### PUBLICATIONS BOARD

*Chairman:* Dr. Batchelder; *Faculty members:* Mr. Hoadley, Dr. Hutchins; *Class representatives—Senior:* Gordon Jowers; *Junior:* Frances Cruikshank; *Sophomore:* Virginia Goodwin.



*"To travel about and carry the news."*

HAVE you ever heard sizzling arguments emanating from the Eagle office on a Monday afternoon? 'Twas the editorial writers discussing the evils that lurk on the campus, and hatching plans for constructive criticism.

When the Student Union fund was launched, we boosted the drive with lots of publicity! To show our appreciation for the beauties of life, we sponsored the election of a "Sweetheart" for the Homecoming dance. In the spring we stimulated the talents of creative writers by offering a five-dollar prize in

a short story contest, won by Gordon Jowers.

Among the new features are an alumni column and a resumé of current events for students who read only the funnies. "My Daze," "Guilt Off the Dome," and "Tidbits," the official organ of the college government, have become permanent fixtures.

A new high in advertising space was attained, thanks to our go-getting busi-





ness manager. Evidently the editor-in-chief system is just as efficient as last year's editorial board, for this year the Eagle has flown high!

#### STAFF

*Editor-in-Chief* . . . . . Charles Corddry  
*Business Manager* . . . . . William Adams  
*Associate Editor* . . . . . Carter Edmonds

#### ASSISTANT EDITORS

*Desk Editor* . . . . . Henry Shields  
*Copy Editor* . . . . . Marion Mattes  
*Sports* . . . . . Robert Little  
*Features* . . . . . Gordon Jowers  
*Photography* . . . . . Walter Barkdull

#### NEWS STAFF

*Reporters:* Tom Aiken, Les Boykin, Addison Clay, Reuben Cohen, Frances Cruikshank, Mary Curry, Margaret Ellison, Clifford Evans, Virginia Goodwin, Bud Gorman, Homer Humbert, Bill Hutterly, Mary Janet Kenyon, Beal Lowry, Richard Marsh, Ellsy McClane, Jean Ray, Stanley Rauch, Jane Sattler, Catherine Stewart, Hector Sherertz, Leon Smith, Jackie Waldron, Nancy Warner, Jan Wheeler.

*Columnists:* Paul Lentz, Helen Miller, Babette Liebman, Daniel Wentz, Annette Steinle, Irwin Krasnoff, Betty Lawton.

*Typists and Copy Readers:* Sarah Brown, Daena Offutt, Louise Harriman, Joyce Weills.

#### BUSINESS STAFF

Mary Curry (*circulation manager*), Betty Adams, Margaret Harned, Ruth Harris, Peggy Rule, Jan Wheeler.

"To the last syllable of recorded time."

ARTISTS sketching and erasing quaint caricatures. Typists pounding away, blithely unaware of copyreaders' marks. The literary staff thumbing through quotations from Shakespeare and Mother Goose. Our forgery expert scribbling in her distinctive handwriting to lend the personal touch. Re-

porters tracking down elusive club presidents for information about their organizations. Business manager and petite assistant handing pink, blue and yellow appointment cards across the counter. Mix everything together and voilà—your AUCOLA!

If you feel that your 1940 yearbook is as intimately personal as your own memory book, our hustlings and busblings have not been in vain.



LATIMER EVANS, *Business Manager*; ADELAIDE BUSHONG, *Editor*



### AUCOLA STAFF

*Editor* . . . . . ADELAIDE BUSHONG

### EDITORIAL STAFF

*Assistant Editors* . . . . . FRANCES BREWSTER,  
HENRY SHIELDS

*Advisory Editor* . . . . . HELEN MILLER

*Literary Editor* . . . . . SARAH ANNE RAPP

*Photographic Editor* . . . . . ERNEST WEBB

*Activities Editor* . . . . . MARGARET ELLISON

*Sports Editor* . . . . . ROBERT LITTLE

*Art Editors* . . . . . JACQUELINE WALDRON,  
RENÉ BEARD

### BUSINESS STAFF

*Business Manager* . . . . . LATIMER EVANS  
Betty Adams, Peggy Bleth, Kenny Fox,  
Ronald McCulloch, Marion Mattes, Eloise  
Swick

### LITERARY AND MAKE-UP STAFF

Thomas Aiken, Dorothy Bixby, June Caudill, Carter Edmonds, Jane Esterline, Arnold Fine, Mary Gautier, Virginia Goodwin, Edgar Keller, Ruth Kent, Barbara Klein, Irwin Krasnoff, Estalyn Kreps, Theodora Kreps, Marjorie Letz, Helen Lundegaard, Lillian Maki, Barbara Marshall, Jeanne Mathews, Edith Mitchell, Jay Rutherford, Gere Dell Sale, Jane Sattler, Robert Shenton, Sarah L. Stewart, Betty Stone, Lois Taylor, Nancy Warner.

*...these few precepts in thy memory...*

Am I puzzled by Panhellenic rushing rules? Do I wonder about the sports schedule? All I do is look in my little red book. By following the helpful hints printed therein, old-timers as well as uninitiated frosh find their questions disposed of in less than no time.

Tucked away in the pages of our A.U. Handbook are those not-to-be-forgotten regulations on fraternities, Women's Residence Hall, sports, and student government. Our revised student "Bible" includes as added attractions the membership requirements of various organizations, clever cartoons, and sound rushing advice.

If you want to be in the know, consult the Student Handbook and you can't go wrong!

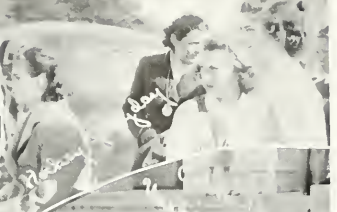
Editor .....HENRY SHIELDS



HENRY SHIELDS  
*Editor of the Handbook*







"I'll rant as well as thou."

SINCE Cicero, Plato, and Aristotle are no longer available as after-dinner speakers, clubs and organizations of Washington ask our Speaker's Bureau to provide public discussions.

Is there a call for a mellow-throated soprano or a humorous skit? The A.U. Speaker's Bureau rushes our talented artists to the scene of duty.

The ether waves have vibrated with several of our radio programs, includ-

ing musical selections and a panel discussion on "Education and Democracy."

Serving the community and turning the limelight on our capable students—that's our job.

#### MEMBERS

Hector Sherertz, Edgar Keller, James Hewitt, William Adams, Jean Miller, Frances Dewey, George Sandefer, Jeanne Mathews, Addison Clay, Paul Lentz, Walter Barkdull, Doris Miller, Bart Reese, Phoebe Robinson.

## DEBATE

WHENEVER you hear the thump of a fist and a confident roar, you can be sure that our Varsity Debate Squad is again arguing its way to victory! While our men's team has played host to such formidable opponents as Maryland University, Pittsburgh, Catholic University, and the Massachusetts Institute of Technology, the women's team has met teams from Ohio Wesleyan, Cape Girardeau, and other campuses.

Later we turned globe trotters. Going south, we met teams at the University of North Carolina and participated in the Winthrop College Tournament at Rock Hill, South Carolina. We returned from the Pennsylvania State Teachers College Tournament with six victories and no defeats to our credit.

We've strengthened our jaw muscles on that tongue-twisting question, "Resolved, that the United States should



Clay, Keller, Barkdull, Sherertz, Sandefer, Mr. Slover, Lentz, Hewitt, Adams, Reese



FRESHMAN DEBATE SQUAD

Center Mr. John Slover, Debate Coach  
 Gabrielson, French, Boykin, Wood, Coach John C. Slover, Ennis, Coffey, Matthews, Gross

follow a policy of strict economic and military isolation toward all nations outside the western hemisphere that are engaged in armed international or civil conflict."

With an eye to filling the shoes of the varsity team, our Freshman Debate Squad tackled local high schools and college freshman teams and even matched wits with a few varsity orators in three debates with the sophomores. The freshman jaw-breaker was,

"Resolved, that the federal government, should own and operate the railroads."

*Varsity Squad:* Theodora Kreps, Estalyn Kreps, Eloise Swick, Nancy Warner, Mary Sanders, Gere Dell Sale, William Adams, James Hewitt, Edgar Keller, Hector Sherertz, Addison Clay, Walter Barkdull, Paul Lentz, Manager.

*Freshman Squad* Loessa Coffey, Iris Gabrielson, Ruth Gross, Jeanne Mathews, Robert Lake, Herbert Wood, Lester Boykin, Charles Richmond, Judson French, manager.



VARSITY DEBATE SQUAD

Swick, Warner, Barkdull,  
 Sherertz, Keller, Mr. Slover,  
 Clay, Lentz, Hewitt, Adams,  
 Sale





"Upstairs, downstairs, in my lady's chamber."

I DIDN'T know what time it was," a noisy coed apologizes to a proctor at half-past midnight . . . a door bangs and a light clicks off. Shuddery memories of a Hallowe'en Poe story, drowned in doughnuts and cider at the Women's Residence Hall.

Christmas brought Yule logs and candlelight, caroling Sophomores at five a.m., and a formal dinner.

Remember how we learned the ins and outs of can openers and tea kettles in the red and white kitchen—any leftover time we spent in the newly decorated second floor lounge.

President . . . . . Mary Martz  
Head Proctor . . . . . Lillian Hawkins  
Secretary . . . . . Edith Mitchell  
Treasurer . . . . . Beatrice Wyman  
Social Chairman . . . . . Adelaide Bushong



#### MOST REPRESENTATIVE GIRLS

Bushong, Junior; Wilson, Sophomore; Marshall, best loved; Jacobs, Senior; Maki, Freshman



#### WOMEN'S HOUSE COUNCIL

Mitchell, Bushong, Martz; Hawkins, Wyman



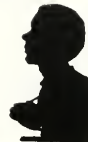


"To hold the mirror up to nature."

EVERY Monday about one o'clock, the birds seem to sing more sweetly, the skies appear bluer, the grass grows greener; and all in spite of the fact that another grinding week of eight-ten classes is under way. Far be it from the Poetry Club to claim the credit, but it is true that we meet at that time. Nor do we gather to read Homer and Omar Khayyam in the original. Twice a month we read our own poetry. Sometimes we hear a report on a more famous poet. Sometimes we write jingles for our own amusement. Occasional Sunday social meetings with guest speakers encourage the appreciation of poetry.

Many of the poetic efforts of members are published in *College Verse*, the official organ of the College Poetry Society of America, of which we are a chapter.

President . . . . . Gordon Jowers  
Vice-President and Treasurer . . . . . Jacqueline Waldron  
Secretary . . . . . Frances Hill



"He called for his fiddlers three."

HAVE you ever wandered by the little gray shack late in the afternoon and heard the discordant strains of a classical jam session? That was our orchestra fiddling and tooting away.

If you arrived at the fall play and the spring Shakespearian drama before curtain time, you'll remember that our overtures added that extra touch of finesse. And commencement is always rendered more memorable by our musical selections.

When Mr. Nuelsen wielded the baton at our assembly concert, the applause proved that music hath charms even to tame a student of American University.

We are convinced that the secret of our success is "Regular practice makes perfect."



JOHN L. NUELSON  
*Director of Orchestra*





THE  
CHORUS  
AND  
CHAPEL  
CHOIR

" 'Tis well she sang the service dirgys  
Entered in her mossy dimly.



THE Chorus marches into chapel, and everyone stands up. We walk upon the concert stage, and everyone applauds. Can you blame them?

Although we are forty strong, we respond as one man to the hypnotic gestures of our director, Mr. McLain. We can sing a dashing Russian folk song, a weird Negro spiritual, or an inspiring anthem with equal ease.

Twice we formally performed for our campus "public"—in our Christmas chapel program and in our spring concert. As for our informal performances during our practice hours, the less said the better!

Fame lured us to sing several Christmas concerts before local organizations. In March we took to the road for a five-day concert tour, including Scranton, East Orange, Newark, and Baltimore.

*Director*, Mr. James B. McLain  
*Manager*, Ronald McCulloch  
*Accompanist*, Sarah Anne Rapp

How about a little close harmony, friends?

## GLEE CLUBS

NOTHING sweeter than the blending of women's voices, nothing more forceful than a full male chorus! We show off our talents in a series of concerts in the spring. Our most gifted members do double duty, warbling with the mixed chorus also.

### WOMEN'S GLEE CLUB

*President* . . . . . Frances Brewster  
*Vice-President* . . . . . Judith Rose  
*Secretary* . . . . . Doris Miller

### MEN'S GLEE CLUB

*President* . . . . . Thomas Sunderland  
*Vice-President-Librarian*  
Addison Clay  
*Secretary* . . . . . Gail Shaw



WOMEN'S GLEE CLUB

### MEN'S GLEE CLUB



"Where are you going, my pretty maid?"

PROPAGANDA, powder puffs, and politics! Members of the League of Women Voters have racked their brains over three major issues — American neutrality, consumer education, and election procedure. Each girl worked with the commission that interested her most, according to whether she was a little dove of peace, a prospective housewife, or a would-be Senator.

The resulting galaxy of ideas produced such memorable meetings as our heated round-table discussion of propaganda techniques and a shocking exposé of cosmetics.

We seasoned our monthly meetings with field trips, including visits to the neutrality law debates in Congress and to the "Chamber of Horrors" which influenced passage of the Food and Drug Act.

Striking clippings have attracted students to our bulletin board. A hilarious satire, "Peace Makes Her Bow," was presented in assembly under our auspices.

If you need any further proof that we're wide-awake, our membership has tripled in our brief two years.

President . . . . .  
Secretary-Treasurer . . . . .  
Program Chairman . . . . .  
Advisor . . . . .

Dorothy Shepherd  
Sarah Anne Rapp  
Sue Horton  
Mrs. Edward Harding







Front row - Dewey, Wilson, Martz, Wagnon, Hawkins. Second row - Miller, Chetham, Adams, Warner. Back row - Gross, Daily, Miller, Hewitt, Wood, Adams, Sanderlin, Liebman

"All the world's a stage"

AFTER limping along last year, the International Relations Club has thrown away its crutches and taken great forward strides.

With diplomatic relations straining and snapping like rubber bands throughout the world, our interest in foreign affairs has been accelerated.

Every two weeks we've met to debate international problems or to hear noted authorities. Among the most enlightening programs was Mr. Lloyd Milligan's illustrated lecture on the Far Eastern situation.

We've kept abreast of current affairs by reading the books sent us by the Carnegie Endowment Fund.

The hotter the world turmoil, the cooler our thinking on international events!

President . . . . . William Adams  
 Secretary . . . . . Kathryn Chetham  
 Faculty Advisors . . . . . Dr. Gewehr, Dr. Stout





Kenyon, Goodwin, Schneider, Johnson, Rickard, Bixby, Scratchley, Engel, Mathews, Sanders, Swanton

*"Sugar and spice and all things nice."*

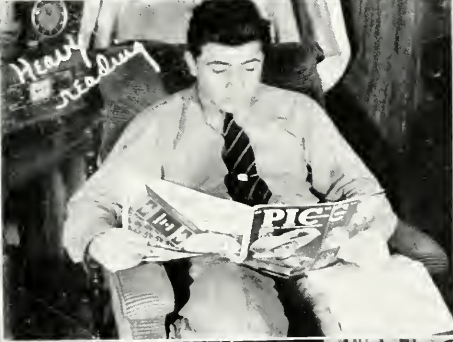
ALL is not Greek that glitters! This momentous discovery we have stumbled upon in our new Independent Women's Club.

Now that we have hatched and spread our wings, we mean to fly as high as our sorority friends in sport tournaments, scholastic rating, and campus leadership. But we're not mere blue stockings. We've danced and hiked and skated. We've gone bicycling and picnicking. Among our most delightful parties was the occasion when Miss Brown entertained us. Like good citizens, we contributed our brain and brawn to a group project on Arbor Day.

We may not have a secret ritual, and we may not have a big budget, but we do have a wonderful time!

President . . . . . Ilse Engel  
 Vice-President . . . . . Elizabeth Mathews  
 Secretary . . . . . Edna Scratchley  
 Treasurer . . . . . Beall Lowry  
 Chaplain . . . . . Dorothy Bixby







Front row - Schaller, Hudson, Hawkins, Barger, Smith, Warner, Lentz. Back row - Dr. Potorf, faculty advisor, Laughton, Webb, Hewitt

"to strive, to seek, to find"

President . . . . . Erva Barger  
 Vice-President . . . . . Charles Laughton  
 Corresponding Secretary . . . . . Mary Hudson  
 Recording Secretary . . . . . Lillian Hawkins  
 Treasurer . . . . . James Hewitt  
 Social Chairman . . . . . Barbara Smith, Ernest Webb  
 Program Chairman . . . . . Nancy Warner  
 Publicity Chairman . . . . . Nelva Ree Smith  
 Conference Chairman . . . . . Dorothy Shepherd



Do you approve of going steady? Are you a pacifist? If you're alert and concerned over the problems of the world, you've participated in our Student Christian Association discussion groups. We've bulled



over coediquette with Staff Cassell. We've held meetings on sociological questions with Howard University.

At Christmas we sponsored the chapel service and played Santa Claus to poor children at a party in the gym. On Dad's Day and Mother's Day we entertained our parents as guests of honor at a special dinner. Taking advantage of tradition, girls treated the men at our Leap Year Party.

A few of us lucky members attended the Penn State Social Action Conference and the Down-the-Bay Conference.

In the interest of peace, we invited Mr. Singh, an exponent of civil disobedience in India, to speak in assembly, and sent delegates to the Campus Peace Commission.

Our program concluded with a banquet featuring Sherwood Eddy as guest speaker.



*Retiring president, Erva Barger, greets successor, Jackie Waldron.*



"Speak the speech, I pray you,

triflingly on the tongue."

President

Vice-President

Secretary

Treasurer

Jean Miller

Charles Davidson

Vivian Yeager

Hector Sherertz



WITH the laughter that greeted the ravings of imperious Katherine and the antics of the country-house week-enders echoing in our memories, we Dramat players still were infected with the comedy bug this spring. And who could be more comic than the gay libertine Falstaff? Again Shakespeare's lines called for hordes of men and a handful of women. Wouldn't it be novel if we reversed the device of the Elizabethan stage by casting young



Shakespeare goes slapstick in *Taming of the Shrew*

women in several male roles? What an escape mechanism that would be for our thwarted feminine members who have lots of talent but no place to go!

A ranting termagant submitted to the masterful control of her indomitable suitor in the 1939 spring play, Shakespeare's *Taming of the Shrew*. Beauty and wit sparkled throughout the production, although the men in the cast outnumbered their glamorous co-stars four to one.

The eternal triangle became a polygon as dizzy blonde, suave diplomat, stage-struck matron, virile athlete, brazen flapper, famous novelist, and cartoonist swapped partners in Noel Coward's hilarious *Hay Fever* last fall. Faked English accents and a continuous stream of repartee kept the audience in guffaws.



Director Hutchins and *Hay Fever* victim, Miller



Coward at his cleverest



*Standing: Newby, Jablonsky. Seated: Dr. Engel, Dr. Andersson, Brown*

## ATHLETIC BOARD

"PROMOTING democracy and fair play." No, not a rabble-rouser's cliché. That's Staff Cassell's opinion of the cooperative Athletic Board. Could you find a higher recommendation?

Although we don't wear spats or monocles, we board members are diplomats par excellence. We keep athletic policy in accord with the wishes of both the student body and the faculty and administration, and that requires no little tact! We settle issues pertaining to inter-collegiate relations and intramural sports. Our advice is often asked by our dynamic young Athletic Director.

*Chairman . . . . . Dr. Andersson*  
*Secretary-Treasurer . . . . . Dr. Engel*

### MEMBERS

Dr. Dennis, George Brown, Hugo Schulze,  
 Harry Newby

### EX-OFFICIO MEMBERS

Chancellor Gray, Dean Woods, Mr. Cassell,

STAFFORD H. CASSELL  
*Director of Athletics*



# Sports





COACH GEORGE MENKE  
ASSISTANT COACH JOEY KAUFMAN

## FOOTBALL

*Lettermen:* Brown, Byham, Blanchard, Cohen, Dean, Flaherty, Fox, Hall, Jablonsky, McLane, Norford, Rauch, Schulze, Streitsberger, Thatcher, Yoakum.

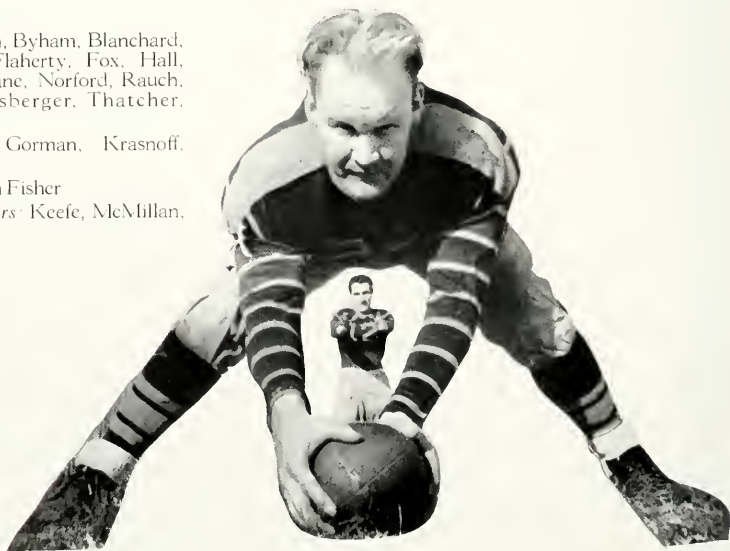
*Numeral Men:* Gorman, Krasnoff, Werner.

*Manager:* Watson Fisher

*Assistant Managers:* Keefe, McMillan, Boykin, Wood.

FIGHTING loyally against impossible odds, the Eagles had a disastrous year on the gridiron. A new coaching staff failed to make up for the lack of material, as the Orange and Blue eleven went down fighting in game after game against bigger and more experienced teams. With nine returning veterans, the first team acquitted itself creditably, but the lack of reserves led to an inevitable let-down when the regulars were out of the game.

Typical of the manner in which the Eagles lost was the opening game of the season, against Randolph-Macon's Yellow Jackets. The first three periods were fought on nearly even terms, with the score at the end of that time standing only 6-0 in favor of the Jackets. Forced to remain in the line-up for the entire game, the regulars wilted and finally yielded two more touchdowns







Doyle, Wagnon, Hutterly, Humbert



in the closing minutes of the last quarter.

Fumbles leading to two Johns Hopkins scores in the first period more than nullified the spirited, last-half Eagle attack that netted one touchdown and kept the opposition on the defensive for the remainder of the game.

In the third contest of the year, Blue Ridge College was forced to take to the air to gain its 20-0 victory over the Eagles, the score being no indication of the closeness of the battle. Only in the final game of the year was A.U. com-

pletely outclassed, when the powerful Swarthmore offensive ran up a 58-0 count on the game but overmatched Eagles.

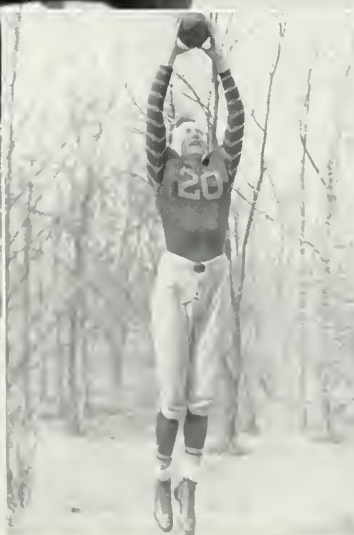
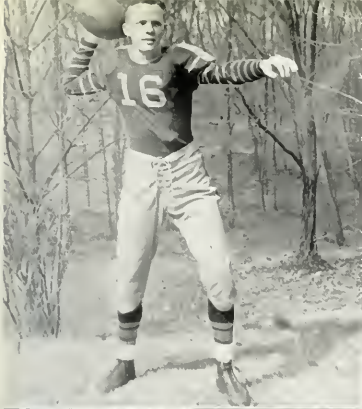
In justice to Coaches Menke and Kaufman it must be said that they did everything possible to present a winning team, handicapped as they were with the lack of material. The players themselves are deserving of praise for their loyal efforts against impossible odds, and their classmates will remember their spirit and fight long after scores are forgotten.

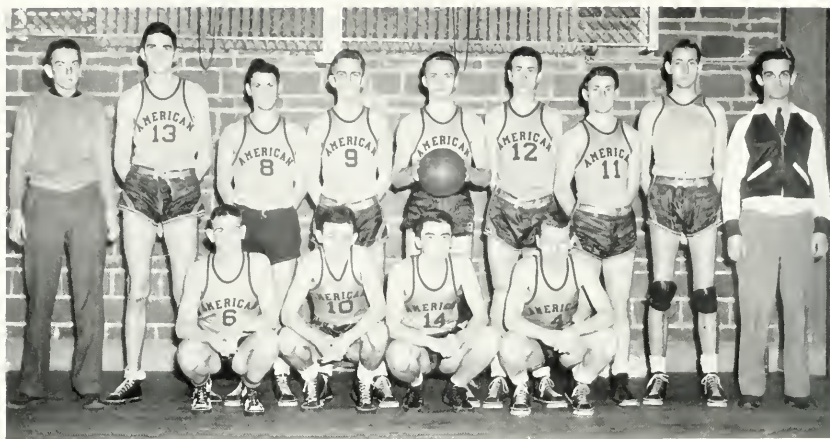
THAT BIG A.U.











JUNIOR VARSITY

*Front row, left to right: Richmond, Shumate, Fellows, Doyle*

*Back row: Schmeltzer, Bachman, Fine, White, Norford, Hollis, Krasnoff, Etchison, Cassell*

## JUNIOR VARSITY BASKETBALL

NOTICE was adequately served of the possible success of next year's Varsity basketball team according to the sterling performances of the 1939-40 edition of the American University Junior Varsity.

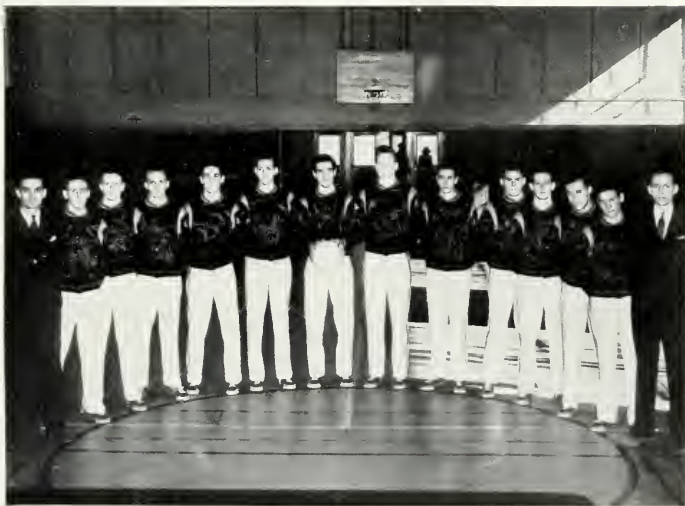
The little Eagles, though they faced a



difficult schedule that called for games with outstanding college junior var-  
sities. District high school "fives" and  
local independent clubs, flew high to  
register eleven victories against five  
defeats for their season total. Under the  
watchful eye of Coach Cassell several  
of the Jayvee stars so improved their  
ball playing that they also regularly  
broke into the Varsity lineup.

#### VARSITY BASKETBALL

Coach Staff Cassell, Webb, Reese, Norford, Schulze, Etchison, Captain Brown, Byham,  
Hollis, Gewehr, Roadman, Morrison, Fine, Manager Hutterly





## VARSITY

**I**MEDIATELY following the cessation of football warfare, Coach Stafford Cassell issued a call for basketball candidates. After several weeks of strenuous practice, the Eagle mentor began to shape up a varsity squad of fourteen men around the nuclei offered by lettermen Captain Moe Brown, "Dutch" Schulze, Carl Byham, Ernie Webb, and numeralmen Barty Reese, Bruce Etchison, Ham Gewehr and Arnold Fine. New figures to the club besides last year's holdovers who earned a berth on the squad were Archie Norford, H. G. Morrison, Keene Roadman, Jim Hollis, Gilbert White, and Irwin Krasnoff.

The Orange and Blue quintet made their début in the week preceding Christmas vacation, playing games with Bucknell, Georgetown, and Randolph-Macon. The Cassellmen suffered setbacks in their two clashes against the well-rounded Bucknell and Georgetown outfits, but gave indications of future potentialities when they trounced their traditional rivals, Randolph-Macon. Court action ceased during January

Brown  
Morrison  
Schulze  
Etchison  
Roadman



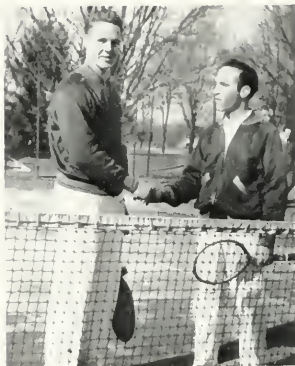
# BASKETBALL

because of the rigors of exams. Hostilities were renewed on February 3 in an away game with Randolph-Macon, and once again American University hoisted their victory colors over the opposing crew. The Eagle aggregation appropriately presented Staff with a win over Delaware on his birthday, February 8. An away game at Western Maryland saw this short winning streak halted. After holding an 18-16 lead at the half over Georgetown at the Tech gym, the Eagles succumbed before a last minute Hoya rally. The varsity regained their winning stride with a triumph over Johns Hopkins at Baltimore; but in games at Juniata, Bucknell, Drexell, and Swarthmore, and a contest on the local boards with Western Maryland, the A.U. courtsters went into a five-game mid-season losing streak. The Cassellmen wound up their season by regaining their triumphing ways in brilliant fashion with wins over Elizabethtown and the Alumni on the home floor, to bring their season record to six wins and nine losses.

Hutterly  
Webb  
Norford  
Byham  
Reese



Fausold and Landman



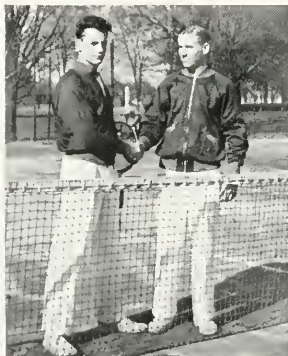
## TENNIS

TENNIS, American University's most successful sport, has just gotten underway as this book goes to print. This year's team is built around the nucleus of Bud Fausold, Harold Landsman, and Ernie Webb, all carry-overs from last year's squad. Three new men appearing on the team to replace those lost due to graduation are Latimer Evans, Harry Nielsen, and Ernest McCarthy.

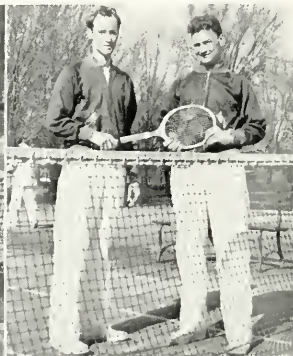
The southern trip this year during the spring vacation resulted in a victory for old J. Pluvius, our men triumphing in the only match not rained out. Returning home, the Eagle netmen quickly reduced their batting average to .500 by succumbing to a powerful Cornell team.

We are expecting great things from this year's team, but since the team is composed of four juniors and two freshmen, we are even more eagerly awaiting the 1941 season.

Nielsen and Webb



Evans and McCarthy









*Second row:* Brown, Maddox, James, Schulze, Spencer, Byham, Etchison, Jablonsky, Nicholson, Thatcher, Cassell, coach. *First row:* Zimple, Blanchard, McCrady, Edmonds, Newby, Price, Fellows, Werner, Cohen

## BASEBALL



WHEN George Brown rose in student assembly in the spring of 1938 to move the resumption of baseball as an intercollegiate spring sport, few students felt the significance of that motion.

But with the call for players in February 1939 twenty boys responded and A.U. had its first intercollegiate baseball team in ten years. The gym resounded with the thud of balls. Soon the new drab gray uniforms of A.U.'s diamond-men were seen at Georgetown.

American University lost that first contest to Georgetown 13 to 4, but a step in athletic progress had been made with the reestablishment of baseball as a sport. After Georgetown came the season's lone win, a 9-7 victory over Johns Hopkins. Then contests followed with Wilson Teachers, Hampden-Sydney, Western Maryland, and Georgetown.

The season score read: 1 win, 7 losses; Clay Price, Burke Hertz, Bob Hall, leading batters; eighteen to twenty men participated; twelve men received A's for their contribution to the revival of this sport.

This year 24 men reported for an enlarged schedule of 14 games and indications show that baseball will be finally entrenched as a permanent spring sport.





Dick Gentle, coach. Jablonsky, McDonald, Wood, Streitberger, Evans, Fox, Boykin, Dixon, Boykin, Adams, Hinkle, Flaherty

## TRACK

UNDER the guidance of Dick Gentle, the American University Trackmen went through a fairly successful season.

Meets were held with Catholic University, Randolph-Macon, Bridgewater, Johns Hopkins, and Washington University. The Eagle Wingmen also took part in the Penn Relays held in Philadelphia.

The Orange and Blue participated in the Catholic University games held for the benefit of the Finnish Republic. They made a noteworthy showing with Bob Dixon winning laurels in the 660-yard run.

The squad included Bill Adams, Jim Flaherty, Otto Streitberger, Bob Dixon, and Bob McMullan—sprinters; Bob Little, Herb Woods, Allan Hinkle, and Le Roy Cook—distance men; John Jablonsky and Ken Fox—shotputters; Doug Rollow—hurdles; and Cliff Evans—high jump.



## INTRAMURALS

DURING the past year the Physical Education Department carried out the most extensive intramural program in the history of the University. Athletic Director Staff Cassell and his student assistant Stanley Rauch held competitive tournaments in Volleyball, Touch Football, Basketball, Softball, Swimming, Ping-Pong, Pool, Badminton, Tennis, and Shuffleboard.

More than 100 boys out of a possible 180 in the college participated in the various events with awards being presented to the winners in their respective events.

Outstanding in class competition were the Juniors who won both the first and second semester All-College Basketball Championships by not losing a single game. Members of the winning quintet coached by Arnold Fine included Bob Dixon, Tommy Adams, Latimer Evans, Jim Vogts, John Trowbridge, John Jablonsky, Carter Edmonds, and Irwin Krasnoff.

Other winners of Intramural awards include: the Sophomores in Touch Football, Henry Daily in Ping-Pong, Hugo Schulze in Tennis, Bud Fausold in Pool, and the Faculty in Volleyball.



"RED" RAUCH, *Director of Intramurals*



Phi Sigma Kappa Touch Football team

Outstanding intramural stars of A.U. were selected to meet similar representatives from Georgetown, George Washington, Catholic U, Maryland, and Gallaudet. Needless to say the alma mater boys made an admirable showing, which is a feather in the cap of old A.U.



PING-PONG CHAMPIONS  
Daily, Landsman, Cassell, Blanchard, James

# INTRA



Just a twist  
of the wrist



Get  
into  
ball



On deck



Swing  
the classic!



The fish  
like glue



Serious business



Over the net  
le ropes



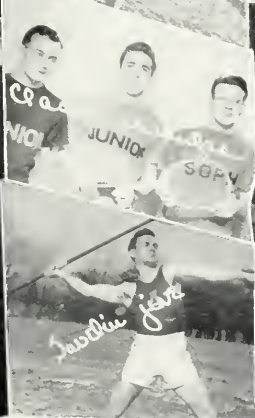
Break  
down  
Brother



Strategy



# MURALS







Front row: Thawley, Waldron, Stewart, Shepherd, Schaller, Yeager  
 Back row: Elumenthal, Barger, Sale, Hill, Scratchley

*... and I'll come tumbling after!*



**D**ON'T be deceived by our frills and ruffles, for we "A" Club cuties are husky Amazons.

In September we sent more than forty freshman girls running all over campus on a scavenger hunt before treating them to a picnic supper. Came hockey season, with us participating in playdays at Wilson Teachers College and Maryland University and playing hostess in return games. Results: close games, no wins, no major casualties.

One brisk fall morning we sponsored a breakfast hike, acquiring appetities too hearty to be dismayed by the slow-burning fire. After dribbling through the sorority basketball tournament, we sent two teams to play George Washington University coeds, and challenged our alumni women.

Spring found us square dancing, bicycling, and holding a swimming party and badminton playday.

At our banquet we awarded letters, stars, and pendants to girls who had earned the required athletic points.

President . . . . . Dorothy Shepherd  
 Secretary . . . . . Sarah Stewart  
 Treasurer . . . . . Mary Schaller

**MANAGERS**

Hiking . . . . . Vivian Yeager  
 Hockey . . . . . Jacqueline Waldron  
 Individual Sports, Eunice Thawley  
 Basketball . . . . . Frances Hill



Her goal is  
Gull's eye!



It's  
a  
game



Best in basketball



Good family car  
No doubt!



Let's  
get  
it  
right



All set for a net game



Let's  
get  
it  
right



Remaining Invader



How the victors fly!









Finch

Barger

Sanderlin

Brewster

Shepherd

## COLLEGE HONOR SOCIETY

*President* . . . . . Dr. Theodore Andersson  
*Secretary-Treasurer* . . . . . Dr. Edward Engel

### FACULTY MEMBERS

Dr. Eugene Anderson, Dr. Theodore Andersson, Dean Brown,  
 Dr. Dennis, Dr. Engel, Dr. Hunter, Mr. Hutchins, Miss Lentz, Dr.  
 Lindsey, Dr. Marshall, Dr. Rouse, Dr. Shenton, Dean Woods

### STUDENT MEMBERS

Erva Barger, Walter Sanderlin, Ruth Finch, Frances Brewster,  
 Dorothy Shepherd.



**R**UBBING elbows with faculty members of academic Phi Beta Kappa and scientific Sigma Xi honorary fraternities is a privilege accorded only to those students elected to college Honor Society.

Are we bespectacled prigs who gravitate between cramming and apple polishing? Not on your life! Besides keeping our grades near the beginning of the alphabet, we must show dependability, integrity, and interest in outside activities.

Three times a year the faculty elects new luminaries to our constellation.





## OMICRON DELTA KAPPA

*President* . . . . . George Brown

*Treasurer* . . . . . Bill Adams

*Secretary* . . . . . Frank Hoadley

*Faculty Advisor* (appointed by General Council)  
Dean Woods

*Student Members*  
George Brown, William Adams, James Hewitt

*Faculty Members*  
Mr. Hoadley, Dr. Holton, Mr. Cassell, Dean Woods  
(Three more members to be elected this spring)

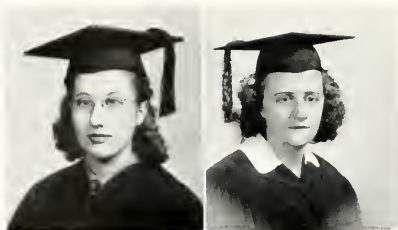
Brown  
Adams  
Hewitt

“**I**NTEGRITY, fellowship, humility, courage, and consecration to a great purpose.”

Sounds like a modern version of a novitiate's vows, doesn't it? But we men who possess these membership qualifications for Omicron Delta Kappa certainly lead no *cloistered* life. We're in a whirlpool of polyglot activities—athletics, religion, publications, forensics, music, dramatics—take your pick. In the few hours left for study, we cram enough knowledge into our skulls to earn honor grades.

Each year we tap campus leaders deserving recognition. By choosing annually one faculty member for a four-year membership, we keep open a channel for cooperation between professors and students.

We're proud that our college is worthy of having a chapter of Omicron Delta Kappa and we're proud to represent our college to other O.D.K.'s throughout the nation.



Reed, Miller, Rose, Brewster, Barger

## CAP AND GOWN

*President, Beryl Reed Vice-President, Helen Miller Secretary-Treas. Judith Rose  
Historian, Frances Brewster Social Chairman, Erva Barger*

**P**ARDON us if we swell with pride! We're the girls who make all A's and B's, dabble in dozens of activities, shine in all of the seven virtues, and lend a helping hand wherever we are needed.

During Freshman Week Cap and Gown cooperated with the Orientation Committee in introducing the greenhorns to student life. In the spring we sponsored the traditional May Fete.

For the first time in our existence, we undertook a series of vocational guidance programs. To cap our service to our school, we have contributed money to worthwhile campus projects.

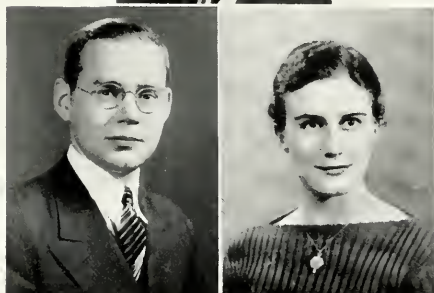
Don't you agree we deserve a little recognition?



*Tap Day*



Dean Woods



Hoadley

Carlo

## DELTA SIGMA RHO

ONCE upon a time, American University had no chapter of Delta Sigma Rho—but that didn't keep her from producing good debaters. In fact, in 1929 our squad included a senior so outstanding that the national forensic fraternity elected him a member-at-large. Three years after Roland Rice won this unusual honor, a chapter of Delta Sigma Rho was installed on our campus.

Membership in Delta Sigma Rho is still a coveted distinction, as we admit only debaters with a high scholastic average who have worked two years on the varsity squad and participated in at least three intercollegiate debates. This year two veteran juniors, Addison Clay and Hector Sherertz, were elected to our fraternity. Alumni members on campus include Mrs. Joseph Carlo and Frank T. Hoadley, with Dean Woods as faculty advisor.



Back row: Bushong, Shields, Brewster. Front row: Webb, Mr. Hoadley, Miller, Corddry

## PI DELTA EPSILON

President	Helen Miller
Vice-President	Henry Shields
Secretary-Treasurer	Frances Brewster

### MEMBERS

Charles Laughton, Adelaide Bushong, Charles Corddry, Ernest Webb, Mr Hoadley.



"SCRIBES' Delight" might well be the nickname for Pi Delta Epsilon, our National Publications Honor Fraternity for men and women. All we typewriter pounders with printer's ink in our veins who are on the *Eagle*, *AUCOLA*, or *Daily Bulletins* staffs, have a 3.00 average, and are capable of assuming responsibility, are eligible for admission.

In the fall our chapter played host to the annual convention of the Virginia Intercollegiate Press Association. Wild-eyed, ink-spotted cub reporters from District of Columbia and Virginia colleges ran amuck with pencils protruding at all angles from their heads. That, dear reader, is a graphic picture of us as we strive to bring to you the latest news on campus. Flash! Flash!

# BETA BETA BETA

*President*, Adele White     *Sec -Treas* Harriette Christie  
MEMBERS: Elizabeth Acton, Richard Bean, Dr. Dennis,  
Ralph Johler, Dr. Lindsay, Elizabeth Mathews, Robert  
Neff, Jacqueline Waldron, Betty Wilson, Edward Wood.  
ASSOCIATE MEMBER: Lois Evans.



"STANDING room only" was the rule on April 19 and 20 as we members of the National Biological Fraternity presented our bi-annual Science Show. Hundreds of visitors, including wide-eyed school children, saw the heartbeat of the chicken embryo in an incubated egg and took the hemoglobin and blood pressure tests.

Preparing exhibits or staining slides in our white smocks doesn't occupy all our waking hours. Sometimes we put on our party clothes and enjoy social gatherings together.

We bright undergraduates who excel in botany, zoology, and physiology are officially known as the Alpha Upsilon Chapter of Beta Beta Beta.



*Back row*: Neff, Mathews, Wood, Evans, Bean, Waldron. *Front row*: Christie, Dr. Lindsay, White, Dr. Dennis, Wilson



# PI GAMMA MU

*President* . . . . . William Adams  
*Secretary* . . . . . Jean Miller

## MEMBERS

Mary Martz, Erva Barger, Helen Miller, Walter Sanderlin, James Hewitt, Ruth Dewey, Dorothy Shepherd, Melvin Fox, Frances Campbell, Mr. Hoadley.



**M**AKE way for the historians, economists, and political scientists of the future! We are the Juniors and Seniors who have accumulated so many A's and B's in our social science courses that we are eligible for the honorary fraternity Pi Gamma Mu.

Just between you and us, we're the power behind the throne in many open forum assembly programs. And we are the nucleus around which the revitalized International Relations Club has been formed.

This year we set the precedent of giving an annual award to the outstanding Freshman or Sophomore student in the course "Introduction to the Social Sciences."



*Standing:* Miller, Sanderlin, Campbell    *Seated:* Hewitt, Miller, Adams, Martz, Dewey



Hewitt, Dr. Woods, Hutterly, Bentley, Webb,  
Neff, Adams, Stevenson

## INTERFRATERNITY COUNCIL

<i>President</i> . . . . .	William Hutterly
<i>Vice-President</i> . . . . .	James Hewitt
<i>Secretary</i> . . . . .	Charles Mayer
<i>Treasurer</i> . . . . .	Philip Bentley

### JUNIOR MEMBERS

Ernest Webb, Alpha Theta Phi; John Stephenson, Jester; Robert Neff, Phi Epsilon Alpha; William Adams, Phi Sigma Kappa.

"In union there is strength"—here's our slogan. No cut-throat competition or misunderstandings worry us. If any questions arise over fraternity government, if cooperation is needed in furthering a project or defending the common interest of fraternities, we are ready to deal with the problem.

With our fellow Greeks, the Panhellenic Council, we sponsored the Interfraternity Promenade in the Shoreham's Gold Room on December 9.

Friendly rivals, we join hands for our mutual advantage.



Hutterly  
Norton  
Jablonsky  
Berry  
Shumate

Corddry  
Norford  
Reese  
Fellows  
Thatcher  
Schulze

Gewehr  
Price  
Blanchard  
Bond  
Hollis  
Carl

Webb  
Etchison  
Rauch  
Doyle  
James  
Humbert

Shields  
Trowbridge  
White  
Boykin  
Aiken

# ALPHA THETA PHI

*Founded at AMERICAN UNIVERSITY November 23, 1928*

## CHAPTER OFFICERS

<i>President</i> . . . . .	William Hutterly
<i>Vice-President</i> . . . . .	Charles Corddry
<i>Corresponding Secretary</i> . . . . .	Eugene Norton
<i>Recording Secretary</i> . . . . .	Hamilton Gewehr
<i>Treasurer</i> . . . . .	Ernest Webb



## MEMBERS

Thomas Aiken, Paul Berry, George Blanchard, Richard Bond, Lester Boykin, Fred Carl, Cartwright Doyle, Bruce Etchison, Philip Fellows, James Hollis, Homer Humbert, John Jablonsky, William James, Archie Norford, Clayland Price, Stanley Rauch, Barthoneue Reese, Hugo Schulze, Henry Shields, Walker Shumate, David Thatcher, John Trowbridge, George Vinall, Gilbert White.



# JESTERS

*Per Sodalitatem Joculatorum virgines collegii formosissimae procedunt*

*Founded at AMERICAN UNIVERSITY January 31, 1928*

## CHAPTER OFFICERS

President ..... Charles Mayer

Vice-President ..... John Stephenson

Secretary ..... Robert Dixon

Secretary ..... Charles Ingalls



## MEMBERS

George Bentley, Henry Daily, John Earle, Watson Fisher, Francis Gorman, Paul Lentz, Joseph Nocera, Leland Parsons, William Thompson, Joseph Walp, Herman Winkler.



*"Jesters do oft prove prophets"*



*"How ill white hairs become a fool and jester."*



*"Diseur de bons, mauvais caractere."*



Mayer  
Earle

Walp

Dixon  
Bentley

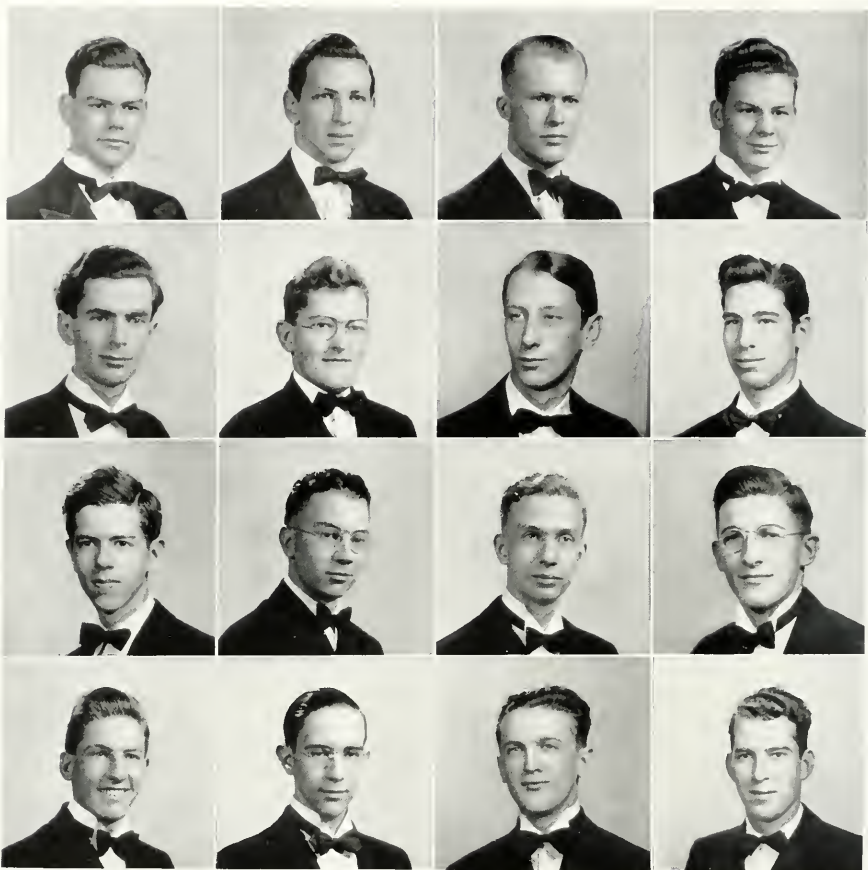
Fisher  
Gorman

Ingalls  
Parsons

Nocera

Stephenson  
Daily

*"The saddest ones are those who wear the jesters' motley garb"*



Bentley  
Purse  
Barkdull  
McMillan

Spencer  
Stone  
Bean  
French

Nicholson  
Davidson  
Shenton  
Robb

Newby  
Abbadessa  
Wood  
Stoner

# PHI EPSILON ALPHA

*Founded at AMERICAN UNIVERSITY in 1937*

## CHAPTER OFFICERS

*President* . . . . . Philip Bentley  
*Vice-President* . . . . . Charles Spencer  
*Corresponding Secretary* . . . . . Edward Nicholson  
*Recording Secretary* . . . . . Harry Newby  
*Treasurer* . . . . . John Abbadessa



## MEMBERS

Walter Barkdull, Richard Bean, Charles Davidson, Judson French, James McFarlane, William McMillan, Robert Neff, Victor Purse, James Robb, Robert Shenton, Samuel Stone, Frank Stoner, Edward Wood.



# PHI SIGMA KAPPA

*Founded at MASSACHUSETTS STATE COLLEGE in 1873*

## EPSILON TRITON CHAPTER

*Established November 14, 1936*

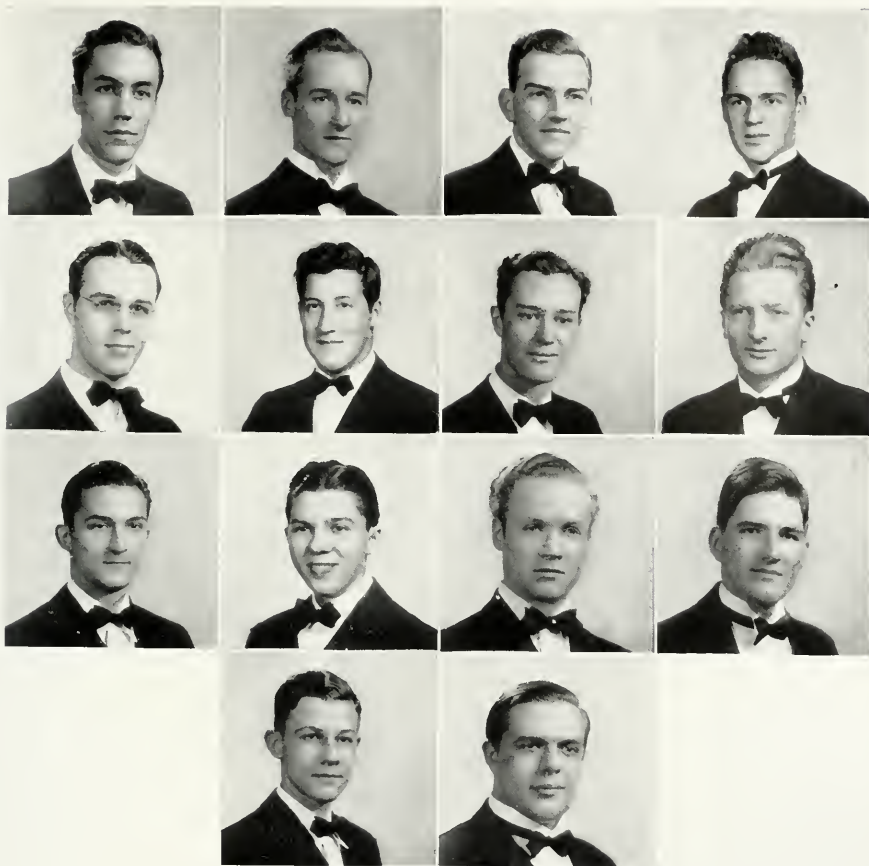
### CHAPTER OFFICERS

<i>President</i>	William Adams
<i>Vice-President</i>	Jack Sparks
<i>Secretary</i>	Latimer Evans
<i>Treasurer</i>	James Hewitt
<i>Sentinel</i>	Gerald MacKellar

### MEMBERS

John Bachman, Clifford Evans, William Fausold, Kenneth Fox, Robert Hall, Allen Hinkel, Ellsworth McClane, Ronald McCulloch, Jene Pankow, Glenn Weight, Daniel Wentz, David Yoakum.





Adams  
MacKellar  
Hinkel

Evans  
Hall  
Weight  
Pankow

Hewitt  
McCulloch  
Evans  
Yoakum

Fausold  
Fox  
Bachman



# PANHELLENIC SONG FEST

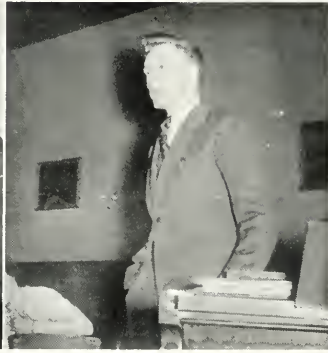
*Delta Gamma,  
winning sorority*



*Proud  
Presidents*



*By Popular  
Demand*



*Alpha Theta Phi,  
winning fraternity*



Back row: Smith, Curry, Ellison, Wagnon, Bushong. Front row: Brewster, Dewey, Lawton, Miller, Marshall

## PANHELLENIC COUNCIL

President . . . . . Betty Lawton  
 Vice-President . . . . . Helen Miller  
 Treasurer . . . . . Barbara Marshall  
 Secretary . . . . . Ruth Dewey

### MEMBERS

Mary Curry, Delta Gamma; Adelaide Bushong, Alpha Chi Omega; Margaret Ellison, Alpha Phi; Margretta Eckloff, Phi Mu; Frances Brewster and Nelva Ree Smith, Sigma Phi Delta.

**P**ANHELLENIC COUNCIL—Olympic seat of our Greeks' idealism—is in its fourth year of rush rule decrees and spring Song Festing.

We held the annual tea for new women just before rushing. In January, all pledges gathered to learn something of the histories and creeds of all five sororities. The next month, Panhellenic gave an evening of music, and March brought the Song Fest caroling, followed by a reception. At the end of the year, the Panhellenic Scholarship Cup was engraved with the name of the freshman fraternity woman earning highest honors.

Discussions of improved rushing plans and meetings of scholarship chairmen and pledge trainers for the exchange of ideas brought the groups closely together, emphasizing our creed of cooperation rather than competition. Olympus rings with new determinations, new aspirations for Panhellenic's approaching fifth year.



Marshall  
Rapp  
Mitchell  
Sattler  
Lundegaard

Hozier  
Bushong  
Klein  
King  
Stewart

Warner  
Esterline  
Letz  
Engel  
Dawson

Drake  
Steinle  
Smith  
Merrill  
Maki

Beard  
Richards  
Plitt  
Brooks  
Caudill

# ALPHA CHI OMEGA

*Founded at DE PAUW UNIVERSITY in 1885*

## BETA RHO CHAPTER

*Established June 3, 1937*

### CHAPTER OFFICERS

*President* . . . . . Barbara Marshall  
*Vice-President* . . . . . Virginia Hozier  
*Corresponding Secretary* . . . . . Sarah Anne Rapp  
*Recording Secretary* . . . . . Nancy Warner  
*Treasurer* . . . . . Beth Drake

### MEMBERS

René Beard, Mary Elizabeth Brooks, Adelaide Bushong, Dorothy Dawson, Margaret Engel, Jane Esterline, Mary King, Barbara Klein, Marjorie Letz, Helen Lundegaard, Lillian Maki, Joan Merrill, Edith Mitchell, Marjorie Plitt, Jeanne Richards, Jane Sattler, Wilda Smith, Annette Steinle, Catherine Stewart.



# ALPHA PHI

*Founded at SYRACUSE UNIVERSITY in 1872*

## BETA XI CHAPTER

*Established October 3, 1937*

### CHAPTER OFFICERS

<i>President</i> . . . . .	Elisabeth Lawton
<i>Vice-President</i> . . . . .	Margaret Ellison
<i>Corresponding Secretary</i> . . . . .	Elizabeth Parkhill
<i>Recording Secretary</i> . . . . .	Jane Rogers
<i>Treasurer</i> . . . . .	Beatrice Gibson

### MEMBERS

Elizabeth Acton, Joan Beadle, Margaret Binder, Frances Campbell, Melba Chase, Germaine Coffey, Frances Coyner, Elaine Davenport, Eloise Fillmore, Mary Gautier, Doris Graham, Elizabeth Ann Gude, Marjorie Heiner, Doris Kanode, Klovvia McKennon, Doris Tannehill, Geraldine Weible, Betty Wilson.







Lawton  
Campbell  
McKennon  
Gautier

Tannhill

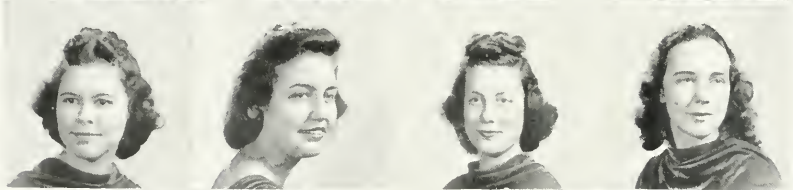
Ellison  
Acton  
Hale  
Binder

Kanode

Rogers  
Gude  
Weible  
Coffey

Chase

Gibson  
Parkhill  
Wilson  
Davenport



Dewey  
Callender  
Hudson  
Wheeler

Stoddard

Miller  
Smith  
Harned  
Adams

Rule

Rose  
Noel  
Dewey  
Harris

Harriman

Curry  
Posey  
Howard  
Brown

# DELTA GAMMA

*Founded at UNIVERSITY OF MISSISSIPPI in 1876*

## BETA EPSILON CHAPTER

*Established March 21, 1936*

### CHAPTER OFFICERS

<i>President</i> . . . . .	Ruth Dewey
<i>Vice-President</i> . . . . .	Jean Miller
<i>Corresponding Secretary</i> . . . . .	Mary Hudson
<i>Recording Secretary</i> . . . . .	Mary Curry
<i>Treasurer</i> . . . . .	Judith Rose

### MEMBERS

Betty Adams, Sarah Brown, Janet Callender, Frances Dewey, Margaret Harned, Louise Harriman, Ruth Harris, Beth Howard, Carol Hunsinger, Elsie Hyde, Margaret Noel, Mary Posey, Peggy Rule, Barbara Smith, Dorothy Smith, Janet Stoddard, Margery Warner, Joyce Weills, Janet Wheeler.



# PHI MU

*Founded at MACON COLLEGE in 1852*

## GAMMA DELTA CHAPTER

*Established November 19, 1933*

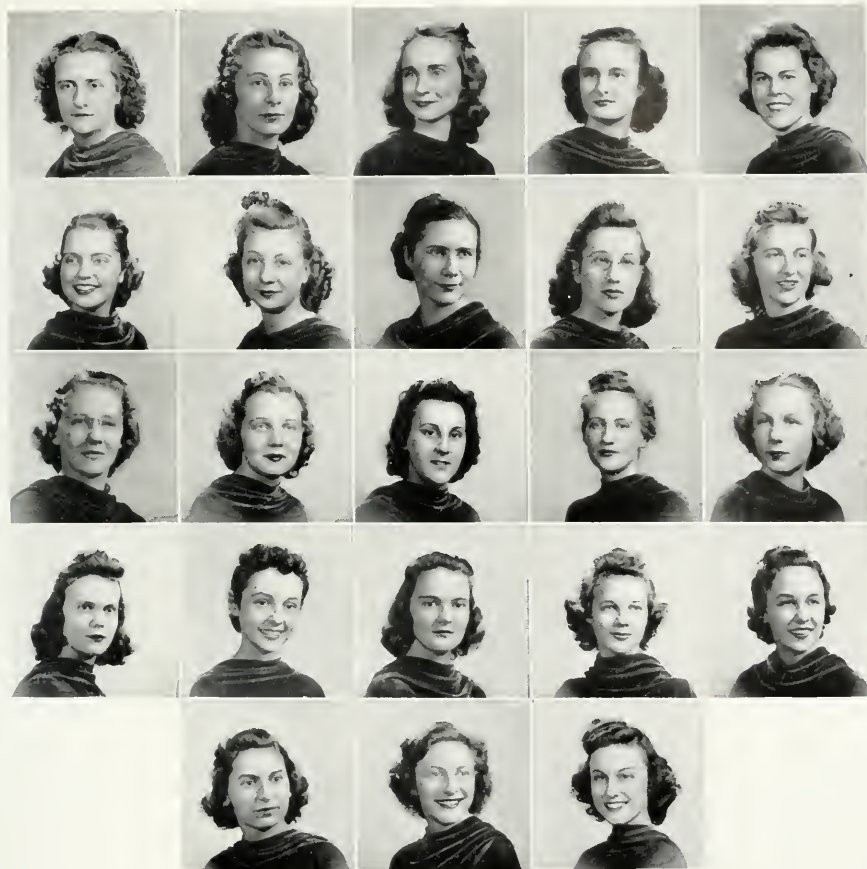
### CHAPTER OFFICERS

*President* . . . . . Helen Miller  
*First Vice-President* . . . . . Elizabeth Andrews  
*Second Vice-President* . . . . . Laura Talbott  
*Secretary* . . . . . Lillian Hawkins  
*Treasurer* . . . . . Alice Massey

### MEMBERS

Ann Bennett, Patricia Cayo, Kathryn Chetham, Loessa Coffey, Kathleen Cowles, Margretta Eckloff, Mary Anne Hunter, Mary Mae Jacobs, Carol Kennedy, Estalyn Kreps, Theodora Kreps, Mary Martz, Marion Mattes, Ralph Randall, Beryl Reed, Jay Rutherford, Annette Snyder, Sarah Stewart, Betty Stone, Mildred Wagnon.





Miller  
Eckloff  
Wagnon  
Snyder

Andrews  
Martz  
Kreps  
Stone  
Bennett

Hawkins  
Jacobs  
Rutherford  
Mattes  
Coffey

Randall  
Reed  
Stewart  
Cowles  
Hunter

Talbott  
Chetham  
Kreps  
Kennedy





Brewster  
Barger  
Hill  
Taylor  
Patterson

Shepherd  
Swick  
Swick  
Waldron  
Sudduth

Waterbury  
Rogers  
Horton  
Yeager  
Boorman

Schaller  
Smith  
Bleth  
Sale  
Barrows

# SIGMA PHI DELTA

*Founded at AMERICAN UNIVERSITY April 22, 1938*

## CHAPTER OFFICERS

<i>President</i> . . . . .	Frances Brewster
<i>Vice-President</i> . . . . .	Dorothy Shepherd
<i>Corresponding Secretary</i> . . . . .	Sue Horton
<i>Recording Secretary</i> . . . . .	Dorothy Waterbury
<i>Treasurer</i> . . . . .	Mary Schaller



## MEMBERS

Erva Barger, Constance Barrows, Margaret Bleth, Lois Boorman, Priscilla Booth, Frances Hill, Doris Patterson, Mary Jane Rogers, Gere Dell Sale, Nelva Ree Smith, Myrtle Sudduth, Alice Swick, Eloise Swick, Lois Taylor, Jacqueline Waldron, Vivian Yeager.





THE 1940 AUCOLA printed, bound and covered is in your hands—it awaits your praise or condemnation. It has progressed from an infant state when it consisted only of ideas to the gangling, awkward, copy-reading period— from an orgy of pasting to the engraver and the printer.

It's been work all along the assembly line. Latimer Evans, Business Manager, has shown himself adept in the fine arts of cooperation and budget-balancing. Sarah Ann Rapp, for whom no task has been too difficult and none too humble, has proven herself a Literary Editor to surpass all Literary Editors. Ernie Webb and Bob Shenton and their corps of camera enthusiasts are responsible for picturing the A.U. 'ite in all his guises. Jackie Waldron and René Beard are responsible for the art work. Margaret Ellison and Sarah Stewart and the many others who gave time, energy and encouragement will surely wear gold crowns when they reach that section of heaven which Mr. Hoadley assures me will be reserved for all yearbook staffs.

We have tried to make the book personal—to remind you of those hours in the chem lab, those jokes you heard in the *Eagle* office, that banter in the library.

To bring back "days that we treasure"—to enable you to relive those high spots which your memory cherishes—these are the aims of the 1940 AUCOLA.

Sincerely,

THE EDITOR.



# STRAYER



## College of ACCOUNTANCY

DEGREES in Commerce, B.C.S. and M.C.S., are conferred. Graduates meet educational requirements for admission to C.P.A. examinations in the District of Columbia, and 47 states.

YOUNG MEN, Strayer trained, have made splendid records in recent C.P.A. examinations.

STRAYER teaches nationally-known accounting systems based on texts used by over 200 colleges and universities.

**New Classes: SEPTEMBER & FEBRUARY**

## College of SECRETARIAL TRAINING

GRADUATION from an accredited high school is required for admission. Courses are planned for academic, general, and commercial graduates, and for college students. A diploma from Strayer means "recommended for employment."

REVIEW and speed building classes in Shorthand and Typewriting for those who have attended commercial schools.

DAY and Evening Sessions.

**New Classes: EVERY MONTH**

### EMPLOYMENT SERVICE secures Positions for Graduates

*Over 1500 calls for office employees received annually  
Secretarial or Accounting Catalog on Request*

**HOMER BUILDING • 13th and F Streets • Washington, D. C.**

## JAMES B. LAMBIE CO., Inc.

*We handle everything  
in the hardware line*

1415 NEW YORK AVE., N.W.  
WASHINGTON, D. C.

*Telephone, NATIONAL 1638*

Established 1881

Incorporated 1903

*American University's Florist*

Two Stores

CONNECTICUT AVENUE  
FLOWER SHOP

2604 CONNECTICUT AVE., N.W. Co. 9004

CAPITOL FLORIST

818 - 17TH ST., N.W.

Re. 0796

WE TELEGRAPH *Campus Rep. GENE HOOVER*

*The Modern  
Philipsborn*

*our*

**JUNIOR VOGUE**  
Dress Shop - 2nd floor

Caters to young moderns. In Fashions with eye-appeal. Priced within your budget.

*Sizes 9 to 15*

## L. G. BALFOUR COMPANY

*Fraternity Badges - Fraternity Jewelry  
Novelties, Favors, Stationery  
Medals, Cups, Trophies, Class Rings  
Class Pins, Club Pins, Buttons  
Convention Badges*

204 INTERNATIONAL BUILDING  
1319 F STREET, N.W. - WASHINGTON, D. C.  
Telephone NATIONAL 1045 - STEPHEN O. FORD, Mgr.



# WESLEY HEIGHTS PHARMACY

*Your College Drug Store*

3303 45th Street, N. W.  
WASHINGTON, D. C.



*We serve meals and in-between snacks  
for A. U. Students*



FULL LINE OF SCHOOL EQUIPMENT

We serve: BREYER'S ICE CREAM

*Prompt  
Free Delivery*

Phone  
WO. { 6200  
      { 6201

*Compliments of*

W. R. WINSLOW CO.

922 NEW YORK AVE., N.W.  
WASHINGTON, D. C.

## TEMPLE SECRETARIAL SCHOOL

*Beginners' and Advanced Classes*  
DAY AND EVENING SESSIONS

SPECIAL SUMMER  
INTENSIVE COURSES

CLASSES IN MACHINE SHORTHAND

*Excellent Placement Service*

1120 K STREET, N.W.      National 3258

PEAKE      111 NEW YORK AVENUE, N.W.  
NATIONAL 8979      PRINTERS

## The Value OF KNOWLEDGE

..LONG EXPERIENCE in handling high-grade fuels has taught our experts to recognize standard quality. That's why we can safely recommend

**'blue coal'**

*High-Grade Pennsylvania Anthracite*

•

**GRIFFITH-CONSUMERS COMPANY**

1413 NEW YORK AVE. METROPOLITAN 4340



*Approved  
by*



*Served*

at leading schools,  
hotels and stores  
from Maryland to  
Florida . . .

Phone, NATIONAL } 2941  
                          } 2942  
                          } 2913

## NATIONAL HOTEL SUPPLY CO., INC.

*Meats and Provisions*

412 TWELFTH ST., S.W.  
WASHINGTON, D. C.

Phone NATIONAL 0910

## ADAMS-BURCH CO., Inc.

6TH AND D STREETS, S.W.  
WASHINGTON, D. C.

★

*Hotel and Restaurant  
Equipment and Supplies*

*Office Furniture  
Bookkeeping Supplies*

*Paper Supplies  
Stationery*

## Chas. G. Stott Co., Inc.

1310 NEW YORK AVE., N.W.  
WASHINGTON, D. C.

*Branches:*

1513 K ST., N.W.  
823 - 17TH ST., N.W.  
804 RHODE ISLAND AVE., N.E.

TO CHARTER A BUS  
*just call*

MICHIGAN 6363

## CAPITAL TRANSIT COMPANY

*Charter Bus Headquarters*

1416 F STREET, N.W.

*Finest Equipment*

*Moderate Rates*

# JULIUS GARFINCKEL & CO.

*We invite the students of American University*

. . . to see our distinctive campus fashions . . . clothes and accessories of quality and style, smart and correct for all occasions. Unusually fine selections for young women on our Fourth and Sixth Floors . . . for young men on our Sixth Floor. Moderate prices to meet college budgets.

F STREET at FOURTEENTH

## The E. B. Adams Company

*China - Glass - Silverware*

*Paper Specialties - House Furnishings  
Janitors' Supplies - Kitchen Equipment*

611-615 NEW YORK AVE., N.W.  
WASHINGTON, D. C.

Phone: DISTRICT 8717

*Compliments of*

Dr. Pepper Bottling Co.  
of Washington, D. C.



6101 BLAIRE ROAD

Ge. 0153

## *Jelleff's*

### JUNIOR DEB SHOP

... popular headquarters for the smart young student set of Washington. Here you find dresses and costumes that are lovely and different, fashion-right and value-right! California Corner is another precious place you'll want to discover for sport togs direct from California.

JUNIOR DEB SHOP  
Fourth Floor

CALIFORNIA CORNER  
SPORTS SHOP  
Third Floor

Phone: RE. 3390

QUALITY  
AND  
SERVICE

## S. A. FREAS COMPANY

*Wholesale Produce  
Vegetables and Fruits in Season*

1221 MAINE AVENUE, S.W.  
WASHINGTON, D. C.

LEATHER SETTEES  
AND CLUB CHAIRS  
VENETIAN BLINDS

CHROME—WOOD  
AND STEEL  
FURNITURE

## COMMERCIAL OFFICE FURNITURE CO.

Met. 4661  
Nat. 8266

800 E STREET, N.W.  
WASHINGTON, D. C.

Compliments

of

A FRIEND



## *It is* KNOWING HOW!

You cannot patent it . . . or copyright it . . . you cannot install it, like a piece of machinery.

You cannot accurately measure it . . . or the lack of it.

Yet it is your most important consideration when you choose your Yearbook Photographer.

### *Experience . . .*

is the one thing that will meet the unusual emergency with the comforting statement — "We know just what to do — we've been through this before."

Our complete organization offers you this background of experience in creative photography and consultation on all problems relating to Yearbook Photography.

It costs nothing to talk it over with us.



# ZAMSKY STUDIOS

PHILADELPHIA



# STANDARD ENGRAVING CO.

Makers of Fine Printing Plates  
for School and College Publications



ENGRAVERS FOR  
1940 AUCOLA



1214 19th Street, N.W.

Washington, D. C.

M E M B E R   O F

The College Annual Producers of the United States

# THOMSEN-ELLIS-HUTTON CO.

COLLEGE ANNUALS  
VIEW BOOKS · CATALOGS  
ADVERTISING LITERATURE



PRINTERS OF THE  
1940 AUCOLA

BALTIMORE

NEW YORK













Aucola, 1940.

L  
LD131  
A83A8  
1940  
c.2

