



THE AMERICAN UNIVERSITY

1 9 4 5

1 9 2 5






*the* AUCOLA

PRESENTS THIS STORY  
IN WORD AND PICTURE  
FOR THE YEAR OF  
1944-1945 OF OUR ALMA MATER

AMERICAN UNIVERSITY

WASHINGTON

DISTRICT OF COLUMBIA



Digitized by the Internet Archive  
in 2010 with funding from  
Lyrasis Members and Sloan Foundation

<http://www.archive.org/details/aucola1945amer>

EDITORS • RUTH CAPELLO • ANNE TRAMMELL  
BUSINESS MANAGER • MURIEL ADAMS

---

TOMORROWS PASS . . . INTO SHADOWS OF THE PAST





THE YEARS WILL FIND US . . . CALLING DAYS THAT





WE YEARN NOW FOR THE PLEASURE . . . AT



COLLEGE WE KNEW . . . FRIENDSHIPS WILL BIND US



FOR MEMORIES REMIND US OF OUR



DEAR OLD A. U. ★ ★ ★ ★ ★



# *Tribute*

Because of their service and loyalty to American University . . .

Because of their character and ability as professors and educators . . .

Because of their interest in the welfare of their students . . .

Because of their inexhaustible efforts for the promotion of this institution . . .

The students of the American University wish to pay tribute to



MARY LOUISE BROWN

AND

GEORGE BENJAMIN WOODS

# C O N T E N T S

DEDICATION • TRIBUTE • CAMPUS SCENES  
FACULTY AND ADMINISTRATION  
SENIOR CLASS • JUNIOR CLASS  
SOPHOMORE CLASS • FRESHMAN CLASS  
ORGANIZATIONS • ATHLETICS  
SORORITIES AND FRATERNITIES  
MEMORIAM • EDITOR'S LETTER  
CANDID SHOTS • ADVERTISEMENTS







# A D M I N I S T R A T I O N

---



# HURST HALL

---

# PRESIDENT DOUGLASS

Paul Franklin Douglass, author, educator, administrator, lawyer, pastor, preacher . . . interested in all phases of education and of human endeavor, in this, the capital of our nation . . . so interested in student affairs that he makes it a point to know almost every student by name and something about him . . . interested in each school of the university, and, above all, in all of them combined to make one landmark, one young, yet historic spot, from which the generations of the future may emerge to go "forward in service" . . . a man of vision and of ideas, which he is not afraid to carry out in the face of setbacks, disappointment and personal sacrifice . . . a man who amid his visions manages to keep his feet on the ground . . . who is human enough to make mistakes, and man enough to admit the fact that he makes them . . . a man who drives himself and exacts great things of his followers . . . one who fosters the development of new ideas in art, in literature, in education, in politics, in society, and in religion, but does not lose sight of the heritage and lessons of the past . . . a young man . . . a Christian thinker . . . and our President.





# DEANS

VIVIENNE BRECKENRIDGE HORNBECK

A.B., Sweet Briar  
Dean of Women



EARL AUBREY DENNIS

B.A., College of Wooster; Ph.D., Chicago  
Dean of the College of Arts and Sciences and David H. Carroll  
Professor of Biology





WOMEN'S  
RESIDENCE  
HALL

---

# FACULTY



**AUBERT BAIN POTORF**  
 B.A., D.Ped., West Virginia Wesleyan;  
 B.D., Th.M., Th.D., Drew; D.D., Ham-  
 line  
 Dean of Religion and William Fraser  
 McDowell, Professor of Philosophy  
 and Religion.



**JOHN EDWARD BENTLEY**  
 M.A., Clark; S.T.B., M.R.E., Boston;  
 Th.D., McGill.  
 Professor of Psychology.



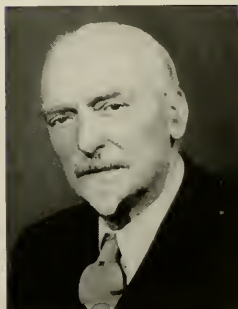
**GEORGE B. WOODS**  
 B.A., Northwestern; M.A., Ph.D., Har-  
 vard.  
 Professor of English.



**MARY LOUISE BROWN**  
 B.A., DePauw; M.A., Michigan.  
 Professor of English.



**WALTER FRANCIS SHENTON**  
 B.A., M.A., Dickinson; Ph.D., Johns  
 Hopkins.  
 Professor of Mathematics.



**C. HENRY LEINEWEBER**  
 Ph.D., Fribourg, Switzerland.  
 Professor of German.





HAMILTON HOUSE

---



# FACULTY



**MERRITT C. BATCHELDER**  
B.A., Hillsdale; M.A., Columbia;  
Ph.D., Iowa.  
Associate Professor of English.



**GEORGE WINSTON SMITH**  
B.A., M.A., Illinois; Ph.D., Wisconsin.  
Associate Professor of History.



**CARROLL E. LANE**  
B.S., Ph.D., Chicago.  
Associate Professor of Chemistry.



**RUBERTA M. OLDS**  
Ph.B., Chicago; M.A., Columbia.  
Assistant Professor of Spanish.



**MAURICE ALLISON MOOK**  
B.A., Allegheny; M.A., Northwestern;  
Ph.D., Pennsylvania.  
Assistant Professor of Sociology.



**JAMES McLAIN**  
B.A., George Washington; Certificate,  
Peabody Conservatory of Music.  
Assistant Professor of Music.





C H A P E L

# FACULTY



**PETER F. STAPAY**  
B.S., Sec. Sci., Rider College; Graduate Study, Rutgers.  
Assistant Professor of Secretarial Science and Registrar.



**BARBARA HALL**  
B.S., Sargent; M.A., Mount Holyoke.  
Assistant Professor of Physical Education.



**CARROLL B. NASH**  
B.S., George Washington; M.S., Ph.D., Maryland.  
Assistant Professor of Biology.



**CATHERINE D. NASH**  
B.S., Goucher College.  
Lecturer in Biology.



**LOIS H. FLINT**  
B.A., M.A., Syracuse; Graduate Study, Stanford.  
Assistant Professor of Education.



**GRACE BARNES**  
B.S., Purdue; B.L.S., Illinois; M.A., Maryland.  
College Librarian.





**MARY FRANCES MILLER**  
B.A., Kalamazoo; M.A., Columbia.  
Instructor in Speech and Dramatics.

**HELEN G. MATTHEW**  
B.A., Hunter; M.A., Columbia  
Instructor in Political Science.

**MARION R. DAUGHERTY**  
B.A., Otago (N. Z.); Ph.D., Chicago.  
Instructor in Economics.



**ALTA E. SCHROCK**  
A.B., Waynesburg; M.A., Kent State;  
Ph.D., Pittsburgh  
Instructor in Biology.



**AMOS J. LESSARD**  
A.B., Clark; M.A., Princeton.  
Instructor in French.



**HELEN M. HILLMAN**  
B.S., Sargent College of Boston Uni-  
versity.  
Instructor in Physical Education.



# F A C U L T Y



# B U S I N E S S   S T A F F

DON FARQUHARSON . . . . . Business Manager  
 REUBEN P. SLEICHER . . . . . Assistant Business Manager  
 PETER P. STAPAY . . . . . Registrar  
 ANNE JENSEN . . . . . University Librarian  
 GRACE BARNES . . . . . College Librarian

JESSIE M. DALRYMPLE . . . . . Bursar  
 MYRA P. SLEICHER . . . . . Public Relations Secretary  
 MILDRED ANDERSON . . . . . Secretary of the College  
 BETTY BROWN . . . . . Secretary to Business Manager  
 MRS. SHAW . . . . . Bookkeeper



# History

## SENIOR CLASS

We were born in the autumn of 1941 under the guidance of Bart Reese. Our constitution was formulated by such now absent names as John Harrison, Sam Hildebrand, Jim Eden, and Bart Fugler.

We struggled through a year of freshman frivolity achieving such firsts as freshman co-editors of the student newspaper, in Ted Sandler and Bill Bosien, Anne Sweet's "Fight Song," the Freshman Hayride and a well mimeographed "Pin-feathers," whose representative freshman themes have not been duplicated since, aided by such hands as those of Betty Erhardt and Hildreth Whittle.

Constitutional difficulties changed our voting system from majority rule to the preferential system and our revised constitution has been the model for incoming classes ever since. John Pribram and Pudge Malony are remembered for these days. Our second year we kept up our share of firsts with the Sophomore Box Lunch, and in February we contributed a good share of the twenty-two boys who left for the army.

That year Bosien, as editor of the "Eagle," introduced the policy of Rhodes Scholars for A. U., which initiated the coming of students from Iceland to this and other colleges of the United States. He was also instrumental in revising the student body constitution and in installing the servicemen's Honor Roll, and ended up by achieving the distinction of being the first second-year student to be made a member of all but two possible major honoraries on campus.

The third year found many new faces to replace the old ones in leading the class. Gary Schweitzer and Teen Clay came up from the ranks and Mary Lu Auch, Lucia Englehart and Ed Lewis came to the fore. Bob Brockway and Barbara Hulfish became the first students to graduate in three years. Our Junior Prom at the Hotel Annapolis became one of the most memorable for many years.

This year we have been guided by Becky Burns, Marcia Crouter, Irene Jaworowski, Jean Leighton, Daphne Stevenson, and Anne Trammell—these alone have gone here all four years and now remain to graduate in June, of the original class of over one hundred.

We have not forgotten those who helped to make our class all that it is and we believe the college will not soon forget or fail to feel our hand. We know we shall never forget all the things that it has done for us.



**LEONARDO TESTA**

WASHINGTON, D. C.

Psychology and Religion

George Washington University, 1941; Religion Board, 1; Student Christian Fellowship, 1, 2; Chorus, 1, 2, 3; Class President, 4; Alpha Tau Omega.

Short, but every inch a gentleman . . . a smile for everyone . . . pleasing personality . . . has given much to A. U. . . preacher . . . left us in February to enter Union Theological School at Richmond.

**JEAN FRANCES LEIGHTON**

MONTROSE, MD.

English

Omicron Epsilon Pi, 1, 2, 3 (Secretary, 4); "A" Club, 1, 2, 3 (Secretary, 4); Glee Club, 1; Class Vice-President, 4.

You've missed a lot if you haven't met Jean . . . sincere friend . . . active poetess . . . plans to marry a minister and use some of that Spanish in missionary capacity down South American way.

# SENIOR CLASS OFFICERS

**IRENE EAVES CLAY**

WASHINGTON, D. C.

Pre-Medical

Class Honors, 2; Beta Beta Beta, 2, 3; "Eagle," 1; College Council, 2, 3; "A" Club, 1, 2, 3; Class Secretary, 4; Chorus, 1, 2, 3; Student Christian Fellowship, 1, 2, 3; Basketball, 1; Tennis, 2; Kappa Delta.

"Teen" . . . she's made a name for herself at A. U. . . poetess and inspirer of other poets . . . hard-working lab assistant . . . plans to go to Rochester to study medicine.

**LUCIA ENGLEHART**

BRAZIL, IND.

Education and English

Indiana University, 1941-42; "Courier," 3; "Aucola," 2; French Club, 2; Chorus, 3; Intramurals, 2; Basketball, 2, 3; Class Treasurer, 4; Delta Gamma.

A ring today, minus a ring tomorrow . . . teaching gym in high heels . . . seen with Beverly and Babs going for cokes . . . playing bridge in the "D.G." room with Margie and Daph.



# SENIORS



MARY LU AUCH



L. ELAINE BEALE



MARIAN BRAUM

MARY LU AUCH . . . . . Glen Ridge, N. J.

Psychology and Education

Indiana University, 1941-42; Brenau College, 1942-'43; International Relations Club (Secretary-Treasurer, 3); Junior Prom Committee, 3.

"Lu" . . . a passion for buying underlined texts . . . Fontaine's . . . going to the drug for "toasted cheese and bacon" . . . hates the gas shortage . . . Johnnie . . . "those ghastly classes downtown."

L. ELAINE BEALE . . . . . Harrisonburg, Va.

Chemistry

Madison College, 1943-44: "Eagle" (Sports Editor, 4); Intramurals, 1, 2, 4; Cheerleader, 1, 2; "Aucola" (Sports Editor, 4), Cheerleader, 1, 2); Kappa Delta.

"Beezie" . . . lover of good food, good music, and good dancing . . . sportin' girl . . . champion ice cream guzzler . . . her heart belongs to the world of chemistry and AKPI.



MARIAN BRAUM . . . . . Washington, D. C.

Psychology

Amarillo Junior College, 1941; Alpha Chi Omega.

Red-head with a ready smile . . . left us in the middle of the year to marry that archduke of real estate dealers —Bob Arledge.



# SENIORS



JANET BRYANT



MARY ELIZABETH BURNS



MARY LOU COURTNEY

JANET BRYANT . . . . . Battle Creek, Mich.

Psychology

Battle Creek College, 1930-33.

Mrs. Bryant . . . claims she has spent most of her life going to school . . . "I just want to get my degree" . . . then, back to a quiet life.



MARY ELIZABETH BURNS . . . . . Scranton, Pa.

Religion and Philosophy

Cap and Gown, 4; Dramat, 3, 4; Art Guild, 2; International Relations Club 4; College Council, 4; Orientation Board, 1, 4; "A" Club, 1, 2, 4 (President, 4); Class Treasurer, 3; Chorus, 4; Intramurals, 1, 2; Basketball, 1, 2, 3; Student Christian Fellowship, 1, 2, 3, 4; Women's House Council, 1, 2, 3; Most Representative Freshman; Most Representative Upper-classman; Phi Mu (President, 3).

"Becky" . . . equally at home as Best Loved Girl, the rowdy maid in "Candlelight," assistant to the Dean of Women, or a major in religion.

MARY LOU COURTNEY . . . . . Chevy Chase, Md.

Biology

"Aucola," 1, 2, 3, 4; College Council, 4; Pan-Hellenic Council (Vice-President, 4); Junior Prom Chairman, 3; Athletic Board, 2; Social Board, 3; Basketball, 1, 3, 4; Delta Gamma (Secretary, 3; President, 4).

"Lou" . . . February graduate . . . wedding bells before finals . . . "Good Gosh Miss Agnes" . . . pet peeve is history . . . bridge addict . . . seen with Edith and the D. G.'s.



# SENIORS



MARCIA CROUTER



BARBARA HULFISH



JANE MARIA INGLING

MARCIA CROUTER . . . . . Boston, Mass.

Art and English

Cap and Gown, 4; Art Guild 2, 3, 4; Debate, 1; International Relations Club, 2, 3, 4; "Eagle" 1, 2, 4; "Aucola" (Co-Editor, 3); French Club, 2; Student Christian Fellowship, 1, 2, 3, 4; Women's House Council (President, 4); Most Representative Sophomore, 2; Pi Delta Epsilon, 4; Phi Mu.

Lighthearted spontaneity . . . Queen of wit . . .  
forever poking fun at herself . . . strictly Navy . . .  
"Mickey's Murals."



BARBARA HULFISH . . . . . Alexandria, Va.

Biology

Pi Delta Epsilon, 2, 4 (President, 3); Dramat, 1, 2, 3, 4; Omicron Epsilon Pi, 1, 2, 4 (President, 3); Art Guild, 2; "A" Club, 4; "Eagle," 1, 2, 4; "Courier," 3; "Aucola," 1, 2, 4 (Literary Editor, 3); French Club, 1, 2; League of Women Voters, 1; Publication Board, 1, 2, 3; College Council, 3; Fund Drive (Junior Chairman, 3); Constitution Committee, 3; Class President, 3; Chorus, 1, 2, 3, 4; Glee Club 1, 2; Basketball, 1, 2, 3; Pi Delta Epsilon Award, 3; Junior Prom Committee, 3.

Ubiquitous and omniscient—practically . . . lunch on the hoof . . . her business—minding other people's business . . . we can't get along without her, though.

JANE MARIA INGLING . . . . . Falls Church, Va.

Psychology

Fairmount Junior College, 1940-42; "Aucola," 4.

"Jingles" . . . Navy wedding in June . . . week-ends at the Academy . . . bridge and more bridge . . . and she still finds time to make the Dean's List.

# SENIORS



IRENE JAWOROWSKI



EDWARD LEWIS



BARBARA WALLER McNEAL

IRENE JAWOROWSKI . . . . . Bridgeport, Conn.

English and History

Class Honors, 1; Pi Delta Epsilon, 3 (President, 4); Dramat, 1, 2, 3, 4; Debate, 1, 2, 3, 4; "Eagle," 1, 4 (News Editor, 2); "Courier" (Editor, 3); "Aucola," 3; Handbook, 3; Pinfeathers (Co-Editor 1); College Council, 3 (President, 4); Orientation Board, 3, 4; "A" Club, 2, 3, 4; Fund Drive, 3; Class Vice-President, 3; Intramurals, 2, 4; Women's House Council (Treasurer 3); Grandestern Parliamentarian, 2; Kappa Delta (Secretary, 3).

Nickles for Natasha . . . played Santa Claus, the Duke of Ephesus, and herself as drill press operator with equal facility . . . few of her ilk will ever tread these halls.



EDWARD LEWIS . . . . . Silver Springs, Md.

Psychology

Asbury College; Frostburg State Teacher's College; Chorus, 3, 4; Student Christian Fellowship, 3, 4; Alpha Tau Omega.

"Parson Ed" . . . has his own pastorate . . . always goes out of his way to greet friends and acquaintances . . . sincere believer in the dignity of man and the munificence of God.

BARBARA WALLER McNEAL . . . . . Washington, D. C.

English and Music

Wilson Teacher's College, 1; Orchestra, 2; Omicron Epsilon Pi, 2, 3, 4; Chorus, 2, 3, 4; Glee Club, 2.

MRS. McNeal . . . consuming interest—overseas, at present . . . how does she keep that engagement peg straight? . . . we missed her last semester.



# SENIORS



MARGARET MAGUIRE

SHIRLEY CLAIRE MASSELL

LOUISE ODOR

MARGARET MAGUIRE . . . . . Rutherford, N. J.

Art

Alfred University, 1941-42; University of Mexico, 1944; "A" Club, 4; Athletic Board, 4; Winner of Tennis Tournament, 3; Intramurals, 3, 4; Delta Gamma.

"Margie" . . . redheaded artist gal . . . plans to teach . . . willing to tell you about her experiences in Mexico last summer any day in the week.

SHIRLEY CLAIRE MASSELL . . . . . Atlanta, Ga.

English

Oglethorpe University, 1940-41; Marjorie Webster Junior College, 1941-42.

From "Jawja" . . . that well-known Southern charm . . . studying law after recovering from her siege with Batch, Brown, Woods, and Co.



LOUISE ODOR . . . . . Washington, D. C.

Biology

Wilson Teacher's College, 1940-42; Beta Beta Beta (Secretary, 4).

Tall and quiet . . . with a sparkle in her eyes . . . you'll find her in the Chem lab working on another long organic experiment.

# SENIORS



PHYLLIS PAYNE



ANNE PAGE SHEPHERD



MARJORIE SMITH

PHYLLIS PAYNE . . . . . Arlington, Va.

Chemistry

Madison College, 1943-44; "Eagle," 2 (Business Manager, 4); Constitution Committee, 1, 2, 4; "A" Club, 1, 2 (President, 4); Intramurals, 1, 2, 4; Cheerleader, 1, 2; Women's House Council (Vice-President, 4); Pi Delta Epsilon, 4; Kappa Delta.

"Pep" . . . in spirit as well as "initially" . . . claims she likes tall men—but Charlie isn't tall . . . AKPi girl . . . looking for Pep? . . . she's in chem lab.

MARJORIE SMITH . . . . . Bethesda, Md.

Romance Languages

Maryville College, 1940-41; Dramat, 3, 4; French Club, 2; Student Christian Fellowship, 3, 4.

"Margie" . . . property mistress of Dramat . . . so doted on languages that she took three classes with Miss Olds . . . Phi Mu's collector of Eternal Revenue.

ANNE PAGE SHEPHERD . . . . . Arlington, Va.

Education

Mary Washington College, 1941-43; Chorus, 4.

"Nancy" . . . nice, friendly . . . school teacher or domestic interests . . . dislikes busses because they make her late for class.



# SENIORS



DAPHNE ADELE STEVENSON



ANNE VIRGINIA TRAMMELL



ELIZABETH WELLER

DAPHNE ADELE STEVENSON . . . . . Babylon, N. Y.

Art

Class Honors 1; Cap and Gown (President, 4); Dramat, 1, 2, 3 4 (President, 3); Art Guild, 2, 3, 4; "Eagle," 1, 2, 4; "Courier," 3; Orientation Board, 3; "A" Club, 1, 2, 3, 4; Cheerleader, 1, 2, 3, 4; Chorus, 1, 2, 3, 4; Basketball, 1, 2, 3, 4; Delta Gamma (Treasurer, 3, 4).

Lively sense of humor . . . sparkling cheerleader . . . School Spirit! . . . takes wonderful class notes . . . artist.

ANNE VIRGINIA TRAMMELL . . . . . McLean, Va.

Psychology and Education

Dramat Apprentice, 3 4; Art Guild, 1; "Courier," 4; "Aucola," 3 (Co-Editor, 4); Publications Board (Chairman, 4); Junior Prom Committee, 3; A. U. Fund Drive Chairman 4; Chorus, 4; Pi Delta Epsilon, 4; Alpha Chi Omega.

Annie and her problems . . . seen charming photographers, profs, everybody . . . notice her third finger, left hand . . . when happy, she's slap-happy . . . will soon be getting big red apples from smitten schoolboys.



ELIZABETH WELLER . . . . . Washington, D. C.

History

Mary Washington College, 1944; Dramat Apprentice, 1, 2; "Eagle" (Assistant Editor, 4); Spanish Club, 1; Student Christian Fellowship, 1, 2; Intramurals, 1, 2, 4; Alpha Chi Omega (Vice-President, 4).

"Betsy" . . . likes anything that Dr. Smith teaches . . . slaves away at history and likes it . . . guiding light of AXO's pledges . . . "Kid!"

---

TOMORROWS PASS SO SOON BEHIND US INTO  
SHADOWS OF THE PAST—SO THE YEARS WILL  
OFTEN FIND US, CALLING DAYS THAT FLEW SO FAST.

# JUNIOR CLASS

## OFFICERS



MIRIAM LEETCH . . . . . President

MARY ELIZABETH LEONARD . . . . . Vice-President

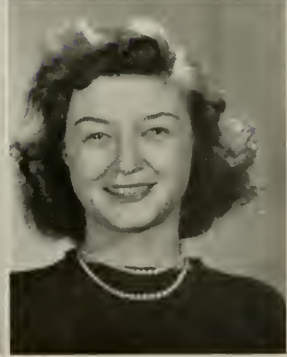
JEAN MOSER . . . . . Secretary

JANIS HOUSLEY . . . . . Treasurer





# J U N I O R S



First Row

LOUIS BARTH . . . . . Florence, S. C.  
Religion  
Student Christian Fellowship, 2 3; Alpha Tau Omega.

RUTH CAPELLO . . . . . Chevy Chase, Md.  
Romance Languages  
Class Honors, 1, 2, 3; "Aucola" (Co-Editor, 2 3); Pinfeathers, 1; French Club, 1; Chorus, 1, 2 3; Glee Club, 1, 2; Intramurals, 1; Faculty Prize, 2; Who's Who in American Colleges, 3.

MARY DEIMEL . . . . . Washington, D. C.  
Sociology  
International Relations Club, 2 (President, 3); Pinfeathers, 1; Pan-Hellenic Council, 3; Delta Gamma (President, 3).

Second Row

KATHERINE DORSEY . . . . . Chevy Chase, Md.  
English, History  
Art Guild, 2; Pinfeathers, 1; Kappa Delta.

LOIS FESSENDEN . . . . . Hyattsville, Md.  
Psychology  
Western Maryland College, 1; "Aucola," 2, 3; Social Board, 3; Alpha Chi Omega.

BEVERLY GRAYSON . . . . . New York, N. Y.  
History  
Blue Ridge College, 1; Omicron Epsilon Pi, 3, 4; International Relations Club, 3.

First Row

JANIS HOUSLEY . . . . . Washington, D. C.

English Speech

University of Maryland, 2; Chorus, 1, 3; Glee Club, 1; Tennis, 1; Class Treasurer, 3; Phi Mu.

PATRICIA JACKSON . . . . . Akron, Ohio

Biology

Class Honors, 3; Beta Beta Beta (Historian, 2, 3); "Eagle," 1; Chorus, 1, 2, 3; Glee Club, 1; Alpha Chi Omega (Treasurer, 3).

BETTY JAMIESON . . . . . Washington, D. C.

History

International Relations Club, 2, 3; "Aucola," 3; Social Board, 3; Chorus, 1, 2, 3; Glee Club, 1, 2; Bowling, 2, 3; Badminton, 3.

Second Row

SHIRLEE KOGOD . . . . . Washington, D. C.

Psychology

Hood College, 1; Dramat, 1; Debate, 1; Spanish Club, 1; Bowling, 2; Basketball, 1; Speedball, 3.

JUNE KULLBERG . . . . . Washington, D. C.

English, Speech

Dramat, 2, 3; "Eagle," 2; "Aucola," 2, 3; College Council, 1; Orientation Board, 3; Sophomore Dance Committee, 2; Intramurals, 1, 3; Baseball, 1; Cheerleader, 3; Phi Mu (Secretary, 2).

MIRIAM LEETCH . . . . . Washington, D. C.

Biology, Medical Secretarial Science

Class Honors, 1; Beta Beta Beta, 3; "Eagle," 1; "Aucola," 1; College Council, 1; Class President, 2, 3; Women's House Council, 3; Freshman Extemporaneous Speaking Prize; Who's Who in American Colleges, 3; Kappa Delta (Vice-President, 3).



J U N I O R S

# J U N I O R S



## First Row

MARY ELIZABETH LEONARD . . . Washington, D. C.

Sociology  
Class Honors, 2; Dramat (Treasurer, 3; Business Manager, 3); "Aucola," 3; Religion Board, 2; Constitution and Election Committee Chairman, 3; Class Vice-President, 3; Basketball, 3; Student Christian Fellowship, 2 (Worship Chairman, 2, 3); Alpha Chi Omega, 1 (Historian, 2; Treasurer, 2; President, 3); Pan-Hellenic Council, 2 (Secretary, 3); A. U. Fund Campaign, 2.

MARGARET LONG . . . Washington, D. C.

Biology  
Class Honors, 1; Beta Beta Beta, 3; "Eagle," 2 (Circulation Manager, 3); "Courier," 3; Religious Board, 3; Orientation Board, 2; "A" Club, 3; Constitution Committee, 2; Chorus, 1, 2, 3; Glee Club, 1, 2; Bowling, 2, 3; Basketball, 3; Student Christian Fellowship, 1, 2, 3; Kappa Delta.

ALICE LUNDEGAARD . . . Melrose Park, Pa.

English  
Class Honors, 3; Omicron Epsilon Pi, 3; "Aucola," 2 (Literary Editor, 3); Handbook, 1; Pinfeathers, 1; French Club, 1; College Council, 3; Social Board, 2; A. U. Fund Campaign, 1; Glee Club, 1; Intramurals, 1; Basketball, 1; Speedball, 3; History Prize, 2; Alpha Chi Omega.

## Second Row

MARGARET McCONNELL . . . Nazareth, Pa.

English  
Debate, 1; "Eagle," 1, 3; "Courier," 2; Handbook, 3; Class Secretary, 1; Orientation Board, 3; Student Christian Fellowship, 1 (Vice-President, 2, 3); Chorus, 1, 2, 3; Glee Club, 1; Women's House Council, 2 (Treasurer, 3); Phillip Marshall Brown Freshman Prize, 1; Most Representative Girl, 1, 3; Phi Mu (Vice-President, 3; Chaplain, 3); Who's Who in American Colleges, 3.

MARY LOUISE McINTOSH . . . Washington, D. C.

Psychology  
Dramat (Vice-President, 3); "Eagle," 1, 3; "Aucola," 1 (Advertising Manager, 3); "A" Club, 1, 2, 3; Bowling, 3; Intramurals, 1, 2, 3; Basketball, 1; Phi Mu (Vice-President, 2; Secretary and Reporter, 3).

CATHARINE McKEE . . . Dover, Del.

Education  
Wesley Junior College, 1, 2; "A" Club, 3; Intramurals, 3; Basketball, 3; Speedball, 3.

First Row

FRANCES McKELVY . . . . . New River, N. C.  
History  
Publications Board, 3; Tennis, 1; Alpha Chi Omega.

JEAN MOSER . . . . . Washington, D. C.  
Biology  
Beta Beta Beta, 3 (President 2); "A" Club, 3; Class Treasurer, 2; Class Secretary, 3; Chorus, 1, 2, 3; Glee Club, 2; Bowling, 2; Intramurals, 2; Basketball, 3; Kappa Delta (President, 3).

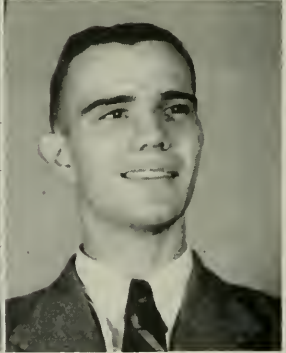
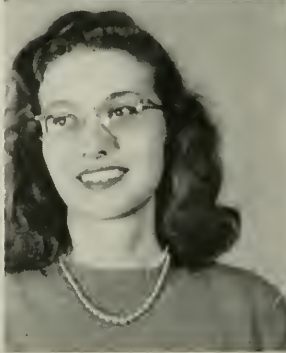
EDNA OFFENBERG . . . . . Washington, D. C.  
Political Science  
Gray Court College, 1; International Relations Club, 2.

Second Row

PATRICIA PETTIT . . . . . Jersey Shore, Pa.  
Music  
Chorus, 1, 2, 3; Glee Club, 1, 2; Alpha Chi Omega.

JEAN PROETSCH . . . . . Washington, D. C.  
English  
Phi Mu (Treasurer, 2; President 3); Pan-Hellenic Council (President, 3); Chorus, 1, 2, 3; Debate, 1, 2, 3; "Aucola," 2, 3; "Eagle," 2; Glee Club, 1.

BRITT SCHWEITZER . . . . . Washington, D. C.  
Mathematics, Physics  
Chorus, 1; Tennis, 1; Phi Sigma Kappa.



J U N I O R S

# J U N I O R S



First Row

MARGARET SETTLE . . . . . Elkin, N. C.  
 Music  
 Mitchell College, 1940-42; Chorus, 3.

JANE SIMON . . . . . Washington, D. C.  
 Psychology  
 Penn Ha'l Junior College, 1, 2; Intramurals, 3.

SARA SIMPICH . . . . . Washington, D. C.  
 English, Speech  
 Eagle, 1, 2; Aucola, 2 (Informal Photography Editor, 3);  
 Phi Mu (Pledge Director, 2, 3); Pan-Hellenic Council, 2, 3.

Second Row

GUNNHILDUR SNORRADOTTIR . . Akureyri, Iceland  
 Education  
 Akureyri College, 1; International Relations Club, 3; Chorus,  
 3; Glee Club, 3.

EDITH SPRAGUE . . . . . Washington, D. C.  
 Biology  
 "A" Club, 1, 2; Athletic Board, 3; Bowling, 1; Intramurals,  
 1, 2; Baseball, 1; Basketball, 1, 2; Delta Gamma (Vice-Presi-  
 dent, 3).

EDWARD STERN . . . . . New York, N. Y.  
 Economics and Business Administration  
 Debate, 1, 3; "Eagle," 1 (Editor, 3); "Courier," 2; Freshman  
 Handbook (Editor, 2); Who's Who in American Colleges 3

First Row

**ROSLYN WARSHAW** . . . . . Morristown, N. J.  
Journalism

'Eagle,' 1, 3; Women's House Council (Secretary, 2); Publications Board, 3; Class Committee, 1, 3.

**PHYLLIS WEINER** . . . . . Rockville Centre, N. Y.  
Political Science

Bucknell University, 1; Class Honors, 1, 2, 3; International Relations Club (Librarian, 2; Parliamentarian and Vice-President, 3); Basketball, 3; Pi Gamma Mu, 3.

**EDITH WIMMER** . . . . . Washington, D. C.  
Music

Student Christian Fellowship, 1, 2; Glee Club, 1, 2.

Second Row

**ANN WOOTTEN** . . . . . Cambridge, Md.  
Psychology

Wesley Junior College, 1, 2; International Relations Club, 3; Basketball, 3; Phi Mu.

**THELMA ZESKIND** . . . . . Washington, D. C.  
English

University of Michigan, 1, 2.

**MURIEL ADAMS** . . . . . Bethesda, Md.  
English, Speech

Dramat. 1 (Treasurer, 2; President, 3); "Aucola" (Assistant Business Manager, 1; Business Manager, 2, 3); Pi Delta Epsilon, 3; College Council, 2, 3; "A" Club, 3; Basketball Manager, 3; Bowling, 2, 3; Basketball, 1, 3; Tennis, 2; Home Coming Queen, 2; Alpha Chi Omega.



J U N I O R S

---

COME, COME, DAYS THAT WE TREASURE,  
WE LIVE IN YOU—WE YEARN NOW FOR  
THE PLEASURE AT COLLEGE WE KNEW.

# SOPHOMORE CLASS



## OFFICERS



JOYCE GOCHENOUR . . . . . President

ROSALIE CORRADO . . . . . Vice-President

JEAN HICKMAN . . . . . Secretary

SUE McBRIDE . . . . . Treasurer





# S O P H O M O R E S



## First Row

LORRAINE BENTON ..... Washington, D. C.  
 CARROLL BISCHOFF ..... Washington, D. C.  
 AUDREY BLESSING ..... Washington, D. C.  
 ALBERT BOTKIN ..... Washington, D. C.

## Second Row

ROSALIE CORRADO ..... Washington, D. C.  
 BEVERLY CUSHMAN ..... Washington, D. C.  
 CONNIE DALRYMPLE ..... Washington, D. C.  
 STACIA GANAS ..... Washington, D. C.

First Row

ELIZABETH GILLESPIE . . . . . Washington, D. C.  
CAROLA GIOVANNONI . . . . . Washington, D. C.  
JOYCE GOCHENOUR . . . . . Washington, D. C.  
ANN GRAHAM . . . . . Falls Church, Va

Second Row

ROBERT GUY . . . . . Washington, D. C.  
JEAN HEWITT . . . . . Washington, D. C.  
JEAN HICKMAN . . . . . Washington, D. C.  
FRANCES KAPLUS . . . . . Newark, N. J.



S O P H O M O R E S

# SOPHOMORES



## First Row

BRITA KORSSTROM ..... Washington, D. C.  
 JEANNE LEAR ..... Washington, D. C.  
 MARY-VIRGINIA LEE ..... Washington, D. C.  
 FLORENCE LYMAN ..... Washington, D. C.

## Second Row

PEGGY McFARLAND ..... Washington, D. C.  
 CLIFTON OLMSTEAD ..... Washington, D. C.  
 CYNTHIA OLSON ..... Long Lake, N. Y.  
 JEAN PECK ..... Leonardtown, Md.

First Row

ADELE REESE ..... Washington, D. C.  
JEAN RITTENHOUSE ..... Arlington, Va.  
NATALIE ROSE ..... Hackensack, N. J.  
ELIZABETH SMITH ..... Bethesda, Md

Second Row

LeROY SMITH ..... Mt. Rainier, Md.  
RUTH SNYDER ..... Washington, D. C.  
BETTY-LEE TORREY ..... Washington, D. C.  
SHIRLEY WALCOTT ..... Washington, D. C



# S O P H O M O R E S

---

FRIENDSHIPS WILL ALWAYS BIND US; IN YOUTH WE  
LIVE, FOR MEM'RIES REMIND US OF ORANGE AND  
BLUE—COME, DAYS FULLEST IN MEASURE—OF OUR A. U.

# FRESHMAN CLASS

## OFFICERS



HELEN LIPPIATT . . . . . President

ANN FROTHINGHAM . . . . . Vice-President

BETTY RICHARDSON . . . . . Secretary

ELLEN BEALE . . . . . Treasurer



# FRESHMEN



## First Row

SIDNEY ALPERT . . . . . Washington, D. C.  
 BETTY AUDISH . . . . . Capitol Heights, Md.  
 ELLEN BEALE . . . . . Harrisonburg, Va  
 ELEANOR BIRD . . . . . Washington, D. C.

## Second Row

MARY BOARD . . . . . Washington, D. C.  
 CATHERINE BROCKMEYER . . . . . Washington, D. C.  
 ELLEN BURGDFORF . . . . . Kensington, Md  
 JOHN COTRONA . . . . . Hammonton, N. J.

First Row

- JEAN CHAPPELL ..... Bay City, Mich  
ALICE CHOY ..... Oahu, T. H.  
MARY COBB ..... Mt. Rainier, Md.  
MARY COCHRAN ..... Washington, D. C.

Second Row

- LUCILLE DAVIS ..... Montross, Va.  
MARGARET DEY ..... Arlington, Va  
KATHRYN DIXON ..... Washington, D. C  
JOHANNA FOSSBERG ..... Reykjavik, Iceland



FRESHMEN



# FRESHMEN



## First Row

JENNY FRANKLIN ..... Fredericksburg, Va.  
 ANN FROTHINGHAM ..... Chevy Chase, Md.  
 PHYLLIS FOSTER ..... Washington, D. C.  
 MELBA GORDON ..... Holland, Mich

## Second Row

JEAN GRAHAM ..... Takoma Park, Md.  
 ELEANOR HEWITT ..... Falls Church, Va.  
 MARGARET IRWIN ..... Washington, D. C.  
 ELIZABETH KOENIG ..... Washington, D. C.

First Row

- LYLEN KANG ..... Honolulu, T. H.  
MARY KEISER ..... Washington, D. C.  
MARIAN KELLEY ..... Scranton, Pa  
FRANCIS KENDRICK ..... Washington, D. C

Second Row

- ELAINE KEROES ..... Washington, D. C.  
JOYCE KLOMPARENS ..... Arlington, Va.  
FRANCES LeGRANDE ..... Washington, D. C.



F R E S H M E N

# FRESHMEN



## First Row

HELEN LIPPIATT . . . . . York, Pa.

BETTY LOUTHAN . . . . . Rockville, Md

JANE METZ . . . . . Belleville, Pa.

JANET MILBURN . . . . . Washington, D. C.

## Second Row

MILDRED MINGOSKY . . . . . Washington, D. C.

LUCY MUDD . . . . . Laurel Hill, N. C.

First Row

JEAN OWENS ..... Washington, D. C.

MARTHA RAWSON ..... Washington, D. C.

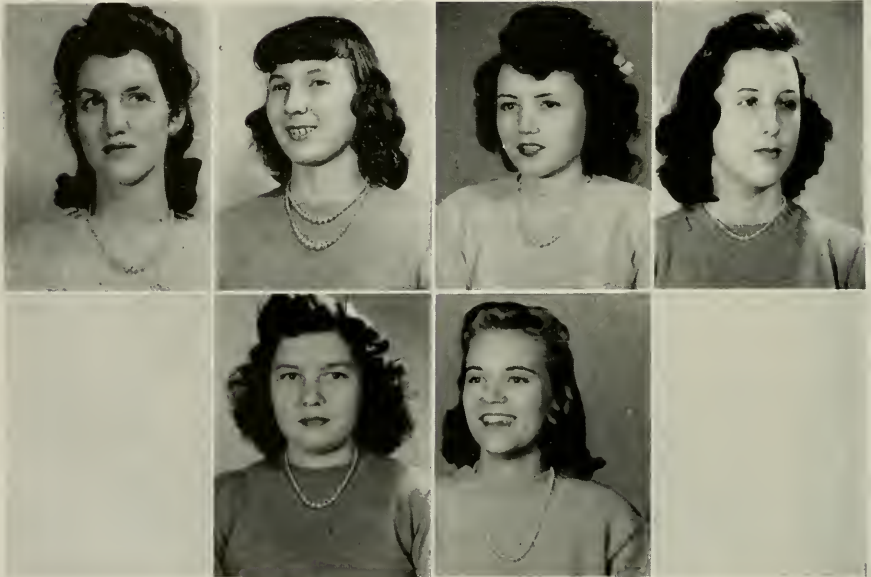
VIRGINIA REAVES ..... Albuquerque, N. M.

ELIZABETH RICHARDSON ..... Bethesda, Md.

Second Row

DREW SCHULZ ..... Winter Haven, Fla.

ROSEMARY SPEIGHTS ..... Washington, D. C.



FRESHMEN

# FRESHMEN



## First Row

ELSIE TOPALIAN ..... Washington, D. C.  
 ASA TRAUSTADOTTIR ..... Reykjavik, Iceland  
 MARIAN WARD ..... Grand Rapids, Mich.  
 PEARL WARD ..... Hallsboro, N. C.

## Second Row

MARY WOOD ..... Chevy Chase, Md.  
 SHEILA YOUNG ..... Arlington, Va.  
 BETTY LEE ZIRKLE ..... Harrisonburg, Va.





# ORGANIZATIONS

# W O R K P R O J E C T S



MARJORIE ANN BUTCHER

BETTY BUTLER

HELEN BUYNOSKI

JOYCE CAUSEY

MELBA CHAPPELL

PHYLLIS COLEMAN

NETTIE DANIEL

MILDRED DOBSON

SUE DUKE

CECILIA DUMBROSKI

NOLA EATON

GLORIA GARDNER

RUTH GLASER

VESTA GRANTHAM

ANNA GRACE GREEN

MARY HILL

MARTHA HOOD

CARMEN HUIE

IVE MAE JACKSON

FRANCES JENKINS





FRANCES KELLER

ARLINE KENNEDY

MARGARET KNAPP

MARGARET LITZELFELNER

ENID McAFEE

MAUREEN McCORMACH

ELNORA McCREARY

ARLENE McNEE

MARY McTRAMARA

VIDA MOORE

MARY ZAMAITIA

MARY MORGAN

BETTY JO OIEN

DOROTHEA OSBORNE

ROBERTA POTTS

DOROTHY RYAN

STELLA SALAK

FRANCES SULLIVAN

VIRGINIA TURNER

JANE E. VADER

ELMA WALKER



**OFFICERS**

DR. E. A. DENNIS  
President



**MEMBERS**

MISS M. L. BROWN  
MISS L. H. FLINT  
DR. C. E. LANE  
MR. A. J. LESSARD  
DR. M. A. MOOK  
DR. W. F. SHENTON  
DR. G. W. SMITH  
DR. C. STONEBURG  
DR. G. B. WOODS

H O N O R S O C I E T Y  
O M I C R O N D E L T A K A P P A

**OFFICERS**

MR. J. L. McLAIN  
President



**MEMBERS**

DR. A. B. POTORF  
DR. W. F. SHENTON  
LEON TESTA  
DR. G. B. WOODS



**OFFICERS**

DAPHNE STEVENSON  
President

BECKY BURNS  
Secretary-Treasurer

MARCIA CROUTER  
Historian



C A P A N D G O W N

P I G A M M A M U



**OFFICERS**

PHYLLIS WEINER  
President

MISS B. C. HALL  
Secretary-Treasurer



**MEMBERS**

MISS G. BARNES  
DR. A. B. POTORF  
DR. G. W. SMITH  
MR. P. P. STAPAY



**OFFICERS**

JEAN MOSER  
President  
IRENE CLAY  
Vice-President  
LOUISE ODOR  
Secretary  
JAY RASOOLI  
Treasurer  
PAT JACKSON  
Historian

**MEMBERS**

ROSALIE CORRADO  
DR. E. A. DENNIS  
BARBARA HULFISH  
MIRIAM LEETCH  
MARGARET LONG  
ETHEL LOW  
DR. C. B. NASH  
MRS. C. B. NASH  
DR. A. E. SCHROCK  
CLIFDENE SCRIMSHAW  
DR. C. STONEBURG

B E T A B E T A B E T A

P I D E L T A E P S I L O N

**OFFICERS**

IRENE JAWOROWSKI  
President  
MURIEL ADAMS  
Secretary-Treasurer

**MEMBERS**

DR. M. C. BATCHELDER  
BARBARA HULFISH  
MARCIA CROUTER  
PHYLLIS PAYNE  
ANNE TRAMMELL



# STUDENT CHRISTIAN FELLOWSHIP



Fellowship—keynote of '45 . . . new students singing hymns around the piano in Great Hall . . . Dad's Day . . . toasts by a dad and his daughter . . . dorm rooms in ship-shape order for judging . . . vespers to close a perfect day

. . . Holy Communion—simple and meaningful . . . Christmas in Chapel . . . students leading—Chorus singing . . . music and noon meditations during Lent . . . Dr. Latch—a smile and a friendly word.

## OFFICERS

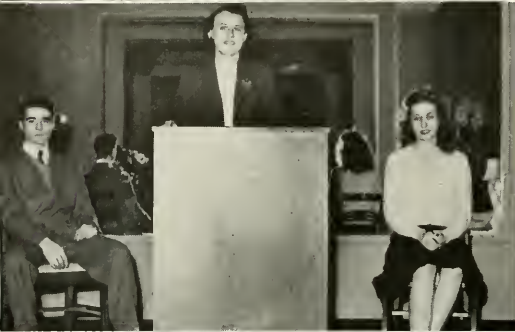
LEON TESTA  
President

MARGARET McCONNELL  
Vice-President

IRENE CLAY  
Secretary

MARY ELIZABETH LEONARD  
Worship Chairman





## POETRY CLUB

### OFFICERS

FRANCES KAPLUS ..... President  
 JEAN LEIGHTON ..... Secretary-Treasurer  
 DR. M. C. BATCHELDER ..... Adviser



## DEBATE

### MEMBERS

JOHN COTRONA  
 BOB GUY  
 IRENE JAWOROWSKI  
 JEAN PROETSCH  
 EDWARD STERN  
 DR. G. B. WOODS ..... Adviser



## INTERNATIONAL RELATIONS CLUB

### OFFICERS

CYNTHIA OLSON ..... President  
 MARY DEIMEL ..... Vice-President  
 FRANCES KAPLUS ..... Secretary-Treasurer  
 PHYLLIS WEINER ..... Parliamentarian



## WOMEN'S HOUSE COUNCIL

### OFFICERS

MARCIA CROUTER ..... President  
 PHYLLIS PAYNE ..... Vice-President  
 FRANCES KAPLUS ..... Secretary  
 MARY ELIZABETH LEONARD ..... Treasurer  
 MIRIAM LEETCH ..... Social Chairman

# D R A M A T I C S



Dramat comes through once more despite the shortage of that vital element—men! . . . the last being handsomely portrayed by Irene and June in Dramat's tea-time presentation of Chekov's "Marriage Proposal" . . . eternal question—what will our Fall play be? . . . sophisticated comedy, "Candlelight," the winner . . . usual scenery problems . . . what would we do without Katherine? . . . opening night at last . . . Angel scores a hit again . . . the fire-inspector enjoyed the play from backstage . . . Mr. Mac—the new matinee idol of A. U. . . . Florence, the naughty baroness . . . Becky and LeRoy take to comedy as valets to wine! . . . John Cotrona in initial A. U. stage appearance . . . the siren Betty . . . our Founders' Day play, "I Am

Looking for an American," by Severino Montano, outstanding Filipino dramatist . . . if we had an Oscar it should go to Mr. Mac for his portrayal of Jim . . . A. U.'s biggest production ever—cast and crew reached almost a hundred . . . unusual, magnificent, tremendously successful . . . Dramat gets a new deal from College Council and the Dean . . . henceforth, Dramat is purely honorary and we have a new organization, the College Theater—completely subsidized by the school . . . rumors of Dramat going national . . . it would be nice . . . again, the question of Bill S., and which play has the least men . . . Angel likes "The Tempest" . . . Spring play date set for June 2 . . . we prophesy a hit—naturally! . . . and another year closes . . . regretfully.



# C H O R U S



JAMES McLAIN

Fall . . . A. T. O. house for rehearsals . . . no men . . . all women's chorus . . . come Monday and Wednesday . . . "Shall I go or skip just this once?" . . . night rehearsals in Hurst Hall . . . Janie at the piano . . . United Nations Bazaar . . . white dresses and gala Statler affair . . . "Shepherds Shake Off Your Drowsy Sleep" . . . tongue twisters . . . "The Nightingale" . . . more rehearsals . . . Christmas Concert . . . "O Holy Night" . . . Mr. Mac gets engaged . . . Oh Hum . . . Thursdays and Chapel . . . "Are we all here?" . . . "What are we singing?" . . . "Who has my robe?" . . . Guy, Lewis . . . Botkin . . . Testa . . . Olmstead—guest additions to Chapel Choir . . . Alma Mater . . . Communion and complicated responses . . . rehearsals begin again . . . Women's Chorus with the Veterans . . . "The Lord's Prayer" . . . "America, The Beautiful" . . . Proetsch, leading lady vocalist . . . new music . . . rehearsal for Spring Concert . . . spring fever . . . graduation . . . excitement . . . robes hung up for another year.





# COLLEGE COUNCIL

## FACULTY

Dr. Batchelder	Mrs. Hornbeck
Dr. Bentley	Mr. McLain
Dr. Dennis	Dr. Mook
Dr. Douglass	Dr. Potorf
Mr. Stapay	

## STUDENTS

IRENE JAWOROWSKI	President
LEON TESTA	Vice-President
IRENE CLAY	Secretary
MIRIAM LEETCH	Comptroller

## SENIOR MEMBERS

Mary Elizabeth Burns	Mary Lou Courtney
----------------------	-------------------

## JUNIOR MEMBERS

Muriel Adams	Alice Lundegaard
--------------	------------------

## SOPHOMORE MEMBERS

Elizabeth Smith	LeRoy Smith
-----------------	-------------

## FRESHMAN MEMBERS

Phyllis Foster	Francis Kendrick
----------------	------------------

## SOCIAL BOARD

Miss Hall	Leon Testa
Mrs. Hornbeck	Betty Jamieson
Mr. McLain	Lucia Englehart
Dr. Nash	Lois Fessenden
Mary Lou Courtney	Carroll Bischoff
Mary Jeanne Board	

## PUBLICATIONS BOARD

Miss Flint	Marcia Crouter
Miss Jensen	Frances McKelvy
Mr. Stapay	Frances Kaplus
Betty Jane Audish	

## ATHLETIC BOARD

Miss Hall	Margaret Maquire
Dr. Nash	Edith Sprague
Dr. Potorf	Sue McBride
Peggy Michael	



## RELIGIOUS BOARD

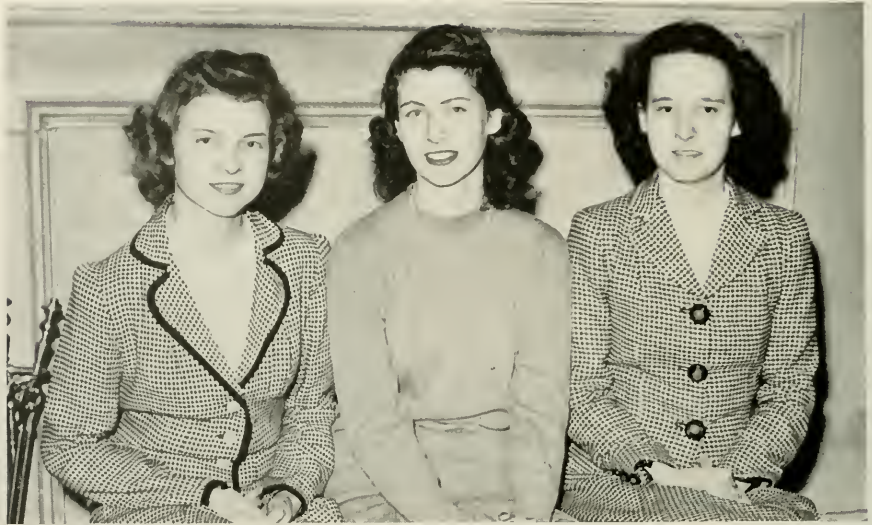
Dr. Bentley	Leon Testa
Dr. Douglass	Margaret McConnell
Dr. Latch	Edward Lewis
Mr. McLain	Margaret Long
Dr. Potorf	Clifton Olmstead
Martha Ann Clark	

## ORIENTATION BOARD

Dr. Bentley	Dr. Potorf
Dr. Dennis	Leon Testa
Dr. Douglass	Jean Proetsch
Mrs. Hornbeck	June Kullberg
Dr. Latch	Daphne Stevenson
Mr. McLain	Albert Botkin
Elizabeth Gillespie	



# T H E 1 9 4 5



## EDITORIAL STAFF

RUTH CAPELLO, ANNE TRAMMELL . . . . . Editors  
ALICE LUNDEGAARD . . . . . Literary Editor  
JEAN PROETSCH, JUNE KULLBERG . . . . . Formal Photography  
LOUIS BARTH, SARA SIMPICH . . . . . Informal Photography  
ELAINE BEALE . . . . . Sports Editor

## BUSINESS STAFF

MURIEL ADAMS . . . . . Business Manager

## ADVERTISING STAFF

MARY LOUISE McINTOSH . . . . . Advertising Manager  
BETTY COCHRAN . . . . . JEAN HEWITT  
LOIS FESSENDEN . . . . . JANE INGLING

# A U C O L A

An early start in September . . . twelve workers volunteer for the advertising staff . . . Benson arrives with some new and terrific ideas . . . sloppy jokes are censored . . . business with the editors piles high . . . new pictures are snapped of every building and every person . . . Barbara Hulfish is still interested in things . . . Ruth Capello holds flash bulbs for Benson . . . Anne Trammell sorts pictures and checks on business staff . . . 221 and 225, "Aucola" assembly rooms . . . the last minute scramble begins in February . . . four of the volunteers are still working for the advertising staff . . . after sending and paying bills Mike Adams screams, "I'm shot!" . . . Lois Fessenden with Mary Lou McIntosh cam-

paign for ads by typewriter . . . at the last minute June Kullberg takes snapshots to fill her own section . . . Alice Lunde-gaard madly completes last-minute copy . . . typing far into the night . . . Jean Proetsch soothes the photographer while she makes late appointments . . . professors camera shy, as always . . . fail to keep appointments . . . pictures return minus the numbers for identification . . . Adams, Burns, McIntosh lost, strayed or just plain missing . . . the editors struggle to identify all . . . Alpert comes through in fine style with the last three pictures to beat the dead-line by a day . . . the number of people one doesn't know is amazing . . . the dummy is assembled . . . the staff sighs . . . the 1945 "Aucola" emerges . . . Behold!



# The



## STAFF

EDWARD STERN ..... Editor  
JEANNE LEAR ..... Associate Editor  
CAROLINE SULZER ..... Associate Editor  
JEAN FIELDS ..... Associate Editor

## ASSISTANT EDITORS

BETSY WELLER ..... Copy  
FRANCES KAPLUS ..... Features  
ROSALIE CORRADO ..... Makeup  
ELAINE BEALE ..... Sports

## BUSINESS STAFF

PHYLLIS PAYNE ..... Manager  
ELEANOR BIRD ..... Advertising  
MARGARET LONG ..... Circulation

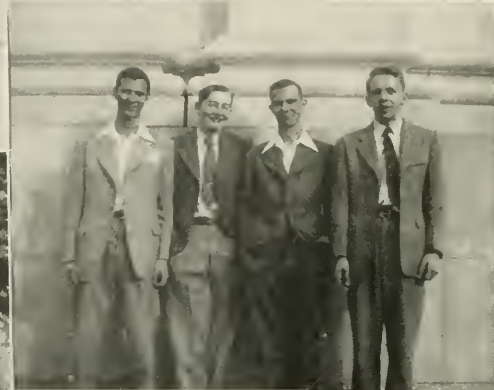


# E A G L E

Fall and the "Courier" fades again . . . the "Eagle" flies on high . . . Editor Stern, the "hidebound conventionalist" (?) takes over with a vengeance . . . and lots of new ideas . . . an All-University Publications Board . . . Trammell Chairman . . . interest shown by students and faculty members in all the schools as well as the college . . . "Eagle" office—any place where you can put a typewriter . . . finally ending up in the secretarial science room, which was the "Eagle" office long years ago . . . a SIX-page "Eagle" for Founders Day . . . columnists from each school . . . Sulzer returns as downtown editor . . . Hulfish contributes items on servicemen . . . Warshaw writes up scandals under a by-line . . . the nurses have their own diary . . . SPORTS for a

whole sports page!! and Beezie the Beale to officiate . . . midnight oil . . . Christmas issue . . . full of secrets which nobody could know but everybody had to work on . . . paths worn to Takoma Park by the new associate editor, Jeanne Lear . . . space writing . . . Assistant Editors Rosalie Corrado, Frances Kaplus, and Betsy Weller struggle with make-up headaches . . . Stern threatens to get a job and leave them to struggle alone . . . cartoons from the OWI . . . black heads and unbalanced makeup . . . too many 6's above the line . . . but pictures, pictures all over every page . . . the vagaries of spring and tough exams hit even the business staff slaves . . . Pep and Ellie Bird share the honors . . . last-minute graduation issue . . . secrets again and then Pi Deltas mark the close of another year.







A T H L E T I C S

# G I R L S ' S P O R T S



The exercise-minded of the better half of A. U. started the fall season with a bang . . . and a bruise or two . . . with the "A" Club behind the sports program, speedball teams were organized . . . the manager recruited, drafted, and dragged people out to the field . . . and then dragged them off as casualties were scored . . . two teams were finally whipped into shape . . . then came a big game with the College of Arts and Sciences battling it out against the Cadet Nurse Corps . . . The College was forced to forfeit because of a lack of players at the crucial moment . . . the game was played with nurses rounding out our team—and still we lost! . . . then a picked team played Maryland U. . . and lost . . . with the end of speedball came a bowling tournament . . . the Outing Club sponsored several hikes . . . an open ping-pong tournament was held under the auspices of the "A" Club . . . and one of the boys was champ . . . basketball season arrived and promising new talent appeared . . . prac-

tices were organized and the sororities went all out with an eye on the championship . . . with the Indoeoendents and the Cadet Nurses in the running the competition was great . . . Kappa Delta, the only undefeated team walked off with the coveted honor . . . an A. U.-Cadet Nurse team neatly overturned a Ham House Navy Women's team . . . then the Cadet Nurse team gave the Arts and Sciences team a nice trimming . . . a freshman team bowed to Friends School . . . Wilson Teachers College came here to play an A. U. varsity team and lost . . . we returned their visit and again won with a lop-sided score . . . the annual girls' varsity-men's varsity tussle was somewhat altered this year . . . it was a men's faculty team that gave the girls a beating . . . many bruises, limps, and black eyes were in evidence for days . . . Grotto weather again ushers in out-of-doors sports . . . with the spotlight on tennis, softball, archery, and Outing Club activities, a successful year in Girls' Sports draws to a close.



# ''A'' CLUB

## OFFICERS

PHYLLIS PAYNE	President
ELAINE BEALE	Vice-President
JEAN LEIGHTON	Secretary

## MEMBERS

Becky Burns	Marjie Maquire
Teen Clay	Jean Moser
Jean Graham	Betty Murray
Irene Jaworowski	Natalie Rose
Mary Louise McIntosh	Edith Sprague
Daphne Stevenson	



Entirely **new** organization . . . **new** point system . . . **new** award system . . . "A's" are common . . . Hillman and Outing Club . . . P. E. Office plus stupendous paint job transformed into Hillman Hall . . . current problem—where is the archery equipment? . . . and why do we play tennis with baseball bats and catchers' mitts? . . . Mack learns to pitch . . . swimming . . . and have you ever watched

the trek to Waves' Barracks D?—for swimming, **not** enlisting . . . Maggie Long and her indefatigable hikes . . . badminton . . . "radiate," not rotate . . . Jamieson and Long win the tournament . . . "don't forget to watch the bulletin board!" . . . "the way things happen around here" . . . May . . . "oh, it's too hot to play softball" . . . June . . . the year winds up.



# B A S K E T B A L L



Even with the scarcity of men, A. U. came through with a basketball team . . . and a team of which to be proud . . . From men of the downtown school Coach Artie Boyd whipped into shape the team that is the second one in the history of the Mason-Dixon Conference to take top honors in the regular hoop tournament and also the Conference title . . . practice started late . . . but the Eagles took their first game 55-49 . . . the first home game was an easy victory 76-38 . . . Ray Love's uncanny shooting ability was witnessed by a large audience . . . three snappy cheerleaders with new routines . . . Bridgewater's Eagles were the next ones trimmed by A. U.'s hoopsters . . . Love again rolls up a good number of points . . . The Eagles travel to Baltimore to take Loyola

with a score of 76-35 . . . Ray seemed to be a second Zuras . . . 6 foot 4 inch Bob Lindeman dropped in 19 points . . . the second semester brought back two veterans of former years—Ralph Yow and Bob Miller . . . Loyola came to A. U. to play the first game of the season in which the Eagles were threatened . . . but we made it—42-39 . . . the Eagles go to Mt. St. Mary's to edge them out of a game 40-38 . . . then Randolph-Macon took a trouncing 58-38 . . . the newspapers prophesied that our undefeated team would take the M-D conference . . . Bridgewater gave the Orange and Blue a scare . . . they climbed up to tie our score and repeated this every time the Eagles chalked up two points . . . it seemed a lost game until a basket and a foul shot just before the whistle

blew . . . our score, 51-48 . . . next the Eagles ran helter-skelter over Johns Hopkins 52-28 . . . with little Captain Johnny Poston and skyscraper Bob Lindeman missing, our undefeated team won over Mt. St. Mary's by one point . . . with ten victories safely tucked away the total points scored equal 563 . . . Ray and Bob hold highest averages per game with 15.5 and 5.1 points respectively . . . then came a turn . . . the Eagles were jolted out of their undefeated status by Washington College with a score of 29-43 . . . but this did not change the opinions of the predictors as to the winner of the Conference title . . . two more victories rung up to end the season . . . the annual Conference games at Baltimore were eagerly looked forward to . . . it seemed a sure thing for A. U. . . . we mopped up Randolph-Macon 45-34 . . . the Virginia Eagles were not disposed of so easily, 59-55 . . . then came the finals, with Johns Hopkins bowing to the Eagles 70-36 to give A. U. its first Mason-Dixon Conference title . . . this crackerjack team played its last game of the year at Uline Area . . . pitted against Fort Belvoir with several All-American players . . . we lost, 58-26. . . . And so ends the season—looking forward to another year—another team!

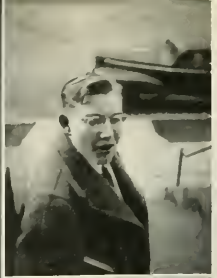
## BASKETBALL SCORES

Jan. 5—A. U. . . . 55;	Gallaudet . . . . . 49
Jan. 10—A. U. . . . 76;	Washington College 38
Jan. 13—A. U. . . . 55;	Bridgewater . . . . . 45
Jan. 17—A. U. . . . 76;	Loyola . . . . . 35
Jan. 31—A. U. . . . 42;	Loyola . . . . . 39
Feb. 1—A. U. . . . 40;	Mt. St. Mary's . . . 38
Feb. 3—A. U. . . . 58;	Randolph-Macon . . 38
Feb. 10—A. U. . . . 51;	Bridgewater . . . . . 48
Feb. 12—A. U. . . . 52;	Johns Hopkins . . . 28
Feb. 14—A. U. . . . 56;	Mt. St. Mary's . . . 55
Feb. 17—A. U. . . . 29;	Washington College 43
Feb. 21—A. U. . . . 76;	Gallaudet . . . . . 43
Feb. 22—A. U. . . . 41;	Randolph-Macon . . 32

## MASON-DIXON CONFERENCE GAMES

Mar. 1—A. U. . . . 45;	Randolph-Macon . . 34
Mar. 2—A. U. . . . 59;	Bridgewater . . . . . 55
Mar. 3—A. U. . . . 70;	Johns Hopkins . . . 36







## SORORITIES AND FRATERNITIES



# PAN-HELLENIC COUNCIL



Pan-Hellenic Tea opens rushing season  
 . . . rules lost and found . . . Interfraternity Prom becomes Pan-Hellenic Prom  
 . . . moved up to second semester . . .  
 St. Patrick's Day theme . . . Rendezvous

Room is pet project for the year . . .  
 majoring in home ec, girls? . . . meetings with everyone present but president . . .  
 Song-Fest secrets not so secret this year . . .  
 . . . lazy Spring weather brings on house-party hopes.

## OFFICERS

JEAN PROETSCH	President
MARY LOU COURTNEY	Vice-President
MARY ELIZABETH LEONARD	Secretary
JEAN MOSER	Treasurer



## MEMBERS

Muriel Adams	Margaret Long
Joyce Gochenour	Sora Simpich



# P H I M U



JEAN PROETSCH  
President



PEGGY McCONNELL  
Vice-President



MARY LOUISE McINTOSH  
Secretary



MARJORIE SMITH  
Treasurer

Gamma Delta founded 1933



Founded 1852

Fall rushing found us at a "Tavern Party" . . . "Pajama Party" . . . and "Formal Dinner" with Dreamcake ceremony . . . bids came out with Dey, Koenig, Housley, Rose, and Wootten wearing pink and white ribbons . . . formal pledging with no flowers but a good time at the Hot Shoppe . . . Pledge Tea with Beta Alpha chapter . . . Mothers' Tea in Great Hall . . . Breakfast Party brings in Christmas holidays on a happy note . . . national inspection with lunch at the Iron Gate

Inn . . . Valentine Party at the President's House brings us two new pledges—Camille Sweatman and Marian Ward . . . Peggy McConnell becomes Mrs. Thompson . . . Song Fest practice and formal pledging and initiation . . . then the Good Earth for dinner with alums Kopulos and Bennett present . . . Founders' Day Tea in Great Hall, March 4, with alumnae and Beta Alpha chapter as our guests . . . Elections . . . Fall rushing plans.



# S O R O R I T Y

## OFFICERS

JEAN PROETSCH	President
PEGGY McCONNELL	Vice-President
MARY LOUISE McINTOSH	Secretary
MARJORIE SMITH	Treasurer



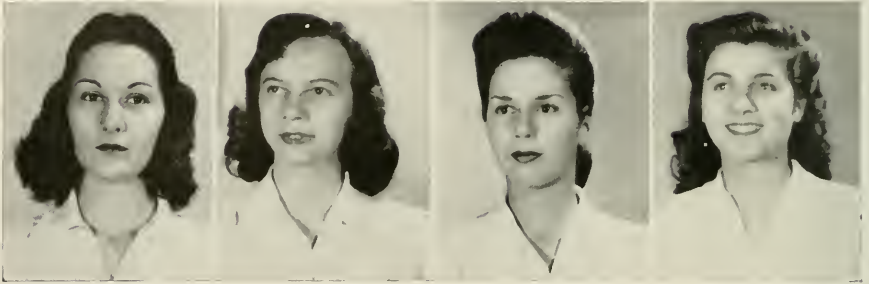
## MEMBERS

Becky Burns	Betty Koenig	Sera Simpich
Marcia Crouter	June Kullberg	Florence Spalding
Peggy Dey	Jean Peck	Camille Sweetman
Stacia Ganas	Natalie Rose	Marian Ward
Janis Housley		Ann Wootten

Crouter, Dey, Ganas, Housley, Koenig, Kullberg, Peck, Rose, Simpich, Spalding, Wootten, Burns.



# DELTA GAMMA



MARY LOU COURTNEY  
President

EDITH SPRAGUE  
Vice-President

JOYCE GOCHENOUR  
Secretary

BETTY GILLESPIE  
Treasurer

Beta Epsilon founded 1936



Founded 1874

Time seemed to fly like the wind for the Delta Gammas . . . the war providing the impetus for our activities as well as everything else in this fateful year . . . the fraternity Blind Project, worked on by the network of chapters all over the country . . . "Buy a War Stamp from a D. G." . . . books for the Merchant Marine . . . Mrs. Vandenburg's reception for the Washington Delta Gammas, acquainting the actives with their renowned "sisters in the bond," Gwen Dew and Ruth Bryan Rhode . . . on the more per-

sonal side innumerable bits of excitement avalanched into our laps, such as the flashing of engagement rings . . . wedding bells for "Parker" and Lou . . . the Mothers' Tea . . . basketball team . . . pictures of Joyce, Lou, Rosemary, and Lois for the "Leatherneck" . . . staying up all night after the Candlelight Service . . . "up in Daf's room" . . . Betty's glamour poses . . . serving at the Rendezvous . . . Lucia and Mrs. Culbertson on how to play bridge . . . trips to New York and Annapolis . . . decorating for the Interfrat.

# S O R O R I T Y

## OFFICERS

MARY LOU COURTNEY

EDITH SPRAGUE

JOYCE GOCHENOUR

BETTY GILLESPIE

President

Vice-President

Secretary

Treasurer

## MEMBERS

Carroll Bischoff

Audrey Blessing

Mary Ann Brown

Beverly Cushman

Mary Deimel

Lucia Englehart

Johanna Fossberg

Marian Kelley

Joyce Klomprens

Brita Korsstrom

Mary Frances LeGrande

Margaret Maquire

Hilda Snorradottir

Rosemary Speights

Daphne Stevenson

Lois Stone

Asa Trustadottir

Bischoff, Blessing, Brown, Cushman, Deimel, Englehart, Klomprens, Korsstrom, LeGrande, Maquire, Speights, Stevenson.



# ALPHA CHI OMEGA



MARY ELIZABETH LEONARD  
President



BETSY WELLER  
Vice-President



PAT JACKSON  
Treasurer



PEGGY McFARLAND  
Recording Secretary



LOIS FESSENDEN  
Corresponding Secretary

Beta Rho founded 1937



Founded 1885

Memories of our houseparty at Chapala and our summer get-togethers . . . business and babble . . . pledges' lawn party made a hit with the actives . . . Pan-Hellenic Scholarship Cup—courtesy of Libby Smith . . . a rush for rushing . . . Kensington Cabin Party . . . Gay Nineties . . . Mike as M. C. . . . Dream Cake Dinner . . . Patty's kodachromes . . . candlelight and carnations . . . ribbons of red and green . . . Smorgasbord . . . formal pledging . . . mystagogues and little sisters . . . Mrs. MacPherson, our province president . . . conferences,

workshop, dinner by candlelight . . . exams!—and the Alpha Chi's are tops in scholarship again . . . Pat Jackson sports a diamond ring . . . and we collect five pounds of chocolates . . . annual Blood Donor Drive . . . Dagwood Buffet for donors . . . March 1—rolling bandages at Walsh House for Hera Day . . . Valentine Party by Beta Rho alums . . . Dorm life . . . 226 becomes the unofficial sorority room . . . fourth for bridge? . . . overnight on the sofa . . . Song-Fest practice with Millie and Lorraine . . . houseparty plans in the air.

# SORORITY

## OFFICERS

MARY ELIZABETH LEONARD	President
BETSY WELLER	Vice-President
PEGGY McFARLAND	Recording Secretary
LOIS FESSENDEN	Corresponding Secretary
PAT JACKSON	Treasurer



## MEMBERS

Muriel Adams	Hallie Lancaster	Pat Pettit
Pat Brown	Jeanne Lear	Libby Smith
Phyllis Foster	Frencos McKelvy	Anno Trammell
Ann Graham	Gisela Mann	Mary Wood

Foster, Graham, Pettit, Lear, Mann, McKelvy, Smith, Trammell, Wood, Adams.



# K A P P A      D E L T A



JEAN MOSER  
President



MIRIAM LEETCH  
Vice-President



IRENE CLAY  
Secretary



KATHERINE DORSEY  
Treasurer

Beta Iota founded 1943



Founded 1897

Eleven actives back . . . Kay, Pep, and BZ, too . . . MRS. for president . . . eight new pledges with Ding in charge . . . room 211 and the **Mystery of the Locked Door** . . . Teen, secretary par excellence and the freshman's friend . . . **that** serviceman's party . . . Dizzy, on accounta she goes in Zirkles . . . Thanksgiving baskets . . . undefeated basketball champions again . . . Splinter and her little bottle of hair lotion . . . B. J. gets engaged and KD gets ten pounds of candy . . . the so-restful slumber party in rooms 212 and

229 . . . explaining the Kappa Alpha shield to Roxie . . . Sheila's clever posters dot the campus . . . Rudie's new little sister, Betty . . . Roger writes to Jawie . . . the chamber of horrors . . . Ginger's sweet smile and impish look . . . Irene J'etc. turns over the Student Association gavel to Ding . . . Betty Pat goes sight-seeing . . . Kay Dorsey, our new president . . . Song-Fest under Maggie's eagle eye . . . Melba and her good-looking Marine . . . house party in the "heart of the Shenandoah Mountains."

# S O R O R I T Y

## OFFICERS

JEAN MOSER

MIRIAM LEETCH

IRENE CLAY

KATHERINE DORSEY

President

Vice-President

Secretary

Treasurer



## MEMBERS

Betty Jane Audish

Elaine Beale

Ellen Beale

Jeanne Board

Mary Elizabeth Cochran

Melba Gordon

Irene Jaworowski

Margaret Long

Cynthia Olson

Betty Patterson

Phyllis Payne

Virginia Reaves

Ruth Snyder

Sheila Young

Betty Lee Zirkle

Audish, Elaine Beale, Ellen Beale, Board, Gordon, Jaworowski, Long, Olson, Payne, Reaves, Snyder, Young, Zirkle.



# ALPHA TAU OMEGA



Testa, Guy, Barth, Lewis, Olmstead, Smith.

Epsilon Iota founded 1943



Founded 1865

## OFFICERS

ROBERT GUY ..... President  
 CLIFTON OLMSTEAD ..... Treasurer



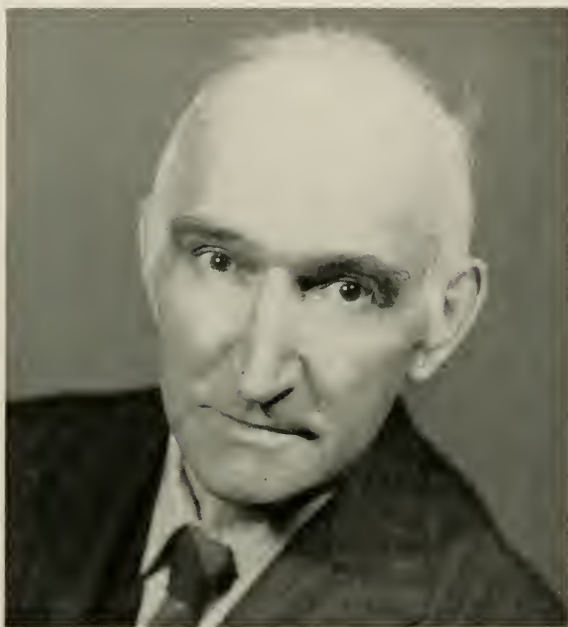
## MEMBERS

LOUIS BARTH ..... ROBERT MILLER  
 EDWARD LEWIS ..... LeROY SMITH

LEON TESTA



I N M E M O R I A M



**Dr. Will Hutchins**

I N M E M O R I A M



**C. Law Watkins**

# LETTER FROM THE EDITORS



Well, we've done it again! The ink is dry, the books are back, and we still can't quite believe that the 1945 "Aucola" is a reality.

Now, while we're still in such a blissful mood, comes the time for handing out bouquets to those who have worked so hard to make this year's "Aucola" a success: Mike Adams, business manager extraordinary and paragon of perfection with her accounts; Mack, the gal who can keep one foot in the door until they say "yes" (P. S. She got the ads); Alice Lundegaard, expert at beating dead-lines via the hunt-and-peck system; Beezie, our indefatigable sports writer; and the photography editors—all four—who came through with more pictures than ever.

Special thanks are due to Mr. Capello, who helped out in many an emergency, and to Mr. Benson, our photographer, engraver, and printer, whose cooperation, untiring effort, and assistance were invaluable.

And so, through headache and heartache comes the 1945 "Aucola."

RUTH CAPELLO, ANNE TRAMMELL, Editors.

# The World Needs Ideas

There's *so much* to be done! And the months ahead hold still greater tasks! As this is written, we dare not even hazard a guess whether you'll be graduating into a world at war, or into one faced with the reconstruction for peace. But of one thing we are sure—that there's a place for you and your ideas.

Ideas are the seed from which The American Way of Life has grown; and the working partners of Ideas are Application and Determination. Your success in whatever field you enter will be determined by the extent to which you use these three.



## GRIFFITH-CONSUMERS COMPANY

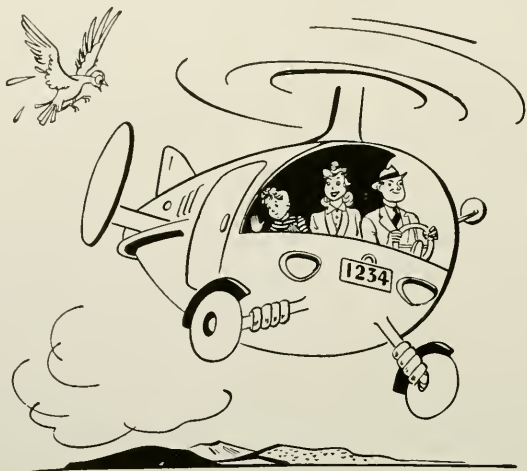
1413 New York Avenue, N.W.

"Blue Coal" Headquarters  
Fuel Oil and Oil Burners

Home Insulation  
Roofing and Siding

Air Conditioning Equipment

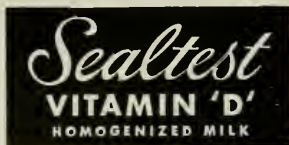




## Post-war Plans

call for all sorts of improved things.  
But here's a nutritionally-improved  
milk you can enjoy now . . .  
our Vitamin "D" Milk.

### CHESTNUT FARMS



A Division of National Dairy Products Corporation



## A Friendly Welcome

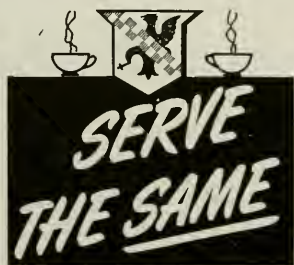
We hope, indeed, that American University students know our fine store well from undergraduate life in Washington. We like to count you among our old friends, as frequent visitors who know the firm belief we have in quality merchandise and courteous service. We think you will find these things increasingly important as you graduate and enter upon careers and family life, and hope that we will see you in Garfinckel's often, assured that the services we offer are outstanding in the capital.

### JULIUS GARFINCKEL & COMPANY

F Street at Fourteenth

Spring Valley Shop, Massachusetts Avenue at 49th

Washington, D. C.



... COFFEE THAT GRACES  
THE TABLES OF AMERICA'S  
FINEST EATING PLACES—

**SEXTON'S**  
**HOTEL**  
**BLEND**



SEXTON'S QUALITY FOODS

FOR FOOD

THAT'S

"TOPS"

It's

THE

HOT SHOPPES

14 CONVENIENT

RESTAURANTS





# C. ENGEL'S SONS

Incorporated

Established 1850

FRUITS  
AND VEGETABLES

District 0995

522 12th Street, S. W.

Washington, D. C.

PEAKE  
NATIONAL 8979

444 NEW YORK AVENUE, N. W.

PRINTERS

## RECORDS

Popular and Classical

SHEET MUSIC

MUSIC SUPPLIES

IRVING MUSIC SHOP

1402 Irving St., N. W.

Washington 10, D. C.

Co. 8816

PLUMBING — HEATING — AIR-CONDITIONING

1246 Taylor Street, N. W.

*Atchison & Keller, INC.*

WASHINGTON, D. C.

TAYLOR

8100



## WESLEY HEIGHTS

PHARMACY

Phone Woodley 6200

Sodas—Perfumes

LUNCHEtte

3303-45th St., N. W., Washington, D. C.

## R. P. ANDREWS PAPER COMPANY

COMMERCIAL STATIONERY STORE

Phone National 1974

718 Thirteenth St.      Washington, D. C.

YEAR IN . . . YEAR OUT . . .

Our congratulations for good  
work well done . . . to all students  
. . . whether this is another "year  
in" or your "year out" . . .

THE NEWER  
**Jelleff's**  
9214-20 # STREET

One of the country's  
great apparel stores



*Buy War Bonds*





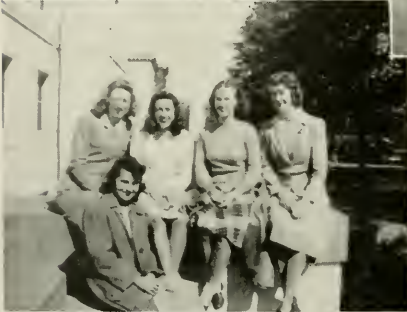






















THE AMERICAN UNIVERSITY



1 9 4 5

1 9 2 5

