

NOVA



*The
American
University
Library*

WASHINGTON, D. C.



Presenting:

The College of Arts and Sciences of

The American University, Washington, D. C.



1947 AUCOLA



Charles B. Norris
Editor

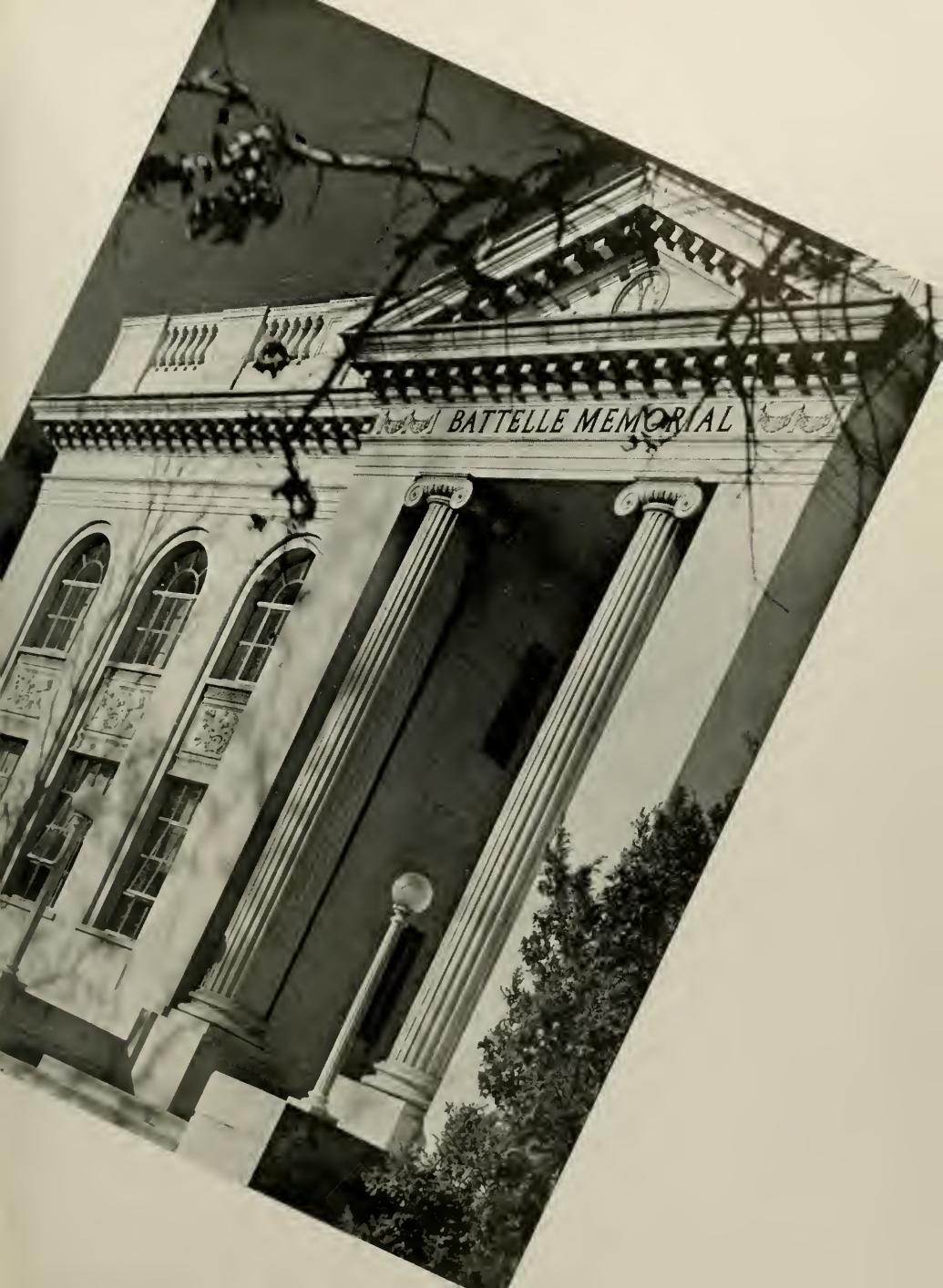
J. Stuart Rich
Business Manager

'D
1.2
1948-49
1949
C2
etc

UNIQUE AMONG CLASSES IS ONE THAT SPANS IN FOUR YEARS THE AVERAGE EXPERIENCES OF A WHOLE LIFETIME—LIFE TO DEATH—PEACE TO WAR. AS UNWILLING POSSESSORS OF THIS DISTINCTION, WE HAVE SEEN OUR CLASS DECIMATED TO THE CALL OF WAR—RETURNING ONCE MORE TO THE ADJUSTMENTS OF PEACE. THREE DECADES AGO ANOTHER CLASS FOUGHT A WAR—THAT TIME TO END ALL WARS; THE COLLEGE YOUTH OF THE TWENTIES SPENT HIS TIME TRYING TO FORGET; THE THIRTIES DID FORGET AND CALLED HIM FRIVOLOUS; AND FRIVOLOUS YOUTH FROM 1941 TO 1945 FOUGHT THIS PAST WAR.

WE COULD BE BITTER AND SAY THAT WE HAD BEEN CHEATED OUT OF WHAT WAS RIGHTFULLY OURS—GAIETY, LACK OF RESPONSIBILITY, AND CONVERTIBLES OR WE COULD RESORT TO “ROSY-GLOW” OPTIMISM AND SAY THAT OURS WAS A GREAT HERITAGE, AND THAT ALL WE HAD TO DO WAS LOOK AROUND THAT EVER-BECKONING CORNER — AND THERE — WERE OUR NEW WORLDS TO CONQUER. BUT HOW CAN WE SAY THAT WE HAVE BEEN CHEATED WHEN ALL THE REST OF THE WORLD FACES POVERTY, DEATH, FAMINE AND PESTILENCE? YET BITTERNESS IS EASY AND THERE ARE ALWAYS THE SELF-DELUDERS WITH THEIR EASIER-WAY-OUTS. WE, THIS COLLEGE, AND THIS NATION MUST CHOOSE A DIFFERENT WAY—FOR BITTERNESS LEADS TO SELF-DESTRUCTION. THIS MUCH IS CLEAR. WE OWE A RESPONSIBILITY TO THE REST OF THE WORLD. THE COLLEGE MEN AND WOMEN OF TODAY HAVE ILLUSTRATED THAT THEY ARE AWARE OF THIS RESPONSIBILITY AND HAVE DEFINITE IDEAS ON WHAT MUST BE DONE. WITH THIS AWARENESS, WE MAY BE SURE THAT RATHER THAN A FEELING OF BITTERNESS, THERE IS GRIM DETERMINATION TO SHAPE THE FUTURE TOWARD THE SORT OF LIFE WE WANT FOR THE WORLD.

FOREWORD



BATTELLE MEMORIAL



Dr. John E. Bentley

DEDIC

FOR TWENTY-THREE YEARS DR. JOHN E. BENTLEY HAS DEVOTED HIMSELF TO THE CAUSE OF AMERICAN UNIVERSITY, WITHOUT REGARD TO TIME OR COST TO HIMSELF. AS A PROFESSOR OF PSYCHOLOGY OR AS DEAN OF THE COLLEGE, THE POSITION HE NOW HOLDS, HE HAS EVER BEEN THE STUDENTS' FRIEND AND COUNSELLOR. DR. BENTLEY, HAVING WATCHED THE COLLEGE FROM ITS BIRTH, IS NOW IN A POSITION TO HELP IT ADJUST TO THE GREAT CHANGES THAT EVERY COLLEGE IS EXPERIENCING DUE TO THE FLUX OF WAR. A KEEN OBSERVER OF THE EDUCATIONAL NEEDS OF THE COUNTRY HE COUPLES THIS WITH A BELIEF IN THE NECESSITY OF A FIRM MORAL AND SPIRITUAL ORIENTATION WHICH WE, AND ALL PEOPLES MUST HAVE TO FACE THE CHALLENGE OF THE FUTURE. THE COLLEGE OF ARTS AND SCIENCES LOOKS FORWARD TO YEARS OF PROGRESS UNDER HIS GUIDANCE.

Dr. George B. Woods

DURING THE TWENTY-TWO YEARS OF SERVICE AND GUIDANCE THAT DR. GEORGE B. WOODS HAS GIVEN TO THE COLLEGE, HE HAS CONSISTENTLY STOOD OUT AS A LEADER OF STUDENTS, NOT ONLY IN THE CLASSROOM BUT IN THE FIELD OF STUDENT ACTIVITIES. DR. WOOD AS A MEMBER OF THE ORIGINAL FACULTY, AS DEAN OF THE COLLEGE, AS A FRIEND AND GUIDE TO ALL WHO HAVE KNOWN HIM, STUDIED UNDER HIM, AND WORKED WITH HIM, HAS SEEN THIS CAMPUS GROW FROM ITS SMALL BEGINNINGS IN 1925, UNTIL TODAY, AS HE RESIGNS, A. U. HAS THE LARGEST ENROLLMENT IN ITS HISTORY. THROUGHOUT THE YEARS HIS TEACHING AND LIVING HAVE ALWAYS BEEN HELD TO HIGH IDEALS OF INTELLECTUAL HONESTY AND SCHOLARSHIP. DR. WOODS HAS HIMSELF CREATED A LIVING MONUMENT TO ALL THAT IS FINE AND PRAISEWORTHY IN AMERICAN UNIVERSITY.



O
U
R

C
A
M
P
U
S







BEAUTIFUL



Our Administration

A COLLEGE CONSISTS OF THREE SEPARATE PARTS — STUDENTS, FACULTY AND ADMINISTRATION. THE FIRST TWO ARE PERHAPS THE MOST OUTSTANDING IN RESPECT TO THE FACT THAT THEY DEAL WITH THE MORE APPARENT AND IMMEDIATE ASPECTS OF COLLEGE LIFE. THERE IS, HOWEVER, BASIC TO ANY WELL-RUN COLLEGE, THAT THIRD PART, THE ADMINISTRATION. IT IS NOT LOVED OR FEARED FOR THE GRADES IT GIVES, OR FOR THE TEAMS IT MAKES, OR FOR THE ORGANIZATION IT RUNS. THE TOKEN OF SUCCESS FOR AN ADMINISTRATION IS ITS ANONYMITY — NOT AS INDIVIDUAL MEMBERS BUT AS A BODY. ITS JOB IS THAT OF COORDINATION, OF RESPONSIBILITY, OF DUTIES, OF BUSINESS DETAILS, AND SO ON, DOWN THE LIST OF MINUTIAE FOR WHICH IT IS RESPONSIBLE. FROM REGULAR STUDENTS TO THE U. S. NAVY, TO CADET NURSES, AND BACK TO REGULAR STUDENTS AGAIN, THE ADMINISTRATION, ITS EXECUTIVE AND BUSINESS BRANCHES HAVE KEPT A. U. STRAIGHT. TO DR. DOUGLASS GOES SPECIAL COMMENDATION FOR THE JOB HE HAS DONE IN HEADING THE UNIVERSITY DURING THESE TURBULENT TIMES. IN OUR ADMINISTRATION, THEN, WE RECOGNIZE THESE TRAITS THAT MARK THE SUCCESSFUL COLLEGE, AND WISH TO EXPRESS OUR APPRECIATION TO THOSE MEN AND WOMEN WHO HAVE MADE THE MECHANICS OF OUR COLLEGE RUN SO SMOOTHLY OVER OUR YEARS HERE.



A D M I N I S



DR. PAUL F. DOUGLASS
President of the University

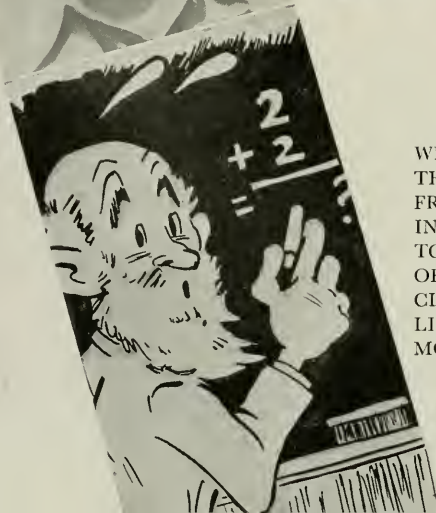
DR. JOHN E. BENTLEY
Dean of the College and Professor
of Psychology

DR. ESTHER STRONG
Dean of Women and Professor
of Sociology



T R A T I O N

FACULTY



WE SALUTE OUR FACULTY. WE SALUTE THEM AS OUR INSTRUCTORS AND OUR FRIENDS. AS CLEAR-SIGHTED BELIEVERS IN AMERICAN EDUCATION AS THE KEY TO AMERICAN LIFE, THEY HAVE GIVEN OF THEIR TIME AND EFFORTS TO MAKE CLEAR TO US THE TRUE MEANING OF A LIBERAL AND HIGHER EDUCATION IN MODERN LIFE.

DR. MERRITT C. BATCHELDER
Professor of English



MARY LOUISE BROWN
Professor of English

DR. C. HENRY LEINWEBER
Professor of German



DR. FRANK LORIMER
Professor of Sociology

DR. THOMAS O. MARSHALL
Professor of Education



DR. HUBERTO ROHDEN
Professor of Religion

DR. WALTER F. SHENTON
Professor of Mathematics



DR. GEORGE B. WOODS
Professor of English



JAMES L. McLAIN
Associate Professor of Music



RUBERTA M. OLDS
Associate Professor of Spanish



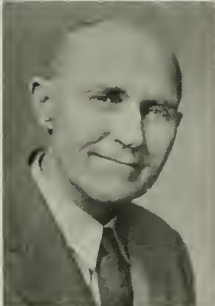
DR. GENE T. PELSOR
Associate Professor of Physics
and Mathematics



BARBARA HALL
Assistant Professor of
Physical Education



DR. CHARLES M. CLARK
Assistant Professor of English



ROBERT C. COONS
Assistant Professor of Chemistry



HARRY T. OSHIMA
Assistant Professor of Economics



PETER P. STAPAY
Assistant Professor of
Secretarial Science

HELEN HILLMAN
Instructor in Physical Education



MARY FRANCES MILLER
Instructor in Speech
and Dramatics

HUGO SCHULZ
Instructor in Physical Education



KATHRYN D. WYATT
Instructor in French

MARGARET BERGER
Lecturer in Spanish



PIETRO LAZZARI
Lecturer in Art

ALEXANDER MACOMB
Lecturer in French and Spanish



GRACE BARNES
College Librarian

Senior
Junior
Sophomore
Freshman



CLASSES





The Senior Class



PRESIDENT, LEE COZAN; VICE-PRESIDENT, CHARLES NORRIS; SECRETARY, CARROLL BISCHOFF; TREASURER, JAMES EDEN . . . OUR OFFICERS—AND WHAT STRUGGLES WE HAD ELECTING THEM. THE VICE-PRESIDENCY WAS THE ONLY OFFICE ANYONE SEEMED ABLE TO HOLD FOR THE WHOLE YEAR. IN FACT, DISCLAIMING HEROICS, OUR WHOLE FOUR YEARS HERE HAVE BEEN A STRUGGLE. TO START, WE SPENT OUR FIRST SEMESTER IN THE DOWNTOWN SCHOOL, LEAVING CAMPUS TO THE TENDER MERCIES OF THE SPARS. DURING THE FOLLOWING YEARS WE BUMPED INTO, AND SHARED CAMPUS WITH THE RED CROSS. FAVORITE COMMENT HEARD IN LUNCH LINES THEN WAS, "OH, AGNES, ARE *THEY* STUDENTS?" AFTER THE END OF THE WAR, THE MALE HALF OF OUR CLASS RETURNED—FEBRUARY, 1946. WE HAVE SPENT OUR SENIOR YEAR RE-ASSEMBLING AS A CO-EDUCATIONAL COLLEGE ONCE AGAIN. SO WHEN JUNE COMES AROUND, WE'LL START TO REMEMBER THAT, "FRIENDSHIPS WILL ALWAYS BIND US . . . FOR MEM'RIES REMIND US, OF . . . OUR A. U."



CAROLINE L. BAISDEN

NURSING

WASHINGTON, D. C.

Registered Nurses' Club of American University, 4.
*always ready with a question . . . she has hubby
renew her books.*



ALICE BEACHLER

SOCIOLOGY

TOLEDO, OHIO

Toledo University, 1, 2; Most Representative Junior Girl,
3; French Club, 3; Varsity Speed Ball (Assistant Man-
ager, 3); Ping Pong Tournament, 3, 4 (Manager, 4);
"A"-Club, 4; Intramural Basketball, 3, 4; Tennis, 3, 4;
AUCOLA, 4 (Copy Editor, 4); Delta Gamma.

*"Smokie" . . . the long of it . . . Gordon . . . a
sudden passion for "soc."*

LORRAINE BENTON

MUSIC

WASHINGTON, D. C.

George Washington University, 1; Religious Board, 4
(Chairman, 4); Chorus, 2; Student Christian Fellowship,
2, 3, 4 (Program Chairman, 3); Alpha Delta Pi.

*pianist par excellence . . . Roy . . . the perfect
minister's wife.*

LAWRENCE BETHEL

ECONOMICS

POULTNEY, VT.

Green Mountain Junior College, 1, 2; EAGLE (Business
Manager, 3); German Club, 4; I.R.C., 4; Intramurals,
3, 4; Varsity Track, 3, 4; Manager of Dining Room, 3,
4; Alpha Tau Omega.

*"Larry" . . . "Boop" . . . they call him "daddy"
. . . canny New Englander . . . fearless exposes.*





CARROLL BISCHOFF

PSYCHOLOGY WASHINGTON, D. C.
Secretary Senior Class; Social Board, 2, 3; International Relations Club, 1; German Club, 2, 3; Delta Gamma (Recording Secretary, 4).

the Fatherland . . . "Bill" . . . wings over China . . . changeable . . . photogenic.

MICHELE BROWNING

PSYCHOLOGY ROCKVILLE, MD.
McGill University, Montreal, Canada, 1, 2, 3.
born in Canada . . . as sweet as she is pretty.



AUDREY BLESSING

SOCIOLOGY WASHINGTON, D. C.
Northwestern Univ., 1; Pi Delta Epsilon; EAGLE, 2, 3 (Society Editor, 2); AUCOLA, 2, 4 (Asst. Ed., 4); Freshman Bible, 4 (Ed., 4); Most Repr. Senior Girl, 4; Who's Who, 4; College Council, 3; Soc. Bd., 4; Spanish Club, 2, 3; I.R.C., 2, 3; Women's House Gov't., 4 (V.-Pres., 4); Intramurals, 3, 4; Assembly Chmn., 3; Univ. Soc. Chmn., 3; Inter-dormitory Council, 4; Cheerleader, 3; Delta Gamma (V.-Pres., 4).
"Blossom" . . . "Chuck" . . . ingenuity.

FREDERICK D. CARL

ECONOMICS WASHINGTON, D. C.
EAGLE, 3; AUCOLA, 2, 4 (Bus. Mgr., 2); Who's Who, 4; Junior Class Treas.; College Council, 3, 4; Orientation Bd., 4; Interfraternity Council, 4 (Sec.-Treas., 4); Varsity Club, 4; Camera Club, 1, 2; S.C.F., 2; Varsity (Swimming Team, 4; Track, 2, 3; Baseball, 1, 2; Asst. Mgr., 1, Mgr., 2); Intramurals, 1, 2, 3, 4; Alpha Tau Omega (Sentinel, 3, Pres., 4).
"Fred" . . . that Hudson . . . one of A. U.'s more serious promoters.





CLEMENT DEAN CARTER

ART WASHINGTON, D. C.

Dramat, 1, 2; Alpha Psi Omega, 3, 4; EAGLE, 1, 2, 3; AUCOLA, 1, 2; Pinfeathers, 1; Dean's List, 1, 2, 3; Art Guild, 2, 3, 4 (President, 3, 4); Student Christian Fellowship, 1, 2, 3, 4; Spanish Club, 3, 4; Phi Sigma Kappa (Secretary, 4).

budding artist . . . oh, those waves . . . Dixie land . . . the Southern touch.

ROSALIE CORRADO

BIOLOGY WASHINGTON, D. C.

Beta Beta Beta, 2, 3, 4 (V.-Pres., 3; Pres., 4); Pi Delta Epsilon, 2, 3, 4 (Secy., 3; V.-Pres., 4); Cap and Gown, 4 (Pres., 4); EAGLE, 1, 2, 3, 4 (Asst. Ed., 2; Co-Ed., 3); AUCOLA, 2; Dean's List, 1, 2, 3; Who's Who, 4; College Council, 3, 4 (V.-Pres., 4); Orientation Bd., 4; Debate, 3; German Club, 2; Dramatics, 1, 2, 3; V.-Pres. Soph. Class; V.-Pres. Junior Class; Univ. Publ. Bd., 3, 4 (Secy., 4).

V.-Pres. who succeeded . . . energetic.



MARTHA ANN CLARK

ENGLISH GROVE CITY, PA.

Faculty Prize, 2; Dean's List, 1, 2, 3; Religious Board, 1; Spanish Club, 2.

she makes the grades . . . determined . . . we wonder what the Orphanage has on M. G. H.?

GORDON COWAN

PSYCHOLOGY NEW YORK, N. Y.

Rutgers University, 1, 2; Omicron Delta Kappa, 4; EAGLE, 3, 4 (Copy and Make-up Editor, 4); Dramatics, 3, 4; College Council, 3, 4 (President, 4); College Publication Board, 3; University Publications Board, 4; Intramurals, 3, 4; Delta Upsilon.

"Milly" . . . that beaming face . . . he was surprised to hear that there was an election going on.





LEE COZAN

PSYCHOLOGY

WASHINGTON, D. C.

Pi Delta Epsilon, 3, 4; EAGLE, 1, 2, 3 (Sports Ed., 3); Athletic Board, 4; Interfraternity Council, 3, 4; Senior Class President; Spanish Club, 4; I.R.C., 1, 2 (Secy., 2); Intramurals, 1, 2, 3, 4; Varsity (Basketball, 1, 3; Track, 1); Phi Sigma Kappa (Pledge Master, 3; President, 4).
quorum, quorum, who's got a quorum . . . the strong, silent type . . . what SHALL we give . . . keeper of the time.



WAYNE CULP

ECONOMICS

YEADON, PA.

Alpha Tau Omega.

long, lean, and likeable . . . that jacket . . . a pipe . . . a gentleman of our old school.

MERIDEL DICKINSON

ENGLISH

WASHINGTON, D. C.

Ohio State University, 1; University of Maryland, 2; Alpha Lambda Delta, 1, 2; Pi Delta Epsilon, 4; EAGLE, 3 (Assistant Editor, 3); Chorus, 3, 4; Spanish Club, 4; Phi Mu.

she's engaged—she wears a diamond . . . we saw double until this year.

BERT L. GASTER

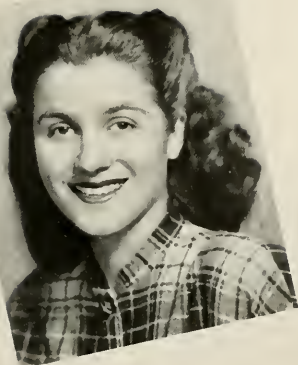
ECONOMICS

WASHINGTON, D. C.

Hampden Sidney College; University of North Carolina; Treasurer Junior Class; Assembly Committee, 4; Spanish Club, 4; Varsity Basketball, 1, 2, 3, 4; "A"-Club, 3, 4; Alpha Tau Omega (Editor, ATO News Letter, Palm Reporter, 3, 4).

"Tex" . . . varsity hot shot . . . those tall, dark men . . . and oh those eyes!





ELIZABETH GILLESPIE

PSYCHOLOGY

WASHINGTON, D. C.

Dramat, 1, 2; Alpha Psi Omega, 3, 4 (V.-Pres., 3; Pres., 4); Orientation Bd., 2, 3; Chairman, Freshman Dance Committee; Junior Prom Committee; International Relations Club, 1, 2, 3; Spanish Club, 2, 3; Chorus, 1, 2, 4; Intramurals, 2, 3; Delta Gamma (Treas., 2, 3).

"Betty" . . . Romeo, Romeo . . . raven locks . . . stars in her eyes . . . Michael.

DONALD GORMLEY

POLITICAL SCIENCE

WASHINGTON, D. C.

Colorado College, 1, University of Portland, 1; Alpha Psi Omega, 2, 3, 4; Elections Board, 4; Interfraternity Council, 4; Student Publicity Board, 4; Dramatics, 2, 3, 4; Intramurals, 2, 3, 4; Alpha Tau Omega.

the hero to vanquish all villains . . . "Bobby" . . . ardent debater.



H. JOYCE GOCHENOUR

SPANISH

WASHINGTON, D. C.

Cap and Gown, 4 (Treas., 4); Pi Gamma Mu, 4; Dean's List, 2, 3; Who's Who, 4; Secy. Class, 1; Pres. Class., 2; Pres. Class., 3; College Council, 4 (Secy., 4); "A"-Club, 2, 3, 4 (Pres., 4); Spanish Club, 2, 3, 4 (Pres., 4); French Club, 3; I.R.C., 3, 4 (Treas., 4); Panhell. Council, 2, 4 (Treas., 4); Intramurals, 1, 2, 3, 4; Varsity (Basketball, 1, 3, 4; Mgr., 4; Softball, 2; Volleyball, 3); Delta Gamma (Rec. Sec., 2, 3; Pres., 4).

"Jerce" . . . versatility . . . capability.

ANN GRAHAM

SOCIOLOGY - HISTORY

FALLS CHURCH, VA.

Duke University, 1; Cap and Gown, 4; Pi Delta Epsilon, 4; Pi Gamma Mu, 3, 4 (V.-Pres., 4); Who's Who, 4; "A"-Club, 3, 4; EAGLE, 2, 3 (Bus. Mgr., 3); AUCOLA, 4 (Features Ed., 4); Freshman Bible, 2 (Ed., 2); Dean's List, 2, 4; Chorus, 2, 3, 4; I.R.C., 2, 4; Interdormitory Council, 4; Women's House Govt., 4 (Pres., 4); Intramurals, 2, 3, 4; Varsity (Basketball, etc., 3, 4); Alpha Chi Omega (Treas., 3; Rec. Sec., 4).

"Annie" . . . Bach . . . basketball . . . wit.





JOHN HARRISON

BIOLOGY ARLINGTON, VA.
Omicron Delta Kappa, 4; Beta Beta Beta, 2, 3, 4 (V.-Pres., 3, 4); Dean's List, 1; Freshman Bible, 2 (Co-ed., 2); Pres. Freshman Class; Treas. Junior Class; Who's Who, 4; Religious Board, 1; Interfraternity Council, 2, 3 (Pres., 3); Debate, 1; S.C.F., 1, 2; Intramurals, 2, 3; Phi Sigma Kappa (Treas., 2; Pres., 3).

"Johnny" . . . September wedding . . . "Mike" . . . saddle shoes, tweeds, and pipe.



MARGERY HARRISON

ENGLISH WASHINGTON, D. C.
Mars Hill Junior College, 1, 2; Chorus, 3, 4; Poetry Club, 3, 4.

"Pug" . . . everyone's friend . . . the higher things in life . . . enthusiasm in the right places.

JANICE HOOVER

ENGLISH HARRISONBURG, VA.
University of Virginia, 1; Madison College, 2; EAGLE, 3; French Club, 3.

steady friend . . . pigeon chaser . . . from Rendez-vous to Coffee Shop.



JAMES JOSEPH

ENGLISH WHITE PLAINS, N. Y.
Alpha Sigma Phi.

"Jimmy" . . . fastidious . . . a student . . . reticent humor . . . good guy.





FRANCES KAPLUS

SOCIOLOGY NEWARK, N. J.
 Grey Court College, 1; Pi Gamma Mu, 3, 4 (Pres., 4);
 Poetry Club, 1, 2, 3, 4 (Pres., 3); EAGLE, 1, 2, 3, 4
 (Asst. Ed., 2); Debate, 1, 3; Dean's List, 1; Who's Who,
 3; Publ. Bd., 2; Women's House Govt., 2, 3 (Treas., 2;
 Soc. Chmn., 3); Chorus 2, 3; Spanish Club, 3 (Treas.,
 3); I.R.C., 1, 2, 3, 4 (Sec.-Treas., 2; V.-Pres., 3; Pres.,
 4); Varsity Volleyball, 2, 3; Intramurals, 2, 3, 4.
*social conscience . . . internationally minded . . .
 ambitious.*

JEANNE LEAR

ECONOMICS WASHINGTON, D. C.
 Pi Delta Epsilon, 2, 3, 4 (Pres., 4); Pi Gamma Mu, 4;
 EAGLE, 2, 3 (Assoc. Ed., 2; Co-ed., 3); Freshman
 Bible, 3; Who's Who, 3; College Council, 4; Publ. Ed.,
 3; Sec., 3; Orientation Bd., 4; Univ. Publ. Bd., 1, 2, 3,
 4 (Sec., 3); Panhell. Council, 4 (Pres., 4); Poetry Club,
 3; French Club, 3 (Sec.-Treas., 3); Debate, 3; Alpha
 Chi Omega (President, 4).
*"Smash" . . . Huxley and Human Living . . . lib-
 eralism in extremis.*



DOROTHY KARAM

CHEMISTRY EASTON, PA.
 Penn Hall Junior College, 1, 2; Varsity Basketball, 3, 4;
 Varsity Softball, 3, 4; Cheerleader, 3; AUCOLA, 4;
 Delta Gamma.
*"Dottie" . . . the baby blue Buick convertible . . .
 the gang . . . an honest friend.*

GILBERTA LYONS

PSYCHOLOGY ASHVILLE, N. C.
 Brerard Junior College, 1; EAGLE, 3, 4; German Club,
 3, 4.
*"Gil" . . . following in Roz's footsteps . . . local
 disseminator of knowledge . . . defender of rights
 of those above 21.*





HELEN MAYO

ENGLISH WASHINGTON, D. C.
Averett College, 1, 2; EAGLE, 3, 4 (Features Editor, 3);
AUCOLA, 4; Publications Board, 4; Publicity Com-
mittee, 4; Radio Station WAMC, 4; Delta Gamma.
diminutive journalist . . . editor's valued helper
. . . a natural for success.



KARL O. MANN

ECONOMICS CHEVY CHASE, MD.
EAGLE, 1 (Circulation Mgr., 1); Orientation Bd., 4;
Chorus, 1; Glee Club, 1; Interfraternity Council, 3, 4
(Secretary, 3; President, 4); Intramurals, 1; Alpha
Sigma Phi (Historian, 2; President, 3, 4).
why study . . . one of the boys . . . that Chevy.

PEGGY McFARLAND

LANGUAGES WASHINGTON, D. C.
AUCOLA, 2, 3; Who's Who, 4; French Club, 3, 4
(Pres., 3); Spanish Club, 3, 4; Constitutions and Elec-
tions Committee, 3, 4 (Sec., 4); "A"-Club, 4; Treas. of
Class, 2, 3; Chorus, 1, 2, 3, 4; Intramurals, 2, 3, 4;
Varsity (Basketball, 3, 4; Volleyball, 3, 4, Mgr., 3);
Alpha Chi Omega (Recording Sec., 2).
"Peg" . . . peerless guardian of baskets and books
. . . feathercut a blessing?

JANE NICHOLS

SOCIOLOGY ARLINGTON, VA.
Paris Junior College, 1, 2; EAGLE, 4 (Office Manager,
4); Religious Board, 3; College Council, 3 (Secretary,
3); International Relations Club, 3; Who's Who, 4.
she's got what it takes . . . another social con-
science . . . those long bus rides to the downtown
school.





CHARLES B. NORRIS

HISTORY

PORTSMOUTH, OHIO

Rio Grande College, 1; Ohio State University, 2; Pi Delta Epsilon, 4; AUCOLA, 4 (Editor, 4); Freshman Bible, 3 (Associate Editor, 3); Vice-President Senior Class; Publications Board, 4; Proctor of Clark House; Interdormitory Council, 4.

"Chuck" . . . "Blossom" . . . he wants to go back to France . . . grand editor to work for.



BRITT SCHWEITZER

MATHEMATICS - PHYSICS WASHINGTON, D. C.

EAGLE, 2, 4; Vice-President Freshman Class; Chorus, 1; German Club, 4; Varsity Tennis, 1; Phi Sigma Kappa.

tennis star . . . genius at the piano, from Bach to Boogie . . . composer.

WALTER G. SCHWEITZER

MATHEMATICS - PHYSICS WASHINGTON, D. C.

EAGLE, 1, 2 (Advertising Manager, 1; Business Manager, 2); Athletic Board, 2; College Council, 3; Interfraternity Council, 2 (President, 2); Varsity Tennis, 2; Phi Sigma Kappa (President, 2).

"Gary" . . . that laugh . . . the intelligencia . . . for almost nuthin' he'll hypnotize you!

BARBARA SIMMONS

MUSIC

WASHINGTON, D. C.

Bob Jones College, 2; EAGLE, 1; Religious Board, 4; Social Board, 4; Orientation Board, 4; Chorus, 1, 3; S.C.F., 1, 3, 4 (Vice-President, 4); Panhellenic Council, 3, 4 (Vice-President, 4); Homecoming Queen, 4; Best Loved Girl, 4; Kappa Delta (Secretary, 3; President, 4).

"Bobbie" . . . his favorite blond . . . true faith in human beings.





LEROY SMITH

ENGLISH ARLINGTON, VA.
 Pi Gamma Mu, 3, 4; Dean's List, 2; Dramat, 1, 2, 3;
 Alpha Psi Omega, 4; Omicron Epsilon Pi, 3; International
 Relations Club, 1, 2; College Council, 1, 2, 3;
 Intramurals, 2; Alpha Tau Omega (Secretary, 3).

*housekeeping . . . Phyllis . . . more and more de-
 grees . . . to teach or not to teach . . . poker fiend.*



GEORGE TOLLEY

ECONOMICS ALEXANDRIA, VA.
 Pennsylvania State College, 1; Pi Delta Epsilon, 2, 3, 4;
 Omicron Delta Kappa, 4; EAGLE, 2, 4 (Editor, 2, 4);
 Publications Board, 1, 2; Radio Station WAMC, 4; Phi
 Sigma Kappa (Secretary 2).

*Eagle-itis . . . good pianist . . . true Phi Sig . . .
 addicted to the more cultured aspects of life.*

BEVERLY C. UNSWORTH

PSYCHOLOGY WASHINGTON, D. C.
 International Relations Club, 3; Spanish Club, 3; Athletic
 Board, 3 (Chairman, 3); "A" Club, 3; Secretary Junior
 Class; Intramurals, 1, 2, 3; Varsity (Basketball, 1, 2, 3;
 Baseball, 2; Speedball, 2, 3); Delta Gamma (Vice-Pres-
 ident, 3).

"Bev" . . . "Walt" . . . Oh! those twins.

RITA YURKANIN

PSYCHOLOGY KINGSTON, PA.
 College of New Rochelle, 1; Bucknell University Junior
 College, 2; Student Christian Fellowship, 4; International
 Relations Club, 4.

*proctor with a conscience . . . idealist with a prac-
 tical streak . . . "Spellbound."*



MUSIC ROSE BARBARA WASHINGTON, D. C.
those big, big eyes . . . interested in people . . . boogie with a vengeance.

SOCIOLOGY EDGAR BENSON WASHINGTON, D. C.
those vets' apartments . . . busy man . . . let's face the facts . . . practicality plus . . . comments in "soc" classes.

SOCIOLOGY ELWOOD BERKELEY WASHINGTON, D. C.
one of A. U.'s golfers . . . he's looking for a world community . . . quiet self-assurance.

MUSIC ALICE CHOY OAHU, HAWAII
University of Hawaii, 1; Chorus, 2; Women's House Council, 2 (Treasurer).
a firm touch on the piano . . . Tom . . . time out for getting engaged . . . "a friend in need."

HISTORY HOWARD COHN WASHINGTON, D. C.
University of Indiana, 1, 2; EAGLE, 4; Pi Lambda Phi.
interest in the printed page . . . February graduate.

POLITICAL SCIENCE JOHN COTRONA HAMMONTON, N. J.
Pi Gamma Mu, 3, 4; Dean's List, 1, 2; Debate, 2, 3; International Relations Club, 2, 3, 4; Constitution and Elections Committee, 4 (Chairman, 4); Alpha Tau Omega.
lawyer-to-be . . . high sounding phrases . . . jovial humor.

ENGLISH FRED JAMES EDEN WASHINGTON, D. C.
Alpha Psi Omega, 4; Omicron Delta Kappa, 4; EAGLE, 1, 2 (Circulation and Adv. Mgr., 2); V.-Pres. Freshman Class; Treas. Soph. Class; Treas. Senior Class; Elections Bd., 3; Cheer Leader, 1; Orientation Bd., 2; Chorus, 1, 2, 3, 4; Varsity Basketball, 1, 2; Intramurals, 1, 2, 4; Interfraternity Council, 1, 2; Alpha Kappa Phi, 1, 2, 3; Alpha Sigma Phi (V.-Pres., 4).
"Jim" . . . all the world's a stage . . . swashing and a martial outside . . . rhetoric unbounded.

MEDICAL TECHNOLOGY ANNA FAGELSON ALEXANDRIA, VA.
she proves that arts and sciences do mix . . . future doctor.

ENGLISH ROBERT FAIN WASHINGTON, D. C.
he's got it . . . a vet's apartment . . . a wonderful wife . . . subtle humor.

ART JAMES WILLIAM FOSTER ARLINGTON, VA.
Johns Hopkins University, 1, 2; George Washington University, 3.
seen most frequently at an easel . . . thorough knowledge of the Virginia bus system.

ART JOHN GALLOWAY WASHINGTON, D. C.
Junior Agricultural College; George Washington University.
dapper . . . the art world . . . that mural on the wall.

PSYCHOLOGY SEWELL GENTRY FAIRTON, N. J.
the "Duck" . . . plaids and pipes . . . sports enthusiast.

POLITICAL SCIENCE CHARLES GIESE WASHINGTON, D. C.
Colorado College, 1.
from the campus to the downtown school . . . always busy.

POLITICAL SCIENCE MARY GODDARD WASHINGTON, D. C.
University of Georgia, 1, 2; Washington Semester, 3; Kappa Alpha Theta.
smooth . . . beautiful clothes . . . A. U.'s Dorothy Parker . . . intelligent interest in all about her.

GODFREY HOCHBAUM

PSYCHOLOGY WASHINGTON, D. C.
University of Vienna, Austria, 1, 2; Missouri State
Teachers College, 2.

*Austria's loss, our gain . . . quips in Dr. Lein-
weber's class . . . on getting 3 point averages.*

BUENA HOPSON

ENGLISH WASHINGTON, D. C.
Henderson State Teachers College, 1; Arkansas State
Teachers College, 2; Arkansas A & M College, 3.

*wonderful secretary to the Dean . . . that Southern
accent . . . a friend to all students.*

JOHN JEHL

BIOLOGY COLLEGE PARK, MD.
University of Maryland, 1, 2.

sandwiches in psychology . . . humorous quips.

MILDRED KECK

ECONOMICS PUEBLO, COLO.
Ohio State University, 1, 2; University of New Mexico, 3.

*"Milly" . . . the girl who should have transferred
sooner . . . "first lady" . . . D. U. pinned . . . oh,
that hair!*

FLORENCE LYMAN

MUSIC WASHINGTON, D. C.
Dramat, 1; Alpha Psi Omega, 2, 3, 4 (Secretary, 3);
EAGLE, 2, 3; Freshman Bible, 2; Co-editor, 2; Social
Board, 4; Publicity Director, WAMC, 4; Dramatics, 1, 2,
3, 4; Chorus, 1, 2, 3, 4.

*"Flo" . . . dramatic soprano . . . oh, to be among
the literati . . . character actress supreme.*

SHEILA McCULLOCH

POLITICAL SCIENCE JACKSON HEIGHTS, N. Y.
Marymount College, 1, 2, 3.

*quiet, cultured personality . . . likes children . . .
journalism in the future.*

ROBERT MILLER

HISTORY WASHINGTON, D. C.
Varsity Basketball, 2, 3 (Captain, 3); Varsity Tennis,
1, 2, 3, 4 (Captain, 3); "A" Club, 2, 3, 4; Alpha Tau
Omega.

*at home with a racquet . . . the good old days in
the ATO House . . . the Army interlude.*

WILFRED MORIN

POLITICAL SCIENCE DERBY, ME.
President of Hamilton House, 4; Interdormitory Coun-
cil 4.

*"Will" . . . "Jacki" . . . tomorrow's professor . . .
always ready for a few holes of golf.*

JOHN READ

BIOLOGY CHICAGO, ILL.
University of Chicago, 1; Dartmouth College, 2.

*music lover . . . photography addict . . . good at
fixing contraptions.*

ADELE REESE

SOCIOLOGY WASHINGTON, D. C.
EAGLE, 1, 3; Prayer Group, 3.

*ardent sociologist . . . hard worker . . . how to
study on the bus.*

BEN LONG SUMMERFORD

ART MONTGOMERY, ALA.
Birmingham Southern College; Howard College; Uni-
versity College.

*he got the prize . . . originality in art . . . promis-
ing future.*

AUGUST WERNER

ECONOMICS CHEVY CHASE, MD.
*industrious . . . those down town courses . . .
definitely an economist.*

DOROTHY WINDENBURG

SPANISH CHEVY CHASE, MD.
Cornell College, 1; University of California, 2; Long
Beach City College, 3.

*dancing talent . . . missionary interests . . . de-
termined.*





The Junior Class

SENIOR



JUNIOR



SOPH



FROSH



MC

PRESIDENT, KENNETH JONES; VICE-PRESIDENT, MARY FRANCES LEGRANDE; SECRETARY, VIRGINIA HUEY; TREASURER, BERT GASTER . . . THE JUNIOR CLASS, RANKS GREATLY INCREASED BY ACCELERATING SOPHOMORES, GOT A HEAD START ON EVERYONE ELSE BY WINDING UP ELECTIONS IN A HURRY, WITH THE ABOVE SLATE BEING DULY ELECTED. KEN JONES, ENERGETIC PRESIDENT, WAS BUSY EVERYWHERE IN HIS EFFORTS TO ADEQUATELY REPRESENT THE GROUP. THE WHOLE CLASS HAS TAKEN AN ACTIVE PART IN CAMPUS AFFAIRS; SOCIAL, EXTRA-CURRICULAR, AND WHAT HAVE YOU; INTERESTS RANGING FROM THE GROTTO TO THE LIBRARY, FROM CAMPUS POLITICS TO SHAKESPEARIAN SONNET FORMS. THE JUNIOR CLASS SENT TWO OF ITS BRIGHTER STUDENTS, JO JO ELAM AND EUGENE PICKETT, TO REPRESENT THE COLLEGE IN THE WASHINGTON SEMESTER, THE LATEST THING IN HIGHER EDUCATION. BIG SOCIAL EVENT OF THE YEAR FOR JUNIORS WAS THE TRADITIONAL JUNIOR-SENIOR PROM, HELD THIS YEAR ON MAY SECOND AT THE KENNEDY-WARREN. WITH THIS SUCCESS, THE JUNIOR CLASS BOWS OUT, EAGER TO HOLD THE LONG COVETED TITLE—SENIOR!

FAYE BAKER

ECONOMICS - HISTORY

WASHINGTON, D. C.

Pi Gamma Mu, 3; EAGLE, 3; Dean's List, 1, 2, 3; Spanish Club, 1, 2; International Relations Club, 3; Student Christian Fellowship, 1, 2, 3; Alpha Chi Omega.



ETHEL YOUNG BENSON

ENGLISH

ETHRIDGE, TENN.

Martin College, 1, 2; Kappa Delta.



BARBARA BROWN

ENGLISH

WASHINGTON, D. C.

Stephens College, 1, 2; Publications Board, 3; Kappa Delta.



MARTHA BROWN

HISTORY

SOUTH WILLIAMSPORT, PA.

Williamsport-Dickinson Junior College, 1, 2; AUCOLA, 3 (Advertising Manager, 3); I.R.C., 3; Politics Club, 3; Chorus, 3.



BETTY COFFELT

CHEMISTRY

FALLS CHURCH, VA.

University of Tennessee, 1; AUCOLA, 2; Intramural Badminton (Manager, 3); Varsity Softball, 2.



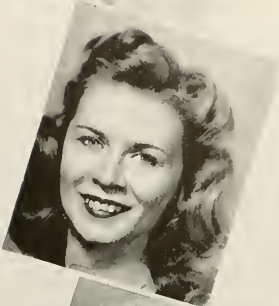


KATHRYN DIXON

ROMANCE LANGUAGES

WASHINGTON, D. C.

EAGLE, 2 (Circulation Manager, 2); Woman's House Council, 3 (Treasurer, 3); Panhellenic Council, 3; Choir, 1, 2, 3; Spanish Club, 3; French Club, 3; Intramural (Basketball, 2, 3; Badminton, 2); Kappa Delta (Secretary, 3).



SARAH JANE EHLERS

HISTORY

FORESTVILLE, MD.

Western Maryland College, 1; AUCOLA, 3 (Co-Editor, Group Photography, 3); Court of Campus Queen, 2; Religious Board, 3 (Secretary-Treasurer, 3); House Council of Mary Graydon Hall, 3 (Social Chairman, 3); Intramural Basketball, 2, 3; International Relations Club, 2, 3.



EMMA JO ELAM

PSYCHOLOGY

PULASKI, TENN.

Martin College, 1, 2; Washington Semester, 1947; Student Christian Fellowship, 3 (Social Chairman, 3); Kappa Delta.



ROSEMARY FELL

BIOLOGY

NOTTINGHAM, PA.

Wesley Junior College, 1, 2; Chorus, 3; Student Christian Fellowship, 3; Alpha Chi Omega.



JENNY-LYNN FRANKLIN

CREATIVE PAINTING

CURACAO, N. W. I.

EAGLE, 2, 3; Art Guild, 2, 3 (Secretary, 3); Intramural Archery, 2; Intramural Basketball, 3; Alpha Chi Omega (Lyre editor, 3).

JULIETTE GEORGE

PSYCHOLOGY

HAVERHILL, MASS.

Green Mountain Junior College, 1, 2; Student Christian Fellowship, 3; International Relations Club, 3; Alpha Chi Omega.



GORDON HAWK

ECONOMICS

CHEVY CHASE, MD.

Western Reserve University, 1, 2; AUCOLA, 3; Delta Kappa Epsilon.



VIRGINIA HUEY

ENGLISH

WASHINGTON, D. C.

Junior Class Secretary; "A"-Club, 2, 3 (Secretary, 3); Spanish Club, 1; Student Christian Fellowship, 2; International Relations Club, 2 (Secretary-Treasurer, 2); Cheerleader, 2; Chorus, 1, 2, 3; Intramural Badminton, 2; Varsity (Speedball, 1, 2; Basketball, 1, 2, 3); Kappa Delta (Treasurer, 3).



HARVEY HUEY

ECONOMICS

WASHINGTON, D. C.

EAGLE, 3; Student Comptroller, 3; Intramurals, 1, 2, 3; Alpha Tau Omega.



KENNETH JONES

PHILOSOPHY - RELIGION

BALTIMORE, MD.

EAGLE, 2, 3; President of Junior Class; Cheerleader, 3; Chorus, 2; Orientation Board, 3; Religious Board, 2, 3 (Vice-chairman, 3); Student Christian Fellowship, 2, 3 (President, 3); Alpha Sigma Phi.





PATRICIA KEISER

PSYCHOLOGY

BETHESDA, MD.

Greenbrier College, 1, 2; Intramurals; Varsity Basketball, 3; Kappa Delta.



WALLACE KELLEY

PSYCHOLOGY

FITZGERALD, GA.

Alpha Sigma Phi.



BETTY JEAN KOENIG

PSYCHOLOGY

WASHINGTON, D. C.

Spanish Club, 3; Pan-Hellenic Council, 3 (Secretary, 3); Intramural Basketball, 2, 3; Phi Mu (President, 3).



MARY FRANCES LEGRANDE

ENGLISH

WASHINGTON, D. C.

Social Board, 3; Secretary Sophomore Class; Vice-President Junior Class; Orchestra, 2, 3; Chorus, 1, 2; Most Representative Junior Girl; Varsity Basketball, 1, 2, 3; Varsity Tennis, 2; Delta Gamma.



CAROL LONSDALE

SPANISH

MILLVILLE, PA.

Williamsport-Dickinson Junior College, 1, 2; AUCOLA, 3 (Assistant Business Mgr., 3); Spanish Club, 3; German Club, 3; Debating Club, 3.

ROBERT MALONE

WASHINGTON, D. C.

ECONOMICS

Hampden Sydney College, 2; Freshman Class President; Student Council, 3; Inter-Fraternity Council, 3; Intramurals, 1, 3; Phi Sigma Kappa (Vice-President, 3).



ANNE NORLING

CHEVY CHASE, MD.

SPANISH

Greenbrier College, 1, 2; Spanish Club, 3; French Club, 3; Kappa Delta.



ROBERT NUGENT

SCARSDALE, N. Y.

ENGLISH

EAGLE, 2, 3; ATO News Letter, 2, 3; Freshman Intramural Sports Director; College Council, 1, 2; Interfraternity Council, 2; Varsity Club; Varsity Basketball, 1; Intramural Football, 2, 3; Basketball, 1, 2, 3; Tennis, 2; Alpha Tau Omega (Usher, 2, 3).



EUGENE PICKETT

WESTMINSTER, MD.

POLITICAL SCIENCE

"Philip Marshal Brown Award," 1943; Washington Semester, 1947; Student Christian Fellowship, 1, 2; Debating Team, 1; Alpha Tau Omega (Treasurer, 2).



ELIZABETH RICHARDSON

BETHESDA, MD.

BIOLOGY

Beta Beta Beta, 2, 3 (Acting Secretary, 2; Secretary, 3); Class Secretary, 1; Sophomore Class President; Who's Who, 3; College Council, 3; Elections Committee, 3; Chorus, 1; Varsity Speedball, 1; Intramurals (Basketball, 3; Ping Pong, 1, 2, 3; Badminton, 1, 3; Swimming, 3).





OTTO SONDER, JR.
POLITICAL SCIENCE SOUTH WILLIAMSPORT, PA.
Williamsport-Dickinson Junior College, 1, 2; Social Board, 3; International Relations Club, 3; Political Science Club, 3; Alpha Sigma Phi.



DREW SCHULZ
PSYCHOLOGY WINTER HAVEN, FLA.
Student Christian Fellowship (Treasurer, 2); Intramural (Basketball, 1, 2, 3; Badminton, 1, 2, 3); Outing Club, 2 (Manager, 2); "A"-Club (Vice-President, 3); Varsity Volley Ball, 1, 2; Basketball, 1, 2, 3; Kappa Delta.



JUNE SCHWEITZER
RELIGION WASHINGTON, D. C.
German Club, 1, 2, 3; Intramural Basketball, 2; Delta Gamma.



WILLARD SMITH, JR.
PHYSICS WASHINGTON, D. C.
Alpha Psi Omega, 1, 2; Varsity Track, 1, 2; Varsity Swimming, 3; Alpha Sigma Phi.



JANICE STONESIFER
SPANISH WASHINGTON, D. C.
University of Maryland, 1; Woman's College of the University of North Carolina, 2; Spanish Club, 3 (Secretary, 3); French Club, 3; German Club, 3; Phi Mu.

THEODORE BRANTHOVER
POLITICAL SCIENCE WASHINGTON, D. C.

KENNETH BROWN
HISTORY - POLITICAL SCI. BROOKLYN, N. Y.

MILDRED BURKLAND
HISTORY - FRENCH ARLINGTON, VA.

GEORGE CARBONEAU
SOCIOLOGY LEWISTON, ME.

SHELIA COWAN
ART WASHINGTON, D. C.

JOHN CRICKENBERGER
ECONOMICS WASHINGTON, D. C.

IRVING JOHN EGGERT
CHEMISTRY WASHINGTON, D. C.

LORICK FOX
SOCIOLOGY PHILADELPHIA, PA.

BARTLEY FUGLER
PHYSICAL EDUCATION WASHINGTON, D. C.

AVERY GIBSON
COMMUNICATIONS ARLINGTON, VA.

BILLY JO GRIFFIN
PHYSICAL EDUCATION SHERMAN, TEXAS

VIOLET JENNEN
ENGLISH NEW YORK, N. Y.

ROBERT JENNINGS
PRE-LAW WASHINGTON, D. C.

ALFRED KABAKOFF
PRE-DENTAL WASHINGTON, D. C.

WILLIAM KAEICHELE
CHEMISTRY OTSEGO, MICH.

GENE KAMM
PSYCHOLOGY WASHINGTON, D. C.

LYLEN KANG
MUSIC HONOLULU, HAWAII

CHARLES KLIGMAN
ECONOMICS WASHINGTON, D. C.

IRA KLINE
BIOLOGY SOMERVILLE, N. J.

ELAINE LEVIN
SOCIOLOGY WASHINGTON, D. C.

ELY M. LIEBOW
ENGLISH HYATTSVILLE, MD.

GEORGE W. LYNN
PSYCHOLOGY WASHINGTON, D. C.

MARJORIE MAYER
ART ATLANTIC CITY, N. J.

FRED O. MEYER
ECONOMICS NEW YORK, N. Y.

CHARLES C. McDANIEL
HISTORY WASHINGTON, D. C.

CARLYLE NIBLEY
PRE-MEDICAL WASHINGTON, D. C.

PAUL OBLER
ENGLISH BROOKLYN, N. Y.

SARAH PARK
POLITICAL SCIENCE HONOLULU, HAWAII

BARBARA PRICE
POLITICAL SCIENCE EVANSTON, ILL.

RITZIE LEE PUTTER
DRAMA MT. RAINIER, MD.

THOMAS REES
ENGLISH WASHINGTON, D. C.

RUTH RUPPELDT
SOCIOLOGY WASHINGTON, D. C.

PAUL SCRIMSHAW
BIOLOGY AUBURN, N. Y.

MARY ELLEN SEILER
ENGLISH VIROQUAR, WISC.

FREDERICK SHARRAH
ECONOMICS ARLINGTON, VA.

JEAN SHIFFLETT
BIOLOGY WASHINGTON, D. C.

BARBARA SPANGLER
ENGLISH PORTLAND, ORE.

EDYTHE STAFFORD
PSYCHOLOGY NEWARK, DEL.

BARBARA STREETER
ENGLISH WASHINGTON, D. C.

CHARLES TALBOT
POLITICAL SCIENCE HOPEWELL, VA.

MARJORIE TEAL
ENGLISH CHEVY CHASE, MD.

ELSIE TOPALIN
LANGUAGE WASHINGTON, D. C.

PHILLIP WARNER
HISTORY PHILLIPSPOET, N. Y.

MARY WOOD
MUSIC CHEVY CHASE, MD.



The Sophomore Class



PRESIDENT, WILLIAM PHILLIPS; VICE-PRESIDENT, MARYADA FRANK; SECRETARY, ARLENE RABUCK; TREASURER, GRANT HALLOCK . . . AFTER AWED LOOKS AT THE BODY OF STUDENTS STANDING ON HURST HALL STEPS, WAITING TO BE HAZED, THE SOPHOMORES, OUTNUMBERED THREE TO ONE, DECIDED TO BE EXTREMELY LENIENT AND TAKE THEIR VENGEANCE OUT IN OTHER WAYS. THIS CLASS, TOO, HAD ITS DIFFICULTIES IN ELECTIONS AND AFTER MANY ATTEMPTS, PAT CRUM WAS FINALLY ALLOWED TO TURN OVER THE GAVEL TO NEW PRESIDENT, PHILLIPS. THE MAIN EVENT ON THE SOPHOMORE CALENDAR WAS THE SOPHOMORE DANCE WHICH WAS HELD FEBRUARY 28, IN CLENDENEN GYM. CALLED THE "BASKET BALL," IT HAD AS ITS THEME THE CHAMPIONSHIP PLAY-OFFS IN THE MASON-DIXON CONFERENCE. A DISTINCTIVE FEATURE WAS THE PRICE, DESIGNATED AS A "SPRING BARGAIN DAY SALE," WHERE THE TICKETS SOLD 99c DRAG AND 74c STAG. INFORMALITY REIGNED AND A GOOD TIME WAS HAD BY ALL. OTHERWISE, EVERYTHING WAS CALM, AS CALM AS ANYTHING CAN BE IN THE CLASS OF 1949 AT AMERICAN UNIVERSITY.

AIKEN, WILLIAM
 ALFANO, FRANK
 BAILEY, PAUL
 BARNARD, JOSEPH
 BASILIKO, GREGORY
 BEARD, EUGENE M.
 BELSON, MAE GOLDIE
 BETTS, STANLEY
 BIGBEE, JOHN
 BIRDSALL, MARJORIE
 BRADFORD, DEVOTA
 BRANNON, GRACE
 BROWN, ELIZABETH
 BROWNING, MARY PAGE
 BUGAI, IRENE
 BURDICK, MARION
 BURNS, EDWARD
 BURTHUR, ROY
 BUTTERFIELD, SIDNEY
 CARVER, JOAN
 CAREY, PAUL
 CHIN, JAMES

CHRISTOFF, MARY
 COFFEY, CLAUDE
 CONNER, MARK
 CORNBROOKS, CHARLES
 COVERT, PETER
 COWAN, JOSEPH
 COWAN, WILLIAM
 CREECH, RALEIGH
 CRUM, PATRICIA
 DIBBLE, LORRAINE
 DIETERICH, FLORENCE
 DIXON, PHILIP
 DOBIHAL, EDWARD
 DOOLITTLE, LEROY
 DORE, ROBERT
 DUNCAN, JAMES O.
 DUTTON, GEORGE
 EMERY, CATHERINE
 FAHEY, EVELYN
 FELDMAN, FRANCES
 FENTIMAN, JANET
 FOX, JAMES

FRAILEY, ROBERT
 FRANK, MARYADA
 GEYER, DONALD
 GHORMLEY, MURIEL
 GRAHAM, RUTH
 GRAUMAN, ROBERT
 HAINES, ROBERT
 HALL, MARJORIE
 HALLOCK, GRANT
 HILDEBRAND, SAM
 HINSHAW, LA FAWN
 HOAK, BRUCE
 HOBBS, ALFRED
 HOLLON, DANIEL
 HUDSON, CHARLES
 HUEY, BARBARA
 HURLEY, WILLIAM
 ISLEIB, JAMES
 JACOBSON, IRVING
 JARBOE, CLARENCE
 JAUDON, MARY
 JENNINGS, BEVERLY





JERNBERG, MARVIN
 KAMM, ARTHUR
 KENDRICK, BARBARA
 KENDRICK, FRANCIS
 KING, ARTHUR
 KLAWANS, JACK
 KURKHILL, PEARL
 LANDRUM, HUGH
 LARSEN, BEVERLY
 LATIMER, ELEANOR
 LEIKARI, KENNETH
 LESCURE, JACK
 LEVIN, JACK
 LONGSHORE, LAMAR
 MARTIN, HELEN
 MARTYN, JOHN
 MATHER, RICHARD
 MAXWELL, ALLEN
 McCONKEY, RICHARD
 MERGNER, ELIZABETH
 MITCHELL, CARL
 MOORHEAD, JOSEPH

MYATT, PAUL
 NENCIONI, ALBERT
 PETRO, JAMES
 PEOPLES, MARGUERITE
 PHILLIPS, RUTH
 PHILLIPS, WILLIAM
 PLUMMER, JUNE
 RABNER, JOHN
 RABUCK, ARLENE
 REEVES, JOHN
 REID, MILDRED
 RESPESS, BENJAMIN
 RICKFERTIG, SEYMOUR
 SANDER, ALFRED
 SCHMIDT, THOMAS
 SHANLEY, EDWARD
 SHERMAN, DAVID
 SHIRER, MARGUERITE
 SIMKINS, ALICE
 SKIRM, GEORGE
 SKIRM, ROSEMARY
 SLOVATEK, EMANUEL

SMALLEY, LESTER
 SMITH, DAVID
 SMITH, MARGARET
 SOLOMON, ERWIN
 STAHL, GERALD
 STRONG, JAMES
 TARVIN, HAROLD
 THOMPSON, HUGH
 TRIESLER, ROBERT
 USREY, THOMAS
 WELKER, JEAN
 WESCHE, ALICE
 WHITE, JOSEPH
 WHITSON, ELIZABETH
 WIDMEYER, PAULINE
 WINSLOW, LAWRENCE
 WOHLGEMUTH, GEORGE
 WOLFINGER, JUDITH
 WOOGEE, CARROLL
 WOODSIDE, CHARLES





The Freshman Class



PRESIDENT, ERIC PEACHER; VICE-PRESIDENT, BOB DI CHIARA; SECRETARY, LORRAINE NOBLE; TREASURER, HELEN DI BIASI . . . FROM THE BEGINNING THE FRESHMAN CLASS HAS SHOWN THE COLLEGE THAT IT IS GOING TO BE DOING GREAT THINGS. THE FRESHMAN FOLLIES, AS A RESULT, WERE THE BEST SEEN IN SOME YEARS; SEVERAL NUMBERS LOOKING GOOD ENOUGH FOR B'WAY. BEV JENNINGS DOING DANNY KAYE, STELLA WERNER PLAYING BOOGIE ON THE ACCORDION, REALLY "SENT" THE AUDIENCE OF STAID UPPERCLASSMEN. IF THAT WASN'T ENOUGH TO ROCK THE GRANITE FOUNDATIONS, THESE ENERGETIC FROSH PUT ON A POLITICAL CAMPAIGN THAT INVOLVED EVERYTHING FROM SENIORS TO THE "DUCK," WITH BRIBES LEFT OUT. "PEACHY'S" PICTURE IN A WASHINGTON NEWSPAPER STARTED A TREND THAT SEEMS PERMANENT. IF FOR ANY REASON SOME HALLOWED SENIOR SHOULD COMPLAIN THAT FRESHMAN HAZING LEFT SOMETHING TO BE DESIRED, HE SHOULD BE INFORMED THAT THE CLASS'S SIZE UNDOUBTEDLY INFLUENCED IT, AND THAT NEXT YEAR THEY'LL BE SURE TO DO A GOOD JOB ON THE CLASS OF '51.

AITKEN, MARY EILEEN
 ALLEN, GEORGE W.
 ALLEN, RODMAN F.
 ALTING, MARION ANN
 ALTING, PHYLLIS ANN
 ANGELLARAS, JAMES GEORGE
 ANSELMO, GUY
 ARLEDGE, MARTHA
 ARMIS, ANTHONY
 ARMIS, RITA
 ANTHANASIADIS, JOHN
 AVERY, ROBERT
 AXELSON, MARY
 BACHMAN, VICTOR
 BAHEN, FRANCIS
 BAILEY, MARY
 BAKER, JASON
 BARKER, JEAN
 BARR, AILEEN
 BARRON, HELEN
 BARTOWSKI, FLORENCE
 BECK, ROSEMARY ANNE
 BECKER, BENJAMIN
 BECKER, STEPHEN
 BENEDICT, BETTY JO
 BENNETT, HELEN
 BENSON, ELIZABETH
 BERGMAN, HELENA
 BETTS, EUGENE
 BEYER, JOSEPH
 BIDDLE, HENRY BRUCE
 BISH, HENRY
 BLACK, MARION
 BLACK, WILLIAM PAUL
 BLACK, WILLIAM J.
 BOTHERY, JOHN
 BOWE, JAMES
 BOWLY, LAWRENCE V.
 BRADEN, ROBERT W.
 BRIGANTI, JACK
 BRIGGS, MARY JANE
 BROWN, LEWIS
 BROWNSCOMBE, THOMAS
 BURNETT, ANN
 BUTLER, ARTHUR
 CALCOTE, MARY ELAINE
 CAMPBELL, JUNE

CANNON, WILLIAM
 CAROTHERS, RITA
 CARTER, WARREN
 CARTER, WILLIAM F.
 CARTWRIGHT, HAZEL
 CHAPTER, JOHN
 CHICHERIO, GERALDINE
 CHISHOLM, LLOYD
 CLARK, ROBERT
 CLARKE, MARGARET
 CLIFFORD, DONALD
 COHEN, HELEN
 COLE, RUTH
 CONNELL, HAROLD G.
 CONNORS, JAMES J.
 CONNORS, JAMES L.
 CORNISH, NED
 CORNWELL, RICHARD
 CONSTANTINO, ORLANDO
 COULTER, DAVID C.
 COYLE, MARGARET
 CRACK, ROXY
 CRAGGE, MARY LOU
 CROMWELL, MARION
 CUNNINGHAM, ARTHUR
 CURRY, LORETTA
 DALSHHEIM, STEPHEN
 DALY, MARY V.
 DASSOULAS, JOHN
 DAVIES, HELEN
 DAVIS, RICHARD
 DAVIS, RUTH
 DAVIS, FREEMAN ROBERT
 DE BIASI, HELEN
 DECKER, LOUIS
 DEEDS, DONALD
 DE GREGORIO, VINCENT
 DEPUTATO, FRANK V.
 DEWITT, EDWARD
 DIAMOND, JOYCE
 DICHIARA, ROBERT
 DIMOND, ROBERT
 DODARO, PAUL
 DONOHUE, DANIEL
 DOONG, HENRY
 DUBINSKY, WESLEY
 DULEY, JAMES

DUNN, LEROY
 DUVAL, DOROTHY
 EARLY, WILLIAM
 EDWARDS, RALPH
 EGBER, ISADORE
 ECHOLTZ, DALE
 EMMONS, THOMAS
 EMORY, HELEN
 ENGLE, ANN
 ENGLISH, HARRY
 EVANS, STED
 EVANS, DAVID
 EVANS, JAMES
 FEDOR, EMORY
 FERER, ELIZABETH
 FITZGIBBONS, PARICK
 FLING, FRED
 FLING, GERALD
 FLODIN, DAVID
 FORTNER, BERNARD
 FRAHM, HERBERT
 FRASER, CHARLES
 FRASER, DOROTHY
 FRISINA, DOMINIC
 GALLIHER, FRANCES
 GLAWSON, ISABEL
 GOLSON, LOUIS
 GOODACE, DANIEL
 GRAHAM, LEROY
 GRAY, ROBERT
 GRIFFITH, PHILIP
 GRIGG, ROBERT
 GRIM, JAMES
 GROESGALL, CLIFFORD
 GRUDER, YVONNE
 GWYNN, EDWARD
 HADAD, HENRY D.
 HALE, BETTY JANE
 HALE, JAMES
 HALL, BARBARA
 HAMLIN, THOMAS
 HARDELL, JOHN
 HARDEN, JOHN
 HARLOW, LLOYD
 HARRIS, WESLEY
 HARRIS, WESTON
 HARPER, HELEN

HASSETT, JAMES
 HAVEMEYER, HENRY
 HAWKES, PATRICIA
 HEDGES, LOUIS
 HEITZINGER, FRED
 HENNESSY, G. PATRICIA
 HENDRICKS, DELBERTA
 HENRY, PATRICK
 HERBERT, NEAL
 HICKSON, JOSEPH
 HILL, RICHARD
 HITE, RICHARD
 HODGES, MURIEL
 HOLLAND, GEORGE
 HOLLAND, WILLIAM
 HOLLEY, JOSEPH
 HOLLOWAY, THOMAS
 HOLM, MEDORA
 HORAN, MAURICE
 HOWARD, ROBERTA
 HUBBARD, DAVID
 HURST, HAROLD
 IRISH, EDWIN
 JENKINS, FRANCES
 JENNINGS, MARY
 JOHNSON, LLOYD
 JOHNSON, LENORE
 JOHNSTON, HARRY
 KARBIBIANIAN, GEORGE
 KARP, LAWRENCE
 KARP, CHARLES
 KEDDIA, LEONARD
 KENNEDY, ROBERT
 KENNEK, JANE
 KENNEY, DONALD
 KERLAND, DAVID
 DERSHENBAUM, HARRIET
 KEYS, PATRICIA
 KILBY, THOMAS
 KOCOUR, LEONARD
 KOUTSANDREAS, JOHN
 KOWAN, ETHEL
 KRANKING, JAMES
 KRIDER, LEROY
 KRIEGER, THEODORE
 KRONFELD, MORRIS
 LAFFERTY, HAYWARD





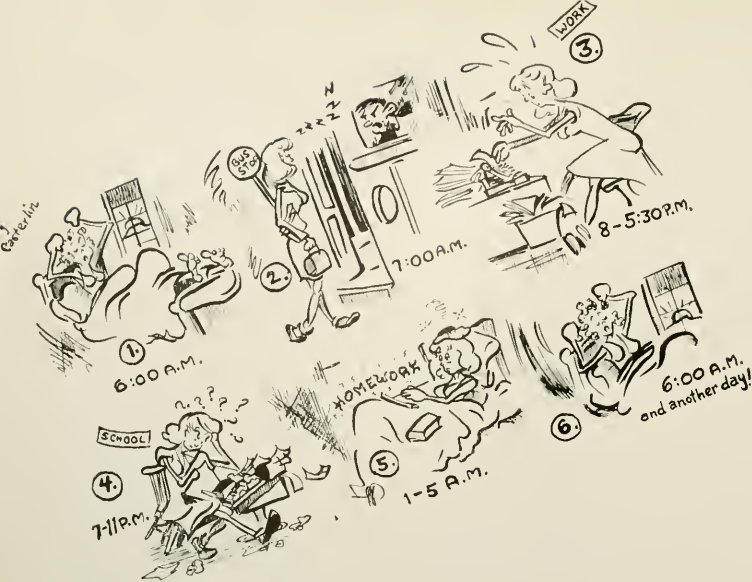
LANCASTER, RICHARD
 LANDER, RICHARD
 LAWRENCE, PAUL
 LEMNITZER, LOIS
 LEWIS, NORHAM
 LINDEMAN, PAUL
 LIPPINCOTT, HAINES
 LIPMAN, MAURICE
 LORCH, PETER
 LOZUPONE, PHYLLIS
 LUDEMAN, DEAN
 LUNDMARK, ROBERT
 LUNSFORD, JOSEFA
 LUTHER, MCKINLEY
 MacWILLIAMS, WALTER
 McATEE, WILMA
 MANCHESTER, JAMES
 MANOGGIAN, PAUL
 MANOUELIAN, EDWARD
 MARCUS, MILTON
 MARTIN, STEPHEN
 MATHER, PAUL
 MATULIS, FLORENCE
 MAZOR, MORTON
 McATEE, WILMA
 McCARY, JOSEPH
 McCORMACK, CHARLES
 McGILL, LAWRENCE
 McCREOR, ROY ROY
 McKISSICK, RICHARD
 McLAUGHLIN, GUY
 McMANAMAN, MARILEE
 MEHRING, BETTY
 MENNEN, LEWIS
 MERGNER, HELEN
 MERSERAU, JOSEPH
 MEYER, MARION
 MILAN, BETTY
 MILLER, DAVID
 MITCHELL, CLIFFORD
 MITCHELL, ROBERT
 MITCHELL, SYLVIA
 MOBS, NOEL
 MORRE, MICHEL
 MORRIS, HAYDEN
 MOSHER, WILLIAM
 MOWERY, JAMES
 MUIR, DOUGLAS

MULLAN, ROBERT
 MULLAN, ROY
 MURPHY, ROBERT
 NEER, JOHN
 NEWBOLD, MARY JANICE
 NIBLEY, REED
 NICHOLS, FRANCIS ANNE
 NICHOLS, JOHN
 NOBLE, LORRAINE
 NORDLIE, ROLF
 NOWAKOWSKI, RICHARD
 NUSSBAUM, MORDECAI
 NYE, ASTRID
 OAKLEY, VELMA
 O'BRIEN, ROBERT A.
 O'BRIEN, ROBERT J.
 O'CONNELL, THOMAS
 O'CONNOR, JOHN C.
 OLANSKY, MELVIN
 OSBORN, CHARLES
 OREVIK, GLENN
 OWENS, JOHN C.
 PARSONS, MARY ALICE
 PASCOE, ANNE
 PATTERSON, CARL
 PEACHER, ERIC
 PELTON, ELIZABETH
 PETERSON, NORMA
 PLANK, JACK
 POLK, WILLIAM
 PORTER, HORACE
 PORTEN, HENRY
 POTLER, ALIA
 POWELL, JAMES
 PUTTER, BEBE
 QUINN, HAROLD
 RADLEY, MARION E.
 RASP, JOHN
 REDWAY, EDITH
 REISER, GRACE
 ReVEAL, VIRGINIA
 REVOIR, ANDREW
 RHODES, GEORGE
 RICH, JAMES S.
 RICHARDSON, CHARLES
 RICHARDSON, WILLIAM

RICUCCI, LEWIS
 RIDER, ERNEST B.
 RIES, MARTIN
 RIGGS, EDWARD
 ROBIYER, JEAN
 ROSENBERGER, ELLA
 ROSENTHAL, HARRY
 ROTH, MURIEL
 RUBIN, MARION
 RUBRIGHT, LENORD
 RUSHBROOK, KESLEY
 RUSSEL, RAY E.
 RYERSON, PHILLIP
 SALERNO, HENRY
 SANDERS, ELLAR
 SCARROW, EDWARD
 SCHAFFER, HENRY
 SCHUEER, ROBERT
 SCHUEFF, THOMAS
 SCHIFF, MARVIN
 SCHLOSSBER, LEONARD
 SCHNEIDER, EUGENE
 SCOTT, HUGH
 SCHOOLS, CHARLES
 SCRIMSHAW, ROGER
 SELWYN, LAWRENCE
 SHANK, ROBERT
 SHUMAN, SUZANNE
 SIEGAL, SARAH
 SIMMONS, ALFONSO
 SIXBY, GLENN
 SMIH, JOHN
 SMITH, RUPERT
 SMITH, VERN
 SNOW, ARTHUR
 SOMMERS, EARL
 SONNABEND, FRANKLIN
 SPILMAN, BERNARD
 SPRIGOB, CARL
 STAHL, PETER
 STALLSMITH, WILLIAM
 STEPHENS, KATHLEEN
 STEVENS, ROBERT
 SPAULDING, HARRY
 STEWART, JOHN
 SUBT, FREDERICK

TAAFFE, JOHN
 TAKAHASHI, SAM
 TANNEN, WILLIAM
 TAYLOR, KEITH
 TEACHOUT, RICHARD
 TEACHOUT, WILLIAM
 TENDLER, ANNABELLE
 TERRILL, GAIL
 THOMAS, HOMER
 TRUNDLE, KARAN
 TURPINE, FRANK
 UNSWORTH, WALTER
 UTTERBACK, LEON
 VAN HERPE, LEO
 VAN WICKLER, CHARLES
 VELLIE, YVETTE
 VERSSEN, LUCILE
 VOLZ, LARRY
 VOLZ, LILLIAN
 WACKER, FRED
 WAHL, WILLIAM
 WAINTRAUB, DOROTHY
 WAINTRAUB, VALERIE
 WAKEFIELD, JOHN
 WALLACE, CARL
 WALTER, EDWARD
 WANT, ELLOITTE
 WARD, JOHN
 WATKINS, JOSEPH
 WEIR, CARL
 WELKER, WALLACE
 WERNER, STELLA
 WHARTON, WILLIAM
 WHEELER, HUGH
 WIENER, RALPH
 WILDERMUTH, ROBERT
 WILLIAMS, ARTHUR
 WILLIAMS, SARA
 WILLIS, STANLEY
 WILLIS, WILLIAM
 WINGO, HENRY
 WINOGRAD, BERTON
 WITHEROW, THOMAS
 YAROTZKEY, MERRIL
 YEATRA, PETER
 ZUCKER, INEZ
 ZUGBE, JULES





The Work Study Program

THE WORK STUDY GROUP, AFTER ACCLIMATING THEMSELVES TO MGH, HAVE SPENT THIS YEAR IN WORK, *OF COURSE*, HARD STUDY, *AMAZING*, AND ENGAGING IN EXTRACURRICULAR ASPECTS OF COLLEGE LIFE. ADEQUATE WITNESS TO THE LAST IS THE USURPATION OF THE SWIMMING POOL ON SATURDAYS, AND PING-PONG TABLES MOST ANY TIME. FOR GIRLS WHO WORK FULL TIME PLUS COLLEGE WORK, YOU'D THINK THAT SLEEP WOULD BE A FAVORED AVOCATION BUT COME SPRING AND SATURDAY, 6:30 IN THE MORNING FINDS THEM OUT FOR HORSEBACK RIDING; AND THEN ON SUNDAY, CHURCH. VARIED PERSONNEL HAS FLO PETTIPET ASPIRING TO THE "MET," MILLY DOBSON ALREADY BELONGING, (CHURCH THAT IS); WHILE ADA VIGER "CREATIVELY" DOES A PORTRAIT OF MARGARET MATUS. MARG IS DOING HER STRETCH ON HOUSE COUNCIL. THIS HAS BEEN A BIG YEAR FOR THE GIRLS. HERE'S TO MANY MORE.





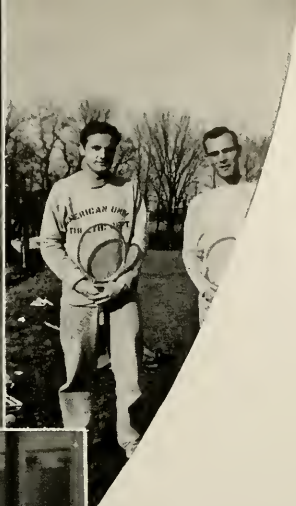
DOBSON, MILDRED
EATON, MOLA
HERBERT, HELEN
MATUS, MARGARET
MORGAN, MARY
PETTIPET, FLORENCE

REID, MILDRED
REISER, GRACE
STUMM, BETTE LOU
WALKER, ELMA
WEYANDT, JEAN
VIGER, ADA

ZAMAITIS, MARY







Athletics
Clubs
Government
Publications

A C T I V I T I E S

Men's Athletics



Varsity Club

The Men's Varsity Club, absent from the school during the war years, brought back into organization this year, is one of the oldest of clubs in the College. Qualifications for membership when this activity was first organized were that an applicant had to have earned at least two major letters. Due to the scarcity of those participants in major sports over the required length of time for this year only, during reorganization, the qualifications have been dropped to one major letter.

The Varsity Club gives as outward token of its membership the College "A." Although obviously an athletic organization it is very active in all phases of campus life, both as individual members and as the group. Until the Coffee Shoppe was moved to the Leonard Gym, the Club sold refreshment for the crowds of students and outsiders who came to the games. "A" Club has sponsored two dances this year, doing its own decorations and all the necessary details.

Officers of the club are Bart Fugler, President; Bert Gaster, Secretary, and Charles Kligman, Treasurer. Its members consist of the following: Fred Carl, Staff Cassell, Leroy Doolittle, Joseph Hossick, Bob Lanzillotti, Bob Miller, Al Nencioni, Bob Nugent, Jim Petro, Edwin Rabbitt, Dutch Schultz, and Fred Sharrah.



Varsity Basketball

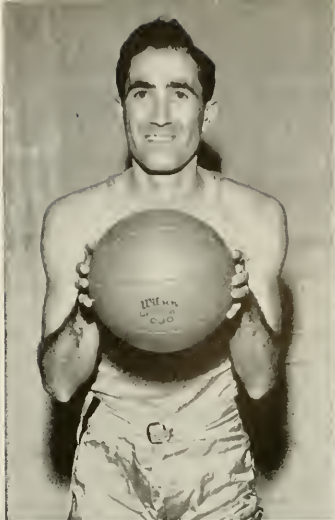
With only three men, Captain Bart Fugler, Bert Gaster and Charlie Kligman, back from prewar days, Coach Staff Cassell faced the problem of producing a team out of what seemed at the time, his imagination. Most of the men out for the team had had previous experience, but hadn't played for three or four years. To add another note of sorrow, some of the men for whom Staff had high hopes dropped out of school.

Even with these troubles, the Eagles showed that they had the makings of a good, if not great, team. Slowly ironing out the kinks of years of inactivity on the court, they started to show great individual ability. Another much needed addition in the form of George Lafferty joined the team half-way through the season.

In spite of the fact that they lost games, the Eagles looked progressively better and better. They showed that they could play ball with the best in the country, and play as a team. They also announced that with most of the team, two of them, Fred Fling and George Lafferty placing on the Mason Dixon All-Star team, returning next year they will be a team to watch.

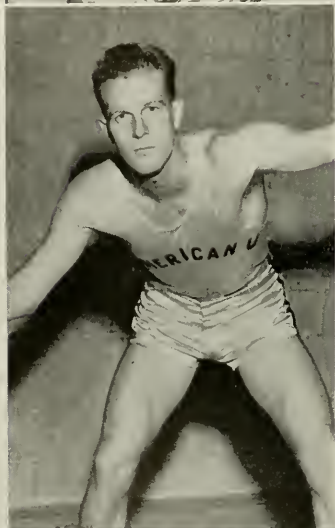
The outstanding games of the season consisted of those with City College of New York, Virginia Tech, Bucknell University, Western Maryland and Loyola.





GRIFFIN

BART FUGLER



Varsity

AMERICAN UNIVERSITY

63	QUANTICO MARINES	48
33	KINGS POINT M. M.	43
58	CITY COLLEGE N. Y.	64
47	CATHOLIC U.	40
48	WASHINGTON COLLEGE	53
45	JOHNS HOPKINS	40
55	LOYOLA	51
44	WILLIAM and MARY	48
51	RANDOLPH MACON	48
35	U. OF VIRGINIA	50
48	V. P. I.	45
47	QUANTICO MARINES	48
44	WASHINGTON COLLEGE	27
52	GALLAUDET	42
40	BUCKNELL	71
54	BUCKNELL	51

KLIGMAN
WAKEFIELD
WINGO

TANNEY

GASTER





STAFF CASSELL



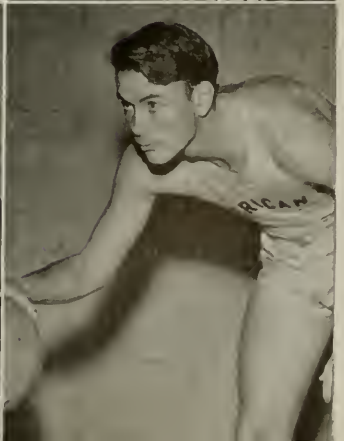
Basketball

38	PENN STATE	46
60	RANDOLPH MACON	43
79	GALLAUDET	36
54	CATHOLIC U.	33
68	WESTERN MARYLAND	71
66	WESTERN MARYLAND	46
58	MT. ST. MARYS	63
55	LOYOLA	57
66	ALUMNI	20
<hr/>		
1,288		1,189
TOURNAMENT		
	AMERICAN UNIVERSITY	
59	WASHINGTON COLLEGE	48
43	LOYOLA	52
61	JOHNS HOPKINS	43

FLING
FRISINA
CANNON

BENSON

NOWAKOWSKI





Junior Varsity Basketball

Captain

AL NENCIONI

Coach

HUGO SCHULTZ

Manager

HARRY CASTERLIN

Showing great form and power, the Eaglets distinguished themselves with a record of sixteen wins and only five losses. Coach Hugo "Dutch" Schultz, aided and abetted with a talented group, showed that the Varsity team might well look to the Eaglets for some excellent reserve strength for next year's season.

Playing some of the best squads in their class, the JV's ended the season as a highly polished, well synchronized and respected team. With Chuck Boothby leading the scoring parade, well supported by such men as Al Nencioni, Dick Hite, Joe Hickson, Joe Hossick, Blackie Selwyn, Ken Brown, Jay Rider, Bernie Gittleson and Jack Neer, the Eaglets probably had their best moment when they avenged the two Pennsylvania road trip losses with a great splurge of offensive power for the rest of the year. Although the team had many individual stars, they undoubtedly had the all important characteristic of a winning group; they played as a team.

As the season progressed, more and more people began coming out to the J.V. games which occasionally preceded those of the varsity. This in itself is a tribute to the fine season that this cocky, hardworking group of players contributed to the activities of our University.

Swimming

Captain
JOHN BRIGGS

Coach
JOE HOLLON

Manager
STEVE BECKER

Last Fall, when the Navy abandoned its pool on our Campus, plans were immediately formulated for a swimming team, meets scheduled, and swimmers recruited. In its infant year, a championship team was turned out. A.U.'s mermen were undefeated in six dual meets, took second place in the Mason Dixon Conference Meet, and acquired top honors in the Metropolitan Washington Invitational Intercollegiate meet.

Comprising the first A.U. swimming team were: Free styleers—Lewis Hedges, Tex Carter, Art Butler, Lewis LaFever, Fred Carl, Jim Evans, Willard Smith; Back strokeers—John Briggs, Phil Dixon; Breast strokeers—Ken Hiltz, Pete Covert, John Backman, Ken Cowan; Diving—Carter, Clifford. Particularly outstanding were: Hedges, Capt. Briggs, Hiltz, and Carter.

In the conference meet at Newark, Delaware, the Eagles "knocked" the confidence out of the heavily favored Delaware team by taking a close second. This was the first M-D swim meet in conference history.

On March 22 the Junior National AAU highboard diving championship for men was held in conjunction with the DC AAU swimming championships in our pool.

On March 28 and 29 A.U. was host to the first annual Metropolitan Invitational Inter-Scholastic and Inter-Collegiate Swimming Meet. The A.U. swimmers appropriately ended their season by copping the team trophy and the majority of the individual awards in the collegiate division of this meet. The Eagles amassed 73 points to 40 for runnerup George Washington. Catholic U. was third with 39 points, Columbia Tech scored 6, and Georgetown 1.



Our new Track Coach, Joe Carlo, was practically swamped in the spring when the call went out for material. The number of men reporting gave A.U. one of its greatest track teams. The team was built largely around veteran Captain Al Nencioni. The squad consisted of Al Gross, Fred Heitzinger and Chuck Hudson in the shot-put; Bob Lundmark, Eric Peacher and Larry Bethel in the pole vault; Fred Fling and Glenn Anderson for the high jump; Bob Lundmark and John Dasselous in the high hurdles; Al Nencioni, Ed Manouelian, Eric Peacher, Fletcher Atkins and Dick Nowakowski for the 100 yard dash; Eugene Betts, Ken Leikari, Henry Schaffer and Guy Anselmo ran the mile; Henry Schaffer and Guy Anselmo ran in the two mile events; Stanley Betts, Dick Davis, Brindley Longshore, Stan Adelson, Tex Griffin, Dick Bauman and Harry Spalding specialized in the 440; Al Gross, Fred Heitzinger, Chuck Hudson and Glenn Anderson threw the discus; Al Nencioni, Bob Lundmark, Leslie Rushbrook and Glenn Anderson for the broad jump; Leslie Rushbrook, John Dasselous and John Koutsandios in the 220 hurdles; Al Nencioni, Dick Nowakowski, Leslie Rushbrook, Bob DiChaira and John Dasselous in the 220 dash; Glenn Anderson and Al Nencioni threw the javelin; Guy Anselmo, John Owens, Francis Kendrick, Cliff Grohsgal and Dick Mather ran the 880. The team competed in the 175th Regimental Games, Penn Relays, Metropolitan A.A.U. Games and the Mason Dixon Conference Meet. This gave the track team a very successful season.

Track

Captain
AL NENCIONI

Coach
JOE CARLO

Manager
HARRY CASTERLIN



The 1947 boxing team spent most of its time preparing for the future. Coach Jim Petro scheduled only one match for this year and that primarily was to give experience to what looked like a potentially fine squad. This match was with the Kings Point team, reputed to be one of the finest in the country. Coach Petro was more than satisfied with the showing made.

Handling the different weights were: Jim Duley at 120 lbs., Cliff Grohsgal, 135, Danny Hollon, 145, Paul Hubbard, 165, Bob Meyers, 155, Henry Shaffer, 130 and Ed Sullivan at 175.

The boys spent most of their time sparring with each other and if they are in as good shape next year at least eight matches will be scheduled. A great point in this team's favor is that all of the men will be back next September, even more determined to wind up on top of a good season. This is a team from which we can expect great things.



Boxing

With the trend at American University to get the athletic department back to cover the complete field of sports, Coach "Dutch" Schultz found himself in a gratifying position when he surveyed the prospects for the Tennis Team of 1947. He found very good reasons for the power displayed on the courts of A.U., Bob Miller, number one on the A.U. team in 1944, Public Parks champ in 1945 and winner against Army in 1946, played number one position. Ted Rubin, who alternated at the number one and number three positions at Cornell last year, was also outstanding this spring. Leroy Doolittle returned; some will remember that Leroy played tennis here way back in 1943. Britt Schweitzer, another returnee, won the Evening Star Tournament in 1941, and was chosen as the sixteenth boy player in the country. Jack Lescurc was a top flight performer on the courts of his home state of Virginia. Bob Wildermuth, a former Prep school star, also gave a good account of himself in this, his first year here. Adding support to the team were Nelson Aters, Bill Cowan, Joe Holley, Jay Rider and Plank.

Tennis

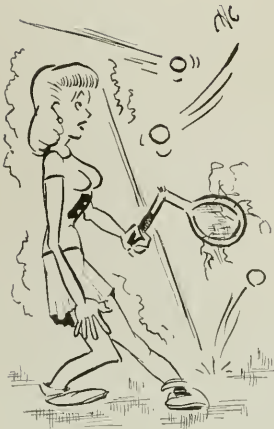


Woman's Athletics



“A” Club

“A” Club is the women’s local sports honorary. Membership to this club is based upon participation in extra-curricular varsity and intramural athletics. Thus for a woman to become eligible she must show interest as well as skill. A woman becomes a member after the accumulation of 350 points received for actual participation in, or management of, sports. After this there are awards given by “A” Club for more accumulated points, but the first 350 are the pre-requisite to membership. All points are voted on and approved by “A” Club before being awarded. Its members are proud that it is more than an honor, for in sponsoring the athletic activities of the Department, they show that their membership entails certain responsibilities of service and leadership. The club appoints the manager of each sport and a report is demanded of her at the end of the season. In March, “A” Club had as the speaker at its banquet, the Assistant Director of the American Youth Hostels. All there were left with a case of wanderlust. So, from archery in the Fall to Tennis in the Spring, it has been a full year and a good one.



Varsity Basketball

Using as practice training the long period of the intersorority basketball tournament, the Women's Varsity Basketball team got off to a very quick start this year. At the end of the intramural practices a list of selected players was posted from which the team was formed. Other interested girls could and did come out to make the team. One of the main points in practice was to get a quicker coordination in passes and pivots and above all to train the forwards against man-to-man defensive play. The A.U. team played a zone defense that was very satisfactory, but instruction in man-to-man was necessary for most of the team's opponents used this latter form of defense. All of the training paid off for the team had a successful year. True they lost games; but some of them were against the physical education major squads of Maryland U. and George Washington U. The long and short of it among the girls were forwards, Kathleen Stephens and Phyllis Alting. Eleanor Latimer became famous for her "swish" shots and among the guards, Peggy McFarland, Peggy Peoples, Liz Ferber and many others kept the opponent covered. Next year prospects are bright as only a few of the team are graduating, leaving the main strength in the underclasses.



Swimming

This year the Women's Athletic Department has inaugurated an experiment which has proved highly successful. So many of the girls in the regular swimming classes expressed such a strong interest in doing regular team work, that the physical education instructors decided to take these girls, outstanding swimmers, and devote separate time to the training and formation of a swimming group. It is probably the most altruistic effort ever to take place in College Athletics, for it is not a regular team and its status is only that of an intramural sport. As a result the girls omit diving. In addition their swimming is not done in regulation "lengths" but merely by lengths of the pool. The strictly intramural status does not stop the women from having great enthusiasm; and wet hair, a badge of their activity which is becoming more and more frequent around the campus. Although they are not a regular team and do not swim regulation events, they have found other nearby colleges ready and willing to participate with them. Meets with Trinity College, Mt. Vernon Junior College, and the University of Maryland were scheduled early. Results showed a very successful season and bore out the purpose of the group—to teach perfection of swimming technique; to learn the essentials of "meet" regulations; and above all to get pleasure out of swimming.







Dramatics

Men again, oh . . . (followed by complete collapse of all those who have struggled along over the past years, trying to find plays with "not *too* many men's parts, please!") The joy of it! The joy of it turned into "Kiss and Tell" and by all results the audience, which packed Leonard Gym, enjoyed it hugely. Under the able direction of Miss Mary Frances Miller, the cast really worked together beautifully—even down to Jim Eden's dog which, despite many anxious moments, barked on the right cues and generally looked as if he were having a good time. Everyone turned in stellar performances. Mike Roth did a convincing Corliss; ditto Bob Stephens as Dexter, (the cast promptly predicted laryngitis as a result); Flo Lyman as Mrs. Archer; Jim Eden as her husband; Sylvia Mitchell as the irrepressible Raymond, who thought everything was *so* dumb; Betty Gillespie as Mildred, who was the cause of all the mixup; and so on down through a competent cast. Sylvia had just as much fun with the shoulder pads as the audience did, as they broke into her dialogue more than once to applaud her. The props were excellent. All in all, it was a big success—even the paper said so.

In the spring the Shakespearian play came around this year, "The Merry Wives of Windsor" which was given as usual in the outdoor Shakespearian theatre.



The Art Guild, a group of students interested in art as a medium of expression in modern society, set as their fixed purpose the promotion and enlightenment of student interest on the campus in art as such, and in the activities of the Art Department. As the latter has brought works and news of art to the students through the Watkins Memorial Gallery with representative shows of prints and paintings, and with examples of Negro sculpture, the Art Guild decided to represent the more social aspects of the Department. As a result the Guild was represented at the Hallowe'en Bazaar with an auctioneer's booth where student-artists' paintings were sold and cartoons done on the spot. In the Spring the members put forth their greatest efforts into an Arts Ball, open to all university students. The Art Guild kept themselves in the news with the *Eagle* column, "Off The Palette," and a radio program on the campus station devoted to stories of the Great Artists and opinions and ideas on art.



Art Guild

President

DEAN CARTER

Vice-President

SHEILA COWAN

Secretary-Treasurer

JENNY FRANKLIN





After so many years of only women's voices, chorus members could hardly believe their eyes and their ears when, at the first rehearsal, they saw the back rows filled up with so many tenors and basses. With this to inspire plus capable direction under Mr. McLain, chorus settled down to the work of the weekly chapel programs plus mastering a repertoire to give at the many concerts of the year. Programs were given at Radio Stations WINX and WTOP. The latter was a coast-to-coast hook-up and despite the fact that everyone had colds, not one single cough registered. The Christmas Concert was highlighted by an overloaded tree that fell, doing no damage, amongst the tenors. The next program took the group to Howard U. The concert schedule ended with the Spring recital, an appropriate finale to a year of hard work. Chapel programs must be remembered here, and a vote of thanks goes to Mr. Romaine, who played the organ so beautifully for the choir.

Chorus

F. BAKER, J. BARKER, B. BERGMANN, M. BIRDSALL, T. BLACK, P. BREIDENBACH, E. BROWN, M. BROWN, R. CAROTHERS, R. COLE, M. CROMWELL, R. DAVIS, K. DIXON, P. DIXON, E. DOBIHAL, L. DOOLITTLE, J. EDEN, C. EMERY, R. FELL, E. FERBER, D. GEYER, M. GHORMLEY, A. GRAHAM, M. HALL, M. HARRISON, R. HILL, R. HOWARD, E. IRISH, H. LANDRUM, E. LATIMER, F. LYMAN, P. MANOOGIAN, P. McFARLAND, C. MITCHELL, M. MOORE, E. PEACHER, L. ROSENBURGER, B. SAUERHOFF, H. SPAULDING, K. STEPHENS, R. STEVENS, J. THIEBAUD, H. THOMAS, Y. VELIE, S. WERNER, M. WOOD.





President
KEN JONES

Vice-President
BARBARA SIMMONS

Secretary-Treasurer
MARJORIE HALL

Student Christian Fellowship

The Student Christian Fellowship, which is affiliated with the Methodist Student Movement and the Student Christian Association Movement of the YWCA, accepted as its year's purpose the objective of connecting living Christianity to the college program in a real and definite way by means of programs of moral, religious, cultural, and social value. The first big event of the year was the "Dad's Day" program on Sunday, November 17, highlighted by the awarding of prizes for the best rooms in each dormitory. Individual student approach to matters of current importance in religion were encouraged by Sunday evening discussions in Great Hall during the fall semester. Later, the SCF took charge of the Combined Charities Drive and succeeded in raising more than \$700.00 which was distributed according to student preferences among various charitable organizations. For Christmas the SCF took charge of the Banquet and Choral Concert. At the SCF banquet March 3, Henrietta Roosenburg of Holland was the guest speaker, where she told of her experiences with the underground movement and of her confinement to a concentration camp. On March 24, a Starvation Banquet was held on behalf of the Church World Service Center. Articles of clothing were the price of admission, the clothing being forwarded to needy families in Europe. All during the spring semester, a series of Tuesday and Thursday Luncheon Devotions were held which were well attended.





German Club

President

MARY JAUDON

Vice-President

WILLIAM TEACHOUT

Secretary

BETTY BROWN

Treasurer

BEVERLY LARSEN



International Relations Club

President

FRANCES KAPLUS

Vice-President

DON GEYER

Secretary-Treasurer

JOYCE GOCHENOUR



French Club

President

MARY JAUDON

Vice-President

MARY JO THIEBAUD

Secretary

PEARL KIRKHILL

Treasurer

MARY WOOD



Spanish Club

President

JOYCE GOCHENOUR

Vice-President

BRUCE HOAK

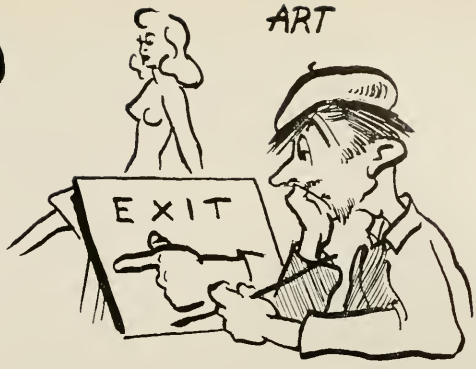
Secretary

JANICE STONESIFER

Treasurer

CATHERINE EMERY

ART



SPORTS

DRAMATICS



STUDENT GOVERNMENT



STUDENT PUBLICATION

RELIGION

CHORUS

MC



President
GORDON COWAN

Vice-President
ROSALIE CORRADO

Secretary
JANE NICHOLS
JOYCE GOCHENOUR

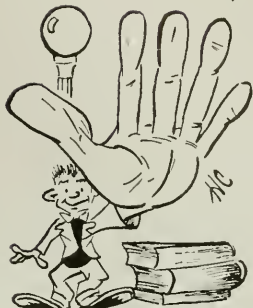
Comptroller
HARVEY HUEY

College Council

The College Council of the College of Arts and Sciences is the representative body whereby the students actually govern themselves in the persons of their elected representatives. Representation to this Council is by class, a man and a woman being chosen for each of the three upper-classes. The Freshman representatives are chosen in the fall. The officers of the Council are elected from among the Junior Class, the term running for the calendar year. To secure a more adequate presentation of all interests on the campus, the Council has as advisory bodies, the various boards, such as Publications, Religion, Social, Athletic, etc., who within their fields act as directors of all connected campus activities. Representatives to these boards are also by class and the group itself has a delegate to College Council. Thus student interests and activities are co-ordinated into an organization that can adequately represent their needs to administration and faculty and within its own jurisdiction carry out its powers to the benefit of the entire campus.

This year the Council was quite active. It had the benefit of an able administration under two capable chief executives, Frank LaFontaine, who transferred in September to Columbia University and Gordon Cowan who so ably stepped into his position. More students than ever necessitated an even wider field of cooperation to fit them all into the college scene. The opening of the new Student Union building took much of the Council's time. To this location were moved the Coffee Shop and Book Store. Offices in the building were assigned to the college publications and to the Student President and Student Comptroller. Student activities were thus centralized in one building. The creation of a new publicity board was a step taken by the Council toward organized dissemination of publicity on all student activities.

The year ended on a note of improvement and the entire Council looks forward to an even better year in the fall.



Administration

DR. DOUGLASS

DR. BENTLEY

Faculty

DR. BATCHELDER

MR. McLAIN

DR. CLARK

MISS OLDS

MR. STAPAY

Students

Senior

FRED CARL

JEANNE LEAR

Junior

ROBERT MALONE

BETTY RICHARDSON

Sophomore

MARJORIE HALL

ROBERT NUGENT

Freshman

DICK DAVIS

B. J. HALE

BOARD MEMBERS

Athletic

SeniorLEE COZAN
 JuniorJAMES PETRO
 SophomoreALBERT NENCIONI
 FreshmanFRED FLING

Publication

SeniorHELEN MAYO
 JuniorBARBARA BROWN
 SophomorePEGGY PEOPLES
 FreshmanJAMES RICH

Religious

SeniorLORRAINE BENTON
 JuniorSALLY EHLERS
 SophomoreRUTH GRAHAM
 FreshmanPHIL DIXON

Social Activities

SeniorAUDREY BLESSING
 JuniorMARY FRANCIS LEGRANDE
 SophomoreBARBARA NEGUS
 FreshmanANN ENGLE

Orientation Board

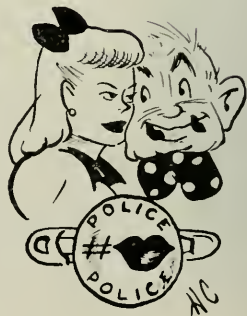
WILLIAM AIKEN KENNETH JONES
 MARY CHRISTOPH JEANNE LEAR
 ROSALIE CORRADO ELAINE SIMON LEVIN
 KARL MANN





Interdormitory Council

With the increase of dormitories on the campus, it seemed advisable to the Dean and the heads of the various houses, to create an over-all dormitory body that would centralize duties and co-ordinate the separate units as would otherwise have been impossible. The result was the Interdormitory Council. As might be supposed, the most urgent problem was to integrate the four new men's dormitories into the college environment with as little friction as possible. With so many new students on campus, it was seen that the sooner certain tradition-setting rules were put into operation and understood by the entire student body, the sooner A.U. would have well regulated college life. To this end ideas were pooled on rules and regulations for the various dormitories that would work in well with other existing rules. Problems of one house were solved more easily, it was found, if brought before representatives who could give objective and disinterested views. Halfway through the first semester it was found that one group on campus was not represented, the veterans apartments. Although this was an Interdormitory Council a representative was invited for this group. Of course the first year was spent to a great extent in the formation of plans but next year, the groundwork having been completed, the Council looks forward to more efficient solutions of campus problems. The dormitories represented on this Council are Mary Graydon Hall, Clark, Flint, Hamilton, Hughes and McDowell Houses.



Kiss And Tell To Be Presented Dec. 1

Who's It Gonna Be?

Muriel Roth, Robert Steven
Play Corliss And Dexter Ro

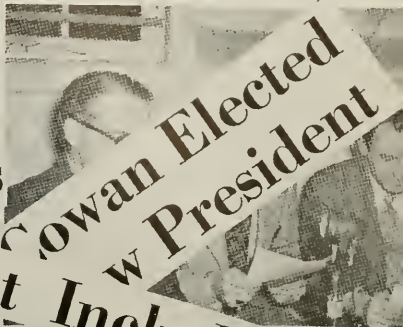
Malone, Nugent, Jones To Be
Fall In Frat-Fixed Assembly

1946-47 Semester Problems

Candlelight Service Climax
Festive Christmas Activities

Marshall Welcomes Students

Washington Semester Begins



**Cowan Elected
New President**

Campus Includes
Construction 131

Eventful Christmas Week Planned

MGH

'Best

**Beta Beta Beta
Taps Ten Students**

Eden, Mrs. and
well known
for their ch
A. U.
mer

The Fanbelt
Interfraternity
December 11
the Ken
9:00 to

Opening Of
Frat Ball
Scheduled For
Play the 13th

Construction began
on the Campus Rad
members of the
in charge of
hopes for
broadcasts.

Loved

'Eagle'

**Cowan, Morie
Nominee**

Who Of American College Selects
Seven Outstanding AU Representative:

Simmons

One Of These Shall Be Queen . . .



Frosh,



Seniors



Climax



Class Election



A. U. Winds Up Heated '46-'47 Stin



Editor

CHARLES B. NORRIS

Assistant Editor

AUDREY BLESSING

Business Manager

JAMES STUART RICH

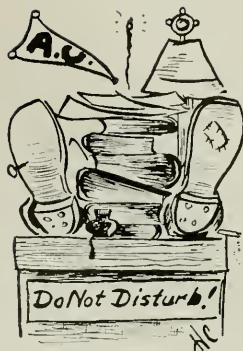
The Aucola

This year's AUCOLA started out with the big problem—twice as many students—same amount of money. Due to the scarcity of microscopes we wondered just what we could do to get everything in and everyone satisfied. But then, as we stopped to think it all over, we decided that no one ever pleased everyone anyway, so we became a little more cheerful and rolled up our sleeves.

One of the big things on our collective minds was—who will we get to print the book, as we definitely wanted someone who would work with us and co-operate with us. The happy solution to all our problems came when we contracted with the Clark Printing Company to publish the book. We feel it only just to say that without the helpful suggestions and constructive criticisms of Mr. Clark and Mr. Flammer, the engraver, the yearbook would never have worked out as well as it has.

Once we had that behind us, we started thinking about just what we did want—a definitely new space arrangement, more space to activities, better pictures all around, a certain distinctive touch and so on into the night. The light in the AUCOLA office burned into the wee small hours and information by telephone became the latest innovation. Aspirin and coke bottles began to compete with the typewriter for space. Editors Chuck and Blossom regularly knocked their heads together fixing the layout (which we all think is strictly tops and with which we hope you will agree). Finally everything was in and the book was out—thanks to all those guys and gals whose names may or may not appear in print but without whose help and encouragement the AUCOLA would never have reached the publishers' desk.

So here for your bouquets of roses and/or thorns we present the 1947 AUCOLA. Pleasant browsing.



Staff

CHARLES B. NORRIS Editor
AUDREY BLESSING Assistant Editor
ANN GRAHAM Features Editor
SARAH EHLERS Formal Photography
BRUCE HOAK Formal Photography
GORDON HAWK Informal Photography
ALICE BEACHLER Copy Editor
WILLIAM COWAN Sports Editor
HARRY CASTERLIN Art Editor
J. STUART RICH Business Manager
CAROL LONSDALE Assistant Business Manager
MARTHA BROWN Advertising Manager
FRED CARL DOROTHY KARAM HELEN MAYO ANN NICHOLS
JUNE PLUMMER MARY ELLEN SEILER
BARBARA SPANGLER BILL WAHL





Editor

GEORGE TOLLEY

Managing Editor

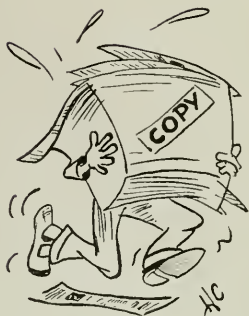
BERNARD LEVIN

Business Manager

ROBERT McLAUGHLIN

The Eagle

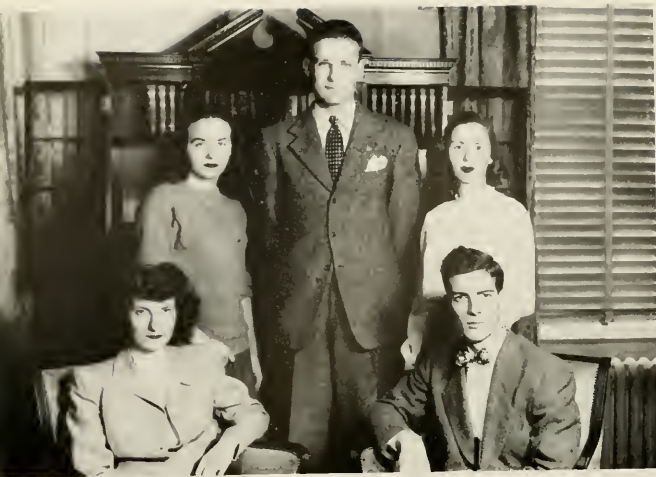
Despite copy that never got there, lack of help, Buicks that broke down, no advertising, confusion over size, and so on, *ad infinitum*, the *Eagle* managed to fly its usual erratic but lofty course this year. Editor, Editor, Editor, yes Tolley our 1943 chief has returned. There was never a moment without doubt, never a perfect issue, never an edition according to schedule. First is was "Letters to the Editor," then the insane idea of a full page of pictures with no advertising and no money. After the decision of the Publications Board it was advertising and more advertising, money plus, more pages with pictures galore. The Christmas issue turned out to be a herculean task. Besides the factor of a blizzard there was the big secret of MGH best-loved girl, with hidden page proofs complicated by a slip of the tongue. Would, could, B. Winograd keep the secret? All during the year there were the issues of the telephone and the Art Department. Close that door, PLEASE! Midway of semester, the *Eagle* took a poll that revealed that most students agreed to disagree. Not confining itself purely to print, the *Eagle* entered the realm of politics to sponsor Frank Pierce. "Who is this fellow Pierce?" "Is he a student here?" Politics, Politics extras and more politics went on into the night. The *Eagle* also took advantage of the adjoining music rooms to indulge in piano. Bach, Beethoven and Bernie's humor became known campus wide. When February came, Tolley stepped out and Levin stepped in, bringing more semblance of organization and embroiling in campus issues. This, then, was the American University *Eagle*. In true, trite *Eagle* style, its name rings true to every journalist and/or staff member who skipped classes, attended its midnight sessions, or did any part of its day and night work.



Staff

GEORGE TOLLEY Editor-in-Chief
BERNARD LEVIN Managing Editor
HARRY HITES Sports Editor
ASTRID NYE Make-Up Editor
BARBARA KENDRICK Copy and Proof Editor
JO HENDRICKS Office Manager
ROBERTA HOWARD Circulation Manager
WINIFRED HUBERMAN Advertising Manager
ROBERT McLAUGHLIN Business Manager
PAT ROONEY Assistant Business Manager
PAUL OBLER Feature Editor
MARY AXELSON FAYE BAKER DEVOTA BRADFORD
MARY CHRISTOPH PHIL DIXON DON GEYER CHARLES GIESE
FRAN KAPLUS DICK LEWIS ELY LIEBOW GIL LYONS
D. SHERMAN ROBERT STEVENS KEITH TAYLOR
GAIL TERRILL INEZ ZUCKER





Freshman Bible

Editor

AUDREY BLESSING

Cheerleaders

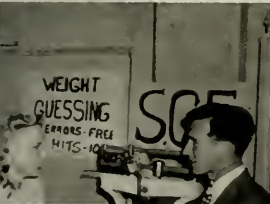
Cheerleader

KEN JONES



A bigger and better Freshman Bible came out this fall, complete with slick covers—a non-existent item during the years of shortage. It was a summer creation and no mistake with Editor "Blossom" dashing around, wildly begging anyone who knew anything about the school to please give her some facts and figures. Despite the fact that the President of every organization on campus decided to be a million miles away, with the help of Chuck Norris, Joyce Gochenour, Peggy Peoples, and Johnny and Mike Harrison all vital statistics wended their way at last to the printed page. Art by Lacita Gregg livened up the many pages of information for the "Frosh." A vote of thanks goes to the printer, Mr. Thomas, who so patiently read the many galleys and got the book together.

A new, bigger gym, a fine team, and plenty of students, created a most pleasing situation for this year's Cheerleaders. Under the direction of Ken Jones; Helen DiBiasi, Jim Duley, Lenore Johnson, Betty Mehrling, and Mike Roth, did their energetic bests to give A.U. the old but not worn out "college try" spirit. Ken Jones, his profile, and his V for victory sign became famous—ditto the drummer. Helen DiBiasi carried on alone at the CCNY game with the aid of the many exuberant A.U.-ites. The squad has really done a fine job of raising enthusiasm and next year look forward to even bigger crowds and better routines. At home games from, "Come on Orange, Come on Blue" to "Give a Yell," the Leonard Gym echoed to the sound of spirited students.



ORGANIZ

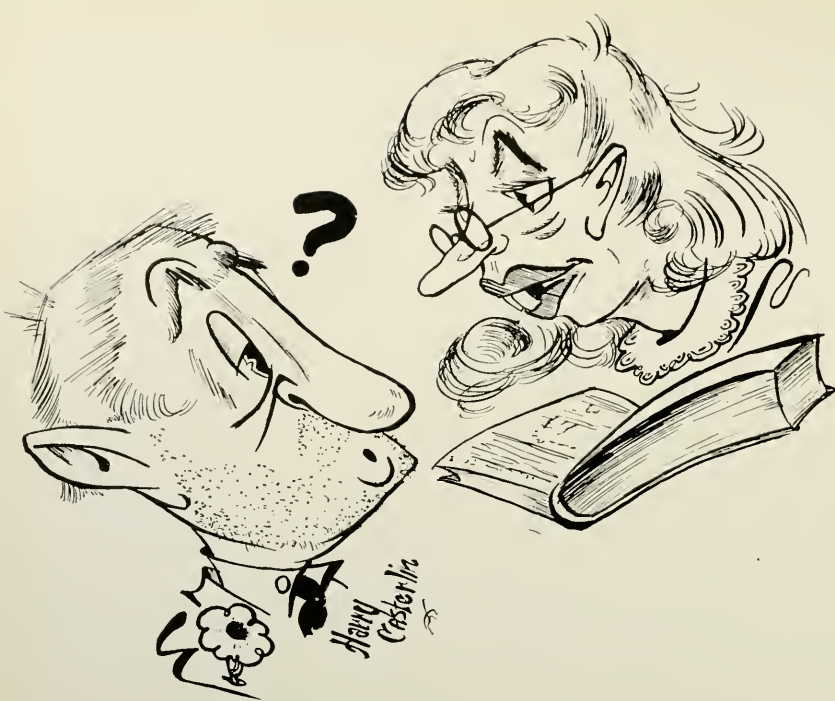
Honorary Fraternities

Social Fraternities



A T T I O N S





Honorary Fraternities

The honorary organizations at American University serve to highlight student interest in special fields and to recognize outstanding ability and leadership. As a consequence there are nine honoraries on campus covering a variety of fields. Members of these groups feel it their responsibility as members of these organizations to take a leading part in any campus activity connected with their group. Omicron Delta Kappa, National Senior men's honorary, just recently became active on campus after a two years' forced absence. This organization represents men of high scholarship and active service to the university. Cap and Gown, Local Senior women's honorary, also elects to membership on the basis of loyalty, service and high scholarship. The College Honor Society reward for scholarship alone is the American University equivalent of Phi Beta Kappa. Alpha Psi Omega, youngest honorary, recognizes faithful service and outstanding ability in dramatics. Beta Beta Beta marks top honors in the field of biology. For meritorious work over a period of years in college publications, there is the national journalistic fraternity, Pi Delta Epsilon. Students of high scholastic average and a penchant for the social sciences are tapped semi-annually to Pi Gamma Mu. The Poetry Club, formerly the national, Omicron Epsilon Pi, taps to its membership all those who show a talented interest in things poetic. The distinction of being elected to "Who's Who Among Students in American Universities and Colleges" is given to those Juniors and Seniors who have made outstanding contributions to the University.

President:

ELIZABETH GILLESPIE

Members:

DEAN CARTER, JAMES EDEN,
JO JO ELAM, DONALD GORMLEY,
FLORENCE, LYMAN, LEROY SMITH,
MR. JAMES McLAIN,
MISS MARY F. MILLER



Alpha Psi Omega

Beta Beta Beta

President:

ROSALIE CORRADO

Members:

VIRGINIA BLACKFORD, MARIAN
BURDICK, PAUL CALABRISI,
VIRGINIA HANUSIK, JOHN
HARRISON, JEAN HICKMAN
ESTHER JACOBOWSKI, FRANCIS
KENDRICK, IRA KLINE, BERT
MEISTER, CARLYLE NIBLEY,
BETTY RICHARDSON, JEANNE
SHIFLET, MARGARET SMITH,
DR. HELEN SLAGITT, DR. STONEBURG





Cap and Gown

President:

ROSALIE CORRADO

Members:

JOYCE GOCHENOUR

ANN GRAHAM

MISS MARY L. BROWN



Omicron Delta Kappa

President:

MR. JAMES L. McLAIN

Members:

DR. JOHN E. BENTLEY,

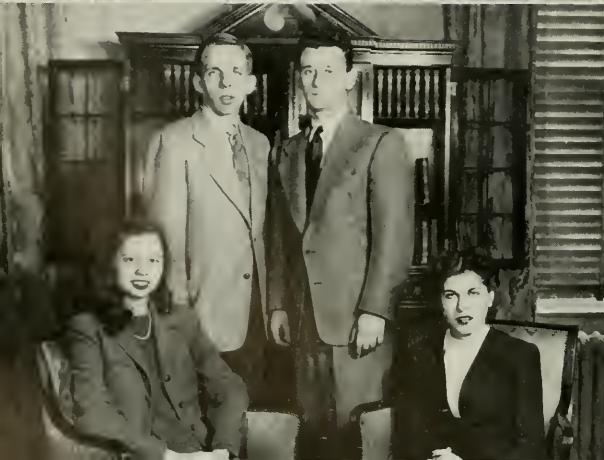
GORDON COWAN,

JAMES EDEN, JOHN HARRISON,

DR. WALTER SHENTON, GEORGE

TOLLEY, DR. GEORGE WOODS,

HERBERT WOODS.



Pi Delta Epsilon

President:

JEANNE LEAR

Members:

AUDREY BLESSING, ROSALIE

CORRADO, LEE COZAN, MERIDEL

DICKINSON, ANN GRAHAM, CHARLES

NORRIS, GEORGE TOLLEY

Pi Gamma Mu

President:

FRANCES KAPLUS

Members:

FAYE BAKER, JOHN COTRONA,
JOYCE GOCHENOUR, ANN GRAHAM,
JEANNE LEAR, MISS BARNES,
MISS HALL, MR. STAPAY



Poetry Club

President:

FRANCES KAPLUS

Members:

MARJORIE HARRISON
PEARL KURKHILL
LARRY MCGILL

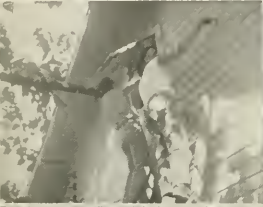


Who's Who

Members:

AUDREY BLESSING, FREDERICK
CARL, ROSALIE CORRADO,
JOYCE GOCHENOUR, ANN GRAHAM,
JOHN HARRISON, FRANCES KAPLUS,
JEANNE LEAR, PEGGY McFARLAND,
JANE NICHOLS, ELIZABETH
RICHARDSON







Panhellenic Council

The Panhellenic Council, governing body of relations between all women's Greek letter fraternities on the campus, was faced with one of the biggest problems in all its history when more than one hundred women went through the fall rush season. Many months of discussion and planning have resulted in a revision of rush rules. Due to great conflicts in schedules, the Council was forced to meet at the early hour of 8:30 A. M. for its regular meetings. The big issue for first semester was the amount of room rent for the sorority rooms. The Administration finally decided upon the amount of \$100 for the calendar year from September to September. On December 13 the "Interfrat" came off beautifully. Panhellenic thanks the Interfraternity Council for supplying the room, the orchestra, and the tickets. The "quota" as of the new semester was raised to thirty and "Panhel" had visions of big chapters once more. In January there was a combined meeting with the advisory board chairmen. In April the annual Greek Retreat was held. This same month also saw the new members and new officers take over. Song Fest was held with a prize going to the winning sorority. At commencement, the year closed as the Panhellenic Cup was presented to the Freshman sorority woman who had had the highest grade average for the two semesters.

OFFICERS

President
JEANNE LEAR

Vice-President
BARBARA SIMMONS

Secretary
BETTY KOENIG

Treasurer
JOYCE GOCHENOUR



The Interfraternity Council

OFFICERS

President
KARL MANN

Secretary-Treasurer
FREDERICK CARL

The Interfraternity Council is charged with the tasks of maintaining harmonious relationships between the University and men's fraternities, and the managing of all affairs that pertain to these organizations. Guided by its faculty advisor and friend, Dr. Marshall, it proudly points to a better relationship existing between fraternities than ever before. In a year of full schedules, Alpha Kappa Pi became Alpha Sigma Phi by the merger of the new nationals. A smooth and successful rushing season followed by a record pledging. Together with the Panhellenic Council, "Interfrat" sponsored the traditional Interfraternity Prom on December 13th. A good orchestra and ballroom combined to make it one of the best in many years. A new "land mark" was made, when, after months of debate and of raising quotas, the latter were finally abolished. So far the "no-quota" system has worked very successfully. In March, the first interfraternity stag party was given; its success bringing about still closer relationships. In April a cup was awarded this year's songfest winner. Among the new customs established during the year were a cup to the fraternity with the highest scholastic average and another to the one with the best intramural record. Awards went also to the individual fraternity man who contributed the most to college and fraternity life and to the independent who contributed the most to the college.



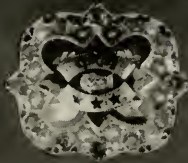


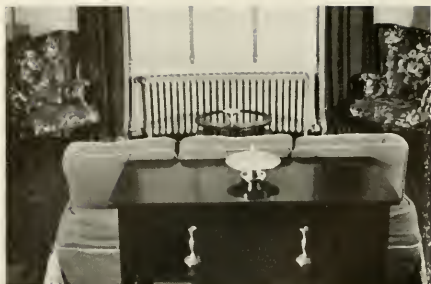
Phi Mu

BETTY JEAN KOENIG*President*
PATRICIA CRUM*Vice-President*
MERIDEL DICKINSON*Secretary*
MARY JAUDON*Treasurer*

RUTH DAVIS, HELEN DE BIASI, CATHERINE EMERY, ELIZABETH FERBER,
YVONNE GRUDER, BETTY JANE HALE, MURIAL HODGES, FRANCES JENKINS,
MARY JENNINGS, GENE KAMM, ANNE NICHOLS, LORRAINE NOBLE, JANICE
STONESIFER, SARA WILLIAMS, JUDY WOLFINGER.

Phi Mu is the second oldest secret organization for women in the United States. Founded at the Wesleyan Women's College, Macon, Georgia, in 1852, as the Philomathean Society, it celebrated its ninety-fifth birthday this year. The local Gamma Delta Chapter was chartered here in 1933, and was the first National Panhellenic group on the campus. The Phi Mu badge is a shield of gold with black enamel; the colors are pink and white; and the flower is the Enchantress carnation. In addition to its campus activities, it is the policy of the fraternity to engage in works of charitable and a social service nature. The national organization maintains a healthmobile, giving medical attention to people living in Georgia. All through the war Phi Mu aided many of the national service committees, especially the Red Cross. This chapter has been helping a nearby orphanage, and during the present year has furnished a complete doll house for their recreational facilities.





Delta Gamma

JOYCE GOCHENOUR*President*
AUDREY BLESSING*Vice-President*
CARROLL BISCHOFF*Secretary*
MARY JO THIEBAUD*Treasurer*

ALICE BEACHLER, HELEN BENNETT, MARY PAGE BROWNING, MARGARET COYLE, MARY LOU CRAGOE, MURIEL GHORMLEY, ELIZABETH GILLESPIE, DOROTHY KARAM, MARY FRANCIS LE GRANDE, HELEN MAYO, BETTY MEHRING, BARBARA NEGUS, PEGGY PEOPLES, ARLENE RABUCK, JUNE SCHWEITZER, BEVERLEY C. UNSWORTH, STELLA WERNER.

Delta Gamma, international fraternity, was established in 1874 at the Lewis School, Oxford, Mississippi. This fraternity was one of the seven groups which founded the National Panhellenic Council in 1902. Since then sixty-nine chapters have been founded. The local chapter, Beta Epsilon, was established here in 1936 when the local Epsilon Kappa went national. There were eight charter members. The Delta Gamma badge is a gold anchor with a white shield; the colors are bronze, pink and blue; and the flower is a cream-colored rose. In the field of philanthropy and social service, the fraternity has a program of "Aid to the Blind and Sight Conservation" plus a project on International Education. Beta Epsilon and the Washington alumni chapter this year sold chances on a car, the proceeds of which would go towards the funds for these programs. Delta Gamma's bi-annual convention was held during the summer of 1946 at Pasadena, California.





Alpha Chi Omega

JEANNE LEAR*President*
JOAN MELERVEY*Vice-President*
ANN GRAHAM*Recording Secretary*
MARJORIE HALL*Corresponding Secretary*
ALICE WESCHE*Treasurer*

MARY AXELSON, ELIZABETH BERGMAN, MILDRED BURKLAND, MARY CHRISTOPH, JENNY FRANKLIN, JULIETTE GEORGE, ISABEL GLAWSON, RUTH GRAHAM, ROBERTA HOWARD, PEGGY McFARLAND, JOAN PILKINGTON, JUNE PLUMMER, EDITH REDWAY, MARY WOOD.

Alpha Chi Omega, the seventh Greek-letter women's fraternity to be organized, was founded at DePauw University in 1885. Unique among women's fraternities, it was founded by a group of music students as a musical fraternity. Rapid expansion to other colleges made it imperative to allow liberal arts students to pledge. Today it numbers seventy chapters and more than twenty-three thousand members. The local chapter, Beta Rho, was installed on this campus in 1936 with nineteen members. Alpha Chi's have chosen for their badge a Greek lyre, encrusted with pearls. Their colors are scarlet and olive green. During the war the national organization ran many day nurseries, and through the years has endowed an artists' studio at the home of the famous composer, Edward MacDowell. The local chapter is engaged this year in recreational work for the District Children's Receiving Home. The fraternity holds its convention this year at the Chateau-Frotenac in Quebec.





Kappa Delta

BARBARA SIMMONS*President*
MARYADA FRANK*Vice-President*
KATHERINE DIXON*Secretary*
VIRGINIA HUEY*Treasurer*

MARION ALTING, PHYLLIS ALTING, ETHYL Y. BENSON, MARJORIE BIRDSALL, BARBARA BROWN, ANN BURNETT, RITA CAROTHERS, MARY J. CARTER, LORRAINE DIBBLE, EMMA JO ELAM, ANN ENGLE, EVELYN FAHEY, BARBARA HUEY, BEVERLY JENNINGS, LENORE JOHNSON, PATRICIA KEISER, ANNE NORLING, MARION REDLEY, DREW SCHULTZ, KATHLEEN STEPHENS.

Kappa Delta, National Panhellenic Sorority, was founded at the Virginia State Teachers College at Farmville, Virginia, on October 23, 1897. Sixty-seven chapters located over the U. S. now make up the active membership. This June the sorority will celebrate its golden anniversary at its bi-annual convention held at Virginia Beach. The sorority colors are emerald green and white; the jewels are the emerald and the pearl; and the flower is the white rose. The local chapter, Beta Iota, was installed on this campus on April 3, 1943, making it the newest Panhellenic group on campus. Before its installation as a national sorority it existed as a local sorority, known as Sigma Phi Delta. Characteristic of all Panhellenic groups, Kappa Delta has its philanthropic projects, one of which is aid to the Children's Hospital in Washington, D. C. The local chapter participates by gifts of money and toys. The National Organization maintains beds in the Crippled Children's Hospital in Richmond, Virginia.





Phi Sigma Kappa

LEE COZAN*President*
BOB MALONE*Vice-President*
DEAN CARTER*Secretary*
BOB JENNINGS*Treasurer*

WILLIAM AIKEN, THOMAS AMATUCCI, NELSON ATERS, CHARLES BEHRENS, BILLY BINSWANGER, TED BRANTHOVER, SIDNEY BUTTERFIELD, RICHARD CORNWELL, PATRICK FITZGIBBONS, ROBERT FRAILEY, BILLY JO GRIFFIN, JOHN HARRISON, BRICE HORTON, CLARENCE JARBOE, ARTHUR KAMM, MIKE KATEN, FRANCIS KENDRICK, MCKINLEY LUTHER, JOSEPH McCARY, RICHARD McCONKEY, IRVING MILLS, MICHAEL MORRE, CARL PATTERSON, EDWIN RABBITT, BENJAMIN RESPESS, WILLIAM RICHARDSON, LEROY RINALDI, BRITT SCHWEITZER, GERALD SCHWEITZER, THOMAS SCHMIDT, FRED SHARRAH, JAMES STRONG, JOHN SYSAK, GEORGE TOLLEY, ROBERT TREISLER.

In 1929, the Epsilon Triton Chapter of Phi Sigma Kappa was established on the American University campus as the local fraternity, Phi Beta Zeta. Eight years later, it became the first national fraternity established at the University, with a charter membership of twelve. Phi Sigma Kappa, itself, was founded in 1873 and has grown to have over fifty chapters. The fraternity colors, by which it is identified, are silver and magenta. The flower is the red carnation. After a year of reactivation since the war, Epsilon Triton now has thirty members. This year's activities were characterized by readjustment to the postwar situation. Old members returned to A.U. and new members were initiated. Headquarters is the house on Fraternity Hill, scene of formal meetings and social gatherings. This year there were meetings, parties, dances, initiation, and sports; all coupled with a good deal of hard work, dedicated to the ideals of Phi Sigma Kappa; Brotherhood, Scholarship, and Character.





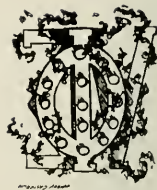
Alpha Tau Omega

FREDERICK CARL*President*
LEWIS LaFEVER*Vice-President*
WILLIAM PHILLIPS*Secretary*
JOHN COTRONA*Treasurer*

PAUL BAILEY, RALPH BENSON, EUGENE BETTS, STANLEY BETTS, LAWRENCE BETHEL, JOSEPH COWAN, WILLIAM COWAN, JOHN CRICKENBERGER, WAYNE CULP, RICHARD DAVIS, ROBERT DICHIARA, LEROY DOOLITTLE, FREDERICK FLING, GERALD FLING, ROBERT FRASER, DOMINIC FRISINA, BARTLEY FUGLER, BERT GASTER, DONALD GORMLEY, CLIFFORD GROHSGAL, GRANT HALLOCK, JAMES HOLLIS, CHARLES HUDSON, HARVEY HUEY, JOSEPH HOSSICK, MARTIN JOHNSTON, LEONARD KEDDA, ARTHUR KING, MILTON MILESKI, ROBERT MILLER, ROBERT NUGENT, CHARLES OSBORN, JAMES POWELL, EUGENE PICKETT, GEORGE SKIRM, LEROY SMITH, WILLIAM THOMAS, LAWRENCE WINSLOW.

Alpha Tau Omega Fraternity was founded at Richmond, Virginia, September 11, 1865. The first chapter was established at Virginia Military Institute that same year. Although the early expansion of the organization was restricted to the South, it was the first Southern Fraternity to establish chapters in the Northern States. The official publication of ATO is *The Palm*. Other features of ATO include ATO's national placement service, a *Career Booklet*, and a Vocational and Veteran's Advisory Board. ATO has ninety-five active chapters in the United States and one hundred and three alumni associations. The fraternity colors are azure and gold; the flower, the white tea rose. The Epsilon Iota chapter was formerly the local fraternity, Alpha Theta Phi, founded November 23, 1928. Last February the old Alpha Theta Phi house, used during the war by the U. S. Bomb Disposal School, was returned to the fraternity and was promptly remodeled for the chapter's use.





Alpha Sigma Phi

KARL MANN*President*
JAMES EDEN*Vice-President*
PHIL WARNER*Recording Secretary*
BRUCE HOAK*Corresponding Secretary*
JAMES JOSEPH*Treasurer*

GUY ANSELMO, CLAUDE COFFEY, LOUIS DECKER, EDWARD DOBIHAL, JAMES DULEY, THOMAS EMMONS, HERBERT FRAHM, SAMUEL HILDEBRAND, KENNETH HILTZ, KENNETH JONES, WALLACE KELLEY, PAUL MYATT, JOHN OWENS, KENT RATH, LESTER SMALLEY, WILLARD SMITH, OTTO SONDER, HARRY SPALDING, BERNARD SPILMAN, ROBERT STEVENS, KEITH TAYLOR, WILLIAM WAHL, ROBERT WILDERMUTH.

Alpha Sigma Phi fraternity, founded at Yale University in 1845, is the tenth oldest national men's fraternity. Today it has twenty-eight thousand members in seventy-three chapters all over the United States. Before the consolidation of the fraternity Alpha Kappa Pi, the local chapter which was founded as the local fraternity Phi Epsilon Alpha in January of 1937, became the Alpha Iota chapter of Alpha Kappa Pi on May 30, 1940. Then, when in September, 1946, Alpha Kappa Pi and Alpha Sigma Phi agreed to merge their national organizations, the newly formed fraternity took the name of the latter group and the chapter at American University became the Beta Chi chapter of Alpha Sigma Phi. After being inactive for three years due to the war, Alpha Sigma Phi, returning to its chapter house on campus, has been able to re-condition it for fraternity use. The fraternity's colors are stone and cardinal. The flower is the Talisman rose.



C. & C.

Coat, Towel & Apron Supply Co.

INC.

2122 L STREET, N. W.

WASHINGTON, D. C.

—————
"AT YOUR SERVICE — PHONE US"

TOM'S AUTO SERVICE, INC.

Chrysler - - - Plymouth

SALES and SERVICE

The Chrysler Service Center of Washington

Chrysler and Plymouth Dealers

-:- 100% Factory Rated Service Station -:-

Showroom and Service Station

637 N STREET, N. W.

Michigan 2400

TOM AMATUCCI, P E K



TAKE IT

from a champ

The Government was right in classing milk as a "Basic 7" food for health, energy and strength. Our Sealtest Vitamin "D" Homogenized Milk adds both enjoyment and nourishment to your milk-drinking.

Sealtest . . . THE MEASURE OF QUALITY IN MILK

CHESTNUT FARMS



BEST WISHES . . .

As you set forth into a bright new world, let us wish you success and happiness in all undertakings. Whatever lies ahead . . . a brilliant career . . . a wedding in June . . . or just a well-earned vacation, we hope you will not forget us but count us always among the friends of your college days.

Julius Garfinckel & Co.

F STREET AT FOURTEENTH (4)

CAREER COURSES

STRAYER offers business training on the college level. Graduates secure positions as secretaries, accountants, executives. Special Eight-week Summer Courses in Shorthand and Typewriting.

B.C.S. degree conferred on graduates of Business Administration course majoring in Accounting subjects and Business Law.

SUMMER CLASSES—June 23 and July 7
FALL-TERM CLASSES—September 8, 15, 22

Ask for Secretarial or Accounting Catalog

STRAYER

COLLEGE OF SECRETARIAL TRAINING
COLLEGE OF ACCOUNTANCY

13th & F, N. W., Washington 5, D. C.

L. G. BALFOUR CO.

Fraternity Badges — Fraternity Jewelry
Novelties, Favors, Stationery, Medals,
Cups, Trophies, Class Rings, Class Pins,
Club Pins, Buttons, Convention Badges

STEPHEN O. FORD, Mgr.

Telephone: NAational 1045

204 International Bldg. 1319 F Street, N. W.
WASHINGTON, D. C.

METROPOLITAN POULTRY CO., INC.

425 - 11th Street, S. W.

Washington, D. C.

Phone District 2044

Serving Finest Foods for Finest
Institutions

PRATT'S

FRESH FROSTED

FOODS

"As Nature Made It We Retain It"

Compliments

of

Lloyd's

"America's One-Price Studios"

== PHOTOGRAPHERS ==

To Keep For One's Own

The memory of place . . .

Hallowed by happy moments,

The memory of time . . .

Young, fleeting, more precious than it
is possible to express.

The memory of all good things . . .

Thoughts, ideals and the many, many
good wishes, among which we hope
our own good wishes will have their
place.

Jelleff's

1214-20 F Street, Washington 4, D C

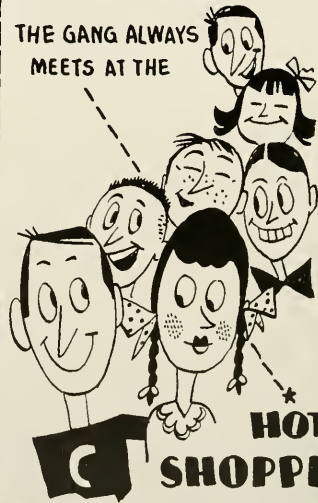
The Acme Disinfectant & Fumigating Corporation

1426 G STREET, N. W.

WASHINGTON, D. C.

NAtional 2058

THE GANG ALWAYS
MEETS AT THE



FAMOUS DRIVE-IN RESTAURANTS

Southern Dairies

Sealtest

ICE CREAM

Unswerving Devotion to a Worthy Principle

IS THE MEASURE OF GREATNESS AMONG
NATIONS, BUSINESSES AND INDIVIDUALS.

For almost half a century, the Griffith-Consumer Company has steadfastly pursued the ideal of striving to make Washington homes and institutions more comfortable places in which to live. The extent to which we have succeeded is marked by the fact that today the Griffith-Consumers Company is a leader among the largest businesses of its kind.

If you are already one of our customers, we pledge our continued efforts to merit your patronage. If you have not yet become acquainted with our merchandise and services, we invite you to try them.

GRIFFITH-CONSUMERS

1113 NEW YORK AVENUE, N. W.

MEtropolitan 1810

WASHINGTON, D. C.

M. E. HORTON, Inc.

Wholesale Grocers

Approval on the Label Means

Approval on the Table

620 C ST., S. W.

NA. 9890

Prescription Specialists

WESLEY HEIGHTS

PHARMACY

3303 - 45th STREET, N. W.

W.O. 6200

SALES and SERVICE

**UNITED
TYPEWRITER CO.**

*A Complete Line of Business Machines
and Supplies*

813 - 14th STREET, N. W.

WASHINGTON 5, D. C.

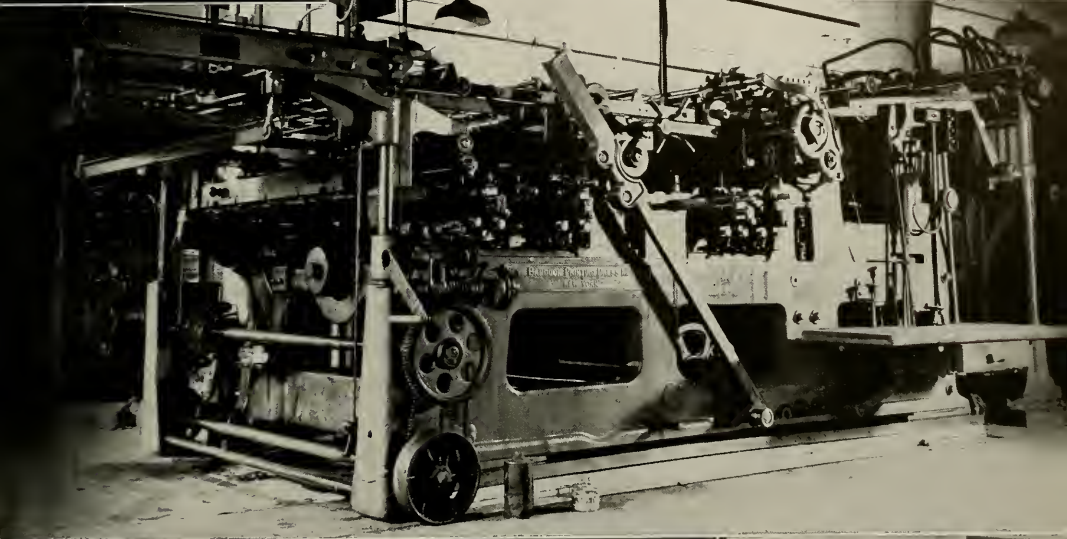
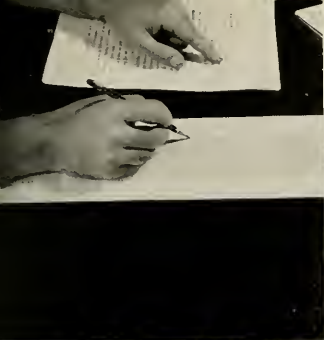
Republic 1177

PEAKE
Printers

*444 New York Avenue Nw.
Washington 1, D. C.*



NAtional 8979



❖ Printers of THE 1947 AUCOLA ❖
CLARK PRINTING HOUSE, INC.
1228 CHERRY STREET • • PHILADELPHIA 7, PA.

Consult us in planning next year's annual



PRINTERS
PUBLISHERS



BASIL L. SMITH SYSTEM

Acclaimed from Maine to Florida

—yes, from
Maine to Florida

Continuous improvements in yearbook design as well as in photo-engraving procedure are the primary considerations that influence your choice of engravers. Over a period of years, we have earned the distinction of being leaders in both design and procedure.

Our congratulations to your yearbook staff. It has been a genuine pleasure to cooperate with them in producing your class record book.

STEVENS HIGH (Me.)
STATE TEACHERS COLL. (Mass.)
PUTNAM ACADEMY (Conn.)
ATHENS HIGH (Ohio)
ST. MARY ACADEMY (Mich.)
CORTLAND TEACHERS (N. Y.)
TEMPLE UNIVERSITY (Pa.)
UNIV. OF DELAWARE (Del.)
ALLEGHENY HIGH (Md.)
MAN HIGH SCHOOL (W. Va.)
FOREST LAKE ACADEMY (Fla.)

HERE'S A HELPING HAND

The only one of its kind—a "continuing" catalogue of over 150 modern and practical layouts plus helpful production information. Schools and colleges all over the country have found in this catalogue the EASY way to prepare their yearbooks and to execute the engraving part of the job.

Every yearbook staff needs one—reserve your copy of the NEW Fall edition now.



THE BASIL L. SMITH SYSTEM • 1016 Cherry St. • Phila. 7, Pa.

LILY CUPS

Paper

S. FREEDMAN & SONS

618 K STREET NORTHWEST

Washington, D. C.

NAional 7234

Compliments of

A Friend

Autographs

