


Aucola



1954

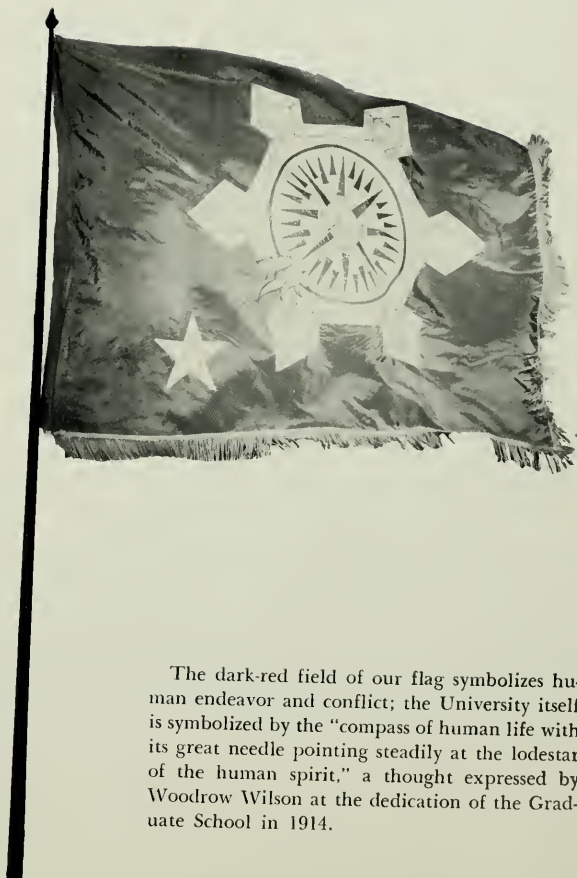






Digitized by the Internet Archive
in 2007 with funding from
Lyrasis Members and Sloan Foundation

<http://www.archive.org/details/aucola1954amer>



The dark-red field of our flag symbolizes human endeavor and conflict; the University itself is symbolized by the "compass of human life with its great needle pointing steadily at the lodestar of the human spirit," a thought expressed by Woodrow Wilson at the dedication of the Graduate School in 1914.



Hurst Hall at night



THE 1954 AUCOLA

*PUBLISHED ANNUALLY BY THE
UNDERGRADUATE DIVISION OF
THE AMERICAN UNIVERSITY
WASHINGTON, D.C.*

McKinley Building, future classrooms



OUR UNIVERSITY

*IN 1954
AS WE SEE IT*

| | |
|-----------------------------|-----|
| ADMINISTRATION | 7 |
| CLASSES | 21 |
| ACTIVITIES | 41 |
| HONORARY FRATERNITIES | 63 |
| SOCIAL FRATERNITIES | 71 |
| SPORTS | 89 |
| THIS YEAR | 101 |
| DIRECTORY | 141 |



Academic convocation in the chapel



ADMINISTRATION

IN TWO YEARS . . .



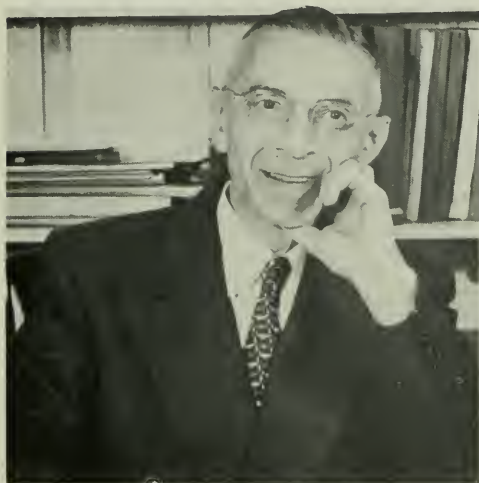
In two short years as President of The American University, Dr. Hurst Robbins Anderson has engineered many changes. The merging of the undergraduate divisions, the newly-painted buildings, and the large Freshman class are testimony to his work. We, the students, are grateful to Dr. Anderson for these improvements. We also realize that he has just begun to put his plans into effect, and we are willing and eager to lend him our aid in the growth of our university.





President Anderson

NEW TITLES AMONG THE DEANS



ERNST POSNER
Dean of the School of Social Sciences and Public Affairs
Ph.D., Berlin

MARGUERITE M. SHAW
Associate Dean of Students
B.A., Bates; M.A., Columbia



DONALD DERBY
Dean of Administration
B.A., Bowdoin; M.A., Ph.D., Harvard



JOHN EDWARD BENTLEY
Dean Emeritus and Director of Student Relations
M.A., Clark; S.T.B., M.R.E., Boston; Th.D., McGill



BETTY ELLIOTT
Secretary to the Deans



HAROLD E. DAVIS
Dean of the Undergraduate College
B.A., Hiram; M.A., Chicago; Ph.D., Harvard

NEW FACES ON THE BUSINESS STAFF



WILLIAM O. NICHOLLS
Director of Financial and Business Affairs
B.A., M.B.A., Syracuse

CLYDE W. MEREDITH
Vice President for University Development
B.A., B.D., Th.M., Th.D.





ANNE JENSEN
University Librarian
B.S. in L.S., Illinois



HAZEL H. FEAGANS
University Registrar
B.A., B.E., George Washington; M.A., American



STAFFORD H. CASPELL
Assistant to the President
B.A., American; B.S., M.S., Pennsylvania State



DAVID R. BOOKSTAVER
Dean of the Washington College of Law
B.A., Cornell; LL.B., Yale

SAMUEL ENGLE BURR, JR.
Chairman of the Department of Education
Litt.B., Rutgers; M.A., Wisconsin; M.A., Columbia; Ed.D.,
Cincinnati



RALPH C. JOHN
Chairman of the Department of Philosophy and Religion
B.A., Berea; S.T.B., S.T.M., Boston; Ph.D., American



JAMES L. MCLAIN
Chairman of the Department of Music
B.A., George Washington; Certificate, Peabody

RUBERTA M. OLDS

Chairman of the Department of Languages
Ph.B., Chicago; M.A., Columbia



MERRITT C. BATCHELDER

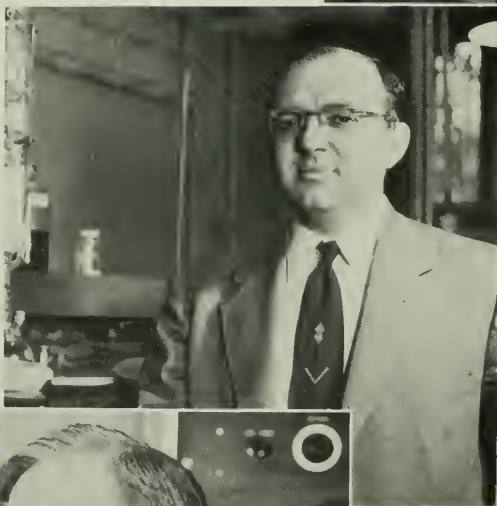
Chairman of the Department of English
B.A., Hillsdale; M.A. Columbia; Ph.D., State University of Iowa

ROBERT E. GATES

Chairman of the Department of Art
Phillips Gallery; Colorado Springs Fine Arts Center



STEPHEN HATCHETT
Chairman of the Department of Biology
B.A., American; M.A., Ph.D., Michigan



LEO SCHUBERT
Chairman of the Department of Chemistry
B.A., CCNY; M.A., Columbia; M.A., American



BANCROFT W. SITTERLY
Chairman of the Department of Physics
B.A., M.A., Ph.D., Princeton



WALTER F. SHENTON
Chairman of the Department of Mathematics
B.S., M.A., Dickinson; Ph.D., Johns Hopkins



HUGO SCHULZE
Chairman of the Department of Physical Education
B.A., American



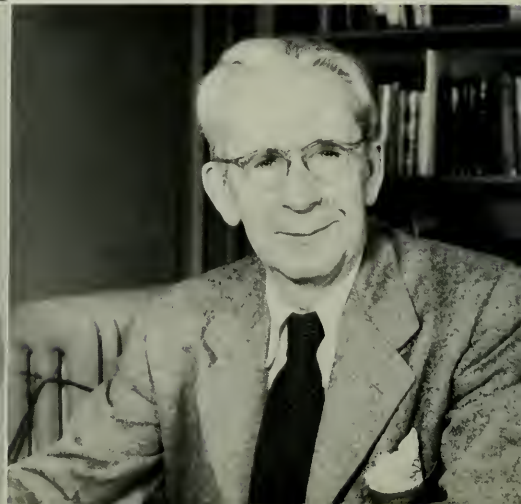
NATHAN A. BAILLY
Chairman of the Department of Business Administration
B.S.S., CCNY; M.A., Ph.D., Columbia



JOHN H. SMITH
Chairman of the Department of Statistics
B.A., Iowa State Teachers; M.B.A., Ph.D., Chicago

FRITZ KARL MANN
Chairman of the Department of Economics
Dr. Jur., Goettigen; Ph.D., Berlin

PITMAN B. POTTER
*Chairman of the Department of International Relations
and Organization*
B.A., M.A., Ph.D., Harvard



CATHERYN SECKLER HUDSON

Chairman of the Department of Political Science and Public Administration

B.A., Northwest Missouri State; M.A., Missouri; Ph.D., American



AUSTIN VAN DER SLICE

Chairman of the Department of Sociology and Anthropology

B.A., M.A., Kansas; Ph.D., Pennsylvania



CHARLES K. TRUEBLOOD

Chairman of the Department of Psychology

B.S., Earlham; B.S., Haverford; M.A., Ph.D., Harvard

WILLETT M. KEMPTON

Chairman of the Department of Communication

B.A., M.A., Wisconsin





Looking from the east entrance of Hurst Hall



CLASSES

THE CLASS OF 1954

We are now leaving the University with which we have lived and grown for the past four years, and we are taking with us many memories.

Four years ago we were introduced to our school and its traditions — the coffee shop with the juke box playing "The Thing," capping and the snake dance, Petro's coffee, all-night carolling, a Mason-Dixon victory, and exams in the stiff lines of chairs in Clendenen.

We soon became seasoned Sophomores. That was the year of the big snowstorm the night of "Seasons Greetings." It was the year of Paul F. Douglass' resignation, of "Spring Bit Me" and of the science show with its exploding volcano.

We moved to upper classmen and welcomed Dr. Anderson and his family to the President's house. "Pop" Cassell became Assistant to the

President, and "Dutch" Schulze led his Eagles to the Mason-Dixon finals and a heart-breaking loss to Loyola in overtime. This was the year of elections and the all-night session in Leonard with WAMU bringing us the returns. We remember the Sibley hospital fracas and "the bugle blows at eight."

We entered our last year at A.U. When we returned last fall we were greeted with new paint, a library that was at last a library, and a tremendous Freshman class. We were sorry to note the passing of the old coffee shop, but soon felt at home in our bedroom-pink "Eagles Nest." The green growing things in the dining hall took more time to get used to. At the basketball games we cheered with our youngest cheerleader, Kathy.

We leave now, pushing these memories aside to make room for what is to come.



Senior Class Officers: Sam Albert, President; Miriam Thompson, Vice President; Jean Sherwood, Secretary; Al Shute, Treasurer.



SAMUEL OSCAR ALBERT, Washington, D.C.; B.A. in Mathematics: Delta Phi Alpha 3,4; Pi Delta Epsilon 3,4; Omicron Delta Kappa 3,4; Chemistry Club 3; Deutsche Verein 1,2,3,4; Eagle 1; Math-Physics Club 3; Varsity "A" Club 3,4; WAMU 2,3,4; Tennis Team 1,2, Captain 3, 4; Senior Class President; Intramural Tennis, Basketball 1.

JAMES WEBSTER ALLEN, Washington, D.C.; B.S. in Mathematics and Physics: Varsity "A" Club 1,2; Math-Physics Club 3; German Club 3; Varsity Baseball 1,2.

EDWARD DELEVAN ANDRUS III, Alexandria, Virginia, B.S. in Geology; Alpha Tau Omega 2,3,4; Pi Delta Epsilon 3,4; Aucola 3, Photography Editor 4; Intramural swimming, basketball, volleyball, softball; Eagle 3,4; Future Teachers of America 2,3,4; I.F.C., 3.

LYLE TURNER AQUILINO, Arlington, Virginia; B.A. in Psychology: Kappa Delta 2,3,4.

FRANCES ELIZABETH ARRAND, Flint, Michigan; B.A. in Sociology: Alpha Chi Omega 1,2,3,4; Choir 1,2,3,4; A.U. Theater 1,2,3,4; Alpha Psi Omega 2,3,4; Clef 2,3; Pan American Club 1; Wesley Foundation 3,4; Student Christian Fellowship 1,2; Cap and Gown 3,4.

LILLYAN CUNNINGHAM BACHELOR, Santa Fe, New Mexico; B.A. in Philosophy.





CHARLES N. BAER, Tamaqua, Pennsylvania; B.S. in Chemistry; Phi Sigma Kappa 2,3,4; Varsity Basketball 1,2,3,4; Baseball 1, 2,3,4; Chemistry Club 3,4; College Council 3; Math-Physics Club 3.

MIRIAM ANDRESE BAILEY, Savannah, Georgia; B.A. in Sociology.

THOMAS EUGENE BARLOW, Alexandria, Virginia; B.A. in Business Administration; Student Government 2,3, President 4; S.A.M. 2,3,4; Omicron Delta Kappa 4.

GEORGIA ANNE BENNETT, Brunswick, Maryland; B.S. in Radio and TV; Phi Mu 3,4; WAMU 3,4; Alpha Psi Omega 3, Secretary-treasurer 4; Radio-TV Guild 3,4.



MARVIN LEWIS BLAYLOCK, Washington, D.C.; B.S. in Business and Industrial Management; S.A.M. 3, Treasurer 4; Student Council, Treasurer 4.

GLENN CHARLES BOBO, Wichita, Kansas; B.A. in Business Administration.

ELIZABETH STEPHENS BOLE, Pensacola, Florida; B.S. in Geology; Kappa Delta, 2,3,4; Aquiana 1,2,3; Women's "A" Club 2,3,4.

KATHERINE ANNE BROOKS, Washington, D.C.; B.A. in French; Alliance Francaise 4; Spanish Club 4.



8:30 AM —

*The day starts with classes
in Hurst Hall.*

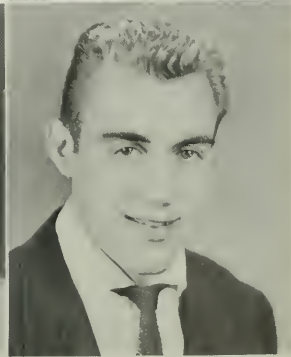


JAMES RICHARD CAUDLE, Albemarle, North Carolina; B.A. in Fine Arts.

VIRGINIA BALDWIN COOPER, Arlington, Virginia; B.A. in History; Pan American Club 1; International Relations Club 2,3,4; Methodist Student Movement 3, Secretary-treasurer 4.

RAYMOND EARL DALY, Kane, Pennsylvania; B.S. in Physical Education; Phi Sigma Kappa 2,3,4; Varsity Basketball 1,2,3, Captain 4; Varsity "A" Club 2,3,4.

CHARLES ALTON DAVIS, JR., Washington, D.C.; B.S. in Biology; Alpha Sigma Phi 1,2,3,4; Beta Beta Beta 4; Omicron Delta Kappa 3,4; Chef 1,2; WAMU 2,3; College Council 1,2, President 4; Music Club 3; President Junior Class.





WALTER H. DIEGEL, Arlington, Virginia; B.S. in Business Administration: Alpha Sigma Phi 2,3,4; Eagle 3, Business Manager 4; WAMU 3,4; Freshman Class Vice President; Pi Delta Epsilon 4; Community Association 3, Vice President 4; Orientation Board Chairman 4; Publications Board 3,4.

MARY ELEANOR DOW, Chevy Chase, Maryland; B.A. in Sociology.

EDWARD REID ELDER, Youngstown, Ohio; B.A. in Sociology; Alpha Tau Omega 3,4; Future Teachers of America 1,2,3,4.

BETTY B. ELLIOTT, Kensington, Maryland; B.A. in Spanish; Kappa Delta 1,2,3, Vice President 4; French Club 1; Chorus 1; Spanish Club 4; Intramurals 1,2,3; Varsity Hockey 2,3; Varsity Basketball 3; Woman's "A" Club 1,2,3; Sweetheart of ATO 2; Bunny Hop Queen 2; Future Teachers of America 4.



CHARLES ALAN FEDER, Washington, D.C.; B.S. in Business Administration: Varsity Golf 1,2,3,4; Intramurals 1,2,3,4; Alpha Tau Omega 1,2, Treasurer 3, Vice President 4.

LUCILE JUDGE FIREY, Washington, D.C.; B.A. in History.

ANDREA MARIE FORJONEL, Trinidad, British West Indies; B.A. in English.

WENCESLAO L. GALAN, Manila, Phillippine Islands; B.A. in Political Science.



11:30 AM —

*Chapel — an important part
of school life*



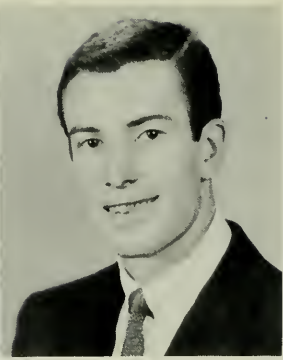
JOHN WILLIAM GALLOWAY, Nashville, Tennessee; B.S. in Radio and TV: Pi Delta Epsilon 2,3,4; WAMU 1,2,3,4.

GEORGE EDWIN GEESEY, Hagerstown, Maryland; B.S. in Radio and TV: Alpha Sigma Phi 3,4; WAMU, 3, Chief Engineer 4.

ROGER LAWRENCE GORDON, Alexandria, Virginia; B.S. in Radio and TV: Alpha Sigma Phi 2, Secretary 3,4; Radio-TV Guild 1,2; Pi Delta Epsilon 3, President 4; WAMU 1,2,3,4; Eagle 1,2.

DANIEL LYNN GREENFIELD, Baltimore, Maryland; B.A. in Sociology; Varsity Basketball 1,2,3,4; Varsity Tennis 1,2,3,4; Varsity "A" Club 3,4; Athletic Board 4; Omicron Delta Kappa 4.





LEWIS HALL GRIFFITH, Arlington, Virginia; B.A. in Political Science: Alpha Tau Omega 3,4; Varsity Baseball 2,3,4; Varsity "A" Club 2,3, Treasurer 4; Political Club 4.

WEST ALEXANDER HAMILTON, Washington, D.C.; B.S. in Communication.

JACQUELINE LEE HOFFECKER, Washington, D.C.; B.S. in Art: Freshman Class Vice President; Phi Mu 1,2,3,4; Women's "A" Club 1,2, Secretary 3, President 4; Chorus 1,4; Intramurals 1,2,3,4; Varsity Hockey, Basketball, Tennis, Softball; "The Night of January 16"; Cheerleaders 3,4.

ROBERT LINCOLN HORAN, Wildwood, New Jersey; B.S. in Social Science: Community Association 1,2,3; Alpha Tau Omega 1,2,3, President 4; Eagle 2; Political Club 1,2; Canterbury Club 2,3; Publications Board Chairman 2; Interfraternity Council President 4; Omicron Delta Kappa 4.



AMYRILLIS SYLVIA HUMM, Falls Church, Virginia; B.A. in Fine Arts: Pan American Club 1,2; Future Teachers of America 2,3,4; Canterbury Club 2,3,4; Art Guild 1.

JOYCE KYLENE HUTCHINSON, Arlington, Virginia; B.A. in Joyce: Delta Gamma 1,2,3,4; Women's "A" Club 4.

FRANCIS PIERCE KICK, Alexandria, Virginia; B.S. in Business Administration: Lambda Chi Alpha; S.A.M. 4.

ALICE RUTH KILEJIAN, Montclair, New Jersey; B.A. in Spanish: Alpha Chi Omega 1,2, Secretary 3, President 4; French Club 1,2; Spanish Club, Treasurer 3,4; Intramurals 1,2,3,4; Women's "A" Club 2,3, Treasurer 4; Mary Graydon House Council 3.



12:30 PM —

After lunch — relaxing in front of Mary Graydon



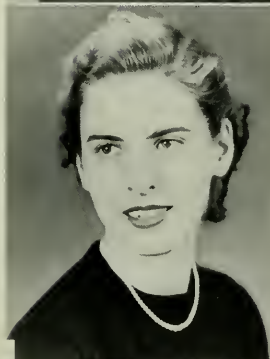
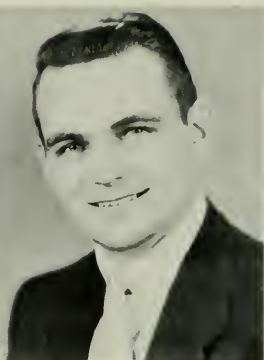
ANITA JANE KORKOLIS, Washington, D.C.; B.A. in Government: Alpha Chi Omega 1,2,3,4; Deutsche Verein 1; Pan American Club 1; Valeda 1,2; Intramurals; Publication Board 2; Student Bar Association 4; Law Review 4; Political Club 4; International Relations Club 4.

IRMA LAZAROFF KRANZLER, Washington, D.C.; B.S. in Biology; Beta Beta Beta 2,3,4; Chemistry Club 4; Alliance Francaise 1,2.

ROBERT JAMES LEWIS, Endicott, New York; B.A. in Philosophy and Religion: Canterbury Club, Chairman 3,4; Methodist Student Movement 3,4; Religious Board 3, Chairman 4; International Relations Club 3; Alliance Francaise 2,3.

EDWARD MANOUELIAN, Washington, D.C.; B.S. in Biology; Intramurals 1,2.





ALLAN THOMAS MARSH, Washington, D.C.; B.A. in Art: Who's Who 4; Delta Phi Alpha 2, Secretary 3, President 4; Deutsche Verein 1,2,3, President 4; Omicron Delta Kappa 4; Future Teachers of America 1,2,3, President 4.

JAMES ROBERT McARTHUR, Philadelphia, Pennsylvania; B.S. in Business and Industrial Management: S.A.M. 4.

ETHEL McEVOY, Washington, D.C.; B.A. in Sociology: College Council Vice President 4; Junior Class Vice President; Panhellenic Council 3, Treasurer 4; Phi Mu 1,2,3, President 4; Cap & Gown 3, President 4; Chorus 1; Aquiana 1,2,3, Secretary-treasurer 4; Aucola 3,4; Eagle 3; Political Club Secretary 3,4; Women's "A" Club 3,4; Student Christian Fellowship 1; Intramurals 1,2,3,4; Varsity 1,2,3,4; Campus Day Committee 3; Who's Who 4.

PATRICIA MILES, Washington, D.C.; B.A. in Art: Delta Gamma 1,2, Treasurer 3, Vice President 4; College Council 4; Women's "A" Club 2, Treasurer 3,4; Varsity Hockey, Basketball, Volleyball, Softball 1,2,3,4; Religious Board 3, Secretary-treasurer 4; Spanish Club 3; Panhellenic 4.

HARRY DAVIS MILLER, Luzerne, Pennsylvania; B.S. in Business Administration: S.A.M. 4.

ARTHUR JAMES MORALES, New Brunswick, New Jersey; B.S. in Industrial Management: Alpha Tau Omega 1,2,3,4; Varsity Baseball, Basketball 1,2,3.

SUSAN S. OLSON, Plainfield, New Jersey; B.A. in Sociology: College Council 3, Secretary 4; House Council Vice President 4; Publications Board 1; Intramurals 1,2,3; Eagle 2; Orientation Board 4; Future Teachers of America 4; Panhellenic Council 3, 4; Junior Alliance Francaise Secretary 1; Kappa Delta 1,2, Secretary 3, President 4.

SONDRA MEYER OUSLEY, Arlington, Virginia; B.S. in Biology: Phi Mu 1,2, Treasurer 3,4; Women's "A" Club 2,3,4; Music Club 1,2,3; Chorus 1, Secretary 2,3; German Club 2; Intramurals 1,2,3,4; Varsity Archery, Softball 2,3; Cap and Gown 3, Vice President 4; Beta Beta Beta 4; Chemistry Club 4.



2:30 PM —

*Time out for coffee in the
"Eagles Nest"*



CHARLOTTE JULIA PARKER, Washington, D.C.; B.S. in Biology; Deutsche Verein 2; Chemistry Club 2; Beta Beta Beta 2,3, President 4.

WALTER KENNARD PEARSON, Alexandria, Virginia; B.A. in Communication.

DORIS HELEN PERSON, Center City, Minnesota; B.A. in Music History; Chorus 2,3,4; Music Club 2,3, Vice President 4; Women's "A" Club 3,4; Cap & Gown 3, Secretary 4; Panhellenic Pledge Scholarship Cup 2; Panhellenic Scholarship Award 3; Who's Who 4; Phi Mu 2,3, Secretary 4.

EROTIDA MARIA PONCE, Arlington, Virginia; B.A. in Spanish; Alpha Kappa Alpha; Pan American Club 1,2,3, President 4; Methodist Student Movement 3, Vice President 4; Chorus 1,4.





NEIL POORMAN, Fort Eustis, Virginia; B.A. in Languages: Delta Gamma 3, President 4; Cap & Gown Treasurer 4; Orientation Board 3,4; Scholastic Achievement Board 4; Deutsche Verein 3; Alliance Francaise; Intramurals 3; House Council Vice President 3.

ALLAN RAPPOPORT, Baltimore, Maryland; B.S. in Biology; Phi Sigma Kappa 4; WAMU Business Manager 3,4.

JOANNE NAREHOOD RUSHBROOK, Clearfield, Pennsylvania; B.A. in English: Kappa Delta 2,3,4; Spanish Club 1; Eagle 1,2; Most Representative Sophomore Girl; House Council 2, Secretary 3; Chorus 1.

ESTHER SCHIFLET, Washington, D.C.; B.A. in Sociology; Chorus 1,2; German Club 1,2,3,4; Delta Phi Alpha 3,4.

JANET SYLVIA SCHOFER, Washington, D.C.; B.A. in Sociology.

JOHN GILBERT SELBY, Washington, D.C.; B.A. in Economics: Varsity Basketball 1,2,3,4; Athletic Board 1,2; Alpha Tau Omega 2,3,4; Varsity "A" Club 1,2,3,4.

JEAN RHEA SHERWOOD, Washington, D.C.; B.A. in Psychology: Pan American Club Secretary 1; Chorus 1,2; Intramurals 1,2,3,4; Softball Manager 3,4; Women's "A" Club Secretary 2, Vice President 3,4; Religious Board 2,3, Secretary-treasurer 4; Freshman Handbook 2,3; Panhellenic Council 3; Methodist Student Movement 3,4; Cheerleaders 3; Future Teachers of America Vice President 4; Senior Class Secretary 4; Alpha Chi Omega 1,2, Secretary 3, Vice President 4.

ALAN HENRY SHUTE, Alexandria, Virginia; B.A. in Sociology: Alpha Sigma Phi 1,2,3,4; Aquiana 1,2,3,4; Varsity "A" Club 3,4; President Freshmen Class; Treasurer Senior Class; Varsity Swimming 1.



5:00 P M —

The line-up — for dinner



BARBARA ANN SHYTLE, Washington, D.C.; B.A. in Elementary Education: Kappa Delta 1,2,3,4; Clef 1; Chorus 1; "Seasons Greetings" 1; Freshman Class Secretary; Pan American Club 1; Future Teachers of America 4; Intramurals 1,2; Orientation Committee 2.

EUGENE MARSHALL SPURLOCK, Washington, D.C.; B.S. in Physics: Aucola 1, Photography Editor 2,3, Editor-in-chief 4; Phi Sigma Kappa Treasurer 2,3, Vice President 4; Eagle staff photographer 1,2,3,4; Freshman Handbook 3; Pi Delta Epsilon 2,3, Vice President 4; WAMU 2,3; Publications Board 4; Publications Major Award 3,4; Math-Physics Club 3; Interfraternity Council Secretary-Treasurer 4; Campus Day Committee 3; Student Life Committee 4.

GERTRUDE J. STEPHENS, Atmore, Alabama; B.A. in History. MIRIAM McCORD THOMPSON, Silver Spring, Maryland; B.A. in English: Cheerleader 1,2,3,4; Junior Class Secretary; Senior Class Vice President; Aquiana 1; Choir 1; Kappa Delta 1,2, Secretary 3,4; Women's "A" Club 2,3,4; Intramurals 1,2,3,4; Varsity Tennis 3,4.





CARYL LIBBY TRATEN, Washington, D.C.; B.A. in Music: Chorus; Future Teachers of America; Music Club.

DOROTHY E. L. TUTTLE, Seattle, Washington; B.S. in Journalism: Women's Press Club, President 4.

EDWARD HESTON WALKER, Washington, D.C.; B.S. in Radio and TV: Alpha Sigma Phi 2,3,4; WAMU 2,3, Station Manager 4; Pi Delta Epsilon 3,4; Omicron Delta Kappa 3,4; Chorus 1; Student Council 4.

JOSEPH BORROWS WATERS, Washington, D.C.; B.A. in Music.

RONALD FRANKLIN WEBER, Lock Haven, Pennsylvania; B.S. in Social Science: WAMU 2,3,4; Varsity "A" Club 3,4; Pi Delta Epsilon 4.



WILMA LORAIN WELTZ, Washington, D.C.; B.A. in History: German Club 2,3,4; Future Teachers of America 4.

DONALD E. WHITE, Claymont, Delaware; B.S. in Psychology: Varsity Baseball 1; Varsity Basketball 2, Manager 3,4; Varsity "A" Club Secretary-Treasurer 3, President 4.

RICHARD MILTON WITTER, Washington, D.C.; B.A. in Sociology: Alpha Sigma Phi 2,3,4; Freshman Class Vice President; Sophomore Class President; Eagle 1,2; Freshman Handbook 1,2; Orientation Committee 2; Clef 1,2,3; "As You Like It" 1; "Misguided Missile" 1; "Spring Bit Me" 2; "Seasons Greetings" 3; Merit Award 2,3; Omicron Delta Kappa 3,4; College Council Comptroller 3,4; Who's Who 4.



8:30 PM —

Taking advantage of our activity cards!



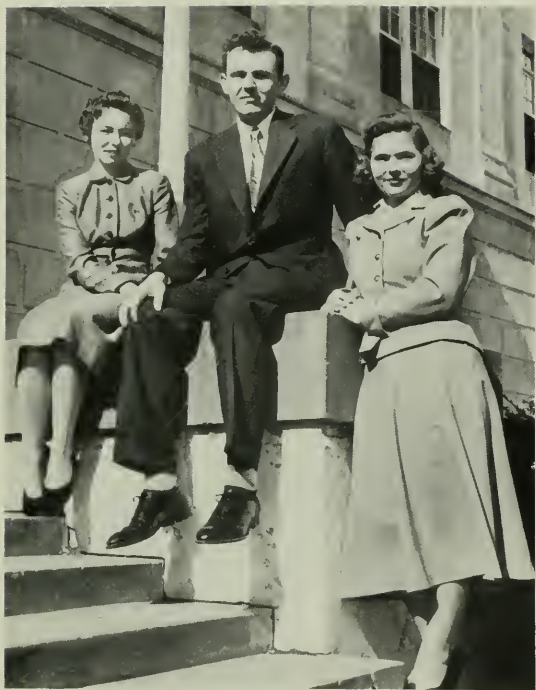
JOHN FRANKLIN WRIGHT, Washington, D.C.; B.A. in Fine Art.

UNPHOTOGRAPHED SENIORS

Joseph R. Brown
Ruth Elizabeth Brown
Grace L. Chavis
Edyth G. Coleman
Belisario R. Contreras
Harold L. Copenhaver
Eleanor M. Crosier
Laura E. Curry
Audrey F. Edmonds
Frederick W. Gibbs
Joan Goldman
Lela F. Hall
Willard D. Hubbard
Rita N. Ingrassia
JoAnn V. Jeffries
Joseph Leavitt
Ira Hamilton Lipscomb, Jr.
Gerard Julius Long
Edward A. Manookian
Claude W. McKenzie
Waldene H. Meadows
Joanna Mary Nickas
Alice Adams Padgett
Luis A. Passalacqua-Christian
John Edward Pugh
Elton Phillips Richards



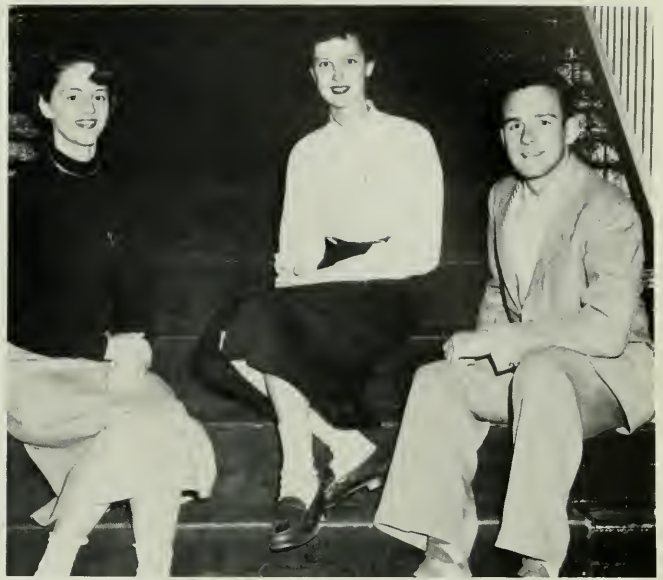
Marcelini Rivera
Philip Joseph Sadoti
Raymond H. Sargent
Dorothy Sawchuk
Ann Schweizer
Robert G. Skinner
David K. Tabor
Iona Trafton
Teresa Wohl
Donald Stanley Woodburn
Eugene Robert Zimmerman



Junior Class Officers: Nancy Ryan, Vice President; Carl Hevener, President; Audrey Ricketts, Secretary-Treasurer.

THE CLASS OF 1955

Almost, but not quite to that enviable "last year" position, the juniors made the most of their in-between-ness. There was the sudden realization that they had only 2 more years and that it perhaps might be wise to check their requirements. With this awakened interest in academic work there was still no lack of membership in activities. The choice of class members for "Who's Who" brought the usual flurry of excitement. Their fine work on the annual Junior-Senior Prom was well received by the graduating seniors and added the final mark of credit to the Class of 1955.



Sophomore Class Officers: Peggy Bole, Secretary; Jane Fuller, President; Jay Guy, Treasurer.

THE CLASS OF 1956

Neophytes bowing before the all-powerful Soph President, Brock Morris.



Sophomores — Freshmen dreaded them, and with good cause, but with the end of Kangaroo court, they had won over many friends. Skit night was proof of the sops' ability to produce an enjoyable show.



THE CLASS OF 1957

Freshman Class Officers: Toni Nuernberg, Vice President; Massey Loughman, Treasurer; Dick Horn, President. Not shown: Ann Barnard, Secretary.

Take new faces, add hesitant smiles, decorate with signs, top with an A.U. dink and behold! — another freshman. Armed with Handbooks and a wary eye for Sophomores, members of the Class of 1957 looked to be typical college frosh. However, the group soon showed itself to be any-

thing but typical. A wide variety of ability made the Talent Show "one of the best." Refusing to rest on their laurels, the freshmen bedecked the gym with blue and silver for the Sno-Ball. Taken together, it made an imposing record for the newcomers.

Cast of Freshman Talent Show





STUDENT COUNCIL: Col. Bolles, Dr. John, Dr. Gondos, Pat Miles, Shirley Geoffroy, Ethel McEvoy, Vice President; Sue Olson, Secretary; Tom Barlow, Co-President; Charles Davis, Co-President; Dick Witter, Comptroller; John Pugh, Midge Eisenlohr, Sara Van Dyke, Jerry Link, Lee Levy.

THE STUDENT COUNCIL

Last Spring the campus and downtown schools elected their separate councils. When the Undergraduate School was formed, and these two schools were merged, the councils joined as the

Student Council for the Undergraduate Division. They have had an increased responsibility in the allocation of student funds, and in the life of the undergraduate students.



Mary Graydon Hall — 11:59 PM



ACTIVITIES



CHEERLEADERS

Loretta Kriegsman, Jackie Hoffecker, Miriam Thompson, Joe Cannon, Jeanne Gedney, Jean Sherwood, Audrey Ricketts; *Front:* Kathie Anderson.

VARSITY "A" CLUB



Seated: Wim DeLooper, Secretary, Don White, President; Charles Baer, Vice President; *Second Row:* Bud Daly, Dick Parker, Jimmy Williams, Al Shute, Danny Greenfield, Carl Hevener, Ronnie Weber, Sam Albert, Dutch Schulze, Adviser. *Not in Picture:* Lew Griffith, Treasurer.



Cheerleaders Skit on Founders Day

WOMEN'S "A" CLUB



First Row: Ellen Coblentz, Ruth Saunders, Betsy Boos, Peggy Bole, Secretary; Frada Strauss, Betty Bole; *Second Row:* Pat Miles, Treasurer; Jean Sherwood, President; Sue Robinson, Vice President; *Third Row:* Pat Blake, Dorothy Hoogland, Ethel McEvoy, Sondra Ousley, Sheila Belle, Betty Porter, Miriam Thompson, Doris Person. *Not in Picture:* Miss Hawke, adviser.

THE LANGUAGE CLUBS

The purpose of the language clubs on campus is to stimulate an appreciation of the cultures of foreign countries through discussions, parties and other projects. El Club Pan Americano is the club for Spanish students; Der Deutsche Verein fosters an interest in German; and the Junior Alliance Francaise is the French club.

THE SPANISH CLUB: *First Row:* Erotida Ponce, President; Jane Fulier, Secretary-Treasurer; Carol Cooper, Rita Metaxatos, Vice President; Nancy Ryan, Jeanne Shuster, Pat Blake. *Second Row:* Barbara Radcliff, Betty Elliott, Sheila Belle, Pat Fox, Miss Olds, Adviser. *Third Row:* Tom Meyers, Irving Glassmyer, Rufus Fink.





THE FRENCH CLUB: Ruth Brow, Jill Jamison, Vice President; Marcia Eddy, President; Midge Eisenlohr, Mary Ann Leber, Mrs. Wyatt, adviser; Don Newton, Secretary-Treasurer; George Skirm, Bill Delorme, Dorothy Hoogland.

THE GERMAN CLUB: *First Row:* Betsy Boos, Audrey Ricketts, Rita Metaxatos, Treasurer; Loretta Kriegsman. *Second Row:* Jeanne Zitmore, Ellen Coblentz, Barbara Kuntz, Pat Fox, Janice Mullin, Charles O'Connor. *Third Row:* Samuel Polen, R. N. Mehta, Joe Waters, Alexander Hamilton, Dr. Frank, adviser; Stinchfield, Le Fevre, Carl Hevener. *Not in picture:* Allan Marsh, President; Sam Albert, Allan Rappoport.



AQUIANA

First Row: Pinky Gilbert, Carol Donsavage, Bettie Roland, Jan Hall, Marcia Eddy, Sherry Schoenfelder, Louise Ralph, Josephine Vermillion, Joan Albery. *Second Row:* Diane Blanken, Pat Van der Hyden, Charlotte Levy, Edith Fillion, Barbara Van Dusen, Joanne Hver, Lee Levy, Ellen Bailey, Donna Erdahl, Betty McWilliams, Maryse Delevaux, Helen Fogel, Sandi Shobe, Ada McLean. *Third Row:* Pete Swindler, Frank Martin, Eddie, Billy Compton, Bob Frailey, coach: Joe Gray, Marshall Algor, Al Shute. *Not in Picture:* Gloria Frailey, Pat Nicklaw, Don Grey, Jean Correy, Lois Allan, Alyce Mullen.





Scene from the Spring Water show, Fiesta de la Aqua.

CHEMISTRY CLUB: *First Row:* Robert McMurdock, Ada McLain, Doug Weiford, Kenny Kadala, Mr. Schubert, Adviser. *Second Row:* Chuck O'Connor, Mary Ann Dvorak, Flo King, Charles Ferriter. *Third Row:* Art Levy, Sue Tucker, Irma Kranzler. *Fourth Row:* Ralph Pode, Hiawatha Jones, Liz Chin, Virginia Ally.





NEWMAN CLUB: *First Row:* Loretta Kreigsmann, Secretary; Angel Lopez, Vice President; Joan Boglia, President; Sharon Shoemaker. *Second Row:* Muriel Mosby, Ada McLean, Jay Guy, Carol Holden, Fred Roff, Irene Kjersgaard, Al Gredone, Louise Ralph, Joe Cannon.



FUTURE TEACHERS OF AMERICA: *First Row:* John Doggett, Barbara Shytle, Midge Eisenlohr, Secretary; Jean Sherwood, Vice President; Bill Feagans. *Second Row:* Lee Levy, Rufus Fink, Commander Al-Shuhail, Elinor Houck, Sue Olson, Audrey Ricketts. *Third Row:* Pat Blake, Walt Eckbreth, Irving Glassmeyer, Dr. Burr, Adviser; Herbert Hicks. *Not in Picture:* Allan Marsh, President; Frank Wright, Treasurer.



POLITICAL CLUB: *First Row:* Larry McCoy, Vice President; Jim Flynn, President; John Apostolakos, Ed Carlough, Mr. Pilcher, Adviser. *Second Row:* Frada Strauss, Dottie Hoogland, Betty Porter, Charlie Peters, Harl La Place, Lew Griffith, Joe Shaheen, Wim de Looper. *Third Row:* Ellen Coblenz, Jeanne Shuster, Steve Feder, Al Stallone, Coral Holden, Commander Al-Sublai, Virginia Cooper, Martha Prince, Ina Silverman, Ronnie Weber. *Fourth Row:* Ernie Poore, A. J. Holley, Joe Grey, Mr. Grillo, John Grench, Ben Cotten, Jane Fuller, Carlton Rogers, Tom Meyers, Carl Hevener.

THE POLITICAL CLUB

What better place is there to learn about government than in Washington, D.C.? The political club is composed of students interested in

politicians and bureaucrats, and sponsors speakers from all branches of government. The originator and adviser of the club is Professor Pilcher.



HILLEL: Prof. Levin, adviser; Toni Neurinberg, Secretary; Jeanne Shuster, President; Evie Parent, Vice President. *Second Row:* Judy Gros, Ted Meyerson, Danny Greenfield, Hal Shupack, Peggy Coones, Al Rappoport. *Third Row:* Myron Sholnick, Norman Betler, Marvin Schned, Al Itzkoff, Bernie Jaffe, Sam Albert.



CANTERBURY CLUB: *First Row:* Pete Popham, Adviser; Peggy Bole, Secretary-Treasurer; Bob Lewis, President, Carol Cooper, Henry Robinson. *Second Row:* Dick Parker, Bob Horan, Edith Fillion, Ben Cotten, Sue Robinson.



METHODIST STUDENT MOVEMENT: Rufus Fink, President; Erotida Ponce, Vice President; Virginia Cooper, Secretary-Treasurer; Midge Eisenlohr, Marcia Eddy, Betty Porter, Jean Sherwood, Bob Barnes, Walt Eckbreth, Irving Glassmyer. *Not in Picture:* Phyllis Marsh, Donna Burgess, Marianell Fink.

RELIGIOUS CLUBS

Religious clubs are playing a more important part than ever in the student life on American University's campus. All faiths work and play together here, but they meet individually once a week to discuss and learn about their own be-

liefs. The four active organizations are the Methodist Student Movement; Hillel, for Jewish students; The Canterbury Club, for Episcopal students; and the Newman Club for Catholic students.



SOCIETY FOR THE ADVANCEMENT OF MANAGEMENT: *First Row:* John Pugh, President; Marvin Blaylock, Treasurer; Carol Clark, Secretary; Shirley Geoffroy, Vice President; Tom Barlow, Executive Vice President; Prof. Fields. *Second Row:* Commander Al-Suhail, Joe Gray, Ed Thomson, Mr. Miller, Dick Dyson.



MARY GRAYDON HOUSE COUNCIL: Doris Sampson, Dean Shaw, adviser; Irene Kjersgaard, Pat Harville, Treasurer; Sue Olson, Vice President; Doris Person, President.



ROPER HOUSE COUNCIL: Delight Ullmark, Joy Roll, Bernadine Spisak, Treasurer; Sally A. Ferry, Vice President; Nancy Snow, President; Carol Marks, Secretary; Anne Rider, Director. *Not in Picture:* Roalie Rizzo

WORK—STUDY GROUP



Students relaxing at the Roper House Halloween Party.



The American University Chorus, under the direction of Dr. James McLain, at the annual Christmas Concert.



RADIO-TV GUILD:
First Row: Ainslie Bricker, Sylvan Dubow, Vice President; Raymond Roche, Acting President; Bunny Leonard. *Second Row:* Lucile Miller, Joan Pope, Elizabeth Muller, Georgia Bennett, Secretary - Treasurer; Bob Parks. *Third Row:* Sam Scott, Joe Clifford, Alexander Hamilton, John Hitchcock, Fred Drake.



MUSIC CLUB: *First Row:* Jill Jamison, Treasurer; Mary Betchler, Vice President; Audrey Ricketts, President; Mrs. Hayes, Advisor; Jeanne Zitmore, Secretary; Sue Robinson. *Second Row:* Barbara Radcliff, Sue Mae Kinzey, Barbara Kuntz, Marlene Williams, Doris Person, Betty Hanes. *Third Row:* Rosalyn Bradford, Betsy Boos, Judy Boswell, Janice Mullin, Ellen Colblentz, Mary French. *Fourth Row:* Joe Waters, Bill Feagans, Carlton Rogers, Emil Kolly, Frank Sink.

FRESHMAN HANDBOOK: Gene Spurlock, Photographer; Pat Harville, Phyllis Holm, Harl La Place, Editor; Jean Sherwood.



610 ON YOUR DIAL . . .

W A M U



"This is George Geesey bringing you the latest news . . ."



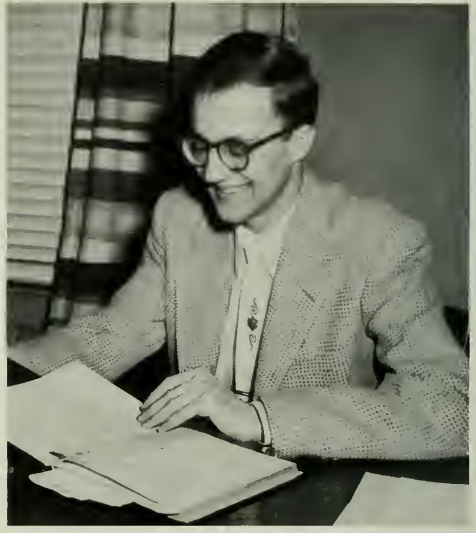
WAMU STAFF: *First Row:* Nancy Chick, Toni Neuremberg, Ellen Riley, Harl La Place. *Second Row:* Stu Krasner, Program director; Ed Walker, Station Manager, Roger Gordon, Program director. *Third Row:* Mary Ann Leber, Elizabeth Muller, Georgia Bennett, Carleton Rogers, Marcia Lowe, Ronnie Weber, Chief Announcer; Harry Nyquist, Allan Rappoport, Business Manager. *Fourth Row:* Bob Parks, Alexander Hamilton, Rudy Garcia, Sam Albert, Publicity director; Sonny Bell, Wm de Loooper, Bob Rickman.



John Galloway, Music director, prepares to run a tape of his show.



Ernie Poore, Editor-in-Chief, Fall Semester



Walt Diegel, Business Manager, Fall Semester

FALL SEMESTER STAFF: Bob Petree, Feature Writer; Lee Levy, Feature Writer; Nancy Ryan, Feature Writer; Harl La-Place, Associate Editor; Jill Jamison, Typist; Audrey Ricketts, Typist; Mary Ann Dvorak, Copy Writer; Ed Andrus, Photographer; Gene Spurlock, Photographer.



THE AMERICAN UNIVERSITY **EAGLE**

With deadlines, leads, by-lines, and editorials flying, the Eagle finds its way to dorms, sorority rooms and fraternity houses each week.

Ernie "Somehow you just don't look right to me" Poore headed the staff for the first semester with the assistance of business manager Walt Diegel.

Second semester Joy "Whowhatwhere-whenwhichwhyandhow" Jepson took over the reins of editor with Al Stallone as business manager.

The Mary Graydon Hall office became the headquarters of the staff during the second semester. It's greatest advantage (besides being convenient) is its nearness to the coffee shop for the traditionally starving journalists!



Business Manager Stallone and Editor Jepson discuss the amount of space left for copy after the advertising has been placed.

SPRING SEMESTER STAFF: Donna Erdahl, Copy Writer; Myron Scholnick, Feature Editor; Lee Levy, Feature Writer; Janet Bowie, Exchange; Ellen Riley, Exchange; Gene Spurlock, Head GooF Photographer; Carol Holden, Copy Writer; Jill Jamison, Typist; Mary Ann Dvorak, Copy Writer; Joyce Watts, Copy Writer; Ed Andrus, Photographer; Betty Porter, Assistant Business Manager; Carolyn Siple, Copy Writer; Jeanne Schuster, Copy Writer; Audrey Ricketts, Typist; Doris Lee Sampson, News Editor; Barbara Balas, Copy Writer.

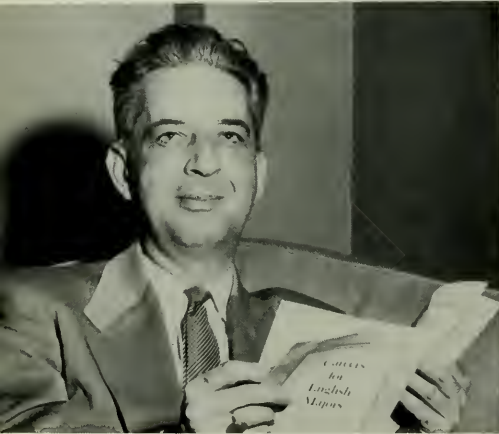




Sports Editor Dixie does some research.



Cover Artist Nancy.



Dr. Clark — he advised us.



Lee and Larry go over the books.

Copy Staff: Sue, Joyce, Frada, Barbara, Bonnie, Dorothy, Pat.



Ellen handled the seniors.



THE 1954 AUCOLA



Editor Gene busy cropping pictures.

Member :
Associated Collegiate Press

| | |
|--|----------------------------|
| Eugene Spurlock | <i>Editor-in-Chief</i> |
| Lucile Buice | <i>Layout Editor</i> |
| Ellen Coblentz | <i>Senior Editor</i> |
| Edward Andrus, Eugene Spurlock | <i>Photography Editors</i> |
| Dave Walker | <i>Sports Editor</i> |
| Frada Strauss | <i>Copy Editor</i> |
| Barbara Balas, Susan Robinson, Bonnie Aikman, Pat Fox, Joyce Watts, Dorothy Hoogland | <i>Copy Staff</i> |
| Nancy Chick | <i>Cover Artist</i> |
| Jill Jamison | <i>Typist</i> |
| Larry Betzler, Lee Levy, Brock Morris | <i>Business Managers</i> |
| Dr. Clark | <i>Faculty Adviser</i> |

And what a year for the yearbook! The Aucola Skit Night was one of the big events of the year — here's to more in the future. Those mysterious jokes in the darkroom . . . come on Ed and Gene, you can tell us. (All we heard was Gene's subtle reply: "We discuss the latest world events and women!") Our two offices: One at Leonard Student Center and the other in the blue Oldsmobile (unofficial but convenient!) Don't forget the precedent-setting *telegram* from the publisher. What's your title, Lucile? Oh Yes - ah, assistant to the editor! Gee whiz kids — write something! Can't pass up Lee and Larry — they managed the business. Nor Ed's flashing camera. And where would we have been but for Joy's witty and wise advice?

Lucile works with rule and pencil.

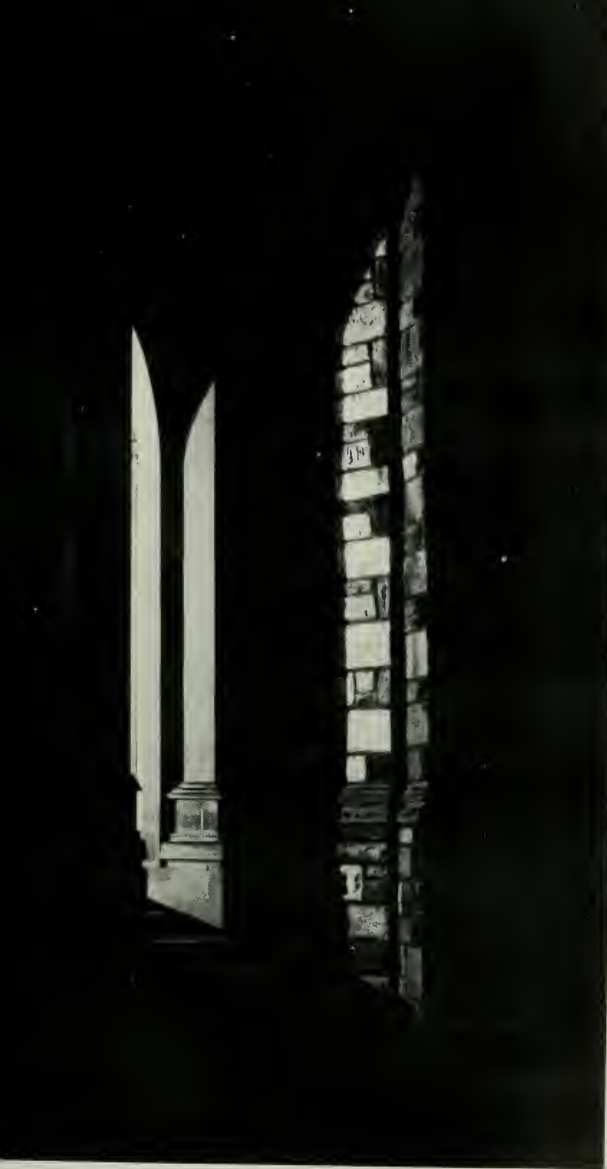


Gene and Ed — what developed?





Two seniors leaving the Chapel.



HONORARY FRATERNITIES



DELTA PHI ALPHA: Ellen Coblentz, Treasurer; Dr. Frank, Adviser; Sam Albert, Vice President; Allan Marsh, President; Rita Metaxatos, Secretary.

Delta Phi Alpha is the honorary German literary fraternity. Members are advanced students of German.



CAP AND GOWN: Doris Person, Secretary; Sondra Ousley, Vice President; Frances Arrand, Historian; Neil Poorman, Treasurer. *Not in Picture:* Ethel McEvoy, President.

Cap and Gown is the women's honorary organization for scholarship and leadership. Members must have a B average and be active in campus organizations.



OMICRON DELTA KAPPA

OMICRON DELTA KAPPA: *First Row:* Dean Bentley, Pete Popham, President; Dr. Clark, Secretary-Treasurer. *Second Row:* Dick Witter, Dr. Hatchett, Charlie Davis, Charlie Baer, Allan Marsh, Ed Walker, Sam Albert, Carl Hevener, Danny Greenfield. *Not in picture:* Bob Horan, Tom Barlow.

Leadership, scholastic achievement and service to school and community are the requirements for members of this honorary fraternity. New members are chosen by a two-thirds vote of the chapter. They hold monthly meetings; their main objective is encouraging scholastic achievement on campus.

ACTORS AND WRITERS



Alpha Psi Omega is the honorary group for actors, actresses, and those who work backstage in the dramatic presentations of the university. The picture on the right is a scene from the skit given by the group at their annual reception for new students.

ALPHA PSI OMEGA: Georgia Bennett, Secretary-Treasurer; Bob O'Connor, Vice President; Fran Arrand, President; Ellie Houck, Bob Parks.





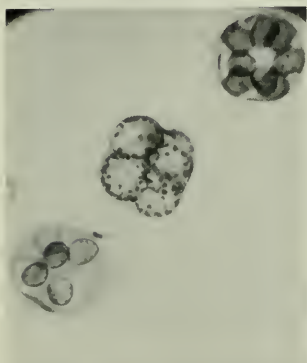
PI DELTA EPSILON: *First Row:* Pete Popham, Gene Spurlock, Vice President; Roger Gordon, President, Ronnie Weber, Secretary-Treasurer, Dr. Clark, Historian. *Second Row:* Sam Albert, George Geesey, Ed Walker, Harl La Place, Ed Andrus, Allan Rappoport. *Not in picture:* Ellen Coblentz, Sue Robinson.



Pi Delta Epsilon is the honorary journalism fraternity. Members are elected from all phases of University publications, including the Eagle, the Aucola, and the radio station WAMU. To be eligible for initiation, a candidate must have served in a major position on one of these staffs for at least one year.

The picture at left shows officers of Pi Delta Epsilon congratulating new members upon their initiation.

BETA BETA BETA



The photograph above was made by a student from a microscopic slide.

BETA BETA BETA: *First Row:* Phillip Miller, Charlotte Parker, President; Dr. Hatchett, Treasurer. *Second Row:* Mr. McCausland, Yvonne Coker, Sondra Ousley, Charlie Davis. *Not in Picture:* Irma Kranzler, Vice President.





WHO'S WHO

WHO'S WHO: *First Row:* Ellie Houck, Dick Witter, Fran Arrand, Harl La Place, Sam Albert, Jackie Hoffecker. *Second Row:* Carl Hevener, Ellen Coblentz, Audrey Ricketts, Betty Elliott, Charlie Davis, Ed Walker, Pat Miles. *Not in picture:* Doris Person, Ethel McEvoy, Bob Horan, Walt Diegel, Ben Cotten, Alice Kilejian, Allan Marsh.

These are juniors and seniors who have been selected to be included in the 1954 edition of *Who's Who in American Universities and Colleges*. Their names are selected on the basis of character, scholarship, leadership, and activity in student affairs.



One of the favorite forms of recreation — watching the fights on television.



SOCIAL FRATERNITIES

GREEK HARMONY

INTERFRATERNITY

PANHELLENIC





INTERFRATERNITY COUNCIL: *First Row:* Al Shute, Social Chairman; Bob Horan, President; Gene Spurlock, Secretary-Treasurer. *Second Row:* Ernie Dibble, Dutch Schulze, Adviser; Dick Parker, Mr. McCausland, Mr. Frailley, Dr. Hatchett.

PANHELLENIC COUNCIL: Pat Miles, Frada Strauss, Harl La Place, Sue Olson, Jean Sherwood, Pat Harville.

The Interfraternity Council is the organization set up to stimulate harmony among the men's fraternities. Panhellenic Council makes policy to guide the women's fraternities on campus. Together the Councils sponsor the annual Interfraternity Prom, Songfest, and award trophies to the outstanding fraternity, as well as independent, man and woman of the year.

PHI MU



President Frada Strauss
Vice President Ellen Coblenz
Secretary Bonnie Aikman
Treasurer Pat Cole

Phi Mu was founded March 4, 1853 at Wesleyan College, Macon, Georgia; Gamma Delta Chapter was founded in 1933.

Victors in hockey over conglomerates . . . Did he mention my name? . . . Little sleep, much fun at Xmas slumber party . . . First annual Valentine Dance (formal) . . . virtuosos Mary and Ellen paid to stop playing violins . . . Carol and Betty's culture hour . . . winners of Aucola Skit Night competition — what's good enough for the men was best for us . . . Are we losing? Put in Citronella Ogden . . . G'bye Sondra, Jackie, Doris, Ethel.

Mary French, Marcia Lowe, Betty Hanes, and Betty Porter combine talents to sing for Phi Mu Rush party.

"Santa" Levy "distributes" presents during the Christmas party.



Bonnie Aikman



Barbara Balas



Ann Bell



Sheila Belle



Georgia Bennett



Ellen Coblentz



Patricia Cole



Donna Erdahl



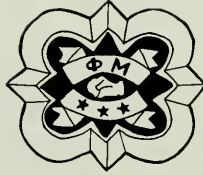
Mary French



Betty Hanes



Jacqueline Hoeffcker



Carol Holden



Dorothy Hoogland



Ethel McEvoy



Janet Ogg



Sondra Ousley



Doris Person



Betty Porter



Ruth Saunders



Frada Strauss



Marlene Williams



Marcia Eddy



Winifred Garcia



Patricia Harville



Kylene Hutchinson



Irene Kjersgaard



Mary Ann Leber



Patricia Miles



Virginia Miller



Neil Poorman



Patricia Van der Hyden

DELTA GAMMA



| | |
|-----------------------|-------------------|
| <i>President</i> | Neil Poorman |
| <i>Vice President</i> | Patricia Miles |
| <i>Secretary</i> | Kylene Hutchinson |
| <i>Treasurer</i> | Virginia Miller |

Delta Gamma was founded January 2, 1873 at Lewis School, Oxford, Mississippi. Beta Epsilon chapter was founded in 1936.

"You're thinking" — a characteristic saying around here, but we do more than that . . . winning Homecoming float . . . Dig those crazy paintings . . . Two hannahs hook their man . . . Four new pledges enliven the roster . . . DG sponsored pledge dance for all greeks . . . Hayseed king (?) . . . The sisters who are sweet and demure, but oh you kid! . . .

Ginny says "Just what I always wanted?"

The DG's boil Loyola in oil.

ALPHA CHI OMEGA



| | |
|------------------------|--------------------|
| <i>President</i> . . . | Alice Kilejian |
| <i>Vice President</i> | Jean Sherwood |
| <i>Secretary</i> . . . | Margaret Eisenlohr |
| <i>Treasurer</i> | Frances Arrand |

Alpha Chi Omega was founded October 15, 1885 at De Paw University, Greencastle, Indiana. Beta Rho Chapter was founded in 1937.

Harps and hearts of gold . . . All Greek open house . . . gambling in the Casino Lyre . . . annual Christmas party . . . Merry-go-round Homecoming float . . . endless buffet suppers for those new pledges . . . red and pink for Songfest? . . . cleaning the grotto for campus day . . . freezing Spring picnic . . . "Hiya, Be-be!" . . . musical talent galore . . . "Not another one knitting aryles!" . . .



Ellie shows her Christmas bonnet to Cathy Probey.

Three little girls and their carousel.



Frances Arrand



Janet Bowie



Margaret Eisenlohr



Elinor Houck



Jill Jamison



Diane Keese



Alice Kilejian



Anita Korkolis



Harl La Place



Marcia Lowe



Ellen Riley



Jean Sherwood



Joyce Watts



Carol Wilson



Lyle Aquilino



Anne Barnard



Patricia Blake



Betty Bole



Peggy Bole



Nancy Chick



Carol Clarke



Carol Cooper



Betty Elliott



Jane Fuller



Jeanne Gedney



Shirley Geoffroy



Betty Guy



Susan Olson



Audrey Ricketts



Nancy Ryan



Judy Seidler



Barbara Shytle



Carolyn Siple



Norma Small



Miriam Thompson



Sara Van Dyke

KAPPA DELTA



President
Vice President
Secretary
Treasurer

Susan Olson
Betty Elliott
Miriam Thompson
Audrey Ricketts

Kappa Delta was founded on October 23, 1897 at Longwood College, Farmville, Virginia; Beta Iota Chapter was founded in 1943.

The long line of KD queens . . . "Chick" was Aucola Queen . . . Miriam made a radiant Homecoming Queen . . . Don't forget our "Sweetheart of ATO" and Susie as Alpha Sig Dreamgirl and Best Loved Girl . . . Betty and Audrey in Who's Who . . . White Rose Formal . . . our fall hayride and spring picnic . . . Apple Blossom Princess . . . a year to remember as friendships deepen . . .

Carolyn Siple accompanies at the Christmas party.

Gold coins from the KD float.

PHI SIGMA KAPPA



President

Howard Parker

Vice President

Eugene Spurlock

Secretary

Wilhelm DeLooper

Treasurer

William Silvey

Phi Sigma Kappa was founded March 15, 1873 at Massachusetts State College, Amherst, Massachusetts.

Epsilon Triton chapter was founded in 1936.

This was the best of all years . . . Moonlight Girl Dance, Carnation Ball, two New Year's Eves . . . floors tiled, walls painted . . . Adam still pining for Bobbie Nesbitt . . . Cuppy reading the Tamaqua Evening Courier . . . Silvey reading the Hobo News . . . Johnson playing piano . . . Hopper just playing . . . Wickey and his shadow . . . the brothers who play sports . . . the brothers who are students . . . the brothers (all of them) who are truly — brothers . . .

Larry and Bart dig hedges during a midnight requisition.

Louise Ralph "sails" on the Phi Sig float.





John Apostolakis



Charles Baer



Larry Betzler



Patrick Butler



Edward Carlough



Raymond Daly



Thomas Day



Wilhelm DeLooper



James Flynn



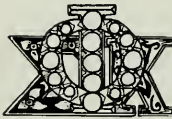
Randolph Gardner



Bart Jepsen



Lucien Johnson



Larry McCoy



Ronald McPherson



Mitchell Myers



Howard Parker



Richard Parker



Allan Rappoport



Charles Redden



Stanley Smith



Eugene Spurlock



Albert Stallone



David Walker



Edward Wickey



John Allerton



Edward Andrus



William Blackburn



Joseph Cannon



Michael Chasman



Benjamin Cotten



William Delorme



Richard Dyson



Reid Elder



Harry Fairbairn



Charles Feder



Steve Feder



Lewis Griffith



Carl Hevener



Daniel Hirsch



Robert Horan



Richard Horn



Bernard Jaffe



Angel Lopez



Ronald Mahanes



German Mancini



Arthur Morales



Brock Morris



Dewey Morris



Robert Newman



Donald Newton



Peter Pine



Fred Roff



Wallace Ryland



John Selby



Octave Stevenson



Deane Winant



William Woodward

ALPHA TAU OMEGA



President
Vice President
Secretaries

Robert Horan
Charles Feder
Richard Dyson,
Reid Elder
Peter Pine

Treasurer

Alpha Tau Omega was founded October 16, 1865 at Virginia Military Institute, Lexington, Virginia. Epsilon Iota chapter was founded January 28, 1943.

Pledges, pledges everywhere, but not a one to work . . . champs of Province XIX basketball; intramural football and basketball . . . Ping-pong and Pinochle, two "P's" in the scholarship ointment . . . Dig dose cr-a-a-zy parties we been havin! . . . our own Puerto Rican terrorist, disguised, of course, as an Angel . . . this place needs a good five-cent phone call . . . the brothers who are sports . . .

ATO's guillotine rolls a — head in the float competition.

Ye . . . s? John Selby, Ben Cotten, and Brock Morris entertain at a rush party.

ALPHA SIGMA PHI



President Alan Shute
Vice President Ernest Dibble
Secretary-Treasurer Richard Witter

Alpha Sigma Phi was founded December 6, 1845, at Yale University, New Haven, Connecticut; Beta Chi chapter was founded in 1940.

"Mufti" the second wins again! . . . pledges kidnapping the membership . . . Don't step on the black squares . . . new furniture a la George Washington . . . we go wild for spaghetti . . . Massey finishes the "serving counter" . . . Dig the new painted house . . . Mr. Popham turns tutor in the main room . . . How many of the actives are "tying the knot?"

The "girls" chorus line cavorts for Skit Night.

Mike Wogan lets his hair down during the pledge party at Aldo's.



Donald Beagle



Sonny Bell



Peter Bono



Milton Cerny



Adnan Daoud



Charles Davis



Ernest Dibble



Walter Diegel



Rudolph Garcia



George Geesey



Roger Gordon



Jay Guy



Kenneth Kadala



Arthur Levey



Masten Loughman



Michael McDarby



Harold Nyquist



Charles O'Connor



Robert Petree



Ernest Poore



Lewis Popham



Alan Rich



Robert Rickman



Thomas Romett



John Schreck



Joseph Shaheen



Alan Shute



Otto Tocchio



Edward Walker



Richard Witter



Michael Wogan



Cheering section at a basketball game.



SPORTS

THE BIG TEAM

Although finishing the season with a 12-11 record, the Eagles managed to floor one of the best ball clubs since the Mason-Dixon Conference champions of 1950-51.

This record does not indicate the calibre of the team, since they played one of the most rugged schedules attempted by any A.U. team. The Eagles played such formidable foes as Manhattan, N.Y.U., Navy, Penn State, Georgetown and Fairleigh-Dickenson.

First Row: Ronnie McPherson, John Baird, Jim Williams, Bud Daly, Dan Greenfield, Wally Ryland, Charlie Baer. *Second Row:* Coach Dutch Schulze, Larry McCoy,

The hoopers were paced most of the season by Mr. Outside, Captain Ray Daly. Mr. Inside of the quartette was jumping John Selby, selected all-Conference for the past two seasons. Although hampered by injuries, Charlie Baer was one of the team's mainstays. Slow-footed but fancy-shooting Dan Greenfield was the outside man on this fast shooting five. The other man on the starting five was Carl Hevener, a home town boy from Coolidge High, and an all-High selection in 1950-51.

Carl Hevener, John Selby, Dick Parker, Manager Don White.





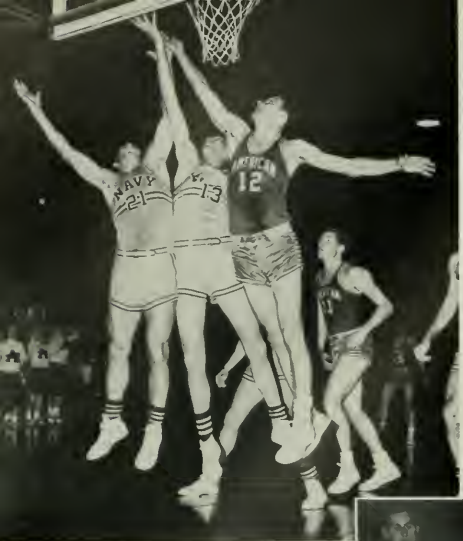
A look into the future; Coach Schulze and Captain Daly.



A typical pose and a familiar sight.



Cheerleaders attempt to get some response.



Eagle Selby takes to the air.



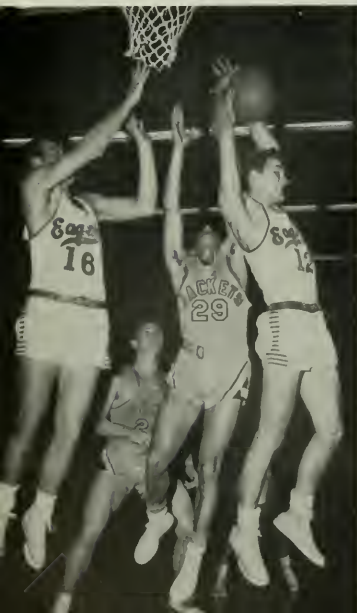
A.U. vs. Baltimore

The ref caught that one.

A.U. takes on Randolph Macon.



Jumping John puts it in.



SCHEDULE

| | A.U. Opp. | |
|---------------------|-----------|----|
| Manhattan | 52 | 75 |
| Scranton | 74 | 69 |
| N.Y.U. | 69 | 83 |
| Catholic University | 75 | 52 |
| Navy | 53 | 63 |
| Loyola | 74 | 68 |
| Dickinson | 56 | 50 |
| Penn State | 53 | 65 |
| Hofstra | 74 | 73 |
| Wagner | 66 | 77 |
| Mount St. Mary's | 77 | 70 |
| Randolph - Macon | 56 | 42 |
| Davis & Elkins | 81 | 66 |
| Georgetown | 46 | 59 |
| Catholic University | 97 | 71 |
| Baltimore | 69 | 80 |
| Mount St. Mary's | 74 | 82 |
| Hampden - Sydney | 60 | 68 |
| Roanoke | 62 | 61 |
| Western Maryland | 70 | 64 |
| Georgetown | 49 | 56 |
| Loyola | 59 | 66 |



Open your eyes boys, it's there.

The Penn State boys take A.U.



This is basketball?





THE ATO CHAMPIONSHIP FOOTBALL TEAM. Line: Bill Faux, Charlie Feder, Tom Wells, Lew Griffith. Backfield: Art Morales, Bill Palmer, Bill Blackburn.

MEN'S INTRAMURALS

Dick Bartlett tries to shake loose from Lew Griffith during the Phi Sig-ATO game.



Thus far, the intramurals have been dominated by ATO. Led by graduate student Bill Palmer, they easily took the football cup.

Basketball shaped up to be interesting this year with the addition of the Washington Semesters. They compiled the most points, but, since they were not in competition for the cup, it was awarded to ATO.

The only hole in the ATO armor was swimming. Phi Sig handily grabbed this trophy by beating the nearest competitor by ten points.

The fight for the Intramural Athletic Trophy may be close if Phi Sig is able to defend its softball title of last year.



Dutch Schulze, Director of Athletics and Supervisor of Intramural Athletics, mugs up for the camera.

PHI SIGMA KAPPA INTRAMURAL SWIMMING CHAMPIONS. *First Row:* Charlie Peters, Coach; Bill Hopper, Randy Gardner, Bart Jepson, Mickey Myers, Al Rappoport, Bob Fogan, Howie Parker.





THE INDEPENDENT INTRAMURAL CHAMPION SWIMMING TEAM. *Left to right:* Ada McLean, Ann Patten, Gail Morton, Lorri Childs (rear), Barbara Ford.

WOMEN'S INTRAMURALS



This was the real year for the Independents, with their wins in swimming and in basketball.

Although most of their wins were by narrow margins, they were able to rack up the points when most needed.

They also possessed the keenest sense of competition and put their every effort into winning.

Swimming Coach Bob Frailey preps two contenders on how to improve their form.



INDEPENDENT INTRAMURAL BASKETBALL CHAMPIONS. *Left to right:* Lee Levy, Lallie Burba, Betsy Boos, Jeanne Zitmore (rear), Liz Chin, Sue Robinson.



A strained moment at the Phi Mu-Independent game.



"In arrears" — the talents of Jean Gedney and Sara Van Dyke were not sufficient as KD lost to the Independents.



VARSITY BASEBALL TEAM: *First Row:* Ronnie McPherson, Bill Wood, Jimmy Williams, Jay Chamberlain, Lew Griffith, Captain; Ronnie Weber, Sonny Morris, Sonny Day, Wally Ryland. *Second Row:* Mike Chasman, Trainer and Manager; Pete Popham, Asst. Coach; Joe Pellagrino, John Schreck, Larry McCoy, Walt Eckbreth, Dick Parker, Ed Carlough, Dutch Schulze, Coach.

BASEBALL

The Eagles showed a new look this year.

This took place mainly in the infield with only two lettermen returning. Joining them were newcomers Sonny Day, Jay Chamberlain, and Wally Ryland. The pitching had life injected into it with the arrival of Larry McCoy,

Ronnie McPherson, and Bill Wood. The outfield boasted two returning lettermen in Dick Parker and Lew Griffith.

All in all, this should be one of the best seasons A.U. has had in a long time.

McCoy comes in from the mound to make a play at home.

"Ye'r out!" as Ryland tags Colby player at the plate.

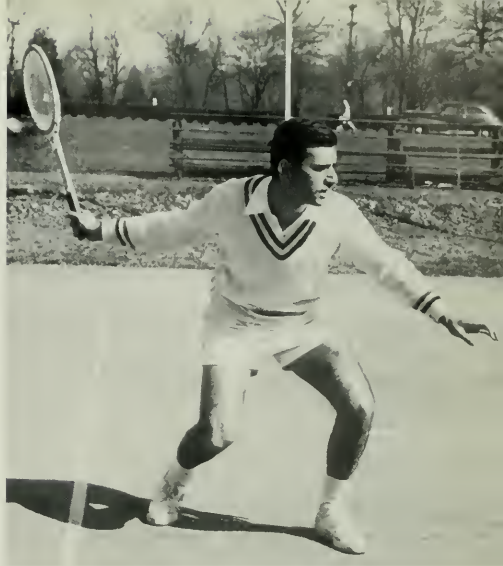


TENNIS

AU's team is definitely one of the better conference teams. Topped only by Catholic U. and Loyola, it looks like at least a third place in this very close race.

Danny Greenfield, who captains the team, is playing his fourth year and is considered one of the top conference players.

Another strong point has been the success in the doubles matches, where the playing has been outstanding throughout the season.




Captain Danny Greenfield gets set to smash one.

VARSITY TENNIS TEAM. *First Row:* Bob Frailey, Coach; Danny Greenfield, Captain; Bill DeLorme, Bob Skinner, Chung, Dick Horn, Sam Albert, Carl Hevener, Al Rappoport, Manager.





A Queen is crowned . . .



THIS YEAR

FROSH MEET A.U.

"Frightened Freshmen" got their first glimpse of "Sophisticated Sophomores" during Skit Night. At this time they began to think that maybe sophomores were human too.

One week later the "greenhorns" retaliated with their own theatrical extravaganza. Freshman Talent Night proved that maybe this wasn't the worst freshman class in the history of A.U. after all.



Sara Van Dyke displays her talents during a ballet dance.



Marcia Eddy represents the Sophomores in a hula.



Rudy Garcia makes like an elephant.



Pat Van der Hyden, representing the Sophomores, caps Ronnie McPherson, a new Frosh.

The Freshman with the most demerits takes his punishment from Lee Levy.



The rosy dreams of the Frosh crumbled as they went through the rigors of Freshmen week, which was concluded with Kangaroo Court.

Were the Sophs really out to see that the Freshmen race became extinct? The only consolation of these glorified high school seniors was that it would be their turn next year!



Frosh Mike Chasman and Harry Fairbairn work off their demerits by measuring the front of Mary Graydon Hall in fish lengths.



RUSHING

Phi Mu's light the rushees' way by candlelight.



DG's serve coffee and cake at their party.

"Indian Signs," the trade mark of an ATO rush party.





Joe Moose plays piano at a Phi Sig rush party.



Barbara Balas enjoys a joke with the group at the Phi Mu rush party.



Joyce Watts seems happy as she opens her bid.



ATO's winning presentation of Fishnet

Two rushees pledge "A Tramps' Organization" during OM's winning skit.

AUCOLA SKIT NIGHT

With their own versions of Dagnet and fraternity rushing, ATO and OM took the honors in the first annual *Aucola* Skit Night. Through the efforts of Lee Levy, this proved to be one of the high spots of the year and served to stimulate student interest in the yearbook.

CANDIDATES FOR THE *AUCOLA* QUEEN.
First Row: Midge Eisenlohr, Nancy Chick, Louise Ralph, Lorri Childs, Carolyn Siple. *Second Row:* Pat Cole, Pat Van der Hyden, Janet Ogg, Jean Sherwood, Marlene Williams.





Miss Nancy Chick, 1954 Aucola Queen



Lee Levy pantomimes to a record at the Coffee Shop Opening.



Dr. and Mrs. Anderson cut the ribbon, officially opening the new "Eagle's Nest."

THE EAGLES NOW HAVE A NEST!



MC Al Rappoport assists Dr. Anderson in crowning the Queen.

Want a cup of coffee? Want eggs for breakfast (with or without . . . shells)?

The new Eagle's Nest is the place for you. At the grand opening of this spot where "the elite meet to eat" President and Mrs. Anderson officially cut the ribbon.

The climax of the evening came when Phyllis Holm was crowned with a coffee pot as Coffee Shop Queen of 1953.



Coffee Shop Queen Phyllis Holm pours the first cup of coffee in the new Eagle's Nest.



The Queen and her court — Anne Barnard and Sue Olson.



A.U. B.B. IN N.Y.

Charlie Baer goes up for two in the N.Y.U. game.



Oops!



The Hofstra game as seen on television in Washington.

New York basketball fans surveyed the Eagles on two occasions during the 53-54 season, and were left with a favorable impression. The A.U. quintet gave both Manhattan and NYU a taste of "big time" ball in the early part of the campaign, until finally succumbing 75-52, and 83-69, to superior height and depth in its first sweep through the New York area.

On its second visit to the Empire State the basketball squad was televised nationally during the Hofstra Invitational Christmas Tournament. This time the A.U. men, rising to the occasion, defeated the Flying Dutchmen in a thrilling 74-73 contest.

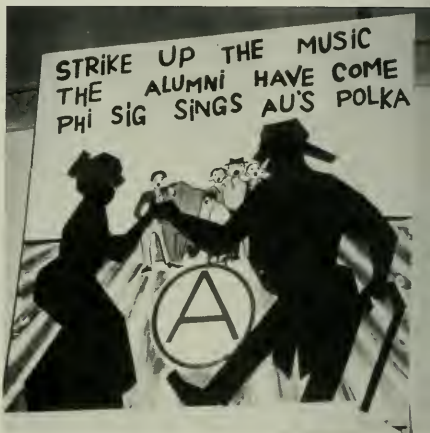
These are the boys who started for A.U. in the New York games: Charlie Baer, Dan Greenfield, Bud Daly, Carl Hevener, John Selby.





Delta Gamma won the float competition with this?

Phi Sigma Kappa's winning poster.



HOMECOMING

Amid posters, floats, and winning baskets, the alums were welcomed back to their Alma Mater at the annual homecoming celebration.

At half time, Miriam Thompson followed in the footsteps of her two older sisters to become the Homecoming Queen of 1953.

Cannibals and Square dancers proved to be the winning themes of the float and poster, and 74 to 68 was A.U.'s winning score.

A dance ended the "Hot Time In the Old Home Town" that night.



Larry McCoy takes a rebound from the Loyola basket.



Miss M. J. Johnson, Homecoming Queen



Dean Shaw, seen from the rear, as she and Don Osten take a break from the game.



The skirted faculty hockey team.

FACULTY SHOWS TALENT

Where else in the world but A.U. could one see the faculty, dressed in skirts and wigs, play the girls' varsity in field hockey? And where else could one dance in the dreamy atmosphere of the annual Freshman Sno Ball? Obviously A.U. has a monopoly on these wonderful moments.

FRESHMAN SNO BALL



Students agreed that the decorations were the best ever at this dance.



Tom Rosenberg, Sno-Ball Queen

SEASONS GREETINGS

Nothing gave A.U. the Christmas spirit quite as much as "Season Greetings," the annual Christmas show presented by the music and dramatic organizations, and directed by Don Osten. With "Santa Claus" giving the talent as gifts, something was present to suit everyone's tastes.

The performers posed as dolls to answer letters written to Santa. And what a variety of dolls there were? One could find a clown doll capering, a pair of romantic dolls, a dancing doll, a nightclub doll, and many others.

Then came the singing of "Ave Maria," and the stirring Nativity Scene, which was presented in pantomime.



Lee Levy finishes a somersault after coming across the stage "dragging a net."

Don Osten, in an old and familiar pose, introduces the show.

Pat Shelhamer sings the lovely and inspiring "Ave Maria."



Dancing doll Sara Van Dyke performs a ballet number.



Rudy "Santa" Garcia jokes with his helpers Loretta Kriegsman and Carol Wilson.



MGH GOES COED!

Never thought we'd see the day that MEN roamed the upper floors of Mary Graydon Hall — but it happened during Open House! When one of the fellows answered the third floor phone, the man on the other end was slightly startled.

Sam Albert and Barbara Balas decide that this Mary Graydon life might have its good points, after all.



MOONLIGHT GIRL DANCE

Phi Sigma Kappa held its annual "Moonlight Girl Dance" and picked Louise Ralph as its Beauty Queen from three finalists, which included Pat Shelhamer and Anne Bell.

The drowsy revelers then took off for home through a never-to-be-forgotten dense fog.

Louise seems delighted as Ed Carlough places her Moonlight pin.



The Phi Sigs all sing to their sweetheart.



Miss Louise Ralph
Moonlight Girl of Phi Sigma Kappa



HIGHLIGHTS OF OUR CHRISTMAS CELEBRATION

What would Christmas be without a traditional Christmas dinner? With turkey and all the trimmings, it was a tremendous success.

The candlelight service for the girls, that followed the dinner festivities, brought a warm Christmas feeling to the dorm. Sue Olson was chosen best-loved girl by the other Mary Graydon residents.

THE MOST-REPRESENTATIVES GIRLS:
Freshman Nancy Sumler, Sophomore Jane Fuller, Junior Doris Lee Sampson, Senior Ethel McEvoy, Washington Semester Anne Bell.



A scene from the dorm mid-night candlelight service.

The German Club, with its winning table decoration.



The cafeteria gals give their annual Christmas concert.





Miss Sue O'Connell, Best Loved Girl



From 2:00 to 4:00 A.M., we all went out caroling to the President's house, dormitories, and fraternity houses.

This picture carries a lot of weight — Dean Shaw properly scolds Lee Levy.



Pat Shelhamer toasts a marshmallow at the Independent's party.



Carol Wilson hands a gift to "Apostolous" as he hands them out to the orphans.

This year the fraternity pledges, under the guidance of Al Stallone, gave a Christmas party for a group of orphans. John Apostolakis, as Santa, distributed gifts, and each child got a free dinner.

Each sorority, and the independent group, sponsored a Christmas party for their members after the midnight service.



PARTIES FOR GIRLS AND ORPHANS

A highlight of the dorm parties was the capture of a stray male who got too near the front door of Mary Graydon.



A.U. GOES ITALIAN



Ronnie McPherson adds the sauce to Carol Wilson's spaghetti.

Howie and Ethel partake in the widely-accepted Italian style.



Alpha Sigma Phi held their annual Christmas dance at the home of the Broyhills. Highlight of the evening was the choosing of their Dream Girl, Sue Olson.



The newly-crowned Queen and her escort, Ernie Dibble.



Miss Susan Olson, Alpha Sigma Phi Dream Girl

Sally entertains the ATO's during intermission before the crowning of the Queen.



ATO PICKS SWEETHEART

The ATO Christmas Dance was held this year in the ATO House on Campus. Miss Sally Shanklin was elected Sweetheart of ATO by vote of the chapter. Another highlight of the evening was the exchanging of comic presents among the members.

ATO SWEETHEARTS FOR THE LAST FOUR YEARS: Mrs. Florence Sanders, 1951; Miss Sally Shanklin, 1954; Miss Betty Elliott, 1952; Miss Jackie Hoeffcker, 1953.



Miss Sally Shanklin, Sweetheart of ATO



CAMPUS SPROUTS NEW ARCHITECTURE



Architect's drawing of the Radio-TV Center.



Mr. Kaufman, President of the Evening Star, breaks ground for the new Radio and Television Building. Looking on are President of the Board of Trustees, Fletcher, and President Anderson.



Work on the new Center is progressing rapidly.

Ground has been broken and construction started on the quarter million dollar TV-Radio production Workshop being built for the University by the Evening Star Broadcasting Company (WMAL). This building is the first of its type in the Washington area and will contain radio and television studios as well as classrooms and research space.

Two new dormitories are now being constructed, and are scheduled to be completed about January. These dorms are the beginning of a new quadrangle, to consist of seven similar units, located on the Nebraska avenue end of the campus. The temporary veterans apartments are being torn down to make room for the new construction.



DORMITORIES FOR THE AMERICAN UNIVERSITY PAULKNER, KINGBURY & STENHOUSE - ARCHITECTS



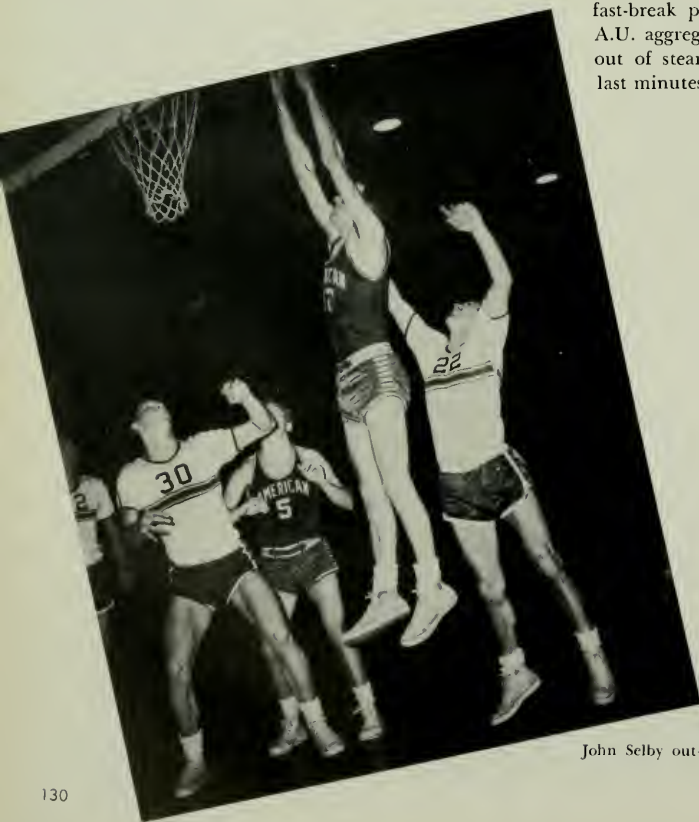
Architects drawing of the two new dormitories, each to house 110 students.

Those temporary apartments are now being torn down, to be replaced by new structures.

MASON-DIXON CONFERENCE

This is the first year in Conference history that A.U. has been eliminated in the first round of the tournament. The Eagles, nevertheless, made one of their finest showings of the season.

The bucketboys were 10 points down at half-time and managed to gain a 4 point lead over a slow-moving Roanoke Club. At one point in the rally, every fan stood up and cheered a fast-break play completed by the sharp-passing A.U. aggregation. At that point the Eagles ran out of steam and finally were defeated in the last minutes of the contest.



John Selby out-jumps the Roanoke boys for a rebound.



Miss Betty Elliott, Apple Blossom Princess



The girls line up for the impressive opener — "Granada."

AQUIANA FIESTA

"South America — Ole!!" The water show paid tribute to a land of color and romance. With graceful dives and smooth strokes they presented percision designs, romance stories, comedy and solo numbers. Who could forget the Donkey Serenade, with the youngest mem-

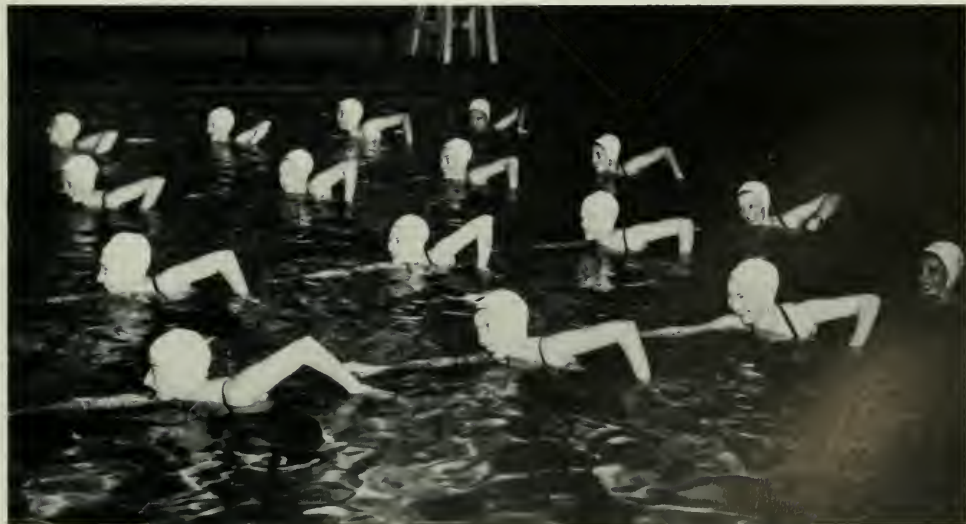
ber of the group as the waltzing burro?

Of course, Bob Frailey was traditionally thrown into the pool right after the final performance. An added surprise was a birthday party for "the little donkey" after the Saturday night show.



Technician takes a light reading for the television film cameras.

Performers form a pattern for the finale of "Fiesta De La Aqua."



FRATS PRANCE



Everyone dances as the orchestra plays a waltz at the Interfraternity Prom at the Hamilton Hotel.

Guests do the Bunny Hop at the Bunny Hop.



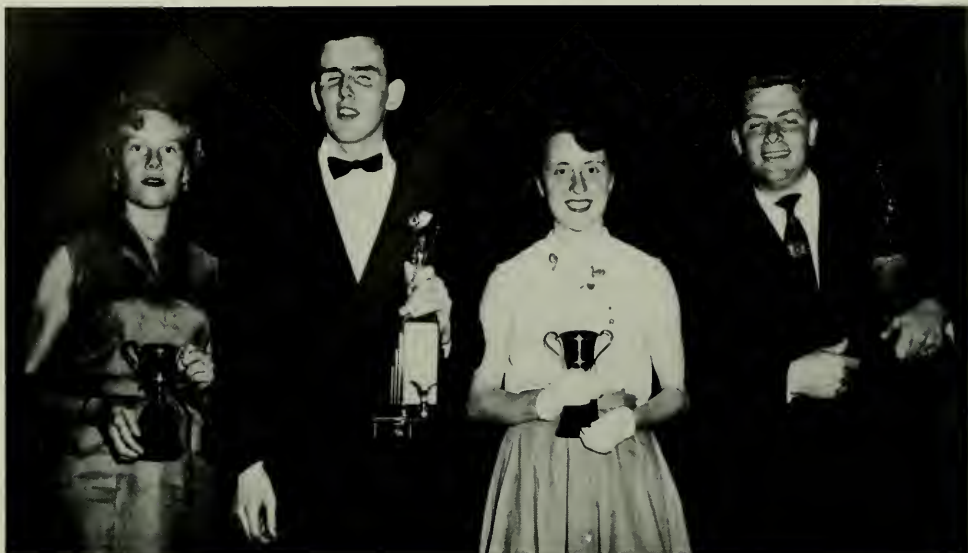
EASTER FROLIC

What is a college without the traditional "dreamy dances?" A.U. had its share of these.

The Interfraternity Prom was one of the big formals of the year. The Bunny Hop was the traditional Sophomore-sponsored shindig. Both proved that we would have very pleasant memories of A.U.'s social life.



Miss Carol Wilson, Bunny Hop Queen



RECIPIENTS OF OUTSTANDING SENIOR AWARDS: Gail Morton, Independent; Ed Walker, Fraternity; Sue Olson, Sorority; Sam Albert, Independent.

"... AND GOOD CLOSE HARMONY"

Kappa Delta and Alpha Sigma Phi placed first in the annual All-Greek Song Fest, sponsored by the Interfraternity and Panhellenic Councils.

The KD's, led by Sara Van Dyke, sang "Here's to Old Kappa Delta" and "Kiss Me Again." Alpha Sig, last year's winners, sang "Within the Mystic Circle" and "I Believe," led by Jay Guy.

Phi Mu and Alpha Sigma Phi won the scholarship awards for the third year, retiring the cup in each case. The Panhellenic pledge scholarship award went to Betty Port-

er, of Phi Mu, with a 3.0 average. Dean Shaw presented the Women's Outstanding Senior awards to Independent Gail Morton and Greek Sue Olson. Dean Bentley presented the Men's awards to Sam Albert, Independent, and Edward Walker, fraternity man.

The Special Interfraternity - Panhellenic Award was presented to Dr. Dorothy D. Gondos, as the faculty member who has done an outstanding job in the promotion of student life. This award is not presented annually, only when the Councils feel it is particularly merited.



Kappa Delta Sorority, winners of the Sorority competition.

Alpha Sigma Phi, winners of the men's competition.



A.U. SAYS FAREWELL TO SENIORS



Seniors enjoy the biggest dance of the year — the Junior-Senior Prom.

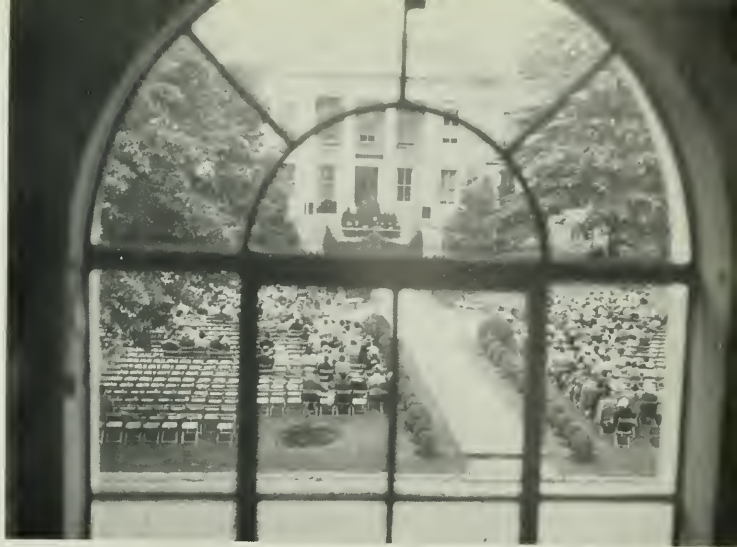
Senior week was crammed full of events to offer a final tribute to graduating AUites.

It began with Campus Day at which time students, covered with green paint, cleaned up, painted, and repaired the campus.

Songfest gave the sororities and fraternities

a chance to sound their "A's".

Other events of the week included an all day picnic, a talk by Bobby Feller, Senior Class Day, the Honors Convocation, and the grand finale of the week — the Junior-Senior Prom.



The Baccalaureate Service as framed by a window in Battelle Library.

Dr. Shenton, University Marshal, leads the graduation procession across the quadrangle.





Battelle Memorial Library



DIRECTORY

UNDERGRADUATES

- AIKMAN, BONNIE — 3636 16th Street, N.W., Washington 10, D. C. — Apt. B310
 ADDIS, BARNETT — 1630 Irving N.W., Washington, D. C. — Apt. 4
 ALBERT SAMUEL — 830 Crittenden Street, N.W., Washington D. C.
 ALEXANDER, SHIRLEY — 4600 29th Street, Mt. Rainier, Maryland
 ALLERTON, JOHN — 4600 32nd Road North, Arlington, Virginia
 ALLEN, JAMES — 119 35th Street, S.E., Washington, D. C.
 AL-SUHAIL, COMMANDER M. — 4796 Western Avenue, N.W., Washington, D. C.
 AL-YAWER, MOHAMMED — 2121 H Street, N.W., Washington, D. C.
 APOSTOLAKOS, JOHN — 1511 Allison Street, N.W., Washington, D. C.
 AQUILINO, LYLE — 6020 20th Street North, Arlington, Virginia
 AILCIA, AROSCURENA — Peunome, Cicle, Rep. de Pausura
 ARRAND, FRANCES — 993 Bradley Street, Flint, Michigan
 AMUNDSON, CLARENCE — 1834 A Street, S.E., Washington, D. C.
 ANDERSON, WALTER — 4913 Jay Street, N.E., Washington, D. C.
 ANDRIS, EDWARD — Route 2, Box 467, Alexandria, Virginia
 ANSARY, CYRUS — 3409-D New Mexico Avenue, N.W., Washington 16, D. C.
 ANTUNES, JORGE — 1426 N Street, N.W., Washington, D. C.
- ASARE-LARTEY, LEWIS — P.O. Box 12 Aburi, Gold Coast, British West Africa.
- BALAS, BARBARA — 10208 Bieber Place, Silver Spring, Maryland
 BACHELOR, LILLYAN — 4301 Massachusetts Avenue, N.W., Washington, D.C. — Apt. A301
 BAER, CHARLES — 257 High Street, Tamaqua, Pennsylvania
 BAKER, LAWRENCE — 4401 South 6th Street, Arlington, Virginia
 BALAMUT, ISAAC — 85-21 152 Street, Jamaica 32, New York
 BARBER, THEODORE — 2004 Eye Street, N.W., Washington, D. C.
 BARLOW, THOMAS — 1424 Fairview Terrace, Alexandria, Virginia
 BARNARD, ANNE — 617 West 168th Street, Washington, D. C.
 BARRETT, MARILYN — 2627 North Roosevelt, Arlington, Virginia
 BARNES, ROBERT — 429 North Park Drive, Arlington, Virginia — Apt. 2
 BARTLETT, RICHARD — 2102 Dayton Street, Silver Spring, Maryland
 BATCHELOR, NANCY — 10 Waugh Avenue, Glyndon, Maryland
 BAUSE, DAVID — 42 East Philadelphia Avenue, Boyertown, Pennsylvania
 BELL, ROBERT — 5512 2nd Street, N.W., Washington 11, D. C.
 BELLE, SHEILA — 2900 Alden Road, Baltimore 14, Maryland
 BENNETT, GEORGIA — 517 Brunswick Street, Brunswick, Maryland
 BENNER, RALPH — 4616 Verplanck Place, N.W., Washington 16, D. C.

Compliments

of the

**WOMAN'S GUILD
 OF THE
 AMERICAN UNIVERSITY**





8:30 arreddy?

TURNER STUDIO

Aucola Portrait Photographer

**108 North Washington Street
Alexandria, Virginia**

King 9-3059

- BENSON, JOHN — 3605 VanNess Street, N.W., Washington 8, D. C.
 BERLIN, STEVE — 1636 Fort Dupont Street, S.E., Washington 20, D. C.
 BETTER, NORMAN — 202 Bunker Hill Road, N.E., Washington 18, D. C.
 BETSCHLER, MARY — 366 Arlington Village, Arlington, 4, Virginia
 BETZLER, LAWRENCE — 2408 Arlington Blvd., Arlington 4, Virginia
 BLACKBURN, WILLIAM — 5028 Allan Road, Washington 16, D. C.
 BLAKE, PATRICIA — 57 West 8th Street, New York 11, New York
 BLAYCOCK, MARVIN — 4252 St. Barnabas Road, Washington 23, D. C.
 BLUME, WALTER — 115-43 227 Street, Cambria Heights 11, Jamaica, New York
 BOGLIA, JOAN — 6420 99th Street, Forest Hills, New York
 BOICE, ROBERT — 3115 G Street, S.E., Washington 19, D. C.
 BOLE, ELIZABETH — 303 SE Baublits Drive, Warrington, Florida
 BOLE, MARGARET — 303 SE Baublits Drive, Warrington, Florida
 BOLSTER, RICHARD — 113 Croydon Street, Silver Spring, Maryland
 BONIGER, WILLIAM — 303 Forest Drive, Erie, Pennsylvania
 BONO, PETER — 113 2nd Avenue, Frankfort, New York
 BOOKER, GEORGE — 201 16th Street, N.E., Washington, D. C. — Apt. 2
 BOOS, ELIZABETH — 1901 Otis Street, N.E., Washington 18, D. C.
 BOSWELL, JUDITH — 7 Cedar Street, Alexandria, Virginia
 BOWIE, JANET — 4801 Connecticut Avenue, Washington, D. C.
 BRADFORD, ROSALYN — 4604 South 4th Street, Arlington, Virginia
 BRAR, HAZOORA — 2700 Macomb Street, Washington, D. C.
 BRIGGS, ROBERT — 5503 28th Avenue, S.E., Washington 21, D. C.
 BROOKS, KATHERINE — 630 Webster Street, N.W., Washington, D. C.
 BROWN, DAVID — 1731 First Street, N.W., Washington, D. C.
 BROWN, JOSEPH — 1731 D Street, N.W., Washington, D. C.
 BROWN, PHYLLIS — 117 Winchester Way, Falls Church, Virginia
 BUDENSTEIN, NANETTE — 2515 13th Street, N.W., Washington, D. C.
 BUITRAGO, LUIS — 817 Webster Street, N.W., Washington, D. C.

Johnson's Flower Center

The Place To Go For — — —

CUT FLOWERS — CORSAGES — ARRANGEMENTS

4200 Wisconsin Avenue, N.W.

Telephone: WO odley 6-9650

- .BURBA, LALLIE — Army War College, Carlile Barracks, Pennsylvania
 BUTLER, ANNE — 6202 Welborn Road, Washington 16, D. C.
 BUSH, FLORA — 6600 Luzon Avenue, N.W., Washington, D. C.
 CANNON, JOSEPH — 2122 36th Place, S.E., Washington 20, D. C.
 CARLOUGH, EDWARD — 3215 Gunston Road, Alexandria, Virginia
 GARVER, HARRY — 1031 20th Street, South, Arlington, Virginia
 CAUDLE, JAMES — 3460-4 New Mexico Avenue, Washington 16, D. C.
 CERNY, MILTON — 2830 South Maple Avenue, Berwyn, Illinois
 CHAMBLIN, HOWARD — 4429 20th Road North, Arlington 7, Virginia
 CHASMAN, MICHAEL — 341 Sanford Avenue, Hillside, New Jersey
 CHICK, NANCY — 864 South Harrison Street, Arlington, Virginia
 CHILDS, LORRI — 3736 15th Avenue, New York 34, New York
 CHIN, ELIZABETH — 1412 Montague Street, N.W., Washington 11, D. C.
 CHUNG, JOHN — 54 Avenue Republica, Macan, S. China
 CLAGGETT, PAUL — 4523 Iowa Avenue, N.W., Washington, D. C.
 CLARKE, CAROLINE — South Howell Avenue, Centerbeach, Long Island, New York
 COBB, GLADYS — 5827 Potomac Avenue, N.W., Washington 16, D. C.
 COBLENTZ, MARY ELLEN — Route 1 Atwood Road, Silver Spring, Maryland
 COLEMAN, EDYTH — 1024 Maplewood Drive, Falls Church, Virginia
 COLLINS, OSCAR — 6921 Blair Road, N.W., Washington, D. C.
 COOKE, WALTER — 3204 Park Place, N.W., Washington, D. C.
 COONES, PEGGY — 110-07 73 Road, Forest Hills, New York
 COOPER, CAROL — St. Margarets, RD 2, Annapolis, Maryland
 COOPER, MARY — 851 21 Street, N.E., Washington, D. C.
 COTTEN, BENJAMIN — 412 4th Street, N.E., Washington, D. C.
 COOPER, VIRGINIA — 1411 South Thomas, Arlington, Virginia
 COUSIN, WILLIAM — 1708 North Fulton Avenue, Baltimore, Maryland
 CROSBY, GEORGE — 4604 29th Street, Mt. Rainier, Maryland
 CROSIER, ELEANOR — 6422 Broad Street, Brookmond, Washington 16, D. C.
 CURTIS, MARJORIE — 918 18th Street, N.W., Washington, D. C.
 DALY, RAYMOND — 212 Moffit Avenue, Kane, Pennsylvania
 D'AMBROSIO, JOSEPH — 304 D Street, N.E., Washington, D. C.
 DAMELIO, MICHAEL — Route 2, Frankfort, New York
 DANIELS, ROBERT — 111 West Juniper Avenue, Wildwood, New Jersey
 DAUD-AGHA, ADNAN — 23 Parliament Street, Damascus, Syria
 DARCEY, JOAN — Route 1, Herndon, Virginia
 DAVIS, CHARLES — 1722 Que Street, N.W., Washington 9, D. C.
 DAVIS, FRANK — 1312 29th Street, N.W., Washington 7, D. C.

Where we meet and eat . . .





Edith Filion, Campus Day Clean-Up Queen

CONKLYN'S FLORIST

Flowers For All Occasions

**2046 Wilson Boulevard
Arlington, Virginia**

JA ckson 7-6916

*Complete Photo Supply
Headquarters*

BAKER'S PHOTO SUPPLY

4611 Wisconsin Avenue, N.W.

EM erson 2-9100

- SAWAFF, RUTH — 4454 Tindall Street, N.W., Wash-
ington 16, D.C.
DAWAFF, RUTH — 4454 Tindall Street, N.W., Wash-
ington 16, D.C.
DAY, GEORGE — Warrenton Drive, Springbrook, Silver
Spring, Maryland
DAY, WILLIAM — 2314 North Kenmore Street, Arling-
ton, Virginia
DEHART, WILLIAM — 1115 South Edison Street, Arling-
ton, Virginia
DELOOPER, WILLIAM — 4201 Massachusetts Avenue,
N.W., Washington, D. C.
DELORME, WILLIAM — 1024 East West Highway, Ta-
koma Park, Maryland
DICHTENBERG, SOL — 3170 17th Street, N.W., Wash-
ington, D. C.
DI TOTO, GLORIA — 3207 Alabama Avenue, S.E.,
Washington 20, D. C.
DOBBIN, ALVIN — 7910 13th Street, N.W., Washing-
ton 12, D. C.
DODSON, MARTHA — 10400 Eastwood Avenue, Silver
Spring, Maryland
DOGGETT, JOHN — Manassas, Virginia
DOLAN, ANN POWELL — 4433 35th Street, N.W.,
Washington 8, D. C.
DOSTERT, PIERRE — 3314 Quesada Street, N.W., Wash-
ington, D. C.
DOW, MARY — 106 East Bradley Lane, Chevy Chase,
Maryland
DRAKE, FREDERICK — 1100 12th Street, N.W., Wash-
ington, D. C.
DVORAK, MARY ANN — 2506 South 2nd Street, Arling-
ton 4, Virginia
DUNLOP, ELIZABETH — 4700 Sedgwick Street, N.W.,
Washington 16, D. C.
DURLOO, LESLIE — Route 5, Box 50M, Vienna, Vir-
ginia
DYSON, RICHARD — Charlotte Hall, Maryland

- EARMAN, DENNIS — 519 Greenwich Street, Falls Church, Virginia
- ECKBRETH, WALTER — 616 Laura Drive, Falls Church, Virginia
- ECKHARDT, DAVID — 1834 Irving Street, N.W., Washington, D. C.
- ECONOMAKIS, PANOS — 1026 Harrington Avenue, Norfolk, Virginia
- EDDY, MARCIA — 4813 South 28th Street, Arlington, Virginia
- EDMONDS, AUDREY — 133 E. Broad Street, Falls Church, Virginia
- EISENLOHR, MARGARET — 626 North Jackson Street, Arlington 1, Virginia
- ELDER, EDWARD — 7017 Marinthana Avenue, Youngstown 12, Ohio
- ENGLAND, JOHN — 1008 DeBeck Drive, Rockville, Maryland
- ERDAHL, DONNA — 4072 Wyndale Street, N.W., Washington 15, D. C.
- EWING, ALICE — 1925 First Street, N.W., Washington, D. C.
- FAIRBAIRN, HARRY — 100 South Sacramento Avenue, Ventnor, New Jersey
- FEAGANS, WILLIAM — Fairfax, Virginia — Box 43
- FEDER, CHARLES — 4349 Verdlanck Place, N.W., Washington 16, D. C.
- FEDER, STEVE — McCabe House, American University, Washington, D. C.
- FERNSTROM, RUTH — 1601 Argonne Place, N.W., Washington, D. C.
- FERRITER, CHARLES — 4722 Rodman Street, N.W., Washington, D. C.
- FILION, EDITH — 332 Winnischi Way, Santa Fe, New Mexico
- FINK, RUFUS — 3515 Nimitz Road, Kensington, Maryland
- FLEMING, ANNA — 2222 Eye Street, N.W., Washington, D. C.
- FLETCHER, WILLIAM — 409 Monticello Blvd., Alexandria, Virginia
- FLYNN, JAMES — 3011 South 13th Street, Arlington, Virginia
- FOAGANS, WILLIAM — Box 43, Fairfax, Virginia
- FOCHT, WILLIAM — 621 East Kemp, Watertown, South Dakota
- FOGAN, ROBERT — 2501 Calvert Street, N.W., Washington 8, D. C.
- FOOTE, RICHARD — 5725 Colorado Avenue, N.W., Washington, D. C.
- FOUQUET, BERNARD — 1832 Biltmore Street, Washington, D. C.
- FOX, PAT — 2814 30th Street, N.E., Washington 18, D. C.
- FRENCH, JOHN — 390 East Hill, Wabash, Indiana
- FRENCH, MARY — 1914 North Johnson Street, Arlington 7, Virginia
- FRIEDMAN, RUTH — 3 Pooks Hill Road, Bethesda, Maryland
- FRISHMAN, SEYMORE — 5333 28th Street, N.W., Washington 15, D. C.
- FUCHS, FRANCINE — 3107 McComas Avenue, Kensington, Maryland
- FULLER, JANE — 157 Spring Street, Brockton 40, Massachusetts
- GALAN, WENCESLAO — 1745 Massachusetts Avenue, S.E., Washington, D. C.
- GALO, LIA — 1724 17th Street, N.W., Washington, D. C. — Apt. 35
- GARCIA, RUDOLPH — 1224 M Street, N.W., Washington, D. C. — Apt. 301
- GARCIA, WINIFRED — 1224 M Street, N.W., Washington, D. C. — Apt. 301

GEORGETOWN

"Washington's Only Repertory Cinema"

1351 Wisconsin Avenue, N.W.

AD ams 4-8100

*Finest Films from the Studios
of the World*

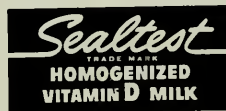
COLUMBIA HOTEL SUPPLY CO.

514 12th Street, S.W.

Purveyors

FRESH MEATS — POULTRY — PROVISIONS
Hotels — Restaurants — Institutions

DI strict 7-1583 — 7-1584 — 7-1585



For Richer Flavor —

Plus extra nutritional benefits —

Drink Creamy Sealtest Vitamin "D"

Homogenized Milk

CHESTNUT FARMS DAIRY

Call AD ams 2-1011 for home delivery or choose
Sealtest in food stores



Don Osten up a tree — again.



Lee Lewy manages to get herself in the most awkward positions.

Your College Drug Store

Wesley Heights Pharmacy, Inc.

45th Street Near Nebraska Avenue, N.W.

WO odley 6-6200

For Over FIFTY Years

the favorite florist of thousands of discriminating Washingtonians and visitors in the Nation's Capital

Blackstone
Inc.
Florists

46th & Mass. Ave., N.W. EM. 3-1606

Convenient A.U. Branch Shop:

1407 "H" St., N.W. DI. 6-1300

- GARDNER, EDWARD — 4201 Massachusetts Avenue, Washington, D. C.
 GARLAND, LOWELL — 604 Notabene Drive, Alexandria, Virginia
 GATHOF, FRANCIS — 4518 Cheltenham Drive, Bethesda 14, Maryland
 GEDNEY, JEAN — 5805 North Washington Blvd., Arlington, Virginia
 GEESFY, GEORGE — 15 Marbern Road, Hagerstown, Maryland
 GEOFFROY, SHIRLEY, 208 Winchester Way, Falls Church, Virginia
 GRIFFIN, CONRAD — 3716 Massachusetts Avenue, N.W., Washington, D. C.
 GILBARD, BURTON, 4408 1st Place, N.E., Washington 11, D.C.
 GILLIARD, VELMA — 9 Logan Circle, N.W., Washington 5, D. C.
 GLAMMEYER, ROY — 2032 O Street, N.W., Washington 6, D. C.
 GLASSMYER, IRVIN — 4739 North 16th Street, Arlington 5, Virginia
 GLADSTONE, EDWARD — 2000 Oglethorpe Street, West Hyattsville, Maryland
 GLEASON, JOHN — 3915 Bruce Street, Alexandria, Virginia — Apt. 205
 GLEYSTEN, ZOE — 4201 Massachusetts Avenue, N.W., Washington, D. C.
 GODFREY, GEORGE — 2006 G Street, N.W., Washington 6, D. C.
 GOLDENBERG, JOANNE — 160 Riverside Drive, New York 24, N. Y.
 GOLDMAN, JOAN — 3926 South 6th Street, Arlington 4, Virginia
 GORDON, ROGER — 527 Four Mile Road, Alexandria, Virginia
 GRAHAM, LORELLA — 2039 New Hampshire Avenue, Washington 9, D. C.

GRAHAM, ORPHEUS — 3460C New Mexico Avenue, N.W., Washington, D. C.
 GRATZ, DAVID — 8520 Garland Avenue, Takoma Park 12, Maryland
 GRAY, JOSEPH — 2130 N Street, N.W., Washington 7, D. C.
 GRENONE, ALFONSO — 219 East Spencer Avenue, Wildwood, New Jersey
 GREEN, JANICE — 1820 California Street, N.W., Washington, D. C.
 GREENFIELD, DANIEL — 4406 Belle Avenue, Baltimore 7, Maryland
 GREENHOUSE, SAMUEL — 618 Nicholson Street, N.E., Washington 11, D. C.
 GREGORY, FRANCIS — 1761 Massachusetts Avenue, N.W., Washington, D. C.
 GRIFFITH, LEWIS — 4835 North 24th Road, Arlington 7, Virginia
 GUY, BETTY — 3717 South 3rd Street, Arlington, Virginia
 GUY, JOSEPH — Clements, Maryland
 HALL, LELA — Stockbridge Road, Seitvate, Massachusetts
 HAMILTON, WILLIAM — 1000 Barnaby Ten., S.E., Washington 20, D. C. — Apt. 101
 HAMPTON, MAURY — 656 Chaplin Street, S.E., Washington, D. C.
 HANES, BETTY — Herndon, Virginia
 HANSON, JOHN — 4657 Pittmar Road, Arlington, Virginia
 HARRIS, CASPA — 1410 Montecello Avenue, N.E., Washington, D. C.
 HART, HENRY — 901 22nd Street, N.W., Washington, D. C.
 HARVILLE, PATRICIA — 702 Atlantic Street, S.E., Washington 20, D. C.
 HASSELMAN, LEE — 2501 Calvert Street, N.W., Washington 8, D. C.
 HERLITLY, FRANK — 4709 Overbrook Road, N.W., Washington 16, D. C.
 HEVENER, CARL — 6609 5 Street, N.W., Washington 12, D. C.
 HEWITT, HARVEY — 210 Greenway Blvd., Falls Church, Virginia
 HICKS, HERBERT — 2012 Sycamore Drive, Falls Church, Virginia
 HILL, EDWARD — 3535 O Street, N.W., Washington 7, D. C.
 HIRSCH, DANIEL — 720 Fort Washington Avenue, New York 33, N. Y.
 HITCHCOCK, JOHN — Route 2, Rockville, Maryland
 HODGE, RALPH — Route 4, Zebulon, North Carolina
 HOELZER, ERNEST — 1214 North Inglewood Street, Arlington, Virginia
 HOFFECKER, JACQUELINE — 101 Rittenhouse Street, N.E., Washington, D. C.

HOLDEN, MARY — 5102 Westling Lane, Bethesda 14, Maryland
 HOLLEY, AL — 5714 16th Avenue, Hyattsville, Maryland
 HOLLEY, EMILE — 1849 3rd Street, N.W., Washington 1, D. C.
 HOLM, PHYLLIS — 937 North Edgewood Street, Arlington, Virginia
 HOOGLAND, DOROTHY — 33 Haviland Pard, Rochester 16, N. Y.
 HOPPER, WILBERT — 3811 Gramercy Street, N.W., Washington, D. C.
 HORAN, ROBERT — 140 East Oak Avenue, Wildwood, New Jersey
 HORN, RICHARD — 412 Hawthorne Avenue, Williamsport, Pennsylvania
 HOUSE, MARGARET — 109 Hillcrest Road, Glastonbury, Connecticut
 HOUSER, EUGENE — 871 South Greenbrier Street, Arlington, Virginia
 HUNGERFORD, THOMAS — 627 Melrose Avenue, Kenilworth, Illinois
 HUNT, LEE — 1501 Patrick Henry Drive, Falls Church, Virginia
 HUNTER, TONEY — 1775 California Street, N.W., Washington, D. C. — Apt. 21
 HUTCHESON, JOAN — 4848 Loughbra Road, Washington, D. C.
 HUTCHINSON, JOYCE — 2036 North Woodstock, Arlington, Virginia
 INGAGLIATO, ALFRED — 4706 Huron Avenue, S.E., Washington, D. C.
 ITZKOFF, ALVIN — 3906 Wabash Avenue, Baltimore 15, Maryland
 JACKSON, HARRY — 840 West Morgan Street, Raleigh, North Carolina

Over Fifty Years of Dependable Service

GRIFFITH-CONSUMERS

"We Make Your Home Comfortable"

1413 New York Avenue, N.W.

ME. 8-4840

- ★ COAL
- ★ FUEL OIL
- ★ OIL BURNERS
- ★ OIL BURNER SERVICE
- ★ HOME INSULATION
- ★ AIR CONDITIONING
- ★ CHAIN LINK FENCING
- ★ BUILDING MATERIALS

Furr Bros. Poultry Co., Inc.

Wholesale Poultry and Eggs

1317 Maine Avenue, S.W.

NA tional 8-4792

JAFFE, BERNARD — 67 Hanson Place, Brooklyn, New York
 JAMISON, JILL — 2230 California Street, N.W., Washington 8, D. C. — Apt. 208
 JEFFREY, JOSEPH — 1009 Hillwood Avenue, Falls Church, Virginia
 JEFFREY, WILLARD — 1009 Hillwood Avenue, Falls Church, Virginia
 JESSOP, WALTER — 38H Ridge Road, Greenbelt, Maryland
 JOHNSON, CLARENCE — 2805 South 8th Street, Arlington, Virginia
 JOHNSON, EDWIN — 527 Fern Place, N.W., Washington 12, D. C.
 JOHNSON, LUCIEN — Box 158, Cross Creek, Pennsylvania
 JONES, HIAWATHA — 1127 8th Street, N.E., Washington 2, D. C.
 JORDAN, RICHARD — 3123 N Street, N.W., Washington, D. C.
 KADALA, KENNETH — 1628 Otis Street, N.E., Washington 18, D. C.
 KANDILLER, RIZA — 1627 19th Street, N.W., Washington 9, D. C.
 KAPLAN, ELAINE — 92-05 68 Avenue, Forest Hills 75, New York
 KAPLIN, NITA — 3900 16th Street, N.W., Washington, D. C.
 KEATING, RICHARD — 4819 Reservoir Road, N.W., Washington, D. C.
 KEAY, VICTOR — 3819 North 23rd Street, Arlington 7, Virginia
 KEEFER, NEIL — 1017 Princeton, Billings, Montana
 KEESE, HELEN — 4901 Montgomery Avenue, Washington 16, D. C.
 KEYVANI, ARSALAN — 3711 Livingston Street, N.W., Washington, D. C.

KICK, FRANCIS — 3918 Bruce Street, Alexandria, Virginia
 KIM, KUM — 77-1 Kung Chung Dong, Seoul, Korea
 KING, FLORENCE — 3614 Connecticut Avenue, N.W., Washington, D. C.
 KING, NANCY — 146 Hillside Avenue, Verona, New Jersey
 KITTINGER, SARAH — 123 II Street, Washington 3, D. C.
 KJERSGAARD, IRENE — 127 Rose Street, Metuchon, New Jersey
 KOONTZ, BARBARA — 4116 18th Place, N.E., Washington, D. C.
 KANZLER, IRMA — 3409-G New Mexico Avenue, N.W., Washington, D. C.
 KRASNER, STUART — 7710 Eastern Avenue, N.W., Washington 12, D. C.

HAVING A PARTY?

Consult Us For — — —
 Fraternal or Organizational Parties and Dances

FOGAN'S

2317 Calvert Street, N.W.

NO rth 7-4779

Opposite Shoreham Hotel

Dancing Friday, Saturday, and Sunday



Students gather for group singing on the steps of Mary Graydon

KRIEGSMANN, LORETTA — 6608 31st Street, N.W., Washington, D. C.
 KTENIDES, STEPHEN — 750 Barnsby Street, S.E., Washington, D. C.
 KUZMINSKY, IRENE — 500 Rittenhouse Street, N.W., Washington, D. C.

LADUSKY, WALTER — 3421 East New Mexico Avenue, N.W., Washington, D. C.
 LANCASTER, MARCIA — 261 Midland Avenue, Montclair, New Jersey
 LANE, JOHN — 1020 19th Street, Washington, D. C.
 LAPLACE, HARL — 818 North Garfield Street, Arlington, Virginia
 LEARY, PAUL — 184 High Street, Newburyport, Massachusetts
 LEBER, MARY ANN — Box 98, Waverly, Pennsylvania
 LEDERER, ELLYN — 2313 Jameson Street, Washington 21, D. C.
 LESTER, RUBY — 2417 North Fairfax Drive, Arlington, Virginia
 LETHBRIDGE, ELAINE — F.O.A., A.P.O. 206A, c/o Postmaster, New York, N. Y.
 LEVEY, ARTHUR — 46 North King Street, Malverne, New York
 LEVY, ARLENE — 4545 Connecticut Avenue, N.W., Washington 16, D. C.
 LEWICKY, WILLIAM — 149-17 16th Road, Whitestone, Long Island, New York
 LEWIS, ROBERT — 32 Grant Avenue, Endicott, New York
 LINK, RICHARD — 829 Grove Avenue, Johnstown, Pennsylvania
 LIPSCOMB, IRA — 877 35th Street, Oakland, California
 LIVESAY, JOHN — 1437 East Capital Street, Washington, D. C.
 LOPEZ, ANGEL — Nueuh Street, #10, Vega Baja, Puerto Rico

PATRONS . . .

Churchill's Restaurant Dairyland Canteen Company



Marcia Eddy — all dressed up for the Paris Party

National Hotel Supply Co.

Provisions for Hotels, Restaurants, Institutions

412 12th Street, S.W.

NA tional 8-2941



LOUGHMAN, MASTEN — 214 Montmorenci, Ridgway, Pennsylvania
 LOWE, MARCIA — 4208 72nd Avenue, Landover Hills, Maryland
 LYMAN, LUCY — 135 Polo Club Road, Bangkok, Thailand
 MACKENZIE, SUSAN — 10-S Plateau Place, Greenbelt, Maryland
 McARTHUR, JAMES — 2517 Pennsylvania Avenue, N.W., Washington, D. C.
 McCOY, LAWRENCE — 80-46 214 Street, Queens Village, New York
 McDARBY, THOMAS — 4387 Raleigh Avenue, Alexandria, Virginia
 McDONNELL, JAMES — 61 Roosevelt Blvd., Fords, New Jersey
 McEVOY, ETHEL — 6214 Georgia Avenue, N.W., Washington, D. C.
 McLEAN, ADA — Star Route Spenard, Box 3515, Alaska
 McLEAN, MIRIAM — 4651 Clark Place, N.W., Washington 7, D. C.
 McMURDOCK, ROBERT — 1250 Irving Street, N.E., Washington, D. C.
 McPHERSON, RONNIE — 10207 Grant Avenue, Silver Spring, Maryland
 McSWEENEY, JOSEPH — 513 13th Street, N.E., Washington, D. C.
 MABEE, WALTER — 5812 Fifth Street South, Arlington, Virginia
 MANCINI, GERMAN — Mohedano 39, La Castellana, Caracas, Venezuela
 MANOOKIAN, EDWARD — 2480 16th Street, N.W., Washington, D. C.
 MANOUELIAN, EDWARD — 5444 33rd Street, N.W., Washington, D. C.

PAPERING
DECORATING

PAINTING
HOUSE REPAIRS



911 13TH STREET, N. W.

Washington, D. C.

General Construction

Telephone
ME tropolitan 8-2460

MARANIAN, HARRY — Old Courthouse Road, Vienna, Virginia
MARSH, ALLAN — 1808 North Jackson Street, Arlington, Virginia
MARSHALL, NORRIS — 3460-F New Mexico Avenue, Washington, D. C.
MARTZ, RICHARD — 4815 Montgomery Lane, Bethesda, Maryland
MATULLO, EUGENE — 5315 North Washington Blvd., Arlington, Virginia
MELBOURNE, JAMES — 52 Que Street, N.E., Washington, D. C.
MELLOR, WILLIAM — 5234 Illinois Avenue, N.W., Washington, D. C.
MEREDITH, CHARLES — 3103 South 13th Street, Arlington, Virginia

METAXATOS, MARGARITA — 1124½ 4th Street, N.E., Washington, D. C.
MEYER, THOMAS — 13218 Bregman Road, Colesville, Maryland
MEYERSON, TED — 1724 Allison Street, N.W., Washington 11, D. C.
MILANI, EDWARD — 3906 Old Dominion Blvd., Alexandria, Virginia
MILES, PATRICIA — 4429 Burlington Place, N.W., Washington 16, D. C.
MILLER, BROWN — 4409 Dexter Street, N.W., Washington 7, D. C.
MILLER, HARRY — New Mexico Avenue, Washington 16, D. C.
MILLER, LOREN — 3409-E New Mexico Avenue, N.W., Washington, D. C.
MILLER, MARY — 1211 26th Street South, Arlington, Virginia
MILLER, MARY — 306 N. Washington Street, Falls Church, Virginia
MILLER, RODNEY — 2544 17th Street, N.W., Washington, D. C.
MILLER, PHILLIP — Vienna, Virginia
MONAGHAN, JAMES — 4075 De Reimer Avenue, Bronx, New York City, N. Y.
MOORE, SAMUEL — 301 East Glendale Avenue, Alexandria, Virginia
MORALES, ARTHUR — 5047 Bradley Blvd., Chevy Chase 15, Maryland
MORRIS, BROCKMAN — 710 South Fayette Street, Alexandria, Virginia
MORRIS, DEWEY — 731 South Fulton Street, Salisbury, North Carolina
MORTON, GAIL — Box 595, Grimsby, Ontario
MULLEN, JANICE — 1612 Massachusetts Avenue, S.E., Washington 3, D. C.
MULLER, ELIZABETH — B-21 James Madison Bldg., Presidential Gardens, Alexandria, Virginia

STANFORD PAPER CO.

Fine Printing Papers
Industrial and Utility Papers

3001 V Street, N.E. Washington 18, D. C.

LI ncoln 7-9500

MURPHY, JEROME — 8107 Greenwood Avenue, Takoma Park, Maryland — Apt. 4
 MYERS, MITCHELL — 2502 14th Street, N.E., Washington, D. C.

NASH, ANN — 4606 Cooper Lane, Washington 16, D. C.
 NASH, RUTH — 4606 Cooper Lane, Washington 16, D. C.
 NELSON, KENNETH — Box 371, Route 1, Alexandria, Virginia

NEWMAN, ROBERT — 69 Paul Ave., New Hyde Park, New York
 NEWTON, DONALD — Ft. Walton Cleaners, Fort Walton, Florida
 NIRENBERG, TONI — 865 Barberry Lane, Woodmere, New York
 NORWITZ, MARTIN — 518 Gilmoure Drive, Silver Spring, Maryland
 NYQUIST, HARRY — 233 Emmett Avenue, Ridgway, Pennsylvania

O'CONNOR, CHARLES — 3204 Jocelyn Street, N.W., Washington, D. C.
 O'CONNOR, ROBERT — Box 601, Route 6, Alexandria, Virginia
 OGDON, CHARLES — 501 Dorchester Road, Falls Church, Virginia
 OGG, JANET — 3701 Massachusetts Avenue, Washington 16, D. C.
 OLIVER, PHILIP — 4621 South Chelsea Lane, Bethesda 14, Maryland
 OLSON, SUE — Plainfield, New Jersey
 O'MARA, ROBERT — 1409 Gladstone Drive, Rockville, Maryland
 OSBORNE, CHARLES — 4801 Connecticut Avenue, N.W., Washington, D. C.
 OUSLEY, SONDRA — 349 North Glebe Road, Arlington, Virginia
 OVERALL, BETTY — 303 East Oxford Avenue, Alexandria, Virginia
 OWENS, DERMOT — 1437 Taylor Street, N.W., Washington, D. C.
 OWENS, MARJORIE — 7814 Tilbury Street, Bethesda 14, Maryland
 OXLEY, JOHN — 128 South Van Buren Street, Rockville, Maryland

PADGETT, ALICE — 3417-B New Mexico Avenue, Washington, D. C.
 PADGETT, FRANCIS — 317 Channing Street, N.E., Washington, D. C.
 PAINE, CAMERON — 35 East 75th Street, New York City, N. Y.
 PALMER, CHARLES — 629 Irving Street, N.W., Washington, D. C.
 PARENT, EVELYN — 125 35th Street, N.E., Washington, D. C.
 PARKER, CHARLOTTE — 3224 Prospect Avenue, Washington, D. C.
 PARKER, RICHARD — 329 Somerset Avenue, Taunton, Massachusetts
 PARKER, HOWARD — 204 Avenue C, New York 9, New York
 PARKER, RICHARD — 66-72 Leonard Street, New York City 12, N. Y.
 PARKS, ROBERT — 1407 South Columbus Street, Arlington, Virginia
 PATTEN, ANNE — 3452-G New Mexico Avenue, N.W., Washington, D. C.
 PATTERSON, JOAN — 2404 Shannon Place, S.E., Washington 20, D. C.
 PATTERSON, FRANK — 117 Bisvey Drive, Falls Church, Virginia
 PATTISON, ALLEN — 4623 South Chelser Lane, Bethesda, Maryland
 PEABODY, JOHN — 562 Peabody Street, Washington, D. C.
 PEARSON, WALTER — 907 Bashford Lane, Alexandria, Virginia
 PECK, MIRIAM — 3540 Volley Drive, Alexandria, Virginia

Grande Valley Products, Inc.

Wholesale

FANCY FRESH EGGS

418 11th Street, S.W.

RE. 7-7915

J. E. DYER & CO.

Wholesale Grocers

*Hotels — Institutions — Bakers
 Janitor Supplies*

AD. 2-2700

3330 M Street, N.W. Washington, D. C.

Established 1878

STANDARD FLOORS, INC.

13th at Eye Streets, N.W.

DI. 7-0488

*Linoleum — Asphalt Tile — Rubber Tile
 Acoustical Tile*

Commercial — Institutional — Residential

PEIRCE, HENRY — 331 South Grace Street, Rocky Mount, North Carolina
 PELLEGRINO, JOSEPH — 4613 41st Street, N.W., Washington, D. C.
 PERRY, WILLIAM — 1809 Savannah Street, S.E., Washington, D. C. — Apt. 202
 PERSON, DORIS — 37 Madison Street, N.W., Washington 11, D. C.
 PETERS, HUGH — 3452-E New Mexico Avenue, N.W., Washington, D. C.
 PETERS, THOMAS — 712 Oakland Blvd., Cambridge, Ohio
 PETREE, ROBERT — 518 Ashford Road, Silver Spring, Maryland
 PHILLIPS, DORIS — Box 343, Route 5, Vienna, Virginia
 PICKETT, FRANCES — 1511 A Street, N.E., Washington, D. C.



Hamilton House, men's dormitory on the Campus.



DISTINCTIVE OFFICE FURNITURE

*A Complete Line of Office Furniture On Display
Completely Furnished Offices On A Rental Basis*

NAtional 8-7824

1621 L. STREET, N. W.

- | | |
|--|--|
| PINE, PETER — 2926 33rd Place, Washington 16, D. C. | PUGH, JOHN — 2125 Herman Avenue, Norfolk 13, Virginia |
| PLOTNICK, NORMAN — 5401 North Capital Street, N.E., Washington, D. C. | QUINT, FLORA — 250 State Street, Nanticoke, Pennsylvania |
| POLANSKY, HOWARD — 6304 47th Avenue, Lewisdale, Maryland | RAQUIS, FRANCES — 3435 Holmead Place, Washington, D. C. |
| POLEN, SAMUEL — 3448-B New Mexico Avenue, N.W., Washington 16, D. C. | RAHMAN, RESHAD — 3342 Stuyvesant Place, N.W., Washington 15, D. C. |
| POLEN, MARY ELLEN — 3448-B New Mexico Avenue, N.W., Washington 16, D. C. | RAPPOPORT, ALLAN — 2850 West Garrison Avenue, Baltimore 15, Maryland |
| PONCE, EROTIDA — 3546 South 19th Street, Arlington 4, Virginia | RATCLIFFE, BARBARA LEE — 1907 North Nicholas Street, Arlington 5, Virginia |
| PORTER, ELIZABETH — 621 Hamilton Street, N.W., Washington, D. C. | REAL, FREDERIC — 2453 39th Place, Washington 7, D. C. |
| POSHAKRISHNA, TONGPOONSRI — 4908 N Street, N.W., Washington, D. C. | |
| PRINCE, MARTHA — 9111 Burdette Road, Bethesda, Maryland | |

MYERS & QUIGG, Inc.

PAVING CONTRACTORS

Office and Plant

CHARLES H. QUIGG
President

91- O STREET, S.E.
WASHINGTON 3, D. C.

PAUL G. MYERS
Vice-President

LI. 4-2403

Asphalt and Concrete Pavements

Black Top Roadways

Sidewalks



The American University Law School

REDDEN, CHARLES — 1900 F Street, N.W., Washington, D. C.
 REID, CLARA — 3220 17th Street, N.W., Washington 10, D. C.
 REID, JESSIE — 46 West 100th Street, New York, N. Y.
 REMLER, ALICE — 5204 Murray Road, Chevy Chase 15, Maryland
 REYNOLDS, GEORGE — 10 Edgewood Terrace, Alexandria, Virginia
 RICH, ALAN — 4519 Alabama Avenue, S. E., Washington, D. C.
 RICHARDSON, CAROLYN — 1408 Stuart Court, Falls Church, Virginia
 RICKETS, AUDREY — 7407 Birch Avenue, Takoma Park 12, Maryland
 RICKMAN, ROBERT — 6023 North 19th Road, Arlington, Virginia
 RILEY, ELLEN — Whitefair, Maple Lane, Fairfax, Virginia
 ROBERTSON, BARBARA — 208 South Courthouse Road, Arlington, Virginia
 ROBINSON, EDWARD — 1818 17th Street North, Arlington, Virginia
 ROBINSON, SUSAN — 206 Jefferson Street, Falls Church, Virginia
 ROBSMAN, SLAVA — 1763 Columbia Road, N.W., Washington 9, D. C.
 ROFF, FREDERICK — 98 Burnham Parkway, Morristown, New Jersey
 ROFFELD, MURRAY — 5166 34th Street, N.W., Washington, D. C.
 ROGERS, CARLETON — 926 Douglas Avenue, Elgin, Illinois
 ROMETT, THOMAS — 516 Chestnut Avenue, Barnesboro, Pennsylvania
 ROMUALDEZ, NORMA — c/o Philippine Trust Company, Manila, Philippines
 ROONEY, DONALD — 86-17 251st Bellerosa 26, Long Island, New York
 ROYAL, ESTELLE — 3014 Wanden Street, N.W., Washington, D. C.
 RUFENER, MELVIN — 2000 Evarts Street, N.E., Washington 18, D. C.
 RUMPE, ROBERT — 318 East Third Street, Frederick, Maryland
 RYAN, NANCY — 730 Van Buren Street, N.W., Washington 12, D. C.
 RYLAND, VIRGIL — 2321 North Columbus Street, Arlington, Virginia

 SAADEH, WAJIH — 1918 N Street, N.W., Washington, D. C.
 SAID, ABDUL — 3210 Wisconsin Avenue, Washington, D. C.
 SAINES, GEORGE — 315 Varnell Street, Kane, Pennsylvania
 SAKAI, ELAINE — 1915 Kalorama Road, N.W., Washington 9, D. C.
 SAMPSON, DORIS — 110 West Bel Air Avenue, Aberdeen, Maryland
 SANSUR, MUSA — Bethlehem, Jordan
 SARTORIUS, DONALD — 1704 Allison Street, Washington, D. C.
 SAUNDERS, RUTH — 7809 Fairfax Road, Bethesda 14, Maryland
 SCANLAN, MARGARET — 4301 Massachusetts Avenue, Washington, D. C.
 SCHOENFELDER, SHARON — 530 East Woodbine Street, Chevy Chase 15, Maryland
 SCHOFFER, JANET — 5510 13th Street, N.W., Washington, D. C.
 SCHEGEL, RAY — 2634 Tunlaw Road, N.W., Washington, D. C. — Apt. 102
 SCHNECK, MARVIN — P. O. Box 96, Kerhonkson, New York
 SCHOLNICK, MYRON — 2300 Anoka Avenue, Baltimore 15, Maryland
 SCHOOLS, CHARLES — 4811 North 3rd Street, Arlington, Virginia
 SCHMOYER, CHARLES — 3880 Rodman Street, N.W., Washington 16, D. C.
 SCHOONMAKER, EUGENE — 1706-C Commonwealth Avenue, Alexandria, Virginia
 SCHRECK, JOHN — 81 Bellmore Street, Floral Park, Long Island, New York
 SCHWEIZER, ANN — 3221 Connecticut Avenue, Washington, D. C.
 SCHNEIDER, MILTON — 2101 N Street, N.W., Washington, D. C.
 SCOTT, WILLARD — 125 Commonwealth Avenue, Alexandria, Virginia
 SEROGGINS, MARIE — 809 6th Street, S.W., Washington, D. C.
 SEIDLER, JUDITH — 1870 Wyoming Avenue, N.W., Washington 9, D. C.
 SELBY, JOHN — 902 Prospect Street, Takoma Park 12, Maryland
 SHAHEEN, JOSEPH — 127 12th Street, N.E., Canton 4, Ohio
 SHEETS, CHARLES — 121 35th Street, N.W., Washington, D. C.
 SHELHAMER, PATRICIA — 408 North Yellowstone, Livingston, Montana
 SHERWOOD, JEAN — 4845 W Street, N.W., Washington 7, D. C.
 SHIELDS, SUSAN — 5322 Decatur Street, Hyattsville, Maryland
 SHIFLET, ESTHER — 7913 Piney Branch Road, Silver Spring, Maryland
 SHUPACK, HAROLD — 110-24 68 Avenue, Forest Hills, New York
 SHUSTER, JEANNE — 502 Rittenhouse Street, N.W., Washington 11, D. C.
 SHUTE, ALAN — 2401 Ridge Road Drive, Alexandria, Virginia
 SHYTLE, BARBARA — 5604 Pioneer Lane, Washington 16, D. C.
 SILVERMAN, INA — 1224 East 23 Street, Brooklyn 10, New York
 SILVEY, WILLIAM — Phi Sigma Kappa House, American University, Washington, D. C.
 SIMMS, WAYLAND — 310 Maple Avenue, Falls Church, Virginia
 SINK, FRANK — 2000 Evarts Street, N.E., Washington 18, D. C.
 SIPLER, CAROLYN — 2822 North 23 Street, Arlington, Virginia
 SKINNER, ROBERT — 3421-D New Mexico Avenue, Washington, D. C.
 SINHA, BHEKI — 1839 R Street, N.W., Washington, D. C.
 SMITH, ALFRED — 40 Independence Avenue, S.W., Washington, D. C.
 SMALL, NORMA — 4825 North 9th Street, Arlington, Virginia
 SMITH, BERNARD — 3610 Warren Road, Cleveland 11, Ohio
 SMITH, MAHLON BERNARD — 1105 Trenton Place, S. E., Washington, D. C.
 SMITH, NORMAN — 1503 North Wakefield Street, Arlington, Virginia
 SMITH, RICHARD — 1152 South Thomas Street, Arlington, Virginia — Apt. 1
 SMITH, STANLEY — 5914 Ramsgate Road, Washington 16, D. C.
 SPEARS, JOSEPH — 5453 33rd Street, N.W., Washington, D. C.
 SPURLOCK, EUGENE — 4204 45th Street, N. W., Washington, D. C.
 STALLONE, ALBERT — 1222 Robeson Street, Reading, Pennsylvania
 STEVENSON, OCTAVE — The Highlands, Washington, D. C.
 STINCHFIELD, ROGER — 5516 Lincoln Street, Bethesda, Maryland
 SUMLEY, NANCY — Box 36, Newington, Virginia
 SWEENEY, VIRGINIA — 414 Kennedy Street, N.W., Washington 11, D. C.
 SWENSON, KARL — 3525 Pope Street, S.E., Washington, D. C.

TABOR, DAVID — 4528 Ellicott Street, N.W., Washington 16, D. C.
 TARAGHI, ARDJOMAND — 3711 Livingston Street, N. W., Washington, D. C.
 THACKARA, MARY — Montrose Road, Rockville, Maryland
 THOMAS, EARL — 309 Wellington Road, Alexandria, Virginia
 THOMPSON, DOLPHIN — Box 1184
 THOMPSON, EDWARD — 6212 North 31st Street, Arlington, Virginia
 THOMPSON, JOHN — 1720 R Street, S.E., Washington, D. C.
 THOMPSON, JOHN WESLEY — 1515 E. Street, S.E., Washington, D. C.
 THOMPSON, MIRIAM — 2 Midhurst Road, Silver Spring, Maryland
 TODA, KENJI — 3448 E New Mexico Avenue, N.W., Washington, D. C.
 TRATEN, CARYL — 7237 Georgia Avenue, N.W., Washington 12, D. C.
 TREVEY, JOHN — 309 First Street, Rockville, Maryland
 TUCKER, SUZANNE — 3302 Carolina Place, Alexandria, Virginia
 TURNER, ROBERT — 3409 Rutgers Street, Hyattsville, Maryland
 VANDERVEER, FRANCIS — 509 West Montgomery Avenue, Rockville, Maryland
 VANDYKE, SARA — 130 Union Avenue, Tarrytown, New York
 VANZANDT, ERNEST — 11 Peachtree Lane, Roslyn Heights, Roslyn, New York
 VIGGIANO, MURIEL — 913 10th Street, N. E., Washington 2, D. C.
 VONSUMPTER, DAVID — 4506 Eads Place, N. E., Washington, D. C.
 VOSSOUGH, MEHDI — 1720 21st Street, N.W., Washington, D. C.
 VANDERHYDEN, PATRICIA — 2231 Bancroft Place, N. W., Washington 8, D. C.
 VONATZIS, ANTHONY — 5910 Walthonding Road, Glen Echo Heights, Maryland
 WALDENBURG, DUANE — 20 Chesapeake Street, S. E., Washington 20, D. C.
 WALESKI, CHARLES — 1701 16th Street, N.W., Washington, D. C.
 WALKER, DAVID — 2315 North 11th Street, Arlington, Virginia
 WALKER, EDWARD — 1218 Euclid Street, N.W., Washington, D. C.
 WANG, DOUGLAS — 1839 R Street, N.W., Washington, D. C.
 WARFIELD, JOHN — 3544 Williamsburg Lane, N.W., Washington, D. C.

WATERS, JOSEPH — 1824 Harvard Street, Washington, D. C.
 WATTS, JOYCE — 33 Park Avenue, Kane, Pennsylvania
 WAUGH, RANDALL — 6602 Westmoreland Avenue, Takoma Park 12, Maryland
 WEBER, RONALD — 1145 North Vermont Street, Arlington 1, Virginia
 WELFORD, DOUGLAS — 5910 Ramgate Road, Washington 16, D. C.
 WELSH, WILLIAM — 955 East-West Highway, Takoma Park 12, Maryland
 WELTZ, WILLMA — 1300 U Street, S.E., Washington, D. C. — Apt 3
 WHITE, DONALD — 8 Darley Road, Claymont, Delaware
 WHITE, SARAH — 628 7th Street, N.E., Washington, D. C.
 WICKEY, EDWARD — Phi Sigma Kappa House, American University, Washington, D. C.
 WILLET, FRANK — 1032 North Garfield Street, Arlington, Virginia
 WILLIAMS, JAMES — 8401 Piney Branch Court, Silver Spring, Maryland
 WILLIAMS, MARLENE — 825 Allison Street, N.W., Washington, D. C.
 WILLOUGHBY, ANDREW — 6701 Persimmon Tree Road, Washington 14, D. C.
 WILSON, CAROL — 129 Second Street, Garden City, New York
 WILSON, PATRICIA — 107 Upside Court, Falls Church, Virginia
 WINANT, DEANE — 30 Franklin Avenue, Montvale, New Jersey
 WINSLOW, JOAN — 1524 Ogden Street, N. W., Washington 11, D. C.
 WITTER, RICHARD — 1211 Vermont Avenue, N. W., Washington 5, D. C.
 WOGAN, MICHAEL — 1913 North Madison Street, Arlington 5, Virginia
 WOOD, CHARLES — 201 North Washington Street, Rockville, Maryland
 WOOD, WILLIAM — 129 Dale Street, Alexandria, Virginia
 WOODWARD, WILLIAM — 48 Rhode Island Avenue, N. E., Washington 2, D. C.
 WRIGHT, DON — 264 Jackson Avenue, Bradford, Pennsylvania
 WRIGHT, JOHN — 75 Adams, Washington, D. C.
 YEATMS, GEORGE — 162 North Loudoun Street, Winchester, Virginia
 ZEIDA, ROBERT — 4416 Chestnut Street, Bethesda 14, Maryland
 ZIMMERMAN, WILLIAM — 233 6th Street, S. W., Washington, D. C.
 ZITMORE, JEANNE — Kensington, Maryland



CANDIDATES FOR HOMECOMING QUEEN: *Left to right in mirror:* Pat Miles, Betty Elliott, Sue Olson, Jackie Hoeffecker, Jean Sherwood, Miriam Thompson.



The Grotto Stream In Winter.

H. G. ROEBUCK & SON

2140 AISQUITH STREET
BALTIMORE, MARYLAND

☆ ☆ ☆ ☆ ☆ ☆ ☆ ☆ ☆

☆

☆

☆

☆

☆

☆

☆

☆

☆

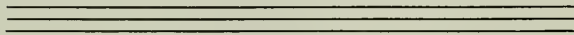
☆

☆

☆ ☆ ☆ ☆ ☆ ☆ ☆ ☆ ☆ ☆ ☆ ☆ ☆



PRINTERS—LITHOGRAPHERS TO
SCHOOLS AND COLLEGES EVERYWHERE



Producers of

YOUR 1954 YEARBOOK

Autographs

Autographs





