

F NTL  
29  
.B3827  
1910z

UNIV OF MD COLLEGE PARK




3 1430 03487819 1

J

Re. Harold, Marie & Beulah

W.H. Sherman (1909) New York, ME



Digitized by the Internet Archive  
in 2011 with funding from  
LYRASIS members and Sloan Foundation

<http://www.archive.org/details/barharbormainewh00barh>

# BAR HARBOR

## MAINE

WHAT CAN BE SEEN THERE



BAR HARBOR AS SEEN FROM BAR ISLAND

EDWARD B. MEARS

A. STROUD RODICK

**EDWARD B. MEARS & CO.**  
**BAR HARBOR REAL ESTATE**

IN ALL ITS BRANCHES

OFFICES { Bar Harbor, Maine  
          { 202 South 15th Street, Philadelphia, Pa.

**THE FIRST NATIONAL BANK**  
**OF BAR HARBOR, MAINE**

NEW FIREPROOF BUILDING

MODERN VAULTS

SAFETY DEPOSIT BOXES TO RENT

VAULTS FOR STORAGE OF SILVER AND VALUABLES

Ladies' Waiting Room with toilet, writing desk, telephone, magazines, etc.

# MOUNT DESERT ISLAND

**T**HE LARGEST ISLAND on the coast of New England, was discovered in 1604, by Champlain who named it "L' Isle des Monts Desert," or the isle of the desert mountains. In its comparatively small area of about one hundred square miles are fifteen mountain peaks varying in height from 700 to 1500 feet above sea level, fifteen ponds and lakes, from a few acres to several square miles in area, deep gorges and picturesque glens, bold promontories and broad stretches of forest, sparkling streams, bays, harbors, coves and indentations of every variety and form. Its mountains can be seen sixty miles at sea, the highest of them, Green Mountain, forming a stately background to Bar Harbor, the Queen of American Summer Resorts, which nestles on a wooded plateau at its foot, where the waters of Frenchman's Bay mingle with the broad Atlantic.

Bar Harbor, in the Town of Eden, takes its name from the sand bar which connects the main island with Bar Island, and forms an inner and outer harbor, in one or the other of which vessels can find shelter from any gale that blows. There are nine hotels in the village, and a large number of elegant and costly summer residences. Among the owners and summer occupants of these beautiful homes are many of the most distinguished people of the country.

Bar Harbor owes its popularity as a summer resort to the natural advantages and attractions it possesses, including

magnificent mountain and ocean scenery, beautiful lakes and streams, enchanting woodland vistas, delightful drives amid ever varying surroundings, charming walks, fishing, boating and fresh, bracing air. Among its public conveniences and improvements are a pure and adequate water supply, a perfect system of drainage, electric lighting, excellent postal, telephone and telegraph service, good roads and a comprehensive system of bridle paths. The Kebo golf links are second to none in New England. Of the many good roads which traverse the length and breadth of the island it is difficult to decide which opens up the most beautiful scenery.

The Atlantic or Ocean Drive skirts the base of Newport Mountain and follows the shore southward, past Schooner Head and the Spouting Horn, Anemone Cave, Thunder Cave, Newport Beach and Great Head to Otter Cliffs. The road in many places is cut out of the solid ledge, and winds along the edge of precipices or by the brink of the restless sea. Turning inland again by the placid waters of Otter Creek the road makes homeward through the grand and rugged scenery of the Gorge, between the wooded battlements of Newport and the steep, bare cliffs of Dry Mountain.

The Cornice or Bay Drive is a continuation of Eden street, beginning at the dell which shelters the outlet of picturesque Duck Brook and climbing along the beetling face of the cliffs, high above the blue waters of the bay, to the historic little hamlet of Hulls Cove, in whose rustic graveyard repose the ashes of the De Gregoires, the heirs of

Sieur de la Motte Cadillac, and grantees under the Commonwealth of Massachusetts of the whole island of Mount Desert. From this point the Breakneck and Norway Drives strike inland, opening up an endless variety of lake and woodland scenery.

The Twenty-two Mile Drive takes the visitor by the Ocean Drive to Otter Creek, thence by the attractive Sea View Drive along the shore to Seal Harbor; through that pretty little village and along the Sea Wall to Northeast Harbor, on by the deep blue waters of Somes Sound, an inland sea that would shelter the navies of the world, to the quiet little hamlet of Somesville. After one of the chicken dinners for which the place is famous, the drive is again resumed through the woods and by Eagle Lake homeward.

The bridle paths, laid out and kept in good condition through the tireless energy of the V. I. A. Committee, open up a variety of scenery which cannot be reached otherwise. In the extent of territory covered by the view the Green Mountain paths lead, the most popular one to reach the summit being the Gorge Path. The return is made over the long spur of the mountain in a zigzag path, opening up new stretches of hill, lake and ocean scenery at every turn. At one's feet are the silvery waters of Eagle Lake, while the hoary head of Katahdin marks the limit of the view. Well defined paths also lead to all of the other mountain peaks. The Shore Path, a promenade skirting the shore from the wharves to Cromwells Harbor, is a feature in itself. By moonlight it is a most

romantic and beautiful promenade, while in daylight it is an unending source of pleasure and joy to the children. Convenient, open at all hours, and always cool and refreshing, it is a charming place of resort within a few minutes' walk of the hotels.

The harbor is an ideal sheet of water for boating, and all kinds of craft from the birch bark canoe to the sloop or motor launch can be found at the boat wharves. Fishing gear and bait are supplied if desired, and a competent sailor and fisherman to take charge. Well fitted steamers ply on the bay and call at neighboring resorts, and one fond of the water can spend all the time thereon that he chooses.

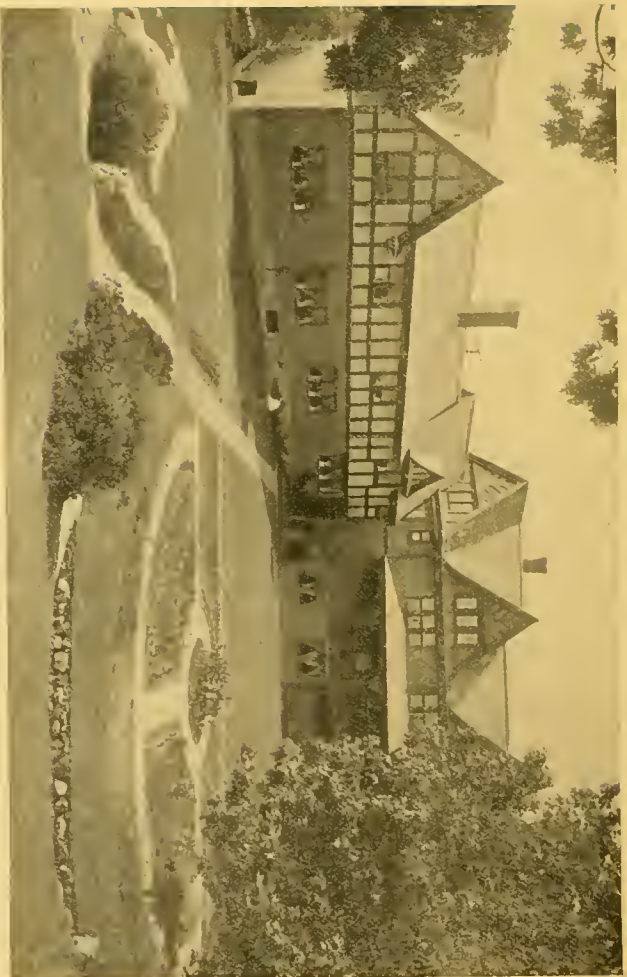
New and valuable additions to Bar Harbor's many attractions include the handsome granite postoffice, the splendid Y. W. C. A. building and the magnificent Jesup Memorial Library. The swimming pool on the West street shore, connected with which are a fine clubhouse and casino and several good tennis courts, and the Arts Building, situated on the Cromwell Harbor road, near the Kebo Valley Club golf links offers splendid attractions.

To those who would hold communication with Nature in her wildest and grandest moods, Bar Harbor offers such facilities as are presented nowhere else; and the lover who would woo her in her gentle guise will find here also richest opportunity. To the wearied man of business and to the tired votary of fashion, Nature extends alike a welcoming hand, promising to each genuine recreation and enjoyment.





BAR HARBOR AS SEEN FROM BAR ISLAND



THE DE GREGOIRE APARTMENT HOUSE, EDEN STREET



THE MALVERN HOTEL, KERO STREET





NEWMAN  
PERP  
1

ROBINHOOD PARK, ON THE OTTER CREEK ROAD



A VIEW OF THE HALLWAY IN ONE OF THE SUMMER COTTAGES



PANORAMIC VIEW OF THE HARBOR



TURBULENT WATERS OF FRENCHMANS BAY AS SEEN FROM THE SHORE PATH



SAND BEACH, ON THE OCEAN DRIVE



THE MEADOW IN THE GORGE



TORPEDO BOAT DESTROYERS AND BATTLESHIPS IN THE LOWER HARBOR



BATTLESHIPS IN THE UPPER HARBOR, SHOWING FLAGSHIPS OF TWO WARS  
Hartford Olympia



MAIN STREET BETWEEN COTTAGE AND MT. DESERT STREETS





THE GORGE DRIVE BETWEEN NEWPORT AND DRY MOUNTAINS



OCEAN DRIVE NEAR SAND BEACH—BEEHIVE MOUNTAIN IN DISTANCE



DUCK BROOK FALLS



EX-PRESIDENT TAFT ON THE KEBO GOLF LINKS—BUILDING OF ARTS IN THE BACKGROUND



STEEL PIER OF THE MOUNT DESERT READING ROOM AND HARBOUR VIEW



BALANCE ROCK AND IT. M. S. INDEFFATIGABLE



A TYPICAL VIEW ON THE COAST OF MOUNT DESERT ISLAND



ST. SAVIOUR'S EPISCOPAL CHURCH, MT. DESERT STREET





SPORT AT THE SWIMMING POOL



PANORAMIC VIEW OF BAR HARBOR

RECEIVED  
NEWBURYPORT  
MASS.



"KENARDEN LODGE," ON THE SHORE PATH



THE FABBRI COTTAGE



U. S. S OLYMPIA AT ANCHOR AT BAR HARBOR



PULPIT ROCK ON THE SHORE PATH



SURF VIEW ON THE SHORE PATH



AN ITALIAN GARDEN AT "BLAIR EYRIE"



NEWPORT MOUNTAIN

DRY MOUNTAIN  
PANORAMIC VIEW FROM BLAIR EYRIE

GRE





MOUNTAIN  
OW'S PARK IN FOREGROUND



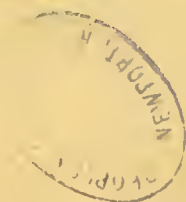
THE LATE DR. S. WEIR MITCHELL, AND HIS FAVORITE PASTIME



BIRCH POINT ON THE SHORE PATH



"DEVILSTONE," SUMMER RESIDENCE OF CLEMENT B. NEWBOLD OF PHILADELPHIA



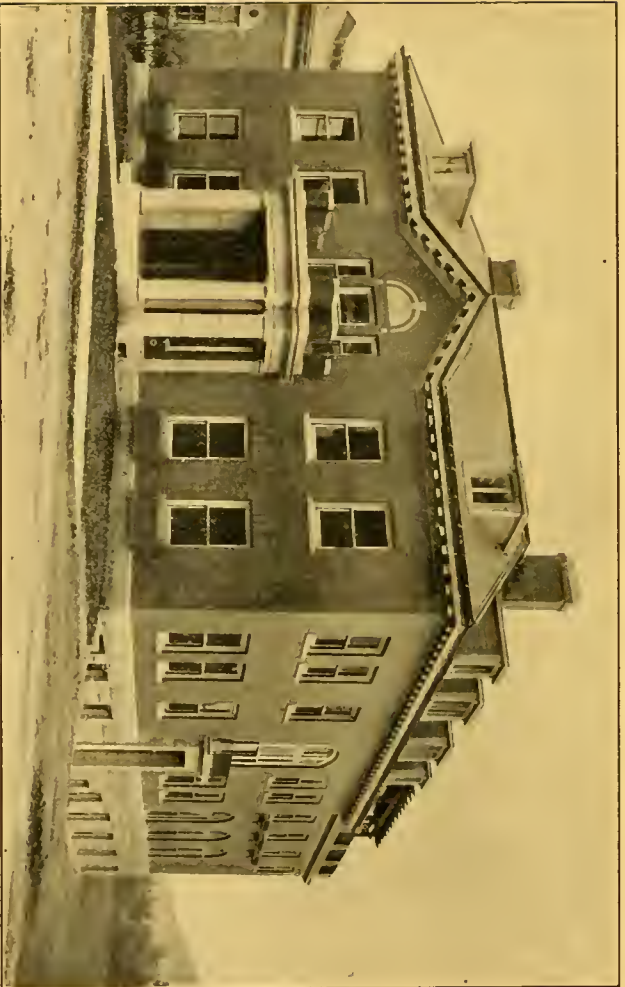


WAITING FOR PRESIDENT TAFT TO COME ASHORE FROM THE MAYFLOWER

Photo by Bradley



POST OFFICE



YOUNG WOMEN'S CHRISTIAN ASSOCIATION BUILDING



THE JESUP MEMORIAL LIBRARY



"CHATWOLD," SUMMER HOME OF MRS. JOSEPH LULITZER



CHURCH OF OUR FATHER, (EPISCOPAL,) HULLS COVE



HIGH SCHOOL BUILDING





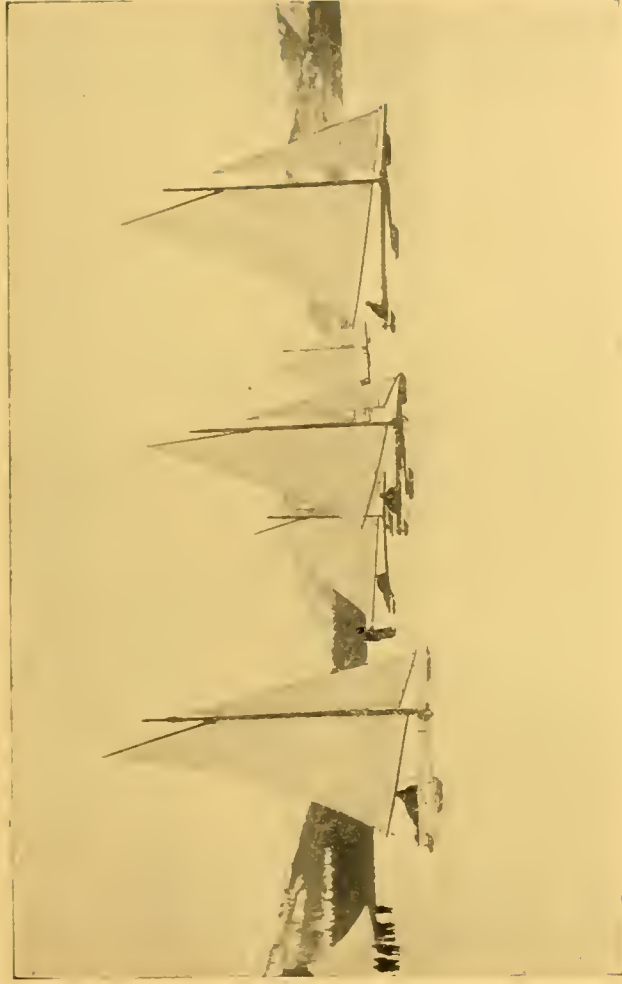
CHURCH OF THE HOLY REDEEMER, MT. DESERT STREET



VIEW ON THE OCEAN DRIVE



Eagle Lake



WINTER SPORT AT EAGLE LAKE



EXTENSION OF LEDGELAWN AVENUE, DRY MOUNTAIN IN DISTANCE



THE SHORE PATH IN WINTER



MOUNT DESERT STREET, LOOKING WEST FROM MAIN STREET



SUNSET FROM THE BAR.



ST. SAUVEUR HOTEL, MT DESERT STREET, A. P. ALLEY, PROPRIETOR

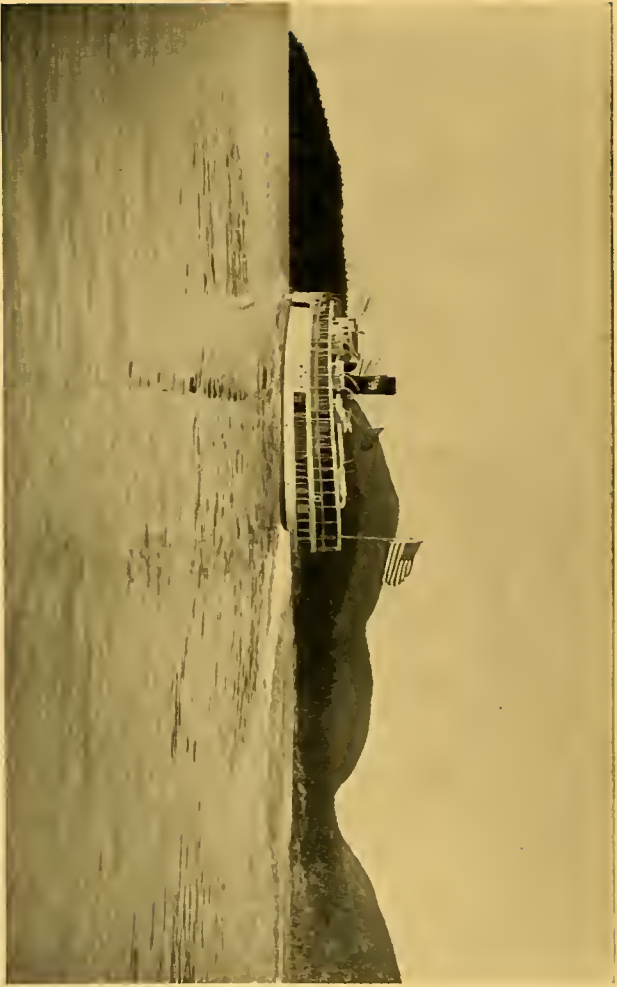


ANEMONE CAVE, ON THE OCEAN DRIVE

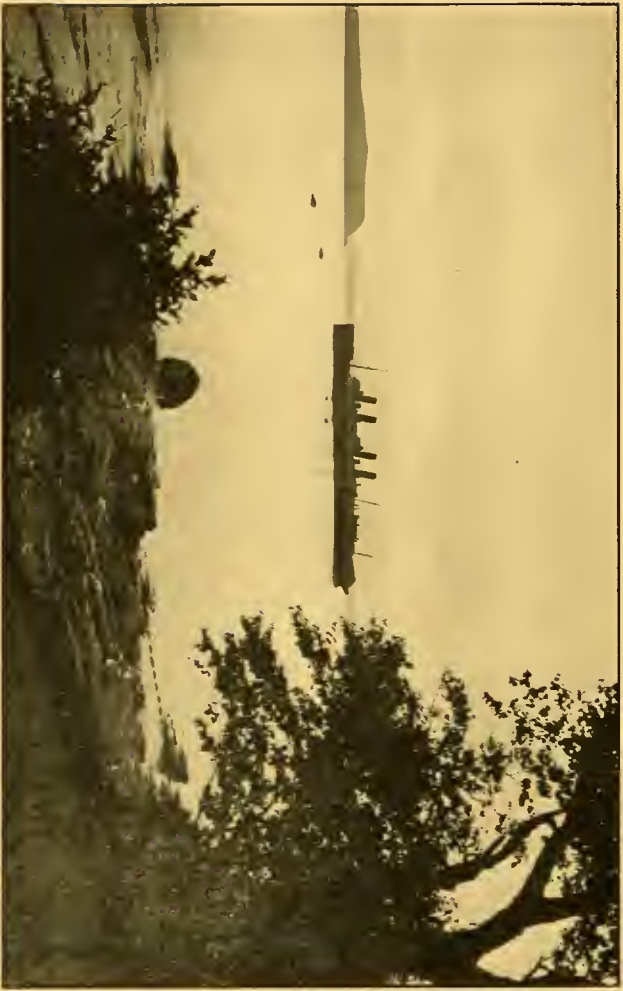




WINTER SCENE ON DUCK BROOK



STEAMER MOOSEHEAD BOUND "AROUND THE HILLS"



"KRONPRINZESSIN CECILIE," THE \$10,000,000 TREASURE SHIP, AT BAR HARBOR



MOSLEY HALL

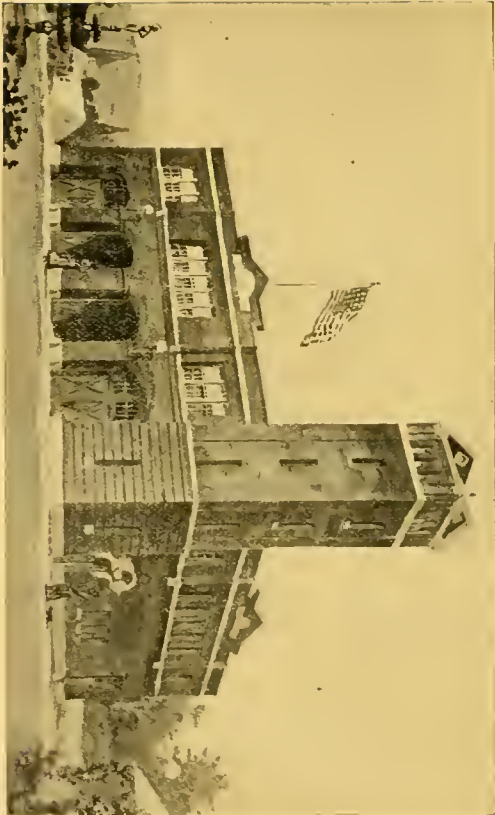
Photo by Bradley



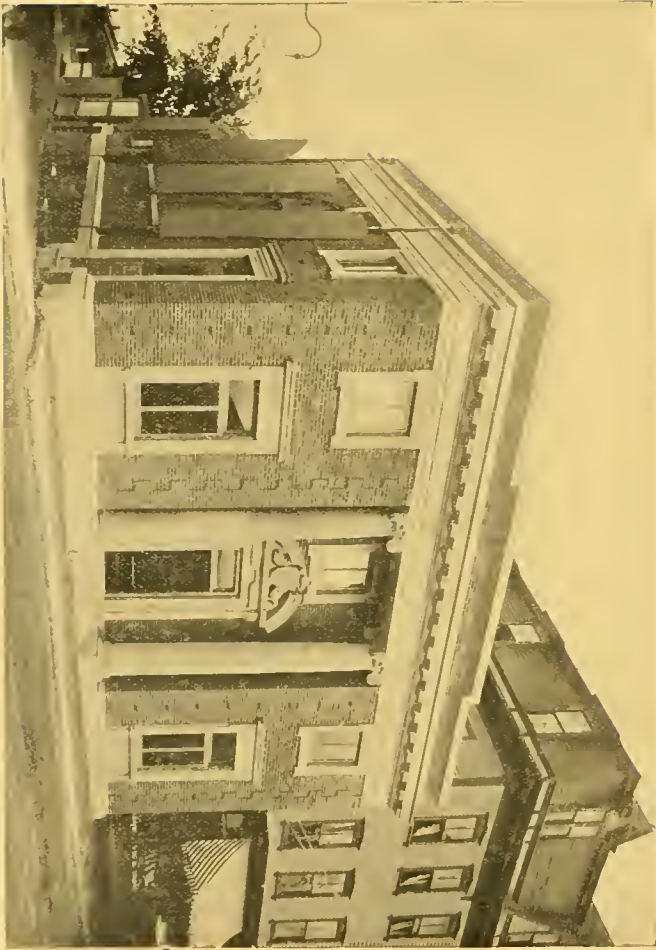
THE OVENS, ON THE BAY DRIVE



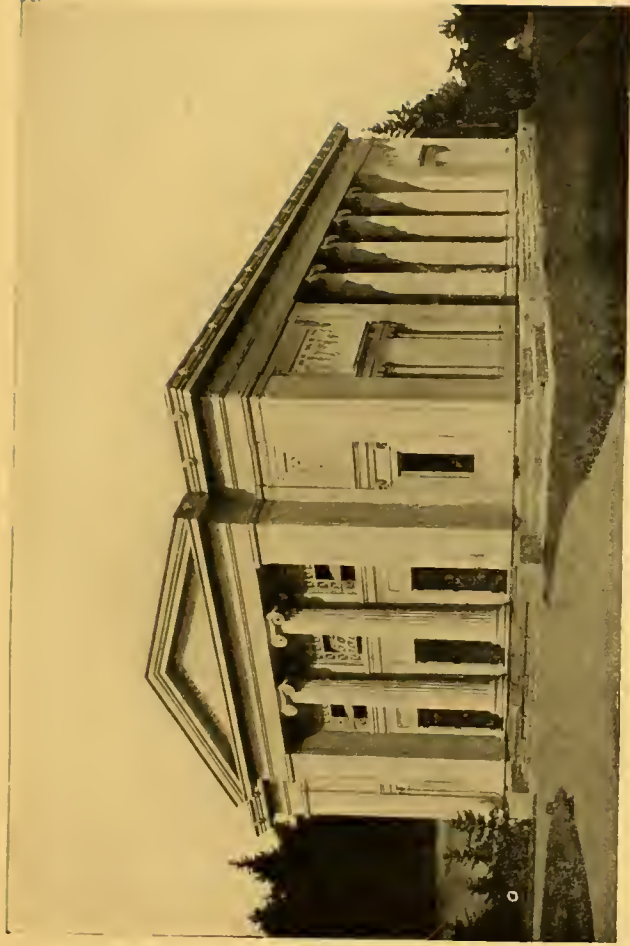
THE OVENS, ON THE BAY DRIVE



FIRE DEPARTMENT BUILDING



FIRST NATIONAL BANK BUILDING



BUILDING OF ARTS

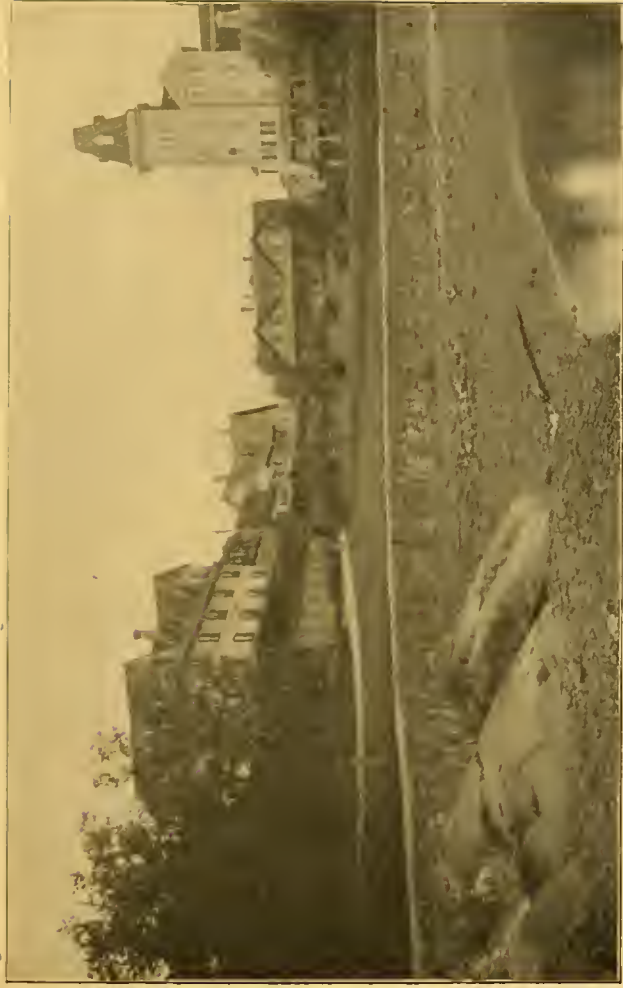


ON THE ROAD TO EAGLE LAKE

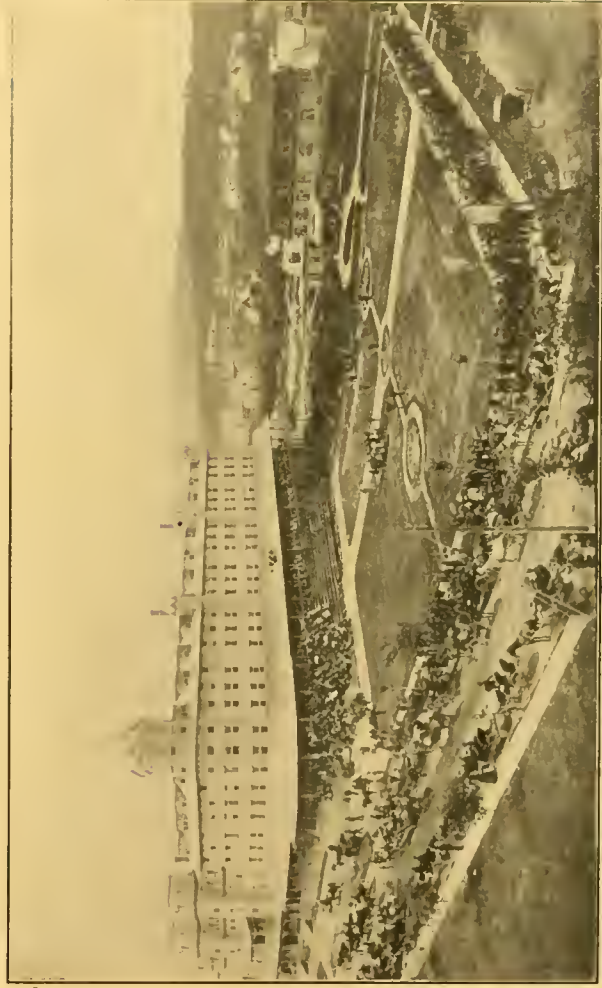


DIRIGO BOAT SLIP AND SAILORS LANDING FROM U. S. BATTLESHIP CONNECTICUT

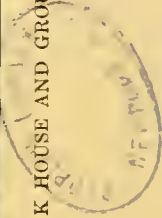




THE NEWPORT HOUSE AND COTTAGES



THE RODICK HOUSE AND GROUNDS AS THEY APPEARED IN 1885



## REPRESENTATIVE BUSINESS FIRMS OF BAR HARBOR, MAINE

<p><b>S. J. CLEMENT</b> <b>MUSIC STORE</b> PIANOS and SEWING MACHINES <b>Victor and Edison Talking Machines</b> Motorcycles and Bicycles 99 Main Street</p>	<p><b>FRED A. GONYA</b> <b>PHARMACIST</b> Compounding physicians prescriptions a specialty Agent for Huyler's, and Page-Shaw's <b>CHOCOLATES</b> Corner of Main and Cottage Streets</p>	<p><b>MME. YOVIN</b> <b>DESIGNER</b>                      <b>IMPORTER</b> Original Designs in <b>EVENING GOWNS</b> <b>DANCING FROCKS, SPORT COATS</b> and <b>LINGERIE DRESSES</b> Paris      New York, 20 West 45th Street Summer Season, Bar Harbor, Maine.      Lakewood, N. J.</p>	<p><b>CHARLES A. KEUCHER, Ph. G.</b> <b>APOTHECARY</b> Prescriptions filled as written Only the best materials used Soda Water—the most delicious in town— 58 Main Street</p>
<p><b>CLARK COAL CO.,</b> <b>COAL, WOOD, CHARCOAL</b> <b>AND KINDLINGS</b> Special attention given to coaling steam yachts 67 West Street, foot of Rodick Street Telephone 202 A. B. Leland, Gen. Man.      A. S. Kingsley, Treas.</p>	<p><b>JAMES E. MARCYES</b> <b>PIANO TUNER</b> 23 High Street Telephone 51</p>	<p><b>L. P. CARTER</b> <b>PLUMBING</b> Steam and Hot Water Heating 46 Cottage Street</p>	<p><b>F. L. CARTER</b> Painting and Interior Decoration Dealer in Wall Papers, Paints, Oils, Varnishes, etc. 46 Cottage Street                      Telephone</p>
<p><b>FRANK T. YOUNG CO.</b> Frank T. Young, President John P. Carney, Treas. and Manager <b>PLUMBING</b> <b>STEAM AND HOT WATER HEATING</b> 170 Main Street, opposite Mr. Desert Street Telephone 407</p>	<p><b>HENRY A. LAWFORD</b> <b>PAINTER, PAPER HANGER</b> <b>AND DECORATOR</b> Deales in Wall Papers, Paints, Oils, Varnishes, Glass, etc. <b>SIGN PAINTING</b> 292 Main Street                      Telephone 179-3</p>	<p><b>B. S. HIGGINS</b> <b>GROCERIES AND PROVISIONS</b> Imported and Domestic Canned Goods P. E. Sharples Gift Edge: Pleasant Valley, and Poland Spring Butter, Beef, Lamb, Veal, Poultry, Game, Fruits, Vegetables, Eggs, etc. Also, Hardware, Nos 131, 133 and 135 Main Street</p>	<p><b>BAR HARBOR STEAM LAUNDRY</b> H. I. Hodgkins, President M. S. Arey, Treasurer <b>HAND WORK A SPECIALTY</b> 83 and 85 West Street</p>
<p><b>ELLSWORTH FOUNDRY</b> <b>AND MACHINE WORKS</b> <b>MACHINISTS AND FOUNDERS</b> <b>FULLY EQUIPPED GARAGE</b> Storage by day or month Repair Work a Specialty Complete line of Accessories Cottage Street                      Telephone 555</p>	<p><b>NICKERSON, SPRATT &amp; GREELEY</b> Wholesale and Retail Dealers in <b>HAY, STRAW, GRAIN, FLOUR</b> Mill Feed and Kerosene Oil RYE STRAW ALWAYS IN STOCK <b>CLIPPEO OATS A SPECIALTY</b> 37 West Street</p>	<p><b>GUTHRIE &amp; WILSON</b> Blacksmithing, Wheelwrighting Horse Shoeing and Carriage Repairing <b>Hardware, Paint, Vulcanizing, Repairing</b> Bicycles For Sale or To Let. Sundries 67 School Street</p>	<p><b>SMALL &amp; INGALLS</b> <b>ROAD AND CONCRETE</b> <b>CONSTRUCTION</b></p>
<p><b>S. L. KINGSLEY &amp; CO.</b> <b>REAL ESTATE, YACHT BROKERS</b> Insurance of all kinds Lyford &amp; Woodward Block      Tel 281-11</p>	<p><b>J. H. SAWYER</b> <b>WATCHMAKER</b> <b>JEWELER</b> <b>OPTICIAN</b> 98 Main Street</p>	<p><b>BAR HARBOR HOUSE AND CAFE</b> E. S. MOORE, Proprietor <b>STEAM HEATED ROOMS</b> <b>PRIVATE DINING ROOMS</b> <b>AUTO PARTS A SPECIALTY</b> Visitors to Bar Harbor will find good accom- modations.</p>	<p><b>R. H. MOON</b> <b>CONTRACTOR AND BUILDER</b> Cottage Work a Specialty Builders' Hardware Lumber of all kinds Office and Shop, 334-336 Main Street Telephone Connection</p>
<p><b>WILLIAM FENNELLY ESTATE</b> Manufacturers of and dealers in <b>Harness, Blankets, Robes, Whips</b> Horse Furnishing Goods, Stable Outfittings Trunks, Boots, Shoes, Rubbers, etc. <b>COMPLETE LINE OF ATHLETIC GOODS</b> Automobile Accessories</p>	<p><b>G. E. SOPER</b> <b>FANCY GROCERIES</b> Beef, Lamb, Veal, Poultry, Eggs, Butter Fruit and Vegetables Telephone                      43, Cottage Street</p>	<p><b>H. A. BROWN</b> <b>FURNITURE</b> <b>DEALER</b> Telephone                      Cottage Street</p>	<p><b>WEST END DRUG CO</b> <b>PHARMACISTS</b> Eastman Kodak Agency Opposite Village Green                      Main Street</p>

## REPRESENTATIVE BUSINESS FIRMS OF BAR HARBOR, MAINE

<p><b>THE FIRST NATIONAL BANK</b> OF BAR HARBOR</p> <p>A. S. Rodiek, Pres.    Thomas Searls, Cashier Geo. F. Berry, Vice Pres. H. F. Carter, Asst. Cashier</p> <p><b>SAVINGS DEPARTMENT</b></p>	<p><b>CHARLES C. LADD'S</b></p> <p style="text-align: center;"><b>SHOE SHOP</b></p> <p>A specialty made of Outing Shoes of all kinds</p> <p style="text-align: center;">Mt. Desert Block, 84 Main Street</p>	<p><b>QUIMBY &amp; STEWART</b></p> <p style="text-align: center;"><b>PAINTING AND PAPER HANGING</b></p> <p>Cottage Street                      T-Telephone 241-2</p> <p style="text-align: center;">WM. QUIMBY                      L. E. STEWART</p>	<p><b>MRS. G. J. LORING</b></p> <p style="text-align: center;"><b>DRY AND FANCY GOODS</b></p> <p style="text-align: center;"><b>MILLINERY</b></p> <p>30 Cottage Street                      Telephone 467-W</p>
<p><b>BAR HARBOR AND UNION</b> <b>RIVER POWER COMPANY</b></p> <p><b>MT. DESERT DIVISION</b></p> <p>Office: 105 Main Street</p>	<p><b>FRED C. LYNAM &amp; CO.,</b></p> <p style="text-align: center;"><b>Fire, Life and Liability</b> <b>INSURANCE</b></p> <p>Office with Bar Harbor Banking and Trust Company</p>	<p><b>M. PERLINSKY</b></p> <p style="text-align: center;"><b>DRY AND FANCY GOODS</b></p> <p style="text-align: center;">Draperies, Rugs and Matting</p> <p>Perlinsky Building                      103 Main Street</p>	<p><b>DAVIS BAR HARBOR</b> <b>BUCKBOARD COMPANY</b></p> <p>B. H. Young, Proprietor</p> <p>Agents for <b>OVERLAND AUTOS</b> Gasoline and Auto Supplies</p> <p>Carriage Building and Repairing in all branches 49 to 57 School Street                      Telephone 303-W</p>
<p><b>E. K. WHITAKER</b></p> <p style="text-align: center;"><b>CONTRACTOR AND BUILDER</b></p> <p style="text-align: center;"><b>COTTAGE JOBBING A SPECIALTY</b></p> <p>Shop and Office, 120-122 Cottage Street</p>	<p><b>H. S. NASON &amp; SON</b></p> <p style="text-align: center;">Headquarters for <b>Men's Fine Furnishing Goods</b></p> <p>Sole agents for Hart Schaffner &amp; Marx Clothing Crawford Shoes and Guyer Hats Yachting Outfits a Specialty</p> <p style="text-align: center;">104 Main Street</p>	<p><b>BREWER ICE COMPANY</b></p> <p style="text-align: center;">Frank L. Brewer, Manager</p> <p style="text-align: center;">Wholesale and retail dealers in <b>EAGLE LAKE ICE</b></p> <p>Heavy Trucking done to order at short notice Office 114 Cottage St., near corner Eden St.</p>	<p><b>JULIUS KURSON</b></p> <p style="text-align: center;">THE UP-TO-DATE <b>CLOTHIER AND FURNISHER</b></p> <p style="text-align: center;"><b>HATS AND SHOES</b></p> <p style="text-align: center;">54-56 Main Street</p>
<p><b>M. FRANKLIN</b></p> <p style="text-align: center;"><b>DRY GOODS</b> <b>CARPETS</b></p> <p>Franklin Building                      Main Street</p>	<p><b>LEON W. TABBUT</b></p> <p style="text-align: center;"><b>PAINTING, DECORATING GILDING</b></p> <p style="text-align: center;"><b>THE VERY LATEST IN WALL PAPERS</b></p> <p>No. 1 West Street                      Telephone 176</p>	<p><b>JOHN W. SILK &amp; SON</b></p> <p style="text-align: center;"><b>PLUMBING, STEAM AND HOT WATER HEATING</b></p> <p>Telephone 352-W                      20 Main Street</p>	<p><b>SHEA BROTHERS</b></p> <p style="text-align: center;"><b>MASONS, CONTRACTORS AND BUILDERS</b></p> <p>Special attention to Tiling, Fireplace Building and Jobbing. Dealers in Masons' Supplies Akron Drain Pipe and Land Tile</p> <p style="text-align: center;">123-125 Cottage Street</p>
<p><b>A. E. LAWRENCE CO.,</b></p> <p style="text-align: center;"><b>CONTRACTORS AND BUILDERS</b></p> <p>Garage and Automobile Supplies, Machine Work Wholesale Gasoline and Oil, Vulcanizing Hardware, Paints and Sporting Goods</p> <p style="text-align: center;">Telephone 248W</p>	<p><b>F. E. SHERMAN</b></p> <p style="text-align: center;"><b>KITCHEN AND DINING ROOM FURNISHINGS</b></p> <p>Stoves, Ranges, Furnaces, Hardware, Sherwin-Williams Paints and Varnishes, Oil Cloths and Linoleums, Household Dry Goods</p> <p style="text-align: center;">14-22 Cottage Street</p>	<p><b>E. W. DOUGLAS</b></p> <p style="text-align: center;"><b>BAKER</b></p> <p>Plain and Fancy Baking, Wedding and Birthday Cakes, Vienna and French Bread. Ice Cream by the quart or gallon.</p> <p>23 Cottage Street                      Telephone 51</p>	<p><b>MT. DESERT NURSERIES</b></p> <p style="text-align: center;"><b>FLORISTS AND SEEDSMEN</b></p> <p style="text-align: center;">Telephone 16-W</p>
<p><b>PERCY KELLY</b></p> <p style="text-align: center;"><b>Fancy Groceries, Flour</b></p> <p>Provisions, Fresh Eggs and Garden Produce P. E. Sharples Philadelphia Butter, and Poland Spring Butter. A full line of S. S. Pierce Co's goods. Foreign and Domestic Fruits</p> <p>47 Cottage Street                      Telephone 6</p>	<p><b>Faneuil Hall Market, Bar Harbor, Maine</b></p> <p style="text-align: center;"><b>J. H. BUTTERFIELD</b></p> <p><b>Beef, Lamb, Veal, Poultry, Game</b> Butter, Cheese and Eggs Game in season a specialty</p> <p>Telephone Connection</p>		<p><b>H. E. WAKEFIELD</b></p> <p style="text-align: center;"><b>PAINTING, PAPER HANGING AND DECORATING</b></p> <p>Dealer in Wall Papers, Paints, Oils, Varnishes</p> <p style="text-align: center;">Telephone                      65 Eden Street</p>



**Elco**  
MOTOR BOATS

36-ft. Elco  
Express

*"You'll always  
be proud of  
your Elco"*

## **ELCO Standardization** —What it Means

**T**O you—established models which year by year have been thoroughly tried out and improved until ELCO represents the last word in beauty, reliability and seaworthiness.

**To us**—increased factory efficiency, enabling us to employ in the production of these models only the most skillful workmen and the most carefully selected materials.

**To both of us**—a motor boat, which by the superiority of its design, exquisite finish and entire dependability cannot be equalled.

**THE ELCO COMPANY**  
Bayonne, N. J.

In a word, ELCO standardization means the utmost possible value.

The *Stream-like* design of our ELCO Express attracted marked attention years before it was adopted by the automobile industry. It is the graceful beauty of this design which you so readily recognize whenever you see an ELCO Express.

### **STANDARDIZED ELCO MODELS**

32 ft. ELCO Cruisette. Sleeps six.	36 ft. ELCO Express. Speed 26 miles.
20 ft. ELCO Express. Speed 22 miles.	38 ft. ELCO Cruiser. Flush deck.
45 ft. ELCO Cruiser. Private stateroom.	

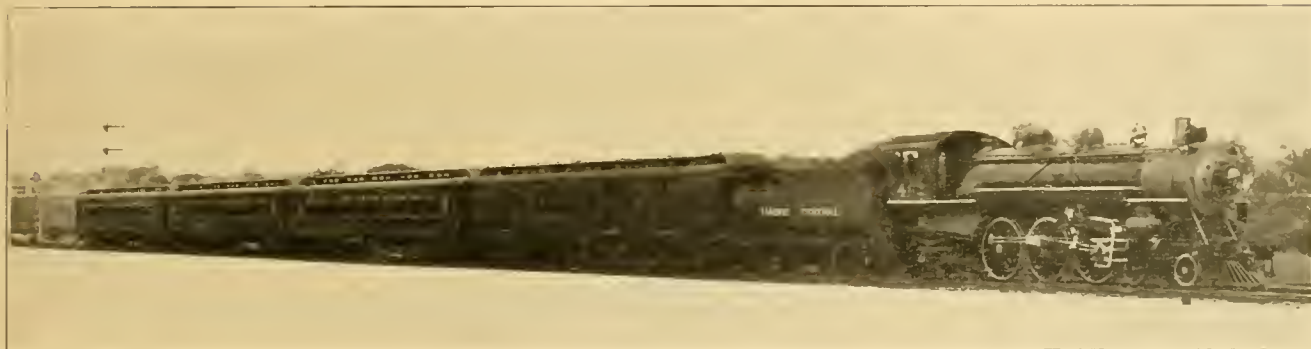
*Write for catalog of "Marine Views"*

Bar Harbor Representative  
**S. L. Kingsley & Co.**



# Maine Central Railroad

High grade Parlor Car, Sleeping Car and Dining Car Service



Modern equipped trains operated daily during the Summer season without change between

**NEW YORK---BOSTON---MOUNT DESERT FERRY**

IN CONNECTION WITH

Palatial Steamers from and to Bar Harbor, Northeast Harbor, Seal Harbor, Southwest Harbor,  
Manset and other points in Frenchmans Bay

Dining Car Service between Portland and Bangor on the New York--Bar Harbor trains

Visitors to Mount Desert should not fail to take the steamer trip "Around the Hills"

Passenger Traffic Department, Maine Central Railroad  
Portland, Maine

**W. H. SHERMAN**

**The Printer and Stationer**

**THE BEST EQUIPPED PRINTING PLANT IN EASTERN MAINE**

Booklets, Programs, Legal Blanks, Cards and all kinds of Commercial Printing, Publisher and Printer of this Souvenir Book and over 150 different Post Card Views taken on Mt. Desert Island

**LATEST AND MOST FASHIONABLE STATIONERY**

Including the papers made by Eaton, Crane & Pike Co., and Samuel Ward Co's. Stationers' Sundries

**Books, Magazines, Leather Goods, Desk Sets, Flags, Dennison's Crepe Papers, Metal Photo Frames, and a large variety of Souvenir Goods**

A copy of this book will be mailed to any address in the United States on receipt of 30 cents

**THE BAR HARBOR TIMES**

Devoted to the best interests of Hancock County and Mount Desert Island in particular  
Published every Saturday throughout the year. Subscription price \$1.00 per year in advance

**W. H. SHERMAN, Publisher, Bar Harbor, Maine**



